

**Flood Control Project Maintenance
Levee Inspections**

Fall 2014 Levee Maintenance Deficiency Summary Report

Overall LMA & Unit Ratings, including USACE Erosion Survey

Sacramento River Basin

ST0011	Overall LMA Rating	Total LMA Miles						
Sacramento Maintenance Yard West Levee Yolo Bypass	A	9.01						
Rated Item	Maintenance Deficiency				Enforcement		Design & System Obsolescence	
	M Miles	U Miles	M + 4U Miles	Threshold %	M Miles	U Miles	M Miles	U Miles
<i>Earthen Levee</i>								
Encroachments					3.39			
<i>Supplemental</i>								
DWR UCIP Field Study					0.04	0.01		
<i>LMA Totals:</i>	0.00	0.00	0.00	0.00%	3.43	0.01	0.00	0.00
Unit No. 01 West Levee RB	Overall Unit Rating	Total Unit Miles						
ST0011	A	2.73						
Rated Item	Maintenance Deficiency				Enforcement		Design & System Obsolescence	
	M Miles	U Miles	M + 4U Miles	Threshold %	M Miles	U Miles	M Miles	U Miles
<i>Earthen Levee</i>								
Encroachments					0.84			
<i>Supplemental</i>								
DWR UCIP Field Study					0.01			
<i>Unit Totals:</i>	0.00	0.00	0.00	0.00%	0.85	0.00	0.00	0.00
Unit No. 02 West Levee RB	Overall Unit Rating	Total Unit Miles						
ST0011	A	1.52						
Rated Item	Maintenance Deficiency				Enforcement		Design & System Obsolescence	
	M Miles	U Miles	M + 4U Miles	Threshold %	M Miles	U Miles	M Miles	U Miles
<i>Earthen Levee</i>								
Encroachments					0.79			
<i>Supplemental</i>								
DWR UCIP Field Study					0.01	0.01		
<i>Unit Totals:</i>	0.00	0.00	0.00	0.00%	0.80	0.01	0.00	0.00
Unit No. 03 West Levee RB	Overall Unit Rating	Total Unit Miles						
ST0011	A	1.15						
Rated Item	Maintenance Deficiency				Enforcement		Design & System Obsolescence	
	M Miles	U Miles	M + 4U Miles	Threshold %	M Miles	U Miles	M Miles	U Miles
<i>Supplemental</i>								
DWR UCIP Field Study					0.02			
<i>Unit Totals:</i>	0.00	0.00	0.00	0.00%	0.02	0.00	0.00	0.00
Unit No. 04 West Levee RB	Overall Unit Rating	Total Unit Miles						
ST0011	A	3.61						
Rated Item	Maintenance Deficiency				Enforcement		Design & System Obsolescence	
	M Miles	U Miles	M + 4U Miles	Threshold %	M Miles	U Miles	M Miles	U Miles
<i>Earthen Levee</i>								
Encroachments					1.76			
<i>Unit Totals:</i>	0.00	0.00	0.00	0.00%	1.76	0.00	0.00	0.00

**Flood Control Project Maintenance
Levee Inspections**
LMA District Cover Sheet
Fall 2014 Levee Inspection Results

Sacramento Maintenance Yard West Levee Yolo Bypass

	Spring (March - May)	Summer ** (June - August)	Fall (September - November)	Winter ** (December - February)
* Overall LMA Rating (Fall Only)			A	

** Non-receipt of Summer or Winter Inspection Reports may effect overall annual rating.

*

SPRING INSPECTIONS: Overall maintenance ratings are not determined for the spring inspection results. Individual maintenance deficiencies are rated using the same criteria in the spring and in the fall.

FALL INSPECTIONS: The overall maintenance rating shown above is based on operation and maintenance deficiencies identified within the attached unit inspection reports. This rating is not intended to be an indication of risk.

Comments

**Flood Control Project Maintenance
Levee Inspections**

Unit Cover Sheet

Fall 2014 Levee Inspection Results

Sacramento Maintenance Yard West Levee Yolo Bypass

Waterway			Bank	Unit Miles
Unit No. 01 West Levee			Right	2.73
	Spring (March - May)	Summer (June - August)	(September - November) Fall	Winter (December - February)
Unit Maintenance Rating (Fall Only)			A	
Date of Inspection	03/11/2014 - 03/11/2014		11/03/2014 - 11/03/2014	
DWR Inspector	John Williamson		Clay Thomas	
Accompanied By	Phil Carey Sacramento Maintenance Yard		Phil Carey Sacramento Maintenance Yard	
	Ted Skidgel Sacramento Maintenance Yard		Ted Skidgel Sacramento Maintenance Yard	

Summer & Winter Inspections

The Local Maintaining Agency (LMA) is responsible for summer and winter inspections. The LMA is required to submit a report regarding summer and winter inspections to the California Department of Water Resources (DWR).

DWR must be informed on the:

- a) completion of the inspection
- b) any changes other than the results of normal maintenance
- c) corrections to deficiencies noted in this report

If additional items are noted, further documentation of those items must also be submitted.

The LMA should submit this information to DWR using the LMA web application tool available at:

<http://cdec.water.ca.gov/lma.html>

If the LMA is unable to submit information on this webpage, please contact DWR for assistance.

The LMA should submit the information and any associated documentation by September 30 for summer inspections and March 31 for winter inspections.

**Flood Control Project Maintenance
Levee Inspections**

Levee Inspection Report By Mile - Fall 2014

Sacramento Maintenance Yard West Levee Yolo Bypass

Waterway	Bank	Unit Miles	Inspection Start/End	Inspector
Unit No. 01 West Levee	Right	2.73	11/03/2014 11/03/2014	Clay Thomas

LM Start		Rating **	A	Issue No.	5
LM End		Issue Type +	Ma	Location *	N/A
Category	Earthen Levee		GPS Latitude/Longitude		
			Start	End	
Item	Operations & Maintenance Manuals			°	°
				°	°
DWR ID	DWR_ST0011_01_s_2013_5				
Action/Comments					
Inspector Comments: The Sacramento Maintenance Yard has the levee manuals.					

No Photos

LM Start		Rating **	A	Issue No.	6
LM End		Issue Type +	Ma	Location *	N/A
Category	Earthen Levee		GPS Latitude/Longitude		
			Start	End	
Item	Emergency Supplies & Equipment			°	°
				°	°
DWR ID	DWR_ST0011_01_s_2013_6				
Action/Comments					
Inspector Comments: The Sacramento Maintenance Yard maintains a stockpile of flood response materials.					

No Photos

LM Start		Rating **	A	Issue No.	7
LM End		Issue Type +	Ma	Location *	N/A
Category	Earthen Levee		GPS Latitude/Longitude		
			Start	End	
Item	Flood Preparedness & Training			°	°
				°	°
DWR ID	DWR_ST0011_01_s_2013_7				
Action/Comments					
Inspector Comments: The Sacramento Maintenance Yard maintains a written flood response plan and regular flood response training.					

No Photos

* Location LS : Land Side N/A : Not Applicable WS : Water Side CR : Crown	** Rating A : Acceptable M : Minimally Acceptable U : Unacceptable	N : Not Inspected/Rated C : Corrected A/W : Acceptable but Monitor & Maintain	+ Issue Type Ma : Maintenance Deficiency Ob : Design & System Obsolescence En : Enforcement
--	--	---	---

**Flood Control Project Maintenance
Levee Inspections**

Levee Inspection Report By Mile - Fall 2014

Sacramento Maintenance Yard West Levee Yolo Bypass

Waterway	Bank	Unit Miles	Inspection Start/End	Inspector
Unit No. 01 West Levee	Right	2.73	11/03/2014 11/03/2014	Clay Thomas

LM Start	0.36	Rating **	M	Issue No.	1
LM End	0.43	Issue Type +	En	Location *	LS
Category	Earthen Levee			GPS Latitude/Longitude	
				Start	End
Item	Encroachments			38.755535 °	38.754512 °
				-121.664127 °	-121.663907 °
DWR ID	DWR_ST0011_01_s_2012_1				
Action/Comments					
Ditch					

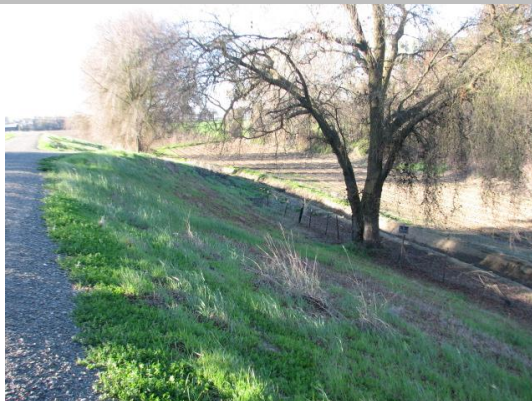
LM Start	0.36	Rating **	M	Issue No.	1 (cont)
LM End	0.43	Issue Type +	En	Location *	LS

Photo 1 of 3 : FA_2014_ST0011_291_1_20141014_00001.jpg



The culvert at the end of the agricultural ditch. Fall 2013

Photo 2 of 3 : FA_2014_ST0011_291_1_20141014_00002.jpg



The drain ditch runs along the toe of the levee. Spring 2014

Photo 3 of 3 : FA_2014_ST0011_291_1_20141014_00003.jpg



The agricultural ditch along the levee toe. Fall 2013

LM Start	0.36	Rating **	M	Issue No.	1 (cont)
LM End	0.43	Issue Type +	En	Location *	LS

*** Location**
LS : Land Side N/A : Not Applicable
WS : Water Side
CR : Crown

**** Rating**
A : Acceptable N : Not Inspected/Rated
M : Minimally Acceptable C : Corrected
U : Unacceptable A/W : Acceptable but Monitor & Maintain

+ Issue Type
Ma : Maintenance Deficiency
Ob : Design & System Obsolescence
En : Enforcement

**Flood Control Project Maintenance
Levee Inspections**

Levee Inspection Report By Mile - Fall 2014

Sacramento Maintenance Yard West Levee Yolo Bypass

Waterway	Bank	Unit Miles	Inspection Start/End	Inspector
Unit No. 01 West Levee	Right	2.73	11/03/2014 11/03/2014	Clay Thomas

LM Start	0.93	Rating **	M	Issue No.	8
LM End	1.63	Issue Type +	En	Location *	LS
Category	Earthen Levee			GPS Latitude/Longitude	
				Start	End
Item	Encroachments			38.747888 °	38.737688 °
				-121.660202 °	-121.660235 °
DWR ID	DWR_ST0011_01_s_ 2012_8				
Action/Comments					
Ditch					

Photo 1 of 2 : FA_2014_ST0011_291_8_20141014_00006.jpg



Another view of the agricultural ditch at the toe. Fall 2013

Photo 2 of 2 : FA_2014_ST0011_291_8_20141014_00007.jpg



The agricultural ditch runs along the toe of the levee. Fall 2013

LM Start	1.85	Rating **	M	Issue No.	175
LM End	1.85	Issue Type +	En	Location *	LS
Category	Supplemental			GPS Latitude/Longitude	
				Start	End
Item	DWR UCIP Field Study			38.734568 °	38.734568 °
				-121.660264 °	-121.660264 °
DWR ID	DWR_ST0011_01_f_ 2014_175				
Action/Comments					
Inspector Comments: FS_ID:33315					
EP_NO: 10284					
Repair Type: Non-Urgent					
Crossing Status: Indicator Found					
UCIP Comments: Found abandoned 42-inch CM pipe on LS berm of the levee. This was abandoned by farmer, how Unknown. need to have					

No Photos

* Location LS : Land Side N/A : Not Applicable WS : Water Side CR : Crown	** Rating A : Acceptable M : Minimally Acceptable U : Unacceptable	N : Not Inspected/Rated C : Corrected A/W : Acceptable but Monitor & Maintain	+ Issue Type Ma : Maintenance Deficiency Ob : Design & System Obsolescence En : Enforcement
--	--	--	---

Sacramento Maintenance Yard West Levee Yolo Bypass

No Photos

The agricultural ditch runs along the toe of the levee. Spring 2014

Page 4 of 5

**Flood Control Project Maintenance
Levee Inspections**

Levee Inspection Report By Mile - Fall 2014

Sacramento Maintenance Yard West Levee Yolo Bypass

Waterway	Bank	Unit Miles	Inspection Start/End	Inspector
Unit No. 01 West Levee	Right	2.73	11/03/2014 11/03/2014	Clay Thomas

LM Start	2.63	Rating **	M	Issue No.	4 (cont)	
LM End	2.70	Issue Type +	En	Location *	LS	
Category	Earthen Levee			GPS Latitude/Longitude		
				Start		End
Item	Encroachments			38.724800 °		38.724230 °
				-121.663710 °		-121.664873 °
DWR ID	DWR_ST0011_01_s_2012_4					
Action/Comments						
Ditch						

Photo 2 of 2 : FA_2014_ST0011_291_4_20141014_00005.jpg



The agricultural ditch runs along the toe of the levee. Spring 2013

* Location LS : Land Side N/A : Not Applicable WS : Water Side CR : Crown	** Rating A : Acceptable M : Minimally Acceptable U : Unacceptable	N : Not Inspected/Rated C : Corrected A/W : Acceptable but Monitor & Maintain	+ Issue Type Ma : Maintenance Deficiency Ob : Design & System Obsolescence En : Enforcement
--	--	---	---

**Flood Control Project Maintenance
Levee Inspections**

Unit Cover Sheet

Fall 2014 Levee Inspection Results

Sacramento Maintenance Yard West Levee Yolo Bypass

Waterway			Bank	Unit Miles
Unit No. 02 West Levee			Right	1.52
	Spring (March - May)	Summer (June - August)	(September - November) Fall	Winter (December - February)
Unit Maintenance Rating (Fall Only)			A	
Date of Inspection	03/11/2014 - 03/11/2014		11/03/2014 - 11/03/2014	
DWR Inspector	John Williamson		Clay Thomas	
Accompanied By	Ted Skidgel Sacramento Maintenance Yard		Ted Skidgel Sacramento Maintenance Yard	

Summer & Winter Inspections

The Local Maintaining Agency (LMA) is responsible for summer and winter inspections. The LMA is required to submit a report regarding summer and winter inspections to the California Department of Water Resources (DWR).

DWR must be informed on the:

- a) completion of the inspection
- b) any changes other than the results of normal maintenance
- c) corrections to deficiencies noted in this report

If additional items are noted, further documentation of those items must also be submitted.

The LMA should submit this information to DWR using the LMA web application tool available at:

<http://cdec.water.ca.gov/lma.html>

If the LMA is unable to submit information on this webpage, please contact DWR for assistance.

The LMA should submit the information and any associated documentation by September 30 for summer inspections and March 31 for winter inspections.

**Flood Control Project Maintenance
Levee Inspections**

Levee Inspection Report By Mile - Fall 2014

Sacramento Maintenance Yard West Levee Yolo Bypass

Waterway	Bank	Unit Miles	Inspection Start/End	Inspector
Unit No. 02 West Levee	Right	1.52	11/03/2014 11/03/2014	Clay Thomas

LM Start	0.00	Rating **	A	Issue No.	80
LM End	1.52	Issue Type +	Ma	Location *	LS
Category	Earthen Levee			GPS Latitude/Longitude	
				Start	End
Item	Vegetation				°
					°
DWR ID	DWR_ST0011_02_f_2014_80				
Action/Comments					
Control annual grass and weeds on the levee slopes and easements.					

Photo 1 of 1 : FA_2014_ST0011_292_80_20141106_00116.jpg



Levee mile 1.50, levee slopes and crown. Fall 2014.

LM Start	0.08	Rating **	C	Issue No.	4
LM End	0.21	Issue Type +	En	Location *	LS
Category	Earthen Levee			GPS Latitude/Longitude	
				Start	End
Item	Encroachments			38.718005 °	38.716140 °
				-121.664496 °	-121.665460 °
DWR ID	DWR_ST0011_02_s_2012_4				
Action/Comments					
Ditch					

No Photos

LM Start	0.22	Rating **	U	Issue No.	78
LM End	0.22	Issue Type +	En	Location *	LS
Category	Supplemental			GPS Latitude/Longitude	
				Start	End
Item	DWR UCIP Field Study			38.716115 °	38.716115 °
				-121.665475 °	-121.665475 °
DWR ID	DWR_ST0011_02_f_2014_78				
Action/Comments					
Inspector Comments: FS_ID:33754					
EP_NO: N/A					
Repair Type: Urgent					
Crossing Status: Found					
UCIP Comments: Slide gate on waterside stand pipe. Not properly abandoned. No new pipe found. Need to fix hole in toe road approximately 10 feet from stand pipe picture included 4-17-2014					
FIELD_STRUCT_DESC: Abandoned 24-inch CM pipe through levee 23.0 feet below crown. Slide gate on waterward end. waterward end extends across irrigation ditch and feeds into 20-inch pipe off waterward toe out into field.					
FS Date: 4/17/2014 2:33:34 PM					

No Photos

* Location LS : Land Side N/A : Not Applicable WS : Water Side CR : Crown	** Rating A : Acceptable M : Minimally Acceptable U : Unacceptable	N : Not Inspected/Rated C : Corrected A/W : Acceptable but Monitor & Maintain	+ Issue Type Ma : Maintenance Deficiency Ob : Design & System Obsolescence En : Enforcement
--	--	--	---

**Flood Control Project Maintenance
Levee Inspections**

Levee Inspection Report By Mile - Fall 2014

Sacramento Maintenance Yard West Levee Yolo Bypass

Waterway	Bank	Unit Miles	Inspection Start/End	Inspector
Unit No. 02 West Levee	Right	1.52	11/03/2014 11/03/2014	Clay Thomas

LM Start	0.47	Rating **	M	Issue No.	3
LM End	0.97	Issue Type +	En	Location *	LS
Category	Earthen Levee			GPS Latitude/Longitude	
				Start	End
Item	Encroachments			38.712813 °	38.706018 °
				-121.667349 °	-121.670831 °
DWR ID	DWR_ST0011_02_s _ 2012_3				
Action/Comments					
Ditch					

Photo 1 of 1 : FA_2014_ST0011_292_3_20141014_00002.jpg



The agricultural ditch is within the easement of the levee. Fall 2013

LM Start	0.98	Rating **	C	Issue No.	2
LM End	0.98	Issue Type +	En	Location *	WS
Category	Earthen Levee			GPS Latitude/Longitude	
				Start	End
Item	Encroachments			38.705783 °	38.705783 °
				-121.670951 °	-121.670951 °
DWR ID	DWR_ST0011_02_s _ 2014_2				
Action/Comments					
Debris					
Inspector Comments: concrete debris on levee toe and slope.					

No Photos

*** Location**
LS : Land Side N/A : Not Applicable
WS : Water Side
CR : Crown

**** Rating**
A : Acceptable N : Not Inspected/Rated
M : Minimally Acceptable C : Corrected
U : Unacceptable A/W : Acceptable but Monitor & Maintain

+ Issue Type
Ma : Maintenance Deficiency
Ob : Design & System Obsolescence
En : Enforcement

**Flood Control Project Maintenance
Levee Inspections**

Levee Inspection Report By Mile - Fall 2014

Sacramento Maintenance Yard West Levee Yolo Bypass

Waterway	Bank	Unit Miles	Inspection Start/End	Inspector
Unit No. 02 West Levee	Right	1.52	11/03/2014 11/03/2014	Clay Thomas

LM Start	0.98	Rating **	M	Issue No.	79
LM End	0.98	Issue Type +	En	Location *	WS
Category	Supplemental			GPS Latitude/Longitude	
				Start	End
Item	DWR UCIP Field Study			38.705952 °	38.705952 °
				-121.670875 °	-121.670875 °
DWR ID	DWR_ST0011_02_f_2014_79				

No Photos

Action/Comments					
Inspector Comments: FS_ID:33316 EP_NO: 10288 Repair Type: Non-Urgent Crossing Status: Found UCIP Comments: Sloughing at pipe day light on WS slope. A 8-inch pipe was not visible during field survey. Air vent leaking water when pump activated causing erosion around pipe on slope. summer of 2013 repaired sloughing around pipe air vent still leaking FIELD_STRUCT_DESC: 24 inch pipe through levee 5.2 feet below crown; a 8-inch pipe sleeved through the 24-inch pipe with the annular space grouted, a pump in a pumphouse at the toe of the landward slope, and a siphon breaker on the waterside slope. (ABO No. 10288 - Cache Creek Ranch). FS Date: 4/10/2014 2:15:06 PM					

LM Start	1.15	Rating **	M	Issue No.	5
LM End	1.44	Issue Type +	En	Location *	LS
Category	Earthen Levee			GPS Latitude/Longitude	
				Start	End
Item	Encroachments			38.703681 °	38.699637 °
				-121.672090 °	-121.674112 °
DWR ID	DWR_ST0011_02 s 2012 5				

Action/Comments					
Ditch					

Photo 1 of 1 : FA_2014_ST0011_292_5_20141014_00004.jpg



The agricultural ditch is within the easement of the levee. Fall 2013

* Location LS : Land Side N/A : Not Applicable WS : Water Side CR : Crown	** Rating A : Acceptable M : Minimally Acceptable U : Unacceptable	N : Not Inspected/Rated C : Corrected A/W : Acceptable but Monitor & Maintain	+ Issue Type Ma : Maintenance Deficiency Ob : Design & System Obsolescence En : Enforcement
--	--	---	---

**Flood Control Project Maintenance
Levee Inspections**

Unit Cover Sheet

Fall 2014 Levee Inspection Results

Sacramento Maintenance Yard West Levee Yolo Bypass

Waterway			Bank	Unit Miles
Unit No. 03 West Levee			Right	1.15
	Spring (March - May)	Summer (June - August)	(September - November) Fall	Winter (December - February)
Unit Maintenance Rating (Fall Only)			A	
Date of Inspection	03/11/2014 - 03/11/2014		11/03/2014 - 11/03/2014	
DWR Inspector	John Williamson		Clay Thomas	
Accompanied By	Ted Skidgel Sacramento Maintenance Yard		Ted Skidgel Sacramento Maintenance Yard	

Summer & Winter Inspections

The Local Maintaining Agency (LMA) is responsible for summer and winter inspections. The LMA is required to submit a report regarding summer and winter inspections to the California Department of Water Resources (DWR).

DWR must be informed on the:

- completion of the inspection
- any changes other than the results of normal maintenance
- corrections to deficiencies noted in this report

If additional items are noted, further documentation of those items must also be submitted.

The LMA should submit this information to DWR using the LMA web application tool available at:

<http://cdec.water.ca.gov/lma.html>

If the LMA is unable to submit information on this webpage, please contact DWR for assistance.

The LMA should submit the information and any associated documentation by September 30 for summer inspections and March 31 for winter inspections.

**Flood Control Project Maintenance
Levee Inspections**

Levee Inspection Report By Mile - Fall 2014

Sacramento Maintenance Yard West Levee Yolo Bypass

Waterway	Bank	Unit Miles	Inspection Start/End	Inspector
Unit No. 03 West Levee	Right	1.15	11/03/2014 11/03/2014	Clay Thomas

LM Start	0.00	Rating **	A	Issue No.	58
LM End	1.48	Issue Type +	Ma	Location *	LS
Category	Earthen Levee			GPS Latitude/Longitude	
				Start	End
Item	Vegetation				°
					°
DWR ID	DWR_ST0011_03_f_2014_58				
Action/Comments					
Control annual grass and weeds on the levee slopes and easements.					

Photo 1 of 1 : FA_2014_ST0011_293_58_20141106_00090.jpg



Levee mile 0.00, vegetation on levee slopes. Fall 2014.

LM Start	1.45	Rating **	M	Issue No.	56
LM End	1.45	Issue Type +	En	Location *	LS
Category	Supplemental			GPS Latitude/Longitude	
				Start	End
Item	DWR UCIP Field Study			38.677539 °	38.677539 °
				-121.672841 °	-121.672841 °
DWR ID	DWR_ST0011_03_f_2014_56				
Action/Comments					
Inspector Comments: FS_ID:33317					
EP_NO: 10296					
Repair Type: Non-Urgent					
Crossing Status: Found					
UCIP Comments: summer of 2013 removed debris and mud					
FIELD_STRUCT_DESC: One of two CMP. Two 36-inch C.M. pipes					
through levee 20.0 feet below crown. (ABO No. 10296 Woodland					
Farms).					
FS Date: 4/10/2014 2:17:09 PM					

No Photos

* Location LS : Land Side N/A : Not Applicable WS : Water Side CR : Crown	** Rating A : Acceptable M : Minimally Acceptable U : Unacceptable	N : Not Inspected/Rated C : Corrected A/W : Acceptable but Monitor & Maintain	+ Issue Type Ma : Maintenance Deficiency Ob : Design & System Obsolescence En : Enforcement
--	--	---	---

**Flood Control Project Maintenance
Levee Inspections**

Levee Inspection Report By Mile - Fall 2014

Sacramento Maintenance Yard West Levee Yolo Bypass

Waterway	Bank	Unit Miles	Inspection Start/End	Inspector
Unit No. 03 West Levee	Right	1.15	11/03/2014 11/03/2014	Clay Thomas

LM Start	1.46	Rating **	M	Issue No.	57
LM End	1.46	Issue Type +	En	Location *	LS
Category	Supplemental			GPS Latitude/Longitude	
				Start	End
Item	DWR UCIP Field Study			38.677527 °	38.677527 °
				-121.672839 °	-121.672839 °
DWR ID	DWR_ST0011_03 f _2014_57				

No Photos

Action/Comments					
Inspector Comments: FS_ID:33318 EP_NO: 10296 Repair Type: Non-Urgent Crossing Status: Found UCIP Comments: Flat gate was partially open. Intake pipes in LS burried with floating debris/wooden logs. Debris removal or trash rack/screen is required. Two pipes are 5 ft apart from each other. summer of 2013 removed debri FIELD_STRUCT_DESC: Two of two CMP. Two 36-inch C.M. pipes through levee 20.0 feet below crown. Slide gate on landward end. (ABO No. 10296 Woodland Farms). FS Date: 4/10/2014 2:19:23 PM					

* Location LS : Land Side N/A : Not Applicable WS : Water Side CR : Crown	** Rating A : Acceptable M : Minimally Acceptable U : Unacceptable	N : Not Inspected/Rated C : Corrected A/W : Acceptable but Monitor & Maintain	+ Issue Type Ma : Maintenance Deficiency Ob : Design & System Obsolescence En : Enforcement
--	--	---	---

**Flood Control Project Maintenance
Levee Inspections**

Unit Cover Sheet

Fall 2014 Levee Inspection Results

Sacramento Maintenance Yard West Levee Yolo Bypass

Waterway			Bank	Unit Miles
Unit No. 04 West Levee			Right	3.61
	Spring (March - May)	Summer (June - August)	(September - November) Fall	Winter (December - February)
Unit Maintenance Rating (Fall Only)			A	
Date of Inspection	03/19/2014 - 03/19/2014		11/13/2014 - 11/13/2014	
DWR Inspector	John Williamson		Clay Thomas	
Accompanied By	Casey Lund Sacramento Maintenance Yard		Casey Lund Sacramento Maintenance Yard	

Summer & Winter Inspections

The Local Maintaining Agency (LMA) is responsible for summer and winter inspections. The LMA is required to submit a report regarding summer and winter inspections to the California Department of Water Resources (DWR).

DWR must be informed on the:

- a) completion of the inspection
- b) any changes other than the results of normal maintenance
- c) corrections to deficiencies noted in this report

If additional items are noted, further documentation of those items must also be submitted.

The LMA should submit this information to DWR using the LMA web application tool available at:

<http://cdec.water.ca.gov/lma.html>

If the LMA is unable to submit information on this webpage, please contact DWR for assistance.

The LMA should submit the information and any associated documentation by September 30 for summer inspections and March 31 for winter inspections.

Levee Inspection Report By Mile - Fall 2014

Waterway	Bank	Unit Miles	Inspection Start/End	Inspector
Unit No. 04 West Levee	Right	3.61	11/13/2014 11/13/2014	Clay Thomas

Photo 1 of 1 : FA_2014_ST0011_294_2_20141114_00007.jpg



Photo 1 of 1 : FA_2014_ST0011_294_1_20141114_00008.jpg



Photo 1 of 2 : FA_2014_ST0011_294_3_20141014_00001.jpg



* Location	** Rating	+ Issue Type
LS : Land Side N/A : Not Applicable	A : Acceptable N : Not Inspected/Rated	Ma : Maintenance Deficiency
WS : Water Side	M : Minimally Acceptable C : Corrected	Ob : Design & System Obsolescence
CR : Crown	U : Unacceptable A/W : Acceptable but Monitor & Maintain	En : Enforcement

**Flood Control Project Maintenance
Levee Inspections**

Levee Inspection Report By Mile - Fall 2014

Sacramento Maintenance Yard West Levee Yolo Bypass

Waterway	Bank	Unit Miles	Inspection Start/End	Inspector
Unit No. 04 West Levee	Right	3.61	11/13/2014 11/13/2014	Clay Thomas

LM Start	1.78	Rating **	M	Issue No.	3 (cont)	
LM End	2.70	Issue Type +	En	Location *	LS	
Category	Earthen Levee			GPS Latitude/Longitude		
				Start		End
Item	Encroachments			38.550387 °		38.536958 °
				-121.631257 °		-121.631450 °
DWR ID	DWR_ST0011_04_s_2012_3					
Action/Comments						
Ditch						

Photo 2 of 2 : FA_2014_ST0011_294_3_20141014_00002.jpg



The agricultural ditch is within the easement of the levee. Fall 2013

LM Start	2.76	Rating **	M	Issue No.	4
LM End	3.60	Issue Type +	En	Location *	LS
Category	Earthen Levee			GPS Latitude/Longitude	
				Start	End
Item	Encroachments			38.536100 °	38.523807 °
				-121.631425 °	-121.631535 °
DWR ID	DWR_ST0011_04_s_2012_4				
Action/Comments					
Ditch					

Photo 1 of 4 : FA_2014_ST0011_294_4_20141014_00003.jpg



The agricultural ditch is within the easement of the levee. Fall 2013

LM Start	2.76	Rating **	M	Issue No.	4 (cont)
LM End	3.60	Issue Type +	En	Location *	LS

Photo 2 of 4 : FA_2014_ST0011_294_4_20141014_00004.jpg



The ditch runs west for about a quarter of a mile. Spring 2014

*** Location**

LS : Land Side N/A : Not Applicable
WS : Water Side
CR : Crown

**** Rating**

A : Acceptable N : Not Inspected/Rated
M : Minimally Acceptable C : Corrected
U : Unacceptable A/W : Acceptable but Monitor & Maintain

+ Issue Type

Ma : Maintenance Deficiency
Ob : Design & System Obsolescence
En : Enforcement

**Flood Control Project Maintenance
Levee Inspections**

Levee Inspection Report By Mile - Fall 2014

Sacramento Maintenance Yard West Levee Yolo Bypass

Waterway	Bank	Unit Miles	Inspection Start/End	Inspector
Unit No. 04 West Levee	Right	3.61	11/13/2014 11/13/2014	Clay Thomas

LM Start	2.76	Rating **	M	Issue No.	4 (cont)	
LM End	3.60	Issue Type +	En	Location *	LS	
Category	Earthen Levee			GPS Latitude/Longitude		
				Start		End
Item	Encroachments			38.536100 °		38.523807 °
				-121.631425 °		-121.631535 °
DWR ID	DWR_ST0011_04_s_ 2012_4					
Action/Comments						
Ditch						

Photo 3 of 4 : FA_2014_ST0011_294_4_20141014_00005.jpg



The ditch is in the profile of the levee slope. Spring 2014

LM Start	2.76	Rating **	M	Issue No.	4 (cont)
LM End	3.60	Issue Type +	En	Location *	LS

Photo 4 of 4 : FA_2014_ST0011_294_4_20141014_00006.jpg



Looking west at the agricultural ditch. Fall 2013

* Location LS : Land Side N/A : Not Applicable WS : Water Side CR : Crown	** Rating A : Acceptable M : Minimally Acceptable U : Unacceptable	N : Not Inspected/Rated C : Corrected A/W : Acceptable but Monitor & Maintain	+ Issue Type Ma : Maintenance Deficiency Ob : Design & System Obsolescence En : Enforcement
--	--	---	---