

**Flood Control Project Maintenance
Levee Inspections**

Maintenance Issue Types Only, Levee Inspection Report By Mile - Fall 2024

Sutter Maintenance Yard Wadsworth Canal

Waterway	Bank	Unit Miles	Inspection Start/End	Inspector
Unit No. 01 Wadsworth Canal	Left	4.63	09/26/2024 09/26/2024	Nate Hicks

LM Start		Rating **	A	Issue No.	10
LM End		Issue Type +	Ma	Location *	N/A
Category	Earthen Levee		GPS Latitude/Longitude		
			Start	End	
Item	Operations & Maintenance Manuals				
DWR ID	DWR_ST0010_01_s _ 2013_10				
Comment Code					
OM : O&M Manuals					
Inspector Comment					
The LMA has the O&M manuals.					

No Photos

LM Start		Rating **	A	Issue No.	11
LM End		Issue Type +	Ma	Location *	N/A
Category	Earthen Levee		GPS Latitude/Longitude		
			Start	End	
Item	Emergency Supplies & Equipment				
DWR ID	DWR_ST0010_01_s _ 2013_11				
Comment Code					
ES : Emergency Supplies & Equipment					
Inspector Comment					
The LMA has flood fight supplies and equipment.					

No Photos

LM Start		Rating **	A	Issue No.	12
LM End		Issue Type +	Ma	Location *	N/A
Category	Earthen Levee		GPS Latitude/Longitude		
			Start	End	
Item	Flood Preparedness & Training				
DWR ID	DWR_ST0010_01_s _ 2013_12				
Comment Code					
FP : Flood Preparedness & Training					
Inspector Comment					
The LMA completed flood fight training in 2021 and has another one scheduled.					

No Photos

* Location LS : Land Side N/A : Not Applicable WS : Water Side CR : Crown	** Rating A : Acceptable M : Minimally Acceptable U : Unacceptable	N : Not Inspected/Rated C : Corrected A/W : Acceptable but Monitor & Maintain	+ Issue Type Ma : Maintenance Deficiency Ob : Design & System Obsolescence En : Enforcement
--	--	---	---

**Flood Control Project Maintenance
Levee Inspections****Maintenance Issue Types Only, Levee Inspection Report By Mile - Fall 2024****Sutter Maintenance Yard Wadsworth Canal**

Waterway	Bank	Unit Miles	Inspection Start/End	Inspector
Unit No. 01 Wadsworth Canal	Left	4.63	09/26/2024 09/26/2024	Nate Hicks

LM Start	0.06	Rating **	C	Issue No.	24
LM End	0.06	Issue Type +	Ma	Location *	WS
Category	Earthen Levee			GPS Latitude/Longitude	
				Start	End
Item	Animal Control			39.114203°	39.114203°
				-121.768015°	-121.768015°
DWR ID	DWR_ST0010_01_s_2024_24				
Comment Code					
A3 : No rodents visible, but rodent burrows visible; need to backfill and compact or grout burrows.					
Inspector Comment					
Corrected.					

No Photos

LM Start	0.06	Rating **	M	Issue No.	20
LM End	0.19	Issue Type +	Ma	Location *	WS
Category	Earthen Levee			GPS Latitude/Longitude	
				Start	End
Item	Erosion / Bank Caving			39.114203°	39.115719°
				-121.768015°	-121.766517°
DWR ID	DWR_ST0010_01_f_2016_20				
Comment Code					
E2 : Schedule repair of erosion site prior to the next inspection.					
Inspector Comment					

Photo 1 of 1 : FA_2024_ST0010_42_20_20241001_00024.jpg



View of erosion on the waterside toe (Fall 2024).

LM Start	0.36	Rating **	C	Issue No.	9
LM End	0.36	Issue Type +	Ma	Location *	WS
Category	Earthen Levee			GPS Latitude/Longitude	
				Start	End
Item	Trim / Thin Trees			39.117622°	39.117622°
				-121.764763°	-121.764763°
DWR ID	DWR_ST0010_01_s_2024_9				
Comment Code					
T3 : Fallen tree with root ball.					
Inspector Comment					
Corrected.					

No Photos

* Location LS : Land Side N/A : Not Applicable WS : Water Side CR : Crown		** Rating A : Acceptable M : Minimally Acceptable U : Unacceptable N : Not Inspected/Rated C : Corrected A/W : Acceptable but Monitor & Maintain		+ Issue Type Ma : Maintenance Deficiency Ob : Design & System Obsolescence En : Enforcement	
--	--	---	--	---	--

**Flood Control Project Maintenance
Levee Inspections****Maintenance Issue Types Only, Levee Inspection Report By Mile - Fall 2024****Sutter Maintenance Yard Wadsworth Canal**

Waterway	Bank	Unit Miles	Inspection Start/End	Inspector
Unit No. 01 Wadsworth Canal	Left	4.63	09/26/2024 09/26/2024	Nate Hicks

LM Start	0.37	Rating **	A/W	Issue No.	19
LM End	0.41	Issue Type +	Ma	Location *	WS
Category	Earthen Levee			GPS Latitude/Longitude	
				Start	End
Item	Erosion / Bank Caving			39.117805°	39.118276°
				-121.764588°	-121.764151°
DWR ID	DWR_ST0010_01_f_2016_19				
Comment Code					
E1 : Note and monitor erosion site.					
Inspector Comment					

Photo 1 of 1 : FA_2024_ST0010_42_19_20240923_00005.jpg



View of the erosion along the waterside toe road (Spring 2024).

LM Start	0.53	Rating **	C	Issue No.	13
LM End	0.56	Issue Type +	Ma	Location *	WS
Category	Earthen Levee			GPS Latitude/Longitude	
				Start	End
Item	Trim / Thin Trees			39.119634°	39.120052°
				-121.762851°	-121.762469°
DWR ID	DWR_ST0010_01_s_2024_13				
Comment Code					
T3 : Fallen tree with root ball.					
Inspector Comment					
Corrected.					

No Photos

LM Start	1.10	Rating **	C	Issue No.	15
LM End	1.13	Issue Type +	Ma	Location *	WS
Category	Earthen Levee			GPS Latitude/Longitude	
				Start	End
Item	Erosion / Bank Caving			39.126265°	39.126657°
				-121.756561°	-121.756178°
DWR ID	DWR_ST0010_01_s_2024_15				
Comment Code					
E2 : Schedule repair of erosion site prior to the next inspection.					
Inspector Comment					
Corrected.					

No Photos

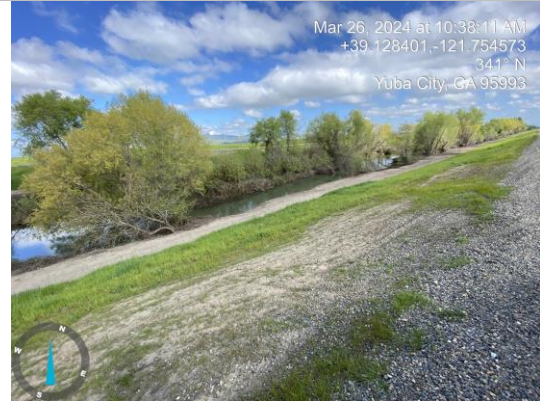
* Location LS : Land Side N/A : Not Applicable WS : Water Side CR : Crown		** Rating A : Acceptable M : Minimally Acceptable U : Unacceptable N : Not Inspected/Rated C : Corrected A/W : Acceptable but Monitor & Maintain		+ Issue Type Ma : Maintenance Deficiency Ob : Design & System Obsolescence En : Enforcement	
--	--	---	--	---	--

**Flood Control Project Maintenance
Levee Inspections****Maintenance Issue Types Only, Levee Inspection Report By Mile - Fall 2024****Sutter Maintenance Yard Wadsworth Canal**

Waterway	Bank	Unit Miles	Inspection Start/End	Inspector
Unit No. 01 Wadsworth Canal	Left	4.63	09/26/2024 09/26/2024	Nate Hicks

LM Start	1.27	Rating **	M	Issue No.	22
LM End	1.31	Issue Type +	Ma	Location *	WS
Category	Earthen Levee			GPS Latitude/Longitude	
				Start	End
Item	Erosion / Bank Caving			39.128319°	39.128730°
				-121.754581°	-121.754187°
DWR ID	DWR_ST0010_01_s_2024_22				
Comment Code					
E2 : Schedule repair of erosion site prior to the next inspection.					
Inspector Comment					
There is erosion along the waterside toe road.					

Photo 1 of 1 : FA_2024_ST0010_42_22_20240923_00007.jpg



View of erosion along the waterside toe road (Spring 2024).

LM Start	1.40	Rating **	M	Issue No.	23
LM End	1.42	Issue Type +	Ma	Location *	WS
Category	Earthen Levee			GPS Latitude/Longitude	
				Start	End
Item	Erosion / Bank Caving			39.129831°	39.130027°
				-121.753145°	-121.752950°
DWR ID	DWR_ST0010_01_s_2024_23				
Comment Code					
E2 : Schedule repair of erosion site prior to the next inspection.					
Inspector Comment					
There is erosion along the waterside toe road.					

Photo 1 of 1 : FA_2024_ST0010_42_23_20240923_00008.jpg



View of erosion along the waterside toe road (Spring 2024).

LM Start	1.74	Rating **	M	Issue No.	6
LM End	2.39	Issue Type +	Ma	Location *	WS
Category	Supplemental			GPS Latitude/Longitude	
				Start	End
Item	2018 USACE Erosion Survey			39.133887°	39.141757°
				-121.749526°	-121.742939°
DWR ID	DWR_ST0010_01_s_2024_6				
Comment Code					
Inspector Comment					
2018 Site ID: WAC 2.1 L					
Status: Eroding					
2018 Field Notes: Last observed in 2017.					
Site History: 2011 - Whole bank is starting to unravel, with failure from poor soils. 2017 - Minor new erosion observed.					

Photo 1 of 1 : FA_2024_ST0010_42_6_20241001_00025.jpg



View of erosion on the waterside toe road (Fall 2024).

* Location	** Rating	+ Issue Type
LS : Land Side WS : Water Side CR : Crown	A : Acceptable M : Minimally Acceptable U : Unacceptable	Ma : Maintenance Deficiency Ob : Design & System Obsolescence En : Enforcement
N : Not Inspected/Rated C : Corrected A/W : Acceptable but Monitor & Maintain		

**Flood Control Project Maintenance
Levee Inspections****Maintenance Issue Types Only, Levee Inspection Report By Mile - Fall 2024****Sutter Maintenance Yard Wadsworth Canal**

Waterway	Bank	Unit Miles	Inspection Start/End	Inspector
Unit No. 01 Wadsworth Canal	Left	4.63	09/26/2024 09/26/2024	Nate Hicks

LM Start	2.43	Rating **	M	Issue No.	7
LM End	3.30	Issue Type +	Ma	Location *	WS
Category	Supplemental			GPS Latitude/Longitude	
				Start	End
Item	2018 USACE Erosion Survey			39.142235°	39.153095°
				-121.742609°	-121.734390°
DWR ID	DWR_ST0010_01_s_2022_7				
Comment Code					
Inspector Comment					
2018 Site ID: WAC 2.4 L					
Status: Eroding					
2018 Field Notes: Last observed in 2017.					
Site History: 2010 - Over steepened levees, some slumping, reach-wide problem. 2011 - Still a reach-wide problem. 2017 - Significant new erosion lower bank.					

Photo 1 of 1 : FA_2024_ST0010_42_7_20241001_00026.jpg



View of erosion on the waterside toe road (Fall 2024).

LM Start	2.76	Rating **	C	Issue No.	8
LM End	2.76	Issue Type +	Ma	Location *	WS
Category	Earthen Levee			GPS Latitude/Longitude	
				Start	End
Item	Slope Stability			39.146163°	39.146163°
				-121.739181°	-121.739181°
DWR ID	DWR_ST0010_01_f_2023_8				
Comment Code					
S1 : Repair slope instability.					
Inspector Comment					
Corrected.					

No Photos

* Location LS : Land Side N/A : Not Applicable WS : Water Side CR : Crown	** Rating A : Acceptable M : Minimally Acceptable U : Unacceptable N : Not Inspected/Rated C : Corrected A/W : Acceptable but Monitor & Maintain	+ Issue Type Ma : Maintenance Deficiency Ob : Design & System Obsolescence En : Enforcement
--	---	---

**Flood Control Project Maintenance
Levee Inspections**

Maintenance Issue Types Only, Levee Inspection Report By Mile - Fall 2024

Sutter Maintenance Yard Wadsworth Canal

Waterway	Bank	Unit Miles	Inspection Start/End	Inspector
Unit No. 01 Wadsworth Canal	Left	4.63	09/26/2024 09/26/2024	Nate Hicks

LM Start	3.04	Rating **	A	Issue No.	26
LM End	3.04	Issue Type +	Ma	Location *	
Category	Supplemental			GPS Latitude/Longitude	
				Start	End
Item	DWR UCIP LMA Responsibility			39.149549°	39.149549°
				-121.736408°	-121.736408°
DWR ID	17065				

Comment Code

Inspector Comment

DS_ID:17065
FS_ID:83620
EP_NO: 7209
Repair Type: No Action Needed
EVAL Issue:
Crossing Status: Found
UCIP Comments: 05/06/2024 Record remains No Action Needed. Pipe was CIPP lined. DMP internal video inspection has found none or minor pipe defects. No issues observed during inspection. (M. Thao - DWR UCIP)
09/25/2023 DMP internal video inspection has found none or minor pipe defects. Recommend next video inspection in 5 years. (J. Taylor - DWR UCIP)
01/06/2022 LoF of crossing is 5.2 due to pin size holes less than 10 feet from pipe end. Crossing remains Non-Urgent because pipe damage located outside of levee prism and does not pose a threat to levee. (O. Yakimov - DWR UCIP)
02/07/2019 Record remains Non-Urgent due to of few maintenance issues observed during inspection. Pipe is being used as a shooting target. Multiple holes are visible on the exposed WS section of the pipe. The inlet pipe section located on the LS has been damaged (pipe wall section pulled). This pipe qualifies as an LMA responsible crossing as it was originally listed in the USACE O&M manual as a drainage pipe. The CVFPB issued a permit in 1970 for the replacement of the original USACE drainage pipe. (O. Magana - DWR UCIP)
04/10/2017 WS pipe end is in good condition. LS pipe end is still deformed and vegetated. (A. Freitag - DWR Sutter Yard)
01/12/2016 LS inlet is still deformed and being overgrown by vegetation. (A. Freitag - DWR Sutter Yard)
04/19/2016 Crossing appears to be in good condition. (A. Freitag - DWR Sutter Yard)
05/12/2015 LS inlet still deformed a little but does not affect the crossing function. (A. Freitag - DWR Sutter Yard)
01/18/2014 Same as last inspection. (A. Freitag - DWR Sutter Yard)
05/13/2014 Same as last inspection. (A. Freitag - DWR Sutter Yard)
01/29/2013 Same as last inspection. (A. Freitag - DWR Sutter Yard)
05/16/2013 Pipe intake on LS appears to be bent and damaged but that does not appear to be affecting water flow or channel bank. (A. Freitag - DWR Sutter Yard)
FIELD_STRUCT_DESC: 36-inch CIPP-lined corrugated metal drainage through the levee, 14 feet below the crown. Flap gate located on the waterside (WS) end. This crossing replaces 36-inch pipe (see DSID 25618). (Crossing authorized under Permit No. 7209, 1970 - Department of Water Resources). [Additional Reference(s): DWR Levee Log, 2005 (HLM 3.06)].
FS Date: 5/6/2024 1:36:46 PM

Photo 1 of 3 : UCIP_FA_2024_83620_122556.jpg



Levee crown looking upstream.

* Location	** Rating	+ Issue Type
LS : Land Side WS : Water Side CR : Crown	A : Acceptable M : Minimally Acceptable U : Unacceptable	Ma : Maintenance Deficiency Ob : Design & System Obsolescence En : Enforcement
	N : Not Inspected/Rated C : Corrected A/W : Acceptable but Monitor & Maintain	

**Flood Control Project Maintenance
Levee Inspections****Maintenance Issue Types Only, Levee Inspection Report By Mile - Fall 2024****Sutter Maintenance Yard Wadsworth Canal**

Waterway	Bank	Unit Miles	Inspection Start/End	Inspector
Unit No. 01 Wadsworth Canal	Left	4.63	09/26/2024 09/26/2024	Nate Hicks

LM Start	3.04	Rating **	A	Issue No.	26 (cont)
LM End	3.04	Issue Type +	Ma	Location *	
Category	Supplemental			GPS Latitude/Longitude	
				Start	End
Item	DWR UCIP LMA Responsibility			39.149549°	39.149549°
				-121.736408°	-121.736408°
DWR ID	17065				

Photo 2 of 3 : UCIP_FA_2024_83620_122557.jpg



LS view: Pipe inlet located at the toe; looking toward levee.

LM Start	3.04	Rating **	A	Issue No.	26 (cont)
LM End	3.04	Issue Type +	Ma	Location *	

Photo 3 of 3 : UCIP_FA_2024_83620_122558.jpg



LS view: Looking into pipe inlet located at the toe; pipe has been CIPP lined.

LM Start	3.32	Rating **	M	Issue No.	16
LM End	4.60	Issue Type +	Ma	Location *	WS
Category	Supplemental			GPS Latitude/Longitude	
				Start	End
Item	2018 USACE Erosion Survey			39.153296°	39.170973°
				-121.734304°	-121.726852°
DWR ID	DWR_ST0010_01_s_2022_16				
Comment Code					
Inspector Comment					
2018 Site ID: WAC 4.4 L					
Status: Eroding					
2018 Field Notes: Last observed in 2017.					
Site History: Significant lower bank erosion and overall slumping.					

Photo 1 of 1 : FA_2024_ST0010_42_16_20241001_00027.jpg



View of erosion on the waterside toe road (Fall 2024).

* Location	** Rating	+ Issue Type
LS : Land Side WS : Water Side CR : Crown	A : Acceptable M : Minimally Acceptable U : Unacceptable	Ma : Maintenance Deficiency Ob : Design & System Obsolescence En : Enforcement
N : Not Inspected/Rated C : Corrected A/W : Acceptable but Monitor & Maintain		

**Flood Control Project Maintenance
Levee Inspections**

Maintenance Issue Types Only, Levee Inspection Report By Mile - Fall 2024

Sutter Maintenance Yard Wadsworth Canal

Waterway	Bank	Unit Miles	Inspection Start/End	Inspector
Unit No. 01 Wadsworth Canal	Left	4.63	09/26/2024 09/26/2024	Nate Hicks

LM Start	4.32	Rating **	M	Issue No.	29
LM End	4.32	Issue Type +	Ma	Location *	
Category	Supplemental			GPS Latitude/Longitude	
				Start	End
Item	DWR UCIP LMA Responsibility			39.167098°	39.167098°
				-121.728341°	-121.728341°
DWR ID	17058				

Comment Code

Inspector Comment

DS_ID:17058
FS_ID:83673
EP_NO: N/A
Repair Type: Non-Urgent
EVAL Issue:
Crossing Status: Not Found
UCIP Comments: 05/06/2024 Record remains Non-Urgent. Crossing not found. Geophysical results did not confirm presence of pipe through levee. Record will remain in UCIP's inspection records until future Levee Improvement Project can confirm no crossing was found through the levee. (M. Thao - DWR UCIP)
02/07/2019 Record has been updated from No Action Needed to Non-Urgent, unable to confirm status of pipe through the levee. Unable to locate pipe or appurtenances through this section of the levee. The DWR DMP geophysical investigation report indicates no signal received of suggestive target. Record will remain in UCIP's inspection records until future Levee Improvement Project can confirm no crossing was found through the levee. Also there is no permit identified for the authorization of this pipe. (O. Magana - DWR UCIP)
04/10/2017 Unable to locate. (A. Freitag - DWR Sutter Yard)
01/12/2016 Unable to locate. (A. Freitag - DWR Sutter Yard)
04/19/2016 Unable to locate. (A. Freitag - DWR Sutter Yard)
05/12/2015 Unable to locate. (A. Freitag - DWR Sutter Yard)
01/18/2014 Unable to locate. (A. Freitag - DWR Sutter Yard)
05/13/2014 Same as last inspection. (A. Freitag - DWR Sutter Yard)
01/29/2013 Same as last inspection. (A. Freitag - DWR Sutter Yard)
05/16/2013 Same as last inspection. (A. Freitag - DWR Sutter Yard)
01/09/2012 Unable to locate. (W. Wylie - DWR UCIP)
FIELD_STRUCT_DESC: 12-inch corrugated metal drainage pipe through the levee, 8.7 feet below the crown. [Additional Reference(s): DWR Levee Log, 2005 (HLM 4.38). USACE Sacramento O&M Manual, Unit 135, May 1953, Revised 29 December 2016, (Station 228+00), listed as 12-inch pipe. USACE As-built Drawing No. 50-04-1949, Drawing No. 2 (Page 2 of 3), Station 228+25, March 1952].
FS Date: 5/6/2024 2:26:47 PM

Photo 1 of 3 : UCIP_FA_2024_83673_122741.jpg



Levee crown looking upstream.

* Location	** Rating	+ Issue Type
LS: Land Side WS: Water Side CR: Crown	A: Acceptable M: Minimally Acceptable U: Unacceptable	Ma: Maintenance Deficiency Ob: Design & System Obsolescence En: Enforcement
N/A: Not Applicable	N: Not Inspected/Rated C: Corrected A/W: Acceptable but Monitor & Maintain	

**Flood Control Project Maintenance
Levee Inspections****Maintenance Issue Types Only, Levee Inspection Report By Mile - Fall 2024****Sutter Maintenance Yard Wadsworth Canal**

Waterway	Bank	Unit Miles	Inspection Start/End	Inspector
Unit No. 01 Wadsworth Canal	Left	4.63	09/26/2024 09/26/2024	Nate Hicks

LM Start	4.32	Rating **	M	Issue No.	29 (cont)
LM End	4.32	Issue Type +	Ma	Location *	
Category	Supplemental			GPS Latitude/Longitude	
				Start	End
Item	DWR UCIP LMA Responsibility			39.167098°	39.167098°
				-121.728341°	-121.728341°
DWR ID	17058				

Photo 2 of 3 : UCIP_FA_2024_83673_122740.jpg



LS view: General overview looking from crown.

LM Start	4.32	Rating **	M	Issue No.	29 (cont)
LM End	4.32	Issue Type +	Ma	Location *	

Photo 3 of 3 : UCIP_FA_2024_83673_122742.jpg



WS view: General overview looking from crown.

* Location LS : Land Side N/A : Not Applicable WS : Water Side CR : Crown	** Rating A : Acceptable M : Minimally Acceptable U : Unacceptable N : Not Inspected/Rated C : Corrected A/W : Acceptable but Monitor & Maintain	+ Issue Type Ma : Maintenance Deficiency Ob : Design & System Obsolescence En : Enforcement
--	---	---

**Flood Control Project Maintenance
Levee Inspections****Maintenance Issue Types Only, Levee Inspection Report By Mile - Fall 2024****Sutter Maintenance Yard Wadsworth Canal**

Waterway	Bank	Unit Miles	Inspection Start/End	Inspector
Unit No. 02 Wadsworth Canal	Right	4.60	09/26/2024 09/26/2024	Nate Hicks

LM Start	0.32	Rating **	M	Issue No.	24
LM End	0.35	Issue Type +	Ma	Location *	WS
Category	Earthen Levee			GPS Latitude/Longitude	
				Start	End
Item	Erosion / Bank Caving			39.117776°	39.118178°
				-121.765901°	-121.765500°
DWR ID	DWR_ST0010_02_s_2022_24				
Comment Code					
E2 : Schedule repair of erosion site prior to the next inspection.					
Inspector Comment					
Erosion is present at the toe of the levee. Erosion is cutting into the patrol road.					

Photo 1 of 1 : FA_2024_ST0010_43_24_20240923_00007.jpg



View of the erosion at the waterside toe/patrol road. Spring 2022.

LM Start	0.45	Rating **	C	Issue No.	16
LM End	0.45	Issue Type +	Ma	Location *	WS
Category	Earthen Levee			GPS Latitude/Longitude	
				Start	End
Item	Trim / Thin Trees			39.119381°	39.119381°
				-121.764372°	-121.764372°
DWR ID	DWR_ST0010_02_s_2024_16				
Comment Code					
T1 : Trim and thin trees to at least five feet above ground level to allow visibility of the ground and room to flood fight.					
Inspector Comment					
Corrected.					

No Photos

LM Start	0.66	Rating **	C	Issue No.	15
LM End	0.66	Issue Type +	Ma	Location *	WS
Category	Earthen Levee			GPS Latitude/Longitude	
				Start	End
Item	Trim / Thin Trees			39.121813°	39.121813°
				-121.762018°	-121.762018°
DWR ID	DWR_ST0010_02_s_2024_15				
Comment Code					
T1 : Trim and thin trees to at least five feet above ground level to allow visibility of the ground and room to flood fight.					
Inspector Comment					
Corrected.					

No Photos

* Location	** Rating	+ Issue Type
LS : Land Side WS : Water Side CR : Crown	A : Acceptable M : Minimally Acceptable U : Unacceptable	Ma : Maintenance Deficiency Ob : Design & System Obsolescence En : Enforcement
N/A : Not Applicable	N : Not Inspected/Rated C : Corrected A/W : Acceptable but Monitor & Maintain	

**Flood Control Project Maintenance
Levee Inspections**

Maintenance Issue Types Only, Levee Inspection Report By Mile - Fall 2024

Sutter Maintenance Yard Wadsworth Canal

Waterway	Bank	Unit Miles	Inspection Start/End	Inspector
Unit No. 02 Wadsworth Canal	Right	4.60	09/26/2024 09/26/2024	Nate Hicks

LM Start	1.15	Rating **	C	Issue No.	27
LM End	1.15	Issue Type +	Ma	Location *	WS
Category	Earthen Levee			GPS Latitude/Longitude	
				Start	End
Item	Animal Control			39.127457°	39.127457°
				-121.756527°	-121.756527°
DWR ID	DWR_ST0010_02_f_2022_27				
Comment Code					
A3 : No rodents visible, but rodent burrows visible; need to backfill and compact or grout burrows.					
Inspector Comment					
Corrected.					

No Photos

LM Start	1.44	Rating **	C	Issue No.	25
LM End	1.44	Issue Type +	Ma	Location *	WS
Category	Earthen Levee			GPS Latitude/Longitude	
				Start	End
Item	Slope Stability			39.130768°	39.130768°
				-121.753336°	-121.753336°
DWR ID	DWR_ST0010_02_s_2022_25				
Comment Code					
S1 : Repair slope instability.					
Inspector Comment					
Corrected.					

No Photos

LM Start	1.65	Rating **	C	Issue No.	14
LM End	1.65	Issue Type +	Ma	Location *	WS
Category	Earthen Levee			GPS Latitude/Longitude	
				Start	End
Item	Erosion / Vehicle Traffic			39.133252°	39.133252°
				-121.750926°	-121.750926°
DWR ID	DWR_ST0010_02_s_2024_14				
Comment Code					
E6 : Repair the levee slope damaged by vehicle traffic and prevent access where possible.					
Inspector Comment					
Corrected.					

No Photos

* Location LS : Land Side N/A : Not Applicable WS : Water Side CR : Crown		** Rating A : Acceptable M : Minimally Acceptable U : Unacceptable		N : Not Inspected/Rated C : Corrected A/W : Acceptable but Monitor & Maintain		+ Issue Type Ma : Maintenance Deficiency Ob : Design & System Obsolescence En : Enforcement	
--	--	--	--	---	--	---	--

**Flood Control Project Maintenance
Levee Inspections**

Maintenance Issue Types Only, Levee Inspection Report By Mile - Fall 2024

Sutter Maintenance Yard Wadsworth Canal

Waterway	Bank	Unit Miles	Inspection Start/End	Inspector
Unit No. 02 Wadsworth Canal	Right	4.60	09/26/2024 09/26/2024	Nate Hicks

LM Start	1.73	Rating **	A/W	Issue No.	8
LM End	2.37	Issue Type +	Ma	Location *	WS
Category	Supplemental			GPS Latitude/Longitude	
				Start	End
Item	2018 USACE Erosion Survey			39.134064°	39.141814°
				-121.749781°	-121.743260°
DWR ID	DWR_ST0010_02_s_2022_8				
Comment Code					
Inspector Comment					
2018 Site ID: WAC 2.1 R					
Status: Eroding					
2018 Field Notes: Last observed in 2017.					
Site History: 2011 - Whole bank is starting to unravel, with failure from poor soils. 2017 - Minor new erosion observed.					

No Photos

LM Start	1.75	Rating **	C	Issue No.	20
LM End	1.75	Issue Type +	Ma	Location *	WS
Category	Earthen Levee			GPS Latitude/Longitude	
				Start	End
Item	Erosion / Vehicle Traffic			39.134378°	39.134378°
				-121.749803°	-121.749803°
DWR ID	DWR_ST0010_02_f_2016_20				
Comment Code					
E6 : Repair the levee slope damaged by vehicle traffic and prevent access where possible.					
Inspector Comment					
Corrected.					

No Photos

LM Start	1.84	Rating **	C	Issue No.	29
LM End	1.84	Issue Type +	Ma	Location *	WS
Category	Earthen Levee			GPS Latitude/Longitude	
				Start	End
Item	Slope Stability			39.135412°	39.135412°
				-121.748835°	-121.748835°
DWR ID	DWR_ST0010_02_f_2022_29				
Comment Code					
S1 : Repair slope instability.					
Inspector Comment					
Corrected.					

No Photos

* Location		** Rating		+ Issue Type	
LS : Land Side	N/A : Not Applicable	A : Acceptable	N : Not Inspected/Rated	Ma : Maintenance Deficiency	
WS : Water Side		M : Minimally Acceptable	C : Corrected	Ob : Design & System Obsolescence	
CR : Crown		U : Unacceptable	A/W : Acceptable but Monitor & Maintain	En : Enforcement	

**Flood Control Project Maintenance
Levee Inspections**

Maintenance Issue Types Only, Levee Inspection Report By Mile - Fall 2024

Sutter Maintenance Yard Wadsworth Canal

Waterway	Bank	Unit Miles	Inspection Start/End	Inspector
Unit No. 02 Wadsworth Canal	Right	4.60	09/26/2024 09/26/2024	Nate Hicks

LM Start	1.91	Rating **	C	Issue No.	28
LM End	1.91	Issue Type +	Ma	Location *	WS
Category	Earthen Levee			GPS Latitude/Longitude	
				Start	End
Item	Slope Stability			39.136275°	39.136275°
				-121.748134°	-121.748134°
DWR ID	DWR_ST0010_02_f_2022_28				
Comment Code					
S1 : Repair slope instability.					
Inspector Comment					
Corrected.					

No Photos

LM Start	2.41	Rating **	A/W	Issue No.	9
LM End	3.28	Issue Type +	Ma	Location *	WS
Category	Supplemental			GPS Latitude/Longitude	
				Start	End
Item	2018 USACE Erosion Survey			39.142254°	39.153150°
				-121.742847°	-121.734611°
DWR ID	DWR_ST0010_02_s_2022_9				
Comment Code					
Inspector Comment					
2018 Site ID: WAC 2.4 R					
Status: Eroding					
2018 Field Notes: Last observed in 2017.					
Site History: 2010 - Over steepened levees, some slumping, reach-wide problem. 2011 - Still a reach-wide problem. 2017 - Significant new erosion lower bank.					

No Photos

* Location LS : Land Side N/A : Not Applicable WS : Water Side CR : Crown	** Rating A : Acceptable M : Minimally Acceptable U : Unacceptable N : Not Inspected/Rated C : Corrected A/W : Acceptable but Monitor & Maintain	+ Issue Type Ma : Maintenance Deficiency Ob : Design & System Obsolescence En : Enforcement
--	---	---

**Flood Control Project Maintenance
Levee Inspections****Maintenance Issue Types Only, Levee Inspection Report By Mile - Fall 2024****Sutter Maintenance Yard Wadsworth Canal**

Waterway	Bank	Unit Miles	Inspection Start/End	Inspector
Unit No. 02 Wadsworth Canal	Right	4.60	09/26/2024 09/26/2024	Nate Hicks

LM Start	2.95	Rating **	M	Issue No.	21
LM End	2.95	Issue Type +	Ma	Location *	WS
Category	Earthen Levee			GPS Latitude/Longitude	
				Start	End
Item	Erosion / Vehicle Traffic			39.148938°	39.148938°
				-121.737620°	-121.737620°
DWR ID	DWR_ST0010_02_f_2016_21				
Comment Code					
E6 : Repair the levee slope damaged by vehicle traffic and prevent access where possible.					
Inspector Comment					
Vehicle traffic has created what appears to be a ramp on the waterside slope.					

Photo 1 of 1 : FA_2024_ST0010_43_21_20240923_00006.jpg



View of the ramp caused by vehicle traffic on the waterside slope (Fall 2023).

* Location	** Rating	+ Issue Type
LS : Land Side WS : Water Side CR : Crown	A : Acceptable M : Minimally Acceptable U : Unacceptable	Ma : Maintenance Deficiency Ob : Design & System Obsolescence En : Enforcement
N/A : Not Applicable	N : Not Inspected/Rated C : Corrected A/W : Acceptable but Monitor & Maintain	

**Flood Control Project Maintenance
Levee Inspections**

Maintenance Issue Types Only, Levee Inspection Report By Mile - Fall 2024

Sutter Maintenance Yard Wadsworth Canal

Waterway	Bank	Unit Miles	Inspection Start/End	Inspector
Unit No. 02 Wadsworth Canal	Right	4.60	09/26/2024 09/26/2024	Nate Hicks

LM Start	3.00	Rating **	A	Issue No.	33
LM End	3.00	Issue Type +	Ma	Location *	
Category	Supplemental			GPS Latitude/Longitude	
				Start	End
Item	DWR UCIP LMA Responsibility			39.149561°	39.149561°
				-121.737080°	-121.737080°
DWR ID	17077				

Comment Code

Inspector Comment

DS_ID:17077
FS_ID:83700
EP_NO: 7209
Repair Type: No Action Needed
EVAL Issue:
Crossing Status: Found
UCIP Comments: 05/06/2024 Record remains No Action Needed. DMP internal video inspection has found none or minor pipe defects. No issues observed during inspection. (M. Thao - DWR UCIP)
09/15/2023 Record updated from Urgent to No Action Needed. Pipe was CIPP lined on April 21, 2021. DMP internal video inspection has found none or minor pipe defects. Recommend next video inspection in 5 years. (O. Yakimov - DWR UCIP)
01/06/2022 Record updated from Non-Urgent to Urgent. DMP internal video inspection has found pipe integrity issues. LoF of crossing is 5.1 due to holes less than 10 feet from pipe end and deformation less or equal 10%. Crossing will be monitored until funding becomes available to address the issues. (O. Yakimov - DWR UCIP)
02/07/2019 Record remains Non-Urgent due to the tree obstructing access to the WS pipe outlet. Maintenance will need to be performed to clear some of the vegetation preventing access to the flap gate. This pipe qualifies as an LMA responsible crossing as it was originally listed in the USACE O&M manual as a drainage pipe. The CVFPB issued a permit in 1970 for the replacement of the original USACE drainage pipe. (O. Magana - DWR UCIP)
04/10/2017 Tree still present and a problem at the WS pipe outlet. LS inlet is still vegetated. (A. Freitag - DWR Sutter Yard)
07/12/2016 Tree at the WS pipe end is still an issue and needs to be cut away. LS inlet is also being overgrown with vegetation. (A. Freitag - DWR Sutter Yard)
04/19/2016 Tree at WS pipe end needs to be trimmed back and/or removed. (A. Freitag - DWR Sutter Yard)
05/12/2015 Tree growing near WS pipe end is getting too big and will affect the crossing. It needs to be cut back or removed. (A. Freitag - DWR Sutter Yard)
11/18/2014 Same as last inspection. (A. Freitag - DWR Sutter Yard)
05/13/2014 Same as last inspection. (A. Freitag - DWR Sutter Yard)
01/29/2013 Same as last inspection. (A. Freitag - DWR Sutter Yard)
05/16/2013 Same as last inspection. (A. Freitag - DWR Sutter Yard)
FIELD_STRUCT_DESC: 36-inch CIPP-lined corrugated metal drainage pipe through the levee, 14 feet below the crown. Flap gate located on the waterside (WS) end. (36-inch authorized under Permit No. 7209, 1970 - Department of Water Resources). [Additional Reference(s): DWR Levee Log, 2005 (HLM 3.04)].
FS Date: 5/6/2024 12:52:17 PM

Photo 1 of 3 : UCIP_FA_2024_83700_122809.jpg



Levee crown looking downstream.

* Location	** Rating	+ Issue Type
LS : Land Side WS : Water Side CR : Crown	A : Acceptable M : Minimally Acceptable U : Unacceptable	Ma : Maintenance Deficiency Ob : Design & System Obsolescence En : Enforcement
	N : Not Inspected/Rated C : Corrected A/W : Acceptable but Monitor & Maintain	

**Flood Control Project Maintenance
Levee Inspections****Maintenance Issue Types Only, Levee Inspection Report By Mile - Fall 2024****Sutter Maintenance Yard Wadsworth Canal**

Waterway	Bank	Unit Miles	Inspection Start/End	Inspector
Unit No. 02 Wadsworth Canal	Right	4.60	09/26/2024 09/26/2024	Nate Hicks

LM Start	3.00	Rating **	A	Issue No.	33 (cont)
LM End	3.00	Issue Type +	Ma	Location *	
Category	Supplemental			GPS Latitude/Longitude	
				Start	End
Item	DWR UCIP LMA Responsibility			39.149561°	39.149561°
				-121.737080°	-121.737080°
DWR ID	17077				

Photo 2 of 3 : UCIP_FA_2024_83700_122811.jpg



LS view: General overview looking from crown.

LM Start	3.00	Rating **	A	Issue No.	33 (cont)
LM End	3.00	Issue Type +	Ma	Location *	

Photo 3 of 3 : UCIP_FA_2024_83700_122812.jpg



LS view: Looking into pipe inlet near toe.

LM Start	3.21	Rating **	C	Issue No.	13
LM End	3.21	Issue Type +	Ma	Location *	WS
Category	Earthen Levee			GPS Latitude/Longitude	
				Start	End
Item	Erosion / Vehicle Traffic			39.152188°	39.152188°
				-121.735279°	-121.735279°
DWR ID	DWR_ST0010_02_s_2024_13				
Comment Code					
E6 : Repair the levee slope damaged by vehicle traffic and prevent access where possible.					
Inspector Comment					
Corrected.					

No Photos

* Location	** Rating	+ Issue Type
LS : Land Side WS : Water Side CR : Crown	A : Acceptable M : Minimally Acceptable U : Unacceptable	Ma : Maintenance Deficiency Ob : Design & System Obsolescence En : Enforcement
N/A : Not Applicable	N : Not Inspected/Rated C : Corrected A/W : Acceptable but Monitor & Maintain	

**Flood Control Project Maintenance
Levee Inspections****Maintenance Issue Types Only, Levee Inspection Report By Mile - Fall 2024****Sutter Maintenance Yard Wadsworth Canal**

Waterway	Bank	Unit Miles	Inspection Start/End	Inspector
Unit No. 02 Wadsworth Canal	Right	4.60	09/26/2024 09/26/2024	Nate Hicks

LM Start	3.29	Rating **	A/W	Issue No.	10
LM End	4.58	Issue Type +	Ma	Location *	WS
Category	Supplemental			GPS Latitude/Longitude	
				Start	End
Item	2018 USACE Erosion Survey			39.153320°	39.171031°
				-121.734573°	-121.727040°
DWR ID	DWR_ST0010_02_s_2022_10				
Comment Code					
Inspector Comment					
2018 Site ID: WAC 4.3 R					
Status: Eroding					
2018 Field Notes: Last observed in 2017.					
Site History: 2011 - Small erosion pocket. 2017 - Site extended downstream, significant lower bank erosion.					

No Photos

* Location LS : Land Side N/A : Not Applicable WS : Water Side CR : Crown	** Rating A : Acceptable M : Minimally Acceptable U : Unacceptable N : Not Inspected/Rated C : Corrected A/W : Acceptable but Monitor & Maintain	+ Issue Type Ma : Maintenance Deficiency Ob : Design & System Obsolescence En : Enforcement
--	---	---