

**Flood Control Project Maintenance
Levee Inspections**

Maintenance Issue Types Only, Levee Inspection Report By Mile - Spring 2021

Sacramento Maintenance Yard Putah Creek

| Waterway | Bank | Unit Miles | Inspection Start/End | Inspector |
|--|------|------------|--------------------------|--------------|
| Unit No. 01 Putah Creek or North Levee | Left | 8.79 | 03/18/2021 03/18/2021 | David Julian |

| | | | | | |
|---|----------------------------------|--------------|----|------------------------|-----|
| LM Start | | Rating ** | A | Issue No. | 25 |
| LM End | | Issue Type + | Ma | Location * | |
| Category | Earthen Levee | | | GPS Latitude/Longitude | |
| | | | | Start | End |
| Item | Operations & Maintenance Manuals | | | ° | ° |
| | | | | ° | ° |
| DWR ID | DWR_ST0007_01_s_2013_25 | | | | |
| Comment Code | | | | | |
| | | | | | |
| Inspector Comment | | | | | |
| The Sacramento Maintenance Yard has a copy of the O&M Manual. | | | | | |

No Photos

| | | | | | |
|---|--------------------------------|--------------|----|------------------------|-----|
| LM Start | | Rating ** | A | Issue No. | 26 |
| LM End | | Issue Type + | Ma | Location * | |
| Category | Earthen Levee | | | GPS Latitude/Longitude | |
| | | | | Start | End |
| Item | Emergency Supplies & Equipment | | | ° | ° |
| | | | | ° | ° |
| DWR ID | DWR_ST0007_01_s_2013_26 | | | | |
| Comment Code | | | | | |
| | | | | | |
| Inspector Comment | | | | | |
| The Sacramento Maintenance Yard has adequate emergency supplies stored. | | | | | |

No Photos

| | | | | | |
|---|-------------------------------|--------------|----|------------------------|-----|
| LM Start | | Rating ** | A | Issue No. | 27 |
| LM End | | Issue Type + | Ma | Location * | |
| Category | Earthen Levee | | | GPS Latitude/Longitude | |
| | | | | Start | End |
| Item | Flood Preparedness & Training | | | ° | ° |
| | | | | ° | ° |
| DWR ID | DWR_ST0007_01_s_2013_27 | | | | |
| Comment Code | | | | | |
| | | | | | |
| Inspector Comment | | | | | |
| The Sacramento Maintenance Yard trains yearly for flood fighting. | | | | | |

No Photos

| | | | |
|--|--|---|---|
| * Location LS : Land Side N/A : Not Applicable WS : Water Side CR : Crown | ** Rating A : Acceptable M : Minimally Acceptable U : Unacceptable | N : Not Inspected/Rated C : Corrected A/W : Acceptable but Monitor & Maintain | + Issue Type Ma : Maintenance Deficiency Ob : Design & System Obsolescence En : Enforcement |
|--|--|---|---|

**Flood Control Project Maintenance
Levee Inspections**

Maintenance Issue Types Only, Levee Inspection Report By Mile - Spring 2021

Sacramento Maintenance Yard Putah Creek

| Waterway | Bank | Unit Miles | Inspection Start/End | Inspector |
|--|------|------------|--------------------------|--------------|
| Unit No. 01 Putah Creek or North Levee | Left | 8.79 | 03/18/2021 03/18/2021 | David Julian |

| | | | | | |
|--|-------------------------|--------------|----|------------------------|---------------|
| LM Start | 0.42 | Rating ** | M | Issue No. | 57 |
| LM End | 3.21 | Issue Type + | Ma | Location * | WS |
| Category | Earthen Levee | | | GPS Latitude/Longitude | |
| | | | | Start | End |
| Item | Vegetation | | | 38.519881 ° | 38.519740 ° |
| | | | | -121.635914 ° | -121.685603 ° |
| DWR ID | DWR_ST0007_01_s_2021_57 | | | | |
| Comment Code | | | | | |
| V1 : Control annual grass and weeds on the levee slopes and easements. | | | | | |
| Inspector Comment | | | | | |
| | | | | | |

No Photos

| | | | | | | |
|---|-----------------------------|--------------|----|------------------------|---|---------------|
| LM Start | 0.58 | Rating ** | M | Issue No. | 3 | |
| LM End | 0.58 | Issue Type + | Ma | Location * | | |
| Category | Supplemental | | | GPS Latitude/Longitude | | |
| | | | | Start | | End |
| Item | DWR UCIP LMA Responsibility | | | 38.519660 ° | | 38.519660 ° |
| | | | | -121.638820 ° | | -121.638820 ° |
| DWR ID | 488 | | | | | |
| Comment Code | | | | | | |
| | | | | | | |
| Inspector Comment | | | | | | |
| FS_ID:59851 DS_ID:488 EP_NO: 10261 Repair Type: Non-Urgent Crossing Status: Found UCIP Comments: 11/07/2019 Rating updated from No Action Needed to Non-Urgent. Crossing type has been updated from Drainage to Irrigation because current crossing design serves irrigation purposes. Need to have CVFPB review ABO and determine current owner. (O.Yakimov - DWR UCIP) FIELD_STRUCT_DESC: 24-inch irrigation pipe of unknown material through the levee, 12.5 feet below the crown. Slide gate is located on the waterside (WS) end. Concrete standpipe and headwall are located on the LS. Water well is connected to the standpipe. (24-inch pipe [HLM 0.58] authorized under Automatic Board Order (ABO) issued as Permit No. 10261, 1974 - Tufts) [Additional Reference(s): DWR Levee Log, 1981 and 2005 (HLM 0.58). USACE Sacramento O&M Manual, Unit 119, December 1952, Revised 29 Dec 2016, (Station 31+00), listed as 24-inch pipe. USACE As-Built Drawing No. 50-04-2396, Revision 1, pdf page 19, Sheet 3, December 1947] FS Date: 11/7/2019 9:56:00 AM | | | | | | |

Photo 1 of 3 : UCIP_SP_2021_59851_82055.jpg



View of WS looking from levee crown

| | | | |
|--|--|---|---|
| * Location LS : Land Side N/A : Not Applicable WS : Water Side CR : Crown | ** Rating A : Acceptable M : Minimally Acceptable U : Unacceptable | N : Not Inspected/Rated C : Corrected A/W : Acceptable but Monitor & Maintain | + Issue Type Ma : Maintenance Deficiency Ob : Design & System Obsolescence En : Enforcement |
|--|--|---|---|

**Flood Control Project Maintenance
Levee Inspections**

Maintenance Issue Types Only, Levee Inspection Report By Mile - Spring 2021

Sacramento Maintenance Yard Putah Creek

| Waterway | Bank | Unit Miles | Inspection Start/End | Inspector |
|--|------|------------|--------------------------|--------------|
| Unit No. 01 Putah Creek or North Levee | Left | 8.79 | 03/18/2021 03/18/2021 | David Julian |

| | | | | | |
|----------|-----------------------------|--------------|----|------------------------|---------------|
| LM Start | 0.58 | Rating ** | M | Issue No. | 3 (cont) |
| LM End | 0.58 | Issue Type + | Ma | Location * | |
| Category | Supplemental | | | GPS Latitude/Longitude | |
| | | | | Start | End |
| Item | DWR UCIP LMA Responsibility | | | 38.519660 ° | 38.519660 ° |
| | | | | -121.638820 ° | -121.638820 ° |
| DWR ID | 488 | | | | |

Photo 2 of 3 : UCIP_SP_2021_59851_82056.jpg



View of LS looking from levee crown

| | | | | | |
|----------|-------------|--------------|----|------------|-----------------|
| LM Start | 0.58 | Rating ** | M | Issue No. | 3 (cont) |
| LM End | 0.58 | Issue Type + | Ma | Location * | |

Photo 3 of 3 : UCIP_SP_2021_59851_82058.jpg



Water well connected to standpipe at LS toe. Top of headwall is visible

| | | | | | |
|--|-------------------------|--------------|----|------------------------|---------------|
| LM Start | 2.68 | Rating ** | M | Issue No. | 58 |
| LM End | 3.21 | Issue Type + | Ma | Location * | LS |
| Category | Earthen Levee | | | GPS Latitude/Longitude | |
| | | | | Start | End |
| Item | Vegetation | | | 38.517441 ° | 38.519740 ° |
| | | | | -121.676251 ° | -121.685606 ° |
| DWR ID | DWR_ST0007_01_s_2021_58 | | | | |
| Comment Code | | | | | |
| V1 : Control annual grass and weeds on the levee slopes and easements. | | | | | |
| Inspector Comment | | | | | |
| | | | | | |

No Photos

| | | | |
|--|--|--|---|
| * Location LS : Land Side N/A : Not Applicable WS : Water Side CR : Crown | ** Rating A : Acceptable M : Minimally Acceptable U : Unacceptable | N : Not Inspected/Rated C : Corrected A/W : Acceptable but Monitor & Maintain | + Issue Type Ma : Maintenance Deficiency Ob : Design & System Obsolescence En : Enforcement |
|--|--|--|---|

**Flood Control Project Maintenance
Levee Inspections**

Maintenance Issue Types Only, Levee Inspection Report By Mile - Spring 2021

Sacramento Maintenance Yard Putah Creek

| Waterway | Bank | Unit Miles | Inspection Start/End | Inspector |
|--|------|------------|--------------------------|--------------|
| Unit No. 01 Putah Creek or North Levee | Left | 8.79 | 03/18/2021 03/18/2021 | David Julian |

| | | | | | | |
|---|-----------------------------|--------------|----|------------------------|---------------|--|
| LM Start | 2.72 | Rating ** | M | Issue No. | 12 | |
| LM End | 2.72 | Issue Type + | Ma | Location * | | |
| Category | Supplemental | | | GPS Latitude/Longitude | | |
| | | | | Start | End | |
| Item | DWR UCIP LMA Responsibility | | | 38.517580 ° | 38.517580 ° | |
| | | | | -121.676820 ° | -121.676820 ° | |
| DWR ID | 492 | | | | | |
| Comment Code | | | | | | |
| | | | | | | |
| Inspector Comment | | | | | | |
| FS_ID:55597 DS_ID:492 EP_NO: 10262 Repair Type: Non-Urgent Crossing Status: Found UCIP Comments: 11/07/2019 Record updated from No Action Needed to Non-Urgent. Need to have CVFPB review ABO and determine current owner. (O.Yakimov - DWR UCIP) FIELD_STRUCT_DESC: 24-inch CIPP-lined drainage pipe of unknown material through levee, 13 feet below crown. Slide gate is located on the waterside (WS) end. Concrete headwalls are located on both the waterside (WS) and landside (LS). (24-inch pipe [HLM 2.77] authorized under Automatic Board Order (ABO) issued as Permit No. 10262, 1974 - Wells Fargo Bank, Trustee for S.H. Cowell Foundation) [Additional Reference(s): DWR Levee Log, 1981 and 2005 (HLM 2.77). USACE Sacramento O&M Manual, Unit 119, December 1952, Revised 29 Dec 2016, (Station P 213+00), listed as 24-inch pipe. USACE As-Built Drawing No. 50-04-2396, Revision 3, pdf page 22, Sheet 6, December 1947] FS Date: 11/7/2019 10:48:08 AM | | | | | | |

| | | | | | |
|----------|-------------|--------------|----|------------|------------------|
| LM Start | 2.72 | Rating ** | M | Issue No. | 12 (cont) |
| LM End | 2.72 | Issue Type + | Ma | Location * | |

Photo 1 of 3 : UCIP_SP_2021_55597_82102.jpg



View of WS looking from levee crown

Photo 2 of 3 : UCIP_SP_2021_55597_82103.jpg



View of LS looking from levee crown

| | | | |
|--|--|---|---|
| * Location LS : Land Side N/A : Not Applicable WS : Water Side CR : Crown | ** Rating A : Acceptable M : Minimally Acceptable U : Unacceptable | N : Not Inspected/Rated C : Corrected A/W : Acceptable but Monitor & Maintain | + Issue Type Ma : Maintenance Deficiency Ob : Design & System Obsolescence En : Enforcement |
|--|--|---|---|

**Flood Control Project Maintenance
Levee Inspections**

Maintenance Issue Types Only, Levee Inspection Report By Mile - Spring 2021

Sacramento Maintenance Yard Putah Creek

| Waterway | Bank | Unit Miles | Inspection Start/End | Inspector |
|--|------|------------|--------------------------|--------------|
| Unit No. 01 Putah Creek or North Levee | Left | 8.79 | 03/18/2021 03/18/2021 | David Julian |

| | | | | | |
|----------|-----------------------------|--------------|----|------------------------|---------------|
| LM Start | 2.72 | Rating ** | M | Issue No. | 12 (cont) |
| LM End | 2.72 | Issue Type + | Ma | Location * | |
| Category | Supplemental | | | GPS Latitude/Longitude | |
| | | | | Start | End |
| Item | DWR UCIP LMA Responsibility | | | 38.517580 ° | 38.517580 ° |
| | | | | -121.676820 ° | -121.676820 ° |
| DWR ID | 492 | | | | |

Photo 3 of 3 : UCIP_SP_2021_55597_82104.jpg



LS levee slope, headwall, and pipe end

| | | | | | |
|--|---------------------------|--------------|----|------------------------|---------------|
| LM Start | 3.78 | Rating ** | M | Issue No. | 60 |
| LM End | 4.82 | Issue Type + | Ma | Location * | WS |
| Category | Earthen Levee | | | GPS Latitude/Longitude | |
| | | | | Start | End |
| Item | Vegetation | | | 38.520025 ° | 38.518040 ° |
| | | | | -121.695339 ° | -121.714036 ° |
| DWR ID | DWR_ST0007_01_s _ 2021_60 | | | | |
| Comment Code | | | | | |
| V1 : Control annual grass and weeds on the levee slopes and easements. | | | | | |
| Inspector Comment | | | | | |
| | | | | | |

No Photos

| | | | | | |
|--|-------------------------|--------------|----|------------------------|---------------|
| LM Start | 3.78 | Rating ** | M | Issue No. | 61 |
| LM End | 4.82 | Issue Type + | Ma | Location * | LS |
| Category | Earthen Levee | | | GPS Latitude/Longitude | |
| | | | | Start | End |
| Item | Vegetation | | | 38.520025 ° | 38.518040 ° |
| | | | | -121.695340 ° | -121.714036 ° |
| DWR ID | DWR_ST0007_01_s_2021_61 | | | | |
| Comment Code | | | | | |
| V1 : Control annual grass and weeds on the levee slopes and easements. | | | | | |
| Inspector Comment | | | | | |
| | | | | | |

No Photos

| | | | |
|--|--|---|---|
| * Location LS : Land Side N/A : Not Applicable WS : Water Side CR : Crown | ** Rating A : Acceptable M : Minimally Acceptable U : Unacceptable | N : Not Inspected/Rated C : Corrected A/W : Acceptable but Monitor & Maintain | + Issue Type Ma : Maintenance Deficiency Ob : Design & System Obsolescence En : Enforcement |
|--|--|---|---|

**Flood Control Project Maintenance
Levee Inspections**

Maintenance Issue Types Only, Levee Inspection Report By Mile - Spring 2021

Sacramento Maintenance Yard Putah Creek

| Waterway | Bank | Unit Miles | Inspection Start/End | Inspector |
|--|------|------------|--------------------------|--------------|
| Unit No. 01 Putah Creek or North Levee | Left | 8.79 | 03/18/2021 03/18/2021 | David Julian |

| | | | | | |
|----------|-----------------------------|--------------|------------------------|---------------|-----------|
| LM Start | 3.80 | Rating ** | M | Issue No. | 18 |
| LM End | 3.80 | Issue Type + | Ma | Location * | |
| Category | Supplemental | | GPS Latitude/Longitude | | |
| | | | Start | End | |
| Item | DWR UCIP LMA Responsibility | | 38.519790 ° | 38.519790 ° | |
| | | | -121.695450 ° | -121.695450 ° | |
| DWR ID | 496 | | | | |

Comment Code

Inspector Comment

FS_ID:55455
DS_ID:496
EP_NO: 10251
Repair Type: Non-Urgent
Crossing Status: Found
UCIP Comments: 10/22/2019 Record updated from No Action Needed to Non-Urgent. Need to have CVFPB review ABO and determine current owner. Installed a new precast concrete box on the waterside. Pipe will be lined in November 2019 according to FMO staff. (O.Yakimov - DWR UCIP)4/10/2019 Major erosion through out pipe. Erosion on WS allows water to enter pipe and flood LS field. Erosion on farmers waterman valve. Field water drains into pipe and floods LS field. (J.McCabe - DWR Sacramento Yard)
FIELD_STRUCT_DESC: 24-inch corrugated metal drainage pipe through levee, 15 feet below the crown. Two metal cutoff walls were installed through the levee. A T-post and T-handle are located on the landside (LS) toe. The outfall structure and flap gate are located on the west side of bridge, waterside (WS). (24-inch pipe [HLM 3.87] authorized under Automatic Board Order (ABO) issued as Permit No. 10251, 1974 - F.M.C. Corp.) [Additional Reference(s): DWR Levee Log, 1981 and 2005 (HLM 3.87). USACE Sacramento O&M Manual, Unit 119, December 1952, Revised 29 Dec 2016, (Station 1+50 PCT), listed as 24-inch pipe. USACE As-Built Drawing No. 50-04-2396, Revision 4, pdf page 23, Sheet 7, December 1947]
FS Date: 10/22/2019 3:38:32 PM

| | | | | | |
|----------|-------------|--------------|----|------------|------------------|
| LM Start | 3.80 | Rating ** | M | Issue No. | 18 (cont) |
| LM End | 3.80 | Issue Type + | Ma | Location * | |

Photo 1 of 3 : UCIP_SP_2021_55455_81753.jpg



LS levee slope, headwall, and pipe end

Photo 2 of 3 : UCIP_SP_2021_55455_81754.jpg



View inside of CMP drainage pipe

| | | | |
|--|--|--|---|
| * Location LS : Land Side N/A : Not Applicable WS : Water Side CR : Crown | ** Rating A : Acceptable M : Minimally Acceptable U : Unacceptable | N : Not Inspected/Rated C : Corrected A/W : Acceptable but Monitor & Maintain | + Issue Type Ma : Maintenance Deficiency Ob : Design & System Obsolescence En : Enforcement |
|--|--|--|---|

**Flood Control Project Maintenance
Levee Inspections**

Maintenance Issue Types Only, Levee Inspection Report By Mile - Spring 2021

Sacramento Maintenance Yard Putah Creek

| Waterway | Bank | Unit Miles | Inspection Start/End | Inspector |
|--|------|------------|--------------------------|--------------|
| Unit No. 01 Putah Creek or North Levee | Left | 8.79 | 03/18/2021 03/18/2021 | David Julian |

| | | | | | |
|----------|-----------------------------|--------------|----|------------------------|---------------|
| LM Start | 3.80 | Rating ** | M | Issue No. | 18 (cont) |
| LM End | 3.80 | Issue Type + | Ma | Location * | |
| Category | Supplemental | | | GPS Latitude/Longitude | |
| | | | | Start | End |
| Item | DWR UCIP LMA Responsibility | | | 38.519790 ° | 38.519790 ° |
| | | | | -121.695450 ° | -121.695450 ° |
| DWR ID | 496 | | | | |

Photo 3 of 3 : UCIP_SP_2021_55455_81755.jpg



View of LS looking from levee crown

| | | | | | |
|----------|-----------------------------|--------------|----|------------------------|---------------|
| LM Start | 4.05 | Rating ** | M | Issue No. | 19 |
| LM End | 4.05 | Issue Type + | Ma | Location * | |
| Category | Supplemental | | | GPS Latitude/Longitude | |
| | | | | Start | End |
| Item | DWR UCIP LMA Responsibility | | | 38.518685 ° | 38.518685 ° |
| | | | | -121.699835 ° | -121.699835 ° |
| DWR ID | 497 | | | | |

Comment Code

Inspector Comment

FS_ID:55456
DS_ID:497
EP_NO: 10251
Repair Type: Non-Urgent
Crossing Status: Found
UCIP Comments: 10/22/2019 Record updated from No Action Needed to Non-Urgent. Geophysical study indicates possible presence of pipe through levee. Need to have CVFPB review ABO and determine current owner. Pipe inlet and headwall are not visible on LS. Slide gate in CMP riser is in closed position, crossing looks abandoned. Construction according to permit 10251-1 hasn't started yet. Field structure description is updated to match original pipe construction. (O.Yakimov - DWR UCIP)
FIELD_STRUCT_DESC: 24-inch drainage pipe of unknown material through levee, 16 feet below the crown. 36-inch galvanized corrugated metal pipe (CMP) riser located on the waterside (WS) slope. (24-inch pipe [HLM 4.13] authorized under Automatic Board Order (ABO) issued as Permit No. 10251, 1974 - F.M.C. Corp.; assumed original 24-inch pipe was installed in 12/12/1952 per O&M manual) [Additional Reference(s): DWR Levee Log, 1981 and 2005 (HLM 4.13). USACE Sacramento O&M Manual, Unit 119, December 1952, Revised 29 Dec 2016, (Station 17+00 PCT), listed as 24-inch pipe. USACE As-Built Drawing No. 50-04-2396, Revision 4, pdf page 23, Sheet 7, December 1947]
FS Date: 10/22/2019 11:37:56 AM

Photo 1 of 3 : UCIP_SP_2021_55456_81760.jpg



View of levee crown at the crossing

| | | |
|--|---|---|
| * Location LS : Land Side N/A : Not Applicable WS : Water Side CR : Crown | ** Rating A : Acceptable M : Minimally Acceptable U : Unacceptable N : Not Inspected/Rated C : Corrected A/W : Acceptable but Monitor & Maintain | + Issue Type Ma : Maintenance Deficiency Ob : Design & System Obsolescence En : Enforcement |
|--|---|---|

**Flood Control Project Maintenance
Levee Inspections**

Maintenance Issue Types Only, Levee Inspection Report By Mile - Spring 2021

Sacramento Maintenance Yard Putah Creek

| Waterway | Bank | Unit Miles | Inspection Start/End | Inspector |
|--|------|------------|--------------------------|--------------|
| Unit No. 01 Putah Creek or North Levee | Left | 8.79 | 03/18/2021 03/18/2021 | David Julian |

| | | | | | |
|----------|-----------------------------|--------------|----|------------------------|------------------|
| LM Start | 4.05 | Rating ** | M | Issue No. | 19 (cont) |
| LM End | 4.05 | Issue Type + | Ma | Location * | |
| Category | Supplemental | | | GPS Latitude/Longitude | |
| | | | | Start | End |
| Item | DWR UCIP LMA Responsibility | | | 38.518685 ° | 38.518685 ° |
| | | | | -121.699835 ° | -121.699835 ° |
| DWR ID | 497 | | | | |

Photo 2 of 3 : UCIP_SP_2021_55456_81761.jpg



View of LS looking from levee crown

| | | | | | |
|----------|-------------|--------------|----|------------|------------------|
| LM Start | 4.05 | Rating ** | M | Issue No. | 19 (cont) |
| LM End | 4.05 | Issue Type + | Ma | Location * | |

Photo 3 of 3 : UCIP_SP_2021_55456_81762.jpg



View of WS looking from levee crown

| | | | |
|--|--|---|---|
| * Location LS : Land Side N/A : Not Applicable WS : Water Side CR : Crown | ** Rating A : Acceptable M : Minimally Acceptable U : Unacceptable | N : Not Inspected/Rated C : Corrected A/W : Acceptable but Monitor & Maintain | + Issue Type Ma : Maintenance Deficiency Ob : Design & System Obsolescence En : Enforcement |
|--|--|---|---|

**Flood Control Project Maintenance
Levee Inspections**

Maintenance Issue Types Only, Levee Inspection Report By Mile - Spring 2021

Sacramento Maintenance Yard Putah Creek

| Waterway | Bank | Unit Miles | Inspection Start/End | Inspector |
|--|------|------------|--------------------------|--------------|
| Unit No. 01 Putah Creek or North Levee | Left | 8.79 | 03/18/2021 03/18/2021 | David Julian |

| | | | | | | |
|--|-----------------------------|--------------|----|------------------------|---------------|--|
| LM Start | 5.28 | Rating ** | M | Issue No. | 22 | |
| LM End | 5.28 | Issue Type + | Ma | Location * | | |
| Category | Supplemental | | | GPS Latitude/Longitude | | |
| | | | | Start | End | |
| Item | DWR UCIP LMA Responsibility | | | 38.518022 ° | 38.518022 ° | |
| | | | | -121.722521 ° | -121.722521 ° | |
| DWR ID | 500 | | | | | |
| Comment Code | | | | | | |
| | | | | | | |
| Inspector Comment | | | | | | |
| FS_ID:59861 DS_ID:500 EP_NO: 10256 Repair Type: Non-Urgent Crossing Status: Found UCIP Comments: 10/22/2019 Record updated from No Action Needed to Non-Urgent. Need to have CVFPB review ABO and determine current owner. (O.Yakimov - DWR UCIP)05/06/2013 Debris removed. See picture (C. Lund - DWR Sacramento Yard) 04/04/2012 Some debris in pipe invert LS (W. Wylie - DWR UCIP) FIELD_STRUCT_DESC: 24-inch CIPP-lined corrugated metal drainage pipe through the levee, 15 feet below the crown. Slide gate on the waterside (WS) end. Concrete headwall on the landside (LS) end. (24-inch pipe [HLM 5.39] authorized under Automatic Board Order (ABO) issued as Permit No. 10256, 1974 - Albert H. Lederer). [Additional Reference(s): DWR Levee Log, 2005 (HLM 5.39). USACE Sacramento O&M Manual, Unit 119, December 1952, Revised 29 Dec 2016, (Station 83+70 PCT), listed as 24-inch pipe. USACE As-Built Drawing No. 50-04-2396, Revision 4, pdf page 24, Sheet 8, December 1947]. FS Date: 10/22/2019 3:11:00 PM | | | | | | |

| | | | | | |
|----------|------|--------------|----|------------|-----------|
| LM Start | 5.28 | Rating ** | M | Issue No. | 22 (cont) |
| LM End | 5.28 | Issue Type + | Ma | Location * | |

Photo 1 of 3 : UCIP_SP_2021_59861_81775.jpg



View of LS looking from levee crown

Photo 2 of 3 : UCIP_SP_2021_59861_81776.jpg



View of WS looking from levee crown

| | | | |
|--|--|---|---|
| * Location LS : Land Side N/A : Not Applicable WS : Water Side CR : Crown | ** Rating A : Acceptable M : Minimally Acceptable U : Unacceptable | N : Not Inspected/Rated C : Corrected A/W : Acceptable but Monitor & Maintain | + Issue Type Ma : Maintenance Deficiency Ob : Design & System Obsolescence En : Enforcement |
|--|--|---|---|

**Flood Control Project Maintenance
Levee Inspections**

Maintenance Issue Types Only, Levee Inspection Report By Mile - Spring 2021

Sacramento Maintenance Yard Putah Creek

| Waterway | Bank | Unit Miles | Inspection Start/End | Inspector |
|--|------|------------|--------------------------|--------------|
| Unit No. 01 Putah Creek or North Levee | Left | 8.79 | 03/18/2021 03/18/2021 | David Julian |

| | | | | | |
|----------|-----------------------------|--------------|----|------------------------|---------------|
| LM Start | 5.28 | Rating ** | M | Issue No. | 22 (cont) |
| LM End | 5.28 | Issue Type + | Ma | Location * | |
| Category | Supplemental | | | GPS Latitude/Longitude | |
| | | | | Start | End |
| Item | DWR UCIP LMA Responsibility | | | 38.518022 ° | 38.518022 ° |
| | | | | -121.722521 ° | -121.722521 ° |
| DWR ID | 500 | | | | |

Photo 3 of 3 : UCIP_SP_2021_59861_81777.jpg



LS levee slope, headwall, and pipe end

| | | | | | |
|----------|-----------------------------|--------------|----|------------------------|---------------|
| LM Start | 5.30 | Rating ** | M | Issue No. | 23 |
| LM End | 5.30 | Issue Type + | Ma | Location * | |
| Category | Supplemental | | | GPS Latitude/Longitude | |
| | | | | Start | End |
| Item | DWR UCIP LMA Responsibility | | | 38.518032 ° | 38.518032 ° |
| | | | | -121.722778 ° | -121.722778 ° |
| DWR ID | 501 | | | | |

Photo 1 of 3 : UCIP_SP_2021_55460_81779.jpg



View of LS slope with concrete standpipe at levee toe

| | | | | | |
|--|--|--|--|--|--|
| Comment Code | | | | | |
| Inspector Comment | | | | | |
| FS_ID:55460 DS_ID:501 EP_NO: 10256 Repair Type: Non-Urgent Crossing Status: Found UCIP Comments: 10/22/2019 Record updated from No Action Needed to Non-Urgent. Need to have CVFPB review ABO and determine current owner. Crossing has been modified to supply water from LS to WS. Should not be considered a storm drainage pipe. (O.Yakimov - DWR UCIP) FIELD_STRUCT_DESC: 24-inch corrugated metal drainage pipe through the levee, 12.5 feet below the crown. Slide gate on the waterside (WS) end in 36-inch standpipe. Concrete standpipe at LS toe with fill-in pipe. (24-inch pipe [HLM 5.40] authorized under Automatic Board Order (ABO) issued as Permit No. 10256, 1974 - Albert H. Lederer). [Additional Reference(s): DWR Levee Log, 2005 (HLM 5.40). USACE Sacramento O&M Manual, Unit 119, December 1952, Revised 29 Dec 2016, (Station 84+40 PCT), listed as 24-inch pipe. USACE As-Built Drawing No. 50-04-2396, Revision 4, pdf page 24, Sheet 8, December 1947]. FS Date: 10/22/2019 3:28:15 PM | | | | | |

| | | | |
|--|--|---|---|
| * Location LS : Land Side N/A : Not Applicable WS : Water Side CR : Crown | ** Rating A : Acceptable M : Minimally Acceptable U : Unacceptable | N : Not Inspected/Rated C : Corrected A/W : Acceptable but Monitor & Maintain | + Issue Type Ma : Maintenance Deficiency Ob : Design & System Obsolescence En : Enforcement |
|--|--|---|---|

**Flood Control Project Maintenance
Levee Inspections**

Maintenance Issue Types Only, Levee Inspection Report By Mile - Spring 2021

Sacramento Maintenance Yard Putah Creek

| Waterway | Bank | Unit Miles | Inspection Start/End | Inspector |
|--|------|------------|--------------------------|--------------|
| Unit No. 01 Putah Creek or North Levee | Left | 8.79 | 03/18/2021 03/18/2021 | David Julian |

| | | | | | |
|----------|-----------------------------|--------------|----|------------------------|------------------|
| LM Start | 5.30 | Rating ** | M | Issue No. | 23 (cont) |
| LM End | 5.30 | Issue Type + | Ma | Location * | |
| Category | Supplemental | | | GPS Latitude/Longitude | |
| | | | | Start | End |
| Item | DWR UCIP LMA Responsibility | | | 38.518032 ° | 38.518032 ° |
| | | | | -121.722778 ° | -121.722778 ° |
| DWR ID | 501 | | | | |

Photo 2 of 3 : UCIP_SP_2021_55460_81780.jpg



36-inch CMP standpipe with slide gate at WS levee toe

| | | | | | |
|----------|-------------|--------------|----|------------|------------------|
| LM Start | 5.30 | Rating ** | M | Issue No. | 23 (cont) |
| LM End | 5.30 | Issue Type + | Ma | Location * | |

Photo 3 of 3 : UCIP_SP_2021_55460_81781.jpg



View inside of CMP standpipe on WS

| | | | |
|--|--|---|---|
| * Location LS : Land Side N/A : Not Applicable WS : Water Side CR : Crown | ** Rating A : Acceptable M : Minimally Acceptable U : Unacceptable | N : Not Inspected/Rated C : Corrected A/W : Acceptable but Monitor & Maintain | + Issue Type Ma : Maintenance Deficiency Ob : Design & System Obsolescence En : Enforcement |
|--|--|---|---|

**Flood Control Project Maintenance
Levee Inspections**

Maintenance Issue Types Only, Levee Inspection Report By Mile - Spring 2021

Sacramento Maintenance Yard Putah Creek

| Waterway | Bank | Unit Miles | Inspection Start/End | Inspector |
|--|------|------------|--------------------------|--------------|
| Unit No. 01 Putah Creek or North Levee | Left | 8.79 | 03/18/2021 03/18/2021 | David Julian |

| | | | | | |
|--|-----------------------------|--------------|----|------------------------|---------------|
| LM Start | 5.56 | Rating ** | M | Issue No. | 24 |
| LM End | 5.56 | Issue Type + | Ma | Location * | |
| Category | Supplemental | | | GPS Latitude/Longitude | |
| | | | | Start | End |
| Item | DWR UCIP LMA Responsibility | | | 38.518249 ° | 38.518249 ° |
| | | | | -121.727538 ° | -121.727538 ° |
| DWR ID | 502 | | | | |
| Comment Code | | | | | |
| | | | | | |
| Inspector Comment | | | | | |
| FS_ID:55461 DS_ID:502 EP_NO: 10255 Repair Type: Non-Urgent Crossing Status: Found UCIP Comments: 10/22/2019 Record updated from No Action Needed to Non-Urgent. Need to have CVFPB review ABO and determine current owner. (O.Yakimov - DWR UCIP) FIELD_STRUCT_DESC: 24-inch CIPP-lined corrugated metal drainage pipe through the levee, 11 feet below the crown. Slide gate on the waterside (WS) end. Concrete headwall on the landside (LS) end. (24-inch pipe [HLM 5.67] authorized under Automatic Board Order (ABO) issued as Permit No. 10255, 1974 - Owen W. and Ray W. Hamel). [Additional Reference(s): DWR Levee Log, 2005 (HLM 5.67). USACE Sacramento O&M Manual, Unit 119, December 1952, Revised 29 Dec 2016, (Station 97+00 PCT), listed as 24-inch pipe. USACE As-Built Drawing No. 50-04-2396, Revision 4, pdf page 24, Sheet 8, December 1947]. FS Date: 10/22/2019 4:03:27 PM | | | | | |

Photo 1 of 3 : UCIP_SP_2021_55461_81782.jpg



View of LS looking from levee crown

| | | | | | |
|----------|-------------|--------------|----|------------|------------------|
| LM Start | 5.56 | Rating ** | M | Issue No. | 24 (cont) |
| LM End | 5.56 | Issue Type + | Ma | Location * | |

Photo 2 of 3 : UCIP_SP_2021_55461_81783.jpg



View of WS looking from levee crown

| | | | |
|--|--|---|---|
| * Location LS : Land Side N/A : Not Applicable WS : Water Side CR : Crown | ** Rating A : Acceptable M : Minimally Acceptable U : Unacceptable | N : Not Inspected/Rated C : Corrected A/W : Acceptable but Monitor & Maintain | + Issue Type Ma : Maintenance Deficiency Ob : Design & System Obsolescence En : Enforcement |
|--|--|---|---|

**Flood Control Project Maintenance
Levee Inspections**

Maintenance Issue Types Only, Levee Inspection Report By Mile - Spring 2021

Sacramento Maintenance Yard Putah Creek

| Waterway | Bank | Unit Miles | Inspection Start/End | Inspector |
|--|------|------------|--------------------------|--------------|
| Unit No. 01 Putah Creek or North Levee | Left | 8.79 | 03/18/2021 03/18/2021 | David Julian |

| | | | | | |
|----------|-----------------------------|--------------|----|------------------------|---------------|
| LM Start | 5.56 | Rating ** | M | Issue No. | 24 (cont) |
| LM End | 5.56 | Issue Type + | Ma | Location * | |
| Category | Supplemental | | | GPS Latitude/Longitude | |
| | | | | Start | End |
| Item | DWR UCIP LMA Responsibility | | | 38.518249 ° | 38.518249 ° |
| | | | | -121.727538 ° | -121.727538 ° |
| DWR ID | 502 | | | | |

Photo 3 of 3 : UCIP_SP_2021_55461_81784.jpg



WS levee slope, headwall, and slide gate

| | | | | | |
|----------|-----------------------------|--------------|----|------------------------|---------------|
| LM Start | 5.74 | Rating ** | M | Issue No. | 29 |
| LM End | 5.74 | Issue Type + | Ma | Location * | |
| Category | Supplemental | | | GPS Latitude/Longitude | |
| | | | | Start | End |
| Item | DWR UCIP LMA Responsibility | | | 38.518368 ° | 38.518368 ° |
| | | | | -121.730947 ° | -121.730947 ° |
| DWR ID | 503 | | | | |

Comment Code

Inspector Comment

FS_ID:59863
 DS_ID:503
 EP_NO: 10252
 Repair Type: Non-Urgent
 Crossing Status: Found
 UCIP Comments: 10/22/2019 Record updated from No Action Needed to Non-Urgent. Need to have CVFPB review ABO and determine current owner. (O.Yakimov - DWR UCIP) 05/06/2013 Owner of pipe needs to clean out obstruction in pipe. (C. Lund - DWR Sacramento Yard)
 04/04/2012 Partially obstructed with sedimentation throughout crossing. (W. Wylie - DWR UCIP)
 FIELD_STRUCT_DESC: 24-inch CIPP-lined corrugated metal drainage pipe through the levee, 12 feet below the crown. Slide gate on the waterside (WS) end. Concrete headwall on the landside (LS) end. (24-inch pipe [HLM 5.86] authorized under Automatic Board Order (ABO) issued as Permit No. 10252, 1974 - John F. Hamel). [Additional Reference(s): DWR Levee Log, 2005 (HLM 5.86). USACE Sacramento O&M Manual, Unit 119, December 1952, Revised 29 Dec 2016, (Station 108+00 PCT), listed as 24-inch pipe. USACE As-Built Drawing No. 50-04-2396, Revision 4, pdf page 24, Sheet 8, December 1947].
 FS Date: 10/22/2019 10:55:00 AM

Photo 1 of 3 : UCIP_SP_2021_59863_82261.jpg



View of LS looking from levee crown

| | | |
|--|---|---|
| * Location LS : Land Side N/A : Not Applicable WS : Water Side CR : Crown | ** Rating A : Acceptable M : Minimally Acceptable U : Unacceptable N : Not Inspected/Rated C : Corrected A/W : Acceptable but Monitor & Maintain | + Issue Type Ma : Maintenance Deficiency Ob : Design & System Obsolescence En : Enforcement |
|--|---|---|

**Flood Control Project Maintenance
Levee Inspections**

Maintenance Issue Types Only, Levee Inspection Report By Mile - Spring 2021

Sacramento Maintenance Yard Putah Creek

| Waterway | Bank | Unit Miles | Inspection Start/End | Inspector |
|--|------|------------|--------------------------|--------------|
| Unit No. 01 Putah Creek or North Levee | Left | 8.79 | 03/18/2021 03/18/2021 | David Julian |

| | | | | | |
|----------|-----------------------------|--------------|----|------------------------|---------------|
| LM Start | 5.74 | Rating ** | M | Issue No. | 29 (cont) |
| LM End | 5.74 | Issue Type + | Ma | Location * | |
| Category | Supplemental | | | GPS Latitude/Longitude | |
| | | | | Start | End |
| Item | DWR UCIP LMA Responsibility | | | 38.518368 ° | 38.518368 ° |
| | | | | -121.730947 ° | -121.730947 ° |
| DWR ID | 503 | | | | |

Photo 2 of 3 : UCIP_SP_2021_59863_82262.jpg



View of WS looking from levee crown

| | | | | | |
|----------|-------------|--------------|----|------------|------------------|
| LM Start | 5.74 | Rating ** | M | Issue No. | 29 (cont) |
| LM End | 5.74 | Issue Type + | Ma | Location * | |

Photo 3 of 3 : UCIP_SP_2021_59863_82263.jpg



LS levee slope, headwall, and pipe end

| | | | | | |
|--|-------------------------|--------------|----|------------------------|---------------|
| LM Start | 6.04 | Rating ** | M | Issue No. | 62 |
| LM End | 6.78 | Issue Type + | Ma | Location * | WS |
| Category | Earthen Levee | | | GPS Latitude/Longitude | |
| | | | | Start | End |
| Item | Vegetation | | | 38.518370 ° | 38.517642 ° |
| | | | | -121.736393 ° | -121.750023 ° |
| DWR ID | DWR_ST0007_01_s_2021_62 | | | | |
| Comment Code | | | | | |
| V1 : Control annual grass and weeds on the levee slopes and easements. | | | | | |
| Inspector Comment | | | | | |
| | | | | | |

No Photos

| | | | |
|--|--|--|---|
| * Location LS : Land Side N/A : Not Applicable WS : Water Side CR : Crown | ** Rating A : Acceptable M : Minimally Acceptable U : Unacceptable | N : Not Inspected/Rated C : Corrected A/W : Acceptable but Monitor & Maintain | + Issue Type Ma : Maintenance Deficiency Ob : Design & System Obsolescence En : Enforcement |
|--|--|--|---|

**Flood Control Project Maintenance
Levee Inspections**

Maintenance Issue Types Only, Levee Inspection Report By Mile - Spring 2021

Sacramento Maintenance Yard Putah Creek

| Waterway | Bank | Unit Miles | Inspection Start/End | Inspector |
|--|------|------------|--------------------------|--------------|
| Unit No. 01 Putah Creek or North Levee | Left | 8.79 | 03/18/2021 03/18/2021 | David Julian |

| | | | | | | |
|---|-----------------------------|--------------|----|------------------------|---------------|--|
| LM Start | 6.45 | Rating ** | M | Issue No. | 30 | |
| LM End | 6.45 | Issue Type + | Ma | Location * | | |
| Category | Supplemental | | | GPS Latitude/Longitude | | |
| | | | | Start | End | |
| Item | DWR UCIP LMA Responsibility | | | 38.518208 ° | 38.518208 ° | |
| | | | | -121.743990 ° | -121.743990 ° | |
| DWR ID | 505 | | | | | |
| Comment Code | | | | | | |
| | | | | | | |
| Inspector Comment | | | | | | |
| FS_ID:55647 DS_ID:505 EP_NO: 10253 Repair Type: Non-Urgent Crossing Status: Found UCIP Comments: 10/22/2019 Record updated from No Action Needed to Non-Urgent. Levee toe erosion on both sides of headwall on WS. Need to have CVFPB review ABO and determine current owner. (O.Yakimov - DWR UCIP) FIELD_STRUCT_DESC: 24-inch CIPP-lined corrugated metal drainage pipe through the levee, 10.4 feet below the crown. Slide gate on the waterside (WS), and concrete headwalls on both the WS and the landside (LS). (24-inch pipe [HLM 6.57] authorized under Automatic Board Order (ABO) issued as Permit No. 10253, 1974 - Lester J. Hamel). [Additional Reference(s): DWR Levee Log, 2005 (HLM 6.57. USACE Sacramento O&M Manual, Unit 119, December 1952, Revised 29 Dec 2016, (Station 145+50 PCT), listed as 24-inch pipe. USACE As-Built Drawing No. 50-04-2396, Revision 4, pdf page 24, Sheet 8, December 1947]. FS Date: 10/22/2019 11:07:35 AM | | | | | | |

| | | | | | |
|----------|-------------|--------------|----|------------|------------------|
| LM Start | 6.45 | Rating ** | M | Issue No. | 30 (cont) |
| LM End | 6.45 | Issue Type + | Ma | Location * | |

Photo 1 of 3 : UCIP_SP_2021_55647_82273.jpg



View of LS looking from levee crown

Photo 2 of 3 : UCIP_SP_2021_55647_82274.jpg



View of WS looking from levee crown

| | | | |
|--|--|---|---|
| * Location LS : Land Side N/A : Not Applicable WS : Water Side CR : Crown | ** Rating A : Acceptable M : Minimally Acceptable U : Unacceptable | N : Not Inspected/Rated C : Corrected A/W : Acceptable but Monitor & Maintain | + Issue Type Ma : Maintenance Deficiency Ob : Design & System Obsolescence En : Enforcement |
|--|--|---|---|

**Flood Control Project Maintenance
Levee Inspections**

Maintenance Issue Types Only, Levee Inspection Report By Mile - Spring 2021

Sacramento Maintenance Yard Putah Creek

| Waterway | Bank | Unit Miles | Inspection Start/End | Inspector |
|--|------|------------|--------------------------|--------------|
| Unit No. 01 Putah Creek or North Levee | Left | 8.79 | 03/18/2021 03/18/2021 | David Julian |

| | | | | | |
|----------|-----------------------------|--------------|----|------------------------|---------------|
| LM Start | 6.45 | Rating ** | M | Issue No. | 30 (cont) |
| LM End | 6.45 | Issue Type + | Ma | Location * | |
| Category | Supplemental | | | GPS Latitude/Longitude | |
| | | | | Start | End |
| Item | DWR UCIP LMA Responsibility | | | 38.518208 ° | 38.518208 ° |
| | | | | -121.743990 ° | -121.743990 ° |
| DWR ID | 505 | | | | |

Photo 3 of 3 : UCIP_SP_2021_55647_82275.jpg



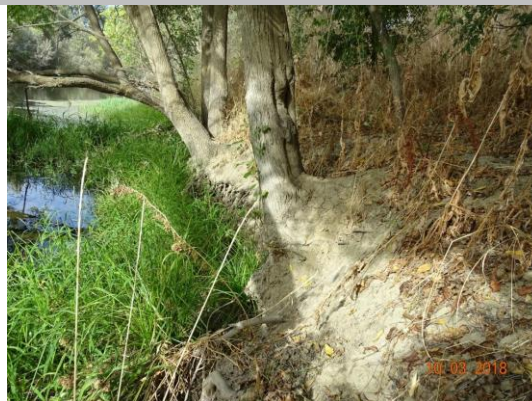
WS levee slope, headwall, and slide gate

| | | | | | |
|---|-------------------------|--------------|----|------------------------|---------------|
| LM Start | 6.83 | Rating ** | M | Issue No. | 47 |
| LM End | 6.83 | Issue Type + | Ma | Location * | LS |
| Category | Earthen Levee | | | GPS Latitude/Longitude | |
| | | | | Start | End |
| Item | Vegetation | | | 38.517669 ° | 38.517669 ° |
| | | | | -121.751011 ° | -121.751011 ° |
| DWR ID | DWR_ST0007_01_s_2020_47 | | | | |
| Comment Code | | | | | |
| V4 : Elderberries are blocking visibility and flood fight capability. | | | | | |
| Inspector Comment | | | | | |
| | | | | | |

No Photos

| | | | | | |
|---|---------------------------|--------------|----|------------------------|---------------|
| LM Start | 6.88 | Rating ** | M | Issue No. | 34 |
| LM End | 6.93 | Issue Type + | Ma | Location * | WS |
| Category | Supplemental | | | GPS Latitude/Longitude | |
| | | | | Start | End |
| Item | 2017 USACE Erosion Survey | | | 38.517362 ° | 38.517355 ° |
| | | | | -121.751778 ° | -121.752824 ° |
| DWR ID | DWR_ST0007_01_f_2018_34 | | | | |
| Comment Code | | | | | |
| | | | | | |
| Inspector Comment | | | | | |
| 2017 Site ID: PUC 7.2 L | | | | | |
| Status: Eroding | | | | | |
| 2017 Field Notes: New erosion along lower bank. | | | | | |
| Site History: 2011 - The toe to mid-bank is slumping. Large tree pop-outs have furthered the erosion. Slope is slightly steeper than 1:1. | | | | | |

Photo 1 of 1 : SP_2021_ST0007_282_34_20210301_00005.jpg



View looking upstream at erosion at the waterside toe. Tree roots are exposed (September 2018).

| | | | |
|--|--|--|---|
| * Location LS : Land Side N/A : Not Applicable WS : Water Side CR : Crown | ** Rating A : Acceptable M : Minimally Acceptable U : Unacceptable | N : Not Inspected/Rated C : Corrected A/W : Acceptable but Monitor & Maintain | + Issue Type Ma : Maintenance Deficiency Ob : Design & System Obsolescence En : Enforcement |
|--|--|--|---|

**Flood Control Project Maintenance
Levee Inspections**

Maintenance Issue Types Only, Levee Inspection Report By Mile - Spring 2021

Sacramento Maintenance Yard Putah Creek

| Waterway | Bank | Unit Miles | Inspection Start/End | Inspector |
|--|------|------------|--------------------------|--------------|
| Unit No. 01 Putah Creek or North Levee | Left | 8.79 | 03/18/2021 03/18/2021 | David Julian |

| | | | | | |
|--|-------------------------|--------------|----|------------------------|---------------|
| LM Start | 6.89 | Rating ** | C | Issue No. | 56 |
| LM End | 6.89 | Issue Type + | Ma | Location * | LS |
| Category | Earthen Levee | | | GPS Latitude/Longitude | |
| | | | | Start | End |
| Item | Trim / Thin Trees | | | 38.517513 ° | 38.517513 ° |
| | | | | -121.752023 ° | -121.752023 ° |
| DWR ID | DWR_ST0007_01_f_2017_56 | | | | |
| Comment Code | | | | | |
| T2 : Thin trees to allow visibility of the ground and room to flood fight. | | | | | |
| Inspector Comment | | | | | |
| | | | | | |

No Photos

| | | | | | | |
|--|-----------------------------|--------------|----|------------------------|---------------|--|
| LM Start | 6.95 | Rating ** | M | Issue No. | 32 | |
| LM End | 6.95 | Issue Type + | Ma | Location * | | |
| Category | Supplemental | | | GPS Latitude/Longitude | | |
| | | | | Start | End | |
| Item | DWR UCIP LMA Responsibility | | | 38.517679 ° | 38.517679 ° | |
| | | | | -121.753146 ° | -121.753146 ° | |
| DWR ID | 508 | | | | | |
| Comment Code | | | | | | |
| | | | | | | |
| Inspector Comment | | | | | | |
| FS_ID:55664 | | | | | | |
| DS_ID:508 | | | | | | |
| EP_NO: 10247 | | | | | | |
| Repair Type: Non-Urgent | | | | | | |
| Crossing Status: Found | | | | | | |
| UCIP Comments: 10/22/2019 Record updated from No Action Needed to Non-Urgent. Need to have CVFPB review ABO and determine current owner. (O.Yakimov - DWR UCIP) | | | | | | |
| FIELD_STRUCT_DESC: 24-inch CIPP-lined corrugated metal drainage pipe through the levee, 11.0 feet below the crown. Flap gate on the waterside (WS) end. Concrete headwall on the landside (LS) end. Concrete Apron on the WS. (24-inch pipe [HLM 7.09] authorized under Automatic Board Order (ABO) issued as Permit No. 10247, 1974 - University of California, Office of the Regents). [Additional Reference(s): DWR Levee Log, 2005 (HLM 7.09). USACE Sacramento O&M Manual, Unit 119, December 1952, Revised 29 Dec 2016, (Station 172+00 PCT), listed as 24-inch pipe. USACE As-Built Drawing No. 50-04-2396, Revision 4, pdf page 25, Sheet 9, December 1947]. | | | | | | |
| FS Date: 10/22/2019 1:55:30 PM | | | | | | |

Photo 1 of 3 : UCIP_SP_2021_55664_82343.jpg



View of levee crown at the crossing

| | | | |
|--|--|---|---|
| * Location LS : Land Side N/A : Not Applicable WS : Water Side CR : Crown | ** Rating A : Acceptable M : Minimally Acceptable U : Unacceptable | N : Not Inspected/Rated C : Corrected A/W : Acceptable but Monitor & Maintain | + Issue Type Ma : Maintenance Deficiency Ob : Design & System Obsolescence En : Enforcement |
|--|--|---|---|

**Flood Control Project Maintenance
Levee Inspections**

Maintenance Issue Types Only, Levee Inspection Report By Mile - Spring 2021

Sacramento Maintenance Yard Putah Creek

| Waterway | Bank | Unit Miles | Inspection Start/End | Inspector |
|--|------|------------|--------------------------|--------------|
| Unit No. 01 Putah Creek or North Levee | Left | 8.79 | 03/18/2021 03/18/2021 | David Julian |

| | | | | | |
|----------|-----------------------------|--------------|------------------------|---------------|------------------|
| LM Start | 6.95 | Rating ** | M | Issue No. | 32 (cont) |
| LM End | 6.95 | Issue Type + | Ma | Location * | |
| Category | Supplemental | | GPS Latitude/Longitude | | |
| | | | Start | End | |
| Item | DWR UCIP LMA Responsibility | | 38.517679 ° | 38.517679 ° | |
| | | | -121.753146 ° | -121.753146 ° | |
| DWR ID | 508 | | | | |

Photo 2 of 3 : UCIP_SP_2021_55664_82344.jpg



View of WS looking from levee crown

| | | | | | |
|----------|-------------|--------------|----|------------|------------------|
| LM Start | 6.95 | Rating ** | M | Issue No. | 32 (cont) |
| LM End | 6.95 | Issue Type + | Ma | Location * | |

Photo 3 of 3 : UCIP_SP_2021_55664_82345.jpg



View of LS looking from levee crown

| | | | |
|--|--|---|---|
| * Location LS : Land Side N/A : Not Applicable WS : Water Side CR : Crown | ** Rating A : Acceptable M : Minimally Acceptable U : Unacceptable | N : Not Inspected/Rated C : Corrected A/W : Acceptable but Monitor & Maintain | + Issue Type Ma : Maintenance Deficiency Ob : Design & System Obsolescence En : Enforcement |
|--|--|---|---|

**Flood Control Project Maintenance
Levee Inspections**

Maintenance Issue Types Only, Levee Inspection Report By Mile - Spring 2021

Sacramento Maintenance Yard Putah Creek

| Waterway | Bank | Unit Miles | Inspection Start/End | Inspector |
|--|------|------------|--------------------------|--------------|
| Unit No. 01 Putah Creek or North Levee | Left | 8.79 | 03/18/2021 03/18/2021 | David Julian |

| | | | | | | |
|---|-----------------------------|--------------|----|------------------------|---------------|--|
| LM Start | 7.18 | Rating ** | M | Issue No. | 37 | |
| LM End | 7.18 | Issue Type + | Ma | Location * | | |
| Category | Supplemental | | | GPS Latitude/Longitude | | |
| | | | | Start | End | |
| Item | DWR UCIP LMA Responsibility | | | 38.518181 ° | 38.518181 ° | |
| | | | | -121.757309 ° | -121.757309 ° | |
| DWR ID | 512 | | | | | |
| Comment Code | | | | | | |
| | | | | | | |
| Inspector Comment | | | | | | |
| FS_ID:59869 DS_ID:512 EP_NO: 10247 Repair Type: Non-Urgent Crossing Status: Found UCIP Comments: 10/21/2019 Record updated from No Action Needed to Non-Urgent. Need to have CVFPB review ABO and determine current owner. (O.Yakimov - DWR UCIP) 05/07/2013 Debris removed from outlet. (C. Lund - DWR Sacramento Yard) 04/04/2012 Some debris blocking outlet. (W. Wylie - DWR UCIP) FIELD_STRUCT_DESC: 24-inch CIPP-lined drainage pipe of an unknown material through the levee, 12 feet below the crown. Flap gate on the waterside (WS) end. Concrete headwall on the landside (LS) end. (24-inch [HLM 7.36] authorized under Automatic Board Order (ABO) issued as Permit No. 10247, 1974 - University of California, Office of the Regents). [Additional Reference(s): DWR Levee Log, 2005 (HLM 7.36). USACE Sacramento O&M Manual, Unit 119, December 1952, Revised 29 Dec 2016, (Station 183+97 PCT), listed as 24-inch pipe. USACE As-Built Drawing No. 50-04-2396, Revision 4, pdf page 25, Sheet 9, December 1947]. FS Date: 10/21/2019 2:33:00 PM | | | | | | |

| | | | | | |
|----------|-------------|--------------|----|------------|------------------|
| LM Start | 7.18 | Rating ** | M | Issue No. | 37 (cont) |
| LM End | 7.18 | Issue Type + | Ma | Location * | |

Photo 1 of 3 : UCIP_SP_2021_59869_82357.jpg



View of WS looking from levee crown

Photo 2 of 3 : UCIP_SP_2021_59869_82355.jpg



View of LS looking from levee crown

| | | | |
|--|--|---|---|
| * Location LS : Land Side N/A : Not Applicable WS : Water Side CR : Crown | ** Rating A : Acceptable M : Minimally Acceptable U : Unacceptable | N : Not Inspected/Rated C : Corrected A/W : Acceptable but Monitor & Maintain | + Issue Type Ma : Maintenance Deficiency Ob : Design & System Obsolescence En : Enforcement |
|--|--|---|---|

Sacramento Maintenance Yard Putah Creek

**Flood Control Project Maintenance
Levee Inspections**

Maintenance Issue Types Only, Levee Inspection Report By Mile - Spring 2021

Sacramento Maintenance Yard Putah Creek

| Waterway | Bank | Unit Miles | Inspection Start/End | Inspector |
|--|------|------------|--------------------------|--------------|
| Unit No. 01 Putah Creek or North Levee | Left | 8.79 | 03/18/2021 03/18/2021 | David Julian |

| | | | | | |
|----------|-----------------------------|--------------|----|------------------------|------------------|
| LM Start | 7.35 | Rating ** | M | Issue No. | 45 (cont) |
| LM End | 7.35 | Issue Type + | Ma | Location * | |
| Category | Supplemental | | | GPS Latitude/Longitude | |
| | | | | Start | End |
| Item | DWR UCIP LMA Responsibility | | | 38.518510 ° | 38.518510 ° |
| | | | | -121.760474 ° | -121.760474 ° |
| DWR ID | 516 | | | | |

Photo 2 of 3 : UCIP_SP_2021_59874_82373.jpg



View of LS looking from levee crown

| | | | | | |
|----------|-------------|--------------|----|------------|------------------|
| LM Start | 7.35 | Rating ** | M | Issue No. | 45 (cont) |
| LM End | 7.35 | Issue Type + | Ma | Location * | |

Photo 3 of 3 : UCIP_SP_2021_59874_82374.jpg



View of WS looking from levee crown

*** Location**
 LS : Land Side N/A : Not Applicable
 WS : Water Side
 CR : Crown

**** Rating**
 A : Acceptable N : Not Inspected/Rated
 M : Minimally Acceptable C : Corrected
 U : Unacceptable A/W : Acceptable but Monitor & Maintain

+ Issue Type
 Ma : Maintenance Deficiency
 Ob : Design & System Obsolescence
 En : Enforcement

**Flood Control Project Maintenance
Levee Inspections**

Maintenance Issue Types Only, Levee Inspection Report By Mile - Spring 2021

Sacramento Maintenance Yard Putah Creek

| Waterway | Bank | Unit Miles | Inspection Start/End | Inspector |
|--|------|------------|--------------------------|--------------|
| Unit No. 01 Putah Creek or North Levee | Left | 8.79 | 03/18/2021 03/18/2021 | David Julian |

| | | | | | | |
|---|-----------------------------|--------------|----|------------------------|---------------|--|
| LM Start | 7.56 | Rating ** | M | Issue No. | 46 | |
| LM End | 7.56 | Issue Type + | Ma | Location * | | |
| Category | Supplemental | | | GPS Latitude/Longitude | | |
| | | | | Start | End | |
| Item | DWR UCIP LMA Responsibility | | | 38.519002 ° | 38.519002 ° | |
| | | | | -121.764315 ° | -121.764315 ° | |
| DWR ID | 518 | | | | | |
| Comment Code | | | | | | |
| | | | | | | |
| Inspector Comment | | | | | | |
| FS_ID:59875 DS_ID:518 EP_NO: 10247 Repair Type: Non-Urgent Crossing Status: Found UCIP Comments: 10/21/2019 Difficult access to pipe inlet on LS due to a fence. (O.Yakimov - DWR UCIP)05/07/2013 Fence blocking inlet. Owner of fence needs to move fence away from inlet. (C. Lund - DWR Sacramento Yard) 04/05/2012 Clear debris from pipe. (W. Wylie - DWR UCIP) FIELD_STRUCT_DESC: 24-inch CIPP-lined corrugated metal drainage pipe through the levee, 12 feet below the crown. Slide gate on the waterside (WS) slope, and headwalls on both sides. (24-inch pipe [HLM 7.75] authorized under Automatic Board Order (ABO) issued as Permit No. 10247, 1974 - University of California, Office of the Regents). [Additional Reference(s): DWR Levee Log, 2005 (HLM 7.75). USACE Sacramento O&M Manual, Unit 119, December 1952, Revised 29 Dec 2016, (Station 204+00 PCT), listed as 24-inch pipe. USACE As-Built Drawing No. 50-04-2396, Revision 4, pdf page 25, Sheet 9, December 1947]. FS Date: 10/21/2019 8:27:00 AM | | | | | | |

| | | | | | |
|----------|-------------|--------------|----|------------|------------------|
| LM Start | 7.56 | Rating ** | M | Issue No. | 46 (cont) |
| LM End | 7.56 | Issue Type + | Ma | Location * | |

Photo 1 of 3 : UCIP_SP_2021_59875_82382.jpg



View of LS looking from levee crown

Photo 2 of 3 : UCIP_SP_2021_59875_82383.jpg



LS: headwall and pipe end near a fence

| | | |
|--|---|---|
| * Location LS : Land Side N/A : Not Applicable WS : Water Side CR : Crown | ** Rating A : Acceptable M : Minimally Acceptable U : Unacceptable N : Not Inspected/Rated C : Corrected A/W : Acceptable but Monitor & Maintain | + Issue Type Ma : Maintenance Deficiency Ob : Design & System Obsolescence En : Enforcement |
|--|---|---|

**Flood Control Project Maintenance
Levee Inspections**

Maintenance Issue Types Only, Levee Inspection Report By Mile - Spring 2021

Sacramento Maintenance Yard Putah Creek

| Waterway | Bank | Unit Miles | Inspection Start/End | Inspector |
|--|------|------------|--------------------------|--------------|
| Unit No. 01 Putah Creek or North Levee | Left | 8.79 | 03/18/2021 03/18/2021 | David Julian |

| | | | | | |
|----------|-----------------------------|--------------|----|------------------------|---------------|
| LM Start | 7.56 | Rating ** | M | Issue No. | 46 (cont) |
| LM End | 7.56 | Issue Type + | Ma | Location * | |
| Category | Supplemental | | | GPS Latitude/Longitude | |
| | | | | Start | End |
| Item | DWR UCIP LMA Responsibility | | | 38.519002 ° | 38.519002 ° |
| | | | | -121.764315 ° | -121.764315 ° |
| DWR ID | 518 | | | | |

Photo 3 of 3 : UCIP_SP_2021_59875_82385.jpg



WS: headwall and slide gate

| | | | | | |
|----------|-----------------------------|--------------|----|------------------------|---------------|
| LM Start | 8.28 | Rating ** | M | Issue No. | 51 |
| LM End | 8.28 | Issue Type + | Ma | Location * | |
| Category | Supplemental | | | GPS Latitude/Longitude | |
| | | | | Start | End |
| Item | DWR UCIP LMA Responsibility | | | 38.521246 ° | 38.521246 ° |
| | | | | -121.776434 ° | -121.776434 ° |
| DWR ID | 520 | | | | |

Comment Code

Inspector Comment

FS_ID:59879
DS_ID:520
EP_NO: 10247
Repair Type: Non-Urgent
Crossing Status: Found
UCIP Comments: 10/21/2019 Record updated from No Action Needed to Non-Urgent. Need to have CVFPB review ABO and determine current owner. (O.Yakimov - DWR UCIP) 05/07/2012 Cleaned inlet and outlets. Owner of pipe may need to clean pipe. (C. Lund - DWR Sacramento Yard)
04/05/2012 Pipe is plugged with soil on LS. (W. Wylie - DWR UCIP)
FIELD_STRUCT_DESC: 24-inch CIPP-lined corrugated metal drainage pipe through the levee, 8 feet below the crown. Slide gate on the waterside (WS) end. (24-inch pipe [HLM 8.45] authorized under Automatic Board Order (ABO) issued as Permit No. 10247, 1974 - University of California, Office of the Regents). [Additional Reference(s): DWR Levee Log, 2005 (HLM 8.45). USACE Sacramento O&M Manual, Unit 119, December 1952, Revised 29 Dec 2016, (Station 241+50 PCT), listed as 24-inch pipe. USACE As-Built Drawing No. 50-04-2396, Revision 2, pdf page 26, Sheet 10, December 1947].
FS Date: 10/21/2019 10:02:00 AM

Photo 1 of 3 : UCIP_SP_2021_59879_82393.jpg



View of levee crown at the crossing

| | | | |
|--|--|---|---|
| * Location LS : Land Side N/A : Not Applicable WS : Water Side CR : Crown | ** Rating A : Acceptable M : Minimally Acceptable U : Unacceptable | N : Not Inspected/Rated C : Corrected A/W : Acceptable but Monitor & Maintain | + Issue Type Ma : Maintenance Deficiency Ob : Design & System Obsolescence En : Enforcement |
|--|--|---|---|

**Flood Control Project Maintenance
Levee Inspections**

Maintenance Issue Types Only, Levee Inspection Report By Mile - Spring 2021

Sacramento Maintenance Yard Putah Creek

| Waterway | Bank | Unit Miles | Inspection Start/End | Inspector |
|--|------|------------|--------------------------|--------------|
| Unit No. 01 Putah Creek or North Levee | Left | 8.79 | 03/18/2021 03/18/2021 | David Julian |

| | | | | | |
|----------|-----------------------------|--------------|----|------------------------|---------------|
| LM Start | 8.28 | Rating ** | M | Issue No. | 51 (cont) |
| LM End | 8.28 | Issue Type + | Ma | Location * | |
| Category | Supplemental | | | GPS Latitude/Longitude | |
| | | | | Start | End |
| Item | DWR UCIP LMA Responsibility | | | 38.521246 ° | 38.521246 ° |
| | | | | -121.776434 ° | -121.776434 ° |
| DWR ID | 520 | | | | |

Photo 2 of 3 : UCIP_SP_2021_59879_82394.jpg



View of LS looking from levee crown

| | | | | | |
|----------|-------------|--------------|----|------------|------------------|
| LM Start | 8.28 | Rating ** | M | Issue No. | 51 (cont) |
| LM End | 8.28 | Issue Type + | Ma | Location * | |

Photo 3 of 3 : UCIP_SP_2021_59879_82395.jpg



View of WS looking from levee crown

| | | | |
|--|--|---|---|
| * Location LS : Land Side N/A : Not Applicable WS : Water Side CR : Crown | ** Rating A : Acceptable M : Minimally Acceptable U : Unacceptable | N : Not Inspected/Rated C : Corrected A/W : Acceptable but Monitor & Maintain | + Issue Type Ma : Maintenance Deficiency Ob : Design & System Obsolescence En : Enforcement |
|--|--|---|---|

**Flood Control Project Maintenance
Levee Inspections**

Maintenance Issue Types Only, Levee Inspection Report By Mile - Spring 2021

Sacramento Maintenance Yard Putah Creek

| Waterway | Bank | Unit Miles | Inspection Start/End | Inspector |
|--|------|------------|--------------------------|--------------|
| Unit No. 01 Putah Creek or North Levee | Left | 8.79 | 03/18/2021 03/18/2021 | David Julian |

| | | | | | |
|----------|-----------------------------|--------------|------------------------|---------------|-----------|
| LM Start | 8.33 | Rating ** | M | Issue No. | 52 |
| LM End | 8.33 | Issue Type + | Ma | Location * | |
| Category | Supplemental | | GPS Latitude/Longitude | | |
| | | | Start | End | |
| Item | DWR UCIP LMA Responsibility | | 38.521660 ° | 38.521660 ° | |
| | | | -121.777203 ° | -121.777203 ° | |
| DWR ID | 521 | | | | |

Comment Code

Inspector Comment

FS_ID:59880
DS_ID:521
EP_NO: 10247
Repair Type: Non-Urgent
Crossing Status: Found
UCIP Comments: 10/21/2019 Record updated from No Action Needed to Non-Urgent. Need to have CVFPB review ABO and determine current owner. (O.Yakimov - DWR UCIP) 05/07/2013 Removed material at slidegate and inlet. (C. Lund - DWR Sacramento Yard) 04/05/2012 Pipe is partially blocked by sedimentation and slide gate will not open. (W. Wylie - DWR UCIP)
FIELD_STRUCT_DESC: 24-inch CIPP-lined corrugated metal drainage pipe through the levee, 7 feet below the crown. Slide gate on the waterside (WS) end. Headwalls on both ends. (24-inch pipe [HLM 8.50] authorized under Automatic Board Order (ABO) issued as Permit No. 10247, 1974 - University of California, Office of the Regents. Also mentioned in Permit No. 5896, 1967 - The Regents of the University of California, Office of Architects and Engineers, University of California, Davis Campus). [Additional Reference(s): DWR Levee Log, 2005 (HLM 8.50). USACE Sacramento O&M Manual, Unit 119, December 1952, Revised 29 Dec 2016, (Station 244+20 PCT), listed as 24-inch pipe. USACE As-Built Drawing No. 50-04-2396, Revision 2, pdf page 26, Sheet 10, December 1947].
FS Date: 10/21/2019 11:46:00 AM

| | | | | | |
|----------|-------------|--------------|----|------------|------------------|
| LM Start | 8.33 | Rating ** | M | Issue No. | 52 (cont) |
| LM End | 8.33 | Issue Type + | Ma | Location * | |

Photo 1 of 3 : UCIP_SP_2021_59880_82398.jpg



View of WS looking from levee crown

Photo 2 of 3 : UCIP_SP_2021_59880_82399.jpg



View of LS looking from levee crown

| | | | |
|--|--|--|---|
| * Location LS : Land Side N/A : Not Applicable WS : Water Side CR : Crown | ** Rating A : Acceptable M : Minimally Acceptable U : Unacceptable | N : Not Inspected/Rated C : Corrected A/W : Acceptable but Monitor & Maintain | + Issue Type Ma : Maintenance Deficiency Ob : Design & System Obsolescence En : Enforcement |
|--|--|--|---|

**Flood Control Project Maintenance
Levee Inspections**

Maintenance Issue Types Only, Levee Inspection Report By Mile - Spring 2021

Sacramento Maintenance Yard Putah Creek

| Waterway | Bank | Unit Miles | Inspection Start/End | Inspector |
|--|------|------------|--------------------------|--------------|
| Unit No. 01 Putah Creek or North Levee | Left | 8.79 | 03/18/2021 03/18/2021 | David Julian |

| | | | | | |
|----------|-----------------------------|--------------|----|------------------------|------------------|
| LM Start | 8.33 | Rating ** | M | Issue No. | 52 (cont) |
| LM End | 8.33 | Issue Type + | Ma | Location * | |
| Category | Supplemental | | | GPS Latitude/Longitude | |
| | | | | Start | End |
| Item | DWR UCIP LMA Responsibility | | | 38.521660 ° | 38.521660 ° |
| | | | | -121.777203 ° | -121.777203 ° |
| DWR ID | 521 | | | | |

Photo 3 of 3 : UCIP_SP_2021_59880_82400.jpg



LS levee slope, headwall, and pipe end

| | | | | | |
|---|-------------------------|--------------|----|------------------------|---------------|
| LM Start | 8.52 | Rating ** | M | Issue No. | 63 |
| LM End | 8.52 | Issue Type + | Ma | Location * | WS |
| Category | Earthen Levee | | | GPS Latitude/Longitude | |
| | | | | Start | End |
| Item | Vegetation | | | 38.523191 ° | 38.523191 ° |
| | | | | -121.780154 ° | -121.780154 ° |
| DWR ID | DWR_ST0007_01_s_2021_63 | | | | |
| Comment Code | | | | | |
| V4 : Elderberries are blocking visibility and flood fight capability. | | | | | |
| Inspector Comment | | | | | |
| Elderberry encroaching onto access road. | | | | | |

No Photos

| | | | |
|--|--|---|---|
| * Location LS : Land Side N/A : Not Applicable WS : Water Side CR : Crown | ** Rating A : Acceptable M : Minimally Acceptable U : Unacceptable | N : Not Inspected/Rated C : Corrected A/W : Acceptable but Monitor & Maintain | + Issue Type Ma : Maintenance Deficiency Ob : Design & System Obsolescence En : Enforcement |
|--|--|---|---|

**Flood Control Project Maintenance
Levee Inspections**

Maintenance Issue Types Only, Levee Inspection Report By Mile - Spring 2021

Sacramento Maintenance Yard Putah Creek

| Waterway | Bank | Unit Miles | Inspection Start/End | Inspector |
|--|------|------------|--------------------------|--------------|
| Unit No. 01 Putah Creek or North Levee | Left | 8.79 | 03/18/2021 03/18/2021 | David Julian |

| | | | | | | |
|---|-----------------------------|--------------|----|------------------------|---------------|--|
| LM Start | 8.69 | Rating ** | M | Issue No. | 55 | |
| LM End | 8.69 | Issue Type + | Ma | Location * | | |
| Category | Supplemental | | | GPS Latitude/Longitude | | |
| | | | | Start | End | |
| Item | DWR UCIP LMA Responsibility | | | 38.523999 ° | 38.523999 ° | |
| | | | | -121.783037 ° | -121.783037 ° | |
| DWR ID | 523 | | | | | |
| Comment Code | | | | | | |
| | | | | | | |
| Inspector Comment | | | | | | |
| FS_ID:59884 DS_ID:523 EP_NO: 10247 Repair Type: Non-Urgent Crossing Status: Found UCIP Comments: 10/21/2019 Record remains Non-Urgent. Pipe inlet is closed with steel plate bolted to headwall in drainage canal on LS. (O.Yakimov - DWR UCIP) FIELD_STRUCT_DESC: 48-inch corrugated metal drainage pipe through the levee, 15.0 feet below the crown. Steel plate installed over inlet off the landside (LS) toe. Pipe not grouted. Flap gate on waterside (WS) end. Headwalls on both ends. (48-inch pipe [HLM 8.88] authorized under Automatic Board Order (ABO) issued as Permit No. 10247, 1974 - University of California, Office of the Regents). [Additional Reference(s): DWR Levee Log, 2005 (HLM 8.88). USACE Sacramento O&M Manual, Unit 119, December 1952, Revised 29 Dec 2016, (Station 262+30 PCT), 48-inch pipe referenced. USACE As-Built Drawing No. 50-04-2396, Revision 2, pdf page 26, Sheet 10, 24-inch pipe referenced on levee alignment, December 1947]. FS Date: 10/21/2019 1:46:00 PM | | | | | | |

| | | | | | |
|----------|------|--------------|----|------------|-----------|
| LM Start | 8.69 | Rating ** | M | Issue No. | 55 (cont) |
| LM End | 8.69 | Issue Type + | Ma | Location * | |

Photo 1 of 3 : UCIP_SP_2021_59884_82410.jpg



WS levee slope, headwall, and flap gate

Photo 2 of 3 : UCIP_SP_2021_59884_82411.jpg



Steel plate installed over pipe off LS toe

| | | | |
|--|--|---|---|
| * Location LS : Land Side N/A : Not Applicable WS : Water Side CR : Crown | ** Rating A : Acceptable M : Minimally Acceptable U : Unacceptable | N : Not Inspected/Rated C : Corrected A/W : Acceptable but Monitor & Maintain | + Issue Type Ma : Maintenance Deficiency Ob : Design & System Obsolescence En : Enforcement |
|--|--|---|---|

**Flood Control Project Maintenance
Levee Inspections**

Maintenance Issue Types Only, Levee Inspection Report By Mile - Spring 2021

Sacramento Maintenance Yard Putah Creek

| Waterway | Bank | Unit Miles | Inspection Start/End | Inspector |
|--|------|------------|--------------------------|--------------|
| Unit No. 01 Putah Creek or North Levee | Left | 8.79 | 03/18/2021 03/18/2021 | David Julian |

| | | | | | |
|----------|-----------------------------|--------------|----|------------------------|------------------|
| LM Start | 8.69 | Rating ** | M | Issue No. | 55 (cont) |
| LM End | 8.69 | Issue Type + | Ma | Location * | |
| Category | Supplemental | | | GPS Latitude/Longitude | |
| | | | | Start | End |
| Item | DWR UCIP LMA Responsibility | | | 38.523999 ° | 38.523999 ° |
| | | | | -121.783037 ° | -121.783037 ° |
| DWR ID | 523 | | | | |

Photo 3 of 3 : UCIP_SP_2021_59884_60299.jpg



LS headwall and pipe before steel plate was installed over pipe to abandon it.

| | | | |
|--|--|---|---|
| * Location LS : Land Side N/A : Not Applicable WS : Water Side CR : Crown | ** Rating A : Acceptable M : Minimally Acceptable U : Unacceptable | N : Not Inspected/Rated C : Corrected A/W : Acceptable but Monitor & Maintain | + Issue Type Ma : Maintenance Deficiency Ob : Design & System Obsolescence En : Enforcement |
|--|--|---|---|

**Flood Control Project Maintenance
Levee Inspections**

Maintenance Issue Types Only, Levee Inspection Report By Mile - Spring 2021

Sacramento Maintenance Yard Putah Creek

| Waterway | Bank | Unit Miles | Inspection Start/End | Inspector |
|--|-------|------------|--------------------------|-----------------|
| Unit No. 02 Putah Creek or South Levee | Right | 7.20 | 03/18/2021 03/18/2021 | David Julian |

| | | | | | |
|--|--------------------------|--------------|------------------------|---------------|-----------|
| LM Start | 0.01 | Rating ** | M | Issue No. | 49 |
| LM End | 1.42 | Issue Type + | Ma | Location * | WS |
| Category | Earthen Levee | | GPS Latitude/Longitude | | |
| | | | Start | End | |
| Item | Vegetation | | 38.504902 ° | 38.513383 ° | |
| | | | -121.663149 ° | -121.682914 ° | |
| DWR ID | DWR_ST0007_02_s_ 2021_49 | | | | |
| Comment Code | | | | | |
| V1 : Control annual grass and weeds on the levee slopes and easements. | | | | | |
| Inspector Comment | | | | | |
| | | | | | |

No Photos

| | | | | | |
|--|--------------------------|--------------|------------------------|---------------|-----------|
| LM Start | 0.01 | Rating ** | M | Issue No. | 48 |
| LM End | 1.86 | Issue Type + | Ma | Location * | LS |
| Category | Earthen Levee | | GPS Latitude/Longitude | | |
| | | | Start | End | |
| Item | Vegetation | | 38.504902 ° | 38.515228 ° | |
| | | | -121.663149 ° | -121.690695 ° | |
| DWR ID | DWR_ST0007_02_s_ 2021_48 | | | | |
| Comment Code | | | | | |
| V1 : Control annual grass and weeds on the levee slopes and easements. | | | | | |
| Inspector Comment | | | | | |
| | | | | | |

No Photos

| | | | |
|--|--|---|---|
| * Location LS : Land Side N/A : Not Applicable WS : Water Side CR : Crown | ** Rating A : Acceptable M : Minimally Acceptable U : Unacceptable | N : Not Inspected/Rated C : Corrected A/W : Acceptable but Monitor & Maintain | + Issue Type Ma : Maintenance Deficiency Ob : Design & System Obsolescence En : Enforcement |
|--|--|---|---|

**Flood Control Project Maintenance
Levee Inspections**

Maintenance Issue Types Only, Levee Inspection Report By Mile - Spring 2021

Sacramento Maintenance Yard Putah Creek

| Waterway | Bank | Unit Miles | Inspection Start/End | Inspector |
|--|-------|------------|--------------------------|--------------|
| Unit No. 02 Putah Creek or South Levee | Right | 7.20 | 03/18/2021 03/18/2021 | David Julian |

| | | | | | | |
|--|-----------------------------|--------------|----|------------------------|---------------|--|
| LM Start | 0.82 | Rating ** | M | Issue No. | 2 | |
| LM End | 0.82 | Issue Type + | Ma | Location * | | |
| Category | Supplemental | | | GPS Latitude/Longitude | | |
| | | | | Start | End | |
| Item | DWR UCIP LMA Responsibility | | | 38.510700 ° | 38.510700 ° | |
| | | | | -121.672410 ° | -121.672410 ° | |
| DWR ID | 16621 | | | | | |
| Comment Code | | | | | | |
| | | | | | | |
| Inspector Comment | | | | | | |
| FS_ID:55424 DS_ID:16621 EP_NO: 10270 Repair Type: Non-Urgent Crossing Status: Found UCIP Comments: 10/22/2019 Crossing visually is in good condition. 12-inch diameter through hole has developed due to soil instability on WS berm visible on the top of pipe outlet embankment. Need to have CVFPB review ABO and determine current owner. (O.Yakimov - DWR UCIP) FIELD_STRUCT_DESC: 36-inch corrugated metal drainage pipe through the levee, 14 feet below the crown. Flap gate on the waterside (WS) end. Concrete headwall on the landside (LS) end. (36-inch pipe [HLM 0.85] authorized under Automatic Board Order (ABO) issued as Permit No. 10270, 1974 - Hamel). [Additional Reference(s): DWR Levee Log, 2005 (HLM 0.85). USACE Sacramento O&M Manual, Unit 119, December 1952, Revised 29 Dec 2016, (Station T 1+45), listed as 36-inch pipe. USACE As-Built Drawing No. 50-04-2396, Revision 1, pdf page 21, Sheet 5, December 1947]. FS Date: 10/22/2019 9:59:31 AM | | | | | | |

| | | | | | |
|----------|-------------|--------------|----|------------|-----------------|
| LM Start | 0.82 | Rating ** | M | Issue No. | 2 (cont) |
| LM End | 0.82 | Issue Type + | Ma | Location * | |

Photo 1 of 3 : UCIP_SP_2021_55424_81638.jpg



View of WS looking from levee crown

Photo 2 of 3 : UCIP_SP_2021_55424_81639.jpg



View of LS looking from levee crown

| | | | |
|--|--|---|---|
| * Location LS : Land Side N/A : Not Applicable WS : Water Side CR : Crown | ** Rating A : Acceptable M : Minimally Acceptable U : Unacceptable | N : Not Inspected/Rated C : Corrected A/W : Acceptable but Monitor & Maintain | + Issue Type Ma : Maintenance Deficiency Ob : Design & System Obsolescence En : Enforcement |
|--|--|---|---|

Sacramento Maintenance Yard Putah Creek

**Flood Control Project Maintenance
Levee Inspections**

Maintenance Issue Types Only, Levee Inspection Report By Mile - Spring 2021

Sacramento Maintenance Yard Putah Creek

| Waterway | Bank | Unit Miles | Inspection Start/End | Inspector |
|--|-------|------------|--------------------------|--------------|
| Unit No. 02 Putah Creek or South Levee | Right | 7.20 | 03/18/2021 03/18/2021 | David Julian |

| | | | | | |
|--|-------------------------|--------------|----|------------------------|---------------|
| LM Start | 2.20 | Rating ** | M | Issue No. | 43 |
| LM End | 5.78 | Issue Type + | Ma | Location * | LS |
| Category | Earthen Levee | | | GPS Latitude/Longitude | |
| | | | | Start | End |
| Item | Vegetation | | | 38.515429 ° | 38.516062 ° |
| | | | | -121.695664 ° | -121.761271 ° |
| DWR ID | DWR_ST0007_02_s_2021_43 | | | | |
| Comment Code | | | | | |
| V1 : Control annual grass and weeds on the levee slopes and easements. | | | | | |
| Inspector Comment | | | | | |
| | | | | | |

No Photos

| | | | | | | |
|--|-----------------------------|--------------|----|------------------------|---------------|--|
| LM Start | 2.65 | Rating ** | U | Issue No. | 6 | |
| LM End | 2.65 | Issue Type + | Ma | Location * | | |
| Category | Supplemental | | | GPS Latitude/Longitude | | |
| | | | | Start | End | |
| Item | DWR UCIP LMA Responsibility | | | 38.514865 ° | 38.514865 ° | |
| | | | | -121.703839 ° | -121.703839 ° | |
| DWR ID | 16625 | | | | | |
| Comment Code | | | | | | |
| | | | | | | |
| Inspector Comment | | | | | | |
| FS_ID:55411 DS_ID:16625 EP_NO: 10277 Repair Type: Urgent Crossing Status: Found UCIP Comments: 10/21/2019 Record updated from No Action Needed to Urgent. A PVC pipe runs through a drainage pipe from LS to WS levee toe. Slide gate cannot be closed properly to prevent flooding on LS. Remove PVC pipe. Need to have CVFPB review ABO and determine current owner. (O.Yakimov - DWR UCIP) FIELD_STRUCT_DESC: 24-inch CIPP-lined corrugated metal drainage pipe through the levee, 9 feet below the crown. Slide gate on the waterside (WS) slope. Concrete headwalls on both ends. (24-inch pipe [HLM 2.71] authorized under Automatic Board Order (ABO) issued as Permit No. 10277, 1974 - Naomi Schoeningh). [Additional Reference(s): DWR Levee Log, 2005 (HLM 2.71). USACE Sacramento O&M Manual, Unit 119, December 1952, Revised 29 Dec 2016, (Station 30+15 PCT), listed as 24-inch pipe. USACE As-Built Drawing No. 50-04-2396, Revision 4, pdf page 23, Sheet 7, December 1947]. FS Date: 10/21/2019 11:18:53 AM | | | | | | |

Photo 1 of 3 : UCIP_SP_2021_55411_81619.jpg



View of LS from levee crown

| | | | |
|--|--|---|---|
| * Location LS : Land Side N/A : Not Applicable WS : Water Side CR : Crown | ** Rating A : Acceptable M : Minimally Acceptable U : Unacceptable | N : Not Inspected/Rated C : Corrected A/W : Acceptable but Monitor & Maintain | + Issue Type Ma : Maintenance Deficiency Ob : Design & System Obsolescence En : Enforcement |
|--|--|---|---|

**Flood Control Project Maintenance
Levee Inspections**

Maintenance Issue Types Only, Levee Inspection Report By Mile - Spring 2021

Sacramento Maintenance Yard Putah Creek

| Waterway | Bank | Unit Miles | Inspection Start/End | Inspector |
|--|-------|------------|--------------------------|--------------|
| Unit No. 02 Putah Creek or South Levee | Right | 7.20 | 03/18/2021 03/18/2021 | David Julian |

| | | | | | |
|----------|-----------------------------|--------------|------------------------|---------------|-----------------|
| LM Start | 2.65 | Rating ** | U | Issue No. | 6 (cont) |
| LM End | 2.65 | Issue Type + | Ma | Location * | |
| Category | Supplemental | | GPS Latitude/Longitude | | |
| | | | Start | End | |
| Item | DWR UCIP LMA Responsibility | | 38.514865 ° | 38.514865 ° | |
| | | | -121.703839 ° | -121.703839 ° | |
| DWR ID | 16625 | | | | |

Photo 2 of 3 : UCIP_SP_2021_55411_81620.jpg



View of WS from levee crown

| | | | | | |
|----------|-------------|--------------|----|------------|-----------------|
| LM Start | 2.65 | Rating ** | U | Issue No. | 6 (cont) |
| LM End | 2.65 | Issue Type + | Ma | Location * | |

Photo 3 of 3 : UCIP_SP_2021_55411_81621.jpg



Headwall and slidegate at WS toe with a PVC pipe running through

| | | | |
|--|--|---|---|
| * Location LS : Land Side N/A : Not Applicable WS : Water Side CR : Crown | ** Rating A : Acceptable M : Minimally Acceptable U : Unacceptable | N : Not Inspected/Rated C : Corrected A/W : Acceptable but Monitor & Maintain | + Issue Type Ma : Maintenance Deficiency Ob : Design & System Obsolescence En : Enforcement |
|--|--|---|---|

**Flood Control Project Maintenance
Levee Inspections**

Maintenance Issue Types Only, Levee Inspection Report By Mile - Spring 2021

Sacramento Maintenance Yard Putah Creek

| Waterway | Bank | Unit Miles | Inspection Start/End | Inspector |
|--|-------|------------|--------------------------|--------------|
| Unit No. 02 Putah Creek or South Levee | Right | 7.20 | 03/18/2021 03/18/2021 | David Julian |

| | | | | | | |
|---|-----------------------------|--------------|----|------------------------|---------------|--|
| LM Start | 3.04 | Rating ** | U | Issue No. | 7 | |
| LM End | 3.04 | Issue Type + | Ma | Location * | | |
| Category | Supplemental | | | GPS Latitude/Longitude | | |
| | | | | Start | End | |
| Item | DWR UCIP LMA Responsibility | | | 38.515080 ° | 38.515080 ° | |
| | | | | -121.711050 ° | -121.711050 ° | |
| DWR ID | 16626 | | | | | |
| Comment Code | | | | | | |
| | | | | | | |
| Inspector Comment | | | | | | |
| FS_ID:55412 DS_ID:16626 EP_NO: 10277 Repair Type: Urgent Crossing Status: Found UCIP Comments: 10/21/2019 Record updated from No Action Needed to Urgent. A PVC pipe runs through a drainage pipe from LS to WS levee toe. Slide gate cannot be closed properly to prevent flooding on LS. Remove PVC pipe. Need to have CVFPB review ABO and determine current owner. (O.Yakimov - DWR UCIP) FIELD_STRUCT_DESC: 24-inch CIPP-lined corrugated metal drainage pipe through the levee, 9 feet below the crown. Slide gate on the waterside (WS) slope, and headwalls on both sides. (24-inch pipe [HLM 3.11] authorized under Automatic Board Order (ABO) issued as Permit No. 10277, 1974 - Naomi Schoeningh). [Additional Reference(s): DWR Levee Log, 2005 (HLM 3.11). USACE Sacramento O&M Manual, Unit 119, December 1952, Revised 29 Dec 2016, (Station 50+72 PCT), listed as 24-inch pipe. USACE As-Built Drawing No. 50-04-2396, Revision 4, pdf page 23, Sheet 7, December 1947]. FS Date: 10/21/2019 1:30:39 PM | | | | | | |

| | | | | | |
|----------|-------------|--------------|----|------------|-----------------|
| LM Start | 3.04 | Rating ** | U | Issue No. | 7 (cont) |
| LM End | 3.04 | Issue Type + | Ma | Location * | |

Photo 1 of 3 : UCIP_SP_2021_55412_81623.jpg



View of LS from levee crown

Photo 2 of 3 : UCIP_SP_2021_55412_81624.jpg



View of WS from levee crown

| | | | |
|--|--|---|---|
| * Location LS : Land Side N/A : Not Applicable WS : Water Side CR : Crown | ** Rating A : Acceptable M : Minimally Acceptable U : Unacceptable | N : Not Inspected/Rated C : Corrected A/W : Acceptable but Monitor & Maintain | + Issue Type Ma : Maintenance Deficiency Ob : Design & System Obsolescence En : Enforcement |
|--|--|---|---|

**Flood Control Project Maintenance
Levee Inspections**

Maintenance Issue Types Only, Levee Inspection Report By Mile - Spring 2021

Sacramento Maintenance Yard Putah Creek

| Waterway | Bank | Unit Miles | Inspection Start/End | Inspector |
|--|-------|------------|--------------------------|--------------|
| Unit No. 02 Putah Creek or South Levee | Right | 7.20 | 03/18/2021 03/18/2021 | David Julian |

| | | | | | |
|----------|-----------------------------|--------------|----|------------------------|-----------------|
| LM Start | 3.04 | Rating ** | U | Issue No. | 7 (cont) |
| LM End | 3.04 | Issue Type + | Ma | Location * | |
| Category | Supplemental | | | GPS Latitude/Longitude | |
| | | | | Start | End |
| Item | DWR UCIP LMA Responsibility | | | 38.515080 ° | 38.515080 ° |
| | | | | -121.711050 ° | -121.711050 ° |
| DWR ID | 16626 | | | | |

Photo 3 of 3 : UCIP_SP_2021_55412_81625.jpg



Headwall and slidegate at WS toe with a PVC pipe running through

| | | | | | |
|----------|-----------------------------|--------------|----|------------------------|---------------|
| LM Start | 4.17 | Rating ** | M | Issue No. | 13 |
| LM End | 4.17 | Issue Type + | Ma | Location * | |
| Category | Supplemental | | | GPS Latitude/Longitude | |
| | | | | Start | End |
| Item | DWR UCIP LMA Responsibility | | | 38.515770 ° | 38.515770 ° |
| | | | | -121.731840 ° | -121.731840 ° |
| DWR ID | 16629 | | | | |

Comment Code

Inspector Comment

FS_ID:55434
 DS_ID:16629
 EP_NO: 10269
 Repair Type: Non-Urgent
 Crossing Status: Found
 UCIP Comments: 10/21/2019 Pipe is partially silted, cleanup pipe.
 Record updated from No Action Needed to Non-Urgent. Need to have CVFPB review ABO and determine current owner. (O.Yakimov - DWR UCIP)
 FIELD_STRUCT_DESC: 24-inch CIPP-lined corrugated metal drainage pipe through the levee, 12.5 feet below the crown. Slide gate on the waterside (WS) end. Concrete headwalls on both ends. (24-inch pipe [HLM 4.26] authorized under Automatic Board Order (ABO) issued as Permit No. 10269, 1974 - Joseph Fahn). [Additional Reference(s): DWR Levee Log, 2005 (HLM 4.26). USACE Sacramento O&M Manual, Unit 119, December 1952, Revised 29 Dec 2016, (Station 109+75 PCT), listed as 24-inch pipe. USACE As-Built Drawing No. 50-04-2396, Revision 4, pdf page 24, Sheet 8, December 1947].
 FS Date: 10/21/2019 9:16:52 AM

Photo 1 of 3 : UCIP_SP_2021_55434_81690.jpg



View of LS looking from levee crown

| | | | |
|--|--|--|---|
| * Location LS : Land Side N/A : Not Applicable WS : Water Side CR : Crown | ** Rating A : Acceptable M : Minimally Acceptable U : Unacceptable | N : Not Inspected/Rated C : Corrected A/W : Acceptable but Monitor & Maintain | + Issue Type Ma : Maintenance Deficiency Ob : Design & System Obsolescence En : Enforcement |
|--|--|--|---|

Sacramento Maintenance Yard Putah Creek

**Flood Control Project Maintenance
Levee Inspections**

Maintenance Issue Types Only, Levee Inspection Report By Mile - Spring 2021

Sacramento Maintenance Yard Putah Creek

| Waterway | Bank | Unit Miles | Inspection Start/End | Inspector |
|--|-------|------------|--------------------------|--------------|
| Unit No. 02 Putah Creek or South Levee | Right | 7.20 | 03/18/2021 03/18/2021 | David Julian |

| | | | | | |
|----------|-------------------------|--------------|----|------------------------|---------------|
| LM Start | 4.66 | Rating ** | U | Issue No. | 33 (cont) |
| LM End | 4.66 | Issue Type + | Ma | Location * | WS |
| Category | Earthen Levee | | | GPS Latitude/Longitude | |
| | | | | Start | End |
| Item | Erosion / Bank Caving | | | 38.515817 ° | 38.515817 ° |
| | | | | -121.740942 ° | -121.740942 ° |
| DWR ID | DWR_ST0007_02_f_2018_33 | | | | |

Photo 2 of 2 : SP_2021_ST0007_283_33_20210301_00009.jpg



View of erosion on the levee slope appears to be due to water from the pipe and trench (September 2018).

| | | | | | |
|----------|-----------------------------|--------------|----|------------------------|---------------|
| LM Start | 4.66 | Rating ** | M | Issue No. | 15 |
| LM End | 4.66 | Issue Type + | Ma | Location * | |
| Category | Supplemental | | | GPS Latitude/Longitude | |
| | | | | Start | End |
| Item | DWR UCIP LMA Responsibility | | | 38.515814 ° | 38.515814 ° |
| | | | | -121.741030 ° | -121.741030 ° |
| DWR ID | 16644 | | | | |

Comment Code

Inspector Comment

FS_ID:55436
 DS_ID:16644
 EP_NO: 10271
 Repair Type: Non-Urgent
 Crossing Status: Found
 UCIP Comments: 10/21/2019 Record updated from No Action Needed to Non-Urgent. Need to have CVFPB review ABO and determine current owner. (O.Yakimov - DWR UCIP)
 FIELD_STRUCT_DESC: 24-inch corrugated metal drainage pipe through the levee, 9.5 feet below the crown. Flap gate on the waterside (WS). 36-inch standpipe on the landside (LS). (24-inch pipe [HLM 4.77] authorized under Automatic Board Order (ABO) issued as Permit No. 10271, 1974 - Ray H. Hamel). [Additional Reference(s): DWR Levee Log, 2005 (HLM 4.77). USACE Sacramento O&M Manual, Unit 119, December 1952, Revised 29 Dec 2016, (Station 136+40 PCT), listed as 24-inch pipe. USACE As-Built Drawing No. 50-04-2396, Revision 4, pdf page 24, Sheet 8, December 1947].
 FS Date: 10/21/2019 9:46:01 AM

Photo 1 of 3 : UCIP_SP_2021_55436_81697.jpg



View of LS looking from levee crown. 36-inch standpipe near levee toe

| * Location | ** Rating | + Issue Type |
|--|---|-----------------------------------|
| LS : Land Side N/A : Not Applicable | A : Acceptable | Ma : Maintenance Deficiency |
| WS : Water Side | M : Minimally Acceptable | Ob : Design & System Obsolescence |
| CR : Crown | U : Unacceptable | En : Enforcement |
| | N : Not Inspected/Rated | |
| | C : Corrected | |
| | A/W : Acceptable but Monitor & Maintain | |

**Flood Control Project Maintenance
Levee Inspections**

Maintenance Issue Types Only, Levee Inspection Report By Mile - Spring 2021

Sacramento Maintenance Yard Putah Creek

| Waterway | Bank | Unit Miles | Inspection Start/End | Inspector |
|--|-------|------------|--------------------------|--------------|
| Unit No. 02 Putah Creek or South Levee | Right | 7.20 | 03/18/2021 03/18/2021 | David Julian |

| | | | | | |
|----------|-----------------------------|--------------|----|------------------------|---------------|
| LM Start | 4.66 | Rating ** | M | Issue No. | 15 (cont) |
| LM End | 4.66 | Issue Type + | Ma | Location * | |
| Category | Supplemental | | | GPS Latitude/Longitude | |
| | | | | Start | End |
| Item | DWR UCIP LMA Responsibility | | | 38.515814 ° | 38.515814 ° |
| | | | | -121.741030 ° | -121.741030 ° |
| DWR ID | 16644 | | | | |

Photo 2 of 3 : UCIP_SP_2021_55436_81698.jpg



View of WS looking from levee crown

| | | | | | |
|----------|-------------|--------------|----|------------|------------------|
| LM Start | 4.66 | Rating ** | M | Issue No. | 15 (cont) |
| LM End | 4.66 | Issue Type + | Ma | Location * | |

Photo 3 of 3 : UCIP_SP_2021_55436_81699.jpg



Headwall and flap gate at WS levee toe

| | | | | | |
|--|-------------------------|--------------|----|------------------------|---------------|
| LM Start | 5.40 | Rating ** | M | Issue No. | 45 |
| LM End | 5.40 | Issue Type + | Ma | Location * | WS |
| Category | Earthen Levee | | | GPS Latitude/Longitude | |
| | | | | Start | End |
| Item | Encroachments | | | 38.515380 ° | 38.515380 ° |
| | | | | -121.754685 ° | -121.754685 ° |
| DWR ID | DWR_ST0007_02_s_2021_45 | | | | |
| Comment Code | | | | | |
| PR : Prunings | | | | | |
| Inspector Comment | | | | | |
| Remove pruned tree limbs on the waterside slope. | | | | | |

Photo 1 of 1 : SP_2021_ST0007_283_45_20210318_00089.jpg



View of pruned tree limbs on the waterside slope (Spring 2021).

*** Location**

LS : Land Side N/A : Not Applicable
WS : Water Side
CR : Crown

**** Rating**

A : Acceptable N : Not Inspected/Rated
M : Minimally Acceptable C : Corrected
U : Unacceptable A/W : Acceptable but Monitor & Maintain

+ Issue Type

Ma : Maintenance Deficiency
Ob : Design & System Obsolescence
En : Enforcement

**Flood Control Project Maintenance
Levee Inspections**

Maintenance Issue Types Only, Levee Inspection Report By Mile - Spring 2021

Sacramento Maintenance Yard Putah Creek

| Waterway | Bank | Unit Miles | Inspection Start/End | Inspector |
|--|-------|------------|--------------------------|--------------|
| Unit No. 02 Putah Creek or South Levee | Right | 7.20 | 03/18/2021 03/18/2021 | David Julian |

| | | | | | | |
|---|-----------------------------|--------------|----|------------------------|---------------|--|
| LM Start | 5.44 | Rating ** | M | Issue No. | 17 | |
| LM End | 5.44 | Issue Type + | Ma | Location * | | |
| Category | Supplemental | | | GPS Latitude/Longitude | | |
| | | | | Start | End | |
| Item | DWR UCIP LMA Responsibility | | | 38.515369 ° | 38.515369 ° | |
| | | | | -121.755247 ° | -121.755247 ° | |
| DWR ID | 16620 | | | | | |
| Comment Code | | | | | | |
| | | | | | | |
| Inspector Comment | | | | | | |
| FS_ID:59897 DS_ID:16620 EP_NO: 10267 Repair Type: Non-Urgent Crossing Status: Found UCIP Comments: 10/21/2019 Record updated from No Action Needed to Non-Urgent. Need to have CVFPB review ABO and determine current owner. (O.Yakimov - DWR UCIP)05/22/2013 Gate has been oiled and debris removed from outlet on land side. (C. Lund - DWR Sacramento Yard) 04/06/2012 Pipe is partially filled with sediment and slide gate is in need of maintenance as it will not move. (W. Wylie - DWR UCIP) FIELD_STRUCT_DESC: 24-inch CIPP-lined corrugated metal drainage pipe through the levee, 13 feet below the crown. Slide gate on the waterside (WS) slope. Concrete headwalls on both ends. (24-inch pipe [HLM 5.56] authorized under Automatic Board Order (ABO) issued as Permit No. 10267, 1974 - Davis Laboratories, Inc.). [Additional Reference(s): DWR Levee Log, 2005 (HLM 5.56). USACE Sacramento O&M Manual, Unit 119, December 1952, Revised 29 Dec 2016, (Station 177+60 PCT), listed as 24-inch pipe. USACE As-Built Drawing No. 50-04-2396, Revision 4, pdf page 25, Sheet 9, December 1947]. FS Date: 10/21/2019 11:46:00 AM | | | | | | |

| | | | | | |
|----------|-------------|--------------|----|------------|------------------|
| LM Start | 5.44 | Rating ** | M | Issue No. | 17 (cont) |
| LM End | 5.44 | Issue Type + | Ma | Location * | |

Photo 1 of 3 : UCIP_SP_2021_59897_81707.jpg



View of LS looking from levee crown

Photo 2 of 3 : UCIP_SP_2021_59897_81708.jpg



View of WS looking from levee crown

| | | | |
|--|--|---|---|
| * Location LS : Land Side N/A : Not Applicable WS : Water Side CR : Crown | ** Rating A : Acceptable M : Minimally Acceptable U : Unacceptable | N : Not Inspected/Rated C : Corrected A/W : Acceptable but Monitor & Maintain | + Issue Type Ma : Maintenance Deficiency Ob : Design & System Obsolescence En : Enforcement |
|--|--|---|---|

**Flood Control Project Maintenance
Levee Inspections**

Maintenance Issue Types Only, Levee Inspection Report By Mile - Spring 2021

Sacramento Maintenance Yard Putah Creek

| Waterway | Bank | Unit Miles | Inspection Start/End | Inspector |
|--|-------|------------|--------------------------|--------------|
| Unit No. 02 Putah Creek or South Levee | Right | 7.20 | 03/18/2021 03/18/2021 | David Julian |

| | | | | | |
|----------|-----------------------------|--------------|----|------------------------|---------------|
| LM Start | 5.44 | Rating ** | M | Issue No. | 17 (cont) |
| LM End | 5.44 | Issue Type + | Ma | Location * | |
| Category | Supplemental | | | GPS Latitude/Longitude | |
| | | | | Start | End |
| Item | DWR UCIP LMA Responsibility | | | 38.515369 ° | 38.515369 ° |
| | | | | -121.755247 ° | -121.755247 ° |
| DWR ID | 16620 | | | | |

Photo 3 of 3 : UCIP_SP_2021_59897_81709.jpg



WS levee slope, headwall and slide gate

| | | | | | |
|----------|-----------------------------|--------------|----|------------------------|---------------|
| LM Start | 5.74 | Rating ** | U | Issue No. | 19 |
| LM End | 5.74 | Issue Type + | Ma | Location * | |
| Category | Supplemental | | | GPS Latitude/Longitude | |
| | | | | Start | End |
| Item | DWR UCIP LMA Responsibility | | | 38.516000 ° | 38.516000 ° |
| | | | | -121.760500 ° | -121.760500 ° |
| DWR ID | 16636 | | | | |

Comment Code

Inspector Comment

FS_ID:59900
 DS_ID:16636
 EP_NO: 10279
 Repair Type: Urgent
 Crossing Status: Found
 UCIP Comments: 10/21/2019 Rating updated from No Action Needed to Urgent. A 6-inch hose connected to a water well on LS runs through a drainage pipe from LS to WS. Slide gate cannot be closed properly to prevent flooding on LS. Remove hose. (O.Yakimov - DWR UCIP)05/22/2013 Pipe was cleaned by the owner and 6 in pipe is still being used. (C. Lund - DWR Sacramento Yard)
 04/05/2012 Pipe needs to be cleared of sedimentation. (W. Wylie - DWR UCIP)
 FIELD_STRUCT_DESC: 24-inch CIPP-lined corrugated metal drainage pipe through the levee, 14 feet below the crown. Slide gate on the waterside (WS) end. Concrete headwall on landside (LS) end. (name change for existing 24-inch drainpipe and slide gate on WS [HLM 5.89] issued under Permit No. 10279-1, 2012 - Elizabeth Dankworth and Michelle Christison; 24-inch pipe [HLM 5.89] authorized under Automatic Board Order (ABO) issued as Permit No. 10279, 1974 - Carmelita Watkins). [Additional Reference(s): DWR Levee Log, 2005 (HLM 5.89). USACE Sacramento O&M Manual, Unit 119, December 1952, Revised 29 Dec 2016, (Station 193+00 PCT), listed as 24-inch pipe. USACE As-Built Drawing No. 50-04-2396, Revision 4, pdf page 25, Sheet 9, December 1947].
 FS Date: 10/21/2019 1:39:00 PM

Photo 1 of 3 : UCIP_SP_2021_59900_81628.jpg



View of WS from levee crown

| * Location | ** Rating | + Issue Type |
|---|---|--|
| LS : Land Side WS : Water Side CR : Crown | A : Acceptable M : Minimally Acceptable U : Unacceptable | Ma : Maintenance Deficiency Ob : Design & System Obsolescence En : Enforcement |
| N/A : Not Applicable | N : Not Inspected/Rated C : Corrected A/W : Acceptable but Monitor & Maintain | |

**Flood Control Project Maintenance
Levee Inspections**

Maintenance Issue Types Only, Levee Inspection Report By Mile - Spring 2021

Sacramento Maintenance Yard Putah Creek

| Waterway | Bank | Unit Miles | Inspection Start/End | Inspector |
|--|-------|------------|--------------------------|--------------|
| Unit No. 02 Putah Creek or South Levee | Right | 7.20 | 03/18/2021 03/18/2021 | David Julian |

| | | | | | |
|----------|-----------------------------|--------------|------------------------|---------------|------------------|
| LM Start | 5.74 | Rating ** | U | Issue No. | 19 (cont) |
| LM End | 5.74 | Issue Type + | Ma | Location * | |
| Category | Supplemental | | GPS Latitude/Longitude | | |
| | | | Start | End | |
| Item | DWR UCIP LMA Responsibility | | 38.516000 ° | 38.516000 ° | |
| | | | -121.760500 ° | -121.760500 ° | |
| DWR ID | 16636 | | | | |

Photo 2 of 3 : UCIP_SP_2021_59900_81629.jpg



View of LS from levee crown

| | | | | | |
|----------|-------------|--------------|----|------------|------------------|
| LM Start | 5.74 | Rating ** | U | Issue No. | 19 (cont) |
| LM End | 5.74 | Issue Type + | Ma | Location * | |

Photo 3 of 3 : UCIP_SP_2021_59900_81630.jpg



WS slope with headwall and slide gate

| | | | |
|--|--|---|---|
| * Location LS : Land Side N/A : Not Applicable WS : Water Side CR : Crown | ** Rating A : Acceptable M : Minimally Acceptable U : Unacceptable | N : Not Inspected/Rated C : Corrected A/W : Acceptable but Monitor & Maintain | + Issue Type Ma : Maintenance Deficiency Ob : Design & System Obsolescence En : Enforcement |
|--|--|---|---|

**Flood Control Project Maintenance
Levee Inspections**

Maintenance Issue Types Only, Levee Inspection Report By Mile - Spring 2021

Sacramento Maintenance Yard Putah Creek

| Waterway | Bank | Unit Miles | Inspection Start/End | Inspector |
|--|-------|------------|--------------------------|--------------|
| Unit No. 02 Putah Creek or South Levee | Right | 7.20 | 03/18/2021 03/18/2021 | David Julian |

| | | | | | |
|----------|-----------------------------|--------------|----|------------------------|---------------|
| LM Start | 5.84 | Rating ** | M | Issue No. | 26 |
| LM End | 5.84 | Issue Type + | Ma | Location * | |
| Category | Supplemental | | | GPS Latitude/Longitude | |
| | | | | Start | End |
| Item | DWR UCIP LMA Responsibility | | | 38.516290 ° | 38.516290 ° |
| | | | | -121.762280 ° | -121.762280 ° |
| DWR ID | 16639 | | | | |

Comment Code

Inspector Comment

FS_ID:59903
DS_ID:16639
EP_NO: 10278
Repair Type: Non-Urgent
Crossing Status: Found
UCIP Comments: 10/21/2019 Record updated from No Action Needed to Non-Urgent. Need to have CVFPB review ABO and determine current owner. (O.Yakimov - DWR UCIP)07/12/2019 After reviewing the USACE O&M manual as-builts there is no reference to this 24-inch pipe. Will need to coordinate with previous UCIP inspector to determine if additional information is available to tie pipe to USACE O&M manual. (O. Magana - DWR UCIP)
05/22/2013 All material was removed. (C. Lund - DWR Sacramento Yard)
04/05/2012 Flap gate blocked by minor amounts of sedimentation. (W. Wylie - DWR UCIP)
FIELD_STRUCT_DESC: 24-inch CIPP-lined corrugated metal drainage pipe through the levee, 15 feet below the crown. Flap gate on waterside (WS) end. Headwall on the landside (LS). (24-inch pipe [HLM 5.99] authorized under Automatic Board Order (ABO) issued as Permit No. 10278, 1974 - Southern Pacific Transportation Company). [Additional Reference(s): DWR Levee Log, 2005, (HLM 5.99). USACE Sacramento O&M Manual 119, December 1952].
FS Date: 10/21/2019 1:46:00 PM

| | | | | | |
|----------|-------------|--------------|----|------------|------------------|
| LM Start | 5.84 | Rating ** | M | Issue No. | 26 (cont) |
| LM End | 5.84 | Issue Type + | Ma | Location * | |

Photo 1 of 3 : UCIP_SP_2021_59903_81718.jpg



Headwall and flap gate

Photo 2 of 3 : UCIP_SP_2021_59903_81719.jpg



View of WS slope and flap gate at levee toe

| * Location | ** Rating | + Issue Type |
|---|---|--|
| LS : Land Side WS : Water Side CR : Crown | A : Acceptable M : Minimally Acceptable U : Unacceptable | Ma : Maintenance Deficiency Ob : Design & System Obsolescence En : Enforcement |
| N/A : Not Applicable | N : Not Inspected/Rated C : Corrected A/W : Acceptable but Monitor & Maintain | |

**Flood Control Project Maintenance
Levee Inspections**

Maintenance Issue Types Only, Levee Inspection Report By Mile - Spring 2021

Sacramento Maintenance Yard Putah Creek

| Waterway | Bank | Unit Miles | Inspection Start/End | Inspector |
|--|-------|------------|--------------------------|--------------|
| Unit No. 02 Putah Creek or South Levee | Right | 7.20 | 03/18/2021 03/18/2021 | David Julian |

| | | | | | |
|----------|-----------------------------|--------------|----|------------------------|------------------|
| LM Start | 6.02 | Rating ** | M | Issue No. | 28 (cont) |
| LM End | 6.02 | Issue Type + | Ma | Location * | |
| Category | Supplemental | | | GPS Latitude/Longitude | |
| | | | | Start | End |
| Item | DWR UCIP LMA Responsibility | | | 38.516658 ° | 38.516658 ° |
| | | | | -121.765572 ° | -121.765572 ° |
| DWR ID | 16641 | | | | |

Photo 2 of 3 : UCIP_SP_2021_59905_81725.jpg



View of WS looking from levee crown

| | | | | | |
|----------|-------------|--------------|----|------------|------------------|
| LM Start | 6.02 | Rating ** | M | Issue No. | 28 (cont) |
| LM End | 6.02 | Issue Type + | Ma | Location * | |

Photo 3 of 3 : UCIP_SP_2021_59905_81726.jpg



WS levee slope, headwall, and slide gate

| | | |
|--|--|---|
| * Location LS : Land Side N/A : Not Applicable WS : Water Side CR : Crown | ** Rating A : Acceptable M : Minimally Acceptable U : Unacceptable | + Issue Type Ma : Maintenance Deficiency Ob : Design & System Obsolescence En : Enforcement |
|--|--|---|

**Flood Control Project Maintenance
Levee Inspections**

Maintenance Issue Types Only, Levee Inspection Report By Mile - Spring 2021

Sacramento Maintenance Yard Putah Creek

| Waterway | Bank | Unit Miles | Inspection Start/End | Inspector |
|--|-------|------------|--------------------------|--------------|
| Unit No. 02 Putah Creek or South Levee | Right | 7.20 | 03/18/2021 03/18/2021 | David Julian |

| | | | | | |
|----------|-----------------------------|--------------|------------------------|---------------|-----------|
| LM Start | 6.34 | Rating ** | M | Issue No. | 31 |
| LM End | 6.34 | Issue Type + | Ma | Location * | |
| Category | Supplemental | | GPS Latitude/Longitude | | |
| | | | Start | End | |
| Item | DWR UCIP LMA Responsibility | | 38.517199 ° | 38.517199 ° | |
| | | | -121.771262 ° | -121.771262 ° | |

| | |
|--------|-------|
| DWR ID | 16642 |
|--------|-------|

| | |
|--------------|--|
| Comment Code | |
|--------------|--|

| | |
|-------------------|--|
| Inspector Comment | |
|-------------------|--|

FS_ID:59906
DS_ID:16642
EP_NO: 10265
Repair Type: Non-Urgent
Crossing Status: Found
UCIP Comments: 10/21/2019 Record remains Non-Urgent. Need to have CVFPB review ABO and determine current owner. (O. Yakimov - DWR UCIP)07/12/2019 After reviewing the USACE O&M manual as-built there is no reference to this 30-inch pipe. Will need to coordinate with previous UCIP inspector to determine if additional information is available to tie pipe to USACE O&M manual. (O. Magana - DWR UCIP) 04/10/2019 There is no more debris around pipe. And is now sprayed and maintained. (J. McCabe - DWR Sacramento Yard) 04/01/2019 Debris buildup at WS outlet. (J. McCabe - DWR Sacramento Yard)
FIELD_STRUCT_DESC: 30-inch CIPP-lined drainage pipe of an unknown material through the levee, 17 feet below the crown. Headwall and slide gate on the landside (LS) end. Flap gate on the waterside (WS) end, 120 feet to the north of the crossing. (36-inch pipe [HLM 6.50] authorized under Automatic Board Order (ABO) issued as Permit No. 10265, 1974 - State of California, Division of Highways. Also included in Automatic Board Order (ABO) issued as Permit No. 11296, 1974 - Capitol National Bank of Sacramento and Crocker Citizens National Bank). [Additional Reference(s): DWR Levee Log, 2005, (HLM 6.50), 36-inch pipe listed. USACE Sacramento O&M Manual 119, December 1952].
FS Date: 10/21/2019 2:11:00 PM

| | | | | | |
|----------|-------------|--------------|----|------------|------------------|
| LM Start | 6.34 | Rating ** | M | Issue No. | 31 (cont) |
| LM End | 6.34 | Issue Type + | Ma | Location * | |

Photo 1 of 3 : UCIP_SP_2021_59906_81729.jpg



View of LS looking from levee crown

Photo 2 of 3 : UCIP_SP_2021_59906_81730.jpg



LS slope, headwall, and slide gate

| | | | |
|--|--|---|---|
| * Location LS : Land Side N/A : Not Applicable WS : Water Side CR : Crown | ** Rating A : Acceptable M : Minimally Acceptable U : Unacceptable | N : Not Inspected/Rated C : Corrected A/W : Acceptable but Monitor & Maintain | + Issue Type Ma : Maintenance Deficiency Ob : Design & System Obsolescence En : Enforcement |
|--|--|---|---|

**Flood Control Project Maintenance
Levee Inspections**

Maintenance Issue Types Only, Levee Inspection Report By Mile - Spring 2021

Sacramento Maintenance Yard Putah Creek

| Waterway | Bank | Unit Miles | Inspection Start/End | Inspector |
|--|-------|------------|--------------------------|--------------|
| Unit No. 02 Putah Creek or South Levee | Right | 7.20 | 03/18/2021 03/18/2021 | David Julian |

| | | | | | |
|----------|-----------------------------|--------------|----|------------------------|------------------|
| LM Start | 6.34 | Rating ** | M | Issue No. | 31 (cont) |
| LM End | 6.34 | Issue Type + | Ma | Location * | |
| Category | Supplemental | | | GPS Latitude/Longitude | |
| | | | | Start | End |
| Item | DWR UCIP LMA Responsibility | | | 38.517199 ° | 38.517199 ° |
| | | | | -121.771262 ° | -121.771262 ° |
| DWR ID | 16642 | | | | |

Photo 3 of 3 : UCIP_SP_2021_59906_81731.jpg



Pipe end on WS

| | | | | | |
|--|-------------------------|--------------|----|------------------------|---------------|
| LM Start | 6.50 | Rating ** | M | Issue No. | 42 |
| LM End | 6.74 | Issue Type + | Ma | Location * | WS |
| Category | Earthen Levee | | | GPS Latitude/Longitude | |
| | | | | Start | End |
| Item | Vegetation | | | 38.518260 ° | 38.520219 ° |
| | | | | -121.773920 ° | -121.777607 ° |
| DWR ID | DWR_ST0007_02_s_2021_42 | | | | |
| Comment Code | | | | | |
| V1 : Control annual grass and weeds on the levee slopes and easements. | | | | | |
| Inspector Comment | | | | | |
| | | | | | |

No Photos

| | | | | | |
|--|-------------------------|--------------|----|------------------------|---------------|
| LM Start | 6.50 | Rating ** | M | Issue No. | 40 |
| LM End | 6.99 | Issue Type + | Ma | Location * | LS |
| Category | Earthen Levee | | | GPS Latitude/Longitude | |
| | | | | Start | End |
| Item | Vegetation | | | 38.518259 ° | 38.522221 ° |
| | | | | -121.773921 ° | -121.781373 ° |
| DWR ID | DWR_ST0007_02_s_2021_40 | | | | |
| Comment Code | | | | | |
| V1 : Control annual grass and weeds on the levee slopes and easements. | | | | | |
| Inspector Comment | | | | | |
| | | | | | |

No Photos

| | | | |
|--|--|---|---|
| * Location LS : Land Side N/A : Not Applicable WS : Water Side CR : Crown | ** Rating A : Acceptable M : Minimally Acceptable U : Unacceptable | N : Not Inspected/Rated C : Corrected A/W : Acceptable but Monitor & Maintain | + Issue Type Ma : Maintenance Deficiency Ob : Design & System Obsolescence En : Enforcement |
|--|--|---|---|

**Flood Control Project Maintenance
Levee Inspections**

Maintenance Issue Types Only, Levee Inspection Report By Mile - Spring 2021

Sacramento Maintenance Yard Putah Creek

| Waterway | Bank | Unit Miles | Inspection Start/End | Inspector |
|--|-------|------------|--------------------------|--------------|
| Unit No. 02 Putah Creek or South Levee | Right | 7.20 | 03/18/2021 03/18/2021 | David Julian |

| | | | | | |
|---|-------------------------|--------------|----|------------------------|---------------|
| LM Start | 6.51 | Rating ** | U | Issue No. | 39 |
| LM End | 6.51 | Issue Type + | Ma | Location * | LS |
| Category | Earthen Levee | | | GPS Latitude/Longitude | |
| | | | | Start | End |
| Item | Vegetation | | | 38.518339 ° | 38.518339 ° |
| | | | | -121.774069 ° | -121.774069 ° |
| DWR ID | DWR_ST0007_02_s_2020_39 | | | | |
| Comment Code | | | | | |
| V4 : Elderberries are blocking visibility and flood fight capability. | | | | | |
| Inspector Comment | | | | | |
| | | | | | |

No Photos

| | | | | | | |
|--|-----------------------------|--------------|----|------------------------|---------------|--|
| LM Start | 6.65 | Rating ** | M | Issue No. | 38 | |
| LM End | 6.65 | Issue Type + | Ma | Location * | | |
| Category | Supplemental | | | GPS Latitude/Longitude | | |
| | | | | Start | End | |
| Item | DWR UCIP LMA Responsibility | | | 38.519470 ° | 38.519470 ° | |
| | | | | -121.776150 ° | -121.776150 ° | |
| DWR ID | 16633 | | | | | |
| Comment Code | | | | | | |
| | | | | | | |
| Inspector Comment | | | | | | |
| FS_ID:59908 DS_ID:16633 EP_NO: 10276 Repair Type: Non-Urgent Crossing Status: Found UCIP Comments: 10/21/2019 Record remains Non-Urgent. Minor sediment buildup at slide gate. Need to have CVFPB review ABO and determine current owner. (O.Yakimov - DWR UCIP)05/22/2013 Will contact owner of pipe and ask to clean for inspection. (C. Lund - DWR Sacramento Yard) 04/05/2012 Pipe heavily clogged with soil. (W. Wylie - DWR UCIP) FIELD_STRUCT_DESC: 24-inch CIPP-lined drainage pipe of an unknown material through the levee, 6 feet below the crown. Slide gate on the waterside (WS) end, and headwalls on both ends. (24-inch pipe [HLM 6.83] authorized under Automatic Board Order (ABO) issued as Permit No. 10276, 1974 - Patricia Schlages). [Additional Reference(s): DWR Levee Log, 2005 (HLM 6.83). USACE Sacramento O&M Manual, Unit 119, December 1952, Revised 29 Dec 2016, (Station 237+50 PCT), listed as 24-inch pipe. USACE As-Built Drawing No. 50-04-2396, Revision 2, pdf page 26, Sheet 10, December 1947]. FS Date: 10/21/2019 2:32:00 PM | | | | | | |

Photo 1 of 3 : UCIP_SP_2021_59908_81739.jpg



View of LS looking from levee crown

| | | | |
|--|--|---|---|
| * Location LS : Land Side N/A : Not Applicable WS : Water Side CR : Crown | ** Rating A : Acceptable M : Minimally Acceptable U : Unacceptable | N : Not Inspected/Rated C : Corrected A/W : Acceptable but Monitor & Maintain | + Issue Type Ma : Maintenance Deficiency Ob : Design & System Obsolescence En : Enforcement |
|--|--|---|---|

**Flood Control Project Maintenance
Levee Inspections**

Maintenance Issue Types Only, Levee Inspection Report By Mile - Spring 2021

Sacramento Maintenance Yard Putah Creek

| Waterway | Bank | Unit Miles | Inspection Start/End | Inspector |
|--|-------|------------|--------------------------|--------------|
| Unit No. 02 Putah Creek or South Levee | Right | 7.20 | 03/18/2021 03/18/2021 | David Julian |

| | | | | | |
|----------|-----------------------------|--------------|----|------------------------|---------------|
| LM Start | 6.65 | Rating ** | M | Issue No. | 38 (cont) |
| LM End | 6.65 | Issue Type + | Ma | Location * | |
| Category | Supplemental | | | GPS Latitude/Longitude | |
| | | | | Start | End |
| Item | DWR UCIP LMA Responsibility | | | 38.519470 ° | 38.519470 ° |
| | | | | -121.776150 ° | -121.776150 ° |
| DWR ID | 16633 | | | | |

Photo 2 of 3 : UCIP_SP_2021_59908_81740.jpg



View of WS looking from levee crown

| | | | | | |
|----------|-------------|--------------|----|------------|------------------|
| LM Start | 6.65 | Rating ** | M | Issue No. | 38 (cont) |
| LM End | 6.65 | Issue Type + | Ma | Location * | |

Photo 3 of 3 : UCIP_SP_2021_59908_81741.jpg



WS levee slope, headwall, and slide gate

| | | | | | |
|---|-------------------------|--------------|----|------------------------|---------------|
| LM Start | 6.87 | Rating ** | U | Issue No. | 46 |
| LM End | 6.90 | Issue Type + | Ma | Location * | WS |
| Category | Earthen Levee | | | GPS Latitude/Longitude | |
| | | | | Start | End |
| Item | Vegetation | | | 38.521253 ° | 38.521547 ° |
| | | | | -121.779481 ° | -121.780033 ° |
| DWR ID | DWR_ST0007_02_s_2017_46 | | | | |
| Comment Code | | | | | |
| V4 : Elderberries are blocking visibility and flood fight capability. | | | | | |
| Inspector Comment | | | | | |
| Stalks less than 1 inch in diameter can be trimmed and thinned. | | | | | |

No Photos

| | | | |
|--|--|---|---|
| * Location LS : Land Side N/A : Not Applicable WS : Water Side CR : Crown | ** Rating A : Acceptable M : Minimally Acceptable U : Unacceptable | N : Not Inspected/Rated C : Corrected A/W : Acceptable but Monitor & Maintain | + Issue Type Ma : Maintenance Deficiency Ob : Design & System Obsolescence En : Enforcement |
|--|--|---|---|

**Flood Control Project Maintenance
Levee Inspections**

Maintenance Issue Types Only, Levee Inspection Report By Mile - Spring 2021

Sacramento Maintenance Yard Putah Creek

| Waterway | Bank | Unit Miles | Inspection Start/End | Inspector |
|--|-------|------------|--------------------------|-----------------|
| Unit No. 02 Putah Creek or South Levee | Right | 7.20 | 03/18/2021 03/18/2021 | David Julian |

| | | | | | |
|---|--------------------------|--------------|----|------------------------|---------------|
| LM Start | 7.00 | Rating ** | U | Issue No. | 47 |
| LM End | 7.01 | Issue Type + | Ma | Location * | WS |
| Category | Earthen Levee | | | GPS Latitude/Longitude | |
| | | | | Start | End |
| Item | Vegetation | | | 38.522328 ° | 38.522393 ° |
| | | | | -121.781447 ° | -121.781663 ° |
| DWR ID | DWR_ST0007_02_s_ 2017_47 | | | | |
| Comment Code | | | | | |
| V4 : Elderberries are blocking visibility and flood fight capability. | | | | | |
| Inspector Comment | | | | | |
| These elderberries are blocking view of levee section and blocking access to a portion of the shoulder waterward. Some of these stalks are less than 1.0 inch and could be thinned out. | | | | | |

No Photos

| | | | |
|--|--|---|---|
| * Location LS : Land Side N/A : Not Applicable WS : Water Side CR : Crown | ** Rating A : Acceptable M : Minimally Acceptable U : Unacceptable | N : Not Inspected/Rated C : Corrected A/W : Acceptable but Monitor & Maintain | + Issue Type Ma : Maintenance Deficiency Ob : Design & System Obsolescence En : Enforcement |
|--|--|---|---|