

**Flood Control Project Maintenance
Levee Inspections**

Maintenance Issue Types Only, Levee Inspection Report By Mile - Spring 2020

Sacramento Maintenance Yard Putah Creek

Waterway	Bank	Unit Miles	Inspection Start/End	Inspector
Unit No. 01 Putah Creek or North Levee	Left	8.79	04/23/2020 04/23/2020	David Julian

LM Start		Rating **	A	Issue No.	25
LM End		Issue Type +	Ma	Location *	
Category	Earthen Levee			GPS Latitude/Longitude	
				Start	End
Item	Operations & Maintenance Manuals			°	°
				°	°
DWR ID	DWR_ST0007_01_s_2013_25				
Comment Code					
Inspector Comment					
The Sacramento Maintenance Yard has a copy of the O&M Manual.					

No Photos

LM Start		Rating **	A	Issue No.	26
LM End		Issue Type +	Ma	Location *	
Category	Earthen Levee			GPS Latitude/Longitude	
				Start	End
Item	Emergency Supplies & Equipment			°	°
				°	°
DWR ID	DWR_ST0007_01_s_2013_26				
Comment Code					
Inspector Comment					
The Sacramento Maintenance Yard has adequate emergency supplies stored.					

No Photos

LM Start		Rating **	A	Issue No.	27
LM End		Issue Type +	Ma	Location *	
Category	Earthen Levee			GPS Latitude/Longitude	
				Start	End
Item	Flood Preparedness & Training			°	°
				°	°
DWR ID	DWR_ST0007_01_s_2013_27				
Comment Code					
Inspector Comment					
The Sacramento Maintenance Yard trains yearly for flood fighting.					

No Photos

* Location LS : Land Side N/A : Not Applicable WS : Water Side CR : Crown	** Rating A : Acceptable M : Minimally Acceptable U : Unacceptable	N : Not Inspected/Rated C : Corrected A/W : Acceptable but Monitor & Maintain	+ Issue Type Ma : Maintenance Deficiency Ob : Design & System Obsolescence En : Enforcement
--	--	---	---

Sacramento Maintenance Yard Putah Creek

View looking upstream at annual vegetation on the landside slope (Spring 2020).

Page 2 of 29

**Flood Control Project Maintenance
Levee Inspections**

Maintenance Issue Types Only, Levee Inspection Report By Mile - Spring 2020

Sacramento Maintenance Yard Putah Creek

Waterway	Bank	Unit Miles	Inspection Start/End	Inspector
Unit No. 01 Putah Creek or North Levee	Left	8.79	04/23/2020 04/23/2020	David Julian

LM Start	0.58	Rating **	M	Issue No.	73
LM End	0.58	Issue Type +	Ma	Location *	
Category	Supplemental			GPS Latitude/Longitude	
				Start	End
Item	DWR UCIP LMA Responsibility			38.519660 °	38.519660 °
				-121.638820 °	-121.638820 °
DWR ID	488				
Comment Code					
Inspector Comment					
DS_ID:488 FS_ID:55584 EP_NO: 10261 Repair Type: Non-Urgent Crossing Status: Found UCIP Comments: 11/07/2019 Rating updated from No Action Needed to Non-Urgent. Crossing type has been updated from Drainage to Irrigation because current crossing design serves irrigation purposes. Need to have CVFPB review ABO and determine current owner. (O.Yakimov - DWR UCIP) FIELD_STRUCT_DESC: 24-inch drainage pipe of unknown material through the levee, 12.5 feet below the crown. Slide gate is located on the waterside (WS) end. Concrete standpipe and headwall are located on the LS. Water well is connected to the standpipe. (24-inch pipe [HLM 0.58] authorized under Automatic Board Order (ABO) issued as Permit No. 10261, 1974 - Tufts) [Additional Reference(s): DWR Levee Log, 1981 and 2005 (HLM 0.58). USACE Sacramento O&M Manual, Unit 119, December 1952, Revised 29 Dec 2016, (Station 31+00), listed as 24-inch pipe. USACE As-Built Drawing No. 50-04-2396, Revision 1, pdf page 19, Sheet 3, December 1947] FS Date: 11/7/2019 9:56:43 AM					

LM Start	0.58	Rating **	M	Issue No.	73 (cont)
LM End	0.58	Issue Type +	Ma	Location *	

Photo 1 of 3 : UCIP_SP_2020_55584_82055.jpg



View of WS looking from levee crown

Photo 2 of 3 : UCIP_SP_2020_55584_82056.jpg



View of LS looking from levee crown

* Location LS : Land Side N/A : Not Applicable WS : Water Side CR : Crown	** Rating A : Acceptable M : Minimally Acceptable U : Unacceptable	N : Not Inspected/Rated C : Corrected A/W : Acceptable but Monitor & Maintain	+ Issue Type Ma : Maintenance Deficiency Ob : Design & System Obsolescence En : Enforcement
--	--	---	---

**Flood Control Project Maintenance
Levee Inspections**

Maintenance Issue Types Only, Levee Inspection Report By Mile - Spring 2020

Sacramento Maintenance Yard Putah Creek

Waterway	Bank	Unit Miles	Inspection Start/End	Inspector
Unit No. 01 Putah Creek or North Levee	Left	8.79	04/23/2020 04/23/2020	David Julian

LM Start	0.58	Rating **	M	Issue No.	73 (cont)
LM End	0.58	Issue Type +	Ma	Location *	
Category	Supplemental			GPS Latitude/Longitude	
				Start	End
Item	DWR UCIP LMA Responsibility			38.519660 °	38.519660 °
				-121.638820 °	-121.638820 °
DWR ID	488				

Photo 3 of 3 : UCIP_SP_2020_55584_82058.jpg



Water well connected to standpipe at LS toe. Top of headwall is visible

LM Start	2.72	Rating **	M	Issue No.	79
LM End	2.72	Issue Type +	Ma	Location *	
Category	Supplemental			GPS Latitude/Longitude	
				Start	End
Item	DWR UCIP LMA Responsibility			38.517580 °	38.517580 °
				-121.676820 °	-121.676820 °
DWR ID	492				

Photo 1 of 3 : UCIP_SP_2020_55597_82102.jpg



View of WS looking from levee crown

Comment Code					
Inspector Comment					
DS_ID:492 FS_ID:55597 EP_NO: 10262 Repair Type: Non-Urgent Crossing Status: Found UCIP Comments: 11/07/2019 Record updated from No Action Needed to Non-Urgent. Need to have CVFPB review ABO and determine current owner. (O.Yakimov - DWR UCIP) FIELD_STRUCT_DESC: 24-inch CIPP-lined drainage pipe of unknown material through levee, 13 feet below crown. Slide gate is located on the waterside (WS) end. Concrete headwalls are located on both the waterside (WS) and landside (LS). (24-inch pipe [HLM 2.77] authorized under Automatic Board Order (ABO) issued as Permit No. 10262, 1974 - Wells Fargo Bank, Trustee for S.H. Cowell Foundation) [Additional Reference(s): DWR Levee Log, 1981 and 2005 (HLM 2.77). USACE Sacramento O&M Manual, Unit 119, December 1952, Revised 29 Dec 2016, (Station P 213+00), listed as 24-inch pipe. USACE As-Built Drawing No. 50-04-2396, Revision 3, pdf page 22, Sheet 6, December 1947] FS Date: 11/7/2019 10:48:08 AM					

* Location	** Rating	+ Issue Type
LS : Land Side WS : Water Side CR : Crown	A : Acceptable M : Minimally Acceptable U : Unacceptable	Ma : Maintenance Deficiency Ob : Design & System Obsolescence En : Enforcement
N/A : Not Applicable	N : Not Inspected/Rated C : Corrected A/W : Acceptable but Monitor & Maintain	

**Flood Control Project Maintenance
Levee Inspections**

Maintenance Issue Types Only, Levee Inspection Report By Mile - Spring 2020

Sacramento Maintenance Yard Putah Creek

Waterway	Bank	Unit Miles	Inspection Start/End	Inspector
Unit No. 01 Putah Creek or North Levee	Left	8.79	04/23/2020 04/23/2020	David Julian

LM Start	2.72	Rating **	M	Issue No.	79 (cont)
LM End	2.72	Issue Type +	Ma	Location *	
Category	Supplemental			GPS Latitude/Longitude	
				Start	End
Item	DWR UCIP LMA Responsibility			38.517580 °	38.517580 °
				-121.676820 °	-121.676820 °
DWR ID	492				

Photo 2 of 3 : UCIP_SP_2020_55597_82103.jpg



View of LS looking from levee crown

LM Start	2.72	Rating **	M	Issue No.	79 (cont)
LM End	2.72	Issue Type +	Ma	Location *	

Photo 3 of 3 : UCIP_SP_2020_55597_82104.jpg



LS levee slope, headwall, and pipe end

* Location LS : Land Side N/A : Not Applicable WS : Water Side CR : Crown	** Rating A : Acceptable M : Minimally Acceptable U : Unacceptable	N : Not Inspected/Rated C : Corrected A/W : Acceptable but Monitor & Maintain	+ Issue Type Ma : Maintenance Deficiency Ob : Design & System Obsolescence En : Enforcement
--	--	---	---

**Flood Control Project Maintenance
Levee Inspections**

Maintenance Issue Types Only, Levee Inspection Report By Mile - Spring 2020

Sacramento Maintenance Yard Putah Creek

Waterway	Bank	Unit Miles	Inspection Start/End	Inspector
Unit No. 01 Putah Creek or North Levee	Left	8.79	04/23/2020 04/23/2020	David Julian

LM Start	3.80	Rating **	M	Issue No.	84
LM End	3.80	Issue Type +	Ma	Location *	
Category	Supplemental		GPS Latitude/Longitude		
			Start	End	
Item	DWR UCIP LMA Responsibility		38.519790 °	38.519790 °	
			-121.695450 °	-121.695450 °	
DWR ID	496				

Comment Code

Inspector Comment

DS_ID:496
FS_ID:55455
EP_NO: 10251
Repair Type: Non-Urgent
Crossing Status: Found
UCIP Comments: 10/22/2019 Record updated from No Action Needed to Non-Urgent. Need to have CVFPB review ABO and determine current owner. Installed a new precast concrete box on the waterside. Pipe will be lined in November 2019 according to FMO staff. (O.Yakimov - DWR UCIP)4/10/2019 Major erosion through out pipe. Erosion on WS allows water to enter pipe and flood LS field. Erosion on farmers waterman valve. Field water drains into pipe and floods LS field. (J.McCabe - DWR Sacramento Yard)
FIELD_STRUCT_DESC: 24-inch corrugated metal drainage pipe through levee, 15 feet below the crown. Two metal cutoff walls were installed through the levee. A T-post and T-handle are located on the landside (LS) toe. The outfall structure and flap gate are located on the west side of bridge, waterside (WS). (24-inch pipe [HLM 3.87] authorized under Automatic Board Order (ABO) issued as Permit No. 10251, 1974 - F.M.C. Corp.) [Additional Reference(s): DWR Levee Log, 1981 and 2005 (HLM 3.87). USACE Sacramento O&M Manual, Unit 119, December 1952, Revised 29 Dec 2016, (Station 1+50 PCT), listed as 24-inch pipe. USACE As-Built Drawing No. 50-04-2396, Revision 4, pdf page 23, Sheet 7, December 1947]
FS Date: 10/22/2019 3:38:32 PM

LM Start	3.80	Rating **	M	Issue No.	84 (cont)
LM End	3.80	Issue Type +	Ma	Location *	

Photo 1 of 3 : UCIP_SP_2020_55455_81753.jpg



LS levee slope, headwall, and pipe end

Photo 2 of 3 : UCIP_SP_2020_55455_81754.jpg



View inside of CMP drainage pipe

* Location LS : Land Side N/A : Not Applicable WS : Water Side CR : Crown	** Rating A : Acceptable M : Minimally Acceptable U : Unacceptable	N : Not Inspected/Rated C : Corrected A/W : Acceptable but Monitor & Maintain	+ Issue Type Ma : Maintenance Deficiency Ob : Design & System Obsolescence En : Enforcement
--	--	--	---

**Flood Control Project Maintenance
Levee Inspections**

Maintenance Issue Types Only, Levee Inspection Report By Mile - Spring 2020

Sacramento Maintenance Yard Putah Creek

Waterway	Bank	Unit Miles	Inspection Start/End	Inspector
Unit No. 01 Putah Creek or North Levee	Left	8.79	04/23/2020 04/23/2020	David Julian

LM Start	3.80	Rating **	M	Issue No.	84 (cont)
LM End	3.80	Issue Type +	Ma	Location *	
Category	Supplemental			GPS Latitude/Longitude	
				Start	End
Item	DWR UCIP LMA Responsibility			38.519790 °	38.519790 °
				-121.695450 °	-121.695450 °
DWR ID	496				

Photo 3 of 3 : UCIP_SP_2020_55455_81755.jpg



View of LS looking from levee crown

LM Start	4.05	Rating **	M	Issue No.	85
LM End	4.05	Issue Type +	Ma	Location *	
Category	Supplemental			GPS Latitude/Longitude	
				Start	End
Item	DWR UCIP LMA Responsibility			38.518685 °	38.518685 °
				-121.699835 °	-121.699835 °
DWR ID	497				

Comment Code

Inspector Comment

DS_ID:497
 FS_ID:55456
 EP_NO: 10251
 Repair Type: Non-Urgent
 Crossing Status: Found
 UCIP Comments: 10/22/2019 Record updated from No Action Needed to Non-Urgent. Geophysical study indicates possible presence of pipe through levee. Need to have CVFPB review ABO and determine current owner. Pipe inlet and headwall are not visible on LS. Slide gate in CMP riser is in closed position, crossing looks abandoned. Construction according to permit 10251-1 hasn't started yet. Field structure description is updated to match original pipe construction. (O.Yakimov - DWR UCIP)
 FIELD_STRUCT_DESC: 24-inch drainage pipe of unknown material through levee, 16 feet below the crown. 36-inch galvanized corrugated metal pipe (CMP) riser located on the waterside (WS) slope. (24-inch pipe [HLM 4.13] authorized under Automatic Board Order (ABO) issued as Permit No. 10251, 1974 - F.M.C. Corp.; assumed original 24-inch pipe was installed in 12/12/1952 per O&M manual) [Additional Reference(s): DWR Levee Log, 1981 and 2005 (HLM 4.13). USACE Sacramento O&M Manual, Unit 119, December 1952, Revised 29 Dec 2016, (Station 17+00 PCT), listed as 24-inch pipe. USACE As-Built Drawing No. 50-04-2396, Revision 4, pdf page 23, Sheet 7, December 1947]
 FS Date: 10/22/2019 11:37:56 AM

Photo 1 of 3 : UCIP_SP_2020_55456_81760.jpg



View of levee crown at the crossing

* Location LS : Land Side N/A : Not Applicable WS : Water Side CR : Crown	** Rating A : Acceptable M : Minimally Acceptable U : Unacceptable N : Not Inspected/Rated C : Corrected A/W : Acceptable but Monitor & Maintain	+ Issue Type Ma : Maintenance Deficiency Ob : Design & System Obsolescence En : Enforcement
--	---	---

**Flood Control Project Maintenance
Levee Inspections**

Maintenance Issue Types Only, Levee Inspection Report By Mile - Spring 2020

Sacramento Maintenance Yard Putah Creek

Waterway	Bank	Unit Miles	Inspection Start/End	Inspector
Unit No. 01 Putah Creek or North Levee	Left	8.79	04/23/2020 04/23/2020	David Julian

LM Start	4.05	Rating **	M	Issue No.	85 (cont)
LM End	4.05	Issue Type +	Ma	Location *	
Category	Supplemental			GPS Latitude/Longitude	
				Start	End
Item	DWR UCIP LMA Responsibility			38.518685 °	38.518685 °
				-121.699835 °	-121.699835 °
DWR ID	497				

Photo 2 of 3 : UCIP_SP_2020_55456_81761.jpg



View of LS looking from levee crown

LM Start	4.05	Rating **	M	Issue No.	85 (cont)
LM End	4.05	Issue Type +	Ma	Location *	

Photo 3 of 3 : UCIP_SP_2020_55456_81762.jpg



View of WS looking from levee crown

LM Start	4.57	Rating **	M	Issue No.	43
LM End	4.57	Issue Type +	Ma	Location *	WS
Category	Earthen Levee			GPS Latitude/Longitude	
				Start	End
Item	Slope Stability			38.518175 °	38.518175 °
				-121.709270 °	-121.709270 °
DWR ID	DWR_ST0007_01_f_2019_43				
Comment Code					
S3 : Repair the levee slope damaged by vehicle traffic and prevent access where possible.					
Inspector Comment					
Vehicle tracks depressed into slope.					

Photo 1 of 1 : SP_2020_ST0007_282_43_20200304_00012.jpg



View of vehicle tracks on the waterside slope (Fall 2019).

* Location	** Rating	+ Issue Type
LS : Land Side WS : Water Side CR : Crown	A : Acceptable M : Minimally Acceptable U : Unacceptable	Ma : Maintenance Deficiency Ob : Design & System Obsolescence En : Enforcement
N/A : Not Applicable	N : Not Inspected/Rated C : Corrected A/W : Acceptable but Monitor & Maintain	

**Flood Control Project Maintenance
Levee Inspections**

Maintenance Issue Types Only, Levee Inspection Report By Mile - Spring 2020

Sacramento Maintenance Yard Putah Creek

Waterway	Bank	Unit Miles	Inspection Start/End	Inspector
Unit No. 01 Putah Creek or North Levee	Left	8.79	04/23/2020 04/23/2020	David Julian

LM Start	4.57	Rating **	M	Issue No.	44
LM End	4.57	Issue Type +	Ma	Location *	WS
Category	Earthen Levee			GPS Latitude/Longitude	
				Start	End
Item	Animal Control			38.518175 °	38.518175 °
				-121.709270 °	-121.709270 °
DWR ID	DWR_ST0007_01_f_2019_44				
Comment Code					
A3 : No rodents visible, but rodent burrows visible; need to backfill and compact or grout burrows.					
Inspector Comment					
Multiple holes. Holes do not look deep.					

Photo 1 of 1 : SP_2020_ST0007_282_44_20200304_00013.jpg



View of animal holes on the waterside slope (Fall 2019).

LM Start	5.24	Rating **	M	Issue No.	45
LM End	5.24	Issue Type +	Ma	Location *	WS
Category	Earthen Levee			GPS Latitude/Longitude	
				Start	End
Item	Slope Stability			38.518142 °	38.518142 °
				-121.721778 °	-121.721778 °
DWR ID	DWR_ST0007_01_f_2019_45				
Comment Code					
S3 : Repair the levee slope damaged by vehicle traffic and prevent access where possible.					
Inspector Comment					
Vehicle depression on the waterside shoulder.					

Photo 1 of 1 : SP_2020_ST0007_282_45_20200304_00014.jpg



View of vehicle track depression on waterside shoulder (Fall 2019).

*** Location**
LS : Land Side N/A : Not Applicable
WS : Water Side
CR : Crown

**** Rating**
A : Acceptable N : Not Inspected/Rated
M : Minimally Acceptable C : Corrected
U : Unacceptable A/W : Acceptable but Monitor & Maintain

+ Issue Type
Ma : Maintenance Deficiency
Ob : Design & System Obsolescence
En : Enforcement

**Flood Control Project Maintenance
Levee Inspections**

Maintenance Issue Types Only, Levee Inspection Report By Mile - Spring 2020

Sacramento Maintenance Yard Putah Creek

Waterway	Bank	Unit Miles	Inspection Start/End	Inspector
Unit No. 01 Putah Creek or North Levee	Left	8.79	04/23/2020 04/23/2020	David Julian

LM Start	5.28	Rating **	M	Issue No.	88	
LM End	5.28	Issue Type +	Ma	Location *		
Category	Supplemental			GPS Latitude/Longitude		
				Start	End	
Item	DWR UCIP LMA Responsibility			38.518022 °	38.518022 °	
				-121.722521 °	-121.722521 °	
DWR ID	500					
Comment Code						
Inspector Comment						
DS_ID:500 FS_ID:55459 EP_NO: 10256 Repair Type: Non-Urgent Crossing Status: Found UCIP Comments: 10/22/2019 Record updated from No Action Needed to Non-Urgent. Need to have CVFPB review ABO and determine current owner. (O.Yakimov - DWR UCIP) 05/06/2013 Debris removed. See picture (C. Lund - DWR Sacramento Yard) 04/04/2012 Some debris in pipe invert LS (W. Wylie - DWR UCIP) FIELD_STRUCT_DESC: 24-inch CIPP-lined corrugated metal drainage pipe through the levee, 15 feet below the crown. Slide gate on the waterside (WS) end. Concrete headwall on the landside (LS) end. (24-inch pipe [HLM 5.39] authorized under Automatic Board Order (ABO) issued as Permit No. 10256, 1974 - Albert H. Lederer). [Additional Reference(s): DWR Levee Log, 2005 (HLM 5.39). USACE Sacramento O&M Manual, Unit 119, December 1952, Revised 29 Dec 2016, (Station 83+70 PCT), listed as 24-inch pipe. USACE As-Built Drawing No. 50-04-2396, Revision 4, pdf page 24, Sheet 8, December 1947]. FS Date: 10/22/2019 3:11:16 PM						

LM Start	5.28	Rating **	M	Issue No.	88 (cont)
LM End	5.28	Issue Type +	Ma	Location *	

Photo 1 of 3 : UCIP_SP_2020_55459_81775.jpg



View of LS looking from levee crown

Photo 2 of 3 : UCIP_SP_2020_55459_81776.jpg



View of WS looking from levee crown

* Location LS : Land Side N/A : Not Applicable WS : Water Side CR : Crown	** Rating A : Acceptable M : Minimally Acceptable U : Unacceptable	N : Not Inspected/Rated C : Corrected A/W : Acceptable but Monitor & Maintain	+ Issue Type Ma : Maintenance Deficiency Ob : Design & System Obsolescence En : Enforcement
--	--	---	---

**Flood Control Project Maintenance
Levee Inspections**

Maintenance Issue Types Only, Levee Inspection Report By Mile - Spring 2020

Sacramento Maintenance Yard Putah Creek

Waterway	Bank	Unit Miles	Inspection Start/End	Inspector
Unit No. 01 Putah Creek or North Levee	Left	8.79	04/23/2020 04/23/2020	David Julian

LM Start	5.28	Rating **	M	Issue No.	88 (cont)
LM End	5.28	Issue Type +	Ma	Location *	
Category	Supplemental			GPS Latitude/Longitude	
				Start	End
Item	DWR UCIP LMA Responsibility			38.518022 °	38.518022 °
				-121.722521 °	-121.722521 °
DWR ID	500				

Photo 3 of 3 : UCIP_SP_2020_55459_81777.jpg



LS levee slope, headwall, and pipe end

LM Start	5.30	Rating **	M	Issue No.	89
LM End	5.30	Issue Type +	Ma	Location *	
Category	Supplemental			GPS Latitude/Longitude	
				Start	End
Item	DWR UCIP LMA Responsibility			38.518032 °	38.518032 °
				-121.722778 °	-121.722778 °
DWR ID	501				

Photo 1 of 3 : UCIP_SP_2020_55460_81779.jpg



View of LS slope with concrete standpipe at levee toe

Comment Code					
Inspector Comment					
DS_ID:501 FS_ID:55460 EP_NO: 10256 Repair Type: Non-Urgent Crossing Status: Found UCIP Comments: 10/22/2019 Record updated from No Action Needed to Non-Urgent. Need to have CVFPB review ABO and determine current owner. Crossing has been modified to supply water from LS to WS. Should not be considered a storm drainage pipe. (O.Yakimov - DWR UCIP) FIELD_STRUCT_DESC: 24-inch corrugated metal drainage pipe through the levee, 12.5 feet below the crown. Slide gate on the waterside (WS) end in 36-inch standpipe. Concrete standpipe at LS toe with fill-in pipe. (24-inch pipe [HLM 5.40] authorized under Automatic Board Order (ABO) issued as Permit No. 10256, 1974 - Albert H. Lederer). [Additional Reference(s): DWR Levee Log, 2005 (HLM 5.40). USACE Sacramento O&M Manual, Unit 119, December 1952, Revised 29 Dec 2016, (Station 84+40 PCT), listed as 24-inch pipe. USACE As-Built Drawing No. 50-04-2396, Revision 4, pdf page 24, Sheet 8, December 1947]. FS Date: 10/22/2019 3:28:15 PM					

* Location LS : Land Side N/A : Not Applicable WS : Water Side CR : Crown	** Rating A : Acceptable M : Minimally Acceptable U : Unacceptable	N : Not Inspected/Rated C : Corrected A/W : Acceptable but Monitor & Maintain	+ Issue Type Ma : Maintenance Deficiency Ob : Design & System Obsolescence En : Enforcement
--	--	---	---

**Flood Control Project Maintenance
Levee Inspections**

Maintenance Issue Types Only, Levee Inspection Report By Mile - Spring 2020

Sacramento Maintenance Yard Putah Creek

Waterway	Bank	Unit Miles	Inspection Start/End	Inspector
Unit No. 01 Putah Creek or North Levee	Left	8.79	04/23/2020 04/23/2020	David Julian

LM Start	5.30	Rating **	M	Issue No.	89 (cont)
LM End	5.30	Issue Type +	Ma	Location *	
Category	Supplemental			GPS Latitude/Longitude	
				Start	End
Item	DWR UCIP LMA Responsibility			38.518032 °	38.518032 °
				-121.722778 °	-121.722778 °
DWR ID	501				

Photo 2 of 3 : UCIP_SP_2020_55460_81780.jpg



36-inch CMP standpipe with slide gate at WS levee toe

LM Start	5.30	Rating **	M	Issue No.	89 (cont)
LM End	5.30	Issue Type +	Ma	Location *	

Photo 3 of 3 : UCIP_SP_2020_55460_81781.jpg



View inside of CMP standpipe on WS

LM Start	5.31	Rating **	C	Issue No.	46
LM End	6.91	Issue Type +	Ma	Location *	CR
Category	Earthen Levee			GPS Latitude/Longitude	
				Start	End
Item	Crown Surface / Depressions / Rutting			38.518062 °	38.517545 °
				-121.723047 °	-121.752413 °
DWR ID	DWR_ST0007_01_f_2019_46				
Comment Code					
C1 : Add appropriate material and re-grade the levee to bring the crown above the design elevation.					
Inspector Comment					
Drag crown to reduce rutting.					

No Photos

* Location LS : Land Side N/A : Not Applicable WS : Water Side CR : Crown	** Rating A : Acceptable M : Minimally Acceptable U : Unacceptable	+ Issue Type Ma : Maintenance Deficiency Ob : Design & System Obsolescence En : Enforcement
--	--	---

**Flood Control Project Maintenance
Levee Inspections**

Maintenance Issue Types Only, Levee Inspection Report By Mile - Spring 2020

Sacramento Maintenance Yard Putah Creek

Waterway	Bank	Unit Miles	Inspection Start/End	Inspector
Unit No. 01 Putah Creek or North Levee	Left	8.79	04/23/2020 04/23/2020	David Julian

LM Start	5.56	Rating **	M	Issue No.	90
LM End	5.56	Issue Type +	Ma	Location *	
Category	Supplemental		GPS Latitude/Longitude		
			Start	End	
Item	DWR UCIP LMA Responsibility		38.518249 °	38.518249 °	
			-121.727538 °	-121.727538 °	
DWR ID	502				

Comment Code

Inspector Comment

DS_ID:502
 FS_ID:55461
 EP_NO: 10255
 Repair Type: Non-Urgent
 Crossing Status: Found
 UCIP Comments: 10/22/2019 Record updated from No Action Needed to Non-Urgent. Need to have CVFPB review ABO and determine current owner. (O.Yakimov - DWR UCIP)
 FIELD_STRUCT_DESC: 24-inch CIPP-lined corrugated metal drainage pipe through the levee, 11 feet below the crown. Slide gate on the waterside (WS) end. Concrete headwall on the landside (LS) end. (24-inch pipe [HLM 5.67] authorized under Automatic Board Order (ABO) issued as Permit No. 10255, 1974 - Owen W. and Ray W. Hamel). [Additional Reference(s): DWR Levee Log, 2005 (HLM 5.67). USACE Sacramento O&M Manual, Unit 119, December 1952, Revised 29 Dec 2016, (Station 97+00 PCT), listed as 24-inch pipe. USACE As-Built Drawing No. 50-04-2396, Revision 4, pdf page 24, Sheet 8, December 1947].
 FS Date: 10/22/2019 4:03:27 PM

LM Start	5.56	Rating **	M	Issue No.	90 (cont)
LM End	5.56	Issue Type +	Ma	Location *	

Photo 1 of 3 : UCIP_SP_2020_55461_81782.jpg



View of LS looking from levee crown

Photo 2 of 3 : UCIP_SP_2020_55461_81783.jpg



View of WS looking from levee crown

* Location LS : Land Side N/A : Not Applicable WS : Water Side CR : Crown	** Rating A : Acceptable M : Minimally Acceptable U : Unacceptable	N : Not Inspected/Rated C : Corrected A/W : Acceptable but Monitor & Maintain	+ Issue Type Ma : Maintenance Deficiency Ob : Design & System Obsolescence En : Enforcement
--	--	--	---

**Flood Control Project Maintenance
Levee Inspections**

Maintenance Issue Types Only, Levee Inspection Report By Mile - Spring 2020

Sacramento Maintenance Yard Putah Creek

Waterway	Bank	Unit Miles	Inspection Start/End	Inspector
Unit No. 01 Putah Creek or North Levee	Left	8.79	04/23/2020 04/23/2020	David Julian

LM Start	5.56	Rating **	M	Issue No.	90 (cont)
LM End	5.56	Issue Type +	Ma	Location *	
Category	Supplemental			GPS Latitude/Longitude	
				Start	End
Item	DWR UCIP LMA Responsibility			38.518249 °	38.518249 °
				-121.727538 °	-121.727538 °
DWR ID	502				

Photo 3 of 3 : UCIP_SP_2020_55461_81784.jpg



WS levee slope, headwall, and slide gate

LM Start	5.74	Rating **	M	Issue No.	92
LM End	5.74	Issue Type +	Ma	Location *	
Category	Supplemental			GPS Latitude/Longitude	
				Start	End
Item	DWR UCIP LMA Responsibility			38.518368 °	38.518368 °
				-121.730947 °	-121.730947 °
DWR ID	503				

Comment Code

Inspector Comment

DS_ID:503
 FS_ID:55644
 EP_NO: 10252
 Repair Type: Non-Urgent
 Crossing Status: Found
 UCIP Comments: 10/22/2019 Record updated from No Action Needed to Non-Urgent. Need to have CVFPB review ABO and determine current owner. (O.Yakimov - DWR UCIP) 05/06/2013 owner of pipe needs to clean out obstruction in pipe. (C. Lund - DWR Sacramento Yard)
 04/04/2012 Partially obstructed with sedimentation throughout crossing. (W. Wylie - DWR UCIP)
 FIELD_STRUCT_DESC: 24-inch CIPP-lined corrugated metal drainage pipe through the levee, 12 feet below the crown. Slide gate on the waterside (WS) end. Concrete headwall on the landside (LS) end. (24-inch pipe [HLM 5.86] authorized under Automatic Board Order (ABO) issued as Permit No. 10252, 1974 - John F. Hamel). [Additional Reference(s): DWR Levee Log, 2005 (HLM 5.86). USACE Sacramento O&M Manual, Unit 119, December 1952, Revised 29 Dec 2016, (Station 108+00 PCT), listed as 24-inch pipe. USACE As-Built Drawing No. 50-04-2396, Revision 4, pdf page 24, Sheet 8, December 1947].
 FS Date: 10/22/2019 10:55:40 AM

Photo 1 of 3 : UCIP_SP_2020_55644_82261.jpg



View of LS looking from levee crown

* Location LS : Land Side N/A : Not Applicable WS : Water Side CR : Crown	** Rating A : Acceptable M : Minimally Acceptable U : Unacceptable N : Not Inspected/Rated C : Corrected A/W : Acceptable but Monitor & Maintain	+ Issue Type Ma : Maintenance Deficiency Ob : Design & System Obsolescence En : Enforcement
--	---	---

**Flood Control Project Maintenance
Levee Inspections**

Maintenance Issue Types Only, Levee Inspection Report By Mile - Spring 2020

Sacramento Maintenance Yard Putah Creek

Waterway	Bank	Unit Miles	Inspection Start/End	Inspector
Unit No. 01 Putah Creek or North Levee	Left	8.79	04/23/2020 04/23/2020	David Julian

LM Start	5.74	Rating **	M	Issue No.	92 (cont)
LM End	5.74	Issue Type +	Ma	Location *	
Category	Supplemental			GPS Latitude/Longitude	
				Start	End
Item	DWR UCIP LMA Responsibility			38.518368 °	38.518368 °
				-121.730947 °	-121.730947 °
DWR ID	503				

Photo 2 of 3 : UCIP_SP_2020_55644_82262.jpg



View of WS looking from levee crown

LM Start	5.74	Rating **	M	Issue No.	92 (cont)
LM End	5.74	Issue Type +	Ma	Location *	

Photo 3 of 3 : UCIP_SP_2020_55644_82263.jpg



LS levee slope, headwall, and pipe end

* Location LS : Land Side N/A : Not Applicable WS : Water Side CR : Crown	** Rating A : Acceptable M : Minimally Acceptable U : Unacceptable	N : Not Inspected/Rated C : Corrected A/W : Acceptable but Monitor & Maintain	+ Issue Type Ma : Maintenance Deficiency Ob : Design & System Obsolescence En : Enforcement
--	--	---	---

**Flood Control Project Maintenance
Levee Inspections**

Maintenance Issue Types Only, Levee Inspection Report By Mile - Spring 2020

Sacramento Maintenance Yard Putah Creek

Waterway	Bank	Unit Miles	Inspection Start/End	Inspector
Unit No. 01 Putah Creek or North Levee	Left	8.79	04/23/2020 04/23/2020	David Julian

LM Start	6.45	Rating **	M	Issue No.	93	
LM End	6.45	Issue Type +	Ma	Location *		
Category	Supplemental			GPS Latitude/Longitude		
				Start	End	
Item	DWR UCIP LMA Responsibility			38.518208 °	38.518208 °	
				-121.743990 °	-121.743990 °	
DWR ID	505					
Comment Code						
Inspector Comment						
DS_ID:505 FS_ID:55647 EP_NO: 10253 Repair Type: Non-Urgent Crossing Status: Found UCIP Comments: 10/22/2019 Record updated from No Action Needed to Non-Urgent. Levee toe erosion on both sides of headwall on WS. Need to have CVFPB review ABO and determine current owner. (O.Yakimov - DWR UCIP) FIELD_STRUCT_DESC: 24-inch CIPP-lined corrugated metal drainage pipe through the levee, 10.4 feet below the crown. Slide gate on the waterside (WS), and concrete headwalls on both the WS and the landside (LS). (24-inch pipe [HLM 6.57] authorized under Automatic Board Order (ABO) issued as Permit No. 10253, 1974 - Lester J. Hamel). [Additional Reference(s): DWR Levee Log, 2005 (HLM 6.57. USACE Sacramento O&M Manual, Unit 119, December 1952, Revised 29 Dec 2016, (Station 145+50 PCT), listed as 24-inch pipe. USACE As-Built Drawing No. 50-04-2396, Revision 4, pdf page 24, Sheet 8, December 1947]. FS Date: 10/22/2019 11:07:35 AM						

LM Start	6.45	Rating **	M	Issue No.	93 (cont)
LM End	6.45	Issue Type +	Ma	Location *	

Photo 1 of 3 : UCIP_SP_2020_55647_82273.jpg



View of LS looking from levee crown

Photo 2 of 3 : UCIP_SP_2020_55647_82274.jpg



View of WS looking from levee crown

* Location LS : Land Side N/A : Not Applicable WS : Water Side CR : Crown	** Rating A : Acceptable M : Minimally Acceptable U : Unacceptable	N : Not Inspected/Rated C : Corrected A/W : Acceptable but Monitor & Maintain	+ Issue Type Ma : Maintenance Deficiency Ob : Design & System Obsolescence En : Enforcement
--	--	---	---

**Flood Control Project Maintenance
Levee Inspections**

Maintenance Issue Types Only, Levee Inspection Report By Mile - Spring 2020

Sacramento Maintenance Yard Putah Creek

Waterway	Bank	Unit Miles	Inspection Start/End	Inspector
Unit No. 01 Putah Creek or North Levee	Left	8.79	04/23/2020 04/23/2020	David Julian

LM Start	6.45	Rating **	M	Issue No.	93 (cont)
LM End	6.45	Issue Type +	Ma	Location *	
Category	Supplemental			GPS Latitude/Longitude	
				Start	End
Item	DWR UCIP LMA Responsibility			38.518208 °	38.518208 °
				-121.743990 °	-121.743990 °
DWR ID	505				

Photo 3 of 3 : UCIP_SP_2020_55647_82275.jpg



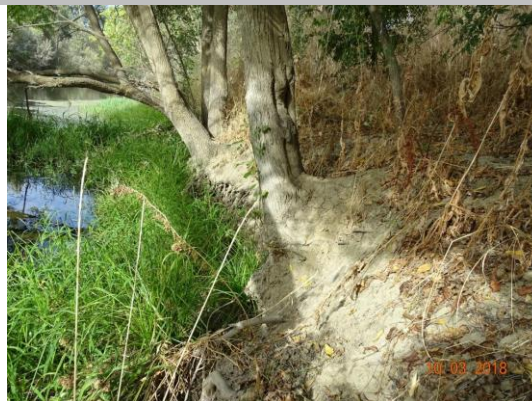
WS levee slope, headwall, and slide gate

LM Start	6.83	Rating **	U	Issue No.	47
LM End	6.83	Issue Type +	Ma	Location *	LS
Category	Earthen Levee			GPS Latitude/Longitude	
				Start	End
Item	Vegetation			38.517669 °	38.517669 °
				-121.751011 °	-121.751011 °
DWR ID	DWR_ST0007_01_s_2020_47				
Comment Code					
V4 : Elderberries are blocking visibility and flood fight capability.					
Inspector Comment					

No Photos

LM Start	6.88	Rating **	M	Issue No.	34
LM End	6.93	Issue Type +	Ma	Location *	WS
Category	Supplemental			GPS Latitude/Longitude	
				Start	End
Item	2017 USACE Erosion Survey			38.517362 °	38.517355 °
				-121.751778 °	-121.752824 °
DWR ID	DWR_ST0007_01_f_2018_34				
Comment Code					
Inspector Comment					
2017 Site ID: PUC 7.2 L					
Status: Eroding					
2017 Field Notes: New erosion along lower bank.					
Site History: 2011 - The toe to mid-bank is slumping. Large tree pop-outs have furthered the erosion. Slope is slightly steeper than 1:1.					

Photo 1 of 1 : SP_2020_ST0007_282_34_20200304_00006.jpg



View looking upstream at erosion at the waterside toe. Tree roots are exposed (September 2018).

* Location LS : Land Side N/A : Not Applicable WS : Water Side CR : Crown		** Rating A : Acceptable M : Minimally Acceptable U : Unacceptable		N : Not Inspected/Rated C : Corrected A/W : Acceptable but Monitor & Maintain		+ Issue Type Ma : Maintenance Deficiency Ob : Design & System Obsolescence En : Enforcement	
--	--	--	--	---	--	---	--

**Flood Control Project Maintenance
Levee Inspections**

Maintenance Issue Types Only, Levee Inspection Report By Mile - Spring 2020

Sacramento Maintenance Yard Putah Creek

Waterway	Bank	Unit Miles	Inspection Start/End	Inspector
Unit No. 01 Putah Creek or North Levee	Left	8.79	04/23/2020 04/23/2020	David Julian

LM Start	6.89	Rating **	U	Issue No.	56
LM End	6.89	Issue Type +	Ma	Location *	LS
Category	Earthen Levee			GPS Latitude/Longitude	
				Start	End
Item	Trim / Thin Trees			38.517513 °	38.517513 °
				-121.752023 °	-121.752023 °
DWR ID	DWR_ST0007_01_f_2017_56				
Comment Code					
T2 : Thin trees to allow visibility of the ground and room to flood fight.					
Inspector Comment					

No Photos

LM Start	6.95	Rating **	M	Issue No.	95	
LM End	6.95	Issue Type +	Ma	Location *		
Category	Supplemental			GPS Latitude/Longitude		
				Start	End	
Item	DWR UCIP LMA Responsibility			38.517679 °	38.517679 °	
				-121.753146 °	-121.753146 °	
DWR ID	508					
Comment Code						
Inspector Comment						
DS_ID:508 FS_ID:55664 EP_NO: 10247 Repair Type: Non-Urgent Crossing Status: Found UCIP Comments: 10/22/2019 Record updated from No Action Needed to Non-Urgent. Need to have CVFPB review ABO and determine current owner. (O.Yakimov - DWR UCIP) FIELD_STRUCT_DESC: 24-inch CIPP-lined corrugated metal drainage pipe through the levee, 11.0 feet below the crown. Flap gate on the waterside (WS) end. Concrete headwall on the landside (LS) end. Concrete Apron on the WS. (24-inch pipe [HLM 7.09] authorized under Automatic Board Order (ABO) issued as Permit No. 10247, 1974 - University of California, Office of the Regents). [Additional Reference(s): DWR Levee Log, 2005 (HLM 7.09). USACE Sacramento O&M Manual, Unit 119, December 1952, Revised 29 Dec 2016, (Station 172+00 PCT), listed as 24-inch pipe. USACE As-Built Drawing No. 50-04-2396, Revision 4, pdf page 25, Sheet 9, December 1947]. FS Date: 10/22/2019 1:55:30 PM						

Photo 1 of 3 : UCIP_SP_2020_55664_82343.jpg



View of levee crown at the crossing

* Location LS : Land Side N/A : Not Applicable WS : Water Side CR : Crown	** Rating A : Acceptable M : Minimally Acceptable U : Unacceptable	N : Not Inspected/Rated C : Corrected A/W : Acceptable but Monitor & Maintain	+ Issue Type Ma : Maintenance Deficiency Ob : Design & System Obsolescence En : Enforcement
--	--	---	---

**Flood Control Project Maintenance
Levee Inspections**

Maintenance Issue Types Only, Levee Inspection Report By Mile - Spring 2020

Sacramento Maintenance Yard Putah Creek

Waterway	Bank	Unit Miles	Inspection Start/End	Inspector
Unit No. 01 Putah Creek or North Levee	Left	8.79	04/23/2020 04/23/2020	David Julian

LM Start	6.95	Rating **	M	Issue No.	95 (cont)
LM End	6.95	Issue Type +	Ma	Location *	
Category	Supplemental		GPS Latitude/Longitude		
			Start	End	
Item	DWR UCIP LMA Responsibility		38.517679 °	38.517679 °	
			-121.753146 °	-121.753146 °	
DWR ID	508				

Photo 2 of 3 : UCIP_SP_2020_55664_82344.jpg



View of WS looking from levee crown

LM Start	6.95	Rating **	M	Issue No.	95 (cont)
LM End	6.95	Issue Type +	Ma	Location *	

Photo 3 of 3 : UCIP_SP_2020_55664_82345.jpg



View of LS looking from levee crown

* Location LS : Land Side N/A : Not Applicable WS : Water Side CR : Crown	** Rating A : Acceptable M : Minimally Acceptable U : Unacceptable N : Not Inspected/Rated C : Corrected A/W : Acceptable but Monitor & Maintain	+ Issue Type Ma : Maintenance Deficiency Ob : Design & System Obsolescence En : Enforcement
--	---	---

**Flood Control Project Maintenance
Levee Inspections**

Maintenance Issue Types Only, Levee Inspection Report By Mile - Spring 2020

Sacramento Maintenance Yard Putah Creek

Waterway	Bank	Unit Miles	Inspection Start/End	Inspector
Unit No. 01 Putah Creek or North Levee	Left	8.79	04/23/2020 04/23/2020	David Julian

LM Start	7.18	Rating **	M	Issue No.	97
LM End	7.18	Issue Type +	Ma	Location *	
Category	Supplemental			GPS Latitude/Longitude	
				Start	End
Item	DWR UCIP LMA Responsibility			38.518181 °	38.518181 °
				-121.757309 °	-121.757309 °
DWR ID	512				
Comment Code					
Inspector Comment					
DS_ID:512 FS_ID:55667 EP_NO: 10247 Repair Type: Non-Urgent Crossing Status: Found UCIP Comments: 10/21/2019 Record updated from No Action Needed to Non-Urgent. Need to have CVFPB review ABO and determine current owner. (O.Yakimov - DWR UCIP) 05/07/2013 Debris removed from outlet (C. Lund - DWR Sacramento Yard) 04/04/2012 Some debris blocking outlet. (W. Wylie - DWR UCIP) FIELD_STRUCT_DESC: 24-inch CIPP-lined drainage pipe of an unknown material through the levee, 12 feet below the crown. Flap gate on the waterside (WS) end. Concrete headwall on the landside (LS) end. (24-inch [HLM 7.36] authorized under Automatic Board Order (ABO) issued as Permit No. 10247, 1974 - University of California, Office of the Regents). [Additional Reference(s): DWR Levee Log, 2005 (HLM 7.36). USACE Sacramento O&M Manual, Unit 119, December 1952, Revised 29 Dec 2016, (Station 183+97 PCT), listed as 24-inch pipe. USACE As-Built Drawing No. 50-04-2396, Revision 4, pdf page 25, Sheet 9, December 1947]. FS Date: 10/21/2019 2:33:12 PM					

LM Start	7.18	Rating **	M	Issue No.	97 (cont)
LM End	7.18	Issue Type +	Ma	Location *	

Photo 1 of 3 : UCIP_SP_2020_55667_82357.jpg



View of WS looking from levee crown

Photo 2 of 3 : UCIP_SP_2020_55667_82355.jpg



View of LS looking from levee crown

* Location LS : Land Side N/A : Not Applicable WS : Water Side CR : Crown	** Rating A : Acceptable M : Minimally Acceptable U : Unacceptable	N : Not Inspected/Rated C : Corrected A/W : Acceptable but Monitor & Maintain	+ Issue Type Ma : Maintenance Deficiency Ob : Design & System Obsolescence En : Enforcement
--	--	---	---

**Flood Control Project Maintenance
Levee Inspections**

Maintenance Issue Types Only, Levee Inspection Report By Mile - Spring 2020

Sacramento Maintenance Yard Putah Creek

Waterway	Bank	Unit Miles	Inspection Start/End	Inspector
Unit No. 01 Putah Creek or North Levee	Left	8.79	04/23/2020 04/23/2020	David Julian

LM Start	7.18	Rating **	M	Issue No.	97 (cont)
LM End	7.18	Issue Type +	Ma	Location *	
Category	Supplemental			GPS Latitude/Longitude	
				Start	End
Item	DWR UCIP LMA Responsibility			38.518181 °	38.518181 °
				-121.757309 °	-121.757309 °
DWR ID	512				

Photo 3 of 3 : UCIP_SP_2020_55667_82356.jpg



LS levee slope, headwall, and pipe end

LM Start	7.28	Rating **	U	Issue No.	48
LM End	8.63	Issue Type +	Ma	Location *	WS
Category	Earthen Levee			GPS Latitude/Longitude	
				Start	End
Item	Vegetation			38.518340 °	38.523888 °
				-121.759233 °	-121.781943 °
DWR ID	DWR_ST0007_01_s_2020_48				
Comment Code					
V1 : Control annual grass and weeds on the levee slopes and easements.					
Inspector Comment					

No Photos

* Location LS : Land Side N/A : Not Applicable WS : Water Side CR : Crown	** Rating A : Acceptable M : Minimally Acceptable U : Unacceptable	N : Not Inspected/Rated C : Corrected A/W : Acceptable but Monitor & Maintain	+ Issue Type Ma : Maintenance Deficiency Ob : Design & System Obsolescence En : Enforcement
--	--	---	---

**Flood Control Project Maintenance
Levee Inspections**

Maintenance Issue Types Only, Levee Inspection Report By Mile - Spring 2020

Sacramento Maintenance Yard Putah Creek

Waterway	Bank	Unit Miles	Inspection Start/End	Inspector
Unit No. 01 Putah Creek or North Levee	Left	8.79	04/23/2020 04/23/2020	David Julian

LM Start	7.35	Rating **	M	Issue No.	102
LM End	7.35	Issue Type +	Ma	Location *	
Category	Supplemental		GPS Latitude/Longitude		
			Start	End	
Item	DWR UCIP LMA Responsibility		38.518510 °	38.518510 °	
			-121.760474 °	-121.760474 °	
DWR ID	516				

Comment Code

Inspector Comment

DS_ID:516
 FS_ID:55673
 EP_NO: 10260
 Repair Type: Non-Urgent
 Crossing Status: Found
 UCIP Comments: 10/21/2019 Record remains Non-Urgent. Need to have CVFPB review ABO and determine current owner. (O. Yakimov - DWR UCIP) 05/07/2013 Owner of pipe may have to clean sediment. (C. Lund - DWR Sacramento Yard)
 04/05/2012 Pipe is partially obstructed with sedimentation. (W. Wylie - DWR UCIP)
 FIELD_STRUCT_DESC: 24-inch corrugated metal drainage pipe through the levee, 12 feet below the crown. Flap gate on the waterside (WS) end. (24-inch pipe [HLM 7.52] authorized under Automatic Board Order (ABO) issued as Permit No. 10260, 1974 - Southern Pacific Transportation Company). [Additional Reference(s): DWR Levee Log, 2005 (HLM 7.52). USACE Sacramento O&M Manual, Unit 119, December 1952, Revised 29 Dec 2016, (Station 193+20 PCT), listed as 24-inch pipe. USACE As-Built Drawing No. 50-04-2396, Revision 4, pdf page 25, Sheet 9, December 1947].
 FS Date: 10/21/2019 4:00:06 PM

LM Start	7.35	Rating **	M	Issue No.	102 (cont)
LM End	7.35	Issue Type +	Ma	Location *	

Photo 1 of 3 : UCIP_SP_2020_55673_82372.jpg



View of levee crown at the crossing

Photo 2 of 3 : UCIP_SP_2020_55673_82373.jpg



View of LS looking from levee crown

* Location LS : Land Side N/A : Not Applicable WS : Water Side CR : Crown	** Rating A : Acceptable M : Minimally Acceptable U : Unacceptable	N : Not Inspected/Rated C : Corrected A/W : Acceptable but Monitor & Maintain	+ Issue Type Ma : Maintenance Deficiency Ob : Design & System Obsolescence En : Enforcement
--	--	--	---

Sacramento Maintenance Yard Putah Creek

**Flood Control Project Maintenance
Levee Inspections**

Maintenance Issue Types Only, Levee Inspection Report By Mile - Spring 2020

Sacramento Maintenance Yard Putah Creek

Waterway	Bank	Unit Miles	Inspection Start/End	Inspector
Unit No. 01 Putah Creek or North Levee	Left	8.79	04/23/2020 04/23/2020	David Julian

LM Start	7.56	Rating **	M	Issue No.	103 (cont)
LM End	7.56	Issue Type +	Ma	Location *	
Category	Supplemental		GPS Latitude/Longitude		
			Start	End	
Item	DWR UCIP LMA Responsibility		38.519002 °	38.519002 °	
			-121.764315 °	-121.764315 °	
DWR ID	518				

Photo 2 of 3 : UCIP_SP_2020_55675_82383.jpg



LS: headwall and pipe end near a fence

LM Start	7.56	Rating **	M	Issue No.	103 (cont)
LM End	7.56	Issue Type +	Ma	Location *	

Photo 3 of 3 : UCIP_SP_2020_55675_82385.jpg



WS: headwall and slide gate

* Location LS : Land Side N/A : Not Applicable WS : Water Side CR : Crown	** Rating A : Acceptable M : Minimally Acceptable U : Unacceptable	N : Not Inspected/Rated C : Corrected A/W : Acceptable but Monitor & Maintain	+ Issue Type Ma : Maintenance Deficiency Ob : Design & System Obsolescence En : Enforcement
--	--	---	---

**Flood Control Project Maintenance
Levee Inspections**

Maintenance Issue Types Only, Levee Inspection Report By Mile - Spring 2020

Sacramento Maintenance Yard Putah Creek

Waterway	Bank	Unit Miles	Inspection Start/End	Inspector
Unit No. 01 Putah Creek or North Levee	Left	8.79	04/23/2020 04/23/2020	David Julian

LM Start	8.28	Rating **	M	Issue No.	107
LM End	8.28	Issue Type +	Ma	Location *	
Category	Supplemental			GPS Latitude/Longitude	
				Start	End
Item	DWR UCIP LMA Responsibility			38.521246 °	38.521246 °
				-121.776434 °	-121.776434 °
DWR ID	520				
Comment Code					
Inspector Comment					
DS_ID:520 FS_ID:55679 EP_NO: 10247 Repair Type: Non-Urgent Crossing Status: Found UCIP Comments: 10/21/2019 Record updated from No Action Needed to Non-Urgent. Need to have CVFPB review ABO and determine current owner. (O.Yakimov - DWR UCIP) 05/07/2012 Cleaned inlet and outlets. Owner of pipe may need to clean pipe. (C. Lund - DWR Sacramento Yard) 04/05/2012 Pipe is plugged with soil on LS. (W. Wylie - DWR UCIP) FIELD_STRUCT_DESC: 24-inch CIPP-lined corrugated metal drainage pipe through the levee, 8 feet below the crown. Slide gate on the waterside (WS) end. (24-inch pipe [HLM 8.45] authorized under Automatic Board Order (ABO) issued as Permit No. 10247, 1974 - University of California, Office of the Regents). [Additional Reference(s): DWR Levee Log, 2005 (HLM 8.45). USACE Sacramento O&M Manual, Unit 119, December 1952, Revised 29 Dec 2016, (Station 241+50 PCT). USACE As-Built Drawing No. 50-04-2396, Revision 2, pdf page 26, Sheet 10, December 1947]. FS Date: 10/21/2019 10:02:10 AM					

LM Start	8.28	Rating **	M	Issue No.	107 (cont)
LM End	8.28	Issue Type +	Ma	Location *	

Photo 1 of 3 : UCIP_SP_2020_55679_82393.jpg



View of levee crown at the crossing

Photo 2 of 3 : UCIP_SP_2020_55679_82394.jpg



View of LS looking from levee crown

* Location LS : Land Side N/A : Not Applicable WS : Water Side CR : Crown	** Rating A : Acceptable M : Minimally Acceptable U : Unacceptable	N : Not Inspected/Rated C : Corrected A/W : Acceptable but Monitor & Maintain	+ Issue Type Ma : Maintenance Deficiency Ob : Design & System Obsolescence En : Enforcement
--	--	---	---

Sacramento Maintenance Yard Putah Creek

Page 26 of 29

**Flood Control Project Maintenance
Levee Inspections**

Maintenance Issue Types Only, Levee Inspection Report By Mile - Spring 2020

Sacramento Maintenance Yard Putah Creek

Waterway	Bank	Unit Miles	Inspection Start/End	Inspector
Unit No. 01 Putah Creek or North Levee	Left	8.79	04/23/2020 04/23/2020	David Julian

LM Start	8.33	Rating **	M	Issue No.	108 (cont)
LM End	8.33	Issue Type +	Ma	Location *	
Category	Supplemental			GPS Latitude/Longitude	
				Start	End
Item	DWR UCIP LMA Responsibility			38.521660 °	38.521660 °
				-121.777203 °	-121.777203 °
DWR ID	521				

Photo 2 of 3 : UCIP_SP_2020_55680_82399.jpg



View of LS looking from levee crown

LM Start	8.33	Rating **	M	Issue No.	108 (cont)
LM End	8.33	Issue Type +	Ma	Location *	

Photo 3 of 3 : UCIP_SP_2020_55680_82400.jpg



LS levee slope, headwall, and pipe end

LM Start	8.52	Rating **	M	Issue No.	49
LM End	8.52	Issue Type +	Ma	Location *	WS
Category	Earthen Levee			GPS Latitude/Longitude	
				Start	End
Item	Trim / Thin Trees			38.523208 °	38.523208 °
				-121.780149 °	-121.780149 °
DWR ID	DWR_ST0007_01_s_2020_49				
Comment Code					
T2 : Thin trees to allow visibility of the ground and room to flood fight.					
Inspector Comment					

No Photos

* Location LS : Land Side N/A : Not Applicable WS : Water Side CR : Crown	** Rating A : Acceptable M : Minimally Acceptable U : Unacceptable	N : Not Inspected/Rated C : Corrected A/W : Acceptable but Monitor & Maintain	+ Issue Type Ma : Maintenance Deficiency Ob : Design & System Obsolescence En : Enforcement
--	--	--	---

**Flood Control Project Maintenance
Levee Inspections**

Maintenance Issue Types Only, Levee Inspection Report By Mile - Spring 2020

Sacramento Maintenance Yard Putah Creek

Waterway	Bank	Unit Miles	Inspection Start/End	Inspector
Unit No. 01 Putah Creek or North Levee	Left	8.79	04/23/2020 04/23/2020	David Julian

LM Start	8.69	Rating **	M	Issue No.	111	
LM End	8.69	Issue Type +	Ma	Location *		
Category	Supplemental			GPS Latitude/Longitude		
				Start	End	
Item	DWR UCIP LMA Responsibility			38.523999 °	38.523999 °	
				-121.783037 °	-121.783037 °	
DWR ID	523					
Comment Code						
Inspector Comment						
DS_ID:523 FS_ID:55684 EP_NO: 10247 Repair Type: Non-Urgent Crossing Status: Found UCIP Comments: 10/21/2019 Record remains Non-Urgent. Pipe inlet is closed with steel plate bolted to headwall in drainage canal on LS. (O.Yakimov - DWR UCIP) FIELD_STRUCT_DESC: *ABANDONED* 48-inch corrugated metal drainage pipe through the levee, 15.0 feet below the crown. Steel plate installed over inlet off the landside (LS) toe. Pipe not grouted. Flap gate on waterside (WS) end. Headwalls on both ends. (48-inch pipe [HLM 8.88] authorized under Automatic Board Order (ABO) issued as Permit No. 10247, 1974 - University of California, Office of the Regents). [Additional Reference(s): DWR Levee Log, 2005 (HLM 8.88). USACE Sacramento O&M Manual, Unit 119, December 1952, Revised 29 Dec 2016, (Station 262+30 PCT), 48-inch pipe referenced. USACE As-Built Drawing No. 50-04-2396, Revision 2, pdf page 26, Sheet 10, 24-inch pipe referenced on levee alignment, December 1947]. FS Date: 10/21/2019 1:46:45 PM						

LM Start	8.69	Rating **	M	Issue No.	111 (cont)
LM End	8.69	Issue Type +	Ma	Location *	

Photo 1 of 3 : UCIP_SP_2020_55684_82410.jpg



WS levee slope, headwall, and flap gate

Photo 2 of 3 : UCIP_SP_2020_55684_82411.jpg



Steel plate installed over pipe off LS toe

* Location LS : Land Side N/A : Not Applicable WS : Water Side CR : Crown	** Rating A : Acceptable M : Minimally Acceptable U : Unacceptable	N : Not Inspected/Rated C : Corrected A/W : Acceptable but Monitor & Maintain	+ Issue Type Ma : Maintenance Deficiency Ob : Design & System Obsolescence En : Enforcement
--	--	---	---

**Flood Control Project Maintenance
Levee Inspections**

Maintenance Issue Types Only, Levee Inspection Report By Mile - Spring 2020

Sacramento Maintenance Yard Putah Creek

Waterway	Bank	Unit Miles	Inspection Start/End	Inspector
Unit No. 01 Putah Creek or North Levee	Left	8.79	04/23/2020 04/23/2020	David Julian

LM Start	8.69	Rating **	M	Issue No.	111 (cont)
LM End	8.69	Issue Type +	Ma	Location *	
Category	Supplemental			GPS Latitude/Longitude	
				Start	End
Item	DWR UCIP LMA Responsibility			38.523999 °	38.523999 °
				-121.783037 °	-121.783037 °
DWR ID	523				

Photo 3 of 3 : UCIP_SP_2020_55684_60299.jpg



LS headwall and pipe before steel plate was installed over pipe to abandon it.

* Location LS : Land Side N/A : Not Applicable WS : Water Side CR : Crown	** Rating A : Acceptable M : Minimally Acceptable U : Unacceptable	N : Not Inspected/Rated C : Corrected A/W : Acceptable but Monitor & Maintain	+ Issue Type Ma : Maintenance Deficiency Ob : Design & System Obsolescence En : Enforcement
--	--	---	---

**Flood Control Project Maintenance
Levee Inspections**

Maintenance Issue Types Only, Levee Inspection Report By Mile - Spring 2020

Sacramento Maintenance Yard Putah Creek

Waterway	Bank	Unit Miles	Inspection Start/End	Inspector
Unit No. 02 Putah Creek or South Levee	Right	7.20	04/23/2020 04/23/2020	David Julian

LM Start	0.02	Rating **	U	Issue No.	31
LM End	2.94	Issue Type +	Ma	Location *	WS
Category	Earthen Levee			GPS Latitude/Longitude	
				Start	End
Item	Vegetation			38.504950 °	38.515013 °
				-121.663154 °	-121.709273 °
DWR ID	DWR_ST0007_02_s_2020_31				
Comment Code					
V1 : Control annual grass and weeds on the levee slopes and easements.					
Inspector Comment					

Photo 1 of 1 : SP_2020_ST0007_283_31_20200518_00098.jpg



View looking downstream at annual vegetation on the waterside slope (Spring 2020).

LM Start	0.02	Rating **	U	Issue No.	54
LM End	7.08	Issue Type +	Ma	Location *	LS
Category	Earthen Levee			GPS Latitude/Longitude	
				Start	End
Item	Vegetation			38.504951 °	38.522695 °
				-121.663156 °	-121.782951 °
DWR ID	DWR_ST0007_02_s_2020_54				
Comment Code					
V1 : Control annual grass and weeds on the levee slopes and easements.					
Inspector Comment					

Photo 1 of 1 : SP_2020_ST0007_283_54_20200423_00096.jpg



View looking downstream at annual vegetation on the landside slope (Spring 2020).

*** Location**
LS : Land Side N/A : Not Applicable
WS : Water Side
CR : Crown

**** Rating**
A : Acceptable N : Not Inspected/Rated
M : Minimally Acceptable C : Corrected
U : Unacceptable A/W : Acceptable but Monitor & Maintain

+ Issue Type
Ma : Maintenance Deficiency
Ob : Design & System Obsolescence
En : Enforcement

**Flood Control Project Maintenance
Levee Inspections**

Maintenance Issue Types Only, Levee Inspection Report By Mile - Spring 2020

Sacramento Maintenance Yard Putah Creek

Waterway	Bank	Unit Miles	Inspection Start/End	Inspector
Unit No. 02 Putah Creek or South Levee	Right	7.20	04/23/2020 04/23/2020	David Julian

LM Start	0.82	Rating **	M	Issue No.	58
LM End	0.82	Issue Type +	Ma	Location *	
Category	Supplemental			GPS Latitude/Longitude	
				Start	End
Item	DWR UCIP LMA Responsibility			38.510700 °	38.510700 °
				-121.672410 °	-121.672410 °
DWR ID	16621				
Comment Code					
Inspector Comment					
DS_ID:16621					
FS_ID:55424					
EP_NO: 10270					
Repair Type: Non-Urgent					
Crossing Status: Found					
UCIP Comments: 10/22/2019 Crossing visually is in good condition. 12-inch diameter through hole has developed due to soil instability on WS berm visible on the top of pipe outlet embankment. Need to have CVFPB review ABO and determine current owner. (O.Yakimov - DWR UCIP)					
FIELD_STRUCT_DESC: 36-inch corrugated metal drainage pipe through the levee, 14 feet below the crown. Flap gate on the waterside (WS) end. Concrete headwall on the landside (LS) end. (36-inch pipe [HLM 0.85] authorized under Automatic Board Order (ABO) issued as Permit No. 10270, 1974 - Hamel). [Additional Reference(s): DWR Levee Log, 2005 (HLM 0.85). USACE Sacramento O&M Manual, Unit 119, December 1952, Revised 29 Dec 2016, (Station T 1+45), listed as 36-inch pipe. USACE As-Built Drawing No. 50-04-2396, Revision 1, pdf page 21, Sheet 5, December 1947].					
FS Date: 10/22/2019 9:59:31 AM					

LM Start	0.82	Rating **	M	Issue No.	58 (cont)
LM End	0.82	Issue Type +	Ma	Location *	

Photo 1 of 3 : UCIP_SP_2020_55424_81638.jpg



View of WS looking from levee crown

Photo 2 of 3 : UCIP_SP_2020_55424_81639.jpg



View of LS looking from levee crown

* Location LS : Land Side N/A : Not Applicable WS : Water Side CR : Crown	** Rating A : Acceptable M : Minimally Acceptable U : Unacceptable	N : Not Inspected/Rated C : Corrected A/W : Acceptable but Monitor & Maintain	+ Issue Type Ma : Maintenance Deficiency Ob : Design & System Obsolescence En : Enforcement
--	--	---	---

Sacramento Maintenance Yard Putah Creek

**Flood Control Project Maintenance
Levee Inspections**

Maintenance Issue Types Only, Levee Inspection Report By Mile - Spring 2020

Sacramento Maintenance Yard Putah Creek

Waterway	Bank	Unit Miles	Inspection Start/End	Inspector
Unit No. 02 Putah Creek or South Levee	Right	7.20	04/23/2020 04/23/2020	David Julian

LM Start	2.21	Rating **	C	Issue No.	26
LM End	5.18	Issue Type +	Ma	Location *	CR
Category	Earthen Levee			GPS Latitude/Longitude	
				Start	End
Item	Crown Surface / Depressions / Rutting			38.515407 °	38.515363 °
				-121.695905 °	-121.750543 °
DWR ID	DWR_ST0007_02_f_2019_26				
Comment Code					
C1 : Add appropriate material and re-grade the levee to bring the crown above the design elevation.					
Inspector Comment					
Regrade levee crown.					

No Photos

LM Start	2.65	Rating **	U	Issue No.	62	
LM End	2.65	Issue Type +	Ma	Location *		
Category	Supplemental			GPS Latitude/Longitude		
				Start	End	
Item	DWR UCIP LMA Responsibility			38.514865 °	38.514865 °	
				-121.703839 °	-121.703839 °	
DWR ID	16625					
Comment Code						
Inspector Comment						
DS_ID:16625 FS_ID:55411 EP_NO: 10277 Repair Type: Urgent Crossing Status: Found UCIP Comments: 10/21/2019 Record updated from No Action Needed to Urgent. A PVC pipe runs through a drainage pipe from LS to WS levee toe. Slide gate cannot be closed properly to prevent flooding on LS. Remove PVC pipe. Need to have CVFPB review ABO and determine current owner. (O.Yakimov - DWR UCIP) FIELD_STRUCT_DESC: 24-inch CIPP-lined corrugated metal drainage pipe through the levee, 9 feet below the crown. Slide gate on the waterside (WS) slope. Concrete headwalls on both ends. (24-inch pipe [HLM 2.71] authorized under Automatic Board Order (ABO) issued as Permit No. 10277, 1974 - Naomi Schoeningh). [Additional Reference(s): DWR Levee Log, 2005 (HLM 2.71). USACE Sacramento O&M Manual, Unit 119, December 1952, Revised 29 Dec 2016, (Station 30+15 PCT), listed as 24-inch pipe. USACE As-Built Drawing No. 50-04-2396, Revision 4, pdf page 23, Sheet 7, December 1947]. FS Date: 10/21/2019 11:18:53 AM						

Photo 1 of 3 : UCIP_SP_2020_55411_81619.jpg



View of LS from levee crown

* Location LS : Land Side N/A : Not Applicable WS : Water Side CR : Crown	** Rating A : Acceptable M : Minimally Acceptable U : Unacceptable	N : Not Inspected/Rated C : Corrected A/W : Acceptable but Monitor & Maintain	+ Issue Type Ma : Maintenance Deficiency Ob : Design & System Obsolescence En : Enforcement
--	--	---	---

**Flood Control Project Maintenance
Levee Inspections**

Maintenance Issue Types Only, Levee Inspection Report By Mile - Spring 2020

Sacramento Maintenance Yard Putah Creek

Waterway	Bank	Unit Miles	Inspection Start/End	Inspector
Unit No. 02 Putah Creek or South Levee	Right	7.20	04/23/2020 04/23/2020	David Julian

LM Start	2.65	Rating **	U	Issue No.	62 (cont)
LM End	2.65	Issue Type +	Ma	Location *	
Category	Supplemental			GPS Latitude/Longitude	
				Start	End
Item	DWR UCIP LMA Responsibility			38.514865 °	38.514865 °
				-121.703839 °	-121.703839 °
DWR ID	16625				

Photo 2 of 3 : UCIP_SP_2020_55411_81620.jpg



View of WS from levee crown

LM Start	2.65	Rating **	U	Issue No.	62 (cont)
LM End	2.65	Issue Type +	Ma	Location *	

Photo 3 of 3 : UCIP_SP_2020_55411_81621.jpg



Headwall and slidegate at WS toe with a PVC pipe running through

LM Start	2.94	Rating **	M	Issue No.	56
LM End	4.70	Issue Type +	Ma	Location *	WS
Category	Earthen Levee			GPS Latitude/Longitude	
				Start	End
Item	Vegetation			38.515012 °	38.515789 °
				-121.709273 °	-121.741715 °
DWR ID	DWR_ST0007_02_s_2020_56				
Comment Code					
V1 : Control annual grass and weeds on the levee slopes and easements.					
Inspector Comment					

Photo 1 of 1 : SP_2020_ST0007_283_56_20200423_00097.jpg



View looking downstream at annual vegetation on the waterside slope (Spring 2020).

* Location LS : Land Side N/A : Not Applicable WS : Water Side CR : Crown	** Rating A : Acceptable M : Minimally Acceptable U : Unacceptable	N : Not Inspected/Rated C : Corrected A/W : Acceptable but Monitor & Maintain	+ Issue Type Ma : Maintenance Deficiency Ob : Design & System Obsolescence En : Enforcement
--	--	--	---

**Flood Control Project Maintenance
Levee Inspections**

Maintenance Issue Types Only, Levee Inspection Report By Mile - Spring 2020

Sacramento Maintenance Yard Putah Creek

Waterway	Bank	Unit Miles	Inspection Start/End	Inspector
Unit No. 02 Putah Creek or South Levee	Right	7.20	04/23/2020 04/23/2020	David Julian

LM Start	3.04	Rating **	U	Issue No.	63	
LM End	3.04	Issue Type +	Ma	Location *		
Category	Supplemental			GPS Latitude/Longitude		
				Start	End	
Item	DWR UCIP LMA Responsibility			38.515080 °	38.515080 °	
				-121.711050 °	-121.711050 °	
DWR ID	16626					
Comment Code						
Inspector Comment						
DS_ID:16626 FS_ID:55412 EP_NO: 10277 Repair Type: Urgent Crossing Status: Found UCIP Comments: 10/21/2019 Record updated from No Action Needed to Urgent. A PVC pipe runs through a drainage pipe from LS to WS levee toe. Slide gate cannot be closed properly to prevent flooding on LS. Remove PVC pipe. Need to have CVFPB review ABO and determine current owner. (O.Yakimov - DWR UCIP) FIELD_STRUCT_DESC: 24-inch CIPP-lined corrugated metal drainage pipe through the levee, 9 feet below the crown. Slide gate on the waterside (WS) slope, and headwalls on both sides. (24-inch pipe [HLM 3.11] authorized under Automatic Board Order (ABO) issued as Permit No. 10277, 1974 - Naomi Schoeningh). [Additional Reference(s): DWR Levee Log, 2005 (HLM 3.11). USACE Sacramento O&M Manual, Unit 119, December 1952, Revised 29 Dec 2016, (Station 50+72 PCT), listed as 24-inch pipe. USACE As-Built Drawing No. 50-04-2396, Revision 4, pdf page 23, Sheet 7, December 1947]. FS Date: 10/21/2019 1:30:39 PM						

LM Start	3.04	Rating **	U	Issue No.	63 (cont)
LM End	3.04	Issue Type +	Ma	Location *	

Photo 1 of 3 : UCIP_SP_2020_55412_81623.jpg



View of LS from levee crown

Photo 2 of 3 : UCIP_SP_2020_55412_81624.jpg



View of WS from levee crown

* Location LS : Land Side N/A : Not Applicable WS : Water Side CR : Crown	** Rating A : Acceptable M : Minimally Acceptable U : Unacceptable	N : Not Inspected/Rated C : Corrected A/W : Acceptable but Monitor & Maintain	+ Issue Type Ma : Maintenance Deficiency Ob : Design & System Obsolescence En : Enforcement
--	--	---	---

**Flood Control Project Maintenance
Levee Inspections**

Maintenance Issue Types Only, Levee Inspection Report By Mile - Spring 2020

Sacramento Maintenance Yard Putah Creek

Waterway	Bank	Unit Miles	Inspection Start/End	Inspector
Unit No. 02 Putah Creek or South Levee	Right	7.20	04/23/2020 04/23/2020	David Julian

LM Start	3.04	Rating **	U	Issue No.	63 (cont)	
LM End	3.04	Issue Type +	Ma	Location *		
Category	Supplemental			GPS Latitude/Longitude		
				Start	End	
Item	DWR UCIP LMA Responsibility			38.515080 °	38.515080 °	
				-121.711050 °	-121.711050 °	
DWR ID	16626					

Photo 3 of 3 : UCIP_SP_2020_55412_81625.jpg



Headwall and slidegate at WS toe with a PVC pipe running through

LM Start	4.17	Rating **	M	Issue No.	67
LM End	4.17	Issue Type +	Ma	Location *	
Category	Supplemental			GPS Latitude/Longitude	
				Start	End
Item	DWR UCIP LMA Responsibility			38.515770 °	38.515770 °
				-121.731840 °	-121.731840 °
DWR ID	16629				

Comment Code

Inspector Comment

DS_ID:16629
 FS_ID:55434
 EP_NO: 10269
 Repair Type: Non-Urgent
 Crossing Status: Found
 UCIP Comments: 10/21/2019 Pipe is partially silted, cleanup pipe.
 Record updated from No Action Needed to Non-Urgent. Need to have CVFPB review ABO and determine current owner. (O.Yakimov - DWR UCIP)
 FIELD_STRUCT_DESC: 24-inch CIPP-lined corrugated metal drainage pipe through the levee, 12.5 feet below the crown. Slide gate on the waterside (WS) end. Concrete headwalls on both ends. (24-inch pipe [HLM 4.26] authorized under Automatic Board Order (ABO) issued as Permit No. 10269, 1974 - Joseph Fahn). [Additional Reference(s): DWR Levee Log, 2005 (HLM 4.26). USACE Sacramento O&M Manual, Unit 119, December 1952, Revised 29 Dec 2016, (Station 109+75 PCT), listed as 24-inch pipe. USACE As-Built Drawing No. 50-04-2396, Revision 4, pdf page 24, Sheet 8, December 1947].
 FS Date: 10/21/2019 9:16:52 AM

Photo 1 of 3 : UCIP_SP_2020_55434_81690.jpg



View of LS looking from levee crown

* Location LS : Land Side N/A : Not Applicable WS : Water Side CR : Crown	** Rating A : Acceptable M : Minimally Acceptable U : Unacceptable	N : Not Inspected/Rated C : Corrected A/W : Acceptable but Monitor & Maintain	+ Issue Type Ma : Maintenance Deficiency Ob : Design & System Obsolescence En : Enforcement
--	--	---	---

Sacramento Maintenance Yard Putah Creek

* Location	** Rating	+ Issue Type
LS : Land Side N/A : Not Applicable	A : Acceptable N : Not Inspected/Rated	Ma : Maintenance Deficiency
WS : Water Side	M : Minimally Acceptable C : Corrected	Ob : Design & System Obsolescence
CR : Crown	U : Unacceptable A/W : Acceptable but Monitor & Maintain	En : Enforcement

**Flood Control Project Maintenance
Levee Inspections**

Maintenance Issue Types Only, Levee Inspection Report By Mile - Spring 2020

Sacramento Maintenance Yard Putah Creek

Waterway	Bank	Unit Miles	Inspection Start/End	Inspector
Unit No. 02 Putah Creek or South Levee	Right	7.20	04/23/2020 04/23/2020	David Julian

LM Start	4.66	Rating **	M	Issue No.	33 (cont)
LM End	4.66	Issue Type +	Ma	Location *	WS
Category	Earthen Levee			GPS Latitude/Longitude	
				Start	End
Item	Erosion / Bank Caving			38.515817 °	38.515817 °
				-121.740942 °	-121.740942 °
DWR ID	DWR_ST0007_02_f_2018_33				

Photo 2 of 2 : SP_2020_ST0007_283_33_20200304_00013.jpg



View of erosion on the levee slope appears to be due to water from the pipe and trench (September 2018).

LM Start	4.66	Rating **	M	Issue No.	69
LM End	4.66	Issue Type +	Ma	Location *	
Category	Supplemental			GPS Latitude/Longitude	
				Start	End
Item	DWR UCIP LMA Responsibility			38.515814 °	38.515814 °
				-121.741030 °	-121.741030 °
DWR ID	16644				

Comment Code

Inspector Comment

DS_ID:16644
 FS_ID:55436
 EP_NO: 10271
 Repair Type: Non-Urgent
 Crossing Status: Found
 UCIP Comments: 10/21/2019 Record updated from No Action Needed to Non-Urgent. Need to have CVFPB review ABO and determine current owner. (O.Yakimov - DWR UCIP)
 FIELD_STRUCT_DESC: 24-inch corrugated metal drainage pipe through the levee, 9.5 feet below the crown. Flap gate on the waterside (WS). 36-inch standpipe on the landside (LS). (24-inch pipe [HLM 4.77] authorized under Automatic Board Order (ABO) issued as Permit No. 10271, 1974 - Ray H. Hamel). [Additional Reference(s): DWR Levee Log, 2005 (HLM 4.77). USACE Sacramento O&M Manual, Unit 119, December 1952, Revised 29 Dec 2016, (Station 136+40 PCT), listed as 24-inch pipe. USACE As-Built Drawing No. 50-04-2396, Revision 4, pdf page 24, Sheet 8, December 1947].
 FS Date: 10/21/2019 9:46:01 AM

Photo 1 of 3 : UCIP_SP_2020_55436_81697.jpg



View of LS looking from levee crown. 36-inch standpipe near levee toe

* Location	** Rating	+ Issue Type
LS : Land Side N/A : Not Applicable	A : Acceptable	Ma : Maintenance Deficiency
WS : Water Side	M : Minimally Acceptable	Ob : Design & System Obsolescence
CR : Crown	U : Unacceptable	En : Enforcement
	N : Not Inspected/Rated	
	C : Corrected	
	A/W : Acceptable but Monitor & Maintain	

**Flood Control Project Maintenance
Levee Inspections**

Maintenance Issue Types Only, Levee Inspection Report By Mile - Spring 2020

Sacramento Maintenance Yard Putah Creek

Waterway	Bank	Unit Miles	Inspection Start/End	Inspector
Unit No. 02 Putah Creek or South Levee	Right	7.20	04/23/2020 04/23/2020	David Julian

LM Start	4.66	Rating **	M	Issue No.	69 (cont)
LM End	4.66	Issue Type +	Ma	Location *	
Category	Supplemental			GPS Latitude/Longitude	
				Start	End
Item	DWR UCIP LMA Responsibility			38.515814 °	38.515814 °
				-121.741030 °	-121.741030 °
DWR ID	16644				

Photo 2 of 3 : UCIP_SP_2020_55436_81698.jpg



View of WS looking from levee crown

LM Start	4.66	Rating **	M	Issue No.	69 (cont)
LM End	4.66	Issue Type +	Ma	Location *	

Photo 3 of 3 : UCIP_SP_2020_55436_81699.jpg



Headwall and flap gate at WS levee toe

LM Start	4.70	Rating **	U	Issue No.	55
LM End	7.08	Issue Type +	Ma	Location *	WS
Category	Earthen Levee			GPS Latitude/Longitude	
				Start	End
Item	Vegetation			38.515789 °	38.522681 °
				-121.741715 °	-121.782913 °
DWR ID	DWR_ST0007_02_s_2020_55				
Comment Code					
V1 : Control annual grass and weeds on the levee slopes and easements.					
Inspector Comment					

Photo 1 of 1 : SP_2020_ST0007_283_55_20200423_00094.jpg



View looking downstream at annual vegetation on the waterside slope (Spring 2020).

* Location LS : Land Side N/A : Not Applicable WS : Water Side CR : Crown	** Rating A : Acceptable M : Minimally Acceptable U : Unacceptable	N : Not Inspected/Rated C : Corrected A/W : Acceptable but Monitor & Maintain	+ Issue Type Ma : Maintenance Deficiency Ob : Design & System Obsolescence En : Enforcement
--	--	---	---

**Flood Control Project Maintenance
Levee Inspections**

Maintenance Issue Types Only, Levee Inspection Report By Mile - Spring 2020

Sacramento Maintenance Yard Putah Creek

Waterway	Bank	Unit Miles	Inspection Start/End	Inspector
Unit No. 02 Putah Creek or South Levee	Right	7.20	04/23/2020 04/23/2020	David Julian

LM Start	5.44	Rating **	M	Issue No.	71	
LM End	5.44	Issue Type +	Ma	Location *		
Category	Supplemental			GPS Latitude/Longitude		
				Start	End	
Item	DWR UCIP LMA Responsibility			38.515369 °	38.515369 °	
				-121.755247 °	-121.755247 °	
DWR ID	16620					
Comment Code						
Inspector Comment						
DS_ID:16620 FS_ID:55439 EP_NO: 10267 Repair Type: Non-Urgent Crossing Status: Found UCIP Comments: 10/21/2019 Record updated from No Action Needed to Non-Urgent. Need to have CVFPB review ABO and determine current owner. (O.Yakimov - DWR UCIP)05/22/2013 Gate has been oiled and debris removed from outlet on land side. (C. Lund - DWR Sacramento Yard) 04/06/2012 Pipe is partially filled with sediment and slide gate is in need of maintenance as it will not move. (W. Wylie - DWR UCIP) FIELD_STRUCT_DESC: 24-inch CIPP-lined corrugated metal drainage pipe through the levee, 13 feet below the crown. Slide gate on the waterside (WS) slope. Concrete headwalls on both ends. (24-inch pipe [HLM 5.56] authorized under Automatic Board Order (ABO) issued as Permit No. 10267, 1974 - Davis Laboratories, Inc.). [Additional Reference(s): DWR Levee Log, 2005 (HLM 5.56). USACE Sacramento O&M Manual, Unit 119, December 1952, Revised 29 Dec 2016, (Station 177+60 PCT), listed as 24-inch pipe. USACE As-Built Drawing No. 50-04-2396, Revision 4, pdf page 25, Sheet 9, December 1947]. FS Date: 10/21/2019 11:46:42 AM						

LM Start	5.44	Rating **	M	Issue No.	71 (cont)
LM End	5.44	Issue Type +	Ma	Location *	

Photo 1 of 3 : UCIP_SP_2020_55439_81707.jpg



View of LS looking from levee crown

Photo 2 of 3 : UCIP_SP_2020_55439_81708.jpg



View of WS looking from levee crown

* Location LS : Land Side N/A : Not Applicable WS : Water Side CR : Crown	** Rating A : Acceptable M : Minimally Acceptable U : Unacceptable	N : Not Inspected/Rated C : Corrected A/W : Acceptable but Monitor & Maintain	+ Issue Type Ma : Maintenance Deficiency Ob : Design & System Obsolescence En : Enforcement
--	--	---	---

**Flood Control Project Maintenance
Levee Inspections**

Maintenance Issue Types Only, Levee Inspection Report By Mile - Spring 2020

Sacramento Maintenance Yard Putah Creek

Waterway	Bank	Unit Miles	Inspection Start/End	Inspector
Unit No. 02 Putah Creek or South Levee	Right	7.20	04/23/2020 04/23/2020	David Julian

LM Start	5.44	Rating **	M	Issue No.	71 (cont)
LM End	5.44	Issue Type +	Ma	Location *	
Category	Supplemental			GPS Latitude/Longitude	
				Start	End
Item	DWR UCIP LMA Responsibility			38.515369 °	38.515369 °
				-121.755247 °	-121.755247 °
DWR ID	16620				

Photo 3 of 3 : UCIP_SP_2020_55439_81709.jpg



WS levee slope, headwall and slide gate

LM Start	5.74	Rating **	U	Issue No.	73
LM End	5.74	Issue Type +	Ma	Location *	
Category	Supplemental			GPS Latitude/Longitude	
				Start	End
Item	DWR UCIP LMA Responsibility			38.516000 °	38.516000 °
				-121.760500 °	-121.760500 °
DWR ID	16636				

Photo 1 of 3 : UCIP_SP_2020_55419_81628.jpg



View of WS from levee crown

Comment Code					
Inspector Comment					
DS_ID:16636 FS_ID:55419 EP_NO: 10279 Repair Type: Urgent Crossing Status: Found UCIP Comments: 10/21/2019 Rating updated from No Action Needed to Urgent. A 6-inch hose connected to a water well on LS runs through a drainage pipe from LS to WS. Slide gate cannot be closed properly to prevent flooding on LS. Remove hose. (O.Yakimov - DWR UCIP)05/22/2013 Pipe was cleaned by the owner and 6 in pipe is still being used. (C. Lund - DWR Sacramento Yard) 04/05/2012 Pipe needs to be cleared of sedimentation. (W. Wylie - DWR UCIP) FIELD_STRUCT_DESC: 24-inch CIPP-lined corrugated metal drainage pipe through the levee, 14 feet below the crown. Slide gate on the waterside (WS) end. Concrete headwall on landside (LS) end. (name change for existing 24-inch drainpipe and slide gate on WS [HLM 5.89] issued under Permit No. 10279-1, 2012 - Elizabeth Dankworth and Michelle Christison; 24-inch pipe [HLM 5.89] authorized under Automatic Board Order (ABO) issued as Permit No. 10279, 1974 - Carmelita Watkins). [Additional Reference(s): DWR Levee Log, 2005 (HLM 5.89). USACE Sacramento O&M Manual, Unit 119, December 1952, Revised 29 Dec 2016, (Station 193+00 PCT), listed as 24-inch pipe. USACE As-Built Drawing No. 50-04-2396, Revision 4, pdf page 25, Sheet 9, December 1947]. FS Date: 10/21/2019 1:39:07 PM					

* Location	** Rating	+ Issue Type
LS : Land Side N/A : Not Applicable	A : Acceptable	Ma : Maintenance Deficiency
WS : Water Side	M : Minimally Acceptable	Ob : Design & System Obsolescence
CR : Crown	U : Unacceptable	En : Enforcement
	N : Not Inspected/Rated	
	C : Corrected	
	A/W : Acceptable but Monitor & Maintain	

**Flood Control Project Maintenance
Levee Inspections**

Maintenance Issue Types Only, Levee Inspection Report By Mile - Spring 2020

Sacramento Maintenance Yard Putah Creek

Waterway	Bank	Unit Miles	Inspection Start/End	Inspector
Unit No. 02 Putah Creek or South Levee	Right	7.20	04/23/2020 04/23/2020	David Julian

LM Start	5.74	Rating **	U	Issue No.	73 (cont)
LM End	5.74	Issue Type +	Ma	Location *	
Category	Supplemental			GPS Latitude/Longitude	
				Start	End
Item	DWR UCIP LMA Responsibility			38.516000 °	38.516000 °
				-121.760500 °	-121.760500 °
DWR ID	16636				

Photo 2 of 3 : UCIP_SP_2020_55419_81629.jpg



View of LS from levee crown

LM Start	5.74	Rating **	U	Issue No.	73 (cont)
LM End	5.74	Issue Type +	Ma	Location *	

Photo 3 of 3 : UCIP_SP_2020_55419_81630.jpg



WS slope with headwall and slide gate

* Location LS : Land Side N/A : Not Applicable WS : Water Side CR : Crown	** Rating A : Acceptable M : Minimally Acceptable U : Unacceptable	N : Not Inspected/Rated C : Corrected A/W : Acceptable but Monitor & Maintain	+ Issue Type Ma : Maintenance Deficiency Ob : Design & System Obsolescence En : Enforcement
--	--	---	---

**Flood Control Project Maintenance
Levee Inspections**

Maintenance Issue Types Only, Levee Inspection Report By Mile - Spring 2020

Sacramento Maintenance Yard Putah Creek

Waterway	Bank	Unit Miles	Inspection Start/End	Inspector
Unit No. 02 Putah Creek or South Levee	Right	7.20	04/23/2020 04/23/2020	David Julian

LM Start	5.84	Rating **	M	Issue No.	78
LM End	5.84	Issue Type +	Ma	Location *	
Category	Supplemental		GPS Latitude/Longitude		
			Start	End	
Item	DWR UCIP LMA Responsibility		38.516290 °	38.516290 °	
			-121.762280 °	-121.762280 °	
DWR ID	16639				

Comment Code

Inspector Comment

DS_ID:16639
FS_ID:55446
EP_NO: 10278
Repair Type: Non-Urgent
Crossing Status: Found
UCIP Comments: 10/21/2019 Record updated from No Action Needed to Non-Urgent. Need to have CVFPB review ABO and determine current owner. (O. Yakimov - DWR UCIP) 07/12/2019 After reviewing the USACE O&M manual as-builts there is no reference to this 24-inch pipe. Will need to coordinate with previous UCIP inspector to determine if additional information is available to tie pipe to USACE O&M manual. (O. Magana - DWR UCIP)
05/22/2013 All material was removed. (C. Lund - DWR Sacramento Yard)
04/05/2012 Flap gate blocked by minor amounts of sedimentation. (W. Wylie - DWR UCIP)
FIELD_STRUCT_DESC: 24-inch CIPP-lined corrugated metal drainage pipe through the levee, 15 feet below the crown. Flap gate on waterside (WS) end. Headwall on the landside (LS). (24-inch pipe [HLM 5.99] authorized under Automatic Board Order (ABO) issued as Permit No. 10278, 1974 - Southern Pacific Transportation Company). [Additional Reference(s): DWR Levee Log, 2005, (HLM 5.99). USACE Sacramento O&M Manual 119, December 1952].
FS Date: 10/21/2019 1:46:38 PM

LM Start	5.84	Rating **	M	Issue No.	78 (cont)
LM End	5.84	Issue Type +	Ma	Location *	

Photo 1 of 3 : UCIP_SP_2020_55446_81718.jpg



Headwall and flap gate

Photo 2 of 3 : UCIP_SP_2020_55446_81719.jpg



View of WS slope and flap gate at levee toe

* Location LS : Land Side N/A : Not Applicable WS : Water Side CR : Crown	** Rating A : Acceptable M : Minimally Acceptable U : Unacceptable	N : Not Inspected/Rated C : Corrected A/W : Acceptable but Monitor & Maintain	+ Issue Type Ma : Maintenance Deficiency Ob : Design & System Obsolescence En : Enforcement
--	--	--	---

**Flood Control Project Maintenance
Levee Inspections**

Maintenance Issue Types Only, Levee Inspection Report By Mile - Spring 2020

Sacramento Maintenance Yard Putah Creek

Waterway	Bank	Unit Miles	Inspection Start/End	Inspector
Unit No. 02 Putah Creek or South Levee	Right	7.20	04/23/2020 04/23/2020	David Julian

LM Start	5.84	Rating **	M	Issue No.	78 (cont)
LM End	5.84	Issue Type +	Ma	Location *	
Category	Supplemental		GPS Latitude/Longitude		
			Start	End	
Item	DWR UCIP LMA Responsibility		38.516290 °	38.516290 °	
			-121.762280 °	-121.762280 °	
DWR ID	16639				

Photo 3 of 3 : UCIP_SP_2020_55446_81720.jpg



LS levee slope, headwall and pipe

LM Start	6.02	Rating **	M	Issue No.	80
LM End	6.02	Issue Type +	Ma	Location *	
Category	Supplemental		GPS Latitude/Longitude		
			Start	End	
Item	DWR UCIP LMA Responsibility		38.516658 °	38.516658 °	
			-121.765572 °	-121.765572 °	
DWR ID	16641				

Comment Code

Inspector Comment

DS_ID:16641
 FS_ID:55448
 EP_NO: 10265
 Repair Type: Non-Urgent
 Crossing Status: Found
 UCIP Comments: 10/21/2019 Record updated from No Action Needed to Non-Urgent. Need to have CVFPB review ABO and determine current owner. (O.Yakimov - DWR UCIP)04/05/2012 Pipe has some sedimentation buildup internally. (W. Wylie - DWR UCIP)
 FIELD_STRUCT_DESC: 24-inch CIPP-lined corrugated metal drainage pipe through the levee, 11 feet below the crown. Slide gate on the waterside (WS) end. Concrete headwall on the landside (LS) end. (24-inch pipe [HLM 6.19] authorized under Automatic Board Order (ABO) issued as Permit No. 10265, 1974 - State of California, Division of Highways. Also included in Automatic Board Order (ABO) issued as Permit No. 11296, 1974 - Capitol National Bank of Sacramento and Crocker Citizens National Bank). [Additional Reference(s): DWR Levee Log, 2005 (HLM 6.19). USACE Sacramento O&M Manual, Unit 119, December 1952, Revised 29 Dec 2016, (Station 208+00 PCT), listed as 24-inch pipe. USACE As-Built Drawing No. 50-04-2396, Revision 4, pdf page 25, Sheet 9, December 1947].
 FS Date: 10/21/2019 2:08:05 PM

Photo 1 of 3 : UCIP_SP_2020_55448_81724.jpg



View of LS looking from levee crown

* Location LS : Land Side N/A : Not Applicable WS : Water Side CR : Crown	** Rating A : Acceptable M : Minimally Acceptable U : Unacceptable	N : Not Inspected/Rated C : Corrected A/W : Acceptable but Monitor & Maintain	+ Issue Type Ma : Maintenance Deficiency Ob : Design & System Obsolescence En : Enforcement
--	--	---	---

**Flood Control Project Maintenance
Levee Inspections**

Maintenance Issue Types Only, Levee Inspection Report By Mile - Spring 2020

Sacramento Maintenance Yard Putah Creek

Waterway	Bank	Unit Miles	Inspection Start/End	Inspector
Unit No. 02 Putah Creek or South Levee	Right	7.20	04/23/2020 04/23/2020	David Julian

LM Start	6.02	Rating **	M	Issue No.	80 (cont)
LM End	6.02	Issue Type +	Ma	Location *	
Category	Supplemental			GPS Latitude/Longitude	
				Start	End
Item	DWR UCIP LMA Responsibility			38.516658 °	38.516658 °
				-121.765572 °	-121.765572 °
DWR ID	16641				

Photo 2 of 3 : UCIP_SP_2020_55448_81725.jpg



View of WS looking from levee crown

LM Start	6.02	Rating **	M	Issue No.	80 (cont)
LM End	6.02	Issue Type +	Ma	Location *	

Photo 3 of 3 : UCIP_SP_2020_55448_81726.jpg



WS levee slope, headwall, and slide gate

* Location LS : Land Side N/A : Not Applicable WS : Water Side CR : Crown	** Rating A : Acceptable M : Minimally Acceptable U : Unacceptable	N : Not Inspected/Rated C : Corrected A/W : Acceptable but Monitor & Maintain	+ Issue Type Ma : Maintenance Deficiency Ob : Design & System Obsolescence En : Enforcement
--	--	---	---

**Flood Control Project Maintenance
Levee Inspections**

Maintenance Issue Types Only, Levee Inspection Report By Mile - Spring 2020

Sacramento Maintenance Yard Putah Creek

Waterway	Bank	Unit Miles	Inspection Start/End	Inspector
Unit No. 02 Putah Creek or South Levee	Right	7.20	04/23/2020 04/23/2020	David Julian

LM Start	6.34	Rating **	M	Issue No.	81
LM End	6.34	Issue Type +	Ma	Location *	
Category	Supplemental		GPS Latitude/Longitude		
			Start	End	
Item	DWR UCIP LMA Responsibility		38.517199 °	38.517199 °	
			-121.771262 °	-121.771262 °	
DWR ID	16642				

Comment Code

Inspector Comment

DS_ID:16642
FS_ID:55450
EP_NO: 10265
Repair Type: Non-Urgent
Crossing Status: Found
UCIP Comments: 10/21/2019 Record remains Non-Urgent. Need to have CVFPB review ABO and determine current owner. (O. Yakimov - DWR UCIP)07/12/2019 After reviewing the USACE O&M manual as-built there is no reference to this 30-inch pipe. Will need to coordinate with previous UCIP inspector to determine if additional information is available to tie pipe to USACE O&M manual. (O. Magana - DWR UCIP) 04/10/2019 There is no more debris around pipe. And is now sprayed and maintained. (J. McCabe - DWR Sacramento yard) 04/01/2019 Debris buildup at WS outlet.
FIELD_STRUCT_DESC: 30-inch CIPP-lined drainage pipe of an unknown material through the levee, 17 feet below the crown. Headwall and slide gate on the landside (LS) end. Flap gate on the waterside (WS) end, 120 feet to the north of the crossing. (36-inch pipe [HLM 6.50] authorized under Automatic Board Order (ABO) issued as Permit No. 10265, 1974 - State of California, Division of Highways. Also included in Automatic Board Order (ABO) issued as Permit No. 11296, 1974 - Capitol National Bank of Sacramento and Crocker Citizens National Bank). [Additional Reference(s): DWR Levee Log, 2005, (HLM 6.50), 36-inch pipe listed. USACE Sacramento O&M Manual 119, December 1952].
FS Date: 10/21/2019 2:11:00 PM

LM Start	6.34	Rating **	M	Issue No.	81 (cont)
LM End	6.34	Issue Type +	Ma	Location *	

Photo 1 of 3 : UCIP_SP_2020_55450_81729.jpg



View of LS looking from levee crown

Photo 2 of 3 : UCIP_SP_2020_55450_81730.jpg



LS slope, headwall, and slide gate

* Location	** Rating	+ Issue Type
LS : Land Side WS : Water Side CR : Crown	A : Acceptable M : Minimally Acceptable U : Unacceptable	Ma : Maintenance Deficiency Ob : Design & System Obsolescence En : Enforcement
N/A : Not Applicable	N : Not Inspected/Rated C : Corrected A/W : Acceptable but Monitor & Maintain	

**Flood Control Project Maintenance
Levee Inspections**

Maintenance Issue Types Only, Levee Inspection Report By Mile - Spring 2020

Sacramento Maintenance Yard Putah Creek

Waterway	Bank	Unit Miles	Inspection Start/End	Inspector
Unit No. 02 Putah Creek or South Levee	Right	7.20	04/23/2020 04/23/2020	David Julian

LM Start	6.34	Rating **	M	Issue No.	81 (cont)
LM End	6.34	Issue Type +	Ma	Location *	
Category	Supplemental			GPS Latitude/Longitude	
				Start	End
Item	DWR UCIP LMA Responsibility			38.517199 °	38.517199 °
				-121.771262 °	-121.771262 °
DWR ID	16642				

Photo 3 of 3 : UCIP_SP_2020_55450_81731.jpg



Pipe end on WS

LM Start	6.51	Rating **	U	Issue No.	39
LM End	6.51	Issue Type +	Ma	Location *	LS
Category	Earthen Levee			GPS Latitude/Longitude	
				Start	End
Item	Vegetation			38.518339 °	38.518339 °
				-121.774069 °	-121.774069 °
DWR ID	DWR_ST0007_02_s _ 2020_39				
Comment Code					
V4 : Elderberries are blocking visibility and flood fight capability.					
Inspector Comment					

No Photos

*** Location**
LS : Land Side N/A : Not Applicable
WS : Water Side
CR : Crown

**** Rating**
A : Acceptable N : Not Inspected/Rated
M : Minimally Acceptable C : Corrected
U : Unacceptable A/W : Acceptable but Monitor & Maintain

+ Issue Type
Ma : Maintenance Deficiency
Ob : Design & System Obsolescence
En : Enforcement

**Flood Control Project Maintenance
Levee Inspections**

Maintenance Issue Types Only, Levee Inspection Report By Mile - Spring 2020

Sacramento Maintenance Yard Putah Creek

Waterway	Bank	Unit Miles	Inspection Start/End	Inspector
Unit No. 02 Putah Creek or South Levee	Right	7.20	04/23/2020 04/23/2020	David Julian

LM Start	6.65	Rating **	M	Issue No.	83
LM End	6.65	Issue Type +	Ma	Location *	
Category	Supplemental			GPS Latitude/Longitude	
				Start	End
Item	DWR UCIP LMA Responsibility			38.519470 °	38.519470 °
				-121.776150 °	-121.776150 °
DWR ID	16633				
Comment Code					
Inspector Comment					
DS_ID:16633 FS_ID:55452 EP_NO: 10276 Repair Type: Non-Urgent Crossing Status: Found UCIP Comments: 10/21/2019 Record remains Non-Urgent. Minor sediment buildup at slide gate. Need to have CVFPB review ABO and determine current owner. (O.Yakimov - DWR UCIP)05/22/2013 Will contact owner of pipe and ask to clean for inspection. (C. Lund - DWR Sacramento Yard) 04/05/2012 Pipe heavily clogged with soil. (W. Wylie - DWR UCIP) FIELD_STRUCT_DESC: 24-inch CIPP-lined drainage pipe of an unknown material through the levee, 6 feet below the crown. Slide gate on the waterside (WS) end, and headwalls on both ends. (24-inch pipe [HLM 6.83] authorized under Automatic Board Order (ABO) issued as Permit No. 10276, 1974 - Patricia Schlages). [Additional Reference(s): DWR Levee Log, 2005 (HLM 6.83). USACE Sacramento O&M Manual, Unit 119, December 1952, Revised 29 Dec 2016, (Station 237+50 PCT), listed as 24-inch pipe. USACE As-Built Drawing No. 50-04-2396, Revision 2, pdf page 26, Sheet 10, December 1947]. FS Date: 10/21/2019 2:32:50 PM					

LM Start	6.65	Rating **	M	Issue No.	83 (cont)
LM End	6.65	Issue Type +	Ma	Location *	

Photo 1 of 3 : UCIP_SP_2020_55452_81739.jpg



View of LS looking from levee crown

Photo 2 of 3 : UCIP_SP_2020_55452_81740.jpg



View of WS looking from levee crown

* Location LS : Land Side N/A : Not Applicable WS : Water Side CR : Crown	** Rating A : Acceptable M : Minimally Acceptable U : Unacceptable	N : Not Inspected/Rated C : Corrected A/W : Acceptable but Monitor & Maintain	+ Issue Type Ma : Maintenance Deficiency Ob : Design & System Obsolescence En : Enforcement
--	--	---	---

**Flood Control Project Maintenance
Levee Inspections**

Maintenance Issue Types Only, Levee Inspection Report By Mile - Spring 2020

Sacramento Maintenance Yard Putah Creek

Waterway	Bank	Unit Miles	Inspection Start/End	Inspector
Unit No. 02 Putah Creek or South Levee	Right	7.20	04/23/2020 04/23/2020	David Julian

LM Start	6.65	Rating **	M	Issue No.	83 (cont)
LM End	6.65	Issue Type +	Ma	Location *	
Category	Supplemental			GPS Latitude/Longitude	
				Start	End
Item	DWR UCIP LMA Responsibility			38.519470 °	38.519470 °
				-121.776150 °	-121.776150 °
DWR ID	16633				

Photo 3 of 3 : UCIP_SP_2020_55452_81741.jpg



WS levee slope, headwall, and slide gate

LM Start	6.87	Rating **	U	Issue No.	46
LM End	6.90	Issue Type +	Ma	Location *	WS
Category	Earthen Levee			GPS Latitude/Longitude	
				Start	End
Item	Vegetation			38.521253 °	38.521547 °
				-121.779481 °	-121.780033 °
DWR ID	DWR_ST0007_02_s_2017_46				
Comment Code					
V4 : Elderberries are blocking visibility and flood fight capability.					
Inspector Comment					
Stalks less than 1 inch in diameter can be trimmed and thinned.					

No Photos

LM Start	7.00	Rating **	U	Issue No.	47
LM End	7.01	Issue Type +	Ma	Location *	WS
Category	Earthen Levee			GPS Latitude/Longitude	
				Start	End
Item	Vegetation			38.522328 °	38.522393 °
				-121.781447 °	-121.781663 °
DWR ID	DWR_ST0007_02_s_2017_47				
Comment Code					
V4 : Elderberries are blocking visibility and flood fight capability.					
Inspector Comment					
These elderberries are blocking view of levee section and blocking access to a portion of the shoulder waterward. Some of these stalks are less than 1.0 inch and could be thinned out.					

No Photos

* Location LS : Land Side N/A : Not Applicable WS : Water Side CR : Crown	** Rating A : Acceptable M : Minimally Acceptable U : Unacceptable	N : Not Inspected/Rated C : Corrected A/W : Acceptable but Monitor & Maintain	+ Issue Type Ma : Maintenance Deficiency Ob : Design & System Obsolescence En : Enforcement
--	--	---	---