

**Flood Control Project Maintenance  
Levee Inspections**

## Maintenance Issue Types Only, Levee Inspection Report By Mile - Spring 2019

### Sacramento Maintenance Yard Putah Creek

Waterway	Bank	Unit Miles	Inspection Start/End	Inspector
Unit No. 01 Putah Creek or North Levee	Left	8.79	04/18/2019 04/18/2019	David Julian

LM Start		Rating **	A	Issue No.	25
LM End		Issue Type +	Ma	Location *	
Category	Earthen Levee		GPS Latitude/Longitude		
			Start	End	
Item	Operations & Maintenance Manuals			°	°
				°	°
DWR ID	DWR_ST0007_01_s_2013_25				
Comment Code					
Inspector Comment					
The Sacramento Maintenance Yard has a copy of the O&M Manual.					

No Photos

LM Start		Rating **	A	Issue No.	26
LM End		Issue Type +	Ma	Location *	
Category	Earthen Levee		GPS Latitude/Longitude		
			Start	End	
Item	Emergency Supplies & Equipment			°	°
				°	°
DWR ID	DWR_ST0007_01_s_2013_26				
Comment Code					
Inspector Comment					
The Sacramento Maintenance Yard has adequate emergency supplies stored.					

No Photos

LM Start		Rating **	A	Issue No.	27
LM End		Issue Type +	Ma	Location *	
Category	Earthen Levee		GPS Latitude/Longitude		
			Start	End	
Item	Flood Preparedness & Training			°	°
				°	°
DWR ID	DWR_ST0007_01_s_2013_27				
Comment Code					
Inspector Comment					
The Sacramento Maintenance Yard trains yearly for flood fighting.					

No Photos

<b>* Location</b> LS : Land Side    N/A : Not Applicable WS : Water Side CR : Crown	<b>** Rating</b> A : Acceptable M : Minimally Acceptable U : Unacceptable	N : Not Inspected/Rated C : Corrected A/W : Acceptable but Monitor & Maintain	<b>+ Issue Type</b> Ma : Maintenance Deficiency Ob : Design & System Obsolescence En : Enforcement
--	--	---	---



**Flood Control Project Maintenance  
Levee Inspections**

**Maintenance Issue Types Only, Levee Inspection Report By Mile - Spring 2019**

**Sacramento Maintenance Yard Putah Creek**

Waterway	Bank	Unit Miles	Inspection Start/End	Inspector
Unit No. 01 Putah Creek or North Levee	Left	8.79	04/18/2019 04/18/2019	David Julian

LM Start	0.58	Rating **	A/W	Issue No.	57
LM End	0.58	Issue Type +	Ma	Location *	
Category	Supplemental			GPS Latitude/Longitude	
				Start	End
Item	DWR UCIP LMA Responsibility			38.519660 °	38.519660 °
				-121.638820 °	-121.638820 °
DWR ID	488				
Comment Code					
Inspector Comment					
FS_ID:33408 DS_ID:488 EP_NO: 10261 Repair Type: No Action Needed Crossing Status: Found UCIP Comments: FIELD_STRUCT_DESC: 24-inch drainage pipe of unknown material through the levee, 12.5 feet below the crown. Slide gate is located on the waterside (WS) end. Concrete headwall is located on the WS. (24-inch pipe [HLM 0.58] authorized under Automatic Board Order (ABO) issued as Permit No. 10261, 1974 - Tufts) [Additional Reference(s): DWR Levee Log, 1981 and 2005. USACE Sacramento O&M Manual Unit 119, December 1952, (Station XX+XX)] FS Date: 4/10/2014 2:49:52 PM					

Photo 1 of 3 : UCIP\_SP\_2019\_33408\_60493.jpg



WS slide gate and headwall

LM Start	<b>0.58</b>	Rating **	A/W	Issue No.	<b>57 (cont)</b>
LM End	<b>0.58</b>	Issue Type +	Ma	Location *	

Photo 2 of 3 : UCIP\_SP\_2019\_33408\_60495.jpg



LS pump and appurtenances

<b>* Location</b> LS : Land Side    N/A : Not Applicable WS : Water Side CR : Crown		<b>** Rating</b> A : Acceptable M : Minimally Acceptable U : Unacceptable N : Not Inspected/Rated C : Corrected A/W : Acceptable but Monitor & Maintain		<b>+ Issue Type</b> Ma : Maintenance Deficiency Ob : Design & System Obsolescence En : Enforcement
--	--	---	--	---

**Flood Control Project Maintenance  
Levee Inspections**

## Maintenance Issue Types Only, Levee Inspection Report By Mile - Spring 2019

### Sacramento Maintenance Yard Putah Creek

Waterway	Bank	Unit Miles	Inspection Start/End	Inspector
Unit No. 01 Putah Creek or North Levee	Left	8.79	04/18/2019 04/18/2019	David Julian

LM Start	0.58	Rating **	A/W	Issue No.	57 (cont)	
LM End	0.58	Issue Type +	Ma	Location *		
Category	Supplemental			GPS Latitude/Longitude		
				Start		End
Item	DWR UCIP LMA Responsibility			38.519660 °		38.519660 °
				-121.638820 °		-121.638820 °
DWR ID	488					
Comment Code						
Inspector Comment						
FS_ID:33408 DS_ID:488 EP_NO: 10261 Repair Type: No Action Needed Crossing Status: Found UCIP Comments: FIELD_STRUCT_DESC: 24-inch drainage pipe of unknown material through the levee, 12.5 feet below the crown. Slide gate is located on the waterside (WS) end. Concrete headwall is located on the WS. (24-inch pipe [HLM 0.58] authorized under Automatic Board Order (ABO) issued as Permit No. 10261, 1974 - Tufts) [Additional Reference(s): DWR Levee Log, 1981 and 2005. USACE Sacramento O&M Manual Unit 119, December 1952, (Station XX+XX)] FS Date: 4/10/2014 2:49:52 PM						

Photo 3 of 3 : UCIP\_SP\_2019\_33408\_60494.jpg



LS pump and appurtances

LM Start	2.72	Rating **	A/W	Issue No.	60
LM End	2.72	Issue Type +	Ma	Location *	
Category	Supplemental			GPS Latitude/Longitude	
				Start	End
Item	DWR UCIP LMA Responsibility			38.517580 °	38.517580 °
				-121.676820 °	-121.676820 °
DWR ID	492				
Comment Code					
Inspector Comment					
FS_ID:33394 DS_ID:492 EP_NO: 10262 Repair Type: No Action Needed Crossing Status: Found UCIP Comments: FIELD_STRUCT_DESC: 24-inch drainage pipe of unknown material through levee, 13 feet below crown. Slide gate is located on the waterside (WS) end. Concrete headwalls are located on both the waterside (WS) and landside (LS). (24-inch pipe [HLM 2.77] authorized under Automatic Board Order (ABO) issued as Permit No. 10262, 1974 - Wells Fargo Bank, Trustee for S.H. Cowell Foundation) [Additional Reference(s): DWR Levee Log, 1981 and 2005. USACE Sacramento O&M Manual Unit 119, December 1952, (Station XX+XX)] FS Date: 4/10/2014 2:43:44 PM					

Photo 1 of 2 : UCIP\_SP\_2019\_33394\_60458.jpg



WS Slide gate

<b>* Location</b> LS : Land Side    N/A : Not Applicable WS : Water Side CR : Crown		<b>** Rating</b> A : Acceptable                      N : Not Inspected/Rated M : Minimally Acceptable        C : Corrected U : Unacceptable                  A/W : Acceptable but Monitor & Maintain		<b>+ Issue Type</b> Ma : Maintenance Deficiency Ob : Design & System Obsolescence En : Enforcement
--	--	---	--	---



**Flood Control Project Maintenance  
Levee Inspections**

**Maintenance Issue Types Only, Levee Inspection Report By Mile - Spring 2019**

**Sacramento Maintenance Yard Putah Creek**

Waterway	Bank	Unit Miles	Inspection Start/End	Inspector
Unit No. 01 Putah Creek or North Levee	Left	8.79	04/18/2019 04/18/2019	David Julian

LM Start	2.72	Rating **	A/W	Issue No.	60 (cont)	
LM End	2.72	Issue Type +	Ma	Location *		
Category	Supplemental			GPS Latitude/Longitude		
				Start		End
Item	DWR UCIP LMA Responsibility			38.517580 °		38.517580 °
				-121.676820 °		-121.676820 °
DWR ID	492					
Comment Code						
Inspector Comment						
FS_ID:33394 DS_ID:492 EP_NO: 10262 Repair Type: No Action Needed Crossing Status: Found UCIP Comments: FIELD_STRUCT_DESC: 24-inch drainage pipe of unknown material through levee, 13 feet below crown. Slide gate is located on the waterside (WS) end. Concrete headwalls are located on both the waterside (WS) and landside (LS). (24-inch pipe [HLM 2.77] authorized under Automatic Board Order (ABO) issued as Permit No. 10262, 1974 - Wells Fargo Bank, Trustee for S.H. Cowell Foundation) [Additional Reference(s): DWR Levee Log, 1981 and 2005. USACE Sacramento O&M Manual Unit 119, December 1952, (Station XX+XX)] FS Date: 4/10/2014 2:43:44 PM						

Photo 2 of 2 : UCIP\_SP\_2019\_33394\_60457.jpg



LS headwall

<b>* Location</b> LS : Land Side    N/A : Not Applicable WS : Water Side CR : Crown	<b>** Rating</b> A : Acceptable M : Minimally Acceptable U : Unacceptable  N : Not Inspected/Rated C : Corrected A/W : Acceptable but Monitor & Maintain	<b>+ Issue Type</b> Ma : Maintenance Deficiency Ob : Design & System Obsolescence En : Enforcement
--	---	---

**Flood Control Project Maintenance  
Levee Inspections**

## Maintenance Issue Types Only, Levee Inspection Report By Mile - Spring 2019

### Sacramento Maintenance Yard Putah Creek

Waterway	Bank	Unit Miles	Inspection Start/End	Inspector
Unit No. 01 Putah Creek or North Levee	Left	8.79	04/18/2019 04/18/2019	David Julian

LM Start	<b>3.80</b>	Rating **	U	Issue No.	<b>62</b>
LM End	<b>3.80</b>	Issue Type +	Ma	Location *	
Category	Supplemental		GPS Latitude/Longitude		
			Start	End	
Item	DWR UCIP LMA Responsibility		38.519790 °	38.519790 °	
			-121.695450 °	-121.695450 °	
DWR ID	496				

**Comment Code**

**Inspector Comment**

FS\_ID:53863  
DS\_ID:496  
EP\_NO: 10251  
Repair Type: Urgent  
Crossing Status: Found  
UCIP Comments: 4/10/2019 Major erosion through out pipe. Erosion on WS allows water to enter pipe and flood LS field. Erosion on farmers waterman valve. Field water drains into pipe and floods LS field. (J.McCabe DWR Sacramento Yard)  
FIELD\_STRUCT\_DESC: 24-inch corrugated metal drainage pipe through levee, 15 feet below the crown. Two metal cutoff walls were installed through the levee. A T-post and T-handle are located on the landside (LS) toe. The outfall structure and flap gate are located on the west side of bridge, waterside (WS). (24-inch pipe [HLM 3.87] authorized under Automatic Board Order (ABO) issued as Permit No. 10251, 1974 - F.M.C. Corp.) [Additional Reference(s): DWR Levee Log, 1981 and 2005. USACE Sacramento O&M Manual Unit 119, December 1952, (Station XX+XX)]  
FS Date: 4/9/2019 9:31:57 AM

LM Start	<b>3.80</b>	Rating **	U	Issue No.	<b>62 (cont)</b>
LM End	<b>3.80</b>	Issue Type +	Ma	Location *	

Photo 1 of 3 : UCIP\_SP\_2019\_53863\_60439.jpg



WS toe at T handle. No access to pipe.

Photo 2 of 3 : UCIP\_SP\_2019\_53863\_60441.jpg



LS headwall and pipe

<b>* Location</b> LS : Land Side    N/A : Not Applicable WS : Water Side CR : Crown		<b>** Rating</b> A : Acceptable M : Minimally Acceptable U : Unacceptable		N : Not Inspected/Rated C : Corrected A/W : Acceptable but Monitor & Maintain		<b>+ Issue Type</b> Ma : Maintenance Deficiency Ob : Design & System Obsolescence En : Enforcement	
--	--	--	--	---	--	---	--

**Flood Control Project Maintenance  
Levee Inspections**

**Maintenance Issue Types Only, Levee Inspection Report By Mile - Spring 2019**

**Sacramento Maintenance Yard Putah Creek**

Waterway	Bank	Unit Miles	Inspection Start/End	Inspector
Unit No. 01 Putah Creek or North Levee	Left	8.79	04/18/2019 04/18/2019	David Julian

LM Start	<b>3.80</b>	Rating **	U	Issue No.	<b>62 (cont)</b>
LM End	<b>3.80</b>	Issue Type +	Ma	Location *	
Category	Supplemental		GPS Latitude/Longitude		
			Start	End	
Item	DWR UCIP LMA Responsibility		38.519790 °	38.519790 °	
			-121.695450 °	-121.695450 °	
DWR ID	496				

Comment Code

Inspector Comment

FS\_ID:53863  
DS\_ID:496  
EP\_NO: 10251  
Repair Type: Urgent  
Crossing Status: Found  
UCIP Comments: 4/10/2019 Major erosion through out pipe. Erosion on WS allows water to enter pipe and flood LS field. Erosion on farmers waterman valve. Field water drains into pipe and floods LS field. (J.McCabe DWR Sacramento Yard)  
FIELD\_STRUCT\_DESC: 24-inch corrugated metal drainage pipe through levee, 15 feet below the crown. Two metal cutoff walls were installed through the levee. A T-post and T-handle are located on the landside (LS) toe. The outfall structure and flap gate are located on the west side of bridge, waterside (WS). (24-inch pipe [HLM 3.87] authorized under Automatic Board Order (ABO) issued as Permit No. 10251, 1974 - F.M.C. Corp.) [Additional Reference(s): DWR Levee Log, 1981 and 2005. USACE Sacramento O&M Manual Unit 119, December 1952, (Station XX+XX)]  
FS Date: 4/9/2019 9:31:57 AM

Photo 3 of 3 : UCIP\_SP\_2019\_53863\_60440.jpg



Outfall at creek with flap gate.

<b>* Location</b> LS : Land Side    N/A : Not Applicable WS : Water Side CR : Crown		<b>** Rating</b> A : Acceptable                      N : Not Inspected/Rated M : Minimally Acceptable        C : Corrected U : Unacceptable                  A/W : Acceptable but Monitor & Maintain		<b>+ Issue Type</b> Ma : Maintenance Deficiency Ob : Design & System Obsolescence En : Enforcement
--	--	---	--	---

**Flood Control Project Maintenance  
Levee Inspections**

**Maintenance Issue Types Only, Levee Inspection Report By Mile - Spring 2019**

**Sacramento Maintenance Yard Putah Creek**

Waterway	Bank	Unit Miles	Inspection Start/End	Inspector
Unit No. 01 Putah Creek or North Levee	Left	8.79	04/18/2019 04/18/2019	David Julian

LM Start	4.05	Rating **	A/W	Issue No.	63
LM End	4.05	Issue Type +	Ma	Location *	
Category	Supplemental			GPS Latitude/Longitude	
				Start	End
Item	DWR UCIP LMA Responsibility			38.518685 °	38.518685 °
				-121.699835 °	-121.699835 °
DWR ID	497				
Comment Code					
Inspector Comment					
FS_ID:33379 DS_ID:497 EP_NO: 10251 Repair Type: No Action Needed Crossing Status: Found UCIP Comments: FIELD_STRUCT_DESC: PENDING CONSTRUCTION STATUS - 20-inch irrigation welded HDPE pipe sleeved through an existing 24-inch pipe through levee, 16 feet below the crown. Annular space between pipes was filled with grout. 36-inch galvanized corrugated metal pipe (CMP) riser and hinged lid are located on the waterside (WS) slope. (20-inch HDPE installed with a 36-inch galvanized CMP riser and hinged lid, work also included the removal of existing CMP riser authorized under Permit No. 10251-1, 2014 - Harris Moran Seed Company; 24-inch pipe [HLM 4.13] authorized under Automatic Board Order (ABO) issued as Permit No. 10251, 1974 - F.M.C. Corp.; assumed original 24-inch pipe was installed in 12/12/1952 per O&M manual) [Additional Reference(s): DWR Levee Log, 1981 and 2005. USACE Sacramento O&M Manual Unit 119, December 1952, (Station XX+XX)] FS Date: 4/10/2014 2:39:45 PM					

Photo 1 of 1 : UCIP\_SP\_2019\_33379\_60436.jpg



Slide gate in 36-inch Standpipe on WS toe.

<b>* Location</b> LS : Land Side    N/A : Not Applicable WS : Water Side CR : Crown	<b>** Rating</b> A : Acceptable M : Minimally Acceptable U : Unacceptable	N : Not Inspected/Rated C : Corrected A/W : Acceptable but Monitor & Maintain	<b>+ Issue Type</b> Ma : Maintenance Deficiency Ob : Design & System Obsolescence En : Enforcement
--	--	---	---



**Flood Control Project Maintenance  
Levee Inspections**

**Maintenance Issue Types Only, Levee Inspection Report By Mile - Spring 2019**

**Sacramento Maintenance Yard Putah Creek**

Waterway	Bank	Unit Miles	Inspection Start/End	Inspector
Unit No. 01 Putah Creek or North Levee	Left	8.79	04/18/2019 04/18/2019	David Julian

LM Start	5.28	Rating **	A/W	Issue No.	64	
LM End	5.28	Issue Type +	Ma	Location *		
Category	Supplemental			GPS Latitude/Longitude		
				Start		End
Item	DWR UCIP LMA Responsibility			38.518022 °	38.518022 °	
				-121.722521 °	-121.722521 °	
DWR ID	500					
Comment Code						
Inspector Comment						
FS_ID:33371						
DS_ID:500						
EP_NO: 10256						
Repair Type: No Action Needed						
Crossing Status: Found						
UCIP Comments: Debris removed. See picture						
FIELD_STRUCT_DESC: 24-inch corrugated metal drainage pipe						
through the levee, 15 feet below the crown. Slide gate on the waterside						
(WS) end. Concrete headwall on the landside (LS) end. (24-inch pipe						
[HLM 5.39] authorized under Automatic Board Order (ABO) issued as						
Permit No. 10256, 1974 - Albert H. Lederer). [Additional Reference(s):						
DWR Levee Log, 2005. USACE Sacramento O&M Manual 119,						
December 1952, (Station 83+70 PCT)].						
FS Date: 4/10/2014 2:37:39 PM						

Photo 1 of 3 : UCIP\_SP\_2019\_33371\_60418.jpg



Enter photo 3 description or comment here.

LM Start	<b>5.28</b>	Rating **	A/W	Issue No.	<b>64 (cont)</b>
LM End	<b>5.28</b>	Issue Type +	Ma	Location *	

Photo 2 of 3 : UCIP\_SP\_2019\_33371\_60416.jpg



WS slide gate

<b>* Location</b> LS : Land Side    N/A : Not Applicable WS : Water Side CR : Crown		<b>** Rating</b> A : Acceptable                      N : Not Inspected/Rated M : Minimally Acceptable        C : Corrected U : Unacceptable                  A/W : Acceptable but Monitor & Maintain		<b>+ Issue Type</b> Ma : Maintenance Deficiency Ob : Design & System Obsolescence En : Enforcement
--	--	---	--	---



**Flood Control Project Maintenance  
Levee Inspections**

## Maintenance Issue Types Only, Levee Inspection Report By Mile - Spring 2019

### Sacramento Maintenance Yard Putah Creek

Waterway	Bank	Unit Miles	Inspection Start/End	Inspector
Unit No. 01 Putah Creek or North Levee	Left	8.79	04/18/2019 04/18/2019	David Julian

LM Start	5.30	Rating **	A/W	Issue No.	65 (cont)	
LM End	5.30	Issue Type +	Ma	Location *		
Category	Supplemental			GPS Latitude/Longitude		
				Start	End	
Item	DWR UCIP LMA Responsibility			38.518032 °	38.518032 °	
				-121.722778 °	-121.722778 °	
DWR ID	501					
Comment Code						
Inspector Comment						
FS_ID:33370 DS_ID:501 EP_NO: 10256 Repair Type: No Action Needed Crossing Status: Found UCIP Comments: FIELD_STRUCT_DESC: 24-inch corrugated metal drainage pipe through the levee, 12.5 feet below the crown. Slide gate on the waterside (WS) end in 36-inch standpipe. Concrete headwall on the landside (LS) end. (24-inch pipe [HLM 5.40] authorized under Automatic Board Order (ABO) issued as Permit No. 10256, 1974 - Albert H. Lederer). [Additional Reference(s): DWR Levee Log, 2005. USACE Sacramento O&M Manual 119, December 1952, (Station 84+40 PCT)]. FS Date: 4/10/2014 2:36:12 PM						

Photo 2 of 2 : UCIP\_SP\_2019\_33370\_60414.jpg



WS slide gate in 36-inch cmp standpipe

LM Start	5.56	Rating **	A/W	Issue No.	66
LM End	5.56	Issue Type +	Ma	Location *	
Category	Supplemental			GPS Latitude/Longitude	
				Start	End
Item	DWR UCIP LMA Responsibility			38.518249 °	38.518249 °
				-121.727538 °	-121.727538 °
DWR ID	502				
Comment Code					
Inspector Comment					
FS_ID:33368					
DS_ID:502					
EP_NO: 10255					
Repair Type: No Action Needed					
Crossing Status: Found					
UCIP Comments:					
FIELD_STRUCT_DESC: 24-inch corrugated metal drainage pipe through the levee, 11 feet below the crown. Slide gate on the waterside (WS) end. Concrete headwall on the landside (LS) end. (24-inch pipe [HLM 5.67] authorized under Automatic Board Order (ABO) issued as Permit No. 10255, 1974 - Owen W. and Ray W. Hamel). [Additional Reference(s): DWR Levee Log, 2005. USACE Sacramento O&M Manual 119, December 1952, (Station 97+00 PCT)].					
FS Date: 4/10/2014 2:35:43 PM					

Photo 1 of 2 : UCIP\_SP\_2019\_33368\_60410.jpg



LS headwall

<b>* Location</b> LS : Land Side    N/A : Not Applicable WS : Water Side CR : Crown		<b>** Rating</b> A : Acceptable                      N : Not Inspected/Rated M : Minimally Acceptable        C : Corrected U : Unacceptable                  A/W : Acceptable but Monitor & Maintain		<b>+ Issue Type</b> Ma : Maintenance Deficiency Ob : Design & System Obsolescence En : Enforcement
--	--	---	--	---



## Sacramento Maintenance Yard Putah Creek

WS slide gateLS headwallPage 12 of 24



**Flood Control Project Maintenance  
Levee Inspections**

## Maintenance Issue Types Only, Levee Inspection Report By Mile - Spring 2019

### Sacramento Maintenance Yard Putah Creek

Waterway	Bank	Unit Miles	Inspection Start/End	Inspector
Unit No. 01 Putah Creek or North Levee	Left	8.79	04/18/2019 04/18/2019	David Julian

LM Start	5.74	Rating **	A/W	Issue No.	68 (cont)	
LM End	5.74	Issue Type +	Ma	Location *		
Category	Supplemental			GPS Latitude/Longitude		
				Start	End	
Item	DWR UCIP LMA Responsibility			38.518368 °	38.518368 °	
				-121.730947 °	-121.730947 °	
DWR ID	503					
Comment Code						
Inspector Comment						
FS_ID:33364 DS_ID:503 EP_NO: 10252 Repair Type: No Action Needed Crossing Status: Found UCIP Comments: owner of pipe needs to clean out obstruction in pipe. FIELD_STRUCT_DESC: 24-inch corrugated metal drainage pipe through the levee, 12 feet below the crown. Slide gate on the waterside (WS) end. Concrete headwall on the landside (LS) end. (24-inch pipe [HLM 5.86] authorized under Automatic Board Order (ABO) issued as Permit No. 10252, 1974 - John F. Hamel). [Additional Reference(s): DWR Levee Log, 2005. USACE Sacramento O&M Manual 119, December 1952, (Station 108+00 PCT)]. FS Date: 4/10/2014 2:34:15 PM						

Photo 2 of 2 : UCIP\_SP\_2019\_33364\_60400.jpg



WS headwall and slidegate

LM Start	6.45	Rating **	A/W	Issue No.	69	
LM End	6.45	Issue Type +	Ma	Location *		
Category	Supplemental			GPS Latitude/Longitude		
				Start	End	
Item	DWR UCIP LMA Responsibility			38.518208 °	38.518208 °	
				-121.743990 °	-121.743990 °	
DWR ID	505					
Comment Code						
Inspector Comment						
FS_ID:33349 DS_ID:505 EP_NO: 10253 Repair Type: No Action Needed Crossing Status: Found UCIP Comments: FIELD_STRUCT_DESC: 24-inch corrugated metal drainage pipe through the levee, 10.4 feet below the crown. Slide gate on the waterside (WS), and concrete headwalls on both the WS and the landside (LS). (24-inch pipe [HLM 6.57] authorized under Automatic Board Order (ABO) issued as Permit No. 10253, 1974 - Lester J. Hamel). [Additional Reference(s): DWR Levee Log, 2005. USACE Sacramento O&M Manual 119, December 1952, (HLM 6.58) (Station 145+50 PCT)]. FS Date: 4/10/2014 2:29:37 PM						

Photo 1 of 2 : UCIP\_SP\_2019\_33349\_60372.jpg



WS Slide Gate

<b>* Location</b> LS : Land Side    N/A : Not Applicable WS : Water Side CR : Crown		<b>** Rating</b> A : Acceptable                      N : Not Inspected/Rated M : Minimally Acceptable        C : Corrected U : Unacceptable                  A/W : Acceptable but Monitor & Maintain		<b>+ Issue Type</b> Ma : Maintenance Deficiency Ob : Design & System Obsolescence En : Enforcement
--	--	---	--	---

**Flood Control Project Maintenance  
Levee Inspections**

**Maintenance Issue Types Only, Levee Inspection Report By Mile - Spring 2019**

**Sacramento Maintenance Yard Putah Creek**

Waterway	Bank	Unit Miles	Inspection Start/End	Inspector
Unit No. 01 Putah Creek or North Levee	Left	8.79	04/18/2019 04/18/2019	David Julian

LM Start	6.45	Rating **	A/W	Issue No.	69 (cont)	
LM End	6.45	Issue Type +	Ma	Location *		
Category	Supplemental			GPS Latitude/Longitude		
				Start		End
Item	DWR UCIP LMA Responsibility			38.518208 °		38.518208 °
				-121.743990 °		-121.743990 °
DWR ID	505					
Comment Code						
Inspector Comment						
FS_ID:33349 DS_ID:505 EP_NO: 10253 Repair Type: No Action Needed Crossing Status: Found UCIP Comments: FIELD_STRUCT_DESC: 24-inch corrugated metal drainage pipe through the levee, 10.4 feet below the crown. Slide gate on the waterside (WS), and concrete headwalls on both the WS and the landside (LS). (24-inch pipe [HLM 6.57] authorized under Automatic Board Order (ABO) issued as Permit No. 10253, 1974 - Lester J. Hamel). [Additional Reference(s): DWR Levee Log, 2005. USACE Sacramento O&M Manual 119, December 1952, (HLM 6.58) (Station 145+50 PCT)]. FS Date: 4/10/2014 2:29:37 PM						

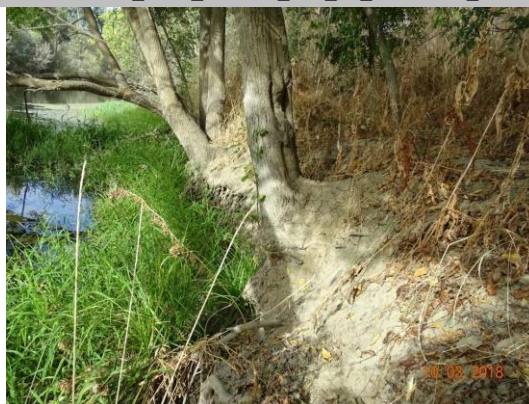
Photo 2 of 2 : UCIP\_SP\_2019\_33349\_60371.jpg



LS Headwall

LM Start	6.88	Rating **	M	Issue No.	34
LM End	6.93	Issue Type +	Ma	Location *	WS
Category	Supplemental			GPS Latitude/Longitude	
				Start	End
Item	2017 USACE Erosion Survey, DRAFT			38.517362 °	38.517355 °
				-121.751778 °	-121.752824 °
DWR ID	DWR_ST0007_01_f_2018_34				
Comment Code					
Inspector Comment					
2017 Site ID: PUC 7.2 L					
Status: Eroding					
2018 Field Notes: Erosion along lower bank with trees exposed. Erosion has not encroached on levee prism.					
2017 Field Notes: New erosion along lower bank.					
Site History: 2011 - The toe to mid-bank is slumping. Large tree pop-outs have furthered the erosion. Slope is slightly steeper than 1:1.					

Photo 1 of 1 : SP\_2019\_ST0007\_282\_34\_20190311\_00007.jpg



View looking upstream at erosion at the waterside toe. Tree roots are exposed (September 2018).

<b>* Location</b> LS : Land Side    N/A : Not Applicable WS : Water Side CR : Crown		<b>** Rating</b> A : Acceptable M : Minimally Acceptable U : Unacceptable N : Not Inspected/Rated C : Corrected A/W : Acceptable but Monitor & Maintain		<b>+ Issue Type</b> Ma : Maintenance Deficiency Ob : Design & System Obsolescence En : Enforcement
--	--	---	--	---

**Flood Control Project Maintenance  
Levee Inspections**

## Maintenance Issue Types Only, Levee Inspection Report By Mile - Spring 2019

### Sacramento Maintenance Yard Putah Creek

Waterway	Bank	Unit Miles	Inspection Start/End	Inspector
Unit No. 01 Putah Creek or North Levee	Left	8.79	04/18/2019 04/18/2019	David Julian

LM Start	6.89	Rating **	M	Issue No.	56
LM End	6.89	Issue Type +	Ma	Location *	LS
Category	Earthen Levee			GPS Latitude/Longitude	
				Start	End
Item	Trim / Thin Trees			38.517513 °	38.517513 °
				-121.752023 °	-121.752023 °
DWR ID	DWR_ST0007_01_f_2017_56				
Comment Code					
T1 : Trim trees to at least five feet above ground level.					
Inspector Comment					

Photo 1 of 1 : SP\_2019\_ST0007\_282\_56\_20190311\_00016.jpg



Trees and bushes on landside block visibility and access. Includes elderberries.

LM Start	6.95	Rating **	A/W	Issue No.	71
LM End	6.95	Issue Type +	Ma	Location *	
Category	Supplemental			GPS Latitude/Longitude	
				Start	End
Item	DWR UCIP LMA Responsibility			38.517679 °	38.517679 °
				-121.753146 °	-121.753146 °
DWR ID	508				
Comment Code					
Inspector Comment					
FS_ID:33343 DS_ID:508 EP_NO: 10247 Repair Type: No Action Needed Crossing Status: Found UCIP Comments: FIELD_STRUCT_DESC: 24-inch drainage pipe of an unknown material through the levee, 11 feet below the crown. Flap gate on the waterside (WS) end. Concrete headwall on the landside (LS) end. Concrete Apron on the WS. (24-inch pipe [HLM 7.09] authorized under Automatic Board Order (ABO) issued as Permit No. 10247, 1974 - University of California, Office of the Regents). [Additional Reference(s): DWR Levee Log, 2005. USACE Sacramento O&M Manual 119, December 1952, (Station 172+00 PCT)]. FS Date: 4/10/2014 2:27:50 PM					

Photo 1 of 3 : UCIP\_SP\_2019\_33343\_60357.jpg



WS flap gate

<b>* Location</b> LS : Land Side    N/A : Not Applicable WS : Water Side CR : Crown		<b>** Rating</b> A : Acceptable                      N : Not Inspected/Rated M : Minimally Acceptable        C : Corrected U : Unacceptable                  A/W : Acceptable but Monitor & Maintain		<b>+ Issue Type</b> Ma : Maintenance Deficiency Ob : Design & System Obsolescence En : Enforcement
--	--	---	--	---



**Flood Control Project Maintenance  
Levee Inspections**

## Maintenance Issue Types Only, Levee Inspection Report By Mile - Spring 2019

### Sacramento Maintenance Yard Putah Creek

Waterway	Bank	Unit Miles	Inspection Start/End	Inspector
Unit No. 01 Putah Creek or North Levee	Left	8.79	04/18/2019 04/18/2019	David Julian

LM Start	6.95	Rating **	A/W	Issue No.	71 (cont)	
LM End	6.95	Issue Type +	Ma	Location *		
Category	Supplemental			GPS Latitude/Longitude		
				Start		End
Item	DWR UCIP LMA Responsibility			38.517679 °		38.517679 °
				-121.753146 °		-121.753146 °
DWR ID	508					
Comment Code						
Inspector Comment						
FS_ID:33343 DS_ID:508 EP_NO: 10247 Repair Type: No Action Needed Crossing Status: Found UCIP Comments: FIELD_STRUCT_DESC: 24-inch drainage pipe of an unknown material through the levee, 11 feet below the crown. Flap gate on the waterside (WS) end. Concrete headwall on the landside (LS) end. Concrete Apron on the WS. (24-inch pipe [HLM 7.09] authorized under Automatic Board Order (ABO) issued as Permit No. 10247, 1974 - University of California, Office of the Regents). [Additional Reference(s): DWR Levee Log, 2005. USACE Sacramento O&M Manual 119, December 1952, (Station 172+00 PCT)]. FS Date: 4/10/2014 2:27:50 PM						

Photo 2 of 3 : UCIP\_SP\_2019\_33343\_60359.jpg



LS headwall

LM Start	<b>6.95</b>	Rating **	A/W	Issue No.	<b>71 (cont)</b>
LM End	<b>6.95</b>	Issue Type +	Ma	Location *	

Photo 3 of 3 : UCIP\_SP\_2019\_33343\_60358.jpg



LS headwall

<b>* Location</b> LS : Land Side    N/A : Not Applicable WS : Water Side CR : Crown		<b>** Rating</b> A : Acceptable M : Minimally Acceptable U : Unacceptable N : Not Inspected/Rated C : Corrected A/W : Acceptable but Monitor & Maintain		<b>+ Issue Type</b> Ma : Maintenance Deficiency Ob : Design & System Obsolescence En : Enforcement
--	--	---	--	---



**Flood Control Project Maintenance  
Levee Inspections**

**Maintenance Issue Types Only, Levee Inspection Report By Mile - Spring 2019**

**Sacramento Maintenance Yard Putah Creek**

Waterway	Bank	Unit Miles	Inspection Start/End	Inspector
Unit No. 01 Putah Creek or North Levee	Left	8.79	04/18/2019 04/18/2019	David Julian

LM Start	7.18	Rating **	A/W	Issue No.	72
LM End	7.18	Issue Type +	Ma	Location *	
Category	Supplemental			GPS Latitude/Longitude	
				Start	End
Item	DWR UCIP LMA Responsibility			38.518181 °	38.518181 °
				-121.757309 °	-121.757309 °
DWR ID	512				
Comment Code					
Inspector Comment					
FS_ID:42952 DS_ID:512 EP_NO: 10247 Repair Type: No Action Needed Crossing Status: Found UCIP Comments: Debris removed from outlet FIELD_STRUCT_DESC: 24-inch drainage pipe of an unknown material through the levee, 12 feet below the crown. Flap gate on the waterside (WS) end. Concrete headwall on the landside (LS) end. (24-inch [HLM 7.36] authorized under Automatic Board Order (ABO) issued as Permit No. 10247, 1974 - University of California, Office of the Regents). [Additional Reference(s): DWR Levee Log, 2005. USACE Sacramento O&M Manual 119, December 1952, (Station 183+97 PCT)]. FS Date: 4/10/2014 2:27:00 PM					

Photo 1 of 2 : UCIP\_SP\_2019\_42952\_60353.jpg



LS Headwall

LM Start	<b>7.18</b>	Rating **	A/W	Issue No.	<b>72 (cont)</b>
LM End	<b>7.18</b>	Issue Type +	Ma	Location *	

Photo 2 of 2 : UCIP\_SP\_2019\_42952\_60352.jpg



WS Flapgate

<b>* Location</b> LS : Land Side    N/A : Not Applicable WS : Water Side CR : Crown		<b>** Rating</b> A : Acceptable M : Minimally Acceptable U : Unacceptable N : Not Inspected/Rated C : Corrected A/W : Acceptable but Monitor & Maintain		<b>+ Issue Type</b> Ma : Maintenance Deficiency Ob : Design & System Obsolescence En : Enforcement
--	--	---	--	---



**Flood Control Project Maintenance  
Levee Inspections**

## Maintenance Issue Types Only, Levee Inspection Report By Mile - Spring 2019

### Sacramento Maintenance Yard Putah Creek

Waterway	Bank	Unit Miles	Inspection Start/End	Inspector
Unit No. 01 Putah Creek or North Levee	Left	8.79	04/18/2019 04/18/2019	David Julian

LM Start	7.56	Rating **	A/W	Issue No.	76
LM End	7.56	Issue Type +	Ma	Location *	
Category	Supplemental			GPS Latitude/Longitude	
				Start	End
Item	DWR UCIP LMA Responsibility			38.519002 °	38.519002 °
				-121.764315 °	-121.764315 °
DWR ID	518				
Comment Code					
Inspector Comment					
FS_ID:33333 DS_ID:518 EP_NO: 10247 Repair Type: No Action Needed Crossing Status: Found UCIP Comments: Fence blocking inlet. Owner of fence needs to move fence away from inlet. FIELD_STRUCT_DESC: 24-inch corrugated metal drainage pipe through the levee, 12 feet below the crown. Slide gate on the waterside (WS) slope, and headwalls on both sides. (24-inch pipe [HLM 7.75] authorized under Automatic Board Order (ABO) issued as Permit No. 10247, 1974 - University of California, Office of the Regents). [Additional Reference(s): DWR Levee Log, 2005. USACE Sacramento O&M Manual 119, December 1952, (Station 204+00 PCT)]. FS Date: 4/10/2014 2:24:52 PM					

Photo 1 of 2 : UCIP\_SP\_2019\_33333\_60342.jpg



WS headwall and slide gate

LM Start	<b>7.56</b>	Rating **	A/W	Issue No.	<b>76 (cont)</b>
LM End	<b>7.56</b>	Issue Type +	Ma	Location *	

Photo 2 of 2 : UCIP\_SP\_2019\_33333\_60341.jpg



LS headwall showing fence and soil buildup.

<b>* Location</b> LS : Land Side    N/A : Not Applicable WS : Water Side CR : Crown		<b>** Rating</b> A : Acceptable M : Minimally Acceptable U : Unacceptable N : Not Inspected/Rated C : Corrected A/W : Acceptable but Monitor & Maintain		<b>+ Issue Type</b> Ma : Maintenance Deficiency Ob : Design & System Obsolescence En : Enforcement
--	--	---	--	---



**Flood Control Project Maintenance  
Levee Inspections**

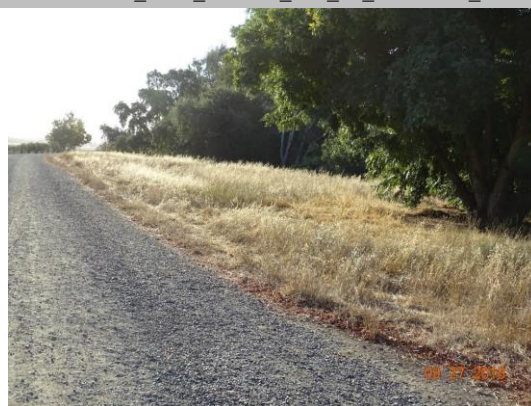
## Maintenance Issue Types Only, Levee Inspection Report By Mile - Spring 2019

### Sacramento Maintenance Yard Putah Creek

Waterway	Bank	Unit Miles	Inspection Start/End	Inspector
Unit No. 01 Putah Creek or North Levee	Left	8.79	04/18/2019 04/18/2019	David Julian

LM Start	8.06	Rating **	M	Issue No.	29
LM End	8.62	Issue Type +	Ma	Location *	WS
Category	Earthen Levee			GPS Latitude/Longitude	
				Start	End
Item	Vegetation			38.519480 °	38.523858 °
				-121.773085 °	-121.781917 °
DWR ID	DWR_ST0007_01_f_2018_29				
Comment Code					
V1 : Control annual grass and weeds on the levee slopes and easements.					
Inspector Comment					
Maintain the vegetation on waterside slope.					

Photo 1 of 1 : SP\_2019\_ST0007\_282\_29\_20190311\_00006.jpg



View looking downstream at thick vegetation up to the crown (September 2018).

LM Start	8.28	Rating **	A/W	Issue No.	78
LM End	8.28	Issue Type +	Ma	Location *	
Category	Supplemental			GPS Latitude/Longitude	
				Start	End
Item	DWR UCIP LMA Responsibility			38.521246 °	38.521246 °
				-121.776434 °	-121.776434 °
DWR ID	520				
Comment Code					
Inspector Comment					
FS_ID:33328					
DS_ID:520					
EP_NO: 10247					
Repair Type: No Action Needed					
Crossing Status: Found					
UCIP Comments: Cleaned inlet and outlets. Owner of pipe may need to clean pipe					
FIELD_STRUCT_DESC: 24-inch corrugated metal drainage pipe through the levee, 8 feet below the crown. Slide gate on the waterside (WS) end. (24-inch pipe [HLM 8.45] authorized under Automatic Board Order (ABO) issued as Permit No. 10247, 1974 - University of California, Office of the Regents). [Additional Reference(s): DWR Levee Log, 2005. USACE Sacramento O&M Manual 119, December 1952, (Station 241+50 PCT)].					
FS Date: 4/10/2014 2:23:46 PM					

Photo 1 of 3 : UCIP\_SP\_2019\_33328\_60329.jpg



Enter photo 3 description or comment here.

* Location LS : Land Side    N/A : Not Applicable WS : Water Side CR : Crown		** Rating A : Acceptable M : Minimally Acceptable U : Unacceptable N : Not Inspected/Rated C : Corrected A/W : Acceptable but Monitor & Maintain		+ Issue Type Ma : Maintenance Deficiency Ob : Design & System Obsolescence En : Enforcement
---	--	--	--	--



**Flood Control Project Maintenance  
Levee Inspections**

**Maintenance Issue Types Only, Levee Inspection Report By Mile - Spring 2019**

**Sacramento Maintenance Yard Putah Creek**

Waterway	Bank	Unit Miles	Inspection Start/End	Inspector
Unit No. 01 Putah Creek or North Levee	Left	8.79	04/18/2019 04/18/2019	David Julian

LM Start	8.28	Rating **	A/W	Issue No.	78 (cont)	
LM End	8.28	Issue Type +	Ma	Location *		
Category	Supplemental			GPS Latitude/Longitude		
				Start		End
Item	DWR UCIP LMA Responsibility			38.521246 °		38.521246 °
				-121.776434 °		-121.776434 °
DWR ID	520					
Comment Code						
Inspector Comment						
FS_ID:33328 DS_ID:520 EP_NO: 10247 Repair Type: No Action Needed Crossing Status: Found UCIP Comments: Cleaned inlet and outlets. Owner of pipe may need to clean pipe FIELD_STRUCT_DESC: 24-inch corrugated metal drainage pipe through the levee, 8 feet below the crown. Slide gate on the waterside (WS) end. (24-inch pipe [HLM 8.45] authorized under Automatic Board Order (ABO) issued as Permit No. 10247, 1974 - University of California, Office of the Regents). [Additional Reference(s): DWR Levee Log, 2005. USACE Sacramento O&M Manual 119, December 1952, (Station 241+50 PCT)]. FS Date: 4/10/2014 2:23:46 PM						

LM Start	<b>8.28</b>	Rating **	A/W	Issue No.	<b>78 (cont)</b>
LM End	<b>8.28</b>	Issue Type +	Ma	Location *	

Photo 2 of 3 : UCIP\_SP\_2019\_33328\_60327.jpg



LS headwall showing pipe plugged with soil

Photo 3 of 3 : UCIP\_SP\_2019\_33328\_60328.jpg



WS slide gate showing some blockage with soil.

<b>* Location</b> LS : Land Side    N/A : Not Applicable WS : Water Side CR : Crown		<b>** Rating</b> A : Acceptable M : Minimally Acceptable U : Unacceptable N : Not Inspected/Rated C : Corrected A/W : Acceptable but Monitor & Maintain		<b>+ Issue Type</b> Ma : Maintenance Deficiency Ob : Design & System Obsolescence En : Enforcement
--	--	---	--	---

**Flood Control Project Maintenance  
Levee Inspections**

## Maintenance Issue Types Only, Levee Inspection Report By Mile - Spring 2019

### Sacramento Maintenance Yard Putah Creek

Waterway	Bank	Unit Miles	Inspection Start/End	Inspector
Unit No. 01 Putah Creek or North Levee	Left	8.79	04/18/2019 04/18/2019	David Julian

LM Start	8.33	Rating **	A/W	Issue No.	79
LM End	8.33	Issue Type +	Ma	Location *	
Category	Supplemental			GPS Latitude/Longitude	
				Start	End
Item	DWR UCIP LMA Responsibility			38.521660 °	38.521660 °
				-121.777203 °	-121.777203 °
DWR ID	521				
Comment Code					
Inspector Comment					
FS_ID:33327					
DS_ID:521					
EP_NO: 10247					
Repair Type: No Action Needed					
Crossing Status: Found					
UCIP Comments: Removed material at slidegate and inlet.					
FIELD_STRUCT_DESC: 24-inch corrugated metal drainage pipe through the levee, 7 feet below the crown. Slide gate on the waterside (WS) end. Headwalls on both ends. (24-inch pipe [HLM 8.50] authorized under Automatic Board Order (ABO) issued as Permit No. 10247, 1974 - University of California, Office of the Regents. Also mentioned in Permit No. 5896, 1967 - The Regents of the University of California, Office of Architects and Engineers, University of California, Davis Campus). [Additional Reference(s): DWR Levee Log, 2005. USACE Sacramento O&M Manual 119, December 1952, (Station 244+20 PCT)].					
FS Date: 4/10/2014 2:23:16 PM					

Photo 1 of 2 : UCIP\_SP\_2019\_33327\_60326.jpg



WS headwall and slidegate

LM Start	<b>8.33</b>	Rating **	A/W	Issue No.	<b>79 (cont)</b>
LM End	<b>8.33</b>	Issue Type +	Ma	Location *	

Photo 2 of 2 : UCIP\_SP\_2019\_33327\_60325.jpg



LS headwall showing partial blockage

<b>* Location</b> LS : Land Side    N/A : Not Applicable WS : Water Side CR : Crown		<b>** Rating</b> A : Acceptable M : Minimally Acceptable U : Unacceptable N : Not Inspected/Rated C : Corrected A/W : Acceptable but Monitor & Maintain		<b>+ Issue Type</b> Ma : Maintenance Deficiency Ob : Design & System Obsolescence En : Enforcement
--	--	---	--	---

**Flood Control Project Maintenance  
Levee Inspections**

**Maintenance Issue Types Only, Levee Inspection Report By Mile - Spring 2019**

**Sacramento Maintenance Yard Putah Creek**

Waterway	Bank	Unit Miles	Inspection Start/End	Inspector
Unit No. 01 Putah Creek or North Levee	Left	8.79	04/18/2019 04/18/2019	David Julian

LM Start	8.69	Rating **	M	Issue No.	80
LM End	8.69	Issue Type +	Ma	Location *	
Category	Supplemental			GPS Latitude/Longitude	
				Start	End
Item	DWR UCIP LMA Responsibility			38.523999 °	38.523999 °
				-121.783037 °	-121.783037 °
DWR ID	523				
Comment Code					
Inspector Comment					
FS_ID:41129 DS_ID:523 EP_NO: 10247 Repair Type: Non-Urgent Crossing Status: Found UCIP Comments: *ABANDONED* FIELD_STRUCT_DESC: *ABANDONED* 48-inch drainage pipe of an unknown material through the levee, 15 feet below the crown. Steel plate installed over inlet off the landside (LS) toe. Pipe not grouted. Flap gate on waterside (WS) end. Headwalls on both ends. (48-inch pipe [HLM 8.88] authorized under Automatic Board Order (ABO) issued as Permit No. 10247, 1974 - University of California, Office of the Regents). [Additional Reference(s): DWR Levee Log, 2005. USACE Sacramento O&M Manual 119, December 1952, (Station 262+30 PCT)]. FS Date: 4/10/2014 2:21:00 PM					

LM Start	<b>8.69</b>	Rating **	M	Issue No.	<b>80 (cont)</b>
LM End	<b>8.69</b>	Issue Type +	Ma	Location *	

Photo 1 of 3 : UCIP\_SP\_2019\_41129\_60301.jpg



Steel plate installed over pipe off LS toe.

Photo 2 of 3 : UCIP\_SP\_2019\_41129\_60299.jpg



LS headwall and pipe before steel plate was installed over pipe to abandon it.

<b>* Location</b> LS : Land Side    N/A : Not Applicable WS : Water Side CR : Crown		<b>** Rating</b> A : Acceptable M : Minimally Acceptable U : Unacceptable		N : Not Inspected/Rated C : Corrected A/W : Acceptable but Monitor & Maintain		<b>+ Issue Type</b> Ma : Maintenance Deficiency Ob : Design & System Obsolescence En : Enforcement	
--	--	--	--	---	--	---	--



**Flood Control Project Maintenance  
Levee Inspections**

**Maintenance Issue Types Only, Levee Inspection Report By Mile - Spring 2019**

**Sacramento Maintenance Yard Putah Creek**

Waterway	Bank	Unit Miles	Inspection Start/End	Inspector
Unit No. 01 Putah Creek or North Levee	Left	8.79	04/18/2019 04/18/2019	David Julian

LM Start	8.69	Rating **	M	Issue No.	80 (cont)	
LM End	8.69	Issue Type +	Ma	Location *		
Category	Supplemental			GPS Latitude/Longitude		
				Start		End
Item	DWR UCIP LMA Responsibility			38.523999 °		38.523999 °
				-121.783037 °		-121.783037 °
DWR ID	523					
Comment Code						
Inspector Comment						
FS_ID:41129 DS_ID:523 EP_NO: 10247 Repair Type: Non-Urgent Crossing Status: Found UCIP Comments: *ABANDONED* FIELD_STRUCT_DESC: *ABANDONED* 48-inch drainage pipe of an unknown material through the levee, 15 feet below the crown. Steel plate installed over inlet off the landside (LS) toe. Pipe not grouted. Flap gate on waterside (WS) end. Headwalls on both ends. (48-inch pipe [HLM 8.88] authorized under Automatic Board Order (ABO) issued as Permit No. 10247, 1974 - University of California, Office of the Regents). [Additional Reference(s): DWR Levee Log, 2005. USACE Sacramento O&M Manual 119, December 1952, (Station 262+30 PCT)]. FS Date: 4/10/2014 2:21:00 PM						

Photo 3 of 3 : UCIP\_SP\_2019\_41129\_60300.jpg



WS flap gate

<b>* Location</b> LS : Land Side    N/A : Not Applicable WS : Water Side CR : Crown		<b>** Rating</b> A : Acceptable M : Minimally Acceptable U : Unacceptable N : Not Inspected/Rated C : Corrected A/W : Acceptable but Monitor & Maintain		<b>+ Issue Type</b> Ma : Maintenance Deficiency Ob : Design & System Obsolescence En : Enforcement
--	--	---	--	---



**Flood Control Project Maintenance  
Levee Inspections**

**Maintenance Issue Types Only, Levee Inspection Report By Mile - Spring 2019**

**Sacramento Maintenance Yard Putah Creek**

Waterway	Bank	Unit Miles	Inspection Start/End	Inspector
Unit No. 02 Putah Creek or South Levee	Right	7.20	04/18/2019 04/18/2019	David Julian

LM Start	0.03	Rating **	M	Issue No.	36
LM End	2.10	Issue Type +	Ma	Location *	WS
Category	Earthen Levee			GPS Latitude/Longitude	
				Start	End
Item	Vegetation			38.505162 °	38.515423 °
				-121.663128 °	-121.695063 °
DWR ID	DWR_ST0007_02_s_2019_36				
Comment Code					
V1 : Control annual grass and weeds on the levee slopes and easements.					
Inspector Comment					
Maintain the annual vegetation.					

Photo 1 of 1 : SP\_2019\_ST0007\_283\_36\_20190418\_00062.jpg



View looking upstream at annual vegetation on the waterside slope (Spring 2019).

LM Start	0.03	Rating **	M	Issue No.	28	
LM End	6.67	Issue Type +	Ma	Location *	LS	
Category	Earthen Levee			GPS Latitude/Longitude		
				Start	End	
Item	Vegetation			38.505162 °	38.519665 °	
				-121.663128 °	-121.776527 °	
DWR ID	DWR_ST0007_02_s_2019_28					
Comment Code						
V1 : Control annual grass and weeds on the levee slopes and easements.						
Inspector Comment						
Maintain the annual vegetation.						

Photo 1 of 1 : SP\_2019\_ST0007\_283\_28\_20190418\_00061.jpg



View looking upstream at annual vegetation on the landside slope (Spring 2019).

\* Location  
LS : Land Side    N/A : Not Applicable  
WS : Water Side  
CR : Crown

\*\* Rating  
A : Acceptable  
M : Minimally Acceptable  
U : Unacceptable  
N : Not Inspected/Rated  
C : Corrected  
A/W : Acceptable but Monitor & Maintain

+ Issue Type  
Ma : Maintenance Deficiency  
Ob : Design & System Obsolescence  
En : Enforcement

**Flood Control Project Maintenance  
Levee Inspections**

**Maintenance Issue Types Only, Levee Inspection Report By Mile - Spring 2019**

**Sacramento Maintenance Yard Putah Creek**

Waterway	Bank	Unit Miles	Inspection Start/End	Inspector
Unit No. 02 Putah Creek or South Levee	Right	7.20	04/18/2019 04/18/2019	David Julian

LM Start	0.82	Rating **	A/W	Issue No.	49
LM End	0.82	Issue Type +	Ma	Location *	
Category	Supplemental			GPS Latitude/Longitude	
				Start	End
Item	DWR UCIP LMA Responsibility			38.510700 °	38.510700 °
				-121.672410 °	-121.672410 °
DWR ID	16621				
Comment Code					
Inspector Comment					
FS_ID:33407 DS_ID:16621 EP_NO: 10270 Repair Type: No Action Needed Crossing Status: Found UCIP Comments: FIELD_STRUCT_DESC: 36-inch corrugated metal drainage pipe through the levee, 14 feet below the crown. Flap gate on the waterside (WS) end. Concrete headwall on the landside (LS) end. (36-inch pipe [HLM 0.85] authorized under Automatic Board Order (ABO) issued as Permit No. 10270, 1974 - Hamel). [Additional Reference(s): DWR Levee Log, 2005. USACE Sacramento O&M Manual 119, December 1952, (Station T 1+45)]. FS Date: 4/10/2014 2:49:39 PM					

Photo 1 of 3 : UCIP\_SP\_2019\_33407\_60489.jpg



L/S inlet

LM Start	<b>0.82</b>	Rating **	A/W	Issue No.	<b>49 (cont)</b>
LM End	<b>0.82</b>	Issue Type +	Ma	Location *	

Photo 2 of 3 : UCIP\_SP\_2019\_33407\_60492.jpg



L/S headwall

<b>* Location</b> LS : Land Side    N/A : Not Applicable WS : Water Side CR : Crown	<b>** Rating</b> A : Acceptable M : Minimally Acceptable U : Unacceptable	N : Not Inspected/Rated C : Corrected A/W : Acceptable but Monitor & Maintain	<b>+ Issue Type</b> Ma : Maintenance Deficiency Ob : Design & System Obsolescence En : Enforcement
--	--	---	---

**Flood Control Project Maintenance  
Levee Inspections**

## Maintenance Issue Types Only, Levee Inspection Report By Mile - Spring 2019

### Sacramento Maintenance Yard Putah Creek

Waterway	Bank	Unit Miles	Inspection Start/End	Inspector
Unit No. 02 Putah Creek or South Levee	Right	7.20	04/18/2019 04/18/2019	David Julian

LM Start	0.82	Rating **	A/W	Issue No.	49 (cont)
LM End	0.82	Issue Type +	Ma	Location *	
Category	Supplemental			GPS Latitude/Longitude	
				Start	End
Item	DWR UCIP LMA Responsibility			38.510700 °	38.510700 °
				-121.672410 °	-121.672410 °
DWR ID	16621				
Comment Code					
Inspector Comment					
FS_ID:33407 DS_ID:16621 EP_NO: 10270 Repair Type: No Action Needed Crossing Status: Found UCIP Comments: FIELD_STRUCT_DESC: 36-inch corrugated metal drainage pipe through the levee, 14 feet below the crown. Flap gate on the waterside (WS) end. Concrete headwall on the landside (LS) end. (36-inch pipe [HLM 0.85] authorized under Automatic Board Order (ABO) issued as Permit No. 10270, 1974 - Hamel). [Additional Reference(s): DWR Levee Log, 2005. USACE Sacramento O&M Manual 119, December 1952, (Station T 1+45)]. FS Date: 4/10/2014 2:49:39 PM					

Photo 3 of 3 : UCIP\_SP\_2019\_33407\_60491.jpg



W/S Channel

LM Start	1.15	Rating **	U	Issue No.	32
LM End	1.15	Issue Type +	Ma	Location *	LS
Category	Earthen Levee			GPS Latitude/Longitude	
				Start	End
Item	Animal Control			38.512052 °	38.512052 °
				-121.678188 °	-121.678188 °
DWR ID	DWR_ST0007_02_f_2018_32				
Comment Code					
A1 : Exterminate rodents and backfill and compact or grout burrows.					
Inspector Comment					
There are multiple burrow holes with lots of fresh dirt outside several of the holes.					

Photo 1 of 3 : SP\_2019\_ST0007\_283\_32\_20190311\_00010.jpg



View looking downstream at multiple animal holes on the levee slope (September 2018).

<b>* Location</b> LS : Land Side    N/A : Not Applicable WS : Water Side CR : Crown		<b>** Rating</b> A : Acceptable M : Minimally Acceptable U : Unacceptable		N : Not Inspected/Rated C : Corrected A/W : Acceptable but Monitor & Maintain	<b>+ Issue Type</b> Ma : Maintenance Deficiency Ob : Design & System Obsolescence En : Enforcement
--	--	--	--	---	---



**Flood Control Project Maintenance  
Levee Inspections**

**Maintenance Issue Types Only, Levee Inspection Report By Mile - Spring 2019**

**Sacramento Maintenance Yard Putah Creek**

Waterway	Bank	Unit Miles	Inspection Start/End	Inspector
Unit No. 02 Putah Creek or South Levee	Right	7.20	04/18/2019 04/18/2019	David Julian

LM Start	1.15	Rating **	U	Issue No.	32 (cont)	
LM End	1.15	Issue Type +	Ma	Location *	LS	
Category	Earthen Levee			GPS Latitude/Longitude		
				Start		End
Item	Animal Control			38.512052 °		38.512052 °
				-121.678188 °		-121.678188 °
DWR ID	DWR_ST0007_02_f_2018_32					
Comment Code						
A1 : Exterminate rodents and backfill and compact or grout burrows.						
Inspector Comment						
There are multiple burrow holes with lots of fresh dirt outside several of the holes.						

Photo 2 of 3 : SP\_2019\_ST0007\_283\_32\_20190311\_00011.jpg



View looking down slope at one of the animal holes on the levee slope with fresh dirt in front of the hole (September 2018).

LM Start	<b>1.15</b>	Rating **	U	Issue No.	<b>32 (cont)</b>
LM End	<b>1.15</b>	Issue Type +	Ma	Location *	LS

Photo 3 of 3 : SP\_2019\_ST0007\_283\_32\_20190311\_00012.jpg



View of multiple animal holes on the levee slope with fresh dirt in front of the holes (September 2018).

LM Start	2.00	Rating **	M	Issue No.	9
LM End	2.09	Issue Type +	Ma	Location *	LS
Category	Earthen Levee			GPS Latitude/Longitude	
				Start	End
Item	Animal Control			38.515356 °	38.515456 °
				-121.693168 °	-121.694817 °
DWR ID	DWR_ST0007_02_s_2013_9				
Comment Code					
A1 : Exterminate rodents and backfill and compact or grout burrows.					
Inspector Comment					
There are no indications of recent rodent activity. Bait stations have been removed. Area should be monitored.					

Photo 1 of 1 : SP\_2019\_ST0007\_283\_9\_20190311\_00002.jpg



Rodent bait station at LM 2.09.

* Location		** Rating		+ Issue Type	
LS : Land Side	N/A : Not Applicable	A : Acceptable	N : Not Inspected/Rated	Ma : Maintenance Deficiency	
WS : Water Side		M : Minimally Acceptable	C : Corrected	Ob : Design & System Obsolescence	
CR : Crown		U : Unacceptable	A/W : Acceptable but Monitor & Maintain	En : Enforcement	

**Flood Control Project Maintenance  
Levee Inspections**

**Maintenance Issue Types Only, Levee Inspection Report By Mile - Spring 2019**

**Sacramento Maintenance Yard Putah Creek**

Waterway	Bank	Unit Miles	Inspection Start/End	Inspector
Unit No. 02 Putah Creek or South Levee	Right	7.20	04/18/2019 04/18/2019	David Julian

LM Start	2.65	Rating **	A/W	Issue No.	52
LM End	2.65	Issue Type +	Ma	Location *	
Category	Supplemental			GPS Latitude/Longitude	
				Start	End
Item	DWR UCIP LMA Responsibility			38.514865 °	38.514865 °
				-121.703839 °	-121.703839 °
DWR ID	16625				
Comment Code					
Inspector Comment					
FS_ID:33395 DS_ID:16625 EP_NO: 10277 Repair Type: No Action Needed Crossing Status: Found UCIP Comments: FIELD_STRUCT_DESC: 24-inch corrugated metal drainage pipe through the levee, 9 feet below the crown. Slide gate on the waterside (WS) slope. Concrete headwalls on both ends. (24-inch pipe [HLM 2.71] authorized under Automatic Board Order (ABO) issued as Permit No. 10277, 1974 - Naomi Schoeningh). [Additional Reference(s): DWR Levee Log, 2005. USACE Sacramento O&M Manual 119, December 1952, (Station 30+15 PCT)]. FS Date: 4/10/2014 2:43:57 PM					

Photo 1 of 2 : UCIP\_SP\_2019\_33395\_60460.jpg



LS headwall

LM Start	<b>2.65</b>	Rating **	A/W	Issue No.	<b>52 (cont)</b>
LM End	<b>2.65</b>	Issue Type +	Ma	Location *	

Photo 2 of 2 : UCIP\_SP\_2019\_33395\_60459.jpg



WS headwall and slidegate

<b>* Location</b> LS : Land Side    N/A : Not Applicable WS : Water Side CR : Crown		<b>** Rating</b> A : Acceptable                      N : Not Inspected/Rated M : Minimally Acceptable        C : Corrected U : Unacceptable                  A/W : Acceptable but Monitor & Maintain		<b>+ Issue Type</b> Ma : Maintenance Deficiency Ob : Design & System Obsolescence En : Enforcement
--	--	---	--	---

**Flood Control Project Maintenance  
Levee Inspections**

**Maintenance Issue Types Only, Levee Inspection Report By Mile - Spring 2019**

**Sacramento Maintenance Yard Putah Creek**

Waterway	Bank	Unit Miles	Inspection Start/End	Inspector
Unit No. 02 Putah Creek or South Levee	Right	7.20	04/18/2019 04/18/2019	David Julian

LM Start	3.04	Rating **	A/W	Issue No.	53
LM End	3.04	Issue Type +	Ma	Location *	
Category	Supplemental			GPS Latitude/Longitude	
				Start	End
Item	DWR UCIP LMA Responsibility			38.515080 °	38.515080 °
				-121.711050 °	-121.711050 °
DWR ID	16626				
Comment Code					
Inspector Comment					
FS_ID:33393 DS_ID:16626 EP_NO: 10277 Repair Type: No Action Needed Crossing Status: Found UCIP Comments: FIELD_STRUCT_DESC: 24-inch corrugated metal drainage pipe through the levee, 9 feet below the crown. Slide gate on the waterside (WS) slope, and headwalls on both sides. (24-inch pipe [HLM 3.11] authorized under Automatic Board Order (ABO) issued as Permit No. 10277, 1974 - Naomi Schoeningh). [Additional Reference(s): DWR Levee Log, 2005. USACE Sacramento O&M Manual 119, December 1952, (Station 50+72 PCT)]. FS Date: 4/10/2014 2:43:31 PM					

Photo 1 of 2 : UCIP\_SP\_2019\_33393\_60456.jpg



WS headwall and slide gate

LM Start	<b>3.04</b>	Rating **	A/W	Issue No.	<b>53 (cont)</b>
LM End	<b>3.04</b>	Issue Type +	Ma	Location *	

Photo 2 of 2 : UCIP\_SP\_2019\_33393\_60455.jpg



LS headwall and pipe

<b>* Location</b> LS : Land Side    N/A : Not Applicable WS : Water Side CR : Crown		<b>** Rating</b> A : Acceptable M : Minimally Acceptable U : Unacceptable		N : Not Inspected/Rated C : Corrected A/W : Acceptable but Monitor & Maintain		<b>+ Issue Type</b> Ma : Maintenance Deficiency Ob : Design & System Obsolescence En : Enforcement	
--	--	--	--	---	--	---	--



**Flood Control Project Maintenance  
Levee Inspections**

**Maintenance Issue Types Only, Levee Inspection Report By Mile - Spring 2019**

**Sacramento Maintenance Yard Putah Creek**

Waterway	Bank	Unit Miles	Inspection Start/End	Inspector
Unit No. 02 Putah Creek or South Levee	Right	7.20	04/18/2019 04/18/2019	David Julian

LM Start	4.17	Rating **	A/W	Issue No.	55
LM End	4.17	Issue Type +	Ma	Location *	
Category	Supplemental			GPS Latitude/Longitude	
				Start	End
Item	DWR UCIP LMA Responsibility			38.515770 °	38.515770 °
				-121.731840 °	-121.731840 °
DWR ID	16629				
Comment Code					
Inspector Comment					
FS_ID:33378 DS_ID:16629 EP_NO: 10269 Repair Type: No Action Needed Crossing Status: Found UCIP Comments: FIELD_STRUCT_DESC: 24-inch corrugated metal drainage pipe through the levee, 12.5 feet below the crown. Slide gate on the waterside (WS) end. Concrete headwalls on both ends. (24-inch pipe [HLM 4.26] authorized under Automatic Board Order (ABO) issued as Permit No. 10269, 1974 - Joseph Fahn). [Additional Reference(s): DWR Levee Log, 2005. USACE Sacramento O&M Manual 119, December 1952, (Station 109+75 PCT)]. FS Date: 4/10/2014 2:39:31 PM					

Photo 1 of 2 : UCIP\_SP\_2019\_33378\_60435.jpg



LS headwall

LM Start	<b>4.17</b>	Rating **	A/W	Issue No.	<b>55 (cont)</b>
LM End	<b>4.17</b>	Issue Type +	Ma	Location *	

Photo 2 of 2 : UCIP\_SP\_2019\_33378\_60434.jpg



WS slide gate and headwall

<b>* Location</b> LS : Land Side    N/A : Not Applicable WS : Water Side CR : Crown		<b>** Rating</b> A : Acceptable M : Minimally Acceptable U : Unacceptable N : Not Inspected/Rated C : Corrected A/W : Acceptable but Monitor & Maintain		<b>+ Issue Type</b> Ma : Maintenance Deficiency Ob : Design & System Obsolescence En : Enforcement
--	--	---	--	---

**Flood Control Project Maintenance  
Levee Inspections**

## Maintenance Issue Types Only, Levee Inspection Report By Mile - Spring 2019

### Sacramento Maintenance Yard Putah Creek

Waterway	Bank	Unit Miles	Inspection Start/End	Inspector
Unit No. 02 Putah Creek or South Levee	Right	7.20	04/18/2019 04/18/2019	David Julian

LM Start	4.66	Rating **	M	Issue No.	33
LM End	4.66	Issue Type +	Ma	Location *	WS
Category	Earthen Levee			GPS Latitude/Longitude	
				Start	End
Item	Erosion / Bank Caving			38.515817 °	38.515817 °
				-121.740942 °	-121.740942 °
DWR ID	DWR_ST0007_02_f_2018_33				
Comment Code					
E2 : Schedule repair of erosion site prior to the next inspection.					
Inspector Comment					
Erosion of the levee slope about 1 foot into the levee should be repaired.					

Photo 1 of 1 : SP\_2019\_ST0007\_283\_33\_20190311\_00013.jpg



View of erosion on the levee slope appears to be due to water from the pipe and trench (September 2018).

LM Start	4.66	Rating **	A/W	Issue No.	57
LM End	4.66	Issue Type +	Ma	Location *	
Category	Supplemental			GPS Latitude/Longitude	
				Start	End
Item	DWR UCIP LMA Responsibility			38.515814 °	38.515814 °
				-121.741030 °	-121.741030 °
DWR ID	16644				
Comment Code					
Inspector Comment					
FS_ID:33375 DS_ID:16644 EP_NO: 10271 Repair Type: No Action Needed Crossing Status: Found UCIP Comments: FIELD_STRUCT_DESC: 24-inch corrugated metal drainage pipe through the levee, 9.5 feet below the crown. Flap gate on the waterside (WS). 36-inch standpipe on the landside (LS). (24-inch pipe [HLM 4.77] authorized under Automatic Board Order (ABO) issued as Permit No. 10271, 1974 - Ray H. Hamel). [Additional Reference(s): DWR Levee Log, 2005. USACE Sacramento O&M Manual 119, December 1952, (Station 136+40 PCT)]. FS Date: 4/10/2014 2:38:34 PM					

Photo 1 of 3 : UCIP\_SP\_2019\_33375\_60427.jpg



LS 36-inch standpipe

* Location LS : Land Side    N/A : Not Applicable WS : Water Side CR : Crown		** Rating A : Acceptable M : Minimally Acceptable U : Unacceptable N : Not Inspected/Rated C : Corrected A/W : Acceptable but Monitor & Maintain		+ Issue Type Ma : Maintenance Deficiency Ob : Design & System Obsolescence En : Enforcement
---	--	--	--	--

**Flood Control Project Maintenance  
Levee Inspections**

**Maintenance Issue Types Only, Levee Inspection Report By Mile - Spring 2019**

**Sacramento Maintenance Yard Putah Creek**

Waterway	Bank	Unit Miles	Inspection Start/End	Inspector
Unit No. 02 Putah Creek or South Levee	Right	7.20	04/18/2019 04/18/2019	David Julian

LM Start	4.66	Rating **	A/W	Issue No.	57 (cont)
LM End	4.66	Issue Type +	Ma	Location *	
Category	Supplemental			GPS Latitude/Longitude	
				Start	End
Item	DWR UCIP LMA Responsibility		38.515814 °	38.515814 °	
			-121.741030 °	-121.741030 °	
DWR ID	16644				
Comment Code					
Inspector Comment					
FS_ID:33375 DS_ID:16644 EP_NO: 10271 Repair Type: No Action Needed Crossing Status: Found UCIP Comments: FIELD_STRUCT_DESC: 24-inch corrugated metal drainage pipe through the levee, 9.5 feet below the crown. Flap gate on the waterside (WS). 36-inch standpipe on the landside (LS). (24-inch pipe [HLM 4.77] authorized under Automatic Board Order (ABO) issued as Permit No. 10271, 1974 - Ray H. Hamel). [Additional Reference(s): DWR Levee Log, 2005. USACE Sacramento O&M Manual 119, December 1952, (Station 136+40 PCT)]. FS Date: 4/10/2014 2:38:34 PM					

Photo 2 of 3 : UCIP\_SP\_2019\_33375\_60429.jpg



WS headwall and flapgate.

LM Start	<b>4.66</b>	Rating **	A/W	Issue No.	<b>57 (cont)</b>
LM End	<b>4.66</b>	Issue Type +	Ma	Location *	

Photo 3 of 3 : UCIP\_SP\_2019\_33375\_60428.jpg



LS looking down standpipe at CC pipe

<b>* Location</b> LS : Land Side    N/A : Not Applicable WS : Water Side CR : Crown		<b>** Rating</b> A : Acceptable M : Minimally Acceptable U : Unacceptable N : Not Inspected/Rated C : Corrected A/W : Acceptable but Monitor & Maintain		<b>+ Issue Type</b> Ma : Maintenance Deficiency Ob : Design & System Obsolescence En : Enforcement
--	--	---	--	---



**Flood Control Project Maintenance  
Levee Inspections**

**Maintenance Issue Types Only, Levee Inspection Report By Mile - Spring 2019**

**Sacramento Maintenance Yard Putah Creek**

Waterway	Bank	Unit Miles	Inspection Start/End	Inspector
Unit No. 02 Putah Creek or South Levee	Right	7.20	04/18/2019 04/18/2019	David Julian

LM Start	4.67	Rating **	M	Issue No.	26
LM End	7.08	Issue Type +	Ma	Location *	WS
Category	Earthen Levee			GPS Latitude/Longitude	
				Start	End
Item	Vegetation			38.515800 °	38.522679 °
				-121.741098 °	-121.782932 °
DWR ID	DWR_ST0007_02_s_2019_26				
Comment Code					
V1 : Control annual grass and weeds on the levee slopes and easements.					
Inspector Comment					
Maintain the annual vegetation.					

Photo 1 of 1 : SP\_2019\_ST0007\_283\_26\_20190418\_00059.jpg



View looking downstream at annual vegetation on the waterside slope (Spring 2019).

LM Start	5.30	Rating **	C	Issue No.	13
LM End	5.48	Issue Type +	Ma	Location *	LS
Category	Earthen Levee			GPS Latitude/Longitude	
				Start	End
Item	Animal Control			38.515377 °	38.515418 °
				-121.752795 °	-121.756028 °
DWR ID	DWR_ST0007_02_f_2012_13				
Comment Code					
A1 : Exterminate rodents and backfill and compact or grout burrows.					
Inspector Comment					
No indications of rodent activity or bait stations were observed.					

No Photos

<b>* Location</b> LS : Land Side    N/A : Not Applicable WS : Water Side CR : Crown		<b>** Rating</b> A : Acceptable                      N : Not Inspected/Rated M : Minimally Acceptable        C : Corrected U : Unacceptable                  A/W : Acceptable but Monitor & Maintain		<b>+ Issue Type</b> Ma : Maintenance Deficiency Ob : Design & System Obsolescence En : Enforcement
--	--	---	--	---

**Flood Control Project Maintenance  
Levee Inspections**

**Maintenance Issue Types Only, Levee Inspection Report By Mile - Spring 2019**

**Sacramento Maintenance Yard Putah Creek**

Waterway	Bank	Unit Miles	Inspection Start/End	Inspector
Unit No. 02 Putah Creek or South Levee	Right	7.20	04/18/2019 04/18/2019	David Julian

LM Start	5.44	Rating **	A/W	Issue No.	59	
LM End	5.44	Issue Type +	Ma	Location *		
Category	Supplemental			GPS Latitude/Longitude		
				Start		End
Item	DWR UCIP LMA Responsibility			38.515369 °		38.515369 °
				-121.755247 °		-121.755247 °
DWR ID	16620					
Comment Code						
Inspector Comment						
FS_ID:33369 DS_ID:16620 EP_NO: 10267 Repair Type: No Action Needed Crossing Status: Found UCIP Comments: Gate has been oiled and debris removed from outlet on land side FIELD_STRUCT_DESC: 24-inch corrugated metal drainage pipe through the levee, 13 feet below the crown. Slide gate on the waterside (WS) slope. Concrete headwalls on both ends. (24-inch pipe [HLM 5.56] authorized under Automatic Board Order (ABO) issued as Permit No. 10267, 1974 - Davis Laboratories, Inc.). [Additional Reference(s): DWR Levee Log, 2005. USACE Sacramento O&M Manual 119, December 1952, (Station 177+80 PCT)]. FS Date: 4/10/2014 2:35:57 PM						

Photo 1 of 3 : UCIP\_SP\_2019\_33369\_60411.jpg



W/S

LM Start	<b>5.44</b>	Rating **	A/W	Issue No.	<b>59 (cont)</b>
LM End	<b>5.44</b>	Issue Type +	Ma	Location *	

Photo 2 of 3 : UCIP\_SP\_2019\_33369\_60413.jpg



L/S Clogged

<b>* Location</b> LS : Land Side    N/A : Not Applicable WS : Water Side CR : Crown		<b>** Rating</b> A : Acceptable                      N : Not Inspected/Rated M : Minimally Acceptable        C : Corrected U : Unacceptable                  A/W : Acceptable but Monitor & Maintain		<b>+ Issue Type</b> Ma : Maintenance Deficiency Ob : Design & System Obsolescence En : Enforcement
--	--	---	--	---

**Flood Control Project Maintenance  
Levee Inspections**

**Maintenance Issue Types Only, Levee Inspection Report By Mile - Spring 2019**

**Sacramento Maintenance Yard Putah Creek**

Waterway	Bank	Unit Miles	Inspection Start/End	Inspector
Unit No. 02 Putah Creek or South Levee	Right	7.20	04/18/2019 04/18/2019	David Julian

LM Start	5.44	Rating **	A/W	Issue No.	59 (cont)	
LM End	5.44	Issue Type +	Ma	Location *		
Category	Supplemental			GPS Latitude/Longitude		
				Start		End
Item	DWR UCIP LMA Responsibility			38.515369 °		38.515369 °
				-121.755247 °		-121.755247 °
DWR ID	16620					
Comment Code						
Inspector Comment						
FS_ID:33369 DS_ID:16620 EP_NO: 10267 Repair Type: No Action Needed Crossing Status: Found UCIP Comments: Gate has been oiled and debris removed from outlet on land side FIELD_STRUCT_DESC: 24-inch corrugated metal drainage pipe through the levee, 13 feet below the crown. Slide gate on the waterside (WS) slope. Concrete headwalls on both ends. (24-inch pipe [HLM 5.56] authorized under Automatic Board Order (ABO) issued as Permit No. 10267, 1974 - Davis Laboratories, Inc.). [Additional Reference(s): DWR Levee Log, 2005. USACE Sacramento O&M Manual 119, December 1952, (Station 177+80 PCT)]. FS Date: 4/10/2014 2:35:57 PM						

Photo 3 of 3 : UCIP\_SP\_2019\_33369\_60412.jpg



W/S positive closure device

<b>* Location</b> LS : Land Side    N/A : Not Applicable WS : Water Side CR : Crown		<b>** Rating</b> A : Acceptable M : Minimally Acceptable U : Unacceptable N : Not Inspected/Rated C : Corrected A/W : Acceptable but Monitor & Maintain		<b>+ Issue Type</b> Ma : Maintenance Deficiency Ob : Design & System Obsolescence En : Enforcement
--	--	---	--	---



**Flood Control Project Maintenance  
Levee Inspections**

## Maintenance Issue Types Only, Levee Inspection Report By Mile - Spring 2019

### Sacramento Maintenance Yard Putah Creek

Waterway	Bank	Unit Miles	Inspection Start/End	Inspector
Unit No. 02 Putah Creek or South Levee	Right	7.20	04/18/2019 04/18/2019	David Julian

LM Start	5.74	Rating **	A/W	Issue No.	60	
LM End	5.74	Issue Type +	Ma	Location *		
Category	Supplemental			GPS Latitude/Longitude		
				Start		End
Item	DWR UCIP LMA Responsibility			38.516000 °		38.516000 °
				-121.760500 °		-121.760500 °
DWR ID	16636					
Comment Code						
Inspector Comment						
FS_ID:33363						
DS_ID:16636						
EP_NO: 10279						
Repair Type: No Action Needed						
Crossing Status: Found						
UCIP Comments: Pipe was cleaned by the owner and 6 in pipe is still being used						
FIELD_STRUCT_DESC: 24-inch corrugated metal drainage pipe through the levee, 14 feet below the crown. Slide gate on the waterside (WS) end. Concrete headwall on landside (LS) end. (name change for existing 24-inch drainpipe and slide gate on WS [HLM 5.89] issued under Permit No. 10279-1, 2012 - Elizabeth Dankworth and Michelle Christison; 24-inch pipe [HLM 5.89] authorized under Automatic Board Order (ABO) issued as Permit No. 10279, 1974 - Carmelita Watkins). [Additional Reference(s): DWR Levee Log, 2005. USACE Sacramento O&M Manual 119, December 1952, (Station 193+00 PCT)].						
FS Date: 4/10/2014 2:34:02 PM						

Photo 1 of 2 : UCIP\_SP\_2019\_33363\_60399.jpg



WS slide gate and headwall. 6-inch irrigation pipe just inside 24-inch pipe.

LM Start	<b>5.74</b>	Rating **	A/W	Issue No.	<b>60 (cont)</b>
LM End	<b>5.74</b>	Issue Type +	Ma	Location *	

Photo 2 of 2 : UCIP\_SP\_2019\_33363\_60398.jpg



LS headwall showing sedimentation and 6-inch pipe sleeved through 24-inch pipe.

<b>* Location</b> LS : Land Side    N/A : Not Applicable WS : Water Side CR : Crown	<b>** Rating</b> A : Acceptable M : Minimally Acceptable U : Unacceptable	N : Not Inspected/Rated C : Corrected A/W : Acceptable but Monitor & Maintain	<b>+ Issue Type</b> Ma : Maintenance Deficiency Ob : Design & System Obsolescence En : Enforcement
--	--	---	---

**Flood Control Project Maintenance  
Levee Inspections**

**Maintenance Issue Types Only, Levee Inspection Report By Mile - Spring 2019**

**Sacramento Maintenance Yard Putah Creek**

Waterway	Bank	Unit Miles	Inspection Start/End	Inspector
Unit No. 02 Putah Creek or South Levee	Right	7.20	04/18/2019 04/18/2019	David Julian

LM Start	5.84	Rating **	A/W	Issue No.	64
LM End	5.84	Issue Type +	Ma	Location *	
Category	Supplemental			GPS Latitude/Longitude	
				Start	End
Item	DWR UCIP LMA Responsibility			38.516290 °	38.516290 °
				-121.762280 °	-121.762280 °
DWR ID	16639				
Comment Code					
Inspector Comment					
FS_ID:42953 DS_ID:16639 EP_NO: 10278 Repair Type: No Action Needed Crossing Status: Found UCIP Comments: All material was removed FIELD_STRUCT_DESC: 24-inch corrugated metal drainage pipe through the levee, 15 feet below the crown. Flap gate on waterside (WS) end. Headwall on the landside (LS). (24-inch pipe [HLM 5.99] authorized under Automatic Board Order (ABO) issued as Permit No. 10278, 1974 - Southern Pacific Transportation Company). [Additional Reference(s): DWR Levee Log, 2005. USACE Sacramento O&M Manual 119, December 1952, (Station 208+00 PCT)]. FS Date: 4/10/2014 2:32:00 PM					

Photo 1 of 2 : UCIP\_SP\_2019\_42953\_60397.jpg



WS Flapgate blocked by sedimentation

LM Start	<b>5.84</b>	Rating **	A/W	Issue No.	<b>64 (cont)</b>
LM End	<b>5.84</b>	Issue Type +	Ma	Location *	

Photo 2 of 2 : UCIP\_SP\_2019\_42953\_60396.jpg



LS headwall

<b>* Location</b> LS : Land Side    N/A : Not Applicable WS : Water Side CR : Crown		<b>** Rating</b> A : Acceptable M : Minimally Acceptable U : Unacceptable N : Not Inspected/Rated C : Corrected A/W : Acceptable but Monitor & Maintain		<b>+ Issue Type</b> Ma : Maintenance Deficiency Ob : Design & System Obsolescence En : Enforcement
--	--	---	--	---





**Flood Control Project Maintenance  
Levee Inspections**

**Maintenance Issue Types Only, Levee Inspection Report By Mile - Spring 2019**

**Sacramento Maintenance Yard Putah Creek**

Waterway	Bank	Unit Miles	Inspection Start/End	Inspector
Unit No. 02 Putah Creek or South Levee	Right	7.20	04/18/2019 04/18/2019	David Julian

LM Start	6.34	Rating **	M	Issue No.	66	
LM End	6.34	Issue Type +	Ma	Location *		
Category	Supplemental			GPS Latitude/Longitude		
				Start	End	
Item	DWR UCIP LMA Responsibility			38.517199°	38.517199°	
				-121.771262°	-121.771262°	
DWR ID	16642					
Comment Code						
Inspector Comment						
FS_ID:53864						
DS_ID:16642						
EP_NO: 10265						
Repair Type: Non-Urgent						
Crossing Status: Found						
UCIP Comments: 04/10/2019 There is no more debris around pipe. And is now sprayed and maintained. (JMccabe DWR Sacramento yard)Debris buildup at WS outlet						
FIELD_STRUCT_DESC: 30-inch drainage pipe of an unknown material through the levee, 17 feet below the crown. Headwall and slide gate on the landside (LS) end. Flap gate on the waterside (WS) end, 120 feet to the north of the crossing. (36-inch pipe [HLM 6.50] authorized under Automatic Board Order (ABO) issued as Permit No. 10265, 1974 - State of California, Division of Highways. Also included in Automatic Board Order (ABO) issued as Permit No. 11296, 1974 - Capitol National Bank of Sacramento and Crocker Citizens National Bank). [Additional Reference(s): DWR Levee Log, 2005, 36-inch pipe listed. USACE Sacramento O&M Manual 119, December 1952, (Station 208+00 ""PCT""), listed as a 24-inch pipe].						
FS Date: 4/10/2014 2:29:00 PM						

LM Start	<b>6.34</b>	Rating **	M	Issue No.	<b>66 (cont)</b>
LM End	<b>6.34</b>	Issue Type +	Ma	Location *	

Photo 1 of 2 : UCIP\_SP\_2019\_53864\_60374.jpg



LS slide gate

Photo 2 of 2 : UCIP\_SP\_2019\_53864\_60373.jpg



WS flap gate

<b>* Location</b> LS : Land Side    N/A : Not Applicable WS : Water Side CR : Crown		<b>** Rating</b> A : Acceptable M : Minimally Acceptable U : Unacceptable N : Not Inspected/Rated C : Corrected A/W : Acceptable but Monitor & Maintain		<b>+ Issue Type</b> Ma : Maintenance Deficiency Ob : Design & System Obsolescence En : Enforcement
--	--	---	--	---

**Flood Control Project Maintenance  
Levee Inspections**

**Maintenance Issue Types Only, Levee Inspection Report By Mile - Spring 2019**

**Sacramento Maintenance Yard Putah Creek**

Waterway	Bank	Unit Miles	Inspection Start/End	Inspector
Unit No. 02 Putah Creek or South Levee	Right	7.20	04/18/2019 04/18/2019	David Julian

LM Start	6.65	Rating **	M	Issue No.	68	
LM End	6.65	Issue Type +	Ma	Location *		
Category	Supplemental			GPS Latitude/Longitude		
				Start		End
Item	DWR UCIP LMA Responsibility			38.519470 °		38.519470 °
				-121.776150 °		-121.776150 °
DWR ID	16633					
Comment Code						
Inspector Comment						
FS_ID:33346 DS_ID:16633 EP_NO: 10276 Repair Type: Non-Urgent Crossing Status: Found UCIP Comments: Pipe heavily clogged with soil. Will contact owner of pipe and ask to clean for inspection. FIELD_STRUCT_DESC: 24-inch drainage pipe of an unknown material through the levee, 6 feet below the crown. Slide gate on the waterside (WS) end, and headwalls on both ends. (24-inch pipe [HLM 6.83] authorized under Automatic Board Order (ABO) issued as Permit No. 10276, 1974 - Patricia Schlables). [Additional Reference(s): DWR Levee Log, 2005. USACE Sacramento O&M Manual 119, December 1952, (Station 237+50 ""PCT"")]. FS Date: 4/10/2014 2:28:29 PM						

Photo 1 of 2 : UCIP\_SP\_2019\_33346\_60364.jpg



WS slide gate showing soil plug

LM Start	<b>6.65</b>	Rating **	M	Issue No.	<b>68 (cont)</b>
LM End	<b>6.65</b>	Issue Type +	Ma	Location *	

Photo 2 of 2 : UCIP\_SP\_2019\_33346\_60363.jpg



LS headwall showing soil plug

<b>* Location</b> LS : Land Side    N/A : Not Applicable WS : Water Side CR : Crown		<b>** Rating</b> A : Acceptable M : Minimally Acceptable U : Unacceptable N : Not Inspected/Rated C : Corrected A/W : Acceptable but Monitor & Maintain		<b>+ Issue Type</b> Ma : Maintenance Deficiency Ob : Design & System Obsolescence En : Enforcement
--	--	---	--	---

**Flood Control Project Maintenance  
Levee Inspections**

**Maintenance Issue Types Only, Levee Inspection Report By Mile - Spring 2019**

**Sacramento Maintenance Yard Putah Creek**

Waterway	Bank	Unit Miles	Inspection Start/End	Inspector
Unit No. 02 Putah Creek or South Levee	Right	7.20	04/18/2019 04/18/2019	David Julian

LM Start	6.88	Rating **	M	Issue No.	46
LM End	6.90	Issue Type +	Ma	Location *	WS
Category	Earthen Levee			GPS Latitude/Longitude	
				Start	End
Item	Vegetation			38.521408 °	38.521547 °
				-121.779775 °	-121.780033 °
DWR ID	DWR_ST0007_02_s_2017_46				
Comment Code					
V4 : Elderberries are blocking visibility and flood fight capability.					
Inspector Comment					
Stalks less than 1 inch in diameter can be trimmed and thinned.					

No Photos

LM Start	7.00	Rating **	U	Issue No.	47
LM End	7.01	Issue Type +	Ma	Location *	WS
Category	Earthen Levee			GPS Latitude/Longitude	
				Start	End
Item	Vegetation			38.522328 °	38.522393 °
				-121.781447 °	-121.781663 °
DWR ID	DWR_ST0007_02_s_2017_47				
Comment Code					
V4 : Elderberries are blocking visibility and flood fight capability.					
Inspector Comment					
These elderberries are blocking view of levee section and blocking access to a portion of the shoulder waterward. Some of these stalks are less than 1.0 inch and could be thinned out.					

No Photos

<b>* Location</b> LS : Land Side    N/A : Not Applicable WS : Water Side CR : Crown		<b>** Rating</b> A : Acceptable                      N : Not Inspected/Rated M : Minimally Acceptable        C : Corrected U : Unacceptable                  A/W : Acceptable but Monitor & Maintain		<b>+ Issue Type</b> Ma : Maintenance Deficiency Ob : Design & System Obsolescence En : Enforcement
--	--	---	--	---