

**Flood Control Project Maintenance
Levee Inspections**

Fall 2019 Levee Maintenance Deficiency Summary Report

Overall LMA & Unit Ratings, including USACE Erosion Survey

Sacramento River Basin

ST0001	Overall LMA Rating	Total LMA Miles						
Sacramento Maintenance Yard Cache Creek	A	25.43						
Rated Item	Maintenance Deficiency				Enforcement		Design & System Obsolescence	
	M Miles	U Miles	M + 4U Miles	Threshold %	M Miles	U Miles	M Miles	U Miles
<i>Earthen Levee</i>								
Vegetation	0.44		0.44	1.73%	0.23	0.08		
Encroachments	0.03		0.03	0.12%	1.97	0.14		
Animal Control	0.01		0.01	0.04%				
Slope Stability	0.03		0.03	0.12%				
Erosion / Bank Caving	0.01		0.01	0.04%				
<i>Supplemental</i>								
DRAFT DWR UCIP Field Study					0.07			
2017 Storm Damage	0.01		0.01	0.04%				
<i>LMA Totals:</i>	0.53	0.00	0.53	2.08%	2.27	0.22	0.00	0.00
Unit No. 01 North Levee LB	Overall Unit Rating	Total Unit Miles						
ST0001	A	11.69						
Rated Item	Maintenance Deficiency				Enforcement		Design & System Obsolescence	
	M Miles	U Miles	M + 4U Miles	Threshold %	M Miles	U Miles	M Miles	U Miles
<i>Earthen Levee</i>								
Vegetation	0.44		0.44	3.76%	0.09	0.08		
Encroachments	0.01		0.01	0.09%	1.20	0.14		
Slope Stability	0.01		0.01	0.09%				
<i>Supplemental</i>								
DRAFT DWR UCIP Field Study					0.07			
<i>Unit Totals:</i>	0.46	0.00	0.46	3.94%	1.36	0.22	0.00	0.00
Unit No. 02 South Levee RB	Overall Unit Rating	Total Unit Miles						
ST0001	A	11.48						
Rated Item	Maintenance Deficiency				Enforcement		Design & System Obsolescence	
	M Miles	U Miles	M + 4U Miles	Threshold %	M Miles	U Miles	M Miles	U Miles
<i>Earthen Levee</i>								
Vegetation					0.14			
Encroachments	0.02		0.02	0.17%	0.77			
Animal Control	0.01		0.01	0.09%				
Slope Stability	0.02		0.02	0.17%				
Erosion / Bank Caving	0.01		0.01	0.09%				
<i>Unit Totals:</i>	0.06	0.00	0.06	0.52%	0.91	0.00	0.00	0.00
Unit No. 04 East Training Levee of Cache Creek Settling Basin LB	Overall Unit Rating	Total Unit Miles						
ST0001	A	2.26						
Rated Item	Maintenance Deficiency				Enforcement		Design & System Obsolescence	
	M Miles	U Miles	M + 4U Miles	Threshold %	M Miles	U Miles	M Miles	U Miles
<i>Supplemental</i>								
2017 Storm Damage	0.01		0.01	0.44%				
<i>Unit Totals:</i>	0.01	0.00	0.01	0.44%	0.00	0.00	0.00	0.00

**Flood Control Project Maintenance
Levee Inspections**
LMA District Cover Sheet
Fall 2019 Levee Inspection Results

Sacramento Maintenance Yard Cache Creek

	Spring (March - May)	Summer ** (June - August)	Fall (September - November)	Winter ** (December - February)
† Overall LMA Rating (Fall Only)			A	

** Non-receipt of Summer or Winter Inspection
Reports may effect overall annual rating.

† SPRING INSPECTIONS: Overall maintenance ratings are not determined for the spring inspection results. Individual maintenance deficiencies are rated using the same criteria in the spring and in the fall.

FALL INSPECTIONS: The overall maintenance rating shown above is based on operation and maintenance deficiencies identified within the attached unit inspection reports. This rating is not intended to be an indication of risk.

Comments

**Flood Control Project Maintenance
Levee Inspections**

Unit Cover Sheet

Fall 2019 Levee Inspection Results

Sacramento Maintenance Yard Cache Creek

Waterway			Bank	Unit Miles
Unit No. 01 North Levee			Left	11.69
	Spring (March - May)	Summer (June - August)	(September - November) Fall	Winter (December - February)
Unit Maintenance Rating (Fall Only)			A	
Date of Inspection	4/23/2019 - 4/23/2019		9/17/2019 - 9/17/2019	
DWR Inspector	Zach Jojola		Zach Jojola	
Accompanied By				

Summer & Winter Inspections

The Local Maintaining Agency (LMA) is responsible for summer and winter inspections. The LMA is required to submit a report regarding summer and winter inspections to the California Department of Water Resources (DWR).

DWR must be informed on the:

- a) completion of the inspection
- b) any changes other than the results of normal maintenance
- c) corrections to deficiencies noted in this report

If additional items are noted, further documentation of those items must also be submitted.

The LMA should submit this information to DWR using the LMA web application tool available at:

<http://cdec.water.ca.gov/lma.html>

If the LMA is unable to submit information on this webpage, please contact DWR for assistance.

The LMA should submit the information and any associated documentation by September 30 for summer inspections and March 31 for winter inspections.

**Flood Control Project Maintenance
Levee Inspections**

Levee Inspection Report By Mile - Fall 2019

Sacramento Maintenance Yard Cache Creek

Waterway	Bank	Unit Miles	Inspection Start/End	Inspector
Unit No. 01 North Levee	Left	11.69	09/17/2019 09/17/2019	Zach Jojola

LM Start		Rating **	A	Issue No.	2
LM End		Issue Type +	Ma	Location *	N/A
Category	Earthen Levee			GPS Latitude/Longitude	
				Start	End
Item	Operations & Maintenance Manuals			°	°
DWR ID	DWR_ST0001_01_s_2013_2				
Comment Code					
Inspector Comment					
The Sacramento Maintenance Yard has copies of the O&M Manuals.					

No Photos

LM Start		Rating **	A	Issue No.	5
LM End		Issue Type +	Ma	Location *	N/A
Category	Earthen Levee			GPS Latitude/Longitude	
				Start	End
Item	Emergency Supplies & Equipment			°	°
DWR ID	DWR_ST0001_01_s_2013_5				
Comment Code					
Inspector Comment					
The Sacramento Maintenance Yard maintains a stockpile of flood fight materials.					

No Photos

LM Start		Rating **	A	Issue No.	21
LM End		Issue Type +	Ma	Location *	N/A
Category	Earthen Levee			GPS Latitude/Longitude	
				Start	End
Item	Flood Preparedness & Training			°	°
DWR ID	DWR_ST0001_01_s_2013_21				
Comment Code					
Inspector Comment					
The Sacramento Maintenance Yard remain current on their emergency response training and practices.					

No Photos

* Location LS : Land Side N/A : Not Applicable WS : Water Side CR : Crown	** Rating A : Acceptable M : Minimally Acceptable U : Unacceptable	N : Not Inspected/Rated C : Corrected A/W : Acceptable but Monitor & Maintain	+ Issue Type Ma : Maintenance Deficiency Ob : Design & System Obsolescence En : Enforcement
--	--	---	---

**Flood Control Project Maintenance
Levee Inspections**

Levee Inspection Report By Mile - Fall 2019

Sacramento Maintenance Yard Cache Creek

Waterway	Bank	Unit Miles	Inspection Start/End	Inspector
Unit No. 01 North Levee	Left	11.69	09/17/2019 09/17/2019	Zach Jojola

LM Start	0.03	Rating **	M	Issue No.	48
LM End	0.16	Issue Type +	En	Location *	LS
Category	Earthen Levee			GPS Latitude/Longitude	
				Start	End
Item	Encroachments			38.715268 °	38.716647 °
				-121.825345 °	-121.823667 °
DWR ID	DWR_ST0001_01_s_2015_48				
Comment Code					
DT : Ditch					
Inspector Comment					
A ditch is located at the levee toe.					

Photo 1 of 2 : FA_2019_ST0001_259_48_20190829_00034.jpg



View of the ditch at the landside levee toe. Fall 2017.

LM Start	0.03	Rating **	M	Issue No.	48 (cont)
LM End	0.16	Issue Type +	En	Location *	LS

Photo 2 of 2 : FA_2019_ST0001_259_48_20190829_00035.jpg

View of the ditch on the landward side of the levee looking upstream.
Fall 2015.

LM Start	1.04	Rating **	C	Issue No.	41
LM End	1.04	Issue Type +	En	Location *	LS
Category	Earthen Levee			GPS Latitude/Longitude	
				Start	End
Item	Encroachments			38.720327°	38.720327°
				-121.813742°	-121.813742°
DWR ID	DWR_ST0001_01_s_2018_41				
Comment Code					
DE : Debris					
Inspector Comment					
There are broken concrete standpipes on the landside slope.					

No Photos

* Location LS : Land Side N/A : Not Applicable WS : Water Side CR : Crown		** Rating A : Acceptable M : Minimally Acceptable U : Unacceptable N : Not Inspected/Rated C : Corrected A/W : Acceptable but Monitor & Maintain		+ Issue Type Ma : Maintenance Deficiency Ob : Design & System Obsolescence En : Enforcement	
---	--	--	--	--	--

**Flood Control Project Maintenance
Levee Inspections**

Levee Inspection Report By Mile - Fall 2019

Sacramento Maintenance Yard Cache Creek

Waterway	Bank	Unit Miles	Inspection Start/End	Inspector
Unit No. 01 North Levee	Left	11.69	09/17/2019 09/17/2019	Zach Jojola

LM Start	1.37	Rating **	M	Issue No.	79
LM End	1.37	Issue Type +	En	Location *	
Category	Supplemental			GPS Latitude/Longitude	
				Start	End
Item	DRAFT DWR UCIP Field Study			38.722669 °	38.722669 °
				-121.808792 °	-121.808792 °
DWR ID	16270				
Comment Code					
Inspector Comment					
DS_ID:16270 FS_ID:50432 EP_NO: 6790 Repair Type: Non-Urgent Crossing Status: Indicator Found UCIP Comments: May need additional signs on LS of levee. FIELD_STRUCT_DESC: 6-inch high-pressure natural gas main of an unknown material through the levee and under the channel, at an unknown depth. Gas line marker on the waterside (WS) slope. (6-inch high-pressure natural gas main authorized under Permit No. 6790, 1969 - Pacific Gas and Electric Company [PG&E]). [Additional Reference(s): DWR Levee Log, 1993]. FS Date: 6/16/2016 6:58:00 AM					

Photo 1 of 3 : UCIP_FA_2019_50432_60162.jpg



Waterside view: gasline marker

LM Start	1.37	Rating **	M	Issue No.	79 (cont)
LM End	1.37	Issue Type +	En	Location *	

Photo 2 of 3 : UCIP_FA_2019_50432_60161.jpg



Waterside view: closer look at gasline marker

* Location LS : Land Side N/A : Not Applicable WS : Water Side CR : Crown	** Rating A : Acceptable M : Minimally Acceptable U : Unacceptable N : Not Inspected/Rated C : Corrected A/W : Acceptable but Monitor & Maintain	+ Issue Type Ma : Maintenance Deficiency Ob : Design & System Obsolescence En : Enforcement
--	---	---

**Flood Control Project Maintenance
Levee Inspections**

Levee Inspection Report By Mile - Fall 2019

Sacramento Maintenance Yard Cache Creek

Waterway	Bank	Unit Miles	Inspection Start/End	Inspector
Unit No. 01 North Levee	Left	11.69	09/17/2019 09/17/2019	Zach Jojola

LM Start	1.37	Rating **	M	Issue No.	79 (cont)
LM End	1.37	Issue Type +	En	Location *	
Category	Supplemental			GPS Latitude/Longitude	
				Start	End
Item	DRAFT DWR UCIP Field Study			38.722669 °	38.722669 °
				-121.808792 °	-121.808792 °
DWR ID	16270				
Comment Code					
Inspector Comment					
DS_ID:16270 FS_ID:50432 EP_NO: 6790 Repair Type: Non-Urgent Crossing Status: Indicator Found UCIP Comments: May need additional signs on LS of levee. FIELD_STRUCT_DESC: 6-inch high-pressure natural gas main of an unknown material through the levee and under the channel, at an unknown depth. Gas line marker on the waterside (WS) slope. (6-inch high-pressure natural gas main authorized under Permit No. 6790, 1969 - Pacific Gas and Electric Company [PG&E]). [Additional Reference(s): DWR Levee Log, 1993]. FS Date: 6/16/2016 6:58:00 AM					

Photo 3 of 3 : UCIP_FA_2019_50432_60160.jpg



Landside view: no gasoline marker

LM Start	1.77	Rating **	M	Issue No.	63
LM End	1.90	Issue Type +	En	Location *	LS
Category	Earthen Levee			GPS Latitude/Longitude	
				Start	End
Item	Encroachments			38.728217 °	38.729944 °
				-121.806903 °	-121.806506 °
DWR ID	DWR_ST0001_01_s_2017_63				
Comment Code					
FE : Fence					
Inspector Comment					

Photo 1 of 1 : FA_2019_ST0001_259_63_20190829_00043.jpg



View of fence on LS slope. Fall 2016.

* Location LS : Land Side N/A : Not Applicable WS : Water Side CR : Crown	** Rating A : Acceptable M : Minimally Acceptable U : Unacceptable	N : Not Inspected/Rated C : Corrected A/W : Acceptable but Monitor & Maintain	+ Issue Type Ma : Maintenance Deficiency Ob : Design & System Obsolescence En : Enforcement
--	--	---	---

**Flood Control Project Maintenance
Levee Inspections**

Levee Inspection Report By Mile - Fall 2019

Sacramento Maintenance Yard Cache Creek

Waterway	Bank	Unit Miles	Inspection Start/End	Inspector
Unit No. 01 North Levee	Left	11.69	09/17/2019 09/17/2019	Zach Jojola

LM Start	1.86	Rating **	M	Issue No.	32
LM End	1.86	Issue Type +	En	Location *	LS
Category	Earthen Levee			GPS Latitude/Longitude	
				Start	End
Item	Encroachments			38.729495 °	38.729495 °
				-121.806535 °	-121.806535 °
DWR ID	DWR_ST0001_01_s_2019_32				
Comment Code					
EQ : Equipment					
Inspector Comment					
Farm equipment and debris are located at the landside toe.					

No Photos

LM Start	1.90	Rating **	U	Issue No.	3
LM End	1.98	Issue Type +	En	Location *	LS
Category	Earthen Levee			GPS Latitude/Longitude	
				Start	End
Item	Vegetation			38.730008 °	38.731170 °
				-121.806497 °	-121.806220 °
DWR ID	DWR_ST0001_01_s _ 2012_3				
Comment Code					
V6 : Landscaping					
Inspector Comment					

Photo 1 of 3 : FA_2019_ST0001_259_3_20190829_00001.jpg



View of thick vegetation on landside slope. Fall 2017.

LM Start	1.90	Rating **	U	Issue No.	3 (cont)
LM End	1.98	Issue Type +	En	Location *	LS

Photo 2 of 3 : FA_2019_ST0001_259_3_20190829_00002.jpg



View of the landscaping that needs to be trimmed on the landward side of the levee looking downstream. Fall 2015.

* Location LS : Land Side N/A : Not Applicable WS : Water Side CR : Crown		** Rating A : Acceptable M : Minimally Acceptable U : Unacceptable N : Not Inspected/Rated C : Corrected A/W : Acceptable but Monitor & Maintain		+ Issue Type Ma : Maintenance Deficiency Ob : Design & System Obsolescence En : Enforcement	
--	--	---	--	---	--

**Flood Control Project Maintenance
Levee Inspections**

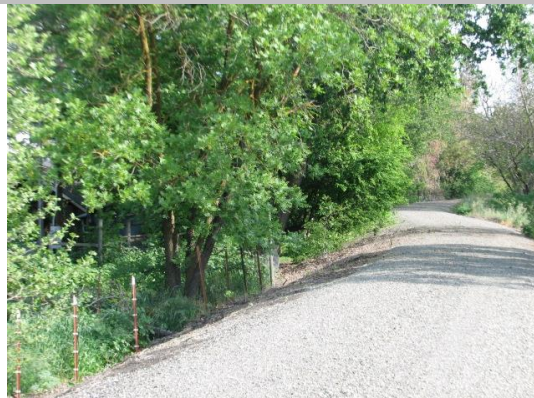
Levee Inspection Report By Mile - Fall 2019

Sacramento Maintenance Yard Cache Creek

Waterway	Bank	Unit Miles	Inspection Start/End	Inspector
Unit No. 01 North Levee	Left	11.69	09/17/2019 09/17/2019	Zach Jojola

LM Start	1.90	Rating **	U	Issue No.	3 (cont)	
LM End	1.98	Issue Type +	En	Location *	LS	
Category	Earthen Levee			GPS Latitude/Longitude		
				Start		End
Item	Vegetation			38.730008 °		38.731170 °
				-121.806497 °		-121.806220 °
DWR ID	DWR_ST0001_01_s_2012_3					
Comment Code						
V6 : Landscaping						
Inspector Comment						

Photo 3 of 3 : FA_2019_ST0001_259_3_20190829_00003.jpg



The landscape needs to be trimmed up. Spring 2014

LM Start	1.96	Rating **	M	Issue No.	28
LM End	1.96	Issue Type +	En	Location *	LS
Category	Earthen Levee			GPS Latitude/Longitude	
				Start	End
Item	Vegetation			38.730860 °	38.730860 °
				-121.806332 °	-121.806332 °
DWR ID	DWR_ST0001_01_s_2014_28				
Comment Code					
V6 : Landscaping					
Inspector Comment					
Cactus is located at the toe of the levee.					

Photo 1 of 1 : FA_2019_ST0001_259_28_20190829_00021.jpg



The property owner has planted cactus along the toe of the levee. Spring 2014

LM Start	1.98	Rating **	M	Issue No.	6
LM End	2.01	Issue Type +	En	Location *	WS
Category	Earthen Levee			GPS Latitude/Longitude	
				Start	End
Item	Vegetation			38.731166°	38.731620°
				-121.806215°	-121.806032°
DWR ID	DWR_ST0001_01_s_2012_6				
Comment Code					
V6 : Landscaping					
Inspector Comment					
Catus is located on the waterside berm.					

Photo 1 of 1 : FA_2019_ST0001_259_6_20190829_00004.jpg



View of the cactus landscaping on the waterward side of the levee looking downstream. Fall 2015.

* Location
LS : Land Side N/A : Not Applicable
WS : Water Side
CR : Crown

** Rating
A : Acceptable N : Not Inspected/Rated
M : Minimally Acceptable C : Corrected
U : Unacceptable A/W : Acceptable but Monitor & Maintain

+ Issue Type
Ma : Maintenance Deficiency
Ob : Design & System Obsolescence
En : Enforcement

**Flood Control Project Maintenance
Levee Inspections**

Levee Inspection Report By Mile - Fall 2019

Sacramento Maintenance Yard Cache Creek

Waterway	Bank	Unit Miles	Inspection Start/End	Inspector
Unit No. 01 North Levee	Left	11.69	09/17/2019 09/17/2019	Zach Jojola

LM Start	1.98	Rating **	U	Issue No.	7
LM End	2.01	Issue Type +	En	Location *	LS
Category	Earthen Levee			GPS Latitude/Longitude	
				Start	End
Item	Encroachments			38.731167 °	38.731614 °
				-121.806217 °	-121.806032 °
DWR ID	DWR_ST0001_01_s_2012_7				
Comment Code					
FE : Fence					
Inspector Comment					

Photo 1 of 2 : FA_2019_ST0001_259_7_20190829_00005.jpg



Wild grape and other plants are obstructing the view for inspection. Fall 2011

LM Start	1.98	Rating **	U	Issue No.	7 (cont)
LM End	2.01	Issue Type +	En	Location *	LS

Photo 2 of 2 : FA_2019_ST0001_259_7_20190829_00006.jpg



View of the landscaping on the landward side of the levee looking downstream. Fall 2015.

LM Start	1.98	Rating **	U	Issue No.	35
LM End	1.98	Issue Type +	En	Location *	LS
Category	Earthen Levee			GPS Latitude/Longitude	
				Start	End
Item	Encroachments			38.731208 °	38.731208 °
				-121.806220 °	-121.806220 °
DWR ID	DWR_ST0001_01_s_2019_35				
Comment Code					
DT : Ditch					
Inspector Comment					
The landowner has dug a 5' diameter hole within 10' of the landside toe and it appears to cut into the levee prism.					

Photo 1 of 2 : FA_2019_ST0001_259_35_20190919_00065.jpg



View of the hole within the landside easement. Fall 2019.

* Location LS : Land Side N/A : Not Applicable WS : Water Side CR : Crown		** Rating A : Acceptable N : Not Inspected/Rated M : Minimally Acceptable C : Corrected U : Unacceptable A/W : Acceptable but Monitor & Maintain		+ Issue Type Ma : Maintenance Deficiency Ob : Design & System Obsolescence En : Enforcement	
--	--	---	--	---	--

**Flood Control Project Maintenance
Levee Inspections**

Levee Inspection Report By Mile - Fall 2019

Sacramento Maintenance Yard Cache Creek

Waterway	Bank	Unit Miles	Inspection Start/End	Inspector
Unit No. 01 North Levee	Left	11.69	09/17/2019 09/17/2019	Zach Jojola

LM Start	1.98	Rating **	U	Issue No.	35 (cont)	
LM End	1.98	Issue Type +	En	Location *	LS	
Category	Earthen Levee			GPS Latitude/Longitude		
				Start	End	
Item	Encroachments			38.731208 °	38.731208 °	
				-121.806220 °	-121.806220 °	
DWR ID	DWR_ST0001_01_s_2019_35					
Comment Code						
DT : Ditch						
Inspector Comment						
The landowner has dug a 5' diameter hole within 10' of the landside toe and it appears to cut into the levee prism.						

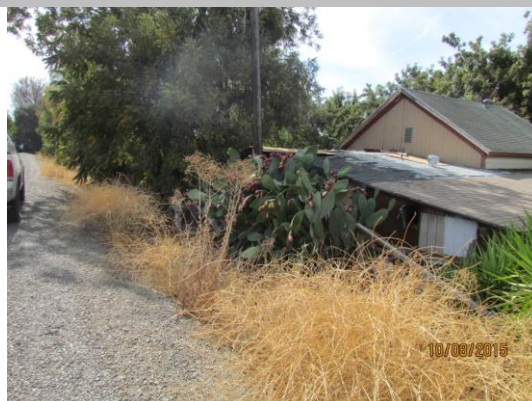
Photo 2 of 2 : FA_2019_ST0001_259_35_20190829_00028.jpg



View of the hole within the landside easement. Spring 2019.

LM Start	2.01	Rating **	M	Issue No.	8
LM End	2.01	Issue Type +	En	Location *	LS
Category	Earthen Levee			GPS Latitude/Longitude	
				Start	End
Item	Encroachments			38.731507°	38.731507°
				-121.806122°	-121.806122°
DWR ID	DWR_ST0001_01_s_2012_8				
Comment Code					
BU : Building					
Inspector Comment					

Photo 1 of 1 : FA_2019_ST0001_259_8_20190829_00007.jpg



View of the building on the landward side of the levee looking upstream. Cactus planted at the toe obstructs visibility. Fall 2015.

LM Start	2.01	Rating **	M	Issue No.	33
LM End	2.01	Issue Type +	En	Location *	LS
Category	Earthen Levee			GPS Latitude/Longitude	
				Start	End
Item	Vegetation			38.731557 °	38.731557 °
				-121.806054 °	-121.806054 °
DWR ID	DWR_ST0001_01_f_2017_33				
Comment Code					
V6 : Landscaping					
Inspector Comment					
Cactus is located on the landside slope.					

No Photos

* Location LS : Land Side N/A : Not Applicable WS : Water Side CR : Crown	** Rating A : Acceptable M : Minimally Acceptable U : Unacceptable	N : Not Inspected/Rated C : Corrected A/W : Acceptable but Monitor & Maintain	+ Issue Type Ma : Maintenance Deficiency Ob : Design & System Obsolescence En : Enforcement
--	--	--	---

**Flood Control Project Maintenance
Levee Inspections**

Levee Inspection Report By Mile - Fall 2019

Sacramento Maintenance Yard Cache Creek

Waterway	Bank	Unit Miles	Inspection Start/End	Inspector
Unit No. 01 North Levee	Left	11.69	09/17/2019 09/17/2019	Zach Jojola

LM Start	2.05	Rating **	M	Issue No.	10
LM End	2.05	Issue Type +	En	Location *	LS
Category	Earthen Levee		GPS Latitude/Longitude		
			Start	End	
Item	Encroachments		38.732162°	38.732162°	
			-121.805895°	-121.805895°	
DWR ID	DWR_ST0001_01_s_2018_10				
Comment Code					
BU : Building					
Inspector Comment					

Photo 1 of 1 : FA_2019_ST0001_259_10_20190829_00008.jpg



View of the house on the landward side of the levee looking downstream. Fall 2015.

LM Start	2.06	Rating **	M	Issue No.	11
LM End	2.06	Issue Type +	En	Location *	LS
Category	Earthen Levee		GPS Latitude/Longitude		
			Start	End	
Item	Encroachments		38.732268°	38.732268°	
			-121.805832°	-121.805832°	
DWR ID	DWR_ST0001_01_s_2012_11				
Comment Code					
BU : Building					
Inspector Comment					

Photo 1 of 1 : FA_2019_ST0001_259_11_20190829_00009.jpg



View of the building on the landward side of the levee looking downstream. Fall 2015.

* Location LS : Land Side N/A : Not Applicable WS : Water Side CR : Crown	** Rating A : Acceptable M : Minimally Acceptable U : Unacceptable	N : Not Inspected/Rated C : Corrected A/W : Acceptable but Monitor & Maintain	+ Issue Type Ma : Maintenance Deficiency Ob : Design & System Obsolescence En : Enforcement
--	--	---	---

**Flood Control Project Maintenance
Levee Inspections**

Levee Inspection Report By Mile - Fall 2019

Sacramento Maintenance Yard Cache Creek

Waterway	Bank	Unit Miles	Inspection Start/End	Inspector
Unit No. 01 North Levee	Left	11.69	09/17/2019 09/17/2019	Zach Jojola

LM Start	2.08	Rating **	M	Issue No.	13
LM End	2.08	Issue Type +	En	Location *	LS
Category	Earthen Levee			GPS Latitude/Longitude	
				Start	End
Item	Encroachments			38.732523 °	38.732523 °
				-121.805690 °	-121.805690 °
DWR ID	DWR_ST0001_01_s_2012_13				
Comment Code					
BU : Building					
Inspector Comment					

Photo 1 of 1 : FA_2019_ST0001_259_13_20190829_00011.jpg



View of the building on the landward side of the levee looking upstream.
Fall 2015.

LM Start	2.12	Rating **	M	Issue No.	12
LM End	2.12	Issue Type +	En	Location *	LS
Category	Earthen Levee			GPS Latitude/Longitude	
				Start	End
Item	Encroachments			38.733000 °	38.733000 °
				-121.805409 °	-121.805409 °
DWR ID	DWR_ST0001_01_f_2019_12				
Comment Code					
BU : Building					
Inspector Comment					

Photo 1 of 1 : FA_2019_ST0001_259_12_20190829_00010.jpg



View of the building on the landward side of the levee looking downstream. Fall 2015.

*** Location**
LS : Land Side N/A : Not Applicable
WS : Water Side
CR : Crown

**** Rating**
A : Acceptable N : Not Inspected/Rated
M : Minimally Acceptable C : Corrected
U : Unacceptable A/W : Acceptable but Monitor & Maintain

+ Issue Type
Ma : Maintenance Deficiency
Ob : Design & System Obsolescence
En : Enforcement

**Flood Control Project Maintenance
Levee Inspections**

Levee Inspection Report By Mile - Fall 2019

Sacramento Maintenance Yard Cache Creek

Waterway	Bank	Unit Miles	Inspection Start/End	Inspector
Unit No. 01 North Levee	Left	11.69	09/17/2019 09/17/2019	Zach Jojola

LM Start	2.12	Rating **	M	Issue No.	14
LM End	2.14	Issue Type +	En	Location *	LS
Category	Earthen Levee			GPS Latitude/Longitude	
				Start	End
Item	Vegetation			38.733103 °	38.733233 °
				-121.805330 °	-121.805180 °
DWR ID	DWR_ST0001_01_s_2012_14				
Comment Code					
V6 : Landscaping					
Inspector Comment					

Photo 1 of 2 : FA_2019_ST0001_259_14_20190829_00012.jpg



View of the shrubs on the landward side of the levee looking upstream. Fall 2015.

LM Start	2.12	Rating **	M	Issue No.	14 (cont)
LM End	2.14	Issue Type +	En	Location *	LS

Photo 2 of 2 : FA_2019_ST0001_259_14_20190829_00013.jpg



Another view of the shrubs. Fall 2016.

LM Start	2.13	Rating **	U	Issue No.	15
LM End	2.15	Issue Type +	En	Location *	LS
Category	Earthen Levee			GPS Latitude/Longitude	
				Start	End
Item	Encroachments			38.733215 °	38.733350 °
				-121.805262 °	-121.805082 °
DWR ID	DWR_ST0001_01_s_2012_15				
Comment Code					
FE : Fence					
Inspector Comment					

Photo 1 of 1 : FA_2019_ST0001_259_15_20190829_00014.jpg



View of the fence on the landward side of the levee looking upstream. Fall 2015.

*** Location**

LS : Land Side N/A : Not Applicable
WS : Water Side
CR : Crown

**** Rating**

A : Acceptable N : Not Inspected/Rated
M : Minimally Acceptable C : Corrected
U : Unacceptable A/W : Acceptable but Monitor & Maintain

+ Issue Type

Ma : Maintenance Deficiency
Ob : Design & System Obsolescence
En : Enforcement

**Flood Control Project Maintenance
Levee Inspections**

Levee Inspection Report By Mile - Fall 2019

Sacramento Maintenance Yard Cache Creek

Waterway	Bank	Unit Miles	Inspection Start/End	Inspector
Unit No. 01 North Levee	Left	11.69	09/17/2019 09/17/2019	Zach Jojola

LM Start	2.16	Rating **	M	Issue No.	9
LM End	2.17	Issue Type +	En	Location *	LS
Category	Earthen Levee			GPS Latitude/Longitude	
				Start	End
Item	Encroachments			38.733460 °	38.733581 °
				-121.804865 °	-121.804647 °
DWR ID	DWR_ST0001_01_f_2017_9				
Comment Code					
FE : Fence					
Inspector Comment					
There is metal railing on the landside hinge point.					

No Photos

LM Start	2.17	Rating **	M	Issue No.	16
LM End	2.17	Issue Type +	En	Location *	LS
Category	Earthen Levee			GPS Latitude/Longitude	
				Start	End
Item	Encroachments			38.733580 °	38.733580 °
				-121.804650 °	-121.804650 °
DWR ID	DWR_ST0001_01_s_2012_16				
Comment Code					
BU : Building					
Inspector Comment					

Photo 1 of 2 : FA_2019_ST0001_259_16_20190829_00015.jpg



Horse barn and corral are within the easement of the levee.

LM Start	2.17	Rating **	M	Issue No.	16 (cont)
LM End	2.17	Issue Type +	En	Location *	LS

Photo 2 of 2 : FA_2019_ST0001_259_16_20190829_00016.jpg



View of the horse barn on the landward side of the levee looking upstream. Fall 2015.

* Location LS : Land Side N/A : Not Applicable WS : Water Side CR : Crown		** Rating A : Acceptable M : Minimally Acceptable U : Unacceptable N : Not Inspected/Rated C : Corrected A/W : Acceptable but Monitor & Maintain		+ Issue Type Ma : Maintenance Deficiency Ob : Design & System Obsolescence En : Enforcement	
--	--	---	--	---	--

**Flood Control Project Maintenance
Levee Inspections**

Levee Inspection Report By Mile - Fall 2019

Sacramento Maintenance Yard Cache Creek

Waterway	Bank	Unit Miles	Inspection Start/End	Inspector
Unit No. 01 North Levee	Left	11.69	09/17/2019 09/17/2019	Zach Jojola

LM Start	2.26	Rating **	M	Issue No.	80
LM End	2.26	Issue Type +	En	Location *	
Category	Supplemental			GPS Latitude/Longitude	
				Start	End
Item	DRAFT DWR UCIP Field Study			38.733675 °	38.733675 °
				-121.803009 °	-121.803009 °
DWR ID	16268				
Comment Code					
Inspector Comment					
DS_ID:16268 FS_ID:49099 EP_NO: 2415 Repair Type: Non-Urgent Crossing Status: Indicator Found UCIP Comments: May need to install gasoline marker on WS slope. FIELD_STRUCT_DESC: 20-inch wrapped steel natural gas pipeline through the levee, 4 feet below the crown. Two cutoff walls. Gas line indicator found on the landside (LS) of the levee. (20-inch wrapped steel natural gas pipeline authorized under Permit No. 2415, 1956 - Pacific Gas and Electric Company [PG&E]). [Additional Reference(s): DWR Levee Log, 1993. USACE Sacramento O&M Manual 126, November 1961, (HLM 2.24)]. FS Date: 6/16/2016 7:00:04 AM					

Photo 1 of 3 : UCIP_FA_2019_49099_60164.jpg



Waterside view: no indicators found

LM Start	2.26	Rating **	M	Issue No.	80 (cont)
LM End	2.26	Issue Type +	En	Location *	

Photo 2 of 3 : UCIP_FA_2019_49099_60163.jpg



Landside view: gasoline indicator

* Location LS : Land Side N/A : Not Applicable WS : Water Side CR : Crown	** Rating A : Acceptable M : Minimally Acceptable U : Unacceptable	N : Not Inspected/Rated C : Corrected A/W : Acceptable but Monitor & Maintain	+ Issue Type Ma : Maintenance Deficiency Ob : Design & System Obsolescence En : Enforcement
--	--	---	---

**Flood Control Project Maintenance
Levee Inspections**

Levee Inspection Report By Mile - Fall 2019

Sacramento Maintenance Yard Cache Creek

Waterway	Bank	Unit Miles	Inspection Start/End	Inspector
Unit No. 01 North Levee	Left	11.69	09/17/2019 09/17/2019	Zach Jojola

LM Start	2.26	Rating **	M	Issue No.	80 (cont)	
LM End	2.26	Issue Type +	En	Location *		
Category	Supplemental			GPS Latitude/Longitude		
				Start	End	
Item	DRAFT DWR UCIP Field Study			38.733675 °	38.733675 °	
				-121.803009 °	-121.803009 °	
DWR ID	16268					
Comment Code						
Inspector Comment						
DS_ID:16268 FS_ID:49099 EP_NO: 2415 Repair Type: Non-Urgent Crossing Status: Indicator Found UCIP Comments: May need to install gasoline marker on WS slope. FIELD_STRUCT_DESC: 20-inch wrapped steel natural gas pipeline through the levee, 4 feet below the crown. Two cutoff walls. Gas line indicator found on the landside (LS) of the levee. (20-inch wrapped steel natural gas pipeline authorized under Permit No. 2415, 1956 - Pacific Gas and Electric Company [PG&E]). [Additional Reference(s): DWR Levee Log, 1993. USACE Sacramento O&M Manual 126, November 1961, (HLM 2.24)]. FS Date: 6/16/2016 7:00:04 AM						

Photo 3 of 3 : UCIP_FA_2019_49099_60165.jpg



Landside view: gasoline indicator/flag

LM Start	2.54	Rating **	M	Issue No.	78
LM End	2.61	Issue Type +	En	Location *	LS
Category	Earthen Levee			GPS Latitude/Longitude	
				Start	End
Item	Encroachments			38.733285 °	38.732782 °
				-121.798029 °	-121.797167 °
DWR ID	DWR_ST0001_01_s_2017_78				
Comment Code					
FE : Fence					
Inspector Comment					
There is a wire fence at the landside levee toe.					

Photo 1 of 1 : FA_2019_ST0001_259_78_20190829_00046.jpg



Chain fence at landside levee toe. Spring 2017.

* Location
 LS : Land Side N/A : Not Applicable
 WS : Water Side
 CR : Crown

** Rating
 A : Acceptable N : Not Inspected/Rated
 M : Minimally Acceptable C : Corrected
 U : Unacceptable A/W : Acceptable but Monitor & Maintain

+ Issue Type
 Ma : Maintenance Deficiency
 Ob : Design & System Obsolescence
 En : Enforcement

**Flood Control Project Maintenance
Levee Inspections**

Levee Inspection Report By Mile - Fall 2019

Sacramento Maintenance Yard Cache Creek

Waterway	Bank	Unit Miles	Inspection Start/End	Inspector
Unit No. 01 North Levee	Left	11.69	09/17/2019 09/17/2019	Zach Jojola

LM Start	2.57	Rating **	A/W	Issue No.	30
LM End	2.61	Issue Type +	Ma	Location *	WS
Category	Supplemental			GPS Latitude/Longitude	
				Start	End
Item	2017 USACE Erosion Survey			38.732836°	38.732685°
				-121.797893°	-121.797154°
DWR ID	DWR_ST0001_01_f_2018_30				

Comment Code

Inspector Comment

2017 Site ID: CHC 2.4 L
Status: Critical
2017 Field Notes: No observed change.
Site History: Site identified as CRITICAL in 2002. 2006 - Currently constructing a setback levee. New failures present and extensive. Downstream end of the setback levee did not extend far enough. Upstream end was repaired. 2007 - DWR repaired with a setback levee, but the levee did not go far enough downstream. 2012 - New cracks observed. 2013 - Fresh erosion on upper bank.

LM Start	2.57	Rating **	A/W	Issue No.	30 (cont)
LM End	2.61	Issue Type +	Ma	Location *	WS

Photo 1 of 3 : FA_2019_ST0001_259_30_20190829_00022.jpg



View of erosion on the waterside toe road. Fall 2018.

Photo 2 of 3 : FA_2019_ST0001_259_30_20190829_00023.jpg



Additional view of the erosion, facing downstream. Fall 2018.

* Location LS : Land Side N/A : Not Applicable WS : Water Side CR : Crown	** Rating A : Acceptable M : Minimally Acceptable U : Unacceptable	N : Not Inspected/Rated C : Corrected A/W : Acceptable but Monitor & Maintain	+ Issue Type Ma : Maintenance Deficiency Ob : Design & System Obsolescence En : Enforcement
--	--	---	---

**Flood Control Project Maintenance
Levee Inspections**

Levee Inspection Report By Mile - Fall 2019

Sacramento Maintenance Yard Cache Creek

Waterway	Bank	Unit Miles	Inspection Start/End	Inspector
Unit No. 01 North Levee	Left	11.69	09/17/2019 09/17/2019	Zach Jojola

LM Start	2.57	Rating **	A/W	Issue No.	30 (cont)
LM End	2.61	Issue Type +	Ma	Location *	WS
Category	Supplemental			GPS Latitude/Longitude	
				Start	End
Item	2017 USACE Erosion Survey			38.732836 °	38.732685 °
				-121.797893 °	-121.797154 °
DWR ID	DWR_ST0001_01_f_2018_30				
Comment Code					
Inspector Comment					
2017 Site ID: CHC 2.4 L					
Status: Critical					
2017 Field Notes: No observed change.					
Site History: Site identified as CRITICAL in 2002. 2006 - Currently constructing a setback levee. New failures present and extensive. Downstream end of the setback levee did not extend far enough. Upstream end was repaired. 2007 - DWR repaired with a setback levee, but the levee did not go far enough downstream. 2012 - New cracks observed. 2013 - Fresh erosion on upper bank.					

Photo 3 of 3 : FA_2019_ST0001_259_30_20190829_00024.jpg



USACE 2013 Photo #1

LM Start	2.62	Rating **	M	Issue No.	77
LM End	2.64	Issue Type +	En	Location *	LS
Category	Earthen Levee			GPS Latitude/Longitude	
				Start	End
Item	Encroachments			38.732795 °	38.732897 °
				-121.797050 °	-121.796547 °
DWR ID	DWR_ST0001_01_s_2017_77				
Comment Code					
FE : Fence					
Inspector Comment					
There is a wire fence at the landside toe.					

Photo 1 of 1 : FA_2019_ST0001_259_77_20190829_00045.jpg



Chain fence at landside levee toe. Spring 2017.

* Location
 LS : Land Side N/A : Not Applicable
 WS : Water Side
 CR : Crown

** Rating
 A : Acceptable N : Not Inspected/Rated
 M : Minimally Acceptable C : Corrected
 U : Unacceptable A/W : Acceptable but Monitor & Maintain

+ Issue Type
 Ma : Maintenance Deficiency
 Ob : Design & System Obsolescence
 En : Enforcement

**Flood Control Project Maintenance
Levee Inspections**

Levee Inspection Report By Mile - Fall 2019

Sacramento Maintenance Yard Cache Creek

Waterway	Bank	Unit Miles	Inspection Start/End	Inspector
Unit No. 01 North Levee	Left	11.69	09/17/2019 09/17/2019	Zach Jojola

LM Start	2.67	Rating **	M	Issue No.	71
LM End	2.74	Issue Type +	En	Location *	LS
Category	Earthen Levee			GPS Latitude/Longitude	
				Start	End
Item	Encroachments			38.733075 °	38.733594 °
				-121.796039 °	-121.795131 °
DWR ID	DWR_ST0001_01_s_2016_71				
Comment Code					
EQ : Equipment					
Inspector Comment					

Photo 1 of 1 : FA_2019_ST0001_259_71_20190829_00044.jpg



View of the equipment on the landward side of the levee looking upstream. Spring 2016.

LM Start	2.69	Rating **	M	Issue No.	20
LM End	2.69	Issue Type +	En	Location *	LS
Category	Earthen Levee			GPS Latitude/Longitude	
				Start	End
Item	Encroachments			38.733145 °	38.733145 °
				-121.795845 °	-121.795845 °
DWR ID	DWR_ST0001_01_s_2012_20				
Comment Code					
BU : Building					
Inspector Comment					

Photo 1 of 2 : FA_2019_ST0001_259_20_20190829_00017.jpg



The corner of the shop is within the easement of the levee. Fall 2011

LM Start	2.69	Rating **	M	Issue No.	20 (cont)
LM End	2.69	Issue Type +	En	Location *	LS

Photo 2 of 2 : FA_2019_ST0001_259_20_20190829_00018.jpg



View of the building on the landward side of the levee looking upstream. Fall 2015.

* Location LS : Land Side N/A : Not Applicable WS : Water Side CR : Crown		** Rating A : Acceptable M : Minimally Acceptable U : Unacceptable N : Not Inspected/Rated C : Corrected A/W : Acceptable but Monitor & Maintain		+ Issue Type Ma : Maintenance Deficiency Ob : Design & System Obsolescence En : Enforcement	
--	--	---	--	---	--

Sacramento Maintenance Yard Cache Creek

Page 18 of 40

**Flood Control Project Maintenance
Levee Inspections**

Levee Inspection Report By Mile - Fall 2019

Sacramento Maintenance Yard Cache Creek

Waterway	Bank	Unit Miles	Inspection Start/End	Inspector
Unit No. 01 North Levee	Left	11.69	09/17/2019 09/17/2019	Zach Jojola

LM Start	2.84	Rating **	A/W	Issue No.	62 (cont)	
LM End	2.84	Issue Type +	Ma	Location *	WS	
Category	Earthen Levee			GPS Latitude/Longitude		
				Start		End
Item	Erosion / Bank Caving			38.734514 °		38.734514 °
				-121.793418 °		-121.793418 °
DWR ID	DWR_ST0001_01_s_2018_62					
Comment Code						
E1 : Note and monitor erosion site.						
Inspector Comment						
Erosion is occurring on the waterside berm and toe road.						

Photo 4 of 5 : FA_2019_ST0001_259_62_20190829_00041.jpg



Additional view of erosion, looking northwest. Spring 2018.

LM Start	2.84	Rating **	A/W	Issue No.	62 (cont)
LM End	2.84	Issue Type +	Ma	Location *	WS

Photo 5 of 5 : FA_2019_ST0001_259_62_20190829_00042.jpg



View of erosion from levee crown, facing Cache Creek. Fall 2018.

LM Start	3.82	Rating **	C	Issue No.	43
LM End	3.82	Issue Type +	En	Location *	LS
Category	Earthen Levee			GPS Latitude/Longitude	
				Start	End
Item	Encroachments			38.728713 °	38.728713 °
				-121.782610 °	-121.782610 °
DWR ID	DWR_ST0001_01_f_2017_43				
Comment Code					
PR : Prunings					
Inspector Comment					

No Photos

* Location LS : Land Side N/A : Not Applicable WS : Water Side CR : Crown	** Rating A : Acceptable M : Minimally Acceptable U : Unacceptable	N : Not Inspected/Rated C : Corrected A/W : Acceptable but Monitor & Maintain	+ Issue Type Ma : Maintenance Deficiency Ob : Design & System Obsolescence En : Enforcement
--	--	--	---

**Flood Control Project Maintenance
Levee Inspections**

Levee Inspection Report By Mile - Fall 2019

Sacramento Maintenance Yard Cache Creek

Waterway	Bank	Unit Miles	Inspection Start/End	Inspector
Unit No. 01 North Levee	Left	11.69	09/17/2019 09/17/2019	Zach Jojola

LM Start	3.85	Rating **	C	Issue No.	54
LM End	3.85	Issue Type +	En	Location *	LS
Category	Earthen Levee		GPS Latitude/Longitude		
			Start	End	
Item	Encroachments		38.728740 °	38.728740 °	
			-121.782051 °	-121.782051 °	
DWR ID	DWR_ST0001_01_s_2019_54				
Comment Code					
PR : Prunings					
Inspector Comment					

No Photos

LM Start	4.03	Rating **	C	Issue No.	56
LM End	4.03	Issue Type +	Ma	Location *	CR
Category	Earthen Levee		GPS Latitude/Longitude		
			Start	End	
Item	Crown Surface / Depressions / Rutting		38.727499 °	38.727499 °	
			-121.779032 °	-121.779032 °	
DWR ID	DWR_ST0001_01_s_2019_56				
Comment Code					
C2 : Repair depressions or ruts in the crown or slope.					
Inspector Comment					

No Photos

* Location LS : Land Side N/A : Not Applicable WS : Water Side CR : Crown	** Rating A : Acceptable M : Minimally Acceptable U : Unacceptable	N : Not Inspected/Rated C : Corrected A/W : Acceptable but Monitor & Maintain	+ Issue Type Ma : Maintenance Deficiency Ob : Design & System Obsolescence En : Enforcement
--	--	---	---

Sacramento Maintenance Yard Cache Creek

Page 21 of 40

**Flood Control Project Maintenance
Levee Inspections**

Levee Inspection Report By Mile - Fall 2019

Sacramento Maintenance Yard Cache Creek

Waterway	Bank	Unit Miles	Inspection Start/End	Inspector
Unit No. 01 North Levee	Left	11.69	09/17/2019 09/17/2019	Zach Jojola

LM Start	4.22	Rating **	A/W	Issue No.	34 (cont)	
LM End	4.23	Issue Type +	Ma	Location *	WS	
Category	Supplemental			GPS Latitude/Longitude		
				Start		End
Item	2017 Storm Damage			38.727207 °		38.727187 °
				-121.775521 °		-121.775450 °
DWR ID	LMA-57					
Comment Code						
Inspector Comment						
Levee Evaluation Comments						
Description:						
Site ID No:249						
Site Designation:LMA-57						
Repair Type: Erosion						
Rating:Area of Concern						
Field Date:6/2/2017						
Notes: setback levee site; remaining berm greater than 86 feet, no section taken, photo only.						

Photo 3 of 3 : LEVAL_FA_2019_249_960.jpg



LM Start	4.34	Rating **	M	Issue No.	52
LM End	4.42	Issue Type +	En	Location *	LS
Category	Earthen Levee			GPS Latitude/Longitude	
				Start	End
Item	Encroachments			38.726754 °	38.726242 °
				-121.773424 °	-121.772221 °
DWR ID	DWR_ST0001_01_f_2016_52				
Comment Code					
FE : Fence					
Inspector Comment					
A fence is located on the landside slope.					

Photo 1 of 1 : FA_2019_ST0001_259_52_20190829_00036.jpg



Fence on landside slope. Fall 2016.

* Location LS : Land Side N/A : Not Applicable WS : Water Side CR : Crown	** Rating A : Acceptable M : Minimally Acceptable U : Unacceptable	N : Not Inspected/Rated C : Corrected A/W : Acceptable but Monitor & Maintain	+ Issue Type Ma : Maintenance Deficiency Ob : Design & System Obsolescence En : Enforcement
--	--	---	---

**Flood Control Project Maintenance
Levee Inspections**

Levee Inspection Report By Mile - Fall 2019

Sacramento Maintenance Yard Cache Creek

Waterway	Bank	Unit Miles	Inspection Start/End	Inspector
Unit No. 01 North Levee	Left	11.69	09/17/2019 09/17/2019	Zach Jojola

LM Start	4.98	Rating **	M	Issue No.	81
LM End	4.98	Issue Type +	En	Location *	
Category	Supplemental			GPS Latitude/Longitude	
				Start	End
Item	DRAFT DWR UCIP Field Study			38.721038°	38.721038°
				-121.764180°	-121.764180°
DWR ID	16265				
Comment Code					
Inspector Comment					
DS_ID:16265 FS_ID:49111 EP_NO: 7232 Repair Type: Non-Urgent Crossing Status: Indicator Found UCIP Comments: May need marker on WS. FIELD_STRUCT_DESC: Telephone conduit of an unknown size or material through the levee, 2.5 feet below the crown. Communications marker located on the east side of Highway 113 on the landside (LS) toe. (Telephone conduit authorized under Permit No. 7232, 1970 - Pacific Telephone and Telegraph Company [PT&T]). [Additional Reference(s): DWR Levee Log, 1993]. FS Date: 6/16/2016 7:08:33 AM					

Photo 1 of 2 : UCIP_FA_2019_49111_73501.jpg



Sign on LS toe.

LM Start	4.98	Rating **	M	Issue No.	81 (cont)
LM End	4.98	Issue Type +	En	Location *	

Photo 2 of 2 : UCIP_FA_2019_49111_73500.jpg



Sign on LS toe.

* Location LS : Land Side N/A : Not Applicable WS : Water Side CR : Crown	** Rating A : Acceptable M : Minimally Acceptable U : Unacceptable	N : Not Inspected/Rated C : Corrected A/W : Acceptable but Monitor & Maintain	+ Issue Type Ma : Maintenance Deficiency Ob : Design & System Obsolescence En : Enforcement
--	--	---	---

**Flood Control Project Maintenance
Levee Inspections**

Levee Inspection Report By Mile - Fall 2019

Sacramento Maintenance Yard Cache Creek

Waterway	Bank	Unit Miles	Inspection Start/End	Inspector
Unit No. 01 North Levee	Left	11.69	09/17/2019 09/17/2019	Zach Jojola

LM Start	4.99	Rating **	M	Issue No.	82
LM End	4.99	Issue Type +	En	Location *	
Category	Supplemental			GPS Latitude/Longitude	
				Start	End
Item	DRAFT DWR UCIP Field Study			38.721025 °	38.721025 °
				-121.764147 °	-121.764147 °
DWR ID	16756				
Comment Code					
Inspector Comment					
DS_ID:16756 FS_ID:49112 EP_NO: 3089 Repair Type: Non-Urgent Crossing Status: Indicator Found UCIP Comments: Signage in disrepair and need signs at Levee. Need to contact owner to determine status of crossing and install new signs if appropriate to do so. FIELD_STRUCT_DESC: 4-inch steel natural gas pipeline through the levee, 4 feet below the crownGas line marker located 500 feet north of the levee crossing at the levee access road/gate. Pipe alignment to east of bridge. (4-inch natural gas pipeline grouted in place and replaced with a 4-inch steel natural gas pipeline to east side of bridge under Permit No. 3089, 1959 - Yolo County Sales Company). [Additional Reference(s): USACE Sacramento O&M Manual 126, November 1961, (HLM 4.98)]. FS Date: 6/16/2016 7:09:02 AM					

LM Start	4.99	Rating **	M	Issue No.	82 (cont)
LM End	4.99	Issue Type +	En	Location *	

Photo 1 of 2 : UCIP_FA_2019_49112_73504.jpg



Gasline marker next to levee access gate 500-feet north of levee crown.

Photo 2 of 2 : UCIP_FA_2019_49112_73503.jpg



Gasline marker at Best Ranch Road, 1500-feet south of levee crossing.

* Location LS : Land Side N/A : Not Applicable WS : Water Side CR : Crown	** Rating A : Acceptable M : Minimally Acceptable U : Unacceptable	N : Not Inspected/Rated C : Corrected A/W : Acceptable but Monitor & Maintain	+ Issue Type Ma : Maintenance Deficiency Ob : Design & System Obsolescence En : Enforcement
--	--	---	---

**Flood Control Project Maintenance
Levee Inspections**

Levee Inspection Report By Mile - Fall 2019

Sacramento Maintenance Yard Cache Creek

Waterway	Bank	Unit Miles	Inspection Start/End	Inspector
Unit No. 01 North Levee	Left	11.69	09/17/2019 09/17/2019	Zach Jojola

LM Start	5.67	Rating **	M	Issue No.	59
LM End	5.67	Issue Type +	En	Location *	LS
Category	Earthen Levee		GPS Latitude/Longitude		
			Start	End	
Item	Encroachments		38.723886°	38.723886°	
			-121.755886°	-121.755886°	
DWR ID	DWR_ST0001_01_s_2019_59				
Comment Code					
EQ : Equipment					
Inspector Comment					
There are beehives at this location.					

No Photos

LM Start	5.74	Rating **	C	Issue No.	60
LM End	5.74	Issue Type +	Ma	Location *	LS
Category	Earthen Levee		GPS Latitude/Longitude		
			Start	End	
Item	Animal Control		38.723720°	38.723720°	
			-121.754694°	-121.754694°	
DWR ID	DWR_ST0001_01_s_2019_60				
Comment Code					
A1 : Exterminate rodents and backfill and compact or grout burrows.					
Inspector Comment					
There are rodent holes on the landside slope.					

No Photos

LM Start	5.74	Rating **	M	Issue No.	61
LM End	5.75	Issue Type +	Ma	Location *	LS
Category	Earthen Levee		GPS Latitude/Longitude		
			Start	End	
Item	Encroachments		38.723721°	38.723795°	
			-121.754693°	-121.754395°	
DWR ID	DWR_ST0001_01_s_2019_61				
Comment Code					
PR : Prunings					
Inspector Comment					
There are prunings on the landside slope.					

No Photos

* Location LS : Land Side N/A : Not Applicable WS : Water Side CR : Crown	** Rating A : Acceptable M : Minimally Acceptable U : Unacceptable	N : Not Inspected/Rated C : Corrected A/W : Acceptable but Monitor & Maintain	+ Issue Type Ma : Maintenance Deficiency Ob : Design & System Obsolescence En : Enforcement
--	--	---	---

**Flood Control Project Maintenance
Levee Inspections**

Levee Inspection Report By Mile - Fall 2019

Sacramento Maintenance Yard Cache Creek

Waterway	Bank	Unit Miles	Inspection Start/End	Inspector
Unit No. 01 North Levee	Left	11.69	09/17/2019 09/17/2019	Zach Jojola

LM Start	6.29	Rating **	M	Issue No.	31
LM End	6.29	Issue Type +	Ma	Location *	LS
Category	Earthen Levee			GPS Latitude/Longitude	
				Start	End
Item	Slope Stability			38.728093 °	38.728093 °
				-121.746605 °	-121.746605 °
DWR ID	DWR_ST0001_01_f_2019_31				
Comment Code					
S3 : Repair the levee slope damaged by vehicle traffic and prevent access where possible.					
Inspector Comment					
There are tire ruts on the landside slope.					

No Photos

LM Start	6.49	Rating **	M	Issue No.	36
LM End	6.53	Issue Type +	En	Location *	LS
Category	Earthen Levee			GPS Latitude/Longitude	
				Start	End
Item	Encroachments			38.728757 °	38.728832 °
				-121.743063 °	-121.742350 °
DWR ID	DWR_ST0001_01_f_2019_36				
Comment Code					
PR : Prunings					
Inspector Comment					
There is a large pruning pile at the landside toe.					

No Photos

LM Start	6.53	Rating **	M	Issue No.	47
LM End	6.53	Issue Type +	En	Location *	WS
Category	Earthen Levee			GPS Latitude/Longitude	
				Start	End
Item	Encroachments			38.728814 °	38.728814 °
				-121.742344 °	-121.742344 °
DWR ID	DWR_ST0001_01_f_2018_47				
Comment Code					
EQ : Equipment					
Inspector Comment					
There are beehives at the waterside toe.					

No Photos

* Location		** Rating		+ Issue Type	
LS : Land Side N/A : Not Applicable		A : Acceptable		Ma : Maintenance Deficiency	
WS : Water Side		M : Minimally Acceptable		Ob : Design & System Obsolescence	
CR : Crown		U : Unacceptable		En : Enforcement	
		N : Not Inspected/Rated			
		C : Corrected			
		A/W : Acceptable but Monitor & Maintain			

**Flood Control Project Maintenance
Levee Inspections**

Levee Inspection Report By Mile - Fall 2019

Sacramento Maintenance Yard Cache Creek

Waterway	Bank	Unit Miles	Inspection Start/End	Inspector
Unit No. 01 North Levee	Left	11.69	09/17/2019 09/17/2019	Zach Jojola

LM Start	6.55	Rating **	U	Issue No.	37
LM End	6.63	Issue Type +	En	Location *	LS
Category	Earthen Levee			GPS Latitude/Longitude	
				Start	End
Item	Encroachments			38.728848 °	38.728885 °
				-121.741978 °	-121.740347 °
DWR ID	DWR_ST0001_01_f_2019_37				
Comment Code					
DE : Debris					
Inspector Comment					
There are topsoil piles at the landside toe.					

No Photos

LM Start	6.66	Rating **	M	Issue No.	66
LM End	6.66	Issue Type +	En	Location *	LS
Category	Earthen Levee			GPS Latitude/Longitude	
				Start	End
Item	Encroachments			38.728826 °	38.728826 °
				-121.739825 °	-121.739825 °
DWR ID	DWR_ST0001_01_s_2019_66				
Comment Code					
EQ : Equipment					
Inspector Comment					
There is coiled irrigation line on the landside slope.					

No Photos

LM Start	6.83	Rating **	M	Issue No.	42
LM End	6.89	Issue Type +	Ma	Location *	LS
Category	Earthen Levee			GPS Latitude/Longitude	
				Start	End
Item	Vegetation			38.728160 °	38.728135 °
				-121.736860 °	-121.735802 °
DWR ID	DWR_ST0001_01_f_2019_42				
Comment Code					
V2 : Remove the wild growth other than native grasses from the levee slopes.					
Inspector Comment					
Vegetation needs to be sprayed.					

No Photos

* Location LS : Land Side N/A : Not Applicable WS : Water Side CR : Crown	** Rating A : Acceptable M : Minimally Acceptable U : Unacceptable	N : Not Inspected/Rated C : Corrected A/W : Acceptable but Monitor & Maintain	+ Issue Type Ma : Maintenance Deficiency Ob : Design & System Obsolescence En : Enforcement
--	--	--	---

**Flood Control Project Maintenance
Levee Inspections**

Levee Inspection Report By Mile - Fall 2019

Sacramento Maintenance Yard Cache Creek

Waterway	Bank	Unit Miles	Inspection Start/End	Inspector
Unit No. 01 North Levee	Left	11.69	09/17/2019 09/17/2019	Zach Jojola

LM Start	6.83	Rating **	M	Issue No.	45
LM End	6.96	Issue Type +	Ma	Location *	WS
Category	Earthen Levee		GPS Latitude/Longitude		
			Start	End	
Item	Vegetation		38.728113°	38.727925°	
			-121.736845°	-121.734543°	
DWR ID	DWR_ST0001_01_f_2019_45				
Comment Code					
V2 : Remove the wild growth other than native grasses from the levee slopes.					
Inspector Comment					
Vegetation needs to be sprayed.					

No Photos

LM Start	6.93	Rating **	M	Issue No.	49
LM End	7.15	Issue Type +	Ma	Location *	LS
Category	Earthen Levee		GPS Latitude/Longitude		
			Start	End	
Item	Vegetation		38.728028°	38.727312°	
			-121.735137°	-121.731222°	
DWR ID	DWR_ST0001_01_f_2019_49				
Comment Code					
V2 : Remove the wild growth other than native grasses from the levee slopes.					
Inspector Comment					
Vegetation needs to be sprayed.					

No Photos

LM Start	6.99	Rating **	M	Issue No.	50
LM End	7.01	Issue Type +	Ma	Location *	WS
Category	Earthen Levee		GPS Latitude/Longitude		
			Start	End	
Item	Vegetation		38.727798°	38.727745°	
			-121.733912°	-121.733578°	
DWR ID	DWR_ST0001_01_f_2019_50				
Comment Code					
V2 : Remove the wild growth other than native grasses from the levee slopes.					
Inspector Comment					
Vegetation needs to be sprayed.					

No Photos

* Location LS : Land Side N/A : Not Applicable WS : Water Side CR : Crown	** Rating A : Acceptable M : Minimally Acceptable U : Unacceptable	N : Not Inspected/Rated C : Corrected A/W : Acceptable but Monitor & Maintain	+ Issue Type Ma : Maintenance Deficiency Ob : Design & System Obsolescence En : Enforcement
--	--	---	---

**Flood Control Project Maintenance
Levee Inspections**

Levee Inspection Report By Mile - Fall 2019

Sacramento Maintenance Yard Cache Creek

Waterway	Bank	Unit Miles	Inspection Start/End	Inspector
Unit No. 01 North Levee	Left	11.69	09/17/2019 09/17/2019	Zach Jojola

LM Start	7.25	Rating **	M	Issue No.	57
LM End	7.25	Issue Type +	En	Location *	LS
Category	Earthen Levee			GPS Latitude/Longitude	
				Start	End
Item	Vegetation			38.727705 °	38.727705 °
				-121.729462 °	-121.729462 °
DWR ID	DWR_ST0001_01_f_2015_57				
Comment Code					
V6 : Landscaping					
Inspector Comment					
There is cactus on the landside slope.					

Photo 1 of 1 : FA_2019_ST0001_259_57_20190829_00037.jpg



View of the cactus on the landward side of the levee looking upstream.
Fall 2015.

LM Start	7.30	Rating **	M	Issue No.	40
LM End	7.34	Issue Type +	En	Location *	LS
Category	Earthen Levee			GPS Latitude/Longitude	
				Start	End
Item	Encroachments			38.727878 °	38.728085 °
				-121.728553 °	-121.727740 °
DWR ID	DWR_ST0001_01_s_2012_40				
Comment Code					
EQ : Equipment					
Inspector Comment					

Photo 1 of 2 : FA_2019_ST0001_259_40_20190829_00031.jpg



Irrigation pipe and equipment are within the easement of the levee.

LM Start	7.30	Rating **	M	Issue No.	40 (cont)
LM End	7.34	Issue Type +	En	Location *	LS

Photo 2 of 2 : FA_2019_ST0001_259_40_20190829_00032.jpg



View of the equipment at the levee toe on the landward side looking downstream. Fall 2015.

*** Location**
LS : Land Side N/A : Not Applicable
WS : Water Side
CR : Crown

**** Rating**
A : Acceptable N : Not Inspected/Rated
M : Minimally Acceptable C : Corrected
U : Unacceptable A/W : Acceptable but Monitor & Maintain

+ Issue Type
Ma : Maintenance Deficiency
Ob : Design & System Obsolescence
En : Enforcement

**Flood Control Project Maintenance
Levee Inspections**

Levee Inspection Report By Mile - Fall 2019

Sacramento Maintenance Yard Cache Creek

Waterway	Bank	Unit Miles	Inspection Start/End	Inspector
Unit No. 01 North Levee	Left	11.69	09/17/2019 09/17/2019	Zach Jojola

LM Start	7.30	Rating **	M	Issue No.	39
LM End	7.30	Issue Type +	En	Location *	LS
Category	Earthen Levee			GPS Latitude/Longitude	
				Start	End
Item	Encroachments			38.727870 °	38.727870 °
				-121.728527 °	-121.728527 °
DWR ID	DWR_ST0001_01_s_2012_39				
Comment Code					
BU : Building					
Inspector Comment					
The barn and livestock pens are within the easement of the levee.					

Photo 1 of 1 : FA_2019_ST0001_259_39_20190829_00030.jpg



View of barn and livestock pens.

LM Start	7.35	Rating **	M	Issue No.	44
LM End	7.35	Issue Type +	En	Location *	LS
Category	Earthen Levee			GPS Latitude/Longitude	
				Start	End
Item	Vegetation			38.728149 °	38.728149 °
				-121.727528 °	-121.727528 °
DWR ID	DWR_ST0001_01_f_2017_44				
Comment Code					
V6 : Landscaping					
Inspector Comment					
There is cactus on the landside slope.					

No Photos

LM Start	7.36	Rating **	M	Issue No.	26	
LM End	7.78	Issue Type +	En	Location *	LS	
Category	Earthen Levee			GPS Latitude/Longitude		
				Start		End
Item	Encroachments			38.728188°		38.728194°
				-121.727442°		-121.720255°
DWR ID	DWR_ST0001_01_s_2015_26					
Comment Code						
DT : Ditch						
Inspector Comment						
A ditch is located at the levee toe.						

Photo 1 of 2 : FA_2019_ST0001_259_26_20190829_00019.jpg



View of ditch on the landward side of the levee looking upstream. Spring 2015.

*** Location**
LS : Land Side N/A : Not Applicable
WS : Water Side
CR : Crown

**** Rating**
A : Acceptable N : Not Inspected/Rated
M : Minimally Acceptable C : Corrected
U : Unacceptable A/W : Acceptable but Monitor & Maintain

+ Issue Type
Ma : Maintenance Deficiency
Ob : Design & System Obsolescence
En : Enforcement

**Flood Control Project Maintenance
Levee Inspections**

Levee Inspection Report By Mile - Fall 2019

Sacramento Maintenance Yard Cache Creek

Waterway	Bank	Unit Miles	Inspection Start/End	Inspector
Unit No. 01 North Levee	Left	11.69	09/17/2019 09/17/2019	Zach Jojola

LM Start	7.36	Rating **	M	Issue No.	26 (cont)	
LM End	7.78	Issue Type +	En	Location *	LS	
Category	Earthen Levee			GPS Latitude/Longitude		
				Start		End
Item	Encroachments			38.728188 °		38.728194 °
				-121.727442 °		-121.720255 °
DWR ID	DWR_ST0001_01_s_2015_26					
Comment Code						
DT : Ditch						
Inspector Comment						
A ditch is located at the levee toe.						

Photo 2 of 2 : FA_2019_ST0001_259_26_20190829_00020.jpg



View of the ditch on the landward side of the levee looking upstream.
Fall 2015.

LM Start	7.69	Rating **	M	Issue No.	29
LM End	7.69	Issue Type +	Ma	Location *	WS
Category	Earthen Levee			GPS Latitude/Longitude	
				Start	End
Item	Vegetation			38.729027 °	38.729027 °
				-121.721683 °	-121.721683 °
DWR ID	DWR_ST0001_01_s_2015_29				
Comment Code					
V4 : Elderberries are blocking visibility and flood fight capability.					
Inspector Comment					

No Photos

LM Start	7.86	Rating **	M	Issue No.	51
LM End	7.88	Issue Type +	En	Location *	LS
Category	Earthen Levee			GPS Latitude/Longitude	
				Start	End
Item	Encroachments			38.727585 °	38.727390 °
				-121.719073 °	-121.718687 °
DWR ID	DWR_ST0001_01_f_2019_51				
Comment Code					
DE : Debris					
Inspector Comment					
There is topsoil at the landside toe.					

No Photos

* Location LS : Land Side N/A : Not Applicable WS : Water Side CR : Crown	** Rating A : Acceptable M : Minimally Acceptable U : Unacceptable	N : Not Inspected/Rated C : Corrected A/W : Acceptable but Monitor & Maintain	+ Issue Type Ma : Maintenance Deficiency Ob : Design & System Obsolescence En : Enforcement
--	--	---	---

**Flood Control Project Maintenance
Levee Inspections**

Levee Inspection Report By Mile - Fall 2019

Sacramento Maintenance Yard Cache Creek

Waterway	Bank	Unit Miles	Inspection Start/End	Inspector
Unit No. 01 North Levee	Left	11.69	09/17/2019 09/17/2019	Zach Jojola

LM Start	7.89	Rating **	M	Issue No.	83
LM End	7.89	Issue Type +	En	Location *	
Category	Supplemental			GPS Latitude/Longitude	
				Start	End
Item	DRAFT DWR UCIP Field Study			38.727333°	38.727333°
				-121.718558°	-121.718558°
DWR ID	16264				
Comment Code					
Inspector Comment					
DS_ID:16264 FS_ID:50811 EP_NO: 12983 Repair Type: Non-Urgent Crossing Status: Indicator Found UCIP Comments: Gasline markers in disrepair and should be replaced. Gasline indicator found on waterside of the levee. FIELD_STRUCT_DESC: 4-inch and 6-inch coated steel natural gas pipelines through the levee and under the Cache Creek Settling Basin, at an unknown depth. (4-inch and 6-inch pipelines authorized under Permit No. 12983, 1980 - Shell Oil Company). [Additional Reference(s): DWR Levee Log, 1993]. FS Date: 11/21/2016 7:56:33 AM					

Photo 1 of 2 : UCIP_FA_2019_50811_60197.jpg



Waterside view: gasline indicator

LM Start	7.89	Rating **	M	Issue No.	83 (cont)
LM End	7.89	Issue Type +	En	Location *	

Photo 2 of 2 : UCIP_FA_2019_50811_60196.jpg



Landside view: no indicator found.

* Location LS : Land Side N/A : Not Applicable WS : Water Side CR : Crown	** Rating A : Acceptable M : Minimally Acceptable U : Unacceptable	N : Not Inspected/Rated C : Corrected A/W : Acceptable but Monitor & Maintain	+ Issue Type Ma : Maintenance Deficiency Ob : Design & System Obsolescence En : Enforcement
--	--	---	---

**Flood Control Project Maintenance
Levee Inspections**

Levee Inspection Report By Mile - Fall 2019

Sacramento Maintenance Yard Cache Creek

Waterway	Bank	Unit Miles	Inspection Start/End	Inspector
Unit No. 01 North Levee	Left	11.69	09/17/2019 09/17/2019	Zach Jojola

LM Start	7.91	Rating **	M	Issue No.	53
LM End	7.91	Issue Type +	En	Location *	LS
Category	Earthen Levee			GPS Latitude/Longitude	
				Start	End
Item	Encroachments			38.727290 °	38.727290 °
				-121.718277 °	-121.718277 °
DWR ID	DWR_ST0001_01_f_2019_53				
Comment Code					
DE : Debris					
Inspector Comment					
There is topsoil at the landside toe.					

No Photos

LM Start	7.94	Rating **	M	Issue No.	38
LM End	7.94	Issue Type +	En	Location *	LS
Category	Earthen Levee			GPS Latitude/Longitude	
				Start	End
Item	Encroachments			38.727277°	38.727277°
				-121.717618°	-121.717618°
DWR ID	DWR_ST0001_01_f_2018_38				
Comment Code					
EQ : Equipment					
Inspector Comment					
There are beehives at this location.					

Photo 1 of 1 : FA_2019_ST0001_259_38_20190829_00029.jpg



View of beehives at the landside toe. Fall 2018.

LM Start	7.95	Rating **	M	Issue No.	55
LM End	7.95	Issue Type +	En	Location *	LS
Category	Earthen Levee			GPS Latitude/Longitude	
				Start	End
Item	Encroachments			38.727307°	38.727307°
				-121.717468°	-121.717468°
DWR ID	DWR_ST0001_01_f_2019_55				
Comment Code					
DE : Debris					
Inspector Comment					
There is topsoil at the landside toe.					

No Photos

* Location LS : Land Side N/A : Not Applicable WS : Water Side CR : Crown	** Rating A : Acceptable M : Minimally Acceptable U : Unacceptable	N : Not Inspected/Rated C : Corrected A/W : Acceptable but Monitor & Maintain	+ Issue Type Ma : Maintenance Deficiency Ob : Design & System Obsolescence En : Enforcement
--	--	---	---

**Flood Control Project Maintenance
Levee Inspections**

Levee Inspection Report By Mile - Fall 2019

Sacramento Maintenance Yard Cache Creek

Waterway	Bank	Unit Miles	Inspection Start/End	Inspector
Unit No. 01 North Levee	Left	11.69	09/17/2019 09/17/2019	Zach Jojola

LM Start	8.00	Rating **	M	Issue No.	58
LM End	8.00	Issue Type +	En	Location *	LS
Category	Earthen Levee		GPS Latitude/Longitude		
			Start	End	
Item	Encroachments		38.727155°	38.727155°	
			-121.716593°	-121.716593°	
DWR ID	DWR_ST0001_01_f_2019_58				
Comment Code					
DE : Debris					
Inspector Comment					
There is topsoil at the landside toe.					

No Photos

LM Start	8.82	Rating **	M	Issue No.	46
LM End	8.82	Issue Type +	En	Location *	LS
Category	Earthen Levee		GPS Latitude/Longitude		
			Start	End	
Item	Encroachments		38.726489°	38.726489°	
			-121.701914°	-121.701914°	
DWR ID	DWR_ST0001_01_f_2018_46				
Comment Code					
EQ : Equipment					
Inspector Comment					
There are beehives on the landside toe.					

No Photos

* Location LS : Land Side N/A : Not Applicable WS : Water Side CR : Crown	** Rating A : Acceptable M : Minimally Acceptable U : Unacceptable	N : Not Inspected/Rated C : Corrected A/W : Acceptable but Monitor & Maintain	+ Issue Type Ma : Maintenance Deficiency Ob : Design & System Obsolescence En : Enforcement
--	--	---	---

**Flood Control Project Maintenance
Levee Inspections**

Levee Inspection Report By Mile - Fall 2019

Sacramento Maintenance Yard Cache Creek

Waterway	Bank	Unit Miles	Inspection Start/End	Inspector
Unit No. 01 North Levee	Left	11.69	09/17/2019 09/17/2019	Zach Jojola

LM Start	10.40	Rating **	M	Issue No.	84
LM End	10.40	Issue Type +	En	Location *	
Category	Supplemental			GPS Latitude/Longitude	
				Start	End
Item	DRAFT DWR UCIP Field Study			38.705051°	38.705051°
				-121.695577°	-121.695577°
DWR ID	17115				
Comment Code					
Inspector Comment					
DS_ID:17115 FS_ID:53214 EP_NO: N/A Repair Type: Non-Urgent Crossing Status: Found UCIP Comments: 10/19/16 w/s capped l/s capped FIELD_STRUCT_DESC: 18-inch, 0.25-inch-thick soil-proofed steel irrigation pipe through the levee, 4 feet below the crown. Pipe used for seasonal irrigation. Pipe opening capped on both ends. As-Built Drawing North Station 68+00. Pipe installed during Cache Creek Settling Basin Enlargement, 1991. FS Date: 11/16/2018 8:34:00 AM					

LM Start	10.40	Rating **	M	Issue No.	84 (cont)
LM End	10.40	Issue Type +	En	Location *	

Photo 1 of 3 : UCIP_FA_2019_53214_60219.jpg



Crown view: overview

Photo 2 of 3 : UCIP_FA_2019_53214_60223.jpg



Waterside view: closer look at capped pipe.

* Location LS : Land Side N/A : Not Applicable WS : Water Side CR : Crown	** Rating A : Acceptable M : Minimally Acceptable U : Unacceptable	N : Not Inspected/Rated C : Corrected A/W : Acceptable but Monitor & Maintain	+ Issue Type Ma : Maintenance Deficiency Ob : Design & System Obsolescence En : Enforcement
--	--	---	---

**Flood Control Project Maintenance
Levee Inspections**

Levee Inspection Report By Mile - Fall 2019

Sacramento Maintenance Yard Cache Creek

Waterway	Bank	Unit Miles	Inspection Start/End	Inspector
Unit No. 01 North Levee	Left	11.69	09/17/2019 09/17/2019	Zach Jojola

LM Start	10.40	Rating **	M	Issue No.	84 (cont)	
LM End	10.40	Issue Type +	En	Location *		
Category	Supplemental			GPS Latitude/Longitude		
				Start	End	
Item	DRAFT DWR UCIP Field Study			38.705051°	38.705051°	
				-121.695577°	-121.695577°	
DWR ID	17115					
Comment Code						
Inspector Comment						
DS_ID:17115 FS_ID:53214 EP_NO: N/A Repair Type: Non-Urgent Crossing Status: Found UCIP Comments: 10/19/16 w/s capped l/s capped FIELD_STRUCT_DESC: 18-inch, 0.25-inch-thick soil-proofed steel irrigation pipe through the levee, 4 feet below the crown. Pipe used for seasonal irrigation. Pipe opening capped on both ends. As-Built Drawing North Station 68+00. Pipe installed during Cache Creek Settling Basin Enlargement, 1991. FS Date: 11/16/2018 8:34:00 AM						

Photo 3 of 3 : UCIP_FA_2019_53214_60222.jpg



Waterside view: steel pipe on the slope of the levee

* Location LS : Land Side N/A : Not Applicable WS : Water Side CR : Crown	** Rating A : Acceptable M : Minimally Acceptable U : Unacceptable N : Not Inspected/Rated C : Corrected A/W : Acceptable but Monitor & Maintain	+ Issue Type Ma : Maintenance Deficiency Ob : Design & System Obsolescence En : Enforcement
--	---	---

**Flood Control Project Maintenance
Levee Inspections**

Levee Inspection Report By Mile - Fall 2019

Sacramento Maintenance Yard Cache Creek

Waterway	Bank	Unit Miles	Inspection Start/End	Inspector
Unit No. 01 North Levee	Left	11.69	09/17/2019 09/17/2019	Zach Jojola

LM Start	10.75	Rating **	M	Issue No.	85
LM End	10.75	Issue Type +	En	Location *	
Category	Supplemental			GPS Latitude/Longitude	
				Start	End
Item	DRAFT DWR UCIP Field Study			38.701814 °	38.701814 °
				-121.690832 °	-121.690832 °
DWR ID	17119				
Comment Code					
Inspector Comment					
DS_ID:17119 FS_ID:53215 EP_NO: N/A Repair Type: Non-Urgent Crossing Status: Found UCIP Comments: 11/3/2016: Per Ted Skidgel, new cap and gasket installed by farmer on LS vent, and siphon breaker/vent installed on WS. No permit was found for this work. Siphon breaker on WS needs cover. Repair Priority changed from No Action Needed to Non-Urgent. (K. Fazel - UCIP)08/16/2016: Repaired erosion L/S 8/16 pipe repaired by farmer prior to erosion. (T. Skidgel - ST0001). (Note: crossing was downgraded from Urgent to No Action Needed)06/28/2016: Erosion still present off LS shoulder, caused by leaking vent. Erosion to be repaired and backfilled this summer by Sac Yard. Pipe leaking at LS toe into ditch (not affecting levee prism) (K. Fazel - UCIP).2013-2016: Pipe leaks, severe erosion from levee shoulder to pipe daylight on landside levee slope, summer of 2013 repaired erosion,pipe needs repaired. (P. Amatya - DWR) FIELD_STRUCT_DESC: 18-inch, 0.25-inch-thick soil-proofed steel irrigation pipe, 2 feet below the crown. Capped vent on the apex of the pipe off the landside (LS) shoulder. Booster pump located off the LS toe at the LS toe ditch. Another groundwater pump is located a further distance off the LS toe. Pumped groundwater is conveyed to the toe ditch and a booster pump pumps water through the levee and into a waterside (WS) ditch in the Cache Creek Settling Basin. Distribution box off the WS toe at the WS toe ditch. Could not locate a positive closure device. [Additional Reference(s): USACE As-Constructed Drawing North Station 49+50]. FS Date: 11/16/2018 8:35:41 AM					

Photo 1 of 3 : UCIP_FA_2019_53215_60148.jpg



Waterside view: pipe in the ditch

* Location LS : Land Side N/A : Not Applicable WS : Water Side CR : Crown	** Rating A : Acceptable M : Minimally Acceptable U : Unacceptable N : Not Inspected/Rated C : Corrected A/W : Acceptable but Monitor & Maintain	+ Issue Type Ma : Maintenance Deficiency Ob : Design & System Obsolescence En : Enforcement
--	---	---

**Flood Control Project Maintenance
Levee Inspections**

Levee Inspection Report By Mile - Fall 2019

Sacramento Maintenance Yard Cache Creek

Waterway	Bank	Unit Miles	Inspection Start/End	Inspector
Unit No. 01 North Levee	Left	11.69	09/17/2019 09/17/2019	Zach Jojola

LM Start	10.75	Rating **	M	Issue No.	85 (cont)	
LM End	10.75	Issue Type +	En	Location *		
Category	Supplemental			GPS Latitude/Longitude		
				Start	End	
Item	DRAFT DWR UCIP Field Study			38.701814 °	38.701814 °	
				-121.690832 °	-121.690832 °	
DWR ID	17119					
Comment Code						
Inspector Comment						
DS_ID:17119 FS_ID:53215 EP_NO: N/A Repair Type: Non-Urgent Crossing Status: Found UCIP Comments: 11/3/2016: Per Ted Skidgel, new cap and gasket installed by farmer on LS vent, and siphon breaker/vent installed on WS. No permit was found for this work. Siphon breaker on WS needs cover. Repair Priority changed from No Action Needed to Non-Urgent. (K. Fazel - UCIP)08/16/2016: Repaired erosion L/S 8/16 pipe repaired by farmer prior to erosion. (T. Skidgel - ST0001). (Note: crossing was downgraded from Urgent to No Action Needed)06/28/2016: Erosion still present off LS shoulder, caused by leaking vent. Erosion to be repaired and backfilled this summer by Sac Yard. Pipe leaking at LS toe into ditch (not affecting levee prism) (K. Fazel - UCIP).2013-2016: Pipe leaks, severe erosion from levee shoulder to pipe daylight on landside levee slope, summer of 2013 repaired erosion,pipe needs repaired. (P. Amatya - DWR) FIELD_STRUCT_DESC: 18-inch, 0.25-inch-thick soil-proofed steel irrigation pipe, 2 feet below the crown. Capped vent on the apex of the pipe off the landside (LS) shoulder. Booster pump located off the LS toe at the LS toe ditch. Another groundwater pump is located a further distance off the LS toe. Pumped groundwater is conveyed to the toe ditch and a booster pump pumps water through the levee and into a waterside (WS) ditch in the Cache Creek Settling Basin. Distribution box off the WS toe at the WS toe ditch. Could not locate a positive closure device. [Additional Reference(s): USACE As-Constructed Drawing North Station 49+50]. FS Date: 11/16/2018 8:35:41 AM						

Photo 2 of 3 : UCIP_FA_2019_53215_60147.jpg



Landside view: pipe daylight on LS levee slope

* Location LS : Land Side N/A : Not Applicable WS : Water Side CR : Crown	** Rating A : Acceptable M : Minimally Acceptable U : Unacceptable	N : Not Inspected/Rated C : Corrected A/W : Acceptable but Monitor & Maintain	+ Issue Type Ma : Maintenance Deficiency Ob : Design & System Obsolescence En : Enforcement
--	--	---	---

**Flood Control Project Maintenance
Levee Inspections**

Levee Inspection Report By Mile - Fall 2019

Sacramento Maintenance Yard Cache Creek

Waterway	Bank	Unit Miles	Inspection Start/End	Inspector
Unit No. 01 North Levee	Left	11.69	09/17/2019 09/17/2019	Zach Jojola

LM Start	10.75	Rating **	M	Issue No.	85 (cont)	
LM End	10.75	Issue Type +	En	Location *		
Category	Supplemental			GPS Latitude/Longitude		
				Start	End	
Item	DRAFT DWR UCIP Field Study			38.701814 °	38.701814 °	
				-121.690832 °	-121.690832 °	
DWR ID	17119					
Comment Code						
Inspector Comment						
DS_ID:17119 FS_ID:53215 EP_NO: N/A Repair Type: Non-Urgent Crossing Status: Found UCIP Comments: 11/3/2016: Per Ted Skidgel, new cap and gasket installed by farmer on LS vent, and siphon breaker/vent installed on WS. No permit was found for this work. Siphon breaker on WS needs cover. Repair Priority changed from No Action Needed to Non-Urgent. (K. Fazel - UCIP)08/16/2016: Repaired erosion L/S 8/16 pipe repaired by farmer prior to erosion. (T. Skidgel - ST0001). (Note: crossing was downgraded from Urgent to No Action Needed)06/28/2016: Erosion still present off LS shoulder, caused by leaking vent. Erosion to be repaired and backfilled this summer by Sac Yard. Pipe leaking at LS toe into ditch (not affecting levee prism) (K. Fazel - UCIP).2013-2016: Pipe leaks, severe erosion from levee shoulder to pipe daylight on landside levee slope, summer of 2013 repaired erosion,pipe needs repaired. (P. Amatya - DWR) FIELD_STRUCT_DESC: 18-inch, 0.25-inch-thick soil-proofed steel irrigation pipe, 2 feet below the crown. Capped vent on the apex of the pipe off the landside (LS) shoulder. Booster pump located off the LS toe at the LS toe ditch. Another groundwater pump is located a further distance off the LS toe. Pumped groundwater is conveyed to the toe ditch and a booster pump pumps water through the levee and into a waterside (WS) ditch in the Cache Creek Settling Basin. Distribution box off the WS toe at the WS toe ditch. Could not locate a positive closure device. [Additional Reference(s): USACE As-Constructed Drawing North Station 49+50]. FS Date: 11/16/2018 8:35:41 AM						

Photo 3 of 3 : UCIP_FA_2019_53215_60149.jpg



Landside view: pumping plant

* Location LS : Land Side N/A : Not Applicable WS : Water Side CR : Crown	** Rating A : Acceptable M : Minimally Acceptable U : Unacceptable	N : Not Inspected/Rated C : Corrected A/W : Acceptable but Monitor & Maintain	+ Issue Type Ma : Maintenance Deficiency Ob : Design & System Obsolescence En : Enforcement
--	--	---	---

**Flood Control Project Maintenance
Levee Inspections**

Levee Inspection Report By Mile - Fall 2019

Sacramento Maintenance Yard Cache Creek

Waterway	Bank	Unit Miles	Inspection Start/End	Inspector
Unit No. 01 North Levee	Left	11.69	09/17/2019 09/17/2019	Zach Jojola

LM Start	11.03	Rating **	A/W	Issue No.	64
LM End	11.03	Issue Type +	Ma	Location *	LS
Category	Earthen Levee		GPS Latitude/Longitude		
			Start	End	
Item	Animal Control		38.700192°	38.700192°	
			-121.685915°	-121.685915°	
DWR ID	DWR_ST0001_01_f_2019_64				
Comment Code					
A3 : No rodents visible, but rodent burrows visible; need to backfill and compact or grout burrows.					
Inspector Comment					
Rodent hole on the landside slope. Recommend monitoring for activity.					

No Photos

* Location LS : Land Side N/A : Not Applicable WS : Water Side CR : Crown	** Rating A : Acceptable M : Minimally Acceptable U : Unacceptable	N : Not Inspected/Rated C : Corrected A/W : Acceptable but Monitor & Maintain	+ Issue Type Ma : Maintenance Deficiency Ob : Design & System Obsolescence En : Enforcement
--	--	---	---

**Flood Control Project Maintenance
Levee Inspections**

Unit Cover Sheet

Fall 2019 Levee Inspection Results

Sacramento Maintenance Yard Cache Creek

Waterway			Bank	Unit Miles
Unit No. 02 South Levee			Right	11.48
	Spring (March - May)	Summer (June - August)	(September - November) Fall	Winter (December - February)
Unit Maintenance Rating (Fall Only)			A	
Date of Inspection	4/22/2019 - 4/22/2019		9/18/2019 - 9/18/2019	
DWR Inspector	Zach Jojola		Zach Jojola	
Accompanied By				

Summer & Winter Inspections

The Local Maintaining Agency (LMA) is responsible for summer and winter inspections. The LMA is required to submit a report regarding summer and winter inspections to the California Department of Water Resources (DWR).

DWR must be informed on the:

- a) completion of the inspection
- b) any changes other than the results of normal maintenance
- c) corrections to deficiencies noted in this report

If additional items are noted, further documentation of those items must also be submitted.

The LMA should submit this information to DWR using the LMA web application tool available at:

<http://cdec.water.ca.gov/lma.html>

If the LMA is unable to submit information on this webpage, please contact DWR for assistance.

The LMA should submit the information and any associated documentation by September 30 for summer inspections and March 31 for winter inspections.

**Flood Control Project Maintenance
Levee Inspections**

Levee Inspection Report By Mile - Fall 2019

Sacramento Maintenance Yard Cache Creek

Waterway	Bank	Unit Miles	Inspection Start/End	Inspector
Unit No. 02 South Levee	Right	11.48	09/18/2019 09/18/2019	Zach Jojola

LM Start	0.18	Rating **	N	Issue No.	10
LM End	0.18	Issue Type +	Ma	Location *	LS
Category	Earthen Levee			GPS Latitude/Longitude	
				Start	End
Item	Trim / Thin Trees			38.729560 °	38.729560 °
				-121.805231 °	-121.805231 °
DWR ID	DWR_ST0001_02_f_2015_10				
Comment Code					
T5 : Tree stumps.					
Inspector Comment					
The stump is located at the levee toe.					

Photo 1 of 1 : FA_2019_ST0001_260_10_20190829_00008.jpg



View of the tree stump at the landward side of the levee looking downstream. Fall 2015.

LM Start	0.27	Rating **	N	Issue No.	6
LM End	0.27	Issue Type +	Ma	Location *	LS
Category	Earthen Levee			GPS Latitude/Longitude	
				Start	End
Item	Trim / Thin Trees			38.730723 °	38.730723 °
				-121.804972 °	-121.804972 °
DWR ID	DWR_ST0001_02_s_2014_6				
Comment Code					
T5 : Tree stumps.					
Inspector Comment					
A large black walnut tree stump is at the toe of the levee					

Photo 1 of 1 : FA_2019_ST0001_260_6_20190829_00005.jpg



View of large black walnut tree stump is at the landside toe. Spring 2014

LM Start	0.34	Rating **	M	Issue No.	40
LM End	0.34	Issue Type +	Ma	Location *	LS
Category	Earthen Levee			GPS Latitude/Longitude	
				Start	End
Item	Slope Stability			38.731823 °	38.731823 °
				-121.804670 °	-121.804670 °
DWR ID	DWR_ST0001_02_s_2019_40				
Comment Code					
S3 : Repair the levee slope damaged by vehicle traffic and prevent access where possible.					
Inspector Comment					

No Photos

* Location		** Rating		+ Issue Type	
LS : Land Side	N/A : Not Applicable	A : Acceptable	N : Not Inspected/Rated	Ma : Maintenance Deficiency	
WS : Water Side		M : Minimally Acceptable	C : Corrected	Ob : Design & System Obsolescence	
CR : Crown		U : Unacceptable	A/W : Acceptable but Monitor & Maintain	En : Enforcement	

**Flood Control Project Maintenance
Levee Inspections**

Levee Inspection Report By Mile - Fall 2019

Sacramento Maintenance Yard Cache Creek

Waterway	Bank	Unit Miles	Inspection Start/End	Inspector
Unit No. 02 South Levee	Right	11.48	09/18/2019 09/18/2019	Zach Jojola

LM Start	0.68	Rating **	M	Issue No.	27
LM End	0.72	Issue Type +	En	Location *	LS
Category	Earthen Levee		GPS Latitude/Longitude		
			Start	End	
Item	Encroachments		38.732295°	38.732075°	
			-121.799103°	-121.798428°	
DWR ID	DWR_ST0001_02_f_2019_27				
Comment Code					
PR : Prunings					
Inspector Comment					
There are prunings at the landside toe.					

No Photos

LM Start	0.70	Rating **	C	Issue No.	1
LM End	0.70	Issue Type +	En	Location *	LS
Category	Earthen Levee		GPS Latitude/Longitude		
			Start	End	
Item	Encroachments		38.732190°	38.732190°	
			-121.798852°	-121.798852°	
DWR ID	DWR_ST0001_02_s_2012_1				
Comment Code					
EQ : Equipment					
Inspector Comment					
There is equipment on the landside toe.					

No Photos

LM Start	1.59	Rating **	M	Issue No.	25
LM End	1.63	Issue Type +	En	Location *	LS
Category	Earthen Levee		GPS Latitude/Longitude		
			Start	End	
Item	Vegetation		38.731795°	38.731202°	
			-121.786167°	-121.786212°	
DWR ID	DWR_ST0001_02_f_2019_25				
Comment Code					
V6 : Landscaping					
Inspector Comment					
Farmers trees need to be trimmed up.					

No Photos

* Location LS : Land Side N/A : Not Applicable WS : Water Side CR : Crown	** Rating A : Acceptable M : Minimally Acceptable U : Unacceptable	N : Not Inspected/Rated C : Corrected A/W : Acceptable but Monitor & Maintain	+ Issue Type Ma : Maintenance Deficiency Ob : Design & System Obsolescence En : Enforcement
--	--	---	---

**Flood Control Project Maintenance
Levee Inspections**

Levee Inspection Report By Mile - Fall 2019

Sacramento Maintenance Yard Cache Creek

Waterway	Bank	Unit Miles	Inspection Start/End	Inspector
Unit No. 02 South Levee	Right	11.48	09/18/2019 09/18/2019	Zach Jojola

LM Start	1.60	Rating **	A/W	Issue No.	16							
LM End	1.60	Issue Type +	Ob	Location *	WS							
Category	Supplemental		GPS Latitude/Longitude									
			Start	End								
Item	2017 Storm Damage		38.731659 °	38.731577 °								
			-121.785931 °	-121.785936 °								
DWR ID	ST1-01											
Comment Code												
Inspector Comment												
Levee Evaluation Comments Description: Site ID No:181 Site Designation:ST1-01 Repair Type: Erosion Rating:Area of Concern Field Date:5/18/2017 Notes: This site was visited under PL84-99 with the USACE, but no data was recorded at the time. USACE did not accept the site for repair because the damage was present before this year. The erosion is on the bank and is starting to cut into the WS toe road.												

Photo 1 of 1 : FA_2019_ST0001_260_16_20190829_00014.jpg



View of storm damage site on waterside berm. Does not appear to be within the levee prism at this time. Fall 2017.

LM Start	1.67	Rating **	M	Issue No.	35							
LM End	1.67	Issue Type +	Ma	Location *	LS							
Category	Earthen Levee		GPS Latitude/Longitude									
			Start	End								
Item	Animal Control		38.730680 °	38.730680 °								
			-121.786112 °	-121.786112 °								
DWR ID	DWR_ST0001_02_s_2019_35											
Comment Code												
A3 : No rodents visible, but rodent burrows visible; need to backfill and compact or grout burrows.												
Inspector Comment												
Large rodent hole on the landside slope.												

No Photos

* Location LS : Land Side N/A : Not Applicable WS : Water Side CR : Crown	** Rating A : Acceptable M : Minimally Acceptable U : Unacceptable	N : Not Inspected/Rated C : Corrected A/W : Acceptable but Monitor & Maintain	+ Issue Type Ma : Maintenance Deficiency Ob : Design & System Obsolescence En : Enforcement
--	--	---	---

**Flood Control Project Maintenance
Levee Inspections**

Levee Inspection Report By Mile - Fall 2019

Sacramento Maintenance Yard Cache Creek

Waterway	Bank	Unit Miles	Inspection Start/End	Inspector
Unit No. 02 South Levee	Right	11.48	09/18/2019 09/18/2019	Zach Jojola

LM Start	1.68	Rating **	M	Issue No.	20
LM End	1.68	Issue Type +	En	Location *	LS
Category	Earthen Levee			GPS Latitude/Longitude	
				Start	End
Item	Encroachments			38.730567 °	38.730567 °
				-121.786027 °	-121.786027 °
DWR ID	DWR_ST0001_02_f_2016_20				
Comment Code					
PR : Prunings					
Inspector Comment					

Photo 1 of 1 : FA_2019_ST0001_260_20_20190829_00016.jpg



View of prunings on LS slope of the levee. Fall 2016.

LM Start	1.97	Rating **	M	Issue No.	24
LM End	1.97	Issue Type +	En	Location *	LS
Category	Earthen Levee			GPS Latitude/Longitude	
				Start	End
Item	Encroachments			38.727653 °	38.727653 °
				-121.782412 °	-121.782412 °
DWR ID	DWR_ST0001_02_f_2019_24				
Comment Code					
EQ : Equipment					
Inspector Comment					
There are small pumps with 10 air valves, and 3 bollards located at the landside toe. The pipes do not appear to cross levee. Need to find permit.					

Photo 1 of 1 : FA_2019_ST0001_260_24_20190919_00023.jpg



View of the pumps, air valves, and bollards at the landside toe. Fall 2019.

LM Start	2.40	Rating **	M	Issue No.	32
LM End	2.40	Issue Type +	En	Location *	LS
Category	Earthen Levee			GPS Latitude/Longitude	
				Start	End
Item	Vegetation			38.726183 °	38.726183 °
				-121.774861 °	-121.774861 °
DWR ID	DWR_ST0001_02_f_2017_32				
Comment Code					
V6 : Landscaping					
Inspector Comment					
Cactus is located at the landside toe.					

No Photos

* Location LS : Land Side N/A : Not Applicable WS : Water Side CR : Crown		** Rating A : Acceptable M : Minimally Acceptable U : Unacceptable		N : Not Inspected/Rated C : Corrected A/W : Acceptable but Monitor & Maintain		+ Issue Type Ma : Maintenance Deficiency Ob : Design & System Obsolescence En : Enforcement	
---	--	---	--	---	--	--	--

**Flood Control Project Maintenance
Levee Inspections**

Levee Inspection Report By Mile - Fall 2019

Sacramento Maintenance Yard Cache Creek

Waterway	Bank	Unit Miles	Inspection Start/End	Inspector
Unit No. 02 South Levee	Right	11.48	09/18/2019 09/18/2019	Zach Jojola

LM Start	2.40	Rating **	M	Issue No.	3
LM End	2.43	Issue Type +	En	Location *	LS
Category	Earthen Levee			GPS Latitude/Longitude	
				Start	End
Item	Encroachments			38.726182 °	38.726067 °
				-121.774859 °	-121.774430 °
DWR ID	DWR_ST0001_02_s_2018_3				
Comment Code					
DE : Debris					
Inspector Comment					
Irrigation lines and broken concrete pipes are on the landside of the levee.					

Photo 1 of 2 : FA_2019_ST0001_260_3_20190829_00002.jpg



Additional view of debris on landward side of the levee. Fall 2016.

LM Start	2.40	Rating **	M	Issue No.	3 (cont)
LM End	2.43	Issue Type +	En	Location *	LS

Photo 2 of 2 : FA_2019_ST0001_260_3_20190829_00003.jpg



View of the concrete pile at the toe of the landward side of the levee looking downstream. Fall 2015.

LM Start	2.43	Rating **	M	Issue No.	29
LM End	2.47	Issue Type +	En	Location *	LS
Category	Earthen Levee			GPS Latitude/Longitude	
				Start	End
Item	Encroachments			38.726036 °	38.725836 °
				-121.774340 °	-121.773688 °
DWR ID	DWR_ST0001_02_f_2017_29				
Comment Code					
EQ : Equipment					
Inspector Comment					
There is farm equipment at the landside toe.					

Photo 1 of 1 : FA_2019_ST0001_260_29_20190829_00019.jpg



View of farm equipment at landside toe. Fall 2017.

*** Location**

LS : Land Side N/A : Not Applicable
WS : Water Side
CR : Crown

**** Rating**

A : Acceptable N : Not Inspected/Rated
M : Minimally Acceptable C : Corrected
U : Unacceptable A/W : Acceptable but Monitor & Maintain

+ Issue Type

Ma : Maintenance Deficiency
Ob : Design & System Obsolescence
En : Enforcement

**Flood Control Project Maintenance
Levee Inspections**

Levee Inspection Report By Mile - Fall 2019

Sacramento Maintenance Yard Cache Creek

Waterway	Bank	Unit Miles	Inspection Start/End	Inspector
Unit No. 02 South Levee	Right	11.48	09/18/2019 09/18/2019	Zach Jojola

LM Start	2.50	Rating **	M	Issue No.	21
LM End	2.50	Issue Type +	Ma	Location *	WS
Category	Earthen Levee		GPS Latitude/Longitude		
			Start	End	
Item	Encroachments		38.725663°	38.725663°	
			-121.773250°	-121.773250°	
DWR ID	DWR_ST0001_02_f_2019_21				
Comment Code					
PR : Prunings					
Inspector Comment					
There is a pruning pile at the landside toe.					

No Photos

LM Start	2.61	Rating **	A/W	Issue No.	36
LM End	2.61	Issue Type +	Ma	Location *	LS
Category	Earthen Levee		GPS Latitude/Longitude		
			Start	End	
Item	Vegetation		38.724457°	38.724457°	
			-121.771757°	-121.771757°	
DWR ID	DWR_ST0001_02_s_2017_36				
Comment Code					
V4 : Elderberries are blocking visibility and flood fight capability.					
Inspector Comment					

No Photos

LM Start	2.64	Rating **	M	Issue No.	37
LM End	2.64	Issue Type +	En	Location *	LS
Category	Earthen Levee		GPS Latitude/Longitude		
			Start	End	
Item	Encroachments		38.724129°	38.724129°	
			-121.771383°	-121.771383°	
DWR ID	DWR_ST0001_02_s_2017_37				
Comment Code					
PO : Pole					
Inspector Comment					
There is a pole with no lines attached on the landside.					

No Photos

* Location LS : Land Side N/A : Not Applicable WS : Water Side CR : Crown	** Rating A : Acceptable M : Minimally Acceptable U : Unacceptable	N : Not Inspected/Rated C : Corrected A/W : Acceptable but Monitor & Maintain	+ Issue Type Ma : Maintenance Deficiency Ob : Design & System Obsolescence En : Enforcement
--	--	---	---

**Flood Control Project Maintenance
Levee Inspections**

Levee Inspection Report By Mile - Fall 2019

Sacramento Maintenance Yard Cache Creek

Waterway	Bank	Unit Miles	Inspection Start/End	Inspector
Unit No. 02 South Levee	Right	11.48	09/18/2019 09/18/2019	Zach Jojola

LM Start	2.72	Rating **	M	Issue No.	19
LM End	2.80	Issue Type +	En	Location *	WS
Category	Earthen Levee			GPS Latitude/Longitude	
				Start	End
Item	Encroachments			38.723362 °	38.722542 °
				-121.770435 °	-121.769352 °
DWR ID	DWR_ST0001_02_f_2019_19				
Comment Code					
EQ : Equipment					
Inspector Comment					
There are beehives on the landside slope and toe.					

No Photos

LM Start	3.09	Rating **	M	Issue No.	18
LM End	3.09	Issue Type +	Ma	Location *	WS
Category	Earthen Levee			GPS Latitude/Longitude	
				Start	End
Item	Erosion / Bank Caving			38.720557 °	38.720557 °
				-121.764575 °	-121.764575 °
DWR ID	DWR_ST0001_02_f _ 2019_18				
Comment Code					
E2 : Schedule repair of erosion site prior to the next inspection.					
Inspector Comment					
There is erosion around tree roots. Recommend backfilling.					

Photo 1 of 1 : FA_2019_ST0001_260_18_20190919_00022.jpg



View of the erosion around the tree. Fall 2019.

LM Start	3.14	Rating **	M	Issue No.	15
LM End	3.52	Issue Type +	En	Location *	LS
Category	Earthen Levee			GPS Latitude/Longitude	
				Start	End
Item	Encroachments			38.720022 °	38.722053 °
				-121.763913 °	-121.759600 °
DWR ID	DWR_ST0001_02_f_2016_15				
Comment Code					
FE : Fence					
Inspector Comment					
There is a wire fence at the landside toe.					

Photo 1 of 1 : FA_2019_ST0001_260_15_20190829_00013.jpg



View of fence on LS slope. Fall 2016.

*** Location**

LS : Land Side N/A : Not Applicable
WS : Water Side
CR : Crown

**** Rating**

A : Acceptable N : Not Inspected/Rated
M : Minimally Acceptable C : Corrected
U : Unacceptable A/W : Acceptable but Monitor & Maintain

+ Issue Type

Ma : Maintenance Deficiency
Ob : Design & System Obsolescence
En : Enforcement

**Flood Control Project Maintenance
Levee Inspections**

Levee Inspection Report By Mile - Fall 2019

Sacramento Maintenance Yard Cache Creek

Waterway	Bank	Unit Miles	Inspection Start/End	Inspector
Unit No. 02 South Levee	Right	11.48	09/18/2019 09/18/2019	Zach Jojola

LM Start	3.39	Rating **	M	Issue No.	17
LM End	3.39	Issue Type +	En	Location *	LS
Category	Earthen Levee			GPS Latitude/Longitude	
				Start	End
Item	Encroachments			38.720204 °	38.720204 °
				-121.759760 °	-121.759760 °
DWR ID	DWR_ST0001_02_f_2016_17				
Comment Code					
FW : Firewood					
Inspector Comment					
There is a firewood pile behind the wire fence.					

Photo 1 of 1 : FA_2019_ST0001_260_17_20190829_00015.jpg



View of firewood at LS levee toe. Fall 2016.

LM Start	3.50	Rating **	M	Issue No.	12
LM End	3.50	Issue Type +	En	Location *	LS
Category	Earthen Levee			GPS Latitude/Longitude	
				Start	End
Item	Encroachments			38.721757 °	38.721757 °
				-121.759565 °	-121.759565 °
DWR ID	DWR_ST0001_02_f_2016_12				
Comment Code					
MA : Material					
Inspector Comment					

Photo 1 of 1 : FA_2019_ST0001_260_12_20190829_00010.jpg



Pipes are stored at levee toe on landside. Fall 2016.

LM Start	3.53	Rating **	A/W	Issue No.	2
LM End	3.60	Issue Type +	Ma	Location *	WS
Category	Supplemental			GPS Latitude/Longitude	
				Start	End
Item	2017 USACE Erosion Survey			38.722138 °	38.723294 °
				-121.759736 °	-121.759588 °
DWR ID	DWR_ST0001_02_f_2018_2				
Comment Code					
Inspector Comment					
2017 Site ID: CHC 3.5 R					
Status: Eroding					
2017 Field Notes: Significant amount of debris along bank.					
Site History: 2010 - Large slump on the upper berm, a tree has recently slid down the slope. 2011 - Large slump and new erosion. 2012 - Slightly steeper slopes and cracks observed.					

Photo 1 of 1 : FA_2019_ST0001_260_2_20190829_00001.jpg



USACE 2013 Photo #1

* Location LS : Land Side N/A : Not Applicable WS : Water Side CR : Crown		** Rating A : Acceptable N : Not Inspected/Rated M : Minimally Acceptable C : Corrected U : Unacceptable A/W : Acceptable but Monitor & Maintain		+ Issue Type Ma : Maintenance Deficiency Ob : Design & System Obsolescence En : Enforcement	
--	--	---	--	---	--

**Flood Control Project Maintenance
Levee Inspections**

Levee Inspection Report By Mile - Fall 2019

Sacramento Maintenance Yard Cache Creek

Waterway	Bank	Unit Miles	Inspection Start/End	Inspector
Unit No. 02 South Levee	Right	11.48	09/18/2019 09/18/2019	Zach Jojola

LM Start	4.06	Rating **	M	Issue No.	8
LM End	4.06	Issue Type +	En	Location *	LS
Category	Earthen Levee			GPS Latitude/Longitude	
				Start	End
Item	Encroachments			38.723992 °	38.723992 °
				-121.752511 °	-121.752511 °
DWR ID	DWR_ST0001_02_s_2012_8				
Comment Code					
BU : Building					
Inspector Comment					
A building is within the easement of the levee.					

Photo 1 of 1 : FA_2019_ST0001_260_8_20190829_00006.jpg



View of the building on the landward side of the levee looking downstream. Fall 2015.

LM Start	4.08	Rating **	M	Issue No.	26
LM End	4.08	Issue Type +	En	Location *	LS
Category	Earthen Levee			GPS Latitude/Longitude	
				Start	End
Item	Encroachments			38.724219 °	38.724219 °
				-121.752252 °	-121.752252 °
DWR ID	DWR_ST0001_02_f_2013_26				
Comment Code					
EQ : Equipment					
Inspector Comment					

Photo 1 of 1 : FA_2019_ST0001_260_26_20190829_00017.jpg



View of the equipment at the toe of the landward side of the levee. Fall 2015.

*** Location**
LS : Land Side N/A : Not Applicable
WS : Water Side
CR : Crown

**** Rating**
A : Acceptable N : Not Inspected/Rated
M : Minimally Acceptable C : Corrected
U : Unacceptable A/W : Acceptable but Monitor & Maintain

+ Issue Type
Ma : Maintenance Deficiency
Ob : Design & System Obsolescence
En : Enforcement

**Flood Control Project Maintenance
Levee Inspections**

Levee Inspection Report By Mile - Fall 2019

Sacramento Maintenance Yard Cache Creek

Waterway	Bank	Unit Miles	Inspection Start/End	Inspector
Unit No. 02 South Levee	Right	11.48	09/18/2019 09/18/2019	Zach Jojola

LM Start	4.09	Rating **	M	Issue No.	9
LM End	4.18	Issue Type +	En	Location *	LS
Category	Earthen Levee			GPS Latitude/Longitude	
				Start	End
Item	Vegetation			38.724317 °	38.725242 °
				-121.752148 °	-121.751075 °
DWR ID	DWR_ST0001_02_s_2012_9				
Comment Code					
V6 : Landscaping					
Inspector Comment					

Photo 1 of 1 : FA_2019_ST0001_260_9_20190829_00007.jpg



View of the landscaping vegetation on the landward side of the levee looking downstream. Fall 2015.

LM Start	4.20	Rating **	M	Issue No.	28
LM End	4.20	Issue Type +	En	Location *	LS
Category	Earthen Levee			GPS Latitude/Longitude	
				Start	End
Item	Encroachments			38.725449 °	38.725449 °
				-121.750856 °	-121.750856 °
DWR ID	DWR_ST0001_02_f_2017_28				
Comment Code					
EQ : Equipment					
Inspector Comment					
Pipes and farm equipment are located at the landside toe.					

No Photos

LM Start	4.22	Rating **	M	Issue No.	13
LM End	4.22	Issue Type +	En	Location *	LS
Category	Earthen Levee			GPS Latitude/Longitude	
				Start	End
Item	Encroachments			38.725762°	38.725762°
				-121.750560°	-121.750560°
DWR ID	DWR_ST0001_02_f_2019_13				
Comment Code					
EQ : Equipment					
Inspector Comment					
Pipes are located on the landside slope.					

No Photos

* Location		** Rating		+ Issue Type	
LS : Land Side	N/A : Not Applicable	A : Acceptable	N : Not Inspected/Rated	Ma : Maintenance Deficiency	
WS : Water Side		M : Minimally Acceptable	C : Corrected	Ob : Design & System Obsolescence	
CR : Crown		U : Unacceptable	A/W : Acceptable but Monitor & Maintain	En : Enforcement	

**Flood Control Project Maintenance
Levee Inspections**

Levee Inspection Report By Mile - Fall 2019

Sacramento Maintenance Yard Cache Creek

Waterway	Bank	Unit Miles	Inspection Start/End	Inspector
Unit No. 02 South Levee	Right	11.48	09/18/2019 09/18/2019	Zach Jojola

LM Start	4.23	Rating **	C	Issue No.	22
LM End	4.45	Issue Type +	En	Location *	LS
Category	Earthen Levee			GPS Latitude/Longitude	
				Start	End
Item	Encroachments			38.725898 °	38.726927 °
				-121.750432 °	-121.746725 °
DWR ID	DWR_ST0001_02_s_2019_22				
Comment Code					
TR : Tree or limb					
Inspector Comment					
The farmer cut down the adjacent walnut orchard and placed the limbs at the landside toe.					

No Photos

LM Start	4.42	Rating **	A/W	Issue No.	4
LM End	4.42	Issue Type +	Ma	Location *	LS
Category	Earthen Levee			GPS Latitude/Longitude	
				Start	End
Item	Erosion / Bank Caving			38.726840 °	38.726840 °
				-121.747228 °	-121.747228 °
DWR ID	DWR_ST0001_02_f_2016_4				
Comment Code					
E1 : Note and monitor erosion site.					
Inspector Comment					
There is erosion on the landside slope near the levee toe. It does not appear to pose a significant threat. Recommend monitoring.					

Photo 1 of 1 : FA_2019_ST0001_260_4_20190829_00004.jpg



Erosion on LS levee slope toward the toe. Fall 2016.

LM Start	4.44	Rating **	C	Issue No.	30
LM End	4.44	Issue Type +	Ma	Location *	LS
Category	Earthen Levee			GPS Latitude/Longitude	
				Start	End
Item	Animal Control			38.726908 °	38.726908 °
				-121.746833 °	-121.746833 °
DWR ID	DWR_ST0001_02_s_2019_30				
Comment Code					
A1 : Exterminate rodents and backfill and compact or grout burrows.					
Inspector Comment					
There are large rodent holes on the landside slope.					

No Photos

* Location LS : Land Side N/A : Not Applicable WS : Water Side CR : Crown		** Rating A : Acceptable M : Minimally Acceptable U : Unacceptable		N : Not Inspected/Rated C : Corrected A/W : Acceptable but Monitor & Maintain		+ Issue Type Ma : Maintenance Deficiency Ob : Design & System Obsolescence En : Enforcement	
--	--	--	--	---	--	---	--

**Flood Control Project Maintenance
Levee Inspections**

Levee Inspection Report By Mile - Fall 2019

Sacramento Maintenance Yard Cache Creek

Waterway	Bank	Unit Miles	Inspection Start/End	Inspector
Unit No. 02 South Levee	Right	11.48	09/18/2019 09/18/2019	Zach Jojola

LM Start	4.50	Rating **	M	Issue No.	7
LM End	4.50	Issue Type +	Ma	Location *	LS
Category	Earthen Levee			GPS Latitude/Longitude	
				Start	End
Item	Encroachments			38.727107°	38.727107°
				-121.745810°	-121.745810°
DWR ID	DWR_ST0001_02_f_2019_7				
Comment Code					
PR : Prunings					
Inspector Comment					
There are prunings at the landside toe.					

No Photos

LM Start	4.69	Rating **	M	Issue No.	14
LM End	4.80	Issue Type +	En	Location *	LS
Category	Earthen Levee			GPS Latitude/Longitude	
				Start	End
Item	Encroachments			38.727588 °	38.727158 °
				-121.742387 °	-121.740499 °
DWR ID	DWR_ST0001_02_s _ 2016_14				
Comment Code					
DT : Ditch					
Inspector Comment					

Photo 1 of 2 : FA_2019_ST0001_260_14_20190829_00011.jpg



View of ditch on landside near the levee toe looking upstream of Cache Creek. Fall 2016.

LM Start	4.69	Rating **	M	Issue No.	14 (cont)
LM End	4.80	Issue Type +	En	Location *	LS

Photo 2 of 2 : FA_2019_ST0001_260_14_20190829_00012.jpg



View of ditch on landside near the levee toe looking downstream of Cache Creek. Fall 2016.

* Location LS : Land Side N/A : Not Applicable WS : Water Side CR : Crown		** Rating A : Acceptable M : Minimally Acceptable U : Unacceptable N : Not Inspected/Rated C : Corrected A/W : Acceptable but Monitor & Maintain		+ Issue Type Ma : Maintenance Deficiency Ob : Design & System Obsolescence En : Enforcement	
--	--	---	--	---	--

**Flood Control Project Maintenance
Levee Inspections**

Levee Inspection Report By Mile - Fall 2019

Sacramento Maintenance Yard Cache Creek

Waterway	Bank	Unit Miles	Inspection Start/End	Inspector
Unit No. 02 South Levee	Right	11.48	09/18/2019 09/18/2019	Zach Jojola

LM Start	5.33	Rating **	A/W	Issue No.	11
LM End	5.37	Issue Type +	Ma	Location *	WS
Category	Supplemental			GPS Latitude/Longitude	
				Start	End
Item	2017 USACE Erosion Survey			38.722933 °	38.723467 °
				-121.760561 °	-121.760436 °
DWR ID	DWR_ST0001_02_f_2018_11				
Comment Code					
Inspector Comment					
2017 Site ID: CHC 5.4 L					
Status: Eroding					
2017 Field Notes: Site continues to erode due to recent high storm events.					
Site History: 2009 - Erosion into the levee slope. 2010 - Minor new erosion. 2011 - New erosion and a freshly fallen tree. 2012 - New animal holes and slightly steeper slopes. 2013 - New tree popout and 2 feet of erosion along the top bank.					

Photo 1 of 1 : FA_2019_ST0001_260_11_20190829_00009.jpg



USACE 2013 Photo #1

LM Start	5.85	Rating **	M	Issue No.	5
LM End	5.85	Issue Type +	Ma	Location *	LS
Category	Earthen Levee			GPS Latitude/Longitude	
				Start	End
Item	Slope Stability			38.727400 °	38.727400 °
				-121.721937 °	-121.721937 °
DWR ID	DWR_ST0001_02_f_2019_5				
Comment Code					
S1 : Repair slope instability.					
Inspector Comment					
There is a minor sinkhole on the landside slope. Recommend filling and compacting.					

Photo 1 of 1 : FA_2019_ST0001_260_5_20190919_00021.jpg



View of sinkhole on the landside slope. Fall 2019.

* Location
 LS : Land Side N/A : Not Applicable
 WS : Water Side
 CR : Crown

** Rating
 A : Acceptable
 M : Minimally Acceptable
 U : Unacceptable
 N : Not Inspected/Rated
 C : Corrected
 A/W : Acceptable but Monitor & Maintain

+ Issue Type
 Ma : Maintenance Deficiency
 Ob : Design & System Obsolescence
 En : Enforcement

**Flood Control Project Maintenance
Levee Inspections**

Unit Cover Sheet

Fall 2019 Levee Inspection Results

Sacramento Maintenance Yard Cache Creek

Waterway			Bank	Unit Miles
Unit No. 04 East Training Levee of Cache Creek Settling Basin			Left	2.26
	Spring (March - May)	Summer (June - August)	(September - November) Fall	Winter (December - February)
Unit Maintenance Rating (Fall Only)			A	
Date of Inspection	4/23/2019 - 4/23/2019		9/17/2019 - 9/17/2019	
DWR Inspector	Zach Jojola		Zach Jojola	
Accompanied By				

Summer & Winter Inspections

The Local Maintaining Agency (LMA) is responsible for summer and winter inspections. The LMA is required to submit a report regarding summer and winter inspections to the California Department of Water Resources (DWR).

DWR must be informed on the:

- a) completion of the inspection
- b) any changes other than the results of normal maintenance
- c) corrections to deficiencies noted in this report

If additional items are noted, further documentation of those items must also be submitted.

The LMA should submit this information to DWR using the LMA web application tool available at:

<http://cdec.water.ca.gov/lma.html>

If the LMA is unable to submit information on this webpage, please contact DWR for assistance.

The LMA should submit the information and any associated documentation by September 30 for summer inspections and March 31 for winter inspections.

**Flood Control Project Maintenance
Levee Inspections**

Levee Inspection Report By Mile - Fall 2019

Sacramento Maintenance Yard Cache Creek

Waterway	Bank	Unit Miles	Inspection Start/End	Inspector
Unit No. 04 East Training Levee of Cache Creek Settling Basin	Left	2.26	09/17/2019 09/17/2019	Zach Jojola

LM Start	2.23	Rating **	A	Issue No.	2
LM End	2.23	Issue Type +	Ma	Location *	LS
Category	Earthen Levee			GPS Latitude/Longitude	
				Start	End
Item	Vegetation			38.695847 °	38.695847 °
				-121.715902 °	-121.715902 °
DWR ID	DWR_ST0001_04_f_2019_2				
Comment Code					
V1 : Control annual grass and weeds on the levee slopes and easements.					
Inspector Comment					
The LMA maintains the vegetation at a high level.					

Photo 1 of 1 : FA_2019_ST0001_261_2_20190919_00008.jpg



View of the maintained landside slope. Fall 2019.

LM Start	2.26	Rating **	M	Issue No.	1	
LM End	2.26	Issue Type +	Ma	Location *		
Category	Supplemental			GPS Latitude/Longitude		
				Start		End
Item	2017 Storm Damage			38.695424 °		38.695253 °
				-121.715914 °		-121.715926 °
DWR ID	LMA-58					
Comment Code						
Inspector Comment						
Levee Evaluation Comments						
Description:						
Site ID No:250						
Site Designation:LMA-58						
Repair Type: Erosion						
Rating:Area of Concern						
Field Date:6/2/2017						
Notes: Training levee end slope where it keys into channel/access ramp erosion. No change as of fall 2018 inspection.						

Photo 1 of 3 : LEVAL_FA_2019_250_962.jpg



* Location
LS : Land Side N/A : Not Applicable
WS : Water Side
CR : Crown

** Rating
A : Acceptable
M : Minimally Acceptable
U : Unacceptable
N : Not Inspected/Rated
C : Corrected
A/W : Acceptable but Monitor & Maintain

+ Issue Type
Ma : Maintenance Deficiency
Ob : Design & System Obsolescence
En : Enforcement

**Flood Control Project Maintenance
Levee Inspections**

Levee Inspection Report By Mile - Fall 2019

Sacramento Maintenance Yard Cache Creek

Waterway	Bank	Unit Miles	Inspection Start/End	Inspector
Unit No. 04 East Training Levee of Cache Creek Settling Basin	Left	2.26	09/17/2019 09/17/2019	Zach Jojola

LM Start	2.26	Rating **	M	Issue No.	1 (cont)	
LM End	2.26	Issue Type +	Ma	Location *		
Category	Supplemental			GPS Latitude/Longitude		
				Start		End
Item	2017 Storm Damage			38.695424 °		38.695253 °
				-121.715914 °		-121.715926 °
DWR ID	LMA-58					
Comment Code						
Inspector Comment						
Levee Evaluation Comments						
Description:						
Site ID No:250						
Site Designation:LMA-58						
Repair Type: Erosion						
Rating:Area of Concern						
Field Date:6/2/2017						
Notes: Training levee end slope where it keys into channel/access ramp erosion. No change as of fall 2018 inspection.						

Photo 2 of 3 : LEVAL_FA_2019_250_964.jpg



Photo 3 of 3 : LEVAL_FA_2019_250_973.jpg



* Location LS : Land Side N/A : Not Applicable WS : Water Side CR : Crown	** Rating A : Acceptable M : Minimally Acceptable U : Unacceptable	N : Not Inspected/Rated C : Corrected A/W : Acceptable but Monitor & Maintain	+ Issue Type Ma : Maintenance Deficiency Ob : Design & System Obsolescence En : Enforcement
--	--	---	---

**Flood Control Project Maintenance
Levee Inspections**

Levee Inspection Report By Mile - Fall 2019

Sacramento Maintenance Yard Cache Creek

Waterway	Bank	Unit Miles	Inspection Start/End	Inspector
Unit No. 04 East Training Levee of Cache Creek Settling Basin	Left	2.26	09/17/2019 09/17/2019	Zach Jojola

LM Start	2.26	Rating **	A/W	Issue No.	3
LM End	2.26	Issue Type +	Ma	Location *	WS
Category	Earthen Levee			GPS Latitude/Longitude	
				Start	End
Item	Erosion / Bank Caving			38.695416 °	38.695416 °
				-121.715943 °	-121.715943 °
DWR ID	DWR_ST0001_04_s_2017_3				
Comment Code					
E2 : Schedule repair of erosion site prior to the next inspection.					
Inspector Comment					
Scour on waterside levee slope at end of Unit 04 levee. There is no visible active erosion at this time, however future high water events will likely cause further erosion into the levee prism.					

LM Start	2.26	Rating **	A/W	Issue No.	3 (cont)
LM End	2.26	Issue Type +	Ma	Location *	WS

Photo 1 of 4 : FA_2019_ST0001_261_3_20190829_00004.jpg



View of scour on waterside levee slope at the end of Unit 4. Spring 2018.

Photo 2 of 4 : FA_2019_ST0001_261_3_20190829_00005.jpg



View of newly scoured pond adjacent to the levee. Spring 2018.

LM Start	2.26	Rating **	A/W	Issue No.	3 (cont)
LM End	2.26	Issue Type +	Ma	Location *	WS

Photo 3 of 4 : FA_2019_ST0001_261_3_20190829_00006.jpg



View of scour at the end of the Training Levee. Ramp is inaccessible at this time. Fall 2017.

* Location LS : Land Side N/A : Not Applicable WS : Water Side CR : Crown		** Rating A : Acceptable M : Minimally Acceptable U : Unacceptable N : Not Inspected/Rated C : Corrected A/W : Acceptable but Monitor & Maintain		+ Issue Type Ma : Maintenance Deficiency Ob : Design & System Obsolescence En : Enforcement	
--	--	---	--	---	--

**Flood Control Project Maintenance
Levee Inspections**

Levee Inspection Report By Mile - Fall 2019

Sacramento Maintenance Yard Cache Creek

Waterway	Bank	Unit Miles	Inspection Start/End	Inspector
Unit No. 04 East Training Levee of Cache Creek Settling Basin	Left	2.26	09/17/2019 09/17/2019	Zach Jojola

LM Start	2.26	Rating **	A/W	Issue No.	3 (cont)	
LM End	2.26	Issue Type +	Ma	Location *	WS	
Category	Earthen Levee			GPS Latitude/Longitude		
				Start	End	
Item	Erosion / Bank Caving			38.695416°	38.695416°	
				-121.715943°	-121.715943°	
DWR ID	DWR_ST0001_04_s_2017_3					
Comment Code						
E2 : Schedule repair of erosion site prior to the next inspection.						
Inspector Comment						
Scour on waterside levee slope at end of Unit 04 levee. There is no visible active erosion at this time, however future high water events will likely cause further erosion into the levee prism.						

Photo 4 of 4 : FA_2019_ST0001_261_3_20190829_00007.jpg



Scour on waterside levee slope at end of Unit 04 levee. Spring 2017.

* Location LS : Land Side N/A : Not Applicable WS : Water Side CR : Crown	** Rating A : Acceptable M : Minimally Acceptable U : Unacceptable	N : Not Inspected/Rated C : Corrected A/W : Acceptable but Monitor & Maintain	+ Issue Type Ma : Maintenance Deficiency Ob : Design & System Obsolescence En : Enforcement
--	--	---	---