

**Flood Control Project Maintenance
Levee Inspections**

Fall 2011 Levee Maintenance Deficiency Summary Report

Overall LMA & Unit Ratings, including USACE Erosion Survey

Sacramento River Basin

ST0001	Overall LMA Rating	Total LMA Miles	* Overall LMA Threshold Percent is less than 10.00%; however, U Rated Miles are present, so the Overall LMA Rating is M instead of A.			
Sacramento Maintenance Yard Cache Creek	M *	25.52				
Rated Item	M Miles	U Miles	M + 4U Miles	Threshold %	Encroachments	
					PO Miles	CO Miles
<i>Earthen Levee</i>						
Encroachments	0.26		0.26	1.02%	0.34	0.35
Animal Control	0.01		0.01	0.04%		
<i>Supplemental</i>						
USACE Erosion Survey	0.29	0.19	1.05	4.11%		
<i>LMA Totals:</i>	0.56	0.19	1.32	5.17% *	0.34	0.35

Unit No. 01 North Levee LB	Overall Unit Rating	Total Unit Miles	* Overall Unit Threshold Percent is less than 10.00%; however, U Rated Miles are present, so the Overall Unit Rating is M instead of A.			
ST0001	M *	11.81				
Rated Item	M Miles	U Miles	M + 4U Miles	Threshold %	Encroachments	
					PO Miles	CO Miles
<i>Earthen Levee</i>						
Encroachments	0.17		0.17	1.44%	0.33	0.13
<i>Supplemental</i>						
USACE Erosion Survey	0.21	0.19	0.97	8.21%		
<i>Unit Totals:</i>	0.38	0.19	1.14	9.65% *	0.33	0.13

Unit No. 02 South Levee RB	Overall Unit Rating	Total Unit Miles				
ST0001	A	11.43				
Rated Item	M Miles	U Miles	M + 4U Miles	Threshold %	Encroachments	
					PO Miles	CO Miles
<i>Earthen Levee</i>						
Encroachments	0.09		0.09	0.79%	0.01	0.22
Animal Control	0.01		0.01	0.09%		
<i>Supplemental</i>						
USACE Erosion Survey	0.08		0.08	0.70%		
<i>Unit Totals:</i>	0.18	0.00	0.18	1.58%	0.01	0.22

Unit No. 04 East Training Levee of Cache Creek Settling Basin LB	Overall Unit Rating	Total Unit Miles				
ST0001	A	2.28				
Rated Item	M Miles	U Miles	M + 4U Miles	Threshold %	Encroachments	
					PO Miles	CO Miles
<i>No Items</i>						
<i>Unit Totals:</i>	0.00	0.00	0.00	0.00%	0.00	0.00

**Flood Control Project Maintenance
Levee Inspections**
LMA District Cover Sheet
Fall 2011 Levee Inspection Results

Sacramento Maintenance Yard Cache Creek

	Spring (March - May)	Summer ** (June - August)	Fall (September - November)	Winter ** (December - February)
* Overall LMA Rating (Fall Only)			M	

** Non-receipt of Summer or Winter Inspection Reports may effect overall annual rating.

*
SPRING INSPECTIONS: Overall maintenance ratings are not determined for the spring inspection results. Individual maintenance deficiencies are rated using the same criteria in the spring and in the fall.

FALL INSPECTIONS: The overall maintenance rating shown above is based on operation and maintenance deficiencies identified within the attached unit inspection reports.

Comments

**Flood Control Project Maintenance
Levee Inspections**

Unit Cover Sheet

Fall 2011 Levee Inspection Results

Sacramento Maintenance Yard Cache Creek

Waterway			Bank	Unit Miles
Unit No. 01 North Levee			Left	11.81
	Spring (March - May)	Summer (June - August)	(September - November) Fall	Winter (December - February)
Unit Maintenance Rating (Fall Only)			M	
Date of Inspection	4/13/2011 - 4/13/2011		11/1/2011 - 11/1/2011	
DWR Inspector	John Williamson		John Williamson	
Accompanied By	Ted Skidgel DWR Sac. Yard		Ted Skidgel DWR Sac. Yard	

Check one:

- ☐ During the current winter (or summer) inspection period, my staff or I have inspected the levee and associated flood project components identified in the attached Levee Inspection Report by Mile. We have found no changes in flood project conditions other than the results of our normal maintenance and the corrections we have made to maintenance deficiencies identified in the enclosed report.
- ☐ During the current winter (or summer) inspection period, my staff or I have inspected the levee and associated flood project components identified in the attached Levee Inspection Report by Mile. In addition to the results of our normal maintenance and the corrections we have made to maintenance deficiencies identified in the report, we have found the following changes in flood project conditions.

(In the comment section below or on additional sheet(s), identify change of condition by: Start to End Levee Mile or GPS coordinates, location (Land Side, Water Side, or Crown), Item identification, and description of the current condition).

Comments

One of the boxes above is to be checked by the Local Maintaining Agency (LMA). If the second box is checked, additional information must also be submitted. This Unit Cover Sheet should be signed and dated by the LMA Representative and returned to DWR with any additional sheets by September 30 (Summer Inspection) or March 31 (Winter Inspection). Please retain a copy for your records. Please mail all of this information to :

DWR Summer/Winter Inspection Reports
3310 El Camino Avenue, Suite 200
Sacramento, CA 95821-9000

X

Signature of LMA Representative

Date

**Flood Control Project Maintenance
Levee Inspections**

Levee Inspection Report By Mile - Fall 2011

Sacramento Maintenance Yard Cache Creek

Waterway							Bank	Unit Miles	Inspection Start/End	Inspector
Unit No. 01 North Levee							Left	11.81	11/01/2011 11/01/2011	John Williamson
LMR No.	Levee Mile		Category	Item	Location *	Rating **	Action/Comment	GPS Latitude/Longitude		Issue No. Photo
	Start	End						Start	End	
1	1.83	1.83	Earthen Levee	Encroachments	LS	M	Material	38.729370 ° -121.806630 °	38.729370 ° -121.806630 °	1 Y
2	1.86	1.96	Earthen Levee	Encroachments	LS	CO	Landscaping	38.729828 ° -121.806532 °	38.731143 ° -121.806255 °	3 Y
3	1.91	1.91	Earthen Levee	Encroachments	LS	CO	Buildings	38.730528 ° -121.806485 °	38.730528 ° -121.806485 °	4 Y
4	1.96	1.99	Earthen Levee	Encroachments	WS	PO	Landscaping Inspector Comments: cactus on waterside berm	38.731197 ° -121.806232 °	38.731655 ° -121.806068 °	6 Y
5	1.96	1.99	Earthen Levee	Encroachments	LS	PO	Landscaping	38.731198 ° -121.806230 °	38.731650 ° -121.806068 °	7 Y
6	1.98	1.98	Earthen Levee	Encroachments	LS	PO	Buildings	38.731507 ° -121.806122 °	38.731507 ° -121.806122 °	8 Y
7	2.01	2.01	Earthen Levee	Encroachments	LS	PO	Buildings	38.731927 ° -121.805973 °	38.731927 ° -121.805973 °	9 Y
8	2.03	2.03	Earthen Levee	Encroachments	LS	PO	Buildings	38.732162 ° -121.805895 °	38.732162 ° -121.805895 °	10 Y
9	2.04	2.04	Earthen Levee	Encroachments	LS	PO	Buildings	38.732268 ° -121.805832 °	38.732268 ° -121.805832 °	11 Y
10	2.06	2.06	Earthen Levee	Encroachments	LS	PO	Buildings	38.732537 ° -121.805708 °	38.732537 ° -121.805708 °	13 Y
11	2.09	2.09	Earthen Levee	Encroachments	LS	PO	Buildings	38.733000 ° -121.805409 °	38.733000 ° -121.805409 °	12 Y
12	2.10	2.11	Earthen Levee	Encroachments	LS	PO	Landscaping	38.733117 ° -121.805367 °	38.733218 ° -121.805263 °	14 Y
13	2.11	2.13	Earthen Levee	Encroachments	LS	CO	Fences	38.733215 ° -121.805262 °	38.733350 ° -121.805082 °	15 Y
14	2.12	2.12	Earthen Levee	Encroachments	LS	M	Debris	38.733324 ° -121.805067 °	38.733324 ° -121.805067 °	2 Y
15	2.15	2.15	Earthen Levee	Encroachments	LS	PO	Buildings	38.733555 ° -121.804737 °	38.733555 ° -121.804737 °	16 Y
16	2.42	2.51	Supplemental Survey	USACE Erosion Survey	WS	U	Inspector Comments: Site identified as CRITICAL in 2002. 2006 - Currently constructing a setback levee. New failures present and extensive. Downstream end of the setback levee did not extend far enough. Upstream end was repaired. 2007 - DWR repaired with a setback levee, but the levee did not go far enough downstream. 2011: No observed change. [2011 Site ID: CHC_2-4_L]	38.732836 ° -121.797893 °	38.732685 ° -121.797154 °	18 Y
17	2.60	2.60	Earthen Levee	Encroachments	LS	PO	Buildings	38.732850 ° -121.796798 °	38.732850 ° -121.796798 °	17 Y

*** Location**

LS : Land Side
WS : Water Side
CR : Crown

**** Rating**

A : Acceptable
M : Minimally Acceptable
U : Unacceptable

PO : Partially Obstructing
CO : Completely Obstructing
W : Watch/Monitor

N : Not Inspected, see Inspector Comment C : Corrected

**Flood Control Project Maintenance
Levee Inspections**

Levee Inspection Report By Mile - Fall 2011

Sacramento Maintenance Yard Cache Creek

Waterway						Bank	Unit Miles	Inspection Start/End	Inspector
Unit No. 01 North Levee						Left	11.81	11/01/2011 11/01/2011	John Williamson

LMR No.	Levee Mile		Category	Item	Location *	Rating **	Action/Comment	GPS Latitude/Longitude		Issue No.
	Start	End						Start	End	
18	2.65	2.70	Earthen Levee	Encroachments	LS	M	Equipment	38.733080 ° -121.796013 °	38.733492 ° -121.795293 °	19 Y
19	2.66	2.66	Earthen Levee	Encroachments	LS	PO	Buildings	38.733132 ° -121.795890 °	38.733132 ° -121.795890 °	20 Y
20	2.68	2.68	Supplemental	USACE Erosion Survey	WS	U	Inspector Comments: Site identified as CRITICAL in 2006. 2006 - Some significant new erosion, especially fresh upper bank slumping. Also have a small piping failure due to recent overbank flows. 2010 - New erosion, flood fought in early 2010. Planned setback levee by CA DWR, 100% designs complete, construction planned for 2011. 2011: Large sections of the bank have slumped off in the past year. [2011 Site ID: CHC_4-2_L]	38.726903 ° -121.774435 °	38.727261 ° -121.776921 °	25 Y
21	2.69	2.78	Supplemental	USACE Erosion Survey	WS	M	Inspector Comments: 2006 - Large new failure. 2008 - Plans for repair currently in the design phase. 2010 - Planned setback levee by CA DWR, 60% design complete, construction planned for 2012. 2011: No observed change. DWR plans to construct a setback levee in 2013. [2011 Site ID: CHC_2-8_L]	38.734067 ° -121.793713 °	38.734171 ° -121.792992 °	30 Y
22	2.70	2.70	Earthen Levee	Encroachments	LS	M	Firewood	38.733562 ° -121.795189 °	38.733562 ° -121.795189 °	21 Y
23	2.79	2.79	Earthen Levee	Encroachments	LS	M	Firewood	38.734129 ° -121.793788 °	38.734129 ° -121.793788 °	5 Y
24	2.86	2.86	Earthen Levee	Encroachments	LS	M	Debris	38.734246 ° -121.792596 °	38.734246 ° -121.792596 °	28 Y
25	3.06	3.06	Earthen Levee	Encroachments	LS	C	Prunings	38.734331 ° -121.788792 °	38.734331 ° -121.788792 °	29 Y
26	3.22	3.22	Earthen Levee	Encroachments	LS	M	Prunings	38.735330 ° -121.786281 °	38.735330 ° -121.786281 °	22 Y
27	3.48	3.56	Supplemental	USACE Erosion Survey	WS	M	Inspector Comments: 2006 - Some significant new erosion, especially fresh upper bank slumping. Still substantial berm. 2010 - Site extended downstream, some new erosion, heavily vegetated and hard to see. Planned setback levee by CA DWR, 60% design complete, construction planned for 2012. 2011: No observed change. DWR plans to construct a setback levee in 2013. [2011 Site ID: CHC_3-4_L]	38.732942 ° -121.784965 °	38.731626 ° -121.785231 °	33 Y
28	3.86	3.86	Earthen Levee	Encroachments	LS	C	Prunings	38.728383 ° -121.781586 °	38.728383 ° -121.781586 °	23 Y

*** Location**

LS : Land Side
WS : Water Side
CR : Crown

**** Rating**

A : Acceptable PO : Partially Obstructing N : Not Inspected, see Inspector Comment C : Corrected
M : Minimally Acceptable CO : Completely Obstructing
U : Unacceptable W : Watch/Monitor

**Flood Control Project Maintenance
Levee Inspections**

Levee Inspection Report By Mile - Fall 2011

Sacramento Maintenance Yard Cache Creek

Waterway	Bank	Unit Miles	Inspection Start/End	Inspector
Unit No. 01 North Levee	Left	11.81	11/01/2011 11/01/2011	John Williamson

LMR No.	Levee Mile		Category	Item	Location *	Rating **	Action/Comment	GPS Latitude/Longitude		Issue No.
	Start	End						Start	End	
29	3.87	3.96	Supplemental	USACE Erosion Survey	WS	U	Inspector Comments: Site identified as CRITICAL in 2006. 2006 - Some significant new erosion, especially fresh upper bank slumping. Also have a small piping failure due to recent overbank flows. 2007 - Some new minor upper bank slumps. 2010 - Planned setback levee by CA DWR, 100% design complete, construction planned for 2011. 2011: Minor new erosion. DWR plans to construct a setback levee in 2012. [2011 Site ID: CHC_3-9_L]	38.728165 ° -121.781673 °	38.727600 ° -121.780359 °	34 Y
30	4.27	4.42	Earthen Levee	Encroachments	LS	PO	Landscaping	38.727047 ° -121.774413 °	38.726113 ° -121.771929 °	27 Y
31	4.76	4.76	Earthen Levee	Encroachments	LS	M	Pipe	38.722590 ° -121.767294 °	38.722590 ° -121.767294 °	24 Y
32	5.33	5.37	Supplemental	USACE Erosion Survey	WS	M	Inspector Comments: 2009 - Erosion into the levee slope. 2010 - Minor new erosion. 2011: New erosion and a freshly fallen tree. [2011 Site ID: CHC_5-4_L]	38.722933 ° -121.760561 °	38.723467 ° -121.760436 °	35 Y
33	5.73	5.73	Earthen Levee	Encroachments	WS	C	Prunings	38.723674 ° -121.754878 °	38.723674 ° -121.754878 °	911
34	6.31	6.31	Earthen Levee	Encroachments	LS	PO	Tank Inspector Comments: filter tanks, concrete, slab fertilizer tanks and pipe through levee, no permit for pipe	38.728084 ° -121.746597 °	38.728084 ° -121.746597 °	31 Y
35	6.36	6.69	Earthen Levee	Encroachments	LS	C	Agricultural Ditch	38.728326 ° -121.745743 °	38.728804 ° -121.739776 °	26
36	6.94	7.23	Earthen Levee	Encroachments	LS	C	Agricultural Ditch	38.728072 ° -121.735393 °	38.727467 ° -121.730367 °	32
37	7.33	7.38	Earthen Levee	Encroachments	LS	M	Equipment	38.727878 ° -121.728553 °	38.728085 ° -121.727740 °	40 Y
38	7.33	7.33	Earthen Levee	Encroachments	LS	PO	Buildings	38.727870 ° -121.728527 °	38.727870 ° -121.728527 °	39 Y

*** Location**

LS : Land Side
WS : Water Side
CR : Crown

**** Rating**

A : Acceptable PO : Partially Obstructing N : Not Inspected, see Inspector Comment C : Corrected
M : Minimally Acceptable CO : Completely Obstructing
U : Unacceptable W : Watch/Monitor

**Flood Control Project Maintenance
Levee Inspections**

Levee Inspection Report By Mile - Fall 2011

Sacramento Maintenance Yard Cache Creek

Waterway	Bank	Unit Miles	Inspection Start/End	Inspector
Unit No. 01 North Levee	Left	11.81	11/01/2011 11/01/2011	John Williamson

Levee Mile Report Line	1
Start Levee Mile	1.83
End Levee Mile	1.83
Location	Land Side
Category	Earthen Levee
Item	Encroachments
The owner has a lot of building material stored within the easement. Fall 2011	
johngw_f_20111102_450.jpg	



Levee Mile Report Line	2
Start Levee Mile	1.86
End Levee Mile	1.96
Location	Land Side
Category	Earthen Levee
Item	Encroachments
The landscape vegetation needs to be trimmed for visibility of the levee slope. Fall 2011	
johngw_f_20111102_451.jpg	



Levee Mile Report Line	3
Start Levee Mile	1.91
End Levee Mile	1.91
Location	Land Side
Category	Earthen Levee
Item	Encroachments
The building backs up to the landside levee toe of the levee.	
johngw_f_20110923_729.jpg	

*** Location**

LS : Land Side
WS : Water Side
CR : Crown

**** Rating**

A : Acceptable
M : Minimally Acceptable
U : Unacceptable

PO : Partially Obstructing
CO : Completely Obstructing
W : Watch/Monitor

N : Not Inspected, see Inspector Comment C : Corrected

**Flood Control Project Maintenance
Levee Inspections**

Levee Inspection Report By Mile - Fall 2011

Sacramento Maintenance Yard Cache Creek

Waterway	Bank	Unit Miles	Inspection Start/End	Inspector
Unit No. 01 North Levee	Left	11.81	11/01/2011 11/01/2011	John Williamson

Levee Mile Report Line	4
Start Levee Mile	1.96
End Levee Mile	1.99
Location	Water Side
Category	Earthen Levee
Item	Encroachments
A cactus garden is planted on the waterside of the levee. There is some planted on the landside also.	
johngw_f_20110923_730.jpg	



Levee Mile Report Line	5
Start Levee Mile	1.96
End Levee Mile	1.99
Location	Land Side
Category	Earthen Levee
Item	Encroachments
Wild grape and other plants are obstructing the view for inspection. Fall 2011	
johngw_f_20111102_452.jpg	



Levee Mile Report Line	6
Start Levee Mile	1.98
End Levee Mile	1.98
Location	Land Side
Category	Earthen Levee
Item	Encroachments
Building and catus landside, town of Yolo	
johngw_f_20110923_731.jpg	

*** Location**

LS : Land Side
WS : Water Side
CR : Crown

**** Rating**

A : Acceptable
M : Minimally Acceptable
U : Unacceptable

PO : Partially Obstructing
CO : Completely Obstructing
W : Watch/Monitor

N : Not Inspected, see Inspector Comment C : Corrected

**Flood Control Project Maintenance
Levee Inspections**

Levee Inspection Report By Mile - Fall 2011

Sacramento Maintenance Yard Cache Creek

Waterway	Bank	Unit Miles	Inspection Start/End	Inspector
Unit No. 01 North Levee	Left	11.81	11/01/2011 11/01/2011	John Williamson

Levee Mile Report Line	7
Start Levee Mile	2.01
End Levee Mile	2.01
Location	Land Side
Category	Earthen Levee
Item	Encroachments

A general photo of homes in the town of Yolo.

johngw_f_20110923_732.jpg



Levee Mile Report Line	8
Start Levee Mile	2.03
End Levee Mile	2.03
Location	Land Side
Category	Earthen Levee
Item	Encroachments

The house is too close to the levee toe. Fall 2011

johngw_f_20111102_453.jpg



Levee Mile Report Line	9
Start Levee Mile	2.04
End Levee Mile	2.04
Location	Land Side
Category	Earthen Levee
Item	Encroachments

The building and backyard is at the toe of the levee. Fall 2011

johngw_f_20111102_454.jpg



*** Location**

LS : Land Side
WS : Water Side
CR : Crown

**** Rating**

A : Acceptable
M : Minimally Acceptable
U : Unacceptable

PO : Partially Obstructing
CO : Completely Obstructing
W : Watch/Monitor

N : Not Inspected, see Inspector Comment C : Corrected

**Flood Control Project Maintenance
Levee Inspections**

Levee Inspection Report By Mile - Fall 2011

Sacramento Maintenance Yard Cache Creek

Waterway	Bank	Unit Miles	Inspection Start/End	Inspector
Unit No. 01 North Levee	Left	11.81	11/01/2011 11/01/2011	John Williamson

Levee Mile Report Line	10
Start Levee Mile	2.06
End Levee Mile	2.06
Location	Land Side
Category	Earthen Levee
Item	Encroachments

The patio is at the toe of the levee Fall 2011

johngw_f_20111102_456.jpg



Levee Mile Report Line	11
Start Levee Mile	2.09
End Levee Mile	2.09
Location	Land Side
Category	Earthen Levee
Item	Encroachments

The building is close to the toe of the levee.

johngw_f_20110923_733.jpg



Levee Mile Report Line	12
Start Levee Mile	2.10
End Levee Mile	2.11
Location	Land Side
Category	Earthen Levee
Item	Encroachments

The shrubs block visibility of the levee slope. Fall 2011

johngw_f_20111102_457.jpg



*** Location**

LS : Land Side
WS : Water Side
CR : Crown

**** Rating**

A : Acceptable
M : Minimally Acceptable
U : Unacceptable

PO : Partially Obstructing
CO : Completely Obstructing
W : Watch/Monitor

N : Not Inspected, see Inspector Comment C : Corrected

**Flood Control Project Maintenance
Levee Inspections**

Levee Inspection Report By Mile - Fall 2011

Sacramento Maintenance Yard Cache Creek

Waterway	Bank	Unit Miles	Inspection Start/End	Inspector
Unit No. 01 North Levee	Left	11.81	11/01/2011 11/01/2011	John Williamson

Levee Mile Report Line	13
Start Levee Mile	2.11
End Levee Mile	2.13
Location	Land Side
Category	Earthen Levee
Item	Encroachments
The fence blocks the visibility of the levee. Fall 2011	
johngw_f_20111102_458.jpg	



Levee Mile Report Line	14
Start Levee Mile	2.12
End Levee Mile	2.12
Location	Land Side
Category	Earthen Levee
Item	Encroachments
This is the same photo but shows the debris pile on the levee. Fall 2011	
johngw_f_20111102_459.jpg	



Levee Mile Report Line	15
Start Levee Mile	2.15
End Levee Mile	2.15
Location	Land Side
Category	Earthen Levee
Item	Encroachments
Horse barn and corral	
johngw_f_20110923_734.jpg	

*** Location**

LS : Land Side
WS : Water Side
CR : Crown

**** Rating**

A : Acceptable
M : Minimally Acceptable
U : Unacceptable

PO : Partially Obstructing
CO : Completely Obstructing
W : Watch/Monitor

N : Not Inspected, see Inspector Comment C : Corrected

**Flood Control Project Maintenance
Levee Inspections**

Levee Inspection Report By Mile - Fall 2011

Sacramento Maintenance Yard Cache Creek

Waterway	Bank	Unit Miles	Inspection Start/End	Inspector
Unit No. 01 North Levee	Left	11.81	11/01/2011 11/01/2011	John Williamson

Levee Mile Report Line	16
Start Levee Mile	2.42
End Levee Mile	2.51
Location	Water Side
Category	Supplemental
Item	USACE Erosion Survey

USACE 2011 Photo #1

USACE2011_CHC_2-4_L_1.jpg



Levee Mile Report Line	16
Start Levee Mile	2.42
End Levee Mile	2.51
Location	Water Side
Category	Supplemental
Item	USACE Erosion Survey

USACE 2011 Photo #2

USACE2011_CHC_2-4_L_2.jpg



Levee Mile Report Line	16
Start Levee Mile	2.42
End Levee Mile	2.51
Location	Water Side
Category	Supplemental
Item	USACE Erosion Survey

USACE 2011 Photo #3

USACE2011_CHC_2-4_L_3.jpg

*** Location**

LS : Land Side
WS : Water Side
CR : Crown

**** Rating**

A : Acceptable
M : Minimally Acceptable
U : Unacceptable

PO : Partially Obstructing
CO : Completely Obstructing
W : Watch/Monitor

N : Not Inspected, see Inspector Comment C : Corrected

**Flood Control Project Maintenance
Levee Inspections**

Levee Inspection Report By Mile - Fall 2011

Sacramento Maintenance Yard Cache Creek

Waterway	Bank	Unit Miles	Inspection Start/End	Inspector
Unit No. 01 North Levee	Left	11.81	11/01/2011 11/01/2011	John Williamson

Levee Mile Report Line	17
Start Levee Mile	2.60
End Levee Mile	2.60
Location	Land Side
Category	Earthen Levee
Item	Encroachments

Building and parts of tractors

johngw_f_20110923_735.jpg



Levee Mile Report Line	18
Start Levee Mile	2.65
End Levee Mile	2.70
Location	Land Side
Category	Earthen Levee
Item	Encroachments

The equipment is stored at the toe of the levee.
Fall 2011

johngw_f_20111102_460.jpg



Levee Mile Report Line	19
Start Levee Mile	2.66
End Levee Mile	2.66
Location	Land Side
Category	Earthen Levee
Item	Encroachments

The corner of the shop is within the easement of
the levee. Fall 2011

johngw_f_20111102_461.jpg



*** Location**

LS : Land Side
WS : Water Side
CR : Crown

**** Rating**

A : Acceptable
M : Minimally Acceptable
U : Unacceptable

PO : Partially Obstructing
CO : Completely Obstructing
W : Watch/Monitor

N : Not Inspected, see Inspector Comment C : Corrected

**Flood Control Project Maintenance
Levee Inspections**

Levee Inspection Report By Mile - Fall 2011

Sacramento Maintenance Yard Cache Creek

Waterway	Bank	Unit Miles	Inspection Start/End	Inspector
Unit No. 01 North Levee	Left	11.81	11/01/2011 11/01/2011	John Williamson

Levee Mile Report Line	20
Start Levee Mile	2.68
End Levee Mile	2.68
Location	Water Side
Category	Supplemental
Item	USACE Erosion Survey

USACE 2011 Photo #1

USACE2011_CHC_4-2_L_1.jpg



Levee Mile Report Line	20
Start Levee Mile	2.68
End Levee Mile	2.68
Location	Water Side
Category	Supplemental
Item	USACE Erosion Survey

USACE 2011 Photo #2

USACE2011_CHC_4-2_L_2.jpg



Levee Mile Report Line	20
Start Levee Mile	2.68
End Levee Mile	2.68
Location	Water Side
Category	Supplemental
Item	USACE Erosion Survey

USACE 2011 Photo #3

USACE2011_CHC_4-2_L_3.jpg

*** Location**

LS : Land Side
WS : Water Side
CR : Crown

**** Rating**

A : Acceptable
M : Minimally Acceptable
U : Unacceptable

PO : Partially Obstructing
CO : Completely Obstructing
W : Watch/Monitor

N : Not Inspected, see Inspector Comment
C : Corrected

**Flood Control Project Maintenance
Levee Inspections**

Levee Inspection Report By Mile - Fall 2011

Sacramento Maintenance Yard Cache Creek

Waterway	Bank	Unit Miles	Inspection Start/End	Inspector
Unit No. 01 North Levee	Left	11.81	11/01/2011 11/01/2011	John Williamson

Levee Mile Report Line	21
Start Levee Mile	2.69
End Levee Mile	2.78
Location	Water Side
Category	Supplemental
Item	USACE Erosion Survey

USACE 2011 Photo #1

USACE2011_CHC_2-8_L_1.jpg



Levee Mile Report Line	21
Start Levee Mile	2.69
End Levee Mile	2.78
Location	Water Side
Category	Supplemental
Item	USACE Erosion Survey

USACE 2011 Photo #2

USACE2011_CHC_2-8_L_2.jpg



Levee Mile Report Line	22
Start Levee Mile	2.70
End Levee Mile	2.70
Location	Land Side
Category	Earthen Levee
Item	Encroachments

Firewood is stockpiled on the levee slope. Fall 2011

johngw_f_20111102_462.jpg

*** Location**

LS : Land Side
WS : Water Side
CR : Crown

**** Rating**

A : Acceptable
M : Minimally Acceptable
U : Unacceptable

PO : Partially Obstructing
CO : Completely Obstructing
W : Watch/Monitor

N : Not Inspected, see Inspector Comment C : Corrected

**Flood Control Project Maintenance
Levee Inspections**

Levee Inspection Report By Mile - Fall 2011

Sacramento Maintenance Yard Cache Creek

Waterway	Bank	Unit Miles	Inspection Start/End	Inspector
Unit No. 01 North Levee	Left	11.81	11/01/2011 11/01/2011	John Williamson

Levee Mile Report Line	23
Start Levee Mile	2.79
End Levee Mile	2.79
Location	Land Side
Category	Earthen Levee
Item	Encroachments

The owner is cutting firewood on the levee slope and has brush to clean up. Fall 2011

johngw_f_20111102_463.jpg



Levee Mile Report Line	24
Start Levee Mile	2.86
End Levee Mile	2.86
Location	Land Side
Category	Earthen Levee
Item	Encroachments

Concrete debris

johngw_f_20110923_740.jpg



Levee Mile Report Line	26
Start Levee Mile	3.22
End Levee Mile	3.22
Location	Land Side
Category	Earthen Levee
Item	Encroachments

This seasons prunings have been piled up against the toe of the landside levee.

johngw_f_20110923_737.jpg



*** Location**

LS : Land Side
WS : Water Side
CR : Crown

**** Rating**

A : Acceptable
M : Minimally Acceptable
U : Unacceptable

PO : Partially Obstructing
CO : Completely Obstructing
W : Watch/Monitor

N : Not Inspected, see Inspector Comment C : Corrected

**Flood Control Project Maintenance
Levee Inspections**

Levee Inspection Report By Mile - Fall 2011

Sacramento Maintenance Yard Cache Creek

Waterway	Bank	Unit Miles	Inspection Start/End	Inspector
Unit No. 01 North Levee	Left	11.81	11/01/2011 11/01/2011	John Williamson

Levee Mile Report Line	27
Start Levee Mile	3.48
End Levee Mile	3.56
Location	Water Side
Category	Supplemental
Item	USACE Erosion Survey

USACE 2011 Photo #1

USACE2011_CHC_3-4_L_1.jpg



Levee Mile Report Line	27
Start Levee Mile	3.48
End Levee Mile	3.56
Location	Water Side
Category	Supplemental
Item	USACE Erosion Survey

USACE 2011 Photo #2

USACE2011_CHC_3-4_L_2.jpg



Levee Mile Report Line	29
Start Levee Mile	3.87
End Levee Mile	3.96
Location	Water Side
Category	Supplemental
Item	USACE Erosion Survey

USACE 2011 Photo #1

USACE2011_CHC_3-9_L_1.jpg

*** Location**

LS : Land Side
WS : Water Side
CR : Crown

**** Rating**

A : Acceptable PO : Partially Obstructing N : Not Inspected, see Inspector Comment C : Corrected
M : Minimally Acceptable CO : Completely Obstructing
U : Unacceptable W : Watch/Monitor

**Flood Control Project Maintenance
Levee Inspections**

Levee Inspection Report By Mile - Fall 2011

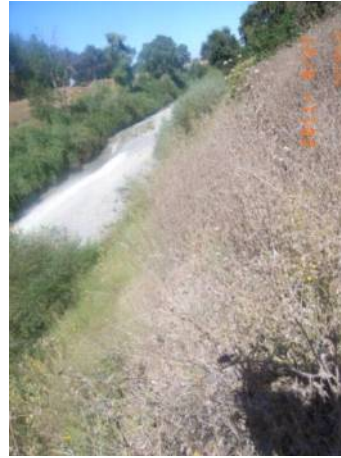
Sacramento Maintenance Yard Cache Creek

Waterway	Bank	Unit Miles	Inspection Start/End	Inspector
Unit No. 01 North Levee	Left	11.81	11/01/2011 11/01/2011	John Williamson

Levee Mile Report Line	29
Start Levee Mile	3.87
End Levee Mile	3.96
Location	Water Side
Category	Supplemental
Item	USACE Erosion Survey

USACE 2011 Photo #2

USACE2011_CHC_3-9_L_2.jpg



Levee Mile Report Line	29
Start Levee Mile	3.87
End Levee Mile	3.96
Location	Water Side
Category	Supplemental
Item	USACE Erosion Survey

USACE 2011 Photo #3

USACE2011_CHC_3-9_L_3.jpg



Levee Mile Report Line	30
Start Levee Mile	4.27
End Levee Mile	4.42
Location	Land Side
Category	Earthen Levee
Item	Encroachments

Landscape trees are planted along the levee to and on the slope. Some of the trees are trimmed up for visibility. Fall 2011

johngw_f_20111102_464.jpg

*** Location**

LS : Land Side
WS : Water Side
CR : Crown

**** Rating**

A : Acceptable
M : Minimally Acceptable
U : Unacceptable

PO : Partially Obstructing
CO : Completely Obstructing
W : Watch/Monitor

N : Not Inspected, see Inspector Comment C : Corrected

**Flood Control Project Maintenance
Levee Inspections**

Levee Inspection Report By Mile - Fall 2011

Sacramento Maintenance Yard Cache Creek

Waterway	Bank	Unit Miles	Inspection Start/End	Inspector
Unit No. 01 North Levee	Left	11.81	11/01/2011 11/01/2011	John Williamson

Levee Mile Report Line	31
Start Levee Mile	4.76
End Levee Mile	4.76
Location	Land Side
Category	Earthen Levee
Item	Encroachments
Aluminum irrigation pipe is placed along the landside levee toe.	
johngw_f_20110923_739.jpg	



Levee Mile Report Line	32
Start Levee Mile	5.33
End Levee Mile	5.37
Location	Water Side
Category	Supplemental
Item	USACE Erosion Survey
USACE 2011 Photo #1	
USACE2011_CHC_5-4_L_1.jpg	



Levee Mile Report Line	32
Start Levee Mile	5.33
End Levee Mile	5.37
Location	Water Side
Category	Supplemental
Item	USACE Erosion Survey
USACE 2011 Photo #2	
USACE2011_CHC_5-4_L_2.jpg	



* Location LS : Land Side WS : Water Side CR : Crown	** Rating A : Acceptable M : Minimally Acceptable U : Unacceptable	PO : Partially Obstructing CO : Completely Obstructing W : Watch/Monitor	N : Not Inspected, see Inspector Comment C : Corrected
--	--	--	---

**Flood Control Project Maintenance
Levee Inspections**

Levee Inspection Report By Mile - Fall 2011

Sacramento Maintenance Yard Cache Creek

Waterway	Bank	Unit Miles	Inspection Start/End	Inspector
Unit No. 01 North Levee	Left	11.81	11/01/2011 11/01/2011	John Williamson

Levee Mile Report Line	34
Start Levee Mile	6.31
End Levee Mile	6.31
Location	Land Side
Category	Earthen Levee
Item	Encroachments
Pipe through levee filter and fertilizer tanks	
johngw_f_20110923_742.jpg	



Levee Mile Report Line	37
Start Levee Mile	7.33
End Levee Mile	7.38
Location	Land Side
Category	Earthen Levee
Item	Encroachments
Irrigation equipment	
johngw_f_20110923_748.jpg	



Levee Mile Report Line	38
Start Levee Mile	7.33
End Levee Mile	7.33
Location	Land Side
Category	Earthen Levee
Item	Encroachments
Barn and livestock pens	
johngw_f_20110923_747.jpg	

*** Location**

LS : Land Side
WS : Water Side
CR : Crown

**** Rating**

A : Acceptable
M : Minimally Acceptable
U : Unacceptable

PO : Partially Obstructing
CO : Completely Obstructing
W : Watch/Monitor

N : Not Inspected, see Inspector Comment C : Corrected

**Flood Control Project Maintenance
Levee Inspections****Levee Inspection Report By Mile - Fall 2011****Sacramento Maintenance Yard Cache Creek**

Waterway	Bank	Unit Miles	Inspection Start/End	Inspector
Unit No. 01 North Levee	Left	11.81	11/01/2011 11/01/2011	John Williamson

*** Location**LS : Land Side
WS : Water Side
CR : Crown**** Rating**A : Acceptable PO : Partially Obstructing N : Not Inspected, see Inspector Comment C : Corrected
M : Minimally Acceptable CO : Completely Obstructing
U : Unacceptable W : Watch/Monitor

**Flood Control Project Maintenance
Levee Inspections**

Unit Cover Sheet

Fall 2011 Levee Inspection Results

Sacramento Maintenance Yard Cache Creek

Waterway			Bank	Unit Miles
Unit No. 02 South Levee			Right	11.43
	Spring (March - May)	Summer (June - August)	(September - November) Fall	Winter (December - February)
Unit Maintenance Rating (Fall Only)			A	
Date of Inspection	4/7/2011 - 4/7/2011		11/2/2011 - 11/2/2011	
DWR Inspector	John Williamson		John Williamson	
Accompanied By	Ted Skidgel DWR Sac. Yard		Ted Skidgel DWR Sac. Yard	

Check one:

- ☐ During the current winter (or summer) inspection period, my staff or I have inspected the levee and associated flood project components identified in the attached Levee Inspection Report by Mile. We have found no changes in flood project conditions other than the results of our normal maintenance and the corrections we have made to maintenance deficiencies identified in the enclosed report.
- ☐ During the current winter (or summer) inspection period, my staff or I have inspected the levee and associated flood project components identified in the attached Levee Inspection Report by Mile. In addition to the results of our normal maintenance and the corrections we have made to maintenance deficiencies identified in the report, we have found the following changes in flood project conditions.

(In the comment section below or on additional sheet(s), identify change of condition by: Start to End Levee Mile or GPS coordinates, location (Land Side, Water Side, or Crown), Item identification, and description of the current condition).

Comments

One of the boxes above is to be checked by the Local Maintaining Agency (LMA). If the second box is checked, additional information must also be submitted. This Unit Cover Sheet should be signed and dated by the LMA Representative and returned to DWR with any additional sheets by September 30 (Summer Inspection) or March 31 (Winter Inspection). Please retain a copy for your records. Please mail all of this information to :

DWR Summer/Winter Inspection Reports
3310 El Camino Avenue, Suite 200
Sacramento, CA 95821-9000

X

Signature of LMA Representative

Date

**Flood Control Project Maintenance
Levee Inspections**

Levee Inspection Report By Mile - Fall 2011

Sacramento Maintenance Yard Cache Creek

Waterway						Bank	Unit Miles	Inspection Start/End	Inspector	
Unit No. 02 South Levee						Right	11.43	11/02/2011 11/02/2011	John Williamson	
LMR No.	Levee Mile		Category	Item	Location *	Rating **	Action/Comment	GPS Latitude/Longitude		Issue No. Photo
	Start	End						Start	End	
1	0.19	0.19	Earthen Levee	Encroachments	LS	M	Prunings Inspector Comments: stumps	38.729743 ° -121.805194 °	38.729743 ° -121.805194 °	11 Y
2	0.28	0.28	Earthen Levee	Encroachments	LS	M	Debris	38.730998 ° -121.804907 °	38.730998 ° -121.804907 °	16 Y
3	0.68	0.68	Earthen Levee	Encroachments	LS	M	Prunings	38.732229 ° -121.798922 °	38.732229 ° -121.798922 °	1 Y
4	1.65	1.65	Earthen Levee	Encroachments	LS	M	Prunings	38.730600 ° -121.786041 °	38.730600 ° -121.786041 °	12 Y
5	1.75	1.75	Earthen Levee	Encroachments	LS	M	Debris	38.729333 ° -121.785045 °	38.729333 ° -121.785045 °	2 Y
6	2.36	2.36	Earthen Levee	Encroachments	LS	M	Debris	38.726182 ° -121.774835 °	38.726182 ° -121.774835 °	3 Y
7	2.42	2.42	Earthen Levee	Encroachments	LS	M	Prunings	38.725903 ° -121.773821 °	38.725903 ° -121.773821 °	5 Y
8	3.48	3.57	Earthen Levee	Encroachments	LS	CO	Landscaping	38.722228 ° -121.759663 °	38.723322 ° -121.759317 °	7 Y
9	3.53	3.61	Supplemental	USACE Erosion Survey	WS	M	Inspector Comments: 2010 - Large slump on the upper berm, a tree has recently slid down the slope. 2011: Large slumped section and new erosion. [2011 Site ID: CHC_3-5_R]	38.722138 ° -121.759736 °	38.723294 ° -121.759588 °	14 Y
10	4.00	4.04	Earthen Levee	Encroachments	LS	CO	Buildings	38.723922 ° -121.752593 °	38.724257 ° -121.752193 °	8 Y
11	4.04	4.13	Earthen Levee	Encroachments	LS	CO	Landscaping	38.724317 ° -121.752148 °	38.725242 ° -121.751075 °	9 Y
12	4.14	4.14	Earthen Levee	Encroachments	LS	M	Prunings	38.725354 ° -121.750982 °	38.725354 ° -121.750982 °	4 Y
13	4.15	4.15	Earthen Levee	Encroachments	LS	M	Pipe	38.725476 ° -121.750809 °	38.725476 ° -121.750809 °	13 Y
14	4.33	4.33	Earthen Levee	Animal Control	WS	M	Exterminate rodents and backfill and compact or grout burrows.	38.726707 ° -121.747943 °	38.726707 ° -121.747943 °	6 Y
15	4.42	4.42	Earthen Levee	Encroachments	LS	PO	Landscaping	38.726996 ° -121.746275 °	38.726996 ° -121.746275 °	10 Y

*** Location**

LS : Land Side
WS : Water Side
CR : Crown

**** Rating**

A : Acceptable PO : Partially Obstructing N : Not Inspected, see Inspector Comment C : Corrected
M : Minimally Acceptable CO : Completely Obstructing
U : Unacceptable W : Watch/Monitor

**Flood Control Project Maintenance
Levee Inspections**

Levee Inspection Report By Mile - Fall 2011

Sacramento Maintenance Yard Cache Creek

Waterway	Bank	Unit Miles	Inspection Start/End	Inspector
Unit No. 02 South Levee	Right	11.43	11/02/2011 11/02/2011	John Williamson

Levee Mile Report Line	1
Start Levee Mile	0.19
End Levee Mile	0.19
Location	Land Side
Category	Earthen Levee
Item	Encroachments

The stumps have not been removed or burned along the toe of the levee. Fall 2011

johngw_f_20111107_465.jpg



Levee Mile Report Line	2
Start Levee Mile	0.28
End Levee Mile	0.28
Location	Land Side
Category	Earthen Levee
Item	Encroachments

A pile of concrete debris is on the landside toe. Fall 2011

johngw_f_20111107_466.jpg



Levee Mile Report Line	3
Start Levee Mile	0.68
End Levee Mile	0.68
Location	Land Side
Category	Earthen Levee
Item	Encroachments

A pile of prunings are at the toe of the levee. There is also a concrete block. Fall 2011

johngw_f_20111107_467.jpg



*** Location**

LS : Land Side
WS : Water Side
CR : Crown

**** Rating**

A : Acceptable
M : Minimally Acceptable
U : Unacceptable

PO : Partially Obstructing
CO : Completely Obstructing
W : Watch/Monitor

N : Not Inspected, see Inspector Comment

C : Corrected

**Flood Control Project Maintenance
Levee Inspections**

Levee Inspection Report By Mile - Fall 2011

Sacramento Maintenance Yard Cache Creek

Waterway	Bank	Unit Miles	Inspection Start/End	Inspector
Unit No. 02 South Levee	Right	11.43	11/02/2011 11/02/2011	John Williamson

Levee Mile Report Line	4
Start Levee Mile	1.65
End Levee Mile	1.65
Location	Land Side
Category	Earthen Levee
Item	Encroachments

Trimmings from the walnut orchard piled up along the toe of the levee. Fall 2011

johngw_f_20111107_468.jpg



Levee Mile Report Line	5
Start Levee Mile	1.75
End Levee Mile	1.75
Location	Land Side
Category	Earthen Levee
Item	Encroachments

Pipe debris and other metal is at the toe of the levee. Fall 2011

johngw_f_20111107_469.jpg



Levee Mile Report Line	6
Start Levee Mile	2.36
End Levee Mile	2.36
Location	Land Side
Category	Earthen Levee
Item	Encroachments

Old concrete pipe debris is stacked up along the toe of the levee. Fall 2011

johngw_f_20111107_470.jpg



*** Location**

LS : Land Side
WS : Water Side
CR : Crown

**** Rating**

A : Acceptable
M : Minimally Acceptable
U : Unacceptable

PO : Partially Obstructing
CO : Completely Obstructing
W : Watch/Monitor

N : Not Inspected, see Inspector Comment C : Corrected

**Flood Control Project Maintenance
Levee Inspections**

Levee Inspection Report By Mile - Fall 2011

Sacramento Maintenance Yard Cache Creek

Waterway	Bank	Unit Miles	Inspection Start/End	Inspector
Unit No. 02 South Levee	Right	11.43	11/02/2011 11/02/2011	John Williamson

Levee Mile Report Line	7
Start Levee Mile	2.42
End Levee Mile	2.42
Location	Land Side
Category	Earthen Levee
Item	Encroachments
There is prunings piled at the toe of the levee. Fall 2011	
johngw_f_20111107_471.jpg	



Levee Mile Report Line	8
Start Levee Mile	3.48
End Levee Mile	3.57
Location	Land Side
Category	Earthen Levee
Item	Encroachments
The landscaping and fence are obstructive to viewing the levee toe. Fall 2011	
johngw_f_20111107_472.jpg	



Levee Mile Report Line	9
Start Levee Mile	3.53
End Levee Mile	3.61
Location	Water Side
Category	Supplemental
Item	USACE Erosion Survey
USACE 2011 Photo #1	
USACE2011_CHC_3-5_R_1.jpg	

*** Location**

LS : Land Side
WS : Water Side
CR : Crown

**** Rating**

A : Acceptable
M : Minimally Acceptable
U : Unacceptable

PO : Partially Obstructing
CO : Completely Obstructing
W : Watch/Monitor

N : Not Inspected, see Inspector Comment C : Corrected

**Flood Control Project Maintenance
Levee Inspections**

Levee Inspection Report By Mile - Fall 2011

Sacramento Maintenance Yard Cache Creek

Waterway	Bank	Unit Miles	Inspection Start/End	Inspector
Unit No. 02 South Levee	Right	11.43	11/02/2011 11/02/2011	John Williamson

Levee Mile Report Line	9
Start Levee Mile	3.53
End Levee Mile	3.61
Location	Water Side
Category	Supplemental
Item	USACE Erosion Survey

USACE 2011 Photo #2

USACE2011_CHC_3-5_R_2.jpg



Levee Mile Report Line	10
Start Levee Mile	4.00
End Levee Mile	4.04
Location	Land Side
Category	Earthen Levee
Item	Encroachments

The out building is at toe of the levee.

johngw_f_20110923_753.jpg



Levee Mile Report Line	11
Start Levee Mile	4.04
End Levee Mile	4.13
Location	Land Side
Category	Earthen Levee
Item	Encroachments

The landscape shrubs block visibility of the toe.
Fall 2011

johngw_f_20111107_473.jpg

*** Location**

LS : Land Side
WS : Water Side
CR : Crown

**** Rating**

A : Acceptable
M : Minimally Acceptable
U : Unacceptable

PO : Partially Obstructing
CO : Completely Obstructing
W : Watch/Monitor

N : Not Inspected, see Inspector Comment C : Corrected

**Flood Control Project Maintenance
Levee Inspections**

Levee Inspection Report By Mile - Fall 2011

Sacramento Maintenance Yard Cache Creek

Waterway	Bank	Unit Miles	Inspection Start/End	Inspector
Unit No. 02 South Levee	Right	11.43	11/02/2011 11/02/2011	John Williamson

Levee Mile Report Line	12
Start Levee Mile	4.14
End Levee Mile	4.14
Location	Land Side
Category	Earthen Levee
Item	Encroachments

The trimmings from the walnut orchard is stacked up on the levee slope. Fall 2011

johngw_f_20111107_474.jpg



Levee Mile Report Line	13
Start Levee Mile	4.15
End Levee Mile	4.15
Location	Land Side
Category	Earthen Levee
Item	Encroachments

The orchard irrigation pipe is stored along the toe of the levee. Fall 2011

johngw_f_20111107_475.jpg



Levee Mile Report Line	14
Start Levee Mile	4.33
End Levee Mile	4.33
Location	Water Side
Category	Earthen Levee
Item	Animal Control

The rodent holes are on the waterside in the walnut orchard. Fall 2011

johngw_f_20111107_476.jpg



*** Location**

LS : Land Side
WS : Water Side
CR : Crown

**** Rating**

A : Acceptable
M : Minimally Acceptable
U : Unacceptable

PO : Partially Obstructing
CO : Completely Obstructing
W : Watch/Monitor

N : Not Inspected, see Inspector Comment

C : Corrected

**Flood Control Project Maintenance
Levee Inspections**

Levee Inspection Report By Mile - Fall 2011

Sacramento Maintenance Yard Cache Creek

Waterway	Bank	Unit Miles	Inspection Start/End	Inspector
Unit No. 02 South Levee	Right	11.43	11/02/2011 11/02/2011	John Williamson

Levee Mile Report Line	15
Start Levee Mile	4.42
End Levee Mile	4.42
Location	Land Side
Category	Earthen Levee
Item	Encroachments

The landscape shrubs are on the levee slope and at the toe. Fall 2011

johngw_f_20111107_477.jpg

*** Location**

LS : Land Side
WS : Water Side
CR : Crown

**** Rating**

A : Acceptable PO : Partially Obstructing N : Not Inspected, see Inspector Comment C : Corrected
M : Minimally Acceptable CO : Completely Obstructing
U : Unacceptable W : Watch/Monitor

**Flood Control Project Maintenance
Levee Inspections**

Unit Cover Sheet

Fall 2011 Levee Inspection Results

Sacramento Maintenance Yard Cache Creek

Waterway			Bank	Unit Miles
Unit No. 04 East Training Levee of Cache Creek Settling Basin			Left	2.28
	Spring (March - May)	Summer (June - August)	(September - November) Fall	Winter (December - February)
Unit Maintenance Rating (Fall Only)			A	
Date of Inspection	4/13/2011 - 4/13/2011		11/1/2011 - 11/1/2011	
DWR Inspector	John Williamson		John Williamson	
Accompanied By	Ted Skidgel DWR Sac. Yard		Ted Skidgel DWR Sac. Yard	

Check one:

- ☐ During the current winter (or summer) inspection period, my staff or I have inspected the levee and associated flood project components identified in the attached Levee Inspection Report by Mile. We have found no changes in flood project conditions other than the results of our normal maintenance and the corrections we have made to maintenance deficiencies identified in the enclosed report.
- ☐ During the current winter (or summer) inspection period, my staff or I have inspected the levee and associated flood project components identified in the attached Levee Inspection Report by Mile. In addition to the results of our normal maintenance and the corrections we have made to maintenance deficiencies identified in the report, we have found the following changes in flood project conditions.

(In the comment section below or on additional sheet(s), identify change of condition by: Start to End Levee Mile or GPS coordinates, location (Land Side, Water Side, or Crown), Item identification, and description of the current condition).

Comments

One of the boxes above is to be checked by the Local Maintaining Agency (LMA). If the second box is checked, additional information must also be submitted. This Unit Cover Sheet should be signed and dated by the LMA Representative and returned to DWR with any additional sheets by September 30 (Summer Inspection) or March 31 (Winter Inspection). Please retain a copy for your records. Please mail all of this information to :

DWR Summer/Winter Inspection Reports
3310 El Camino Avenue, Suite 200
Sacramento, CA 95821-9000

X

Signature of LMA Representative

Date

**Flood Control Project Maintenance
Levee Inspections**

Levee Inspection Report By Mile - Fall 2011

Sacramento Maintenance Yard Cache Creek

Waterway						Bank	Unit Miles	Inspection Start/End	Inspector
Unit No. 04 East Training Levee of Cache Creek Settling Basin						Left	2.28	11/01/2011 11/01/2011	John Williamson

LMR No.	Levee Mile		Category	Item	Location *	Rating **	Action/Comment	GPS Latitude/Longitude		Issue No. Photo
	Start	End						Start	End	
1			Earthen Levee	Vegetation	LS	A	Remove the wild growth other than native grasses from the levee slopes.	38.727076 ° -121.717978 °	° °	1 Y
2			Earthen Levee	Vegetation	WS	A	Remove the wild growth other than native grasses from the levee slopes.	38.727077 ° -121.717978 °	° °	2 Y

*** Location**

LS : Land Side
WS : Water Side
CR : Crown

**** Rating**

A : Acceptable PO : Partially Obstructing N : Not Inspected, see Inspector Comment C : Corrected
M : Minimally Acceptable CO : Completely Obstructing
U : Unacceptable W : Watch/Monitor

**Flood Control Project Maintenance
Levee Inspections**

Levee Inspection Report By Mile - Fall 2011

Sacramento Maintenance Yard Cache Creek

Waterway	Bank	Unit Miles	Inspection Start/End	Inspector
Unit No. 04 East Training Levee of Cache Creek Settling Basin	Left	2.28	11/01/2011 11/01/2011	John Williamson

Levee Mile Report Line	1
Start Levee Mile	
End Levee Mile	
Location	Land Side
Category	Earthen Levee
Item	Vegetation
The levee slope is clean of all brush and has at least 50% grasses. Fall 2011	
johngw_f_20111102_449.jpg	



Levee Mile Report Line	2
Start Levee Mile	
End Levee Mile	
Location	Water Side
Category	Earthen Levee
Item	Vegetation
The levee slope is clean of all brush and has at least 50% grasses. Fall 2011	
johngw_f_20111102_448.jpg	



* Location LS : Land Side WS : Water Side CR : Crown	** Rating A : Acceptable M : Minimally Acceptable U : Unacceptable	PO : Partially Obstructing CO : Completely Obstructing W : Watch/Monitor	N : Not Inspected, see Inspector Comment C : Corrected
--	--	--	---