

**Flood Control Project Maintenance
Levee Inspections**

Maintenance Issue Types Only, Levee Inspection Report By Mile - Fall 2017

Reclamation District No. 2103 Wheatland Vicinity

Waterway	Bank	Unit Miles	Inspection Start/End	Inspector
Unit No. 01 South Dry Creek	Left	4.64	10/03/2017 10/03/2017	Sterling York

LM Start	0.00	Rating **	A	Issue No.	2
LM End	0.00	Issue Type +	Ma	Location *	N/A
Category	Earthen Levee			GPS Latitude/Longitude	
				Start	End
Item	Flood Preparedness & Training				
DWR ID	DWR_RD2103_01_s_2012_2				
Comment Code					
Inspector Comment					
LMA regularly attends flood fight training put on by RD784 and DWR.					

No Photos

LM Start	0.00	Rating **	A	Issue No.	5
LM End	0.00	Issue Type +	Ma	Location *	N/A
Category	Earthen Levee			GPS Latitude/Longitude	
				Start	End
Item	Operations & Maintenance Manuals				
DWR ID	DWR_RD2103_01_s_2013_5				
Comment Code					
Inspector Comment					
The LMA has a copy of the manual.					

No Photos

* Location LS : Land Side N/A : Not Applicable WS : Water Side CR : Crown	** Rating A : Acceptable M : Minimally Acceptable U : Unacceptable	N : Not Inspected/Rated C : Corrected A/W : Acceptable but Monitor & Maintain	+ Issue Type Ma : Maintenance Deficiency Ob : Design & System Obsolescence En : Enforcement
--	--	---	---

**Flood Control Project Maintenance
Levee Inspections**

Maintenance Issue Types Only, Levee Inspection Report By Mile - Fall 2017

Reclamation District No. 2103 Wheatland Vicinity

Waterway	Bank	Unit Miles	Inspection Start/End	Inspector
Unit No. 01 South Dry Creek	Left	4.64	10/03/2017 10/03/2017	Sterling York

LM Start	0.00	Rating **	A	Issue No.	6		
LM End	0.00	Issue Type +	Ma	Location *	N/A		
Category	Earthen Levee			GPS Latitude/Longitude			
				Start		End	
Item	Emergency Supplies & Equipment				°		°
					°		°
DWR ID	DWR_RD2103_01_s_2013_6						
Comment Code							
Inspector Comment							
LMA stated that they have approx. 2500 sandbags and related flood fight material located in a mini storage in downtown Wheatland.							

No Photos

LM Start	0.20	Rating **	M	Issue No.	23
LM End	0.22	Issue Type +	Ma	Location *	LS
Category	Earthen Levee			GPS Latitude/Longitude	
				Start	End
Item	Animal Control			39.020856 °	39.020938 °
				-121.450629 °	-121.450237 °
DWR ID	DWR_RD2103_01_f_2015_23				
Comment Code					
A3 : No rodents visible, but rodent burrows visible; need to backfill and compact or grout burrows.					
Inspector Comment					

Photo 1 of 1 : FA_2017_RD2103_10_23_20170911_00007.jpg



View of squirrel holes on the waterside looking downstream but no evidence of animal activity during Fall 2017 inspection.

* Location LS : Land Side N/A : Not Applicable WS : Water Side CR : Crown		** Rating A : Acceptable N : Not Inspected/Rated M : Minimally Acceptable C : Corrected U : Unacceptable A/W : Acceptable but Monitor & Maintain		+ Issue Type Ma : Maintenance Deficiency Ob : Design & System Obsolescence En : Enforcement
--	--	---	--	---

**Flood Control Project Maintenance
Levee Inspections**

Maintenance Issue Types Only, Levee Inspection Report By Mile - Fall 2017

Reclamation District No. 2103 Wheatland Vicinity

Waterway	Bank	Unit Miles	Inspection Start/End	Inspector
Unit No. 01 South Dry Creek	Left	4.64	10/03/2017 10/03/2017	Sterling York

LM Start	0.56	Rating **	A	Issue No.	19
LM End	4.51	Issue Type +	Ma	Location *	LS
Category	Earthen Levee			GPS Latitude/Longitude	
				Start	End
Item	Vegetation			39.022644 °	39.042024 °
				-121.444628 °	-121.393752 °
DWR ID	DWR_RD2103_01_f_2017_19				
Comment Code					
V1 : Control annual grass and weeds on the levee slopes and easements.					
Inspector Comment					
The annual vegetation is well maintained, Fall 2017.					

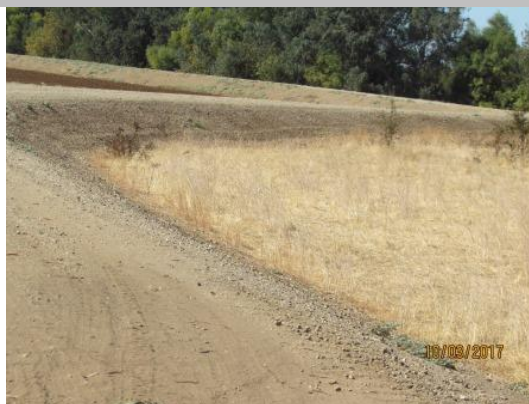
Photo 1 of 1 : FA_2017_RD2103_10_19_20171011_00049.jpg



View looking downstream landside of well maintained annual vegetation, Fall 2017.

LM Start	0.56	Rating **	A	Issue No.	21
LM End	4.51	Issue Type +	Ma	Location *	WS
Category	Earthen Levee			GPS Latitude/Longitude	
				Start	End
Item	Vegetation			39.022644 °	39.042131 °
				-121.444628 °	-121.393653 °
DWR ID	DWR_RD2103_01_f_2017_21				
Comment Code					
V1 : Control annual grass and weeds on the levee slopes and easements.					
Inspector Comment					
The annual vegetation is well maintained, Fall 2017.					

Photo 1 of 1 : FA_2017_RD2103_10_21_20171011_00050.jpg



View looking downstream waterside of well maintained annual vegetation, Fall 2017.

* Location LS : Land Side N/A : Not Applicable WS : Water Side CR : Crown		** Rating A : Acceptable M : Minimally Acceptable U : Unacceptable N : Not Inspected/Rated C : Corrected A/W : Acceptable but Monitor & Maintain		+ Issue Type Ma : Maintenance Deficiency Ob : Design & System Obsolescence En : Enforcement	
---	--	--	--	--	--

**Flood Control Project Maintenance
Levee Inspections**

Maintenance Issue Types Only, Levee Inspection Report By Mile - Fall 2017

Reclamation District No. 2103 Wheatland Vicinity

Waterway	Bank	Unit Miles	Inspection Start/End	Inspector
Unit No. 01 South Dry Creek	Left	4.64	10/03/2017 10/03/2017	Sterling York

LM Start	0.82	Rating **	A/W	Issue No.	36
LM End	0.82	Issue Type +	Ma	Location *	
Category	Supplemental			GPS Latitude/Longitude	
				Start	End
Item	DWR UCIP LMA Responsibility			39.024811 °	39.024811 °
				-121.440750 °	-121.440750 °
DWR ID					
Comment Code					
Inspector Comment					
FS_ID:38325					
DS_ID:19471					
EP_NO: N/A					
Repair Type: No Action Needed					
Crossing Status: Found					
UCIP Comments:					
FIELD_STRUCT_DESC: 36-inch CM drainpipe through the levee, 14.4 feet below the crown. Concrete headwall, flap-gate and 3x6-foot concrete splash apron at waterward toe. Outfall drain from old Grasshopper Slough. (USACE-1962). This entry matches the Drainage or Irrigation Structure referenced in O&M manual (HLM 0.83).					
FS Date: 3/20/2014					

Photo 1 of 3 : UCIP_FA_2017_38325_69869.jpg



View of CMP crossing located on landward side.

LM Start	0.82	Rating **	A/W	Issue No.	36 (cont)
LM End	0.82	Issue Type +	Ma	Location *	

Photo 2 of 3 : UCIP_FA_2017_38325_69868.jpg



Close up view of crossing from landward side.

* Location LS : Land Side N/A : Not Applicable WS : Water Side CR : Crown	** Rating A : Acceptable M : Minimally Acceptable U : Unacceptable	N : Not Inspected/Rated C : Corrected A/W : Acceptable but Monitor & Maintain	+ Issue Type Ma : Maintenance Deficiency Ob : Design & System Obsolescence En : Enforcement
--	--	---	---

**Flood Control Project Maintenance
Levee Inspections**

Maintenance Issue Types Only, Levee Inspection Report By Mile - Fall 2017

Reclamation District No. 2103 Wheatland Vicinity

Waterway	Bank	Unit Miles	Inspection Start/End	Inspector
Unit No. 01 South Dry Creek	Left	4.64	10/03/2017 10/03/2017	Sterling York

LM Start	0.82	Rating **	A/W	Issue No.	36 (cont)	
LM End	0.82	Issue Type +	Ma	Location *		
Category	Supplemental			GPS Latitude/Longitude		
				Start	End	
Item	DWR UCIP LMA Responsibility			39.024811 °	39.024811 °	
				-121.440750 °	-121.440750 °	
DWR ID						
Comment Code						
Inspector Comment						
FS_ID:38325						
DS_ID:19471						
EP_NO: N/A						
Repair Type: No Action Needed						
Crossing Status: Found						
UCIP Comments:						
FIELD_STRUCT_DESC: 36-inch CM drainpipe through the levee, 14.4 feet below the crown. Concrete headwall, flap-gate and 3x6-foot concrete splash apron at waterward toe. Outfall drain from old Grasshopper Slough. (USACE-1962). This entry matches the Drainage or Irrigation Structure referenced in O&M manual (HLM 0.83).						
FS Date: 3/20/2014						

Photo 3 of 3 : UCIP_FA_2017_38325_69873.jpg



View of levee crown at crossing.

LM Start	1.27	Rating **	N	Issue No.	26
LM End	1.27	Issue Type +	Ma	Location *	LS
Category	Earthen Levee			GPS Latitude/Longitude	
				Start	End
Item	Trim / Thin Trees			39.027261 °	39.027261 °
				-121.433269 °	-121.433269 °
DWR ID	DWR_RD2103_01_s_2016_26				
Comment Code					
T5 : Tree stumps.					
Inspector Comment					
Stump needs to be removed fom slope. Fall 2016.					

Photo 1 of 1 : FA_2017_RD2103_10_26_20170911_00008.jpg



View of tree stump on landside levee slope. Fall 2016, still exist as of Fall 2017.

* Location LS : Land Side N/A : Not Applicable WS : Water Side CR : Crown	** Rating A : Acceptable M : Minimally Acceptable U : Unacceptable N : Not Inspected/Rated C : Corrected A/W : Acceptable but Monitor & Maintain	+ Issue Type Ma : Maintenance Deficiency Ob : Design & System Obsolescence En : Enforcement
--	---	---

**Flood Control Project Maintenance
Levee Inspections**

Maintenance Issue Types Only, Levee Inspection Report By Mile - Fall 2017

Reclamation District No. 2103 Wheatland Vicinity

Waterway	Bank	Unit Miles	Inspection Start/End	Inspector
Unit No. 02 Bear River	Right	4.88	10/03/2017 10/03/2017	Sterling York

LM Start	0.16	Rating **	A	Issue No.	13
LM End	1.19	Issue Type +	Ma	Location *	LS
Category	Earthen Levee			GPS Latitude/Longitude	
				Start	End
Item	Vegetation			38.994109 °	38.998316 °
				-121.434590 °	-121.416505 °
DWR ID	DWR_RD2103_02_f_2017_13				
Comment Code					
V1 : Control annual grass and weeds on the levee slopes and easements.					
Inspector Comment					
The annual vegetation is well maintained through this section, Fall 2017.					

LM Start	0.16	Rating **	A	Issue No.	13 (cont)
LM End	1.19	Issue Type +	Ma	Location *	LS

Photo 1 of 2 : FA_2017_RD2103_11_13_20171011_00031.jpg



View looking upstream landside of well maintained vegetation, Fall 2017.

Photo 2 of 2 : FA_2017_RD2103_11_13_20171011_00032.jpg



Second view looking upstream landside of well maintained vegetation, Fall 2017.

* Location LS : Land Side N/A : Not Applicable WS : Water Side CR : Crown		** Rating A : Acceptable M : Minimally Acceptable U : Unacceptable N : Not Inspected/Rated C : Corrected A/W : Acceptable but Monitor & Maintain		+ Issue Type Ma : Maintenance Deficiency Ob : Design & System Obsolescence En : Enforcement
--	--	---	--	---

**Flood Control Project Maintenance
Levee Inspections**

Maintenance Issue Types Only, Levee Inspection Report By Mile - Fall 2017

Reclamation District No. 2103 Wheatland Vicinity

Waterway	Bank	Unit Miles	Inspection Start/End	Inspector
Unit No. 02 Bear River	Right	4.88	10/03/2017 10/03/2017	Sterling York

LM Start	0.16	Rating **	A	Issue No.	14
LM End	1.20	Issue Type +	Ma	Location *	WS
Category	Earthen Levee			GPS Latitude/Longitude	
				Start	End
Item	Vegetation			38.994109 °	38.998319 °
				-121.434590 °	-121.416319 °
DWR ID	DWR_RD2103_02_f_2017_14				
Comment Code					
V1 : Control annual grass and weeds on the levee slopes and easements.					
Inspector Comment					
The annual vegetation is well maintained through this section, Fall 2017.					

Photo 1 of 2 : FA_2017_RD2103_11_14_20171011_00029.jpg



View looking upstream waterside of well maintained vegetation, Fall 2017.

LM Start	0.16	Rating **	A	Issue No.	14 (cont)
LM End	1.20	Issue Type +	Ma	Location *	WS

Photo 2 of 2 : FA_2017_RD2103_11_14_20171011_00030.jpg




Second view looking upstream waterside of well maintained vegetation, Fall 2017.

* Location LS : Land Side N/A : Not Applicable WS : Water Side CR : Crown		** Rating A : Acceptable M : Minimally Acceptable U : Unacceptable N : Not Inspected/Rated C : Corrected A/W : Acceptable but Monitor & Maintain		+ Issue Type Ma : Maintenance Deficiency Ob : Design & System Obsolescence En : Enforcement	
---	--	--	--	--	--

Maintenance Issue Types Only, Levee Inspection Report By Mile - Fall 2017


Waterway	Bank	Unit Miles	Inspection Start/End	Inspector
Unit No. 02 Bear River	Right	4.88	10/03/2017 10/03/2017	Sterling York

Photo 1 of 1 : FA_2017_RD2103_11_15_20171011_00033.jpg



View looking upstream landside of the annual vegetation that needs to be maintained, Fall 2017.

Photo 1 of 1 : FA_2017_RD2103_11_16_20171011_00034.jpg



View looking upstream waterside of the annual vegetation that needs to be maintained, Fall 2017.

* Location	** Rating	+ Issue Type
LS : Land Side N/A : Not Applicable	A : Acceptable N : Not Inspected/Rated	Ma : Maintenance Deficiency
WS : Water Side	M : Minimally Acceptable C : Corrected	Ob : Design & System Obsolescence
CR : Crown	U : Unacceptable A/W : Acceptable but Monitor & Maintain	En : Enforcement

Maintenance Issue Types Only, Levee Inspection Report By Mile - Fall 2017

Waterway	Bank	Unit Miles	Inspection Start/End	Inspector
Unit No. 02 Bear River	Right	4.88	10/03/2017 10/03/2017	Sterling York

Levee Evaluation Comments
Description: 2017 Flood Fight Emergency Repair - 200 feet of site repaired in March 2017. Additional 50 feet requires repair after water receded. \$220,000 estimated total for completion and post project permits and mitigation
Site ID No: 488
Site Designation: LMA-326
Repair Type: Erosion
Rating: Area of Concern
Field Date: 7/27/2017
Notes: Site will likely degrade quickly due to lack of RSP along the lower portion of the bank slope and downstream end of site. At time of field visit, site does not appear to be any imminent threat of failure.

LM Start	1.97	Rating **	A/W	Issue No.	12 (cont)
LM End		Issue Type +	Ma	Location *	

Photo taken at time of Fall 2017 Levee Inspection, looking upstream at the erosion site.

* Location	** Rating	+ Issue Type
LS : Land Side N/A : Not Applicable WS : Water Side CR : Crown	A : Acceptable N : Not Inspected/Rated M : Minimally Acceptable C : Corrected U : Unacceptable A/W : Acceptable but Monitor & Maintain	Ma : Maintenance Deficiency Ob : Design & System Obsolescence En : Enforcement

Maintenance Issue Types Only, Levee Inspection Report By Mile - Fall 2017

Waterway	Bank	Unit Miles	Inspection Start/End	Inspector
Unit No. 02 Bear River	Right	4.88	10/03/2017 10/03/2017	Sterling York

Levee Evaluation Comments
Description: 2017 Flood Fight Emergency Repair - 200 feet of site repaired in March 2017. Additional 50 feet requires repair after water receded. \$220,000 estimated total for completion and post project permits and mitigation
Site ID No: 488
Site Designation: LMA-326
Repair Type: Erosion
Rating: Area of Concern
Field Date: 7/27/2017
Notes: Site will likely degrade quickly due to lack of RSP along the lower portion of the bank slope and downstream end of site. At time of field visit, site does not appear to be any imminent threat of failure.

LM Start	1.97	Rating **	A/W	Issue No.	12 (cont)
LM End		Issue Type +	Ma	Location *	

A photograph showing a rocky stream bank. The foreground is dominated by grey, angular rocks and patches of dry, yellowish-brown grass. A small, clear stream flows through the middle ground, bordered by more rocks and some green shrubs. In the background, there are dense green trees and a clear blue sky. The overall scene is bright and sunny.

* Location	** Rating	+ Issue Type
LS : Land Side N/A : Not Applicable	A : Acceptable N : Not Inspected/Rated	Ma : Maintenance Deficiency
WS : Water Side	M : Minimally Acceptable C : Corrected	Ob : Design & System Obsolescence
CR : Crown	U : Unacceptable A/W : Acceptable but Monitor & Maintain	En : Enforcement

**Flood Control Project Maintenance
Levee Inspections**

Maintenance Issue Types Only, Levee Inspection Report By Mile - Fall 2017

Reclamation District No. 2103 Wheatland Vicinity

Waterway	Bank	Unit Miles	Inspection Start/End	Inspector
Unit No. 02 Bear River	Right	4.88	10/03/2017 10/03/2017	Sterling York

LM Start	1.97	Rating **	A/W	Issue No.	12 (cont)	
LM End		Issue Type +	Ma	Location *		
Category	Supplemental			GPS Latitude/Longitude		
				Start	End	
Item	2017 Storm Damage			39.002378 °		°
				-121.403611 °		°
DWR ID	DWR_RD2103_02_f_2017_12					
Comment Code						
Inspector Comment						
Levee Evaluation Comments						
Description:2017 Flood Fight Emergency Repair - 200 feet of site repaired in March 2017. Additional 50 feet requires repair after water receded. \$220,000 estimated total for completion and post project permits and mitigation						
Site ID No:488						
Site Designation:LMA-326						
Repair Type: Erosion						
Rating:Area of Concern						
Field Date:7/27/2017						
Notes: Site will likely degrade quickly due to lack of RSP along the lower portion of the bank slope and downstream end of site. At time of field visit, site does not appear to be any imminent threat of failure.						

Photo 5 of 5 : LEVAL_FA_2017_488_1812.jpg



LM Start	2.56	Rating **	A	Issue No.	17
LM End	4.83	Issue Type +	Ma	Location *	WS
Category	Earthen Levee			GPS Latitude/Longitude	
				Start	End
Item	Vegetation			39.008797 °	39.031172 °
				-121.397328 °	-121.367277 °
DWR ID	DWR_RD2103_02_f_2017_17				
Comment Code					
V1 : Control annual grass and weeds on the levee slopes and easements.					
Inspector Comment					
The annual vegetation is well maintained through this section, Fall 2017.					

Photo 1 of 1 : FA_2017_RD2103_11_17_20171011_00037.jpg



View looking upstream waterside of well maintained annual vegetation, Fall 2017.

* Location LS : Land Side N/A : Not Applicable WS : Water Side CR : Crown		** Rating A : Acceptable M : Minimally Acceptable U : Unacceptable N : Not Inspected/Rated C : Corrected A/W : Acceptable but Monitor & Maintain		+ Issue Type Ma : Maintenance Deficiency Ob : Design & System Obsolescence En : Enforcement
--	--	---	--	---

**Flood Control Project Maintenance
Levee Inspections**

Maintenance Issue Types Only, Levee Inspection Report By Mile - Fall 2017

Reclamation District No. 2103 Wheatland Vicinity

Waterway	Bank	Unit Miles	Inspection Start/End	Inspector
Unit No. 02 Bear River	Right	4.88	10/03/2017 10/03/2017	Sterling York

LM Start	2.59	Rating **	M	Issue No.	24
LM End	2.59	Issue Type +	Ma	Location *	LS
Category	Earthen Levee			GPS Latitude/Longitude	
				Start	End
Item	Vegetation			39.009249 °	39.009249 °
				-121.397334 °	-121.397334 °
DWR ID	DWR_RD2103_02_s_2015_24				
Comment Code					
V4 : Elderberries are blocking visibility and flood fight capability.					
Inspector Comment					

No Photos

LM Start	3.42	Rating **	A	Issue No.	18
LM End	4.83	Issue Type +	Ma	Location *	LS
Category	Earthen Levee			GPS Latitude/Longitude	
				Start	End
Item	Vegetation			39.017155 °	39.031179 °
				-121.386272 °	-121.367274 °
DWR ID	DWR_RD2103_02_f_2017_18				
Comment Code					
V1 : Control annual grass and weeds on the levee slopes and easements.					
Inspector Comment					
The annual vegetation is well maintained through this section, Fall 2017.					

Photo 1 of 1 : FA_2017_RD2103_11_18_20171011_00038.jpg



View looking upstream landside of well maintained annual vegetation, Fall 2017.

* Location LS : Land Side N/A : Not Applicable WS : Water Side CR : Crown		** Rating A : Acceptable N : Not Inspected/Rated M : Minimally Acceptable C : Corrected U : Unacceptable A/W : Acceptable but Monitor & Maintain		+ Issue Type Ma : Maintenance Deficiency Ob : Design & System Obsolescence En : Enforcement
--	--	---	--	---