

**Flood Control Project Maintenance
Levee Inspections**

Maintenance Issue Types Only, Levee Inspection Report By Mile - Spring 2019

Reclamation District No. 2098 Cache and Haas Slough

Waterway	Bank	Unit Miles	Inspection Start/End	Inspector
Unit No. 01 Yolo Bypass	Right	3.60	03/26/2019	David Julian

LM Start		Rating **	A	Issue No.	3
LM End		Issue Type +	Ma	Location *	
Category	Earthen Levee		GPS Latitude/Longitude		
			Start	End	
Item	Operations & Maintenance Manuals			°	°
				°	°
DWR ID	DWR_RD2098_01_f_2014_3				
Comment Code					
Inspector Comment					
RD 2098 has on file O+M Manual.					

No Photos

LM Start		Rating **	A	Issue No.	4
LM End		Issue Type +	Ma	Location *	
Category	Earthen Levee		GPS Latitude/Longitude		
			Start	End	
Item	Emergency Supplies & Equipment			°	°
				°	°
DWR ID	DWR_RD2098_01_f_2014_4				
Comment Code					
Inspector Comment					
RD 2098 has emergency supplies in storage along with equipment.					

No Photos

LM Start		Rating **	A	Issue No.	5
LM End		Issue Type +	Ma	Location *	
Category	Earthen Levee		GPS Latitude/Longitude		
			Start	End	
Item	Flood Preparedness & Training			°	°
				°	°
DWR ID	DWR_RD2098_01_f_2014_5				
Comment Code					
Inspector Comment					
RD 2098 has their team well prepared for a flood fight.					

No Photos

* Location LS : Land Side N/A : Not Applicable WS : Water Side CR : Crown	** Rating A : Acceptable M : Minimally Acceptable U : Unacceptable	N : Not Inspected/Rated C : Corrected A/W : Acceptable but Monitor & Maintain	+ Issue Type Ma : Maintenance Deficiency Ob : Design & System Obsolescence En : Enforcement
--	--	---	---

**Flood Control Project Maintenance
Levee Inspections**

Maintenance Issue Types Only, Levee Inspection Report By Mile - Spring 2019

Reclamation District No. 2098 Cache and Haas Slough

Waterway	Bank	Unit Miles	Inspection Start/End	Inspector
Unit No. 01 Yolo Bypass	Right	3.60	03/26/2019	David Julian

LM Start	0.07	Rating **	A	Issue No.	22
LM End	0.67	Issue Type +	Ma	Location *	WS
Category	Earthen Levee			GPS Latitude/Longitude	
				Start	End
Item	Vegetation			38.328125 °	38.319367 °
				-121.694047 °	-121.694040 °
DWR ID	DWR_RD2098_01_f_2018_22				
Comment Code					
V1 : Control annual grass and weeds on the levee slopes and easements.					
Inspector Comment					
The LMA is doing a good job of maintaining annual vegetation.					

Photo 1 of 2 : SP_2019_RD2098_244_22_20190326_00059.jpg



View looking downstream at vegetation on the waterside slope (Spring 2019).

LM Start	0.07	Rating **	A	Issue No.	22 (cont)
LM End	0.67	Issue Type +	Ma	Location *	WS

Photo 2 of 2 : SP_2019_RD2098_244_22_20190311_00013.jpg



View of vegetation on the waterside slope. The vegetation is spread enough that can still see the levee but is thick enough that it should be removed (October 2018).

* Location
LS : Land Side N/A : Not Applicable
WS : Water Side
CR : Crown

** Rating
A : Acceptable
M : Minimally Acceptable
U : Unacceptable
N : Not Inspected/Rated
C : Corrected
A/W : Acceptable but Monitor & Maintain

+ Issue Type
Ma : Maintenance Deficiency
Ob : Design & System Obsolescence
En : Enforcement

**Flood Control Project Maintenance
Levee Inspections**

Maintenance Issue Types Only, Levee Inspection Report By Mile - Spring 2019

Reclamation District No. 2098 Cache and Haas Slough

Waterway	Bank	Unit Miles	Inspection Start/End	Inspector
Unit No. 01 Yolo Bypass	Right	3.60	03/26/2019	David Julian

LM Start	0.07	Rating **	A	Issue No.	16
LM End	1.01	Issue Type +	Ma	Location *	LS
Category	Earthen Levee			GPS Latitude/Longitude	
				Start	End
Item	Vegetation			38.328125 °	38.314483 °
				-121.694047 °	-121.694012 °
DWR ID	DWR_RD2098_01_f_2018_16				
Comment Code					
V1 : Control annual grass and weeds on the levee slopes and easements.					
Inspector Comment					
The LMA is doing a good job of maintaining annual vegetation.					

Photo 1 of 2 : SP_2019_RD2098_244_16_20190326_00060.jpg



View looking downstream at vegetation on the landside slope (Spring 2019).

LM Start	0.07	Rating **	A	Issue No.	16 (cont)
LM End	1.01	Issue Type +	Ma	Location *	LS

Photo 2 of 2 : SP_2019_RD2098_244_16_20190311_00005.jpg



View looking upstream at vegetation on the landside slope. Vegetation is spaced enough that still can partially see the levee slope but still should be removed (October 2018).

*** Location**
LS : Land Side N/A : Not Applicable
WS : Water Side
CR : Crown

**** Rating**
A : Acceptable
M : Minimally Acceptable
U : Unacceptable
N : Not Inspected/Rated
C : Corrected
A/W : Acceptable but Monitor & Maintain

+ Issue Type
Ma : Maintenance Deficiency
Ob : Design & System Obsolescence
En : Enforcement

**Flood Control Project Maintenance
Levee Inspections**

Maintenance Issue Types Only, Levee Inspection Report By Mile - Spring 2019

Reclamation District No. 2098 Cache and Haas Slough

Waterway	Bank	Unit Miles	Inspection Start/End	Inspector
Unit No. 01 Yolo Bypass	Right	3.60	03/26/2019	David Julian

LM Start	0.57	Rating **	M	Issue No.	13
LM End	1.06	Issue Type +	Ma	Location *	WS
Category	Earthen Levee			GPS Latitude/Longitude	
				Start	End
Item	Erosion / Bank Caving			38.320755 °	38.313700 °
				-121.693982 °	-121.693639 °
DWR ID	DWR_RD2098_01_s_2017_13				
Comment Code					
E2 : Schedule repair of erosion site prior to the next inspection.					
Inspector Comment					
Monitor and repair erosion on waterside.					

Photo 1 of 1 : SP_2019_RD2098_244_13_20190311_00003.jpg



View of erosion on waterside.

LM Start	0.87	Rating **	M	Issue No.	23
LM End	0.97	Issue Type +	Ma	Location *	WS
Category	Earthen Levee			GPS Latitude/Longitude	
				Start	End
Item	Vegetation			38.316480 °	38.315005 °
				-121.694015 °	-121.693995 °
DWR ID	DWR_RD2098_01_f_2018_23				
Comment Code					
V1 : Control annual grass and weeds on the levee slopes and easements.					
Inspector Comment					

No Photos

* Location LS : Land Side N/A : Not Applicable WS : Water Side CR : Crown		** Rating A : Acceptable N : Not Inspected/Rated M : Minimally Acceptable C : Corrected U : Unacceptable A/W : Acceptable but Monitor & Maintain		+ Issue Type Ma : Maintenance Deficiency Ob : Design & System Obsolescence En : Enforcement
--	--	---	--	---

**Flood Control Project Maintenance
Levee Inspections**

Maintenance Issue Types Only, Levee Inspection Report By Mile - Spring 2019

Reclamation District No. 2098 Cache and Haas Slough

Waterway	Bank	Unit Miles	Inspection Start/End	Inspector
Unit No. 01 Yolo Bypass	Right	3.60	03/26/2019	David Julian

LM Start	0.96	Rating **	A/W	Issue No.	19
LM End	0.96	Issue Type +	Ma	Location *	
Category	Supplemental			GPS Latitude/Longitude	
				Start	End
Item	2017 Storm Damage			38.315200 °	38.315100 °
				-121.694100 °	-121.694100 °
DWR ID	DWR_RD2098_01_s_2018_19				
Comment Code					
Inspector Comment					
Levee Evaluation Comments					
Description:The damage consists of cracking and sloughing of the lower landside levee slope.					
Site ID No:414					
Site Designation:LMA-241					
Repair Type: Erosion					
Rating:Area of Concern					
Field Date:7/24/2017					
Notes: Landside sloughing about 2' deep and extends to toe ditch.					

Photo 1 of 3 : LEVAL_SP_2019_414_3594.jpg



Photo 2 of 3 : LEVAL_SP_2019_414_3596.jpg



LM Start	0.96	Rating **	A/W	Issue No.	19 (cont)
LM End	0.96	Issue Type +	Ma	Location *	

* Location LS : Land Side N/A : Not Applicable WS : Water Side CR : Crown		** Rating A : Acceptable M : Minimally Acceptable U : Unacceptable N : Not Inspected/Rated C : Corrected A/W : Acceptable but Monitor & Maintain		+ Issue Type Ma : Maintenance Deficiency Ob : Design & System Obsolescence En : Enforcement
--	--	---	--	---

**Flood Control Project Maintenance
Levee Inspections**

Maintenance Issue Types Only, Levee Inspection Report By Mile - Spring 2019

Reclamation District No. 2098 Cache and Haas Slough

Waterway	Bank	Unit Miles	Inspection Start/End	Inspector
Unit No. 01 Yolo Bypass	Right	3.60	03/26/2019	David Julian

LM Start	0.96	Rating **	A/W	Issue No.	19 (cont)
LM End	0.96	Issue Type +	Ma	Location *	
Category	Supplemental			GPS Latitude/Longitude	
				Start	End
Item	2017 Storm Damage			38.315200 °	38.315100 °
				-121.694100 °	-121.694100 °
DWR ID	DWR_RD2098_01_s_2018_19				
Comment Code					
Inspector Comment					
Levee Evaluation Comments					
Description:The damage consists of cracking and sloughing of the lower landside levee slope.					
Site ID No:414					
Site Designation:LMA-241					
Repair Type: Erosion					
Rating:Area of Concern					
Field Date:7/24/2017					
Notes: Landside sloughing about 2' deep and extends to toe ditch.					

Photo 3 of 3 : LEVAL_SP_2019_414_3603.jpg



LM Start	1.06	Rating **	C	Issue No.	24
LM End	1.64	Issue Type +	Ma	Location *	LS
Category	Earthen Levee			GPS Latitude/Longitude	
				Start	End
Item	Vegetation			38.313702 °	38.305367 °
				-121.693657 °	-121.693648 °
DWR ID	DWR_RD2098_01_f_2018_24				
Comment Code					
V1 : Control annual grass and weeds on the levee slopes and easements.					
Inspector Comment					

No Photos

* Location LS : Land Side N/A : Not Applicable WS : Water Side CR : Crown	** Rating A : Acceptable M : Minimally Acceptable U : Unacceptable	N : Not Inspected/Rated C : Corrected A/W : Acceptable but Monitor & Maintain	+ Issue Type Ma : Maintenance Deficiency Ob : Design & System Obsolescence En : Enforcement
--	--	---	---

**Flood Control Project Maintenance
Levee Inspections**

Maintenance Issue Types Only, Levee Inspection Report By Mile - Spring 2019

Reclamation District No. 2098 Cache and Haas Slough

Waterway	Bank	Unit Miles	Inspection Start/End	Inspector
Unit No. 01 Yolo Bypass	Right	3.60	03/26/2019	David Julian

LM Start	1.55	Rating **	M	Issue No.	14
LM End	1.55	Issue Type +	Ma	Location *	LS
Category	Earthen Levee			GPS Latitude/Longitude	
				Start	End
Item	Trim / Thin Trees			38.306628 °	38.306628 °
				-121.693632 °	-121.693632 °
DWR ID	DWR_RD2098_01_f_2018_14				
Comment Code					
T1 : Trim trees to at least five feet above ground level.					
Inspector Comment					
Trim and thin trees to allow inspection and access to landside slope and toe. Also, remove fallen tree on landside slope.					

Photo 1 of 1 : SP_2019_RD2098_244_14_20190311_00004.jpg



View of fallen tree and other trees on waterside slope.

LM Start	1.76	Rating **	M	Issue No.	18
LM End	1.76	Issue Type +	Ma	Location *	WS
Category	Earthen Levee			GPS Latitude/Longitude	
				Start	End
Item	Erosion / Bank Caving			38.303611 °	38.303611 °
				-121.693607 °	-121.693607 °
DWR ID	DWR_RD2098_01_s_2018_18				
Comment Code					
E1 : Note and monitor erosion site.					
Inspector Comment					
Monitor and repair erosion.					

Photo 1 of 1 : SP_2019_RD2098_244_18_20190311_00006.jpg



View of erosion.

* Location LS : Land Side N/A : Not Applicable WS : Water Side CR : Crown		** Rating A : Acceptable N : Not Inspected/Rated M : Minimally Acceptable C : Corrected U : Unacceptable A/W : Acceptable but Monitor & Maintain		+ Issue Type Ma : Maintenance Deficiency Ob : Design & System Obsolescence En : Enforcement
--	--	---	--	---

**Flood Control Project Maintenance
Levee Inspections**

Maintenance Issue Types Only, Levee Inspection Report By Mile - Spring 2019

Reclamation District No. 2098 Cache and Haas Slough

Waterway	Bank	Unit Miles	Inspection Start/End	Inspector
Unit No. 01 Yolo Bypass	Right	3.60	03/26/2019	David Julian

LM Start	1.82	Rating **	M	Issue No.	41 (cont)	
LM End	1.82	Issue Type +	Ma	Location *		
Category	Supplemental			GPS Latitude/Longitude		
				Start	End	
Item	DWR UCIP LMA Responsibility			38.302770 °	38.302770 °	
				-121.693640 °	-121.693640 °	
DWR ID	20965					
Comment Code						
Inspector Comment						
FS_ID:32197 DS_ID:20965 EP_NO: 10168 Repair Type: Non-Urgent Crossing Status: Found UCIP Comments: 12/22/2016 Met with Mike Hadesty, LMA Superintendent, and Brian Bush, LMA General Manager, to go over the list of pipes in RD2098. Per LMA records, this pipe has a different owner. (O. Magana - DWR UCIP) 03/18/2014 Erosion under pipe at WS toe. (W. Wylie - DWR UCIP) FIELD_STRUCT_DESC: 10-inch steel drainage pipe through the levee, 2.8 feet below the crown. Pump in pump house off the landside (LS). (This pipe was retained under Automatic Board Order (ABO) issued as Permit No. 10168, 1974 - Moresco Brothers). [Additional Reference(s): DWR Levee Log, 2003. USACE Sacramento O&M Manual 109, April 1962, (HLM 1.80)]. FS Date: 3/18/2014						

Photo 3 of 3 : UCIP_SP_2019_32197_58660.jpg



Erosion under pipe at WS toe.

LM Start	2.20	Rating **	A/W	Issue No.	15
LM End	2.24	Issue Type +	Ma	Location *	WS
Category	Supplemental			GPS Latitude/Longitude	
				Start	End
Item	2017 USACE Erosion Survey, DRAFT			38.297232 °	38.296678 °
				-121.693200 °	-121.693223 °
DWR ID	DWR_RD2098_01_f_2018_15				
Comment Code					
Inspector Comment					
2017 Site ID: YOL 2.2 R					
Status: Eroding New					
2017 Field Notes: POTENTIALLY UNDER REPAIR; full landslide from levee crown down, revetment failure , additional slumping ds and slump cracks observed.					
Site History:					

No Photos

* Location LS : Land Side N/A : Not Applicable WS : Water Side CR : Crown		** Rating A : Acceptable M : Minimally Acceptable U : Unacceptable		N : Not Inspected/Rated C : Corrected A/W : Acceptable but Monitor & Maintain		+ Issue Type Ma : Maintenance Deficiency Ob : Design & System Obsolescence En : Enforcement	
--	--	--	--	---	--	---	--

**Flood Control Project Maintenance
Levee Inspections**

Maintenance Issue Types Only, Levee Inspection Report By Mile - Spring 2019

Reclamation District No. 2098 Cache and Haas Slough

Waterway	Bank	Unit Miles	Inspection Start/End	Inspector
Unit No. 01 Yolo Bypass	Right	3.60	03/26/2019	David Julian

LM Start	2.21	Rating **	A/W	Issue No.	21
LM End	2.22	Issue Type +	Ma	Location *	
Category	Supplemental			GPS Latitude/Longitude	
				Start	End
Item	2017 Storm Damage			38.297100 °	38.297000 °
				-121.693300 °	-121.693300 °
DWR ID	DWR_RD2098_01_s_2018_21				
Comment Code					
Inspector Comment					
Levee Evaluation Comments					
Description:The damage consists of erosion, cracking, and sloughing of the waterside levee slope.					
Site ID No:416					
Site Designation:LMA-243					
Repair Type: Erosion					
Rating:Serious					
Field Date:7/24/2017					
Notes: Erosion with sloughing. About 2' vertical cut at top of erosion.					

Photo 1 of 3 : LEVAL_SP_2019_416_2726.jpg



LM Start	2.21	Rating **	A/W	Issue No.	21 (cont)
LM End	2.22	Issue Type +	Ma	Location *	

Photo 2 of 3 : LEVAL_SP_2019_416_2727.jpg



* Location LS : Land Side N/A : Not Applicable WS : Water Side CR : Crown	** Rating A : Acceptable M : Minimally Acceptable U : Unacceptable N : Not Inspected/Rated C : Corrected A/W : Acceptable but Monitor & Maintain	+ Issue Type Ma : Maintenance Deficiency Ob : Design & System Obsolescence En : Enforcement
--	---	---

**Flood Control Project Maintenance
Levee Inspections**

Maintenance Issue Types Only, Levee Inspection Report By Mile - Spring 2019

Reclamation District No. 2098 Cache and Haas Slough

Waterway	Bank	Unit Miles	Inspection Start/End	Inspector
Unit No. 01 Yolo Bypass	Right	3.60	03/26/2019	David Julian

LM Start	2.29	Rating **	A/W	Issue No.	27 (cont)	
LM End	2.31	Issue Type +	Ma	Location *		
Category	Supplemental			GPS Latitude/Longitude		
				Start	End	
Item	2017 Storm Damage			38.295900 °	38.295700 °	
				-121.693500 °	-121.693500 °	
DWR ID	DWR_RD2098_01_f_2017_27					
Comment Code						
Inspector Comment						
Levee Evaluation Comments						
Description:The damage consists of scour and sloughing of the waterside levee slope.						
Site ID No:421						
Site Designation:LMA-248						
Repair Type: Erosion						
Rating:Serious						
Field Date:7/24/2017						
Notes: Toe of slope has eroded and minor sloughing has started.						

Photo 2 of 3 : SP_2019_RD2098_244_27_20190311_00015.jpg



Photo 3 of 3 : SP_2019_RD2098_244_27_20190311_00016.jpg



* Location LS : Land Side N/A : Not Applicable WS : Water Side CR : Crown		** Rating A : Acceptable N : Not Inspected/Rated M : Minimally Acceptable C : Corrected U : Unacceptable A/W : Acceptable but Monitor & Maintain		+ Issue Type Ma : Maintenance Deficiency Ob : Design & System Obsolescence En : Enforcement
--	--	---	--	---

**Flood Control Project Maintenance
Levee Inspections**

Maintenance Issue Types Only, Levee Inspection Report By Mile - Spring 2019

Reclamation District No. 2098 Cache and Haas Slough

Waterway	Bank	Unit Miles	Inspection Start/End	Inspector
Unit No. 01 Yolo Bypass	Right	3.60	03/26/2019	David Julian

LM Start	2.30	Rating **	M	Issue No.	20
LM End	2.32	Issue Type +	Ma	Location *	WS
Category	Earthen Levee			GPS Latitude/Longitude	
				Start	End
Item	Erosion / Bank Caving			38.295870 °	38.295430 °
				-121.693645 °	-121.693628 °
DWR ID	DWR_RD2098_01_s_2017_20				
Comment Code					
E1 : Note and monitor erosion site.					
Inspector Comment					

No Photos

LM Start	2.35	Rating **	A/W	Issue No.	28
LM End	2.39	Issue Type +	Ma	Location *	
Category	Supplemental			GPS Latitude/Longitude	
				Start	End
Item	2017 Storm Damage			38.295100 °	38.294500 °
				-121.693400 °	-121.693400 °
DWR ID	DWR_RD2098_01_f_2017_28				
Comment Code					
Inspector Comment					
Levee Evaluation Comments					
Description:The damage consists of scour, sloughing, and cracking of the lower and mid waterside levee slope.					
Site ID No:423					
Site Designation:LMA-250					
Repair Type: Erosion					
Rating:Area of Concern					
Field Date:7/24/2017					
Notes: 2' of sloughing about half way up the slope.					

Photo 1 of 3 : SP_2019_RD2098_244_28_20190311_00017.jpg



* Location LS : Land Side N/A : Not Applicable WS : Water Side CR : Crown		** Rating A : Acceptable N : Not Inspected/Rated M : Minimally Acceptable C : Corrected U : Unacceptable A/W : Acceptable but Monitor & Maintain		+ Issue Type Ma : Maintenance Deficiency Ob : Design & System Obsolescence En : Enforcement
--	--	---	--	---

**Flood Control Project Maintenance
Levee Inspections**

Maintenance Issue Types Only, Levee Inspection Report By Mile - Spring 2019

Reclamation District No. 2098 Cache and Haas Slough

Waterway	Bank	Unit Miles	Inspection Start/End	Inspector
Unit No. 01 Yolo Bypass	Right	3.60	03/26/2019	David Julian

LM Start	2.35	Rating **	A/W	Issue No.	28 (cont)	
LM End	2.39	Issue Type +	Ma	Location *		
Category	Supplemental			GPS Latitude/Longitude		
				Start		End
Item	2017 Storm Damage			38.295100 °		38.294500 °
				-121.693400 °		-121.693400 °
DWR ID	DWR_RD2098_01_f_2017_28					
Comment Code						
Inspector Comment						
Levee Evaluation Comments						
Description:The damage consists of scour, sloughing, and cracking of the lower and mid waterside levee slope.						
Site ID No:423						
Site Designation:LMA-250						
Repair Type: Erosion						
Rating:Area of Concern						
Field Date:7/24/2017						
Notes: 2' of sloughing about half way up the slope.						

Photo 2 of 3 : SP_2019_RD2098_244_28_20190311_00018.jpg



Photo 3 of 3 : SP_2019_RD2098_244_28_20190311_00019.jpg



* Location LS : Land Side N/A : Not Applicable WS : Water Side CR : Crown		** Rating A : Acceptable N : Not Inspected/Rated M : Minimally Acceptable C : Corrected U : Unacceptable A/W : Acceptable but Monitor & Maintain		+ Issue Type Ma : Maintenance Deficiency Ob : Design & System Obsolescence En : Enforcement
--	--	---	--	---

**Flood Control Project Maintenance
Levee Inspections**

Maintenance Issue Types Only, Levee Inspection Report By Mile - Spring 2019

Reclamation District No. 2098 Cache and Haas Slough

Waterway	Bank	Unit Miles	Inspection Start/End	Inspector
Unit No. 01 Yolo Bypass	Right	3.60	03/26/2019	David Julian

LM Start	2.75	Rating **	A/W	Issue No.	34
LM End	2.78	Issue Type +	Ma	Location *	
Category	Supplemental			GPS Latitude/Longitude	
				Start	End
Item	2017 Storm Damage			38.289200 °	38.288800 °
				-121.693500 °	-121.693500 °
DWR ID	DWR_RD2098_01_f _ 2017_34				
Comment Code					
Inspector Comment					
Levee Evaluation Comments					
Description:The damage consists of scour and sloughing of the waterside levee slope.					
Site ID No:429					
Site Designation:LMA-256					
Repair Type: Erosion					
Rating:Serious					
Field Date:7/25/2017					
Notes: Erosion at WS toe, causing sloughing half-way down WS slope.					

Photo 1 of 3 : SP_2019_RD2098_244_34_20190311_00020.jpg



LM Start	2.75	Rating **	A/W	Issue No.	34 (cont)
LM End	2.78	Issue Type +	Ma	Location *	

Photo 2 of 3 : SP_2019_RD2098_244_34_20190311_00021.jpg



* Location LS : Land Side N/A : Not Applicable WS : Water Side CR : Crown		** Rating A : Acceptable N : Not Inspected/Rated M : Minimally Acceptable C : Corrected U : Unacceptable A/W : Acceptable but Monitor & Maintain		+ Issue Type Ma : Maintenance Deficiency Ob : Design & System Obsolescence En : Enforcement
--	--	---	--	---

Reclamation District No. 2098 Cache and Haas Slough

Waterway	Bank	Unit Miles	Inspection Start/End	Inspector
Unit No. 01 Yolo Bypass	Right	3.60	03/26/2019	David Julian

LM Start	2.75	Rating **	A/W	Issue No.	34 (cont)
LM End	2.78	Issue Type +	Ma	Location *	
Category	Supplemental			GPS Latitude/Longitude	
				Start	End
Item	2017 Storm Damage			38.289200 °	38.288800 °
				-121.693500 °	-121.693500 °
DWR ID	DWR_RD2098_01_f_2017_34				
Comment Code					
Inspector Comment					
Levee Evaluation Comments					
Description:The damage consists of scour and sloughing of the waterside levee slope.					
Site ID No:429					
Site Designation:LMA-256					
Repair Type: Erosion					
Rating:Serious					
Field Date:7/25/2017					
Notes: Erosion at WS toe, causing sloughing half-way down WS slope.					

Photo 3 of 3 : SP_2019_RD2098_244_34_20190311_00022.jpg



LM Start	2.78	Rating **	A/W	Issue No.	35
LM End	2.81	Issue Type +	Ma	Location *	
Category	Supplemental			GPS Latitude/Longitude	
				Start	End
Item	2017 Storm Damage			38.288800 °	38.288400 °
				-121.693500 °	-121.693500 °
DWR ID	DWR_RD2098_01_f_2017_35				
Comment Code					
Inspector Comment					
Levee Evaluation Comments					
Description:The damage consists of scour and sloughing of the waterside levee slope.					
Site ID No:430					
Site Designation:LMA-257					
Repair Type: Erosion					
Rating:Serious					
Field Date:7/25/2017					
Notes: Erosion at waterside toe, causing sloughing 2/3 down waterside slope.					

Photo 1 of 3 : SP_2019_RD2098_244_35_20190311_00023.jpg



* Location	** Rating	+ Issue Type
LS : Land Side N/A : Not Applicable WS : Water Side CR : Crown	A : Acceptable N : Not Inspected/Rated M : Minimally Acceptable C : Corrected U : Unacceptable A/W : Acceptable but Monitor & Maintain	Ma : Maintenance Deficiency Ob : Design & System Obsolescence En : Enforcement

**Flood Control Project Maintenance
Levee Inspections**

Maintenance Issue Types Only, Levee Inspection Report By Mile - Spring 2019

Reclamation District No. 2098 Cache and Haas Slough

Waterway	Bank	Unit Miles	Inspection Start/End	Inspector
Unit No. 01 Yolo Bypass	Right	3.60	03/26/2019	David Julian

LM Start	2.78	Rating **	A/W	Issue No.	35 (cont)	
LM End	2.81	Issue Type +	Ma	Location *		
Category	Supplemental			GPS Latitude/Longitude		
				Start		End
Item	2017 Storm Damage			38.288800 °		38.288400 °
				-121.693500 °		-121.693500 °
DWR ID	DWR_RD2098_01_f_2017_35					
Comment Code						
Inspector Comment						
Levee Evaluation Comments						
Description:The damage consists of scour and sloughing of the waterside levee slope.						
Site ID No:430						
Site Designation:LMA-257						
Repair Type: Erosion						
Rating:Serious						
Field Date:7/25/2017						
Notes: Erosion at waterside toe, causing sloughing 2/3 down waterside slope.						

Photo 2 of 3 : SP_2019_RD2098_244_35_20190311_00024.jpg



LM Start	2.78	Rating **	A/W	Issue No.	35 (cont)
LM End	2.81	Issue Type +	Ma	Location *	

Photo 3 of 3 : SP_2019_RD2098_244_35_20190311_00025.jpg



* Location
 LS : Land Side N/A : Not Applicable
 WS : Water Side
 CR : Crown

** Rating
 A : Acceptable N : Not Inspected/Rated
 M : Minimally Acceptable C : Corrected
 U : Unacceptable A/W : Acceptable but Monitor & Maintain

+ Issue Type
 Ma : Maintenance Deficiency
 Ob : Design & System Obsolescence
 En : Enforcement

**Flood Control Project Maintenance
Levee Inspections**

Maintenance Issue Types Only, Levee Inspection Report By Mile - Spring 2019

Reclamation District No. 2098 Cache and Haas Slough

Waterway	Bank	Unit Miles	Inspection Start/End	Inspector
Unit No. 01 Yolo Bypass	Right	3.60	03/26/2019	David Julian

LM Start	2.80	Rating **	M	Issue No.	11
LM End	2.97	Issue Type +	Ma	Location *	WS
Category	Earthen Levee			GPS Latitude/Longitude	
				Start	End
Item	Vegetation			38.288590 °	38.286013 °
				-121.693645 °	-121.693632 °
DWR ID	DWR_RD2098_01_f_2017_11				
Comment Code					
V2 : Remove the wild growth other than native grasses from the levee slopes.					
Inspector Comment					
Nearby construction operations forced termination of goat grazing. Vegetation should be cleared.					

Photo 1 of 1 : SP_2019_RD2098_244_11_20190311_00001.jpg



View of vegetation on waterside slope.

LM Start	2.80	Rating **	M	Issue No.	12
LM End	3.60	Issue Type +	Ma	Location *	LS
Category	Earthen Levee			GPS Latitude/Longitude	
				Start	End
Item	Vegetation			38.288590 °	38.277458 °
				-121.693645 °	-121.696303 °
DWR ID	DWR_RD2098_01_f_2017_12				
Comment Code					
V2 : Remove the wild growth other than native grasses from the levee slopes.					
Inspector Comment					
Nearby construction operations forced termination of goat grazing. Vegetation should be cleared.					

Photo 1 of 1 : SP_2019_RD2098_244_12_20190311_00002.jpg



View of vegetation on landside slope.

* Location LS : Land Side N/A : Not Applicable WS : Water Side CR : Crown		** Rating A : Acceptable N : Not Inspected/Rated M : Minimally Acceptable C : Corrected U : Unacceptable A/W : Acceptable but Monitor & Maintain		+ Issue Type Ma : Maintenance Deficiency Ob : Design & System Obsolescence En : Enforcement
--	--	---	--	---

**Flood Control Project Maintenance
Levee Inspections**

Maintenance Issue Types Only, Levee Inspection Report By Mile - Spring 2019

Reclamation District No. 2098 Cache and Haas Slough

Waterway	Bank	Unit Miles	Inspection Start/End	Inspector
Unit No. 01 Yolo Bypass	Right	3.60	03/26/2019	David Julian

LM Start	2.91	Rating **	A/W	Issue No.	36
LM End	2.93	Issue Type +	Ma	Location *	
Category	Supplemental			GPS Latitude/Longitude	
				Start	End
Item	2017 Storm Damage			38.286900 °	38.286700 °
				-121.693500 °	-121.693500 °
DWR ID	DWR_RD2098_01_f_2017_36				
Comment Code					
Inspector Comment					
Levee Evaluation Comments					
Description:The damage consists of scour and sloughing of the waterside levee slope.					
Site ID No:431					
Site Designation:LMA-258					
Repair Type: Erosion					
Rating:Serious					
Field Date:7/25/2017					
Notes: Erosion of WS toe, resulting in 8' verticle wall.					

Photo 1 of 3 : SP_2019_RD2098_244_36_20190311_00026.jpg



LM Start	2.91	Rating **	A/W	Issue No.	36 (cont)
LM End	2.93	Issue Type +	Ma	Location *	

Photo 2 of 3 : SP_2019_RD2098_244_36_20190311_00027.jpg



* Location LS : Land Side N/A : Not Applicable WS : Water Side CR : Crown		** Rating A : Acceptable M : Minimally Acceptable U : Unacceptable N : Not Inspected/Rated C : Corrected A/W : Acceptable but Monitor & Maintain		+ Issue Type Ma : Maintenance Deficiency Ob : Design & System Obsolescence En : Enforcement
--	--	---	--	---

**Flood Control Project Maintenance
Levee Inspections**

Maintenance Issue Types Only, Levee Inspection Report By Mile - Spring 2019

Reclamation District No. 2098 Cache and Haas Slough

Waterway	Bank	Unit Miles	Inspection Start/End	Inspector
Unit No. 01 Yolo Bypass	Right	3.60	03/26/2019	David Julian

LM Start	2.91	Rating **	A/W	Issue No.	36 (cont)
LM End	2.93	Issue Type +	Ma	Location *	
Category	Supplemental			GPS Latitude/Longitude	
				Start	End
Item	2017 Storm Damage			38.286900 °	38.286700 °
				-121.693500 °	-121.693500 °
DWR ID	DWR_RD2098_01_f_2017_36				
Comment Code					
Inspector Comment					
Levee Evaluation Comments					
Description:The damage consists of scour and sloughing of the waterside levee slope.					
Site ID No:431					
Site Designation:LMA-258					
Repair Type: Erosion					
Rating:Serious					
Field Date:7/25/2017					
Notes: Erosion of WS toe, resulting in 8' verticle wall.					

Photo 3 of 3 : SP_2019_RD2098_244_36_20190311_00028.jpg



LM Start	2.99	Rating **	C	Issue No.	37
LM End	3.29	Issue Type +	Ma	Location *	
Category	Supplemental			GPS Latitude/Longitude	
				Start	End
Item	2017 Storm Damage			38.285700 °	38.281500 °
				-121.693500 °	-121.694300 °
DWR ID	DWR_RD2098_01_f_2017_37				
Comment Code					
Inspector Comment					
Levee Evaluation Comments					
Description:The damage consists of scour and sloughing of the waterside levee slope.					
Site ID No:432					
Site Designation:LMA-259					
Repair Type: Erosion					
Rating:Serious					
Field Date:7/25/2017					
Notes: Varying erosion and sloughing at WS toe. Revetment at end of levee section. Repaired in September 2018					

No Photos

* Location LS : Land Side N/A : Not Applicable WS : Water Side CR : Crown	** Rating A : Acceptable M : Minimally Acceptable U : Unacceptable	N : Not Inspected/Rated C : Corrected A/W : Acceptable but Monitor & Maintain	+ Issue Type Ma : Maintenance Deficiency Ob : Design & System Obsolescence En : Enforcement
--	--	---	---

**Flood Control Project Maintenance
Levee Inspections**

Maintenance Issue Types Only, Levee Inspection Report By Mile - Spring 2019

Reclamation District No. 2098 Cache and Haas Slough

Waterway	Bank	Unit Miles	Inspection Start/End	Inspector
Unit No. 01 Yolo Bypass	Right	3.60	03/26/2019	David Julian

LM Start	3.18	Rating **	C	Issue No.	17
LM End	3.60	Issue Type +	Ma	Location *	WS
Category	Earthen Levee			GPS Latitude/Longitude	
				Start	End
Item	Vegetation			38.283035 °	38.277458 °
				-121.693617 °	-121.696303 °
DWR ID	DWR_RD2098_01_f_2017_17				
Comment Code					
V2 : Remove the wild growth other than native grasses from the levee slopes.					
Inspector Comment					

No Photos

LM Start	3.31	Rating **	C	Issue No.	39
LM End	3.32	Issue Type +	Ma	Location *	
Category	Supplemental			GPS Latitude/Longitude	
				Start	End
Item	2017 Storm Damage			38.281200 °	38.281100 °
				-121.694500 °	-121.694600 °
DWR ID	DWR_RD2098_01_f_2017_39				
Comment Code					
Inspector Comment					
Levee Evaluation Comments					
Description:The damage consists of scour and sloughing of the lower waterside levee slope.					
Site ID No:433					
Site Designation:LMA-260					
Repair Type: Erosion					
Rating:Area of Concern					
Field Date:7/25/2017					
Notes: Two combined erosion sites (260 and 261) adjacent to each other at WS toe. Existing rip rap placed at area of concern.					

No Photos

* Location LS : Land Side N/A : Not Applicable WS : Water Side CR : Crown	** Rating A : Acceptable M : Minimally Acceptable U : Unacceptable N : Not Inspected/Rated C : Corrected A/W : Acceptable but Monitor & Maintain	+ Issue Type Ma : Maintenance Deficiency Ob : Design & System Obsolescence En : Enforcement
--	---	---

**Flood Control Project Maintenance
Levee Inspections**

Maintenance Issue Types Only, Levee Inspection Report By Mile - Spring 2019

Reclamation District No. 2098 Cache and Haas Slough

Waterway	Bank	Unit Miles	Inspection Start/End	Inspector
Unit No. 01 Yolo Bypass	Right	3.60	03/26/2019	David Julian

LM Start	3.44	Rating **	C	Issue No.	25
LM End	3.59	Issue Type +	Ma	Location *	LS
Category	Earthen Levee			GPS Latitude/Longitude	
				Start	End
Item	Vegetation			38.279555 °	38.277490 °
				-121.695588 °	-121.696253 °
DWR ID	DWR_RD2098_01_f_2018_25				
Comment Code					
V1 : Control annual grass and weeds on the levee slopes and easements.					
Inspector Comment					

No Photos

LM Start	3.50	Rating **	C	Issue No.	40
LM End	3.56	Issue Type +	Ma	Location *	
Category	Supplemental			GPS Latitude/Longitude	
				Start	End
Item	2017 Storm Damage			38.278700 °	38.278000 °
				-121.695900 °	-121.696100 °
DWR ID	DWR_RD2098_01_f_2017_40				
Comment Code					
Inspector Comment					
Levee Evaluation Comments					
Description:The damage consists of scour and sloughing of the lower and mid waterside levee slope.					
Site ID No:435					
Site Designation:LMA-262					
Repair Type: Erosion					
Rating:Area of Concern					
Field Date:7/25/2017					
Notes: Two combined sloughing sites adjacent to each other on lower waterside slope. Existing rip rap on beginning 100' section of site 262.					
This site is combined with site 263.					

No Photos

* Location LS : Land Side N/A : Not Applicable WS : Water Side CR : Crown	** Rating A : Acceptable M : Minimally Acceptable U : Unacceptable N : Not Inspected/Rated C : Corrected A/W : Acceptable but Monitor & Maintain	+ Issue Type Ma : Maintenance Deficiency Ob : Design & System Obsolescence En : Enforcement
--	---	---

**Flood Control Project Maintenance
Levee Inspections**

Maintenance Issue Types Only, Levee Inspection Report By Mile - Spring 2019

Reclamation District No. 2098 Cache and Haas Slough

Waterway	Bank	Unit Miles	Inspection Start/End	Inspector
Unit No. 01A Cross Levee	Right	0.53	03/26/2019 03/26/2019	David Julian

LM Start	0.00	Rating **	A	Issue No.	2
LM End	0.52	Issue Type +	Ma	Location *	WS
Category	Earthen Levee			GPS Latitude/Longitude	
				Start	End
Item	Vegetation			38.277382 °	38.275722 °
				-121.696270 °	-121.705675 °
DWR ID	DWR_RD2098_01A_s_2019_2				
Comment Code					
V1 : Control annual grass and weeds on the levee slopes and easements.					
Inspector Comment					
Continue to maintain annual vegetation.					

Photo 1 of 1 : SP_2019_RD2098_245_2_20190329_00004.jpg



View looking upstream at annual vegetation on the waterside slope (Spring 2019).

LM Start	0.00	Rating **	A	Issue No.	1
LM End	0.52	Issue Type +	Ma	Location *	LS
Category	Earthen Levee			GPS Latitude/Longitude	
				Start	End
Item	Vegetation			38.277382 °	38.275722 °
				-121.696270 °	-121.705675 °
DWR ID	DWR_RD2098_01A_s_2017_1				
Comment Code					
V1 : Control annual grass and weeds on the levee slopes and easements.					
Inspector Comment					
Continue to maintain annual vegetation.					

Photo 1 of 1 : SP_2019_RD2098_245_1_20190329_00005.jpg



View looking upstream at annual vegetation on the landside slope (Spring 2019).

* Location
LS : Land Side N/A : Not Applicable
WS : Water Side
CR : Crown

** Rating
A : Acceptable
M : Minimally Acceptable
U : Unacceptable
N : Not Inspected/Rated
C : Corrected
A/W : Acceptable but Monitor & Maintain

+ Issue Type
Ma : Maintenance Deficiency
Ob : Design & System Obsolescence
En : Enforcement

**Flood Control Project Maintenance
Levee Inspections**

Maintenance Issue Types Only, Levee Inspection Report By Mile - Spring 2019

Reclamation District No. 2098 Cache and Haas Slough

Waterway	Bank	Unit Miles	Inspection Start/End	Inspector
Unit No. 02 Cache Slough	Left	1.89	03/26/2019 03/26/2019	David Julian

LM Start	5.30	Rating **	C	Issue No.	9
LM End	5.56	Issue Type +	Ma	Location *	WS
Category	Earthen Levee			GPS Latitude/Longitude	
				Start	End
Item	Vegetation			38.275757 °	38.278863 °
				-121.705818 °	-121.708687 °
DWR ID	DWR_RD2098_02_s_2017_9				
Comment Code					
V2 : Remove the wild growth other than native grasses from the levee slopes.					
Inspector Comment					
Remove the wild weed growth from the waterside levee slope.					

No Photos

LM Start	5.30	Rating **	A	Issue No.	6
LM End	7.19	Issue Type +	Ma	Location *	WS
Category	Earthen Levee			GPS Latitude/Longitude	
				Start	End
Item	Vegetation			38.275757 °	38.293139 °
				-121.705818 °	-121.724174 °
DWR ID	DWR_RD2098_02_s_2019_6				
Comment Code					
V1 : Control annual grass and weeds on the levee slopes and easements.					
Inspector Comment					
LMA is doing a good job of maintaining annual vegetation					

Photo 1 of 1 : SP_2019_RD2098_246_6_20190329_00038.jpg



View looking upstream at annual vegetation on the waterside slope (Spring 2019).

LM Start	5.30	Rating **	A	Issue No.	14
LM End	7.19	Issue Type +	Ma	Location *	LS
Category	Earthen Levee			GPS Latitude/Longitude	
				Start	End
Item	Vegetation			38.275757 °	38.293139 °
				-121.705818 °	-121.724174 °
DWR ID	DWR_RD2098_02_s_2019_14				
Comment Code					
V1 : Control annual grass and weeds on the levee slopes and easements.					
Inspector Comment					
LMA is doing a good job maintaining annual vegetation					

Photo 1 of 1 : SP_2019_RD2098_246_14_20190329_00039.jpg



View looking upstream at annual vegetation on the landside slope (Spring 2019).

* Location		** Rating		+ Issue Type	
LS : Land Side	N/A : Not Applicable	A : Acceptable	N : Not Inspected/Rated	Ma : Maintenance Deficiency	
WS : Water Side		M : Minimally Acceptable	C : Corrected	Ob : Design & System Obsolescence	
CR : Crown		U : Unacceptable	A/W : Acceptable but Monitor & Maintain	En : Enforcement	

**Flood Control Project Maintenance
Levee Inspections**

Maintenance Issue Types Only, Levee Inspection Report By Mile - Spring 2019

Reclamation District No. 2098 Cache and Haas Slough

Waterway	Bank	Unit Miles	Inspection Start/End	Inspector
Unit No. 02 Cache Slough	Left	1.89	03/26/2019 03/26/2019	David Julian

LM Start	5.48	Rating **	C	Issue No.	8
LM End	5.61	Issue Type +	Ma	Location *	LS
Category	Earthen Levee			GPS Latitude/Longitude	
				Start	End
Item	Vegetation			38.277922 °	38.279443 °
				-121.707698 °	-121.709233 °
DWR ID	DWR_RD2098_02_s_2017_8				
Comment Code					
V2 : Remove the wild growth other than native grasses from the levee slopes.					
Inspector Comment					
Remove the wild weed growth from the landside levee slope and berm.					

No Photos

LM Start	5.88	Rating **	M	Issue No.	11
LM End	5.88	Issue Type +	Ma	Location *	WS
Category	Earthen Levee			GPS Latitude/Longitude	
				Start	End
Item	Erosion / Bank Caving			38.282946 °	38.282946 °
				-121.710902 °	-121.710902 °
DWR ID	DWR_RD2098_02_s_2018_11				
Comment Code					
E1 : Note and monitor erosion site.					
Inspector Comment					
This waterside slump site is not new, and is somewhat protected by riprap and thick brushy vegetation, but it has the potential to erode into crown during high water with a strong south wind. It currently has a two-foot vertical scarp at the levee shoulder.					

Photo 1 of 1 : SP_2019_RD2098_246_11_20190311_00004.jpg



Repair slumping on waterside slope.

LM Start	5.89	Rating **	C	Issue No.	13
LM End	6.15	Issue Type +	Ma	Location *	LS
Category	Earthen Levee			GPS Latitude/Longitude	
				Start	End
Item	Vegetation			38.283053 °	38.284662 °
				-121.711010 °	-121.715028 °
DWR ID	DWR_RD2098_02_f_2018_13				
Comment Code					
V1 : Control annual grass and weeds on the levee slopes and easements.					
Inspector Comment					

No Photos

* Location		** Rating		+ Issue Type	
LS : Land Side	N/A : Not Applicable	A : Acceptable	N : Not Inspected/Rated	Ma : Maintenance Deficiency	
WS : Water Side		M : Minimally Acceptable	C : Corrected	Ob : Design & System Obsolescence	
CR : Crown		U : Unacceptable	A/W : Acceptable but Monitor & Maintain	En : Enforcement	

**Flood Control Project Maintenance
Levee Inspections**

Maintenance Issue Types Only, Levee Inspection Report By Mile - Spring 2019

Reclamation District No. 2098 Cache and Haas Slough

Waterway	Bank	Unit Miles	Inspection Start/End	Inspector
Unit No. 02 Cache Slough	Left	1.89	03/26/2019 03/26/2019	David Julian

LM Start	6.12	Rating **	M	Issue No.	12
LM End	6.12	Issue Type +	Ma	Location *	LS
Category	Earthen Levee			GPS Latitude/Longitude	
				Start	End
Item	Encroachments			38.284348 °	38.284348 °
				-121.714682 °	-121.714682 °
DWR ID	DWR_RD2098_02_f_2016_12				
Comment Code					
TR : Tree or limb					
Inspector Comment					
Remove this nut tree from the landside slope.					

No Photos

LM Start	6.46	Rating **	A/W	Issue No.	15
LM End	6.46	Issue Type +	Ma	Location *	
Category	Supplemental			GPS Latitude/Longitude	
				Start	End
Item	2017 Storm Damage			38.288700 °	38.288800 °
				-121.717000 °	-121.717000 °
DWR ID	DWR_RD2098_02_f_2017_15				
Comment Code					
Inspector Comment					
Levee Evaluation Comments					
Description:The damage consists of scour of the lower and mid waterside levee slope.					
Site ID No:440					
Site Designation:LMA-267					
Repair Type: Erosion					
Rating:Area of Concern					
Field Date:7/25/2017					
Notes: Sloughing on waterside slope due to toe erosion.					

Photo 1 of 3 : SP_2019_RD2098_246_15_20190311_00005.jpg



* Location LS : Land Side N/A : Not Applicable WS : Water Side CR : Crown	** Rating A : Acceptable M : Minimally Acceptable U : Unacceptable	N : Not Inspected/Rated C : Corrected A/W : Acceptable but Monitor & Maintain	+ Issue Type Ma : Maintenance Deficiency Ob : Design & System Obsolescence En : Enforcement
--	--	---	---

**Flood Control Project Maintenance
Levee Inspections**

Maintenance Issue Types Only, Levee Inspection Report By Mile - Spring 2019

Reclamation District No. 2098 Cache and Haas Slough

Waterway	Bank	Unit Miles	Inspection Start/End	Inspector
Unit No. 02 Cache Slough	Left	1.89	03/26/2019 03/26/2019	David Julian

LM Start	6.46	Rating **	A/W	Issue No.	15 (cont)
LM End	6.46	Issue Type +	Ma	Location *	
Category	Supplemental			GPS Latitude/Longitude	
				Start	End
Item	2017 Storm Damage			38.288700 °	38.288800 °
				-121.717000 °	-121.717000 °
DWR ID	DWR_RD2098_02_f _ 2017_15				
Comment Code					
Inspector Comment					
Levee Evaluation Comments					
Description:The damage consists of scour of the lower and mid waterside levee slope.					
Site ID No:440					
Site Designation:LMA-267					
Repair Type: Erosion					
Rating:Area of Concern					
Field Date:7/25/2017					
Notes: Sloughing on waterside slope due to toe erosion.					

Photo 2 of 3 : SP_2019_RD2098_246_15_20190311_00006.jpg

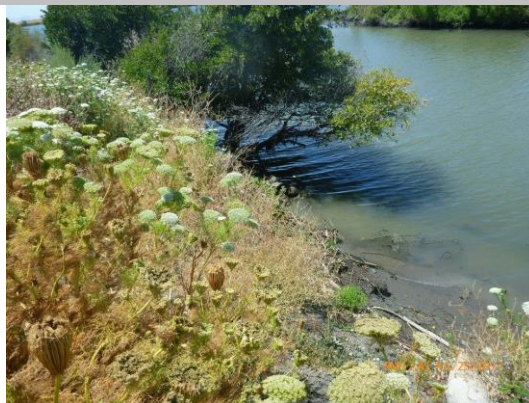


Photo 3 of 3 : SP_2019_RD2098_246_15_20190311_00007.jpg



* Location LS : Land Side N/A : Not Applicable WS : Water Side CR : Crown	** Rating A : Acceptable M : Minimally Acceptable U : Unacceptable N : Not Inspected/Rated C : Corrected A/W : Acceptable but Monitor & Maintain	+ Issue Type Ma : Maintenance Deficiency Ob : Design & System Obsolescence En : Enforcement
--	---	---

**Flood Control Project Maintenance
Levee Inspections**

Maintenance Issue Types Only, Levee Inspection Report By Mile - Spring 2019

Reclamation District No. 2098 Cache and Haas Slough

Waterway	Bank	Unit Miles	Inspection Start/End	Inspector
Unit No. 02 Cache Slough	Left	1.89	03/26/2019 03/26/2019	David Julian

LM Start	6.47	Rating **	A/W	Issue No.	17
LM End	6.48	Issue Type +	Ma	Location *	
Category	Supplemental			GPS Latitude/Longitude	
				Start	End
Item	2017 Storm Damage			38.288900 °	38.289000 °
				-121.717000 °	-121.717000 °
DWR ID	DWR_RD2098_02_f_2017_17				
Comment Code					
Inspector Comment					
Levee Evaluation Comments					
Description:The damage consists of scour and sloughing of the lower and mid waterside levee slope.					
Site ID No:441					
Site Designation:LMA-268					
Repair Type: Erosion					
Rating:Area of Concern					
Field Date:7/25/2017					
Notes: Sloughing on waterside slope due to toe erosion.					

Photo 1 of 3 : SP_2019_RD2098_246_17_20190311_00008.jpg



LM Start	6.47	Rating **	A/W	Issue No.	17 (cont)
LM End	6.48	Issue Type +	Ma	Location *	

Photo 2 of 3 : SP_2019_RD2098_246_17_20190311_00009.jpg



* Location LS : Land Side N/A : Not Applicable WS : Water Side CR : Crown	** Rating A : Acceptable M : Minimally Acceptable U : Unacceptable N : Not Inspected/Rated C : Corrected A/W : Acceptable but Monitor & Maintain	+ Issue Type Ma : Maintenance Deficiency Ob : Design & System Obsolescence En : Enforcement
--	---	---

**Flood Control Project Maintenance
Levee Inspections**

Maintenance Issue Types Only, Levee Inspection Report By Mile - Spring 2019

Reclamation District No. 2098 Cache and Haas Slough

Waterway	Bank	Unit Miles	Inspection Start/End	Inspector
Unit No. 02 Cache Slough	Left	1.89	03/26/2019 03/26/2019	David Julian

LM Start	6.64	Rating **	A/W	Issue No.	18
LM End	6.65	Issue Type +	Ma	Location *	
Category	Supplemental			GPS Latitude/Longitude	
				Start	End
Item	2017 Storm Damage			38.291300 °	38.291400 °
				-121.716100 °	-121.716000 °
DWR ID	DWR_RD2098_02_f_2017_18				
Comment Code					
Inspector Comment					
Levee Evaluation Comments					
Description:The damage consists of scour, cracking, instability, and sloughing of the waterside levee slope.					
Site ID No:442					
Site Designation:LMA-269					
Repair Type: Erosion					
Rating:Serious					
Field Date:7/25/2017					
Notes: Two sloughing sections along waterside slope due to toe erosion.					
LM Start	6.64	Rating **	A/W	Issue No.	18 (cont)
LM End	6.65	Issue Type +	Ma	Location *	

Photo 1 of 3 : SP_2019_RD2098_246_18_20190311_00011.jpg



Photo 2 of 3 : SP_2019_RD2098_246_18_20190311_00012.jpg



* Location LS : Land Side N/A : Not Applicable WS : Water Side CR : Crown	** Rating A : Acceptable M : Minimally Acceptable U : Unacceptable	N : Not Inspected/Rated C : Corrected A/W : Acceptable but Monitor & Maintain	+ Issue Type Ma : Maintenance Deficiency Ob : Design & System Obsolescence En : Enforcement
--	--	---	---

Reclamation District No. 2098 Cache and Haas Slough

Waterway	Bank	Unit Miles	Inspection Start/End	Inspector
Unit No. 02 Cache Slough	Left	1.89	03/26/2019 03/26/2019	David Julian

LM Start	6.64	Rating **	A/W	Issue No.	18 (cont)
LM End	6.65	Issue Type +	Ma	Location *	
Category	Supplemental			GPS Latitude/Longitude	
				Start	End
Item	2017 Storm Damage			38.291300 °	38.291400 °
				-121.716100 °	-121.716000 °
DWR ID	DWR_RD2098_02_f _ 2017_18				
Comment Code					
Inspector Comment					
<p>Levee Evaluation Comments</p> <p>Description: The damage consists of scour, cracking, instability, and sloughing of the waterside levee slope.</p> <p>Site ID No: 442</p> <p>Site Designation: LMA-269</p> <p>Repair Type: Erosion</p> <p>Rating: Serious</p> <p>Field Date: 7/25/2017</p> <p>Notes: Two sloughing sections along waterside slope due to toe erosion.</p>					

Photo 3 of 3 : SP_2019_RD2098_246_18_20190311_00013.jpg



LM Start	6.71	Rating **	M	Issue No.	22	
LM End	6.71	Issue Type +	Ma	Location *		
Category	Supplemental			GPS Latitude/Longitude		
				Start	End	
Item	DWR UCIP LMA Responsibility			38.292194 °	38.292194 °	
				-121.715853 °	-121.715853 °	
DWR ID	20976					
Comment Code						
Inspector Comment						
<p>FS_ID:33784</p> <p>DS_ID:20976</p> <p>EP_NO: 10172</p> <p>Repair Type: Non-Urgent</p> <p>Crossing Status: Found</p> <p>UCIP Comments: 03/18/2014 Headwalls on WS toe failing at outlet. It is unclear if these were permanent installations or something that was installed as a temporary fix. (W. Wylie - DWR UCIP)</p> <p>FIELD_STRUCT_DESC: 1 of 2: 48-inch corrugated metal drainage pipe through the levee, 29 feet below the crown. Two slide gates in a 7-foot-diameter corrugated metal pipe (CMP) riser on the waterside (WS) slope. (two 48-inch [HLM 6.75] authorized under Automatic Board Order (ABO) issued as Permit No. 10172, 1974 - Moresco Brothers).</p> <p>[Additional Reference(s): DWR Levee Log, 2003. USACE Sacramento O&M Manual 109, April 1962, (HLM 6.75)].</p> <p>FS Date: 3/18/2014</p>						

Photo 1 of 3 : UCIP_SP_2019_33784_61162.jpg



Two slide gates in 7-foot diameter CMP riser on waterward slope.

* Location	** Rating	+ Issue Type
LS : Land Side N/A : Not Applicable WS : Water Side CR : Crown	A : Acceptable N : Not Inspected/Rated M : Minimally Acceptable C : Corrected U : Unacceptable A/W : Acceptable but Monitor & Maintain	Ma : Maintenance Deficiency Ob : Design & System Obsolescence En : Enforcement

**Flood Control Project Maintenance
Levee Inspections**

Maintenance Issue Types Only, Levee Inspection Report By Mile - Spring 2019

Reclamation District No. 2098 Cache and Haas Slough

Waterway	Bank	Unit Miles	Inspection Start/End	Inspector
Unit No. 02 Cache Slough	Left	1.89	03/26/2019 03/26/2019	David Julian

LM Start	6.71	Rating **	M	Issue No.	22 (cont)	
LM End	6.71	Issue Type +	Ma	Location *		
Category	Supplemental			GPS Latitude/Longitude		
				Start		End
Item	DWR UCIP LMA Responsibility			38.292194 °		38.292194 °
				-121.715853 °		-121.715853 °
DWR ID	20976					
Comment Code						
Inspector Comment						
FS_ID:33784 DS_ID:20976 EP_NO: 10172 Repair Type: Non-Urgent Crossing Status: Found UCIP Comments: 03/18/2014 Headwalls on WS toe failing at outlet. It is unclear if these were permanent installations or something that was installed as a temporary fix. (W. Wylie - DWR UCIP) FIELD_STRUCT_DESC: 1 of 2: 48-inch corrugated metal drainage pipe through the levee, 29 feet below the crown. Two slide gates in a 7-foot-diameter corrugated metal pipe (CMP) riser on the waterside (WS) slope. (two 48-inch [HLM 6.75] authorized under Automatic Board Order (ABO) issued as Permit No. 10172, 1974 - Moresco Brothers). [Additional Reference(s): DWR Levee Log, 2003. USACE Sacramento O&M Manual 109, April 1962, (HLM 6.75)]. FS Date: 3/18/2014						

Photo 2 of 3 : UCIP_SP_2019_33784_61161.jpg



Inlet not visible on LS toe.

LM Start	6.71	Rating **	M	Issue No.	22 (cont)
LM End	6.71	Issue Type +	Ma	Location *	

Photo 3 of 3 : UCIP_SP_2019_33784_61160.jpg



View inside CMP riser on WS shoulder.

* Location LS : Land Side N/A : Not Applicable WS : Water Side CR : Crown		** Rating A : Acceptable M : Minimally Acceptable U : Unacceptable		N : Not Inspected/Rated C : Corrected A/W : Acceptable but Monitor & Maintain		+ Issue Type Ma : Maintenance Deficiency Ob : Design & System Obsolescence En : Enforcement	
--	--	--	--	---	--	---	--

**Flood Control Project Maintenance
Levee Inspections**

Maintenance Issue Types Only, Levee Inspection Report By Mile - Spring 2019

Reclamation District No. 2098 Cache and Haas Slough

Waterway	Bank	Unit Miles	Inspection Start/End	Inspector
Unit No. 02 Cache Slough	Left	1.89	03/26/2019 03/26/2019	David Julian

LM Start	6.72	Rating **	M	Issue No.	23	
LM End	6.72	Issue Type +	Ma	Location *		
Category	Supplemental			GPS Latitude/Longitude		
				Start	End	
Item	DWR UCIP LMA Responsibility			38.292234 °	38.292234 °	
				-121.715875 °	-121.715875 °	
DWR ID	20961					
Comment Code						
Inspector Comment						
FS_ID:32285 DS_ID:20961 EP_NO: 10172 Repair Type: Non-Urgent Crossing Status: Found UCIP Comments: 03/18/2014 Headwalls at WS toe failing. It is uncertain if these retaining walls were a permanent fixture or a temporary fix that failed. (W. Wylie - DWR UCIP) FIELD_STRUCT_DESC: 2 of 2: 48-inch corrugated metal drainage pipe through the levee, 29 feet below the crown. Two slide gates in a 7-foot-diameter corrugated metal pipe (CMP) riser on the waterside (WS) slope. (two 48-inch pipes [HLM 6.75] authorized under Automatic Board Order (ABO) issued as Permit No. 10172, 1974 - Moresco Brothers). [Additional Reference(s): DWR Levee Log, 2003. USACE Sacramento O&M Manual 109, April 1962, (HLM 6.75)]. FS Date: 3/18/2014						

LM Start	6.72	Rating **	M	Issue No.	23 (cont)
LM End	6.72	Issue Type +	Ma	Location *	

Photo 1 of 3 : UCIP_SP_2019_32285_58749.jpg



Inlet not visible on LS toe.

Photo 2 of 3 : UCIP_SP_2019_32285_58748.jpg



7-foot diameter CMP riser with two slide gates inside.

* Location LS : Land Side N/A : Not Applicable WS : Water Side CR : Crown		** Rating A : Acceptable M : Minimally Acceptable U : Unacceptable N : Not Inspected/Rated C : Corrected A/W : Acceptable but Monitor & Maintain		+ Issue Type Ma : Maintenance Deficiency Ob : Design & System Obsolescence En : Enforcement
--	--	---	--	---

**Flood Control Project Maintenance
Levee Inspections**

Maintenance Issue Types Only, Levee Inspection Report By Mile - Spring 2019

Reclamation District No. 2098 Cache and Haas Slough

Waterway	Bank	Unit Miles	Inspection Start/End	Inspector
Unit No. 02 Cache Slough	Left	1.89	03/26/2019 03/26/2019	David Julian

LM Start	6.72	Rating **	M	Issue No.	23 (cont)	
LM End	6.72	Issue Type +	Ma	Location *		
Category	Supplemental			GPS Latitude/Longitude		
				Start	End	
Item	DWR UCIP LMA Responsibility			38.292234 °	38.292234 °	
				-121.715875 °	-121.715875 °	
DWR ID	20961					
Comment Code						
Inspector Comment						
FS_ID:32285						
DS_ID:20961						
EP_NO: 10172						
Repair Type: Non-Urgent						
Crossing Status: Found						
UCIP Comments: 03/18/2014 Headwalls at WS toe failing. It is uncertain if these retaining walls were a permanent fixture or a temporary fix that failed. (W. Wylie - DWR UCIP)						
FIELD_STRUCT_DESC: 2 of 2: 48-inch corrugated metal drainage pipe through the levee, 29 feet below the crown. Two slide gates in a 7-foot-diameter corrugated metal pipe (CMP) riser on the waterside (WS) slope. (two 48-inch pipes [HLM 6.75] authorized under Automatic Board Order (ABO) issued as Permit No. 10172, 1974 - Moresco Brothers).						
[Additional Reference(s): DWR Levee Log, 2003. USACE Sacramento O&M Manual 109, April 1962, (HLM 6.75)].						
FS Date: 3/18/2014						

Photo 3 of 3 : UCIP_SP_2019_32285_58747.jpg



7-foot diameter CMP riser with two slide gates inside.

LM Start	6.74	Rating **	A/W	Issue No.	19
LM End	6.75	Issue Type +	Ma	Location *	LS
Category	Supplemental			GPS Latitude/Longitude	
				Start	End
Item	2017 Storm Damage			38.292500 °	38.292600 °
				-121.716100 °	-121.716200 °
DWR ID	DWR_RD2098_02_f_2017_19				
Comment Code					
Inspector Comment					
Levee Evaluation Comments					
Description:The damage consists of scour and sloughing of the					
landside levee slope.					
Site ID No:443					
Site Designation:LMA-270					
Repair Type: Stability					
Rating:Area of Concern					
Field Date:7/25/2017					
Notes: Sloughing on crown into upper portion of landside levee slope.					

Photo 1 of 3 : SP_2019_RD2098_246_19_20190311_00014.jpg



* Location LS : Land Side N/A : Not Applicable WS : Water Side CR : Crown		** Rating A : Acceptable M : Minimally Acceptable U : Unacceptable N : Not Inspected/Rated C : Corrected A/W : Acceptable but Monitor & Maintain		+ Issue Type Ma : Maintenance Deficiency Ob : Design & System Obsolescence En : Enforcement
--	--	---	--	---

**Flood Control Project Maintenance
Levee Inspections**

Maintenance Issue Types Only, Levee Inspection Report By Mile - Spring 2019

Reclamation District No. 2098 Cache and Haas Slough

Waterway	Bank	Unit Miles	Inspection Start/End	Inspector
Unit No. 02 Cache Slough	Left	1.89	03/26/2019 03/26/2019	David Julian

LM Start	6.74	Rating **	A/W	Issue No.	19 (cont)
LM End	6.75	Issue Type +	Ma	Location *	LS
Category	Supplemental			GPS Latitude/Longitude	
				Start	End
Item	2017 Storm Damage			38.292500 °	38.292600 °
				-121.716100 °	-121.716200 °
DWR ID	DWR_RD2098_02_f_2017_19				
Comment Code					
Inspector Comment					
Levee Evaluation Comments					
Description:The damage consists of scour and sloughing of the					
landside levee slope.					
Site ID No:443					
Site Designation:LMA-270					
Repair Type: Stability					
Rating:Area of Concern					
Field Date:7/25/2017					
Notes: Sloughing on crown into upper portion of landside levee slope.					

Photo 2 of 3 : SP_2019_RD2098_246_19_20190311_00015.jpg



Photo 3 of 3 : SP_2019_RD2098_246_19_20190311_00016.jpg



* Location LS : Land Side N/A : Not Applicable WS : Water Side CR : Crown	** Rating A : Acceptable M : Minimally Acceptable U : Unacceptable N : Not Inspected/Rated C : Corrected A/W : Acceptable but Monitor & Maintain	+ Issue Type Ma : Maintenance Deficiency Ob : Design & System Obsolescence En : Enforcement
--	---	---

**Flood Control Project Maintenance
Levee Inspections**

Maintenance Issue Types Only, Levee Inspection Report By Mile - Spring 2019

Reclamation District No. 2098 Cache and Haas Slough

Waterway	Bank	Unit Miles	Inspection Start/End	Inspector
Unit No. 02 Cache Slough	Left	1.89	03/26/2019 03/26/2019	David Julian

LM Start	6.77	Rating **	A/W	Issue No.	20
LM End	6.80	Issue Type +	Ma	Location *	LS
Category	Supplemental			GPS Latitude/Longitude	
				Start	End
Item	2017 Storm Damage			38.292900 °	38.293000 °
				-121.716600 °	-121.717000 °
DWR ID	DWR_RD2098_02 f _ 2017_20				

Comment Code

Inspector Comment

Levee Evaluation Comments

Description: The damage consists of cracking of the levee crest.

Site ID No: 444

Site Designation: LMA-271

Repair Type: Erosion

Rating: Area of Concern

Field Date: 7/25/2017

Notes: Two combined sloughing locations (271 and 272) within levee crown into waterside and landside slopes. Sloughing on landside slope bulges into ditch at toe.

LM Start	6.77	Rating **	A/W	Issue No.	20 (cont)
LM End	6.80	Issue Type +	Ma	Location *	LS

Photo 1 of 4 : SP_2019_RD2098_246_20_20190311_00017.jpg



Photo 2 of 4 : SP_2019_RD2098_246_20_20190311_00018.jpg



* Location LS : Land Side N/A : Not Applicable WS : Water Side CR : Crown		** Rating A : Acceptable M : Minimally Acceptable U : Unacceptable N : Not Inspected/Rated C : Corrected A/W : Acceptable but Monitor & Maintain		+ Issue Type Ma : Maintenance Deficiency Ob : Design & System Obsolescence En : Enforcement
--	--	---	--	---

**Flood Control Project Maintenance
Levee Inspections**

Maintenance Issue Types Only, Levee Inspection Report By Mile - Spring 2019

Reclamation District No. 2098 Cache and Haas Slough

Waterway	Bank	Unit Miles	Inspection Start/End	Inspector
Unit No. 02 Cache Slough	Left	1.89	03/26/2019 03/26/2019	David Julian

LM Start	6.77	Rating **	A/W	Issue No.	20 (cont)
LM End	6.80	Issue Type +	Ma	Location *	LS
Category	Supplemental			GPS Latitude/Longitude	
				Start	End
Item	2017 Storm Damage			38.292900 °	38.293000 °
				-121.716600 °	-121.717000 °
DWR ID	DWR_RD2098_02_f_2017_20				
Comment Code					
Inspector Comment					
Levee Evaluation Comments					
Description:The damage consists of cracking of the levee crest.					
Site ID No:444					
Site Designation:LMA-271					
Repair Type: Erosion					
Rating:Area of Concern					
Field Date:7/25/2017					
Notes: Two combined sloughing locations (271 and 272) within levee crown into waterside and landside slopes. Sloughing on landside slope bulges into ditch at toe.					

Photo 3 of 4 : SP_2019_RD2098_246_20_20190311_00019.jpg



Photo 4 of 4 : SP_2019_RD2098_246_20_20190311_00020.jpg



10/26/17: Notice depression in crown road and slumping toward the left/landside (bulge at toe of levee).

* Location LS : Land Side N/A : Not Applicable WS : Water Side CR : Crown		** Rating A : Acceptable M : Minimally Acceptable U : Unacceptable N : Not Inspected/Rated C : Corrected A/W : Acceptable but Monitor & Maintain		+ Issue Type Ma : Maintenance Deficiency Ob : Design & System Obsolescence En : Enforcement
--	--	---	--	---

**Flood Control Project Maintenance
Levee Inspections**

Maintenance Issue Types Only, Levee Inspection Report By Mile - Spring 2019

Reclamation District No. 2098 Cache and Haas Slough

Waterway	Bank	Unit Miles	Inspection Start/End	Inspector
Unit No. 02 Cache Slough	Left	1.89	03/26/2019 03/26/2019	David Julian

LM Start	7.24	Rating **	A/W	Issue No.	25 (cont)	
LM End	7.24	Issue Type +	Ma	Location *		
Category	Supplemental			GPS Latitude/Longitude		
				Start	End	
Item	DWR UCIP LMA Responsibility			38.293741 °	38.293741 °	
				-121.724787 °	-121.724787 °	
DWR ID	20978					
Comment Code						
Inspector Comment						
FS_ID:32303 DS_ID:20978 EP_NO: 10171 Repair Type: No Action Needed Crossing Status: Found UCIP Comments: 09/14/2017 Permit review indicates this 24-inch pipe was authorized as an irrigation and drainage pipe under ABO issued as Permit No. 10171, structure description was updated. Structure type logged as drainage. (DWR UCIP - O. Magana) FIELD_STRUCT_DESC: *ABANDONED* 24-inch steel dual-purpose irrigation and drainage pipe through the levee, 4.5 feet below the crown. Corrugated metal cutoff wall around the pipe. Pipe has welded steel plate over end on the landside (LS) slope and is not visible on the waterside (WS) slope. (24-inch pipe [HLM 7.23] authorized under Automatic Board Order (ABO) issued as Permit No. 10171, 1974 - Glenn A. Bowlsbey). [Additional Reference(s): DWR Levee Log, 2003. USACE Sacramento O&M Manual 109, April 1962, (HLM 7.28)]. FS Date: 3/18/2014 7:07:14 AM						

Photo 3 of 3 : UCIP_SP_2019_32303_58780.jpg



Welded steel cap over LS end of pipe.

* Location LS : Land Side N/A : Not Applicable WS : Water Side CR : Crown		** Rating A : Acceptable M : Minimally Acceptable U : Unacceptable N : Not Inspected/Rated C : Corrected A/W : Acceptable but Monitor & Maintain		+ Issue Type Ma : Maintenance Deficiency Ob : Design & System Obsolescence En : Enforcement
--	--	---	--	---

**Flood Control Project Maintenance
Levee Inspections**

Maintenance Issue Types Only, Levee Inspection Report By Mile - Spring 2019

Reclamation District No. 2098 Cache and Haas Slough

Waterway	Bank	Unit Miles	Inspection Start/End	Inspector
Unit No. 03 Haas Slough	Right	1.94	03/26/2019 03/26/2019	David Julian

LM Start	7.29	Rating **	A	Issue No.	6
LM End	8.33	Issue Type +	Ma	Location *	LS
Category	Earthen Levee			GPS Latitude/Longitude	
				Start	End
Item	Vegetation			38.294473 °	38.306635 °
				-121.725092 °	-121.731700 °
DWR ID	DWR_RD2098_03_s_2019_6				
Comment Code					
V1 : Control annual grass and weeds on the levee slopes and easements.					
Inspector Comment					
LMA doing a good job maintaining annual vegetation					

Photo 1 of 1 : SP_2019_RD2098_247_6_20190326_00021.jpg



View looking upstream at annual vegetation on the landside slope (Spring 2019).

LM Start	7.29	Rating **	A	Issue No.	8
LM End	8.33	Issue Type +	Ma	Location *	WS
Category	Earthen Levee			GPS Latitude/Longitude	
				Start	End
Item	Vegetation			38.294473 °	38.306635 °
				-121.725092 °	-121.731700 °
DWR ID	DWR_RD2098_03_s_2019_8				
Comment Code					
V1 : Control annual grass and weeds on the levee slopes and easements.					
Inspector Comment					
LMA doing a good job maintaining annual vegetation					

Photo 1 of 1 : SP_2019_RD2098_247_8_20190326_00020.jpg



View looking upstream at annual vegetation on the waterside slope (Spring 2019).

LM Start	7.33	Rating **	M	Issue No.	7
LM End	7.72	Issue Type +	Ma	Location *	WS
Category	Supplemental			GPS Latitude/Longitude	
				Start	End
Item	2017 USACE Erosion Survey, DRAFT			38.294858 °	38.299606 °
				-121.725433 °	-121.728621 °
DWR ID	DWR_RD2098_03_f_2018_7				
Comment Code					
Inspector Comment					
2017 Site ID: HAS 7.9 L					
Status: Eroding					
2017 Field Notes: deep cracks along bank and toe, intermittent slump.					
Site History: 2011 - Large vertical erosion pockets and bank slumping.					

No Photos

* Location		** Rating		+ Issue Type	
LS : Land Side	N/A : Not Applicable	A : Acceptable	N : Not Inspected/Rated	Ma : Maintenance Deficiency	
WS : Water Side		M : Minimally Acceptable	C : Corrected	Ob : Design & System Obsolescence	
CR : Crown		U : Unacceptable	A/W : Acceptable but Monitor & Maintain	En : Enforcement	

**Flood Control Project Maintenance
Levee Inspections**

Maintenance Issue Types Only, Levee Inspection Report By Mile - Spring 2019

Reclamation District No. 2098 Cache and Haas Slough

Waterway	Bank	Unit Miles	Inspection Start/End	Inspector
Unit No. 03 Haas Slough	Right	1.94	03/26/2019 03/26/2019	David Julian

LM Start	7.51	Rating **	M	Issue No.	1
LM End	7.51	Issue Type +	Ma	Location *	LS
Category	Earthen Levee			GPS Latitude/Longitude	
				Start	End
Item	Slope Stability			38.296846 °	38.296846 °
				-121.727546 °	-121.727546 °
DWR ID	DWR_RD2098_03_f_2016_1				
Comment Code					
S2 : Repair the levee slope damaged by foot traffic and prevent access where possible.					
Inspector Comment					
Livestock activity causing erosion of levee slope.					

Photo 1 of 3 : SP_2019_RD2098_247_1_20190311_00001.jpg



Close up. Looking upstream.

LM Start	7.51	Rating **	M	Issue No.	1 (cont)
LM End	7.51	Issue Type +	Ma	Location *	LS

Photo 2 of 3 : SP_2019_RD2098_247_1_20190311_00002.jpg



Looking downstream.

LM Start	7.51	Rating **	M	Issue No.	1 (cont)
LM End	7.51	Issue Type +	Ma	Location *	LS

Photo 3 of 3 : SP_2019_RD2098_247_1_20190311_00003.jpg



Erosion site on 03/15/18.

* Location LS : Land Side N/A : Not Applicable WS : Water Side CR : Crown		** Rating A : Acceptable M : Minimally Acceptable U : Unacceptable N : Not Inspected/Rated C : Corrected A/W : Acceptable but Monitor & Maintain		+ Issue Type Ma : Maintenance Deficiency Ob : Design & System Obsolescence En : Enforcement	
---	--	--	--	--	--

**Flood Control Project Maintenance
Levee Inspections**

Maintenance Issue Types Only, Levee Inspection Report By Mile - Spring 2019

Reclamation District No. 2098 Cache and Haas Slough

Waterway	Bank	Unit Miles	Inspection Start/End	Inspector
Unit No. 03 Haas Slough	Right	1.94	03/26/2019 03/26/2019	David Julian

LM Start	7.61	Rating **	A/W	Issue No.	10
LM End	7.62	Issue Type +	Ma	Location *	
Category	Supplemental		GPS Latitude/Longitude		
			Start	End	
Item	2017 Storm Damage		38.297900 °	38.298100 °	
			-121.728900 °	-121.728900 °	
DWR ID	DWR_RD2098_03_f_2017_10				

Comment Code

Inspector Comment

Levee Evaluation Comments

Description: The damage consists of sloughing of the lower and mid waterside levee slope.

Site ID No: 449

Site Designation: LMA-276

Repair Type: Erosion

Rating: Area of Concern

Field Date: 7/27/2017

Notes: Sloughing on waterside slope due to erosion at waterside toe.

LM Start	7.61	Rating **	A/W	Issue No.	10 (cont)
LM End	7.62	Issue Type +	Ma	Location *	

Photo 1 of 3 : SP_2019_RD2098_247_10_20190311_00006.jpg



Photo 2 of 3 : SP_2019_RD2098_247_10_20190311_00007.jpg



* Location LS : Land Side N/A : Not Applicable WS : Water Side CR : Crown		** Rating A : Acceptable M : Minimally Acceptable U : Unacceptable N : Not Inspected/Rated C : Corrected A/W : Acceptable but Monitor & Maintain		+ Issue Type Ma : Maintenance Deficiency Ob : Design & System Obsolescence En : Enforcement
--	--	---	--	---

**Flood Control Project Maintenance
Levee Inspections**

Maintenance Issue Types Only, Levee Inspection Report By Mile - Spring 2019

Reclamation District No. 2098 Cache and Haas Slough

Waterway	Bank	Unit Miles	Inspection Start/End	Inspector
Unit No. 03 Haas Slough	Right	1.94	03/26/2019 03/26/2019	David Julian

LM Start	7.61	Rating **	A/W	Issue No.	10 (cont)	
LM End	7.62	Issue Type +	Ma	Location *		
Category	Supplemental			GPS Latitude/Longitude		
				Start		End
Item	2017 Storm Damage			38.297900 °		38.298100 °
				-121.728900 °		-121.728900 °
DWR ID	DWR_RD2098_03_f _ 2017_10					
Comment Code						
Inspector Comment						
Levee Evaluation Comments						
Description:The damage consists of sloughing of the lower and mid waterside levee slope.						
Site ID No:449						
Site Designation:LMA-276						
Repair Type: Erosion						
Rating:Area of Concern						
Field Date:7/27/2017						
Notes: Sloughing on waterside slope due to erosion at waterside toe.						

Photo 3 of 3 : SP_2019_RD2098_247_10_20190311_00008.jpg



LM Start	7.63	Rating **	A/W	Issue No.	13
LM End	7.64	Issue Type +	Ma	Location *	
Category	Supplemental			GPS Latitude/Longitude	
				Start	End
Item	2017 Storm Damage			38.298300 °	38.298400 °
				-121.728800 °	-121.728800 °
DWR ID	DWR_RD2098_03_f_2017_13				
Comment Code					
Inspector Comment					
Levee Evaluation Comments					
Description:The damage consists of scour and sloughing of the waterside levee slope.					
Site ID No:450					
Site Designation:LMA-277					
Repair Type: Erosion					
Rating:Area of Concern					
Field Date:7/27/2017					
Notes: Sloughing on waterside due to waterside toe erosion.					

Photo 1 of 3 : SP_2019_RD2098_247_13_20190311_00009.jpg



* Location LS : Land Side N/A : Not Applicable WS : Water Side CR : Crown	** Rating A : Acceptable M : Minimally Acceptable U : Unacceptable	N : Not Inspected/Rated C : Corrected A/W : Acceptable but Monitor & Maintain	+ Issue Type Ma : Maintenance Deficiency Ob : Design & System Obsolescence En : Enforcement
--	--	---	---

**Flood Control Project Maintenance
Levee Inspections**

Maintenance Issue Types Only, Levee Inspection Report By Mile - Spring 2019

Reclamation District No. 2098 Cache and Haas Slough

Waterway	Bank	Unit Miles	Inspection Start/End	Inspector
Unit No. 03 Haas Slough	Right	1.94	03/26/2019 03/26/2019	David Julian

LM Start	7.63	Rating **	A/W	Issue No.	13 (cont)
LM End	7.64	Issue Type +	Ma	Location *	
Category	Supplemental			GPS Latitude/Longitude	
				Start	End
Item	2017 Storm Damage			38.298300 °	38.298400 °
				-121.728800 °	-121.728800 °
DWR ID	DWR_RD2098_03_f_2017_13				
Comment Code					
Inspector Comment					
Levee Evaluation Comments					
Description:The damage consists of scour and sloughing of the waterside levee slope.					
Site ID No:450					
Site Designation:LMA-277					
Repair Type: Erosion					
Rating:Area of Concern					
Field Date:7/27/2017					
Notes: Sloughing on waterside due to waterside toe erosion.					

Photo 2 of 3 : SP_2019_RD2098_247_13_20190311_00010.jpg



Photo 3 of 3 : SP_2019_RD2098_247_13_20190311_00011.jpg



LM Start	7.63	Rating **	A/W	Issue No.	13 (cont)
LM End	7.64	Issue Type +	Ma	Location *	

* Location LS : Land Side N/A : Not Applicable WS : Water Side CR : Crown		** Rating A : Acceptable M : Minimally Acceptable U : Unacceptable N : Not Inspected/Rated C : Corrected A/W : Acceptable but Monitor & Maintain		+ Issue Type Ma : Maintenance Deficiency Ob : Design & System Obsolescence En : Enforcement
--	--	---	--	---

**Flood Control Project Maintenance
Levee Inspections**

Maintenance Issue Types Only, Levee Inspection Report By Mile - Spring 2019

Reclamation District No. 2098 Cache and Haas Slough

Waterway	Bank	Unit Miles	Inspection Start/End	Inspector
Unit No. 03 Haas Slough	Right	1.94	03/26/2019 03/26/2019	David Julian

LM Start	7.66	Rating **	A/W	Issue No.	15 (cont)	
LM End	7.68	Issue Type +	Ma	Location *		
Category	Supplemental			GPS Latitude/Longitude		
				Start	End	
Item	2017 Storm Damage			38.298700 °	38.299000 °	
				-121.728700 °	-121.728600 °	
DWR ID	DWR_RD2098_03_f_2017_15					
Comment Code						
Inspector Comment						
Levee Evaluation Comments						
Description:The damage consists of scour and sloughing of the lower and mid waterside levee slope.						
Site ID No:451						
Site Designation:LMA-278						
Repair Type: Erosion						
Rating:Area of Concern						
Field Date:7/27/2017						
Notes: Sloughing on waterside slope due to waterside toe erosion.						
Additional erosion seen on the spring 2019 inspection. Mitigate erosion then monitor site.						

Photo 3 of 4 : SP_2019_RD2098_247_15_20190311_00013.jpg



Photo 4 of 4 : SP_2019_RD2098_247_15_20190311_00014.jpg



* Location LS : Land Side N/A : Not Applicable WS : Water Side CR : Crown		** Rating A : Acceptable M : Minimally Acceptable U : Unacceptable N : Not Inspected/Rated C : Corrected A/W : Acceptable but Monitor & Maintain		+ Issue Type Ma : Maintenance Deficiency Ob : Design & System Obsolescence En : Enforcement
--	--	---	--	---

**Flood Control Project Maintenance
Levee Inspections**

Maintenance Issue Types Only, Levee Inspection Report By Mile - Spring 2019

Reclamation District No. 2098 Cache and Haas Slough

Waterway	Bank	Unit Miles	Inspection Start/End	Inspector
Unit No. 03 Haas Slough	Right	1.94	03/26/2019 03/26/2019	David Julian

LM Start	7.87	Rating **	M	Issue No.	9
LM End	7.87	Issue Type +	Ma	Location *	WS
Category	Earthen Levee			GPS Latitude/Longitude	
				Start	End
Item	Encroachments			38.301707 °	38.301707 °
				-121.728045 °	-121.728045 °
DWR ID	DWR_RD2098_03_s_2014_9				
Comment Code					
TR : Tree or limb					
Inspector Comment					
Remove the fallen tree limb from the water side slope.					

Photo 1 of 1 : SP_2019_RD2098_247_9_20190311_00005.jpg



View of fallen tree limb on the water side slope (October 2018).

LM Start	8.05	Rating **	M	Issue No.	12
LM End	8.34	Issue Type +	Ma	Location *	WS
Category	Supplemental			GPS Latitude/Longitude	
				Start	End
Item	2017 USACE Erosion Survey, DRAFT			38.304278 °	38.306705 °
				-121.727960 °	-121.732014 °
DWR ID	DWR_RD2098_03_f_2018_12				
Comment Code					
Inspector Comment					
2017 Site ID: HAS 8.4 L					
Status: Eroding New					
2017 Field Notes: Horizontal cracks; scour along toe; poorly constructed levee susceptible to erosion.					
Site History:					

No Photos

LM Start	8.07	Rating **	A/W	Issue No.	5
LM End	8.07	Issue Type +	Ma	Location *	WS
Category	Earthen Levee			GPS Latitude/Longitude	
				Start	End
Item	Cracking			38.304553 °	38.304553 °
				-121.727853 °	-121.727853 °
DWR ID	DWR_RD2098_03_f_2018_5				
Comment Code					
CR1 : Monitor and have inspected by geotechnical engineer.					
Inspector Comment					
Cracks in waterside shoulder parallel to levee should be monitored for additional movement. Currently up to 2 inches wide and 50 feet long. Probed to 3.5 feet deep. Up to 1 inch of vertical offset observed on 10/26/17. No change as of 03/15/18.					

Photo 1 of 1 : SP_2019_RD2098_247_5_20190311_00004.jpg



View upstream of cracks in waterside shoulder.

* Location LS : Land Side N/A : Not Applicable WS : Water Side CR : Crown		** Rating A : Acceptable M : Minimally Acceptable U : Unacceptable N : Not Inspected/Rated C : Corrected A/W : Acceptable but Monitor & Maintain		+ Issue Type Ma : Maintenance Deficiency Ob : Design & System Obsolescence En : Enforcement	
--	--	---	--	---	--

**Flood Control Project Maintenance
Levee Inspections**

Maintenance Issue Types Only, Levee Inspection Report By Mile - Spring 2019

Reclamation District No. 2098 Cache and Haas Slough

Waterway	Bank	Unit Miles	Inspection Start/End	Inspector
Unit No. 03 Haas Slough	Right	1.94	03/26/2019 03/26/2019	David Julian

LM Start	8.16	Rating **	A/W	Issue No.	17	
LM End	8.16	Issue Type +	Ma	Location *		
Category	Supplemental			GPS Latitude/Longitude		
				Start	End	
Item	DWR UCIP LMA Responsibility			38.305462 °	38.305462 °	
				-121.728881 °	-121.728881 °	
DWR ID	20981					
Comment Code						
Inspector Comment						
FS_ID:51453 DS_ID:20981 EP_NO: 10174 Repair Type: No Action Needed Crossing Status: Found UCIP Comments: 12/22/2016 Crossing has been downgraded from Urgent to No Action Needed walkways on both WS and LS have been rebuilt and the WS gate has been upgraded to stainless steel where previous corrodable material was present. (O. Magana - DWR UCIP)03/19/2014 Current walkway to slidegate on WS toe does not provide safe access to operate slidegate. (W. Wylie - DWR UCIP) FIELD_STRUCT_DESC: 36-inch steel dual-purpose irrigation and drainage pipe through the levee, 26 feet below the crown. Two corrugated metal cutoff walls around the pipe. Walkway to the slide gate on the waterside (WS) end. Combination slide and flap gate on the landside (LS) end. 48-inch corrugated metal pipe (CMP) riser and an adjoining pump on a metal pier at the LS toe. (36-inch pipe [HLM 8.20] authorized under Automatic Board Order (ABO) issued as Permit No. 10174, 1974 - Glen A. Bowsbey). [Additional Reference(s): DWR Levee Log, 2003. USACE Sacramento O&M Manual 109, April 1962, (HLM 8.20)]. FS Date: 12/22/2016						

LM Start	8.16	Rating **	A/W	Issue No.	17 (cont)
LM End	8.16	Issue Type +	Ma	Location *	

Photo 1 of 3 : UCIP_SP_2019_51453_76858.jpg



Walkway has been re-built, photo 1 of 2.

Photo 2 of 3 : UCIP_SP_2019_51453_76861.jpg



Walkway has been re-built, photo 2 of 2.

* Location LS : Land Side N/A : Not Applicable WS : Water Side CR : Crown	** Rating A : Acceptable M : Minimally Acceptable U : Unacceptable N : Not Inspected/Rated C : Corrected A/W : Acceptable but Monitor & Maintain	+ Issue Type Ma : Maintenance Deficiency Ob : Design & System Obsolescence En : Enforcement
--	---	---

**Flood Control Project Maintenance
Levee Inspections**

Maintenance Issue Types Only, Levee Inspection Report By Mile - Spring 2019

Reclamation District No. 2098 Cache and Haas Slough

Waterway	Bank	Unit Miles	Inspection Start/End	Inspector
Unit No. 03 Haas Slough	Right	1.94	03/26/2019 03/26/2019	David Julian

LM Start	8.16	Rating **	A/W	Issue No.	17 (cont)	
LM End	8.16	Issue Type +	Ma	Location *		
Category	Supplemental			GPS Latitude/Longitude		
				Start		End
Item	DWR UCIP LMA Responsibility			38.305462 °		38.305462 °
				-121.728881 °		-121.728881 °
DWR ID	20981					
Comment Code						
Inspector Comment						
FS_ID:51453 DS_ID:20981 EP_NO: 10174 Repair Type: No Action Needed Crossing Status: Found UCIP Comments: 12/22/2016 Crossing has been downgraded from Urgent to No Action Needed walkways on both WS and LS have been rebuilt and the WS gate has been upgraded to stainless steel where previous corrodable material was present. (O. Magana - DWR UCIP)03/19/2014 Current walkway to slidegate on WS toe does not provide safe access to operate slidegate. (W. Wylie - DWR UCIP) FIELD_STRUCT_DESC: 36-inch steel dual-purpose irrigation and drainage pipe through the levee, 26 feet below the crown. Two corrugated metal cutoff walls around the pipe. Walkway to the slide gate on the waterside (WS) end. Combination slide and flap gate on the landside (LS) end. 48-inch corrugated metal pipe (CMP) riser and an adjoining pump on a metal pier at the LS toe. (36-inch pipe [HLM 8.20] authorized under Automatic Board Order (ABO) issued as Permit No. 10174, 1974 - Glen A. Bowsbey). [Additional Reference(s): DWR Levee Log, 2003. USACE Sacramento O&M Manual 109, April 1962, (HLM 8.20)]. FS Date: 12/22/2016						

Photo 3 of 3 : UCIP_SP_2019_51453_76859.jpg



View of levee crown at pipe crossing.

* Location LS : Land Side N/A : Not Applicable WS : Water Side CR : Crown		** Rating A : Acceptable M : Minimally Acceptable U : Unacceptable N : Not Inspected/Rated C : Corrected A/W : Acceptable but Monitor & Maintain		+ Issue Type Ma : Maintenance Deficiency Ob : Design & System Obsolescence En : Enforcement
--	--	---	--	---

**Flood Control Project Maintenance
Levee Inspections**

Maintenance Issue Types Only, Levee Inspection Report By Mile - Spring 2019

Reclamation District No. 2098 Cache and Haas Slough

Waterway	Bank	Unit Miles	Inspection Start/End	Inspector
Unit No. 03 Haas Slough	Right	1.94	03/26/2019 03/26/2019	David Julian

LM Start	8.35	Rating **	A/W	Issue No.	18
LM End	8.35	Issue Type +	Ma	Location *	
Category	Supplemental			GPS Latitude/Longitude	
				Start	End
Item	DWR UCIP LMA Responsibility		38.306916 °	38.306916 °	
			-121.731984 °	-121.731984 °	
DWR ID	20962				
Comment Code					
Inspector Comment					
FS_ID:32384 DS_ID:20962 EP_NO: 10174 Repair Type: No Action Needed Crossing Status: Found UCIP Comments: FIELD_STRUCT_DESC: 60-inch corrugated metal drainage pipe through the levee, 25.5 feet below the crown. Walkway to the slide gates at both ends of the pipe. (Permit No. 1607, 1951 - R. F. Moore and Lorraine W. Zanetti. This pipe was retained under Automatic Board Order (ABO) issued as Permit No. 10174, 1974 - Glen A. Bowsbey). [Additional Reference(s): DWR Levee Log, 2003. USACE Sacramento O&M Manual 109, April 1962, (HLM 8.40)]. FS Date: 3/19/2014					

Photo 1 of 2 : UCIP_SP_2019_32384_58883.jpg



Slide gate at LS toe.

LM Start	8.35	Rating **	A/W	Issue No.	18 (cont)
LM End	8.35	Issue Type +	Ma	Location *	

Photo 2 of 2 : UCIP_SP_2019_32384_58882.jpg



Walkway with slide gate on WS toe.

* Location LS : Land Side N/A : Not Applicable WS : Water Side CR : Crown		** Rating A : Acceptable M : Minimally Acceptable U : Unacceptable N : Not Inspected/Rated C : Corrected A/W : Acceptable but Monitor & Maintain		+ Issue Type Ma : Maintenance Deficiency Ob : Design & System Obsolescence En : Enforcement
--	--	---	--	---

**Flood Control Project Maintenance
Levee Inspections**

Maintenance Issue Types Only, Levee Inspection Report By Mile - Spring 2019

Reclamation District No. 2098 Cache and Haas Slough

Waterway	Bank	Unit Miles	Inspection Start/End	Inspector
Unit No. 03 Haas Slough	Right	1.94	03/26/2019 03/26/2019	David Julian

LM Start	8.36	Rating **	M	Issue No.	14
LM End	8.71	Issue Type +	Ma	Location *	CR
Category	Earthen Levee			GPS Latitude/Longitude	
				Start	End
Item	Vegetation			38.306970 °	38.311349 °
				-121.732007 °	-121.734760 °
DWR ID	DWR_RD2098_03_s_2019_14				
Comment Code					
V1 : Control annual grass and weeds on the levee slopes and easements.					
Inspector Comment					
Maintain vegetation on the crown					

Photo 1 of 1 : SP_2019_RD2098_247_14_20190326_00025.jpg



View looking upstream at annual vegetation on the crown (Spring 2019).

* Location LS : Land Side N/A : Not Applicable WS : Water Side CR : Crown		** Rating A : Acceptable N : Not Inspected/Rated M : Minimally Acceptable C : Corrected U : Unacceptable A/W : Acceptable but Monitor & Maintain		+ Issue Type Ma : Maintenance Deficiency Ob : Design & System Obsolescence En : Enforcement
--	--	---	--	---

**Flood Control Project Maintenance
Levee Inspections**

Maintenance Issue Types Only, Levee Inspection Report By Mile - Spring 2019

Reclamation District No. 2098 Cache and Haas Slough

Waterway	Bank	Unit Miles	Inspection Start/End	Inspector
Unit No. 04 Back Levee	Left	2.95	03/26/2019 03/26/2019	David Julian

LM Start	9.18	Rating **	A	Issue No.	10
LM End	9.77	Issue Type +	Ma	Location *	LS
Category	Earthen Levee			GPS Latitude/Longitude	
				Start	End
Item	Vegetation			38.316543 °	38.358110 °
				-121.740085 °	-121.740381 °
DWR ID	DWR_RD2098_04_s_2019_10				
Comment Code					
V1 : Control annual grass and weeds on the levee slopes and easements.					
Inspector Comment					
Vegetation well managed in this area.					

Photo 1 of 1 : SP_2019_RD2098_248_10_20190329_00026.jpg



View looking upstream at annual vegetation on the landside slope (Spring 2019).

LM Start	9.18	Rating **	A	Issue No.	11	
LM End	12.07	Issue Type +	Ma	Location *	WS	
Category	Earthen Levee			GPS Latitude/Longitude		
				Start		End
Item	Vegetation			38.316543 °		38.358110 °
				-121.740085 °		-121.740381 °
DWR ID	DWR_RD2098_04_s_2019_11					
Comment Code						
V1 : Control annual grass and weeds on the levee slopes and easements.						
Inspector Comment						
Vegetation well managed in this area.						

Photo 1 of 1 : SP_2019_RD2098_248_11_20190329_00027.jpg



View looking upstream at vegetation on the waterside slope (Spring 2019).

* Location
LS : Land Side N/A : Not Applicable
WS : Water Side
CR : Crown

** Rating
A : Acceptable
M : Minimally Acceptable
U : Unacceptable
N : Not Inspected/Rated
C : Corrected
A/W : Acceptable but Monitor & Maintain

+ Issue Type
Ma : Maintenance Deficiency
Ob : Design & System Obsolescence
En : Enforcement

**Flood Control Project Maintenance
Levee Inspections**

Maintenance Issue Types Only, Levee Inspection Report By Mile - Spring 2019

Reclamation District No. 2098 Cache and Haas Slough

Waterway	Bank	Unit Miles	Inspection Start/End	Inspector
Unit No. 04 Back Levee	Left	2.95	03/26/2019 03/26/2019	David Julian

LM Start	9.44	Rating **	M	Issue No.	9
LM End	9.74	Issue Type +	Ma	Location *	WS
Category	Supplemental			GPS Latitude/Longitude	
				Start	End
Item	2017 USACE Erosion Survey, DRAFT			38.320240 °	38.324587 °
				-121.740183 °	-121.740254 °
DWR ID	DWR_RD2098_04_f_2018_9				
Comment Code					
Inspector Comment					
2017 Site ID: HAS 9.7 L Status: Critical 2018: Some erosion about a third to half way up the slope the whole length. A couple pockets of deeper erosion into the slope. I would mark as unacceptable (Djulian). 2017 Field Notes: Upgraded to CRITICAL. Multiple slump on top of old slumping ; slump is into levee prism. Site History: 2011 - Several scallops of erosion. Erosion primarily due to the weight of cattle on the slope. 2016 - Two new large scallop pockets in the middle of the site.					

LM Start	9.44	Rating **	M	Issue No.	9 (cont)
LM End	9.74	Issue Type +	Ma	Location *	WS

Photo 1 of 3 : SP_2019_RD2098_248_9_20190408_00031.jpg



View looking downslope at deep ruts in the waterside slope made by cows (Spring 2019).

Photo 2 of 3 : SP_2019_RD2098_248_9_20190408_00032.jpg



View looking upstream at deep ruts in the waterside slope made by cows (Spring 2019).

* Location LS : Land Side N/A : Not Applicable WS : Water Side CR : Crown		** Rating A : Acceptable M : Minimally Acceptable U : Unacceptable		N : Not Inspected/Rated C : Corrected A/W : Acceptable but Monitor & Maintain		+ Issue Type Ma : Maintenance Deficiency Ob : Design & System Obsolescence En : Enforcement	
--	--	--	--	---	--	---	--

**Flood Control Project Maintenance
Levee Inspections**

Maintenance Issue Types Only, Levee Inspection Report By Mile - Spring 2019

Reclamation District No. 2098 Cache and Haas Slough

Waterway	Bank	Unit Miles	Inspection Start/End	Inspector
Unit No. 04 Back Levee	Left	2.95	03/26/2019 03/26/2019	David Julian

LM Start	9.44	Rating **	M	Issue No.	9 (cont)	
LM End	9.74	Issue Type +	Ma	Location *	WS	
Category	Supplemental			GPS Latitude/Longitude		
				Start	End	
Item	2017 USACE Erosion Survey, DRAFT			38.320240 °	38.324587 °	
				-121.740183 °	-121.740254 °	
DWR ID	DWR_RD2098_04_f_2018_9					
Comment Code						
Inspector Comment						
2017 Site ID: HAS 9.7 L						
Status: Critical						
2018: Some erosion about a third to half way up the slope the whole length. A couple pockets of deeper erosion into the slope. I would mark as unacceptable (Djulian).						
2017 Field Notes: Upgraded to CRITICAL. Multiple slump on top of old slumping ; slump is into levee prism.						
Site History: 2011 - Several scallops of erosion. Erosion primarily due to the weight of cattle on the slope. 2016 - Two new large scallop pockets in the middle of the site.						

Photo 3 of 3 : SP_2019_RD2098_248_9_20190408_00033.jpg



View looking downstream at worst section of the erosion on the waterside slope (Spring 2019).

LM Start	10.02	Rating **	A/W	Issue No.	17
LM End	10.02	Issue Type +	Ma	Location *	LS
Category	Earthen Levee			GPS Latitude/Longitude	
				Start	End
Item	Slope Stability			38.328368 °	38.328438 °
				-121.740617 °	-121.740612 °
DWR ID	DWR_RD2098_04_s_2017_17				
Comment Code					
S2 : Repair the levee slope damaged by foot traffic and prevent access where possible.					
Inspector Comment					
Sloughing landside slope has been temporarily repaired at this specific location, but this area shows cracks along shoulder and should continue to be monitored.					

Photo 1 of 1 : SP_2019_RD2098_248_17_20190311_00002.jpg



Slumping landside slope should be monitored and repaired as needed.

* Location LS : Land Side N/A : Not Applicable WS : Water Side CR : Crown	** Rating A : Acceptable M : Minimally Acceptable U : Unacceptable N : Not Inspected/Rated C : Corrected A/W : Acceptable but Monitor & Maintain	+ Issue Type Ma : Maintenance Deficiency Ob : Design & System Obsolescence En : Enforcement
--	---	---