

**Flood Control Project Maintenance  
Levee Inspections****LMA District Cover Sheet****Spring 2014 Levee Inspection Results****Reclamation District No. 2098 Cache and Haas Slough**

	Spring (March - May)	Summer ** (June - August)	Fall (September - November)	Winter ** (December - February)
* Overall LMA Rating (Fall Only)				

\*\* Non-receipt of Summer or Winter Inspection Reports may effect overall annual rating.

\*  
**SPRING INSPECTIONS:** Overall maintenance ratings are not determined for the spring inspection results. Individual maintenance deficiencies are rated using the same criteria in the spring and in the fall.

**FALL INSPECTIONS:** The overall maintenance rating shown above is based on operation and maintenance deficiencies identified within the attached unit inspection reports. This rating is not intended to be an indication of risk.

Comments


**Flood Control Project Maintenance  
Levee Inspections**

**Unit Cover Sheet**

**Spring 2014 Levee Inspection Results**

**Reclamation District No. 2098 Cache and Haas Slough**

Waterway			Bank	Unit Miles
Unit No. 01 Yolo Bypass			Right	3.58
	Spring (March - May)	Summer (June - August)	(September - November) Fall	Winter (December - February)
Unit Maintenance Rating (Fall Only)				
Date of Inspection	05/13/2014 - 05/13/2014			
DWR Inspector	Herman Phillips			
Accompanied By				

**Summer & Winter Inspections**

The Local Maintaining Agency (LMA) is responsible for summer and winter inspections. The LMA is required to submit a report regarding summer and winter inspections to the California Department of Water Resources (DWR).

DWR must be informed on the:

- a) completion of the inspection
- b) any changes other than the results of normal maintenance
- c) corrections to deficiencies noted in this report

If additional items are noted, further documentation of those items must also be submitted.

The LMA should submit this information to DWR using the LMA web application tool available at:

<http://cdec.water.ca.gov/lma.html>

If the LMA is unable to submit information on this webpage, please contact DWR for assistance.

*The LMA should submit the information and any associated documentation by September 30 for summer inspections and March 31 for winter inspections.*

**Flood Control Project Maintenance  
Levee Inspections**

**Levee Inspection Report By Mile - Spring 2014**

**Reclamation District No. 2098 Cache and Haas Slough**

Waterway	Bank	Unit Miles	Inspection Start/End	Inspector
Unit No. 01 Yolo Bypass	Right	3.58	05/13/2014 05/13/2014	Herman Phillips

LM Start		Rating **	A	Issue No.	13
LM End		Issue Type +	Ma	Location *	CR
Category	Earthen Levee			GPS Latitude/Longitude	
				Start	End
Item	Operations & Maintenance Manuals				°
					°
DWR ID	DWR_RD2098_01_s _ 2012_13				
Action/Comments					

No Photos

LM Start		Rating **	A	Issue No.	14
LM End		Issue Type +	Ma	Location *	CR
Category	Earthen Levee			GPS Latitude/Longitude	
				Start	End
Item	Emergency Supplies & Equipment				°
					°
DWR ID	DWR_RD2098_01_s _ 2012_14				
Action/Comments					

No Photos

LM Start		Rating **	A	Issue No.	15
LM End		Issue Type +	Ma	Location *	CR
Category	Earthen Levee			GPS Latitude/Longitude	
				Start	End
Item	Flood Preparedness & Training				°
					°
DWR ID	DWR_RD2098_01_s _ 2012_15				
Action/Comments					

No Photos

**\* Location**  
LS : Land Side  
WS : Water Side  
CR : Crown

**\*\* Rating**  
A : Acceptable  
M : Minimally Acceptable  
U : Unacceptable  
N : Not Inspected/Rated  
C : Corrected  
A/W : Acceptable but Monitor & Maintain

**+ Issue Type**  
Ma : Maintenance Deficiency  
Ob : Design & System Obsolescence  
En : Enforcement

**Flood Control Project Maintenance  
Levee Inspections**

**Levee Inspection Report By Mile - Spring 2014**

**Reclamation District No. 2098 Cache and Haas Slough**

Waterway	Bank	Unit Miles	Inspection Start/End	Inspector
Unit No. 01 Yolo Bypass	Right	3.58	05/13/2014 05/13/2014	Herman Phillips

LM Start	0.02	Rating **	M	Issue No.	2
LM End	0.59	Issue Type +	Ma	Location *	WS
Category	Earthen Levee			GPS Latitude/Longitude	
				Start	End
Item	Vegetation			38.328833 °	38.320446 °
				-121.694141 °	-121.693999 °
DWR ID	DWR_RD2098_01_s _ 2014_2				
Action/Comments					
Control annual grass and weeds on the levee slopes and easements.					

Photo 1 of 1 : phillips\_s\_20140603\_06018.jpg



RD 2098 Looking downstream waterside levee mile 0.02. Photo taken 13-05-2014.

LM Start	0.02	Rating **	M	Issue No.	1
LM End	3.56	Issue Type +	Ma	Location *	LS
Category	Earthen Levee			GPS Latitude/Longitude	
				Start	End
Item	Vegetation			38.328831 °	38.277636 °
				-121.694142 °	-121.696221 °
DWR ID	DWR_RD2098_01_s _ 2014_1				
Action/Comments					
Control annual grass and weeds on the levee slopes and easements.					

Photo 1 of 1 : phillips\_s\_20140603\_06019.jpg



Looking downstream from landside slope levee mile 0.02 RD 2098 Unit 1. Photo taken 05-13-2014.

LM Start	0.43	Rating **	M	Issue No.	3
LM End	3.56	Issue Type +	Ma	Location *	WS
Category	Earthen Levee			GPS Latitude/Longitude	
				Start	End
Item	Vegetation			38.322857 °	38.277636 °
				-121.694001 °	-121.696221 °
DWR ID	DWR_RD2098_01_s _ 2014_3				
Action/Comments					
Remove the wild growth other than native grasses from the levee slopes.					

No Photos

\* Location  
LS : Land Side  
WS : Water Side  
CR : Crown

\*\* Rating  
A : Acceptable  
M : Minimally Acceptable  
U : Unacceptable  
N : Not Inspected/Rated  
C : Corrected  
A/W : Acceptable but Monitor & Maintain

+ Issue Type  
Ma : Maintenance Deficiency  
Ob : Design & System Obsolescence  
En : Enforcement

**Flood Control Project Maintenance  
Levee Inspections**

**Levee Inspection Report By Mile - Spring 2014**

**Reclamation District No. 2098 Cache and Haas Slough**

Waterway	Bank	Unit Miles	Inspection Start/End	Inspector
Unit No. 01 Yolo Bypass	Right	3.58	05/13/2014 05/13/2014	Herman Phillips

LM Start	0.57	Rating **	M	Issue No.	16
LM End	0.59	Issue Type +	Ma	Location *	WS
Category	Earthen Levee			GPS Latitude/Longitude	
				Start	End
Item	Erosion / Bank Caving			38.320853 °	38.320564 °
				-121.694002 °	-121.694002 °
DWR ID	DWR_RD2098_01_s _ 2012_16				
Action/Comments					
Note and monitor erosion site.					

No Photos

LM Start	0.61	Rating **	M	Issue No.	17
LM End	0.63	Issue Type +	Ma	Location *	WS
Category	Earthen Levee			GPS Latitude/Longitude	
				Start	End
Item	Erosion / Bank Caving			38.320979 °	38.319984 °
				-121.694029 °	-121.694001 °
DWR ID	DWR_RD2098_01_s _ 2012_17				
Action/Comments					
Note and monitor erosion site.					

No Photos

LM Start	1.56	Rating **	M	Issue No.	4
LM End	2.76	Issue Type +	Ma	Location *	CR
Category	Earthen Levee			GPS Latitude/Longitude	
				Start	End
Item	Vegetation			38.306390 °	38.288961 °
				-121.693573 °	-121.693600 °
DWR ID	DWR_RD2098_01_s _ 2014_4				
Action/Comments					
Keep the crown roadway free of vegetation.					

No Photos

\* Location  
LS : Land Side  
WS : Water Side  
CR : Crown

\*\* Rating  
A : Acceptable  
M : Minimally Acceptable  
U : Unacceptable  
N : Not Inspected/Rated  
C : Corrected  
A/W : Acceptable but Monitor & Maintain

+ Issue Type  
Ma : Maintenance Deficiency  
Ob : Design & System Obsolescence  
En : Enforcement

**Flood Control Project Maintenance  
Levee Inspections**

**Unit Cover Sheet**

**Spring 2014 Levee Inspection Results**

**Reclamation District No. 2098 Cache and Haas Slough**

Waterway			Bank	Unit Miles
Unit No. 01A Cross Levee			Right	0.55
	Spring (March - May)	Summer (June - August)	(September - November) Fall	Winter (December - February)
Unit Maintenance Rating (Fall Only)				
Date of Inspection	05/14/2014 - 05/14/2014			
DWR Inspector	Herman Phillips			
Accompanied By				

**Summer & Winter Inspections**

The Local Maintaining Agency (LMA) is responsible for summer and winter inspections. The LMA is required to submit a report regarding summer and winter inspections to the California Department of Water Resources (DWR).

DWR must be informed on the:

- a) completion of the inspection
- b) any changes other than the results of normal maintenance
- c) corrections to deficiencies noted in this report

If additional items are noted, further documentation of those items must also be submitted.

The LMA should submit this information to DWR using the LMA web application tool available at:

<http://cdec.water.ca.gov/lma.html>

If the LMA is unable to submit information on this webpage, please contact DWR for assistance.

*The LMA should submit the information and any associated documentation by September 30 for summer inspections and March 31 for winter inspections.*

**Flood Control Project Maintenance  
Levee Inspections**

**Levee Inspection Report By Mile - Spring 2014**

**Reclamation District No. 2098 Cache and Haas Slough**

Waterway	Bank	Unit Miles	Inspection Start/End	Inspector
Unit No. 01A Cross Levee	Right	0.55	05/14/2014 05/14/2014	Herman Phillips

LM Start	0.01	Rating **	M	Issue No.	3
LM End	0.53	Issue Type +	Ma	Location *	LS
Category	Earthen Levee			GPS Latitude/Longitude	
				Start	End
Item	Vegetation			38.277388 °	38.275847 °
				-121.696465 °	-121.705830 °
DWR ID	DWR_RD2098_01A_s _ 2014_3				
Action/Comments					
Control annual grass and weeds on the levee slopes and easements.					

No Photos

LM Start	0.01	Rating **	A	Issue No.	4
LM End	0.53	Issue Type +	Ma	Location *	CR
Category	Earthen Levee			GPS Latitude/Longitude	
				Start	End
Item	Vegetation			38.277388 °	38.275847 °
				-121.696465 °	-121.705833 °
DWR ID	DWR_RD2098_01A_s _ 2014_4				
Action/Comments					
Keep the crown roadway free of vegetation.					

No Photos

LM Start	0.01	Rating **	M	Issue No.	2
LM End	0.53	Issue Type +	Ma	Location *	WS
Category	Earthen Levee			GPS Latitude/Longitude	
				Start	End
Item	Vegetation			38.277388 °	38.275763 °
				-121.696465 °	-121.705424 °
DWR ID	DWR_RD2098_01A_s _ 2014_2				
Action/Comments					
Control annual grass and weeds on the levee slopes and easements.					

Photo 1 of 1 : phillips\_s\_20140603\_06020.jpg



Unit 1A waterside looking downstream. 0.01. Photo taken 05-13-2014.

\* Location  
LS : Land Side  
WS : Water Side  
CR : Crown

\*\* Rating  
A : Acceptable  
M : Minimally Acceptable  
U : Unacceptable  
N : Not Inspected/Rated  
C : Corrected  
A/W : Acceptable but Monitor & Maintain

+ Issue Type  
Ma : Maintenance Deficiency  
Ob : Design & System Obsolescence  
En : Enforcement

**Flood Control Project Maintenance  
Levee Inspections**

**Unit Cover Sheet**

**Spring 2014 Levee Inspection Results**

**Reclamation District No. 2098 Cache and Haas Slough**

Waterway			Bank	Unit Miles
Unit No. 02 Cache Slough			Left	2.01
	Spring (March - May)	Summer (June - August)	(September - November) Fall	Winter (December - February)
Unit Maintenance Rating (Fall Only)				
Date of Inspection	05/14/2014 - 05/14/2014			
DWR Inspector	Herman Phillips			
Accompanied By				

**Summer & Winter Inspections**

The Local Maintaining Agency (LMA) is responsible for summer and winter inspections. The LMA is required to submit a report regarding summer and winter inspections to the California Department of Water Resources (DWR).

DWR must be informed on the:

- a) completion of the inspection
- b) any changes other than the results of normal maintenance
- c) corrections to deficiencies noted in this report

If additional items are noted, further documentation of those items must also be submitted.

The LMA should submit this information to DWR using the LMA web application tool available at:

<http://cdec.water.ca.gov/lma.html>

If the LMA is unable to submit information on this webpage, please contact DWR for assistance.

*The LMA should submit the information and any associated documentation by September 30 for summer inspections and March 31 for winter inspections.*



**Flood Control Project Maintenance  
Levee Inspections**

**Levee Inspection Report By Mile - Spring 2014**

**Reclamation District No. 2098 Cache and Haas Slough**

Waterway	Bank	Unit Miles	Inspection Start/End	Inspector
Unit No. 02 Cache Slough	Left	2.01	05/14/2014 05/14/2014	Herman Phillips

LM Start	5.29	Rating **	M	Issue No.	1
LM End	6.00	Issue Type +	Ma	Location *	LS
Category	Earthen Levee			GPS Latitude/Longitude	
				Start	End
Item	Vegetation			38.275709 °	38.283703 °
				-121.705718 °	-121.712851 °
DWR ID	DWR_RD2098_02_s _ 2014_1				
Action/Comments					
Remove the wild growth other than native grasses from the levee slopes.					

No Photos

LM Start	5.29	Rating **	U	Issue No.	2
LM End	7.17	Issue Type +	Ma	Location *	LS
Category	Earthen Levee			GPS Latitude/Longitude	
				Start	End
Item	Vegetation			38.275709 °	38.293009 °
				-121.705718 °	-121.723461 °
DWR ID	DWR_RD2098_02_s _ 2014_2				
Action/Comments					
Control annual grass and weeds on the levee slopes and easements.					

Photo 1 of 1 : phillips\_s\_20140603\_06021.jpg



Looking downstream from landside slope tall weeds on levee slope.

LM Start	5.79	Rating **	M	Issue No.	6
LM End	5.88	Issue Type +	Ma	Location *	WS
Category	Earthen Levee			GPS Latitude/Longitude	
				Start	End
Item	Slope Stability			38.281747 °	38.282929 °
				-121.709946 °	-121.710789 °
DWR ID	DWR_RD2098_02_s _ 2014_6				
Action/Comments					
Repair slope instability. Inspector Comments: This is an old erosion site, no additional movement was noted at this location, the area is rocky.					

No Photos

\* Location  
LS : Land Side  
WS : Water Side  
CR : Crown

\*\* Rating  
A : Acceptable  
M : Minimally Acceptable  
U : Unacceptable  
N : Not Inspected/Rated  
C : Corrected  
A/W : Acceptable but Monitor & Maintain

+ Issue Type  
Ma : Maintenance Deficiency  
Ob : Design & System Obsolescence  
En : Enforcement

**Flood Control Project Maintenance  
Levee Inspections**

**Levee Inspection Report By Mile - Spring 2014**

**Reclamation District No. 2098 Cache and Haas Slough**

Waterway	Bank	Unit Miles	Inspection Start/End	Inspector
Unit No. 02 Cache Slough	Left	2.01	05/14/2014 05/14/2014	Herman Phillips

LM Start	6.13	Rating **	M	Issue No.	7
LM End	6.13	Issue Type +	Ma	Location *	LS
Category	Earthen Levee			GPS Latitude/Longitude	
				Start	End
Item	Trim / Thin Trees			38.284350 °	38.284350 °
				-121.714657 °	-121.714657 °
DWR ID	DWR_RD2098_02_s _ 2014_7				
Action/Comments					
Trim and thin trees to allow visibility of the ground and room to flood fight.					

No Photos

LM Start	6.22	Rating **	U	Issue No.	8
LM End	7.17	Issue Type +	Ma	Location *	LS
Category	Earthen Levee			GPS Latitude/Longitude	
				Start	End
Item	Vegetation			38.285290 °	38.293009 °
				-121.715708 °	-121.723461 °
DWR ID	DWR_RD2098_02_s _ 2014_8				
Action/Comments					
Control annual grass and weeds on the levee slopes and easements.					

No Photos

LM Start	6.23	Rating **	M	Issue No.	9
LM End	6.55	Issue Type +	Ma	Location *	CR
Category	Earthen Levee			GPS Latitude/Longitude	
				Start	End
Item	Vegetation			38.285501 °	38.289931 °
				-121.715831 °	-121.716770 °
DWR ID	DWR_RD2098_02_s _ 2014_9				
Action/Comments					
Keep the crown roadway free of vegetation.					

No Photos

<b>* Location</b> LS : Land Side WS : Water Side CR : Crown	<b>** Rating</b> A : Acceptable M : Minimally Acceptable U : Unacceptable	N : Not Inspected/Rated C : Corrected A/W : Acceptable but Monitor & Maintain	<b>+ Issue Type</b> Ma : Maintenance Deficiency Ob : Design & System Obsolescence En : Enforcement
--	--	---	---

**Flood Control Project Maintenance  
Levee Inspections**

**Levee Inspection Report By Mile - Spring 2014**

**Reclamation District No. 2098 Cache and Haas Slough**

Waterway	Bank	Unit Miles	Inspection Start/End	Inspector
Unit No. 02 Cache Slough	Left	2.01	05/14/2014 05/14/2014	Herman Phillips

LM Start	6.71	Rating **	U	Issue No.	4
LM End	6.71	Issue Type +	Ma	Location *	CR
Category	Earthen Levee			GPS Latitude/Longitude	
				Start	End
Item	Repair Gates			38.289452 °	38.289452 °
				-121.716814 °	-121.716814 °
DWR ID	DWR_RD2098_02_f_2013_4				
Action/Comments					
Inspector Comments: This gate is damaged and requires replacement.					

Photo 1 of 1 : phillips\_s\_20140603\_06022.jpg



This gate has no hinges.

LM Start	6.72	Rating **	U	Issue No.	10
LM End	6.72	Issue Type +	Ma	Location *	WS
Category	Earthen Levee			GPS Latitude/Longitude	
				Start	End
Item	Slope Stability			38.292076 °	38.292076 °
				-121.715792 °	-121.715792 °
DWR ID	DWR_RD2098_02_s_2014_10				
Action/Comments					
Repair slope instability.					

Photo 1 of 1 : phillips\_s\_20140603\_06023.jpg



There is some slope damage at this location under this concrete.

LM Start	6.74	Rating **	M	Issue No.	11
LM End	7.17	Issue Type +	Ma	Location *	CR
Category	Earthen Levee			GPS Latitude/Longitude	
				Start	End
Item	Vegetation			38.292365 °	38.293009 °
				-121.715997 °	-121.723461 °
DWR ID	DWR_RD2098_02_s_2014_11				
Action/Comments					
Keep the crown roadway free of vegetation.					

No Photos

\* Location  
LS : Land Side  
WS : Water Side  
CR : Crown

\*\* Rating  
A : Acceptable  
M : Minimally Acceptable  
U : Unacceptable  
N : Not Inspected/Rated  
C : Corrected  
A/W : Acceptable but Monitor & Maintain

+ Issue Type  
Ma : Maintenance Deficiency  
Ob : Design & System Obsolescence  
En : Enforcement

**Flood Control Project Maintenance  
Levee Inspections**

**Levee Inspection Report By Mile - Spring 2014**

**Reclamation District No. 2098 Cache and Haas Slough**

Waterway	Bank	Unit Miles	Inspection Start/End	Inspector
Unit No. 02 Cache Slough	Left	2.01	05/14/2014 05/14/2014	Herman Phillips

LM Start	7.13	Rating **	M	Issue No.	5
LM End	7.13	Issue Type +	Ma	Location *	CR
Category	Earthen Levee			GPS Latitude/Longitude	
				Start	End
Item	Repair Gates			38.292962 °	38.292962 °
				-121.723312 °	-121.723312 °
DWR ID	DWR_RD2098_02_f_2013_5				
Action/Comments					

No Photos

LM Start	7.17	Rating **	M	Issue No.	12
LM End	7.30	Issue Type +	Ma	Location *	LS
Category	Earthen Levee			GPS Latitude/Longitude	
				Start	End
Item	Vegetation			38.293009 °	38.294171 °
				-121.723461 °	-121.725037 °
DWR ID	DWR_RD2098_02_s_2014_12				
Action/Comments					
Control annual grass and weeds on the levee slopes and easements.					

No Photos

LM Start	7.17	Rating **	M	Issue No.	13
LM End	7.30	Issue Type +	Ma	Location *	WS
Category	Earthen Levee			GPS Latitude/Longitude	
				Start	End
Item	Vegetation			38.293009 °	38.294171 °
				-121.723461 °	-121.725037 °
DWR ID	DWR_RD2098_02_s_2014_13				
Action/Comments					
Control annual grass and weeds on the levee slopes and easements.					

No Photos

\* Location  
LS : Land Side  
WS : Water Side  
CR : Crown

\*\* Rating  
A : Acceptable  
M : Minimally Acceptable  
U : Unacceptable  
N : Not Inspected/Rated  
C : Corrected  
A/W : Acceptable but Monitor & Maintain

+ Issue Type  
Ma : Maintenance Deficiency  
Ob : Design & System Obsolescence  
En : Enforcement

**Flood Control Project Maintenance  
Levee Inspections**

**Unit Cover Sheet**

**Spring 2014 Levee Inspection Results**

**Reclamation District No. 2098 Cache and Haas Slough**

Waterway			Bank	Unit Miles
Unit No. 03 Haas Slough			Right	1.89
	Spring (March - May)	Summer (June - August)	(September - November) Fall	Winter (December - February)
Unit Maintenance Rating (Fall Only)				
Date of Inspection	05/14/2014 - 05/14/2014			
DWR Inspector	Herman Phillips			
Accompanied By				

**Summer & Winter Inspections**

The Local Maintaining Agency (LMA) is responsible for summer and winter inspections. The LMA is required to submit a report regarding summer and winter inspections to the California Department of Water Resources (DWR).

DWR must be informed on the:

- a) completion of the inspection
- b) any changes other than the results of normal maintenance
- c) corrections to deficiencies noted in this report

If additional items are noted, further documentation of those items must also be submitted.

The LMA should submit this information to DWR using the LMA web application tool available at:

<http://cdec.water.ca.gov/lma.html>

If the LMA is unable to submit information on this webpage, please contact DWR for assistance.

*The LMA should submit the information and any associated documentation by September 30 for summer inspections and March 31 for winter inspections.*

**Flood Control Project Maintenance  
Levee Inspections**

**Levee Inspection Report By Mile - Spring 2014**

**Reclamation District No. 2098 Cache and Haas Slough**

Waterway	Bank	Unit Miles	Inspection Start/End	Inspector
Unit No. 03 Haas Slough	Right	1.89	05/14/2014 05/14/2014	Herman Phillips

LM Start	7.30	Rating **	M	Issue No.	3
LM End	9.09	Issue Type +	Ma	Location *	WS
Category	Earthen Levee			GPS Latitude/Longitude	
				Start	End
Item	Vegetation			38.294205 °	38.314957 °
				-121.725057 °	-121.738939 °
DWR ID	DWR_RD2098_03_s_2014_3				
Action/Comments					
Control annual grass and weeds on the levee slopes and easements.					

Photo 1 of 1 : phillips\_s\_20140603\_06024.jpg



Looking downstream from the waterside of Unit 3. Photo taken 05-14-2014.

LM Start	7.31	Rating **	M	Issue No.	8
LM End	9.09	Issue Type +	Ma	Location *	WS
Category	Earthen Levee			GPS Latitude/Longitude	
				Start	End
Item	Vegetation			38.294343 °	38.314957 °
				-121.725073 °	-121.738939 °
DWR ID	DWR_RD2098_03_s_2014_8				
Action/Comments					
Control annual grass and weeds on the levee slopes and easements.					

No Photos

LM Start	7.33	Rating **	M	Issue No.	7
LM End	7.72	Issue Type +	Ma	Location *	WS
Category	Supplemental			GPS Latitude/Longitude	
				Start	End
Item	USACE Erosion Survey			38.299606 °	38.294858 °
				-121.728621 °	-121.725433 °
DWR ID					
Action/Comments					
Inspector Comments: 2011 - Large vertical erosion pockets and bank slumping. 2013: Site is part of the extended inventory, last inspected 2011. [2013 Site ID: HAS_7-9_L]					

No Photos

\* Location  
LS : Land Side  
WS : Water Side  
CR : Crown

\*\* Rating  
A : Acceptable  
M : Minimally Acceptable  
U : Unacceptable  
N : Not Inspected/Rated  
C : Corrected  
A/W : Acceptable but Monitor & Maintain

+ Issue Type  
Ma : Maintenance Deficiency  
Ob : Design & System Obsolescence  
En : Enforcement



**Flood Control Project Maintenance  
Levee Inspections**

**Levee Inspection Report By Mile - Spring 2014**

**Reclamation District No. 2098 Cache and Haas Slough**

Waterway	Bank	Unit Miles	Inspection Start/End	Inspector
Unit No. 03 Haas Slough	Right	1.89	05/14/2014 05/14/2014	Herman Phillips

LM Start	7.36	Rating **	M	Issue No.	6
LM End	7.54	Issue Type +	Ma	Location *	LS
Category	Earthen Levee			GPS Latitude/Longitude	
				Start	End
Item	Slope Stability			38.295460 °	38.296799 °
				-121.725750 °	-121.727510 °
DWR ID	DWR_RD2098_03_s _ 2013_6				
Action/Comments					
Repair the levee slope damaged by foot traffic and prevent access where possible. Inspector Comments: This erosion is caused by the resident goats in the area. They are corralled in this location with full access to the levee					

No Photos

LM Start	7.50	Rating **	M	Issue No.	4
LM End	7.61	Issue Type +	Ma	Location *	WS
Category	Earthen Levee			GPS Latitude/Longitude	
				Start	End
Item	Slope Stability			38.295930 °	38.298142 °
				-121.727043 °	-121.739715 °
DWR ID	DWR_RD2098_03_s _ 2013_4				
Action/Comments					
Repair slope instability. Inspector Comments: There is erosion on waterside covered by tullies. This is not a new site. Monitor but it appears to be stable at this time, 4-23-2013. During inspection 5-14-2014 no movement at site.					

Photo 1 of 1 : phillips\_s\_20140513\_05867.jpg



RD 2098 Unit 3 landside slope erosion levee mile 7.50-7.61. Photo taken 4-23-2013.

**\* Location**  
LS : Land Side  
WS : Water Side  
CR : Crown

**\*\* Rating**  
A : Acceptable  
M : Minimally Acceptable  
U : Unacceptable  
N : Not Inspected/Rated  
C : Corrected  
A/W : Acceptable but Monitor & Maintain

**+ Issue Type**  
Ma : Maintenance Deficiency  
Ob : Design & System Obsolescence  
En : Enforcement

**Flood Control Project Maintenance  
Levee Inspections**

**Levee Inspection Report By Mile - Spring 2014**

**Reclamation District No. 2098 Cache and Haas Slough**

Waterway	Bank	Unit Miles	Inspection Start/End	Inspector
Unit No. 03 Haas Slough	Right	1.89	05/14/2014 05/14/2014	Herman Phillips

LM Start	7.58	Rating **	M	Issue No.	1
LM End	7.58	Issue Type +	Ma	Location *	WS
Category	Earthen Levee			GPS Latitude/Longitude	
				Start	End
Item	Erosion / Bank Caving			38.297384 °	38.297384 °
				-121.728137 °	-121.728137 °
DWR ID	DWR_RD2098_03_s _ 2014_1				
Action/Comments					
Note and monitor erosion site.					

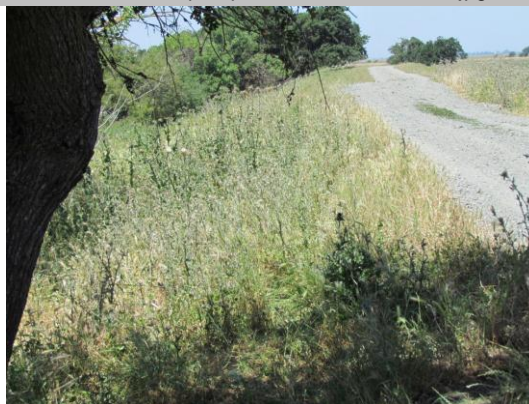
No Photos

LM Start	7.58	Rating **	M	Issue No.	2
LM End	7.73	Issue Type +	Ma	Location *	WS
Category	Earthen Levee			GPS Latitude/Longitude	
				Start	End
Item	Erosion / Bank Caving			38.297384 °	38.299197 °
				-121.728137 °	-121.728516 °
DWR ID	DWR_RD2098_03_s _ 2014_2				
Action/Comments					
Note and monitor erosion site. Inspector Comments: The erosion at this location is partially blocked by bambo growth.					

No Photos

LM Start	7.89	Rating **	U	Issue No.	10
LM End	7.91	Issue Type +	Ma	Location *	WS
Category	Earthen Levee			GPS Latitude/Longitude	
				Start	End
Item	Vegetation			38.301498 °	38.301846 °
				-121.728064 °	-121.728047 °
DWR ID	DWR_RD2098_03_s _ 2014_10				
Action/Comments					
Remove the wild growth other than native grasses from the levee slopes.					

Photo 1 of 1 : phillips\_s\_20140603\_06026.jpg



Looking downstream from the waterside slope tall weeds covering the levee section.

\* Location  
LS : Land Side  
WS : Water Side  
CR : Crown

\*\* Rating  
A : Acceptable  
M : Minimally Acceptable  
U : Unacceptable  
N : Not Inspected/Rated  
C : Corrected  
A/W : Acceptable but Monitor & Maintain

+ Issue Type  
Ma : Maintenance Deficiency  
Ob : Design & System Obsolescence  
En : Enforcement



**Flood Control Project Maintenance  
Levee Inspections**

**Levee Inspection Report By Mile - Spring 2014**

**Reclamation District No. 2098 Cache and Haas Slough**

Waterway	Bank	Unit Miles	Inspection Start/End	Inspector
Unit No. 03 Haas Slough	Right	1.89	05/14/2014 05/14/2014	Herman Phillips

LM Start	7.89	Rating **	U	Issue No.	11
LM End	7.92	Issue Type +	Ma	Location *	LS
Category	Earthen Levee			GPS Latitude/Longitude	
				Start	End
Item	Vegetation			38.301502 °	38.302011 °
				-121.728055 °	-121.728037 °
DWR ID	DWR_RD2098_03_s _ 2014_11				
Action/Comments					
Remove the wild growth other than native grasses from the levee slopes.					

Photo 1 of 1 : phillips\_s\_20140603\_06025.jpg



Looking downstream from the landside slope there are tall weeds covering the levee section.

LM Start	7.90	Rating **	M	Issue No.	9
LM End	7.90	Issue Type +	En	Location *	WS
Category	Earthen Levee			GPS Latitude/Longitude	
				Start	End
Item	Encroachments			38.301707 °	38.301707 °
				-121.728045 °	-121.728045 °
DWR ID	DWR_RD2098_03_s _ 2014_9				
Action/Comments					
Tree or limb					

No Photos

LM Start	8.20	Rating **	M	Issue No.	12
LM End	9.09	Issue Type +	Ma	Location *	WS
Category	Earthen Levee			GPS Latitude/Longitude	
				Start	End
Item	Vegetation			38.305586 °	38.314957 °
				-121.729106 °	-121.738939 °
DWR ID	DWR_RD2098_03_s _ 2014_12				
Action/Comments					
Remove the wild growth other than native grasses from the levee slopes.					

No Photos

\* Location  
LS : Land Side  
WS : Water Side  
CR : Crown

\*\* Rating  
A : Acceptable  
M : Minimally Acceptable  
U : Unacceptable  
N : Not Inspected/Rated  
C : Corrected  
A/W : Acceptable but Monitor & Maintain

+ Issue Type  
Ma : Maintenance Deficiency  
Ob : Design & System Obsolescence  
En : Enforcement

**Flood Control Project Maintenance  
Levee Inspections**

**Levee Inspection Report By Mile - Spring 2014**

**Reclamation District No. 2098 Cache and Haas Slough**

Waterway	Bank	Unit Miles	Inspection Start/End	Inspector
Unit No. 03 Haas Slough	Right	1.89	05/14/2014 05/14/2014	Herman Phillips

LM Start	8.30	Rating **	M	Issue No.	5
LM End	8.30	Issue Type +	Ma	Location *	CR
Category	Earthen Levee			GPS Latitude/Longitude	
				Start	End
Item	Repair Gates			38.306200 °	38.306200 °
				-121.730699 °	-121.730699 °
DWR ID	DWR_RD2098_03_f_2013_5				
Action/Comments					

No Photos

LM Start	8.34	Rating **	U	Issue No.	13
LM End	9.09	Issue Type +	Ma	Location *	LS
Category	Earthen Levee			GPS Latitude/Longitude	
				Start	End
Item	Vegetation			38.306442 °	38.314957 °
				-121.731284 °	-121.738939 °
DWR ID	DWR_RD2098_03_s_2014_13				
Action/Comments					
Remove the wild growth other than native grasses from the levee slopes.					

Photo 1 of 1 : phillips\_s\_20140603\_06027.jpg



Tall weeds on the landside shoulder slope and toe of the levee section.

LM Start	8.37	Rating **	U	Issue No.	14
LM End	9.07	Issue Type +	Ma	Location *	WS
Category	Earthen Levee			GPS Latitude/Longitude	
				Start	End
Item	Vegetation			38.306778 °	38.314746 °
				-121.731875 °	-121.738696 °
DWR ID	DWR_RD2098_03_s_2014_14				
Action/Comments					
Remove the wild growth other than native grasses from the levee slopes.					

Photo 1 of 1 : phillips\_s\_20140603\_06028.jpg



Unsatisfactory growth of tall mustard grass completely covering the waterward levee slope.

**\* Location**

LS : Land Side  
WS : Water Side  
CR : Crown

**\*\* Rating**

A : Acceptable                      N : Not Inspected/Rated  
M : Minimally Acceptable        C : Corrected  
U : Unacceptable                  A/W : Acceptable but Monitor & Maintain

**+ Issue Type**

Ma : Maintenance Deficiency  
Ob : Design & System Obsolescence  
En : Enforcement

**Flood Control Project Maintenance  
Levee Inspections**

**Levee Inspection Report By Mile - Spring 2014**

**Reclamation District No. 2098 Cache and Haas Slough**

Waterway	Bank	Unit Miles	Inspection Start/End	Inspector
Unit No. 03 Haas Slough	Right	1.89	05/14/2014 05/14/2014	Herman Phillips

LM Start	8.39	Rating **	U	Issue No.	15
LM End	8.97	Issue Type +	Ma	Location *	CR
Category	Earthen Levee			GPS Latitude/Longitude	
				Start	End
Item	Vegetation			38.307004 °	38.313686 °
				-121.732025 °	-121.737480 °
DWR ID	DWR_RD2098_03_s _ 2014_15				
Action/Comments					
Keep the crown roadway free of vegetation.					

Photo 1 of 1 : phillips\_s\_20140603\_06029.jpg



Unsatisfactory tall weeds are covering landside slope.

LM Start	8.49	Rating **	U	Issue No.	16
LM End	9.07	Issue Type +	Ma	Location *	LS
Category	Earthen Levee			GPS Latitude/Longitude	
				Start	End
Item	Vegetation			38.308240 °	38.314906 °
				-121.732891 °	-121.738885 °
DWR ID	DWR_RD2098_03_s _ 2014_16				
Action/Comments					
Remove the wild growth other than native grasses from the levee slopes.					

Photo 1 of 1 : phillips\_s\_20140603\_06030.jpg



Tall weed grasses covering the landside levee slope.

\* Location  
LS : Land Side  
WS : Water Side  
CR : Crown

\*\* Rating  
A : Acceptable  
M : Minimally Acceptable  
U : Unacceptable  
N : Not Inspected/Rated  
C : Corrected  
A/W : Acceptable but Monitor & Maintain

+ Issue Type  
Ma : Maintenance Deficiency  
Ob : Design & System Obsolescence  
En : Enforcement

**Flood Control Project Maintenance  
Levee Inspections**

**Unit Cover Sheet**

**Spring 2014 Levee Inspection Results**

**Reclamation District No. 2098 Cache and Haas Slough**

Waterway			Bank	Unit Miles
Unit No. 04 Back Levee			Left	2.93
	Spring (March - May)	Summer (June - August)	(September - November) Fall	Winter (December - February)
Unit Maintenance Rating (Fall Only)				
Date of Inspection	05/14/2014 - 05/14/2014			
DWR Inspector	Herman Phillips			
Accompanied By				

**Summer & Winter Inspections**

The Local Maintaining Agency (LMA) is responsible for summer and winter inspections. The LMA is required to submit a report regarding summer and winter inspections to the California Department of Water Resources (DWR).

DWR must be informed on the:

- a) completion of the inspection
- b) any changes other than the results of normal maintenance
- c) corrections to deficiencies noted in this report

If additional items are noted, further documentation of those items must also be submitted.

The LMA should submit this information to DWR using the LMA web application tool available at:

<http://cdec.water.ca.gov/lma.html>

If the LMA is unable to submit information on this webpage, please contact DWR for assistance.

*The LMA should submit the information and any associated documentation by September 30 for summer inspections and March 31 for winter inspections.*

**Flood Control Project Maintenance  
Levee Inspections**

**Levee Inspection Report By Mile - Spring 2014**

**Reclamation District No. 2098 Cache and Haas Slough**

Waterway	Bank	Unit Miles	Inspection Start/End	Inspector
Unit No. 04 Back Levee	Left	2.93	05/14/2014 05/14/2014	Herman Phillips

LM Start	9.20	Rating **	M	Issue No.	4
LM End	9.20	Issue Type +	Ma	Location *	LS
Category	Earthen Levee			GPS Latitude/Longitude	
				Start	End
Item	Vegetation			38.316167 °	38.316167 °
				-121.740115 °	-121.740120 °
DWR ID	DWR_RD2098_04_s _ 2014_4				
Action/Comments					
Remove the wild growth other than native grasses from the levee slopes.					

No Photos

LM Start	9.20	Rating **	M	Issue No.	1
LM End	12.08	Issue Type +	Ma	Location *	CR
Category	Earthen Levee			GPS Latitude/Longitude	
				Start	End
Item	Vegetation			38.316167 °	38.357631 °
				-121.740115 °	-121.740423 °
DWR ID	DWR_RD2098_04_s_2014_1				
Action/Comments					
Keep the crown roadway free of vegetation.					

No Photos

LM Start	9.46	Rating **	M	Issue No.	2
LM End	9.46	Issue Type +	Ma	Location *	WS
Category	Supplemental			GPS Latitude/Longitude	
				Start	End
Item	USACE Erosion Survey			38.320240 °	38.324587 °
				-121.740183 °	-121.740254 °
DWR ID					
Action/Comments					
Inspector Comments: 2011 - Several scallops of erosion. Erosion primarily due to the weight of cattle on the slope. 2013: Site is part of the extended inventory, last inspected 2011. [2013 Site ID: HAS_9-7_L]					

No Photos

<b>* Location</b> LS : Land Side WS : Water Side CR : Crown	<b>** Rating</b> A : Acceptable M : Minimally Acceptable U : Unacceptable N : Not Inspected/Rated C : Corrected A/W : Acceptable but Monitor & Maintain	<b>+ Issue Type</b> Ma : Maintenance Deficiency Ob : Design & System Obsolescence En : Enforcement
--	---	---



**Flood Control Project Maintenance  
Levee Inspections**

**Levee Inspection Report By Mile - Spring 2014**

**Reclamation District No. 2098 Cache and Haas Slough**

Waterway	Bank	Unit Miles	Inspection Start/End	Inspector
Unit No. 04 Back Levee	Left	2.93	05/14/2014 05/14/2014	Herman Phillips

LM Start	9.51	Rating **	U	Issue No.	5
LM End	9.54	Issue Type +	Ma	Location *	LS
Category	Earthen Levee			GPS Latitude/Longitude	
				Start	End
Item	Vegetation			38.320664 °	38.321113 °
				-121.740173 °	-121.740143 °
DWR ID	DWR_RD2098_04_s_2014_5				
Action/Comments					
Remove the wild growth other than native grasses from the levee slopes.					

Photo 1 of 1 : phillips\_s\_20140603\_06031.jpg



Unsatisfactory tall weeds on the landside shoulder and slope. Photo taken 05-14-2014.

LM Start	9.51	Rating **	U	Issue No.	3
LM End	9.54	Issue Type +	Ma	Location *	WS
Category	Earthen Levee			GPS Latitude/Longitude	
				Start	End
Item	Vegetation			38.320664 °	38.321116 °
				-121.740173 °	-121.740146 °
DWR ID	DWR_RD2098_04_s_2014_3				
Action/Comments					
Remove the wild growth other than native grasses from the levee slopes.					

Photo 1 of 1 : phillips\_s\_20140603\_06032.jpg



Unsatisfactory milk weeds covering the waterside levee section. Photo taken 05-14-2014.

LM Start	9.63	Rating **	M	Issue No.	7
LM End	9.63	Issue Type +	Ma	Location *	WS
Category	Earthen Levee			GPS Latitude/Longitude	
				Start	End
Item	Erosion / Bank Caving			38.322647 °	38.322647 °
				-121.740138 °	-121.740138 °
DWR ID	DWR_RD2098_04_s_2014_7				
Action/Comments					
Note and monitor erosion site.					

No Photos

\* Location  
LS : Land Side  
WS : Water Side  
CR : Crown

\*\* Rating  
A : Acceptable  
M : Minimally Acceptable  
U : Unacceptable  
N : Not Inspected/Rated  
C : Corrected  
A/W : Acceptable but Monitor & Maintain

+ Issue Type  
Ma : Maintenance Deficiency  
Ob : Design & System Obsolescence  
En : Enforcement

**Flood Control Project Maintenance  
Levee Inspections**

**Levee Inspection Report By Mile - Spring 2014**

**Reclamation District No. 2098 Cache and Haas Slough**

Waterway	Bank	Unit Miles	Inspection Start/End	Inspector
Unit No. 04 Back Levee	Left	2.93	05/14/2014 05/14/2014	Herman Phillips

LM Start	9.63	Rating **	M	Issue No.	6
LM End	9.63	Issue Type +	Ma	Location *	WS
Category	Earthen Levee			GPS Latitude/Longitude	
				Start	End
Item	Erosion / Bank Caving			38.322606 °	38.322606 °
				-121.740136 °	-121.740136 °
DWR ID	DWR_RD2098_04_s_2014_6				
Action/Comments					
Note and monitor erosion site.					

No Photos

LM Start	9.72	Rating **	M	Issue No.	8
LM End	9.77	Issue Type +	Ma	Location *	WS
Category	Earthen Levee			GPS Latitude/Longitude	
				Start	End
Item	Erosion / Bank Caving			38.323749 °	38.324467 °
				-121.740148 °	-121.740155 °
DWR ID	DWR_RD2098_04_s_2014_8				
Action/Comments					

No Photos

LM Start	9.79	Rating **	M	Issue No.	46
LM End	9.81	Issue Type +	Ma	Location *	WS
Category	Earthen Levee			GPS Latitude/Longitude	
				Start	End
Item	Vegetation			38.324775 °	38.325065 °
				-121.740116 °	-121.740105 °
DWR ID	DWR_RD2098_04_f_2013_46				
Action/Comments					
Elderberries are blocking visibility and flood fight capability.					

No Photos

\* Location  
LS : Land Side  
WS : Water Side  
CR : Crown

\*\* Rating  
A : Acceptable  
M : Minimally Acceptable  
U : Unacceptable  
N : Not Inspected/Rated  
C : Corrected  
A/W : Acceptable but Monitor & Maintain

+ Issue Type  
Ma : Maintenance Deficiency  
Ob : Design & System Obsolescence  
En : Enforcement

**Flood Control Project Maintenance  
Levee Inspections**

**Levee Inspection Report By Mile - Spring 2014**

**Reclamation District No. 2098 Cache and Haas Slough**

Waterway	Bank	Unit Miles	Inspection Start/End	Inspector
Unit No. 04 Back Levee	Left	2.93	05/14/2014 05/14/2014	Herman Phillips

LM Start	9.80	Rating **	U	Issue No.	9
LM End	9.83	Issue Type +	Ma	Location *	WS
Category	Earthen Levee			GPS Latitude/Longitude	
				Start	End
Item	Vegetation			38.324968 °	38.325364 °
				-121.740118 °	-121.740084 °
DWR ID	DWR_RD2098_04_s _ 2014_9				
Action/Comments					
Control annual grass and weeds on the levee slopes and easements.					

Photo 1 of 1 : phillips\_s\_20140603\_06033.jpg



Unsatisfactory tall weeds covering the waterward slope and shoulder.

LM Start	9.81	Rating **	M	Issue No.	10
LM End	9.81	Issue Type +	En	Location *	WS
Category	Earthen Levee			GPS Latitude/Longitude	
				Start	End
Item	Encroachments			38.325061 °	38.325061 °
				-121.740123 °	-121.740123 °
DWR ID	DWR_RD2098_04_s _ 2014_10				
Action/Comments					
Material					

No Photos

LM Start	9.83	Rating **	U	Issue No.	13
LM End	11.13	Issue Type +	Ma	Location *	WS
Category	Earthen Levee			GPS Latitude/Longitude	
				Start	End
Item	Vegetation			-38.325355 °	38.343856 °
				121.740095 °	-21.740803 °
DWR ID	DWR_RD2098_04_s _ 2014_13				
Action/Comments					
Remove the wild growth other than native grasses from the levee slopes.					

Photo 1 of 1 : phillips\_s\_20140603\_06035.jpg



Waterside looking upstream at tall weeds covering the levee section.

\* Location  
LS : Land Side  
WS : Water Side  
CR : Crown

\*\* Rating  
A : Acceptable  
M : Minimally Acceptable  
U : Unacceptable  
N : Not Inspected/Rated  
C : Corrected  
A/W : Acceptable but Monitor & Maintain

+ Issue Type  
Ma : Maintenance Deficiency  
Ob : Design & System Obsolescence  
En : Enforcement



**Flood Control Project Maintenance  
Levee Inspections**

**Levee Inspection Report By Mile - Spring 2014**

**Reclamation District No. 2098 Cache and Haas Slough**

Waterway	Bank	Unit Miles	Inspection Start/End	Inspector
Unit No. 04 Back Levee	Left	2.93	05/14/2014 05/14/2014	Herman Phillips

LM Start	9.83	Rating **	M	Issue No.	12
LM End	11.51	Issue Type +	Ma	Location *	WS
Category	Earthen Levee			GPS Latitude/Longitude	
				Start	End
Item	Vegetation			38.325602 °	38.349374 °
				-121.740098 °	-121.740713 °
DWR ID	DWR_RD2098_04_s_2014_12				
Action/Comments					
Control annual grass and weeds on the levee slopes and easements.					

No Photos

LM Start	9.89	Rating **	M	Issue No.	58
LM End	10.55	Issue Type +	Ma	Location *	WS
Category	Earthen Levee			GPS Latitude/Longitude	
				Start	End
Item	Vegetation			38.325891 °	38.335461 °
				-121.740640 °	-121.740602 °
DWR ID	DWR_RD2098_04_f_2013_58				
Action/Comments					
Control annual grass and weeds on the levee slopes and easements.					

No Photos

LM Start	11.13	Rating **	U	Issue No.	11
LM End	12.12	Issue Type +	Ma	Location *	WS
Category	Earthen Levee			GPS Latitude/Longitude	
				Start	End
Item	Vegetation			38.343856 °	38.358206 °
				-121.740803 °	-121.740377 °
DWR ID	DWR_RD2098_04_s_2014_11				
Action/Comments					
Remove the wild growth other than native grasses from the levee slopes.					

Photo 1 of 1 : phillips\_s\_20140603\_06034.jpg



Tall weeds along the canal.

\* Location  
LS : Land Side  
WS : Water Side  
CR : Crown

\*\* Rating  
A : Acceptable  
M : Minimally Acceptable  
U : Unacceptable  
N : Not Inspected/Rated  
C : Corrected  
A/W : Acceptable but Monitor & Maintain

+ Issue Type  
Ma : Maintenance Deficiency  
Ob : Design & System Obsolescence  
En : Enforcement