

Flood Control Project Maintenance Levee Inspections

Fall 2024 Levee Maintenance Deficiency Summary Report

Sacramento River Basin

RD2098 ‡ Reclamation District No. 2098 Cache and Haas Slough	Overall LMA Rating	Total LMA Miles						
	U	10.91						
Rated Item	Maintenance Deficiency				Enforcement		Design & System Obsolescence	
	M Miles	U Miles	M + 4U Miles	Threshold %	M Miles	U Miles	M Miles	U Miles
<i>Earthen Levee</i>								
Trim / Thin Trees	0.01		0.01	0.09%	0.01			
Encroachments		0.16	0.64	5.87%	0.01			
Animal Control	0.14		0.14	1.28%				
Erosion / Bank Caving	0.06		0.06	0.55%				
Erosion / Livestock	1.15		1.15	10.55%				
<i>Supplemental</i>								
2018 USACE Erosion Survey	0.68		0.68	6.24%				
DWR UCIP Field Study					0.01	0.03		
DWR UCIP LMA Responsibility	0.02		0.02	0.18%				
<i>LMA Totals:</i>	2.06	0.16	2.70	24.76%	0.03	0.03	0.00	0.00
Unit No. 01 Yolo Bypass RB	Overall Unit Rating	Total Unit Miles						
RD2098	A	3.60						
Rated Item	Maintenance Deficiency				Enforcement		Design & System Obsolescence	
	M Miles	U Miles	M + 4U Miles	Threshold %	M Miles	U Miles	M Miles	U Miles
No Items								
<i>Unit Totals:</i>	0.00	0.00	0.00	0.00%				
Unit No. 01A Cross Levee RB	Overall Unit Rating	Total Unit Miles						
RD2098	A	0.53						
Rated Item	Maintenance Deficiency				Enforcement		Design & System Obsolescence	
	M Miles	U Miles	M + 4U Miles	Threshold %	M Miles	U Miles	M Miles	U Miles
No Items								
<i>Unit Totals:</i>	0.00	0.00	0.00	0.00%				
Unit No. 02 Cache Slough LB	Overall Unit Rating	Total Unit Miles						
RD2098	A	1.89						
Rated Item	Maintenance Deficiency				Enforcement		Design & System Obsolescence	
	M Miles	U Miles	M + 4U Miles	Threshold %	M Miles	U Miles	M Miles	U Miles
<i>Supplemental</i>								
DWR UCIP LMA Responsibility	0.01		0.01	0.53%				
<i>Unit Totals:</i>	0.01	0.00	0.01	0.53%	0.00	0.00	0.00	0.00

Flood Control Project Maintenance Levee Inspections

Fall 2024 Levee Maintenance Deficiency Summary Report

Sacramento River Basin (cont.)

Unit No. 03 Haas Slough RB	Overall Unit Rating	Total Unit Miles						
RD2098	U	1.94						
Rated Item	Maintenance Deficiency				Enforcement		Design & System Obsolescence	
	M Miles	U Miles	M + 4U Miles	Threshold %	M Miles	U Miles	M Miles	U Miles
<i>Earthen Levee</i>								
Trim / Thin Trees	0.01		0.01	0.52%	0.01			
Encroachments					0.01			
Erosion / Livestock	0.01		0.01	0.52%				
<i>Supplemental</i>								
2018 USACE Erosion Survey	0.68		0.68	35.12%				
DWR UCIP LMA Responsibility	0.01		0.01	0.52%				
<i>Unit Totals:</i>	0.71	0.00	0.71	36.67%	0.02	0.00	0.00	0.00

Unit No. 04 Back Levee LB	Overall Unit Rating	Total Unit Miles						
RD2098	U	2.95						
Rated Item	Maintenance Deficiency				Enforcement		Design & System Obsolescence	
	M Miles	U Miles	M + 4U Miles	Threshold %	M Miles	U Miles	M Miles	U Miles
<i>Earthen Levee</i>								
Encroachments		0.16	0.64	21.68%				
Animal Control	0.14		0.14	4.74%				
Erosion / Bank Caving	0.06		0.06	2.03%				
Erosion / Livestock	1.14		1.14	38.62%				
<i>Supplemental</i>								
DWR UCIP Field Study					0.01	0.03		
<i>Unit Totals:</i>	1.34	0.16	1.98	67.07%	0.01	0.03	0.00	0.00

‡ Some areas within the LMA are under construction and as such, the contractor has operation and maintenance obligations in those areas during project construction and closeout.

**Flood Control Project Maintenance
Levee Inspections
LMA District Cover Sheet**

Reclamation District No. 2098 Cache and Haas Slough

	Spring (March - May)	Summer ** (June - August)	Fall (September - November)	Winter ** (December - February)
† Overall LMA Rating (Fall Only)			U	

** Non-receipt of Summer or Winter Inspection
Reports may effect overall annual rating.

† SPRING INSPECTIONS: Overall maintenance ratings are not determined for the spring inspection results. Individual maintenance deficiencies are rated using the same criteria in the spring and in the fall.

FALL INSPECTIONS: The overall maintenance rating shown above is based on operation and maintenance deficiencies identified within the attached unit inspection reports. This rating is not intended to be an indication of risk.

Comments

**Flood Control Project Maintenance
Levee Inspections
Unit Cover Sheet**

Reclamation District No. 2098 Cache and Haas Slough

Waterway	Bank	Unit Miles
Unit No. 01 Yolo Bypass	Right	3.60

	Spring (March - May)	Summer (June - August)	(September - November) Fall	Winter (December - February)
Unit Maintenance Rating (Fall Only)			A	
Date of Inspection	4/2/2024 - 4/2/2024		10/23/2024 - 10/23/2024	
DWR Inspector	Gregg McMillon		Gregg McMillon	
Accompanied By	Justin Noutary Reclamation District 2098		Justin Noutary Reclamation District 2098	
	Greggory McMillon DWR		Mike Moncrief MBK Engineering	

Summer & Winter Inspections

The Local Maintaining Agency (LMA) is responsible for summer and winter inspections. The LMA is required to submit a report regarding summer and winter inspections to the California Department of Water Resources (DWR).

DWR must be informed on the:

- a) completion of the inspection
- b) any changes other than the results of normal maintenance
- c) corrections to deficiencies noted in this report

If additional items are noted, further documentation of those items must also be submitted.

The LMA should submit this information to DWR using the LMA web application tool available at:

<http://cdec.water.ca.gov/lma.html>

If the LMA is unable to submit information on this webpage, please contact DWR for assistance.

The LMA should submit the information and any associated documentation by September 30 for summer inspections and March 31 for winter inspections.

**Flood Control Project Maintenance
Levee Inspections**

Levee Inspection Report By Mile - Fall 2024

Reclamation District No. 2098 Cache and Haas Slough

Waterway	Bank	Unit Miles	Inspection Start/End	Inspector
Unit No. 01 Yolo Bypass	Right	3.60	10/23/2024 10/23/2024	Gregg McMillon

LM Start		Rating **	A	Issue No.	3
LM End		Issue Type +	Ma	Location *	
Category	Earthen Levee			GPS Latitude/Longitude	
				Start	End
Item	Operations & Maintenance Manuals				o
					o
DWR ID	DWR_RD2098_01_f_2014_3				
Comment Code					
OM : O&M Manuals					
Inspector Comment					
RD 2098 has O&M Manual on file.					

No Photos

LM Start		Rating **	A	Issue No.	4	
LM End		Issue Type +	Ma	Location *		
Category	Earthen Levee			GPS Latitude/Longitude		
				Start		End
Item	Emergency Supplies & Equipment					o
						o
DWR ID	DWR_RD2098_01_f_2014_4					
Comment Code						
ES : Emergency Supplies & Equipment						
Inspector Comment						
RD 2098 has emergency supplies in storage along with equipment.						

No Photos

LM Start		Rating **	A	Issue No.	5		
LM End		Issue Type +	Ma	Location *			
Category	Earthen Levee			GPS Latitude/Longitude			
				Start		End	
Item	Flood Preparedness & Training				o		o
					o		o
DWR ID	DWR_RD2098_01_f_2014_5						
Comment Code							
FP : Flood Preparedness & Training							
Inspector Comment							
RD 2098 has their team well prepared for a flood fight.							

No Photos

* Location LS : Land Side N/A : Not Applicable WS : Water Side CR : Crown		** Rating A : Acceptable M : Minimally Acceptable U : Unacceptable		N : Not Inspected/Rated C : Corrected A/W : Acceptable but Monitor & Maintain		+ Issue Type Ma : Maintenance Deficiency Ob : Design & System Obsolescence En : Enforcement	
--	--	--	--	---	--	---	--

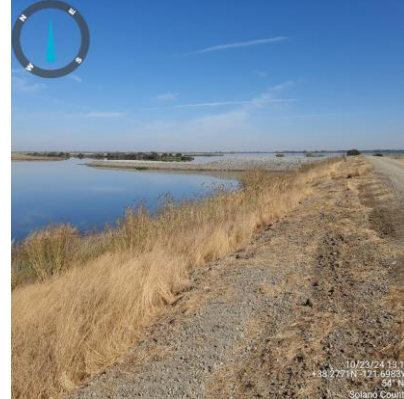
**Flood Control Project Maintenance
Levee Inspections****Levee Inspection Report By Mile - Fall 2024****Reclamation District No. 2098 Cache and Haas Slough**

Waterway	Bank	Unit Miles	Inspection Start/End	Inspector
Unit No. 01 Yolo Bypass	Right	3.60	10/23/2024 10/23/2024	Gregg McMillon

LM Start	0.00	Rating **	A/W	Issue No.	10
LM End	3.60	Issue Type +	En	Location *	CR
Category	Earthen Levee			GPS Latitude/Longitude	
				Start	End
Item	Encroachments			38.329084 °	38.277407 °
				-121.694047 °	-121.696281 °
DWR ID	DWR_RD2098_01_s _ 2023_10				
Comment Code					
LC : Authorized Levee Construction					
Inspector Comment					
Unit 1 is part of the Lookout Slough Tidal Habitat Restoration and Flood Improvement Project (in progress). The levee has been breached in several locations, degraded, and it is not possible to drive the full length of the levee. Existing maintenance issues in Unit 1 will continue to be rated A/W until the O&M manual is updated.					

LM Start	0.00	Rating **	A/W	Issue No.	10 (cont)
LM End	3.60	Issue Type +	En	Location *	CR

Photo 1 of 2 : FA_2024_RD2098_244_10_20241106_00031.jpg



View of the southern end of Unit 1 and one of the breached locations of the levee. (Fall 2024)

Photo 2 of 2 : FA_2024_RD2098_244_10_20241001_00001.jpg



View of location that will be breached as part of the project (Fall 2023).

LM Start	0.57	Rating **	A/W	Issue No.	13
LM End	1.06	Issue Type +	Ma	Location *	WS
Category	Earthen Levee			GPS Latitude/Longitude	
				Start	End
Item	Erosion / Bank Caving			38.320755 °	38.313700 °
				-121.693982 °	-121.693639 °
DWR ID	DWR_RD2098_01_s _ 2017_13				
Comment Code					
E2 : Schedule repair of erosion site prior to the next inspection.					
Inspector Comment					
There is erosion on the waterside slope. Several areas of pocket erosion on the bank are encroaching into the extended levee prism. There is some riprap protection on the lower slope in some areas. Spring 2023: Rated A/W due to ongoing habitat restoration and flood improvement project.					

Photo 1 of 1 : FA_2024_RD2098_244_13_20241001_00004.jpg



View of the erosion on the WS bank (Fall 2022).

* Location	** Rating	+ Issue Type
LS : Land Side WS : Water Side CR : Crown	A : Acceptable M : Minimally Acceptable U : Unacceptable	Ma : Maintenance Deficiency Ob : Design & System Obsolescence En : Enforcement
N : Not Inspected/Rated C : Corrected A/W : Acceptable but Monitor & Maintain		

**Flood Control Project Maintenance
Levee Inspections**

Levee Inspection Report By Mile - Fall 2024

Reclamation District No. 2098 Cache and Haas Slough

Waterway	Bank	Unit Miles	Inspection Start/End	Inspector
Unit No. 01 Yolo Bypass	Right	3.60	10/23/2024 10/23/2024	Gregg McMillon

LM Start	0.96	Rating **	A/W	Issue No.	19
LM End	0.96	Issue Type +	Ma	Location *	LS
Category	Earthen Levee			GPS Latitude/Longitude	
				Start	End
Item	Erosion / Bank Caving			38.315200 °	38.315100 °
				-121.694100 °	-121.694100 °
DWR ID	DWR_RD2098_01_s _ 2021_19				
Comment Code					
E1 : Note and monitor erosion site.					
Inspector Comment					
This was a 2017 Storm Damage site. The damage consists of cracking and sloughing of the lower landside levee slope.					
Site ID No:414					
Site Designation:LMA-241 Spring 2023: Rated A/W due to ongoing habitat restoration and flood improvement project.					

Photo 1 of 1 : FA_2024_RD2098_244_19_20241001_00006.jpg



View of the sloughing/caving on the LS slope (Fall 2022).

LM Start	1.66	Rating **	A/W	Issue No.	12
LM End	1.72	Issue Type +	En	Location *	LS
Category	Earthen Levee			GPS Latitude/Longitude	
				Start	End
Item	Encroachments			38.305059 °	38.304209 °
				-121.693631 °	-121.693997 °
DWR ID	DWR_RD2098_01_f _ 2021_12				
Comment Code					
MA : Material					
Inspector Comment					
There is additional material and equipment on the LS toe. Spring 2023: Rated A/W due to ongoing habitat restoration and flood improvement project.					

Photo 1 of 1 : FA_2024_RD2098_244_12_20241001_00003.jpg



View of material and equipment on the LS toe (Fall 2022).

LM Start	1.76	Rating **	A/W	Issue No.	18
LM End	1.76	Issue Type +	Ma	Location *	WS
Category	Earthen Levee			GPS Latitude/Longitude	
				Start	End
Item	Erosion / Bank Caving			38.303611 °	38.303611 °
				-121.693607 °	-121.693607 °
DWR ID	DWR_RD2098_01_s _ 2018_18				
Comment Code					
E2 : Schedule repair of erosion site prior to the next inspection.					
Inspector Comment					
There is erosion at the waterside toe. Spring 2023: Rated A/W due to ongoing habitat restoration and flood improvement project.					

Photo 1 of 1 : FA_2024_RD2098_244_18_20241001_00005.jpg



View of the erosion on the WS toe (Fall 2022).

* Location LS : Land Side N/A : Not Applicable WS : Water Side CR : Crown		** Rating A : Acceptable M : Minimally Acceptable U : Unacceptable N : Not Inspected/Rated C : Corrected A/W : Acceptable but Monitor & Maintain		+ Issue Type Ma : Maintenance Deficiency Ob : Design & System Obsolescence En : Enforcement	
--	--	---	--	---	--

**Flood Control Project Maintenance
Levee Inspections**

Levee Inspection Report By Mile - Fall 2024

Reclamation District No. 2098 Cache and Haas Slough

Waterway	Bank	Unit Miles	Inspection Start/End	Inspector
Unit No. 01 Yolo Bypass	Right	3.60	10/23/2024 10/23/2024	Gregg McMillon

LM Start	2.20	Rating **	A/W	Issue No.	15
LM End	2.24	Issue Type +	Ma	Location *	WS
Category	Supplemental			GPS Latitude/Longitude	
				Start	End
Item	2018 USACE Erosion Survey			38.297232°	38.296678°
				-121.693200°	-121.693223°
DWR ID	DWR_RD2098_01_s_2022_15				
Comment Code					
Inspector Comment					
2018 Site ID: YOL 2.2 R					
Status: Eroding					
2018 Field Notes: Last observed in 2017.					
Site History: POTENTIALLY UNDER REPAIR; full waterside from levee crown down, revetment failure, additional slumping and slump cracks observed.					

No Photos

LM Start	2.29	Rating **	A/W	Issue No.	27
LM End	2.32	Issue Type +	Ma	Location *	WS
Category	Earthen Levee			GPS Latitude/Longitude	
				Start	End
Item	Erosion / Bank Caving			38.295900°	38.295468°
				-121.693500°	-121.693619°
DWR ID	LMA-248				
Comment Code					
E2 : Schedule repair of erosion site prior to the next inspection.					
Inspector Comment					
This was a 2017 Storm Damage site. The damage consists of scour and sloughing of the waterside levee slope. Site ID No:421 Site Designation:LMA-248 Spring 2023: Rated A/W due to ongoing habitat restoration and flood improvement project.					

Photo 1 of 1 : FA_2024_RD2098_244_27_20241001_00008.jpg



View of the erosion on the WS slope (Fall 2022).

* Location LS : Land Side N/A : Not Applicable WS : Water Side CR : Crown		** Rating A : Acceptable M : Minimally Acceptable U : Unacceptable N : Not Inspected/Rated C : Corrected A/W : Acceptable but Monitor & Maintain		+ Issue Type Ma : Maintenance Deficiency Ob : Design & System Obsolescence En : Enforcement
--	--	---	--	---

**Flood Control Project Maintenance
Levee Inspections****Levee Inspection Report By Mile - Fall 2024****Reclamation District No. 2098 Cache and Haas Slough**

Waterway	Bank	Unit Miles	Inspection Start/End	Inspector
Unit No. 01 Yolo Bypass	Right	3.60	10/23/2024 10/23/2024	Gregg McMillon

LM Start	2.35	Rating **	A/W	Issue No.	28
LM End	2.39	Issue Type +	Ma	Location *	WS
Category	Earthen Levee			GPS Latitude/Longitude	
				Start	End
Item	Erosion / Bank Caving			38.295100 °	38.294500 °
				-121.693400 °	-121.693400 °
DWR ID	LMA-250				
Comment Code					
E2 : Schedule repair of erosion site prior to the next inspection.					
Inspector Comment					
This was a 2017 Storm Damage site. The damage consists of scour, sloughing, and cracking of the lower and mid waterside levee slope. Site ID No:423 Site Designation:LMA-250 Spring 2023: Rated A/W due to ongoing habitat restoration and flood improvement project.					

Photo 1 of 1 : FA_2024_RD2098_244_28_20241001_00009.jpg



View of the erosion on the WS slope (Spring 2023).

LM Start	2.75	Rating **	A/W	Issue No.	34
LM End	2.81	Issue Type +	Ma	Location *	WS
Category	Earthen Levee			GPS Latitude/Longitude	
				Start	End
Item	Erosion / Bank Caving			38.289200 °	38.288405 °
				-121.693500 °	-121.693617 °
DWR ID	LMA-256				
Comment Code					
E2 : Schedule repair of erosion site prior to the next inspection.					
Inspector Comment					
Fall 2022: Site is pending repair. This was a 2017 Storm Damage site. The damage consists of scour and sloughing of the waterside levee slope.					
Site ID No:429 & 430					
Site Designation:LMA-256, LMA-257 Spring 2023: Rated A/W due to ongoing habitat restoration and flood improvement project.					

Photo 1 of 1 : FA_2024_RD2098_244_34_20241001_00010.jpg



View of the erosion on the WS slope (Fall 2022).

* Location LS : Land Side N/A : Not Applicable WS : Water Side CR : Crown	** Rating A : Acceptable M : Minimally Acceptable U : Unacceptable N : Not Inspected/Rated C : Corrected A/W : Acceptable but Monitor & Maintain	+ Issue Type Ma : Maintenance Deficiency Ob : Design & System Obsolescence En : Enforcement
--	---	---

**Flood Control Project Maintenance
Levee Inspections****Levee Inspection Report By Mile - Fall 2024****Reclamation District No. 2098 Cache and Haas Slough**

Waterway	Bank	Unit Miles	Inspection Start/End	Inspector
Unit No. 01 Yolo Bypass	Right	3.60	10/23/2024 10/23/2024	Gregg McMillon

LM Start	2.91	Rating **	A/W	Issue No.	36
LM End	2.93	Issue Type +	Ma	Location *	WS
Category	Earthen Levee			GPS Latitude/Longitude	
				Start	End
Item	Erosion / Bank Caving			38.286900 °	38.286700 °
				-121.693500 °	-121.693500 °
DWR ID	LMA-258				
Comment Code					
E2 : Schedule repair of erosion site prior to the next inspection.					
Inspector Comment					
This was a 2017 Storm Damage site. The damage consists of scour and sloughing of the waterside levee slope. Site ID No:431 Site Designation:LMA-258 Spring 2023: Rated A/W due to ongoing habitat restoration and flood improvement project.					

Photo 1 of 1 : FA_2024_RD2098_244_36_20241001_00011.jpg



View looking upstream at erosion into the waterside slope (Spring 2020).

LM Start	2.99	Rating **	A/W	Issue No.	37
LM End	3.29	Issue Type +	Ma	Location *	WS
Category	Earthen Levee			GPS Latitude/Longitude	
				Start	End
Item	Erosion / Bank Caving			38.285700 °	38.281500 °
				-121.693500 °	-121.694300 °
DWR ID	LMA-259				
Comment Code					
E2 : Schedule repair of erosion site prior to the next inspection.					
Inspector Comment					
Fall 2022: Site is pending repair. This was a 2017 Storm Damage site. The damage consists of scour and sloughing of the waterside levee slope.					
Site ID No:432					
Site Designation:LMA-259 Spring 2023: Rated A/W due to ongoing habitat restoration and flood improvement project.					

Photo 1 of 1 : FA_2024_RD2098_244_37_20241001_00012.jpg



View of the erosion on the WS slope (Fall 2022).

* Location LS : Land Side N/A : Not Applicable WS : Water Side CR : Crown	** Rating A : Acceptable M : Minimally Acceptable U : Unacceptable N : Not Inspected/Rated C : Corrected A/W : Acceptable but Monitor & Maintain	+ Issue Type Ma : Maintenance Deficiency Ob : Design & System Obsolescence En : Enforcement
---	---	---

**Flood Control Project Maintenance
Levee Inspections****Levee Inspection Report By Mile - Fall 2024****Reclamation District No. 2098 Cache and Haas Slough**

Waterway	Bank	Unit Miles	Inspection Start/End	Inspector
Unit No. 01 Yolo Bypass	Right	3.60	10/23/2024 10/23/2024	Gregg McMillon

LM Start	3.13	Rating **	A/W	Issue No.	20
LM End	3.13	Issue Type +	Ma	Location *	LS
Category	Earthen Levee			GPS Latitude/Longitude	
				Start	End
Item	Trim / Thin Trees			38.283800 °	38.283800 °
				-121.693618 °	-121.693618 °
DWR ID	DWR_RD2098_01_s _ 2024_20				
Comment Code					
T2 : Tree or limb.					
Inspector Comment					
Spring 2023: Rated A/W due to ongoing habitat restoration and flood improvement project.					

Photo 1 of 1 : FA_2024_RD2098_244_20_20241001_00007.jpg



View of tree limb on the landside slope (Fall 2020).

* Location LS : Land Side N/A : Not Applicable WS : Water Side CR : Crown	** Rating A : Acceptable M : Minimally Acceptable U : Unacceptable N : Not Inspected/Rated C : Corrected A/W : Acceptable but Monitor & Maintain	+ Issue Type Ma : Maintenance Deficiency Ob : Design & System Obsolescence En : Enforcement
--	---	---

**Flood Control Project Maintenance
Levee Inspections
Unit Cover Sheet**

Reclamation District No. 2098 Cache and Haas Slough

Waterway	Bank	Unit Miles
Unit No. 01A Cross Levee	Right	0.53

	Spring (March - May)	Summer (June - August)	(September - November) Fall	Winter (December - February)
Unit Maintenance Rating (Fall Only)			A	
Date of Inspection	4/2/2024 - 4/2/2024		10/23/2024 - 10/23/2024	
DWR Inspector	Gregg McMillon		Gregg McMillon	
Accompanied By	Justin Noutary Reclamation District 2098		Justin Noutary Reclamation District 2098	
			Mike Moncrief MBK Engineering	

Summer & Winter Inspections

The Local Maintaining Agency (LMA) is responsible for summer and winter inspections. The LMA is required to submit a report regarding summer and winter inspections to the California Department of Water Resources (DWR).

DWR must be informed on the:

- a) completion of the inspection
- b) any changes other than the results of normal maintenance
- c) corrections to deficiencies noted in this report

If additional items are noted, further documentation of those items must also be submitted.

The LMA should submit this information to DWR using the LMA web application tool available at:

<http://cdec.water.ca.gov/lma.html>

If the LMA is unable to submit information on this webpage, please contact DWR for assistance.

The LMA should submit the information and any associated documentation by September 30 for summer inspections and March 31 for winter inspections.

**Flood Control Project Maintenance
Levee Inspections****Levee Inspection Report By Mile - Fall 2024****Reclamation District No. 2098 Cache and Haas Slough**

Waterway	Bank	Unit Miles	Inspection Start/End	Inspector
Unit No. 01A Cross Levee	Right	0.53	10/23/2024 10/23/2024	Gregg McMillon

LM Start	0.00	Rating **	A/W	Issue No.	2
LM End	0.53	Issue Type +	En	Location *	CR
Category	Earthen Levee			GPS Latitude/Longitude	
				Start	End
Item	Encroachments			38.277410 °	38.275707 °
				-121.696280 °	-121.705705 °
DWR ID	DWR_RD2098_01A_s_2023_2				
Comment Code					
LC : Authorized Levee Construction					
Inspector Comment					
Unit 1A is part of the Lookout Slough Tidal Habitat Restoration and Flood Improvement Project (in progress). Existing maintenance issues in Unit 1A will continue to be rated A/W. The O&M manual is currently being updated.					

Photo 1 of 1 : FA_2024_RD2098_245_2_20241001_00001.jpg



View of construction area on Unit 1 that extends through Unit 1A (Fall 2023).

LM Start	0.09	Rating **	A/W	Issue No.	1
LM End	0.52	Issue Type +	Ma	Location *	LS
Category	Earthen Levee			GPS Latitude/Longitude	
				Start	End
Item	Vegetation			38.277124 °	38.275701 °
				-121.697906 °	-121.705579 °
DWR ID	DWR_RD2098_01A_f_2024_1				
Comment Code					
V1 : Control annual grass and weeds on the levee slopes and easements.					
Inspector Comment					

Photo 1 of 1 : FA_2024_RD2098_245_1_20241106_00002.jpg



View of vegetation on the landside slope. (Fall 2024)

* Location LS : Land Side N/A : Not Applicable WS : Water Side CR : Crown	** Rating A : Acceptable M : Minimally Acceptable U : Unacceptable N : Not Inspected/Rated C : Corrected A/W : Acceptable but Monitor & Maintain	+ Issue Type Ma : Maintenance Deficiency Ob : Design & System Obsolescence En : Enforcement
--	---	---

**Flood Control Project Maintenance
Levee Inspections
Unit Cover Sheet**

Reclamation District No. 2098 Cache and Haas Slough

Waterway	Bank	Unit Miles
Unit No. 02 Cache Slough	Left	1.89

	Spring (March - May)	Summer (June - August)	(September - November) Fall	Winter (December - February)
Unit Maintenance Rating (Fall Only)			A	
Date of Inspection	4/2/2024 - 4/2/2024		10/23/2024 - 10/23/2024	
DWR Inspector	Gregg McMillon		Gregg McMillon	
Accompanied By	Justin Noutary Reclamation District 2098		Justin Noutary Reclamation District 2098	
			Mike Moncrief MBK Engineering	

Summer & Winter Inspections

The Local Maintaining Agency (LMA) is responsible for summer and winter inspections. The LMA is required to submit a report regarding summer and winter inspections to the California Department of Water Resources (DWR).

DWR must be informed on the:

- a) completion of the inspection
- b) any changes other than the results of normal maintenance
- c) corrections to deficiencies noted in this report

If additional items are noted, further documentation of those items must also be submitted.

The LMA should submit this information to DWR using the LMA web application tool available at:

<http://cdec.water.ca.gov/lma.html>

If the LMA is unable to submit information on this webpage, please contact DWR for assistance.

The LMA should submit the information and any associated documentation by September 30 for summer inspections and March 31 for winter inspections.

**Flood Control Project Maintenance
Levee Inspections****Levee Inspection Report By Mile - Fall 2024****Reclamation District No. 2098 Cache and Haas Slough**

Waterway	Bank	Unit Miles	Inspection Start/End	Inspector
Unit No. 02 Cache Slough	Left	1.89	10/23/2024 10/23/2024	Gregg McMillon

LM Start	5.29	Rating **	A/W	Issue No.	7
LM End	7.18	Issue Type +	En	Location *	CR
Category	Earthen Levee			GPS Latitude/Longitude	
				Start	End
Item	Encroachments			38.275706°	38.293073°
				-121.705699°	-121.724076°
DWR ID	DWR_RD2098_02_f_2022_7				
Comment Code					
LC : Authorized Levee Construction					
Inspector Comment					
Unit 2 is part of the Lookout Slough Tidal Habitat Restoration and Flood Improvement Project (in progress). Existing maintenance issues in Unit 2 will continue to be rated A/W until the O&M manual has been updated.					

No Photos

LM Start	5.58	Rating **	A/W	Issue No.	6
LM End	5.58	Issue Type +	Ma	Location *	LS
Category	Earthen Levee			GPS Latitude/Longitude	
				Start	End
Item	Seepage / Sandboils			38.278989 °	38.278989 °
				-121.708859 °	-121.708859 °
DWR ID	DWR_RD2098_02_s_2024_6				
Comment Code					
SS : Seepage / Sandboils					
Inspector Comment					
RD observed possible seepage area during 2024 rainy season. During Spring 2024 inspection no visible seepage was observed.					

No Photos

LM Start	5.62	Rating **	A/W	Issue No.	5
LM End	5.80	Issue Type +	Ma	Location *	LS
Category	Earthen Levee			GPS Latitude/Longitude	
				Start	End
Item	Vegetation			38.279575 °	38.282081 °
				-121.709325 °	-121.710075 °
DWR ID	DWR_RD2098_02_f_2024_5				
Comment Code					
V1 : Control annual grass and weeds on the levee slopes and easements.					
Inspector Comment					

Photo 1 of 1 : FA_2024_RD2098_246_5_20241106_00017.jpg



View of vegetation on the landside slope. (Fall 2024)

* Location	** Rating	+ Issue Type
LS : Land Side WS : Water Side CR : Crown	A : Acceptable M : Minimally Acceptable U : Unacceptable N : Not Inspected/Rated C : Corrected A/W : Acceptable but Monitor & Maintain	Ma : Maintenance Deficiency Ob : Design & System Obsolescence En : Enforcement

**Flood Control Project Maintenance
Levee Inspections****Levee Inspection Report By Mile - Fall 2024****Reclamation District No. 2098 Cache and Haas Slough**

Waterway	Bank	Unit Miles	Inspection Start/End	Inspector
Unit No. 02 Cache Slough	Left	1.89	10/23/2024 10/23/2024	Gregg McMillon

LM Start	5.88	Rating **	A/W	Issue No.	11
LM End	5.88	Issue Type +	Ma	Location *	WS
Category	Earthen Levee			GPS Latitude/Longitude	
				Start	End
Item	Erosion / Bank Caving			38.282946°	38.282946°
				-121.710902°	-121.710902°
DWR ID	DWR_RD2098_02_f_2020_11				
Comment Code					
E2 : Schedule repair of erosion site prior to the next inspection.					
Inspector Comment					
This waterside slump site is not new, and is somewhat protected by riprap and thick brushy vegetation, but it has the potential to erode into crown during high water with a strong south wind. It currently has a two-foot vertical scarp at the levee shoulder. Spring 2023: Rated A/W due to ongoing habitat restoration and flood improvement project.					

Photo 1 of 1 : FA_2024_RD2098_246_11_20241001_00002.jpg



View of the erosion on the WS slope (Fall 2022).

LM Start	6.18	Rating **	A	Issue No.	19
LM End	6.18	Issue Type +	Ma	Location *	
Category	Supplemental			GPS Latitude/Longitude	
				Start	End
Item	DWR UCIP LMA Responsibility			38.284928 °	38.284928 °
				-121.715355 °	-121.715355 °
DWR ID	20974				
Comment Code					
Inspector Comment					
DS_ID:20974 FS_ID:74580 EP_NO: 10172 Repair Type: No Action Needed EVAL Issue: Crossing Status: Found UCIP Comments: 04/12/2022 Record remains No Action Needed. No issues observed during inspection except minor issue of half broken lid on riser. System Feature. (D.Sanoski - DWR UCIP) 12/22/2016 Met with Mike Hadesty, LMA Superintendent, and Brian Bush, LMA General Manager, to go over the list of pipes in RD2098. Per LMA, pipe is a drainage pipe. (O. Magana - DWR UCIP) FIELD_STRUCT_DESC: 24-inch corrugated metal drainage pipe through the levee, 21.5 feet below the crown. Two cutoff walls around the pipe at the levee shoulders. Slide gate in corrugated metal pipe (CMP) riser on the waterside (WS) slope. Flap gate and concrete U-shaped headwall on the landside (LS) end. (24-inch pipe [HLM 6.21] authorized under Automatic Board Order (ABO) issued as Permit No. 10172, 1974 - Moresco Brothers). [Additional Reference(s): DWR Levee Log, 2003 (HLM 6.21). USACE Sacramento O&M Manual, Unit 109, April 1962, Revised 29 December 2016, (HLM 6.21), listed as 24-inch pipe]. FS Date: 4/12/2022 12:55:23 PM					

Photo 1 of 3 : UCIP_FA_2024_74580_111390.jpg



View of levee crown.

* Location	** Rating	+ Issue Type
LS : Land Side WS : Water Side CR : Crown	A : Acceptable M : Minimally Acceptable U : Unacceptable N : Not Inspected/Rated C : Corrected A/W : Acceptable but Monitor & Maintain	Ma : Maintenance Deficiency Ob : Design & System Obsolescence En : Enforcement

**Flood Control Project Maintenance
Levee Inspections****Levee Inspection Report By Mile - Fall 2024****Reclamation District No. 2098 Cache and Haas Slough**

Waterway	Bank	Unit Miles	Inspection Start/End	Inspector
Unit No. 02 Cache Slough	Left	1.89	10/23/2024 10/23/2024	Gregg McMillon

LM Start	6.18	Rating **	A	Issue No.	19 (cont)
LM End	6.18	Issue Type +	Ma	Location *	
Category	Supplemental			GPS Latitude/Longitude	
				Start	End
Item	DWR UCIP LMA Responsibility			38.284928 °	38.284928 °
				-121.715355 °	-121.715355 °
DWR ID	20974				

Photo 2 of 3 : UCIP_FA_2024_74580_111389.jpg



View of pipe with flap gate out of WS toe.

LM Start	6.18	Rating **	A	Issue No.	19 (cont)
LM End	6.18	Issue Type +	Ma	Location *	

Photo 3 of 3 : UCIP_FA_2024_74580_111392.jpg



View of LS shoulder and slope.

LM Start	6.46	Rating **	A/W	Issue No.	15
LM End	6.48	Issue Type +	Ma	Location *	WS
Category	Earthen Levee			GPS Latitude/Longitude	
				Start	End
Item	Erosion / Bank Caving			38.288700 °	38.289061 °
				-121.717000 °	-121.716885 °
DWR ID	LMA-267				

Comment Code

E2 : Schedule repair of erosion site prior to the next inspection.

Inspector Comment

This was a 2017 Storm Damage site.
The damage consists of scour of the lower and mid waterside levee slope.
Site ID No:440 & 441
Site Designation:LMA-267 & LMA-268 Spring 2023: Rated A/W due to ongoing habitat restoration and flood improvement project.

Photo 1 of 1 : FA_2024_RD2098_246_15_20241001_00003.jpg



View of the erosion on the WS (Spring 2023).

* Location	** Rating	+ Issue Type
LS : Land Side WS : Water Side CR : Crown	A : Acceptable M : Minimally Acceptable U : Unacceptable	Ma : Maintenance Deficiency Ob : Design & System Obsolescence En : Enforcement
N/A : Not Applicable	N : Not Inspected/Rated C : Corrected A/W : Acceptable but Monitor & Maintain	

**Flood Control Project Maintenance
Levee Inspections****Levee Inspection Report By Mile - Fall 2024****Reclamation District No. 2098 Cache and Haas Slough**

Waterway	Bank	Unit Miles	Inspection Start/End	Inspector
Unit No. 02 Cache Slough	Left	1.89	10/23/2024 10/23/2024	Gregg McMillon

LM Start	6.64	Rating **	A/W	Issue No.	18
LM End	6.65	Issue Type +	Ma	Location *	WS
Category	Earthen Levee			GPS Latitude/Longitude	
				Start	End
Item	Erosion / Bank Caving			38.291300 °	38.291400 °
				-121.716100 °	-121.716000 °
DWR ID	LMA-269				
Comment Code					
E2 : Schedule repair of erosion site prior to the next inspection.					
Inspector Comment					
This was a 2017 Storm Damage site. The damage consists of scour, cracking, instability, and sloughing of the waterside levee slope. Site ID No:442 Site Designation:LMA-269 Spring 2023: Rated A/W due to ongoing habitat restoration and flood improvement project.					

Photo 1 of 1 : FA_2024_RD2098_246_18_20241106_00018.jpg



View of the erosion on the waterside (Fall 2024).

LM Start	6.68	Rating **	C	Issue No.	9
LM End	6.68	Issue Type +	Ma	Location *	LS
Category	Earthen Levee			GPS Latitude/Longitude	
				Start	End
Item	Encroachments			38.291779 °	38.291779 °
				-121.715727 °	-121.715727 °
DWR ID	DWR_RD2098_02_s_2022_9				
Comment Code					
PR : Prunings					
Inspector Comment					

No Photos

* Location LS : Land Side N/A : Not Applicable WS : Water Side CR : Crown	** Rating A : Acceptable M : Minimally Acceptable U : Unacceptable N : Not Inspected/Rated C : Corrected A/W : Acceptable but Monitor & Maintain	+ Issue Type Ma : Maintenance Deficiency Ob : Design & System Obsolescence En : Enforcement
--	---	---

**Flood Control Project Maintenance
Levee Inspections****Levee Inspection Report By Mile - Fall 2024****Reclamation District No. 2098 Cache and Haas Slough**

Waterway	Bank	Unit Miles	Inspection Start/End	Inspector
Unit No. 02 Cache Slough	Left	1.89	10/23/2024 10/23/2024	Gregg McMillon

LM Start	6.71	Rating **	A	Issue No.	20	
LM End	6.71	Issue Type +	Ma	Location *		
Category	Supplemental			GPS Latitude/Longitude		
				Start	End	
Item	DWR UCIP LMA Responsibility			38.292194 °	38.292194 °	
				-121.715853 °	-121.715853 °	
DWR ID	20976					
Comment Code						
Inspector Comment						
DS_ID:20976 FS_ID:74585 EP_NO: 10172 Repair Type: No Action Needed EVAL Issue: Crossing Status: Found UCIP Comments: 04/12/2022 Record updated from Non-Urgent to No Action Needed. No issues observed during inspection. WS toe too overgrown to see inlet, but appears same conditions as last inspection. System Feature. (D.Sanoski - DWR UCIP) 03/18/2014 Headwalls on WS toe failing at outlet. It is unclear if these were permanent installations or something that was installed as a temporary fix. (W. Wylie - DWR UCIP) FIELD_STRUCT_DESC: 1 of 2: 48-inch corrugated metal drainage pipe through the levee, 29 feet below the crown. Two slide gates in a 7-foot-diameter corrugated metal pipe (CMP) riser on the waterside (WS) slope. (Two 48-inch [HLM 6.75] authorized under Automatic Board Order (ABO) issued as Permit No. 10172, 1974 - Moresco Brothers). [Additional Reference(s): DWR Levee Log, 2003 (HLM 6.75). USACE Sacramento O&M Manual, Unit 109, April 1962, Revised 29 December 2016, (HLM 6.75), listed as Two 48-inch pipes]. FS Date: 4/12/2022 12:55:59 PM						

LM Start	6.71	Rating **	A	Issue No.	20 (cont)
LM End	6.71	Issue Type +	Ma	Location *	

Photo 1 of 3 : UCIP_FA_2024_74585_111408.jpg



View of levee crown.

Photo 2 of 3 : UCIP_FA_2024_74585_111406.jpg



View of pipe out of LS slope with metal retaining wall.

* Location	** Rating	+ Issue Type
LS : Land Side WS : Water Side CR : Crown	A : Acceptable M : Minimally Acceptable U : Unacceptable N : Not Inspected/Rated C : Corrected A/W : Acceptable but Monitor & Maintain	Ma : Maintenance Deficiency Ob : Design & System Obsolescence En : Enforcement

**Flood Control Project Maintenance
Levee Inspections****Levee Inspection Report By Mile - Fall 2024****Reclamation District No. 2098 Cache and Haas Slough**

Waterway	Bank	Unit Miles	Inspection Start/End	Inspector
Unit No. 02 Cache Slough	Left	1.89	10/23/2024 10/23/2024	Gregg McMillon

LM Start	6.71	Rating **	A	Issue No.	20 (cont)
LM End	6.71	Issue Type +	Ma	Location *	
Category	Supplemental			GPS Latitude/Longitude	
				Start	End
Item	DWR UCIP LMA Responsibility			38.292194 °	38.292194 °
				-121.715853 °	-121.715853 °
DWR ID	20976				

Photo 3 of 3 : UCIP_FA_2024_74585_111409.jpg



View of WS shoulder with CMP riser on slope.

LM Start	6.72	Rating **	A	Issue No.	21
LM End	6.72	Issue Type +	Ma	Location *	
Category	Supplemental			GPS Latitude/Longitude	
				Start	End
Item	DWR UCIP LMA Responsibility			38.292234 °	38.292234 °
				-121.715875 °	-121.715875 °
DWR ID	20961				

Comment Code**Inspector Comment**

DS_ID:20961
FS_ID:74586
EP_NO: 10172
Repair Type: No Action Needed
EVAL Issue:
Crossing Status: Found
UCIP Comments: 04/12/2022 Record updated from Non-Urgent to No Action Needed. No issues observed during inspection. WS too overgrown to see WS toe completely, but appears same as last inspection. System Feature. (D.Sanoski - DWR UCIP)
03/18/2014 Headwalls at WS toe failing. It is uncertain if these retaining walls were a permanent fixture or a temporary fix that failed. (W. Wylie - DWR UCIP)
FIELD_STRUCT_DESC: 2 of 2: 48-inch corrugated metal drainage pipe through the levee, 29 feet below the crown. Two slide gates in a 7-foot-diameter corrugated metal pipe (CMP) riser on the waterside (WS) slope. (Two 48-inch pipes [HLM 6.75] authorized under Automatic Board Order (ABO) issued as Permit No. 10172, 1974 - Moresco Brothers). [Additional Reference(s): DWR Levee Log, 2003 (HLM 6.75). USACE Sacramento O&M Manual, Unit 109, April 1962, Revised 29 December 2016, (HLM 6.75), listed as Two 48-inch pipes].
FS Date: 4/12/2022 12:56:18 PM

Photo 1 of 3 : UCIP_FA_2024_74586_111417.jpg



View of levee crown.

* Location	** Rating	+ Issue Type
LS : Land Side WS : Water Side CR : Crown	A : Acceptable M : Minimally Acceptable U : Unacceptable	Ma : Maintenance Deficiency Ob : Design & System Obsolescence En : Enforcement
	N : Not Inspected/Rated C : Corrected A/W : Acceptable but Monitor & Maintain	

**Flood Control Project Maintenance
Levee Inspections****Levee Inspection Report By Mile - Fall 2024****Reclamation District No. 2098 Cache and Haas Slough**

Waterway	Bank	Unit Miles	Inspection Start/End	Inspector
Unit No. 02 Cache Slough	Left	1.89	10/23/2024 10/23/2024	Gregg McMillon

LM Start	6.72	Rating **	A	Issue No.	21 (cont)
LM End	6.72	Issue Type +	Ma	Location *	
Category	Supplemental		GPS Latitude/Longitude		
			Start	End	
Item	DWR UCIP LMA Responsibility		38.292234 °	38.292234 °	
			-121.715875 °	-121.715875 °	
DWR ID	20961				

Photo 2 of 3 : UCIP_FA_2024_74586_111420.jpg



View of pipe out of LS slope with metal retaining wall.

LM Start	6.72	Rating **	A	Issue No.	21 (cont)
LM End	6.72	Issue Type +	Ma	Location *	

Photo 3 of 3 : UCIP_FA_2024_74586_111418.jpg



View of WS shoulder with CMP riser on slope.

* Location LS : Land Side N/A : Not Applicable WS : Water Side CR : Crown	** Rating A : Acceptable M : Minimally Acceptable U : Unacceptable N : Not Inspected/Rated C : Corrected A/W : Acceptable but Monitor & Maintain	+ Issue Type Ma : Maintenance Deficiency Ob : Design & System Obsolescence En : Enforcement
--	---	---

**Flood Control Project Maintenance
Levee Inspections****Levee Inspection Report By Mile - Fall 2024****Reclamation District No. 2098 Cache and Haas Slough**

Waterway	Bank	Unit Miles	Inspection Start/End	Inspector
Unit No. 02 Cache Slough	Left	1.89	10/23/2024 10/23/2024	Gregg McMillon

LM Start	7.19	Rating **	M	Issue No.	22
LM End	7.19	Issue Type +	Ma	Location *	
Category	Supplemental			GPS Latitude/Longitude	
				Start	End
Item	DWR UCIP LMA Responsibility			38.293139°	38.293139°
				-121.724174°	-121.724174°
DWR ID	20977				

Comment Code**Inspector Comment**

DS_ID:20977
FS_ID:74588
EP_NO: 10171
Repair Type: Non-Urgent
EVAL Issue:
Crossing Status: Found
UCIP Comments: 04/12/2022 Record remains Non-Urgent. Crossing appears abandoned. System Feature. (D.Sanoski - DWR UCIP)
(D.Sanoski - DWR UCIP)
12/22/2016 Met with Mike Hadesty, LMA Superintendent, and Brian Bush, LMA General Manager, to go over the list of pipes in RD2098. Per LMA, pipe is a drainage pipe.(O. Magana - DWR UCIP)
03/18/2014 Pipe appears to be abandoned and if so it should be done so properly. Walkway to gate valve actuator on WS slope is in disrepair and does not appear to be safe for use. (W. Wylie - DWR UCIP)
FIELD_STRUCT_DESC: 36-inch corrugated metal drainage pipe through the levee, 23 feet below the crown. Walkway to slide gate on the waterside (WS) end. Slide gate at the landside (LS) toe. (36-inch pipe [HLM 7.23] authorized under Automatic Board Order (ABO) issued as Permit No. 10171, 1974 - Glenn A. Bowsbey). [Additional Reference(s): DWR Levee Log, 2003 (HLM 7.23). USACE Sacramento O&M Manual, Unit 109, April 1962, Revised 29 December 2016, (HLM 7.23), listed as 36-inch pipe].
FS Date: 4/12/2022 12:56:49 PM

LM Start	7.19	Rating **	M	Issue No.	22 (cont)
LM End	7.19	Issue Type +	Ma	Location *	

Photo 1 of 3 : UCIP_FA_2024_74588_111422.jpg



View of levee crown.

Photo 2 of 3 : UCIP_FA_2024_74588_111425.jpg



View of LS slope and slide gate on toe.

* Location	** Rating	+ Issue Type
LS : Land Side WS : Water Side CR : Crown	A : Acceptable M : Minimally Acceptable U : Unacceptable	Ma : Maintenance Deficiency Ob : Design & System Obsolescence En : Enforcement
N/A : Not Applicable	N : Not Inspected/Rated C : Corrected A/W : Acceptable but Monitor & Maintain	

**Flood Control Project Maintenance
Levee Inspections****Levee Inspection Report By Mile - Fall 2024****Reclamation District No. 2098 Cache and Haas Slough**

Waterway	Bank	Unit Miles	Inspection Start/End	Inspector
Unit No. 02 Cache Slough	Left	1.89	10/23/2024 10/23/2024	Gregg McMillon

LM Start	7.19	Rating **	M	Issue No.	22 (cont)
LM End	7.19	Issue Type +	Ma	Location *	
Category	Supplemental			GPS Latitude/Longitude	
				Start	End
Item	DWR UCIP LMA Responsibility			38.293139 °	38.293139 °
				-121.724174 °	-121.724174 °
DWR ID	20977				

Photo 3 of 3 : UCIP_FA_2024_74588_111424.jpg



View of WS slope and abandoned walkway.

* Location LS : Land Side N/A : Not Applicable WS : Water Side CR : Crown	** Rating A : Acceptable M : Minimally Acceptable U : Unacceptable N : Not Inspected/Rated C : Corrected A/W : Acceptable but Monitor & Maintain	+ Issue Type Ma : Maintenance Deficiency Ob : Design & System Obsolescence En : Enforcement
--	---	---

**Flood Control Project Maintenance
Levee Inspections
Unit Cover Sheet**

Reclamation District No. 2098 Cache and Haas Slough

Waterway	Bank	Unit Miles
Unit No. 03 Haas Slough	Right	1.94

	Spring (March - May)	Summer (June - August)	(September - November) Fall	Winter (December - February)
Unit Maintenance Rating (Fall Only)			U	
Date of Inspection	4/2/2024 - 4/2/2024		10/23/2024 - 10/23/2024	
DWR Inspector	Gregg McMillon		Gregg McMillon	
Accompanied By	Justin Noutary Reclamation District 2098		Justin Noutary Reclamation District 2098	
	Greggory McMillon DWR		Mike Moncrief MBK Engineering	

Summer & Winter Inspections

The Local Maintaining Agency (LMA) is responsible for summer and winter inspections. The LMA is required to submit a report regarding summer and winter inspections to the California Department of Water Resources (DWR).

DWR must be informed on the:

- a) completion of the inspection
- b) any changes other than the results of normal maintenance
- c) corrections to deficiencies noted in this report

If additional items are noted, further documentation of those items must also be submitted.

The LMA should submit this information to DWR using the LMA web application tool available at:

<http://cdec.water.ca.gov/lma.html>

If the LMA is unable to submit information on this webpage, please contact DWR for assistance.

The LMA should submit the information and any associated documentation by September 30 for summer inspections and March 31 for winter inspections.

Flood Control Project Maintenance
Levee Inspections

Levee Inspection Report By Mile - Fall 2024

Reclamation District No. 2098 Cache and Haas Slough

Waterway	Bank	Unit Miles	Inspection Start/End	Inspector
Unit No. 03 Haas Slough	Right	1.94	10/23/2024 10/23/2024	Gregg McMillon

LM Start	7.18	Rating **	A/W	Issue No.	6
LM End	8.31	Issue Type +	En	Location *	CR
Category	Earthen Levee			GPS Latitude/Longitude	
				Start	End
Item	Encroachments			38.293107 °	38.306511 °
				-121.724136 °	-121.731462 °
DWR ID	DWR_RD2098_03_s _ 2023_6				
Comment Code					
LC : Authorized Levee Construction					
Inspector Comment					
This section of Unit 3 is part of the Lookout Slough Tidal Habitat Restoration and Flood Improvement Project (in progress). The project area is bounded by a newly constructed levee along Duck Slough, which connects to Unit 3 at LM 8.31.					

Photo 1 of 1 : FA_2024_RD2098_247_6_20241001_00003.jpg



View of the newly constructed setback levee along Duck Slough connecting to Unit 3 at LM 8.31, looking east-southeast (Spring 2023).

LM Start	7.24	Rating **	A	Issue No.	19	
LM End	7.24	Issue Type +	Ma	Location *		
Category	Supplemental			GPS Latitude/Longitude		
				Start	End	
Item	DWR UCIP LMA Responsibility			38.293741 °	38.293741 °	
				-121.724787 °	-121.724787 °	
DWR ID	20978					
Comment Code						
Inspector Comment						
DS_ID:20978 FS_ID:74589 EP_NO: 10171 Repair Type: No Action Needed EVAL Issue: Crossing Status: Found UCIP Comments: 04/12/2022 Record remains No Action Needed. No issues observed during inspection. This pipe appears to fully functioning. System Feature. (D.Sanoski - DWR UCIP) 09/14/2017 Permit review indicates this 24-inch pipe was authorized as an irrigation and drainage pipe under ABO issued as Permit No. 10171 structure description was updated. Structure type logged as drainage. (DWR UCIP - O. Magana) FIELD_STRUCT_DESC: 24-inch steel dual-purpose irrigation and drainage pipe through the levee, 4.5 feet below the crown. CM cutoff wall around pipe. Siphon breaker on waterward slope. Gate valve on landward side. Walkway to slide gate on waterward end. Pump on structure in drain on landward side. (24-inch pipe [HLM 7.23] authorized under Automatic Board Order (ABO) issued as Permit No. 10171, 1974 - Glenn A. Bowsbey). [Additional Reference(s): DWR Levee Log, 2003 (HLM 7.28). USACE Sacramento O&M Manual, Unit 109, April 1962, Revised 29 December 2016, (HLM 7.28), listed as 24-inch pipe]. FS Date: 4/12/2022 12:57:07 PM						

No Photos

* Location	** Rating	+ Issue Type
LS : Land Side WS : Water Side CR : Crown	A : Acceptable M : Minimally Acceptable U : Unacceptable	Ma : Maintenance Deficiency Ob : Design & System Obsolescence En : Enforcement
N/A : Not Applicable	N : Not Inspected/Rated C : Corrected A/W : Acceptable but Monitor & Maintain	

**Flood Control Project Maintenance
Levee Inspections****Levee Inspection Report By Mile - Fall 2024****Reclamation District No. 2098 Cache and Haas Slough**

Waterway	Bank	Unit Miles	Inspection Start/End	Inspector
Unit No. 03 Haas Slough	Right	1.94	10/23/2024 10/23/2024	Gregg McMillon

LM Start	7.33	Rating **	M	Issue No.	7
LM End	7.72	Issue Type +	Ma	Location *	WS
Category	Supplemental			GPS Latitude/Longitude	
				Start	End
Item	2018 USACE Erosion Survey			38.294858 °	38.299606 °
				-121.725433 °	-121.728621 °
DWR ID	DWR_RD2098_03_s _ 2022_7				
Comment Code					
Inspector Comment					
2018 Site ID: HAS 7.9 L					
Status: Eroding					
2018 Field Notes: Last observed in 2017.					
Site History: 2011 - Large vertical erosion pockets and bank slumping.					
2017 - POSSIBLY BEING FIXED BY RD; deep cracks along bank and toe, intermittent slump.					

No Photos

LM Start	7.67	Rating **	A/W	Issue No.	15
LM End	7.67	Issue Type +	Ma	Location *	WS
Category	Earthen Levee			GPS Latitude/Longitude	
				Start	End
Item	Erosion / Bank Caving			38.298779 °	38.298779 °
				-121.728582 °	-121.728582 °
DWR ID	DWR_RD2098_03_s _ 2024_15				
Comment Code					
E1 : Note and monitor erosion site.					
Inspector Comment					
Bank caving observed at location that appears to be an old erosion site.					

Photo 1 of 1 : FA_2024_RD2098_247_15_20241106_00013.jpg



View of erosion on the waterside slope. (Fall 2024)

* Location LS : Land Side N/A : Not Applicable WS : Water Side CR : Crown		** Rating A : Acceptable M : Minimally Acceptable U : Unacceptable N : Not Inspected/Rated C : Corrected A/W : Acceptable but Monitor & Maintain		+ Issue Type Ma : Maintenance Deficiency Ob : Design & System Obsolescence En : Enforcement	
--	--	---	--	---	--

**Flood Control Project Maintenance
Levee Inspections****Levee Inspection Report By Mile - Fall 2024****Reclamation District No. 2098 Cache and Haas Slough**

Waterway	Bank	Unit Miles	Inspection Start/End	Inspector
Unit No. 03 Haas Slough	Right	1.94	10/23/2024 10/23/2024	Gregg McMillon

LM Start	8.05	Rating **	M	Issue No.	9
LM End	8.34	Issue Type +	Ma	Location *	WS
Category	Supplemental			GPS Latitude/Longitude	
				Start	End
Item	2018 USACE Erosion Survey			38.304278 °	38.306705 °
				-121.727960 °	-121.732014 °
DWR ID	DWR_RD2098_03_s _ 2022_9				
Comment Code					
Inspector Comment					
2018 Site ID: HAS 8.4 L					
Status: Eroding					
2018 Field Notes: Last observed in 2017.					
Site History: Horizontal cracks; scour along toe; poorly constructed levee susceptible to erosion.					

No Photos

LM Start	8.12	Rating **	C	Issue No.	16
LM End	8.12	Issue Type +	En	Location *	LS
Category	Earthen Levee			GPS Latitude/Longitude	
				Start	End
Item	Encroachments			38.305147 °	38.305147 °
				-121.728275 °	-121.728275 °
DWR ID	DWR_RD2098_03_s _ 2024_16				
Comment Code					
RA : Ramp					
Inspector Comment					

No Photos

* Location LS : Land Side N/A : Not Applicable WS : Water Side CR : Crown	** Rating A : Acceptable M : Minimally Acceptable U : Unacceptable N : Not Inspected/Rated C : Corrected A/W : Acceptable but Monitor & Maintain	+ Issue Type Ma : Maintenance Deficiency Ob : Design & System Obsolescence En : Enforcement
--	---	---

**Flood Control Project Maintenance
Levee Inspections**

Levee Inspection Report By Mile - Fall 2024

Reclamation District No. 2098 Cache and Haas Slough

Waterway	Bank	Unit Miles	Inspection Start/End	Inspector
Unit No. 03 Haas Slough	Right	1.94	10/23/2024 10/23/2024	Gregg McMillon

LM Start	8.16	Rating **	M	Issue No.	20	
LM End	8.16	Issue Type +	Ma	Location *		
Category	Supplemental			GPS Latitude/Longitude		
				Start	End	
Item	DWR UCIP LMA Responsibility			38.305462 °	38.305462 °	
				-121.728881 °	-121.728881 °	
DWR ID	20981					
Comment Code						
Inspector Comment						
DS_ID:20981 FS_ID:74598 EP_NO: 10174 Repair Type: Non-Urgent EVAL Issue: Crossing Status: Found UCIP Comments: 04/12/2022 Record updated from No Action Needed to Non-Urgent. Crossing appears abandoned per Superintendent Bryce Hall per Lookout Slough Rehabilitation Project. System Feature. (D.Sanoski - DWR UCIP) 12/22/2016 Crossing has been downgraded from Urgent to No Action Needed walkways on both WS and LS have been rebuilt and the WS gate has been upgraded to stainless steel where previous corrodable material was present. (O. Magana - DWR UCIP) 03/19/2014 Current walkway to slidegate on WS toe does not provide safe access to operate slidegate. (W. Wylie - DWR UCIP) FIELD_STRUCT_DESC: 36-inch steel dual-purpose irrigation and drainage pipe through the levee, 26 feet below the crown. Two corrugated metal cutoff walls around the pipe. Walkway to the slide gate on the waterside (WS) end. Combination slide and flap gate on the landside (LS) end. 48-inch corrugated metal pipe (CMP) riser and an adjoining pump on a metal pier at the LS toe. (36-inch pipe [HLM 8.20] authorized under Automatic Board Order (ABO) issued as Permit No. 10174, 1974 - Glen A. Bowsbey). [Additional Reference(s): DWR Levee Log, 2003 (HLM 8.20). USACE Sacramento O&M Manual, Unit 109, April 1962, Revised 29 December 2016, (HLM 8.20), listed as 36-inch pipe]. FS Date: 4/12/2022 1:01:14 PM						

Photo 1 of 3 : UCIP_FA_2024_74598_111454.jpg



View of levee crown.

* Location LS : Land Side N/A : Not Applicable WS : Water Side CR : Crown	** Rating A : Acceptable M : Minimally Acceptable U : Unacceptable N : Not Inspected/Rated C : Corrected A/W : Acceptable but Monitor & Maintain	+ Issue Type Ma : Maintenance Deficiency Ob : Design & System Obsolescence En : Enforcement
--	---	---

**Flood Control Project Maintenance
Levee Inspections****Levee Inspection Report By Mile - Fall 2024****Reclamation District No. 2098 Cache and Haas Slough**

Waterway	Bank	Unit Miles	Inspection Start/End	Inspector
Unit No. 03 Haas Slough	Right	1.94	10/23/2024 10/23/2024	Gregg McMillon

LM Start	8.16	Rating **	M	Issue No.	20 (cont)
LM End	8.16	Issue Type +	Ma	Location *	
Category	Supplemental			GPS Latitude/Longitude	
				Start	End
Item	DWR UCIP LMA Responsibility			38.305462 °	38.305462 °
				-121.728881 °	-121.728881 °
DWR ID	20981				

Photo 2 of 3 : UCIP_FA_2024_74598_111455.jpg



View of WS slope and abandoned pier on toe.

LM Start	8.16	Rating **	M	Issue No.	20 (cont)
LM End	8.16	Issue Type +	Ma	Location *	

Photo 3 of 3 : UCIP_FA_2024_74598_111456.jpg



View of LS slope and toe.

* Location LS : Land Side N/A : Not Applicable WS : Water Side CR : Crown	** Rating A : Acceptable M : Minimally Acceptable U : Unacceptable N : Not Inspected/Rated C : Corrected A/W : Acceptable but Monitor & Maintain	+ Issue Type Ma : Maintenance Deficiency Ob : Design & System Obsolescence En : Enforcement
--	---	---

**Flood Control Project Maintenance
Levee Inspections****Levee Inspection Report By Mile - Fall 2024****Reclamation District No. 2098 Cache and Haas Slough**

Waterway	Bank	Unit Miles	Inspection Start/End	Inspector
Unit No. 03 Haas Slough	Right	1.94	10/23/2024 10/23/2024	Gregg McMillon

LM Start	8.34	Rating **	A	Issue No.	21
LM End	8.34	Issue Type +	Ma	Location *	
Category	Supplemental			GPS Latitude/Longitude	
				Start	End
Item	DWR UCIP LMA Responsibility			38.306786 °	38.306786 °
				-121.731888 °	-121.731888 °
DWR ID	20982				
Comment Code					
Inspector Comment					
DS_ID:20982 FS_ID:74611 EP_NO: 10174 Repair Type: No Action Needed EVAL Issue: Crossing Status: Found UCIP Comments: 04/12/2022 Record remains No Action Needed. No issues observed during inspection. System Feature. (D.Sanoski - DWR UCIP) FIELD_STRUCT_DESC: 36-inch corrugated metal dual purpose irrigation-drainage pipe through the levee, 25.5 feet below the crown. Walkway to the slide gates at both ends of the pipe. (36-inch pipe [HLM 8.40] authorized under Automatic Board Order (ABO) issued as Permit No. 10174, 1974 - Glen A. Bowlsbey). [Additional Reference(s): DWR Levee Log, 2003 (HLM 8.40). USACE Sacramento O&M Manual, Unit 109, April 1962, Revised 29 December 2016, (HLM 8.40), listed as 36-inch pipe]. FS Date: 4/12/2022 1:01:34 PM					

LM Start	8.34	Rating **	A	Issue No.	21 (cont)
LM End	8.34	Issue Type +	Ma	Location *	

Photo 1 of 3 : UCIP_FA_2024_74611_111487.jpg



View of levee crown.

Photo 2 of 3 : UCIP_FA_2024_74611_111489.jpg



View of LS slope and slide gate at toe.

* Location	** Rating	+ Issue Type
LS : Land Side WS : Water Side CR : Crown	A : Acceptable M : Minimally Acceptable U : Unacceptable N : Not Inspected/Rated C : Corrected A/W : Acceptable but Monitor & Maintain	Ma : Maintenance Deficiency Ob : Design & System Obsolescence En : Enforcement

**Flood Control Project Maintenance
Levee Inspections**

Levee Inspection Report By Mile - Fall 2024

Reclamation District No. 2098 Cache and Haas Slough

Waterway	Bank	Unit Miles	Inspection Start/End	Inspector
Unit No. 03 Haas Slough	Right	1.94	10/23/2024 10/23/2024	Gregg McMillon

LM Start	8.34	Rating **	A	Issue No.	21 (cont)
LM End	8.34	Issue Type +	Ma	Location *	
Category	Supplemental		GPS Latitude/Longitude		
			Start	End	
Item	DWR UCIP LMA Responsibility		38.306786°	38.306786°	
			-121.731888°	-121.731888°	
DWR ID	20982				

Photo 3 of 3 : UCIP_FA_2024_74611_111488.jpg



View of WS slope and walkway on toe.

LM Start	8.37	Rating **	M	Issue No.	5
LM End	8.37	Issue Type +	En	Location *	CR
Category	Earthen Levee			GPS Latitude/Longitude	
				Start	End
Item	Encroachments			38.307092 °	38.307092 °
				-121.732106 °	-121.732106 °
DWR ID	DWR_RD2098_03_f _ 2023_5				
Comment Code					
PI : Pipe					
Inspector Comment					
There is a pipe built up over the levee crown.					

Photo 1 of 1 : FA_2024_RD2098_247_5_20241001_00002.jpg



View of pipe crossing the levee crown (Fall 2023).

LM Start	8.39	Rating **	M	Issue No.	12
LM End	8.39	Issue Type +	Ma	Location *	LS
Category	Earthen Levee			GPS Latitude/Longitude	
				Start	End
Item	Trim / Thin Trees			38.307344°	38.307344°
				-121.732273°	-121.732273°
DWR ID	DWR_RD2098_03_s_2022_12				
Comment Code					
T2 : Tree or limb.					
Inspector Comment					
Two fallen trees on the landside slope.					

Photo 1 of 1 : FA_2024_RD2098_247_12_20241106_00016.jpg



View of fallen tree on the landside slope. (Fall 2024)

* Location LS : Land Side N/A : Not Applicable WS : Water Side CR : Crown		** Rating A : Acceptable M : Minimally Acceptable U : Unacceptable N : Not Inspected/Rated C : Corrected A/W : Acceptable but Monitor & Maintain		+ Issue Type Ma : Maintenance Deficiency Ob : Design & System Obsolescence En : Enforcement
--	--	---	--	---

**Flood Control Project Maintenance
Levee Inspections****Levee Inspection Report By Mile - Fall 2024****Reclamation District No. 2098 Cache and Haas Slough**

Waterway	Bank	Unit Miles	Inspection Start/End	Inspector
Unit No. 03 Haas Slough	Right	1.94	10/23/2024 10/23/2024	Gregg McMillon

LM Start	8.43	Rating **	M	Issue No.	18
LM End	8.43	Issue Type +	En	Location *	LS
Category	Earthen Levee			GPS Latitude/Longitude	
				Start	End
Item	Trim / Thin Trees			38.307928 °	38.307928 °
				-121.732641 °	-121.732641 °
DWR ID	DWR_RD2098_03_s_2024_18				
Comment Code					
T2 : Tree or limb.					
Inspector Comment					

No Photos

LM Start	8.86	Rating **	M	Issue No.	4
LM End	8.86	Issue Type +	Ma	Location *	LS
Category	Earthen Levee			GPS Latitude/Longitude	
				Start	End
Item	Erosion / Livestock			38.313003 °	38.313003 °
				-121.736663 °	-121.736663 °
DWR ID	DWR_RD2098_03_s_2021_4				
Comment Code					
E4 : Repair the levee slope damaged by livestock and prevent large animal access.					
Inspector Comment					
Cattle paths have caused terracing on the landside slope and should be smoothed and recompact.					

Photo 1 of 1 : FA_2024_RD2098_247_4_20241001_00001.jpg



View of slope terracing caused by cattle on the landside slope (Spring 2024).

* Location LS : Land Side N/A : Not Applicable WS : Water Side CR : Crown	** Rating A : Acceptable M : Minimally Acceptable U : Unacceptable N : Not Inspected/Rated C : Corrected A/W : Acceptable but Monitor & Maintain	+ Issue Type Ma : Maintenance Deficiency Ob : Design & System Obsolescence En : Enforcement
--	---	---

**Flood Control Project Maintenance
Levee Inspections
Unit Cover Sheet**

Reclamation District No. 2098 Cache and Haas Slough

Waterway	Bank	Unit Miles
Unit No. 04 Back Levee	Left	2.95

	Spring (March - May)	Summer (June - August)	(September - November) Fall	Winter (December - February)
Unit Maintenance Rating (Fall Only)			U	
Date of Inspection	4/2/2024 - 4/2/2024		10/23/2024 - 10/23/2024	
DWR Inspector	Gregg McMillon		Gregg McMillon	
Accompanied By	Justin Noutary Reclamation District 2098		Justin Noutary Reclamation District 2098	
			Mike Moncrief MBK Engineering	

Summer & Winter Inspections

The Local Maintaining Agency (LMA) is responsible for summer and winter inspections. The LMA is required to submit a report regarding summer and winter inspections to the California Department of Water Resources (DWR).

DWR must be informed on the:

- a) completion of the inspection
- b) any changes other than the results of normal maintenance
- c) corrections to deficiencies noted in this report

If additional items are noted, further documentation of those items must also be submitted.

The LMA should submit this information to DWR using the LMA web application tool available at:

<http://cdec.water.ca.gov/lma.html>

If the LMA is unable to submit information on this webpage, please contact DWR for assistance.

The LMA should submit the information and any associated documentation by September 30 for summer inspections and March 31 for winter inspections.

**Flood Control Project Maintenance
Levee Inspections****Levee Inspection Report By Mile - Fall 2024****Reclamation District No. 2098 Cache and Haas Slough**

Waterway	Bank	Unit Miles	Inspection Start/End	Inspector
Unit No. 04 Back Levee	Left	2.95	10/23/2024 10/23/2024	Gregg McMillon

LM Start	9.19	Rating **	M	Issue No.	11
LM End	9.76	Issue Type +	Ma	Location *	WS
Category	Earthen Levee			GPS Latitude/Longitude	
				Start	End
Item	Erosion / Livestock			38.316733 °	38.324861 °
				-121.740076 °	-121.740124 °
DWR ID	DWR_RD2098_04_s_2021_11				
Comment Code					
E4 : Repair the levee slope damaged by livestock and prevent large animal access.					
Inspector Comment					

Photo 1 of 1 : FA_2024_RD2098_248_11_20241106_00021.jpg



View of terracing due to cows on the waterside slope (Fall 2024).

LM Start	9.19	Rating **	M	Issue No.	10
LM End	9.76	Issue Type +	Ma	Location *	LS
Category	Earthen Levee			GPS Latitude/Longitude	
				Start	End
Item	Erosion / Livestock			38.316734 °	38.324861 °
				-121.740075 °	-121.740124 °
DWR ID	DWR_RD2098_04_f_2019_10				
Comment Code					
E4 : Repair the levee slope damaged by livestock and prevent large animal access.					
Inspector Comment					

Photo 1 of 1 : FA_2024_RD2098_248_10_20241106_00022.jpg



View of terracing due to cows on the landside slope (Fall 2024).

* Location LS : Land Side N/A : Not Applicable WS : Water Side CR : Crown	** Rating A : Acceptable M : Minimally Acceptable U : Unacceptable N : Not Inspected/Rated C : Corrected A/W : Acceptable but Monitor & Maintain	+ Issue Type Ma : Maintenance Deficiency Ob : Design & System Obsolescence En : Enforcement
--	---	---

**Flood Control Project Maintenance
Levee Inspections****Levee Inspection Report By Mile - Fall 2024****Reclamation District No. 2098 Cache and Haas Slough**

Waterway	Bank	Unit Miles	Inspection Start/End	Inspector
Unit No. 04 Back Levee	Left	2.95	10/23/2024 10/23/2024	Gregg McMillon

LM Start	9.44	Rating **	A/W	Issue No.	9
LM End	9.74	Issue Type +	Ma	Location *	WS
Category	Supplemental			GPS Latitude/Longitude	
				Start	End
Item	2018 USACE Erosion Survey			38.320240°	38.324587°
				-121.740183°	-121.740254°
DWR ID	DWR_RD2098_04_s_2022_9				
Comment Code					
Inspector Comment					
2018 Site ID: HAS 9.7 L					
Status: Critical					
2018 Field Notes: Last observed in 2017.					
Site History: 2011 - Several scallops of erosion. Erosion primarily due to the weight of cattle on the slope. 2016 - Two new large scallop pockets in the middle of the site. 2017 - Upgraded to CRITICAL. Multiple slump on top of old slumping ; slump is into levee prisim.					

No Photos

LM Start	9.86	Rating **	U	Issue No.	8
LM End	10.02	Issue Type +	Ma	Location *	WS
Category	Earthen Levee			GPS Latitude/Longitude	
				Start	End
Item	Encroachments			38.326009 °	38.328394 °
				-121.740661 °	-121.740638 °
DWR ID	DWR_RD2098_04_f _ 2021_8				
Comment Code					
MA : Material					
Inspector Comment					
Dredge material is on the waterside hinge.					

Photo 1 of 1 : FA_2024_RD2098_248_8_20241106_00023.jpg



View of the overgrown dredge material on the waterside shoulder (Fall 2024).

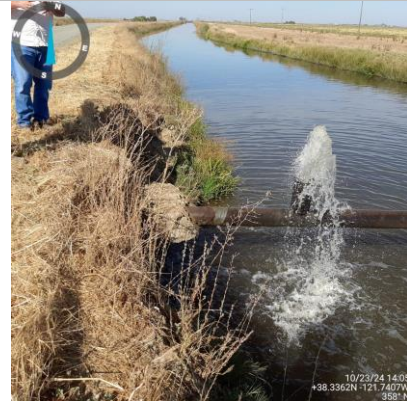
* Location LS : Land Side N/A : Not Applicable WS : Water Side CR : Crown	** Rating A : Acceptable M : Minimally Acceptable U : Unacceptable N : Not Inspected/Rated C : Corrected A/W : Acceptable but Monitor & Maintain	+ Issue Type Ma : Maintenance Deficiency Ob : Design & System Obsolescence En : Enforcement
--	---	---

**Flood Control Project Maintenance
Levee Inspections****Levee Inspection Report By Mile - Fall 2024****Reclamation District No. 2098 Cache and Haas Slough**

Waterway	Bank	Unit Miles	Inspection Start/End	Inspector
Unit No. 04 Back Levee	Left	2.95	10/23/2024 10/23/2024	Gregg McMillon

LM Start	10.55	Rating **	M	Issue No.	15
LM End	10.60	Issue Type +	Ma	Location *	LS
Category	Earthen Levee			GPS Latitude/Longitude	
				Start	End
Item	Erosion / Bank Caving			38.336082 °	38.336754 °
				-121.740663 °	-121.740787 °
DWR ID	DWR_RD2098_04_s_2022_15				
Comment Code					
E2 : Schedule repair of erosion site prior to the next inspection.					
Inspector Comment					
LMA should backfill the eroded area and cover the slope with riprap to prevent future erosion.					

Photo 1 of 1 : FA_2024_RD2098_248_15_20241106_00024.jpg



View of the erosion on the landside. (Fall 2024)

LM Start	10.56	Rating **	M	Issue No.	16	
LM End	10.56	Issue Type +	En	Location *		
Category	Supplemental			GPS Latitude/Longitude		
				Start		End
Item	DWR UCIP Field Study			38.336199°		38.336199°
				-121.740705°		-121.740705°
DWR ID	20996					
Comment Code						
Inspector Comment						
DS_ID:20996 FS_ID:74679 EP_NO: 13126 Repair Type: Non-Urgent EVAL Issue: 6, Levee Damage or Threat for Levee Damage Crossing Status: Found UCIP Comments: 04/28/2022 Record updated from No Action Needed to Non-Urgent. Threat for levee damage- developing significant scour/erosion on LS slope around pipe exit from slope. (D.Sanoski - DWR UCIP) FIELD_STRUCT_DESC: 8-inch steel irrigation pipe through the levee, 4 feet below the crown. Steel cutoff wall around the pipe at the center of the levee. Pump and siphon breaker on the landside (LS) of the Reclamation District No. 2068 canal. Pipe exposed across canal. Pipe encased in 5 inches of cement slurry under the crown. (8-inch pipe authorized under Permit No. 13126, 1981 - Edward S. Wineman). FS Date: 4/28/2022 1:24:25 PM						

Photo 1 of 3 : UCIP_FA_2024_74679_111675.jpg



View of levee crown.

* Location	** Rating	+ Issue Type
LS : Land Side WS : Water Side CR : Crown	A : Acceptable M : Minimally Acceptable U : Unacceptable N : Not Inspected/Rated C : Corrected A/W : Acceptable but Monitor & Maintain	Ma : Maintenance Deficiency Ob : Design & System Obsolescence En : Enforcement

**Flood Control Project Maintenance
Levee Inspections****Levee Inspection Report By Mile - Fall 2024****Reclamation District No. 2098 Cache and Haas Slough**

Waterway	Bank	Unit Miles	Inspection Start/End	Inspector
Unit No. 04 Back Levee	Left	2.95	10/23/2024 10/23/2024	Gregg McMillon

LM Start	10.56	Rating **	M	Issue No.	16 (cont)
LM End	10.56	Issue Type +	En	Location *	
Category	Supplemental			GPS Latitude/Longitude	
				Start	End
Item	DWR UCIP Field Study			38.336199°	38.336199°
				-121.740705°	-121.740705°
DWR ID	20996				

Photo 2 of 3 : UCIP_FA_2024_74679_111678.jpg



View of serious scour around pipe on LS slope.

LM Start	10.56	Rating **	M	Issue No.	16 (cont)
LM End	10.56	Issue Type +	En	Location *	

Photo 3 of 3 : UCIP_FA_2024_74679_111677.jpg



View of WS slope with pipe in distance.

LM Start	10.98	Rating **	M	Issue No.	14
LM End	10.98	Issue Type +	Ma	Location *	LS
Category	Earthen Levee			GPS Latitude/Longitude	
				Start	End
Item	Erosion / Bank Caving			38.342307 °	38.342307 °
				-121.740812 °	-121.740812 °
DWR ID	DWR_RD2098_04_s _ 2022_14				
Comment Code					
E2 : Schedule repair of erosion site prior to the next inspection.					
Inspector Comment					

Photo 1 of 1 : FA_2024_RD2098_248_14_20241001_00004.jpg



View of the erosion on the LS (Spring 2023).

* Location	** Rating	+ Issue Type
LS : Land Side WS : Water Side CR : Crown	A : Acceptable M : Minimally Acceptable U : Unacceptable	Ma : Maintenance Deficiency Ob : Design & System Obsolescence En : Enforcement
N/A : Not Applicable	N : Not Inspected/Rated C : Corrected A/W : Acceptable but Monitor & Maintain	

**Flood Control Project Maintenance
Levee Inspections****Levee Inspection Report By Mile - Fall 2024****Reclamation District No. 2098 Cache and Haas Slough**

Waterway	Bank	Unit Miles	Inspection Start/End	Inspector
Unit No. 04 Back Levee	Left	2.95	10/23/2024 10/23/2024	Gregg McMillon

LM Start	11.42	Rating **	M	Issue No.	12
LM End	11.56	Issue Type +	Ma	Location *	LS
Category	Earthen Levee			GPS Latitude/Longitude	
				Start	End
Item	Animal Control			38.348747 °	38.350690 °
				-121.740745 °	-121.740702 °
DWR ID	DWR_RD2098_04_f _ 2023_12				
Comment Code					
A3 : No rodents visible, but rodent burrows visible; need to backfill and compact or grout burrows.					
Inspector Comment					
Animal burrows were observed. Site should be repaired.					

No Photos

* Location LS : Land Side N/A : Not Applicable WS : Water Side CR : Crown	** Rating A : Acceptable M : Minimally Acceptable U : Unacceptable N : Not Inspected/Rated C : Corrected A/W : Acceptable but Monitor & Maintain	+ Issue Type Ma : Maintenance Deficiency Ob : Design & System Obsolescence En : Enforcement
--	---	---

**Flood Control Project Maintenance
Levee Inspections**

Levee Inspection Report By Mile - Fall 2024

Reclamation District No. 2098 Cache and Haas Slough

Waterway	Bank	Unit Miles	Inspection Start/End	Inspector
Unit No. 04 Back Levee	Left	2.95	10/23/2024 10/23/2024	Gregg McMillon

LM Start	12.05	Rating **	U	Issue No.	17
LM End	12.05	Issue Type +	En	Location *	
Category	Supplemental			GPS Latitude/Longitude	
				Start	End
Item	DWR UCIP Field Study			38.357841 °	38.357841 °
				-121.740396 °	-121.740396 °
DWR ID	20989				
Comment Code					
Inspector Comment					
DS_ID:20989 FS_ID:75241 EP_NO: 11564 Repair Type: Urgent EVAL Issue: 1, Pipe Integrity Crossing Status: Found UCIP Comments: 04/28/2022 Record remains Urgent. DMP internal video inspection has found pipe integrity issues. LOF of crossing is between 5 and 6. Crossing will be monitored until funding becomes available to address the issues. Flood Risk - up and over pipe open on both ends. (D.Sanoski - DWR UCIP) 10/2/2018 Same as last inspection; remaining as Urgent and recommend internal pipe inspection (D. Sanoski - DWR UCIP) 2/06/2016 Crossing has been upgraded from Non-Urgent to Urgent due to sections of the wall missing on the LS. Crossing is also opened on both WS and LS. According to Mr. Mike Hardesty, this crossing is not abandoned the crossing is out of service for now. Recommend internal integrity inspection and coordinating with CVFPB to comply with Title 23. (O. Magana - DWR UCIP) 03/19/2014 Pipe appears abandoned and if so should be done so properly. Pipe rusted through at outlet in canal. This may indicate further degradation of pipe within the levee. Good candidate for video inspection. (W. Wylie - DWR UCIP) FIELD_STRUCT_DESC: 18-inch steel drainage pipe through the levee, 2 feet below the crown. Steel cutoff wall around the pipe at the center of the levee. Siphon breaker on the apex of the pipe located on the landside (LS) shoulder. Pump missing from steel pump pad over a 4-foot by 4-foot concrete sump located on the waterside (WS) toe. (18-inch pipe authorized under Permit No. 11564, 1976 - Reclamation District No. 2068). [Additional Reference(s): DWR Levee Log, 2003 (HLM 12.06)]. FS Date: 4/28/2022 1:27:33 PM					

Photo 1 of 3 : UCIP_FA_2024_75241_111733.jpg



View of levee crown.

* Location LS : Land Side N/A : Not Applicable WS : Water Side CR : Crown	** Rating A : Acceptable M : Minimally Acceptable U : Unacceptable N : Not Inspected/Rated C : Corrected A/W : Acceptable but Monitor & Maintain	+ Issue Type Ma : Maintenance Deficiency Ob : Design & System Obsolescence En : Enforcement
--	---	---

**Flood Control Project Maintenance
Levee Inspections****Levee Inspection Report By Mile - Fall 2024****Reclamation District No. 2098 Cache and Haas Slough**

Waterway	Bank	Unit Miles	Inspection Start/End	Inspector
Unit No. 04 Back Levee	Left	2.95	10/23/2024 10/23/2024	Gregg McMillon

LM Start	12.05	Rating **	U	Issue No.	17 (cont)
LM End	12.05	Issue Type +	En	Location *	
Category	Supplemental			GPS Latitude/Longitude	
				Start	End
Item	DWR UCIP Field Study			38.357841 °	38.357841 °
				-121.740396 °	-121.740396 °
DWR ID	20989				

Photo 2 of 3 : UCIP_FA_2024_75241_111734.jpg



View of WS slope and concrete distribution box.

LM Start	12.05	Rating **	U	Issue No.	17 (cont)
LM End	12.05	Issue Type +	En	Location *	

Photo 3 of 3 : UCIP_FA_2024_75241_111735.jpg



View of LS slope and CMP riser.

* Location LS : Land Side N/A : Not Applicable WS : Water Side CR : Crown		** Rating A : Acceptable M : Minimally Acceptable U : Unacceptable N : Not Inspected/Rated C : Corrected A/W : Acceptable but Monitor & Maintain		+ Issue Type Ma : Maintenance Deficiency Ob : Design & System Obsolescence En : Enforcement	
--	--	---	--	---	--

**Flood Control Project Maintenance
Levee Inspections**

Levee Inspection Report By Mile - Fall 2024

Reclamation District No. 2098 Cache and Haas Slough

Waterway	Bank	Unit Miles	Inspection Start/End	Inspector
Unit No. 04 Back Levee	Left	2.95	10/23/2024 10/23/2024	Gregg McMillon

LM Start	12.05	Rating **	U	Issue No.	18
LM End	12.05	Issue Type +	En	Location *	
Category	Supplemental			GPS Latitude/Longitude	
				Start	End
Item	DWR UCIP Field Study			38.357863 °	38.357863 °
				-121.740394 °	-121.740394 °
DWR ID	20990				

Comment Code

Inspector Comment

DS_ID:20990
FS_ID:74695
EP_NO: 5426-A
Repair Type: Urgent
EVAL Issue: 1, Pipe Integrity
Crossing Status: Found
UCIP Comments: 04/28/2022 Record remains Urgent. DMP internal video inspection has found pipe integrity issues. LOF of crossing is between 5 and 6. Crossing will be monitored until funding becomes available to address the issues. Flood Risk - up and over pipe open on both ends. (D.Sanoski - DWR UCIP)
10/2/2018 Same as last inspection; remaining as Urgent and recommend internal pipe inspection (D. Sanoski - DWR UCIP)
2/06/2016 Crossing is opened on both WS and LS. Concrete box located on the LS has been removed. According to Mr. Mike Hardesty, this crossing is not abandoned the crossing is out of service for now. Recommend internal integrity inspection and coordinating with CVFPB to comply with Title 23. (O. Magana - DWR UCIP)
3/19/2014 Pipe appears abandoned and if so should be done so properly. Foundation for concrete distribution box on LS toe at canal has failed. Box has fallen into canal and LS slope has erosion at same location. Pipe open on both ends. (W. Wylie - DWR UCIP)
FIELD_STRUCT_DESC: 1 of 2: 18-inch coated steel drainage pipe through the levee, 3 feet below the crown. Vertical pump missing from steel platform over a 7-foot by 4-foot concrete box located on the waterside (WS) toe. Concrete cattle guard structure, 7 feet long, 15 feet wide, and 4 feet deep, located on the crown around the pipes. Discharge structure is located on the landside (LS) slope. (14-inch and 18-inch pipe authorized under Permit No. 5426-A, 1967 - Reclamation District No. 2068). (20-inch pipe authorized under Permit No. 5426, 1966 - Reclamation District No. 2068). [Additional Reference(s): DWR Levee Log, 2003 (HLM 12.10)].
FS Date: 4/28/2022 1:27:56 PM

Photo 1 of 3 : UCIP_FA_2024_74695_111744.jpg



View of levee crown.

* Location	** Rating	+ Issue Type
LS : Land Side WS : Water Side CR : Crown	A : Acceptable M : Minimally Acceptable U : Unacceptable N : Not Inspected/Rated C : Corrected A/W : Acceptable but Monitor & Maintain	Ma : Maintenance Deficiency Ob : Design & System Obsolescence En : Enforcement

**Flood Control Project Maintenance
Levee Inspections****Levee Inspection Report By Mile - Fall 2024****Reclamation District No. 2098 Cache and Haas Slough**

Waterway	Bank	Unit Miles	Inspection Start/End	Inspector
Unit No. 04 Back Levee	Left	2.95	10/23/2024 10/23/2024	Gregg McMillon

LM Start	12.05	Rating **	U	Issue No.	18 (cont)
LM End	12.05	Issue Type +	En	Location *	
Category	Supplemental			GPS Latitude/Longitude	
				Start	End
Item	DWR UCIP Field Study			38.357863 °	38.357863 °
				-121.740394 °	-121.740394 °
DWR ID	20990				

Photo 2 of 3 : UCIP_FA_2024_74695_111743.jpg



View of pipe out of WS slope into distribution box.

LM Start	12.05	Rating **	U	Issue No.	18 (cont)
LM End	12.05	Issue Type +	En	Location *	

Photo 3 of 3 : UCIP_FA_2024_74695_111747.jpg



View of pipe out of LS slope.

* Location LS : Land Side N/A : Not Applicable WS : Water Side CR : Crown		** Rating A : Acceptable M : Minimally Acceptable U : Unacceptable N : Not Inspected/Rated C : Corrected A/W : Acceptable but Monitor & Maintain		+ Issue Type Ma : Maintenance Deficiency Ob : Design & System Obsolescence En : Enforcement	
--	--	---	--	---	--

**Flood Control Project Maintenance
Levee Inspections**

Levee Inspection Report By Mile - Fall 2024

Reclamation District No. 2098 Cache and Haas Slough

Waterway	Bank	Unit Miles	Inspection Start/End	Inspector
Unit No. 04 Back Levee	Left	2.95	10/23/2024 10/23/2024	Gregg McMillon

LM Start	12.05	Rating **	U	Issue No.	19
LM End	12.05	Issue Type +	En	Location *	
Category	Supplemental			GPS Latitude/Longitude	
				Start	End
Item	DWR UCIP Field Study			38.357870 °	38.357870 °
				-121.740396 °	-121.740396 °
DWR ID	21013				

Comment Code

Inspector Comment

DS_ID:21013
FS_ID:74696
EP_NO: 5426-A
Repair Type: Urgent
EVAL Issue: 1, Pipe Integrity
Crossing Status: Found
UCIP Comments: 04/28/2022 Record remains Urgent. DMP internal video inspection has found pipe integrity issues. LOF of crossing is between 5 and 6. Crossing will be monitored until funding becomes available to address the issues. Flood Risk - up and over pipe open on both ends. (D.Sanoski - DWR UCIP)
10/2/2018 Same as last inspection; remaining as Urgent and recommend internal pipe inspection (D. Sanoski - DWR UCIP)
2/06/2016 Crossing is opened on both WS and LS. Concrete box located on the LS has been removed. According to Mr. Mike Hardesty, this crossing is not abandoned the crossing is out of service for now. Recommend internal integrity inspection and coordinating with CVFPB to comply with Title 23. (O. Magana - DWR UCIP)
3/19/2014 Pipe appears abandoned and if so should be done so properly. Foundation for concrete distribution box on LS toe at canal has failed. Box has fallen into canal and LS slope has erosion at same location. Pipe open on both ends. (W. Wylie - DWR UCIP)
FIELD_STRUCT_DESC: 2 of 2: 18-inch coated steel drainage pipe through the levee, 3 feet below the crown. Vertical pumps missing from steel pad over a 7-foot by 4-foot concrete sump located on the waterside (WS) toe. Concrete cattle guard structure, 7 feet long, 15 feet wide, and 4 feet deep, located on the crown around the pipes. Discharge structure is located on the landside (LS) slope. (14-inch and 18-inch pipe authorized under Permit No. 5426-A, 1967 - Reclamation District No. 2068). (20-inch pipe authorized under Permit No. 5426, 1966 - Reclamation District No. 2068). [Additional Reference(s): DWR Levee Log, 2003 (HLM 12.10)].
FS Date: 4/28/2022 1:30:26 PM

Photo 1 of 3 : UCIP_FA_2024_74696_78546.jpg



Crown view - looks in good condition.

* Location	** Rating	+ Issue Type
LS : Land Side WS : Water Side CR : Crown	A : Acceptable M : Minimally Acceptable U : Unacceptable N : Not Inspected/Rated C : Corrected A/W : Acceptable but Monitor & Maintain	Ma : Maintenance Deficiency Ob : Design & System Obsolescence En : Enforcement

**Flood Control Project Maintenance
Levee Inspections****Levee Inspection Report By Mile - Fall 2024****Reclamation District No. 2098 Cache and Haas Slough**

Waterway	Bank	Unit Miles	Inspection Start/End	Inspector
Unit No. 04 Back Levee	Left	2.95	10/23/2024 10/23/2024	Gregg McMillon

LM Start	12.05	Rating **	U	Issue No.	19 (cont)
LM End	12.05	Issue Type +	En	Location *	
Category	Supplemental			GPS Latitude/Longitude	
				Start	End
Item	DWR UCIP Field Study			38.357870°	38.357870°
				-121.740396°	-121.740396°
DWR ID	21013				

Photo 2 of 3 : UCIP_FA_2024_74696_78547.jpg



LS view - erosion around bottom of pipe.

LM Start	12.05	Rating **	U	Issue No.	19 (cont)
LM End	12.05	Issue Type +	En	Location *	

Photo 3 of 3 : UCIP_FA_2024_74696_78548.jpg



WS view - looks in good condition.

* Location LS : Land Side N/A : Not Applicable WS : Water Side CR : Crown		** Rating A : Acceptable M : Minimally Acceptable U : Unacceptable N : Not Inspected/Rated C : Corrected A/W : Acceptable but Monitor & Maintain		+ Issue Type Ma : Maintenance Deficiency Ob : Design & System Obsolescence En : Enforcement	
--	--	---	--	---	--