

**Flood Control Project Maintenance
Levee Inspections**

Maintenance Issue Types Only, Levee Inspection Report By Mile - Spring 2018

Reclamation District No. 2096 Wetherbee Lake

Waterway	Bank	Unit Miles	Inspection Start/End	Inspector
Unit No. 01 San Joaquin River	Right	0.16	03/13/2018 03/13/2018	Maksim Khashchuk

LM Start		Rating **	A	Issue No.	1
LM End		Issue Type +	Ma	Location *	N/A
Category	Earthen Levee		GPS Latitude/Longitude		
			Start	End	
Item	Operations & Maintenance Manuals			°	°
				°	°
DWR ID	DWR_RD2096_01_s_2013_1				
Comment Code					
Inspector Comment					
O&M Manual is at the LMA's office.					

No Photos

LM Start		Rating **	A	Issue No.	2
LM End		Issue Type +	Ma	Location *	N/A
Category	Earthen Levee		GPS Latitude/Longitude		
			Start	End	
Item	Emergency Supplies & Equipment			°	°
				°	°
DWR ID	DWR_RD2096_01_s_2013_2				
Comment Code					
Inspector Comment					
Emergency supplies available.					

No Photos

* Location LS : Land Side N/A : Not Applicable WS : Water Side CR : Crown	** Rating A : Acceptable M : Minimally Acceptable U : Unacceptable N : Not Inspected/Rated C : Corrected A/W : Acceptable but Monitor & Maintain	+ Issue Type Ma : Maintenance Deficiency Ob : Design & System Obsolescence En : Enforcement
--	---	---

**Flood Control Project Maintenance
Levee Inspections**

Maintenance Issue Types Only, Levee Inspection Report By Mile - Spring 2018

Reclamation District No. 2096 Wetherbee Lake

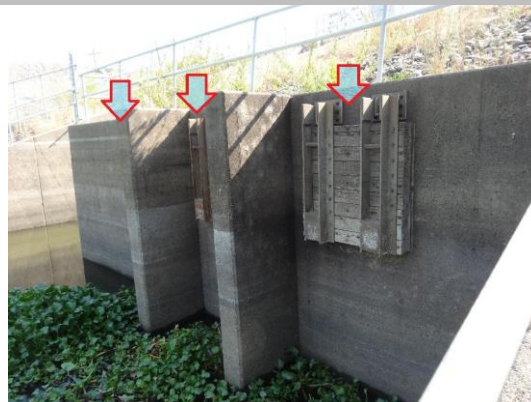
Waterway	Bank	Unit Miles	Inspection Start/End	Inspector
Unit No. 01 San Joaquin River	Right	0.16	03/13/2018 03/13/2018	Maksim Khashchuk

LM Start		Rating **	A	Issue No.	4
LM End		Issue Type +	Ma	Location *	N/A
Category	Earthen Levee			GPS Latitude/Longitude	
				Start	End
Item	Flood Preparedness & Training				o
					o
DWR ID	DWR_RD2096_01_s_2013_4				
Comment Code					
Inspector Comment					
LMA has a flood response plan in the office. It is recommended that the LMA and interested local volunteers take a flood fight training class in order to refresh their flood fight skills and methods.					

No Photos

LM Start	0.02	Rating **	A/W	Issue No.	14
LM End	0.02	Issue Type +	Ma	Location *	
Category	Supplemental			GPS Latitude/Longitude	
				Start	End
Item	DWR UCIP LMA Responsibility			37.773852 °	37.773852 °
				-121.298413 °	-121.298413 °
DWR ID					
Comment Code					
Inspector Comment					
FS_ID:21505 DS_ID:22737 EP_NO: N/A Repair Type: No Action Needed Crossing Status: Found UCIP Comments: - steel walkway to pump platform.- pumping plant and navigation structure area is fenced with gates at north and south end. FIELD_STRUCT_DESC: 1 of 3: 36-inch drainage discharge pipe of an unknown material through the levee, 3.5 feet below the crown. One concrete cutoff wall. Automatic pumping plant and concrete sump on the landside (LS). Vent pipes on the waterside (WS) shoulder. Concrete headwall and spill box on the WS. Flap gate on the WS end. [Additional Reference(s): DWR Levee Log, 2005. USACE San Joaquin O&M Manual 3, December 1968, (HLM 0.03)]. FS Date: 9/10/2013					

Photo 1 of 3 : UCIP_SP_2018_21505_36449.jpg



WS view: three wooden flap gates for drainage pipes. Concrete headwall at levee slope end.

* Location LS : Land Side WS : Water Side CR : Crown	N/A : Not Applicable	** Rating A : Acceptable M : Minimally Acceptable U : Unacceptable	N : Not Inspected/Rated C : Corrected A/W : Acceptable but Monitor & Maintain	+ Issue Type Ma : Maintenance Deficiency Ob : Design & System Obsolescence En : Enforcement
---	----------------------	---	---	--

**Flood Control Project Maintenance
Levee Inspections**

Maintenance Issue Types Only, Levee Inspection Report By Mile - Spring 2018

Reclamation District No. 2096 Wetherbee Lake

Waterway	Bank	Unit Miles	Inspection Start/End	Inspector
Unit No. 01 San Joaquin River	Right	0.16	03/13/2018 03/13/2018	Maksim Khashchuk

LM Start	0.02	Rating **	A/W	Issue No.	14 (cont)	
LM End	0.02	Issue Type +	Ma	Location *		
Category	Supplemental			GPS Latitude/Longitude		
				Start	End	
Item	DWR UCIP LMA Responsibility			37.773852 °	37.773852 °	
				-121.298413 °	-121.298413 °	
DWR ID						
Comment Code						
Inspector Comment						
FS_ID:21505 DS_ID:22737 EP_NO: N/A Repair Type: No Action Needed Crossing Status: Found UCIP Comments: - steel walkway to pump platform.- pumping plant and navigation structure area is fenced with gates at north and south end. FIELD_STRUCT_DESC: 1 of 3: 36-inch drainage discharge pipe of an unknown material through the levee, 3.5 feet below the crown. One concrete cutoff wall. Automatic pumping plant and concrete sump on the landside (LS). Vent pipes on the waterside (WS) shoulder. Concrete headwall and spill box on the WS. Flap gate on the WS end. [Additional Reference(s): DWR Levee Log, 2005. USACE San Joaquin O&M Manual 3, December 1968, (HLM 0.03)]. FS Date: 9/10/2013						

Photo 2 of 3 : UCIP_SP_2018_21505_36448.jpg



WS view: three air vents for three drainage pipes on levee shoulder.

LM Start	0.02	Rating **	A/W	Issue No.	14 (cont)
LM End	0.02	Issue Type +	Ma	Location *	

Photo 3 of 3 : UCIP_SP_2018_21505_36447.jpg



LS view: automatic pumping plant with three pumps. Steel walkway to pump platform.

* Location LS : Land Side N/A : Not Applicable WS : Water Side CR : Crown		** Rating A : Acceptable M : Minimally Acceptable U : Unacceptable N : Not Inspected/Rated C : Corrected A/W : Acceptable but Monitor & Maintain		+ Issue Type Ma : Maintenance Deficiency Ob : Design & System Obsolescence En : Enforcement
--	--	---	--	---

**Flood Control Project Maintenance
Levee Inspections**

Maintenance Issue Types Only, Levee Inspection Report By Mile - Spring 2018

Reclamation District No. 2096 Wetherbee Lake

Waterway	Bank	Unit Miles	Inspection Start/End	Inspector
Unit No. 01 San Joaquin River	Right	0.16	03/13/2018 03/13/2018	Maksim Khashchuk

LM Start	0.02	Rating **	A/W	Issue No.	15 (cont)	
LM End	0.02	Issue Type +	Ma	Location *		
Category	Supplemental			GPS Latitude/Longitude		
				Start	End	
Item	DWR UCIP LMA Responsibility			37.773835 °	37.773835 °	
				-121.298419 °	-121.298419 °	
DWR ID						
Comment Code						
Inspector Comment						
FS_ID:21507						
DS_ID:22740						
EP_NO: N/A						
Repair Type: No Action Needed						
Crossing Status: Found						
UCIP Comments: - steel walkway to pump platform.- pumping plant and navigation structure area is fenced with gates at north and south end.						
FIELD_STRUCT_DESC: 2 of 3: 36-inch drainage discharge pipe of an unknown material through the levee, 3.5 feet below the crown. One concrete cutoff wall. Automatic pumping plant and concrete sump on the landside (LS). Vent pipes on the waterside (WS) shoulder. Concrete headwall and spill box on the WS. Flap gate on the WS end. [Additional Reference(s): DWR Levee Log, 2005. USACE San Joaquin O&M Manual 3, December 1968, (HLM 0.03)].						
FS Date: 9/10/2013						

Photo 3 of 3 : UCIP_SP_2018_21507_36454.jpg



LS view: automatic pumping plant with three pumps. Steel walkway to pump platform.

* Location LS : Land Side N/A : Not Applicable WS : Water Side CR : Crown	** Rating A : Acceptable M : Minimally Acceptable U : Unacceptable N : Not Inspected/Rated C : Corrected A/W : Acceptable but Monitor & Maintain	+ Issue Type Ma : Maintenance Deficiency Ob : Design & System Obsolescence En : Enforcement
--	---	---

**Flood Control Project Maintenance
Levee Inspections**

Maintenance Issue Types Only, Levee Inspection Report By Mile - Spring 2018

Reclamation District No. 2096 Wetherbee Lake

Waterway	Bank	Unit Miles	Inspection Start/End	Inspector
Unit No. 01 San Joaquin River	Right	0.16	03/13/2018 03/13/2018	Maksim Khashchuk

LM Start	0.03	Rating **	A/W	Issue No.	16 (cont)	
LM End	0.03	Issue Type +	Ma	Location *		
Category	Supplemental			GPS Latitude/Longitude		
				Start	End	
Item	DWR UCIP LMA Responsibility			37.773818 °	37.773818 °	
				-121.298423 °	-121.298423 °	
DWR ID						
Comment Code						
Inspector Comment						
FS_ID:21508 DS_ID:22739 EP_NO: N/A Repair Type: No Action Needed Crossing Status: Found UCIP Comments: - steel walkway to pump platform.- pumping plant and navigation structure area is fenced with gates at north and south end. FIELD_STRUCT_DESC: 3 of 3: 36-inch drainage discharge pipe of an unknown material through the levee, 3.5 feet below the crown. One concrete cutoff wall. Automatic pumping plant and concrete sump on the landside (LS). Vent pipes on the waterside (WS) shoulder. Concrete headwall and spill box on the WS. Flap gate on the WS end. [Additional Reference(s): DWR Levee Log, 2005. USACE San Joaquin O&M Manual 3, December 1968, (HLM 0.03)]. FS Date: 9/10/2013						

Photo 3 of 3 : UCIP_SP_2018_21508_36461.jpg



LS view: automatic pumping plant with three pumps. Steel walkway to pump platform.

LM Start	0.06	Rating **	N	Issue No.	9
LM End	0.06	Issue Type +	Ma	Location *	LS
Category	Earthen Levee			GPS Latitude/Longitude	
				Start	End
Item	Trim / Thin Trees			37.773348 °	37.773348 °
				-121.298475 °	-121.298475 °
DWR ID	DWR_RD2096_01_s_2014_9				
Comment Code					
T5 : Tree stumps.					
Inspector Comment					
Pine tree stump at levee toe.					

Photo 1 of 1 : SP_2018_RD2096_117_9_20180305_00003.jpg



View of the tree stump at the landside levee toe.

* Location LS : Land Side N/A : Not Applicable WS : Water Side CR : Crown		** Rating A : Acceptable M : Minimally Acceptable U : Unacceptable N : Not Inspected/Rated C : Corrected A/W : Acceptable but Monitor & Maintain		+ Issue Type Ma : Maintenance Deficiency Ob : Design & System Obsolescence En : Enforcement
--	--	---	--	---

**Flood Control Project Maintenance
Levee Inspections**

Maintenance Issue Types Only, Levee Inspection Report By Mile - Spring 2018

Reclamation District No. 2096 Wetherbee Lake

Waterway	Bank	Unit Miles	Inspection Start/End	Inspector
Unit No. 01 San Joaquin River	Right	0.16	03/13/2018 03/13/2018	Maksim Khashchuk

LM Start	0.09	Rating **	A/W	Issue No.	6
LM End	0.09	Issue Type +	Ma	Location *	LS
Category	Earthen Levee			GPS Latitude/Longitude	
				Start	End
Item	Animal Control			37.772891 °	37.772891 °
				-121.298454 °	-121.298454 °
DWR ID	DWR_RD2096_01_s_2016_6				
Comment Code					
A3 : No rodents visible, but rodent burrows visible; need to backfill and compact or grout burrows.					
Inspector Comment					
LMA has effective rodent control program. Monitor this location for possible future activity.					

Photo 1 of 1 : SP_2018_RD2096_117_6_20180314_00019.jpg



View of the previously rodent infested area on the landside levee slope.

LM Start	0.12	Rating **	M	Issue No.	11
LM End	0.12	Issue Type +	Ma	Location *	WS
Category	Earthen Levee			GPS Latitude/Longitude	
				Start	End
Item	Slope Stability			37.772434 °	37.772434 °
				-121.298433 °	-121.298433 °
DWR ID	DWR_RD2096_01_s_2015_11				
Comment Code					
S3 : Repair the levee slope damaged by vehicle traffic and prevent access where possible.					
Inspector Comment					
LMA restricted access but still a regrade and re-compaction of damaged waterside levee slope is required.					

Photo 1 of 3 : SP_2018_RD2096_117_11_20180305_00004.jpg



View of the material placed to prevent vehicles from driving around the gate.

* Location LS : Land Side N/A : Not Applicable WS : Water Side CR : Crown		** Rating A : Acceptable N : Not Inspected/Rated M : Minimally Acceptable C : Corrected U : Unacceptable A/W : Acceptable but Monitor & Maintain		+ Issue Type Ma : Maintenance Deficiency Ob : Design & System Obsolescence En : Enforcement
--	--	---	--	---

**Flood Control Project Maintenance
Levee Inspections**

Maintenance Issue Types Only, Levee Inspection Report By Mile - Spring 2018

Reclamation District No. 2096 Wetherbee Lake

Waterway	Bank	Unit Miles	Inspection Start/End	Inspector
Unit No. 01 San Joaquin River	Right	0.16	03/13/2018 03/13/2018	Maksim Khashchuk

LM Start	0.12	Rating **	M	Issue No.	11 (cont)	
LM End	0.12	Issue Type +	Ma	Location *	WS	
Category	Earthen Levee			GPS Latitude/Longitude		
				Start	End	
Item	Slope Stability			37.772434 °	37.772434 °	
				-121.298433 °	-121.298433 °	
DWR ID	DWR_RD2096_01_s_2015_11					
Comment Code						
S3 : Repair the levee slope damaged by vehicle traffic and prevent access where possible.						
Inspector Comment						
LMA restricted access but still a regrade and re-compaction of damaged waterside levee slope is required.						

Photo 2 of 3 : SP_2018_RD2096_117_11_20180305_00005.jpg



Another view of the material placed to prevent vehicles from driving around the gate. Looking downstream.

LM Start	0.12	Rating **	M	Issue No.	11 (cont)
LM End	0.12	Issue Type +	Ma	Location *	WS

Photo 3 of 3 : SP_2018_RD2096_117_11_20180305_00006.jpg



View of the waterside slope damaged by vehicle.

* Location
LS : Land Side N/A : Not Applicable
WS : Water Side
CR : Crown

** Rating
A : Acceptable N : Not Inspected/Rated
M : Minimally Acceptable C : Corrected
U : Unacceptable A/W : Acceptable but Monitor & Maintain

+ Issue Type
Ma : Maintenance Deficiency
Ob : Design & System Obsolescence
En : Enforcement