

**Flood Control Project Maintenance
Levee Inspections**

Maintenance Issue Types Only, Levee Inspection Report By Mile - Fall 2023

Reclamation District No. 2092 Dos Rios

Waterway	Bank	Unit Miles	Inspection Start/End	Inspector
Unit No. 01 San Joaquin River	Right	3.71	09/06/2023 09/06/2023	Nate Hicks

LM Start	0.00	Rating **	M	Issue No.	18
LM End	0.00	Issue Type +	Ma	Location *	N/A
Category	Earthen Levee			GPS Latitude/Longitude	
				Start	End
Item	Flood Preparedness & Training			°	°
				°	°
DWR ID	DWR_RD2092_01_f_2012_18				
Comment Code					
FP : Flood Preparedness & Training					
Inspector Comment					
The LMA is prepared for flood response, but has not been involved in flood fight training for several years.					

No Photos

LM Start	0.00	Rating **	A	Issue No.	24
LM End	0.00	Issue Type +	Ma	Location *	N/A
Category	Earthen Levee			GPS Latitude/Longitude	
				Start	End
Item	Operations & Maintenance Manuals			°	°
				°	°
DWR ID	DWR_RD2092_01_s_2012_24				
Comment Code					
OM : O&M Manuals					
Inspector Comment					
LMA has the O&M manual for their district.					

No Photos

LM Start	0.00	Rating **	A	Issue No.	26
LM End	0.00	Issue Type +	Ma	Location *	N/A
Category	Earthen Levee			GPS Latitude/Longitude	
				Start	End
Item	Emergency Supplies & Equipment			°	°
				°	°
DWR ID	DWR_RD2092_01_s_2012_26				
Comment Code					
ES : Emergency Supplies & Equipment					
Inspector Comment					
LMA has adequate flood fighting supplies.					

No Photos

* Location LS : Land Side N/A : Not Applicable WS : Water Side CR : Crown	** Rating A : Acceptable M : Minimally Acceptable U : Unacceptable	N : Not Inspected/Rated C : Corrected A/W : Acceptable but Monitor & Maintain	+ Issue Type Ma : Maintenance Deficiency Ob : Design & System Obsolescence En : Enforcement
--	--	---	---

**Flood Control Project Maintenance
Levee Inspections**

Maintenance Issue Types Only, Levee Inspection Report By Mile - Fall 2023

Reclamation District No. 2092 Dos Rios

Waterway	Bank	Unit Miles	Inspection Start/End	Inspector
Unit No. 01 San Joaquin River	Right	3.71	09/06/2023 09/06/2023	Nate Hicks

LM Start	0.00	Rating **	U	Issue No.	13
LM End	3.10	Issue Type +	Ma	Location *	LS
Category	Earthen Levee			GPS Latitude/Longitude	
				Start	End
Item	Vegetation			37.602600°	37.573675°
				-121.158100°	-121.151367°
DWR ID	DWR_RD2092_01_f_2023_13				
Comment Code					
V1 : Control annual grass and weeds on the levee slopes and easements.					
Inspector Comment					

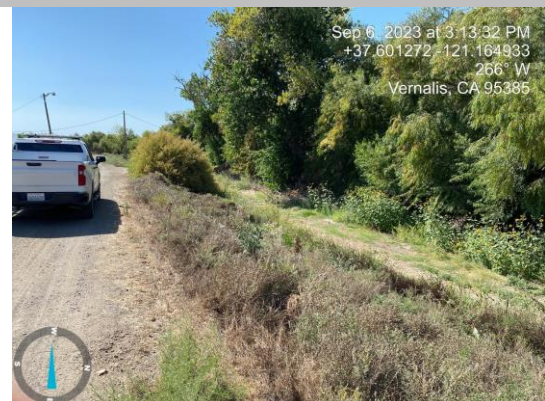
Photo 1 of 1 : FA_2023_RD2092_116_13_20230922_00070.jpg



View of vegetation on the landside slope (Fall 2023).

LM Start	0.00	Rating **	U	Issue No.	14
LM End	3.10	Issue Type +	Ma	Location *	WS
Category	Earthen Levee			GPS Latitude/Longitude	
				Start	End
Item	Vegetation			37.602600°	37.573673°
				-121.158100°	-121.151360°
DWR ID	DWR_RD2092_01_f_2023_14				
Comment Code					
V1 : Control annual grass and weeds on the levee slopes and easements.					
Inspector Comment					

Photo 1 of 1 : FA_2023_RD2092_116_14_20230922_00071.jpg



View of vegetation on the waterside slope (Fall 2023).

LM Start	0.12	Rating **	M	Issue No.	30
LM End	0.12	Issue Type +	Ma	Location *	LS
Category	Earthen Levee			GPS Latitude/Longitude	
				Start	End
Item	Vegetation			37.602391°	37.602391°
				-121.160191°	-121.160191°
DWR ID	DWR_RD2092_01_f_2021_30				
Comment Code					
V4 : Elderberries are blocking visibility and flood fight capability.					
Inspector Comment					
Three elderberry trees are growing on the landside slope.					

No Photos

* Location LS : Land Side N/A : Not Applicable WS : Water Side CR : Crown	** Rating A : Acceptable M : Minimally Acceptable U : Unacceptable	N : Not Inspected/Rated C : Corrected A/W : Acceptable but Monitor & Maintain	+ Issue Type Ma : Maintenance Deficiency Ob : Design & System Obsolescence En : Enforcement
--	--	---	---

**Flood Control Project Maintenance
Levee Inspections**

Maintenance Issue Types Only, Levee Inspection Report By Mile - Fall 2023

Reclamation District No. 2092 Dos Rios

Waterway	Bank	Unit Miles	Inspection Start/End	Inspector
Unit No. 01 San Joaquin River	Right	3.71	09/06/2023 09/06/2023	Nate Hicks

LM Start	0.13	Rating **	U	Issue No.	32
LM End	0.13	Issue Type +	Ma	Location *	WS
Category	Earthen Levee			GPS Latitude/Longitude	
				Start	End
Item	Vegetation			37.602322°	37.602322°
				-121.160378°	-121.160378°
DWR ID	DWR_RD2092_01_f_2021_32				
Comment Code					
V2 : Remove the wild growth and woody vegetation other than native grasses from the levee slopes.					
Inspector Comment					

Photo 1 of 1 : FA_2023_RD2092_116_32_20230905_00009.jpg



View of a large shrub growing on the waterside slope and shoulder. (Fall 2021)

* Location LS : Land Side N/A : Not Applicable WS : Water Side CR : Crown	** Rating A : Acceptable M : Minimally Acceptable U : Unacceptable	N : Not Inspected/Rated C : Corrected A/W : Acceptable but Monitor & Maintain	+ Issue Type Ma : Maintenance Deficiency Ob : Design & System Obsolescence En : Enforcement
--	--	---	---

**Flood Control Project Maintenance
Levee Inspections**

Maintenance Issue Types Only, Levee Inspection Report By Mile - Fall 2023

Reclamation District No. 2092 Dos Rios

Waterway	Bank	Unit Miles	Inspection Start/End	Inspector
Unit No. 01 San Joaquin River	Right	3.71	09/06/2023 09/06/2023	Nate Hicks

LM Start	0.18	Rating **	U	Issue No.	973
LM End	0.18	Issue Type +	Ma	Location *	
Category	Supplemental			GPS Latitude/Longitude	
				Start	End
Item	DWR UCIP LMA Responsibility			37.602031°	37.602031°
				-121.161249°	-121.161249°
DWR ID	20561				

Comment Code

Inspector Comment

DS_ID:20561
FS_ID:81387
EP_NO: N/A
Repair Type: Urgent
EVAL Issue: 1, Pipe Integrity
Crossing Status: Found
UCIP Comments: 10/19/2023 Record remains Urgent. DMP internal video inspection has found severe pipe defects. Crossing will be monitored until funding becomes available to address the issues. Unable to confirm if flap gate is still broken (from the 2017 inspection) due to it being covered with a tarp. The flap gate hinges are bent causing the flap gate to not close properly; needs to be fixed. LS concrete headwall is completely separated from the pipe. No sink hole along LS pipe alignment (as noted in the 2019 inspection) during this inspection. No cover was present on CMP riser causing a safety hazard. Debris appears to be present at the slide gate which could potentially cause the slide gate to not close properly. (M. Thao - DWR UCIP) 03/12/2019 A thorough internal evaluation of this crossing is necessary. Pipe shows evidence of pipe integrity (LS) issues (pipe wall sections missing on LS inlet) and levee integrity issues (sink hole visible along LS pipe alignment). Internal inspection is recommended for this crossing to determine the extent of pipe damage through the levee. Pipe crosses the levee at an angle at a depth of about 19 feet. Recommend caution be taken at this crossing when driving over levee until additional information becomes available to determine condition of pipe through levee. Recommend cover be placed on riser to address safety concern (riser is 80 inches in diameter and about 19 feet deep). Slide gate appears to be blocked by sediment/debris preventing slide gate to work properly. Unable to confirm if the flap gate located on the WS is still broken (see photo from 2017). (O. Magana - DWR UCIP)09/24/2013 Pipe rusted through at headwall on LS toe. Good candidate for video inspection. (W. Wylie - DWR UCIP)
FIELD_STRUCT_DESC: 60-inch corrugated metal drainage pipe through the levee, 19 feet below the crown. Flap gate on the waterside (WS) end. Slide gate in an 80-inch corrugated metal pipe (CMP) riser on the WS slope. Concrete U-shaped headwalls on both ends.
[Additional Reference(s): DWR Levee Log, 2005. USACE San Joaquin O&M Manual 5, August 1961, (HLM 0.18)].
FS Date: 10/19/2023 11:40:52 AM

Photo 1 of 3 : UCIP_FA_2023_81387_117478.jpg



LS view: Headwall (right) completely separated from pipe inlet (left).

* Location LS: Land Side N/A: Not Applicable WS: Water Side CR: Crown	** Rating A: Acceptable M: Minimally Acceptable U: Unacceptable N: Not Inspected/Rated C: Corrected A/W: Acceptable but Monitor & Maintain	+ Issue Type Ma: Maintenance Deficiency Ob: Design & System Obsolescence En: Enforcement
--	---	--

**Flood Control Project Maintenance
Levee Inspections**

Maintenance Issue Types Only, Levee Inspection Report By Mile - Fall 2023

Reclamation District No. 2092 Dos Rios

Waterway	Bank	Unit Miles	Inspection Start/End	Inspector
Unit No. 01 San Joaquin River	Right	3.71	09/06/2023 09/06/2023	Nate Hicks

LM Start	0.18	Rating **	U	Issue No.	973 (cont)
LM End	0.18	Issue Type +	Ma	Location *	
Category	Supplemental		GPS Latitude/Longitude		
			Start	End	
Item	DWR UCIP LMA Responsibility		37.602031°	37.602031°	
			-121.161249°	-121.161249°	
DWR ID	20561				

Photo 2 of 3 : UCIP_FA_2023_81387_117481.jpg



WS view: Slide gate located in CMP riser with debris.

LM Start	0.18	Rating **	U	Issue No.	973 (cont)
LM End	0.18	Issue Type +	Ma	Location *	

Photo 3 of 3 : UCIP_FA_2023_81387_117483.jpg



WS view: Close-up view of flap gate covered with tarp; hinge bent so flap gate is not closing properly.

LM Start	0.35	Rating **	U	Issue No.	33
LM End	0.75	Issue Type +	Ma	Location *	LS
Category	Earthen Levee			GPS Latitude/Longitude	
				Start	End
Item	Vegetation			37.601360°	37.597490°
				-121.164292°	-121.168434°
DWR ID	DWR_RD2092_01_s_2022_33				
Comment Code					
V2 : Remove the wild growth and woody vegetation other than native grasses from the levee slopes.					
Inspector Comment					

Photo 1 of 1 : FA_2023_RD2092_116_33_20230905_00010.jpg



Several large bushes obstructing view of the landside slope. (Fall 2022)

* Location	** Rating	+ Issue Type
LS : Land Side WS : Water Side CR : Crown	A : Acceptable M : Minimally Acceptable U : Unacceptable	Ma : Maintenance Deficiency Ob : Design & System Obsolescence En : Enforcement
N/A : Not Applicable	N : Not Inspected/Rated C : Corrected A/W : Acceptable but Monitor & Maintain	

**Flood Control Project Maintenance
Levee Inspections**

Maintenance Issue Types Only, Levee Inspection Report By Mile - Fall 2023

Reclamation District No. 2092 Dos Rios

Waterway	Bank	Unit Miles	Inspection Start/End	Inspector
Unit No. 01 San Joaquin River	Right	3.71	09/06/2023 09/06/2023	Nate Hicks

LM Start	0.41	Rating **	U	Issue No.	29
LM End	0.41	Issue Type +	Ma	Location *	WS
Category	Earthen Levee			GPS Latitude/Longitude	
				Start	End
Item	Vegetation			37.601230°	37.601230°
				-121.165247°	-121.165247°
DWR ID	DWR_RD2092_01_s_2023_29				
Comment Code					
V2 : Remove the wild growth and woody vegetation other than native grasses from the levee slopes.					
Inspector Comment					

Photo 1 of 1 : FA_2023_RD2092_116_29_20230905_00007.jpg



Woody vegetation on waterside slope (Spring 2023).

LM Start	0.44	Rating **	M	Issue No.	31
LM End	0.44	Issue Type +	Ma	Location *	WS
Category	Earthen Levee			GPS Latitude/Longitude	
				Start	End
Item	Trim / Thin Trees			37.601149°	37.601149°
				-121.165772°	-121.165772°
DWR ID	DWR_RD2092_01_s_2018_31				
Comment Code					
T1 : Trim and thin trees to at least five feet above ground level to allow visibility of the ground and room to flood fight.					
Inspector Comment					
Remove small tree on waterward shoulder before tree is established.					

Photo 1 of 1 : FA_2023_RD2092_116_31_20230905_00008.jpg



View of small tree growing on waterside shoulder. (Spring 2021)

LM Start	0.58	Rating **	U	Issue No.	35
LM End	0.58	Issue Type +	Ma	Location *	WS
Category	Earthen Levee			GPS Latitude/Longitude	
				Start	End
Item	Vegetation			37.599526°	37.599526°
				-121.167076°	-121.167076°
DWR ID	DWR_RD2092_01_s_2023_35				
Comment Code					
V2 : Remove the wild growth and woody vegetation other than native grasses from the levee slopes.					
Inspector Comment					

Photo 1 of 1 : FA_2023_RD2092_116_35_20230905_00011.jpg



View of woody vegetation on waterside slope (Spring 2023).

* Location LS : Land Side N/A : Not Applicable WS : Water Side CR : Crown		** Rating A : Acceptable M : Minimally Acceptable U : Unacceptable		+ Issue Type Ma : Maintenance Deficiency Ob : Design & System Obsolescence En : Enforcement	
		N : Not Inspected/Rated C : Corrected A/W : Acceptable but Monitor & Maintain			

**Flood Control Project Maintenance
Levee Inspections**

Maintenance Issue Types Only, Levee Inspection Report By Mile - Fall 2023

Reclamation District No. 2092 Dos Rios

Waterway	Bank	Unit Miles	Inspection Start/End	Inspector
Unit No. 01 San Joaquin River	Right	3.71	09/06/2023 09/06/2023	Nate Hicks

LM Start	0.59	Rating **	M	Issue No.	40
LM End	0.59	Issue Type +	Ma	Location *	LS
Category	Earthen Levee			GPS Latitude/Longitude	
				Start	End
Item	Erosion / Vehicle Traffic			37.599406°	37.599406°
				-121.167083°	-121.167083°
DWR ID	DWR_RD2092_01_f_2018_40				
Comment Code					
E6 : Repair the levee slope damaged by vehicle traffic and prevent access where possible.					
Inspector Comment					
Vehicle tracks on the landside slope should be repaired.					

Photo 1 of 1 : FA_2023_RD2092_116_40_20230905_00014.jpg



Vehicle tracks on landside slope approximately 6" deep perpendicular to the slope. (Fall 2018)

LM Start	0.61	Rating **	M	Issue No.	21
LM End	0.61	Issue Type +	Ma	Location *	WS
Category	Earthen Levee			GPS Latitude/Longitude	
				Start	End
Item	Trim / Thin Trees			37.599208°	37.599208°
				-121.167150°	-121.167150°
DWR ID	DWR_RD2092_01_s_2021_21				
Comment Code					
T1 : Trim and thin trees to at least five feet above ground level to allow visibility of the ground and room to flood fight.					
Inspector Comment					
Remove small tree on waterward shoulder before tree is established.					

Photo 1 of 1 : FA_2023_RD2092_116_21_20230905_00005.jpg



Looking upstream at a tree growing in the waterside shoulder. (Fall 2020)

LM Start	0.62	Rating **	M	Issue No.	34
LM End	0.62	Issue Type +	Ma	Location *	LS
Category	Earthen Levee			GPS Latitude/Longitude	
				Start	End
Item	Vegetation			37.599070°	37.599070°
				-121.167223°	-121.167223°
DWR ID	DWR_RD2092_01_f_2020_34				
Comment Code					
V4 : Elderberries are blocking visibility and flood fight capability.					
Inspector Comment					
A small elderberry tree is growing on the landside slope. Recommend removing before it can establish.					

No Photos

* Location		** Rating		+ Issue Type	
LS : Land Side	N/A : Not Applicable	A : Acceptable	N : Not Inspected/Rated	Ma : Maintenance Deficiency	
WS : Water Side		M : Minimally Acceptable	C : Corrected	Ob : Design & System Obsolescence	
CR : Crown		U : Unacceptable	A/W : Acceptable but Monitor & Maintain	En : Enforcement	

**Flood Control Project Maintenance
Levee Inspections**

Maintenance Issue Types Only, Levee Inspection Report By Mile - Fall 2023

Reclamation District No. 2092 Dos Rios

Waterway	Bank	Unit Miles	Inspection Start/End	Inspector
Unit No. 01 San Joaquin River	Right	3.71	09/06/2023 09/06/2023	Nate Hicks

LM Start	0.66	Rating **	U	Issue No.	64
LM End	0.66	Issue Type +	Ma	Location *	WS
Category	Earthen Levee			GPS Latitude/Longitude	
				Start	End
Item	Vegetation			37.598518°	37.598518°
				-121.167698°	-121.167698°
DWR ID	DWR_RD2092_01_s_2023_64				
Comment Code					
V2 : Remove the wild growth and woody vegetation other than native grasses from the levee slopes.					
Inspector Comment					

Photo 1 of 1 : FA_2023_RD2092_116_64_20230905_00030.jpg



View of woody vegation on the waterside slope (Spring 2023).

LM Start	0.68	Rating **	M	Issue No.	67
LM End	0.68	Issue Type +	Ma	Location *	WS
Category	Earthen Levee			GPS Latitude/Longitude	
				Start	End
Item	Vegetation			37.598278°	37.598278°
				-121.167915°	-121.167915°
DWR ID	DWR_RD2092_01_s_2023_67				
Comment Code					
V2 : Remove the wild growth and woody vegetation other than native grasses from the levee slopes.					
Inspector Comment					

No Photos

LM Start	0.77	Rating **	M	Issue No.	54
LM End	1.08	Issue Type +	Ma	Location *	LS
Category	Earthen Levee			GPS Latitude/Longitude	
				Start	End
Item	Vegetation			37.597098°	37.593071°
				-121.168527°	-121.166494°
DWR ID	DWR_RD2092_01_f_2021_54				
Comment Code					
V4 : Elderberries are blocking visibility and flood fight capability.					
Inspector Comment					
Several elderberry trees should be removed before they can establish.					

No Photos

* Location LS : Land Side N/A : Not Applicable WS : Water Side CR : Crown	** Rating A : Acceptable M : Minimally Acceptable U : Unacceptable	N : Not Inspected/Rated C : Corrected A/W : Acceptable but Monitor & Maintain	+ Issue Type Ma : Maintenance Deficiency Ob : Design & System Obsolescence En : Enforcement
--	--	---	---

**Flood Control Project Maintenance
Levee Inspections**

Maintenance Issue Types Only, Levee Inspection Report By Mile - Fall 2023

Reclamation District No. 2092 Dos Rios

Waterway	Bank	Unit Miles	Inspection Start/End	Inspector
Unit No. 01 San Joaquin River	Right	3.71	09/06/2023 09/06/2023	Nate Hicks

LM Start	1.19	Rating **	M	Issue No.	55
LM End	1.22	Issue Type +	Ma	Location *	LS
Category	Earthen Levee			GPS Latitude/Longitude	
				Start	End
Item	Vegetation			37.591527°	37.591188°
				-121.165707°	-121.165327°
DWR ID	DWR_RD2092_01_f_2021_55				
Comment Code					
V4 : Elderberries are blocking visibility and flood fight capability.					
Inspector Comment					

No Photos

LM Start	1.25	Rating **	M	Issue No.	39
LM End	1.31	Issue Type +	Ma	Location *	CR
Category	Earthen Levee			GPS Latitude/Longitude	
				Start	End
Item	Crown Surface / Depressions / Rutting			37.590936°	37.590524°
				-121.164819°	-121.163947°
DWR ID	DWR_RD2092_01_s_2017_39				
Comment Code					
C3 : Add appropriate gravel or road base. Grade and compact.					
Inspector Comment					

Photo 1 of 1 : FA_2023_RD2092_116_39_20230905_00013.jpg



Looking upstream at rutting and depression on levee crown. (Fall 2022)

LM Start	1.29	Rating **	U	Issue No.	15
LM End	1.29	Issue Type +	Ma	Location *	CR
Category	Earthen Levee			GPS Latitude/Longitude	
				Start	End
Item	Erosion / Bank Caving			37.590674°	37.590674°
				-121.164195°	-121.164195°
DWR ID	DWR_RD2092_01_f_2023_15				
Comment Code					
E2 : Schedule repair of erosion site prior to the next inspection.					
Inspector Comment					
A sinkhole has formed on the waterside shoulder and needs to be backfilled and compacted.					

Photo 1 of 1 : FA_2023_RD2092_116_15_20230922_00069.jpg



View of sinkhole near waterside shoulder (Fall 2023).

* Location LS : Land Side N/A : Not Applicable WS : Water Side CR : Crown		** Rating A : Acceptable M : Minimally Acceptable U : Unacceptable		N : Not Inspected/Rated C : Corrected A/W : Acceptable but Monitor & Maintain		+ Issue Type Ma : Maintenance Deficiency Ob : Design & System Obsolescence En : Enforcement	
--	--	--	--	---	--	---	--

**Flood Control Project Maintenance
Levee Inspections**

Maintenance Issue Types Only, Levee Inspection Report By Mile - Fall 2023

Reclamation District No. 2092 Dos Rios

Waterway	Bank	Unit Miles	Inspection Start/End	Inspector
Unit No. 01 San Joaquin River	Right	3.71	09/06/2023 09/06/2023	Nate Hicks

LM Start	1.31	Rating **	M	Issue No.	46
LM End	1.31	Issue Type +	Ma	Location *	LS
Category	Earthen Levee			GPS Latitude/Longitude	
				Start	End
Item	Vegetation			37.590563°	37.590563°
				-121.164005°	-121.164005°
DWR ID	DWR_RD2092_01_f_2019_46				
Comment Code					
V4 : Elderberries are blocking visibility and flood fight capability.					
Inspector Comment					
Multiple elderberry trees in landside slope should be removed before they can establish.					

No Photos

LM Start	1.33	Rating **	M	Issue No.	36
LM End	1.33	Issue Type +	Ma	Location *	WS
Category	Earthen Levee			GPS Latitude/Longitude	
				Start	End
Item	Vegetation			37.590382°	37.590382°
				-121.163677°	-121.163677°
DWR ID	DWR_RD2092_01_s_2023_36				
Comment Code					
V2 : Remove the wild growth and woody vegetation other than native grasses from the levee slopes.					
Inspector Comment					

No Photos

LM Start	1.38	Rating **	M	Issue No.	47
LM End	1.38	Issue Type +	Ma	Location *	LS
Category	Earthen Levee			GPS Latitude/Longitude	
				Start	End
Item	Vegetation			37.589985°	37.589985°
				-121.162959°	-121.162959°
DWR ID	DWR_RD2092_01_f_2021_47				
Comment Code					
V4 : Elderberries are blocking visibility and flood fight capability.					
Inspector Comment					
There are multiple elderberry trees on the landside slope.					

No Photos

* Location LS : Land Side N/A : Not Applicable WS : Water Side CR : Crown	** Rating A : Acceptable M : Minimally Acceptable U : Unacceptable	N : Not Inspected/Rated C : Corrected A/W : Acceptable but Monitor & Maintain	+ Issue Type Ma : Maintenance Deficiency Ob : Design & System Obsolescence En : Enforcement
--	--	---	---

**Flood Control Project Maintenance
Levee Inspections**

Maintenance Issue Types Only, Levee Inspection Report By Mile - Fall 2023

Reclamation District No. 2092 Dos Rios

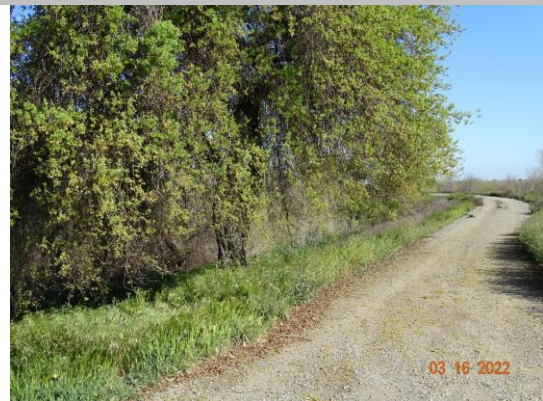
Waterway	Bank	Unit Miles	Inspection Start/End	Inspector
Unit No. 01 San Joaquin River	Right	3.71	09/06/2023 09/06/2023	Nate Hicks

LM Start	1.45	Rating **	M	Issue No.	56
LM End	1.45	Issue Type +	Ma	Location *	LS
Category	Earthen Levee			GPS Latitude/Longitude	
				Start	End
Item	Vegetation			37.589151°	37.589151°
				-121.162259°	-121.162259°
DWR ID	DWR_RD2092_01_f _ 2021_56				
Comment Code					
V4 : Elderberries are blocking visibility and flood fight capability.					
Inspector Comment					
There are several elderberry trees on the landside slope.					

No Photos

LM Start	1.53	Rating **	M	Issue No.	37
LM End	1.53	Issue Type +	Ma	Location *	WS
Category	Earthen Levee			GPS Latitude/Longitude	
				Start	End
Item	Trim / Thin Trees			37.587961°	37.587961°
				-121.162259°	-121.162259°
DWR ID	DWR_RD2092_01_s_2021_37				
Comment Code					
T4 : Trim trees over roadway to at least 12 feet above ground level.					
Inspector Comment					

Photo 1 of 1 : FA_2023_RD2092_116_37_20230905_00012.jpg



View of tree branches hanging over the waterside slope and shoulder. (Spring 2022)

LM Start	1.58	Rating **	U	Issue No.	57
LM End	1.58	Issue Type +	Ma	Location *	LS
Category	Earthen Levee			GPS Latitude/Longitude	
				Start	End
Item	Animal Control			37.587344°	37.587344°
				-121.162631°	-121.162631°
DWR ID	DWR_RD2092_01_f_2021_57				
Comment Code					
A3 : No rodents visible, but rodent burrows visible; need to backfill and compact or grout burrows.					
Inspector Comment					

Photo 1 of 1 : FA_2023_RD2092_116_57_20230905_00024.jpg



View of multiple large rodent burrows in the landside slope. (Fall 2021)

* Location LS : Land Side N/A : Not Applicable WS : Water Side CR : Crown		** Rating A : Acceptable M : Minimally Acceptable U : Unacceptable		N : Not Inspected/Rated C : Corrected A/W : Acceptable but Monitor & Maintain		+ Issue Type Ma : Maintenance Deficiency Ob : Design & System Obsolescence En : Enforcement	
--	--	--	--	---	--	---	--

**Flood Control Project Maintenance
Levee Inspections**

Maintenance Issue Types Only, Levee Inspection Report By Mile - Fall 2023

Reclamation District No. 2092 Dos Rios

Waterway	Bank	Unit Miles	Inspection Start/End	Inspector
Unit No. 01 San Joaquin River	Right	3.71	09/06/2023 09/06/2023	Nate Hicks

LM Start	1.60	Rating **	M	Issue No.	48
LM End	1.62	Issue Type +	Ma	Location *	WS
Category	Earthen Levee			GPS Latitude/Longitude	
				Start	End
Item	Trim / Thin Trees			37.587068°	37.586794°
				-121.162773°	-121.162950°
DWR ID	DWR_RD2092_01_f_2019_48				
Comment Code					
T1 : Trim and thin trees to at least five feet above ground level to allow visibility of the ground and room to flood fight.					
Inspector Comment					

Photo 1 of 1 : FA_2023_RD2092_116_48_20230905_00019.jpg



View of branches hanging over waterside slope. (Fall 2019)

LM Start	1.62	Rating **	M	Issue No.	38
LM End	1.62	Issue Type +	Ma	Location *	WS
Category	Earthen Levee			GPS Latitude/Longitude	
				Start	End
Item	Vegetation			37.586842°	37.586842°
				-121.162897°	-121.162897°
DWR ID	DWR_RD2092_01_f_2020_38				
Comment Code					
V4 : Elderberries are blocking visibility and flood fight capability.					
Inspector Comment					
There is a young elderberry tree growing on the waterside shoulder. Recommend removing it before it can establish.					

No Photos

* Location LS : Land Side N/A : Not Applicable WS : Water Side CR : Crown	** Rating A : Acceptable M : Minimally Acceptable U : Unacceptable	N : Not Inspected/Rated C : Corrected A/W : Acceptable but Monitor & Maintain	+ Issue Type Ma : Maintenance Deficiency Ob : Design & System Obsolescence En : Enforcement
--	--	---	---

**Flood Control Project Maintenance
Levee Inspections**

Maintenance Issue Types Only, Levee Inspection Report By Mile - Fall 2023

Reclamation District No. 2092 Dos Rios

Waterway	Bank	Unit Miles	Inspection Start/End	Inspector
Unit No. 01 San Joaquin River	Right	3.71	09/06/2023 09/06/2023	Nate Hicks

LM Start	1.69	Rating **	U	Issue No.	976
LM End	1.69	Issue Type +	Ma	Location *	
Category	Supplemental			GPS Latitude/Longitude	
				Start	End
Item	DWR UCIP LMA Responsibility			37.585938°	37.585938°
				-121.163348°	-121.163348°
DWR ID	20563				
Comment Code					
Inspector Comment					
DS_ID:20563 FS_ID:81556 EP_NO: N/A Repair Type: Urgent EVAL Issue: 3a, Flood Risk Crossing Status: Found UCIP Comments: 10/19/2023 Record remains Urgent. Slide gate on waterside missing potentially allowing uncontrolled flood water from WS to LS. Unable to locate CMP riser on WS slope due to overgrown vegetation. No issues observed on the LS headwall. DMP internal video inspection has found none or minor pipe defects. Recommend next video inspection in 5 years. (M. Thao - DWR UCIP) 03/12/2019 A thorough internal evaluation of this crossing is required, pipe shows evidence of pipe integrity (LS) issues (pipe wall sections missing on WS outlet). Internal inspection is recommended for this crossing to determine the extent of pipe damage through the levee. Maintenance issues identified at this crossing include: flap gate missing on WS, debris found inside concrete distribution box, and missing cover on riser. No permit has been identified for this crossing. Need to determine who maintains crossing; crossing appears functional. (O. Magana - DWR UCIP) FIELD_STRUCT_DESC: 24-inch corrugated metal drainage pipe through the levee, 14 feet below the crown. Slide gate in a corrugated metal pipe (CMP) riser on the waterside (WS) slope. Concrete U-shaped headwall at the landside (LS) toe. [Additional Reference(s): DWR Levee Log, 2005. USACE San Joaquin O&M Manual 5, August 1961, (HLM 1.71)]. FS Date: 10/19/2023 10:15:17 AM					

Photo 1 of 2 : UCIP_FA_2023_81556_117531.jpg



WS view: Pipe outlet at toe with missing flap gate.

* Location	** Rating	+ Issue Type
LS: Land Side WS: Water Side CR: Crown	A: Acceptable M: Minimally Acceptable U: Unacceptable	Ma: Maintenance Deficiency Ob: Design & System Obsolescence En: Enforcement
N/A: Not Applicable	N: Not Inspected/Rated C: Corrected A/W: Acceptable but Monitor & Maintain	

**Flood Control Project Maintenance
Levee Inspections**

Maintenance Issue Types Only, Levee Inspection Report By Mile - Fall 2023

Reclamation District No. 2092 Dos Rios

Waterway	Bank	Unit Miles	Inspection Start/End	Inspector
Unit No. 01 San Joaquin River	Right	3.71	09/06/2023 09/06/2023	Nate Hicks

LM Start	1.69	Rating **	U	Issue No.	976 (cont)
LM End	1.69	Issue Type +	Ma	Location *	
Category	Supplemental			GPS Latitude/Longitude	
				Start	End
Item	DWR UCIP LMA Responsibility			37.585938°	37.585938°
				-121.163348°	-121.163348°
DWR ID	20563				

Photo 2 of 2 : UCIP_FA_2023_81556_79081.jpg



WS view: potential voids visible at pipe outlet.

LM Start	1.81	Rating **	M	Issue No.	49
LM End	1.81	Issue Type +	Ma	Location *	CR
Category	Earthen Levee			GPS Latitude/Longitude	
				Start	End
Item	Animal Control			37.584288°	37.584288°
				-121.162864°	-121.162864°
DWR ID	DWR_RD2092_01_s_2022_49				
Comment Code					
A3 : No rodents visible, but rodent burrows visible; need to backfill and compact or grout burrows.					
Inspector Comment					
Rodent burrow in landside shoulder has collapsed into the crown.					

Photo 1 of 1 : FA_2023_RD2092_116_49_20230905_00020.jpg



Levee crown collapsing into a rodent burrow. (Spring 2022)

LM Start	1.88	Rating **	U	Issue No.	62
LM End	1.88	Issue Type +	Ma	Location *	CR
Category	Earthen Levee			GPS Latitude/Longitude	
				Start	End
Item	Animal Control			37.584091°	37.584091°
				-121.161624°	-121.161624°
DWR ID	DWR_RD2092_01_s_2022_62				
Comment Code					
A3 : No rodents visible, but rodent burrows visible; need to backfill and compact or grout burrows.					
Inspector Comment					
Rodent burrow has collapsed in landside shoulder causing a hole on the crown.					

Photo 1 of 1 : FA_2023_RD2092_116_62_20230905_00028.jpg



Large hole in the levee crown from rodent burrows collapsing. (Spring 2022)

* Location LS : Land Side N/A : Not Applicable WS : Water Side CR : Crown		** Rating A : Acceptable M : Minimally Acceptable U : Unacceptable		+ Issue Type Ma : Maintenance Deficiency Ob : Design & System Obsolescence En : Enforcement	
		N : Not Inspected/Rated C : Corrected A/W : Acceptable but Monitor & Maintain			

**Flood Control Project Maintenance
Levee Inspections**

Maintenance Issue Types Only, Levee Inspection Report By Mile - Fall 2023

Reclamation District No. 2092 Dos Rios

Waterway	Bank	Unit Miles	Inspection Start/End	Inspector
Unit No. 01 San Joaquin River	Right	3.71	09/06/2023 09/06/2023	Nate Hicks

LM Start	1.90	Rating **	U	Issue No.	63
LM End	1.90	Issue Type +	Ma	Location *	CR
Category	Earthen Levee			GPS Latitude/Longitude	
				Start	End
Item	Animal Control			37.584185°	37.584185°
				-121.161336°	-121.161336°
DWR ID	DWR_RD2092_01_s_2022_63				
Comment Code					
A3 : No rodents visible, but rodent burrows visible; need to backfill and compact or grout burrows.					
Inspector Comment					
Rodent hole that has collapsed leaving a pothole in the levee crown.					

Photo 1 of 1 : FA_2023_RD2092_116_63_20230905_00029.jpg



View of collapsed rodent hole on the crown of the levee (Spring 2023).

LM Start	1.95	Rating **	U	Issue No.	70
LM End	1.95	Issue Type +	Ma	Location *	CR
Category	Earthen Levee			GPS Latitude/Longitude	
				Start	End
Item	Animal Control			37.584379°	37.584379°
				-121.160335°	-121.160335°
DWR ID	DWR_RD2092_01_s_2023_70				
Comment Code					
A3 : No rodents visible, but rodent burrows visible; need to backfill and compact or grout burrows.					
Inspector Comment					
Collapsed animal hole that has led to a large pothole in the levee crown.					

Photo 1 of 1 : FA_2023_RD2092_116_70_20230905_00032.jpg



View of collapsed rodent hole on the crown of the levee (Spring 2023).

* Location LS: Land Side N/A: Not Applicable WS: Water Side CR: Crown		** Rating A: Acceptable M: Minimally Acceptable U: Unacceptable N: Not Inspected/Rated C: Corrected A/W: Acceptable but Monitor & Maintain		+ Issue Type Ma: Maintenance Deficiency Ob: Design & System Obsolescence En: Enforcement	
--	--	---	--	--	--

**Flood Control Project Maintenance
Levee Inspections**

Maintenance Issue Types Only, Levee Inspection Report By Mile - Fall 2023

Reclamation District No. 2092 Dos Rios

Waterway	Bank	Unit Miles	Inspection Start/End	Inspector
Unit No. 01 San Joaquin River	Right	3.71	09/06/2023 09/06/2023	Nate Hicks

LM Start	2.07	Rating **	M	Issue No.	977
LM End	2.07	Issue Type +	Ma	Location *	
Category	Supplemental			GPS Latitude/Longitude	
				Start	End
Item	DWR UCIP LMA Responsibility			37.584212°	37.584212°
				-121.158347°	-121.158347°
DWR ID	20564				
Comment Code					
Inspector Comment					
DS_ID:20564 FS_ID:81477 EP_NO: N/A Repair Type: Non-Urgent EVAL Issue: Crossing Status: Found UCIP Comments: 10/19/2023 Record remains Non-Urgent. Crossing appears abandoned; unable to locate a permit and confirm proper pipe abandonment. Overgrown vegetation limits inspection of levee on WS. (M. Thao - DWR UCIP) 03/12/2019 Concrete headwall found on LS toe. Pipe appears to have been grouted through. No other appurtenances were found during inspection. WS outlet was not found. Need to coordinate with the CVFPB to determine if additional steps are needed to comply with Title 23. (O. Magana - DWR UCIP) FIELD_STRUCT_DESC: *ABANDONED* 30-inch corrugated metal drainage pipe through the levee, 15 feet below the crown. Flap gate on the waterside (WS) end. Concrete U-shaped headwalls on both ends. Filled with concrete on the landside (LS) toe. [Additional Reference(s): DWR Levee Log, 2005. USACE San Joaquin O&M Manual 5, August 1961, (HLM 2.10), 36-inch pipe listed]. FS Date: 10/19/2023 2:50:09 PM					

LM Start	2.07	Rating **	M	Issue No.	977 (cont)
LM End	2.07	Issue Type +	Ma	Location *	

Photo 1 of 3 : UCIP_FA_2023_81477_117865.jpg



Levee crown looking upstream.

Photo 2 of 3 : UCIP_FA_2023_81477_117866.jpg



LS view: Concrete headwall and pipe inlet at toe (left); groundwater pump and concrete drop structure approximately 10 feet off toe (right).

* Location LS: Land Side N/A: Not Applicable WS: Water Side CR: Crown	** Rating A: Acceptable M: Minimally Acceptable U: Unacceptable	N: Not Inspected/Rated C: Corrected A/W: Acceptable but Monitor & Maintain	+ Issue Type Ma: Maintenance Deficiency Ob: Design & System Obsolescence En: Enforcement
--	---	--	--

**Flood Control Project Maintenance
Levee Inspections**

Maintenance Issue Types Only, Levee Inspection Report By Mile - Fall 2023

Reclamation District No. 2092 Dos Rios

Waterway	Bank	Unit Miles	Inspection Start/End	Inspector
Unit No. 01 San Joaquin River	Right	3.71	09/06/2023 09/06/2023	Nate Hicks

LM Start	2.07	Rating **	M	Issue No.	977 (cont)
LM End	2.07	Issue Type +	Ma	Location *	
Category	Supplemental			GPS Latitude/Longitude	
				Start	End
Item	DWR UCIP LMA Responsibility			37.584212°	37.584212°
				-121.158347°	-121.158347°
DWR ID	20564				

Photo 3 of 3 : UCIP_FA_2023_81477_117867.jpg



LS view: Close-up view of concrete headwall and pipe inlet on toe.

LM Start	2.07	Rating **	M	Issue No.	72
LM End	2.07	Issue Type +	Ma	Location *	WS
Category	Earthen Levee			GPS Latitude/Longitude	
				Start	End
Item	Vegetation			37.584191°	37.584191°
				-121.158298°	-121.158298°
DWR ID	DWR_RD2092_01_s_2023_72				
Comment Code					
V4 : Elderberries are blocking visibility and flood fight capability.					
Inspector Comment					

No Photos

LM Start	2.21	Rating **	M	Issue No.	73
LM End	2.21	Issue Type +	Ma	Location *	WS
Category	Earthen Levee			GPS Latitude/Longitude	
				Start	End
Item	Vegetation			37.582980°	37.582980°
				-121.156263°	-121.156263°
DWR ID	DWR_RD2092_01_s_2023_73				
Comment Code					
V4 : Elderberries are blocking visibility and flood fight capability.					
Inspector Comment					

No Photos

* Location LS : Land Side N/A : Not Applicable WS : Water Side CR : Crown		** Rating A : Acceptable M : Minimally Acceptable U : Unacceptable		N : Not Inspected/Rated C : Corrected A/W : Acceptable but Monitor & Maintain		+ Issue Type Ma : Maintenance Deficiency Ob : Design & System Obsolescence En : Enforcement	
---	--	---	--	---	--	--	--

**Flood Control Project Maintenance
Levee Inspections**

Maintenance Issue Types Only, Levee Inspection Report By Mile - Fall 2023

Reclamation District No. 2092 Dos Rios

Waterway	Bank	Unit Miles	Inspection Start/End	Inspector
Unit No. 01 San Joaquin River	Right	3.71	09/06/2023 09/06/2023	Nate Hicks

LM Start	2.23	Rating **	M	Issue No.	43
LM End	2.23	Issue Type +	Ma	Location *	LS
Category	Earthen Levee			GPS Latitude/Longitude	
				Start	End
Item	Trim / Thin Trees			37.582717°	37.582717°
				-121.155980°	-121.155980°
DWR ID	DWR_RD2092_01_f_2020_43				
Comment Code					
T1 : Trim and thin trees to at least five feet above ground level to allow visibility of the ground and room to flood fight.					
Inspector Comment					
Palm tree in landside toe should be removed before it can establish.					

Photo 1 of 1 : FA_2023_RD2092_116_43_20230905_00016.jpg



View of small palm tree growing on the landside toe. (Fall 2020)

LM Start	2.28	Rating **	M	Issue No.	41
LM End	2.28	Issue Type +	Ma	Location *	WS
Category	Earthen Levee			GPS Latitude/Longitude	
				Start	End
Item	Vegetation			37.582041°	37.582041°
				-121.155851°	-121.155851°
DWR ID	DWR_RD2092_01_s_2021_41				
Comment Code					
V4 : Elderberries are blocking visibility and flood fight capability.					
Inspector Comment					
Elderberry tree in waterside shoulder should be removed before it can establish.					

No Photos

LM Start	2.29	Rating **	M	Issue No.	59
LM End	2.29	Issue Type +	Ma	Location *	LS
Category	Earthen Levee			GPS Latitude/Longitude	
				Start	End
Item	Trim / Thin Trees			37.581898°	37.581898°
				-121.155857°	-121.155857°
DWR ID	DWR_RD2092_01_s_2020_59				
Comment Code					
T1 : Trim and thin trees to at least five feet above ground level to allow visibility of the ground and room to flood fight.					
Inspector Comment					
Palm tree should be removed from the landside toe before it can establish.					

Photo 1 of 1 : FA_2023_RD2092_116_59_20230905_00026.jpg



Up close view of palm tree growing at the levee toe. (Spring 2020)

* Location LS : Land Side N/A : Not Applicable WS : Water Side CR : Crown		** Rating A : Acceptable M : Minimally Acceptable U : Unacceptable N : Not Inspected/Rated C : Corrected A/W : Acceptable but Monitor & Maintain		+ Issue Type Ma : Maintenance Deficiency Ob : Design & System Obsolescence En : Enforcement	
--	--	---	--	---	--

**Flood Control Project Maintenance
Levee Inspections**

Maintenance Issue Types Only, Levee Inspection Report By Mile - Fall 2023

Reclamation District No. 2092 Dos Rios

Waterway	Bank	Unit Miles	Inspection Start/End	Inspector
Unit No. 01 San Joaquin River	Right	3.71	09/06/2023 09/06/2023	Nate Hicks

LM Start	2.33	Rating **	U	Issue No.	74
LM End	2.33	Issue Type +	Ma	Location *	LS
Category	Earthen Levee			GPS Latitude/Longitude	
				Start	End
Item	Vegetation			37.581324°	37.581324°
				-121.156108°	-121.156108°
DWR ID	DWR_RD2092_01_s_2023_74				
Comment Code					
V2 : Remove the wild growth and woody vegetation other than native grasses from the levee slopes.					
Inspector Comment					

Photo 1 of 1 : FA_2023_RD2092_116_74_20230905_00033.jpg



View of woody vegetation on landside slope (Spring 2023).

LM Start	2.34	Rating **	M	Issue No.	65
LM End	2.37	Issue Type +	Ma	Location *	CR
Category	Earthen Levee			GPS Latitude/Longitude	
				Start	End
Item	Crown Surface / Depressions / Rutting			37.581186°	37.580835°
				-121.156182°	-121.156475°
DWR ID	DWR_RD2092_01_s_2022_65				
Comment Code					
C2 : Repair depressions or ruts in the crown or slope.					
Inspector Comment					

No Photos

LM Start	2.34	Rating **	M	Issue No.	58
LM End	2.34	Issue Type +	Ma	Location *	LS
Category	Earthen Levee			GPS Latitude/Longitude	
				Start	End
Item	Trim / Thin Trees			37.581166°	37.581166°
				-121.156156°	-121.156156°
DWR ID	DWR_RD2092_01_s_2022_58				
Comment Code					
T1 : Trim and thin trees to at least five feet above ground level to allow visibility of the ground and room to flood fight.					
Inspector Comment					
Palm tree should be removed from the landside slope.					

Photo 1 of 1 : FA_2023_RD2092_116_58_20230905_00025.jpg



View of palm tree growing on the landside slope. (Spring 2020)

* Location LS : Land Side N/A : Not Applicable WS : Water Side CR : Crown		** Rating A : Acceptable M : Minimally Acceptable U : Unacceptable		+ Issue Type Ma : Maintenance Deficiency Ob : Design & System Obsolescence En : Enforcement	
		N : Not Inspected/Rated C : Corrected A/W : Acceptable but Monitor & Maintain			

**Flood Control Project Maintenance
Levee Inspections**

Maintenance Issue Types Only, Levee Inspection Report By Mile - Fall 2023

Reclamation District No. 2092 Dos Rios

Waterway	Bank	Unit Miles	Inspection Start/End	Inspector
Unit No. 01 San Joaquin River	Right	3.71	09/06/2023 09/06/2023	Nate Hicks

LM Start	2.35	Rating **	M	Issue No.	75
LM End	2.35	Issue Type +	Ma	Location *	WS
Category	Earthen Levee			GPS Latitude/Longitude	
				Start	End
Item	Vegetation			37.581072°	37.581072°
				-121.156281°	-121.156281°
DWR ID	DWR_RD2092_01_s_2023_75				
Comment Code					
V2 : Remove the wild growth and woody vegetation other than native grasses from the levee slopes.					
Inspector Comment					

No Photos

LM Start	2.36	Rating **	U	Issue No.	66
LM End	2.39	Issue Type +	Ma	Location *	LS
Category	Earthen Levee			GPS Latitude/Longitude	
				Start	End
Item	Animal Control			37.580992°	37.580641°
				-121.156336°	-121.156610°
DWR ID	DWR_RD2092_01_s_2022_66				
Comment Code					
A3 : No rodents visible, but rodent burrows visible; need to backfill and compact or grout burrows.					
Inspector Comment					

Photo 1 of 1 : FA_2023_RD2092_116_66_20230905_00031.jpg



View of several large rodent holes in the landside slope. (Spring 2022)

LM Start	2.38	Rating **	M	Issue No.	76
LM End	2.38	Issue Type +	Ma	Location *	LS
Category	Earthen Levee			GPS Latitude/Longitude	
				Start	End
Item	Trim / Thin Trees			37.580731°	37.580731°
				-121.156552°	-121.156552°
DWR ID	DWR_RD2092_01_s_2023_76				
Comment Code					
T1 : Trim and thin trees to at least five feet above ground level to allow visibility of the ground and room to flood fight.					
Inspector Comment					

No Photos

* Location LS : Land Side N/A : Not Applicable WS : Water Side CR : Crown	** Rating A : Acceptable M : Minimally Acceptable U : Unacceptable	N : Not Inspected/Rated C : Corrected A/W : Acceptable but Monitor & Maintain	+ Issue Type Ma : Maintenance Deficiency Ob : Design & System Obsolescence En : Enforcement
--	--	---	---

**Flood Control Project Maintenance
Levee Inspections**

Maintenance Issue Types Only, Levee Inspection Report By Mile - Fall 2023

Reclamation District No. 2092 Dos Rios

Waterway	Bank	Unit Miles	Inspection Start/End	Inspector
Unit No. 01 San Joaquin River	Right	3.71	09/06/2023 09/06/2023	Nate Hicks

LM Start	2.40	Rating **	M	Issue No.	980	
LM End	2.40	Issue Type +	Ma	Location *		
Category	Supplemental			GPS Latitude/Longitude		
				Start	End	
Item	DWR UCIP LMA Responsibility			37.580426°	37.580426°	
				-121.156798°	-121.156798°	
DWR ID	20567					
Comment Code						
Inspector Comment						
DS_ID:20567 FS_ID:81503 EP_NO: N/A Repair Type: Non-Urgent EVAL Issue: Crossing Status: Found UCIP Comments: 10/19/2023 Record remains Non-Urgent. Concrete head on LS may be buried; therefore, unable to locate concrete headwall. Concrete headwall on WS approximately 100 feet off toe was found; however, dense vegetation prevented inspection of the flap gate. Top of pipe leading to headwall is visible within the floodway. If crossing is no longer in use, recommend owner contact CVFPB to abandon pipe properly. (M. Thao - DWR UCIP) 03/12/2019 Unable to locate concrete headwall on the WS due to high water. Unable to locate concrete headwall on LS due to dense vegetation. No permit was found authorizing crossing. If crossing is no longer in use recommend removing crossing and appurtenances from levee. Need to coordinate with CVFPB to determine pipe owner. (O. Magana - DWR UCIP) 09/24/2013 Appears abandoned and if so should be done so properly. (W. Wylie - DWR UCIP) FIELD_STRUCT_DESC: *ABANDONED* 24-inch corrugated metal drainage pipe through the levee, 15 feet below the crown. Flap gate on the waterside (WS) end. Concrete U-shaped headwall on the WS end. Concrete headwall on the landside (LS) toe next to pump. [Additional Reference(s): DWR Levee Log, 2005. USACE San Joaquin O&M Manual 5, August 1961, (HLM 2.44)]. FS Date: 10/19/2023 8:57:18 AM						

Photo 1 of 3 : UCIP_FA_2023_81503_117957.jpg



Levee crown looking upstream.

* Location LS: Land Side N/A: Not Applicable WS: Water Side CR: Crown	** Rating A: Acceptable M: Minimally Acceptable U: Unacceptable N: Not Inspected/Rated C: Corrected A/W: Acceptable but Monitor & Maintain	+ Issue Type Ma: Maintenance Deficiency Ob: Design & System Obsolescence En: Enforcement
--	---	--

**Flood Control Project Maintenance
Levee Inspections**

Maintenance Issue Types Only, Levee Inspection Report By Mile - Fall 2023

Reclamation District No. 2092 Dos Rios

Waterway	Bank	Unit Miles	Inspection Start/End	Inspector
Unit No. 01 San Joaquin River	Right	3.71	09/06/2023 09/06/2023	Nate Hicks

LM Start	2.40	Rating **	M	Issue No.	980 (cont)
LM End	2.40	Issue Type +	Ma	Location *	
Category	Supplemental		GPS Latitude/Longitude		
			Start	End	
Item	DWR UCIP LMA Responsibility		37.580426°	37.580426°	
			-121.156798°	-121.156798°	
DWR ID	20567				

Photo 2 of 3 : UCIP_FA_2023_81503_117958.jpg



LS view: Looking from crown; no concrete headwall found. Pipe appurtenances associated with a different record (DSID 20568).

LM Start	2.40	Rating **	M	Issue No.	980 (cont)
LM End	2.40	Issue Type +	Ma	Location *	

Photo 3 of 3 : UCIP_FA_2023_81503_117959.jpg



LS view: Looking toward levee; no concrete headwall found. Pipe appurtenances associated with a different record (DSID 20568).

LM Start	2.44	Rating **	M	Issue No.	50
LM End	2.44	Issue Type +	Ma	Location *	LS
Category	Earthen Levee			GPS Latitude/Longitude	
				Start	End
Item	Trim / Thin Trees			37.579945°	37.579945°
				-121.156995°	-121.156995°
DWR ID	DWR_RD2092_01_f_2019_50				
Comment Code					
T1 : Trim and thin trees to at least five feet above ground level to allow visibility of the ground and room to flood fight.					
Inspector Comment					
Palm tree should be removed from landside slope before it can establish.					

Photo 1 of 1 : FA_2023_RD2092_116_50_20230905_00021.jpg



View of palm tree in the landside slope. (Spring 2020)

* Location LS : Land Side WS : Water Side CR : Crown	** Rating A : Acceptable M : Minimally Acceptable U : Unacceptable	N : Not Inspected/Rated C : Corrected A/W : Acceptable but Monitor & Maintain	+ Issue Type Ma : Maintenance Deficiency Ob : Design & System Obsolescence En : Enforcement
--	--	--	---

**Flood Control Project Maintenance
Levee Inspections**

Maintenance Issue Types Only, Levee Inspection Report By Mile - Fall 2023

Reclamation District No. 2092 Dos Rios

Waterway	Bank	Unit Miles	Inspection Start/End	Inspector
Unit No. 01 San Joaquin River	Right	3.71	09/06/2023 09/06/2023	Nate Hicks

LM Start	2.45	Rating **	M	Issue No.	77
LM End	2.50	Issue Type +	Ma	Location *	CR
Category	Earthen Levee			GPS Latitude/Longitude	
				Start	End
Item	Crown Surface / Depressions / Rutting			37.579732°	37.579019°
				-121.157021°	-121.157006°
DWR ID	DWR_RD2092_01_s_2023_77				
Comment Code					
C2 : Repair depressions or ruts in the crown or slope.					
Inspector Comment					

No Photos

LM Start	2.49	Rating **	M	Issue No.	51
LM End	2.49	Issue Type +	Ma	Location *	LS
Category	Earthen Levee			GPS Latitude/Longitude	
				Start	End
Item	Trim / Thin Trees			37.579133°	37.579133°
				-121.156981°	-121.156981°
DWR ID	DWR_RD2092_01_f_2019_51				
Comment Code					
T1 : Trim and thin trees to at least five feet above ground level to allow visibility of the ground and room to flood fight.					
Inspector Comment					
Palm tree should be removed from landside toe before it can establish.					

Photo 1 of 1 : FA_2023_RD2092_116_51_20230905_00022.jpg



View of palm tree growing in landside toe. (Fall 2019)

LM Start	2.55	Rating **	M	Issue No.	19
LM End	2.55	Issue Type +	Ma	Location *	LS
Category	Earthen Levee			GPS Latitude/Longitude	
				Start	End
Item	Trim / Thin Trees			37.578333°	37.578333°
				-121.157011°	-121.157011°
DWR ID	DWR_RD2092_01_s_2018_19				
Comment Code					
T1 : Trim and thin trees to at least five feet above ground level to allow visibility of the ground and room to flood fight.					
Inspector Comment					
Palm trees at landward slope and toe should be removed.					

Photo 1 of 1 : FA_2023_RD2092_116_19_20230905_00003.jpg



View of palm tree growing on landside slope. (Fall 2019)

* Location LS : Land Side N/A : Not Applicable WS : Water Side CR : Crown		** Rating A : Acceptable M : Minimally Acceptable U : Unacceptable		+ Issue Type Ma : Maintenance Deficiency Ob : Design & System Obsolescence En : Enforcement	
		N : Not Inspected/Rated C : Corrected A/W : Acceptable but Monitor & Maintain			

**Flood Control Project Maintenance
Levee Inspections**

Maintenance Issue Types Only, Levee Inspection Report By Mile - Fall 2023

Reclamation District No. 2092 Dos Rios

Waterway	Bank	Unit Miles	Inspection Start/End	Inspector
Unit No. 01 San Joaquin River	Right	3.71	09/06/2023 09/06/2023	Nate Hicks

LM Start	2.56	Rating **	U	Issue No.	44
LM End	2.63	Issue Type +	Ma	Location *	LS
Category	Earthen Levee			GPS Latitude/Longitude	
				Start	End
Item	Animal Control			37.578179°	37.577159°
				-121.157036°	-121.157150°
DWR ID	DWR_RD2092_01_f_2018_44				
Comment Code					
A1 : Exterminate rodents and backfill and compact or grout burrows.					
Inspector Comment					
There are several burrows along the landside slope that need to be backfilled.					

Photo 1 of 1 : FA_2023_RD2092_116_44_20230905_00017.jpg



View of rodent burrows in landside slope. (Spring 2020)

LM Start	2.60	Rating **	M	Issue No.	78
LM End	2.60	Issue Type +	Ma	Location *	LS
Category	Earthen Levee			GPS Latitude/Longitude	
				Start	End
Item	Vegetation			37.577653°	37.577653°
				-121.157121°	-121.157121°
DWR ID	DWR_RD2092_01_s_2023_78				
Comment Code					
V4 : Elderberries are blocking visibility and flood fight capability.					
Inspector Comment					

No Photos

LM Start	2.62	Rating **	M	Issue No.	53
LM End	2.62	Issue Type +	Ma	Location *	LS
Category	Earthen Levee			GPS Latitude/Longitude	
				Start	End
Item	Vegetation			37.577261°	37.577261°
				-121.157146°	-121.157146°
DWR ID	DWR_RD2092_01_f_2019_53				
Comment Code					
V4 : Elderberries are blocking visibility and flood fight capability.					
Inspector Comment					

No Photos

* Location LS : Land Side N/A : Not Applicable WS : Water Side CR : Crown		** Rating A : Acceptable M : Minimally Acceptable U : Unacceptable N : Not Inspected/Rated C : Corrected A/W : Acceptable but Monitor & Maintain		+ Issue Type Ma : Maintenance Deficiency Ob : Design & System Obsolescence En : Enforcement	
--	--	---	--	---	--

**Flood Control Project Maintenance
Levee Inspections**

Maintenance Issue Types Only, Levee Inspection Report By Mile - Fall 2023

Reclamation District No. 2092 Dos Rios

Waterway	Bank	Unit Miles	Inspection Start/End	Inspector
Unit No. 01 San Joaquin River	Right	3.71	09/06/2023 09/06/2023	Nate Hicks

LM Start	2.63	Rating **	U	Issue No.	17
LM End	2.76	Issue Type +	Ma	Location *	WS
Category	Earthen Levee			GPS Latitude/Longitude	
				Start	End
Item	Animal Control			37.577186°	37.575364°
				-121.157159°	-121.157093°
DWR ID	DWR_RD2092_01_s_2018_17				
Comment Code					
A1 : Exterminate rodents and backfill and compact or grout burrows.					
Inspector Comment					
Several large rodent holes within this reach need to be backfilled.					

Photo 1 of 1 : FA_2023_RD2092_116_17_20230905_00002.jpg



Looking upstream on waterward slope at several large rodent holes.
(Spring 2018)

LM Start	2.74	Rating **	U	Issue No.	45
LM End	2.74	Issue Type +	Ma	Location *	CR
Category	Earthen Levee			GPS Latitude/Longitude	
				Start	End
Item	Crown Surface / Depressions / Rutting			37.575514°	37.575514°
				-121.157140°	-121.157140°
DWR ID	DWR_RD2092_01_s_2019_45				
Comment Code					
C2 : Repair depressions or ruts in the crown or slope.					
Inspector Comment					
Depression and rutting in levee crown should be repaired.					

Photo 1 of 1 : FA_2023_RD2092_116_45_20230905_00018.jpg



View of depression in levee crown. (Spring 2019)

* Location LS: Land Side N/A: Not Applicable WS: Water Side CR: Crown	** Rating A: Acceptable M: Minimally Acceptable U: Unacceptable	+ Issue Type Ma: Maintenance Deficiency Ob: Design & System Obsolescence En: Enforcement
--	---	--

**Flood Control Project Maintenance
Levee Inspections**

Maintenance Issue Types Only, Levee Inspection Report By Mile - Fall 2023

Reclamation District No. 2092 Dos Rios

Waterway	Bank	Unit Miles	Inspection Start/End	Inspector
Unit No. 01 San Joaquin River	Right	3.71	09/06/2023 09/06/2023	Nate Hicks

LM Start	2.78	Rating **	M	Issue No.	981
LM End	2.78	Issue Type +	Ma	Location *	
Category	Supplemental			GPS Latitude/Longitude	
				Start	End
Item	DWR UCIP LMA Responsibility			37.575050°	37.575050°
				-121.156872°	-121.156872°
DWR ID	20569				
Comment Code					
Inspector Comment					
DS_ID:20569					
FS_ID:81479					
EP_NO: N/A					
Repair Type: Non-Urgent					
EVAL Issue:					
Crossing Status: Not Found					
UCIP Comments: 10/19/2023 Record remains Non-Urgent. Crossing not found. Geophysical study indicates possible presence of pipe through levee. Owner needs to coordinate with the CVFPB to remove or abandon crossing properly. Coordinates have been updated from 37.575002, -121.156753 to 37.575050, -121.156872 based on DMP aerial imagery. (M. Thao - DWR UCIP)					
03/12/2019 Need to confirm status of crossing through levee section. Geophysical study indicates possible presence of pipe through levee. Owner needs to coordinate with the CVFPB to remove or abandon crossing according to Title 23 requirements. (O. Magana - DWR UCIP)					
FIELD_STRUCT_DESC: 24-inch corrugated metal drainage pipe through the levee, 6 feet below the crown. Concrete U-shaped headwall and flap gate on the waterside (WS) end. [Additional Reference(s): DWR Levee Log, 2005. USACE San Joaquin O&M Manual 5, August 1961, (HLM 2.83)].					
FS Date: 10/19/2023 10:35:58 AM					

Photo 1 of 3 : UCIP_FA_2023_81479_117873.jpg



Levee crown looking upstream.

LM Start	2.78	Rating **	M	Issue No.	981 (cont)
LM End	2.78	Issue Type +	Ma	Location *	

Photo 2 of 3 : UCIP_FA_2023_81479_117872.jpg



LS view: General overview looking from crown.

* Location LS: Land Side N/A: Not Applicable WS: Water Side CR: Crown	** Rating A: Acceptable M: Minimally Acceptable U: Unacceptable	N: Not Inspected/Rated C: Corrected A/W: Acceptable but Monitor & Maintain	+ Issue Type Ma: Maintenance Deficiency Ob: Design & System Obsolescence En: Enforcement
--	---	--	--

**Flood Control Project Maintenance
Levee Inspections**

Maintenance Issue Types Only, Levee Inspection Report By Mile - Fall 2023

Reclamation District No. 2092 Dos Rios

Waterway	Bank	Unit Miles	Inspection Start/End	Inspector
Unit No. 01 San Joaquin River	Right	3.71	09/06/2023 09/06/2023	Nate Hicks

LM Start	2.78	Rating **	M	Issue No.	981 (cont)
LM End	2.78	Issue Type +	Ma	Location *	
Category	Supplemental			GPS Latitude/Longitude	
				Start	End
Item	DWR UCIP LMA Responsibility			37.575050°	37.575050°
				-121.156872°	-121.156872°
DWR ID	20569				

Photo 3 of 3 : UCIP_FA_2023_81479_117874.jpg



WS view: General overview looking from crown.

LM Start	2.82	Rating **	U	Issue No.	60
LM End	2.94	Issue Type +	Ma	Location *	CR
Category	Earthen Levee			GPS Latitude/Longitude	
				Start	End
Item	Crown Surface / Depressions / Rutting			37.574868°	37.574425°
				-121.156163°	-121.154046°
DWR ID	DWR_RD2092_01_s_2020_60				
Comment Code					
C2 : Repair depressions or ruts in the crown or slope.					
Inspector Comment					
Potholes and rutting in the levee crown should be repaired.					

Photo 1 of 1 : FA_2023_RD2092_116_60_20230905_00027.jpg



View of rutting and potholes on levee crown looking downstream. (Spring 2021)

* Location LS: Land Side N/A: Not Applicable WS: Water Side CR: Crown	** Rating A: Acceptable M: Minimally Acceptable U: Unacceptable	N: Not Inspected/Rated C: Corrected A/W: Acceptable but Monitor & Maintain	+ Issue Type Ma: Maintenance Deficiency Ob: Design & System Obsolescence En: Enforcement
--	---	--	--

**Flood Control Project Maintenance
Levee Inspections**

Maintenance Issue Types Only, Levee Inspection Report By Mile - Fall 2023

Reclamation District No. 2092 Dos Rios

Waterway	Bank	Unit Miles	Inspection Start/End	Inspector
Unit No. 01 San Joaquin River	Right	3.71	09/06/2023 09/06/2023	Nate Hicks

LM Start	2.86	Rating **	M	Issue No.	982
LM End	2.86	Issue Type +	Ma	Location *	
Category	Supplemental			GPS Latitude/Longitude	
				Start	End
Item	DWR UCIP LMA Responsibility			37.574741°	37.574741°
				-121.155495°	-121.155495°
DWR ID	20570				
Comment Code					
Inspector Comment					
DS_ID:20570 FS_ID:81480 EP_NO: N/A Repair Type: Non-Urgent EVAL Issue: Crossing Status: Not Found UCIP Comments: 10/19/2023 Record remains Non-Urgent. Crossing not found. Geophysical study indicates possible presence of pipe through levee. If pipe is no longer in use, recommend owner to contact CVFPB to abandon or remove pipe from levee properly. (M. Thao - DWR UCIP) 03/12/2019 Unable to locate concrete headwall on the WS. Concrete headwall is still visible on the LS however, this crossing appears to be abandoned. No permit was found authorizing crossing. If crossing is no longer in use recommend removing crossing and appurtenances from levee. (O. Magana - DWR UCIP) 09/24/2013 Appears abandoned and if so, should be done so properly. (W. Wylie - DWR UCIP) FIELD_STRUCT_DESC: 24-inch corrugated metal drainage pipe through the levee, 6.5 feet below the crown. Concrete U-shaped headwall and flap gate on the waterside (WS) end. Concrete headwall on the landside (LS) slope. [Additional Reference(s): DWR Levee Log, 2005. USACE San Joaquin O&M Manual 5, August 1961]. FS Date: 10/19/2023 11:06:32 AM					

Photo 1 of 3 : UCIP_FA_2023_81480_117876.jpg



Levee crown looking upstream.

LM Start	2.86	Rating **	M	Issue No.	982 (cont)
LM End	2.86	Issue Type +	Ma	Location *	

Photo 2 of 3 : UCIP_FA_2023_81480_117877.jpg



LS view: General overview looking from crown.

* Location LS: Land Side N/A: Not Applicable WS: Water Side CR: Crown	** Rating A: Acceptable M: Minimally Acceptable U: Unacceptable	N: Not Inspected/Rated C: Corrected A/W: Acceptable but Monitor & Maintain	+ Issue Type Ma: Maintenance Deficiency Ob: Design & System Obsolescence En: Enforcement
--	---	--	--

**Flood Control Project Maintenance
Levee Inspections**

Maintenance Issue Types Only, Levee Inspection Report By Mile - Fall 2023

Reclamation District No. 2092 Dos Rios

Waterway	Bank	Unit Miles	Inspection Start/End	Inspector
Unit No. 01 San Joaquin River	Right	3.71	09/06/2023 09/06/2023	Nate Hicks

LM Start	2.86	Rating **	M	Issue No.	982 (cont)
LM End	2.86	Issue Type +	Ma	Location *	
Category	Supplemental		GPS Latitude/Longitude		
			Start	End	
Item	DWR UCIP LMA Responsibility		37.574741°	37.574741°	
			-121.155495°	-121.155495°	
DWR ID	20570				

Photo 3 of 3 : UCIP_FA_2023_81480_117875.jpg



WS view: General overview looking from crown.

LM Start	2.94	Rating **	A/W	Issue No.	52
LM End	2.94	Issue Type +	Ma	Location *	LS
Category	Earthen Levee			GPS Latitude/Longitude	
				Start	End
Item	Animal Control			37.574455°	37.574455°
				-121.154069°	-121.154069°
DWR ID	DWR_RD2092_01_s_2021_52				
Comment Code					
A1 : Exterminate rodents and backfill and compact or grout burrows.					
Inspector Comment					
Single rodent and burrow observed on landside shoulder. Monitor area for increase in rodent activity.					

Photo 1 of 1 : FA_2023_RD2092_116_52_20230905_00023.jpg



View of single burrow and rodent observed on landside shoulder. (Spring 2021)

LM Start	3.01	Rating **	M	Issue No.	69
LM End	3.01	Issue Type +	Ma	Location *	LS
Category	Earthen Levee			GPS Latitude/Longitude	
				Start	End
Item	Vegetation			37.574237°	37.574237°
				-121.152758°	-121.152758°
DWR ID	DWR_RD2092_01_s_2022_69				
Comment Code					
V4 : Elderberries are blocking visibility and flood fight capability.					
Inspector Comment					

No Photos

* Location LS : Land Side N/A : Not Applicable WS : Water Side CR : Crown		** Rating A : Acceptable M : Minimally Acceptable U : Unacceptable N : Not Inspected/Rated C : Corrected A/W : Acceptable but Monitor & Maintain		+ Issue Type Ma : Maintenance Deficiency Ob : Design & System Obsolescence En : Enforcement	
---	--	--	--	--	--

**Flood Control Project Maintenance
Levee Inspections**

Maintenance Issue Types Only, Levee Inspection Report By Mile - Fall 2023

Reclamation District No. 2092 Dos Rios

Waterway	Bank	Unit Miles	Inspection Start/End	Inspector
Unit No. 01 San Joaquin River	Right	3.71	09/06/2023 09/06/2023	Nate Hicks

LM Start	3.15	Rating **	M	Issue No.	81
LM End	3.15	Issue Type +	Ma	Location *	CR
Category	Earthen Levee			GPS Latitude/Longitude	
				Start	End
Item	Crown Surface / Depressions / Rutting			37.573403°	37.573403°
				-121.150444°	-121.150444°
DWR ID	DWR_RD2092_01_s_2023_81				
Comment Code					
C2 : Repair depressions or ruts in the crown or slope.					
Inspector Comment					

No Photos

* Location LS: Land Side N/A: Not Applicable WS: Water Side CR: Crown	** Rating A: Acceptable M: Minimally Acceptable U: Unacceptable	N: Not Inspected/Rated C: Corrected A/W: Acceptable but Monitor & Maintain	+ Issue Type Ma: Maintenance Deficiency Ob: Design & System Obsolescence En: Enforcement
--	---	--	--

**Flood Control Project Maintenance
Levee Inspections**

Maintenance Issue Types Only, Levee Inspection Report By Mile - Fall 2023

Reclamation District No. 2092 Dos Rios

Waterway	Bank	Unit Miles	Inspection Start/End	Inspector
Unit No. 01 San Joaquin River	Right	3.71	09/06/2023 09/06/2023	Nate Hicks

LM Start	3.47	Rating **	M	Issue No.	983	
LM End	3.47	Issue Type +	Ma	Location *		
Category	Supplemental			GPS Latitude/Longitude		
				Start	End	
Item	DWR UCIP LMA Responsibility			37.573304°	37.573304°	
				-121.144747°	-121.144747°	
DWR ID	20572					
Comment Code						
Inspector Comment						
DS_ID:20572 FS_ID:81482 EP_NO: N/A Repair Type: Non-Urgent EVAL Issue: 4b, Safety Issue Crossing Status: Found UCIP Comments: 10/19/2023 Record remains Non-Urgent. No cover was present on WS CMP riser causing a safety hazard; recommend adding a cover. Debris found in CMP riser but no slide gate present. Concrete headwalls were not found on landside (LS) or WS. Geophysical study indicates possible presence of pipe through levee. If crossing is no longer in use, owner needs to coordinate with the CVFPB to remove or abandon crossing properly. (M. Thao - DWR UCIP) 03/12/2019 No permit was found authorizing crossing. Unable to confirm if crossing is in use. Recommend adding cover to riser to address safety concern. No slide gate was found in CMP riser. If crossing is no longer in use, recommend proper abandonment or removal from levee. Owner will need to coordinate with CVFPB to be compliant with Title 23. (O. Magana - DWR UCIP) 09/24/2013 This pipe appears abandoned and if so, should be done so properly. (W. Wylie - DWR UCIP) FIELD_STRUCT_DESC: 36-inch corrugated metal drainage pipe through the levee, 11 feet below the crown. Slide gate in a corrugated metal pipe (CMP) riser on the waterside (WS) slope. Concrete headwalls on both ends. [Additional Reference(s): DWR Levee Log, 2005. USACE San Joaquin O&M Manual 5, August 1961, (HLM 3.52)]. FS Date: 10/19/2023 12:01:36 PM						

LM Start	3.47	Rating **	M	Issue No.	983 (cont)
LM End	3.47	Issue Type +	Ma	Location *	

Photo 1 of 2 : UCIP_FA_2023_81482_117882.jpg



WS view: 48-inch CMP riser with no cover on slope; looking from crown.

Photo 2 of 2 : UCIP_FA_2023_81482_117883.jpg



WS view: Debris within 48-inch CMP riser.

* Location LS: Land Side N/A: Not Applicable WS: Water Side CR: Crown	** Rating A: Acceptable M: Minimally Acceptable U: Unacceptable	N: Not Inspected/Rated C: Corrected A/W: Acceptable but Monitor & Maintain	+ Issue Type Ma: Maintenance Deficiency Ob: Design & System Obsolescence En: Enforcement
--	---	--	--

**Flood Control Project Maintenance
Levee Inspections****Maintenance Issue Types Only, Levee Inspection Report By Mile - Fall 2023****Reclamation District No. 2092 Dos Rios**

Waterway	Bank	Unit Miles	Inspection Start/End	Inspector
Unit No. 01 San Joaquin River	Right	3.71	09/06/2023 09/06/2023	Nate Hicks

* Location LS: Land Side N/A: Not Applicable WS: Water Side CR: Crown	** Rating A: Acceptable M: Minimally Acceptable U: Unacceptable N: Not Inspected/Rated C: Corrected A/W: Acceptable but Monitor & Maintain	+ Issue Type Ma: Maintenance Deficiency Ob: Design & System Obsolescence En: Enforcement
--	---	--