

**Flood Control Project Maintenance
Levee Inspections**

Maintenance Issue Types Only, Levee Inspection Report By Mile - Fall 2018

Reclamation District No. 2092 Dos Rios

Waterway	Bank	Unit Miles	Inspection Start/End	Inspector
Unit No. 01 San Joaquin River	Right	3.71	10/04/2018 10/04/2018	Corey Fujitani

LM Start	0.00	Rating **	A	Issue No.	18
LM End	0.00	Issue Type +	Ma	Location *	N/A
Category	Earthen Levee			GPS Latitude/Longitude	
				Start	End
Item	Flood Preparedness & Training			°	°
DWR ID	DWR_RD2092_01_f_2012_18				
Comment Code					
Inspector Comment					
LMA preparedness and training is adequate for flood response.					

No Photos

LM Start	0.00	Rating **	A	Issue No.	24
LM End	0.00	Issue Type +	Ma	Location *	N/A
Category	Earthen Levee			GPS Latitude/Longitude	
				Start	End
Item	Operations & Maintenance Manuals			°	°
DWR ID	DWR_RD2092_01_s_2012_24				
Comment Code					
Inspector Comment					
LMA has the O&M manual for their district.					

No Photos

LM Start	0.00	Rating **	A	Issue No.	26
LM End	0.00	Issue Type +	Ma	Location *	N/A
Category	Earthen Levee			GPS Latitude/Longitude	
				Start	End
Item	Emergency Supplies & Equipment			°	°
DWR ID	DWR_RD2092_01_s_2012_26				
Comment Code					
Inspector Comment					
LMA has adequate flood fighting supplies.					

No Photos

* Location LS : Land Side N/A : Not Applicable WS : Water Side CR : Crown	** Rating A : Acceptable M : Minimally Acceptable U : Unacceptable	N : Not Inspected/Rated C : Corrected A/W : Acceptable but Monitor & Maintain	+ Issue Type Ma : Maintenance Deficiency Ob : Design & System Obsolescence En : Enforcement
--	--	---	---

**Flood Control Project Maintenance
Levee Inspections**

Maintenance Issue Types Only, Levee Inspection Report By Mile - Fall 2018

Reclamation District No. 2092 Dos Rios

Waterway	Bank	Unit Miles	Inspection Start/End	Inspector
Unit No. 01 San Joaquin River	Right	3.71	10/04/2018 10/04/2018	Corey Fujitani

LM Start	0.18	Rating **	M	Issue No.	973
LM End	0.18	Issue Type +	Ma	Location *	
Category	Supplemental			GPS Latitude/Longitude	
				Start	End
Item	DWR UCIP LMA Responsibility			37.602031 °	37.602031 °
				-121.161249 °	-121.161249 °
DWR ID	20561				
Comment Code					
Inspector Comment					
FS_ID:27123 DS_ID:20561 EP_NO: N/A Repair Type: Non-Urgent Crossing Status: Found UCIP Comments: 09/24/2013 Pipe rusted through at headwall on LS toe. Good candidate for video inspection. (W. Wylie - DWR UCIP) FIELD_STRUCT_DESC: 60-inch corrugated metal drainage pipe through the levee, 19 feet below the crown. Flap gate on the waterside (WS) end. Slide gate in an 80-inch corrugated metal pipe (CMP) riser on the WS slope. Concrete U-shaped headwalls on both ends. [Additional Reference(s): DWR Levee Log, 2005. USACE San Joaquin O&M Manual 5, August 1961, (HLM 0.18)]. FS Date: 1/16/2014 12:03:14 PM					

LM Start	0.18	Rating **	M	Issue No.	973 (cont)
LM End	0.18	Issue Type +	Ma	Location *	

Photo 1 of 3 : UCIP_FA_2018_27123_50242.jpg



Slide gate in 80-inch CMP riser on WS slope.

Photo 2 of 3 : UCIP_FA_2018_27123_50241.jpg



Concrete headwall on LS toe in front of pump on pier.

* Location LS : Land Side N/A : Not Applicable WS : Water Side CR : Crown	** Rating A : Acceptable M : Minimally Acceptable U : Unacceptable	N : Not Inspected/Rated C : Corrected A/W : Acceptable but Monitor & Maintain	+ Issue Type Ma : Maintenance Deficiency Ob : Design & System Obsolescence En : Enforcement
--	--	---	---

**Flood Control Project Maintenance
Levee Inspections**

Maintenance Issue Types Only, Levee Inspection Report By Mile - Fall 2018

Reclamation District No. 2092 Dos Rios

Waterway	Bank	Unit Miles	Inspection Start/End	Inspector
Unit No. 01 San Joaquin River	Right	3.71	10/04/2018 10/04/2018	Corey Fujitani

LM Start	0.18	Rating **	M	Issue No.	973 (cont)	
LM End	0.18	Issue Type +	Ma	Location *		
Category	Supplemental			GPS Latitude/Longitude		
				Start		End
Item	DWR UCIP LMA Responsibility			37.602031 °		37.602031 °
				-121.161249 °		-121.161249 °
DWR ID	20561					
Comment Code						
Inspector Comment						
FS_ID:27123						
DS_ID:20561						
EP_NO: N/A						
Repair Type: Non-Urgent						
Crossing Status: Found						
UCIP Comments: 09/24/2013 Pipe rusted through at headwall on LS toe. Good candidate for video inspection. (W. Wylie - DWR UCIP)						
FIELD_STRUCT_DESC: 60-inch corrugated metal drainage pipe through the levee, 19 feet below the crown. Flap gate on the waterside (WS) end. Slide gate in an 80-inch corrugated metal pipe (CMP) riser on the WS slope. Concrete U-shaped headwalls on both ends.						
[Additional Reference(s): DWR Levee Log, 2005. USACE San Joaquin O&M Manual 5, August 1961, (HLM 0.18)].						
FS Date: 1/16/2014 12:03:14 PM						

Photo 3 of 3 : UCIP_FA_2018_27123_50240.jpg



Flapgate and headwall on WS toe.

LM Start	0.36	Rating **	M	Issue No.	36
LM End	0.75	Issue Type +	Ma	Location *	LS
Category	Earthen Levee			GPS Latitude/Longitude	
				Start	End
Item	Vegetation			37.601353 °	37.597473 °
				-121.164330 °	-121.168471 °
DWR ID	DWR_RD2092_01_f_2018_36				
Comment Code					
V1 : Control annual grass and weeds on the levee slopes and easements.					
Inspector Comment					
vegetation along landside toe and slope.					

Photo 1 of 1 : FA_2018_RD2092_116_36_20181005_00048.jpg



Vegetation along landside slope and toe obstructing view. (Fall 2018)

* Location LS : Land Side N/A : Not Applicable WS : Water Side CR : Crown	** Rating A : Acceptable M : Minimally Acceptable U : Unacceptable	N : Not Inspected/Rated C : Corrected A/W : Acceptable but Monitor & Maintain	+ Issue Type Ma : Maintenance Deficiency Ob : Design & System Obsolescence En : Enforcement
--	--	---	---

**Flood Control Project Maintenance
Levee Inspections**

Maintenance Issue Types Only, Levee Inspection Report By Mile - Fall 2018

Reclamation District No. 2092 Dos Rios

Waterway	Bank	Unit Miles	Inspection Start/End	Inspector
Unit No. 01 San Joaquin River	Right	3.71	10/04/2018 10/04/2018	Corey Fujitani

LM Start	1.30	Rating **	A/W	Issue No.	976	
LM End	1.30	Issue Type +	Ma	Location *		
Category	Supplemental			GPS Latitude/Longitude		
				Start		End
Item	DWR UCIP LMA Responsibility			37.590603 °		37.590603 °
				-121.164111 °		-121.164111 °
DWR ID	20562					
Comment Code						
Inspector Comment						
FS_ID:20889 DS_ID:20562 EP_NO: N/A Repair Type: No Action Needed Crossing Status: Found UCIP Comments: FIELD_STRUCT_DESC: 36-inch corrugated metal drainage pipe through the levee, 15 feet below the crown. Slide gate in a 48-inch corrugated metal pipe (CMP) riser on the waterside (WS) slope. 4-foot by 6-foot concrete distribution box on the landside (LS) toe. 5-foot by 5-foot concrete riser on the WS toe. [Additional Reference(s): DWR Levee Log, 2005. USACE San Joaquin O&M Manual 5, August 1961, (HLM 1.31)]. FS Date: 9/24/2013						

LM Start	1.30	Rating **	A/W	Issue No.	976 (cont)
LM End	1.30	Issue Type +	Ma	Location *	

Photo 1 of 2 : UCIP_FA_2018_20889_35213.jpg



Slide gate in 48-inch CMP riser on WS slope.

Photo 2 of 2 : UCIP_FA_2018_20889_35212.jpg



Concrete distribution box at concrete canal on LS toe.

* Location LS : Land Side N/A : Not Applicable WS : Water Side CR : Crown	** Rating A : Acceptable M : Minimally Acceptable U : Unacceptable	N : Not Inspected/Rated C : Corrected A/W : Acceptable but Monitor & Maintain	+ Issue Type Ma : Maintenance Deficiency Ob : Design & System Obsolescence En : Enforcement
--	--	---	---

Reclamation District No. 2092 Dos Rios

During spring inspection 2012, the sand boil was not active but materials were present on the landside toe of the levee. The sand boil occurred due to an underground irrigation pipe leakage. The picture was taken from the crown looking toward the toe of the levee. The area was repaired but should be monitored.

Page 7 of 20

**Flood Control Project Maintenance
Levee Inspections**

Maintenance Issue Types Only, Levee Inspection Report By Mile - Fall 2018

Reclamation District No. 2092 Dos Rios

Waterway	Bank	Unit Miles	Inspection Start/End	Inspector
Unit No. 01 San Joaquin River	Right	3.71	10/04/2018 10/04/2018	Corey Fujitani

LM Start	1.32	Rating **	A/W	Issue No.	10 (cont)	
LM End	1.32	Issue Type +	Ma	Location *	LS	
Category	Earthen Levee			GPS Latitude/Longitude		
				Start	End	
Item	Encroachments			37.590467 °	37.590467 °	
				-121.163822 °	-121.163822 °	
DWR ID	DWR_RD2092_01_s_2012_10					
Comment Code						
PI : Pipe						
Inspector Comment						
A sand boil appeared on the landside toe of the levee because of an underground pipe leakage. The pipe and boil have been repaired but should be monitored.						

Photo 2 of 2 : FA_2018_RD2092_116_10_20180905_00003.jpg



A sand boil was found on the landside of the levee. It was caused by a pipe leak couple of feet below the boil location. LMA was notified to repair it as soon as possible. The picture was taken from the crown looking upstream.

LM Start	1.69	Rating **	A/W	Issue No.	977	
LM End	1.69	Issue Type +	Ma	Location *		
Category	Supplemental			GPS Latitude/Longitude		
				Start		End
Item	DWR UCIP LMA Responsibility			37.585938 °		37.585938 °
				-121.163348 °		-121.163348 °
DWR ID	20563					
Comment Code						
Inspector Comment						
FS_ID:20891 DS_ID:20563 EP_NO: N/A Repair Type: No Action Needed Crossing Status: Found UCIP Comments: FIELD_STRUCT_DESC: 24-inch corrugated metal drainage pipe through the levee, 14 feet below the crown. Slide gate in a corrugated metal pipe (CMP) riser on the waterside (WS) slope. Concrete U-shaped headwall at the landside (LS) toe. [Additional Reference(s): DWR Levee Log, 2005. USACE San Joaquin O&M Manual 5, August 1961, (HLM 1.71)]. FS Date: 9/24/2013						

Photo 1 of 3 : UCIP_FA_2018_20891_35216.jpg



Slide gate in 36-inch CMP riser on WS slope.

* Location LS : Land Side N/A : Not Applicable WS : Water Side CR : Crown	** Rating A : Acceptable M : Minimally Acceptable U : Unacceptable N : Not Inspected/Rated C : Corrected A/W : Acceptable but Monitor & Maintain	+ Issue Type Ma : Maintenance Deficiency Ob : Design & System Obsolescence En : Enforcement
--	---	---

**Flood Control Project Maintenance
Levee Inspections**

Maintenance Issue Types Only, Levee Inspection Report By Mile - Fall 2018

Reclamation District No. 2092 Dos Rios

Waterway	Bank	Unit Miles	Inspection Start/End	Inspector
Unit No. 01 San Joaquin River	Right	3.71	10/04/2018 10/04/2018	Corey Fujitani

LM Start	1.69	Rating **	A/W	Issue No.	977 (cont)	
LM End	1.69	Issue Type +	Ma	Location *		
Category	Supplemental			GPS Latitude/Longitude		
				Start	End	
Item	DWR UCIP LMA Responsibility			37.585938 °	37.585938 °	
				-121.163348 °	-121.163348 °	
DWR ID	20563					
Comment Code						
Inspector Comment						
FS_ID:20891						
DS_ID:20563						
EP_NO: N/A						
Repair Type: No Action Needed						
Crossing Status: Found						
UCIP Comments:						
FIELD_STRUCT_DESC: 24-inch corrugated metal drainage pipe through the levee, 14 feet below the crown. Slide gate in a corrugated metal pipe (CMP) riser on the waterside (WS) slope. Concrete U-shaped headwall at the landside (LS) toe. [Additional Reference(s): DWR Levee Log, 2005. USACE San Joaquin O&M Manual 5, August 1961, (HLM 1.71)].						
FS Date: 9/24/2013						

LM Start	1.69	Rating **	A/W	Issue No.	977 (cont)
LM End	1.69	Issue Type +	Ma	Location *	

Photo 2 of 3 : UCIP_FA_2018_20891_35215.jpg



Slide gate in 36-inch CMP riser on WS slope.

Photo 3 of 3 : UCIP_FA_2018_20891_35214.jpg



Concrete headwall at base of LS toe.

* Location LS : Land Side N/A : Not Applicable WS : Water Side CR : Crown	** Rating A : Acceptable M : Minimally Acceptable U : Unacceptable	N : Not Inspected/Rated C : Corrected A/W : Acceptable but Monitor & Maintain	+ Issue Type Ma : Maintenance Deficiency Ob : Design & System Obsolescence En : Enforcement
--	--	---	---

**Flood Control Project Maintenance
Levee Inspections**

Maintenance Issue Types Only, Levee Inspection Report By Mile - Fall 2018

Reclamation District No. 2092 Dos Rios

Waterway	Bank	Unit Miles	Inspection Start/End	Inspector
Unit No. 01 San Joaquin River	Right	3.71	10/04/2018 10/04/2018	Corey Fujitani

LM Start	1.82	Rating **	U	Issue No.	32
LM End	2.71	Issue Type +	Ma	Location *	WS
Category	Earthen Levee			GPS Latitude/Longitude	
				Start	End
Item	Vegetation			37.584168 °	37.576007 °
				-121.162668 °	-121.157221 °
DWR ID	DWR_RD2092_01_f_2018_32				
Comment Code					
V1 : Control annual grass and weeds on the levee slopes and easements.					
Inspector Comment					

Photo 1 of 1 : FA_2018_RD2092_116_32_20181005_00052.jpg



Vegetation on waterside slope should be maintained. (Fall 2018)

LM Start	1.92	Rating **	M	Issue No.	37
LM End	1.92	Issue Type +	Ma	Location *	CR
Category	Earthen Levee			GPS Latitude/Longitude	
				Start	End
Item	Crown Surface / Depressions / Rutting			37.584273 °	37.584273 °
				-121.161034 °	-121.161034 °
DWR ID	DWR_RD2092_01_s_2017_37				
Comment Code					
C3 : Add appropriate gravel or road base. Grade and compact.					
Inspector Comment					

No Photos

LM Start	2.04	Rating **	C	Issue No.	29
LM End	2.04	Issue Type +	Ma	Location *	CR
Category	Earthen Levee			GPS Latitude/Longitude	
				Start	End
Item	Crown Surface / Depressions / Rutting			37.584270 °	37.584270 °
				-121.158820 °	-121.158820 °
DWR ID	DWR_RD2092_01_s_2017_29				
Comment Code					
C2 : Repair depressions or ruts in the crown or slope.					
Inspector Comment					

No Photos

* Location LS : Land Side N/A : Not Applicable WS : Water Side CR : Crown	** Rating A : Acceptable M : Minimally Acceptable U : Unacceptable	N : Not Inspected/Rated C : Corrected A/W : Acceptable but Monitor & Maintain	+ Issue Type Ma : Maintenance Deficiency Ob : Design & System Obsolescence En : Enforcement
--	--	---	---

**Flood Control Project Maintenance
Levee Inspections**

Maintenance Issue Types Only, Levee Inspection Report By Mile - Fall 2018

Reclamation District No. 2092 Dos Rios

Waterway	Bank	Unit Miles	Inspection Start/End	Inspector
Unit No. 01 San Joaquin River	Right	3.71	10/04/2018 10/04/2018	Corey Fujitani

LM Start	2.07	Rating **	A/W	Issue No.	978
LM End	2.07	Issue Type +	Ma	Location *	
Category	Supplemental			GPS Latitude/Longitude	
				Start	End
Item	DWR UCIP LMA Responsibility			37.584212 °	37.584212 °
				-121.158347 °	-121.158347 °
DWR ID	20564				
Comment Code					
Inspector Comment					
FS_ID:20904 DS_ID:20564 EP_NO: N/A Repair Type: No Action Needed Crossing Status: Found UCIP Comments: FIELD_STRUCT_DESC: *ABANDONED* 30-inch corrugated metal drainage pipe through the levee, 15 feet below the crown. Flap gate on the waterside (WS) end. Concrete U-shaped headwalls on both ends. Filled with concrete on the landside (LS) toe. [Additional Reference(s): DWR Levee Log, 2005. USACE San Joaquin O&M Manual 5, August 1961, (HLM 2.10), 36-inch pipe listed]. FS Date: 9/24/2013					

LM Start	2.07	Rating **	A/W	Issue No.	978 (cont)
LM End	2.07	Issue Type +	Ma	Location *	

Photo 1 of 2 : UCIP_FA_2018_20904_35221.jpg



Pipe and concrete headwall visible on LS toe to right of powerpole.

Photo 2 of 2 : UCIP_FA_2018_20904_35220.jpg



Pipe and concrete headwall visible on LS toe.

* Location LS : Land Side N/A : Not Applicable WS : Water Side CR : Crown	** Rating A : Acceptable M : Minimally Acceptable U : Unacceptable	N : Not Inspected/Rated C : Corrected A/W : Acceptable but Monitor & Maintain	+ Issue Type Ma : Maintenance Deficiency Ob : Design & System Obsolescence En : Enforcement
--	--	---	---

**Flood Control Project Maintenance
Levee Inspections**

Maintenance Issue Types Only, Levee Inspection Report By Mile - Fall 2018

Reclamation District No. 2092 Dos Rios

Waterway	Bank	Unit Miles	Inspection Start/End	Inspector
Unit No. 01 San Joaquin River	Right	3.71	10/04/2018 10/04/2018	Corey Fujitani

LM Start	2.07	Rating **	M	Issue No.	43
LM End	2.07	Issue Type +	Ma	Location *	LS
Category	Earthen Levee			GPS Latitude/Longitude	
				Start	End
Item	Trim / Thin Trees			37.584215 °	37.584215 °
				-121.158290 °	-121.158290 °
DWR ID	DWR_RD2092_01_f_2018_43				
Comment Code					
T2 : Thin trees to allow visibility of the ground and room to flood fight.					
Inspector Comment					
remove trees before they are established					

Photo 1 of 1 : FA_2018_RD2092_116_43_20181005_00053.jpg



View of saplings along landside levee toe. (Fall 2018)

LM Start	2.20	Rating **	C	Issue No.	30
LM End	2.20	Issue Type +	Ma	Location *	CR
Category	Earthen Levee			GPS Latitude/Longitude	
				Start	End
Item	Crown Surface / Depressions / Rutting			37.583080 °	37.583080 °
				-121.156387 °	-121.156387 °
DWR ID	DWR_RD2092_01_s_2017_30				
Comment Code					
C2 : Repair depressions or ruts in the crown or slope.					
Inspector Comment					

No Photos

* Location
LS : Land Side N/A : Not Applicable
WS : Water Side
CR : Crown

** Rating
A : Acceptable N : Not Inspected/Rated
M : Minimally Acceptable C : Corrected
U : Unacceptable A/W : Acceptable but Monitor & Maintain

+ Issue Type
Ma : Maintenance Deficiency
Ob : Design & System Obsolescence
En : Enforcement

**Flood Control Project Maintenance
Levee Inspections**

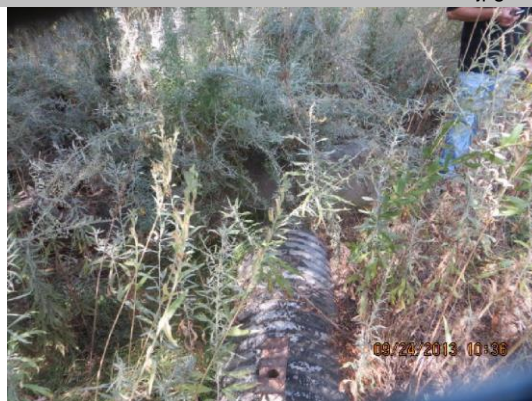
Maintenance Issue Types Only, Levee Inspection Report By Mile - Fall 2018

Reclamation District No. 2092 Dos Rios

Waterway	Bank	Unit Miles	Inspection Start/End	Inspector
Unit No. 01 San Joaquin River	Right	3.71	10/04/2018 10/04/2018	Corey Fujitani

LM Start	2.40	Rating **	M	Issue No.	981	
LM End	2.40	Issue Type +	Ma	Location *		
Category	Supplemental			GPS Latitude/Longitude		
				Start	End	
Item	DWR UCIP LMA Responsibility			37.580426 °	37.580426 °	
				-121.156798 °	-121.156798 °	
DWR ID	20567					
Comment Code						
Inspector Comment						
FS_ID:20943						
DS_ID:20567						
EP_NO: N/A						
Repair Type: Non-Urgent						
Crossing Status: Found						
UCIP Comments: 09/24/2013 Appears abandoned and if so should be done so properly. (W. Wylie - DWR UCIP)						
FIELD_STRUCT_DESC: *ABANDONED* 24-inch corrugated metal drainage pipe through the levee, 15 feet below the crown. Flap gate on the waterside (WS) end. Concrete U-shaped headwall on the WS end. Concrete headwall on the landside (LS) toe next to pump. [Additional Reference(s): DWR Levee Log, 2005. USACE San Joaquin O&M Manual 5, August 1961, (HLM 2.44)].						
FS Date: 9/24/2013						

Photo 1 of 3 : UCIP_FA_2018_20943_35251.jpg



24-inch pipe visible on WS berm.

LM Start	2.40	Rating **	M	Issue No.	981 (cont)
LM End	2.40	Issue Type +	Ma	Location *	

Photo 2 of 3 : UCIP_FA_2018_20943_35250.jpg



Concrete U-shaped headwall and flapgate on WS berm.

* Location LS : Land Side N/A : Not Applicable WS : Water Side CR : Crown	** Rating A : Acceptable M : Minimally Acceptable U : Unacceptable	N : Not Inspected/Rated C : Corrected A/W : Acceptable but Monitor & Maintain	+ Issue Type Ma : Maintenance Deficiency Ob : Design & System Obsolescence En : Enforcement
--	--	---	---

**Flood Control Project Maintenance
Levee Inspections**

Maintenance Issue Types Only, Levee Inspection Report By Mile - Fall 2018

Reclamation District No. 2092 Dos Rios

Waterway	Bank	Unit Miles	Inspection Start/End	Inspector
Unit No. 01 San Joaquin River	Right	3.71	10/04/2018 10/04/2018	Corey Fujitani

LM Start	2.40	Rating **	M	Issue No.	981 (cont)	
LM End	2.40	Issue Type +	Ma	Location *		
Category	Supplemental			GPS Latitude/Longitude		
				Start		End
Item	DWR UCIP LMA Responsibility			37.580426 °		37.580426 °
				-121.156798 °		-121.156798 °
DWR ID	20567					
Comment Code						
Inspector Comment						
FS_ID:20943						
DS_ID:20567						
EP_NO: N/A						
Repair Type: Non-Urgent						
Crossing Status: Found						
UCIP Comments: 09/24/2013 Appears abandoned and if so should be done so properly. (W. Wylie - DWR UCIP)						
FIELD_STRUCT_DESC: *ABANDONED* 24-inch corrugated metal drainage pipe through the levee, 15 feet below the crown. Flap gate on the waterside (WS) end. Concrete U-shaped headwall on the WS end. Concrete headwall on the landside (LS) toe next to pump. [Additional Reference(s): DWR Levee Log, 2005. USACE San Joaquin O&M Manual 5, August 1961, (HLM 2.44)].						
FS Date: 9/24/2013						

Photo 3 of 3 : UCIP_FA_2018_20943_35252.jpg



Concrete headwall next to pump on WS toe.

LM Start	2.42	Rating **	U	Issue No.	25
LM End	2.71	Issue Type +	Ma	Location *	LS
Category	Earthen Levee			GPS Latitude/Longitude	
				Start	End
Item	Vegetation			37.580202 °	37.576059 °
				-121.156904 °	-121.157241 °
DWR ID	DWR_RD2092_01_f_2018_25				
Comment Code					
V1 : Control annual grass and weeds on the levee slopes and easements.					
Inspector Comment					
View of landside slope completely obstructed up vegetation.					

Photo 1 of 1 : FA_2018_RD2092_116_25_20181005_00054.jpg



View of vegetation along landside slope looking upstream. (Fall 2018)

* Location LS : Land Side N/A : Not Applicable WS : Water Side CR : Crown	** Rating A : Acceptable M : Minimally Acceptable U : Unacceptable	N : Not Inspected/Rated C : Corrected A/W : Acceptable but Monitor & Maintain	+ Issue Type Ma : Maintenance Deficiency Ob : Design & System Obsolescence En : Enforcement
--	--	---	---

**Flood Control Project Maintenance
Levee Inspections**

Maintenance Issue Types Only, Levee Inspection Report By Mile - Fall 2018

Reclamation District No. 2092 Dos Rios

Waterway	Bank	Unit Miles	Inspection Start/End	Inspector
Unit No. 01 San Joaquin River	Right	3.71	10/04/2018 10/04/2018	Corey Fujitani

LM Start	2.55	Rating **	U	Issue No.	19
LM End	2.55	Issue Type +	Ma	Location *	LS
Category	Earthen Levee			GPS Latitude/Longitude	
				Start	End
Item	Vegetation			37.578333 °	37.578333 °
				-121.157011 °	-121.157011 °
DWR ID	DWR_RD2092_01_s_2018_19				
Comment Code					
V7 : Trees / Woody Vegetation					
Inspector Comment					
Palm tree at landward toe should be removed.					

Photo 1 of 1 : FA_2018_RD2092_116_19_20180905_00008.jpg



Looking at Palm tree at landward toe. (Spring 2018)

LM Start	2.59	Rating **	U	Issue No.	44
LM End	2.61	Issue Type +	Ma	Location *	LS
Category	Earthen Levee			GPS Latitude/Longitude	
				Start	End
Item	Animal Control			37.577789 °	37.577496 °
				-121.157090 °	-121.157123 °
DWR ID	DWR_RD2092_01_f_2018_44				
Comment Code					
A3 : No rodents visible, but rodent burrows visible; need to backfill and compact or grout burrows.					
Inspector Comment					
Several burrows along the landside slope.					

Photo 1 of 1 : FA_2018_RD2092_116_44_20181005_00056.jpg



View of animal burrows looking upstream. (Fall 2018)

LM Start	2.63	Rating **	U	Issue No.	17
LM End	2.76	Issue Type +	Ma	Location *	WS
Category	Earthen Levee			GPS Latitude/Longitude	
				Start	End
Item	Animal Control			37.577186°	37.575364°
				-121.157159°	-121.157093°
DWR ID	DWR_RD2092_01_s_2018_17				
Comment Code					
A1 : Exterminate rodents and backfill and compact or grout burrows.					
Inspector Comment					
Several large rodent holes within this reach.					

Photo 1 of 4 : FA_2018_RD2092_116_17_20180905_00004.jpg



Looking upstream on waterward slope at several large rodent holes. (Spring 2018)

* Location LS : Land Side N/A : Not Applicable WS : Water Side CR : Crown	** Rating A : Acceptable M : Minimally Acceptable U : Unacceptable	N : Not Inspected/Rated C : Corrected A/W : Acceptable but Monitor & Maintain	+ Issue Type Ma : Maintenance Deficiency Ob : Design & System Obsolescence En : Enforcement
--	--	--	---

**Flood Control Project Maintenance
Levee Inspections**

Maintenance Issue Types Only, Levee Inspection Report By Mile - Fall 2018

Reclamation District No. 2092 Dos Rios

Waterway	Bank	Unit Miles	Inspection Start/End	Inspector
Unit No. 01 San Joaquin River	Right	3.71	10/04/2018 10/04/2018	Corey Fujitani

LM Start	2.63	Rating **	U	Issue No.	17 (cont)	
LM End	2.76	Issue Type +	Ma	Location *	WS	
Category	Earthen Levee			GPS Latitude/Longitude		
				Start		End
Item	Animal Control			37.577186°		37.575364°
				-121.157159°		-121.157093°
DWR ID	DWR_RD2092_01_s_2018_17					
Comment Code						
A1 : Exterminate rodents and backfill and compact or grout burrows.						
Inspector Comment						
Several large rodent holes within this reach.						

LM Start	2.63	Rating **	U	Issue No.	17 (cont)
LM End	2.76	Issue Type +	Ma	Location *	WS

Photo 2 of 4 : FA_2018_RD2092_116_17_20180905_00005.jpg



Looking at typical large rodent holes on waterward slope. (Spring 2018)

Photo 3 of 4 : FA_2018_RD2092_116_17_20180905_00006.jpg



Looking upstream at large rodent holes on waterward slope. (Spring 2018)

LM Start	2.63	Rating **	U	Issue No.	17 (cont)
LM End	2.76	Issue Type +	Ma	Location *	WS

Photo 4 of 4 : FA_2018_RD2092_116_17_20180905_00007.jpg



Looking downstream at several rodent holes on waterward slope. (Spring 2018)

* Location LS : Land Side N/A : Not Applicable WS : Water Side CR : Crown		** Rating A : Acceptable N : Not Inspected/Rated M : Minimally Acceptable C : Corrected U : Unacceptable A/W : Acceptable but Monitor & Maintain		+ Issue Type Ma : Maintenance Deficiency Ob : Design & System Obsolescence En : Enforcement	
---	--	--	--	--	--

**Flood Control Project Maintenance
Levee Inspections**

Maintenance Issue Types Only, Levee Inspection Report By Mile - Fall 2018

Reclamation District No. 2092 Dos Rios

Waterway	Bank	Unit Miles	Inspection Start/End	Inspector
Unit No. 01 San Joaquin River	Right	3.71	10/04/2018 10/04/2018	Corey Fujitani

LM Start	2.82	Rating **	U	Issue No.	35
LM End	3.01	Issue Type +	Ma	Location *	WS
Category	Earthen Levee			GPS Latitude/Longitude	
				Start	End
Item	Animal Control			37.574869 °	37.574141 °
				-121.156247 °	-121.152762 °
DWR ID	DWR_RD2092_01_s_2017_35				
Comment Code					
A3 : No rodents visible, but rodent burrows visible; need to backfill and compact or grout burrows.					
Inspector Comment					

Photo 1 of 4 : FA_2018_RD2092_116_35_20180905_00013.jpg



Updated picture of the rodent holes on the waterside of the levee looking upstream. Fall 2017

LM Start	2.82	Rating **	U	Issue No.	35 (cont)
LM End	3.01	Issue Type +	Ma	Location *	WS

Photo 2 of 4 : FA_2018_RD2092_116_35_20180905_00014.jpg



View of multiple rodent holes on the waterside slope of the levee. Spring 2017

LM Start	2.82	Rating **	U	Issue No.	35 (cont)
LM End	3.01	Issue Type +	Ma	Location *	WS

Photo 3 of 4 : FA_2018_RD2092_116_35_20180905_00015.jpg



Looking at Typical view of rodent holes on landward slope within this reach. (Spring 2018)

* Location LS : Land Side N/A : Not Applicable WS : Water Side CR : Crown		** Rating A : Acceptable N : Not Inspected/Rated M : Minimally Acceptable C : Corrected U : Unacceptable A/W : Acceptable but Monitor & Maintain		+ Issue Type Ma : Maintenance Deficiency Ob : Design & System Obsolescence En : Enforcement	
--	--	---	--	---	--

Reclamation District No. 2092 Dos Rios

Vegetation along landside slope. (Fall 2018)

Page 18 of 20

**Flood Control Project Maintenance
Levee Inspections**

Maintenance Issue Types Only, Levee Inspection Report By Mile - Fall 2018

Reclamation District No. 2092 Dos Rios

Waterway	Bank	Unit Miles	Inspection Start/End	Inspector
Unit No. 01 San Joaquin River	Right	3.71	10/04/2018 10/04/2018	Corey Fujitani

LM Start	3.47	Rating **	M	Issue No.	984	
LM End	3.47	Issue Type +	Ma	Location *		
Category	Supplemental			GPS Latitude/Longitude		
				Start		End
Item	DWR UCIP LMA Responsibility			37.573304 °	37.573304 °	
				-121.144747 °	-121.144747 °	
DWR ID	20572					
Comment Code						
Inspector Comment						
FS_ID:20945						
DS_ID:20572						
EP_NO: N/A						
Repair Type: Non-Urgent						
Crossing Status: Found						
UCIP Comments: 09/24/2013 This pipe appears abandoned and if so, should be done so properly. (W. Wylie - DWR UCIP)						
FIELD_STRUCT_DESC: *ABANDONED* 36-inch corrugated metal drainage pipe through the levee, 11 feet below the crown. Slide gate in a corrugated metal pipe (CMP) riser on the waterside (WS) slope. Concrete headwalls on both ends. [Additional Reference(s): DWR Levee Log, 2005. USACE San Joaquin O&M Manual 5, August 1961, (HLM 3.52)].						
FS Date: 9/24/2013						

Photo 1 of 3 : UCIP_FA_2018_20945_35261.jpg



48-inch CMP riser on WS slope.

LM Start	3.47	Rating **	M	Issue No.	984 (cont)
LM End	3.47	Issue Type +	Ma	Location *	

Photo 2 of 3 : UCIP_FA_2018_20945_35260.jpg



Grate over sump on LS toe.

* Location LS : Land Side N/A : Not Applicable WS : Water Side CR : Crown	** Rating A : Acceptable M : Minimally Acceptable U : Unacceptable	N : Not Inspected/Rated C : Corrected A/W : Acceptable but Monitor & Maintain	+ Issue Type Ma : Maintenance Deficiency Ob : Design & System Obsolescence En : Enforcement
--	--	---	---

**Flood Control Project Maintenance
Levee Inspections**

Maintenance Issue Types Only, Levee Inspection Report By Mile - Fall 2018

Reclamation District No. 2092 Dos Rios

Waterway	Bank	Unit Miles	Inspection Start/End	Inspector
Unit No. 01 San Joaquin River	Right	3.71	10/04/2018 10/04/2018	Corey Fujitani

LM Start	3.47	Rating **	M	Issue No.	984 (cont)	
LM End	3.47	Issue Type +	Ma	Location *		
Category	Supplemental			GPS Latitude/Longitude		
				Start	End	
Item	DWR UCIP LMA Responsibility			37.573304 °	37.573304 °	
				-121.144747 °	-121.144747 °	
DWR ID	20572					
Comment Code						
Inspector Comment						
FS_ID:20945						
DS_ID:20572						
EP_NO: N/A						
Repair Type: Non-Urgent						
Crossing Status: Found						
UCIP Comments: 09/24/2013 This pipe appears abandoned and if so, should be done so properly. (W. Wylie - DWR UCIP)						
FIELD_STRUCT_DESC: *ABANDONED* 36-inch corrugated metal drainage pipe through the levee, 11 feet below the crown. Slide gate in a corrugated metal pipe (CMP) riser on the waterside (WS) slope. Concrete headwalls on both ends. [Additional Reference(s): DWR Levee Log, 2005. USACE San Joaquin O&M Manual 5, August 1961, (HLM 3.52)].						
FS Date: 9/24/2013						

Photo 3 of 3 : UCIP_FA_2018_20945_35262.jpg



Grate over sump on LS toe.

* Location LS : Land Side N/A : Not Applicable WS : Water Side CR : Crown	** Rating A : Acceptable M : Minimally Acceptable U : Unacceptable N : Not Inspected/Rated C : Corrected A/W : Acceptable but Monitor & Maintain	+ Issue Type Ma : Maintenance Deficiency Ob : Design & System Obsolescence En : Enforcement
--	---	---