

**Flood Control Project Maintenance
Levee Inspections**

Fall 2016 Levee Maintenance Deficiency Summary Report

Overall LMA & Unit Ratings, including DWR Erosion Survey

San Joaquin River Basin

RD2092	Overall LMA Rating	Total LMA Miles						
Reclamation District No. 2092 Dos Rios	A	3.71						
Rated Item	Maintenance Deficiency				Enforcement		Design & System Obsolescence	
	M Miles	U Miles	M + 4U Miles	Threshold %	M Miles	U Miles	M Miles	U Miles
<i>Earthen Levee</i>								
Encroachments					1.15			
Animal Control	0.02		0.02	0.54%				
<i>Supplemental</i>								
DWR UCIP Field Study					0.09			
<i>LMA Totals:</i>	0.02	0.00	0.02	0.54%	1.24	0.00	0.00	0.00

Unit No. 01 San Joaquin River RB	Overall Unit Rating	Total Unit Miles						
RD2092	A	3.71						
Rated Item	Maintenance Deficiency				Enforcement		Design & System Obsolescence	
	M Miles	U Miles	M + 4U Miles	Threshold %	M Miles	U Miles	M Miles	U Miles
<i>Earthen Levee</i>								
Encroachments					1.15			
Animal Control	0.02		0.02	0.54%				
<i>Supplemental</i>								
DWR UCIP Field Study					0.09			
<i>Unit Totals:</i>	0.02	0.00	0.02	0.54%	1.24	0.00	0.00	0.00

**Flood Control Project Maintenance
Levee Inspections**
LMA District Cover Sheet
Fall 2016 Levee Inspection Results

Reclamation District No. 2092 Dos Rios

	Spring (March - May)	Summer ** (June - August)	Fall (September - November)	Winter ** (December - February)
† Overall LMA Rating (Fall Only)			A	

** Non-receipt of Summer or Winter Inspection
Reports may effect overall annual rating.

† SPRING INSPECTIONS: Overall maintenance ratings are not determined for the spring inspection results. Individual maintenance deficiencies are rated using the same criteria in the spring and in the fall.

FALL INSPECTIONS: The overall maintenance rating shown above is based on operation and maintenance deficiencies identified within the attached unit inspection reports. This rating is not intended to be an indication of risk.

Comments

**Flood Control Project Maintenance
Levee Inspections**

Unit Cover Sheet

Fall 2016 Levee Inspection Results

Reclamation District No. 2092 Dos Rios

Waterway			Bank	Unit Miles
Unit No. 01 San Joaquin River			Right	3.71
	Spring (March - May)	Summer (June - August)	(September - November) Fall	Winter (December - February)
Unit Maintenance Rating (Fall Only)			A	
Date of Inspection	4/7/2016 - 4/7/2016		10/4/2016 - 10/4/2016	
DWR Inspector	Pavel Kazi		Pavel Kazi	
Accompanied By	Feliciano Degante River Partners		Steve Sheppard River Partner	

Summer & Winter Inspections

The Local Maintaining Agency (LMA) is responsible for summer and winter inspections. The LMA is required to submit a report regarding summer and winter inspections to the California Department of Water Resources (DWR).

DWR must be informed on the:

- a) completion of the inspection
- b) any changes other than the results of normal maintenance
- c) corrections to deficiencies noted in this report

If additional items are noted, further documentation of those items must also be submitted.

The LMA should submit this information to DWR using the LMA web application tool available at:

<http://cdec.water.ca.gov/lma.html>

If the LMA is unable to submit information on this webpage, please contact DWR for assistance.

The LMA should submit the information and any associated documentation by September 30 for summer inspections and March 31 for winter inspections.

**Flood Control Project Maintenance
Levee Inspections**

Levee Inspection Report By Mile - Fall 2016

Reclamation District No. 2092 Dos Rios

Waterway	Bank	Unit Miles	Inspection Start/End	Inspector
Unit No. 01 San Joaquin River	Right	3.71	10/04/2016 10/04/2016	Pavel Kazi

LM Start	0.00	Rating **	A	Issue No.	18
LM End	0.00	Issue Type +	Ma	Location *	N/A
Category	Earthen Levee		GPS Latitude/Longitude		
			Start	End	
Item	Flood Preparedness & Training			°	°
				°	°
DWR ID	DWR_RD2092_01_f_2012_18				
Comment Code					
Inspector Comment					
River Partner crews will attend the upcoming flood fighting class offered in their area. A few members of the company have already been through a few flood events and received proper training.					

No Photos

LM Start	0.00	Rating **	A	Issue No.	24
LM End	0.00	Issue Type +	Ma	Location *	N/A
Category	Earthen Levee		GPS Latitude/Longitude		
			Start	End	
Item	Operations & Maintenance Manuals			°	°
				°	°
DWR ID	DWR_RD2092_01_s_2012_24				
Comment Code					
Inspector Comment					
They have the latest O&M manual for their district.					

No Photos

LM Start	0.00	Rating **	A	Issue No.	26
LM End	0.00	Issue Type +	Ma	Location *	N/A
Category	Earthen Levee		GPS Latitude/Longitude		
			Start	End	
Item	Emergency Supplies & Equipment			°	°
				°	°
DWR ID	DWR_RD2092_01_s_2012_26				
Comment Code					
Inspector Comment					
LMA has adequate flood fighting supplies.					

No Photos

*** Location**

LS : Land Side N/A : Not Applicable
WS : Water Side
CR : Crown

**** Rating**

A : Acceptable N : Not Inspected/Rated
M : Minimally Acceptable C : Corrected
U : Unacceptable A/W : Acceptable but Monitor & Maintain

+ Issue Type

Ma : Maintenance Deficiency
Ob : Design & System Obsolescence
En : Enforcement

**Flood Control Project Maintenance
Levee Inspections**

Levee Inspection Report By Mile - Fall 2016

Reclamation District No. 2092 Dos Rios

Waterway	Bank	Unit Miles	Inspection Start/End	Inspector
Unit No. 01 San Joaquin River	Right	3.71	10/04/2016 10/04/2016	Pavel Kazi

LM Start	0.18	Rating **	M	Issue No.	981
LM End	0.18	Issue Type +	En	Location *	N/A
Category	Supplemental			GPS Latitude/Longitude	
				Start	End
Item	DWR UCIP Field Study			37.602031 °	37.602031 °
				-121.161249 °	-121.161249 °
DWR ID					
Comment Code					
Inspector Comment					
FS_ID:27123 DS_ID:20561 EP_NO: N/A Repair Type: Non-Urgent Crossing Status: Found UCIP Comments: Pipe rusted through at headwall on LS toe. Good candidate for video inspection. FIELD_STRUCT_DESC: 60-inch corrugated metal drainpipe through levee 19.0 feet below crown. Flap gate on the waterward end. Slide gate in 80-inch corrugated metal pipe riser on the waterward slope. Concrete "U" headwalls on both ends. Originally included in the 1961 O&M manual. FS Date: 1/16/2014 12:03:14 PM					

Photo 1 of 2 : UCIP_FA_2016_27123_50242.jpg



Slide gate in 80-inch CMP riser on WS slope.

LM Start	0.18	Rating **	M	Issue No.	981 (cont)
LM End	0.18	Issue Type +	En	Location *	N/A

Photo 2 of 2 : UCIP_FA_2016_27123_50241.jpg



Concrete headwall on LS toe in front of pump on pier.

* Location LS : Land Side N/A : Not Applicable WS : Water Side CR : Crown	** Rating A : Acceptable M : Minimally Acceptable U : Unacceptable N : Not Inspected/Rated C : Corrected A/W : Acceptable but Monitor & Maintain	+ Issue Type Ma : Maintenance Deficiency Ob : Design & System Obsolescence En : Enforcement
--	---	---

**Flood Control Project Maintenance
Levee Inspections**

Levee Inspection Report By Mile - Fall 2016

Reclamation District No. 2092 Dos Rios

Waterway	Bank	Unit Miles	Inspection Start/End	Inspector
Unit No. 01 San Joaquin River	Right	3.71	10/04/2016 10/04/2016	Pavel Kazi

LM Start	0.19	Rating **	M	Issue No.	979
LM End	0.19	Issue Type +	En	Location *	N/A
Category	Supplemental			GPS Latitude/Longitude	
				Start	End
Item	DWR UCIP Field Study			37.601978 °	37.601978 °
				-121.161370 °	-121.161370 °
DWR ID					
Comment Code					
Inspector Comment					
FS_ID:20886 DS_ID:20573 EP_NO: 4699 Repair Type: Non-Urgent Crossing Status: Indicator Found UCIP Comments: Appears abandoned and should be verified as having been removed from levee. FIELD_STRUCT_DESC: *ABANDONED* 12-inch steel pipe over the levee with 3.5 feet of fill on top. Siphon breakers on waterward shoulder. Pad constructed over pipes. This pumping plant was constructed in 1969 during emergency conditions without a permit. 12-inch pipe debris on WS berm at WS toe. FS Date: 9/24/2013					

No Photos

LM Start	0.19	Rating **	M	Issue No.	978
LM End	0.19	Issue Type +	En	Location *	N/A
Category	Supplemental			GPS Latitude/Longitude	
				Start	End
Item	DWR UCIP Field Study			37.601976 °	37.601976 °
				-121.161395 °	-121.161395 °
DWR ID					
Comment Code					
Inspector Comment					
FS_ID:20885 DS_ID:20579 EP_NO: 6254 Repair Type: Non-Urgent Crossing Status: Found UCIP Comments: Verify pipe has bee removed from levee. Pipe visible on WS at riverbank. FIELD_STRUCT_DESC: *ABANDONED* 16-inch steel pipe over the levee with 3.5 feet of fill on top. Siphon breakers on waterward shoulder. Pad constructed over pipes. This pumping plant was constructed in 1969 during emergency conditions without a permit (Permit No. 6254, 1968). FS Date: 9/24/2013					

Photo 1 of 2 : UCIP_FA_2016_20885_35205.jpg



Pipe visible at rivers edge on WS toe.

* Location LS : Land Side N/A : Not Applicable WS : Water Side CR : Crown	** Rating A : Acceptable M : Minimally Acceptable U : Unacceptable	N : Not Inspected/Rated C : Corrected A/W : Acceptable but Monitor & Maintain	+ Issue Type Ma : Maintenance Deficiency Ob : Design & System Obsolescence En : Enforcement
--	--	---	---

**Flood Control Project Maintenance
Levee Inspections**

Levee Inspection Report By Mile - Fall 2016

Reclamation District No. 2092 Dos Rios

Waterway	Bank	Unit Miles	Inspection Start/End	Inspector
Unit No. 01 San Joaquin River	Right	3.71	10/04/2016 10/04/2016	Pavel Kazi

LM Start	0.19	Rating **	M	Issue No.	978 (cont)	
LM End	0.19	Issue Type +	En	Location *	N/A	
Category	Supplemental			GPS Latitude/Longitude		
				Start	End	
Item	DWR UCIP Field Study			37.601976 °	37.601976 °	
				-121.161395 °	-121.161395 °	
DWR ID						
Comment Code						
Inspector Comment						
FS_ID:20885 DS_ID:20579 EP_NO: 6254 Repair Type: Non-Urgent Crossing Status: Found UCIP Comments: Verify pipe has bee removed from levee. Pipe visible on WS at riverbank. FIELD_STRUCT_DESC: *ABANDONED* 16-inch steel pipe over the levee with 3.5 feet of fill on top. Siphon breakers on waterward shoulder. Pad constructed over pipes. This pumping plant was constructed in 1969 during emergency conditions without a permit (Permit No. 6254, 1968). FS Date: 9/24/2013						

Photo 2 of 2 : UCIP_FA_2016_20885_35204.jpg



Pipe visible at rivers edge on WS toe.

LM Start	0.40	Rating **	A	Issue No.	12
LM End	0.40	Issue Type +	Ma	Location *	LS
Category	Earthen Levee			GPS Latitude/Longitude	
				Start	End
Item	Vegetation			37.601235 °	37.601235 °
				-121.165117 °	-121.165117 °
DWR ID	DWR_RD2092_01_f_2016_12				
Comment Code					
V1 : Control annual grass and weeds on the levee slopes and easements.					
Inspector Comment					
Acceptable vegetation on the landside of the levee					

Photo 1 of 1 : FA_2016_RD2092_116_12_20161005_00033.jpg



View of the landside slope of the levee during fall 2016 inspection.

* Location LS : Land Side N/A : Not Applicable WS : Water Side CR : Crown	** Rating A : Acceptable M : Minimally Acceptable U : Unacceptable	N : Not Inspected/Rated C : Corrected A/W : Acceptable but Monitor & Maintain	+ Issue Type Ma : Maintenance Deficiency Ob : Design & System Obsolescence En : Enforcement
--	--	---	---

**Flood Control Project Maintenance
Levee Inspections**

Levee Inspection Report By Mile - Fall 2016

Reclamation District No. 2092 Dos Rios

Waterway	Bank	Unit Miles	Inspection Start/End	Inspector
Unit No. 01 San Joaquin River	Right	3.71	10/04/2016 10/04/2016	Pavel Kazi

LM Start	0.42	Rating **	M	Issue No.	28
LM End	0.42	Issue Type +	En	Location *	LS
Category	Earthen Levee		GPS Latitude/Longitude		
			Start	End	
Item	Encroachments		37.601207 °	37.601207 °	
			-121.165508 °	-121.165508 °	
DWR ID	DWR_RD2092_01_f_2014_28				
Comment Code					
PO : Pole					
Inspector Comment					

No Photos

LM Start	0.44	Rating **	M	Issue No.	27
LM End	0.44	Issue Type +	En	Location *	WS
Category	Earthen Levee		GPS Latitude/Longitude		
			Start	End	
Item	Encroachments		37.601161 °	37.601161 °	
			-121.165805 °	-121.165805 °	
DWR ID	DWR_RD2092_01_f_2014_27				
Comment Code					
PO : Pole					
Inspector Comment					

No Photos

LM Start	0.65	Rating **	C	Issue No.	13
LM End	0.65	Issue Type +	Ma	Location *	LS
Category	Earthen Levee		GPS Latitude/Longitude		
			Start	End	
Item	Animal Control		37.598640 °	37.598640 °	
			-121.167578 °	-121.167578 °	
DWR ID	DWR_RD2092_01_s_2016_13				
Comment Code					
A3 : No rodents visible, but rodent burrows visible; need to backfill and compact or grout burrows.					
Inspector Comment					

No Photos

* Location LS : Land Side N/A : Not Applicable WS : Water Side CR : Crown	** Rating A : Acceptable M : Minimally Acceptable U : Unacceptable	N : Not Inspected/Rated C : Corrected A/W : Acceptable but Monitor & Maintain	+ Issue Type Ma : Maintenance Deficiency Ob : Design & System Obsolescence En : Enforcement
--	--	---	---

Reclamation District No. 2092 Dos Rios

**Flood Control Project Maintenance
Levee Inspections**

Levee Inspection Report By Mile - Fall 2016

Reclamation District No. 2092 Dos Rios

Waterway	Bank	Unit Miles	Inspection Start/End	Inspector
Unit No. 01 San Joaquin River	Right	3.71	10/04/2016 10/04/2016	Pavel Kazi

LM Start	1.32	Rating **	A/W	Issue No.	10
LM End	1.32	Issue Type +	Ma	Location *	LS
Category	Earthen Levee			GPS Latitude/Longitude	
				Start	End
Item	Encroachments			37.590467 °	37.590467 °
				-121.163822 °	-121.163822 °
DWR ID	DWR_RD2092_01_s_2012_10				
Comment Code					
PI : Pipe					
Inspector Comment					
A sand boil appeared on the landside toe of the levee because of an underground pipe leakage. The pipe and boil have been repaired but should be monitored.					

Photo 1 of 2 : FA_2016_RD2092_116_10_20160823_00002.jpg



During spring inspection 2012, the sand boil was not active but materials were present on the landside toe of the levee. The sand boil occurred due to an underground irrigation pipe leakage. The picture was taken from the crown looking toward the toe of the levee. The area was repaired but should be monitored.

LM Start	1.32	Rating **	A/W	Issue No.	10 (cont)
LM End	1.32	Issue Type +	Ma	Location *	LS

Photo 2 of 2 : FA_2016_RD2092_116_10_20160823_00003.jpg



A sand boil was found on the landside of the levee. It was caused by a pipe leak couple of feet below the boil location. LMA was notified to repair it as soon as possible. The picture was taken from the crown looking upstream.

* Location LS : Land Side N/A : Not Applicable WS : Water Side CR : Crown		** Rating A : Acceptable N : Not Inspected/Rated M : Minimally Acceptable C : Corrected U : Unacceptable A/W : Acceptable but Monitor & Maintain		+ Issue Type Ma : Maintenance Deficiency Ob : Design & System Obsolescence En : Enforcement	
--	--	---	--	---	--

Reclamation District No. 2092 Dos Rios

View of an agricultural ditch at the waterward toe of the slope.

Page 8 of 18

**Flood Control Project Maintenance
Levee Inspections**

Levee Inspection Report By Mile - Fall 2016

Reclamation District No. 2092 Dos Rios

Waterway	Bank	Unit Miles	Inspection Start/End	Inspector
Unit No. 01 San Joaquin River	Right	3.71	10/04/2016 10/04/2016	Pavel Kazi

LM Start	2.34	Rating **	M	Issue No.	980
LM End	2.34	Issue Type +	En	Location *	WS
Category	Supplemental			GPS Latitude/Longitude	
				Start	End
Item	DWR UCIP Field Study			37.581226 °	37.581226 °
				-121.156175 °	-121.156175 °
DWR ID					
Comment Code					
Inspector Comment					
FS_ID:22916 DS_ID:24680 EP_NO: N/A Repair Type: Non-Urgent Crossing Status: Found UCIP Comments: No permit identified for this crossing. FIELD_STRUCT_DESC: 21-inch PVC irrigation pipe through the levee at an unknown depth below the crown. Pipe discharges into concrete distribution box on LS toe. Pump on pier off WS toe. FS Date: 9/24/2013					

Photo 1 of 2 : UCIP_FA_2016_22916_39046.jpg



21-inch PVC irrigation pipe visible on LS shoulder.

LM Start	2.34	Rating **	M	Issue No.	980 (cont)
LM End	2.34	Issue Type +	En	Location *	WS

Photo 2 of 2 : UCIP_FA_2016_22916_39045.jpg



Inside of pipe at LS shoulder.

* Location LS : Land Side N/A : Not Applicable WS : Water Side CR : Crown	** Rating A : Acceptable M : Minimally Acceptable U : Unacceptable N : Not Inspected/Rated C : Corrected A/W : Acceptable but Monitor & Maintain	+ Issue Type Ma : Maintenance Deficiency Ob : Design & System Obsolescence En : Enforcement
--	---	---

**Flood Control Project Maintenance
Levee Inspections**

Levee Inspection Report By Mile - Fall 2016

Reclamation District No. 2092 Dos Rios

Waterway	Bank	Unit Miles	Inspection Start/End	Inspector
Unit No. 01 San Joaquin River	Right	3.71	10/04/2016 10/04/2016	Pavel Kazi

LM Start	2.34	Rating **	M	Issue No.	973
LM End	2.34	Issue Type +	En	Location *	WS
Category	Supplemental			GPS Latitude/Longitude	
				Start	End
Item	DWR UCIP Field Study			37.581213 °	37.581213 °
				-121.156175 °	-121.156175 °
DWR ID					
Comment Code					
Inspector Comment					
FS_ID:20908 DS_ID:20566 EP_NO: N/A Repair Type: Non-Urgent Crossing Status: Found UCIP Comments: Pipe appears abandoned and needs to be verified as having been done so properly. FIELD_STRUCT_DESC: *ABANDONED* 24-inch corrugated metal pipe through levee 11.0 feet below crown. Slide gate in 36-inch corrugated metal pipe riser on the waterward slope. 5'X5' Concrete distribution box on the landward side. Pump on platform in channel. Pipe filled with concrete on LS toe. Originally included in the 1961 O&M manual. FS Date: 9/24/2013					

LM Start	2.34	Rating **	M	Issue No.	973 (cont)
LM End	2.34	Issue Type +	En	Location *	WS

Photo 1 of 2 : UCIP_FA_2016_20908_35229.jpg



5x5 concrete distribuion box on LS toe.

Photo 2 of 2 : UCIP_FA_2016_20908_35227.jpg



Pipe filled with concrete inside conc. distro box on LS toe.

* Location LS : Land Side N/A : Not Applicable WS : Water Side CR : Crown	** Rating A : Acceptable M : Minimally Acceptable U : Unacceptable N : Not Inspected/Rated C : Corrected A/W : Acceptable but Monitor & Maintain	+ Issue Type Ma : Maintenance Deficiency Ob : Design & System Obsolescence En : Enforcement
--	---	---

**Flood Control Project Maintenance
Levee Inspections**

Levee Inspection Report By Mile - Fall 2016

Reclamation District No. 2092 Dos Rios

Waterway	Bank	Unit Miles	Inspection Start/End	Inspector
Unit No. 01 San Joaquin River	Right	3.71	10/04/2016 10/04/2016	Pavel Kazi

LM Start	2.37	Rating **	M	Issue No.	20							
LM End	2.37	Issue Type +	En	Location *	LS							
Category	Earthen Levee		GPS Latitude/Longitude									
			Start	End								
Item	Encroachments		37.580821 °	37.580821 °								
			-121.156468 °	-121.156468 °								
DWR ID	DWR_RD2092_01_f_2014_20											
Comment Code												
PO : Pole												
Inspector Comment												

No Photos

LM Start	2.39	Rating **	C	Issue No.	17							
LM End	2.39	Issue Type +	Ma	Location *	LS							
Category	Earthen Levee		GPS Latitude/Longitude									
			Start	End								
Item	Erosion / Bank Caving		37.580628 °	37.580628 °								
			-121.156624 °	-121.156624 °								
DWR ID	DWR_RD2092_01_s_2016_17											
Comment Code												
E2 : Schedule repair of erosion site prior to the next inspection.												
Inspector Comment												
Erosion due to runoff												

No Photos

* Location LS : Land Side N/A : Not Applicable WS : Water Side CR : Crown	** Rating A : Acceptable M : Minimally Acceptable U : Unacceptable	N : Not Inspected/Rated C : Corrected A/W : Acceptable but Monitor & Maintain	+ Issue Type Ma : Maintenance Deficiency Ob : Design & System Obsolescence En : Enforcement
--	--	---	---

**Flood Control Project Maintenance
Levee Inspections**

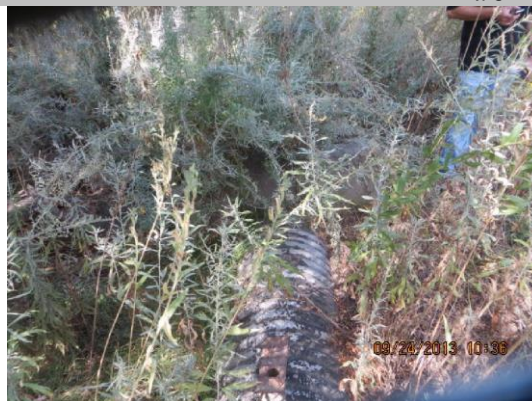
Levee Inspection Report By Mile - Fall 2016

Reclamation District No. 2092 Dos Rios

Waterway	Bank	Unit Miles	Inspection Start/End	Inspector
Unit No. 01 San Joaquin River	Right	3.71	10/04/2016 10/04/2016	Pavel Kazi

LM Start	2.40	Rating **	M	Issue No.	974
LM End	2.40	Issue Type +	En	Location *	LS
Category	Supplemental			GPS Latitude/Longitude	
				Start	End
Item	DWR UCIP Field Study			37.580426 °	37.580426 °
				-121.156798 °	-121.156798 °
DWR ID					
Comment Code					
Inspector Comment					
FS_ID:20943 DS_ID:20567 EP_NO: N/A Repair Type: Non-Urgent Crossing Status: Found UCIP Comments: Appears abandoned and if so should be done so properly. FIELD_STRUCT_DESC: *ABANDONED* 24-inch corrugated metal drain pipe through levee 15.0 feet below crown. Flap gate on the waterward end. Concrete "U" headwall on the waterward end and concrete headwall on LS toe next to pump. Originally included in the 1961 O&M manual. FS Date: 9/24/2013					

Photo 1 of 2 : UCIP_FA_2016_20943_35251.jpg



24-inch pipe visible on WS berm.

LM Start	2.40	Rating **	M	Issue No.	974 (cont)
LM End	2.40	Issue Type +	En	Location *	LS

Photo 2 of 2 : UCIP_FA_2016_20943_35250.jpg



Concrete U-shaped headwall and flapgate on WS berm.

* Location LS : Land Side N/A : Not Applicable WS : Water Side CR : Crown	** Rating A : Acceptable M : Minimally Acceptable U : Unacceptable	N : Not Inspected/Rated C : Corrected A/W : Acceptable but Monitor & Maintain	+ Issue Type Ma : Maintenance Deficiency Ob : Design & System Obsolescence En : Enforcement
--	--	---	---

**Flood Control Project Maintenance
Levee Inspections**

Levee Inspection Report By Mile - Fall 2016

Reclamation District No. 2092 Dos Rios

Waterway	Bank	Unit Miles	Inspection Start/End	Inspector
Unit No. 01 San Joaquin River	Right	3.71	10/04/2016 10/04/2016	Pavel Kazi

LM Start	2.41	Rating **	M	Issue No.	977
LM End	2.41	Issue Type +	En	Location *	LS
Category	Supplemental			GPS Latitude/Longitude	
				Start	End
Item	DWR UCIP Field Study			37.580405 °	37.580405 °
				-121.156825 °	-121.156825 °
DWR ID					
Comment Code					
Inspector Comment					
FS_ID:20923					
DS_ID:20568					
EP_NO: N/A					
Repair Type: Non-Urgent					
Crossing Status: Indicator Found					
UCIP Comments: Pipe abandoned and should be verified as having been removed from the levee.					
FIELD_STRUCT_DESC: *ABANDONED* 4-inch pipe through levee 1.0 foot below crown. Pump on sump at LS toe. Roadway extending to the landward pump.					
FS Date: 9/24/2013					

Photo 1 of 2 : UCIP_FA_2016_20923_35234.jpg



Pump and 4-inch pipe visible at LS toe.

LM Start	2.41	Rating **	M	Issue No.	977 (cont)
LM End	2.41	Issue Type +	En	Location *	LS

Photo 2 of 2 : UCIP_FA_2016_20923_35233.jpg



Gravel on WS slope appears to indicate trench.

* Location LS : Land Side N/A : Not Applicable WS : Water Side CR : Crown	** Rating A : Acceptable M : Minimally Acceptable U : Unacceptable	N : Not Inspected/Rated C : Corrected A/W : Acceptable but Monitor & Maintain	+ Issue Type Ma : Maintenance Deficiency Ob : Design & System Obsolescence En : Enforcement
--	--	---	---

**Flood Control Project Maintenance
Levee Inspections**

Levee Inspection Report By Mile - Fall 2016

Reclamation District No. 2092 Dos Rios

Waterway	Bank	Unit Miles	Inspection Start/End	Inspector
Unit No. 01 San Joaquin River	Right	3.71	10/04/2016 10/04/2016	Pavel Kazi

LM Start	2.61	Rating **	M	Issue No.	22
LM End	2.61	Issue Type +	En	Location *	LS
Category	Earthen Levee		GPS Latitude/Longitude		
			Start	End	
Item	Encroachments		37.577387°	37.577387°	
			-121.157133°	-121.157133°	
DWR ID	DWR_RD2092_01_f_2014_22				
Comment Code					
PO : Pole					
Inspector Comment					

No Photos

LM Start	2.68	Rating **	C	Issue No.	29
LM End	2.68	Issue Type +	Ma	Location *	LS
Category	Earthen Levee		GPS Latitude/Longitude		
			Start	End	
Item	Animal Control		37.576451°	37.576451°	
			-121.157208°	-121.157208°	
DWR ID	DWR_RD2092_01_s_2016_29				
Comment Code					
A3 : No rodents visible, but rodent burrows visible; need to backfill and compact or grout burrows.					
Inspector Comment					

No Photos

LM Start	2.69	Rating **	M	Issue No.	23
LM End	2.69	Issue Type +	En	Location *	LS
Category	Earthen Levee		GPS Latitude/Longitude		
			Start	End	
Item	Encroachments		37.576363°	37.576363°	
			-121.157212°	-121.157212°	
DWR ID	DWR_RD2092_01_f_2014_23				
Comment Code					
PO : Pole					
Inspector Comment					

No Photos

* Location LS : Land Side N/A : Not Applicable WS : Water Side CR : Crown	** Rating A : Acceptable M : Minimally Acceptable U : Unacceptable	N : Not Inspected/Rated C : Corrected A/W : Acceptable but Monitor & Maintain	+ Issue Type Ma : Maintenance Deficiency Ob : Design & System Obsolescence En : Enforcement
--	--	---	---

**Flood Control Project Maintenance
Levee Inspections**

Levee Inspection Report By Mile - Fall 2016

Reclamation District No. 2092 Dos Rios

Waterway	Bank	Unit Miles	Inspection Start/End	Inspector
Unit No. 01 San Joaquin River	Right	3.71	10/04/2016 10/04/2016	Pavel Kazi

LM Start	2.70	Rating **	C	Issue No.	19
LM End	2.70	Issue Type +	Ma	Location *	LS
Category	Earthen Levee			GPS Latitude/Longitude	
				Start	End
Item	Animal Control			37.576165 °	37.576165 °
				-121.157230 °	-121.157230 °
DWR ID	DWR_RD2092_01_s_2015_19				
Comment Code					
A3 : No rodents visible, but rodent burrows visible; need to backfill and compact or grout burrows.					
Inspector Comment					

No Photos

LM Start	2.72	Rating **	M	Issue No.	25
LM End	2.72	Issue Type +	En	Location *	LS
Category	Earthen Levee			GPS Latitude/Longitude	
				Start	End
Item	Encroachments			37.575923 °	37.575923 °
				-121.157228 °	-121.157228 °
DWR ID	DWR_RD2092_01_f_2014_25				
Comment Code					
PO : Pole					
Inspector Comment					

No Photos

LM Start	2.73	Rating **	A	Issue No.	30
LM End	2.73	Issue Type +	Ma	Location *	WS
Category	Earthen Levee			GPS Latitude/Longitude	
				Start	End
Item	Animal Control			37.575743 °	37.575743 °
				-121.157237 °	-121.157237 °
DWR ID	DWR_RD2092_01_s_2016_30				
Comment Code					
A3 : No rodents visible, but rodent burrows visible; need to backfill and compact or grout burrows.					
Inspector Comment					
LMA has repaired the rodent holes at this location.					

Photo 1 of 2 : FA_2016_RD2092_116_30_20161005_00036.jpg



LMA has repaired the rodent holes on the waterside of the levee looking downstream. Fall 2016.

* Location LS : Land Side N/A : Not Applicable WS : Water Side CR : Crown	** Rating A : Acceptable M : Minimally Acceptable U : Unacceptable	N : Not Inspected/Rated C : Corrected A/W : Acceptable but Monitor & Maintain	+ Issue Type Ma : Maintenance Deficiency Ob : Design & System Obsolescence En : Enforcement
--	--	---	---

Reclamation District No. 2092 Dos Rios

View of barbed wire fence along the waterward slope looking upstream.

Page 16 of 18

**Flood Control Project Maintenance
Levee Inspections**

Levee Inspection Report By Mile - Fall 2016

Reclamation District No. 2092 Dos Rios

Waterway	Bank	Unit Miles	Inspection Start/End	Inspector
Unit No. 01 San Joaquin River	Right	3.71	10/04/2016 10/04/2016	Pavel Kazi

LM Start	2.86	Rating **	M	Issue No.	975
LM End	2.86	Issue Type +	En	Location *	WS
Category	Supplemental			GPS Latitude/Longitude	
				Start	End
Item	DWR UCIP Field Study			37.574741 °	37.574741 °
				-121.155495 °	-121.155495 °
DWR ID					
Comment Code					
Inspector Comment					
FS_ID:20944					
DS_ID:20570					
EP_NO: N/A					
Repair Type: Non-Urgent					
Crossing Status: Indicator Found					
UCIP Comments: Appears abandoned and if so, should be done so properly.					
FIELD_STRUCT_DESC: *ABANDONED* 24-inch corrugated metal pipe through levee 6.5 feet below crown. Concrete "U" headwall and flap gate on the waterward end. Concrete headwall on LS slope. Originally included in the 1961 O&M manual.					
FS Date: 9/24/2013					

Photo 1 of 1 : UCIP_FA_2016_20944_35255.jpg



Concrete headwall visible on LS slope.

LM Start	3.47	Rating **	M	Issue No.	976
LM End	3.47	Issue Type +	En	Location *	WS
Category	Supplemental			GPS Latitude/Longitude	
				Start	End
Item	DWR UCIP Field Study			37.573304 °	37.573304 °
				-121.144747 °	-121.144747 °
DWR ID					
Comment Code					
Inspector Comment					
FS_ID:20945					
DS_ID:20572					
EP_NO: N/A					
Repair Type: Non-Urgent					
Crossing Status: Found					
UCIP Comments: This pipe appears abandoned and if so, should be done so properly.					
FIELD_STRUCT_DESC: *ABANDONED* 36-inch corrugated metal pipe through levee 11.0 feet below crown. Slide gate in corrugated metal pipe riser on the waterward slope. Concrete headwalls on both ends. Originally included in the 1961 O&M manual.					
FS Date: 9/24/2013					

Photo 1 of 2 : UCIP_FA_2016_20945_35261.jpg



48-inch CMP riser on WS slope.

* Location LS : Land Side N/A : Not Applicable WS : Water Side CR : Crown	** Rating A : Acceptable M : Minimally Acceptable U : Unacceptable	N : Not Inspected/Rated C : Corrected A/W : Acceptable but Monitor & Maintain	+ Issue Type Ma : Maintenance Deficiency Ob : Design & System Obsolescence En : Enforcement
--	--	---	---

**Flood Control Project Maintenance
Levee Inspections**

Levee Inspection Report By Mile - Fall 2016

Reclamation District No. 2092 Dos Rios

Waterway	Bank	Unit Miles	Inspection Start/End	Inspector
Unit No. 01 San Joaquin River	Right	3.71	10/04/2016 10/04/2016	Pavel Kazi

LM Start	3.47	Rating **	M	Issue No.	976 (cont)	
LM End	3.47	Issue Type +	En	Location *	WS	
Category	Supplemental			GPS Latitude/Longitude		
				Start	End	
Item	DWR UCIP Field Study			37.573304 °	37.573304 °	
				-121.144747 °	-121.144747 °	
DWR ID						
Comment Code						
Inspector Comment						
FS_ID:20945						
DS_ID:20572						
EP_NO: N/A						
Repair Type: Non-Urgent						
Crossing Status: Found						
UCIP Comments: This pipe appears abandoned and if so, should be done so properly.						
FIELD_STRUCT_DESC: *ABANDONED* 36-inch corrugated metal pipe through levee 11.0 feet below crown. Slide gate in corrugated metal pipe riser on the waterward slope. Concrete headwalls on both ends. Originally included in the 1961 O&M manual.						
FS Date: 9/24/2013						

Photo 2 of 2 : UCIP_FA_2016_20945_35260.jpg



Grate over sump on LS toe.

* Location LS : Land Side N/A : Not Applicable WS : Water Side CR : Crown	** Rating A : Acceptable M : Minimally Acceptable U : Unacceptable N : Not Inspected/Rated C : Corrected A/W : Acceptable but Monitor & Maintain	+ Issue Type Ma : Maintenance Deficiency Ob : Design & System Obsolescence En : Enforcement
--	---	---