

Flood Control Project Maintenance Levee Inspections

Fall 2020 Levee Maintenance Deficiency Summary Report

San Joaquin River Basin

RD2091	Overall LMA Rating	Total LMA Miles	* Overall LMA Threshold Percent is less than 10.00%; however, U Rated Miles are present, so the Overall LMA Rating is M instead of A.					
Reclamation District No. 2091 Chase	M *	7.51						
Rated Item	Maintenance Deficiency				Enforcement		Design & System Obsolescence	
	M Miles	U Miles	M + 4U Miles	Threshold %	M Miles	U Miles	M Miles	U Miles
<i>Earthen Levee</i>								
Vegetation	0.04		0.04	0.53%				
Erosion / Bank Caving		0.03	0.12	1.60%				
Flood Preparedness & Training	0.08		0.08	1.07%				
<i>Supplemental</i>								
DWR UCIP Field Study					0.02			
DWR UCIP LMA Responsibility								
<i>LMA Totals:</i>	0.12	0.03	0.24	3.19% *	0.02	0.00	0.00	0.00
Unit No. 01 San Joaquin River RB	Overall Unit Rating	Total Unit Miles	* Overall Unit Threshold Percent is less than 10.00%; however, U Rated Miles are present, so the Overall Unit Rating is M instead of A.					
RD2091	M *	7.46						
Rated Item	Maintenance Deficiency				Enforcement		Design & System Obsolescence	
	M Miles	U Miles	M + 4U Miles	Threshold %	M Miles	U Miles	M Miles	U Miles
<i>Earthen Levee</i>								
Erosion / Bank Caving		0.03	0.12	1.61%				
<i>Supplemental</i>								
DWR UCIP Field Study					0.01			
DWR UCIP LMA Responsibility								
<i>Unit Totals:</i>	0.00	0.03	0.12	1.61% *	0.01	0.00	0.00	0.00
Unit No. 02 San Joaquin River NA	Overall Unit Rating	Total Unit Miles						
RD2091	U	0.05						
Rated Item	Maintenance Deficiency				Enforcement		Design & System Obsolescence	
	M Miles	U Miles	M + 4U Miles	Threshold %	M Miles	U Miles	M Miles	U Miles
<i>Earthen Levee</i>								
Vegetation	0.04		0.04	80.00%				
<i>Supplemental</i>								
DWR UCIP Field Study					0.01			
<i>Unit Totals:</i>	0.04	0.00	0.04	80.00%	0.01	0.00	0.00	0.00

	Spring (March - May)	Summer ** (June - August)	Fall (September - November)	Winter ** (December - February)
† Overall LMA Rating (Fall Only)			M *	

* Overall LMA Threshold Percent is less than 10.00%; however, U Rated Miles are present, so the Overall LMA Rating is M instead of A.

SPRING INSPECTIONS: Overall maintenance ratings are not determined for the spring inspection results. Individual maintenance deficiencies are rated using the same criteria in the spring and in the fall.

FALL INSPECTIONS: The overall maintenance rating shown above is based on operation and maintenance deficiencies identified within the attached unit inspection reports. This rating is not intended to be an indication of risk.

Comments

[illegible]

**Flood Control Project Maintenance
Levee Inspections
Unit Cover Sheet**

Reclamation District No. 2091 Chase

Waterway			Bank	Unit Miles
Unit No. 01 San Joaquin River			Right	7.46
	Spring (March - May)	Summer (June - August)	(September - November) Fall	Winter (December - February)
Unit Maintenance Rating (Fall Only)			M *	
Date of Inspection	3/26/2020 - 3/26/2020		9/29/2020 - 9/29/2020	
DWR Inspector	Corey Fujitani		Corey Fujitani	
Accompanied By			Mike Alves City of Modesto	

* Overall LMA Threshold Percent is less than 10.00%; however, U Rated Miles are present, so the Overall LMA Rating is M instead of A.

Summer & Winter Inspections

The Local Maintaining Agency (LMA) is responsible for summer and winter inspections. The LMA is required to submit a report regarding summer and winter inspections to the California Department of Water Resources (DWR).

DWR must be informed on the:

- a) completion of the inspection
- b) any changes other than the results of normal maintenance
- c) corrections to deficiencies noted in this report

If additional items are noted, further documentation of those items must also be submitted.

The LMA should submit this information to DWR using the LMA web application tool available at:

<http://cdec.water.ca.gov/lma.html>

If the LMA is unable to submit information on this webpage, please contact DWR for assistance.

The LMA should submit the information and any associated documentation by September 30 for summer inspections and March 31 for winter inspections.

**Flood Control Project Maintenance
Levee Inspections**

Levee Inspection Report By Mile - Fall 2020

Reclamation District No. 2091 Chase

Waterway	Bank	Unit Miles	Inspection Start/End	Inspector
Unit No. 01 San Joaquin River	Right	7.46	09/29/2020 09/29/2020	Corey Fujitani

LM Start	0.00	Rating **	A	Issue No.	2	
LM End	0.00	Issue Type +	Ma	Location *		
Category	Earthen Levee			GPS Latitude/Longitude		
				Start		End
Item	Operations & Maintenance Manuals				°	
					°	
DWR ID	DWR_RD2091_01_s_2013_2					
Comment Code						
Inspector Comment						
The LMA has copy of O & M manual on file at district office.						

No Photos

LM Start	0.00	Rating **	A	Issue No.	4		
LM End	0.00	Issue Type +	Ma	Location *			
Category	Earthen Levee			GPS Latitude/Longitude			
				Start		End	
Item	Emergency Supplies & Equipment				°		°
					°		°
DWR ID	DWR_RD2091_01_s_2013_4						
Comment Code							
Inspector Comment							
The LMA maintains adequate flood fight supplies and equipment.							

No Photos

LM Start	0.00	Rating **	M	Issue No.	5
LM End	0.00	Issue Type +	Ma	Location *	
Category	Earthen Levee			GPS Latitude/Longitude	
				Start	End
Item	Flood Preparedness & Training				°
					°
DWR ID	DWR_RD2091_01_s_2013_5				
Comment Code					
Inspector Comment					
The LMA maintains a good working knowledge of flood response activities but has not recently received flood fight training.					

No Photos

* Location LS : Land Side N/A : Not Applicable WS : Water Side CR : Crown		** Rating A : Acceptable N : Not Inspected/Rated M : Minimally Acceptable C : Corrected U : Unacceptable A/W : Acceptable but Monitor & Maintain		+ Issue Type Ma : Maintenance Deficiency Ob : Design & System Obsolescence En : Enforcement
--	--	---	--	---

**Flood Control Project Maintenance
Levee Inspections**

Levee Inspection Report By Mile - Fall 2020

Reclamation District No. 2091 Chase

Waterway	Bank	Unit Miles	Inspection Start/End	Inspector
Unit No. 01 San Joaquin River	Right	7.46	09/29/2020 09/29/2020	Corey Fujitani

LM Start	0.08	Rating **	M	Issue No.	45	
LM End	0.08	Issue Type +	Ma	Location *		
Category	Supplemental			GPS Latitude/Longitude		
				Start		End
Item	DWR UCIP LMA Responsibility			37.541970 °	37.541970 °	
				-121.093980 °	-121.093980 °	
DWR ID	23155					
Comment Code						
Inspector Comment						
DS_ID:23155 FS_ID:43207 EP_NO: N/A Repair Type: Non-Urgent EVAL Issue: Crossing Status: Found UCIP Comments: 10/15/2013 Appears abandoned and if so should be done so properly. (W. Wylie - DWR UCIP) FIELD_STRUCT_DESC: *ABANDONED* 24-inch corrugated metal drainage pipe through the levee, 7.2 feet below the crown. Slide gate in a 36-inch corrugated metal pipe (CMP) riser on the waterside (WS) slope. [Additional Reference(s): DWR Levee Log, 1992. USACE San Joaquin O&M Manual 6, September 1961, (HLM 0.07), Drawing No. 07-04-1555, Sheets 1555/17 and 1555/55, (Station 906+85)]. FS Date: 1/29/2015 2:26:31 PM						

LM Start	0.08	Rating **	M	Issue No.	45 (cont)
LM End	0.08	Issue Type +	Ma	Location *	

Photo 1 of 3 : UCIP_FA_2020_43207_38148.jpg



Slide gate in 36-inch CMP riser on WS toe.

Photo 2 of 3 : UCIP_FA_2020_43207_38147.jpg



Slide gate in 36-inch CMP riser on WS toe.

* Location LS : Land Side N/A : Not Applicable WS : Water Side CR : Crown	** Rating A : Acceptable M : Minimally Acceptable U : Unacceptable	N : Not Inspected/Rated C : Corrected A/W : Acceptable but Monitor & Maintain	+ Issue Type Ma : Maintenance Deficiency Ob : Design & System Obsolescence En : Enforcement
--	--	---	---

**Flood Control Project Maintenance
Levee Inspections**

Levee Inspection Report By Mile - Fall 2020

Reclamation District No. 2091 Chase

Waterway	Bank	Unit Miles	Inspection Start/End	Inspector
Unit No. 01 San Joaquin River	Right	7.46	09/29/2020 09/29/2020	Corey Fujitani

LM Start	0.08	Rating **	M	Issue No.	45 (cont)
LM End	0.08	Issue Type +	Ma	Location *	
Category	Supplemental			GPS Latitude/Longitude	
				Start	End
Item	DWR UCIP LMA Responsibility			37.541970 °	37.541970 °
				-121.093980 °	-121.093980 °
DWR ID	23155				

Photo 3 of 3 : UCIP_FA_2020_43207_38146.jpg



CMP stormdrain at outlet off WS toe.

* Location LS : Land Side N/A : Not Applicable WS : Water Side CR : Crown	** Rating A : Acceptable N : Not Inspected/Rated M : Minimally Acceptable C : Corrected U : Unacceptable A/W : Acceptable but Monitor & Maintain	+ Issue Type Ma : Maintenance Deficiency Ob : Design & System Obsolescence En : Enforcement
--	---	---

**Flood Control Project Maintenance
Levee Inspections**

Levee Inspection Report By Mile - Fall 2020

Reclamation District No. 2091 Chase

Waterway	Bank	Unit Miles	Inspection Start/End	Inspector
Unit No. 01 San Joaquin River	Right	7.46	09/29/2020 09/29/2020	Corey Fujitani

LM Start	0.10	Rating **	M	Issue No.	46
LM End	0.10	Issue Type +	Ma	Location *	
Category	Supplemental			GPS Latitude/Longitude	
				Start	End
Item	DWR UCIP LMA Responsibility			37.542030 °	37.542030 °
				-121.094370 °	-121.094370 °
DWR ID	23156				

Comment Code

Inspector Comment

DS_ID:23156
FS_ID:53094
EP_NO: N/A
Repair Type: Non-Urgent
EVAL Issue:
Crossing Status: Found
UCIP Comments: 10/18/2018 Crossing remains abandoned. Unable to locate WS outlet due to dense vegetation. Crossing has been downgraded from Urgent to Non-Urgent. No integrity issues were observed along pipe alignment. LMA is still seeking proper abandonment or removal of this crossing. Crossing is part of the Deferred Maintenance Project (DMP) phase 1 inspection. No video inspection has been completed yet. (O. Magana - DWR UCIP)
11/18/2016 Same as last inspection this is a non-functional crossing with no visible inlet on LS or outlet on WS. The only appurtenance found at this location is a CMP riser with a missing cover located on the WS. This crossing remains Urgent since the pipe on the WS may still be opened. According to Mike Alves, this crossing is abandoned and the City of Modesto is working with CVFPB to authorize proper abandonment/removal. The City is working at finding funds to pay for proper abandonment/removal of all the drainage structures through this levee. (O. Magana - DWR UCIP)10/15/2013 Pipe open on WS and slide gate has been removed. Appears abandoned and should be done so properly. (W. Wylie - City of Modesto)
FIELD_STRUCT_DESC: *ABANDONED* 24-inch corrugated metal drainage pipe through the levee, 9 feet below the crown. Slide gate in a corrugated metal pipe (CMP) riser located on the waterside (WS) slope. [Additional Reference(s): DWR Levee Log, 1992. USACE San Joaquin O&M Manual 6, September 1961, (HLM 0.10), Drawing No. 07-04-1555, Sheets 1555/17 and 1555/55, (Station 907+55)].
FS Date: 10/18/2018

Photo 1 of 3 : UCIP_FA_2020_53094_38150.jpg



36-inch CMP riser on WS slope.

* Location LS : Land Side N/A : Not Applicable WS : Water Side CR : Crown	** Rating A : Acceptable M : Minimally Acceptable U : Unacceptable N : Not Inspected/Rated C : Corrected A/W : Acceptable but Monitor & Maintain	+ Issue Type Ma : Maintenance Deficiency Ob : Design & System Obsolescence En : Enforcement
--	---	---

**Flood Control Project Maintenance
Levee Inspections**

Levee Inspection Report By Mile - Fall 2020

Reclamation District No. 2091 Chase

Waterway	Bank	Unit Miles	Inspection Start/End	Inspector
Unit No. 01 San Joaquin River	Right	7.46	09/29/2020 09/29/2020	Corey Fujitani

LM Start	0.10	Rating **	M	Issue No.	46 (cont)
LM End	0.10	Issue Type +	Ma	Location *	
Category	Supplemental		GPS Latitude/Longitude		
			Start	End	
Item	DWR UCIP LMA Responsibility		37.542030 °	37.542030 °	
			-121.094370 °	-121.094370 °	
DWR ID	23156				

Photo 2 of 3 : UCIP_FA_2020_53094_38149.jpg



Slide gate missing from open end of pipe at WS slope.

LM Start	0.10	Rating **	M	Issue No.	46 (cont)
LM End	0.10	Issue Type +	Ma	Location *	

Photo 3 of 3 : UCIP_FA_2020_53094_76669.jpg



Overview of levee crown at pipe crossing.

LM Start	0.23	Rating **	A/W	Issue No.	15
LM End	0.23	Issue Type +	Ma	Location *	LS
Category	Earthen Levee			GPS Latitude/Longitude	
				Start	End
Item	Erosion / Bank Caving			37.541550 °	37.541550 °
				-121.096742 °	-121.096742 °
DWR ID	DWR_RD2091_01_s_2016_15				
Comment Code					
E1 : Note and monitor erosion site.					
Inspector Comment					
Caving on landward shoulder noted in 2017 possible collapsed pipe. Monitor for potential reoccurrence.					

Photo 1 of 1 : FA_2020_RD2091_318_15_20200901_00006.jpg



Looking west along the landside shoulder. (Spring 2020)

*** Location**

LS : Land Side N/A : Not Applicable
WS : Water Side
CR : Crown

**** Rating**

A : Acceptable N : Not Inspected/Rated
M : Minimally Acceptable C : Corrected
U : Unacceptable A/W : Acceptable but Monitor & Maintain

+ Issue Type

Ma : Maintenance Deficiency
Ob : Design & System Obsolescence
En : Enforcement

**Flood Control Project Maintenance
Levee Inspections**

Levee Inspection Report By Mile - Fall 2020

Reclamation District No. 2091 Chase

Waterway	Bank	Unit Miles	Inspection Start/End	Inspector
Unit No. 01 San Joaquin River	Right	7.46	09/29/2020 09/29/2020	Corey Fujitani

LM Start	0.24	Rating **	M	Issue No.	47
LM End	0.24	Issue Type +	Ma	Location *	
Category	Supplemental			GPS Latitude/Longitude	
				Start	End
Item	DWR UCIP LMA Responsibility			37.541564 °	37.541564 °
				-121.096792 °	-121.096792 °
DWR ID	23158				

Comment Code

Inspector Comment

DS_ID:23158
FS_ID:53431
EP_NO: N/A
Repair Type: Non-Urgent
EVAL Issue:
Crossing Status: Found
UCIP Comments: 10/18/2018 Crossing remains abandoned. Unable to locate WS outlet due to dense vegetation. Crossing has been downgraded from Urgent to Non-Urgent, no integrity issues were observed along the pipe alignment. LMA is still seeking proper abandonment or removal of this crossing. This crossing is part of the Deferred Maintenance Project (DMP) phase 1 inspection. No video inspection has been completed yet. (O. Magana - DWR UCIP)
11/18/2016 Same as last inspection. This crossing remains Urgent due to the flap gate still missing from the WS toe. According to Mike Alves, this crossing is an abandoned line and the City of Modesto is working with CVFPB to authorize proper abandonment/removal. The City is working at finding funds to pay for proper abandonment/removal of all the drainage structures through this levee. (O. Magana - DWR UCIP)10/15/2013 Flap gate has fallen off at WS toe. Appears abandoned and if so should be done so properly. (W. Wylie - DWR UCIP)
FIELD_STRUCT_DESC: *ABANDONED* 24-inch corrugated metal drainage pipe through the levee, 10 feet below the crown. Flap gate on the waterside (WS) end. Drain opening is located approximately 15 feet off the landside (LS) toe. [Additional Reference(s): DWR Levee Log, 1992. USACE San Joaquin O&M Manual 6, September 1961, (HLM 0.23), Drawing No. 07-04-1555, Sheets 1555/17 and 1555/55, (Station 915+00)].
FS Date: 10/18/2018

Photo 1 of 3 : UCIP_FA_2020_53431_38156.jpg



Pipe visible in canal on WS toe.

* Location LS : Land Side N/A : Not Applicable WS : Water Side CR : Crown	** Rating A : Acceptable M : Minimally Acceptable U : Unacceptable N : Not Inspected/Rated C : Corrected A/W : Acceptable but Monitor & Maintain	+ Issue Type Ma : Maintenance Deficiency Ob : Design & System Obsolescence En : Enforcement
--	---	---

**Flood Control Project Maintenance
Levee Inspections**

Levee Inspection Report By Mile - Fall 2020

Reclamation District No. 2091 Chase

Waterway	Bank	Unit Miles	Inspection Start/End	Inspector
Unit No. 01 San Joaquin River	Right	7.46	09/29/2020 09/29/2020	Corey Fujitani

LM Start	0.24	Rating **	M	Issue No.	47 (cont)
LM End	0.24	Issue Type +	Ma	Location *	
Category	Supplemental		GPS Latitude/Longitude		
			Start	End	
Item	DWR UCIP LMA Responsibility		37.541564 °	37.541564 °	
			-121.096792 °	-121.096792 °	
DWR ID	23158				

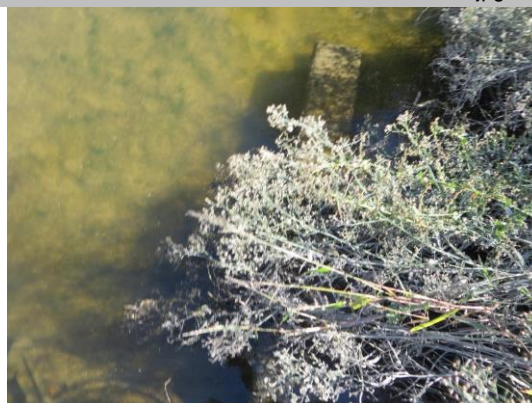
Photo 2 of 3 : UCIP_FA_2020_53431_38155.jpg



Flapgate has fallen off at WS toe.

LM Start	0.24	Rating **	M	Issue No.	47 (cont)
LM End	0.24	Issue Type +	Ma	Location *	

Photo 3 of 3 : UCIP_FA_2020_53431_38154.jpg



Concrete headwall under pipe at WS toe.

LM Start	0.25	Rating **	C	Issue No.	16
LM End	0.28	Issue Type +	Ma	Location *	LS
Category	Earthen Levee			GPS Latitude/Longitude	
				Start	End
Item	Erosion / Bank Caving			37.541492 °	37.541408 °
				-121.097052 °	-121.097453 °
DWR ID	DWR_RD2091_01_s_2016_16				
Comment Code					
E1 : Note and monitor erosion site.					
Inspector Comment					

No Photos

* Location LS : Land Side N/A : Not Applicable WS : Water Side CR : Crown		** Rating A : Acceptable N : Not Inspected/Rated M : Minimally Acceptable C : Corrected U : Unacceptable A/W : Acceptable but Monitor & Maintain		+ Issue Type Ma : Maintenance Deficiency Ob : Design & System Obsolescence En : Enforcement
--	--	---	--	---

**Flood Control Project Maintenance
Levee Inspections**

Levee Inspection Report By Mile - Fall 2020

Reclamation District No. 2091 Chase

Waterway	Bank	Unit Miles	Inspection Start/End	Inspector
Unit No. 01 San Joaquin River	Right	7.46	09/29/2020 09/29/2020	Corey Fujitani

LM Start	0.63	Rating **	M	Issue No.	48	
LM End	0.63	Issue Type +	Ma	Location *		
Category	Supplemental			GPS Latitude/Longitude		
				Start	End	
Item	DWR UCIP LMA Responsibility			37.541220 °	37.541220 °	
				-121.103880 °	-121.103880 °	
DWR ID	23161					
Comment Code						
Inspector Comment						
DS_ID:23161 FS_ID:51639 EP_NO: N/A Repair Type: Non-Urgent EVAL Issue: Crossing Status: Found UCIP Comments: 11/18/2016 Crossing has been downgraded from Urgent to Non-Urgent since the flap gate appears to fully close. According to Mike Alvez, this crossing is abandoned and the City of Modesto is working with CVFPB to authorize proper abandonment/removal. The City is working at finding funds to pay for proper abandonment/removal of all the drainage structures through this levee. (O. Magana - DWR UCIP)10/15/2013 Appears abandoned and if so should be done so properly. (W. Wylie - DWR UCIP) FIELD_STRUCT_DESC: *ABANDONED* 24-inch corrugated metal drainage pipe through the levee, 12 feet below the crown. Flap gate and concrete headwall on the waterside (WS) end. [Additional Reference(s): DWR Levee Log, 1992. USACE San Joaquin O&M Manual 6, September 1961, (HLM 0.64)]. FS Date: 11/18/2016						

Photo 1 of 3 : UCIP_FA_2020_51639_38158.jpg



24-inch CMP on concrete headwall with flapgate on WS toe.

LM Start	0.63	Rating **	M	Issue No.	48 (cont)
LM End	0.63	Issue Type +	Ma	Location *	

Photo 2 of 3 : UCIP_FA_2020_51639_38157.jpg



24-inch CMP on concrete headwall with flapgate on WS toe.

* Location LS : Land Side N/A : Not Applicable WS : Water Side CR : Crown	** Rating A : Acceptable M : Minimally Acceptable U : Unacceptable	N : Not Inspected/Rated C : Corrected A/W : Acceptable but Monitor & Maintain	+ Issue Type Ma : Maintenance Deficiency Ob : Design & System Obsolescence En : Enforcement
--	--	---	---

**Flood Control Project Maintenance
Levee Inspections**

Levee Inspection Report By Mile - Fall 2020

Reclamation District No. 2091 Chase

Waterway	Bank	Unit Miles	Inspection Start/End	Inspector
Unit No. 01 San Joaquin River	Right	7.46	09/29/2020 09/29/2020	Corey Fujitani

LM Start	0.63	Rating **	M	Issue No.	48 (cont)
LM End	0.63	Issue Type +	Ma	Location *	
Category	Supplemental		GPS Latitude/Longitude		
			Start	End	
Item	DWR UCIP LMA Responsibility		37.541220 °	37.541220 °	
			-121.103880 °	-121.103880 °	
DWR ID	23161				

Photo 3 of 3 : UCIP_FA_2020_51639_76677.jpg



View of LS.

LM Start	2.15	Rating **	A/W	Issue No.	25
LM End	2.15	Issue Type +	Ob	Location *	LS
Category	Earthen Levee			GPS Latitude/Longitude	
				Start	End
Item	Seepage / Sandboils			37.525220 °	37.525220 °
				-121.097700 °	-121.097700 °
DWR ID	199-1				
Comment Code					
Inspector Comment					
2017 Storm Damage					
Site ID No:124					
Site Designation:199-1					

No Photos

LM Start	2.41	Rating **	A/W	Issue No.	26
LM End	2.49	Issue Type +	Ob	Location *	LS
Category	Earthen Levee			GPS Latitude/Longitude	
				Start	End
Item	Seepage / Sandboils			37.522090 °	37.521140 °
				-121.095580 °	-121.095080 °
DWR ID	DWR_RD2091_01_R_2012_05				
Comment Code					
Inspector Comment					
2017 Storm Damage					
Site ID No:125					
Site Designation: DWR_RD2091_01_R_2012_05					

No Photos

* Location LS : Land Side N/A : Not Applicable WS : Water Side CR : Crown	** Rating A : Acceptable M : Minimally Acceptable U : Unacceptable	N : Not Inspected/Rated C : Corrected A/W : Acceptable but Monitor & Maintain	+ Issue Type Ma : Maintenance Deficiency Ob : Design & System Obsolescence En : Enforcement
--	--	---	---

**Flood Control Project Maintenance
Levee Inspections**

Levee Inspection Report By Mile - Fall 2020

Reclamation District No. 2091 Chase

Waterway	Bank	Unit Miles	Inspection Start/End	Inspector
Unit No. 01 San Joaquin River	Right	7.46	09/29/2020 09/29/2020	Corey Fujitani

LM Start	2.84	Rating **	A/W	Issue No.	38
LM End	3.46	Issue Type +	Ob	Location *	LS
Category	Earthen Levee			GPS Latitude/Longitude	
				Start	End
Item	Seepage / Sandboils			37.519210 °	37.511720 °
				-121.089010 °	-121.087380 °
DWR ID	199-105				
Comment Code					
Inspector Comment					
2017 Storm Damage					
Site ID No:128					
Site Designation:199-105					

No Photos

LM Start	3.97	Rating **	A/W	Issue No.	11
LM End	3.97	Issue Type +	Ma	Location *	LS
Category	Earthen Levee			GPS Latitude/Longitude	
				Start	End
Item	Trim / Thin Trees			37.505925 °	37.505925 °
				-121.082469 °	-121.082469 °
DWR ID	DWR_RD2091_01_f _ 2020_11				
Comment Code					
T1 : Trim trees to at least five feet above ground level.					
Inspector Comment					
LMA removed tree sapling on the landside slope.					

Photo 1 of 1 : FA_2020_RD2091_318_11_20201028_00026.jpg



View of removed sapling growing in landside slope. (Fall 2020)

LM Start	4.44	Rating **	A/W	Issue No.	39
LM End	4.54	Issue Type +	Ob	Location *	LS
Category	Earthen Levee			GPS Latitude/Longitude	
				Start	End
Item	Seepage / Sandboils			37.499440 °	37.498040 °
				-121.080720 °	-121.080720 °
DWR ID	DWR_RD2091_01_R_2012_02				
Comment Code					
Inspector Comment					
2017 Storm Damage					
Site ID No:131					
Site Designation: DWR_RD2091_01_R_2012_02					

No Photos

* Location LS : Land Side N/A : Not Applicable WS : Water Side CR : Crown		** Rating A : Acceptable M : Minimally Acceptable U : Unacceptable N : Not Inspected/Rated C : Corrected A/W : Acceptable but Monitor & Maintain		+ Issue Type Ma : Maintenance Deficiency Ob : Design & System Obsolescence En : Enforcement	
---	--	--	--	--	--

**Flood Control Project Maintenance
Levee Inspections**

Levee Inspection Report By Mile - Fall 2020

Reclamation District No. 2091 Chase

Waterway	Bank	Unit Miles	Inspection Start/End	Inspector
Unit No. 01 San Joaquin River	Right	7.46	09/29/2020 09/29/2020	Corey Fujitani

LM Start	4.57	Rating **	A/W	Issue No.	40
LM End	5.00	Issue Type +	Ob	Location *	LS
Category	Earthen Levee			GPS Latitude/Longitude	
				Start	End
Item	Seepage / Sandboils			37.497780 °	37.492630 °
				-121.080340 °	-121.076070 °
DWR ID	199-100				
Comment Code					
Inspector Comment					
2017 Storm Damage					
Site ID No:130					
Site Designation:199-100					

No Photos

LM Start	4.59	Rating **	M	Issue No.	49	
LM End	4.59	Issue Type +	En	Location *		
Category	Supplemental			GPS Latitude/Longitude		
				Start		End
Item	DWR UCIP Field Study			37.497390 °	37.497390 °	
				-121.080370 °	-121.080370 °	
DWR ID	23165					
Comment Code						
Inspector Comment						
DS_ID:23165 FS_ID:43209 EP_NO: N/A Repair Type: Non-Urgent EVAL Issue: Crossing Status: Found UCIP Comments: 10/15/2013 Appears abandoned and if so should be done so properly. (P. Amatya - DWR UCIP) FIELD_STRUCT_DESC: 36-inch corrugated metal irrigation pipe through the levee, 15 feet below the crown. Abandoned concrete inlet box on the waterside (WS) slope of the levee. 6-foot by 5-foot concrete distribution box at the landside (LS) toe. [Additional Reference(s): DWR Levee Log, 1992. USACE San Joaquin O&M Manual 6, September 1961, (HLM 4.67), 30-inch pipe listed]. FS Date: 1/29/2015 2:27:42 PM						

Photo 1 of 3 : UCIP_FA_2020_43209_38211.jpg



Distribution box on LS toe.

* Location LS : Land Side N/A : Not Applicable WS : Water Side CR : Crown	** Rating A : Acceptable M : Minimally Acceptable U : Unacceptable	N : Not Inspected/Rated C : Corrected A/W : Acceptable but Monitor & Maintain	+ Issue Type Ma : Maintenance Deficiency Ob : Design & System Obsolescence En : Enforcement
--	--	---	---

**Flood Control Project Maintenance
Levee Inspections**

Levee Inspection Report By Mile - Fall 2020

Reclamation District No. 2091 Chase

Waterway	Bank	Unit Miles	Inspection Start/End	Inspector
Unit No. 01 San Joaquin River	Right	7.46	09/29/2020 09/29/2020	Corey Fujitani

LM Start	4.59	Rating **	M	Issue No.	49 (cont)
LM End	4.59	Issue Type +	En	Location *	
Category	Supplemental		GPS Latitude/Longitude		
			Start	End	
Item	DWR UCIP Field Study		37.497390 °	37.497390 °	
			-121.080370 °	-121.080370 °	
DWR ID	23165				

Photo 2 of 3 : UCIP_FA_2020_43209_38210.jpg



Open CMP pipe through levee at distribution box on LS toe.

LM Start	4.59	Rating **	M	Issue No.	49 (cont)
LM End	4.59	Issue Type +	En	Location *	

Photo 3 of 3 : UCIP_FA_2020_43209_38209.jpg



Abandoned concrete box on WS slope.

LM Start	5.60	Rating **	A/W	Issue No.	42
LM End	5.65	Issue Type +	Ob	Location *	LS
Category	Earthen Levee			GPS Latitude/Longitude	
				Start	End
Item	Seepage / Sandboils			37.486820 °	37.486220 °
				-121.068100 °	-121.067530 °
DWR ID	199-101				
Comment Code					
Inspector Comment					
2017 Storm Damage					
Site ID No:129					
Site Designation:199-101					

No Photos

* Location LS : Land Side N/A : Not Applicable WS : Water Side CR : Crown	** Rating A : Acceptable M : Minimally Acceptable U : Unacceptable	N : Not Inspected/Rated C : Corrected A/W : Acceptable but Monitor & Maintain	+ Issue Type Ma : Maintenance Deficiency Ob : Design & System Obsolescence En : Enforcement
--	--	--	---

**Flood Control Project Maintenance
Levee Inspections**

Levee Inspection Report By Mile - Fall 2020

Reclamation District No. 2091 Chase

Waterway	Bank	Unit Miles	Inspection Start/End	Inspector
Unit No. 01 San Joaquin River	Right	7.46	09/29/2020 09/29/2020	Corey Fujitani

LM Start	5.99	Rating **	A/W	Issue No.	43
LM End	5.99	Issue Type +	Ob	Location *	LS
Category	Earthen Levee			GPS Latitude/Longitude	
				Start	End
Item	Seepage / Sandboils			37.486490 °	37.486490 °
				-121.062270 °	-121.062270 °
DWR ID	199-4				
Comment Code					
Inspector Comment					
2017 Storm Damage					
Site ID No:127					
Site Designation:199-4					

No Photos

LM Start	6.07	Rating **	A/W	Issue No.	14
LM End	6.07	Issue Type +	Ma	Location *	LS
Category	Earthen Levee			GPS Latitude/Longitude	
				Start	End
Item	Animal Control			37.486852 °	37.486852 °
				-121.060915 °	-121.060915 °
DWR ID	DWR_RD2091_01_s_2020_14				
Comment Code					
A3 : No rodents visible, but rodent burrows visible; need to backfill and compact or grout burrows.					
Inspector Comment					
LMA repaired slope with animal burrow.					

Photo 1 of 1 : FA_2020_RD2091_318_14_20201028_00027.jpg



View of repaired animal burrow on landside slope. (Fall 2020)

LM Start	6.29	Rating **	A/W	Issue No.	44
LM End	6.75	Issue Type +	Ob	Location *	LS
Category	Earthen Levee			GPS Latitude/Longitude	
				Start	End
Item	Seepage / Sandboils			37.485040 °	37.481740 °
				-121.057680 °	-121.052910 °
DWR ID	199-106				
Comment Code					
Inspector Comment					
2017 Storm Damage					
Site ID No:126					
Site Designation:199-106					

No Photos

* Location LS : Land Side N/A : Not Applicable WS : Water Side CR : Crown	** Rating A : Acceptable M : Minimally Acceptable U : Unacceptable	N : Not Inspected/Rated C : Corrected A/W : Acceptable but Monitor & Maintain	+ Issue Type Ma : Maintenance Deficiency Ob : Design & System Obsolescence En : Enforcement
--	--	---	---

**Flood Control Project Maintenance
Levee Inspections**

Levee Inspection Report By Mile - Fall 2020

Reclamation District No. 2091 Chase

Waterway	Bank	Unit Miles	Inspection Start/End	Inspector
Unit No. 01 San Joaquin River	Right	7.46	09/29/2020 09/29/2020	Corey Fujitani

LM Start	7.42	Rating **	U	Issue No.	8
LM End	7.45	Issue Type +	Ma	Location *	LS
Category	Earthen Levee			GPS Latitude/Longitude	
				Start	End
Item	Erosion / Bank Caving			37.479308 °	37.478998 °
				-121.044708 °	-121.044660 °
DWR ID	DWR_RD2091_01_s_2017_8				
Comment Code					
E2 : Schedule repair of erosion site prior to the next inspection.					
Inspector Comment					
Repaired area with concrete containing rebar. Need to remove rebar.					

Photo 1 of 1 : FA_2020_RD2091_318_8_20200901_00002.jpg



View of rebar and other steel in the concrete rubble along the landside toe. (Spring 2020)

* Location LS : Land Side N/A : Not Applicable WS : Water Side CR : Crown	** Rating A : Acceptable M : Minimally Acceptable U : Unacceptable	N : Not Inspected/Rated C : Corrected A/W : Acceptable but Monitor & Maintain	+ Issue Type Ma : Maintenance Deficiency Ob : Design & System Obsolescence En : Enforcement
--	--	---	---

**Flood Control Project Maintenance
Levee Inspections
Unit Cover Sheet**

Reclamation District No. 2091 Chase

Waterway			Bank	Unit Miles
Unit No. 02 San Joaquin River				0.05
	Spring (March - May)	Summer (June - August)	(September - November) Fall	Winter (December - February)
Unit Maintenance Rating (Fall Only)			U	
Date of Inspection	3/26/2020 - 3/26/2020		9/29/2020 - 9/29/2020	
DWR Inspector	Corey Fujitani		Corey Fujitani	
Accompanied By			Mike Alves City of Modesto	

Summer & Winter Inspections

The Local Maintaining Agency (LMA) is responsible for summer and winter inspections. The LMA is required to submit a report regarding summer and winter inspections to the California Department of Water Resources (DWR).

DWR must be informed on the:

- a) completion of the inspection
- b) any changes other than the results of normal maintenance
- c) corrections to deficiencies noted in this report

If additional items are noted, further documentation of those items must also be submitted.

The LMA should submit this information to DWR using the LMA web application tool available at:

<http://cdec.water.ca.gov/lma.html>

If the LMA is unable to submit information on this webpage, please contact DWR for assistance.

The LMA should submit the information and any associated documentation by September 30 for summer inspections and March 31 for winter inspections.

**Flood Control Project Maintenance
Levee Inspections**

Levee Inspection Report By Mile - Fall 2020

Reclamation District No. 2091 Chase

Waterway	Bank	Unit Miles	Inspection Start/End	Inspector
Unit No. 02 San Joaquin River		0.05	09/29/2020 09/29/2020	Corey Fujitani

LM Start	0.01	Rating **	M	Issue No.	2
LM End	0.03	Issue Type +	Ma	Location *	LS
Category	Earthen Levee			GPS Latitude/Longitude	
				Start	End
Item	Vegetation			37.482294 °	37.482513 °
				-121.051383 °	-121.051149 °
DWR ID	DWR_RD2091_02_f _ 2020_2				
Comment Code					
V1 : Control annual grass and weeds on the levee slopes and easements.					
Inspector Comment					

Photo 1 of 1 : FA_2020_RD2091_319_2_20201008_00004.jpg



View of vegetation on the landside slope. (Fall 2020)

LM Start	0.01	Rating **	M	Issue No.	3
LM End	0.03	Issue Type +	Ma	Location *	WS
Category	Earthen Levee			GPS Latitude/Longitude	
				Start	End
Item	Vegetation			37.482333 °	37.482513 °
				-121.051338 °	-121.051149 °
DWR ID	DWR_RD2091_02_f _ 2020_3				
Comment Code					
V1 : Control annual grass and weeds on the levee slopes and easements.					
Inspector Comment					

Photo 1 of 1 : FA_2020_RD2091_319_3_20201008_00005.jpg



Vegetation on the waterside slope. (Fall 2020)

* Location LS : Land Side N/A : Not Applicable WS : Water Side CR : Crown	** Rating A : Acceptable M : Minimally Acceptable U : Unacceptable	N : Not Inspected/Rated C : Corrected A/W : Acceptable but Monitor & Maintain	+ Issue Type Ma : Maintenance Deficiency Ob : Design & System Obsolescence En : Enforcement
--	--	---	---

**Flood Control Project Maintenance
Levee Inspections**

Levee Inspection Report By Mile - Fall 2020

Reclamation District No. 2091 Chase

Waterway	Bank	Unit Miles	Inspection Start/End	Inspector
Unit No. 02 San Joaquin River		0.05	09/29/2020 09/29/2020	Corey Fujitani

LM Start	0.02	Rating **	M	Issue No.	4
LM End	0.02	Issue Type +	En	Location *	
Category	Supplemental			GPS Latitude/Longitude	
				Start	End
Item	DWR UCIP Field Study			37.482450 °	37.482450 °
				-121.051220 °	-121.051220 °
DWR ID	23175				

Comment Code

Inspector Comment

DS_ID:23175
FS_ID:51390
EP_NO: N/A
Repair Type: Non-Urgent
EVAL Issue:
Crossing Status: Found
UCIP Comments: 11/18/2016 Same as last inspection. This is a non-functional crossing with flap gate in the closed position. This crossing has been downgraded from Urgent to Non-Urgent -- no integrity issues were observed on the levee crown or slopes. According to Mike A. this crossing is abandoned and the City of Modesto is working with CVFPB to authorize proper abandonment/removal. The City is working at finding funds to pay for proper abandonment/removal of all the drainage structures through this levee. (O. Magana - DWR UCIP)10/15/2013 Flap gate rusted in-place and does not function. In closed position. (W. Wylie - DWR UCIP)
FIELD_STRUCT_DESC: 24-inch corrugated metal drainage pipe through the levee, 16.4 feet below the crown. Flap gate on the waterside (WS) toe. [Additional Reference(s): DWR Levee Log, 1992].
FS Date: 11/18/2016

LM Start	0.02	Rating **	M	Issue No.	4 (cont)
LM End	0.02	Issue Type +	En	Location *	

Photo 1 of 3 : UCIP_FA_2020_51390_38216.jpg



24-inch CMP with flapgate visible on WS toe.

Photo 2 of 3 : UCIP_FA_2020_51390_76689.jpg



Overview photo of levee crown at crossing.

* Location LS : Land Side N/A : Not Applicable WS : Water Side CR : Crown	** Rating A : Acceptable M : Minimally Acceptable U : Unacceptable	N : Not Inspected/Rated C : Corrected A/W : Acceptable but Monitor & Maintain	+ Issue Type Ma : Maintenance Deficiency Ob : Design & System Obsolescence En : Enforcement
--	--	--	---

**Flood Control Project Maintenance
Levee Inspections**

Levee Inspection Report By Mile - Fall 2020

Reclamation District No. 2091 Chase

Waterway	Bank	Unit Miles	Inspection Start/End	Inspector
Unit No. 02 San Joaquin River		0.05	09/29/2020 09/29/2020	Corey Fujitani

LM Start	0.02	Rating **	M	Issue No.	4 (cont)
LM End	0.02	Issue Type +	En	Location *	
Category	Supplemental			GPS Latitude/Longitude	
				Start	End
Item	DWR UCIP Field Study			37.482450 °	37.482450 °
				-121.051220 °	-121.051220 °
DWR ID	23175				

Photo 3 of 3 : UCIP_FA_2020_51390_76686.jpg



Overview of levee crown at crossing and at a distance there is a shooting range.

* Location LS : Land Side N/A : Not Applicable WS : Water Side CR : Crown	** Rating A : Acceptable M : Minimally Acceptable U : Unacceptable N : Not Inspected/Rated C : Corrected A/W : Acceptable but Monitor & Maintain	+ Issue Type Ma : Maintenance Deficiency Ob : Design & System Obsolescence En : Enforcement
--	---	---