

**Flood Control Project Maintenance  
Levee Inspections  
LMA District Cover Sheet**

**Reclamation District No. 2089 Stark**

	Spring (March - May)	Summer ** (June - August)	Fall (September - November)	Winter ** (December - February)
† Overall LMA Rating (Fall Only)				

\*\* Non-receipt of Summer or Winter Inspection  
Reports may effect overall annual rating.

†  
SPRING INSPECTIONS: Overall maintenance ratings are not determined for the spring inspection results. Individual maintenance deficiencies are rated using the same criteria in the spring and in the fall.  
  
FALL INSPECTIONS: The overall maintenance rating shown above is based on operation and maintenance deficiencies identified within the attached unit inspection reports. This rating is not intended to be an indication of risk.

Comments


**Flood Control Project Maintenance  
Levee Inspections  
Unit Cover Sheet**

**Reclamation District No. 2089 Stark**

Waterway	Bank	Unit Miles
Unit No. 01 Old River	Right	1.51

	Spring (March - May)	Summer (June - August)	(September - November) Fall	Winter (December - February)
Unit Maintenance Rating (Fall Only)				
Date of Inspection	4/20/2022 - 4/20/2022			
DWR Inspector	Alberto De Leon			
Accompanied By				

**Summer & Winter Inspections**

The Local Maintaining Agency (LMA) is responsible for summer and winter inspections. The LMA is required to submit a report regarding summer and winter inspections to the California Department of Water Resources (DWR).

DWR must be informed on the:

- a) completion of the inspection
- b) any changes other than the results of normal maintenance
- c) corrections to deficiencies noted in this report

If additional items are noted, further documentation of those items must also be submitted.

The LMA should submit this information to DWR using the LMA web application tool available at:

<http://cdec.water.ca.gov/lma.html>

If the LMA is unable to submit information on this webpage, please contact DWR for assistance.

*The LMA should submit the information and any associated documentation by September 30 for summer inspections and March 31 for winter inspections.*

**Flood Control Project Maintenance  
Levee Inspections**

**Levee Inspection Report By Mile - Spring 2022**

**Reclamation District No. 2089 Stark**

Waterway	Bank	Unit Miles	Inspection Start/End	Inspector
Unit No. 01 Old River	Right	1.51	04/20/2022 04/20/2022	Alberto De Leon

LM Start		Rating **	A	Issue No.	4
LM End		Issue Type +	Ma	Location *	N/A
Category	Earthen Levee			GPS Latitude/Longitude	
				Start	End
Item	Operations & Maintenance Manuals				°
					°
DWR ID	DWR_RD2089_01_s_2013_4				
Comment Code					
Inspector Comment					
The O&M Manual is available at the LMA's office.					

No Photos

LM Start		Rating **	A	Issue No.	15
LM End		Issue Type +	Ma	Location *	N/A
Category	Earthen Levee			GPS Latitude/Longitude	
				Start	End
Item	Emergency Supplies & Equipment				°
					°
DWR ID	DWR_RD2089_01_s_2013_15				
Comment Code					
Inspector Comment					
The LMA has access to flood fighting supplies.					

No Photos

LM Start		Rating **	A	Issue No.	34
LM End		Issue Type +	Ma	Location *	N/A
Category	Earthen Levee			GPS Latitude/Longitude	
				Start	End
Item	Flood Preparedness & Training				°
					°
DWR ID	DWR_RD2089_01_s_2021_34				
Comment Code					
Inspector Comment					
LMA has a flood response plan in the office. It is recommended that the LMA and interested local volunteers take a flood fight training class in order to refresh their flood fight skills and methods.					

No Photos

<b>* Location</b> LS : Land Side    N/A : Not Applicable WS : Water Side CR : Crown	<b>** Rating</b> A : Acceptable M : Minimally Acceptable U : Unacceptable	N : Not Inspected/Rated C : Corrected A/W : Acceptable but Monitor & Maintain	<b>+ Issue Type</b> Ma : Maintenance Deficiency Ob : Design & System Obsolescence En : Enforcement
--	--	---	---

**Flood Control Project Maintenance  
Levee Inspections**

**Levee Inspection Report By Mile - Spring 2022**

**Reclamation District No. 2089 Stark**

Waterway	Bank	Unit Miles	Inspection Start/End	Inspector
Unit No. 01 Old River	Right	1.51	04/20/2022 04/20/2022	Alberto De Leon

LM Start	0.00	Rating **	M	Issue No.	9
LM End	0.38	Issue Type +	En	Location *	LS
Category	Earthen Levee			GPS Latitude/Longitude	
				Start	End
Item	Encroachments			37.811681 °	37.809755 °
				-121.384930 °	-121.391520 °
DWR ID	DWR_RD2089_01_s_2012_9				
Comment Code					
DT : Ditch					
Inspector Comment					

Photo 1 of 1 : SP\_2022\_RD2089\_316\_9\_20220406\_00007.jpg



View of an irrigation ditch within the landside easement. Fall 2021

LM Start	0.02	Rating **	U	Issue No.	58
LM End	0.75	Issue Type +	Ma	Location *	LS
Category	Earthen Levee			GPS Latitude/Longitude	
				Start	End
Item	Vegetation			37.811578 °	37.809091 °
				-121.385272 °	-121.397409 °
DWR ID	DWR_RD2089_01_s_2021_58				
Comment Code					
V1 : Control annual grass and weeds on the levee slopes and easements.					
Inspector Comment					

Photo 1 of 1 : SP\_2022\_RD2089\_316\_58\_20220421\_00038.jpg



View of vegetation along the landside slope and easement. Spring 2022

LM Start	0.02	Rating **	U	Issue No.	59
LM End	0.75	Issue Type +	Ma	Location *	WS
Category	Earthen Levee			GPS Latitude/Longitude	
				Start	End
Item	Vegetation			37.811578 °	37.809091 °
				-121.385272 °	-121.397409 °
DWR ID	DWR_RD2089_01_s_2021_59				
Comment Code					
V1 : Control annual grass and weeds on the levee slopes and easements.					
Inspector Comment					

Photo 1 of 1 : SP\_2022\_RD2089\_316\_59\_20220421\_00037.jpg



View of vegetation along the waterside slope. Spring 2022

* Location		** Rating		+ Issue Type	
LS : Land Side	N/A : Not Applicable	A : Acceptable	N : Not Inspected/Rated	Ma : Maintenance Deficiency	
WS : Water Side		M : Minimally Acceptable	C : Corrected	Ob : Design & System Obsolescence	
CR : Crown		U : Unacceptable	A/W : Acceptable but Monitor & Maintain	En : Enforcement	

**Flood Control Project Maintenance  
Levee Inspections**

**Levee Inspection Report By Mile - Spring 2022**

**Reclamation District No. 2089 Stark**

Waterway	Bank	Unit Miles	Inspection Start/End	Inspector
Unit No. 01 Old River	Right	1.51	04/20/2022 04/20/2022	Alberto De Leon

LM Start	0.02	Rating **	C	Issue No.	12
LM End	0.02	Issue Type +	Ma	Location *	CR
Category	Earthen Levee			GPS Latitude/Longitude	
				Start	End
Item	Crown Surface / Depressions / Rutting			37.811537 °	37.811537 °
				-121.385354 °	-121.385354 °
DWR ID	DWR_RD2089_01_s_2019_12				
Comment Code					
C2 : Repair depressions or ruts in the crown or slope.					
Inspector Comment					

No Photos

LM Start	0.03	Rating **	C	Issue No.	18
LM End	0.03	Issue Type +	Ma	Location *	LS
Category	Earthen Levee			GPS Latitude/Longitude	
				Start	End
Item	Trim / Thin Trees			37.811518 °	37.811518 °
				-121.385430 °	-121.385430 °
DWR ID	DWR_RD2089_01_f_2018_18				
Comment Code					
T1 : Trim and thin trees to at least five feet above ground level to allow visibility of the ground and room to flood fight.					
Inspector Comment					

No Photos

LM Start	0.05	Rating **	C	Issue No.	11
LM End	0.05	Issue Type +	Ma	Location *	WS
Category	Earthen Levee			GPS Latitude/Longitude	
				Start	End
Item	Trim / Thin Trees			37.811433 °	37.811433 °
				-121.385740 °	-121.385740 °
DWR ID	DWR_RD2089_01_f_2021_11				
Comment Code					
T1 : Trim and thin trees to at least five feet above ground level to allow visibility of the ground and room to flood fight.					
Inspector Comment					

No Photos

<b>* Location</b> LS : Land Side    N/A : Not Applicable WS : Water Side CR : Crown	<b>** Rating</b> A : Acceptable M : Minimally Acceptable U : Unacceptable	N : Not Inspected/Rated C : Corrected A/W : Acceptable but Monitor & Maintain	<b>+ Issue Type</b> Ma : Maintenance Deficiency Ob : Design & System Obsolescence En : Enforcement
--	--	---	---

**Flood Control Project Maintenance  
Levee Inspections**

**Levee Inspection Report By Mile - Spring 2022**

**Reclamation District No. 2089 Stark**

Waterway	Bank	Unit Miles	Inspection Start/End	Inspector
Unit No. 01 Old River	Right	1.51	04/20/2022 04/20/2022	Alberto De Leon

LM Start	0.09	Rating **	M	Issue No.	20
LM End	0.09	Issue Type +	Ma	Location *	CR
Category	Earthen Levee			GPS Latitude/Longitude	
				Start	End
Item	Crown Surface / Depressions / Rutting			37.811256 °	37.811256 °
				-121.386424 °	-121.386424 °
DWR ID	DWR_RD2089_01_f _ 2020_20				
Comment Code					
C2 : Repair depressions or ruts in the crown or slope.					
Inspector Comment					

No Photos

LM Start	0.09	Rating **	C	Issue No.	21
LM End	0.09	Issue Type +	Ma	Location *	LS
Category	Earthen Levee			GPS Latitude/Longitude	
				Start	End
Item	Trim / Thin Trees			37.811268 °	37.811268 °
				-121.386521 °	-121.386521 °
DWR ID	DWR_RD2089_01_s _ 2022_21				
Comment Code					
T1 : Trim and thin trees to at least five feet above ground level to allow visibility of the ground and room to flood fight.					
Inspector Comment					

No Photos

LM Start	0.17	Rating **	C	Issue No.	23
LM End	0.51	Issue Type +	Ma	Location *	LS
Category	Earthen Levee			GPS Latitude/Longitude	
				Start	End
Item	Trim / Thin Trees			37.810858 °	37.809866 °
				-121.387931 °	-121.393546 °
DWR ID	DWR_RD2089_01_s _ 2020_23				
Comment Code					
T1 : Trim and thin trees to at least five feet above ground level to allow visibility of the ground and room to flood fight.					
Inspector Comment					

No Photos

<b>* Location</b> LS : Land Side    N/A : Not Applicable WS : Water Side CR : Crown	<b>** Rating</b> A : Acceptable M : Minimally Acceptable U : Unacceptable	N : Not Inspected/Rated C : Corrected A/W : Acceptable but Monitor & Maintain	<b>+ Issue Type</b> Ma : Maintenance Deficiency Ob : Design & System Obsolescence En : Enforcement
--	--	---	---

**Flood Control Project Maintenance  
Levee Inspections**

**Levee Inspection Report By Mile - Spring 2022**

**Reclamation District No. 2089 Stark**

Waterway	Bank	Unit Miles	Inspection Start/End	Inspector
Unit No. 01 Old River	Right	1.51	04/20/2022 04/20/2022	Alberto De Leon

LM Start	0.28	Rating **	U	Issue No.	13
LM End	0.28	Issue Type +	Ma	Location *	LS
Category	Earthen Levee			GPS Latitude/Longitude	
				Start	End
Item	Vegetation			37.810228 °	37.810228 °
				-121.389711 °	-121.389711 °
DWR ID	DWR_RD2089_01_s _ 2022_13				
Comment Code					
V4 : Elderberries are blocking visibility and flood fight capability.					
Inspector Comment					

No Photos

LM Start	0.31	Rating **	C	Issue No.	25
LM End	0.31	Issue Type +	Ma	Location *	WS
Category	Earthen Levee			GPS Latitude/Longitude	
				Start	End
Item	Trim / Thin Trees			37.810109 °	37.810109 °
				-121.390192 °	-121.390192 °
DWR ID	DWR_RD2089_01_s _ 2020_25				
Comment Code					
T1 : Trim and thin trees to at least five feet above ground level to allow visibility of the ground and room to flood fight.					
Inspector Comment					

No Photos

LM Start	0.35	Rating **	C	Issue No.	28
LM End	0.35	Issue Type +	Ma	Location *	WS
Category	Earthen Levee			GPS Latitude/Longitude	
				Start	End
Item	Trim / Thin Trees			37.809904 °	37.809904 °
				-121.391021 °	-121.391021 °
DWR ID	DWR_RD2089_01_s _ 2020_28				
Comment Code					
T1 : Trim and thin trees to at least five feet above ground level to allow visibility of the ground and room to flood fight.					
Inspector Comment					

No Photos

<b>* Location</b> LS : Land Side    N/A : Not Applicable WS : Water Side CR : Crown	<b>** Rating</b> A : Acceptable M : Minimally Acceptable U : Unacceptable	N : Not Inspected/Rated C : Corrected A/W : Acceptable but Monitor & Maintain	<b>+ Issue Type</b> Ma : Maintenance Deficiency Ob : Design & System Obsolescence En : Enforcement
--	--	---	---



**Flood Control Project Maintenance  
Levee Inspections**

**Levee Inspection Report By Mile - Spring 2022**

**Reclamation District No. 2089 Stark**

Waterway	Bank	Unit Miles	Inspection Start/End	Inspector
Unit No. 01 Old River	Right	1.51	04/20/2022 04/20/2022	Alberto De Leon

LM Start	0.46	Rating **	M	Issue No.	1	
LM End	0.46	Issue Type +	En	Location *		
Category	Supplemental			GPS Latitude/Longitude		
				Start		End
Item	DWR UCIP Field Study			37.809501 °		37.809501 °
				-121.392798 °		-121.392798 °
DWR ID	23042					
Comment Code						
Inspector Comment						
FS_ID:21635 DS_ID:23042 EP_NO: 5641 Repair Type: Non-Urgent Crossing Status: Found UCIP Comments: - damaged siphon breaker.- most of the pipe on landside exposed on levee slope. FIELD_STRUCT_DESC: 20-inch steel irrigation discharge pipe and electrical conduit through the levee, 5.8 feet below the crown. Pump on a pile structure in the stream. Siphon breaker on the landside (LS) slope. (Plans to replace a rusted out irrigation discharge pipe through the levee authorized under Permit No. 5641, 1967 - Theodore Stark). [Additional Reference(s): DWR Levee Log, 1991. USACE San Joaquin O&M Manual 8, 1968, (HLM 0.46), 21-inch pipe referenced]. FS Date: 9/12/2013						

Photo 1 of 3 : UCIP\_SP\_2022\_21635\_36742.jpg



WS view: walkway to pump platform and pump on steel piling structure in the channel.

LM Start	<b>0.46</b>	Rating **	M	Issue No.	<b>1 (cont)</b>
LM End	<b>0.46</b>	Issue Type +	En	Location *	

Photo 2 of 3 : UCIP\_SP\_2022\_21635\_36741.jpg



WS view: steel walkway, electric control box, and pump on steel piling structure in the channel.

<b>* Location</b> LS : Land Side    N/A : Not Applicable WS : Water Side CR : Crown		<b>** Rating</b> A : Acceptable                      N : Not Inspected/Rated M : Minimally Acceptable        C : Corrected U : Unacceptable                  A/W : Acceptable but Monitor & Maintain		<b>+ Issue Type</b> Ma : Maintenance Deficiency Ob : Design & System Obsolescence En : Enforcement	
--	--	---	--	---	--



**Flood Control Project Maintenance  
Levee Inspections**

**Levee Inspection Report By Mile - Spring 2022**

**Reclamation District No. 2089 Stark**

Waterway	Bank	Unit Miles	Inspection Start/End	Inspector
Unit No. 01 Old River	Right	1.51	04/20/2022 04/20/2022	Alberto De Leon

LM Start	<b>0.46</b>	Rating **	M	Issue No.	<b>1 (cont)</b>
LM End	<b>0.46</b>	Issue Type +	En	Location *	
Category	Supplemental		GPS Latitude/Longitude		
			Start	End	
Item	DWR UCIP Field Study		37.809501 °	37.809501 °	
			-121.392798 °	-121.392798 °	
DWR ID	23042				

Photo 3 of 3 : UCIP\_SP\_2022\_21635\_36740.jpg



LS view: overview of exposed steel pipe (right) on levee slope and service pole (left).

LM Start	0.46	Rating **	C	Issue No.	50
LM End	0.48	Issue Type +	Ma	Location *	WS
Category	Earthen Levee			GPS Latitude/Longitude	
				Start	End
Item	Trim / Thin Trees			37.809495 °	37.809621 °
				-121.392807 °	-121.393125 °
DWR ID	DWR_RD2089_01_s_2020_50				
Comment Code					
T1 : Trim and thin trees to at least five feet above ground level to allow visibility of the ground and room to flood fight.					
Inspector Comment					

No Photos

LM Start	0.50	Rating **	M	Issue No.	16
LM End	0.50	Issue Type +	Ma	Location *	CR
Category	Earthen Levee			GPS Latitude/Longitude	
				Start	End
Item	Crown Surface / Depressions / Rutting			37.809802 °	37.809802 °
				-121.393509 °	-121.393509 °
DWR ID	DWR_RD2089_01_f_2021_16				
Comment Code					
C2 : Repair depressions or ruts in the crown or slope.					
Inspector Comment					

No Photos

* Location		** Rating		+ Issue Type	
LS : Land Side	N/A : Not Applicable	A : Acceptable	N : Not Inspected/Rated	Ma : Maintenance Deficiency	
WS : Water Side		M : Minimally Acceptable	C : Corrected	Ob : Design & System Obsolescence	
CR : Crown		U : Unacceptable	A/W : Acceptable but Monitor & Maintain	En : Enforcement	

**Flood Control Project Maintenance  
Levee Inspections**

**Levee Inspection Report By Mile - Spring 2022**

**Reclamation District No. 2089 Stark**

Waterway	Bank	Unit Miles	Inspection Start/End	Inspector
Unit No. 01 Old River	Right	1.51	04/20/2022 04/20/2022	Alberto De Leon

LM Start	0.53	Rating **	C	Issue No.	29
LM End	0.53	Issue Type +	En	Location *	LS
Category	Earthen Levee			GPS Latitude/Longitude	
				Start	End
Item	Encroachments			37.810001 °	37.810001 °
				-121.393903 °	-121.393903 °
DWR ID	DWR_RD2089_01_f_2019_29				
Comment Code					
TR : Tree or limb					
Inspector Comment					

No Photos

LM Start	0.55	Rating **	C	Issue No.	14
LM End	0.55	Issue Type +	Ma	Location *	CR
Category	Earthen Levee			GPS Latitude/Longitude	
				Start	End
Item	Crown Surface / Depressions / Rutting			37.810128 °	37.810128 °
				-121.394200 °	-121.394200 °
DWR ID	DWR_RD2089_01_s_2012_14				
Comment Code					
C3 : Add appropriate gravel or road base. Grade and compact.					
Inspector Comment					

No Photos

LM Start	0.56	Rating **	C	Issue No.	60
LM End	0.56	Issue Type +	Ma	Location *	LS
Category	Earthen Levee			GPS Latitude/Longitude	
				Start	End
Item	Trim / Thin Trees			37.810174 °	37.810174 °
				-121.394445 °	-121.394445 °
DWR ID	DWR_RD2089_01_s_2021_60				
Comment Code					
T1 : Trim and thin trees to at least five feet above ground level to allow visibility of the ground and room to flood fight.					
Inspector Comment					

No Photos

<b>* Location</b> LS : Land Side    N/A : Not Applicable WS : Water Side CR : Crown	<b>** Rating</b> A : Acceptable M : Minimally Acceptable U : Unacceptable	N : Not Inspected/Rated C : Corrected A/W : Acceptable but Monitor & Maintain	<b>+ Issue Type</b> Ma : Maintenance Deficiency Ob : Design & System Obsolescence En : Enforcement
--	--	---	---

**Flood Control Project Maintenance  
Levee Inspections**

**Levee Inspection Report By Mile - Spring 2022**

**Reclamation District No. 2089 Stark**

Waterway	Bank	Unit Miles	Inspection Start/End	Inspector
Unit No. 01 Old River	Right	1.51	04/20/2022 04/20/2022	Alberto De Leon

LM Start	0.59	Rating **	C	Issue No.	53
LM End	0.59	Issue Type +	Ma	Location *	LS
Category	Earthen Levee			GPS Latitude/Longitude	
				Start	End
Item	Trim / Thin Trees			37.810233 °	37.810233 °
				-121.395095 °	-121.395095 °
DWR ID	DWR_RD2089_01_s_2020_53				
Comment Code					
T1 : Trim and thin trees to at least five feet above ground level to allow visibility of the ground and room to flood fight.					
Inspector Comment					

No Photos

LM Start	0.62	Rating **	M	Issue No.	36
LM End	0.62	Issue Type +	Ma	Location *	LS
Category	Earthen Levee			GPS Latitude/Longitude	
				Start	End
Item	Trim / Thin Trees			37.810144 °	37.810144 °
				-121.395578 °	-121.395578 °
DWR ID	DWR_RD2089_01_f_2019_36				
Comment Code					
T1 : Trim and thin trees to at least five feet above ground level to allow visibility of the ground and room to flood fight.					
Inspector Comment					

No Photos

<b>* Location</b> LS : Land Side    N/A : Not Applicable WS : Water Side CR : Crown	<b>** Rating</b> A : Acceptable M : Minimally Acceptable U : Unacceptable	N : Not Inspected/Rated C : Corrected A/W : Acceptable but Monitor & Maintain	<b>+ Issue Type</b> Ma : Maintenance Deficiency Ob : Design & System Obsolescence En : Enforcement
--	--	---	---

**Flood Control Project Maintenance  
Levee Inspections**

**Levee Inspection Report By Mile - Spring 2022**

**Reclamation District No. 2089 Stark**

Waterway	Bank	Unit Miles	Inspection Start/End	Inspector
Unit No. 01 Old River	Right	1.51	04/20/2022 04/20/2022	Alberto De Leon

LM Start	0.65	Rating **	U	Issue No.	3
LM End	0.67	Issue Type +	Ma	Location *	WS
Category	Supplemental			GPS Latitude/Longitude	
				Start	End
Item	DWR Erosion Survey			37.809780 °	37.809780 °
				-121.396230 °	-121.396230 °
DWR ID	RD2089U01RM29.61				

**Comment Code**

**Inspector Comment**

Site ID: RD2089U01RM29.61  
 8/25/21: Less levee slope vegetation has exposed bank undercutting. Increased erosion length to 100 feet.  
 09/30/2020: Noticed less vegetation on the upper levee slope and surface erosion above the pocket erosion.  
 08/14/2019: From 2012 to 2019, no significant changes were observed during the annual survey.  
 08/23/2011: The 5-foot vertical scarp shows no significant change from the last year inspection. No new erosion activities observed. Dense white willow trees on site.  
 09/07/2010: It was difficult to view the erosion due to the thick Willow thickets and other vegetation at the water line. At the time of the inspection, there were no signs of repair on site. As noted during the last survey, there is a 5-foot vertical scarp along the lower slope that may be subjected to high flow velocities.  
 08/05/2010: Recommended for repair, per CLRO; "Erosion of this site may be subjective to rapid rates of erosion."  
 09/28/2009: No major change observed; 5-foot vertical scarp is immediately downstream of where berm has tapered; site is recommended as local maintenance issue, per CLRO CES Evaluation 2008 Report; Site # is the same as RM29.6, LM0.60; previously rated "U".  
 11/05/2008: No change observed; rodent holes on lower slope; wide levee crown.

LM Start	<b>0.65</b>	Rating **	U	Issue No.	<b>3 (cont)</b>
LM End	<b>0.67</b>	Issue Type +	Ma	Location *	WS

Photo 1 of 2 : SP\_2022\_RD2089\_316\_3\_20220406\_00003.jpg



8/25/2021: Front view of the eroded slope.

Photo 2 of 2 : SP\_2022\_RD2089\_316\_3\_20220406\_00004.jpg



8/25/2021: Front view of the site. Note the very dense white willow thickets on site.

<b>* Location</b> LS : Land Side    N/A : Not Applicable WS : Water Side CR : Crown		<b>** Rating</b> A : Acceptable                      N : Not Inspected/Rated M : Minimally Acceptable        C : Corrected U : Unacceptable                  A/W : Acceptable but Monitor & Maintain		<b>+ Issue Type</b> Ma : Maintenance Deficiency Ob : Design & System Obsolescence En : Enforcement	
--	--	---	--	---	--

**Flood Control Project Maintenance  
Levee Inspections**

**Levee Inspection Report By Mile - Spring 2022**

**Reclamation District No. 2089 Stark**

Waterway	Bank	Unit Miles	Inspection Start/End	Inspector
Unit No. 01 Old River	Right	1.51	04/20/2022 04/20/2022	Alberto De Leon

LM Start	0.80	Rating **	M	Issue No.	22
LM End	0.80	Issue Type +	En	Location *	LS
Category	Earthen Levee			GPS Latitude/Longitude	
				Start	End
Item	Encroachments			37.808466 °	37.808466 °
				-121.397847 °	-121.397847 °
DWR ID	DWR_RD2089_01_f _ 2016_22				
Comment Code					
ST : Stairway					
Inspector Comment					

Photo 1 of 1 : SP\_2022\_RD2089\_316\_22\_20220406\_00013.jpg



View of steps on landside slope. Fall 2021

LM Start	0.80	Rating **	M	Issue No.	6	
LM End	0.80	Issue Type +	En	Location *		
Category	Supplemental			GPS Latitude/Longitude		
				Start	End	
Item	DWR UCIP Field Study			37.808387 °	37.808387 °	
				-121.397843 °	-121.397843 °	
DWR ID	23043					
Comment Code						
Inspector Comment						
FS_ID:21587						
DS_ID:23043						
EP_NO: 3385						
Repair Type: Non-Urgent						
Crossing Status: Found						
UCIP Comments: - powerline on landside.- electric control box on waterside.- waterside slope erosion under pump platform.						
FIELD_STRUCT_DESC: 16-inch irrigation discharge pipe of an unknown material through the levee, 5.5 feet below the crown. Two cutoff walls. Slant pump in a pump house on the waterside (WS) slope. Siphon breaker on the landside (LS) slope. (Plans for installation of a pumping plant on the riverbank and a pipe that crosses the levee authorized under Permit No. 3385, 1960 - Eleanor M. Lawrence).						
[Additional Reference(s): DWR Levee Log, 1991. USACE San Joaquin O&M Manual 8, 1968, (HLM 0.81)].						
FS Date: 9/12/2013						

Photo 1 of 3 : UCIP\_SP\_2022\_21587\_36635.jpg



WS view: slant pump on wooden platform. Oil leaks from the pump.

<b>* Location</b> LS : Land Side    N/A : Not Applicable WS : Water Side CR : Crown	<b>** Rating</b> A : Acceptable M : Minimally Acceptable U : Unacceptable	N : Not Inspected/Rated C : Corrected A/W : Acceptable but Monitor & Maintain	<b>+ Issue Type</b> Ma : Maintenance Deficiency Ob : Design & System Obsolescence En : Enforcement
--	--	---	---



**Flood Control Project Maintenance  
Levee Inspections**

**Levee Inspection Report By Mile - Spring 2022**

**Reclamation District No. 2089 Stark**

Waterway	Bank	Unit Miles	Inspection Start/End	Inspector
Unit No. 01 Old River	Right	1.51	04/20/2022 04/20/2022	Alberto De Leon

LM Start	<b>0.80</b>	Rating **	M	Issue No.	<b>6 (cont)</b>
LM End	<b>0.80</b>	Issue Type +	En	Location *	
Category	Supplemental		GPS Latitude/Longitude		
			Start	End	
Item	DWR UCIP Field Study		37.808387 °	37.808387 °	
			-121.397843 °	-121.397843 °	
DWR ID	23043				

Photo 2 of 3 : UCIP\_SP\_2022\_21587\_36634.jpg



WS view: soil erosion under pump platform. Needs mitigation measures to stop erosion.

LM Start	<b>0.80</b>	Rating **	M	Issue No.	<b>6 (cont)</b>
LM End	<b>0.80</b>	Issue Type +	En	Location *	

Photo 3 of 3 : UCIP\_SP\_2022\_21587\_36633.jpg



LS view: exposed pipe with siphon breaker on levee slope. Concrete standpipe on levee toe.

LM Start	0.81	Rating **	M	Issue No.	17
LM End	0.94	Issue Type +	En	Location *	LS
Category	Earthen Levee			GPS Latitude/Longitude	
				Start	End
Item	Encroachments			37.808319 °	37.806453 °
				-121.397881 °	-121.397755 °
DWR ID	DWR_RD2089_01_f_2014_17				
Comment Code					
AT : Agricultural tilling					
Inspector Comment					
The landside levee toe is cut due to farming.					

Photo 1 of 1 : SP\_2022\_RD2089\_316\_17\_20220406\_00010.jpg



View of vertical cut along the landside toe. (Fall 2019)

<b>* Location</b> LS : Land Side    N/A : Not Applicable WS : Water Side CR : Crown	<b>** Rating</b> A : Acceptable M : Minimally Acceptable U : Unacceptable	<b>N : Not Inspected/Rated</b> C : Corrected A/W : Acceptable but Monitor & Maintain	<b>+ Issue Type</b> Ma : Maintenance Deficiency Ob : Design & System Obsolescence En : Enforcement
--	--	--	---

**Flood Control Project Maintenance  
Levee Inspections**

**Levee Inspection Report By Mile - Spring 2022**

**Reclamation District No. 2089 Stark**

Waterway	Bank	Unit Miles	Inspection Start/End	Inspector
Unit No. 01 Old River	Right	1.51	04/20/2022 04/20/2022	Alberto De Leon

LM Start	0.82	Rating **	M	Issue No.	24
LM End	1.51	Issue Type +	Ma	Location *	LS
Category	Earthen Levee			GPS Latitude/Longitude	
				Start	End
Item	Vegetation			37.808148 °	37.806673 °
				-121.397872 °	-121.407939 °
DWR ID	DWR_RD2089_01_s_2022_24				
Comment Code					
V1 : Control annual grass and weeds on the levee slopes and easements.					
Inspector Comment					

No Photos

LM Start	0.82	Rating **	M	Issue No.	19
LM End	1.51	Issue Type +	Ma	Location *	WS
Category	Earthen Levee			GPS Latitude/Longitude	
				Start	End
Item	Vegetation			37.808147 °	37.806673 °
				-121.397873 °	-121.407940 °
DWR ID	DWR_RD2089_01_s_2022_19				
Comment Code					
V1 : Control annual grass and weeds on the levee slopes and easements.					
Inspector Comment					

Photo 1 of 1 : SP\_2022\_RD2089\_316\_19\_20220406\_00012.jpg



View of overgrown vegetation along the waterside slope. Fall 2021

LM Start	0.86	Rating **	C	Issue No.	37
LM End	0.86	Issue Type +	Ma	Location *	LS
Category	Earthen Levee			GPS Latitude/Longitude	
				Start	End
Item	Trim / Thin Trees			37.807519 °	37.807519 °
				-121.397780 °	-121.397780 °
DWR ID	DWR_RD2089_01_f_2019_37				
Comment Code					
T1 : Trim and thin trees to at least five feet above ground level to allow visibility of the ground and room to flood fight.					
Inspector Comment					

No Photos

\* Location  
LS : Land Side    N/A : Not Applicable  
WS : Water Side  
CR : Crown

\*\* Rating  
A : Acceptable                      N : Not Inspected/Rated  
M : Minimally Acceptable        C : Corrected  
U : Unacceptable                  A/W : Acceptable but Monitor & Maintain

+ Issue Type  
Ma : Maintenance Deficiency  
Ob : Design & System Obsolescence  
En : Enforcement



**Flood Control Project Maintenance  
Levee Inspections**

**Levee Inspection Report By Mile - Spring 2022**

**Reclamation District No. 2089 Stark**

Waterway	Bank	Unit Miles	Inspection Start/End	Inspector
Unit No. 01 Old River	Right	1.51	04/20/2022 04/20/2022	Alberto De Leon

LM Start	0.94	Rating **	C	Issue No.	38
LM End	0.94	Issue Type +	Ma	Location *	LS
Category	Earthen Levee			GPS Latitude/Longitude	
				Start	End
Item	Trim / Thin Trees			37.806403 °	37.806403 °
				-121.397779 °	-121.397779 °
DWR ID	DWR_RD2089_01_f _ 2019_38				
Comment Code					
T1 : Trim and thin trees to at least five feet above ground level to allow visibility of the ground and room to flood fight.					
Inspector Comment					

No Photos

LM Start	0.96	Rating **	C	Issue No.	39
LM End	0.96	Issue Type +	Ma	Location *	LS
Category	Earthen Levee			GPS Latitude/Longitude	
				Start	End
Item	Trim / Thin Trees			37.806253 °	37.806253 °
				-121.398070 °	-121.398070 °
DWR ID	DWR_RD2089_01_f_2019_39				
Comment Code					
T1 : Trim and thin trees to at least five feet above ground level to allow visibility of the ground and room to flood fight.					
Inspector Comment					

No Photos

LM Start	1.00	Rating **	C	Issue No.	40
LM End	1.07	Issue Type +	Ma	Location *	LS
Category	Earthen Levee			GPS Latitude/Longitude	
				Start	End
Item	Trim / Thin Trees			37.806107 °	37.805837 °
				-121.398771 °	-121.400056 °
DWR ID	DWR_RD2089_01_f_2019_40				
Comment Code					
T1 : Trim and thin trees to at least five feet above ground level to allow visibility of the ground and room to flood fight.					
Inspector Comment					

No Photos

<b>* Location</b> LS : Land Side    N/A : Not Applicable WS : Water Side CR : Crown	<b>** Rating</b> A : Acceptable M : Minimally Acceptable U : Unacceptable	N : Not Inspected/Rated C : Corrected A/W : Acceptable but Monitor & Maintain	<b>+ Issue Type</b> Ma : Maintenance Deficiency Ob : Design & System Obsolescence En : Enforcement
--	--	---	---

**Flood Control Project Maintenance  
Levee Inspections**

**Levee Inspection Report By Mile - Spring 2022**

**Reclamation District No. 2089 Stark**

Waterway	Bank	Unit Miles	Inspection Start/End	Inspector
Unit No. 01 Old River	Right	1.51	04/20/2022 04/20/2022	Alberto De Leon

LM Start	1.00	Rating **	M	Issue No.	43
LM End	1.00	Issue Type +	Ma	Location *	LS
Category	Earthen Levee			GPS Latitude/Longitude	
				Start	End
Item	Vegetation			37.806131 °	37.806131 °
				-121.398819 °	-121.398819 °
DWR ID	DWR_RD2089_01_s _ 2021_43				
Comment Code					
V4 : Elderberries are blocking visibility and flood fight capability.					
Inspector Comment					

No Photos

LM Start	1.03	Rating **	M	Issue No.	35
LM End	1.03	Issue Type +	Ma	Location *	LS
Category	Earthen Levee			GPS Latitude/Longitude	
				Start	End
Item	Vegetation			37.806033 °	37.806033 °
				-121.399246 °	-121.399246 °
DWR ID	DWR_RD2089_01_s _ 2021_35				
Comment Code					
V4 : Elderberries are blocking visibility and flood fight capability.					
Inspector Comment					

No Photos

LM Start	1.05	Rating **	U	Issue No.	33
LM End	1.07	Issue Type +	Ma	Location *	LS
Category	Earthen Levee			GPS Latitude/Longitude	
				Start	End
Item	Vegetation			37.805931 °	37.805880 °
				-121.399738 °	-121.400034 °
DWR ID	DWR_RD2089_01_s _ 2021_33				
Comment Code					
V4 : Elderberries are blocking visibility and flood fight capability.					
Inspector Comment					

No Photos

<b>* Location</b> LS : Land Side    N/A : Not Applicable WS : Water Side CR : Crown	<b>** Rating</b> A : Acceptable M : Minimally Acceptable U : Unacceptable	N : Not Inspected/Rated C : Corrected A/W : Acceptable but Monitor & Maintain	<b>+ Issue Type</b> Ma : Maintenance Deficiency Ob : Design & System Obsolescence En : Enforcement
--	--	---	---

**Flood Control Project Maintenance  
Levee Inspections**

**Levee Inspection Report By Mile - Spring 2022**

**Reclamation District No. 2089 Stark**

Waterway	Bank	Unit Miles	Inspection Start/End	Inspector
Unit No. 01 Old River	Right	1.51	04/20/2022 04/20/2022	Alberto De Leon

LM Start	1.17	Rating **	M	Issue No.	2
LM End	1.18	Issue Type +	Ma	Location *	WS
Category	Supplemental			GPS Latitude/Longitude	
				Start	End
Item	DWR Erosion Survey			37.805523 °	37.805523 °
				-121.401718 °	-121.401718 °
DWR ID	RD2089U01RM29.1				

**Comment Code**

**Inspector Comment**

Site ID: RD2089U01RM29.1

8/25/2021: Unable to perform the inspection due to dense vegetation on the land and water.

09/22/2020: Noticed signs of animal burrowing activity. The upper levee slope has areas with exposed soil. Vegetation is limiting the view of the scarp.

09/26/2019: No significant change observed.

09/13/2017: The erosion is at the upstream of a small tree, inside of a slight river bend.

LM Start	<b>1.17</b>	Rating **	M	Issue No.	<b>2 (cont)</b>
LM End	<b>1.18</b>	Issue Type +	Ma	Location *	WS

Photo 1 of 2 : SP\_2022\_RD2089\_316\_2\_20220406\_00001.jpg



9/22/2020: View of the eroded slope looking upstream with bare soil off the levee shoulder.

Photo 2 of 2 : SP\_2022\_RD2089\_316\_2\_20220406\_00002.jpg



9/22/2020: The erosion is visible on the lower levee slope.

**\* Location**

LS : Land Side    N/A : Not Applicable  
WS : Water Side  
CR : Crown

**\*\* Rating**

A : Acceptable                      N : Not Inspected/Rated  
M : Minimally Acceptable        C : Corrected  
U : Unacceptable                  A/W : Acceptable but Monitor & Maintain

**+ Issue Type**

Ma : Maintenance Deficiency  
Ob : Design & System Obsolescence  
En : Enforcement

**Flood Control Project Maintenance  
Levee Inspections**

**Levee Inspection Report By Mile - Spring 2022**

**Reclamation District No. 2089 Stark**

Waterway	Bank	Unit Miles	Inspection Start/End	Inspector
Unit No. 01 Old River	Right	1.51	04/20/2022 04/20/2022	Alberto De Leon

LM Start	1.22	Rating **	U	Issue No.	5
LM End	1.23	Issue Type +	Ma	Location *	WS
Category	Supplemental			GPS Latitude/Longitude	
				Start	End
Item	DWR Erosion Survey			37.805800 °	37.805800 °
				-121.402868 °	-121.402868 °
DWR ID	RD2089U01RM29.04				
Comment Code					
Inspector Comment					
Site ID: RD2089U01RM29.04					
8/25/2021: Unable to perform the inspection due to dense vegetation on the land and water.					
9/22/2020: From 2014 to present, no significant changes were observed during the annual survey. Noticed signs of burrowing activity.					
08/13/2013: The erosion is around a tree at the levee toe. Dense vegetation is visible.					

LM Start	<b>1.22</b>	Rating **	U	Issue No.	<b>5 (cont)</b>
LM End	<b>1.23</b>	Issue Type +	Ma	Location *	WS

Photo 1 of 2 : SP\_2022\_RD2089\_316\_5\_20220406\_00005.jpg



9/22/2020: View of the erosion around the tree looking upstream. Despite the dense vegetation, the scarp above the tree is visible.

Photo 2 of 2 : SP\_2022\_RD2089\_316\_5\_20220406\_00006.jpg



9/22/2020: View of the erosion looking downstream.

<b>* Location</b> LS : Land Side    N/A : Not Applicable WS : Water Side CR : Crown	<b>** Rating</b> A : Acceptable M : Minimally Acceptable U : Unacceptable	N : Not Inspected/Rated C : Corrected A/W : Acceptable but Monitor & Maintain	<b>+ Issue Type</b> Ma : Maintenance Deficiency Ob : Design & System Obsolescence En : Enforcement
--	--	---	---



**Flood Control Project Maintenance  
Levee Inspections**

**Levee Inspection Report By Mile - Spring 2022**

**Reclamation District No. 2089 Stark**

Waterway	Bank	Unit Miles	Inspection Start/End	Inspector
Unit No. 01 Old River	Right	1.51	04/20/2022 04/20/2022	Alberto De Leon

LM Start	1.22	Rating **	M	Issue No.	42
LM End	1.23	Issue Type +	Ma	Location *	LS
Category	Earthen Levee			GPS Latitude/Longitude	
				Start	End
Item	Trim / Thin Trees			37.805766 °	37.805797 °
				-121.402748 °	-121.402894 °
DWR ID	DWR_RD2089_01_f_2019_42				
Comment Code					
T1 : Trim and thin trees to at least five feet above ground level to allow visibility of the ground and room to flood fight.					
Inspector Comment					

Photo 1 of 1 : SP\_2022\_RD2089\_316\_42\_20220406\_00016.jpg



View of an untrimmed tree on the landside slope. Fall 2021

LM Start	1.25	Rating **	M	Issue No.	44
LM End	1.25	Issue Type +	Ma	Location *	LS
Category	Earthen Levee			GPS Latitude/Longitude	
				Start	End
Item	Crown Surface / Depressions / Rutting			37.805889 °	37.805889 °
				-121.403277 °	-121.403277 °
DWR ID	DWR_RD2089_01_s_2012_44				
Comment Code					
C3 : Add appropriate gravel or road base. Grade and compact.					
Inspector Comment					

Photo 1 of 1 : SP\_2022\_RD2089\_316\_44\_20220406\_00017.jpg



View of roadway depression. 11/10/2011

LM Start	1.34	Rating **	M	Issue No.	45
LM End	1.34	Issue Type +	Ma	Location *	CR
Category	Earthen Levee			GPS Latitude/Longitude	
				Start	End
Item	Crown Surface / Depressions / Rutting			37.806128 °	37.806128 °
				-121.404890 °	-121.404890 °
DWR ID	DWR_RD2089_01_s_2012_45				
Comment Code					
C3 : Add appropriate gravel or road base. Grade and compact.					
Inspector Comment					

Photo 1 of 1 : SP\_2022\_RD2089\_316\_45\_20220406\_00018.jpg



View of roadway depression. Fall 2021

**\* Location**  
LS : Land Side    N/A : Not Applicable  
WS : Water Side  
CR : Crown

**\*\* Rating**  
A : Acceptable                      N : Not Inspected/Rated  
M : Minimally Acceptable        C : Corrected  
U : Unacceptable                  A/W : Acceptable but Monitor & Maintain

**+ Issue Type**  
Ma : Maintenance Deficiency  
Ob : Design & System Obsolescence  
En : Enforcement

## Reclamation District No. 2089 Stark

Waterway	Bank	Unit Miles	Inspection Start/End	Inspector
Unit No. 01 Old River	Right	1.51	04/20/2022 04/20/2022	Alberto De Leon

LM Start	1.37	Rating **	M	Issue No.	30
LM End	1.37	Issue Type +	Ma	Location *	CR
Category	Earthen Levee			GPS Latitude/Longitude	
				Start	End
Item	Trim / Thin Trees			37.806197 °	37.806197 °
				-121.405426 °	-121.405426 °
DWR ID	DWR_RD2089_01_f _ 2020_30				
Comment Code					
T4 : Trim trees over roadway to at least 12 feet above ground level.					
Inspector Comment					

No Photos

LM Start	1.40	Rating **	M	Issue No.	47
LM End	1.40	Issue Type +	Ma	Location *	LS
Category	Earthen Levee			GPS Latitude/Longitude	
				Start	End
Item	Animal Control			37.806268 °	37.806268 °
				-121.405874 °	-121.405874 °
DWR ID	DWR_RD2089_01_s _ 2012_47				
Comment Code					
A3 : No rodents visible, but rodent burrows visible; need to backfill and compact or grout burrows.					
Inspector Comment					



View of active rodent burrow on landside slope. 11/10/2011

LM Start	1.41	Rating **	M	Issue No.	46
LM End	1.41	Issue Type +	Ma	Location *	LS
Category	Earthen Levee			GPS Latitude/Longitude	
				Start	End
Item	Trim / Thin Trees			37.806299 °	37.806299 °
				-121.406010 °	-121.406010 °
DWR ID	DWR_RD2089_01_f _ 2019_46				
Comment Code					
T1 : Trim and thin trees to at least five feet above ground level to allow visibility of the ground and room to flood fight.					
Inspector Comment					

No Photos

* Location	** Rating	+ Issue Type
LS : Land Side    N/A : Not Applicable	A : Acceptable                      N : Not Inspected/Rated	Ma : Maintenance Deficiency
WS : Water Side	M : Minimally Acceptable        C : Corrected	Ob : Design & System Obsolescence
CR : Crown	U : Unacceptable                  A/W : Acceptable but Monitor & Maintain	En : Enforcement

**Flood Control Project Maintenance  
Levee Inspections**

**Levee Inspection Report By Mile - Spring 2022**

**Reclamation District No. 2089 Stark**

Waterway	Bank	Unit Miles	Inspection Start/End	Inspector
Unit No. 01 Old River	Right	1.51	04/20/2022 04/20/2022	Alberto De Leon

LM Start	1.41	Rating **	M	Issue No.	7	
LM End	1.41	Issue Type +	En	Location *		
Category	Supplemental			GPS Latitude/Longitude		
				Start	End	
Item	DWR UCIP Field Study			37.806323 °	37.806323 °	
				-121.406149 °	-121.406149 °	
DWR ID	24667					
Comment Code						
Inspector Comment						
FS_ID:53379 DS_ID:24667 EP_NO: N/A Repair Type: Non-Urgent Crossing Status: Found UCIP Comments: 10/12/2018 Same as last inspection. Down grading to Non-Urgent due to abandonment and no visual threat to pipe or levee integrity (D. Sanoski - DWR UCIP).11/15/2016 Same as last inspection. (K. Fazel - UCIP)09/12/2013:- if abandoned, it needs proper abandonment. Pipe damaged and open on both ends. (P. Amatya - DWR) FIELD_STRUCT_DESC: *ABANDONED* 6-inch polyvinyl chloride (PVC) irrigation discharge pipe through the levee, 2 feet below the crown. Pipe was installed due to pump failure, but never removed. Field study discovered pipe. FS Date: 10/12/2018 5:16:00 PM						

Photo 1 of 3 : UCIP\_SP\_2022\_53379\_36611.jpg



WS view: 6-inch pvc pipe on levee slope. Pipe end open and damaged.

LM Start	<b>1.41</b>	Rating **	M	Issue No.	<b>7 (cont)</b>
LM End	<b>1.41</b>	Issue Type +	En	Location *	

Photo 2 of 3 : UCIP\_SP\_2022\_53379\_36610.jpg



WS view: inside view of pvc pipe. Sediments found inside the pipe.

<b>* Location</b> LS : Land Side    N/A : Not Applicable WS : Water Side CR : Crown		<b>** Rating</b> A : Acceptable                      N : Not Inspected/Rated M : Minimally Acceptable        C : Corrected U : Unacceptable                  A/W : Acceptable but Monitor & Maintain		<b>+ Issue Type</b> Ma : Maintenance Deficiency Ob : Design & System Obsolescence En : Enforcement	
--	--	---	--	---	--



**Flood Control Project Maintenance  
Levee Inspections**

**Levee Inspection Report By Mile - Spring 2022**

**Reclamation District No. 2089 Stark**

Waterway	Bank	Unit Miles	Inspection Start/End	Inspector
Unit No. 01 Old River	Right	1.51	04/20/2022 04/20/2022	Alberto De Leon

LM Start	<b>1.41</b>	Rating **	M	Issue No.	<b>7 (cont)</b>
LM End	<b>1.41</b>	Issue Type +	En	Location *	
Category	Supplemental		GPS Latitude/Longitude		
			Start	End	
Item	DWR UCIP Field Study		37.806323 °	37.806323 °	
			-121.406149 °	-121.406149 °	
DWR ID	24667				

Photo 3 of 3 : UCIP\_SP\_2022\_53379\_36609.jpg



LS view: 6-inch pvc pipe on levee slope. Pipe end open.

LM Start	<b>1.41</b>	Rating **	M	Issue No.	<b>8</b>
LM End	<b>1.41</b>	Issue Type +	Ma	Location *	
Category	Supplemental		GPS Latitude/Longitude		
			Start	End	
Item	DWR UCIP LMA Responsibility		37.806323 °	37.806323 °	
			-121.406155 °	-121.406155 °	
DWR ID	23045				

**Comment Code**

**Inspector Comment**

FS\_ID:21585  
 DS\_ID:23045  
 EP\_NO: N/A  
 Repair Type: Non-Urgent  
 Crossing Status: Found  
 UCIP Comments: - siphon breaker needs repair.  
 FIELD\_STRUCT\_DESC: 10-inch steel drainage discharge pipe through the levee, 2.4 feet below the crown. Pump in a drainage ditch on the landside (LS). Siphon breaker on the waterside (WS) shoulder.  
 [Additional Reference(s): DWR Levee Log, 1991].  
 FS Date: 9/12/2013

Photo 1 of 3 : UCIP\_SP\_2022\_21585\_36624.jpg



WS view: exposed steel pipe on levee slope. A pvc pipe on left.

<b>* Location</b> LS : Land Side    N/A : Not Applicable WS : Water Side CR : Crown	<b>** Rating</b> A : Acceptable M : Minimally Acceptable U : Unacceptable	N : Not Inspected/Rated C : Corrected A/W : Acceptable but Monitor & Maintain	<b>+ Issue Type</b> Ma : Maintenance Deficiency Ob : Design & System Obsolescence En : Enforcement
--	--	---	---

**Flood Control Project Maintenance  
Levee Inspections**

**Levee Inspection Report By Mile - Spring 2022**

**Reclamation District No. 2089 Stark**

Waterway	Bank	Unit Miles	Inspection Start/End	Inspector
Unit No. 01 Old River	Right	1.51	04/20/2022 04/20/2022	Alberto De Leon

LM Start	<b>1.41</b>	Rating **	M	Issue No.	<b>8 (cont)</b>
LM End	<b>1.41</b>	Issue Type +	Ma	Location *	
Category	Supplemental			GPS Latitude/Longitude	
				Start	End
Item	DWR UCIP LMA Responsibility			37.806323 °	37.806323 °
				-121.406155 °	-121.406155 °
DWR ID	23045				

Photo 2 of 3 : UCIP\_SP\_2022\_21585\_36623.jpg



WS view: exposed steel pipe with siphon breaker. Looks siphon breaker needs repair.

LM Start	<b>1.41</b>	Rating **	M	Issue No.	<b>8 (cont)</b>
LM End	<b>1.41</b>	Issue Type +	Ma	Location *	

Photo 3 of 3 : UCIP\_SP\_2022\_21585\_36622.jpg



LS view: exposed steel pipe on levee slope.

LM Start	1.43	Rating **	M	Issue No.	48
LM End	1.44	Issue Type +	Ma	Location *	LS
Category	Earthen Levee			GPS Latitude/Longitude	
				Start	End
Item	Trim / Thin Trees			37.806375 °	37.806416 °
				-121.406516 °	-121.406537 °
DWR ID	DWR_RD2089_01_f_2019_48				
Comment Code					
T1 : Trim and thin trees to at least five feet above ground level to allow visibility of the ground and room to flood fight.					
Inspector Comment					

No Photos

<b>* Location</b> LS : Land Side    N/A : Not Applicable WS : Water Side CR : Crown	<b>** Rating</b> A : Acceptable M : Minimally Acceptable U : Unacceptable	N : Not Inspected/Rated C : Corrected A/W : Acceptable but Monitor & Maintain	<b>+ Issue Type</b> Ma : Maintenance Deficiency Ob : Design & System Obsolescence En : Enforcement
--	--	---	---

**Flood Control Project Maintenance  
Levee Inspections**

**Levee Inspection Report By Mile - Spring 2022**

**Reclamation District No. 2089 Stark**

Waterway	Bank	Unit Miles	Inspection Start/End	Inspector
Unit No. 01 Old River	Right	1.51	04/20/2022 04/20/2022	Alberto De Leon

LM Start	1.47	Rating **	C	Issue No.	32
LM End	1.48	Issue Type +	Ma	Location *	LS
Category	Earthen Levee			GPS Latitude/Longitude	
				Start	End
Item	Trim / Thin Trees			37.806516 °	37.806560 °
				-121.407249 °	-121.407423 °
DWR ID	DWR_RD2089_01_s_2021_32				
Comment Code					
T1 : Trim and thin trees to at least five feet above ground level to allow visibility of the ground and room to flood fight.					
Inspector Comment					

No Photos

LM Start	1.48	Rating **	M	Issue No.	10	
LM End	1.48	Issue Type +	En	Location *		
Category	Supplemental			GPS Latitude/Longitude		
				Start	End	
Item	DWR UCIP Field Study			37.806520 °	37.806520 °	
				-121.407392 °	-121.407392 °	
DWR ID	23046					
Comment Code						
Inspector Comment						
FS_ID:53182 DS_ID:23046 EP_NO: N/A Repair Type: Non-Urgent Crossing Status: Found UCIP Comments: 10/12/2018 Same as last inspection; downgrading to Non-Urgent due to no visual pipe or levee threat (D. Sanoski - DWR UCIP).11/15/2016 Pipe found on WS only. Same as last inspection. (K. Fazel - UCIP)06/25/2015 Crossing appears abandoned; if so, should be done so properly. Pipe open on WS. Holes and cracks visible on pipe. (K. Fazel - UCIP) FIELD_STRUCT_DESC: *ABANDONED* 12-inch reinforced concrete pipe of an unknown purpose possibly through the levee, approximately 8 feet below the crown. Smaller steel pipe sleeved through the 12-inch pipe with annular space grouted. Pipe does not cross channel and may not cross levee. May be related to the gas line crossing with DS ID 25121. Discovered from boat on 2015 DWR Erosion Survey. FS Date: 10/12/2018 5:22:43 PM						

Photo 1 of 3 : UCIP\_SP\_2022\_53182\_74506.jpg



View up WS slope from water. Pipe does not cross channel.

<b>* Location</b> LS : Land Side    N/A : Not Applicable WS : Water Side CR : Crown	<b>** Rating</b> A : Acceptable M : Minimally Acceptable U : Unacceptable	N : Not Inspected/Rated C : Corrected A/W : Acceptable but Monitor & Maintain	<b>+ Issue Type</b> Ma : Maintenance Deficiency Ob : Design & System Obsolescence En : Enforcement
--	--	---	---

**Flood Control Project Maintenance  
Levee Inspections**

**Levee Inspection Report By Mile - Spring 2022**

**Reclamation District No. 2089 Stark**

Waterway	Bank	Unit Miles	Inspection Start/End	Inspector
Unit No. 01 Old River	Right	1.51	04/20/2022 04/20/2022	Alberto De Leon

LM Start	1.48	Rating **	M	Issue No.	10 (cont)
LM End	1.48	Issue Type +	En	Location *	
Category	Supplemental			GPS Latitude/Longitude	
				Start	End
Item	DWR UCIP Field Study			37.806520 °	37.806520 °
				-121.407392 °	-121.407392 °
DWR ID	23046				

Photo 2 of 3 : UCIP\_SP\_2022\_53182\_74508.jpg



Gasline marker (for crossing with DS ID 25121) appr. 100 ft west of crossing.

LM Start	<b>1.48</b>	Rating **	M	Issue No.	<b>10 (cont)</b>
LM End	<b>1.48</b>	Issue Type +	En	Location *	

Photo 3 of 3 : UCIP\_SP\_2022\_53182\_76207.jpg



WS view of pipe

<b>* Location</b> LS : Land Side    N/A : Not Applicable WS : Water Side CR : Crown	<b>** Rating</b> A : Acceptable M : Minimally Acceptable U : Unacceptable	N : Not Inspected/Rated C : Corrected A/W : Acceptable but Monitor & Maintain	<b>+ Issue Type</b> Ma : Maintenance Deficiency Ob : Design & System Obsolescence En : Enforcement
--	--	---	---



**Flood Control Project Maintenance  
Levee Inspections  
Unit Cover Sheet**

**Reclamation District No. 2089 Stark**

Waterway			Bank	Unit Miles
Unit No. 02 Salmon Slough			Right	1.35
	Spring (March - May)	Summer (June - August)	(September - November) Fall	Winter (December - February)
Unit Maintenance Rating (Fall Only)				
Date of Inspection	4/20/2022 - 4/20/2022			
DWR Inspector	Alberto De Leon			
Accompanied By				

**Summer & Winter Inspections**

The Local Maintaining Agency (LMA) is responsible for summer and winter inspections. The LMA is required to submit a report regarding summer and winter inspections to the California Department of Water Resources (DWR).

DWR must be informed on the:

- a) completion of the inspection
- b) any changes other than the results of normal maintenance
- c) corrections to deficiencies noted in this report

If additional items are noted, further documentation of those items must also be submitted.

The LMA should submit this information to DWR using the LMA web application tool available at:

<http://cdec.water.ca.gov/lma.html>

If the LMA is unable to submit information on this webpage, please contact DWR for assistance.

*The LMA should submit the information and any associated documentation by September 30 for summer inspections and March 31 for winter inspections.*

**Flood Control Project Maintenance  
Levee Inspections**

**Levee Inspection Report By Mile - Spring 2022**

**Reclamation District No. 2089 Stark**

Waterway	Bank	Unit Miles	Inspection Start/End	Inspector
Unit No. 02 Salmon Slough	Right	1.35	04/20/2022 04/20/2022	Alberto De Leon

LM Start	0.00	Rating **	M	Issue No.	8
LM End	1.34	Issue Type +	Ma	Location *	LS
Category	Earthen Levee			GPS Latitude/Longitude	
				Start	End
Item	Vegetation			37.806665 °	37.819557 °
				-121.407956 °	-121.419696 °
DWR ID	DWR_RD2089_02_f _ 2021_8				
Comment Code					
V1 : Control annual grass and weeds on the levee slopes and easements.					
Inspector Comment					

Photo 1 of 1 : SP\_2022\_RD2089\_317\_8\_20220421\_00028.jpg



View of vegetation along the landside slope and easement. Spring 2022

LM Start	0.00	Rating **	M	Issue No.	10
LM End	1.34	Issue Type +	Ma	Location *	WS
Category	Earthen Levee			GPS Latitude/Longitude	
				Start	End
Item	Vegetation			37.806666 °	37.819557 °
				-121.407956 °	-121.419696 °
DWR ID	DWR_RD2089_02_f_2021_10				
Comment Code					
V1 : Control annual grass and weeds on the levee slopes and easements.					
Inspector Comment					

Photo 1 of 1 : SP\_2022\_RD2089\_317\_10\_20220421\_00027.jpg



View of vegetation along the waterside slope. Spring 2022

LM Start	0.02	Rating **	M	Issue No.	76
LM End	0.03	Issue Type +	Ma	Location *	LS
Category	Earthen Levee			GPS Latitude/Longitude	
				Start	End
Item	Trim / Thin Trees			37.806820 °	37.806965 °
				-121.408105 °	-121.408280 °
DWR ID	DWR_RD2089_02_s_2021_76				
Comment Code					
T1 : Trim and thin trees to at least five feet above ground level to allow visibility of the ground and room to flood fight.					
Inspector Comment					

No Photos

<b>* Location</b> LS : Land Side    N/A : Not Applicable WS : Water Side CR : Crown	<b>** Rating</b> A : Acceptable M : Minimally Acceptable U : Unacceptable	N : Not Inspected/Rated C : Corrected A/W : Acceptable but Monitor & Maintain	<b>+ Issue Type</b> Ma : Maintenance Deficiency Ob : Design & System Obsolescence En : Enforcement
--	--	---	---

**Flood Control Project Maintenance  
Levee Inspections**

**Levee Inspection Report By Mile - Spring 2022**

**Reclamation District No. 2089 Stark**

Waterway	Bank	Unit Miles	Inspection Start/End	Inspector
Unit No. 02 Salmon Slough	Right	1.35	04/20/2022 04/20/2022	Alberto De Leon

LM Start	0.06	Rating **	U	Issue No.	4
LM End	0.06	Issue Type +	Ma	Location *	WS
Category	Earthen Levee			GPS Latitude/Longitude	
				Start	End
Item	Vegetation			37.807305 °	37.807305 °
				-121.408702 °	-121.408702 °
DWR ID	DWR_RD2089_02_s_2012_4				
Comment Code					
V4 : Elderberries are blocking visibility and flood fight capability.					
Inspector Comment					

No Photos

LM Start	0.20	Rating **	A/W	Issue No.	46
LM End	0.21	Issue Type +	Ma	Location *	WS
Category	Earthen Levee			GPS Latitude/Longitude	
				Start	End
Item	Erosion / Bank Caving			37.809100 °	37.809200 °
				-121.409800 °	-121.409900 °
DWR ID	LMA-415				
Comment Code					
E1 : Note and monitor erosion site.					
Inspector Comment					
2017 Storm Damage Site, ID No. 509, LMA 415, displaced riprap at toe. Inspected: Fall 2020, vegetation did not allow inspection of rip rap.					

Photo 1 of 1 : SP\_2022\_RD2089\_317\_46\_20220406\_00020.jpg



View of erosion site on waterside slope. Spring 2020

LM Start	0.23	Rating **	C	Issue No.	15
LM End	0.23	Issue Type +	Ma	Location *	WS
Category	Earthen Levee			GPS Latitude/Longitude	
				Start	End
Item	Slope Stability			37.809457 °	37.809457 °
				-121.410230 °	-121.410230 °
DWR ID	DWR_RD2089_02_f_2020_15				
Comment Code					
S1 : Repair slope instability.					
Inspector Comment					

No Photos

<b>* Location</b> LS : Land Side    N/A : Not Applicable WS : Water Side CR : Crown	<b>** Rating</b> A : Acceptable M : Minimally Acceptable U : Unacceptable	N : Not Inspected/Rated C : Corrected A/W : Acceptable but Monitor & Maintain	<b>+ Issue Type</b> Ma : Maintenance Deficiency Ob : Design & System Obsolescence En : Enforcement
--	--	---	---



## Reclamation District No. 2089 Stark

* Location	** Rating	+ Issue Type
LS : Land Side    N/A : Not Applicable	A : Acceptable                      N : Not Inspected/Rated	Ma : Maintenance Deficiency
WS : Water Side	M : Minimally Acceptable        C : Corrected	Ob : Design & System Obsolescence
CR : Crown	U : Unacceptable                  A/W : Acceptable but Monitor & Maintain	En : Enforcement

**Flood Control Project Maintenance  
Levee Inspections**

**Levee Inspection Report By Mile - Spring 2022**

**Reclamation District No. 2089 Stark**

Waterway	Bank	Unit Miles	Inspection Start/End	Inspector
Unit No. 02 Salmon Slough	Right	1.35	04/20/2022 04/20/2022	Alberto De Leon

LM Start	0.40	Rating **	U	Issue No.	3
LM End	0.41	Issue Type +	Ma	Location *	WS
Category	Supplemental			GPS Latitude/Longitude	
				Start	End
Item	DWR Erosion Survey			37.810184 °	37.810184 °
				-121.413019 °	-121.413019 °
DWR ID	RD2089U02RM28.35				

**Comment Code**

**Inspector Comment**

Site ID: RD2089U02RM28.35  
 08/25/2021: Heavy vegetation on water made boat navigation to site inaccessible.  
 09/22/2020: Observed less vegetation on the levee slope, loose soil, and scattered riprap.  
 09/26/2019: From 2011 to 2019, no significant changes were observed during the annual survey.  
 09/07/2010: Site consists of a jutting rip rap that has created an eddy, scouring the levee slope. Most sections of the toe and lower slope are lined with rip rap. However, the rip rap is sloughing on the mid slope and at the toe, exposing the underlying soils and tree roots. The remaining revetment is no longer adequately protecting the slope. There are 3 Sycamore trees at the toe with exposed tree roots.  
 08/05/2010: Recommended for repair, per CLRO.  
 09/28/2009: Pocket erosion on lower slope just above the toe rip rap; protruding rip rap upstream is creating an eddy, scouring the levee slope; Site # is the same as RM28.40, LM0.30; previously rated "U"; pictures will be made available during the next survey.  
 11/05/2008: Cut into levee profile; riprap slide; rodent holes; pictures do not match GPS and current condition.

LM Start	<b>0.40</b>	Rating **	U	Issue No.	<b>3 (cont)</b>
LM End	<b>0.41</b>	Issue Type +	Ma	Location *	WS

Photo 1 of 2 : SP\_2022\_RD2089\_317\_3\_20220406\_00004.jpg



9/22/2020: View of the erosion and scattered riprap on the levee slope.

Photo 2 of 2 : SP\_2022\_RD2089\_317\_3\_20220406\_00005.jpg



9/22/2020: Close-up view of the eroded levee slope.

<b>* Location</b> LS : Land Side    N/A : Not Applicable WS : Water Side CR : Crown		<b>** Rating</b> A : Acceptable M : Minimally Acceptable U : Unacceptable N : Not Inspected/Rated C : Corrected A/W : Acceptable but Monitor & Maintain		<b>+ Issue Type</b> Ma : Maintenance Deficiency Ob : Design & System Obsolescence En : Enforcement	
--	--	---	--	---	--

**Flood Control Project Maintenance  
Levee Inspections**

**Levee Inspection Report By Mile - Spring 2022**

**Reclamation District No. 2089 Stark**

Waterway	Bank	Unit Miles	Inspection Start/End	Inspector
Unit No. 02 Salmon Slough	Right	1.35	04/20/2022 04/20/2022	Alberto De Leon

LM Start	0.43	Rating **	C	Issue No.	61
LM End	0.43	Issue Type +	Ma	Location *	LS
Category	Earthen Levee			GPS Latitude/Longitude	
				Start	End
Item	Trim / Thin Trees			37.810378 °	37.810378 °
				-121.413415 °	-121.413415 °
DWR ID	DWR_RD2089_02_f_2019_61				
Comment Code					
T1 : Trim and thin trees to at least five feet above ground level to allow visibility of the ground and room to flood fight.					
Inspector Comment					

No Photos

LM Start	0.44	Rating **	M	Issue No.	27
LM End	0.44	Issue Type +	En	Location *	WS
Category	Earthen Levee			GPS Latitude/Longitude	
				Start	End
Item	Encroachments			37.810490 °	37.810490 °
				-121.413638 °	-121.413638 °
DWR ID	DWR_RD2089_02_s_2012_27				
Comment Code					
BU : Building					
Inspector Comment					
There is a portable toilet on the bank at the water's edge.					

Photo 1 of 1 : SP\_2022\_RD2089\_317\_27\_20220406\_00015.jpg



Close-up view of portable toilet at water's edge. (Fall 2018)

LM Start	0.50	Rating **	U	Issue No.	7
LM End	0.54	Issue Type +	Ma	Location *	WS
Category	Earthen Levee			GPS Latitude/Longitude	
				Start	End
Item	Slope Stability			37.810999 °	37.811380 °
				-121.414532 °	-121.415059 °
DWR ID	DWR_RD2089_02_s_2022_7				
Comment Code					
S1 : Repair slope instability.					
Inspector Comment					
The slope near the waterside hinge is eroded caused by grazing livestock.					

Photo 1 of 1 : SP\_2022\_RD2089\_317\_7\_20220421\_00029.jpg



View of eroded waterside slope caused by livestock. Spring 2022

\* Location  
LS : Land Side N/A : Not Applicable  
WS : Water Side  
CR : Crown

\*\* Rating  
A : Acceptable N : Not Inspected/Rated  
M : Minimally Acceptable C : Corrected  
U : Unacceptable A/W : Acceptable but Monitor & Maintain

+ Issue Type  
Ma : Maintenance Deficiency  
Ob : Design & System Obsolescence  
En : Enforcement



**Flood Control Project Maintenance  
Levee Inspections**

**Levee Inspection Report By Mile - Spring 2022**

**Reclamation District No. 2089 Stark**

Waterway	Bank	Unit Miles	Inspection Start/End	Inspector
Unit No. 02 Salmon Slough	Right	1.35	04/20/2022 04/20/2022	Alberto De Leon

LM Start	0.51	Rating **	U	Issue No.	62
LM End	0.83	Issue Type +	En	Location *	LS
Category	Earthen Levee			GPS Latitude/Longitude	
				Start	End
Item	Encroachments			37.811125 °	37.814845 °
				-121.414685 °	-121.414586 °
DWR ID	DWR_RD2089_02_s _ 2021_62				
Comment Code					
DT : Ditch					
Inspector Comment					

Photo 1 of 1 : SP\_2022\_RD2089\_317\_62\_20220406\_00023.jpg



View of an irrigation ditch within the landside easement. Spring 2021

LM Start	0.52	Rating **	C	Issue No.	63
LM End	0.52	Issue Type +	Ma	Location *	LS
Category	Earthen Levee			GPS Latitude/Longitude	
				Start	End
Item	Trim / Thin Trees			37.811165 °	37.811165 °
				-121.414796 °	-121.414796 °
DWR ID	DWR_RD2089_02_s _ 2020_63				
Comment Code					
T1 : Trim and thin trees to at least five feet above ground level to allow visibility of the ground and room to flood fight.					
Inspector Comment					

No Photos

<b>* Location</b> LS : Land Side    N/A : Not Applicable WS : Water Side CR : Crown	<b>** Rating</b> A : Acceptable M : Minimally Acceptable U : Unacceptable	N : Not Inspected/Rated C : Corrected A/W : Acceptable but Monitor & Maintain	<b>+ Issue Type</b> Ma : Maintenance Deficiency Ob : Design & System Obsolescence En : Enforcement
--	--	---	---

**Flood Control Project Maintenance  
Levee Inspections**

**Levee Inspection Report By Mile - Spring 2022**

**Reclamation District No. 2089 Stark**

Waterway	Bank	Unit Miles	Inspection Start/End	Inspector
Unit No. 02 Salmon Slough	Right	1.35	04/20/2022 04/20/2022	Alberto De Leon

LM Start	0.54	Rating **	M	Issue No.	5	
LM End	0.54	Issue Type +	En	Location *		
Category	Supplemental			GPS Latitude/Longitude		
				Start		End
Item	DWR UCIP Field Study			37.811369 °		37.811369 °
				-121.415050 °		-121.415050 °
DWR ID	23047					
Comment Code						
Inspector Comment						
FS_ID:21676 DS_ID:23047 EP_NO: N/A Repair Type: Non-Urgent Crossing Status: Found UCIP Comments: - air relief valve on waterside. Needs repair.- concrete standpipe on landside. FIELD_STRUCT_DESC: 14-inch irrigation discharge pipe of an unknown material through the levee, 8 feet below the crown. Pump on a pile structure in the stream. Timber walkway to the pump. Air relief valve on the waterside (WS) slope. Concrete distribution standpipe on the landside (LS) toe. [Additional Reference(s): DWR Levee Log, 1991. USACE San Joaquin O&M Manual 8, 1968, (HLM 0.55)]. FS Date: 9/12/2013						

Photo 1 of 3 : UCIP\_SP\_2022\_21676\_36861.jpg



WS view: pipe and pump on piling structure in water channel.

LM Start	<b>0.54</b>	Rating **	M	Issue No.	<b>5 (cont)</b>
LM End	<b>0.54</b>	Issue Type +	En	Location *	

Photo 2 of 3 : UCIP\_SP\_2022\_21676\_36860.jpg



WS view: air relief valve on pipe. Pipe exposed in levee slope.

<b>* Location</b> LS : Land Side    N/A : Not Applicable WS : Water Side CR : Crown	<b>** Rating</b> A : Acceptable M : Minimally Acceptable U : Unacceptable	N : Not Inspected/Rated C : Corrected A/W : Acceptable but Monitor & Maintain	<b>+ Issue Type</b> Ma : Maintenance Deficiency Ob : Design & System Obsolescence En : Enforcement
--	--	---	---

**Flood Control Project Maintenance  
Levee Inspections**

**Levee Inspection Report By Mile - Spring 2022**

**Reclamation District No. 2089 Stark**

Waterway	Bank	Unit Miles	Inspection Start/End	Inspector
Unit No. 02 Salmon Slough	Right	1.35	04/20/2022 04/20/2022	Alberto De Leon

LM Start	<b>0.54</b>	Rating **	M	Issue No.	<b>5 (cont)</b>
LM End	<b>0.54</b>	Issue Type +	En	Location *	
Category	Supplemental		GPS Latitude/Longitude		
			Start	End	
Item	DWR UCIP Field Study		37.811369 °	37.811369 °	
			-121.415050 °	-121.415050 °	
DWR ID	23047				

Photo 3 of 3 : UCIP\_SP\_2022\_21676\_36859.jpg



WS view: pipe (left) and steel walkway to pump on piling structure in the channel.

LM Start	<b>0.60</b>	Rating **	M	Issue No.	<b>1</b>
LM End	<b>0.61</b>	Issue Type +	Ma	Location *	WS
Category	Supplemental		GPS Latitude/Longitude		
			Start	End	
Item	DWR Erosion Survey		37.812000 °	37.812000 °	
			-121.415700 °	-121.415700 °	
DWR ID	RD2089U02RM28.14				

**Comment Code**

**Inspector Comment**

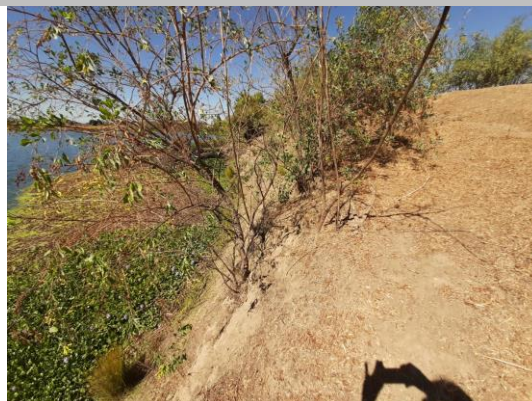
Site ID: RD2089U02RM28.14

8/25/2021: Heavy vegetation on water made boat navigation to site inaccessible.

09/22/2020: This site is a 2017 Storm Damage Site (LMA-413). There is a vertical cut on the bank. The berm width ranges from 2 ft to 20 ft. The site will likely worsen during the next high water.

LM Start	<b>0.60</b>	Rating **	M	Issue No.	<b>1 (cont)</b>
LM End	<b>0.61</b>	Issue Type +	Ma	Location *	WS

Photo 1 of 2 : SP\_2022\_RD2089\_317\_1\_20220406\_00001.jpg



9/22/2020: View of the vertical cut on the river bank looking downstream.

Photo 2 of 2 : SP\_2022\_RD2089\_317\_1\_20220406\_00002.jpg



9/22/2020: View of the bank erosion further upstream.

<b>* Location</b> LS : Land Side    N/A : Not Applicable WS : Water Side CR : Crown		<b>** Rating</b> A : Acceptable M : Minimally Acceptable U : Unacceptable N : Not Inspected/Rated C : Corrected A/W : Acceptable but Monitor & Maintain		<b>+ Issue Type</b> Ma : Maintenance Deficiency Ob : Design & System Obsolescence En : Enforcement	
--	--	---	--	---	--

**Flood Control Project Maintenance  
Levee Inspections**

**Levee Inspection Report By Mile - Spring 2022**

**Reclamation District No. 2089 Stark**

Waterway	Bank	Unit Miles	Inspection Start/End	Inspector
Unit No. 02 Salmon Slough	Right	1.35	04/20/2022 04/20/2022	Alberto De Leon

LM Start	0.78	Rating **	M	Issue No.	74
LM End	0.78	Issue Type +	Ma	Location *	WS
Category	Earthen Levee			GPS Latitude/Longitude	
				Start	End
Item	Trim / Thin Trees			37.814141 °	37.814141 °
				-121.414266 °	-121.414266 °
DWR ID	DWR_RD2089_02_s_2021_74				
Comment Code					
T1 : Trim and thin trees to at least five feet above ground level to allow visibility of the ground and room to flood fight.					
Inspector Comment					

No Photos

LM Start	0.79	Rating **	M	Issue No.	73
LM End	0.79	Issue Type +	Ma	Location *	LS
Category	Earthen Levee			GPS Latitude/Longitude	
				Start	End
Item	Trim / Thin Trees			37.814328 °	37.814328 °
				-121.414269 °	-121.414269 °
DWR ID	DWR_RD2089_02_s_2021_73				
Comment Code					
T1 : Trim and thin trees to at least five feet above ground level to allow visibility of the ground and room to flood fight.					
Inspector Comment					

No Photos

LM Start	0.81	Rating **	M	Issue No.	57
LM End	0.81	Issue Type +	Ma	Location *	LS
Category	Earthen Levee			GPS Latitude/Longitude	
				Start	End
Item	Trim / Thin Trees			37.814599 °	37.814599 °
				-121.414387 °	-121.414387 °
DWR ID	DWR_RD2089_02_s_2021_57				
Comment Code					
T1 : Trim and thin trees to at least five feet above ground level to allow visibility of the ground and room to flood fight.					
Inspector Comment					

No Photos

<b>* Location</b> LS : Land Side    N/A : Not Applicable WS : Water Side CR : Crown	<b>** Rating</b> A : Acceptable M : Minimally Acceptable U : Unacceptable	N : Not Inspected/Rated C : Corrected A/W : Acceptable but Monitor & Maintain	<b>+ Issue Type</b> Ma : Maintenance Deficiency Ob : Design & System Obsolescence En : Enforcement
--	--	---	---



**Flood Control Project Maintenance  
Levee Inspections**

**Levee Inspection Report By Mile - Spring 2022**

**Reclamation District No. 2089 Stark**

Waterway	Bank	Unit Miles	Inspection Start/End	Inspector
Unit No. 02 Salmon Slough	Right	1.35	04/20/2022 04/20/2022	Alberto De Leon

LM Start	0.84	Rating **	M	Issue No.	9
LM End	0.84	Issue Type +	En	Location *	CR
Category	Earthen Levee			GPS Latitude/Longitude	
				Start	End
Item	Encroachments			37.814881 °	37.814881 °
				-121.414676 °	-121.414676 °
DWR ID	DWR_RD2089_02_s_2012_9				
Comment Code					
FE : Fence					
Inspector Comment					
Cattle guard type fence on levee crown.					

Photo 1 of 1 : SP\_2022\_RD2089\_317\_9\_20220406\_00008.jpg



View of the fence gate across levee crown.

LM Start	0.84	Rating **	M	Issue No.	25
LM End	0.85	Issue Type +	Ma	Location *	LS
Category	Earthen Levee			GPS Latitude/Longitude	
				Start	End
Item	Vegetation			37.814906 °	37.815011 °
				-121.414745 °	-121.414900 °
DWR ID	DWR_RD2089_02_s_2012_25				
Comment Code					
V4 : Elderberries are blocking visibility and flood fight capability.					
Inspector Comment					

No Photos

LM Start	0.85	Rating **	M	Issue No.	12
LM End	1.34	Issue Type +	Ma	Location *	CR
Category	Earthen Levee			GPS Latitude/Longitude	
				Start	End
Item	Vegetation			37.814980 °	37.819547 °
				-121.414871 °	-121.419685 °
DWR ID	DWR_RD2089_02_s_2022_12				
Comment Code					
V1 : Control annual grass and weeds on the levee slopes and easements.					
Inspector Comment					

No Photos

<b>* Location</b> LS : Land Side    N/A : Not Applicable WS : Water Side CR : Crown		<b>** Rating</b> A : Acceptable                      N : Not Inspected/Rated M : Minimally Acceptable        C : Corrected U : Unacceptable                  A/W : Acceptable but Monitor & Maintain		<b>+ Issue Type</b> Ma : Maintenance Deficiency Ob : Design & System Obsolescence En : Enforcement
--	--	---	--	---

**Flood Control Project Maintenance  
Levee Inspections**

**Levee Inspection Report By Mile - Spring 2022**

**Reclamation District No. 2089 Stark**

Waterway	Bank	Unit Miles	Inspection Start/End	Inspector
Unit No. 02 Salmon Slough	Right	1.35	04/20/2022 04/20/2022	Alberto De Leon

LM Start	0.91	Rating **	A/W	Issue No.	59
LM End	0.93	Issue Type +	Ob	Location *	LS
Category	Earthen Levee			GPS Latitude/Longitude	
				Start	End
Item	Seepage / Sandboils			37.814890 °	37.814890 °
				-121.415880 °	-121.416330 °
DWR ID	335-3				
Comment Code					
Inspector Comment					

No Photos

LM Start	0.96	Rating **	M	Issue No.	68
LM End	0.96	Issue Type +	Ma	Location *	LS
Category	Earthen Levee			GPS Latitude/Longitude	
				Start	End
Item	Trim / Thin Trees			37.814911 °	37.814911 °
				-121.416756 °	-121.416756 °
DWR ID	DWR_RD2089_02_s _ 2020_68				
Comment Code					
T1 : Trim and thin trees to at least five feet above ground level to allow visibility of the ground and room to flood fight.					
Inspector Comment					

No Photos

LM Start	0.98	Rating **	M	Issue No.	69
LM End	1.02	Issue Type +	Ma	Location *	LS
Category	Earthen Levee			GPS Latitude/Longitude	
				Start	End
Item	Trim / Thin Trees			37.815018 °	37.815356 °
				-121.417117 °	-121.417745 °
DWR ID	DWR_RD2089_02_s _ 2020_69				
Comment Code					
T1 : Trim and thin trees to at least five feet above ground level to allow visibility of the ground and room to flood fight.					
Inspector Comment					

No Photos

<b>* Location</b> LS : Land Side    N/A : Not Applicable WS : Water Side CR : Crown	<b>** Rating</b> A : Acceptable M : Minimally Acceptable U : Unacceptable	N : Not Inspected/Rated C : Corrected A/W : Acceptable but Monitor & Maintain	<b>+ Issue Type</b> Ma : Maintenance Deficiency Ob : Design & System Obsolescence En : Enforcement
--	--	---	---

**Flood Control Project Maintenance  
Levee Inspections**

**Levee Inspection Report By Mile - Spring 2022**

**Reclamation District No. 2089 Stark**

Waterway	Bank	Unit Miles	Inspection Start/End	Inspector
Unit No. 02 Salmon Slough	Right	1.35	04/20/2022 04/20/2022	Alberto De Leon

LM Start	0.99	Rating **	M	Issue No.	51
LM End	1.02	Issue Type +	Ma	Location *	LS
Category	Earthen Levee			GPS Latitude/Longitude	
				Start	End
Item	Trim / Thin Trees			37.815124 °	37.815387 °
				-121.417332 °	-121.417766 °
DWR ID	DWR_RD2089_02_s_2021_51				
Comment Code					
T1 : Trim and thin trees to at least five feet above ground level to allow visibility of the ground and room to flood fight.					
Inspector Comment					

No Photos

LM Start	1.03	Rating **	U	Issue No.	50
LM End	1.03	Issue Type +	Ma	Location *	WS
Category	Earthen Levee			GPS Latitude/Longitude	
				Start	End
Item	Vegetation			37.815515 °	37.815515 °
				-121.417931 °	-121.417931 °
DWR ID	DWR_RD2089_02_s_2021_50				
Comment Code					
V4 : Elderberries are blocking visibility and flood fight capability.					
Inspector Comment					

No Photos

LM Start	1.04	Rating **	M	Issue No.	70
LM End	1.04	Issue Type +	Ma	Location *	LS
Category	Earthen Levee			GPS Latitude/Longitude	
				Start	End
Item	Trim / Thin Trees			37.815563 °	37.815563 °
				-121.418052 °	-121.418052 °
DWR ID	DWR_RD2089_02_s_2020_70				
Comment Code					
T1 : Trim and thin trees to at least five feet above ground level to allow visibility of the ground and room to flood fight.					
Inspector Comment					

No Photos

<b>* Location</b> LS : Land Side    N/A : Not Applicable WS : Water Side CR : Crown	<b>** Rating</b> A : Acceptable M : Minimally Acceptable U : Unacceptable	N : Not Inspected/Rated C : Corrected A/W : Acceptable but Monitor & Maintain	<b>+ Issue Type</b> Ma : Maintenance Deficiency Ob : Design & System Obsolescence En : Enforcement
--	--	---	---

**Flood Control Project Maintenance  
Levee Inspections**

**Levee Inspection Report By Mile - Spring 2022**

**Reclamation District No. 2089 Stark**

Waterway	Bank	Unit Miles	Inspection Start/End	Inspector
Unit No. 02 Salmon Slough	Right	1.35	04/20/2022 04/20/2022	Alberto De Leon

LM Start	1.05	Rating **	N	Issue No.	29
LM End	1.05	Issue Type +	Ma	Location *	WS
Category	Earthen Levee			GPS Latitude/Longitude	
				Start	End
Item	Trim / Thin Trees			37.815629 °	37.815629 °
				-121.418133 °	-121.418133 °
DWR ID	DWR_RD2089_02_s_2012_29				
Comment Code					
T5 : Tree stumps.					
Inspector Comment					

Photo 1 of 1 : SP\_2022\_RD2089\_317\_29\_20220406\_00017.jpg



View of tree stump left after vegetation and tree removal.

LM Start	1.06	Rating **	M	Issue No.	44
LM End	1.06	Issue Type +	Ma	Location *	LS
Category	Earthen Levee			GPS Latitude/Longitude	
				Start	End
Item	Trim / Thin Trees			37.815731 °	37.815731 °
				-121.418197 °	-121.418197 °
DWR ID	DWR_RD2089_02_s_2021_44				
Comment Code					
T1 : Trim and thin trees to at least five feet above ground level to allow visibility of the ground and room to flood fight.					
Inspector Comment					

No Photos

LM Start	1.08	Rating **	C	Issue No.	45
LM End	1.12	Issue Type +	Ma	Location *	LS
Category	Earthen Levee			GPS Latitude/Longitude	
				Start	End
Item	Trim / Thin Trees			37.815985 °	37.816461 °
				-121.418486 °	-121.418877 °
DWR ID	DWR_RD2089_02_f_2019_45				
Comment Code					
T1 : Trim and thin trees to at least five feet above ground level to allow visibility of the ground and room to flood fight.					
Inspector Comment					

No Photos

\* Location  
LS : Land Side    N/A : Not Applicable  
WS : Water Side  
CR : Crown

\*\* Rating  
A : Acceptable                      N : Not Inspected/Rated  
M : Minimally Acceptable        C : Corrected  
U : Unacceptable                  A/W : Acceptable but Monitor & Maintain

+ Issue Type  
Ma : Maintenance Deficiency  
Ob : Design & System Obsolescence  
En : Enforcement

**Flood Control Project Maintenance  
Levee Inspections**

**Levee Inspection Report By Mile - Spring 2022**

**Reclamation District No. 2089 Stark**

Waterway	Bank	Unit Miles	Inspection Start/End	Inspector
Unit No. 02 Salmon Slough	Right	1.35	04/20/2022 04/20/2022	Alberto De Leon

LM Start	1.12	Rating **	M	Issue No.	30
LM End	1.12	Issue Type +	Ma	Location *	WS
Category	Earthen Levee			GPS Latitude/Longitude	
				Start	End
Item	Vegetation			37.816514 °	37.816514 °
				-121.418948 °	-121.418948 °
DWR ID	DWR_RD2089_02_s_2012_30				
Comment Code					
V4 : Elderberries are blocking visibility and flood fight capability.					
Inspector Comment					

No Photos

LM Start	1.17	Rating **	M	Issue No.	71
LM End	1.17	Issue Type +	Ma	Location *	WS
Category	Earthen Levee			GPS Latitude/Longitude	
				Start	End
Item	Trim / Thin Trees			37.817069 °	37.817069 °
				-121.419274 °	-121.419274 °
DWR ID	DWR_RD2089_02_s_2020_71				
Comment Code					
T1 : Trim and thin trees to at least five feet above ground level to allow visibility of the ground and room to flood fight.					
Inspector Comment					

No Photos

LM Start	1.17	Rating **	M	Issue No.	37
LM End	1.17	Issue Type +	Ma	Location *	LS
Category	Earthen Levee			GPS Latitude/Longitude	
				Start	End
Item	Trim / Thin Trees			37.817182 °	37.817182 °
				-121.419302 °	-121.419302 °
DWR ID	DWR_RD2089_02_s_2021_37				
Comment Code					
T1 : Trim and thin trees to at least five feet above ground level to allow visibility of the ground and room to flood fight.					
Inspector Comment					

No Photos

<b>* Location</b> LS : Land Side    N/A : Not Applicable WS : Water Side CR : Crown	<b>** Rating</b> A : Acceptable M : Minimally Acceptable U : Unacceptable	N : Not Inspected/Rated C : Corrected A/W : Acceptable but Monitor & Maintain	<b>+ Issue Type</b> Ma : Maintenance Deficiency Ob : Design & System Obsolescence En : Enforcement
--	--	---	---



**Flood Control Project Maintenance  
Levee Inspections**

**Levee Inspection Report By Mile - Spring 2022**

**Reclamation District No. 2089 Stark**

Waterway	Bank	Unit Miles	Inspection Start/End	Inspector
Unit No. 02 Salmon Slough	Right	1.35	04/20/2022 04/20/2022	Alberto De Leon

LM Start	1.18	Rating **	M	Issue No.	6
LM End	1.18	Issue Type +	Ma	Location *	LS
Category	Earthen Levee			GPS Latitude/Longitude	
				Start	End
Item	Animal Control			37.817271 °	37.817271 °
				-121.419380 °	-121.419380 °
DWR ID	DWR_RD2089_02_s_2014_6				
Comment Code					
A1 : Exterminate rodents and backfill and compact or grout burrows.					
Inspector Comment					

Photo 1 of 1 : SP\_2022\_RD2089\_317\_6\_20220406\_00006.jpg



View of the large rodent hole on the landside levee slope.

LM Start	1.19	Rating **	M	Issue No.	36
LM End	1.19	Issue Type +	Ma	Location *	LS
Category	Earthen Levee			GPS Latitude/Longitude	
				Start	End
Item	Trim / Thin Trees			37.817380 °	37.817380 °
				-121.419434 °	-121.419434 °
DWR ID	DWR_RD2089_02_s_2021_36				
Comment Code					
T1 : Trim and thin trees to at least five feet above ground level to allow visibility of the ground and room to flood fight.					
Inspector Comment					

No Photos

LM Start	1.23	Rating **	U	Issue No.	31
LM End	1.24	Issue Type +	Ma	Location *	WS
Category	Earthen Levee			GPS Latitude/Longitude	
				Start	End
Item	Vegetation			37.817976 °	37.818051 °
				-121.419714 °	-121.419743 °
DWR ID	DWR_RD2089_02_s_2012_31				
Comment Code					
V4 : Elderberries are blocking visibility and flood fight capability.					
Inspector Comment					

No Photos

\* Location  
LS : Land Side N/A : Not Applicable  
WS : Water Side  
CR : Crown

\*\* Rating  
A : Acceptable N : Not Inspected/Rated  
M : Minimally Acceptable C : Corrected  
U : Unacceptable A/W : Acceptable but Monitor & Maintain

+ Issue Type  
Ma : Maintenance Deficiency  
Ob : Design & System Obsolescence  
En : Enforcement

**Flood Control Project Maintenance  
Levee Inspections**

**Levee Inspection Report By Mile - Spring 2022**

**Reclamation District No. 2089 Stark**

Waterway	Bank	Unit Miles	Inspection Start/End	Inspector
Unit No. 02 Salmon Slough	Right	1.35	04/20/2022 04/20/2022	Alberto De Leon

LM Start	1.24	Rating **	U	Issue No.	28
LM End	1.24	Issue Type +	Ma	Location *	LS
Category	Earthen Levee			GPS Latitude/Longitude	
				Start	End
Item	Animal Control			37.818112 °	37.818112 °
				-121.419720 °	-121.419720 °
DWR ID	DWR_RD2089_02_f_2016_28				
Comment Code					
A1 : Exterminate rodents and backfill and compact or grout burrows.					
Inspector Comment					

Photo 1 of 1 : SP\_2022\_RD2089\_317\_28\_20220406\_00016.jpg



View of the rodent burrow in the landside levee slope.

LM Start	1.24	Rating **	M	Issue No.	72
LM End	1.27	Issue Type +	Ma	Location *	LS
Category	Earthen Levee			GPS Latitude/Longitude	
				Start	End
Item	Trim / Thin Trees			37.818151 °	37.818558 °
				-121.419745 °	-121.419757 °
DWR ID	DWR_RD2089_02_s_2020_72				
Comment Code					
T1 : Trim and thin trees to at least five feet above ground level to allow visibility of the ground and room to flood fight.					
Inspector Comment					

No Photos

LM Start	1.25	Rating **	M	Issue No.	23
LM End	1.31	Issue Type +	En	Location *	LS
Category	Earthen Levee			GPS Latitude/Longitude	
				Start	End
Item	Encroachments			37.818277 °	37.819040 °
				-121.419725 °	-121.419760 °
DWR ID	DWR_RD2089_02_s_2012_23				
Comment Code					
BU : Building					
Inspector Comment					
Buildings and equipment encroach within 10-ft of landside toe.					

Photo 1 of 1 : SP\_2022\_RD2089\_317\_23\_20220406\_00014.jpg



View of buildings and patio decks within 10-ft of the levee slope. Fall 2009

<b>* Location</b> LS : Land Side    N/A : Not Applicable WS : Water Side CR : Crown	<b>** Rating</b> A : Acceptable M : Minimally Acceptable U : Unacceptable	N : Not Inspected/Rated C : Corrected A/W : Acceptable but Monitor & Maintain	<b>+ Issue Type</b> Ma : Maintenance Deficiency Ob : Design & System Obsolescence En : Enforcement
--	--	---	---

**Flood Control Project Maintenance  
Levee Inspections**

**Levee Inspection Report By Mile - Spring 2022**

**Reclamation District No. 2089 Stark**

Waterway	Bank	Unit Miles	Inspection Start/End	Inspector
Unit No. 02 Salmon Slough	Right	1.35	04/20/2022 04/20/2022	Alberto De Leon

LM Start	1.25	Rating **	U	Issue No.	33
LM End	1.25	Issue Type +	Ma	Location *	CR
Category	Earthen Levee			GPS Latitude/Longitude	
				Start	End
Item	Trim / Thin Trees			37.818300 °	37.818300 °
				-121.419715 °	-121.419715 °
DWR ID	DWR_RD2089_02_f _ 2018_33				
Comment Code					
T4 : Trim trees over roadway to at least 12 feet above ground level.					
Inspector Comment					

Photo 1 of 1 : SP\_2022\_RD2089\_317\_33\_20220406\_00018.jpg



View of an untrimmed tree over the surface road. Spring 2021

LM Start	1.27	Rating **	U	Issue No.	35
LM End	1.27	Issue Type +	Ma	Location *	CR
Category	Earthen Levee			GPS Latitude/Longitude	
				Start	End
Item	Trim / Thin Trees			37.818534 °	37.818534 °
				-121.419749 °	-121.419749 °
DWR ID	DWR_RD2089_02_s_2021_35				
Comment Code					
T4 : Trim trees over roadway to at least 12 feet above ground level.					
Inspector Comment					

Photo 1 of 1 : SP\_2022\_RD2089\_317\_35\_20220406\_00019.jpg



View of an untrimmed tree over the surface road. Spring 2021

LM Start	1.27	Rating **	M	Issue No.	22
LM End	1.27	Issue Type +	En	Location *	WS
Category	Earthen Levee			GPS Latitude/Longitude	
				Start	End
Item	Encroachments			37.818541 °	37.818541 °
				-121.419748 °	-121.419748 °
DWR ID	DWR_RD2089_02_f_2020_22				
Comment Code					
PR : Prunings					
Inspector Comment					

No Photos

<b>* Location</b> LS : Land Side    N/A : Not Applicable WS : Water Side CR : Crown		<b>** Rating</b> A : Acceptable                      N : Not Inspected/Rated M : Minimally Acceptable        C : Corrected U : Unacceptable                  A/W : Acceptable but Monitor & Maintain		<b>+ Issue Type</b> Ma : Maintenance Deficiency Ob : Design & System Obsolescence En : Enforcement
--	--	---	--	---

**Flood Control Project Maintenance  
Levee Inspections**

**Levee Inspection Report By Mile - Spring 2022**

**Reclamation District No. 2089 Stark**

Waterway	Bank	Unit Miles	Inspection Start/End	Inspector
Unit No. 02 Salmon Slough	Right	1.35	04/20/2022 04/20/2022	Alberto De Leon

LM Start	1.28	Rating **	M	Issue No.	34
LM End	1.30	Issue Type +	Ma	Location *	LS
Category	Earthen Levee			GPS Latitude/Longitude	
				Start	End
Item	Trim / Thin Trees			37.818673 °	37.819006 °
				-121.419760 °	-121.419769 °
DWR ID	DWR_RD2089_02_s_2021_34				
Comment Code					
T1 : Trim and thin trees to at least five feet above ground level to allow visibility of the ground and room to flood fight.					
Inspector Comment					

No Photos

LM Start	1.29	Rating **	U	Issue No.	16
LM End	1.30	Issue Type +	Ma	Location *	LS
Category	Earthen Levee			GPS Latitude/Longitude	
				Start	End
Item	Animal Control			37.818740 °	37.818987 °
				-121.419759 °	-121.419767 °
DWR ID	DWR_RD2089_02_s_2015_16				
Comment Code					
A1 : Exterminate rodents and backfill and compact or grout burrows.					
Inspector Comment					

Photo 1 of 1 : SP\_2022\_RD2089\_317\_16\_20220406\_00012.jpg



View of the rodent burrow in the landside levee slope.

LM Start	1.29	Rating **	A/W	Issue No.	32
LM End	1.29	Issue Type +	Ma	Location *	WS
Category	Earthen Levee			GPS Latitude/Longitude	
				Start	End
Item	Vegetation			37.818829 °	37.818829 °
				-121.419776 °	-121.419776 °
DWR ID	DWR_RD2089_02_s_2012_32				
Comment Code					
V4 : Elderberries are blocking visibility and flood fight capability.					
Inspector Comment					

No Photos

<b>* Location</b> LS : Land Side    N/A : Not Applicable WS : Water Side CR : Crown		<b>** Rating</b> A : Acceptable                      N : Not Inspected/Rated M : Minimally Acceptable        C : Corrected U : Unacceptable                  A/W : Acceptable but Monitor & Maintain		<b>+ Issue Type</b> Ma : Maintenance Deficiency Ob : Design & System Obsolescence En : Enforcement
--	--	---	--	---



**Flood Control Project Maintenance  
Levee Inspections**

**Levee Inspection Report By Mile - Spring 2022**

**Reclamation District No. 2089 Stark**

Waterway	Bank	Unit Miles	Inspection Start/End	Inspector
Unit No. 02 Salmon Slough	Right	1.35	04/20/2022 04/20/2022	Alberto De Leon

LM Start	1.29	Rating **	N	Issue No.	18
LM End	1.29	Issue Type +	Ma	Location *	LS
Category	Earthen Levee			GPS Latitude/Longitude	
				Start	End
Item	Trim / Thin Trees			37.818843 °	37.818843 °
				-121.419762 °	-121.419762 °
DWR ID	DWR_RD2089_02_f_2016_18				
Comment Code					
T5 : Tree stumps.					
Inspector Comment					

Photo 1 of 1 : SP\_2022\_RD2089\_317\_18\_20220406\_00013.jpg



View of the tree stump from the levee crown.

LM Start	1.33	Rating **	U	Issue No.	11
LM End	1.34	Issue Type +	Ma	Location *	LS
Category	Earthen Levee			GPS Latitude/Longitude	
				Start	End
Item	Animal Control			37.819371 °	37.819557 °
				-121.419774 °	-121.419696 °
DWR ID	DWR_RD2089_02_f_2014_11				
Comment Code					
A3 : No rodents visible, but rodent burrows visible; need to backfill and compact or grout burrows.					
Inspector Comment					

Photo 1 of 1 : SP\_2022\_RD2089\_317\_11\_20220406\_00010.jpg



View of the multiple rodent burrows on the landside levee slope.

<b>* Location</b> LS : Land Side    N/A : Not Applicable WS : Water Side CR : Crown		<b>** Rating</b> A : Acceptable                      N : Not Inspected/Rated M : Minimally Acceptable        C : Corrected U : Unacceptable                  A/W : Acceptable but Monitor & Maintain		<b>+ Issue Type</b> Ma : Maintenance Deficiency Ob : Design & System Obsolescence En : Enforcement
--	--	---	--	---