

Flood Control Project Maintenance Levee Inspections LMA District Cover Sheet

Reclamation District No. 2089 Stark

	Spring (March - May)	Summer ** (June - August)	Fall (September - November)	Winter ** (December - February)
† Overall LMA Rating (Fall Only)				

**** Non-receipt of Summer or Winter Inspection Reports may effect overall annual rating.**

SPRING INSPECTIONS: Overall maintenance ratings are not determined for the spring inspection results. Individual maintenance deficiencies are rated using the same criteria in the spring and in the fall.

FALL INSPECTIONS: The overall maintenance rating shown above is based on operation and maintenance deficiencies identified within the attached unit inspection reports. This rating is not intended to be an indication of risk.

Comments

**Flood Control Project Maintenance
Levee Inspections
Unit Cover Sheet**

Reclamation District No. 2089 Stark

Waterway			Bank	Unit Miles
Unit No. 01 Old River			Right	1.51
	Spring (March - May)	Summer (June - August)	(September - November) Fall	Winter (December - February)
Unit Maintenance Rating (Fall Only)				
Date of Inspection	4/15/2021 - 4/15/2021			
DWR Inspector	Alberto De Leon			
Accompanied By				

Summer & Winter Inspections

The Local Maintaining Agency (LMA) is responsible for summer and winter inspections. The LMA is required to submit a report regarding summer and winter inspections to the California Department of Water Resources (DWR).

DWR must be informed on the:

- a) completion of the inspection
- b) any changes other than the results of normal maintenance
- c) corrections to deficiencies noted in this report

If additional items are noted, further documentation of those items must also be submitted.

The LMA should submit this information to DWR using the LMA web application tool available at:

<http://cdec.water.ca.gov/lma.html>

If the LMA is unable to submit information on this webpage, please contact DWR for assistance.

The LMA should submit the information and any associated documentation by September 30 for summer inspections and March 31 for winter inspections.

**Flood Control Project Maintenance
Levee Inspections**

Levee Inspection Report By Mile - Spring 2021

Reclamation District No. 2089 Stark

Waterway	Bank	Unit Miles	Inspection Start/End	Inspector
Unit No. 01 Old River	Right	1.51	04/15/2021 04/15/2021	Alberto De Leon

LM Start		Rating **	A	Issue No.	4
LM End		Issue Type +	Ma	Location *	N/A
Category	Earthen Levee			GPS Latitude/Longitude	
				Start	End
Item	Operations & Maintenance Manuals				°
					°
DWR ID	DWR_RD2089_01_s_2013_4				
Comment Code					
Inspector Comment					
The O&M Manual is available at the LMA's office.					

No Photos

LM Start		Rating **	M	Issue No.	15
LM End		Issue Type +	Ma	Location *	N/A
Category	Earthen Levee			GPS Latitude/Longitude	
				Start	End
Item	Emergency Supplies & Equipment				°
					°
DWR ID	DWR_RD2089_01_s_2013_15				
Comment Code					
Inspector Comment					
The LMA has flood fighting supplies on-site.					

No Photos

LM Start		Rating **	M	Issue No.	34
LM End		Issue Type +	Ma	Location *	N/A
Category	Earthen Levee			GPS Latitude/Longitude	
				Start	End
Item	Flood Preparedness & Training				°
					°
DWR ID	DWR_RD2089_01_s_2021_34				
Comment Code					
Inspector Comment					
The LMA has not attended a flood fight training class in the past few years. They do have an emergency plan.					

No Photos

* Location LS : Land Side N/A : Not Applicable WS : Water Side CR : Crown	** Rating A : Acceptable M : Minimally Acceptable U : Unacceptable	N : Not Inspected/Rated C : Corrected A/W : Acceptable but Monitor & Maintain	+ Issue Type Ma : Maintenance Deficiency Ob : Design & System Obsolescence En : Enforcement
--	--	---	---

**Flood Control Project Maintenance
Levee Inspections**

Levee Inspection Report By Mile - Spring 2021

Reclamation District No. 2089 Stark

Waterway	Bank	Unit Miles	Inspection Start/End	Inspector
Unit No. 01 Old River	Right	1.51	04/15/2021 04/15/2021	Alberto De Leon

LM Start	0.00	Rating **	M	Issue No.	9
LM End	0.38	Issue Type +	En	Location *	LS
Category	Earthen Levee			GPS Latitude/Longitude	
				Start	End
Item	Encroachments			37.811681 °	37.809755 °
				-121.384930 °	-121.391520 °
DWR ID	DWR_RD2089_01_s_2012_9				
Comment Code					
DT : Ditch					
Inspector Comment					

Photo 1 of 1 : SP_2021_RD2089_316_9_20210210_00007.jpg



Ditch flows parallel with the utility line shown in the photo. 05/24/2011

LM Start	0.02	Rating **	U	Issue No.	59
LM End	0.59	Issue Type +	Ma	Location *	WS
Category	Earthen Levee			GPS Latitude/Longitude	
				Start	End
Item	Vegetation			37.811578 °	37.810255 °
				-121.385272 °	-121.394940 °
DWR ID	DWR_RD2089_01_s_2021_59				
Comment Code					
V2 : Remove the wild growth other than native grasses from the levee slopes.					
Inspector Comment					

Photo 1 of 1 : SP_2021_RD2089_316_59_20210504_00044.jpg



View of wild growth vegetation along the waterside slope. Spring 2021

LM Start	0.02	Rating **	U	Issue No.	58
LM End	0.59	Issue Type +	Ma	Location *	LS
Category	Earthen Levee			GPS Latitude/Longitude	
				Start	End
Item	Vegetation			37.811578 °	37.810241 °
				-121.385272 °	-121.394960 °
DWR ID	DWR_RD2089_01_s_2021_58				
Comment Code					
V2 : Remove the wild growth other than native grasses from the levee slopes.					
Inspector Comment					

Photo 1 of 1 : SP_2021_RD2089_316_58_20210504_00043.jpg



View of wild growth vegetation along the landside slope and easement. Spring 2021

* Location LS : Land Side N/A : Not Applicable WS : Water Side CR : Crown	** Rating A : Acceptable M : Minimally Acceptable U : Unacceptable	N : Not Inspected/Rated C : Corrected A/W : Acceptable but Monitor & Maintain	+ Issue Type Ma : Maintenance Deficiency Ob : Design & System Obsolescence En : Enforcement
--	--	--	---

**Flood Control Project Maintenance
Levee Inspections**

Levee Inspection Report By Mile - Spring 2021

Reclamation District No. 2089 Stark

Waterway	Bank	Unit Miles	Inspection Start/End	Inspector
Unit No. 01 Old River	Right	1.51	04/15/2021 04/15/2021	Alberto De Leon

LM Start	0.02	Rating **	M	Issue No.	12
LM End	0.02	Issue Type +	Ma	Location *	CR
Category	Earthen Levee			GPS Latitude/Longitude	
				Start	End
Item	Crown Surface / Depressions / Rutting			37.811537 °	37.811537 °
				-121.385354 °	-121.385354 °
DWR ID	DWR_RD2089_01_s_2019_12				
Comment Code					
C2 : Repair depressions or ruts in the crown or slope.					
Inspector Comment					

Photo 1 of 1 : SP_2021_RD2089_316_12_20210210_00008.jpg



View of depression on surface road near landside hinge. Spring 2020

LM Start	0.03	Rating **	U	Issue No.	18
LM End	0.03	Issue Type +	Ma	Location *	LS
Category	Earthen Levee			GPS Latitude/Longitude	
				Start	End
Item	Trim / Thin Trees			37.811518 °	37.811518 °
				-121.385430 °	-121.385430 °
DWR ID	DWR_RD2089_01_f_2018_18				
Comment Code					
T3 : Trim and thin trees to allow visibility of the ground and room to flood fight.					
Inspector Comment					

Photo 1 of 1 : SP_2021_RD2089_316_18_20210210_00013.jpg



View of untrimmed tree on landside slope. Fall 2020

LM Start	0.09	Rating **	M	Issue No.	20
LM End	0.09	Issue Type +	Ma	Location *	CR
Category	Earthen Levee			GPS Latitude/Longitude	
				Start	End
Item	Crown Surface / Depressions / Rutting			37.811256 °	37.811256 °
				-121.386424 °	-121.386424 °
DWR ID	DWR_RD2089_01_f_2020_20				
Comment Code					
C2 : Repair depressions or ruts in the crown or slope.					
Inspector Comment					

No Photos

* Location LS : Land Side N/A : Not Applicable WS : Water Side CR : Crown		** Rating A : Acceptable N : Not Inspected/Rated M : Minimally Acceptable C : Corrected U : Unacceptable A/W : Acceptable but Monitor & Maintain		+ Issue Type Ma : Maintenance Deficiency Ob : Design & System Obsolescence En : Enforcement
--	--	---	--	---

**Flood Control Project Maintenance
Levee Inspections**

Levee Inspection Report By Mile - Spring 2021

Reclamation District No. 2089 Stark

Waterway	Bank	Unit Miles	Inspection Start/End	Inspector
Unit No. 01 Old River	Right	1.51	04/15/2021 04/15/2021	Alberto De Leon

LM Start	0.09	Rating **	M	Issue No.	21
LM End	0.09	Issue Type +	Ma	Location *	LS
Category	Earthen Levee			GPS Latitude/Longitude	
				Start	End
Item	Trim / Thin Trees			37.811268 °	37.811268 °
				-121.386521 °	-121.386521 °
DWR ID	DWR_RD2089_01_s_2019_21				
Comment Code					
T3 : Trim and thin trees to allow visibility of the ground and room to flood fight.					
Inspector Comment					

No Photos

LM Start	0.17	Rating **	U	Issue No.	23
LM End	0.51	Issue Type +	Ma	Location *	LS
Category	Earthen Levee			GPS Latitude/Longitude	
				Start	End
Item	Trim / Thin Trees			37.810858 °	37.809866 °
				-121.387931 °	-121.393546 °
DWR ID	DWR_RD2089_01_s_2020_23				
Comment Code					
T3 : Trim and thin trees to allow visibility of the ground and room to flood fight.					
Inspector Comment					

Photo 1 of 1 : SP_2021_RD2089_316_23_20210504_00045.jpg



View of untrimmed trees along the landside slope. Spring 2021

LM Start	0.26	Rating **	A/W	Issue No.	13
LM End	0.27	Issue Type +	Ma	Location *	WS
Category	Earthen Levee			GPS Latitude/Longitude	
				Start	End
Item	Erosion / Bank Caving			37.810300 °	37.810300 °
				-121.389300 °	-121.389500 °
DWR ID	LMA-419				
Comment Code					
E1 : Note and monitor erosion site.					
Inspector Comment					
2017 Storm Damage Site, ID No. 513, LMA 419. Slope protection repairs are needed along the waterside slope due to erosion and riprap displacement from high water.					
.					

Photo 1 of 1 : LEVAL_SP_2021_513_4443.jpg



* Location
LS : Land Side N/A : Not Applicable
WS : Water Side
CR : Crown

** Rating
A : Acceptable N : Not Inspected/Rated
M : Minimally Acceptable C : Corrected
U : Unacceptable A/W : Acceptable but Monitor & Maintain

+ Issue Type
Ma : Maintenance Deficiency
Ob : Design & System Obsolescence
En : Enforcement

**Flood Control Project Maintenance
Levee Inspections**

Levee Inspection Report By Mile - Spring 2021

Reclamation District No. 2089 Stark

Waterway	Bank	Unit Miles	Inspection Start/End	Inspector
Unit No. 01 Old River	Right	1.51	04/15/2021 04/15/2021	Alberto De Leon

LM Start	0.31	Rating **	M	Issue No.	25
LM End	0.31	Issue Type +	Ma	Location *	WS
Category	Earthen Levee			GPS Latitude/Longitude	
				Start	End
Item	Trim / Thin Trees			37.810109 °	37.810109 °
				-121.390192 °	-121.390192 °
DWR ID	DWR_RD2089_01_s _ 2020_25				
Comment Code					
T1 : Trim trees to at least five feet above ground level.					
Inspector Comment					

No Photos

LM Start	0.35	Rating **	M	Issue No.	28
LM End	0.35	Issue Type +	Ma	Location *	WS
Category	Earthen Levee			GPS Latitude/Longitude	
				Start	End
Item	Trim / Thin Trees			37.809904 °	37.809904 °
				-121.391021 °	-121.391021 °
DWR ID	DWR_RD2089_01_s _ 2020_28				
Comment Code					
T2 : Thin trees to allow visibility of the ground and room to flood fight.					
Inspector Comment					

No Photos

*** Location**
LS : Land Side N/A : Not Applicable
WS : Water Side
CR : Crown

**** Rating**
A : Acceptable N : Not Inspected/Rated
M : Minimally Acceptable C : Corrected
U : Unacceptable A/W : Acceptable but Monitor & Maintain

+ Issue Type
Ma : Maintenance Deficiency
Ob : Design & System Obsolescence
En : Enforcement

**Flood Control Project Maintenance
Levee Inspections**

Levee Inspection Report By Mile - Spring 2021

Reclamation District No. 2089 Stark

Waterway	Bank	Unit Miles	Inspection Start/End	Inspector
Unit No. 01 Old River	Right	1.51	04/15/2021 04/15/2021	Alberto De Leon

LM Start	0.46	Rating **	M	Issue No.	1	
LM End	0.46	Issue Type +	En	Location *		
Category	Supplemental			GPS Latitude/Longitude		
				Start		End
Item	DWR UCIP Field Study			37.809501 °	37.809501 °	
				-121.392798 °	-121.392798 °	
DWR ID	23042					
Comment Code						
Inspector Comment						
FS_ID:21635 DS_ID:23042 EP_NO: 5641 Repair Type: Non-Urgent Crossing Status: Found UCIP Comments: - damaged siphon breaker.- most of the pipe on landside exposed on levee slope. FIELD_STRUCT_DESC: 20-inch steel irrigation discharge pipe and electrical conduit through the levee, 5.8 feet below the crown. Pump on a pile structure in the stream. Siphon breaker on the landside (LS) slope. (Plans to replace a rusted out irrigation discharge pipe through the levee authorized under Permit No. 5641, 1967 - Theodore Stark). [Additional Reference(s): DWR Levee Log, 1991. USACE San Joaquin O&M Manual 8, 1968, (HLM 0.46), 21-inch pipe referenced]. FS Date: 9/12/2013						

LM Start	0.46	Rating **	M	Issue No.	1 (cont)
LM End	0.46	Issue Type +	En	Location *	

Photo 1 of 3 : UCIP_SP_2021_21635_36742.jpg



WS view: walkway to pump platform and pump on steel piling structure in the channel.

Photo 2 of 3 : UCIP_SP_2021_21635_36741.jpg



WS view: steel walkway, electric control box, and pump on steel piling structure in the channel.

* Location LS : Land Side N/A : Not Applicable WS : Water Side CR : Crown	** Rating A : Acceptable M : Minimally Acceptable U : Unacceptable	N : Not Inspected/Rated C : Corrected A/W : Acceptable but Monitor & Maintain	+ Issue Type Ma : Maintenance Deficiency Ob : Design & System Obsolescence En : Enforcement
--	--	---	---

**Flood Control Project Maintenance
Levee Inspections**

Levee Inspection Report By Mile - Spring 2021

Reclamation District No. 2089 Stark

Waterway	Bank	Unit Miles	Inspection Start/End	Inspector
Unit No. 01 Old River	Right	1.51	04/15/2021 04/15/2021	Alberto De Leon

LM Start	0.46	Rating **	M	Issue No.	1 (cont)
LM End	0.46	Issue Type +	En	Location *	
Category	Supplemental		GPS Latitude/Longitude		
			Start	End	
Item	DWR UCIP Field Study		37.809501 °	37.809501 °	
			-121.392798 °	-121.392798 °	
DWR ID	23042				

Photo 3 of 3 : UCIP_SP_2021_21635_36740.jpg



LS view: overview of exposed steel pipe (right) on levee slope and service pole (left).

LM Start	0.46	Rating **	M	Issue No.	50
LM End	0.48	Issue Type +	Ma	Location *	WS
Category	Earthen Levee			GPS Latitude/Longitude	
				Start	End
Item	Trim / Thin Trees			37.809495 °	37.809621 °
				-121.392807 °	-121.393125 °
DWR ID	DWR_RD2089_01_s_2020_50				
Comment Code					
T2 : Thin trees to allow visibility of the ground and room to flood fight.					
Inspector Comment					

No Photos

LM Start	0.53	Rating **	U	Issue No.	29
LM End	0.53	Issue Type +	En	Location *	LS
Category	Earthen Levee			GPS Latitude/Longitude	
				Start	End
Item	Encroachments			37.810001 °	37.810001 °
				-121.393903 °	-121.393903 °
DWR ID	DWR_RD2089_01_f_2019_29				
Comment Code					
TR : Tree or limb					
Inspector Comment					
Downed tree limb has been cut and placed on landside slope.					

Photo 1 of 1 : SP_2021_RD2089_316_29_20210210_00018.jpg



View of downed tree limb on landside slope. Spring 2020

* Location LS : Land Side N/A : Not Applicable WS : Water Side CR : Crown	** Rating A : Acceptable M : Minimally Acceptable U : Unacceptable	N : Not Inspected/Rated C : Corrected A/W : Acceptable but Monitor & Maintain	+ Issue Type Ma : Maintenance Deficiency Ob : Design & System Obsolescence En : Enforcement
--	--	--	---

**Flood Control Project Maintenance
Levee Inspections**

Levee Inspection Report By Mile - Spring 2021

Reclamation District No. 2089 Stark

Waterway	Bank	Unit Miles	Inspection Start/End	Inspector
Unit No. 01 Old River	Right	1.51	04/15/2021 04/15/2021	Alberto De Leon

LM Start	0.55	Rating **	M	Issue No.	14
LM End	0.55	Issue Type +	Ma	Location *	CR
Category	Earthen Levee			GPS Latitude/Longitude	
				Start	End
Item	Crown Surface / Depressions / Rutting			37.810128 °	37.810128 °
				-121.394200 °	-121.394200 °
DWR ID	DWR_RD2089_01_s_2012_14				
Comment Code					
C3 : Add appropriate gravel or road base. Grade and compact.					
Inspector Comment					

Photo 1 of 1 : SP_2021_RD2089_316_14_20210210_00010.jpg



11/10/2011 Depressions in crown.

LM Start	0.56	Rating **	M	Issue No.	60
LM End	0.56	Issue Type +	Ma	Location *	LS
Category	Earthen Levee			GPS Latitude/Longitude	
				Start	End
Item	Trim / Thin Trees			37.810174 °	37.810174 °
				-121.394445 °	-121.394445 °
DWR ID	DWR_RD2089_01_s_2021_60				
Comment Code					
T3 : Trim and thin trees to allow visibility of the ground and room to flood fight.					
Inspector Comment					

No Photos

LM Start	0.59	Rating **	U	Issue No.	24
LM End	0.68	Issue Type +	Ma	Location *	LS
Category	Earthen Levee			GPS Latitude/Longitude	
				Start	End
Item	Vegetation			37.810241 °	37.809745 °
				-121.394960 °	-121.396465 °
DWR ID	DWR_RD2089_01_f_2019_24				
Comment Code					
V1 : Control annual grass and weeds on the levee slopes and easements.					
Inspector Comment					
Vegetation on landside slope needs to be maintained to allow access and visibility.					

Photo 1 of 1 : SP_2021_RD2089_316_24_20210210_00016.jpg



Typical view of overgrown vegetation on landside slope. Fall 2020

*** Location**

LS : Land Side N/A : Not Applicable
WS : Water Side
CR : Crown

**** Rating**

A : Acceptable N : Not Inspected/Rated
M : Minimally Acceptable C : Corrected
U : Unacceptable A/W : Acceptable but Monitor & Maintain

+ Issue Type

Ma : Maintenance Deficiency
Ob : Design & System Obsolescence
En : Enforcement

**Flood Control Project Maintenance
Levee Inspections**

Levee Inspection Report By Mile - Spring 2021

Reclamation District No. 2089 Stark

Waterway	Bank	Unit Miles	Inspection Start/End	Inspector
Unit No. 01 Old River	Right	1.51	04/15/2021 04/15/2021	Alberto De Leon

LM Start	0.59	Rating **	M	Issue No.	53
LM End	0.59	Issue Type +	Ma	Location *	LS
Category	Earthen Levee			GPS Latitude/Longitude	
				Start	End
Item	Trim / Thin Trees			37.810233 °	37.810233 °
				-121.395095 °	-121.395095 °
DWR ID	DWR_RD2089_01_s_2020_53				
Comment Code					
T3 : Trim and thin trees to allow visibility of the ground and room to flood fight.					
Inspector Comment					

No Photos

LM Start	0.62	Rating **	M	Issue No.	36
LM End	0.62	Issue Type +	Ma	Location *	LS
Category	Earthen Levee			GPS Latitude/Longitude	
				Start	End
Item	Trim / Thin Trees			37.810144 °	37.810144 °
				-121.395578 °	-121.395578 °
DWR ID	DWR_RD2089_01_f_2019_36				
Comment Code					
T1 : Trim trees to at least five feet above ground level.					
Inspector Comment					

No Photos

*** Location**
 LS : Land Side N/A : Not Applicable
 WS : Water Side
 CR : Crown

**** Rating**
 A : Acceptable N : Not Inspected/Rated
 M : Minimally Acceptable C : Corrected
 U : Unacceptable A/W : Acceptable but Monitor & Maintain

+ Issue Type
 Ma : Maintenance Deficiency
 Ob : Design & System Obsolescence
 En : Enforcement

**Flood Control Project Maintenance
Levee Inspections**

Levee Inspection Report By Mile - Spring 2021

Reclamation District No. 2089 Stark

Waterway	Bank	Unit Miles	Inspection Start/End	Inspector
Unit No. 01 Old River	Right	1.51	04/15/2021 04/15/2021	Alberto De Leon

LM Start	0.66	Rating **	M	Issue No.	3
LM End	0.66	Issue Type +	Ma	Location *	WS
Category	Supplemental			GPS Latitude/Longitude	
				Start	End
Item	DWR Erosion Survey			37.809780 °	37.809780 °
				-121.396230 °	-121.396230 °
DWR ID	RD2089U01RM29.61				

Comment Code

Inspector Comment

Site ID: RD2089U01RM29.61

09/30/2020: Noticed less vegetation on the upper levee slope and surface erosion above the pocket erosion.

08/14/2019: From 2012 to 2019, no significant changes were observed during the annual survey.

08/23/2011: The 5-foot vertical scarp shows no significant change from the last year inspection. No new erosion activities observed. Dense white willow trees on site.

09/07/2010: It was difficult to view the erosion due to the thick Willow thickets and other vegetation at the water line. At the time of the inspection, there were no signs of repair on site. As noted during the last survey, there is a 5-foot vertical scarp along the lower slope that may be subjected to high flow velocities.

08/05/2010: Recommended for repair, per CLRO; "Erosion of this site may be subjective to rapid rates of erosion."

09/28/2009: No major change observed; 5-foot vertical scarp is immediately downstream of where berm has tapered; site is recommended as local maintenance issue, per CLRO CES Evaluation 2008 Report; Site # is the same as RM29.6, LM0.60; previously rated "U".

11/05/2008: No change observed; rodent holes on lower slope; wide levee crown.

LM Start	0.66	Rating **	M	Issue No.	3 (cont)
LM End	0.66	Issue Type +	Ma	Location *	WS

Photo 1 of 2 : SP_2021_RD2089_316_3_20210210_00003.jpg



9/30/2020: Front view of the eroded slope.

Photo 2 of 2 : SP_2021_RD2089_316_3_20210210_00004.jpg



8/14/2019: Front view of the site. Note the very dense white willow thickets on site.

* Location LS : Land Side N/A : Not Applicable WS : Water Side CR : Crown	** Rating A : Acceptable M : Minimally Acceptable U : Unacceptable	N : Not Inspected/Rated C : Corrected A/W : Acceptable but Monitor & Maintain	+ Issue Type Ma : Maintenance Deficiency Ob : Design & System Obsolescence En : Enforcement
--	--	---	---

**Flood Control Project Maintenance
Levee Inspections**

Levee Inspection Report By Mile - Spring 2021

Reclamation District No. 2089 Stark

Waterway	Bank	Unit Miles	Inspection Start/End	Inspector
Unit No. 01 Old River	Right	1.51	04/15/2021 04/15/2021	Alberto De Leon

LM Start	0.68	Rating **	U	Issue No.	57
LM End	0.74	Issue Type +	Ma	Location *	LS
Category	Earthen Levee			GPS Latitude/Longitude	
				Start	End
Item	Vegetation			37.809745 °	37.809176 °
				-121.396465 °	-121.397349 °
DWR ID	DWR_RD2089_01_s_2021_57				
Comment Code					
V2 : Remove the wild growth other than native grasses from the levee slopes.					
Inspector Comment					

Photo 1 of 1 : SP_2021_RD2089_316_57_20210504_00042.jpg



View of wild growth vegetation along the landside slope. Spring 2021

LM Start	0.75	Rating **	M	Issue No.	51
LM End	0.99	Issue Type +	Ma	Location *	WS
Category	Earthen Levee			GPS Latitude/Longitude	
				Start	End
Item	Vegetation			37.809176 °	37.806184 °
				-121.397727 °	-121.398565 °
DWR ID	DWR_RD2089_01_s_2021_51				
Comment Code					
V1 : Control annual grass and weeds on the levee slopes and easements.					
Inspector Comment					

No Photos

LM Start	0.80	Rating **	M	Issue No.	22
LM End	0.80	Issue Type +	En	Location *	LS
Category	Earthen Levee			GPS Latitude/Longitude	
				Start	End
Item	Encroachments			37.808466 °	37.808466 °
				-121.397847 °	-121.397847 °
DWR ID	DWR_RD2089_01_f _ 2016_22				
Comment Code					
ST : Stairway					
Inspector Comment					

Photo 1 of 1 : SP_2021_RD2089_316_22_20210210_00014.jpg



View of steps on landside slope. Fall 2020

* Location
LS : Land Side N/A : Not Applicable
WS : Water Side
CR : Crown

** Rating
A : Acceptable N : Not Inspected/Rated
M : Minimally Acceptable C : Corrected
U : Unacceptable A/W : Acceptable but Monitor & Maintain

+ Issue Type
Ma : Maintenance Deficiency
Ob : Design & System Obsolescence
En : Enforcement

Reclamation District No. 2089 Stark

**Flood Control Project Maintenance
Levee Inspections**

Levee Inspection Report By Mile - Spring 2021

Reclamation District No. 2089 Stark

Waterway	Bank	Unit Miles	Inspection Start/End	Inspector
Unit No. 01 Old River	Right	1.51	04/15/2021 04/15/2021	Alberto De Leon

LM Start	0.80	Rating **	M	Issue No.	6 (cont)
LM End	0.80	Issue Type +	En	Location *	
Category	Supplemental			GPS Latitude/Longitude	
				Start	End
Item	DWR UCIP Field Study			37.808387 °	37.808387 °
				-121.397843 °	-121.397843 °
DWR ID	23043				

Photo 3 of 3 : UCIP_SP_2021_21587_36633.jpg



LS view: exposed pipe with siphon breaker on levee slope. Concrete standpipe on levee toe.

LM Start	0.81	Rating **	M	Issue No.	17
LM End	0.94	Issue Type +	En	Location *	LS
Category	Earthen Levee			GPS Latitude/Longitude	
				Start	End
Item	Encroachments			37.808319 °	37.806453 °
				-121.397881 °	-121.397755 °
DWR ID	DWR_RD2089_01_f_2014_17				
Comment Code					
AT : Agricultural tilling					
Inspector Comment					
The landside levee toe is cut due to farming.					

Photo 1 of 1 : SP_2021_RD2089_316_17_20210210_00012.jpg



View of vertical cut along the landside toe. (Fall 2019)

LM Start	0.86	Rating **	M	Issue No.	37
LM End	0.86	Issue Type +	Ma	Location *	LS
Category	Earthen Levee			GPS Latitude/Longitude	
				Start	End
Item	Trim / Thin Trees			37.807519 °	37.807519 °
				-121.397780 °	-121.397780 °
DWR ID	DWR_RD2089_01_f_2019_37				
Comment Code					
T1 : Trim trees to at least five feet above ground level.					
Inspector Comment					

No Photos

* Location LS : Land Side N/A : Not Applicable WS : Water Side CR : Crown	** Rating A : Acceptable M : Minimally Acceptable U : Unacceptable	N : Not Inspected/Rated C : Corrected A/W : Acceptable but Monitor & Maintain	+ Issue Type Ma : Maintenance Deficiency Ob : Design & System Obsolescence En : Enforcement
--	--	---	---

**Flood Control Project Maintenance
Levee Inspections**

Levee Inspection Report By Mile - Spring 2021

Reclamation District No. 2089 Stark

Waterway	Bank	Unit Miles	Inspection Start/End	Inspector
Unit No. 01 Old River	Right	1.51	04/15/2021 04/15/2021	Alberto De Leon

LM Start	0.94	Rating **	M	Issue No.	38
LM End	0.94	Issue Type +	Ma	Location *	LS
Category	Earthen Levee			GPS Latitude/Longitude	
				Start	End
Item	Trim / Thin Trees			37.806403 °	37.806403 °
				-121.397779 °	-121.397779 °
DWR ID	DWR_RD2089_01_f_2019_38				
Comment Code					
T3 : Trim and thin trees to allow visibility of the ground and room to flood fight.					
Inspector Comment					

No Photos

LM Start	0.96	Rating **	M	Issue No.	39
LM End	0.96	Issue Type +	Ma	Location *	LS
Category	Earthen Levee			GPS Latitude/Longitude	
				Start	End
Item	Trim / Thin Trees			37.806253 °	37.806253 °
				-121.398070 °	-121.398070 °
DWR ID	DWR_RD2089_01_f_2019_39				
Comment Code					
T3 : Trim and thin trees to allow visibility of the ground and room to flood fight.					
Inspector Comment					

No Photos

LM Start	0.97	Rating **	M	Issue No.	27
LM End	1.07	Issue Type +	Ma	Location *	LS
Category	Earthen Levee			GPS Latitude/Longitude	
				Start	End
Item	Vegetation			37.806245 °	37.805853 °
				-121.398156 °	-121.400090 °
DWR ID	DWR_RD2089_01_s_2019_27				
Comment Code					
V1 : Control annual grass and weeds on the levee slopes and easements.					
Inspector Comment					
Vegetation on landside slope needs to be maintained to allow access and visibility.					

Photo 1 of 1 : SP_2021_RD2089_316_27_20210210_00017.jpg



View of vegetation on landside slope. (spring 2019)

*** Location**
LS : Land Side N/A : Not Applicable
WS : Water Side
CR : Crown

**** Rating**
A : Acceptable N : Not Inspected/Rated
M : Minimally Acceptable C : Corrected
U : Unacceptable A/W : Acceptable but Monitor & Maintain

+ Issue Type
Ma : Maintenance Deficiency
Ob : Design & System Obsolescence
En : Enforcement

**Flood Control Project Maintenance
Levee Inspections**

Levee Inspection Report By Mile - Spring 2021

Reclamation District No. 2089 Stark

Waterway	Bank	Unit Miles	Inspection Start/End	Inspector
Unit No. 01 Old River	Right	1.51	04/15/2021 04/15/2021	Alberto De Leon

LM Start	0.99	Rating **	U	Issue No.	54
LM End	1.07	Issue Type +	Ma	Location *	WS
Category	Earthen Levee			GPS Latitude/Longitude	
				Start	End
Item	Vegetation			37.806184 °	37.805854 °
				-121.398570 °	-121.400088 °
DWR ID	DWR_RD2089_01_s_2020_54				
Comment Code					
V1 : Control annual grass and weeds on the levee slopes and easements.					
Inspector Comment					

Photo 1 of 1 : SP_2021_RD2089_316_54_20210210_00023.jpg



Typical view of overgrown vegetation on waterside slope. Fall 2020

LM Start	1.00	Rating **	M	Issue No.	40
LM End	1.03	Issue Type +	Ma	Location *	LS
Category	Earthen Levee			GPS Latitude/Longitude	
				Start	End
Item	Trim / Thin Trees			37.806107 °	37.805969 °
				-121.398771 °	-121.399305 °
DWR ID	DWR_RD2089_01_f_2019_40				
Comment Code					
T3 : Trim and thin trees to allow visibility of the ground and room to flood fight.					
Inspector Comment					

No Photos

LM Start	1.00	Rating **	M	Issue No.	43
LM End	1.00	Issue Type +	Ma	Location *	LS
Category	Earthen Levee			GPS Latitude/Longitude	
				Start	End
Item	Vegetation			37.806131 °	37.806131 °
				-121.398819 °	-121.398819 °
DWR ID	DWR_RD2089_01_s_2021_43				
Comment Code					
V4 : Elderberries are blocking visibility and flood fight capability.					
Inspector Comment					

No Photos

* Location LS : Land Side N/A : Not Applicable WS : Water Side CR : Crown	** Rating A : Acceptable M : Minimally Acceptable U : Unacceptable	N : Not Inspected/Rated C : Corrected A/W : Acceptable but Monitor & Maintain	+ Issue Type Ma : Maintenance Deficiency Ob : Design & System Obsolescence En : Enforcement
--	--	---	---

**Flood Control Project Maintenance
Levee Inspections**

Levee Inspection Report By Mile - Spring 2021

Reclamation District No. 2089 Stark

Waterway	Bank	Unit Miles	Inspection Start/End	Inspector
Unit No. 01 Old River	Right	1.51	04/15/2021 04/15/2021	Alberto De Leon

LM Start	1.03	Rating **	M	Issue No.	35
LM End	1.03	Issue Type +	Ma	Location *	LS
Category	Earthen Levee			GPS Latitude/Longitude	
				Start	End
Item	Vegetation			37.806033 °	37.806033 °
				-121.399246 °	-121.399246 °
DWR ID	DWR_RD2089_01_s _ 2021_35				
Comment Code					
V4 : Elderberries are blocking visibility and flood fight capability.					
Inspector Comment					

No Photos

LM Start	1.05	Rating **	U	Issue No.	33
LM End	1.07	Issue Type +	Ma	Location *	LS
Category	Earthen Levee			GPS Latitude/Longitude	
				Start	End
Item	Vegetation			37.805931 °	37.805880 °
				-121.399738 °	-121.400034 °
DWR ID	DWR_RD2089_01_s _ 2021_33				
Comment Code					
V4 : Elderberries are blocking visibility and flood fight capability.					
Inspector Comment					

No Photos

LM Start	1.07	Rating **	M	Issue No.	41
LM End	1.07	Issue Type +	Ma	Location *	LS
Category	Earthen Levee			GPS Latitude/Longitude	
				Start	End
Item	Trim / Thin Trees			37.805861 °	37.805861 °
				-121.399976 °	-121.399976 °
DWR ID	DWR_RD2089_01_f _ 2019_41				
Comment Code					
T3 : Trim and thin trees to allow visibility of the ground and room to flood fight.					
Inspector Comment					

No Photos

* Location LS : Land Side N/A : Not Applicable WS : Water Side CR : Crown	** Rating A : Acceptable M : Minimally Acceptable U : Unacceptable	N : Not Inspected/Rated C : Corrected A/W : Acceptable but Monitor & Maintain	+ Issue Type Ma : Maintenance Deficiency Ob : Design & System Obsolescence En : Enforcement
--	--	---	---

**Flood Control Project Maintenance
Levee Inspections**

Levee Inspection Report By Mile - Spring 2021

Reclamation District No. 2089 Stark

Waterway	Bank	Unit Miles	Inspection Start/End	Inspector
Unit No. 01 Old River	Right	1.51	04/15/2021 04/15/2021	Alberto De Leon

LM Start	1.17	Rating **	M	Issue No.	5
LM End	1.17	Issue Type +	Ma	Location *	WS
Category	Supplemental			GPS Latitude/Longitude	
				Start	End
Item	DWR Erosion Survey			37.805523 °	37.805523 °
				-121.401718 °	-121.401718 °
DWR ID	RD2089U01RM29.1				

Comment Code

Inspector Comment

Site ID: RD2089U01RM29.1

09/22/2020: Noticed signs of animal burrowing activity. The upper levee slope has areas with exposed soil. Vegetation is limiting the view of the scarp.

09/26/2019: No significant change observed.

09/13/2017: The erosion is at the upstream of a small tree, inside of a slight river bend.

LM Start	1.17	Rating **	M	Issue No.	5 (cont)
LM End	1.17	Issue Type +	Ma	Location *	WS

Photo 1 of 2 : SP_2021_RD2089_316_5_20210210_00005.jpg



9/22/2020: View of the eroded slope looking upstream with bare soil off the levee shoulder.

Photo 2 of 2 : SP_2021_RD2089_316_5_20210210_00006.jpg



9/22/2020: The erosion is visible on the lower levee slope.

*** Location**

LS : Land Side N/A : Not Applicable
WS : Water Side
CR : Crown

**** Rating**

A : Acceptable N : Not Inspected/Rated
M : Minimally Acceptable C : Corrected
U : Unacceptable A/W : Acceptable but Monitor & Maintain

+ Issue Type

Ma : Maintenance Deficiency
Ob : Design & System Obsolescence
En : Enforcement

**Flood Control Project Maintenance
Levee Inspections**

Levee Inspection Report By Mile - Spring 2021

Reclamation District No. 2089 Stark

Waterway	Bank	Unit Miles	Inspection Start/End	Inspector
Unit No. 01 Old River	Right	1.51	04/15/2021 04/15/2021	Alberto De Leon

LM Start	1.19	Rating **	M	Issue No.	19
LM End	1.52	Issue Type +	Ma	Location *	WS
Category	Earthen Levee			GPS Latitude/Longitude	
				Start	End
Item	Vegetation			37.805646 °	37.806665 °
				-121.402086 °	-121.407952 °
DWR ID	DWR_RD2089_01_f _ 2020_19				
Comment Code					
V1 : Control annual grass and weeds on the levee slopes and easements.					
Inspector Comment					

No Photos

LM Start	1.22	Rating **	U	Issue No.	2
LM End	1.23	Issue Type +	Ma	Location *	WS
Category	Supplemental			GPS Latitude/Longitude	
				Start	End
Item	DWR Erosion Survey			37.805800 °	37.805800 °
				-121.402868 °	-121.402868 °
DWR ID	RD2089U01RM29.04				
Comment Code					
Inspector Comment					
Site ID: RD2089U01RM29.04					
9/22/2020: From 2014 to present, no significant changes were observed during the annual survey. Noticed signs of burrowing activity.					
08/13/2013: The erosion is around a tree at the levee toe. Dense vegetation is visible.					

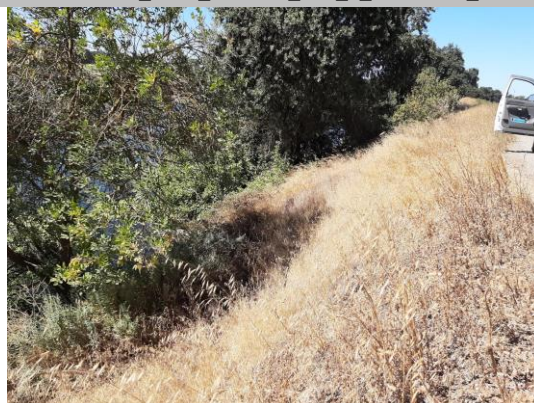
Photo 1 of 2 : SP_2021_RD2089_316_2_20210210_00001.jpg



9/22/2020: View of the erosion around the tree looking upstream. Despite the dense vegetation, the scarp above the tree is visible.

LM Start	1.22	Rating **	U	Issue No.	2 (cont)
LM End	1.23	Issue Type +	Ma	Location *	WS

Photo 2 of 2 : SP_2021_RD2089_316_2_20210210_00002.jpg



9/22/2020: View of the erosion looking downstream.

* Location LS : Land Side N/A : Not Applicable WS : Water Side CR : Crown	** Rating A : Acceptable M : Minimally Acceptable U : Unacceptable	N : Not Inspected/Rated C : Corrected A/W : Acceptable but Monitor & Maintain	+ Issue Type Ma : Maintenance Deficiency Ob : Design & System Obsolescence En : Enforcement
--	--	--	---

**Flood Control Project Maintenance
Levee Inspections**

Levee Inspection Report By Mile - Spring 2021

Reclamation District No. 2089 Stark

Waterway	Bank	Unit Miles	Inspection Start/End	Inspector
Unit No. 01 Old River	Right	1.51	04/15/2021 04/15/2021	Alberto De Leon

LM Start	1.22	Rating **	U	Issue No.	42
LM End	1.23	Issue Type +	Ma	Location *	LS
Category	Earthen Levee			GPS Latitude/Longitude	
				Start	End
Item	Trim / Thin Trees			37.805766 °	37.805797 °
				-121.402748 °	-121.402894 °
DWR ID	DWR_RD2089_01_f _ 2019_42				
Comment Code					
T3 : Trim and thin trees to allow visibility of the ground and room to flood fight.					
Inspector Comment					

Photo 1 of 1 : SP_2021_RD2089_316_42_20210504_00041.jpg



View of an untrimmed tree on the landside slope. Spring 2021

LM Start	1.23	Rating **	M	Issue No.	44
LM End	1.23	Issue Type +	Ma	Location *	LS
Category	Earthen Levee			GPS Latitude/Longitude	
				Start	End
Item	Crown Surface / Depressions / Rutting			37.805801 °	37.805801 °
				-121.402913 °	-121.402913 °
DWR ID	DWR_RD2089_01_s_2012_44				
Comment Code					
C3 : Add appropriate gravel or road base. Grade and compact.					
Inspector Comment					

Photo 1 of 1 : SP_2021_RD2089_316_44_20210210_00019.jpg



View of roadway depression. 11/10/2011

LM Start	1.34	Rating **	M	Issue No.	45
LM End	1.34	Issue Type +	Ma	Location *	CR
Category	Earthen Levee			GPS Latitude/Longitude	
				Start	End
Item	Crown Surface / Depressions / Rutting			37.806128 °	37.806128 °
				-121.404890 °	-121.404890 °
DWR ID	DWR_RD2089_01_s_2012_45				
Comment Code					
C3 : Add appropriate gravel or road base. Grade and compact.					
Inspector Comment					

Photo 1 of 1 : SP_2021_RD2089_316_45_20210210_00020.jpg



View of roadway depression. 11/10/2011

* Location
LS : Land Side N/A : Not Applicable
WS : Water Side
CR : Crown

** Rating
A : Acceptable N : Not Inspected/Rated
M : Minimally Acceptable C : Corrected
U : Unacceptable A/W : Acceptable but Monitor & Maintain

+ Issue Type
Ma : Maintenance Deficiency
Ob : Design & System Obsolescence
En : Enforcement

**Flood Control Project Maintenance
Levee Inspections**

Levee Inspection Report By Mile - Spring 2021

Reclamation District No. 2089 Stark

Waterway	Bank	Unit Miles	Inspection Start/End	Inspector
Unit No. 01 Old River	Right	1.51	04/15/2021 04/15/2021	Alberto De Leon

LM Start	1.37	Rating **	U	Issue No.	31
LM End	1.51	Issue Type +	Ma	Location *	WS
Category	Earthen Levee			GPS Latitude/Longitude	
				Start	End
Item	Vegetation			37.806230 °	37.806664 °
				-121.405398 °	-121.407843 °
DWR ID	DWR_RD2089_01_s_2021_31				
Comment Code					
V1 : Control annual grass and weeds on the levee slopes and easements.					
Inspector Comment					

Photo 1 of 1 : SP_2021_RD2089_316_31_20210504_00040.jpg



View of vegetation along the waterside slope. Spring 2021

LM Start	1.37	Rating **	M	Issue No.	30
LM End	1.37	Issue Type +	Ma	Location *	CR
Category	Earthen Levee			GPS Latitude/Longitude	
				Start	End
Item	Trim / Thin Trees			37.806197 °	37.806197 °
				-121.405426 °	-121.405426 °
DWR ID	DWR_RD2089_01_f_2020_30				
Comment Code					
T4 : Trim trees over roadway to at least 12 feet above ground level.					
Inspector Comment					

No Photos

LM Start	1.38	Rating **	M	Issue No.	55
LM End	1.51	Issue Type +	Ma	Location *	LS
Category	Earthen Levee			GPS Latitude/Longitude	
				Start	End
Item	Vegetation			37.806234 °	37.806619 °
				-121.405617 °	-121.407842 °
DWR ID	DWR_RD2089_01_s_2020_55				
Comment Code					
V1 : Control annual grass and weeds on the levee slopes and easements.					
Inspector Comment					

No Photos

* Location LS : Land Side N/A : Not Applicable WS : Water Side CR : Crown	** Rating A : Acceptable M : Minimally Acceptable U : Unacceptable	N : Not Inspected/Rated C : Corrected A/W : Acceptable but Monitor & Maintain	+ Issue Type Ma : Maintenance Deficiency Ob : Design & System Obsolescence En : Enforcement
--	--	---	---

**Flood Control Project Maintenance
Levee Inspections**

Levee Inspection Report By Mile - Spring 2021

Reclamation District No. 2089 Stark

Waterway	Bank	Unit Miles	Inspection Start/End	Inspector
Unit No. 01 Old River	Right	1.51	04/15/2021 04/15/2021	Alberto De Leon

LM Start	1.40	Rating **	U	Issue No.	11
LM End	1.51	Issue Type +	Ma	Location *	LS
Category	Earthen Levee			GPS Latitude/Longitude	
				Start	End
Item	Vegetation			37.806296 °	37.806664 °
				-121.405838 °	-121.407843 °
DWR ID	DWR_RD2089_01_s_2021_11				
Comment Code					
V1 : Control annual grass and weeds on the levee slopes and easements.					
Inspector Comment					

Photo 1 of 1 : SP_2021_RD2089_316_11_20210504_00039.jpg



View of vegetation along the landside slope and easement. Spring 2021

LM Start	1.40	Rating **	M	Issue No.	47
LM End	1.40	Issue Type +	Ma	Location *	LS
Category	Earthen Levee			GPS Latitude/Longitude	
				Start	End
Item	Animal Control			37.806268 °	37.806268 °
				-121.405874 °	-121.405874 °
DWR ID	DWR_RD2089_01_s_2012_47				
Comment Code					
A3 : No rodents visible, but rodent burrows visible; need to backfill and compact or grout burrows.					
Inspector Comment					

Photo 1 of 1 : SP_2021_RD2089_316_47_20210210_00021.jpg



View of active rodent burrow on landside slope. 11/10/2011

LM Start	1.41	Rating **	M	Issue No.	46
LM End	1.41	Issue Type +	Ma	Location *	LS
Category	Earthen Levee			GPS Latitude/Longitude	
				Start	End
Item	Trim / Thin Trees			37.806299 °	37.806299 °
				-121.406010 °	-121.406010 °
DWR ID	DWR_RD2089_01_f_2019_46				
Comment Code					
T3 : Trim and thin trees to allow visibility of the ground and room to flood fight.					
Inspector Comment					

No Photos

* Location LS : Land Side N/A : Not Applicable WS : Water Side CR : Crown	** Rating A : Acceptable M : Minimally Acceptable U : Unacceptable	N : Not Inspected/Rated C : Corrected A/W : Acceptable but Monitor & Maintain	+ Issue Type Ma : Maintenance Deficiency Ob : Design & System Obsolescence En : Enforcement
--	--	---	---

**Flood Control Project Maintenance
Levee Inspections**

Levee Inspection Report By Mile - Spring 2021

Reclamation District No. 2089 Stark

Waterway	Bank	Unit Miles	Inspection Start/End	Inspector
Unit No. 01 Old River	Right	1.51	04/15/2021 04/15/2021	Alberto De Leon

LM Start	1.41	Rating **	M	Issue No.	7	
LM End	1.41	Issue Type +	En	Location *		
Category	Supplemental			GPS Latitude/Longitude		
				Start	End	
Item	DWR UCIP Field Study			37.806323 °	37.806323 °	
				-121.406149 °	-121.406149 °	
DWR ID	24667					
Comment Code						
Inspector Comment						
FS_ID:53379 DS_ID:24667 EP_NO: N/A Repair Type: Non-Urgent Crossing Status: Found UCIP Comments: 10/12/2018 Same as last inspection. Down grading to Non-Urgent due to abandonment and no visual threat to pipe or levee integrity (D. Sanoski - DWR UCIP).11/15/2016 Same as last inspection. (K. Fazel - UCIP)09/12/2013:- if abandoned, it needs proper abandonment. Pipe damaged and open on both ends. (P. Amatya - DWR) FIELD_STRUCT_DESC: *ABANDONED* 6-inch polyvinyl chloride (PVC) irrigation discharge pipe through the levee, 2 feet below the crown. Pipe was installed due to pump failure, but never removed. Field study discovered pipe. FS Date: 10/12/2018 5:16:00 PM						

Photo 1 of 3 : UCIP_SP_2021_53379_36611.jpg



WS view: 6-inch pvc pipe on levee slope. Pipe end open and damaged.

LM Start	1.41	Rating **	M	Issue No.	7 (cont)
LM End	1.41	Issue Type +	En	Location *	

Photo 2 of 3 : UCIP_SP_2021_53379_36610.jpg



WS view: inside view of pvc pipe. Sediments found inside the pipe.

* Location LS : Land Side N/A : Not Applicable WS : Water Side CR : Crown	** Rating A : Acceptable M : Minimally Acceptable U : Unacceptable	N : Not Inspected/Rated C : Corrected A/W : Acceptable but Monitor & Maintain	+ Issue Type Ma : Maintenance Deficiency Ob : Design & System Obsolescence En : Enforcement
--	--	---	---

**Flood Control Project Maintenance
Levee Inspections**

Levee Inspection Report By Mile - Spring 2021

Reclamation District No. 2089 Stark

Waterway	Bank	Unit Miles	Inspection Start/End	Inspector
Unit No. 01 Old River	Right	1.51	04/15/2021 04/15/2021	Alberto De Leon

LM Start	1.41	Rating **	M	Issue No.	7 (cont)
LM End	1.41	Issue Type +	En	Location *	
Category	Supplemental		GPS Latitude/Longitude		
			Start	End	
Item	DWR UCIP Field Study		37.806323 °	37.806323 °	
			-121.406149 °	-121.406149 °	
DWR ID	24667				

Photo 3 of 3 : UCIP_SP_2021_53379_36609.jpg



LS view: 6-inch pvc pipe on levee slope. Pipe end open.

LM Start	1.41	Rating **	M	Issue No.	8
LM End	1.41	Issue Type +	Ma	Location *	
Category	Supplemental		GPS Latitude/Longitude		
			Start	End	
Item	DWR UCIP LMA Responsibility		37.806323 °	37.806323 °	
			-121.406155 °	-121.406155 °	
DWR ID	23045				

Comment Code

Inspector Comment

FS_ID:21585
 DS_ID:23045
 EP_NO: N/A
 Repair Type: Non-Urgent
 Crossing Status: Found
 UCIP Comments: - siphon breaker needs repair.
 FIELD_STRUCT_DESC: 10-inch steel drainage discharge pipe through the levee, 2.4 feet below the crown. Pump in a drainage ditch on the landside (LS). Siphon breaker on the waterside (WS) shoulder.
 [Additional Reference(s): DWR Levee Log, 1991].
 FS Date: 9/12/2013

Photo 1 of 3 : UCIP_SP_2021_21585_36624.jpg



WS view: exposed steel pipe on levee slope. A pvc pipe on left.

* Location LS : Land Side N/A : Not Applicable WS : Water Side CR : Crown	** Rating A : Acceptable M : Minimally Acceptable U : Unacceptable	N : Not Inspected/Rated C : Corrected A/W : Acceptable but Monitor & Maintain	+ Issue Type Ma : Maintenance Deficiency Ob : Design & System Obsolescence En : Enforcement
--	--	---	---

**Flood Control Project Maintenance
Levee Inspections**

Levee Inspection Report By Mile - Spring 2021

Reclamation District No. 2089 Stark

Waterway	Bank	Unit Miles	Inspection Start/End	Inspector
Unit No. 01 Old River	Right	1.51	04/15/2021 04/15/2021	Alberto De Leon

LM Start	1.41	Rating **	M	Issue No.	8 (cont)
LM End	1.41	Issue Type +	Ma	Location *	
Category	Supplemental		GPS Latitude/Longitude		
			Start	End	
Item	DWR UCIP LMA Responsibility		37.806323 °	37.806323 °	
			-121.406155 °	-121.406155 °	
DWR ID	23045				

Photo 2 of 3 : UCIP_SP_2021_21585_36623.jpg



WS view: exposed steel pipe with siphon breaker. Looks siphon breaker needs repair.

LM Start	1.41	Rating **	M	Issue No.	8 (cont)
LM End	1.41	Issue Type +	Ma	Location *	

Photo 3 of 3 : UCIP_SP_2021_21585_36622.jpg



LS view: exposed steel pipe on levee slope.

LM Start	1.43	Rating **	M	Issue No.	48
LM End	1.44	Issue Type +	Ma	Location *	LS
Category	Earthen Levee			GPS Latitude/Longitude	
				Start	End
Item	Trim / Thin Trees			37.806375 °	37.806416 °
				-121.406516 °	-121.406537 °
DWR ID	DWR_RD2089_01_f_2019_48				
Comment Code					
T3 : Trim and thin trees to allow visibility of the ground and room to flood fight.					
Inspector Comment					

No Photos

* Location LS : Land Side N/A : Not Applicable WS : Water Side CR : Crown	** Rating A : Acceptable M : Minimally Acceptable U : Unacceptable	N : Not Inspected/Rated C : Corrected A/W : Acceptable but Monitor & Maintain	+ Issue Type Ma : Maintenance Deficiency Ob : Design & System Obsolescence En : Enforcement
--	--	---	---

**Flood Control Project Maintenance
Levee Inspections**

Levee Inspection Report By Mile - Spring 2021

Reclamation District No. 2089 Stark

Waterway	Bank	Unit Miles	Inspection Start/End	Inspector
Unit No. 01 Old River	Right	1.51	04/15/2021 04/15/2021	Alberto De Leon

LM Start	1.44	Rating **	M	Issue No.	49
LM End	1.44	Issue Type +	Ma	Location *	WS
Category	Earthen Levee			GPS Latitude/Longitude	
				Start	End
Item	Animal Control			37.806383 °	37.806383 °
				-121.406599 °	-121.406599 °
DWR ID	DWR_RD2089_01_s _ 2012_49				
Comment Code					
A3 : No rodents visible, but rodent burrows visible; need to backfill and compact or grout burrows.					
Inspector Comment					

Photo 1 of 1 : SP_2021_RD2089_316_49_20210210_00022.jpg



View of deep burrow on waterside. 11/10/2011

LM Start	1.47	Rating **	M	Issue No.	32
LM End	1.48	Issue Type +	Ma	Location *	LS
Category	Earthen Levee			GPS Latitude/Longitude	
				Start	End
Item	Trim / Thin Trees			37.806516 °	37.806560 °
				-121.407249 °	-121.407423 °
DWR ID	DWR_RD2089_01_s _ 2021_32				
Comment Code					
T3 : Trim and thin trees to allow visibility of the ground and room to flood fight.					
Inspector Comment					

No Photos

*** Location**
LS : Land Side N/A : Not Applicable
WS : Water Side
CR : Crown

**** Rating**
A : Acceptable N : Not Inspected/Rated
M : Minimally Acceptable C : Corrected
U : Unacceptable A/W : Acceptable but Monitor & Maintain

+ Issue Type
Ma : Maintenance Deficiency
Ob : Design & System Obsolescence
En : Enforcement

**Flood Control Project Maintenance
Levee Inspections**

Levee Inspection Report By Mile - Spring 2021

Reclamation District No. 2089 Stark

Waterway	Bank	Unit Miles	Inspection Start/End	Inspector
Unit No. 01 Old River	Right	1.51	04/15/2021 04/15/2021	Alberto De Leon

LM Start	1.48	Rating **	M	Issue No.	10
LM End	1.48	Issue Type +	En	Location *	
Category	Supplemental			GPS Latitude/Longitude	
				Start	End
Item	DWR UCIP Field Study			37.806520 °	37.806520 °
				-121.407392 °	-121.407392 °
DWR ID	23046				

Comment Code

Inspector Comment

FS_ID:53182
DS_ID:23046
EP_NO: N/A
Repair Type: Non-Urgent
Crossing Status: Found
UCIP Comments: 10/12/2018 Same as last inspection; downgrading to Non-Urgent due to no visual pipe or levee threat (D. Sanoski - DWR UCIP).11/15/2016 Pipe found on WS only. Same as last inspection. (K. Fazel - UCIP)06/25/2015 Crossing appears abandoned; if so, should be done so properly. Pipe open on WS. Holes and cracks visible on pipe. (K. Fazel - UCIP)
FIELD_STRUCT_DESC: *ABANDONED* 12-inch reinforced concrete pipe of an unknown purpose possibly through the levee, approximately 8 feet below the crown. Smaller steel pipe sleeved through the 12-inch pipe with annular space grouted. Pipe does not cross channel and may not cross levee. May be related to the gas line crossing with DS ID 25121. Discovered from boat on 2015 DWR Erosion Survey.
FS Date: 10/12/2018 5:22:43 PM

LM Start	1.48	Rating **	M	Issue No.	10 (cont)
LM End	1.48	Issue Type +	En	Location *	

Photo 1 of 3 : UCIP_SP_2021_53182_74506.jpg



View up WS slope from water. Pipe does not cross channel.

Photo 2 of 3 : UCIP_SP_2021_53182_74508.jpg



Gasline marker (for crossing with DS ID 25121) appr. 100 ft west of crossing.

* Location LS : Land Side N/A : Not Applicable WS : Water Side CR : Crown	** Rating A : Acceptable M : Minimally Acceptable U : Unacceptable	N : Not Inspected/Rated C : Corrected A/W : Acceptable but Monitor & Maintain	+ Issue Type Ma : Maintenance Deficiency Ob : Design & System Obsolescence En : Enforcement
--	--	--	---

**Flood Control Project Maintenance
Levee Inspections**

Levee Inspection Report By Mile - Spring 2021

Reclamation District No. 2089 Stark

Waterway	Bank	Unit Miles	Inspection Start/End	Inspector
Unit No. 01 Old River	Right	1.51	04/15/2021 04/15/2021	Alberto De Leon

LM Start	1.48	Rating **	M	Issue No.	10 (cont)
LM End	1.48	Issue Type +	En	Location *	
Category	Supplemental			GPS Latitude/Longitude	
				Start	End
Item	DWR UCIP Field Study			37.806520 °	37.806520 °
				-121.407392 °	-121.407392 °
DWR ID	23046				

Photo 3 of 3 : UCIP_SP_2021_53182_76207.jpg



WS view of pipe

* Location LS : Land Side N/A : Not Applicable WS : Water Side CR : Crown	** Rating A : Acceptable M : Minimally Acceptable U : Unacceptable	N : Not Inspected/Rated C : Corrected A/W : Acceptable but Monitor & Maintain	+ Issue Type Ma : Maintenance Deficiency Ob : Design & System Obsolescence En : Enforcement
--	--	---	---

**Flood Control Project Maintenance
Levee Inspections
Unit Cover Sheet**

Reclamation District No. 2089 Stark

Waterway			Bank	Unit Miles
Unit No. 02 Salmon Slough			Right	1.35
	Spring (March - May)	Summer (June - August)	(September - November) Fall	Winter (December - February)
Unit Maintenance Rating (Fall Only)				
Date of Inspection	4/15/2021 - 4/15/2021			
DWR Inspector	Alberto De Leon			
Accompanied By				

Summer & Winter Inspections

The Local Maintaining Agency (LMA) is responsible for summer and winter inspections. The LMA is required to submit a report regarding summer and winter inspections to the California Department of Water Resources (DWR).

DWR must be informed on the:

- a) completion of the inspection
- b) any changes other than the results of normal maintenance
- c) corrections to deficiencies noted in this report

If additional items are noted, further documentation of those items must also be submitted.

The LMA should submit this information to DWR using the LMA web application tool available at:

<http://cdec.water.ca.gov/lma.html>

If the LMA is unable to submit information on this webpage, please contact DWR for assistance.

The LMA should submit the information and any associated documentation by September 30 for summer inspections and March 31 for winter inspections.

**Flood Control Project Maintenance
Levee Inspections**

Levee Inspection Report By Mile - Spring 2021

Reclamation District No. 2089 Stark

Waterway	Bank	Unit Miles	Inspection Start/End	Inspector
Unit No. 02 Salmon Slough	Right	1.35	04/15/2021 04/15/2021	Alberto De Leon

LM Start	0.00	Rating **	U	Issue No.	10
LM End	1.34	Issue Type +	Ma	Location *	LS
Category	Earthen Levee			GPS Latitude/Longitude	
				Start	End
Item	Vegetation			37.806671 °	37.819557 °
				-121.407854 °	-121.419695 °
DWR ID	DWR_RD2089_02_s_2021_10				
Comment Code					
V1 : Control annual grass and weeds on the levee slopes and easements.					
Inspector Comment					

Photo 1 of 1 : SP_2021_RD2089_317_10_20210504_00040.jpg



View of vegetation on the landside slope and easement. Spring 2021

LM Start	0.00	Rating **	U	Issue No.	13
LM End	1.34	Issue Type +	Ma	Location *	WS
Category	Earthen Levee			GPS Latitude/Longitude	
				Start	End
Item	Vegetation			37.806669 °	37.819556 °
				-121.407855 °	-121.419695 °
DWR ID	DWR_RD2089_02_s_2021_13				
Comment Code					
V1 : Control annual grass and weeds on the levee slopes and easements.					
Inspector Comment					

Photo 1 of 1 : SP_2021_RD2089_317_13_20210504_00042.jpg



View of vegetation along the waterside slope. Spring 2021

LM Start	0.02	Rating **	M	Issue No.	76
LM End	0.03	Issue Type +	Ma	Location *	LS
Category	Earthen Levee			GPS Latitude/Longitude	
				Start	End
Item	Trim / Thin Trees			37.806820 °	37.806965 °
				-121.408105 °	-121.408280 °
DWR ID	DWR_RD2089_02_s_2021_76				
Comment Code					
T3 : Trim and thin trees to allow visibility of the ground and room to flood fight.					
Inspector Comment					

No Photos

* Location LS : Land Side N/A : Not Applicable WS : Water Side CR : Crown	** Rating A : Acceptable M : Minimally Acceptable U : Unacceptable	N : Not Inspected/Rated C : Corrected A/W : Acceptable but Monitor & Maintain	+ Issue Type Ma : Maintenance Deficiency Ob : Design & System Obsolescence En : Enforcement
--	--	---	---

**Flood Control Project Maintenance
Levee Inspections**

Levee Inspection Report By Mile - Spring 2021

Reclamation District No. 2089 Stark

Waterway	Bank	Unit Miles	Inspection Start/End	Inspector
Unit No. 02 Salmon Slough	Right	1.35	04/15/2021 04/15/2021	Alberto De Leon

LM Start	0.06	Rating **	U	Issue No.	4
LM End	0.06	Issue Type +	Ma	Location *	WS
Category	Earthen Levee			GPS Latitude/Longitude	
				Start	End
Item	Vegetation			37.807305 °	37.807305 °
				-121.408702 °	-121.408702 °
DWR ID	DWR_RD2089_02_s_2012_4				
Comment Code					
V4 : Elderberries are blocking visibility and flood fight capability.					
Inspector Comment					

No Photos

LM Start	0.16	Rating **	U	Issue No.	48
LM End	0.16	Issue Type +	Ma	Location *	LS
Category	Earthen Levee			GPS Latitude/Longitude	
				Start	End
Item	Animal Control			37.808583 °	37.808583 °
				-121.409432 °	-121.409432 °
DWR ID	DWR_RD2089_02_f_2013_48				
Comment Code					
A3 : No rodents visible, but rodent burrows visible; need to backfill and compact or grout burrows.					
Inspector Comment					

Photo 1 of 1 : SP_2021_RD2089_317_48_20210210_00026.jpg



View of the rodent burrow on the landside levee slope.

LM Start	0.20	Rating **	A/W	Issue No.	46
LM End	0.21	Issue Type +	Ma	Location *	WS
Category	Earthen Levee			GPS Latitude/Longitude	
				Start	End
Item	Erosion / Bank Caving			37.809100 °	37.809200 °
				-121.409800 °	-121.409900 °
DWR ID	LMA-415				
Comment Code					
E1 : Note and monitor erosion site.					
Inspector Comment					
2017 Storm Damage Site, ID No. 509, LMA 415, displaced riprap at toe. Inspected: Fall 2020, vegetation did not allow inspection of rip rap.					

Photo 1 of 1 : SP_2021_RD2089_317_46_20210210_00024.jpg



View of erosion site on waterside slope. Spring 2020

* Location LS : Land Side N/A : Not Applicable WS : Water Side CR : Crown		** Rating A : Acceptable M : Minimally Acceptable U : Unacceptable N : Not Inspected/Rated C : Corrected A/W : Acceptable but Monitor & Maintain		+ Issue Type Ma : Maintenance Deficiency Ob : Design & System Obsolescence En : Enforcement	
--	--	---	--	---	--

Reclamation District No. 2089 Stark

**Flood Control Project Maintenance
Levee Inspections**

Levee Inspection Report By Mile - Spring 2021

Reclamation District No. 2089 Stark

Waterway	Bank	Unit Miles	Inspection Start/End	Inspector
Unit No. 02 Salmon Slough	Right	1.35	04/15/2021 04/15/2021	Alberto De Leon

LM Start	0.30	Rating **	U	Issue No.	53
LM End	0.31	Issue Type +	Ma	Location *	LS
Category	Earthen Levee			GPS Latitude/Longitude	
				Start	End
Item	Animal Control			37.809977 °	37.810022 °
				-121.411189 °	-121.411387 °
DWR ID	DWR_RD2089_02_f_2013_53				
Comment Code					
A1 : Exterminate rodents and backfill and compact or grout burrows.					
Inspector Comment					

Photo 1 of 1 : SP_2021_RD2089_317_53_20210210_00028.jpg



View of the rodent burrow on the landside levee slope.

LM Start	0.32	Rating **	A/W	Issue No.	47
LM End	0.57	Issue Type +	Ma	Location *	WS
Category	Earthen Levee			GPS Latitude/Longitude	
				Start	End
Item	Erosion / Bank Caving			37.810020 °	37.811810 °
				-121.411550 °	-121.415390 °
DWR ID	335-103				
Comment Code					
E1 : Note and monitor erosion site.					
Inspector Comment					
2017 Storm Damage Site, ID No: 109					

Photo 1 of 1 : LEVAL_SP_2021_109_1298.jpg



LM Start	0.34	Rating **	M	Issue No.	55
LM End	0.34	Issue Type +	Ma	Location *	LS
Category	Earthen Levee			GPS Latitude/Longitude	
				Start	End
Item	Trim / Thin Trees			37.810052 °	37.810052 °
				-121.411966 °	-121.411966 °
DWR ID	DWR_RD2089_02_s_2017_55				
Comment Code					
T3 : Trim and thin trees to allow visibility of the ground and room to flood fight.					
Inspector Comment					

Photo 1 of 1 : SP_2021_RD2089_317_55_20210210_00030.jpg



View of the overgrown tree on the levee slope.

*** Location**
LS : Land Side N/A : Not Applicable
WS : Water Side
CR : Crown

**** Rating**
A : Acceptable N : Not Inspected/Rated
M : Minimally Acceptable C : Corrected
U : Unacceptable A/W : Acceptable but Monitor & Maintain

+ Issue Type
Ma : Maintenance Deficiency
Ob : Design & System Obsolescence
En : Enforcement

Reclamation District No. 2089 Stark

View of gate across levee crown.

View of active rodent burrow. 05/24/2011

View of vegetation covering the crown. Spring 2021

Page 5 of 23

**Flood Control Project Maintenance
Levee Inspections**

Levee Inspection Report By Mile - Spring 2021

Reclamation District No. 2089 Stark

Waterway	Bank	Unit Miles	Inspection Start/End	Inspector
Unit No. 02 Salmon Slough	Right	1.35	04/15/2021 04/15/2021	Alberto De Leon

LM Start	0.40	Rating **	U	Issue No.	1
LM End	0.41	Issue Type +	Ma	Location *	WS
Category	Supplemental			GPS Latitude/Longitude	
				Start	End
Item	DWR Erosion Survey			37.810184 °	37.810184 °
				-121.413019 °	-121.413019 °
DWR ID	RD2089U02RM28.35				

Comment Code

Inspector Comment

Site ID: RD2089U02RM28.35

09/22/2020: Observed less vegetation on the levee slope, loose soil, and scattered riprap.

09/26/2019: From 2011 to 2019, no significant changes were observed during the annual survey.

09/07/2010: Site consists of a jutting rip rap that has created an eddy, scouring the levee slope. Most sections of the toe and lower slope are lined with rip rap. However, the rip rap is sloughing on the mid slope and at the toe, exposing the underlying soils and tree roots. The remaining revetment is no longer adequately protecting the slope.

There are 3 Sycamore trees at the toe with exposed tree roots.

08/05/2010: Recommended for repair, per CLRO.

09/28/2009: Pocket erosion on lower slope just above the toe rip rap; protruding rip rap upstream is creating an eddy, scouring the levee slope; Site # is the same as RM28.40, LM0.30; previously rated "U"; pictures will be made available during the next survey.

11/05/2008: Cut into levee profile; riprap slide; rodent holes; pictures do not match GPS and current condition.

LM Start	0.40	Rating **	U	Issue No.	1 (cont)
LM End	0.41	Issue Type +	Ma	Location *	WS

Photo 1 of 2 : SP_2021_RD2089_317_1_20210210_00001.jpg



9/22/2020: View of the erosion and scattered riprap on the levee slope.

Photo 2 of 2 : SP_2021_RD2089_317_1_20210210_00002.jpg



9/22/2020: Close-up view of the eroded levee slope.

* Location LS : Land Side N/A : Not Applicable WS : Water Side CR : Crown		** Rating A : Acceptable M : Minimally Acceptable U : Unacceptable N : Not Inspected/Rated C : Corrected A/W : Acceptable but Monitor & Maintain		+ Issue Type Ma : Maintenance Deficiency Ob : Design & System Obsolescence En : Enforcement	
--	--	---	--	---	--

**Flood Control Project Maintenance
Levee Inspections**

Levee Inspection Report By Mile - Spring 2021

Reclamation District No. 2089 Stark

Waterway	Bank	Unit Miles	Inspection Start/End	Inspector
Unit No. 02 Salmon Slough	Right	1.35	04/15/2021 04/15/2021	Alberto De Leon

LM Start	0.43	Rating **	M	Issue No.	61
LM End	0.43	Issue Type +	Ma	Location *	LS
Category	Earthen Levee			GPS Latitude/Longitude	
				Start	End
Item	Trim / Thin Trees			37.810378 °	37.810378 °
				-121.413415 °	-121.413415 °
DWR ID	DWR_RD2089_02_f_2019_61				
Comment Code					
T3 : Trim and thin trees to allow visibility of the ground and room to flood fight.					
Inspector Comment					

No Photos

LM Start	0.44	Rating **	M	Issue No.	27
LM End	0.44	Issue Type +	En	Location *	WS
Category	Earthen Levee			GPS Latitude/Longitude	
				Start	End
Item	Encroachments			37.810490 °	37.810490 °
				-121.413638 °	-121.413638 °
DWR ID	DWR_RD2089_02_s_2012_27				
Comment Code					
BU : Building					
Inspector Comment					
There is a portable toilet on the bank at the water's edge.					

Photo 1 of 1 : SP_2021_RD2089_317_27_20210210_00019.jpg



Close-up view of portable toilet at water's edge. (Fall 2018)

LM Start	0.50	Rating **	U	Issue No.	54
LM End	0.50	Issue Type +	Ma	Location *	LS
Category	Earthen Levee			GPS Latitude/Longitude	
				Start	End
Item	Animal Control			37.810989 °	37.810989 °
				-121.414517 °	-121.414517 °
DWR ID	DWR_RD2089_02_f_2013_54				
Comment Code					
A1 : Exterminate rodents and backfill and compact or grout burrows.					
Inspector Comment					

Photo 1 of 1 : SP_2021_RD2089_317_54_20210210_00029.jpg



View of the rodent burrow on the landside levee slope.

*** Location**
LS : Land Side N/A : Not Applicable
WS : Water Side
CR : Crown

**** Rating**
A : Acceptable N : Not Inspected/Rated
M : Minimally Acceptable C : Corrected
U : Unacceptable A/W : Acceptable but Monitor & Maintain

+ Issue Type
Ma : Maintenance Deficiency
Ob : Design & System Obsolescence
En : Enforcement

**Flood Control Project Maintenance
Levee Inspections**

Levee Inspection Report By Mile - Spring 2021

Reclamation District No. 2089 Stark

Waterway	Bank	Unit Miles	Inspection Start/End	Inspector
Unit No. 02 Salmon Slough	Right	1.35	04/15/2021 04/15/2021	Alberto De Leon

LM Start	0.51	Rating **	U	Issue No.	62
LM End	0.83	Issue Type +	En	Location *	LS
Category	Earthen Levee			GPS Latitude/Longitude	
				Start	End
Item	Encroachments			37.811125 °	37.814845 °
				-121.414685 °	-121.414586 °
DWR ID	DWR_RD2089_02_s_2021_62				
Comment Code					
DT : Ditch					
Inspector Comment					

Photo 1 of 1 : SP_2021_RD2089_317_62_20210504_00044.jpg



View of an irrigation ditch within the landside easement. Spring 2021

LM Start	0.52	Rating **	A/W	Issue No.	14
LM End	0.52	Issue Type +	Ma	Location *	WS
Category	Earthen Levee			GPS Latitude/Longitude	
				Start	End
Item	Animal Control			37.811150 °	37.811150 °
				-121.414748 °	-121.414748 °
DWR ID	DWR_RD2089_02_s_2012_14				
Comment Code					
A2 : Repair the levee slope damaged by livestock and prevent large animal access.					
Inspector Comment					
Repair damage to slope caused by livestock.					

Photo 1 of 1 : SP_2021_RD2089_317_14_20210210_00011.jpg



View of the approximately 1' scarp that has been created by livestock. Spring 2020

LM Start	0.52	Rating **	M	Issue No.	63
LM End	0.52	Issue Type +	Ma	Location *	LS
Category	Earthen Levee			GPS Latitude/Longitude	
				Start	End
Item	Trim / Thin Trees			37.811165 °	37.811165 °
				-121.414796 °	-121.414796 °
DWR ID	DWR_RD2089_02_s_2020_63				
Comment Code					
T3 : Trim and thin trees to allow visibility of the ground and room to flood fight.					
Inspector Comment					

No Photos

* Location LS : Land Side N/A : Not Applicable WS : Water Side CR : Crown	** Rating A : Acceptable M : Minimally Acceptable U : Unacceptable	N : Not Inspected/Rated C : Corrected A/W : Acceptable but Monitor & Maintain	+ Issue Type Ma : Maintenance Deficiency Ob : Design & System Obsolescence En : Enforcement
--	--	---	---

**Flood Control Project Maintenance
Levee Inspections**

Levee Inspection Report By Mile - Spring 2021

Reclamation District No. 2089 Stark

Waterway	Bank	Unit Miles	Inspection Start/End	Inspector
Unit No. 02 Salmon Slough	Right	1.35	04/15/2021 04/15/2021	Alberto De Leon

LM Start	0.54	Rating **	M	Issue No.	7	
LM End	0.54	Issue Type +	En	Location *		
Category	Supplemental			GPS Latitude/Longitude		
				Start	End	
Item	DWR UCIP Field Study			37.811369 °	37.811369 °	
				-121.415050 °	-121.415050 °	
DWR ID	23047					
Comment Code						
Inspector Comment						
FS_ID:21676 DS_ID:23047 EP_NO: N/A Repair Type: Non-Urgent Crossing Status: Found UCIP Comments: - air relief valve on waterside. Needs repair.- concrete standpipe on landside. FIELD_STRUCT_DESC: 14-inch irrigation discharge pipe of an unknown material through the levee, 8 feet below the crown. Pump on a pile structure in the stream. Timber walkway to the pump. Air relief valve on the waterside (WS) slope. Concrete distribution standpipe on the landside (LS) toe. [Additional Reference(s): DWR Levee Log, 1991. USACE San Joaquin O&M Manual 8, 1968, (HLM 0.55)]. FS Date: 9/12/2013						

LM Start	0.54	Rating **	M	Issue No.	7 (cont)
LM End	0.54	Issue Type +	En	Location *	

Photo 1 of 3 : UCIP_SP_2021_21676_36861.jpg



WS view: pipe and pump on piling strucure in water channel.

Photo 2 of 3 : UCIP_SP_2021_21676_36860.jpg



WS view: air relief valve on pipe. Pipe exposed in levee slope.

* Location LS : Land Side N/A : Not Applicable WS : Water Side CR : Crown	** Rating A : Acceptable M : Minimally Acceptable U : Unacceptable	N : Not Inspected/Rated C : Corrected A/W : Acceptable but Monitor & Maintain	+ Issue Type Ma : Maintenance Deficiency Ob : Design & System Obsolescence En : Enforcement
--	--	---	---

**Flood Control Project Maintenance
Levee Inspections**

Levee Inspection Report By Mile - Spring 2021

Reclamation District No. 2089 Stark

Waterway	Bank	Unit Miles	Inspection Start/End	Inspector
Unit No. 02 Salmon Slough	Right	1.35	04/15/2021 04/15/2021	Alberto De Leon

LM Start	0.54	Rating **	M	Issue No.	7 (cont)
LM End	0.54	Issue Type +	En	Location *	
Category	Supplemental		GPS Latitude/Longitude		
			Start	End	
Item	DWR UCIP Field Study		37.811369 °	37.811369 °	
			-121.415050 °	-121.415050 °	
DWR ID	23047				

Photo 3 of 3 : UCIP_SP_2021_21676_36859.jpg



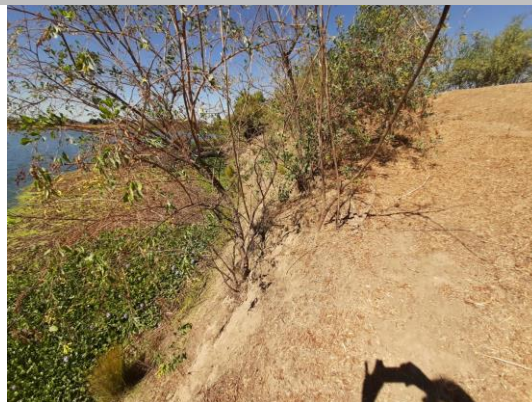
WS view: pipe (left) and steel walkway to pump on piling structure in the channel.

LM Start	0.57	Rating **	M	Issue No.	75
LM End	0.57	Issue Type +	En	Location *	LS
Category	Earthen Levee			GPS Latitude/Longitude	
				Start	End
Item	Encroachments			37.811802 °	37.811802 °
				-121.415350 °	-121.415350 °
DWR ID	DWR_RD2089_02_s_2021_75				
Comment Code					
PR : Prunings					
Inspector Comment					

No Photos

LM Start	0.60	Rating **	M	Issue No.	3
LM End	0.61	Issue Type +	Ma	Location *	WS
Category	Supplemental			GPS Latitude/Longitude	
				Start	End
Item	DWR Erosion Survey			37.812000 °	37.812000 °
				-121.415700 °	-121.415700 °
DWR ID	RD2089U02RM28.14				
Comment Code					
Inspector Comment					
Site ID: RD2089U02RM28.14 09/22/2020: This site is a 2017 Storm Damage Site (LMA-413). There is a vertical cut on the bank. The berm width ranges from 2 ft to 20 ft. The site will likely worsen during the next high water.					

Photo 1 of 2 : SP_2021_RD2089_317_3_20210210_00004.jpg



9/22/2020: View of the vertical cut on the river bank looking downstream.

* Location LS : Land Side N/A : Not Applicable WS : Water Side CR : Crown	** Rating A : Acceptable M : Minimally Acceptable U : Unacceptable	N : Not Inspected/Rated C : Corrected A/W : Acceptable but Monitor & Maintain	+ Issue Type Ma : Maintenance Deficiency Ob : Design & System Obsolescence En : Enforcement
--	--	---	---

**Flood Control Project Maintenance
Levee Inspections**

Levee Inspection Report By Mile - Spring 2021

Reclamation District No. 2089 Stark

Waterway	Bank	Unit Miles	Inspection Start/End	Inspector
Unit No. 02 Salmon Slough	Right	1.35	04/15/2021 04/15/2021	Alberto De Leon

LM Start	0.60	Rating **	M	Issue No.	3 (cont)
LM End	0.61	Issue Type +	Ma	Location *	WS
Category	Supplemental			GPS Latitude/Longitude	
				Start	End
Item	DWR Erosion Survey			37.812000 °	37.812000 °
				-121.415700 °	-121.415700 °
DWR ID	RD2089U02RM28.14				

Photo 2 of 2 : SP_2021_RD2089_317_3_20210210_00005.jpg



9/22/2020: View of the bank erosion further upstream.

LM Start	0.78	Rating **	M	Issue No.	74
LM End	0.78	Issue Type +	Ma	Location *	WS
Category	Earthen Levee			GPS Latitude/Longitude	
				Start	End
Item	Trim / Thin Trees			37.814141 °	37.814141 °
				-121.414266 °	-121.414266 °
DWR ID	DWR_RD2089_02_s_2021_74				
Comment Code					
T2 : Thin trees to allow visibility of the ground and room to flood fight.					
Inspector Comment					

No Photos

LM Start	0.79	Rating **	M	Issue No.	73
LM End	0.79	Issue Type +	Ma	Location *	LS
Category	Earthen Levee			GPS Latitude/Longitude	
				Start	End
Item	Trim / Thin Trees			37.814328 °	37.814328 °
				-121.414269 °	-121.414269 °
DWR ID	DWR_RD2089_02_s_2021_73				
Comment Code					
T1 : Trim trees to at least five feet above ground level.					
Inspector Comment					

No Photos

* Location LS : Land Side N/A : Not Applicable WS : Water Side CR : Crown	** Rating A : Acceptable M : Minimally Acceptable U : Unacceptable	N : Not Inspected/Rated C : Corrected A/W : Acceptable but Monitor & Maintain	+ Issue Type Ma : Maintenance Deficiency Ob : Design & System Obsolescence En : Enforcement
--	--	---	---

**Flood Control Project Maintenance
Levee Inspections**

Levee Inspection Report By Mile - Spring 2021

Reclamation District No. 2089 Stark

Waterway	Bank	Unit Miles	Inspection Start/End	Inspector
Unit No. 02 Salmon Slough	Right	1.35	04/15/2021 04/15/2021	Alberto De Leon

LM Start	0.81	Rating **	M	Issue No.	57
LM End	0.81	Issue Type +	Ma	Location *	LS
Category	Earthen Levee			GPS Latitude/Longitude	
				Start	End
Item	Trim / Thin Trees			37.814599 °	37.814599 °
				-121.414387 °	-121.414387 °
DWR ID	DWR_RD2089_02_s _ 2021_57				
Comment Code					
T3 : Trim and thin trees to allow visibility of the ground and room to flood fight.					
Inspector Comment					

No Photos

LM Start	0.83	Rating **	A/W	Issue No.	21
LM End	0.83	Issue Type +	Ma	Location *	WS
Category	Earthen Levee			GPS Latitude/Longitude	
				Start	End
Item	Animal Control			37.814773 °	37.814773 °
				-121.414555 °	-121.414555 °
DWR ID	DWR_RD2089_02_s _ 2012_21				
Comment Code					
A2 : Repair the levee slope damaged by livestock and prevent large animal access.					
Inspector Comment					
Livestock have worn paths into levee slope.					

No Photos

LM Start	0.83	Rating **	M	Issue No.	38
LM End	0.83	Issue Type +	Ma	Location *	WS
Category	Earthen Levee			GPS Latitude/Longitude	
				Start	End
Item	Animal Control			37.814844 °	37.814844 °
				-121.414566 °	-121.414566 °
DWR ID	DWR_RD2089_02_s _ 2012_38				
Comment Code					
A3 : No rodents visible, but rodent burrows visible; need to backfill and compact or grout burrows.					
Inspector Comment					

No Photos

* Location LS : Land Side N/A : Not Applicable WS : Water Side CR : Crown	** Rating A : Acceptable M : Minimally Acceptable U : Unacceptable	N : Not Inspected/Rated C : Corrected A/W : Acceptable but Monitor & Maintain	+ Issue Type Ma : Maintenance Deficiency Ob : Design & System Obsolescence En : Enforcement
--	--	---	---

**Flood Control Project Maintenance
Levee Inspections**

Levee Inspection Report By Mile - Spring 2021

Reclamation District No. 2089 Stark

Waterway	Bank	Unit Miles	Inspection Start/End	Inspector
Unit No. 02 Salmon Slough	Right	1.35	04/15/2021 04/15/2021	Alberto De Leon

LM Start	0.84	Rating **	M	Issue No.	9
LM End	0.84	Issue Type +	En	Location *	CR
Category	Earthen Levee			GPS Latitude/Longitude	
				Start	End
Item	Encroachments			37.814881 °	37.814881 °
				-121.414676 °	-121.414676 °
DWR ID	DWR_RD2089_02_s_2012_9				
Comment Code					
FE : Fence					
Inspector Comment					
Cattle guard type fence on levee crown.					

Photo 1 of 1 : SP_2021_RD2089_317_9_20210210_00008.jpg



View of the fence gate across levee crown.

LM Start	0.84	Rating **	M	Issue No.	25
LM End	0.85	Issue Type +	Ma	Location *	LS
Category	Earthen Levee			GPS Latitude/Longitude	
				Start	End
Item	Vegetation			37.814906 °	37.815011 °
				-121.414745 °	-121.414900 °
DWR ID	DWR_RD2089_02_s_2012_25				
Comment Code					
V4 : Elderberries are blocking visibility and flood fight capability.					
Inspector Comment					

No Photos

LM Start	0.85	Rating **	U	Issue No.	40
LM End	0.91	Issue Type +	Ma	Location *	LS
Category	Earthen Levee			GPS Latitude/Longitude	
				Start	End
Item	Animal Control			37.814997 °	37.814903 °
				-121.414774 °	-121.415887 °
DWR ID	DWR_RD2089_02_s_2012_40				
Comment Code					
A1 : Exterminate rodents and backfill and compact or grout burrows.					
Inspector Comment					

Photo 1 of 1 : SP_2021_RD2089_317_40_20210210_00023.jpg



View of the multiple rodent holes on the landside levee slope.

*** Location**
LS : Land Side N/A : Not Applicable
WS : Water Side
CR : Crown

**** Rating**
A : Acceptable N : Not Inspected/Rated
M : Minimally Acceptable C : Corrected
U : Unacceptable A/W : Acceptable but Monitor & Maintain

+ Issue Type
Ma : Maintenance Deficiency
Ob : Design & System Obsolescence
En : Enforcement

**Flood Control Project Maintenance
Levee Inspections**

Levee Inspection Report By Mile - Spring 2021

Reclamation District No. 2089 Stark

Waterway	Bank	Unit Miles	Inspection Start/End	Inspector
Unit No. 02 Salmon Slough	Right	1.35	04/15/2021 04/15/2021	Alberto De Leon

LM Start	0.89	Rating **	U	Issue No.	56
LM End	0.89	Issue Type +	Ma	Location *	LS
Category	Earthen Levee			GPS Latitude/Longitude	
				Start	End
Item	Trim / Thin Trees			37.815001 °	37.815001 °
				-121.415548 °	-121.415548 °
DWR ID	DWR_RD2089_02_s_2021_56				
Comment Code					
T3 : Trim and thin trees to allow visibility of the ground and room to flood fight.					
Inspector Comment					

Photo 1 of 1 : SP_2021_RD2089_317_56_20210504_00043.jpg



View of an untrimmed tree on the landside slope. Spring 2021

LM Start	0.91	Rating **	A/W	Issue No.	59
LM End	0.93	Issue Type +	Ob	Location *	LS
Category	Earthen Levee			GPS Latitude/Longitude	
				Start	End
Item	Seepage / Sandboils			37.814890 °	37.814890 °
				-121.415880 °	-121.416330 °
DWR ID	335-3				
Comment Code					
Inspector Comment					

No Photos

LM Start	0.95	Rating **	U	Issue No.	5
LM End	0.95	Issue Type +	Ma	Location *	LS
Category	Earthen Levee			GPS Latitude/Longitude	
				Start	End
Item	Animal Control			37.814915 °	37.814915 °
				-121.416606 °	-121.416606 °
DWR ID	DWR_RD2089_02_s_2014_5				
Comment Code					
A1 : Exterminate rodents and backfill and compact or grout burrows.					
Inspector Comment					

Photo 1 of 1 : SP_2021_RD2089_317_5_20210210_00006.jpg



View of the rodent holes on the landside levee slope.

* Location
LS : Land Side N/A : Not Applicable
WS : Water Side
CR : Crown

** Rating
A : Acceptable N : Not Inspected/Rated
M : Minimally Acceptable C : Corrected
U : Unacceptable A/W : Acceptable but Monitor & Maintain

+ Issue Type
Ma : Maintenance Deficiency
Ob : Design & System Obsolescence
En : Enforcement

**Flood Control Project Maintenance
Levee Inspections**

Levee Inspection Report By Mile - Spring 2021

Reclamation District No. 2089 Stark

Waterway	Bank	Unit Miles	Inspection Start/End	Inspector
Unit No. 02 Salmon Slough	Right	1.35	04/15/2021 04/15/2021	Alberto De Leon

LM Start	0.96	Rating **	M	Issue No.	68
LM End	0.96	Issue Type +	Ma	Location *	LS
Category	Earthen Levee			GPS Latitude/Longitude	
				Start	End
Item	Trim / Thin Trees			37.814911 °	37.814911 °
				-121.416756 °	-121.416756 °
DWR ID	DWR_RD2089_02_s _ 2020_68				
Comment Code					
T1 : Trim trees to at least five feet above ground level.					
Inspector Comment					

No Photos

LM Start	0.96	Rating **	M	Issue No.	52
LM End	0.96	Issue Type +	Ma	Location *	LS
Category	Earthen Levee			GPS Latitude/Longitude	
				Start	End
Item	Trim / Thin Trees			37.814945 °	37.814945 °
				-121.416780 °	-121.416780 °
DWR ID	DWR_RD2089_02_s _ 2021_52				
Comment Code					
T1 : Trim trees to at least five feet above ground level.					
Inspector Comment					

No Photos

LM Start	0.98	Rating **	M	Issue No.	69
LM End	1.02	Issue Type +	Ma	Location *	LS
Category	Earthen Levee			GPS Latitude/Longitude	
				Start	End
Item	Trim / Thin Trees			37.815018 °	37.815356 °
				-121.417117 °	-121.417745 °
DWR ID	DWR_RD2089_02_s _ 2020_69				
Comment Code					
T1 : Trim trees to at least five feet above ground level.					
Inspector Comment					

No Photos

* Location LS : Land Side N/A : Not Applicable WS : Water Side CR : Crown	** Rating A : Acceptable M : Minimally Acceptable U : Unacceptable	N : Not Inspected/Rated C : Corrected A/W : Acceptable but Monitor & Maintain	+ Issue Type Ma : Maintenance Deficiency Ob : Design & System Obsolescence En : Enforcement
--	--	---	---

**Flood Control Project Maintenance
Levee Inspections**

Levee Inspection Report By Mile - Spring 2021

Reclamation District No. 2089 Stark

Waterway	Bank	Unit Miles	Inspection Start/End	Inspector
Unit No. 02 Salmon Slough	Right	1.35	04/15/2021 04/15/2021	Alberto De Leon

LM Start	0.99	Rating **	M	Issue No.	51
LM End	1.02	Issue Type +	Ma	Location *	LS
Category	Earthen Levee			GPS Latitude/Longitude	
				Start	End
Item	Trim / Thin Trees			37.815124 °	37.815387 °
				-121.417332 °	-121.417766 °
DWR ID	DWR_RD2089_02_s_2021_51				
Comment Code					
T1 : Trim trees to at least five feet above ground level.					
Inspector Comment					

No Photos

LM Start	1.00	Rating **	U	Issue No.	12
LM End	1.00	Issue Type +	Ma	Location *	CR
Category	Earthen Levee			GPS Latitude/Longitude	
				Start	End
Item	Animal Control			37.815182 °	37.815182 °
				-121.417439 °	-121.417439 °
DWR ID	DWR_RD2089_02_f _ 2014_12				
Comment Code					
A3 : No rodents visible, but rodent burrows visible; need to backfill and compact or grout burrows.					
Inspector Comment					

Photo 1 of 1 : SP_2021_RD2089_317_12_20210210_00010.jpg



View of several rodent burrows on landside levee hinge and crown.

LM Start	1.03	Rating **	U	Issue No.	50
LM End	1.03	Issue Type +	Ma	Location *	WS
Category	Earthen Levee			GPS Latitude/Longitude	
				Start	End
Item	Vegetation			37.815515 °	37.815515 °
				-121.417931 °	-121.417931 °
DWR ID	DWR_RD2089_02_s_2021_50				
Comment Code					
V4 : Elderberries are blocking visibility and flood fight capability.					
Inspector Comment					

No Photos

* Location LS : Land Side N/A : Not Applicable WS : Water Side CR : Crown	** Rating A : Acceptable M : Minimally Acceptable U : Unacceptable	N : Not Inspected/Rated C : Corrected A/W : Acceptable but Monitor & Maintain	+ Issue Type Ma : Maintenance Deficiency Ob : Design & System Obsolescence En : Enforcement
--	--	---	---

**Flood Control Project Maintenance
Levee Inspections**

Levee Inspection Report By Mile - Spring 2021

Reclamation District No. 2089 Stark

Waterway	Bank	Unit Miles	Inspection Start/End	Inspector
Unit No. 02 Salmon Slough	Right	1.35	04/15/2021 04/15/2021	Alberto De Leon

LM Start	1.04	Rating **	M	Issue No.	70
LM End	1.04	Issue Type +	Ma	Location *	LS
Category	Earthen Levee			GPS Latitude/Longitude	
				Start	End
Item	Trim / Thin Trees			37.815563 °	37.815563 °
				-121.418052 °	-121.418052 °
DWR ID	DWR_RD2089_02_s_2020_70				
Comment Code					
T1 : Trim trees to at least five feet above ground level.					
Inspector Comment					

No Photos

LM Start	1.05	Rating **	N	Issue No.	29
LM End	1.05	Issue Type +	Ma	Location *	WS
Category	Earthen Levee			GPS Latitude/Longitude	
				Start	End
Item	Trim / Thin Trees			37.815629 °	37.815629 °
				-121.418133 °	-121.418133 °
DWR ID	DWR_RD2089_02_s_2012_29				
Comment Code					
T5 : Tree stumps.					
Inspector Comment					

Photo 1 of 1 : SP_2021_RD2089_317_29_20210210_00021.jpg



View of tree stump left after vegetation and tree removal.

LM Start	1.06	Rating **	M	Issue No.	44
LM End	1.06	Issue Type +	Ma	Location *	LS
Category	Earthen Levee			GPS Latitude/Longitude	
				Start	End
Item	Trim / Thin Trees			37.815731 °	37.815731 °
				-121.418197 °	-121.418197 °
DWR ID	DWR_RD2089_02_s_2021_44				
Comment Code					
T1 : Trim trees to at least five feet above ground level.					
Inspector Comment					

No Photos

* Location LS : Land Side N/A : Not Applicable WS : Water Side CR : Crown	** Rating A : Acceptable M : Minimally Acceptable U : Unacceptable	N : Not Inspected/Rated C : Corrected A/W : Acceptable but Monitor & Maintain	+ Issue Type Ma : Maintenance Deficiency Ob : Design & System Obsolescence En : Enforcement
--	--	---	---

**Flood Control Project Maintenance
Levee Inspections**

Levee Inspection Report By Mile - Spring 2021

Reclamation District No. 2089 Stark

Waterway	Bank	Unit Miles	Inspection Start/End	Inspector
Unit No. 02 Salmon Slough	Right	1.35	04/15/2021 04/15/2021	Alberto De Leon

LM Start	1.08	Rating **	M	Issue No.	45
LM End	1.12	Issue Type +	Ma	Location *	LS
Category	Earthen Levee			GPS Latitude/Longitude	
				Start	End
Item	Trim / Thin Trees			37.815985 °	37.816461 °
				-121.418486 °	-121.418877 °
DWR ID	DWR_RD2089_02_f_2019_45				
Comment Code					
T1 : Trim trees to at least five feet above ground level.					
Inspector Comment					

No Photos

LM Start	1.12	Rating **	M	Issue No.	30
LM End	1.12	Issue Type +	Ma	Location *	WS
Category	Earthen Levee			GPS Latitude/Longitude	
				Start	End
Item	Vegetation			37.816514 °	37.816514 °
				-121.418948 °	-121.418948 °
DWR ID	DWR_RD2089_02_s_2012_30				
Comment Code					
V4 : Elderberries are blocking visibility and flood fight capability.					
Inspector Comment					

No Photos

LM Start	1.17	Rating **	M	Issue No.	71
LM End	1.17	Issue Type +	Ma	Location *	WS
Category	Earthen Levee			GPS Latitude/Longitude	
				Start	End
Item	Trim / Thin Trees			37.817069 °	37.817069 °
				-121.419274 °	-121.419274 °
DWR ID	DWR_RD2089_02_s_2020_71				
Comment Code					
T1 : Trim trees to at least five feet above ground level.					
Inspector Comment					

No Photos

* Location LS : Land Side N/A : Not Applicable WS : Water Side CR : Crown	** Rating A : Acceptable M : Minimally Acceptable U : Unacceptable	N : Not Inspected/Rated C : Corrected A/W : Acceptable but Monitor & Maintain	+ Issue Type Ma : Maintenance Deficiency Ob : Design & System Obsolescence En : Enforcement
--	--	---	---

**Flood Control Project Maintenance
Levee Inspections**

Levee Inspection Report By Mile - Spring 2021

Reclamation District No. 2089 Stark

Waterway	Bank	Unit Miles	Inspection Start/End	Inspector
Unit No. 02 Salmon Slough	Right	1.35	04/15/2021 04/15/2021	Alberto De Leon

LM Start	1.17	Rating **	M	Issue No.	37
LM End	1.17	Issue Type +	Ma	Location *	LS
Category	Earthen Levee			GPS Latitude/Longitude	
				Start	End
Item	Trim / Thin Trees			37.817182 °	37.817182 °
				-121.419302 °	-121.419302 °
DWR ID	DWR_RD2089_02_s_2021_37				
Comment Code					
T3 : Trim and thin trees to allow visibility of the ground and room to flood fight.					
Inspector Comment					

No Photos

LM Start	1.18	Rating **	M	Issue No.	6
LM End	1.18	Issue Type +	Ma	Location *	LS
Category	Earthen Levee			GPS Latitude/Longitude	
				Start	End
Item	Animal Control			37.817271 °	37.817271 °
				-121.419380 °	-121.419380 °
DWR ID	DWR_RD2089_02_s_2014_6				
Comment Code					
A1 : Exterminate rodents and backfill and compact or grout burrows.					
Inspector Comment					

Photo 1 of 1 : SP_2021_RD2089_317_6_20210210_00007.jpg



View of the large rodent hole on the landside levee slope.

LM Start	1.19	Rating **	M	Issue No.	36
LM End	1.19	Issue Type +	Ma	Location *	LS
Category	Earthen Levee			GPS Latitude/Longitude	
				Start	End
Item	Trim / Thin Trees			37.817380 °	37.817380 °
				-121.419434 °	-121.419434 °
DWR ID	DWR_RD2089_02_s_2021_36				
Comment Code					
T1 : Trim trees to at least five feet above ground level.					
Inspector Comment					

No Photos

* Location LS : Land Side N/A : Not Applicable WS : Water Side CR : Crown	** Rating A : Acceptable M : Minimally Acceptable U : Unacceptable	N : Not Inspected/Rated C : Corrected A/W : Acceptable but Monitor & Maintain	+ Issue Type Ma : Maintenance Deficiency Ob : Design & System Obsolescence En : Enforcement
--	--	---	---

**Flood Control Project Maintenance
Levee Inspections**

Levee Inspection Report By Mile - Spring 2021

Reclamation District No. 2089 Stark

Waterway	Bank	Unit Miles	Inspection Start/End	Inspector
Unit No. 02 Salmon Slough	Right	1.35	04/15/2021 04/15/2021	Alberto De Leon

LM Start	1.23	Rating **	U	Issue No.	31
LM End	1.24	Issue Type +	Ma	Location *	WS
Category	Earthen Levee			GPS Latitude/Longitude	
				Start	End
Item	Vegetation			37.817976 °	37.818051 °
				-121.419714 °	-121.419743 °
DWR ID	DWR_RD2089_02_s_2012_31				
Comment Code					
V4 : Elderberries are blocking visibility and flood fight capability.					
Inspector Comment					

No Photos

LM Start	1.24	Rating **	U	Issue No.	28
LM End	1.24	Issue Type +	Ma	Location *	LS
Category	Earthen Levee			GPS Latitude/Longitude	
				Start	End
Item	Animal Control			37.818112 °	37.818112 °
				-121.419720 °	-121.419720 °
DWR ID	DWR_RD2089_02_f _ 2016_28				
Comment Code					
A1 : Exterminate rodents and backfill and compact or grout burrows.					
Inspector Comment					

Photo 1 of 1 : SP_2021_RD2089_317_28_20210210_00020.jpg



View of the rodent burrow in the landside levee slope.

LM Start	1.24	Rating **	M	Issue No.	72
LM End	1.27	Issue Type +	Ma	Location *	LS
Category	Earthen Levee			GPS Latitude/Longitude	
				Start	End
Item	Trim / Thin Trees			37.818151 °	37.818558 °
				-121.419745 °	-121.419757 °
DWR ID	DWR_RD2089_02_s_2020_72				
Comment Code					
T3 : Trim and thin trees to allow visibility of the ground and room to flood fight.					
Inspector Comment					

No Photos

* Location LS : Land Side N/A : Not Applicable WS : Water Side CR : Crown	** Rating A : Acceptable M : Minimally Acceptable U : Unacceptable	N : Not Inspected/Rated C : Corrected A/W : Acceptable but Monitor & Maintain	+ Issue Type Ma : Maintenance Deficiency Ob : Design & System Obsolescence En : Enforcement
--	--	---	---

Reclamation District No. 2089 Stark

Waterway	Bank	Unit Miles	Inspection Start/End	Inspector
Unit No. 02 Salmon Slough	Right	1.35	04/15/2021 04/15/2021	Alberto De Leon

LM Start	1.25	Rating **	M	Issue No.	23
LM End	1.31	Issue Type +	En	Location *	LS
Category	Earthen Levee			GPS Latitude/Longitude	
				Start	End
Item	Encroachments			37.818277 °	37.819040 °
				-121.419725 °	-121.419760 °
DWR ID	DWR_RD2089_02_s_2012_23				
Comment Code					
BU : Building					
Inspector Comment					
Buildings and equipment encroach within 10-ft of landside toe.					

View of buildings and patio decks within 10-ft of the levee slope. Fall 2009

LM Start	1.25	Rating **	U	Issue No.	33
LM End	1.25	Issue Type +	Ma	Location *	CR
Category	Earthen Levee			GPS Latitude/Longitude	
				Start	End
Item	Trim / Thin Trees			37.818300 °	37.818300 °
				-121.419715 °	-121.419715 °
DWR ID	DWR_RD2089_02_f _ 2018_33				
Comment Code					
T4 : Trim trees over roadway to at least 12 feet above ground level.					
Inspector Comment					

A photograph of a grassy mound or hill in a wooded area, with trees and foliage surrounding it. The date '04 15 2021' is visible in the bottom right corner.

View of an untrimmed tree over the surface road. Spring 2021

LM Start	1.27	Rating **	U	Issue No.	35
LM End	1.27	Issue Type +	Ma	Location *	CR
Category	Earthen Levee			GPS Latitude/Longitude	
				Start	End
Item	Trim / Thin Trees			37.818534 °	37.818534 °
				-121.419749 °	-121.419749 °
DWR ID	DWR_RD2089_02_s _ 2021_35				
Comment Code					
T4 : Trim trees over roadway to at least 12 feet above ground level.					
Inspector Comment					

A large, spreading tree with dense green foliage dominates the right side of the image. The tree's branches are thick and dark, extending horizontally across the frame. The leaves are a vibrant green, creating a thick canopy. The tree is situated on a grassy hillside that slopes upwards from the bottom left towards the right. The ground is covered in green grass and some dry, brownish patches. In the background, more trees and foliage are visible, though less distinct. A date stamp "04-16-2007" is visible in the bottom right corner of the image.

View of an untrimmed tree over the surface road. Spring 2021

* Location	** Rating	+ Issue Type
LS : Land Side N/A : Not Applicable WS : Water Side CR : Crown	A : Acceptable N : Not Inspected/Rated M : Minimally Acceptable C : Corrected U : Unacceptable A/W : Acceptable but Monitor & Maintain	Ma : Maintenance Deficiency Ob : Design & System Obsolescence En : Enforcement

Reclamation District No. 2089 Stark

No Photos

No Photos

View of the rodent burrow in the landside levee slope.

Page 22 of 23

**Flood Control Project Maintenance
Levee Inspections**

Levee Inspection Report By Mile - Spring 2021

Reclamation District No. 2089 Stark

Waterway	Bank	Unit Miles	Inspection Start/End	Inspector
Unit No. 02 Salmon Slough	Right	1.35	04/15/2021 04/15/2021	Alberto De Leon

LM Start	1.29	Rating **	A/W	Issue No.	32
LM End	1.29	Issue Type +	Ma	Location *	WS
Category	Earthen Levee			GPS Latitude/Longitude	
				Start	End
Item	Vegetation			37.818829 °	37.818829 °
				-121.419776 °	-121.419776 °
DWR ID	DWR_RD2089_02_s_2012_32				
Comment Code					
V4 : Elderberries are blocking visibility and flood fight capability.					
Inspector Comment					

No Photos

LM Start	1.29	Rating **	N	Issue No.	18
LM End	1.29	Issue Type +	Ma	Location *	LS
Category	Earthen Levee			GPS Latitude/Longitude	
				Start	End
Item	Trim / Thin Trees			37.818843 °	37.818843 °
				-121.419762 °	-121.419762 °
DWR ID	DWR_RD2089_02_f_2016_18				
Comment Code					
T5 : Tree stumps.					
Inspector Comment					

Photo 1 of 1 : SP_2021_RD2089_317_18_20210210_00014.jpg



View of the tree stump from the levee crown.

LM Start	1.33	Rating **	U	Issue No.	11
LM End	1.34	Issue Type +	Ma	Location *	LS
Category	Earthen Levee			GPS Latitude/Longitude	
				Start	End
Item	Animal Control			37.819371 °	37.819557 °
				-121.419774 °	-121.419696 °
DWR ID	DWR_RD2089_02_f_2014_11				
Comment Code					
Inspector Comment					

Photo 1 of 1 : SP_2021_RD2089_317_11_20210210_00009.jpg



View of the multiple rodent burrows on the landside levee slope.

*** Location**
LS : Land Side N/A : Not Applicable
WS : Water Side
CR : Crown

**** Rating**
A : Acceptable N : Not Inspected/Rated
M : Minimally Acceptable C : Corrected
U : Unacceptable A/W : Acceptable but Monitor & Maintain

+ Issue Type
Ma : Maintenance Deficiency
Ob : Design & System Obsolescence
En : Enforcement