

**Flood Control Project Maintenance
Levee Inspections**
LMA District Cover Sheet
Spring 2017 Levee Inspection Results

Reclamation District No. 2089 Stark

	Spring (March - May)	Summer ** (June - August)	Fall (September - November)	Winter ** (December - February)
† Overall LMA Rating (Fall Only)				

** Non-receipt of Summer or Winter Inspection
Reports may effect overall annual rating.

† SPRING INSPECTIONS: Overall maintenance ratings are not determined for the spring inspection results. Individual maintenance deficiencies are rated using the same criteria in the spring and in the fall.

FALL INSPECTIONS: The overall maintenance rating shown above is based on operation and maintenance deficiencies identified within the attached unit inspection reports. This rating is not intended to be an indication of risk.

Comments

**Flood Control Project Maintenance
Levee Inspections**

Unit Cover Sheet

Spring 2017 Levee Inspection Results

Reclamation District No. 2089 Stark

Waterway			Bank	Unit Miles
Unit No. 01 Old River			Right	1.51
	Spring (March - May)	Summer (June - August)	(September - November) Fall	Winter (December - February)
Unit Maintenance Rating (Fall Only)				
Date of Inspection	4/12/2017 - 4/12/2017			
DWR Inspector	Maksim Khashchuk			
Accompanied By				

Summer & Winter Inspections

The Local Maintaining Agency (LMA) is responsible for summer and winter inspections. The LMA is required to submit a report regarding summer and winter inspections to the California Department of Water Resources (DWR).

DWR must be informed on the:

- a) completion of the inspection
- b) any changes other than the results of normal maintenance
- c) corrections to deficiencies noted in this report

If additional items are noted, further documentation of those items must also be submitted.

The LMA should submit this information to DWR using the LMA web application tool available at:

<http://cdec.water.ca.gov/lma.html>

If the LMA is unable to submit information on this webpage, please contact DWR for assistance.

The LMA should submit the information and any associated documentation by September 30 for summer inspections and March 31 for winter inspections.

**Flood Control Project Maintenance
Levee Inspections**

Levee Inspection Report By Mile - Spring 2017

Reclamation District No. 2089 Stark

Waterway	Bank	Unit Miles	Inspection Start/End	Inspector
Unit No. 01 Old River	Right	1.51	04/12/2017 04/12/2017	Maksim Khashchuk

LM Start		Rating **	A	Issue No.	4
LM End		Issue Type +	Ma	Location *	N/A
Category	Earthen Levee		GPS Latitude/Longitude		
			Start	End	
Item	Operations & Maintenance Manuals				
DWR ID	DWR_RD2089_01_s _ 2013_4				
Comment Code					
Inspector Comment					
The O&M Manual is available at the LMA's office.					

No Photos

LM Start		Rating **	A	Issue No.	15
LM End		Issue Type +	Ma	Location *	N/A
Category	Earthen Levee		GPS Latitude/Longitude		
			Start	End	
Item	Emergency Supplies & Equipment				
DWR ID	DWR_RD2089_01_s _ 2013_15				
Comment Code					
Inspector Comment					
The LMA has flood fighting supplies on-site.					

No Photos

LM Start		Rating **	M	Issue No.	34
LM End		Issue Type +	Ma	Location *	N/A
Category	Earthen Levee		GPS Latitude/Longitude		
			Start	End	
Item	Flood Preparedness & Training				
DWR ID	DWR_RD2089_01_s _ 2013_34				
Comment Code					
Inspector Comment					
The LMA has not attended a flood fight training class in the past few years. They do have an emergency plan.					

No Photos

* Location LS : Land Side N/A : Not Applicable WS : Water Side CR : Crown	** Rating A : Acceptable M : Minimally Acceptable U : Unacceptable	N : Not Inspected/Rated C : Corrected A/W : Acceptable but Monitor & Maintain	+ Issue Type Ma : Maintenance Deficiency Ob : Design & System Obsolescence En : Enforcement
--	--	---	---

**Flood Control Project Maintenance
Levee Inspections**

Levee Inspection Report By Mile - Spring 2017

Reclamation District No. 2089 Stark

Waterway	Bank	Unit Miles	Inspection Start/End	Inspector
Unit No. 01 Old River	Right	1.51	04/12/2017 04/12/2017	Maksim Khashchuk

LM Start	0.00	Rating **	M	Issue No.	9
LM End	0.38	Issue Type +	En	Location *	LS
Category	Earthen Levee			GPS Latitude/Longitude	
				Start	End
Item	Encroachments			37.811681 °	37.809755 °
				-121.384930 °	-121.391520 °
DWR ID	DWR_RD2089_01_s_2012_9				
Comment Code					
DT : Ditch					
Inspector Comment					
05/24/2011 Photo added of Ag ditch.					

Photo 1 of 1 : SP_2017_RD2089_316_9_20170407_00007.jpg



05/24/2011 Ditch flows parallel with the utility line shown in the photo.

LM Start	0.03	Rating **	M	Issue No.	1
LM End	0.03	Issue Type +	Ma	Location *	LS
Category	Earthen Levee			GPS Latitude/Longitude	
				Start	End
Item	Encroachments			37.811508 °	37.811508 °
				-121.385464 °	-121.385464 °
DWR ID	DWR_RD2089_01_s_2012_1				
Comment Code					
ST : Stairway					
Inspector Comment					
Steps have been cut into the levee slope, this could become an erosion point, please fill and compact.					

Photo 1 of 1 : SP_2017_RD2089_316_1_20170407_00001.jpg



View of the stairs eroding into the landside levee slope.

LM Start	0.04	Rating **	M	Issue No.	30
LM End	0.24	Issue Type +	Ma	Location *	LS
Category	Earthen Levee			GPS Latitude/Longitude	
				Start	End
Item	Vegetation			37.811474 °	37.810451 °
				-121.385573 °	-121.389109 °
DWR ID	DWR_RD2089_01_f_2016_30				
Comment Code					
V1 : Control annual grass and weeds on the levee slopes and easements.					
Inspector Comment					

Photo 1 of 1 : SP_2017_RD2089_316_30_20170407_00022.jpg



View of the vegetation on the landside levee slope.

*** Location**

LS : Land Side N/A : Not Applicable
WS : Water Side
CR : Crown

**** Rating**

A : Acceptable N : Not Inspected/Rated
M : Minimally Acceptable C : Corrected
U : Unacceptable A/W : Acceptable but Monitor & Maintain

+ Issue Type

Ma : Maintenance Deficiency
Ob : Design & System Obsolescence
En : Enforcement

**Flood Control Project Maintenance
Levee Inspections**

Levee Inspection Report By Mile - Spring 2017

Reclamation District No. 2089 Stark

Waterway	Bank	Unit Miles	Inspection Start/End	Inspector
Unit No. 01 Old River	Right	1.51	04/12/2017 04/12/2017	Maksim Khashchuk

LM Start	0.04	Rating **	U	Issue No.	35
LM End	0.20	Issue Type +	Ma	Location *	WS
Category	Earthen Levee			GPS Latitude/Longitude	
				Start	End
Item	Vegetation			37.811445 °	37.810673 °
				-121.385704 °	-121.388374 °
DWR ID	DWR_RD2089_01_s_2017_35				
Comment Code					
V1 : Control annual grass and weeds on the levee slopes and easements.					
Inspector Comment					

Photo 1 of 1 : SP_2017_RD2089_316_35_20170417_00054.jpg



View of the tall vegetation on the levee slope.

LM Start	0.24	Rating **	A/W	Issue No.	940
LM End	0.24	Issue Type +	Ma	Location *	LS
Category	Earthen Levee			GPS Latitude/Longitude	
				Start	End
Item	Vegetation			37.810412 °	37.810412 °
				-121.389115 °	-121.389115 °
DWR ID	DWR_RD2089_01_s_2012_940				
Comment Code					
V2 : Remove the wild growth other than native grasses from the levee slopes.					
Inspector Comment					
Arundo has been trimmed back from the crown but still remains as an obstruction to the slope and obstructs visibility, needs to be removed.					

Photo 1 of 1 : SP_2017_RD2089_316_940_20170407_00030.jpg



The LMA is actively trying to remove the vegetation on the landside levee slope and toe.

LM Start	0.27	Rating **	U	Issue No.	12
LM End	0.39	Issue Type +	Ma	Location *	LS
Category	Earthen Levee			GPS Latitude/Longitude	
				Start	End
Item	Vegetation			37.810319 °	37.809740 °
				-121.389510 °	-121.391645 °
DWR ID	DWR_RD2089_01_s_2012_12				
Comment Code					
V2 : Remove the wild growth other than native grasses from the levee slopes.					
Inspector Comment					
Access and visibility completely blocked. 11/10/2011 issue has not changed.					

Photo 1 of 1 : SP_2017_RD2089_316_12_20170407_00008.jpg



Thick brush and wild rose completely block access and visibility of landside slope and toe.

* Location		** Rating		+ Issue Type	
LS : Land Side	N/A : Not Applicable	A : Acceptable	N : Not Inspected/Rated	Ma : Maintenance Deficiency	
WS : Water Side		M : Minimally Acceptable	C : Corrected	Ob : Design & System Obsolescence	
CR : Crown		U : Unacceptable	A/W : Acceptable but Monitor & Maintain	En : Enforcement	

**Flood Control Project Maintenance
Levee Inspections**

Levee Inspection Report By Mile - Spring 2017

Reclamation District No. 2089 Stark

Waterway	Bank	Unit Miles	Inspection Start/End	Inspector
Unit No. 01 Old River	Right	1.51	04/12/2017 04/12/2017	Maksim Khashchuk

LM Start	0.33	Rating **	U	Issue No.	19
LM End	0.33	Issue Type +	Ma	Location *	LS
Category	Earthen Levee			GPS Latitude/Longitude	
				Start	End
Item	Vegetation			37.810002 °	37.810002 °
				-121.390674 °	-121.390674 °
DWR ID	DWR_RD2089_01_s_2012_19				
Comment Code					
V2 : Remove the wild growth other than native grasses from the levee slopes.					
Inspector Comment					
Arundo is thick and blocks visibility and access.					

Photo 1 of 2 : SP_2017_RD2089_316_19_20170407_00012.jpg



View of the arundo back on the landside levee slope. Fall 2016

LM Start	0.33	Rating **	U	Issue No.	19 (cont)
LM End	0.33	Issue Type +	Ma	Location *	LS

Photo 2 of 2 : SP_2017_RD2089_316_19_20170407_00013.jpg



Arundo was trimmed back from the road and needs to be maintained so that it does not obstruct visibility and access to the landside toe.

LM Start	0.41	Rating **	M	Issue No.	28
LM End	0.46	Issue Type +	Ma	Location *	LS
Category	Earthen Levee			GPS Latitude/Longitude	
				Start	End
Item	Vegetation			37.809593 °	37.809507 °
				-121.391963 °	-121.392907 °
DWR ID	DWR_RD2089_01_s_2012_28				
Comment Code					
V2 : Remove the wild growth other than native grasses from the levee slopes.					
Inspector Comment					
Vegetation is too thick to allow access and visibility. Some thick patches of shrubs remain and continue to block visibility and access.					

Photo 1 of 1 : SP_2017_RD2089_316_28_20170407_00020.jpg



05/24/2011 Photo shows thick dead vegetation and continuation of trees in area that are preventing access and visibility of landside slope and toe.

* Location		** Rating		+ Issue Type	
LS : Land Side	N/A : Not Applicable	A : Acceptable	N : Not Inspected/Rated	Ma : Maintenance Deficiency	
WS : Water Side		M : Minimally Acceptable	C : Corrected	Ob : Design & System Obsolescence	
CR : Crown		U : Unacceptable	A/W : Acceptable but Monitor & Maintain	En : Enforcement	

**Flood Control Project Maintenance
Levee Inspections**

Levee Inspection Report By Mile - Spring 2017

Reclamation District No. 2089 Stark

Waterway	Bank	Unit Miles	Inspection Start/End	Inspector
Unit No. 01 Old River	Right	1.51	04/12/2017 04/12/2017	Maksim Khashchuk

LM Start	0.46	Rating **	M	Issue No.	958
LM End	0.46	Issue Type +	En	Location *	LS
Category	Supplemental			GPS Latitude/Longitude	
				Start	End
Item	DWR UCIP Field Study			37.809501 °	37.809501 °
				-121.392798 °	-121.392798 °
DWR ID					
Comment Code					
Inspector Comment					
FS_ID:21635					
DS_ID:23042					
EP_NO: 5641					
Repair Type: Non-Urgent					
Crossing Status: Found					
UCIP Comments: - damaged siphon breaker.- most of the pipe on					
landside exposed on levee slope.					
FIELD_STRUCT_DESC: 20-inch steel pipe and electric conduit through					
the levee, 5.8 feet below the crown, pump on pile structure in the					
stream. Siphon breaker on the landward slope. (App. No. 5641- Ted					
Stark)					
FS Date: 9/12/2013					

LM Start	0.46	Rating **	M	Issue No.	958 (cont)
LM End	0.46	Issue Type +	En	Location *	LS

Photo 1 of 3 : UCIP_SP_2017_21635_36742.jpg



WS view: walkway to pump platform and pump on steel piling structure in the channel.

Photo 2 of 3 : UCIP_SP_2017_21635_36741.jpg



WS view: steel walkway, electric control box, and pump on steel piling structure in the channel.

* Location LS : Land Side N/A : Not Applicable WS : Water Side CR : Crown		** Rating A : Acceptable N : Not Inspected/Rated M : Minimally Acceptable C : Corrected U : Unacceptable A/W : Acceptable but Monitor & Maintain		+ Issue Type Ma : Maintenance Deficiency Ob : Design & System Obsolescence En : Enforcement
--	--	---	--	---

**Flood Control Project Maintenance
Levee Inspections**

Levee Inspection Report By Mile - Spring 2017

Reclamation District No. 2089 Stark

Waterway	Bank	Unit Miles	Inspection Start/End	Inspector
Unit No. 01 Old River	Right	1.51	04/12/2017 04/12/2017	Maksim Khashchuk

LM Start	0.46	Rating **	M	Issue No.	958 (cont)	
LM End	0.46	Issue Type +	En	Location *	LS	
Category	Supplemental			GPS Latitude/Longitude		
				Start	End	
Item	DWR UCIP Field Study			37.809501 °	37.809501 °	
				-121.392798 °	-121.392798 °	
DWR ID						
Comment Code						
Inspector Comment						
FS_ID:21635						
DS_ID:23042						
EP_NO: 5641						
Repair Type: Non-Urgent						
Crossing Status: Found						
UCIP Comments: - damaged siphon breaker.- most of the pipe on						
landside exposed on levee slope.						
FIELD_STRUCT_DESC: 20-inch steel pipe and electric conduit through						
the levee, 5.8 feet below the crown, pump on pile structure in the						
stream. Siphon breaker on the landward slope. (App. No. 5641- Ted						
Stark)						
FS Date: 9/12/2013						

Photo 3 of 3 : UCIP_SP_2017_21635_36740.jpg



LS view: overview of exposed steel pipe (right) on levee slope and service pole (left).

LM Start	0.46	Rating **	M	Issue No.	5
LM End	0.46	Issue Type +	Ma	Location *	WS
Category	Supplemental			GPS Latitude/Longitude	
				Start	End
Item	DWR Erosion Survey			37.809394 °	37.809394 °
				-121.392791 °	-121.392791 °
DWR ID	DWR_RD2089_01_s_2017_5				
Comment Code					
Inspector Comment					
07/25/2016: No significant change observed.					
06/25/2015: No significant change observed.					
07/02/2014: No significant change observed.					
08/13/2013: No significant change observed.					
08/07/2012: The site has been visited by boat survey. No significant change observed					
08/23/2011: The site shows loose material around the pipe crossing.					
The operation of the pipe might have caused an impact on the levee.					
[2016 Site ID:RD2089U01RM29.8]					

Photo 1 of 2 : SP_2017_RD2089_316_5_20170407_00005.jpg



Front view of the site. Note the irrigation pipe on the site.

* Location LS : Land Side N/A : Not Applicable WS : Water Side CR : Crown		** Rating A : Acceptable M : Minimally Acceptable U : Unacceptable N : Not Inspected/Rated C : Corrected A/W : Acceptable but Monitor & Maintain		+ Issue Type Ma : Maintenance Deficiency Ob : Design & System Obsolescence En : Enforcement
--	--	---	--	---

Reclamation District No. 2089 Stark

Waterway	Bank	Unit Miles	Inspection Start/End	Inspector
Unit No. 01 Old River	Right	1.51	04/12/2017 04/12/2017	Maksim Khashchuk

LM Start	0.46	Rating **	M	Issue No.	5 (cont)	
LM End	0.46	Issue Type +	Ma	Location *	WS	
Category	Supplemental			GPS Latitude/Longitude		
				Start	End	
Item	DWR Erosion Survey			37.809394 °	37.809394 °	
				-121.392791 °	-121.392791 °	
DWR ID	DWR_RD2089_01_s_2017_5					
Comment Code						
Inspector Comment						
07/25/2016: No significant change observed.						
06/25/2015: No significant change observed.						
07/02/2014: No significant change observed.						
08/13/2013: No significant change observed.						
08/07/2012: The site has been visited by boat survey. No significant change observed						
08/23/2011: The site shows loose material around the pipe crossing.						
The operation of the pipe might have caused an impact on the levee.						
[2016 Site ID:RD2089U01RM29.8]						

A photograph showing a concrete bridge structure spanning a river. The bridge has a metal railing and is supported by concrete piers. To the right of the bridge, there is a steep, rocky embankment covered with dense, dry vegetation and trees. The water in the river is calm and reflects the surrounding greenery.

Close view of the site.

LM Start	0.47	Rating **	M	Issue No.	27
LM End	0.55	Issue Type +	Ma	Location *	LS
Category	Earthen Levee			GPS Latitude/Longitude	
				Start	End
Item	Vegetation			37.809592 °	37.810136 °
				-121.392993 °	-121.394259 °
DWR ID	DWR_RD2089_01_f_2016_27				
Comment Code					
V2 : Remove the wild growth other than native grasses from the levee slopes.					
Inspector Comment					

A photograph showing a gravel road curving through a dry, grassy landscape. There are trees and shrubs in the background. A date stamp '10/15/2015' is visible in the bottom right corner.

View of the vegetation on the landside levee slope.

* Location	** Rating	+ Issue Type
LS : Land Side N/A : Not Applicable WS : Water Side CR : Crown	A : Acceptable N : Not Inspected/Rated M : Minimally Acceptable C : Corrected U : Unacceptable A/W : Acceptable but Monitor & Maintain	Ma : Maintenance Deficiency Ob : Design & System Obsolescence En : Enforcement

**Flood Control Project Maintenance
Levee Inspections**

Levee Inspection Report By Mile - Spring 2017

Reclamation District No. 2089 Stark

Waterway	Bank	Unit Miles	Inspection Start/End	Inspector
Unit No. 01 Old River	Right	1.51	04/12/2017 04/12/2017	Maksim Khashchuk

LM Start	0.50	Rating **	U	Issue No.	29
LM End	0.71	Issue Type +	Ma	Location *	WS
Category	Earthen Levee			GPS Latitude/Longitude	
				Start	End
Item	Vegetation			37.809814 °	37.809452 °
				-121.393481 °	-121.397013 °
DWR ID	DWR_RD2089_01_f_2016_29				
Comment Code					
V2 : Remove the wild growth other than native grasses from the levee slopes.					
Inspector Comment					
Tumbleweeds and other tall vegetation are on the levee slope.					

Photo 1 of 2 : SP_2017_RD2089_316_29_20170417_00053.jpg



View of the tall vegetation on the levee slope.

LM Start	0.50	Rating **	U	Issue No.	29 (cont)
LM End	0.71	Issue Type +	Ma	Location *	WS

Photo 2 of 2 : SP_2017_RD2089_316_29_20170407_00021.jpg



View of the vegetation on the waterside levee slope.

LM Start	0.54	Rating **	M	Issue No.	14
LM End	0.54	Issue Type +	Ma	Location *	CR
Category	Earthen Levee			GPS Latitude/Longitude	
				Start	End
Item	Crown Surface / Depressions / Rutting			37.810087 °	37.810087 °
				-121.394200 °	-121.394200 °
DWR ID	DWR_RD2089_01_s_2012_14				
Comment Code					
C3 : Add appropriate gravel or road base. Grade and compact.					
Inspector Comment					
11/10/2011 Minor depressions will cause ponding.					

Photo 1 of 1 : SP_2017_RD2089_316_14_20170407_00009.jpg



11/10/2011 Depressions in crown.

* Location		** Rating		+ Issue Type	
LS : Land Side	N/A : Not Applicable	A : Acceptable	N : Not Inspected/Rated	Ma : Maintenance Deficiency	
WS : Water Side		M : Minimally Acceptable	C : Corrected	Ob : Design & System Obsolescence	
CR : Crown		U : Unacceptable	A/W : Acceptable but Monitor & Maintain	En : Enforcement	

**Flood Control Project Maintenance
Levee Inspections**

Levee Inspection Report By Mile - Spring 2017

Reclamation District No. 2089 Stark

Waterway	Bank	Unit Miles	Inspection Start/End	Inspector
Unit No. 01 Old River	Right	1.51	04/12/2017 04/12/2017	Maksim Khashchuk

LM Start	0.67	Rating **	U	Issue No.	3
LM End	0.67	Issue Type +	Ma	Location *	WS
Category	Supplemental			GPS Latitude/Longitude	
				Start	End
Item	DWR Erosion Survey			37.809780 °	37.809780 °
				-121.396230 °	-121.396230 °
DWR ID	DWR_RD2089_01_s_2017_3				
Comment Code					
Inspector Comment					
07/25/2016: No significant change observed.					
06/25/2015: No significant change observed.					
07/02/2014: No significant change observed.					
08/13/2013: No significant change observed.					
08/07/2012: The site has been visited by boat survey. No significant change observed					
08/23/2011: The 5-foot vertical scarp shows no significant change from the last year inspection. No new erosion activities observed. Dense white willow trees on site.					
09/07/2010: It was difficult to view the erosion due to the thick Willow thickets and other vegetation at the water line. At the time of the inspection, there were no signs of repair on site. As noted during the last survey, there is a 5-foot vertical scarp along the lower slope that may be subjected to high flow velocities.					
08/05/2010: Recommended for repair, per CLRO; "Erosion of this site may be subjective to rapid rates of erosion."					
09/28/2009: No major change observed; 5-foot vertical scarp is immediately downstream of where berm has tapered; site is recommended as local maintenance issue, per CLRO CES Evaluation 2008 Report; Site # is the same as RM29.6, LM0.60; previously rated "U".					
11/05/2008: No change observed; rodent holes on lower slope; wide levee crown. [2016 Site ID:RD2089U01RM29.61]					

Photo 1 of 1 : SP_2017_RD2089_316_3_20170407_00004.jpg



Front view of the site. Note the very dense white willow thickets on site.

LM Start	0.80	Rating **	M	Issue No.	22
LM End	0.80	Issue Type +	Ma	Location *	LS
Category	Earthen Levee			GPS Latitude/Longitude	
				Start	End
Item	Slope Stability			37.808466 °	37.808466 °
				-121.397847 °	-121.397847 °
DWR ID	DWR_RD2089_01_f_2016_22				
Comment Code					
S2 : Repair the levee slope damaged by foot traffic and prevent access where possible.					
Inspector Comment					

Photo 1 of 1 : SP_2017_RD2089_316_22_20170407_00016.jpg



View of the footpath on the landside levee slope.

* Location LS : Land Side N/A : Not Applicable WS : Water Side CR : Crown	** Rating A : Acceptable M : Minimally Acceptable U : Unacceptable	N : Not Inspected/Rated C : Corrected A/W : Acceptable but Monitor & Maintain	+ Issue Type Ma : Maintenance Deficiency Ob : Design & System Obsolescence En : Enforcement
--	--	---	---

**Flood Control Project Maintenance
Levee Inspections**

Levee Inspection Report By Mile - Spring 2017

Reclamation District No. 2089 Stark

Waterway	Bank	Unit Miles	Inspection Start/End	Inspector
Unit No. 01 Old River	Right	1.51	04/12/2017 04/12/2017	Maksim Khashchuk

LM Start	0.80	Rating **	M	Issue No.	959
LM End	0.80	Issue Type +	En	Location *	LS
Category	Supplemental			GPS Latitude/Longitude	
				Start	End
Item	DWR UCIP Field Study			37.808387 °	37.808387 °
				-121.397843 °	-121.397843 °
DWR ID					
Comment Code					
Inspector Comment					
FS_ID:21587					
DS_ID:23043					
EP_NO: 3385					
Repair Type: Non-Urgent					
Crossing Status: Found					
UCIP Comments: - powerline on landside.- electric control box on waterside.- waterside slope erosion under pump platform.					
FIELD_STRUCT_DESC: 16-inch pipe through the levee, 5.5 feet below the crown, slant pump in pump house on the waterward slope. Siphon breaker on the landward slope. (App. No. 3385-Elinore Lawrence).					
Originally included in O+M (1968)					
FS Date: 9/12/2013					

LM Start	0.80	Rating **	M	Issue No.	959 (cont)
LM End	0.80	Issue Type +	En	Location *	LS

Photo 1 of 3 : UCIP_SP_2017_21587_36635.jpg



WS view: slant pump on wooden platform. Oil leaks from the pump.

Photo 2 of 3 : UCIP_SP_2017_21587_36634.jpg



WS view: soil erosion under pump platform. Needs mitigation measures to stop erosion.

* Location LS : Land Side N/A : Not Applicable WS : Water Side CR : Crown		** Rating A : Acceptable M : Minimally Acceptable U : Unacceptable N : Not Inspected/Rated C : Corrected A/W : Acceptable but Monitor & Maintain		+ Issue Type Ma : Maintenance Deficiency Ob : Design & System Obsolescence En : Enforcement
--	--	---	--	---

**Flood Control Project Maintenance
Levee Inspections**

Levee Inspection Report By Mile - Spring 2017

Reclamation District No. 2089 Stark

Waterway	Bank	Unit Miles	Inspection Start/End	Inspector
Unit No. 01 Old River	Right	1.51	04/12/2017 04/12/2017	Maksim Khashchuk

LM Start	0.80	Rating **	M	Issue No.	959 (cont)
LM End	0.80	Issue Type +	En	Location *	LS
Category	Supplemental			GPS Latitude/Longitude	
				Start	End
Item	DWR UCIP Field Study			37.808387 °	37.808387 °
				-121.397843 °	-121.397843 °
DWR ID					
Comment Code					
Inspector Comment					
FS_ID:21587					
DS_ID:23043					
EP_NO: 3385					
Repair Type: Non-Urgent					
Crossing Status: Found					
UCIP Comments: - powerline on landside.- electric control box on waterside.- waterside slope erosion under pump platform.					
FIELD_STRUCT_DESC: 16-inch pipe through the levee, 5.5 feet below the crown, slant pump in pump house on the waterward slope. Siphon breaker on the landward slope. (App. No. 3385-Elinore Lawrence).					
Originally included in O+M (1968)					
FS Date: 9/12/2013					

Photo 3 of 3 : UCIP_SP_2017_21587_36633.jpg



LS view: exposed pipe with siphon breaker on levee slope. Concrete standpipe on levee toe.

LM Start	0.81	Rating **	M	Issue No.	17
LM End	0.94	Issue Type +	Ma	Location *	LS
Category	Earthen Levee			GPS Latitude/Longitude	
				Start	End
Item	Slope Stability			37.808319 °	37.806453 °
				-121.397881 °	-121.397755 °
DWR ID	DWR_RD2089_01_f_ 2014_17				
Comment Code					
S1 : Repair slope instability.					
Inspector Comment					
Landside levee toe cut due to farming.					

Photo 1 of 1 : SP_2017_RD2089_316_17_20170407_00011.jpg



View of the vertical cut along the landside levee toe.

* Location LS : Land Side N/A : Not Applicable WS : Water Side CR : Crown	** Rating A : Acceptable M : Minimally Acceptable U : Unacceptable	N : Not Inspected/Rated C : Corrected A/W : Acceptable but Monitor & Maintain	+ Issue Type Ma : Maintenance Deficiency Ob : Design & System Obsolescence En : Enforcement
--	--	---	---

**Flood Control Project Maintenance
Levee Inspections**

Levee Inspection Report By Mile - Spring 2017

Reclamation District No. 2089 Stark

Waterway	Bank	Unit Miles	Inspection Start/End	Inspector
Unit No. 01 Old River	Right	1.51	04/12/2017 04/12/2017	Maksim Khashchuk

LM Start	0.82	Rating **	M	Issue No.	21
LM End	0.88	Issue Type +	Ma	Location *	WS
Category	Earthen Levee			GPS Latitude/Longitude	
				Start	End
Item	Vegetation			37.808043 °	37.807284 °
				-121.397853 °	-121.397718 °
DWR ID	DWR_RD2089_01_f_2016_21				
Comment Code					
V2 : Remove the wild growth other than native grasses from the levee slopes.					
Inspector Comment					
Willows starting to encroach onto levee crown.					

Photo 1 of 2 : SP_2017_RD2089_316_21_20170417_00052.jpg



The willows are starting to creep up the levee slope.

LM Start	0.82	Rating **	M	Issue No.	21 (cont)
LM End	0.88	Issue Type +	Ma	Location *	WS

Photo 2 of 2 : SP_2017_RD2089_316_21_20170407_00015.jpg



View of the vegetation on the waterside levee slope. The willows were trimmed back.

LM Start	0.94	Rating **	A/W	Issue No.	33
LM End	0.94	Issue Type +	Ma	Location *	WS
Category	Earthen Levee			GPS Latitude/Longitude	
				Start	End
Item	Vegetation			37.806397 °	37.806397 °
				-121.397758 °	-121.397758 °
DWR ID	DWR_RD2089_01_s_2012_33				
Comment Code					
V2 : Remove the wild growth other than native grasses from the levee slopes.					
Inspector Comment					
Arundo on waterside impedes visibility and access to waterside slope.					

Photo 1 of 1 : SP_2017_RD2089_316_33_20170407_00023.jpg



Arundo was trimmed back and needs to be maintained to allow visibility and access.

* Location LS : Land Side N/A : Not Applicable WS : Water Side CR : Crown		** Rating A : Acceptable M : Minimally Acceptable U : Unacceptable		N : Not Inspected/Rated C : Corrected A/W : Acceptable but Monitor & Maintain		+ Issue Type Ma : Maintenance Deficiency Ob : Design & System Obsolescence En : Enforcement	
--	--	--	--	---	--	---	--

**Flood Control Project Maintenance
Levee Inspections**

Levee Inspection Report By Mile - Spring 2017

Reclamation District No. 2089 Stark

Waterway	Bank	Unit Miles	Inspection Start/End	Inspector
Unit No. 01 Old River	Right	1.51	04/12/2017 04/12/2017	Maksim Khashchuk

LM Start	1.02	Rating **	M	Issue No.	956
LM End	1.02	Issue Type +	Ma	Location *	LS
Category	Earthen Levee			GPS Latitude/Longitude	
				Start	End
Item	Vegetation			37.806026 °	37.806026 °
				-121.399206 °	-121.399206 °
DWR ID	DWR_RD2089_01_s _ 2012_956				
Comment Code					
V4 : Elderberries are blocking visibility and flood fight capability.					
Inspector Comment					
Elderberry and tobacco block visibility.					

No Photos

LM Start	1.06	Rating **	U	Issue No.	32
LM End	1.24	Issue Type +	Ma	Location *	LS
Category	Earthen Levee			GPS Latitude/Longitude	
				Start	End
Item	Vegetation			37.805882 °	37.805847 °
				-121.399790 °	-121.403082 °
DWR ID	DWR_RD2089_01_s _ 2017_32				
Comment Code					
V2 : Remove the wild growth other than native grasses from the levee slopes.					
Inspector Comment					

Photo 1 of 1 : SP_2017_RD2089_316_32_20170417_00051.jpg



View of the tall vegetation on the levee slope.

LM Start	1.07	Rating **	U	Issue No.	957
LM End	1.07	Issue Type +	Ma	Location *	LS
Category	Earthen Levee			GPS Latitude/Longitude	
				Start	End
Item	Vegetation			37.805848 °	37.805848 °
				-121.400003 °	-121.400003 °
DWR ID	DWR_RD2089_01_s _ 2012_957				
Comment Code					
V4 : Elderberries are blocking visibility and flood fight capability.					
Inspector Comment					
Brush blocks access.					

No Photos

* Location		** Rating		+ Issue Type	
LS : Land Side	N/A : Not Applicable	A : Acceptable	N : Not Inspected/Rated	Ma : Maintenance Deficiency	
WS : Water Side		M : Minimally Acceptable	C : Corrected	Ob : Design & System Obsolescence	
CR : Crown		U : Unacceptable	A/W : Acceptable but Monitor & Maintain	En : Enforcement	

**Flood Control Project Maintenance
Levee Inspections**

Levee Inspection Report By Mile - Spring 2017

Reclamation District No. 2089 Stark

Waterway	Bank	Unit Miles	Inspection Start/End	Inspector
Unit No. 01 Old River	Right	1.51	04/12/2017 04/12/2017	Maksim Khashchuk

LM Start	1.12	Rating **	M	Issue No.	16
LM End	1.12	Issue Type +	Ma	Location *	LS
Category	Earthen Levee			GPS Latitude/Longitude	
				Start	End
Item	Animal Control			37.805699 °	37.805699 °
				-121.400952 °	-121.400952 °
DWR ID	DWR_RD2089_01_f_2014_16				
Comment Code					
A3 : No rodents visible, but rodent burrows visible; need to backfill and compact or grout burrows.					
Inspector Comment					
Some rodent holes have collapsed. Backfill the remaining voids in the levee slope.					

Photo 1 of 1 : SP_2017_RD2089_316_16_20170407_00010.jpg



View of the rodent burrow on the landside levee slope.

LM Start	1.19	Rating **	A/W	Issue No.	25
LM End	1.19	Issue Type +	Ma	Location *	WS
Category	Earthen Levee			GPS Latitude/Longitude	
				Start	End
Item	Vegetation			37.805663 °	37.805663 °
				-121.402151 °	-121.402151 °
DWR ID	DWR_RD2089_01_s_2016_25				
Comment Code					
V2 : Remove the wild growth other than native grasses from the levee slopes.					
Inspector Comment					
Arrundo was trimmed back but may creep up the waterside levee slope if not maintained.					

Photo 1 of 1 : SP_2017_RD2089_316_25_20170407_00017.jpg



View of the Arrundo on the waterside slope obstructing visibility. LMA is actively trying to remove the wild growth.

LM Start	1.22	Rating **	M	Issue No.	43
LM End	1.22	Issue Type +	Ma	Location *	CR
Category	Earthen Levee			GPS Latitude/Longitude	
				Start	End
Item	Crown Surface / Depressions / Rutting			37.805735 °	37.805735 °
				-121.402614 °	-121.402614 °
DWR ID	DWR_RD2089_01_s_2012_43				
Comment Code					
C3 : Add appropriate gravel or road base. Grade and compact.					
Inspector Comment					
11/10/2011 Depression needs to be filled.					

Photo 1 of 1 : SP_2017_RD2089_316_43_20170407_00024.jpg



11/10/2011 Depression in roadway.

* Location		** Rating		+ Issue Type	
LS : Land Side	N/A : Not Applicable	A : Acceptable	N : Not Inspected/Rated	Ma : Maintenance Deficiency	
WS : Water Side		M : Minimally Acceptable	C : Corrected	Ob : Design & System Obsolescence	
CR : Crown		U : Unacceptable	A/W : Acceptable but Monitor & Maintain	En : Enforcement	

**Flood Control Project Maintenance
Levee Inspections**

Levee Inspection Report By Mile - Spring 2017

Reclamation District No. 2089 Stark

Waterway	Bank	Unit Miles	Inspection Start/End	Inspector
Unit No. 01 Old River	Right	1.51	04/12/2017 04/12/2017	Maksim Khashchuk

LM Start	1.23	Rating **	M	Issue No.	2
LM End	1.24	Issue Type +	Ma	Location *	WS
Category	Supplemental			GPS Latitude/Longitude	
				Start	End
Item	DWR Erosion Survey			37.805580 °	37.805580 °
				-121.403010 °	-121.403010 °
DWR ID	DWR_RD2089_01_s_2017_2				
Comment Code					
Inspector Comment					
09/16/2016: The river was not navigable near the site due to the dense water grass, so the site was visited by land survey. No significant change observed.					
06/25/2015: No significant change observed.					
07/02/2014: No significant change observed.					
08/13/2013: The erosion is around a tree at the levee toe. Dense vegetation is visible. [2016 Site ID:RD2089U01RM29.04]					

LM Start	1.23	Rating **	M	Issue No.	2 (cont)
LM End	1.24	Issue Type +	Ma	Location *	WS

Photo 1 of 2 : SP_2017_RD2089_316_2_20170407_00002.jpg



View of the erosion from levee slope.

Photo 2 of 2 : SP_2017_RD2089_316_2_20170407_00003.jpg



Close view of the erosion.

* Location LS : Land Side N/A : Not Applicable WS : Water Side CR : Crown		** Rating A : Acceptable N : Not Inspected/Rated M : Minimally Acceptable C : Corrected U : Unacceptable A/W : Acceptable but Monitor & Maintain		+ Issue Type Ma : Maintenance Deficiency Ob : Design & System Obsolescence En : Enforcement
--	--	---	--	---

**Flood Control Project Maintenance
Levee Inspections**

Levee Inspection Report By Mile - Spring 2017

Reclamation District No. 2089 Stark

Waterway	Bank	Unit Miles	Inspection Start/End	Inspector
Unit No. 01 Old River	Right	1.51	04/12/2017 04/12/2017	Maksim Khashchuk

LM Start	1.23	Rating **	M	Issue No.	44
LM End	1.23	Issue Type +	Ma	Location *	LS
Category	Earthen Levee			GPS Latitude/Longitude	
				Start	End
Item	Crown Surface / Depressions / Rutting			37.805801 °	37.805801 °
				-121.402913 °	-121.402913 °
DWR ID	DWR_RD2089_01_s_2012_44				
Comment Code					
C3 : Add appropriate gravel or road base. Grade and compact.					
Inspector Comment					
11/10/2011 Depression in roadway needs to be filled.					

Photo 1 of 1 : SP_2017_RD2089_316_44_20170407_00025.jpg



11/10/2011 Roadway depression.

LM Start	1.25	Rating **	M	Issue No.	20
LM End	1.34	Issue Type +	Ma	Location *	LS
Category	Earthen Levee			GPS Latitude/Longitude	
				Start	End
Item	Vegetation			37.805889 °	37.806148 °
				-121.403153 °	-121.404804 °
DWR ID	DWR_RD2089_01_f_2016_20				
Comment Code					
V1 : Control annual grass and weeds on the levee slopes and easements.					
Inspector Comment					

Photo 1 of 1 : SP_2017_RD2089_316_20_20170407_00014.jpg



View of the vegetation on the landside levee slope.

LM Start	1.34	Rating **	M	Issue No.	45
LM End	1.34	Issue Type +	Ma	Location *	CR
Category	Earthen Levee			GPS Latitude/Longitude	
				Start	End
Item	Crown Surface / Depressions / Rutting			37.806128 °	37.806128 °
				-121.404890 °	-121.404890 °
DWR ID	DWR_RD2089_01_s_2012_45				
Comment Code					
C3 : Add appropriate gravel or road base. Grade and compact.					
Inspector Comment					
11/10/2011 Depression needs to be filled.					

Photo 1 of 1 : SP_2017_RD2089_316_45_20170407_00026.jpg



11/10/2011 Roadway depression.

* Location LS : Land Side N/A : Not Applicable WS : Water Side CR : Crown		** Rating A : Acceptable M : Minimally Acceptable U : Unacceptable N : Not Inspected/Rated C : Corrected A/W : Acceptable but Monitor & Maintain		+ Issue Type Ma : Maintenance Deficiency Ob : Design & System Obsolescence En : Enforcement	
--	--	---	--	---	--

**Flood Control Project Maintenance
Levee Inspections**

Levee Inspection Report By Mile - Spring 2017

Reclamation District No. 2089 Stark

Waterway	Bank	Unit Miles	Inspection Start/End	Inspector
Unit No. 01 Old River	Right	1.51	04/12/2017 04/12/2017	Maksim Khashchuk

LM Start	1.39	Rating **	U	Issue No.	31
LM End	1.50	Issue Type +	Ma	Location *	WS
Category	Earthen Levee			GPS Latitude/Longitude	
				Start	End
Item	Vegetation			37.806264 °	37.806602 °
				-121.405740 °	-121.407781 °
DWR ID	DWR_RD2089_01_s_2017_31				
Comment Code					
V2 : Remove the wild growth other than native grasses from the levee slopes.					
Inspector Comment					
Remove thistle from the levee slope.					

Photo 1 of 1 : SP_2017_RD2089_316_31_20170417_00049.jpg



View of the tall vegetation on the levee slope.

LM Start	1.39	Rating **	U	Issue No.	18
LM End	1.50	Issue Type +	Ma	Location *	LS
Category	Earthen Levee			GPS Latitude/Longitude	
				Start	End
Item	Vegetation			37.806264 °	37.806604 °
				-121.405742 °	-121.407780 °
DWR ID	DWR_RD2089_01_s_2017_18				
Comment Code					
V2 : Remove the wild growth other than native grasses from the levee slopes.					
Inspector Comment					
Remove thistle from the levee slope.					

Photo 1 of 1 : SP_2017_RD2089_316_18_20170417_00050.jpg



View of the tall vegetation on the levee slope.

LM Start	1.40	Rating **	M	Issue No.	47
LM End	1.40	Issue Type +	Ma	Location *	LS
Category	Earthen Levee			GPS Latitude/Longitude	
				Start	End
Item	Animal Control			37.806268 °	37.806268 °
				-121.405874 °	-121.405874 °
DWR ID	DWR_RD2089_01_s_2012_47				
Comment Code					
A3 : No rodents visible, but rodent burrows visible; need to backfill and compact or grout burrows.					
Inspector Comment					
11/10/2011 No rodents visible, but active burrows are present.					

Photo 1 of 1 : SP_2017_RD2089_316_47_20170407_00028.jpg



11/10/2011 Active rodent burrow on landside slope.

* Location LS : Land Side N/A : Not Applicable WS : Water Side CR : Crown		** Rating A : Acceptable M : Minimally Acceptable U : Unacceptable		N : Not Inspected/Rated C : Corrected A/W : Acceptable but Monitor & Maintain		+ Issue Type Ma : Maintenance Deficiency Ob : Design & System Obsolescence En : Enforcement	
--	--	--	--	---	--	---	--

**Flood Control Project Maintenance
Levee Inspections**

Levee Inspection Report By Mile - Spring 2017

Reclamation District No. 2089 Stark

Waterway	Bank	Unit Miles	Inspection Start/End	Inspector
Unit No. 01 Old River	Right	1.51	04/12/2017 04/12/2017	Maksim Khashchuk

LM Start	1.40	Rating **	C	Issue No.	46
LM End	1.40	Issue Type +	Ma	Location *	LS
Category	Earthen Levee			GPS Latitude/Longitude	
				Start	End
Item	Encroachments			37.806266 °	37.806266 °
				-121.405876 °	-121.405876 °
DWR ID	DWR_RD2089_01_s_2012_46				
Comment Code					
TR : Tree or limb					
Inspector Comment					
11/10/2011 Downed tree at levee toe prevents access to levee from landside.					

No Photos

LM Start	1.40	Rating **	U	Issue No.	26
LM End	1.40	Issue Type +	Ma	Location *	CR
Category	Earthen Levee			GPS Latitude/Longitude	
				Start	End
Item	Animal Control			37.806306 °	37.806306 °
				-121.405952 °	-121.405952 °
DWR ID	DWR_RD2089_01_f_2015_26				
Comment Code					
A3 : No rodents visible, but rodent burrows visible; need to backfill and compact or grout burrows.					
Inspector Comment					
Rodent hole is at least 4 ft. deep and needs to be backfilled and compacted.					

Photo 1 of 1 : SP_2017_RD2089_316_26_20170407_00018.jpg



View of the rodent hole on the levee crown.

* Location LS : Land Side N/A : Not Applicable WS : Water Side CR : Crown		** Rating A : Acceptable N : Not Inspected/Rated M : Minimally Acceptable C : Corrected U : Unacceptable A/W : Acceptable but Monitor & Maintain		+ Issue Type Ma : Maintenance Deficiency Ob : Design & System Obsolescence En : Enforcement
--	--	---	--	---

**Flood Control Project Maintenance
Levee Inspections**

Levee Inspection Report By Mile - Spring 2017

Reclamation District No. 2089 Stark

Waterway	Bank	Unit Miles	Inspection Start/End	Inspector
Unit No. 01 Old River	Right	1.51	04/12/2017 04/12/2017	Maksim Khashchuk

LM Start	1.41	Rating **	U	Issue No.	960
LM End	1.41	Issue Type +	En	Location *	CR
Category	Supplemental			GPS Latitude/Longitude	
				Start	End
Item	DWR UCIP Field Study			37.806323 °	37.806323 °
				-121.406149 °	-121.406149 °
DWR ID					
Comment Code					
Inspector Comment					
FS_ID:50737 DS_ID:24667 EP_NO: N/A Repair Type: Urgent Crossing Status: Found UCIP Comments: 11/15/2016 Same as last inspection. (K. Fazel - UCIP)09/12/2013:- if abandoned, it needs proper abandonment. Pipe damaged and open on both ends. (P. Amatya - DWR) FIELD_STRUCT_DESC: *ABANDONED* 6-inch polyvinyl chloride (PVC) irrigation pipe through the levee, 2 feet below the crown. Pipe was installed due to pump failure but never removed. Field study discovered pipe. FS Date: 11/15/2016					

LM Start	1.41	Rating **	U	Issue No.	960 (cont)
LM End	1.41	Issue Type +	En	Location *	CR

Photo 1 of 3 : UCIP_SP_2017_50737_36611.jpg



WS view: 6-inch pvc pipe on levee slope. Pipe end open and damaged.

Photo 2 of 3 : UCIP_SP_2017_50737_36610.jpg



WS view: inside view of pvc pipe. Sediments found inside the pipe.

* Location LS : Land Side N/A : Not Applicable WS : Water Side CR : Crown		** Rating A : Acceptable M : Minimally Acceptable U : Unacceptable N : Not Inspected/Rated C : Corrected A/W : Acceptable but Monitor & Maintain		+ Issue Type Ma : Maintenance Deficiency Ob : Design & System Obsolescence En : Enforcement
--	--	---	--	---

**Flood Control Project Maintenance
Levee Inspections**

Levee Inspection Report By Mile - Spring 2017

Reclamation District No. 2089 Stark

Waterway	Bank	Unit Miles	Inspection Start/End	Inspector
Unit No. 01 Old River	Right	1.51	04/12/2017 04/12/2017	Maksim Khashchuk

LM Start	1.41	Rating **	U	Issue No.	960 (cont)	
LM End	1.41	Issue Type +	En	Location *	CR	
Category	Supplemental			GPS Latitude/Longitude		
				Start	End	
Item	DWR UCIP Field Study			37.806323 °	37.806323 °	
				-121.406149 °	-121.406149 °	
DWR ID						
Comment Code						
Inspector Comment						
FS_ID:50737						
DS_ID:24667						
EP_NO: N/A						
Repair Type: Urgent						
Crossing Status: Found						
UCIP Comments: 11/15/2016 Same as last inspection. (K. Fazel - UCIP)09/12/2013:- if abandoned, it needs proper abandonment.						
Pipe damaged and open on both ends. (P. Amatya - DWR)						
FIELD_STRUCT_DESC: *ABANDONED* 6-inch polyvinyl chloride (PVC) irrigation pipe through the levee, 2 feet below the crown. Pipe was installed due to pump failure but never removed. Field study discovered pipe.						
FS Date: 11/15/2016						

Photo 3 of 3 : UCIP_SP_2017_50737_36609.jpg



LS view: 6-inch pvc pipe on levee slope. Pipe end open.

LM Start	1.41	Rating **	M	Issue No.	961
LM End	1.41	Issue Type +	Ma	Location *	CR
Category	Supplemental			GPS Latitude/Longitude	
				Start	End
Item	DWR UCIP LMA Responsibility			37.806323°	37.806323°
				-121.406155°	-121.406155°
DWR ID					
Comment Code					
Inspector Comment					
FS_ID:21585 DS_ID:23045 EP_NO: N/A Repair Type: Non-Urgent Crossing Status: Found UCIP Comments: - siphon breaker needs repair. FIELD_STRUCT_DESC: 10-inch steel pipe through the levee, 2.4 feet below the crown. Pump in drain ditch on the landward side. Siphon breaker on the waterward shoulder. FS Date: 9/12/2013					

Photo 1 of 3 : UCIP_SP_2017_21585_36624.jpg



WS view: exposed steel pipe on levee slope. A pvc pipe on left.

* Location LS : Land Side N/A : Not Applicable WS : Water Side CR : Crown		** Rating A : Acceptable N : Not Inspected/Rated M : Minimally Acceptable C : Corrected U : Unacceptable A/W : Acceptable but Monitor & Maintain		+ Issue Type Ma : Maintenance Deficiency Ob : Design & System Obsolescence En : Enforcement
--	--	---	--	---

**Flood Control Project Maintenance
Levee Inspections**

Levee Inspection Report By Mile - Spring 2017

Reclamation District No. 2089 Stark

Waterway	Bank	Unit Miles	Inspection Start/End	Inspector
Unit No. 01 Old River	Right	1.51	04/12/2017 04/12/2017	Maksim Khashchuk

LM Start	1.41	Rating **	M	Issue No.	961 (cont)
LM End	1.41	Issue Type +	Ma	Location *	CR
Category	Supplemental			GPS Latitude/Longitude	
				Start	End
Item	DWR UCIP LMA Responsibility			37.806323 °	37.806323 °
				-121.406155 °	-121.406155 °
DWR ID					
Comment Code					
Inspector Comment					
FS_ID:21585 DS_ID:23045 EP_NO: N/A Repair Type: Non-Urgent Crossing Status: Found UCIP Comments: - siphon breaker needs repair. FIELD_STRUCT_DESC: 10-inch steel pipe through the levee, 2.4 feet below the crown. Pump in drain ditch on the landward side. Siphon breaker on the waterward shoulder. FS Date: 9/12/2013					

Photo 2 of 3 : UCIP_SP_2017_21585_36623.jpg



WS view: exposed steel pipe with siphon breaker. Looks siphon breaker needs repair.

LM Start	1.41	Rating **	M	Issue No.	961 (cont)
LM End	1.41	Issue Type +	Ma	Location *	CR

Photo 3 of 3 : UCIP_SP_2017_21585_36622.jpg



LS view: exposed steel pipe on levee slope.

* Location LS : Land Side N/A : Not Applicable WS : Water Side CR : Crown	** Rating A : Acceptable M : Minimally Acceptable U : Unacceptable N : Not Inspected/Rated C : Corrected A/W : Acceptable but Monitor & Maintain	+ Issue Type Ma : Maintenance Deficiency Ob : Design & System Obsolescence En : Enforcement
--	---	---

**Flood Control Project Maintenance
Levee Inspections**

Levee Inspection Report By Mile - Spring 2017

Reclamation District No. 2089 Stark

Waterway	Bank	Unit Miles	Inspection Start/End	Inspector
Unit No. 01 Old River	Right	1.51	04/12/2017 04/12/2017	Maksim Khashchuk

LM Start	1.44	Rating **	M	Issue No.	49
LM End	1.44	Issue Type +	Ma	Location *	WS
Category	Earthen Levee			GPS Latitude/Longitude	
				Start	End
Item	Animal Control			37.806383 °	37.806383 °
				-121.406599 °	-121.406599 °
DWR ID	DWR_RD2089_01_s_2012_49				
Comment Code					
A3 : No rodents visible, but rodent burrows visible; need to backfill and compact or grout burrows.					
Inspector Comment					
Deep burrow on waterside needs to be filled.					

Photo 1 of 1 : SP_2017_RD2089_316_49_20170407_00029.jpg



11/10/2011 Deep burrow on waterside.

LM Start	1.48	Rating **	U	Issue No.	962
LM End	1.48	Issue Type +	En	Location *	WS
Category	Supplemental			GPS Latitude/Longitude	
				Start	End
Item	DWR UCIP Field Study			37.806520 °	37.806520 °
				-121.407392 °	-121.407392 °
DWR ID					
Comment Code					
Inspector Comment					
FS_ID:50736 DS_ID:23046 EP_NO: 4133A Repair Type: Urgent Crossing Status: Found UCIP Comments: 11/15/2016 Pipe found on WS only. Same as last inspection. (K. Fazel - UCIP)06/25/2015 Crossing appears abandoned; if so, should be done so properly. Pipe open on WS. Holes and cracks visible on pipe. (K. Fazel - UCIP) FIELD_STRUCT_DESC: *ABANDONED* 12-inch concrete pipe of an unknown purpose possibly through the levee, approximately 8 feet below the crown. Smaller steel pipe is sleeved through the concrete pipe with annular space grouted. Pipe does not cross channel and may not cross levee. May be related to gasoline crossing with DS ID 25121. Discovered from boat on 2015 DWR Erosion Survey. FS Date: 11/15/2016					

Photo 1 of 3 : UCIP_SP_2017_50736_74506.jpg



View up WS slope from water. Pipe does not cross channel.

* Location	** Rating	+ Issue Type
LS : Land Side WS : Water Side CR : Crown	A : Acceptable M : Minimally Acceptable U : Unacceptable	Ma : Maintenance Deficiency Ob : Design & System Obsolescence En : Enforcement
	N : Not Inspected/Rated C : Corrected A/W : Acceptable but Monitor & Maintain	

**Flood Control Project Maintenance
Levee Inspections**

Levee Inspection Report By Mile - Spring 2017

Reclamation District No. 2089 Stark

Waterway	Bank	Unit Miles	Inspection Start/End	Inspector
Unit No. 01 Old River	Right	1.51	04/12/2017 04/12/2017	Maksim Khashchuk

LM Start	1.48	Rating **	U	Issue No.	962 (cont)	
LM End	1.48	Issue Type +	En	Location *	WS	
Category	Supplemental			GPS Latitude/Longitude		
				Start		End
Item	DWR UCIP Field Study			37.806520 °	37.806520 °	
				-121.407392 °	-121.407392 °	
DWR ID						
Comment Code						
Inspector Comment						
FS_ID:50736 DS_ID:23046 EP_NO: 4133A Repair Type: Urgent Crossing Status: Found UCIP Comments: 11/15/2016 Pipe found on WS only. Same as last inspection. (K. Fazel - UCIP)06/25/2015 Crossing appears abandoned; if so, should be done so properly. Pipe open on WS. Holes and cracks visible on pipe. (K. Fazel - UCIP) FIELD_STRUCT_DESC: *ABANDONED* 12-inch concrete pipe of an unknown purpose possibly through the levee, approximately 8 feet below the crown. Smaller steel pipe is sleeved through the concrete pipe with annular space grouted. Pipe does not cross channel and may not cross levee. May be related to gasoline crossing with DS ID 25121. Discovered from boat on 2015 DWR Erosion Survey. FS Date: 11/15/2016						

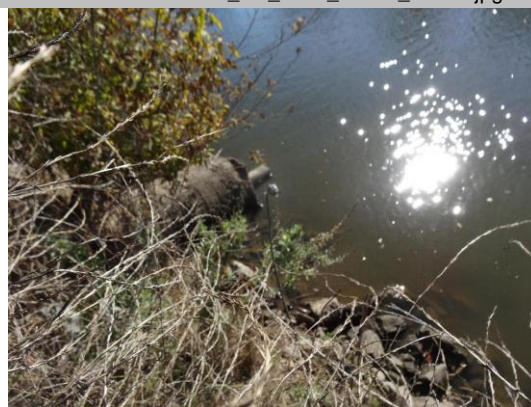
Photo 2 of 3 : UCIP_SP_2017_50736_74508.jpg



Gasline marker (for crossing with DS ID 25121) appr. 100 ft west of crossing.

LM Start	1.48	Rating **	U	Issue No.	962 (cont)
LM End	1.48	Issue Type +	En	Location *	WS

Photo 3 of 3 : UCIP_SP_2017_50736_76207.jpg



WS view of pipe

* Location LS : Land Side N/A : Not Applicable WS : Water Side CR : Crown		** Rating A : Acceptable M : Minimally Acceptable U : Unacceptable		N : Not Inspected/Rated C : Corrected A/W : Acceptable but Monitor & Maintain		+ Issue Type Ma : Maintenance Deficiency Ob : Design & System Obsolescence En : Enforcement	
--	--	--	--	---	--	---	--

**Flood Control Project Maintenance
Levee Inspections**

Unit Cover Sheet

Spring 2017 Levee Inspection Results

Reclamation District No. 2089 Stark

Waterway			Bank	Unit Miles
Unit No. 02 Salmon Slough			Right	1.35
	Spring (March - May)	Summer (June - August)	(September - November) Fall	Winter (December - February)
Unit Maintenance Rating (Fall Only)				
Date of Inspection	4/12/2017 - 4/12/2017			
DWR Inspector	Maksim Khashchuk			
Accompanied By				

Summer & Winter Inspections

The Local Maintaining Agency (LMA) is responsible for summer and winter inspections. The LMA is required to submit a report regarding summer and winter inspections to the California Department of Water Resources (DWR).

DWR must be informed on the:

- a) completion of the inspection
- b) any changes other than the results of normal maintenance
- c) corrections to deficiencies noted in this report

If additional items are noted, further documentation of those items must also be submitted.

The LMA should submit this information to DWR using the LMA web application tool available at:

<http://cdec.water.ca.gov/lma.html>

If the LMA is unable to submit information on this webpage, please contact DWR for assistance.

The LMA should submit the information and any associated documentation by September 30 for summer inspections and March 31 for winter inspections.

**Flood Control Project Maintenance
Levee Inspections**

Levee Inspection Report By Mile - Spring 2017

Reclamation District No. 2089 Stark

Waterway	Bank	Unit Miles	Inspection Start/End	Inspector
Unit No. 02 Salmon Slough	Right	1.35	04/12/2017 04/12/2017	Maksim Khashchuk

LM Start	0.06	Rating **	U	Issue No.	58
LM End	0.06	Issue Type +	Ma	Location *	WS
Category	Earthen Levee			GPS Latitude/Longitude	
				Start	End
Item	Vegetation			37.807306 °	37.807306 °
				-121.408692 °	-121.408692 °
DWR ID	DWR_RD2089_02_s_2017_58				
Comment Code					
V4 : Elderberries are blocking visibility and flood fight capability.					
Inspector Comment					
Trim back the shrub to allow access and visibility.					

No Photos

LM Start	0.06	Rating **	U	Issue No.	20
LM End	0.06	Issue Type +	Ma	Location *	LS
Category	Earthen Levee			GPS Latitude/Longitude	
				Start	End
Item	Vegetation			37.807341 °	37.807341 °
				-121.408686 °	-121.408686 °
DWR ID	DWR_RD2089_02_s_2016_20				
Comment Code					
V2 : Remove the wild growth other than native grasses from the levee slopes.					
Inspector Comment					

Photo 1 of 1 : SP_2017_RD2089_317_20_20170407_00020.jpg



View of the vegetation on the landside levee slope.

LM Start	0.07	Rating **	U	Issue No.	4
LM End	0.07	Issue Type +	Ma	Location *	WS
Category	Earthen Levee			GPS Latitude/Longitude	
				Start	End
Item	Vegetation			37.807375 °	37.807375 °
				-121.408605 °	-121.408605 °
DWR ID	DWR_RD2089_02_s_2012_4				
Comment Code					
V4 : Elderberries are blocking visibility and flood fight capability.					
Inspector Comment					
Thick brush may include some elderberries.					

No Photos

* Location		** Rating		+ Issue Type	
LS : Land Side	N/A : Not Applicable	A : Acceptable	N : Not Inspected/Rated	Ma : Maintenance Deficiency	
WS : Water Side		M : Minimally Acceptable	C : Corrected	Ob : Design & System Obsolescence	
CR : Crown		U : Unacceptable	A/W : Acceptable but Monitor & Maintain	En : Enforcement	

**Flood Control Project Maintenance
Levee Inspections**

Levee Inspection Report By Mile - Spring 2017

Reclamation District No. 2089 Stark

Waterway	Bank	Unit Miles	Inspection Start/End	Inspector
Unit No. 02 Salmon Slough	Right	1.35	04/12/2017 04/12/2017	Maksim Khashchuk

LM Start	0.07	Rating **	U	Issue No.	56
LM End	0.12	Issue Type +	Ma	Location *	LS
Category	Earthen Levee			GPS Latitude/Longitude	
				Start	End
Item	Vegetation			37.807428 °	37.808070 °
				-121.408749 °	-121.409156 °
DWR ID	DWR_RD2089_02_s_2017_56				
Comment Code					
V1 : Control annual grass and weeds on the levee slopes and easements.					
Inspector Comment					
Remove thistle from the levee slope.					

Photo 1 of 1 : SP_2017_RD2089_317_56_20170417_00061.jpg



View of the tall vegetation on the levee slope.

LM Start	0.16	Rating **	U	Issue No.	48
LM End	0.16	Issue Type +	Ma	Location *	LS
Category	Earthen Levee			GPS Latitude/Longitude	
				Start	End
Item	Animal Control			37.808583 °	37.808583 °
				-121.409432 °	-121.409432 °
DWR ID	DWR_RD2089_02_f_2013_48				
Comment Code					
A3 : No rodents visible, but rodent burrows visible; need to backfill and compact or grout burrows.					
Inspector Comment					

Photo 1 of 1 : SP_2017_RD2089_317_48_20170407_00042.jpg



View of the rodent burrow on the landside levee slope.

LM Start	0.21	Rating **	M	Issue No.	49
LM End	0.21	Issue Type +	Ma	Location *	LS
Category	Earthen Levee			GPS Latitude/Longitude	
				Start	End
Item	Animal Control			37.809148 °	37.809148 °
				-121.409897 °	-121.409897 °
DWR ID	DWR_RD2089_02_f_2013_49				
Comment Code					
A3 : No rodents visible, but rodent burrows visible; need to backfill and compact or grout burrows.					
Inspector Comment					

Photo 1 of 1 : SP_2017_RD2089_317_49_20170407_00043.jpg



View of the multiple rodent burrows on the landside levee hinge and slope.

* Location LS : Land Side N/A : Not Applicable WS : Water Side CR : Crown		** Rating A : Acceptable M : Minimally Acceptable U : Unacceptable		N : Not Inspected/Rated C : Corrected A/W : Acceptable but Monitor & Maintain		+ Issue Type Ma : Maintenance Deficiency Ob : Design & System Obsolescence En : Enforcement	
--	--	--	--	---	--	---	--

**Flood Control Project Maintenance
Levee Inspections**

Levee Inspection Report By Mile - Spring 2017

Reclamation District No. 2089 Stark

Waterway	Bank	Unit Miles	Inspection Start/End	Inspector
Unit No. 02 Salmon Slough	Right	1.35	04/12/2017 04/12/2017	Maksim Khashchuk

LM Start	0.26	Rating **	M	Issue No.	24
LM End	0.26	Issue Type +	Ma	Location *	LS
Category	Earthen Levee			GPS Latitude/Longitude	
				Start	End
Item	Animal Control			37.809717 °	37.809717 °
				-121.410511 °	-121.410511 °
DWR ID	DWR_RD2089_02_s_2012_24				
Comment Code					
A1 : Exterminate rodents and backfill and compact or grout burrows.					
Inspector Comment					
Ground squirrel sighted and active burrowing in area.					

Photo 1 of 1 : SP_2017_RD2089_317_24_20170407_00022.jpg



05/24/2011 Active burrows, ground squirrel sighted in area.

LM Start	0.28	Rating **	U	Issue No.	52
LM End	0.30	Issue Type +	En	Location *	LS
Category	Earthen Levee			GPS Latitude/Longitude	
				Start	End
Item	Encroachments			37.809899 °	37.809997 °
				-121.410888 °	-121.411298 °
DWR ID	DWR_RD2089_02_f_2013_52				
Comment Code					
PR : Prunings					
Inspector Comment					
Remove prunings and other debris from the levee toe.					

Photo 1 of 1 : SP_2017_RD2089_317_52_20170407_00045.jpg



View of the tree branches on the landside levee toe obstructing access.

LM Start	0.28	Rating **	U	Issue No.	51
LM End	0.28	Issue Type +	Ma	Location *	LS
Category	Earthen Levee			GPS Latitude/Longitude	
				Start	End
Item	Animal Control			37.809899 °	37.809899 °
				-121.410889 °	-121.410889 °
DWR ID	DWR_RD2089_02_f_2013_51				
Comment Code					
A3 : No rodents visible, but rodent burrows visible; need to backfill and compact or grout burrows.					
Inspector Comment					

Photo 1 of 1 : SP_2017_RD2089_317_51_20170407_00044.jpg



View of the rodent burrow on the landside levee toe.

* Location
LS : Land Side N/A : Not Applicable
WS : Water Side
CR : Crown

** Rating
A : Acceptable N : Not Inspected/Rated
M : Minimally Acceptable C : Corrected
U : Unacceptable A/W : Acceptable but Monitor & Maintain

+ Issue Type
Ma : Maintenance Deficiency
Ob : Design & System Obsolescence
En : Enforcement

**Flood Control Project Maintenance
Levee Inspections**

Levee Inspection Report By Mile - Spring 2017

Reclamation District No. 2089 Stark

Waterway	Bank	Unit Miles	Inspection Start/End	Inspector
Unit No. 02 Salmon Slough	Right	1.35	04/12/2017 04/12/2017	Maksim Khashchuk

LM Start	0.30	Rating **	U	Issue No.	53
LM End	0.31	Issue Type +	Ma	Location *	LS
Category	Earthen Levee			GPS Latitude/Longitude	
				Start	End
Item	Animal Control			37.809977 °	37.810022 °
				-121.411189 °	-121.411387 °
DWR ID	DWR_RD2089_02_f_2013_53				
Comment Code					
A1 : Exterminate rodents and backfill and compact or grout burrows.					
Inspector Comment					
Exterminating rodents and grouting the burrows recommended.					

Photo 1 of 3 : SP_2017_RD2089_317_53_20170407_00046.jpg



View of the multiple rodent burrows on the landside levee slope.

LM Start	0.30	Rating **	U	Issue No.	53 (cont)
LM End	0.31	Issue Type +	Ma	Location *	LS

Photo 2 of 3 : SP_2017_RD2089_317_53_20170407_00047.jpg



View of the rodent burrow on the landside levee slope.

LM Start	0.30	Rating **	U	Issue No.	53 (cont)
LM End	0.31	Issue Type +	Ma	Location *	LS

Photo 3 of 3 : SP_2017_RD2089_317_53_20170407_00048.jpg



Another view of the multiple rodent burrows on the landside levee slope.

*** Location**
LS : Land Side N/A : Not Applicable
WS : Water Side
CR : Crown

**** Rating**
A : Acceptable
M : Minimally Acceptable
U : Unacceptable
N : Not Inspected/Rated
C : Corrected
A/W : Acceptable but Monitor & Maintain

+ Issue Type
Ma : Maintenance Deficiency
Ob : Design & System Obsolescence
En : Enforcement

**Flood Control Project Maintenance
Levee Inspections**

Levee Inspection Report By Mile - Spring 2017

Reclamation District No. 2089 Stark

Waterway	Bank	Unit Miles	Inspection Start/End	Inspector
Unit No. 02 Salmon Slough	Right	1.35	04/12/2017 04/12/2017	Maksim Khashchuk

LM Start	0.34	Rating **	M	Issue No.	55
LM End	0.34	Issue Type +	Ma	Location *	LS
Category	Earthen Levee			GPS Latitude/Longitude	
				Start	End
Item	Trim / Thin Trees			37.810052 °	37.810052 °
				-121.411966 °	-121.411966 °
DWR ID	DWR_RD2089_02_s_2017_55				
Comment Code					
T1 : Trim trees to at least five feet above ground level.					
Inspector Comment					

Photo 1 of 1 : SP_2017_RD2089_317_55_20170417_00060.jpg



View of the overgrown tree on the levee slope.

LM Start	0.35	Rating **	M	Issue No.	2
LM End	0.35	Issue Type +	En	Location *	CR
Category	Earthen Levee			GPS Latitude/Longitude	
				Start	End
Item	Encroachments			37.810106 °	37.810106 °
				-121.412133 °	-121.412133 °
DWR ID	DWR_RD2089_02_s_2012_2				
Comment Code					
FE : Fence					
Inspector Comment					
Gates across levee.					

Photo 1 of 1 : SP_2017_RD2089_317_2_20170407_00003.jpg



View of gate across levee crown.

LM Start	0.36	Rating **	M	Issue No.	26
LM End	0.36	Issue Type +	Ma	Location *	LS
Category	Earthen Levee			GPS Latitude/Longitude	
				Start	End
Item	Animal Control			37.810125 °	37.810125 °
				-121.412317 °	-121.412317 °
DWR ID	DWR_RD2089_02_s_2012_26				
Comment Code					
A3 : No rodents visible, but rodent burrows visible; need to backfill and compact or grout burrows.					
Inspector Comment					
Active burrow needs to be repaired.					

Photo 1 of 1 : SP_2017_RD2089_317_26_20170407_00023.jpg



05/24/2011 Active rodent burrow.

* Location LS : Land Side N/A : Not Applicable WS : Water Side CR : Crown		** Rating A : Acceptable M : Minimally Acceptable U : Unacceptable		N : Not Inspected/Rated C : Corrected A/W : Acceptable but Monitor & Maintain		+ Issue Type Ma : Maintenance Deficiency Ob : Design & System Obsolescence En : Enforcement	
--	--	--	--	---	--	---	--

**Flood Control Project Maintenance
Levee Inspections**

Levee Inspection Report By Mile - Spring 2017

Reclamation District No. 2089 Stark

Waterway	Bank	Unit Miles	Inspection Start/End	Inspector
Unit No. 02 Salmon Slough	Right	1.35	04/12/2017 04/12/2017	Maksim Khashchuk

LM Start	0.37	Rating **	U	Issue No.	44
LM End	0.59	Issue Type +	Ma	Location *	WS
Category	Earthen Levee			GPS Latitude/Longitude	
				Start	End
Item	Vegetation			37.810081 °	37.811955 °
				-121.412449 °	-121.415628 °
DWR ID	DWR_RD2089_02_f_2016_44				
Comment Code					
V2 : Remove the wild growth other than native grasses from the levee slopes.					
Inspector Comment					

Photo 1 of 1 : SP_2017_RD2089_317_44_20170407_00041.jpg



View of the vegetation on the levee slopes.

LM Start	0.37	Rating **	U	Issue No.	36
LM End	0.80	Issue Type +	Ma	Location *	LS
Category	Earthen Levee			GPS Latitude/Longitude	
				Start	End
Item	Vegetation			37.810081 °	37.814421 °
				-121.412449 °	-121.414203 °
DWR ID	DWR_RD2089_02_s_2012_36				
Comment Code					
V2 : Remove the wild growth other than native grasses from the levee slopes.					
Inspector Comment					
Wild growth and dead underbrush prevents visibility of levee slope and area cannot be accessed if needed for a flood fight.					

Photo 1 of 2 : SP_2017_RD2089_317_36_20170407_00031.jpg



Extremely thick dead brush prevents access and visibility.

LM Start	0.37	Rating **	U	Issue No.	36 (cont)
LM End	0.80	Issue Type +	Ma	Location *	LS

Photo 2 of 2 : SP_2017_RD2089_317_36_20170407_00032.jpg



Another view of the thick vegetation on the landside levee slope.

* Location LS : Land Side N/A : Not Applicable WS : Water Side CR : Crown		** Rating A : Acceptable M : Minimally Acceptable U : Unacceptable N : Not Inspected/Rated C : Corrected A/W : Acceptable but Monitor & Maintain		+ Issue Type Ma : Maintenance Deficiency Ob : Design & System Obsolescence En : Enforcement
--	--	---	--	---

**Flood Control Project Maintenance
Levee Inspections**

Levee Inspection Report By Mile - Spring 2017

Reclamation District No. 2089 Stark

Waterway	Bank	Unit Miles	Inspection Start/End	Inspector
Unit No. 02 Salmon Slough	Right	1.35	04/12/2017 04/12/2017	Maksim Khashchuk

LM Start	0.40	Rating **	M	Issue No.	1
LM End	0.41	Issue Type +	Ma	Location *	WS
Category	Supplemental			GPS Latitude/Longitude	
				Start	End
Item	DWR Erosion Survey			37.809960 °	37.809960 °
				-121.413200 °	-121.413200 °
DWR ID	DWR_RD2089_02_s_2017_1				
Comment Code					
Inspector Comment					
09/26/2016: The erosion site was visited by land survey instead of water surface survey due to the dense water grass in the river this year. No significant change observed.					
06/25/2015: No significant change observed.					
07/02/2014: No significant change observed.					
08/13/2013: No significant change observed.					
08/07/2012: The site has been visited by boat survey. No significant change observed.					
08/23/2011: No significant change observed on site.					
09/07/2010: Site consists of a jutting rip rap that has created an eddy, scouring the levee slope. Most sections of the toe and lower slope are lined with rip rap. However, the rip rap is sloughing on the mid slope and at the toe, exposing the underlying soils and tree roots. The remaining revetment is no longer adequately protecting the slope.					
There are 3 Sycamore trees at the toe with exposed tree roots.					
08/05/2010: Recommended for repair, per CLRO.					
09/28/2009: Pocket erosion on lower slope just above the toe rip rap; protruding rip rap upstream is creating an eddy, scouring the levee slope; Site # is the same as RM28.40,LM0.30; previously rated "U"; pictures will be made available during the next survey.					
11/05/2008: Cut into levee profile; riprap slide; rodent holes; pictures do not match GPS and current condition. [2016 Site ID:RD2089U02RM28.35]					

LM Start	0.40	Rating **	M	Issue No.	1 (cont)
LM End	0.41	Issue Type +	Ma	Location *	WS

Photo 1 of 2 : SP_2017_RD2089_317_1_20170407_00001.jpg



View of the site from levee crest.

Photo 2 of 2 : SP_2017_RD2089_317_1_20170407_00002.jpg



Close view of the erosion. Note the vegetation at the site.

* Location LS : Land Side N/A : Not Applicable WS : Water Side CR : Crown		** Rating A : Acceptable N : Not Inspected/Rated M : Minimally Acceptable C : Corrected U : Unacceptable A/W : Acceptable but Monitor & Maintain		+ Issue Type Ma : Maintenance Deficiency Ob : Design & System Obsolescence En : Enforcement
--	--	---	--	---

**Flood Control Project Maintenance
Levee Inspections**

Levee Inspection Report By Mile - Spring 2017

Reclamation District No. 2089 Stark

Waterway	Bank	Unit Miles	Inspection Start/End	Inspector
Unit No. 02 Salmon Slough	Right	1.35	04/12/2017 04/12/2017	Maksim Khashchuk

LM Start	0.44	Rating **	M	Issue No.	27
LM End	0.44	Issue Type +	En	Location *	WS
Category	Earthen Levee			GPS Latitude/Longitude	
				Start	End
Item	Encroachments			37.810490 °	37.810490 °
				-121.413638 °	-121.413638 °
DWR ID	DWR_RD2089_02_s_2012_27				
Comment Code					
BU : Building					
Inspector Comment					
Portable toilet on bank, at water's edge.					

Photo 1 of 1 : SP_2017_RD2089_317_27_20170407_00024.jpg



05/24/2011 Portable toilet is in the shadows in the center of the photo at the water's edge.

LM Start	0.46	Rating **	M	Issue No.	13
LM End	0.46	Issue Type +	Ma	Location *	CR
Category	Earthen Levee			GPS Latitude/Longitude	
				Start	End
Item	Animal Control			37.810691 °	37.810691 °
				-121.414014 °	-121.414014 °
DWR ID	DWR_RD2089_02_s_2012_13				
Comment Code					
A3 : No rodents visible, but rodent burrows visible; need to backfill and compact or grout burrows.					
Inspector Comment					
Two old burrows that need to be filled.					

Photo 1 of 1 : SP_2017_RD2089_317_13_20170407_00013.jpg



11/10/2011 Two large burrows on crown, need to be filled.

LM Start	0.47	Rating **	M	Issue No.	10
LM End	0.47	Issue Type +	Ma	Location *	CR
Category	Earthen Levee			GPS Latitude/Longitude	
				Start	End
Item	Crown Surface / Depressions / Rutting			37.810714 °	37.810714 °
				-121.414057 °	-121.414057 °
DWR ID	DWR_RD2089_02_s_2012_10				
Comment Code					
C3 : Add appropriate gravel or road base. Grade and compact.					
Inspector Comment					
Surface depression needs to be filled.					

Photo 1 of 1 : SP_2017_RD2089_317_10_20170407_00009.jpg



11/10/2011 Depression in crown needs to be filled.

* Location		** Rating		+ Issue Type	
LS : Land Side	N/A : Not Applicable	A : Acceptable	N : Not Inspected/Rated	Ma : Maintenance Deficiency	
WS : Water Side		M : Minimally Acceptable	C : Corrected	Ob : Design & System Obsolescence	
CR : Crown		U : Unacceptable	A/W : Acceptable but Monitor & Maintain	En : Enforcement	

**Flood Control Project Maintenance
Levee Inspections**

Levee Inspection Report By Mile - Spring 2017

Reclamation District No. 2089 Stark

Waterway	Bank	Unit Miles	Inspection Start/End	Inspector
Unit No. 02 Salmon Slough	Right	1.35	04/12/2017 04/12/2017	Maksim Khashchuk

LM Start	0.50	Rating **	U	Issue No.	54
LM End	0.50	Issue Type +	Ma	Location *	LS
Category	Earthen Levee			GPS Latitude/Longitude	
				Start	End
Item	Animal Control			37.810989 °	37.810989 °
				-121.414517 °	-121.414517 °
DWR ID	DWR_RD2089_02_f_2013_54				
Comment Code					
A1 : Exterminate rodents and backfill and compact or grout burrows.					
Inspector Comment					

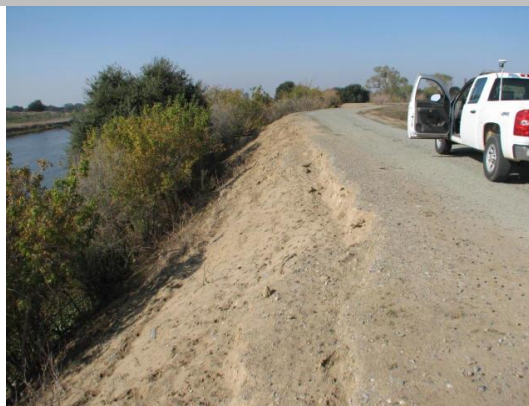
Photo 1 of 1 : SP_2017_RD2089_317_54_20170407_00049.jpg



View of the rodent burrow on the landside levee slope.

LM Start	0.52	Rating **	U	Issue No.	14
LM End	0.52	Issue Type +	Ma	Location *	WS
Category	Earthen Levee			GPS Latitude/Longitude	
				Start	End
Item	Animal Control			37.811150 °	37.811150 °
				-121.414748 °	-121.414748 °
DWR ID	DWR_RD2089_02_s_2012_14				
Comment Code					
A2 : Repair the levee slope damaged by livestock and prevent large animal access.					
Inspector Comment					
11/10/2011 Repair damage to slope caused by livestock.					

Photo 1 of 1 : SP_2017_RD2089_317_14_20170407_00014.jpg



11/10/2011 Approximately 1' scarp has been created by livestock travel.

* Location
LS : Land Side N/A : Not Applicable
WS : Water Side
CR : Crown

** Rating
A : Acceptable
M : Minimally Acceptable
U : Unacceptable
N : Not Inspected/Rated
C : Corrected
A/W : Acceptable but Monitor & Maintain

+ Issue Type
Ma : Maintenance Deficiency
Ob : Design & System Obsolescence
En : Enforcement

**Flood Control Project Maintenance
Levee Inspections**

Levee Inspection Report By Mile - Spring 2017

Reclamation District No. 2089 Stark

Waterway	Bank	Unit Miles	Inspection Start/End	Inspector
Unit No. 02 Salmon Slough	Right	1.35	04/12/2017 04/12/2017	Maksim Khashchuk

LM Start	0.54	Rating **	M	Issue No.	59
LM End	0.54	Issue Type +	En	Location *	WS
Category	Supplemental			GPS Latitude/Longitude	
				Start	End
Item	DWR UCIP Field Study			37.811369 °	37.811369 °
				-121.415050 °	-121.415050 °
DWR ID					
Comment Code					
Inspector Comment					
FS_ID:21676					
DS_ID:23047					
EP_NO: N/A					
Repair Type: Non-Urgent					
Crossing Status: Found					
UCIP Comments: - air relief valve on waterside. Needs repair.- concrete standpipe on landside.					
FIELD_STRUCT_DESC: 14-inch pipe through the levee, 8.0 feet below the crown, pump on pile structure in the stream. Air relief valve on the waterside slope. Timber walkway to the pump. Concrete distribution standpipe on landside toe. Originally included in O+M (1968)					
FS Date: 9/12/2013					

Photo 1 of 3 : UCIP_SP_2017_21676_36861.jpg



WS view: pipe and pump on piling structure in water channel.

LM Start	0.54	Rating **	M	Issue No.	59 (cont)
LM End	0.54	Issue Type +	En	Location *	WS

Photo 2 of 3 : UCIP_SP_2017_21676_36860.jpg



WS view: air relief valve on pipe. Pipe exposed in levee slope.

* Location LS : Land Side N/A : Not Applicable WS : Water Side CR : Crown		** Rating A : Acceptable M : Minimally Acceptable U : Unacceptable N : Not Inspected/Rated C : Corrected A/W : Acceptable but Monitor & Maintain		+ Issue Type Ma : Maintenance Deficiency Ob : Design & System Obsolescence En : Enforcement
--	--	---	--	---

**Flood Control Project Maintenance
Levee Inspections**

Levee Inspection Report By Mile - Spring 2017

Reclamation District No. 2089 Stark

Waterway	Bank	Unit Miles	Inspection Start/End	Inspector
Unit No. 02 Salmon Slough	Right	1.35	04/12/2017 04/12/2017	Maksim Khashchuk

LM Start	0.54	Rating **	M	Issue No.	35 (cont)	
LM End	0.54	Issue Type +	Ma	Location *	CR	
Category	Earthen Levee			GPS Latitude/Longitude		
				Start		End
Item	Crown Surface / Depressions / Rutting			37.811382 °		37.811382 °
				-121.415054 °		-121.415054 °
DWR ID	DWR_RD2089_02_f_2015_35					
Comment Code						
C2 : Repair depressions or ruts in the crown or slope.						
Inspector Comment						

Photo 2 of 4 : SP_2017_RD2089_317_35_20170407_00028.jpg



View of the levee crown depression looking downstream.

LM Start	0.54	Rating **	M	Issue No.	35 (cont)
LM End	0.54	Issue Type +	Ma	Location *	CR

Photo 3 of 4 : SP_2017_RD2089_317_35_20170407_00029.jpg



View of the levee crown depression looking to the landside.

LM Start	0.54	Rating **	M	Issue No.	35 (cont)
LM End	0.54	Issue Type +	Ma	Location *	CR

Photo 4 of 4 : SP_2017_RD2089_317_35_20170407_00030.jpg



View of the levee crown depression looking to the waterside.

*** Location**
LS : Land Side N/A : Not Applicable
WS : Water Side
CR : Crown

**** Rating**
A : Acceptable
M : Minimally Acceptable
U : Unacceptable
N : Not Inspected/Rated
C : Corrected
A/W : Acceptable but Monitor & Maintain

+ Issue Type
Ma : Maintenance Deficiency
Ob : Design & System Obsolescence
En : Enforcement

**Flood Control Project Maintenance
Levee Inspections**

Levee Inspection Report By Mile - Spring 2017

Reclamation District No. 2089 Stark

Waterway	Bank	Unit Miles	Inspection Start/End	Inspector
Unit No. 02 Salmon Slough	Right	1.35	04/12/2017 04/12/2017	Maksim Khashchuk

LM Start	0.66	Rating **	M	Issue No.	43
LM End	0.66	Issue Type +	Ma	Location *	WS
Category	Earthen Levee			GPS Latitude/Longitude	
				Start	End
Item	Animal Control			37.812677 °	37.812677 °
				-121.415393 °	-121.415393 °
DWR ID	DWR_RD2089_02_f_2016_43				
Comment Code					
A2 : Repair the levee slope damaged by livestock and prevent large animal access.					
Inspector Comment					

Photo 1 of 1 : SP_2017_RD2089_317_43_20170407_00040.jpg



View of the animal paths on the waterside levee slope.

LM Start	0.76	Rating **	M	Issue No.	15
LM End	0.76	Issue Type +	Ma	Location *	LS
Category	Earthen Levee			GPS Latitude/Longitude	
				Start	End
Item	Erosion / Bank Caving			37.813934 °	37.813934 °
				-121.414320 °	-121.414320 °
DWR ID	DWR_RD2089_02_f_2014_15				
Comment Code					
E2 : Schedule repair of erosion site prior to the next inspection.					
Inspector Comment					

Photo 1 of 1 : SP_2017_RD2089_317_15_20170407_00015.jpg



View of the scour from surface runoff on the landside levee slope.

LM Start	0.83	Rating **	M	Issue No.	21
LM End	0.83	Issue Type +	Ma	Location *	WS
Category	Earthen Levee			GPS Latitude/Longitude	
				Start	End
Item	Animal Control			37.814773 °	37.814773 °
				-121.414555 °	-121.414555 °
DWR ID	DWR_RD2089_02_s_2012_21				
Comment Code					
A2 : Repair the levee slope damaged by livestock and prevent large animal access.					
Inspector Comment					
Livestock have worn paths into levee slope.					

No Photos

* Location		** Rating		+ Issue Type	
LS : Land Side	N/A : Not Applicable	A : Acceptable	N : Not Inspected/Rated	Ma : Maintenance Deficiency	
WS : Water Side		M : Minimally Acceptable	C : Corrected	Ob : Design & System Obsolescence	
CR : Crown		U : Unacceptable	A/W : Acceptable but Monitor & Maintain	En : Enforcement	

**Flood Control Project Maintenance
Levee Inspections**

Levee Inspection Report By Mile - Spring 2017

Reclamation District No. 2089 Stark

Waterway	Bank	Unit Miles	Inspection Start/End	Inspector
Unit No. 02 Salmon Slough	Right	1.35	04/12/2017 04/12/2017	Maksim Khashchuk

LM Start	0.83	Rating **	U	Issue No.	46
LM End	1.23	Issue Type +	Ma	Location *	LS
Category	Earthen Levee			GPS Latitude/Longitude	
				Start	End
Item	Vegetation			37.814790 °	37.817976 °
				-121.414547 °	-121.419705 °
DWR ID	DWR_RD2089_02_s_2017_46				
Comment Code					
V1 : Control annual grass and weeds on the levee slopes and easements.					
Inspector Comment					

Photo 1 of 1 : SP_2017_RD2089_317_46_20170417_00058.jpg



View of the tall vegetation on the levee slope.

LM Start	0.83	Rating **	U	Issue No.	47
LM End	1.23	Issue Type +	Ma	Location *	WS
Category	Earthen Levee			GPS Latitude/Longitude	
				Start	End
Item	Vegetation			37.814790 °	37.817976 °
				-121.414548 °	-121.419705 °
DWR ID	DWR_RD2089_02_s_2017_47				
Comment Code					
V1 : Control annual grass and weeds on the levee slopes and easements.					
Inspector Comment					

Photo 1 of 1 : SP_2017_RD2089_317_47_20170417_00059.jpg



View of the tall vegetation on the levee slope.

LM Start	0.83	Rating **	M	Issue No.	38
LM End	0.83	Issue Type +	Ma	Location *	WS
Category	Earthen Levee			GPS Latitude/Longitude	
				Start	End
Item	Animal Control			37.814844 °	37.814844 °
				-121.414566 °	-121.414566 °
DWR ID	DWR_RD2089_02_s_2012_38				
Comment Code					
A3 : No rodents visible, but rodent burrows visible; need to backfill and compact or grout burrows.					
Inspector Comment					
Active burrows present.					

No Photos

* Location LS : Land Side N/A : Not Applicable WS : Water Side CR : Crown		** Rating A : Acceptable M : Minimally Acceptable U : Unacceptable		N : Not Inspected/Rated C : Corrected A/W : Acceptable but Monitor & Maintain		+ Issue Type Ma : Maintenance Deficiency Ob : Design & System Obsolescence En : Enforcement	
--	--	--	--	---	--	---	--

**Flood Control Project Maintenance
Levee Inspections**

Levee Inspection Report By Mile - Spring 2017

Reclamation District No. 2089 Stark

Waterway	Bank	Unit Miles	Inspection Start/End	Inspector
Unit No. 02 Salmon Slough	Right	1.35	04/12/2017 04/12/2017	Maksim Khashchuk

LM Start	0.84	Rating **	M	Issue No.	9
LM End	0.84	Issue Type +	En	Location *	CR
Category	Earthen Levee			GPS Latitude/Longitude	
				Start	End
Item	Encroachments			37.814881 °	37.814881 °
				-121.414676 °	-121.414676 °
DWR ID	DWR_RD2089_02_s_2012_9				
Comment Code					
FE : Fence					
Inspector Comment					
Gate across levee crown.					

Photo 1 of 1 : SP_2017_RD2089_317_9_20170407_00008.jpg



View of the fence gate across levee crown.

LM Start	0.84	Rating **	M	Issue No.	50
LM End	1.23	Issue Type +	Ma	Location *	CR
Category	Earthen Levee			GPS Latitude/Longitude	
				Start	End
Item	Vegetation			37.814900 °	37.817976 °
				-121.414698 °	-121.419704 °
DWR ID	DWR_RD2089_02_s_2017_50				
Comment Code					
V1 : Control annual grass and weeds on the levee slopes and easements.					
Inspector Comment					

Photo 1 of 1 : SP_2017_RD2089_317_50_20170417_00057.jpg



View of the vegetation on the levee crown.

LM Start	0.84	Rating **	M	Issue No.	25
LM End	0.84	Issue Type +	Ma	Location *	LS
Category	Earthen Levee			GPS Latitude/Longitude	
				Start	End
Item	Vegetation			37.814906 °	37.814906 °
				-121.414745 °	-121.414745 °
DWR ID	DWR_RD2089_02_s_2012_25				
Comment Code					
V4 : Elderberries are blocking visibility and flood fight capability.					
Inspector Comment					
Elderberry and blackberry on levee slope.					

No Photos

* Location		** Rating		+ Issue Type	
LS : Land Side	N/A : Not Applicable	A : Acceptable	N : Not Inspected/Rated	Ma : Maintenance Deficiency	
WS : Water Side		M : Minimally Acceptable	C : Corrected	Ob : Design & System Obsolescence	
CR : Crown		U : Unacceptable	A/W : Acceptable but Monitor & Maintain	En : Enforcement	

**Flood Control Project Maintenance
Levee Inspections**

Levee Inspection Report By Mile - Spring 2017

Reclamation District No. 2089 Stark

Waterway	Bank	Unit Miles	Inspection Start/End	Inspector
Unit No. 02 Salmon Slough	Right	1.35	04/12/2017 04/12/2017	Maksim Khashchuk

LM Start	0.84	Rating **	M	Issue No.	42
LM End	0.84	Issue Type +	Ma	Location *	LS
Category	Earthen Levee			GPS Latitude/Longitude	
				Start	End
Item	Slope Stability			37.814931 °	37.814931 °
				-121.414756 °	-121.414756 °
DWR ID	DWR_RD2089_02_f_2016_42				
Comment Code					
S3 : Repair the levee slope damaged by vehicle traffic and prevent access where possible.					
Inspector Comment					
Ramp is encroaching into the levee slope. Add appropriate material to stabilize the slope.					

Photo 1 of 1 : SP_2017_RD2089_317_42_20170407_00039.jpg



View of the ramp on the landside levee slope.

LM Start	0.85	Rating **	U	Issue No.	40
LM End	0.90	Issue Type +	Ma	Location *	LS
Category	Earthen Levee			GPS Latitude/Longitude	
				Start	End
Item	Animal Control			37.814997 °	37.814970 °
				-121.414774 °	-121.415767 °
DWR ID	DWR_RD2089_02_s_2012_40				
Comment Code					
A1 : Exterminate rodents and backfill and compact or grout burrows.					
Inspector Comment					
Numerous burrows on landside slope adjacent to hay storage area. Deep burrows in crown and landside ramp.					

Photo 1 of 3 : SP_2017_RD2089_317_40_20170407_00035.jpg



05/24/2011 Deep vertical burrow in ramp on land side of levee.

LM Start	0.85	Rating **	U	Issue No.	40 (cont)
LM End	0.90	Issue Type +	Ma	Location *	LS

Photo 2 of 3 : SP_2017_RD2089_317_40_20170407_00036.jpg



05/24/2011 Deep vertical burrow in levee crown.

* Location LS : Land Side N/A : Not Applicable WS : Water Side CR : Crown		** Rating A : Acceptable M : Minimally Acceptable U : Unacceptable		N : Not Inspected/Rated C : Corrected A/W : Acceptable but Monitor & Maintain		+ Issue Type Ma : Maintenance Deficiency Ob : Design & System Obsolescence En : Enforcement	
---	--	---	--	---	--	--	--

**Flood Control Project Maintenance
Levee Inspections**

Levee Inspection Report By Mile - Spring 2017

Reclamation District No. 2089 Stark

Waterway	Bank	Unit Miles	Inspection Start/End	Inspector
Unit No. 02 Salmon Slough	Right	1.35	04/12/2017 04/12/2017	Maksim Khashchuk

LM Start	0.85	Rating **	U	Issue No.	40 (cont)	
LM End	0.90	Issue Type +	Ma	Location *	LS	
Category	Earthen Levee			GPS Latitude/Longitude		
				Start		End
Item	Animal Control			37.814997 °		37.814970 °
				-121.414774 °		-121.415767 °
DWR ID	DWR_RD2089_02_s_2012_40					
Comment Code						
A1 : Exterminate rodents and backfill and compact or grout burrows.						
Inspector Comment						
Numerous burrows on landside slope adjacent to hay storage area. Deep burrows in crown and landside ramp.						

Photo 3 of 3 : SP_2017_RD2089_317_40_20170407_00037.jpg



View of the multiple rodent holes on the landside levee slope.

LM Start	0.85	Rating **	U	Issue No.	39
LM End	0.88	Issue Type +	Ma	Location *	LS
Category	Earthen Levee			GPS Latitude/Longitude	
				Start	End
Item	Vegetation			37.814967 °	37.815017 °
				-121.414839 °	-121.415455 °
DWR ID	DWR_RD2089_02_f_2016_39				
Comment Code					
V2 : Remove the wild growth other than native grasses from the levee slopes.					
Inspector Comment					
Tumbleweeds on landside levee hinge and slope.					

Photo 1 of 1 : SP_2017_RD2089_317_39_20170407_00034.jpg



View of the vegetation on the landside levee slope.

LM Start	0.91	Rating **	M	Issue No.	22
LM End	0.91	Issue Type +	Ma	Location *	LS
Category	Earthen Levee			GPS Latitude/Longitude	
				Start	End
Item	Animal Control			37.814903 °	37.814903 °
				-121.415887 °	-121.415887 °
DWR ID	DWR_RD2089_02_s_2015_22				
Comment Code					
A3 : No rodents visible, but rodent burrows visible; need to backfill and compact or grout burrows.					
Inspector Comment					

No Photos

* Location		** Rating		+ Issue Type	
LS : Land Side	N/A : Not Applicable	A : Acceptable	N : Not Inspected/Rated	Ma : Maintenance Deficiency	
WS : Water Side		M : Minimally Acceptable	C : Corrected	Ob : Design & System Obsolescence	
CR : Crown		U : Unacceptable	A/W : Acceptable but Monitor & Maintain	En : Enforcement	

**Flood Control Project Maintenance
Levee Inspections**

Levee Inspection Report By Mile - Spring 2017

Reclamation District No. 2089 Stark

Waterway	Bank	Unit Miles	Inspection Start/End	Inspector
Unit No. 02 Salmon Slough	Right	1.35	04/12/2017 04/12/2017	Maksim Khashchuk

LM Start	0.94	Rating **	M	Issue No.	41
LM End	0.94	Issue Type +	Ma	Location *	WS
Category	Earthen Levee			GPS Latitude/Longitude	
				Start	End
Item	Encroachments			37.814940 °	37.814940 °
				-121.416499 °	-121.416499 °
DWR ID	DWR_RD2089_02_s_2012_41				
Comment Code					
PI : Pipe					
Inspector Comment					
Debris/CMP on levee slope needs to be removed.					

Photo 1 of 1 : SP_2017_RD2089_317_41_20170407_00038.jpg



05/24/2011 Old CMP left on waterside levee slope, needs to be removed.

LM Start	0.95	Rating **	U	Issue No.	5
LM End	0.95	Issue Type +	Ma	Location *	LS
Category	Earthen Levee			GPS Latitude/Longitude	
				Start	End
Item	Animal Control			37.814915 °	37.814915 °
				-121.416606 °	-121.416606 °
DWR ID	DWR_RD2089_02_s_2014_5				
Comment Code					
A1 : Exterminate rodents and backfill and compact or grout burrows.					
Inspector Comment					

Photo 1 of 1 : SP_2017_RD2089_317_5_20170407_00004.jpg



View of the rodent holes on the landside levee slope.

LM Start	1.00	Rating **	U	Issue No.	12
LM End	1.00	Issue Type +	Ma	Location *	CR
Category	Earthen Levee			GPS Latitude/Longitude	
				Start	End
Item	Animal Control			37.815182 °	37.815182 °
				-121.417439 °	-121.417439 °
DWR ID	DWR_RD2089_02_f_2014_12				
Comment Code					
A3 : No rodents visible, but rodent burrows visible; need to backfill and compact or grout burrows.					
Inspector Comment					

Photo 1 of 2 : SP_2017_RD2089_317_12_20170407_00011.jpg



View of several large rodent holes on the levee crown.

* Location
LS : Land Side N/A : Not Applicable
WS : Water Side
CR : Crown

** Rating
A : Acceptable N : Not Inspected/Rated
M : Minimally Acceptable C : Corrected
U : Unacceptable A/W : Acceptable but Monitor & Maintain

+ Issue Type
Ma : Maintenance Deficiency
Ob : Design & System Obsolescence
En : Enforcement

**Flood Control Project Maintenance
Levee Inspections**

Levee Inspection Report By Mile - Spring 2017

Reclamation District No. 2089 Stark

Waterway	Bank	Unit Miles	Inspection Start/End	Inspector
Unit No. 02 Salmon Slough	Right	1.35	04/12/2017 04/12/2017	Maksim Khashchuk

LM Start	1.00	Rating **	U	Issue No.	12 (cont)	
LM End	1.00	Issue Type +	Ma	Location *	CR	
Category	Earthen Levee			GPS Latitude/Longitude		
				Start		End
Item	Animal Control			37.815182 °		37.815182 °
				-121.417439 °		-121.417439 °
DWR ID	DWR_RD2089_02_f_2014_12					
Comment Code						
A3 : No rodents visible, but rodent burrows visible; need to backfill and compact or grout burrows.						
Inspector Comment						

Photo 2 of 2 : SP_2017_RD2089_317_12_20170407_00012.jpg



View of several rodent burrows on landside levee hinge and crown.

LM Start	1.05	Rating **	N	Issue No.	29
LM End	1.05	Issue Type +	Ma	Location *	WS
Category	Earthen Levee			GPS Latitude/Longitude	
				Start	End
Item	Trim / Thin Trees			37.815629 °	37.815629 °
				-121.418133 °	-121.418133 °
DWR ID	DWR_RD2089_02_s_2012_29				
Comment Code					
T5 : Tree stumps.					
Inspector Comment					
14" dia stump. Could not verify as the area is overgrown with high weeds.					

Photo 1 of 1 : SP_2017_RD2089_317_29_20170407_00026.jpg



Tree stump >2" left after vegetation and tree removal.

LM Start	1.09	Rating **	M	Issue No.	17
LM End	1.09	Issue Type +	Ma	Location *	WS
Category	Earthen Levee			GPS Latitude/Longitude	
				Start	End
Item	Encroachments			37.816100 °	37.816100 °
				-121.418487 °	-121.418487 °
DWR ID	DWR_RD2089_02_s_2012_17				
Comment Code					
DE : Debris					
Inspector Comment					
Water tanks disposed of on levee are obstructive.					

Photo 1 of 1 : SP_2017_RD2089_317_17_20170407_00017.jpg



View of water tanks disposed on waterside slope.

* Location
LS : Land Side N/A : Not Applicable
WS : Water Side
CR : Crown

** Rating
A : Acceptable N : Not Inspected/Rated
M : Minimally Acceptable C : Corrected
U : Unacceptable A/W : Acceptable but Monitor & Maintain

+ Issue Type
Ma : Maintenance Deficiency
Ob : Design & System Obsolescence
En : Enforcement

**Flood Control Project Maintenance
Levee Inspections**

Levee Inspection Report By Mile - Spring 2017

Reclamation District No. 2089 Stark

Waterway	Bank	Unit Miles	Inspection Start/End	Inspector
Unit No. 02 Salmon Slough	Right	1.35	04/12/2017 04/12/2017	Maksim Khashchuk

LM Start	1.12	Rating **	M	Issue No.	30
LM End	1.12	Issue Type +	Ma	Location *	WS
Category	Earthen Levee			GPS Latitude/Longitude	
				Start	End
Item	Vegetation			37.816487 °	37.816487 °
				-121.418948 °	-121.418948 °
DWR ID	DWR_RD2089_02_s_2012_30				
Comment Code					
V4 : Elderberries are blocking visibility and flood fight capability.					
Inspector Comment					

No Photos

LM Start	1.18	Rating **	M	Issue No.	6
LM End	1.18	Issue Type +	Ma	Location *	LS
Category	Earthen Levee			GPS Latitude/Longitude	
				Start	End
Item	Animal Control			37.817271 °	37.817271 °
				-121.419380 °	-121.419380 °
DWR ID	DWR_RD2089_02_s_2014_6				
Comment Code					
A1 : Exterminate rodents and backfill and compact or grout burrows.					
Inspector Comment					

Photo 1 of 1 : SP_2017_RD2089_317_6_20170407_00005.jpg



View of the large rodent hole on the landside levee slope.

LM Start	1.24	Rating **	U	Issue No.	31
LM End	1.24	Issue Type +	Ma	Location *	WS
Category	Earthen Levee			GPS Latitude/Longitude	
				Start	End
Item	Vegetation			37.818051 °	37.818051 °
				-121.419743 °	-121.419743 °
DWR ID	DWR_RD2089_02_s_2012_31				
Comment Code					
V4 : Elderberries are blocking visibility and flood fight capability.					
Inspector Comment					
Trim back the shrub to allow access and visibility.					

Photo 1 of 1 : SP_2017_RD2089_317_31_20170417_00056.jpg



View of the overgrown shrub on the levee slope.

* Location LS : Land Side N/A : Not Applicable WS : Water Side CR : Crown		** Rating A : Acceptable M : Minimally Acceptable U : Unacceptable N : Not Inspected/Rated C : Corrected A/W : Acceptable but Monitor & Maintain		+ Issue Type Ma : Maintenance Deficiency Ob : Design & System Obsolescence En : Enforcement	
--	--	---	--	---	--

**Flood Control Project Maintenance
Levee Inspections**

Levee Inspection Report By Mile - Spring 2017

Reclamation District No. 2089 Stark

Waterway	Bank	Unit Miles	Inspection Start/End	Inspector
Unit No. 02 Salmon Slough	Right	1.35	04/12/2017 04/12/2017	Maksim Khashchuk

LM Start	1.24	Rating **	U	Issue No.	37
LM End	1.24	Issue Type +	En	Location *	LS
Category	Earthen Levee			GPS Latitude/Longitude	
				Start	End
Item	Encroachments			37.818097 °	37.818097 °
				-121.419709 °	-121.419709 °
DWR ID	DWR_RD2089_02_s_2016_37				
Comment Code					
PR : Prunings					
Inspector Comment					

Photo 1 of 1 : SP_2017_RD2089_317_37_20170407_00033.jpg



View of the prunings on the landside levee slope.

LM Start	1.24	Rating **	U	Issue No.	28
LM End	1.24	Issue Type +	Ma	Location *	LS
Category	Earthen Levee			GPS Latitude/Longitude	
				Start	End
Item	Animal Control			37.818112 °	37.818112 °
				-121.419720 °	-121.419720 °
DWR ID	DWR_RD2089_02_f_2016_28				
Comment Code					
A1 : Exterminate rodents and backfill and compact or grout burrows.					
Inspector Comment					

Photo 1 of 1 : SP_2017_RD2089_317_28_20170407_00025.jpg



View of the rodent burrow in the landside levee slope.

LM Start	1.25	Rating **	U	Issue No.	23
LM End	1.31	Issue Type +	En	Location *	LS
Category	Earthen Levee			GPS Latitude/Longitude	
				Start	End
Item	Encroachments			37.818277 °	37.819040 °
				-121.419725 °	-121.419760 °
DWR ID	DWR_RD2089_02_s_2012_23				
Comment Code					
BU : Building					
Inspector Comment					
Buildings and equipment encroach within 10-ft of landside toe. The boat was removed.					

Photo 1 of 1 : SP_2017_RD2089_317_23_20170407_00021.jpg



Fall 2009 photo: Buildings and patio decks are built within 10-ft of the levee slope.

* Location LS : Land Side N/A : Not Applicable WS : Water Side CR : Crown		** Rating A : Acceptable M : Minimally Acceptable U : Unacceptable		N : Not Inspected/Rated C : Corrected A/W : Acceptable but Monitor & Maintain		+ Issue Type Ma : Maintenance Deficiency Ob : Design & System Obsolescence En : Enforcement	
--	--	--	--	---	--	---	--

**Flood Control Project Maintenance
Levee Inspections**

Levee Inspection Report By Mile - Spring 2017

Reclamation District No. 2089 Stark

Waterway	Bank	Unit Miles	Inspection Start/End	Inspector
Unit No. 02 Salmon Slough	Right	1.35	04/12/2017 04/12/2017	Maksim Khashchuk

LM Start	1.27	Rating **	M	Issue No.	57
LM End	1.27	Issue Type +	En	Location *	CR
Category	Earthen Levee			GPS Latitude/Longitude	
				Start	End
Item	Vegetation			37.818499 °	37.818499 °
				-121.419754 °	-121.419754 °
DWR ID	DWR_RD2089_02_f_2013_57				
Comment Code					
V6 : Landscaping					
Inspector Comment					
Remove cactus from levee crown.					

Photo 1 of 1 : SP_2017_RD2089_317_57_20170407_00050.jpg



View of the cactus on the landside levee shoulder.

LM Start	1.27	Rating **	M	Issue No.	45
LM End	1.27	Issue Type +	Ma	Location *	LS
Category	Earthen Levee			GPS Latitude/Longitude	
				Start	End
Item	Encroachments			37.818585 °	37.818585 °
				-121.419734 °	-121.419734 °
DWR ID	DWR_RD2089_02_s_2017_45				
Comment Code					
TR : Tree or limb					
Inspector Comment					
Remove down tree limb from the levee slope.					

Photo 1 of 1 : SP_2017_RD2089_317_45_20170417_00055.jpg



View of the down tree limb on the levee slope.

LM Start	1.28	Rating **	U	Issue No.	7
LM End	1.28	Issue Type +	Ma	Location *	WS
Category	Earthen Levee			GPS Latitude/Longitude	
				Start	End
Item	Vegetation			37.818689 °	37.818689 °
				-121.419746 °	-121.419746 °
DWR ID	DWR_RD2089_02_s_2017_7				
Comment Code					
V2 : Remove the wild growth other than native grasses from the levee slopes.					
Inspector Comment					
Remove thistle from the levee slope.					

Photo 1 of 1 : SP_2017_RD2089_317_7_20170417_00054.jpg



View of the tall vegetation on the levee slope.

*** Location**
LS : Land Side N/A : Not Applicable
WS : Water Side
CR : Crown

**** Rating**
A : Acceptable N : Not Inspected/Rated
M : Minimally Acceptable C : Corrected
U : Unacceptable A/W : Acceptable but Monitor & Maintain

+ Issue Type
Ma : Maintenance Deficiency
Ob : Design & System Obsolescence
En : Enforcement

**Flood Control Project Maintenance
Levee Inspections**

Levee Inspection Report By Mile - Spring 2017

Reclamation District No. 2089 Stark

Waterway	Bank	Unit Miles	Inspection Start/End	Inspector
Unit No. 02 Salmon Slough	Right	1.35	04/12/2017 04/12/2017	Maksim Khashchuk

LM Start	1.29	Rating **	U	Issue No.	19
LM End	1.29	Issue Type +	Ma	Location *	LS
Category	Earthen Levee			GPS Latitude/Longitude	
				Start	End
Item	Animal Control			37.818740 °	37.818740 °
				-121.419759 °	-121.419759 °
DWR ID	DWR_RD2089_02_f_2016_19				
Comment Code					
A3 : No rodents visible, but rodent burrows visible; need to backfill and compact or grout burrows.					
Inspector Comment					

Photo 1 of 1 : SP_2017_RD2089_317_19_20170407_00019.jpg



View of the rodent burrow in the landside levee slope.

LM Start	1.29	Rating **	A/W	Issue No.	32
LM End	1.29	Issue Type +	Ma	Location *	WS
Category	Earthen Levee			GPS Latitude/Longitude	
				Start	End
Item	Vegetation			37.818829 °	37.818829 °
				-121.419776 °	-121.419776 °
DWR ID	DWR_RD2089_02_s_2012_32				
Comment Code					
V4 : Elderberries are blocking visibility and flood fight capability.					
Inspector Comment					

No Photos

LM Start	1.29	Rating **	N	Issue No.	18
LM End	1.29	Issue Type +	Ma	Location *	LS
Category	Earthen Levee			GPS Latitude/Longitude	
				Start	End
Item	Trim / Thin Trees			37.818843 °	37.818843 °
				-121.419762 °	-121.419762 °
DWR ID	DWR_RD2089_02_f_2016_18				
Comment Code					
T5 : Tree stumps.					
Inspector Comment					

Photo 1 of 1 : SP_2017_RD2089_317_18_20170407_00018.jpg



View of the tree stump from the levee crown.

* Location LS : Land Side N/A : Not Applicable WS : Water Side CR : Crown		** Rating A : Acceptable M : Minimally Acceptable U : Unacceptable N : Not Inspected/Rated C : Corrected A/W : Acceptable but Monitor & Maintain		+ Issue Type Ma : Maintenance Deficiency Ob : Design & System Obsolescence En : Enforcement	
--	--	---	--	---	--

**Flood Control Project Maintenance
Levee Inspections**

Levee Inspection Report By Mile - Spring 2017

Reclamation District No. 2089 Stark

Waterway	Bank	Unit Miles	Inspection Start/End	Inspector
Unit No. 02 Salmon Slough	Right	1.35	04/12/2017 04/12/2017	Maksim Khashchuk

LM Start	1.30	Rating **	U	Issue No.	16
LM End	1.30	Issue Type +	Ma	Location *	LS
Category	Earthen Levee			GPS Latitude/Longitude	
				Start	End
Item	Animal Control			37.818987 °	37.818987 °
				-121.419767 °	-121.419767 °
DWR ID	DWR_RD2089_02_s_2015_16				
Comment Code					
A1 : Exterminate rodents and backfill and compact or grout burrows.					
Inspector Comment					

Photo 1 of 1 : SP_2017_RD2089_317_16_20170407_00016.jpg



View of the rodent burrow in the landside levee slope.

LM Start	1.30	Rating **	M	Issue No.	8
LM End	1.34	Issue Type +	En	Location *	LS
Category	Earthen Levee			GPS Latitude/Longitude	
				Start	End
Item	Vegetation			37.818994 °	37.819556 °
				-121.419762 °	-121.419621 °
DWR ID	DWR_RD2089_02_f_2016_8				
Comment Code					
V6 : Landscaping					
Inspector Comment					

Photo 1 of 2 : SP_2017_RD2089_317_8_20170407_00006.jpg



View of the ice plant landscaping on the landside levee slope, looking downstream.

LM Start	1.30	Rating **	M	Issue No.	8 (cont)
LM End	1.34	Issue Type +	En	Location *	LS

Photo 2 of 2 : SP_2017_RD2089_317_8_20170407_00007.jpg



View of the ice plant and irrigation line on the landside levee slope, looking upstream.

* Location LS : Land Side N/A : Not Applicable WS : Water Side CR : Crown		** Rating A : Acceptable M : Minimally Acceptable U : Unacceptable		N : Not Inspected/Rated C : Corrected A/W : Acceptable but Monitor & Maintain		+ Issue Type Ma : Maintenance Deficiency Ob : Design & System Obsolescence En : Enforcement	
---	--	---	--	---	--	--	--

**Flood Control Project Maintenance
Levee Inspections**

Levee Inspection Report By Mile - Spring 2017

Reclamation District No. 2089 Stark

Waterway	Bank	Unit Miles	Inspection Start/End	Inspector
Unit No. 02 Salmon Slough	Right	1.35	04/12/2017 04/12/2017	Maksim Khashchuk

LM Start	1.33	Rating **	U	Issue No.	11
LM End	1.33	Issue Type +	Ma	Location *	LS
Category	Earthen Levee			GPS Latitude/Longitude	
				Start	End
Item	Animal Control			37.819371 °	37.819371 °
				-121.419774 °	-121.419774 °
DWR ID	DWR_RD2089_02_f_2014_11				
Comment Code					
A3 : No rodents visible, but rodent burrows visible; need to backfill and compact or grout burrows.					
Inspector Comment					
Some of the rodent hole openings have collapsed.					

Photo 1 of 1 : SP_2017_RD2089_317_11_20170407_00010.jpg



View of the multiple rodent burrows on the landside levee slope.

* Location LS : Land Side N/A : Not Applicable WS : Water Side CR : Crown		** Rating A : Acceptable N : Not Inspected/Rated M : Minimally Acceptable C : Corrected U : Unacceptable A/W : Acceptable but Monitor & Maintain		+ Issue Type Ma : Maintenance Deficiency Ob : Design & System Obsolescence En : Enforcement
--	--	---	--	---