

**Flood Control Project Maintenance
Levee Inspections**

Maintenance Issue Types Only, Levee Inspection Report By Mile - Spring 2019

Reclamation District No. 2075 McMullin

Waterway	Bank	Unit Miles	Inspection Start/End	Inspector
Unit No. 01 San Joaquin River	Right	7.45	05/15/2019 05/15/2019	Alberto De Leon

LM Start		Rating **	A	Issue No.	9
LM End		Issue Type +	Ma	Location *	N/A
Category	Earthen Levee		GPS Latitude/Longitude		
			Start	End	
Item	Operations & Maintenance Manuals			°	37.744860 °
				°	-121.289828 °
DWR ID	DWR_RD2075_01_f_2014_9				
Comment Code					
Inspector Comment					
RD 2075 has the O&M Manual on file.					

No Photos

LM Start		Rating **	A	Issue No.	10
LM End		Issue Type +	Ma	Location *	
Category	Earthen Levee		GPS Latitude/Longitude		
			Start	End	
Item	Emergency Supplies & Equipment			°	
				°	
DWR ID	DWR_RD2075_01_f_2014_10				
Comment Code					
Inspector Comment					
RD 2075 has emergency supplies stored in their building.					

No Photos

LM Start		Rating **	A	Issue No.	11
LM End		Issue Type +	Ma	Location *	
Category	Earthen Levee		GPS Latitude/Longitude		
			Start	End	
Item	Flood Preparedness & Training			°	
				°	
DWR ID	DWR_RD2075_01_f_2014_11				
Comment Code					
Inspector Comment					
RD 2075 has regular training for their work crews.					

No Photos

* Location LS : Land Side N/A : Not Applicable WS : Water Side CR : Crown	** Rating A : Acceptable M : Minimally Acceptable U : Unacceptable	N : Not Inspected/Rated C : Corrected A/W : Acceptable but Monitor & Maintain	+ Issue Type Ma : Maintenance Deficiency Ob : Design & System Obsolescence En : Enforcement
--	--	---	---

**Flood Control Project Maintenance
Levee Inspections**

Maintenance Issue Types Only, Levee Inspection Report By Mile - Spring 2019

Reclamation District No. 2075 McMullin

Waterway	Bank	Unit Miles	Inspection Start/End	Inspector
Unit No. 01 San Joaquin River	Right	7.45	05/15/2019 05/15/2019	Alberto De Leon

LM Start	1.43	Rating **	U	Issue No.	29
LM End	1.63	Issue Type +	Ma	Location *	LS
Category	Earthen Levee			GPS Latitude/Longitude	
				Start	End
Item	Vegetation			37.735061 °	37.734213 °
				-121.284269 °	-121.287660 °
DWR ID	DWR_RD2075_01_s_2018_29				
Comment Code					
V2 : Remove the wild growth other than native grasses from the levee slopes.					
Inspector Comment					
Wild growth at the landward toe is blocking the view and should be cleared to fifteen feet from the landward toe.					

LM Start	1.43	Rating **	U	Issue No.	29 (cont)
LM End	1.63	Issue Type +	Ma	Location *	LS

Photo 1 of 3 : SP_2019_RD2075_315_29_20190313_00040.jpg



Looking west at dense veg at landward toe. (Spring 2018)

Photo 2 of 3 : SP_2019_RD2075_315_29_20190313_00041.jpg



Looking west at dense veg. at landward toe. (Spring 2018)

LM Start	1.43	Rating **	U	Issue No.	29 (cont)
LM End	1.63	Issue Type +	Ma	Location *	LS

Photo 3 of 3 : SP_2019_RD2075_315_29_20190313_00042.jpg



Looking northeast at dense veg at landward toe. (Spring 2018)

* Location LS : Land Side N/A : Not Applicable WS : Water Side CR : Crown		** Rating A : Acceptable M : Minimally Acceptable U : Unacceptable		N : Not Inspected/Rated C : Corrected A/W : Acceptable but Monitor & Maintain		+ Issue Type Ma : Maintenance Deficiency Ob : Design & System Obsolescence En : Enforcement	
--	--	--	--	---	--	---	--

**Flood Control Project Maintenance
Levee Inspections**

Maintenance Issue Types Only, Levee Inspection Report By Mile - Spring 2019

Reclamation District No. 2075 McMullin

Waterway	Bank	Unit Miles	Inspection Start/End	Inspector
Unit No. 01 San Joaquin River	Right	7.45	05/15/2019 05/15/2019	Alberto De Leon

LM Start	1.58	Rating **	M	Issue No.	12
LM End	1.67	Issue Type +	Ma	Location *	WS
Category	Supplemental			GPS Latitude/Longitude	
				Start	End
Item	2017 Storm Damage			37.734353 °	37.734463 °
				-121.286720 °	-121.288258 °
DWR ID	DWR_RD2075_01_f_2017_12				
Comment Code					

Photo 1 of 4 : LEVAL_SP_2019_575_4241.jpg



Inspector Comment					
<p>Levee Evaluation Comments</p> <p>Description: Slope protection repairs are needed along the waterside slope due to erosion and riprap displacement from high water. Based upon levee inspections, it was determined the waterside levee slope is eroding, deteriorating, and degrading. The eroded levee sections need to be restored back to design standards to prevent further deterioration and damage.</p> <p>Site ID No: 575</p> <p>Site Designation: LMA-481</p> <p>Repair Type: Erosion</p> <p>Rating: Area of Concern</p> <p>Field Date: 8/10/2017</p> <p>Notes: 10/23/17: According to LMA and my observations at LM 1.63, this site never had riprap (contrary to previous comments). Erosion has encroached into levee prism. Future high water and wavewash will likely advance erosion further into prism. Repairs should be made prior to next high water.</p>					

LM Start	1.58	Rating **	M	Issue No.	12 (cont)
LM End	1.67	Issue Type +	Ma	Location *	WS

Photo 2 of 4 : LEVAL_SP_2019_575_4245.jpg



* Location LS : Land Side N/A : Not Applicable WS : Water Side CR : Crown		** Rating A : Acceptable N : Not Inspected/Rated M : Minimally Acceptable C : Corrected U : Unacceptable A/W : Acceptable but Monitor & Maintain		+ Issue Type Ma : Maintenance Deficiency Ob : Design & System Obsolescence En : Enforcement
--	--	---	--	---

**Flood Control Project Maintenance
Levee Inspections**

Maintenance Issue Types Only, Levee Inspection Report By Mile - Spring 2019

Reclamation District No. 2075 McMullin

Waterway	Bank	Unit Miles	Inspection Start/End	Inspector
Unit No. 01 San Joaquin River	Right	7.45	05/15/2019 05/15/2019	Alberto De Leon

LM Start	1.58	Rating **	M	Issue No.	12 (cont)
LM End	1.67	Issue Type +	Ma	Location *	WS
Category	Supplemental			GPS Latitude/Longitude	
				Start	End
Item	2017 Storm Damage			37.734353 °	37.734463 °
				-121.286720 °	-121.288258 °
DWR ID	DWR_RD2075_01_f_2017_12				
Comment Code					

Photo 3 of 4 : LEVAL_SP_2019_575_4246.jpg



Inspector Comment

Levee Evaluation Comments

Description: Slope protection repairs are needed along the waterside slope due to erosion and riprap displacement from high water. Based upon levee inspections, it was determined the waterside levee slope is eroding, deteriorating, and degrading. The eroded levee sections need to be restored back to design standards to prevent further deterioration and damage.

Site ID No: 575

Site Designation: LMA-481

Repair Type: Erosion

Rating: Area of Concern

Field Date: 8/10/2017

Notes: 10/23/17: According to LMA and my observations at LM 1.63, this site never had riprap (contrary to previous comments). Erosion has encroached into levee prism. Future high water and wavewash will likely advance erosion further into prism. Repairs should be made prior to next high water.

LM Start	1.58	Rating **	M	Issue No.	12 (cont)
LM End	1.67	Issue Type +	Ma	Location *	WS

Photo 4 of 4 : SP_2019_RD2075_315_12_20190313_00007.jpg



10/23/17: According to LMA and my observations at LM 1.63, this site never had riprap (contrary to previous comments). Erosion has encroached into levee prism. Future high water and wavewash will likely advance erosion further into prism. Repairs should be made prior to next high water.

* Location LS : Land Side N/A : Not Applicable WS : Water Side CR : Crown		** Rating A : Acceptable M : Minimally Acceptable U : Unacceptable N : Not Inspected/Rated C : Corrected A/W : Acceptable but Monitor & Maintain		+ Issue Type Ma : Maintenance Deficiency Ob : Design & System Obsolescence En : Enforcement	
---	--	--	--	--	--

**Flood Control Project Maintenance
Levee Inspections**

Maintenance Issue Types Only, Levee Inspection Report By Mile - Spring 2019

Reclamation District No. 2075 McMullin

Waterway	Bank	Unit Miles	Inspection Start/End	Inspector
Unit No. 01 San Joaquin River	Right	7.45	05/15/2019 05/15/2019	Alberto De Leon

LM Start	1.89	Rating **	M	Issue No.	31
LM End	2.28	Issue Type +	Ma	Location *	LS
Category	Earthen Levee			GPS Latitude/Longitude	
				Start	End
Item	Vegetation			37.736052 °	37.731919 °
				-121.291255 °	-121.293768 °
DWR ID	DWR_RD2075_01_s_2019_31				
Comment Code					
V2 : Remove the wild growth other than native grasses from the levee slopes.					
Inspector Comment					
Tumble weeds are on the landside toe. RD will burn the weeds in late spring.					

No Photos

LM Start	2.32	Rating **	M	Issue No.	36
LM End	2.32	Issue Type +	Ma	Location *	
Category	Supplemental			GPS Latitude/Longitude	
				Start	End
Item	DWR UCIP LMA Responsibility			37.731314 °	37.731314 °
				-121.293713 °	-121.293713 °
DWR ID	24737				
Comment Code					
Inspector Comment					
FS_ID:24666 DS_ID:24737 EP_NO: N/A Repair Type: Non-Urgent Crossing Status: Found UCIP Comments: - service pole on landside.- looks abandoned. Walkway in dilapidated condition. FIELD_STRUCT_DESC: 16-inch steel drainage discharge pipe through the levee, 4.5 feet below the crown. Corrugated metal cutoff wall. Pump mounted on a pile structure in a drainage ditch on the landside (LS). Siphon breaker in a corrugated metal pipe (CMP) riser on the waterside (WS) slope. [Additional Reference(s): DWR Levee Log, 2005. USACE San Joaquin O&M Manual 3, December 1968, (HLM 2.30)]. FS Date: 11/13/2013					

Photo 1 of 3 : UCIP_SP_2019_24666_45600.jpg



WS view: concrete standpipe (top) and steel pipe riser (bottom marked) on levee slope.

* Location	** Rating	+ Issue Type
LS : Land Side WS : Water Side CR : Crown	A : Acceptable M : Minimally Acceptable U : Unacceptable	Ma : Maintenance Deficiency Ob : Design & System Obsolescence En : Enforcement
N/A : Not Applicable	N : Not Inspected/Rated C : Corrected A/W : Acceptable but Monitor & Maintain	

**Flood Control Project Maintenance
Levee Inspections**

Maintenance Issue Types Only, Levee Inspection Report By Mile - Spring 2019

Reclamation District No. 2075 McMullin

Waterway	Bank	Unit Miles	Inspection Start/End	Inspector
Unit No. 01 San Joaquin River	Right	7.45	05/15/2019 05/15/2019	Alberto De Leon

LM Start	2.32	Rating **	M	Issue No.	36 (cont)	
LM End	2.32	Issue Type +	Ma	Location *		
Category	Supplemental			GPS Latitude/Longitude		
				Start		End
Item	DWR UCIP LMA Responsibility			37.731314 °		37.731314 °
				-121.293713 °		-121.293713 °
DWR ID	24737					
Comment Code						
Inspector Comment						
FS_ID:24666 DS_ID:24737 EP_NO: N/A Repair Type: Non-Urgent Crossing Status: Found UCIP Comments: - service pole on landside.- looks abandoned. Walkway in dilapidated condition. FIELD_STRUCT_DESC: 16-inch steel drainage discharge pipe through the levee, 4.5 feet below the crown. Corrugated metal cutoff wall. Pump mounted on a pile structure in a drainage ditch on the landside (LS). Siphon breaker in a corrugated metal pipe (CMP) riser on the waterside (WS) slope. [Additional Reference(s): DWR Levee Log, 2005. USACE San Joaquin O&M Manual 3, December 1968, (HLM 2.30)]. FS Date: 11/13/2013						

Photo 2 of 3 : UCIP_SP_2019_24666_44030.jpg



WS view: blocked siphon breaker in steel pipe riser on levee slope.

LM Start	2.32	Rating **	M	Issue No.	36 (cont)
LM End	2.32	Issue Type +	Ma	Location *	

Photo 3 of 3 : UCIP_SP_2019_24666_44029.jpg



WS view: concrete standpipe on levee toe.

* Location LS : Land Side N/A : Not Applicable WS : Water Side CR : Crown		** Rating A : Acceptable M : Minimally Acceptable U : Unacceptable		N : Not Inspected/Rated C : Corrected A/W : Acceptable but Monitor & Maintain		+ Issue Type Ma : Maintenance Deficiency Ob : Design & System Obsolescence En : Enforcement	
--	--	--	--	---	--	---	--

**Flood Control Project Maintenance
Levee Inspections**

Maintenance Issue Types Only, Levee Inspection Report By Mile - Spring 2019

Reclamation District No. 2075 McMullin

Waterway	Bank	Unit Miles	Inspection Start/End	Inspector
Unit No. 01 San Joaquin River	Right	7.45	05/15/2019 05/15/2019	Alberto De Leon

LM Start	2.32	Rating **	A/W	Issue No.	15
LM End	2.78	Issue Type +	Ma	Location *	LS
Category	Supplemental			GPS Latitude/Longitude	
				Start	End
Item	2017 Storm Damage			37.731200 °	37.724900 °
				-121.293400 °	-121.293800 °
DWR ID	DWR_RD2075_01_f_2017_15				
Comment Code					
Inspector Comment					
Levee Evaluation Comments					
Description:Sinkholes have formed along the landside levee toe as a result of the high water. The cause of the sinkholes is not clear, but a similar phenomenon in this area is believed to have caused the levee breach earlier this year. Further geotechnical investigation is needed.					
Site ID No:479					
Site Designation:LMA-306					
Repair Type: Stability					
Rating:Area of Concern					
Field Date:7/26/2017					
Notes: Sink holes appear to have already been filled. 10/23/17: LMA has removed pipes (parallel to levee) in this area, and drainage ditch has been relocated to approx 60 feet away from levee toe. Known sandy soils in region may contribute to sinkholes.					

Photo 1 of 3 : LEVAL_SP_2019_479_2203.jpg



LM Start	2.32	Rating **	A/W	Issue No.	15 (cont)
LM End	2.78	Issue Type +	Ma	Location *	LS

Photo 2 of 3 : LEVAL_SP_2019_479_2215.jpg



* Location LS : Land Side N/A : Not Applicable WS : Water Side CR : Crown		** Rating A : Acceptable N : Not Inspected/Rated M : Minimally Acceptable C : Corrected U : Unacceptable A/W : Acceptable but Monitor & Maintain		+ Issue Type Ma : Maintenance Deficiency Ob : Design & System Obsolescence En : Enforcement
--	--	---	--	---

**Flood Control Project Maintenance
Levee Inspections**

Maintenance Issue Types Only, Levee Inspection Report By Mile - Spring 2019

Reclamation District No. 2075 McMullin

Waterway	Bank	Unit Miles	Inspection Start/End	Inspector
Unit No. 01 San Joaquin River	Right	7.45	05/15/2019 05/15/2019	Alberto De Leon

LM Start	2.32	Rating **	A/W	Issue No.	15 (cont)
LM End	2.78	Issue Type +	Ma	Location *	LS
Category	Supplemental			GPS Latitude/Longitude	
				Start	End
Item	2017 Storm Damage			37.731200 °	37.724900 °
				-121.293400 °	-121.293800 °
DWR ID	DWR_RD2075_01_f_2017_15				
Comment Code					
Inspector Comment					
Levee Evaluation Comments					
Description:Sinkholes have formed along the landside levee toe as a result of the high water. The cause of the sinkholes is not clear, but a similar phenomenon in this area is believed to have caused the levee breach earlier this year. Further geotechnical investigation is needed.					
Site ID No:479					
Site Designation:LMA-306					
Repair Type: Stability					
Rating:Area of Concern					
Field Date:7/26/2017					
Notes: Sink holes appear to have already been filled. 10/23/17: LMA has removed pipes (parallel to levee) in this area, and drainage ditch has been relocated to approx 60 feet away from levee toe. Known sandy soils in region may contribute to sinkholes.					

Photo 3 of 3 : SP_2019_RD2075_315_15_20190313_00016.jpg



10/23/17: LMA has removed pipes (parallel to levee) in this area, and drainage ditch has been relocated to approx 60 feet away from levee toe. Known sandy soils in region may contribute to sinkholes.

LM Start	2.74	Rating **	A/W	Issue No.	16
LM End	2.84	Issue Type +	Ma	Location *	WS
Category	Supplemental			GPS Latitude/Longitude	
				Start	End
Item	2017 Storm Damage			37.725200 °	37.724000 °
				-121.294400 °	-121.293200 °
DWR ID	DWR_RD2075_01_f_2017_16				
Comment Code					
Inspector Comment					
Levee Evaluation Comments					
Description:Slope protection repairs are needed along the waterside slope due to erosion. Based upon levee inspections, it was determined the waterside levee slopes were eroding, deteriorating and degrading in concave pocket sections at various locations along this levee reach. The eroded levee sections need to be restored back to design standards to prevent further deterioration of the damaged levee sections.					
Site ID No:480					
Site Designation:LMA-307					
Repair Type: Erosion					
Rating:Area of Concern					
Field Date:7/26/2017					
Notes: Low priority because of the wide berm. Could not see all of the bank because of vegetation. Rock was placed on LS here during this years (2017) storms.					

Photo 1 of 3 : LEVAL_SP_2019_480_2206.jpg



* Location LS : Land Side N/A : Not Applicable WS : Water Side CR : Crown		** Rating A : Acceptable N : Not Inspected/Rated M : Minimally Acceptable C : Corrected U : Unacceptable A/W : Acceptable but Monitor & Maintain		+ Issue Type Ma : Maintenance Deficiency Ob : Design & System Obsolescence En : Enforcement
--	--	---	--	---

**Flood Control Project Maintenance
Levee Inspections**

Maintenance Issue Types Only, Levee Inspection Report By Mile - Spring 2019

Reclamation District No. 2075 McMullin

Waterway	Bank	Unit Miles	Inspection Start/End	Inspector
Unit No. 01 San Joaquin River	Right	7.45	05/15/2019 05/15/2019	Alberto De Leon

LM Start	2.74	Rating **	A/W	Issue No.	16 (cont)
LM End	2.84	Issue Type +	Ma	Location *	WS
Category	Supplemental		GPS Latitude/Longitude		
			Start	End	
Item	2017 Storm Damage		37.725200 °	37.724000 °	
			-121.294400 °	-121.293200 °	
DWR ID	DWR_RD2075_01_f_2017_16				

Comment Code

Inspector Comment

Levee Evaluation Comments

Description: Slope protection repairs are needed along the waterside slope due to erosion. Based upon levee inspections, it was determined the waterside levee slopes were eroding, deteriorating and degrading in concave pocket sections at various locations along this levee reach. The eroded levee sections need to be restored back to design standards to prevent further deterioration of the damaged levee sections.

Site ID No: 480

Site Designation: LMA-307

Repair Type: Erosion

Rating: Area of Concern

Field Date: 7/26/2017

Notes: Low priority because of the wide berm. Could not see all of the bank because of vegetation. Rock was placed on LS here during this years (2017) storms.

Photo 2 of 3 : LEVAL_SP_2019_480_2207.jpg



Photo 3 of 3 : LEVAL_SP_2019_480_2209.jpg



* Location LS : Land Side N/A : Not Applicable WS : Water Side CR : Crown		** Rating A : Acceptable M : Minimally Acceptable U : Unacceptable		N : Not Inspected/Rated C : Corrected A/W : Acceptable but Monitor & Maintain		+ Issue Type Ma : Maintenance Deficiency Ob : Design & System Obsolescence En : Enforcement	
--	--	--	--	---	--	---	--

**Flood Control Project Maintenance
Levee Inspections**

Maintenance Issue Types Only, Levee Inspection Report By Mile - Spring 2019

Reclamation District No. 2075 McMullin

Waterway	Bank	Unit Miles	Inspection Start/End	Inspector
Unit No. 01 San Joaquin River	Right	7.45	05/15/2019 05/15/2019	Alberto De Leon

LM Start	2.77	Rating **	A/W	Issue No.	14
LM End	2.83	Issue Type +	Ma	Location *	WS
Category	Supplemental			GPS Latitude/Longitude	
				Start	End
Item	2017 Storm Damage			37.724810 °	37.724207 °
				-121.294150 °	-121.293308 °
DWR ID	DWR_RD2075_01_f_2017_14				
Comment Code					
Inspector Comment					
Levee Evaluation Comments					
Description:					
Site ID No:81					
Site Designation:LMA-35					
Repair Type: Erosion					
Rating:Area of Concern					
Field Date:6/8/2017					
Notes: no damage present 10/23/17: Photos taken of vertical eroded low-flow bank approximately 20 feet from waterside levee toe. Area is composed of loose sand. Sandbar in channel may direct current toward this area.					

Photo 1 of 6 : LEVAL_SP_2019_81_1339.jpg



Photo 2 of 6 : LEVAL_SP_2019_81_1341.jpg



* Location LS : Land Side N/A : Not Applicable WS : Water Side CR : Crown		** Rating A : Acceptable M : Minimally Acceptable U : Unacceptable N : Not Inspected/Rated C : Corrected A/W : Acceptable but Monitor & Maintain		+ Issue Type Ma : Maintenance Deficiency Ob : Design & System Obsolescence En : Enforcement
--	--	---	--	---

**Flood Control Project Maintenance
Levee Inspections**

Maintenance Issue Types Only, Levee Inspection Report By Mile - Spring 2019

Reclamation District No. 2075 McMullin

Waterway	Bank	Unit Miles	Inspection Start/End	Inspector
Unit No. 01 San Joaquin River	Right	7.45	05/15/2019 05/15/2019	Alberto De Leon

LM Start	2.77	Rating **	A/W	Issue No.	14 (cont)
LM End	2.83	Issue Type +	Ma	Location *	WS
Category	Supplemental			GPS Latitude/Longitude	
				Start	End
Item	2017 Storm Damage			37.724810 °	37.724207 °
				-121.294150 °	-121.293308 °
DWR ID	DWR_RD2075_01_f_2017_14				
Comment Code					
Inspector Comment					
Levee Evaluation Comments					
Description:					
Site ID No:81					
Site Designation:LMA-35					
Repair Type: Erosion					
Rating:Area of Concern					
Field Date:6/8/2017					
Notes: no damage present 10/23/17: Photos taken of vertical eroded low-flow bank approximately 20 feet from waterside levee toe. Area is composed of loose sand. Sandbar in channel may direct current toward this area.					

LM Start	2.77	Rating **	A/W	Issue No.	14 (cont)
LM End	2.83	Issue Type +	Ma	Location *	WS

Photo 3 of 6 : LEVAL_SP_2019_81_1343.jpg



Photo 4 of 6 : SP_2019_RD2075_315_14_20190313_00011.jpg



View down through erosion rut in bank. 10/23/17: Photos taken of vertical eroded low-flow bank approximately 20 feet from waterside levee toe. Area is composed of loose sand. Sandbar in channel may direct current toward this area.

* Location LS : Land Side N/A : Not Applicable WS : Water Side CR : Crown		** Rating A : Acceptable M : Minimally Acceptable U : Unacceptable N : Not Inspected/Rated C : Corrected A/W : Acceptable but Monitor & Maintain		+ Issue Type Ma : Maintenance Deficiency Ob : Design & System Obsolescence En : Enforcement
--	--	---	--	---

**Flood Control Project Maintenance
Levee Inspections**

Maintenance Issue Types Only, Levee Inspection Report By Mile - Spring 2019

Reclamation District No. 2075 McMullin

Waterway	Bank	Unit Miles	Inspection Start/End	Inspector
Unit No. 01 San Joaquin River	Right	7.45	05/15/2019 05/15/2019	Alberto De Leon

LM Start	2.77	Rating **	A/W	Issue No.	14 (cont)
LM End	2.83	Issue Type +	Ma	Location *	WS
Category	Supplemental			GPS Latitude/Longitude	
				Start	End
Item	2017 Storm Damage			37.724810 °	37.724207 °
				-121.294150 °	-121.293308 °
DWR ID	DWR_RD2075_01_f_2017_14				
Comment Code					
Inspector Comment					
Levee Evaluation Comments					
Description:					
Site ID No:81					
Site Designation:LMA-35					
Repair Type: Erosion					
Rating:Area of Concern					
Field Date:6/8/2017					
Notes: no damage present 10/23/17: Photos taken of vertical eroded low-flow bank approximately 20 feet from waterside levee toe. Area is composed of loose sand. Sandbar in channel may direct current toward this area.					

LM Start	2.77	Rating **	A/W	Issue No.	14 (cont)
LM End	2.83	Issue Type +	Ma	Location *	WS

Photo 5 of 6 : SP_2019_RD2075_315_14_20190313_00012.jpg



View upstream showing narrow distance between levee toe and vertical bank. 10/23/17: Photos taken of vertical eroded low-flow bank approximately 20 feet from waterside levee toe. Area is composed of loose sand. Sandbar in channel may direct current toward this area.

Photo 6 of 6 : SP_2019_RD2075_315_14_20190313_00013.jpg



View upstream showing narrow distance between levee toe and vertical bank. 10/23/17: Photos taken of vertical eroded low-flow bank approximately 20 feet from waterside levee toe. Area is composed of loose sand. Sandbar in channel may direct current toward this area.

* Location LS : Land Side N/A : Not Applicable WS : Water Side CR : Crown		** Rating A : Acceptable M : Minimally Acceptable U : Unacceptable N : Not Inspected/Rated C : Corrected A/W : Acceptable but Monitor & Maintain		+ Issue Type Ma : Maintenance Deficiency Ob : Design & System Obsolescence En : Enforcement	
---	--	--	--	--	--

**Flood Control Project Maintenance
Levee Inspections**

Maintenance Issue Types Only, Levee Inspection Report By Mile - Spring 2019

Reclamation District No. 2075 McMullin

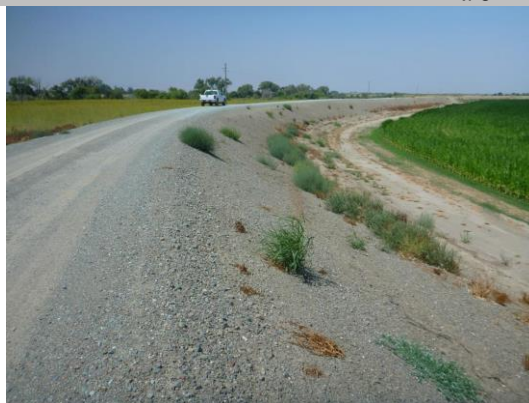
Waterway	Bank	Unit Miles	Inspection Start/End	Inspector
Unit No. 01 San Joaquin River	Right	7.45	05/15/2019 05/15/2019	Alberto De Leon

LM Start	3.43	Rating **	M	Issue No.	32
LM End	3.43	Issue Type +	Ma	Location *	LS
Category	Earthen Levee			GPS Latitude/Longitude	
				Start	End
Item	Animal Control			37.717477 °	37.717477 °
				-121.286716 °	-121.286716 °
DWR ID	DWR_RD2075_01_s_2019_32				
Comment Code					
A3 : No rodents visible, but rodent burrows visible; need to backfill and compact or grout burrows.					
Inspector Comment					

No Photos

LM Start	3.90	Rating **	A/W	Issue No.	18
LM End	3.95	Issue Type +	Ma	Location *	WS
Category	Supplemental			GPS Latitude/Longitude	
				Start	End
Item	2017 Storm Damage			37.713388 °	37.713492 °
				-121.280018 °	-121.278982 °
DWR ID	DWR_RD2075_01_f _ 2017_18				
Comment Code					
Inspector Comment					
Levee Evaluation Comments					
Description:Slope protection repairs are needed along the waterside slope due to erosion and riprap displacement from high water. Based upon levee inspections, it was determined the waterside levee slope is eroding, deteriorating, and degrading. The eroded levee sections need to be restored back to design standards to prevent further deterioration and damage.					
Site ID No:576					
Site Designation:LMA-482					
Repair Type: Erosion					
Rating:Area of Concern					
Field Date:8/10/2017					
Notes: 10/23/17: There was no riprap in this area. Erosion sites have been repaired by LMA.					

Photo 1 of 4 : LEVAL_SP_2019_576_4231.jpg



* Location	** Rating	+ Issue Type
LS : Land Side WS : Water Side CR : Crown	A : Acceptable M : Minimally Acceptable U : Unacceptable	Ma : Maintenance Deficiency Ob : Design & System Obsolescence En : Enforcement
N/A : Not Applicable	N : Not Inspected/Rated C : Corrected A/W : Acceptable but Monitor & Maintain	

**Flood Control Project Maintenance
Levee Inspections**

Maintenance Issue Types Only, Levee Inspection Report By Mile - Spring 2019

Reclamation District No. 2075 McMullin

Waterway	Bank	Unit Miles	Inspection Start/End	Inspector
Unit No. 01 San Joaquin River	Right	7.45	05/15/2019 05/15/2019	Alberto De Leon

LM Start	3.90	Rating **	A/W	Issue No.	18 (cont)
LM End	3.95	Issue Type +	Ma	Location *	WS
Category	Supplemental			GPS Latitude/Longitude	
				Start	End
Item	2017 Storm Damage		37.713388 °	37.713492 °	
			-121.280018 °	-121.278982 °	
DWR ID	DWR_RD2075_01_f_2017_18				
Comment Code					
Inspector Comment					
Levee Evaluation Comments					
Description:Slope protection repairs are needed along the waterside slope due to erosion and riprap displacement from high water. Based upon levee inspections, it was determined the waterside levee slope is eroding, deteriorating, and degrading. The eroded levee sections need to be restored back to design standards to prevent further deterioration and damage.					
Site ID No:576					
Site Designation:LMA-482					
Repair Type: Erosion					
Rating:Area of Concern					
Field Date:8/10/2017					
Notes: 10/23/17: There was no riprap in this area. Erosion sites have been repaired by LMA.					

Photo 2 of 4 : LEVAL_SP_2019_576_4236.jpg



LM Start	3.90	Rating **	A/W	Issue No.	18 (cont)
LM End	3.95	Issue Type +	Ma	Location *	WS

Photo 3 of 4 : LEVAL_SP_2019_576_4238.jpg



* Location LS : Land Side N/A : Not Applicable WS : Water Side CR : Crown	** Rating A : Acceptable M : Minimally Acceptable U : Unacceptable N : Not Inspected/Rated C : Corrected A/W : Acceptable but Monitor & Maintain	+ Issue Type Ma : Maintenance Deficiency Ob : Design & System Obsolescence En : Enforcement
--	---	---

**Flood Control Project Maintenance
Levee Inspections**

Maintenance Issue Types Only, Levee Inspection Report By Mile - Spring 2019

Reclamation District No. 2075 McMullin

Waterway	Bank	Unit Miles	Inspection Start/End	Inspector
Unit No. 01 San Joaquin River	Right	7.45	05/15/2019 05/15/2019	Alberto De Leon

LM Start	3.90	Rating **	A/W	Issue No.	18 (cont)
LM End	3.95	Issue Type +	Ma	Location *	WS
Category	Supplemental		GPS Latitude/Longitude		
			Start	End	
Item	2017 Storm Damage		37.713388 °	37.713492 °	
			-121.280018 °	-121.278982 °	
DWR ID	DWR_RD2075_01_f_2017_18				
Comment Code					
Inspector Comment					
<p>Levee Evaluation Comments</p> <p>Description: Slope protection repairs are needed along the waterside slope due to erosion and riprap displacement from high water. Based upon levee inspections, it was determined the waterside levee slope is eroding, deteriorating, and degrading. The eroded levee sections need to be restored back to design standards to prevent further deterioration and damage.</p> <p>Site ID No: 576</p> <p>Site Designation: LMA-482</p> <p>Repair Type: Erosion</p> <p>Rating: Area of Concern</p> <p>Field Date: 8/10/2017</p> <p>Notes: 10/23/17: There was no riprap in this area. Erosion sites have been repaired by LMA.</p>					

Photo 4 of 4 : SP_2019_RD2075_315_18_20190313_00023.jpg



10/23/17: There was no riprap in this area (contrary to previous comment). Erosion sites have been repaired by LMA.

LM Start	4.00	Rating **	A/W	Issue No.	19
LM End	4.04	Issue Type +	Ma	Location *	WS
Category	Supplemental		GPS Latitude/Longitude		
			Start	End	
Item	2017 Storm Damage		37.714048 °	37.714630 °	
			-121.278363 °	-121.278263 °	
DWR ID	DWR_RD2075_01_f_2017_19				
Comment Code					
Inspector Comment					
<p>Levee Evaluation Comments</p> <p>Description: Slope protection repairs are needed along the waterside slope due to erosion and riprap displacement from high water. Based upon levee inspections, it was determined the waterside levee slope is eroding, deteriorating, and degrading. The eroded levee sections need to be restored back to design standards to prevent further deterioration and damage.</p> <p>Site ID No: 577</p> <p>Site Designation: LMA-483</p> <p>Repair Type: Erosion</p> <p>Rating: Area of Concern</p> <p>Field Date: 8/10/2017</p> <p>Notes:</p>					

Photo 1 of 3 : LEVAL_SP_2019_577_4471.jpg



* Location	** Rating	+ Issue Type
LS : Land Side WS : Water Side CR : Crown	A : Acceptable M : Minimally Acceptable U : Unacceptable	Ma : Maintenance Deficiency Ob : Design & System Obsolescence En : Enforcement
	N : Not Inspected/Rated C : Corrected A/W : Acceptable but Monitor & Maintain	

**Flood Control Project Maintenance
Levee Inspections**

Maintenance Issue Types Only, Levee Inspection Report By Mile - Spring 2019

Reclamation District No. 2075 McMullin

Waterway	Bank	Unit Miles	Inspection Start/End	Inspector
Unit No. 01 San Joaquin River	Right	7.45	05/15/2019 05/15/2019	Alberto De Leon

LM Start	4.00	Rating **	A/W	Issue No.	19 (cont)
LM End	4.04	Issue Type +	Ma	Location *	WS
Category	Supplemental			GPS Latitude/Longitude	
				Start	End
Item	2017 Storm Damage			37.714048 °	37.714630 °
				-121.278363 °	-121.278263 °
DWR ID	DWR_RD2075_01_f_2017_19				
Comment Code					
Inspector Comment					
Levee Evaluation Comments					
Description:Slope protection repairs are needed along the waterside slope due to erosion and riprap displacement from high water. Based upon levee inspections, it was determined the waterside levee slope is eroding, deteriorating, and degrading. The eroded levee sections need to be restored back to design standards to prevent further deterioration and damage.					
Site ID No:577					
Site Designation:LMA-483					
Repair Type: Erosion					
Rating:Area of Concern					
Field Date:8/10/2017					
Notes:					

Photo 2 of 3 : LEVAL_SP_2019_577_4473.jpg



LM Start	4.00	Rating **	A/W	Issue No.	19 (cont)
LM End	4.04	Issue Type +	Ma	Location *	WS

Photo 3 of 3 : LEVAL_SP_2019_577_4475.jpg



* Location LS : Land Side N/A : Not Applicable WS : Water Side CR : Crown	** Rating A : Acceptable M : Minimally Acceptable U : Unacceptable N : Not Inspected/Rated C : Corrected A/W : Acceptable but Monitor & Maintain	+ Issue Type Ma : Maintenance Deficiency Ob : Design & System Obsolescence En : Enforcement
--	---	---

**Flood Control Project Maintenance
Levee Inspections**

Maintenance Issue Types Only, Levee Inspection Report By Mile - Spring 2019

Reclamation District No. 2075 McMullin

Waterway	Bank	Unit Miles	Inspection Start/End	Inspector
Unit No. 01 San Joaquin River	Right	7.45	05/15/2019 05/15/2019	Alberto De Leon

LM Start	5.24	Rating **	A/W	Issue No.	21
LM End	5.29	Issue Type +	Ma	Location *	WS
Category	Supplemental			GPS Latitude/Longitude	
				Start	End
Item	2017 Storm Damage			37.728460 °	37.727799 °
				-121.274671 °	-121.274252 °
DWR ID	DWR_RD2075_01_f _ 2017_21				
Comment Code					
Inspector Comment					
Levee Evaluation Comments					
Description:Slope protection repairs are needed along the waterside slope due to erosion and riprap displacement from high water. Based upon levee inspections, it was determined the waterside levee slope is eroding, deteriorating, and degrading. The eroded levee sections need to be restored back to design standards to prevent further deterioration and damage.					
Site ID No:578					
Site Designation:LMA-484					
Repair Type: Erosion					
Rating:Area of Concern					
Field Date:8/10/2017					
Notes: Paved road on levee.					

Photo 1 of 3 : LEVAL_SP_2019_578_4248.jpg



LM Start	5.24	Rating **	A/W	Issue No.	21 (cont)
LM End	5.29	Issue Type +	Ma	Location *	WS

Photo 2 of 3 : LEVAL_SP_2019_578_4252.jpg



* Location LS : Land Side N/A : Not Applicable WS : Water Side CR : Crown	** Rating A : Acceptable M : Minimally Acceptable U : Unacceptable N : Not Inspected/Rated C : Corrected A/W : Acceptable but Monitor & Maintain	+ Issue Type Ma : Maintenance Deficiency Ob : Design & System Obsolescence En : Enforcement
--	---	---

**Flood Control Project Maintenance
Levee Inspections**

Maintenance Issue Types Only, Levee Inspection Report By Mile - Spring 2019

Reclamation District No. 2075 McMullin

Waterway	Bank	Unit Miles	Inspection Start/End	Inspector
Unit No. 01 San Joaquin River	Right	7.45	05/15/2019 05/15/2019	Alberto De Leon

LM Start	5.24	Rating **	A/W	Issue No.	21 (cont)
LM End	5.29	Issue Type +	Ma	Location *	WS
Category	Supplemental			GPS Latitude/Longitude	
				Start	End
Item	2017 Storm Damage			37.728460 °	37.727799 °
				-121.274671 °	-121.274252 °
DWR ID	DWR_RD2075_01_f_2017_21				
Comment Code					
Inspector Comment					
Levee Evaluation Comments					
Description:Slope protection repairs are needed along the waterside slope due to erosion and riprap displacement from high water. Based upon levee inspections, it was determined the waterside levee slope is eroding, deteriorating, and degrading. The eroded levee sections need to be restored back to design standards to prevent further deterioration and damage.					
Site ID No:578					
Site Designation:LMA-484					
Repair Type: Erosion					
Rating:Area of Concern					
Field Date:8/10/2017					
Notes: Paved road on levee.					

Photo 3 of 3 : LEVAL_SP_2019_578_4257.jpg



LM Start	5.26	Rating **	A/W	Issue No.	23
LM End		Issue Type +	Ma	Location *	WS
Category	Supplemental			GPS Latitude/Longitude	
				Start	End
Item	2017 Storm Damage			37.728216 °	°
				-121.274434 °	°
DWR ID	DWR_RD2075_01_f_2017_23				
Comment Code					
Inspector Comment					
Levee Evaluation Comments					
Description:					
Site ID No:79					
Site Designation:LMA-33					
Repair Type: Erosion					
Rating:Area of Concern					
Field Date:6/8/2017					
Notes: no damage present					

Photo 1 of 3 : LEVAL_SP_2019_79_1331.jpg



* Location LS : Land Side N/A : Not Applicable WS : Water Side CR : Crown		** Rating A : Acceptable N : Not Inspected/Rated M : Minimally Acceptable C : Corrected U : Unacceptable A/W : Acceptable but Monitor & Maintain		+ Issue Type Ma : Maintenance Deficiency Ob : Design & System Obsolescence En : Enforcement
--	--	---	--	---

**Flood Control Project Maintenance
Levee Inspections**

Maintenance Issue Types Only, Levee Inspection Report By Mile - Spring 2019

Reclamation District No. 2075 McMullin

Waterway	Bank	Unit Miles	Inspection Start/End	Inspector
Unit No. 01 San Joaquin River	Right	7.45	05/15/2019 05/15/2019	Alberto De Leon

LM Start	5.26	Rating **	A/W	Issue No.	23 (cont)	
LM End		Issue Type +	Ma	Location *	WS	
Category	Supplemental			GPS Latitude/Longitude		
				Start	End	
Item	2017 Storm Damage			37.728216 °		°
				-121.274434 °		°
DWR ID	DWR_RD2075_01_f_2017_23					
Comment Code						
Inspector Comment						
Levee Evaluation Comments						
Description:						
Site ID No:79						
Site Designation:LMA-33						
Repair Type: Erosion						
Rating:Area of Concern						
Field Date:6/8/2017						
Notes: no damage present						

LM Start	5.26	Rating **	A/W	Issue No.	23 (cont)
LM End		Issue Type +	Ma	Location *	WS

Photo 2 of 3 : LEVAL_SP_2019_79_1335.jpg



Photo 3 of 3 : LEVAL_SP_2019_79_1337.jpg



* Location		** Rating		+ Issue Type	
LS : Land Side	N/A : Not Applicable	A : Acceptable	N : Not Inspected/Rated	Ma : Maintenance Deficiency	
WS : Water Side		M : Minimally Acceptable	C : Corrected	Ob : Design & System Obsolescence	
CR : Crown		U : Unacceptable	A/W : Acceptable but Monitor & Maintain	En : Enforcement	

**Flood Control Project Maintenance
Levee Inspections**

Maintenance Issue Types Only, Levee Inspection Report By Mile - Spring 2019

Reclamation District No. 2075 McMullin

Waterway	Bank	Unit Miles	Inspection Start/End	Inspector
Unit No. 01 San Joaquin River	Right	7.45	05/15/2019 05/15/2019	Alberto De Leon

LM Start	5.28	Rating **	A/W	Issue No.	1
LM End	5.29	Issue Type +	Ma	Location *	WS
Category	Supplemental			GPS Latitude/Longitude	
				Start	End
Item	DWR Erosion Survey			37.727933 °	37.727933 °
				-121.274491 °	-121.274491 °
DWR ID	RD2075U01RM64.34				

Comment Code

Inspector Comment

09/13/2017: No significant change observed.
 07/12/2016: No significant change observed.
 08/28/2015: No significant change observed. Loose material is visible at the upper levee slope. The loose soil may have been caused by runoff.
 08/18/2014: No significant change observed.
 09/10/2013: No significant change observed.
 09/13/2012: No significant change observed.
 08/18/2011: No significant change observed. Some new material added to the water side levee slope, but the added material is loose and seems not helping the levee protection.
 10/05/2010: No significant change observed. Levee slope has minimal vegetation and lacks rip rap protection. Sandy material found on the lower and middle slope is an undesirable material to have on a levee.
 08/05/2010: Recommended for annual assessment and monitoring during flood events, per CLRO.
 08/20/2009: No major change since last visit; site is located in an oxbow; slope surface consists of very sandy material; there is a tree on site leaning and with exposed tree roots; site is recommended as a local maintenance issue, per CLRO CES Evaluation 2008 Report; Eddy Cordoza from the district is aware of the site and is looking for recommendation; site is previously rated "U".
 08/17/2007: Site is close to an irrigation pump inlet. [2017 Site ID:RD2075U01RM64.34]

LM Start	5.28	Rating **	A/W	Issue No.	1 (cont)
LM End	5.29	Issue Type +	Ma	Location *	WS

Photo 1 of 3 : SP_2019_RD2075_315_1_20190313_00001.jpg



Upstream view of the erosion site.

Photo 2 of 3 : SP_2019_RD2075_315_1_20190313_00002.jpg



Close view of the site.

* Location LS : Land Side N/A : Not Applicable WS : Water Side CR : Crown		** Rating A : Acceptable M : Minimally Acceptable U : Unacceptable		N : Not Inspected/Rated C : Corrected A/W : Acceptable but Monitor & Maintain		+ Issue Type Ma : Maintenance Deficiency Ob : Design & System Obsolescence En : Enforcement	
--	--	--	--	---	--	---	--

**Flood Control Project Maintenance
Levee Inspections**

Maintenance Issue Types Only, Levee Inspection Report By Mile - Spring 2019

Reclamation District No. 2075 McMullin

Waterway	Bank	Unit Miles	Inspection Start/End	Inspector
Unit No. 01 San Joaquin River	Right	7.45	05/15/2019 05/15/2019	Alberto De Leon

LM Start	5.28	Rating **	A/W	Issue No.	1 (cont)	
LM End	5.29	Issue Type +	Ma	Location *	WS	
Category	Supplemental			GPS Latitude/Longitude		
				Start	End	
Item	DWR Erosion Survey			37.727933 °	37.727933 °	
				-121.274491 °	-121.274491 °	
DWR ID	RD2075U01RM64.34					
Comment Code						
Inspector Comment						
09/13/2017: No significant change observed.						
07/12/2016: No significant change observed.						
08/28/2015: No significant change observed. Loose material is visible at the upper levee slope. The loose soil may have been caused by runoff.						
08/18/2014: No significant change observed.						
09/10/2013: No significant change observed.						
09/13/2012: No significant change observed.						
08/18/2011: No significant change observed. Some new material added to the water side levee slope, but the added material is loose and seems not helping the levee protection.						
10/05/2010: No significant change observed. Levee slope has minimal vegetation and lacks rip rap protection. Sandy material found on the lower and middle slope is an undesirable material to have on a levee.						
08/05/2010: Recommended for annual assessment and monitoring during flood events, per CLRO.						
08/20/2009: No major change since last visit; site is located in an oxbow; slope surface consists of very sandy material; there is a tree on site leaning and with exposed tree roots; site is recommended as a local maintenance issue, per CLRO CES Evaluation 2008 Report; Eddy Cordoza from the district is aware of the site and is looking for recommendation; site is previously rated "U".						
08/17/2007: Site is close to an irrigation pump inlet. [2017 Site ID:RD2075U01RM64.34]						

Photo 3 of 3 : SP_2019_RD2075_315_1_20190313_00003.jpg



Looking upstream at the site.

LM Start	5.30	Rating **	M	Issue No.	33
LM End	5.46	Issue Type +	Ma	Location *	LS
Category	Earthen Levee			GPS Latitude/Longitude	
				Start	End
Item	Vegetation			37.727732 °	37.726172 °
				-121.274007 °	-121.272007 °
DWR ID	DWR_RD2075_01_s_2019_33				
Comment Code					
V2 : Remove the wild growth other than native grasses from the levee slopes.					
Inspector Comment					
There is vegetation on the landside toe. Spraying is limited due to almond orchards. The RD will be dragging the area before fall.					

No Photos

* Location LS : Land Side N/A : Not Applicable WS : Water Side CR : Crown		** Rating A : Acceptable N : Not Inspected/Rated M : Minimally Acceptable C : Corrected U : Unacceptable A/W : Acceptable but Monitor & Maintain		+ Issue Type Ma : Maintenance Deficiency Ob : Design & System Obsolescence En : Enforcement
--	--	---	--	---

**Flood Control Project Maintenance
Levee Inspections**

Maintenance Issue Types Only, Levee Inspection Report By Mile - Spring 2019

Reclamation District No. 2075 McMullin

Waterway	Bank	Unit Miles	Inspection Start/End	Inspector
Unit No. 01 San Joaquin River	Right	7.45	05/15/2019 05/15/2019	Alberto De Leon

LM Start	5.57	Rating **	U	Issue No.	22
LM End	5.57	Issue Type +	Ma	Location *	LS
Category	Earthen Levee			GPS Latitude/Longitude	
				Start	End
Item	Trim / Thin Trees			37.724795 °	37.724795 °
				-121.270935 °	-121.270935 °
DWR ID	DWR_RD2075_01_s_2018_22				
Comment Code					
T1 : Trim trees to at least five feet above ground level.					
Inspector Comment					

Photo 1 of 1 : SP_2019_RD2075_315_22_20190313_00033.jpg



Looking downstream at untrimmed tree on landward toe. (Spring 2018)

LM Start	5.87	Rating **	A/W	Issue No.	28
LM End	6.33	Issue Type +	Ma	Location *	WS
Category	Supplemental			GPS Latitude/Longitude	
				Start	End
Item	2017 Storm Damage			37.721710 °	37.720960 °
				-121.267490 °	-121.259830 °
DWR ID	DWR_RD2075_01_f_2017_28				
Comment Code					
Inspector Comment					
Levee Evaluation Comments					
Description:Slope protection repairs are needed along the waterside slope due to erosion and riprap displacement from high water. Based upon levee inspections, it was determined the waterside levee slope is eroding, deteriorating, and degrading. The eroded levee sections need to be restored back to design standards to prevent further deterioration and damage.					
Site ID No:579					
Site Designation:LMA-485					
Repair Type: Erosion					
Rating:Area of Concern					
Field Date:8/10/2017					
Notes: Berm present on LS. LMA 486 is combined with this site.					

Photo 1 of 3 : LEVAL_SP_2019_579_4263.jpg



* Location LS : Land Side N/A : Not Applicable WS : Water Side CR : Crown		** Rating A : Acceptable N : Not Inspected/Rated M : Minimally Acceptable C : Corrected U : Unacceptable A/W : Acceptable but Monitor & Maintain		+ Issue Type Ma : Maintenance Deficiency Ob : Design & System Obsolescence En : Enforcement
--	--	---	--	---

**Flood Control Project Maintenance
Levee Inspections**

Maintenance Issue Types Only, Levee Inspection Report By Mile - Spring 2019

Reclamation District No. 2075 McMullin

Waterway	Bank	Unit Miles	Inspection Start/End	Inspector
Unit No. 01 San Joaquin River	Right	7.45	05/15/2019 05/15/2019	Alberto De Leon

LM Start	5.87	Rating **	A/W	Issue No.	28 (cont)
LM End	6.33	Issue Type +	Ma	Location *	WS
Category	Supplemental			GPS Latitude/Longitude	
				Start	End
Item	2017 Storm Damage			37.721710 °	37.720960 °
				-121.267490 °	-121.259830 °
DWR ID	DWR_RD2075_01_f_2017_28				
Comment Code					
Inspector Comment					
Levee Evaluation Comments					
Description:Slope protection repairs are needed along the waterside slope due to erosion and riprap displacement from high water. Based upon levee inspections, it was determined the waterside levee slope is eroding, deteriorating, and degrading. The eroded levee sections need to be restored back to design standards to prevent further deterioration and damage.					
Site ID No:579					
Site Designation:LMA-485					
Repair Type: Erosion					
Rating:Area of Concern					
Field Date:8/10/2017					
Notes: Berm present on LS. LMA 486 is combined with this site.					

Photo 2 of 3 : LEVAL_SP_2019_579_4264.jpg



Photo 3 of 3 : LEVAL_SP_2019_579_4275.jpg



LM Start	5.87	Rating **	A/W	Issue No.	28 (cont)
LM End	6.33	Issue Type +	Ma	Location *	WS

* Location LS : Land Side N/A : Not Applicable WS : Water Side CR : Crown	** Rating A : Acceptable M : Minimally Acceptable U : Unacceptable N : Not Inspected/Rated C : Corrected A/W : Acceptable but Monitor & Maintain	+ Issue Type Ma : Maintenance Deficiency Ob : Design & System Obsolescence En : Enforcement
--	---	---

**Flood Control Project Maintenance
Levee Inspections**

Maintenance Issue Types Only, Levee Inspection Report By Mile - Spring 2019

Reclamation District No. 2075 McMullin

Waterway	Bank	Unit Miles	Inspection Start/End	Inspector
Unit No. 01 San Joaquin River	Right	7.45	05/15/2019 05/15/2019	Alberto De Leon

LM Start	6.12	Rating **	M	Issue No.	34
LM End	6.12	Issue Type +	Ma	Location *	LS
Category	Earthen Levee			GPS Latitude/Longitude	
				Start	End
Item	Trim / Thin Trees			37.722471 °	37.722471 °
				-121.263221 °	-121.263221 °
DWR ID	DWR_RD2075_01_s_2019_34				
Comment Code					
T1 : Trim trees to at least five feet above ground level.					
Inspector Comment					

No Photos

LM Start	6.20	Rating **	A/W	Issue No.	27
LM End	6.33	Issue Type +	Ma	Location *	WS
Category	Supplemental			GPS Latitude/Longitude	
				Start	End
Item	2017 Storm Damage			37.722087 °	37.720952 °
				-121.261863 °	-121.259950 °
DWR ID	DWR_RD2075_01_f _ 2017_27				
Comment Code					
Inspector Comment					
Levee Evaluation Comments					
Description:Slope protection repairs are needed along the waterside slope due to erosion and riprap displacement from high water. Based upon levee inspections, it was determined the waterside levee slope is eroding, deteriorating, and degrading. The eroded levee sections need to be restored back to design standards to prevent further deterioration and damage.					
Site ID No:580					
Site Designation:LMA-486					
Repair Type: Erosion					
Rating:Area of Concern					
Field Date:8/10/2017					
Notes: This site is combined with LMA 485.					

No Photos

* Location LS : Land Side N/A : Not Applicable WS : Water Side CR : Crown	** Rating A : Acceptable M : Minimally Acceptable U : Unacceptable N : Not Inspected/Rated C : Corrected A/W : Acceptable but Monitor & Maintain	+ Issue Type Ma : Maintenance Deficiency Ob : Design & System Obsolescence En : Enforcement
--	---	---