

**Flood Control Project Maintenance
Levee Inspections
LMA District Cover Sheet**

Reclamation District No. 2062 Stewart

| | Spring (March - May) | Summer ** (June - August) | Fall (September - November) | Winter ** (December - February) |
|----------------------------------|-------------------------|------------------------------|--------------------------------|------------------------------------|
| † Overall LMA Rating (Fall Only) | | | | |

** Non-receipt of Summer or Winter Inspection
Reports may effect overall annual rating.

| | |
|---|---|
| † | <p><u>SPRING INSPECTIONS:</u> Overall maintenance ratings are not determined for the spring inspection results. Individual maintenance deficiencies are rated using the same criteria in the spring and in the fall.</p> <p><u>FALL INSPECTIONS:</u> The overall maintenance rating shown above is based on operation and maintenance deficiencies identified within the attached unit inspection reports. This rating is not intended to be an indication of risk.</p> |
|---|---|

Comments

| |
|--|
| |
| |
| |
| |
| |
| |
| |
| |

**Flood Control Project Maintenance
Levee Inspections
Unit Cover Sheet**

Reclamation District No. 2062 Stewart

| Waterway | | | Bank | Unit Miles |
|--|-------------------------|---------------------------|--------------------------------|---------------------------------|
| Unit No. 01 San Joaquin River | | | Left | 2.64 |
| | Spring (March - May) | Summer (June - August) | (September - November) Fall | Winter (December - February) |
| Unit Maintenance Rating (Fall Only) | | | | |
| Date of Inspection | 4/26/2022 - 4/26/2022 | | | |
| DWR Inspector | Alberto De Leon | | | |
| Accompanied By | Tim Mello RD2062 | | | |

Summer & Winter Inspections

The Local Maintaining Agency (LMA) is responsible for summer and winter inspections. The LMA is required to submit a report regarding summer and winter inspections to the California Department of Water Resources (DWR).

DWR must be informed on the:

- a) completion of the inspection
- b) any changes other than the results of normal maintenance
- c) corrections to deficiencies noted in this report

If additional items are noted, further documentation of those items must also be submitted.

The LMA should submit this information to DWR using the LMA web application tool available at:

<http://cdec.water.ca.gov/lma.html>

If the LMA is unable to submit information on this webpage, please contact DWR for assistance.

The LMA should submit the information and any associated documentation by September 30 for summer inspections and March 31 for winter inspections.

**Flood Control Project Maintenance
Levee Inspections**

Levee Inspection Report By Mile - Spring 2022

Reclamation District No. 2062 Stewart

| Waterway | Bank | Unit Miles | Inspection Start/End | Inspector |
|-------------------------------|------|------------|--------------------------|-----------------|
| Unit No. 01 San Joaquin River | Left | 2.64 | 04/26/2022 04/26/2022 | Alberto De Leon |

| | | | | | |
|--|----------------------------------|--------------|------------------------|------------|---|
| LM Start | | Rating ** | A | Issue No. | 2 |
| LM End | | Issue Type + | Ma | Location * | |
| Category | Earthen Levee | | GPS Latitude/Longitude | | |
| | | | Start | End | |
| Item | Operations & Maintenance Manuals | | | ° | ° |
| | | | | ° | ° |
| DWR ID | DWR_RD2062_01_f_2013_2 | | | | |
| Comment Code | | | | | |
| | | | | | |
| Inspector Comment | | | | | |
| The O&M Manual is available at the LMA's office. | | | | | |

No Photos

| | | | | | |
|--|--------------------------------|--------------|------------------------|------------|---|
| LM Start | | Rating ** | A | Issue No. | 5 |
| LM End | | Issue Type + | Ma | Location * | |
| Category | Earthen Levee | | GPS Latitude/Longitude | | |
| | | | Start | End | |
| Item | Emergency Supplies & Equipment | | | ° | ° |
| | | | | ° | ° |
| DWR ID | DWR_RD2062_01_s_2013_5 | | | | |
| Comment Code | | | | | |
| | | | | | |
| Inspector Comment | | | | | |
| Adequate flood fight supplies are available on-site. | | | | | |

No Photos

| | | | | | |
|---|-------------------------------|--------------|------------------------|------------|---|
| LM Start | | Rating ** | A | Issue No. | 8 |
| LM End | | Issue Type + | Ma | Location * | |
| Category | Earthen Levee | | GPS Latitude/Longitude | | |
| | | | Start | End | |
| Item | Flood Preparedness & Training | | | ° | ° |
| | | | | ° | ° |
| DWR ID | DWR_RD2062_01_s_2013_8 | | | | |
| Comment Code | | | | | |
| | | | | | |
| Inspector Comment | | | | | |
| The LMA has a flood fight emergency response plan. LMA has attended DWR flood fight training class. | | | | | |

No Photos

| | | | |
|--|--|---|---|
| * Location LS : Land Side N/A : Not Applicable WS : Water Side CR : Crown | ** Rating A : Acceptable M : Minimally Acceptable U : Unacceptable | N : Not Inspected/Rated C : Corrected A/W : Acceptable but Monitor & Maintain | + Issue Type Ma : Maintenance Deficiency Ob : Design & System Obsolescence En : Enforcement |
|--|--|---|---|

**Flood Control Project Maintenance
Levee Inspections**

Levee Inspection Report By Mile - Spring 2022

Reclamation District No. 2062 Stewart

| Waterway | Bank | Unit Miles | Inspection Start/End | Inspector |
|-------------------------------|------|------------|--------------------------|-----------------|
| Unit No. 01 San Joaquin River | Left | 2.64 | 04/26/2022 04/26/2022 | Alberto De Leon |

| | | | | | |
|--|-------------------------|--------------|----|------------------------|---------------|
| LM Start | 0.41 | Rating ** | C | Issue No. | 13 |
| LM End | 0.41 | Issue Type + | Ma | Location * | WS |
| Category | Earthen Levee | | | GPS Latitude/Longitude | |
| | | | | Start | End |
| Item | Erosion / Foot Traffic | | | 37.804510 ° | 37.804510 ° |
| | | | | -121.321988 ° | -121.321988 ° |
| DWR ID | DWR_RD2062_01_f_2020_13 | | | | |
| Comment Code | | | | | |
| E3 : Repair the levee slope damaged by foot traffic and prevent access where possible. | | | | | |
| Inspector Comment | | | | | |
| | | | | | |

No Photos

| | | | | | |
|--|------------------------|--------------|-----|------------------------|---------------|
| LM Start | 1.54 | Rating ** | A/W | Issue No. | 4 |
| LM End | 1.54 | Issue Type + | Ma | Location * | WS |
| Category | Earthen Levee | | | GPS Latitude/Longitude | |
| | | | | Start | End |
| Item | Erosion / Foot Traffic | | | 37.794843 ° | 37.794843 ° |
| | | | | -121.315269 ° | -121.315269 ° |
| DWR ID | DWR_RD2062_01_s_2022_4 | | | | |
| Comment Code | | | | | |
| E3 : Repair the levee slope damaged by foot traffic and prevent access where possible. | | | | | |
| Inspector Comment | | | | | |
| Pedestrian pathway on waterside slope needs to monitored. | | | | | |

Photo 1 of 1 : SP_2022_RD2062_309_4_20220428_00011.jpg



View of pedestrian path on the waterside slope. Spring 2022

| | | | | | |
|--|-------------------------|--------------|----|------------------------|---------------|
| LM Start | 1.66 | Rating ** | C | Issue No. | 12 |
| LM End | 1.66 | Issue Type + | Ma | Location * | WS |
| Category | Earthen Levee | | | GPS Latitude/Longitude | |
| | | | | Start | End |
| Item | Erosion / Foot Traffic | | | 37.793207 ° | 37.793207 ° |
| | | | | -121.315214 ° | -121.315214 ° |
| DWR ID | DWR_RD2062_01_f_2020_12 | | | | |
| Comment Code | | | | | |
| E3 : Repair the levee slope damaged by foot traffic and prevent access where possible. | | | | | |
| Inspector Comment | | | | | |
| | | | | | |

No Photos

* Location
LS : Land Side N/A : Not Applicable
WS : Water Side
CR : Crown

** Rating
A : Acceptable N : Not Inspected/Rated
M : Minimally Acceptable C : Corrected
U : Unacceptable A/W : Acceptable but Monitor & Maintain

+ Issue Type
Ma : Maintenance Deficiency
Ob : Design & System Obsolescence
En : Enforcement

**Flood Control Project Maintenance
Levee Inspections**

Levee Inspection Report By Mile - Spring 2022

Reclamation District No. 2062 Stewart

| Waterway | Bank | Unit Miles | Inspection Start/End | Inspector |
|-------------------------------|------|------------|--------------------------|-----------------|
| Unit No. 01 San Joaquin River | Left | 2.64 | 04/26/2022 04/26/2022 | Alberto De Leon |

| | | | | | |
|--|-------------------------|--------------|-----|------------------------|---------------|
| LM Start | 1.87 | Rating ** | A/W | Issue No. | 11 |
| LM End | 1.87 | Issue Type + | Ma | Location * | WS |
| Category | Earthen Levee | | | GPS Latitude/Longitude | |
| | | | | Start | End |
| Item | Erosion / Foot Traffic | | | 37.791827 ° | 37.791827 ° |
| | | | | -121.312045 ° | -121.312045 ° |
| DWR ID | DWR_RD2062_01_f_2020_11 | | | | |
| Comment Code | | | | | |
| E3 : Repair the levee slope damaged by foot traffic and prevent access where possible. | | | | | |
| Inspector Comment | | | | | |
| Pedestrian pathway on waterside slope needs to monitored for slope stability. | | | | | |

No Photos

| | | | | | |
|--|-------------------------|--------------|----|------------------------|---------------|
| LM Start | 1.91 | Rating ** | C | Issue No. | 10 |
| LM End | 1.91 | Issue Type + | Ma | Location * | WS |
| Category | Earthen Levee | | | GPS Latitude/Longitude | |
| | | | | Start | End |
| Item | Erosion / Foot Traffic | | | 37.791977 ° | 37.791977 ° |
| | | | | -121.311383 ° | -121.311383 ° |
| DWR ID | DWR_RD2062_01_f_2020_10 | | | | |
| Comment Code | | | | | |
| E3 : Repair the levee slope damaged by foot traffic and prevent access where possible. | | | | | |
| Inspector Comment | | | | | |
| | | | | | |

No Photos

| | | | | | |
|--|------------------------|--------------|-----|------------------------|---------------|
| LM Start | 1.95 | Rating ** | A/W | Issue No. | 6 |
| LM End | 1.95 | Issue Type + | Ma | Location * | WS |
| Category | Earthen Levee | | | GPS Latitude/Longitude | |
| | | | | Start | End |
| Item | Erosion / Foot Traffic | | | 37.792341 ° | 37.792341 ° |
| | | | | -121.310704 ° | -121.310704 ° |
| DWR ID | DWR_RD2062_01_f_2021_6 | | | | |
| Comment Code | | | | | |
| E3 : Repair the levee slope damaged by foot traffic and prevent access where possible. | | | | | |
| Inspector Comment | | | | | |
| | | | | | |

Photo 1 of 1 : SP_2022_RD2062_309_6_20220428_00010.jpg



View of pedestrian path on the waterside slope. Spring 2022

| | | | |
|--|--|---|---|
| * Location LS : Land Side N/A : Not Applicable WS : Water Side CR : Crown | ** Rating A : Acceptable M : Minimally Acceptable U : Unacceptable | N : Not Inspected/Rated C : Corrected A/W : Acceptable but Monitor & Maintain | + Issue Type Ma : Maintenance Deficiency Ob : Design & System Obsolescence En : Enforcement |
|--|--|---|---|

**Flood Control Project Maintenance
Levee Inspections**

Levee Inspection Report By Mile - Spring 2022

Reclamation District No. 2062 Stewart

| Waterway | Bank | Unit Miles | Inspection Start/End | Inspector |
|-------------------------------|------|------------|--------------------------|-----------------|
| Unit No. 01 San Joaquin River | Left | 2.64 | 04/26/2022 04/26/2022 | Alberto De Leon |

| | | | | | | |
|--|----------------------|--------------|----|------------------------|---|---------------|
| LM Start | 2.53 | Rating ** | M | Issue No. | 1 | |
| LM End | 2.53 | Issue Type + | En | Location * | | |
| Category | Supplemental | | | GPS Latitude/Longitude | | |
| | | | | Start | | End |
| Item | DWR UCIP Field Study | | | 37.788604 ° | | 37.788604 ° |
| | | | | -121.308792 ° | | -121.308792 ° |
| DWR ID | 19178 | | | | | |
| Comment Code | | | | | | |
| | | | | | | |
| Inspector Comment | | | | | | |
| FS_ID:72735 DS_ID:19178 EP_NO: N/A Repair Type: Non-Urgent Crossing Status: Not Found UCIP Comments: 03/22/2022 Record remains Non-Urgent. Crossing not found. Unauthorized encroachment recorded in Levee Log prior to 2011. (D.Sanoski - DWR UCIP) FIELD_STRUCT_DESC: Telephone conduit of an unknown size or material through the levee, 4 feet below the crown. [Additional Reference(s): DWR Levee Log, 2007]. FS Date: 3/22/2022 3:50:12 PM | | | | | | |

Photo 1 of 3 : UCIP_SP_2022_72735_109083.jpg



Top of Levee: view of crown.

| | | | | | |
|----------|-------------|--------------|----|------------|-----------------|
| LM Start | 2.53 | Rating ** | M | Issue No. | 1 (cont) |
| LM End | 2.53 | Issue Type + | En | Location * | |

Photo 2 of 3 : UCIP_SP_2022_72735_109085.jpg



Water-Side: view of shoulder.

| | | | |
|--|--|---|---|
| * Location LS : Land Side N/A : Not Applicable WS : Water Side CR : Crown | ** Rating A : Acceptable M : Minimally Acceptable U : Unacceptable | N : Not Inspected/Rated C : Corrected A/W : Acceptable but Monitor & Maintain | + Issue Type Ma : Maintenance Deficiency Ob : Design & System Obsolescence En : Enforcement |
|--|--|---|---|

**Flood Control Project Maintenance
Levee Inspections**

Levee Inspection Report By Mile - Spring 2022

Reclamation District No. 2062 Stewart

| Waterway | Bank | Unit Miles | Inspection Start/End | Inspector |
|-------------------------------|------|------------|--------------------------|-----------------|
| Unit No. 01 San Joaquin River | Left | 2.64 | 04/26/2022 04/26/2022 | Alberto De Leon |

| | | | | | |
|----------|----------------------|--------------|------------------------|---------------|-----------------|
| LM Start | 2.53 | Rating ** | M | Issue No. | 1 (cont) |
| LM End | 2.53 | Issue Type + | En | Location * | |
| Category | Supplemental | | GPS Latitude/Longitude | | |
| | | | Start | End | |
| Item | DWR UCIP Field Study | | 37.788604 ° | 37.788604 ° | |
| | | | -121.308792 ° | -121.308792 ° | |
| DWR ID | 19178 | | | | |

Photo 3 of 3 : UCIP_SP_2022_72735_109084.jpg



Water-Side: view of slope.

| | | | | | |
|----------|----------------------|--------------|------------------------|---------------|----------|
| LM Start | 2.62 | Rating ** | M | Issue No. | 3 |
| LM End | 2.62 | Issue Type + | En | Location * | |
| Category | Supplemental | | GPS Latitude/Longitude | | |
| | | | Start | End | |
| Item | DWR UCIP Field Study | | 37.787567 ° | 37.787567 ° | |
| | | | -121.309202 ° | -121.309202 ° | |
| DWR ID | 19179 | | | | |

Comment Code

Inspector Comment

FS_ID:72736
DS_ID:19179
EP_NO: N/A
Repair Type: Non-Urgent
Crossing Status: Indicator Found
UCIP Comments: 03/22/2022 Record updated from No Action Needed to Non-Urgent. No inspection records were available to determine status of line through the levee. Unauthorized encroachment recorded in Levee Log prior to 2011. (D.Sanoski - DWR UCIP)
10/24/2013 Need to contact owner to determine status of crossing and install signs if appropriate. (P. Khoi - DWR UCIP)
FIELD_STRUCT_DESC: Natural gas pipeline of an unknown size or material through the levee, 2.5 feet below the crown. Gas line vent on the landside (LS) toe with small temporary Pacific Gas and Electric (PG&E) flags. (Pipeline owned by PG&E). [Additional Reference(s): DWR Levee Log, 2007].
FS Date: 3/22/2022 3:52:19 PM

Photo 1 of 3 : UCIP_SP_2022_72736_109086.jpg



Top of Levee: view of crown.

| | | | |
|--|--|--|---|
| * Location LS : Land Side N/A : Not Applicable WS : Water Side CR : Crown | ** Rating A : Acceptable M : Minimally Acceptable U : Unacceptable | N : Not Inspected/Rated C : Corrected A/W : Acceptable but Monitor & Maintain | + Issue Type Ma : Maintenance Deficiency Ob : Design & System Obsolescence En : Enforcement |
|--|--|--|---|

**Flood Control Project Maintenance
Levee Inspections**

Levee Inspection Report By Mile - Spring 2022

Reclamation District No. 2062 Stewart

| Waterway | Bank | Unit Miles | Inspection Start/End | Inspector |
|-------------------------------|------|------------|--------------------------|-----------------|
| Unit No. 01 San Joaquin River | Left | 2.64 | 04/26/2022 04/26/2022 | Alberto De Leon |

| | | | | | |
|----------|----------------------|--------------|------------------------|---------------|-----------------|
| LM Start | 2.62 | Rating ** | M | Issue No. | 3 (cont) |
| LM End | 2.62 | Issue Type + | En | Location * | |
| Category | Supplemental | | GPS Latitude/Longitude | | |
| | | | Start | End | |
| Item | DWR UCIP Field Study | | 37.787567 ° | 37.787567 ° | |
| | | | -121.309202 ° | -121.309202 ° | |
| DWR ID | 19179 | | | | |

Photo 2 of 3 : UCIP_SP_2022_72736_109087.jpg



Land-Side: view of shoulder, slope, and gas vent.

| | | | | | |
|----------|-------------|--------------|----|------------|-----------------|
| LM Start | 2.62 | Rating ** | M | Issue No. | 3 (cont) |
| LM End | 2.62 | Issue Type + | En | Location * | |

Photo 3 of 3 : UCIP_SP_2022_72736_109088.jpg



Water-Side: view of slope.

| | | | |
|--|--|---|---|
| * Location LS : Land Side N/A : Not Applicable WS : Water Side CR : Crown | ** Rating A : Acceptable M : Minimally Acceptable U : Unacceptable | N : Not Inspected/Rated C : Corrected A/W : Acceptable but Monitor & Maintain | + Issue Type Ma : Maintenance Deficiency Ob : Design & System Obsolescence En : Enforcement |
|--|--|---|---|

**Flood Control Project Maintenance
Levee Inspections
Unit Cover Sheet**

Reclamation District No. 2062 Stewart

| Waterway | | | Bank | Unit Miles |
|--|-------------------------|---------------------------|--------------------------------|---------------------------------|
| Unit No. 02 Paradise Cut | | | Right | 3.96 |
| | Spring (March - May) | Summer (June - August) | (September - November) Fall | Winter (December - February) |
| Unit Maintenance Rating (Fall Only) | | | | |
| Date of Inspection | 4/26/2022 - 4/26/2022 | | | |
| DWR Inspector | Alberto De Leon | | | |
| Accompanied By | Tim Mello RD2062 | | | |

Summer & Winter Inspections

The Local Maintaining Agency (LMA) is responsible for summer and winter inspections. The LMA is required to submit a report regarding summer and winter inspections to the California Department of Water Resources (DWR).

DWR must be informed on the:

- a) completion of the inspection
- b) any changes other than the results of normal maintenance
- c) corrections to deficiencies noted in this report

If additional items are noted, further documentation of those items must also be submitted.

The LMA should submit this information to DWR using the LMA web application tool available at:

<http://cdec.water.ca.gov/lma.html>

If the LMA is unable to submit information on this webpage, please contact DWR for assistance.

The LMA should submit the information and any associated documentation by September 30 for summer inspections and March 31 for winter inspections.

**Flood Control Project Maintenance
Levee Inspections**

Levee Inspection Report By Mile - Spring 2022

Reclamation District No. 2062 Stewart

| Waterway | Bank | Unit Miles | Inspection Start/End | Inspector |
|--------------------------|-------|------------|--------------------------|-----------------|
| Unit No. 02 Paradise Cut | Right | 3.96 | 04/26/2022 04/26/2022 | Alberto De Leon |

| | | | | | | |
|---|----------------------|--------------|----|------------------------|---------------|--|
| LM Start | 0.46 | Rating ** | M | Issue No. | 1 | |
| LM End | 0.46 | Issue Type + | En | Location * | | |
| Category | Supplemental | | | GPS Latitude/Longitude | | |
| | | | | Start | End | |
| Item | DWR UCIP Field Study | | | 37.783174 ° | 37.783174 ° | |
| | | | | -121.337861 ° | -121.337861 ° | |
| DWR ID | 19191 | | | | | |
| Comment Code | | | | | | |
| | | | | | | |
| Inspector Comment | | | | | | |
| FS_ID:72740 DS_ID:19191 EP_NO: N/A Repair Type: Non-Urgent Crossing Status: Not Found UCIP Comments: 03/22/2022 Record updated from No Action Needed to Non-Urgent. Geophysical results did not confirm presence of pipe through levee. Record will remain in UCIP's inspection records until future Levee Improvement Project can confirm no crossing was found through the levee. No permit has been identified authorizing pipe. (D.Sanoski - DWR UCIP) FIELD_STRUCT_DESC: *ABANDONED* 36-inch corrugated metal pipe of an unknown purpose under the levee, below ground elevation. Pipe plugged with concrete. [Additional Reference(s): DWR Levee Log, 2007. USACE San Joaquin O&M Manual 9, April 1964, (HLM 0.47)]. FS Date: 3/22/2022 4:01:39 PM | | | | | | |

| | | | | | |
|----------|-------------|--------------|----|------------|-----------------|
| LM Start | 0.46 | Rating ** | M | Issue No. | 1 (cont) |
| LM End | 0.46 | Issue Type + | En | Location * | |

Photo 1 of 3 : UCIP_SP_2022_72740_109106.jpg



Top of Levee: view of crown.

Photo 2 of 3 : UCIP_SP_2022_72740_109107.jpg



Land-Side: view of slope.

| | | | |
|--|--|---|---|
| * Location LS : Land Side N/A : Not Applicable WS : Water Side CR : Crown | ** Rating A : Acceptable M : Minimally Acceptable U : Unacceptable | N : Not Inspected/Rated C : Corrected A/W : Acceptable but Monitor & Maintain | + Issue Type Ma : Maintenance Deficiency Ob : Design & System Obsolescence En : Enforcement |
|--|--|---|---|

**Flood Control Project Maintenance
Levee Inspections**

Levee Inspection Report By Mile - Spring 2022

Reclamation District No. 2062 Stewart

| Waterway | Bank | Unit Miles | Inspection Start/End | Inspector |
|--------------------------|-------|------------|--------------------------|-----------------|
| Unit No. 02 Paradise Cut | Right | 3.96 | 04/26/2022 04/26/2022 | Alberto De Leon |

| | | | | | | |
|----------|----------------------|--------------|----|------------------------|---------------|-----|
| LM Start | 0.46 | Rating ** | M | Issue No. | 1 (cont) | |
| LM End | 0.46 | Issue Type + | En | Location * | | |
| Category | Supplemental | | | GPS Latitude/Longitude | | |
| | | | | Start | | End |
| Item | DWR UCIP Field Study | | | 37.783174 ° | 37.783174 ° | |
| | | | | -121.337861 ° | -121.337861 ° | |
| DWR ID | 19191 | | | | | |

Photo 3 of 3 : UCIP_SP_2022_72740_109108.jpg



Water-Side: view of slope.

| | | | | | |
|----------|----------------------|--------------|----|------------------------|---------------|
| LM Start | 0.56 | Rating ** | M | Issue No. | 2 |
| LM End | 0.56 | Issue Type + | En | Location * | |
| Category | Supplemental | | | GPS Latitude/Longitude | |
| | | | | Start | End |
| Item | DWR UCIP Field Study | | | 37.784380 ° | 37.784380 ° |
| | | | | -121.338985 ° | -121.338985 ° |
| DWR ID | 24697 | | | | |

Comment Code

Inspector Comment

FS_ID:72742
DS_ID:24697
EP_NO: N/A
Repair Type: Non-Urgent
Crossing Status: Found
UCIP Comments: 03/22/2022 Record remains Non-Urgent. No permit has been found authorizing this pipe through the levee. Crossing appears abandoned. (D.Sanoski - DWR UCIP)
10/23/2013 Found on field with the help of USACE 2012 PI Report.

Needs proper abandonment. (P. Khoi - DWR UCIP)
FIELD_STRUCT_DESC: *ABANDONED* 24-inch steel irrigation discharge pipe through the levee, at an unknown depth. Damaged siphon breaker on the waterside (WS) slope. Pump on a concrete sump in an irrigation ditch on the landside (LS). Service pole on the LS slope. Pump disconnected from the service pole.
FS Date: 3/22/2022 4:03:35 PM

Photo 1 of 3 : UCIP_SP_2022_72742_109109.jpg



Top of Levee: view of crown.

| | | | |
|--|--|---|---|
| * Location LS : Land Side N/A : Not Applicable WS : Water Side CR : Crown | ** Rating A : Acceptable M : Minimally Acceptable U : Unacceptable | N : Not Inspected/Rated C : Corrected A/W : Acceptable but Monitor & Maintain | + Issue Type Ma : Maintenance Deficiency Ob : Design & System Obsolescence En : Enforcement |
|--|--|---|---|

**Flood Control Project Maintenance
Levee Inspections**

Levee Inspection Report By Mile - Spring 2022

Reclamation District No. 2062 Stewart

| Waterway | Bank | Unit Miles | Inspection Start/End | Inspector |
|--------------------------|-------|------------|--------------------------|-----------------|
| Unit No. 02 Paradise Cut | Right | 3.96 | 04/26/2022 04/26/2022 | Alberto De Leon |

| | | | | | |
|----------|----------------------|--------------|------------------------|---------------|-----------------|
| LM Start | 0.56 | Rating ** | M | Issue No. | 2 (cont) |
| LM End | 0.56 | Issue Type + | En | Location * | |
| Category | Supplemental | | GPS Latitude/Longitude | | |
| | | | Start | End | |
| Item | DWR UCIP Field Study | | 37.784380 ° | 37.784380 ° | |
| | | | -121.338985 ° | -121.338985 ° | |
| DWR ID | 24697 | | | | |

Photo 2 of 3 : UCIP_SP_2022_72742_109110.jpg



Land-Side: view of slope and pipe to pump.

| | | | | | |
|----------|-------------|--------------|----|------------|-----------------|
| LM Start | 0.56 | Rating ** | M | Issue No. | 2 (cont) |
| LM End | 0.56 | Issue Type + | En | Location * | |

Photo 3 of 3 : UCIP_SP_2022_72742_109111.jpg



Water-Side: view of pipe out of slope.

| | | | |
|--|--|---|---|
| * Location LS : Land Side N/A : Not Applicable WS : Water Side CR : Crown | ** Rating A : Acceptable M : Minimally Acceptable U : Unacceptable | N : Not Inspected/Rated C : Corrected A/W : Acceptable but Monitor & Maintain | + Issue Type Ma : Maintenance Deficiency Ob : Design & System Obsolescence En : Enforcement |
|--|--|---|---|

**Flood Control Project Maintenance
Levee Inspections**

Levee Inspection Report By Mile - Spring 2022

Reclamation District No. 2062 Stewart

| Waterway | Bank | Unit Miles | Inspection Start/End | Inspector |
|--------------------------|-------|------------|--------------------------|-----------------|
| Unit No. 02 Paradise Cut | Right | 3.96 | 04/26/2022 04/26/2022 | Alberto De Leon |

| | | | | | | |
|--|----------------------|--------------|----|------------------------|---------------|--|
| LM Start | 1.32 | Rating ** | M | Issue No. | 3 | |
| LM End | 1.32 | Issue Type + | En | Location * | | |
| Category | Supplemental | | | GPS Latitude/Longitude | | |
| | | | | Start | End | |
| Item | DWR UCIP Field Study | | | 37.791416 ° | 37.791416 ° | |
| | | | | -121.349704 ° | -121.349704 ° | |
| DWR ID | 19196 | | | | | |
| Comment Code | | | | | | |
| | | | | | | |
| Inspector Comment | | | | | | |
| FS_ID:72746 DS_ID:19196 EP_NO: N/A Repair Type: Non-Urgent Crossing Status: Not Found UCIP Comments: 03/22/2022 Record remains Non-Urgent. Geophysical results did not confirm presence of pipe through levee. Record will remain in UCIP's inspection records until future Levee Improvement Project can confirm no crossing was found through the levee. No permit has been identified authorizing pipe. (D.Sanoski - DWR UCIP) FIELD_STRUCT_DESC: *ABANDONED* 36-inch pipe of an unknown material or purpose through the levee, 8 feet below the crown. Pipe plugged with concrete. [Additional Reference(s): USACE San Joaquin O&M Manual 9, April 1964, (HLM 1.35)]. FS Date: 3/22/2022 4:13:14 PM | | | | | | |

Photo 1 of 3 : UCIP_SP_2022_72746_109123.jpg



Top of Levee: view of crown.

| | | | | | |
|----------|------|--------------|----|------------|----------|
| LM Start | 1.32 | Rating ** | M | Issue No. | 3 (cont) |
| LM End | 1.32 | Issue Type + | En | Location * | |

Photo 2 of 3 : UCIP_SP_2022_72746_109124.jpg



Land-Side: view of slope.

| | | | |
|--|--|---|---|
| * Location LS : Land Side N/A : Not Applicable WS : Water Side CR : Crown | ** Rating A : Acceptable M : Minimally Acceptable U : Unacceptable | N : Not Inspected/Rated C : Corrected A/W : Acceptable but Monitor & Maintain | + Issue Type Ma : Maintenance Deficiency Ob : Design & System Obsolescence En : Enforcement |
|--|--|---|---|

**Flood Control Project Maintenance
Levee Inspections**

Levee Inspection Report By Mile - Spring 2022

Reclamation District No. 2062 Stewart

| Waterway | Bank | Unit Miles | Inspection Start/End | Inspector |
|--------------------------|-------|------------|--------------------------|-----------------|
| Unit No. 02 Paradise Cut | Right | 3.96 | 04/26/2022 04/26/2022 | Alberto De Leon |

| | | | | | |
|----------|----------------------|--------------|------------------------|---------------|-----------------|
| LM Start | 1.32 | Rating ** | M | Issue No. | 3 (cont) |
| LM End | 1.32 | Issue Type + | En | Location * | |
| Category | Supplemental | | GPS Latitude/Longitude | | |
| | | | Start | End | |
| Item | DWR UCIP Field Study | | 37.791416 ° | 37.791416 ° | |
| | | | -121.349704 ° | -121.349704 ° | |
| DWR ID | 19196 | | | | |

Photo 3 of 3 : UCIP_SP_2022_72746_109125.jpg



Water-Side: view of shoulder.

| | | | | | |
|----------|----------------------|--------------|------------------------|---------------|----------|
| LM Start | 1.37 | Rating ** | M | Issue No. | 4 |
| LM End | 1.37 | Issue Type + | En | Location * | |
| Category | Supplemental | | GPS Latitude/Longitude | | |
| | | | Start | End | |
| Item | DWR UCIP Field Study | | 37.791821 ° | 37.791821 ° | |
| | | | -121.350448 ° | -121.350448 ° | |
| DWR ID | 19193 | | | | |

Comment Code

Inspector Comment

FS_ID:72747
DS_ID:19193
EP_NO: N/A
Repair Type: Non-Urgent
Crossing Status: Found
UCIP Comments: 03/22/2022 Record remains Non-Urgent. No permit has been identified authorizing pipe. Pipe capped with steel plate on WS and new attachment added to existing pipe out of pumphouse. (D.Sanoski - DWR UCIP)
04/05/2017 Pipe has been plugged as a flood fight measure and is likely to be replaced under a permit. MBK (Michael Moncrief) is working on the permit. Photo and update courtesy of Max Khashchuk as part of his 2017 Spring Inspection. (K. Fazel - UCIP)10/22/201 Pumphouse on concrete sump in the channel.- erosion under walkway on waterside. (P. Amatya - DWR)
FIELD_STRUCT_DESC: 20-inch steel irrigation discharge pipe through the levee, 8 feet below the crown. Pump house on the waterside (WS) slope. Metal walkway from the pump house to the crown. Flap gate, siphon breaker, and concrete distribution box on the landside (LS) slope. [Additional Reference(s): DWR Levee Log, 2007, 18-inch pipe referenced. USACE San Joaquin O&M Manual 9, April 1964, (HLM 1.40), 18-inch pipe referenced].
FS Date: 3/22/2022 4:15:05 PM

Photo 1 of 3 : UCIP_SP_2022_72747_109126.jpg



Top of Levee: view of crown.

| | | | |
|--|--|--|---|
| * Location LS : Land Side N/A : Not Applicable WS : Water Side CR : Crown | ** Rating A : Acceptable M : Minimally Acceptable U : Unacceptable | N : Not Inspected/Rated C : Corrected A/W : Acceptable but Monitor & Maintain | + Issue Type Ma : Maintenance Deficiency Ob : Design & System Obsolescence En : Enforcement |
|--|--|--|---|

**Flood Control Project Maintenance
Levee Inspections**

Levee Inspection Report By Mile - Spring 2022

Reclamation District No. 2062 Stewart

| Waterway | Bank | Unit Miles | Inspection Start/End | Inspector |
|--------------------------|-------|------------|--------------------------|-----------------|
| Unit No. 02 Paradise Cut | Right | 3.96 | 04/26/2022 04/26/2022 | Alberto De Leon |

| | | | | | |
|----------|----------------------|--------------|------------------------|---------------|-----------------|
| LM Start | 1.37 | Rating ** | M | Issue No. | 4 (cont) |
| LM End | 1.37 | Issue Type + | En | Location * | |
| Category | Supplemental | | GPS Latitude/Longitude | | |
| | | | Start | End | |
| Item | DWR UCIP Field Study | | 37.791821 ° | 37.791821 ° | |
| | | | -121.350448 ° | -121.350448 ° | |
| DWR ID | 19193 | | | | |

Photo 2 of 3 : UCIP_SP_2022_72747_109128.jpg



Land-Side: view of slope to distribution box on toe.

| | | | | | |
|----------|-------------|--------------|----|------------|-----------------|
| LM Start | 1.37 | Rating ** | M | Issue No. | 4 (cont) |
| LM End | 1.37 | Issue Type + | En | Location * | |

Photo 3 of 3 : UCIP_SP_2022_72747_109127.jpg



Water-Side: view of new pipe alignment.

| | | | | | |
|--|---------------------------------------|--------------|----|------------------------|---------------|
| LM Start | 1.63 | Rating ** | M | Issue No. | 7 |
| LM End | 1.63 | Issue Type + | Ma | Location * | CR |
| Category | Earthen Levee | | | GPS Latitude/Longitude | |
| | | | | Start | End |
| Item | Crown Surface / Depressions / Rutting | | | 37.793972 ° | 37.793972 ° |
| | | | | -121.354272 ° | -121.354272 ° |
| DWR ID | DWR_RD2062_02_s_2022_7 | | | | |
| Comment Code | | | | | |
| C2 : Repair depressions or ruts in the crown or slope. | | | | | |
| Inspector Comment | | | | | |
| | | | | | |

No Photos

| | | | |
|--|--|---|---|
| * Location LS : Land Side N/A : Not Applicable WS : Water Side CR : Crown | ** Rating A : Acceptable M : Minimally Acceptable U : Unacceptable | N : Not Inspected/Rated C : Corrected A/W : Acceptable but Monitor & Maintain | + Issue Type Ma : Maintenance Deficiency Ob : Design & System Obsolescence En : Enforcement |
|--|--|---|---|

**Flood Control Project Maintenance
Levee Inspections**

Levee Inspection Report By Mile - Spring 2022

Reclamation District No. 2062 Stewart

| Waterway | Bank | Unit Miles | Inspection Start/End | Inspector |
|--------------------------|-------|------------|--------------------------|--------------------|
| Unit No. 02 Paradise Cut | Right | 3.96 | 04/26/2022 04/26/2022 | Alberto De Leon |

| | | | | | |
|---|----------------------|--------------|----|------------------------|---------------|
| LM Start | 1.64 | Rating ** | U | Issue No. | 5 |
| LM End | 1.64 | Issue Type + | En | Location * | |
| Category | Supplemental | | | GPS Latitude/Longitude | |
| | | | | Start | End |
| Item | DWR UCIP Field Study | | | 37.794014 ° | 37.794014 ° |
| | | | | -121.354434 ° | -121.354434 ° |
| DWR ID | 19197 | | | | |
| Comment Code | | | | | |
| | | | | | |
| Inspector Comment | | | | | |
| FS_ID:72749 DS_ID:19197 EP_NO: 4305 Repair Type: Urgent Crossing Status: Found UCIP Comments: 03/22/2022 Record remains Urgent. DMP internal video inspection has found pipe integrity issues. LOF of crossing is between 5 and 6. Crossing will be monitored until funding becomes available to address the issues. Found holes in pipe on WS between water and pumphouse. (D.Sanoski - DWR UCIP) 10/10/2018 Extremely overgrown vegetation did not allow visual inspection of WS levee erosion; however, there are indications based on vegetation growth patterns that the erosion is still present, so keeping crossing as Urgent (D. Sanoski - DWR UCIP).08/31/2016: Heavy sloughing and sink hole remains at the WS slope in alignment with pipes. Though sloughing is not affecting levee prism, it is still an indication of a pipe integrity problem. Oil leak at the pump but does not appear to impact levee. (K. Fazel - UCIP)10/22/2013:- missing roof in pump house.- no protection for siphon breaker- huge erosion under pumphouse and levee slope on waterside. (P. Amatya - DWR) FIELD_STRUCT_DESC: 2 of 2: 18-inch steel irrigation discharge pipe through the levee, 4.8 feet below the crown. Pump house on the waterside (WS) slope. Siphon breaker on the landside (LS) shoulder. Service pole on the LS shoulder. Concrete distribution box at the LS toe. (Plans for installation of two irrigation pumps on the bank to replace an old centrifugal pumping plant at the same location authorized under Permit No. 4305, 1963 - Reclamation District No. 2062) [Additional Reference(s): DWR Levee Log, 2007. USACE San Joaquin O&M Manual 9, April 1964, (HLM 1.67)]. FS Date: 3/22/2022 4:28:01 PM | | | | | |

Photo 1 of 3 : UCIP_SP_2022_72749_109142.jpg



Top of Levee: view of crown.

| | | | |
|--|--|---|---|
| * Location LS : Land Side N/A : Not Applicable WS : Water Side CR : Crown | ** Rating A : Acceptable M : Minimally Acceptable U : Unacceptable | N : Not Inspected/Rated C : Corrected A/W : Acceptable but Monitor & Maintain | + Issue Type Ma : Maintenance Deficiency Ob : Design & System Obsolescence En : Enforcement |
|--|--|---|---|

**Flood Control Project Maintenance
Levee Inspections**

Levee Inspection Report By Mile - Spring 2022

Reclamation District No. 2062 Stewart

| Waterway | Bank | Unit Miles | Inspection Start/End | Inspector |
|--------------------------|-------|------------|--------------------------|-----------------|
| Unit No. 02 Paradise Cut | Right | 3.96 | 04/26/2022 04/26/2022 | Alberto De Leon |

| | | | | | |
|----------|----------------------|--------------|----|------------------------|-----------------|
| LM Start | 1.64 | Rating ** | U | Issue No. | 5 (cont) |
| LM End | 1.64 | Issue Type + | En | Location * | |
| Category | Supplemental | | | GPS Latitude/Longitude | |
| | | | | Start | End |
| Item | DWR UCIP Field Study | | | 37.794014 ° | 37.794014 ° |
| | | | | -121.354434 ° | -121.354434 ° |
| DWR ID | 19197 | | | | |

Photo 2 of 3 : UCIP_SP_2022_72749_109143.jpg



Water-Side: view of pipe with corroded holes on far side.

| | | | | | |
|----------|-------------|--------------|----|------------|-----------------|
| LM Start | 1.64 | Rating ** | U | Issue No. | 5 (cont) |
| LM End | 1.64 | Issue Type + | En | Location * | |

Photo 3 of 3 : UCIP_SP_2022_72749_109144.jpg



Land-Side: view of pipe outlet in distribution box.

| | | | | | |
|---|-------------------------|--------------|----|------------------------|---------------|
| LM Start | 2.08 | Rating ** | C | Issue No. | 16 |
| LM End | 2.42 | Issue Type + | Ma | Location * | LS |
| Category | Earthen Levee | | | GPS Latitude/Longitude | |
| | | | | Start | End |
| Item | Animal Control | | | 37.797753 ° | 37.800706 ° |
| | | | | -121.361108 ° | -121.366055 ° |
| DWR ID | DWR_RD2062_02_s_2021_16 | | | | |
| Comment Code | | | | | |
| A3 : No rodents visible, but rodent burrows visible; need to backfill and compact or grout burrows. | | | | | |
| Inspector Comment | | | | | |
| | | | | | |

No Photos

| | | | | |
|--|--|---|--|---|
| * Location LS : Land Side N/A : Not Applicable WS : Water Side CR : Crown | | ** Rating A : Acceptable N : Not Inspected/Rated M : Minimally Acceptable C : Corrected U : Unacceptable A/W : Acceptable but Monitor & Maintain | | + Issue Type Ma : Maintenance Deficiency Ob : Design & System Obsolescence En : Enforcement |
|--|--|---|--|---|

**Flood Control Project Maintenance
Levee Inspections**

Levee Inspection Report By Mile - Spring 2022

Reclamation District No. 2062 Stewart

| Waterway | Bank | Unit Miles | Inspection Start/End | Inspector |
|--------------------------|-------|------------|--------------------------|-----------------|
| Unit No. 02 Paradise Cut | Right | 3.96 | 04/26/2022 04/26/2022 | Alberto De Leon |

| | | | | | |
|--|---------------------------|--------------|----|------------------------|---------------|
| LM Start | 3.27 | Rating ** | M | Issue No. | 15 |
| LM End | 3.27 | Issue Type + | Ma | Location * | LS |
| Category | Earthen Levee | | | GPS Latitude/Longitude | |
| | | | | Start | End |
| Item | Trim / Thin Trees | | | 37.804876 ° | 37.804876 ° |
| | | | | -121.380140 ° | -121.380140 ° |
| DWR ID | DWR_RD2062_02_f _ 2021_15 | | | | |
| Comment Code | | | | | |
| T1 : Trim and thin trees to at least five feet above ground level to allow visibility of the ground and room to flood fight. | | | | | |
| Inspector Comment | | | | | |
| | | | | | |

Photo 1 of 1 : SP_2022_RD2062_310_15_20220428_00017.jpg



View of untrimmed tree within the landside easement. Spring 2022

| | | | | | |
|--|------------------------|--------------|----|------------------------|---------------|
| LM Start | 3.45 | Rating ** | U | Issue No. | 6 |
| LM End | 3.52 | Issue Type + | Ma | Location * | LS |
| Category | Earthen Levee | | | GPS Latitude/Longitude | |
| | | | | Start | End |
| Item | Vegetation | | | 37.805621 ° | 37.805884 ° |
| | | | | -121.383404 ° | -121.384534 ° |
| DWR ID | DWR_RD2062_02_s_2022_6 | | | | |
| Comment Code | | | | | |
| V1 : Control annual grass and weeds on the levee slopes and easements. | | | | | |
| Inspector Comment | | | | | |
| | | | | | |

Photo 1 of 1 : SP_2022_RD2062_310_6_20220428_00016.jpg



View of landside vegetation completely blocking visibility of the easement. Spring 2022

| | | | | | |
|---|-------------------------|--------------|----|------------------------|---------------|
| LM Start | 3.64 | Rating ** | C | Issue No. | 12 |
| LM End | 3.74 | Issue Type + | Ma | Location * | LS |
| Category | Earthen Levee | | | GPS Latitude/Longitude | |
| | | | | Start | End |
| Item | Animal Control | | | 37.806345 ° | 37.806834 ° |
| | | | | -121.386611 ° | -121.388484 ° |
| DWR ID | DWR_RD2062_02_s_2021_12 | | | | |
| Comment Code | | | | | |
| A3 : No rodents visible, but rodent burrows visible; need to backfill and compact or grout burrows. | | | | | |
| Inspector Comment | | | | | |
| | | | | | |

No Photos

*** Location**
LS : Land Side N/A : Not Applicable
WS : Water Side
CR : Crown

**** Rating**
A : Acceptable N : Not Inspected/Rated
M : Minimally Acceptable C : Corrected
U : Unacceptable A/W : Acceptable but Monitor & Maintain

+ Issue Type
Ma : Maintenance Deficiency
Ob : Design & System Obsolescence
En : Enforcement

**Flood Control Project Maintenance
Levee Inspections**

Levee Inspection Report By Mile - Spring 2022

Reclamation District No. 2062 Stewart

| Waterway | Bank | Unit Miles | Inspection Start/End | Inspector |
|--------------------------|-------|------------|--------------------------|--------------------|
| Unit No. 02 Paradise Cut | Right | 3.96 | 04/26/2022 04/26/2022 | Alberto De Leon |

| | | | | | |
|---|---------------------------|--------------|----|------------------------|---------------|
| LM Start | 3.85 | Rating ** | C | Issue No. | 11 |
| LM End | 3.85 | Issue Type + | Ma | Location * | LS |
| Category | Earthen Levee | | | GPS Latitude/Longitude | |
| | | | | Start | End |
| Item | Animal Control | | | 37.807858 ° | 37.807858 ° |
| | | | | -121.389986 ° | -121.389986 ° |
| DWR ID | DWR_RD2062_02_f _ 2021_11 | | | | |
| Comment Code | | | | | |
| A3 : No rodents visible, but rodent burrows visible; need to backfill and compact or grout burrows. | | | | | |
| Inspector Comment | | | | | |
| | | | | | |

No Photos

| | | | |
|--|--|---|---|
| * Location LS : Land Side N/A : Not Applicable WS : Water Side CR : Crown | ** Rating A : Acceptable M : Minimally Acceptable U : Unacceptable | N : Not Inspected/Rated C : Corrected A/W : Acceptable but Monitor & Maintain | + Issue Type Ma : Maintenance Deficiency Ob : Design & System Obsolescence En : Enforcement |
|--|--|---|---|

**Flood Control Project Maintenance
Levee Inspections
Unit Cover Sheet**

Reclamation District No. 2062 Stewart

| Waterway | | | Bank | Unit Miles |
|--|-------------------------|---------------------------|--------------------------------|---------------------------------|
| Unit No. 03 Old River | | | Left | 5.55 |
| | Spring (March - May) | Summer (June - August) | (September - November) Fall | Winter (December - February) |
| Unit Maintenance Rating (Fall Only) | | | | |
| Date of Inspection | 4/26/2022 - 4/26/2022 | | | |
| DWR Inspector | Alberto De Leon | | | |
| Accompanied By | Tim Mello RD2062 | | | |

Summer & Winter Inspections

The Local Maintaining Agency (LMA) is responsible for summer and winter inspections. The LMA is required to submit a report regarding summer and winter inspections to the California Department of Water Resources (DWR).

DWR must be informed on the:

- a) completion of the inspection
- b) any changes other than the results of normal maintenance
- c) corrections to deficiencies noted in this report

If additional items are noted, further documentation of those items must also be submitted.

The LMA should submit this information to DWR using the LMA web application tool available at:

<http://cdec.water.ca.gov/lma.html>

If the LMA is unable to submit information on this webpage, please contact DWR for assistance.

The LMA should submit the information and any associated documentation by September 30 for summer inspections and March 31 for winter inspections.

**Flood Control Project Maintenance
Levee Inspections**

Levee Inspection Report By Mile - Spring 2022

Reclamation District No. 2062 Stewart

| Waterway | Bank | Unit Miles | Inspection Start/End | Inspector |
|-----------------------|------|------------|--------------------------|--------------------|
| Unit No. 03 Old River | Left | 5.55 | 04/26/2022 04/26/2022 | Alberto De Leon |

| | | | | | |
|----------|--------------------|--------------|----|------------------------|---------------|
| LM Start | -0.03 | Rating ** | M | Issue No. | 9 |
| LM End | 0.07 | Issue Type + | Ma | Location * | WS |
| Category | Supplemental | | | GPS Latitude/Longitude | |
| | | | | Start | End |
| Item | DWR Erosion Survey | | | 37.809514 ° | 37.809514 ° |
| | | | | -121.390125 ° | -121.390125 ° |
| DWR ID | RD2062U03RM29.94 | | | | |

Comment Code

Inspector Comment

Site ID: RD2062U03RM29.94

08/25/2021: No significant changes were observed since the previous inspection

09/30/2020: Nearly vertical scarp visible along the levee slope. Noticed rodent holes in some areas and crushed concrete pieces.

08/14/2019: No significant change observed.

09/13/2017: The erosion site has expanded significantly along the river bank.

11/09/2016: No significant change observed.

06/25/2015: The erosion is below a large oak tree. Vegetation is visible around the erosion site.

| | | | | | |
|----------|--------------|--------------|----|------------|-----------------|
| LM Start | -0.03 | Rating ** | M | Issue No. | 9 (cont) |
| LM End | 0.07 | Issue Type + | Ma | Location * | WS |

Photo 1 of 3 : SP_2022_RD2062_311_9_20220406_00016.jpg



08/25/2021: Close-up view of the scarp on the levee slope.

Photo 2 of 3 : SP_2022_RD2062_311_9_20220406_00017.jpg



08/25/2021: View of the eroded levee slope looking downstream.

| | | | | | |
|--|--|---|--|---|--|
| * Location LS : Land Side N/A : Not Applicable WS : Water Side CR : Crown | | ** Rating A : Acceptable N : Not Inspected/Rated M : Minimally Acceptable C : Corrected U : Unacceptable A/W : Acceptable but Monitor & Maintain | | + Issue Type Ma : Maintenance Deficiency Ob : Design & System Obsolescence En : Enforcement | |
|--|--|---|--|---|--|

**Flood Control Project Maintenance
Levee Inspections**

Levee Inspection Report By Mile - Spring 2022

Reclamation District No. 2062 Stewart

| Waterway | Bank | Unit Miles | Inspection Start/End | Inspector |
|-----------------------|------|------------|--------------------------|-----------------|
| Unit No. 03 Old River | Left | 5.55 | 04/26/2022 04/26/2022 | Alberto De Leon |

| | | | | | |
|----------|--------------------|--------------|----|------------------------|---------------|
| LM Start | -0.03 | Rating ** | M | Issue No. | 9 (cont) |
| LM End | 0.07 | Issue Type + | Ma | Location * | WS |
| Category | Supplemental | | | GPS Latitude/Longitude | |
| | | | | Start | End |
| Item | DWR Erosion Survey | | | 37.809514 ° | 37.809514 ° |
| | | | | -121.390125 ° | -121.390125 ° |
| DWR ID | RD2062U03RM29.94 | | | | |

Photo 3 of 3 : SP_2022_RD2062_311_9_20220406_00018.jpg



08/25/2021: Crushed concrete on the eroded levee slope.

| | | | | | |
|--|-------------------------|--------------|----|------------------------|---------------|
| LM Start | 0.00 | Rating ** | M | Issue No. | 21 |
| LM End | 5.52 | Issue Type + | Ma | Location * | WS |
| Category | Earthen Levee | | | GPS Latitude/Longitude | |
| | | | | Start | End |
| Item | Vegetation | | | 37.809257 ° | 37.807568 ° |
| | | | | -121.390362 ° | -121.328585 ° |
| DWR ID | DWR_RD2062_03_s_2022_21 | | | | |
| Comment Code | | | | | |
| V1 : Control annual grass and weeds on the levee slopes and easements. | | | | | |
| Inspector Comment | | | | | |
| | | | | | |

No Photos

| | | | | | |
|--|-------------------------|--------------|----|------------------------|---------------|
| LM Start | 0.00 | Rating ** | M | Issue No. | 22 |
| LM End | 5.51 | Issue Type + | Ma | Location * | LS |
| Category | Earthen Levee | | | GPS Latitude/Longitude | |
| | | | | Start | End |
| Item | Vegetation | | | 37.809258 ° | 37.807570 ° |
| | | | | -121.390361 ° | -121.328773 ° |
| DWR ID | DWR_RD2062_03_s_2022_22 | | | | |
| Comment Code | | | | | |
| V1 : Control annual grass and weeds on the levee slopes and easements. | | | | | |
| Inspector Comment | | | | | |
| | | | | | |

No Photos

| | | | | |
|--|--|---|--|---|
| * Location LS : Land Side N/A : Not Applicable WS : Water Side CR : Crown | | ** Rating A : Acceptable N : Not Inspected/Rated M : Minimally Acceptable C : Corrected U : Unacceptable A/W : Acceptable but Monitor & Maintain | | + Issue Type Ma : Maintenance Deficiency Ob : Design & System Obsolescence En : Enforcement |
|--|--|---|--|---|

**Flood Control Project Maintenance
Levee Inspections**

Levee Inspection Report By Mile - Spring 2022

Reclamation District No. 2062 Stewart

| Waterway | Bank | Unit Miles | Inspection Start/End | Inspector |
|-----------------------|------|------------|--------------------------|-----------------|
| Unit No. 03 Old River | Left | 5.55 | 04/26/2022 04/26/2022 | Alberto De Leon |

| | | | | | |
|----------|--------------------|--------------|----|------------------------|---------------|
| LM Start | 0.09 | Rating ** | U | Issue No. | 8 |
| LM End | 0.12 | Issue Type + | Ma | Location * | WS |
| Category | Supplemental | | | GPS Latitude/Longitude | |
| | | | | Start | End |
| Item | DWR Erosion Survey | | | 37.809932 ° | 37.809932 ° |
| | | | | -121.388788 ° | -121.388788 ° |
| DWR ID | RD2062U03RM30.02 | | | | |

Comment Code

Inspector Comment

Site ID: RD2062U03RM30.02

08/25/2021: No significant changes were observed since the previous inspection.

09/30/2020: Noticed burrowing activity, old riprap, and caving along the lower levee slope.

08/14/2019: The erosion has extended downstream by approximately 60 ft.

09/13/2017: The erosion site has expanded significantly with the erosion length increased to approximately 90 ft from 40 ft. Signs of animal activities have been found at the site.

07/25/2016: From 2012 to present, no significant changes were observed during the annual survey.

08/23/2011: Hard to view the erosion because of the dense vegetation and trees on site. The site is under the bush, close to the tree.

| | | | | | |
|----------|-------------|--------------|----|------------|-----------------|
| LM Start | 0.09 | Rating ** | U | Issue No. | 8 (cont) |
| LM End | 0.12 | Issue Type + | Ma | Location * | WS |

Photo 1 of 2 : SP_2022_RD2062_311_8_20220406_00014.jpg



08/25/2021: View of the eroded levee toe and signs of animal activity.

Photo 2 of 2 : SP_2022_RD2062_311_8_20220406_00015.jpg



08/25/2021: View of the erosion and some old riprap.

| | | | | | |
|--|--|---|--|---|--|
| * Location LS : Land Side N/A : Not Applicable WS : Water Side CR : Crown | | ** Rating A : Acceptable M : Minimally Acceptable U : Unacceptable N : Not Inspected/Rated C : Corrected A/W : Acceptable but Monitor & Maintain | | + Issue Type Ma : Maintenance Deficiency Ob : Design & System Obsolescence En : Enforcement | |
|--|--|---|--|---|--|

**Flood Control Project Maintenance
Levee Inspections**

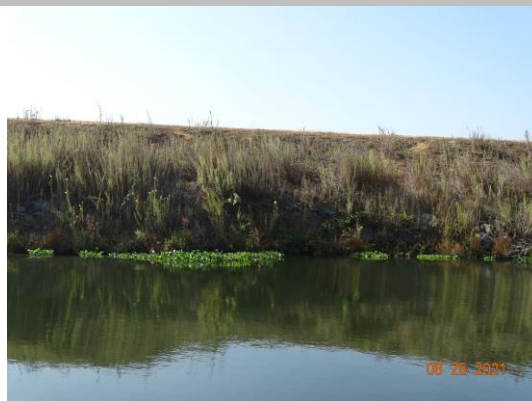
Levee Inspection Report By Mile - Spring 2022

Reclamation District No. 2062 Stewart

| Waterway | Bank | Unit Miles | Inspection Start/End | Inspector |
|-----------------------|------|------------|--------------------------|-----------------|
| Unit No. 03 Old River | Left | 5.55 | 04/26/2022 04/26/2022 | Alberto De Leon |

| | | | | | |
|--|--------------------|--------------|----|------------------------|---------------|
| LM Start | 0.17 | Rating ** | M | Issue No. | 7 |
| LM End | 0.18 | Issue Type + | Ma | Location * | WS |
| Category | Supplemental | | | GPS Latitude/Longitude | |
| | | | | Start | End |
| Item | DWR Erosion Survey | | | 37.810268 ° | 37.810268 ° |
| | | | | -121.387495 ° | -121.387495 ° |
| DWR ID | RD2062U03RM30.1 | | | | |
| Comment Code | | | | | |
| | | | | | |
| Inspector Comment | | | | | |
| Site ID: RD2062U03RM30.1 | | | | | |
| 08/25/2021: No significant changes were observed since the previous inspection. | | | | | |
| 09/30/2020: From 2012 to present, no significant changes were observed during the annual survey. | | | | | |
| 08/23/2011: The protection at the levee toe has been washed away. | | | | | |

Photo 1 of 2 : SP_2022_RD2062_311_7_20220406_00012.jpg



08/25/2021: Overview of the erosion site.

| | | | | | |
|----------|-------------|--------------|----|------------|-----------------|
| LM Start | 0.17 | Rating ** | M | Issue No. | 7 (cont) |
| LM End | 0.18 | Issue Type + | Ma | Location * | WS |

Photo 2 of 2 : SP_2022_RD2062_311_7_20220406_00013.jpg



08/25/2021: Close-up view of the erosion.

| | | | |
|--|--|---|---|
| * Location LS : Land Side N/A : Not Applicable WS : Water Side CR : Crown | ** Rating A : Acceptable M : Minimally Acceptable U : Unacceptable | N : Not Inspected/Rated C : Corrected A/W : Acceptable but Monitor & Maintain | + Issue Type Ma : Maintenance Deficiency Ob : Design & System Obsolescence En : Enforcement |
|--|--|---|---|

**Flood Control Project Maintenance
Levee Inspections**

Levee Inspection Report By Mile - Spring 2022

Reclamation District No. 2062 Stewart

| Waterway | Bank | Unit Miles | Inspection Start/End | Inspector |
|-----------------------|------|------------|--------------------------|-----------------|
| Unit No. 03 Old River | Left | 5.55 | 04/26/2022 04/26/2022 | Alberto De Leon |

| | | | | | |
|----------|--------------------|--------------|----|------------------------|---------------|
| LM Start | 0.22 | Rating ** | U | Issue No. | 2 |
| LM End | 0.31 | Issue Type + | Ma | Location * | WS |
| Category | Supplemental | | | GPS Latitude/Longitude | |
| | | | | Start | End |
| Item | DWR Erosion Survey | | | 37.810609 ° | 37.810609 ° |
| | | | | -121.385879 ° | -121.385879 ° |
| DWR ID | RD2062U03RM30.19 | | | | |

Comment Code

Inspector Comment

Site ID: RD2062U03RM30.19
 08/25/2021: No significant changes were observed since the previous inspection.
 09/30/2020: From 2018 to present, no significant changes were observed during the annual survey.
 09/13/2017: The erosion has developed vertically. More vegetation at the site.
 07/25/2106: From 2014 to present, no significant changes were observed during the annual survey.
 08/13/2013: A new pocket erosion at the upper levee slope has been found directly above a large tree. The erosion might have been caused by internal pipe leakage or surface runoff. 08/07/2012: No significant change was observed.
 08/23/2011: Dense vegetation is visible along the water line.
 09/07/2010: Much of the upper slope was recently cleared of vegetation by spraying. 4- to 6-foot vertical scarp and pocket erosions are lined along a span of 475 feet. In some sections, the vertical scarp encroaches into the levee prism. There is a lack of berm along this reach, exposing the levee slope to high flow velocities during normal and flood events. 08/06/2010: Recommended as local maintenance issue, per CLRO. 03/09/2010: As discussed with Michael Moncrief of MBK Engineers, the site will be 'addressed' later this year. 09/29/2009: No major change observed since last visit; pocket erosion and a vertical scarp forming; this site was combined with Site RM30.13 and 30.02 with a combined total erosion length of 475 feet; recommended as annual assessment and monitoring of the site, per CLRO CES Evaluation 2008 Report; previously rated "M". 11/05/2008: Top of vertical scarp has rip rap that appears to be sliding; rodent holes; existing toe rip rap.

Photo 1 of 2 : SP_2022_RD2062_311_2_20220406_00003.jpg



08/25/2021: View of the eroding levee slope.

| | | | |
|--|--|---|---|
| * Location LS : Land Side N/A : Not Applicable WS : Water Side CR : Crown | ** Rating A : Acceptable M : Minimally Acceptable U : Unacceptable | N : Not Inspected/Rated C : Corrected A/W : Acceptable but Monitor & Maintain | + Issue Type Ma : Maintenance Deficiency Ob : Design & System Obsolescence En : Enforcement |
|--|--|---|---|

Reclamation District No. 2062 Stewart

| Waterway | Bank | Unit Miles | Inspection Start/End | Inspector |
|-----------------------|------|------------|--------------------------|--------------------|
| Unit No. 03 Old River | Left | 5.55 | 04/26/2022 04/26/2022 | Alberto De Leon |

| | | | | | |
|----------|--------------------|--------------|----|------------------------|-----------------|
| LM Start | 0.22 | Rating ** | U | Issue No. | 2 (cont) |
| LM End | 0.31 | Issue Type + | Ma | Location * | WS |
| Category | Supplemental | | | GPS Latitude/Longitude | |
| | | | | Start | End |
| Item | DWR Erosion Survey | | | 37.810609 ° | 37.810609 ° |
| | | | | -121.385879 ° | -121.385879 ° |
| DWR ID | RD2062U03RM30.19 | | | | |

08/25/2021: The erosion has cut into the levee prism.

| | | | | | |
|----------|--------------------|--------------|----|------------------------|---------------|
| LM Start | 0.35 | Rating ** | M | Issue No. | 6 |
| LM End | 0.36 | Issue Type + | Ma | Location * | WS |
| Category | Supplemental | | | GPS Latitude/Longitude | |
| | | | | Start | End |
| Item | DWR Erosion Survey | | | 37.811101 ° | 37.811101 ° |
| | | | | -121.384402 ° | -121.384402 ° |
| DWR ID | RD2062U03RM30.27 | | | | |

Comment Code

Inspector Comment

Site ID: RD2062U03RM30.27

08/25/2021: No significant changes were observed since the previous inspection.

09/30/2020: From 2012 to present, no significant changes were observed during the annual survey.

08/23/2011: The site is right at the downstream of a river bend.

A photograph of a riverbank with dense vegetation, including tall grasses and shrubs, under a clear blue sky. The date '09-26-2021' is visible in the bottom right corner.

08/25/2021: Front view of the erosion.

| * Location | ** Rating | + Issue Type |
|--|---|-----------------------------------|
| LS : Land Side N/A : Not Applicable | A : Acceptable N : Not Inspected/Rated | Ma : Maintenance Deficiency |
| WS : Water Side | M : Minimally Acceptable C : Corrected | Ob : Design & System Obsolescence |
| CR : Crown | U : Unacceptable A/W : Acceptable but Monitor & Maintain | En : Enforcement |

**Flood Control Project Maintenance
Levee Inspections**

Levee Inspection Report By Mile - Spring 2022

Reclamation District No. 2062 Stewart

| Waterway | Bank | Unit Miles | Inspection Start/End | Inspector |
|-----------------------|------|------------|--------------------------|-----------------|
| Unit No. 03 Old River | Left | 5.55 | 04/26/2022 04/26/2022 | Alberto De Leon |

| | | | | | | |
|---|----------------------|--------------|----|------------------------|---------------|-----|
| LM Start | 0.42 | Rating ** | M | Issue No. | 10 | |
| LM End | 0.42 | Issue Type + | En | Location * | | |
| Category | Supplemental | | | GPS Latitude/Longitude | | |
| | | | | Start | | End |
| Item | DWR UCIP Field Study | | | 37.811335 ° | 37.811335 ° | |
| | | | | -121.383243 ° | -121.383243 ° | |
| DWR ID | 19204 | | | | | |
| Comment Code | | | | | | |
| | | | | | | |
| Inspector Comment | | | | | | |
| FS_ID:72763 DS_ID:19204 EP_NO: N/A Repair Type: Non-Urgent Crossing Status: Not Found UCIP Comments: 03/22/2022 Record remains Non-Urgent. Crossing not found. No permit has been identified authorizing pipe. (D.Sanoski - DWR UCIP) FIELD_STRUCT_DESC: 12-inch irrigation discharge pipe of an unknown material through the levee, 7 feet below the crown. Pump house on the waterside (WS). [Additional Reference(s): USACE San Joaquin O&M Manual 9, April 1964, (HLM 0.32)]. FS Date: 3/22/2022 12:43:53 PM | | | | | | |

Photo 1 of 3 : UCIP_SP_2022_72763_109178.jpg



Top of Levee: view of crown.

| | | | | | |
|----------|-------------|--------------|----|------------|------------------|
| LM Start | 0.42 | Rating ** | M | Issue No. | 10 (cont) |
| LM End | 0.42 | Issue Type + | En | Location * | |

Photo 2 of 3 : UCIP_SP_2022_72763_109179.jpg



Land-Side: view of slope.

| | | | |
|--|--|---|---|
| * Location LS : Land Side N/A : Not Applicable WS : Water Side CR : Crown | ** Rating A : Acceptable M : Minimally Acceptable U : Unacceptable | N : Not Inspected/Rated C : Corrected A/W : Acceptable but Monitor & Maintain | + Issue Type Ma : Maintenance Deficiency Ob : Design & System Obsolescence En : Enforcement |
|--|--|---|---|

**Flood Control Project Maintenance
Levee Inspections**

Levee Inspection Report By Mile - Spring 2022

Reclamation District No. 2062 Stewart

| Waterway | Bank | Unit Miles | Inspection Start/End | Inspector |
|-----------------------|------|------------|--------------------------|-----------------|
| Unit No. 03 Old River | Left | 5.55 | 04/26/2022 04/26/2022 | Alberto De Leon |

| | | | | | |
|----------|----------------------|--------------|----|------------------------|------------------|
| LM Start | 0.42 | Rating ** | M | Issue No. | 10 (cont) |
| LM End | 0.42 | Issue Type + | En | Location * | |
| Category | Supplemental | | | GPS Latitude/Longitude | |
| | | | | Start | End |
| Item | DWR UCIP Field Study | | | 37.811335 ° | 37.811335 ° |
| | | | | -121.383243 ° | -121.383243 ° |
| DWR ID | 19204 | | | | |

Photo 3 of 3 : UCIP_SP_2022_72763_109180.jpg



Water-Side: view of slope.

| | | | |
|--|--|---|---|
| * Location LS : Land Side N/A : Not Applicable WS : Water Side CR : Crown | ** Rating A : Acceptable M : Minimally Acceptable U : Unacceptable | N : Not Inspected/Rated C : Corrected A/W : Acceptable but Monitor & Maintain | + Issue Type Ma : Maintenance Deficiency Ob : Design & System Obsolescence En : Enforcement |
|--|--|---|---|

**Flood Control Project Maintenance
Levee Inspections**

Levee Inspection Report By Mile - Spring 2022

Reclamation District No. 2062 Stewart

| Waterway | Bank | Unit Miles | Inspection Start/End | Inspector |
|-----------------------|------|------------|--------------------------|-----------------|
| Unit No. 03 Old River | Left | 5.55 | 04/26/2022 04/26/2022 | Alberto De Leon |

| | | | | | | |
|---|----------------------|--------------|----|------------------------|---------------|--|
| LM Start | 0.51 | Rating ** | M | Issue No. | 11 | |
| LM End | 0.51 | Issue Type + | En | Location * | | |
| Category | Supplemental | | | GPS Latitude/Longitude | | |
| | | | | Start | End | |
| Item | DWR UCIP Field Study | | | 37.812575 ° | 37.812575 ° | |
| | | | | -121.382798 ° | -121.382798 ° | |
| DWR ID | 19200 | | | | | |
| Comment Code | | | | | | |
| | | | | | | |
| Inspector Comment | | | | | | |
| FS_ID:72764 DS_ID:19200 EP_NO: 2029 Repair Type: Non-Urgent Crossing Status: Found UCIP Comments: 03/22/2022 Record updated from Urgent to Non-Urgent. Possible levee threat due to erosion on LS slope beneath pipe remains, but that is because it was too difficult to confirm due to the overgrown vegetation; but does appear to be imminent threat of failure. WS erosion beneath platform appears fixed. (D.Sanoski - DWR UCIP) 10/10/2018 Same as last inspection; erosion still present on LS slope, so keeping as Urgent (D. Sanoski - DWR UCIP).08/31/2016: Sloughing of LS slope beneath exposed section of pipe. Overflow pipe has been replaced on WS, though I could not locate a permit for that work. (K. Fazel - UCIP)10/22/2013:- pits and holes on overflow pipe on waterside.- underpinning at pump support.- slope erosion on both sides of the levee.- 2-inch electric conduit on waterside and power pole on landside. (P. Amatya - DWR) FIELD_STRUCT_DESC: 16-inch coated steel irrigation discharge pipe through the levee, 8 feet below the crown. Siphon breaker on the landside (LS) slope. Pump house on the waterside (WS) slope. Concrete distribution box on the LS. 2-inch electrical conduit on the WS. Service pole on the LS. Newly installed, as of 2016, overflow pipe with shutoff valve on the WS. (Plans for installation of an inclined irrigation pump on the bank authorized under Permit No. 2029, 1954 - Reclamation District No. 2062). [Additional Reference(s): DWR Levee Log, 2007. USACE San Joaquin O&M Manual 9, April 1964, (HLM 0.52)]. FS Date: 3/22/2022 12:45:54 PM | | | | | | |

Photo 1 of 3 : UCIP_SP_2022_72764_109181.jpg



Overview of Levee: view of crossing.

| | | | |
|--|--|---|---|
| * Location LS : Land Side N/A : Not Applicable WS : Water Side CR : Crown | ** Rating A : Acceptable M : Minimally Acceptable U : Unacceptable | N : Not Inspected/Rated C : Corrected A/W : Acceptable but Monitor & Maintain | + Issue Type Ma : Maintenance Deficiency Ob : Design & System Obsolescence En : Enforcement |
|--|--|---|---|

**Flood Control Project Maintenance
Levee Inspections**

Levee Inspection Report By Mile - Spring 2022

Reclamation District No. 2062 Stewart

| Waterway | Bank | Unit Miles | Inspection Start/End | Inspector |
|-----------------------|------|------------|--------------------------|-----------------|
| Unit No. 03 Old River | Left | 5.55 | 04/26/2022 04/26/2022 | Alberto De Leon |

| | | | | | |
|----------|----------------------|--------------|----|------------------------|------------------|
| LM Start | 0.51 | Rating ** | M | Issue No. | 11 (cont) |
| LM End | 0.51 | Issue Type + | En | Location * | |
| Category | Supplemental | | | GPS Latitude/Longitude | |
| | | | | Start | End |
| Item | DWR UCIP Field Study | | | 37.812575 ° | 37.812575 ° |
| | | | | -121.382798 ° | -121.382798 ° |
| DWR ID | 19200 | | | | |

Photo 2 of 3 : UCIP_SP_2022_72764_109182.jpg



Land-Side: view of pipe and covered in vegetation.

| | | | | | |
|----------|-------------|--------------|----|------------|------------------|
| LM Start | 0.51 | Rating ** | M | Issue No. | 11 (cont) |
| LM End | 0.51 | Issue Type + | En | Location * | |

Photo 3 of 3 : UCIP_SP_2022_72764_109183.jpg



Water-Side: view of slope and pipes.

| | | | |
|--|--|---|---|
| * Location LS : Land Side N/A : Not Applicable WS : Water Side CR : Crown | ** Rating A : Acceptable M : Minimally Acceptable U : Unacceptable | N : Not Inspected/Rated C : Corrected A/W : Acceptable but Monitor & Maintain | + Issue Type Ma : Maintenance Deficiency Ob : Design & System Obsolescence En : Enforcement |
|--|--|---|---|

**Flood Control Project Maintenance
Levee Inspections**

Levee Inspection Report By Mile - Spring 2022

Reclamation District No. 2062 Stewart

| Waterway | Bank | Unit Miles | Inspection Start/End | Inspector |
|-----------------------|------|------------|--------------------------|--------------------|
| Unit No. 03 Old River | Left | 5.55 | 04/26/2022 04/26/2022 | Alberto De Leon |

| | | | | | |
|--------------|--------------------|--------------|----|------------------------|---------------|
| LM Start | 0.55 | Rating ** | M | Issue No. | 3 |
| LM End | 0.56 | Issue Type + | Ma | Location * | WS |
| Category | Supplemental | | | GPS Latitude/Longitude | |
| | | | | Start | End |
| Item | DWR Erosion Survey | | | 37.813070 ° | 37.813070 ° |
| | | | | -121.383100 ° | -121.383100 ° |
| DWR ID | RD2062U03RM30.43 | | | | |
| Comment Code | | | | | |

Comment Code

Inspector Comment

Site ID: RD2062U03RM30.43
 08/25/2021: No significant changes were observed since the previous inspection.
 09/30/2020: From 2011 to present, no significant changes were observed during the annual survey.
 09/07/2010: Much of the placed rip rap revetment has slid. It is no longer adequately protecting the slope.
 08/06/2010: Recommended as local maintenance issue, per CLRO Report.
 03/09/2010: As discussed with Michael Moncrief of MBK, site will be 'addressed' this year.
 09/29/2009: No major change observed since last visit; a section of the rip rap has slipped, exposing a levee section that has eroded; recommended as local maintenance issue, per CLRO CES Evaluation 2008 Report; Site # is the same as RM30.43, LM0.63; previously rated "U".
 11/05/2008: Site is located inside of a bend; scarp looks to be into the levee prism; piles of concrete chunks placed on the slope, with some of them already starting to slide.

| | | | | | |
|----------|-------------|--------------|----|------------|-----------------|
| LM Start | 0.55 | Rating ** | M | Issue No. | 3 (cont) |
| LM End | 0.56 | Issue Type + | Ma | Location * | WS |

Photo 1 of 2 : SP_2022_RD2062_311_3_20220406_00005.jpg



08/25/2021: View of the eroded levee slope and displaced riprap.

Photo 2 of 2 : SP_2022_RD2062_311_3_20220406_00006.jpg



08/25/2021: Another view of the eroded slope with displaced riprap.

| | | | | | |
|--|--|---|--|---|--|
| * Location LS : Land Side N/A : Not Applicable WS : Water Side CR : Crown | | ** Rating A : Acceptable M : Minimally Acceptable U : Unacceptable N : Not Inspected/Rated C : Corrected A/W : Acceptable but Monitor & Maintain | | + Issue Type Ma : Maintenance Deficiency Ob : Design & System Obsolescence En : Enforcement | |
|--|--|---|--|---|--|

**Flood Control Project Maintenance
Levee Inspections**

Levee Inspection Report By Mile - Spring 2022

Reclamation District No. 2062 Stewart

| Waterway | Bank | Unit Miles | Inspection Start/End | Inspector |
|-----------------------|------|------------|--------------------------|-----------------|
| Unit No. 03 Old River | Left | 5.55 | 04/26/2022 04/26/2022 | Alberto De Leon |

| | | | | | |
|--------------|--------------------|--------------|----|------------------------|---------------|
| LM Start | 1.18 | Rating ** | M | Issue No. | 4 |
| LM End | 1.19 | Issue Type + | Ma | Location * | WS |
| Category | Supplemental | | | GPS Latitude/Longitude | |
| | | | | Start | End |
| Item | DWR Erosion Survey | | | 37.819408 ° | 37.819408 ° |
| | | | | -121.378888 ° | -121.378888 ° |
| DWR ID | RD2062U03RM31.12 | | | | |
| Comment Code | | | | | |

Comment Code

Inspector Comment

Site ID: RD2062U03RM31.12
 08/25/2021: No significant changes were observed since the previous inspection.
 09/30/2020: From 2011 to present, no significant changes were observed during the annual survey. The site is immediately upstream of a repaired site.
 09/07/2010: Much of the seasonal grass along the slope was cleared. Site consists of an existing scalloped erosion approximately 30 feet long by 5 feet wide at its widest opening. The lateral crack is extended outwards along the middle slope. There is a 1 to 2 feet of differential settlement that could further develop into a shallow slide.
 08/06/2010: Recommended as local maintenance issue, per CLRO.
 03/09/2010: As discussed with Michael Moncrief of MBK Engineers, site will be 'addressed' this year.
 09/28/2009: No major change observed; section of rip rap has slipped, creating a terraced effect; dense vegetation growth; recommended as a local maintenance issue, per CLRO CES Evaluation 2008 Report; Site # is the same as RM31.12, LM1.25; previously rated "U".
 09/14/2006: 1-2' into prism.

| | | | | | |
|----------|-------------|--------------|----|------------|-----------------|
| LM Start | 1.18 | Rating ** | M | Issue No. | 4 (cont) |
| LM End | 1.19 | Issue Type + | Ma | Location * | WS |

Photo 1 of 2 : SP_2022_RD2062_311_4_20220406_00007.jpg



08/25/2021: Front view of the erosion.

Photo 2 of 2 : SP_2022_RD2062_311_4_20220406_00008.jpg



08/25/2021: Close-up view of the erosion.

| | | | | | |
|--|--|---|--|---|--|
| * Location LS : Land Side N/A : Not Applicable WS : Water Side CR : Crown | | ** Rating A : Acceptable N : Not Inspected/Rated M : Minimally Acceptable C : Corrected U : Unacceptable A/W : Acceptable but Monitor & Maintain | | + Issue Type Ma : Maintenance Deficiency Ob : Design & System Obsolescence En : Enforcement | |
|--|--|---|--|---|--|

**Flood Control Project Maintenance
Levee Inspections**

Levee Inspection Report By Mile - Spring 2022

Reclamation District No. 2062 Stewart

| Waterway | Bank | Unit Miles | Inspection Start/End | Inspector |
|-----------------------|------|------------|--------------------------|-----------------|
| Unit No. 03 Old River | Left | 5.55 | 04/26/2022 04/26/2022 | Alberto De Leon |

| | | | | | |
|---|---------------------------|--------------|-----|------------------------|---------------|
| LM Start | 1.32 | Rating ** | A/W | Issue No. | 37 |
| LM End | 1.32 | Issue Type + | Ma | Location * | WS |
| Category | Earthen Levee | | | GPS Latitude/Longitude | |
| | | | | Start | End |
| Item | Animal Control | | | 37.820459 ° | 37.820459 ° |
| | | | | -121.377109 ° | -121.377109 ° |
| DWR ID | DWR_RD2062_03_f _ 2019_37 | | | | |
| Comment Code | | | | | |
| A1 : Exterminate rodents and backfill and compact or grout burrows. | | | | | |
| Inspector Comment | | | | | |
| | | | | | |

No Photos

| | | | | | |
|--|--------------------|--------------|----|------------------------|---------------|
| LM Start | 1.39 | Rating ** | M | Issue No. | 5 |
| LM End | 1.40 | Issue Type + | Ma | Location * | WS |
| Category | Supplemental | | | GPS Latitude/Longitude | |
| | | | | Start | End |
| Item | DWR Erosion Survey | | | 37.821380 ° | 37.821380 ° |
| | | | | -121.376900 ° | -121.376900 ° |
| DWR ID | RD2062U03RM31.28 | | | | |
| Comment Code | | | | | |
| | | | | | |
| Inspector Comment | | | | | |
| Site ID: RD2062U03RM31.28 | | | | | |
| 08/25/2021: No significant changes were observed since the previous inspection. | | | | | |
| 09/30/2020: From 2011 to present, no significant changes were observed during the annual survey. | | | | | |
| 09/07/2010: There is a small- to medium sized Oak tree on the mid-slope just above rip rap. Some of the rip rap has collapsed, creating a pocket erosion just above the existing toe rip rap and upstream of the Oak tree. | | | | | |
| 08/06/2010: Recommended as local maintenance issue, per CLRO. | | | | | |
| 03/09/2010: As discussed with Michael Moncrief of MBK Engineers, site will be 'addressed' in 2010. | | | | | |
| 09/29/2009: No major change since last visit; sliding of the rip rap at the base of the lone tree; there is noticeable man-made trail and foot traffic extending from the crown to the toe; much of the broken concrete used as temporary rip rap has slid, exposing portion of the bare levee slope; recommended as local maintenance issue, per CLRO CES Evaluation 2008 Report; Site # is the same as RM31.3, LM1.45; previously rated "M". | | | | | |
| 11/05/2008: Portion of rip rap collapsing. | | | | | |
| 09/14/2006: Portion of rip rap along the slope has collapsed; exposed levee section is starting to erode, exposing roots from the nearby tree. | | | | | |

Photo 1 of 2 : SP_2022_RD2062_311_5_20220406_00009.jpg



08/25/2021: View of the erosion looking upstream.

| | | | |
|--|--|---|---|
| * Location LS : Land Side N/A : Not Applicable WS : Water Side CR : Crown | ** Rating A : Acceptable M : Minimally Acceptable U : Unacceptable | N : Not Inspected/Rated C : Corrected A/W : Acceptable but Monitor & Maintain | + Issue Type Ma : Maintenance Deficiency Ob : Design & System Obsolescence En : Enforcement |
|--|--|---|---|

**Flood Control Project Maintenance
Levee Inspections**

Levee Inspection Report By Mile - Spring 2022

Reclamation District No. 2062 Stewart

| Waterway | Bank | Unit Miles | Inspection Start/End | Inspector |
|-----------------------|------|------------|--------------------------|-----------------|
| Unit No. 03 Old River | Left | 5.55 | 04/26/2022 04/26/2022 | Alberto De Leon |

| | | | | | |
|----------|--------------------|--------------|----|------------------------|---------------|
| LM Start | 1.39 | Rating ** | M | Issue No. | 5 (cont) |
| LM End | 1.40 | Issue Type + | Ma | Location * | WS |
| Category | Supplemental | | | GPS Latitude/Longitude | |
| | | | | Start | End |
| Item | DWR Erosion Survey | | | 37.821380 ° | 37.821380 ° |
| | | | | -121.376900 ° | -121.376900 ° |
| DWR ID | RD2062U03RM31.28 | | | | |

Photo 2 of 2 : SP_2022_RD2062_311_5_20220406_00010.jpg



08/25/2021: Close-up view of the site.

| | | | | | |
|---|-------------------------|--------------|-----|------------------------|---------------|
| LM Start | 1.46 | Rating ** | A/W | Issue No. | 34 |
| LM End | 1.50 | Issue Type + | Ma | Location * | LS |
| Category | Earthen Levee | | | GPS Latitude/Longitude | |
| | | | | Start | End |
| Item | Animal Control | | | 37.821657 ° | 37.821358 ° |
| | | | | -121.375657 ° | -121.374915 ° |
| DWR ID | DWR_RD2062_03_f_2019_34 | | | | |
| Comment Code | | | | | |
| A3 : No rodents visible, but rodent burrows visible; need to backfill and compact or grout burrows. | | | | | |
| Inspector Comment | | | | | |
| | | | | | |

No Photos

| | | | | | |
|---|-------------------------|--------------|----|------------------------|---------------|
| LM Start | 1.77 | Rating ** | M | Issue No. | 25 |
| LM End | 1.77 | Issue Type + | Ma | Location * | LS |
| Category | Earthen Levee | | | GPS Latitude/Longitude | |
| | | | | Start | End |
| Item | Animal Control | | | 37.820805 ° | 37.820805 ° |
| | | | | -121.370224 ° | -121.370224 ° |
| DWR ID | DWR_RD2062_03_s_2022_25 | | | | |
| Comment Code | | | | | |
| A3 : No rodents visible, but rodent burrows visible; need to backfill and compact or grout burrows. | | | | | |
| Inspector Comment | | | | | |
| | | | | | |

Photo 1 of 1 : SP_2022_RD2062_311_25_20220428_00042.jpg



View of large animal burrow along the landside slope. Spring 2022

| | | | | | |
|--|--|---|--|---|--|
| * Location LS : Land Side N/A : Not Applicable WS : Water Side CR : Crown | | ** Rating A : Acceptable M : Minimally Acceptable U : Unacceptable | | + Issue Type Ma : Maintenance Deficiency Ob : Design & System Obsolescence En : Enforcement | |
| | | N : Not Inspected/Rated C : Corrected A/W : Acceptable but Monitor & Maintain | | | |

**Flood Control Project Maintenance
Levee Inspections**

Levee Inspection Report By Mile - Spring 2022

Reclamation District No. 2062 Stewart

| Waterway | Bank | Unit Miles | Inspection Start/End | Inspector |
|-----------------------|------|------------|--------------------------|-----------------|
| Unit No. 03 Old River | Left | 5.55 | 04/26/2022 04/26/2022 | Alberto De Leon |

| | | | | | |
|--|----------------------|--------------|----|------------------------|---------------|
| LM Start | 2.12 | Rating ** | M | Issue No. | 12 |
| LM End | 2.12 | Issue Type + | En | Location * | |
| Category | Supplemental | | | GPS Latitude/Longitude | |
| | | | | Start | End |
| Item | DWR UCIP Field Study | | | 37.818632 ° | 37.818632 ° |
| | | | | -121.364856 ° | -121.364856 ° |
| DWR ID | 19201 | | | | |
| Comment Code | | | | | |
| Inspector Comment | | | | | |
| FS_ID:72765 DS_ID:19201 EP_NO: N/A Repair Type: Non-Urgent Crossing Status: Found UCIP Comments: 03/22/2022 Record updated from No Action Needed to Non-Urgent. No permit has been identified authorizing pipe. (D.Sanoski - DWR UCIP) 11/15/2016 Per phone conversation with Lyn Hale of RD2062, steel riser that housed the air relief valve was knocked over by a mower. The hole in the levee slope was created by this mistake and not indicative of pipe failure. A new HDPE standpipe was installed on 11/11/2016. This crossing has been downgraded from Urgent to No Action Needed. (K. Fazel - UCIP)11/11/2016 Per email exchange between John Hale of RD2062 and Max Khashchuk, the hole in the levee has been repaired and standpipe installed in its place. Unclear whether pipe itself was repaired. Awaiting more information from LMA. (K. Fazel - UCIP)09/28/2016 DWR FPIIB Inspector Max Khashchuk provided the attached photo showing a hole in the LS slope likely resulting from failure in pipe. Crossing has been upgraded from No Action Needed to Urgent. (K. Fazel - UCIP) FIELD_STRUCT_DESC: 18-inch concrete encased steel irrigation discharge pipe through the levee, 10 feet below the crown. Two cutoff walls. Pump in a pump house on a concrete sump in the stream. Gate valve under walkway on the waterside (WS). Flap gate in a concrete distribution box on the landside (LS). 2-inch electrical conduit on the WS to the service pole at the LS toe. Timber bulkhead and pad on the WS slope. High-density polyethylene (HDPE) standpipe houses air relief valve on the LS slope. Installed by USACE in 1963. [Additional Reference(s): DWR Levee Log, 2007. USACE San Joaquin O&M Manual 9, April 1964, (HLM 2.16)]. FS Date: 3/22/2022 12:53:42 PM | | | | | |

Photo 1 of 3 : UCIP_SP_2022_72765_109186.jpg



Top of Levee: view of crown.

| | | |
|--|---|---|
| * Location LS : Land Side N/A : Not Applicable WS : Water Side CR : Crown | ** Rating A : Acceptable M : Minimally Acceptable U : Unacceptable N : Not Inspected/Rated C : Corrected A/W : Acceptable but Monitor & Maintain | + Issue Type Ma : Maintenance Deficiency Ob : Design & System Obsolescence En : Enforcement |
|--|---|---|

**Flood Control Project Maintenance
Levee Inspections**

Levee Inspection Report By Mile - Spring 2022

Reclamation District No. 2062 Stewart

| Waterway | Bank | Unit Miles | Inspection Start/End | Inspector |
|-----------------------|------|------------|--------------------------|-----------------|
| Unit No. 03 Old River | Left | 5.55 | 04/26/2022 04/26/2022 | Alberto De Leon |

| | | | | | |
|----------|----------------------|--------------|----|------------------------|------------------|
| LM Start | 2.12 | Rating ** | M | Issue No. | 12 (cont) |
| LM End | 2.12 | Issue Type + | En | Location * | |
| Category | Supplemental | | | GPS Latitude/Longitude | |
| | | | | Start | End |
| Item | DWR UCIP Field Study | | | 37.818632 ° | 37.818632 ° |
| | | | | -121.364856 ° | -121.364856 ° |
| DWR ID | 19201 | | | | |

Photo 2 of 3 : UCIP_SP_2022_72765_109187.jpg



Land-Side: view of standpipes on slope.

| | | | | | |
|----------|-------------|--------------|----|------------|------------------|
| LM Start | 2.12 | Rating ** | M | Issue No. | 12 (cont) |
| LM End | 2.12 | Issue Type + | En | Location * | |

Photo 3 of 3 : UCIP_SP_2022_72765_109188.jpg



Water-Side: view of pipe and butterfly valve under walkway.

| | | | | | |
|---|-------------------------|--------------|-----|------------------------|---------------|
| LM Start | 2.75 | Rating ** | A/W | Issue No. | 19 |
| LM End | 3.50 | Issue Type + | Ma | Location * | LS |
| Category | Earthen Levee | | | GPS Latitude/Longitude | |
| | | | | Start | End |
| Item | Animal Control | | | 37.816368 ° | 37.818057 ° |
| | | | | -121.354684 ° | -121.344222 ° |
| DWR ID | DWR_RD2062_03_f_2020_19 | | | | |
| Comment Code | | | | | |
| A3 : No rodents visible, but rodent burrows visible; need to backfill and compact or grout burrows. | | | | | |
| Inspector Comment | | | | | |
| | | | | | |

No Photos

| | | | | | |
|---|--|--|--|--|--|
| * Location LS : Land Side N/A : Not Applicable WS : Water Side CR : Crown | | ** Rating A : Acceptable N : Not Inspected/Rated M : Minimally Acceptable C : Corrected U : Unacceptable A/W : Acceptable but Monitor & Maintain | | + Issue Type Ma : Maintenance Deficiency Ob : Design & System Obsolescence En : Enforcement | |
|---|--|--|--|--|--|

**Flood Control Project Maintenance
Levee Inspections**

Levee Inspection Report By Mile - Spring 2022

Reclamation District No. 2062 Stewart

| Waterway | Bank | Unit Miles | Inspection Start/End | Inspector |
|-----------------------|------|------------|--------------------------|--------------------|
| Unit No. 03 Old River | Left | 5.55 | 04/26/2022 04/26/2022 | Alberto De Leon |

| | | | | | | |
|---|----------------------|--------------|----|------------------------|---------------|--|
| LM Start | 2.77 | Rating ** | M | Issue No. | 13 | |
| LM End | 2.77 | Issue Type + | En | Location * | | |
| Category | Supplemental | | | GPS Latitude/Longitude | | |
| | | | | Start | End | |
| Item | DWR UCIP Field Study | | | 37.816362 ° | 37.816362 ° | |
| | | | | -121.354339 ° | -121.354339 ° | |
| DWR ID | 19202 | | | | | |
| Comment Code | | | | | | |
| | | | | | | |
| Inspector Comment | | | | | | |
| FS_ID:72770 DS_ID:19202 EP_NO: 2505 Repair Type: Non-Urgent Crossing Status: Found UCIP Comments: 03/22/2022 Record remains Non-Urgent. Maintenance compliance issue with risers filled with soil. (D.Sanoski - DWR UCIP) 10/22/2013 Pumphouse roof missing, siphon breaker buried by dirt in CMP riser, and 2.25 inch electric conduit and power pole on landside. (P. Khoi - DWR UCIP) FIELD_STRUCT_DESC: 2 of 2: 16-inch irrigation discharge pipe of an unknown material through the levee, 6.5 feet below the crown. Pump in a pump house on a pile structure in the stream. Timber walkway to the pump. Siphon breaker in a corrugated metal pipe (CMP) riser on the landside (LS) slope. Concrete distribution box at the LS toe. Timber bulkhead and slab on the waterside (WS) slope. Installed by USACE in 1963. (Plans for the installation of two irrigation pumps on the bank to replace an existing pumping plant at this location authorized under Permit No. 2505, 1959 - Reclamation District No. 2062). [Additional Reference(s): DWR Levee Log, 2007. USACE San Joaquin O&M Manual 9, April 1964, (HLM 2.81)]. FS Date: 3/22/2022 12:57:00 PM | | | | | | |

| | | | | | |
|----------|-------------|--------------|----|------------|------------------|
| LM Start | 2.77 | Rating ** | M | Issue No. | 13 (cont) |
| LM End | 2.77 | Issue Type + | En | Location * | |

Photo 1 of 3 : UCIP_SP_2022_72770_109191.jpg



Top of Levee: view of crown.

Photo 2 of 3 : UCIP_SP_2022_72770_109192.jpg



Land-Side: view of abandoned standpipes on slope.

| | | | |
|--|--|---|---|
| * Location LS : Land Side N/A : Not Applicable WS : Water Side CR : Crown | ** Rating A : Acceptable M : Minimally Acceptable U : Unacceptable | N : Not Inspected/Rated C : Corrected A/W : Acceptable but Monitor & Maintain | + Issue Type Ma : Maintenance Deficiency Ob : Design & System Obsolescence En : Enforcement |
|--|--|---|---|

**Flood Control Project Maintenance
Levee Inspections**

Levee Inspection Report By Mile - Spring 2022

Reclamation District No. 2062 Stewart

| Waterway | Bank | Unit Miles | Inspection Start/End | Inspector |
|-----------------------|------|------------|--------------------------|--------------------|
| Unit No. 03 Old River | Left | 5.55 | 04/26/2022 04/26/2022 | Alberto De Leon |

| | | | | | |
|----------|----------------------|--------------|------------------------|---------------|------------------|
| LM Start | 2.77 | Rating ** | M | Issue No. | 13 (cont) |
| LM End | 2.77 | Issue Type + | En | Location * | |
| Category | Supplemental | | GPS Latitude/Longitude | | |
| | | | Start | End | |
| Item | DWR UCIP Field Study | | 37.816362 ° | 37.816362 ° | |
| | | | -121.354339 ° | -121.354339 ° | |
| DWR ID | 19202 | | | | |

Photo 3 of 3 : UCIP_SP_2022_72770_109194.jpg



Water-Side: view of slope.

| | | | | | |
|----------|----------------------|--------------|------------------------|---------------|-----------|
| LM Start | 2.77 | Rating ** | M | Issue No. | 14 |
| LM End | 2.77 | Issue Type + | En | Location * | |
| Category | Supplemental | | GPS Latitude/Longitude | | |
| | | | Start | End | |
| Item | DWR UCIP Field Study | | 37.816362 ° | 37.816362 ° | |
| | | | -121.354334 ° | -121.354334 ° | |
| DWR ID | 19205 | | | | |

Comment Code

Inspector Comment

FS_ID:72771
DS_ID:19205
EP_NO: 2505
Repair Type: Non-Urgent
Crossing Status: Found
UCIP Comments: 03/22/2022 Record remains Non-Urgent.
Maintenance compliance issue with risers filled with soil. (D.Sanoski - DWR UCIP)
10/22/2013 Pumphouse roof missing, siphon breaker buried by dirt in CMP riser, and 2.25 inch electric conduit and power pole on landside. (P. Khoi - DWR UCIP)
FIELD_STRUCT_DESC: 1 of 2: 14-inch irrigation discharge pipe of an unknown material through the levee, 6.5 feet below the crown. Pump in a pump house on a pile structure in the stream. Timber walkway to the pump. Siphon breaker in a corrugated metal pipe (CMP) riser on the landside (LS) slope. Concrete distribution box at the LS toe. Timber bulkhead and slab on the waterside (WS) slope. Installed by USACE in 1963. (Plans for the installation of two irrigation pumps on the bank to replace an existing pumping plant at this location authorized under Permit No. 2505, 1959 - Reclamation District No. 2062). [Additional Reference(s): DWR Levee Log, 2007. USACE San Joaquin O&M Manual 9, April 1964, (HLM 2.81)].
FS Date: 3/22/2022 1:05:00 PM

Photo 1 of 3 : UCIP_SP_2022_72771_109195.jpg



Top of Levee: view of crown.

| | | | |
|--|--|--|---|
| * Location LS : Land Side N/A : Not Applicable WS : Water Side CR : Crown | ** Rating A : Acceptable M : Minimally Acceptable U : Unacceptable | N : Not Inspected/Rated C : Corrected A/W : Acceptable but Monitor & Maintain | + Issue Type Ma : Maintenance Deficiency Ob : Design & System Obsolescence En : Enforcement |
|--|--|--|---|

**Flood Control Project Maintenance
Levee Inspections**

Levee Inspection Report By Mile - Spring 2022

Reclamation District No. 2062 Stewart

| Waterway | Bank | Unit Miles | Inspection Start/End | Inspector |
|-----------------------|------|------------|--------------------------|-----------------|
| Unit No. 03 Old River | Left | 5.55 | 04/26/2022 04/26/2022 | Alberto De Leon |

| | | | | | |
|----------|----------------------|--------------|------------------------|---------------|------------------|
| LM Start | 2.77 | Rating ** | M | Issue No. | 14 (cont) |
| LM End | 2.77 | Issue Type + | En | Location * | |
| Category | Supplemental | | GPS Latitude/Longitude | | |
| | | | Start | End | |
| Item | DWR UCIP Field Study | | 37.816362 ° | 37.816362 ° | |
| | | | -121.354334 ° | -121.354334 ° | |
| DWR ID | 19205 | | | | |

Photo 2 of 3 : UCIP_SP_2022_72771_109196.jpg



Land-Side: view of soil-filled risers on slope.

| | | | | | |
|----------|-------------|--------------|----|------------|------------------|
| LM Start | 2.77 | Rating ** | M | Issue No. | 14 (cont) |
| LM End | 2.77 | Issue Type + | En | Location * | |

Photo 3 of 3 : UCIP_SP_2022_72771_109197.jpg



Water-Side: view of pipes to pumphouse.

| | | | | | |
|---|-------------------------|--------------|----|------------------------|---------------|
| LM Start | 3.61 | Rating ** | C | Issue No. | 18 |
| LM End | 3.83 | Issue Type + | Ma | Location * | LS |
| Category | Earthen Levee | | | GPS Latitude/Longitude | |
| | | | | Start | End |
| Item | Animal Control | | | 37.816942 ° | 37.818261 ° |
| | | | | -121.342902 ° | -121.340544 ° |
| DWR ID | DWR_RD2062_03_s_2020_18 | | | | |
| Comment Code | | | | | |
| A3 : No rodents visible, but rodent burrows visible; need to backfill and compact or grout burrows. | | | | | |
| Inspector Comment | | | | | |
| | | | | | |

No Photos

| | | | | | |
|--|--|---|--|---|--|
| * Location LS : Land Side N/A : Not Applicable WS : Water Side CR : Crown | | ** Rating A : Acceptable M : Minimally Acceptable U : Unacceptable N : Not Inspected/Rated C : Corrected A/W : Acceptable but Monitor & Maintain | | + Issue Type Ma : Maintenance Deficiency Ob : Design & System Obsolescence En : Enforcement | |
|--|--|---|--|---|--|

**Flood Control Project Maintenance
Levee Inspections**

Levee Inspection Report By Mile - Spring 2022

Reclamation District No. 2062 Stewart

| Waterway | Bank | Unit Miles | Inspection Start/End | Inspector |
|-----------------------|------|------------|--------------------------|-----------------|
| Unit No. 03 Old River | Left | 5.55 | 04/26/2022 04/26/2022 | Alberto De Leon |

| | | | | | |
|-------------------|-------------------------|--------------|----|------------------------|---------------|
| LM Start | 3.91 | Rating ** | M | Issue No. | 23 |
| LM End | 3.91 | Issue Type + | En | Location * | LS |
| Category | Earthen Levee | | | GPS Latitude/Longitude | |
| | | | | Start | End |
| Item | Encroachments | | | 37.819386 ° | 37.819386 ° |
| | | | | -121.340369 ° | -121.340369 ° |
| DWR ID | DWR_RD2062_03_s_2022_23 | | | | |
| Comment Code | | | | | |
| PR : Prunings | | | | | |
| Inspector Comment | | | | | |
| | | | | | |

Photo 1 of 1 : SP_2022_RD2062_311_23_20220428_00041.jpg



View of landscape debris along the landside easement. Spring 2022

| | | | | | |
|---|--------------------|--------------|-----|------------------------|---------------|
| LM Start | 4.00 | Rating ** | A/W | Issue No. | 1 |
| LM End | 4.01 | Issue Type + | Ma | Location * | WS |
| Category | Supplemental | | | GPS Latitude/Longitude | |
| | | | | Start | End |
| Item | DWR Erosion Survey | | | 37.820750 ° | 37.820750 ° |
| | | | | -121.340159 ° | -121.340159 ° |
| DWR ID | RD2062U03RM33.92 | | | | |
| Comment Code | | | | | |
| | | | | | |
| Inspector Comment | | | | | |
| Site ID: RD2062U03RM33.92 | | | | | |
| 08/25/2021: No significant changes were observed since the previous inspection. | | | | | |
| 09/30/2020: From 2018 to present, no significant changes were observed during the annual survey. The site is not rated due to the relatively wide berm. | | | | | |
| 09/13/2017: The erosion site is immediately downstream of a sharp river bend. | | | | | |

Photo 1 of 2 : SP_2022_RD2062_311_1_20220406_00001.jpg



08/25/2021: Front view of the erosion.

| | | | |
|--|--|---|---|
| * Location LS : Land Side N/A : Not Applicable WS : Water Side CR : Crown | ** Rating A : Acceptable M : Minimally Acceptable U : Unacceptable | N : Not Inspected/Rated C : Corrected A/W : Acceptable but Monitor & Maintain | + Issue Type Ma : Maintenance Deficiency Ob : Design & System Obsolescence En : Enforcement |
|--|--|---|---|

**Flood Control Project Maintenance
Levee Inspections**

Levee Inspection Report By Mile - Spring 2022

Reclamation District No. 2062 Stewart

| Waterway | Bank | Unit Miles | Inspection Start/End | Inspector |
|-----------------------|------|------------|--------------------------|-----------------|
| Unit No. 03 Old River | Left | 5.55 | 04/26/2022 04/26/2022 | Alberto De Leon |

| | | | | | |
|----------|--------------------|--------------|-----|------------------------|---------------|
| LM Start | 4.00 | Rating ** | A/W | Issue No. | 1 (cont) |
| LM End | 4.01 | Issue Type + | Ma | Location * | WS |
| Category | Supplemental | | | GPS Latitude/Longitude | |
| | | | | Start | End |
| Item | DWR Erosion Survey | | | 37.820750 ° | 37.820750 ° |
| | | | | -121.340159 ° | -121.340159 ° |
| DWR ID | RD2062U03RM33.92 | | | | |

Photo 2 of 2 : SP_2022_RD2062_311_1_20220406_00002.jpg



08/25/2021: Another view of the erosion.

| | | | | | |
|---|-------------------------|--------------|----|------------------------|---------------|
| LM Start | 4.03 | Rating ** | C | Issue No. | 17 |
| LM End | 4.03 | Issue Type + | Ma | Location * | LS |
| Category | Earthen Levee | | | GPS Latitude/Longitude | |
| | | | | Start | End |
| Item | Animal Control | | | 37.821111 ° | 37.821111 ° |
| | | | | -121.339867 ° | -121.339867 ° |
| DWR ID | DWR_RD2062_03_f_2021_17 | | | | |
| Comment Code | | | | | |
| A3 : No rodents visible, but rodent burrows visible; need to backfill and compact or grout burrows. | | | | | |
| Inspector Comment | | | | | |
| | | | | | |

No Photos

| | | | | | |
|---|-------------------------|--------------|----|------------------------|---------------|
| LM Start | 4.86 | Rating ** | C | Issue No. | 24 |
| LM End | 4.86 | Issue Type + | Ma | Location * | LS |
| Category | Earthen Levee | | | GPS Latitude/Longitude | |
| | | | | Start | End |
| Item | Animal Control | | | 37.812501 ° | 37.812501 ° |
| | | | | -121.336125 ° | -121.336125 ° |
| DWR ID | DWR_RD2062_03_s_2021_24 | | | | |
| Comment Code | | | | | |
| A3 : No rodents visible, but rodent burrows visible; need to backfill and compact or grout burrows. | | | | | |
| Inspector Comment | | | | | |
| | | | | | |

No Photos

| | | | |
|--|--|---|---|
| * Location LS : Land Side N/A : Not Applicable WS : Water Side CR : Crown | ** Rating A : Acceptable M : Minimally Acceptable U : Unacceptable | N : Not Inspected/Rated C : Corrected A/W : Acceptable but Monitor & Maintain | + Issue Type Ma : Maintenance Deficiency Ob : Design & System Obsolescence En : Enforcement |
|--|--|---|---|

**Flood Control Project Maintenance
Levee Inspections**

Levee Inspection Report By Mile - Spring 2022

Reclamation District No. 2062 Stewart

| Waterway | Bank | Unit Miles | Inspection Start/End | Inspector |
|-----------------------|------|------------|--------------------------|-----------------|
| Unit No. 03 Old River | Left | 5.55 | 04/26/2022 04/26/2022 | Alberto De Leon |

| | | | | | |
|---|-------------------------|--------------|----|------------------------|---------------|
| LM Start | 5.11 | Rating ** | C | Issue No. | 20 |
| LM End | 5.11 | Issue Type + | Ma | Location * | LS |
| Category | Earthen Levee | | | GPS Latitude/Longitude | |
| | | | | Start | End |
| Item | Animal Control | | | 37.808902 ° | 37.808902 ° |
| | | | | -121.335346 ° | -121.335346 ° |
| DWR ID | DWR_RD2062_03_s_2021_20 | | | | |
| Comment Code | | | | | |
| A3 : No rodents visible, but rodent burrows visible; need to backfill and compact or grout burrows. | | | | | |
| Inspector Comment | | | | | |
| | | | | | |

No Photos

| | | | | | | |
|---|----------------------|--------------|----|------------------------|---------------|--|
| LM Start | 5.37 | Rating ** | M | Issue No. | 15 | |
| LM End | 5.37 | Issue Type + | En | Location * | | |
| Category | Supplemental | | | GPS Latitude/Longitude | | |
| | | | | Start | End | |
| Item | DWR UCIP Field Study | | | 37.807305 ° | 37.807305 ° | |
| | | | | -121.331290 ° | -121.331290 ° | |
| DWR ID | 19203 | | | | | |
| Comment Code | | | | | | |
| | | | | | | |
| Inspector Comment | | | | | | |
| FS_ID:72768 DS_ID:19203 EP_NO: N/A Repair Type: Non-Urgent Crossing Status: Found UCIP Comments: 03/22/2022 Record remains Non-Urgent. No permit has been identified authorizing pipe. Crossing appears abandoned. Not found on LS, pipes cut on WS near water line, and pumphouse removed. (D.Sanoski - DWR UCIP) 10/22/2013 Siphon breakers not protected, flow meter and gage station on waterside, pump house on wooden pile structure, and walkway to the pumphouse. (P. Khoi - DWR UCIP) FIELD_STRUCT_DESC: 1 of 2: 16-inch irrigation discharge pipe of an unknown material through the levee, 4 feet below the crown. Pump in a pump house on a pile structure in the stream. Walkway to the pump house. Siphon breaker on the landside (LS) slope. Concrete distribution box on the LS berm. [Additional Reference(s): DWR Levee Log, 2007. USACE San Joaquin O&M Manual 9, April 1964, (HLM 5.45)]. FS Date: 3/22/2022 1:09:31 PM | | | | | | |

Photo 1 of 3 : UCIP_SP_2022_72768_109200.jpg



Top of Levee: view of crown.

| | | | |
|--|--|---|---|
| * Location LS : Land Side N/A : Not Applicable WS : Water Side CR : Crown | ** Rating A : Acceptable M : Minimally Acceptable U : Unacceptable | N : Not Inspected/Rated C : Corrected A/W : Acceptable but Monitor & Maintain | + Issue Type Ma : Maintenance Deficiency Ob : Design & System Obsolescence En : Enforcement |
|--|--|---|---|

**Flood Control Project Maintenance
Levee Inspections**

Levee Inspection Report By Mile - Spring 2022

Reclamation District No. 2062 Stewart

| Waterway | Bank | Unit Miles | Inspection Start/End | Inspector |
|-----------------------|------|------------|--------------------------|-----------------|
| Unit No. 03 Old River | Left | 5.55 | 04/26/2022 04/26/2022 | Alberto De Leon |

| | | | | | |
|----------|----------------------|--------------|------------------------|---------------|------------------|
| LM Start | 5.37 | Rating ** | M | Issue No. | 15 (cont) |
| LM End | 5.37 | Issue Type + | En | Location * | |
| Category | Supplemental | | GPS Latitude/Longitude | | |
| | | | Start | End | |
| Item | DWR UCIP Field Study | | 37.807305 ° | 37.807305 ° | |
| | | | -121.331290 ° | -121.331290 ° | |
| DWR ID | 19203 | | | | |

Photo 2 of 3 : UCIP_SP_2022_72768_109201.jpg



Land-Side: view of slope.

| | | | | | |
|----------|-------------|--------------|----|------------|------------------|
| LM Start | 5.37 | Rating ** | M | Issue No. | 15 (cont) |
| LM End | 5.37 | Issue Type + | En | Location * | |

Photo 3 of 3 : UCIP_SP_2022_72768_109202.jpg



Water-Side: view of open-ended pipe on slope.

| | | | |
|--|--|---|---|
| * Location LS : Land Side N/A : Not Applicable WS : Water Side CR : Crown | ** Rating A : Acceptable M : Minimally Acceptable U : Unacceptable | N : Not Inspected/Rated C : Corrected A/W : Acceptable but Monitor & Maintain | + Issue Type Ma : Maintenance Deficiency Ob : Design & System Obsolescence En : Enforcement |
|--|--|---|---|

**Flood Control Project Maintenance
Levee Inspections**

Levee Inspection Report By Mile - Spring 2022

Reclamation District No. 2062 Stewart

| Waterway | Bank | Unit Miles | Inspection Start/End | Inspector |
|-----------------------|------|------------|--------------------------|-----------------|
| Unit No. 03 Old River | Left | 5.55 | 04/26/2022 04/26/2022 | Alberto De Leon |

| | | | | | | |
|---|----------------------|--------------|----|------------------------|----|---------------|
| LM Start | 5.37 | Rating ** | M | Issue No. | 16 | |
| LM End | 5.37 | Issue Type + | En | Location * | | |
| Category | Supplemental | | | GPS Latitude/Longitude | | |
| | | | | Start | | End |
| Item | DWR UCIP Field Study | | | 37.807305 ° | | 37.807305 ° |
| | | | | -121.331276 ° | | -121.331276 ° |
| DWR ID | 19206 | | | | | |
| Comment Code | | | | | | |
| | | | | | | |
| Inspector Comment | | | | | | |
| FS_ID:72769 DS_ID:19206 EP_NO: N/A Repair Type: Non-Urgent Crossing Status: Found UCIP Comments: 03/22/2022 Record remains Non-Urgent. No permit has been identified authorizing pipe. Crossing appears abandoned. Not found on LS, pipes cut on WS near water line, and pumphouse removed. (D.Sanoski - DWR UCIP) 10/22/2013 Siphon breakers not protected, flow meter and gage station on waterside, pump house on wooden pile structure, and walkway to the pumphouse. (P. Khoi - DWR UCIP) FIELD_STRUCT_DESC: 2 of 2: 16-inch irrigation discharge pipe of an unknown material through the levee, 4 feet below the crown. Pump in a pump house on a pile structure in the stream. Walkway to the pump house. Siphon breaker on the landside (LS) slope. Concrete distribution box on the LS berm. [Additional Reference(s): DWR Levee Log, 2007. USACE San Joaquin O&M Manual 9, April 1964, (HLM 5.45)]. FS Date: 3/22/2022 1:13:49 PM | | | | | | |

Photo 1 of 3 : UCIP_SP_2022_72769_109205.jpg



Top of Levee: view of crown.

| | | | | | |
|----------|-------------|--------------|----|------------|------------------|
| LM Start | 5.37 | Rating ** | M | Issue No. | 16 (cont) |
| LM End | 5.37 | Issue Type + | En | Location * | |

Photo 2 of 3 : UCIP_SP_2022_72769_109206.jpg



Land-Side: view of slope.

| | | | |
|--|--|---|---|
| * Location LS : Land Side N/A : Not Applicable WS : Water Side CR : Crown | ** Rating A : Acceptable M : Minimally Acceptable U : Unacceptable | N : Not Inspected/Rated C : Corrected A/W : Acceptable but Monitor & Maintain | + Issue Type Ma : Maintenance Deficiency Ob : Design & System Obsolescence En : Enforcement |
|--|--|---|---|

**Flood Control Project Maintenance
Levee Inspections**

Levee Inspection Report By Mile - Spring 2022

Reclamation District No. 2062 Stewart

| Waterway | Bank | Unit Miles | Inspection Start/End | Inspector |
|-----------------------|------|------------|--------------------------|-----------------|
| Unit No. 03 Old River | Left | 5.55 | 04/26/2022 04/26/2022 | Alberto De Leon |

| | | | | | |
|----------|----------------------|--------------|----|------------------------|------------------|
| LM Start | 5.37 | Rating ** | M | Issue No. | 16 (cont) |
| LM End | 5.37 | Issue Type + | En | Location * | |
| Category | Supplemental | | | GPS Latitude/Longitude | |
| | | | | Start | End |
| Item | DWR UCIP Field Study | | | 37.807305 ° | 37.807305 ° |
| | | | | -121.331276 ° | -121.331276 ° |
| DWR ID | 19206 | | | | |

Photo 3 of 3 : UCIP_SP_2022_72769_109207.jpg



Water-Side: view of open-ended pipe on slope.

| | | | |
|--|--|---|---|
| * Location LS : Land Side N/A : Not Applicable WS : Water Side CR : Crown | ** Rating A : Acceptable M : Minimally Acceptable U : Unacceptable | N : Not Inspected/Rated C : Corrected A/W : Acceptable but Monitor & Maintain | + Issue Type Ma : Maintenance Deficiency Ob : Design & System Obsolescence En : Enforcement |
|--|--|---|---|