

**Flood Control Project Maintenance
Levee Inspections
Unit Cover Sheet**

Reclamation District No. 2062 Stewart

Waterway			Bank	Unit Miles
Unit No. 01 San Joaquin River			Left	2.64
	Spring (March - May)	Summer (June - August)	(September - November) Fall	Winter (December - February)
Unit Maintenance Rating (Fall Only)				
Date of Inspection	4/7/2021 - 4/7/2021			
DWR Inspector	Alberto De Leon			
Accompanied By	Tim Mello RD2062			

Summer & Winter Inspections

The Local Maintaining Agency (LMA) is responsible for summer and winter inspections. The LMA is required to submit a report regarding summer and winter inspections to the California Department of Water Resources (DWR).

DWR must be informed on the:

- a) completion of the inspection
- b) any changes other than the results of normal maintenance
- c) corrections to deficiencies noted in this report

If additional items are noted, further documentation of those items must also be submitted.

The LMA should submit this information to DWR using the LMA web application tool available at:

<http://cdec.water.ca.gov/lma.html>

If the LMA is unable to submit information on this webpage, please contact DWR for assistance.

The LMA should submit the information and any associated documentation by September 30 for summer inspections and March 31 for winter inspections.

**Flood Control Project Maintenance
Levee Inspections**

Levee Inspection Report By Mile - Spring 2021

Reclamation District No. 2062 Stewart

Waterway	Bank	Unit Miles	Inspection Start/End	Inspector
Unit No. 01 San Joaquin River	Left	2.64	04/07/2021 04/07/2021	Alberto De Leon

LM Start		Rating **	A	Issue No.	2
LM End		Issue Type +	Ma	Location *	
Category	Earthen Levee			GPS Latitude/Longitude	
				Start	End
Item	Operations & Maintenance Manuals				°
					°
DWR ID	DWR_RD2062_01_f_2013_2				
Comment Code					
Inspector Comment					
The O&M Manual is available at the LMA's office.					

No Photos

LM Start		Rating **	A	Issue No.	5	
LM End		Issue Type +	Ma	Location *		
Category	Earthen Levee			GPS Latitude/Longitude		
				Start		End
Item	Emergency Supplies & Equipment				°	°
					°	
DWR ID	DWR_RD2062_01_s_2013_5					
Comment Code						
Inspector Comment						
Adequate flood fight supplies are available on-site.						

No Photos

LM Start		Rating **	A	Issue No.	8		
LM End		Issue Type +	Ma	Location *			
Category	Earthen Levee			GPS Latitude/Longitude			
				Start	End		
Item	Flood Preparedness & Training				°		°
					°		°
DWR ID	DWR_RD2062_01_s_2013_8						
Comment Code							
Inspector Comment							
The LMA has a flood fight emergency response plan. LMA has attended DWR flood fight training class.							

No Photos

* Location LS : Land Side N/A : Not Applicable WS : Water Side CR : Crown	** Rating A : Acceptable M : Minimally Acceptable U : Unacceptable	N : Not Inspected/Rated C : Corrected A/W : Acceptable but Monitor & Maintain	+ Issue Type Ma : Maintenance Deficiency Ob : Design & System Obsolescence En : Enforcement
--	--	---	---

**Flood Control Project Maintenance
Levee Inspections**

Levee Inspection Report By Mile - Spring 2021

Reclamation District No. 2062 Stewart

Waterway	Bank	Unit Miles	Inspection Start/End	Inspector
Unit No. 01 San Joaquin River	Left	2.64	04/07/2021 04/07/2021	Alberto De Leon

LM Start	0.00	Rating **	M	Issue No.	7
LM End	0.88	Issue Type +	Ma	Location *	WS
Category	Earthen Levee			GPS Latitude/Longitude	
				Start	End
Item	Vegetation			37.807450 °	37.804096 °
				-121.328025 °	-121.313910 °
DWR ID	DWR_RD2062_01_s_2021_7				
Comment Code					
V1 : Control annual grass and weeds on the levee slopes and easements.					
Inspector Comment					

No Photos

LM Start	0.41	Rating **	A/W	Issue No.	13
LM End	0.41	Issue Type +	Ma	Location *	WS
Category	Earthen Levee			GPS Latitude/Longitude	
				Start	End
Item	Slope Stability			37.804510 °	37.804510 °
				-121.321988 °	-121.321988 °
DWR ID	DWR_RD2062_01_f_2020_13				
Comment Code					
S2 : Repair the levee slope damaged by foot traffic and prevent access where possible.					
Inspector Comment					
Pedestrian pathway on waterside slope needs to monitored for slope stability.					

No Photos

* Location LS : Land Side N/A : Not Applicable WS : Water Side CR : Crown	** Rating A : Acceptable M : Minimally Acceptable U : Unacceptable	N : Not Inspected/Rated C : Corrected A/W : Acceptable but Monitor & Maintain	+ Issue Type Ma : Maintenance Deficiency Ob : Design & System Obsolescence En : Enforcement
--	--	---	---

**Flood Control Project Maintenance
Levee Inspections**

Levee Inspection Report By Mile - Spring 2021

Reclamation District No. 2062 Stewart

Waterway	Bank	Unit Miles	Inspection Start/End	Inspector
Unit No. 01 San Joaquin River	Left	2.64	04/07/2021 04/07/2021	Alberto De Leon

LM Start	1.64	Rating **	M	Issue No.	1
LM End	1.64	Issue Type +	En	Location *	
Category	Supplemental		GPS Latitude/Longitude		
			Start	End	
Item	DWR UCIP Field Study		37.793521 °	37.793521 °	
			-121.315348 °	-121.315348 °	
DWR ID	19177				

Comment Code

Inspector Comment

FS_ID:22807
DS_ID:19177
EP_NO: 12679
Repair Type: Non-Urgent
Crossing Status: Found
UCIP Comments: - All 3 pipes on landside looks new.- Pumps, pump house, and pipes removed from waterside.- Land development activities going on in this area.- Needs to confirm from LMA or DWR Inspector about the crossing.
FIELD_STRUCT_DESC: 1 of 3: 16-inch steel irrigation discharge pipe through the levee, 5 feet below the crown. Electrical conduit through the levee. Slant pump in a pump house on the waterside (WS) slope. Siphon breaker on the landside (LS) slope. Service pole and concrete gate valve box at the landside (LS) toe. Installed by USACE in 1961. (Plans to replace rusted portions of two 16-inch irrigation pipes through the levee authorized under Permit No. 16124, 1993 - Reclamation District No. 2062). [Additional Reference(s): DWR Levee Log, 2007. USACE San Joaquin O&M Manual 9, April 1964, (HLM 1.65)].
FS Date: 10/22/2013

LM Start	1.64	Rating **	M	Issue No.	1 (cont)
LM End	1.64	Issue Type +	En	Location *	

Photo 1 of 3 : UCIP_SP_2021_22807_38905.jpg



WS view: pipes, walkway, and dismantled pumphouse (right).

Photo 2 of 3 : UCIP_SP_2021_22807_38904.jpg



WS view: 16-inch pipes on both sides of walkway and 10-inch pipe (on right) away from walkway.

*** Location**

LS : Land Side N/A : Not Applicable
WS : Water Side
CR : Crown

**** Rating**

A : Acceptable N : Not Inspected/Rated
M : Minimally Acceptable C : Corrected
U : Unacceptable A/W : Acceptable but Monitor & Maintain

+ Issue Type

Ma : Maintenance Deficiency
Ob : Design & System Obsolescence
En : Enforcement

**Flood Control Project Maintenance
Levee Inspections**

Levee Inspection Report By Mile - Spring 2021

Reclamation District No. 2062 Stewart

Waterway	Bank	Unit Miles	Inspection Start/End	Inspector
Unit No. 01 San Joaquin River	Left	2.64	04/07/2021 04/07/2021	Alberto De Leon

LM Start	1.64	Rating **	M	Issue No.	1 (cont)
LM End	1.64	Issue Type +	En	Location *	
Category	Supplemental		GPS Latitude/Longitude		
			Start	End	
Item	DWR UCIP Field Study		37.793521 °	37.793521 °	
			-121.315348 °	-121.315348 °	
DWR ID	19177				

Photo 3 of 3 : UCIP_SP_2021_22807_38903.jpg



WS view: two 16-inch pipes. Pumps were removed. Pumphouse dismantled.

LM Start	1.64	Rating **	M	Issue No.	3
LM End	1.64	Issue Type +	En	Location *	
Category	Supplemental		GPS Latitude/Longitude		
			Start	End	
Item	DWR UCIP Field Study		37.793510 °	37.793510 °	
			-121.315345 °	-121.315345 °	
DWR ID	19183				

Comment Code

Inspector Comment

FS_ID:22809
 DS_ID:19183
 EP_NO: 12679
 Repair Type: Non-Urgent
 Crossing Status: Found
 UCIP Comments: - All 3 pipes on landside looks new.- Pumps, pump house, and pipes removed from waterside.- Land development activities going on in this area.- Needs to confirm from LMA or DWR Inspector about the crossing.
 FIELD_STRUCT_DESC: 2 of 3: 16-inch steel irrigation discharge pipe through the levee, 5 feet below the crown. Electrical conduit through the levee. Slant pump in a pump house on the waterside (WS) slope. Siphon breaker on the landside (LS) slope. Service pole and concrete gate valve box at the landside (LS) toe. Installed by USACE in 1961. (Plans to replace rusted portions of two 16-inch irrigation pipes through the levee authorized under Permit No. 16124, 1993 - Reclamation District No. 2062). [Additional Reference(s): DWR Levee Log, 2007. USACE San Joaquin O&M Manual 9, April 1964, (HLM 1.65)].
 FS Date: 10/22/2013

Photo 1 of 3 : UCIP_SP_2021_22809_38913.jpg



WS view: pipes, walkway, and dismantled pumphouse (right).

* Location LS : Land Side N/A : Not Applicable WS : Water Side CR : Crown	** Rating A : Acceptable M : Minimally Acceptable U : Unacceptable	N : Not Inspected/Rated C : Corrected A/W : Acceptable but Monitor & Maintain	+ Issue Type Ma : Maintenance Deficiency Ob : Design & System Obsolescence En : Enforcement
--	--	---	---

**Flood Control Project Maintenance
Levee Inspections**

Levee Inspection Report By Mile - Spring 2021

Reclamation District No. 2062 Stewart

Waterway	Bank	Unit Miles	Inspection Start/End	Inspector
Unit No. 01 San Joaquin River	Left	2.64	04/07/2021 04/07/2021	Alberto De Leon

LM Start	1.64	Rating **	M	Issue No.	3 (cont)
LM End	1.64	Issue Type +	En	Location *	
Category	Supplemental			GPS Latitude/Longitude	
				Start	End
Item	DWR UCIP Field Study			37.793510 °	37.793510 °
				-121.315345 °	-121.315345 °
DWR ID	19183				

Photo 2 of 3 : UCIP_SP_2021_22809_38912.jpg



WS view: 16-inch pipes on both sides of walkway and 10-inch pipe (on right) away from walkway.

LM Start	1.64	Rating **	M	Issue No.	3 (cont)
LM End	1.64	Issue Type +	En	Location *	

Photo 3 of 3 : UCIP_SP_2021_22809_38911.jpg



WS view: two 16-inch pipes under walkway; pumps were removed.

* Location LS : Land Side N/A : Not Applicable WS : Water Side CR : Crown		** Rating A : Acceptable N : Not Inspected/Rated M : Minimally Acceptable C : Corrected U : Unacceptable A/W : Acceptable but Monitor & Maintain		+ Issue Type Ma : Maintenance Deficiency Ob : Design & System Obsolescence En : Enforcement
--	--	---	--	---

**Flood Control Project Maintenance
Levee Inspections**

Levee Inspection Report By Mile - Spring 2021

Reclamation District No. 2062 Stewart

Waterway	Bank	Unit Miles	Inspection Start/End	Inspector
Unit No. 01 San Joaquin River	Left	2.64	04/07/2021 04/07/2021	Alberto De Leon

LM Start	1.64	Rating **	M	Issue No.	4
LM End	1.64	Issue Type +	En	Location *	
Category	Supplemental			GPS Latitude/Longitude	
				Start	End
Item	DWR UCIP Field Study			37.793497 °	37.793497 °
				-121.315340 °	-121.315340 °
DWR ID	19184				

Comment Code

Inspector Comment

FS_ID:22810
DS_ID:19184
EP_NO: 12679
Repair Type: Non-Urgent
Crossing Status: Found
UCIP Comments: - All 3 pipes on landside looks new. No pump associated with 8-inch pipe.- Pumps, pump house, and pipes removed from waterside.- Land development activities going on in this area.- Needs to confirm from LMA or DWR Inspector about the crossing.
FIELD_STRUCT_DESC: 3 of 3: 8-inch steel irrigation discharge pipe through the levee, 8 feet below the crown. Electrical conduit through the levee. Slant pump in a pump house on the waterside (WS) slope. Siphon breaker on the landside (LS) slope. Service pole and concrete gate valve box at the landside (LS) toe. (Plans to install a 75-horsepower pump on the bank with a 10-inch steel discharge pipe through the levee authorized under Permit No. 12679, 1979 - Reclamation District No. 2062). [Additional Reference(s): DWR Levee Log, 2007].
FS Date: 10/22/2013

LM Start	1.64	Rating **	M	Issue No.	4 (cont)
LM End	1.64	Issue Type +	En	Location *	

Photo 1 of 3 : UCIP_SP_2021_22810_38918.jpg



WS view: pipes, walkway, and dismantled pumphouse (right).

Photo 2 of 3 : UCIP_SP_2021_22810_38917.jpg



WS view: electric conduit and 10-inch pipe (right). Dismantled/removed pipe and pump house (far right).

* Location LS : Land Side N/A : Not Applicable WS : Water Side CR : Crown		** Rating A : Acceptable N : Not Inspected/Rated M : Minimally Acceptable C : Corrected U : Unacceptable A/W : Acceptable but Monitor & Maintain		+ Issue Type Ma : Maintenance Deficiency Ob : Design & System Obsolescence En : Enforcement	
--	--	---	--	---	--

**Flood Control Project Maintenance
Levee Inspections**

Levee Inspection Report By Mile - Spring 2021

Reclamation District No. 2062 Stewart

Waterway	Bank	Unit Miles	Inspection Start/End	Inspector
Unit No. 01 San Joaquin River	Left	2.64	04/07/2021 04/07/2021	Alberto De Leon

LM Start	1.64	Rating **	M	Issue No.	4 (cont)
LM End	1.64	Issue Type +	En	Location *	
Category	Supplemental		GPS Latitude/Longitude		
			Start	End	
Item	DWR UCIP Field Study		37.793497 °	37.793497 °	
			-121.315340 °	-121.315340 °	
DWR ID	19184				

Photo 3 of 3 : UCIP_SP_2021_22810_38916.jpg



LS view: two 16-inch pipes (left) and one 10-inch pipe (right) in ditch.
Concrete box removed.

LM Start	1.66	Rating **	A/W	Issue No.	12
LM End	1.66	Issue Type +	Ma	Location *	WS
Category	Earthen Levee			GPS Latitude/Longitude	
				Start	End
Item	Slope Stability			37.793207 °	37.793207 °
				-121.315214 °	-121.315214 °
DWR ID	DWR_RD2062_01_f_2020_12				
Comment Code					
S2 : Repair the levee slope damaged by foot traffic and prevent access where possible.					
Inspector Comment					
Pedestrian pathway on waterside slope needs to monitored for slope stability.					

Photo 1 of 1 : SP_2021_RD2062_309_12_20210210_00002.jpg



View of pedestrian pathway on waterside slope. Fall 2020

LM Start	1.87	Rating **	A/W	Issue No.	11
LM End	1.87	Issue Type +	Ma	Location *	WS
Category	Earthen Levee			GPS Latitude/Longitude	
				Start	End
Item	Slope Stability			37.791827 °	37.791827 °
				-121.312045 °	-121.312045 °
DWR ID	DWR_RD2062_01_f_2020_11				
Comment Code					
S2 : Repair the levee slope damaged by foot traffic and prevent access where possible.					
Inspector Comment					
Pedestrian pathway on waterside slope needs to monitored for slope stability.					

No Photos

* Location LS : Land Side N/A : Not Applicable WS : Water Side CR : Crown	** Rating A : Acceptable M : Minimally Acceptable U : Unacceptable	N : Not Inspected/Rated C : Corrected A/W : Acceptable but Monitor & Maintain	+ Issue Type Ma : Maintenance Deficiency Ob : Design & System Obsolescence En : Enforcement
--	--	---	---

**Flood Control Project Maintenance
Levee Inspections**

Levee Inspection Report By Mile - Spring 2021

Reclamation District No. 2062 Stewart

Waterway	Bank	Unit Miles	Inspection Start/End	Inspector
Unit No. 01 San Joaquin River	Left	2.64	04/07/2021 04/07/2021	Alberto De Leon

LM Start	1.91	Rating **	A/W	Issue No.	10
LM End	1.91	Issue Type +	Ma	Location *	WS
Category	Earthen Levee			GPS Latitude/Longitude	
				Start	End
Item	Slope Stability			37.791977 °	37.791977 °
				-121.311383 °	-121.311383 °
DWR ID	DWR_RD2062_01_f_2020_10				
Comment Code					
S2 : Repair the levee slope damaged by foot traffic and prevent access where possible.					
Inspector Comment					

Photo 1 of 1 : SP_2021_RD2062_309_10_20210210_00001.jpg



View of pedestrian pathway on waterside slope. Fall 2020

* Location LS : Land Side N/A : Not Applicable WS : Water Side CR : Crown	** Rating A : Acceptable M : Minimally Acceptable U : Unacceptable	N : Not Inspected/Rated C : Corrected A/W : Acceptable but Monitor & Maintain	+ Issue Type Ma : Maintenance Deficiency Ob : Design & System Obsolescence En : Enforcement
--	--	---	---

**Flood Control Project Maintenance
Levee Inspections
Unit Cover Sheet**

Reclamation District No. 2062 Stewart

Waterway			Bank	Unit Miles
Unit No. 02 Paradise Cut			Right	3.96
	Spring (March - May)	Summer (June - August)	(September - November) Fall	Winter (December - February)
Unit Maintenance Rating (Fall Only)				
Date of Inspection	4/7/2021 - 4/7/2021			
DWR Inspector	Alberto De Leon			
Accompanied By	Tim Mello RD2062			

Summer & Winter Inspections

The Local Maintaining Agency (LMA) is responsible for summer and winter inspections. The LMA is required to submit a report regarding summer and winter inspections to the California Department of Water Resources (DWR).

DWR must be informed on the:

- a) completion of the inspection
- b) any changes other than the results of normal maintenance
- c) corrections to deficiencies noted in this report

If additional items are noted, further documentation of those items must also be submitted.

The LMA should submit this information to DWR using the LMA web application tool available at:

<http://cdec.water.ca.gov/lma.html>

If the LMA is unable to submit information on this webpage, please contact DWR for assistance.

The LMA should submit the information and any associated documentation by September 30 for summer inspections and March 31 for winter inspections.

**Flood Control Project Maintenance
Levee Inspections**

Levee Inspection Report By Mile - Spring 2021

Reclamation District No. 2062 Stewart

Waterway	Bank	Unit Miles	Inspection Start/End	Inspector
Unit No. 02 Paradise Cut	Right	3.96	04/07/2021 04/07/2021	Alberto De Leon

LM Start	0.03	Rating **	A	Issue No.	10
LM End	3.96	Issue Type +	Ma	Location *	LS
Category	Earthen Levee			GPS Latitude/Longitude	
				Start	End
Item	Vegetation			37.778149 °	37.809302 °
				-121.333270 °	-121.390326 °
DWR ID	DWR_RD2062_02_s_2021_10				
Comment Code					
V1 : Control annual grass and weeds on the levee slopes and easements.					
Inspector Comment					

Photo 1 of 1 : SP_2021_RD2062_310_10_20210419_00026.jpg



View of well maintained vegetation along the landside slope and easement. Spring 2021

LM Start	0.03	Rating **	A	Issue No.	11
LM End	3.96	Issue Type +	Ma	Location *	WS
Category	Earthen Levee			GPS Latitude/Longitude	
				Start	End
Item	Vegetation			37.778149 °	37.809303 °
				-121.333270 °	-121.390326 °
DWR ID	DWR_RD2062_02_s_2021_11				
Comment Code					
V1 : Control annual grass and weeds on the levee slopes and easements.					
Inspector Comment					

Photo 1 of 1 : SP_2021_RD2062_310_11_20210419_00027.jpg



View of well maintained vegetation along the waterside slope. Spring 2021

*** Location**
LS : Land Side N/A : Not Applicable
WS : Water Side
CR : Crown

**** Rating**
A : Acceptable N : Not Inspected/Rated
M : Minimally Acceptable C : Corrected
U : Unacceptable A/W : Acceptable but Monitor & Maintain

+ Issue Type
Ma : Maintenance Deficiency
Ob : Design & System Obsolescence
En : Enforcement

**Flood Control Project Maintenance
Levee Inspections**

Levee Inspection Report By Mile - Spring 2021

Reclamation District No. 2062 Stewart

Waterway	Bank	Unit Miles	Inspection Start/End	Inspector
Unit No. 02 Paradise Cut	Right	3.96	04/07/2021 04/07/2021	Alberto De Leon

LM Start	0.56	Rating **	M	Issue No.	1	
LM End	0.56	Issue Type +	En	Location *		
Category	Supplemental			GPS Latitude/Longitude		
				Start		End
Item	DWR UCIP Field Study			37.784380 °		37.784380 °
				-121.338985 °		-121.338985 °
DWR ID	24697					
Comment Code						
Inspector Comment						
FS_ID:23110 DS_ID:24697 EP_NO: N/A Repair Type: Non-Urgent Crossing Status: Found UCIP Comments: Found on field with the help of USACE 2012 PI Report.Needs proper abandonment. FIELD_STRUCT_DESC: *ABANDONED* 24-inch steel irrigation discharge pipe through the levee, at an unknown depth. Damaged siphon breaker on the waterside (WS) slope. Pump on a concrete sump in an irrigation ditch on the landside (LS). Service pole on the LS slope. Pump disconnected from the service pole. FS Date: 10/23/2013						

LM Start	0.56	Rating **	M	Issue No.	1 (cont)
LM End	0.56	Issue Type +	En	Location *	

Photo 1 of 3 : UCIP_SP_2021_23110_39398.jpg



WS view: power pole (left), siphon breaker (marked- left), and steel pipe (right) on levee slope.

Photo 2 of 3 : UCIP_SP_2021_23110_39397.jpg



WS view: exposed steel pipe and damaged siphon breaker on levee slope.

* Location LS : Land Side N/A : Not Applicable WS : Water Side CR : Crown	** Rating A : Acceptable M : Minimally Acceptable U : Unacceptable	N : Not Inspected/Rated C : Corrected A/W : Acceptable but Monitor & Maintain	+ Issue Type Ma : Maintenance Deficiency Ob : Design & System Obsolescence En : Enforcement
--	--	---	---

Reclamation District No. 2062 Stewart

Waterway	Bank	Unit Miles	Inspection Start/End	Inspector
Unit No. 02 Paradise Cut	Right	3.96	04/07/2021 04/07/2021	Alberto De Leon

LM Start	0.56	Rating **	M	Issue No.	1 (cont)
LM End	0.56	Issue Type +	En	Location *	
Category	Supplemental			GPS Latitude/Longitude	
				Start	End
Item	DWR UCIP Field Study			37.784380 °	37.784380 °
				-121.338985 °	-121.338985 °
DWR ID	24697				

A photograph showing a large, rusted metal pipe protruding from a sandy bank into a body of green water. The pipe is surrounded by bare, tangled branches and some dry, brown foliage. The water is a murky green color, and the background shows more trees and a distant shoreline.

LM Start	0.75	Rating **	M	Issue No.	2
LM End	0.75	Issue Type +	En	Location *	
Category	Supplemental			GPS Latitude/Longitude	
				Start	End
Item	DWR UCIP Field Study			37.786130 °	37.786130 °
				-121.341564 °	-121.341564 °
DWR ID	19192				

	Comment Code
	Inspector Comment

FS_ID:23181
DS_ID:19192
EP_NO: 12427
Repair Type: Non-Urgent
Crossing Status: Found
UCIP Comments: - no siphon breaker found- levee toe erosion under walkway on waterside.- erosion around concrete standpipe on landside- may be base of the standpipe was leaking.
FIELD_STRUCT_DESC: 18-inch irrigation discharge pipe of an unknown material through the levee, 4.4 feet below the crown. Pump house on the waterside (WS) slope. Metal walkway from the pump house to the crown. Service pole on the WS. Flap gate, siphon breaker, and concrete distribution box on the landside (LS) slope. (Emergency plans to replace an existing 18-inch discharge pipe through the levee authorized under Permit No. 12427, 1978 - Reclamation District No. 2062). [Additional Reference(s): DWR Levee Log, 2007, 16-inch pipe referenced. USACE San Joaquin O&M Manual 9, April 1964, (HLM 0.76)].
FS Date: 10/23/2013

* Location	** Rating	+ Issue Type
LS : Land Side N/A : Not Applicable	A : Acceptable N : Not Inspected/Rated	Ma : Maintenance Deficiency
WS : Water Side	M : Minimally Acceptable C : Corrected	Ob : Design & System Obsolescence
CR : Crown	U : Unacceptable A/W : Acceptable but Monitor & Maintain	En : Enforcement

**Flood Control Project Maintenance
Levee Inspections**

Levee Inspection Report By Mile - Spring 2021

Reclamation District No. 2062 Stewart

Waterway	Bank	Unit Miles	Inspection Start/End	Inspector
Unit No. 02 Paradise Cut	Right	3.96	04/07/2021 04/07/2021	Alberto De Leon

LM Start	0.75	Rating **	M	Issue No.	2 (cont)
LM End	0.75	Issue Type +	En	Location *	
Category	Supplemental		GPS Latitude/Longitude		
			Start	End	
Item	DWR UCIP Field Study		37.786130 °	37.786130 °	
			-121.341564 °	-121.341564 °	
DWR ID	19192				

Photo 2 of 3 : UCIP_SP_2021_23181_39791.jpg



WS view: leaky slant pump in pumphouse on levee slope.

LM Start	0.75	Rating **	M	Issue No.	2 (cont)
LM End	0.75	Issue Type +	En	Location *	

Photo 3 of 3 : UCIP_SP_2021_23181_39790.jpg



WS view: oil leakage from slant pump. Pipe under pump house.

* Location LS : Land Side N/A : Not Applicable WS : Water Side CR : Crown	** Rating A : Acceptable M : Minimally Acceptable U : Unacceptable	N : Not Inspected/Rated C : Corrected A/W : Acceptable but Monitor & Maintain	+ Issue Type Ma : Maintenance Deficiency Ob : Design & System Obsolescence En : Enforcement
--	--	---	---

**Flood Control Project Maintenance
Levee Inspections**

Levee Inspection Report By Mile - Spring 2021

Reclamation District No. 2062 Stewart

Waterway	Bank	Unit Miles	Inspection Start/End	Inspector
Unit No. 02 Paradise Cut	Right	3.96	04/07/2021 04/07/2021	Alberto De Leon

LM Start	1.37	Rating **	M	Issue No.	3
LM End	1.37	Issue Type +	En	Location *	
Category	Supplemental			GPS Latitude/Longitude	
				Start	End
Item	DWR UCIP Field Study			37.791821 °	37.791821 °
				-121.350448 °	-121.350448 °
DWR ID	19193				

Comment Code

Inspector Comment

FS_ID:51468
DS_ID:19193
EP_NO: N/A
Repair Type: Non-Urgent
Crossing Status: Found
UCIP Comments: 04/05/2017: Pipe has been plugged as a flood fight measure and is likely to be replaced under a permit. MBK (Michael Moncrief) is working on the permit. Photo and update courtesy of Max Khashchuk as part of his 2017 Spring Inspection. (K. Fazel - UCIP)10/22/2013:- pumphouse on concrete sump in the channel.- erosion under walkway on waterside. (P. Amatya - DWR)
FIELD_STRUCT_DESC: 20-inch steel irrigation discharge pipe through the levee, 8 feet below the crown. Pump house on the waterside (WS) slope. Metal walkway from the pump house to the crown. Flap gate, siphon breaker, and concrete distribution box on the landside (LS) slope. [Additional Reference(s): DWR Levee Log, 2007, 18-inch pipe referenced. USACE San Joaquin O&M Manual 9, April 1964, (HLM 1.40), 18-inch pipe referenced].
FS Date: 4/6/2017

LM Start	1.37	Rating **	M	Issue No.	3 (cont)
LM End	1.37	Issue Type +	En	Location *	

Photo 1 of 3 : UCIP_SP_2021_51468_39195.jpg



WS view: pipe, walkway, and pumphouse on levee berm. Service pole on waterside.

Photo 2 of 3 : UCIP_SP_2021_51468_39194.jpg



WS view: leaky pump and control box in pumphouse.

* Location LS : Land Side N/A : Not Applicable WS : Water Side CR : Crown	** Rating A : Acceptable M : Minimally Acceptable U : Unacceptable	N : Not Inspected/Rated C : Corrected A/W : Acceptable but Monitor & Maintain	+ Issue Type Ma : Maintenance Deficiency Ob : Design & System Obsolescence En : Enforcement
--	--	---	---

**Flood Control Project Maintenance
Levee Inspections**

Levee Inspection Report By Mile - Spring 2021

Reclamation District No. 2062 Stewart

Waterway	Bank	Unit Miles	Inspection Start/End	Inspector
Unit No. 02 Paradise Cut	Right	3.96	04/07/2021 04/07/2021	Alberto De Leon

LM Start	1.37	Rating **	M	Issue No.	3 (cont)
LM End	1.37	Issue Type +	En	Location *	
Category	Supplemental			GPS Latitude/Longitude	
				Start	End
Item	DWR UCIP Field Study			37.791821 °	37.791821 °
				-121.350448 °	-121.350448 °
DWR ID	19193				

Photo 3 of 3 : UCIP_SP_2021_51468_39193.jpg



WS view: exposed steel pipe under walkway. Soil erosion under walkway. This may be due to leaky pipe joint.

LM Start	1.52	Rating **	M	Issue No.	17
LM End	1.52	Issue Type +	Ma	Location *	LS
Category	Earthen Levee			GPS Latitude/Longitude	
				Start	End
Item	Trim / Thin Trees			37.793046 °	37.793046 °
				-121.352584 °	-121.352584 °
DWR ID	DWR_RD2062_02_s_2021_17				
Comment Code					
T2 : Thin trees to allow visibility of the ground and room to flood fight.					
Inspector Comment					

No Photos

*** Location**
LS : Land Side N/A : Not Applicable
WS : Water Side
CR : Crown

**** Rating**
A : Acceptable N : Not Inspected/Rated
M : Minimally Acceptable C : Corrected
U : Unacceptable A/W : Acceptable but Monitor & Maintain

+ Issue Type
Ma : Maintenance Deficiency
Ob : Design & System Obsolescence
En : Enforcement

**Flood Control Project Maintenance
Levee Inspections**

Levee Inspection Report By Mile - Spring 2021

Reclamation District No. 2062 Stewart

Waterway	Bank	Unit Miles	Inspection Start/End	Inspector
Unit No. 02 Paradise Cut	Right	3.96	04/07/2021 04/07/2021	Alberto De Leon

LM Start	1.64	Rating **	U	Issue No.	4
LM End	1.64	Issue Type +	En	Location *	
Category	Supplemental			GPS Latitude/Longitude	
				Start	End
Item	DWR UCIP Field Study			37.794009 °	37.794009 °
				-121.354417 °	-121.354417 °
DWR ID	19194				

Comment Code

Inspector Comment

FS_ID:53375
DS_ID:19194
EP_NO: 4305
Repair Type: Urgent
Crossing Status: Found
UCIP Comments: 10/10/2018 Extremely overgrown vegetation did not allow visual inspection of WS levee erosion; however, there are indications based on vegetation growth patterns that the erosion is still present, so keeping crossing as Urgent (D. Sanoski - DWR UCIP).08/31/2016: Heavy sloughing and sink hole remains at the WS slope in alignment with pipe. Though sloughing is not affecting levee prism, it is still an indication of a pipe integrity problem. Oil leak at the pump but does not appear to impact the levee. (K. Fazel - UCIP)10/22/2013:- missing roof in pump house.- no protection for siphon breaker- huge erosion under pumphouse and levee slope on waterside. (P. Amatya - DWR)
FIELD_STRUCT_DESC: 1 of 2: 18-inch steel irrigation discharge pipe through the levee, 4.8 feet below the crown. Pump house on the waterside (WS) slope. Siphon breaker on the landside (LS) shoulder. Service pole on the LS shoulder. Concrete distribution box at the LS toe. (Plans for installation of two irrigation pumps on the bank to replace an old centrifugal pumping plant at the same location authorized under Permit No. 4305, 1963 - Reclamation District No. 2062) [Additional Reference(s): DWR Levee Log, 2007. USACE San Joaquin O&M Manual 9, April 1964, (HLM 1.67)].
FS Date: 10/10/2018 11:02:00 AM

LM Start	1.64	Rating **	U	Issue No.	4 (cont)
LM End	1.64	Issue Type +	En	Location *	

Photo 1 of 3 : UCIP_SP_2021_53375_39187.jpg



WS view: pipes, walkway, and pumphouse with missing roof (right).

Photo 2 of 3 : UCIP_SP_2021_53375_39186.jpg



WS view: walkway to pumphouse. Walkway in poor condition.

* Location LS : Land Side N/A : Not Applicable WS : Water Side CR : Crown		** Rating A : Acceptable N : Not Inspected/Rated M : Minimally Acceptable C : Corrected U : Unacceptable A/W : Acceptable but Monitor & Maintain		+ Issue Type Ma : Maintenance Deficiency Ob : Design & System Obsolescence En : Enforcement
--	--	---	--	---

**Flood Control Project Maintenance
Levee Inspections**

Levee Inspection Report By Mile - Spring 2021

Reclamation District No. 2062 Stewart

Waterway	Bank	Unit Miles	Inspection Start/End	Inspector
Unit No. 02 Paradise Cut	Right	3.96	04/07/2021 04/07/2021	Alberto De Leon

LM Start	1.64	Rating **	U	Issue No.	5 (cont)
LM End	1.64	Issue Type +	En	Location *	
Category	Supplemental		GPS Latitude/Longitude		
			Start	End	
Item	DWR UCIP Field Study		37.794014 °	37.794014 °	
			-121.354434 °	-121.354434 °	
DWR ID	19197				

Photo 2 of 3 : UCIP_SP_2021_53376_39175.jpg



WS view: walkway in poor condition, to pumphouse.

LM Start	1.64	Rating **	U	Issue No.	5 (cont)
LM End	1.64	Issue Type +	En	Location *	

Photo 3 of 3 : UCIP_SP_2021_53376_39174.jpg



WS view: two leaky slant pumps in pumphouse with missing roof.

LM Start	2.08	Rating **	M	Issue No.	16
LM End	2.42	Issue Type +	Ma	Location *	LS
Category	Earthen Levee			GPS Latitude/Longitude	
				Start	End
Item	Animal Control			37.797753 °	37.800706 °
				-121.361108 °	-121.366055 °
DWR ID	DWR_RD2062_02_s_2021_16				
Comment Code					
A3 : No rodents visible, but rodent burrows visible; need to backfill and compact or grout burrows.					
Inspector Comment					

No Photos

* Location LS : Land Side N/A : Not Applicable WS : Water Side CR : Crown	** Rating A : Acceptable M : Minimally Acceptable U : Unacceptable	N : Not Inspected/Rated C : Corrected A/W : Acceptable but Monitor & Maintain	+ Issue Type Ma : Maintenance Deficiency Ob : Design & System Obsolescence En : Enforcement
--	--	---	---

**Flood Control Project Maintenance
Levee Inspections**

Levee Inspection Report By Mile - Spring 2021

Reclamation District No. 2062 Stewart

Waterway	Bank	Unit Miles	Inspection Start/End	Inspector
Unit No. 02 Paradise Cut	Right	3.96	04/07/2021 04/07/2021	Alberto De Leon

LM Start	2.48	Rating **	M	Issue No.	14
LM End	2.48	Issue Type +	Ma	Location *	CR
Category	Earthen Levee			GPS Latitude/Longitude	
				Start	End
Item	Crown Surface / Depressions / Rutting			37.801107 °	37.801107 °
				-121.366872 °	-121.366872 °
DWR ID	DWR_RD2062_02_s_2021_14				
Comment Code					
C1 : Add appropriate material and re-grade the levee to bring the crown above the design elevation.					
Inspector Comment					

No Photos

LM Start	3.24	Rating **	M	Issue No.	6	
LM End	3.24	Issue Type +	En	Location *		
Category	Supplemental			GPS Latitude/Longitude		
				Start	End	
Item	DWR UCIP Field Study			37.804770 °	37.804770 °	
				-121.379679 °	-121.379679 °	
DWR ID	19199					
Comment Code						
Inspector Comment						
FS_ID:23304 DS_ID:19199 EP_NO: 11524 Repair Type: Non-Urgent Crossing Status: Found UCIP Comments: - waterside pipe immersed into channel water.- most of the pipe on landside exposed and siphon breaker on waterside not protected. FIELD_STRUCT_DESC: 1 of 3: 24-inch coated steel drainage discharge pipe through the levee, 2 feet below the crown. Siphon breaker on the waterside (WS) slope. Pump on a steel platform in a drainage ditch, 350 feet from the levee centerline off the landward berm. (Plans to install a drainage pump and 24-inch discharge line through the levee at existing main drainage pump authorized under Permit No. 11524, 1976 - Reclamation District No. 2062). [Additional Reference(s): DWR Levee Log, 2007. USACE San Joaquin O&M Manual 9, April 1964, (HLM 3.29)]. FS Date: 10/22/2013						

Photo 1 of 3 : UCIP_SP_2021_23304_40147.jpg



WS view: 24-inch steel pipe (left) with siphon breaker on levee slope. 18-inch pipe on right.

* Location LS : Land Side N/A : Not Applicable WS : Water Side CR : Crown	** Rating A : Acceptable M : Minimally Acceptable U : Unacceptable	N : Not Inspected/Rated C : Corrected A/W : Acceptable but Monitor & Maintain	+ Issue Type Ma : Maintenance Deficiency Ob : Design & System Obsolescence En : Enforcement
--	--	---	---

**Flood Control Project Maintenance
Levee Inspections**

Levee Inspection Report By Mile - Spring 2021

Reclamation District No. 2062 Stewart

Waterway	Bank	Unit Miles	Inspection Start/End	Inspector
Unit No. 02 Paradise Cut	Right	3.96	04/07/2021 04/07/2021	Alberto De Leon

LM Start	3.24	Rating **	M	Issue No.	6 (cont)	
LM End	3.24	Issue Type +	En	Location *		
Category	Supplemental			GPS Latitude/Longitude		
				Start	End	
Item	DWR UCIP Field Study			37.804770 °	37.804770 °	
				-121.379679 °	-121.379679 °	
DWR ID	19199					

Photo 2 of 3 : UCIP_SP_2021_23304_40146.jpg



WS view: leaky siphon breaker on levee slope.

LM Start	3.24	Rating **	M	Issue No.	6 (cont)
LM End	3.24	Issue Type +	En	Location *	

Photo 3 of 3 : UCIP_SP_2021_23304_40148.jpg



LS view: overview of pipes on levee berm and pump platform (marked - right) off the berm 350 ft from the levee.

LM Start	3.24	Rating **	M	Issue No.	13
LM End	3.24	Issue Type +	Ma	Location *	CR
Category	Earthen Levee			GPS Latitude/Longitude	
				Start	End
Item	Crown Surface / Depressions / Rutting			37.804791 °	37.804791 °
				-121.379701 °	-121.379701 °
DWR ID	DWR_RD2062_02_s_2021_13				
Comment Code					
C3 : Add appropriate gravel or road base. Grade and compact.					
Inspector Comment					

No Photos

* Location LS : Land Side N/A : Not Applicable WS : Water Side CR : Crown	** Rating A : Acceptable M : Minimally Acceptable U : Unacceptable	N : Not Inspected/Rated C : Corrected A/W : Acceptable but Monitor & Maintain	+ Issue Type Ma : Maintenance Deficiency Ob : Design & System Obsolescence En : Enforcement
--	--	---	---

**Flood Control Project Maintenance
Levee Inspections**

Levee Inspection Report By Mile - Spring 2021

Reclamation District No. 2062 Stewart

Waterway	Bank	Unit Miles	Inspection Start/End	Inspector
Unit No. 02 Paradise Cut	Right	3.96	04/07/2021 04/07/2021	Alberto De Leon

LM Start	3.24	Rating **	M	Issue No.	7
LM End	3.24	Issue Type +	En	Location *	
Category	Supplemental			GPS Latitude/Longitude	
				Start	End
Item	DWR UCIP Field Study			37.804777 °	37.804777 °
				-121.379704 °	-121.379704 °
DWR ID	19198				

Comment Code

Inspector Comment

FS_ID:23023
DS_ID:19198
EP_NO: 11524
Repair Type: Non-Urgent
Crossing Status: Found
UCIP Comments: - 18-inch pipe bifurcated near the pump and two gate valves installed.- waterside pipe immersed into channel water.- most of the pipe on landside exposed and siphon breaker on waterside not protected.
FIELD_STRUCT_DESC: 2 of 3: 18-inch coated steel drainage discharge pipe through the levee, 4 feet below the crown. Siphon breaker on the waterside (WS) slope. Pump on a steel platform in a drainage ditch, 350 feet from the levee centerline off the landward berm. (Plans to install a drainage pump and 24-inch discharge line through the levee at existing main drainage pump authorized under Permit No. 11524, 1976 - Reclamation District No. 2062). [Additional Reference(s): DWR Levee Log, 2007. USACE San Joaquin O&M Manual 9, April 1964, (HLM 3.29), 16-inch pipe referenced].
FS Date: 10/22/2013

LM Start	3.24	Rating **	M	Issue No.	7 (cont)
LM End	3.24	Issue Type +	En	Location *	

Photo 1 of 3 : UCIP_SP_2021_23023_39082.jpg



WS view: exposed 18-inch pipe with siphon breaker on levee slope.
Exposed 24-inch pipe (left).

Photo 2 of 3 : UCIP_SP_2021_23023_39081.jpg



WS view: closer view of 18-inch pipe with siphon breaker on levee slope.

* Location LS : Land Side N/A : Not Applicable WS : Water Side CR : Crown	** Rating A : Acceptable M : Minimally Acceptable U : Unacceptable	N : Not Inspected/Rated C : Corrected A/W : Acceptable but Monitor & Maintain	+ Issue Type Ma : Maintenance Deficiency Ob : Design & System Obsolescence En : Enforcement
--	--	---	---

Reclamation District No. 2062 Stewart

**Flood Control Project Maintenance
Levee Inspections**

Levee Inspection Report By Mile - Spring 2021

Reclamation District No. 2062 Stewart

Waterway	Bank	Unit Miles	Inspection Start/End	Inspector
Unit No. 02 Paradise Cut	Right	3.96	04/07/2021 04/07/2021	Alberto De Leon

LM Start	3.24	Rating **	M	Issue No.	8 (cont)	
LM End	3.24	Issue Type +	En	Location *		
Category	Supplemental			GPS Latitude/Longitude		
				Start		End
Item	DWR UCIP Field Study			37.804787 °	37.804787 °	
				-121.379734 °	-121.379734 °	
DWR ID	19195					

Photo 2 of 3 : UCIP_SP_2021_23305_40152.jpg



WS view: closer view of siphon breaker in steel pipe riser on levee slope.

LM Start	3.24	Rating **	M	Issue No.	8 (cont)
LM End	3.24	Issue Type +	En	Location *	

Photo 3 of 3 : UCIP_SP_2021_23305_40151.jpg



WS view: exposed pipe and steel pipe riser on levee slope.

LM Start	3.64	Rating **	M	Issue No.	12
LM End	3.74	Issue Type +	Ma	Location *	LS
Category	Earthen Levee			GPS Latitude/Longitude	
				Start	End
Item	Animal Control			37.806345 °	37.806834 °
				-121.386611 °	-121.388484 °
DWR ID	DWR_RD2062_02_s_2021_12				
Comment Code					
A3 : No rodents visible, but rodent burrows visible; need to backfill and compact or grout burrows.					
Inspector Comment					

No Photos

* Location LS : Land Side N/A : Not Applicable WS : Water Side CR : Crown		** Rating A : Acceptable M : Minimally Acceptable U : Unacceptable N : Not Inspected/Rated C : Corrected A/W : Acceptable but Monitor & Maintain		+ Issue Type Ma : Maintenance Deficiency Ob : Design & System Obsolescence En : Enforcement	
---	--	--	--	--	--

**Flood Control Project Maintenance
Levee Inspections**

Levee Inspection Report By Mile - Spring 2021

Reclamation District No. 2062 Stewart

Waterway	Bank	Unit Miles	Inspection Start/End	Inspector
Unit No. 02 Paradise Cut	Right	3.96	04/07/2021 04/07/2021	Alberto De Leon

LM Start	3.85	Rating **	C	Issue No.	9
LM End	3.85	Issue Type +	Ma	Location *	LS
Category	Earthen Levee			GPS Latitude/Longitude	
				Start	End
Item	Trim / Thin Trees			37.807780 °	37.807780 °
				-121.389938 °	-121.389938 °
DWR ID	DWR_RD2062_02_f_2020_9				
Comment Code					
T1 : Trim trees to at least five feet above ground level.					
Inspector Comment					

No Photos

LM Start	3.95	Rating **	C	Issue No.	15
LM End	3.95	Issue Type +	En	Location *	LS
Category	Earthen Levee			GPS Latitude/Longitude	
				Start	End
Item	Encroachments			37.809191 °	37.809191 °
				-121.390388 °	-121.390388 °
DWR ID	DWR_RD2062_02_s_2020_15				
Comment Code					
PR : Prunings					
Inspector Comment					

No Photos

* Location LS : Land Side N/A : Not Applicable WS : Water Side CR : Crown	** Rating A : Acceptable M : Minimally Acceptable U : Unacceptable	N : Not Inspected/Rated C : Corrected A/W : Acceptable but Monitor & Maintain	+ Issue Type Ma : Maintenance Deficiency Ob : Design & System Obsolescence En : Enforcement
--	--	---	---

**Flood Control Project Maintenance
Levee Inspections
Unit Cover Sheet**

Reclamation District No. 2062 Stewart

Waterway			Bank	Unit Miles
Unit No. 03 Old River			Left	5.55
	Spring (March - May)	Summer (June - August)	(September - November) Fall	Winter (December - February)
Unit Maintenance Rating (Fall Only)				
Date of Inspection	4/7/2021 - 4/7/2021			
DWR Inspector	Alberto De Leon			
Accompanied By	Tim Mello RD2062			

Summer & Winter Inspections

The Local Maintaining Agency (LMA) is responsible for summer and winter inspections. The LMA is required to submit a report regarding summer and winter inspections to the California Department of Water Resources (DWR).

DWR must be informed on the:

- a) completion of the inspection
- b) any changes other than the results of normal maintenance
- c) corrections to deficiencies noted in this report

If additional items are noted, further documentation of those items must also be submitted.

The LMA should submit this information to DWR using the LMA web application tool available at:

<http://cdec.water.ca.gov/lma.html>

If the LMA is unable to submit information on this webpage, please contact DWR for assistance.

The LMA should submit the information and any associated documentation by September 30 for summer inspections and March 31 for winter inspections.

**Flood Control Project Maintenance
Levee Inspections**

Levee Inspection Report By Mile - Spring 2021

Reclamation District No. 2062 Stewart

Waterway	Bank	Unit Miles	Inspection Start/End	Inspector
Unit No. 03 Old River	Left	5.55	04/07/2021 04/07/2021	Alberto De Leon

LM Start	0.00	Rating **	M	Issue No.	8
LM End	0.07	Issue Type +	Ma	Location *	WS
Category	Supplemental			GPS Latitude/Longitude	
				Start	End
Item	DWR Erosion Survey			37.809514 °	37.809514 °
				-121.390125 °	-121.390125 °
DWR ID	RD2062U03RM29.94				

Comment Code

Inspector Comment

Site ID: RD2062U03RM29.94

09/30/2020: Nearly vertical scarp visible along the levee slope. Noticed rodent holes in some areas and crushed concrete pieces.

08/14/2019: No significant change observed.

09/13/2017: The erosion site has expanded significantly along the river bank.

11/09/2016: No significant change observed.

06/25/2015: The erosion is below a large oak tree. Vegetation is visible around the erosion site.

LM Start	0.00	Rating **	M	Issue No.	8 (cont)
LM End	0.07	Issue Type +	Ma	Location *	WS

Photo 1 of 3 : SP_2021_RD2062_311_8_20210210_00016.jpg



9/30/2020: Close-up view of the scarp on the levee slope.

Photo 2 of 3 : SP_2021_RD2062_311_8_20210210_00017.jpg



9/30/2020: View of the eroded levee slope looking downstream.

* Location LS : Land Side N/A : Not Applicable WS : Water Side CR : Crown		** Rating A : Acceptable M : Minimally Acceptable U : Unacceptable N : Not Inspected/Rated C : Corrected A/W : Acceptable but Monitor & Maintain		+ Issue Type Ma : Maintenance Deficiency Ob : Design & System Obsolescence En : Enforcement	
--	--	---	--	---	--

**Flood Control Project Maintenance
Levee Inspections**

Levee Inspection Report By Mile - Spring 2021

Reclamation District No. 2062 Stewart

Waterway	Bank	Unit Miles	Inspection Start/End	Inspector
Unit No. 03 Old River	Left	5.55	04/07/2021 04/07/2021	Alberto De Leon

LM Start	0.00	Rating **	M	Issue No.	8 (cont)
LM End	0.07	Issue Type +	Ma	Location *	WS
Category	Supplemental			GPS Latitude/Longitude	
				Start	End
Item	DWR Erosion Survey			37.809514 °	37.809514 °
				-121.390125 °	-121.390125 °
DWR ID	RD2062U03RM29.94				

Photo 3 of 3 : SP_2021_RD2062_311_8_20210210_00018.jpg



9/30/2020: Crushed concrete on the eroded levee slope.

LM Start	0.00	Rating **	A	Issue No.	30
LM End	1.15	Issue Type +	Ma	Location *	LS
Category	Earthen Levee			GPS Latitude/Longitude	
				Start	End
Item	Vegetation			37.809300 °	37.819234 °
				-121.390332 °	-121.379358 °
DWR ID	DWR_RD2062_03_s_2021_30				
Comment Code					
V1 : Control annual grass and weeds on the levee slopes and easements.					
Inspector Comment					

Photo 1 of 1 : SP_2021_RD2062_311_30_20210419_00042.jpg



Typical view of well maintained vegetation along the landside slope and easement. Spring 2021

* Location LS : Land Side N/A : Not Applicable WS : Water Side CR : Crown	** Rating A : Acceptable M : Minimally Acceptable U : Unacceptable	N : Not Inspected/Rated C : Corrected A/W : Acceptable but Monitor & Maintain	+ Issue Type Ma : Maintenance Deficiency Ob : Design & System Obsolescence En : Enforcement
--	--	---	---

Reclamation District No. 2062 Stewart

* Location	** Rating	+ Issue Type
LS : Land Side N/A : Not Applicable	A : Acceptable N : Not Inspected/Rated	Ma : Maintenance Deficiency
WS : Water Side	M : Minimally Acceptable C : Corrected	Ob : Design & System Obsolescence
CR : Crown	U : Unacceptable A/W : Acceptable but Monitor & Maintain	En : Enforcement

**Flood Control Project Maintenance
Levee Inspections**

Levee Inspection Report By Mile - Spring 2021

Reclamation District No. 2062 Stewart

Waterway	Bank	Unit Miles	Inspection Start/End	Inspector
Unit No. 03 Old River	Left	5.55	04/07/2021 04/07/2021	Alberto De Leon

LM Start	0.09	Rating **	U	Issue No.	3 (cont)
LM End	0.12	Issue Type +	Ma	Location *	WS
Category	Supplemental			GPS Latitude/Longitude	
				Start	End
Item	DWR Erosion Survey			37.809932 °	37.809932 °
				-121.388788 °	-121.388788 °
DWR ID	RD2062U03RM30.02				

Photo 2 of 3 : SP_2021_RD2062_311_3_20210210_00005.jpg



9/30/2020: View of the erosion and some old riprap.

LM Start	0.09	Rating **	U	Issue No.	3 (cont)
LM End	0.12	Issue Type +	Ma	Location *	WS

Photo 3 of 3 : SP_2021_RD2062_311_3_20210210_00006.jpg



9/30/2020: Another view of the erosion.

LM Start	0.17	Rating **	M	Issue No.	2
LM End	0.17	Issue Type +	Ma	Location *	WS
Category	Supplemental			GPS Latitude/Longitude	
				Start	End
Item	DWR Erosion Survey			37.810268 °	37.810268 °
				-121.387495 °	-121.387495 °
DWR ID	RD2062U03RM30.1				

Photo 1 of 2 : SP_2021_RD2062_311_2_20210210_00002.jpg



9/30/2020: Overview of the erosion site.

Comment Code					
Inspector Comment					
Site ID: RD2062U03RM30.1					
09/30/2020: From 2012 to present, no significant changes were observed during the annual survey.					
08/23/2011: The protection at the levee toe has been washed away.					

*** Location**

LS : Land Side N/A : Not Applicable
WS : Water Side
CR : Crown

**** Rating**

A : Acceptable N : Not Inspected/Rated
M : Minimally Acceptable C : Corrected
U : Unacceptable A/W : Acceptable but Monitor & Maintain

+ Issue Type

Ma : Maintenance Deficiency
Ob : Design & System Obsolescence
En : Enforcement

**Flood Control Project Maintenance
Levee Inspections**

Levee Inspection Report By Mile - Spring 2021

Reclamation District No. 2062 Stewart

Waterway	Bank	Unit Miles	Inspection Start/End	Inspector
Unit No. 03 Old River	Left	5.55	04/07/2021 04/07/2021	Alberto De Leon

LM Start	0.17	Rating **	M	Issue No.	2 (cont)
LM End	0.17	Issue Type +	Ma	Location *	WS
Category	Supplemental			GPS Latitude/Longitude	
				Start	End
Item	DWR Erosion Survey			37.810268 °	37.810268 °
				-121.387495 °	-121.387495 °
DWR ID	RD2062U03RM30.1				

Photo 2 of 2 : SP_2021_RD2062_311_2_20210210_00003.jpg



9/30/2020: Close-up view of the erosion.

* Location LS : Land Side N/A : Not Applicable WS : Water Side CR : Crown	** Rating A : Acceptable M : Minimally Acceptable U : Unacceptable N : Not Inspected/Rated C : Corrected A/W : Acceptable but Monitor & Maintain	+ Issue Type Ma : Maintenance Deficiency Ob : Design & System Obsolescence En : Enforcement
--	---	---

**Flood Control Project Maintenance
Levee Inspections**

Levee Inspection Report By Mile - Spring 2021

Reclamation District No. 2062 Stewart

Waterway	Bank	Unit Miles	Inspection Start/End	Inspector
Unit No. 03 Old River	Left	5.55	04/07/2021 04/07/2021	Alberto De Leon

LM Start	0.22	Rating **	U	Issue No.	4
LM End	0.31	Issue Type +	Ma	Location *	WS
Category	Supplemental			GPS Latitude/Longitude	
				Start	End
Item	DWR Erosion Survey			37.810609 °	37.810609 °
				-121.385879 °	-121.385879 °
DWR ID	RD2062U03RM30.19				

Comment Code

Inspector Comment

Site ID: RD2062U03RM30.19

09/30/2020: From 2018 to present, no significant changes were observed during the annual survey.

09/13/2017: The erosion has developed vertically. More vegetation at the site.

07/25/2106: From 2014 to present, no significant changes were observed during the annual survey.

08/13/2013: A new pocket erosion at the upper levee slope has been found directly above a large tree. The erosion might have been caused by internal pipe leakage or surface runoff. 08/07/2012: No significant change was observed.

08/23/2011: Dense vegetation is visible along the water line.

09/07/2010: Much of the upper slope was recently cleared of vegetation by spraying. 4- to 6-foot vertical scarp and pocket erosions are lined along a span of 475 feet. In some sections, the vertical scarp encroaches into the levee prism. There is a lack of berm along this reach, exposing the levee slope to high flow velocities during normal and flood events. 08/06/2010: Recommended as local maintenance issue, per CLRO. 03/09/2010: As discussed with Michael Moncrief of MBK Engineers, the site will be 'addressed' later this year. 09/29/2009: No major change observed since last visit; pocket erosion and a vertical scarp forming; this site was combined with Site RM30.13 and 30.02 with a combined total erosion length of 475 feet; recommended as annual assessment and monitoring of the site, per CLRO CES Evaluation 2008 Report; previously rated "M". 11/05/2008: Top of vertical scarp has rip rap that appears to be sliding; rodent holes; existing toe rip rap.

LM Start	0.22	Rating **	U	Issue No.	4 (cont)
LM End	0.31	Issue Type +	Ma	Location *	WS

Photo 1 of 3 : SP_2021_RD2062_311_4_20210210_00007.jpg



9/30/2020: View of the eroding levee slope.

Photo 2 of 3 : SP_2021_RD2062_311_4_20210210_00008.jpg



9/30/2020: The erosion has cut into the levee prism.

* Location LS : Land Side N/A : Not Applicable WS : Water Side CR : Crown		** Rating A : Acceptable N : Not Inspected/Rated M : Minimally Acceptable C : Corrected U : Unacceptable A/W : Acceptable but Monitor & Maintain		+ Issue Type Ma : Maintenance Deficiency Ob : Design & System Obsolescence En : Enforcement	
--	--	---	--	---	--

**Flood Control Project Maintenance
Levee Inspections**

Levee Inspection Report By Mile - Spring 2021

Reclamation District No. 2062 Stewart

Waterway	Bank	Unit Miles	Inspection Start/End	Inspector
Unit No. 03 Old River	Left	5.55	04/07/2021 04/07/2021	Alberto De Leon

LM Start	0.22	Rating **	U	Issue No.	4 (cont)
LM End	0.31	Issue Type +	Ma	Location *	WS
Category	Supplemental			GPS Latitude/Longitude	
				Start	End
Item	DWR Erosion Survey			37.810609 °	37.810609 °
				-121.385879 °	-121.385879 °
DWR ID	RD2062U03RM30.19				

Photo 3 of 3 : SP_2021_RD2062_311_4_20210210_00009.jpg



9/30/2020: View of the erosion near the downstream end.

LM Start	0.33	Rating **	C	Issue No.	38
LM End	0.33	Issue Type +	Ma	Location *	LS
Category	Earthen Levee			GPS Latitude/Longitude	
				Start	End
Item	Trim / Thin Trees			37.810972 °	37.810972 °
				-121.384714 °	-121.384714 °
DWR ID	DWR_RD2062_03_f_2020_38				
Comment Code					
T1 : Trim trees to at least five feet above ground level.					
Inspector Comment					

No Photos

LM Start	0.35	Rating **	M	Issue No.	1
LM End	0.35	Issue Type +	Ma	Location *	WS
Category	Supplemental			GPS Latitude/Longitude	
				Start	End
Item	DWR Erosion Survey			37.811101 °	37.811101 °
				-121.384402 °	-121.384402 °
DWR ID	RD2062U03RM30.27				
Comment Code					
Inspector Comment					
Site ID: RD2062U03RM30.27 09/30/2020: From 2012 to present, no significant changes were observed during the annual survey. 08/23/2011: The site is right at the downstream of a river bend.					

Photo 1 of 1 : SP_2021_RD2062_311_1_20210210_00001.jpg



9/30/2020: Front view of the erosion.

* Location LS : Land Side N/A : Not Applicable WS : Water Side CR : Crown	** Rating A : Acceptable M : Minimally Acceptable U : Unacceptable	N : Not Inspected/Rated C : Corrected A/W : Acceptable but Monitor & Maintain	+ Issue Type Ma : Maintenance Deficiency Ob : Design & System Obsolescence En : Enforcement
--	--	---	---

**Flood Control Project Maintenance
Levee Inspections**

Levee Inspection Report By Mile - Spring 2021

Reclamation District No. 2062 Stewart

Waterway	Bank	Unit Miles	Inspection Start/End	Inspector
Unit No. 03 Old River	Left	5.55	04/07/2021 04/07/2021	Alberto De Leon

LM Start	0.43	Rating **	U	Issue No.	36
LM End	0.43	Issue Type +	Ma	Location *	WS
Category	Earthen Levee			GPS Latitude/Longitude	
				Start	End
Item	Vegetation			37.811450 °	37.811450 °
				-121.383167 °	-121.383167 °
DWR ID	DWR_RD2062_03_f _ 2020_36				
Comment Code					
V2 : Remove the wild growth other than native grasses from the levee slopes.					
Inspector Comment					
Large Arundo plants blocking visibility on waterside slope.					

Photo 1 of 1 : SP_2021_RD2062_311_36_20210210_00025.jpg



Large Arundo plants blocking visibility on waterside slope. Fall 2020

LM Start	0.51	Rating **	U	Issue No.	10	
LM End	0.51	Issue Type +	En	Location *		
Category	Supplemental			GPS Latitude/Longitude		
				Start	End	
Item	DWR UCIP Field Study			37.812575 °	37.812575 °	
				-121.382798 °	-121.382798 °	
DWR ID	19200					
Comment Code						
Inspector Comment						
FS_ID:53377 DS_ID:19200 EP_NO: 2029 Repair Type: Urgent Crossing Status: Found UCIP Comments: 10/10/2018 Same as last inspection; erosion still present on LS slope, so keeping as Urgent (D. Sanoski - DWR UCIP).08/31/2016: Sloughing of LS slope beneath exposed section of pipe. Overflow pipe has been replaced on WS, though I could not locate a permit for that work. (K. Fazel - UCIP)10/22/2013:- pits and holes on overflow pipe on waterside.- underpinning at pump support.- slope erosion on both sides of the levee.- 2-inch electric conduit on waterside and power pole on landside. (P. Amatya - DWR) FIELD_STRUCT_DESC: 16-inch coated steel irrigation discharge pipe through the levee, 8 feet below the crown. Siphon breaker on the landside (LS) slope. Pump house on the waterside (WS) slope. Concrete distribution box on the LS. 2-inch electrical conduit on the WS. Service pole on the LS. Newly installed, as of 2016, overflow pipe with shutoff valve on the WS. (Plans for installation of an inclined irrigation pump on the bank authorized under Permit No. 2029, 1954 - Reclamation District No. 2062). [Additional Reference(s): DWR Levee Log, 2007. USACE San Joaquin O&M Manual 9, April 1964, (HLM 0.52)]. FS Date: 10/10/2018 11:25:00 AM						

Photo 1 of 3 : UCIP_SP_2021_53377_40158.jpg



WS view: pump house on levee slope and soil erosion on levee slope.

* Location LS : Land Side N/A : Not Applicable WS : Water Side CR : Crown	** Rating A : Acceptable M : Minimally Acceptable U : Unacceptable	N : Not Inspected/Rated C : Corrected A/W : Acceptable but Monitor & Maintain	+ Issue Type Ma : Maintenance Deficiency Ob : Design & System Obsolescence En : Enforcement
--	--	---	---

**Flood Control Project Maintenance
Levee Inspections**

Levee Inspection Report By Mile - Spring 2021

Reclamation District No. 2062 Stewart

Waterway	Bank	Unit Miles	Inspection Start/End	Inspector
Unit No. 03 Old River	Left	5.55	04/07/2021 04/07/2021	Alberto De Leon

LM Start	0.51	Rating **	U	Issue No.	10 (cont)
LM End	0.51	Issue Type +	En	Location *	
Category	Supplemental		GPS Latitude/Longitude		
			Start	End	
Item	DWR UCIP Field Study		37.812575 °	37.812575 °	
			-121.382798 °	-121.382798 °	
DWR ID	19200				

Photo 2 of 3 : UCIP_SP_2021_53377_40157.jpg



WS view: pump house on levee slope and holes-pits on corroded overflow pipe (left).

LM Start	0.51	Rating **	U	Issue No.	10 (cont)
LM End	0.51	Issue Type +	En	Location *	

Photo 3 of 3 : UCIP_SP_2021_53377_40156.jpg



WS view: slant pump in pumphouse on levee slope.

* Location LS : Land Side N/A : Not Applicable WS : Water Side CR : Crown		** Rating A : Acceptable N : Not Inspected/Rated M : Minimally Acceptable C : Corrected U : Unacceptable A/W : Acceptable but Monitor & Maintain		+ Issue Type Ma : Maintenance Deficiency Ob : Design & System Obsolescence En : Enforcement
--	--	---	--	---

**Flood Control Project Maintenance
Levee Inspections**

Levee Inspection Report By Mile - Spring 2021

Reclamation District No. 2062 Stewart

Waterway	Bank	Unit Miles	Inspection Start/End	Inspector
Unit No. 03 Old River	Left	5.55	04/07/2021 04/07/2021	Alberto De Leon

LM Start	0.55	Rating **	M	Issue No.	5
LM End	0.56	Issue Type +	Ma	Location *	WS
Category	Supplemental			GPS Latitude/Longitude	
				Start	End
Item	DWR Erosion Survey			37.813070 °	37.813070 °
				-121.383100 °	-121.383100 °
DWR ID	RD2062U03RM30.43				

Comment Code

Inspector Comment

Site ID: RD2062U03RM30.43

09/30/2020: From 2011 to present, no significant changes were observed during the annual survey.

09/07/2010: Much of the placed rip rap revetment has slid. It is no longer adequately protecting the slope.

08/06/2010: Recommended as local maintenance issue, per CLRO Report.

03/09/2010: As discussed with Michael Moncrief of MBK, site will be 'addressed' this year.

09/29/2009: No major change observed since last visit; a section of the rip rap has slipped, exposing a levee section that has eroded; recommended as local maintenance issue, per CLRO CES Evaluation 2008 Report; Site # is the same as RM30.43, LM0.63; previously rated "U".

11/05/2008: Site is located inside of a bend; scarp looks to be into the levee prism; piles of concrete chunks placed on the slope, with some of them already starting to slide.

LM Start	0.55	Rating **	M	Issue No.	5 (cont)
LM End	0.56	Issue Type +	Ma	Location *	WS

Photo 1 of 2 : SP_2021_RD2062_311_5_20210210_00010.jpg



9/30/2020: View of the eroded levee slope and displaced riprap.

Photo 2 of 2 : SP_2021_RD2062_311_5_20210210_00011.jpg



9/30/2020: Another view of the eroded slope with displaced riprap.

* Location LS : Land Side N/A : Not Applicable WS : Water Side CR : Crown		** Rating A : Acceptable N : Not Inspected/Rated M : Minimally Acceptable C : Corrected U : Unacceptable A/W : Acceptable but Monitor & Maintain		+ Issue Type Ma : Maintenance Deficiency Ob : Design & System Obsolescence En : Enforcement	
--	--	---	--	---	--

**Flood Control Project Maintenance
Levee Inspections**

Levee Inspection Report By Mile - Spring 2021

Reclamation District No. 2062 Stewart

Waterway	Bank	Unit Miles	Inspection Start/End	Inspector
Unit No. 03 Old River	Left	5.55	04/07/2021 04/07/2021	Alberto De Leon

LM Start	1.03	Rating **	C	Issue No.	35
LM End	1.03	Issue Type +	Ma	Location *	LS
Category	Earthen Levee			GPS Latitude/Longitude	
				Start	End
Item	Trim / Thin Trees			37.817748 °	37.817748 °
				-121.378601 °	-121.378601 °
DWR ID	DWR_RD2062_03_f _ 2020_35				
Comment Code					
T3 : Trim and thin trees to allow visibility of the ground and room to flood fight.					
Inspector Comment					

No Photos

LM Start	1.14	Rating **	C	Issue No.	32
LM End	1.14	Issue Type +	Ma	Location *	LS
Category	Earthen Levee			GPS Latitude/Longitude	
				Start	End
Item	Trim / Thin Trees			37.819156 °	37.819156 °
				-121.379333 °	-121.379333 °
DWR ID	DWR_RD2062_03_f_2020_32				
Comment Code					
T3 : Trim and thin trees to allow visibility of the ground and room to flood fight.					
Inspector Comment					

No Photos

* Location LS : Land Side N/A : Not Applicable WS : Water Side CR : Crown	** Rating A : Acceptable M : Minimally Acceptable U : Unacceptable	N : Not Inspected/Rated C : Corrected A/W : Acceptable but Monitor & Maintain	+ Issue Type Ma : Maintenance Deficiency Ob : Design & System Obsolescence En : Enforcement
--	--	---	---

**Flood Control Project Maintenance
Levee Inspections**

Levee Inspection Report By Mile - Spring 2021

Reclamation District No. 2062 Stewart

Waterway	Bank	Unit Miles	Inspection Start/End	Inspector
Unit No. 03 Old River	Left	5.55	04/07/2021 04/07/2021	Alberto De Leon

LM Start	1.18	Rating **	M	Issue No.	6
LM End	1.19	Issue Type +	Ma	Location *	WS
Category	Supplemental		GPS Latitude/Longitude		
			Start	End	
Item	DWR Erosion Survey		37.819408 °	37.819408 °	
			-121.378888 °	-121.378888 °	
DWR ID	RD2062U03RM31.12				

Comment Code

Inspector Comment

Site ID: RD2062U03RM31.12

09/30/2020: From 2011 to present, no significant changes were observed during the annual survey. The site is immediately upstream of a repaired site.

09/07/2010: Much of the seasonal grass along the slope was cleared. Site consists of an existing scalloped erosion approximately 30 feet long by 5 feet wide at its widest opening. The lateral crack is extended outwards along the middle slope. There is a 1 to 2 feet of differential settlement that could further develop into a shallow slide.

08/06/2010: Recommended as local maintenance issue, per CLRO.

03/09/2010: As discussed with Michael Moncrief of MBK Engineers, site will be 'addressed' this year.

09/28/2009: No major change observed; section of rip rap has slipped, creating a terraced effect; dense vegetation growth; recommended as a local maintenance issue, per CLRO CES Evaluation 2008 Report; Site # is the same as RM31.12, LM1.25; previously rated "U".

09/14/2006: 1-2' into prism.

LM Start	1.18	Rating **	M	Issue No.	6 (cont)
LM End	1.19	Issue Type +	Ma	Location *	WS

Photo 1 of 2 : SP_2021_RD2062_311_6_20210210_00012.jpg



9/30/2020: Front view of the erosion.

Photo 2 of 2 : SP_2021_RD2062_311_6_20210210_00013.jpg



9/30/2020: Close-up view of the erosion.

* Location LS : Land Side N/A : Not Applicable WS : Water Side CR : Crown	** Rating A : Acceptable M : Minimally Acceptable U : Unacceptable	N : Not Inspected/Rated C : Corrected A/W : Acceptable but Monitor & Maintain	+ Issue Type Ma : Maintenance Deficiency Ob : Design & System Obsolescence En : Enforcement
--	--	---	---

**Flood Control Project Maintenance
Levee Inspections**

Levee Inspection Report By Mile - Spring 2021

Reclamation District No. 2062 Stewart

Waterway	Bank	Unit Miles	Inspection Start/End	Inspector
Unit No. 03 Old River	Left	5.55	04/07/2021 04/07/2021	Alberto De Leon

LM Start	1.27	Rating **	C	Issue No.	31
LM End	1.27	Issue Type +	Ma	Location *	LS
Category	Earthen Levee			GPS Latitude/Longitude	
				Start	End
Item	Trim / Thin Trees			37.819783 °	37.819783 °
				-121.377449 °	-121.377449 °
DWR ID	DWR_RD2062_03_f _ 2020_31				
Comment Code					
T1 : Trim trees to at least five feet above ground level.					
Inspector Comment					

No Photos

LM Start	1.32	Rating **	M	Issue No.	37
LM End	1.32	Issue Type +	Ma	Location *	WS
Category	Earthen Levee			GPS Latitude/Longitude	
				Start	End
Item	Animal Control			37.820459 °	37.820459 °
				-121.377109 °	-121.377109 °
DWR ID	DWR_RD2062_03_f_2019_37				
Comment Code					
A1 : Exterminate rodents and backfill and compact or grout burrows.					
Inspector Comment					

No Photos

* Location LS : Land Side N/A : Not Applicable WS : Water Side CR : Crown	** Rating A : Acceptable M : Minimally Acceptable U : Unacceptable	N : Not Inspected/Rated C : Corrected A/W : Acceptable but Monitor & Maintain	+ Issue Type Ma : Maintenance Deficiency Ob : Design & System Obsolescence En : Enforcement
--	--	---	---

**Flood Control Project Maintenance
Levee Inspections**

Levee Inspection Report By Mile - Spring 2021

Reclamation District No. 2062 Stewart

Waterway	Bank	Unit Miles	Inspection Start/End	Inspector
Unit No. 03 Old River	Left	5.55	04/07/2021 04/07/2021	Alberto De Leon

LM Start	1.39	Rating **	M	Issue No.	7
LM End	1.40	Issue Type +	Ma	Location *	WS
Category	Supplemental			GPS Latitude/Longitude	
				Start	End
Item	DWR Erosion Survey			37.821380 °	37.821380 °
				-121.376900 °	-121.376900 °
DWR ID	DWR_RD2062_03_s_2021_7				

Comment Code

Inspector Comment

Site ID: RD2062U03RM31.28

09/30/2020: From 2011 to present, no significant changes were observed during the annual survey.

09/07/2010: There is a small- to medium sized Oak tree on the mid-slope just above rip rap. Some of the rip rap has collapsed, creating a pocket erosion just above the existing toe rip rap and upstream of the Oak tree.

08/06/2010: Recommended as local maintenance issue, per CLRO.

03/09/2010: As discussed with Michael Moncrief of MBK Engineers, site will be 'addressed' in 2010.

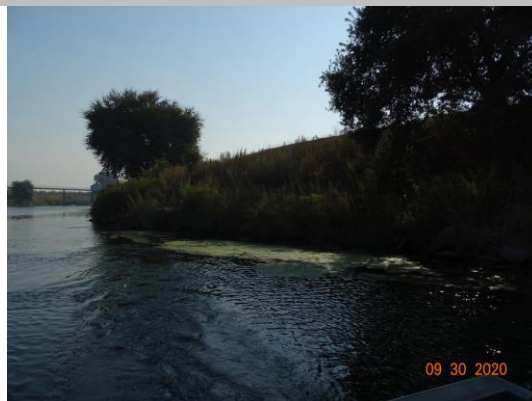
09/29/2009: No major change since last visit; sliding of the rip rap at the base of the lone tree; there is noticeable man-made trail and foot traffic extending from the crown to the toe; much of the broken concrete used as temporary rip rap has slid, exposing portion of the bare levee slope; recommended as local maintenance issue, per CLRO CES Evaluation 2008 Report; Site # is the same as RM31.3, LM1.45; previously rated "M".

11/05/2008: Portion of rip rap collapsing.

09/14/2006: Portion of rip rap along the slope has collapsed; exposed levee section is starting to erode, exposing roots from the nearby tree.

LM Start	1.39	Rating **	M	Issue No.	7 (cont)
LM End	1.40	Issue Type +	Ma	Location *	WS

Photo 1 of 2 : SP_2021_RD2062_311_7_20210210_00014.jpg



9/30/2020: View of the erosion looking upstream.

Photo 2 of 2 : SP_2021_RD2062_311_7_20210210_00015.jpg



8/14/2019: Close-up view of the site.

* Location LS : Land Side N/A : Not Applicable WS : Water Side CR : Crown		** Rating A : Acceptable N : Not Inspected/Rated M : Minimally Acceptable C : Corrected U : Unacceptable A/W : Acceptable but Monitor & Maintain		+ Issue Type Ma : Maintenance Deficiency Ob : Design & System Obsolescence En : Enforcement
--	--	---	--	---

**Flood Control Project Maintenance
Levee Inspections**

Levee Inspection Report By Mile - Spring 2021

Reclamation District No. 2062 Stewart

Waterway	Bank	Unit Miles	Inspection Start/End	Inspector
Unit No. 03 Old River	Left	5.55	04/07/2021 04/07/2021	Alberto De Leon

LM Start	2.77	Rating **	M	Issue No.	11	
LM End	2.77	Issue Type +	En	Location *		
Category	Supplemental			GPS Latitude/Longitude		
				Start	End	
Item	DWR UCIP Field Study			37.816362 °	37.816362 °	
				-121.354339 °	-121.354339 °	
DWR ID	19202					
Comment Code						
Inspector Comment						
FS_ID:23311 DS_ID:19202 EP_NO: 2505 Repair Type: Non-Urgent Crossing Status: Found UCIP Comments: - pumphouse roof missing.- siphon breaker buried by dirt in CMP riser.- 2.25 inch electric conduit and power pole on landside. FIELD_STRUCT_DESC: 2 of 2: 16-inch irrigation discharge pipe of an unknown material through the levee, 6.5 feet below the crown. Pump in a pump house on a pile structure in the stream. Timber walkway to the pump. Siphon breaker in a corrugated metal pipe (CMP) riser on the landside (LS) slope. Concrete distribution box at the LS toe. Timber bulkhead and slab on the waterside (WS) slope. Installed by USACE in 1963. (Plans for the installation of two irrigation pumps on the bank to replace an existing pumping plant at this location authorized under Permit No. 2505, 1959 - Reclamation District No. 2062). [Additional Reference(s): DWR Levee Log, 2007. USACE San Joaquin O&M Manual 9, April 1964, (HLM 2.81)]. FS Date: 10/22/2013						

LM Start	2.77	Rating **	M	Issue No.	11 (cont)
LM End	2.77	Issue Type +	En	Location *	

Photo 1 of 3 : UCIP_SP_2021_23311_40175.jpg



WS view: wooden walkway to pumphouse, pumphouse on wooden pile structure in the stream.

Photo 2 of 3 : UCIP_SP_2021_23311_40174.jpg



WS view: exposed steel pipes and an electric conduit on levee slope.

* Location LS : Land Side N/A : Not Applicable WS : Water Side CR : Crown	** Rating A : Acceptable M : Minimally Acceptable U : Unacceptable	N : Not Inspected/Rated C : Corrected A/W : Acceptable but Monitor & Maintain	+ Issue Type Ma : Maintenance Deficiency Ob : Design & System Obsolescence En : Enforcement
--	--	---	---

**Flood Control Project Maintenance
Levee Inspections**

Levee Inspection Report By Mile - Spring 2021

Reclamation District No. 2062 Stewart

Waterway	Bank	Unit Miles	Inspection Start/End	Inspector
Unit No. 03 Old River	Left	5.55	04/07/2021 04/07/2021	Alberto De Leon

LM Start	2.77	Rating **	M	Issue No.	11 (cont)
LM End	2.77	Issue Type +	En	Location *	
Category	Supplemental		GPS Latitude/Longitude		
			Start	End	
Item	DWR UCIP Field Study		37.816362 °	37.816362 °	
			-121.354339 °	-121.354339 °	
DWR ID	19202				

Photo 3 of 3 : UCIP_SP_2021_23311_40173.jpg



LS view: two CMP risers on levee slope, concrete distribution box, and service pole across the dirt road, off the levee toe.

LM Start	2.77	Rating **	M	Issue No.	12
LM End	2.77	Issue Type +	En	Location *	
Category	Supplemental		GPS Latitude/Longitude		
			Start	End	
Item	DWR UCIP Field Study		37.816362 °	37.816362 °	
			-121.354334 °	-121.354334 °	
DWR ID	19205				

Comment Code

Inspector Comment

FS_ID:23312
DS_ID:19205
EP_NO: 2505
Repair Type: Non-Urgent
Crossing Status: Found
UCIP Comments: - pumphouse roof missing.- siphon breaker buried by dirt in CMP riser.- 2.25 inch electric conduit and power pole on landside.
FIELD_STRUCT_DESC: 1 of 2: 14-inch irrigation discharge pipe of an unknown material through the levee, 6.5 feet below the crown. Pump in a pump house on a pile structure in the stream. Timber walkway to the pump. Siphon breaker in a corrugated metal pipe (CMP) riser on the landside (LS) slope. Concrete distribution box at the LS toe. Timber bulkhead and slab on the waterside (WS) slope. Installed by USACE in 1963. (Plans for the installation of two irrigation pumps on the bank to replace an existing pumping plant at this location authorized under Permit No. 2505, 1959 - Reclamation District No. 2062). [Additional Reference(s): DWR Levee Log, 2007. USACE San Joaquin O&M Manual 9, April 1964, (HLM 2.81)].
FS Date: 10/22/2013

Photo 1 of 3 : UCIP_SP_2021_23312_40181.jpg



WS view: wooden walkway to pumphouse, pumphouse on wooden pile structure in the stream.

* Location LS : Land Side N/A : Not Applicable WS : Water Side CR : Crown		** Rating A : Acceptable M : Minimally Acceptable U : Unacceptable N : Not Inspected/Rated C : Corrected A/W : Acceptable but Monitor & Maintain		+ Issue Type Ma : Maintenance Deficiency Ob : Design & System Obsolescence En : Enforcement	
--	--	---	--	---	--

**Flood Control Project Maintenance
Levee Inspections**

Levee Inspection Report By Mile - Spring 2021

Reclamation District No. 2062 Stewart

Waterway	Bank	Unit Miles	Inspection Start/End	Inspector
Unit No. 03 Old River	Left	5.55	04/07/2021 04/07/2021	Alberto De Leon

LM Start	2.77	Rating **	M	Issue No.	12 (cont)
LM End	2.77	Issue Type +	En	Location *	
Category	Supplemental		GPS Latitude/Longitude		
			Start	End	
Item	DWR UCIP Field Study		37.816362 °	37.816362 °	
			-121.354334 °	-121.354334 °	
DWR ID	19205				

Photo 2 of 3 : UCIP_SP_2021_23312_40179.jpg



WS view: exposed steel pipes and a electric conduit on levee slope.

LM Start	2.77	Rating **	M	Issue No.	12 (cont)
LM End	2.77	Issue Type +	En	Location *	

Photo 3 of 3 : UCIP_SP_2021_23312_40180.jpg



LS view: two CMP risers on levee slope, concrete distribution box, and service pole across the dirt road, off the levee toe.

LM Start	3.61	Rating **	M	Issue No.	18
LM End	3.83	Issue Type +	Ma	Location *	LS
Category	Earthen Levee			GPS Latitude/Longitude	
				Start	End
Item	Animal Control			37.816942 °	37.818261 °
				-121.342902 °	-121.340544 °
DWR ID	DWR_RD2062_03_s_2020_18				
Comment Code					
A3 : No rodents visible, but rodent burrows visible; need to backfill and compact or grout burrows.					
Inspector Comment					

No Photos

* Location LS : Land Side N/A : Not Applicable WS : Water Side CR : Crown		** Rating A : Acceptable M : Minimally Acceptable U : Unacceptable N : Not Inspected/Rated C : Corrected A/W : Acceptable but Monitor & Maintain		+ Issue Type Ma : Maintenance Deficiency Ob : Design & System Obsolescence En : Enforcement	
---	--	--	--	--	--

**Flood Control Project Maintenance
Levee Inspections**

Levee Inspection Report By Mile - Spring 2021

Reclamation District No. 2062 Stewart

Waterway	Bank	Unit Miles	Inspection Start/End	Inspector
Unit No. 03 Old River	Left	5.55	04/07/2021 04/07/2021	Alberto De Leon

LM Start	4.00	Rating **	A/W	Issue No.	9
LM End	4.01	Issue Type +	Ma	Location *	WS
Category	Supplemental			GPS Latitude/Longitude	
				Start	End
Item	DWR Erosion Survey			37.820750 °	37.820750 °
				-121.340159 °	-121.340159 °
DWR ID	RD2062U03RM33.92				
Comment Code					
Inspector Comment					
Site ID: RD2062U03RM33.92 09/30/2020: From 2018 to present, no significant changes were observed during the annual survey. The site is not rated due to the relatively wide berm. 09/13/2017: The erosion site is immediately downstream of a sharp river bend.					

Photo 1 of 2 : SP_2021_RD2062_311_9_20210210_00019.jpg



9/30/2020: Front view of the erosion.

LM Start	4.00	Rating **	A/W	Issue No.	9 (cont)
LM End	4.01	Issue Type +	Ma	Location *	WS

Photo 2 of 2 : SP_2021_RD2062_311_9_20210210_00020.jpg



9/30/2020: Another view of the erosion.

LM Start	4.25	Rating **	M	Issue No.	16
LM End	4.25	Issue Type +	Ma	Location *	LS
Category	Earthen Levee			GPS Latitude/Longitude	
				Start	End
Item	Animal Control			37.819744 °	37.819744 °
				-121.336462 °	-121.336462 °
DWR ID	DWR_RD2062_03_f_2020_16				
Comment Code					
A3 : No rodents visible, but rodent burrows visible; need to backfill and compact or grout burrows.					
Inspector Comment					

No Photos

* Location LS : Land Side N/A : Not Applicable WS : Water Side CR : Crown	** Rating A : Acceptable M : Minimally Acceptable U : Unacceptable	N : Not Inspected/Rated C : Corrected A/W : Acceptable but Monitor & Maintain	+ Issue Type Ma : Maintenance Deficiency Ob : Design & System Obsolescence En : Enforcement
--	--	---	---

**Flood Control Project Maintenance
Levee Inspections**

Levee Inspection Report By Mile - Spring 2021

Reclamation District No. 2062 Stewart

Waterway	Bank	Unit Miles	Inspection Start/End	Inspector
Unit No. 03 Old River	Left	5.55	04/07/2021 04/07/2021	Alberto De Leon

LM Start	4.86	Rating **	M	Issue No.	24
LM End	4.86	Issue Type +	Ma	Location *	LS
Category	Earthen Levee			GPS Latitude/Longitude	
				Start	End
Item	Animal Control			37.812501 °	37.812501 °
				-121.336125 °	-121.336125 °
DWR ID	DWR_RD2062_03_s_2021_24				
Comment Code					
A3 : No rodents visible, but rodent burrows visible; need to backfill and compact or grout burrows.					
Inspector Comment					

No Photos

LM Start	5.11	Rating **	M	Issue No.	20
LM End	5.11	Issue Type +	Ma	Location *	LS
Category	Earthen Levee			GPS Latitude/Longitude	
				Start	End
Item	Animal Control			37.808902 °	37.808902 °
				-121.335346 °	-121.335346 °
DWR ID	DWR_RD2062_03_s_2021_20				
Comment Code					
A3 : No rodents visible, but rodent burrows visible; need to backfill and compact or grout burrows.					
Inspector Comment					

No Photos

LM Start	5.36	Rating **	M	Issue No.	15
LM End	5.36	Issue Type +	En	Location *	LS
Category	Earthen Levee			GPS Latitude/Longitude	
				Start	End
Item	Encroachments			37.807296 °	37.807296 °
				-121.331438 °	-121.331438 °
DWR ID	DWR_RD2062_03_s_2021_15				
Comment Code					
TR : Tree or limb					
Inspector Comment					

Photo 1 of 1 : SP_2021_RD2062_311_15_20210419_00041.jpg



View of tree limbs and stumps within the landside easement. Spring 2021

* Location LS : Land Side N/A : Not Applicable WS : Water Side CR : Crown	** Rating A : Acceptable M : Minimally Acceptable U : Unacceptable	N : Not Inspected/Rated C : Corrected A/W : Acceptable but Monitor & Maintain	+ Issue Type Ma : Maintenance Deficiency Ob : Design & System Obsolescence En : Enforcement
--	--	---	---

**Flood Control Project Maintenance
Levee Inspections**

Levee Inspection Report By Mile - Spring 2021

Reclamation District No. 2062 Stewart

Waterway	Bank	Unit Miles	Inspection Start/End	Inspector
Unit No. 03 Old River	Left	5.55	04/07/2021 04/07/2021	Alberto De Leon

LM Start	5.37	Rating **	M	Issue No.	13	
LM End	5.37	Issue Type +	En	Location *		
Category	Supplemental			GPS Latitude/Longitude		
				Start		End
Item	DWR UCIP Field Study			37.807305 °		37.807305 °
				-121.331290 °		-121.331290 °
DWR ID	19203					
Comment Code						
Inspector Comment						
FS_ID:23142 DS_ID:19203 EP_NO: N/A Repair Type: Non-Urgent Crossing Status: Found UCIP Comments: - siphon breakers not protected.- flow meter and gage station on waterside.- pump house on wooden pile structure. Walkway to the pumphouse. FIELD_STRUCT_DESC: 1 of 2: 16-inch irrigation discharge pipe of an unknown material through the levee, 4 feet below the crown. Pump in a pump house on a pile structure in the stream. Walkway to the pump house. Siphon breaker on the landside (LS) slope. Concrete distribution box on the LS berm. [Additional Reference(s): DWR Levee Log, 2007. USACE San Joaquin O&M Manual 9, April 1964, (HLM 5.45)]. FS Date: 10/22/2013						

LM Start	5.37	Rating **	M	Issue No.	13 (cont)
LM End	5.37	Issue Type +	En	Location *	

Photo 1 of 3 : UCIP_SP_2021_23142_39549.jpg



WS view: steel walkway to pump house in the stream.

Photo 2 of 3 : UCIP_SP_2021_23142_39548.jpg



WS view: two 16-inch pipes under walkway. Gate valve without handle on one of the pipes.

* Location LS : Land Side N/A : Not Applicable WS : Water Side CR : Crown	** Rating A : Acceptable M : Minimally Acceptable U : Unacceptable	N : Not Inspected/Rated C : Corrected A/W : Acceptable but Monitor & Maintain	+ Issue Type Ma : Maintenance Deficiency Ob : Design & System Obsolescence En : Enforcement
--	--	---	---

Reclamation District No. 2062 Stewart

**Flood Control Project Maintenance
Levee Inspections**

Levee Inspection Report By Mile - Spring 2021

Reclamation District No. 2062 Stewart

Waterway	Bank	Unit Miles	Inspection Start/End	Inspector
Unit No. 03 Old River	Left	5.55	04/07/2021 04/07/2021	Alberto De Leon

LM Start	5.37	Rating **	M	Issue No.	14 (cont)
LM End	5.37	Issue Type +	En	Location *	
Category	Supplemental		GPS Latitude/Longitude		
			Start	End	
Item	DWR UCIP Field Study		37.807305 °	37.807305 °	
			-121.331276 °	-121.331276 °	
DWR ID	19206				

Photo 2 of 3 : UCIP_SP_2021_23140_39530.jpg



WS view: two 16-inch pipes under walkway. Gate valve without handle on one of the pipes.

LM Start	5.37	Rating **	M	Issue No.	14 (cont)
LM End	5.37	Issue Type +	En	Location *	

Photo 3 of 3 : UCIP_SP_2021_23140_39529.jpg



WS view: pump house on wooden pipe structure in the stream. Two steel pipes under the walkway.

* Location LS : Land Side N/A : Not Applicable WS : Water Side CR : Crown		** Rating A : Acceptable N : Not Inspected/Rated M : Minimally Acceptable C : Corrected U : Unacceptable A/W : Acceptable but Monitor & Maintain		+ Issue Type Ma : Maintenance Deficiency Ob : Design & System Obsolescence En : Enforcement	
--	--	---	--	---	--