

**Flood Control Project Maintenance  
Levee Inspections**  
**LMA District Cover Sheet**  
**Spring 2020 Levee Inspection Results**

**Reclamation District No. 2062 Stewart**

|                                  | Spring<br>(March - May) | Summer **<br>(June - August) | Fall<br>(September - November) | Winter **<br>(December - February) |
|----------------------------------|-------------------------|------------------------------|--------------------------------|------------------------------------|
| † Overall LMA Rating (Fall Only) |                         |                              |                                |                                    |

\*\* Non-receipt of Summer or Winter Inspection  
Reports may effect overall annual rating.

† SPRING INSPECTIONS: Overall maintenance ratings are not determined for the spring inspection results. Individual maintenance deficiencies are rated using the same criteria in the spring and in the fall.

FALL INSPECTIONS: The overall maintenance rating shown above is based on operation and maintenance deficiencies identified within the attached unit inspection reports. This rating is not intended to be an indication of risk.

Comments

|  |
|--|
|  |
|  |
|  |
|  |
|  |
|  |
|  |
|  |

**Flood Control Project Maintenance  
Levee Inspections**

**Unit Cover Sheet**

**Spring 2020 Levee Inspection Results**

**Reclamation District No. 2062 Stewart**

| Waterway                               |                         |                           | Bank                           | Unit Miles                      |
|--|-------------------------|---------------------------|--------------------------------|---------------------------------|
| Unit No. 01 San Joaquin River          |                         |                           | Left                           | 2.64                            |
|  | Spring<br>(March - May) | Summer<br>(June - August) | (September - November)<br>Fall | Winter<br>(December - February) |
| Unit Maintenance Rating<br>(Fall Only) |                         |                           |                                |                                 |
| Date of Inspection                     | 3/13/2020 - 3/13/2020   |                           |                                |                                 |
| DWR Inspector                          | Alberto De Leon         |                           |                                |                                 |
| Accompanied By                         | Tim Mello<br>RD2062     |                           |                                |                                 |

**Summer & Winter Inspections**

The Local Maintaining Agency (LMA) is responsible for summer and winter inspections. The LMA is required to submit a report regarding summer and winter inspections to the California Department of Water Resources (DWR).

DWR must be informed on the:

- a) completion of the inspection
- b) any changes other than the results of normal maintenance
- c) corrections to deficiencies noted in this report

If additional items are noted, further documentation of those items must also be submitted.

The LMA should submit this information to DWR using the LMA web application tool available at:

<http://cdec.water.ca.gov/lma.html>

If the LMA is unable to submit information on this webpage, please contact DWR for assistance.

*The LMA should submit the information and any associated documentation by September 30 for summer inspections and March 31 for winter inspections.*

**Flood Control Project Maintenance  
Levee Inspections**

**Levee Inspection Report By Mile - Spring 2020**

**Reclamation District No. 2062 Stewart**

| Waterway                      | Bank | Unit Miles | Inspection Start/End     | Inspector       |
|-------------------------------|------|------------|--------------------------|-----------------|
| Unit No. 01 San Joaquin River | Left | 2.64       | 03/13/2020<br>03/13/2020 | Alberto De Leon |

|  |                                  |              |                        |            |   |
|--|----------------------------------|--------------|------------------------|------------|---|
| LM Start   |                                  | Rating **    | A                      | Issue No.  | 2 |
| LM End   |                                  | Issue Type + | Ma                     | Location * |   |
| Category   | Earthen Levee                    |              | GPS Latitude/Longitude |            |   |
|  |                                  |              | Start                  | End        |   |
| Item   | Operations & Maintenance Manuals |              |                        | °          | ° |
|  |                                  |              |                        | °          | ° |
| DWR ID   | DWR_RD2062_01_f_2013_2           |              |                        |            |   |
| Comment Code                                     |                                  |              |                        |            |   |
|  |                                  |              |                        |            |   |
| Inspector Comment                                |                                  |              |                        |            |   |
| The O&M Manual is available at the LMA's office. |                                  |              |                        |            |   |

No Photos

|  |                                |              |                        |            |   |
|--|--------------------------------|--------------|------------------------|------------|---|
| LM Start   |                                | Rating **    | A                      | Issue No.  | 5 |
| LM End   |                                | Issue Type + | Ma                     | Location * |   |
| Category   | Earthen Levee                  |              | GPS Latitude/Longitude |            |   |
|  |                                |              | Start                  | End        |   |
| Item   | Emergency Supplies & Equipment |              |                        | °          | ° |
|  |                                |              |                        | °          | ° |
| DWR ID   | DWR_RD2062_01_s_2013_5         |              |                        |            |   |
| Comment Code   |                                |              |                        |            |   |
|  |                                |              |                        |            |   |
| Inspector Comment                                    |                                |              |                        |            |   |
| Adequate flood fight supplies are available on-site. |                                |              |                        |            |   |

No Photos

|   |                               |              |                        |            |   |
|---|-------------------------------|--------------|------------------------|------------|---|
| LM Start  |                               | Rating **    | A                      | Issue No.  | 8 |
| LM End  |                               | Issue Type + | Ma                     | Location * |   |
| Category  | Earthen Levee                 |              | GPS Latitude/Longitude |            |   |
|   |                               |              | Start                  | End        |   |
| Item  | Flood Preparedness & Training |              |                        | °          | ° |
|   |                               |              |                        | °          | ° |
| DWR ID  | DWR_RD2062_01_s_2013_8        |              |                        |            |   |
| Comment Code  |                               |              |                        |            |   |
|   |                               |              |                        |            |   |
| Inspector Comment   |                               |              |                        |            |   |
| The LMA has a flood fight emergency response plan. LMA has attended DWR flood fight training class. |                               |              |                        |            |   |

No Photos

|  |  |   |   |
|--|--|---|---|
| <b>* Location</b><br>LS : Land Side    N/A : Not Applicable<br>WS : Water Side<br>CR : Crown | <b>** Rating</b><br>A : Acceptable<br>M : Minimally Acceptable<br>U : Unacceptable | N : Not Inspected/Rated<br>C : Corrected<br>A/W : Acceptable but Monitor & Maintain | <b>+ Issue Type</b><br>Ma : Maintenance Deficiency<br>Ob : Design & System Obsolescence<br>En : Enforcement |
|--|--|---|---|

**Flood Control Project Maintenance  
Levee Inspections**

**Levee Inspection Report By Mile - Spring 2020**

**Reclamation District No. 2062 Stewart**

| Waterway                      | Bank | Unit Miles | Inspection Start/End     | Inspector       |
|-------------------------------|------|------------|--------------------------|-----------------|
| Unit No. 01 San Joaquin River | Left | 2.64       | 03/13/2020<br>03/13/2020 | Alberto De Leon |

|  |                         |              |    |                        |               |
|--|-------------------------|--------------|----|------------------------|---------------|
| LM Start   | 0.39                    | Rating **    | C  | Issue No.              | 11            |
| LM End   | 0.81                    | Issue Type + | Ma | Location *             | WS            |
| Category   | Earthen Levee           |              |    | GPS Latitude/Longitude |               |
|  |                         |              |    | Start                  | End           |
| Item   | Vegetation              |              |    | 37.804458 °            | 37.804608 °   |
|  |                         |              |    | -121.322316 °          | -121.314865 ° |
| DWR ID   | DWR_RD2062_01_f_2019_11 |              |    |                        |               |
| Comment Code   |                         |              |    |                        |               |
| V2 : Remove the wild growth other than native grasses from the levee slopes. |                         |              |    |                        |               |
| Inspector Comment  |                         |              |    |                        |               |
|  |                         |              |    |                        |               |

No Photos

|  |                         |              |    |                        |               |
|--|-------------------------|--------------|----|------------------------|---------------|
| LM Start   | 0.94                    | Rating **    | C  | Issue No.              | 10            |
| LM End   | 2.01                    | Issue Type + | Ma | Location *             | WS            |
| Category   | Earthen Levee           |              |    | GPS Latitude/Longitude |               |
|  |                         |              |    | Start                  | End           |
| Item   | Vegetation              |              |    | 37.803317 °            | 37.793050 °   |
|  |                         |              |    | -121.313639 °          | -121.310021 ° |
| DWR ID   | DWR_RD2062_01_f_2019_10 |              |    |                        |               |
| Comment Code   |                         |              |    |                        |               |
| V2 : Remove the wild growth other than native grasses from the levee slopes. |                         |              |    |                        |               |
| Inspector Comment  |                         |              |    |                        |               |
|  |                         |              |    |                        |               |

No Photos

**\* Location**  
 LS : Land Side    N/A : Not Applicable  
 WS : Water Side  
 CR : Crown

**\*\* Rating**  
 A : Acceptable                      N : Not Inspected/Rated  
 M : Minimally Acceptable        C : Corrected  
 U : Unacceptable                  A/W : Acceptable but Monitor & Maintain

**+ Issue Type**  
 Ma : Maintenance Deficiency  
 Ob : Design & System Obsolescence  
 En : Enforcement

**Flood Control Project Maintenance  
Levee Inspections**

**Levee Inspection Report By Mile - Spring 2020**

**Reclamation District No. 2062 Stewart**

| Waterway                      | Bank | Unit Miles | Inspection Start/End     | Inspector       |
|-------------------------------|------|------------|--------------------------|-----------------|
| Unit No. 01 San Joaquin River | Left | 2.64       | 03/13/2020<br>03/13/2020 | Alberto De Leon |

|          |                      |              |    |                        |               |
|----------|----------------------|--------------|----|------------------------|---------------|
| LM Start | 1.64                 | Rating **    | M  | Issue No.              | 14            |
| LM End   | 1.64                 | Issue Type + | En | Location *             |               |
| Category | Supplemental         |              |    | GPS Latitude/Longitude |               |
|          |                      |              |    | Start                  | End           |
| Item     | DWR UCIP Field Study |              |    | 37.793521 °            | 37.793521 °   |
|          |                      |              |    | -121.315348 °          | -121.315348 ° |
| DWR ID   | 19177                |              |    |                        |               |

**Comment Code**

**Inspector Comment**

DS\_ID:19177  
FS\_ID:22807  
EP\_NO: 12679  
Repair Type: Non-Urgent  
Crossing Status: Found  
UCIP Comments: - All 3 pipes on landside looks new.- Pumps, pump house, and pipes removed from waterside.- Land development activities going on in this area.- Needs to confirm from LMA or DWR Inspector about the crossing.  
FIELD\_STRUCT\_DESC: 1 of 3: 16-inch steel irrigation discharge pipe through the levee, 5 feet below the crown. Electrical conduit through the levee. Slant pump in a pump house on the waterside (WS) slope. Siphon breaker on the landside (LS) slope. Service pole and concrete gate valve box at the landside (LS) toe. Installed by USACE in 1961. (Plans to replace rusted portions of two 16-inch irrigation pipes through the levee authorized under Permit No. 16124, 1993 - Reclamation District No. 2062). [Additional Reference(s): DWR Levee Log, 2007. USACE San Joaquin O&M Manual 9, April 1964, (HLM 1.65)].  
FS Date: 10/22/2013

|          |             |              |    |            |                  |
|----------|-------------|--------------|----|------------|------------------|
| LM Start | <b>1.64</b> | Rating **    | M  | Issue No.  | <b>14 (cont)</b> |
| LM End   | <b>1.64</b> | Issue Type + | En | Location * |                  |

Photo 1 of 3 : UCIP\_SP\_2020\_22807\_38905.jpg



WS view: pipes, walkway, and dismantled pumphouse (right).

Photo 2 of 3 : UCIP\_SP\_2020\_22807\_38904.jpg



WS view: 16-inch pipes on both sides of walkway and 10-inch pipe (on right) away from walkway.

|  |  |  |   |
|--|--|--|---|
| <b>* Location</b><br>LS : Land Side    N/A : Not Applicable<br>WS : Water Side<br>CR : Crown | <b>** Rating</b><br>A : Acceptable<br>M : Minimally Acceptable<br>U : Unacceptable | <b>N : Not Inspected/Rated</b><br>C : Corrected<br>A/W : Acceptable but Monitor & Maintain | <b>+ Issue Type</b><br>Ma : Maintenance Deficiency<br>Ob : Design & System Obsolescence<br>En : Enforcement |
|--|--|--|---|

**Flood Control Project Maintenance  
Levee Inspections**

**Levee Inspection Report By Mile - Spring 2020**

**Reclamation District No. 2062 Stewart**

| Waterway                      | Bank | Unit Miles | Inspection Start/End     | Inspector       |
|-------------------------------|------|------------|--------------------------|-----------------|
| Unit No. 01 San Joaquin River | Left | 2.64       | 03/13/2020<br>03/13/2020 | Alberto De Leon |

|          |                      |              |                        |               |                  |
|----------|----------------------|--------------|------------------------|---------------|------------------|
| LM Start | <b>1.64</b>          | Rating **    | M                      | Issue No.     | <b>14 (cont)</b> |
| LM End   | <b>1.64</b>          | Issue Type + | En                     | Location *    |                  |
| Category | Supplemental         |              | GPS Latitude/Longitude |               |                  |
|          |                      |              | Start                  | End           |                  |
| Item     | DWR UCIP Field Study |              | 37.793521 °            | 37.793521 °   |                  |
|          |                      |              | -121.315348 °          | -121.315348 ° |                  |
| DWR ID   | 19177                |              |                        |               |                  |

Photo 3 of 3 : UCIP\_SP\_2020\_22807\_38903.jpg



WS view: two 16-inch pipes. Pumps were removed. Pumphouse dismantled.

|          |                      |              |                        |               |           |
|----------|----------------------|--------------|------------------------|---------------|-----------|
| LM Start | <b>1.64</b>          | Rating **    | M                      | Issue No.     | <b>15</b> |
| LM End   | <b>1.64</b>          | Issue Type + | En                     | Location *    |           |
| Category | Supplemental         |              | GPS Latitude/Longitude |               |           |
|          |                      |              | Start                  | End           |           |
| Item     | DWR UCIP Field Study |              | 37.793510 °            | 37.793510 °   |           |
|          |                      |              | -121.315345 °          | -121.315345 ° |           |
| DWR ID   | 19183                |              |                        |               |           |

**Comment Code**

**Inspector Comment**

DS\_ID:19183  
FS\_ID:22809  
EP\_NO: 12679  
Repair Type: Non-Urgent  
Crossing Status: Found  
UCIP Comments: - All 3 pipes on landside looks new.- Pumps, pump house, and pipes removed from waterside.- Land development activities going on in this area.- Needs to confirm from LMA or DWR Inspector about the crossing.  
FIELD\_STRUCT\_DESC: 2 of 3: 16-inch steel irrigation discharge pipe through the levee, 5 feet below the crown. Electrical conduit through the levee. Slant pump in a pump house on the waterside (WS) slope. Siphon breaker on the landside (LS) slope. Service pole and concrete gate valve box at the landside (LS) toe. Installed by USACE in 1961. (Plans to replace rusted portions of two 16-inch irrigation pipes through the levee authorized under Permit No. 16124, 1993 - Reclamation District No. 2062). [Additional Reference(s): DWR Levee Log, 2007. USACE San Joaquin O&M Manual 9, April 1964, (HLM 1.65)].  
FS Date: 10/22/2013

Photo 1 of 3 : UCIP\_SP\_2020\_22809\_38913.jpg



WS view: pipes, walkway, and dismantled pumphouse (right).

|  |  |   |   |
|--|--|---|---|
| <b>* Location</b><br>LS : Land Side    N/A : Not Applicable<br>WS : Water Side<br>CR : Crown | <b>** Rating</b><br>A : Acceptable<br>M : Minimally Acceptable<br>U : Unacceptable | N : Not Inspected/Rated<br>C : Corrected<br>A/W : Acceptable but Monitor & Maintain | <b>+ Issue Type</b><br>Ma : Maintenance Deficiency<br>Ob : Design & System Obsolescence<br>En : Enforcement |
|--|--|---|---|



**Flood Control Project Maintenance  
Levee Inspections**

**Levee Inspection Report By Mile - Spring 2020**

**Reclamation District No. 2062 Stewart**

| Waterway                      | Bank | Unit Miles | Inspection Start/End     | Inspector       |
|-------------------------------|------|------------|--------------------------|-----------------|
| Unit No. 01 San Joaquin River | Left | 2.64       | 03/13/2020<br>03/13/2020 | Alberto De Leon |

|          |                      |              |                        |               |                  |
|----------|----------------------|--------------|------------------------|---------------|------------------|
| LM Start | <b>1.64</b>          | Rating **    | M                      | Issue No.     | <b>15 (cont)</b> |
| LM End   | <b>1.64</b>          | Issue Type + | En                     | Location *    |                  |
| Category | Supplemental         |              | GPS Latitude/Longitude |               |                  |
|          |                      |              | Start                  | End           |                  |
| Item     | DWR UCIP Field Study |              | 37.793510 °            | 37.793510 °   |                  |
|          |                      |              | -121.315345 °          | -121.315345 ° |                  |
| DWR ID   | 19183                |              |                        |               |                  |

Photo 2 of 3 : UCIP\_SP\_2020\_22809\_38912.jpg



WS view: 16-inch pipes on both sides of walkway and 10-inch pipe (on right) away from walkway.

|          |             |              |    |            |                  |
|----------|-------------|--------------|----|------------|------------------|
| LM Start | <b>1.64</b> | Rating **    | M  | Issue No.  | <b>15 (cont)</b> |
| LM End   | <b>1.64</b> | Issue Type + | En | Location * |                  |

Photo 3 of 3 : UCIP\_SP\_2020\_22809\_38911.jpg



WS view: two 16-inch pipes under walkway; pumps were removed.

|  |  |   |   |
|--|--|---|---|
| <b>* Location</b><br>LS : Land Side    N/A : Not Applicable<br>WS : Water Side<br>CR : Crown | <b>** Rating</b><br>A : Acceptable<br>M : Minimally Acceptable<br>U : Unacceptable | N : Not Inspected/Rated<br>C : Corrected<br>A/W : Acceptable but Monitor & Maintain | <b>+ Issue Type</b><br>Ma : Maintenance Deficiency<br>Ob : Design & System Obsolescence<br>En : Enforcement |
|--|--|---|---|

**Flood Control Project Maintenance  
Levee Inspections**

**Levee Inspection Report By Mile - Spring 2020**

**Reclamation District No. 2062 Stewart**

| Waterway                      | Bank | Unit Miles | Inspection Start/End     | Inspector       |
|-------------------------------|------|------------|--------------------------|-----------------|
| Unit No. 01 San Joaquin River | Left | 2.64       | 03/13/2020<br>03/13/2020 | Alberto De Leon |

|          |                      |              |    |                        |               |
|----------|----------------------|--------------|----|------------------------|---------------|
| LM Start | 1.64                 | Rating **    | M  | Issue No.              | 16            |
| LM End   | 1.64                 | Issue Type + | En | Location *             |               |
| Category | Supplemental         |              |    | GPS Latitude/Longitude |               |
|          |                      |              |    | Start                  | End           |
| Item     | DWR UCIP Field Study |              |    | 37.793497 °            | 37.793497 °   |
|          |                      |              |    | -121.315340 °          | -121.315340 ° |
| DWR ID   | 19184                |              |    |                        |               |

**Comment Code**

**Inspector Comment**

DS\_ID:19184  
FS\_ID:22810  
EP\_NO: 12679  
Repair Type: Non-Urgent  
Crossing Status: Found  
UCIP Comments: - All 3 pipes on landside looks new. No pump associated with 8-inch pipe.- Pumps, pump house, and pipes removed from waterside.- Land development activities going on in this area.- Needs to confirm from LMA or DWR Inspector about the crossing.  
FIELD\_STRUCT\_DESC: 3 of 3: 8-inch steel irrigation discharge pipe through the levee, 8 feet below the crown. Electrical conduit through the levee. Slant pump in a pump house on the waterside (WS) slope. Siphon breaker on the landside (LS) slope. Service pole and concrete gate valve box at the landside (LS) toe. (Plans to install a 75-horsepower pump on the bank with a 10-inch steel discharge pipe through the levee authorized under Permit No. 12679, 1979 - Reclamation District No. 2062). [Additional Reference(s): DWR Levee Log, 2007].  
FS Date: 10/22/2013

|          |             |              |    |            |                  |
|----------|-------------|--------------|----|------------|------------------|
| LM Start | <b>1.64</b> | Rating **    | M  | Issue No.  | <b>16 (cont)</b> |
| LM End   | <b>1.64</b> | Issue Type + | En | Location * |                  |

Photo 1 of 3 : UCIP\_SP\_2020\_22810\_38918.jpg



WS view: pipes, walkway, and dismantled pumphouse (right).

Photo 2 of 3 : UCIP\_SP\_2020\_22810\_38917.jpg



WS view: electric conduit and 10-inch pipe (right). Dismantled/removed pipe and pump house (far right).

|  |  |   |  |   |  |
|--|--|---|--|---|--|
| <b>* Location</b><br>LS : Land Side    N/A : Not Applicable<br>WS : Water Side<br>CR : Crown |  | <b>** Rating</b><br>A : Acceptable                      N : Not Inspected/Rated<br>M : Minimally Acceptable        C : Corrected<br>U : Unacceptable                  A/W : Acceptable but Monitor & Maintain |  | <b>+ Issue Type</b><br>Ma : Maintenance Deficiency<br>Ob : Design & System Obsolescence<br>En : Enforcement |  |
|--|--|---|--|---|--|



**Flood Control Project Maintenance  
Levee Inspections**

**Levee Inspection Report By Mile - Spring 2020**

**Reclamation District No. 2062 Stewart**

| Waterway                      | Bank | Unit Miles | Inspection Start/End     | Inspector       |
|-------------------------------|------|------------|--------------------------|-----------------|
| Unit No. 01 San Joaquin River | Left | 2.64       | 03/13/2020<br>03/13/2020 | Alberto De Leon |

|          |                      |              |                        |               |                  |
|----------|----------------------|--------------|------------------------|---------------|------------------|
| LM Start | <b>1.64</b>          | Rating **    | M                      | Issue No.     | <b>16 (cont)</b> |
| LM End   | <b>1.64</b>          | Issue Type + | En                     | Location *    |                  |
| Category | Supplemental         |              | GPS Latitude/Longitude |               |                  |
|          |                      |              | Start                  | End           |                  |
| Item     | DWR UCIP Field Study |              | 37.793497 °            | 37.793497 °   |                  |
|          |                      |              | -121.315340 °          | -121.315340 ° |                  |
| DWR ID   | 19184                |              |                        |               |                  |

Photo 3 of 3 : UCIP\_SP\_2020\_22810\_38916.jpg



LS view: two 16-inch pipes (left) and one 10-inch pipe (right) in ditch. Concrete box removed.

|  |                         |              |    |                        |               |
|--|-------------------------|--------------|----|------------------------|---------------|
| LM Start   | 1.84                    | Rating **    | A  | Issue No.              | 13            |
| LM End   | 1.84                    | Issue Type + | Ma | Location *             | LS            |
| Category   | Earthen Levee           |              |    | GPS Latitude/Longitude |               |
|  |                         |              |    | Start                  | End           |
| Item   | Vegetation              |              |    | 37.791821 °            | 37.791821 °   |
|  |                         |              |    | -121.312488 °          | -121.312488 ° |
| DWR ID   | DWR_RD2062_01_s_2020_13 |              |    |                        |               |
| Comment Code   |                         |              |    |                        |               |
| V1 : Control annual grass and weeds on the levee slopes and easements. |                         |              |    |                        |               |
| Inspector Comment  |                         |              |    |                        |               |
|  |                         |              |    |                        |               |

Photo 1 of 1 : SP\_2020\_RD2062\_309\_13\_20200318\_00012.jpg



Typical view of well maintained vegetation on landside slope. Spring 2020

**\* Location**  
LS : Land Side    N/A : Not Applicable  
WS : Water Side  
CR : Crown

**\*\* Rating**  
A : Acceptable                      N : Not Inspected/Rated  
M : Minimally Acceptable        C : Corrected  
U : Unacceptable                  A/W : Acceptable but Monitor & Maintain

**+ Issue Type**  
Ma : Maintenance Deficiency  
Ob : Design & System Obsolescence  
En : Enforcement

**Flood Control Project Maintenance  
Levee Inspections**

**Levee Inspection Report By Mile - Spring 2020**

**Reclamation District No. 2062 Stewart**

| Waterway                      | Bank | Unit Miles | Inspection Start/End     | Inspector       |
|-------------------------------|------|------------|--------------------------|-----------------|
| Unit No. 01 San Joaquin River | Left | 2.64       | 03/13/2020<br>03/13/2020 | Alberto De Leon |

|  |                         |              |    |                        |               |
|--|-------------------------|--------------|----|------------------------|---------------|
| LM Start   | 1.84                    | Rating **    | A  | Issue No.              | 12            |
| LM End   | 1.84                    | Issue Type + | Ma | Location *             | WS            |
| Category   | Earthen Levee           |              |    | GPS Latitude/Longitude |               |
|  |                         |              |    | Start                  | End           |
| Item   | Vegetation              |              |    | 37.791821 °            | 37.791821 °   |
|  |                         |              |    | -121.312487 °          | -121.312487 ° |
| DWR ID   | DWR_RD2062_01_s_2020_12 |              |    |                        |               |
| Comment Code   |                         |              |    |                        |               |
| V1 : Control annual grass and weeds on the levee slopes and easements. |                         |              |    |                        |               |
| Inspector Comment  |                         |              |    |                        |               |
|  |                         |              |    |                        |               |

Photo 1 of 1 : SP\_2020\_RD2062\_309\_12\_20200318\_00013.jpg



Typical view of well maintained vegetation on waterside slope. Spring 2020

|  |                          |              |    |                        |               |
|--|--------------------------|--------------|----|------------------------|---------------|
| LM Start   | 2.01                     | Rating **    | C  | Issue No.              | 9             |
| LM End   | 2.09                     | Issue Type + | Ma | Location *             | WS            |
| Category   | Earthen Levee            |              |    | GPS Latitude/Longitude |               |
|  |                          |              |    | Start                  | End           |
| Item   | Vegetation               |              |    | 37.793068 °            | 37.794010 °   |
|  |                          |              |    | -121.310008 °          | -121.309373 ° |
| DWR ID   | DWR_RD2062_01_f _ 2019_9 |              |    |                        |               |
| Comment Code   |                          |              |    |                        |               |
| V2 : Remove the wild growth other than native grasses from the levee slopes. |                          |              |    |                        |               |
| Inspector Comment  |                          |              |    |                        |               |
|  |                          |              |    |                        |               |

No Photos

|   |                        |              |     |                        |               |
|---|------------------------|--------------|-----|------------------------|---------------|
| LM Start  | 2.03                   | Rating **    | A/W | Issue No.              | 7             |
| LM End  | 2.03                   | Issue Type + | Ma  | Location *             | WS            |
| Category  | Earthen Levee          |              |     | GPS Latitude/Longitude |               |
|   |                        |              |     | Start                  | End           |
| Item  | Vegetation             |              |     | 37.793257 °            | 37.793257 °   |
|   |                        |              |     | -121.309869 °          | -121.309869 ° |
| DWR ID  | DWR_RD2062_01_s_2020_7 |              |     |                        |               |
| Comment Code  |                        |              |     |                        |               |
| V4 : Elderberries are blocking visibility and flood fight capability. |                        |              |     |                        |               |
| Inspector Comment   |                        |              |     |                        |               |
|   |                        |              |     |                        |               |

No Photos

|   |  |   |  |   |  |  |  |
|---|--|---|--|---|--|--|--|
| * Location<br>LS : Land Side    N/A : Not Applicable<br>WS : Water Side<br>CR : Crown |  | ** Rating<br>A : Acceptable<br>M : Minimally Acceptable<br>U : Unacceptable |  | N : Not Inspected/Rated<br>C : Corrected<br>A/W : Acceptable but Monitor & Maintain |  | + Issue Type<br>Ma : Maintenance Deficiency<br>Ob : Design & System Obsolescence<br>En : Enforcement |  |
|---|--|---|--|---|--|--|--|

**Flood Control Project Maintenance  
Levee Inspections**

**Levee Inspection Report By Mile - Spring 2020**

**Reclamation District No. 2062 Stewart**

| Waterway                      | Bank | Unit Miles | Inspection Start/End     | Inspector          |
|-------------------------------|------|------------|--------------------------|--------------------|
| Unit No. 01 San Joaquin River | Left | 2.64       | 03/13/2020<br>03/13/2020 | Alberto<br>De Leon |

|  |                        |              |    |                        |               |
|--|------------------------|--------------|----|------------------------|---------------|
| LM Start   | 2.09                   | Rating **    | C  | Issue No.              | 6             |
| LM End   | 2.51                   | Issue Type + | Ma | Location *             | WS            |
| Category   | Earthen Levee          |              |    | GPS Latitude/Longitude |               |
|  |                        |              |    | Start                  | End           |
| Item   | Vegetation             |              |    | 37.794010 °            | 37.788784 °   |
|  |                        |              |    | -121.309373 °          | -121.308884 ° |
| DWR ID   | DWR_RD2062_01_f_2019_6 |              |    |                        |               |
| Comment Code   |                        |              |    |                        |               |
| V2 : Remove the wild growth other than native grasses from the levee slopes. |                        |              |    |                        |               |
| Inspector Comment  |                        |              |    |                        |               |
|  |                        |              |    |                        |               |

No Photos

**\* Location**  
 LS : Land Side    N/A : Not Applicable  
 WS : Water Side  
 CR : Crown

**\*\* Rating**  
 A : Acceptable                      N : Not Inspected/Rated  
 M : Minimally Acceptable        C : Corrected  
 U : Unacceptable                  A/W : Acceptable but Monitor & Maintain

**+ Issue Type**  
 Ma : Maintenance Deficiency  
 Ob : Design & System Obsolescence  
 En : Enforcement

**Flood Control Project Maintenance  
Levee Inspections**

**Unit Cover Sheet**

**Spring 2020 Levee Inspection Results**

**Reclamation District No. 2062 Stewart**

| Waterway                               |                         |                           | Bank                           | Unit Miles                      |
|--|-------------------------|---------------------------|--------------------------------|---------------------------------|
| Unit No. 02 Paradise Cut               |                         |                           | Right                          | 3.96                            |
|  | Spring<br>(March - May) | Summer<br>(June - August) | (September - November)<br>Fall | Winter<br>(December - February) |
| Unit Maintenance Rating<br>(Fall Only) |                         |                           |                                |                                 |
| Date of Inspection                     | 3/13/2020 - 3/13/2020   |                           |                                |                                 |
| DWR Inspector                          | Alberto De Leon         |                           |                                |                                 |
| Accompanied By                         | Tim Mello<br>RD2062     |                           |                                |                                 |

**Summer & Winter Inspections**

The Local Maintaining Agency (LMA) is responsible for summer and winter inspections. The LMA is required to submit a report regarding summer and winter inspections to the California Department of Water Resources (DWR).

DWR must be informed on the:

- a) completion of the inspection
- b) any changes other than the results of normal maintenance
- c) corrections to deficiencies noted in this report

If additional items are noted, further documentation of those items must also be submitted.

The LMA should submit this information to DWR using the LMA web application tool available at:

<http://cdec.water.ca.gov/lma.html>

If the LMA is unable to submit information on this webpage, please contact DWR for assistance.

*The LMA should submit the information and any associated documentation by September 30 for summer inspections and March 31 for winter inspections.*

**Flood Control Project Maintenance  
Levee Inspections**

**Levee Inspection Report By Mile - Spring 2020**

**Reclamation District No. 2062 Stewart**

| Waterway                 | Bank  | Unit Miles | Inspection Start/End     | Inspector       |
|--------------------------|-------|------------|--------------------------|-----------------|
| Unit No. 02 Paradise Cut | Right | 3.96       | 03/13/2020<br>03/13/2020 | Alberto De Leon |

|   |                         |              |    |                        |               |
|---|-------------------------|--------------|----|------------------------|---------------|
| LM Start  | 0.00                    | Rating **    | C  | Issue No.              | 27            |
| LM End  | 0.19                    | Issue Type + | Ma | Location *             | WS            |
| Category  | Earthen Levee           |              |    | GPS Latitude/Longitude |               |
|   |                         |              |    | Start                  | End           |
| Item  | Animal Control          |              |    | 37.777815 °            | 37.779984 °   |
|   |                         |              |    | -121.333054 °          | -121.335088 ° |
| DWR ID  | DWR_RD2062_02_f_2019_27 |              |    |                        |               |
| Comment Code  |                         |              |    |                        |               |
| A3 : No rodents visible, but rodent burrows visible; need to backfill and compact or grout burrows. |                         |              |    |                        |               |
| Inspector Comment   |                         |              |    |                        |               |
|   |                         |              |    |                        |               |

No Photos

|  |                           |              |    |                        |               |
|--|---------------------------|--------------|----|------------------------|---------------|
| LM Start   | 0.00                      | Rating **    | C  | Issue No.              | 24            |
| LM End   | 0.77                      | Issue Type + | Ma | Location *             | WS            |
| Category   | Earthen Levee             |              |    | GPS Latitude/Longitude |               |
|  |                           |              |    | Start                  | End           |
| Item   | Vegetation                |              |    | 37.777815 °            | 37.786367 °   |
|  |                           |              |    | -121.333054 °          | -121.341881 ° |
| DWR ID   | DWR_RD2062_02_f _ 2019_24 |              |    |                        |               |
| Comment Code   |                           |              |    |                        |               |
| V2 : Remove the wild growth other than native grasses from the levee slopes. |                           |              |    |                        |               |
| Inspector Comment  |                           |              |    |                        |               |
|  |                           |              |    |                        |               |

No Photos

|                   |                           |              |    |                        |               |
|-------------------|---------------------------|--------------|----|------------------------|---------------|
| LM Start          | 0.43                      | Rating **    | M  | Issue No.              | 25            |
| LM End            | 0.43                      | Issue Type + | En | Location *             | LS            |
| Category          | Earthen Levee             |              |    | GPS Latitude/Longitude |               |
|                   |                           |              |    | Start                  | End           |
| Item              | Encroachments             |              |    | 37.782800 °            | 37.782800 °   |
|                   |                           |              |    | -121.337532 °          | -121.337532 ° |
| DWR ID            | DWR_RD2062_02_f _ 2019_25 |              |    |                        |               |
| Comment Code      |                           |              |    |                        |               |
| RA : Ramp         |                           |              |    |                        |               |
| Inspector Comment |                           |              |    |                        |               |
|                   |                           |              |    |                        |               |

No Photos

|  |  |   |   |
|--|--|---|---|
| <b>* Location</b><br>LS : Land Side    N/A : Not Applicable<br>WS : Water Side<br>CR : Crown | <b>** Rating</b><br>A : Acceptable<br>M : Minimally Acceptable<br>U : Unacceptable | N : Not Inspected/Rated<br>C : Corrected<br>A/W : Acceptable but Monitor & Maintain | <b>+ Issue Type</b><br>Ma : Maintenance Deficiency<br>Ob : Design & System Obsolescence<br>En : Enforcement |
|--|--|---|---|

**Flood Control Project Maintenance  
Levee Inspections**

**Levee Inspection Report By Mile - Spring 2020**

**Reclamation District No. 2062 Stewart**

| Waterway                 | Bank  | Unit Miles | Inspection Start/End     | Inspector       |
|--------------------------|-------|------------|--------------------------|-----------------|
| Unit No. 02 Paradise Cut | Right | 3.96       | 03/13/2020<br>03/13/2020 | Alberto De Leon |

|                   |                         |              |    |                        |               |
|-------------------|-------------------------|--------------|----|------------------------|---------------|
| LM Start          | 0.43                    | Rating **    | C  | Issue No.              | 26            |
| LM End            | 0.43                    | Issue Type + | En | Location *             | WS            |
| Category          | Earthen Levee           |              |    | GPS Latitude/Longitude |               |
|                   |                         |              |    | Start                  | End           |
| Item              | Encroachments           |              |    | 37.782802 °            | 37.782802 °   |
|                   |                         |              |    | -121.337532 °          | -121.337532 ° |
| DWR ID            | DWR_RD2062_02_f_2019_26 |              |    |                        |               |
| Comment Code      |                         |              |    |                        |               |
| RA : Ramp         |                         |              |    |                        |               |
| Inspector Comment |                         |              |    |                        |               |
|                   |                         |              |    |                        |               |

No Photos

|   |                      |              |    |                        |               |
|---|----------------------|--------------|----|------------------------|---------------|
| LM Start  | 0.56                 | Rating **    | M  | Issue No.              | 28            |
| LM End  | 0.56                 | Issue Type + | En | Location *             |               |
| Category  | Supplemental         |              |    | GPS Latitude/Longitude |               |
|   |                      |              |    | Start                  | End           |
| Item  | DWR UCIP Field Study |              |    | 37.784380 °            | 37.784380 °   |
|   |                      |              |    | -121.338985 °          | -121.338985 ° |
| DWR ID  | 24697                |              |    |                        |               |
| Comment Code  |                      |              |    |                        |               |
|   |                      |              |    |                        |               |
| Inspector Comment   |                      |              |    |                        |               |
| DS_ID:24697<br>FS_ID:23110<br>EP_NO: N/A<br>Repair Type: Non-Urgent<br>Crossing Status: Found<br>UCIP Comments: Found on field with the help of USACE 2012 PI Report.Needs proper abandonment.<br>FIELD_STRUCT_DESC: *ABANDONED* 24-inch steel irrigation discharge pipe through the levee, at an unknown depth. Damaged siphon breaker on the waterside (WS) slope. Pump on a concrete sump in an irrigation ditch on the landside (LS). Service pole on the LS slope. Pump disconnected from the service pole.<br>FS Date: 10/23/2013 |                      |              |    |                        |               |

Photo 1 of 3 : UCIP\_SP\_2020\_23110\_39398.jpg



WS view: power pole (left), siphon breaker (marked- left), and steel pipe (right) on levee slope.

|  |   |   |
|--|---|---|
| <b>* Location</b><br>LS : Land Side    N/A : Not Applicable<br>WS : Water Side<br>CR : Crown | <b>** Rating</b><br>A : Acceptable<br>M : Minimally Acceptable<br>U : Unacceptable<br>N : Not Inspected/Rated<br>C : Corrected<br>A/W : Acceptable but Monitor & Maintain | <b>+ Issue Type</b><br>Ma : Maintenance Deficiency<br>Ob : Design & System Obsolescence<br>En : Enforcement |
|--|---|---|



**Flood Control Project Maintenance  
Levee Inspections**

**Levee Inspection Report By Mile - Spring 2020**

**Reclamation District No. 2062 Stewart**

| Waterway                 | Bank  | Unit Miles | Inspection Start/End     | Inspector       |
|--------------------------|-------|------------|--------------------------|-----------------|
| Unit No. 02 Paradise Cut | Right | 3.96       | 03/13/2020<br>03/13/2020 | Alberto De Leon |

|          |                      |              |                        |               |                  |
|----------|----------------------|--------------|------------------------|---------------|------------------|
| LM Start | <b>0.56</b>          | Rating **    | M                      | Issue No.     | <b>28 (cont)</b> |
| LM End   | <b>0.56</b>          | Issue Type + | En                     | Location *    |                  |
| Category | Supplemental         |              | GPS Latitude/Longitude |               |                  |
|          |                      |              | Start                  | End           |                  |
| Item     | DWR UCIP Field Study |              | 37.784380 °            | 37.784380 °   |                  |
|          |                      |              | -121.338985 °          | -121.338985 ° |                  |
| DWR ID   | 24697                |              |                        |               |                  |

Photo 2 of 3 : UCIP\_SP\_2020\_23110\_39397.jpg



WS view: exposed steel pipe and damaged siphon breaker on levee slope.

|          |             |              |    |            |                  |
|----------|-------------|--------------|----|------------|------------------|
| LM Start | <b>0.56</b> | Rating **    | M  | Issue No.  | <b>28 (cont)</b> |
| LM End   | <b>0.56</b> | Issue Type + | En | Location * |                  |

Photo 3 of 3 : UCIP\_SP\_2020\_23110\_39396.jpg



WS view: exposed steel pipe on channel bank and also immersed into channel water.

|  |  |   |   |
|--|--|---|---|
| <b>* Location</b><br>LS : Land Side    N/A : Not Applicable<br>WS : Water Side<br>CR : Crown | <b>** Rating</b><br>A : Acceptable<br>M : Minimally Acceptable<br>U : Unacceptable | N : Not Inspected/Rated<br>C : Corrected<br>A/W : Acceptable but Monitor & Maintain | <b>+ Issue Type</b><br>Ma : Maintenance Deficiency<br>Ob : Design & System Obsolescence<br>En : Enforcement |
|--|--|---|---|

**Flood Control Project Maintenance  
Levee Inspections**

**Levee Inspection Report By Mile - Spring 2020**

**Reclamation District No. 2062 Stewart**

| Waterway                 | Bank  | Unit Miles | Inspection Start/End     | Inspector       |
|--------------------------|-------|------------|--------------------------|-----------------|
| Unit No. 02 Paradise Cut | Right | 3.96       | 03/13/2020<br>03/13/2020 | Alberto De Leon |

|          |                      |              |    |                        |               |
|----------|----------------------|--------------|----|------------------------|---------------|
| LM Start | 0.75                 | Rating **    | M  | Issue No.              | 29            |
| LM End   | 0.75                 | Issue Type + | En | Location *             |               |
| Category | Supplemental         |              |    | GPS Latitude/Longitude |               |
|          |                      |              |    | Start                  | End           |
| Item     | DWR UCIP Field Study |              |    | 37.786130 °            | 37.786130 °   |
|          |                      |              |    | -121.341564 °          | -121.341564 ° |
| DWR ID   | 19192                |              |    |                        |               |

**Comment Code**

**Inspector Comment**

DS\_ID:19192  
FS\_ID:23181  
EP\_NO: 12427  
Repair Type: Non-Urgent  
Crossing Status: Found  
UCIP Comments: - no siphon breaker found- levee toe erosion under walkway on waterside.- erosion around concrete standpipe on landside- may be base of the standpipe was leaking.  
FIELD\_STRUCT\_DESC: 18-inch irrigation discharge pipe of an unknown material through the levee, 4.4 feet below the crown. Pump house on the waterside (WS) slope. Metal walkway from the pump house to the crown. Service pole on the WS. Flap gate, siphon breaker, and concrete distribution box on the landside (LS) slope. (Emergency plans to replace an existing 18-inch discharge pipe through the levee authorized under Permit No. 12427, 1978 - Reclamation District No. 2062). [Additional Reference(s): DWR Levee Log, 2007, 16-inch pipe referenced. USACE San Joaquin O&M Manual 9, April 1964, (HLM 0.76)].  
FS Date: 10/23/2013

|          |             |              |    |            |                  |
|----------|-------------|--------------|----|------------|------------------|
| LM Start | <b>0.75</b> | Rating **    | M  | Issue No.  | <b>29 (cont)</b> |
| LM End   | <b>0.75</b> | Issue Type + | En | Location * |                  |

Photo 1 of 3 : UCIP\_SP\_2020\_23181\_39792.jpg



WS view: pipe, walkway, service pole, and pumphouse on levee slope.

Photo 2 of 3 : UCIP\_SP\_2020\_23181\_39791.jpg



WS view: leaky slant pump in pumphouse on levee slope.

|  |  |   |  |   |  |
|--|--|---|--|---|--|
| <b>* Location</b><br>LS : Land Side    N/A : Not Applicable<br>WS : Water Side<br>CR : Crown |  | <b>** Rating</b><br>A : Acceptable<br>M : Minimally Acceptable<br>U : Unacceptable<br>N : Not Inspected/Rated<br>C : Corrected<br>A/W : Acceptable but Monitor & Maintain |  | <b>+ Issue Type</b><br>Ma : Maintenance Deficiency<br>Ob : Design & System Obsolescence<br>En : Enforcement |  |
|--|--|---|--|---|--|

**Flood Control Project Maintenance  
Levee Inspections**

**Levee Inspection Report By Mile - Spring 2020**

**Reclamation District No. 2062 Stewart**

| Waterway                 | Bank  | Unit Miles | Inspection Start/End     | Inspector       |
|--------------------------|-------|------------|--------------------------|-----------------|
| Unit No. 02 Paradise Cut | Right | 3.96       | 03/13/2020<br>03/13/2020 | Alberto De Leon |

|          |                      |              |    |                        |                  |
|----------|----------------------|--------------|----|------------------------|------------------|
| LM Start | <b>0.75</b>          | Rating **    | M  | Issue No.              | <b>29 (cont)</b> |
| LM End   | <b>0.75</b>          | Issue Type + | En | Location *             |                  |
| Category | Supplemental         |              |    | GPS Latitude/Longitude |                  |
|          |                      |              |    | Start                  | End              |
| Item     | DWR UCIP Field Study |              |    | 37.786130 °            | 37.786130 °      |
|          |                      |              |    | -121.341564 °          | -121.341564 °    |
| DWR ID   | 19192                |              |    |                        |                  |

Photo 3 of 3 : UCIP\_SP\_2020\_23181\_39790.jpg



WS view: oil leakage from slant pump. Pipe under pump house.

|  |                         |              |    |                        |               |
|--|-------------------------|--------------|----|------------------------|---------------|
| LM Start   | 1.12                    | Rating **    | C  | Issue No.              | 10            |
| LM End   | 3.21                    | Issue Type + | Ma | Location *             | WS            |
| Category   | Earthen Levee           |              |    | GPS Latitude/Longitude |               |
|  |                         |              |    | Start                  | End           |
| Item   | Vegetation              |              |    | 37.789666 °            | 37.804653 °   |
|  |                         |              |    | -121.346854 °          | -121.379183 ° |
| DWR ID   | DWR_RD2062_02_f_2019_10 |              |    |                        |               |
| Comment Code   |                         |              |    |                        |               |
| V2 : Remove the wild growth other than native grasses from the levee slopes. |                         |              |    |                        |               |
| Inspector Comment  |                         |              |    |                        |               |
|  |                         |              |    |                        |               |

No Photos

|  |  |   |  |   |
|--|--|---|--|---|
| <b>* Location</b><br>LS : Land Side    N/A : Not Applicable<br>WS : Water Side<br>CR : Crown |  | <b>** Rating</b><br>A : Acceptable                      N : Not Inspected/Rated<br>M : Minimally Acceptable        C : Corrected<br>U : Unacceptable                  A/W : Acceptable but Monitor & Maintain |  | <b>+ Issue Type</b><br>Ma : Maintenance Deficiency<br>Ob : Design & System Obsolescence<br>En : Enforcement |
|--|--|---|--|---|

**Flood Control Project Maintenance  
Levee Inspections**

**Levee Inspection Report By Mile - Spring 2020**

**Reclamation District No. 2062 Stewart**

| Waterway                 | Bank  | Unit Miles | Inspection Start/End     | Inspector       |
|--------------------------|-------|------------|--------------------------|-----------------|
| Unit No. 02 Paradise Cut | Right | 3.96       | 03/13/2020<br>03/13/2020 | Alberto De Leon |

|          |                      |              |                        |               |           |
|----------|----------------------|--------------|------------------------|---------------|-----------|
| LM Start | <b>1.37</b>          | Rating **    | M                      | Issue No.     | <b>30</b> |
| LM End   | <b>1.37</b>          | Issue Type + | En                     | Location *    |           |
| Category | Supplemental         |              | GPS Latitude/Longitude |               |           |
|          |                      |              | Start                  | End           |           |
| Item     | DWR UCIP Field Study |              | 37.791821 °            | 37.791821 °   |           |
|          |                      |              | -121.350448 °          | -121.350448 ° |           |
| DWR ID   | 19193                |              |                        |               |           |

**Comment Code**

**Inspector Comment**

DS\_ID:19193  
FS\_ID:51468  
EP\_NO: N/A  
Repair Type: Non-Urgent  
Crossing Status: Found  
UCIP Comments: 04/05/2017: Pipe has been plugged as a flood fight measure and is likely to be replaced under a permit. MBK (Michael Moncrief) is working on the permit. Photo and update courtesy of Max Khashchuk as part of his 2017 Spring Inspection. (K. Fazel - UCIP)10/22/2013:- pumphouse on concrete sump in the channel.- erosion under walkway on waterside. (P. Amatya - DWR)  
FIELD\_STRUCT\_DESC: 20-inch steel irrigation discharge pipe through the levee, 8 feet below the crown. Pump house on the waterside (WS) slope. Metal walkway from the pump house to the crown. Flap gate, siphon breaker, and concrete distribution box on the landside (LS) slope. [Additional Reference(s): DWR Levee Log, 2007, 18-inch pipe referenced. USACE San Joaquin O&M Manual 9, April 1964, (HLM 1.40), 18-inch pipe referenced].  
FS Date: 4/6/2017

|          |             |              |    |            |                  |
|----------|-------------|--------------|----|------------|------------------|
| LM Start | <b>1.37</b> | Rating **    | M  | Issue No.  | <b>30 (cont)</b> |
| LM End   | <b>1.37</b> | Issue Type + | En | Location * |                  |

Photo 1 of 3 : UCIP\_SP\_2020\_51468\_39195.jpg



WS view: pipe, walkway, and pumphouse on levee berm. Service pole on waterside.

Photo 2 of 3 : UCIP\_SP\_2020\_51468\_39194.jpg



WS view: leaky pump and control box in pumphouse.

|  |  |   |  |   |  |
|--|--|---|--|---|--|
| <b>* Location</b><br>LS : Land Side    N/A : Not Applicable<br>WS : Water Side<br>CR : Crown |  | <b>** Rating</b><br>A : Acceptable<br>M : Minimally Acceptable<br>U : Unacceptable<br>N : Not Inspected/Rated<br>C : Corrected<br>A/W : Acceptable but Monitor & Maintain |  | <b>+ Issue Type</b><br>Ma : Maintenance Deficiency<br>Ob : Design & System Obsolescence<br>En : Enforcement |  |
|--|--|---|--|---|--|



**Flood Control Project Maintenance  
Levee Inspections**

**Levee Inspection Report By Mile - Spring 2020**

**Reclamation District No. 2062 Stewart**

| Waterway                 | Bank  | Unit Miles | Inspection Start/End     | Inspector       |
|--------------------------|-------|------------|--------------------------|-----------------|
| Unit No. 02 Paradise Cut | Right | 3.96       | 03/13/2020<br>03/13/2020 | Alberto De Leon |

|          |                      |              |                        |               |                  |
|----------|----------------------|--------------|------------------------|---------------|------------------|
| LM Start | <b>1.37</b>          | Rating **    | M                      | Issue No.     | <b>30 (cont)</b> |
| LM End   | <b>1.37</b>          | Issue Type + | En                     | Location *    |                  |
| Category | Supplemental         |              | GPS Latitude/Longitude |               |                  |
|          |                      |              | Start                  | End           |                  |
| Item     | DWR UCIP Field Study |              | 37.791821 °            | 37.791821 °   |                  |
|          |                      |              | -121.350448 °          | -121.350448 ° |                  |
| DWR ID   | 19193                |              |                        |               |                  |

Photo 3 of 3 : UCIP\_SP\_2020\_51468\_39193.jpg



WS view: exposed steel pipe under walkway. Soil erosion under walkway. This may be due to leaky pipe joint.

|   |                         |              |    |                        |               |
|---|-------------------------|--------------|----|------------------------|---------------|
| LM Start  | 1.51                    | Rating **    | C  | Issue No.              | 23            |
| LM End  | 1.51                    | Issue Type + | Ma | Location *             | LS            |
| Category  | Earthen Levee           |              |    | GPS Latitude/Longitude |               |
|   |                         |              |    | Start                  | End           |
| Item  | Trim / Thin Trees       |              |    | 37.793014 °            | 37.793014 °   |
|   |                         |              |    | -121.352582 °          | -121.352582 ° |
| DWR ID  | DWR_RD2062_02_f_2019_23 |              |    |                        |               |
| Comment Code  |                         |              |    |                        |               |
| T3 : Trim and thin trees to allow visibility of the ground and room to flood fight. |                         |              |    |                        |               |
| Inspector Comment   |                         |              |    |                        |               |
|   |                         |              |    |                        |               |

No Photos

**\* Location**  
LS : Land Side    N/A : Not Applicable  
WS : Water Side  
CR : Crown

**\*\* Rating**  
A : Acceptable                      N : Not Inspected/Rated  
M : Minimally Acceptable        C : Corrected  
U : Unacceptable                  A/W : Acceptable but Monitor & Maintain

**+ Issue Type**  
Ma : Maintenance Deficiency  
Ob : Design & System Obsolescence  
En : Enforcement

**Flood Control Project Maintenance  
Levee Inspections**

**Levee Inspection Report By Mile - Spring 2020**

**Reclamation District No. 2062 Stewart**

| Waterway                 | Bank  | Unit Miles | Inspection Start/End     | Inspector       |
|--------------------------|-------|------------|--------------------------|-----------------|
| Unit No. 02 Paradise Cut | Right | 3.96       | 03/13/2020<br>03/13/2020 | Alberto De Leon |

|          |                      |              |    |                        |               |
|----------|----------------------|--------------|----|------------------------|---------------|
| LM Start | 1.64                 | Rating **    | U  | Issue No.              | 31            |
| LM End   | 1.64                 | Issue Type + | En | Location *             |               |
| Category | Supplemental         |              |    | GPS Latitude/Longitude |               |
|          |                      |              |    | Start                  | End           |
| Item     | DWR UCIP Field Study |              |    | 37.794009 °            | 37.794009 °   |
|          |                      |              |    | -121.354417 °          | -121.354417 ° |
| DWR ID   | 19194                |              |    |                        |               |

**Comment Code**

**Inspector Comment**

DS\_ID:19194  
FS\_ID:53375  
EP\_NO: 4305  
Repair Type: Urgent  
Crossing Status: Found  
UCIP Comments: 10/10/2018 Extremely overgrown vegetation did not allow visual inspection of WS levee erosion; however, there are indications based on vegetation growth patterns that the erosion is still present, so keeping crossing as Urgent (D. Sanoski - DWR UCIP).08/31/2016: Heavy sloughing and sink hole remains at the WS slope in alignment with pipe. Though sloughing is not affecting levee prism, it is still an indication of a pipe integrity problem. Oil leak at the pump but does not appear to impact the levee. (K. Fazel - UCIP)10/22/2013:- missing roof in pump house.- no protection for siphon breaker- huge erosion under pumphouse and levee slope on waterside. (P. Amatya - DWR)  
FIELD\_STRUCT\_DESC: 1 of 2: 18-inch steel irrigation discharge pipe through the levee, 4.8 feet below the crown. Pump house on the waterside (WS) slope. Siphon breaker on the landside (LS) shoulder. Service pole on the LS shoulder. Concrete distribution box at the LS toe. (Plans for installation of two irrigation pumps on the bank to replace an old centrifugal pumping plant at the same location authorized under Permit No. 4305, 1963 - Reclamation District No. 2062) [Additional Reference(s): DWR Levee Log, 2007. USACE San Joaquin O&M Manual 9, April 1964, (HLM 1.67)].  
FS Date: 10/10/2018 11:02:00 AM

|          |             |              |    |            |                  |
|----------|-------------|--------------|----|------------|------------------|
| LM Start | <b>1.64</b> | Rating **    | U  | Issue No.  | <b>31 (cont)</b> |
| LM End   | <b>1.64</b> | Issue Type + | En | Location * |                  |

Photo 1 of 3 : UCIP\_SP\_2020\_53375\_39187.jpg



WS view: pipes, walkway, and pumphouse with missing roof (right).

Photo 2 of 3 : UCIP\_SP\_2020\_53375\_39186.jpg



WS view: walkway to pumphouse. Walkway in poor condition.

|  |  |   |  |   |  |
|--|--|---|--|---|--|
| <b>* Location</b><br>LS : Land Side    N/A : Not Applicable<br>WS : Water Side<br>CR : Crown |  | <b>** Rating</b><br>A : Acceptable<br>M : Minimally Acceptable<br>U : Unacceptable<br>N : Not Inspected/Rated<br>C : Corrected<br>A/W : Acceptable but Monitor & Maintain |  | <b>+ Issue Type</b><br>Ma : Maintenance Deficiency<br>Ob : Design & System Obsolescence<br>En : Enforcement |  |
|--|--|---|--|---|--|



**Flood Control Project Maintenance  
Levee Inspections**

**Levee Inspection Report By Mile - Spring 2020**

**Reclamation District No. 2062 Stewart**

| Waterway                 | Bank  | Unit Miles | Inspection Start/End     | Inspector       |
|--------------------------|-------|------------|--------------------------|-----------------|
| Unit No. 02 Paradise Cut | Right | 3.96       | 03/13/2020<br>03/13/2020 | Alberto De Leon |

|          |                      |              |                        |               |                  |
|----------|----------------------|--------------|------------------------|---------------|------------------|
| LM Start | <b>1.64</b>          | Rating **    | U                      | Issue No.     | <b>31 (cont)</b> |
| LM End   | <b>1.64</b>          | Issue Type + | En                     | Location *    |                  |
| Category | Supplemental         |              | GPS Latitude/Longitude |               |                  |
|          |                      |              | Start                  | End           |                  |
| Item     | DWR UCIP Field Study |              | 37.794009 °            | 37.794009 °   |                  |
|          |                      |              | -121.354417 °          | -121.354417 ° |                  |
| DWR ID   | 19194                |              |                        |               |                  |

Photo 3 of 3 : UCIP\_SP\_2020\_53375\_39185.jpg



WS view: two leaky slant pumps in pumphouse with missing roof.

|          |                      |              |                        |               |           |
|----------|----------------------|--------------|------------------------|---------------|-----------|
| LM Start | <b>1.64</b>          | Rating **    | U                      | Issue No.     | <b>32</b> |
| LM End   | <b>1.64</b>          | Issue Type + | En                     | Location *    |           |
| Category | Supplemental         |              | GPS Latitude/Longitude |               |           |
|          |                      |              | Start                  | End           |           |
| Item     | DWR UCIP Field Study |              | 37.794014 °            | 37.794014 °   |           |
|          |                      |              | -121.354434 °          | -121.354434 ° |           |
| DWR ID   | 19197                |              |                        |               |           |

**Comment Code**

**Inspector Comment**

DS\_ID:19197  
FS\_ID:53376  
EP\_NO: 4305  
Repair Type: Urgent  
Crossing Status: Found  
UCIP Comments: 10/10/2018 Extremely overgrown vegetation did not allow visual inspection of WS levee erosion; however, there are indications based on vegetation growth patterns that the erosion is still present, so keeping crossing as Urgent (D. Sanoski - DWR UCIP).08/31/2016: Heavy sloughing and sink hole remains at the WS slope in alignment with pipes. Though sloughing is not affecting levee prism, it is still an indication of a pipe integrity problem. Oil leak at the pump but does not appear to impact levee. (K. Fazel - UCIP)10/22/2013:- missing roof in pump house.- no protection for siphon breaker- huge erosion under pumphouse and levee slope on waterside. (P. Amatya - DWR)  
FIELD\_STRUCT\_DESC: 2 of 2: 18-inch steel irrigation discharge pipe through the levee, 4.8 feet below the crown. Pump house on the waterside (WS) slope. Siphon breaker on the landside (LS) shoulder. Service pole on the LS shoulder. Concrete distribution box at the LS toe. (Plans for installation of two irrigation pumps on the bank to replace an old centrifugal pumping plant at the same location authorized under Permit No. 4305, 1963 - Reclamation District No. 2062) [Additional Reference(s): DWR Levee Log, 2007. USACE San Joaquin O&M Manual 9, April 1964, (HLM 1.67)].  
FS Date: 10/10/2018 11:20:00 AM

Photo 1 of 3 : UCIP\_SP\_2020\_53376\_39176.jpg



WS view: pipes, walkway, and pumphouse with missing roof (right).

|  |   |   |
|--|---|---|
| <b>* Location</b><br>LS : Land Side    N/A : Not Applicable<br>WS : Water Side<br>CR : Crown | <b>** Rating</b><br>A : Acceptable<br>M : Minimally Acceptable<br>U : Unacceptable<br>N : Not Inspected/Rated<br>C : Corrected<br>A/W : Acceptable but Monitor & Maintain | <b>+ Issue Type</b><br>Ma : Maintenance Deficiency<br>Ob : Design & System Obsolescence<br>En : Enforcement |
|--|---|---|

**Flood Control Project Maintenance  
Levee Inspections**

**Levee Inspection Report By Mile - Spring 2020**

**Reclamation District No. 2062 Stewart**

| Waterway                 | Bank  | Unit Miles | Inspection Start/End     | Inspector       |
|--------------------------|-------|------------|--------------------------|-----------------|
| Unit No. 02 Paradise Cut | Right | 3.96       | 03/13/2020<br>03/13/2020 | Alberto De Leon |

|          |                      |              |                        |               |                  |
|----------|----------------------|--------------|------------------------|---------------|------------------|
| LM Start | <b>1.64</b>          | Rating **    | U                      | Issue No.     | <b>32 (cont)</b> |
| LM End   | <b>1.64</b>          | Issue Type + | En                     | Location *    |                  |
| Category | Supplemental         |              | GPS Latitude/Longitude |               |                  |
|          |                      |              | Start                  | End           |                  |
| Item     | DWR UCIP Field Study |              | 37.794014 °            | 37.794014 °   |                  |
|          |                      |              | -121.354434 °          | -121.354434 ° |                  |
| DWR ID   | 19197                |              |                        |               |                  |

Photo 2 of 3 : UCIP\_SP\_2020\_53376\_39175.jpg



WS view: walkway in poor condition, to pumphouse.

|          |             |              |    |            |                  |
|----------|-------------|--------------|----|------------|------------------|
| LM Start | <b>1.64</b> | Rating **    | U  | Issue No.  | <b>32 (cont)</b> |
| LM End   | <b>1.64</b> | Issue Type + | En | Location * |                  |

Photo 3 of 3 : UCIP\_SP\_2020\_53376\_39174.jpg



WS view: two leaky slant pumps in pumphouse with missing roof.

|                   |                         |              |    |                        |               |
|-------------------|-------------------------|--------------|----|------------------------|---------------|
| LM Start          | 1.79                    | Rating **    | C  | Issue No.              | 14            |
| LM End            | 1.79                    | Issue Type + | Ma | Location *             | WS            |
| Category          | Earthen Levee           |              |    | GPS Latitude/Longitude |               |
|                   |                         |              |    | Start                  | End           |
| Item              | Encroachments           |              |    | 37.795289 °            | 37.795289 °   |
|                   |                         |              |    | -121.356750 °          | -121.356750 ° |
| DWR ID            | DWR_RD2062_02_f_2019_14 |              |    |                        |               |
| Comment Code      |                         |              |    |                        |               |
| DE : Debris       |                         |              |    |                        |               |
| Inspector Comment |                         |              |    |                        |               |
|                   |                         |              |    |                        |               |

No Photos

|  |  |   |   |
|--|--|---|---|
| <b>* Location</b><br>LS : Land Side    N/A : Not Applicable<br>WS : Water Side<br>CR : Crown | <b>** Rating</b><br>A : Acceptable<br>M : Minimally Acceptable<br>U : Unacceptable | N : Not Inspected/Rated<br>C : Corrected<br>A/W : Acceptable but Monitor & Maintain | <b>+ Issue Type</b><br>Ma : Maintenance Deficiency<br>Ob : Design & System Obsolescence<br>En : Enforcement |
|--|--|---|---|

**Flood Control Project Maintenance  
Levee Inspections**

**Levee Inspection Report By Mile - Spring 2020**

**Reclamation District No. 2062 Stewart**

| Waterway                 | Bank  | Unit Miles | Inspection Start/End     | Inspector       |
|--------------------------|-------|------------|--------------------------|-----------------|
| Unit No. 02 Paradise Cut | Right | 3.96       | 03/13/2020<br>03/13/2020 | Alberto De Leon |

|   |                         |              |    |                        |               |
|---|-------------------------|--------------|----|------------------------|---------------|
| LM Start  | 2.13                    | Rating **    | C  | Issue No.              | 13            |
| LM End  | 2.13                    | Issue Type + | Ma | Location *             | WS            |
| Category  | Earthen Levee           |              |    | GPS Latitude/Longitude |               |
|   |                         |              |    | Start                  | End           |
| Item  | Animal Control          |              |    | 37.798103 °            | 37.798103 °   |
|   |                         |              |    | -121.361789 °          | -121.361789 ° |
| DWR ID  | DWR_RD2062_02_f_2019_13 |              |    |                        |               |
| Comment Code  |                         |              |    |                        |               |
| A1 : Exterminate rodents and backfill and compact or grout burrows. |                         |              |    |                        |               |
| Inspector Comment   |                         |              |    |                        |               |
|   |                         |              |    |                        |               |

No Photos

|   |                         |              |    |                        |               |
|---|-------------------------|--------------|----|------------------------|---------------|
| LM Start  | 2.13                    | Rating **    | C  | Issue No.              | 12            |
| LM End  | 2.13                    | Issue Type + | Ma | Location *             | LS            |
| Category  | Earthen Levee           |              |    | GPS Latitude/Longitude |               |
|   |                         |              |    | Start                  | End           |
| Item  | Animal Control          |              |    | 37.798104 °            | 37.798104 °   |
|   |                         |              |    | -121.361789 °          | -121.361789 ° |
| DWR ID  | DWR_RD2062_02_f_2019_12 |              |    |                        |               |
| Comment Code  |                         |              |    |                        |               |
| A1 : Exterminate rodents and backfill and compact or grout burrows. |                         |              |    |                        |               |
| Inspector Comment   |                         |              |    |                        |               |
|   |                         |              |    |                        |               |

No Photos

|   |                         |              |    |                        |               |
|---|-------------------------|--------------|----|------------------------|---------------|
| LM Start  | 2.23                    | Rating **    | C  | Issue No.              | 11            |
| LM End  | 2.23                    | Issue Type + | Ma | Location *             | WS            |
| Category  | Earthen Levee           |              |    | GPS Latitude/Longitude |               |
|   |                         |              |    | Start                  | End           |
| Item  | Animal Control          |              |    | 37.798909 °            | 37.798909 °   |
|   |                         |              |    | -121.363258 °          | -121.363258 ° |
| DWR ID  | DWR_RD2062_02_f_2019_11 |              |    |                        |               |
| Comment Code  |                         |              |    |                        |               |
| A1 : Exterminate rodents and backfill and compact or grout burrows. |                         |              |    |                        |               |
| Inspector Comment   |                         |              |    |                        |               |
|   |                         |              |    |                        |               |

No Photos

|  |  |   |   |
|--|--|---|---|
| <b>* Location</b><br>LS : Land Side    N/A : Not Applicable<br>WS : Water Side<br>CR : Crown | <b>** Rating</b><br>A : Acceptable<br>M : Minimally Acceptable<br>U : Unacceptable | N : Not Inspected/Rated<br>C : Corrected<br>A/W : Acceptable but Monitor & Maintain | <b>+ Issue Type</b><br>Ma : Maintenance Deficiency<br>Ob : Design & System Obsolescence<br>En : Enforcement |
|--|--|---|---|

**Flood Control Project Maintenance  
Levee Inspections**

**Levee Inspection Report By Mile - Spring 2020**

**Reclamation District No. 2062 Stewart**

| Waterway                 | Bank  | Unit Miles | Inspection Start/End     | Inspector          |
|--------------------------|-------|------------|--------------------------|--------------------|
| Unit No. 02 Paradise Cut | Right | 3.96       | 03/13/2020<br>03/13/2020 | Alberto<br>De Leon |

|          |                      |              |    |                        |               |
|----------|----------------------|--------------|----|------------------------|---------------|
| LM Start | 3.24                 | Rating **    | M  | Issue No.              | 33            |
| LM End   | 3.24                 | Issue Type + | En | Location *             |               |
| Category | Supplemental         |              |    | GPS Latitude/Longitude |               |
|          |                      |              |    | Start                  | End           |
| Item     | DWR UCIP Field Study |              |    | 37.804770 °            | 37.804770 °   |
|          |                      |              |    | -121.379679 °          | -121.379679 ° |
| DWR ID   | 19199                |              |    |                        |               |

**Comment Code**

**Inspector Comment**

DS\_ID:19199  
FS\_ID:23304  
EP\_NO: 11524  
Repair Type: Non-Urgent  
Crossing Status: Found  
UCIP Comments: - waterside pipe immersed into channel water.- most of the pipe on landside exposed and siphon breaker on waterside not protected.  
FIELD\_STRUCT\_DESC: 1 of 3: 24-inch coated steel drainage discharge pipe through the levee, 2 feet below the crown. Siphon breaker on the waterside (WS) slope. Pump on a steel platform in a drainage ditch, 350 feet from the levee centerline off the landward berm. (Plans to install a drainage pump and 24-inch discharge line through the levee at existing main drainage pump authorized under Permit No. 11524, 1976 - Reclamation District No. 2062). [Additional Reference(s): DWR Levee Log, 2007. USACE San Joaquin O&M Manual 9, April 1964, (HLM 3.29)].  
FS Date: 10/22/2013

|          |             |              |    |            |                  |
|----------|-------------|--------------|----|------------|------------------|
| LM Start | <b>3.24</b> | Rating **    | M  | Issue No.  | <b>33 (cont)</b> |
| LM End   | <b>3.24</b> | Issue Type + | En | Location * |                  |

Photo 1 of 3 : UCIP\_SP\_2020\_23304\_40147.jpg



WS view: 24-inch steel pipe (left) with siphon breaker on levee slope. 18-inch pipe on right.

Photo 2 of 3 : UCIP\_SP\_2020\_23304\_40146.jpg



WS view: leaky siphon breaker on levee slope.

|  |  |   |  |   |  |
|--|--|---|--|---|--|
| <b>* Location</b><br>LS : Land Side    N/A : Not Applicable<br>WS : Water Side<br>CR : Crown |  | <b>** Rating</b><br>A : Acceptable<br>M : Minimally Acceptable<br>U : Unacceptable<br>N : Not Inspected/Rated<br>C : Corrected<br>A/W : Acceptable but Monitor & Maintain |  | <b>+ Issue Type</b><br>Ma : Maintenance Deficiency<br>Ob : Design & System Obsolescence<br>En : Enforcement |  |
|--|--|---|--|---|--|



**Flood Control Project Maintenance  
Levee Inspections**

**Levee Inspection Report By Mile - Spring 2020**

**Reclamation District No. 2062 Stewart**

| Waterway                 | Bank  | Unit Miles | Inspection Start/End     | Inspector       |
|--------------------------|-------|------------|--------------------------|-----------------|
| Unit No. 02 Paradise Cut | Right | 3.96       | 03/13/2020<br>03/13/2020 | Alberto De Leon |

|          |                      |              |                        |               |                  |
|----------|----------------------|--------------|------------------------|---------------|------------------|
| LM Start | <b>3.24</b>          | Rating **    | M                      | Issue No.     | <b>33 (cont)</b> |
| LM End   | <b>3.24</b>          | Issue Type + | En                     | Location *    |                  |
| Category | Supplemental         |              | GPS Latitude/Longitude |               |                  |
|          |                      |              | Start                  | End           |                  |
| Item     | DWR UCIP Field Study |              | 37.804770 °            | 37.804770 °   |                  |
|          |                      |              | -121.379679 °          | -121.379679 ° |                  |
| DWR ID   | 19199                |              |                        |               |                  |

Photo 3 of 3 : UCIP\_SP\_2020\_23304\_40148.jpg



LS view: overview of pipes on levee berm and pump platform (marked - right) off the berm 350 ft from the levee.

|          |                      |              |                        |               |           |
|----------|----------------------|--------------|------------------------|---------------|-----------|
| LM Start | <b>3.24</b>          | Rating **    | M                      | Issue No.     | <b>34</b> |
| LM End   | <b>3.24</b>          | Issue Type + | En                     | Location *    |           |
| Category | Supplemental         |              | GPS Latitude/Longitude |               |           |
|          |                      |              | Start                  | End           |           |
| Item     | DWR UCIP Field Study |              | 37.804777 °            | 37.804777 °   |           |
|          |                      |              | -121.379704 °          | -121.379704 ° |           |
| DWR ID   | 19198                |              |                        |               |           |

**Comment Code**

**Inspector Comment**

DS\_ID:19198  
FS\_ID:23023  
EP\_NO: 11524  
Repair Type: Non-Urgent  
Crossing Status: Found  
UCIP Comments: - 18-inch pipe bifurcated near the pump and two gate valves installed.- waterside pipe immersed into channel water.- most of the pipe on landside exposed and siphon breaker on waterside not protected.  
FIELD\_STRUCT\_DESC: 2 of 3: 18-inch coated steel drainage discharge pipe through the levee, 4 feet below the crown. Siphon breaker on the waterside (WS) slope. Pump on a steel platform in a drainage ditch, 350 feet from the levee centerline off the landward berm. (Plans to install a drainage pump and 24-inch discharge line through the levee at existing main drainage pump authorized under Permit No. 11524, 1976 - Reclamation District No. 2062). [Additional Reference(s): DWR Levee Log, 2007. USACE San Joaquin O&M Manual 9, April 1964, (HLM 3.29), 16-inch pipe referenced].  
FS Date: 10/22/2013

Photo 1 of 3 : UCIP\_SP\_2020\_23023\_39082.jpg



WS view: exposed 18-inch pipe with siphon breaker on levee slope. Exposed 24-inch pipe (left).

|  |   |   |
|--|---|---|
| <b>* Location</b><br>LS : Land Side    N/A : Not Applicable<br>WS : Water Side<br>CR : Crown | <b>** Rating</b><br>A : Acceptable<br>M : Minimally Acceptable<br>U : Unacceptable<br>N : Not Inspected/Rated<br>C : Corrected<br>A/W : Acceptable but Monitor & Maintain | <b>+ Issue Type</b><br>Ma : Maintenance Deficiency<br>Ob : Design & System Obsolescence<br>En : Enforcement |
|--|---|---|

**Flood Control Project Maintenance  
Levee Inspections**

**Levee Inspection Report By Mile - Spring 2020**

**Reclamation District No. 2062 Stewart**

| Waterway                 | Bank  | Unit Miles | Inspection Start/End     | Inspector       |
|--------------------------|-------|------------|--------------------------|-----------------|
| Unit No. 02 Paradise Cut | Right | 3.96       | 03/13/2020<br>03/13/2020 | Alberto De Leon |

|          |                      |              |                        |               |                  |
|----------|----------------------|--------------|------------------------|---------------|------------------|
| LM Start | <b>3.24</b>          | Rating **    | M                      | Issue No.     | <b>34 (cont)</b> |
| LM End   | <b>3.24</b>          | Issue Type + | En                     | Location *    |                  |
| Category | Supplemental         |              | GPS Latitude/Longitude |               |                  |
|          |                      |              | Start                  | End           |                  |
| Item     | DWR UCIP Field Study |              | 37.804777 °            | 37.804777 °   |                  |
|          |                      |              | -121.379704 °          | -121.379704 ° |                  |
| DWR ID   | 19198                |              |                        |               |                  |

Photo 2 of 3 : UCIP\_SP\_2020\_23023\_39081.jpg



WS view: closer view of 18-inch pipe with siphon breaker on levee slope.

|          |             |              |    |            |                  |
|----------|-------------|--------------|----|------------|------------------|
| LM Start | <b>3.24</b> | Rating **    | M  | Issue No.  | <b>34 (cont)</b> |
| LM End   | <b>3.24</b> | Issue Type + | En | Location * |                  |

Photo 3 of 3 : UCIP\_SP\_2020\_23023\_39080.jpg



LS view: overview of exposed pipes and pump station (marked-right) 350 ft from levee center.

|  |  |   |
|--|--|---|
| <b>* Location</b><br>LS : Land Side    N/A : Not Applicable<br>WS : Water Side<br>CR : Crown | <b>** Rating</b><br>A : Acceptable<br>M : Minimally Acceptable<br>U : Unacceptable | <b>+ Issue Type</b><br>Ma : Maintenance Deficiency<br>Ob : Design & System Obsolescence<br>En : Enforcement |
|--|--|---|



**Flood Control Project Maintenance  
Levee Inspections**

**Levee Inspection Report By Mile - Spring 2020**

**Reclamation District No. 2062 Stewart**

| Waterway                 | Bank  | Unit Miles | Inspection Start/End     | Inspector       |
|--------------------------|-------|------------|--------------------------|-----------------|
| Unit No. 02 Paradise Cut | Right | 3.96       | 03/13/2020<br>03/13/2020 | Alberto De Leon |

|          |                      |              |    |                        |               |
|----------|----------------------|--------------|----|------------------------|---------------|
| LM Start | 3.24                 | Rating **    | M  | Issue No.              | 35            |
| LM End   | 3.24                 | Issue Type + | En | Location *             |               |
| Category | Supplemental         |              |    | GPS Latitude/Longitude |               |
|          |                      |              |    | Start                  | End           |
| Item     | DWR UCIP Field Study |              |    | 37.804787 °            | 37.804787 °   |
|          |                      |              |    | -121.379734 °          | -121.379734 ° |
| DWR ID   | 19195                |              |    |                        |               |

**Comment Code**

**Inspector Comment**

DS\_ID:19195  
FS\_ID:23305  
EP\_NO: 11524  
Repair Type: Non-Urgent  
Crossing Status: Found  
UCIP Comments: - no associated pump or any other appurtenances found on landside.- looks abandoned pipe. Needs proper abandonment.  
FIELD\_STRUCT\_DESC: 3 of 3: 24-inch coated steel drainage discharge pipe through the levee, 2 feet below the crown. Siphon breaker on the waterside (WS) slope. Pump on a steel platform in a drainage ditch, 350 feet from the levee centerline off the landward berm. (Plans to install a drainage pump and 24-inch discharge line through the levee at existing main drainage pump authorized under Permit No. 11524, 1976 - Reclamation District No. 2062). [Additional Reference(s): DWR Levee Log, 2007. USACE San Joaquin O&M Manual 9, April 1964, (HLM 3.29)].  
FS Date: 10/22/2013

|          |             |              |    |            |                  |
|----------|-------------|--------------|----|------------|------------------|
| LM Start | <b>3.24</b> | Rating **    | M  | Issue No.  | <b>35 (cont)</b> |
| LM End   | <b>3.24</b> | Issue Type + | En | Location * |                  |

Photo 1 of 3 : UCIP\_SP\_2020\_23305\_40153.jpg



WS view: siphon breaker in steel pipe riser on levee slope.

Photo 2 of 3 : UCIP\_SP\_2020\_23305\_40152.jpg



WS view: closer view of siphon breaker in steel pipe riser on levee slope.

| * Location                                      | ** Rating   | + Issue Type   |
|---|---|--|
| LS : Land Side<br>WS : Water Side<br>CR : Crown | A : Acceptable<br>M : Minimally Acceptable<br>U : Unacceptable                      | Ma : Maintenance Deficiency<br>Ob : Design & System Obsolescence<br>En : Enforcement |
| N/A : Not Applicable                            | N : Not Inspected/Rated<br>C : Corrected<br>A/W : Acceptable but Monitor & Maintain |  |

**Flood Control Project Maintenance  
Levee Inspections**

**Levee Inspection Report By Mile - Spring 2020**

**Reclamation District No. 2062 Stewart**

| Waterway                 | Bank  | Unit Miles | Inspection Start/End     | Inspector       |
|--------------------------|-------|------------|--------------------------|-----------------|
| Unit No. 02 Paradise Cut | Right | 3.96       | 03/13/2020<br>03/13/2020 | Alberto De Leon |

|          |                      |              |    |                        |               |
|----------|----------------------|--------------|----|------------------------|---------------|
| LM Start | 3.24                 | Rating **    | M  | Issue No.              | 35 (cont)     |
| LM End   | 3.24                 | Issue Type + | En | Location *             |               |
| Category | Supplemental         |              |    | GPS Latitude/Longitude |               |
|          |                      |              |    | Start                  | End           |
| Item     | DWR UCIP Field Study |              |    | 37.804787 °            | 37.804787 °   |
|          |                      |              |    | -121.379734 °          | -121.379734 ° |
| DWR ID   | 19195                |              |    |                        |               |

Photo 3 of 3 : UCIP\_SP\_2020\_23305\_40151.jpg



WS view: exposed pipe and steel pipe riser on levee slope.

|  |                                       |              |    |                        |               |
|--|---------------------------------------|--------------|----|------------------------|---------------|
| LM Start   | 3.74                                  | Rating **    | C  | Issue No.              | 17            |
| LM End   | 3.74                                  | Issue Type + | Ma | Location *             | CR            |
| Category   | Earthen Levee                         |              |    | GPS Latitude/Longitude |               |
|  |                                       |              |    | Start                  | End           |
| Item   | Crown Surface / Depressions / Rutting |              |    | 37.806798 °            | 37.806798 °   |
|  |                                       |              |    | -121.388427 °          | -121.388427 ° |
| DWR ID   | DWR_RD2062_02_s_2019_17               |              |    |                        |               |
| Comment Code   |                                       |              |    |                        |               |
| C2 : Repair depressions or ruts in the crown or slope. |                                       |              |    |                        |               |
| Inspector Comment                                      |                                       |              |    |                        |               |
|  |                                       |              |    |                        |               |

No Photos

|  |                        |              |    |                        |               |
|--|------------------------|--------------|----|------------------------|---------------|
| LM Start   | 3.77                   | Rating **    | C  | Issue No.              | 9             |
| LM End   | 3.96                   | Issue Type + | Ma | Location *             | WS            |
| Category   | Earthen Levee          |              |    | GPS Latitude/Longitude |               |
|  |                        |              |    | Start                  | End           |
| Item   | Vegetation             |              |    | 37.807013 °            | 37.809286 °   |
|  |                        |              |    | -121.388964 °          | -121.390327 ° |
| DWR ID   | DWR_RD2062_02_f_2019_9 |              |    |                        |               |
| Comment Code   |                        |              |    |                        |               |
| V2 : Remove the wild growth other than native grasses from the levee slopes. |                        |              |    |                        |               |
| Inspector Comment  |                        |              |    |                        |               |
|  |                        |              |    |                        |               |

No Photos

|  |  |   |   |
|--|--|---|---|
| <b>* Location</b><br>LS : Land Side    N/A : Not Applicable<br>WS : Water Side<br>CR : Crown | <b>** Rating</b><br>A : Acceptable<br>M : Minimally Acceptable<br>U : Unacceptable | N : Not Inspected/Rated<br>C : Corrected<br>A/W : Acceptable but Monitor & Maintain | <b>+ Issue Type</b><br>Ma : Maintenance Deficiency<br>Ob : Design & System Obsolescence<br>En : Enforcement |
|--|--|---|---|

**Flood Control Project Maintenance  
Levee Inspections**

**Levee Inspection Report By Mile - Spring 2020**

**Reclamation District No. 2062 Stewart**

| Waterway                 | Bank  | Unit Miles | Inspection Start/End     | Inspector       |
|--------------------------|-------|------------|--------------------------|-----------------|
| Unit No. 02 Paradise Cut | Right | 3.96       | 03/13/2020<br>03/13/2020 | Alberto De Leon |

|                                 |                         |              |    |                        |               |
|---------------------------------|-------------------------|--------------|----|------------------------|---------------|
| LM Start                        | 3.95                    | Rating **    | M  | Issue No.              | 15            |
| LM End                          | 3.95                    | Issue Type + | En | Location *             | LS            |
| Category                        | Earthen Levee           |              |    | GPS Latitude/Longitude |               |
|                                 |                         |              |    | Start                  | End           |
| Item                            | Encroachments           |              |    | 37.809191 °            | 37.809191 °   |
|                                 |                         |              |    | -121.390388 °          | -121.390388 ° |
| DWR ID                          | DWR_RD2062_02_s_2020_15 |              |    |                        |               |
| Comment Code                    |                         |              |    |                        |               |
| PR : Prunings                   |                         |              |    |                        |               |
| Inspector Comment               |                         |              |    |                        |               |
| Large branch on landside slope. |                         |              |    |                        |               |

Photo 1 of 1 : SP\_2020\_RD2062\_310\_15\_20200318\_00026.jpg



View of fallen tree branches on landside slope. Spring 2020

|  |  |   |   |
|--|--|---|---|
| <b>* Location</b><br>LS : Land Side    N/A : Not Applicable<br>WS : Water Side<br>CR : Crown | <b>** Rating</b><br>A : Acceptable<br>M : Minimally Acceptable<br>U : Unacceptable | N : Not Inspected/Rated<br>C : Corrected<br>A/W : Acceptable but Monitor & Maintain | <b>+ Issue Type</b><br>Ma : Maintenance Deficiency<br>Ob : Design & System Obsolescence<br>En : Enforcement |
|--|--|---|---|

**Flood Control Project Maintenance  
Levee Inspections**

**Unit Cover Sheet**

**Spring 2020 Levee Inspection Results**

**Reclamation District No. 2062 Stewart**

| Waterway                               |                         |                           | Bank                           | Unit Miles                      |
|--|-------------------------|---------------------------|--------------------------------|---------------------------------|
| Unit No. 03 Old River                  |                         |                           | Left                           | 5.55                            |
|  | Spring<br>(March - May) | Summer<br>(June - August) | (September - November)<br>Fall | Winter<br>(December - February) |
| Unit Maintenance Rating<br>(Fall Only) |                         |                           |                                |                                 |
| Date of Inspection                     | 3/13/2020 - 3/13/2020   |                           |                                |                                 |
| DWR Inspector                          | Alberto De Leon         |                           |                                |                                 |
| Accompanied By                         | Tim Mello<br>RD2062     |                           |                                |                                 |

**Summer & Winter Inspections**

The Local Maintaining Agency (LMA) is responsible for summer and winter inspections. The LMA is required to submit a report regarding summer and winter inspections to the California Department of Water Resources (DWR).

DWR must be informed on the:

- a) completion of the inspection
- b) any changes other than the results of normal maintenance
- c) corrections to deficiencies noted in this report

If additional items are noted, further documentation of those items must also be submitted.

The LMA should submit this information to DWR using the LMA web application tool available at:

<http://cdec.water.ca.gov/lma.html>

If the LMA is unable to submit information on this webpage, please contact DWR for assistance.

*The LMA should submit the information and any associated documentation by September 30 for summer inspections and March 31 for winter inspections.*



**Flood Control Project Maintenance  
Levee Inspections**

**Levee Inspection Report By Mile - Spring 2020**

**Reclamation District No. 2062 Stewart**

| Waterway              | Bank | Unit Miles | Inspection Start/End     | Inspector       |
|-----------------------|------|------------|--------------------------|-----------------|
| Unit No. 03 Old River | Left | 5.55       | 03/13/2020<br>03/13/2020 | Alberto De Leon |

|          |                    |              |    |                        |               |
|----------|--------------------|--------------|----|------------------------|---------------|
| LM Start | -0.03              | Rating **    | M  | Issue No.              | 1             |
| LM End   | 0.07               | Issue Type + | Ma | Location *             | WS            |
| Category | Supplemental       |              |    | GPS Latitude/Longitude |               |
|          |                    |              |    | Start                  | End           |
| Item     | DWR Erosion Survey |              |    | 37.809514 °            | 37.809514 °   |
|          |                    |              |    | -121.390125 °          | -121.390125 ° |
| DWR ID   | RD2062U03RM29.94   |              |    |                        |               |

**Comment Code**

**Inspector Comment**

Site ID: RD2062U03RM29.94  
 08/14/2019: No significant change observed.  
 09/13/2017: The erosion site has expanded significantly along the river bank.  
 11/09/2016: No significant change observed.  
 06/25/2015: The erosion is below a large oak tree. Vegetation is visible around the erosion site.

|          |              |              |    |            |                 |
|----------|--------------|--------------|----|------------|-----------------|
| LM Start | <b>-0.03</b> | Rating **    | M  | Issue No.  | <b>1 (cont)</b> |
| LM End   | <b>0.07</b>  | Issue Type + | Ma | Location * | WS              |

Photo 1 of 3 : SP\_2020\_RD2062\_311\_1\_20200228\_00001.jpg



Front view of the erosion site. Note the large tree above the erosion.

Photo 2 of 3 : SP\_2020\_RD2062\_311\_1\_20200228\_00002.jpg



Close-up view of the erosion.

|          |              |              |    |            |                 |
|----------|--------------|--------------|----|------------|-----------------|
| LM Start | <b>-0.03</b> | Rating **    | M  | Issue No.  | <b>1 (cont)</b> |
| LM End   | <b>0.07</b>  | Issue Type + | Ma | Location * | WS              |

Photo 3 of 3 : SP\_2020\_RD2062\_311\_1\_20200228\_00003.jpg



Close-up view of the erosion.

|  |  |   |  |   |  |
|--|--|---|--|---|--|
| <b>* Location</b><br>LS : Land Side    N/A : Not Applicable<br>WS : Water Side<br>CR : Crown |  | <b>** Rating</b><br>A : Acceptable                      N : Not Inspected/Rated<br>M : Minimally Acceptable        C : Corrected<br>U : Unacceptable                  A/W : Acceptable but Monitor & Maintain |  | <b>+ Issue Type</b><br>Ma : Maintenance Deficiency<br>Ob : Design & System Obsolescence<br>En : Enforcement |  |
|--|--|---|--|---|--|

**Flood Control Project Maintenance  
Levee Inspections**

**Levee Inspection Report By Mile - Spring 2020**

**Reclamation District No. 2062 Stewart**

| Waterway              | Bank | Unit Miles | Inspection Start/End     | Inspector          |
|-----------------------|------|------------|--------------------------|--------------------|
| Unit No. 03 Old River | Left | 5.55       | 03/13/2020<br>03/13/2020 | Alberto<br>De Leon |

|  |                           |              |    |                        |               |
|--|---------------------------|--------------|----|------------------------|---------------|
| LM Start   | 0.01                      | Rating **    | C  | Issue No.              | 39            |
| LM End   | 1.31                      | Issue Type + | Ma | Location *             | WS            |
| Category   | Earthen Levee             |              |    | GPS Latitude/Longitude |               |
|  |                           |              |    | Start                  | End           |
| Item   | Vegetation                |              |    | 37.809337 °            | 37.820322 °   |
|  |                           |              |    | -121.390284 °          | -121.377146 ° |
| DWR ID   | DWR_RD2062_03_f _ 2019_39 |              |    |                        |               |
| Comment Code   |                           |              |    |                        |               |
| V2 : Remove the wild growth other than native grasses from the levee slopes. |                           |              |    |                        |               |
| Inspector Comment  |                           |              |    |                        |               |
|  |                           |              |    |                        |               |

No Photos

|  |                         |              |    |                        |               |
|--|-------------------------|--------------|----|------------------------|---------------|
| LM Start   | 0.01                    | Rating **    | C  | Issue No.              | 23            |
| LM End   | 3.18                    | Issue Type + | Ma | Location *             | LS            |
| Category   | Earthen Levee           |              |    | GPS Latitude/Longitude |               |
|  |                         |              |    | Start                  | End           |
| Item   | Vegetation              |              |    | 37.809382 °            | 37.819574 °   |
|  |                         |              |    | -121.390258 °          | -121.348635 ° |
| DWR ID   | DWR_RD2062_03_s_2019_23 |              |    |                        |               |
| Comment Code   |                         |              |    |                        |               |
| V2 : Remove the wild growth other than native grasses from the levee slopes. |                         |              |    |                        |               |
| Inspector Comment  |                         |              |    |                        |               |
|  |                         |              |    |                        |               |

No Photos

|  |  |   |   |
|--|--|---|---|
| <b>* Location</b><br>LS : Land Side    N/A : Not Applicable<br>WS : Water Side<br>CR : Crown | <b>** Rating</b><br>A : Acceptable<br>M : Minimally Acceptable<br>U : Unacceptable | N : Not Inspected/Rated<br>C : Corrected<br>A/W : Acceptable but Monitor & Maintain | <b>+ Issue Type</b><br>Ma : Maintenance Deficiency<br>Ob : Design & System Obsolescence<br>En : Enforcement |
|--|--|---|---|



**Flood Control Project Maintenance  
Levee Inspections**

**Levee Inspection Report By Mile - Spring 2020**

**Reclamation District No. 2062 Stewart**

| Waterway              | Bank | Unit Miles | Inspection Start/End     | Inspector       |
|-----------------------|------|------------|--------------------------|-----------------|
| Unit No. 03 Old River | Left | 5.55       | 03/13/2020<br>03/13/2020 | Alberto De Leon |

|          |                    |              |    |                        |               |
|----------|--------------------|--------------|----|------------------------|---------------|
| LM Start | 0.09               | Rating **    | U  | Issue No.              | 2             |
| LM End   | 0.12               | Issue Type + | Ma | Location *             | WS            |
| Category | Supplemental       |              |    | GPS Latitude/Longitude |               |
|          |                    |              |    | Start                  | End           |
| Item     | DWR Erosion Survey |              |    | 37.809932 °            | 37.809932 °   |
|          |                    |              |    | -121.388788 °          | -121.388788 ° |
| DWR ID   | RD2062U03RM30.02   |              |    |                        |               |

**Comment Code**

**Inspector Comment**

Site ID: RD2062U03RM30.02  
 08/14/2019: The erosion has extended downstream by approximately 60 ft.  
 09/13/2017: The erosion site has expanded significantly with the erosion length increased to approximately 90 ft from 40 ft. Signs of animal activities have been found at the site.  
 07/25/2016: No significant change observed.  
 06/25/2015: No significant change observed.  
 07/02/2014: No significant change observed.  
 08/13/2013: No significant change observed.  
 08/07/2012: The site has been visited by boat survey. No significant change observed.  
 08/23/2011: Hard to view the erosion because of the dense vegetation and trees on site. The site is under the bush, close to the tree.

|          |             |              |    |            |                 |
|----------|-------------|--------------|----|------------|-----------------|
| LM Start | <b>0.09</b> | Rating **    | U  | Issue No.  | <b>2 (cont)</b> |
| LM End   | <b>0.12</b> | Issue Type + | Ma | Location * | WS              |

Photo 1 of 3 : SP\_2020\_RD2062\_311\_2\_20200228\_00004.jpg



Front view of the site.

Photo 2 of 3 : SP\_2020\_RD2062\_311\_2\_20200228\_00005.jpg



Close-up view of the erosion. Note signs of animal activities at the site..

|  |  |  |   |
|--|--|--|---|
| <b>* Location</b><br>LS : Land Side    N/A : Not Applicable<br>WS : Water Side<br>CR : Crown | <b>** Rating</b><br>A : Acceptable<br>M : Minimally Acceptable<br>U : Unacceptable | <b>N : Not Inspected/Rated</b><br>C : Corrected<br>A/W : Acceptable but Monitor & Maintain | <b>+ Issue Type</b><br>Ma : Maintenance Deficiency<br>Ob : Design & System Obsolescence<br>En : Enforcement |
|--|--|--|---|





**Flood Control Project Maintenance  
Levee Inspections**

**Levee Inspection Report By Mile - Spring 2020**

**Reclamation District No. 2062 Stewart**

| Waterway              | Bank | Unit Miles | Inspection Start/End     | Inspector       |
|-----------------------|------|------------|--------------------------|-----------------|
| Unit No. 03 Old River | Left | 5.55       | 03/13/2020<br>03/13/2020 | Alberto De Leon |

|          |                    |              |    |                        |               |
|----------|--------------------|--------------|----|------------------------|---------------|
| LM Start | 0.22               | Rating **    | U  | Issue No.              | 4             |
| LM End   | 0.31               | Issue Type + | Ma | Location *             | WS            |
| Category | Supplemental       |              |    | GPS Latitude/Longitude |               |
|          |                    |              |    | Start                  | End           |
| Item     | DWR Erosion Survey |              |    | 37.810609 °            | 37.810609 °   |
|          |                    |              |    | -121.385879 °          | -121.385879 ° |
| DWR ID   | RD2062U03RM30.19   |              |    |                        |               |

**Comment Code**

**Inspector Comment**

Site ID: RD2062U03RM30.19  
 08/14/2019: No significant change observed.  
 09/13/2017: The erosion has developed vertically. More vegetation at the site.  
 07/25/2106: No significant change observed. More vegetation observed at the site.  
 06/25/2015: No significant change observed.  
 07/02/2014: No significant change observed.  
 08/13/2013: A new pocket erosion at the upper levee slope has been found directly above a large tree. The erosion might have been caused by internal pipe leakage or surface runoff.  
 08/07/2012: The site has been visited by boat survey. No significant change observed  
 08/23/2011: No significant change observed on site. Dense vegetation is visible along the water line.  
 09/07/2010: No significant change observed on site. Much of the upper slope was recently cleared of vegetation by spraying. 4- to 6-foot vertical scarp and pocket erosions are lined along a span of 475 feet. In some sections, the vertical scarp encroaches into the levee prism. There is a lack of berm along this reach, exposing the levee slope to high flow velocities during normal and flood events.  
 08/06/2010: Recommended as local maintenance issue, per CLRO.  
 03/09/2010: As discussed with Michael Moncrief of MBK Engineers, the site will be 'addressed' later this year.  
 09/29/2009: No major change observed since last visit; pocket erosion and a vertical scarp forming; this site was combined with Site RM30.13 and 30.02 with a combined total erosion length of 475 feet; recommended as annual assessment and monitoring of the site, per CLRO CES Evaluation 2008 Report; previously rated "M".  
 11/05/2008: Top of vertical scarp has rip rap that appears to be sliding; rodent holes; existing toe rip rap.

Photo 1 of 3 : SP\_2020\_RD2062\_311\_4\_20200228\_00010.jpg



View of the pocket erosion.

|  |  |   |   |
|--|--|---|---|
| <b>* Location</b><br>LS : Land Side    N/A : Not Applicable<br>WS : Water Side<br>CR : Crown | <b>** Rating</b><br>A : Acceptable<br>M : Minimally Acceptable<br>U : Unacceptable | N : Not Inspected/Rated<br>C : Corrected<br>A/W : Acceptable but Monitor & Maintain | <b>+ Issue Type</b><br>Ma : Maintenance Deficiency<br>Ob : Design & System Obsolescence<br>En : Enforcement |
|--|--|---|---|



**Flood Control Project Maintenance  
Levee Inspections**

**Levee Inspection Report By Mile - Spring 2020**

**Reclamation District No. 2062 Stewart**

| Waterway              | Bank | Unit Miles | Inspection Start/End     | Inspector       |
|-----------------------|------|------------|--------------------------|-----------------|
| Unit No. 03 Old River | Left | 5.55       | 03/13/2020<br>03/13/2020 | Alberto De Leon |

|          |                    |              |    |                        |               |
|----------|--------------------|--------------|----|------------------------|---------------|
| LM Start | 0.22               | Rating **    | U  | Issue No.              | 4 (cont)      |
| LM End   | 0.31               | Issue Type + | Ma | Location *             | WS            |
| Category | Supplemental       |              |    | GPS Latitude/Longitude |               |
|          |                    |              |    | Start                  | End           |
| Item     | DWR Erosion Survey |              |    | 37.810609 °            | 37.810609 °   |
|          |                    |              |    | -121.385879 °          | -121.385879 ° |
| DWR ID   | RD2062U03RM30.19   |              |    |                        |               |

Photo 2 of 3 : SP\_2020\_RD2062\_311\_4\_20200228\_00011.jpg



Close-up view of the pocket erosion. Note the dense vegetation at the site.

|          |             |              |    |            |                 |
|----------|-------------|--------------|----|------------|-----------------|
| LM Start | <b>0.22</b> | Rating **    | U  | Issue No.  | <b>4 (cont)</b> |
| LM End   | <b>0.31</b> | Issue Type + | Ma | Location * | WS              |

Photo 3 of 3 : SP\_2020\_RD2062\_311\_4\_20200228\_00012.jpg



Front view of the site with dense vegetation.

|   |                         |              |    |                        |               |
|---|-------------------------|--------------|----|------------------------|---------------|
| LM Start  | 0.33                    | Rating **    | C  | Issue No.              | 43            |
| LM End  | 0.33                    | Issue Type + | Ma | Location *             | LS            |
| Category  | Earthen Levee           |              |    | GPS Latitude/Longitude |               |
|   |                         |              |    | Start                  | End           |
| Item  | Trim / Thin Trees       |              |    | 37.810952 °            | 37.810952 °   |
|   |                         |              |    | -121.384748 °          | -121.384748 ° |
| DWR ID  | DWR_RD2062_03_s_2020_43 |              |    |                        |               |
| Comment Code  |                         |              |    |                        |               |
| T1 : Trim trees to at least five feet above ground level. |                         |              |    |                        |               |
| Inspector Comment   |                         |              |    |                        |               |
|   |                         |              |    |                        |               |

No Photos

|  |  |   |   |
|--|--|---|---|
| <b>* Location</b><br>LS : Land Side    N/A : Not Applicable<br>WS : Water Side<br>CR : Crown | <b>** Rating</b><br>A : Acceptable<br>M : Minimally Acceptable<br>U : Unacceptable | N : Not Inspected/Rated<br>C : Corrected<br>A/W : Acceptable but Monitor & Maintain | <b>+ Issue Type</b><br>Ma : Maintenance Deficiency<br>Ob : Design & System Obsolescence<br>En : Enforcement |
|--|--|---|---|



**Flood Control Project Maintenance  
Levee Inspections**

**Levee Inspection Report By Mile - Spring 2020**

**Reclamation District No. 2062 Stewart**

| Waterway              | Bank | Unit Miles | Inspection Start/End     | Inspector       |
|-----------------------|------|------------|--------------------------|-----------------|
| Unit No. 03 Old River | Left | 5.55       | 03/13/2020<br>03/13/2020 | Alberto De Leon |

|          |                    |              |    |                        |               |
|----------|--------------------|--------------|----|------------------------|---------------|
| LM Start | 0.35               | Rating **    | M  | Issue No.              | 5             |
| LM End   | 0.35               | Issue Type + | Ma | Location *             | WS            |
| Category | Supplemental       |              |    | GPS Latitude/Longitude |               |
|          |                    |              |    | Start                  | End           |
| Item     | DWR Erosion Survey |              |    | 37.811101 °            | 37.811101 °   |
|          |                    |              |    | -121.384402 °          | -121.384402 ° |
| DWR ID   | RD2062U03RM30.27   |              |    |                        |               |

**Comment Code**

**Inspector Comment**

Site ID: RD2062U03RM30.27  
 08/14/2019: No significant change observed.  
 09/13/2017: No significant change observed.  
 07/25/2016: No significant change observed.  
 06/25/2015: No significant change observed.  
 07/02/2014: No significant change observed.  
 08/13/2013: No significant change observed.  
 08/07/2012: The site has been visited by boat survey. No significant change observed  
 08/23/2011: The site is right at the downstream of a river bend.

|          |             |              |    |            |                 |
|----------|-------------|--------------|----|------------|-----------------|
| LM Start | <b>0.35</b> | Rating **    | M  | Issue No.  | <b>5 (cont)</b> |
| LM End   | <b>0.35</b> | Issue Type + | Ma | Location * | WS              |

Photo 1 of 3 : SP\_2020\_RD2062\_311\_5\_20200228\_00013.jpg



Front view of the erosion.

Photo 2 of 3 : SP\_2020\_RD2062\_311\_5\_20200228\_00014.jpg



Close-up view of the site. Note the dense vegetation at the site.

|  |  |  |   |
|--|--|--|---|
| <b>* Location</b><br>LS : Land Side    N/A : Not Applicable<br>WS : Water Side<br>CR : Crown | <b>** Rating</b><br>A : Acceptable<br>M : Minimally Acceptable<br>U : Unacceptable | <b>N : Not Inspected/Rated</b><br>C : Corrected<br>A/W : Acceptable but Monitor & Maintain | <b>+ Issue Type</b><br>Ma : Maintenance Deficiency<br>Ob : Design & System Obsolescence<br>En : Enforcement |
|--|--|--|---|

**Flood Control Project Maintenance  
Levee Inspections**

**Levee Inspection Report By Mile - Spring 2020**

**Reclamation District No. 2062 Stewart**

| Waterway              | Bank | Unit Miles | Inspection Start/End     | Inspector       |
|-----------------------|------|------------|--------------------------|-----------------|
| Unit No. 03 Old River | Left | 5.55       | 03/13/2020<br>03/13/2020 | Alberto De Leon |

|          |                    |              |    |                        |               |
|----------|--------------------|--------------|----|------------------------|---------------|
| LM Start | 0.35               | Rating **    | M  | Issue No.              | 5 (cont)      |
| LM End   | 0.35               | Issue Type + | Ma | Location *             | WS            |
| Category | Supplemental       |              |    | GPS Latitude/Longitude |               |
|          |                    |              |    | Start                  | End           |
| Item     | DWR Erosion Survey |              |    | 37.811101 °            | 37.811101 °   |
|          |                    |              |    | -121.384402 °          | -121.384402 ° |
| DWR ID   | RD2062U03RM30.27   |              |    |                        |               |

Photo 3 of 3 : SP\_2020\_RD2062\_311\_5\_20200228\_00015.jpg



Close-up view of the erosion.

|  |                         |              |    |                        |               |
|--|-------------------------|--------------|----|------------------------|---------------|
| LM Start   | 0.35                    | Rating **    | C  | Issue No.              | 42            |
| LM End   | 0.35                    | Issue Type + | En | Location *             | LS            |
| Category   | Earthen Levee           |              |    | GPS Latitude/Longitude |               |
|  |                         |              |    | Start                  | End           |
| Item   | Encroachments           |              |    | 37.810950 °            | 37.810950 °   |
|  |                         |              |    | -121.384317 °          | -121.384317 ° |
| DWR ID   | DWR_RD2062_03_f_2019_42 |              |    |                        |               |
| Comment Code   |                         |              |    |                        |               |
| DE : Debris  |                         |              |    |                        |               |
| Inspector Comment  |                         |              |    |                        |               |
| PGE utility pole left on the landside slope. LMA will contact PGE for removal. |                         |              |    |                        |               |

No Photos

|  |  |   |   |
|--|--|---|---|
| <b>* Location</b><br>LS : Land Side    N/A : Not Applicable<br>WS : Water Side<br>CR : Crown | <b>** Rating</b><br>A : Acceptable<br>M : Minimally Acceptable<br>U : Unacceptable | N : Not Inspected/Rated<br>C : Corrected<br>A/W : Acceptable but Monitor & Maintain | <b>+ Issue Type</b><br>Ma : Maintenance Deficiency<br>Ob : Design & System Obsolescence<br>En : Enforcement |
|--|--|---|---|

**Flood Control Project Maintenance  
Levee Inspections**

**Levee Inspection Report By Mile - Spring 2020**

**Reclamation District No. 2062 Stewart**

| Waterway              | Bank | Unit Miles | Inspection Start/End     | Inspector       |
|-----------------------|------|------------|--------------------------|-----------------|
| Unit No. 03 Old River | Left | 5.55       | 03/13/2020<br>03/13/2020 | Alberto De Leon |

|          |                      |              |                        |               |           |
|----------|----------------------|--------------|------------------------|---------------|-----------|
| LM Start | <b>0.51</b>          | Rating **    | U                      | Issue No.     | <b>44</b> |
| LM End   | <b>0.51</b>          | Issue Type + | En                     | Location *    |           |
| Category | Supplemental         |              | GPS Latitude/Longitude |               |           |
|          |                      |              | Start                  | End           |           |
| Item     | DWR UCIP Field Study |              | 37.812575 °            | 37.812575 °   |           |
|          |                      |              | -121.382798 °          | -121.382798 ° |           |
| DWR ID   | 19200                |              |                        |               |           |

**Comment Code**

**Inspector Comment**

DS\_ID:19200  
FS\_ID:53377  
EP\_NO: 2029  
Repair Type: Urgent  
Crossing Status: Found  
UCIP Comments: 10/10/2018 Same as last inspection; erosion still present on LS slope, so keeping as Urgent (D. Sanoski - DWR UCIP).08/31/2016: Sloughing of LS slope beneath exposed section of pipe. Overflow pipe has been replaced on WS, though I could not locate a permit for that work. (K. Fazel - UCIP)10/22/2013:- pits and holes on overflow pipe on waterside.- underpinning at pump support.- slope erosion on both sides of the levee.- 2-inch electric conduit on waterside and power pole on landside. (P. Amatya - DWR) FIELD\_STRUCT\_DESC: 16-inch coated steel irrigation discharge pipe through the levee, 8 feet below the crown. Siphon breaker on the landside (LS) slope. Pump house on the waterside (WS) slope. Concrete distribution box on the LS. 2-inch electrical conduit on the WS. Service pole on the LS. Newly installed, as of 2016, overflow pipe with shutoff valve on the WS. (Plans for installation of an inclined irrigation pump on the bank authorized under Permit No. 2029, 1954 - Reclamation District No. 2062). [Additional Reference(s): DWR Levee Log, 2007. USACE San Joaquin O&M Manual 9, April 1964, (HLM 0.52)].  
FS Date: 10/10/2018 11:25:00 AM

|          |             |              |    |            |                  |
|----------|-------------|--------------|----|------------|------------------|
| LM Start | <b>0.51</b> | Rating **    | U  | Issue No.  | <b>44 (cont)</b> |
| LM End   | <b>0.51</b> | Issue Type + | En | Location * |                  |

Photo 1 of 3 : UCIP\_SP\_2020\_53377\_40158.jpg



WS view: pump house on levee slope and soil erosion on levee slope.

Photo 2 of 3 : UCIP\_SP\_2020\_53377\_40157.jpg



WS view: pump house on levee slope and holes-pits on corroded overflow pipe (left).

|  |  |   |  |   |  |
|--|--|---|--|---|--|
| <b>* Location</b><br>LS : Land Side    N/A : Not Applicable<br>WS : Water Side<br>CR : Crown |  | <b>** Rating</b><br>A : Acceptable<br>M : Minimally Acceptable<br>U : Unacceptable<br>N : Not Inspected/Rated<br>C : Corrected<br>A/W : Acceptable but Monitor & Maintain |  | <b>+ Issue Type</b><br>Ma : Maintenance Deficiency<br>Ob : Design & System Obsolescence<br>En : Enforcement |  |
|--|--|---|--|---|--|

**Flood Control Project Maintenance  
Levee Inspections**

**Levee Inspection Report By Mile - Spring 2020**

**Reclamation District No. 2062 Stewart**

| Waterway              | Bank | Unit Miles | Inspection Start/End     | Inspector       |
|-----------------------|------|------------|--------------------------|-----------------|
| Unit No. 03 Old River | Left | 5.55       | 03/13/2020<br>03/13/2020 | Alberto De Leon |

|          |                      |              |                        |               |                  |
|----------|----------------------|--------------|------------------------|---------------|------------------|
| LM Start | <b>0.51</b>          | Rating **    | U                      | Issue No.     | <b>44 (cont)</b> |
| LM End   | <b>0.51</b>          | Issue Type + | En                     | Location *    |                  |
| Category | Supplemental         |              | GPS Latitude/Longitude |               |                  |
|          |                      |              | Start                  | End           |                  |
| Item     | DWR UCIP Field Study |              | 37.812575 °            | 37.812575 °   |                  |
|          |                      |              | -121.382798 °          | -121.382798 ° |                  |
| DWR ID   | 19200                |              |                        |               |                  |

Photo 3 of 3 : UCIP\_SP\_2020\_53377\_40156.jpg



WS view: slant pump in pumphouse on levee slope.

|          |                    |              |                        |               |          |
|----------|--------------------|--------------|------------------------|---------------|----------|
| LM Start | <b>0.55</b>        | Rating **    | M                      | Issue No.     | <b>7</b> |
| LM End   | <b>0.56</b>        | Issue Type + | Ma                     | Location *    | WS       |
| Category | Supplemental       |              | GPS Latitude/Longitude |               |          |
|          |                    |              | Start                  | End           |          |
| Item     | DWR Erosion Survey |              | 37.813070 °            | 37.813070 °   |          |
|          |                    |              | -121.383100 °          | -121.383100 ° |          |
| DWR ID   | RD2062U03RM30.43   |              |                        |               |          |

**Comment Code**

**Inspector Comment**

Site ID: RD2062U03RM30.43  
 08/14/2019: No significant change observed.  
 09/13/2017: No significant change observed.  
 07/25/2016: No significant change observed.  
 06/25/2015: No significant change observed.  
 07/02/2014: No significant change observed.  
 08/13/2013: No significant change observed.  
 08/07/2012: The site has been visited by boat survey. No significant change observed.  
 08/23/2011: No significant change observed on site.  
 09/07/2010: No significant change observed on site. Much of the placed rip rap revetment has slid. It is no longer adequately protecting the slope.  
 08/06/2010: Recommended as local maintenance issue, per CLRO Report.  
 03/09/2010: As discussed with Michael Moncrief of MBK, site will be 'addressed' this year.  
 09/29/2009: No major change observed since last visit; a section of the rip rap has slipped, exposing a levee section that has eroded; recommended as local maintenance issue, per CLRO CES Evaluation 2008 Report; Site # is the same as RM30.43, LM0.63; previously rated "U".  
 11/05/2008: Site is located inside of a bend; scarp looks to be into the levee prism; piles of concrete chunks placed on the slope, with some of them already starting to slide.

Photo 1 of 3 : SP\_2020\_RD2062\_311\_7\_20200228\_00016.jpg



Close-up view of the site.

|  |  |  |   |
|--|--|--|---|
| <b>* Location</b><br>LS : Land Side    N/A : Not Applicable<br>WS : Water Side<br>CR : Crown | <b>** Rating</b><br>A : Acceptable<br>M : Minimally Acceptable<br>U : Unacceptable | <b>N : Not Inspected/Rated</b><br>C : Corrected<br>A/W : Acceptable but Monitor & Maintain | <b>+ Issue Type</b><br>Ma : Maintenance Deficiency<br>Ob : Design & System Obsolescence<br>En : Enforcement |
|--|--|--|---|



**Flood Control Project Maintenance  
Levee Inspections**

**Levee Inspection Report By Mile - Spring 2020**

**Reclamation District No. 2062 Stewart**

| Waterway              | Bank | Unit Miles | Inspection Start/End     | Inspector       |
|-----------------------|------|------------|--------------------------|-----------------|
| Unit No. 03 Old River | Left | 5.55       | 03/13/2020<br>03/13/2020 | Alberto De Leon |

|          |                    |              |    |                        |               |
|----------|--------------------|--------------|----|------------------------|---------------|
| LM Start | 0.55               | Rating **    | M  | Issue No.              | 7 (cont)      |
| LM End   | 0.56               | Issue Type + | Ma | Location *             | WS            |
| Category | Supplemental       |              |    | GPS Latitude/Longitude |               |
|          |                    |              |    | Start                  | End           |
| Item     | DWR Erosion Survey |              |    | 37.813070 °            | 37.813070 °   |
|          |                    |              |    | -121.383100 °          | -121.383100 ° |
| DWR ID   | RD2062U03RM30.43   |              |    |                        |               |

Photo 2 of 3 : SP\_2020\_RD2062\_311\_7\_20200228\_00017.jpg



Front view of the site.

|          |             |              |    |            |                 |
|----------|-------------|--------------|----|------------|-----------------|
| LM Start | <b>0.55</b> | Rating **    | M  | Issue No.  | <b>7 (cont)</b> |
| LM End   | <b>0.56</b> | Issue Type + | Ma | Location * | WS              |

Photo 3 of 3 : SP\_2020\_RD2062\_311\_7\_20200228\_00018.jpg



Front view of the site.

|   |                         |              |    |                        |               |
|---|-------------------------|--------------|----|------------------------|---------------|
| LM Start  | 0.75                    | Rating **    | C  | Issue No.              | 41            |
| LM End  | 0.75                    | Issue Type + | Ma | Location *             | WS            |
| Category  | Earthen Levee           |              |    | GPS Latitude/Longitude |               |
|   |                         |              |    | Start                  | End           |
| Item  | Trim / Thin Trees       |              |    | 37.815440 °            | 37.815440 °   |
|   |                         |              |    | -121.381511 °          | -121.381511 ° |
| DWR ID  | DWR_RD2062_03_f_2019_41 |              |    |                        |               |
| Comment Code  |                         |              |    |                        |               |
| T1 : Trim trees to at least five feet above ground level. |                         |              |    |                        |               |
| Inspector Comment   |                         |              |    |                        |               |
|   |                         |              |    |                        |               |

No Photos

|  |  |   |   |
|--|--|---|---|
| <b>* Location</b><br>LS : Land Side    N/A : Not Applicable<br>WS : Water Side<br>CR : Crown | <b>** Rating</b><br>A : Acceptable<br>M : Minimally Acceptable<br>U : Unacceptable | N : Not Inspected/Rated<br>C : Corrected<br>A/W : Acceptable but Monitor & Maintain | <b>+ Issue Type</b><br>Ma : Maintenance Deficiency<br>Ob : Design & System Obsolescence<br>En : Enforcement |
|--|--|---|---|



**Flood Control Project Maintenance  
Levee Inspections**

**Levee Inspection Report By Mile - Spring 2020**

**Reclamation District No. 2062 Stewart**

| Waterway              | Bank | Unit Miles | Inspection Start/End     | Inspector       |
|-----------------------|------|------------|--------------------------|-----------------|
| Unit No. 03 Old River | Left | 5.55       | 03/13/2020<br>03/13/2020 | Alberto De Leon |

|   |                         |              |    |                        |               |
|---|-------------------------|--------------|----|------------------------|---------------|
| LM Start  | 1.03                    | Rating **    | C  | Issue No.              | 40            |
| LM End  | 1.03                    | Issue Type + | Ma | Location *             | LS            |
| Category  | Earthen Levee           |              |    | GPS Latitude/Longitude |               |
|   |                         |              |    | Start                  | End           |
| Item  | Trim / Thin Trees       |              |    | 37.817750 °            | 37.817750 °   |
|   |                         |              |    | -121.378604 °          | -121.378604 ° |
| DWR ID  | DWR_RD2062_03_f_2019_40 |              |    |                        |               |
| Comment Code  |                         |              |    |                        |               |
| T1 : Trim trees to at least five feet above ground level. |                         |              |    |                        |               |
| Inspector Comment   |                         |              |    |                        |               |
|   |                         |              |    |                        |               |

No Photos

|  |                    |              |    |                        |               |  |
|--|--------------------|--------------|----|------------------------|---------------|--|
| LM Start   | 1.18               | Rating **    | M  | Issue No.              | 8             |  |
| LM End   | 1.19               | Issue Type + | Ma | Location *             | WS            |  |
| Category   | Supplemental       |              |    | GPS Latitude/Longitude |               |  |
|  |                    |              |    | Start                  | End           |  |
| Item   | DWR Erosion Survey |              |    | 37.819290 °            | 37.819290 °   |  |
|  |                    |              |    | -121.378880 °          | -121.378880 ° |  |
| DWR ID   | RD2062U03RM31.12   |              |    |                        |               |  |
| Comment Code   |                    |              |    |                        |               |  |
|  |                    |              |    |                        |               |  |
| Inspector Comment  |                    |              |    |                        |               |  |
| Site ID: RD2062U03RM31.12<br>08/14/2019: No significant change observed.<br>09/13/2017: No significant change observed.<br>07/25/2016: No significant change observed.<br>06/25/2015: No significant change observed.<br>07/02/2014: No significant change observed.<br>08/13/2013: No significant change observed.<br>08/07/2012: The site has been visited by boat survey. No significant change observed<br>08/23/2011: No significant change observed on site.<br>09/07/2010: No significant change observed on site. Much of the seasonal grass along the slope was cleared. Site consists of an existing scalloped erosion approximately 30 feet long by 5 feet wide at its widest opening. The lateral crack is extended outwards along the middle slope. There is a 1 to 2 feet of differential settlement that could further develop into a shallow slide.<br>08/06/2010: Recommended as local maintenance issue, per CLRO.<br>03/09/2010: As discussed with Michael Moncrief of MBK Engineer, site will be 'addressed' this year.<br>09/28/2009: No major change observed; section of rip rap has slipped, creating a terraced effect; dense vegetation growth; recommended as a local maintenance issue, per CLRO CES Evaluation 2008 Report; Site # is the same as RM31.12,LM1.25; previously rated "U".<br>09/14/2006: 1-2' into prism. |                    |              |    |                        |               |  |

Photo 1 of 3 : SP\_2020\_RD2062\_311\_8\_20200228\_00019.jpg



Front view of the site.

|  |  |   |   |
|--|--|---|---|
| <b>* Location</b><br>LS : Land Side    N/A : Not Applicable<br>WS : Water Side<br>CR : Crown | <b>** Rating</b><br>A : Acceptable<br>M : Minimally Acceptable<br>U : Unacceptable | N : Not Inspected/Rated<br>C : Corrected<br>A/W : Acceptable but Monitor & Maintain | <b>+ Issue Type</b><br>Ma : Maintenance Deficiency<br>Ob : Design & System Obsolescence<br>En : Enforcement |
|--|--|---|---|

**Flood Control Project Maintenance  
Levee Inspections**

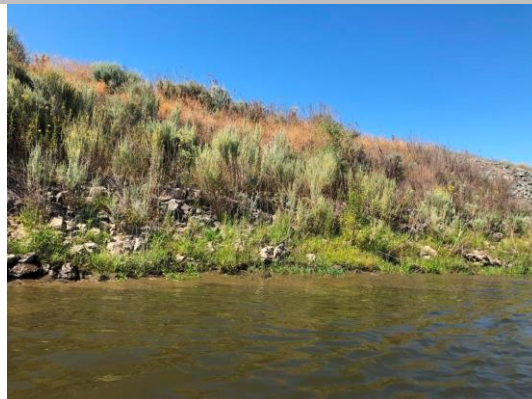
**Levee Inspection Report By Mile - Spring 2020**

**Reclamation District No. 2062 Stewart**

| Waterway              | Bank | Unit Miles | Inspection Start/End     | Inspector       |
|-----------------------|------|------------|--------------------------|-----------------|
| Unit No. 03 Old River | Left | 5.55       | 03/13/2020<br>03/13/2020 | Alberto De Leon |

|          |                    |              |    |                        |               |
|----------|--------------------|--------------|----|------------------------|---------------|
| LM Start | 1.18               | Rating **    | M  | Issue No.              | 8 (cont)      |
| LM End   | 1.19               | Issue Type + | Ma | Location *             | WS            |
| Category | Supplemental       |              |    | GPS Latitude/Longitude |               |
|          |                    |              |    | Start                  | End           |
| Item     | DWR Erosion Survey |              |    | 37.819290 °            | 37.819290 °   |
|          |                    |              |    | -121.378880 °          | -121.378880 ° |
| DWR ID   | RD2062U03RM31.12   |              |    |                        |               |

Photo 2 of 3 : SP\_2020\_RD2062\_311\_8\_20200228\_00020.jpg



Front view of the site.

|          |             |              |    |            |                 |
|----------|-------------|--------------|----|------------|-----------------|
| LM Start | <b>1.18</b> | Rating **    | M  | Issue No.  | <b>8 (cont)</b> |
| LM End   | <b>1.19</b> | Issue Type + | Ma | Location * | WS              |

Photo 3 of 3 : SP\_2020\_RD2062\_311\_8\_20200228\_00021.jpg



Close-up view of the site.

|  |                         |              |    |                        |               |
|--|-------------------------|--------------|----|------------------------|---------------|
| LM Start   | 1.31                    | Rating **    | C  | Issue No.              | 22            |
| LM End   | 1.36                    | Issue Type + | Ma | Location *             | WS            |
| Category   | Earthen Levee           |              |    | GPS Latitude/Longitude |               |
|  |                         |              |    | Start                  | End           |
| Item   | Vegetation              |              |    | 37.820322 °            | 37.821072 °   |
|  |                         |              |    | -121.377146 °          | -121.377031 ° |
| DWR ID   | DWR_RD2062_03_s_2018_22 |              |    |                        |               |
| Comment Code   |                         |              |    |                        |               |
| V2 : Remove the wild growth other than native grasses from the levee slopes. |                         |              |    |                        |               |
| Inspector Comment  |                         |              |    |                        |               |
|  |                         |              |    |                        |               |

No Photos

|  |  |   |   |
|--|--|---|---|
| <b>* Location</b><br>LS : Land Side    N/A : Not Applicable<br>WS : Water Side<br>CR : Crown | <b>** Rating</b><br>A : Acceptable<br>M : Minimally Acceptable<br>U : Unacceptable | N : Not Inspected/Rated<br>C : Corrected<br>A/W : Acceptable but Monitor & Maintain | <b>+ Issue Type</b><br>Ma : Maintenance Deficiency<br>Ob : Design & System Obsolescence<br>En : Enforcement |
|--|--|---|---|



**Flood Control Project Maintenance  
Levee Inspections**

**Levee Inspection Report By Mile - Spring 2020**

**Reclamation District No. 2062 Stewart**

| Waterway              | Bank | Unit Miles | Inspection Start/End     | Inspector       |
|-----------------------|------|------------|--------------------------|-----------------|
| Unit No. 03 Old River | Left | 5.55       | 03/13/2020<br>03/13/2020 | Alberto De Leon |

|              |                    |              |    |                        |               |
|--------------|--------------------|--------------|----|------------------------|---------------|
| LM Start     | 1.39               | Rating **    | U  | Issue No.              | 9             |
| LM End       | 1.40               | Issue Type + | Ma | Location *             | WS            |
| Category     | Supplemental       |              |    | GPS Latitude/Longitude |               |
|              |                    |              |    | Start                  | End           |
| Item         | DWR Erosion Survey |              |    | 37.821380 °            | 37.821380 °   |
|              |                    |              |    | -121.376900 °          | -121.376900 ° |
| DWR ID       | RD2062U03RM31.28   |              |    |                        |               |
| Comment Code |                    |              |    |                        |               |

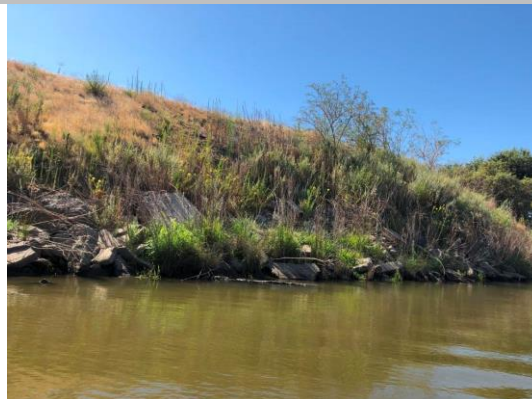
**Comment Code**

**Inspector Comment**

Site ID: RD2062U03RM31.28  
 08/14/2019: No significant change observed.  
 09/13/2017: No significant change observed.  
 07/25/2016: No significant change observed.  
 06/25/2015: No significant change observed.  
 07/02/2014: No significant change observed.  
 08/13/2013: No significant change observed.  
 08/07/2012: The site has been visited by boat survey. No significant change observed  
 08/23/2011: No significant change observed on site.  
 09/07/2010: No significant change observed on site. There is a small- to medium sized Oak tree on the mid-slope just above rip rap. Some of the rip rap has collapsed, creating a pocket erosion just above the existing toe rip rap and upstream of the Oak tree.  
 08/06/2010: Recommended as local maintenance issue, per CLRO.  
 03/09/2010: As discussed with Michael Moncrief of MBK Engineer, site will be 'addressed' in 2010.  
 09/29/2009: No major change since last visit; sliding of the rip rap at the base of the lone tree; there is noticeable man-made trail and foot traffic extending from the crown to the toe; much of the broken concrete used as temporary rip rap has slid, exposing portion of the bare levee slope; recommended as local maintenance issue, per CLRO CES Evaluation 2008 Report; Site # is the same as RM31.3, LM1.45; previously rated "M".  
 11/05/2008: Portion of rip rap collapsing.  
 09/14/2006: Portion of rip rap along the slope has collapsed; exposed levee section is starting to erode, exposing roots from the nearby tree.

|          |             |              |           |            |                 |
|----------|-------------|--------------|-----------|------------|-----------------|
| LM Start | <b>1.39</b> | Rating **    | <b>U</b>  | Issue No.  | <b>9 (cont)</b> |
| LM End   | <b>1.40</b> | Issue Type + | <b>Ma</b> | Location * | <b>WS</b>       |

Photo 1 of 3 : SP\_2020\_RD2062\_311\_9\_20200228\_00022.jpg



Front view of the erosion site.

Photo 2 of 3 : SP\_2020\_RD2062\_311\_9\_20200228\_00023.jpg



Close-up view of the site.

|  |  |   |  |   |  |
|--|--|---|--|---|--|
| <b>* Location</b><br>LS : Land Side    N/A : Not Applicable<br>WS : Water Side<br>CR : Crown |  | <b>** Rating</b><br>A : Acceptable<br>M : Minimally Acceptable<br>U : Unacceptable<br>N : Not Inspected/Rated<br>C : Corrected<br>A/W : Acceptable but Monitor & Maintain |  | <b>+ Issue Type</b><br>Ma : Maintenance Deficiency<br>Ob : Design & System Obsolescence<br>En : Enforcement |  |
|--|--|---|--|---|--|

**Flood Control Project Maintenance  
Levee Inspections**

**Levee Inspection Report By Mile - Spring 2020**

**Reclamation District No. 2062 Stewart**

| Waterway              | Bank | Unit Miles | Inspection Start/End     | Inspector       |
|-----------------------|------|------------|--------------------------|-----------------|
| Unit No. 03 Old River | Left | 5.55       | 03/13/2020<br>03/13/2020 | Alberto De Leon |

|          |                    |              |    |                        |               |
|----------|--------------------|--------------|----|------------------------|---------------|
| LM Start | 1.39               | Rating **    | U  | Issue No.              | 9 (cont)      |
| LM End   | 1.40               | Issue Type + | Ma | Location *             | WS            |
| Category | Supplemental       |              |    | GPS Latitude/Longitude |               |
|          |                    |              |    | Start                  | End           |
| Item     | DWR Erosion Survey |              |    | 37.821380 °            | 37.821380 °   |
|          |                    |              |    | -121.376900 °          | -121.376900 ° |
| DWR ID   | RD2062U03RM31.28   |              |    |                        |               |

Photo 3 of 3 : SP\_2020\_RD2062\_311\_9\_20200228\_00024.jpg



Close-up view of the site. Note the existing broken concrete on levee slope and at the levee toe.

|   |                         |              |     |                        |               |
|---|-------------------------|--------------|-----|------------------------|---------------|
| LM Start  | 1.46                    | Rating **    | A/W | Issue No.              | 34            |
| LM End  | 1.46                    | Issue Type + | Ma  | Location *             | LS            |
| Category  | Earthen Levee           |              |     | GPS Latitude/Longitude |               |
|   |                         |              |     | Start                  | End           |
| Item  | Animal Control          |              |     | 37.821657 °            | 37.821657 °   |
|   |                         |              |     | -121.375657 °          | -121.375657 ° |
| DWR ID  | DWR_RD2062_03_f_2019_34 |              |     |                        |               |
| Comment Code  |                         |              |     |                        |               |
| A3 : No rodents visible, but rodent burrows visible; need to backfill and compact or grout burrows. |                         |              |     |                        |               |
| Inspector Comment   |                         |              |     |                        |               |
|   |                         |              |     |                        |               |

No Photos

|   |                         |              |    |                        |               |
|---|-------------------------|--------------|----|------------------------|---------------|
| LM Start  | 1.70                    | Rating **    | M  | Issue No.              | 33            |
| LM End  | 1.70                    | Issue Type + | Ma | Location *             | WS            |
| Category  | Earthen Levee           |              |    | GPS Latitude/Longitude |               |
|   |                         |              |    | Start                  | End           |
| Item  | Trim / Thin Trees       |              |    | 37.820938 °            | 37.820938 °   |
|   |                         |              |    | -121.371534 °          | -121.371534 ° |
| DWR ID  | DWR_RD2062_03_f_2019_33 |              |    |                        |               |
| Comment Code  |                         |              |    |                        |               |
| T1 : Trim trees to at least five feet above ground level. |                         |              |    |                        |               |
| Inspector Comment   |                         |              |    |                        |               |
|   |                         |              |    |                        |               |

No Photos

|  |  |   |   |
|--|--|---|---|
| <b>* Location</b><br>LS : Land Side    N/A : Not Applicable<br>WS : Water Side<br>CR : Crown | <b>** Rating</b><br>A : Acceptable<br>M : Minimally Acceptable<br>U : Unacceptable | N : Not Inspected/Rated<br>C : Corrected<br>A/W : Acceptable but Monitor & Maintain | <b>+ Issue Type</b><br>Ma : Maintenance Deficiency<br>Ob : Design & System Obsolescence<br>En : Enforcement |
|--|--|---|---|



**Flood Control Project Maintenance  
Levee Inspections**

**Levee Inspection Report By Mile - Spring 2020**

**Reclamation District No. 2062 Stewart**

| Waterway              | Bank | Unit Miles | Inspection Start/End     | Inspector          |
|-----------------------|------|------------|--------------------------|--------------------|
| Unit No. 03 Old River | Left | 5.55       | 03/13/2020<br>03/13/2020 | Alberto<br>De Leon |

|   |                         |              |    |                        |               |
|---|-------------------------|--------------|----|------------------------|---------------|
| LM Start  | 1.95                    | Rating **    | C  | Issue No.              | 32            |
| LM End  | 1.95                    | Issue Type + | Ma | Location *             | WS            |
| Category  | Earthen Levee           |              |    | GPS Latitude/Longitude |               |
|   |                         |              |    | Start                  | End           |
| Item  | Trim / Thin Trees       |              |    | 37.819118 °            | 37.819118 °   |
|   |                         |              |    | -121.367894 °          | -121.367894 ° |
| DWR ID  | DWR_RD2062_03_f_2019_32 |              |    |                        |               |
| Comment Code  |                         |              |    |                        |               |
| T1 : Trim trees to at least five feet above ground level. |                         |              |    |                        |               |
| Inspector Comment   |                         |              |    |                        |               |
|   |                         |              |    |                        |               |

No Photos

|   |                         |              |    |                        |               |
|---|-------------------------|--------------|----|------------------------|---------------|
| LM Start  | 2.03                    | Rating **    | M  | Issue No.              | 30            |
| LM End  | 2.03                    | Issue Type + | Ma | Location *             | WS            |
| Category  | Earthen Levee           |              |    | GPS Latitude/Longitude |               |
|   |                         |              |    | Start                  | End           |
| Item  | Trim / Thin Trees       |              |    | 37.818647 °            | 37.818647 °   |
|   |                         |              |    | -121.366502 °          | -121.366502 ° |
| DWR ID  | DWR_RD2062_03_f_2019_30 |              |    |                        |               |
| Comment Code  |                         |              |    |                        |               |
| T1 : Trim trees to at least five feet above ground level. |                         |              |    |                        |               |
| Inspector Comment   |                         |              |    |                        |               |
|   |                         |              |    |                        |               |

No Photos

|   |                           |              |     |                        |               |
|---|---------------------------|--------------|-----|------------------------|---------------|
| LM Start  | 2.16                      | Rating **    | A/W | Issue No.              | 29            |
| LM End  | 2.16                      | Issue Type + | Ma  | Location *             | LS            |
| Category  | Earthen Levee             |              |     | GPS Latitude/Longitude |               |
|   |                           |              |     | Start                  | End           |
| Item  | Animal Control            |              |     | 37.818687 °            | 37.818687 °   |
|   |                           |              |     | -121.364138 °          | -121.364138 ° |
| DWR ID  | DWR_RD2062_03_f _ 2019_29 |              |     |                        |               |
| Comment Code  |                           |              |     |                        |               |
| A3 : No rodents visible, but rodent burrows visible; need to backfill and compact or grout burrows. |                           |              |     |                        |               |
| Inspector Comment   |                           |              |     |                        |               |
|   |                           |              |     |                        |               |

No Photos

|  |  |   |   |
|--|--|---|---|
| <b>* Location</b><br>LS : Land Side    N/A : Not Applicable<br>WS : Water Side<br>CR : Crown | <b>** Rating</b><br>A : Acceptable<br>M : Minimally Acceptable<br>U : Unacceptable | N : Not Inspected/Rated<br>C : Corrected<br>A/W : Acceptable but Monitor & Maintain | <b>+ Issue Type</b><br>Ma : Maintenance Deficiency<br>Ob : Design & System Obsolescence<br>En : Enforcement |
|--|--|---|---|

**Flood Control Project Maintenance  
Levee Inspections**

**Levee Inspection Report By Mile - Spring 2020**

**Reclamation District No. 2062 Stewart**

| Waterway              | Bank | Unit Miles | Inspection Start/End     | Inspector       |
|-----------------------|------|------------|--------------------------|-----------------|
| Unit No. 03 Old River | Left | 5.55       | 03/13/2020<br>03/13/2020 | Alberto De Leon |

|   |                         |              |    |                        |               |
|---|-------------------------|--------------|----|------------------------|---------------|
| LM Start  | 2.18                    | Rating **    | C  | Issue No.              | 25            |
| LM End  | 2.18                    | Issue Type + | Ma | Location *             | WS            |
| Category  | Earthen Levee           |              |    | GPS Latitude/Longitude |               |
|   |                         |              |    | Start                  | End           |
| Item  | Trim / Thin Trees       |              |    | 37.818748 °            | 37.818748 °   |
|   |                         |              |    | -121.363716 °          | -121.363716 ° |
| DWR ID  | DWR_RD2062_03_s_2019_25 |              |    |                        |               |
| Comment Code  |                         |              |    |                        |               |
| T1 : Trim trees to at least five feet above ground level. |                         |              |    |                        |               |
| Inspector Comment   |                         |              |    |                        |               |
|   |                         |              |    |                        |               |

No Photos

|  |                      |              |    |                        |               |
|--|----------------------|--------------|----|------------------------|---------------|
| LM Start   | 2.77                 | Rating **    | M  | Issue No.              | 45            |
| LM End   | 2.77                 | Issue Type + | En | Location *             |               |
| Category   | Supplemental         |              |    | GPS Latitude/Longitude |               |
|  |                      |              |    | Start                  | End           |
| Item   | DWR UCIP Field Study |              |    | 37.816362 °            | 37.816362 °   |
|  |                      |              |    | -121.354339 °          | -121.354339 ° |
| DWR ID   | 19202                |              |    |                        |               |
| Comment Code   |                      |              |    |                        |               |
|  |                      |              |    |                        |               |
| Inspector Comment  |                      |              |    |                        |               |
| DS_ID:19202<br>FS_ID:23311<br>EP_NO: 2505<br>Repair Type: Non-Urgent<br>Crossing Status: Found<br>UCIP Comments: - pumphouse roof missing.- siphon breaker buried by dirt in CMP riser.- 2.25 inch electric conduit and power pole on landside.<br>FIELD_STRUCT_DESC: 2 of 2: 16-inch irrigation discharge pipe of an unknown material through the levee, 6.5 feet below the crown. Pump in a pump house on a pile structure in the stream. Timber walkway to the pump. Siphon breaker in a corrugated metal pipe (CMP) riser on the landside (LS) slope. Concrete distribution box at the LS toe. Timber bulkhead and slab on the waterside (WS) slope. Installed by USACE in 1963. (Plans for the installation of two irrigation pumps on the bank to replace an existing pumping plant at this location authorized under Permit No. 2505, 1959 - Reclamation District No. 2062). [Additional Reference(s): DWR Levee Log, 2007. USACE San Joaquin O&M Manual 9, April 1964, (HLM 2.81)].<br>FS Date: 10/22/2013 |                      |              |    |                        |               |

Photo 1 of 3 : UCIP\_SP\_2020\_23311\_40175.jpg



WS view: wooden walkway to pumphouse, pumphouse on wooden pile structure in the stream.

|  |  |   |   |
|--|--|---|---|
| <b>* Location</b><br>LS : Land Side    N/A : Not Applicable<br>WS : Water Side<br>CR : Crown | <b>** Rating</b><br>A : Acceptable<br>M : Minimally Acceptable<br>U : Unacceptable | N : Not Inspected/Rated<br>C : Corrected<br>A/W : Acceptable but Monitor & Maintain | <b>+ Issue Type</b><br>Ma : Maintenance Deficiency<br>Ob : Design & System Obsolescence<br>En : Enforcement |
|--|--|---|---|

**Flood Control Project Maintenance  
Levee Inspections**

**Levee Inspection Report By Mile - Spring 2020**

**Reclamation District No. 2062 Stewart**

| Waterway              | Bank | Unit Miles | Inspection Start/End     | Inspector       |
|-----------------------|------|------------|--------------------------|-----------------|
| Unit No. 03 Old River | Left | 5.55       | 03/13/2020<br>03/13/2020 | Alberto De Leon |

|          |                      |              |    |                        |               |
|----------|----------------------|--------------|----|------------------------|---------------|
| LM Start | 2.77                 | Rating **    | M  | Issue No.              | 45 (cont)     |
| LM End   | 2.77                 | Issue Type + | En | Location *             |               |
| Category | Supplemental         |              |    | GPS Latitude/Longitude |               |
|          |                      |              |    | Start                  | End           |
| Item     | DWR UCIP Field Study |              |    | 37.816362 °            | 37.816362 °   |
|          |                      |              |    | -121.354339 °          | -121.354339 ° |
| DWR ID   | 19202                |              |    |                        |               |

Photo 2 of 3 : UCIP\_SP\_2020\_23311\_40174.jpg



WS view: exposed steel pipes and an electric conduit on levee slope.

|          |             |              |    |            |                  |
|----------|-------------|--------------|----|------------|------------------|
| LM Start | <b>2.77</b> | Rating **    | M  | Issue No.  | <b>45 (cont)</b> |
| LM End   | <b>2.77</b> | Issue Type + | En | Location * |                  |

Photo 3 of 3 : UCIP\_SP\_2020\_23311\_40173.jpg



LS view: two CMP risers on levee slope, concrete distribution box, and service pole across the dirt road, off the levee toe.

|  |  |   |  |   |
|--|--|---|--|---|
| <b>* Location</b><br>LS : Land Side    N/A : Not Applicable<br>WS : Water Side<br>CR : Crown |  | <b>** Rating</b><br>A : Acceptable                      N : Not Inspected/Rated<br>M : Minimally Acceptable        C : Corrected<br>U : Unacceptable                  A/W : Acceptable but Monitor & Maintain |  | <b>+ Issue Type</b><br>Ma : Maintenance Deficiency<br>Ob : Design & System Obsolescence<br>En : Enforcement |
|--|--|---|--|---|

**Flood Control Project Maintenance  
Levee Inspections**

**Levee Inspection Report By Mile - Spring 2020**

**Reclamation District No. 2062 Stewart**

| Waterway              | Bank | Unit Miles | Inspection Start/End     | Inspector          |
|-----------------------|------|------------|--------------------------|--------------------|
| Unit No. 03 Old River | Left | 5.55       | 03/13/2020<br>03/13/2020 | Alberto<br>De Leon |

|  |                      |              |    |                        |               |
|--|----------------------|--------------|----|------------------------|---------------|
| LM Start   | 2.77                 | Rating **    | M  | Issue No.              | 46            |
| LM End   | 2.77                 | Issue Type + | En | Location *             |               |
| Category   | Supplemental         |              |    | GPS Latitude/Longitude |               |
|  |                      |              |    | Start                  | End           |
| Item   | DWR UCIP Field Study |              |    | 37.816362 °            | 37.816362 °   |
|  |                      |              |    | -121.354334 °          | -121.354334 ° |
| DWR ID   | 19205                |              |    |                        |               |
| Comment Code   |                      |              |    |                        |               |
|  |                      |              |    |                        |               |
| Inspector Comment  |                      |              |    |                        |               |
| DS_ID:19205<br>FS_ID:23312<br>EP_NO: 2505<br>Repair Type: Non-Urgent<br>Crossing Status: Found<br>UCIP Comments: - pumphouse roof missing.- siphon breaker buried by dirt in CMP riser.- 2.25 inch electric conduit and power pole on landside.<br>FIELD_STRUCT_DESC: 1 of 2: 14-inch irrigation discharge pipe of an unknown material through the levee, 6.5 feet below the crown. Pump in a pump house on a pile structure in the stream. Timber walkway to the pump. Siphon breaker in a corrugated metal pipe (CMP) riser on the landside (LS) slope. Concrete distribution box at the LS toe. Timber bulkhead and slab on the waterside (WS) slope. Installed by USACE in 1963. (Plans for the installation of two irrigation pumps on the bank to replace an existing pumping plant at this location authorized under Permit No. 2505, 1959 - Reclamation District No. 2062). [Additional Reference(s): DWR Levee Log, 2007. USACE San Joaquin O&M Manual 9, April 1964, (HLM 2.81)].<br>FS Date: 10/22/2013 |                      |              |    |                        |               |

|          |             |              |    |            |                  |
|----------|-------------|--------------|----|------------|------------------|
| LM Start | <b>2.77</b> | Rating **    | M  | Issue No.  | <b>46 (cont)</b> |
| LM End   | <b>2.77</b> | Issue Type + | En | Location * |                  |

Photo 1 of 3 : UCIP\_SP\_2020\_23312\_40181.jpg



WS view: wooden walkway to pumphouse, pumphouse on wooden pile structure in the stream.

Photo 2 of 3 : UCIP\_SP\_2020\_23312\_40179.jpg



WS view: exposed steel pipes and a electric conduit on levee slope.

|  |  |   |   |
|--|--|---|---|
| <b>* Location</b><br>LS : Land Side    N/A : Not Applicable<br>WS : Water Side<br>CR : Crown | <b>** Rating</b><br>A : Acceptable<br>M : Minimally Acceptable<br>U : Unacceptable | N : Not Inspected/Rated<br>C : Corrected<br>A/W : Acceptable but Monitor & Maintain | <b>+ Issue Type</b><br>Ma : Maintenance Deficiency<br>Ob : Design & System Obsolescence<br>En : Enforcement |
|--|--|---|---|

**Flood Control Project Maintenance  
Levee Inspections**

**Levee Inspection Report By Mile - Spring 2020**

**Reclamation District No. 2062 Stewart**

| Waterway              | Bank | Unit Miles | Inspection Start/End     | Inspector       |
|-----------------------|------|------------|--------------------------|-----------------|
| Unit No. 03 Old River | Left | 5.55       | 03/13/2020<br>03/13/2020 | Alberto De Leon |

|          |                      |              |                        |               |                  |
|----------|----------------------|--------------|------------------------|---------------|------------------|
| LM Start | <b>2.77</b>          | Rating **    | M                      | Issue No.     | <b>46 (cont)</b> |
| LM End   | <b>2.77</b>          | Issue Type + | En                     | Location *    |                  |
| Category | Supplemental         |              | GPS Latitude/Longitude |               |                  |
|          |                      |              | Start                  | End           |                  |
| Item     | DWR UCIP Field Study |              | 37.816362 °            | 37.816362 °   |                  |
|          |                      |              | -121.354334 °          | -121.354334 ° |                  |
| DWR ID   | 19205                |              |                        |               |                  |

Photo 3 of 3 : UCIP\_SP\_2020\_23312\_40180.jpg



LS view: two CMP risers on levee slope, concrete distribution box, and service pole across the dirt road, off the levee toe.

|   |                         |              |     |                        |               |
|---|-------------------------|--------------|-----|------------------------|---------------|
| LM Start  | 2.85                    | Rating **    | A/W | Issue No.              | 21            |
| LM End  | 4.37                    | Issue Type + | Ma  | Location *             | LS            |
| Category  | Earthen Levee           |              |     | GPS Latitude/Longitude |               |
|   |                         |              |     | Start                  | End           |
| Item  | Animal Control          |              |     | 37.816313 °            | 37.818882 °   |
|   |                         |              |     | -121.352848 °          | -121.334412 ° |
| DWR ID  | DWR_RD2062_03_s_2018_21 |              |     |                        |               |
| Comment Code  |                         |              |     |                        |               |
| A3 : No rodents visible, but rodent burrows visible; need to backfill and compact or grout burrows. |                         |              |     |                        |               |
| Inspector Comment   |                         |              |     |                        |               |
|   |                         |              |     |                        |               |

No Photos

|   |                         |              |    |                        |               |
|---|-------------------------|--------------|----|------------------------|---------------|
| LM Start  | 3.05                    | Rating **    | C  | Issue No.              | 28            |
| LM End  | 3.05                    | Issue Type + | Ma | Location *             | WS            |
| Category  | Earthen Levee           |              |    | GPS Latitude/Longitude |               |
|   |                         |              |    | Start                  | End           |
| Item  | Trim / Thin Trees       |              |    | 37.817885 °            | 37.817885 °   |
|   |                         |              |    | -121.349956 °          | -121.349956 ° |
| DWR ID  | DWR_RD2062_03_f_2019_28 |              |    |                        |               |
| Comment Code  |                         |              |    |                        |               |
| T1 : Trim trees to at least five feet above ground level. |                         |              |    |                        |               |
| Inspector Comment   |                         |              |    |                        |               |
|   |                         |              |    |                        |               |

No Photos

|  |  |   |   |
|--|--|---|---|
| <b>* Location</b><br>LS : Land Side    N/A : Not Applicable<br>WS : Water Side<br>CR : Crown | <b>** Rating</b><br>A : Acceptable<br>M : Minimally Acceptable<br>U : Unacceptable | N : Not Inspected/Rated<br>C : Corrected<br>A/W : Acceptable but Monitor & Maintain | <b>+ Issue Type</b><br>Ma : Maintenance Deficiency<br>Ob : Design & System Obsolescence<br>En : Enforcement |
|--|--|---|---|



**Flood Control Project Maintenance  
Levee Inspections**

**Levee Inspection Report By Mile - Spring 2020**

**Reclamation District No. 2062 Stewart**

| Waterway              | Bank | Unit Miles | Inspection Start/End     | Inspector       |
|-----------------------|------|------------|--------------------------|-----------------|
| Unit No. 03 Old River | Left | 5.55       | 03/13/2020<br>03/13/2020 | Alberto De Leon |

|  |                         |              |    |                        |               |
|--|-------------------------|--------------|----|------------------------|---------------|
| LM Start   | 3.31                    | Rating **    | C  | Issue No.              | 19            |
| LM End   | 5.42                    | Issue Type + | Ma | Location *             | LS            |
| Category   | Earthen Levee           |              |    | GPS Latitude/Longitude |               |
|  |                         |              |    | Start                  | End           |
| Item   | Vegetation              |              |    | 37.819898 °            | 37.807428 °   |
|  |                         |              |    | -121.346864 °          | -121.330299 ° |
| DWR ID   | DWR_RD2062_03_f_2019_19 |              |    |                        |               |
| Comment Code   |                         |              |    |                        |               |
| V2 : Remove the wild growth other than native grasses from the levee slopes. |                         |              |    |                        |               |
| Inspector Comment  |                         |              |    |                        |               |
|  |                         |              |    |                        |               |

No Photos

|   |                         |              |    |                        |               |
|---|-------------------------|--------------|----|------------------------|---------------|
| LM Start  | 3.45                    | Rating **    | M  | Issue No.              | 18            |
| LM End  | 3.45                    | Issue Type + | Ma | Location *             | LS            |
| Category  | Earthen Levee           |              |    | GPS Latitude/Longitude |               |
|   |                         |              |    | Start                  | End           |
| Item  | Animal Control          |              |    | 37.818590 °            | 37.818590 °   |
|   |                         |              |    | -121.344968 °          | -121.344968 ° |
| DWR ID  | DWR_RD2062_03_s_2020_18 |              |    |                        |               |
| Comment Code  |                         |              |    |                        |               |
| A3 : No rodents visible, but rodent burrows visible; need to backfill and compact or grout burrows. |                         |              |    |                        |               |
| Inspector Comment   |                         |              |    |                        |               |
|   |                         |              |    |                        |               |

No Photos

|   |                         |              |    |                        |               |
|---|-------------------------|--------------|----|------------------------|---------------|
| LM Start  | 3.61                    | Rating **    | C  | Issue No.              | 31            |
| LM End  | 3.66                    | Issue Type + | Ma | Location *             | LS            |
| Category  | Earthen Levee           |              |    | GPS Latitude/Longitude |               |
|   |                         |              |    | Start                  | End           |
| Item  | Erosion / Bank Caving   |              |    | 37.816982 °            | 37.816541 °   |
|   |                         |              |    | -121.342939 °          | -121.342191 ° |
| DWR ID  | DWR_RD2062_03_s_2015_31 |              |    |                        |               |
| Comment Code  |                         |              |    |                        |               |
| E2 : Schedule repair of erosion site prior to the next inspection.        |                         |              |    |                        |               |
| Inspector Comment   |                         |              |    |                        |               |
| There is about a 3 ft vertical cut at the levee toe into the levee prism. |                         |              |    |                        |               |

No Photos

|  |  |   |   |
|--|--|---|---|
| <b>* Location</b><br>LS : Land Side    N/A : Not Applicable<br>WS : Water Side<br>CR : Crown | <b>** Rating</b><br>A : Acceptable<br>M : Minimally Acceptable<br>U : Unacceptable | N : Not Inspected/Rated<br>C : Corrected<br>A/W : Acceptable but Monitor & Maintain | <b>+ Issue Type</b><br>Ma : Maintenance Deficiency<br>Ob : Design & System Obsolescence<br>En : Enforcement |
|--|--|---|---|

**Flood Control Project Maintenance  
Levee Inspections**

**Levee Inspection Report By Mile - Spring 2020**

**Reclamation District No. 2062 Stewart**

| Waterway              | Bank | Unit Miles | Inspection Start/End     | Inspector       |
|-----------------------|------|------------|--------------------------|-----------------|
| Unit No. 03 Old River | Left | 5.55       | 03/13/2020<br>03/13/2020 | Alberto De Leon |

|   |                         |              |    |                        |               |
|---|-------------------------|--------------|----|------------------------|---------------|
| LM Start  | 3.83                    | Rating **    | M  | Issue No.              | 24            |
| LM End  | 3.83                    | Issue Type + | Ma | Location *             | WS            |
| Category  | Earthen Levee           |              |    | GPS Latitude/Longitude |               |
|   |                         |              |    | Start                  | End           |
| Item  | Trim / Thin Trees       |              |    | 37.818245 °            | 37.818245 °   |
|   |                         |              |    | -121.340564 °          | -121.340564 ° |
| DWR ID  | DWR_RD2062_03_s_2019_24 |              |    |                        |               |
| Comment Code  |                         |              |    |                        |               |
| T1 : Trim trees to at least five feet above ground level. |                         |              |    |                        |               |
| Inspector Comment   |                         |              |    |                        |               |
|   |                         |              |    |                        |               |

No Photos

|   |                         |              |    |                        |               |
|---|-------------------------|--------------|----|------------------------|---------------|
| LM Start  | 3.91                    | Rating **    | C  | Issue No.              | 26            |
| LM End  | 3.91                    | Issue Type + | Ma | Location *             | WS            |
| Category  | Earthen Levee           |              |    | GPS Latitude/Longitude |               |
|   |                         |              |    | Start                  | End           |
| Item  | Trim / Thin Trees       |              |    | 37.819465 °            | 37.819465 °   |
|   |                         |              |    | -121.340375 °          | -121.340375 ° |
| DWR ID  | DWR_RD2062_03_f_2019_26 |              |    |                        |               |
| Comment Code  |                         |              |    |                        |               |
| T1 : Trim trees to at least five feet above ground level. |                         |              |    |                        |               |
| Inspector Comment   |                         |              |    |                        |               |
|   |                         |              |    |                        |               |

No Photos

|   |                    |              |     |                        |               |
|---|--------------------|--------------|-----|------------------------|---------------|
| LM Start  | 3.99               | Rating **    | A/W | Issue No.              | 10            |
| LM End  | 4.01               | Issue Type + | Ma  | Location *             | WS            |
| Category  | Supplemental       |              |     | GPS Latitude/Longitude |               |
|   |                    |              |     | Start                  | End           |
| Item  | DWR Erosion Survey |              |     | 37.820834 °            | 37.820834 °   |
|   |                    |              |     | -121.340314 °          | -121.340314 ° |
| DWR ID  | RD2062U03RM33.92   |              |     |                        |               |
| Comment Code  |                    |              |     |                        |               |
|   |                    |              |     |                        |               |
| Inspector Comment   |                    |              |     |                        |               |
| Site ID: RD2062U03RM33.92   |                    |              |     |                        |               |
| 08/14/2019: No significant change observed.                                   |                    |              |     |                        |               |
| 09/13/2017: The erosion site is immediately downstream of a sharp river bend. |                    |              |     |                        |               |

Photo 1 of 3 : SP\_2020\_RD2062\_311\_10\_20200228\_00025.jpg



Close-up view of the erosion located at the inside of a sharp river bend.

**\* Location**  
LS : Land Side    N/A : Not Applicable  
WS : Water Side  
CR : Crown

**\*\* Rating**  
A : Acceptable                      N : Not Inspected/Rated  
M : Minimally Acceptable        C : Corrected  
U : Unacceptable                  A/W : Acceptable but Monitor & Maintain

**+ Issue Type**  
Ma : Maintenance Deficiency  
Ob : Design & System Obsolescence  
En : Enforcement

**Flood Control Project Maintenance  
Levee Inspections**

**Levee Inspection Report By Mile - Spring 2020**

**Reclamation District No. 2062 Stewart**

| Waterway              | Bank | Unit Miles | Inspection Start/End     | Inspector       |
|-----------------------|------|------------|--------------------------|-----------------|
| Unit No. 03 Old River | Left | 5.55       | 03/13/2020<br>03/13/2020 | Alberto De Leon |

|          |                    |              |     |                        |               |
|----------|--------------------|--------------|-----|------------------------|---------------|
| LM Start | 3.99               | Rating **    | A/W | Issue No.              | 10 (cont)     |
| LM End   | 4.01               | Issue Type + | Ma  | Location *             | WS            |
| Category | Supplemental       |              |     | GPS Latitude/Longitude |               |
|          |                    |              |     | Start                  | End           |
| Item     | DWR Erosion Survey |              |     | 37.820834 °            | 37.820834 °   |
|          |                    |              |     | -121.340314 °          | -121.340314 ° |
| DWR ID   | RD2062U03RM33.92   |              |     |                        |               |

Photo 2 of 3 : SP\_2020\_RD2062\_311\_10\_20200228\_00026.jpg



Close-up view of the erosion.

|          |             |              |     |            |                  |
|----------|-------------|--------------|-----|------------|------------------|
| LM Start | <b>3.99</b> | Rating **    | A/W | Issue No.  | <b>10 (cont)</b> |
| LM End   | <b>4.01</b> | Issue Type + | Ma  | Location * | WS               |

Photo 3 of 3 : SP\_2020\_RD2062\_311\_10\_20200228\_00027.jpg



Close-up view of the erosion. Note the sandy material of the river bank at the erosion site.

|  |                         |              |    |                        |               |
|--|-------------------------|--------------|----|------------------------|---------------|
| LM Start   | 4.48                    | Rating **    | A  | Issue No.              | 17            |
| LM End   | 4.48                    | Issue Type + | Ma | Location *             | LS            |
| Category   | Earthen Levee           |              |    | GPS Latitude/Longitude |               |
|  |                         |              |    | Start                  | End           |
| Item   | Vegetation              |              |    | 37.817491 °            | 37.817491 °   |
|  |                         |              |    | -121.333689 °          | -121.333689 ° |
| DWR ID   | DWR_RD2062_03_s_2020_17 |              |    |                        |               |
| Comment Code   |                         |              |    |                        |               |
| V1 : Control annual grass and weeds on the levee slopes and easements. |                         |              |    |                        |               |
| Inspector Comment  |                         |              |    |                        |               |
|  |                         |              |    |                        |               |

Photo 1 of 1 : SP\_2020\_RD2062\_311\_17\_20200318\_00051.jpg



Typical view of well maintained vegetation on landside slope. Spring 2020

| * Location                                      | ** Rating   | + Issue Type   |
|---|---|--|
| LS : Land Side<br>WS : Water Side<br>CR : Crown | A : Acceptable<br>M : Minimally Acceptable<br>U : Unacceptable                      | Ma : Maintenance Deficiency<br>Ob : Design & System Obsolescence<br>En : Enforcement |
| N/A : Not Applicable                            | N : Not Inspected/Rated<br>C : Corrected<br>A/W : Acceptable but Monitor & Maintain |  |

**Flood Control Project Maintenance  
Levee Inspections**

**Levee Inspection Report By Mile - Spring 2020**

**Reclamation District No. 2062 Stewart**

| Waterway              | Bank | Unit Miles | Inspection Start/End     | Inspector       |
|-----------------------|------|------------|--------------------------|-----------------|
| Unit No. 03 Old River | Left | 5.55       | 03/13/2020<br>03/13/2020 | Alberto De Leon |

|  |                         |              |    |                        |               |
|--|-------------------------|--------------|----|------------------------|---------------|
| LM Start   | 4.83                    | Rating **    | C  | Issue No.              | 35            |
| LM End   | 4.91                    | Issue Type + | Ma | Location *             | LS            |
| Category   | Earthen Levee           |              |    | GPS Latitude/Longitude |               |
|  |                         |              |    | Start                  | End           |
| Item   | Erosion / Bank Caving   |              |    | 37.812849 °            | 37.811682 °   |
|  |                         |              |    | -121.336116 °          | -121.336271 ° |
| DWR ID   | DWR_RD2062_03_f_2014_35 |              |    |                        |               |
| Comment Code   |                         |              |    |                        |               |
| E2 : Schedule repair of erosion site prior to the next inspection. |                         |              |    |                        |               |
| Inspector Comment  |                         |              |    |                        |               |
| There is a 2 to 3 feet vertical cut at the landside toe.           |                         |              |    |                        |               |

No Photos

|   |                           |              |     |                        |               |
|---|---------------------------|--------------|-----|------------------------|---------------|
| LM Start  | 4.91                      | Rating **    | A/W | Issue No.              | 20            |
| LM End  | 4.91                      | Issue Type + | Ma  | Location *             | LS            |
| Category  | Earthen Levee             |              |     | GPS Latitude/Longitude |               |
|   |                           |              |     | Start                  | End           |
| Item  | Animal Control            |              |     | 37.811729 °            | 37.811729 °   |
|   |                           |              |     | -121.336117 °          | -121.336117 ° |
| DWR ID  | DWR_RD2062_03_f _ 2019_20 |              |     |                        |               |
| Comment Code  |                           |              |     |                        |               |
| A3 : No rodents visible, but rodent burrows visible; need to backfill and compact or grout burrows. |                           |              |     |                        |               |
| Inspector Comment   |                           |              |     |                        |               |
|   |                           |              |     |                        |               |

No Photos

|   |                         |              |    |                        |               |
|---|-------------------------|--------------|----|------------------------|---------------|
| LM Start  | 5.28                    | Rating **    | C  | Issue No.              | 16            |
| LM End  | 5.28                    | Issue Type + | Ma | Location *             | WS            |
| Category  | Earthen Levee           |              |    | GPS Latitude/Longitude |               |
|   |                         |              |    | Start                  | End           |
| Item  | Trim / Thin Trees       |              |    | 37.807519 °            | 37.807519 °   |
|   |                         |              |    | -121.332921 °          | -121.332921 ° |
| DWR ID  | DWR_RD2062_03_s_2019_16 |              |    |                        |               |
| Comment Code  |                         |              |    |                        |               |
| T1 : Trim trees to at least five feet above ground level. |                         |              |    |                        |               |
| Inspector Comment   |                         |              |    |                        |               |
|   |                         |              |    |                        |               |

No Photos

|  |  |   |   |
|--|--|---|---|
| <b>* Location</b><br>LS : Land Side    N/A : Not Applicable<br>WS : Water Side<br>CR : Crown | <b>** Rating</b><br>A : Acceptable<br>M : Minimally Acceptable<br>U : Unacceptable | N : Not Inspected/Rated<br>C : Corrected<br>A/W : Acceptable but Monitor & Maintain | <b>+ Issue Type</b><br>Ma : Maintenance Deficiency<br>Ob : Design & System Obsolescence<br>En : Enforcement |
|--|--|---|---|



**Flood Control Project Maintenance  
Levee Inspections**

**Levee Inspection Report By Mile - Spring 2020**

**Reclamation District No. 2062 Stewart**

| Waterway              | Bank | Unit Miles | Inspection Start/End     | Inspector       |
|-----------------------|------|------------|--------------------------|-----------------|
| Unit No. 03 Old River | Left | 5.55       | 03/13/2020<br>03/13/2020 | Alberto De Leon |

|   |                      |              |    |                        |               |     |
|---|----------------------|--------------|----|------------------------|---------------|-----|
| LM Start  | 5.37                 | Rating **    | M  | Issue No.              | 47            |     |
| LM End  | 5.37                 | Issue Type + | En | Location *             |               |     |
| Category  | Supplemental         |              |    | GPS Latitude/Longitude |               |     |
|   |                      |              |    | Start                  |               | End |
| Item  | DWR UCIP Field Study |              |    | 37.807305 °            | 37.807305 °   |     |
|   |                      |              |    | -121.331290 °          | -121.331290 ° |     |
| DWR ID  | 19203                |              |    |                        |               |     |
| Comment Code  |                      |              |    |                        |               |     |
|   |                      |              |    |                        |               |     |
| Inspector Comment   |                      |              |    |                        |               |     |
| DS_ID:19203<br>FS_ID:23142<br>EP_NO: N/A<br>Repair Type: Non-Urgent<br>Crossing Status: Found<br>UCIP Comments: - siphon breakers not protected.- flow meter and gage station on waterside.- pump house on wooden pile structure.<br>Walkway to the pumphouse.<br>FIELD_STRUCT_DESC: 1 of 2: 16-inch irrigation discharge pipe of an unknown material through the levee, 4 feet below the crown. Pump in a pump house on a pile structure in the stream. Walkway to the pump house. Siphon breaker on the landside (LS) slope. Concrete distribution box on the LS berm. [Additional Reference(s): DWR Levee Log, 2007. USACE San Joaquin O&M Manual 9, April 1964, (HLM 5.45)].<br>FS Date: 10/22/2013 |                      |              |    |                        |               |     |

|          |             |              |    |            |                  |
|----------|-------------|--------------|----|------------|------------------|
| LM Start | <b>5.37</b> | Rating **    | M  | Issue No.  | <b>47 (cont)</b> |
| LM End   | <b>5.37</b> | Issue Type + | En | Location * |                  |

Photo 1 of 3 : UCIP\_SP\_2020\_23142\_39549.jpg



WS view: steel walkway to pump house in the stream.

Photo 2 of 3 : UCIP\_SP\_2020\_23142\_39548.jpg



WS view: two 16-inch pipes under walkway. Gate valve without handle on one of the pipes.

|  |  |   |   |
|--|--|---|---|
| <b>* Location</b><br>LS : Land Side    N/A : Not Applicable<br>WS : Water Side<br>CR : Crown | <b>** Rating</b><br>A : Acceptable<br>M : Minimally Acceptable<br>U : Unacceptable | N : Not Inspected/Rated<br>C : Corrected<br>A/W : Acceptable but Monitor & Maintain | <b>+ Issue Type</b><br>Ma : Maintenance Deficiency<br>Ob : Design & System Obsolescence<br>En : Enforcement |
|--|--|---|---|



## Reclamation District No. 2062 Stewart

**Flood Control Project Maintenance  
Levee Inspections**

**Levee Inspection Report By Mile - Spring 2020**

**Reclamation District No. 2062 Stewart**

| Waterway              | Bank | Unit Miles | Inspection Start/End     | Inspector       |
|-----------------------|------|------------|--------------------------|-----------------|
| Unit No. 03 Old River | Left | 5.55       | 03/13/2020<br>03/13/2020 | Alberto De Leon |

|          |                      |              |                        |               |                  |
|----------|----------------------|--------------|------------------------|---------------|------------------|
| LM Start | <b>5.37</b>          | Rating **    | M                      | Issue No.     | <b>48 (cont)</b> |
| LM End   | <b>5.37</b>          | Issue Type + | En                     | Location *    |                  |
| Category | Supplemental         |              | GPS Latitude/Longitude |               |                  |
|          |                      |              | Start                  | End           |                  |
| Item     | DWR UCIP Field Study |              | 37.807305 °            | 37.807305 °   |                  |
|          |                      |              | -121.331276 °          | -121.331276 ° |                  |
| DWR ID   | 19206                |              |                        |               |                  |

Photo 2 of 3 : UCIP\_SP\_2020\_23140\_39530.jpg



WS view: two 16-inch pipes under walkway. Gate valve without handle on one of the pipes.

|          |             |              |    |            |                  |
|----------|-------------|--------------|----|------------|------------------|
| LM Start | <b>5.37</b> | Rating **    | M  | Issue No.  | <b>48 (cont)</b> |
| LM End   | <b>5.37</b> | Issue Type + | En | Location * |                  |

Photo 3 of 3 : UCIP\_SP\_2020\_23140\_39529.jpg



WS view: pump house on wooden pipe structure in the stream. Two steel pipes under the walkway.

|  |  |   |  |   |  |
|--|--|---|--|---|--|
| <b>* Location</b><br>LS : Land Side    N/A : Not Applicable<br>WS : Water Side<br>CR : Crown |  | <b>** Rating</b><br>A : Acceptable                      N : Not Inspected/Rated<br>M : Minimally Acceptable        C : Corrected<br>U : Unacceptable                  A/W : Acceptable but Monitor & Maintain |  | <b>+ Issue Type</b><br>Ma : Maintenance Deficiency<br>Ob : Design & System Obsolescence<br>En : Enforcement |  |
|--|--|---|--|---|--|