

**Flood Control Project Maintenance
Levee Inspections**

Maintenance Issue Types Only, Levee Inspection Report By Mile - Spring 2019

Reclamation District No. 2035 Conaway

Waterway	Bank	Unit Miles	Inspection Start/End	Inspector
Unit No. 01 Cache Creek Settling Basin	Right	2.01	04/15/2019 04/15/2019	Zach Jojola

LM Start	0.00	Rating **	A	Issue No.	3
LM End	0.00	Issue Type +	Ma	Location *	CR
Category	Earthen Levee		GPS Latitude/Longitude		
			Start	End	
Item	Operations & Maintenance Manuals			°	°
DWR ID	DWR_RD2035_01_s_2013_3				
Comment Code					
Inspector Comment					
The LMA stated that they keep a copy of the O&M manuals on hand at the district office.					

No Photos

LM Start	0.00	Rating **	A	Issue No.	4
LM End	0.00	Issue Type +	Ma	Location *	CR
Category	Earthen Levee		GPS Latitude/Longitude		
			Start	End	
Item	Emergency Supplies & Equipment			°	°
DWR ID	DWR_RD2035_01_s_2013_4				
Comment Code					
Inspector Comment					
The district has emergency supplies and equipment on hand at their district office.					

No Photos

LM Start	0.00	Rating **	A	Issue No.	5
LM End	0.00	Issue Type +	Ma	Location *	CR
Category	Earthen Levee		GPS Latitude/Longitude		
			Start	End	
Item	Flood Preparedness & Training			°	°
DWR ID	DWR_RD2035_01_s_2013_5				
Comment Code					
Inspector Comment					
The LMA is current with flood fight training.					

No Photos

* Location LS : Land Side N/A : Not Applicable WS : Water Side CR : Crown	** Rating A : Acceptable M : Minimally Acceptable U : Unacceptable	N : Not Inspected/Rated C : Corrected A/W : Acceptable but Monitor & Maintain	+ Issue Type Ma : Maintenance Deficiency Ob : Design & System Obsolescence En : Enforcement
--	--	---	---

**Flood Control Project Maintenance
Levee Inspections**

Maintenance Issue Types Only, Levee Inspection Report By Mile - Spring 2019

Reclamation District No. 2035 Conaway

Waterway	Bank	Unit Miles	Inspection Start/End	Inspector
Unit No. 01 Cache Creek Settling Basin	Right	2.01	04/15/2019 04/15/2019	Zach Jojola

LM Start	0.02	Rating **	A/W	Issue No.	11
LM End	0.02	Issue Type +	Ma	Location *	
Category	Supplemental			GPS Latitude/Longitude	
				Start	End
Item	DWR UCIP LMA Responsibility			38.677377 °	38.677377 °
				-121.709487 °	-121.709487 °
DWR ID	17814				

Comment Code

Inspector Comment

FS_ID:10827
DS_ID:17814
EP_NO: 10127
Repair Type: No Action Needed
Crossing Status: Found
UCIP Comments:
FIELD_STRUCT_DESC: 42-inch concrete encased corrugated metal drainage pipe through the levee, 10 feet below the crown. Flap gate on the waterside (WS) end. Grouted spillway on the WS. Pipe exposed on the landside (LS). (36-inch pipe [HLM 0.02] authorized under Automatic Board Order (ABO) issued as Permit No. 10127, 1974 - City of Woodland, Department of Public Works). [Additional Reference(s): DWR Levee Log, 1990. USACE Sacramento O&M Manual 126, November 1961, (HLM 0.01), listed as 5.5 feet below the crown].
FS Date: 4/2/2013

LM Start	0.02	Rating **	A/W	Issue No.	11 (cont)
LM End	0.02	Issue Type +	Ma	Location *	

Photo 1 of 3 : UCIP_SP_2019_10827_18109.jpg



Flap gate and spillway on WS toe.

Photo 2 of 3 : UCIP_SP_2019_10827_18108.jpg



Flap gate and spillway on WS toe.

* Location LS : Land Side N/A : Not Applicable WS : Water Side CR : Crown		** Rating A : Acceptable M : Minimally Acceptable U : Unacceptable N : Not Inspected/Rated C : Corrected A/W : Acceptable but Monitor & Maintain		+ Issue Type Ma : Maintenance Deficiency Ob : Design & System Obsolescence En : Enforcement
--	--	---	--	---

**Flood Control Project Maintenance
Levee Inspections**

Maintenance Issue Types Only, Levee Inspection Report By Mile - Spring 2019

Reclamation District No. 2035 Conaway

Waterway	Bank	Unit Miles	Inspection Start/End	Inspector
Unit No. 01 Cache Creek Settling Basin	Right	2.01	04/15/2019 04/15/2019	Zach Jojola

LM Start	0.02	Rating **	A/W	Issue No.	11 (cont)	
LM End	0.02	Issue Type +	Ma	Location *		
Category	Supplemental			GPS Latitude/Longitude		
				Start		End
Item	DWR UCIP LMA Responsibility			38.677377 °		38.677377 °
				-121.709487 °		-121.709487 °
DWR ID	17814					
Comment Code						
Inspector Comment						
FS_ID:10827 DS_ID:17814 EP_NO: 10127 Repair Type: No Action Needed Crossing Status: Found UCIP Comments: FIELD_STRUCT_DESC: 42-inch concrete encased corrugated metal drainage pipe through the levee, 10 feet below the crown. Flap gate on the waterside (WS) end. Grouted spillway on the WS. Pipe exposed on the landside (LS). (36-inch pipe [HLM 0.02] authorized under Automatic Board Order (ABO) issued as Permit No. 10127, 1974 - City of Woodland, Department of Public Works). [Additional Reference(s): DWR Levee Log, 1990. USACE Sacramento O&M Manual 126, November 1961, (HLM 0.01), listed as 5.5 feet below the crown]. FS Date: 4/2/2013						

Photo 3 of 3 : UCIP_SP_2019_10827_18107.jpg



Concrete encased pipe on LS toe.

LM Start	0.03	Rating **	M	Issue No.	9
LM End	2.01	Issue Type +	Ma	Location *	WS
Category	Earthen Levee			GPS Latitude/Longitude	
				Start	End
Item	Vegetation			38.677335 °	38.677183 °
				-121.709358 °	-121.672783 °
DWR ID	DWR_RD2035_01_s_2019_9				
Comment Code					
V1 : Control annual grass and weeds on the levee slopes and easements.					
Inspector Comment					

Photo 1 of 1 : SP_2019_RD2035_238_9_20190422_00013.jpg



View of vegetation on the waterside slope. Spring 2019.

* Location LS : Land Side N/A : Not Applicable WS : Water Side CR : Crown	** Rating A : Acceptable M : Minimally Acceptable U : Unacceptable	N : Not Inspected/Rated C : Corrected A/W : Acceptable but Monitor & Maintain	+ Issue Type Ma : Maintenance Deficiency Ob : Design & System Obsolescence En : Enforcement
--	--	---	---

**Flood Control Project Maintenance
Levee Inspections**

Maintenance Issue Types Only, Levee Inspection Report By Mile - Spring 2019

Reclamation District No. 2035 Conaway

Waterway	Bank	Unit Miles	Inspection Start/End	Inspector
Unit No. 02 Yolo Bypass	Right	7.63	04/15/2019 04/15/2019	Zach Jojola

LM Start	0.02	Rating **	M	Issue No.	3
LM End	1.91	Issue Type +	Ma	Location *	LS
Category	Earthen Levee			GPS Latitude/Longitude	
				Start	End
Item	Vegetation			38.676855 °	38.649852 °
				-121.672719 °	-121.667127 °
DWR ID	DWR_RD2035_02_s_2019_3				
Comment Code					
V1 : Control annual grass and weeds on the levee slopes and easements.					
Inspector Comment					

No Photos

* Location LS : Land Side N/A : Not Applicable WS : Water Side CR : Crown	** Rating A : Acceptable M : Minimally Acceptable U : Unacceptable N : Not Inspected/Rated C : Corrected A/W : Acceptable but Monitor & Maintain	+ Issue Type Ma : Maintenance Deficiency Ob : Design & System Obsolescence En : Enforcement
--	---	---

**Flood Control Project Maintenance
Levee Inspections**

Maintenance Issue Types Only, Levee Inspection Report By Mile - Spring 2019

Reclamation District No. 2035 Conaway

Waterway	Bank	Unit Miles	Inspection Start/End	Inspector
Unit No. 02 Yolo Bypass	Right	7.63	04/15/2019 04/15/2019	Zach Jojola

LM Start	0.38	Rating **	U	Issue No.	980
LM End	0.38	Issue Type +	Ma	Location *	
Category	Supplemental			GPS Latitude/Longitude	
				Start	End
Item	DWR UCIP LMA Responsibility			38.671813 °	38.671813 °
				-121.671581 °	-121.671581 °
DWR ID	17822				

Comment Code

Inspector Comment

FS_ID:53429
DS_ID:17822
EP_NO: N/A
Repair Type: Urgent
Crossing Status: Found
UCIP Comments: 10/30/2018 Same as last inspection. Flap gate on the WS was submerged at the time of the inspection. Erosion is still present behind the headwall. Sink hole/burrow activity was observed along the concrete box located on the LS. Recommend internal inspection of the pipe section through levee to determine the condition of the pipe through the levee. Crossing remains Urgent due to signs of pipe leakage on LS. (O. Magana - DWR UCIP)09/14/2016 - Flap gate on the WS was submerged at time of inspection. LS headwall at the pumping plant has exposed rebar. There is still erosion present behind the headwall. However, water was present making it difficult to determine if it is getting worse. As-built drawings were requested from LMA consultant representative. (T. Hatch/UCIP)04/02/2013 - Flap gate broken in half on WS toe. Some erosion at headwalls on pumping plant. (W. Wylie/UCIP)
FIELD_STRUCT_DESC: 44-inch corrugated metal drainage pipe through the levee, 22 feet below the crown. Pump on platform in drainage ditch at the landside (LS) toe. Slide gate and flap gates in a 5-foot by 9-foot concrete box. Flap gate on the waterside (WS) toe. 8-inch vent/standpipe at the WS toe. [Additional Reference(s): DWR Levee Log, 1990. USACE Sacramento O&M Manual 121, May 1959, (HLM 0.4) (4-foot by 4-foot concrete culvert listed)].
FS Date: 10/30/2018 1:55:00 PM

LM Start	0.38	Rating **	U	Issue No.	980 (cont)
LM End	0.38	Issue Type +	Ma	Location *	

Photo 1 of 3 : UCIP_SP_2019_53429_18202.jpg



Pumping plant off LS toe.

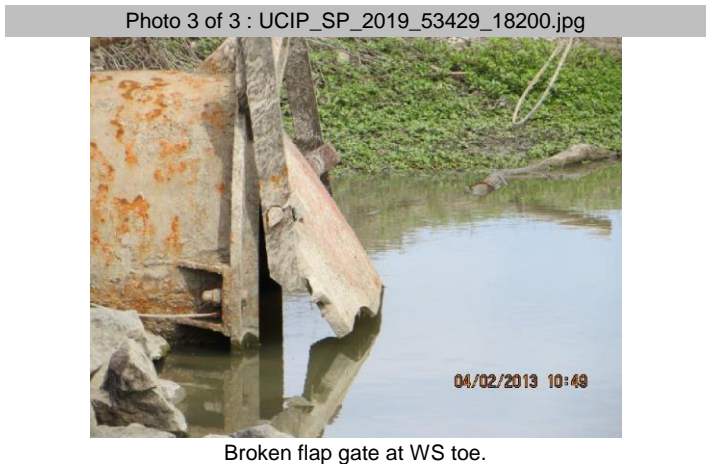
Photo 2 of 3 : UCIP_SP_2019_53429_18201.jpg



Pipe and flap gate with vent riser on WS toe.

* Location LS : Land Side N/A : Not Applicable WS : Water Side CR : Crown		** Rating A : Acceptable M : Minimally Acceptable U : Unacceptable N : Not Inspected/Rated C : Corrected A/W : Acceptable but Monitor & Maintain		+ Issue Type Ma : Maintenance Deficiency Ob : Design & System Obsolescence En : Enforcement	
--	--	---	--	---	--

Reclamation District No. 2035 Conaway



**Flood Control Project Maintenance
Levee Inspections**

Maintenance Issue Types Only, Levee Inspection Report By Mile - Spring 2019

Reclamation District No. 2035 Conaway

Waterway	Bank	Unit Miles	Inspection Start/End	Inspector
Unit No. 02 Yolo Bypass	Right	7.63	04/15/2019 04/15/2019	Zach Jojola

LM Start	1.20	Rating **	A/W	Issue No.	11
LM End	1.24	Issue Type +	Ma	Location *	WS
Category	Supplemental			GPS Latitude/Longitude	
				Start	End
Item	2017 USACE Erosion Survey, DRAFT			38.660050 °	38.659465 °
				-121.669028 °	-121.668940 °
DWR ID	DWR_RD2035_02_f_2018_11				
Comment Code					
Inspector Comment					
2017 Site ID: YOL 1.2 R					
Status: Eroding					
2017 Field Notes: Small amount of toe erosion.					
Site History: 2011 - Small sections of slumping, likely from wind wave.					

No Photos

LM Start	1.98	Rating **	A/W	Issue No.	12
LM End	2.03	Issue Type +	Ma	Location *	WS
Category	Supplemental			GPS Latitude/Longitude	
				Start	End
Item	2017 USACE Erosion Survey, DRAFT			38.648881 °	38.648178 °
				-121.666653 °	-121.666385 °
DWR ID	DWR_RD2035_02_f_2018_12				
Comment Code					
Inspector Comment					
2017 Site ID: YOL 2.0 R					
Status: Eroding					
2017 Field Notes: Toe continues to erode.					
Site History: 2006 - Wave wash erosion and some saturation slumping occurring. Tension/separation cracks evident in fine grained levee slope materials. 2011 - Small sections of slumping lower bank, just downstream of bank rock. 2016 - New cracks observed a the mid-slope.					

No Photos

* Location LS : Land Side N/A : Not Applicable WS : Water Side CR : Crown		** Rating A : Acceptable N : Not Inspected/Rated M : Minimally Acceptable C : Corrected U : Unacceptable A/W : Acceptable but Monitor & Maintain		+ Issue Type Ma : Maintenance Deficiency Ob : Design & System Obsolescence En : Enforcement
--	--	---	--	---

**Flood Control Project Maintenance
Levee Inspections**

Maintenance Issue Types Only, Levee Inspection Report By Mile - Spring 2019

Reclamation District No. 2035 Conaway

Waterway	Bank	Unit Miles	Inspection Start/End	Inspector
Unit No. 02 Yolo Bypass	Right	7.63	04/15/2019 04/15/2019	Zach Jojola

LM Start	2.11	Rating **	A/W	Issue No.	17
LM End	6.97	Issue Type +	Ma	Location *	WS
Category	Supplemental			GPS Latitude/Longitude	
				Start	End
Item	2017 Storm Damage			38.647061 °	38.583800 °
				-121.666439 °	-121.630879 °
DWR ID	DWR_RD2035_02_f_2017_17				
Comment Code					
Inspector Comment					
Levee Evaluation Comments					
Description:					
Site ID No:196					
Site Designation:RD 2035-09					
Repair Type: Erosion					
Rating:Area of Concern					
Field Date:5/18/2017					
Notes: This site had wave wash for approximately 4.5 miles. The USACE has accepted it for repair under the PL84-99 program. This site will be repaired in 2019.					

No Photos

LM Start	2.15	Rating **	A/W	Issue No.	982
LM End	2.15	Issue Type +	Ma	Location *	
Category	Supplemental			GPS Latitude/Longitude	
				Start	End
Item	DWR UCIP LMA Responsibility			38.646445 °	38.646445 °
				-121.666423 °	-121.666423 °
DWR ID	17833				
Comment Code					
Inspector Comment					
FS_ID:10933 DS_ID:17833 EP_NO: N/A Repair Type: No Action Needed Crossing Status: Found UCIP Comments: FIELD_STRUCT_DESC: 1 of 2: 60-inch drainage pipe of an unknown material through the levee, 26 feet below the crown. Concrete well and gate structure on the waterside (WS) slope. [Additional Reference(s): DWR Levee Log, 1990. USACE Sacramento O&M Manual 121, May 1959, (HLM 2.3) (6-foot by 6-foot concrete culvert listed)]. FS Date: 4/2/2013					

Photo 1 of 3 : UCIP_SP_2019_10933_18226.jpg



Slide gates in concrete vault on WS slope.

* Location LS : Land Side N/A : Not Applicable WS : Water Side CR : Crown		** Rating A : Acceptable N : Not Inspected/Rated M : Minimally Acceptable C : Corrected U : Unacceptable A/W : Acceptable but Monitor & Maintain		+ Issue Type Ma : Maintenance Deficiency Ob : Design & System Obsolescence En : Enforcement
--	--	---	--	---

**Flood Control Project Maintenance
Levee Inspections**

Maintenance Issue Types Only, Levee Inspection Report By Mile - Spring 2019

Reclamation District No. 2035 Conaway

Waterway	Bank	Unit Miles	Inspection Start/End	Inspector
Unit No. 02 Yolo Bypass	Right	7.63	04/15/2019 04/15/2019	Zach Jojola

LM Start	2.15	Rating **	A/W	Issue No.	982 (cont)	
LM End	2.15	Issue Type +	Ma	Location *		
Category	Supplemental			GPS Latitude/Longitude		
				Start	End	
Item	DWR UCIP LMA Responsibility			38.646445 °	38.646445 °	
				-121.666423 °	-121.666423 °	
DWR ID	17833					
Comment Code						
Inspector Comment						
FS_ID:10933 DS_ID:17833 EP_NO: N/A Repair Type: No Action Needed Crossing Status: Found UCIP Comments: FIELD_STRUCT_DESC: 1 of 2: 60-inch drainage pipe of an unknown material through the levee, 26 feet below the crown. Concrete well and gate structure on the waterside (WS) slope. [Additional Reference(s): DWR Levee Log, 1990. USACE Sacramento O&M Manual 121, May 1959, (HLM 2.3) (6-foot by 6-foot concrete culvert listed)]. FS Date: 4/2/2013						

Photo 2 of 3 : UCIP_SP_2019_10933_18225.jpg



LS at intake.

LM Start	2.15	Rating **	A/W	Issue No.	982 (cont)
LM End	2.15	Issue Type +	Ma	Location *	

Photo 3 of 3 : UCIP_SP_2019_10933_18224.jpg



Outlet on WS toe.

* Location LS : Land Side N/A : Not Applicable WS : Water Side CR : Crown	** Rating A : Acceptable M : Minimally Acceptable U : Unacceptable	N : Not Inspected/Rated C : Corrected A/W : Acceptable but Monitor & Maintain	+ Issue Type Ma : Maintenance Deficiency Ob : Design & System Obsolescence En : Enforcement
--	--	---	---

**Flood Control Project Maintenance
Levee Inspections**

Maintenance Issue Types Only, Levee Inspection Report By Mile - Spring 2019

Reclamation District No. 2035 Conaway

Waterway	Bank	Unit Miles	Inspection Start/End	Inspector
Unit No. 02 Yolo Bypass	Right	7.63	04/15/2019 04/15/2019	Zach Jojola

LM Start	2.15	Rating **	A/W	Issue No.	983
LM End	2.15	Issue Type +	Ma	Location *	
Category	Supplemental			GPS Latitude/Longitude	
				Start	End
Item	DWR UCIP LMA Responsibility			38.646425 °	38.646425 °
				-121.666421 °	-121.666421 °
DWR ID	17877				
Comment Code					
Inspector Comment					
FS_ID:10934 DS_ID:17877 EP_NO: N/A Repair Type: No Action Needed Crossing Status: Found UCIP Comments: FIELD_STRUCT_DESC: 2 of 2: 60-inch drainage pipe of an unknown material through the levee, 26 feet below the crown. Concrete well and gate structure on the waterside (WS) slope. Concrete headwalls on both ends. [Additional Reference(s): DWR Levee Log, 1990. USACE Sacramento O&M Manual 121, May 1959, (HLM 2.3) (6-foot by 6-foot concrete culvert listed)]. FS Date: 4/2/2013					

Photo 1 of 3 : UCIP_SP_2019_10934_18230.jpg



Slide gates in concrete vault on WS slope.

LM Start	2.15	Rating **	A/W	Issue No.	983 (cont)
LM End	2.15	Issue Type +	Ma	Location *	

Photo 2 of 3 : UCIP_SP_2019_10934_18229.jpg



Intake at channel on LS toe.

* Location LS : Land Side N/A : Not Applicable WS : Water Side CR : Crown	** Rating A : Acceptable M : Minimally Acceptable U : Unacceptable	N : Not Inspected/Rated C : Corrected A/W : Acceptable but Monitor & Maintain	+ Issue Type Ma : Maintenance Deficiency Ob : Design & System Obsolescence En : Enforcement
--	--	---	---

**Flood Control Project Maintenance
Levee Inspections**

Maintenance Issue Types Only, Levee Inspection Report By Mile - Spring 2019

Reclamation District No. 2035 Conaway

Waterway	Bank	Unit Miles	Inspection Start/End	Inspector
Unit No. 02 Yolo Bypass	Right	7.63	04/15/2019 04/15/2019	Zach Jojola

LM Start	2.15	Rating **	A/W	Issue No.	983 (cont)
LM End	2.15	Issue Type +	Ma	Location *	
Category	Supplemental			GPS Latitude/Longitude	
				Start	End
Item	DWR UCIP LMA Responsibility			38.646425 °	38.646425 °
				-121.666421 °	-121.666421 °
DWR ID	17877				
Comment Code					
Inspector Comment					
FS_ID:10934 DS_ID:17877 EP_NO: N/A Repair Type: No Action Needed Crossing Status: Found UCIP Comments: FIELD_STRUCT_DESC: 2 of 2: 60-inch drainage pipe of an unknown material through the levee, 26 feet below the crown. Concrete well and gate structure on the waterside (WS) slope. Concrete headwalls on both ends. [Additional Reference(s): DWR Levee Log, 1990. USACE Sacramento O&M Manual 121, May 1959, (HLM 2.3) (6-foot by 6-foot concrete culvert listed)]. FS Date: 4/2/2013					

Photo 3 of 3 : UCIP_SP_2019_10934_18228.jpg



Concrete headwall on WS toe.

LM Start	2.20	Rating **	M	Issue No.	18	
LM End	6.30	Issue Type +	Ma	Location *	LS	
Category	Earthen Levee			GPS Latitude/Longitude		
				Start		End
Item	Vegetation			38.645858 °		38.593535 °
				-121.666110 °		-121.631253 °
DWR ID	DWR_RD2035_02_s_2019_18					
Comment Code						
V1 : Control annual grass and weeds on the levee slopes and easements.						
Inspector Comment						

Photo 1 of 1 : SP_2019_RD2035_239_18_20190422_00028.jpg



View of vegetation on the landside slope. Spring 2019.

* Location LS : Land Side N/A : Not Applicable WS : Water Side CR : Crown	** Rating A : Acceptable M : Minimally Acceptable U : Unacceptable	N : Not Inspected/Rated C : Corrected A/W : Acceptable but Monitor & Maintain	+ Issue Type Ma : Maintenance Deficiency Ob : Design & System Obsolescence En : Enforcement
--	--	---	---

**Flood Control Project Maintenance
Levee Inspections**

Maintenance Issue Types Only, Levee Inspection Report By Mile - Spring 2019

Reclamation District No. 2035 Conaway

Waterway	Bank	Unit Miles	Inspection Start/End	Inspector
Unit No. 02 Yolo Bypass	Right	7.63	04/15/2019 04/15/2019	Zach Jojola

LM Start	2.26	Rating **	A/W	Issue No.	13
LM End	2.60	Issue Type +	Ma	Location *	WS
Category	Supplemental			GPS Latitude/Longitude	
				Start	End
Item	2017 USACE Erosion Survey, DRAFT			38.645319 °	38.640997 °
				-121.665089 °	-121.661878 °
DWR ID	DWR_RD2035_02_f_2018_13				
Comment Code					
Inspector Comment					
2017 Site ID: YOL 2.3 R					
Status: Eroding					
2017 Field Notes: Minor new toe erosion.					
Site History: 2011 - Erosion from wind waves along entire length of the levee toe. Several sections of slumping bank along the toe. 2016 - Fresh cracks observed.					

No Photos

LM Start	2.78	Rating **	A/W	Issue No.	14
LM End	3.26	Issue Type +	Ma	Location *	WS
Category	Supplemental			GPS Latitude/Longitude	
				Start	End
Item	2017 USACE Erosion Survey, DRAFT			38.638731 °	38.632783 °
				-121.660247 °	-121.655864 °
DWR ID	DWR_RD2035_02_f_2018_14				
Comment Code					
Inspector Comment					
2017 Site ID: YOL 2.8 R					
Status: Eroding					
2017 Field Notes: Erosion creeps further into levee toe.					
Site History: 2011 - Wave wash erosion and several sections of slumping bank along the toe.					

No Photos

LM Start	3.70	Rating **	A/W	Issue No.	15
LM End	3.99	Issue Type +	Ma	Location *	WS
Category	Supplemental			GPS Latitude/Longitude	
				Start	End
Item	2017 USACE Erosion Survey, DRAFT			38.627145 °	38.623533 °
				-121.651820 °	-121.649176 °
DWR ID	DWR_RD2035_02_f_2018_15				
Comment Code					
Inspector Comment					
2017 Site ID: YOL 3.5 R					
Status: Eroding New					
2017 Field Notes: Unable to view due to access issues.					
Site History: 2016 - Erosion observed at levee toe.					

No Photos

* Location		** Rating		+ Issue Type	
LS : Land Side	N/A : Not Applicable	A : Acceptable	N : Not Inspected/Rated	Ma : Maintenance Deficiency	
WS : Water Side		M : Minimally Acceptable	C : Corrected	Ob : Design & System Obsolescence	
CR : Crown		U : Unacceptable	A/W : Acceptable but Monitor & Maintain	En : Enforcement	

**Flood Control Project Maintenance
Levee Inspections**

Maintenance Issue Types Only, Levee Inspection Report By Mile - Spring 2019

Reclamation District No. 2035 Conaway

Waterway	Bank	Unit Miles	Inspection Start/End	Inspector
Unit No. 02 Yolo Bypass	Right	7.63	04/15/2019 04/15/2019	Zach Jojola

LM Start	4.09	Rating **	A/W	Issue No.	16
LM End	4.41	Issue Type +	Ma	Location *	WS
Category	Supplemental			GPS Latitude/Longitude	
				Start	End
Item	2017 USACE Erosion Survey, DRAFT			38.622224 °	38.618302 °
				-121.648201 °	-121.645296 °
DWR ID	DWR_RD2035_02_f_2018_16				
Comment Code					
Inspector Comment					
2017 Site ID: YOL 4.2 R					
Status: Eroding					
2017 Field Notes: Unable to view due to access issues					
Site History: 2006 - Wave wash erosion and some saturation slumping occurring. Several small scallops present in lower levee slope/toe due to saturation slumping. Tension/separation cracks evident in fine-grained levee slope materials. 2011 - Small pockets of erosion throughout the site. Site formerly called 3.8.					

No Photos

LM Start	6.35	Rating **	A/W	Issue No.	31
LM End	6.38	Issue Type +	Ma	Location *	LS
Category	Supplemental			GPS Latitude/Longitude	
				Start	End
Item	2017 Storm Damage			38.592840 °	38.592390 °
				-121.631340 °	-121.631320 °
DWR ID	DWR_RD2035_02_f_2017_31				
Comment Code					
Inspector Comment					
Levee Evaluation Comments					
Description:					
Site ID No:195					
Site Designation:RD 2035-08					
Repair Type: Erosion					
Rating:Critical					
Field Date:7/13/2017					
Notes: long longitudinal cracks on the crown. Scheduled for repair in 2020.					

Photo 1 of 4 : SP_2019_RD2035_239_31_20190304_00002.jpg



View looking downstream landside of 2017 Storm Damage, sluffing site.
All plastic is remove, sandbags remain, and is NOT scheduled to be repaired in 2017.

* Location LS : Land Side N/A : Not Applicable WS : Water Side CR : Crown		** Rating A : Acceptable N : Not Inspected/Rated M : Minimally Acceptable C : Corrected U : Unacceptable A/W : Acceptable but Monitor & Maintain		+ Issue Type Ma : Maintenance Deficiency Ob : Design & System Obsolescence En : Enforcement
--	--	---	--	---

**Flood Control Project Maintenance
Levee Inspections**

Maintenance Issue Types Only, Levee Inspection Report By Mile - Spring 2019

Reclamation District No. 2035 Conaway

Waterway	Bank	Unit Miles	Inspection Start/End	Inspector
Unit No. 02 Yolo Bypass	Right	7.63	04/15/2019 04/15/2019	Zach Jojola

LM Start	6.35	Rating **	A/W	Issue No.	31 (cont)
LM End	6.38	Issue Type +	Ma	Location *	LS
Category	Supplemental		GPS Latitude/Longitude		
			Start	End	
Item	2017 Storm Damage		38.592840 °	38.592390 °	
			-121.631340 °	-121.631320 °	
DWR ID	DWR_RD2035_02_f_2017_31				

Comment Code

Inspector Comment

Levee Evaluation Comments

Description:

Site ID No:195

Site Designation:RD 2035-08

Repair Type: Erosion

Rating:Critical

Field Date:7/13/2017

Notes: long longitudinal cracks on the crown. Scheduled for repair in 2020.

LM Start	6.35	Rating **	A/W	Issue No.	31 (cont)
LM End	6.38	Issue Type +	Ma	Location *	LS

Photo 2 of 4 : LEVAL_SP_2019_195_1600.jpg



Photo 3 of 4 : LEVAL_SP_2019_195_1603.jpg



* Location LS : Land Side N/A : Not Applicable WS : Water Side CR : Crown		** Rating A : Acceptable M : Minimally Acceptable U : Unacceptable N : Not Inspected/Rated C : Corrected A/W : Acceptable but Monitor & Maintain		+ Issue Type Ma : Maintenance Deficiency Ob : Design & System Obsolescence En : Enforcement
--	--	---	--	---

**Flood Control Project Maintenance
Levee Inspections**

Maintenance Issue Types Only, Levee Inspection Report By Mile - Spring 2019

Reclamation District No. 2035 Conaway

Waterway	Bank	Unit Miles	Inspection Start/End	Inspector
Unit No. 02 Yolo Bypass	Right	7.63	04/15/2019 04/15/2019	Zach Jojola

LM Start	6.35	Rating **	A/W	Issue No.	31 (cont)
LM End	6.38	Issue Type +	Ma	Location *	LS
Category	Supplemental			GPS Latitude/Longitude	
				Start	End
Item	2017 Storm Damage			38.592840 °	38.592390 °
				-121.631340 °	-121.631320 °
DWR ID	DWR_RD2035_02_f_2017_31				
Comment Code					
Inspector Comment					
Levee Evaluation Comments					
Description:					
Site ID No:195					
Site Designation:RD 2035-08					
Repair Type: Erosion					
Rating:Critical					
Field Date:7/13/2017					
Notes: long longitudinal cracks on the crown. Scheduled for repair in 2020.					

Photo 4 of 4 : LEVAL_SP_2019_195_1592.jpg



* Location LS : Land Side N/A : Not Applicable WS : Water Side CR : Crown	** Rating A : Acceptable M : Minimally Acceptable U : Unacceptable N : Not Inspected/Rated C : Corrected A/W : Acceptable but Monitor & Maintain	+ Issue Type Ma : Maintenance Deficiency Ob : Design & System Obsolescence En : Enforcement
--	---	---

**Flood Control Project Maintenance
Levee Inspections**

Maintenance Issue Types Only, Levee Inspection Report By Mile - Spring 2019

Reclamation District No. 2035 Conaway

Waterway	Bank	Unit Miles	Inspection Start/End	Inspector
Unit No. 03 Willow Slough Bypass	Left	2.51	04/15/2019 04/15/2019	Zach Jojola

LM Start	0.00	Rating **	U	Issue No.	6
LM End	0.64	Issue Type +	Ma	Location *	WS
Category	Earthen Levee			GPS Latitude/Longitude	
				Start	End
Item	Vegetation			38.575400 °	38.578663 °
				-121.635697 °	-121.645182 °
DWR ID	DWR_RD2035_03_s_2019_6				
Comment Code					
V1 : Control annual grass and weeds on the levee slopes and easements.					
Inspector Comment					

Photo 1 of 1 : SP_2019_RD2035_240_6_20190422_00015.jpg



View of vegetation on the waterside slope. Spring 2019.

LM Start	0.07	Rating **	M	Issue No.	7
LM End	0.68	Issue Type +	Ma	Location *	LS
Category	Earthen Levee			GPS Latitude/Longitude	
				Start	End
Item	Vegetation			38.575687 °	38.579187 °
				-121.636730 °	-121.645133 °
DWR ID	DWR_RD2035_03_s_2019_7				
Comment Code					
V1 : Control annual grass and weeds on the levee slopes and easements.					
Inspector Comment					

No Photos

* Location LS : Land Side N/A : Not Applicable WS : Water Side CR : Crown		** Rating A : Acceptable N : Not Inspected/Rated M : Minimally Acceptable C : Corrected U : Unacceptable A/W : Acceptable but Monitor & Maintain		+ Issue Type Ma : Maintenance Deficiency Ob : Design & System Obsolescence En : Enforcement
--	--	---	--	---

**Flood Control Project Maintenance
Levee Inspections**

Maintenance Issue Types Only, Levee Inspection Report By Mile - Spring 2019

Reclamation District No. 2035 Conaway

Waterway	Bank	Unit Miles	Inspection Start/End	Inspector
Unit No. 03 Willow Slough Bypass	Left	2.51	04/15/2019 04/15/2019	Zach Jojola

LM Start	1.39	Rating **	M	Issue No.	975
LM End	1.39	Issue Type +	Ma	Location *	
Category	Supplemental			GPS Latitude/Longitude	
				Start	End
Item	DWR UCIP LMA Responsibility			38.589425 °	38.589425 °
				-121.645359 °	-121.645359 °
DWR ID	17836				
Comment Code					
Inspector Comment					
FS_ID:41128 DS_ID:17836 EP_NO: N/A Repair Type: Non-Urgent Crossing Status: Found UCIP Comments: 04/03/2013 Need to clear vegetation and debris from WS at outlet. (W. Wylie - DWR UCIP) FIELD_STRUCT_DESC: 36-inch corrugated metal drainage pipe through the levee, 17.5 feet below the crown. Flap gate on the waterside (WS) end. Slide gate and concrete headwall on the landside (LS) end. [Additional Reference(s): DWR Levee Log, 1990. USACE Sacramento O&M Manual 120, June 1952, (Station 327+75)]. FS Date: 4/3/2013					

Photo 1 of 3 : UCIP_SP_2019_41128_18348.jpg



Slide gate and headwall in canal at LS toe.

LM Start	1.39	Rating **	M	Issue No.	975 (cont)
LM End	1.39	Issue Type +	Ma	Location *	

Photo 2 of 3 : UCIP_SP_2019_41128_18347.jpg



Slide gate and headwall in canal at LS toe.

* Location LS : Land Side N/A : Not Applicable WS : Water Side CR : Crown	** Rating A : Acceptable M : Minimally Acceptable U : Unacceptable	N : Not Inspected/Rated C : Corrected A/W : Acceptable but Monitor & Maintain	+ Issue Type Ma : Maintenance Deficiency Ob : Design & System Obsolescence En : Enforcement
--	--	---	---

Reclamation District No. 2035 Conaway

**Flood Control Project Maintenance
Levee Inspections**

Maintenance Issue Types Only, Levee Inspection Report By Mile - Spring 2019

Reclamation District No. 2035 Conaway

Waterway	Bank	Unit Miles	Inspection Start/End	Inspector
Unit No. 03 Willow Slough Bypass	Left	2.51	04/15/2019 04/15/2019	Zach Jojola

LM Start	2.17	Rating **	M	Issue No.	976 (cont)	
LM End	2.17	Issue Type +	Ma	Location *		
Category	Supplemental			GPS Latitude/Longitude		
				Start	End	
Item	DWR UCIP LMA Responsibility			38.590934 °	38.590934 °	
				-121.658940 °	-121.658940 °	
DWR ID	17837					
Comment Code						
Inspector Comment						
FS_ID:11011						
DS_ID:17837						
EP_NO: N/A						
Repair Type: Non-Urgent						
Crossing Status: Found						
UCIP Comments: 04/03/2013 Debris and vegetation partially blocking inlet and outlet at both toes. (W. Wylie - DWR UCIP)						
FIELD_STRUCT_DESC: 48-inch corrugated metal drainage pipe through the levee, 19 feet below the crown. Slide gates on both ends. [Additional Reference(s): DWR Levee Log, 1990. USACE Sacramento O&M Manual 120, June 1952, (Station 290+37)].						
FS Date: 4/3/2013						

Photo 2 of 2 : UCIP_SP_2019_11011_18353.jpg



Slide gate at LS toe showing excessive vegetation.

LM Start	2.19	Rating **	M	Issue No.	977
LM End	2.19	Issue Type +	Ma	Location *	
Category	Supplemental			GPS Latitude/Longitude	
				Start	End
Item	DWR UCIP LMA Responsibility			38.590909 °	38.590909 °
				-121.659311 °	-121.659311 °
DWR ID	17838				
Comment Code					
Inspector Comment					
FS_ID:11012					
DS_ID:17838					
EP_NO: N/A					
Repair Type: Non-Urgent					
Crossing Status: Found					
UCIP Comments: 04/03/2013 Debris and vegetation partially blocking both ends of pipe. (W. Wylie - DWR UCIP)					
FIELD_STRUCT_DESC: 36-inch corrugated metal drainage pipe through the levee, 18 feet below the crown. Slide gate on the landside (LS) toe. Combination flap and slide gate on the waterside (WS) toe.					
[Additional Reference(s): DWR Levee Log, 1990. USACE Sacramento O&M Manual 120, June 1952, (Station 289+33)].					
FS Date: 4/3/2013					

Photo 1 of 3 : UCIP_SP_2019_11012_18357.jpg



Combination flap and slide gate on WS toe. With excessive vegetation

* Location LS : Land Side N/A : Not Applicable WS : Water Side CR : Crown		** Rating A : Acceptable M : Minimally Acceptable U : Unacceptable N : Not Inspected/Rated C : Corrected A/W : Acceptable but Monitor & Maintain		+ Issue Type Ma : Maintenance Deficiency Ob : Design & System Obsolescence En : Enforcement
--	--	---	--	---

**Flood Control Project Maintenance
Levee Inspections**

Maintenance Issue Types Only, Levee Inspection Report By Mile - Spring 2019

Reclamation District No. 2035 Conaway

Waterway	Bank	Unit Miles	Inspection Start/End	Inspector
Unit No. 03 Willow Slough Bypass	Left	2.51	04/15/2019 04/15/2019	Zach Jojola

LM Start	2.19	Rating **	M	Issue No.	977 (cont)	
LM End	2.19	Issue Type +	Ma	Location *		
Category	Supplemental			GPS Latitude/Longitude		
				Start	End	
Item	DWR UCIP LMA Responsibility			38.590909 °	38.590909 °	
				-121.659311 °	-121.659311 °	
DWR ID	17838					
Comment Code						
Inspector Comment						
FS_ID:11012 DS_ID:17838 EP_NO: N/A Repair Type: Non-Urgent Crossing Status: Found UCIP Comments: 04/03/2013 Debris and vegetation partially blocking both ends of pipe. (W. Wylie - DWR UCIP) FIELD_STRUCT_DESC: 36-inch corrugated metal drainage pipe through the levee, 18 feet below the crown. Slide gate on the landside (LS) toe. Combination flap and slide gate on the waterside (WS) toe. [Additional Reference(s): DWR Levee Log, 1990. USACE Sacramento O&M Manual 120, June 1952, (Station 289+33)]. FS Date: 4/3/2013						

Photo 2 of 3 : UCIP_SP_2019_11012_18356.jpg



Headwall at bottom of fenceline on LS toe

LM Start	2.19	Rating **	M	Issue No.	977 (cont)
LM End	2.19	Issue Type +	Ma	Location *	

Photo 3 of 3 : UCIP_SP_2019_11012_18355.jpg



Headwall and pipe on LS toe.

* Location LS : Land Side N/A : Not Applicable WS : Water Side CR : Crown	** Rating A : Acceptable M : Minimally Acceptable U : Unacceptable	N : Not Inspected/Rated C : Corrected A/W : Acceptable but Monitor & Maintain	+ Issue Type Ma : Maintenance Deficiency Ob : Design & System Obsolescence En : Enforcement
--	--	---	---