

**Flood Control Project Maintenance
Levee Inspections**

Maintenance Issue Types Only, Levee Inspection Report By Mile - Spring 2015

Reclamation District No. 2035 Conaway

Waterway	Bank	Unit Miles	Inspection Start/End	Inspector
Unit No. 01 Cache Creek Settling Basin	Right	2.01	03/30/2015 03/30/2015	Michael Pitta

LM Start	0.00	Rating **	A	Issue No.	3
LM End	0.00	Issue Type +	Ma	Location *	CR
Category	Earthen Levee		GPS Latitude/Longitude		
			Start	End	
Item	Operations & Maintenance Manuals			°	°
				°	°
DWR ID	DWR_RD2035_01_s _ 2013_3				
Action/Comments					
Inspector Comments: The LMA stated that they keep a copy of the O&M manuals on hand at the district office.					

No Photos

LM Start	0.00	Rating **	A	Issue No.	4
LM End	0.00	Issue Type +	Ma	Location *	CR
Category	Earthen Levee		GPS Latitude/Longitude		
			Start	End	
Item	Emergency Supplies & Equipment			°	°
				°	°
DWR ID	DWR_RD2035_01_s _ 2013_4				
Action/Comments					
Inspector Comments: The district has emergency supplies and equipment on hand at their district office.					

No Photos

LM Start	0.00	Rating **	A	Issue No.	5
LM End	0.00	Issue Type +	Ma	Location *	CR
Category	Earthen Levee		GPS Latitude/Longitude		
			Start	End	
Item	Flood Preparedness & Training			°	°
				°	°
DWR ID	DWR_RD2035_01_s _ 2013_5				
Action/Comments					
Inspector Comments: The LMA plans on attending DWR Flood Fight training class this fall.					

No Photos

* Location		** Rating		+ Issue Type	
LS : Land Side	N/A : Not Applicable	A : Acceptable	N : Not Inspected/Rated	Ma : Maintenance Deficiency	
WS : Water Side		M : Minimally Acceptable	C : Corrected	Ob : Design & System Obsolescence	
CR : Crown		U : Unacceptable	A/W : Acceptable but Monitor & Maintain	En : Enforcement	

**Flood Control Project Maintenance
Levee Inspections**

Maintenance Issue Types Only, Levee Inspection Report By Mile - Spring 2015

Reclamation District No. 2035 Conaway

Waterway	Bank	Unit Miles	Inspection Start/End	Inspector
Unit No. 01 Cache Creek Settling Basin	Right	2.01	03/30/2015 03/30/2015	Michael Pitta

LM Start	0.00	Rating **	U	Issue No.	7
LM End	2.00	Issue Type +	Ma	Location *	LS
Category	Earthen Levee			GPS Latitude/Longitude	
				Start	End
Item	Vegetation			38.677423 °	38.677178 °
				-121.709905 °	-121.672865 °
DWR ID	DWR_RD2035_01_s _ 2015_7				
Action/Comments					
Control annual grass and weeds on the levee slopes and easements.					

Photo 1 of 1 : SP_2015_RD2035_238_7_20150330_00006.jpg



View of the vegetation landside of levee facing downstream.

LM Start	0.00	Rating **	U	Issue No.	8
LM End	2.00	Issue Type +	Ma	Location *	WS
Category	Earthen Levee			GPS Latitude/Longitude	
				Start	End
Item	Vegetation			38.677423 °	38.677178 °
				-121.709905 °	-121.672865 °
DWR ID	DWR_RD2035_01_s _ 2015_8				
Action/Comments					
Control annual grass and weeds on the levee slopes and easements.					

No Photos

LM Start	0.00	Rating **	U	Issue No.	9
LM End	2.00	Issue Type +	Ma	Location *	CR
Category	Earthen Levee			GPS Latitude/Longitude	
				Start	End
Item	Vegetation			38.677423 °	38.677178 °
				-121.709905 °	-121.672865 °
DWR ID	DWR_RD2035_01_s _ 2015_9				
Action/Comments					
Control annual grass and weeds on the levee slopes and easements.					

No Photos

* Location LS : Land Side N/A : Not Applicable WS : Water Side CR : Crown		** Rating A : Acceptable N : Not Inspected/Rated M : Minimally Acceptable C : Corrected U : Unacceptable A/W : Acceptable but Monitor & Maintain		+ Issue Type Ma : Maintenance Deficiency Ob : Design & System Obsolescence En : Enforcement
----------------------------------------------------------------------------------------------	--	---------------------------------------------------------------------------------------------------------------------------------------------------------------------------------------------------------------	--	-------------------------------------------------------------------------------------------------------------

**Flood Control Project Maintenance
Levee Inspections**

Maintenance Issue Types Only, Levee Inspection Report By Mile - Spring 2015

Reclamation District No. 2035 Conaway

Waterway	Bank	Unit Miles	Inspection Start/End	Inspector
Unit No. 01 Cache Creek Settling Basin	Right	2.01	03/30/2015 03/30/2015	Michael Pitta

LM Start	0.03	Rating **	A/W	Issue No.	11
LM End	2.00	Issue Type +	Ma	Location *	WS
Category	Earthen Levee			GPS Latitude/Longitude	
				Start	End
Item	Encroachments			38.677347 °	38.677175 °
				-121.709285 °	-121.672945 °
DWR ID	DWR_RD2035_01_f_2013_11				
Action/Comments					
Agricultural tilling Inspector Comments: Discing on the waterward slope can lead to erosion.					

Photo 1 of 1 : SP_2015_RD2035_238_11_20150318_00001.jpg



This photo was taken from the levee crown facing east looking at discing on the waterward slope. Fall 2013.

* Location LS : Land Side N/A : Not Applicable WS : Water Side CR : Crown		** Rating A : Acceptable N : Not Inspected/Rated M : Minimally Acceptable C : Corrected U : Unacceptable A/W : Acceptable but Monitor & Maintain		+ Issue Type Ma : Maintenance Deficiency Ob : Design & System Obsolescence En : Enforcement
----------------------------------------------------------------------------------------------	--	---------------------------------------------------------------------------------------------------------------------------------------------------------------------------------------------------------------	--	-------------------------------------------------------------------------------------------------------------

**Flood Control Project Maintenance
Levee Inspections**

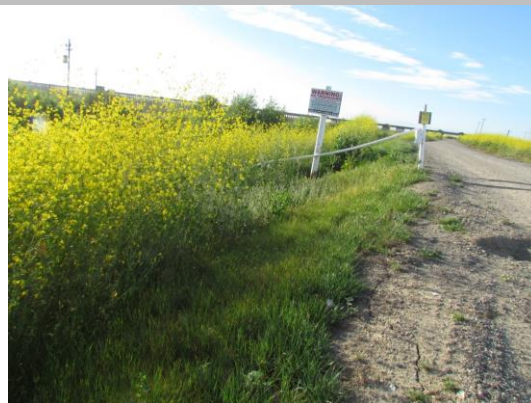
Maintenance Issue Types Only, Levee Inspection Report By Mile - Spring 2015

Reclamation District No. 2035 Conaway

Waterway	Bank	Unit Miles	Inspection Start/End	Inspector
Unit No. 02 Yolo Bypass	Right	7.63	03/30/2015 03/30/2015	Michael Pitta

LM Start	0.05	Rating **	M	Issue No.	14
LM End	1.76	Issue Type +	Ma	Location *	WS
Category	Earthen Levee			GPS Latitude/Longitude	
				Start	End
Item	Vegetation			38.676485 °	38.652040 °
				-121.672577 °	-121.667670 °
DWR ID	DWR_RD2035_02_s _ 2015_14				
Action/Comments					
Control annual grass and weeds on the levee slopes and easements.					

Photo 1 of 1 : SP_2015_RD2035_239_14_20150330_00007.jpg



View of the vegetation on the waterside of levee looking downstream.

LM Start	0.05	Rating **	M	Issue No.	15
LM End	1.76	Issue Type +	Ma	Location *	LS
Category	Earthen Levee			GPS Latitude/Longitude	
				Start	End
Item	Vegetation			38.676485 °	38.652040 °
				-121.672577 °	-121.667670 °
DWR ID	DWR_RD2035_02_s _ 2015_15				
Action/Comments					
Control annual grass and weeds on the levee slopes and easements.					

No Photos

LM Start	0.28	Rating **	M	Issue No.	4
LM End	0.36	Issue Type +	Ma	Location *	WS
Category	Supplemental			GPS Latitude/Longitude	
				Start	End
Item	USACE Erosion Survey			38.673229 °	38.672069 °
				-121.671732 °	-121.671516 °
DWR ID	DWR_RD2035_02_f _ 2014_4				
Action/Comments					
Inspector Comments: 2006 - Wave wash erosion and some saturation slumping occurring. Tension/separation cracks evident in fine grained levee slope materials. 2011 - Slumping of the lower toe. New slumped section on downstream end. 2013: Site is part of the extended inventory, last inspected 2011. [2013 Site ID: YOL_0-1_R]					

No Photos

* Location LS : Land Side N/A : Not Applicable WS : Water Side CR : Crown		** Rating A : Acceptable N : Not Inspected/Rated M : Minimally Acceptable C : Corrected U : Unacceptable A/W : Acceptable but Monitor & Maintain		+ Issue Type Ma : Maintenance Deficiency Ob : Design & System Obsolescence En : Enforcement	
----------------------------------------------------------------------------------------------	--	---------------------------------------------------------------------------------------------------------------------------------------------------------------------------------------------------------------	--	-------------------------------------------------------------------------------------------------------------	--

**Flood Control Project Maintenance
Levee Inspections**

Maintenance Issue Types Only, Levee Inspection Report By Mile - Spring 2015

Reclamation District No. 2035 Conaway

Waterway	Bank	Unit Miles	Inspection Start/End	Inspector
Unit No. 02 Yolo Bypass	Right	7.63	03/30/2015 03/30/2015	Michael Pitta

LM Start	1.20	Rating **	M	Issue No.	5
LM End	1.24	Issue Type +	Ma	Location *	WS
Category	Supplemental			GPS Latitude/Longitude	
				Start	End
Item	USACE Erosion Survey			38.660050 °	38.659465 °
				-121.669028 °	-121.668940 °
DWR ID	DWR_RD2035_02_f_2014_5				
Action/Comments					
Inspector Comments: 2011 - Small sections of slumping, likely from wind wave. 2013: Site is part of the extended inventory, last inspected 2011. [2013 Site ID: YOL_1-2_R]					

No Photos

LM Start	1.76	Rating **	A/W	Issue No.	16
LM End	7.63	Issue Type +	Ma	Location *	WS
Category	Earthen Levee			GPS Latitude/Longitude	
				Start	End
Item	Vegetation			38.652040 °	38.575375 °
				-121.667670 °	-121.635540 °
DWR ID	DWR_RD2035_02_s_2015_16				
Action/Comments					
Control annual grass and weeds on the levee slopes and easements.					

No Photos

LM Start	1.76	Rating **	A/W	Issue No.	17
LM End	7.63	Issue Type +	Ma	Location *	LS
Category	Earthen Levee			GPS Latitude/Longitude	
				Start	End
Item	Vegetation			38.652040 °	38.575375 °
				-121.667670 °	-121.635540 °
DWR ID	DWR_RD2035_02_s_2015_17				
Action/Comments					
Control annual grass and weeds on the levee slopes and easements.					

No Photos

* Location LS : Land Side N/A : Not Applicable WS : Water Side CR : Crown		** Rating A : Acceptable N : Not Inspected/Rated M : Minimally Acceptable C : Corrected U : Unacceptable A/W : Acceptable but Monitor & Maintain		+ Issue Type Ma : Maintenance Deficiency Ob : Design & System Obsolescence En : Enforcement
----------------------------------------------------------------------------------------------	--	---------------------------------------------------------------------------------------------------------------------------------------------------------------------------------------------------------------	--	-------------------------------------------------------------------------------------------------------------

**Flood Control Project Maintenance
Levee Inspections**

Maintenance Issue Types Only, Levee Inspection Report By Mile - Spring 2015

Reclamation District No. 2035 Conaway

Waterway	Bank	Unit Miles	Inspection Start/End	Inspector
Unit No. 02 Yolo Bypass	Right	7.63	03/30/2015 03/30/2015	Michael Pitta

LM Start	1.98	Rating **	M	Issue No.	6
LM End	2.03	Issue Type +	Ma	Location *	WS
Category	Supplemental			GPS Latitude/Longitude	
				Start	End
Item	USACE Erosion Survey			38.648881 °	38.648178 °
				-121.666653 °	-121.666385 °
DWR ID	DWR_RD2035_02_f _ 2014_6				
Action/Comments					
Inspector Comments: 2006 - Wave wash erosion and some saturation slumping occurring. Tension/separation cracks evident in fine grained levee slope materials. 2011 - Small sections of slumping lower bank, just downstream of bank rock. 2013: Site is part of the extended inventory, last inspected 2011. [2013 Site ID: YOL_2-0_R]					

No Photos

LM Start	2.26	Rating **	M	Issue No.	7
LM End	2.60	Issue Type +	Ma	Location *	WS
Category	Supplemental			GPS Latitude/Longitude	
				Start	End
Item	USACE Erosion Survey			38.645319 °	38.640997 °
				-121.665089 °	-121.661878 °
DWR ID	DWR_RD2035_02_f _ 2014_7				
Action/Comments					
Inspector Comments: 2011 - Erosion from wind waves along entire length of the levee toe. Several sections of slumping bank along the toe2013: Site is part of the extended inventory, last inspected 2011. [2013 Site ID: YOL_2-3_R]					

No Photos

LM Start	2.78	Rating **	M	Issue No.	8
LM End	3.26	Issue Type +	Ma	Location *	WS
Category	Supplemental			GPS Latitude/Longitude	
				Start	End
Item	USACE Erosion Survey			38.638731 °	38.632783 °
				-121.660247 °	-121.655864 °
DWR ID	DWR_RD2035_02_f _ 2014_8				
Action/Comments					
Inspector Comments: 2011 - Wave wash erosion and several sections of slumping bank along the toe. 2013: Site is part of the extended inventory, last inspected 2011. [2013 Site ID: YOL_2-8_R]					

No Photos

* Location LS : Land Side N/A : Not Applicable WS : Water Side CR : Crown		** Rating A : Acceptable N : Not Inspected/Rated M : Minimally Acceptable C : Corrected U : Unacceptable A/W : Acceptable but Monitor & Maintain		+ Issue Type Ma : Maintenance Deficiency Ob : Design & System Obsolescence En : Enforcement
----------------------------------------------------------------------------------------------	--	---------------------------------------------------------------------------------------------------------------------------------------------------------------------------------------------------------------	--	-------------------------------------------------------------------------------------------------------------

**Flood Control Project Maintenance
Levee Inspections**

Maintenance Issue Types Only, Levee Inspection Report By Mile - Spring 2015

Reclamation District No. 2035 Conaway

Waterway	Bank	Unit Miles	Inspection Start/End	Inspector
Unit No. 02 Yolo Bypass	Right	7.63	03/30/2015 03/30/2015	Michael Pitta

LM Start	4.09	Rating **	M	Issue No.	9
LM End	4.41	Issue Type +	Ma	Location *	WS
Category	Supplemental			GPS Latitude/Longitude	
				Start	End
Item	USACE Erosion Survey			38.622224 °	38.618302 °
				-121.648201 °	-121.645296 °
DWR ID	DWR_RD2035_02_f_2014_9				
Action/Comments					
Inspector Comments: 2006 - Wave wash erosion and some saturation slumping occurring. Several small scallops present in lower levee slope/toe due to saturation slumping. Tension/separation cracks evident in fine-grained levee slope materials. 2011 - Small pockets of erosion throughout the site. Site formerly called 3.8. 2013: Site is part of the extended inventory, last inspected 2011. [2013 Site ID: YOL_4-2_R]					

No Photos

* Location LS : Land Side N/A : Not Applicable WS : Water Side CR : Crown	** Rating A : Acceptable N : Not Inspected/Rated M : Minimally Acceptable C : Corrected U : Unacceptable A/W : Acceptable but Monitor & Maintain	+ Issue Type Ma : Maintenance Deficiency Ob : Design & System Obsolescence En : Enforcement
----------------------------------------------------------------------------------------------	---------------------------------------------------------------------------------------------------------------------------------------------------------------------------------------------------------------	-------------------------------------------------------------------------------------------------------------

**Flood Control Project Maintenance
Levee Inspections**

Maintenance Issue Types Only, Levee Inspection Report By Mile - Spring 2015

Reclamation District No. 2035 Conaway

Waterway	Bank	Unit Miles	Inspection Start/End	Inspector
Unit No. 03 Willow Slough Bypass	Left	2.51	03/30/2015 03/30/2015	Michael Pitta

LM Start	0.00	Rating **	M	Issue No.	7
LM End	2.47	Issue Type +	Ma	Location *	WS
Category	Earthen Levee			GPS Latitude/Longitude	
				Start	End
Item	Vegetation			38.575343 °	38.590817 °
				-121.635635 °	-121.664500 °
DWR ID	DWR_RD2035_03_s _ 2015_7				
Action/Comments					
Control annual grass and weeds on the levee slopes and easements.					

Photo 1 of 1 : SP_2015_RD2035_240_7_20150330_00007.jpg



View of the vegetation on the waterside of levee facing downstream.

LM Start	0.00	Rating **	M	Issue No.	8
LM End	2.47	Issue Type +	Ma	Location *	LS
Category	Earthen Levee			GPS Latitude/Longitude	
				Start	End
Item	Vegetation			38.575343 °	38.590817 °
				-121.635635 °	-121.664500 °
DWR ID	DWR_RD2035_03_s _ 2015_8				
Action/Comments					
Control annual grass and weeds on the levee slopes and easements.					

No Photos

* Location
LS : Land Side N/A : Not Applicable
WS : Water Side
CR : Crown

** Rating
A : Acceptable N : Not Inspected/Rated
M : Minimally Acceptable C : Corrected
U : Unacceptable A/W : Acceptable but Monitor & Maintain

+ Issue Type
Ma : Maintenance Deficiency
Ob : Design & System Obsolescence
En : Enforcement