

**Flood Control Project Maintenance
Levee Inspections
LMA District Cover Sheet**

Reclamation District No. 2035 Conaway

	Spring (March - May)	Summer ** (June - August)	Fall (September - November)	Winter ** (December - February)
† Overall LMA Rating (Fall Only)				

** Non-receipt of Summer or Winter Inspection
Reports may effect overall annual rating.

†
SPRING INSPECTIONS: Overall maintenance ratings are not determined for the spring inspection results. Individual maintenance deficiencies are rated using the same criteria in the spring and in the fall.

FALL INSPECTIONS: The overall maintenance rating shown above is based on operation and maintenance deficiencies identified within the attached unit inspection reports. This rating is not intended to be an indication of risk.

Comments

**Flood Control Project Maintenance
Levee Inspections
Unit Cover Sheet**

Reclamation District No. 2035 Conaway

Waterway			Bank	Unit Miles
Unit No. 01 Cache Creek Settling Basin			Right	2.01
	Spring (March - May)	Summer (June - August)	(September - November) Fall	Winter (December - February)
Unit Maintenance Rating (Fall Only)				
Date of Inspection	5/17/2023 - 5/17/2023			
DWR Inspector	Nate Hicks			

Reclamation District No. 2035 Conaway

Waterway			Bank	Unit Miles
Unit No. 01 Cache Creek Settling Basin			Right	2.01
	Spring (March - May)	Summer (June - August)	(September - November) Fall	Winter (December - February)
Unit Maintenance Rating (Fall Only)				
Date of Inspection	5/17/2023 - 5/17/2023			
DWR Inspector	Nate Hicks			
Accompanied By	Jesse Clark RD 2035			

Summer & Winter Inspections

The Local Maintaining Agency (LMA) is responsible for summer and winter inspections. The LMA is required to submit a report regarding summer and winter inspections to the California Department of Water Resources (DWR).

DWR must be informed on the:

- a) completion of the inspection
- b) any changes other than the results of normal maintenance
- c) corrections to deficiencies noted in this report

If additional items are noted, further documentation of those items must also be submitted.

The LMA should submit this information to DWR using the LMA web application tool available at:

<http://cdec.water.ca.gov/lma.html>

If the LMA is unable to submit information on this webpage, please contact DWR for assistance.

The LMA should submit the information and any associated documentation by September 30 for summer inspections and March 31 for winter inspections.

**Flood Control Project Maintenance
Levee Inspections**

Levee Inspection Report By Mile - Spring 2023

Reclamation District No. 2035 Conaway

Waterway	Bank	Unit Miles	Inspection Start/End	Inspector
Unit No. 01 Cache Creek Settling Basin	Right	2.01	05/17/2023 05/17/2023	Nate Hicks

LM Start	0.00	Rating **	A	Issue No.	3
LM End	0.00	Issue Type +	Ma	Location *	CR
Category	Earthen Levee		GPS Latitude/Longitude		
			Start	End	
Item	Operations & Maintenance Manuals			°	°
				°	°
DWR ID	DWR_RD2035_01_s_2013_3				
Comment Code					
OM : O&M Manuals					
Inspector Comment					
The LMA stated that they keep a copy of the O&M manuals on hand at the district office.					

No Photos

LM Start	0.00	Rating **	A	Issue No.	4
LM End	0.00	Issue Type +	Ma	Location *	CR
Category	Earthen Levee		GPS Latitude/Longitude		
			Start	End	
Item	Emergency Supplies & Equipment			°	°
				°	°
DWR ID	DWR_RD2035_01_s_2013_4				
Comment Code					
ES : Emergency Supplies & Equipment					
Inspector Comment					
The district has emergency supplies and equipment on hand at their district office.					

No Photos

LM Start	0.00	Rating **	A	Issue No.	5
LM End	0.00	Issue Type +	Ma	Location *	CR
Category	Earthen Levee		GPS Latitude/Longitude		
			Start	End	
Item	Flood Preparedness & Training			°	°
				°	°
DWR ID	DWR_RD2035_01_s_2013_5				
Comment Code					
FP : Flood Preparedness & Training					
Inspector Comment					
The LMA is current with flood fight training.					

No Photos

* Location LS : Land Side N/A : Not Applicable WS : Water Side CR : Crown	** Rating A : Acceptable M : Minimally Acceptable U : Unacceptable	N : Not Inspected/Rated C : Corrected A/W : Acceptable but Monitor & Maintain	+ Issue Type Ma : Maintenance Deficiency Ob : Design & System Obsolescence En : Enforcement
--	--	---	---

**Flood Control Project Maintenance
Levee Inspections**

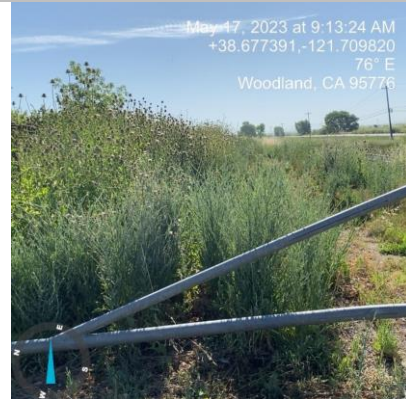
Levee Inspection Report By Mile - Spring 2023

Reclamation District No. 2035 Conaway

Waterway	Bank	Unit Miles	Inspection Start/End	Inspector
Unit No. 01 Cache Creek Settling Basin	Right	2.01	05/17/2023 05/17/2023	Nate Hicks

LM Start	0.00	Rating **	U	Issue No.	2
LM End	2.01	Issue Type +	Ma	Location *	CR
Category	Earthen Levee			GPS Latitude/Longitude	
				Start	End
Item	Vegetation			38.677367°	38.677165°
				-121.709898°	-121.672717°
DWR ID	DWR_RD2035_01_s_2022_2				
Comment Code					
V1 : Control annual grass and weeds on the levee slopes and easements.					
Inspector Comment					

Photo 1 of 1 : SP_2022_RD2035_238_2_20230517_00004.jpg



View of vegetation preventing access on the levee crown (Spring 2023).

LM Start	0.02	Rating **	A/W	Issue No.	1	
LM End	0.02	Issue Type +	Ma	Location *		
Category	Supplemental			GPS Latitude/Longitude		
				Start	End	
Item	DWR UCIP LMA Responsibility			38.677377°	38.677377°	
				-121.709487°	-121.709487°	
DWR ID	17814					
Comment Code						
Inspector Comment						
DS_ID:17814 FS_ID:77644 EP_NO: 10127 Repair Type: No Action Needed EVAL Issue: Crossing Status: Found UCIP Comments: 03/09/2022 The record has been update from No Action Needed to Non Urgent. The structure appears to be in good condition. (M. Thao - DWR UCIP)08/16/2019 Pending update... record will be updated in 2020. (O. Magana - DWR UCIP) FIELD_STRUCT_DESC: 42-inch concrete encased corrugated metal drainage pipe through the levee, 10 feet below the crown. Flap gate on the waterside (WS) end. Grouted spillway on the WS. Pipe exposed on the landside (LS). (36-inch pipe [HLM 0.02] authorized under Automatic Board Order (ABO) issued as Permit No. 10127, 1974 - City of Woodland, Department of Public Works). [Additional Reference(s): DWR Levee Log, 1990 (HLM 0.02). USACE Sacramento O&M Manual, Unit 126, November 1961, Revised 29 December 2016, (HLM 0.01), listed as 42-inch CMP 5.5 feet below the crown. USACE As-Built Drawing No. 50-04-3227, January 1960, Sheet 33, STA 775+14, listed as 42-inch concrete pipe encased in concrete conduit]. FS Date: 3/9/2022						

Photo 1 of 3 : UCIP_SP_2022_77644_107275.jpg



Levee crown looking downstream.

* Location LS: Land Side N/A: Not Applicable WS: Water Side CR: Crown	** Rating A: Acceptable M: Minimally Acceptable U: Unacceptable	N: Not Inspected/Rated C: Corrected A/W: Acceptable but Monitor & Maintain	+ Issue Type Ma: Maintenance Deficiency Ob: Design & System Obsolescence En: Enforcement
--	---	--	--

**Flood Control Project Maintenance
Levee Inspections**

Levee Inspection Report By Mile - Spring 2023

Reclamation District No. 2035 Conaway

Waterway	Bank	Unit Miles	Inspection Start/End	Inspector
Unit No. 01 Cache Creek Settling Basin	Right	2.01	05/17/2023 05/17/2023	Nate Hicks

LM Start	0.02	Rating **	A/W	Issue No.	1 (cont)
LM End	0.02	Issue Type +	Ma	Location *	
Category	Supplemental		GPS Latitude/Longitude		
			Start	End	
Item	DWR UCIP LMA Responsibility		38.677377°	38.677377°	
			-121.709487°	-121.709487°	
DWR ID	17814				

Photo 2 of 3 : UCIP_SP_2022_77644_107276.jpg



LS view: Concrete encased pipe.

LM Start	0.02	Rating **	A/W	Issue No.	1 (cont)
LM End	0.02	Issue Type +	Ma	Location *	

Photo 3 of 3 : UCIP_SP_2022_77644_107277.jpg



WS view: Flap gate and spillway on WS toe (view facing levee from WS).

* Location LS : Land Side N/A : Not Applicable WS : Water Side CR : Crown	** Rating A : Acceptable M : Minimally Acceptable U : Unacceptable	N : Not Inspected/Rated C : Corrected A/W : Acceptable but Monitor & Maintain	+ Issue Type Ma : Maintenance Deficiency Ob : Design & System Obsolescence En : Enforcement
--	--	---	---

**Flood Control Project Maintenance
Levee Inspections
Unit Cover Sheet**

Reclamation District No. 2035 Conaway

Waterway			Bank	Unit Miles
Unit No. 02 Yolo Bypass			Right	7.63
	Spring (March - May)	Summer (June - August)	(September - November) Fall	Winter (December - February)
Unit Maintenance Rating (Fall Only)				
Date of Inspection	5/17/2023 - 5/17/2023			
DWR Inspector	Nate Hicks			
Accompanied By	Jesse Clark RD 2035			

Summer & Winter Inspections

The Local Maintaining Agency (LMA) is responsible for summer and winter inspections. The LMA is required to submit a report regarding summer and winter inspections to the California Department of Water Resources (DWR).

DWR must be informed on the:

- a) completion of the inspection
- b) any changes other than the results of normal maintenance
- c) corrections to deficiencies noted in this report

If additional items are noted, further documentation of those items must also be submitted.

The LMA should submit this information to DWR using the LMA web application tool available at:

<http://cdec.water.ca.gov/lma.html>

If the LMA is unable to submit information on this webpage, please contact DWR for assistance.

The LMA should submit the information and any associated documentation by September 30 for summer inspections and March 31 for winter inspections.

**Flood Control Project Maintenance
Levee Inspections**

Levee Inspection Report By Mile - Spring 2023

Reclamation District No. 2035 Conaway

Waterway	Bank	Unit Miles	Inspection Start/End	Inspector
Unit No. 02 Yolo Bypass	Right	7.63	05/17/2023 05/17/2023	Nate Hicks

LM Start	0.06	Rating **	U	Issue No.	9
LM End	7.60	Issue Type +	Ma	Location *	LS
Category	Earthen Levee			GPS Latitude/Longitude	
				Start	End
Item	Vegetation			38.676359 °	38.575468 °
				-121.672514 °	-121.635069 °
DWR ID	DWR_RD2035_02_s_2023_9				
Comment Code					
V1 : Control annual grass and weeds on the levee slopes and easements.					
Inspector Comment					

Photo 1 of 1 : SP_2023_RD2035_239_9_20230517_00028.jpg



View of vegetation on the landside slope (Spring 2023).

LM Start	0.06	Rating **	U	Issue No.	17
LM End	7.60	Issue Type +	Ma	Location *	WS
Category	Earthen Levee			GPS Latitude/Longitude	
				Start	End
Item	Vegetation			38.676354°	38.575468°
				-121.672510°	-121.635069°
DWR ID	DWR_RD2035_02_s_2023_17				
Comment Code					
V1 : Control annual grass and weeds on the levee slopes and easements.					
Inspector Comment					

Photo 1 of 1 : SP_2023_RD2035_239_17_20230517_00029.jpg



View of vegetation on the waterside slope (Spring 2023).

* Location LS : Land Side N/A : Not Applicable WS : Water Side CR : Crown	** Rating A : Acceptable M : Minimally Acceptable U : Unacceptable	N : Not Inspected/Rated C : Corrected A/W : Acceptable but Monitor & Maintain	+ Issue Type Ma : Maintenance Deficiency Ob : Design & System Obsolescence En : Enforcement
--	--	---	---

**Flood Control Project Maintenance
Levee Inspections**

Levee Inspection Report By Mile - Spring 2023

Reclamation District No. 2035 Conaway

Waterway	Bank	Unit Miles	Inspection Start/End	Inspector
Unit No. 02 Yolo Bypass	Right	7.63	05/17/2023 05/17/2023	Nate Hicks

LM Start	0.38	Rating **	U	Issue No.	1	
LM End	0.38	Issue Type +	Ma	Location *		
Category	Supplemental			GPS Latitude/Longitude		
				Start	End	
Item	DWR UCIP LMA Responsibility			38.671813°	38.671813°	
				-121.671581°	-121.671581°	
DWR ID	17822					
Comment Code						
Inspector Comment						
DS_ID:17822 FS_ID:78134 EP_NO: N/A Repair Type: Urgent EVAL Issue: 3a, Flood Risk Crossing Status: Found UCIP Comments: 02/15/2022 The record remains Urgent. Flap gate on WS was partially submerged at the time of inspection, so unable to confirm if the broken flap gate noted in 2013 has been repaired. No permit has been identified authorizing pipe. (Mike T. - DWR UCIP)08/16/2019 Pending update... record will be updated in 2020. (O. Magana - DWR UCIP)10/30/2018 Same as last inspection. Flap gate on the WS was submerged at the time of the inspection. Erosion is still present behind the headwall. Sink hole/burrow activity was observed along the concrete box located on the LS. Recommend internal inspection of the pipe section through levee to determine the condition of the pipe through the levee. Crossing remains Urgent due to signs of pipe leakage on LS. (O. Magana - DWR UCIP)09/14/2016 - Flap gate on the WS was submerged at time of inspection. LS headwall at the pumping plant has exposed rebar. There is still erosion present behind the headwall. However, water was present making it difficult to determine if it is getting worse. As-built drawings were requested from LMA consultant representative. (T. Hatch/UCIP)04/02/2013 - Flap gate broken in half on WS toe. Some erosion at headwalls on pumping plant. (W. Wylie/UCIP) FIELD_STRUCT_DESC: 44-inch corrugated metal drainage pipe through the levee, 22 feet below the crown. Pump on platform in drainage ditch at the landside (LS) toe. Slide gate and flap gates in a 5-foot by 9-foot concrete box. Flap gate on the waterside (WS) toe. 8-inch vent/standpipe at the WS toe. [Additional Reference(s): DWR Levee Log, 1990 (HLM 0.37), listed as 48-inch corrugated metal pipe. USACE Sacramento O&M Manual 121, May 1959, Revised 23 November 2021, (HLM 0.4), listed as 4-foot by 4-foot concrete culvert]. FS Date: 2/15/2022						

Photo 1 of 2 : UCIP_SP_2023_78134_106894.jpg



WS view: Pipe with vent riser on toe.

* Location LS: Land Side N/A: Not Applicable WS: Water Side CR: Crown	** Rating A: Acceptable M: Minimally Acceptable U: Unacceptable	N: Not Inspected/Rated C: Corrected A/W: Acceptable but Monitor & Maintain	+ Issue Type Ma: Maintenance Deficiency Ob: Design & System Obsolescence En: Enforcement
--	---	--	--

**Flood Control Project Maintenance
Levee Inspections**

Levee Inspection Report By Mile - Spring 2023

Reclamation District No. 2035 Conaway

Waterway	Bank	Unit Miles	Inspection Start/End	Inspector
Unit No. 02 Yolo Bypass	Right	7.63	05/17/2023 05/17/2023	Nate Hicks

LM Start	0.38	Rating **	U	Issue No.	1 (cont)
LM End	0.38	Issue Type +	Ma	Location *	
Category	Supplemental		GPS Latitude/Longitude		
			Start	End	
Item	DWR UCIP LMA Responsibility		38.671813°	38.671813°	
			-121.671581°	-121.671581°	
DWR ID	17822				

Photo 2 of 2 : UCIP_SP_2023_78134_106895.jpg



WS view: Pipe outlet with flap gate; unable to determine if flap gate has been repaired.

LM Start	1.20	Rating **	A/W	Issue No.	11
LM End	1.24	Issue Type +	Ma	Location *	WS
Category	Supplemental			GPS Latitude/Longitude	
				Start	End
Item	2018 USACE Erosion Survey			38.660050°	38.659465°
				-121.669028°	-121.668940°
DWR ID	DWR_RD2035_02_f_2018_11				
Comment Code					
Inspector Comment					
2018 Site ID: YOL 1.2 R					
Status: Eroding					
2018 Field Notes: Last observed in 2017.					
Site History: 2011 - Small sections of slumping, likely from wind wave.					
2017 - Small amount of toe erosion.					

Photo 1 of 1 : SP_2023_RD2035_239_11_20230516_00002.jpg



View of erosion on the waterside slope. Fall 2022.

* Location LS: Land Side N/A: Not Applicable WS: Water Side CR: Crown	** Rating A: Acceptable M: Minimally Acceptable U: Unacceptable	N: Not Inspected/Rated C: Corrected A/W: Acceptable but Monitor & Maintain	+ Issue Type Ma: Maintenance Deficiency Ob: Design & System Obsolescence En: Enforcement
--	---	---	--

**Flood Control Project Maintenance
Levee Inspections**

Levee Inspection Report By Mile - Spring 2023

Reclamation District No. 2035 Conaway

Waterway	Bank	Unit Miles	Inspection Start/End	Inspector
Unit No. 02 Yolo Bypass	Right	7.63	05/17/2023 05/17/2023	Nate Hicks

LM Start	1.71	Rating **	U	Issue No.	2
LM End	1.71	Issue Type +	En	Location *	
Category	Supplemental			GPS Latitude/Longitude	
				Start	End
Item	DWR UCIP Field Study			38.652715°	38.652715°
				-121.667773°	-121.667773°
DWR ID	17825				

Comment Code

Inspector Comment

DS_ID:17825
FS_ID:78230
EP_NO: N/A
Repair Type: Urgent
EVAL Issue: 1, Pipe Integrity
Crossing Status: Found
UCIP Comments: 02/15/2022 The record has been updated from No Action Needed to Urgent. DWR DMP internal inspection has found pipe integrity issues. LOF of crossing is greater than or equal to 5 and less than 6. Crossing will be monitored until funding becomes available to address the issues. A sinkhole, approximately 1.5-foot in diameter and 0.5-foot deep, was observed approximately 20 feet of the LS toe. The concrete well on the WS well did not have a cover causing a safety hazard. No permit has been identified authorizing the pipe. (M. Thao - DWR UCIP)08/16/2019 Pending update... record will be updated in 2020. (O. Magana - DWR UCIP)
FIELD_STRUCT_DESC: 48-inch corrugated metal irrigation pipe through the levee, 16 feet below the crown. Slide gate in a concrete well on the waterside (WS) slope. Concrete headwall and intake off the landside (LS) toe. Bank revetted with concrete rubble. [Additional Reference(s): DWR Levee Log, 1990 (HLM 1.69). USACE Sacramento O&M Manual 121, May 1959, Revised 23 November 2021, (HLM 1.8), listed as 48-inch pipe].
FS Date: 2/15/2022

LM Start	1.71	Rating **	U	Issue No.	2 (cont)
LM End	1.71	Issue Type +	En	Location *	

Photo 1 of 2 : UCIP_SP_2023_78230_106907.jpg



LS view: Sinkhole located approximately 20 feet off toe.

Photo 2 of 2 : UCIP_SP_2023_78230_106908.jpg



LS view: Close-up view of sinkhole, approximately 1.5-foot in diameter and 0.5-foot deep, located approximately 20 off toe.

* Location LS: Land Side WS: Water Side CR: Crown	** Rating A: Acceptable M: Minimally Acceptable U: Unacceptable	N: Not Inspected/Rated C: Corrected A/W: Acceptable but Monitor & Maintain	+ Issue Type Ma: Maintenance Deficiency Ob: Design & System Obsolescence En: Enforcement
---	---	---	--

**Flood Control Project Maintenance
Levee Inspections**

Levee Inspection Report By Mile - Spring 2023

Reclamation District No. 2035 Conaway

Waterway	Bank	Unit Miles	Inspection Start/End	Inspector
Unit No. 02 Yolo Bypass	Right	7.63	05/17/2023 05/17/2023	Nate Hicks

LM Start	1.98	Rating **	A/W	Issue No.	12
LM End	2.03	Issue Type +	Ma	Location *	WS
Category	Supplemental			GPS Latitude/Longitude	
				Start	End
Item	2018 USACE Erosion Survey			38.648881°	38.648178°
				-121.666653°	-121.666385°
DWR ID	DWR_RD2035_02_f_2020_12				
Comment Code					
Inspector Comment					
2018 Site ID: YOL 2.0 R					
Status: Eroding					
2018 Field Notes: Last observed in 2017.					
Site History: 2006 - Wave wash erosion and some saturation slumping occurring. Tension/separation cracks evident in fine grained levee slope materials. 2011 - Small sections of slumping lower bank, just downstream of bank rock. 2016 - New cracks observed at the midslope. 2017 - Toe continues to erode.					

Photo 1 of 1 : SP_2023_RD2035_239_12_20230516_00003.jpg



View of erosion on the waterside slope. Fall 2022.

LM Start	2.15	Rating **	M	Issue No.	3	
LM End	2.15	Issue Type +	Ma	Location *		
Category	Supplemental			GPS Latitude/Longitude		
				Start	End	
Item	DWR UCIP LMA Responsibility			38.646445°	38.646445°	
				-121.666423°	-121.666423°	
DWR ID	17833					
Comment Code						
Inspector Comment						
DS_ID:17833 FS_ID:78206 EP_NO: N/A Repair Type: Non-Urgent EVAL Issue: Crossing Status: Found UCIP Comments: 02/15/2022 The record was updated from No Action Needed to Non-Urgent due to no permit authorizing the encroachment. Overall, the structure was observed to be in good condition with typical weather behind the headwall on the LS. (M. Thao - DWR UCIP) FIELD_STRUCT_DESC: 1 of 2: 60-inch drainage pipe of an unknown material through the levee, 26 feet below the crown. Concrete well and gate structure on the waterside (WS) slope. [Additional Reference(s): DWR Levee Log, 1990 (HLM 2.13). USACE Sacramento O&M Manual 121, May 1959, Revised 23 November 2021, (HLM 2.3), listed as 6-foot by 6-foot concrete culvert]. FS Date: 2/15/2022						

Photo 1 of 3 : UCIP_SP_2023_78206_107030.jpg



Levee crown looking downstream.

* Location LS: Land Side N/A: Not Applicable WS: Water Side CR: Crown	** Rating A: Acceptable M: Minimally Acceptable U: Unacceptable	N: Not Inspected/Rated C: Corrected A/W: Acceptable but Monitor & Maintain	+ Issue Type Ma: Maintenance Deficiency Ob: Design & System Obsolescence En: Enforcement
--	---	--	--

**Flood Control Project Maintenance
Levee Inspections**

Levee Inspection Report By Mile - Spring 2023

Reclamation District No. 2035 Conaway

Waterway	Bank	Unit Miles	Inspection Start/End	Inspector
Unit No. 02 Yolo Bypass	Right	7.63	05/17/2023 05/17/2023	Nate Hicks

LM Start	2.15	Rating **	M	Issue No.	3 (cont)	
LM End	2.15	Issue Type +	Ma	Location *		
Category	Supplemental			GPS Latitude/Longitude		
				Start	End	
Item	DWR UCIP LMA Responsibility			38.646445°	38.646445°	
				-121.666423°	-121.666423°	
DWR ID	17833					

Photo 2 of 3 : UCIP_SP_2023_78206_107032.jpg



LS view: Pipe intake headwall.

LM Start	2.15	Rating **	M	Issue No.	3 (cont)
LM End	2.15	Issue Type +	Ma	Location *	

Photo 3 of 3 : UCIP_SP_2023_78206_107031.jpg



WS view: Slide gate operators and concrete vault on WS slope.

* Location LS : Land Side N/A : Not Applicable WS : Water Side CR : Crown	** Rating A : Acceptable M : Minimally Acceptable U : Unacceptable	N : Not Inspected/Rated C : Corrected A/W : Acceptable but Monitor & Maintain	+ Issue Type Ma : Maintenance Deficiency Ob : Design & System Obsolescence En : Enforcement
--	--	---	---

**Flood Control Project Maintenance
Levee Inspections**

Levee Inspection Report By Mile - Spring 2023

Reclamation District No. 2035 Conaway

Waterway	Bank	Unit Miles	Inspection Start/End	Inspector
Unit No. 02 Yolo Bypass	Right	7.63	05/17/2023 05/17/2023	Nate Hicks

LM Start	2.15	Rating **	A/W	Issue No.	4	
LM End	2.15	Issue Type +	Ma	Location *		
Category	Supplemental			GPS Latitude/Longitude		
				Start	End	
Item	DWR UCIP LMA Responsibility			38.646425 °	38.646425 °	
				-121.666421 °	-121.666421 °	
DWR ID	17877					
Comment Code						
Inspector Comment						
DS_ID:17877						
FS_ID:78205						
EP_NO: N/A						
Repair Type: No Action Needed						
EVAL Issue:						
Crossing Status: Found						
UCIP Comments: 02/15/2022 The record was updated from No Action						
Needed to Non-Urgent due to no permit authorizing the encroachment.						
Overall, the structure was observed to be in good condition with typical						
weather behind the headwall on the LS. (M. Thao - DWR UCIP)						
FIELD_STRUCT_DESC: 2 of 2: 60-inch drainage pipe of an unknown						
material through the levee, 26 feet below the crown. Concrete well and						
gate structure on the waterside (WS) slope. Concrete headwalls on both						
ends. [Additional Reference(s): DWR Levee Log, 1990 (HLM 2.13).						
USACE Sacramento O&M Manual 121, May 1959, Revised 23						
November 2021, (HLM 2.3), listed as 6-foot by 6-foot concrete culvert].						
FS Date: 2/15/2022						

LM Start	2.15	Rating **	A/W	Issue No.	4 (cont)
LM End	2.15	Issue Type +	Ma	Location *	

Photo 1 of 3 : UCIP_SP_2023_78205_107033.jpg



Levee crown looking downstream.

Photo 2 of 3 : UCIP_SP_2023_78205_107035.jpg



LS view: Pipe intake headwall.

* Location LS : Land Side N/A : Not Applicable WS : Water Side CR : Crown	** Rating A : Acceptable M : Minimally Acceptable U : Unacceptable	N : Not Inspected/Rated C : Corrected A/W : Acceptable but Monitor & Maintain	+ Issue Type Ma : Maintenance Deficiency Ob : Design & System Obsolescence En : Enforcement
--	--	---	---

**Flood Control Project Maintenance
Levee Inspections**

Levee Inspection Report By Mile - Spring 2023

Reclamation District No. 2035 Conaway

Waterway	Bank	Unit Miles	Inspection Start/End	Inspector
Unit No. 02 Yolo Bypass	Right	7.63	05/17/2023 05/17/2023	Nate Hicks

LM Start	2.15	Rating **	A/W	Issue No.	4 (cont)
LM End	2.15	Issue Type +	Ma	Location *	
Category	Supplemental			GPS Latitude/Longitude	
				Start	End
Item	DWR UCIP LMA Responsibility			38.646425 °	38.646425 °
				-121.666421 °	-121.666421 °
DWR ID	17877				

Photo 3 of 3 : UCIP_SP_2023_78205_107034.jpg



WS view: Slide gate operators and concrete vault on WS slope.

LM Start	2.18	Rating **	M	Issue No.	979
LM End	4.02	Issue Type +	En	Location *	LS
Category	Earthen Levee			GPS Latitude/Longitude	
				Start	End
Item	Encroachments			38.646063 °	38.623062 °
				-121.666332 °	-121.648925 °
DWR ID	DWR_RD2035_02_s_2012_979				
Comment Code					
DT : Ditch					
Inspector Comment					
A ditch is located at the landside toe of the levee.					

Photo 1 of 1 : SP_2023_RD2035_239_979_20230516_00008.jpg

View of the ditch on the landward side of the levee looking downstream.
Fall 2016.

* Location LS : Land Side N/A : Not Applicable WS : Water Side CR : Crown	** Rating A : Acceptable M : Minimally Acceptable U : Unacceptable	N : Not Inspected/Rated C : Corrected A/W : Acceptable but Monitor & Maintain	+ Issue Type Ma : Maintenance Deficiency Ob : Design & System Obsolescence En : Enforcement
--	--	---	---

**Flood Control Project Maintenance
Levee Inspections**

Levee Inspection Report By Mile - Spring 2023

Reclamation District No. 2035 Conaway

Waterway	Bank	Unit Miles	Inspection Start/End	Inspector
Unit No. 02 Yolo Bypass	Right	7.63	05/17/2023 05/17/2023	Nate Hicks

LM Start	2.26	Rating **	A/W	Issue No.	13
LM End	2.60	Issue Type +	Ma	Location *	WS
Category	Supplemental			GPS Latitude/Longitude	
				Start	End
Item	2018 USACE Erosion Survey			38.645319°	38.640997°
				-121.665089°	-121.661878°
DWR ID	DWR_RD2035_02_f_2018_13				
Comment Code					
Inspector Comment					
2018 Site ID: YOL 2.3 R					
Status: Eroding					
2018 Field Notes: Last observed in 2017.					
Site History: 2011 - Erosion from wind waves along entire length of the levee toe. Several sections of slumping bank along the toe. 2016 - Fresh cracks observed. 2017 - Minor new toe erosion.					

No Photos

LM Start	2.78	Rating **	A/W	Issue No.	14
LM End	3.26	Issue Type +	Ma	Location *	WS
Category	Supplemental			GPS Latitude/Longitude	
				Start	End
Item	2018 USACE Erosion Survey			38.638731°	38.632783°
				-121.660247°	-121.655864°
DWR ID	DWR_RD2035_02_f_2018_14				
Comment Code					
Inspector Comment					
2018 Site ID: YOL 2.8 R					
Status: Eroding					
2018 Field Notes: Last observed in 2017.					
Site History: 2011 - Wave wash erosion and several sections of slumping bank along the toe. 2017 - Erosion creeps further into the levee toe.					

Photo 1 of 1 : SP_2023_RD2035_239_14_20230516_00004.jpg



View of erosion at the waterside toe. Spring 2022.

* Location LS : Land Side N/A : Not Applicable WS : Water Side CR : Crown	** Rating A : Acceptable M : Minimally Acceptable U : Unacceptable	N : Not Inspected/Rated C : Corrected A/W : Acceptable but Monitor & Maintain	+ Issue Type Ma : Maintenance Deficiency Ob : Design & System Obsolescence En : Enforcement
--	--	---	---

**Flood Control Project Maintenance
Levee Inspections**

Levee Inspection Report By Mile - Spring 2023

Reclamation District No. 2035 Conaway

Waterway	Bank	Unit Miles	Inspection Start/End	Inspector
Unit No. 02 Yolo Bypass	Right	7.63	05/17/2023 05/17/2023	Nate Hicks

LM Start	2.79	Rating **	M	Issue No.	19
LM End	2.79	Issue Type +	Ma	Location *	WS
Category	Earthen Levee			GPS Latitude/Longitude	
				Start	End
Item	Erosion / Bank Caving			38.638511°	38.638511°
				-121.660277°	-121.660277°
DWR ID	DWR_RD2035_02_f _ 2020_19				
Comment Code					
E2 : Schedule repair of erosion site prior to the next inspection.					
Inspector Comment					
Erosion on the waterside toe.					

Photo 1 of 1 : SP_2023_RD2035_239_19_20230516_00007.jpg



View of erosion on the waterside slope near the toe. Fall 2020.

LM Start	3.04	Rating **	C	Issue No.	25
LM End	3.05	Issue Type +	Ma	Location *	CR
Category	Earthen Levee			GPS Latitude/Longitude	
				Start	End
Item	Cracking			38.635443°	38.635273°
				-121.658027°	-121.657906°
DWR ID	DWR_RD2035_02_f _ 2022_25				
Comment Code					
CR1 : Monitor and have inspected by geotechnical engineer.					
Inspector Comment					
Corrected.					

No Photos

LM Start	3.42	Rating **	M	Issue No.	18
LM End	3.42	Issue Type +	Ma	Location *	WS
Category	Earthen Levee			GPS Latitude/Longitude	
				Start	End
Item	Erosion / Bank Caving			38.630657°	38.630657°
				-121.654502°	-121.654502°
DWR ID	DWR_RD2035_02_s_2020_18				
Comment Code					
E2 : Schedule repair of erosion site prior to the next inspection.					
Inspector Comment					
Erosion at the waterside toe.					

Photo 1 of 1 : SP_2023_RD2035_239_18_20230516_00006.jpg



View of erosion at waterside toe. Spring 2021.

* Location LS : Land Side N/A : Not Applicable WS : Water Side CR : Crown		** Rating A : Acceptable M : Minimally Acceptable U : Unacceptable		+ Issue Type Ma : Maintenance Deficiency Ob : Design & System Obsolescence En : Enforcement	
		N : Not Inspected/Rated C : Corrected A/W : Acceptable but Monitor & Maintain			

**Flood Control Project Maintenance
Levee Inspections**

Levee Inspection Report By Mile - Spring 2023

Reclamation District No. 2035 Conaway

Waterway	Bank	Unit Miles	Inspection Start/End	Inspector
Unit No. 02 Yolo Bypass	Right	7.63	05/17/2023 05/17/2023	Nate Hicks

LM Start	3.70	Rating **	M	Issue No.	15
LM End	3.99	Issue Type +	Ma	Location *	WS
Category	Supplemental			GPS Latitude/Longitude	
				Start	End
Item	2018 USACE Erosion Survey			38.627145°	38.623533°
				-121.651820°	-121.649176°
DWR ID	DWR_RD2035_02_f_2018_15				
Comment Code					
Inspector Comment					
2018 Site ID: YOL 3.5 R					
Status: Eroding					
2018 Field Notes: Last observed in 2011. Access issues prevented inspection in 2017.					
Site History: 2016 - Erosion observed at levee toe.					

Photo 1 of 1 : SP_2023_RD2035_239_15_20230516_00005.jpg



View of erosion on the waterside slope. Fall 2022.

LM Start	4.09	Rating **	A/W	Issue No.	16
LM End	4.41	Issue Type +	Ma	Location *	WS
Category	Supplemental			GPS Latitude/Longitude	
				Start	End
Item	2018 USACE Erosion Survey			38.622224°	38.618302°
				-121.648201°	-121.645296°
DWR ID	DWR_RD2035_02_f_2018_16				
Comment Code					
Inspector Comment					
2018 Site ID: YOL 4.2 R					
Status: Eroding					
2018 Field Notes: Last observed in 2017.					
Site History: 2006 - Wave wash erosion and some saturation slumping occurring. Several small scallops present in lower levee slope/toe due to saturation slumping. Tension/separation cracks evident in finegrained levee slope materials. 2011 - Small pockets of erosion throughout the site. Site formerly called 3.8.					

No Photos

* Location LS : Land Side N/A : Not Applicable WS : Water Side CR : Crown	** Rating A : Acceptable M : Minimally Acceptable U : Unacceptable	N : Not Inspected/Rated C : Corrected A/W : Acceptable but Monitor & Maintain	+ Issue Type Ma : Maintenance Deficiency Ob : Design & System Obsolescence En : Enforcement
--	--	---	---

**Flood Control Project Maintenance
Levee Inspections**

Levee Inspection Report By Mile - Spring 2023

Reclamation District No. 2035 Conaway

Waterway	Bank	Unit Miles	Inspection Start/End	Inspector
Unit No. 02 Yolo Bypass	Right	7.63	05/17/2023 05/17/2023	Nate Hicks

LM Start	4.41	Rating **	M	Issue No.	5	
LM End	4.41	Issue Type +	En	Location *		
Category	Supplemental			GPS Latitude/Longitude		
				Start	End	
Item	DWR UCIP Field Study			38.618215°	38.618215°	
				-121.645363°	-121.645363°	
DWR ID	17869					
Comment Code						
Inspector Comment						
DS_ID:17869 FS_ID:72251 EP_NO: 15563 Repair Type: Non-Urgent EVAL Issue: 4b, Safety Issue Crossing Status: Found UCIP Comments: 02/15/2022 The record was updated from No Action Needed to Non-Urgent. There was no cover on the riser causing a safety hazard. Inspection of the pipe outlet was limited due to the dense vegetation and water present. This pipe replaces DSID 17827. (M. Thao - DWR UCIP) FIELD_STRUCT_DESC: 48-inch corrugated metal dual-purpose pipe through the levee, 16.5 feet below the crown. Slide gate in a 60-inch steel riser on the waterside (WS). Concrete headwalls on both ends. This pipe was installed to replace an existing 48-inch pipe at the same location. (48-inch pipe authorized under Permit No. 15563, 1990 - Reclamation District No. 2035, existing pipe removed). FS Date: 2/15/2022						

Photo 1 of 1 : UCIP_SP_2023_72251_107044.jpg



WS view: Steel riser with no cover and slide gate on the slope.

* Location LS: Land Side N/A: Not Applicable WS: Water Side CR: Crown	** Rating A: Acceptable M: Minimally Acceptable U: Unacceptable N: Not Inspected/Rated C: Corrected A/W: Acceptable but Monitor & Maintain	+ Issue Type Ma: Maintenance Deficiency Ob: Design & System Obsolescence En: Enforcement
--	---	--

**Flood Control Project Maintenance
Levee Inspections**

Levee Inspection Report By Mile - Spring 2023

Reclamation District No. 2035 Conaway

Waterway	Bank	Unit Miles	Inspection Start/End	Inspector
Unit No. 02 Yolo Bypass	Right	7.63	05/17/2023 05/17/2023	Nate Hicks

LM Start	4.43	Rating **	U	Issue No.	6
LM End	4.43	Issue Type +	En	Location *	
Category	Supplemental			GPS Latitude/Longitude	
				Start	End
Item	DWR UCIP Field Study			38.618030°	38.618030°
				-121.645192°	-121.645192°
DWR ID	17828				
Comment Code					
Inspector Comment					
DS_ID:17828 FS_ID:78211 EP_NO: 1701 Repair Type: Urgent EVAL Issue: 2b, Levee Integrity Crossing Status: Found UCIP Comments: 02/15/2022 The record has been updated from Non-Urgent to Urgent. More than 1/2-foot displacement above the pipe alignment on the WS slope was observed. There was no cover on the CMP riser causing a safety hazard. (M. Thao - DWR UCIP)04/03/2013 Animal activity at outlet causing damage to berm and undermining the pipe at the outlet headwall on WS toe. (W. Wylie - DWR UCIP) FIELD_STRUCT_DESC: 60-inch corrugated metal drainage pipe encased in 6 inches of reinforced concrete through the levee, 20.6 feet below the crown. Slide gate in a 7-foot-diameter corrugated metal pipe (CMP) riser on the waterside (WS) slope. Pumping plant with 6 pumps and pipes that discharge into a 4-foot by 18-foot surge box on the landside (LS) toe. (drainage pumping plant, 60-inch pipe, authorized under Permit No. 1701, 1952 - Reclamation District No. 2035). [Additional Reference(s): DWR Levee Log, 1990 (HLM 4.39). USACE Sacramento O&M Manual 121, May 1959, Revised 23 November 2021, (HLM 4.7), listed as 60-inch pipe]. FS Date: 2/15/2022					

LM Start	4.43	Rating **	U	Issue No.	6 (cont)
LM End	4.43	Issue Type +	En	Location *	

Photo 1 of 2 : UCIP_SP_2023_78211_107049.jpg



WS view: CMP riser with no cover and slide gate on the slope.

Photo 2 of 2 : UCIP_SP_2023_78211_107051.jpg



WS view: More than 1/2-foot of erosion above pipe alignment.

* Location LS : Land Side N/A : Not Applicable WS : Water Side CR : Crown	** Rating A : Acceptable M : Minimally Acceptable U : Unacceptable	N : Not Inspected/Rated C : Corrected A/W : Acceptable but Monitor & Maintain	+ Issue Type Ma : Maintenance Deficiency Ob : Design & System Obsolescence En : Enforcement
--	--	---	---

**Flood Control Project Maintenance
Levee Inspections**

Levee Inspection Report By Mile - Spring 2023

Reclamation District No. 2035 Conaway

Waterway	Bank	Unit Miles	Inspection Start/End	Inspector
Unit No. 02 Yolo Bypass	Right	7.63	05/17/2023 05/17/2023	Nate Hicks

LM Start	4.43	Rating **	M	Issue No.	10
LM End	6.57	Issue Type +	En	Location *	LS
Category	Earthen Levee			GPS Latitude/Longitude	
				Start	End
Item	Encroachments			38.617921°	38.589619°
				-121.645109°	-121.631277°
DWR ID	DWR_RD2035_02_s_2013_10				
Comment Code					
DT : Ditch					
Inspector Comment					
A ditch is located at the landside levee toe.					

Photo 1 of 1 : SP_2023_RD2035_239_10_20230517_00030.jpg



View of the drainage ditch on the landward side of the levee looking downstream (Spring 2023).

LM Start	6.37	Rating **	C	Issue No.	20
LM End	6.37	Issue Type +	Ma	Location *	LS
Category	Earthen Levee			GPS Latitude/Longitude	
				Start	End
Item	Erosion / Bank Caving			38.592554°	38.592554°
				-121.631263°	-121.631263°
DWR ID	DWR_RD2035_02_f _ 2020_20				
Comment Code					
E1 : Note and monitor erosion site.					
Inspector Comment					
Corrected.					

No Photos

* Location LS : Land Side N/A : Not Applicable WS : Water Side CR : Crown	** Rating A : Acceptable M : Minimally Acceptable U : Unacceptable	N : Not Inspected/Rated C : Corrected A/W : Acceptable but Monitor & Maintain	+ Issue Type Ma : Maintenance Deficiency Ob : Design & System Obsolescence En : Enforcement
--	--	---	---

**Flood Control Project Maintenance
Levee Inspections**

Levee Inspection Report By Mile - Spring 2023

Reclamation District No. 2035 Conaway

Waterway	Bank	Unit Miles	Inspection Start/End	Inspector
Unit No. 02 Yolo Bypass	Right	7.63	05/17/2023 05/17/2023	Nate Hicks

LM Start	6.50	Rating **	M	Issue No.	7
LM End	6.50	Issue Type +	En	Location *	
Category	Supplemental			GPS Latitude/Longitude	
				Start	End
Item	DWR UCIP Field Study			38.590691°	38.590691°
				-121.631284°	-121.631284°
DWR ID	17868				
Comment Code					
Inspector Comment					
DS_ID:17868 FS_ID:72221 EP_NO: 16480 Repair Type: Non-Urgent EVAL Issue: 6, Levee Damage or Threat for Levee Damage Crossing Status: Found UCIP Comments: 02/17/2022 The record remains Non-Urgent. Erosion is still present on the sheet pile walls of the pumping plant. The erosion does not appear to pose an imminent threat to levee integrity since the erosion is off the LS toe. This pipe replaces DSID 17830. (M. Thao - DWR UCIP)09/14/2016 Erosion on the LS toe at the sheet pile walls for the pumping plant is still present. It does not appear to be significantly different than during the previous inspection. Erosion should be monitored, but at this time does not appear to result in a potential threat to levee integrity. (T. Hatch/UCIP)04/03/2013 Erosion on LS toe at pumping plant. Severe erosion of sheet pile walls at pumping plant. (W. Wylie/UCIP) FIELD_STRUCT_DESC: 1 of 2: 60-inch by 48-inch reinforced concrete box drainage culvert through the levee, 22 feet below the crown. Steel walkway to the slide gate handles on the waterside (WS) shoulder. 6-foot by 18-foot surge box and pumping plant on the landside (LS) toe. This culvert replaced a 48-inch at the same location. (construct two 60-inch concrete box drainage conduits and remove two 48-inch pipelines, work authorized under Permit No. 16480, 1995 - Conaway Conservancy Group and Reclamation District No. 2035). FS Date: 2/17/2022					

LM Start	6.50	Rating **	M	Issue No.	7 (cont)
LM End	6.50	Issue Type +	En	Location *	

Photo 1 of 3 : UCIP_SP_2023_72221_107058.jpg



LS view: Pumping plant off LS toe.

Photo 2 of 3 : UCIP_SP_2023_72221_107057.jpg



LS view: Erosion on the southern side of the pumping plant.

* Location LS: Land Side N/A: Not Applicable WS: Water Side CR: Crown	** Rating A: Acceptable M: Minimally Acceptable U: Unacceptable	N: Not Inspected/Rated C: Corrected A/W: Acceptable but Monitor & Maintain	+ Issue Type Ma: Maintenance Deficiency Ob: Design & System Obsolescence En: Enforcement
--	---	--	--

**Flood Control Project Maintenance
Levee Inspections**

Levee Inspection Report By Mile - Spring 2023

Reclamation District No. 2035 Conaway

Waterway	Bank	Unit Miles	Inspection Start/End	Inspector
Unit No. 02 Yolo Bypass	Right	7.63	05/17/2023 05/17/2023	Nate Hicks

LM Start	6.50	Rating **	M	Issue No.	7 (cont)	
LM End	6.50	Issue Type +	En	Location *		
Category	Supplemental			GPS Latitude/Longitude		
				Start	End	
Item	DWR UCIP Field Study			38.590691°	38.590691°	
				-121.631284°	-121.631284°	
DWR ID	17868					

Photo 3 of 3 : UCIP_SP_2023_72221_107059.jpg



LS view: Erosion on the northern side of the pumping plant.

LM Start	6.50	Rating **	M	Issue No.	8
LM End	6.50	Issue Type +	En	Location *	
Category	Supplemental			GPS Latitude/Longitude	
				Start	End
Item	DWR UCIP Field Study			38.590680°	38.590680°
				-121.631283°	-121.631283°
DWR ID	17891				

Comment Code

Inspector Comment

DS_ID:17891
 FS_ID:72220
 EP_NO: 16480
 Repair Type: Non-Urgent
 EVAL Issue: 6, Levee Damage or Threat for Levee Damage
 Crossing Status: Found
 UCIP Comments: 02/17/2022 The record remains Non-Urgent. Erosion is still present on the sheet pile walls of the pumping plant. The erosion does not appear to pose an imminent threat to levee integrity since the erosion is off the LS toe. This pipe replaces DSID 17884. (M. Thao - DWR UCIP)09/14/2016 Erosion is still present on the LS of the levee off the WS toe. This erosion should continue to be monitored, but does not appear to be a threat to levee integrity at this time. (T. Hatch/UCIP)04/02/2013 Severe erosion at pumping plant on LS toe. (W. Wylie/UCIP)
 FIELD_STRUCT_DESC: 2 of 2: 60-inch by 48-inch reinforced concrete box drainage culvert through the levee, 22 feet below the crown. Steel walkway to the slide gate handles on the waterside (WS) shoulder. 6-foot by 18-foot surge box and pumping plant on the landside (LS) toe. This culvert replaced a 48-inch at the same location. (construct two 60-inch concrete box drainage conduits and remove two 48-inch pipelines, work authorized under Permit No. 16480, 1995 - Conaway Conservancy Group and Reclamation District No. 2035).
 FS Date: 2/17/2022

Photo 1 of 3 : UCIP_SP_2023_72220_107066.jpg



LS view: Pumping plant off LS toe.

* Location LS : Land Side N/A : Not Applicable WS : Water Side CR : Crown		** Rating A : Acceptable M : Minimally Acceptable U : Unacceptable N : Not Inspected/Rated C : Corrected A/W : Acceptable but Monitor & Maintain		+ Issue Type Ma : Maintenance Deficiency Ob : Design & System Obsolescence En : Enforcement	
--	--	---	--	---	--

**Flood Control Project Maintenance
Levee Inspections**

Levee Inspection Report By Mile - Spring 2023

Reclamation District No. 2035 Conaway

Waterway	Bank	Unit Miles	Inspection Start/End	Inspector
Unit No. 02 Yolo Bypass	Right	7.63	05/17/2023 05/17/2023	Nate Hicks

LM Start	6.50	Rating **	M	Issue No.	8 (cont)
LM End	6.50	Issue Type +	En	Location *	
Category	Supplemental		GPS Latitude/Longitude		
			Start	End	
Item	DWR UCIP Field Study		38.590680 °	38.590680 °	
			-121.631283 °	-121.631283 °	
DWR ID	17891				

Photo 2 of 3 : UCIP_SP_2023_72220_107065.jpg



LS view: Erosion on the southern side of the pumping plant.

LM Start	6.50	Rating **	M	Issue No.	8 (cont)
LM End	6.50	Issue Type +	En	Location *	

Photo 3 of 3 : UCIP_SP_2023_72220_107067.jpg



LS view: Erosion on the northern side of the pumping plant.

* Location LS : Land Side N/A : Not Applicable WS : Water Side CR : Crown	** Rating A : Acceptable M : Minimally Acceptable U : Unacceptable N : Not Inspected/Rated C : Corrected A/W : Acceptable but Monitor & Maintain	+ Issue Type Ma : Maintenance Deficiency Ob : Design & System Obsolescence En : Enforcement
--	---	---

**Flood Control Project Maintenance
Levee Inspections
Unit Cover Sheet**

Reclamation District No. 2035 Conaway

Waterway			Bank	Unit Miles
Unit No. 03 Willow Slough Bypass			Left	2.51
	Spring (March - May)	Summer (June - August)	(September - November) Fall	Winter (December - February)
Unit Maintenance Rating (Fall Only)				
Date of Inspection	5/17/2023 - 5/17/2023			
DWR Inspector	Nate Hicks			
Accompanied By	Jesse Clark RD 2035			

Summer & Winter Inspections

The Local Maintaining Agency (LMA) is responsible for summer and winter inspections. The LMA is required to submit a report regarding summer and winter inspections to the California Department of Water Resources (DWR).

DWR must be informed on the:

- a) completion of the inspection
- b) any changes other than the results of normal maintenance
- c) corrections to deficiencies noted in this report

If additional items are noted, further documentation of those items must also be submitted.

The LMA should submit this information to DWR using the LMA web application tool available at:

<http://cdec.water.ca.gov/lma.html>

If the LMA is unable to submit information on this webpage, please contact DWR for assistance.

The LMA should submit the information and any associated documentation by September 30 for summer inspections and March 31 for winter inspections.

**Flood Control Project Maintenance
Levee Inspections**

Levee Inspection Report By Mile - Spring 2023

Reclamation District No. 2035 Conaway

Waterway	Bank	Unit Miles	Inspection Start/End	Inspector
Unit No. 03 Willow Slough Bypass	Left	2.51	05/17/2023 05/17/2023	Nate Hicks

LM Start	0.03	Rating **	U	Issue No.	6
LM End	2.51	Issue Type +	Ma	Location *	LS
Category	Earthen Levee			GPS Latitude/Longitude	
				Start	End
Item	Vegetation			38.575423°	38.590812°
				-121.636208°	-121.665138°
DWR ID	DWR_RD2035_03_s_2023_6				
Comment Code					
V1 : Control annual grass and weeds on the levee slopes and easements.					
Inspector Comment					

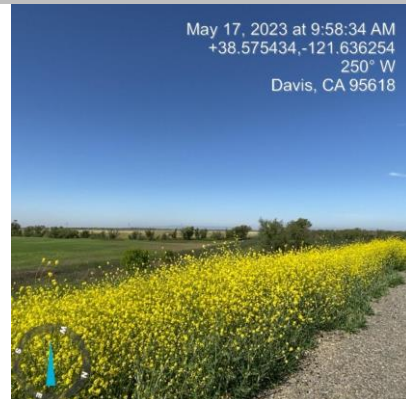
Photo 1 of 1 : SP_2023_RD2035_240_6_20230517_00010.jpg



View of vegetation on the landside slope (Spring 2023).

LM Start	0.03	Rating **	U	Issue No.	4
LM End	2.51	Issue Type +	Ma	Location *	WS
Category	Earthen Levee			GPS Latitude/Longitude	
				Start	End
Item	Vegetation			38.575418°	38.590815°
				-121.636216°	-121.665136°
DWR ID	DWR_RD2035_03_s_2023_4				
Comment Code					
V1 : Control annual grass and weeds on the levee slopes and easements.					
Inspector Comment					

Photo 1 of 1 : SP_2023_RD2035_240_4_20230517_00009.jpg



View of vegetation on waterside slope (Spring 2023).

LM Start	0.06	Rating **	M	Issue No.	973
LM End	2.16	Issue Type +	En	Location *	LS
Category	Earthen Levee			GPS Latitude/Longitude	
				Start	End
Item	Encroachments			38.575615°	38.590919°
				-121.636680°	-121.658682°
DWR ID	DWR_RD2035_03_s_2012_973				
Comment Code					
DT : Ditch					
Inspector Comment					

Photo 1 of 1 : SP_2023_RD2035_240_973_20230517_00002.jpg



View of the ditch at the landside toe. Fall 2021.

* Location LS : Land Side N/A : Not Applicable WS : Water Side CR : Crown		** Rating A : Acceptable M : Minimally Acceptable U : Unacceptable		+ Issue Type Ma : Maintenance Deficiency Ob : Design & System Obsolescence En : Enforcement	
		N : Not Inspected/Rated C : Corrected A/W : Acceptable but Monitor & Maintain			

**Flood Control Project Maintenance
Levee Inspections**

Levee Inspection Report By Mile - Spring 2023

Reclamation District No. 2035 Conaway

Waterway	Bank	Unit Miles	Inspection Start/End	Inspector
Unit No. 03 Willow Slough Bypass	Left	2.51	05/17/2023 05/17/2023	Nate Hicks

LM Start	1.39	Rating **	M	Issue No.	1	
LM End	1.39	Issue Type +	Ma	Location *		
Category	Supplemental			GPS Latitude/Longitude		
				Start	End	
Item	DWR UCIP LMA Responsibility			38.589425°	38.589425°	
				-121.645359°	-121.645359°	
DWR ID	17836					
Comment Code						
Inspector Comment						
DS_ID:17836 FS_ID:78554 EP_NO: N/A Repair Type: Non-Urgent EVAL Issue: 11, Maintenance Compliance Issue Crossing Status: Found UCIP Comments: 02/17/2022 The record remains Non-Urgent. No permit was found authorizing this encroachment. Inspection of pipe inlet was limited due to water present in the canal. Inspection of pipe outlet was limited due to excessive vegetation. Recommend removing vegetation at the outlet. No permit has been identified authorizing pipe. (M. Thao - DWR UCIP)04/03/2013 Need to clear vegetation and debris from WS at outlet. (W. Wylie - DWR UCIP) FIELD_STRUCT_DESC: 36-inch corrugated metal drainage pipe through the levee, 17.5 feet below the crown. Flap gate on the waterside (WS) end. Slide gate and concrete headwall on the landside (LS) end. [Additional Reference(s): DWR Levee Log, 1990 (HLM 1.38). USACE Sacramento O&M Manual Unit 120, June 1952, Revised 29 December 2016, (Station 327+75), listed as 36-inch pipe]. FS Date: 2/17/2022						

LM Start	1.39	Rating **	M	Issue No.	1 (cont)
LM End	1.39	Issue Type +	Ma	Location *	

Photo 1 of 2 : UCIP_SP_2023_78554_106711.jpg



WS view: Vegetated area blocks access to pipe outlet.

Photo 2 of 2 : UCIP_SP_2023_78554_18346.jpg



Vegetated area blocks access to WS of pipe.

* Location LS : Land Side N/A : Not Applicable WS : Water Side CR : Crown	** Rating A : Acceptable M : Minimally Acceptable U : Unacceptable	N : Not Inspected/Rated C : Corrected A/W : Acceptable but Monitor & Maintain	+ Issue Type Ma : Maintenance Deficiency Ob : Design & System Obsolescence En : Enforcement
--	--	---	---

**Flood Control Project Maintenance
Levee Inspections**

Levee Inspection Report By Mile - Spring 2023

Reclamation District No. 2035 Conaway

Waterway	Bank	Unit Miles	Inspection Start/End	Inspector
Unit No. 03 Willow Slough Bypass	Left	2.51	05/17/2023 05/17/2023	Nate Hicks

LM Start	2.17	Rating **	M	Issue No.	2
LM End	2.17	Issue Type +	Ma	Location *	
Category	Supplemental			GPS Latitude/Longitude	
				Start	End
Item	DWR UCIP LMA Responsibility			38.590934°	38.590934°
				-121.658940°	-121.658940°
DWR ID	17837				

Comment Code

Inspector Comment

DS_ID:17837
 FS_ID:78555
 EP_NO: N/A
 Repair Type: Non-Urgent
 EVAL Issue: 11, Maintenance Compliance Issue
 Crossing Status: Found
 UCIP Comments: 02/15/2022 Record remains Non-Urgent. No permit was found authorizing this encroachment. Inspection of the pipe inlet and outlet were limited due to dense vegetation. Recommend removing vegetation at the inlet and outlet. No permit has been identified authorizing pipe. (M. Thao - DWR UCIP)04/03/2013 Debris and vegetation partially blocking inlet and outlet at both toes. (W. Wylie - DWR UCIP)
 FIELD_STRUCT_DESC: 48-inch corrugated metal drainage pipe through the levee, 19 feet below the crown. Slide gates on both ends.
 [Additional Reference(s): DWR Levee Log, 1990 (HLM 2.17). USACE Sacramento O&M Manual Unit 120, June 1952, Revised 29 December 2016, (Station 290+37), listed as 48-inch pipe].
 FS Date: 2/15/2022

LM Start	2.17	Rating **	M	Issue No.	2 (cont)
LM End	2.17	Issue Type +	Ma	Location *	

Photo 1 of 2 : UCIP_SP_2023_78555_106679.jpg



LS view: Headwall at toe barely visible with excessive vegetation.

Photo 2 of 2 : UCIP_SP_2023_78555_106680.jpg



WS view: Slide gate on toe with excessive vegetation.

* Location LS : Land Side N/A : Not Applicable WS : Water Side CR : Crown	** Rating A : Acceptable M : Minimally Acceptable U : Unacceptable	+ Issue Type Ma : Maintenance Deficiency Ob : Design & System Obsolescence En : Enforcement
--	--	---

**Flood Control Project Maintenance
Levee Inspections**

Levee Inspection Report By Mile - Spring 2023

Reclamation District No. 2035 Conaway

Waterway	Bank	Unit Miles	Inspection Start/End	Inspector
Unit No. 03 Willow Slough Bypass	Left	2.51	05/17/2023 05/17/2023	Nate Hicks

LM Start	2.19	Rating **	M	Issue No.	3
LM End	2.19	Issue Type +	Ma	Location *	
Category	Supplemental			GPS Latitude/Longitude	
				Start	End
Item	DWR UCIP LMA Responsibility			38.590909°	38.590909°
				-121.659311°	-121.659311°
DWR ID	17838				

Comment Code

Inspector Comment

DS_ID:17838
FS_ID:78556
EP_NO: N/A
Repair Type: Non-Urgent
EVAL Issue: 11, Maintenance Compliance Issue
Crossing Status: Found
UCIP Comments: 02/15/2022 The record remains Non-Urgent. Inspection of the pipe inlet and outlet were limited due to dense vegetation. Recommend removing vegetation at the pipe inlet and outlet. No permit has been identified authorizing pipe. (M. Thao - DWR UCIP)04/03/2013 Debris and vegetation partially blocking both ends of pipe. (W. Wylie - DWR UCIP)
FIELD_STRUCT_DESC: 36-inch corrugated metal drainage pipe through the levee, 18 feet below the crown. Slide gate on the landside (LS) toe. Combination flap and slide gate on the waterside (WS) toe. [Additional Reference(s): DWR Levee Log, 1990 (HLM 2.18). USACE Sacramento O&M Manual Unit 120, June 1952, Revised 29 December 2016, (Station 289+33), listed as 36-inch pipe].
FS Date: 2/15/2022

LM Start	2.19	Rating **	M	Issue No.	3 (cont)
LM End	2.19	Issue Type +	Ma	Location *	

Photo 1 of 2 : UCIP_SP_2023_78556_105492.jpg



LS view: Headwall at toe with excessive vegetation.

Photo 2 of 2 : UCIP_SP_2023_78556_105493.jpg



WS view: Combination flap and slide gate on toe with excessive vegetation.

* Location LS : Land Side N/A : Not Applicable WS : Water Side CR : Crown	** Rating A : Acceptable M : Minimally Acceptable U : Unacceptable	N : Not Inspected/Rated C : Corrected A/W : Acceptable but Monitor & Maintain	+ Issue Type Ma : Maintenance Deficiency Ob : Design & System Obsolescence En : Enforcement
--	--	--	---

**Flood Control Project Maintenance
Levee Inspections**

Levee Inspection Report By Mile - Spring 2023

Reclamation District No. 2035 Conaway

Waterway	Bank	Unit Miles	Inspection Start/End	Inspector
Unit No. 03 Willow Slough Bypass	Left	2.51	05/17/2023 05/17/2023	Nate Hicks

LM Start	2.23	Rating **	M	Issue No.	5
LM End	2.51	Issue Type +	En	Location *	LS
Category	Earthen Levee			GPS Latitude/Longitude	
				Start	End
Item	Encroachments			38.590893°	38.590760°
				-121.659942°	-121.665210°
DWR ID	DWR_RD2035_03_s_2013_5				
Comment Code					
FE : Fence					
Inspector Comment					

Photo 1 of 1 : SP_2023_RD2035_240_5_20230517_00001.jpg



View of fence on the landside shoulder of the crown. Fall 2018.

* Location LS : Land Side N/A : Not Applicable WS : Water Side CR : Crown	** Rating A : Acceptable M : Minimally Acceptable U : Unacceptable	N : Not Inspected/Rated C : Corrected A/W : Acceptable but Monitor & Maintain	+ Issue Type Ma : Maintenance Deficiency Ob : Design & System Obsolescence En : Enforcement
--	--	---	---