

**Flood Control Project Maintenance
Levee Inspections**

Maintenance Issue Types Only, Levee Inspection Report By Mile - Spring 2019

Reclamation District No. 1660 Tisdale

Waterway	Bank	Unit Miles	Inspection Start/End	Inspector
Unit No. 01 Sacramento River	Left	2.94	04/03/2019 04/03/2019	Makar Sokol

LM Start		Rating **	A	Issue No.	14
LM End		Issue Type +	Ma	Location *	
Category	Earthen Levee		GPS Latitude/Longitude		
			Start	End	
Item	Operations & Maintenance Manuals			°	°
				°	°
DWR ID	DWR_RD1660_01_s_2013_14				
Comment Code					
Inspector Comment					
The LMA has the O&M manuals.					

No Photos

LM Start		Rating **	A	Issue No.	15
LM End		Issue Type +	Ma	Location *	
Category	Earthen Levee		GPS Latitude/Longitude		
			Start	End	
Item	Emergency Supplies & Equipment			°	°
				°	°
DWR ID	DWR_RD1660_01_s_2013_15				
Comment Code					
Inspector Comment					
The LMA has adequate emergency supplies and equipment.					

No Photos

LM Start		Rating **	A	Issue No.	16
LM End		Issue Type +	Ma	Location *	
Category	Earthen Levee		GPS Latitude/Longitude		
			Start	End	
Item	Flood Preparedness & Training			°	°
				°	°
DWR ID	DWR_RD1660_01_s_2013_16				
Comment Code					
Inspector Comment					
The LMA has completed flood fight training in 2018.					

No Photos

* Location LS : Land Side N/A : Not Applicable WS : Water Side CR : Crown	** Rating A : Acceptable M : Minimally Acceptable U : Unacceptable	N : Not Inspected/Rated C : Corrected A/W : Acceptable but Monitor & Maintain	+ Issue Type Ma : Maintenance Deficiency Ob : Design & System Obsolescence En : Enforcement
--	--	---	---

**Flood Control Project Maintenance
Levee Inspections**

Maintenance Issue Types Only, Levee Inspection Report By Mile - Spring 2019

Reclamation District No. 1660 Tisdale

Waterway	Bank	Unit Miles	Inspection Start/End	Inspector
Unit No. 01 Sacramento River	Left	2.94	04/03/2019 04/03/2019	Makar Sokol

LM Start	0.02	Rating **	M	Issue No.	7
LM End	2.93	Issue Type +	Ma	Location *	WS
Category	Earthen Levee			GPS Latitude/Longitude	
				Start	End
Item	Vegetation			39.063102 °	39.026678 °
				-121.837836 °	-121.821932 °
DWR ID	DWR_RD1660_01_s _ 2012_7				
Comment Code					
V1 : Control annual grass and weeds on the levee slopes and easements.					
Inspector Comment					

No Photos

LM Start	0.02	Rating **	M	Issue No.	6
LM End	2.93	Issue Type +	Ma	Location *	LS
Category	Earthen Levee			GPS Latitude/Longitude	
				Start	End
Item	Vegetation			39.063102 °	39.026678 °
				-121.837837 °	-121.821932 °
DWR ID	DWR_RD1660_01_s _ 2012_6				
Comment Code					
V1 : Control annual grass and weeds on the levee slopes and easements.					
Inspector Comment					

No Photos

* Location LS : Land Side N/A : Not Applicable WS : Water Side CR : Crown		** Rating A : Acceptable N : Not Inspected/Rated M : Minimally Acceptable C : Corrected U : Unacceptable A/W : Acceptable but Monitor & Maintain		+ Issue Type Ma : Maintenance Deficiency Ob : Design & System Obsolescence En : Enforcement
--	--	---	--	---

**Flood Control Project Maintenance
Levee Inspections**

Maintenance Issue Types Only, Levee Inspection Report By Mile - Spring 2019

Reclamation District No. 1660 Tisdale

Waterway	Bank	Unit Miles	Inspection Start/End	Inspector
Unit No. 01 Sacramento River	Left	2.94	04/03/2019 04/03/2019	Makar Sokol

LM Start	0.14	Rating **	M	Issue No.	27	
LM End	0.14	Issue Type +	Ma	Location *		
Category	Supplemental			GPS Latitude/Longitude		
				Start		End
Item	DWR UCIP LMA Responsibility			39.061322 °		39.061322 °
				-121.837993 °		-121.837993 °
DWR ID	22489					
Comment Code						
Inspector Comment						
FS_ID:46670 DS_ID:22489 EP_NO: N/A Repair Type: Non-Urgent Crossing Status: Found UCIP Comments: - needs proper abandonment.- opening of landside pipe almost buried. FIELD_STRUCT_DESC: *ABANDONED* 24-inch corrugated metal gravity drainage pipe through the levee, 16.4 feet below the crown. Two corrugated metal cutoff walls. Slide gate in a concrete well at the waterside (WS) toe. (IV A-Winship). USACE bench mark on the top of the headwall at the landside (LS) toe. [Additional Reference(s): DWR Levee Log, 2005. USACE Sacramento O&M Manual 133, August 1955, (Station 2+07.8)]. FS Date: 10/10/2013						

LM Start	0.14	Rating **	M	Issue No.	27 (cont)
LM End	0.14	Issue Type +	Ma	Location *	

Photo 1 of 3 : UCIP_SP_2019_46670_38107.jpg



WS view: concrete box on levee slope. No pipe found on berm and river bank.

Photo 2 of 3 : UCIP_SP_2019_46670_38106.jpg



WS view: two slide gates in concrete box on levee slope.

* Location LS : Land Side N/A : Not Applicable WS : Water Side CR : Crown		** Rating A : Acceptable M : Minimally Acceptable U : Unacceptable N : Not Inspected/Rated C : Corrected A/W : Acceptable but Monitor & Maintain		+ Issue Type Ma : Maintenance Deficiency Ob : Design & System Obsolescence En : Enforcement
--	--	---	--	---

**Flood Control Project Maintenance
Levee Inspections**

Maintenance Issue Types Only, Levee Inspection Report By Mile - Spring 2019

Reclamation District No. 1660 Tisdale

Waterway	Bank	Unit Miles	Inspection Start/End	Inspector
Unit No. 01 Sacramento River	Left	2.94	04/03/2019 04/03/2019	Makar Sokol

LM Start	0.14	Rating **	M	Issue No.	27 (cont)	
LM End	0.14	Issue Type +	Ma	Location *		
Category	Supplemental			GPS Latitude/Longitude		
				Start		End
Item	DWR UCIP LMA Responsibility			39.061322 °		39.061322 °
				-121.837993 °		-121.837993 °
DWR ID	22489					
Comment Code						
Inspector Comment						
FS_ID:46670 DS_ID:22489 EP_NO: N/A Repair Type: Non-Urgent Crossing Status: Found UCIP Comments: - needs proper abandonment.- opening of landside pipe almost buried. FIELD_STRUCT_DESC: *ABANDONED* 24-inch corrugated metal gravity drainage pipe through the levee, 16.4 feet below the crown. Two corrugated metal cutoff walls. Slide gate in a concrete well at the waterside (WS) toe. (IV A-Winship). USACE bench mark on the top of the headwall at the landside (LS) toe. [Additional Reference(s): DWR Levee Log, 2005. USACE Sacramento O&M Manual 133, August 1955, (Station 2+07.8)]. FS Date: 10/10/2013						

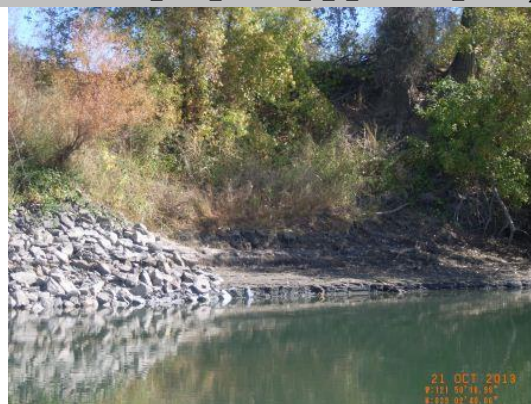
Photo 3 of 3 : UCIP_SP_2019_46670_38105.jpg



WS view: closer view of two slide gates in concrete box on levee slope.

LM Start	1.33	Rating **	M	Issue No.	8
LM End	1.36	Issue Type +	Ma	Location *	WS
Category	Supplemental			GPS Latitude/Longitude	
				Start	End
Item	2017 USACE Erosion Survey, DRAFT			39.044361 °	39.043916 °
				-121.837654 °	-121.837305 °
DWR ID	DWR_RD1660_01_f_2018_8				
Comment Code					
Inspector Comment					
2017 Site ID: SAC 120.6 L Status: Eroding 2017 Field Notes: No observed change. Site History: 2009 - Erosion on levee toe where an old cobble site is failing. 2011 - Some new minor erosion. 2012 - Site extended downstream, bank is being impacted from the weight of the trees. 2013 - Minor new erosion at the toe. 2015 - Minor new erosion at toe.					

Photo 1 of 1 : SP_2019_RD1660_8_8_20190326_00004.jpg



USACE 2013 Photo #1

* Location LS : Land Side N/A : Not Applicable WS : Water Side CR : Crown	** Rating A : Acceptable M : Minimally Acceptable U : Unacceptable	N : Not Inspected/Rated C : Corrected A/W : Acceptable but Monitor & Maintain	+ Issue Type Ma : Maintenance Deficiency Ob : Design & System Obsolescence En : Enforcement
--	--	---	---

**Flood Control Project Maintenance
Levee Inspections**

Maintenance Issue Types Only, Levee Inspection Report By Mile - Spring 2019

Reclamation District No. 1660 Tisdale

Waterway	Bank	Unit Miles	Inspection Start/End	Inspector
Unit No. 01 Sacramento River	Left	2.94	04/03/2019 04/03/2019	Makar Sokol

LM Start	2.36	Rating **	U	Issue No.	23
LM End	2.36	Issue Type +	Ma	Location *	WS
Category	Earthen Levee			GPS Latitude/Longitude	
				Start	End
Item	Animal Control			39.034209 °	39.034209 °
				-121.825316 °	-121.825316 °
DWR ID	DWR_RD1660_01_s_2019_23				
Comment Code					
A3 : No rodents visible, but rodent burrows visible; need to backfill and compact or grout burrows.					
Inspector Comment					

Photo 1 of 1 : SP_2019_RD1660_8_23_20190408_00020.jpg



View of a large rodent burrow on the waterside shoulder. Spring 2019.

LM Start	2.37	Rating **	M	Issue No.	2
LM End	2.37	Issue Type +	Ma	Location *	LS
Category	Earthen Levee			GPS Latitude/Longitude	
				Start	End
Item	Slope Stability			39.034107 °	39.034107 °
				-121.825152 °	-121.825152 °
DWR ID	DWR_RD1660_01_s_2012_2				
Comment Code					
S1 : Repair slope instability.					
Inspector Comment					

Photo 1 of 1 : SP_2019_RD1660_8_2_20190326_00002.jpg



View of the toe cut by the farmer on the landside.

LM Start	2.38	Rating **	U	Issue No.	21
LM End	2.38	Issue Type +	Ma	Location *	LS
Category	Earthen Levee			GPS Latitude/Longitude	
				Start	End
Item	Animal Control			39.034032 °	39.034032 °
				-121.825120 °	-121.825120 °
DWR ID	DWR_RD1660_01_f_2018_21				
Comment Code					
A3 : No rodents visible, but rodent burrows visible; need to backfill and compact or grout burrows.					
Inspector Comment					

Photo 1 of 1 : SP_2019_RD1660_8_21_20190326_00009.jpg



View of rodent holes along the landside slope.

* Location LS : Land Side N/A : Not Applicable WS : Water Side CR : Crown		** Rating A : Acceptable M : Minimally Acceptable U : Unacceptable		N : Not Inspected/Rated C : Corrected A/W : Acceptable but Monitor & Maintain		+ Issue Type Ma : Maintenance Deficiency Ob : Design & System Obsolescence En : Enforcement	
--	--	--	--	--	--	---	--

**Flood Control Project Maintenance
Levee Inspections**

Maintenance Issue Types Only, Levee Inspection Report By Mile - Spring 2019

Reclamation District No. 1660 Tisdale

Waterway	Bank	Unit Miles	Inspection Start/End	Inspector
Unit No. 01 Sacramento River	Left	2.94	04/03/2019 04/03/2019	Makar Sokol

LM Start	2.39	Rating **	M	Issue No.	4
LM End	2.39	Issue Type +	Ma	Location *	LS
Category	Earthen Levee			GPS Latitude/Longitude	
				Start	End
Item	Slope Stability			39.033858 °	39.033858 °
				-121.824985 °	-121.824985 °
DWR ID	DWR_RD1660_01_f_2018_4				
Comment Code					
S1 : Repair slope instability.					
Inspector Comment					

No Photos

LM Start	2.57	Rating **	M	Issue No.	20
LM End	2.57	Issue Type +	Ma	Location *	LS
Category	Earthen Levee			GPS Latitude/Longitude	
				Start	End
Item	Animal Control			39.031625 °	39.031625 °
				-121.823492 °	-121.823492 °
DWR ID	DWR_RD1660_01_s_2018_20				
Comment Code					
A3 : No rodents visible, but rodent burrows visible; need to backfill and compact or grout burrows.					
Inspector Comment					

Photo 1 of 1 : SP_2019_RD1660_8_20_20190326_00008.jpg



View of the rodent holes along the landside slope.

LM Start	2.63	Rating **	M	Issue No.	5
LM End	2.66	Issue Type +	Ma	Location *	LS
Category	Earthen Levee			GPS Latitude/Longitude	
				Start	End
Item	Slope Stability			39.030891 °	39.030436 °
				-121.822956 °	-121.822617 °
DWR ID	DWR_RD1660_01_s_2012_5				
Comment Code					
S1 : Repair slope instability.					
Inspector Comment					

No Photos

* Location		** Rating		+ Issue Type	
LS : Land Side	N/A : Not Applicable	A : Acceptable	N : Not Inspected/Rated	Ma : Maintenance Deficiency	
WS : Water Side		M : Minimally Acceptable	C : Corrected	Ob : Design & System Obsolescence	
CR : Crown		U : Unacceptable	A/W : Acceptable but Monitor & Maintain	En : Enforcement	

**Flood Control Project Maintenance
Levee Inspections**

Maintenance Issue Types Only, Levee Inspection Report By Mile - Spring 2019

Reclamation District No. 1660 Tisdale

Waterway	Bank	Unit Miles	Inspection Start/End	Inspector
Unit No. 01 Sacramento River	Left	2.94	04/03/2019 04/03/2019	Makar Sokol

LM Start	2.84	Rating **	M	Issue No.	19
LM End	2.84	Issue Type +	Ma	Location *	WS
Category	Earthen Levee		GPS Latitude/Longitude		
			Start	End	
Item	Encroachments		39.027971 °	39.027971 °	
			-121.821771 °	-121.821771 °	
DWR ID	DWR_RD1660_01_s_2019_19				
Comment Code					
TR : Tree or limb					
Inspector Comment					
The tree should be removed from the waterside slope.					

No Photos

* Location LS : Land Side N/A : Not Applicable WS : Water Side CR : Crown	** Rating A : Acceptable M : Minimally Acceptable U : Unacceptable N : Not Inspected/Rated C : Corrected A/W : Acceptable but Monitor & Maintain	+ Issue Type Ma : Maintenance Deficiency Ob : Design & System Obsolescence En : Enforcement
--	---	---

**Flood Control Project Maintenance
Levee Inspections**

Maintenance Issue Types Only, Levee Inspection Report By Mile - Spring 2019

Reclamation District No. 1660 Tisdale

Waterway	Bank	Unit Miles	Inspection Start/End	Inspector
Unit No. 02 Sutter Bypass	Right	9.10	04/02/2019 04/02/2019	Makar Sokol

LM Start	0.00	Rating **	M	Issue No.	6
LM End	0.00	Issue Type +	Ma	Location *	LS
Category	Earthen Levee			GPS Latitude/Longitude	
				Start	End
Item	Slope Stability			39.032910 °	39.032910 °
				-121.743665 °	-121.743665 °
DWR ID	DWR_RD1660_02_f_2016_6				
Comment Code					
S1 : Repair slope instability.					
Inspector Comment					

Photo 1 of 2 : SP_2019_RD1660_9_6_20190326_00001.jpg



View of the slope instability looking from the landside toe.

LM Start	0.00	Rating **	M	Issue No.	6 (cont)
LM End	0.00	Issue Type +	Ma	Location *	LS

Photo 2 of 2 : SP_2019_RD1660_9_6_20190326_00002.jpg



Another view of the slope instability looking from the levee crown.

LM Start	0.00	Rating **	A	Issue No.	1
LM End	2.38	Issue Type +	Ma	Location *	LS
Category	Earthen Levee			GPS Latitude/Longitude	
				Start	End
Item	Vegetation			39.033004 °	39.065780 °
				-121.743451 °	-121.757099 °
DWR ID	DWR_RD1660_02_s_2012_1				
Comment Code					
V1 : Control annual grass and weeds on the levee slopes and easements.					
Inspector Comment					
The vegetation is well maintained on the landside slope.					

Photo 1 of 1 : SP_2019_RD1660_9_1_20190411_00016.jpg



View of the vegetation on the landside slope. Spring 2019.

* Location LS : Land Side N/A : Not Applicable WS : Water Side CR : Crown		** Rating A : Acceptable M : Minimally Acceptable U : Unacceptable		N : Not Inspected/Rated C : Corrected A/W : Acceptable but Monitor & Maintain		+ Issue Type Ma : Maintenance Deficiency Ob : Design & System Obsolescence En : Enforcement
--	--	--	--	---	--	---

**Flood Control Project Maintenance
Levee Inspections**

Maintenance Issue Types Only, Levee Inspection Report By Mile - Spring 2019

Reclamation District No. 1660 Tisdale

Waterway	Bank	Unit Miles	Inspection Start/End	Inspector
Unit No. 02 Sutter Bypass	Right	9.10	04/02/2019 04/02/2019	Makar Sokol

LM Start	0.00	Rating **	A	Issue No.	2
LM End	2.38	Issue Type +	Ma	Location *	WS
Category	Earthen Levee			GPS Latitude/Longitude	
				Start	End
Item	Vegetation			39.033005 °	39.065774 °
				-121.743450 °	-121.757090 °
DWR ID	DWR_RD1660_02_s_2012_2				
Comment Code					
V1 : Control annual grass and weeds on the levee slopes and easements.					
Inspector Comment					
The vegetation is well maintained on the waterside slope.					

Photo 1 of 1 : SP_2019_RD1660_9_2_20190411_00017.jpg



View of the vegetation on the waterside slope. Spring 2019.

LM Start	0.02	Rating **	A/W	Issue No.	24
LM End	0.02	Issue Type +	Ma	Location *	
Category	Supplemental			GPS Latitude/Longitude	
				Start	End
Item	DWR UCIP LMA Responsibility			39.033214 °	39.033214 °
				-121.743541 °	-121.743541 °
DWR ID	22495				
Comment Code					
Inspector Comment					
FS_ID:22663 DS_ID:22495 EP_NO: 10020 Repair Type: No Action Needed Crossing Status: Found UCIP Comments: - pipe/opening not visible as it was submerged into water on both sides.- it seems that 36-inch concrete pipe through the levee. It needs confirmation from LMA/DWR Inspector.- USED bench mark on landside concrete vault. FIELD_STRUCT_DESC: [Reclamation District No. 1660 (RD1660) Drainage Pump] 48-inch by 84-inch reinforced concrete outfall structure through the levee, 34 feet below the crown. Slide gate in a 4-foot by 8-foot concrete riser on the waterside (WS) slope. (Retention of a 4-foot by 7-foot concrete culvert outfall drain through the levee, 34 feet below the crown, and a slide gate in a concrete well authorized under Automatic Board Order (ABO) issued as Permit No. 10020, 1974 - Leo Bandoni, care of John Digardi). [Additional Reference(s): DWR Levee Log, 2005. USACE Sacramento O&M Manual 133, August 1955, (Station 1044+60), two 4-foot by 7-foot concrete tunnels referenced]. FS Date: 10/10/2013					

Photo 1 of 3 : UCIP_SP_2019_22663_38248.jpg



WS view: 4 ft. by 8 ft. concrete box with slide gate on levee slope. USED bench mark on top of the box.

* Location		** Rating		+ Issue Type	
LS : Land Side	N/A : Not Applicable	A : Acceptable	N : Not Inspected/Rated	Ma : Maintenance Deficiency	
WS : Water Side		M : Minimally Acceptable	C : Corrected	Ob : Design & System Obsolescence	
CR : Crown		U : Unacceptable	A/W : Acceptable but Monitor & Maintain	En : Enforcement	

**Flood Control Project Maintenance
Levee Inspections**

Maintenance Issue Types Only, Levee Inspection Report By Mile - Spring 2019

Reclamation District No. 1660 Tisdale

Waterway	Bank	Unit Miles	Inspection Start/End	Inspector
Unit No. 02 Sutter Bypass	Right	9.10	04/02/2019 04/02/2019	Makar Sokol

LM Start	0.02	Rating **	A/W	Issue No.	24 (cont)	
LM End	0.02	Issue Type +	Ma	Location *		
Category	Supplemental			GPS Latitude/Longitude		
				Start	End	
Item	DWR UCIP LMA Responsibility			39.033214 °	39.033214 °	
				-121.743541 °	-121.743541 °	
DWR ID	22495					
Comment Code						
Inspector Comment						
FS_ID:22663 DS_ID:22495 EP_NO: 10020 Repair Type: No Action Needed Crossing Status: Found UCIP Comments: - pipe/opening not visible as it was submerged into water on both sides.- it seems that 36-inch concrete pipe through the levee. It needs confirmation from LMA/DWR Inspector.- USED bench mark on landside concrete vault. FIELD_STRUCT_DESC: [Reclamation District No. 1660 (RD1660) Drainage Pump] 48-inch by 84-inch reinforced concrete outfall structure through the levee, 34 feet below the crown. Slide gate in a 4-foot by 8-foot concrete riser on the waterside (WS) slope. (Retention of a 4-foot by 7-foot concrete culvert outfall drain through the levee, 34 feet below the crown, and a slide gate in a concrete well authorized under Automatic Board Order (ABO) issued as Permit No. 10020, 1974 - Leo Bandoni, care of John Digardi). [Additional Reference(s): DWR Levee Log, 2005. USACE Sacramento O&M Manual 133, August 1955, (Station 1044+60), two 4-foot by 7-foot concrete tunnels referenced]. FS Date: 10/10/2013						

LM Start	0.02	Rating **	A/W	Issue No.	24 (cont)
LM End	0.02	Issue Type +	Ma	Location *	

Photo 2 of 3 : UCIP_SP_2019_22663_38247.jpg



WS view: inside view of concrete box on levee slope. Slide gate in concrete box.

Photo 3 of 3 : UCIP_SP_2019_22663_38246.jpg



WS view: closer view of U shaped concrete headwall in bypass channel. Pipe not visible.

* Location LS : Land Side N/A : Not Applicable WS : Water Side CR : Crown		** Rating A : Acceptable M : Minimally Acceptable U : Unacceptable		N : Not Inspected/Rated C : Corrected A/W : Acceptable but Monitor & Maintain		+ Issue Type Ma : Maintenance Deficiency Ob : Design & System Obsolescence En : Enforcement	
--	--	--	--	---	--	---	--

**Flood Control Project Maintenance
Levee Inspections**

Maintenance Issue Types Only, Levee Inspection Report By Mile - Spring 2019

Reclamation District No. 1660 Tisdale

Waterway	Bank	Unit Miles	Inspection Start/End	Inspector
Unit No. 02 Sutter Bypass	Right	9.10	04/02/2019 04/02/2019	Makar Sokol

LM Start	1.43	Rating **	C	Issue No.	23
LM End	1.43	Issue Type +	Ma	Location *	LS
Category	Earthen Levee			GPS Latitude/Longitude	
				Start	End
Item	Animal Control			39.052687 °	39.052687 °
				-121.751720 °	-121.751720 °
DWR ID	DWR_RD1660_02_f_2017_23				
Comment Code					
A3 : No rodents visible, but rodent burrows visible; need to backfill and compact or grout burrows.					
Inspector Comment					
The rodent holes have been backfilled.					

No Photos

LM Start	2.38	Rating **	M	Issue No.	13
LM End	9.10	Issue Type +	Ma	Location *	WS
Category	Earthen Levee			GPS Latitude/Longitude	
				Start	End
Item	Vegetation			39.065774 °	39.137114 °
				-121.757099 °	-121.834490 °
DWR ID	DWR_RD1660_02_s_2019_13				
Comment Code					
V1 : Control annual grass and weeds on the levee slopes and easements.					
Inspector Comment					

No Photos

LM Start	2.38	Rating **	M	Issue No.	7
LM End	9.10	Issue Type +	Ma	Location *	LS
Category	Earthen Levee			GPS Latitude/Longitude	
				Start	End
Item	Vegetation			39.065780 °	39.137114 °
				-121.757120 °	-121.834490 °
DWR ID	DWR_RD1660_02_s_2019_7				
Comment Code					
V1 : Control annual grass and weeds on the levee slopes and easements.					
Inspector Comment					

No Photos

* Location		** Rating		+ Issue Type	
LS : Land Side	N/A : Not Applicable	A : Acceptable	N : Not Inspected/Rated	Ma : Maintenance Deficiency	
WS : Water Side		M : Minimally Acceptable	C : Corrected	Ob : Design & System Obsolescence	
CR : Crown		U : Unacceptable	A/W : Acceptable but Monitor & Maintain	En : Enforcement	

**Flood Control Project Maintenance
Levee Inspections**

Maintenance Issue Types Only, Levee Inspection Report By Mile - Spring 2019

Reclamation District No. 1660 Tisdale

Waterway	Bank	Unit Miles	Inspection Start/End	Inspector
Unit No. 02 Sutter Bypass	Right	9.10	04/02/2019 04/02/2019	Makar Sokol

LM Start	5.22	Rating **	M	Issue No.	8
LM End	5.22	Issue Type +	Ma	Location *	WS
Category	Earthen Levee			GPS Latitude/Longitude	
				Start	End
Item	Encroachments			39.103800 °	39.103800 °
				-121.776320 °	-121.776320 °
DWR ID	DWR_RD1660_02_s _2019_8				
Comment Code					
TR : Tree or limb					
Inspector Comment					
The fallen tree should be removed from the waterside slope.					

No Photos

LM Start	6.19	Rating **	M	Issue No.	12
LM End	6.19	Issue Type +	Ma	Location *	WS
Category	Earthen Levee			GPS Latitude/Longitude	
				Start	End
Item	Encroachments			39.112670 °	39.112670 °
				-121.790310 °	-121.790310 °
DWR ID	DWR_RD1660_02_s _ 2019_12				
Comment Code					
TR : Tree or limb					
Inspector Comment					
The fallen trees should be removed from the waterside slope.					

No Photos

LM Start	7.21	Rating **	M	Issue No.	14
LM End	7.21	Issue Type +	Ma	Location *	WS
Category	Earthen Levee			GPS Latitude/Longitude	
				Start	End
Item	Encroachments			39.121260 °	39.121260 °
				-121.805850 °	-121.805850 °
DWR ID	DWR_RD1660_02_s _ 2019_14				
Comment Code					
AV : Abandoned vehicles					
Inspector Comment					
The abandoned vehicle should be removed from the waterside slope.					

No Photos

* Location LS : Land Side N/A : Not Applicable WS : Water Side CR : Crown	** Rating A : Acceptable M : Minimally Acceptable U : Unacceptable	N : Not Inspected/Rated C : Corrected A/W : Acceptable but Monitor & Maintain	+ Issue Type Ma : Maintenance Deficiency Ob : Design & System Obsolescence En : Enforcement
--	--	--	---

**Flood Control Project Maintenance
Levee Inspections**

Maintenance Issue Types Only, Levee Inspection Report By Mile - Spring 2019

Reclamation District No. 1660 Tisdale

Waterway	Bank	Unit Miles	Inspection Start/End	Inspector
Unit No. 02 Sutter Bypass	Right	9.10	04/02/2019 04/02/2019	Makar Sokol

LM Start	7.44	Rating **	M	Issue No.	15
LM End	7.44	Issue Type +	Ma	Location *	WS
Category	Earthen Levee			GPS Latitude/Longitude	
				Start	End
Item	Encroachments			39.123150 °	39.123150 °
				-121.809230 °	-121.809230 °
DWR ID	DWR_RD1660_02_s _ 2019_15				
Comment Code					
DE : Debris					
Inspector Comment					
The fridge should be removed from the waterside slope.					

No Photos

LM Start	7.66	Rating **	M	Issue No.	16
LM End	7.66	Issue Type +	Ma	Location *	WS
Category	Earthen Levee			GPS Latitude/Longitude	
				Start	End
Item	Encroachments			39.125060 °	39.125060 °
				-121.812690 °	-121.812690 °
DWR ID	DWR_RD1660_02_s _ 2019_16				
Comment Code					
TR : Tree or limb					
Inspector Comment					
The fallen trees should be removed from the waterside slope.					

No Photos

LM Start	7.80	Rating **	M	Issue No.	17
LM End	7.80	Issue Type +	Ma	Location *	WS
Category	Earthen Levee			GPS Latitude/Longitude	
				Start	End
Item	Encroachments			39.126240 °	39.126240 °
				-121.814810 °	-121.814810 °
DWR ID	DWR_RD1660_02_s _ 2019_17				
Comment Code					
TR : Tree or limb					
Inspector Comment					
The fallen tree should be removed from the waterside slope.					

No Photos

* Location LS : Land Side N/A : Not Applicable WS : Water Side CR : Crown		** Rating A : Acceptable M : Minimally Acceptable U : Unacceptable N : Not Inspected/Rated C : Corrected A/W : Acceptable but Monitor & Maintain		+ Issue Type Ma : Maintenance Deficiency Ob : Design & System Obsolescence En : Enforcement	
--	--	---	--	---	--

**Flood Control Project Maintenance
Levee Inspections**

Maintenance Issue Types Only, Levee Inspection Report By Mile - Spring 2019

Reclamation District No. 1660 Tisdale

Waterway	Bank	Unit Miles	Inspection Start/End	Inspector
Unit No. 02 Sutter Bypass	Right	9.10	04/02/2019 04/02/2019	Makar Sokol

LM Start	8.06	Rating **	M	Issue No.	18
LM End	8.06	Issue Type +	Ma	Location *	WS
Category	Earthen Levee			GPS Latitude/Longitude	
				Start	End
Item	Encroachments			39.128370 °	39.128370 °
				-121.818680 °	-121.818680 °
DWR ID	DWR_RD1660_02_s_2019_18				
Comment Code					
TR : Tree or limb					
Inspector Comment					
The fallen trees should be removed from the waterside slope.					

No Photos

LM Start	9.07	Rating **	A/W	Issue No.	26
LM End	9.07	Issue Type +	Ma	Location *	
Category	Supplemental			GPS Latitude/Longitude	
				Start	End
Item	DWR UCIP LMA Responsibility			39.136861 °	39.136861 °
				-121.833974 °	-121.833974 °
DWR ID	22505				
Comment Code					
Inspector Comment					
FS_ID:22708					
DS_ID:22505					
EP_NO: N/A					
Repair Type: No Action Needed					
Crossing Status: Found					
UCIP Comments: - inlet structure 160 ft off the levee center on landside drainage ditch.					
FIELD_STRUCT_DESC: 48-inch steel gravity drainage pipe through the levee, 29 feet below the crown. Slide gate and concrete bulkhead on the riverbank. Staff gage on the waterside (WS) berm. (Retention of a 48-inch corrugated metal pipe (CMP) through the levee, 29 feet below the crown, a slide gate, and a concrete bulkhead authorized under Automatic Board Order (ABO) No. 10021, 1974 - Butte Slough Irrigation Company, care of Tarke Warehouse). [Additional Reference(s): DWR Levee Log, 2005. USACE Sacramento O&M Manual 133, August 1955, (Station 433+43), 48-inch CMP referenced].					
FS Date: 10/15/2013					

Photo 1 of 3 : UCIP_SP_2019_22708_38406.jpg



WS view: overview of concrete box on channel bank. It looks like a fish ladder. Pipe discharges into this box.

* Location LS : Land Side N/A : Not Applicable WS : Water Side CR : Crown	** Rating A : Acceptable M : Minimally Acceptable U : Unacceptable	N : Not Inspected/Rated C : Corrected A/W : Acceptable but Monitor & Maintain	+ Issue Type Ma : Maintenance Deficiency Ob : Design & System Obsolescence En : Enforcement
--	--	---	---

**Flood Control Project Maintenance
Levee Inspections**

Maintenance Issue Types Only, Levee Inspection Report By Mile - Spring 2019

Reclamation District No. 1660 Tisdale

Waterway	Bank	Unit Miles	Inspection Start/End	Inspector
Unit No. 02 Sutter Bypass	Right	9.10	04/02/2019 04/02/2019	Makar Sokol

LM Start	9.07	Rating **	A/W	Issue No.	26 (cont)	
LM End	9.07	Issue Type +	Ma	Location *		
Category	Supplemental			GPS Latitude/Longitude		
				Start	End	
Item	DWR UCIP LMA Responsibility			39.136861 °	39.136861 °	
				-121.833974 °	-121.833974 °	
DWR ID	22505					
Comment Code						
Inspector Comment						
FS_ID:22708						
DS_ID:22505						
EP_NO: N/A						
Repair Type: No Action Needed						
Crossing Status: Found						
UCIP Comments: - inlet structure 160 ft off the levee center on landside drainage ditch.						
FIELD_STRUCT_DESC: 48-inch steel gravity drainage pipe through the levee, 29 feet below the crown. Slide gate and concrete bulkhead on the riverbank. Staff gage on the waterside (WS) berm. (Retention of a 48-inch corrugated metal pipe (CMP) through the levee, 29 feet below the crown, a slide gate, and a concrete bulkhead authorized under Automatic Board Order (ABO) No. 10021, 1974 - Butte Slough Irrigation Company, care of Tarke Warehouse). [Additional Reference(s): DWR Levee Log, 2005. USACE Sacramento O&M Manual 133, August 1955, (Station 433+43), 48-inch CMP referenced].						
FS Date: 10/15/2013						

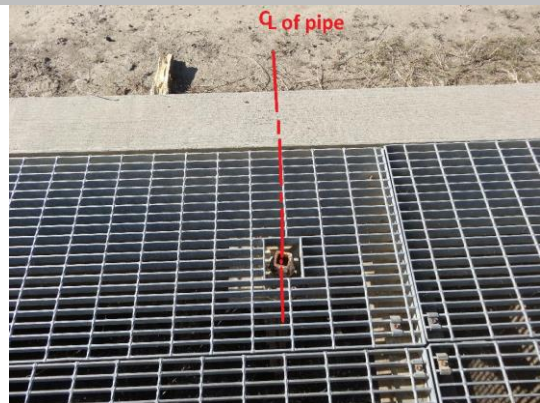
LM Start	9.07	Rating **	A/W	Issue No.	26 (cont)
LM End	9.07	Issue Type +	Ma	Location *	

Photo 2 of 3 : UCIP_SP_2019_22708_38405.jpg



WS view: concrete box on channel bank. Pipe end with slide gate. Pipe discharges into this box.

Photo 3 of 3 : UCIP_SP_2019_22708_38409.jpg



WS view: concrete box on channel bank. Pipe discharges into this box. A slide gate inside this box.

* Location LS : Land Side N/A : Not Applicable WS : Water Side CR : Crown		** Rating A : Acceptable M : Minimally Acceptable U : Unacceptable N : Not Inspected/Rated C : Corrected A/W : Acceptable but Monitor & Maintain		+ Issue Type Ma : Maintenance Deficiency Ob : Design & System Obsolescence En : Enforcement
--	--	---	--	---