

**Flood Control Project Maintenance
Levee Inspections**
LMA District Cover Sheet
Spring 2020 Levee Inspection Results

Reclamation District No. 1602 Del Puerto

	Spring (March - May)	Summer ** (June - August)	Fall (September - November)	Winter ** (December - February)
† Overall LMA Rating (Fall Only)				

** Non-receipt of Summer or Winter Inspection
Reports may effect overall annual rating.

† SPRING INSPECTIONS: Overall maintenance ratings are not determined for the spring inspection results. Individual maintenance deficiencies are rated using the same criteria in the spring and in the fall.

FALL INSPECTIONS: The overall maintenance rating shown above is based on operation and maintenance deficiencies identified within the attached unit inspection reports. This rating is not intended to be an indication of risk.

Comments

**Flood Control Project Maintenance
Levee Inspections**

Unit Cover Sheet

Spring 2020 Levee Inspection Results

Reclamation District No. 1602 Del Puerto

Waterway			Bank	Unit Miles
Unit No. 01 San Joaquin River			Left	6.24
	Spring (March - May)	Summer (June - August)	(September - November) Fall	Winter (December - February)
Unit Maintenance Rating (Fall Only)				
Date of Inspection	4/2/2020 - 4/2/2020			
DWR Inspector	Corey Fujitani			
Accompanied By	Tony Martinez RD 1602			

Summer & Winter Inspections

The Local Maintaining Agency (LMA) is responsible for summer and winter inspections. The LMA is required to submit a report regarding summer and winter inspections to the California Department of Water Resources (DWR).

DWR must be informed on the:

- a) completion of the inspection
- b) any changes other than the results of normal maintenance
- c) corrections to deficiencies noted in this report

If additional items are noted, further documentation of those items must also be submitted.

The LMA should submit this information to DWR using the LMA web application tool available at:

<http://cdec.water.ca.gov/lma.html>

If the LMA is unable to submit information on this webpage, please contact DWR for assistance.

The LMA should submit the information and any associated documentation by September 30 for summer inspections and March 31 for winter inspections.

**Flood Control Project Maintenance
Levee Inspections**

Levee Inspection Report By Mile - Spring 2020

Reclamation District No. 1602 Del Puerto

Waterway	Bank	Unit Miles	Inspection Start/End	Inspector
Unit No. 01 San Joaquin River	Left	6.24	04/02/2020 04/02/2020	Corey Fujitani

LM Start	0.00	Rating **	A	Issue No.	39
LM End	0.00	Issue Type +	Ma	Location *	N/A
Category	Earthen Levee			GPS Latitude/Longitude	
				Start	End
Item	Operations & Maintenance Manuals				°
					°
DWR ID	DWR_RD1602_01_s _ 2012_39				
Comment Code					
Inspector Comment					
The LMA has all the O&M manuals.					

No Photos

LM Start	0.00	Rating **	A	Issue No.	77
LM End	0.00	Issue Type +	Ma	Location *	N/A
Category	Earthen Levee			GPS Latitude/Longitude	
				Start	End
Item	Emergency Supplies & Equipment				°
					°
DWR ID	DWR_RD1602_01_s _ 2012_77				
Comment Code					
Inspector Comment					
The LMA has enough flood materials in case of an incident.					

No Photos

LM Start	0.00	Rating **	A	Issue No.	97
LM End	0.00	Issue Type +	Ma	Location *	N/A
Category	Earthen Levee			GPS Latitude/Longitude	
				Start	End
Item	Flood Preparedness & Training				°
					°
DWR ID	DWR_RD1602_01_s _ 2012_97				
Comment Code					
Inspector Comment					
The LMA has solid understanding of flood fight techniques and most of the staff have flood preparedness training.					

No Photos

* Location LS : Land Side N/A : Not Applicable WS : Water Side CR : Crown	** Rating A : Acceptable M : Minimally Acceptable U : Unacceptable	N : Not Inspected/Rated C : Corrected A/W : Acceptable but Monitor & Maintain	+ Issue Type Ma : Maintenance Deficiency Ob : Design & System Obsolescence En : Enforcement
--	--	---	---

**Flood Control Project Maintenance
Levee Inspections**

Levee Inspection Report By Mile - Spring 2020

Reclamation District No. 1602 Del Puerto

Waterway	Bank	Unit Miles	Inspection Start/End	Inspector
Unit No. 01 San Joaquin River	Left	6.24	04/02/2020 04/02/2020	Corey Fujitani

LM Start	0.00	Rating **	U	Issue No.	132
LM End	0.04	Issue Type +	En	Location *	CR
Category	Earthen Levee			GPS Latitude/Longitude	
				Start	End
Item	Encroachments			37.476578 °	37.476864 °
				-121.083898 °	-121.083235 °
DWR ID	DWR_RD1602_01_f_2019_132				
Comment Code					
PR : Prunings					
Inspector Comment					
Pruning pile on the levee crown.					

Photo 1 of 1 : SP_2020_RD1602_110_132_20200225_00077.jpg



View of burn pile on levee crown. (Fall 2019)

LM Start	0.09	Rating **	M	Issue No.	60
LM End	0.11	Issue Type +	Ma	Location *	LS
Category	Earthen Levee			GPS Latitude/Longitude	
				Start	End
Item	Trim / Thin Trees			37.477161 °	37.477299 °
				-121.082504 °	-121.082084 °
DWR ID	DWR_RD1602_01_f _ 2019_60				
Comment Code					
T1 : Trim trees to at least five feet above ground level.					
Inspector Comment					

Photo 1 of 1 : SP_2020_RD1602_110_60_20200403_00123.jpg



View of trees on landside slope looking towards Fig Ave. (Spring 2020)

LM Start	0.13	Rating **	M	Issue No.	130
LM End	0.71	Issue Type +	Ma	Location *	WS
Category	Earthen Levee			GPS Latitude/Longitude	
				Start	End
Item	Vegetation			37.477227 °	37.478520 °
				-121.081812 °	-121.073474 °
DWR ID	DWR_RD1602_01_f _ 2019_130				
Comment Code					
V1 : Control annual grass and weeds on the levee slopes and easements.					
Inspector Comment					

Photo 1 of 1 : SP_2020_RD1602_110_130_20200403_00124.jpg



Looking East along the waterside slope. (Spring 2020)

* Location
LS : Land Side N/A : Not Applicable
WS : Water Side
CR : Crown

** Rating
A : Acceptable N : Not Inspected/Rated
M : Minimally Acceptable C : Corrected
U : Unacceptable A/W : Acceptable but Monitor & Maintain

+ Issue Type
Ma : Maintenance Deficiency
Ob : Design & System Obsolescence
En : Enforcement

**Flood Control Project Maintenance
Levee Inspections**

Levee Inspection Report By Mile - Spring 2020

Reclamation District No. 1602 Del Puerto

Waterway	Bank	Unit Miles	Inspection Start/End	Inspector
Unit No. 01 San Joaquin River	Left	6.24	04/02/2020 04/02/2020	Corey Fujitani

LM Start	0.13	Rating **	M	Issue No.	131
LM End	1.08	Issue Type +	Ma	Location *	LS
Category	Earthen Levee			GPS Latitude/Longitude	
				Start	End
Item	Vegetation			37.477227 °	37.478468 °
				-121.081811 °	-121.067382 °
DWR ID	DWR_RD1602_01_f_2019_131				
Comment Code					
V1 : Control annual grass and weeds on the levee slopes and easements.					
Inspector Comment					

Photo 1 of 1 : SP_2020_RD1602_110_131_20200403_00125.jpg



Looking East along the landside slope. (Spring 2020)

LM Start	0.18	Rating **	M	Issue No.	20
LM End	0.18	Issue Type +	Ma	Location *	LS
Category	Earthen Levee			GPS Latitude/Longitude	
				Start	End
Item	Animal Control			37.477575 °	37.477575 °
				-121.080943 °	-121.080943 °
DWR ID	DWR_RD1602_01_f _ 2016_20				
Comment Code					
A3 : No rodents visible, but rodent burrows visible; need to backfill and compact or grout burrows.					
Inspector Comment					

No Photos

LM Start	0.20	Rating **	C	Issue No.	28
LM End	0.20	Issue Type +	Ma	Location *	WS
Category	Earthen Levee			GPS Latitude/Longitude	
				Start	End
Item	Animal Control			37.477706 °	37.477706 °
				-121.080674 °	-121.080674 °
DWR ID	DWR_RD1602_01_f_2015_28				
Comment Code					
A3 : No rodents visible, but rodent burrows visible; need to backfill and compact or grout burrows.					
Inspector Comment					

No Photos

* Location LS : Land Side N/A : Not Applicable WS : Water Side CR : Crown	** Rating A : Acceptable M : Minimally Acceptable U : Unacceptable	N : Not Inspected/Rated C : Corrected A/W : Acceptable but Monitor & Maintain	+ Issue Type Ma : Maintenance Deficiency Ob : Design & System Obsolescence En : Enforcement
--	--	---	---

**Flood Control Project Maintenance
Levee Inspections**

Levee Inspection Report By Mile - Spring 2020

Reclamation District No. 1602 Del Puerto

Waterway	Bank	Unit Miles	Inspection Start/End	Inspector
Unit No. 01 San Joaquin River	Left	6.24	04/02/2020 04/02/2020	Corey Fujitani

LM Start	0.26	Rating **	C	Issue No.	29
LM End	0.26	Issue Type +	Ma	Location *	WS
Category	Earthen Levee			GPS Latitude/Longitude	
				Start	End
Item	Animal Control			37.478138 °	37.478138 °
				-121.079810 °	-121.079810 °
DWR ID	DWR_RD1602_01_f_2017_29				
Comment Code					
A3 : No rodents visible, but rodent burrows visible; need to backfill and compact or grout burrows.					
Inspector Comment					

No Photos

LM Start	0.47	Rating **	M	Issue No.	31
LM End	0.47	Issue Type +	Ma	Location *	WS
Category	Earthen Levee			GPS Latitude/Longitude	
				Start	End
Item	Animal Control			37.479659 °	37.479659 °
				-121.076419 °	-121.076419 °
DWR ID	DWR_RD1602_01_f_2015_31				
Comment Code					
A3 : No rodents visible, but rodent burrows visible; need to backfill and compact or grout burrows.					
Inspector Comment					

No Photos

LM Start	0.50	Rating **	M	Issue No.	110
LM End	0.50	Issue Type +	Ma	Location *	LS
Category	Earthen Levee			GPS Latitude/Longitude	
				Start	End
Item	Animal Control			37.479899 °	37.479899 °
				-121.075930 °	-121.075930 °
DWR ID	DWR_RD1602_01_f_2018_110				
Comment Code					
A3 : No rodents visible, but rodent burrows visible; need to backfill and compact or grout burrows.					
Inspector Comment					

No Photos

* Location LS : Land Side N/A : Not Applicable WS : Water Side CR : Crown	** Rating A : Acceptable M : Minimally Acceptable U : Unacceptable	N : Not Inspected/Rated C : Corrected A/W : Acceptable but Monitor & Maintain	+ Issue Type Ma : Maintenance Deficiency Ob : Design & System Obsolescence En : Enforcement
--	--	---	---

**Flood Control Project Maintenance
Levee Inspections**

Levee Inspection Report By Mile - Spring 2020

Reclamation District No. 1602 Del Puerto

Waterway	Bank	Unit Miles	Inspection Start/End	Inspector
Unit No. 01 San Joaquin River	Left	6.24	04/02/2020 04/02/2020	Corey Fujitani

LM Start	0.58	Rating **	A/W	Issue No.	200
LM End	0.58	Issue Type +	Ma	Location *	
Category	Supplemental		GPS Latitude/Longitude		
			Start	End	
Item	DWR UCIP LMA Responsibility		37.480182 °	37.480182 °	
			-121.074765 °	-121.074765 °	
DWR ID	20215				

Comment Code

Inspector Comment

DS_ID:20215
FS_ID:51325
EP_NO: N/A
Repair Type: No Action Needed
Crossing Status: Found
UCIP Comments: 11/18/2016 Crossing has been downgraded from Urgent to No Action Needed a cover has been added to the CMP riser. (O. Magana - DWR UCIP)10/01/2013 Open 60-inch CMP riser on WS needs lid as it's depth may be a hazard to the public. (W. Wylie - DWR UCIP)
FIELD_STRUCT_DESC: 16-inch steel drainage pipe through levee, 11.3 feet below crown. Slide gate in 60-inch corrugated metal pipe (CMP) riser located on the waterside (WS). Concrete inlet is approximately 110 feet west of the levee crown or 110 feet off landside (LS) toe next to roadway. [Additional Reference(s): DWR Levee Log, 1992. USACE San Joaquin River O&M Manual Unit 13, April 1964, (HLM 0.58), Drawing No. 7-4-1784].
FS Date: 11/18/2016

LM Start	0.58	Rating **	A/W	Issue No.	200 (cont)
LM End	0.58	Issue Type +	Ma	Location *	

Photo 1 of 3 : UCIP_SP_2020_51325_36702.jpg



60-inch CMP riser on WS shoulder.

Photo 2 of 3 : UCIP_SP_2020_51325_36701.jpg



CMP riser with slide gate on WS shoulder.

* Location LS : Land Side N/A : Not Applicable WS : Water Side CR : Crown		** Rating A : Acceptable M : Minimally Acceptable U : Unacceptable N : Not Inspected/Rated C : Corrected A/W : Acceptable but Monitor & Maintain		+ Issue Type Ma : Maintenance Deficiency Ob : Design & System Obsolescence En : Enforcement	
--	--	---	--	---	--

**Flood Control Project Maintenance
Levee Inspections**

Levee Inspection Report By Mile - Spring 2020

Reclamation District No. 1602 Del Puerto

Waterway	Bank	Unit Miles	Inspection Start/End	Inspector
Unit No. 01 San Joaquin River	Left	6.24	04/02/2020 04/02/2020	Corey Fujitani

LM Start	0.58	Rating **	M	Issue No.	201 (cont)
LM End	0.58	Issue Type +	En	Location *	
Category	Supplemental		GPS Latitude/Longitude		
			Start	End	
Item	DWR UCIP Field Study		37.480176 °	37.480176 °	
			-121.074736 °	-121.074736 °	
DWR ID	24681				

Photo 2 of 3 : UCIP_SP_2020_22937_39049.jpg



Communication line access box on LS shoulder.

LM Start	0.58	Rating **	M	Issue No.	201 (cont)
LM End	0.58	Issue Type +	En	Location *	

Photo 3 of 3 : UCIP_SP_2020_22937_39048.jpg



Communication line marker on LS shoulder.

LM Start	0.60	Rating **	M	Issue No.	70
LM End	0.71	Issue Type +	En	Location *	WS
Category	Earthen Levee			GPS Latitude/Longitude	
				Start	End
Item	Encroachments			37.479967 °	37.478514 °
				-121.074582 °	-121.073435 °
DWR ID	DWR_RD1602_01_s_2012_70				
Comment Code					
FE : Fence					
Inspector Comment					
Barbed wire fence along the landward toe.					

Photo 1 of 1 : SP_2020_RD1602_110_70_20200225_00043.jpg



View of barbed wire fence at landward toe looking upstream.

*** Location**

LS : Land Side N/A : Not Applicable
WS : Water Side
CR : Crown

**** Rating**

A : Acceptable N : Not Inspected/Rated
M : Minimally Acceptable C : Corrected
U : Unacceptable A/W : Acceptable but Monitor & Maintain

+ Issue Type

Ma : Maintenance Deficiency
Ob : Design & System Obsolescence
En : Enforcement

**Flood Control Project Maintenance
Levee Inspections**

Levee Inspection Report By Mile - Spring 2020

Reclamation District No. 1602 Del Puerto

Waterway	Bank	Unit Miles	Inspection Start/End	Inspector
Unit No. 01 San Joaquin River	Left	6.24	04/02/2020 04/02/2020	Corey Fujitani

LM Start	0.63	Rating **	M	Issue No.	107
LM End	0.63	Issue Type +	Ma	Location *	LS
Category	Earthen Levee			GPS Latitude/Longitude	
				Start	End
Item	Animal Control			37.479569 °	37.479569 °
				-121.074299 °	-121.074299 °
DWR ID	DWR_RD1602_01_f_2018_107				
Comment Code					
A3 : No rodents visible, but rodent burrows visible; need to backfill and compact or grout burrows.					
Inspector Comment					

No Photos

LM Start	0.64	Rating **	M	Issue No.	30
LM End	0.64	Issue Type +	Ma	Location *	WS
Category	Earthen Levee			GPS Latitude/Longitude	
				Start	End
Item	Animal Control			37.479391 °	37.479391 °
				-121.074168 °	-121.074168 °
DWR ID	DWR_RD1602_01_f_2017_30				
Comment Code					
A3 : No rodents visible, but rodent burrows visible; need to backfill and compact or grout burrows.					
Inspector Comment					

Photo 1 of 1 : SP_2020_RD1602_110_30_20200225_00014.jpg



View of rodent holes on the waterside slope of the levee. Fall 2017

* Location LS : Land Side N/A : Not Applicable WS : Water Side CR : Crown	** Rating A : Acceptable M : Minimally Acceptable U : Unacceptable	N : Not Inspected/Rated C : Corrected A/W : Acceptable but Monitor & Maintain	+ Issue Type Ma : Maintenance Deficiency Ob : Design & System Obsolescence En : Enforcement
--	--	---	---

**Flood Control Project Maintenance
Levee Inspections**

Levee Inspection Report By Mile - Spring 2020

Reclamation District No. 1602 Del Puerto

Waterway	Bank	Unit Miles	Inspection Start/End	Inspector
Unit No. 01 San Joaquin River	Left	6.24	04/02/2020 04/02/2020	Corey Fujitani

LM Start	0.77	Rating **	A/W	Issue No.	202
LM End	0.77	Issue Type +	Ma	Location *	
Category	Supplemental			GPS Latitude/Longitude	
				Start	End
Item	DWR UCIP LMA Responsibility			37.477993 °	37.477993 °
				-121.072645 °	-121.072645 °
DWR ID	20216				

Comment Code

Inspector Comment

DS_ID:20216
FS_ID:51634
EP_NO: N/A
Repair Type: No Action Needed
Crossing Status: Found
UCIP Comments: 11/18/2016 Crossing has been downgraded from Urgent to No Action Needed the debris blocking the outlet has been cleared. (O. Magana - DWR UCIP)10/01/2013 Flap gate blocked from functioning by soil buildup on WS toe. Soil should be cleared. (W. Wylie - DWR UCIP)
FIELD_STRUCT_DESC: 30-inch square reinforced concrete box culvert through levee, 14.4 feet below crown. Concrete "U" headwall on the waterside (WS) and landside (LS) ends. Slide gate in 6-foot by 7-foot concrete surge box is located on the WS shoulder. Flap gate is located on the WS end. [Additional Reference(s): DWR Levee Log, 1992. USACE San Joaquin River O&M Manual Unit 13, April 1964, (HLM 0.78), Drawing No. 7-4-1784].
FS Date: 11/18/2016

LM Start	0.77	Rating **	A/W	Issue No.	202 (cont)
LM End	0.77	Issue Type +	Ma	Location *	

Photo 1 of 3 : UCIP_SP_2020_51634_36723.jpg



Inlet on LS toe.

Photo 2 of 3 : UCIP_SP_2020_51634_36722.jpg



Slide gate in concrete box on WS shoulder.

* Location LS : Land Side N/A : Not Applicable WS : Water Side CR : Crown	** Rating A : Acceptable M : Minimally Acceptable U : Unacceptable	N : Not Inspected/Rated C : Corrected A/W : Acceptable but Monitor & Maintain	+ Issue Type Ma : Maintenance Deficiency Ob : Design & System Obsolescence En : Enforcement
--	--	--	---

**Flood Control Project Maintenance
Levee Inspections**

Levee Inspection Report By Mile - Spring 2020

Reclamation District No. 1602 Del Puerto

Waterway	Bank	Unit Miles	Inspection Start/End	Inspector
Unit No. 01 San Joaquin River	Left	6.24	04/02/2020 04/02/2020	Corey Fujitani

LM Start	0.77	Rating **	A/W	Issue No.	202 (cont)
LM End	0.77	Issue Type +	Ma	Location *	
Category	Supplemental			GPS Latitude/Longitude	
				Start	End
Item	DWR UCIP LMA Responsibility			37.477993 °	37.477993 °
				-121.072645 °	-121.072645 °
DWR ID	20216				

Photo 3 of 3 : UCIP_SP_2020_51634_36721.jpg



Concrete inlet on LS toe.

LM Start	0.80	Rating **	M	Issue No.	25
LM End	1.34	Issue Type +	Ma	Location *	WS
Category	Earthen Levee			GPS Latitude/Longitude	
				Start	End
Item	Vegetation			37.477830 °	37.479293 °
				-121.072226 °	-121.063091 °
DWR ID	DWR_RD1602_01_s_2020_25				
Comment Code					
V1 : Control annual grass and weeds on the levee slopes and easements.					
Inspector Comment					

Photo 1 of 1 : SP_2020_RD1602_110_25_20200403_00126.jpg



View of the waterside slope looking upstream. (Spring 2020)

LM Start	0.81	Rating **	M	Issue No.	40
LM End	1.63	Issue Type +	Ma	Location *	CR
Category	Earthen Levee			GPS Latitude/Longitude	
				Start	End
Item	Vegetation			37.477849 °	37.477455 °
				-121.071953 °	-121.058627 °
DWR ID	DWR_RD1602_01_s_2020_40				
Comment Code					
V9 : Keep the crown roadway free of vegetation.					
Inspector Comment					

Photo 1 of 1 : SP_2020_RD1602_110_40_20200403_00127.jpg



View of vegetation growing along the crown. (Spring 2020)

*** Location**
LS : Land Side N/A : Not Applicable
WS : Water Side
CR : Crown

**** Rating**
A : Acceptable N : Not Inspected/Rated
M : Minimally Acceptable C : Corrected
U : Unacceptable A/W : Acceptable but Monitor & Maintain

+ Issue Type
Ma : Maintenance Deficiency
Ob : Design & System Obsolescence
En : Enforcement

**Flood Control Project Maintenance
Levee Inspections**

Levee Inspection Report By Mile - Spring 2020

Reclamation District No. 1602 Del Puerto

Waterway	Bank	Unit Miles	Inspection Start/End	Inspector
Unit No. 01 San Joaquin River	Left	6.24	04/02/2020 04/02/2020	Corey Fujitani

LM Start	1.00	Rating **	M	Issue No.	36
LM End	1.00	Issue Type +	En	Location *	WS
Category	Earthen Levee			GPS Latitude/Longitude	
				Start	End
Item	Encroachments			37.478810 °	37.478810 °
				-121.068738 °	-121.068738 °
DWR ID	DWR_RD1602_01_s_2012_36				
Comment Code					
RA : Ramp					
Inspector Comment					
Pipe owner placed fill over pipe above crown of levee to build ramp over pipe.					

Photo 1 of 1 : SP_2020_RD1602_110_36_20200225_00018.jpg



View of the ramp on the crown. The picture was taken from crown looking downstream.

LM Start	1.00	Rating **	M	Issue No.	203	
LM End	1.00	Issue Type +	Ma	Location *		
Category	Supplemental			GPS Latitude/Longitude		
				Start		End
Item	DWR UCIP LMA Responsibility			37.478816 °	37.478816 °	
				-121.068780 °	-121.068780 °	
DWR ID	20217					
Comment Code						
Inspector Comment						
DS_ID:20217 FS_ID:51636 EP_NO: N/A Repair Type: Non-Urgent Crossing Status: Found UCIP Comments: 11/18/2016 Crossing has been downgraded from Urgent to Non-Urgent a flap gate has been added to the WS but pipe is currently not connected to pump. According to Tony Martinez, LMA representative, this crossing is currently not in use. Owner will need to coordinate with CVFPB to obtain permit. (O. Magana - DWR UCIP)10/01/2013 Appears abandoned and if so should be done so properly. Flapgate missing. (W. Wylie - DWR UCIP) FIELD_STRUCT_DESC: *ABANDONED* 1 of 2: 16-inch steel drainage pipe through levee, 17 feet below crown. Pumps on the pump platform are located on the landside (LS). Siphon breaker in 24-inch corrugated metal pipe (CMP) riser is located on the waterside (WS) shoulder. Concrete "U" headwall and flap gate are located on the WS end. [Additional Reference(s): DWR Levee Log, 1992. USACE San Joaquin River O&M Manual Unit 13, April 1964, (HLM 1.01), Drawing No. 7-4-1784]. FS Date: 11/18/2016						

Photo 1 of 3 : UCIP_SP_2020_51636_36758.jpg



Pumping plant on LS toe. Pipe visible under walkway.

* Location LS : Land Side N/A : Not Applicable WS : Water Side CR : Crown		** Rating A : Acceptable M : Minimally Acceptable U : Unacceptable N : Not Inspected/Rated C : Corrected A/W : Acceptable but Monitor & Maintain		+ Issue Type Ma : Maintenance Deficiency Ob : Design & System Obsolescence En : Enforcement	
---	--	--	--	--	--

**Flood Control Project Maintenance
Levee Inspections**

Levee Inspection Report By Mile - Spring 2020

Reclamation District No. 1602 Del Puerto

Waterway	Bank	Unit Miles	Inspection Start/End	Inspector
Unit No. 01 San Joaquin River	Left	6.24	04/02/2020 04/02/2020	Corey Fujitani

LM Start	1.00	Rating **	M	Issue No.	203 (cont)
LM End	1.00	Issue Type +	Ma	Location *	
Category	Supplemental		GPS Latitude/Longitude		
			Start	End	
Item	DWR UCIP LMA Responsibility		37.478816 °	37.478816 °	
			-121.068780 °	-121.068780 °	
DWR ID	20217				

Photo 2 of 3 : UCIP_SP_2020_51636_36757.jpg



Siphon breaker in 24-inch CMP riser on WS shoulder.

LM Start	1.00	Rating **	M	Issue No.	203 (cont)
LM End	1.00	Issue Type +	Ma	Location *	

Photo 3 of 3 : UCIP_SP_2020_51636_36756.jpg



Siphon breaker in 24-inch CMP riser on WS shoulder.

* Location LS : Land Side N/A : Not Applicable WS : Water Side CR : Crown		** Rating A : Acceptable N : Not Inspected/Rated M : Minimally Acceptable C : Corrected U : Unacceptable A/W : Acceptable but Monitor & Maintain		+ Issue Type Ma : Maintenance Deficiency Ob : Design & System Obsolescence En : Enforcement
--	--	---	--	---

**Flood Control Project Maintenance
Levee Inspections**

Levee Inspection Report By Mile - Spring 2020

Reclamation District No. 1602 Del Puerto

Waterway	Bank	Unit Miles	Inspection Start/End	Inspector
Unit No. 01 San Joaquin River	Left	6.24	04/02/2020 04/02/2020	Corey Fujitani

LM Start	1.00	Rating **	M	Issue No.	204
LM End	1.00	Issue Type +	Ma	Location *	
Category	Supplemental			GPS Latitude/Longitude	
				Start	End
Item	DWR UCIP LMA Responsibility			37.478817 °	37.478817 °
				-121.068773 °	-121.068773 °
DWR ID	20219				

Comment Code

Inspector Comment

DS_ID:20219
FS_ID:51637
EP_NO: N/A
Repair Type: Non-Urgent
Crossing Status: Found
UCIP Comments: 11/18/2016 Crossing has been downgraded from Urgent to Non-Urgent a flap gate has been added to the WS. According to Tony Martinez, LMA representative, this crossing is currently not in use. Owner will need to coordinate with CVFPB to obtain permit. (O. Magana - DWR UCIP)10/01/2013 Appears abandoned siphon breakers covered in soil and flapgate missing. (W. Wylie - DWR UCIP) FIELD_STRUCT_DESC: *ABANDONED* 2 of 2: 16-inch steel drainage pipe through levee, 17 feet below crown. Pump on pump platform located on the landside (LS). Siphon breaker in 24-inch riser located on the waterside (WS) shoulder. Concrete "U" headwall and flap gate are located on the WS end. [Additional Reference(s): DWR Levee Log, 1992. USACE San Joaquin River O&M Manual Unit 13, April 1964, (HLM 1.01), Drawing No. 7-4-1784].
FS Date: 11/18/2016

LM Start	1.00	Rating **	M	Issue No.	204 (cont)
LM End	1.00	Issue Type +	Ma	Location *	

Photo 1 of 3 : UCIP_SP_2020_51637_36772.jpg



Pipe visible under walkway at puming plant on LS toe.

Photo 2 of 3 : UCIP_SP_2020_51637_36771.jpg



Siphon breaker covered in soil at CMP riser on WS shoulder.

* Location	** Rating	+ Issue Type
LS : Land Side WS : Water Side CR : Crown	A : Acceptable M : Minimally Acceptable U : Unacceptable	Ma : Maintenance Deficiency Ob : Design & System Obsolescence En : Enforcement
N/A : Not Applicable	N : Not Inspected/Rated C : Corrected A/W : Acceptable but Monitor & Maintain	

**Flood Control Project Maintenance
Levee Inspections**

Levee Inspection Report By Mile - Spring 2020

Reclamation District No. 1602 Del Puerto

Waterway	Bank	Unit Miles	Inspection Start/End	Inspector
Unit No. 01 San Joaquin River	Left	6.24	04/02/2020 04/02/2020	Corey Fujitani

LM Start	1.00	Rating **	M	Issue No.	204 (cont)
LM End	1.00	Issue Type +	Ma	Location *	
Category	Supplemental			GPS Latitude/Longitude	
				Start	End
Item	DWR UCIP LMA Responsibility			37.478817 °	37.478817 °
				-121.068773 °	-121.068773 °
DWR ID	20219				

Photo 3 of 3 : UCIP_SP_2020_51637_36770.jpg



Concrete headwall on WS toe with missing flapgate.

* Location LS : Land Side N/A : Not Applicable WS : Water Side CR : Crown	** Rating A : Acceptable M : Minimally Acceptable U : Unacceptable N : Not Inspected/Rated C : Corrected A/W : Acceptable but Monitor & Maintain	+ Issue Type Ma : Maintenance Deficiency Ob : Design & System Obsolescence En : Enforcement
--	---	---

**Flood Control Project Maintenance
Levee Inspections**

Levee Inspection Report By Mile - Spring 2020

Reclamation District No. 1602 Del Puerto

Waterway	Bank	Unit Miles	Inspection Start/End	Inspector
Unit No. 01 San Joaquin River	Left	6.24	04/02/2020 04/02/2020	Corey Fujitani

LM Start	1.02	Rating **	U	Issue No.	205
LM End	1.02	Issue Type +	Ma	Location *	
Category	Supplemental			GPS Latitude/Longitude	
				Start	End
Item	DWR UCIP LMA Responsibility			37.478779 °	37.478779 °
				-121.068508 °	-121.068508 °
DWR ID	20218				

Comment Code

Inspector Comment

DS_ID:20218

FS_ID:53521

EP_NO: N/A

Repair Type: Urgent

Crossing Status: Found

UCIP Comments: 10/19/2018 Pipe remains the same. WS concrete headwall is still detached with vertical erosion on the WS slope. Dense vegetation along pipe alignment made it difficult to inspect levee slopes and identify any potential issues present at this site. Recommend clearing vegetation along pipe alignment to be able to conduct a proper UCIP inspection. This crossing is part of DWR's Flood System Repair Project (FSRP) and Deferred Maintenance Project (DMP). Crossing will be monitored to identify progress of erosion on the WS slope. Crossing remains Urgent due to the detachment of the concrete wall and vertical cut on the WS. (O. Magana - DWR UCIP)11/18/2016 Same as previous inspection headwall on the WS toe has separated from pipe and flap gate is still missing. Erosion around concrete headwall and undermined WS slope are visible from WS. The slope undermined appears to have progressed but no photos were taken due to the dense vegetation covering area. According to Tony Martinez, LMA representative, the WS concrete headwall has been detached since 2008/2009. LMA has been in contact with CVFPB, DWR, and USACE regarding this site. (O. Magana - DWR UCIP)10/01/2013 Headwall on WS toe separated from pipe. Erosion around concrete headwall and undermined at WS toe. Flap gate missing from WS toe headwall. (W. Wylie - DWR UCIP)

FIELD_STRUCT_DESC: 30-inch square reinforced concrete box culvert through levee, 25.4 feet below crown. Concrete "U" headwalls on both waterside (WS) and landside (LS) ends. Slide gate in concrete surge box located on the WS slope. A 5-foot by 5-foot concrete box is located on LS toe. Flap gate is located on the WS end. [Additional Reference(s): DWR Levee Log, 1992. USACE San Joaquin River O&M Manual Unit 13, April 1964, (HLM 1.02), Drawing No. 7-4-1784].
FS Date: 10/19/2018 10:23:00 AM

Photo 1 of 3 : UCIP_SP_2020_53521_36786.jpg



Grated inlet and 5'X5' concrete box on LS toe.

* Location LS : Land Side N/A : Not Applicable WS : Water Side CR : Crown	** Rating A : Acceptable M : Minimally Acceptable U : Unacceptable N : Not Inspected/Rated C : Corrected A/W : Acceptable but Monitor & Maintain	+ Issue Type Ma : Maintenance Deficiency Ob : Design & System Obsolescence En : Enforcement
--	---	---

**Flood Control Project Maintenance
Levee Inspections**

Levee Inspection Report By Mile - Spring 2020

Reclamation District No. 1602 Del Puerto

Waterway	Bank	Unit Miles	Inspection Start/End	Inspector
Unit No. 01 San Joaquin River	Left	6.24	04/02/2020 04/02/2020	Corey Fujitani

LM Start	1.02	Rating **	U	Issue No.	205 (cont)
LM End	1.02	Issue Type +	Ma	Location *	
Category	Supplemental		GPS Latitude/Longitude		
			Start	End	
Item	DWR UCIP LMA Responsibility		37.478779 °	37.478779 °	
			-121.068508 °	-121.068508 °	
DWR ID	20218				

Photo 2 of 3 : UCIP_SP_2020_53521_36785.jpg



Grated inlet at LS toe.

LM Start	1.02	Rating **	U	Issue No.	205 (cont)
LM End	1.02	Issue Type +	Ma	Location *	

Photo 3 of 3 : UCIP_SP_2020_53521_36789.jpg



Slide gate in concrete riser next to shed on WS shoulder.

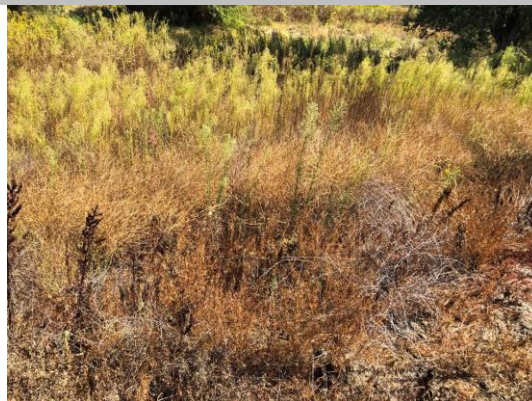
LM Start	1.05	Rating **	M	Issue No.	2
LM End	1.05	Issue Type +	Ma	Location *	
Category	Supplemental		GPS Latitude/Longitude		
			Start	End	
Item	DWR Erosion Survey		37.478567 °	37.478567 °	
			-121.067847 °	-121.067847 °	
DWR ID	RD1602U01RM97.68				

Comment Code

Inspector Comment

Site ID: RD1602U01RM97.68
 09/17/2019: No significant change observed. Signs of animal activities at the site.
 09/20/2017: The erosion was discovered during the spring levee inspection. The size of the erosion is roughly estimated due to dense vegetation at the site.

Photo 1 of 3 : SP_2020_RD1602_110_2_20200225_00001.jpg



Close-up view of the erosion. The erosion is covered by dense vegetation at the site.

* Location	** Rating	+ Issue Type
LS : Land Side WS : Water Side CR : Crown	A : Acceptable M : Minimally Acceptable U : Unacceptable	Ma : Maintenance Deficiency Ob : Design & System Obsolescence En : Enforcement
N/A : Not Applicable	N : Not Inspected/Rated C : Corrected A/W : Acceptable but Monitor & Maintain	

**Flood Control Project Maintenance
Levee Inspections**

Levee Inspection Report By Mile - Spring 2020

Reclamation District No. 1602 Del Puerto

Waterway	Bank	Unit Miles	Inspection Start/End	Inspector
Unit No. 01 San Joaquin River	Left	6.24	04/02/2020 04/02/2020	Corey Fujitani

LM Start	1.05	Rating **	M	Issue No.	2 (cont)
LM End	1.05	Issue Type +	Ma	Location *	
Category	Supplemental			GPS Latitude/Longitude	
				Start	End
Item	DWR Erosion Survey			37.478567 °	37.478567 °
				-121.067847 °	-121.067847 °
DWR ID	RD1602U01RM97.68				

Photo 2 of 3 : SP_2020_RD1602_110_2_20200225_00002.jpg



Close view of the erosion.

LM Start	1.05	Rating **	M	Issue No.	2 (cont)
LM End	1.05	Issue Type +	Ma	Location *	

Photo 3 of 3 : SP_2020_RD1602_110_2_20200225_00003.jpg



Close-up view at the erosion. Signs of squirrel activities.

LM Start	1.08	Rating **	U	Issue No.	61
LM End	1.31	Issue Type +	Ma	Location *	LS
Category	Earthen Levee			GPS Latitude/Longitude	
				Start	End
Item	Vegetation			37.478467 °	37.479209 °
				-121.067380 °	-121.063671 °
DWR ID	DWR_RD1602_01_s_2020_61				
Comment Code					
V1 : Control annual grass and weeds on the levee slopes and easements.					
Inspector Comment					

Photo 1 of 1 : SP_2020_RD1602_110_61_20200403_00128.jpg

Looking upstream at vegetation growing on the landside slope and toe.
(Spring 2020)

* Location LS : Land Side N/A : Not Applicable WS : Water Side CR : Crown		** Rating A : Acceptable N : Not Inspected/Rated M : Minimally Acceptable C : Corrected U : Unacceptable A/W : Acceptable but Monitor & Maintain		+ Issue Type Ma : Maintenance Deficiency Ob : Design & System Obsolescence En : Enforcement	
--	--	---	--	---	--

**Flood Control Project Maintenance
Levee Inspections**

Levee Inspection Report By Mile - Spring 2020

Reclamation District No. 1602 Del Puerto

Waterway	Bank	Unit Miles	Inspection Start/End	Inspector
Unit No. 01 San Joaquin River	Left	6.24	04/02/2020 04/02/2020	Corey Fujitani

LM Start	1.09	Rating **	M	Issue No.	127
LM End	1.09	Issue Type +	Ma	Location *	LS
Category	Earthen Levee			GPS Latitude/Longitude	
				Start	End
Item	Trim / Thin Trees			37.478449 °	37.478449 °
				-121.067261 °	-121.067261 °
DWR ID	DWR_RD1602_01_f_2019_127				
Comment Code					
T2 : Thin trees to allow visibility of the ground and room to flood fight.					
Inspector Comment					
Young tree growing in the landside shoulder should be removed before it can establish.					

Photo 1 of 1 : SP_2020_RD1602_110_127_20200225_00072.jpg



Young tree growing on the landside shoulder should be removed. (Fall 2019)

LM Start	1.19	Rating **	M	Issue No.	32
LM End	1.19	Issue Type +	Ma	Location *	WS
Category	Earthen Levee			GPS Latitude/Longitude	
				Start	End
Item	Animal Control			37.478347 °	37.478347 °
				-121.065361 °	-121.065361 °
DWR ID	DWR_RD1602_01_f_2017_32				
Comment Code					
A3 : No rodents visible, but rodent burrows visible; need to backfill and compact or grout burrows.					
Inspector Comment					

No Photos

LM Start	1.31	Rating **	M	Issue No.	64
LM End	2.06	Issue Type +	Ma	Location *	LS
Category	Earthen Levee			GPS Latitude/Longitude	
				Start	End
Item	Vegetation			37.479228 °	37.471354 °
				-121.063642 °	-121.057452 °
DWR ID	DWR_RD1602_01_s_2020_64				
Comment Code					
V1 : Control annual grass and weeds on the levee slopes and easements.					
Inspector Comment					

No Photos

* Location		** Rating		+ Issue Type	
LS : Land Side N/A : Not Applicable		A : Acceptable		Ma : Maintenance Deficiency	
WS : Water Side		M : Minimally Acceptable		Ob : Design & System Obsolescence	
CR : Crown		U : Unacceptable		En : Enforcement	
		N : Not Inspected/Rated			
		C : Corrected			
		A/W : Acceptable but Monitor & Maintain			

**Flood Control Project Maintenance
Levee Inspections**

Levee Inspection Report By Mile - Spring 2020

Reclamation District No. 1602 Del Puerto

Waterway	Bank	Unit Miles	Inspection Start/End	Inspector
Unit No. 01 San Joaquin River	Left	6.24	04/02/2020 04/02/2020	Corey Fujitani

LM Start	1.34	Rating **	U	Issue No.	65
LM End	1.54	Issue Type +	Ma	Location *	WS
Category	Earthen Levee			GPS Latitude/Longitude	
				Start	End
Item	Vegetation			37.479294 °	37.478348 °
				-121.063091 °	-121.059757 °
DWR ID	DWR_RD1602_01_s_2020_65				
Comment Code					
V1 : Control annual grass and weeds on the levee slopes and easements.					
Inspector Comment					

Photo 1 of 1 : SP_2020_RD1602_110_65_20200403_00129.jpg



View of the waterside slope looking upstream. (Spring 2020)

LM Start	1.54	Rating **	M	Issue No.	75
LM End	1.65	Issue Type +	Ma	Location *	WS
Category	Earthen Levee			GPS Latitude/Longitude	
				Start	End
Item	Vegetation			37.478347 °	37.477236 °
				-121.059759 °	-121.058496 °
DWR ID	DWR_RD1602_01_s_2020_75				
Comment Code					
V1 : Control annual grass and weeds on the levee slopes and easements.					
Inspector Comment					

No Photos

LM Start	1.55	Rating **	U	Issue No.	122
LM End	1.55	Issue Type +	Ma	Location *	LS
Category	Earthen Levee			GPS Latitude/Longitude	
				Start	End
Item	Trim / Thin Trees			37.478245 °	37.478245 °
				-121.059535 °	-121.059535 °
DWR ID	DWR_RD1602_01_f_2019_122				
Comment Code					
T4 : Trim trees over roadway to at least 12 feet above ground level.					
Inspector Comment					

Photo 1 of 1 : SP_2020_RD1602_110_122_20200225_00068.jpg



Looking at tree limbs hanging over the landside shoulder and crown. (Fall 2019)

* Location
LS : Land Side N/A : Not Applicable
WS : Water Side
CR : Crown

** Rating
A : Acceptable N : Not Inspected/Rated
M : Minimally Acceptable C : Corrected
U : Unacceptable A/W : Acceptable but Monitor & Maintain

+ Issue Type
Ma : Maintenance Deficiency
Ob : Design & System Obsolescence
En : Enforcement

**Flood Control Project Maintenance
Levee Inspections**

Levee Inspection Report By Mile - Spring 2020

Reclamation District No. 1602 Del Puerto

Waterway	Bank	Unit Miles	Inspection Start/End	Inspector
Unit No. 01 San Joaquin River	Left	6.24	04/02/2020 04/02/2020	Corey Fujitani

LM Start	1.57	Rating **	M	Issue No.	33
LM End	1.57	Issue Type +	Ma	Location *	LS
Category	Earthen Levee			GPS Latitude/Longitude	
				Start	End
Item	Encroachments			37.478113 °	37.478113 °
				-121.059287 °	-121.059287 °
DWR ID	DWR_RD1602_01_f _ 2017_33				
Comment Code					
TR : Tree or limb					
Inspector Comment					

Photo 1 of 1 : SP_2020_RD1602_110_33_20200225_00015.jpg



View of prunings on the landside of the levee.

LM Start	1.61	Rating **	M	Issue No.	43
LM End	2.22	Issue Type +	En	Location *	LS
Category	Earthen Levee			GPS Latitude/Longitude	
				Start	End
Item	Encroachments			37.477663 °	37.470125 °
				-121.058716 °	-121.055244 °
DWR ID	DWR_RD1602_01_s_2012_43				
Comment Code					
FE : Fence					
Inspector Comment					
Fence at the landside toe of the levee.					

Photo 1 of 1 : SP_2020_RD1602_110_43_20200225_00022.jpg



View of the fence on the landside toe of the levee. The picture was taken from crown looking upstream.

*** Location**
LS : Land Side N/A : Not Applicable
WS : Water Side
CR : Crown

**** Rating**
A : Acceptable N : Not Inspected/Rated
M : Minimally Acceptable C : Corrected
U : Unacceptable A/W : Acceptable but Monitor & Maintain

+ Issue Type
Ma : Maintenance Deficiency
Ob : Design & System Obsolescence
En : Enforcement

**Flood Control Project Maintenance
Levee Inspections**

Levee Inspection Report By Mile - Spring 2020

Reclamation District No. 1602 Del Puerto

Waterway	Bank	Unit Miles	Inspection Start/End	Inspector
Unit No. 01 San Joaquin River	Left	6.24	04/02/2020 04/02/2020	Corey Fujitani

LM Start	1.65	Rating **	U	Issue No.	80
LM End	1.65	Issue Type +	Ma	Location *	LS
Category	Earthen Levee			GPS Latitude/Longitude	
				Start	End
Item	Encroachments			37.477218 °	37.477218 °
				-121.058505 °	-121.058505 °
DWR ID	DWR_RD1602_01_s_2018_80				
Comment Code					
TR : Tree or limb					
Inspector Comment					
Fallen tree branch on landward slope and toe.					

Photo 1 of 1 : SP_2020_RD1602_110_80_20200225_00045.jpg



Looking at fallen branch on landward slope and toe.

LM Start	1.80	Rating **	M	Issue No.	104
LM End	1.80	Issue Type +	Ma	Location *	LS
Category	Earthen Levee			GPS Latitude/Longitude	
				Start	End
Item	Encroachments			37.475110 °	37.475110 °
				-121.057925 °	-121.057925 °
DWR ID	DWR_RD1602_01_f _ 2018_104				
Comment Code					
PR : Prunings					
Inspector Comment					
Tree limbs on landside toe.					

Photo 1 of 1 : SP_2020_RD1602_110_104_20200225_00064.jpg



tree limbs on landside toe. (Fall 2018)

LM Start	2.03	Rating **	M	Issue No.	45
LM End	2.03	Issue Type +	En	Location *	LS
Category	Earthen Levee			GPS Latitude/Longitude	
				Start	End
Item	Encroachments			37.471734 °	37.471734 °
				-121.057670 °	-121.057670 °
DWR ID	DWR_RD1602_01_s_2012_45				
Comment Code					
EQ : Equipment					
Inspector Comment					
A well is present at the toe of the landside of the slope.					

Photo 1 of 1 : SP_2020_RD1602_110_45_20200225_00024.jpg



A well is located at the landside toe of the levee. The picture was taken from the crown looking toward the landside of the levee.

*** Location**
LS : Land Side N/A : Not Applicable
WS : Water Side
CR : Crown

**** Rating**
A : Acceptable N : Not Inspected/Rated
M : Minimally Acceptable C : Corrected
U : Unacceptable A/W : Acceptable but Monitor & Maintain

+ Issue Type
Ma : Maintenance Deficiency
Ob : Design & System Obsolescence
En : Enforcement

**Flood Control Project Maintenance
Levee Inspections**

Levee Inspection Report By Mile - Spring 2020

Reclamation District No. 1602 Del Puerto

Waterway	Bank	Unit Miles	Inspection Start/End	Inspector
Unit No. 01 San Joaquin River	Left	6.24	04/02/2020 04/02/2020	Corey Fujitani

LM Start	2.07	Rating **	U	Issue No.	93
LM End	2.07	Issue Type +	Ma	Location *	LS
Category	Earthen Levee			GPS Latitude/Longitude	
				Start	End
Item	Animal Control			37.471195 °	37.471195 °
				-121.057356 °	-121.057356 °
DWR ID	DWR_RD1602_01_s_2020_93				
Comment Code					
A3 : No rodents visible, but rodent burrows visible; need to backfill and compact or grout burrows.					
Inspector Comment					

Photo 1 of 2 : SP_2020_RD1602_110_93_20200403_00132.jpg



View rodent burrows in landside slope. (Spring 2020)

LM Start	2.07	Rating **	U	Issue No.	93 (cont)
LM End	2.07	Issue Type +	Ma	Location *	LS

Photo 2 of 2 : SP_2020_RD1602_110_93_20200403_00131.jpg



Representative view of rodent burrow in landside slope. (Spring 2020)

LM Start	2.17	Rating **	M	Issue No.	116
LM End	2.28	Issue Type +	Ma	Location *	LS
Category	Earthen Levee			GPS Latitude/Longitude	
				Start	End
Item	Vegetation			37.470322 °	37.470293 °
				-121.056173 °	-121.054244 °
DWR ID	DWR_RD1602_01_s_2020_116				
Comment Code					
V1 : Control annual grass and weeds on the levee slopes and easements.					
Inspector Comment					

No Photos

* Location LS : Land Side N/A : Not Applicable WS : Water Side CR : Crown	** Rating A : Acceptable M : Minimally Acceptable U : Unacceptable	N : Not Inspected/Rated C : Corrected A/W : Acceptable but Monitor & Maintain	+ Issue Type Ma : Maintenance Deficiency Ob : Design & System Obsolescence En : Enforcement
--	--	---	---

**Flood Control Project Maintenance
Levee Inspections**

Levee Inspection Report By Mile - Spring 2020

Reclamation District No. 1602 Del Puerto

Waterway	Bank	Unit Miles	Inspection Start/End	Inspector
Unit No. 01 San Joaquin River	Left	6.24	04/02/2020 04/02/2020	Corey Fujitani

LM Start	2.19	Rating **	M	Issue No.	101
LM End	2.19	Issue Type +	En	Location *	LS
Category	Earthen Levee			GPS Latitude/Longitude	
				Start	End
Item	Encroachments			37.470210 °	37.470210 °
				-121.055683 °	-121.055683 °
DWR ID	DWR_RD1602_01_f_2018_101				
Comment Code					
PR : Prunings					
Inspector Comment					
Remove pruning pile on landside slope.					

Photo 1 of 1 : SP_2020_RD1602_110_101_20200225_00062.jpg



Pruning pile at landside toe. (Fall 2018)

LM Start	2.27	Rating **	M	Issue No.	117
LM End	2.27	Issue Type +	Ma	Location *	WS
Category	Earthen Levee			GPS Latitude/Longitude	
				Start	End
Item	Trim / Thin Trees			37.470258 °	37.470258 °
				-121.054392 °	-121.054392 °
DWR ID	DWR_RD1602_01_s_2019_117				
Comment Code					
T1 : Trim trees to at least five feet above ground level.					
Inspector Comment					

No Photos

LM Start	2.29	Rating **	M	Issue No.	79
LM End	2.29	Issue Type +	Ma	Location *	WS
Category	Earthen Levee			GPS Latitude/Longitude	
				Start	End
Item	Animal Control			37.470348 °	37.470348 °
				-121.053987 °	-121.053987 °
DWR ID	DWR_RD1602_01_s_2017_79				
Comment Code					
A3 : No rodents visible, but rodent burrows visible; need to backfill and compact or grout burrows.					
Inspector Comment					

No Photos

* Location LS : Land Side N/A : Not Applicable WS : Water Side CR : Crown	** Rating A : Acceptable M : Minimally Acceptable U : Unacceptable	N : Not Inspected/Rated C : Corrected A/W : Acceptable but Monitor & Maintain	+ Issue Type Ma : Maintenance Deficiency Ob : Design & System Obsolescence En : Enforcement
--	--	---	---

Reclamation District No. 1602 Del Puerto

No Photos

Looking down at the erosion pocket.

Looking upstream along the waterside slope at cattle trail. (Spring 2020)

Page 24 of 63

**Flood Control Project Maintenance
Levee Inspections**

Levee Inspection Report By Mile - Spring 2020

Reclamation District No. 1602 Del Puerto

Waterway	Bank	Unit Miles	Inspection Start/End	Inspector
Unit No. 01 San Joaquin River	Left	6.24	04/02/2020 04/02/2020	Corey Fujitani

LM Start	2.82	Rating **	C	Issue No.	44
LM End	2.82	Issue Type +	Ma	Location *	LS
Category	Earthen Levee			GPS Latitude/Longitude	
				Start	End
Item	Animal Control			37.466645 °	37.466645 °
				-121.046148 °	-121.046148 °
DWR ID	DWR_RD1602_01_f_2016_44				
Comment Code					
A3 : No rodents visible, but rodent burrows visible; need to backfill and compact or grout burrows.					
Inspector Comment					

No Photos

LM Start	2.85	Rating **	M	Issue No.	47
LM End	2.86	Issue Type +	Ma	Location *	WS
Category	Earthen Levee			GPS Latitude/Longitude	
				Start	End
Item	Animal Control			37.466294 °	37.466166 °
				-121.045693 °	-121.045527 °
DWR ID	DWR_RD1602_01_f _ 2016_47				
Comment Code					
A3 : No rodents visible, but rodent burrows visible; need to backfill and compact or grout burrows.					
Inspector Comment					

Photo 1 of 1 : SP_2020_RD1602_110_47_20200225_00025.jpg



View of rodent holes on the waterside of the levee. Fall 2016

LM Start	2.89	Rating **	M	Issue No.	49
LM End	2.89	Issue Type +	Ma	Location *	WS
Category	Earthen Levee			GPS Latitude/Longitude	
				Start	End
Item	Animal Control			37.465898 °	37.465898 °
				-121.045209 °	-121.045209 °
DWR ID	DWR_RD1602_01_f_2016_49				
Comment Code					
A3 : No rodents visible, but rodent burrows visible; need to backfill and compact or grout burrows.					
Inspector Comment					

Photo 1 of 1 : SP_2020_RD1602_110_49_20200225_00027.jpg



View of rodent holes on the waterside slope of the levee. Spring 2017

* Location
LS : Land Side N/A : Not Applicable
WS : Water Side
CR : Crown

** Rating
A : Acceptable N : Not Inspected/Rated
M : Minimally Acceptable C : Corrected
U : Unacceptable A/W : Acceptable but Monitor & Maintain

+ Issue Type
Ma : Maintenance Deficiency
Ob : Design & System Obsolescence
En : Enforcement

**Flood Control Project Maintenance
Levee Inspections**

Levee Inspection Report By Mile - Spring 2020

Reclamation District No. 1602 Del Puerto

Waterway	Bank	Unit Miles	Inspection Start/End	Inspector
Unit No. 01 San Joaquin River	Left	6.24	04/02/2020 04/02/2020	Corey Fujitani

LM Start	2.95	Rating **	M	Issue No.	51
LM End	2.95	Issue Type +	Ma	Location *	WS
Category	Earthen Levee			GPS Latitude/Longitude	
				Start	End
Item	Animal Control			37.465190 °	37.465190 °
				-121.044584 °	-121.044584 °
DWR ID	DWR_RD1602_01_f _ 2016_51				
Comment Code					
A3 : No rodents visible, but rodent burrows visible; need to backfill and compact or grout burrows.					
Inspector Comment					

Photo 1 of 1 : SP_2020_RD1602_110_51_20200225_00029.jpg



View of a rodent hole on the waterside of the levee.

LM Start	2.98	Rating **	M	Issue No.	95
LM End	2.98	Issue Type +	Ma	Location *	LS
Category	Earthen Levee			GPS Latitude/Longitude	
				Start	End
Item	Animal Control			37.464810 °	37.464810 °
				-121.044248 °	-121.044248 °
DWR ID	DWR_RD1602_01_f _ 2018_95				
Comment Code					
A3 : No rodents visible, but rodent burrows visible; need to backfill and compact or grout burrows.					
Inspector Comment					

Photo 1 of 1 : SP_2020_RD1602_110_95_20200403_00135.jpg



View of the landside slope from the toe of the levee. (Spring 2020)

LM Start	3.24	Rating **	M	Issue No.	94
LM End	3.24	Issue Type +	Ma	Location *	LS
Category	Earthen Levee			GPS Latitude/Longitude	
				Start	End
Item	Animal Control			37.461879 °	37.461879 °
				-121.041519 °	-121.041519 °
DWR ID	DWR_RD1602_01_f_2018_94				
Comment Code					
A1 : Exterminate rodents and backfill and compact or grout burrows.					
Inspector Comment					

No Photos

* Location LS : Land Side N/A : Not Applicable WS : Water Side CR : Crown	** Rating A : Acceptable M : Minimally Acceptable U : Unacceptable	N : Not Inspected/Rated C : Corrected A/W : Acceptable but Monitor & Maintain	+ Issue Type Ma : Maintenance Deficiency Ob : Design & System Obsolescence En : Enforcement
--	--	---	---

**Flood Control Project Maintenance
Levee Inspections**

Levee Inspection Report By Mile - Spring 2020

Reclamation District No. 1602 Del Puerto

Waterway	Bank	Unit Miles	Inspection Start/End	Inspector
Unit No. 01 San Joaquin River	Left	6.24	04/02/2020 04/02/2020	Corey Fujitani

LM Start	3.27	Rating **	U	Issue No.	206
LM End	3.27	Issue Type +	En	Location *	
Category	Supplemental			GPS Latitude/Longitude	
				Start	End
Item	DWR UCIP Field Study			37.461507 °	37.461507 °
				-121.041609 °	-121.041609 °
DWR ID	20204				

Comment Code

Inspector Comment

DS_ID:20204
FS_ID:53522
EP_NO: 8193
Repair Type: Urgent
Crossing Status: Found
UCIP Comments: 10/19/2018 Pipe is deteriorated on the LS toe (pipe section missing at inlet). This crossing remains Urgent due to the wall deterioration at the inlet. If wall is rusted out at the inlet, need to determine the condition of the pipe section through the levee. According to the LMA representative, this crossing is no longer in use (crossing is abandoned). LMA is interested in abandoning crossing in place. LMA was referred to the CVFPB staff for direction regarding proper action under Title 23 for this crossing. (O. Magana - DWR UCIP)11/18/2016 Same as previous inspection riser cover and handle on slide gate are still missing. Crossing remains Urgent due to the public safety issue of the 60-inch CMP cover still missing. According to Tony Martinez, LMA representative, the condition and future use of this crossing is being evaluated. Owner will need to coordinate with CVFPB for future use requirements or proper abandonment/removal. (O. Magana - DWR UCIP)10/01/2013 Appears abandoned, and if so should be done so properly. No handle on slide gate, no cover on CMP standpipe on WS shoulder. (W. Wylie - DWR UCIP)
FIELD_STRUCT_DESC: 16-inch steel irrigation pipe through levee, 11.5 feet below crown. Slide gate in 60-inch corrugated metal pipe riser is located on the waterside (WS) slope. Pipe discharges into concrete-lined ditch on the landside (LS) (irrigation pipe was authorized under Automatic Board Order (ABO) issued as Permit No. 8193, 1964 - Sabatte). [Additional Reference(s): DWR Levee Log, 1992. USACE San Joaquin River O&M Manual Unit 13, April 1964, (HLM 0.58), Drawing No. 7-4-1784].
FS Date: 10/19/2018 10:25:00 AM

Photo 1 of 3 : UCIP_SP_2020_53522_36805.jpg



Pipe visible in concrete channel on LS toe.

* Location LS : Land Side N/A : Not Applicable WS : Water Side CR : Crown	** Rating A : Acceptable M : Minimally Acceptable U : Unacceptable	N : Not Inspected/Rated C : Corrected A/W : Acceptable but Monitor & Maintain	+ Issue Type Ma : Maintenance Deficiency Ob : Design & System Obsolescence En : Enforcement
--	--	--	---

**Flood Control Project Maintenance
Levee Inspections**

Levee Inspection Report By Mile - Spring 2020

Reclamation District No. 1602 Del Puerto

Waterway	Bank	Unit Miles	Inspection Start/End	Inspector
Unit No. 01 San Joaquin River	Left	6.24	04/02/2020 04/02/2020	Corey Fujitani

LM Start	3.27	Rating **	U	Issue No.	206 (cont)
LM End	3.27	Issue Type +	En	Location *	
Category	Supplemental		GPS Latitude/Longitude		
			Start	End	
Item	DWR UCIP Field Study		37.461507 °	37.461507 °	
			-121.041609 °	-121.041609 °	
DWR ID	20204				

Photo 2 of 3 : UCIP_SP_2020_53522_36804.jpg



Slide gate in 60-inch CMP riser on WS shoulder.

LM Start	3.27	Rating **	U	Issue No.	206 (cont)
LM End	3.27	Issue Type +	En	Location *	

Photo 3 of 3 : UCIP_SP_2020_53522_76527.jpg



Overview of levee crown at pipe crossing.

LM Start	3.32	Rating **	M	Issue No.	56
LM End	3.32	Issue Type +	Ma	Location *	LS
Category	Earthen Levee			GPS Latitude/Longitude	
				Start	End
Item	Animal Control			37.460811 °	37.460811 °
				-121.042078 °	-121.042078 °
DWR ID	DWR_RD1602_01_s_2017_56				
Comment Code					
A3 : No rodents visible, but rodent burrows visible; need to backfill and compact or grout burrows.					
Inspector Comment					

Photo 1 of 1 : SP_2020_RD1602_110_56_20200225_00031.jpg



View of rodent holes on the landside of the levee. Fall 2016

*** Location**
LS : Land Side N/A : Not Applicable
WS : Water Side
CR : Crown

**** Rating**
A : Acceptable N : Not Inspected/Rated
M : Minimally Acceptable C : Corrected
U : Unacceptable A/W : Acceptable but Monitor & Maintain

+ Issue Type
Ma : Maintenance Deficiency
Ob : Design & System Obsolescence
En : Enforcement

**Flood Control Project Maintenance
Levee Inspections**

Levee Inspection Report By Mile - Spring 2020

Reclamation District No. 1602 Del Puerto

Waterway	Bank	Unit Miles	Inspection Start/End	Inspector
Unit No. 01 San Joaquin River	Left	6.24	04/02/2020 04/02/2020	Corey Fujitani

LM Start	3.34	Rating **	M	Issue No.	50
LM End	3.53	Issue Type +	En	Location *	WS
Category	Earthen Levee			GPS Latitude/Longitude	
				Start	End
Item	Encroachments			37.460644 °	37.458373 °
				-121.042231 °	-121.044081 °
DWR ID	DWR_RD1602_01_s_2012_50				
Comment Code					
DT : Ditch					
Inspector Comment					
A ditch is located on waterside toe of the levee.					

Photo 1 of 3 : SP_2020_RD1602_110_50_20200403_00136.jpg



Looking downstream along the waterside slope. (Spring 2020)

LM Start	3.34	Rating **	M	Issue No.	50 (cont)
LM End	3.53	Issue Type +	En	Location *	WS

Photo 2 of 3 : SP_2020_RD1602_110_50_20200403_00137.jpg



Looking upstream along the waterside toe. (Spring 2020)

LM Start	3.34	Rating **	M	Issue No.	50 (cont)
LM End	3.53	Issue Type +	En	Location *	WS

Photo 3 of 3 : SP_2020_RD1602_110_50_20200403_00139.jpg



View of upstream end of the the waterside ditch. (Spring 2020)

*** Location**

LS : Land Side N/A : Not Applicable
WS : Water Side
CR : Crown

**** Rating**

A : Acceptable N : Not Inspected/Rated
M : Minimally Acceptable C : Corrected
U : Unacceptable A/W : Acceptable but Monitor & Maintain

+ Issue Type

Ma : Maintenance Deficiency
Ob : Design & System Obsolescence
En : Enforcement

**Flood Control Project Maintenance
Levee Inspections**

Levee Inspection Report By Mile - Spring 2020

Reclamation District No. 1602 Del Puerto

Waterway	Bank	Unit Miles	Inspection Start/End	Inspector
Unit No. 01 San Joaquin River	Left	6.24	04/02/2020 04/02/2020	Corey Fujitani

LM Start	3.35	Rating **	M	Issue No.	120
LM End	3.44	Issue Type +	Ma	Location *	LS
Category	Earthen Levee			GPS Latitude/Longitude	
				Start	End
Item	Vegetation			37.460481 °	37.459459 °
				-121.042383 °	-121.043407 °
DWR ID	DWR_RD1602_01_s_2020_120				
Comment Code					
V1 : Control annual grass and weeds on the levee slopes and easements.					
Inspector Comment					

No Photos

LM Start	3.37	Rating **	M	Issue No.	113
LM End	3.37	Issue Type +	Ma	Location *	CR
Category	Earthen Levee			GPS Latitude/Longitude	
				Start	End
Item	Crown Surface / Depressions / Rutting			37.460217 °	37.460217 °
				-121.042583 °	-121.042583 °
DWR ID	DWR_RD1602_01_s_2019_113				
Comment Code					
C1 : Add appropriate material and re-grade the levee to bring the crown above the design elevation.					
Inspector Comment					

No Photos

LM Start	3.43	Rating **	C	Issue No.	57
LM End	3.43	Issue Type +	Ma	Location *	WS
Category	Earthen Levee			GPS Latitude/Longitude	
				Start	End
Item	Animal Control			37.459552 °	37.459552 °
				-121.043279 °	-121.043279 °
DWR ID	DWR_RD1602_01_f _ 2017_57				
Comment Code					
A3 : No rodents visible, but rodent burrows visible; need to backfill and compact or grout burrows.					
Inspector Comment					

No Photos

* Location LS : Land Side N/A : Not Applicable WS : Water Side CR : Crown	** Rating A : Acceptable M : Minimally Acceptable U : Unacceptable	N : Not Inspected/Rated C : Corrected A/W : Acceptable but Monitor & Maintain	+ Issue Type Ma : Maintenance Deficiency Ob : Design & System Obsolescence En : Enforcement
--	--	---	---

**Flood Control Project Maintenance
Levee Inspections**

Levee Inspection Report By Mile - Spring 2020

Reclamation District No. 1602 Del Puerto

Waterway	Bank	Unit Miles	Inspection Start/End	Inspector
Unit No. 01 San Joaquin River	Left	6.24	04/02/2020 04/02/2020	Corey Fujitani

LM Start	3.68	Rating **	M	Issue No.	133
LM End	4.86	Issue Type +	Ma	Location *	LS
Category	Earthen Levee			GPS Latitude/Longitude	
				Start	End
Item	Vegetation			37.456391 °	37.441215 °
				-121.044430 °	-121.036806 °
DWR ID	DWR_RD1602_01_s_2020_133				
Comment Code					
V1 : Control annual grass and weeds on the levee slopes and easements.					
Inspector Comment					

Photo 1 of 1 : SP_2020_RD1602_110_133_20200403_00140.jpg



View of the landside slope looking upstream. (Spring 2020)

LM Start	3.68	Rating **	M	Issue No.	121
LM End	4.87	Issue Type +	Ma	Location *	WS
Category	Earthen Levee			GPS Latitude/Longitude	
				Start	End
Item	Vegetation			37.456387 °	37.441178 °
				-121.044428 °	-121.036828 °
DWR ID	DWR_RD1602_01_s_2020_121				
Comment Code					
V1 : Control annual grass and weeds on the levee slopes and easements.					
Inspector Comment					

Photo 1 of 1 : SP_2020_RD1602_110_121_20200403_00141.jpg



Looking upstream along the waterside slope. (Spring 2020)

LM Start	3.69	Rating **	U	Issue No.	102
LM End	3.69	Issue Type +	Ma	Location *	WS
Category	Earthen Levee			GPS Latitude/Longitude	
				Start	End
Item	Encroachments			37.456234 °	37.456234 °
				-121.044194 °	-121.044194 °
DWR ID	DWR_RD1602_01_f_2019_102				
Comment Code					
TR : Tree or limb					
Inspector Comment					

Photo 1 of 1 : SP_2020_RD1602_110_102_20200225_00063.jpg



View of fallen tree on the waterside slope and toe. (Fall 2019)

* Location
LS : Land Side N/A : Not Applicable
WS : Water Side
CR : Crown

** Rating
A : Acceptable N : Not Inspected/Rated
M : Minimally Acceptable C : Corrected
U : Unacceptable A/W : Acceptable but Monitor & Maintain

+ Issue Type
Ma : Maintenance Deficiency
Ob : Design & System Obsolescence
En : Enforcement

**Flood Control Project Maintenance
Levee Inspections**

Levee Inspection Report By Mile - Spring 2020

Reclamation District No. 1602 Del Puerto

Waterway	Bank	Unit Miles	Inspection Start/End	Inspector
Unit No. 01 San Joaquin River	Left	6.24	04/02/2020 04/02/2020	Corey Fujitani

LM Start	3.76	Rating **	U	Issue No.	83
LM End	3.76	Issue Type +	Ma	Location *	WS
Category	Earthen Levee			GPS Latitude/Longitude	
				Start	End
Item	Encroachments			37.455414 °	37.455414 °
				-121.043765 °	-121.043765 °
DWR ID	DWR_RD1602_01_s_2017_83				
Comment Code					
TR : Tree or limb					
Inspector Comment					

Photo 1 of 1 : SP_2020_RD1602_110_83_20200225_00047.jpg



View of a tree trunk on the waterside slope of the levee.

LM Start	3.82	Rating **	M	Issue No.	66
LM End	3.92	Issue Type +	En	Location *	LS
Category	Earthen Levee			GPS Latitude/Longitude	
				Start	End
Item	Encroachments			37.454611 °	37.453309 °
				-121.043193 °	-121.042191 °
DWR ID	DWR_RD1602_01_f _ 2013_66				
Comment Code					
FE : Fence					
Inspector Comment					
Fence, animal pen and other encroachments at landward toe.					

Photo 1 of 2 : SP_2020_RD1602_110_66_20200225_00038.jpg



Fences were found on the landside toe of the levee looking upstream.

LM Start	3.82	Rating **	M	Issue No.	66 (cont)
LM End	3.92	Issue Type +	En	Location *	LS

Photo 2 of 2 : SP_2020_RD1602_110_66_20200225_00039.jpg



Looking southwest at animal pens and other encroachments on landward toe. (Spring 2018)

* Location LS : Land Side N/A : Not Applicable WS : Water Side CR : Crown		** Rating A : Acceptable M : Minimally Acceptable U : Unacceptable N : Not Inspected/Rated C : Corrected A/W : Acceptable but Monitor & Maintain		+ Issue Type Ma : Maintenance Deficiency Ob : Design & System Obsolescence En : Enforcement	
--	--	---	--	---	--

**Flood Control Project Maintenance
Levee Inspections**

Levee Inspection Report By Mile - Spring 2020

Reclamation District No. 1602 Del Puerto

Waterway	Bank	Unit Miles	Inspection Start/End	Inspector
Unit No. 01 San Joaquin River	Left	6.24	04/02/2020 04/02/2020	Corey Fujitani

LM Start	3.82	Rating **	M	Issue No.	42
LM End	3.82	Issue Type +	En	Location *	LS
Category	Earthen Levee			GPS Latitude/Longitude	
				Start	End
Item	Vegetation			37.454574 °	37.454574 °
				-121.043142 °	-121.043142 °
DWR ID	DWR_RD1602_01_s_2012_42				
Comment Code					
V6 : Landscaping					
Inspector Comment					
Cactus on landside slope					

Photo 1 of 1 : SP_2020_RD1602_110_42_20200225_00021.jpg



Remove landscaping from within 10' of landside toe.

* Location LS : Land Side N/A : Not Applicable WS : Water Side CR : Crown	** Rating A : Acceptable M : Minimally Acceptable U : Unacceptable	N : Not Inspected/Rated C : Corrected A/W : Acceptable but Monitor & Maintain	+ Issue Type Ma : Maintenance Deficiency Ob : Design & System Obsolescence En : Enforcement
--	--	---	---

**Flood Control Project Maintenance
Levee Inspections**

Levee Inspection Report By Mile - Spring 2020

Reclamation District No. 1602 Del Puerto

Waterway	Bank	Unit Miles	Inspection Start/End	Inspector
Unit No. 01 San Joaquin River	Left	6.24	04/02/2020 04/02/2020	Corey Fujitani

LM Start	3.86	Rating **	M	Issue No.	207
LM End	3.86	Issue Type +	En	Location *	
Category	Supplemental			GPS Latitude/Longitude	
				Start	End
Item	DWR UCIP Field Study			37.454097 °	37.454097 °
				-121.042810 °	-121.042810 °
DWR ID	20206				

Comment Code

Inspector Comment

DS_ID:20206
FS_ID:53523
EP_NO: 7796
Repair Type: Non-Urgent
Crossing Status: Indicator Found
UCIP Comments: 10/19/2018 Pipe section through the WS ramp was exposed during the 2017 storms. According to LMA representative, adjacent property owner has backfilled the pipe with soil to avoid damage to line. Contacted Mr. Chris Williams with PG&E and Mr. Williams mentioned that PG&E is planning to abandon the line and install a new line. The new line will be bored through the levee. Mr. Williams also mentioned that the line was inspected in 2016-17 and was found to be functional. However, due to the pipe exposure in 2017 PG&E has decided to abandon the current line. PG&E is working with the CVFPB to obtain the proper permits and complete the final design for the new line. This crossing has been downgraded from Urgent to Non-Urgent due to the updated UCIP reclassification evaluations. Pending action for this crossing includes line abandonment documentation from CVFPB and closeout files for this crossing. Primary PG&E contact for this crossing is Carlos Carbrera, Stanislaus and San Joaquin PG&E Local Engineer. He can be reached at 1-925-789-0509 or by email at c4ch@pge.com. (O. Magana - DWR UCIP)11/18/2016 Same as previous inspection crossing is missing markers visible from levee crown. PG&E completed some construction work on this line from September - November 3rd, 2016 and installed a marker on WS approximately 341 feet from levee crown. UCIP inspector will need to contact Mr. Chris Williams, Associate Construction Specialist, Gas Construction Management Central Valley Region with PG&E at 1-209-272-2811 to determine extent of inspection through levee. (O. Magana - DWR UCIP)10/01/2013 Gasline needs sign markers at levee. (W. Wylie - DWR UCIP)
FIELD_STRUCT_DESC: 12.75-inch gas line crossing through levee, 3 feet below crown. Gas line is near Prune Avenue and Paradise Avenue. For emergencies call PG&E at 1-800-811-4111. (12.75-inch line authorized under Permit No. 7796, 1972 - Pacific Gas and Electric Company [PG&E], related permits include Permit No. 7796-A issued to amend plans to allow installing gas line under river by boring method, and Permit No. 7796-B issued to modify condition no. 18 by allowing work before July 20, 1972) [Additional Reference(s): DWR Levee Log, 1992. USACE San Joaquin River O&M Manual Unit 13, April 1964, (HLM 3.90), Drawing No. 7-4-1784].
FS Date: 10/19/2018 10:26:00 AM

Photo 1 of 3 : UCIP_SP_2020_53523_76534.jpg



Overview of levee crown at pipe crossing.

* Location LS : Land Side N/A : Not Applicable WS : Water Side CR : Crown	** Rating A : Acceptable M : Minimally Acceptable U : Unacceptable	N : Not Inspected/Rated C : Corrected A/W : Acceptable but Monitor & Maintain	+ Issue Type Ma : Maintenance Deficiency Ob : Design & System Obsolescence En : Enforcement
--	--	---	---

**Flood Control Project Maintenance
Levee Inspections**

Levee Inspection Report By Mile - Spring 2020

Reclamation District No. 1602 Del Puerto

Waterway	Bank	Unit Miles	Inspection Start/End	Inspector
Unit No. 01 San Joaquin River	Left	6.24	04/02/2020 04/02/2020	Corey Fujitani

LM Start	3.86	Rating **	M	Issue No.	207 (cont)
LM End	3.86	Issue Type +	En	Location *	
Category	Supplemental		GPS Latitude/Longitude		
			Start	End	
Item	DWR UCIP Field Study		37.454097 °	37.454097 °	
			-121.042810 °	-121.042810 °	
DWR ID	20206				

Photo 2 of 3 : UCIP_SP_2020_53523_76535.jpg



View of LS.

LM Start	3.86	Rating **	M	Issue No.	207 (cont)
LM End	3.86	Issue Type +	En	Location *	

Photo 3 of 3 : UCIP_SP_2020_53523_76536.jpg



PVC riser with yellow cover located along fence on LS.

LM Start	3.87	Rating **	U	Issue No.	90
LM End	3.87	Issue Type +	Ma	Location *	WS
Category	Earthen Levee			GPS Latitude/Longitude	
				Start	End
Item	Encroachments			37.454004 °	37.454004 °
				-121.042724 °	-121.042724 °
DWR ID	DWR_RD1602_01_s_2019_90				
Comment Code					
TR : Tree or limb					
Inspector Comment					
Fallen tree on waterside slope.					

Photo 1 of 1 : SP_2020_RD1602_110_90_20200225_00055.jpg



Fallen tree trunk on waterside slope. (Spring 2019)

*** Location**

LS : Land Side N/A : Not Applicable
WS : Water Side
CR : Crown

**** Rating**

A : Acceptable N : Not Inspected/Rated
M : Minimally Acceptable C : Corrected
U : Unacceptable A/W : Acceptable but Monitor & Maintain

+ Issue Type

Ma : Maintenance Deficiency
Ob : Design & System Obsolescence
En : Enforcement

**Flood Control Project Maintenance
Levee Inspections**

Levee Inspection Report By Mile - Spring 2020

Reclamation District No. 1602 Del Puerto

Waterway	Bank	Unit Miles	Inspection Start/End	Inspector
Unit No. 01 San Joaquin River	Left	6.24	04/02/2020 04/02/2020	Corey Fujitani

LM Start	3.90	Rating **	A/W	Issue No.	18
LM End	3.90	Issue Type +	Ob	Location *	LS
Category	Earthen Levee			GPS Latitude/Longitude	
				Start	End
Item	Seepage / Sandboils			37.453620 °	37.453620 °
				-121.042410 °	-121.042410 °
DWR ID	190-FOC-1				
Comment Code					
Inspector Comment					
2017 Storm Damage					
Site ID No:118					
Site Designation:190-FOC-1					

No Photos

LM Start	3.90	Rating **	M	Issue No.	84
LM End	3.90	Issue Type +	Ma	Location *	WS
Category	Earthen Levee			GPS Latitude/Longitude	
				Start	End
Item	Animal Control			37.453566 °	37.453566 °
				-121.042376 °	-121.042376 °
DWR ID	DWR_RD1602_01_s_2017_84				
Comment Code					
A3 : No rodents visible, but rodent burrows visible; need to backfill and compact or grout burrows.					
Inspector Comment					

Photo 1 of 1 : SP_2020_RD1602_110_84_20200225_00048.jpg



View of rodent holes on the waterside of the levee.

LM Start	3.93	Rating **	M	Issue No.	85
LM End	3.96	Issue Type +	Ma	Location *	CR
Category	Earthen Levee			GPS Latitude/Longitude	
				Start	End
Item	Crown Surface / Depressions / Rutting			37.453233 °	37.452931 °
				-121.042117 °	-121.041863 °
DWR ID	DWR_RD1602_01_s_2017_85				
Comment Code					
C1 : Add appropriate material and re-grade the levee to bring the crown above the design elevation.					
Inspector Comment					

No Photos

* Location LS : Land Side N/A : Not Applicable WS : Water Side CR : Crown	** Rating A : Acceptable M : Minimally Acceptable U : Unacceptable	N : Not Inspected/Rated C : Corrected A/W : Acceptable but Monitor & Maintain	+ Issue Type Ma : Maintenance Deficiency Ob : Design & System Obsolescence En : Enforcement
--	--	---	---

**Flood Control Project Maintenance
Levee Inspections**

Levee Inspection Report By Mile - Spring 2020

Reclamation District No. 1602 Del Puerto

Waterway	Bank	Unit Miles	Inspection Start/End	Inspector
Unit No. 01 San Joaquin River	Left	6.24	04/02/2020 04/02/2020	Corey Fujitani

LM Start	3.93	Rating **	M	Issue No.	63
LM End	4.04	Issue Type +	En	Location *	LS
Category	Earthen Levee			GPS Latitude/Longitude	
				Start	End
Item	Encroachments			37.453226 °	37.451866 °
				-121.042118 °	-121.041206 °
DWR ID	DWR_RD1602_01_s_2012_63				
Comment Code					
FE : Fence					
Inspector Comment					
Fence on landward slope.					

Photo 1 of 2 : SP_2020_RD1602_110_63_20200225_00036.jpg



View of a barbed wire fence on the landward slope looking upstream.

LM Start	3.93	Rating **	M	Issue No.	63 (cont)
LM End	4.04	Issue Type +	En	Location *	LS

Photo 2 of 2 : SP_2020_RD1602_110_63_20200225_00037.jpg



Looking upstream at fence on landward slope. (Spring 2018)

LM Start	3.93	Rating **	M	Issue No.	62
LM End	3.93	Issue Type +	Ma	Location *	LS
Category	Earthen Levee			GPS Latitude/Longitude	
				Start	End
Item	Slope Stability			37.453216 °	37.453216 °
				-121.042127 °	-121.042127 °
DWR ID	DWR_RD1602_01_s_2012_62				
Comment Code					
S3 : Repair the levee slope damaged by vehicle traffic and prevent access where possible.					
Inspector Comment					
Significant damage to USACE constructed seepage berm due to human activity.					

Photo 1 of 2 : SP_2020_RD1602_110_62_20200403_00142.jpg



View of damage on downstream side of seepage berm. (Spring 2020)

*** Location**
LS : Land Side N/A : Not Applicable
WS : Water Side
CR : Crown

**** Rating**
A : Acceptable N : Not Inspected/Rated
M : Minimally Acceptable C : Corrected
U : Unacceptable A/W : Acceptable but Monitor & Maintain

+ Issue Type
Ma : Maintenance Deficiency
Ob : Design & System Obsolescence
En : Enforcement

**Flood Control Project Maintenance
Levee Inspections**

Levee Inspection Report By Mile - Spring 2020

Reclamation District No. 1602 Del Puerto

Waterway	Bank	Unit Miles	Inspection Start/End	Inspector
Unit No. 01 San Joaquin River	Left	6.24	04/02/2020 04/02/2020	Corey Fujitani

LM Start	3.93	Rating **	M	Issue No.	62 (cont)	
LM End	3.93	Issue Type +	Ma	Location *	LS	
Category	Earthen Levee			GPS Latitude/Longitude		
				Start	End	
Item	Slope Stability			37.453216 °	37.453216 °	
				-121.042127 °	-121.042127 °	
DWR ID	DWR_RD1602_01_s_2012_62					

Photo 2 of 2 : SP_2020_RD1602_110_62_20200225_00035.jpg



Repair damage to USACE constructed seepage berm by pedestrian and cycle traffic.

LM Start	4.03	Rating **	A/W	Issue No.	21
LM End	4.03	Issue Type +	Ob	Location *	LS
Category	Earthen Levee			GPS Latitude/Longitude	
				Start	End
Item	Seepage / Sandboils			37.451990 °	37.451990 °
				-121.041240 °	-121.041240 °
DWR ID	190-FOC-2				
Comment Code					
Inspector Comment					
2017 Storm Damage					
Site ID No:119					
Site Designation:190-FOC-2					

No Photos

LM Start	4.04	Rating **	U	Issue No.	74
LM End	4.16	Issue Type +	Ma	Location *	LS
Category	Earthen Levee			GPS Latitude/Longitude	
				Start	End
Item	Animal Control			37.451892 °	37.450563 °
				-121.041168 °	-121.039725 °
DWR ID	DWR_RD1602_01_s_2019_74				
Comment Code					
A1 : Exterminate rodents and backfill and compact or grout burrows.					
Inspector Comment					

Photo 1 of 2 : SP_2020_RD1602_110_74_20200403_00144.jpg



Looking at the landside slope from the levee toe. (Spring 2020)

*** Location**
LS : Land Side N/A : Not Applicable
WS : Water Side
CR : Crown

**** Rating**
A : Acceptable N : Not Inspected/Rated
M : Minimally Acceptable C : Corrected
U : Unacceptable A/W : Acceptable but Monitor & Maintain

+ Issue Type
Ma : Maintenance Deficiency
Ob : Design & System Obsolescence
En : Enforcement

**Flood Control Project Maintenance
Levee Inspections**

Levee Inspection Report By Mile - Spring 2020

Reclamation District No. 1602 Del Puerto

Waterway	Bank	Unit Miles	Inspection Start/End	Inspector
Unit No. 01 San Joaquin River	Left	6.24	04/02/2020 04/02/2020	Corey Fujitani

LM Start	4.04	Rating **	U	Issue No.	74 (cont)
LM End	4.16	Issue Type +	Ma	Location *	LS
Category	Earthen Levee			GPS Latitude/Longitude	
				Start	End
Item	Animal Control			37.451892 °	37.450563 °
				-121.041168 °	-121.039725 °
DWR ID	DWR_RD1602_01_s_2019_74				

Photo 2 of 2 : SP_2020_RD1602_110_74_20200403_00145.jpg



Looking downstream at the landside slope. (Spring 2020)

LM Start	4.13	Rating **	A/W	Issue No.	23
LM End	4.45	Issue Type +	Ob	Location *	LS
Category	Earthen Levee			GPS Latitude/Longitude	
				Start	End
Item	Seepage / Sandboils			37.450930 °	37.446820 °
				-121.039990 °	-121.037840 °
DWR ID	190-101				
Comment Code					
Inspector Comment					
2017 Storm Damage					
Site ID No:120					
Site Designation:190-101					

No Photos

LM Start	4.22	Rating **	M	Issue No.	134
LM End	4.22	Issue Type +	Ma	Location *	WS
Category	Earthen Levee			GPS Latitude/Longitude	
				Start	End
Item	Trim / Thin Trees			37.449848 °	37.449848 °
				-121.039128 °	-121.039128 °
DWR ID	DWR_RD1602_01_s_2020_134				
Comment Code					
T1 : Trim trees to at least five feet above ground level.					
Inspector Comment					
Remove young trees before they can establish.					

Photo 1 of 1 : SP_2020_RD1602_110_134_20200403_00146.jpg

View of young trees growing around tree limb on the waterside slope.
(Spring 2020)

* Location LS : Land Side N/A : Not Applicable WS : Water Side CR : Crown	** Rating A : Acceptable M : Minimally Acceptable U : Unacceptable	N : Not Inspected/Rated C : Corrected A/W : Acceptable but Monitor & Maintain	+ Issue Type Ma : Maintenance Deficiency Ob : Design & System Obsolescence En : Enforcement
--	--	--	---

**Flood Control Project Maintenance
Levee Inspections**

Levee Inspection Report By Mile - Spring 2020

Reclamation District No. 1602 Del Puerto

Waterway	Bank	Unit Miles	Inspection Start/End	Inspector
Unit No. 01 San Joaquin River	Left	6.24	04/02/2020 04/02/2020	Corey Fujitani

LM Start	4.22	Rating **	M	Issue No.	73
LM End	4.22	Issue Type +	Ma	Location *	WS
Category	Earthen Levee			GPS Latitude/Longitude	
				Start	End
Item	Encroachments			37.449814 °	37.449814 °
				-121.039112 °	-121.039112 °
DWR ID	DWR_RD1602_01_s_2019_73				
Comment Code					
TR : Tree or limb					
Inspector Comment					

No Photos

LM Start	4.32	Rating **	U	Issue No.	87
LM End	4.32	Issue Type +	Ma	Location *	LS
Category	Earthen Levee			GPS Latitude/Longitude	
				Start	End
Item	Animal Control			37.448492 °	37.448492 °
				-121.038303 °	-121.038303 °
DWR ID	DWR_RD1602_01_f_2019_87				
Comment Code					
A3 : No rodents visible, but rodent burrows visible; need to backfill and compact or grout burrows.					
Inspector Comment					

Photo 1 of 2 : SP_2020_RD1602_110_87_20200225_00051.jpg



View of rodent burrows in the landside slope. (Fall 2019)

LM Start	4.32	Rating **	U	Issue No.	87 (cont)
LM End	4.32	Issue Type +	Ma	Location *	LS

Photo 2 of 2 : SP_2020_RD1602_110_87_20200225_00052.jpg



Representative rodent burrow in the landside slope. (Fall 2019)

* Location LS : Land Side N/A : Not Applicable WS : Water Side CR : Crown		** Rating A : Acceptable M : Minimally Acceptable U : Unacceptable N : Not Inspected/Rated C : Corrected A/W : Acceptable but Monitor & Maintain		+ Issue Type Ma : Maintenance Deficiency Ob : Design & System Obsolescence En : Enforcement	
--	--	---	--	---	--

**Flood Control Project Maintenance
Levee Inspections**

Levee Inspection Report By Mile - Spring 2020

Reclamation District No. 1602 Del Puerto

Waterway	Bank	Unit Miles	Inspection Start/End	Inspector
Unit No. 01 San Joaquin River	Left	6.24	04/02/2020 04/02/2020	Corey Fujitani

LM Start	4.38	Rating **	M	Issue No.	71
LM End	4.38	Issue Type +	Ma	Location *	LS
Category	Earthen Levee			GPS Latitude/Longitude	
				Start	End
Item	Animal Control			37.447761 °	37.447761 °
				-121.037845 °	-121.037845 °
DWR ID	DWR_RD1602_01_s_2019_71				
Comment Code					
A3 : No rodents visible, but rodent burrows visible; need to backfill and compact or grout burrows.					
Inspector Comment					

No Photos

LM Start	4.42	Rating **	M	Issue No.	67
LM End	4.88	Issue Type +	En	Location *	LS
Category	Earthen Levee			GPS Latitude/Longitude	
				Start	End
Item	Encroachments			37.447213 °	37.441014 °
				-121.037665 °	-121.036932 °
DWR ID	DWR_RD1602_01_s_2012_67				
Comment Code					
FE : Fence					
Inspector Comment					

Photo 1 of 1 : SP_2020_RD1602_110_67_20200225_00041.jpg



View of the fence on the landside toe of the levee. The picture was taken from the crown looking upstream.

* Location LS : Land Side N/A : Not Applicable WS : Water Side CR : Crown	** Rating A : Acceptable M : Minimally Acceptable U : Unacceptable N : Not Inspected/Rated C : Corrected A/W : Acceptable but Monitor & Maintain	+ Issue Type Ma : Maintenance Deficiency Ob : Design & System Obsolescence En : Enforcement
--	---	---

**Flood Control Project Maintenance
Levee Inspections**

Levee Inspection Report By Mile - Spring 2020

Reclamation District No. 1602 Del Puerto

Waterway	Bank	Unit Miles	Inspection Start/End	Inspector
Unit No. 01 San Joaquin River	Left	6.24	04/02/2020 04/02/2020	Corey Fujitani

LM Start	4.47	Rating **	M	Issue No.	208
LM End	4.47	Issue Type +	En	Location *	
Category	Supplemental			GPS Latitude/Longitude	
				Start	End
Item	DWR UCIP Field Study			37.446545 °	37.446545 °
				-121.037941 °	-121.037941 °
DWR ID	20207				

Comment Code

Inspector Comment

DS_ID:20207
FS_ID:51332
EP_NO: 8195
Repair Type: Non-Urgent
Crossing Status: Found
UCIP Comments: 11/18/2016 60-inch riser has a temporary cover therefore crossing has been downgraded from Urgent to Non-Urgent. (O. Magana - DWR UCIP) 10/01/2013 Lid missing from 60-inch CMP riser, may be an attractive nuisance or hazard to public. (W. Wylie - DWR UCIP)
FIELD_STRUCT_DESC: 18-inch steel pipe through levee, 10 feet below crown. Slide gate in 60-inch corrugated metal pipe riser located on the waterside (WS) slope. Concrete discharge box is located on landside (LS) end. Pipe is buried across WS berm to pump located on the riverbank approximately 1,000 feet from the levee. (18-inch pipe authorized under Automatic Board Order (ABO) issued as Permit No. 8195, 1972 - Larry Buehner). [Additional Reference(s): DWR Levee Log, 1992. USACE San Joaquin River O&M Manual Unit 13, April 1964, (HLM 4.51), Drawing No. 7-4-1784].
FS Date: 11/18/2016

LM Start	4.47	Rating **	M	Issue No.	208 (cont)
LM End	4.47	Issue Type +	En	Location *	

Photo 1 of 3 : UCIP_SP_2020_51332_36819.jpg



Slide gate in CMP riser on WS slope.

Photo 2 of 3 : UCIP_SP_2020_51332_36818.jpg



Slide gate in CMP riser on WS slope.

* Location LS : Land Side N/A : Not Applicable WS : Water Side CR : Crown	** Rating A : Acceptable M : Minimally Acceptable U : Unacceptable	N : Not Inspected/Rated C : Corrected A/W : Acceptable but Monitor & Maintain	+ Issue Type Ma : Maintenance Deficiency Ob : Design & System Obsolescence En : Enforcement
--	--	--	---

**Flood Control Project Maintenance
Levee Inspections**

Levee Inspection Report By Mile - Spring 2020

Reclamation District No. 1602 Del Puerto

Waterway	Bank	Unit Miles	Inspection Start/End	Inspector
Unit No. 01 San Joaquin River	Left	6.24	04/02/2020 04/02/2020	Corey Fujitani

LM Start	4.47	Rating **	M	Issue No.	208 (cont)	
LM End	4.47	Issue Type +	En	Location *		
Category	Supplemental			GPS Latitude/Longitude		
				Start		End
Item	DWR UCIP Field Study			37.446545 °	37.446545 °	
				-121.037941 °	-121.037941 °	
DWR ID	20207					

Photo 3 of 3 : UCIP_SP_2020_51332_36817.jpg



Concrete ditch at outlet from pipe on LS toe.

LM Start	4.49	Rating **	U	Issue No.	69
LM End	4.49	Issue Type +	Ma	Location *	WS
Category	Earthen Levee			GPS Latitude/Longitude	
				Start	End
Item	Encroachments			37.446178 °	37.446178 °
				-121.037855 °	-121.037855 °
DWR ID	DWR_RD1602_01_s_2019_69				
Comment Code					
TR : Tree or limb					
Inspector Comment					

Photo 1 of 1 : SP_2020_RD1602_110_69_20200225_00042.jpg



View of fallen tree trunk on waterside slope. (Spring 2019)

LM Start	4.55	Rating **	M	Issue No.	91
LM End	4.55	Issue Type +	Ma	Location *	WS
Category	Earthen Levee			GPS Latitude/Longitude	
				Start	End
Item	Animal Control			37.445402 °	37.445402 °
				-121.037706 °	-121.037706 °
DWR ID	DWR_RD1602_01_s_2017_91				
Comment Code					
A3 : No rodents visible, but rodent burrows visible; need to backfill and compact or grout burrows.					
Inspector Comment					
Holes in waterside slope and both the waterside and landside shoulders.					

Photo 1 of 1 : SP_2020_RD1602_110_91_20200225_00056.jpg

View of rodent holes on the waterside of the levee looking downstream.
Spring 2017

*** Location**
LS : Land Side N/A : Not Applicable
WS : Water Side
CR : Crown

**** Rating**
A : Acceptable N : Not Inspected/Rated
M : Minimally Acceptable C : Corrected
U : Unacceptable A/W : Acceptable but Monitor & Maintain

+ Issue Type
Ma : Maintenance Deficiency
Ob : Design & System Obsolescence
En : Enforcement

**Flood Control Project Maintenance
Levee Inspections**

Levee Inspection Report By Mile - Spring 2020

Reclamation District No. 1602 Del Puerto

Waterway	Bank	Unit Miles	Inspection Start/End	Inspector
Unit No. 01 San Joaquin River	Left	6.24	04/02/2020 04/02/2020	Corey Fujitani

LM Start	4.60	Rating **	M	Issue No.	78
LM End	4.60	Issue Type +	Ma	Location *	CR
Category	Earthen Levee			GPS Latitude/Longitude	
				Start	End
Item	Trim / Thin Trees			37.444624 °	37.444624 °
				-121.037777 °	-121.037777 °
DWR ID	DWR_RD1602_01_f_2019_78				
Comment Code					
T4 : Trim trees over roadway to at least 12 feet above ground level.					
Inspector Comment					

No Photos

LM Start	4.84	Rating **	M	Issue No.	76
LM End	4.84	Issue Type +	Ma	Location *	CR
Category	Earthen Levee			GPS Latitude/Longitude	
				Start	End
Item	Trim / Thin Trees			37.441469 °	37.441469 °
				-121.036653 °	-121.036653 °
DWR ID	DWR_RD1602_01_f_2019_76				
Comment Code					
T4 : Trim trees over roadway to at least 12 feet above ground level.					
Inspector Comment					

No Photos

LM Start	4.87	Rating **	U	Issue No.	136
LM End	5.08	Issue Type +	Ma	Location *	WS
Category	Earthen Levee			GPS Latitude/Longitude	
				Start	End
Item	Vegetation			37.441177 °	37.438233 °
				-121.036828 °	-121.037099 °
DWR ID	DWR_RD1602_01_s_2020_136				
Comment Code					
V1 : Control annual grass and weeds on the levee slopes and easements.					
Inspector Comment					

Photo 1 of 1 : SP_2020_RD1602_110_136_20200403_00147.jpg



View of waterside slope looking upstream. (Spring 2020)

*** Location**
LS : Land Side N/A : Not Applicable
WS : Water Side
CR : Crown

**** Rating**
A : Acceptable N : Not Inspected/Rated
M : Minimally Acceptable C : Corrected
U : Unacceptable A/W : Acceptable but Monitor & Maintain

+ Issue Type
Ma : Maintenance Deficiency
Ob : Design & System Obsolescence
En : Enforcement

**Flood Control Project Maintenance
Levee Inspections**

Levee Inspection Report By Mile - Spring 2020

Reclamation District No. 1602 Del Puerto

Waterway	Bank	Unit Miles	Inspection Start/End	Inspector
Unit No. 01 San Joaquin River	Left	6.24	04/02/2020 04/02/2020	Corey Fujitani

LM Start	4.87	Rating **	U	Issue No.	135
LM End	5.08	Issue Type +	Ma	Location *	LS
Category	Earthen Levee			GPS Latitude/Longitude	
				Start	End
Item	Vegetation			37.441177 °	37.438233 °
				-121.036829 °	-121.037099 °
DWR ID	DWR_RD1602_01_s_2020_135				
Comment Code					
V1 : Control annual grass and weeds on the levee slopes and easements.					
Inspector Comment					

Photo 1 of 1 : SP_2020_RD1602_110_135_20200403_00148.jpg



View of the landside slope looking upstream. (Spring 2020)

LM Start	4.88	Rating **	U	Issue No.	137
LM End	4.97	Issue Type +	Ma	Location *	CR
Category	Earthen Levee			GPS Latitude/Longitude	
				Start	End
Item	Vegetation			37.441045 °	37.439832 °
				-121.036917 °	-121.037562 °
DWR ID	DWR_RD1602_01_s_2020_137				
Comment Code					
V9 : Keep the crown roadway free of vegetation.					
Inspector Comment					

Photo 1 of 1 : SP_2020_RD1602_110_137_20200403_00149.jpg



View of vegetation growing along the levee crown. (Spring 2020)

LM Start	4.97	Rating **	M	Issue No.	138
LM End	5.41	Issue Type +	Ma	Location *	CR
Category	Earthen Levee			GPS Latitude/Longitude	
				Start	End
Item	Vegetation			37.439809 °	37.434156 °
				-121.037562 °	-121.034467 °
DWR ID	DWR_RD1602_01_s_2020_138				
Comment Code					
V9 : Keep the crown roadway free of vegetation.					
Inspector Comment					

No Photos

* Location LS : Land Side N/A : Not Applicable WS : Water Side CR : Crown	** Rating A : Acceptable M : Minimally Acceptable U : Unacceptable	N : Not Inspected/Rated C : Corrected A/W : Acceptable but Monitor & Maintain	+ Issue Type Ma : Maintenance Deficiency Ob : Design & System Obsolescence En : Enforcement
--	--	---	---

**Flood Control Project Maintenance
Levee Inspections**

Levee Inspection Report By Mile - Spring 2020

Reclamation District No. 1602 Del Puerto

Waterway	Bank	Unit Miles	Inspection Start/End	Inspector
Unit No. 01 San Joaquin River	Left	6.24	04/02/2020 04/02/2020	Corey Fujitani

LM Start	5.08	Rating **	M	Issue No.	89
LM End	5.13	Issue Type +	Ma	Location *	LS
Category	Earthen Levee			GPS Latitude/Longitude	
				Start	End
Item	Slope Stability			37.438249 °	37.437523 °
				-121.037100 °	-121.036958 °
DWR ID	DWR_RD1602_01_f_2018_89				
Comment Code					
S3 : Repair the levee slope damaged by vehicle traffic and prevent access where possible.					
Inspector Comment					
Damage to slope appears to be from vehicle traffic.					

Photo 1 of 2 : SP_2020_RD1602_110_89_20200225_00053.jpg



View along landside slope looking upstream. (Fall 2018)

LM Start	5.08	Rating **	M	Issue No.	89 (cont)
LM End	5.13	Issue Type +	Ma	Location *	LS

Photo 2 of 2 : SP_2020_RD1602_110_89_20200225_00054.jpg



Upclose view of some of the damage to slope. (Fall 2018)

LM Start	5.08	Rating **	M	Issue No.	139
LM End	5.25	Issue Type +	Ma	Location *	LS
Category	Earthen Levee			GPS Latitude/Longitude	
				Start	End
Item	Vegetation			37.438233 °	37.436045 °
				-121.037099 °	-121.035917 °
DWR ID	DWR_RD1602_01_s_2020_139				
Comment Code					
V1 : Control annual grass and weeds on the levee slopes and easements.					
Inspector Comment					

No Photos

* Location LS : Land Side N/A : Not Applicable WS : Water Side CR : Crown		** Rating A : Acceptable N : Not Inspected/Rated M : Minimally Acceptable C : Corrected U : Unacceptable A/W : Acceptable but Monitor & Maintain		+ Issue Type Ma : Maintenance Deficiency Ob : Design & System Obsolescence En : Enforcement
--	--	---	--	---

**Flood Control Project Maintenance
Levee Inspections**

Levee Inspection Report By Mile - Spring 2020

Reclamation District No. 1602 Del Puerto

Waterway	Bank	Unit Miles	Inspection Start/End	Inspector
Unit No. 01 San Joaquin River	Left	6.24	04/02/2020 04/02/2020	Corey Fujitani

LM Start	5.08	Rating **	M	Issue No.	140
LM End	5.25	Issue Type +	Ma	Location *	WS
Category	Earthen Levee			GPS Latitude/Longitude	
				Start	End
Item	Vegetation			37.438233 °	37.436043 °
				-121.037099 °	-121.035919 °
DWR ID	DWR_RD1602_01_s_2020_140				
Comment Code					
V1 : Control annual grass and weeds on the levee slopes and easements.					
Inspector Comment					

No Photos

LM Start	5.09	Rating **	M	Issue No.	199
LM End	5.09	Issue Type +	Ma	Location *	WS
Category	Earthen Levee			GPS Latitude/Longitude	
				Start	End
Item	Animal Control			37.438165 °	37.438165 °
				-121.037073 °	-121.037073 °
DWR ID	DWR_RD1602_01_s_2014_199				
Comment Code					
A3 : No rodents visible, but rodent burrows visible; need to backfill and compact or grout burrows.					
Inspector Comment					

Photo 1 of 1 : SP_2020_RD1602_110_199_20200225_00078.jpg



Rodent holes were found on the waterside toe of the levee looking upstream.

*** Location**
LS : Land Side N/A : Not Applicable
WS : Water Side
CR : Crown

**** Rating**
A : Acceptable N : Not Inspected/Rated
M : Minimally Acceptable C : Corrected
U : Unacceptable A/W : Acceptable but Monitor & Maintain

+ Issue Type
Ma : Maintenance Deficiency
Ob : Design & System Obsolescence
En : Enforcement

Reclamation District No. 1602 Del Puerto

**Flood Control Project Maintenance
Levee Inspections**

Levee Inspection Report By Mile - Spring 2020

Reclamation District No. 1602 Del Puerto

Waterway	Bank	Unit Miles	Inspection Start/End	Inspector
Unit No. 01 San Joaquin River	Left	6.24	04/02/2020 04/02/2020	Corey Fujitani

LM Start	5.19	Rating **	M	Issue No.	209
LM End	5.19	Issue Type +	Ma	Location *	
Category	Supplemental			GPS Latitude/Longitude	
				Start	End
Item	DWR UCIP LMA Responsibility			37.436748 °	37.436748 °
				-121.036597 °	-121.036597 °
DWR ID	20208				

Comment Code

Inspector Comment

DS_ID:20208
FS_ID:51336
EP_NO: N/A
Repair Type: Non-Urgent
Crossing Status: Found
UCIP Comments: 11/18/2016 Same as previous inspection soil and debris prevent flap gate from properly functioning and slide gate won't close due to sediment build up. Crossing has been downgraded from Urgent to Non-Urgent due to no pipe or levee integrity issues observed during the site visit. Need to contact owner to determine status of crossing. If crossing is no longer in use owner will need to coordinate with CVFPB to properly abandon or remove according to Title 23 requirements. (O. Magana - DWR UCIP)10/01/2013 Soil and debris prevent flapgate from proper function. Slide gate won't close completely due to sediment buildup. CMP riser needs cover. (W. Wylie - DWR UCIP)
FIELD_STRUCT_DESC: 24-inch steel pipe through levee, 11.6 feet below crown. Concrete headwall on the landside (LS) end. Concrete "U" headwall and flap gate located on the waterside (WS) end. Slide gate in 60-inch corrugated metal pipe (CMP) riser is located on the WS slope. [Additional Reference(s): DWR Levee Log, 1992. USACE San Joaquin River O&M Manual Unit 13, April 1964, (HLM 5.23), Drawing No. 7-4-1784].
FS Date: 11/18/2016

LM Start	5.19	Rating **	M	Issue No.	209 (cont)
LM End	5.19	Issue Type +	Ma	Location *	

Photo 1 of 3 : UCIP_SP_2020_51336_36822.jpg



Slide gate in CMP riser on WS slope. Outlet visible under tree in background.

Photo 2 of 3 : UCIP_SP_2020_51336_36821.jpg



Flapgate in Concrete headwall on WS toe under tree.

* Location LS : Land Side N/A : Not Applicable WS : Water Side CR : Crown		** Rating A : Acceptable M : Minimally Acceptable U : Unacceptable N : Not Inspected/Rated C : Corrected A/W : Acceptable but Monitor & Maintain		+ Issue Type Ma : Maintenance Deficiency Ob : Design & System Obsolescence En : Enforcement	
--	--	---	--	---	--

**Flood Control Project Maintenance
Levee Inspections**

Levee Inspection Report By Mile - Spring 2020

Reclamation District No. 1602 Del Puerto

Waterway	Bank	Unit Miles	Inspection Start/End	Inspector
Unit No. 01 San Joaquin River	Left	6.24	04/02/2020 04/02/2020	Corey Fujitani

LM Start	5.19	Rating **	M	Issue No.	209 (cont)
LM End	5.19	Issue Type +	Ma	Location *	
Category	Supplemental		GPS Latitude/Longitude		
			Start	End	
Item	DWR UCIP LMA Responsibility		37.436748 °	37.436748 °	
			-121.036597 °	-121.036597 °	
DWR ID	20208				

Photo 3 of 3 : UCIP_SP_2020_51336_36820.jpg



Concrete headwall at inlet on LS toe.

LM Start	5.22	Rating **	M	Issue No.	52
LM End	5.22	Issue Type +	Ma	Location *	WS
Category	Earthen Levee			GPS Latitude/Longitude	
				Start	End
Item	Animal Control			37.436393 °	37.436393 °
				-121.036296 °	-121.036296 °
DWR ID	DWR_RD1602_01_s_2018_52				
Comment Code					
A3 : No rodents visible, but rodent burrows visible; need to backfill and compact or grout burrows.					
Inspector Comment					
Large rodent hole on waterward slope.					

Photo 1 of 1 : SP_2020_RD1602_110_52_20200225_00030.jpg



Looking at rodent hole and erosion around rodent hole on waterward slope.

LM Start	5.22	Rating **	M	Issue No.	68
LM End	5.22	Issue Type +	Ma	Location *	CR
Category	Earthen Levee			GPS Latitude/Longitude	
				Start	End
Item	Trim / Thin Trees			37.436294 °	37.436294 °
				-121.036226 °	-121.036226 °
DWR ID	DWR_RD1602_01_f_2019_68				
Comment Code					
T4 : Trim trees over roadway to at least 12 feet above ground level.					
Inspector Comment					

No Photos

* Location LS : Land Side N/A : Not Applicable WS : Water Side CR : Crown	** Rating A : Acceptable M : Minimally Acceptable U : Unacceptable	N : Not Inspected/Rated C : Corrected A/W : Acceptable but Monitor & Maintain	+ Issue Type Ma : Maintenance Deficiency Ob : Design & System Obsolescence En : Enforcement
--	--	--	---

**Flood Control Project Maintenance
Levee Inspections**

Levee Inspection Report By Mile - Spring 2020

Reclamation District No. 1602 Del Puerto

Waterway	Bank	Unit Miles	Inspection Start/End	Inspector
Unit No. 01 San Joaquin River	Left	6.24	04/02/2020 04/02/2020	Corey Fujitani

LM Start	5.23	Rating **	A/W	Issue No.	210
LM End	5.23	Issue Type +	Ma	Location *	
Category	Supplemental			GPS Latitude/Longitude	
				Start	End
Item	DWR UCIP LMA Responsibility			37.436246 °	37.436246 °
				-121.036193 °	-121.036193 °
DWR ID	20209				
Comment Code					
Inspector Comment					
DS_ID:20209 FS_ID:21665 EP_NO: 8192 Repair Type: No Action Needed Crossing Status: Found UCIP Comments: FIELD_STRUCT_DESC: 1 of 2: 36-inch by 36-inch reinforced concrete box drainage culvert through the levee, 15.8 feet below the crown. Slide gate in a 6-foot by 7-foot concrete surge box on the waterside (WS) slope. 36-inch concrete pipes buried on both sides of the levee and connected to the reinforced concrete box culvert. Constructed through the levee section. (two 36-inch by 36-inch culvert [HLM 5.27] authorized under Automatic Board Order (ABO) issued as Permit No. 8192, 1972 - Stanislaus County). [Additional Reference(s): DWR Levee Log, 1992. USACE San Joaquin O&M Manual 13, April 1964, (HLM 5.27), Drawing No. 7-4-1784]. FS Date: 10/1/2013					

LM Start	5.23	Rating **	A/W	Issue No.	210 (cont)
LM End	5.23	Issue Type +	Ma	Location *	

Photo 1 of 2 : UCIP_SP_2020_21665_36829.jpg



Shed with slide gate in Concrete riser on WS shoulder.

Photo 2 of 2 : UCIP_SP_2020_21665_36828.jpg



Likely risers for pipe off LS toe.

* Location LS : Land Side N/A : Not Applicable WS : Water Side CR : Crown	** Rating A : Acceptable M : Minimally Acceptable U : Unacceptable	N : Not Inspected/Rated C : Corrected A/W : Acceptable but Monitor & Maintain	+ Issue Type Ma : Maintenance Deficiency Ob : Design & System Obsolescence En : Enforcement
--	--	---	---

**Flood Control Project Maintenance
Levee Inspections**

Levee Inspection Report By Mile - Spring 2020

Reclamation District No. 1602 Del Puerto

Waterway	Bank	Unit Miles	Inspection Start/End	Inspector
Unit No. 01 San Joaquin River	Left	6.24	04/02/2020 04/02/2020	Corey Fujitani

LM Start	5.23	Rating **	A/W	Issue No.	211	
LM End	5.23	Issue Type +	Ma	Location *		
Category	Supplemental			GPS Latitude/Longitude		
				Start	End	
Item	DWR UCIP LMA Responsibility			37.436227 °	37.436227 °	
				-121.036169 °	-121.036169 °	
DWR ID	20222					
Comment Code						
Inspector Comment						
DS_ID:20222						
FS_ID:21668						
EP_NO: 8192						
Repair Type: No Action Needed						
Crossing Status: Found						
UCIP Comments:						
FIELD_STRUCT_DESC: 2 of 2: 36-inch by 36-inch reinforced concrete box drainage culvert through the levee, 15.8 feet below the crown. Slide gate in a 6-foot by 7-foot concrete surge box on the waterside (WS) slope. 36-inch concrete pipes buried on both sides of the levee and connected to the reinforced concrete box culvert. Constructed through the levee section. (two 36-inch by 36-inch culvert [HLM 5.27] authorized under Automatic Board Order (ABO) issued as Permit No. 8192, 1972 - Stanislaus County). [Additional Reference(s): DWR Levee Log, 1992. USACE San Joaquin O&M Manual 13, April 1964, (HLM 5.27), Drawing No. 7-4-1784].						
FS Date: 10/1/2013						

LM Start	5.23	Rating **	A/W	Issue No.	211 (cont)
LM End	5.23	Issue Type +	Ma	Location *	

Photo 1 of 2 : UCIP_SP_2020_21668_36835.jpg



Slide gate in Concrete vault on WS shoulder.

Photo 2 of 2 : UCIP_SP_2020_21668_36834.jpg



Possible concrete risers for pipe off LS toe.

* Location LS : Land Side N/A : Not Applicable WS : Water Side CR : Crown	** Rating A : Acceptable M : Minimally Acceptable U : Unacceptable	N : Not Inspected/Rated C : Corrected A/W : Acceptable but Monitor & Maintain	+ Issue Type Ma : Maintenance Deficiency Ob : Design & System Obsolescence En : Enforcement
--	--	---	---

**Flood Control Project Maintenance
Levee Inspections**

Levee Inspection Report By Mile - Spring 2020

Reclamation District No. 1602 Del Puerto

Waterway	Bank	Unit Miles	Inspection Start/End	Inspector
Unit No. 01 San Joaquin River	Left	6.24	04/02/2020 04/02/2020	Corey Fujitani

LM Start	5.24	Rating **	A/W	Issue No.	212
LM End	5.24	Issue Type +	Ma	Location *	
Category	Supplemental			GPS Latitude/Longitude	
				Start	End
Item	DWR UCIP LMA Responsibility			37.436129 °	37.436129 °
				-121.036065 °	-121.036065 °
DWR ID	20210				
Comment Code					
Inspector Comment					
DS_ID:20210					
FS_ID:21672					
EP_NO: N/A					
Repair Type: No Action Needed					
Crossing Status: Found					
UCIP Comments:					
FIELD_STRUCT_DESC: 30-inch by 30-inch reinforced concrete box drainage culvert through the levee, 12.9 feet below the crown. Slide gate in a concrete surge box on the waterside (WS) slope. Concrete discharge boxes on both ends. [Additional Reference(s): DWR Levee Log, 1992. USACE San Joaquin O&M Manual 13, April 1964, (HLM 5.28), Drawing No. 7-4-1784].					
FS Date: 10/1/2013					

Photo 1 of 3 : UCIP_SP_2020_21672_36848.jpg



Slidegate in concrete riser on WS shoulder.

LM Start	5.24	Rating **	A/W	Issue No.	212 (cont)
LM End	5.24	Issue Type +	Ma	Location *	

Photo 2 of 3 : UCIP_SP_2020_21672_36847.jpg



Concrete outlet on WS toe.

* Location LS : Land Side N/A : Not Applicable WS : Water Side CR : Crown	** Rating A : Acceptable M : Minimally Acceptable U : Unacceptable	N : Not Inspected/Rated C : Corrected A/W : Acceptable but Monitor & Maintain	+ Issue Type Ma : Maintenance Deficiency Ob : Design & System Obsolescence En : Enforcement
--	--	---	---

**Flood Control Project Maintenance
Levee Inspections**

Levee Inspection Report By Mile - Spring 2020

Reclamation District No. 1602 Del Puerto

Waterway	Bank	Unit Miles	Inspection Start/End	Inspector
Unit No. 01 San Joaquin River	Left	6.24	04/02/2020 04/02/2020	Corey Fujitani

LM Start	5.24	Rating **	A/W	Issue No.	212 (cont)
LM End	5.24	Issue Type +	Ma	Location *	
Category	Supplemental			GPS Latitude/Longitude	
				Start	End
Item	DWR UCIP LMA Responsibility			37.436129 °	37.436129 °
				-121.036065 °	-121.036065 °
DWR ID	20210				

Photo 3 of 3 : UCIP_SP_2020_21672_36846.jpg



Concrete inlet on LS toe.

LM Start	5.25	Rating **	U	Issue No.	142
LM End	6.23	Issue Type +	Ma	Location *	LS
Category	Earthen Levee			GPS Latitude/Longitude	
				Start	End
Item	Vegetation			37.436044 °	37.429108 °
				-121.035915 °	-121.029747 °
DWR ID	DWR_RD1602_01_s_2020_142				
Comment Code					
V1 : Control annual grass and weeds on the levee slopes and easements.					
Inspector Comment					

Photo 1 of 1 : SP_2020_RD1602_110_142_20200403_00151.jpg



View of vegetation along the landside slope looking upstream. (Spring 2020)

* Location LS : Land Side N/A : Not Applicable WS : Water Side CR : Crown		** Rating A : Acceptable N : Not Inspected/Rated M : Minimally Acceptable C : Corrected U : Unacceptable A/W : Acceptable but Monitor & Maintain		+ Issue Type Ma : Maintenance Deficiency Ob : Design & System Obsolescence En : Enforcement	
--	--	---	--	---	--

**Flood Control Project Maintenance
Levee Inspections**

Levee Inspection Report By Mile - Spring 2020

Reclamation District No. 1602 Del Puerto

Waterway	Bank	Unit Miles	Inspection Start/End	Inspector
Unit No. 01 San Joaquin River	Left	6.24	04/02/2020 04/02/2020	Corey Fujitani

LM Start	5.25	Rating **	U	Issue No.	143
LM End	5.95	Issue Type +	Ma	Location *	WS
Category	Earthen Levee			GPS Latitude/Longitude	
				Start	End
Item	Vegetation			37.436043 °	37.432237 °
				-121.035914 °	-121.026588 °
DWR ID	DWR_RD1602_01_s_2020_143				
Comment Code					
V1 : Control annual grass and weeds on the levee slopes and easements.					
Inspector Comment					

Photo 1 of 1 : SP_2020_RD1602_110_143_20200403_00152.jpg



View of vegetation on the waterside slope looking upstream. (Spring 2020)

LM Start	5.27	Rating **	M	Issue No.	41
LM End	5.27	Issue Type +	Ma	Location *	WS
Category	Earthen Levee			GPS Latitude/Longitude	
				Start	End
Item	Trim / Thin Trees			37.435834 °	37.435834 °
				-121.035615 °	-121.035615 °
DWR ID	DWR_RD1602_01_s_2019_41				
Comment Code					
T1 : Trim trees to at least five feet above ground level.					
Inspector Comment					

No Photos

LM Start	5.32	Rating **	M	Issue No.	35
LM End	5.32	Issue Type +	En	Location *	WS
Category	Earthen Levee			GPS Latitude/Longitude	
				Start	End
Item	Encroachments			37.435235 °	37.435235 °
				-121.035280 °	-121.035280 °
DWR ID	DWR_RD1602_01_s_2019_35				
Comment Code					
TR : Tree or limb					
Inspector Comment					

No Photos

* Location LS : Land Side N/A : Not Applicable WS : Water Side CR : Crown	** Rating A : Acceptable M : Minimally Acceptable U : Unacceptable	N : Not Inspected/Rated C : Corrected A/W : Acceptable but Monitor & Maintain	+ Issue Type Ma : Maintenance Deficiency Ob : Design & System Obsolescence En : Enforcement
--	--	---	---

**Flood Control Project Maintenance
Levee Inspections**

Levee Inspection Report By Mile - Spring 2020

Reclamation District No. 1602 Del Puerto

Waterway	Bank	Unit Miles	Inspection Start/End	Inspector
Unit No. 01 San Joaquin River	Left	6.24	04/02/2020 04/02/2020	Corey Fujitani

LM Start	5.38	Rating **	M	Issue No.	22
LM End	5.44	Issue Type +	En	Location *	LS
Category	Earthen Levee			GPS Latitude/Longitude	
				Start	End
Item	Encroachments			37.434447 °	37.433791 °
				-121.034865 °	-121.034000 °
DWR ID	DWR_RD1602_01_f_2012_22				
Comment Code					
FE : Fence					
Inspector Comment					

Photo 1 of 1 : SP_2020_RD1602_110_22_20200225_00007.jpg



A fence was found on the landside toe of the levee looking upstream.

LM Start	5.41	Rating **	U	Issue No.	144
LM End	5.52	Issue Type +	Ma	Location *	CR
Category	Earthen Levee			GPS Latitude/Longitude	
				Start	End
Item	Vegetation			37.434156 °	37.433128 °
				-121.034470 °	-121.032848 °
DWR ID	DWR_RD1602_01_s_2020_144				
Comment Code					
V9 : Keep the crown roadway free of vegetation.					
Inspector Comment					

Photo 1 of 1 : SP_2020_RD1602_110_144_20200403_00153.jpg



View of vegetation along the levee crown. (Spring 2020)

*** Location**
LS : Land Side N/A : Not Applicable
WS : Water Side
CR : Crown

**** Rating**
A : Acceptable N : Not Inspected/Rated
M : Minimally Acceptable C : Corrected
U : Unacceptable A/W : Acceptable but Monitor & Maintain

+ Issue Type
Ma : Maintenance Deficiency
Ob : Design & System Obsolescence
En : Enforcement

**Flood Control Project Maintenance
Levee Inspections**

Levee Inspection Report By Mile - Spring 2020

Reclamation District No. 1602 Del Puerto

Waterway	Bank	Unit Miles	Inspection Start/End	Inspector
Unit No. 01 San Joaquin River	Left	6.24	04/02/2020 04/02/2020	Corey Fujitani

LM Start	5.46	Rating **	M	Issue No.	213	
LM End	5.46	Issue Type +	Ma	Location *		
Category	Supplemental			GPS Latitude/Longitude		
				Start		End
Item	DWR UCIP LMA Responsibility			37.433646 °	37.433646 °	
				-121.033846 °	-121.033846 °	
DWR ID	20211					
Comment Code						
Inspector Comment						
DS_ID:20211 FS_ID:21674 EP_NO: N/A Repair Type: Non-Urgent Crossing Status: Found UCIP Comments: 10/01/2013 Pipe appears abandoned and if so should be done so properly. (W. Wylie - DWR UCIP) FIELD_STRUCT_DESC: *ABANDONED* 12-inch drainage pipe of an unknown material through the levee, 6.9 feet below the crown. Flap gate on the waterside (WS) end. Could not locate, March 1984. (Reclamation District No. 1602). [Additional Reference(s): DWR Levee Log, 1992. USACE San Joaquin O&M Manual 13, April 1964, (HLM 5.50), Drawing No. 7-4-1784]. FS Date: 10/1/2013						

Photo 1 of 1 : UCIP_SP_2020_21674_36854.jpg



Pipe and flapgate visible on WS toe.

LM Start	5.52	Rating **	M	Issue No.	145
LM End	5.91	Issue Type +	Ma	Location *	CR
Category	Earthen Levee			GPS Latitude/Longitude	
				Start	End
Item	Vegetation			37.433126 °	37.432677 °
				-121.032838 °	-121.026152 °
DWR ID	DWR_RD1602_01_s_2020_145				
Comment Code					
V9 : Keep the crown roadway free of vegetation.					
Inspector Comment					

No Photos

* Location LS : Land Side N/A : Not Applicable WS : Water Side CR : Crown	** Rating A : Acceptable M : Minimally Acceptable U : Unacceptable	N : Not Inspected/Rated C : Corrected A/W : Acceptable but Monitor & Maintain	+ Issue Type Ma : Maintenance Deficiency Ob : Design & System Obsolescence En : Enforcement
--	--	---	---

**Flood Control Project Maintenance
Levee Inspections**

Levee Inspection Report By Mile - Spring 2020

Reclamation District No. 1602 Del Puerto

Waterway	Bank	Unit Miles	Inspection Start/End	Inspector
Unit No. 01 San Joaquin River	Left	6.24	04/02/2020 04/02/2020	Corey Fujitani

LM Start	5.64	Rating **	C	Issue No.	54
LM End	5.64	Issue Type +	Ma	Location *	CR
Category	Earthen Levee			GPS Latitude/Longitude	
				Start	End
Item	Trim / Thin Trees			37.432992 °	37.432992 °
				-121.030722 °	-121.030722 °
DWR ID	DWR_RD1602_01_f_2019_54				
Comment Code					
T4 : Trim trees over roadway to at least 12 feet above ground level.					
Inspector Comment					

No Photos

LM Start	5.72	Rating **	M	Issue No.	214
LM End	5.72	Issue Type +	Ma	Location *	
Category	Supplemental			GPS Latitude/Longitude	
				Start	End
Item	DWR UCIP LMA Responsibility			37.433003 °	37.433003 °
				-121.029346 °	-121.029346 °
DWR ID	20212				
Comment Code					
Inspector Comment					
DS_ID:20212 FS_ID:51337 EP_NO: N/A Repair Type: Non-Urgent Crossing Status: Found UCIP Comments: 11/18/2016 Crossing has been downgraded from Urgent to Non-Urgent flap gate is functional. Recommend clearing dense vegetation from WS and LS slopes. (O. Magana - DWR UCIP)10/01/2013 Flapgate has minor blockage preventing gate from fully closing. (W. Wylie - DWR UCIP) FIELD_STRUCT_DESC: 30-inch square reinforced concrete box culvert through levee, 9 feet below crown. Slide gate in concrete surge box is located on the waterside (WS) slope. Concrete "U" headwalls are located on both the waterside (WS) and landside (LS) ends. Flap gate is located on the WS end. [Additional Reference(s): DWR Levee Log, 1992. USACE San Joaquin River O&M Manual Unit 13, April 1964, (HLM 5.28), Drawing No. 7-4-1784]. FS Date: 11/18/2016					

Photo 1 of 3 : UCIP_SP_2020_51337_36878.jpg



Slide gate in concrete riser on WS shoulder.

* Location LS : Land Side N/A : Not Applicable WS : Water Side CR : Crown	** Rating A : Acceptable M : Minimally Acceptable U : Unacceptable	N : Not Inspected/Rated C : Corrected A/W : Acceptable but Monitor & Maintain	+ Issue Type Ma : Maintenance Deficiency Ob : Design & System Obsolescence En : Enforcement
--	--	---	---

**Flood Control Project Maintenance
Levee Inspections**

Levee Inspection Report By Mile - Spring 2020

Reclamation District No. 1602 Del Puerto

Waterway	Bank	Unit Miles	Inspection Start/End	Inspector
Unit No. 01 San Joaquin River	Left	6.24	04/02/2020 04/02/2020	Corey Fujitani

LM Start	5.72	Rating **	M	Issue No.	214 (cont)
LM End	5.72	Issue Type +	Ma	Location *	
Category	Supplemental		GPS Latitude/Longitude		
			Start	End	
Item	DWR UCIP LMA Responsibility		37.433003 °	37.433003 °	
			-121.029346 °	-121.029346 °	
DWR ID	20212				

Photo 2 of 3 : UCIP_SP_2020_51337_36877.jpg



Concrete U-shaped headwall on LS toe.

LM Start	5.72	Rating **	M	Issue No.	214 (cont)
LM End	5.72	Issue Type +	Ma	Location *	

Photo 3 of 3 : UCIP_SP_2020_51337_36876.jpg



Concrete U-shaped headwall on LS toe.

LM Start	5.72	Rating **	M	Issue No.	53
LM End	5.72	Issue Type +	Ma	Location *	WS
Category	Earthen Levee			GPS Latitude/Longitude	
				Start	End
Item	Trim / Thin Trees			37.432990 °	37.432990 °
				-121.029240 °	-121.029240 °
DWR ID	DWR_RD1602_01_f_2019_53				
Comment Code					
T1 : Trim trees to at least five feet above ground level.					
Inspector Comment					

No Photos

* Location LS : Land Side N/A : Not Applicable WS : Water Side CR : Crown	** Rating A : Acceptable M : Minimally Acceptable U : Unacceptable	N : Not Inspected/Rated C : Corrected A/W : Acceptable but Monitor & Maintain	+ Issue Type Ma : Maintenance Deficiency Ob : Design & System Obsolescence En : Enforcement
--	--	---	---

**Flood Control Project Maintenance
Levee Inspections**

Levee Inspection Report By Mile - Spring 2020

Reclamation District No. 1602 Del Puerto

Waterway	Bank	Unit Miles	Inspection Start/End	Inspector
Unit No. 01 San Joaquin River	Left	6.24	04/02/2020 04/02/2020	Corey Fujitani

LM Start	5.78	Rating **	U	Issue No.	34
LM End	5.81	Issue Type +	Ma	Location *	WS
Category	Earthen Levee			GPS Latitude/Longitude	
				Start	End
Item	Trim / Thin Trees			37.433038 °	37.433081 °
				-121.028190 °	-121.027632 °
DWR ID	DWR_RD1602_01_f_2018_34				
Comment Code					
T2 : Thin trees to allow visibility of the ground and room to flood fight.					
Inspector Comment					

Photo 1 of 2 : SP_2020_RD1602_110_34_20200225_00016.jpg



Looking upstream along the waterside shoulder. (Fall 2019)

LM Start	5.78	Rating **	U	Issue No.	34 (cont)
LM End	5.81	Issue Type +	Ma	Location *	WS

Photo 2 of 2 : SP_2020_RD1602_110_34_20200225_00017.jpg



Trim tree to 5 feet above ground. (Fall 2018)

LM Start	5.86	Rating **	M	Issue No.	26
LM End	5.86	Issue Type +	Ma	Location *	WS
Category	Earthen Levee			GPS Latitude/Longitude	
				Start	End
Item	Trim / Thin Trees			37.433142 °	37.433142 °
				-121.026702 °	-121.026702 °
DWR ID	DWR_RD1602_01_f_2018_26				
Comment Code					
T1 : Trim trees to at least five feet above ground level.					
Inspector Comment					

Photo 1 of 1 : SP_2020_RD1602_110_26_20200225_00009.jpg



View of trees growing on the waterside slope. (Fall 2019)

*** Location**

LS : Land Side N/A : Not Applicable
WS : Water Side
CR : Crown

**** Rating**

A : Acceptable N : Not Inspected/Rated
M : Minimally Acceptable C : Corrected
U : Unacceptable A/W : Acceptable but Monitor & Maintain

+ Issue Type

Ma : Maintenance Deficiency
Ob : Design & System Obsolescence
En : Enforcement

**Flood Control Project Maintenance
Levee Inspections**

Levee Inspection Report By Mile - Spring 2020

Reclamation District No. 1602 Del Puerto

Waterway	Bank	Unit Miles	Inspection Start/End	Inspector
Unit No. 01 San Joaquin River	Left	6.24	04/02/2020 04/02/2020	Corey Fujitani

LM Start	5.90	Rating **	M	Issue No.	38
LM End	5.90	Issue Type +	Ma	Location *	WS
Category	Earthen Levee			GPS Latitude/Longitude	
				Start	End
Item	Trim / Thin Trees			37.432756 °	37.432756 °
				-121.026147 °	-121.026147 °
DWR ID	DWR_RD1602_01_f _ 2019_38				
Comment Code					
T1 : Trim trees to at least five feet above ground level.					
Inspector Comment					

Photo 1 of 1 : SP_2020_RD1602_110_38_20200225_00020.jpg



View of a tree growing on the waterside slope. (Fall 2019)

LM Start	6.13	Rating **	U	Issue No.	86
LM End	6.13	Issue Type +	En	Location *	WS
Category	Earthen Levee			GPS Latitude/Longitude	
				Start	End
Item	Vegetation			37.430181 °	37.430181 °
				-121.028679 °	-121.028679 °
DWR ID	DWR_RD1602_01_s_2020_86				
Comment Code					
V6 : Landscaping					
Inspector Comment					
Cactus blocking view of waterward slope.					

Photo 1 of 2 : SP_2020_RD1602_110_86_20200225_00049.jpg



Looking at dense cactus growth on the waterside slope. (Fall 2019)

LM Start	6.13	Rating **	U	Issue No.	86 (cont)
LM End	6.13	Issue Type +	En	Location *	WS

Photo 2 of 2 : SP_2020_RD1602_110_86_20200225_00050.jpg



Looking south at dense cactus on waterward slope.

*** Location**
LS : Land Side N/A : Not Applicable
WS : Water Side
CR : Crown

**** Rating**
A : Acceptable N : Not Inspected/Rated
M : Minimally Acceptable C : Corrected
U : Unacceptable A/W : Acceptable but Monitor & Maintain

+ Issue Type
Ma : Maintenance Deficiency
Ob : Design & System Obsolescence
En : Enforcement

**Flood Control Project Maintenance
Levee Inspections**

Levee Inspection Report By Mile - Spring 2020

Reclamation District No. 1602 Del Puerto

Waterway	Bank	Unit Miles	Inspection Start/End	Inspector
Unit No. 01 San Joaquin River	Left	6.24	04/02/2020 04/02/2020	Corey Fujitani

LM Start	6.24	Rating **	M	Issue No.	215
LM End	6.24	Issue Type +	En	Location *	
Category	Supplemental			GPS Latitude/Longitude	
				Start	End
Item	DWR UCIP Field Study			37.429032 °	37.429032 °
				-121.029867 °	-121.029867 °
DWR ID	20214				
Comment Code					
Inspector Comment					
DS_ID:20214 FS_ID:21683 EP_NO: 8194 Repair Type: Non-Urgent Crossing Status: Found UCIP Comments: 10/01/2013 Pipe heavily deteriorated on LS toe. May indicate condition of rest of pipe is bad. Good candidate for video inspection. (W. Wylie - DWR UCIP) FIELD_STRUCT_DESC: 18-inch reinforced concrete irrigation pipe through the levee, 3 feet below the crown. Slide gate in a 36-inch concrete standpipe on the waterside (WS) shoulder. (18-inch concrete pipe was authorized under Automatic Board Order (ABO) issued as Permit No. 8194, 1972 - Ernest F. Nunes). [Additional Reference(s): DWR Levee Log, 1992. USACE San Joaquin O&M Manual 13, April 1964, (HLM 6.28), Drawing No. 7-4-1784]. FS Date: 10/1/2013					

Photo 1 of 3 : UCIP_SP_2020_21683_36882.jpg



Drainage/irrigation canal on LS toe.

LM Start	6.24	Rating **	M	Issue No.	215 (cont)
LM End	6.24	Issue Type +	En	Location *	

Photo 2 of 3 : UCIP_SP_2020_21683_36881.jpg



36-inch concrete standpipe on WS shoulder.

* Location LS : Land Side N/A : Not Applicable WS : Water Side CR : Crown	** Rating A : Acceptable M : Minimally Acceptable U : Unacceptable	N : Not Inspected/Rated C : Corrected A/W : Acceptable but Monitor & Maintain	+ Issue Type Ma : Maintenance Deficiency Ob : Design & System Obsolescence En : Enforcement
--	--	---	---

**Flood Control Project Maintenance
Levee Inspections**

Levee Inspection Report By Mile - Spring 2020

Reclamation District No. 1602 Del Puerto

Waterway	Bank	Unit Miles	Inspection Start/End	Inspector
Unit No. 01 San Joaquin River	Left	6.24	04/02/2020 04/02/2020	Corey Fujitani

LM Start	6.24	Rating **	M	Issue No.	215 (cont)
LM End	6.24	Issue Type +	En	Location *	
Category	Supplemental			GPS Latitude/Longitude	
				Start	End
Item	DWR UCIP Field Study			37.429032 °	37.429032 °
				-121.029867 °	-121.029867 °
DWR ID	20214				

Photo 3 of 3 : UCIP_SP_2020_21683_36880.jpg



Pipe deteriorated on LS at outlet.

* Location LS : Land Side N/A : Not Applicable WS : Water Side CR : Crown	** Rating A : Acceptable M : Minimally Acceptable U : Unacceptable N : Not Inspected/Rated C : Corrected A/W : Acceptable but Monitor & Maintain	+ Issue Type Ma : Maintenance Deficiency Ob : Design & System Obsolescence En : Enforcement
--	---	---