

## Flood Control Project Maintenance Levee Inspections

### Fall 2022 Levee Maintenance Deficiency Summary Report

#### ***San Joaquin River Basin***

<b>RD1602</b>	Overall LMA Rating	Total LMA Miles						
<b>Reclamation District No. 1602 Del Puerto</b>	<b>U</b>	<b>6.24</b>						
Rated Item	Maintenance Deficiency				Enforcement		Design & System Obsolescence	
	M Miles	U Miles	M + 4U Miles	Threshold %	M Miles	U Miles	M Miles	U Miles
<i>Earthen Levee</i>								
Vegetation					0.01	0.01		
Trim / Thin Trees	0.05	0.02	0.13	2.08%				
Encroachments					1.66	0.38		
Animal Control	0.19	0.42	1.87	29.98%				
Erosion / Foot Traffic	0.01		0.01	0.16%				
Erosion / Vehicle Traffic					0.01			
Crown Surface / Depressions / Rutting	0.02		0.02	0.32%				
<i>Rivers, Channels &amp; Designated Floodways</i>								
Encroachments						0.12		
<i>Supplemental</i>								
DWR UCIP Field Study					0.03	0.03		
DWR UCIP LMA Responsibility								
<i>LMA Totals:</i>	0.27	0.44	2.03	32.54%	1.71	0.54	0.00	0.00

<b>Unit No. 01 San Joaquin River LB</b>	Overall Unit Rating	Total Unit Miles						
<b>RD1602</b>	<b>U</b>	<b>6.24</b>						
Rated Item	Maintenance Deficiency				Enforcement		Design & System Obsolescence	
	M Miles	U Miles	M + 4U Miles	Threshold %	M Miles	U Miles	M Miles	U Miles
<i>Earthen Levee</i>								
Vegetation					0.01	0.01		
Trim / Thin Trees	0.05	0.02	0.13	2.08%				
Encroachments					1.66	0.38		
Animal Control	0.19	0.42	1.87	29.98%				
Erosion / Foot Traffic	0.01		0.01	0.16%				
Erosion / Vehicle Traffic					0.01			
Crown Surface / Depressions / Rutting	0.02		0.02	0.32%				
<i>Rivers, Channels &amp; Designated Floodways</i>								
Encroachments						0.12		
<i>Supplemental</i>								
DWR UCIP Field Study					0.03	0.03		
DWR UCIP LMA Responsibility								
<i>Unit Totals:</i>	0.27	0.44	2.03	32.54%	1.71	0.54	0.00	0.00

**Flood Control Project Maintenance  
Levee Inspections  
LMA District Cover Sheet**

**Reclamation District No. 1602 Del Puerto**

	Spring (March - May)	Summer ** (June - August)	Fall (September - November)	Winter ** (December - February)
† Overall LMA Rating (Fall Only)			U	

\*\* Non-receipt of Summer or Winter Inspection  
Reports may effect overall annual rating.

†

SPRING INSPECTIONS:
Overall maintenance ratings are not determined for the spring inspection results. Individual maintenance deficiencies are rated using the same criteria in the spring and in the fall.

FALL INSPECTIONS:
The overall maintenance rating shown above is based on operation and maintenance deficiencies identified within the attached unit inspection reports. This rating is not intended to be an indication of risk.

Comments

**Flood Control Project Maintenance  
Levee Inspections  
Unit Cover Sheet**

**Reclamation District No. 1602 Del Puerto**

Waterway			Bank	Unit Miles
Unit No. 01 San Joaquin River			Left	6.24
	Spring (March - May)	Summer (June - August)	(September - November) Fall	Winter (December - February)
Unit Maintenance Rating (Fall Only)			<b>U</b>	
Date of Inspection	4/13/2022 - 4/13/2022		10/11/2022 - 10/11/2022	
DWR Inspector	Corey Fujitani		Corey Fujitani	
Accompanied By	Matt Brady RD 1602		Matt Brady RD1602	
	Ryan Vieira RD1602		Brent Lunt RD1602	
	Todd Turley RD1602			

**Summer & Winter Inspections**

The Local Maintaining Agency (LMA) is responsible for summer and winter inspections. The LMA is required to submit a report regarding summer and winter inspections to the California Department of Water Resources (DWR).

DWR must be informed on the:

- a) completion of the inspection
- b) any changes other than the results of normal maintenance
- c) corrections to deficiencies noted in this report

If additional items are noted, further documentation of those items must also be submitted.

The LMA should submit this information to DWR using the LMA web application tool available at:

<http://cdec.water.ca.gov/lma.html>

If the LMA is unable to submit information on this webpage, please contact DWR for assistance.

*The LMA should submit the information and any associated documentation by September 30 for summer inspections and March 31 for winter inspections.*

**Flood Control Project Maintenance  
Levee Inspections**

**Levee Inspection Report By Mile - Fall 2022**

**Reclamation District No. 1602 Del Puerto**

Waterway	Bank	Unit Miles	Inspection Start/End	Inspector
Unit No. 01 San Joaquin River	Left	6.24	10/11/2022 10/11/2022	Corey Fujitani

LM Start	0.00	Rating **	A	Issue No.	39
LM End	0.00	Issue Type +	Ma	Location *	N/A
Category	Earthen Levee			GPS Latitude/Longitude	
				Start	End
Item	Operations & Maintenance Manuals				°
					°
DWR ID	DWR_RD1602_01_s_2012_39				
Comment Code					
OM : O&M Manuals					
Inspector Comment					
The LMA has all the O&M manuals on hand.					

No Photos

LM Start	0.00	Rating **	A	Issue No.	77
LM End	0.00	Issue Type +	Ma	Location *	N/A
Category	Earthen Levee			GPS Latitude/Longitude	
				Start	End
Item	Emergency Supplies & Equipment				°
					°
DWR ID	DWR_RD1602_01_s_2012_77				
Comment Code					
ES : Emergency Supplies & Equipment					
Inspector Comment					
The LMA has enough flood materials in case of an incident.					

No Photos

LM Start	0.00	Rating **	A	Issue No.	97		
LM End	0.00	Issue Type +	Ma	Location *	N/A		
Category	Earthen Levee			GPS Latitude/Longitude			
				Start	End		
Item	Flood Preparedness & Training				°		°
					°		°
DWR ID	DWR_RD1602_01_s_2012_97						
Comment Code							
FP : Flood Preparedness & Training							
Inspector Comment							
The LMA has solid understanding of flood fight techniques.							

No Photos

<b>* Location</b> LS : Land Side    N/A : Not Applicable WS : Water Side CR : Crown	<b>** Rating</b> A : Acceptable M : Minimally Acceptable U : Unacceptable	N : Not Inspected/Rated C : Corrected A/W : Acceptable but Monitor & Maintain	<b>+ Issue Type</b> Ma : Maintenance Deficiency Ob : Design & System Obsolescence En : Enforcement
--	--	---	---

**Flood Control Project Maintenance  
Levee Inspections**

**Levee Inspection Report By Mile - Fall 2022**

**Reclamation District No. 1602 Del Puerto**

Waterway	Bank	Unit Miles	Inspection Start/End	Inspector
Unit No. 01 San Joaquin River	Left	6.24	10/11/2022 10/11/2022	Corey Fujitani

LM Start	0.01	Rating **	M	Issue No.	57
LM End	0.01	Issue Type +	Ma	Location *	CR
Category	Earthen Levee			GPS Latitude/Longitude	
				Start	End
Item	Animal Control			37.476650 °	37.476650 °
				-121.083740 °	-121.083740 °
DWR ID	DWR_RD1602_01_f_2022_57				
Comment Code					
A3 : No rodents visible, but rodent burrows visible; need to backfill and compact or grout burrows.					
Inspector Comment					
Rodent burrows in the crown and landside shoulder should be backfilled and compacted.					

No Photos

LM Start	0.11	Rating **	M	Issue No.	60
LM End	0.11	Issue Type +	En	Location *	LS
Category	Earthen Levee			GPS Latitude/Longitude	
				Start	End
Item	Encroachments			37.477289 °	37.477289 °
				-121.082183 °	-121.082183 °
DWR ID	DWR_RD1602_01_f_2022_60				
Comment Code					
EQ : Equipment					
Inspector Comment					
Farming equipment should be moved off of the landside slope and toe.					

Photo 1 of 1 : FA\_2022\_RD1602\_110\_60\_20221021\_00049.jpg



Equipment should be moved off of the landside slope and toe. (Fall 2022)

LM Start	0.18	Rating **	A/W	Issue No.	20
LM End	0.18	Issue Type +	Ma	Location *	LS
Category	Earthen Levee			GPS Latitude/Longitude	
				Start	End
Item	Animal Control			37.477575 °	37.477575 °
				-121.080943 °	-121.080943 °
DWR ID	DWR_RD1602_01_f_2016_20				
Comment Code					
A3 : No rodents visible, but rodent burrows visible; need to backfill and compact or grout burrows.					
Inspector Comment					

No Photos

<b>* Location</b> LS : Land Side    N/A : Not Applicable WS : Water Side CR : Crown		<b>** Rating</b> A : Acceptable                      N : Not Inspected/Rated M : Minimally Acceptable        C : Corrected U : Unacceptable                  A/W : Acceptable but Monitor & Maintain		<b>+ Issue Type</b> Ma : Maintenance Deficiency Ob : Design & System Obsolescence En : Enforcement	
--	--	---	--	---	--

**Flood Control Project Maintenance  
Levee Inspections**

**Levee Inspection Report By Mile - Fall 2022**

**Reclamation District No. 1602 Del Puerto**

Waterway	Bank	Unit Miles	Inspection Start/End	Inspector
Unit No. 01 San Joaquin River	Left	6.24	10/11/2022 10/11/2022	Corey Fujitani

LM Start	0.22	Rating **	M	Issue No.	58
LM End	0.22	Issue Type +	Ma	Location *	LS
Category	Earthen Levee			GPS Latitude/Longitude	
				Start	End
Item	Animal Control			37.477854 °	37.477854 °
				-121.080361 °	-121.080361 °
DWR ID	DWR_RD1602_01_f_2022_58				
Comment Code					
A3 : No rodents visible, but rodent burrows visible; need to backfill and compact or grout burrows.					
Inspector Comment					

No Photos

LM Start	0.47	Rating **	M	Issue No.	31
LM End	0.47	Issue Type +	Ma	Location *	WS
Category	Earthen Levee			GPS Latitude/Longitude	
				Start	End
Item	Animal Control			37.479659 °	37.479659 °
				-121.076419 °	-121.076419 °
DWR ID	DWR_RD1602_01_f_2015_31				
Comment Code					
A3 : No rodents visible, but rodent burrows visible; need to backfill and compact or grout burrows.					
Inspector Comment					

No Photos

LM Start	0.50	Rating **	M	Issue No.	110
LM End	0.50	Issue Type +	Ma	Location *	LS
Category	Earthen Levee			GPS Latitude/Longitude	
				Start	End
Item	Animal Control			37.479899 °	37.479899 °
				-121.075930 °	-121.075930 °
DWR ID	DWR_RD1602_01_f_2018_110				
Comment Code					
A3 : No rodents visible, but rodent burrows visible; need to backfill and compact or grout burrows.					
Inspector Comment					

No Photos

<b>* Location</b> LS : Land Side    N/A : Not Applicable WS : Water Side CR : Crown	<b>** Rating</b> A : Acceptable M : Minimally Acceptable U : Unacceptable	N : Not Inspected/Rated C : Corrected A/W : Acceptable but Monitor & Maintain	<b>+ Issue Type</b> Ma : Maintenance Deficiency Ob : Design & System Obsolescence En : Enforcement
--	--	---	---

**Flood Control Project Maintenance  
Levee Inspections**

**Levee Inspection Report By Mile - Fall 2022**

**Reclamation District No. 1602 Del Puerto**

Waterway	Bank	Unit Miles	Inspection Start/End	Inspector
Unit No. 01 San Joaquin River	Left	6.24	10/11/2022 10/11/2022	Corey Fujitani

LM Start	0.58	Rating **	U	Issue No.	200
LM End	0.58	Issue Type +	Ma	Location *	
Category	Supplemental			GPS Latitude/Longitude	
				Start	End
Item	DWR UCIP LMA Responsibility			37.480182 °	37.480182 °
				-121.074765 °	-121.074765 °
DWR ID	20215				
Comment Code					
Inspector Comment					
DS_ID:20215 FS_ID:74549 EP_NO: N/A Repair Type: Urgent EVAL Issue: 1, Pipe Integrity Crossing Status: Found UCIP Comments: 04/05/2022 Record remains Urgent. DMP internal video inspection has found pipe integrity issues. LOF of crossing is between 5 and 6. Crossing will be monitored until funding becomes available to address the issues. No cover on CMP riser causing a safety hazard. (M.Thao - DWR UCIP) 11/18/2016 Crossing has been downgraded from Urgent to No Action Needed a cover has been added to the CMP riser. (O. Magana - DWR UCIP)10/01/2013 Open 60-inch CMP riser on WS needs lid as it's depth may be a hazard to the public. (W. Wylie - DWR UCIP) FIELD_STRUCT_DESC: 16-inch steel drainage pipe through levee, 11.3 feet below crown. Slide gate in 60-inch corrugated metal pipe (CMP) riser located on the waterside (WS). Concrete inlet is approximately 110 feet west of the levee crown or 110 feet off landside (LS) toe next to roadway. [Additional Reference(s): DWR Levee Log, 1992. USACE San Joaquin River O&M Manual Unit 13, April 1964, (HLM 0.58), Drawing No. 7-4-1784]. FS Date: 4/5/2022					

LM Start	<b>0.58</b>	Rating **	U	Issue No.	<b>200 (cont)</b>
LM End	<b>0.58</b>	Issue Type +	Ma	Location *	

Photo 1 of 2 : UCIP\_FA\_2022\_74549\_111308.jpg



WS view: Looking into CMP riser at slide gate.

Photo 2 of 2 : UCIP\_FA\_2022\_74549\_111309.jpg



WS view: Looking into CMP riser at deteriorated pipe inlet.

<b>* Location</b> LS : Land Side    N/A : Not Applicable WS : Water Side CR : Crown	<b>** Rating</b> A : Acceptable M : Minimally Acceptable U : Unacceptable	N : Not Inspected/Rated C : Corrected A/W : Acceptable but Monitor & Maintain	<b>+ Issue Type</b> Ma : Maintenance Deficiency Ob : Design & System Obsolescence En : Enforcement
--	--	---	---



# Reclamation District No. 1602 Del Puerto



**Flood Control Project Maintenance  
Levee Inspections**

**Levee Inspection Report By Mile - Fall 2022**

**Reclamation District No. 1602 Del Puerto**

Waterway	Bank	Unit Miles	Inspection Start/End	Inspector
Unit No. 01 San Joaquin River	Left	6.24	10/11/2022 10/11/2022	Corey Fujitani

LM Start	0.63	Rating **	M	Issue No.	107
LM End	0.63	Issue Type +	Ma	Location *	LS
Category	Earthen Levee			GPS Latitude/Longitude	
				Start	End
Item	Animal Control			37.479569 °	37.479569 °
				-121.074299 °	-121.074299 °
DWR ID	DWR_RD1602_01_f_2018_107				
Comment Code					
A3 : No rodents visible, but rodent burrows visible; need to backfill and compact or grout burrows.					
Inspector Comment					

No Photos

LM Start	0.64	Rating **	M	Issue No.	30
LM End	0.64	Issue Type +	Ma	Location *	WS
Category	Earthen Levee			GPS Latitude/Longitude	
				Start	End
Item	Animal Control			37.479391 °	37.479391 °
				-121.074168 °	-121.074168 °
DWR ID	DWR_RD1602_01_f_2017_30				
Comment Code					
A3 : No rodents visible, but rodent burrows visible; need to backfill and compact or grout burrows.					
Inspector Comment					

Photo 1 of 1 : FA\_2022\_RD1602\_110\_30\_20220822\_00009.jpg



View of rodent holes on the waterside slope of the levee. Fall 2017

<b>* Location</b> LS : Land Side    N/A : Not Applicable WS : Water Side CR : Crown	<b>** Rating</b> A : Acceptable M : Minimally Acceptable U : Unacceptable	N : Not Inspected/Rated C : Corrected A/W : Acceptable but Monitor & Maintain	<b>+ Issue Type</b> Ma : Maintenance Deficiency Ob : Design & System Obsolescence En : Enforcement
--	--	---	---

**Flood Control Project Maintenance  
Levee Inspections**

**Levee Inspection Report By Mile - Fall 2022**

**Reclamation District No. 1602 Del Puerto**

Waterway	Bank	Unit Miles	Inspection Start/End	Inspector
Unit No. 01 San Joaquin River	Left	6.24	10/11/2022 10/11/2022	Corey Fujitani

LM Start	0.77	Rating **	M	Issue No.	201	
LM End	0.77	Issue Type +	Ma	Location *		
Category	Supplemental			GPS Latitude/Longitude		
				Start		End
Item	DWR UCIP LMA Responsibility			37.477993 °	37.477993 °	
				-121.072645 °	-121.072645 °	
DWR ID	20216					
Comment Code						
Inspector Comment						
DS_ID:20216 FS_ID:75648 EP_NO: N/A Repair Type: Non-Urgent EVAL Issue: 10, Unauthorized Modification or Non-Compliant Permit Crossing Status: Found UCIP Comments: 04/05/2022 Record updated from No Action Needed to Non-Urgent. A new concrete discharge box was installed on the LS toe since the last inspection; unable to find a permit for modification. (M.Thao - DWR UCIP) 11/18/2016 Crossing has been downgraded from Urgent to No Action Needed the debris blocking the outlet has been cleared. (O. Magana - DWR UCIP)10/01/2013 Flap gate blocked from functioning by soil buildup on WS toe. Soil should be cleared. (W. Wylie - DWR UCIP) FIELD_STRUCT_DESC: 30-inch square reinforced concrete box culvert through levee, 14.4 feet below crown. Concrete "U" headwall on the waterside (WS) and landside (LS) ends. Slide gate in 6-foot by 7-foot concrete surge box is located on the WS shoulder. Flap gate is located on the WS end. [Additional Reference(s): DWR Levee Log, 1992. USACE San Joaquin River O&M Manual Unit 13, April 1964, (HLM 0.78), Drawing No. 7-4-1784]. FS Date: 4/5/2022						

Photo 1 of 1 : UCIP\_FA\_2022\_75648\_111281.jpg



LS view: Looking from crown; new concrete drainage box on toe.

LM Start	1.00	Rating **	A/W	Issue No.	36
LM End	1.00	Issue Type +	En	Location *	CR
Category	Earthen Levee			GPS Latitude/Longitude	
				Start	End
Item	Encroachments			37.478810 °	37.478810 °
				-121.068738 °	-121.068738 °
DWR ID	DWR_RD1602_01_s_2012_36				
Comment Code					
RA : Ramp					
Inspector Comment					
Pipe owner placed fill over pipe above crown of levee to build ramp over pipe.					

Photo 1 of 1 : FA\_2022\_RD1602\_110\_36\_20220822\_00012.jpg



View of ramp built up on levee crown. (Fall 2020)

<b>* Location</b> LS : Land Side    N/A : Not Applicable WS : Water Side CR : Crown	<b>** Rating</b> A : Acceptable M : Minimally Acceptable U : Unacceptable	N : Not Inspected/Rated C : Corrected A/W : Acceptable but Monitor & Maintain	<b>+ Issue Type</b> Ma : Maintenance Deficiency Ob : Design & System Obsolescence En : Enforcement
--	--	---	---

**Flood Control Project Maintenance  
Levee Inspections**

**Levee Inspection Report By Mile - Fall 2022**

**Reclamation District No. 1602 Del Puerto**

Waterway	Bank	Unit Miles	Inspection Start/End	Inspector
Unit No. 01 San Joaquin River	Left	6.24	10/11/2022 10/11/2022	Corey Fujitani

LM Start	1.00	Rating **	M	Issue No.	202
LM End	1.00	Issue Type +	Ma	Location *	
Category	Supplemental			GPS Latitude/Longitude	
				Start	End
Item	DWR UCIP LMA Responsibility			37.478816 °	37.478816 °
				-121.068780 °	-121.068780 °
DWR ID	20217				
Comment Code					
Inspector Comment					
DS_ID:20217 FS_ID:74539 EP_NO: N/A Repair Type: Non-Urgent EVAL Issue: 4b, Safety Issue Crossing Status: Found UCIP Comments: 04/05/2022 Record remains Non-Urgent. Pump and platform on LS has been removed. The crossing has been capped and exposed on the LS toe. Unable to find a permit for modification. Crossing appears abandoned. Unable to locate a permit and confirm proper pipe abandonment. Recommend owner to contact CVFPB to abandon or remove pipe from levee. Cover missing on CMP riser causing a safety hazard. (M.Thao - DWR UCIP) 11/18/2016 Crossing has been downgraded from Urgent to Non-Urgent a flap gate has been added to the WS but pipe is currently not connected to pump. According to Tony Martinez, LMA representative, this crossing is currently not in use. Owner will need to coordinate with CVFPB to obtain permit. (O. Magana - DWR UCIP)10/01/2013 Appears abandoned and if so should be done so properly. Flapgate missing. (W. Wylie - DWR UCIP) FIELD_STRUCT_DESC: *ABANDONED* 1 of 2: 16-inch steel drainage pipe through levee, 17 feet below crown. Pumps on the pump platform are located on the landside (LS). Siphon breaker in 24-inch corrugated metal pipe (CMP) riser is located on the waterside (WS) shoulder. Concrete "U" headwall and flap gate are located on the WS end. [Additional Reference(s): DWR Levee Log, 1992. USACE San Joaquin River O&M Manual Unit 13, April 1964, (HLM 1.01), Drawing No. 7-4-1784]. FS Date: 4/5/2022					

Photo 1 of 2 : UCIP\_FA\_2022\_74539\_111263.jpg



LS view: Close-up view of pipe inlet capped.

<b>* Location</b> LS : Land Side    N/A : Not Applicable WS : Water Side CR : Crown	<b>** Rating</b> A : Acceptable M : Minimally Acceptable U : Unacceptable N : Not Inspected/Rated C : Corrected A/W : Acceptable but Monitor & Maintain	<b>+ Issue Type</b> Ma : Maintenance Deficiency Ob : Design & System Obsolescence En : Enforcement
--	---	---

**Flood Control Project Maintenance  
Levee Inspections**

**Levee Inspection Report By Mile - Fall 2022**

**Reclamation District No. 1602 Del Puerto**

Waterway	Bank	Unit Miles	Inspection Start/End	Inspector
Unit No. 01 San Joaquin River	Left	6.24	10/11/2022 10/11/2022	Corey Fujitani

LM Start	<b>1.00</b>	Rating **	M	Issue No.	<b>202 (cont)</b>
LM End	<b>1.00</b>	Issue Type +	Ma	Location *	
Category	Supplemental			GPS Latitude/Longitude	
				Start	End
Item	DWR UCIP LMA Responsibility			37.478816 °	37.478816 °
				-121.068780 °	-121.068780 °
DWR ID	20217				

Photo 2 of 2 : UCIP\_FA\_2022\_74539\_111264.jpg



WS view: Siphon breaker in CMP riser on shoulder; missing cover on riser. Concrete headwall on toe in background.

<b>* Location</b> LS : Land Side    N/A : Not Applicable WS : Water Side CR : Crown	<b>** Rating</b> A : Acceptable M : Minimally Acceptable U : Unacceptable	N : Not Inspected/Rated C : Corrected A/W : Acceptable but Monitor & Maintain	<b>+ Issue Type</b> Ma : Maintenance Deficiency Ob : Design & System Obsolescence En : Enforcement
--	--	---	---



**Flood Control Project Maintenance  
Levee Inspections**

**Levee Inspection Report By Mile - Fall 2022**

**Reclamation District No. 1602 Del Puerto**

Waterway	Bank	Unit Miles	Inspection Start/End	Inspector
Unit No. 01 San Joaquin River	Left	6.24	10/11/2022 10/11/2022	Corey Fujitani

LM Start	1.00	Rating **	M	Issue No.	203	
LM End	1.00	Issue Type +	Ma	Location *		
Category	Supplemental			GPS Latitude/Longitude		
				Start	End	
Item	DWR UCIP LMA Responsibility			37.478817 °	37.478817 °	
				-121.068773 °	-121.068773 °	
DWR ID	20219					
Comment Code						
Inspector Comment						
DS_ID:20219 FS_ID:74536 EP_NO: N/A Repair Type: Non-Urgent EVAL Issue: 10, Unauthorized Modification or Non-Compliant Permit Crossing Status: Found UCIP Comments: 04/05/2022 Record remains Non-Urgent. Pump and platform on LS has been removed. The crossing has been capped and exposed on the LS toe. Unable to find a permit for modification. Crossing appears abandoned. Unable to locate a permit and confirm proper pipe abandonment. Recommend owner to contact CVFPB to abandon or remove pipe from levee. (M.Thao - DWR UCIP) 11/18/2016 Crossing has been downgraded from Urgent to Non-Urgent a flap gate has been added to the WS. According to Tony Martinez, LMA representative, this crossing is currently not in use. Owner will need to coordinate with CVFPB to obtain permit. (O. Magana - DWR UCIP) 10/01/2013 Appears abandoned siphon breakers covered in soil and flapgate missing. (W. Wylie - DWR UCIP) FIELD_STRUCT_DESC: *ABANDONED* 2 of 2: 16-inch steel drainage pipe through levee, 17 feet below crown. Pump on pump platform located on the landside (LS). Siphon breaker in 24-inch riser located on the waterside (WS) shoulder. Concrete "U" headwall and flap gate are located on the WS end. [Additional Reference(s): DWR Levee Log, 1992. USACE San Joaquin River O&M Manual Unit 13, April 1964, (HLM 1.01), Drawing No. 7-4-1784]. FS Date: 4/5/2022						

LM Start	<b>1.00</b>	Rating **	M	Issue No.	<b>203 (cont)</b>
LM End	<b>1.00</b>	Issue Type +	Ma	Location *	

Photo 1 of 2 : UCIP\_FA\_2022\_74536\_111245.jpg



LS view: Looking from crown; general overview.

Photo 2 of 2 : UCIP\_FA\_2022\_74536\_111247.jpg



LS view: Close-up view of pipe inlet capped.

<b>* Location</b> LS : Land Side    N/A : Not Applicable WS : Water Side CR : Crown	<b>** Rating</b> A : Acceptable M : Minimally Acceptable U : Unacceptable	N : Not Inspected/Rated C : Corrected A/W : Acceptable but Monitor & Maintain	<b>+ Issue Type</b> Ma : Maintenance Deficiency Ob : Design & System Obsolescence En : Enforcement
--	--	---	---

**Flood Control Project Maintenance  
Levee Inspections**

**Levee Inspection Report By Mile - Fall 2022**

**Reclamation District No. 1602 Del Puerto**

Waterway	Bank	Unit Miles	Inspection Start/End	Inspector
Unit No. 01 San Joaquin River	Left	6.24	10/11/2022 10/11/2022	Corey Fujitani

LM Start	1.02	Rating **	U	Issue No.	204
LM End	1.02	Issue Type +	Ma	Location *	
Category	Supplemental			GPS Latitude/Longitude	
				Start	End
Item	DWR UCIP LMA Responsibility			37.478779 °	37.478779 °
				-121.068508 °	-121.068508 °
DWR ID	20218				

**Comment Code**

**Inspector Comment**

DS\_ID:20218  
FS\_ID:75649  
EP\_NO: N/A  
Repair Type: Urgent  
EVAL Issue: 2b, Levee Integrity  
Crossing Status: Found  
UCIP Comments: 04/05/2022 Record remains Urgent. WS concrete headwall is still detached with vertical erosion behind the headwall on the WS slope. Was not able to inspect the flap gate due to water on present on WS. Modification was made on the LS to move the grated inlet at the toe landward approximately 100 feet; unable to find a permit for modification. (M.Thao - DWR UCIP)  
10/19/2018 Pipe remains the same. WS concrete headwall is still detached with vertical erosion on the WS slope. Dense vegetation along pipe alignment made it difficult to inspect levee slopes and identify any potential issues present at this site. Recommend clearing vegetation along pipe alignment to be able to conduct a proper UCIP inspection. This crossing is part of DWR's Flood System Repair Project (FSRP) and Deferred Maintenance Project (DMP). Crossing will be monitored to identify progress of erosion on the WS slope. Crossing remains Urgent due to the detachment of the concrete wall and vertical cut on the WS. (O. Magana - DWR UCIP)  
11/18/2016 Same as previous inspection headwall on the WS toe has separated from pipe and flap gate is still missing. Erosion around concrete headwall and undermined WS slope are visible from WS. The slope undermined appears to have progressed but no photos were taken due to the dense vegetation covering area. According to Tony Martinez, LMA representative, the WS concrete headwall has been detached since 2008/2009. LMA has been in contact with CVFPB, DWR, and USACE regarding this site. (O. Magana - DWR UCIP)  
10/01/2013 Headwall on WS toe separated from pipe. Erosion around concrete headwall and undermined at WS toe. Flap gate missing from WS toe headwall. (W. Wylie - DWR UCIP)  
FIELD\_STRUCT\_DESC: 30-inch square reinforced concrete box culvert through levee, 25.4 feet below crown. Concrete "U" headwalls on both waterside (WS) and landside (LS) ends. Slide gate in concrete surge box located on the WS slope. A 5-foot by 5-foot concrete box is located on LS toe. Flap gate is located on the WS end. [Additional Reference(s): DWR Levee Log, 1992. USACE San Joaquin River O&M Manual Unit 13, April 1964, (HLM 1.02), Drawing No. 7-4-1784].  
FS Date: 4/5/2022

Photo 1 of 2 : UCIP\_FA\_2022\_75649\_111240.jpg



WS view: Looking toward levee; concrete headwall on toe with erosion.

<b>* Location</b> LS : Land Side    N/A : Not Applicable WS : Water Side CR : Crown	<b>** Rating</b> A : Acceptable M : Minimally Acceptable U : Unacceptable N : Not Inspected/Rated C : Corrected A/W : Acceptable but Monitor & Maintain	<b>+ Issue Type</b> Ma : Maintenance Deficiency Ob : Design & System Obsolescence En : Enforcement
--	---	---

**Flood Control Project Maintenance  
Levee Inspections**

**Levee Inspection Report By Mile - Fall 2022**

**Reclamation District No. 1602 Del Puerto**

Waterway	Bank	Unit Miles	Inspection Start/End	Inspector
Unit No. 01 San Joaquin River	Left	6.24	10/11/2022 10/11/2022	Corey Fujitani

LM Start	<b>1.02</b>	Rating **	U	Issue No.	<b>204 (cont)</b>
LM End	<b>1.02</b>	Issue Type +	Ma	Location *	
Category	Supplemental		GPS Latitude/Longitude		
			Start	End	
Item	DWR UCIP LMA Responsibility		37.478779 °	37.478779 °	
			-121.068508 °	-121.068508 °	
DWR ID	20218				

Photo 2 of 2 : UCIP\_FA\_2022\_75649\_111241.jpg



WS view: Close-up view of detached concrete headwall on toe.

LM Start	<b>1.06</b>	Rating **	U	Issue No.	<b>28</b>
LM End	<b>1.44</b>	Issue Type +	En	Location *	LS
Category	Earthen Levee		GPS Latitude/Longitude		
			Start	End	
Item	Encroachments		37.478535 °	37.478997 °	
			-121.067746 °	-121.061409 °	
DWR ID	DWR_RD1602_01_f_2021_28				

**Comment Code**

UR : Urban

**Inspector Comment**

Landowner is building a bmx course right on landside toe. Access ramps have also been constructed. Plans for bikes to cross levee. Enforcement section is working with the landowner to get the work permitted.

Photo 1 of 1 : FA\_2022\_RD1602\_110\_28\_20220822\_00007.jpg



Landowner is constructing a BMX track on the landside toe. (Fall 2021)

LM Start	<b>1.19</b>	Rating **	M	Issue No.	<b>32</b>
LM End	<b>1.19</b>	Issue Type +	Ma	Location *	WS
Category	Earthen Levee		GPS Latitude/Longitude		
			Start	End	
Item	Animal Control		37.478347 °	37.478347 °	
			-121.065361 °	-121.065361 °	
DWR ID	DWR_RD1602_01_f_2017_32				

**Comment Code**

A3 : No rodents visible, but rodent burrows visible; need to backfill and compact or grout burrows.

**Inspector Comment**

No Photos

<b>* Location</b> LS : Land Side    N/A : Not Applicable WS : Water Side CR : Crown		<b>** Rating</b> A : Acceptable                      N : Not Inspected/Rated M : Minimally Acceptable        C : Corrected U : Unacceptable                  A/W : Acceptable but Monitor & Maintain		<b>+ Issue Type</b> Ma : Maintenance Deficiency Ob : Design & System Obsolescence En : Enforcement
--	--	---	--	---



**Flood Control Project Maintenance  
Levee Inspections**

**Levee Inspection Report By Mile - Fall 2022**

**Reclamation District No. 1602 Del Puerto**

Waterway	Bank	Unit Miles	Inspection Start/End	Inspector
Unit No. 01 San Joaquin River	Left	6.24	10/11/2022 10/11/2022	Corey Fujitani

LM Start	1.29	Rating **	C	Issue No.	72
LM End	1.29	Issue Type +	Ma	Location *	WS
Category	Earthen Levee			GPS Latitude/Longitude	
				Start	End
Item	Trim / Thin Trees			37.479016 °	37.479016 °
				-121.063928 °	-121.063928 °
DWR ID	DWR_RD1602_01_f_2020_72				
Comment Code					
T2 : Tree or limb.					
Inspector Comment					

No Photos

LM Start	1.50	Rating **	C	Issue No.	34
LM End	1.55	Issue Type +	Ma	Location *	CR
Category	Earthen Levee			GPS Latitude/Longitude	
				Start	End
Item	Vegetation			37.478645 °	37.478254 °
				-121.060277 °	-121.059558 °
DWR ID	DWR_RD1602_01_s_2022_34				
Comment Code					
V3 : Keep the crown roadway free of vegetation.					
Inspector Comment					

No Photos

LM Start	1.55	Rating **	M	Issue No.	40
LM End	1.55	Issue Type +	Ma	Location *	LS
Category	Earthen Levee			GPS Latitude/Longitude	
				Start	End
Item	Trim / Thin Trees			37.478267 °	37.478267 °
				-121.059626 °	-121.059626 °
DWR ID	DWR_RD1602_01_f_2020_40				
Comment Code					
T2 : Tree or limb.					
Inspector Comment					

Photo 1 of 1 : FA\_2022\_RD1602\_110\_40\_20220822\_00013.jpg



Broken tree limb left on the landside toe. (Fall 2020)

<b>* Location</b> LS : Land Side    N/A : Not Applicable WS : Water Side CR : Crown	<b>** Rating</b> A : Acceptable M : Minimally Acceptable U : Unacceptable	N : Not Inspected/Rated C : Corrected A/W : Acceptable but Monitor & Maintain	<b>+ Issue Type</b> Ma : Maintenance Deficiency Ob : Design & System Obsolescence En : Enforcement
--	--	---	---

# Reclamation District No. 1602 Del Puerto

# Reclamation District No. 1602 Del Puerto

Page 15 of 48



**Flood Control Project Maintenance  
Levee Inspections**

**Levee Inspection Report By Mile - Fall 2022**

**Reclamation District No. 1602 Del Puerto**

Waterway	Bank	Unit Miles	Inspection Start/End	Inspector
Unit No. 01 San Joaquin River	Left	6.24	10/11/2022 10/11/2022	Corey Fujitani

LM Start	2.29	Rating **	M	Issue No.	79
LM End	2.29	Issue Type +	Ma	Location *	WS
Category	Earthen Levee			GPS Latitude/Longitude	
				Start	End
Item	Animal Control			37.470348 °	37.470348 °
				-121.053987 °	-121.053987 °
DWR ID	DWR_RD1602_01_s_2017_79				
Comment Code					
A3 : No rodents visible, but rodent burrows visible; need to backfill and compact or grout burrows.					
Inspector Comment					

No Photos

LM Start	2.81	Rating **	C	Issue No.	119
LM End	3.01	Issue Type +	Ma	Location *	WS
Category	Earthen Levee			GPS Latitude/Longitude	
				Start	End
Item	Erosion / Livestock			37.466673 °	37.464528 °
				-121.046185 °	-121.044012 °
DWR ID	DWR_RD1602_01_s_2020_119				
Comment Code					
E4 : Repair the levee slope damaged by livestock and prevent large animal access.					
Inspector Comment					

No Photos

LM Start	2.85	Rating **	A/W	Issue No.	47
LM End	2.86	Issue Type +	Ma	Location *	WS
Category	Earthen Levee			GPS Latitude/Longitude	
				Start	End
Item	Animal Control			37.466294 °	37.466166 °
				-121.045693 °	-121.045527 °
DWR ID	DWR_RD1602_01_f_2016_47				
Comment Code					
A3 : No rodents visible, but rodent burrows visible; need to backfill and compact or grout burrows.					
Inspector Comment					

No Photos

<b>* Location</b> LS : Land Side    N/A : Not Applicable WS : Water Side CR : Crown	<b>** Rating</b> A : Acceptable M : Minimally Acceptable U : Unacceptable	N : Not Inspected/Rated C : Corrected A/W : Acceptable but Monitor & Maintain	<b>+ Issue Type</b> Ma : Maintenance Deficiency Ob : Design & System Obsolescence En : Enforcement
--	--	---	---

**Flood Control Project Maintenance  
Levee Inspections**

**Levee Inspection Report By Mile - Fall 2022**

**Reclamation District No. 1602 Del Puerto**

Waterway	Bank	Unit Miles	Inspection Start/End	Inspector
Unit No. 01 San Joaquin River	Left	6.24	10/11/2022 10/11/2022	Corey Fujitani

LM Start	2.89	Rating **	A/W	Issue No.	49
LM End	2.89	Issue Type +	Ma	Location *	WS
Category	Earthen Levee			GPS Latitude/Longitude	
				Start	End
Item	Animal Control			37.465898 °	37.465898 °
				-121.045209 °	-121.045209 °
DWR ID	DWR_RD1602_01_f_2016_49				
Comment Code					
A3 : No rodents visible, but rodent burrows visible; need to backfill and compact or grout burrows.					
Inspector Comment					

No Photos

LM Start	2.95	Rating **	A/W	Issue No.	51
LM End	2.95	Issue Type +	Ma	Location *	WS
Category	Earthen Levee			GPS Latitude/Longitude	
				Start	End
Item	Animal Control			37.465190 °	37.465190 °
				-121.044584 °	-121.044584 °
DWR ID	DWR_RD1602_01_f_2016_51				
Comment Code					
A3 : No rodents visible, but rodent burrows visible; need to backfill and compact or grout burrows.					
Inspector Comment					

Photo 1 of 1 : FA\_2022\_RD1602\_110\_51\_20220822\_00020.jpg



View of a rodent hole on the waterside of the levee.

LM Start	2.98	Rating **	M	Issue No.	95
LM End	2.98	Issue Type +	Ma	Location *	LS
Category	Earthen Levee			GPS Latitude/Longitude	
				Start	End
Item	Animal Control			37.464810 °	37.464810 °
				-121.044248 °	-121.044248 °
DWR ID	DWR_RD1602_01_f_2018_95				
Comment Code					
A3 : No rodents visible, but rodent burrows visible; need to backfill and compact or grout burrows.					
Inspector Comment					

Photo 1 of 1 : FA\_2022\_RD1602\_110\_95\_20220822\_00041.jpg



View of the landside slope from the toe of the levee. (Spring 2020)

* Location		** Rating		+ Issue Type	
LS : Land Side	N/A : Not Applicable	A : Acceptable	N : Not Inspected/Rated	Ma : Maintenance Deficiency	
WS : Water Side		M : Minimally Acceptable	C : Corrected	Ob : Design & System Obsolescence	
CR : Crown		U : Unacceptable	A/W : Acceptable but Monitor & Maintain	En : Enforcement	

## Levee Inspection Report By Mile - Fall 2022

Waterway	Bank	Unit Miles	Inspection Start/End	Inspector
Unit No. 01 San Joaquin River	Left	6.24	10/11/2022 10/11/2022	Corey Fujitani

LM Start	3.20	Rating **	M	Issue No.	59
LM End	3.20	Issue Type +	Ma	Location *	LS
Category	Earthen Levee			GPS Latitude/Longitude	
				Start	End
Item	Animal Control			37.462476 °	37.462476 °
				-121.041686 °	-121.041686 °
DWR ID	DWR_RD1602_01_f _ 2020_59				
Comment Code					
A3 : No rodents visible, but rodent burrows visible; need to backfill and compact or grout burrows.					
Inspector Comment					

No Photos

LM Start	3.24	Rating **	M	Issue No.	94
LM End	3.24	Issue Type +	Ma	Location *	LS
Category	Earthen Levee			GPS Latitude/Longitude	
				Start	End
Item	Animal Control			37.461879 °	37.461879 °
				-121.041519 °	-121.041519 °
DWR ID	DWR_RD1602_01_f _ 2018_94				
Comment Code					
A1 : Exterminate rodents and backfill and compact or grout burrows.					
Inspector Comment					

No Photos

* Location	** Rating	+ Issue Type
LS : Land Side    N/A : Not Applicable	A : Acceptable                      N : Not Inspected/Rated	Ma : Maintenance Deficiency
WS : Water Side	M : Minimally Acceptable        C : Corrected	Ob : Design & System Obsolescence
CR : Crown	U : Unacceptable                  A/W : Acceptable but Monitor & Maintain	En : Enforcement

**Flood Control Project Maintenance  
Levee Inspections**

**Levee Inspection Report By Mile - Fall 2022**

**Reclamation District No. 1602 Del Puerto**

Waterway	Bank	Unit Miles	Inspection Start/End	Inspector
Unit No. 01 San Joaquin River	Left	6.24	10/11/2022 10/11/2022	Corey Fujitani

LM Start	3.27	Rating **	U	Issue No.	205
LM End	3.27	Issue Type +	En	Location *	
Category	Supplemental			GPS Latitude/Longitude	
				Start	End
Item	DWR UCIP Field Study			37.461507 °	37.461507 °
				-121.041609 °	-121.041609 °
DWR ID	20204				
Comment Code					
Inspector Comment					
DS_ID:20204 FS_ID:74530 EP_NO: 8193 Repair Type: Urgent EVAL Issue: 1, Pipe Integrity Crossing Status: Found UCIP Comments: 04/05/2022 Record remains Urgent. Pipe inlet within CMP riser is deteriorated. CMP riser cover has broken and fallen into the riser; no cover on the riser causing a safety hazard. Crossing appears abandoned. Recommend owner to contact CVFPB to abandon or remove pipe from levee. (M.Thao - DWR UCIP) 10/19/2018 Pipe is deteriorated on the LS toe (pipe section missing at inlet). This crossing remains Urgent due to the wall deterioration at the inlet. If wall is rusted out at the inlet, need to determine the condition of the pipe section through the levee. According to the LMA representative, this crossing is no longer in use (crossing is abandoned). LMA is interested in abandoning crossing in place. LMA was referred to the CVFPB staff for direction regarding proper action under Title 23 for this crossing. (O. Magana - DWR UCIP) 11/18/2016 Same as previous inspection riser cover and handle on slide gate are still missing. Crossing remains Urgent due to the public safety issue of the 60-inch CMP cover still missing. According to Tony Martinez, LMA representative, the condition and future use of this crossing is being evaluated. Owner will need to coordinate with CVFPB for future use requirements or proper abandonment/removal. (O. Magana - DWR UCIP) 10/01/2013 Appears abandoned, and if so should be done so properly. No handle on slide gate, no cover on CMP standpipe on WS shoulder. (W. Wylie - DWR UCIP) FIELD_STRUCT_DESC: 16-inch steel irrigation pipe through levee, 11.5 feet below crown. Slide gate in 60-inch corrugated metal pipe riser is located on the waterside (WS) slope. Pipe discharges into concrete-lined ditch on the landside (LS) (irrigation pipe was authorized under Automatic Board Order (ABO) issued as Permit No. 8193, 1964 - Sabatte). [Additional Reference(s): DWR Levee Log, 1992. USACE San Joaquin River O&M Manual Unit 13, April 1964, (HLM 0.58), Drawing No. 7-4-1784]. FS Date: 4/5/2022					

Photo 1 of 3 : UCIP\_FA\_2022\_74530\_76528.jpg



Concrete drain channel located on LS toe.

<b>* Location</b> LS : Land Side    N/A : Not Applicable WS : Water Side CR : Crown	<b>** Rating</b> A : Acceptable M : Minimally Acceptable U : Unacceptable	N : Not Inspected/Rated C : Corrected A/W : Acceptable but Monitor & Maintain	<b>+ Issue Type</b> Ma : Maintenance Deficiency Ob : Design & System Obsolescence En : Enforcement
--	--	---	---



**Flood Control Project Maintenance  
Levee Inspections**

**Levee Inspection Report By Mile - Fall 2022**

**Reclamation District No. 1602 Del Puerto**

Waterway	Bank	Unit Miles	Inspection Start/End	Inspector
Unit No. 01 San Joaquin River	Left	6.24	10/11/2022 10/11/2022	Corey Fujitani

LM Start	<b>3.27</b>	Rating **	U	Issue No.	<b>205 (cont)</b>
LM End	<b>3.27</b>	Issue Type +	En	Location *	
Category	Supplemental		GPS Latitude/Longitude		
			Start	End	
Item	DWR UCIP Field Study		37.461507 °	37.461507 °	
			-121.041609 °	-121.041609 °	
DWR ID	20204				

Photo 2 of 3 : UCIP\_FA\_2022\_74530\_76529.jpg



View of WS--CMP riser located on WS shoulder and concrete riser approximately 100 feet from levee crown.

LM Start	<b>3.27</b>	Rating **	U	Issue No.	<b>205 (cont)</b>
LM End	<b>3.27</b>	Issue Type +	En	Location *	

Photo 3 of 3 : UCIP\_FA\_2022\_74530\_76530.jpg



Concrete riser located in the floodway, photo 1 of 2.

LM Start	3.32	Rating **	M	Issue No.	56
LM End	3.32	Issue Type +	Ma	Location *	LS
Category	Earthen Levee			GPS Latitude/Longitude	
				Start	End
Item	Animal Control			37.460811 °	37.460811 °
				-121.042078 °	-121.042078 °
DWR ID	DWR_RD1602_01_s_2017_56				
Comment Code					
A3 : No rodents visible, but rodent burrows visible; need to backfill and compact or grout burrows.					
Inspector Comment					

Photo 1 of 1 : FA\_2022\_RD1602\_110\_56\_20220822\_00023.jpg



View of rodent holes on the landside of the levee. Fall 2016

* Location	** Rating	+ Issue Type
LS : Land Side WS : Water Side CR : Crown	A : Acceptable M : Minimally Acceptable U : Unacceptable	Ma : Maintenance Deficiency Ob : Design & System Obsolescence En : Enforcement
N/A : Not Applicable	N : Not Inspected/Rated C : Corrected A/W : Acceptable but Monitor & Maintain	

**Flood Control Project Maintenance  
Levee Inspections**

**Levee Inspection Report By Mile - Fall 2022**

**Reclamation District No. 1602 Del Puerto**

Waterway	Bank	Unit Miles	Inspection Start/End	Inspector
Unit No. 01 San Joaquin River	Left	6.24	10/11/2022 10/11/2022	Corey Fujitani

LM Start	3.34	Rating **	M	Issue No.	50
LM End	3.53	Issue Type +	En	Location *	WS
Category	Earthen Levee			GPS Latitude/Longitude	
				Start	End
Item	Encroachments			37.460644 °	37.458373 °
				-121.042231 °	-121.044081 °
DWR ID	DWR_RD1602_01_s_2012_50				
Comment Code					
DT : Ditch					
Inspector Comment					
A ditch is located on the waterside toe of the levee.					

Photo 1 of 1 : FA\_2022\_RD1602\_110\_50\_20220822\_00019.jpg



Looking upstream along the waterside toe. (Spring 2020)

LM Start	3.37	Rating **	M	Issue No.	113
LM End	3.37	Issue Type +	Ma	Location *	CR
Category	Earthen Levee			GPS Latitude/Longitude	
				Start	End
Item	Crown Surface / Depressions / Rutting			37.460217 °	37.460217 °
				-121.042583 °	-121.042583 °
DWR ID	DWR_RD1602_01_s_2019_113				
Comment Code					
C1 : Add appropriate material and re-grade the levee to bring the crown above the design elevation.					
Inspector Comment					

No Photos

LM Start	3.43	Rating **	M	Issue No.	26
LM End	3.43	Issue Type +	Ma	Location *	LS
Category	Earthen Levee			GPS Latitude/Longitude	
				Start	End
Item	Animal Control			37.459653 °	37.459653 °
				-121.043204 °	-121.043204 °
DWR ID	DWR_RD1602_01_s_2022_26				
Comment Code					
A1 : Exterminate rodents and backfill and compact or grout burrows.					
Inspector Comment					

No Photos

<b>* Location</b> LS : Land Side    N/A : Not Applicable WS : Water Side CR : Crown	<b>** Rating</b> A : Acceptable M : Minimally Acceptable U : Unacceptable	N : Not Inspected/Rated C : Corrected A/W : Acceptable but Monitor & Maintain	<b>+ Issue Type</b> Ma : Maintenance Deficiency Ob : Design & System Obsolescence En : Enforcement
--	--	---	---

**Flood Control Project Maintenance  
Levee Inspections**

**Levee Inspection Report By Mile - Fall 2022**

**Reclamation District No. 1602 Del Puerto**

Waterway	Bank	Unit Miles	Inspection Start/End	Inspector
Unit No. 01 San Joaquin River	Left	6.24	10/11/2022 10/11/2022	Corey Fujitani

LM Start	3.53	Rating **	M	Issue No.	206	
LM End	3.53	Issue Type +	En	Location *		
Category	Supplemental			GPS Latitude/Longitude		
				Start	End	
Item	DWR UCIP Field Study			37.458300 °	37.458300 °	
				-121.044138 °	-121.044138 °	
DWR ID	20221					
Comment Code						
Inspector Comment						
DS_ID:20221 FS_ID:74520 EP_NO: 8191 Repair Type: Non-Urgent EVAL Issue: 6, Levee Damage or Threat for Levee Damage Crossing Status: Found UCIP Comments: 04/05/2022 Record updated from No Action Needed to Non-Urgent. Minor erosion was present around the downstream sides of the concrete distribution box on the LS toe. (M.Thao - DWR UCIP) FIELD_STRUCT_DESC: 1 of 3: 18-inch irrigation pipe of an unknown material through the levee, 10.2 feet below the crown. Pump on pump platform on the bank. Siphon breaker in a 24-inch riser on the landside (LS) shoulder. Concrete discharge box on the LS end. (two 18-inch and one 20-inch pipes were authorized under Automatic Board Order (ABO) issued as Permit No. 8191, 1972 - Twin Oaks Irrigation District c/o Mr. V. R. Peterson). [Additional Reference(s): DWR Levee Log, 1992. USACE San Joaquin O&M Manual 13, April 1964, (HLM 3.57), Drawing No. 7-4-1784]. FS Date: 4/5/2022						

LM Start	<b>3.53</b>	Rating **	M	Issue No.	<b>206 (cont)</b>
LM End	<b>3.53</b>	Issue Type +	En	Location *	

Photo 1 of 2 : UCIP\_FA\_2022\_74520\_111227.jpg



LS view: Concrete discharge box on toe; erosion around downstream sides.

Photo 2 of 2 : UCIP\_FA\_2022\_74520\_111228.jpg



LS view: Concrete discharge box on toe; erosion around downstream sides.

<b>* Location</b> LS : Land Side    N/A : Not Applicable WS : Water Side CR : Crown	<b>** Rating</b> A : Acceptable M : Minimally Acceptable U : Unacceptable	N : Not Inspected/Rated C : Corrected A/W : Acceptable but Monitor & Maintain	<b>+ Issue Type</b> Ma : Maintenance Deficiency Ob : Design & System Obsolescence En : Enforcement
--	--	---	---



**Flood Control Project Maintenance  
Levee Inspections**

**Levee Inspection Report By Mile - Fall 2022**

**Reclamation District No. 1602 Del Puerto**

Waterway	Bank	Unit Miles	Inspection Start/End	Inspector
Unit No. 01 San Joaquin River	Left	6.24	10/11/2022 10/11/2022	Corey Fujitani

LM Start	3.53	Rating **	M	Issue No.	207	
LM End	3.53	Issue Type +	En	Location *		
Category	Supplemental			GPS Latitude/Longitude		
				Start	End	
Item	DWR UCIP Field Study			37.458292 °	37.458292 °	
				-121.044149 °	-121.044149 °	
DWR ID	20220					
Comment Code						
Inspector Comment						
DS_ID:20220 FS_ID:74519 EP_NO: 8191 Repair Type: Non-Urgent EVAL Issue: 6, Levee Damage or Threat for Levee Damage Crossing Status: Found UCIP Comments: 04/05/2022 Record updated from No Action Needed to Non-Urgent. Minor erosion was present around the downstream sides of the concrete distribution box on the LS toe. (M.Thao - DWR UCIP) FIELD_STRUCT_DESC: 2 of 3: 18-inch irrigation pipe of an unknown material through the levee, 10.2 feet below the crown. Pump on pump platform on the bank. Siphon breaker in a 24-inch riser on the landside (LS) shoulder. Concrete discharge box on the LS end. (two 18-inch and one 20-inch pipes were authorized under Automatic Board Order (ABO) issued as Permit No. 8191, 1972 - Twin Oaks Irrigation District c/o Mr. V. R. Peterson). [Additional Reference(s): DWR Levee Log, 1992. USACE San Joaquin O&M Manual 13, April 1964, (HLM 3.57), Drawing No. 7-4-1784]. FS Date: 4/5/2022						

LM Start	<b>3.53</b>	Rating **	M	Issue No.	<b>207 (cont)</b>
LM End	<b>3.53</b>	Issue Type +	En	Location *	

Photo 1 of 2 : UCIP\_FA\_2022\_74519\_111221.jpg



LS view: Concrete discharge box on toe; erosion around downstream sides.

Photo 2 of 2 : UCIP\_FA\_2022\_74519\_111222.jpg



LS view: Concrete discharge box on toe; erosion around downstream sides.

<b>* Location</b> LS : Land Side    N/A : Not Applicable WS : Water Side CR : Crown	<b>** Rating</b> A : Acceptable M : Minimally Acceptable U : Unacceptable	N : Not Inspected/Rated C : Corrected A/W : Acceptable but Monitor & Maintain	<b>+ Issue Type</b> Ma : Maintenance Deficiency Ob : Design & System Obsolescence En : Enforcement
--	--	---	---

**Flood Control Project Maintenance  
Levee Inspections**

**Levee Inspection Report By Mile - Fall 2022**

**Reclamation District No. 1602 Del Puerto**

Waterway	Bank	Unit Miles	Inspection Start/End	Inspector
Unit No. 01 San Joaquin River	Left	6.24	10/11/2022 10/11/2022	Corey Fujitani

LM Start	3.54	Rating **	M	Issue No.	208
LM End	3.54	Issue Type +	En	Location *	
Category	Supplemental			GPS Latitude/Longitude	
				Start	End
Item	DWR UCIP Field Study			37.458283 °	37.458283 °
				-121.044146 °	-121.044146 °
DWR ID	20205				
Comment Code					
Inspector Comment					
DS_ID:20205 FS_ID:74503 EP_NO: 8191 Repair Type: Non-Urgent EVAL Issue: 6, Levee Damage or Threat for Levee Damage Crossing Status: Found UCIP Comments: 04/05/2022 Record updated from No Action Needed to Non-Urgent. Siphon breaker in CMP riser is broken; recommend repairing the siphon breaker. Minor erosion was present around the downstream sides of the concrete distribution box on the LS toe. (M.Thao - DWR UCIP)					
FIELD_STRUCT_DESC: 3 of 3: 18-inch irrigation pipe of an unknown material through the levee, 10.2 feet below the crown. Pump on pump platform on the bank. Siphon breaker in a 24-inch riser on the landside (LS) shoulder. Concrete discharge box on the LS end. (two 18-inch and one 20-inch pipes were authorized under Automatic Board Order (ABO) issued as Permit No. 8191, 1972 - Twin Oaks Irrigation District c/o Mr. V. R. Peterson). [Additional Reference(s): DWR Levee Log, 1992. USACE San Joaquin O&M Manual 13, April 1964, (HLM 3.57), Drawing No. 7-4-1784, (20-inch pipe listed)]. FS Date: 4/5/2022					
LM Start	3.54	Rating **	M	Issue No.	208 (cont)
LM End	3.54	Issue Type +	En	Location *	

Photo 1 of 3 : UCIP\_FA\_2022\_74503\_111215.jpg



LS view: Close-up view of broken siphon breaker.

Photo 2 of 3 : UCIP\_FA\_2022\_74503\_111216.jpg



LS view: Concrete discharge box on toe; erosion around downstream sides.

<b>* Location</b> LS : Land Side    N/A : Not Applicable WS : Water Side CR : Crown	<b>** Rating</b> A : Acceptable M : Minimally Acceptable U : Unacceptable	N : Not Inspected/Rated C : Corrected A/W : Acceptable but Monitor & Maintain	<b>+ Issue Type</b> Ma : Maintenance Deficiency Ob : Design & System Obsolescence En : Enforcement
--	--	---	---

**Flood Control Project Maintenance  
Levee Inspections**

**Levee Inspection Report By Mile - Fall 2022**

**Reclamation District No. 1602 Del Puerto**

Waterway	Bank	Unit Miles	Inspection Start/End	Inspector
Unit No. 01 San Joaquin River	Left	6.24	10/11/2022 10/11/2022	Corey Fujitani

LM Start	<b>3.54</b>	Rating **	M	Issue No.	<b>208 (cont)</b>
LM End	<b>3.54</b>	Issue Type +	En	Location *	
Category	Supplemental		GPS Latitude/Longitude		
			Start	End	
Item	DWR UCIP Field Study		37.458283 °	37.458283 °	
			-121.044146 °	-121.044146 °	
DWR ID	20205				

Photo 3 of 3 : UCIP\_FA\_2022\_74503\_111217.jpg



LS view: Concrete discharge box on toe; erosion around downstream sides.

LM Start	3.76	Rating **	U	Issue No.	83
LM End	3.76	Issue Type +	Ma	Location *	WS
Category	Earthen Levee			GPS Latitude/Longitude	
				Start	End
Item	Trim / Thin Trees			37.455414 °	37.455414 °
				-121.043765 °	-121.043765 °
DWR ID	DWR_RD1602_01_s_2017_83				
Comment Code					
T2 : Tree or limb.					
Inspector Comment					
Fallen tree has been moved to the floodway. It should be removed from the floodway.					

Photo 1 of 1 : FA\_2022\_RD1602\_110\_83\_20220822\_00034.jpg



View of a tree trunk on the waterside slope of the levee.

<b>* Location</b> LS : Land Side    N/A : Not Applicable WS : Water Side CR : Crown	<b>** Rating</b> A : Acceptable M : Minimally Acceptable U : Unacceptable	N : Not Inspected/Rated C : Corrected A/W : Acceptable but Monitor & Maintain	<b>+ Issue Type</b> Ma : Maintenance Deficiency Ob : Design & System Obsolescence En : Enforcement
--	--	---	---



**Flood Control Project Maintenance  
Levee Inspections**

**Levee Inspection Report By Mile - Fall 2022**

**Reclamation District No. 1602 Del Puerto**

Waterway	Bank	Unit Miles	Inspection Start/End	Inspector
Unit No. 01 San Joaquin River	Left	6.24	10/11/2022 10/11/2022	Corey Fujitani

LM Start	3.82	Rating **	M	Issue No.	66
LM End	3.92	Issue Type +	En	Location *	LS
Category	Earthen Levee			GPS Latitude/Longitude	
				Start	End
Item	Encroachments			37.454611 °	37.453309 °
				-121.043193 °	-121.042191 °
DWR ID	DWR_RD1602_01_f_2013_66				
Comment Code					
FE : Fence					
Inspector Comment					
Fence, animal pen and other encroachments at landward toe.					

Photo 1 of 1 : FA\_2022\_RD1602\_110\_66\_20220822\_00026.jpg



Looking southwest at animal pens and other encroachments on landward toe. (Spring 2018)

LM Start	3.82	Rating **	M	Issue No.	42
LM End	3.82	Issue Type +	En	Location *	LS
Category	Earthen Levee			GPS Latitude/Longitude	
				Start	End
Item	Vegetation			37.454574 °	37.454574 °
				-121.043142 °	-121.043142 °
DWR ID	DWR_RD1602_01_s_2012_42				
Comment Code					
V6 : Landscaping					
Inspector Comment					
Cactus on the landside slope should be removed.					

Photo 1 of 1 : FA\_2022\_RD1602\_110\_42\_20220822\_00014.jpg



Cactus growing on the landside slope. (Fall 2020)

LM Start	3.90	Rating **	A/W	Issue No.	18
LM End	3.90	Issue Type +	Ob	Location *	LS
Category	Earthen Levee			GPS Latitude/Longitude	
				Start	End
Item	Seepage / Sandboils			37.453620 °	37.453620 °
				-121.042410 °	-121.042410 °
DWR ID	190-FOC-1				
Comment Code					
SS : Seepage / Sandboils					
Inspector Comment					
2017 Storm Damage					
Site ID No:118					
Site Designation:190-FOC-1					

No Photos

<b>* Location</b> LS : Land Side    N/A : Not Applicable WS : Water Side CR : Crown	<b>** Rating</b> A : Acceptable M : Minimally Acceptable U : Unacceptable	<b>N : Not Inspected/Rated</b> C : Corrected A/W : Acceptable but Monitor & Maintain	<b>+ Issue Type</b> Ma : Maintenance Deficiency Ob : Design & System Obsolescence En : Enforcement
--	--	--	---



**Flood Control Project Maintenance  
Levee Inspections**

**Levee Inspection Report By Mile - Fall 2022**

**Reclamation District No. 1602 Del Puerto**

Waterway	Bank	Unit Miles	Inspection Start/End	Inspector
Unit No. 01 San Joaquin River	Left	6.24	10/11/2022 10/11/2022	Corey Fujitani

LM Start	3.90	Rating **	M	Issue No.	84
LM End	3.90	Issue Type +	Ma	Location *	WS
Category	Earthen Levee			GPS Latitude/Longitude	
				Start	End
Item	Animal Control			37.453566 °	37.453566 °
				-121.042376 °	-121.042376 °
DWR ID	DWR_RD1602_01_s_2017_84				
Comment Code					
A3 : No rodents visible, but rodent burrows visible; need to backfill and compact or grout burrows.					
Inspector Comment					

Photo 1 of 1 : FA\_2022\_RD1602\_110\_84\_20220822\_00035.jpg



View of rodent holes on the waterside of the levee.

LM Start	3.93	Rating **	M	Issue No.	63
LM End	4.04	Issue Type +	En	Location *	LS
Category	Earthen Levee			GPS Latitude/Longitude	
				Start	End
Item	Encroachments			37.453226 °	37.451866 °
				-121.042118 °	-121.041206 °
DWR ID	DWR_RD1602_01_s_2012_63				
Comment Code					
FE : Fence					
Inspector Comment					
Fence on landward slope.					

Photo 1 of 1 : FA\_2022\_RD1602\_110\_63\_20220822\_00025.jpg



Looking upstream at fence on landward slope. (Spring 2018)

LM Start	3.93	Rating **	M	Issue No.	62
LM End	3.93	Issue Type +	Ma	Location *	LS
Category	Earthen Levee			GPS Latitude/Longitude	
				Start	End
Item	Erosion / Foot Traffic			37.453216 °	37.453216 °
				-121.042127 °	-121.042127 °
DWR ID	DWR_RD1602_01_s_2012_62				
Comment Code					
E3 : Repair the levee slope damaged by foot traffic and prevent access where possible.					
Inspector Comment					
Significant damage to USACE constructed seepage berm due to human activity.					

Photo 1 of 1 : FA\_2022\_RD1602\_110\_62\_20220822\_00024.jpg



View of damage to seepage berm constructed on the landside toe. (Fall 2020)

* Location		** Rating		+ Issue Type	
LS : Land Side	N/A : Not Applicable	A : Acceptable	N : Not Inspected/Rated	Ma : Maintenance Deficiency	
WS : Water Side		M : Minimally Acceptable	C : Corrected	Ob : Design & System Obsolescence	
CR : Crown		U : Unacceptable	A/W : Acceptable but Monitor & Maintain	En : Enforcement	

**Flood Control Project Maintenance  
Levee Inspections**

**Levee Inspection Report By Mile - Fall 2022**

**Reclamation District No. 1602 Del Puerto**

Waterway	Bank	Unit Miles	Inspection Start/End	Inspector
Unit No. 01 San Joaquin River	Left	6.24	10/11/2022 10/11/2022	Corey Fujitani

LM Start	4.03	Rating **	A/W	Issue No.	21
LM End	4.03	Issue Type +	Ob	Location *	LS
Category	Earthen Levee			GPS Latitude/Longitude	
				Start	End
Item	Seepage / Sandboils			37.451990 °	37.451990 °
				-121.041240 °	-121.041240 °
DWR ID	190-FOC-2				
Comment Code					
SS : Seepage / Sandboils					
Inspector Comment					
2017 Storm Damage					
Site ID No:119					
Site Designation:190-FOC-2					

No Photos

LM Start	4.04	Rating **	U	Issue No.	74
LM End	4.32	Issue Type +	Ma	Location *	LS
Category	Earthen Levee			GPS Latitude/Longitude	
				Start	End
Item	Animal Control			37.451892 °	37.448492 °
				-121.041168 °	-121.038303 °
DWR ID	DWR_RD1602_01_s_2019_74				
Comment Code					
A1 : Exterminate rodents and backfill and compact or grout burrows.					
Inspector Comment					

Photo 1 of 1 : FA\_2022\_RD1602\_110\_74\_20220822\_00032.jpg



Looking at the landside slope from the levee toe. (Spring 2020)

LM Start	4.13	Rating **	A/W	Issue No.	23
LM End	4.45	Issue Type +	Ob	Location *	LS
Category	Earthen Levee			GPS Latitude/Longitude	
				Start	End
Item	Seepage / Sandboils			37.450930 °	37.446820 °
				-121.039990 °	-121.037840 °
DWR ID	190-101				
Comment Code					
SS : Seepage / Sandboils					
Inspector Comment					
2017 Storm Damage					
Site ID No:120					
Site Designation:190-101					

No Photos

<b>* Location</b> LS : Land Side    N/A : Not Applicable WS : Water Side CR : Crown	<b>** Rating</b> A : Acceptable M : Minimally Acceptable U : Unacceptable	<b>N : Not Inspected/Rated</b> C : Corrected A/W : Acceptable but Monitor & Maintain	<b>+ Issue Type</b> Ma : Maintenance Deficiency Ob : Design & System Obsolescence En : Enforcement
--	--	--	---

**Flood Control Project Maintenance  
Levee Inspections**

**Levee Inspection Report By Mile - Fall 2022**

**Reclamation District No. 1602 Del Puerto**

Waterway	Bank	Unit Miles	Inspection Start/End	Inspector
Unit No. 01 San Joaquin River	Left	6.24	10/11/2022 10/11/2022	Corey Fujitani

LM Start	4.22	Rating **	M	Issue No.	73
LM End	4.22	Issue Type +	Ma	Location *	WS
Category	Earthen Levee			GPS Latitude/Longitude	
				Start	End
Item	Trim / Thin Trees			37.449814 °	37.449814 °
				-121.039112 °	-121.039112 °
DWR ID	DWR_RD1602_01_s_2019_73				
Comment Code					
T2 : Tree or limb.					
Inspector Comment					
Fallen tree has been moved to the floodway. It should be removed from the floodway.					

Photo 1 of 1 : FA\_2022\_RD1602\_110\_73\_20220822\_00031.jpg



Branches should be removed from the waterside slope. (Fall 2021)

LM Start	4.38	Rating **	A/W	Issue No.	71
LM End	4.44	Issue Type +	Ma	Location *	LS
Category	Earthen Levee			GPS Latitude/Longitude	
				Start	End
Item	Animal Control			37.447761 °	37.446872 °
				-121.037845 °	-121.037822 °
DWR ID	DWR_RD1602_01_s_2019_71				
Comment Code					
A3 : No rodents visible, but rodent burrows visible; need to backfill and compact or grout burrows.					
Inspector Comment					

No Photos

LM Start	4.42	Rating **	M	Issue No.	67
LM End	4.88	Issue Type +	En	Location *	LS
Category	Earthen Levee			GPS Latitude/Longitude	
				Start	End
Item	Encroachments			37.447213 °	37.441014 °
				-121.037665 °	-121.036932 °
DWR ID	DWR_RD1602_01_s_2012_67				
Comment Code					
FE : Fence					
Inspector Comment					

Photo 1 of 1 : FA\_2022\_RD1602\_110\_67\_20220822\_00027.jpg



View of the fence on the landside toe of the levee. The picture was taken from the crown looking upstream.

* Location LS : Land Side    N/A : Not Applicable WS : Water Side CR : Crown		** Rating A : Acceptable                      N : Not Inspected/Rated M : Minimally Acceptable        C : Corrected U : Unacceptable                  A/W : Acceptable but Monitor & Maintain		+ Issue Type Ma : Maintenance Deficiency Ob : Design & System Obsolescence En : Enforcement	
---	--	--	--	--	--



**Flood Control Project Maintenance  
Levee Inspections**

**Levee Inspection Report By Mile - Fall 2022**

**Reclamation District No. 1602 Del Puerto**

Waterway	Bank	Unit Miles	Inspection Start/End	Inspector
Unit No. 01 San Joaquin River	Left	6.24	10/11/2022 10/11/2022	Corey Fujitani

LM Start	4.47	Rating **	U	Issue No.	209	
LM End	4.47	Issue Type +	En	Location *		
Category	Supplemental			GPS Latitude/Longitude		
				Start	End	
Item	DWR UCIP Field Study			37.446545 °	37.446545 °	
				-121.037941 °	-121.037941 °	
DWR ID	20207					
Comment Code						
Inspector Comment						
DS_ID:20207 FS_ID:74531 EP_NO: 8195 Repair Type: Urgent EVAL Issue: 1, Pipe Integrity Crossing Status: Found UCIP Comments: 04/05/2022 Record updated from Non-Urgent to Urgent. Pipe inlet and outlet within CMP riser is deteriorated. Broken wood pallet was used as a cover causing a safety hazard. No handle on slide gate in CMP riser on WS slope. Alfalfa valve was not capped in concrete distribution box on LS toe. (M.Thao - DWR UCIP) 11/18/2016 60-inch riser has a temporary cover therefore crossing has been downgraded from Urgent to Non-Urgent. (O. Magana - DWR UCIP) 10/01/2013 Lid missing from 60-inch CMP riser, may be an attractive nuisance or hazard to public. (W. Wylie - DWR UCIP) FIELD_STRUCT_DESC: 18-inch steel pipe through levee, 10 feet below crown. Slide gate in 60-inch corrugated metal pipe riser located on the waterside (WS) slope. Concrete discharge box is located on landside (LS) end. Pipe is buried across WS berm to pump located on the riverbank approximately 1,000 feet from the levee. (18-inch pipe authorized under Automatic Board Order (ABO) issued as Permit No. 8195, 1972 - Larry Buehner). [Additional Reference(s): DWR Levee Log, 1992. USACE San Joaquin River O&M Manual Unit 13, April 1964, (HLM 4.51), Drawing No. 7-4-1784]. FS Date: 4/5/2022						

Photo 1 of 2 : UCIP\_FA\_2022\_74531\_111172.jpg



LS view: Pipe outlet on toe within concrete ditch.

<b>* Location</b> LS : Land Side    N/A : Not Applicable WS : Water Side CR : Crown	<b>** Rating</b> A : Acceptable M : Minimally Acceptable U : Unacceptable N : Not Inspected/Rated C : Corrected A/W : Acceptable but Monitor & Maintain	<b>+ Issue Type</b> Ma : Maintenance Deficiency Ob : Design & System Obsolescence En : Enforcement
--	---	---

**Flood Control Project Maintenance  
Levee Inspections**

**Levee Inspection Report By Mile - Fall 2022**

**Reclamation District No. 1602 Del Puerto**

Waterway	Bank	Unit Miles	Inspection Start/End	Inspector
Unit No. 01 San Joaquin River	Left	6.24	10/11/2022 10/11/2022	Corey Fujitani

LM Start	4.47	Rating **	U	Issue No.	209 (cont)	
LM End	4.47	Issue Type +	En	Location *		
Category	Supplemental			GPS Latitude/Longitude		
				Start	End	
Item	DWR UCIP Field Study			37.446545 °	37.446545 °	
				-121.037941 °	-121.037941 °	
DWR ID	20207					

Photo 2 of 2 : UCIP\_FA\_2022\_74531\_111174.jpg



WS view: Looking into CMP riser; inlet of pipe through levee is deteriorating.

LM Start	4.49	Rating **	M	Issue No.	69
LM End	4.49	Issue Type +	Ma	Location *	WS
Category	Earthen Levee			GPS Latitude/Longitude	
				Start	End
Item	Trim / Thin Trees			37.446178 °	37.446178 °
				-121.037855 °	-121.037855 °
DWR ID	DWR_RD1602_01_s_2019_69				
Comment Code					
T2 : Tree or limb.					
Inspector Comment					
Fallen tree has been moved to the floodway. It should be removed from the floodway.					

Photo 1 of 1 : FA\_2022\_RD1602\_110\_69\_20220822\_00028.jpg



View of fallen tree trunk on waterside slope. (Spring 2019)

**\* Location**  
LS : Land Side    N/A : Not Applicable  
WS : Water Side  
CR : Crown

**\*\* Rating**  
A : Acceptable                      N : Not Inspected/Rated  
M : Minimally Acceptable        C : Corrected  
U : Unacceptable                  A/W : Acceptable but Monitor & Maintain

**+ Issue Type**  
Ma : Maintenance Deficiency  
Ob : Design & System Obsolescence  
En : Enforcement

# Reclamation District No. 1602 Del Puerto







**Flood Control Project Maintenance  
Levee Inspections**

**Levee Inspection Report By Mile - Fall 2022**

**Reclamation District No. 1602 Del Puerto**

Waterway	Bank	Unit Miles	Inspection Start/End	Inspector
Unit No. 01 San Joaquin River	Left	6.24	10/11/2022 10/11/2022	Corey Fujitani

LM Start	5.04	Rating **	U	Issue No.	53
LM End	5.04	Issue Type +	Ma	Location *	LS
Category	Earthen Levee			GPS Latitude/Longitude	
				Start	End
Item	Animal Control			37.438810 °	37.438810 °
				-121.037254 °	-121.037254 °
DWR ID	DWR_RD1602_01_f _ 2022_53				
Comment Code					
A3 : No rodents visible, but rodent burrows visible; need to backfill and compact or grout burrows.					
Inspector Comment					

Photo 1 of 1 : FA\_2022\_RD1602\_110\_53\_20221021\_00051.jpg



Several large animal burrows were observed at this location. (Fall 2022)

LM Start	5.07	Rating **	U	Issue No.	25
LM End	5.11	Issue Type +	Ma	Location *	LS
Category	Earthen Levee			GPS Latitude/Longitude	
				Start	End
Item	Animal Control			37.438335 °	37.437817 °
				-121.037133 °	-121.037029 °
DWR ID	DWR_RD1602_01_s_2022_25				
Comment Code					
A3 : No rodents visible, but rodent burrows visible; need to backfill and compact or grout burrows.					
Inspector Comment					

Photo 1 of 1 : FA\_2022\_RD1602\_110\_25\_20220822\_00005.jpg



View of rodent burrows in the landside slope. (Spring 2022)

LM Start	5.09	Rating **	M	Issue No.	199
LM End	5.09	Issue Type +	Ma	Location *	WS
Category	Earthen Levee			GPS Latitude/Longitude	
				Start	End
Item	Animal Control			37.438165 °	37.438165 °
				-121.037073 °	-121.037073 °
DWR ID	DWR_RD1602_01_s_2014_199				
Comment Code					
A3 : No rodents visible, but rodent burrows visible; need to backfill and compact or grout burrows.					
Inspector Comment					

Photo 1 of 1 : FA\_2022\_RD1602\_110\_199\_20220822\_00045.jpg



Rodent holes were found on the waterside toe of the levee looking upstream.

<b>* Location</b> LS : Land Side    N/A : Not Applicable WS : Water Side CR : Crown		<b>** Rating</b> A : Acceptable M : Minimally Acceptable U : Unacceptable N : Not Inspected/Rated C : Corrected A/W : Acceptable but Monitor & Maintain		<b>+ Issue Type</b> Ma : Maintenance Deficiency Ob : Design & System Obsolescence En : Enforcement	
--	--	---	--	---	--

**Flood Control Project Maintenance  
Levee Inspections**

**Levee Inspection Report By Mile - Fall 2022**

**Reclamation District No. 1602 Del Puerto**

Waterway	Bank	Unit Miles	Inspection Start/End	Inspector
Unit No. 01 San Joaquin River	Left	6.24	10/11/2022 10/11/2022	Corey Fujitani

LM Start	5.13	Rating **	M	Issue No.	92
LM End	5.13	Issue Type +	Ma	Location *	WS
Category	Earthen Levee			GPS Latitude/Longitude	
				Start	End
Item	Animal Control			37.437527 °	37.437527 °
				-121.036967 °	-121.036967 °
DWR ID	DWR_RD1602_01_s_2017_92				
Comment Code					
A3 : No rodents visible, but rodent burrows visible; need to backfill and compact or grout burrows.					
Inspector Comment					

Photo 1 of 1 : FA\_2022\_RD1602\_110\_92\_20220822\_00039.jpg



View of a rodent hole on the waterside shoulder of the levee looking downstream.

LM Start	5.16	Rating **	U	Issue No.	141
LM End	5.16	Issue Type +	Ma	Location *	WS
Category	Earthen Levee			GPS Latitude/Longitude	
				Start	End
Item	Animal Control			37.437146 °	37.437146 °
				-121.036814 °	-121.036814 °
DWR ID	DWR_RD1602_01_s_2020_141				
Comment Code					
A1 : Exterminate rodents and backfill and compact or grout burrows.					
Inspector Comment					

Photo 1 of 1 : FA\_2022\_RD1602\_110\_141\_20220822\_00044.jpg



View of burrow in the waterside shoulder. (Spring 2020)

**\* Location**  
LS : Land Side    N/A : Not Applicable  
WS : Water Side  
CR : Crown

**\*\* Rating**  
A : Acceptable                      N : Not Inspected/Rated  
M : Minimally Acceptable        C : Corrected  
U : Unacceptable                  A/W : Acceptable but Monitor & Maintain

**+ Issue Type**  
Ma : Maintenance Deficiency  
Ob : Design & System Obsolescence  
En : Enforcement

**Flood Control Project Maintenance  
Levee Inspections**

**Levee Inspection Report By Mile - Fall 2022**

**Reclamation District No. 1602 Del Puerto**

Waterway	Bank	Unit Miles	Inspection Start/End	Inspector
Unit No. 01 San Joaquin River	Left	6.24	10/11/2022 10/11/2022	Corey Fujitani

LM Start	5.18	Rating **	U	Issue No.	48
LM End	5.18	Issue Type +	Ma	Location *	WS
Category	Earthen Levee			GPS Latitude/Longitude	
				Start	End
Item	Animal Control			37.436785 °	37.436785 °
				-121.036593 °	-121.036593 °
DWR ID	DWR_RD1602_01_s_2016_48				
Comment Code					
A3 : No rodents visible, but rodent burrows visible; need to backfill and compact or grout burrows.					
Inspector Comment					

Photo 1 of 1 : FA\_2022\_RD1602\_110\_48\_20220822\_00018.jpg



View of rodent holes on the waterside of the levee looking downstream.  
(Fall 2021)

<b>* Location</b> LS : Land Side    N/A : Not Applicable WS : Water Side CR : Crown	<b>** Rating</b> A : Acceptable M : Minimally Acceptable U : Unacceptable	N : Not Inspected/Rated C : Corrected A/W : Acceptable but Monitor & Maintain	<b>+ Issue Type</b> Ma : Maintenance Deficiency Ob : Design & System Obsolescence En : Enforcement
--	--	---	---



**Flood Control Project Maintenance  
Levee Inspections**

**Levee Inspection Report By Mile - Fall 2022**

**Reclamation District No. 1602 Del Puerto**

Waterway	Bank	Unit Miles	Inspection Start/End	Inspector
Unit No. 01 San Joaquin River	Left	6.24	10/11/2022 10/11/2022	Corey Fujitani

LM Start	5.19	Rating **	U	Issue No.	210	
LM End	5.19	Issue Type +	Ma	Location *		
Category	Supplemental			GPS Latitude/Longitude		
				Start	End	
Item	DWR UCIP LMA Responsibility			37.436748 °	37.436748 °	
				-121.036597 °	-121.036597 °	
DWR ID	20208					
Comment Code						
Inspector Comment						
DS_ID:20208 FS_ID:74358 EP_NO: N/A Repair Type: Urgent EVAL Issue: 1, Pipe Integrity Crossing Status: Found UCIP Comments: 04/05/2022 Record remains Urgent. DMP internal video inspection has found pipe integrity issues. LOF of crossing is between 5 and 6. Crossing will be monitored until funding becomes available to address the issues. No cover present on CMP riser causing a safety hazard. Vegetation is growing and partially blocking the inlet on LS; recommend removing vegetation. No cover was present on CMP riser causing a safety hazard. Soil and debris, previously mentioned, have been cleared so flap gate and slide gate was operational. (M.Thao - DWR UCIP) 11/18/2016 Same as previous inspection soil and debris prevent flap gate from properly functioning and slide gate won't close due to sediment build up. Crossing has been downgraded from Urgent to Non-Urgent due to no pipe or levee integrity issues observed during the site visit. Need to contact owner to determine status of crossing. If crossing is no longer in use owner will need to coordinate with CVFPB to properly abandon or remove according to Title 23 requirements. (O. Magana - DWR UCIP)10/01/2013 Soil and debris prevent flapgate from proper function. Slide gate won't close completely due to sediment buildup. CMP riser needs cover. (W. Wylie - DWR UCIP) FIELD_STRUCT_DESC: 24-inch steel pipe through levee, 11.6 feet below crown. Concrete headwall on the landside (LS) end. Concrete "U" headwall and flap gate located on the waterside (WS) end. Slide gate in 60-inch corrugated metal pipe (CMP) riser is located on the WS slope. [Additional Reference(s): DWR Levee Log, 1992. USACE San Joaquin River O&M Manual Unit 13, April 1964, (HLM 5.23), Drawing No. 7-4-1784]. FS Date: 4/5/2022						

Photo 1 of 2 : UCIP\_FA\_2022\_74358\_111160.jpg



WS view: Looking from crown; CMP riser with no cover on slope.

<b>* Location</b> LS : Land Side    N/A : Not Applicable WS : Water Side CR : Crown	<b>** Rating</b> A : Acceptable M : Minimally Acceptable U : Unacceptable N : Not Inspected/Rated C : Corrected A/W : Acceptable but Monitor & Maintain	<b>+ Issue Type</b> Ma : Maintenance Deficiency Ob : Design & System Obsolescence En : Enforcement
--	---	---

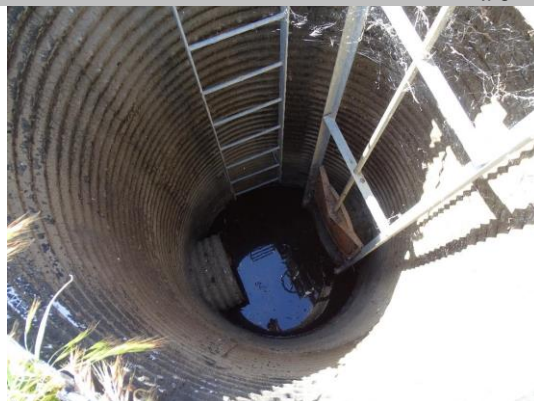


## Levee Inspection Report By Mile - Fall 2022

Waterway	Bank	Unit Miles	Inspection Start/End	Inspector
Unit No. 01 San Joaquin River	Left	6.24	10/11/2022 10/11/2022	Corey Fujitani

LM Start	5.19	Rating **	U	Issue No.	210 (cont)	
LM End	5.19	Issue Type +	Ma	Location *		
Category	Supplemental			GPS Latitude/Longitude		
				Start	End	
Item	DWR UCIP LMA Responsibility			37.436748 °	37.436748 °	
				-121.036597 °	-121.036597 °	
DWR ID	20208					

Photo 2 of 2 : UCIP\_FA\_2022\_74358\_111161.jpg



WS view: Looking into CMP riser.

LM Start	5.21	Rating **	U	Issue No.	27
LM End	5.21	Issue Type +	Ma	Location *	LS
Category	Earthen Levee			GPS Latitude/Longitude	
				Start	End
Item	Animal Control			37.436470 °	37.436470 °
				-121.036356 °	-121.036356 °
DWR ID	DWR_RD1602_01_s _2021_27				
Comment Code					
A1 : Exterminate rodents and backfill and compact or grout burrows.					
Inspector Comment					

Photo 1 of 1 : FA\_2022\_RD1602\_110\_27\_20220822\_00006.jpg



Large rodent burrows in the landside slope. (Spring 2021)

LM Start	5.22	Rating **	U	Issue No.	52
LM End	5.22	Issue Type +	Ma	Location *	WS
Category	Earthen Levee			GPS Latitude/Longitude	
				Start	End
Item	Animal Control			37.436393 °	37.436393 °
				-121.036296 °	-121.036296 °
DWR ID	DWR_RD1602_01_s _ 2018_52				
Comment Code					
A3 : No rodents visible, but rodent burrows visible; need to backfill and compact or grout burrows.					
Inspector Comment					
Large rodent hole on waterward slope.					

Photo 1 of 1 : FA\_2022\_RD1602\_110\_52\_20220822\_00021.jpg



View of large rodent burrow on the waterside slope. (Spring 2021)

* Location	** Rating	+ Issue Type
LS : Land Side    N/A : Not Applicable WS : Water Side CR : Crown	A : Acceptable                      N : Not Inspected/Rated M : Minimally Acceptable        C : Corrected U : Unacceptable                  A/W : Acceptable but Monitor & Maintain	Ma : Maintenance Deficiency Ob : Design & System Obsolescence En : Enforcement

**Flood Control Project Maintenance  
Levee Inspections**

**Levee Inspection Report By Mile - Fall 2022**

**Reclamation District No. 1602 Del Puerto**

Waterway	Bank	Unit Miles	Inspection Start/End	Inspector
Unit No. 01 San Joaquin River	Left	6.24	10/11/2022 10/11/2022	Corey Fujitani

LM Start	5.23	Rating **	A/W	Issue No.	211	
LM End	5.23	Issue Type +	Ma	Location *		
Category	Supplemental			GPS Latitude/Longitude		
				Start		End
Item	DWR UCIP LMA Responsibility			37.436246 °	37.436246 °	
				-121.036193 °	-121.036193 °	
DWR ID	20209					
Comment Code						
Inspector Comment						
DS_ID:20209 FS_ID:75653 EP_NO: 8192 Repair Type: No Action Needed EVAL Issue: Crossing Status: Found UCIP Comments: 04/05/2022 Record remains No Action Needed. No issues observed during inspection. (M.Thao - DWR UCIP) FIELD_STRUCT_DESC: 1 of 2: 36-inch by 36-inch reinforced concrete box drainage culvert through the levee, 15.8 feet below the crown. Slide gate in a 6-foot by 7-foot concrete surge box on the waterside (WS) slope. 36-inch concrete pipes buried on both sides of the levee and connected to the reinforced concrete box culvert. Constructed through the levee section. (two 36-inch by 36-inch culvert [HLM 5.27] authorized under Automatic Board Order (ABO) issued as Permit No. 8192, 1972 - Stanislaus County). [Additional Reference(s): DWR Levee Log, 1992. USACE San Joaquin O&M Manual 13, April 1964, (HLM 5.27), Drawing No. 7-4-1784]. FS Date: 4/5/2022						

Photo 1 of 3 : UCIP\_FA\_2022\_75653\_111146.jpg



Levee crown looking downstream.

LM Start	<b>5.23</b>	Rating **	A/W	Issue No.	<b>211 (cont)</b>
LM End	<b>5.23</b>	Issue Type +	Ma	Location *	

Photo 2 of 3 : UCIP\_FA\_2022\_75653\_111141.jpg



LS view: Looking from crown; general overview.

<b>* Location</b> LS : Land Side    N/A : Not Applicable WS : Water Side CR : Crown	<b>** Rating</b> A : Acceptable M : Minimally Acceptable U : Unacceptable	N : Not Inspected/Rated C : Corrected A/W : Acceptable but Monitor & Maintain	<b>+ Issue Type</b> Ma : Maintenance Deficiency Ob : Design & System Obsolescence En : Enforcement
--	--	---	---

**Flood Control Project Maintenance  
Levee Inspections**

**Levee Inspection Report By Mile - Fall 2022**

**Reclamation District No. 1602 Del Puerto**

Waterway	Bank	Unit Miles	Inspection Start/End	Inspector
Unit No. 01 San Joaquin River	Left	6.24	10/11/2022 10/11/2022	Corey Fujitani

LM Start	<b>5.23</b>	Rating **	A/W	Issue No.	<b>211 (cont)</b>
LM End	<b>5.23</b>	Issue Type +	Ma	Location *	
Category	Supplemental		GPS Latitude/Longitude		
			Start	End	
Item	DWR UCIP LMA Responsibility		37.436246 °	37.436246 °	
			-121.036193 °	-121.036193 °	
DWR ID	20209				

Photo 3 of 3 : UCIP\_FA\_2022\_75653\_111145.jpg



LS view: Likely risers for pipe off LS toe.

LM Start	<b>5.23</b>	Rating **	A/W	Issue No.	<b>212</b>
LM End	<b>5.23</b>	Issue Type +	Ma	Location *	
Category	Supplemental		GPS Latitude/Longitude		
			Start	End	
Item	DWR UCIP LMA Responsibility		37.436227 °	37.436227 °	
			-121.036169 °	-121.036169 °	
DWR ID	20222				

**Comment Code**

**Inspector Comment**

DS\_ID:20222  
 FS\_ID:75654  
 EP\_NO: 8192  
 Repair Type: No Action Needed  
 EVAL Issue:  
 Crossing Status: Found  
 UCIP Comments: 04/05/2022 Record remains No Action Needed. No issues observed during inspection. (M.Thao - DWR UCIP)  
 FIELD\_STRUCT\_DESC: 2 of 2: 36-inch by 36-inch reinforced concrete box drainage culvert through the levee, 15.8 feet below the crown. Slide gate in a 6-foot by 7-foot concrete surge box on the waterside (WS) slope. 36-inch concrete pipes buried on both sides of the levee and connected to the reinforced concrete box culvert. Constructed through the levee section. (two 36-inch by 36-inch culvert [HLM 5.27] authorized under Automatic Board Order (ABO) issued as Permit No. 8192, 1972 - Stanislaus County). [Additional Reference(s): DWR Levee Log, 1992. USACE San Joaquin O&M Manual 13, April 1964, (HLM 5.27), Drawing No. 7-4-1784].  
 FS Date: 4/5/2022

Photo 1 of 3 : UCIP\_FA\_2022\_75654\_111150.jpg



Levee crown looking downstream.

<b>* Location</b> LS : Land Side    N/A : Not Applicable WS : Water Side CR : Crown	<b>** Rating</b> A : Acceptable M : Minimally Acceptable U : Unacceptable N : Not Inspected/Rated C : Corrected A/W : Acceptable but Monitor & Maintain	<b>+ Issue Type</b> Ma : Maintenance Deficiency Ob : Design & System Obsolescence En : Enforcement
--	---	---



**Flood Control Project Maintenance  
Levee Inspections**

**Levee Inspection Report By Mile - Fall 2022**

**Reclamation District No. 1602 Del Puerto**

Waterway	Bank	Unit Miles	Inspection Start/End	Inspector
Unit No. 01 San Joaquin River	Left	6.24	10/11/2022 10/11/2022	Corey Fujitani

LM Start	<b>5.23</b>	Rating **	A/W	Issue No.	<b>212 (cont)</b>
LM End	<b>5.23</b>	Issue Type +	Ma	Location *	
Category	Supplemental		GPS Latitude/Longitude		
			Start	End	
Item	DWR UCIP LMA Responsibility		37.436227 °	37.436227 °	
			-121.036169 °	-121.036169 °	
DWR ID	20222				

Photo 2 of 3 : UCIP\_FA\_2022\_75654\_111147.jpg



LS view: Looking from crown; general overview.

LM Start	<b>5.23</b>	Rating **	A/W	Issue No.	<b>212 (cont)</b>
LM End	<b>5.23</b>	Issue Type +	Ma	Location *	

Photo 3 of 3 : UCIP\_FA\_2022\_75654\_111149.jpg



LS view: Likely risers for pipe off LS toe.

<b>* Location</b> LS : Land Side    N/A : Not Applicable WS : Water Side CR : Crown	<b>** Rating</b> A : Acceptable M : Minimally Acceptable U : Unacceptable N : Not Inspected/Rated C : Corrected A/W : Acceptable but Monitor & Maintain	<b>+ Issue Type</b> Ma : Maintenance Deficiency Ob : Design & System Obsolescence En : Enforcement
--	---	---



**Flood Control Project Maintenance  
Levee Inspections**

**Levee Inspection Report By Mile - Fall 2022**

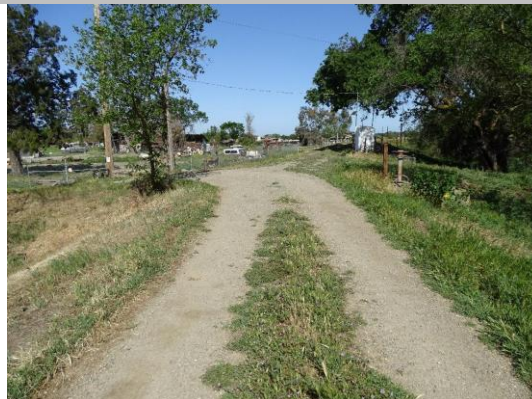
**Reclamation District No. 1602 Del Puerto**

Waterway	Bank	Unit Miles	Inspection Start/End	Inspector
Unit No. 01 San Joaquin River	Left	6.24	10/11/2022 10/11/2022	Corey Fujitani

LM Start	5.24	Rating **	A/W	Issue No.	213	
LM End	5.24	Issue Type +	Ma	Location *		
Category	Supplemental			GPS Latitude/Longitude		
				Start	End	
Item	DWR UCIP LMA Responsibility			37.436129 °	37.436129 °	
				-121.036065 °	-121.036065 °	
DWR ID	20210					
Comment Code						
Inspector Comment						
DS_ID:20210 FS_ID:74559 EP_NO: N/A Repair Type: No Action Needed EVAL Issue: Crossing Status: Found UCIP Comments: 04/05/2022 Record remains No Action Needed. DWR DMP internal video inspection has not found pipe integrity issues. LOF of crossing is less or equal to 4.0. Recommend next video inspection in 5 years. No issues observed during inspection. (M.Thao - DWR UCIP) FIELD_STRUCT_DESC: 30-inch by 30-inch reinforced concrete box drainage culvert through the levee, 12.9 feet below the crown. Slide gate in a concrete surge box on the waterside (WS) slope. Concrete discharge boxes on both ends. [Additional Reference(s): DWR Levee Log, 1992. USACE San Joaquin O&M Manual 13, April 1964, (HLM 5.28), Drawing No. 7-4-1784]. FS Date: 4/5/2022						

LM Start	<b>5.24</b>	Rating **	A/W	Issue No.	<b>213 (cont)</b>
LM End	<b>5.24</b>	Issue Type +	Ma	Location *	

Photo 1 of 3 : UCIP\_FA\_2022\_74559\_111126.jpg



Levee crown looking downstream.

Photo 2 of 3 : UCIP\_FA\_2022\_74559\_111127.jpg



LS view: Looking from levee crown; general overview.

<b>* Location</b> LS : Land Side    N/A : Not Applicable WS : Water Side CR : Crown	<b>** Rating</b> A : Acceptable M : Minimally Acceptable U : Unacceptable	N : Not Inspected/Rated C : Corrected A/W : Acceptable but Monitor & Maintain	<b>+ Issue Type</b> Ma : Maintenance Deficiency Ob : Design & System Obsolescence En : Enforcement
--	--	---	---

**Flood Control Project Maintenance  
Levee Inspections**

**Levee Inspection Report By Mile - Fall 2022**

**Reclamation District No. 1602 Del Puerto**

Waterway	Bank	Unit Miles	Inspection Start/End	Inspector
Unit No. 01 San Joaquin River	Left	6.24	10/11/2022 10/11/2022	Corey Fujitani

LM Start	<b>5.24</b>	Rating **	A/W	Issue No.	<b>213 (cont)</b>
LM End	<b>5.24</b>	Issue Type +	Ma	Location *	
Category	Supplemental		GPS Latitude/Longitude		
			Start	End	
Item	DWR UCIP LMA Responsibility		37.436129 °	37.436129 °	
			-121.036065 °	-121.036065 °	
DWR ID	20210				

Photo 3 of 3 : UCIP\_FA\_2022\_74559\_111128.jpg



LS view: Concrete inlet on toe.

LM Start	5.32	Rating **	C	Issue No.	35
LM End	5.32	Issue Type +	En	Location *	WS
Category	Earthen Levee			GPS Latitude/Longitude	
				Start	End
Item	Trim / Thin Trees			37.435235 °	37.435235 °
				-121.035280 °	-121.035280 °
DWR ID	DWR_RD1602_01_s_2019_35				
Comment Code					
T2 : Tree or limb.					
Inspector Comment					

No Photos

LM Start	5.38	Rating **	M	Issue No.	22
LM End	5.44	Issue Type +	En	Location *	LS
Category	Earthen Levee			GPS Latitude/Longitude	
				Start	End
Item	Encroachments			37.434447 °	37.433791 °
				-121.034865 °	-121.034000 °
DWR ID	DWR_RD1602_01_f_2012_22				
Comment Code					
FE : Fence					
Inspector Comment					

Photo 1 of 1 : FA\_2022\_RD1602\_110\_22\_20220822\_00003.jpg



A fence was found on the landside toe of the levee looking upstream.

**\* Location**  
LS : Land Side    N/A : Not Applicable  
WS : Water Side  
CR : Crown

**\*\* Rating**  
A : Acceptable                      N : Not Inspected/Rated  
M : Minimally Acceptable        C : Corrected  
U : Unacceptable                  A/W : Acceptable but Monitor & Maintain

**+ Issue Type**  
Ma : Maintenance Deficiency  
Ob : Design & System Obsolescence  
En : Enforcement

**Flood Control Project Maintenance  
Levee Inspections**

**Levee Inspection Report By Mile - Fall 2022**

**Reclamation District No. 1602 Del Puerto**

Waterway	Bank	Unit Miles	Inspection Start/End	Inspector
Unit No. 01 San Joaquin River	Left	6.24	10/11/2022 10/11/2022	Corey Fujitani

LM Start	5.46	Rating **	M	Issue No.	214
LM End	5.46	Issue Type +	Ma	Location *	
Category	Supplemental			GPS Latitude/Longitude	
				Start	End
Item	DWR UCIP LMA Responsibility			37.433646 °	37.433646 °
				-121.033846 °	-121.033846 °
DWR ID	20211				
Comment Code					
Inspector Comment					
DS_ID:20211 FS_ID:75650 EP_NO: N/A Repair Type: Non-Urgent EVAL Issue: Crossing Status: Found UCIP Comments: 04/05/2022 Record remains Non-Urgent. Crossing appears abandoned. Recommend owner to contact CVFPB to abandon or remove pipe from levee. DWR DMP internal video inspection has not found pipe integrity issues. LOF of crossing is less or equal to 4.0. Recommend next video inspection in 5 years. (M.Thao - DWR UCIP) 10/01/2013 Pipe appears abandoned and if so should be done so properly. (W. Wylie - DWR UCIP) FIELD_STRUCT_DESC: *ABANDONED* 12-inch CMP drainage pipe through the levee, 6.9 feet below the crown. Flap gate on the waterside (WS) end. Could not locate, March 1984. (Reclamation District No. 1602). [Additional Reference(s): DWR Levee Log, 1992. USACE San Joaquin O&M Manual 13, April 1964, (HLM 5.50), Drawing No. 7-4-1784]. FS Date: 4/5/2022					

Photo 1 of 3 : UCIP\_FA\_2022\_75650\_111112.jpg



Levee crown looking downstream.

LM Start	<b>5.46</b>	Rating **	M	Issue No.	<b>214 (cont)</b>
LM End	<b>5.46</b>	Issue Type +	Ma	Location *	

Photo 2 of 3 : UCIP\_FA\_2022\_75650\_111113.jpg



LS view: Looking from crown; general overview.

<b>* Location</b> LS : Land Side    N/A : Not Applicable WS : Water Side CR : Crown	<b>** Rating</b> A : Acceptable M : Minimally Acceptable U : Unacceptable	N : Not Inspected/Rated C : Corrected A/W : Acceptable but Monitor & Maintain	<b>+ Issue Type</b> Ma : Maintenance Deficiency Ob : Design & System Obsolescence En : Enforcement
--	--	---	---



**Flood Control Project Maintenance  
Levee Inspections**

**Levee Inspection Report By Mile - Fall 2022**

**Reclamation District No. 1602 Del Puerto**

Waterway	Bank	Unit Miles	Inspection Start/End	Inspector
Unit No. 01 San Joaquin River	Left	6.24	10/11/2022 10/11/2022	Corey Fujitani

LM Start	<b>5.46</b>	Rating **	M	Issue No.	<b>214 (cont)</b>
LM End	<b>5.46</b>	Issue Type +	Ma	Location *	
Category	Supplemental		GPS Latitude/Longitude		
			Start	End	
Item	DWR UCIP LMA Responsibility		37.433646 °	37.433646 °	
			-121.033846 °	-121.033846 °	
DWR ID	20211				

Photo 3 of 3 : UCIP\_FA\_2022\_75650\_111114.jpg



WS view: Looking from crown; 12-inch CMP outlet with flap gate on toe.

LM Start	<b>5.72</b>	Rating **	M	Issue No.	<b>215</b>
LM End	<b>5.72</b>	Issue Type +	Ma	Location *	
Category	Supplemental		GPS Latitude/Longitude		
			Start	End	
Item	DWR UCIP LMA Responsibility		37.433003 °	37.433003 °	
			-121.029346 °	-121.029346 °	
DWR ID	20212				

**Comment Code**

**Inspector Comment**

DS\_ID:20212  
 FS\_ID:74470  
 EP\_NO: N/A  
 Repair Type: Non-Urgent  
 EVAL Issue: 5, Pipe Damage  
 Crossing Status: Found  
 UCIP Comments: 04/05/2022 Record remains Non-Urgent. DMP internal video inspection has found pipe integrity issues. LOF of crossing is greater than or equal to 4.1 and less than 5. Crossing will be monitored until funding becomes available for rehabilitation. (M.Thao - DWR UCIP)  
 11/18/2016 Crossing has been downgraded from Urgent to Non-Urgent flap gate is functional. Recommend clearing dense vegetation from WS and LS slopes. (O. Magana - DWR UCIP)10/01/2013 Flapgate has minor blockage preventing gate from fully closing. (W. Wylie - DWR UCIP)  
 FIELD\_STRUCT\_DESC: 30-inch square reinforced concrete box culvert through levee, 9 feet below crown. Slide gate in concrete surge box is located on the waterside (WS) slope. Concrete "U" headwalls are located on both the waterside (WS) and landside (LS) ends. Flap gate is located on the WS end. [Additional Reference(s): DWR Levee Log, 1992. USACE San Joaquin River O&M Manual Unit 13, April 1964, (HLM 5.28), Drawing No. 7-4-1784].  
 FS Date: 4/5/2022

Photo 1 of 2 : UCIP\_FA\_2022\_74470\_111109.jpg



LS view: Close-up view of concrete headwall on toe.

<b>* Location</b> LS : Land Side    N/A : Not Applicable WS : Water Side CR : Crown	<b>** Rating</b> A : Acceptable M : Minimally Acceptable U : Unacceptable N : Not Inspected/Rated C : Corrected A/W : Acceptable but Monitor & Maintain	<b>+ Issue Type</b> Ma : Maintenance Deficiency Ob : Design & System Obsolescence En : Enforcement
--	---	---



# Reclamation District No. 1602 Del Puerto

**Flood Control Project Maintenance  
Levee Inspections**

**Levee Inspection Report By Mile - Fall 2022**

**Reclamation District No. 1602 Del Puerto**

Waterway	Bank	Unit Miles	Inspection Start/End	Inspector
Unit No. 01 San Joaquin River	Left	6.24	10/11/2022 10/11/2022	Corey Fujitani

LM Start	6.22	Rating **	M	Issue No.	24
LM End	6.22	Issue Type +	Ma	Location *	CR
Category	Earthen Levee			GPS Latitude/Longitude	
				Start	End
Item	Crown Surface / Depressions / Rutting			37.429145 °	37.429145 °
				-121.029714 °	-121.029714 °
DWR ID	DWR_RD1602_01_f _ 2020_24				
Comment Code					
C2 : Repair depressions or ruts in the crown or slope.					
Inspector Comment					

Photo 1 of 1 : FA\_2022\_RD1602\_110\_24\_20220822\_00004.jpg



Depression in levee crown from vehicle traffic. (Spring 2022)

LM Start	6.24	Rating **	U	Issue No.	216
LM End	6.24	Issue Type +	En	Location *	
Category	Supplemental			GPS Latitude/Longitude	
				Start	End
Item	DWR UCIP Field Study			37.429032 °	37.429032 °
				-121.029867 °	-121.029867 °
DWR ID	20214				
Comment Code					
Inspector Comment					
DS_ID:20214 FS_ID:74345 EP_NO: 8194 Repair Type: Urgent EVAL Issue: 1, Pipe Integrity Crossing Status: Found UCIP Comments: 04/05/2022 Record remains Urgent. DMP internal video inspection has found pipe integrity issues. LOF of crossing is between 5 and 6. Crossing will be monitored until funding becomes available to address the issues. (M.Thao - DWR UCIP) 10/01/2013 Pipe heavily deteriorated on LS toe. May indicate condition of rest of pipe is bad. Good candidate for video inspection. (W. Wylie - DWR UCIP) FIELD_STRUCT_DESC: 18-inch reinforced concrete irrigation pipe through the levee, 3 feet below the crown. Slide gate in a 36-inch concrete standpipe on the waterside (WS) shoulder. (18-inch concrete pipe was authorized under Automatic Board Order (ABO) issued as Permit No. 8194, 1972 - Ernest F. Nunes). [Additional Reference(s): DWR Levee Log, 1992. USACE San Joaquin O&M Manual 13, April 1964, (HLM 6.28), Drawing No. 7-4-1784]. FS Date: 4/5/2022					

Photo 1 of 2 : UCIP\_FA\_2022\_74345\_111103.jpg



LS view: Outlet of irrigation pipe is deteriorated.

<b>* Location</b> LS : Land Side    N/A : Not Applicable WS : Water Side CR : Crown	<b>** Rating</b> A : Acceptable M : Minimally Acceptable U : Unacceptable	N : Not Inspected/Rated C : Corrected A/W : Acceptable but Monitor & Maintain	<b>+ Issue Type</b> Ma : Maintenance Deficiency Ob : Design & System Obsolescence En : Enforcement
--	--	---	---

**Flood Control Project Maintenance  
Levee Inspections**

**Levee Inspection Report By Mile - Fall 2022**

**Reclamation District No. 1602 Del Puerto**

Waterway	Bank	Unit Miles	Inspection Start/End	Inspector
Unit No. 01 San Joaquin River	Left	6.24	10/11/2022 10/11/2022	Corey Fujitani

LM Start	<b>6.24</b>	Rating **	U	Issue No.	<b>216 (cont)</b>
LM End	<b>6.24</b>	Issue Type +	En	Location *	
Category	Supplemental			GPS Latitude/Longitude	
				Start	End
Item	DWR UCIP Field Study			37.429032 °	37.429032 °
				-121.029867 °	-121.029867 °
DWR ID	20214				

Photo 2 of 2 : UCIP\_FA\_2022\_74345\_111106.jpg



LS view: View of inside of pipe outlet.

<b>* Location</b> LS : Land Side    N/A : Not Applicable WS : Water Side CR : Crown	<b>** Rating</b> A : Acceptable M : Minimally Acceptable U : Unacceptable N : Not Inspected/Rated C : Corrected A/W : Acceptable but Monitor & Maintain	<b>+ Issue Type</b> Ma : Maintenance Deficiency Ob : Design & System Obsolescence En : Enforcement
--	---	---