

**Flood Control Project Maintenance  
Levee Inspections****Maintenance Issue Types Only, Levee Inspection Report By Mile - Fall 2024****Reclamation District No. 1601 Twitchell**

| Waterway                     | Bank | Unit Miles | Inspection Start/End     | Inspector         |
|------------------------------|------|------------|--------------------------|-------------------|
| Unit No. 01 Threemile Slough | Left | 2.43       | 10/10/2024<br>10/10/2024 | Gregg<br>McMillon |

|  |                                  |              |                        |            |     |  |  |  |  |  |
|--|----------------------------------|--------------|------------------------|------------|-----|--|--|--|--|--|
| LM Start   | 0.00                             | Rating **    | A                      | Issue No.  | 6   |  |  |  |  |  |
| LM End   | 0.00                             | Issue Type + | Ma                     | Location * | N/A |  |  |  |  |  |
| Category   | Earthen Levee                    |              | GPS Latitude/Longitude |            |     |  |  |  |  |  |
|  |                                  |              | Start                  | End        |     |  |  |  |  |  |
| Item   | Operations & Maintenance Manuals |              |                        |            |     |  |  |  |  |  |
| DWR ID   | DWR_RD1601_01_s _ 2013_6         |              |                        |            |     |  |  |  |  |  |
| Comment Code   |                                  |              |                        |            |     |  |  |  |  |  |
| OM : O&M Manuals   |                                  |              |                        |            |     |  |  |  |  |  |
| Inspector Comment  |                                  |              |                        |            |     |  |  |  |  |  |
| LMA has a copy of the O & M Manuals on file at the office. |                                  |              |                        |            |     |  |  |  |  |  |

No Photos

|   |                                |              |                        |            |     |  |  |  |  |  |
|---|--------------------------------|--------------|------------------------|------------|-----|--|--|--|--|--|
| LM Start                                      | 0.00                           | Rating **    | A                      | Issue No.  | 7   |  |  |  |  |  |
| LM End  | 0.00                           | Issue Type + | Ma                     | Location * | N/A |  |  |  |  |  |
| Category                                      | Earthen Levee                  |              | GPS Latitude/Longitude |            |     |  |  |  |  |  |
|   |                                |              | Start                  | End        |     |  |  |  |  |  |
| Item  | Emergency Supplies & Equipment |              |                        |            |     |  |  |  |  |  |
| DWR ID  | DWR_RD1601_01_s _ 2013_7       |              |                        |            |     |  |  |  |  |  |
| Comment Code                                  |                                |              |                        |            |     |  |  |  |  |  |
| ES : Emergency Supplies & Equipment           |                                |              |                        |            |     |  |  |  |  |  |
| Inspector Comment                             |                                |              |                        |            |     |  |  |  |  |  |
| LMA has adequate floodfight supplies on hand. |                                |              |                        |            |     |  |  |  |  |  |

No Photos

|                                    |                               |              |                        |            |     |  |  |  |  |  |
|------------------------------------|-------------------------------|--------------|------------------------|------------|-----|--|--|--|--|--|
| LM Start                           | 0.00                          | Rating **    | A                      | Issue No.  | 8   |  |  |  |  |  |
| LM End                             | 0.00                          | Issue Type + | Ma                     | Location * | N/A |  |  |  |  |  |
| Category                           | Earthen Levee                 |              | GPS Latitude/Longitude |            |     |  |  |  |  |  |
|                                    |                               |              | Start                  | End        |     |  |  |  |  |  |
| Item                               | Flood Preparedness & Training |              |                        |            |     |  |  |  |  |  |
| DWR ID                             | DWR_RD1601_01_s _ 2013_8      |              |                        |            |     |  |  |  |  |  |
| Comment Code                       |                               |              |                        |            |     |  |  |  |  |  |
| FP : Flood Preparedness & Training |                               |              |                        |            |     |  |  |  |  |  |
| Inspector Comment                  |                               |              |                        |            |     |  |  |  |  |  |
| LMA staff is trained.              |                               |              |                        |            |     |  |  |  |  |  |

No Photos

| * Location  | ** Rating  | + Issue Type   |
|---|--|--|
| LS : Land Side<br>WS : Water Side<br>CR : Crown                                     | A : Acceptable<br>M : Minimally Acceptable<br>U : Unacceptable | Ma : Maintenance Deficiency<br>Ob : Design & System Obsolescence<br>En : Enforcement |
| N : Not Inspected/Rated<br>C : Corrected<br>A/W : Acceptable but Monitor & Maintain |  |  |

**Flood Control Project Maintenance  
Levee Inspections****Maintenance Issue Types Only, Levee Inspection Report By Mile - Fall 2024****Reclamation District No. 1601 Twitchell**

| Waterway                     | Bank | Unit Miles | Inspection Start/End     | Inspector         |
|------------------------------|------|------------|--------------------------|-------------------|
| Unit No. 01 Threemile Slough | Left | 2.43       | 10/10/2024<br>10/10/2024 | Gregg<br>McMillon |

|   |                         |              |    |                        |              |
|---|-------------------------|--------------|----|------------------------|--------------|
| LM Start  | 0.02                    | Rating **    | M  | Issue No.              | 10           |
| LM End  | 0.04                    | Issue Type + | Ma | Location *             | LS           |
| Category  | Earthen Levee           |              |    | GPS Latitude/Longitude |              |
|   |                         |              |    | Start                  | End          |
| Item  | Vegetation              |              |    | 38.122007°             | 38.121772°   |
|   |                         |              |    | -121.682632°           | -121.682699° |
| DWR ID  | DWR_RD1601_01_f_2024_10 |              |    |                        |              |
| Comment Code  |                         |              |    |                        |              |
| V2 : Remove the wild growth and woody vegetation other than native grasses from the levee slopes. |                         |              |    |                        |              |
| Inspector Comment   |                         |              |    |                        |              |
| Remove blackberry bushes from landside toe.   |                         |              |    |                        |              |

No Photos

|   |                        |              |    |                        |              |
|---|------------------------|--------------|----|------------------------|--------------|
| LM Start  | 0.03                   | Rating **    | C  | Issue No.              | 9            |
| LM End  | 0.48                   | Issue Type + | Ma | Location *             | WS           |
| Category  | Earthen Levee          |              |    | GPS Latitude/Longitude |              |
|   |                        |              |    | Start                  | End          |
| Item  | Vegetation             |              |    | 38.121884°             | 38.115501°   |
|   |                        |              |    | -121.682626°           | -121.682068° |
| DWR ID  | DWR_RD1601_01_f_2023_9 |              |    |                        |              |
| Comment Code  |                        |              |    |                        |              |
| V2 : Remove the wild growth and woody vegetation other than native grasses from the levee slopes. |                        |              |    |                        |              |
| Inspector Comment   |                        |              |    |                        |              |
|   |                        |              |    |                        |              |

No Photos

|   |                         |              |    |                        |              |
|---|-------------------------|--------------|----|------------------------|--------------|
| LM Start  | 0.62                    | Rating **    | C  | Issue No.              | 11           |
| LM End  | 0.67                    | Issue Type + | Ma | Location *             | WS           |
| Category  | Earthen Levee           |              |    | GPS Latitude/Longitude |              |
|   |                         |              |    | Start                  | End          |
| Item  | Vegetation              |              |    | 38.113536°             | 38.112786°   |
|   |                         |              |    | -121.681945°           | -121.682050° |
| DWR ID  | DWR_RD1601_01_s_2024_11 |              |    |                        |              |
| Comment Code  |                         |              |    |                        |              |
| V2 : Remove the wild growth and woody vegetation other than native grasses from the levee slopes. |                         |              |    |                        |              |
| Inspector Comment   |                         |              |    |                        |              |
|   |                         |              |    |                        |              |

No Photos

|  |  |   |
|--|--|---|
| <b>* Location</b><br>LS : Land Side    N/A : Not Applicable<br>WS : Water Side<br>CR : Crown | <b>** Rating</b><br>A : Acceptable<br>M : Minimally Acceptable<br>U : Unacceptable | <b>+ Issue Type</b><br>Ma : Maintenance Deficiency<br>Ob : Design & System Obsolescence<br>En : Enforcement |
|--|--|---|

N : Not Inspected/Rated  
C : Corrected  
A/W : Acceptable but Monitor & Maintain

**Flood Control Project Maintenance  
Levee Inspections****Maintenance Issue Types Only, Levee Inspection Report By Mile - Fall 2024****Reclamation District No. 1601 Twitchell**

| Waterway                     | Bank | Unit Miles | Inspection Start/End     | Inspector         |
|------------------------------|------|------------|--------------------------|-------------------|
| Unit No. 01 Threemile Slough | Left | 2.43       | 10/10/2024<br>10/10/2024 | Gregg<br>McMillon |

|   |                        |              |    |                        |              |
|---|------------------------|--------------|----|------------------------|--------------|
| LM Start  | 0.71                   | Rating **    | C  | Issue No.              | 5            |
| LM End  | 0.85                   | Issue Type + | Ma | Location *             | WS           |
| Category  | Earthen Levee          |              |    | GPS Latitude/Longitude |              |
|   |                        |              |    | Start                  | End          |
| Item  | Vegetation             |              |    | 38.112253°             | 38.110173°   |
|   |                        |              |    | -121.682078°           | -121.682167° |
| DWR ID  | DWR_RD1601_01_f_2023_5 |              |    |                        |              |
| Comment Code  |                        |              |    |                        |              |
| V2 : Remove the wild growth and woody vegetation other than native grasses from the levee slopes. |                        |              |    |                        |              |
| Inspector Comment   |                        |              |    |                        |              |
|   |                        |              |    |                        |              |

No Photos

|   |                             |              |    |                        |              |
|---|-----------------------------|--------------|----|------------------------|--------------|
| LM Start  | 0.74                        | Rating **    | M  | Issue No.              | 19           |
| LM End  | 0.74                        | Issue Type + | Ma | Location *             |              |
| Category  | Supplemental                |              |    | GPS Latitude/Longitude |              |
|   |                             |              |    | Start                  | End          |
| Item  | DWR UCIP LMA Responsibility |              |    | 38.111846°             | 38.111846°   |
|   |                             |              |    | -121.682008°           | -121.682008° |
| DWR ID  | 20957                       |              |    |                        |              |
| Comment Code  |                             |              |    |                        |              |
|   |                             |              |    |                        |              |
| Inspector Comment   |                             |              |    |                        |              |
| DS_ID:20957<br>FS_ID:76138<br>EP_NO: N/A<br>Repair Type: Non-Urgent<br>EVAL Issue:<br>Crossing Status: Not Found<br>UCIP Comments: 05/25/2022 The record is Non-Urgent. Pipe not found by visual inspection. DWR DMP geophysical study did not confirm presence of pipe through levee. Record will remain in UCIP's inspection records until future Levee Improvement Project can confirm no crossing was found through the levee. The UCIP inspection was completed with GEI staff, C. Riddell. (A. Lau - GEI) 05/14/2013 No signs indicating crossing present--rip rap present on waterward slope. (Olivia Magana ? DWR)<br>FIELD_STRUCT_DESC: 18-inch corrugated metal drainage pipe through the levee at an unknown depth. [Additional Reference(s): DWR Levee Log, 2023 (HLM 0.79). USACE As-Built Drawing No. 50-04-2671, 25 January 1951, Sheet 12, STA 26+75].<br>FS Date: 5/25/2022 8:57:02 PM |                             |              |    |                        |              |

Photo 1 of 3 : UCIP\_FA\_2024\_76138\_113885.jpg



Levee crown at crossing location on record.

| * Location                                      | ** Rating   | + Issue Type   |
|---|---|--|
| LS : Land Side<br>WS : Water Side<br>CR : Crown | A : Acceptable<br>M : Minimally Acceptable<br>U : Unacceptable                      | Ma : Maintenance Deficiency<br>Ob : Design & System Obsolescence<br>En : Enforcement |
| N/A : Not Applicable                            | N : Not Inspected/Rated<br>C : Corrected<br>A/W : Acceptable but Monitor & Maintain |  |

**Flood Control Project Maintenance  
Levee Inspections**

## Maintenance Issue Types Only, Levee Inspection Report By Mile - Fall 2024

### Reclamation District No. 1601 Twitchell

| Waterway                     | Bank | Unit Miles | Inspection Start/End     | Inspector      |
|------------------------------|------|------------|--------------------------|----------------|
| Unit No. 01 Threemile Slough | Left | 2.43       | 10/10/2024<br>10/10/2024 | Gregg McMillon |

|          |                             |              |                        |              |                  |
|----------|-----------------------------|--------------|------------------------|--------------|------------------|
| LM Start | <b>0.74</b>                 | Rating **    | M                      | Issue No.    | <b>19 (cont)</b> |
| LM End   | <b>0.74</b>                 | Issue Type + | Ma                     | Location *   |                  |
| Category | Supplemental                |              | GPS Latitude/Longitude |              |                  |
|          |                             |              | Start                  | End          |                  |
| Item     | DWR UCIP LMA Responsibility |              | 38.111846°             | 38.111846°   |                  |
|          |                             |              | -121.682008°           | -121.682008° |                  |
| DWR ID   | 20957                       |              |                        |              |                  |

Photo 2 of 3 : UCIP\_FA\_2024\_76138\_113886.jpg



WS view: Slope from crown at crossing location on record; no visible pipe crossing.

|          |             |              |    |            |                  |
|----------|-------------|--------------|----|------------|------------------|
| LM Start | <b>0.74</b> | Rating **    | M  | Issue No.  | <b>19 (cont)</b> |
| LM End   | <b>0.74</b> | Issue Type + | Ma | Location * |                  |

Photo 3 of 3 : UCIP\_FA\_2024\_76138\_113887.jpg



LS view: Toe from crown at crossing location on record; no visible pipe crossing.

|   |                         |              |    |                        |              |
|---|-------------------------|--------------|----|------------------------|--------------|
| LM Start  | 1.29                    | Rating **    | U  | Issue No.              | 16           |
| LM End  | 1.29                    | Issue Type + | Ma | Location *             | LS           |
| Category  | Earthen Levee           |              |    | GPS Latitude/Longitude |              |
|   |                         |              |    | Start                  | End          |
| Item  | Erosion / Bank Caving   |              |    | 38.103970°             | 38.103970°   |
|   |                         |              |    | -121.684028°           | -121.684028° |
| DWR ID  | DWR_RD1601_01_f_2024_16 |              |    |                        |              |
| Comment Code  |                         |              |    |                        |              |
| E2 : Schedule repair of erosion site prior to the next inspection.  |                         |              |    |                        |              |
| Inspector Comment   |                         |              |    |                        |              |
| Large approximately 30'x30' sink hole has appeared. LMA to work with their district engineer for emergency repairs to fill the sink hole. |                         |              |    |                        |              |

Photo 1 of 1 : FA\_2024\_RD1601\_237\_16\_20241011\_00015.jpg



View of approximately 30'x30' sink hole that has formed on the landside slope. (Fall 2024)

|                 |                      |                          |   |                                   |  |
|-----------------|----------------------|--------------------------|---|-----------------------------------|--|
| * Location      |                      | ** Rating                |   | + Issue Type                      |  |
| LS : Land Side  | N/A : Not Applicable | A : Acceptable           | N : Not Inspected/Rated                 | Ma : Maintenance Deficiency       |  |
| WS : Water Side |                      | M : Minimally Acceptable | C : Corrected                           | Ob : Design & System Obsolescence |  |
| CR : Crown      |                      | U : Unacceptable         | A/W : Acceptable but Monitor & Maintain | En : Enforcement                  |  |

**Flood Control Project Maintenance  
Levee Inspections****Maintenance Issue Types Only, Levee Inspection Report By Mile - Fall 2024****Reclamation District No. 1601 Twitchell**

| Waterway                     | Bank | Unit Miles | Inspection Start/End     | Inspector         |
|------------------------------|------|------------|--------------------------|-------------------|
| Unit No. 01 Threemile Slough | Left | 2.43       | 10/10/2024<br>10/10/2024 | Gregg<br>McMillon |

|   |                         |              |    |                        |              |
|---|-------------------------|--------------|----|------------------------|--------------|
| LM Start  | 1.34                    | Rating **    | C  | Issue No.              | 12           |
| LM End  | 1.34                    | Issue Type + | Ma | Location *             | WS           |
| Category  | Earthen Levee           |              |    | GPS Latitude/Longitude |              |
|   |                         |              |    | Start                  | End          |
| Item  | Vegetation              |              |    | 38.103342°             | 38.103342°   |
|   |                         |              |    | -121.684059°           | -121.684059° |
| DWR ID  | DWR_RD1601_01_s_2024_12 |              |    |                        |              |
| Comment Code  |                         |              |    |                        |              |
| V2 : Remove the wild growth and woody vegetation other than native grasses from the levee slopes. |                         |              |    |                        |              |
| Inspector Comment   |                         |              |    |                        |              |
|   |                         |              |    |                        |              |

No Photos

|   |                         |              |    |                        |              |
|---|-------------------------|--------------|----|------------------------|--------------|
| LM Start  | 1.54                    | Rating **    | C  | Issue No.              | 13           |
| LM End  | 1.58                    | Issue Type + | Ma | Location *             | WS           |
| Category  | Earthen Levee           |              |    | GPS Latitude/Longitude |              |
|   |                         |              |    | Start                  | End          |
| Item  | Vegetation              |              |    | 38.100357°             | 38.099870°   |
|   |                         |              |    | -121.684719°           | -121.684781° |
| DWR ID  | DWR_RD1601_01_s_2024_13 |              |    |                        |              |
| Comment Code  |                         |              |    |                        |              |
| V2 : Remove the wild growth and woody vegetation other than native grasses from the levee slopes. |                         |              |    |                        |              |
| Inspector Comment   |                         |              |    |                        |              |
|   |                         |              |    |                        |              |

No Photos

|   |                         |              |    |                        |              |
|---|-------------------------|--------------|----|------------------------|--------------|
| LM Start  | 1.69                    | Rating **    | C  | Issue No.              | 14           |
| LM End  | 1.69                    | Issue Type + | Ma | Location *             | WS           |
| Category  | Earthen Levee           |              |    | GPS Latitude/Longitude |              |
|   |                         |              |    | Start                  | End          |
| Item  | Vegetation              |              |    | 38.098184°             | 38.098184°   |
|   |                         |              |    | -121.684886°           | -121.684886° |
| DWR ID  | DWR_RD1601_01_f_2024_14 |              |    |                        |              |
| Comment Code  |                         |              |    |                        |              |
| V2 : Remove the wild growth and woody vegetation other than native grasses from the levee slopes. |                         |              |    |                        |              |
| Inspector Comment   |                         |              |    |                        |              |
|   |                         |              |    |                        |              |

No Photos

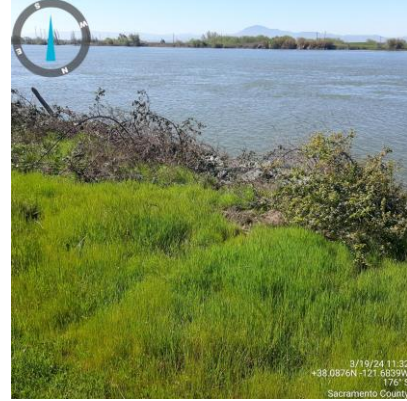
|  |  |   |  |   |  |
|--|--|---|--|---|--|
| <b>* Location</b><br>LS : Land Side    N/A : Not Applicable<br>WS : Water Side<br>CR : Crown |  | <b>** Rating</b><br>A : Acceptable<br>M : Minimally Acceptable<br>U : Unacceptable<br>N : Not Inspected/Rated<br>C : Corrected<br>A/W : Acceptable but Monitor & Maintain |  | <b>+ Issue Type</b><br>Ma : Maintenance Deficiency<br>Ob : Design & System Obsolescence<br>En : Enforcement |  |
|--|--|---|--|---|--|

**Flood Control Project Maintenance  
Levee Inspections****Maintenance Issue Types Only, Levee Inspection Report By Mile - Fall 2024****Reclamation District No. 1601 Twitchell**

| Waterway                     | Bank | Unit Miles | Inspection Start/End     | Inspector         |
|------------------------------|------|------------|--------------------------|-------------------|
| Unit No. 01 Threemile Slough | Left | 2.43       | 10/10/2024<br>10/10/2024 | Gregg<br>McMillon |

|   |                         |              |    |                        |              |
|---|-------------------------|--------------|----|------------------------|--------------|
| LM Start  | 2.42                    | Rating **    | U  | Issue No.              | 15           |
| LM End  | 2.42                    | Issue Type + | Ma | Location *             | WS           |
| Category  | Earthen Levee           |              |    | GPS Latitude/Longitude |              |
|   |                         |              |    | Start                  | End          |
| Item  | Vegetation              |              |    | 38.087580°             | 38.087580°   |
|   |                         |              |    | -121.683899°           | -121.683899° |
| DWR ID  | DWR_RD1601_01_s_2024_15 |              |    |                        |              |
| Comment Code  |                         |              |    |                        |              |
| V2 : Remove the wild growth and woody vegetation other than native grasses from the levee slopes. |                         |              |    |                        |              |
| Inspector Comment   |                         |              |    |                        |              |
| Blackberry bushes to be removed.  |                         |              |    |                        |              |

Photo 1 of 1 : FA\_2024\_RD1601\_237\_15\_20241001\_00002.jpg



View of wild vegetation on the WS slope. (Spring 2024)

| * Location                                      | ** Rating   | + Issue Type   |
|---|---|--|
| LS : Land Side<br>WS : Water Side<br>CR : Crown | A : Acceptable<br>M : Minimally Acceptable<br>U : Unacceptable                      | Ma : Maintenance Deficiency<br>Ob : Design & System Obsolescence<br>En : Enforcement |
| N/A : Not Applicable                            | N : Not Inspected/Rated<br>C : Corrected<br>A/W : Acceptable but Monitor & Maintain |  |