

Flood Control Project Maintenance Levee Inspections

Fall 2024 Levee Maintenance Deficiency Summary Report

Sacramento River Basin

RD1600 ‡	Overall LMA Rating	Total LMA Miles						
Reclamation District No. 1600 Mull	U	14.69						
Rated Item	Maintenance Deficiency				Enforcement		Design & System Obsolescence	
	M Miles	U Miles	M + 4U Miles	Threshold %	M Miles	U Miles	M Miles	U Miles
<i>Earthen Levee</i>								
Vegetation	5.95		5.95	40.50%				
Trim / Thin Trees	0.01	0.01	0.05	0.34%				
Encroachments					0.21			
Animal Control		0.01	0.04	0.27%				
Slope Stability	0.01		0.01	0.07%				
Erosion / Bank Caving	0.82	0.01	0.86	5.85%				
Erosion / Foot Traffic	0.01		0.01	0.07%				
Erosion / Rills	0.02		0.02	0.14%				
Erosion / Vehicle Traffic	0.03	0.01	0.07	0.48%				
<i>Supplemental</i>								
2018 USACE Erosion Survey	0.03		0.03	0.20%				
DWR UCIP Field Study					0.06	0.03		
<i>LMA Totals:</i>	6.88	0.04	7.04	47.92%	0.27	0.03	0.00	0.00
Unit No. 01 Sacramento River RB	Overall Unit Rating	Total Unit Miles						
RD1600	U	10.46						
Rated Item	Maintenance Deficiency				Enforcement		Design & System Obsolescence	
	M Miles	U Miles	M + 4U Miles	Threshold %	M Miles	U Miles	M Miles	U Miles
<i>Earthen Levee</i>								
Vegetation	5.95		5.95	56.89%				
Trim / Thin Trees		0.01	0.04	0.38%				
Encroachments					0.21			
Animal Control		0.01	0.04	0.38%				
Slope Stability	0.01		0.01	0.10%				
Erosion / Bank Caving	0.08	0.01	0.12	1.15%				
Erosion / Foot Traffic	0.01		0.01	0.10%				
Erosion / Rills	0.02		0.02	0.19%				
Erosion / Vehicle Traffic	0.03	0.01	0.07	0.67%				
<i>Supplemental</i>								
2018 USACE Erosion Survey	0.03		0.03	0.29%				
DWR UCIP Field Study					0.05	0.03		
<i>Unit Totals:</i>	6.13	0.04	6.29	60.14%	0.26	0.03	0.00	0.00
Unit No. 02 Yolo Bypass LB	Overall Unit Rating	Total Unit Miles						
RD1600	M	4.23						
Rated Item	Maintenance Deficiency				Enforcement		Design & System Obsolescence	
	M Miles	U Miles	M + 4U Miles	Threshold %	M Miles	U Miles	M Miles	U Miles
<i>Earthen Levee</i>								
Trim / Thin Trees	0.01		0.01	0.24%				
Erosion / Bank Caving	0.74		0.74	17.48%				
<i>Supplemental</i>								
DWR UCIP Field Study					0.01			
<i>Unit Totals:</i>	0.75	0.00	0.75	17.72%	0.01	0.00	0.00	0.00

**Flood Control Project Maintenance
Levee Inspections
Fall 2024 Levee Maintenance Deficiency Summary Report**

Sacramento River Basin (cont.)

‡ Some areas within the LMA are under construction and as such, the contractor has operation and maintenance obligations in those areas during project construction and closeout.

**Flood Control Project Maintenance
Levee Inspections
LMA District Cover Sheet**

Reclamation District No. 1600 Mull

	Spring (March - May)	Summer ** (June - August)	Fall (September - November)	Winter ** (December - February)
† Overall LMA Rating (Fall Only)			U	

** Non-receipt of Summer or Winter Inspection
Reports may effect overall annual rating.

† SPRING INSPECTIONS: Overall maintenance ratings are not determined for the spring inspection results. Individual maintenance deficiencies are rated using the same criteria in the spring and in the fall.

FALL INSPECTIONS: The overall maintenance rating shown above is based on operation and maintenance deficiencies identified within the attached unit inspection reports. This rating is not intended to be an indication of risk.

Comments

**Flood Control Project Maintenance
Levee Inspections
Unit Cover Sheet**

Reclamation District No. 1600 Mull

Waterway	Bank	Unit Miles
Unit No. 01 Sacramento River	Right	10.46

	Spring (March - May)	Summer (June - August)	(September - November) Fall	Winter (December - February)
Unit Maintenance Rating (Fall Only)			U	
Date of Inspection	4/3/2024 - 5/7/2024		10/28/2024 - 10/28/2024	
DWR Inspector	Nate Hicks		Nate Hicks	
Accompanied By	Tina Anderson MBK		Tina Anderson MBK	
	Sterling York DWR			

Summer & Winter Inspections

The Local Maintaining Agency (LMA) is responsible for summer and winter inspections. The LMA is required to submit a report regarding summer and winter inspections to the California Department of Water Resources (DWR).

DWR must be informed on the:

- a) completion of the inspection
- b) any changes other than the results of normal maintenance
- c) corrections to deficiencies noted in this report

If additional items are noted, further documentation of those items must also be submitted.

The LMA should submit this information to DWR using the LMA web application tool available at:

<http://cdec.water.ca.gov/lma.html>

If the LMA is unable to submit information on this webpage, please contact DWR for assistance.

The LMA should submit the information and any associated documentation by September 30 for summer inspections and March 31 for winter inspections.

**Flood Control Project Maintenance
Levee Inspections****Levee Inspection Report By Mile - Fall 2024****Reclamation District No. 1600 Mull**

Waterway	Bank	Unit Miles	Inspection Start/End	Inspector
Unit No. 01 Sacramento River	Right	10.46	10/28/2024 10/28/2024	Nate Hicks

LM Start		Rating **	A	Issue No.	32
LM End		Issue Type +	Ma	Location *	N/A
Category	Earthen Levee			GPS Latitude/Longitude	
				Start	End
Item	Operations & Maintenance Manuals				o
					o
DWR ID	DWR_RD1600_01_s _ 2013_32				
Comment Code					
OM : O&M Manuals					
Inspector Comment					
RD 1600 has copies of the O&M manuals.					

No Photos

LM Start		Rating **	A	Issue No.	33
LM End		Issue Type +	Ma	Location *	N/A
Category	Earthen Levee			GPS Latitude/Longitude	
				Start	End
Item	Emergency Supplies & Equipment				o
					o
DWR ID	DWR_RD1600_01_s _ 2019_33				
Comment Code					
ES : Emergency Supplies & Equipment					
Inspector Comment					
RD 1600 maintains a stockpile of flood response material.					

No Photos

LM Start		Rating **	A	Issue No.	34		
LM End		Issue Type +	Ma	Location *	N/A		
Category	Earthen Levee			GPS Latitude/Longitude			
				Start		End	
Item	Flood Preparedness & Training				o		o
					o		o
DWR ID	DWR_RD1600_01_s _ 2013_34						
Comment Code							
FP : Flood Preparedness & Training							
Inspector Comment							
RD 1600 has a written flood response plan and flood response training.							

No Photos

* Location LS : Land Side N/A : Not Applicable WS : Water Side CR : Crown		** Rating A : Acceptable M : Minimally Acceptable U : Unacceptable N : Not Inspected/Rated C : Corrected A/W : Acceptable but Monitor & Maintain		+ Issue Type Ma : Maintenance Deficiency Ob : Design & System Obsolescence En : Enforcement	
--	--	---	--	---	--

**Flood Control Project Maintenance
Levee Inspections****Levee Inspection Report By Mile - Fall 2024****Reclamation District No. 1600 Mull**

Waterway	Bank	Unit Miles	Inspection Start/End	Inspector
Unit No. 01 Sacramento River	Right	10.46	10/28/2024 10/28/2024	Nate Hicks

LM Start	0.10	Rating **	M	Issue No.	129
LM End	0.10	Issue Type +	En	Location *	WS
Category	Earthen Levee			GPS Latitude/Longitude	
				Start	End
Item	Encroachments			38.676467°	38.676467°
				-121.631217°	-121.631217°
DWR ID	DWR_RD1600_01_s _ 2023_129				
Comment Code					
BU : Building					
Inspector Comment					
Well pump house located on the waterside shoulder.					

Photo 1 of 1 : FA_2024_RD1600_191_129_20241028_00042.jpg



View of pump house on the waterside shoulder (Spring 2024).

LM Start	0.11	Rating **	A/W	Issue No.	49
LM End	0.23	Issue Type +	Ob	Location *	WS
Category	Earthen Levee			GPS Latitude/Longitude	
				Start	End
Item	Vegetation			38.676577°	38.678131°
				-121.631290°	-121.632324°
DWR ID	DWR_RD1600_01_s _ 2012_49				
Comment Code					
V5 : Environmental Requirements.					
Inspector Comment					

Photo 1 of 1 : FA_2024_RD1600_191_49_20241028_00028.jpg



Sign stating revegetation site. Spring 2016.

LM Start	0.12	Rating **	M	Issue No.	10
LM End	3.42	Issue Type +	Ma	Location *	LS
Category	Earthen Levee			GPS Latitude/Longitude	
				Start	End
Item	Vegetation			38.676638°	38.715894°
				-121.631361°	-121.609373°
DWR ID	DWR_RD1600_01_f _ 2024_10				
Comment Code					
V1 : Control annual grass and weeds on the levee slopes and easements.					
Inspector Comment					

Photo 1 of 1 : FA_2024_RD1600_191_10_20241101_00069.jpg



View of vegetation on the landside slope (Fall 2024).

* Location	** Rating	+ Issue Type
LS : Land Side WS : Water Side CR : Crown	A : Acceptable M : Minimally Acceptable U : Unacceptable	Ma : Maintenance Deficiency Ob : Design & System Obsolescence En : Enforcement
N : Not Inspected/Rated C : Corrected A/W : Acceptable but Monitor & Maintain		

**Flood Control Project Maintenance
Levee Inspections****Levee Inspection Report By Mile - Fall 2024****Reclamation District No. 1600 Mull**

Waterway	Bank	Unit Miles	Inspection Start/End	Inspector
Unit No. 01 Sacramento River	Right	10.46	10/28/2024 10/28/2024	Nate Hicks

LM Start	0.19	Rating **	C	Issue No.	52
LM End	0.19	Issue Type +	Ma	Location *	LS
Category	Earthen Levee			GPS Latitude/Longitude	
				Start	End
Item	Erosion / Vehicle Traffic			38.677589°	38.677589°
				-121.632022°	-121.632022°
DWR ID	DWR_RD1600_01_f _ 2023_52				
Comment Code					
E6 : Repair the levee slope damaged by vehicle traffic and prevent access where possible.					
Inspector Comment					
Corrected.					

No Photos

LM Start	0.52	Rating **	M	Issue No.	44
LM End	0.52	Issue Type +	En	Location *	CR
Category	Earthen Levee			GPS Latitude/Longitude	
				Start	End
Item	Encroachments			38.682046°	38.682046°
				-121.634064°	-121.634064°
DWR ID	DWR_RD1600_01_s_2020_44				
Comment Code					
PO : Pole					
Inspector Comment					
There are telephone poles over the levee crown.					

Photo 1 of 1 : FA_2024_RD1600_191_44_20241028_00024.jpg



View of telephone line over levee crown (Fall 2023).

LM Start	0.53	Rating **	M	Issue No.	133
LM End	0.53	Issue Type +	Ma	Location *	LS
Category	Earthen Levee			GPS Latitude/Longitude	
				Start	End
Item	Erosion / Foot Traffic			38.682140°	38.682140°
				-121.634083°	-121.634083°
DWR ID	DWR_RD1600_01_f_2013_133				
Comment Code					
E3 : Repair the levee slope damaged by foot traffic and prevent access where possible.					
Inspector Comment					
There appears to be a footpath and settlement on landside slope over pipe crossing.					

Photo 1 of 1 : FA_2024_RD1600_191_133_20241028_00043.jpg



View of settlement and footpath on landside slope (Spring 2024).

* Location	** Rating	+ Issue Type
LS : Land Side WS : Water Side CR : Crown	A : Acceptable M : Minimally Acceptable U : Unacceptable	Ma : Maintenance Deficiency Ob : Design & System Obsolescence En : Enforcement
N : Not Inspected/Rated C : Corrected A/W : Acceptable but Monitor & Maintain		

**Flood Control Project Maintenance
Levee Inspections****Levee Inspection Report By Mile - Fall 2024****Reclamation District No. 1600 Mull**

Waterway	Bank	Unit Miles	Inspection Start/End	Inspector
Unit No. 01 Sacramento River	Right	10.46	10/28/2024 10/28/2024	Nate Hicks

LM Start	0.53	Rating **	M	Issue No.	1198	
LM End	0.53	Issue Type +	En	Location *		
Category	Supplemental			GPS Latitude/Longitude		
				Start	End	
Item	DWR UCIP Field Study			38.682155°	38.682155°	
				-121.634070°	-121.634070°	
DWR ID	21460					
Comment Code						
Inspector Comment						
DS_ID:21460 FS_ID:73418 EP_NO: N/A Repair Type: Non-Urgent EVAL Issue: 6, Levee Damage or Threat for Levee Damage Crossing Status: Found UCIP Comments: 03/01/2022 Record updated from No Action Needed to Non-Urgent. Sinkhole measured 24-inch in diameter and 6-inch in depth located at the shoulder of CO RD 117. Depression on landside slope. New concrete distribution box constructed on landside. Vertical pump on the top of it, and sand filters in the field are installed. Old concrete distribution box debris found on road shoulder. No permit has been identified authorizing pipe. (O.Yakimov - DWR UCIP) FIELD_STRUCT_DESC: 14-inch steel irrigation pipe through the levee 15.2 feet below the crown. Slant pump and gate valve on the waterside (WS) slope. Service pole with electrical panel on WS shoulder, overhead power line. Concrete distribution box off the landside (LS) toe. Vertical pump over the concrete distribution box, sand filters on LS. [Additional Reference(s): DWR Levee Log, 1988 (HLM 0.53). USACE Sacramento O&M Manual, Unit 123, August 1955, Revised 17 December 2020, (RM 71.0), listed as 14-inch pipe]. FS Date: 3/1/2022						

LM Start	0.53	Rating **	M	Issue No.	1198 (cont)
LM End	0.53	Issue Type +	En	Location *	

Photo 1 of 3 : UCIP_FA_2024_73418_109776.jpg



Water-Side: Slant pump at riverbank

Photo 2 of 3 : UCIP_FA_2024_73418_109780.jpg



Land-Side: View of depression on levee slope and a sinkhole at road shoulder

* Location	** Rating	+ Issue Type
LS : Land Side WS : Water Side CR : Crown	A : Acceptable M : Minimally Acceptable U : Unacceptable	Ma : Maintenance Deficiency Ob : Design & System Obsolescence En : Enforcement
N/A : Not Applicable	N : Not Inspected/Rated C : Corrected A/W : Acceptable but Monitor & Maintain	

**Flood Control Project Maintenance
Levee Inspections****Levee Inspection Report By Mile - Fall 2024****Reclamation District No. 1600 Mull**

Waterway	Bank	Unit Miles	Inspection Start/End	Inspector
Unit No. 01 Sacramento River	Right	10.46	10/28/2024 10/28/2024	Nate Hicks

LM Start	0.53	Rating **	M	Issue No.	1198 (cont)
LM End	0.53	Issue Type +	En	Location *	
Category	Supplemental			GPS Latitude/Longitude	
				Start	End
Item	DWR UCIP Field Study			38.682155°	38.682155°
				-121.634070°	-121.634070°
DWR ID	21460				

Photo 3 of 3 : UCIP_FA_2024_73418_109774.jpg



Land-Side: New concrete distribution box, pump on the top, and sand filters installed on landside

LM Start	0.56	Rating **	A/W	Issue No.	26
LM End	0.66	Issue Type +	Ob	Location *	WS
Category	Earthen Levee			GPS Latitude/Longitude	
				Start	End
Item	Vegetation			38.682661°	38.684099°
				-121.634238°	-121.634625°
DWR ID	DWR_RD1600_01_s_2020_26				
Comment Code					
V5 : Environmental Requirements.					
Inspector Comment					
USACE, DWR, and RD 1600 revegetation site.					

Photo 1 of 1 : FA_2024_RD1600_191_26_20241028_00018.jpg



View of revegetation sign on the waterside berm. Spring 2020.

* Location LS : Land Side N/A : Not Applicable WS : Water Side CR : Crown	** Rating A : Acceptable M : Minimally Acceptable U : Unacceptable N : Not Inspected/Rated C : Corrected A/W : Acceptable but Monitor & Maintain	+ Issue Type Ma : Maintenance Deficiency Ob : Design & System Obsolescence En : Enforcement
--	---	---

**Flood Control Project Maintenance
Levee Inspections****Levee Inspection Report By Mile - Fall 2024****Reclamation District No. 1600 Mull**

Waterway	Bank	Unit Miles	Inspection Start/End	Inspector
Unit No. 01 Sacramento River	Right	10.46	10/28/2024 10/28/2024	Nate Hicks

LM Start	0.94	Rating **	U	Issue No.	1199	
LM End	0.94	Issue Type +	En	Location *		
Category	Supplemental			GPS Latitude/Longitude		
				Start	End	
Item	DWR UCIP Field Study			38.688030°	38.688030°	
				-121.635367°	-121.635367°	
DWR ID	21463					
Comment Code						
Inspector Comment						
DS_ID:21463 FS_ID:73427 EP_NO: 6100 Repair Type: Urgent EVAL Issue: 2a, Levee Integrity Crossing Status: Found UCIP Comments: 03/01/2022 Record updated from Non-Urgent to Urgent. Found unauthorized excavation under the pump on waterside to install flow meter. Excavation is 36 inches in diameter and 10 inches deep. Gate valve at the pump is in operable condition. (O.Yakimov - DWR UCIP) 06/18/2013 Gate valve will not open or close. (W.Wylie - DWR UCIP) FIELD_STRUCT_DESC: 12-inch steel irrigation pipe through the levee, 3.4 feet below the crown. Slant pump and gate valve on the waterside (WS) slope. Siphon breaker in a 12-inch steel riser on the landside (LS) shoulder. Filter, booster pump, and butterfly valve on the LS toe. 2.25-inch galvanized iron electrical conduit at the same location. This crossing replaces 8-inch pipe (see DSID 21462). (12-inch pipe authorized under Permit No. 6100, 1968 - Charles Plumb Jr.). [Additional Reference(s): DWR Levee Log, 1988 (HLM 0.94)]. FS Date: 3/1/2022 2:36:45 PM						

LM Start	0.94	Rating **	U	Issue No.	1199 (cont)
LM End	0.94	Issue Type +	En	Location *	

Photo 1 of 3 : UCIP_FA_2024_73427_109788.jpg



Water-Side: Excavation made to install flow meter under the pump

Photo 2 of 3 : UCIP_FA_2024_73427_109787.jpg



Water-Side: Overview of slant pipe on levee berm. Sand bags put on the top of pipe to lower vibration and keep pipe in place

* Location	** Rating	+ Issue Type
LS : Land Side WS : Water Side CR : Crown	A : Acceptable M : Minimally Acceptable U : Unacceptable	Ma : Maintenance Deficiency Ob : Design & System Obsolescence En : Enforcement
N/A : Not Applicable	N : Not Inspected/Rated C : Corrected A/W : Acceptable but Monitor & Maintain	

**Flood Control Project Maintenance
Levee Inspections****Levee Inspection Report By Mile - Fall 2024****Reclamation District No. 1600 Mull**

Waterway	Bank	Unit Miles	Inspection Start/End	Inspector
Unit No. 01 Sacramento River	Right	10.46	10/28/2024 10/28/2024	Nate Hicks

LM Start	0.94	Rating **	U	Issue No.	1199 (cont)
LM End	0.94	Issue Type +	En	Location *	
Category	Supplemental			GPS Latitude/Longitude	
				Start	End
Item	DWR UCIP Field Study			38.688030°	38.688030°
				-121.635367°	-121.635367°
DWR ID	21463				

Photo 3 of 3 : UCIP_FA_2024_73427_109791.jpg



Land-Side: View of levee slope looking from crown

LM Start	0.97	Rating **	M	Issue No.	134
LM End	0.97	Issue Type +	Ma	Location *	LS
Category	Earthen Levee			GPS Latitude/Longitude	
				Start	End
Item	Erosion / Rills			38.688454°	38.688454°
				-121.635528°	-121.635528°
DWR ID	DWR_RD1600_01_f_2021_134				
Comment Code					
E5 : Schedule repair of rills prior to the next inspection.					
Inspector Comment					
Rills are forming on the landside slope.					

Photo 1 of 1 : FA_2024_RD1600_191_134_20241028_00044.jpg



View of erosion on the landside shoulder. Spring 2022.

LM Start	1.01	Rating **	A/W	Issue No.	22
LM End	1.10	Issue Type +	Ob	Location *	WS
Category	Earthen Levee			GPS Latitude/Longitude	
				Start	End
Item	Vegetation			38.689092°	38.690368°
				-121.635616°	-121.635669°
DWR ID	DWR_RD1600_01_f_2017_22				
Comment Code					
V5 : Environmental Requirements.					
Inspector Comment					

Photo 1 of 1 : FA_2024_RD1600_191_22_20241028_00014.jpg



Sign stating revegetation site. Spring 2016.

* Location	** Rating	+ Issue Type
LS : Land Side WS : Water Side CR : Crown	A : Acceptable M : Minimally Acceptable U : Unacceptable	Ma : Maintenance Deficiency Ob : Design & System Obsolescence En : Enforcement
	N : Not Inspected/Rated C : Corrected A/W : Acceptable but Monitor & Maintain	

**Flood Control Project Maintenance
Levee Inspections****Levee Inspection Report By Mile - Fall 2024****Reclamation District No. 1600 Mull**

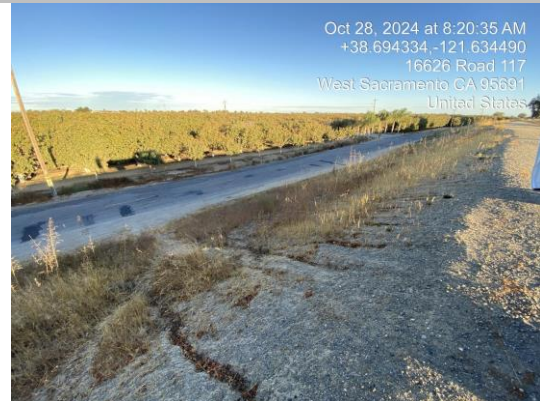
Waterway	Bank	Unit Miles	Inspection Start/End	Inspector
Unit No. 01 Sacramento River	Right	10.46	10/28/2024 10/28/2024	Nate Hicks

LM Start	1.26	Rating **	C	Issue No.	11
LM End	1.26	Issue Type +	Ma	Location *	WS
Category	Earthen Levee			GPS Latitude/Longitude	
				Start	End
Item	Trim / Thin Trees			38.692608°	38.692608°
				-121.635233°	-121.635233°
DWR ID	DWR_RD1600_01_s_2024_11				
Comment Code					
T2 : Tree or limb.					
Inspector Comment					
Corrected.					

No Photos

LM Start	1.38	Rating **	A/W	Issue No.	12
LM End	1.42	Issue Type +	Ma	Location *	LS
Category	Earthen Levee			GPS Latitude/Longitude	
				Start	End
Item	Erosion / Rills			38.694317°	38.694741°
				-121.634404°	-121.634240°
DWR ID	DWR_RD1600_01_s_2023_12				
Comment Code					
E5 : Schedule repair of rills prior to the next inspection.					
Inspector Comment					
Rills are beginning to form on the landside slope. Recommend monitoring.					

Photo 1 of 1 : FA_2024_RD1600_191_12_20241101_00070.jpg



View of rills beginning to form on the landside slope (Fall 2024).

LM Start	1.40	Rating **	A/W	Issue No.	5
LM End	1.40	Issue Type +	Ob	Location *	WS
Category	Earthen Levee			GPS Latitude/Longitude	
				Start	End
Item	Vegetation			38.694469°	38.694469°
				-121.634312°	-121.634312°
DWR ID	DWR_RD1600_01_f_2012_5				
Comment Code					
V5 : Environmental Requirements.					
Inspector Comment					

Photo 1 of 1 : FA_2024_RD1600_191_5_20241028_00001.jpg



View of the revegetation site on the berm of the waterward side of the levee looking upstream. Spring 2016.

* Location	** Rating	+ Issue Type
LS : Land Side WS : Water Side CR : Crown	A : Acceptable M : Minimally Acceptable U : Unacceptable	Ma : Maintenance Deficiency Ob : Design & System Obsolescence En : Enforcement
N/A : Not Applicable	N : Not Inspected/Rated C : Corrected A/W : Acceptable but Monitor & Maintain	

**Flood Control Project Maintenance
Levee Inspections****Levee Inspection Report By Mile - Fall 2024****Reclamation District No. 1600 Mull**

Waterway	Bank	Unit Miles	Inspection Start/End	Inspector
Unit No. 01 Sacramento River	Right	10.46	10/28/2024 10/28/2024	Nate Hicks

LM Start	1.65	Rating **	C	Issue No.	46
LM End	1.65	Issue Type +	Ma	Location *	LS
Category	Earthen Levee			GPS Latitude/Longitude	
				Start	End
Item	Erosion / Rills			38.697799°	38.697799°
				-121.632396°	-121.632396°
DWR ID	DWR_RD1600_01_f _ 2019_46				
Comment Code					
E5 : Schedule repair of rills prior to the next inspection.					
Inspector Comment					
Corrected.					

No Photos

LM Start	1.70	Rating **	A/W	Issue No.	70
LM End	1.70	Issue Type +	Ma	Location *	LS
Category	Earthen Levee			GPS Latitude/Longitude	
				Start	End
Item	Erosion / Vehicle Traffic			38.698414°	38.698414°
				-121.631874°	-121.631874°
DWR ID	DWR_RD1600_01_f_2017_70				
Comment Code					
E6 : Repair the levee slope damaged by vehicle traffic and prevent access where possible.					
Inspector Comment					
Footpath and vehicle access on landside slope. Recommend monitoring.					

Photo 1 of 1 : FA_2024_RD1600_191_70_20241028_00039.jpg



View of footpath on the landside slope. Spring 2022.

LM Start	1.72	Rating **	A/W	Issue No.	31
LM End	1.72	Issue Type +	Ma	Location *	WS
Category	Earthen Levee			GPS Latitude/Longitude	
				Start	End
Item	Vegetation			38.698639°	38.698639°
				-121.631687°	-121.631687°
DWR ID	DWR_RD1600_01_s_2012_31				
Comment Code					
V4 : Elderberries are blocking visibility and flood fight capability.					
Inspector Comment					

No Photos

* Location LS : Land Side N/A : Not Applicable WS : Water Side CR : Crown		** Rating A : Acceptable M : Minimally Acceptable U : Unacceptable N : Not Inspected/Rated C : Corrected A/W : Acceptable but Monitor & Maintain		+ Issue Type Ma : Maintenance Deficiency Ob : Design & System Obsolescence En : Enforcement	
--	--	---	--	---	--

**Flood Control Project Maintenance
Levee Inspections****Levee Inspection Report By Mile - Fall 2024****Reclamation District No. 1600 Mull**

Waterway	Bank	Unit Miles	Inspection Start/End	Inspector
Unit No. 01 Sacramento River	Right	10.46	10/28/2024 10/28/2024	Nate Hicks

LM Start	1.89	Rating **	C	Issue No.	62
LM End	1.89	Issue Type +	Ma	Location *	LS
Category	Earthen Levee			GPS Latitude/Longitude	
				Start	End
Item	Erosion / Vehicle Traffic			38.700579°	38.700579°
				-121.629585°	-121.629585°
DWR ID	DWR_RD1600_01_s _ 2022_62				
Comment Code					
E6 : Repair the levee slope damaged by vehicle traffic and prevent access where possible.					
Inspector Comment					
Corrected.					

No Photos

LM Start	2.01	Rating **	A/W	Issue No.	14
LM End	2.01	Issue Type +	Ma	Location *	WS
Category	Earthen Levee			GPS Latitude/Longitude	
				Start	End
Item	Erosion / Foot Traffic			38.701633°	38.701633°
				-121.627945°	-121.627945°
DWR ID	DWR_RD1600_01_s _ 2023_14				
Comment Code					
E3 : Repair the levee slope damaged by foot traffic and prevent access where possible.					
Inspector Comment					
There is a footpath on the waterside slope. Recommend monitoring for now.					

Photo 1 of 1 : FA_2024_RD1600_191_14_20241028_00004.jpg



View of footpath that has eroded the waterside levee slope (Spring 2023).

LM Start	2.02	Rating **	C	Issue No.	24
LM End	2.02	Issue Type +	Ma	Location *	LS
Category	Earthen Levee			GPS Latitude/Longitude	
				Start	End
Item	Erosion / Foot Traffic			38.701724°	38.701724°
				-121.627778°	-121.627778°
DWR ID	DWR_RD1600_01_s _ 2023_24				
Comment Code					
E3 : Repair the levee slope damaged by foot traffic and prevent access where possible.					
Inspector Comment					
Corrected.					

No Photos

* Location LS : Land Side N/A : Not Applicable WS : Water Side CR : Crown		** Rating A : Acceptable M : Minimally Acceptable U : Unacceptable N : Not Inspected/Rated C : Corrected A/W : Acceptable but Monitor & Maintain		+ Issue Type Ma : Maintenance Deficiency Ob : Design & System Obsolescence En : Enforcement	
---	--	---	--	---	--

**Flood Control Project Maintenance
Levee Inspections****Levee Inspection Report By Mile - Fall 2024****Reclamation District No. 1600 Mull**

Waterway	Bank	Unit Miles	Inspection Start/End	Inspector
Unit No. 01 Sacramento River	Right	10.46	10/28/2024 10/28/2024	Nate Hicks

LM Start	2.10	Rating **	M	Issue No.	66
LM End	2.10	Issue Type +	Ma	Location *	LS
Category	Earthen Levee			GPS Latitude/Longitude	
				Start	End
Item	Slope Stability			38.702417°	38.702417°
				-121.626588°	-121.626588°
DWR ID	DWR_RD1600_01_f_2023_66				
Comment Code					
S1 : Repair slope instability.					
Inspector Comment					
Slope instability may be caused by sheep grazing. Recommend caution with future use.					

Photo 1 of 1 : FA_2024_RD1600_191_66_20241028_00036.jpg



View of slope instability on the landside slope (Fall 2023).

LM Start	2.14	Rating **	M	Issue No.	18
LM End	2.14	Issue Type +	Ma	Location *	LS
Category	Earthen Levee			GPS Latitude/Longitude	
				Start	End
Item	Erosion / Vehicle Traffic			38.702730°	38.702730°
				-121.626038°	-121.626038°
DWR ID	DWR_RD1600_01_f_2020_18				
Comment Code					
E6 : Repair the levee slope damaged by vehicle traffic and prevent access where possible.					
Inspector Comment					
Vehicle traffic on the landside slope.					

No Photos

* Location LS : Land Side N/A : Not Applicable WS : Water Side CR : Crown	** Rating A : Acceptable M : Minimally Acceptable U : Unacceptable N : Not Inspected/Rated C : Corrected A/W : Acceptable but Monitor & Maintain	+ Issue Type Ma : Maintenance Deficiency Ob : Design & System Obsolescence En : Enforcement
--	---	---

**Flood Control Project Maintenance
Levee Inspections****Levee Inspection Report By Mile - Fall 2024****Reclamation District No. 1600 Mull**

Waterway	Bank	Unit Miles	Inspection Start/End	Inspector
Unit No. 01 Sacramento River	Right	10.46	10/28/2024 10/28/2024	Nate Hicks

LM Start	2.16	Rating **	M	Issue No.	1200
LM End	2.16	Issue Type +	En	Location *	
Category	Supplemental			GPS Latitude/Longitude	
				Start	End
Item	DWR UCIP Field Study			38.702981°	38.702981°
				-121.625644°	-121.625644°
DWR ID	21466				
Comment Code					
Inspector Comment					
DS_ID:21466 FS_ID:73455 EP_NO: 14648 Repair Type: Non-Urgent EVAL Issue: 10, Unauthorized Modification or Non-Compliant Permit Crossing Status: Found UCIP Comments: 03/01/2022 Record updated from No Action Needed to Non-Urgent. Excavation was discovered to expose pipe section near steel standpipe on landside more that 15 feet from toe. Discharge pipe was cut open and its end was plugged with metal plate to re-route flow from steel standpipe to a booster pump and then to sand filters. Unable to find a permit for modification. Open hole on the top of pipe under the pump on waterside made for flow meter wrapped with tape. (O.Yakimov - DWR UCIP) FIELD_STRUCT_DESC: 24-inch steel irrigation pipe through the levee, 4 feet below the crown. Pump on metal platform on the waterside (WS). 8-foot-diameter steel distribution standpipe with gate valve, 45 feet from the landside (LS) toe. Diesel booster pump and sand filters on landside. (24-inch pipe authorized under Permit No. 14648, 1987 - Layton Knaggs). [Additional Reference(s): DWR Levee Log, 1988 (HLM 2.10)]. FS Date: 3/1/2022 4:13:02 PM					

LM Start	2.16	Rating **	M	Issue No.	1200 (cont)
LM End	2.16	Issue Type +	En	Location *	

Photo 1 of 3 : UCIP_FA_2024_73455_109809.jpg



Water-Side: Slant pump at riverbank

Photo 2 of 3 : UCIP_FA_2024_73455_109814.jpg



Water-Side: Taped hole made for flow meter under the pump

* Location	** Rating	+ Issue Type
LS: Land Side WS: Water Side CR: Crown	A: Acceptable M: Minimally Acceptable U: Unacceptable	Ma: Maintenance Deficiency Ob: Design & System Obsolescence En: Enforcement
N/A: Not Applicable	N: Not Inspected/Rated C: Corrected A/W: Acceptable but Monitor & Maintain	

**Flood Control Project Maintenance
Levee Inspections****Levee Inspection Report By Mile - Fall 2024****Reclamation District No. 1600 Mull**

Waterway	Bank	Unit Miles	Inspection Start/End	Inspector
Unit No. 01 Sacramento River	Right	10.46	10/28/2024 10/28/2024	Nate Hicks

LM Start	2.16	Rating **	M	Issue No.	1200 (cont)
LM End	2.16	Issue Type +	En	Location *	
Category	Supplemental			GPS Latitude/Longitude	
				Start	End
Item	DWR UCIP Field Study			38.702981°	38.702981°
				-121.625644°	-121.625644°
DWR ID	21466				

Photo 3 of 3 : UCIP_FA_2024_73455_109813.jpg



Land-Side: Excavation to expose pipe section and re-route water flow to booster pump and sand filters

LM Start	2.18	Rating **	M	Issue No.	30
LM End	2.18	Issue Type +	Ma	Location *	LS
Category	Earthen Levee			GPS Latitude/Longitude	
				Start	End
Item	Erosion / Vehicle Traffic			38.703143°	38.703143°
				-121.625415°	-121.625415°
DWR ID	DWR_RD1600_01_s_2021_30				
Comment Code					
E6 : Repair the levee slope damaged by vehicle traffic and prevent access where possible.					
Inspector Comment					
There is vehicle traffic on the landside slope causing erosion.					

Photo 1 of 1 : FA_2024_RD1600_191_30_20241101_00071.jpg



View of erosion caused by vehicle traffic on the landside slope (Fall 2024).

* Location LS : Land Side N/A : Not Applicable WS : Water Side CR : Crown	** Rating A : Acceptable M : Minimally Acceptable U : Unacceptable N : Not Inspected/Rated C : Corrected A/W : Acceptable but Monitor & Maintain	+ Issue Type Ma : Maintenance Deficiency Ob : Design & System Obsolescence En : Enforcement
--	---	---

Flood Control Project Maintenance
Levee Inspections

Levee Inspection Report By Mile - Fall 2024

Reclamation District No. 1600 Mull

Waterway	Bank	Unit Miles	Inspection Start/End	Inspector
Unit No. 01 Sacramento River	Right	10.46	10/28/2024 10/28/2024	Nate Hicks

LM Start	2.32	Rating **	U	Issue No.	27
LM End	2.32	Issue Type +	Ma	Location *	LS
Category	Earthen Levee			GPS Latitude/Longitude	
				Start	End
Item	Trim / Thin Trees			38.704405°	38.704405°
				-121.623386°	-121.623386°
DWR ID	DWR_RD1600_01_f _ 2024_27				
Comment Code					
T2 : Tree or limb.					
Inspector Comment					

Photo 1 of 1 : FA_2024_RD1600_191_27_20241101_00072.jpg



View of fallen tree on the landside slope and easement (Fall 2024).

LM Start	2.32	Rating **	M	Issue No.	64
LM End	2.32	Issue Type +	Ma	Location *	LS
Category	Earthen Levee			GPS Latitude/Longitude	
				Start	End
Item	Erosion / Rills			38.704423°	38.704423°
				-121.623385°	-121.623385°
DWR ID	DWR_RD1600_01_s_2022_64				
Comment Code					
E5 : Schedule repair of rills prior to the next inspection.					
Inspector Comment					
Rills on the landside slope.					

No Photos

LM Start	2.35	Rating **	A/W	Issue No.	35
LM End	2.40	Issue Type +	Ob	Location *	WS
Category	Earthen Levee			GPS Latitude/Longitude	
				Start	End
Item	Vegetation			38.704624°	38.705152°
				-121.623034°	-121.622187°
DWR ID	DWR_RD1600_01_s_2012_35				
Comment Code					
V5 : Environmental Requirements.					
Inspector Comment					

Photo 1 of 1 : FA_2024_RD1600_191_35_20241028_00021.jpg



Sign for revegetation site. Spring 2016.

* Location	** Rating	+ Issue Type
LS : Land Side WS : Water Side CR : Crown	A : Acceptable M : Minimally Acceptable U : Unacceptable	Ma : Maintenance Deficiency Ob : Design & System Obsolescence En : Enforcement
N : Not Inspected/Rated C : Corrected A/W : Acceptable but Monitor & Maintain		

Flood Control Project Maintenance
Levee Inspections

Levee Inspection Report By Mile - Fall 2024

Reclamation District No. 1600 Mull

Waterway	Bank	Unit Miles	Inspection Start/End	Inspector
Unit No. 01 Sacramento River	Right	10.46	10/28/2024 10/28/2024	Nate Hicks

LM Start	2.41	Rating **	A/W	Issue No.	42
LM End	2.41	Issue Type +	Ma	Location *	LS
Category	Earthen Levee			GPS Latitude/Longitude	
				Start	End
Item	Erosion / Vehicle Traffic			38.705187°	38.705187°
				-121.622177°	-121.622177°
DWR ID	DWR_RD1600_01_f _ 2024_42				
Comment Code					
E6 : Repair the levee slope damaged by vehicle traffic and prevent access where possible.					
Inspector Comment					
Erosion damage caused by vehicle traffic. Recommend monitoring.					

Photo 1 of 1 : FA_2024_RD1600_191_42_20241101_00073.jpg



View of erosion caused by vehicle traffic on the landside slope (Fall 2024).

LM Start	2.51	Rating **	M	Issue No.	53
LM End	2.67	Issue Type +	En	Location *	CR
Category	Earthen Levee			GPS Latitude/Longitude	
				Start	End
Item	Encroachments			38.706231°	38.707850°
				-121.620850°	-121.618796°
DWR ID	DWR_RD1600_01_f_2024_53				
Comment Code					
MISC : Miscellaneous					
Inspector Comment					
Bee boxes on the levee crown.					

No Photos

LM Start	2.61	Rating **	A/W	Issue No.	45
LM End	2.61	Issue Type +	Ma	Location *	LS
Category	Earthen Levee			GPS Latitude/Longitude	
				Start	End
Item	Vegetation			38.707311°	38.707311°
				-121.619517°	-121.619517°
DWR ID	DWR_RD1600_01_f_2016_45				
Comment Code					
V4 : Elderberries are blocking visibility and flood fight capability.					
Inspector Comment					

No Photos

* Location	** Rating	+ Issue Type
LS : Land Side WS : Water Side CR : Crown	A : Acceptable M : Minimally Acceptable U : Unacceptable	Ma : Maintenance Deficiency Ob : Design & System Obsolescence En : Enforcement
N/A : Not Applicable	N : Not Inspected/Rated C : Corrected A/W : Acceptable but Monitor & Maintain	

**Flood Control Project Maintenance
Levee Inspections****Levee Inspection Report By Mile - Fall 2024****Reclamation District No. 1600 Mull**

Waterway	Bank	Unit Miles	Inspection Start/End	Inspector
Unit No. 01 Sacramento River	Right	10.46	10/28/2024 10/28/2024	Nate Hicks

LM Start	2.81	Rating **	M	Issue No.	55
LM End	2.81	Issue Type +	En	Location *	WS
Category	Earthen Levee			GPS Latitude/Longitude	
				Start	End
Item	Encroachments			38.709309°	38.709309°
				-121.616938°	-121.616938°
DWR ID	DWR_RD1600_01_f_2024_55				
Comment Code					
MISC : Miscellaneous					
Inspector Comment					
Bee boxes on the waterside slope and toe.					

No Photos

LM Start	2.99	Rating **	A/W	Issue No.	15
LM End	3.37	Issue Type +	Ma	Location *	WS
Category	Supplemental			GPS Latitude/Longitude	
				Start	End
Item	2018 USACE Erosion Survey			38.710874°	38.715134°
				-121.614239°	-121.609566°
DWR ID	DWR_RD1600_01_s_2022_15				
Comment Code					
Inspector Comment					
2018 Site ID: SAC 74.0 R					
Status: Eroding					
2018 Field Notes: Bank toe continues to erode.					
Site History: 2017 - Significant toe erosion. Erosion along entire bank.					
Tree popouts observed.					

LM Start	2.99	Rating **	A/W	Issue No.	15 (cont)
LM End	3.37	Issue Type +	Ma	Location *	WS

Photo 1 of 2 : FA_2024_RD1600_191_15_20241028_00005.jpg



USACE 2018 Erosion Photo #1

Photo 2 of 2 : FA_2024_RD1600_191_15_20241028_00006.jpg



USACE 2018 Erosion Photo #2

* Location	** Rating	+ Issue Type
LS : Land Side WS : Water Side CR : Crown	A : Acceptable M : Minimally Acceptable U : Unacceptable	Ma : Maintenance Deficiency Ob : Design & System Obsolescence En : Enforcement
N/A : Not Applicable	N : Not Inspected/Rated C : Corrected A/W : Acceptable but Monitor & Maintain	

**Flood Control Project Maintenance
Levee Inspections****Levee Inspection Report By Mile - Fall 2024****Reclamation District No. 1600 Mull**

Waterway	Bank	Unit Miles	Inspection Start/End	Inspector
Unit No. 01 Sacramento River	Right	10.46	10/28/2024 10/28/2024	Nate Hicks

LM Start	2.99	Rating **	C	Issue No.	25
LM End	3.01	Issue Type +	Ma	Location *	LS
Category	Earthen Levee			GPS Latitude/Longitude	
				Start	End
Item	Animal Control			38.711193°	38.711339°
				-121.614493°	-121.614302°
DWR ID	DWR_RD1600_01_s_2024_25				
Comment Code					
A3 : No rodents visible, but rodent burrows visible; need to backfill and compact or grout burrows.					
Inspector Comment					
Corrected.					

No Photos

LM Start	3.04	Rating **	A/W	Issue No.	37
LM End	3.04	Issue Type +	Ma	Location *	LS
Category	Earthen Levee			GPS Latitude/Longitude	
				Start	End
Item	Vegetation			38.711597°	38.711597°
				-121.613890°	-121.613890°
DWR ID	DWR_RD1600_01_s_2012_37				
Comment Code					
V4 : Elderberries are blocking visibility and flood fight capability.					
Inspector Comment					

No Photos

LM Start	3.09	Rating **	M	Issue No.	29
LM End	3.09	Issue Type +	Ma	Location *	WS
Category	Earthen Levee			GPS Latitude/Longitude	
				Start	End
Item	Erosion / Bank Caving			38.712205°	38.712205°
				-121.613212°	-121.613212°
DWR ID	DWR_RD1600_01_f_2020_29				
Comment Code					
E2 : Schedule repair of erosion site prior to the next inspection.					
Inspector Comment					
There is an erosion pocket on the waterside berm. There is approximately 20' of berm before a vertical drop that cuts into the prism.					

Photo 1 of 1 : FA_2024_RD1600_191_29_20241028_00020.jpg



View of erosion from the water. Spring 2022.

* Location	** Rating	+ Issue Type
LS : Land Side WS : Water Side CR : Crown	A : Acceptable M : Minimally Acceptable U : Unacceptable	Ma : Maintenance Deficiency Ob : Design & System Obsolescence En : Enforcement
N : Not Inspected/Rated C : Corrected A/W : Acceptable but Monitor & Maintain		

Flood Control Project Maintenance
Levee Inspections

Levee Inspection Report By Mile - Fall 2024

Reclamation District No. 1600 Mull

Waterway	Bank	Unit Miles	Inspection Start/End	Inspector
Unit No. 01 Sacramento River	Right	10.46	10/28/2024 10/28/2024	Nate Hicks

LM Start	3.20	Rating **	M	Issue No.	51
LM End	3.20	Issue Type +	Ma	Location *	LS
Category	Earthen Levee			GPS Latitude/Longitude	
				Start	End
Item	Vegetation			38.713393°	38.713393°
				-121.611828°	-121.611828°
DWR ID	DWR_RD1600_01_s_2017_51				
Comment Code					
V4 : Elderberries are blocking visibility and flood fight capability.					
Inspector Comment					

No Photos

LM Start	3.26	Rating **	M	Issue No.	40
LM End	3.26	Issue Type +	Ma	Location *	WS
Category	Earthen Levee			GPS Latitude/Longitude	
				Start	End
Item	Erosion / Bank Caving			38.713816°	38.713816°
				-121.610697°	-121.610697°
DWR ID	DWR_RD1600_01_s_2022_40				
Comment Code					
E2 : Schedule repair of erosion site prior to the next inspection.					
Inspector Comment					
Vertical erosion wall on the waterside slope.					

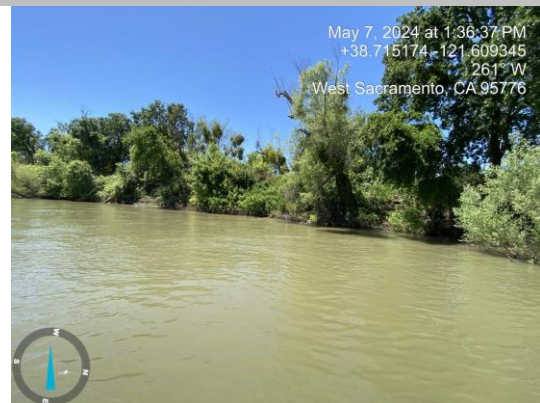
Photo 1 of 1 : FA_2024_RD1600_191_40_20241028_00022.jpg



View of erosion from the water (Spring 2024).

LM Start	3.36	Rating **	M	Issue No.	43
LM End	3.36	Issue Type +	Ma	Location *	WS
Category	Earthen Levee			GPS Latitude/Longitude	
				Start	End
Item	Erosion / Bank Caving			38.714903°	38.714903°
				-121.609654°	-121.609654°
DWR ID	DWR_RD1600_01_s_2022_43				
Comment Code					
E2 : Schedule repair of erosion site prior to the next inspection.					
Inspector Comment					
Vertical erosion wall on the waterside slope.					

Photo 1 of 1 : FA_2024_RD1600_191_43_20241028_00023.jpg



View of erosion from the water (Spring 2024).

* Location LS : Land Side N/A : Not Applicable WS : Water Side CR : Crown		** Rating A : Acceptable M : Minimally Acceptable U : Unacceptable N : Not Inspected/Rated C : Corrected A/W : Acceptable but Monitor & Maintain		+ Issue Type Ma : Maintenance Deficiency Ob : Design & System Obsolescence En : Enforcement	
--	--	---	--	---	--

**Flood Control Project Maintenance
Levee Inspections****Levee Inspection Report By Mile - Fall 2024****Reclamation District No. 1600 Mull**

Waterway	Bank	Unit Miles	Inspection Start/End	Inspector
Unit No. 01 Sacramento River	Right	10.46	10/28/2024 10/28/2024	Nate Hicks

LM Start	3.40	Rating **	M	Issue No.	77
LM End	3.40	Issue Type +	Ma	Location *	LS
Category	Earthen Levee			GPS Latitude/Longitude	
				Start	End
Item	Vegetation			38.715681°	38.715681°
				-121.609555°	-121.609555°
DWR ID	DWR_RD1600_01_f _ 2019_77				
Comment Code					
V4 : Elderberries are blocking visibility and flood fight capability.					
Inspector Comment					

No Photos

LM Start	3.58	Rating **	U	Issue No.	1201	
LM End	3.58	Issue Type +	En	Location *		
Category	Supplemental			GPS Latitude/Longitude		
				Start	End	
Item	DWR UCIP Field Study			38.717835°	38.717835°	
				-121.607941°	-121.607941°	
DWR ID	21468					
Comment Code						
Inspector Comment						
DS_ID:21468 FS_ID:73513 EP_NO: 6196 Repair Type: Urgent EVAL Issue: 2a, Levee Integrity Crossing Status: Found UCIP Comments: 03/01/2022 Record updated from No Action Needed to Urgent. Unauthorized excavation on waterside berm made to install flow meter and around pipe at the pumping platform. Electric motor removed from the pump. (O.Yakimov - DWR UCIP) FIELD_STRUCT_DESC: 18-inch steel irrigation pipe through the levee, 3 feet below the crown. Slant pump on the waterside (WS) berm. Siphon breaker in an 18-inch steel riser on the landside (LS) shoulder. 6-foot by 6-foot concrete distribution box off the LS toe. Water well on landside. This crossing replaces 18-inch pipe (see DSID 21489). (Replacement of 75-foot section of pipe within levee prism authorized under Permit No. 6196, 1968 - The Church of Jesus Christ of Latter Day Saints). [Additional Reference(s): DWR Levee Log, 1988 (HLM 3.59)]. FS Date: 3/1/2022 3:10:52 PM						

Photo 1 of 3 : UCIP_FA_2024_73513_109840.jpg



Water-Side: Overview of slant pump at riverbank

* Location	** Rating	+ Issue Type
LS : Land Side WS : Water Side CR : Crown	A : Acceptable M : Minimally Acceptable U : Unacceptable	Ma : Maintenance Deficiency Ob : Design & System Obsolescence En : Enforcement
N/A : Not Applicable	N : Not Inspected/Rated C : Corrected A/W : Acceptable but Monitor & Maintain	

**Flood Control Project Maintenance
Levee Inspections****Levee Inspection Report By Mile - Fall 2024****Reclamation District No. 1600 Mull**

Waterway	Bank	Unit Miles	Inspection Start/End	Inspector
Unit No. 01 Sacramento River	Right	10.46	10/28/2024 10/28/2024	Nate Hicks

LM Start	3.58	Rating **	U	Issue No.	1201 (cont)
LM End	3.58	Issue Type +	En	Location *	
Category	Supplemental			GPS Latitude/Longitude	
				Start	End
Item	DWR UCIP Field Study			38.717835°	38.717835°
				-121.607941°	-121.607941°
DWR ID	21468				

Photo 2 of 3 : UCIP_FA_2024_73513_109847.jpg



Water-Side: Excavation around pipe on levee berm to install flow meter

LM Start	3.58	Rating **	U	Issue No.	1201 (cont)
LM End	3.58	Issue Type +	En	Location *	

Photo 3 of 3 : UCIP_FA_2024_73513_109841.jpg



Water-Side: Excavation to install pipe at pumping platform

* Location LS : Land Side N/A : Not Applicable WS : Water Side CR : Crown	** Rating A : Acceptable M : Minimally Acceptable U : Unacceptable N : Not Inspected/Rated C : Corrected A/W : Acceptable but Monitor & Maintain	+ Issue Type Ma : Maintenance Deficiency Ob : Design & System Obsolescence En : Enforcement
--	---	---

**Flood Control Project Maintenance
Levee Inspections****Levee Inspection Report By Mile - Fall 2024****Reclamation District No. 1600 Mull**

Waterway	Bank	Unit Miles	Inspection Start/End	Inspector
Unit No. 01 Sacramento River	Right	10.46	10/28/2024 10/28/2024	Nate Hicks

LM Start	3.58	Rating **	A/W	Issue No.	16
LM End	3.83	Issue Type +	Ma	Location *	WS
Category	Supplemental			GPS Latitude/Longitude	
				Start	End
Item	2018 USACE Erosion Survey			38.717770°	38.721351°
				-121.607423°	-121.606414°
DWR ID	DWR_RD1600_01_s _ 2022_16				
Comment Code					
Inspector Comment					
2018 Site ID: SAC 74.4 R Status: Eroding 2018 Field Notes: Minor new erosion. Site History: 1997 - Steep high bank. 2005 - Some small pockets in the low toe near the waterline. 2006 - Minor slope clearing. 2010 - Minor new erosion. 2011 - Multiple trees have fallen since last year. Some other trees look ready to fall. Significant new erosion since last year. 2012 - Minor new erosion. 2013 - Minor new erosion. 2015 - Minor new toe erosion. 2017 - Significant erosion at toe in the past year. Fresh tree popout. DWR Inspector Comment: Erosion begins where riprap ends.					

LM Start	3.58	Rating **	A/W	Issue No.	16 (cont)
LM End	3.83	Issue Type +	Ma	Location *	WS

Photo 1 of 3 : FA_2024_RD1600_191_16_20241028_00007.jpg



View of beginning of erosion from downstream end. Spring 2022.

Photo 2 of 3 : FA_2024_RD1600_191_16_20241028_00008.jpg



View of erosion at the worst location. Spring 2022.

* Location LS: Land Side N/A: Not Applicable WS: Water Side CR: Crown		** Rating A: Acceptable M: Minimally Acceptable U: Unacceptable N: Not Inspected/Rated C: Corrected A/W: Acceptable but Monitor & Maintain		+ Issue Type Ma: Maintenance Deficiency Ob: Design & System Obsolescence En: Enforcement	
--	--	---	--	--	--

**Flood Control Project Maintenance
Levee Inspections****Levee Inspection Report By Mile - Fall 2024****Reclamation District No. 1600 Mull**

Waterway	Bank	Unit Miles	Inspection Start/End	Inspector
Unit No. 01 Sacramento River	Right	10.46	10/28/2024 10/28/2024	Nate Hicks

LM Start	3.58	Rating **	A/W	Issue No.	16 (cont)
LM End	3.83	Issue Type +	Ma	Location *	WS
Category	Supplemental			GPS Latitude/Longitude	
				Start	End
Item	2018 USACE Erosion Survey			38.717770°	38.721351°
				-121.607423°	-121.606414°
DWR ID	DWR_RD1600_01_s_2022_16				

Photo 3 of 3 : FA_2024_RD1600_191_16_20241028_00009.jpg



View of end of erosion at the upstream end. Spring 2022.

LM Start	3.59	Rating **	M	Issue No.	47
LM End	3.59	Issue Type +	Ma	Location *	WS
Category	Earthen Levee			GPS Latitude/Longitude	
				Start	End
Item	Erosion / Bank Caving			38.718047°	38.718047°
				-121.607840°	-121.607840°
DWR ID	DWR_RD1600_01_f_2020_47				
Comment Code					
E2 : Schedule repair of erosion site prior to the next inspection.					
Inspector Comment					
Erosion pocket on waterside berm. Approximately 15 feet of berm until vertical drop into prism.					

Photo 1 of 1 : FA_2024_RD1600_191_47_20241028_00026.jpg



View of erosion on waterside berm (Spring 2024).

LM Start	3.62	Rating **	M	Issue No.	48
LM End	3.62	Issue Type +	Ma	Location *	WS
Category	Earthen Levee			GPS Latitude/Longitude	
				Start	End
Item	Erosion / Bank Caving			38.718449°	38.718449°
				-121.607591°	-121.607591°
DWR ID	DWR_RD1600_01_f_2020_48				
Comment Code					
E2 : Schedule repair of erosion site prior to the next inspection.					
Inspector Comment					
Erosion pocket on waterside berm. Approximately 8 feet of berm until vertical drop into prism.					

Photo 1 of 1 : FA_2024_RD1600_191_48_20241028_00027.jpg



View of erosion location on waterside berm (Spring 2024).

* Location LS : Land Side N/A : Not Applicable WS : Water Side CR : Crown		** Rating A : Acceptable M : Minimally Acceptable U : Unacceptable N : Not Inspected/Rated C : Corrected A/W : Acceptable but Monitor & Maintain		+ Issue Type Ma : Maintenance Deficiency Ob : Design & System Obsolescence En : Enforcement	
--	--	---	--	---	--

Flood Control Project Maintenance
Levee Inspections

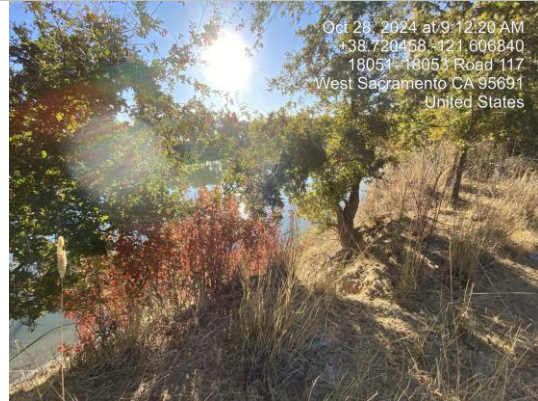
Levee Inspection Report By Mile - Fall 2024

Reclamation District No. 1600 Mull

Waterway	Bank	Unit Miles	Inspection Start/End	Inspector
Unit No. 01 Sacramento River	Right	10.46	10/28/2024 10/28/2024	Nate Hicks

LM Start	3.76	Rating **	U	Issue No.	50
LM End	3.76	Issue Type +	Ma	Location *	WS
Category	Earthen Levee			GPS Latitude/Longitude	
				Start	End
Item	Erosion / Bank Caving			38.720447°	38.720447°
				-121.606946°	-121.606946°
DWR ID	DWR_RD1600_01_f_2020_50				
Comment Code					
E2 : Schedule repair of erosion site prior to the next inspection.					
Inspector Comment					
Erosion pocket on waterside berm that appears to be encroaching into the theoretical levee prism.					

Photo 1 of 1 : FA_2024_RD1600_191_50_20241101_00074.jpg



View of erosion on the waterside bank that appears to be encroaching into the theoretical levee prism (Fall 2024).

LM Start	3.85	Rating **	M	Issue No.	38
LM End	3.85	Issue Type +	Ma	Location *	LS
Category	Earthen Levee			GPS Latitude/Longitude	
				Start	End
Item	Erosion / Vehicle Traffic			38.721665°	38.721665°
				-121.606814°	-121.606814°
DWR ID	DWR_RD1600_01_s_2021_38				
Comment Code					
E6 : Repair the levee slope damaged by vehicle traffic and prevent access where possible.					
Inspector Comment					
Vehicle traffic on the landside slope.					

No Photos

LM Start	4.03	Rating **	C	Issue No.	67
LM End	4.06	Issue Type +	Ma	Location *	LS
Category	Earthen Levee			GPS Latitude/Longitude	
				Start	End
Item	Erosion / Rills			38.724350°	38.724710°
				-121.606606°	-121.606570°
DWR ID	DWR_RD1600_01_f_2023_67				
Comment Code					
E5 : Schedule repair of rills prior to the next inspection.					
Inspector Comment					
Corrected.					

No Photos

* Location	** Rating	+ Issue Type
LS : Land Side WS : Water Side CR : Crown	A : Acceptable M : Minimally Acceptable U : Unacceptable	Ma : Maintenance Deficiency Ob : Design & System Obsolescence En : Enforcement
N : Not Inspected/Rated C : Corrected A/W : Acceptable but Monitor & Maintain		

**Flood Control Project Maintenance
Levee Inspections****Levee Inspection Report By Mile - Fall 2024****Reclamation District No. 1600 Mull**

Waterway	Bank	Unit Miles	Inspection Start/End	Inspector
Unit No. 01 Sacramento River	Right	10.46	10/28/2024 10/28/2024	Nate Hicks

LM Start	4.11	Rating **	C	Issue No.	65
LM End	4.14	Issue Type +	Ma	Location *	LS
Category	Earthen Levee			GPS Latitude/Longitude	
				Start	End
Item	Erosion / Rills			38.725471°	38.725844°
				-121.606511°	-121.606494°
DWR ID	DWR_RD1600_01_s_2022_65				
Comment Code					
E5 : Schedule repair of rills prior to the next inspection.					
Inspector Comment					
Corrected.					

No Photos

LM Start	4.34	Rating **	A/W	Issue No.	17
LM End	4.86	Issue Type +	Ma	Location *	WS
Category	Supplemental			GPS Latitude/Longitude	
				Start	End
Item	2018 USACE Erosion Survey			38.728684°	38.736110°
				-121.605844°	-121.604153°
DWR ID	DWR_RD1600_01_s_2022_17				
Comment Code					
Inspector Comment					
2018 Site ID: SAC 75.3 R Status: Eroding 2018 Field Notes: Minor new toe erosion. Site History: 1997 - Very steep bank. 2005 - Lots of small trees down along the bank at the upstream end. 2006 - Minor new erosion, but slow. 2010 - Almost all of the roots are exposed on the trees, appears ready to fall. 2011 - New erosion and tree popouts. 2012 - Site has become overgrown with vegetation, making it hard to observe. 2015 - Dense vegetation made the site difficult to observe. 2017 - Fresh erosion along lower bank in sections.					

Photo 1 of 2 : FA_2024_RD1600_191_17_20241028_00010.jpg



View of erosion near downstream end. Spring 2022.

* Location LS : Land Side N/A : Not Applicable WS : Water Side CR : Crown	** Rating A : Acceptable M : Minimally Acceptable U : Unacceptable N : Not Inspected/Rated C : Corrected A/W : Acceptable but Monitor & Maintain	+ Issue Type Ma : Maintenance Deficiency Ob : Design & System Obsolescence En : Enforcement
--	---	---

Flood Control Project Maintenance
Levee Inspections

Levee Inspection Report By Mile - Fall 2024

Reclamation District No. 1600 Mull

Waterway	Bank	Unit Miles	Inspection Start/End	Inspector
Unit No. 01 Sacramento River	Right	10.46	10/28/2024 10/28/2024	Nate Hicks

LM Start	4.34	Rating **	A/W	Issue No.	17 (cont)
LM End	4.86	Issue Type +	Ma	Location *	WS
Category	Supplemental			GPS Latitude/Longitude	
				Start	End
Item	2018 USACE Erosion Survey			38.728684°	38.736110°
				-121.605844°	-121.604153°
DWR ID	DWR_RD1600_01_s_2022_17				

Photo 2 of 2 : FA_2024_RD1600_191_17_20241028_00011.jpg



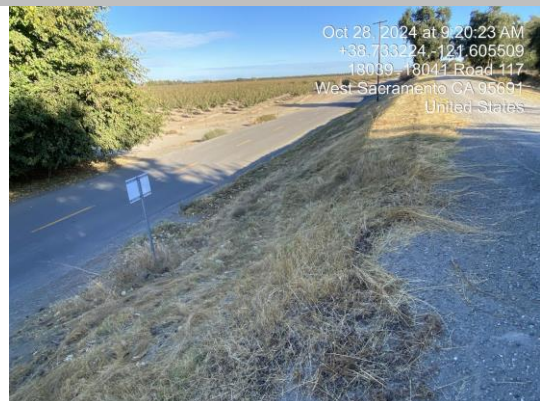
View of erosion near upstream end. Spring 2022.

LM Start	4.50	Rating **	C	Issue No.	69
LM End	4.50	Issue Type +	Ma	Location *	LS
Category	Earthen Levee			GPS Latitude/Longitude	
				Start	End
Item	Erosion / Foot Traffic			38.731088°	38.731088°
				-121.605871°	-121.605871°
DWR ID	DWR_RD1600_01_f_2023_69				
Comment Code					
E3 : Repair the levee slope damaged by foot traffic and prevent access where possible.					
Inspector Comment					
Corrected.					

No Photos

LM Start	4.66	Rating **	M	Issue No.	36
LM End	4.66	Issue Type +	Ma	Location *	LS
Category	Earthen Levee			GPS Latitude/Longitude	
				Start	End
Item	Erosion / Bank Caving			38.733296°	38.733296°
				-121.605472°	-121.605472°
DWR ID	DWR_RD1600_01_s_2020_36				
Comment Code					
E2 : Schedule repair of erosion site prior to the next inspection.					
Inspector Comment					
There is a depression in the landside slope that is possibly being caused by runoff.					

Photo 1 of 1 : FA_2024_RD1600_191_36_20241101_00075.jpg



View of bank caving on the landside slope (Fall 2024).

* Location	** Rating	+ Issue Type
LS : Land Side WS : Water Side CR : Crown	A : Acceptable M : Minimally Acceptable U : Unacceptable	Ma : Maintenance Deficiency Ob : Design & System Obsolescence En : Enforcement
N : Not Inspected/Rated C : Corrected A/W : Acceptable but Monitor & Maintain		

**Flood Control Project Maintenance
Levee Inspections****Levee Inspection Report By Mile - Fall 2024****Reclamation District No. 1600 Mull**

Waterway	Bank	Unit Miles	Inspection Start/End	Inspector
Unit No. 01 Sacramento River	Right	10.46	10/28/2024 10/28/2024	Nate Hicks

LM Start	4.75	Rating **	A/W	Issue No.	1193
LM End	4.75	Issue Type +	Ma	Location *	LS
Category	Earthen Levee			GPS Latitude/Longitude	
				Start	End
Item	Vegetation			38.734561°	38.734561°
				-121.605113°	-121.605113°
DWR ID	DWR_RD1600_01_s _ 2022_1193				
Comment Code					
V4 : Elderberries are blocking visibility and flood fight capability.					
Inspector Comment					

No Photos

LM Start	4.76	Rating **	A/W	Issue No.	1194
LM End	4.76	Issue Type +	Ma	Location *	LS
Category	Earthen Levee			GPS Latitude/Longitude	
				Start	End
Item	Vegetation			38.734784°	38.734784°
				-121.605048°	-121.605048°
DWR ID	DWR_RD1600_01_s _ 2015_1194				
Comment Code					
V4 : Elderberries are blocking visibility and flood fight capability.					
Inspector Comment					

No Photos

LM Start	4.79	Rating **	A/W	Issue No.	1195
LM End	4.79	Issue Type +	Ma	Location *	WS
Category	Earthen Levee			GPS Latitude/Longitude	
				Start	End
Item	Vegetation			38.735111°	38.735111°
				-121.604923°	-121.604923°
DWR ID	DWR_RD1600_01_s _ 2015_1195				
Comment Code					
V4 : Elderberries are blocking visibility and flood fight capability.					
Inspector Comment					

No Photos

* Location LS : Land Side N/A : Not Applicable WS : Water Side CR : Crown	** Rating A : Acceptable M : Minimally Acceptable U : Unacceptable N : Not Inspected/Rated C : Corrected A/W : Acceptable but Monitor & Maintain	+ Issue Type Ma : Maintenance Deficiency Ob : Design & System Obsolescence En : Enforcement
--	---	---

**Flood Control Project Maintenance
Levee Inspections****Levee Inspection Report By Mile - Fall 2024****Reclamation District No. 1600 Mull**

Waterway	Bank	Unit Miles	Inspection Start/End	Inspector
Unit No. 01 Sacramento River	Right	10.46	10/28/2024 10/28/2024	Nate Hicks

LM Start	4.80	Rating **	A/W	Issue No.	1196
LM End	4.80	Issue Type +	Ma	Location *	LS
Category	Earthen Levee			GPS Latitude/Longitude	
				Start	End
Item	Vegetation			38.735275°	38.735275°
				-121.604863°	-121.604863°
DWR ID	DWR_RD1600_01_f _ 2019_1196				
Comment Code					
V4 : Elderberries are blocking visibility and flood fight capability.					
Inspector Comment					

No Photos

LM Start	4.85	Rating **	A/W	Issue No.	1197
LM End	4.85	Issue Type +	Ma	Location *	WS
Category	Earthen Levee			GPS Latitude/Longitude	
				Start	End
Item	Vegetation			38.736095°	38.736095°
				-121.604642°	-121.604642°
DWR ID	DWR_RD1600_01_s_2015_1197				
Comment Code					
V4 : Elderberries are blocking visibility and flood fight capability.					
Inspector Comment					

No Photos

* Location LS : Land Side N/A : Not Applicable WS : Water Side CR : Crown	** Rating A : Acceptable M : Minimally Acceptable U : Unacceptable N : Not Inspected/Rated C : Corrected A/W : Acceptable but Monitor & Maintain	+ Issue Type Ma : Maintenance Deficiency Ob : Design & System Obsolescence En : Enforcement
--	---	---

**Flood Control Project Maintenance
Levee Inspections****Levee Inspection Report By Mile - Fall 2024****Reclamation District No. 1600 Mull**

Waterway	Bank	Unit Miles	Inspection Start/End	Inspector
Unit No. 01 Sacramento River	Right	10.46	10/28/2024 10/28/2024	Nate Hicks

LM Start	4.87	Rating **	M	Issue No.	1202
LM End	4.87	Issue Type +	En	Location *	
Category	Supplemental			GPS Latitude/Longitude	
				Start	End
Item	DWR UCIP Field Study			38.736299°	38.736299°
				-121.604582°	-121.604582°
DWR ID	25463				
Comment Code					
Inspector Comment					
DS_ID:25463 FS_ID:73530 EP_NO: 18850 Repair Type: Non-Urgent EVAL Issue: 4b, Safety Issue Crossing Status: Found UCIP Comments: 03/01/2022 Record updated from No Action Needed to Non-Urgent. 36-inch CMP riser at waterside shoulder needs a cover. Pump removed from the pier. Water well on landside discharges to the same concrete distribution box on landside. (O.Yakimov - DWR UCIP) 08/15/2016 - pump in operation during field inspection. electricity provided via mobile generator unit parked on WS ramp adjacent to pump platform. (T. Hatch/UCIP) FIELD_STRUCT_DESC: 18-inch welded steel irrigation pipe through the levee, 2 feet below the crown. Vertical pump at wooden pump platform on the waterside, extending out into the river. Positive closure device in 36-inch CMP riser on the waterside (WS) hinge. Siphon breaker inside of christy box on the landside (LS) hinge. 5-foot by 5-foot distribution box on the LS toe, across County Road 117. Water well on LS. This crossing replaces 18-inch pipe (see DSID 21487). (18-inch pipe authorized under Permit No. 18850, 2014 - Bypass Farms). FS Date: 3/1/2022 9:39:17 AM					

LM Start	4.87	Rating **	M	Issue No.	1202 (cont)
LM End	4.87	Issue Type +	En	Location *	

Photo 1 of 3 : UCIP_FA_2024_73530_109873.jpg



Land-Side: View of levee slope looking from crown. Concrete distribution box and water well on landside

Photo 2 of 3 : UCIP_FA_2024_73530_109874.jpg



Water-Side: View of levee slope looking from crown. CMP riser missing top cover

* Location	** Rating	+ Issue Type
LS: Land Side WS: Water Side CR: Crown	A: Acceptable M: Minimally Acceptable U: Unacceptable	Ma: Maintenance Deficiency Ob: Design & System Obsolescence En: Enforcement
N/A: Not Applicable	N: Not Inspected/Rated C: Corrected A/W: Acceptable but Monitor & Maintain	

**Flood Control Project Maintenance
Levee Inspections****Levee Inspection Report By Mile - Fall 2024****Reclamation District No. 1600 Mull**

Waterway	Bank	Unit Miles	Inspection Start/End	Inspector
Unit No. 01 Sacramento River	Right	10.46	10/28/2024 10/28/2024	Nate Hicks

LM Start	4.87	Rating **	M	Issue No.	1202 (cont)
LM End	4.87	Issue Type +	En	Location *	
Category	Supplemental			GPS Latitude/Longitude	
				Start	End
Item	DWR UCIP Field Study			38.736299°	38.736299°
				-121.604582°	-121.604582°
DWR ID	25463				

Photo 3 of 3 : UCIP_FA_2024_73530_109871.jpg



Water-Side: Pumping pier in river stream with pump currently removed

LM Start	5.42	Rating **	A/W	Issue No.	13
LM End	5.42	Issue Type +	Ma	Location *	LS
Category	Earthen Levee			GPS Latitude/Longitude	
				Start	End
Item	Vegetation			38.743805°	38.743805°
				-121.601319°	-121.601319°
DWR ID	DWR_RD1600_01_s_2012_13				
Comment Code					
V4 : Elderberries are blocking visibility and flood fight capability.					
Inspector Comment					

No Photos

LM Start	5.44	Rating **	A/W	Issue No.	19
LM End	5.77	Issue Type +	Ma	Location *	WS
Category	Earthen Levee			GPS Latitude/Longitude	
				Start	End
Item	Erosion / Bank Caving			38.744118°	38.748210°
				-121.601104°	-121.598025°
DWR ID	DWR_RD1600_01_s_2012_19				
Comment Code					
E1 : Note and monitor erosion site.					
Inspector Comment					
Gradual loss of the berm over many years. Erosion is at the waters edge. Walnut trees are close to edge now. Recommend monitoring.					

No Photos

* Location LS : Land Side N/A : Not Applicable WS : Water Side CR : Crown		** Rating A : Acceptable M : Minimally Acceptable U : Unacceptable N : Not Inspected/Rated C : Corrected A/W : Acceptable but Monitor & Maintain		+ Issue Type Ma : Maintenance Deficiency Ob : Design & System Obsolescence En : Enforcement	
--	--	---	--	---	--

**Flood Control Project Maintenance
Levee Inspections****Levee Inspection Report By Mile - Fall 2024****Reclamation District No. 1600 Mull**

Waterway	Bank	Unit Miles	Inspection Start/End	Inspector
Unit No. 01 Sacramento River	Right	10.46	10/28/2024 10/28/2024	Nate Hicks

LM Start	5.56	Rating **	M	Issue No.	28
LM End	5.56	Issue Type +	Ma	Location *	WS
Category	Earthen Levee			GPS Latitude/Longitude	
				Start	End
Item	Erosion / Bank Caving			38.745549°	38.745549°
				-121.600049°	-121.600049°
DWR ID	DWR_RD1600_01_s _ 2023_28				
Comment Code					
E2 : Schedule repair of erosion site prior to the next inspection.					
Inspector Comment					
Erosion on the waterside berm appears to be outside of the theoretical levee prism.					

Photo 1 of 1 : FA_2024_RD1600_191_28_20241028_00019.jpg



View of erosion on waterside berm (Spring 2023).

LM Start	5.77	Rating **	C	Issue No.	54
LM End	5.77	Issue Type +	Ma	Location *	LS
Category	Earthen Levee			GPS Latitude/Longitude	
				Start	End
Item	Erosion / Vehicle Traffic			38.748258°	38.748258°
				-121.598000°	-121.598000°
DWR ID	DWR_RD1600_01_s _ 2020_54				
Comment Code					
E6 : Repair the levee slope damaged by vehicle traffic and prevent access where possible.					
Inspector Comment					
Corrected.					

No Photos

LM Start	5.78	Rating **	C	Issue No.	72
LM End	5.78	Issue Type +	Ma	Location *	LS
Category	Earthen Levee			GPS Latitude/Longitude	
				Start	End
Item	Animal Control			38.748297°	38.748297°
				-121.597978°	-121.597978°
DWR ID	DWR_RD1600_01_f _ 2023_72				
Comment Code					
A3 : No rodents visible, but rodent burrows visible; need to backfill and compact or grout burrows.					
Inspector Comment					
Corrected.					

No Photos

* Location LS : Land Side N/A : Not Applicable WS : Water Side CR : Crown		** Rating A : Acceptable M : Minimally Acceptable U : Unacceptable N : Not Inspected/Rated C : Corrected A/W : Acceptable but Monitor & Maintain		+ Issue Type Ma : Maintenance Deficiency Ob : Design & System Obsolescence En : Enforcement	
--	--	---	--	---	--

Flood Control Project Maintenance
Levee Inspections

Levee Inspection Report By Mile - Fall 2024

Reclamation District No. 1600 Mull

Waterway	Bank	Unit Miles	Inspection Start/End	Inspector
Unit No. 01 Sacramento River	Right	10.46	10/28/2024 10/28/2024	Nate Hicks

LM Start	5.80	Rating **	M	Issue No.	39
LM End	5.80	Issue Type +	En	Location *	WS
Category	Earthen Levee			GPS Latitude/Longitude	
				Start	End
Item	Encroachments			38.748639°	38.748639°
				-121.597662°	-121.597662°
DWR ID	DWR_RD1600_01_f _ 2017_39				
Comment Code					
DE : Debris					
Inspector Comment					
Abandoned pipes on waterside slope should be removed.					

No Photos

LM Start	5.82	Rating **	U	Issue No.	57
LM End	5.82	Issue Type +	Ma	Location *	LS
Category	Earthen Levee			GPS Latitude/Longitude	
				Start	End
Item	Erosion / Vehicle Traffic			38.748815°	38.748815°
				-121.597525°	-121.597525°
DWR ID	DWR_RD1600_01_f_2024_57				
Comment Code					
E6 : Repair the levee slope damaged by vehicle traffic and prevent access where possible.					
Inspector Comment					
There is slope damage that appears to be caused by mowing activities.					

Photo 1 of 1 : FA_2024_RD1600_191_57_20241101_00076.jpg



View of slope damage caused by mowing activities (Fall 2024).

LM Start	5.85	Rating **	C	Issue No.	41
LM End	5.85	Issue Type +	Ma	Location *	LS
Category	Earthen Levee			GPS Latitude/Longitude	
				Start	End
Item	Erosion / Bank Caving			38.749163°	38.749163°
				-121.597267°	-121.597267°
DWR ID	DWR_RD1600_01_f_2022_41				
Comment Code					
E1 : Note and monitor erosion site.					
Inspector Comment					
Corrected.					

No Photos

* Location LS : Land Side N/A : Not Applicable WS : Water Side CR : Crown		** Rating A : Acceptable M : Minimally Acceptable U : Unacceptable N : Not Inspected/Rated C : Corrected A/W : Acceptable but Monitor & Maintain		+ Issue Type Ma : Maintenance Deficiency Ob : Design & System Obsolescence En : Enforcement	
--	--	---	--	---	--

**Flood Control Project Maintenance
Levee Inspections****Levee Inspection Report By Mile - Fall 2024****Reclamation District No. 1600 Mull**

Waterway	Bank	Unit Miles	Inspection Start/End	Inspector
Unit No. 01 Sacramento River	Right	10.46	10/28/2024 10/28/2024	Nate Hicks

LM Start	5.85	Rating **	M	Issue No.	63
LM End	5.85	Issue Type +	En	Location *	WS
Category	Earthen Levee			GPS Latitude/Longitude	
				Start	End
Item	Encroachments			38.749253°	38.749253°
				-121.597203°	-121.597203°
DWR ID	DWR_RD1600_01_f _ 2018_63				
Comment Code					
DE : Debris					
Inspector Comment					
Abandoned pipes on the waterside berm need to be removed.					

No Photos

LM Start	5.99	Rating **	C	Issue No.	73
LM End	6.09	Issue Type +	Ma	Location *	LS
Category	Earthen Levee			GPS Latitude/Longitude	
				Start	End
Item	Vegetation			38.751101°	38.752459°
				-121.596187°	-121.595530°
DWR ID	DWR_RD1600_01_f_2023_73				
Comment Code					
V2 : Remove the wild growth and woody vegetation other than native grasses from the levee slopes.					
Inspector Comment					
Corrected.					

No Photos

* Location LS : Land Side N/A : Not Applicable WS : Water Side CR : Crown	** Rating A : Acceptable M : Minimally Acceptable U : Unacceptable N : Not Inspected/Rated C : Corrected A/W : Acceptable but Monitor & Maintain	+ Issue Type Ma : Maintenance Deficiency Ob : Design & System Obsolescence En : Enforcement
--	---	---

**Flood Control Project Maintenance
Levee Inspections****Levee Inspection Report By Mile - Fall 2024****Reclamation District No. 1600 Mull**

Waterway	Bank	Unit Miles	Inspection Start/End	Inspector
Unit No. 01 Sacramento River	Right	10.46	10/28/2024 10/28/2024	Nate Hicks

LM Start	6.19	Rating **	U	Issue No.	1203
LM End	6.19	Issue Type +	En	Location *	
Category	Supplemental			GPS Latitude/Longitude	
				Start	End
Item	DWR UCIP Field Study			38.753820°	38.753820°
				-121.595012°	-121.595012°
DWR ID	21476				

Comment Code**Inspector Comment**

DS_ID:21476
FS_ID:73560
EP_NO: N/A
Repair Type: Urgent
EVAL Issue: 3b, Flood Risk
Crossing Status: Found
UCIP Comments: 03/03/2022 Record is Urgent. Crossing appears abandoned. Broken standpipe at ground level on landside road shoulder. Crossing appears concrete plugged as observed on waterside shoulder. Unable to confirm proper abandonment. Through holes on waterside slope pose flood threat to the landside if abandoned improperly. Ruined pump structure in the stream, pump and portion of pipe at riverbank were removed. DMP internal video inspection has found pipe integrity issues. LOF of crossing is greater than or equal to 4.1 and less than 5. Crossing will be monitored until funding becomes available for rehabilitation. No permit has been identified authorizing pipe. (O.Yakimov - DWR UCIP)
07/17/2018 No integrity issue observed, therefore crossing downgraded to "Non-Urgent". Needs proper abandonment or removal. Fall hazard: one of two standpipes on LS is broken to the ground level and uncovered which is a safety issue. (O.Yakimov-DWR UCIP)
08/15/2016 - no change since previous inspection (T. Hatch/UCIP)
06/20/2013 - Pipe is abandoned and open on both ends. It should be abandoned properly. (W. Wylie/UCIP)
FIELD_STRUCT_DESC: 18-inch steel irrigation pipe through the levee, 4.5 feet below the crown. Pump on pile structure on the waterside (WS), pump not found and only the piles remain. Walkway between levee crown and pile structure on the WS, not found. Overhead power line crosses the levee. Service pole on the WS slope. 6-foot by 6-foot concrete distribution box at the landside (LS) toe. [Additional Reference(s): DWR Levee Log, 1988 (HLM 6.22). USACE Sacramento O&M Manual, Unit 123, August 1955, Revised 17 December 2020, (RM 77.0), listed as 18-inch pipe].
FS Date: 3/3/2022 4:15:41 PM

Photo 1 of 3 : UCIP_FA_2024_73560_109897.jpg



Water-Side: View of pipe at waterside shoulder. Pipe appears abandoned by concrete grouting

* Location	** Rating	+ Issue Type
LS: Land Side WS: Water Side CR: Crown	A: Acceptable M: Minimally Acceptable U: Unacceptable N: Not Inspected/Rated C: Corrected A/W: Acceptable but Monitor & Maintain	Ma: Maintenance Deficiency Ob: Design & System Obsolescence En: Enforcement

**Flood Control Project Maintenance
Levee Inspections****Levee Inspection Report By Mile - Fall 2024****Reclamation District No. 1600 Mull**

Waterway	Bank	Unit Miles	Inspection Start/End	Inspector
Unit No. 01 Sacramento River	Right	10.46	10/28/2024 10/28/2024	Nate Hicks

LM Start	6.19	Rating **	U	Issue No.	1203 (cont)
LM End	6.19	Issue Type +	En	Location *	
Category	Supplemental			GPS Latitude/Longitude	
				Start	End
Item	DWR UCIP Field Study			38.753820°	38.753820°
				-121.595012°	-121.595012°
DWR ID	21476				

Photo 2 of 3 : UCIP_FA_2024_73560_109894.jpg



Land-Side: Broken at ground level one of two concrete standpipes at concrete distribution box

LM Start	6.19	Rating **	U	Issue No.	1203 (cont)
LM End	6.19	Issue Type +	En	Location *	

Photo 3 of 3 : UCIP_FA_2024_73560_77707.jpg



Holes in pipe on at WS toe.

* Location	** Rating	+ Issue Type
LS : Land Side WS : Water Side CR : Crown	A : Acceptable M : Minimally Acceptable U : Unacceptable	Ma : Maintenance Deficiency Ob : Design & System Obsolescence En : Enforcement
N/A : Not Applicable	N : Not Inspected/Rated C : Corrected A/W : Acceptable but Monitor & Maintain	

**Flood Control Project Maintenance
Levee Inspections****Levee Inspection Report By Mile - Fall 2024****Reclamation District No. 1600 Mull**

Waterway	Bank	Unit Miles	Inspection Start/End	Inspector
Unit No. 01 Sacramento River	Right	10.46	10/28/2024 10/28/2024	Nate Hicks

LM Start	6.39	Rating **	M	Issue No.	1204	
LM End	6.39	Issue Type +	En	Location *		
Category	Supplemental			GPS Latitude/Longitude		
				Start	End	
Item	DWR UCIP Field Study			38.756585°	38.756585°	
				-121.594334°	-121.594334°	
DWR ID	21478					
Comment Code						
Inspector Comment						
DS_ID:21478 FS_ID:73691 EP_NO: N/A Repair Type: Non-Urgent EVAL Issue: 10, Unauthorized Modification or Non-Compliant Permit Crossing Status: Found UCIP Comments: 03/03/2022 Record updated from No Action Needed to Non-Urgent. 22-inch pipe sleeved through 24-inch pipe as observed on waterside shoulder. Unable to find a permit for modification. A sinkhole or excavation on upstream side of landside CMP standpipe measured 3' x 3' x 12" deep located more than 15 feet from levee toe. Keep watching this issue to see if it grows towards the toe. Unauthorized encroachment. (O.Yakimov - DWR UCIP) FIELD_STRUCT_DESC: 22-inch pipe sleeved through 24-inch steel irrigation pipe through the levee 4.5 feet below the crown. Pump on pier in the stream, siphon breaker and air release valve on pipe at waterside shoulder. Siphon breaker on landside (LS) slope, 64-inch CMP standpipe on LS off levee toe. Water well and sand filters on LS. Overhead power line crosses the levee with poles on both slopes. 6-foot by 6-foot concrete distribution box behind CMP standpipe on LS. (24-inch pipe authorized under Permit No. 652, 1935 - California-Western States Life Insurance Company. Replacement of 22-inch pipe with a 20-inch pipe-inch pipe authorized under Permit No. 17264, 2001 - Deseret Farms of California). [Additional Reference(s): DWR Levee Log, 1988 (HLM 6.42), listed as 24-inch pipe. USACE Sacramento O&M Manual, Unit 123, August 1955, Revised 17 December 2020, (RM 77.3), listed as 24-inch pipe]. FS Date: 3/3/2022 1:25:43 PM						

Photo 1 of 3 : UCIP_FA_2024_73691_110131.jpg



Water-Side: View of levee slope looking from crown. Wooden walkway to the pump

* Location	** Rating	+ Issue Type
LS: Land Side WS: Water Side CR: Crown	A: Acceptable M: Minimally Acceptable U: Unacceptable	Ma: Maintenance Deficiency Ob: Design & System Obsolescence En: Enforcement
N/A: Not Applicable	N: Not Inspected/Rated C: Corrected A/W: Acceptable but Monitor & Maintain	

**Flood Control Project Maintenance
Levee Inspections****Levee Inspection Report By Mile - Fall 2024****Reclamation District No. 1600 Mull**

Waterway	Bank	Unit Miles	Inspection Start/End	Inspector
Unit No. 01 Sacramento River	Right	10.46	10/28/2024 10/28/2024	Nate Hicks

LM Start	6.39	Rating **	M	Issue No.	1204 (cont)
LM End	6.39	Issue Type +	En	Location *	
Category	Supplemental			GPS Latitude/Longitude	
				Start	End
Item	DWR UCIP Field Study			38.756585°	38.756585°
				-121.594334°	-121.594334°
DWR ID	21478				

Photo 2 of 3 : UCIP_FA_2024_73691_110133.jpg



Water-Side: View of pipe sleeved through larger pipe on waterside shoulder

LM Start	6.39	Rating **	M	Issue No.	1204 (cont)
LM End	6.39	Issue Type +	En	Location *	

Photo 3 of 3 : UCIP_FA_2024_73691_110132.jpg



Land-Side: View of levee slope looking from crown

LM Start	6.39	Rating **	A/W	Issue No.	75
LM End	6.39	Issue Type +	Ma	Location *	LS
Category	Earthen Levee			GPS Latitude/Longitude	
				Start	End
Item	Erosion / Vehicle Traffic			38.756607°	38.756607°
				-121.594371°	-121.594371°
DWR ID	DWR_RD1600_01_f_2023_75				
Comment Code					
E6 : Repair the levee slope damaged by vehicle traffic and prevent access where possible.					
Inspector Comment					
There are vehicle ruts down the LS slope. Recommend monitoring for now.					

Photo 1 of 1 : FA_2024_RD1600_191_75_20241028_00041.jpg



View of vehicle ruts on the landside slope (Fall 2023).

* Location	** Rating	+ Issue Type
LS : Land Side WS : Water Side CR : Crown	A : Acceptable M : Minimally Acceptable U : Unacceptable	Ma : Maintenance Deficiency Ob : Design & System Obsolescence En : Enforcement
N/A : Not Applicable	N : Not Inspected/Rated C : Corrected A/W : Acceptable but Monitor & Maintain	

**Flood Control Project Maintenance
Levee Inspections****Levee Inspection Report By Mile - Fall 2024****Reclamation District No. 1600 Mull**

Waterway	Bank	Unit Miles	Inspection Start/End	Inspector
Unit No. 01 Sacramento River	Right	10.46	10/28/2024 10/28/2024	Nate Hicks

LM Start	6.56	Rating **	M	Issue No.	80
LM End	6.56	Issue Type +	Ma	Location *	LS
Category	Earthen Levee			GPS Latitude/Longitude	
				Start	End
Item	Vegetation			38.759131°	38.759131°
				-121.594092°	-121.594092°
DWR ID	DWR_RD1600_01_s_2017_80				
Comment Code					
V4 : Elderberries are blocking visibility and flood fight capability.					
Inspector Comment					

No Photos

LM Start	6.58	Rating **	U	Issue No.	58
LM End	6.58	Issue Type +	Ma	Location *	LS
Category	Earthen Levee			GPS Latitude/Longitude	
				Start	End
Item	Animal Control			38.759388°	38.759388°
				-121.594128°	-121.594128°
DWR ID	DWR_RD1600_01_f_2024_58				
Comment Code					
A3 : No rodents visible, but rodent burrows visible; need to backfill and compact or grout burrows.					
Inspector Comment					

Photo 1 of 1 : FA_2024_RD1600_191_58_20241101_00077.jpg



View of animal burrows on the landside slope (Fall 2024).

* Location LS : Land Side N/A : Not Applicable WS : Water Side CR : Crown	** Rating A : Acceptable M : Minimally Acceptable U : Unacceptable N : Not Inspected/Rated C : Corrected A/W : Acceptable but Monitor & Maintain	+ Issue Type Ma : Maintenance Deficiency Ob : Design & System Obsolescence En : Enforcement
--	---	---

**Flood Control Project Maintenance
Levee Inspections****Levee Inspection Report By Mile - Fall 2024****Reclamation District No. 1600 Mull**

Waterway	Bank	Unit Miles	Inspection Start/End	Inspector
Unit No. 01 Sacramento River	Right	10.46	10/28/2024 10/28/2024	Nate Hicks

LM Start	6.95	Rating **	M	Issue No.	23
LM End	6.98	Issue Type +	Ma	Location *	WS
Category	Supplemental			GPS Latitude/Longitude	
				Start	End
Item	2018 USACE Erosion Survey			38.764801°	38.765219°
				-121.594926°	-121.595049°
DWR ID	DWR_RD1600_01_s_2022_23				
Comment Code					
Inspector Comment					
2018 Site ID: SAC 77.7 R					
Status: Eroding					
2018 Field Notes: Minor new erosion.					
Site History: 2006 - Eddy scour off end of rock causing erosion and scour hole near levee. Sandy silt bank with rock on upstream end.					
2010 - Trees are leaning more, minor new erosion. 2011 - Many of the tree roots have scoured out and trees look ready to fall. 2017 - Minor new erosion.					

Photo 1 of 1 : FA_2024_RD1600_191_23_20241101_00078.jpg



View of erosion on the waterside bank (Fall 2024).

LM Start	7.10	Rating **	M	Issue No.	20
LM End	7.10	Issue Type +	Ma	Location *	WS
Category	Earthen Levee			GPS Latitude/Longitude	
				Start	End
Item	Erosion / Bank Caving			38.766691°	38.766691°
				-121.596300°	-121.596300°
DWR ID	DWR_RD1600_01_f_2021_20				
Comment Code					
E2 : Schedule repair of erosion site prior to the next inspection.					
Inspector Comment					
Continued erosion within the waterside berm that appears to be outside of the levee prism.					

Photo 1 of 2 : FA_2024_RD1600_191_20_20241028_00012.jpg



View of erosion from the water (Spring 2024).

* Location LS : Land Side N/A : Not Applicable WS : Water Side CR : Crown		** Rating A : Acceptable M : Minimally Acceptable U : Unacceptable N : Not Inspected/Rated C : Corrected A/W : Acceptable but Monitor & Maintain		+ Issue Type Ma : Maintenance Deficiency Ob : Design & System Obsolescence En : Enforcement	
--	--	---	--	---	--

Flood Control Project Maintenance
Levee Inspections

Levee Inspection Report By Mile - Fall 2024

Reclamation District No. 1600 Mull

Waterway	Bank	Unit Miles	Inspection Start/End	Inspector
Unit No. 01 Sacramento River	Right	10.46	10/28/2024 10/28/2024	Nate Hicks

LM Start	7.10	Rating **	M	Issue No.	20 (cont)
LM End	7.10	Issue Type +	Ma	Location *	WS
Category	Earthen Levee			GPS Latitude/Longitude	
				Start	End
Item	Erosion / Bank Caving			38.766691°	38.766691°
				-121.596300°	-121.596300°
DWR ID	DWR_RD1600_01_f_2021_20				

Photo 2 of 2 : FA_2024_RD1600_191_20_20241101_00079.jpg



View of erosion taken from the levee crown and looking upstream (Fall 2024).

LM Start	7.21	Rating **	A/W	Issue No.	61
LM End	7.21	Issue Type +	Ma	Location *	LS
Category	Earthen Levee			GPS Latitude/Longitude	
				Start	End
Item	Erosion / Bank Caving			38.768094°	38.768094°
				-121.597075°	-121.597075°
DWR ID	DWR_RD1600_01_f _ 2015_61				
Comment Code					
E1 : Note and monitor erosion site.					
Inspector Comment					
Runoff erosion on landside slope. Recommend monitoring.					

No Photos

LM Start	7.23	Rating **	A/W	Issue No.	21
LM End	7.23	Issue Type +	Ma	Location *	WS
Category	Earthen Levee			GPS Latitude/Longitude	
				Start	End
Item	Erosion / Bank Caving			38.768409°	38.768409°
				-121.597213°	-121.597213°
DWR ID	DWR_RD1600_01_f_2022_21				
Comment Code					
E1 : Note and monitor erosion site.					
Inspector Comment					
Erosion on waterside berm. Not within the prism. Monitor for now.					

Photo 1 of 1 : FA_2024_RD1600_191_21_20241028_00013.jpg



View of erosion from the water (Spring 2024).

* Location	** Rating	+ Issue Type
LS : Land Side WS : Water Side CR : Crown	A : Acceptable M : Minimally Acceptable U : Unacceptable	Ma : Maintenance Deficiency Ob : Design & System Obsolescence En : Enforcement
N/A : Not Applicable	N : Not Inspected/Rated C : Corrected A/W : Acceptable but Monitor & Maintain	

Reclamation District No. 1600 Mull

No Photos

DS_ID:25464
FS_ID:73694
EP_NO: 18849
Repair Type: Non-Urgent
EVAL Issue: 11, Maintenance Compliance Issue
Crossing Status: Found
UCIP Comments: 03/03/2022 Record remains Non-Urgent. Pump is not running, unable to confirm that siphon breaker is not leaking. Work to install piping for sand filters is in progress. (O.Yakimov - DWR UCIP)
08/15/2016 - Pipe appears in good condition overall. Standing water found in riser for siphon breaker. Pump was not in operation during field visit. (T. Hatch/UCIP)
FIELD_STRUCT_DESC: 24-inch welded steel irrigation pipe through the levee, 2 feet below the crown. Positive closure device in a steel riser with a lid on the waterside (WS) hinge of the levee. Siphon breaker in a steel riser with lid on the landside (LS) hinge of the levee. PVC standpipe on the LS toe. Water well and sand filters on landside. This crossing replaces 24-inch pipe (see DSID 21496). (24-inch pipe authorized under Permit No. 18849, 2014 - Bypass Farms).
FS Date: 3/3/2022 2:05:57 PM

**Flood Control Project Maintenance
Levee Inspections****Levee Inspection Report By Mile - Fall 2024****Reclamation District No. 1600 Mull**

Waterway	Bank	Unit Miles	Inspection Start/End	Inspector
Unit No. 01 Sacramento River	Right	10.46	10/28/2024 10/28/2024	Nate Hicks

LM Start	7.56	Rating **	M	Issue No.	1205 (cont)
LM End	7.56	Issue Type +	En	Location *	
Category	Supplemental			GPS Latitude/Longitude	
				Start	End
Item	DWR UCIP Field Study			38.772560°	38.772560°
				-121.600153°	-121.600153°
DWR ID	25464				

Photo 2 of 3 : UCIP_FA_2024_73694_110147.jpg



Water-Side: View of pipe at riverbank

LM Start	7.56	Rating **	M	Issue No.	1205 (cont)
LM End	7.56	Issue Type +	En	Location *	

Photo 3 of 3 : UCIP_FA_2024_73694_110142.jpg



Land-Side: Siphon breaker inside steel riser. Was noted as leaking earlier

LM Start	7.89	Rating **	C	Issue No.	56
LM End	7.89	Issue Type +	Ma	Location *	WS
Category	Earthen Levee			GPS Latitude/Longitude	
				Start	End
Item	Erosion / Rills			38.776452°	38.776452°
				-121.603835°	-121.603835°
DWR ID	DWR_RD1600_01_s _ 2023_56				
Comment Code					
E5 : Schedule repair of rills prior to the next inspection.					
Inspector Comment					
Corrected.					

No Photos

* Location LS : Land Side N/A : Not Applicable WS : Water Side CR : Crown		** Rating A : Acceptable M : Minimally Acceptable U : Unacceptable N : Not Inspected/Rated C : Corrected A/W : Acceptable but Monitor & Maintain		+ Issue Type Ma : Maintenance Deficiency Ob : Design & System Obsolescence En : Enforcement	
--	--	---	--	---	--

**Flood Control Project Maintenance
Levee Inspections****Levee Inspection Report By Mile - Fall 2024****Reclamation District No. 1600 Mull**

Waterway	Bank	Unit Miles	Inspection Start/End	Inspector
Unit No. 01 Sacramento River	Right	10.46	10/28/2024 10/28/2024	Nate Hicks

LM Start	8.10	Rating **	M	Issue No.	68
LM End	10.36	Issue Type +	Ma	Location *	WS
Category	Earthen Levee			GPS Latitude/Longitude	
				Start	End
Item	Vegetation			38.778394°	38.766560°
				-121.606781°	-121.634063°
DWR ID	DWR_RD1600_01_f_2024_68				
Comment Code					
V1 : Control annual grass and weeds on the levee slopes and easements.					
Inspector Comment					

No Photos

LM Start	8.10	Rating **	C	Issue No.	59
LM End	8.10	Issue Type +	En	Location *	LS
Category	Earthen Levee			GPS Latitude/Longitude	
				Start	End
Item	Encroachments			38.778407°	38.778407°
				-121.606824°	-121.606824°
DWR ID	DWR_RD1600_01_s_2023_59				
Comment Code					
MA : Material					
Inspector Comment					
Corrected.					

No Photos

LM Start	10.21	Rating **	M	Issue No.	71
LM End	10.46	Issue Type +	Ma	Location *	LS
Category	Earthen Levee			GPS Latitude/Longitude	
				Start	End
Item	Vegetation			38.768489°	38.765393°
				-121.632774°	-121.635013°
DWR ID	DWR_RD1600_01_f_2024_71				
Comment Code					
V1 : Control annual grass and weeds on the levee slopes and easements.					
Inspector Comment					

No Photos

* Location LS : Land Side N/A : Not Applicable WS : Water Side CR : Crown	** Rating A : Acceptable M : Minimally Acceptable U : Unacceptable	+ Issue Type Ma : Maintenance Deficiency Ob : Design & System Obsolescence En : Enforcement
--	--	---

**Flood Control Project Maintenance
Levee Inspections****Levee Inspection Report By Mile - Fall 2024****Reclamation District No. 1600 Mull**

Waterway	Bank	Unit Miles	Inspection Start/End	Inspector
Unit No. 01 Sacramento River	Right	10.46	10/28/2024 10/28/2024	Nate Hicks

LM Start	10.27	Rating **	M	Issue No.	60
LM End	10.27	Issue Type +	Ma	Location *	WS
Category	Earthen Levee			GPS Latitude/Longitude	
				Start	End
Item	Vegetation			38.767638°	38.767638°
				-121.633173°	-121.633173°
DWR ID	DWR_RD1600_01_s_2023_60				
Comment Code					
V2 : Remove the wild growth and woody vegetation other than native grasses from the levee slopes.					
Inspector Comment					
Fallen tree on the waterside shoulder.					

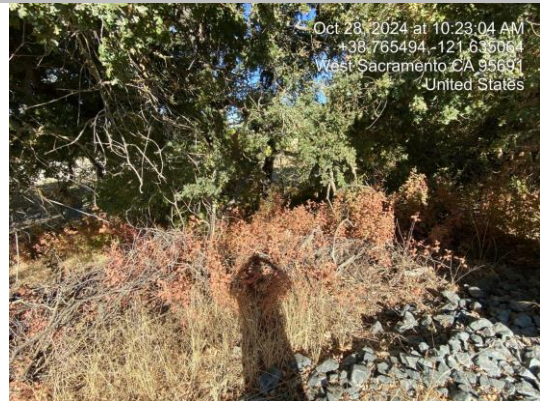
Photo 1 of 1 : FA_2024_RD1600_191_60_20241028_00033.jpg



View of fallen trees partially blocking access and visibility to the levee (Spring 2023).

LM Start	10.36	Rating **	M	Issue No.	79
LM End	10.45	Issue Type +	Ma	Location *	WS
Category	Earthen Levee			GPS Latitude/Longitude	
				Start	End
Item	Vegetation			38.766612°	38.765457°
				-121.634097°	-121.634961°
DWR ID	DWR_RD1600_01_f_2023_79				
Comment Code					
V2 : Remove the wild growth and woody vegetation other than native grasses from the levee slopes.					
Inspector Comment					
Remove woody growth 20 feet down the waterside slope.					

Photo 1 of 1 : FA_2024_RD1600_191_79_20241101_00080.jpg



View of woody growth on the waterside slope (Fall 2024).

* Location LS : Land Side N/A : Not Applicable WS : Water Side CR : Crown		** Rating A : Acceptable M : Minimally Acceptable U : Unacceptable N : Not Inspected/Rated C : Corrected A/W : Acceptable but Monitor & Maintain		+ Issue Type Ma : Maintenance Deficiency Ob : Design & System Obsolescence En : Enforcement	
--	--	---	--	---	--

**Flood Control Project Maintenance
Levee Inspections
Unit Cover Sheet**

Reclamation District No. 1600 Mull

Waterway	Bank	Unit Miles
Unit No. 02 Yolo Bypass	Left	4.23

	Spring (March - May)	Summer (June - August)	(September - November) Fall	Winter (December - February)
Unit Maintenance Rating (Fall Only)			M	
Date of Inspection	4/4/2024 - 4/4/2024		10/28/2024 - 10/28/2024	
DWR Inspector	Nate Hicks		Nate Hicks	
Accompanied By	Tina Anderson MBK		Tina Anderson MBK	
	Sterling York DWR			

Summer & Winter Inspections

The Local Maintaining Agency (LMA) is responsible for summer and winter inspections. The LMA is required to submit a report regarding summer and winter inspections to the California Department of Water Resources (DWR).

DWR must be informed on the:

- a) completion of the inspection
- b) any changes other than the results of normal maintenance
- c) corrections to deficiencies noted in this report

If additional items are noted, further documentation of those items must also be submitted.

The LMA should submit this information to DWR using the LMA web application tool available at:

<http://cdec.water.ca.gov/lma.html>

If the LMA is unable to submit information on this webpage, please contact DWR for assistance.

The LMA should submit the information and any associated documentation by September 30 for summer inspections and March 31 for winter inspections.

**Flood Control Project Maintenance
Levee Inspections****Levee Inspection Report By Mile - Fall 2024****Reclamation District No. 1600 Mull**

Waterway	Bank	Unit Miles	Inspection Start/End	Inspector
Unit No. 02 Yolo Bypass	Left	4.23	10/28/2024 10/28/2024	Nate Hicks

LM Start	0.36	Rating **	A	Issue No.	24
LM End	0.36	Issue Type +	Ma	Location *	
Category	Supplemental			GPS Latitude/Longitude	
				Start	End
Item	DWR UCIP LMA Responsibility			38.731000°	38.731000°
				-121.633490°	-121.633490°
DWR ID	21500				

Comment Code**Inspector Comment**

DS_ID:21500
FS_ID:73777
EP_NO: 3076A
Repair Type: No Action Needed
EVAL Issue:
Crossing Status: Found
UCIP Comments: 03/08/2022 Record remains No Action Needed. No issues observed during inspection. (O.Yakimov - DWR UCIP)
06/21/2013 Good candidate for video inspection. (W.Wylie - DWR UCIP)
FIELD_STRUCT_DESC: 48-inch corrugated metal gravity pipe through the levee, 33.5 feet below the crown. Two cutoff walls. Flap gate on the waterside (WS) end, and screw gate in a 48-inch corrugated metal pipe (CMP) riser on the WS slope. Steel grate on pipe inlet in drainage ditch on landside (LS). This crossing replaces 48-inch pipe (see DSID 21505). (Three 48-inch pipes authorized under Permit No. 3076-A, 1959 - Reclamation District No. 1600). [Additional Reference(s): DWR Levee Log, 1988 (HLM 0.32)].
FS Date: 3/8/2022 9:46:16 AM

LM Start	0.36	Rating **	A	Issue No.	24 (cont)
LM End	0.36	Issue Type +	Ma	Location *	

Photo 1 of 3 : UCIP_FA_2024_73777_110235.jpg



Top of Levee: View of levee crown looking downstream

Photo 2 of 3 : UCIP_FA_2024_73777_110238.jpg



Water-Side: View of levee slope looking from crown. Flap gate underwater

* Location	** Rating	+ Issue Type
LS : Land Side WS : Water Side CR : Crown	A : Acceptable M : Minimally Acceptable U : Unacceptable	Ma : Maintenance Deficiency Ob : Design & System Obsolescence En : Enforcement
N/A : Not Applicable	N : Not Inspected/Rated C : Corrected A/W : Acceptable but Monitor & Maintain	

Flood Control Project Maintenance
Levee Inspections

Levee Inspection Report By Mile - Fall 2024

Reclamation District No. 1600 Mull

Waterway	Bank	Unit Miles	Inspection Start/End	Inspector
Unit No. 02 Yolo Bypass	Left	4.23	10/28/2024 10/28/2024	Nate Hicks

LM Start	0.36	Rating **	A	Issue No.	24 (cont)
LM End	0.36	Issue Type +	Ma	Location *	
Category	Supplemental			GPS Latitude/Longitude	
				Start	End
Item	DWR UCIP LMA Responsibility			38.731000°	38.731000°
				-121.633490°	-121.633490°
DWR ID	21500				

Photo 3 of 3 : UCIP_FA_2024_73777_110236.jpg



Water-Side: CMP riser with screw gate on waterside slope

LM Start	0.92	Rating **	M	Issue No.	23
LM End	1.40	Issue Type +	Ma	Location *	WS
Category	Earthen Levee			GPS Latitude/Longitude	
				Start	End
Item	Erosion / Bank Caving			38.722948°	38.716108°
				-121.633477°	-121.634930°
DWR ID	DWR_RD1600_02_s_2017_23				
Comment Code					
E2 : Schedule repair of erosion site prior to the next inspection.					
Inspector Comment					
Long section of wave wash damage on waterside levee slope.					
Site ID No:203					
Site Designation:RD 1600-03					

Photo 1 of 2 : FA_2024_RD1600_192_23_20241028_00004.jpg



View of wave wash damage on the waterside slope (Fall 2023).

LM Start	0.92	Rating **	M	Issue No.	23 (cont)
LM End	1.40	Issue Type +	Ma	Location *	WS

Photo 2 of 2 : FA_2024_RD1600_192_23_20241028_00005.jpg



View of wave wash damage on waterside levee slope. Spring 2017.

* Location	** Rating	+ Issue Type
LS : Land Side WS : Water Side CR : Crown	A : Acceptable M : Minimally Acceptable U : Unacceptable	Ma : Maintenance Deficiency Ob : Design & System Obsolescence En : Enforcement
N/A : Not Applicable	N : Not Inspected/Rated C : Corrected A/W : Acceptable but Monitor & Maintain	

**Flood Control Project Maintenance
Levee Inspections****Levee Inspection Report By Mile - Fall 2024****Reclamation District No. 1600 Mull**

Waterway	Bank	Unit Miles	Inspection Start/End	Inspector
Unit No. 02 Yolo Bypass	Left	4.23	10/28/2024 10/28/2024	Nate Hicks

LM Start	1.38	Rating **	A/W	Issue No.	4
LM End	1.68	Issue Type +	En	Location *	LS
Category	Earthen Levee			GPS Latitude/Longitude	
				Start	End
Item	Encroachments			38.716390°	38.712270°
				-121.634821°	-121.636474°
DWR ID	DWR_RD1600_02_f_2024_4				
Comment Code					
LC : Authorized Levee Construction					
Inspector Comment					

Photo 1 of 1 : FA_2024_RD1600_192_4_20241101_00012.jpg



View of USACE levee repair (Fall 2024).

LM Start	1.64	Rating **	A/W	Issue No.	6
LM End	1.66	Issue Type +	Ma	Location *	LS
Category	Earthen Levee			GPS Latitude/Longitude	
				Start	End
Item	Slope Stability			38.712768°	38.712482°
				-121.636264°	-121.636378°
DWR ID	DWR_RD1600_02_f_2024_6				
Comment Code					
S1 : Repair slope instability.					
Inspector Comment					
Recommend monitoring for now.					

Photo 1 of 1 : FA_2024_RD1600_192_6_20241028_00001.jpg



View of landside cracking and sloughing (Fall 2023).

LM Start	1.68	Rating **	A	Issue No.	5
LM End	1.68	Issue Type +	Ma	Location *	WS
Category	Earthen Levee			GPS Latitude/Longitude	
				Start	End
Item	Vegetation			38.712274°	38.712274°
				-121.636472°	-121.636472°
DWR ID	DWR_RD1600_02_f_2024_5				
Comment Code					
V1 : Control annual grass and weeds on the levee slopes and easements.					
Inspector Comment					

Photo 1 of 1 : FA_2024_RD1600_192_5_20241101_00013.jpg



View of good vegetation on the waterside slope (Fall 2024).

* Location	** Rating	+ Issue Type
LS : Land Side WS : Water Side CR : Crown	A : Acceptable M : Minimally Acceptable U : Unacceptable	Ma : Maintenance Deficiency Ob : Design & System Obsolescence En : Enforcement
N : Not Inspected/Rated C : Corrected A/W : Acceptable but Monitor & Maintain		

**Flood Control Project Maintenance
Levee Inspections****Levee Inspection Report By Mile - Fall 2024****Reclamation District No. 1600 Mull**

Waterway	Bank	Unit Miles	Inspection Start/End	Inspector
Unit No. 02 Yolo Bypass	Left	4.23	10/28/2024 10/28/2024	Nate Hicks

LM Start	1.68	Rating **	A	Issue No.	7
LM End	1.68	Issue Type +	Ma	Location *	LS
Category	Earthen Levee			GPS Latitude/Longitude	
				Start	End
Item	Vegetation			38.712275°	38.712275°
				-121.636479°	-121.636479°
DWR ID	DWR_RD1600_02_f_2024_7				
Comment Code					
V1 : Control annual grass and weeds on the levee slopes and easements.					
Inspector Comment					

Photo 1 of 1 : FA_2024_RD1600_192_7_20241101_00014.jpg



View of good vegetation on the landside slope (Fall 2024).

LM Start	1.79	Rating **	M	Issue No.	14
LM End	2.05	Issue Type +	Ma	Location *	WS
Category	Earthen Levee			GPS Latitude/Longitude	
				Start	End
Item	Erosion / Bank Caving			38.710763°	38.707116°
				-121.637147°	-121.638722°
DWR ID	DWR_RD1600_02_s_2019_14				
Comment Code					
E2 : Schedule repair of erosion site prior to the next inspection.					
Inspector Comment					
Wavewash on the waterside slope.					
Site ID No:202					
Site Designation:RD 1600-01					

Photo 1 of 1 : FA_2024_RD1600_192_14_20241028_00003.jpg



View of wave wash on the waterside slope (Fall 2023).

LM Start	2.77	Rating **	A/W	Issue No.	3
LM End	2.77	Issue Type +	Ma	Location *	WS
Category	Earthen Levee			GPS Latitude/Longitude	
				Start	End
Item	Vegetation			38.697266°	38.697266°
				-121.642952°	-121.642952°
DWR ID	DWR_RD1600_02_s_2016_3				
Comment Code					
V4 : Elderberries are blocking visibility and flood fight capability.					
Inspector Comment					

No Photos

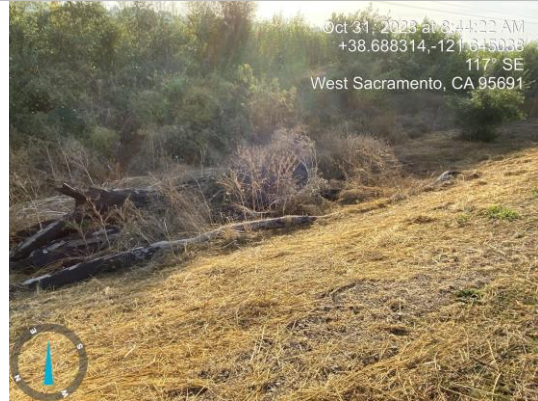
* Location LS : Land Side N/A : Not Applicable WS : Water Side CR : Crown		** Rating A : Acceptable M : Minimally Acceptable U : Unacceptable N : Not Inspected/Rated C : Corrected A/W : Acceptable but Monitor & Maintain		+ Issue Type Ma : Maintenance Deficiency Ob : Design & System Obsolescence En : Enforcement	
--	--	---	--	---	--

**Flood Control Project Maintenance
Levee Inspections****Levee Inspection Report By Mile - Fall 2024****Reclamation District No. 1600 Mull**

Waterway	Bank	Unit Miles	Inspection Start/End	Inspector
Unit No. 02 Yolo Bypass	Left	4.23	10/28/2024 10/28/2024	Nate Hicks

LM Start	3.41	Rating **	M	Issue No.	8
LM End	3.41	Issue Type +	Ma	Location *	LS
Category	Earthen Levee			GPS Latitude/Longitude	
				Start	End
Item	Trim / Thin Trees			38.688284°	38.688284°
				-121.645048°	-121.645048°
DWR ID	DWR_RD1600_02_f _ 2023_8				
Comment Code					
T2 : Tree or limb.					
Inspector Comment					

Photo 1 of 1 : FA_2024_RD1600_192_8_20241028_00002.jpg



View of discarded tree limbs on the landside slope (Fall 2023).

* Location LS : Land Side N/A : Not Applicable WS : Water Side CR : Crown		** Rating A : Acceptable M : Minimally Acceptable U : Unacceptable N : Not Inspected/Rated C : Corrected A/W : Acceptable but Monitor & Maintain		+ Issue Type Ma : Maintenance Deficiency Ob : Design & System Obsolescence En : Enforcement	
--	--	---	--	---	--

**Flood Control Project Maintenance
Levee Inspections****Levee Inspection Report By Mile - Fall 2024****Reclamation District No. 1600 Mull**

Waterway	Bank	Unit Miles	Inspection Start/End	Inspector
Unit No. 02 Yolo Bypass	Left	4.23	10/28/2024 10/28/2024	Nate Hicks

LM Start	4.17	Rating **	M	Issue No.	25	
LM End	4.17	Issue Type +	En	Location *		
Category	Supplemental			GPS Latitude/Longitude		
				Start	End	
Item	DWR UCIP Field Study			38.677286°	38.677286°	
				-121.643683°	-121.643683°	
DWR ID	21502					
Comment Code						
Inspector Comment						
DS_ID:21502 FS_ID:73790 EP_NO: N/A Repair Type: Non-Urgent EVAL Issue: 5, Pipe Damage Crossing Status: Found UCIP Comments: 09/28/2023 MBK Engineers confirmed this pipe belongs to RD2035. (O. Yakimov - DWR UCIP) 03/08/2022 Record updated from No Action Needed to Non-Urgent. DMP internal video inspection has found pipe integrity issues. LOF of crossing is greater than or equal to 4.1 and less than 5. Crossing will be monitored until funding becomes available for rehabilitation. New slide gate actuator installed. No permit has been identified authorizing pipe. (O.Yakimov - DWR UCIP) FIELD_STRUCT_DESC: 72-inch by 72-inch dual purpose drainage-irrigation reinforced concrete box culvert through the levee, 26 feet below the crown. Steel grate at culvert inlet in a ditch on landside (LS) flow meter at this location. Slide gate on the waterside (WS) slope in a 9-foot by 10-foot concrete box. Culvert passes under the bypass canal, the railroad, and County Road 22 and terminates in Conaway irrigation canal on the southwest side of the County Road 22 bridge. [Additional Reference(s): DWR Levee Log, 1988 (HLM 4.12). USACE Sacramento O&M Manual, Unit 123, August 1955, Revised 29 December 2016, (Station 155+00), listed as 6-foot by 6-foot concrete culvert. USACE As-Built Drawing No. 06-13-0573, November 1922, Sheet 5. USACE As-Built Drawing No. 50-04-1310, October 1931, Sheet 1, Station 155+00]. FS Date: 3/8/2022 11:37:25 AM						

Photo 1 of 3 : UCIP_FA_2024_73790_110274.jpg



Land-Side: Steel grate, flow meter at culvert inlet in a ditch

* Location	** Rating	+ Issue Type
LS: Land Side WS: Water Side CR: Crown	A: Acceptable M: Minimally Acceptable U: Unacceptable	Ma: Maintenance Deficiency Ob: Design & System Obsolescence En: Enforcement
N/A: Not Applicable	N: Not Inspected/Rated C: Corrected A/W: Acceptable but Monitor & Maintain	

**Flood Control Project Maintenance
Levee Inspections****Levee Inspection Report By Mile - Fall 2024****Reclamation District No. 1600 Mull**

Waterway	Bank	Unit Miles	Inspection Start/End	Inspector
Unit No. 02 Yolo Bypass	Left	4.23	10/28/2024 10/28/2024	Nate Hicks

LM Start	4.17	Rating **	M	Issue No.	25 (cont)
LM End	4.17	Issue Type +	En	Location *	
Category	Supplemental			GPS Latitude/Longitude	
				Start	End
Item	DWR UCIP Field Study			38.677286°	38.677286°
				-121.643683°	-121.643683°
DWR ID	21502				

Photo 2 of 3 : UCIP_FA_2024_73790_110272.jpg



Water-Side: View of levee slope looking from crown. Concrete box with slide gate on levee slope

LM Start	4.17	Rating **	M	Issue No.	25 (cont)
LM End	4.17	Issue Type +	En	Location *	

Photo 3 of 3 : UCIP_FA_2024_73790_110273.jpg



Water-Side: New slide gate actuator installed

* Location LS : Land Side N/A : Not Applicable WS : Water Side CR : Crown	** Rating A : Acceptable M : Minimally Acceptable U : Unacceptable N : Not Inspected/Rated C : Corrected A/W : Acceptable but Monitor & Maintain	+ Issue Type Ma : Maintenance Deficiency Ob : Design & System Obsolescence En : Enforcement
--	---	---