

**Flood Control Project Maintenance
Levee Inspections**

Fall 2018 Levee Maintenance Deficiency Summary Report

Overall LMA & Unit Ratings, including USACE Erosion Survey

Sacramento River Basin

RD1600	Overall LMA Rating	Total LMA Miles						
Reclamation District No. 1600 Mull	M	14.69						
Rated Item	Maintenance Deficiency				Enforcement		Design & System Obsolescence	
	M Miles	U Miles	M + 4U Miles	Threshold %	M Miles	U Miles	M Miles	U Miles
<i>Earthen Levee</i>								
Vegetation	1.43		1.43	9.73%				
Trim / Thin Trees	0.01		0.01	0.07%				
Encroachments	0.11		0.11	0.75%	0.17			
Animal Control	0.01		0.01	0.07%				
Slope Stability	0.07		0.07	0.48%				
Erosion / Bank Caving	0.05		0.05	0.34%				
<i>Supplemental</i>								
2017 USACE Erosion Survey, DRAFT	1.18		1.18	8.03%				
DWR UCIP Field Study					0.10			
<i>LMA Totals:</i>	2.86	0.00	2.86	19.47%	0.27	0.00	0.00	0.00
Unit No. 01 Sacramento River RB	Overall Unit Rating	Total Unit Miles						
RD1600	U	10.46						
Rated Item	Maintenance Deficiency				Enforcement		Design & System Obsolescence	
	M Miles	U Miles	M + 4U Miles	Threshold %	M Miles	U Miles	M Miles	U Miles
<i>Earthen Levee</i>								
Vegetation	1.43		1.43	13.67%				
Trim / Thin Trees	0.01		0.01	0.10%				
Encroachments	0.02		0.02	0.19%	0.17			
Animal Control	0.01		0.01	0.10%				
Slope Stability	0.06		0.06	0.57%				
Erosion / Bank Caving	0.04		0.04	0.38%				
<i>Supplemental</i>								
2017 USACE Erosion Survey, DRAFT	1.18		1.18	11.28%				
DWR UCIP Field Study					0.09			
<i>Unit Totals:</i>	2.75	0.00	2.75	26.29%	0.26	0.00	0.00	0.00
Unit No. 02 Yolo Bypass LB	Overall Unit Rating	Total Unit Miles						
RD1600	A	4.23						
Rated Item	Maintenance Deficiency				Enforcement		Design & System Obsolescence	
	M Miles	U Miles	M + 4U Miles	Threshold %	M Miles	U Miles	M Miles	U Miles
<i>Earthen Levee</i>								
Encroachments	0.09		0.09	2.13%				
Slope Stability	0.01		0.01	0.24%				
Erosion / Bank Caving	0.01		0.01	0.24%				
<i>Supplemental</i>								
DWR UCIP Field Study					0.01			
<i>Unit Totals:</i>	0.11	0.00	0.11	2.60%	0.01	0.00	0.00	0.00

**Flood Control Project Maintenance
Levee Inspections**
LMA District Cover Sheet
Fall 2018 Levee Inspection Results

Reclamation District No. 1600 Mull

	Spring (March - May)	Summer ** (June - August)	Fall (September - November)	Winter ** (December - February)
† Overall LMA Rating (Fall Only)			M	

** Non-receipt of Summer or Winter Inspection
Reports may effect overall annual rating.

† SPRING INSPECTIONS: Overall maintenance ratings are not determined for the spring inspection results. Individual maintenance deficiencies are rated using the same criteria in the spring and in the fall.

FALL INSPECTIONS: The overall maintenance rating shown above is based on operation and maintenance deficiencies identified within the attached unit inspection reports. This rating is not intended to be an indication of risk.

Comments

**Flood Control Project Maintenance
Levee Inspections**

Unit Cover Sheet

Fall 2018 Levee Inspection Results

Reclamation District No. 1600 Mull

Waterway			Bank	Unit Miles
Unit No. 01 Sacramento River			Right	10.46
	Spring (March - May)	Summer (June - August)	(September - November) Fall	Winter (December - February)
Unit Maintenance Rating (Fall Only)			U	
Date of Inspection	4/10/2018 - 5/8/2018		11/7/2018 - 11/7/2018	
DWR Inspector	Zach Jojola		Zach Jojola	
Accompanied By				

Summer & Winter Inspections

The Local Maintaining Agency (LMA) is responsible for summer and winter inspections. The LMA is required to submit a report regarding summer and winter inspections to the California Department of Water Resources (DWR).

DWR must be informed on the:

- a) completion of the inspection
- b) any changes other than the results of normal maintenance
- c) corrections to deficiencies noted in this report

If additional items are noted, further documentation of those items must also be submitted.

The LMA should submit this information to DWR using the LMA web application tool available at:

<http://cdec.water.ca.gov/lma.html>

If the LMA is unable to submit information on this webpage, please contact DWR for assistance.

The LMA should submit the information and any associated documentation by September 30 for summer inspections and March 31 for winter inspections.

**Flood Control Project Maintenance
Levee Inspections**

Levee Inspection Report By Mile - Fall 2018

Reclamation District No. 1600 Mull

Waterway	Bank	Unit Miles	Inspection Start/End	Inspector
Unit No. 01 Sacramento River	Right	10.46	11/07/2018 11/07/2018	Zach Jojola

LM Start		Rating **	A	Issue No.	32
LM End		Issue Type +	Ma	Location *	N/A
Category	Earthen Levee			GPS Latitude/Longitude	
				Start	End
Item	Operations & Maintenance Manuals			°	°
				°	°
DWR ID	DWR_RD1600_01_s _ 2013_32				
Comment Code					
Inspector Comment					
RD 1600 has copies of the O&M manuals.					

No Photos

LM Start		Rating **	A	Issue No.	33
LM End		Issue Type +	Ma	Location *	N/A
Category	Earthen Levee			GPS Latitude/Longitude	
				Start	End
Item	Emergency Supplies & Equipment			°	°
				°	°
DWR ID	DWR_RD1600_01_s _ 2013_33				
Comment Code					
Inspector Comment					
RD 1600 maintains a stockpile of flood response material.					

No Photos

LM Start		Rating **	A	Issue No.	34
LM End		Issue Type +	Ma	Location *	N/A
Category	Earthen Levee			GPS Latitude/Longitude	
				Start	End
Item	Flood Preparedness & Training			°	°
				°	°
DWR ID	DWR_RD1600_01_s _ 2013_34				
Comment Code					
Inspector Comment					
RD 1600 has a written flood response plan and flood response training.					

No Photos

* Location LS : Land Side N/A : Not Applicable WS : Water Side CR : Crown	** Rating A : Acceptable M : Minimally Acceptable U : Unacceptable	N : Not Inspected/Rated C : Corrected A/W : Acceptable but Monitor & Maintain	+ Issue Type Ma : Maintenance Deficiency Ob : Design & System Obsolescence En : Enforcement
--	--	---	---

**Flood Control Project Maintenance
Levee Inspections**

Levee Inspection Report By Mile - Fall 2018

Reclamation District No. 1600 Mull

Waterway	Bank	Unit Miles	Inspection Start/End	Inspector
Unit No. 01 Sacramento River	Right	10.46	11/07/2018 11/07/2018	Zach Jojola

LM Start	0.10	Rating **	M	Issue No.	129
LM End	0.10	Issue Type +	En	Location *	WS
Category	Earthen Levee			GPS Latitude/Longitude	
				Start	End
Item	Encroachments			38.676467 °	38.676467 °
				-121.631217 °	-121.631217 °
DWR ID	DWR_RD1600_01_f_2013_129				
Comment Code					
BU : Building					
Inspector Comment					
Well pump house.					

Photo 1 of 2 : FA_2018_RD1600_191_129_20180904_00044.jpg



The small building is a pump house for the well. It services the house with water. Fall 2013

LM Start	0.10	Rating **	M	Issue No.	129 (cont)
LM End	0.10	Issue Type +	En	Location *	WS

Photo 2 of 2 : FA_2018_RD1600_191_129_20180904_00045.jpg



Updated view of the building. Fall 2016.

LM Start	0.11	Rating **	A/W	Issue No.	1
LM End	0.11	Issue Type +	Ma	Location *	WS
Category	Earthen Levee			GPS Latitude/Longitude	
				Start	End
Item	Erosion / Bank Caving			38.676524 °	38.676524 °
				-121.631243 °	-121.631243 °
DWR ID	DWR_RD1600_01_f_2018_1				
Comment Code					
E1 : Note and monitor erosion site.					
Inspector Comment					
Rills forming on overbuilt section of levee. Not within the prism. Recommend monitoring.					

No Photos

* Location LS : Land Side N/A : Not Applicable WS : Water Side CR : Crown		** Rating A : Acceptable M : Minimally Acceptable U : Unacceptable N : Not Inspected/Rated C : Corrected A/W : Acceptable but Monitor & Maintain		+ Issue Type Ma : Maintenance Deficiency Ob : Design & System Obsolescence En : Enforcement	
--	--	---	--	---	--

**Flood Control Project Maintenance
Levee Inspections**

Levee Inspection Report By Mile - Fall 2018

Reclamation District No. 1600 Mull

Waterway	Bank	Unit Miles	Inspection Start/End	Inspector
Unit No. 01 Sacramento River	Right	10.46	11/07/2018 11/07/2018	Zach Jojola

LM Start	0.11	Rating **	M	Issue No.	38
LM End	0.11	Issue Type +	Ma	Location *	LS
Category	Earthen Levee			GPS Latitude/Longitude	
				Start	End
Item	Slope Stability			38.676524 °	38.676524 °
				-121.631245 °	-121.631245 °
DWR ID	DWR_RD1600_01_f_2018_38				
Comment Code					
S3 : Repair the levee slope damaged by vehicle traffic and prevent access where possible.					
Inspector Comment					
Vehicle ruts on the landside slope.					

Photo 1 of 1 : FA_2018_RD1600_191_38_20181108_00078.jpg



View of ruts on the landside slope. Fall 2018.

LM Start	0.11	Rating **	A/W	Issue No.	49
LM End	0.23	Issue Type +	Ob	Location *	WS
Category	Earthen Levee			GPS Latitude/Longitude	
				Start	End
Item	Vegetation			38.676577 °	38.678131 °
				-121.631290 °	-121.632324 °
DWR ID	DWR_RD1600_01_s_2012_49				
Comment Code					
V8 : Environmental Requirements.					
Inspector Comment					

Photo 1 of 2 : FA_2018_RD1600_191_49_20180904_00030.jpg



Sign stating revegetation site. Spring 2016.

LM Start	0.11	Rating **	A/W	Issue No.	49 (cont)
LM End	0.23	Issue Type +	Ob	Location *	WS

Photo 2 of 2 : FA_2018_RD1600_191_49_20180904_00031.jpg



View of the revegetation site and fence on the waterward side of the levee looking upstream. Spring 2016.

* Location LS : Land Side N/A : Not Applicable WS : Water Side CR : Crown		** Rating A : Acceptable M : Minimally Acceptable U : Unacceptable N : Not Inspected/Rated C : Corrected A/W : Acceptable but Monitor & Maintain		+ Issue Type Ma : Maintenance Deficiency Ob : Design & System Obsolescence En : Enforcement	
--	--	---	--	---	--

**Flood Control Project Maintenance
Levee Inspections**

Levee Inspection Report By Mile - Fall 2018

Reclamation District No. 1600 Mull

Waterway	Bank	Unit Miles	Inspection Start/End	Inspector
Unit No. 01 Sacramento River	Right	10.46	11/07/2018 11/07/2018	Zach Jojola

LM Start	0.12	Rating **	C	Issue No.	46
LM End	0.12	Issue Type +	Ma	Location *	WS
Category	Earthen Levee			GPS Latitude/Longitude	
				Start	End
Item	Erosion / Bank Caving			38.676660 °	38.676660 °
				-121.631337 °	-121.631337 °
DWR ID	DWR_RD1600_01_s_2017_46				
Comment Code					
E1 : Note and monitor erosion site.					
Inspector Comment					
Two small rills on waterside levee slope.					

No Photos

LM Start	0.13	Rating **	M	Issue No.	1203	
LM End	0.13	Issue Type +	En	Location *		
Category	Supplemental			GPS Latitude/Longitude		
				Start	End	
Item	DWR UCIP Field Study			38.676802 °	38.676802 °	
				-121.631442 °	-121.631442 °	
DWR ID	21459					
Comment Code						
Inspector Comment						
FS_ID:15087 DS_ID:21459 EP_NO: 1929 Repair Type: Non-Urgent Crossing Status: Indicator Found UCIP Comments: Line should be located with carsonite signs on both sides of levee. FIELD_STRUCT_DESC: Telephone conduit of an unknown size or material through the levee, 3 feet below the crown. Telephone line at joint pole (JP) off the landside (LS) toe. (Permit No. 1929, 1954 - Pacific Telephone and Telegraph Company [PT&T]). [Additional Reference(s): DWR Levee Log, 1988]. FS Date: 6/18/2013						

Photo 1 of 1 : UCIP_FA_2018_15087_24812.jpg



Line visible on JP off LS toe. Likely this is the source of crossing.

* Location LS : Land Side N/A : Not Applicable WS : Water Side CR : Crown	** Rating A : Acceptable M : Minimally Acceptable U : Unacceptable	N : Not Inspected/Rated C : Corrected A/W : Acceptable but Monitor & Maintain	+ Issue Type Ma : Maintenance Deficiency Ob : Design & System Obsolescence En : Enforcement
--	--	---	---

**Flood Control Project Maintenance
Levee Inspections**

Levee Inspection Report By Mile - Fall 2018

Reclamation District No. 1600 Mull

Waterway	Bank	Unit Miles	Inspection Start/End	Inspector
Unit No. 01 Sacramento River	Right	10.46	11/07/2018 11/07/2018	Zach Jojola

LM Start	0.37	Rating **	M	Issue No.	40
LM End	0.37	Issue Type +	Ma	Location *	LS
Category	Earthen Levee			GPS Latitude/Longitude	
				Start	End
Item	Slope Stability			38.679892 °	38.679892 °
				-121.633280 °	-121.633280 °
DWR ID	DWR_RD1600_01_f_2018_40				
Comment Code					
S3 : Repair the levee slope damaged by vehicle traffic and prevent access where possible.					
Inspector Comment					
Tire ruts on the landside slope.					

No Photos

LM Start	0.46	Rating **	M	Issue No.	42
LM End	0.46	Issue Type +	Ma	Location *	LS
Category	Earthen Levee			GPS Latitude/Longitude	
				Start	End
Item	Slope Stability			38.681232 °	38.681232 °
				-121.633757 °	-121.633757 °
DWR ID	DWR_RD1600_01_f_2018_42				
Comment Code					
S3 : Repair the levee slope damaged by vehicle traffic and prevent access where possible.					
Inspector Comment					
Tire ruts on the landside slope.					

No Photos

LM Start	0.52	Rating **	M	Issue No.	44
LM End	0.52	Issue Type +	En	Location *	CR
Category	Earthen Levee			GPS Latitude/Longitude	
				Start	End
Item	Encroachments			38.682046 °	38.682046 °
				-121.634064 °	-121.634064 °
DWR ID	DWR_RD1600_01_f_2018_44				
Comment Code					
PO : Pole					
Inspector Comment					
Telephone pole over the levee crown. Was unable to find permit.					

Photo 1 of 2 : FA_2018_RD1600_191_44_20181108_00079.jpg



View of telephone line over levee crown. Fall 2018.

* Location LS : Land Side N/A : Not Applicable WS : Water Side CR : Crown	** Rating A : Acceptable M : Minimally Acceptable U : Unacceptable	N : Not Inspected/Rated C : Corrected A/W : Acceptable but Monitor & Maintain	+ Issue Type Ma : Maintenance Deficiency Ob : Design & System Obsolescence En : Enforcement
--	--	---	---

**Flood Control Project Maintenance
Levee Inspections**

Levee Inspection Report By Mile - Fall 2018

Reclamation District No. 1600 Mull

Waterway	Bank	Unit Miles	Inspection Start/End	Inspector
Unit No. 01 Sacramento River	Right	10.46	11/07/2018 11/07/2018	Zach Jojola

LM Start	0.52	Rating **	M	Issue No.	44 (cont)	
LM End	0.52	Issue Type +	En	Location *	CR	
Category	Earthen Levee			GPS Latitude/Longitude		
				Start	End	
Item	Encroachments			38.682046°	38.682046°	
				-121.634064°	-121.634064°	
DWR ID	DWR_RD1600_01_f_2018_44					
Comment Code						
PO : Pole						
Inspector Comment						
Telephone pole over the levee crown. Was unable to find permit.						

Photo 2 of 2 : FA_2018_RD1600_191_44_20181108_00080.jpg



View of line running to pole on the other side of County Road 117. Fall 2018.

LM Start	0.53	Rating **	M	Issue No.	133
LM End	0.53	Issue Type +	Ma	Location *	LS
Category	Earthen Levee			GPS Latitude/Longitude	
				Start	End
Item	Slope Stability			38.682140 °	38.682140 °
				-121.634083 °	-121.634083 °
DWR ID	DWR_RD1600_01_f_2013_133				
Comment Code					
S2 : Repair the levee slope damaged by foot traffic and prevent access where possible.					
Inspector Comment					
Footpath on landside slope over pipe crossing.					

Photo 1 of 1 : FA_2018_RD1600_191_133_20180904_00047.jpg



Updated view of the slope stability site. Fall 2016.

*** Location**
LS : Land Side N/A : Not Applicable
WS : Water Side
CR : Crown

**** Rating**
A : Acceptable N : Not Inspected/Rated
M : Minimally Acceptable C : Corrected
U : Unacceptable A/W : Acceptable but Monitor & Maintain

+ Issue Type
Ma : Maintenance Deficiency
Ob : Design & System Obsolescence
En : Enforcement

**Flood Control Project Maintenance
Levee Inspections**

Levee Inspection Report By Mile - Fall 2018

Reclamation District No. 1600 Mull

Waterway	Bank	Unit Miles	Inspection Start/End	Inspector
Unit No. 01 Sacramento River	Right	10.46	11/07/2018 11/07/2018	Zach Jojola

LM Start	0.56	Rating **	C	Issue No.	14
LM End	0.66	Issue Type +	Ma	Location *	WS
Category	Supplemental		GPS Latitude/Longitude		
			Start	End	
Item	2017 USACE Erosion Survey, DRAFT		38.682707°	38.684106°	
			-121.633830°	-121.634219°	
DWR ID	DWR_RD1600_01_f_2018_14				
Comment Code					
Inspector Comment					
2017 Site ID: SAC 71.3 R Status: Under Construction 2017 Field Notes: New erosion pocket and fresh toe erosion. Site is currently under construction. Site History: 2000 - Very cohesive vertical bank. 2003 - Some minor new erosion. 2006 - Some minor erosion in old pockets. 2009 - Minimal new erosion. 2011 - Multiple new erosion pockets and a few new tree popouts. DWR Inspector Comment: Repaired as of inspection date.					

No Photos

LM Start	0.60	Rating **	M	Issue No.	29
LM End	0.62	Issue Type +	Ma	Location *	WS
Category	Earthen Levee		GPS Latitude/Longitude		
			Start	End	
Item	Vegetation		38.683238°	38.683415°	
			-121.634388°	-121.634448°	
DWR ID	DWR_RD1600_01_s_2016_29				
Comment Code					
V2 : Remove the wild growth other than native grasses from the levee slopes.					
Inspector Comment					
Recommend removal of willow trees.					

Photo 1 of 3 : FA_2018_RD1600_191_29_20180904_00018.jpg



Perspective view of the willows on the waterward side of the levee looking upstream. Spring 2016.

*** Location**
 LS : Land Side N/A : Not Applicable
 WS : Water Side
 CR : Crown

**** Rating**
 A : Acceptable N : Not Inspected/Rated
 M : Minimally Acceptable C : Corrected
 U : Unacceptable A/W : Acceptable but Monitor & Maintain

+ Issue Type
 Ma : Maintenance Deficiency
 Ob : Design & System Obsolescence
 En : Enforcement

**Flood Control Project Maintenance
Levee Inspections**

Levee Inspection Report By Mile - Fall 2018

Reclamation District No. 1600 Mull

Waterway	Bank	Unit Miles	Inspection Start/End	Inspector
Unit No. 01 Sacramento River	Right	10.46	11/07/2018 11/07/2018	Zach Jojola

LM Start	0.60	Rating **	M	Issue No.	29 (cont)	
LM End	0.62	Issue Type +	Ma	Location *	WS	
Category	Earthen Levee			GPS Latitude/Longitude		
				Start		End
Item	Vegetation			38.683238 °		38.683415 °
				-121.634388 °		-121.634448 °
DWR ID	DWR_RD1600_01_s_2016_29					
Comment Code						
V2 : Remove the wild growth other than native grasses from the levee slopes.						
Inspector Comment						
Recommend removal of willow trees.						

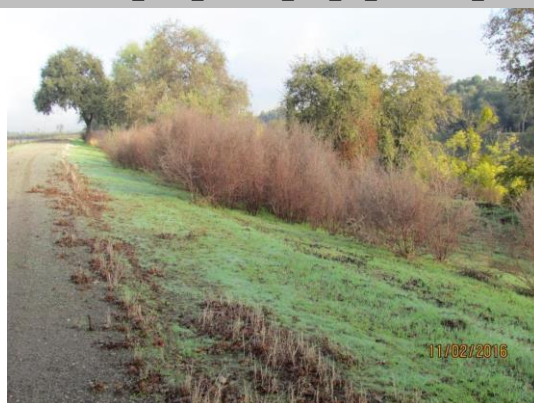
Photo 2 of 3 : FA_2018_RD1600_191_29_20180904_00019.jpg



Willows are growing on the waterward side of the levee. Spring 2016.

LM Start	0.60	Rating **	M	Issue No.	29 (cont)
LM End	0.62	Issue Type +	Ma	Location *	WS

Photo 3 of 3 : FA_2018_RD1600_191_29_20180904_00020.jpg



Updated view of willows on waterward side. Fall 2016.

LM Start	0.69	Rating **	M	Issue No.	47
LM End	0.72	Issue Type +	Ma	Location *	LS
Category	Earthen Levee			GPS Latitude/Longitude	
				Start	End
Item	Vegetation			38.684411 °	38.684823 °
				-121.634686 °	-121.634771 °
DWR ID	DWR_RD1600_01_f_2018_47				
Comment Code					
V2 : Remove the wild growth other than native grasses from the levee slopes.					
Inspector Comment					

No Photos

* Location LS : Land Side N/A : Not Applicable WS : Water Side CR : Crown	** Rating A : Acceptable M : Minimally Acceptable U : Unacceptable	N : Not Inspected/Rated C : Corrected A/W : Acceptable but Monitor & Maintain	+ Issue Type Ma : Maintenance Deficiency Ob : Design & System Obsolescence En : Enforcement
--	--	---	---

**Flood Control Project Maintenance
Levee Inspections**

Levee Inspection Report By Mile - Fall 2018

Reclamation District No. 1600 Mull

Waterway	Bank	Unit Miles	Inspection Start/End	Inspector
Unit No. 01 Sacramento River	Right	10.46	11/07/2018 11/07/2018	Zach Jojola

LM Start	0.78	Rating **	N	Issue No.	624
LM End	0.78	Issue Type +	Ma	Location *	WS
Category	Earthen Levee			GPS Latitude/Longitude	
				Start	End
Item	Trim / Thin Trees			38.685713 °	38.685713 °
				-121.634985 °	-121.634985 °
DWR ID	DWR_RD1600_01_s_2017_624				
Comment Code					
T5 : Tree stumps.					
Inspector Comment					
Burnt stump on waterside slope.					

Photo 1 of 1 : FA_2018_RD1600_191_624_20180904_00051.jpg



View of burnt tree on waterside slope. Fall 2016.

LM Start	0.89	Rating **	M	Issue No.	48
LM End	0.90	Issue Type +	Ma	Location *	LS
Category	Earthen Levee			GPS Latitude/Longitude	
				Start	End
Item	Vegetation			38.687364 °	38.687528 °
				-121.635200 °	-121.635243 °
DWR ID	DWR_RD1600_01_f_2018_48				
Comment Code					
V2 : Remove the wild growth other than native grasses from the levee slopes.					
Inspector Comment					

No Photos

* Location
LS : Land Side N/A : Not Applicable
WS : Water Side
CR : Crown

** Rating
A : Acceptable N : Not Inspected/Rated
M : Minimally Acceptable C : Corrected
U : Unacceptable A/W : Acceptable but Monitor & Maintain

+ Issue Type
Ma : Maintenance Deficiency
Ob : Design & System Obsolescence
En : Enforcement

**Flood Control Project Maintenance
Levee Inspections**

Levee Inspection Report By Mile - Fall 2018

Reclamation District No. 1600 Mull

Waterway	Bank	Unit Miles	Inspection Start/End	Inspector
Unit No. 01 Sacramento River	Right	10.46	11/07/2018 11/07/2018	Zach Jojola

LM Start	0.94	Rating **	M	Issue No.	1204	
LM End	0.94	Issue Type +	En	Location *		
Category	Supplemental			GPS Latitude/Longitude		
				Start	End	
Item	DWR UCIP Field Study			38.688030 °	38.688030 °	
				-121.635367 °	-121.635367 °	
DWR ID	21463					
Comment Code						
Inspector Comment						
FS_ID:15285 DS_ID:21463 EP_NO: 6100 Repair Type: Non-Urgent Crossing Status: Found UCIP Comments: Gate valve will not open or close. FIELD_STRUCT_DESC: 12-inch steel irrigation pipe through the levee, 3.4 feet below the crown. Slant pump and gate valve on the waterside (WS) slope. Siphon breaker in a 12-inch steel riser on the landside (LS) shoulder. Filter, booster pump, and butterfly valve on the LS toe. 2.25-inch galvanized iron electrical conduit at the same location. (Permit No. 6100, 1968 - Charles Plumb Jr., replaced 8-inch pipe at same location). [Additional Reference(s): DWR Levee Log, 1988]. FS Date: 6/18/2013						

LM Start	0.94	Rating **	M	Issue No.	1204 (cont)
LM End	0.94	Issue Type +	En	Location *	

Photo 1 of 3 : UCIP_FA_2018_15285_25088.jpg



Siphon breaker in steel riser on LS shoulder and concrete standpipe off LS toe.

Photo 2 of 3 : UCIP_FA_2018_15285_25087.jpg



Pump and gate valve on WS slope.

* Location LS : Land Side N/A : Not Applicable WS : Water Side CR : Crown	** Rating A : Acceptable M : Minimally Acceptable U : Unacceptable	N : Not Inspected/Rated C : Corrected A/W : Acceptable but Monitor & Maintain	+ Issue Type Ma : Maintenance Deficiency Ob : Design & System Obsolescence En : Enforcement
--	--	---	---

**Flood Control Project Maintenance
Levee Inspections**

Levee Inspection Report By Mile - Fall 2018

Reclamation District No. 1600 Mull

Waterway	Bank	Unit Miles	Inspection Start/End	Inspector
Unit No. 01 Sacramento River	Right	10.46	11/07/2018 11/07/2018	Zach Jojola

LM Start	0.94	Rating **	M	Issue No.	1204 (cont)	
LM End	0.94	Issue Type +	En	Location *		
Category	Supplemental			GPS Latitude/Longitude		
				Start	End	
Item	DWR UCIP Field Study			38.688030 °	38.688030 °	
				-121.635367 °	-121.635367 °	
DWR ID	21463					
Comment Code						
Inspector Comment						
FS_ID:15285						
DS_ID:21463						
EP_NO: 6100						
Repair Type: Non-Urgent						
Crossing Status: Found						
UCIP Comments: Gate valve will not open or close.						
FIELD_STRUCT_DESC: 12-inch steel irrigation pipe through the levee, 3.4 feet below the crown. Slant pump and gate valve on the waterside (WS) slope. Siphon breaker in a 12-inch steel riser on the landside (LS) shoulder. Filter, booster pump, and butterfly valve on the LS toe. 2.25-inch galvanized iron electrical conduit at the same location. (Permit No. 6100, 1968 - Charles Plumb Jr., replaced 8-inch pipe at same location). [Additional Reference(s): DWR Levee Log, 1988].						
FS Date: 6/18/2013						

Photo 3 of 3 : UCIP_FA_2018_15285_25086.jpg



Filters, boost pump, and gate valve down stream from concrete standpipe off LS toe.

LM Start	0.97	Rating **	M	Issue No.	134
LM End	0.97	Issue Type +	Ma	Location *	LS
Category	Earthen Levee			GPS Latitude/Longitude	
				Start	End
Item	Erosion / Bank Caving			38.688454 °	38.688454 °
				-121.635528 °	-121.635528 °
DWR ID	DWR_RD1600_01_f_2013_134				
Comment Code					
E2 : Schedule repair of erosion site prior to the next inspection.					
Inspector Comment					

Photo 1 of 2 : FA_2018_RD1600_191_134_20181108_00081.jpg



Updated view of slope depression and runoff erosion on landside slope. Fall 2018.

* Location LS : Land Side N/A : Not Applicable WS : Water Side CR : Crown	** Rating A : Acceptable M : Minimally Acceptable U : Unacceptable	N : Not Inspected/Rated C : Corrected A/W : Acceptable but Monitor & Maintain	+ Issue Type Ma : Maintenance Deficiency Ob : Design & System Obsolescence En : Enforcement
--	--	--	---

**Flood Control Project Maintenance
Levee Inspections**

Levee Inspection Report By Mile - Fall 2018

Reclamation District No. 1600 Mull

Waterway	Bank	Unit Miles	Inspection Start/End	Inspector
Unit No. 01 Sacramento River	Right	10.46	11/07/2018 11/07/2018	Zach Jojola

LM Start	0.97	Rating **	M	Issue No.	134 (cont)	
LM End	0.97	Issue Type +	Ma	Location *	LS	
Category	Earthen Levee			GPS Latitude/Longitude		
				Start		End
Item	Erosion / Bank Caving			38.688454 °		38.688454 °
				-121.635528 °		-121.635528 °
DWR ID	DWR_RD1600_01_f_2013_134					
Comment Code						
E2 : Schedule repair of erosion site prior to the next inspection.						
Inspector Comment						

Photo 2 of 2 : FA_2018_RD1600_191_134_20180904_00049.jpg



View of the depression of the slope on the landward side of the levee looking downstream. Fall 2015.

LM Start	1.01	Rating **	A/W	Issue No.	22
LM End	1.10	Issue Type +	Ma	Location *	WS
Category	Earthen Levee			GPS Latitude/Longitude	
				Start	End
Item	Vegetation			38.689092 °	38.690368 °
				-121.635616 °	-121.635669 °
DWR ID	DWR_RD1600_01_f_2017_22				
Comment Code					
V8 : Environmental Requirements.					
Inspector Comment					

Photo 1 of 2 : FA_2018_RD1600_191_22_20180904_00014.jpg



View of the revegetation site at the berm edge on the waterward side of the levee looking upstream. Spring 2016.

LM Start	1.01	Rating **	A/W	Issue No.	22 (cont)
LM End	1.10	Issue Type +	Ma	Location *	WS

Photo 2 of 2 : FA_2018_RD1600_191_22_20180904_00015.jpg



Sign stating revegetation site. Spring 2016.

* Location LS : Land Side N/A : Not Applicable WS : Water Side CR : Crown		** Rating A : Acceptable M : Minimally Acceptable U : Unacceptable		N : Not Inspected/Rated C : Corrected A/W : Acceptable but Monitor & Maintain		+ Issue Type Ma : Maintenance Deficiency Ob : Design & System Obsolescence En : Enforcement	
--	--	--	--	---	--	---	--

**Flood Control Project Maintenance
Levee Inspections**

Levee Inspection Report By Mile - Fall 2018

Reclamation District No. 1600 Mull

Waterway	Bank	Unit Miles	Inspection Start/End	Inspector
Unit No. 01 Sacramento River	Right	10.46	11/07/2018 11/07/2018	Zach Jojola

LM Start	1.40	Rating **	M	Issue No.	4
LM End	1.40	Issue Type +	Ma	Location *	LS
Category	Earthen Levee			GPS Latitude/Longitude	
				Start	End
Item	Slope Stability			38.694452 °	38.694452 °
				-121.634292 °	-121.634292 °
DWR ID	DWR_RD1600_01_s_2017_4				
Comment Code					
S3 : Repair the levee slope damaged by vehicle traffic and prevent access where possible.					
Inspector Comment					
Ruts on the landside slope from vehicles.					

Photo 1 of 1 : FA_2018_RD1600_191_4_20180904_00003.jpg



View of the slope stability caused by vehicles on the landward side of the levee looking upstream. Fall 2015.

LM Start	1.40	Rating **	A/W	Issue No.	5
LM End	1.40	Issue Type +	Ob	Location *	WS
Category	Earthen Levee			GPS Latitude/Longitude	
				Start	End
Item	Vegetation			38.694469 °	38.694469 °
				-121.634312 °	-121.634312 °
DWR ID	DWR_RD1600_01_f_2012_5				
Comment Code					
V8 : Environmental Requirements.					
Inspector Comment					

Photo 1 of 2 : FA_2018_RD1600_191_5_20180904_00004.jpg



View of the revegetation site on the berm of the waterward side of the levee looking upstream. Spring 2016.

LM Start	1.40	Rating **	A/W	Issue No.	5 (cont)
LM End	1.40	Issue Type +	Ob	Location *	WS

Photo 2 of 2 : FA_2018_RD1600_191_5_20180904_00005.jpg



DWR revegetation site. Spring 2016.

* Location LS : Land Side N/A : Not Applicable WS : Water Side CR : Crown		** Rating A : Acceptable N : Not Inspected/Rated M : Minimally Acceptable C : Corrected U : Unacceptable A/W : Acceptable but Monitor & Maintain		+ Issue Type Ma : Maintenance Deficiency Ob : Design & System Obsolescence En : Enforcement	
--	--	---	--	---	--

**Flood Control Project Maintenance
Levee Inspections**

Levee Inspection Report By Mile - Fall 2018

Reclamation District No. 1600 Mull

Waterway	Bank	Unit Miles	Inspection Start/End	Inspector
Unit No. 01 Sacramento River	Right	10.46	11/07/2018 11/07/2018	Zach Jojola

LM Start	1.42	Rating **	M	Issue No.	52
LM End	1.42	Issue Type +	Ma	Location *	LS
Category	Earthen Levee			GPS Latitude/Longitude	
				Start	End
Item	Slope Stability			38.694728 °	38.694728 °
				-121.634224 °	-121.634224 °
DWR ID	DWR_RD1600_01_f_2018_52				
Comment Code					
S3 : Repair the levee slope damaged by vehicle traffic and prevent access where possible.					
Inspector Comment					
Ruts on the landside slop from vehicles.					

No Photos

LM Start	1.53	Rating **	M	Issue No.	53
LM End	1.54	Issue Type +	Ma	Location *	LS
Category	Earthen Levee			GPS Latitude/Longitude	
				Start	End
Item	Vegetation			38.696247 °	38.696394 °
				-121.633499 °	-121.633411 °
DWR ID	DWR_RD1600_01_f_2018_53				
Comment Code					
V2 : Remove the wild growth other than native grasses from the levee slopes.					
Inspector Comment					

No Photos

LM Start	1.53	Rating **	M	Issue No.	50
LM End	1.58	Issue Type +	Ma	Location *	WS
Category	Earthen Levee			GPS Latitude/Longitude	
				Start	End
Item	Vegetation			38.696341 °	38.696918 °
				-121.633417 °	-121.633044 °
DWR ID	DWR_RD1600_01_s_2016_50				
Comment Code					
V2 : Remove the wild growth other than native grasses from the levee slopes.					
Inspector Comment					
Recommend removal of willows on waterward side of the levee.					

Photo 1 of 1 : FA_2018_RD1600_191_50_20180904_00032.jpg



View of willows on waterward side of the levee. Recommended removal. Fall 2016.

* Location LS : Land Side N/A : Not Applicable WS : Water Side CR : Crown	** Rating A : Acceptable M : Minimally Acceptable U : Unacceptable	N : Not Inspected/Rated C : Corrected A/W : Acceptable but Monitor & Maintain	+ Issue Type Ma : Maintenance Deficiency Ob : Design & System Obsolescence En : Enforcement
--	--	---	---

Reclamation District No. 1600 Mull

Photo 1 of 1 : FA_2018_RD1600_191_70_20180904_00038.jpg



11/02/2016

View of slope instability. Fall 2016.

No Photos

Photo 1 of 1 : FA_2018_RD1600_191_72_20180904_00039.jpg



04/11/2017

Updated view of the erosion site. Spring 2017.

Page 15 of 43

**Flood Control Project Maintenance
Levee Inspections**

Levee Inspection Report By Mile - Fall 2018

Reclamation District No. 1600 Mull

Waterway	Bank	Unit Miles	Inspection Start/End	Inspector
Unit No. 01 Sacramento River	Right	10.46	11/07/2018 11/07/2018	Zach Jojola

LM Start	2.03	Rating **	M	Issue No.	62
LM End	2.03	Issue Type +	Ma	Location *	WS
Category	Earthen Levee			GPS Latitude/Longitude	
				Start	End
Item	Animal Control			38.701780 °	38.701780 °
				-121.627648 °	-121.627648 °
DWR ID	DWR_RD1600_01_f_2017_62				
Comment Code					
A3 : No rodents visible, but rodent burrows visible; need to backfill and compact or grout burrows.					
Inspector Comment					
Multiple holes on the waterside slope. The LMA has done a good job of baiting the area.					

No Photos

LM Start	2.11	Rating **	M	Issue No.	54
LM End	2.13	Issue Type +	Ma	Location *	LS
Category	Earthen Levee			GPS Latitude/Longitude	
				Start	End
Item	Vegetation			38.702491 °	38.702645 °
				-121.626463 °	-121.626227 °
DWR ID	DWR_RD1600_01_f_2018_54				
Comment Code					
V2 : Remove the wild growth other than native grasses from the levee slopes.					
Inspector Comment					

No Photos

LM Start	2.17	Rating **	C	Issue No.	67
LM End	2.17	Issue Type +	Ma	Location *	WS
Category	Earthen Levee			GPS Latitude/Longitude	
				Start	End
Item	Animal Control			38.703066 °	38.703066 °
				-121.625518 °	-121.625518 °
DWR ID	DWR_RD1600_01_s_2018_67				
Comment Code					
A3 : No rodents visible, but rodent burrows visible; need to backfill and compact or grout burrows.					
Inspector Comment					
Rodent holes on the waterside slope next to large mound of dirt.					

No Photos

* Location LS : Land Side N/A : Not Applicable WS : Water Side CR : Crown	** Rating A : Acceptable M : Minimally Acceptable U : Unacceptable	N : Not Inspected/Rated C : Corrected A/W : Acceptable but Monitor & Maintain	+ Issue Type Ma : Maintenance Deficiency Ob : Design & System Obsolescence En : Enforcement
--	--	---	---

**Flood Control Project Maintenance
Levee Inspections**

Levee Inspection Report By Mile - Fall 2018

Reclamation District No. 1600 Mull

Waterway	Bank	Unit Miles	Inspection Start/End	Inspector
Unit No. 01 Sacramento River	Right	10.46	11/07/2018 11/07/2018	Zach Jojola

LM Start	2.29	Rating **	C	Issue No.	58
LM End	2.29	Issue Type +	Ma	Location *	WS
Category	Earthen Levee			GPS Latitude/Longitude	
				Start	End
Item	Animal Control			38.704095 °	38.704095 °
				-121.623891 °	-121.623891 °
DWR ID	DWR_RD1600_01_s_2018_58				
Comment Code					
A3 : No rodents visible, but rodent burrows visible; need to backfill and compact or grout burrows.					
Inspector Comment					
Multiple large rodent holes on the waterside slope and berm.					

No Photos

LM Start	2.35	Rating **	A/W	Issue No.	35
LM End	2.40	Issue Type +	Ob	Location *	WS
Category	Earthen Levee			GPS Latitude/Longitude	
				Start	End
Item	Vegetation			38.704624 °	38.705152 °
				-121.623034 °	-121.622187 °
DWR ID	DWR_RD1600_01_s_2012_35				
Comment Code					
V8 : Environmental Requirements.					
Inspector Comment					

Photo 1 of 2 : FA_2018_RD1600_191_35_20180904_00023.jpg



Sign for revegetation site. Spring 2016.

LM Start	2.35	Rating **	A/W	Issue No.	35 (cont)
LM End	2.40	Issue Type +	Ob	Location *	WS

Photo 2 of 2 : FA_2018_RD1600_191_35_20180904_00024.jpg



View of the revegetation site on the waterward side of the levee looking upstream. Spring 2016.

* Location LS : Land Side N/A : Not Applicable WS : Water Side CR : Crown		** Rating A : Acceptable M : Minimally Acceptable U : Unacceptable N : Not Inspected/Rated C : Corrected A/W : Acceptable but Monitor & Maintain		+ Issue Type Ma : Maintenance Deficiency Ob : Design & System Obsolescence En : Enforcement	
--	--	---	--	---	--

**Flood Control Project Maintenance
Levee Inspections**

Levee Inspection Report By Mile - Fall 2018

Reclamation District No. 1600 Mull

Waterway	Bank	Unit Miles	Inspection Start/End	Inspector
Unit No. 01 Sacramento River	Right	10.46	11/07/2018 11/07/2018	Zach Jojola

LM Start	2.40	Rating **	M	Issue No.	43
LM End	2.40	Issue Type +	Ma	Location *	LS
Category	Earthen Levee			GPS Latitude/Longitude	
				Start	End
Item	Erosion / Bank Caving			38.705154 °	38.705154 °
				-121.622231 °	-121.622231 °
DWR ID	DWR_RD1600_01_f_2016_43				
Comment Code					
E2 : Schedule repair of erosion site prior to the next inspection.					
Inspector Comment					
Runoff on the landside slope.					

Photo 1 of 1 : FA_2018_RD1600_191_43_20181108_00082.jpg



View of runoff on the landside slope. Fall 2018.

LM Start	2.61	Rating **	A/W	Issue No.	45
LM End	2.61	Issue Type +	Ma	Location *	LS
Category	Earthen Levee			GPS Latitude/Longitude	
				Start	End
Item	Vegetation			38.707311 °	38.707311 °
				-121.619517 °	-121.619517 °
DWR ID	DWR_RD1600_01_f_2016_45				
Comment Code					
V4 : Elderberries are blocking visibility and flood fight capability.					
Inspector Comment					

No Photos

*** Location**
LS : Land Side N/A : Not Applicable
WS : Water Side
CR : Crown

**** Rating**
A : Acceptable N : Not Inspected/Rated
M : Minimally Acceptable C : Corrected
U : Unacceptable A/W : Acceptable but Monitor & Maintain

+ Issue Type
Ma : Maintenance Deficiency
Ob : Design & System Obsolescence
En : Enforcement

**Flood Control Project Maintenance
Levee Inspections**

Levee Inspection Report By Mile - Fall 2018

Reclamation District No. 1600 Mull

Waterway	Bank	Unit Miles	Inspection Start/End	Inspector
Unit No. 01 Sacramento River	Right	10.46	11/07/2018 11/07/2018	Zach Jojola

LM Start	2.81	Rating **	M	Issue No.	1205	
LM End	2.81	Issue Type +	En	Location *		
Category	Supplemental			GPS Latitude/Longitude		
				Start	End	
Item	DWR UCIP Field Study			38.709350 °	38.709350 °	
				-121.616913 °	-121.616913 °	
DWR ID	21467					
Comment Code						
Inspector Comment						
FS_ID:15108						
DS_ID:21467						
EP_NO: N/A						
Repair Type: Non-Urgent						
Crossing Status: Not Found						
UCIP Comments: Pipe removed and replaced with a pipe dsid 25565 - permit 18852.						
Appears abandoned and should be done so properly. Debris buildup on pier. Power cut to pump.						
FIELD_STRUCT_DESC: *REMOVED* 16-inch steel irrigation pipe through the levee, 2 feet below the crown. Walkway from berm to pump on pile structure in the stream. Siphon breaker on the landside (LS) slope. 12-inch polyvinyl chloride (PVC) standpipe off the LS toe.						
[Additional Reference(s): DWR Levee Log, 1988. USACE Sacramento O&M Manual 123, August 1955, (RM 73.4) (18-inch pipe listed)].						
FS Date: 6/18/2013						

LM Start	2.81	Rating **	M	Issue No.	1205 (cont)
LM End	2.81	Issue Type +	En	Location *	

Photo 1 of 3 : UCIP_FA_2018_15108_24826.jpg



Pump on metal platform off WS berm.

Photo 2 of 3 : UCIP_FA_2018_15108_24825.jpg



Debris buildup at metal platform waterline.

* Location LS : Land Side N/A : Not Applicable WS : Water Side CR : Crown	** Rating A : Acceptable M : Minimally Acceptable U : Unacceptable	N : Not Inspected/Rated C : Corrected A/W : Acceptable but Monitor & Maintain	+ Issue Type Ma : Maintenance Deficiency Ob : Design & System Obsolescence En : Enforcement
--	--	---	---

**Flood Control Project Maintenance
Levee Inspections**

Levee Inspection Report By Mile - Fall 2018

Reclamation District No. 1600 Mull

Waterway	Bank	Unit Miles	Inspection Start/End	Inspector
Unit No. 01 Sacramento River	Right	10.46	11/07/2018 11/07/2018	Zach Jojola

LM Start	2.81	Rating **	M	Issue No.	1205 (cont)	
LM End	2.81	Issue Type +	En	Location *		
Category	Supplemental			GPS Latitude/Longitude		
				Start	End	
Item	DWR UCIP Field Study			38.709350 °	38.709350 °	
				-121.616913 °	-121.616913 °	
DWR ID	21467					
Comment Code						
Inspector Comment						
FS_ID:15108						
DS_ID:21467						
EP_NO: N/A						
Repair Type: Non-Urgent						
Crossing Status: Not Found						
UCIP Comments: Pipe removed and replaced with a pipe dsid 25565 - permit 18852.						
Appears abandoned and should be done so properly. Debris buildup on pier. Power cut to pump.						
FIELD_STRUCT_DESC: *REMOVED* 16-inch steel irrigation pipe through the levee, 2 feet below the crown. Walkway from berm to pump on pile structure in the stream. Siphon breaker on the landside (LS) slope. 12-inch polyvinyl chloride (PVC) standpipe off the LS toe.						
[Additional Reference(s): DWR Levee Log, 1988. USACE Sacramento O&M Manual 123, August 1955, (RM 73.4) (18-inch pipe listed)].						
FS Date: 6/18/2013						

Photo 3 of 3 : UCIP_FA_2018_15108_24824.jpg



Electrical cut to pump.

LM Start	2.93	Rating **	M	Issue No.	1206	
LM End	2.93	Issue Type +	En	Location *		
Category	Supplemental			GPS Latitude/Longitude		
				Start	End	
Item	DWR UCIP Field Study			38.710497°	38.710497°	
				-121.615381°	-121.615381°	
DWR ID	21490					
Comment Code						
Inspector Comment						
FS_ID:15110 DS_ID:21490 EP_NO: N/A Repair Type: Non-Urgent Crossing Status: Indicator Found UCIP Comments: Abandoned and should be removed from levee. FIELD_STRUCT_DESC: *ABANDONED* 10-inch reinforced concrete pipe of an unknown purpose through the levee, 5 feet below the crown. Pipe visible on the landside (LS) slope. [Additional Reference(s): USACE Sacramento O&M Manual 123, August 1955, (RM 73.5)]. FS Date: 6/18/2013						

Photo 1 of 2 : UCIP_FA_2018_15110_24828.jpg



Pipe visible on LS slope.

* Location LS : Land Side N/A : Not Applicable WS : Water Side CR : Crown	** Rating A : Acceptable M : Minimally Acceptable U : Unacceptable	N : Not Inspected/Rated C : Corrected A/W : Acceptable but Monitor & Maintain	+ Issue Type Ma : Maintenance Deficiency Ob : Design & System Obsolescence En : Enforcement
--	--	---	---

**Flood Control Project Maintenance
Levee Inspections**

Levee Inspection Report By Mile - Fall 2018

Reclamation District No. 1600 Mull

Waterway	Bank	Unit Miles	Inspection Start/End	Inspector
Unit No. 01 Sacramento River	Right	10.46	11/07/2018 11/07/2018	Zach Jojola

LM Start	2.93	Rating **	M	Issue No.	1206 (cont)	
LM End	2.93	Issue Type +	En	Location *		
Category	Supplemental			GPS Latitude/Longitude		
				Start	End	
Item	DWR UCIP Field Study			38.710497°	38.710497°	
				-121.615381°	-121.615381°	
DWR ID	21490					
Comment Code						
Inspector Comment						
FS_ID:15110 DS_ID:21490 EP_NO: N/A Repair Type: Non-Urgent Crossing Status: Indicator Found UCIP Comments: Abandoned and should be removed from levee. FIELD_STRUCT_DESC: *ABANDONED* 10-inch reinforced concrete pipe of an unknown purpose through the levee, 5 feet below the crown. Pipe visible on the landside (LS) slope. [Additional Reference(s): USACE Sacramento O&M Manual 123, August 1955, (RM 73.5)]. FS Date: 6/18/2013						

Photo 2 of 2 : UCIP_FA_2018_15110_24827.jpg



Pipe visible on LS slope.

LM Start	2.99	Rating **	M	Issue No.	15
LM End	3.37	Issue Type +	Ma	Location *	WS
Category	Supplemental			GPS Latitude/Longitude	
				Start	End
Item	2017 USACE Erosion Survey, DRAFT			38.710874°	38.715134°
				-121.614239°	-121.609566°
DWR ID	DWR_RD1600_01_f_2018_15				
Comment Code					
Inspector Comment					
2017 Site ID: SAC 74.0 R Status: Eroding New 2017 Field Notes: Significant toe erosion. Erosion along entire bank. Tree popouts observed. Site History: DWR Inspector Comment: Erosion within waterside bench and possibly the toe of levee prism.					

No Photos

* Location LS : Land Side N/A : Not Applicable WS : Water Side CR : Crown	** Rating A : Acceptable M : Minimally Acceptable U : Unacceptable	N : Not Inspected/Rated C : Corrected A/W : Acceptable but Monitor & Maintain	+ Issue Type Ma : Maintenance Deficiency Ob : Design & System Obsolescence En : Enforcement
--	--	---	---

**Flood Control Project Maintenance
Levee Inspections**

Levee Inspection Report By Mile - Fall 2018

Reclamation District No. 1600 Mull

Waterway	Bank	Unit Miles	Inspection Start/End	Inspector
Unit No. 01 Sacramento River	Right	10.46	11/07/2018 11/07/2018	Zach Jojola

LM Start	3.04	Rating **	A/W	Issue No.	37
LM End	3.04	Issue Type +	Ma	Location *	LS
Category	Earthen Levee			GPS Latitude/Longitude	
				Start	End
Item	Vegetation			38.711597°	38.711597°
				-121.613890°	-121.613890°
DWR ID	DWR_RD1600_01_s_2012_37				
Comment Code					
V4 : Elderberries are blocking visibility and flood fight capability.					
Inspector Comment					

No Photos

LM Start	3.16	Rating **	M	Issue No.	55
LM End	3.19	Issue Type +	Ma	Location *	LS
Category	Earthen Levee			GPS Latitude/Longitude	
				Start	End
Item	Vegetation			38.712904°	38.713262°
				-121.612390°	-121.611990°
DWR ID	DWR_RD1600_01_f_2018_55				
Comment Code					
V2 : Remove the wild growth other than native grasses from the levee slopes.					
Inspector Comment					

No Photos

LM Start	3.20	Rating **	M	Issue No.	51
LM End	3.20	Issue Type +	Ma	Location *	LS
Category	Earthen Levee			GPS Latitude/Longitude	
				Start	End
Item	Vegetation			38.713393°	38.713393°
				-121.611828°	-121.611828°
DWR ID	DWR_RD1600_01_s_2017_51				
Comment Code					
V4 : Elderberries are blocking visibility and flood fight capability.					
Inspector Comment					

No Photos

* Location LS : Land Side N/A : Not Applicable WS : Water Side CR : Crown	** Rating A : Acceptable M : Minimally Acceptable U : Unacceptable	N : Not Inspected/Rated C : Corrected A/W : Acceptable but Monitor & Maintain	+ Issue Type Ma : Maintenance Deficiency Ob : Design & System Obsolescence En : Enforcement
--	--	---	---

**Flood Control Project Maintenance
Levee Inspections**

Levee Inspection Report By Mile - Fall 2018

Reclamation District No. 1600 Mull

Waterway	Bank	Unit Miles	Inspection Start/End	Inspector
Unit No. 01 Sacramento River	Right	10.46	11/07/2018 11/07/2018	Zach Jojola

LM Start	3.22	Rating **	M	Issue No.	59
LM End	3.39	Issue Type +	Ma	Location *	LS
Category	Earthen Levee			GPS Latitude/Longitude	
				Start	End
Item	Vegetation			38.713561°	38.715588°
				-121.611682°	-121.609652°
DWR ID	DWR_RD1600_01_f_2018_59				
Comment Code					
V2 : Remove the wild growth other than native grasses from the levee slopes.					
Inspector Comment					

No Photos

LM Start	3.40	Rating **	M	Issue No.	77
LM End	3.40	Issue Type +	Ma	Location *	LS
Category	Earthen Levee			GPS Latitude/Longitude	
				Start	End
Item	Vegetation			38.715681°	38.715681°
				-121.609555°	-121.609555°
DWR ID	DWR_RD1600_01_s_2017_77				
Comment Code					
V4 : Elderberries are blocking visibility and flood fight capability.					
Inspector Comment					

No Photos

LM Start	3.57	Rating **	C	Issue No.	627
LM End	3.57	Issue Type +	En	Location *	WS
Category	Earthen Levee			GPS Latitude/Longitude	
				Start	End
Item	Encroachments			38.717717°	38.717717°
				-121.608015°	-121.608015°
DWR ID	DWR_RD1600_01_s_2014_627				
Comment Code					
DE : Debris					
Inspector Comment					
Plywood on waterside slope.					

No Photos

* Location LS : Land Side N/A : Not Applicable WS : Water Side CR : Crown	** Rating A : Acceptable M : Minimally Acceptable U : Unacceptable	N : Not Inspected/Rated C : Corrected A/W : Acceptable but Monitor & Maintain	+ Issue Type Ma : Maintenance Deficiency Ob : Design & System Obsolescence En : Enforcement
--	--	---	---

**Flood Control Project Maintenance
Levee Inspections**

Levee Inspection Report By Mile - Fall 2018

Reclamation District No. 1600 Mull

Waterway	Bank	Unit Miles	Inspection Start/End	Inspector
Unit No. 01 Sacramento River	Right	10.46	11/07/2018 11/07/2018	Zach Jojola

LM Start	3.58	Rating **	M	Issue No.	16
LM End	3.83	Issue Type +	Ma	Location *	WS
Category	Supplemental			GPS Latitude/Longitude	
				Start	End
Item	2017 USACE Erosion Survey, DRAFT			38.717770 °	38.721351 °
				-121.607423 °	-121.606414 °
DWR ID	DWR_RD1600_01_f_2018_16				
Comment Code					
Inspector Comment					
2017 Site ID: SAC 74.4 R Status: Eroding 2017 Field Notes: Significant erosion at toe in the past year. Fresh tree popout. Site History: 1997 - Steep high bank. 2005 - Some small pockets in the low toe near the waterline. 2006 - Minor slope clearing. 2010 - Minor new erosion. 2011 - Multiple trees have fallen since last year. Some other trees look ready to fall. Significant new erosion since last year. 2012 - Minor new erosion. 2013 - Minor new erosion. 2015 - Minor new toe erosion. DWR Inspector Comment: Erosion within waterside bench and possibly sections of the waterside toe prism.					

Photo 1 of 1 : FA_2018_RD1600_191_16_20181114_00002.jpg



USACE 2013 Photo #1

LM Start	3.59	Rating **	C	Issue No.	628
LM End	3.59	Issue Type +	En	Location *	WS
Category	Earthen Levee			GPS Latitude/Longitude	
				Start	End
Item	Encroachments			38.718080 °	38.718080 °
				-121.607815 °	-121.607815 °
DWR ID	DWR_RD1600_01_s_2014_628				
Comment Code					
DE : Debris					
Inspector Comment					

No Photos

* Location LS : Land Side N/A : Not Applicable WS : Water Side CR : Crown	** Rating A : Acceptable M : Minimally Acceptable U : Unacceptable	N : Not Inspected/Rated C : Corrected A/W : Acceptable but Monitor & Maintain	+ Issue Type Ma : Maintenance Deficiency Ob : Design & System Obsolescence En : Enforcement
--	--	---	---

**Flood Control Project Maintenance
Levee Inspections**

Levee Inspection Report By Mile - Fall 2018

Reclamation District No. 1600 Mull

Waterway	Bank	Unit Miles	Inspection Start/End	Inspector
Unit No. 01 Sacramento River	Right	10.46	11/07/2018 11/07/2018	Zach Jojola

LM Start	3.84	Rating **	C	Issue No.	57
LM End	3.84	Issue Type +	Ma	Location *	LS
Category	Earthen Levee			GPS Latitude/Longitude	
				Start	End
Item	Encroachments			38.721511 °	38.721511 °
				-121.606828 °	-121.606828 °
DWR ID	DWR_RD1600_01_s_2018_57				
Comment Code					
TR : Tree or limb					
Inspector Comment					
Fallen tree on landside slope.					

No Photos

LM Start	4.34	Rating **	M	Issue No.	17
LM End	4.86	Issue Type +	Ma	Location *	WS
Category	Supplemental			GPS Latitude/Longitude	
				Start	End
Item	2017 USACE Erosion Survey, DRAFT			38.728684 °	38.736110 °
				-121.605844 °	-121.604153 °
DWR ID	DWR_RD1600_01_f _ 2018_17				
Comment Code					
Inspector Comment					
2017 Site ID: SAC 75.3 R					
Status: Eroding					
2017 Field Notes: Fresh erosion along lower bank in sections.					
Site History: 1997 - Very steep bank. 2005 - Lots of small trees down along the bank at the upstream end. 2006 - Minor new erosion, but slow. 2010 - Almost all of the roots are exposed on the trees, appears ready to fall. 2011 - New erosion and tree popouts. 2012 - Site has become overgrown with vegetation, making it hard to observe. 2015 - Dense vegetation made the site difficult to observe.					

Photo 1 of 1 : FA_2018_RD1600_191_17_20181114_00008.jpg



USACE 2013 Photo #1

* Location LS : Land Side N/A : Not Applicable WS : Water Side CR : Crown	** Rating A : Acceptable M : Minimally Acceptable U : Unacceptable N : Not Inspected/Rated C : Corrected A/W : Acceptable but Monitor & Maintain	+ Issue Type Ma : Maintenance Deficiency Ob : Design & System Obsolescence En : Enforcement
--	---	---

**Flood Control Project Maintenance
Levee Inspections**

Levee Inspection Report By Mile - Fall 2018

Reclamation District No. 1600 Mull

Waterway	Bank	Unit Miles	Inspection Start/End	Inspector
Unit No. 01 Sacramento River	Right	10.46	11/07/2018 11/07/2018	Zach Jojola

LM Start	4.46	Rating **	M	Issue No.	60
LM End	4.46	Issue Type +	Ma	Location *	WS
Category	Earthen Levee			GPS Latitude/Longitude	
				Start	End
Item	Encroachments			38.730441 °	38.730441 °
				-121.605931 °	-121.605931 °
DWR ID	DWR_RD1600_01_f_2018_60				
Comment Code					
TR : Tree or limb					
Inspector Comment					
Fallen tree on the waterside slope.					

No Photos

LM Start	4.51	Rating **	M	Issue No.	1207	
LM End	4.51	Issue Type +	En	Location *		
Category	Supplemental			GPS Latitude/Longitude		
				Start		End
Item	DWR UCIP Field Study			38.731143 °		38.731143 °
				-121.605825 °		-121.605825 °
DWR ID	21470					
Comment Code						
Inspector Comment						
FS_ID:15125 DS_ID:21470 EP_NO: N/A Repair Type: Non-Urgent Crossing Status: Found UCIP Comments: Pumphouse abandoned with deep pit open. Safety issue. If plant is abandoned it should be done so properly. FIELD_STRUCT_DESC: 24-inch steel irrigation pipe through the levee, 21.4 feet below the crown. 16-inch pipe ties into 24-inch pipe at the waterside (WS) slope. Slant pump on metal platform and gate valve on the WS berm. Gate valve in pump house off the landside (LS). Two power poles at the LS toe. [Additional Reference(s): DWR Levee Log, 1988. USACE Sacramento O&M Manual 123, August 1955, (RM 75.2) (20-inch pipe listed)]. FS Date: 6/18/2013 7:36:00 AM						

Photo 1 of 3 : UCIP_FA_2018_15125_24846.jpg



Pumphouse/distribution box off LS toe.

* Location LS : Land Side N/A : Not Applicable WS : Water Side CR : Crown	** Rating A : Acceptable M : Minimally Acceptable U : Unacceptable N : Not Inspected/Rated C : Corrected A/W : Acceptable but Monitor & Maintain	+ Issue Type Ma : Maintenance Deficiency Ob : Design & System Obsolescence En : Enforcement
--	---	---

**Flood Control Project Maintenance
Levee Inspections**

Levee Inspection Report By Mile - Fall 2018

Reclamation District No. 1600 Mull

Waterway	Bank	Unit Miles	Inspection Start/End	Inspector
Unit No. 01 Sacramento River	Right	10.46	11/07/2018 11/07/2018	Zach Jojola

LM Start	4.51	Rating **	M	Issue No.	1207 (cont)	
LM End	4.51	Issue Type +	En	Location *		
Category	Supplemental			GPS Latitude/Longitude		
				Start	End	
Item	DWR UCIP Field Study			38.731143	°	38.731143
				-121.605825	°	-121.605825
DWR ID	21470					
Comment Code						
Inspector Comment						
FS_ID:15125 DS_ID:21470 EP_NO: N/A Repair Type: Non-Urgent Crossing Status: Found UCIP Comments: Pumphouse abandoned with deep pit open. Safety issue. If plant is abandoned it should be done so properly. FIELD_STRUCT_DESC: 24-inch steel irrigation pipe through the levee, 21.4 feet below the crown. 16-inch pipe ties into 24-inch pipe at the waterside (WS) slope. Slant pump on metal platform and gate valve on the WS berm. Gate valve in pump house off the landside (LS). Two power poles at the LS toe. [Additional Reference(s): DWR Levee Log, 1988. USACE Sacramento O&M Manual 123, August 1955, (RM 75.2) (20-inch pipe listed)]. FS Date: 6/18/2013 7:36:00 AM						

Photo 2 of 3 : UCIP_FA_2018_15125_24845.jpg



Slant pump on metal pier on WS berm.

LM Start	4.51	Rating **	M	Issue No.	1207 (cont)
LM End	4.51	Issue Type +	En	Location *	

Photo 3 of 3 : UCIP_FA_2018_15125_24844.jpg



16-inch pipe ties into 24-inch pipe under pump platform at slide gate.

* Location LS : Land Side N/A : Not Applicable WS : Water Side CR : Crown	** Rating A : Acceptable M : Minimally Acceptable U : Unacceptable	N : Not Inspected/Rated C : Corrected A/W : Acceptable but Monitor & Maintain	+ Issue Type Ma : Maintenance Deficiency Ob : Design & System Obsolescence En : Enforcement
--	--	---	---

**Flood Control Project Maintenance
Levee Inspections**

Levee Inspection Report By Mile - Fall 2018

Reclamation District No. 1600 Mull

Waterway	Bank	Unit Miles	Inspection Start/End	Inspector
Unit No. 01 Sacramento River	Right	10.46	11/07/2018 11/07/2018	Zach Jojola

LM Start	4.52	Rating **	M	Issue No.	1208	
LM End	4.52	Issue Type +	En	Location *		
Category	Supplemental			GPS Latitude/Longitude		
				Start		End
Item	DWR UCIP Field Study			38.731280 °		38.731280 °
				-121.605825 °		-121.605825 °
DWR ID	21471					
Comment Code						
Inspector Comment						
FS_ID:41563 DS_ID:21471 EP_NO: N/A Repair Type: Non-Urgent Crossing Status: Found UCIP Comments: Pipe should be removed from slope. FIELD_STRUCT_DESC: *ABANDONED* 12-inch pipe through the levee 5.5 feet below the crown. Grouted in place 1957. FS Date: 6/18/2013						

LM Start	4.52	Rating **	M	Issue No.	1208 (cont)
LM End	4.52	Issue Type +	En	Location *	

Photo 1 of 2 : UCIP_FA_2018_41563_27474.jpg



Pipe and remnants of grouted pipe on LS slope.

Photo 2 of 2 : UCIP_FA_2018_41563_27473.jpg



Pipe and remnants of grouted pipe on LS slope.

* Location LS : Land Side N/A : Not Applicable WS : Water Side CR : Crown	** Rating A : Acceptable M : Minimally Acceptable U : Unacceptable	N : Not Inspected/Rated C : Corrected A/W : Acceptable but Monitor & Maintain	+ Issue Type Ma : Maintenance Deficiency Ob : Design & System Obsolescence En : Enforcement
--	--	---	---

**Flood Control Project Maintenance
Levee Inspections**

Levee Inspection Report By Mile - Fall 2018

Reclamation District No. 1600 Mull

Waterway	Bank	Unit Miles	Inspection Start/End	Inspector
Unit No. 01 Sacramento River	Right	10.46	11/07/2018 11/07/2018	Zach Jojola

LM Start	4.59	Rating **	C	Issue No.	56
LM End	4.59	Issue Type +	Ma	Location *	WS
Category	Earthen Levee			GPS Latitude/Longitude	
				Start	End
Item	Animal Control			38.732315°	38.732315°
				-121.605681°	-121.605681°
DWR ID	DWR_RD1600_01_s_2018_56				
Comment Code					
A3 : No rodents visible, but rodent burrows visible; need to backfill and compact or grout burrows.					
Inspector Comment					
Observed a large rodent hole on the waterside berm during a previous site visit. Recommend monitoring.					

No Photos

LM Start	4.72	Rating **	M	Issue No.	18
LM End	4.72	Issue Type +	Ma	Location *	WS
Category	Earthen Levee			GPS Latitude/Longitude	
				Start	End
Item	Encroachments			38.734255°	38.734255°
				-121.605190°	-121.605190°
DWR ID	DWR_RD1600_01_s_2018_18				
Comment Code					
TR : Tree or limb					
Inspector Comment					
Fallen tree on waterside slope.					

No Photos

LM Start	4.75	Rating **	A/W	Issue No.	1193
LM End	4.75	Issue Type +	Ma	Location *	LS
Category	Earthen Levee			GPS Latitude/Longitude	
				Start	End
Item	Vegetation			38.734561°	38.734561°
				-121.605113°	-121.605113°
DWR ID	DWR_RD1600_01_s_2015_1193				
Comment Code					
V4 : Elderberries are blocking visibility and flood fight capability.					
Inspector Comment					

No Photos

* Location LS : Land Side N/A : Not Applicable WS : Water Side CR : Crown	** Rating A : Acceptable M : Minimally Acceptable U : Unacceptable	N : Not Inspected/Rated C : Corrected A/W : Acceptable but Monitor & Maintain	+ Issue Type Ma : Maintenance Deficiency Ob : Design & System Obsolescence En : Enforcement
--	--	---	---

**Flood Control Project Maintenance
Levee Inspections**

Levee Inspection Report By Mile - Fall 2018

Reclamation District No. 1600 Mull

Waterway	Bank	Unit Miles	Inspection Start/End	Inspector
Unit No. 01 Sacramento River	Right	10.46	11/07/2018 11/07/2018	Zach Jojola

LM Start	4.76	Rating **	A/W	Issue No.	1194
LM End	4.76	Issue Type +	Ma	Location *	LS
Category	Earthen Levee			GPS Latitude/Longitude	
				Start	End
Item	Vegetation			38.734784 °	38.734784 °
				-121.605048 °	-121.605048 °
DWR ID	DWR_RD1600_01_s _ 2015_1194				
Comment Code					
V4 : Elderberries are blocking visibility and flood fight capability.					
Inspector Comment					

No Photos

LM Start	4.79	Rating **	A/W	Issue No.	1195
LM End	4.79	Issue Type +	Ma	Location *	WS
Category	Earthen Levee			GPS Latitude/Longitude	
				Start	End
Item	Vegetation			38.735111 °	38.735111 °
				-121.604923 °	-121.604923 °
DWR ID	DWR_RD1600_01_s _ 2015_1195				
Comment Code					
V4 : Elderberries are blocking visibility and flood fight capability.					
Inspector Comment					

No Photos

LM Start	4.80	Rating **	A/W	Issue No.	1196
LM End	4.80	Issue Type +	Ma	Location *	LS
Category	Earthen Levee			GPS Latitude/Longitude	
				Start	End
Item	Vegetation			38.735275 °	38.735275 °
				-121.604863 °	-121.604863 °
DWR ID	DWR_RD1600_01_s _ 2015_1196				
Comment Code					
V4 : Elderberries are blocking visibility and flood fight capability.					
Inspector Comment					

No Photos

* Location LS : Land Side N/A : Not Applicable WS : Water Side CR : Crown	** Rating A : Acceptable M : Minimally Acceptable U : Unacceptable	N : Not Inspected/Rated C : Corrected A/W : Acceptable but Monitor & Maintain	+ Issue Type Ma : Maintenance Deficiency Ob : Design & System Obsolescence En : Enforcement
--	--	---	---

**Flood Control Project Maintenance
Levee Inspections**

Levee Inspection Report By Mile - Fall 2018

Reclamation District No. 1600 Mull

Waterway	Bank	Unit Miles	Inspection Start/End	Inspector
Unit No. 01 Sacramento River	Right	10.46	11/07/2018 11/07/2018	Zach Jojola

LM Start	4.85	Rating **	A/W	Issue No.	1197
LM End	4.85	Issue Type +	Ma	Location *	WS
Category	Earthen Levee			GPS Latitude/Longitude	
				Start	End
Item	Vegetation			38.736095 °	38.736095 °
				-121.604642 °	-121.604642 °
DWR ID	DWR_RD1600_01_s_2015_1197				
Comment Code					
V4 : Elderberries are blocking visibility and flood fight capability.					
Inspector Comment					

No Photos

LM Start	5.42	Rating **	A/W	Issue No.	13
LM End	5.42	Issue Type +	Ma	Location *	LS
Category	Earthen Levee			GPS Latitude/Longitude	
				Start	End
Item	Vegetation			38.743805 °	38.743805 °
				-121.601319 °	-121.601319 °
DWR ID	DWR_RD1600_01_s_2012_13				
Comment Code					
V4 : Elderberries are blocking visibility and flood fight capability.					
Inspector Comment					

No Photos

LM Start	5.44	Rating **	A/W	Issue No.	19
LM End	5.77	Issue Type +	Ma	Location *	WS
Category	Earthen Levee			GPS Latitude/Longitude	
				Start	End
Item	Erosion / Bank Caving			38.744118 °	38.748210 °
				-121.601104 °	-121.598025 °
DWR ID	DWR_RD1600_01_s_2012_19				
Comment Code					
E1 : Note and monitor erosion site.					
Inspector Comment					
Levee district had us add this because of the loss of the berm over years of water flows. Erosion is at the waters edge. Walnut trees are close to edge now.					

No Photos

* Location LS : Land Side N/A : Not Applicable WS : Water Side CR : Crown	** Rating A : Acceptable M : Minimally Acceptable U : Unacceptable	N : Not Inspected/Rated C : Corrected A/W : Acceptable but Monitor & Maintain	+ Issue Type Ma : Maintenance Deficiency Ob : Design & System Obsolescence En : Enforcement
--	--	---	---

**Flood Control Project Maintenance
Levee Inspections**

Levee Inspection Report By Mile - Fall 2018

Reclamation District No. 1600 Mull

Waterway	Bank	Unit Miles	Inspection Start/End	Inspector
Unit No. 01 Sacramento River	Right	10.46	11/07/2018 11/07/2018	Zach Jojola

LM Start	5.80	Rating **	M	Issue No.	39
LM End	5.80	Issue Type +	En	Location *	WS
Category	Earthen Levee		GPS Latitude/Longitude		
			Start	End	
Item	Encroachments		38.748639 °	38.748639 °	
			-121.597662 °	-121.597662 °	
DWR ID	DWR_RD1600_01_f_2017_39				
Comment Code					
DE : Debris					
Inspector Comment					
Abandoned pipes on waterside slope.					

No Photos

LM Start	5.85	Rating **	M	Issue No.	63
LM End	5.85	Issue Type +	En	Location *	WS
Category	Earthen Levee		GPS Latitude/Longitude		
			Start	End	
Item	Encroachments		38.749253 °	38.749253 °	
			-121.597203 °	-121.597203 °	
DWR ID	DWR_RD1600_01_f_2018_63				
Comment Code					
DE : Debris					
Inspector Comment					
Abandoned pipes on the waterside bench.					

No Photos

*** Location**
 LS : Land Side N/A : Not Applicable
 WS : Water Side
 CR : Crown

**** Rating**
 A : Acceptable N : Not Inspected/Rated
 M : Minimally Acceptable C : Corrected
 U : Unacceptable A/W : Acceptable but Monitor & Maintain

+ Issue Type
 Ma : Maintenance Deficiency
 Ob : Design & System Obsolescence
 En : Enforcement

**Flood Control Project Maintenance
Levee Inspections**

Levee Inspection Report By Mile - Fall 2018

Reclamation District No. 1600 Mull

Waterway	Bank	Unit Miles	Inspection Start/End	Inspector
Unit No. 01 Sacramento River	Right	10.46	11/07/2018 11/07/2018	Zach Jojola

LM Start	6.19	Rating **	M	Issue No.	1209
LM End	6.19	Issue Type +	En	Location *	
Category	Supplemental			GPS Latitude/Longitude	
				Start	End
Item	DWR UCIP Field Study			38.753820 °	38.753820 °
				-121.595012 °	-121.595012 °
DWR ID	21476				
Comment Code					
Inspector Comment					
FS_ID:53410 DS_ID:21476 EP_NO: N/A Repair Type: Non-Urgent Crossing Status: Found UCIP Comments: 07/17/2018 No integrity issue observed, therefore crossing downgraded to "Non-Urgent". Needs proper abandonment or removal. Fall hazard: one of two standpipes on LS is broken to the ground level and uncovered which is a safety issue. (O.Yakimov-DWR UCIP)08/15/2016 - no change since previous inspection (T. Hatch/UCIP)06/20/2013 - Pipe is abandoned and open on both ends. It should be abandoned properly. (W. Wylie/UCIP) FIELD_STRUCT_DESC: *ABANDONED* 18-inch steel irrigation pipe through the levee, 4.5 feet below the crown. Pump on pile structure on the waterside (WS), pump not found and only the piles remain. Walkway between levee crown and pile structure on the WS, not found. Overhead power line crosses the levee. Service pole on the WS slope. 6-foot by 6-foot concrete distribution box at the landside (LS) toe. [Additional Reference(s): DWR Levee Log, 1988. USACE Sacramento O&M Manual 123, August 1955, (RM 77.0)]. FS Date: 7/17/2018 7:56:22 AM					

LM Start	6.19	Rating **	M	Issue No.	1209 (cont)
LM End	6.19	Issue Type +	En	Location *	

Photo 1 of 3 : UCIP_FA_2018_53410_25011.jpg



6'X6' concrete distribution box on LS toe.

Photo 2 of 3 : UCIP_FA_2018_53410_25010.jpg



Pipe on WS slope.

* Location LS : Land Side N/A : Not Applicable WS : Water Side CR : Crown	** Rating A : Acceptable M : Minimally Acceptable U : Unacceptable	N : Not Inspected/Rated C : Corrected A/W : Acceptable but Monitor & Maintain	+ Issue Type Ma : Maintenance Deficiency Ob : Design & System Obsolescence En : Enforcement
--	--	---	---

**Flood Control Project Maintenance
Levee Inspections**

Levee Inspection Report By Mile - Fall 2018

Reclamation District No. 1600 Mull

Waterway	Bank	Unit Miles	Inspection Start/End	Inspector
Unit No. 01 Sacramento River	Right	10.46	11/07/2018 11/07/2018	Zach Jojola

LM Start	6.19	Rating **	M	Issue No.	1209 (cont)	
LM End	6.19	Issue Type +	En	Location *		
Category	Supplemental			GPS Latitude/Longitude		
				Start	End	
Item	DWR UCIP Field Study			38.753820 °	38.753820 °	
				-121.595012 °	-121.595012 °	
DWR ID	21476					
Comment Code						
Inspector Comment						
FS_ID:53410 DS_ID:21476 EP_NO: N/A Repair Type: Non-Urgent Crossing Status: Found UCIP Comments: 07/17/2018 No integrity issue observed, therefore crossing downgraded to "Non-Urgent". Needs proper abandonment or removal. Fall hazard: one of two standpipes on LS is broken to the ground level and uncovered which is a safety issue. (O.Yakimov-DWR UCIP)08/15/2016 - no change since previous inspection (T. Hatch/UCIP)06/20/2013 - Pipe is abandoned and open on both ends. It should be abandoned properly. (W. Wylie/UCIP) FIELD_STRUCT_DESC: *ABANDONED* 18-inch steel irrigation pipe through the levee, 4.5 feet below the crown. Pump on pile structure on the waterside (WS), pump not found and only the piles remain. Walkway between levee crown and pile structure on the WS, not found. Overhead power line crosses the levee. Service pole on the WS slope. 6-foot by 6-foot concrete distribution box at the landside (LS) toe. [Additional Reference(s): DWR Levee Log, 1988. USACE Sacramento O&M Manual 123, August 1955, (RM 77.0)]. FS Date: 7/17/2018 7:56:22 AM						

Photo 3 of 3 : UCIP_FA_2018_53410_25012.jpg



Pump missing from pier on WS toe.

LM Start	6.30	Rating **	C	Issue No.	25
LM End	6.36	Issue Type +	Ma	Location *	WS
Category	Supplemental			GPS Latitude/Longitude	
				Start	End
Item	2017 USACE Erosion Survey, DRAFT			38.755246 °	38.756186 °
				-121.594206 °	-121.594024 °
DWR ID	DWR_RD1600_01_f_2018_25				
Comment Code					
Inspector Comment					
2017 Site ID: SAC 77.0 R					
Status: removed					
2017 Field Notes: Does not meet criterial.					
Site History: 2011 - Large vertical eroded face from a rotational failure just below pump.					

No Photos

* Location LS : Land Side N/A : Not Applicable WS : Water Side CR : Crown	** Rating A : Acceptable M : Minimally Acceptable U : Unacceptable	N : Not Inspected/Rated C : Corrected A/W : Acceptable but Monitor & Maintain	+ Issue Type Ma : Maintenance Deficiency Ob : Design & System Obsolescence En : Enforcement
--	--	---	---

**Flood Control Project Maintenance
Levee Inspections**

Levee Inspection Report By Mile - Fall 2018

Reclamation District No. 1600 Mull

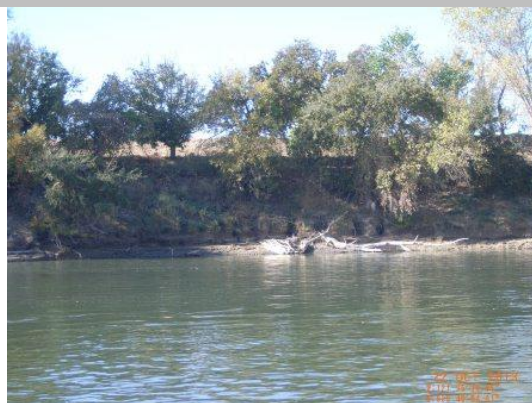
Waterway	Bank	Unit Miles	Inspection Start/End	Inspector
Unit No. 01 Sacramento River	Right	10.46	11/07/2018 11/07/2018	Zach Jojola

LM Start	6.56	Rating **	M	Issue No.	80
LM End	6.56	Issue Type +	Ma	Location *	LS
Category	Earthen Levee			GPS Latitude/Longitude	
				Start	End
Item	Vegetation			38.759131 °	38.759131 °
				-121.594092 °	-121.594092 °
DWR ID	DWR_RD1600_01_s_2017_80				
Comment Code					
V4 : Elderberries are blocking visibility and flood fight capability.					
Inspector Comment					

No Photos

LM Start	6.95	Rating **	M	Issue No.	23
LM End	6.98	Issue Type +	Ma	Location *	WS
Category	Supplemental			GPS Latitude/Longitude	
				Start	End
Item	2017 USACE Erosion Survey, DRAFT			38.764801 °	38.765219 °
				-121.594926 °	-121.595049 °
DWR ID	DWR_RD1600_01_f _ 2018_23				
Comment Code					
Inspector Comment					
2017 Site ID: SAC 77.7 R					
Status: Eroding					
2017 Field Notes: Minor new erosion.					
Site History: 2006 - Eddy scour off end of rock causing erosion and scour hole near levee. Sandy silt bank with rock on upstream end.					
2010 - Trees are leaning more, minor new erosion. 2011 - Many of the tree roots have scoured out and trees look ready to fall.					
DWR Inspector Comment: Continued erosion within the waterside berm.					

Photo 1 of 1 : FA_2018_RD1600_191_23_20181114_00009.jpg



USACE 2013 Photo #1

* Location LS : Land Side N/A : Not Applicable WS : Water Side CR : Crown	** Rating A : Acceptable M : Minimally Acceptable U : Unacceptable	N : Not Inspected/Rated C : Corrected A/W : Acceptable but Monitor & Maintain	+ Issue Type Ma : Maintenance Deficiency Ob : Design & System Obsolescence En : Enforcement
--	--	---	---

**Flood Control Project Maintenance
Levee Inspections**

Levee Inspection Report By Mile - Fall 2018

Reclamation District No. 1600 Mull

Waterway	Bank	Unit Miles	Inspection Start/End	Inspector
Unit No. 01 Sacramento River	Right	10.46	11/07/2018 11/07/2018	Zach Jojola

LM Start	6.97	Rating **	A/W	Issue No.	27
LM End	6.97	Issue Type +	Ma	Location *	LS
Category	Earthen Levee			GPS Latitude/Longitude	
				Start	End
Item	Erosion / Bank Caving			38.764974 °	38.764974 °
				-121.595533 °	-121.595533 °
DWR ID	DWR_RD1600_01_s _ 2012_27				
Comment Code					
E1 : Note and monitor erosion site.					
Inspector Comment					
Minor runoff. Recommend monitoring.					

No Photos

LM Start	7.10	Rating **	A/W	Issue No.	20
LM End	7.10	Issue Type +	Ma	Location *	WS
Category	Earthen Levee			GPS Latitude/Longitude	
				Start	End
Item	Erosion / Bank Caving			38.766691 °	38.766691 °
				-121.596300 °	-121.596300 °
DWR ID	DWR_RD1600_01_s _ 2012_20				
Comment Code					
E1 : Note and monitor erosion site.					
Inspector Comment					
Continued erosion within the waterside berm. Not within the prism.					

Photo 1 of 2 : FA_2018_RD1600_191_20_20180904_00006.jpg



This another view of the site.

LM Start	7.10	Rating **	A/W	Issue No.	20 (cont)
LM End	7.10	Issue Type +	Ma	Location *	WS

Photo 2 of 2 : FA_2018_RD1600_191_20_20180904_00007.jpg



View of the erosion in the berm area on the waterward side looking upstream. Fall 2015.

* Location LS : Land Side N/A : Not Applicable WS : Water Side CR : Crown		** Rating A : Acceptable N : Not Inspected/Rated M : Minimally Acceptable C : Corrected U : Unacceptable A/W : Acceptable but Monitor & Maintain		+ Issue Type Ma : Maintenance Deficiency Ob : Design & System Obsolescence En : Enforcement	
---	--	--	--	--	--

Reclamation District No. 1600 Mull

The bank is eroding away and has become very steep.

Page 37 of 43

**Flood Control Project Maintenance
Levee Inspections**

Levee Inspection Report By Mile - Fall 2018

Reclamation District No. 1600 Mull

Waterway	Bank	Unit Miles	Inspection Start/End	Inspector
Unit No. 01 Sacramento River	Right	10.46	11/07/2018 11/07/2018	Zach Jojola

LM Start	7.23	Rating **	A/W	Issue No.	21 (cont)	
LM End	7.23	Issue Type +	Ma	Location *	WS	
Category	Earthen Levee			GPS Latitude/Longitude		
				Start		End
Item	Erosion / Bank Caving			38.768409 °		38.768409 °
				-121.597213 °		-121.597213 °
DWR ID	DWR_RD1600_01_s _ 2012_21					
Comment Code						
E1 : Note and monitor erosion site.						
Inspector Comment						
Erosion on waterside berm. Not within the prism.						

Photo 3 of 3 : FA_2018_RD1600_191_21_20180904_00013.jpg



View of the erosion along the waterward berm of the levee. Fall 2015.

LM Start	7.38	Rating **	M	Issue No.	81
LM End	7.38	Issue Type +	Ma	Location *	WS
Category	Earthen Levee			GPS Latitude/Longitude	
				Start	End
Item	Vegetation			38.770338 °	38.770338 °
				-121.598542 °	-121.598542 °
DWR ID	DWR_RD1600_01_s _ 2017_81				
Comment Code					
V4 : Elderberries are blocking visibility and flood fight capability.					
Inspector Comment					

No Photos

* Location LS : Land Side N/A : Not Applicable WS : Water Side CR : Crown	** Rating A : Acceptable M : Minimally Acceptable U : Unacceptable	N : Not Inspected/Rated C : Corrected A/W : Acceptable but Monitor & Maintain	+ Issue Type Ma : Maintenance Deficiency Ob : Design & System Obsolescence En : Enforcement
--	--	---	---

**Flood Control Project Maintenance
Levee Inspections**

Levee Inspection Report By Mile - Fall 2018

Reclamation District No. 1600 Mull

Waterway	Bank	Unit Miles	Inspection Start/End	Inspector
Unit No. 01 Sacramento River	Right	10.46	11/07/2018 11/07/2018	Zach Jojola

LM Start	7.56	Rating **	M	Issue No.	1210	
LM End	7.56	Issue Type +	En	Location *		
Category	Supplemental			GPS Latitude/Longitude		
				Start	End	
Item	DWR UCIP Field Study			38.772560 °	38.772560 °	
				-121.600153 °	-121.600153 °	
DWR ID	25464					
Comment Code						
Inspector Comment						
FS_ID:50169 DS_ID:25464 EP_NO: 18849 Repair Type: Non-Urgent Crossing Status: Found UCIP Comments: 08/15/2016 - Pipe appears in good condition overall. Standing water found in riser for siphon breaker. Pump was not in operation during field visit. (T. Hatch/UCIP) FIELD_STRUCT_DESC: 24-inch welded steel irrigation pipe through the levee, 2 feet below the crown. Positive closure device in a steel riser with a lid on the waterside (WS) hinge of the levee. Siphon breaker in a steel riser with lid on the landside (LS) hinge of the levee. Distribution box on the LS toe. (Installed under Permit No. 18849, 2014 - Bypass Farms). FS Date: 8/15/2016						

LM Start	7.56	Rating **	M	Issue No.	1210 (cont)
LM End	7.56	Issue Type +	En	Location *	

Photo 1 of 3 : UCIP_FA_2018_50169_75607.jpg



view along the levee crown looking downstream. WS slope of the levee is visible.

Photo 2 of 3 : UCIP_FA_2018_50169_75608.jpg



view of positive closure device in metal riser on WS shoulder of levee.

* Location LS : Land Side N/A : Not Applicable WS : Water Side CR : Crown	** Rating A : Acceptable M : Minimally Acceptable U : Unacceptable	N : Not Inspected/Rated C : Corrected A/W : Acceptable but Monitor & Maintain	+ Issue Type Ma : Maintenance Deficiency Ob : Design & System Obsolescence En : Enforcement
--	--	---	---

**Flood Control Project Maintenance
Levee Inspections**

Levee Inspection Report By Mile - Fall 2018

Reclamation District No. 1600 Mull

Waterway	Bank	Unit Miles	Inspection Start/End	Inspector
Unit No. 01 Sacramento River	Right	10.46	11/07/2018 11/07/2018	Zach Jojola

LM Start	7.56	Rating **	M	Issue No.	1210 (cont)	
LM End	7.56	Issue Type +	En	Location *		
Category	Supplemental			GPS Latitude/Longitude		
				Start	End	
Item	DWR UCIP Field Study			38.772560 °	38.772560 °	
				-121.600153 °	-121.600153 °	
DWR ID	25464					
Comment Code						
Inspector Comment						
FS_ID:50169 DS_ID:25464 EP_NO: 18849 Repair Type: Non-Urgent Crossing Status: Found UCIP Comments: 08/15/2016 - Pipe appears in good condition overall. Standing water found in riser for siphon breaker. Pump was not in operation during field visit. (T. Hatch/UCIP) FIELD_STRUCT_DESC: 24-inch welded steel irrigation pipe through the levee, 2 feet below the crown. Positive closure device in a steel riser with a lid on the waterside (WS) hinge of the levee. Siphon breaker in a steel riser with lid on the landside (LS) hinge of the levee. Distribution box on the LS toe. (Installed under Permit No. 18849, 2014 - Bypass Farms). FS Date: 8/15/2016						

Photo 3 of 3 : UCIP_FA_2018_50169_75609.jpg



view of levee crown looking upstream from pipe location.

LM Start	8.03	Rating **	M	Issue No.	1211
LM End	8.03	Issue Type +	En	Location *	
Category	Supplemental			GPS Latitude/Longitude	
				Start	End
Item	DWR UCIP Field Study			38.777799 °	38.777799 °
				-121.605763 °	-121.605763 °
DWR ID	21480				
Comment Code					
Inspector Comment					
FS_ID:16310 DS_ID:21480 EP_NO: 7339 Repair Type: Non-Urgent Crossing Status: Indicator Found UCIP Comments: Need to determine disposition of pipe. If abandoned, it should be done so properly. FIELD_STRUCT_DESC: 24-inch steel irrigation pipe through the levee, 3.8 feet below the crown. Steel plate welded on the waterside (WS) end. Pipe not visible on either slope. Pylons in river at the WS toe, and a 4-foot-diameter steel standpipe on the landside (LS) toe. Seepage area at the landside (LS) toe. (Permit No. 7339, 1971 - Layton Knaggs). [Additional Reference(s): DWR Levee Log, 1988]. FS Date: 6/20/2013					

Photo 1 of 1 : UCIP_FA_2018_16310_27485.jpg



4-foot diameter steel standpipe at LS toe, may be indicator of pipe location.

* Location LS : Land Side N/A : Not Applicable WS : Water Side CR : Crown	** Rating A : Acceptable M : Minimally Acceptable U : Unacceptable	N : Not Inspected/Rated C : Corrected A/W : Acceptable but Monitor & Maintain	+ Issue Type Ma : Maintenance Deficiency Ob : Design & System Obsolescence En : Enforcement
--	--	---	---

**Flood Control Project Maintenance
Levee Inspections**

Levee Inspection Report By Mile - Fall 2018

Reclamation District No. 1600 Mull

Waterway	Bank	Unit Miles	Inspection Start/End	Inspector
Unit No. 01 Sacramento River	Right	10.46	11/07/2018 11/07/2018	Zach Jojola

LM Start	8.19	Rating **	M	Issue No.	30
LM End	8.19	Issue Type +	En	Location *	WS
Category	Earthen Levee			GPS Latitude/Longitude	
				Start	End
Item	Encroachments			38.778931 °	38.778931 °
				-121.608199 °	-121.608199 °
DWR ID	DWR_RD1600_01_f_2018_30				
Comment Code					
EQ : Equipment					
Inspector Comment					
Beehives.					

No Photos

LM Start	8.41	Rating **	C	Issue No.	36
LM End	8.41	Issue Type +	Ma	Location *	WS
Category	Earthen Levee			GPS Latitude/Longitude	
				Start	End
Item	Encroachments			38.779848 °	38.779848 °
				-121.612130 °	-121.612130 °
DWR ID	DWR_RD1600_01_f_2017_36				
Comment Code					
TR : Tree or limb					
Inspector Comment					
Fallen tree on waterside slope.					

No Photos

LM Start	9.40	Rating **	M	Issue No.	66
LM End	10.45	Issue Type +	Ma	Location *	WS
Category	Earthen Levee			GPS Latitude/Longitude	
				Start	End
Item	Vegetation			38.778649 °	38.765406 °
				-121.627172 °	-121.635004 °
DWR ID	DWR_RD1600_01_f_2016_66				
Comment Code					
V2 : Remove the wild growth other than native grasses from the levee slopes.					
Inspector Comment					

Photo 1 of 1 : FA_2018_RD1600_191_66_20180904_00036.jpg



Vegetation on WS slope has been cleared only about 10 ft. from the crown. Fall 2016.

* Location LS : Land Side N/A : Not Applicable WS : Water Side CR : Crown		** Rating A : Acceptable N : Not Inspected/Rated M : Minimally Acceptable C : Corrected U : Unacceptable A/W : Acceptable but Monitor & Maintain		+ Issue Type Ma : Maintenance Deficiency Ob : Design & System Obsolescence En : Enforcement	
---	--	--	--	--	--

**Flood Control Project Maintenance
Levee Inspections**

Levee Inspection Report By Mile - Fall 2018

Reclamation District No. 1600 Mull

Waterway	Bank	Unit Miles	Inspection Start/End	Inspector
Unit No. 01 Sacramento River	Right	10.46	11/07/2018 11/07/2018	Zach Jojola

LM Start	10.27	Rating **	M	Issue No.	26
LM End	10.27	Issue Type +	En	Location *	LS
Category	Earthen Levee			GPS Latitude/Longitude	
				Start	End
Item	Encroachments			38.767711 °	38.767711 °
				-121.633150 °	-121.633150 °
DWR ID	DWR_RD1600_01_f_2017_26				
Comment Code					
EQ : Equipment					
Inspector Comment					
Beehives on landside berm.					

No Photos

LM Start	10.38	Rating **	M	Issue No.	1202
LM End	10.45	Issue Type +	En	Location *	WS
Category	Earthen Levee			GPS Latitude/Longitude	
				Start	End
Item	Encroachments			38.766363 °	38.765402 °
				-121.634317 °	-121.635005 °
DWR ID	DWR_RD1600_01_s_2015_1202				
Comment Code					
DE : Debris					
Inspector Comment					
Concrete pipes and blocks on levee crown.					

Photo 1 of 1 : FA_2018_RD1600_191_1202_20180904_00056.jpg



View of debris on the waterward side of the levee looking upstream.
Spring 2015.

LM Start	10.38	Rating **	M	Issue No.	69
LM End	10.38	Issue Type +	Ma	Location *	LS
Category	Earthen Levee			GPS Latitude/Longitude	
				Start	End
Item	Trim / Thin Trees			38.766293 °	38.766293 °
				-121.634349 °	-121.634349 °
DWR ID	DWR_RD1600_01_f_2015_69				
Comment Code					
T1 : Trim trees to at least five feet above ground level.					
Inspector Comment					

No Photos

* Location LS : Land Side N/A : Not Applicable WS : Water Side CR : Crown	** Rating A : Acceptable M : Minimally Acceptable U : Unacceptable	N : Not Inspected/Rated C : Corrected A/W : Acceptable but Monitor & Maintain	+ Issue Type Ma : Maintenance Deficiency Ob : Design & System Obsolescence En : Enforcement
--	--	--	---

**Flood Control Project Maintenance
Levee Inspections**

Levee Inspection Report By Mile - Fall 2018

Reclamation District No. 1600 Mull

Waterway	Bank	Unit Miles	Inspection Start/End	Inspector
Unit No. 01 Sacramento River	Right	10.46	11/07/2018 11/07/2018	Zach Jojola

LM Start	10.40	Rating **	M	Issue No.	24
LM End	10.44	Issue Type +	En	Location *	LS
Category	Earthen Levee		GPS Latitude/Longitude		
			Start	End	
Item	Encroachments		38.766109°	38.765655°	
			-121.634524°	-121.634850°	
DWR ID	DWR_RD1600_01_f_2017_24				
Comment Code					
EQ : Equipment					
Inspector Comment					
Beehives on lanside shoulder.					

No Photos

*** Location**
 LS : Land Side N/A : Not Applicable
 WS : Water Side
 CR : Crown

**** Rating**
 A : Acceptable N : Not Inspected/Rated
 M : Minimally Acceptable C : Corrected
 U : Unacceptable A/W : Acceptable but Monitor & Maintain

+ Issue Type
 Ma : Maintenance Deficiency
 Ob : Design & System Obsolescence
 En : Enforcement

**Flood Control Project Maintenance
Levee Inspections**

Unit Cover Sheet

Fall 2018 Levee Inspection Results

Reclamation District No. 1600 Mull

Waterway			Bank	Unit Miles
Unit No. 02 Yolo Bypass			Left	4.23
	Spring (March - May)	Summer (June - August)	(September - November) Fall	Winter (December - February)
Unit Maintenance Rating (Fall Only)			A	
Date of Inspection	4/10/2018 - 4/10/2018		11/7/2018 - 11/13/2018	
DWR Inspector	Zach Jojola		Zach Jojola	
Accompanied By				

Summer & Winter Inspections

The Local Maintaining Agency (LMA) is responsible for summer and winter inspections. The LMA is required to submit a report regarding summer and winter inspections to the California Department of Water Resources (DWR).

DWR must be informed on the:

- a) completion of the inspection
- b) any changes other than the results of normal maintenance
- c) corrections to deficiencies noted in this report

If additional items are noted, further documentation of those items must also be submitted.

The LMA should submit this information to DWR using the LMA web application tool available at:

<http://cdec.water.ca.gov/lma.html>

If the LMA is unable to submit information on this webpage, please contact DWR for assistance.

The LMA should submit the information and any associated documentation by September 30 for summer inspections and March 31 for winter inspections.

**Flood Control Project Maintenance
Levee Inspections**

Levee Inspection Report By Mile - Fall 2018

Reclamation District No. 1600 Mull

Waterway	Bank	Unit Miles	Inspection Start/End	Inspector
Unit No. 02 Yolo Bypass	Left	4.23	11/07/2018 11/13/2018	Zach Jojola

LM Start	0.20	Rating **	A/W	Issue No.	17
LM End	4.21	Issue Type +	Ma	Location *	
Category	Supplemental			GPS Latitude/Longitude	
				Start	End
Item	2017 Storm Damage			38.733333 °	38.676750 °
				-121.633611 °	-121.643250 °
DWR ID	DWR_RD1600_02_f_2017_17				

Comment Code

Inspector Comment

Levee Evaluation Comments

Description:

Site ID No:202

Site Designation:RD 1600-01

Repair Type: Erosion

Rating:Area of Concern

Field Date:6/5/2017

Notes: Long stretches of wavewash on the waterside slope.

LM Start	0.20	Rating **	A/W	Issue No.	17 (cont)
LM End	4.21	Issue Type +	Ma	Location *	

Photo 1 of 3 : LEVAL_FA_2018_202_1210.jpg



Photo 2 of 3 : LEVAL_FA_2018_202_369.jpg



* Location LS : Land Side N/A : Not Applicable WS : Water Side CR : Crown		** Rating A : Acceptable N : Not Inspected/Rated M : Minimally Acceptable C : Corrected U : Unacceptable A/W : Acceptable but Monitor & Maintain		+ Issue Type Ma : Maintenance Deficiency Ob : Design & System Obsolescence En : Enforcement	
--	--	---	--	---	--

**Flood Control Project Maintenance
Levee Inspections**

Levee Inspection Report By Mile - Fall 2018

Reclamation District No. 1600 Mull

Waterway	Bank	Unit Miles	Inspection Start/End	Inspector
Unit No. 02 Yolo Bypass	Left	4.23	11/07/2018 11/13/2018	Zach Jojola

LM Start	0.20	Rating **	A/W	Issue No.	17 (cont)	
LM End	4.21	Issue Type +	Ma	Location *		
Category	Supplemental			GPS Latitude/Longitude		
				Start		End
Item	2017 Storm Damage			38.733333	°	38.676750
				-121.633611	°	-121.643250
DWR ID	DWR_RD1600_02_f_2017_17					
Comment Code						
Inspector Comment						
Levee Evaluation Comments						
Description:						
Site ID No:202						
Site Designation:RD 1600-01						
Repair Type: Erosion						
Rating:Area of Concern						
Field Date:6/5/2017						
Notes: Long stretchs of wavewash on the waterside slope.						

Photo 3 of 3 : LEVAL_FA_2018_202_371.jpg



LM Start	0.37	Rating **	M	Issue No.	4
LM End	0.37	Issue Type +	Ma	Location *	LS
Category	Earthen Levee			GPS Latitude/Longitude	
				Start	End
Item	Erosion / Bank Caving			38.730872°	38.730872°
				-121.633504°	-121.633504°
DWR ID	DWR_RD1600_02_f_2016_4				
Comment Code					
E2 : Schedule repair of erosion site prior to the next inspection.					
Inspector Comment					

Photo 1 of 1 : FA_2018_RD1600_192_4_20180904_00001.jpg



Landside levee slope erosion at RD1600 pumping plant. Fall 2016.

* Location LS : Land Side N/A : Not Applicable WS : Water Side CR : Crown	** Rating A : Acceptable M : Minimally Acceptable U : Unacceptable N : Not Inspected/Rated C : Corrected A/W : Acceptable but Monitor & Maintain	+ Issue Type Ma : Maintenance Deficiency Ob : Design & System Obsolescence En : Enforcement
--	---	---

**Flood Control Project Maintenance
Levee Inspections**

Levee Inspection Report By Mile - Fall 2018

Reclamation District No. 1600 Mull

Waterway	Bank	Unit Miles	Inspection Start/End	Inspector
Unit No. 02 Yolo Bypass	Left	4.23	11/07/2018 11/13/2018	Zach Jojola

LM Start	0.92	Rating **	A/W	Issue No.	23
LM End	1.40	Issue Type +	Ma	Location *	WS
Category	Earthen Levee			GPS Latitude/Longitude	
				Start	End
Item	Erosion / Bank Caving			38.722948 °	38.716108 °
				-121.633477 °	-121.634930 °
DWR ID	DWR_RD1600_02_s_2017_23				
Comment Code					
E2 : Schedule repair of erosion site prior to the next inspection.					
Inspector Comment					
Long section of wave wash damage on waterside levee slope.					

Photo 1 of 1 : FA_2018_RD1600_192_23_20180904_00016.jpg



View of wave wash damage on waterside levee slope. Spring 2017.

LM Start	1.22	Rating **	A/W	Issue No.	16	
LM End	1.26	Issue Type +	Ma	Location *		
Category	Supplemental			GPS Latitude/Longitude		
				Start		End
Item	2017 Storm Damage			38.718528 °		38.718043 °
				-121.633972 °		-121.634274 °
DWR ID	DWR_RD1600_02_f _ 2017_16					
Comment Code						
Inspector Comment						
Levee Evaluation Comments						
Description:						
Site ID No:203						
Site Designation:RD 1600-03						
Repair Type: Erosion						
Rating:Area of Concern						
Field Date:6/5/2017						
Notes: Site located inside bounds of 1600-01, same evaluation. Seems to be part of site ID No. 202.						

No Photos

* Location LS : Land Side N/A : Not Applicable WS : Water Side CR : Crown	** Rating A : Acceptable M : Minimally Acceptable U : Unacceptable	N : Not Inspected/Rated C : Corrected A/W : Acceptable but Monitor & Maintain	+ Issue Type Ma : Maintenance Deficiency Ob : Design & System Obsolescence En : Enforcement
--	--	---	---

**Flood Control Project Maintenance
Levee Inspections**

Levee Inspection Report By Mile - Fall 2018

Reclamation District No. 1600 Mull

Waterway	Bank	Unit Miles	Inspection Start/End	Inspector
Unit No. 02 Yolo Bypass	Left	4.23	11/07/2018 11/13/2018	Zach Jojola

LM Start	1.58	Rating **	C	Issue No.	22
LM End	1.58	Issue Type +	Ma	Location *	WS
Category	Earthen Levee			GPS Latitude/Longitude	
				Start	End
Item	Encroachments			38.713632 °	38.713632 °
				-121.635928 °	-121.635928 °
DWR ID	DWR_RD1600_02_s_2017_22				
Comment Code					
DE : Debris					
Inspector Comment					
Refrigerator on waterside levee slope.					

No Photos

LM Start	1.79	Rating **	A/W	Issue No.	14
LM End	2.05	Issue Type +	Ma	Location *	WS
Category	Earthen Levee			GPS Latitude/Longitude	
				Start	End
Item	Erosion / Bank Caving			38.710763 °	38.707116 °
				-121.637147 °	-121.638722 °
DWR ID	DWR_RD1600_02_s_2012_14				
Comment Code					
E1 : Note and monitor erosion site.					
Inspector Comment					

Photo 1 of 4 : FA_2018_RD1600_192_14_20180904_00005.jpg



A closer view of the wave wash damage along the bypass.

LM Start	1.79	Rating **	A/W	Issue No.	14 (cont)
LM End	2.05	Issue Type +	Ma	Location *	WS

Photo 2 of 4 : FA_2018_RD1600_192_14_20180904_00006.jpg



Wave wash damage along the slope the cut is 1'-2'.

* Location LS : Land Side N/A : Not Applicable WS : Water Side CR : Crown		** Rating A : Acceptable N : Not Inspected/Rated M : Minimally Acceptable C : Corrected U : Unacceptable A/W : Acceptable but Monitor & Maintain		+ Issue Type Ma : Maintenance Deficiency Ob : Design & System Obsolescence En : Enforcement	
--	--	---	--	---	--

**Flood Control Project Maintenance
Levee Inspections**

Levee Inspection Report By Mile - Fall 2018

Reclamation District No. 1600 Mull

Waterway	Bank	Unit Miles	Inspection Start/End	Inspector
Unit No. 02 Yolo Bypass	Left	4.23	11/07/2018 11/13/2018	Zach Jojola

LM Start	1.79	Rating **	A/W	Issue No.	14 (cont)	
LM End	2.05	Issue Type +	Ma	Location *	WS	
Category	Earthen Levee			GPS Latitude/Longitude		
				Start		End
Item	Erosion / Bank Caving			38.710763 °	38.707116 °	
				-121.637147 °	-121.638722 °	
DWR ID	DWR_RD1600_02_s_2012_14					
Comment Code						
E1 : Note and monitor erosion site.						
Inspector Comment						

Photo 3 of 4 : FA_2018_RD1600_192_14_20180904_00007.jpg



View of the erosion on the waterward side of the levee looking downstream. Fall 2015.

LM Start	1.79	Rating **	A/W	Issue No.	14 (cont)
LM End	2.05	Issue Type +	Ma	Location *	WS

Photo 4 of 4 : FA_2018_RD1600_192_14_20180904_00008.jpg



Updated view of erosion site on WS slope. Fall 2016.

LM Start	2.16	Rating **	A/W	Issue No.	15
LM End	2.27	Issue Type +	Ma	Location *	WS
Category	Earthen Levee			GPS Latitude/Longitude	
				Start	End
Item	Erosion / Bank Caving			38.705614 °	38.704052 °
				-121.639357 °	-121.640016 °
DWR ID	DWR_RD1600_02_s_2012_15				
Comment Code					
E1 : Note and monitor erosion site.					
Inspector Comment					
Previous erosion site. Recommend monitoring.					

Photo 1 of 3 : FA_2018_RD1600_192_15_20180904_00009.jpg



Looking upstream a deeper cut of 2'-3' damage.

*** Location**

LS : Land Side N/A : Not Applicable
WS : Water Side
CR : Crown

**** Rating**

A : Acceptable N : Not Inspected/Rated
M : Minimally Acceptable C : Corrected
U : Unacceptable A/W : Acceptable but Monitor & Maintain

+ Issue Type

Ma : Maintenance Deficiency
Ob : Design & System Obsolescence
En : Enforcement

**Flood Control Project Maintenance
Levee Inspections**

Levee Inspection Report By Mile - Fall 2018

Reclamation District No. 1600 Mull

Waterway	Bank	Unit Miles	Inspection Start/End	Inspector
Unit No. 02 Yolo Bypass	Left	4.23	11/07/2018 11/13/2018	Zach Jojola

LM Start	2.16	Rating **	A/W	Issue No.	15 (cont)	
LM End	2.27	Issue Type +	Ma	Location *	WS	
Category	Earthen Levee			GPS Latitude/Longitude		
				Start	End	
Item	Erosion / Bank Caving			38.705614 °	38.704052 °	
				-121.639357 °	-121.640016 °	
DWR ID	DWR_RD1600_02_s_2012_15					
Comment Code						
E1 : Note and monitor erosion site.						
Inspector Comment						
Previous erosion site. Recommend monitoring.						

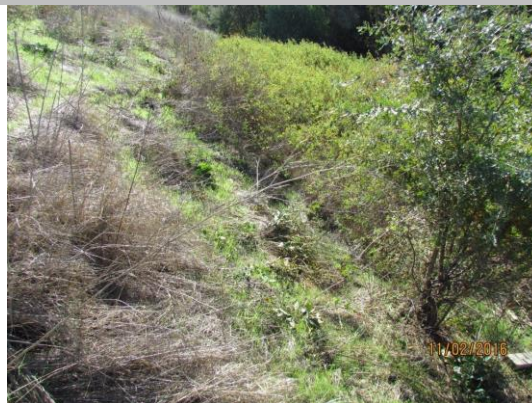
Photo 2 of 3 : FA_2018_RD1600_192_15_20180904_00010.jpg



This is wave wash damage along the toe of the levee looking downstream.

LM Start	2.16	Rating **	A/W	Issue No.	15 (cont)
LM End	2.27	Issue Type +	Ma	Location *	WS

Photo 3 of 3 : FA_2018_RD1600_192_15_20180904_00011.jpg



Updated view of wave wash damage on WS slope. Fall 2016.

LM Start	2.34	Rating **	C	Issue No.	32
LM End	2.34	Issue Type +	Ma	Location *	WS
Category	Earthen Levee			GPS Latitude/Longitude	
				Start	End
Item	Encroachments			38.703158 °	38.703158 °
				-121.640376 °	-121.640376 °
DWR ID	DWR_RD1600_02_s_2018_32				
Comment Code					
PR : Prunings					
Inspector Comment					
Prunings on the waterside slope.					

No Photos

* Location LS : Land Side N/A : Not Applicable WS : Water Side CR : Crown	** Rating A : Acceptable M : Minimally Acceptable U : Unacceptable	N : Not Inspected/Rated C : Corrected A/W : Acceptable but Monitor & Maintain	+ Issue Type Ma : Maintenance Deficiency Ob : Design & System Obsolescence En : Enforcement
--	--	---	---

**Flood Control Project Maintenance
Levee Inspections**

Levee Inspection Report By Mile - Fall 2018

Reclamation District No. 1600 Mull

Waterway	Bank	Unit Miles	Inspection Start/End	Inspector
Unit No. 02 Yolo Bypass	Left	4.23	11/07/2018 11/13/2018	Zach Jojola

LM Start	2.41	Rating **	M	Issue No.	20
LM End	2.41	Issue Type +	Ma	Location *	WS
Category	Earthen Levee			GPS Latitude/Longitude	
				Start	End
Item	Encroachments			38.702222°	38.702222°
				-121.640791°	-121.640791°
DWR ID	DWR_RD1600_02_s_2018_20				
Comment Code					
PR : Prunings					
Inspector Comment					
Prunings on the waterside slope.					

Photo 1 of 1 : FA_2018_RD1600_192_20_20181108_00024.jpg



View of pruning pile on the waterside slope. Fall 2018.

LM Start	2.55	Rating **	C	Issue No.	31
LM End	2.55	Issue Type +	Ma	Location *	WS
Category	Earthen Levee			GPS Latitude/Longitude	
				Start	End
Item	Slope Stability			38.700313 °	38.700313 °
				-121.641656 °	-121.641656 °
DWR ID	DWR_RD1600_02_f_2017_31				
Comment Code					
S1 : Repair slope instability.					
Inspector Comment					
Void on the slope from removed tree.					

No Photos

LM Start	2.62	Rating **	M	Issue No.	19
LM End	2.62	Issue Type +	Ma	Location *	LS
Category	Earthen Levee			GPS Latitude/Longitude	
				Start	End
Item	Encroachments			38.699360 °	38.699360 °
				-121.642046 °	-121.642046 °
DWR ID	DWR_RD1600_02_s_2018_19				
Comment Code					
PR : Prunings					
Inspector Comment					
Prunings on the landside slope.					

No Photos

* Location LS : Land Side N/A : Not Applicable WS : Water Side CR : Crown	** Rating A : Acceptable M : Minimally Acceptable U : Unacceptable	N : Not Inspected/Rated C : Corrected A/W : Acceptable but Monitor & Maintain	+ Issue Type Ma : Maintenance Deficiency Ob : Design & System Obsolescence En : Enforcement
--	--	---	---

**Flood Control Project Maintenance
Levee Inspections**

Levee Inspection Report By Mile - Fall 2018

Reclamation District No. 1600 Mull

Waterway	Bank	Unit Miles	Inspection Start/End	Inspector
Unit No. 02 Yolo Bypass	Left	4.23	11/07/2018 11/13/2018	Zach Jojola

LM Start	2.77	Rating **	A/W	Issue No.	3
LM End	2.77	Issue Type +	Ma	Location *	WS
Category	Earthen Levee			GPS Latitude/Longitude	
				Start	End
Item	Vegetation			38.697266°	38.697266°
				-121.642952°	-121.642952°
DWR ID	DWR_RD1600_02_s_2016_3				
Comment Code					
V4 : Elderberries are blocking visibility and flood fight capability.					
Inspector Comment					

No Photos

LM Start	2.80	Rating **	M	Issue No.	18
LM End	2.80	Issue Type +	Ma	Location *	LS
Category	Earthen Levee			GPS Latitude/Longitude	
				Start	End
Item	Encroachments			38.696837 °	38.696837 °
				-121.643132 °	-121.643132 °
DWR ID	DWR_RD1600_02_s_2018_18				
Comment Code					
PR : Prunings					
Inspector Comment					
Prunings on the landside slope.					

No Photos

LM Start	2.97	Rating **	M	Issue No.	30
LM End	2.97	Issue Type +	Ma	Location *	LS
Category	Earthen Levee			GPS Latitude/Longitude	
				Start	End
Item	Encroachments			38.694478 °	38.694478 °
				-121.644116 °	-121.644116 °
DWR ID	DWR_RD1600_02_f_2017_30				
Comment Code					
PR : Prunings					
Inspector Comment					
Pruning pile on landside slope.					

No Photos

* Location LS : Land Side N/A : Not Applicable WS : Water Side CR : Crown		** Rating A : Acceptable N : Not Inspected/Rated M : Minimally Acceptable C : Corrected U : Unacceptable A/W : Acceptable but Monitor & Maintain		+ Issue Type Ma : Maintenance Deficiency Ob : Design & System Obsolescence En : Enforcement	
---	--	--	--	--	--

**Flood Control Project Maintenance
Levee Inspections**

Levee Inspection Report By Mile - Fall 2018

Reclamation District No. 1600 Mull

Waterway	Bank	Unit Miles	Inspection Start/End	Inspector
Unit No. 02 Yolo Bypass	Left	4.23	11/07/2018 11/13/2018	Zach Jojola

LM Start	3.04	Rating **	M	Issue No.	13
LM End	3.04	Issue Type +	Ma	Location *	LS
Category	Earthen Levee			GPS Latitude/Longitude	
				Start	End
Item	Encroachments			38.693494 °	38.693494 °
				-121.644539 °	-121.644539 °
DWR ID	DWR_RD1600_02_s_2018_13				
Comment Code					
PR : Prunings					
Inspector Comment					
Pruning pile on the landside slope.					

No Photos

LM Start	3.13	Rating **	M	Issue No.	10
LM End	3.13	Issue Type +	Ma	Location *	LS
Category	Earthen Levee			GPS Latitude/Longitude	
				Start	End
Item	Encroachments			38.692324 °	38.692324 °
				-121.644964 °	-121.644964 °
DWR ID	DWR_RD1600_02_s_2018_10				
Comment Code					
PR : Prunings					
Inspector Comment					
Prunings on the landside slope.					

Photo 1 of 1 : FA_2018_RD1600_192_10_20180904_00004.jpg



View of pruning pile on the landside slope. Spring 2018.

LM Start	3.52	Rating **	C	Issue No.	29
LM End	3.56	Issue Type +	Ma	Location *	LS
Category	Earthen Levee			GPS Latitude/Longitude	
				Start	End
Item	Encroachments			38.686675 °	38.686052 °
				-121.644852 °	-121.644773 °
DWR ID	DWR_RD1600_02_f_2017_29				
Comment Code					
PR : Prunings					
Inspector Comment					
Multiple pruning piles on landside slope.					

No Photos

* Location LS : Land Side N/A : Not Applicable WS : Water Side CR : Crown	** Rating A : Acceptable M : Minimally Acceptable U : Unacceptable	N : Not Inspected/Rated C : Corrected A/W : Acceptable but Monitor & Maintain	+ Issue Type Ma : Maintenance Deficiency Ob : Design & System Obsolescence En : Enforcement
--	--	---	---

**Flood Control Project Maintenance
Levee Inspections**

Levee Inspection Report By Mile - Fall 2018

Reclamation District No. 1600 Mull

Waterway	Bank	Unit Miles	Inspection Start/End	Inspector
Unit No. 02 Yolo Bypass	Left	4.23	11/07/2018 11/13/2018	Zach Jojola

LM Start	3.71	Rating **	M	Issue No.	33	
LM End	3.71	Issue Type +	En	Location *		
Category	Supplemental			GPS Latitude/Longitude		
				Start	End	
Item	DWR UCIP Field Study			38.683971 °	38.683971 °	
				-121.644522 °	-121.644522 °	
DWR ID	21501					
Comment Code						
Inspector Comment						
FS_ID:52738 DS_ID:21501 EP_NO: 10944 Repair Type: Non-Urgent Crossing Status: Indicator Found UCIP Comments: 07/17/2018 Gas line markers are not installed. Unable to determine exact location of pipe. Crossing has been downgraded to "Non-Urgent" due to reclassification of gas lines. (O.Yakimov-DWR UCIP)08/16/2016 - unable to locate pipe. Need to install gas line markers on LS and WS of levee crown to denote location. (T. Hatch/UCIP)06/21/2013 - Need to install gasline markers on levee. (W. Wylie/UCIP) FIELD_STRUCT_DESC: 8.625-inch steel gas line through the levee, 2 feet below the crown. (Permit No. 10944, 1975 - Shell Oil Company). [Additional Reference(s): DWR Levee Log, 1988]. FS Date: 7/17/2018 3:18:28 PM						

LM Start	3.71	Rating **	M	Issue No.	33 (cont)
LM End	3.71	Issue Type +	En	Location *	

Photo 1 of 3 : UCIP_FA_2018_52738_27478.jpg



PG&E marker flag on Crown.

Photo 2 of 3 : UCIP_FA_2018_52738_27477.jpg



Carsonite gasline marker visible approximately 1,000-feet east of levee crown.

* Location LS : Land Side N/A : Not Applicable WS : Water Side CR : Crown	** Rating A : Acceptable M : Minimally Acceptable U : Unacceptable	N : Not Inspected/Rated C : Corrected A/W : Acceptable but Monitor & Maintain	+ Issue Type Ma : Maintenance Deficiency Ob : Design & System Obsolescence En : Enforcement
--	--	---	---

**Flood Control Project Maintenance
Levee Inspections**

Levee Inspection Report By Mile - Fall 2018

Reclamation District No. 1600 Mull

Waterway	Bank	Unit Miles	Inspection Start/End	Inspector
Unit No. 02 Yolo Bypass	Left	4.23	11/07/2018 11/13/2018	Zach Jojola

LM Start	3.71	Rating **	M	Issue No.	33 (cont)	
LM End	3.71	Issue Type +	En	Location *		
Category	Supplemental			GPS Latitude/Longitude		
				Start	End	
Item	DWR UCIP Field Study			38.683971 °	38.683971 °	
				-121.644522 °	-121.644522 °	
DWR ID	21501					
Comment Code						
Inspector Comment						
FS_ID:52738 DS_ID:21501 EP_NO: 10944 Repair Type: Non-Urgent Crossing Status: Indicator Found UCIP Comments: 07/17/2018 Gas line markers are not installed. Unable to determine exact location of pipe. Crossing has been downgraded to "Non-Urgent" due to reclassification of gas lines. (O.Yakimov-DWR UCIP)08/16/2016 - unable to locate pipe. Need to install gas line markers on LS and WS of levee crown to denote location. (T. Hatch/UCIP)06/21/2013 - Need to install gasline markers on levee. (W. Wylie/UCIP) FIELD_STRUCT_DESC: 8.625-inch steel gas line through the levee, 2 feet below the crown. (Permit No. 10944, 1975 - Shell Oil Company). [Additional Reference(s): DWR Levee Log, 1988]. FS Date: 7/17/2018 3:18:28 PM						

Photo 3 of 3 : UCIP_FA_2018_52738_77709.jpg



View of levee crown at potential crossing looking upstream.

LM Start	3.73	Rating **	M	Issue No.	12
LM End	3.73	Issue Type +	Ma	Location *	LS
Category	Earthen Levee			GPS Latitude/Longitude	
				Start	End
Item	Encroachments			38.683589 °	38.683589 °
				-121.644513 °	-121.644513 °
DWR ID	DWR_RD1600_02_s_2018_12				
Comment Code					
PR : Prunings					
Inspector Comment					
Prunings on the landside shoulder.					

No Photos

* Location LS : Land Side N/A : Not Applicable WS : Water Side CR : Crown	** Rating A : Acceptable M : Minimally Acceptable U : Unacceptable	N : Not Inspected/Rated C : Corrected A/W : Acceptable but Monitor & Maintain	+ Issue Type Ma : Maintenance Deficiency Ob : Design & System Obsolescence En : Enforcement
--	--	---	---

**Flood Control Project Maintenance
Levee Inspections**

Levee Inspection Report By Mile - Fall 2018

Reclamation District No. 1600 Mull

Waterway	Bank	Unit Miles	Inspection Start/End	Inspector
Unit No. 02 Yolo Bypass	Left	4.23	11/07/2018 11/13/2018	Zach Jojola

LM Start	3.78	Rating **	M	Issue No.	5
LM End	3.78	Issue Type +	Ma	Location *	LS
Category	Earthen Levee			GPS Latitude/Longitude	
				Start	End
Item	Slope Stability			38.682947 °	38.682947 °
				-121.644425 °	-121.644425 °
DWR ID	DWR_RD1600_02_f_2018_5				
Comment Code					
S3 : Repair the levee slope damaged by vehicle traffic and prevent access where possible.					
Inspector Comment					
Tire ruts on the landside slope.					

No Photos

LM Start	3.86	Rating **	M	Issue No.	26
LM End	3.86	Issue Type +	Ma	Location *	LS
Category	Earthen Levee			GPS Latitude/Longitude	
				Start	End
Item	Encroachments			38.681752 °	38.681752 °
				-121.644287 °	-121.644287 °
DWR ID	DWR_RD1600_02_f_2017_26				
Comment Code					
PR : Prunings					
Inspector Comment					
Prunings on landside slope.					

No Photos

LM Start	4.00	Rating **	C	Issue No.	25
LM End	4.00	Issue Type +	Ma	Location *	LS
Category	Earthen Levee			GPS Latitude/Longitude	
				Start	End
Item	Encroachments			38.679714 °	38.679714 °
				-121.644035 °	-121.644035 °
DWR ID	DWR_RD1600_02_f_2017_25				
Comment Code					
PR : Prunings					
Inspector Comment					
Prunings on landside slope.					

No Photos

* Location LS : Land Side N/A : Not Applicable WS : Water Side CR : Crown	** Rating A : Acceptable M : Minimally Acceptable U : Unacceptable	N : Not Inspected/Rated C : Corrected A/W : Acceptable but Monitor & Maintain	+ Issue Type Ma : Maintenance Deficiency Ob : Design & System Obsolescence En : Enforcement
--	--	--	---

**Flood Control Project Maintenance
Levee Inspections**

Levee Inspection Report By Mile - Fall 2018

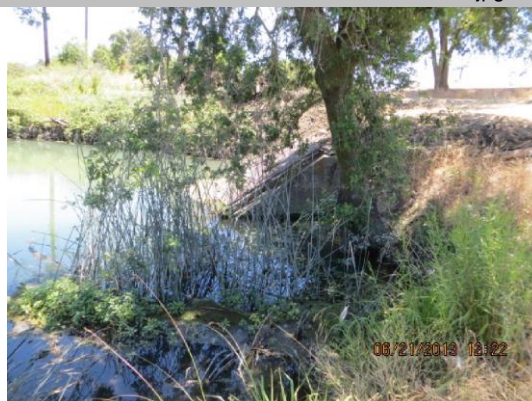
Reclamation District No. 1600 Mull

Waterway	Bank	Unit Miles	Inspection Start/End	Inspector
Unit No. 02 Yolo Bypass	Left	4.23	11/07/2018 11/13/2018	Zach Jojola

LM Start	4.17	Rating **	A/W	Issue No.	34
LM End	4.17	Issue Type +	Ma	Location *	
Category	Supplemental			GPS Latitude/Longitude	
				Start	End
Item	DWR UCIP LMA Responsibility			38.677286 °	38.677286 °
				-121.643683 °	-121.643683 °
DWR ID	21502				
Comment Code					
Inspector Comment					
FS_ID:15303 DS_ID:21502 EP_NO: N/A Repair Type: No Action Needed Crossing Status: Found UCIP Comments: FIELD_STRUCT_DESC: 72-inch by 72-inch reinforced concrete box drainage culvert through the levee, 26 feet below the crown. Slide gate on the waterside (WS) slope in a 9-foot by 10-foot concrete box. Culvert passes under the bypass canal, the railroad, and County Road 22 and terminates in the canal on the southwest side of the County Road 22 bridge. [Additional Reference(s): DWR Levee Log, 1988. USACE Sacramento O&M Manual 123, August 1955, (Station 155+00)]. FS Date: 6/21/2013					

LM Start	4.17	Rating **	A/W	Issue No.	34 (cont)
LM End	4.17	Issue Type +	Ma	Location *	

Photo 1 of 3 : UCIP_FA_2018_15303_25158.jpg



Concrete intake structure on LS.

Photo 2 of 3 : UCIP_FA_2018_15303_25157.jpg



Concrete intake structure on LS.

* Location LS : Land Side N/A : Not Applicable WS : Water Side CR : Crown	** Rating A : Acceptable M : Minimally Acceptable U : Unacceptable	N : Not Inspected/Rated C : Corrected A/W : Acceptable but Monitor & Maintain	+ Issue Type Ma : Maintenance Deficiency Ob : Design & System Obsolescence En : Enforcement
--	--	---	---

**Flood Control Project Maintenance
Levee Inspections**

Levee Inspection Report By Mile - Fall 2018

Reclamation District No. 1600 Mull

Waterway	Bank	Unit Miles	Inspection Start/End	Inspector
Unit No. 02 Yolo Bypass	Left	4.23	11/07/2018 11/13/2018	Zach Jojola

LM Start	4.17	Rating **	A/W	Issue No.	34 (cont)	
LM End	4.17	Issue Type +	Ma	Location *		
Category	Supplemental			GPS Latitude/Longitude		
				Start		End
Item	DWR UCIP LMA Responsibility			38.677286 °		38.677286 °
				-121.643683 °		-121.643683 °
DWR ID	21502					
Comment Code						
Inspector Comment						
FS_ID:15303 DS_ID:21502 EP_NO: N/A Repair Type: No Action Needed Crossing Status: Found UCIP Comments: FIELD_STRUCT_DESC: 72-inch by 72-inch reinforced concrete box drainage culvert through the levee, 26 feet below the crown. Slide gate on the waterside (WS) slope in a 9-foot by 10-foot concrete box. Culvert passes under the bypass canal, the railroad, and County Road 22 and terminates in the canal on the southwest side of the County Road 22 bridge. [Additional Reference(s): DWR Levee Log, 1988. USACE Sacramento O&M Manual 123, August 1955, (Station 155+00)]. FS Date: 6/21/2013						

Photo 3 of 3 : UCIP_FA_2018_15303_25156.jpg



Slide gate in 9'X10' concrete box on WS slope.

LM Start	4.19	Rating **	M	Issue No.	6
LM End	4.19	Issue Type +	Ma	Location *	LS
Category	Earthen Levee			GPS Latitude/Longitude	
				Start	End
Item	Encroachments			38.677121 °	38.677121 °
				-121.643466 °	-121.643466 °
DWR ID	DWR_RD1600_02_s_2016_6				
Comment Code					
TR : Tree or limb					
Inspector Comment					

Photo 1 of 2 : FA_2018_RD1600_192_6_20180904_00002.jpg

View of the trees on the landward side of the levee looking downstream.
Spring 2016.

* Location LS : Land Side N/A : Not Applicable WS : Water Side CR : Crown	** Rating A : Acceptable M : Minimally Acceptable U : Unacceptable	N : Not Inspected/Rated C : Corrected A/W : Acceptable but Monitor & Maintain	+ Issue Type Ma : Maintenance Deficiency Ob : Design & System Obsolescence En : Enforcement
--	--	--	---

**Flood Control Project Maintenance
Levee Inspections**

Levee Inspection Report By Mile - Fall 2018

Reclamation District No. 1600 Mull

Waterway	Bank	Unit Miles	Inspection Start/End	Inspector
Unit No. 02 Yolo Bypass	Left	4.23	11/07/2018 11/13/2018	Zach Jojola

LM Start	4.19	Rating **	M	Issue No.	6 (cont)	
LM End	4.19	Issue Type +	Ma	Location *	LS	
Category	Earthen Levee			GPS Latitude/Longitude		
				Start		End
Item	Encroachments			38.677121°		38.677121°
				-121.643466°		-121.643466°
DWR ID	DWR_RD1600_02_s_2016_6					
Comment Code						
TR : Tree or limb						
Inspector Comment						

Photo 2 of 2 : FA_2018_RD1600_192_6_20180904_00003.jpg



View of debris on LS slope. Fall 2016.

* Location LS : Land Side N/A : Not Applicable WS : Water Side CR : Crown	** Rating A : Acceptable M : Minimally Acceptable U : Unacceptable	N : Not Inspected/Rated C : Corrected A/W : Acceptable but Monitor & Maintain	+ Issue Type Ma : Maintenance Deficiency Ob : Design & System Obsolescence En : Enforcement
--	--	---	---