

**Flood Control Project Maintenance
Levee Inspections**

Fall 2017 Levee Maintenance Deficiency Summary Report

Overall LMA & Unit Ratings, including USACE Erosion Survey

Sacramento River Basin

RD1600	Overall LMA Rating	Total LMA Miles						
Reclamation District No. 1600 Mull	U	14.69						
Rated Item	Maintenance Deficiency				Enforcement		Design & System Obsolescence	
	M Miles	U Miles	M + 4U Miles	Threshold %	M Miles	U Miles	M Miles	U Miles
<i>Earthen Levee</i>								
Vegetation	1.48		1.48	10.07%				
Trim / Thin Trees	0.02	0.01	0.06	0.41%				
Encroachments	0.16		0.16	1.09%	0.24			
Animal Control		0.01	0.04	0.27%				
Slope Stability	0.07		0.07	0.48%				
Erosion / Bank Caving	0.89		0.89	6.06%				
<i>Supplemental</i>								
2015 USACE Erosion Survey, DRAFT	0.80		0.80	5.45%				
DWR UCIP Field Study					0.08	0.02		
<i>LMA Totals:</i>	3.42	0.02	3.50	23.82%	0.32	0.02	0.00	0.00
Unit No. 01 Sacramento River RB	Overall Unit Rating	Total Unit Miles						
RD1600	U	10.46						
Rated Item	Maintenance Deficiency				Enforcement		Design & System Obsolescence	
	M Miles	U Miles	M + 4U Miles	Threshold %	M Miles	U Miles	M Miles	U Miles
<i>Earthen Levee</i>								
Vegetation	1.48		1.48	14.15%				
Trim / Thin Trees	0.02	0.01	0.06	0.57%				
Encroachments	0.04		0.04	0.38%	0.22			
Animal Control		0.01	0.04	0.38%				
Slope Stability	0.06		0.06	0.57%				
Erosion / Bank Caving	0.03		0.03	0.29%				
<i>Supplemental</i>								
2015 USACE Erosion Survey, DRAFT	0.80		0.80	7.65%				
DWR UCIP Field Study					0.08	0.01		
<i>Unit Totals:</i>	2.43	0.02	2.51	24.00%	0.30	0.01	0.00	0.00
Unit No. 02 Yolo Bypass LB	Overall Unit Rating	Total Unit Miles						
RD1600	U	4.23						
Rated Item	Maintenance Deficiency				Enforcement		Design & System Obsolescence	
	M Miles	U Miles	M + 4U Miles	Threshold %	M Miles	U Miles	M Miles	U Miles
<i>Earthen Levee</i>								
Encroachments	0.12		0.12	2.84%	0.02			
Slope Stability	0.01		0.01	0.24%				
Erosion / Bank Caving	0.86		0.86	20.32%				
<i>Supplemental</i>								
DWR UCIP Field Study						0.01		
<i>Unit Totals:</i>	0.99	0.00	0.99	23.39%	0.02	0.01	0.00	0.00

**Flood Control Project Maintenance
Levee Inspections**
LMA District Cover Sheet
Fall 2017 Levee Inspection Results

Reclamation District No. 1600 Mull

	Spring (March - May)	Summer ** (June - August)	Fall (September - November)	Winter ** (December - February)
† Overall LMA Rating (Fall Only)			U	

** Non-receipt of Summer or Winter Inspection
Reports may effect overall annual rating.

† SPRING INSPECTIONS: Overall maintenance ratings are not determined for the spring inspection results. Individual maintenance deficiencies are rated using the same criteria in the spring and in the fall.

FALL INSPECTIONS: The overall maintenance rating shown above is based on operation and maintenance deficiencies identified within the attached unit inspection reports. This rating is not intended to be an indication of risk.

Comments

**Flood Control Project Maintenance
Levee Inspections**

Unit Cover Sheet

Fall 2017 Levee Inspection Results

Reclamation District No. 1600 Mull

Waterway			Bank	Unit Miles
Unit No. 01 Sacramento River			Right	10.46
	Spring (March - May)	Summer (June - August)	(September - November) Fall	Winter (December - February)
Unit Maintenance Rating (Fall Only)			U	
Date of Inspection	4/11/2017 - 4/11/2017		11/2/2017 - 11/2/2017	
DWR Inspector	Zach Jojola		Zach Jojola	
Accompanied By				

Summer & Winter Inspections

The Local Maintaining Agency (LMA) is responsible for summer and winter inspections. The LMA is required to submit a report regarding summer and winter inspections to the California Department of Water Resources (DWR).

DWR must be informed on the:

- a) completion of the inspection
- b) any changes other than the results of normal maintenance
- c) corrections to deficiencies noted in this report

If additional items are noted, further documentation of those items must also be submitted.

The LMA should submit this information to DWR using the LMA web application tool available at:

<http://cdec.water.ca.gov/lma.html>

If the LMA is unable to submit information on this webpage, please contact DWR for assistance.

The LMA should submit the information and any associated documentation by September 30 for summer inspections and March 31 for winter inspections.

**Flood Control Project Maintenance
Levee Inspections**

Levee Inspection Report By Mile - Fall 2017

Reclamation District No. 1600 Mull

Waterway	Bank	Unit Miles	Inspection Start/End	Inspector
Unit No. 01 Sacramento River	Right	10.46	11/02/2017 11/02/2017	Zach Jojola

LM Start		Rating **	A	Issue No.	32
LM End		Issue Type +	Ma	Location *	N/A
Category	Earthen Levee		GPS Latitude/Longitude		
			Start	End	
Item	Operations & Maintenance Manuals				
DWR ID	DWR_RD1600_01_s _ 2013_32				
Comment Code					
Inspector Comment					
RD 1600 has copies of the O&M manuals.					

No Photos

LM Start		Rating **	A	Issue No.	33
LM End		Issue Type +	Ma	Location *	N/A
Category	Earthen Levee		GPS Latitude/Longitude		
			Start	End	
Item	Emergency Supplies & Equipment				
DWR ID	DWR_RD1600_01_s _ 2013_33				
Comment Code					
Inspector Comment					
RD 1600 maintains a stockpile of flood response material.					

No Photos

LM Start		Rating **	A	Issue No.	34
LM End		Issue Type +	Ma	Location *	N/A
Category	Earthen Levee		GPS Latitude/Longitude		
			Start	End	
Item	Flood Preparedness & Training				
DWR ID	DWR_RD1600_01_s _ 2013_34				
Comment Code					
Inspector Comment					
RD 1600 has a written flood response plan and flood response training.					

No Photos

* Location LS : Land Side N/A : Not Applicable WS : Water Side CR : Crown	** Rating A : Acceptable M : Minimally Acceptable U : Unacceptable	N : Not Inspected/Rated C : Corrected A/W : Acceptable but Monitor & Maintain	+ Issue Type Ma : Maintenance Deficiency Ob : Design & System Obsolescence En : Enforcement
--	--	---	---

**Flood Control Project Maintenance
Levee Inspections**

Levee Inspection Report By Mile - Fall 2017

Reclamation District No. 1600 Mull

Waterway	Bank	Unit Miles	Inspection Start/End	Inspector
Unit No. 01 Sacramento River	Right	10.46	11/02/2017 11/02/2017	Zach Jojola

LM Start	0.06	Rating **	A/W	Issue No.	1
LM End	0.06	Issue Type +	En	Location *	WS
Category	Earthen Levee			GPS Latitude/Longitude	
				Start	End
Item	Encroachments			38.675998 °	38.675998 °
				-121.630732 °	-121.630732 °
DWR ID	DWR_RD1600_01_s_2012_1				
Comment Code					
BU : Building					
Inspector Comment					
This is the new pumping plant for RD 2035.					

Photo 1 of 2 : FA_2017_RD1600_191_1_20171128_00119.jpg



View of new pumping plant construction. Fall 2017.

LM Start	0.06	Rating **	A/W	Issue No.	1 (cont)
LM End	0.06	Issue Type +	En	Location *	WS

Photo 2 of 2 : FA_2017_RD1600_191_1_20170911_00002.jpg



Building was removed due to a new construction. Fall 2016.

LM Start	0.08	Rating **	M	Issue No.	25
LM End	0.08	Issue Type +	Ma	Location *	WS
Category	Earthen Levee			GPS Latitude/Longitude	
				Start	End
Item	Erosion / Bank Caving			38.676163 °	38.676163 °
				-121.631005 °	-121.631005 °
DWR ID	DWR_RD1600_01_s_2017_25				
Comment Code					
E2 : Schedule repair of erosion site prior to the next inspection.					
Inspector Comment					
Sloughing on waterside slope. RD has placed visqueen to protect the slope.					

Photo 1 of 1 : FA_2017_RD1600_191_25_20170911_00024.jpg



Runoff erosion on waterside levee slope. LMA placed visqueen to prevent further erosion. Spring 2017.

* Location LS : Land Side N/A : Not Applicable WS : Water Side CR : Crown		** Rating A : Acceptable M : Minimally Acceptable U : Unacceptable N : Not Inspected/Rated C : Corrected A/W : Acceptable but Monitor & Maintain		+ Issue Type Ma : Maintenance Deficiency Ob : Design & System Obsolescence En : Enforcement	
--	--	---	--	---	--

**Flood Control Project Maintenance
Levee Inspections**

Levee Inspection Report By Mile - Fall 2017

Reclamation District No. 1600 Mull

Waterway	Bank	Unit Miles	Inspection Start/End	Inspector
Unit No. 01 Sacramento River	Right	10.46	11/02/2017 11/02/2017	Zach Jojola

LM Start	0.10	Rating **	M	Issue No.	129
LM End	0.10	Issue Type +	En	Location *	WS
Category	Earthen Levee			GPS Latitude/Longitude	
				Start	End
Item	Encroachments			38.676467 °	38.676467 °
				-121.631217 °	-121.631217 °
DWR ID	DWR_RD1600_01_f_2013_129				
Comment Code					
BU : Building					
Inspector Comment					
This is a well pump house. It is potable water for the house and pumping plant.					

Photo 1 of 2 : FA_2017_RD1600_191_129_20170911_00075.jpg



The small building is a pump house for the well. It services the house with water. Fall 2013

LM Start	0.10	Rating **	M	Issue No.	129 (cont)
LM End	0.10	Issue Type +	En	Location *	WS

Photo 2 of 2 : FA_2017_RD1600_191_129_20170911_00076.jpg



Updated view of the building. Fall 2016.

LM Start	0.11	Rating **	A/W	Issue No.	49
LM End	0.23	Issue Type +	Ob	Location *	WS
Category	Earthen Levee			GPS Latitude/Longitude	
				Start	End
Item	Vegetation			38.676577 °	38.678131 °
				-121.631290 °	-121.632324 °
DWR ID	DWR_RD1600_01_s_2012_49				
Comment Code					
V8 : Environmental Requirements.					
Inspector Comment					

Photo 1 of 2 : FA_2017_RD1600_191_49_20170911_00047.jpg



Sign stating revegetation site. Spring 2016.

* Location		** Rating		+ Issue Type	
LS : Land Side	N/A : Not Applicable	A : Acceptable	N : Not Inspected/Rated	Ma : Maintenance Deficiency	
WS : Water Side		M : Minimally Acceptable	C : Corrected	Ob : Design & System Obsolescence	
CR : Crown		U : Unacceptable	A/W : Acceptable but Monitor & Maintain	En : Enforcement	

**Flood Control Project Maintenance
Levee Inspections**

Levee Inspection Report By Mile - Fall 2017

Reclamation District No. 1600 Mull

Waterway	Bank	Unit Miles	Inspection Start/End	Inspector
Unit No. 01 Sacramento River	Right	10.46	11/02/2017 11/02/2017	Zach Jojola

LM Start	0.11	Rating **	A/W	Issue No.	49 (cont)	
LM End	0.23	Issue Type +	Ob	Location *	WS	
Category	Earthen Levee			GPS Latitude/Longitude		
				Start		End
Item	Vegetation			38.676577 °		38.678131 °
				-121.631290 °		-121.632324 °
DWR ID	DWR_RD1600_01_s_2012_49					
Comment Code						
V8 : Environmental Requirements.						
Inspector Comment						

Photo 2 of 2 : FA_2017_RD1600_191_49_20170911_00048.jpg



View of the revegetation site and fence on the waterward side of the levee looking upstream. Spring 2016.

LM Start	0.12	Rating **	C	Issue No.	38
LM End	0.12	Issue Type +	Ma	Location *	LS
Category	Earthen Levee			GPS Latitude/Longitude	
				Start	End
Item	Slope Stability			38.676654 °	38.676654 °
				-121.631348 °	-121.631348 °
DWR ID	DWR_RD1600_01_f_2015_38				
Comment Code					
S3 : Repair the levee slope damaged by vehicle traffic and prevent access where possible.					
Inspector Comment					

No Photos

LM Start	0.12	Rating **	A/W	Issue No.	46
LM End	0.12	Issue Type +	Ma	Location *	WS
Category	Earthen Levee			GPS Latitude/Longitude	
				Start	End
Item	Erosion / Bank Caving			38.676660 °	38.676660 °
				-121.631337 °	-121.631337 °
DWR ID	DWR_RD1600_01_s_2017_46				
Comment Code					
E1 : Note and monitor erosion site.					
Inspector Comment					
Two small rills on waterside levee slope.					

Photo 1 of 1 : FA_2017_RD1600_191_46_20170911_00044.jpg



Rills from runoff on waterside levee slope. Spring 2017.

* Location LS : Land Side N/A : Not Applicable WS : Water Side CR : Crown		** Rating A : Acceptable M : Minimally Acceptable U : Unacceptable N : Not Inspected/Rated C : Corrected A/W : Acceptable but Monitor & Maintain		+ Issue Type Ma : Maintenance Deficiency Ob : Design & System Obsolescence En : Enforcement	
--	--	---	--	---	--

**Flood Control Project Maintenance
Levee Inspections**

Levee Inspection Report By Mile - Fall 2017

Reclamation District No. 1600 Mull

Waterway	Bank	Unit Miles	Inspection Start/End	Inspector
Unit No. 01 Sacramento River	Right	10.46	11/02/2017 11/02/2017	Zach Jojola

LM Start	0.13	Rating **	M	Issue No.	1203	
LM End	0.13	Issue Type +	En	Location *		
Category	Supplemental			GPS Latitude/Longitude		
				Start		End
Item	DWR UCIP Field Study			38.676802 °		38.676802 °
				-121.631442 °		-121.631442 °
DWR ID						
Comment Code						
Inspector Comment						
FS_ID:15087 DS_ID:21459 EP_NO: 1929 Repair Type: Non-Urgent Crossing Status: Indicator Found UCIP Comments: Line should be located with carsonite signs on both sides of levee. FIELD_STRUCT_DESC: Telephone conduit of an unknown size or material through the levee, 3 feet below the crown. Telephone line at joint pole (JP) off the landside (LS) toe. (Permit No. 1929, 1954 - Pacific Telephone and Telegraph Company [PT&T]). [Additional Reference(s): DWR Levee Log, 1988]. FS Date: 6/18/2013						

Photo 1 of 1 : UCIP_FA_2017_15087_24812.jpg



Line visible on JP off LS toe. Likely this is the source of crossing.

LM Start	0.53	Rating **	M	Issue No.	133
LM End	0.53	Issue Type +	Ma	Location *	LS
Category	Earthen Levee			GPS Latitude/Longitude	
				Start	End
Item	Slope Stability			38.682140 °	38.682140 °
				-121.634083 °	-121.634083 °
DWR ID	DWR_RD1600_01_f_2013_133				
Comment Code					
S2 : Repair the levee slope damaged by foot traffic and prevent access where possible.					
Inspector Comment					
Footpath on landside slope over pipe crossing.					

Photo 1 of 2 : FA_2017_RD1600_191_133_20170911_00077.jpg



View of the slope stability on the landward side of the levee. Fall 2015.

* Location LS : Land Side N/A : Not Applicable WS : Water Side CR : Crown	** Rating A : Acceptable M : Minimally Acceptable U : Unacceptable	N : Not Inspected/Rated C : Corrected A/W : Acceptable but Monitor & Maintain	+ Issue Type Ma : Maintenance Deficiency Ob : Design & System Obsolescence En : Enforcement
--	--	---	---

**Flood Control Project Maintenance
Levee Inspections**

Levee Inspection Report By Mile - Fall 2017

Reclamation District No. 1600 Mull

Waterway	Bank	Unit Miles	Inspection Start/End	Inspector
Unit No. 01 Sacramento River	Right	10.46	11/02/2017 11/02/2017	Zach Jojola

LM Start	0.53	Rating **	M	Issue No.	133 (cont)	
LM End	0.53	Issue Type +	Ma	Location *	LS	
Category	Earthen Levee			GPS Latitude/Longitude		
				Start		End
Item	Slope Stability			38.682140 °		38.682140 °
				-121.634083 °		-121.634083 °
DWR ID	DWR_RD1600_01_f_2013_133					
Comment Code						
S2 : Repair the levee slope damaged by foot traffic and prevent access where possible.						
Inspector Comment						
Footpath on landside slope over pipe crossing.						

Photo 2 of 2 : FA_2017_RD1600_191_133_20170911_00078.jpg



Updated view of the slope stability site. Fall 2016.

LM Start	0.56	Rating **	A/W	Issue No.	7
LM End	0.66	Issue Type +	Ma	Location *	WS
Category	Supplemental			GPS Latitude/Longitude	
				Start	End
Item	2015 USACE Erosion Survey, DRAFT			38.682707 °	38.684106 °
				-121.633830 °	-121.634219 °
DWR ID	DWR_RD1600_01_s_2016_7				
Comment Code					
Inspector Comment					
2000 - Very cohesive vertical bank. 2003 - Some minor new erosion. 2006 - Some minor erosion in old pockets. 2009 - Minimal new erosion. 2011 - Multiple new erosion pockets and a few new tree popouts. 2015: No observed changes. [2015 Site ID: SAC_71-3_R]					

Photo 1 of 1 : FA_2017_RD1600_191_7_20170911_00010.jpg



USACE 2013 Photo #1

LM Start	0.60	Rating **	M	Issue No.	29
LM End	0.62	Issue Type +	Ma	Location *	WS
Category	Earthen Levee			GPS Latitude/Longitude	
				Start	End
Item	Vegetation			38.683238 °	38.683415 °
				-121.634388 °	-121.634448 °
DWR ID	DWR_RD1600_01_s_2016_29				
Comment Code					
V2 : Remove the wild growth other than native grasses from the levee slopes.					
Inspector Comment					
Recommend removal of willow trees.					

Photo 1 of 3 : FA_2017_RD1600_191_29_20170911_00030.jpg



Perspective view of the willows on the waterward side of the levee looking upstream. Spring 2016.

* Location		** Rating		+ Issue Type	
LS : Land Side	N/A : Not Applicable	A : Acceptable	N : Not Inspected/Rated	Ma : Maintenance Deficiency	
WS : Water Side		M : Minimally Acceptable	C : Corrected	Ob : Design & System Obsolescence	
CR : Crown		U : Unacceptable	A/W : Acceptable but Monitor & Maintain	En : Enforcement	

**Flood Control Project Maintenance
Levee Inspections**

Levee Inspection Report By Mile - Fall 2017

Reclamation District No. 1600 Mull

Waterway	Bank	Unit Miles	Inspection Start/End	Inspector
Unit No. 01 Sacramento River	Right	10.46	11/02/2017 11/02/2017	Zach Jojola

LM Start	0.60	Rating **	M	Issue No.	29 (cont)	
LM End	0.62	Issue Type +	Ma	Location *	WS	
Category	Earthen Levee			GPS Latitude/Longitude		
				Start		End
Item	Vegetation			38.683238 °		38.683415 °
				-121.634388 °		-121.634448 °
DWR ID	DWR_RD1600_01_s_2016_29					
Comment Code						
V2 : Remove the wild growth other than native grasses from the levee slopes.						
Inspector Comment						
Recommend removal of willow trees.						

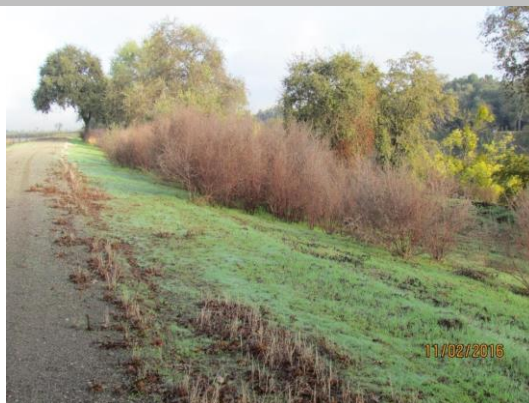
Photo 2 of 3 : FA_2017_RD1600_191_29_20170911_00031.jpg



Willows are growing on the waterward side of the levee. Spring 2016.

LM Start	0.60	Rating **	M	Issue No.	29 (cont)
LM End	0.62	Issue Type +	Ma	Location *	WS

Photo 3 of 3 : FA_2017_RD1600_191_29_20170911_00032.jpg



Updated view of willows on waterward side. Fall 2016.

LM Start	0.78	Rating **	U	Issue No.	624
LM End	0.78	Issue Type +	Ma	Location *	WS
Category	Earthen Levee			GPS Latitude/Longitude	
				Start	End
Item	Trim / Thin Trees			38.685713 °	38.685713 °
				-121.634985 °	-121.634985 °
DWR ID	DWR_RD1600_01_s_2017_624				
Comment Code					
T5 : Tree stumps.					
Inspector Comment					
Burnt stump on waterside slope.					

Photo 1 of 2 : FA_2017_RD1600_191_624_20170911_00083.jpg



View of the dying tree on the waterward side of the levee looking upstream. Spring 2016.

* Location LS : Land Side N/A : Not Applicable WS : Water Side CR : Crown		** Rating A : Acceptable M : Minimally Acceptable U : Unacceptable N : Not Inspected/Rated C : Corrected A/W : Acceptable but Monitor & Maintain		+ Issue Type Ma : Maintenance Deficiency Ob : Design & System Obsolescence En : Enforcement	
--	--	---	--	---	--

**Flood Control Project Maintenance
Levee Inspections**

Levee Inspection Report By Mile - Fall 2017

Reclamation District No. 1600 Mull

Waterway	Bank	Unit Miles	Inspection Start/End	Inspector
Unit No. 01 Sacramento River	Right	10.46	11/02/2017 11/02/2017	Zach Jojola

LM Start	0.78	Rating **	U	Issue No.	624 (cont)	
LM End	0.78	Issue Type +	Ma	Location *	WS	
Category	Earthen Levee			GPS Latitude/Longitude		
				Start		End
Item	Trim / Thin Trees			38.685713 °		38.685713 °
				-121.634985 °		-121.634985 °
DWR ID	DWR_RD1600_01_s_2017_624					
Comment Code						
T5 : Tree stumps.						
Inspector Comment						
Burnt stump on waterside slope.						

Photo 2 of 2 : FA_2017_RD1600_191_624_20170911_00084.jpg



Dying tree on waterward side was burnt. Fall 2016.

LM Start	0.94	Rating **	M	Issue No.	1204	
LM End	0.94	Issue Type +	En	Location *		
Category	Supplemental			GPS Latitude/Longitude		
				Start	End	
Item	DWR UCIP Field Study			38.688030 °	38.688030 °	
				-121.635367 °	-121.635367 °	
DWR ID						
Comment Code						
Inspector Comment						
FS_ID:15285 DS_ID:21463 EP_NO: 6100 Repair Type: Non-Urgent Crossing Status: Found UCIP Comments: Gate valve will not open or close. FIELD_STRUCT_DESC: 12-inch steel irrigation pipe through the levee, 3.4 feet below the crown. Slant pump and gate valve on the waterside (WS) slope. Siphon breaker in a 12-inch steel riser on the landside (LS) shoulder. Filter, booster pump, and butterfly valve on the LS toe. 2.25-inch galvanized iron electrical conduit at the same location. (Permit No. 6100, 1968 - Charles Plumb Jr., replaced 8-inch pipe at same location). [Additional Reference(s): DWR Levee Log, 1988]. FS Date: 6/18/2013						

Photo 1 of 3 : UCIP_FA_2017_15285_25088.jpg



Siphon breaker in steel riser on LS shoulder and concrete standpipe off LS toe.

* Location		** Rating		+ Issue Type	
LS : Land Side	N/A : Not Applicable	A : Acceptable	N : Not Inspected/Rated	Ma : Maintenance Deficiency	
WS : Water Side		M : Minimally Acceptable	C : Corrected	Ob : Design & System Obsolescence	
CR : Crown		U : Unacceptable	A/W : Acceptable but Monitor & Maintain	En : Enforcement	

**Flood Control Project Maintenance
Levee Inspections**

Levee Inspection Report By Mile - Fall 2017

Reclamation District No. 1600 Mull

Waterway	Bank	Unit Miles	Inspection Start/End	Inspector
Unit No. 01 Sacramento River	Right	10.46	11/02/2017 11/02/2017	Zach Jojola

LM Start	0.94	Rating **	M	Issue No.	1204 (cont)	
LM End	0.94	Issue Type +	En	Location *		
Category	Supplemental			GPS Latitude/Longitude		
				Start	End	
Item	DWR UCIP Field Study			38.688030 °	38.688030 °	
				-121.635367 °	-121.635367 °	
DWR ID						
Comment Code						
Inspector Comment						
FS_ID:15285 DS_ID:21463 EP_NO: 6100 Repair Type: Non-Urgent Crossing Status: Found UCIP Comments: Gate valve will not open or close. FIELD_STRUCT_DESC: 12-inch steel irrigation pipe through the levee, 3.4 feet below the crown. Slant pump and gate valve on the waterside (WS) slope. Siphon breaker in a 12-inch steel riser on the landside (LS) shoulder. Filter, booster pump, and butterfly valve on the LS toe. 2.25-inch galvanized iron electrical conduit at the same location. (Permit No. 6100, 1968 - Charles Plumb Jr., replaced 8-inch pipe at same location). [Additional Reference(s): DWR Levee Log, 1988]. FS Date: 6/18/2013						

Photo 2 of 3 : UCIP_FA_2017_15285_25087.jpg



Pump and gate valve on WS slope.

LM Start	0.94	Rating **	M	Issue No.	1204 (cont)
LM End	0.94	Issue Type +	En	Location *	

Photo 3 of 3 : UCIP_FA_2017_15285_25086.jpg



Filters, boost pump, and gate valve down stream from concrete standpipe off LS toe.

* Location LS : Land Side N/A : Not Applicable WS : Water Side CR : Crown	** Rating A : Acceptable M : Minimally Acceptable U : Unacceptable	N : Not Inspected/Rated C : Corrected A/W : Acceptable but Monitor & Maintain	+ Issue Type Ma : Maintenance Deficiency Ob : Design & System Obsolescence En : Enforcement
--	--	---	---

**Flood Control Project Maintenance
Levee Inspections**

Levee Inspection Report By Mile - Fall 2017

Reclamation District No. 1600 Mull

Waterway	Bank	Unit Miles	Inspection Start/End	Inspector
Unit No. 01 Sacramento River	Right	10.46	11/02/2017 11/02/2017	Zach Jojola

LM Start	0.97	Rating **	M	Issue No.	134
LM End	0.97	Issue Type +	Ma	Location *	LS
Category	Earthen Levee			GPS Latitude/Longitude	
				Start	End
Item	Slope Stability			38.688454 °	38.688454 °
				-121.635528 °	-121.635528 °
DWR ID	DWR_RD1600_01_f_2013_134				
Comment Code					
S1 : Repair slope instability.					
Inspector Comment					

Photo 1 of 2 : FA_2017_RD1600_191_134_20170911_00079.jpg



The levee has a deep depression caused by removed tree. Fall 2013

LM Start	0.97	Rating **	M	Issue No.	134 (cont)
LM End	0.97	Issue Type +	Ma	Location *	LS

Photo 2 of 2 : FA_2017_RD1600_191_134_20170911_00080.jpg



View of the depression of the slope on the landward side of the levee looking downstream. Fall 2015.

LM Start	1.00	Rating **	M	Issue No.	68
LM End	1.00	Issue Type +	Ma	Location *	WS
Category	Earthen Levee			GPS Latitude/Longitude	
				Start	End
Item	Encroachments			38.688890 °	38.688890 °
				-121.635596 °	-121.635596 °
DWR ID	DWR_RD1600_01_f_2017_68				
Comment Code					
TR : Tree or limb					
Inspector Comment					
Fallen tree on waterside slope.					

No Photos

* Location		** Rating		+ Issue Type	
LS : Land Side	N/A : Not Applicable	A : Acceptable	N : Not Inspected/Rated	Ma : Maintenance Deficiency	
WS : Water Side		M : Minimally Acceptable	C : Corrected	Ob : Design & System Obsolescence	
CR : Crown		U : Unacceptable	A/W : Acceptable but Monitor & Maintain	En : Enforcement	

**Flood Control Project Maintenance
Levee Inspections**

Levee Inspection Report By Mile - Fall 2017

Reclamation District No. 1600 Mull

Waterway	Bank	Unit Miles	Inspection Start/End	Inspector
Unit No. 01 Sacramento River	Right	10.46	11/02/2017 11/02/2017	Zach Jojola

LM Start	1.01	Rating **	A/W	Issue No.	22
LM End	1.10	Issue Type +	Ma	Location *	WS
Category	Earthen Levee			GPS Latitude/Longitude	
				Start	End
Item	Vegetation			38.689092 °	38.690368 °
				-121.635616 °	-121.635669 °
DWR ID	DWR_RD1600_01_f_2017_22				
Comment Code					
V8 : Environmental Requirements.					
Inspector Comment					

Photo 1 of 2 : FA_2017_RD1600_191_22_20170911_00022.jpg



View of the revegetation site at the berm edge on the waterward side of the levee looking upstream. Spring 2016.

LM Start	1.01	Rating **	A/W	Issue No.	22 (cont)
LM End	1.10	Issue Type +	Ma	Location *	WS

Photo 2 of 2 : FA_2017_RD1600_191_22_20170911_00023.jpg



Sign stating revegetation site. Spring 2016.

LM Start	1.40	Rating **	A/W	Issue No.	4
LM End	1.40	Issue Type +	Ma	Location *	LS
Category	Earthen Levee			GPS Latitude/Longitude	
				Start	End
Item	Slope Stability			38.694452 °	38.694452 °
				-121.634292 °	-121.634292 °
DWR ID	DWR_RD1600_01_s_2017_4				
Comment Code					
S3 : Repair the levee slope damaged by vehicle traffic and prevent access where possible.					
Inspector Comment					
Vehicle access point. Recommend monitoring.					

Photo 1 of 2 : FA_2017_RD1600_191_4_20170911_00005.jpg



Erosion from vehicles on levee slope. Spring 2013

*** Location**

LS : Land Side N/A : Not Applicable
WS : Water Side
CR : Crown

**** Rating**

A : Acceptable N : Not Inspected/Rated
M : Minimally Acceptable C : Corrected
U : Unacceptable A/W : Acceptable but Monitor & Maintain

+ Issue Type

Ma : Maintenance Deficiency
Ob : Design & System Obsolescence
En : Enforcement

**Flood Control Project Maintenance
Levee Inspections**

Levee Inspection Report By Mile - Fall 2017

Reclamation District No. 1600 Mull

Waterway	Bank	Unit Miles	Inspection Start/End	Inspector
Unit No. 01 Sacramento River	Right	10.46	11/02/2017 11/02/2017	Zach Jojola

LM Start	1.40	Rating **	A/W	Issue No.	4 (cont)	
LM End	1.40	Issue Type +	Ma	Location *	LS	
Category	Earthen Levee			GPS Latitude/Longitude		
				Start		End
Item	Slope Stability			38.694452 °		38.694452 °
				-121.634292 °		-121.634292 °
DWR ID	DWR_RD1600_01_s_2017_4					
Comment Code						
S3 : Repair the levee slope damaged by vehicle traffic and prevent access where possible.						
Inspector Comment						
Vehicle access point. Recommend monitoring.						

Photo 2 of 2 : FA_2017_RD1600_191_4_20170911_00006.jpg



View of the slope stability caused by vehicles on the landward side of the levee looking upstream. Fall 2015.

LM Start	1.40	Rating **	A/W	Issue No.	5
LM End	1.40	Issue Type +	Ob	Location *	WS
Category	Earthen Levee			GPS Latitude/Longitude	
				Start	End
Item	Vegetation			38.694469 °	38.694469 °
				-121.634312 °	-121.634312 °
DWR ID	DWR_RD1600_01_f_2012_5				
Comment Code					
V8 : Environmental Requirements.					
Inspector Comment					

Photo 1 of 2 : FA_2017_RD1600_191_5_20170911_00007.jpg



View of the revegetation site on the berm of the waterward side of the levee looking upstream. Spring 2016.

LM Start	1.40	Rating **	A/W	Issue No.	5 (cont)
LM End	1.40	Issue Type +	Ob	Location *	WS

Photo 2 of 2 : FA_2017_RD1600_191_5_20170911_00008.jpg



DWR revegetation site. Spring 2016.

* Location LS : Land Side N/A : Not Applicable WS : Water Side CR : Crown		** Rating A : Acceptable M : Minimally Acceptable U : Unacceptable		N : Not Inspected/Rated C : Corrected A/W : Acceptable but Monitor & Maintain		+ Issue Type Ma : Maintenance Deficiency Ob : Design & System Obsolescence En : Enforcement	
---	--	---	--	---	--	--	--

**Flood Control Project Maintenance
Levee Inspections**

Levee Inspection Report By Mile - Fall 2017

Reclamation District No. 1600 Mull

Waterway	Bank	Unit Miles	Inspection Start/End	Inspector
Unit No. 01 Sacramento River	Right	10.46	11/02/2017 11/02/2017	Zach Jojola

LM Start	1.41	Rating **	A/W	Issue No.	65
LM End	1.41	Issue Type +	Ma	Location *	LS
Category	Earthen Levee			GPS Latitude/Longitude	
				Start	End
Item	Slope Stability			38.694705 °	38.694705 °
				-121.634212 °	-121.634212 °
DWR ID	DWR_RD1600_01_f_2017_65				
Comment Code					
S2 : Repair the levee slope damaged by foot traffic and prevent access where possible.					
Inspector Comment					
Footpath on landside slope.					

No Photos

LM Start	1.53	Rating **	M	Issue No.	50
LM End	1.58	Issue Type +	Ma	Location *	WS
Category	Earthen Levee			GPS Latitude/Longitude	
				Start	End
Item	Vegetation			38.696341 °	38.696918 °
				-121.633417 °	-121.633044 °
DWR ID	DWR_RD1600_01_s_2016_50				
Comment Code					
V2 : Remove the wild growth other than native grasses from the levee slopes.					
Inspector Comment					
Recommend removal of willows on waterward side of the levee.					

Photo 1 of 1 : FA_2017_RD1600_191_50_20170911_00049.jpg



View of willows on waterward side of the levee. Recommended removal. Fall 2016.

LM Start	1.70	Rating **	A/W	Issue No.	70
LM End	1.70	Issue Type +	Ma	Location *	LS
Category	Earthen Levee			GPS Latitude/Longitude	
				Start	End
Item	Slope Stability			38.698414 °	38.698414 °
				-121.631874 °	-121.631874 °
DWR ID	DWR_RD1600_01_f_2017_70				
Comment Code					
S2 : Repair the levee slope damaged by foot traffic and prevent access where possible.					
Inspector Comment					
Footpath on landside slope.					

Photo 1 of 1 : FA_2017_RD1600_191_70_20170911_00063.jpg



View of slope instability due to vehicular activity. Fall 2016.

* Location LS : Land Side N/A : Not Applicable WS : Water Side CR : Crown		** Rating A : Acceptable M : Minimally Acceptable U : Unacceptable N : Not Inspected/Rated C : Corrected A/W : Acceptable but Monitor & Maintain		+ Issue Type Ma : Maintenance Deficiency Ob : Design & System Obsolescence En : Enforcement	
--	--	---	--	---	--

**Flood Control Project Maintenance
Levee Inspections**

Levee Inspection Report By Mile - Fall 2017

Reclamation District No. 1600 Mull

Waterway	Bank	Unit Miles	Inspection Start/End	Inspector
Unit No. 01 Sacramento River	Right	10.46	11/02/2017 11/02/2017	Zach Jojola

LM Start	1.72	Rating **	C	Issue No.	71
LM End	1.72	Issue Type +	Ma	Location *	WS
Category	Earthen Levee			GPS Latitude/Longitude	
				Start	End
Item	Slope Stability			38.698628 °	38.698628 °
				-121.631694 °	-121.631694 °
DWR ID	DWR_RD1600_01_s_2016_71				
Comment Code					
S3 : Repair the levee slope damaged by vehicle traffic and prevent access where possible.					
Inspector Comment					

No Photos

LM Start	1.72	Rating **	A/W	Issue No.	31
LM End	1.72	Issue Type +	Ma	Location *	WS
Category	Earthen Levee			GPS Latitude/Longitude	
				Start	End
Item	Vegetation			38.698639 °	38.698639 °
				-121.631687 °	-121.631687 °
DWR ID	DWR_RD1600_01_s_2012_31				
Comment Code					
V4 : Elderberries are blocking visibility and flood fight capability.					
Inspector Comment					

No Photos

LM Start	1.99	Rating **	M	Issue No.	64
LM End	1.99	Issue Type +	Ma	Location *	CR
Category	Earthen Levee			GPS Latitude/Longitude	
				Start	End
Item	Encroachments			38.701394 °	38.701394 °
				-121.628254 °	-121.628254 °
DWR ID	DWR_RD1600_01_f_2017_64				
Comment Code					
TR : Tree or limb					
Inspector Comment					
Fallen tree limb on crown.					

No Photos

* Location LS : Land Side N/A : Not Applicable WS : Water Side CR : Crown		** Rating A : Acceptable N : Not Inspected/Rated M : Minimally Acceptable C : Corrected U : Unacceptable A/W : Acceptable but Monitor & Maintain		+ Issue Type Ma : Maintenance Deficiency Ob : Design & System Obsolescence En : Enforcement	
--	--	---	--	---	--

**Flood Control Project Maintenance
Levee Inspections**

Levee Inspection Report By Mile - Fall 2017

Reclamation District No. 1600 Mull

Waterway	Bank	Unit Miles	Inspection Start/End	Inspector
Unit No. 01 Sacramento River	Right	10.46	11/02/2017 11/02/2017	Zach Jojola

LM Start	2.01	Rating **	M	Issue No.	72
LM End	2.01	Issue Type +	Ma	Location *	LS
Category	Earthen Levee			GPS Latitude/Longitude	
				Start	End
Item	Erosion / Bank Caving			38.701605 °	38.701605 °
				-121.627954 °	-121.627954 °
DWR ID	DWR_RD1600_01_s_2016_72				
Comment Code					
E2 : Schedule repair of erosion site prior to the next inspection.					
Inspector Comment					
Runoff on landside slope.					

Photo 1 of 4 : FA_2017_RD1600_191_72_20170911_00065.jpg



Erosion is on the landward side of the levee about midway from the shoulder of the levee. Spring 2016.

LM Start	2.01	Rating **	M	Issue No.	72 (cont)
LM End	2.01	Issue Type +	Ma	Location *	LS

Photo 2 of 4 : FA_2017_RD1600_191_72_20170911_00066.jpg



Updated view of the erosion site. Fall 2016.

LM Start	2.01	Rating **	M	Issue No.	72 (cont)
LM End	2.01	Issue Type +	Ma	Location *	LS

Photo 3 of 4 : FA_2017_RD1600_191_72_20170911_00067.jpg



Perspective view of the erosion on the landward side of the levee looking upstream. Spring 2016.

* Location LS : Land Side N/A : Not Applicable WS : Water Side CR : Crown		** Rating A : Acceptable M : Minimally Acceptable U : Unacceptable N : Not Inspected/Rated C : Corrected A/W : Acceptable but Monitor & Maintain		+ Issue Type Ma : Maintenance Deficiency Ob : Design & System Obsolescence En : Enforcement	
--	--	---	--	---	--

**Flood Control Project Maintenance
Levee Inspections**

Levee Inspection Report By Mile - Fall 2017

Reclamation District No. 1600 Mull

Waterway	Bank	Unit Miles	Inspection Start/End	Inspector
Unit No. 01 Sacramento River	Right	10.46	11/02/2017 11/02/2017	Zach Jojola

LM Start	2.01	Rating **	M	Issue No.	72 (cont)	
LM End	2.01	Issue Type +	Ma	Location *	LS	
Category	Earthen Levee			GPS Latitude/Longitude		
				Start		End
Item	Erosion / Bank Caving			38.701605 °	38.701605 °	
				-121.627954 °	-121.627954 °	
DWR ID	DWR_RD1600_01_s_2016_72					
Comment Code						
E2 : Schedule repair of erosion site prior to the next inspection.						
Inspector Comment						
Runoff on landside slope.						

Photo 4 of 4 : FA_2017_RD1600_191_72_20170911_00068.jpg



Updated view of the erosion site. Spring 2017.

LM Start	2.02	Rating **	C	Issue No.	52
LM End	2.02	Issue Type +	Ma	Location *	WS
Category	Earthen Levee			GPS Latitude/Longitude	
				Start	End
Item	Slope Stability			38.701753 °	38.701753 °
				-121.627734 °	-121.627734 °
DWR ID	DWR_RD1600_01_f_2015_52				
Comment Code					
S3 : Repair the levee slope damaged by vehicle traffic and prevent access where possible.					
Inspector Comment					

No Photos

LM Start	2.03	Rating **	U	Issue No.	62
LM End	2.03	Issue Type +	Ma	Location *	WS
Category	Earthen Levee			GPS Latitude/Longitude	
				Start	End
Item	Animal Control			38.701780 °	38.701780 °
				-121.627648 °	-121.627648 °
DWR ID	DWR_RD1600_01_f_2017_62				
Comment Code					
A3 : No rodents visible, but rodent burrows visible; need to backfill and compact or grout burrows.					
Inspector Comment					
Multiple large holes over 1' wide on waterside slope.					

Photo 1 of 1 : FA_2017_RD1600_191_62_20171102_00118.jpg



View of rodent holes on waterside slope. Fall 2017.

* Location LS : Land Side N/A : Not Applicable WS : Water Side CR : Crown		** Rating A : Acceptable M : Minimally Acceptable U : Unacceptable		N : Not Inspected/Rated C : Corrected A/W : Acceptable but Monitor & Maintain		+ Issue Type Ma : Maintenance Deficiency Ob : Design & System Obsolescence En : Enforcement	
--	--	--	--	---	--	---	--

**Flood Control Project Maintenance
Levee Inspections**

Levee Inspection Report By Mile - Fall 2017

Reclamation District No. 1600 Mull

Waterway	Bank	Unit Miles	Inspection Start/End	Inspector
Unit No. 01 Sacramento River	Right	10.46	11/02/2017 11/02/2017	Zach Jojola

LM Start	2.10	Rating **	M	Issue No.	55
LM End	2.10	Issue Type +	Ma	Location *	LS
Category	Earthen Levee			GPS Latitude/Longitude	
				Start	End
Item	Slope Stability			38.702416 °	38.702416 °
				-121.626593 °	-121.626593 °
DWR ID	DWR_RD1600_01_f_2015_55				
Comment Code					
S3 : Repair the levee slope damaged by vehicle traffic and prevent access where possible.					
Inspector Comment					

Photo 1 of 1 : FA_2017_RD1600_191_55_20170911_00052.jpg



View of the slope stability damaged by vehicles on the landward side of the levee. Fall 2015.

LM Start	2.17	Rating **	C	Issue No.	56
LM End	2.17	Issue Type +	Ma	Location *	LS
Category	Earthen Levee			GPS Latitude/Longitude	
				Start	End
Item	Slope Stability			38.703025 °	38.703025 °
				-121.625605 °	-121.625605 °
DWR ID	DWR_RD1600_01_f_2015_56				
Comment Code					
S1 : Repair slope instability.					
Inspector Comment					

No Photos

LM Start	2.35	Rating **	A/W	Issue No.	35
LM End	2.40	Issue Type +	Ob	Location *	WS
Category	Earthen Levee			GPS Latitude/Longitude	
				Start	End
Item	Vegetation			38.704624 °	38.705152 °
				-121.623034 °	-121.622187 °
DWR ID	DWR_RD1600_01_s_2012_35				
Comment Code					
V8 : Environmental Requirements.					
Inspector Comment					

Photo 1 of 2 : FA_2017_RD1600_191_35_20170911_00037.jpg



Sign for revegetation site. Spring 2016.

* Location		** Rating		+ Issue Type	
LS : Land Side	N/A : Not Applicable	A : Acceptable	N : Not Inspected/Rated	Ma : Maintenance Deficiency	
WS : Water Side		M : Minimally Acceptable	C : Corrected	Ob : Design & System Obsolescence	
CR : Crown		U : Unacceptable	A/W : Acceptable but Monitor & Maintain	En : Enforcement	

**Flood Control Project Maintenance
Levee Inspections**

Levee Inspection Report By Mile - Fall 2017

Reclamation District No. 1600 Mull

Waterway	Bank	Unit Miles	Inspection Start/End	Inspector
Unit No. 01 Sacramento River	Right	10.46	11/02/2017 11/02/2017	Zach Jojola

LM Start	2.35	Rating **	A/W	Issue No.	35 (cont)	
LM End	2.40	Issue Type +	Ob	Location *	WS	
Category	Earthen Levee			GPS Latitude/Longitude		
				Start		End
Item	Vegetation			38.704624 °		38.705152 °
				-121.623034 °		-121.622187 °
DWR ID	DWR_RD1600_01_s_2012_35					
Comment Code						
V8 : Environmental Requirements.						
Inspector Comment						

Photo 2 of 2 : FA_2017_RD1600_191_35_20170911_00038.jpg



View of the revegetation site on the waterward side of the levee looking upstream. Spring 2016.

LM Start	2.41	Rating **	M	Issue No.	43
LM End	2.41	Issue Type +	Ma	Location *	LS
Category	Earthen Levee			GPS Latitude/Longitude	
				Start	End
Item	Slope Stability			38.705203 °	38.705203 °
				-121.622184 °	-121.622184 °
DWR ID	DWR_RD1600_01_f_2016_43				
Comment Code					
S1 : Repair slope instability.					
Inspector Comment					

Photo 1 of 1 : FA_2017_RD1600_191_43_20170911_00041.jpg



LS slope damaged by a vehicle. Fall 2016.

LM Start	2.61	Rating **	A/W	Issue No.	45
LM End	2.61	Issue Type +	Ma	Location *	LS
Category	Earthen Levee			GPS Latitude/Longitude	
				Start	End
Item	Vegetation			38.707311 °	38.707311 °
				-121.619517 °	-121.619517 °
DWR ID	DWR_RD1600_01_f_2016_45				
Comment Code					
V4 : Elderberries are blocking visibility and flood fight capability.					
Inspector Comment					

Photo 1 of 1 : FA_2017_RD1600_191_45_20170911_00043.jpg



Elderberry tree on landside slope. Fall 2016.

* Location LS : Land Side N/A : Not Applicable WS : Water Side CR : Crown		** Rating A : Acceptable M : Minimally Acceptable U : Unacceptable		N : Not Inspected/Rated C : Corrected A/W : Acceptable but Monitor & Maintain		+ Issue Type Ma : Maintenance Deficiency Ob : Design & System Obsolescence En : Enforcement	
--	--	--	--	---	--	---	--

**Flood Control Project Maintenance
Levee Inspections**

Levee Inspection Report By Mile - Fall 2017

Reclamation District No. 1600 Mull

Waterway	Bank	Unit Miles	Inspection Start/End	Inspector
Unit No. 01 Sacramento River	Right	10.46	11/02/2017 11/02/2017	Zach Jojola

LM Start	2.62	Rating **	M	Issue No.	53
LM End	2.66	Issue Type +	En	Location *	WS
Category	Earthen Levee			GPS Latitude/Longitude	
				Start	End
Item	Encroachments			38.707366 °	38.707798 °
				-121.619431 °	-121.618884 °
DWR ID	DWR_RD1600_01_f_2017_53				
Comment Code					
EQ : Equipment					
Inspector Comment					
Beehives on waterside slope.					

No Photos

LM Start	2.73	Rating **	M	Issue No.	42
LM End	2.73	Issue Type +	En	Location *	WS
Category	Earthen Levee			GPS Latitude/Longitude	
				Start	End
Item	Encroachments			38.708513 °	38.708513 °
				-121.617983 °	-121.617983 °
DWR ID	DWR_RD1600_01_f_2017_42				
Comment Code					
EQ : Equipment					
Inspector Comment					
Beehives on waterside slope.					

No Photos

* Location LS : Land Side N/A : Not Applicable WS : Water Side CR : Crown		** Rating A : Acceptable N : Not Inspected/Rated M : Minimally Acceptable C : Corrected U : Unacceptable A/W : Acceptable but Monitor & Maintain		+ Issue Type Ma : Maintenance Deficiency Ob : Design & System Obsolescence En : Enforcement
--	--	---	--	---

**Flood Control Project Maintenance
Levee Inspections**

Levee Inspection Report By Mile - Fall 2017

Reclamation District No. 1600 Mull

Waterway	Bank	Unit Miles	Inspection Start/End	Inspector
Unit No. 01 Sacramento River	Right	10.46	11/02/2017 11/02/2017	Zach Jojola

LM Start	2.81	Rating **	M	Issue No.	1205
LM End	2.81	Issue Type +	En	Location *	
Category	Supplemental			GPS Latitude/Longitude	
				Start	End
Item	DWR UCIP Field Study			38.709350 °	38.709350 °
				-121.616913 °	-121.616913 °
DWR ID					
Comment Code					
Inspector Comment					
FS_ID:15108 DS_ID:21467 EP_NO: N/A Repair Type: Non-Urgent Crossing Status: Found UCIP Comments: Appears abandoned and should be done so properly. Debris buildup on pier. Power cut to pump. FIELD_STRUCT_DESC: 16-inch steel irrigation pipe through the levee, 2 feet below the crown. Walkway from berm to pump on pile structure in the stream. Siphon breaker on the landside (LS) slope. 12-inch polyvinyl chloride (PVC) standpipe off the LS toe. [Additional Reference(s): DWR Levee Log, 1988. USACE Sacramento O&M Manual 123, August 1955, (RM 73.4) (18-inch pipe listed)]. FS Date: 6/18/2013					

LM Start	2.81	Rating **	M	Issue No.	1205 (cont)
LM End	2.81	Issue Type +	En	Location *	

Photo 1 of 3 : UCIP_FA_2017_15108_24826.jpg



Pump on metal platform off WS berm.

Photo 2 of 3 : UCIP_FA_2017_15108_24825.jpg



Debris buildup at metal platform waterline.

* Location LS : Land Side N/A : Not Applicable WS : Water Side CR : Crown	** Rating A : Acceptable M : Minimally Acceptable U : Unacceptable	N : Not Inspected/Rated C : Corrected A/W : Acceptable but Monitor & Maintain	+ Issue Type Ma : Maintenance Deficiency Ob : Design & System Obsolescence En : Enforcement
--	--	---	---

**Flood Control Project Maintenance
Levee Inspections**

Levee Inspection Report By Mile - Fall 2017

Reclamation District No. 1600 Mull

Waterway	Bank	Unit Miles	Inspection Start/End	Inspector
Unit No. 01 Sacramento River	Right	10.46	11/02/2017 11/02/2017	Zach Jojola

LM Start	2.81	Rating **	M	Issue No.	1205 (cont)
LM End	2.81	Issue Type +	En	Location *	
Category	Supplemental			GPS Latitude/Longitude	
				Start	End
Item	DWR UCIP Field Study			38.709350 °	38.709350 °
				-121.616913 °	-121.616913 °
DWR ID					
Comment Code					
Inspector Comment					
FS_ID:15108 DS_ID:21467 EP_NO: N/A Repair Type: Non-Urgent Crossing Status: Found UCIP Comments: Appears abandoned and should be done so properly. Debris buildup on pier. Power cut to pump. FIELD_STRUCT_DESC: 16-inch steel irrigation pipe through the levee, 2 feet below the crown. Walkway from berm to pump on pile structure in the stream. Siphon breaker on the landside (LS) slope. 12-inch polyvinyl chloride (PVC) standpipe off the LS toe. [Additional Reference(s): DWR Levee Log, 1988. USACE Sacramento O&M Manual 123, August 1955, (RM 73.4) (18-inch pipe listed)]. FS Date: 6/18/2013					

Photo 3 of 3 : UCIP_FA_2017_15108_24824.jpg



Electrical cut to pump.

LM Start	2.93	Rating **	M	Issue No.	1206
LM End	2.93	Issue Type +	En	Location *	
Category	Supplemental			GPS Latitude/Longitude	
				Start	End
Item	DWR UCIP Field Study			38.710497 °	38.710497 °
				-121.615381 °	-121.615381 °
DWR ID					
Comment Code					
Inspector Comment					
FS_ID:15110 DS_ID:21490 EP_NO: N/A Repair Type: Non-Urgent Crossing Status: Indicator Found UCIP Comments: Abandoned and should be removed from levee. FIELD_STRUCT_DESC: *ABANDONED* 10-inch reinforced concrete pipe of an unknown purpose through the levee, 5 feet below the crown. Pipe visible on the landside (LS) slope. [Additional Reference(s): USACE Sacramento O&M Manual 123, August 1955, (RM 73.5)]. FS Date: 6/18/2013					

Photo 1 of 2 : UCIP_FA_2017_15110_24828.jpg



Pipe visible on LS slope.

* Location LS : Land Side N/A : Not Applicable WS : Water Side CR : Crown		** Rating A : Acceptable N : Not Inspected/Rated M : Minimally Acceptable C : Corrected U : Unacceptable A/W : Acceptable but Monitor & Maintain		+ Issue Type Ma : Maintenance Deficiency Ob : Design & System Obsolescence En : Enforcement
--	--	---	--	---

**Flood Control Project Maintenance
Levee Inspections**

Levee Inspection Report By Mile - Fall 2017

Reclamation District No. 1600 Mull

Waterway	Bank	Unit Miles	Inspection Start/End	Inspector
Unit No. 01 Sacramento River	Right	10.46	11/02/2017 11/02/2017	Zach Jojola

LM Start	2.93	Rating **	M	Issue No.	1206 (cont)	
LM End	2.93	Issue Type +	En	Location *		
Category	Supplemental			GPS Latitude/Longitude		
				Start	End	
Item	DWR UCIP Field Study			38.710497 °	38.710497 °	
				-121.615381 °	-121.615381 °	
DWR ID						
Comment Code						
Inspector Comment						
FS_ID:15110						
DS_ID:21490						
EP_NO: N/A						
Repair Type: Non-Urgent						
Crossing Status: Indicator Found						
UCIP Comments: Abandoned and should be removed from levee.						
FIELD_STRUCT_DESC: *ABANDONED* 10-inch reinforced concrete						
pipe of an unknown purpose through the levee, 5 feet below the crown.						
Pipe visible on the landside (LS) slope. [Additional Reference(s):						
USACE Sacramento O&M Manual 123, August 1955, (RM 73.5)].						
FS Date: 6/18/2013						

Photo 2 of 2 : UCIP_FA_2017_15110_24827.jpg



Pipe visible on LS slope.

LM Start	2.93	Rating **	C	Issue No.	47
LM End	2.93	Issue Type +	Ma	Location *	LS
Category	Earthen Levee			GPS Latitude/Longitude	
				Start	End
Item	Slope Stability			38.710518 °	38.710518 °
				-121.615366 °	-121.615366 °
DWR ID	DWR_RD1600_01_f_2016_47				
Comment Code					
S3 : Repair the levee slope damaged by vehicle traffic and prevent access where possible.					
Inspector Comment					

No Photos

* Location LS : Land Side N/A : Not Applicable WS : Water Side CR : Crown	** Rating A : Acceptable M : Minimally Acceptable U : Unacceptable	N : Not Inspected/Rated C : Corrected A/W : Acceptable but Monitor & Maintain	+ Issue Type Ma : Maintenance Deficiency Ob : Design & System Obsolescence En : Enforcement
--	--	---	---

**Flood Control Project Maintenance
Levee Inspections**

Levee Inspection Report By Mile - Fall 2017

Reclamation District No. 1600 Mull

Waterway	Bank	Unit Miles	Inspection Start/End	Inspector
Unit No. 01 Sacramento River	Right	10.46	11/02/2017 11/02/2017	Zach Jojola

LM Start	3.00	Rating **	M	Issue No.	75
LM End	3.00	Issue Type +	Ma	Location *	LS
Category	Earthen Levee			GPS Latitude/Longitude	
				Start	End
Item	Vegetation			38.711232 °	38.711232 °
				-121.614401 °	-121.614401 °
DWR ID	DWR_RD1600_01_s_2017_75				
Comment Code					
V2 : Remove the wild growth other than native grasses from the levee slopes.					
Inspector Comment					
Remove wild growth on landside levee slope.					

Photo 1 of 1 : FA_2017_RD1600_191_75_20170911_00072.jpg



Wild growth on landside levee slope. Spring 2017.

LM Start	3.04	Rating **	A/W	Issue No.	37
LM End	3.04	Issue Type +	Ma	Location *	LS
Category	Earthen Levee			GPS Latitude/Longitude	
				Start	End
Item	Vegetation			38.711597 °	38.711597 °
				-121.613890 °	-121.613890 °
DWR ID	DWR_RD1600_01_s_2012_37				
Comment Code					
V4 : Elderberries are blocking visibility and flood fight capability.					
Inspector Comment					

No Photos

LM Start	3.04	Rating **	M	Issue No.	76
LM End	3.04	Issue Type +	Ma	Location *	LS
Category	Earthen Levee			GPS Latitude/Longitude	
				Start	End
Item	Slope Stability			38.711660 °	38.711660 °
				-121.613839 °	-121.613839 °
DWR ID	DWR_RD1600_01_s_2017_76				
Comment Code					
S3 : Repair the levee slope damaged by vehicle traffic and prevent access where possible.					
Inspector Comment					
Slope depression on landside levee slope from vehicle traffic.					

Photo 1 of 1 : FA_2017_RD1600_191_76_20170911_00073.jpg



Slope depression on landside levee slope from vehicle traffic. Spring 2017.

* Location LS : Land Side N/A : Not Applicable WS : Water Side CR : Crown		** Rating A : Acceptable M : Minimally Acceptable U : Unacceptable N : Not Inspected/Rated C : Corrected A/W : Acceptable but Monitor & Maintain		+ Issue Type Ma : Maintenance Deficiency Ob : Design & System Obsolescence En : Enforcement	
--	--	---	--	---	--

**Flood Control Project Maintenance
Levee Inspections**

Levee Inspection Report By Mile - Fall 2017

Reclamation District No. 1600 Mull

Waterway	Bank	Unit Miles	Inspection Start/End	Inspector
Unit No. 01 Sacramento River	Right	10.46	11/02/2017 11/02/2017	Zach Jojola

LM Start	3.20	Rating **	M	Issue No.	51
LM End	3.20	Issue Type +	Ma	Location *	LS
Category	Earthen Levee			GPS Latitude/Longitude	
				Start	End
Item	Vegetation			38.713393 °	38.713393 °
				-121.611828 °	-121.611828 °
DWR ID	DWR_RD1600_01_s_2017_51				
Comment Code					
V4 : Elderberries are blocking visibility and flood fight capability.					
Inspector Comment					

No Photos

LM Start	3.40	Rating **	M	Issue No.	77
LM End	3.40	Issue Type +	Ma	Location *	LS
Category	Earthen Levee			GPS Latitude/Longitude	
				Start	End
Item	Vegetation			38.715681 °	38.715681 °
				-121.609555 °	-121.609555 °
DWR ID	DWR_RD1600_01_s_2017_77				
Comment Code					
V4 : Elderberries are blocking visibility and flood fight capability.					
Inspector Comment					

No Photos

LM Start	3.57	Rating **	M	Issue No.	627
LM End	3.57	Issue Type +	En	Location *	WS
Category	Earthen Levee			GPS Latitude/Longitude	
				Start	End
Item	Encroachments			38.717717 °	38.717717 °
				-121.608015 °	-121.608015 °
DWR ID	DWR_RD1600_01_s_2014_627				
Comment Code					
DE : Debris					
Inspector Comment					
Plywood on waterside slope.					

Photo 1 of 2 : FA_2017_RD1600_191_627_20170911_00085.jpg



Metal pipe and wood debris is on the waterside berm. Spring 2014

* Location		** Rating		+ Issue Type	
LS : Land Side	N/A : Not Applicable	A : Acceptable	N : Not Inspected/Rated	Ma : Maintenance Deficiency	
WS : Water Side		M : Minimally Acceptable	C : Corrected	Ob : Design & System Obsolescence	
CR : Crown		U : Unacceptable	A/W : Acceptable but Monitor & Maintain	En : Enforcement	

**Flood Control Project Maintenance
Levee Inspections**

Levee Inspection Report By Mile - Fall 2017

Reclamation District No. 1600 Mull

Waterway	Bank	Unit Miles	Inspection Start/End	Inspector
Unit No. 01 Sacramento River	Right	10.46	11/02/2017 11/02/2017	Zach Jojola

LM Start	3.57	Rating **	M	Issue No.	627 (cont)	
LM End	3.57	Issue Type +	En	Location *	WS	
Category	Earthen Levee			GPS Latitude/Longitude		
				Start	End	
Item	Encroachments			38.717717 °	38.717717 °	
				-121.608015 °	-121.608015 °	
DWR ID	DWR_RD1600_01_s_2014_627					
Comment Code						
DE : Debris						
Inspector Comment						
Plywood on waterside slope.						

Photo 2 of 2 : FA_2017_RD1600_191_627_20170911_00086.jpg



View of the metal pipe and wood debris on the berm of the waterward side of the levee. Fall 2015.

LM Start	3.58	Rating **	M	Issue No.	3
LM End	3.83	Issue Type +	Ma	Location *	WS
Category	Supplemental			GPS Latitude/Longitude	
				Start	End
Item	2015 USACE Erosion Survey, DRAFT			38.717770 °	38.721351 °
				-121.607423 °	-121.606414 °
DWR ID	DWR_RD1600_01_s_2016_3				
Comment Code					
Inspector Comment					
1997 - Steep high bank. 2005 - Some small pockets in the low toe near the waterline. 2006 - Minor slope clearing. 2010 - Minor new erosion. 2011 - Multiple trees have fallen since last year. Some other trees look ready to fall. Significant new erosion since last year. 2012 - Minor new erosion. 2013 - Minor new erosion. 2015: New minor erosion at toe. [2015 Site ID: SAC 74-4 R]					

Photo 1 of 1 : FA_2017_RD1600_191_3_20170911_00004.jpg



USACE 2013 Photo #1

* Location LS : Land Side N/A : Not Applicable WS : Water Side CR : Crown		** Rating A : Acceptable M : Minimally Acceptable U : Unacceptable N : Not Inspected/Rated C : Corrected A/W : Acceptable but Monitor & Maintain		+ Issue Type Ma : Maintenance Deficiency Ob : Design & System Obsolescence En : Enforcement	
---	--	--	--	--	--

**Flood Control Project Maintenance
Levee Inspections**

Levee Inspection Report By Mile - Fall 2017

Reclamation District No. 1600 Mull

Waterway	Bank	Unit Miles	Inspection Start/End	Inspector
Unit No. 01 Sacramento River	Right	10.46	11/02/2017 11/02/2017	Zach Jojola

LM Start	3.59	Rating **	M	Issue No.	628
LM End	3.59	Issue Type +	En	Location *	WS
Category	Earthen Levee			GPS Latitude/Longitude	
				Start	End
Item	Encroachments			38.718080 °	38.718080 °
				-121.607815 °	-121.607815 °
DWR ID	DWR_RD1600_01_s_2014_628				
Comment Code					
DE : Debris					
Inspector Comment					

Photo 1 of 2 : FA_2017_RD1600_191_628_20170911_00087.jpg



Perspective view of the concrete pile looking upstream. Spring 2016.

LM Start	3.59	Rating **	M	Issue No.	628 (cont)
LM End	3.59	Issue Type +	En	Location *	WS

Photo 2 of 2 : FA_2017_RD1600_191_628_20170911_00088.jpg



View of the concrete pile on the berm of the waterward side of the levee. Spring 2016.

LM Start	3.76	Rating **	A	Issue No.	73
LM End	3.93	Issue Type +	Ob	Location *	LS
Category	Earthen Levee			GPS Latitude/Longitude	
				Start	End
Item	Seepage / Sandboils			38.720407 °	38.722850 °
				-121.606953 °	-121.606899 °
DWR ID	DWR_RD1600_01_s_2016_73				
Comment Code					
Inspector Comment					
There appears to be a ponding issue and will have to be monitored during next inspection.					

Photo 1 of 2 : FA_2017_RD1600_191_73_20170911_00069.jpg



View taken from the crown of the levee of the seepage. Spring 2016.

*** Location**

LS : Land Side N/A : Not Applicable
WS : Water Side
CR : Crown

**** Rating**

A : Acceptable N : Not Inspected/Rated
M : Minimally Acceptable C : Corrected
U : Unacceptable A/W : Acceptable but Monitor & Maintain

+ Issue Type

Ma : Maintenance Deficiency
Ob : Design & System Obsolescence
En : Enforcement

**Flood Control Project Maintenance
Levee Inspections**

Levee Inspection Report By Mile - Fall 2017

Reclamation District No. 1600 Mull

Waterway	Bank	Unit Miles	Inspection Start/End	Inspector
Unit No. 01 Sacramento River	Right	10.46	11/02/2017 11/02/2017	Zach Jojola

LM Start	3.76	Rating **	A	Issue No.	73 (cont)	
LM End	3.93	Issue Type +	Ob	Location *	LS	
Category	Earthen Levee			GPS Latitude/Longitude		
				Start		End
Item	Seepage / Sandboils			38.720407 °		38.722850 °
				-121.606953 °		-121.606899 °
DWR ID	DWR_RD1600_01_s_2016_73					
Comment Code						
Inspector Comment						
There appears to be a ponding issue and will have to be monitored during next inspection.						

Photo 2 of 2 : FA_2017_RD1600_191_73_20170911_00070.jpg



View of the seepage by the road looking upstream. Spring 2016.

LM Start	3.83	Rating **	C	Issue No.	54
LM End	3.83	Issue Type +	Ma	Location *	LS
Category	Earthen Levee			GPS Latitude/Longitude	
				Start	End
Item	Encroachments			38.721407 °	38.721407 °
				-121.606849 °	-121.606849 °
DWR ID	DWR_RD1600_01_s_2017_54				
Comment Code					
PR : Prunings					
Inspector Comment					

No Photos

LM Start	3.89	Rating **	C	Issue No.	67
LM End	3.89	Issue Type +	Ma	Location *	WS
Category	Earthen Levee			GPS Latitude/Longitude	
				Start	End
Item	Slope Stability			38.722300 °	38.722300 °
				-121.606769 °	-121.606769 °
DWR ID	DWR_RD1600_01_f_2015_67				
Comment Code					
S3 : Repair the levee slope damaged by vehicle traffic and prevent access where possible.					
Inspector Comment					

No Photos

* Location LS : Land Side N/A : Not Applicable WS : Water Side CR : Crown		** Rating A : Acceptable M : Minimally Acceptable U : Unacceptable		+ Issue Type Ma : Maintenance Deficiency Ob : Design & System Obsolescence En : Enforcement	
		N : Not Inspected/Rated C : Corrected A/W : Acceptable but Monitor & Maintain			

**Flood Control Project Maintenance
Levee Inspections**

Levee Inspection Report By Mile - Fall 2017

Reclamation District No. 1600 Mull

Waterway	Bank	Unit Miles	Inspection Start/End	Inspector
Unit No. 01 Sacramento River	Right	10.46	11/02/2017 11/02/2017	Zach Jojola

LM Start	3.93	Rating **	M	Issue No.	40
LM End	3.93	Issue Type +	Ma	Location *	LS
Category	Earthen Levee			GPS Latitude/Longitude	
				Start	End
Item	Encroachments			38.722823 °	38.722823 °
				-121.606707 °	-121.606707 °
DWR ID	DWR_RD1600_01_f_2017_40				
Comment Code					
TR : Tree or limb					
Inspector Comment					
Fallen tree limbs on landside slope.					

No Photos

LM Start	4.12	Rating **	C	Issue No.	57
LM End	4.12	Issue Type +	Ma	Location *	LS
Category	Earthen Levee			GPS Latitude/Longitude	
				Start	End
Item	Animal Control			38.725598 °	38.725598 °
				-121.606486 °	-121.606486 °
DWR ID	DWR_RD1600_01_f_2016_57				
Comment Code					
A3 : No rodents visible, but rodent burrows visible; need to backfill and compact or grout burrows.					
Inspector Comment					

No Photos

LM Start	4.34	Rating **	M	Issue No.	8
LM End	4.86	Issue Type +	Ma	Location *	WS
Category	Supplemental			GPS Latitude/Longitude	
				Start	End
Item	2015 USACE Erosion Survey, DRAFT			38.728684 °	38.736110 °
				-121.605844 °	-121.604153 °
DWR ID	DWR_RD1600_01_s_2016_8				
Comment Code					
Inspector Comment					
1997 - Very steep bank. 2005 - Lots of small trees down along the bank at the upstream end. 2006 - Minor new erosion, but slow. 2010 - Almost all of the roots are exposed on the trees, appears ready to fall. 2011 - New erosion and tree popouts. 2012 - Site has become overgrown with vegetation, making it hard to observe. 2015: Dense vegetation made observation difficult. [2015 Site ID: SAC 75-3 R]					

Photo 1 of 1 : FA_2017_RD1600_191_8_20170911_00011.jpg



USACE 2013 Photo #1

* Location LS : Land Side N/A : Not Applicable WS : Water Side CR : Crown		** Rating A : Acceptable N : Not Inspected/Rated M : Minimally Acceptable C : Corrected U : Unacceptable A/W : Acceptable but Monitor & Maintain		+ Issue Type Ma : Maintenance Deficiency Ob : Design & System Obsolescence En : Enforcement	
--	--	---	--	---	--

**Flood Control Project Maintenance
Levee Inspections**

Levee Inspection Report By Mile - Fall 2017

Reclamation District No. 1600 Mull

Waterway	Bank	Unit Miles	Inspection Start/End	Inspector
Unit No. 01 Sacramento River	Right	10.46	11/02/2017 11/02/2017	Zach Jojola

LM Start	4.51	Rating **	M	Issue No.	1207	
LM End	4.51	Issue Type +	En	Location *		
Category	Supplemental			GPS Latitude/Longitude		
				Start	End	
Item	DWR UCIP Field Study			38.731143	°	38.731143
				-121.605825	°	-121.605825
DWR ID						
Comment Code						
Inspector Comment						
FS_ID:15125 DS_ID:21470 EP_NO: N/A Repair Type: Non-Urgent Crossing Status: Found UCIP Comments: Pumphouse abandoned with deep pit open. Safety issue. If plant is abandoned it should be done so properly. FIELD_STRUCT_DESC: 24-inch steel irrigation pipe through the levee, 21.4 feet below the crown. 16-inch pipe ties into 24-inch pipe at the waterside (WS) slope. Slant pump on metal platform and gate valve on the WS berm. Gate valve in pump house off the landside (LS). Two power poles at the LS toe. [Additional Reference(s): DWR Levee Log, 1988. USACE Sacramento O&M Manual 123, August 1955, (RM 75.2) (20-inch pipe listed)]. FS Date: 6/18/2013 7:36:00 AM						

Photo 1 of 3 : UCIP_FA_2017_15125_24846.jpg



Pumphouse/distribution box off LS toe.

LM Start	4.51	Rating **	M	Issue No.	1207 (cont)
LM End	4.51	Issue Type +	En	Location *	

Photo 2 of 3 : UCIP_FA_2017_15125_24845.jpg



Slant pump on metal pier on WS berm.

* Location LS : Land Side N/A : Not Applicable WS : Water Side CR : Crown		** Rating A : Acceptable M : Minimally Acceptable U : Unacceptable		N : Not Inspected/Rated C : Corrected A/W : Acceptable but Monitor & Maintain		+ Issue Type Ma : Maintenance Deficiency Ob : Design & System Obsolescence En : Enforcement	
--	--	--	--	---	--	---	--

**Flood Control Project Maintenance
Levee Inspections**

Levee Inspection Report By Mile - Fall 2017

Reclamation District No. 1600 Mull

Waterway	Bank	Unit Miles	Inspection Start/End	Inspector
Unit No. 01 Sacramento River	Right	10.46	11/02/2017 11/02/2017	Zach Jojola

LM Start	4.51	Rating **	M	Issue No.	1207 (cont)	
LM End	4.51	Issue Type +	En	Location *		
Category	Supplemental			GPS Latitude/Longitude		
				Start		End
Item	DWR UCIP Field Study			38.731143 °		38.731143 °
				-121.605825 °		-121.605825 °
DWR ID						
Comment Code						
Inspector Comment						
FS_ID:15125 DS_ID:21470 EP_NO: N/A Repair Type: Non-Urgent Crossing Status: Found UCIP Comments: Pumphouse abandoned with deep pit open. Safety issue. If plant is abandoned it should be done so properly. FIELD_STRUCT_DESC: 24-inch steel irrigation pipe through the levee, 21.4 feet below the crown. 16-inch pipe ties into 24-inch pipe at the waterside (WS) slope. Slant pump on metal platform and gate valve on the WS berm. Gate valve in pump house off the landside (LS). Two power poles at the LS toe. [Additional Reference(s): DWR Levee Log, 1988. USACE Sacramento O&M Manual 123, August 1955, (RM 75.2) (20-inch pipe listed)]. FS Date: 6/18/2013 7:36:00 AM						

Photo 3 of 3 : UCIP_FA_2017_15125_24844.jpg



16-inch pipe ties into 24-inch pipe under pump platform at slide gate.

LM Start	4.52	Rating **	M	Issue No.	1208
LM End	4.52	Issue Type +	En	Location *	
Category	Supplemental			GPS Latitude/Longitude	
				Start	End
Item	DWR UCIP Field Study			38.731280 °	38.731280 °
				-121.605825 °	-121.605825 °
DWR ID					
Comment Code					
Inspector Comment					
FS_ID:41563 DS_ID:21471 EP_NO: N/A Repair Type: Non-Urgent Crossing Status: Found UCIP Comments: Pipe should be removed from slope. FIELD_STRUCT_DESC: *ABANDONED* 12-inch pipe through the levee 5.5 feet below the crown. Grouted in place 1957. FS Date: 6/18/2013					

Photo 1 of 2 : UCIP_FA_2017_41563_27474.jpg



Pipe and remnants of grouted pipe on LS slope.

* Location LS : Land Side N/A : Not Applicable WS : Water Side CR : Crown		** Rating A : Acceptable M : Minimally Acceptable U : Unacceptable		N : Not Inspected/Rated C : Corrected A/W : Acceptable but Monitor & Maintain		+ Issue Type Ma : Maintenance Deficiency Ob : Design & System Obsolescence En : Enforcement	
--	--	--	--	---	--	---	--

Reclamation District No. 1600 Mull

View of the bulge at the toe of the levee on the landward side looking downstream. Fall 2015.

Page 31 of 52

**Flood Control Project Maintenance
Levee Inspections**

Levee Inspection Report By Mile - Fall 2017

Reclamation District No. 1600 Mull

Waterway	Bank	Unit Miles	Inspection Start/End	Inspector
Unit No. 01 Sacramento River	Right	10.46	11/02/2017 11/02/2017	Zach Jojola

LM Start	4.75	Rating **	A/W	Issue No.	1193
LM End	4.75	Issue Type +	Ma	Location *	LS
Category	Earthen Levee			GPS Latitude/Longitude	
				Start	End
Item	Vegetation			38.734561 °	38.734561 °
				-121.605113 °	-121.605113 °
DWR ID	DWR_RD1600_01_s_2015_1193				
Comment Code					
V4 : Elderberries are blocking visibility and flood fight capability.					
Inspector Comment					

No Photos

LM Start	4.76	Rating **	A/W	Issue No.	1194
LM End	4.76	Issue Type +	Ma	Location *	LS
Category	Earthen Levee			GPS Latitude/Longitude	
				Start	End
Item	Vegetation			38.734784 °	38.734784 °
				-121.605048 °	-121.605048 °
DWR ID	DWR_RD1600_01_s_2015_1194				
Comment Code					
V4 : Elderberries are blocking visibility and flood fight capability.					
Inspector Comment					

No Photos

LM Start	4.77	Rating **	M	Issue No.	141
LM End	4.77	Issue Type +	Ma	Location *	LS
Category	Earthen Levee			GPS Latitude/Longitude	
				Start	End
Item	Slope Stability			38.734840 °	38.734840 °
				-121.605026 °	-121.605026 °
DWR ID	DWR_RD1600_01_f_2013_141				
Comment Code					
S1 : Repair slope instability.					
Inspector Comment					

Photo 1 of 2 : FA_2017_RD1600_191_141_20170911_00081.jpg



The erosion at the shoulder of the levee could be slope instability. Fall 2013

* Location		** Rating		+ Issue Type	
LS : Land Side	N/A : Not Applicable	A : Acceptable	N : Not Inspected/Rated	Ma : Maintenance Deficiency	
WS : Water Side		M : Minimally Acceptable	C : Corrected	Ob : Design & System Obsolescence	
CR : Crown		U : Unacceptable	A/W : Acceptable but Monitor & Maintain	En : Enforcement	

**Flood Control Project Maintenance
Levee Inspections**

Levee Inspection Report By Mile - Fall 2017

Reclamation District No. 1600 Mull

Waterway	Bank	Unit Miles	Inspection Start/End	Inspector
Unit No. 01 Sacramento River	Right	10.46	11/02/2017 11/02/2017	Zach Jojola

LM Start	4.77	Rating **	M	Issue No.	141 (cont)	
LM End	4.77	Issue Type +	Ma	Location *	LS	
Category	Earthen Levee			GPS Latitude/Longitude		
				Start		End
Item	Slope Stability			38.734840 °		38.734840 °
				-121.605026 °		-121.605026 °
DWR ID	DWR_RD1600_01_f_2013_141					
Comment Code						
S1 : Repair slope instability.						
Inspector Comment						

Photo 2 of 2 : FA_2017_RD1600_191_141_20170911_00082.jpg



View of the erosion on the landward side of the levee looking upstream.
Fall 2015.

LM Start	4.79	Rating **	A/W	Issue No.	1195
LM End	4.79	Issue Type +	Ma	Location *	WS
Category	Earthen Levee			GPS Latitude/Longitude	
				Start	End
Item	Vegetation			38.735111 °	38.735111 °
				-121.604923 °	-121.604923 °
DWR ID	DWR_RD1600_01_s_2015_1195				
Comment Code					
V4 : Elderberries are blocking visibility and flood fight capability.					
Inspector Comment					

No Photos

LM Start	4.80	Rating **	A/W	Issue No.	1196
LM End	4.80	Issue Type +	Ma	Location *	LS
Category	Earthen Levee			GPS Latitude/Longitude	
				Start	End
Item	Vegetation			38.735275 °	38.735275 °
				-121.604863 °	-121.604863 °
DWR ID	DWR_RD1600_01_s_2015_1196				
Comment Code					
V4 : Elderberries are blocking visibility and flood fight capability.					
Inspector Comment					

No Photos

* Location		** Rating		+ Issue Type	
LS : Land Side	N/A : Not Applicable	A : Acceptable	N : Not Inspected/Rated	Ma : Maintenance Deficiency	
WS : Water Side		M : Minimally Acceptable	C : Corrected	Ob : Design & System Obsolescence	
CR : Crown		U : Unacceptable	A/W : Acceptable but Monitor & Maintain	En : Enforcement	

**Flood Control Project Maintenance
Levee Inspections**

Levee Inspection Report By Mile - Fall 2017

Reclamation District No. 1600 Mull

Waterway	Bank	Unit Miles	Inspection Start/End	Inspector
Unit No. 01 Sacramento River	Right	10.46	11/02/2017 11/02/2017	Zach Jojola

LM Start	4.85	Rating **	A/W	Issue No.	1197
LM End	4.85	Issue Type +	Ma	Location *	WS
Category	Earthen Levee			GPS Latitude/Longitude	
				Start	End
Item	Vegetation			38.736095 °	38.736095 °
				-121.604642 °	-121.604642 °
DWR ID	DWR_RD1600_01_s_2015_1197				
Comment Code					
V4 : Elderberries are blocking visibility and flood fight capability.					
Inspector Comment					

No Photos

LM Start	5.40	Rating **	C	Issue No.	44
LM End	5.40	Issue Type +	Ma	Location *	WS
Category	Earthen Levee			GPS Latitude/Longitude	
				Start	End
Item	Slope Stability			38.743585 °	38.743585 °
				-121.601447 °	-121.601447 °
DWR ID	DWR_RD1600_01_s_2016_44				
Comment Code					
S1 : Repair slope instability.					
Inspector Comment					

No Photos

LM Start	5.42	Rating **	A/W	Issue No.	13
LM End	5.42	Issue Type +	Ma	Location *	LS
Category	Earthen Levee			GPS Latitude/Longitude	
				Start	End
Item	Vegetation			38.743805 °	38.743805 °
				-121.601319 °	-121.601319 °
DWR ID	DWR_RD1600_01_s_2012_13				
Comment Code					
V4 : Elderberries are blocking visibility and flood fight capability.					
Inspector Comment					

No Photos

* Location		** Rating		+ Issue Type	
LS : Land Side	N/A : Not Applicable	A : Acceptable	N : Not Inspected/Rated	Ma : Maintenance Deficiency	
WS : Water Side		M : Minimally Acceptable	C : Corrected	Ob : Design & System Obsolescence	
CR : Crown		U : Unacceptable	A/W : Acceptable but Monitor & Maintain	En : Enforcement	

**Flood Control Project Maintenance
Levee Inspections**

Levee Inspection Report By Mile - Fall 2017

Reclamation District No. 1600 Mull

Waterway	Bank	Unit Miles	Inspection Start/End	Inspector
Unit No. 01 Sacramento River	Right	10.46	11/02/2017 11/02/2017	Zach Jojola

LM Start	5.44	Rating **	A/W	Issue No.	19
LM End	5.77	Issue Type +	Ma	Location *	WS
Category	Earthen Levee			GPS Latitude/Longitude	
				Start	End
Item	Erosion / Bank Caving			38.744118 °	38.748210 °
				-121.601104 °	-121.598025 °
DWR ID	DWR_RD1600_01_s_2012_19				
Comment Code					
E1 : Note and monitor erosion site.					
Inspector Comment					
Levee district had us add this because of the loss of the berm over years of water flows. Erosion is at the waters edge. Walnut trees are close to edge now.					

No Photos

LM Start	5.81	Rating **	M	Issue No.	78
LM End	5.81	Issue Type +	En	Location *	WS
Category	Earthen Levee			GPS Latitude/Longitude	
				Start	End
Item	Encroachments			38.748731 °	38.748731 °
				-121.597591 °	-121.597591 °
DWR ID	DWR_RD1600_01_s_2017_78				
Comment Code					
MA : Material					
Inspector Comment					
Sand pile on waterside levee shoulder.					

Photo 1 of 1 : FA_2017_RD1600_191_78_20170911_00074.jpg



View of sand pile on waterside levee shoulder. Spring 2017.

LM Start	5.86	Rating **	M	Issue No.	39
LM End	5.86	Issue Type +	En	Location *	WS
Category	Earthen Levee			GPS Latitude/Longitude	
				Start	End
Item	Encroachments			38.749285 °	38.749285 °
				-121.597197 °	-121.597197 °
DWR ID	DWR_RD1600_01_f_2017_39				
Comment Code					
DE : Debris					
Inspector Comment					
Abandoned pipes on waterside slope.					

No Photos

* Location		** Rating		+ Issue Type	
LS : Land Side	N/A : Not Applicable	A : Acceptable	N : Not Inspected/Rated	Ma : Maintenance Deficiency	
WS : Water Side		M : Minimally Acceptable	C : Corrected	Ob : Design & System Obsolescence	
CR : Crown		U : Unacceptable	A/W : Acceptable but Monitor & Maintain	En : Enforcement	

**Flood Control Project Maintenance
Levee Inspections**

Levee Inspection Report By Mile - Fall 2017

Reclamation District No. 1600 Mull

Waterway	Bank	Unit Miles	Inspection Start/End	Inspector
Unit No. 01 Sacramento River	Right	10.46	11/02/2017 11/02/2017	Zach Jojola

LM Start	6.00	Rating **	M	Issue No.	59
LM End	6.11	Issue Type +	Ma	Location *	LS
Category	Earthen Levee			GPS Latitude/Longitude	
				Start	End
Item	Vegetation			38.751179 °	38.752670 °
				-121.596173 °	-121.595485 °
DWR ID	DWR_RD1600_01_f_2016_59				
Comment Code					
V2 : Remove the wild growth other than native grasses from the levee slopes.					
Inspector Comment					

Photo 1 of 1 : FA_2017_RD1600_191_59_20170911_00057.jpg



Vegetation on LS slope partially blocks visibility. Fall 2016.

LM Start	6.09	Rating **	C	Issue No.	58
LM End	6.09	Issue Type +	Ma	Location *	WS
Category	Earthen Levee			GPS Latitude/Longitude	
				Start	End
Item	Slope Stability			38.752358 °	38.752358 °
				-121.595608 °	-121.595608 °
DWR ID	DWR_RD1600_01_f_2015_58				
Comment Code					
S3 : Repair the levee slope damaged by vehicle traffic and prevent access where possible.					
Inspector Comment					

No Photos

* Location LS : Land Side N/A : Not Applicable WS : Water Side CR : Crown		** Rating A : Acceptable N : Not Inspected/Rated M : Minimally Acceptable C : Corrected U : Unacceptable A/W : Acceptable but Monitor & Maintain		+ Issue Type Ma : Maintenance Deficiency Ob : Design & System Obsolescence En : Enforcement
--	--	---	--	---

**Flood Control Project Maintenance
Levee Inspections**

Levee Inspection Report By Mile - Fall 2017

Reclamation District No. 1600 Mull

Waterway	Bank	Unit Miles	Inspection Start/End	Inspector
Unit No. 01 Sacramento River	Right	10.46	11/02/2017 11/02/2017	Zach Jojola

LM Start	6.19	Rating **	U	Issue No.	1209
LM End	6.19	Issue Type +	En	Location *	
Category	Supplemental			GPS Latitude/Longitude	
				Start	End
Item	DWR UCIP Field Study			38.753820 °	38.753820 °
				-121.595012 °	-121.595012 °
DWR ID					

Comment Code

Inspector Comment

FS_ID:50101
 DS_ID:21476
 EP_NO: N/A
 Repair Type: Urgent
 Crossing Status: Found
 UCIP Comments: 08/15/2016 - no change since previous inspection (T. Hatch/UCIP)06/20/2013 - Pipe is abandoned and open on both ends. It should be abandoned properly. (W. Wylie/UCIP)
 FIELD_STRUCT_DESC: *ABANDONED* 18-inch steel irrigation pipe through the levee, 4.5 feet below the crown. Pump on pile structure on the waterside (WS), pump not found and only the piles remain. Walkway between levee crown and pile structure on the WS, not found. Overhead power line crosses the levee. Service pole on the WS slope. 6-foot by 6-foot concrete distribution box at the landside (LS) toe.
 [Additional Reference(s): DWR Levee Log, 1988. USACE Sacramento O&M Manual 123, August 1955, (RM 77.0)].
 FS Date: 8/15/2016

LM Start	6.19	Rating **	U	Issue No.	1209 (cont)
LM End	6.19	Issue Type +	En	Location *	

Photo 1 of 3 : UCIP_FA_2017_50101_25011.jpg



6'X6' concrete distribution box on LS toe.

Photo 2 of 3 : UCIP_FA_2017_50101_25010.jpg



Pipe on WS slope.

* Location LS : Land Side N/A : Not Applicable WS : Water Side CR : Crown		** Rating A : Acceptable N : Not Inspected/Rated M : Minimally Acceptable C : Corrected U : Unacceptable A/W : Acceptable but Monitor & Maintain		+ Issue Type Ma : Maintenance Deficiency Ob : Design & System Obsolescence En : Enforcement
--	--	---	--	---

**Flood Control Project Maintenance
Levee Inspections**

Levee Inspection Report By Mile - Fall 2017

Reclamation District No. 1600 Mull

Waterway	Bank	Unit Miles	Inspection Start/End	Inspector
Unit No. 01 Sacramento River	Right	10.46	11/02/2017 11/02/2017	Zach Jojola

LM Start	6.19	Rating **	U	Issue No.	1209 (cont)	
LM End	6.19	Issue Type +	En	Location *		
Category	Supplemental			GPS Latitude/Longitude		
				Start	End	
Item	DWR UCIP Field Study			38.753820 °	38.753820 °	
				-121.595012 °	-121.595012 °	
DWR ID						
Comment Code						
Inspector Comment						
FS_ID:50101 DS_ID:21476 EP_NO: N/A Repair Type: Urgent Crossing Status: Found UCIP Comments: 08/15/2016 - no change since previous inspection (T. Hatch/UCIP)06/20/2013 - Pipe is abandoned and open on both ends. It should be abandoned properly. (W. Wylie/UCIP) FIELD_STRUCT_DESC: *ABANDONED* 18-inch steel irrigation pipe through the levee, 4.5 feet below the crown. Pump on pile structure on the waterside (WS), pump not found and only the piles remain. Walkway between levee crown and pile structure on the WS, not found. Overhead power line crosses the levee. Service pole on the WS slope. 6-foot by 6-foot concrete distribution box at the landside (LS) toe. [Additional Reference(s): DWR Levee Log, 1988. USACE Sacramento O&M Manual 123, August 1955, (RM 77.0)]. FS Date: 8/15/2016						

Photo 3 of 3 : UCIP_FA_2017_50101_25009.jpg



Hole in pipe at WS toe.

LM Start	6.30	Rating **	A/W	Issue No.	9
LM End	6.36	Issue Type +	Ma	Location *	WS
Category	Supplemental			GPS Latitude/Longitude	
				Start	End
Item	2015 USACE Erosion Survey, DRAFT			38.755246 °	38.756186 °
				-121.594206 °	-121.594024 °
DWR ID	DWR_RD1600_01_s_2016_9				
Comment Code					
Inspector Comment					
2011 - Large vertical eroded face from a rotational failure just below pump. 2015: Does not meet criterial. [2015 Site ID: SAC_77-0_R]					

Photo 1 of 1 : FA_2017_RD1600_191_9_20170911_00012.jpg



USACE 2013 Photo #1

* Location LS : Land Side N/A : Not Applicable WS : Water Side CR : Crown		** Rating A : Acceptable N : Not Inspected/Rated M : Minimally Acceptable C : Corrected U : Unacceptable A/W : Acceptable but Monitor & Maintain		+ Issue Type Ma : Maintenance Deficiency Ob : Design & System Obsolescence En : Enforcement
--	--	---	--	---

**Flood Control Project Maintenance
Levee Inspections**

Levee Inspection Report By Mile - Fall 2017

Reclamation District No. 1600 Mull

Waterway	Bank	Unit Miles	Inspection Start/End	Inspector
Unit No. 01 Sacramento River	Right	10.46	11/02/2017 11/02/2017	Zach Jojola

LM Start	6.39	Rating **	C	Issue No.	1199	
LM End	6.39	Issue Type +	Ma	Location *	LS	
Category	Earthen Levee			GPS Latitude/Longitude		
				Start	End	
Item	Erosion / Bank Caving			38.756612 °	38.756612 °	
				-121.594370 °	-121.594370 °	
DWR ID	DWR_RD1600_01_s _ 2015_1199					
Comment Code						
E1 : Note and monitor erosion site.						
Inspector Comment						
The erosion is caused by the water coming from the siphon breaker.						

No Photos

LM Start	6.56	Rating **	M	Issue No.	80
LM End	6.56	Issue Type +	Ma	Location *	LS
Category	Earthen Levee			GPS Latitude/Longitude	
				Start	End
Item	Vegetation			38.759131 °	38.759131 °
				-121.594092 °	-121.594092 °
DWR ID	DWR_RD1600_01_s _ 2017_80				
Comment Code					
V4 : Elderberries are blocking visibility and flood fight capability.					
Inspector Comment					

No Photos

LM Start	6.60	Rating **	M	Issue No.	631
LM End	6.64	Issue Type +	Ma	Location *	LS
Category	Earthen Levee			GPS Latitude/Longitude	
				Start	End
Item	Vegetation			38.759633 °	38.760242 °
				-121.594128 °	-121.594163 °
DWR ID	DWR_RD1600_01_s _ 2014_631				
Comment Code					
V2 : Remove the wild growth other than native grasses from the levee slopes.					
Inspector Comment					

Photo 1 of 2 : FA_2017_RD1600_191_631_20170911_00089.jpg



The tall brush and vegetation blocks visibility. Spring 2014

* Location LS : Land Side N/A : Not Applicable WS : Water Side CR : Crown		** Rating A : Acceptable N : Not Inspected/Rated M : Minimally Acceptable C : Corrected U : Unacceptable A/W : Acceptable but Monitor & Maintain		+ Issue Type Ma : Maintenance Deficiency Ob : Design & System Obsolescence En : Enforcement	
---	--	--	--	--	--

**Flood Control Project Maintenance
Levee Inspections**

Levee Inspection Report By Mile - Fall 2017

Reclamation District No. 1600 Mull

Waterway	Bank	Unit Miles	Inspection Start/End	Inspector
Unit No. 01 Sacramento River	Right	10.46	11/02/2017 11/02/2017	Zach Jojola

LM Start	6.60	Rating **	M	Issue No.	631 (cont)	
LM End	6.64	Issue Type +	Ma	Location *	LS	
Category	Earthen Levee			GPS Latitude/Longitude		
				Start		End
Item	Vegetation			38.759633 °		38.760242 °
				-121.594128 °		-121.594163 °
DWR ID	DWR_RD1600_01_s_2014_631					
Comment Code						
V2 : Remove the wild growth other than native grasses from the levee slopes.						
Inspector Comment						

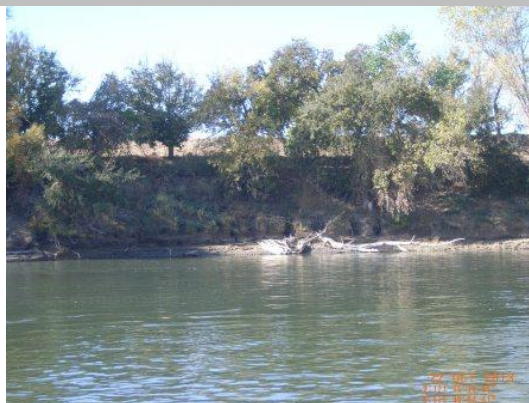
Photo 2 of 2 : FA_2017_RD1600_191_631_20170911_00090.jpg



View of the brush and vegetation on the landward side of the levee. Fall 2015.

LM Start	6.95	Rating **	M	Issue No.	6
LM End	6.98	Issue Type +	Ma	Location *	WS
Category	Supplemental			GPS Latitude/Longitude	
				Start	End
Item	2015 USACE Erosion Survey, DRAFT			38.764801 °	38.765219 °
				-121.594926 °	-121.595049 °
DWR ID	DWR_RD1600_01_s_2016_6				
Comment Code					
Inspector Comment					
2006 - Eddy scour off end of rock causing erosion and scour hole near levee. Sandy silt bank with rock on upstream end. 2010 - Trees are leaning more, minor new erosion. 2011 - Many of the tree roots have scoured out and trees look ready to fall. 2015: No observed changes. [2015 Site ID: SAC 77-7 R]					

Photo 1 of 1 : FA_2017_RD1600_191_6_20170911_00009.jpg



USACE 2013 Photo #1

LM Start	6.97	Rating **	A/W	Issue No.	27
LM End	6.97	Issue Type +	Ma	Location *	LS
Category	Earthen Levee			GPS Latitude/Longitude	
				Start	End
Item	Erosion / Bank Caving			38.764974 °	38.764974 °
				-121.595533 °	-121.595533 °
DWR ID	DWR_RD1600_01_s_2012_27				
Comment Code					
E1 : Note and monitor erosion site.					
Inspector Comment					
The erosion appears to be fixed. Recommend monitoring due to previous activity.					

Photo 1 of 3 : FA_2017_RD1600_191_27_20170911_00025.jpg



The erosion appears to be moving closer to the shoulder.

* Location
LS : Land Side N/A : Not Applicable
WS : Water Side
CR : Crown

** Rating
A : Acceptable N : Not Inspected/Rated
M : Minimally Acceptable C : Corrected
U : Unacceptable A/W : Acceptable but Monitor & Maintain

+ Issue Type
Ma : Maintenance Deficiency
Ob : Design & System Obsolescence
En : Enforcement

**Flood Control Project Maintenance
Levee Inspections**

Levee Inspection Report By Mile - Fall 2017

Reclamation District No. 1600 Mull

Waterway	Bank	Unit Miles	Inspection Start/End	Inspector
Unit No. 01 Sacramento River	Right	10.46	11/02/2017 11/02/2017	Zach Jojola

LM Start	6.97	Rating **	A/W	Issue No.	27 (cont)	
LM End	6.97	Issue Type +	Ma	Location *	LS	
Category	Earthen Levee			GPS Latitude/Longitude		
				Start		End
Item	Erosion / Bank Caving			38.764974 °		38.764974 °
				-121.595533 °		-121.595533 °
DWR ID	DWR_RD1600_01_s_2012_27					
Comment Code						
E1 : Note and monitor erosion site.						
Inspector Comment						
The erosion appears to be fixed. Recommend monitoring due to previous activity.						

Photo 2 of 3 : FA_2017_RD1600_191_27_20170911_00026.jpg



The erosion seems to have been fixed. There still seems to be some erosion on the landward side of the levee looking downstream. Fall 2015.

LM Start	6.97	Rating **	A/W	Issue No.	27 (cont)
LM End	6.97	Issue Type +	Ma	Location *	LS

Photo 3 of 3 : FA_2017_RD1600_191_27_20170911_00027.jpg



Updated view of erosion site. Fall 2016.

LM Start	6.97	Rating **	A/W	Issue No.	30
LM End	6.97	Issue Type +	Ma	Location *	WS
Category	Earthen Levee			GPS Latitude/Longitude	
				Start	End
Item	Erosion / Bank Caving			38.764980 °	38.764980 °
				-121.595513 °	-121.595513 °
DWR ID	DWR_RD1600_01_f_2017_30				
Comment Code					
E1 : Note and monitor erosion site.					
Inspector Comment					

Photo 1 of 2 : FA_2017_RD1600_191_30_20170911_00033.jpg



Erosion is into the berm area and needs to be monitored. Spring 2013

* Location LS : Land Side N/A : Not Applicable WS : Water Side CR : Crown		** Rating A : Acceptable M : Minimally Acceptable U : Unacceptable		N : Not Inspected/Rated C : Corrected A/W : Acceptable but Monitor & Maintain		+ Issue Type Ma : Maintenance Deficiency Ob : Design & System Obsolescence En : Enforcement	
--	--	--	--	---	--	---	--

**Flood Control Project Maintenance
Levee Inspections**

Levee Inspection Report By Mile - Fall 2017

Reclamation District No. 1600 Mull

Waterway	Bank	Unit Miles	Inspection Start/End	Inspector
Unit No. 01 Sacramento River	Right	10.46	11/02/2017 11/02/2017	Zach Jojola

LM Start	6.97	Rating **	A/W	Issue No.	30 (cont)	
LM End	6.97	Issue Type +	Ma	Location *	WS	
Category	Earthen Levee			GPS Latitude/Longitude		
				Start		End
Item	Erosion / Bank Caving			38.764980 °		38.764980 °
				-121.595513 °		-121.595513 °
DWR ID	DWR_RD1600_01_f_2017_30					
Comment Code						
E1 : Note and monitor erosion site.						
Inspector Comment						

Photo 2 of 2 : FA_2017_RD1600_191_30_20170911_00034.jpg



View of the erosion into the berm area that needs to be monitored. Fall 2015.

LM Start	7.10	Rating **	A/W	Issue No.	20
LM End	7.10	Issue Type +	Ma	Location *	WS
Category	Earthen Levee			GPS Latitude/Longitude	
				Start	End
Item	Erosion / Bank Caving			38.766691 °	38.766691 °
				-121.596300 °	-121.596300 °
DWR ID	DWR_RD1600_01_s_2012_20				
Comment Code					
E1 : Note and monitor erosion site.					
Inspector Comment					
Erosion present at the berm, and it hasn't got into the levee prism yet.					

Photo 1 of 5 : FA_2017_RD1600_191_20_20170911_00014.jpg



This another view of the site.

LM Start	7.10	Rating **	A/W	Issue No.	20 (cont)
LM End	7.10	Issue Type +	Ma	Location *	WS

Photo 2 of 5 : FA_2017_RD1600_191_20_20170911_00015.jpg



View of the erosion in the berm area on the waterward side looking upstream. Fall 2015.

* Location LS : Land Side N/A : Not Applicable WS : Water Side CR : Crown		** Rating A : Acceptable M : Minimally Acceptable U : Unacceptable N : Not Inspected/Rated C : Corrected A/W : Acceptable but Monitor & Maintain		+ Issue Type Ma : Maintenance Deficiency Ob : Design & System Obsolescence En : Enforcement	
---	--	--	--	--	--

**Flood Control Project Maintenance
Levee Inspections**

Levee Inspection Report By Mile - Fall 2017

Reclamation District No. 1600 Mull

Waterway	Bank	Unit Miles	Inspection Start/End	Inspector
Unit No. 01 Sacramento River	Right	10.46	11/02/2017 11/02/2017	Zach Jojola

LM Start	7.10	Rating **	A/W	Issue No.	20 (cont)	
LM End	7.10	Issue Type +	Ma	Location *	WS	
Category	Earthen Levee			GPS Latitude/Longitude		
				Start		End
Item	Erosion / Bank Caving			38.766691 °		38.766691 °
				-121.596300 °		-121.596300 °
DWR ID	DWR_RD1600_01_s_2012_20					
Comment Code						
E1 : Note and monitor erosion site.						
Inspector Comment						
Erosion present at the berm, and it hasn't got into the levee prism yet.						

Photo 3 of 5 : FA_2017_RD1600_191_20_20170911_00016.jpg



The erosion is eroding away at the berm area.

LM Start	7.10	Rating **	A/W	Issue No.	20 (cont)
LM End	7.10	Issue Type +	Ma	Location *	WS

Photo 4 of 5 : FA_2017_RD1600_191_20_20170911_00017.jpg



Looking at the erosion site on the berm. Fall 2015.

LM Start	7.10	Rating **	A/W	Issue No.	20 (cont)
LM End	7.10	Issue Type +	Ma	Location *	WS

Photo 5 of 5 : FA_2017_RD1600_191_20_20170911_00018.jpg



Updated view of erosion site. Fall 2016.

* Location
LS : Land Side N/A : Not Applicable
WS : Water Side
CR : Crown

** Rating
A : Acceptable
M : Minimally Acceptable
U : Unacceptable
N : Not Inspected/Rated
C : Corrected
A/W : Acceptable but Monitor & Maintain

+ Issue Type
Ma : Maintenance Deficiency
Ob : Design & System Obsolescence
En : Enforcement

**Flood Control Project Maintenance
Levee Inspections**

Levee Inspection Report By Mile - Fall 2017

Reclamation District No. 1600 Mull

Waterway	Bank	Unit Miles	Inspection Start/End	Inspector
Unit No. 01 Sacramento River	Right	10.46	11/02/2017 11/02/2017	Zach Jojola

LM Start	7.21	Rating **	M	Issue No.	61
LM End	7.21	Issue Type +	Ma	Location *	LS
Category	Earthen Levee			GPS Latitude/Longitude	
				Start	End
Item	Erosion / Bank Caving			38.768094 °	38.768094 °
				-121.597075 °	-121.597075 °
DWR ID	DWR_RD1600_01_f_2015_61				
Comment Code					
E1 : Note and monitor erosion site.					
Inspector Comment					
Runoff erosion on landside slope.					

Photo 1 of 1 : FA_2017_RD1600_191_61_20170911_00059.jpg



View of the erosion on the landward side of the levee looking downstream. Fall 2015.

LM Start	7.23	Rating **	A/W	Issue No.	21
LM End	7.23	Issue Type +	Ma	Location *	WS
Category	Earthen Levee			GPS Latitude/Longitude	
				Start	End
Item	Erosion / Bank Caving			38.768409 °	38.768409 °
				-121.597213 °	-121.597213 °
DWR ID	DWR_RD1600_01_s_2012_21				
Comment Code					
E1 : Note and monitor erosion site.					
Inspector Comment					
Erosion on waterside berm.					

Photo 1 of 3 : FA_2017_RD1600_191_21_20170911_00019.jpg



The erosion is eroding away the berm area.

LM Start	7.23	Rating **	A/W	Issue No.	21 (cont)
LM End	7.23	Issue Type +	Ma	Location *	WS

Photo 2 of 3 : FA_2017_RD1600_191_21_20170911_00020.jpg



The bank is eroding away and has become very steep.

* Location LS : Land Side N/A : Not Applicable WS : Water Side CR : Crown		** Rating A : Acceptable M : Minimally Acceptable U : Unacceptable N : Not Inspected/Rated C : Corrected A/W : Acceptable but Monitor & Maintain		+ Issue Type Ma : Maintenance Deficiency Ob : Design & System Obsolescence En : Enforcement	
---	--	--	--	--	--

**Flood Control Project Maintenance
Levee Inspections**

Levee Inspection Report By Mile - Fall 2017

Reclamation District No. 1600 Mull

Waterway	Bank	Unit Miles	Inspection Start/End	Inspector
Unit No. 01 Sacramento River	Right	10.46	11/02/2017 11/02/2017	Zach Jojola

LM Start	7.23	Rating **	A/W	Issue No.	21 (cont)	
LM End	7.23	Issue Type +	Ma	Location *	WS	
Category	Earthen Levee			GPS Latitude/Longitude		
				Start		End
Item	Erosion / Bank Caving			38.768409 °		38.768409 °
				-121.597213 °		-121.597213 °
DWR ID	DWR_RD1600_01_s_2012_21					
Comment Code						
E1 : Note and monitor erosion site.						
Inspector Comment						
Erosion on waterside berm.						

Photo 3 of 3 : FA_2017_RD1600_191_21_20170911_00021.jpg



View of the erosion along the waterward berm of the levee. Fall 2015.

LM Start	7.38	Rating **	M	Issue No.	81
LM End	7.38	Issue Type +	Ma	Location *	WS
Category	Earthen Levee			GPS Latitude/Longitude	
				Start	End
Item	Vegetation			38.770338 °	38.770338 °
				-121.598542 °	-121.598542 °
DWR ID	DWR_RD1600_01_s_2017_81				
Comment Code					
V4 : Elderberries are blocking visibility and flood fight capability.					
Inspector Comment					

No Photos

* Location LS : Land Side N/A : Not Applicable WS : Water Side CR : Crown		** Rating A : Acceptable N : Not Inspected/Rated M : Minimally Acceptable C : Corrected U : Unacceptable A/W : Acceptable but Monitor & Maintain		+ Issue Type Ma : Maintenance Deficiency Ob : Design & System Obsolescence En : Enforcement
--	--	---	--	---

**Flood Control Project Maintenance
Levee Inspections**

Levee Inspection Report By Mile - Fall 2017

Reclamation District No. 1600 Mull

Waterway	Bank	Unit Miles	Inspection Start/End	Inspector
Unit No. 01 Sacramento River	Right	10.46	11/02/2017 11/02/2017	Zach Jojola

LM Start	7.56	Rating **	M	Issue No.	1210 (cont)	
LM End	7.56	Issue Type +	En	Location *		
Category	Supplemental			GPS Latitude/Longitude		
				Start		End
Item	DWR UCIP Field Study			38.772560 °		38.772560 °
				-121.600153 °		-121.600153 °
DWR ID						
Comment Code						
Inspector Comment						
FS_ID:50169 DS_ID:25464 EP_NO: 18849 Repair Type: Non-Urgent Crossing Status: Found UCIP Comments: 08/15/2016 - Pipe appears in good condition overall. Standing water found in riser for siphon breaker. Pump was not in operation during field visit. (T. Hatch/UCIP) FIELD_STRUCT_DESC: 24-inch welded steel irrigation pipe through the levee, 2 feet below the crown. Positive closure device in a steel riser with a lid on the waterside (WS) hinge of the levee. Siphon breaker in a steel riser with lid on the landside (LS) hinge of the levee. Distribution box on the LS toe. (Installed under Permit No. 18849, 2014 - Bypass Farms). FS Date: 8/15/2016						

Photo 3 of 3 : UCIP_FA_2017_50169_75609.jpg



view of levee crown looking upstream from pipe location.

LM Start	8.03	Rating **	M	Issue No.	1211
LM End	8.03	Issue Type +	En	Location *	
Category	Supplemental			GPS Latitude/Longitude	
				Start	End
Item	DWR UCIP Field Study			38.777799 °	38.777799 °
				-121.605763 °	-121.605763 °
DWR ID					
Comment Code					
Inspector Comment					
FS_ID:16310					
DS_ID:21480					
EP_NO: 7339					
Repair Type: Non-Urgent					
Crossing Status: Indicator Found					
UCIP Comments: Need to determine disposition of pipe. If abandoned, it should be done so properly.					
FIELD_STRUCT_DESC: 24-inch steel irrigation pipe through the levee, 3.8 feet below the crown. Steel plate welded on the waterside (WS) end. Pipe not visible on either slope. Pylons in river at the WS toe, and a 4-foot-diameter steel standpipe on the landside (LS) toe. Seepage area at the landside (LS) toe. (Permit No. 7339, 1971 - Layton Knaggs).					
[Additional Reference(s): DWR Levee Log, 1988].					
FS Date: 6/20/2013					

Photo 1 of 1 : UCIP_FA_2017_16310_27485.jpg



4-foot diameter steel standpipe at LS toe, may be indicator of pipe location.

* Location LS : Land Side N/A : Not Applicable WS : Water Side CR : Crown		** Rating A : Acceptable M : Minimally Acceptable U : Unacceptable		N : Not Inspected/Rated C : Corrected A/W : Acceptable but Monitor & Maintain		+ Issue Type Ma : Maintenance Deficiency Ob : Design & System Obsolescence En : Enforcement	
--	--	--	--	---	--	---	--

**Flood Control Project Maintenance
Levee Inspections**

Levee Inspection Report By Mile - Fall 2017

Reclamation District No. 1600 Mull

Waterway	Bank	Unit Miles	Inspection Start/End	Inspector
Unit No. 01 Sacramento River	Right	10.46	11/02/2017 11/02/2017	Zach Jojola

LM Start	8.10	Rating **	M	Issue No.	60
LM End	8.26	Issue Type +	Ma	Location *	LS
Category	Earthen Levee			GPS Latitude/Longitude	
				Start	End
Item	Vegetation			38.778390 °	38.779128 °
				-121.606875 °	-121.609582 °
DWR ID	DWR_RD1600_01_f _ 2016_60				
Comment Code					
V2 : Remove the wild growth other than native grasses from the levee slopes.					
Inspector Comment					

Photo 1 of 1 : FA_2017_RD1600_191_60_20170911_00058.jpg



Vegetation on LS slope partially blocks visibility. Fall 2016.

LM Start	8.18	Rating **	M	Issue No.	63
LM End	8.18	Issue Type +	Ma	Location *	WS
Category	Earthen Levee			GPS Latitude/Longitude	
				Start	End
Item	Trim / Thin Trees			38.778922 °	38.778922 °
				-121.608075 °	-121.608075 °
DWR ID	DWR_RD1600_01_f_2015_63				
Comment Code					
T1 : Trim trees to at least five feet above ground level.					
Inspector Comment					

Photo 1 of 1 : FA_2017_RD1600_191_63_20170911_00060.jpg



Tree trimming on WS slope is needed. Fall 2016.

LM Start	8.18	Rating **	C	Issue No.	48
LM End	8.18	Issue Type +	En	Location *	WS
Category	Earthen Levee			GPS Latitude/Longitude	
				Start	End
Item	Encroachments			38.778963 °	38.778963 °
				-121.608106 °	-121.608106 °
DWR ID	DWR_RD1600_01_s_2016_48				
Comment Code					
EQ : Equipment					
Inspector Comment					

No Photos

* Location LS : Land Side N/A : Not Applicable WS : Water Side CR : Crown		** Rating A : Acceptable M : Minimally Acceptable U : Unacceptable N : Not Inspected/Rated C : Corrected A/W : Acceptable but Monitor & Maintain		+ Issue Type Ma : Maintenance Deficiency Ob : Design & System Obsolescence En : Enforcement	
---	--	--	--	--	--

**Flood Control Project Maintenance
Levee Inspections**

Levee Inspection Report By Mile - Fall 2017

Reclamation District No. 1600 Mull

Waterway	Bank	Unit Miles	Inspection Start/End	Inspector
Unit No. 01 Sacramento River	Right	10.46	11/02/2017 11/02/2017	Zach Jojola

LM Start	8.21	Rating **	C	Issue No.	1200
LM End	8.21	Issue Type +	Ma	Location *	WS
Category	Earthen Levee			GPS Latitude/Longitude	
				Start	End
Item	Animal Control			38.778938 °	38.778938 °
				-121.608595 °	-121.608595 °
DWR ID	DWR_RD1600_01_s_2015_1200				
Comment Code					
A3 : No rodents visible, but rodent burrows visible; need to backfill and compact or grout burrows.					
Inspector Comment					

No Photos

LM Start	8.41	Rating **	M	Issue No.	36
LM End	8.41	Issue Type +	Ma	Location *	WS
Category	Earthen Levee			GPS Latitude/Longitude	
				Start	End
Item	Encroachments			38.779848 °	38.779848 °
				-121.612130 °	-121.612130 °
DWR ID	DWR_RD1600_01_f_2017_36				
Comment Code					
TR : Tree or limb					
Inspector Comment					
Fallen tree on landside slope.					

Photo 1 of 1 : FA_2017_RD1600_191_36_20171102_00117.jpg



View of fallen tree on waterside slope. Fall 2017.

LM Start	9.40	Rating **	M	Issue No.	66
LM End	10.45	Issue Type +	Ma	Location *	WS
Category	Earthen Levee			GPS Latitude/Longitude	
				Start	End
Item	Vegetation			38.778649 °	38.765406 °
				-121.627172 °	-121.635004 °
DWR ID	DWR_RD1600_01_f_2016_66				
Comment Code					
V2 : Remove the wild growth other than native grasses from the levee slopes.					
Inspector Comment					

Photo 1 of 1 : FA_2017_RD1600_191_66_20170911_00061.jpg



Vegetation on WS slope has been cleared only about 10 ft. from the crown. Fall 2016.

* Location LS : Land Side N/A : Not Applicable WS : Water Side CR : Crown		** Rating A : Acceptable M : Minimally Acceptable U : Unacceptable		N : Not Inspected/Rated C : Corrected A/W : Acceptable but Monitor & Maintain		+ Issue Type Ma : Maintenance Deficiency Ob : Design & System Obsolescence En : Enforcement	
--	--	--	--	---	--	---	--

**Flood Control Project Maintenance
Levee Inspections**

Levee Inspection Report By Mile - Fall 2017

Reclamation District No. 1600 Mull

Waterway	Bank	Unit Miles	Inspection Start/End	Inspector
Unit No. 01 Sacramento River	Right	10.46	11/02/2017 11/02/2017	Zach Jojola

LM Start	9.59	Rating **	A/W	Issue No.	1201
LM End	9.59	Issue Type +	Ma	Location *	WS
Category	Earthen Levee			GPS Latitude/Longitude	
				Start	End
Item	Vegetation			38.776493 °	38.776493 °
				-121.629160 °	-121.629160 °
DWR ID	DWR_RD1600_01_s_2015_1201				
Comment Code					
V4 : Elderberries are blocking visibility and flood fight capability.					
Inspector Comment					

No Photos

LM Start	10.27	Rating **	M	Issue No.	26
LM End	10.27	Issue Type +	En	Location *	LS
Category	Earthen Levee			GPS Latitude/Longitude	
				Start	End
Item	Encroachments			38.767711 °	38.767711 °
				-121.633150 °	-121.633150 °
DWR ID	DWR_RD1600_01_f_2017_26				
Comment Code					
EQ : Equipment					
Inspector Comment					
Beehives on landside berm.					

No Photos

LM Start	10.37	Rating **	C	Issue No.	86
LM End	10.37	Issue Type +	En	Location *	LS
Category	Earthen Levee			GPS Latitude/Longitude	
				Start	End
Item	Encroachments			38.766510 °	38.766510 °
				-121.634168 °	-121.634168 °
DWR ID	DWR_RD1600_01_s_2017_86				
Comment Code					
TR : Tree or limb					
Inspector Comment					
Prunings on landside levee slope.					

No Photos

* Location		** Rating		+ Issue Type	
LS : Land Side	N/A : Not Applicable	A : Acceptable	N : Not Inspected/Rated	Ma : Maintenance Deficiency	
WS : Water Side		M : Minimally Acceptable	C : Corrected	Ob : Design & System Obsolescence	
CR : Crown		U : Unacceptable	A/W : Acceptable but Monitor & Maintain	En : Enforcement	

**Flood Control Project Maintenance
Levee Inspections**

Levee Inspection Report By Mile - Fall 2017

Reclamation District No. 1600 Mull

Waterway	Bank	Unit Miles	Inspection Start/End	Inspector
Unit No. 01 Sacramento River	Right	10.46	11/02/2017 11/02/2017	Zach Jojola

LM Start	10.38	Rating **	M	Issue No.	1202
LM End	10.45	Issue Type +	En	Location *	WS
Category	Earthen Levee			GPS Latitude/Longitude	
				Start	End
Item	Encroachments			38.766363 °	38.765402 °
				-121.634317 °	-121.635005 °
DWR ID	DWR_RD1600_01_s_2015_1202				
Comment Code					
DE : Debris					
Inspector Comment					
Concrete pipes and blocks on levee crown.					

Photo 1 of 1 : FA_2017_RD1600_191_1202_20170911_00095.jpg



View of debris on the waterward side of the levee looking upstream.
Spring 2015.

LM Start	10.38	Rating **	M	Issue No.	69
LM End	10.38	Issue Type +	Ma	Location *	LS
Category	Earthen Levee			GPS Latitude/Longitude	
				Start	End
Item	Trim / Thin Trees			38.766293 °	38.766293 °
				-121.634349 °	-121.634349 °
DWR ID	DWR_RD1600_01_f_2015_69				
Comment Code					
T1 : Trim trees to at least five feet above ground level.					
Inspector Comment					

No Photos

LM Start	10.40	Rating **	M	Issue No.	24
LM End	10.44	Issue Type +	En	Location *	CR
Category	Earthen Levee			GPS Latitude/Longitude	
				Start	End
Item	Encroachments			38.766109 °	38.765655 °
				-121.634524 °	-121.634850 °
DWR ID	DWR_RD1600_01_f_2017_24				
Comment Code					
EQ : Equipment					
Inspector Comment					
Beehives on crown.					

No Photos

* Location		** Rating		+ Issue Type	
LS : Land Side	N/A : Not Applicable	A : Acceptable	N : Not Inspected/Rated	Ma : Maintenance Deficiency	
WS : Water Side		M : Minimally Acceptable	C : Corrected	Ob : Design & System Obsolescence	
CR : Crown		U : Unacceptable	A/W : Acceptable but Monitor & Maintain	En : Enforcement	

**Flood Control Project Maintenance
Levee Inspections**

Levee Inspection Report By Mile - Fall 2017

Reclamation District No. 1600 Mull

Waterway	Bank	Unit Miles	Inspection Start/End	Inspector
Unit No. 01 Sacramento River	Right	10.46	11/02/2017 11/02/2017	Zach Jojola

LM Start	10.41	Rating **	C	Issue No.	74
LM End	10.42	Issue Type +	Ma	Location *	LS
Category	Earthen Levee			GPS Latitude/Longitude	
				Start	End
Item	Trim / Thin Trees			38.765905 °	38.765774 °
				-121.634580 °	-121.634661 °
DWR ID	DWR_RD1600_01_f_2016_74				
Comment Code					
T3 : Trim and thin trees to allow visibility of the ground and room to flood fight.					
Inspector Comment					

No Photos

* Location LS : Land Side N/A : Not Applicable WS : Water Side CR : Crown	** Rating A : Acceptable M : Minimally Acceptable U : Unacceptable N : Not Inspected/Rated C : Corrected A/W : Acceptable but Monitor & Maintain	+ Issue Type Ma : Maintenance Deficiency Ob : Design & System Obsolescence En : Enforcement
--	---	---

**Flood Control Project Maintenance
Levee Inspections**

Unit Cover Sheet

Fall 2017 Levee Inspection Results

Reclamation District No. 1600 Mull

Waterway			Bank	Unit Miles
Unit No. 02 Yolo Bypass			Left	4.23
	Spring (March - May)	Summer (June - August)	(September - November) Fall	Winter (December - February)
Unit Maintenance Rating (Fall Only)			U	
Date of Inspection	4/11/2017 - 4/11/2017		11/2/2017 - 11/2/2017	
DWR Inspector	Zach Jojola		Zach Jojola	
Accompanied By				

Summer & Winter Inspections

The Local Maintaining Agency (LMA) is responsible for summer and winter inspections. The LMA is required to submit a report regarding summer and winter inspections to the California Department of Water Resources (DWR).

DWR must be informed on the:

- a) completion of the inspection
- b) any changes other than the results of normal maintenance
- c) corrections to deficiencies noted in this report

If additional items are noted, further documentation of those items must also be submitted.

The LMA should submit this information to DWR using the LMA web application tool available at:

<http://cdec.water.ca.gov/lma.html>

If the LMA is unable to submit information on this webpage, please contact DWR for assistance.

The LMA should submit the information and any associated documentation by September 30 for summer inspections and March 31 for winter inspections.

**Flood Control Project Maintenance
Levee Inspections**

Levee Inspection Report By Mile - Fall 2017

Reclamation District No. 1600 Mull

Waterway	Bank	Unit Miles	Inspection Start/End	Inspector
Unit No. 02 Yolo Bypass	Left	4.23	11/02/2017 11/02/2017	Zach Jojola

LM Start	0.20	Rating **	A/W	Issue No.	17	
LM End	4.21	Issue Type +	Ma	Location *		
Category	Supplemental			GPS Latitude/Longitude		
				Start	End	
Item	2017 Storm Damage			38.733333 °	38.676750 °	
				-121.633611 °	-121.643250 °	
DWR ID	DWR_RD1600_02_f_2017_17					
Comment Code						
Inspector Comment						
Levee Evaluation Comments						
Description:						
Site ID No:202						
Site Designation:RD 1600-01						
Repair Type: Erosion						
Rating:Area of Concern						
Field Date:6/5/2017						
Notes: dense vegetation makes identification difficult						

LM Start	0.20	Rating **	A/W	Issue No.	17 (cont)
LM End	4.21	Issue Type +	Ma	Location *	

Photo 1 of 3 : LEVAL_FA_2017_202_1210.jpg



Photo 2 of 3 : LEVAL_FA_2017_202_369.jpg



* Location LS : Land Side N/A : Not Applicable WS : Water Side CR : Crown		** Rating A : Acceptable M : Minimally Acceptable U : Unacceptable N : Not Inspected/Rated C : Corrected A/W : Acceptable but Monitor & Maintain		+ Issue Type Ma : Maintenance Deficiency Ob : Design & System Obsolescence En : Enforcement	
---	--	--	--	--	--

**Flood Control Project Maintenance
Levee Inspections**

Levee Inspection Report By Mile - Fall 2017

Reclamation District No. 1600 Mull

Waterway	Bank	Unit Miles	Inspection Start/End	Inspector
Unit No. 02 Yolo Bypass	Left	4.23	11/02/2017 11/02/2017	Zach Jojola

LM Start	0.20	Rating **	A/W	Issue No.	17 (cont)	
LM End	4.21	Issue Type +	Ma	Location *		
Category	Supplemental			GPS Latitude/Longitude		
				Start	End	
Item	2017 Storm Damage			38.733333 °	38.676750 °	
				-121.633611 °	-121.643250 °	
DWR ID	DWR_RD1600_02_f_2017_17					
Comment Code						
Inspector Comment						
Levee Evaluation Comments						
Description:						
Site ID No:202						
Site Designation:RD 1600-01						
Repair Type: Erosion						
Rating:Area of Concern						
Field Date:6/5/2017						
Notes: dense vegetation makes identification difficult						

Photo 3 of 3 : LEVAL_FA_2017_202_371.jpg



LM Start	0.37	Rating **	M	Issue No.	4
LM End	0.37	Issue Type +	Ma	Location *	LS
Category	Earthen Levee			GPS Latitude/Longitude	
				Start	End
Item	Erosion / Bank Caving			38.730872 °	38.730872 °
				-121.633504 °	-121.633504 °
DWR ID	DWR_RD1600_02_f_2016_4				
Comment Code					
E2 : Schedule repair of erosion site prior to the next inspection.					
Inspector Comment					

Photo 1 of 1 : FA_2017_RD1600_192_4_20170911_00003.jpg



Landside levee slope erosion at RD1600 pumping plant. Fall 2016.

* Location		** Rating		+ Issue Type	
LS : Land Side	N/A : Not Applicable	A : Acceptable	N : Not Inspected/Rated	Ma : Maintenance Deficiency	
WS : Water Side		M : Minimally Acceptable	C : Corrected	Ob : Design & System Obsolescence	
CR : Crown		U : Unacceptable	A/W : Acceptable but Monitor & Maintain	En : Enforcement	

**Flood Control Project Maintenance
Levee Inspections**

Levee Inspection Report By Mile - Fall 2017

Reclamation District No. 1600 Mull

Waterway	Bank	Unit Miles	Inspection Start/End	Inspector
Unit No. 02 Yolo Bypass	Left	4.23	11/02/2017 11/02/2017	Zach Jojola

LM Start	0.39	Rating **	A/W	Issue No.	5
LM End	0.91	Issue Type +	Ma	Location *	WS
Category	Earthen Levee			GPS Latitude/Longitude	
				Start	End
Item	Vegetation			38.730547 °	38.723081 °
				-121.633490 °	-121.633449 °
DWR ID	DWR_RD1600_02_f_2016_5				
Comment Code					
V2 : Remove the wild growth other than native grasses from the levee slopes.					
Inspector Comment					
Vegetation has been trimmed and complies with standards. Recommend monitoring.					

Photo 1 of 1 : FA_2017_RD1600_192_5_20170911_00004.jpg



Previous view of vegetation on waterside slope. Fall 2016.

LM Start	0.41	Rating **	A/W	Issue No.	7
LM End	1.01	Issue Type +	Ma	Location *	LS
Category	Earthen Levee			GPS Latitude/Longitude	
				Start	End
Item	Vegetation			38.730316 °	38.721685 °
				-121.633472 °	-121.633577 °
DWR ID	DWR_RD1600_02_f_2016_7				
Comment Code					
V2 : Remove the wild growth other than native grasses from the levee slopes.					
Inspector Comment					
Vegetation has been trimmed and complies with standards. Recommend monitoring.					

Photo 1 of 1 : FA_2017_RD1600_192_7_20170911_00007.jpg



Previous view of vegetation on landside slope. Fall 2016.

LM Start	0.92	Rating **	M	Issue No.	23
LM End	1.40	Issue Type +	Ma	Location *	WS
Category	Earthen Levee			GPS Latitude/Longitude	
				Start	End
Item	Erosion / Bank Caving			38.722948 °	38.716108 °
				-121.633477 °	-121.634930 °
DWR ID	DWR_RD1600_02_s_2017_23				
Comment Code					
E2 : Schedule repair of erosion site prior to the next inspection.					
Inspector Comment					
Long section of wave wash damage on waterside levee slope.					

Photo 1 of 1 : FA_2017_RD1600_192_23_20170911_00024.jpg



View of wave wash damage on waterside levee slope. Spring 2017.

* Location LS : Land Side N/A : Not Applicable WS : Water Side CR : Crown		** Rating A : Acceptable M : Minimally Acceptable U : Unacceptable N : Not Inspected/Rated C : Corrected A/W : Acceptable but Monitor & Maintain		+ Issue Type Ma : Maintenance Deficiency Ob : Design & System Obsolescence En : Enforcement	
--	--	---	--	---	--

**Flood Control Project Maintenance
Levee Inspections**

Levee Inspection Report By Mile - Fall 2017

Reclamation District No. 1600 Mull

Waterway	Bank	Unit Miles	Inspection Start/End	Inspector
Unit No. 02 Yolo Bypass	Left	4.23	11/02/2017 11/02/2017	Zach Jojola

LM Start	1.22	Rating **	A/W	Issue No.	16
LM End	1.26	Issue Type +	Ma	Location *	
Category	Supplemental			GPS Latitude/Longitude	
				Start	End
Item	2017 Storm Damage			38.718528 °	38.718043 °
				-121.633972 °	-121.634274 °
DWR ID	DWR_RD1600_02_f_2017_16				
Comment Code					
Inspector Comment					
Levee Evaluation Comments Description: Site ID No:203 Site Designation:RD 1600-03 Repair Type: Erosion Rating:Area of Concern Field Date:6/5/2017 Notes: Site located inside bounds of 1600-01, same evaluation. Seems to be part of site ID No. 202.					

No Photos

LM Start	1.57	Rating **	C	Issue No.	8
LM End	1.57	Issue Type +	Ma	Location *	WS
Category	Earthen Levee			GPS Latitude/Longitude	
				Start	End
Item	Slope Stability			38.713733 °	38.713733 °
				-121.635872 °	-121.635872 °
DWR ID	DWR_RD1600_02_f_2015_8				
Comment Code					
S1 : Repair slope instability.					
Inspector Comment					

No Photos

* Location LS : Land Side N/A : Not Applicable WS : Water Side CR : Crown	** Rating A : Acceptable M : Minimally Acceptable U : Unacceptable N : Not Inspected/Rated C : Corrected A/W : Acceptable but Monitor & Maintain	+ Issue Type Ma : Maintenance Deficiency Ob : Design & System Obsolescence En : Enforcement
--	---	---

**Flood Control Project Maintenance
Levee Inspections**

Levee Inspection Report By Mile - Fall 2017

Reclamation District No. 1600 Mull

Waterway	Bank	Unit Miles	Inspection Start/End	Inspector
Unit No. 02 Yolo Bypass	Left	4.23	11/02/2017 11/02/2017	Zach Jojola

LM Start	1.58	Rating **	M	Issue No.	22
LM End	1.58	Issue Type +	En	Location *	WS
Category	Earthen Levee			GPS Latitude/Longitude	
				Start	End
Item	Encroachments			38.713632 °	38.713632 °
				-121.635928 °	-121.635928 °
DWR ID	DWR_RD1600_02_s_2017_22				
Comment Code					
DE : Debris					
Inspector Comment					
Refrigerator on waterside levee slope.					

Photo 1 of 1 : FA_2017_RD1600_192_22_20170911_00023.jpg



Refrigerator on waterside levee slope. Spring 2017.

LM Start	1.65	Rating **	C	Issue No.	9
LM End	2.89	Issue Type +	Ma	Location *	LS
Category	Earthen Levee			GPS Latitude/Longitude	
				Start	End
Item	Vegetation			38.712569 °	38.695566 °
				-121.636348 °	-121.643661 °
DWR ID	DWR_RD1600_02_f_2016_9				
Comment Code					
V2 : Remove the wild growth other than native grasses from the levee slopes.					
Inspector Comment					

No Photos

LM Start	1.79	Rating **	M	Issue No.	14
LM End	2.05	Issue Type +	Ma	Location *	WS
Category	Earthen Levee			GPS Latitude/Longitude	
				Start	End
Item	Erosion / Bank Caving			38.710763 °	38.707116 °
				-121.637147 °	-121.638722 °
DWR ID	DWR_RD1600_02_s_2012_14				
Comment Code					
E2 : Schedule repair of erosion site prior to the next inspection.					
Inspector Comment					

Photo 1 of 4 : FA_2017_RD1600_192_14_20170911_00012.jpg



A closer view of the wave wash damage along the bypass.

* Location LS : Land Side N/A : Not Applicable WS : Water Side CR : Crown		** Rating A : Acceptable M : Minimally Acceptable U : Unacceptable N : Not Inspected/Rated C : Corrected A/W : Acceptable but Monitor & Maintain		+ Issue Type Ma : Maintenance Deficiency Ob : Design & System Obsolescence En : Enforcement	
--	--	---	--	---	--

**Flood Control Project Maintenance
Levee Inspections**

Levee Inspection Report By Mile - Fall 2017

Reclamation District No. 1600 Mull

Waterway	Bank	Unit Miles	Inspection Start/End	Inspector
Unit No. 02 Yolo Bypass	Left	4.23	11/02/2017 11/02/2017	Zach Jojola

LM Start	1.79	Rating **	M	Issue No.	14 (cont)	
LM End	2.05	Issue Type +	Ma	Location *	WS	
Category	Earthen Levee			GPS Latitude/Longitude		
				Start		End
Item	Erosion / Bank Caving			38.710763 °		38.707116 °
				-121.637147 °		-121.638722 °
DWR ID	DWR_RD1600_02_s_2012_14					
Comment Code						
E2 : Schedule repair of erosion site prior to the next inspection.						
Inspector Comment						

Photo 2 of 4 : FA_2017_RD1600_192_14_20170911_00013.jpg



Wave wash damage along the slope the cut is 1'-2'.

LM Start	1.79	Rating **	M	Issue No.	14 (cont)
LM End	2.05	Issue Type +	Ma	Location *	WS

Photo 3 of 4 : FA_2017_RD1600_192_14_20170911_00014.jpg



View of the erosion on the waterward side of the levee looking downstream. Fall 2015.

LM Start	1.79	Rating **	M	Issue No.	14 (cont)
LM End	2.05	Issue Type +	Ma	Location *	WS

Photo 4 of 4 : FA_2017_RD1600_192_14_20170911_00015.jpg



Updated view of erosion site on WS slope. Fall 2016.

* Location LS : Land Side N/A : Not Applicable WS : Water Side CR : Crown		** Rating A : Acceptable M : Minimally Acceptable U : Unacceptable N : Not Inspected/Rated C : Corrected A/W : Acceptable but Monitor & Maintain		+ Issue Type Ma : Maintenance Deficiency Ob : Design & System Obsolescence En : Enforcement	
---	--	--	--	--	--

**Flood Control Project Maintenance
Levee Inspections**

Levee Inspection Report By Mile - Fall 2017

Reclamation District No. 1600 Mull

Waterway	Bank	Unit Miles	Inspection Start/End	Inspector
Unit No. 02 Yolo Bypass	Left	4.23	11/02/2017 11/02/2017	Zach Jojola

LM Start	2.05	Rating **	M	Issue No.	21
LM End	2.05	Issue Type +	Ma	Location *	WS
Category	Earthen Levee			GPS Latitude/Longitude	
				Start	End
Item	Encroachments			38.707130 °	38.707130 °
				-121.638712 °	-121.638712 °
DWR ID	DWR_RD1600_02_s_2017_21				
Comment Code					
DE : Debris					
Inspector Comment					
Trash and large log on watersid levee slope.					

Photo 1 of 1 : FA_2017_RD1600_192_21_20170911_00022.jpg



Trash on waterside levee slope. Spring 2017.

LM Start	2.16	Rating **	M	Issue No.	15
LM End	2.27	Issue Type +	Ma	Location *	WS
Category	Earthen Levee			GPS Latitude/Longitude	
				Start	End
Item	Erosion / Bank Caving			38.705614 °	38.704052 °
				-121.639357 °	-121.640016 °
DWR ID	DWR_RD1600_02_s_2012_15				
Comment Code					
E1 : Note and monitor erosion site.					
Inspector Comment					
Previous erosion site. Recommend monitoring.					

Photo 1 of 3 : FA_2017_RD1600_192_15_20170911_00016.jpg



Looking upstream a deeper cut of 2'-3' damage.

LM Start	2.16	Rating **	M	Issue No.	15 (cont)
LM End	2.27	Issue Type +	Ma	Location *	WS

Photo 2 of 3 : FA_2017_RD1600_192_15_20170911_00017.jpg



This is wave wash damage along the toe of the levee looking downstream.

* Location LS : Land Side N/A : Not Applicable WS : Water Side CR : Crown		** Rating A : Acceptable M : Minimally Acceptable U : Unacceptable N : Not Inspected/Rated C : Corrected A/W : Acceptable but Monitor & Maintain		+ Issue Type Ma : Maintenance Deficiency Ob : Design & System Obsolescence En : Enforcement	
---	--	--	--	--	--

**Flood Control Project Maintenance
Levee Inspections**

Levee Inspection Report By Mile - Fall 2017

Reclamation District No. 1600 Mull

Waterway	Bank	Unit Miles	Inspection Start/End	Inspector
Unit No. 02 Yolo Bypass	Left	4.23	11/02/2017 11/02/2017	Zach Jojola

LM Start	2.16	Rating **	M	Issue No.	15 (cont)	
LM End	2.27	Issue Type +	Ma	Location *	WS	
Category	Earthen Levee			GPS Latitude/Longitude		
				Start		End
Item	Erosion / Bank Caving			38.705614 °	38.704052 °	
				-121.639357 °	-121.640016 °	
DWR ID	DWR_RD1600_02_s _ 2012_15					
Comment Code						
E1 : Note and monitor erosion site.						
Inspector Comment						
Previous erosion site. Recommend monitoring.						

Photo 3 of 3 : FA_2017_RD1600_192_15_20170911_00018.jpg



Updated view of wave wash damage on WS slope. Fall 2016.

LM Start	2.40	Rating **	C	Issue No.	2
LM End	2.40	Issue Type +	Ma	Location *	LS
Category	Earthen Levee			GPS Latitude/Longitude	
				Start	End
Item	Encroachments			38.702366 °	38.702366 °
				-121.640732 °	-121.640732 °
DWR ID	DWR_RD1600_02_s _ 2016_2				
Comment Code					
TR : Tree or limb					
Inspector Comment					

No Photos

LM Start	2.53	Rating **	C	Issue No.	20
LM End	3.23	Issue Type +	En	Location *	LS
Category	Earthen Levee			GPS Latitude/Longitude	
				Start	End
Item	Encroachments			38.700581 °	38.690801 °
				-121.641533 °	-121.645226 °
DWR ID	DWR_RD1600_02_s _ 2017_20				
Comment Code					
TR : Tree or limb					
Inspector Comment					
Mutiple pruning piles on landside levee slope.					

No Photos

* Location		** Rating		+ Issue Type	
LS : Land Side	N/A : Not Applicable	A : Acceptable	N : Not Inspected/Rated	Ma : Maintenance Deficiency	
WS : Water Side		M : Minimally Acceptable	C : Corrected	Ob : Design & System Obsolescence	
CR : Crown		U : Unacceptable	A/W : Acceptable but Monitor & Maintain	En : Enforcement	

**Flood Control Project Maintenance
Levee Inspections**

Levee Inspection Report By Mile - Fall 2017

Reclamation District No. 1600 Mull

Waterway	Bank	Unit Miles	Inspection Start/End	Inspector
Unit No. 02 Yolo Bypass	Left	4.23	11/02/2017 11/02/2017	Zach Jojola

LM Start	2.55	Rating **	M	Issue No.	31
LM End	2.55	Issue Type +	Ma	Location *	WS
Category	Earthen Levee			GPS Latitude/Longitude	
				Start	End
Item	Slope Stability			38.700313 °	38.700313 °
				-121.641656 °	-121.641656 °
DWR ID	DWR_RD1600_02_f_2017_31				
Comment Code					
S1 : Repair slope instability.					
Inspector Comment					
Void on the slope from removed tree.					

No Photos

LM Start	2.77	Rating **	A/W	Issue No.	3
LM End	2.77	Issue Type +	Ma	Location *	WS
Category	Earthen Levee			GPS Latitude/Longitude	
				Start	End
Item	Vegetation			38.697266 °	38.697266 °
				-121.642952 °	-121.642952 °
DWR ID	DWR_RD1600_02_s_2016_3				
Comment Code					
V4 : Elderberries are blocking visibility and flood fight capability.					
Inspector Comment					

No Photos

LM Start	3.00	Rating **	M	Issue No.	30
LM End	3.00	Issue Type +	Ma	Location *	LS
Category	Earthen Levee			GPS Latitude/Longitude	
				Start	End
Item	Encroachments			38.694033 °	38.694033 °
				-121.644329 °	-121.644329 °
DWR ID	DWR_RD1600_02_f_2017_30				
Comment Code					
PR : Prunings					
Inspector Comment					
Pruning pile on landside slope.					

No Photos

* Location		** Rating		+ Issue Type	
LS : Land Side	N/A : Not Applicable	A : Acceptable	N : Not Inspected/Rated	Ma : Maintenance Deficiency	
WS : Water Side		M : Minimally Acceptable	C : Corrected	Ob : Design & System Obsolescence	
CR : Crown		U : Unacceptable	A/W : Acceptable but Monitor & Maintain	En : Enforcement	

**Flood Control Project Maintenance
Levee Inspections**

Levee Inspection Report By Mile - Fall 2017

Reclamation District No. 1600 Mull

Waterway	Bank	Unit Miles	Inspection Start/End	Inspector
Unit No. 02 Yolo Bypass	Left	4.23	11/02/2017 11/02/2017	Zach Jojola

LM Start	3.12	Rating **	C	Issue No.	10
LM End	3.84	Issue Type +	Ma	Location *	LS
Category	Earthen Levee			GPS Latitude/Longitude	
				Start	End
Item	Vegetation			38.692390 °	38.681950 °
				-121.644950 °	-121.644296 °
DWR ID	DWR_RD1600_02_f_2016_10				
Comment Code					
V2 : Remove the wild growth other than native grasses from the levee slopes.					
Inspector Comment					
Only about 20 ft of LS slope cleared.					

No Photos

LM Start	3.27	Rating **	C	Issue No.	19
LM End	3.43	Issue Type +	En	Location *	LS
Category	Earthen Levee			GPS Latitude/Longitude	
				Start	End
Item	Encroachments			38.690182 °	38.687991 °
				-121.645219 °	-121.644983 °
DWR ID	DWR_RD1600_02_s_2017_19				
Comment Code					
PR : Prunings					
Inspector Comment					
Multiple pruning piles on landside levee slope.					

No Photos

LM Start	3.41	Rating **	A/W	Issue No.	300
LM End	3.41	Issue Type +	Ma	Location *	LS
Category	Earthen Levee			GPS Latitude/Longitude	
				Start	End
Item	Vegetation			38.688243 °	38.688243 °
				-121.645010 °	-121.645010 °
DWR ID	DWR_RD1600_02_s_2015_300				
Comment Code					
V4 : Elderberries are blocking visibility and flood fight capability.					
Inspector Comment					

No Photos

* Location LS : Land Side N/A : Not Applicable WS : Water Side CR : Crown		** Rating A : Acceptable M : Minimally Acceptable U : Unacceptable N : Not Inspected/Rated C : Corrected A/W : Acceptable but Monitor & Maintain		+ Issue Type Ma : Maintenance Deficiency Ob : Design & System Obsolescence En : Enforcement	
--	--	---	--	---	--

**Flood Control Project Maintenance
Levee Inspections**

Levee Inspection Report By Mile - Fall 2017

Reclamation District No. 1600 Mull

Waterway	Bank	Unit Miles	Inspection Start/End	Inspector
Unit No. 02 Yolo Bypass	Left	4.23	11/02/2017 11/02/2017	Zach Jojola

LM Start	3.52	Rating **	M	Issue No.	29
LM End	3.56	Issue Type +	Ma	Location *	LS
Category	Earthen Levee			GPS Latitude/Longitude	
				Start	End
Item	Encroachments			38.686675 °	38.686052 °
				-121.644852 °	-121.644773 °
DWR ID	DWR_RD1600_02_f_2017_29				
Comment Code					
PR : Prunings					
Inspector Comment					
Multiple pruning piles on landside slope.					

No Photos

LM Start	3.53	Rating **	A/W	Issue No.	299
LM End	3.53	Issue Type +	Ma	Location *	LS
Category	Earthen Levee			GPS Latitude/Longitude	
				Start	End
Item	Vegetation			38.686436 °	38.686436 °
				-121.644799 °	-121.644799 °
DWR ID	DWR_RD1600_02_s_2015_299				
Comment Code					
V4 : Elderberries are blocking visibility and flood fight capability.					
Inspector Comment					

No Photos

LM Start	3.59	Rating **	C	Issue No.	12
LM End	3.65	Issue Type +	En	Location *	LS
Category	Earthen Levee			GPS Latitude/Longitude	
				Start	End
Item	Encroachments			38.685670 °	38.684720 °
				-121.644700 °	-121.644629 °
DWR ID	DWR_RD1600_02_s_2017_12				
Comment Code					
PR : Prunings					
Inspector Comment					
Multiple pruning piles on landside levee slope.					

No Photos

* Location		** Rating		+ Issue Type	
LS : Land Side	N/A : Not Applicable	A : Acceptable	N : Not Inspected/Rated	Ma : Maintenance Deficiency	
WS : Water Side		M : Minimally Acceptable	C : Corrected	Ob : Design & System Obsolescence	
CR : Crown		U : Unacceptable	A/W : Acceptable but Monitor & Maintain	En : Enforcement	

**Flood Control Project Maintenance
Levee Inspections**

Levee Inspection Report By Mile - Fall 2017

Reclamation District No. 1600 Mull

Waterway	Bank	Unit Miles	Inspection Start/End	Inspector
Unit No. 02 Yolo Bypass	Left	4.23	11/02/2017 11/02/2017	Zach Jojola

LM Start	3.59	Rating **	M	Issue No.	28
LM End	3.59	Issue Type +	Ma	Location *	LS
Category	Earthen Levee			GPS Latitude/Longitude	
				Start	End
Item	Encroachments			38.685565 °	38.685565 °
				-121.644719 °	-121.644719 °
DWR ID	DWR_RD1600_02_f_2017_28				
Comment Code					
TR : Tree or limb					
Inspector Comment					
Larger limbs on landside slope.					

No Photos

LM Start	3.71	Rating **	U	Issue No.	301
LM End	3.71	Issue Type +	En	Location *	
Category	Supplemental			GPS Latitude/Longitude	
				Start	End
Item	DWR UCIP Field Study			38.683971 °	38.683971 °
				-121.644522 °	-121.644522 °
DWR ID					
Comment Code					
Inspector Comment					
FS_ID:50099 DS_ID:21501 EP_NO: 10944 Repair Type: Urgent Crossing Status: Indicator Found UCIP Comments: 08/16/2016 - unable to locate pipe. Need to install gas line markers on LS and WS of levee crown to denote location. (T. Hatch/UCIP)06/21/2013 - Need to install gasoline markers on levee. (W. Wylie/UCIP) FIELD_STRUCT_DESC: 8.625-inch steel gas line through the levee, 2 feet below the crown. (Permit No. 10944, 1975 - Shell Oil Company). [Additional Reference(s): DWR Levee Log, 1988]. FS Date: 8/15/2016					

Photo 1 of 2 : UCIP_FA_2017_50099_27478.jpg



PG&E marker flag on Crown.

* Location LS : Land Side N/A : Not Applicable WS : Water Side CR : Crown	** Rating A : Acceptable M : Minimally Acceptable U : Unacceptable N : Not Inspected/Rated C : Corrected A/W : Acceptable but Monitor & Maintain	+ Issue Type Ma : Maintenance Deficiency Ob : Design & System Obsolescence En : Enforcement
--	---	---

**Flood Control Project Maintenance
Levee Inspections**

Levee Inspection Report By Mile - Fall 2017

Reclamation District No. 1600 Mull

Waterway	Bank	Unit Miles	Inspection Start/End	Inspector
Unit No. 02 Yolo Bypass	Left	4.23	11/02/2017 11/02/2017	Zach Jojola

LM Start	3.71	Rating **	U	Issue No.	301 (cont)	
LM End	3.71	Issue Type +	En	Location *		
Category	Supplemental			GPS Latitude/Longitude		
				Start	End	
Item	DWR UCIP Field Study			38.683971 °	38.683971 °	
				-121.644522 °	-121.644522 °	
DWR ID						
Comment Code						
Inspector Comment						
FS_ID:50099 DS_ID:21501 EP_NO: 10944 Repair Type: Urgent Crossing Status: Indicator Found UCIP Comments: 08/16/2016 - unable to locate pipe. Need to install gas line markers on LS and WS of levee crown to denote location. (T. Hatch/UCIP)06/21/2013 - Need to install gasline markers on levee. (W. Wylie/UCIP) FIELD_STRUCT_DESC: 8.625-inch steel gas line through the levee, 2 feet below the crown. (Permit No. 10944, 1975 - Shell Oil Company). [Additional Reference(s): DWR Levee Log, 1988]. FS Date: 8/15/2016						

Photo 2 of 2 : UCIP_FA_2017_50099_27477.jpg



Carsonite gasline marker visible approximately 1,000-feet east of levee crown.

LM Start	3.81	Rating **	M	Issue No.	27	
LM End	3.81	Issue Type +	Ma	Location *	LS	
Category	Earthen Levee			GPS Latitude/Longitude		
				Start		End
Item	Encroachments			38.682379 °		38.682379 °
				-121.644373 °		-121.644373 °
DWR ID	DWR_RD1600_02_f_2017_27					
Comment Code						
PR : Prunings						
Inspector Comment						
Prunings at landside toe.						

No Photos

* Location LS : Land Side N/A : Not Applicable WS : Water Side CR : Crown	** Rating A : Acceptable M : Minimally Acceptable U : Unacceptable	N : Not Inspected/Rated C : Corrected A/W : Acceptable but Monitor & Maintain	+ Issue Type Ma : Maintenance Deficiency Ob : Design & System Obsolescence En : Enforcement
--	--	---	---

**Flood Control Project Maintenance
Levee Inspections**

Levee Inspection Report By Mile - Fall 2017

Reclamation District No. 1600 Mull

Waterway	Bank	Unit Miles	Inspection Start/End	Inspector
Unit No. 02 Yolo Bypass	Left	4.23	11/02/2017 11/02/2017	Zach Jojola

LM Start	3.86	Rating **	M	Issue No.	26
LM End	3.86	Issue Type +	Ma	Location *	LS
Category	Earthen Levee			GPS Latitude/Longitude	
				Start	End
Item	Encroachments			38.681752 °	38.681752 °
				-121.644287 °	-121.644287 °
DWR ID	DWR_RD1600_02_f_2017_26				
Comment Code					
PR : Prunings					
Inspector Comment					
Prunings on landside slope.					

No Photos

LM Start	3.90	Rating **	M	Issue No.	11
LM End	3.90	Issue Type +	En	Location *	LS
Category	Earthen Levee			GPS Latitude/Longitude	
				Start	End
Item	Encroachments			38.681194 °	38.681194 °
				-121.644201 °	-121.644201 °
DWR ID	DWR_RD1600_02_s_2017_11				
Comment Code					
PR : Prunings					
Inspector Comment					
Prunings on landside levee slope.					

Photo 1 of 1 : FA_2017_RD1600_192_11_20170911_00010.jpg



Prunings on landside levee slope. Spring 2017.

LM Start	4.00	Rating **	M	Issue No.	25
LM End	4.00	Issue Type +	Ma	Location *	LS
Category	Earthen Levee			GPS Latitude/Longitude	
				Start	End
Item	Encroachments			38.679714 °	38.679714 °
				-121.644035 °	-121.644035 °
DWR ID	DWR_RD1600_02_f_2017_25				
Comment Code					
PR : Prunings					
Inspector Comment					
Prunings on landside slope.					

Photo 1 of 1 : FA_2017_RD1600_192_25_20171102_00037.jpg



View of pruning pile on landside slope. Fall 2017.

* Location		** Rating		+ Issue Type	
LS : Land Side	N/A : Not Applicable	A : Acceptable	N : Not Inspected/Rated	Ma : Maintenance Deficiency	
WS : Water Side		M : Minimally Acceptable	C : Corrected	Ob : Design & System Obsolescence	
CR : Crown		U : Unacceptable	A/W : Acceptable but Monitor & Maintain	En : Enforcement	

**Flood Control Project Maintenance
Levee Inspections**

Levee Inspection Report By Mile - Fall 2017

Reclamation District No. 1600 Mull

Waterway	Bank	Unit Miles	Inspection Start/End	Inspector
Unit No. 02 Yolo Bypass	Left	4.23	11/02/2017 11/02/2017	Zach Jojola

LM Start	4.07	Rating **	M	Issue No.	24
LM End	4.07	Issue Type +	Ma	Location *	WS
Category	Earthen Levee			GPS Latitude/Longitude	
				Start	End
Item	Encroachments			38.678634 °	38.678634 °
				-121.643922 °	-121.643922 °
DWR ID	DWR_RD1600_02_f_2017_24				
Comment Code					
PR : Prunings					
Inspector Comment					
Prunings on waterside slope.					

No Photos

LM Start	4.17	Rating **	A/W	Issue No.	302
LM End	4.17	Issue Type +	Ma	Location *	
Category	Supplemental			GPS Latitude/Longitude	
				Start	End
Item	DWR UCIP LMA Responsibility			38.677286 °	38.677286 °
				-121.643683 °	-121.643683 °
DWR ID					
Comment Code					
Inspector Comment					
FS_ID:15303 DS_ID:21502 EP_NO: N/A Repair Type: No Action Needed Crossing Status: Found UCIP Comments: FIELD_STRUCT_DESC: 72-inch by 72-inch reinforced concrete box drainage culvert through the levee, 26 feet below the crown. Slide gate on the waterside (WS) slope in a 9-foot by 10-foot concrete box. Culvert passes under the bypass canal, the railroad, and County Road 22 and terminates in the canal on the southwest side of the County Road 22 bridge. [Additional Reference(s): DWR Levee Log, 1988. USACE Sacramento O&M Manual 123, August 1955, (Station 155+00)]. FS Date: 6/21/2013					

Photo 1 of 3 : UCIP_FA_2017_15303_25158.jpg



Concrete intake structure on LS.

* Location LS : Land Side N/A : Not Applicable WS : Water Side CR : Crown	** Rating A : Acceptable M : Minimally Acceptable U : Unacceptable	N : Not Inspected/Rated C : Corrected A/W : Acceptable but Monitor & Maintain	+ Issue Type Ma : Maintenance Deficiency Ob : Design & System Obsolescence En : Enforcement
--	--	---	---

**Flood Control Project Maintenance
Levee Inspections**

Levee Inspection Report By Mile - Fall 2017

Reclamation District No. 1600 Mull

Waterway	Bank	Unit Miles	Inspection Start/End	Inspector
Unit No. 02 Yolo Bypass	Left	4.23	11/02/2017 11/02/2017	Zach Jojola

LM Start	4.17	Rating **	A/W	Issue No.	302 (cont)	
LM End	4.17	Issue Type +	Ma	Location *		
Category	Supplemental			GPS Latitude/Longitude		
				Start		End
Item	DWR UCIP LMA Responsibility			38.677286 °		38.677286 °
				-121.643683 °		-121.643683 °
DWR ID						
Comment Code						
Inspector Comment						
FS_ID:15303 DS_ID:21502 EP_NO: N/A Repair Type: No Action Needed Crossing Status: Found UCIP Comments: FIELD_STRUCT_DESC: 72-inch by 72-inch reinforced concrete box drainage culvert through the levee, 26 feet below the crown. Slide gate on the waterside (WS) slope in a 9-foot by 10-foot concrete box. Culvert passes under the bypass canal, the railroad, and County Road 22 and terminates in the canal on the southwest side of the County Road 22 bridge. [Additional Reference(s): DWR Levee Log, 1988. USACE Sacramento O&M Manual 123, August 1955, (Station 155+00)]. FS Date: 6/21/2013						

LM Start	4.17	Rating **	A/W	Issue No.	302 (cont)
LM End	4.17	Issue Type +	Ma	Location *	

Photo 2 of 3 : UCIP_FA_2017_15303_25157.jpg



Concrete intake structure on LS.

Photo 3 of 3 : UCIP_FA_2017_15303_25156.jpg



Slide gate in 9'x10' concrete box on WS slope.

* Location LS : Land Side N/A : Not Applicable WS : Water Side CR : Crown		** Rating A : Acceptable M : Minimally Acceptable U : Unacceptable N : Not Inspected/Rated C : Corrected A/W : Acceptable but Monitor & Maintain		+ Issue Type Ma : Maintenance Deficiency Ob : Design & System Obsolescence En : Enforcement
--	--	---	--	---

**Flood Control Project Maintenance
Levee Inspections**

Levee Inspection Report By Mile - Fall 2017

Reclamation District No. 1600 Mull

Waterway	Bank	Unit Miles	Inspection Start/End	Inspector
Unit No. 02 Yolo Bypass	Left	4.23	11/02/2017 11/02/2017	Zach Jojola

LM Start	4.18	Rating **	C	Issue No.	18	
LM End	4.18	Issue Type +	Ma	Location *	LS	
Category	Earthen Levee			GPS Latitude/Longitude		
				Start		End
Item	Slope Stability			38.677144 °		38.677144 °
				-121.643505 °		-121.643505 °
DWR ID	DWR_RD1600_02_s_2017_18					
Comment Code						
S3 : Repair the levee slope damaged by vehicle traffic and prevent access where possible.						
Inspector Comment						
Vehicle tracks on landside levee slope.						

No Photos

LM Start	4.19	Rating **	M	Issue No.	6
LM End	4.19	Issue Type +	Ma	Location *	LS
Category	Earthen Levee			GPS Latitude/Longitude	
				Start	End
Item	Encroachments			38.677121 °	38.677121 °
				-121.643466 °	-121.643466 °
DWR ID	DWR_RD1600_02_s_2016_6				
Comment Code					
TR : Tree or limb					
Inspector Comment					

Photo 1 of 2 : FA_2017_RD1600_192_6_20170911_00005.jpg



View of the trees on the landward side of the levee looking downstream. Spring 2016.

LM Start	4.19	Rating **	M	Issue No.	6 (cont)
LM End	4.19	Issue Type +	Ma	Location *	LS

Photo 2 of 2 : FA_2017_RD1600_192_6_20170911_00006.jpg



View of debris on LS slope. Fall 2016.

* Location LS : Land Side N/A : Not Applicable WS : Water Side CR : Crown		** Rating A : Acceptable M : Minimally Acceptable U : Unacceptable N : Not Inspected/Rated C : Corrected A/W : Acceptable but Monitor & Maintain		+ Issue Type Ma : Maintenance Deficiency Ob : Design & System Obsolescence En : Enforcement	
---	--	--	--	--	--