

**Flood Control Project Maintenance
Levee Inspections**

Fall 2012 Levee Maintenance Deficiency Summary Report

Overall LMA & Unit Ratings, including USACE Erosion Survey

Sacramento River Basin

RD1600	Overall LMA Rating	Total LMA Miles						
Reclamation District No. 1600 Mull	U	14.73						
Rated Item	Maintenance Deficiency				Enforcement		Design & System Obsolescence	
	M Miles	U Miles	M + 4U Miles	Threshold %	M Miles	U Miles	M Miles	U Miles
<i>Earthen Levee</i>								
Vegetation	11.79		11.79	80.04%				
Trim / Thin Trees	0.01		0.01	0.07%				
Encroachments					0.04	0.08		
Erosion / Bank Caving	0.73	0.02	0.81	5.50%				
Crown Surface / Depressions / Rutting	0.01		0.01	0.07%				
<i>Supplemental</i>								
USACE Erosion Survey	0.05		0.05	0.34%				
<i>LMA Totals:</i>	12.59	0.02	12.67	86.01%	0.04	0.08	0.00	0.00

Unit No. 01 Sacramento River RB	Overall Unit Rating	Total Unit Miles						
RD1600	U	10.51						
Rated Item	Maintenance Deficiency				Enforcement		Design & System Obsolescence	
	M Miles	U Miles	M + 4U Miles	Threshold %	M Miles	U Miles	M Miles	U Miles
<i>Earthen Levee</i>								
Vegetation	10.79		10.79	102.66%				
Trim / Thin Trees	0.01		0.01	0.10%				
Encroachments					0.02	0.08		
Erosion / Bank Caving	0.35	0.02	0.43	4.09%				
<i>Supplemental</i>								
USACE Erosion Survey	0.05		0.05	0.48%				
<i>Unit Totals:</i>	11.20	0.02	11.28	107.33%	0.02	0.08	0.00	0.00

Unit No. 02 Yolo Bypass LB	Overall Unit Rating	Total Unit Miles						
RD1600	U	4.22						
Rated Item	Maintenance Deficiency				Enforcement		Design & System Obsolescence	
	M Miles	U Miles	M + 4U Miles	Threshold %	M Miles	U Miles	M Miles	U Miles
<i>Earthen Levee</i>								
Vegetation	1.00		1.00	23.70%				
Encroachments					0.02			
Erosion / Bank Caving	0.38		0.38	9.01%				
Crown Surface / Depressions / Rutting	0.01		0.01	0.24%				
<i>Unit Totals:</i>	1.39	0.00	1.39	32.94%	0.02	0.00	0.00	0.00

**Flood Control Project Maintenance
Levee Inspections**
LMA District Cover Sheet
Fall 2012 Levee Inspection Results

Reclamation District No. 1600 Mull

	Spring (March - May)	Summer ** (June - August)	Fall (September - November)	Winter ** (December - February)
* Overall LMA Rating (Fall Only)			U	

** Non-receipt of Summer or Winter Inspection Reports may effect overall annual rating.

*
SPRING INSPECTIONS: Overall maintenance ratings are not determined for the spring inspection results. Individual maintenance deficiencies are rated using the same criteria in the spring and in the fall.

FALL INSPECTIONS: The overall maintenance rating shown above is based on operation and maintenance deficiencies identified within the attached unit inspection reports.

Comments

**Flood Control Project Maintenance
Levee Inspections
Unit Cover Sheet
Fall 2012 Levee Inspection Results
Reclamation District No. 1600 Mull**

Waterway			Bank	Unit Miles
Unit No. 01 Sacramento River			Right	10.51
	Spring (March - May)	Summer (June - August)	(September - November) Fall	Winter (December - February)
Unit Maintenance Rating (Fall Only)			U	
Date of Inspection	05/08/2012 - 05/08/2012		11/27/2012 - 11/27/2012	
DWR Inspector	John Williamson		John Williamson	
Accompanied By	Kent Lang RD1600		Kent Lang RD1600	
	Kyle Lang RD 537/ RD 1600		Kyle Lang RD 537/ RD 1600	

Summer & Winter Inspections

The Local Maintaining Agency (LMA) is responsible for summer and winter inspections. The LMA is required to submit a report regarding summer and winter inspections to the California Department of Water Resources (DWR).

DWR must be informed on the:

- a) completion of the inspection
- b) any changes other than the results of normal maintenance
- c) corrections to deficiencies noted in this report

If additional items are noted, further documentation of those items must also be submitted.

The LMA should submit this information to DWR using the LMA web application tool available at:

<http://cdec.water.ca.gov/lma.html>

If the LMA is unable to submit information on this webpage, please contact DWR for assistance.

The LMA should submit the information and any associated documentation by September 30 for summer inspections and March 31 for winter inspections.

Reclamation District No. 1600 Mull

12	1.42	1.42	Earthen Levee	Vegetation	WSA/W Ob	V8 : Environmental Requirements.	38.694589 ° -121.634286 °	38.694589 ° -121.634286 °	5 Y
							DWR ID: DWR_RD1600_01_f_2012_5		

Page 1 of 20

**Flood Control Project Maintenance
Levee Inspections**

Levee Inspection Report By Mile - Fall 2012

Reclamation District No. 1600 Mull

Waterway						Bank	Unit Miles	Inspection Start/End	Inspector
Unit No. 01 Sacramento River						Right	10.51	11/27/2012 11/27/2012	John Williamson

LMR No.	Levee Mile		Category	Item	Location *	Rating **	Action/Comment	GPS Latitude/Longitude		Issue No. Photo
	Start	End						Start	End	
13	1.58	1.58	Earthen Levee	Vegetation	WS	M Ma	V2 : Remove the wild growth other than native grasses from the levee slopes.	38.696748 ° -121.633201 °	38.696748 ° -121.633201 °	7 Y
DWR ID: DWR_RD1600_01_f_2012_7										
14	1.71	1.71	Earthen Levee	Encroachments	WS	A Ma	MA : Material Inspector Comments: Old metal ramp from unused dock, ramp is on levee shoulder. Ramp was removed by DWR for levee repairs and is due to be placed back.	38.698364 ° -121.631926 °	38.698364 ° -121.631926 °	9 Y
DWR ID: DWR_RD1600_01_s_2012_9										
15	1.73	1.73	Earthen Levee	Vegetation	WSA/W	Ob	V8 : Environmental Requirements.	38.698613 ° -121.631710 °	38.698613 ° -121.631710 °	31 Y
DWR ID: DWR_RD1600_01_s_2012_31										
16	1.84	8.13	Earthen Levee	Vegetation	LS	M Ma	V1 : Control annual grass and weeds on the levee slopes and easements.	38.699877 ° -121.630511 °	38.778233 ° -121.606500 °	12 Y
DWR ID: DWR_RD1600_01_f_2012_12										
17	1.84	5.90	Earthen Levee	Vegetation	WS	M Ma	V1 : Control annual grass and weeds on the levee slopes and easements.	38.699873 ° -121.630500 °	38.749510 ° -121.597086 °	15 Y
DWR ID: DWR_RD1600_01_f_2012_15										
18	2.02	2.02	Earthen Levee	Erosion / Bank Caving	LS	M Ma	E2 : Schedule repair of erosion site prior to the next inspection.	38.701590 ° -121.627991 °	38.701590 ° -121.627991 °	17 Y
DWR ID: DWR_RD1600_01_f_2012_17										
19	2.08	2.08	Earthen Levee	Erosion / Bank Caving	CR	U Ma	E2 : Schedule repair of erosion site prior to the next inspection.	38.702121 ° -121.627123 °	38.702121 ° -121.627123 °	24 Y
DWR ID: DWR_RD1600_01_f_2012_24										
20	2.17	2.17	Earthen Levee	Encroachments	WS	C En	DE : Debris Inspector Comments: concrete on waterside berm.	38.702858 ° -121.625750 °	38.702858 ° -121.625750 °	33 Y
DWR ID: DWR_RD1600_01_s_2012_33										
21	2.36	2.42	Earthen Levee	Vegetation	WSA/W	Ob	V8 : Environmental Requirements.	38.704592 ° -121.623067 °	38.705152 ° -121.622187 °	35 Y
DWR ID: DWR_RD1600_01_s_2012_35										
22	3.06	3.06	Earthen Levee	Vegetation	LS A/W	Ma	V4 : Elderberries are blocking visibility and flood fight capability.	38.711597 ° -121.613890 °	38.711597 ° -121.613890 °	37 Y
DWR ID: DWR_RD1600_01_s_2012_37										
23	3.60	3.60	Supplemental Survey	USACE Erosion Survey	WS	M Ma	Inspector Comments: 1997 - Steep high bank. 2005 - Some small pockets in the low toe near the waterline. 2006 - Minor slope clearing. 2010 - Minor new erosion. 2011 - Multiple trees have fallen since last year. Some other trees look ready to fall. Significant new erosion since last year. 2012: Minor new erosion. [2012 Site ID: SAC_74-4_R]	38.721351 ° -121.606414 °	38.717770 ° -121.607423 °	8 Y
DWR ID:										
24	4.35	4.35	Supplemental Survey	USACE Erosion Survey	WS	M Ma	Inspector Comments: 1997 - Very steep bank. 2005 - Lots of small trees down along the bank at the upstream end. 2006 - Minor new erosion, but slow. 2010 - Almost all of the roots are exposed on the trees, appears ready to fall. 2011 - New erosion and tree popouts. 2012: No observed change, however site is overgrown and hard to observe. [2012 Site ID: SAC_75-3_R]	38.736110 ° -121.604153 °	38.728684 ° -121.605844 °	10 Y
DWR ID:										

*** Location**

LS : Land Side
WS : Water Side
CR : Crown

**** Rating**

A : Acceptable
M : Minimally Acceptable
U : Unacceptable
N : Not Inspected/Rated
C : Corrected
A/W : Acceptable but Monitor & Maintain

+ Issue Type

Ma : Maintenance Deficiency
Ob : Design & System Obsolescence
En : Enforcement

**Flood Control Project Maintenance
Levee Inspections**

Levee Inspection Report By Mile - Fall 2012

Reclamation District No. 1600 Mull

Waterway						Bank	Unit Miles	Inspection Start/End	Inspector
Unit No. 01 Sacramento River						Right	10.51	11/27/2012 11/27/2012	John Williamson

LMR No.	Levee Mile		Category	Item	Location	Rating	Action/Comment	GPS Latitude/Longitude		Issue No.
	Start	End						Start	End	
25	4.89	4.89	Earthen Levee	Erosion / Bank Caving	LS	U Ma	E2 : Schedule repair of erosion site prior to the next inspection. Inspector Comments: Hole in pipe causing erosion of levee slope. Replace pipe and repair damage.	38.736250 ° -121.604605 °	38.736250 ° -121.604605 °	25 Y
DWR ID: DWR_RD1600_01_f_2012_25										
26	5.26	5.26	Earthen Levee	Encroachments	WS	C En	DE : Debris	38.741197 ° -121.602645 °	38.741197 ° -121.602645 °	41 Y
DWR ID: DWR_RD1600_01_s_2012_41										
27	5.43	5.43	Earthen Levee	Vegetation	LS A/W	Ma	V4 : Elderberries are blocking visibility and flood fight capability.	38.743632 ° -121.601173 °	38.743632 ° -121.601173 °	13 Y
DWR ID: DWR_RD1600_01_s_2012_13										
28	5.48	5.81	Earthen Levee	Erosion / Bank Caving	WS	M Ma	E1 : Note and monitor erosion site. Inspector Comments: Levee district had us add this because of the loss of the berm over years of water flows. Erosion is at the waters edge. Walnut trees are close to edge now.	38.744118 ° -121.601104 °	38.748210 ° -121.598025 °	19 Y
DWR ID: DWR_RD1600_01_s_2012_19										
29	5.79	5.79	Earthen Levee	Encroachments	WS	M En	PR : Prunings	38.748000 ° -121.598165 °	38.748000 ° -121.598165 °	44 Y
DWR ID: DWR_RD1600_01_s_2012_44										
30	6.05	6.05	Earthen Levee	Vegetation	LS	M Ma	V2 : Remove the wild growth other than native grasses from the levee slopes. Inspector Comments: Berries cover the slope.	38.751303 ° -121.596087 °	38.751303 ° -121.596087 °	45 Y
DWR ID: DWR_RD1600_01_s_2012_45										
31	6.31	6.31	Supplemental	USACE Erosion Survey	WS	M Ma	Inspector Comments: 2011 - Large vertical eroded face from a rotational failure just below pump. 2012: No observed change. [2012 Site ID: SAC_77-0_R]	38.756186 ° -121.594024 °	38.755246 ° -121.594206 °	11 Y
DWR ID:										
32	6.47	6.89	Earthen Levee	Vegetation	WS	M Ma	V1 : Control annual grass and weeds on the levee slopes and easements.	38.757269 ° -121.594287 °	38.763239 ° -121.594824 °	28 Y
DWR ID: DWR_RD1600_01_f_2012_28										
33	6.65	6.65	Earthen Levee	Trim / Thin Trees	LS	M Ma	T3 : Trim and thin trees to allow visibility of the ground and room to flood fight.	38.759757 ° -121.594112 °	38.759757 ° -121.594112 °	26 Y
DWR ID: DWR_RD1600_01_s_2012_26										
34	6.96	6.96	Supplemental	USACE Erosion Survey	WS	M Ma	Inspector Comments: 2006 - Eddy scour off end of rock causing erosion and scour hole near levee. Sandy silt bank with rock on upstream end. 2010 - Trees are leaning more, minor new erosion. 2011 - Many of the tree roots have scoured out and trees look ready to fall. 2012: No observed change. [2012 Site ID: SAC_77-7_R]	38.765219 ° -121.595049 °	38.764801 ° -121.594926 °	16 Y
DWR ID:										
35	7.02	7.02	Earthen Levee	Erosion / Bank Caving	LS A/W	Ma	E1 : Note and monitor erosion site.	38.764974 ° -121.595533 °	38.764974 ° -121.595533 °	27 Y
DWR ID: DWR_RD1600_01_s_2012_27										
36	7.13	7.13	Earthen Levee	Erosion / Bank Caving	WS A/W	Ma	E1 : Note and monitor erosion site.	38.766505 ° -121.596214 °	38.766505 ° -121.596214 °	20 Y
DWR ID: DWR_RD1600_01_s_2012_20										

*** Location**

LS : Land Side
WS : Water Side
CR : Crown

**** Rating**

A : Acceptable
M : Minimally Acceptable
U : Unacceptable
N : Not Inspected/Rated
C : Corrected
A/W : Acceptable but Monitor & Maintain

+ Issue Type

Ma : Maintenance Deficiency
Ob : Design & System Obsolescence
En : Enforcement

**Flood Control Project Maintenance
Levee Inspections**

Levee Inspection Report By Mile - Fall 2012

Reclamation District No. 1600 Mull

Waterway	Bank	Unit Miles	Inspection Start/End	Inspector
Unit No. 01 Sacramento River	Right	10.51	11/27/2012 11/27/2012	John Williamson

LMR No.	Levee Mile		Category	Item	Location *	Rating ** +	Action/Comment	GPS Latitude/Longitude		Issue No. Photo
	Start	End						Start	End	
37	7.27	7.27	Earthen Levee	Erosion / Bank Caving	WSA/W	E1	Note and monitor erosion site.	38.768409 ° -121.597213 °	38.768409 ° -121.597213 °	21 Y
								DWR ID: DWR_RD1600_01_s_ 2012_21		

* Location LS : Land Side WS : Water Side CR : Crown	** Rating A : Acceptable M : Minimally Acceptable U : Unacceptable	N : Not Inspected/Rated C : Corrected A/W : Acceptable but Monitor & Maintain	+ Issue Type Ma : Maintenance Deficiency Ob : Design & System Obsolescence En : Enforcement
--	--	---	---

**Flood Control Project Maintenance
Levee Inspections**

Levee Inspection Report By Mile - Fall 2012

Reclamation District No. 1600 Mull

Waterway	Bank	Unit Miles	Inspection Start/End	Inspector
Unit No. 01 Sacramento River	Right	10.51	11/27/2012 11/27/2012	John Williamson

Levee Mile Report Line	4
Start Levee Mile	0.01
End Levee Mile	0.09
Location	Water Side
Category	Earthen Levee
Item	Encroachments
Chain link fence no permit. The building and pumping plant in background is an issue.	
johngw_f_20120911_556.jpg	



Levee Mile Report Line	5
Start Levee Mile	0.06
End Levee Mile	0.06
Location	Water Side
Category	Earthen Levee
Item	Encroachments
The house of the operator of the pumping plant for RD 2035.	
johngw_f_20120911_554.jpg	



Levee Mile Report Line	6
Start Levee Mile	0.10
End Levee Mile	0.10
Location	Water Side
Category	Earthen Levee
Item	Encroachments
A pile of concrete left over from the drilling of the well. Photo taken spring 2012.	
johngw_f_20120911_582.jpg	



* Location LS : Land Side WS : Water Side CR : Crown	** Rating A : Acceptable M : Minimally Acceptable U : Unacceptable N : Not Inspected/Rated C : Corrected A/W : Acceptable but Monitor & Maintain	+ Issue Type Ma : Maintenance Deficiency Ob : Design & System Obsolescence En : Enforcement
--	---	---

**Flood Control Project Maintenance
Levee Inspections**

Levee Inspection Report By Mile - Fall 2012

Reclamation District No. 1600 Mull

Waterway	Bank	Unit Miles	Inspection Start/End	Inspector
Unit No. 01 Sacramento River	Right	10.51	11/27/2012 11/27/2012	John Williamson

Levee Mile Report Line	7
Start Levee Mile	0.10
End Levee Mile	0.24
Location	Water Side
Category	Earthen Levee
Item	Vegetation

Revegetation site. Photo taken spring 2012.

johngw_f_20120911_591.jpg



Levee Mile Report Line	7
Start Levee Mile	0.10
End Levee Mile	0.24
Location	Water Side
Category	Earthen Levee
Item	Vegetation

The revegetation site on the berm with the fence showing. Photo taken spring 2012.

johngw_f_20120911_592.jpg



Levee Mile Report Line	8
Start Levee Mile	0.57
End Levee Mile	0.57
Location	Water Side
Category	Supplemental
Item	USACE Erosion Survey

USACE 2012 Photo #1

USACE2012_SAC_71-3_R_1.jpg



* Location LS : Land Side WS : Water Side CR : Crown	** Rating A : Acceptable M : Minimally Acceptable U : Unacceptable	N : Not Inspected/Rated C : Corrected A/W : Acceptable but Monitor & Maintain	+ Issue Type Ma : Maintenance Deficiency Ob : Design & System Obsolescence En : Enforcement
--	--	---	---

**Flood Control Project Maintenance
Levee Inspections**

Levee Inspection Report By Mile - Fall 2012

Reclamation District No. 1600 Mull

Waterway	Bank	Unit Miles	Inspection Start/End	Inspector
Unit No. 01 Sacramento River	Right	10.51	11/27/2012 11/27/2012	John Williamson

Levee Mile Report Line	8
Start Levee Mile	0.57
End Levee Mile	0.57
Location	Water Side
Category	Supplemental
Item	USACE Erosion Survey

USACE 2012 Photo #2

USACE2012_SAC_71-3_R_2.jpg



Levee Mile Report Line	8
Start Levee Mile	0.57
End Levee Mile	0.57
Location	Water Side
Category	Supplemental
Item	USACE Erosion Survey

USACE 2012 Photo #3

USACE2012_SAC_71-3_R_3.jpg



Levee Mile Report Line	10
Start Levee Mile	1.02
End Levee Mile	1.11
Location	Water Side
Category	Earthen Levee
Item	Vegetation

Revegetation site. Photo taken spring 2012.

johngw_f_20120911_578.jpg



* Location LS : Land Side WS : Water Side CR : Crown	** Rating A : Acceptable M : Minimally Acceptable U : Unacceptable	N : Not Inspected/Rated C : Corrected A/W : Acceptable but Monitor & Maintain	+ Issue Type Ma : Maintenance Deficiency Ob : Design & System Obsolescence En : Enforcement
--	--	---	---

**Flood Control Project Maintenance
Levee Inspections**

Levee Inspection Report By Mile - Fall 2012

Reclamation District No. 1600 Mull

Waterway	Bank	Unit Miles	Inspection Start/End	Inspector
Unit No. 01 Sacramento River	Right	10.51	11/27/2012 11/27/2012	John Williamson

Levee Mile Report Line	10
Start Levee Mile	1.02
End Levee Mile	1.11
Location	Water Side
Category	Earthen Levee
Item	Vegetation

The revegetation site along the berm and shoulder of the river.

johngw_f_20120911_579.jpg



Levee Mile Report Line	11
Start Levee Mile	1.40
End Levee Mile	1.40
Location	Land Side
Category	Earthen Levee
Item	Erosion / Bank Caving

Vehicles and people have created some erosion on the levee. Fall 2012

johngw_f_20121129_958.jpg



Levee Mile Report Line	12
Start Levee Mile	1.42
End Levee Mile	1.42
Location	Water Side
Category	Earthen Levee
Item	Vegetation

Revegetation site. Fall 2012.

johngw_f_20121129_959.jpg



* Location LS : Land Side WS : Water Side CR : Crown	** Rating A : Acceptable M : Minimally Acceptable U : Unacceptable N : Not Inspected/Rated C : Corrected A/W : Acceptable but Monitor & Maintain	+ Issue Type Ma : Maintenance Deficiency Ob : Design & System Obsolescence En : Enforcement
--	---	---

**Flood Control Project Maintenance
Levee Inspections**

Levee Inspection Report By Mile - Fall 2012

Reclamation District No. 1600 Mull

Waterway	Bank	Unit Miles	Inspection Start/End	Inspector
Unit No. 01 Sacramento River	Right	10.51	11/27/2012 11/27/2012	John Williamson

Levee Mile Report Line	12
Start Levee Mile	1.42
End Levee Mile	1.42
Location	Water Side
Category	Earthen Levee
Item	Vegetation

Flats of plant material to be planted at the site.
Fall 2012

johngw_f_20121129_960.jpg



Levee Mile Report Line	13
Start Levee Mile	1.58
End Levee Mile	1.58
Location	Water Side
Category	Earthen Levee
Item	Vegetation

Willows are growing on the waterside shoulder.
They have been grazed by goats. Fall 2012

johngw_f_20121129_961.jpg



Levee Mile Report Line	14
Start Levee Mile	1.71
End Levee Mile	1.71
Location	Water Side
Category	Earthen Levee
Item	Encroachments

Ramp for dock not being used.

johngw_f_20120911_563.jpg



*** Location**

LS : Land Side
WS : Water Side
CR : Crown

**** Rating**

A : Acceptable
M : Minimally Acceptable
U : Unacceptable
N : Not Inspected/Rated
C : Corrected
A/W : Acceptable but Monitor & Maintain

+ Issue Type

Ma : Maintenance Deficiency
Ob : Design & System Obsolescence
En : Enforcement

**Flood Control Project Maintenance
Levee Inspections**

Levee Inspection Report By Mile - Fall 2012

Reclamation District No. 1600 Mull

Waterway	Bank	Unit Miles	Inspection Start/End	Inspector
Unit No. 01 Sacramento River	Right	10.51	11/27/2012 11/27/2012	John Williamson

Levee Mile Report Line	14
Start Levee Mile	1.71
End Levee Mile	1.71
Location	Water Side
Category	Earthen Levee
Item	Encroachments

The ramp has been moved to the waterside edge. This ramp is next to repair and is scheduled to be put back in place. Fall 2012

johngw_f_20121129_962.jpg



Levee Mile Report Line	15
Start Levee Mile	1.73
End Levee Mile	1.73
Location	Water Side
Category	Earthen Levee
Item	Vegetation

Revegetation site with the Elderberry Beetle. Photo taken spring 2012.

johngw_f_20120911_583.jpg



Levee Mile Report Line	15
Start Levee Mile	1.73
End Levee Mile	1.73
Location	Water Side
Category	Earthen Levee
Item	Vegetation

A photo of a Elderberry bush in the area.

johngw_f_20120911_584.jpg



*** Location**

LS : Land Side
WS : Water Side
CR : Crown

**** Rating**

A : Acceptable
M : Minimally Acceptable
U : Unacceptable
N : Not Inspected/Rated
C : Corrected
A/W : Acceptable but Monitor & Maintain

+ Issue Type

Ma : Maintenance Deficiency
Ob : Design & System Obsolescence
En : Enforcement

**Flood Control Project Maintenance
Levee Inspections**

Levee Inspection Report By Mile - Fall 2012

Reclamation District No. 1600 Mull

Waterway	Bank	Unit Miles	Inspection Start/End	Inspector
Unit No. 01 Sacramento River	Right	10.51	11/27/2012 11/27/2012	John Williamson

Levee Mile Report Line	16
Start Levee Mile	1.84
End Levee Mile	8.13
Location	Land Side
Category	Earthen Levee
Item	Vegetation

The goats have work up to this point. Vegetation is taller than 12 inches. Fall 2012

johngw_f_20121129_963.jpg



Levee Mile Report Line	17
Start Levee Mile	1.84
End Levee Mile	5.90
Location	Water Side
Category	Earthen Levee
Item	Vegetation

The vegetation is taller than 12 inches. Fall 2012

johngw_f_20121129_964.jpg



Levee Mile Report Line	18
Start Levee Mile	2.02
End Levee Mile	2.02
Location	Land Side
Category	Earthen Levee
Item	Erosion / Bank Caving

Vehicle and foot traffic has caused erosion. Fall 2012

johngw_f_20121129_965.jpg



* Location LS : Land Side WS : Water Side CR : Crown	** Rating A : Acceptable M : Minimally Acceptable U : Unacceptable N : Not Inspected/Rated C : Corrected A/W : Acceptable but Monitor & Maintain	+ Issue Type Ma : Maintenance Deficiency Ob : Design & System Obsolescence En : Enforcement
--	---	---

**Flood Control Project Maintenance
Levee Inspections**

Levee Inspection Report By Mile - Fall 2012

Reclamation District No. 1600 Mull

Waterway	Bank	Unit Miles	Inspection Start/End	Inspector
Unit No. 01 Sacramento River	Right	10.51	11/27/2012 11/27/2012	John Williamson

Levee Mile Report Line	19
Start Levee Mile	2.08
End Levee Mile	2.08
Location	Crown
Category	Earthen Levee
Item	Erosion / Bank Caving

The hole in the crown is 1X2 feet and 1 foot deep.
Fall 2012

johngw_f_20121129_966.jpg



Levee Mile Report Line	21
Start Levee Mile	2.36
End Levee Mile	2.42
Location	Water Side
Category	Earthen Levee
Item	Vegetation

Revegetation site, photo taken spring 2012.

johngw_f_20120911_586.jpg



Levee Mile Report Line	21
Start Levee Mile	2.36
End Levee Mile	2.42
Location	Water Side
Category	Earthen Levee
Item	Vegetation

The revegetation site extends almost to the hinge point.

johngw_f_20120911_587.jpg



* Location LS : Land Side WS : Water Side CR : Crown	** Rating A : Acceptable M : Minimally Acceptable U : Unacceptable	N : Not Inspected/Rated C : Corrected A/W : Acceptable but Monitor & Maintain	+ Issue Type Ma : Maintenance Deficiency Ob : Design & System Obsolescence En : Enforcement
--	--	---	---

**Flood Control Project Maintenance
Levee Inspections**

Levee Inspection Report By Mile - Fall 2012

Reclamation District No. 1600 Mull

Waterway	Bank	Unit Miles	Inspection Start/End	Inspector
Unit No. 01 Sacramento River	Right	10.51	11/27/2012 11/27/2012	John Williamson

Levee Mile Report Line	22
Start Levee Mile	3.06
End Levee Mile	3.06
Location	Land Side
Category	Earthen Levee
Item	Vegetation

A large stand of elderberries on the landside slope. Fall 2012

johngw_f_20121129_967.jpg



Levee Mile Report Line	23
Start Levee Mile	3.60
End Levee Mile	3.60
Location	Water Side
Category	Supplemental
Item	USACE Erosion Survey

USACE 2012 Photo #1

USACE2012_SAC_74-4_R_1.jpg



Levee Mile Report Line	23
Start Levee Mile	3.60
End Levee Mile	3.60
Location	Water Side
Category	Supplemental
Item	USACE Erosion Survey

USACE 2012 Photo #2

USACE2012_SAC_74-4_R_2.jpg



* Location LS : Land Side WS : Water Side CR : Crown	** Rating A : Acceptable M : Minimally Acceptable U : Unacceptable N : Not Inspected/Rated C : Corrected A/W : Acceptable but Monitor & Maintain	+ Issue Type Ma : Maintenance Deficiency Ob : Design & System Obsolescence En : Enforcement
--	---	---

**Flood Control Project Maintenance
Levee Inspections**

Levee Inspection Report By Mile - Fall 2012

Reclamation District No. 1600 Mull

Waterway	Bank	Unit Miles	Inspection Start/End	Inspector
Unit No. 01 Sacramento River	Right	10.51	11/27/2012 11/27/2012	John Williamson

Levee Mile Report Line	23
Start Levee Mile	3.60
End Levee Mile	3.60
Location	Water Side
Category	Supplemental
Item	USACE Erosion Survey

USACE 2012 Photo #3

USACE2012_SAC_74-4_R_3.jpg



Levee Mile Report Line	24
Start Levee Mile	4.35
End Levee Mile	4.35
Location	Water Side
Category	Supplemental
Item	USACE Erosion Survey

USACE 2012 Photo #1

USACE2012_SAC_75-3_R_1.jpg



Levee Mile Report Line	24
Start Levee Mile	4.35
End Levee Mile	4.35
Location	Water Side
Category	Supplemental
Item	USACE Erosion Survey

USACE 2012 Photo #2

USACE2012_SAC_75-3_R_2.jpg



* Location LS : Land Side WS : Water Side CR : Crown	** Rating A : Acceptable M : Minimally Acceptable U : Unacceptable N : Not Inspected/Rated C : Corrected A/W : Acceptable but Monitor & Maintain	+ Issue Type Ma : Maintenance Deficiency Ob : Design & System Obsolescence En : Enforcement
--	---	---

**Flood Control Project Maintenance
Levee Inspections**

Levee Inspection Report By Mile - Fall 2012

Reclamation District No. 1600 Mull

Waterway	Bank	Unit Miles	Inspection Start/End	Inspector
Unit No. 01 Sacramento River	Right	10.51	11/27/2012 11/27/2012	John Williamson

Levee Mile Report Line	24
Start Levee Mile	4.35
End Levee Mile	4.35
Location	Water Side
Category	Supplemental
Item	USACE Erosion Survey

USACE 2012 Photo #3

USACE2012_SAC_75-3_R_3.jpg



Levee Mile Report Line	25
Start Levee Mile	4.89
End Levee Mile	4.89
Location	Land Side
Category	Earthen Levee
Item	Erosion / Bank Caving

The concrete collection box across the road. Fall 2012

johngw_f_20121129_968.jpg



Levee Mile Report Line	25
Start Levee Mile	4.89
End Levee Mile	4.89
Location	Land Side
Category	Earthen Levee
Item	Erosion / Bank Caving

The hole in the levee slope from the leaking pipe. Fall 2012

johngw_f_20121129_969.jpg



* Location LS : Land Side WS : Water Side CR : Crown	** Rating A : Acceptable M : Minimally Acceptable U : Unacceptable N : Not Inspected/Rated C : Corrected A/W : Acceptable but Monitor & Maintain	+ Issue Type Ma : Maintenance Deficiency Ob : Design & System Obsolescence En : Enforcement
--	---	---

**Flood Control Project Maintenance
Levee Inspections**

Levee Inspection Report By Mile - Fall 2012

Reclamation District No. 1600 Mull

Waterway	Bank	Unit Miles	Inspection Start/End	Inspector
Unit No. 01 Sacramento River	Right	10.51	11/27/2012 11/27/2012	John Williamson

Levee Mile Report Line	27
Start Levee Mile	5.43
End Levee Mile	5.43
Location	Land Side
Category	Earthen Levee
Item	Vegetation

A thick stand of elderberries on the landside. Fall 2012

johngw_f_20121129_970.jpg



Levee Mile Report Line	29
Start Levee Mile	5.79
End Levee Mile	5.79
Location	Water Side
Category	Earthen Levee
Item	Encroachments

A pruning pile left over from the installation of the new pipe. Photo taken spring 2012.

johngw_f_20120911_589.jpg



Levee Mile Report Line	30
Start Levee Mile	6.05
End Levee Mile	6.05
Location	Land Side
Category	Earthen Levee
Item	Vegetation

The berries are taking over the slope. Photo taken spring 2012.

johngw_f_20120911_590.jpg



*** Location**

LS : Land Side
WS : Water Side
CR : Crown

**** Rating**

A : Acceptable
M : Minimally Acceptable
U : Unacceptable
N : Not Inspected/Rated
C : Corrected
A/W : Acceptable but Monitor & Maintain

+ Issue Type

Ma : Maintenance Deficiency
Ob : Design & System Obsolescence
En : Enforcement

**Flood Control Project Maintenance
Levee Inspections**

Levee Inspection Report By Mile - Fall 2012

Reclamation District No. 1600 Mull

Waterway	Bank	Unit Miles	Inspection Start/End	Inspector
Unit No. 01 Sacramento River	Right	10.51	11/27/2012 11/27/2012	John Williamson

Levee Mile Report Line	31
Start Levee Mile	6.31
End Levee Mile	6.31
Location	Water Side
Category	Supplemental
Item	USACE Erosion Survey

USACE 2012 Photo #1

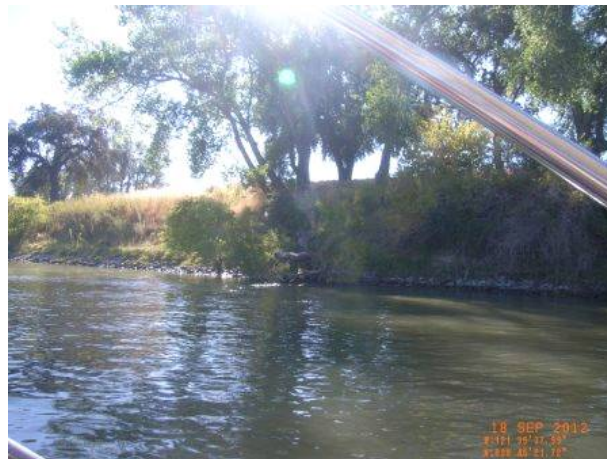
USACE2012_SAC_77-0_R_1.jpg



Levee Mile Report Line	31
Start Levee Mile	6.31
End Levee Mile	6.31
Location	Water Side
Category	Supplemental
Item	USACE Erosion Survey

USACE 2012 Photo #2

USACE2012_SAC_77-0_R_2.jpg



Levee Mile Report Line	31
Start Levee Mile	6.31
End Levee Mile	6.31
Location	Water Side
Category	Supplemental
Item	USACE Erosion Survey

USACE 2012 Photo #3

USACE2012_SAC_77-0_R_3.jpg



* Location LS : Land Side WS : Water Side CR : Crown	** Rating A : Acceptable M : Minimally Acceptable U : Unacceptable N : Not Inspected/Rated C : Corrected A/W : Acceptable but Monitor & Maintain	+ Issue Type Ma : Maintenance Deficiency Ob : Design & System Obsolescence En : Enforcement
--	---	---

**Flood Control Project Maintenance
Levee Inspections**

Levee Inspection Report By Mile - Fall 2012

Reclamation District No. 1600 Mull

Waterway	Bank	Unit Miles	Inspection Start/End	Inspector
Unit No. 01 Sacramento River	Right	10.51	11/27/2012 11/27/2012	John Williamson

Levee Mile Report Line	33
Start Levee Mile	6.65
End Levee Mile	6.65
Location	Land Side
Category	Earthen Levee
Item	Trim / Thin Trees

The willows need to be cut for visibility of the slope. Photo taken spring 2012.

johngw_f_20120911_580.jpg



Levee Mile Report Line	34
Start Levee Mile	6.96
End Levee Mile	6.96
Location	Water Side
Category	Supplemental
Item	USACE Erosion Survey

USACE 2012 Photo #1

USACE2012_SAC_77-7_R_1.jpg



Levee Mile Report Line	34
Start Levee Mile	6.96
End Levee Mile	6.96
Location	Water Side
Category	Supplemental
Item	USACE Erosion Survey

USACE 2012 Photo #2

USACE2012_SAC_77-7_R_2.jpg



*** Location**

LS : Land Side
WS : Water Side
CR : Crown

**** Rating**

A : Acceptable
M : Minimally Acceptable
U : Unacceptable
N : Not Inspected/Rated
C : Corrected
A/W : Acceptable but Monitor & Maintain

+ Issue Type

Ma : Maintenance Deficiency
Ob : Design & System Obsolescence
En : Enforcement

**Flood Control Project Maintenance
Levee Inspections**

Levee Inspection Report By Mile - Fall 2012

Reclamation District No. 1600 Mull

Waterway	Bank	Unit Miles	Inspection Start/End	Inspector
Unit No. 01 Sacramento River	Right	10.51	11/27/2012 11/27/2012	John Williamson

Levee Mile Report Line	35
Start Levee Mile	7.02
End Levee Mile	7.02
Location	Land Side
Category	Earthen Levee
Item	Erosion / Bank Caving

The erosion appears to be moving closer to the shoulder.

johngw_f_20120911_581.jpg



Levee Mile Report Line	36
Start Levee Mile	7.13
End Levee Mile	7.13
Location	Water Side
Category	Earthen Levee
Item	Erosion / Bank Caving

The erosion is eroding away at the berm area.

johngw_f_20120911_574.jpg



Levee Mile Report Line	36
Start Levee Mile	7.13
End Levee Mile	7.13
Location	Water Side
Category	Earthen Levee
Item	Erosion / Bank Caving

This another view of the site.

johngw_f_20120911_575.jpg



* Location LS : Land Side WS : Water Side CR : Crown	** Rating A : Acceptable M : Minimally Acceptable U : Unacceptable N : Not Inspected/Rated C : Corrected A/W : Acceptable but Monitor & Maintain	+ Issue Type Ma : Maintenance Deficiency Ob : Design & System Obsolescence En : Enforcement
--	---	---

**Flood Control Project Maintenance
Levee Inspections**

Levee Inspection Report By Mile - Fall 2012

Reclamation District No. 1600 Mull

Waterway	Bank	Unit Miles	Inspection Start/End	Inspector
Unit No. 01 Sacramento River	Right	10.51	11/27/2012 11/27/2012	John Williamson

Levee Mile Report Line	37
Start Levee Mile	7.27
End Levee Mile	7.27
Location	Water Side
Category	Earthen Levee
Item	Erosion / Bank Caving

The bank is eroding away and has become very steep.

johngw_f_20120911_576.jpg



Levee Mile Report Line	37
Start Levee Mile	7.27
End Levee Mile	7.27
Location	Water Side
Category	Earthen Levee
Item	Erosion / Bank Caving

The erosion is eroding away the berm area.

johngw_f_20120911_577.jpg



* Location LS : Land Side WS : Water Side CR : Crown	** Rating A : Acceptable M : Minimally Acceptable U : Unacceptable N : Not Inspected/Rated C : Corrected A/W : Acceptable but Monitor & Maintain	+ Issue Type Ma : Maintenance Deficiency Ob : Design & System Obsolescence En : Enforcement
--	---	---

**Flood Control Project Maintenance
Levee Inspections
Unit Cover Sheet
Fall 2012 Levee Inspection Results
Reclamation District No. 1600 Mull**

Waterway			Bank	Unit Miles
Unit No. 02 Yolo Bypass			Left	4.22
	Spring (March - May)	Summer (June - August)	(September - November) Fall	Winter (December - February)
Unit Maintenance Rating (Fall Only)			U	
Date of Inspection	04/24/2012 - 04/24/2012		11/06/2012 - 11/06/2012	
DWR Inspector	John Williamson		John Williamson	
Accompanied By	Kent Lang RD 1600		Kent Lang RD 1600	
	Kyle Lang RD 537/ RD 1600		Kyle Lang RD 537/ RD 1600	

Summer & Winter Inspections

The Local Maintaining Agency (LMA) is responsible for summer and winter inspections. The LMA is required to submit a report regarding summer and winter inspections to the California Department of Water Resources (DWR).

DWR must be informed on the:

- a) completion of the inspection
- b) any changes other than the results of normal maintenance
- c) corrections to deficiencies noted in this report

If additional items are noted, further documentation of those items must also be submitted.

The LMA should submit this information to DWR using the LMA web application tool available at:

<http://cdec.water.ca.gov/lma.html>

If the LMA is unable to submit information on this webpage, please contact DWR for assistance.

The LMA should submit the information and any associated documentation by September 30 for summer inspections and March 31 for winter inspections.

**Flood Control Project Maintenance
Levee Inspections**

Levee Inspection Report By Mile - Fall 2012

Reclamation District No. 1600 Mull

Waterway							Bank	Unit Miles	Inspection Start/End	Inspector
Unit No. 02 Yolo Bypass							Left	4.22	11/06/2012 11/06/2012	John Williamson
LMR No.	Levee Mile		Category	Item	Location	Rating	Action/Comment	GPS Latitude/Longitude		Issue No.
	Start	End						Start	End	Photo
1	0.01	0.39	Earthen Levee	Vegetation	LS	A Ma	V1 : Control annual grass and weeds on the levee slopes and easements.	38.735844 ° -121.633633 °	38.730368 ° -121.633470 °	1 Y
								DWR ID: DWR_RD1600_02_f_2012_1		
2	0.01	0.39	Earthen Levee	Vegetation	WS	A Ma	V1 : Control annual grass and weeds on the levee slopes and easements.	38.735844 ° -121.633633 °	38.730368 ° -121.633470 °	2 Y
								DWR ID: DWR_RD1600_02_f_2012_2		
3	0.22	0.22	Earthen Levee	Crown Surface / Depressions / Rutting	CR	C Ma	C3 : Add appropriate gravel or road base. Grade and compact.	38.732843 ° -121.633426 °	38.732843 ° -121.633426 °	10
								DWR ID: DWR_RD1600_02_s_2012_10		
4	0.35	0.35	Earthen Levee	Encroachments	WS	M En	PR : Prunings Inspector Comments: Piles are at the toe of the waterside slope.	38.730868 ° -121.633497 °	38.730868 ° -121.633497 °	29 Y
								DWR ID: DWR_RD1600_02_s_2012_29		
5	0.39	0.89	Earthen Levee	Vegetation	LS	M Ma	V1 : Control annual grass and weeds on the levee slopes and easements.	38.730368 ° -121.633473 °	38.723016 ° -121.633447 °	4 Y
								DWR ID: DWR_RD1600_02_f_2012_4		
6	0.39	0.89	Earthen Levee	Vegetation	WS	M Ma	V1 : Control annual grass and weeds on the levee slopes and easements.	38.730368 ° 38.723016 °	-121.633470 ° -121.633450 °	5 Y
								DWR ID: DWR_RD1600_02_f_2012_5		
7	0.49	0.49	Earthen Levee	Encroachments	WS	M En	PR : Prunings	38.728902 ° -121.633465 °	38.728902 ° -121.633465 °	30 Y
								DWR ID: DWR_RD1600_02_s_2012_30		
8	0.68	0.77	Earthen Levee	Crown Surface / Depressions / Rutting	CR A/W	M Ma	C3 : Add appropriate gravel or road base. Grade and compact.	38.726252 ° -121.633424 °	38.724869 ° -121.633411 °	11 Y
								DWR ID: DWR_RD1600_02_s_2012_11		
9	0.85	4.08	Earthen Levee	Crown Surface / Depressions / Rutting	CR A/W	M Ma	C1 : Add appropriate material and re-grade the levee to bring the crown above the design elevation.	38.723730 ° -121.633372 °	38.678393 ° -121.643858 °	31 Y
								DWR ID: DWR_RD1600_02_s_2012_31		
10	0.89	4.15	Earthen Levee	Vegetation	WS	A Ma	V1 : Control annual grass and weeds on the levee slopes and easements.	38.723018 ° -121.633443 °	38.677316 ° -121.643706 °	7 Y
								DWR ID: DWR_RD1600_02_f_2012_7		
11	0.89	4.15	Earthen Levee	Vegetation	LS	A Ma	V1 : Control annual grass and weeds on the levee slopes and easements.	38.723018 ° -121.633443 °	38.677315 ° -121.643707 °	6 Y
								DWR ID: DWR_RD1600_02_f_2012_6		
12	1.65	1.65	Earthen Levee	Crown Surface / Depressions / Rutting	CR	M Ma	C2 : Repair depressions or ruts in the crown or slope.	38.712382 ° -121.636417 °	38.712382 ° -121.636417 °	32 Y
								DWR ID: DWR_RD1600_02_s_2012_32		
13	1.74	2.01	Earthen Levee	Erosion / Bank Caving	WS	M Ma	E1 : Note and monitor erosion site.	38.710763 ° -121.637147 °	38.707116 ° -121.638722 °	14 Y
								DWR ID: DWR_RD1600_02_s_2012_14		

*** Location**

LS : Land Side
WS : Water Side
CR : Crown

**** Rating**

A : Acceptable
M : Minimally Acceptable
U : Unacceptable
N : Not Inspected/Rated
C : Corrected
A/W : Acceptable but Monitor & Maintain

+ Issue Type

Ma : Maintenance Deficiency
Ob : Design & System Obsolescence
En : Enforcement

**Flood Control Project Maintenance
Levee Inspections**

Levee Inspection Report By Mile - Fall 2012

Reclamation District No. 1600 Mull

Waterway	Bank	Unit Miles	Inspection Start/End	Inspector
Unit No. 02 Yolo Bypass	Left	4.22	11/06/2012 11/06/2012	John Williamson

LMR No.	Levee Mile		Category	Item	Location *	Rating ** +	Action/Comment	GPS Latitude/Longitude		Issue No. Photo
	Start	End						Start	End	
14	2.12	2.23	Earthen Levee	Erosion / Bank Caving	WS	M Ma	E1 : Note and monitor erosion site. Inspector Comments: This is wave wash damage caused by last high water.	38.705614 ° -121.639357 °	38.704052 ° -121.640016 °	15 Y
DWR ID: DWR_RD1600_02_s_2012_15										
15	2.19	3.83	Earthen Levee	Crown Surface / Depressions / Rutting	CR A/W	M Ma	C3 : Add appropriate gravel or road base. Grade and compact. Inspector Comments: The areas on the crown. I have marked are the worst areas. The entire unit needs to have base added. This is to have all weather road for patrolling.	38.705027 ° -121.639568 °	38.682007 ° -121.644305 °	3 Y
DWR ID: DWR_RD1600_02_s_2012_3										

*** Location**

LS : Land Side
WS : Water Side
CR : Crown

**** Rating**

A : Acceptable
M : Minimally Acceptable
U : Unacceptable
N : Not Inspected/Rated
C : Corrected
A/W : Acceptable but Monitor & Maintain

+ Issue Type

Ma : Maintenance Deficiency
Ob : Design & System Obsolescence
En : Enforcement

**Flood Control Project Maintenance
Levee Inspections**

Levee Inspection Report By Mile - Fall 2012

Reclamation District No. 1600 Mull

Waterway	Bank	Unit Miles	Inspection Start/End	Inspector
Unit No. 02 Yolo Bypass	Left	4.22	11/06/2012 11/06/2012	John Williamson

Levee Mile Report Line	1
Start Levee Mile	0.01
End Levee Mile	0.39
Location	Land Side
Category	Earthen Levee
Item	Vegetation

The levee slope complies with standards. Fall 2012

johngw_f_20121107_846.jpg



Levee Mile Report Line	2
Start Levee Mile	0.01
End Levee Mile	0.39
Location	Water Side
Category	Earthen Levee
Item	Vegetation

The levee slope complies with standards. Fall 2012

johngw_f_20121107_845.jpg



Levee Mile Report Line	4
Start Levee Mile	0.35
End Levee Mile	0.35
Location	Water Side
Category	Earthen Levee
Item	Encroachments

Pruning piles along the toe of the waterside levee. Photo taken spring 2012.

johngw_f_20120911_600.jpg



*** Location**

LS : Land Side
WS : Water Side
CR : Crown

**** Rating**

A : Acceptable
M : Minimally Acceptable
U : Unacceptable
N : Not Inspected/Rated
C : Corrected
A/W : Acceptable but Monitor & Maintain

+ Issue Type

Ma : Maintenance Deficiency
Ob : Design & System Obsolescence
En : Enforcement

**Flood Control Project Maintenance
Levee Inspections**

Levee Inspection Report By Mile - Fall 2012

Reclamation District No. 1600 Mull

Waterway	Bank	Unit Miles	Inspection Start/End	Inspector
Unit No. 02 Yolo Bypass	Left	4.22	11/06/2012 11/06/2012	John Williamson

Levee Mile Report Line	5
Start Levee Mile	0.39
End Levee Mile	0.89
Location	Land Side
Category	Earthen Levee
Item	Vegetation

Tall vegetation on the levee slope unable to see.
Fall 2012

johngw_f_20121107_847.jpg



Levee Mile Report Line	6
Start Levee Mile	0.39
End Levee Mile	0.89
Location	Water Side
Category	Earthen Levee
Item	Vegetation

Tall vegetation on the levee slope. Fall 2012

johngw_f_20121107_848.jpg



Levee Mile Report Line	7
Start Levee Mile	0.49
End Levee Mile	0.49
Location	Water Side
Category	Earthen Levee
Item	Encroachments

Pruning piles along the the waterside toe of the levee. Photo taken spring 2012.

johngw_f_20120911_601.jpg



*** Location**

LS : Land Side
WS : Water Side
CR : Crown

**** Rating**

A : Acceptable
M : Minimally Acceptable
U : Unacceptable
N : Not Inspected/Rated
C : Corrected
A/W : Acceptable but Monitor & Maintain

+ Issue Type

Ma : Maintenance Deficiency
Ob : Design & System Obsolescence
En : Enforcement

**Flood Control Project Maintenance
Levee Inspections**

Levee Inspection Report By Mile - Fall 2012

Reclamation District No. 1600 Mull

Waterway	Bank	Unit Miles	Inspection Start/End	Inspector
Unit No. 02 Yolo Bypass	Left	4.22	11/06/2012 11/06/2012	John Williamson

Levee Mile Report Line	8
Start Levee Mile	0.68
End Levee Mile	0.77
Location	Crown
Category	Earthen Levee
Item	Crown Surface / Depressions / Rutting

This area is soft and needs to have AB added to make an all weather surface.

johngw_f_20120911_595.jpg



Levee Mile Report Line	9
Start Levee Mile	0.85
End Levee Mile	4.08
Location	Crown
Category	Earthen Levee
Item	Crown Surface / Depressions / Rutting

The crown roadway needs to be free of weeds. Photo taken spring 2012.

johngw_f_20120911_602.jpg



Levee Mile Report Line	9
Start Levee Mile	0.85
End Levee Mile	4.08
Location	Crown
Category	Earthen Levee
Item	Crown Surface / Depressions / Rutting

The crown of the levee needs to be weed free. Fall 2012

johngw_f_20121107_849.jpg



* Location LS : Land Side WS : Water Side CR : Crown	** Rating A : Acceptable M : Minimally Acceptable U : Unacceptable N : Not Inspected/Rated C : Corrected A/W : Acceptable but Monitor & Maintain	+ Issue Type Ma : Maintenance Deficiency Ob : Design & System Obsolescence En : Enforcement
--	---	---

**Flood Control Project Maintenance
Levee Inspections**

Levee Inspection Report By Mile - Fall 2012

Reclamation District No. 1600 Mull

Waterway	Bank	Unit Miles	Inspection Start/End	Inspector
Unit No. 02 Yolo Bypass	Left	4.22	11/06/2012 11/06/2012	John Williamson

Levee Mile Report Line	10
Start Levee Mile	0.89
End Levee Mile	4.15
Location	Water Side
Category	Earthen Levee
Item	Vegetation

The goats are doing a good job on vegetation control. Fall 2012

johngw_f_20121107_850.jpg



Levee Mile Report Line	11
Start Levee Mile	0.89
End Levee Mile	4.15
Location	Land Side
Category	Earthen Levee
Item	Vegetation

A look at the waterside of the levee slope. Fall 2012

johngw_f_20121107_851.jpg



Levee Mile Report Line	12
Start Levee Mile	1.65
End Levee Mile	1.65
Location	Crown
Category	Earthen Levee
Item	Crown Surface / Depressions / Rutting

Tire ruts are deeper than 6", the crown needs to be graded. Photo taken spring 2012.

johngw_f_20120911_603.jpg



*** Location**

LS : Land Side
WS : Water Side
CR : Crown

**** Rating**

A : Acceptable
M : Minimally Acceptable
U : Unacceptable
N : Not Inspected/Rated
C : Corrected
A/W : Acceptable but Monitor & Maintain

+ Issue Type

Ma : Maintenance Deficiency
Ob : Design & System Obsolescence
En : Enforcement

**Flood Control Project Maintenance
Levee Inspections**

Levee Inspection Report By Mile - Fall 2012

Reclamation District No. 1600 Mull

Waterway	Bank	Unit Miles	Inspection Start/End	Inspector
Unit No. 02 Yolo Bypass	Left	4.22	11/06/2012 11/06/2012	John Williamson

Levee Mile Report Line	12
Start Levee Mile	1.65
End Levee Mile	1.65
Location	Crown
Category	Earthen Levee
Item	Crown Surface / Depressions / Rutting

The crown has ruts deeper then six inches. Fall 2012

johngw_f_20121107_852.jpg



Levee Mile Report Line	13
Start Levee Mile	1.74
End Levee Mile	2.01
Location	Water Side
Category	Earthen Levee
Item	Erosion / Bank Caving

Wave wash damage along the slope the cut is 1'-2'.

johngw_f_20120911_596.jpg



Levee Mile Report Line	13
Start Levee Mile	1.74
End Levee Mile	2.01
Location	Water Side
Category	Earthen Levee
Item	Erosion / Bank Caving

A closer view of the wave wash damage along the bypass.

johngw_f_20120911_597.jpg



*** Location**

LS : Land Side
WS : Water Side
CR : Crown

**** Rating**

A : Acceptable
M : Minimally Acceptable
U : Unacceptable
N : Not Inspected/Rated
C : Corrected
A/W : Acceptable but Monitor & Maintain

+ Issue Type

Ma : Maintenance Deficiency
Ob : Design & System Obsolescence
En : Enforcement

**Flood Control Project Maintenance
Levee Inspections**

Levee Inspection Report By Mile - Fall 2012

Reclamation District No. 1600 Mull

Waterway	Bank	Unit Miles	Inspection Start/End	Inspector
Unit No. 02 Yolo Bypass	Left	4.22	11/06/2012 11/06/2012	John Williamson

Levee Mile Report Line	14
Start Levee Mile	2.12
End Levee Mile	2.23
Location	Water Side
Category	Earthen Levee
Item	Erosion / Bank Caving

This is wave wash damage along the toe of the levee looking downstream.

johngw_f_20120911_598.jpg



Levee Mile Report Line	14
Start Levee Mile	2.12
End Levee Mile	2.23
Location	Water Side
Category	Earthen Levee
Item	Erosion / Bank Caving

Looking upstream a deeper cut of 2'-3' damage.

johngw_f_20120911_599.jpg



Levee Mile Report Line	15
Start Levee Mile	2.19
End Levee Mile	3.83
Location	Crown
Category	Earthen Levee
Item	Crown Surface / Depressions / Rutting

The crown of the levee needs to have AB added. Some rutting has occurred.

johngw_f_20120911_593.jpg



*** Location**

LS : Land Side
WS : Water Side
CR : Crown

**** Rating**

A : Acceptable
M : Minimally Acceptable
U : Unacceptable
N : Not Inspected/Rated
C : Corrected
A/W : Acceptable but Monitor & Maintain

+ Issue Type

Ma : Maintenance Deficiency
Ob : Design & System Obsolescence
En : Enforcement