

Flood Control Project Maintenance Levee Inspections

Fall 2021 Levee Maintenance Deficiency Summary Report

Sacramento River Basin

RD1000 ‡	Overall LMA Rating	Total LMA Miles						
Reclamation District No. 1000 Natomas	A	41.84						
Rated Item	Maintenance Deficiency				Enforcement		Design & System Obsolescence	
	M Miles	U Miles	M + 4U Miles	Threshold %	M Miles	U Miles	M Miles	U Miles
<i>Earthen Levee</i>								
Vegetation					2.54	0.49		
Trim / Thin Trees	0.71		0.71	1.70%				
Encroachments					1.84	0.21		
<i>Supplemental</i>								
DWR UCIP Field Study					0.12			
<i>LMA Totals:</i>	0.71	0.00	0.71	1.70%	4.50	0.70	0.00	0.00
Unit No. 01 Sacramento River LB	Overall Unit Rating	Total Unit Miles						
RD1000	A	18.28						
Rated Item	Maintenance Deficiency				Enforcement		Design & System Obsolescence	
	M Miles	U Miles	M + 4U Miles	Threshold %	M Miles	U Miles	M Miles	U Miles
<i>Earthen Levee</i>								
Vegetation					2.48	0.49		
Encroachments					0.51	0.21		
<i>Unit Totals:</i>	0.00	0.00	0.00	0.00%	2.99	0.70	0.00	0.00
Unit No. 02 American River RB	Overall Unit Rating	Total Unit Miles						
RD1000	U	2.32						
Rated Item	Maintenance Deficiency				Enforcement		Design & System Obsolescence	
	M Miles	U Miles	M + 4U Miles	Threshold %	M Miles	U Miles	M Miles	U Miles
<i>Earthen Levee</i>								
Trim / Thin Trees	0.71		0.71	30.58%				
Encroachments					0.01			
<i>Unit Totals:</i>	0.71	0.00	0.71	30.58%	0.01	0.00	0.00	0.00
Unit No. 03 Natomas East Canal RB	Overall Unit Rating	Total Unit Miles						
RD1000	A	16.93						
Rated Item	Maintenance Deficiency				Enforcement		Design & System Obsolescence	
	M Miles	U Miles	M + 4U Miles	Threshold %	M Miles	U Miles	M Miles	U Miles
<i>Earthen Levee</i>								
Vegetation					0.06			
Encroachments					1.32			
<i>Unit Totals:</i>	0.00	0.00	0.00	0.00%	1.38	0.00	0.00	0.00
Unit No. 04 Natomas Cross Canal LB	Overall Unit Rating	Total Unit Miles						
RD1000	A	4.30						
Rated Item	Maintenance Deficiency				Enforcement		Design & System Obsolescence	
	M Miles	U Miles	M + 4U Miles	Threshold %	M Miles	U Miles	M Miles	U Miles
<i>Supplemental</i>								
DWR UCIP Field Study					0.12			
<i>Unit Totals:</i>	0.00	0.00	0.00	0.00%	0.12	0.00	0.00	0.00

‡ Some areas within the LMA are under construction and as such, the contractor has operation and maintenance obligations in those areas during project construction and closeout.

**Flood Control Project Maintenance
Levee Inspections
Unit Cover Sheet**

Reclamation District No. 1000 Natomas

Waterway			Bank	Unit Miles
Unit No. 01 Sacramento River			Left	18.28
	Spring (March - May)	Summer (June - August)	(September - November) Fall	Winter (December - February)
Unit Maintenance Rating (Fall Only)			A	
Date of Inspection	3/29/2021 - 4/28/2021		10/15/2021 - 10/15/2021	
DWR Inspector	Brooks Weisser		Brooks Weisser	
Accompanied By	Don Caldwell RD1000		Don Caldwell RD1000	

Summer & Winter Inspections

The Local Maintaining Agency (LMA) is responsible for summer and winter inspections. The LMA is required to submit a report regarding summer and winter inspections to the California Department of Water Resources (DWR).

DWR must be informed on the:

- a) completion of the inspection
- b) any changes other than the results of normal maintenance
- c) corrections to deficiencies noted in this report

If additional items are noted, further documentation of those items must also be submitted.

The LMA should submit this information to DWR using the LMA web application tool available at:

<http://cdec.water.ca.gov/lma.html>

If the LMA is unable to submit information on this webpage, please contact DWR for assistance.

The LMA should submit the information and any associated documentation by September 30 for summer inspections and March 31 for winter inspections.

**Flood Control Project Maintenance
Levee Inspections**

Levee Inspection Report By Mile - Fall 2021

Reclamation District No. 1000 Natomas

Waterway	Bank	Unit Miles	Inspection Start/End	Inspector
Unit No. 01 Sacramento River	Left	18.28	10/15/2021 10/15/2021	Brooks Weisser

LM Start		Rating **	A	Issue No.	18		
LM End		Issue Type +	Ma	Location *			
Category	Earthen Levee			GPS Latitude/Longitude			
				Start	End		
Item	Operations & Maintenance Manuals				°		°
					°		°
DWR ID	DWR_RD1000_01_f _ 2014_18						
Comment Code							
Inspector Comment							
RD 1000 has a copy of the O&M manuals at their district office.							

No Photos

LM Start		Rating **	A	Issue No.	24
LM End		Issue Type +	Ma	Location *	
Category	Earthen Levee			GPS Latitude/Longitude	
				Start	End
Item	Emergency Supplies & Equipment				°
					°
DWR ID	DWR_RD1000_01_f_2014_24				
Comment Code					
Inspector Comment					
RD 1000 has flood fight supplies on hand at their equipment yard located near Unit 4.					

No Photos

LM Start		Rating **	A	Issue No.	39
LM End		Issue Type +	Ma	Location *	
Category	Earthen Levee			GPS Latitude/Longitude	
				Start	End
Item	Flood Preparedness & Training				°
					°
DWR ID	DWR_RD1000_01_f_2014_39				
Comment Code					
Inspector Comment					
RD 1000 employees attend the DWR flood fight class held at Cal Expo annually.					

No Photos

* Location LS : Land Side N/A : Not Applicable WS : Water Side CR : Crown		** Rating A : Acceptable N : Not Inspected/Rated M : Minimally Acceptable C : Corrected U : Unacceptable A/W : Acceptable but Monitor & Maintain		+ Issue Type Ma : Maintenance Deficiency Ob : Design & System Obsolescence En : Enforcement
--	--	---	--	---

**Flood Control Project Maintenance
Levee Inspections**

Levee Inspection Report By Mile - Fall 2021

Reclamation District No. 1000 Natomas

Waterway	Bank	Unit Miles	Inspection Start/End	Inspector
Unit No. 01 Sacramento River	Left	18.28	10/15/2021 10/15/2021	Brooks Weisser

LM Start	1.63	Rating **	M	Issue No.	136
LM End	1.69	Issue Type +	En	Location *	WS
Category	Earthen Levee			GPS Latitude/Longitude	
				Start	End
Item	Encroachments			38.759320 °	38.758415 °
				-121.591343 °	-121.591348 °
DWR ID	DWR_RD1000_01_s _ 2012_136				
Comment Code					
FE : Fence					
Inspector Comment					
A fence on the waterside slope prevents access, Fall 2021.					

Photo 1 of 1 : FA_2021_RD1000_31_136_20210901_00060.jpg



View of the fence encroachment.

LM Start	1.72	Rating **	M	Issue No.	135
LM End	1.75	Issue Type +	En	Location *	WS
Category	Earthen Levee			GPS Latitude/Longitude	
				Start	End
Item	Vegetation			38.757962 °	38.757480 °
				-121.591342 °	-121.591147 °
DWR ID	DWR_RD1000_01_s _ 2012_135				
Comment Code					
V6 : Landscaping					
Inspector Comment					
The landscape vegetation prevents the ability to see waterside slope and will make it difficult to access for flood fight, Fall 2021.					

No Photos

LM Start	1.75	Rating **	M	Issue No.	134
LM End	1.77	Issue Type +	En	Location *	WS
Category	Earthen Levee			GPS Latitude/Longitude	
				Start	End
Item	Vegetation			38.757478 °	38.757238 °
				-121.591140 °	-121.591272 °
DWR ID	DWR_RD1000_01_s _ 2012_134				
Comment Code					
V6 : Landscaping					
Inspector Comment					
The landscape vegetation prevents the ability to see waterside slope and will make it difficult to access for flood fight, Fall 2021.					

No Photos

* Location LS : Land Side N/A : Not Applicable WS : Water Side CR : Crown	** Rating A : Acceptable M : Minimally Acceptable U : Unacceptable	N : Not Inspected/Rated C : Corrected A/W : Acceptable but Monitor & Maintain	+ Issue Type Ma : Maintenance Deficiency Ob : Design & System Obsolescence En : Enforcement
--	--	---	---

**Flood Control Project Maintenance
Levee Inspections**

Levee Inspection Report By Mile - Fall 2021

Reclamation District No. 1000 Natomas

Waterway	Bank	Unit Miles	Inspection Start/End	Inspector
Unit No. 01 Sacramento River	Left	18.28	10/15/2021 10/15/2021	Brooks Weisser

LM Start	1.87	Rating **	M	Issue No.	133
LM End	1.89	Issue Type +	En	Location *	WS
Category	Earthen Levee			GPS Latitude/Longitude	
				Start	End
Item	Vegetation			38.755824 °	38.755585 °
				-121.591569 °	-121.591530 °
DWR ID	DWR_RD1000_01_s _ 2012_133				
Comment Code					
V6 : Landscaping					
Inspector Comment					
The landscape vegetation prevents the ability to see waterside slope and will make it difficult to access for flood fight, Fall 2021.					

Photo 1 of 1 : FA_2021_RD1000_31_133_20210901_00059.jpg



Typical Garden Hwy 'Landscaping'.

LM Start	1.94	Rating **	M	Issue No.	132
LM End	1.96	Issue Type +	En	Location *	WS
Category	Earthen Levee			GPS Latitude/Longitude	
				Start	End
Item	Vegetation			38.754848 °	38.754562 °
				-121.591742 °	-121.591795 °
DWR ID	DWR_RD1000_01_s _ 2012_132				
Comment Code					
V6 : Landscaping					
Inspector Comment					
The landscape vegetation prevents the ability to see waterside slope and will make it difficult to access for flood fight, Fall 2021.					

Photo 1 of 1 : FA_2021_RD1000_31_132_20211019_00061.jpg



View taken from the crown facing downstream looking at the waterward levee slope at the landscaping, Fall 2021.

*** Location**
LS : Land Side N/A : Not Applicable
WS : Water Side
CR : Crown

**** Rating**
A : Acceptable N : Not Inspected/Rated
M : Minimally Acceptable C : Corrected
U : Unacceptable A/W : Acceptable but Monitor & Maintain

+ Issue Type
Ma : Maintenance Deficiency
Ob : Design & System Obsolescence
En : Enforcement

**Flood Control Project Maintenance
Levee Inspections**

Levee Inspection Report By Mile - Fall 2021

Reclamation District No. 1000 Natomas

Waterway	Bank	Unit Miles	Inspection Start/End	Inspector
Unit No. 01 Sacramento River	Left	18.28	10/15/2021 10/15/2021	Brooks Weisser

LM Start	2.00	Rating **	M	Issue No.	129
LM End	2.01	Issue Type +	En	Location *	WS
Category	Earthen Levee			GPS Latitude/Longitude	
				Start	End
Item	Vegetation			38.753983 °	38.753848 °
				-121.591737 °	-121.591797 °
DWR ID	DWR_RD1000_01_s_2012_129				
Comment Code					
V6 : Landscaping					
Inspector Comment					
Landscape vegetation is blocking access and visibility to the levee, Fall 2021.					

Photo 1 of 1 : FA_2021_RD1000_31_129_20210901_00057.jpg



View looking upstream waterside of landscape vegetation that is blocking access and visibility to the levee, Spring 2021.

LM Start	2.10	Rating **	M	Issue No.	122
LM End	2.16	Issue Type +	En	Location *	WS
Category	Earthen Levee			GPS Latitude/Longitude	
				Start	End
Item	Vegetation			38.752540 °	38.751822 °
				-121.592563 °	-121.592857 °
DWR ID	DWR_RD1000_01_s_2012_122				
Comment Code					
V6 : Landscaping					
Inspector Comment					
Landscape vegetation is blocking access and visibility to the levee, Fall 2021.					

Photo 1 of 1 : FA_2021_RD1000_31_122_20210901_00055.jpg



View looking upstream waterside of landscape vegetation that is blocking access and visibility to the levee, Spring 2021.

* Location LS : Land Side N/A : Not Applicable WS : Water Side CR : Crown		** Rating A : Acceptable N : Not Inspected/Rated M : Minimally Acceptable C : Corrected U : Unacceptable A/W : Acceptable but Monitor & Maintain		+ Issue Type Ma : Maintenance Deficiency Ob : Design & System Obsolescence En : Enforcement
--	--	---	--	---

**Flood Control Project Maintenance
Levee Inspections**

Levee Inspection Report By Mile - Fall 2021

Reclamation District No. 1000 Natomas

Waterway	Bank	Unit Miles	Inspection Start/End	Inspector
Unit No. 01 Sacramento River	Left	18.28	10/15/2021 10/15/2021	Brooks Weisser

LM Start	2.52	Rating **	M	Issue No.	121
LM End	2.67	Issue Type +	En	Location *	WS
Category	Earthen Levee			GPS Latitude/Longitude	
				Start	End
Item	Vegetation			38.747087 °	38.745127 °
				-121.595582 °	-121.596793 °
DWR ID	DWR_RD1000_01_s_2012_121				
Comment Code					
V6 : Landscaping					
Inspector Comment					
Landscape vegetation is blocking access and visibility to the levee, Fall 2021.					

Photo 1 of 1 : FA_2021_RD1000_31_121_20210901_00054.jpg



View looking upstream waterside of landscape vegetation that is blocking access and visibility to the levee, Spring 2021

LM Start	5.17	Rating **	M	Issue No.	120
LM End	5.21	Issue Type +	En	Location *	WS
Category	Earthen Levee			GPS Latitude/Longitude	
				Start	End
Item	Vegetation			38.711248 °	38.710806 °
				-121.610500 °	-121.611110 °
DWR ID	DWR_RD1000_01_s_2012_120				
Comment Code					
V6 : Landscaping					
Inspector Comment					
Landscape vegetation is blocking access and visibility to the levee, Fall 2021.					

Photo 1 of 1 : FA_2021_RD1000_31_120_20210901_00053.jpg



Typical landscape vegetation along the waterside in front of residences.

LM Start	5.21	Rating **	A/W	Issue No.	4
LM End	5.21	Issue Type +	Ma	Location *	WS
Category	Earthen Levee			GPS Latitude/Longitude	
				Start	End
Item	Erosion / Bank Caving			38.710830 °	38.710830 °
				-121.611100 °	-121.611100 °
DWR ID	LMA-12				
Comment Code					
E1 : Note and monitor erosion site.					
Inspector Comment					
Erosion site is at a private residence.					
Site ID No:45					
Site Designation:LMA-12					

Photo 1 of 3 : LEVAL_FA_2021_45_1257.jpg



* Location LS : Land Side N/A : Not Applicable WS : Water Side CR : Crown		** Rating A : Acceptable M : Minimally Acceptable U : Unacceptable		N : Not Inspected/Rated C : Corrected A/W : Acceptable but Monitor & Maintain		+ Issue Type Ma : Maintenance Deficiency Ob : Design & System Obsolescence En : Enforcement	
---	--	---	--	---	--	--	--

**Flood Control Project Maintenance
Levee Inspections**

Levee Inspection Report By Mile - Fall 2021

Reclamation District No. 1000 Natomas

Waterway	Bank	Unit Miles	Inspection Start/End	Inspector
Unit No. 01 Sacramento River	Left	18.28	10/15/2021 10/15/2021	Brooks Weisser

LM Start	5.21	Rating **	A/W	Issue No.	4 (cont)
LM End	5.21	Issue Type +	Ma	Location *	WS
Category	Earthen Levee			GPS Latitude/Longitude	
				Start	End
Item	Erosion / Bank Caving			38.710830 °	38.710830 °
				-121.611100 °	-121.611100 °
DWR ID	LMA-12				

Photo 2 of 3 : LEVAL_FA_2021_45_1259.jpg



LM Start	5.21	Rating **	A/W	Issue No.	4 (cont)
LM End	5.21	Issue Type +	Ma	Location *	WS

Photo 3 of 3 : LEVAL_FA_2021_45_1261.jpg



LM Start	5.24	Rating **	M	Issue No.	119
LM End	5.28	Issue Type +	En	Location *	WS
Category	Earthen Levee			GPS Latitude/Longitude	
				Start	End
Item	Vegetation			38.710508 °	38.710132 °
				-121.611450 °	-121.611882 °
DWR ID	DWR_RD1000_01_s_2012_119				
Comment Code					
V6 : Landscaping					
Inspector Comment					
The landscape vegetation prevents the ability to see waterside slope and will make it difficult to access for flood fight, Fall 2021.					

No Photos

* Location LS : Land Side N/A : Not Applicable WS : Water Side CR : Crown	** Rating A : Acceptable M : Minimally Acceptable U : Unacceptable	N : Not Inspected/Rated C : Corrected A/W : Acceptable but Monitor & Maintain	+ Issue Type Ma : Maintenance Deficiency Ob : Design & System Obsolescence En : Enforcement
--	--	--	---

**Flood Control Project Maintenance
Levee Inspections**

Levee Inspection Report By Mile - Fall 2021

Reclamation District No. 1000 Natomas

Waterway	Bank	Unit Miles	Inspection Start/End	Inspector
Unit No. 01 Sacramento River	Left	18.28	10/15/2021 10/15/2021	Brooks Weisser

LM Start	5.62	Rating **	M	Issue No.	118
LM End	5.65	Issue Type +	En	Location *	WS
Category	Earthen Levee			GPS Latitude/Longitude	
				Start	End
Item	Vegetation			38.706456 °	38.706082 °
				-121.616223 °	-121.616385 °
DWR ID	DWR_RD1000_01_s_2012_118				
Comment Code					
V6 : Landscaping					
Inspector Comment					
The landscape vegetation prevents the ability to see waterside slope and will make it difficult to access if a flood fight is needed, Fall 2021.					

Photo 1 of 1 : FA_2021_RD1000_31_118_20210901_00052.jpg



This photo was taken from the crown facing downstream looking down the waterward levee slope at the landscaping, Spring 2021.

LM Start	5.92	Rating **	M	Issue No.	7
LM End	5.92	Issue Type +	En	Location *	WS
Category	Earthen Levee			GPS Latitude/Longitude	
				Start	End
Item	Encroachments			38.703201 °	38.703201 °
				-121.619718 °	-121.619718 °
DWR ID	DWR_RD1000_01_f_2019_7				
Comment Code					
TR : Tree or limb					
Inspector Comment					
Remove fruit trees and vegetation that has been planted on the levee slope.					

Photo 1 of 1 : FA_2021_RD1000_31_7_20210901_00008.jpg



View of waterside levee where the landowner has planted fruit trees and other landscape vegetation, Spring 2021.

*** Location**
LS : Land Side N/A : Not Applicable
WS : Water Side
CR : Crown

**** Rating**
A : Acceptable N : Not Inspected/Rated
M : Minimally Acceptable C : Corrected
U : Unacceptable A/W : Acceptable but Monitor & Maintain

+ Issue Type
Ma : Maintenance Deficiency
Ob : Design & System Obsolescence
En : Enforcement

**Flood Control Project Maintenance
Levee Inspections**

Levee Inspection Report By Mile - Fall 2021

Reclamation District No. 1000 Natomas

Waterway	Bank	Unit Miles	Inspection Start/End	Inspector
Unit No. 01 Sacramento River	Left	18.28	10/15/2021 10/15/2021	Brooks Weisser

LM Start	5.97	Rating **	M	Issue No.	116
LM End	6.00	Issue Type +	En	Location *	WS
Category	Earthen Levee			GPS Latitude/Longitude	
				Start	End
Item	Vegetation			38.702742 °	38.702467 °
				-121.620557 °	-121.620947 °
DWR ID	DWR_RD1000_01_s_2012_116				
Comment Code					
V6 : Landscaping					
Inspector Comment					
Landscape vegetation is blocking access and visibility to the levee.					

Photo 1 of 1 : FA_2021_RD1000_31_116_20210901_00051.jpg



View looking at waterside landscape vegetation that is blocking access and visibility to the levee, Spring 2021.

LM Start	6.12	Rating **	M	Issue No.	113
LM End	6.17	Issue Type +	En	Location *	WS
Category	Earthen Levee			GPS Latitude/Longitude	
				Start	End
Item	Vegetation			38.701422 °	38.700987 °
				-121.622755 °	-121.623564 °
DWR ID	DWR_RD1000_01_s_2012_113				
Comment Code					
V6 : Landscaping					
Inspector Comment					
The landscape vegetation prevents the ability to see waterside slope and will make it difficult to access for flood fightt, Fall 2021.					

Photo 1 of 1 : FA_2021_RD1000_31_113_20211019_00062.jpg



View taken from the crown facing downstream looking at the waterward levee slope at the landscaping, Fall 2021.

*** Location**
LS : Land Side N/A : Not Applicable
WS : Water Side
CR : Crown

**** Rating**
A : Acceptable N : Not Inspected/Rated
M : Minimally Acceptable C : Corrected
U : Unacceptable A/W : Acceptable but Monitor & Maintain

+ Issue Type
Ma : Maintenance Deficiency
Ob : Design & System Obsolescence
En : Enforcement

**Flood Control Project Maintenance
Levee Inspections**

Levee Inspection Report By Mile - Fall 2021

Reclamation District No. 1000 Natomas

Waterway	Bank	Unit Miles	Inspection Start/End	Inspector
Unit No. 01 Sacramento River	Left	18.28	10/15/2021 10/15/2021	Brooks Weisser

LM Start	6.28	Rating **	M	Issue No.	111
LM End	6.32	Issue Type +	En	Location *	WS
Category	Earthen Levee			GPS Latitude/Longitude	
				Start	End
Item	Vegetation			38.699877 °	38.699575 °
				-121.624948 °	-121.625475 °
DWR ID	DWR_RD1000_01_s_2012_111				
Comment Code					
V6 : Landscaping					
Inspector Comment					
The landscape vegetation prevents the ability to see waterside slope and will make it difficult to access if a flood fight is needed, Fall 2021.					

Photo 1 of 1 : FA_2021_RD1000_31_111_20210901_00049.jpg



This photo was taken from the crown facing downstream looking down the waterward levee slope at the landscaping.

LM Start	6.36	Rating **	M	Issue No.	68
LM End	6.40	Issue Type +	En	Location *	WS
Category	Earthen Levee			GPS Latitude/Longitude	
				Start	End
Item	Vegetation			38.699313 °	38.698978 °
				-121.626281 °	-121.626777 °
DWR ID	DWR_RD1000_01_s_2015_68				
Comment Code					
V6 : Landscaping					
Inspector Comment					
Vegetation is blocking visibility and access.					

Photo 1 of 1 : FA_2021_RD1000_31_68_20210901_00035.jpg



View at landscape vegetation that is blocking visibility and access, Spring 2021.

* Location
LS : Land Side N/A : Not Applicable
WS : Water Side
CR : Crown

** Rating
A : Acceptable N : Not Inspected/Rated
M : Minimally Acceptable C : Corrected
U : Unacceptable A/W : Acceptable but Monitor & Maintain

+ Issue Type
Ma : Maintenance Deficiency
Ob : Design & System Obsolescence
En : Enforcement

**Flood Control Project Maintenance
Levee Inspections**

Levee Inspection Report By Mile - Fall 2021

Reclamation District No. 1000 Natomas

Waterway	Bank	Unit Miles	Inspection Start/End	Inspector
Unit No. 01 Sacramento River	Left	18.28	10/15/2021 10/15/2021	Brooks Weisser

LM Start	6.49	Rating **	M	Issue No.	125
LM End	6.49	Issue Type +	En	Location *	WS
Category	Earthen Levee			GPS Latitude/Longitude	
				Start	End
Item	Vegetation			38.758607 °	38.758607 °
				-121.601933 °	-121.601933 °
DWR ID	DWR_RD1000_01_s _ 2012_125				
Comment Code					
V6 : Landscaping					
Inspector Comment					
The landscape vegetation prevents the ability to see waterside slope and will make it difficult to access for flood fight, Fall 2021.					

Photo 1 of 1 : FA_2021_RD1000_31_125_20211019_00063.jpg



View taken from the crown facing downstream looking at the waterward levee slope at the landscaping, Fall 2021.

LM Start	6.50	Rating **	M	Issue No.	109
LM End	6.53	Issue Type +	En	Location *	WS
Category	Earthen Levee			GPS Latitude/Longitude	
				Start	End
Item	Vegetation			38.697958 °	38.697773 °
				-121.628273 °	-121.628682 °
DWR ID	DWR_RD1000_01_s _ 2012_109				
Comment Code					
V6 : Landscaping					
Inspector Comment					
The landscape vegetation prevents the ability to see waterside slope and will make it difficult to access for flood fight, Fall 2021.					

No Photos

LM Start	6.67	Rating **	M	Issue No.	107
LM End	6.68	Issue Type +	En	Location *	WS
Category	Earthen Levee			GPS Latitude/Longitude	
				Start	End
Item	Vegetation			38.696010 °	38.695821 °
				-121.630007 °	-121.630142 °
DWR ID	DWR_RD1000_01_s _ 2012_107				
Comment Code					
V6 : Landscaping					
Inspector Comment					
The landscape vegetation prevents the ability to see waterside slope and will make it difficult to access for flood fight. Fall 2021.					

No Photos

* Location		** Rating		+ Issue Type	
LS : Land Side	N/A : Not Applicable	A : Acceptable	N : Not Inspected/Rated	Ma : Maintenance Deficiency	
WS : Water Side		M : Minimally Acceptable	C : Corrected	Ob : Design & System Obsolescence	
CR : Crown		U : Unacceptable	A/W : Acceptable but Monitor & Maintain	En : Enforcement	

**Flood Control Project Maintenance
Levee Inspections**

Levee Inspection Report By Mile - Fall 2021

Reclamation District No. 1000 Natomas

Waterway	Bank	Unit Miles	Inspection Start/End	Inspector
Unit No. 01 Sacramento River	Left	18.28	10/15/2021 10/15/2021	Brooks Weisser

LM Start	6.83	Rating **	M	Issue No.	104
LM End	6.87	Issue Type +	En	Location *	WS
Category	Earthen Levee			GPS Latitude/Longitude	
				Start	End
Item	Vegetation			38.693935 °	38.693412 °
				-121.631478 °	-121.631765 °
DWR ID	DWR_RD1000_01_s_2012_104				
Comment Code					
V6 : Landscaping					
Inspector Comment					
The landscape vegetation prevents the ability to see waterside slope and will make it difficult to access for flood fight, Fall 2021.					

No Photos

LM Start	6.90	Rating **	M	Issue No.	102
LM End	6.95	Issue Type +	En	Location *	WS
Category	Earthen Levee			GPS Latitude/Longitude	
				Start	End
Item	Vegetation			38.693037 °	38.692363 °
				-121.632097 °	-121.632373 °
DWR ID	DWR_RD1000_01_s_2012_102				
Comment Code					
V6 : Landscaping					
Inspector Comment					
The landscape vegetation prevents the ability to see waterside slope and will make it difficult to access for flood fight, Fall 2021.					

Photo 1 of 1 : FA_2021_RD1000_31_102_20211019_00064.jpg



View taken from the crown facing downstream looking at the waterward levee slope at the landscaping, Fall 2021.

LM Start	7.02	Rating **	M	Issue No.	100
LM End	7.09	Issue Type +	En	Location *	WS
Category	Earthen Levee			GPS Latitude/Longitude	
				Start	End
Item	Vegetation			38.691363 °	38.690367 °
				-121.632652 °	-121.632797 °
DWR ID	DWR_RD1000_01_s_2012_100				
Comment Code					
V6 : Landscaping					
Inspector Comment					
The landscape vegetation prevents the ability to see waterside slope and will make it difficult to access for flood fight, Fall 2021.					

No Photos

* Location LS : Land Side N/A : Not Applicable WS : Water Side CR : Crown		** Rating A : Acceptable M : Minimally Acceptable U : Unacceptable		+ Issue Type Ma : Maintenance Deficiency Ob : Design & System Obsolescence En : Enforcement	
		N : Not Inspected/Rated C : Corrected A/W : Acceptable but Monitor & Maintain			

**Flood Control Project Maintenance
Levee Inspections**

Levee Inspection Report By Mile - Fall 2021

Reclamation District No. 1000 Natomas

Waterway	Bank	Unit Miles	Inspection Start/End	Inspector
Unit No. 01 Sacramento River	Left	18.28	10/15/2021 10/15/2021	Brooks Weisser

LM Start	7.30	Rating **	M	Issue No.	96
LM End	7.34	Issue Type +	En	Location *	WS
Category	Earthen Levee			GPS Latitude/Longitude	
				Start	End
Item	Vegetation			38.687347 °	38.686780 °
				-121.632433 °	-121.632138 °
DWR ID	DWR_RD1000_01_s_2012_96				
Comment Code					
V6 : Landscaping					
Inspector Comment					
The landscape vegetation prevents the ability to see waterside slope and will make it difficult to access for flood fight, Fall 2021.					

No Photos

LM Start	7.41	Rating **	M	Issue No.	1
LM End	7.41	Issue Type +	En	Location *	WS
Category	Earthen Levee			GPS Latitude/Longitude	
				Start	End
Item	Vegetation			38.685843 °	38.685843 °
				-121.632012 °	-121.632012 °
DWR ID	DWR_RD1000_01_s_2012_1				
Comment Code					
V6 : Landscaping					
Inspector Comment					
The landscape vegetation prevents the ability to see waterside slope and will make it difficult to access for flood fight, Fall 2021.					

No Photos

LM Start	7.55	Rating **	M	Issue No.	9
LM End	7.55	Issue Type +	En	Location *	WS
Category	Earthen Levee			GPS Latitude/Longitude	
				Start	End
Item	Encroachments			38.683799 °	38.683799 °
				-121.631432 °	-121.631432 °
DWR ID	DWR_RD1000_01_f_2020_9				
Comment Code					
EQ : Equipment					
Inspector Comment					
Shipping container on waterside slope is blocking access and visibility and should be removed, Fall 2021.					

Photo 1 of 1 : FA_2021_RD1000_31_9_20210901_00010.jpg



View of shipping container on water side.

* Location LS : Land Side N/A : Not Applicable WS : Water Side CR : Crown		** Rating A : Acceptable M : Minimally Acceptable U : Unacceptable N : Not Inspected/Rated C : Corrected A/W : Acceptable but Monitor & Maintain		+ Issue Type Ma : Maintenance Deficiency Ob : Design & System Obsolescence En : Enforcement	
--	--	---	--	---	--

**Flood Control Project Maintenance
Levee Inspections**

Levee Inspection Report By Mile - Fall 2021

Reclamation District No. 1000 Natomas

Waterway	Bank	Unit Miles	Inspection Start/End	Inspector
Unit No. 01 Sacramento River	Left	18.28	10/15/2021 10/15/2021	Brooks Weisser

LM Start	7.56	Rating **	M	Issue No.	95
LM End	7.62	Issue Type +	En	Location *	WS
Category	Earthen Levee			GPS Latitude/Longitude	
				Start	End
Item	Vegetation			38.683620 °	38.682742 °
				-121.631180 °	-121.631190 °
DWR ID	DWR_RD1000_01_s_2012_95				
Comment Code					
V6 : Landscaping					
Inspector Comment					
The landscape vegetation prevents the ability to see waterside slope and will make it difficult to access for flood fight, Fall 2021.					

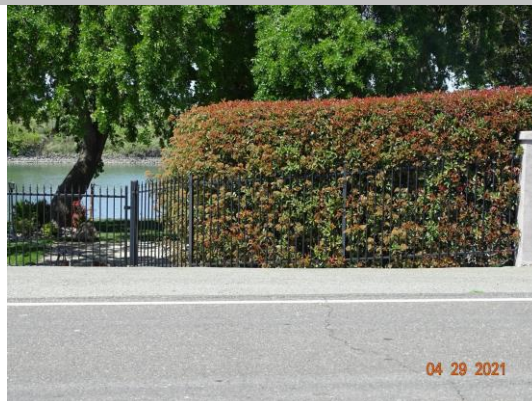
Photo 1 of 1 : FA_2021_RD1000_31_95_20210901_00047.jpg



View looking at waterside landscape vegetation that is blocking access and visibility to the levee, Spring 2021.

LM Start	7.62	Rating **	M	Issue No.	94
LM End	7.65	Issue Type +	En	Location *	WS
Category	Earthen Levee			GPS Latitude/Longitude	
				Start	End
Item	Vegetation			38.682742 °	38.682310 °
				-121.631168 °	-121.631085 °
DWR ID	DWR_RD1000_01_s_2012_94				
Comment Code					
V6 : Landscaping					
Inspector Comment					
The landscape vegetation prevents the ability to see waterside slope and will make it difficult to access for flood fight, Fall 2021.					

Photo 1 of 1 : FA_2021_RD1000_31_94_20210901_00046.jpg



View looking at waterside landscape vegetation that is blocking access and visibility to the levee, Spring 2021.

* Location LS : Land Side N/A : Not Applicable WS : Water Side CR : Crown		** Rating A : Acceptable N : Not Inspected/Rated M : Minimally Acceptable C : Corrected U : Unacceptable A/W : Acceptable but Monitor & Maintain		+ Issue Type Ma : Maintenance Deficiency Ob : Design & System Obsolescence En : Enforcement	
--	--	---	--	---	--

**Flood Control Project Maintenance
Levee Inspections**

Levee Inspection Report By Mile - Fall 2021

Reclamation District No. 1000 Natomas

Waterway	Bank	Unit Miles	Inspection Start/End	Inspector
Unit No. 01 Sacramento River	Left	18.28	10/15/2021 10/15/2021	Brooks Weisser

LM Start	7.71	Rating **	M	Issue No.	93
LM End	7.76	Issue Type +	En	Location *	WS
Category	Earthen Levee			GPS Latitude/Longitude	
				Start	End
Item	Vegetation			38.681592 °	38.680837 °
				-121.630768 °	-121.630530 °
DWR ID	DWR_RD1000_01_s_2012_93				
Comment Code					
V6 : Landscaping					
Inspector Comment					
The landscape vegetation prevents the ability to see waterside slope and will make it difficult to access for flood fight, Fall 2021.					

No Photos

LM Start	8.11	Rating **	M	Issue No.	90
LM End	8.14	Issue Type +	En	Location *	WS
Category	Earthen Levee			GPS Latitude/Longitude	
				Start	End
Item	Vegetation			38.676425 °	38.676038 °
				-121.627462 °	-121.627063 °
DWR ID	DWR_RD1000_01_s_2012_90				
Comment Code					
V6 : Landscaping					
Inspector Comment					
The landscape vegetation prevents the ability to see waterside slope and will make it difficult to access for flood fight, Fall 2021.					

Photo 1 of 1 : FA_2021_RD1000_31_90_20210901_00045.jpg



This photo was taken from the crown facing downstream looking downstream. Landowner maintained vegetation completely blocks visibility of or access to the levee.

* Location
LS : Land Side N/A : Not Applicable
WS : Water Side
CR : Crown

** Rating
A : Acceptable N : Not Inspected/Rated
M : Minimally Acceptable C : Corrected
U : Unacceptable A/W : Acceptable but Monitor & Maintain

+ Issue Type
Ma : Maintenance Deficiency
Ob : Design & System Obsolescence
En : Enforcement

**Flood Control Project Maintenance
Levee Inspections**

Levee Inspection Report By Mile - Fall 2021

Reclamation District No. 1000 Natomas

Waterway	Bank	Unit Miles	Inspection Start/End	Inspector
Unit No. 01 Sacramento River	Left	18.28	10/15/2021 10/15/2021	Brooks Weisser

LM Start	8.14	Rating **	M	Issue No.	89
LM End	8.17	Issue Type +	En	Location *	WS
Category	Earthen Levee			GPS Latitude/Longitude	
				Start	End
Item	Vegetation			38.676040 °	38.675772 °
				-121.627063 °	-121.626785 °
DWR ID	DWR_RD1000_01_s _ 2012_89				
Comment Code					
V6 : Landscaping					
Inspector Comment					
The landscape vegetation prevents the ability to see waterside slope and will make it difficult to access for flood fight, Fall 2021.					

Photo 1 of 1 : FA_2021_RD1000_31_89_20211019_00065.jpg



View of landscape vegetation that is blocking visibility and access, Fall 2021.

LM Start	8.49	Rating **	M	Issue No.	85
LM End	8.54	Issue Type +	En	Location *	WS
Category	Earthen Levee			GPS Latitude/Longitude	
				Start	End
Item	Vegetation			38.672263 °	38.671790 °
				-121.622784 °	-121.622118 °
DWR ID	DWR_RD1000_01_s _ 2012_85				
Comment Code					
V6 : Landscaping					
Inspector Comment					
The landscape vegetation prevents the ability to see waterside slope and will make it difficult to access for flood fight, Fall 2021.					

No Photos

*** Location**
LS : Land Side N/A : Not Applicable
WS : Water Side
CR : Crown

**** Rating**
A : Acceptable N : Not Inspected/Rated
M : Minimally Acceptable C : Corrected
U : Unacceptable A/W : Acceptable but Monitor & Maintain

+ Issue Type
Ma : Maintenance Deficiency
Ob : Design & System Obsolescence
En : Enforcement

**Flood Control Project Maintenance
Levee Inspections**

Levee Inspection Report By Mile - Fall 2021

Reclamation District No. 1000 Natomas

Waterway	Bank	Unit Miles	Inspection Start/End	Inspector
Unit No. 01 Sacramento River	Left	18.28	10/15/2021 10/15/2021	Brooks Weisser

LM Start	8.70	Rating **	M	Issue No.	6
LM End	8.74	Issue Type +	En	Location *	WS
Category	Earthen Levee			GPS Latitude/Longitude	
				Start	End
Item	Vegetation			38.670142 °	38.669730 °
				-121.620147 °	-121.619582 °
DWR ID	DWR_RD1000_01_s _ 2020_6				
Comment Code					
V6 : Landscaping					
Inspector Comment					
The landscape vegetation prevents the ability to see waterside slope and will make it difficult to access for flood fight, Fall 2021.					

Photo 1 of 1 : FA_2021_RD1000_31_6_20211019_00066.jpg



View taken from the crown facing downstream looking at the waterward levee slope at the landscaping, Fall 2021.

LM Start	8.86	Rating **	M	Issue No.	82
LM End	8.89	Issue Type +	En	Location *	WS
Category	Earthen Levee			GPS Latitude/Longitude	
				Start	End
Item	Vegetation			38.668673 °	38.668405 °
				-121.617772 °	-121.617278 °
DWR ID	DWR_RD1000_01_s _ 2012_82				
Comment Code					
V6 : Landscaping					
Inspector Comment					
The landscape vegetation prevents the ability to see waterside slope and will make it difficult to access for flood fight, Fall 2021.					

Photo 1 of 1 : FA_2021_RD1000_31_82_20210901_00043.jpg



This photo was taken from the crown facing downstream waterside levee slope at the landscaping, Spring 2021.

* Location
LS : Land Side N/A : Not Applicable
WS : Water Side
CR : Crown

** Rating
A : Acceptable N : Not Inspected/Rated
M : Minimally Acceptable C : Corrected
U : Unacceptable A/W : Acceptable but Monitor & Maintain

+ Issue Type
Ma : Maintenance Deficiency
Ob : Design & System Obsolescence
En : Enforcement

**Flood Control Project Maintenance
Levee Inspections**

Levee Inspection Report By Mile - Fall 2021

Reclamation District No. 1000 Natomas

Waterway	Bank	Unit Miles	Inspection Start/End	Inspector
Unit No. 01 Sacramento River	Left	18.28	10/15/2021 10/15/2021	Brooks Weisser

LM Start	8.90	Rating **	M	Issue No.	81
LM End	8.96	Issue Type +	En	Location *	WS
Category	Earthen Levee			GPS Latitude/Longitude	
				Start	End
Item	Vegetation			38.668312 °	38.667783 °
				-121.617138 °	-121.616382 °
DWR ID	DWR_RD1000_01_s_2012_81				
Comment Code					
V6 : Landscaping					
Inspector Comment					
The landscape vegetation prevents the ability to see waterside slope and will make it difficult to access for flood fight, Fall 2021.					

Photo 1 of 1 : FA_2021_RD1000_31_81_20210901_00042.jpg



View of landscape vegetation that blocks visibility and access, Spring 2021.

LM Start	8.99	Rating **	M	Issue No.	79
LM End	9.02	Issue Type +	En	Location *	WS
Category	Earthen Levee			GPS Latitude/Longitude	
				Start	End
Item	Vegetation			38.667505 °	38.667255 °
				-121.615912 °	-121.615525 °
DWR ID	DWR_RD1000_01_s_2012_79				
Comment Code					
V6 : Landscaping					
Inspector Comment					
The landscape vegetation prevents the ability to see waterside slope and will make it difficult to access for flood fight, Fall 2021.					

No Photos

LM Start	9.02	Rating **	M	Issue No.	78
LM End	9.04	Issue Type +	En	Location *	WS
Category	Earthen Levee			GPS Latitude/Longitude	
				Start	End
Item	Vegetation			38.667250 °	38.667028 °
				-121.615522 °	-121.615115 °
DWR ID	DWR_RD1000_01_s_2012_78				
Comment Code					
V6 : Landscaping					
Inspector Comment					
The landscape vegetation prevents the ability to see waterside slope and will make it difficult to access for flood fight. Fall 2021.					

No Photos

* Location LS : Land Side N/A : Not Applicable WS : Water Side CR : Crown		** Rating A : Acceptable N : Not Inspected/Rated M : Minimally Acceptable C : Corrected U : Unacceptable A/W : Acceptable but Monitor & Maintain		+ Issue Type Ma : Maintenance Deficiency Ob : Design & System Obsolescence En : Enforcement
--	--	---	--	---

**Flood Control Project Maintenance
Levee Inspections**

Levee Inspection Report By Mile - Fall 2021

Reclamation District No. 1000 Natomas

Waterway	Bank	Unit Miles	Inspection Start/End	Inspector
Unit No. 01 Sacramento River	Left	18.28	10/15/2021 10/15/2021	Brooks Weisser

LM Start	9.06	Rating **	M	Issue No.	2
LM End	9.08	Issue Type +	En	Location *	WS
Category	Earthen Levee			GPS Latitude/Longitude	
				Start	End
Item	Encroachments			38.666821 °	38.666604 °
				-121.615019 °	-121.614672 °
DWR ID	DWR_RD1000_01_s_2012_2				
Comment Code					
FE : Fence					
Inspector Comment					
There is an unacceptable fence at this location. According to the NOV all panels of the fence are to be removed. The owner has removed some of the panels between the posts, Fall 2021.					

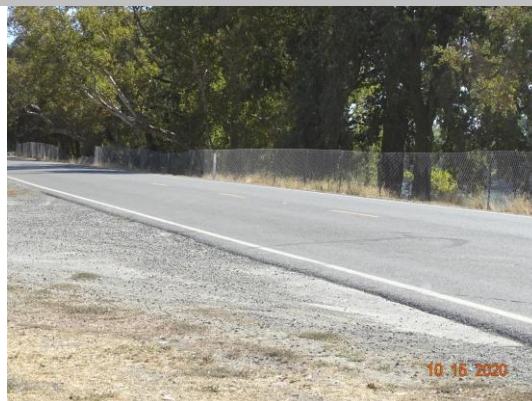
Photo 1 of 1 : FA_2021_RD1000_31_2_20210901_00001.jpg



This photo was taken during Fall 2020 from the crown facing upstream on the waterward levee slope at a fence enforcement issue.

LM Start	9.09	Rating **	M	Issue No.	10
LM End	9.18	Issue Type +	En	Location *	WS
Category	Earthen Levee			GPS Latitude/Longitude	
				Start	End
Item	Encroachments			38.666650 °	38.665750 °
				-121.614461 °	-121.613078 °
DWR ID	DWR_RD1000_01_f_2017_10				
Comment Code					
FE : Fence					
Inspector Comment					
Non-permitted fence needs to be removed, Fall 2021.					

Photo 1 of 1 : FA_2021_RD1000_31_10_20210901_00011.jpg



View on waterside of a non-permitted fence.

*** Location**
LS : Land Side N/A : Not Applicable
WS : Water Side
CR : Crown

**** Rating**
A : Acceptable N : Not Inspected/Rated
M : Minimally Acceptable C : Corrected
U : Unacceptable A/W : Acceptable but Monitor & Maintain

+ Issue Type
Ma : Maintenance Deficiency
Ob : Design & System Obsolescence
En : Enforcement

**Flood Control Project Maintenance
Levee Inspections**

Levee Inspection Report By Mile - Fall 2021

Reclamation District No. 1000 Natomas

Waterway	Bank	Unit Miles	Inspection Start/End	Inspector
Unit No. 01 Sacramento River	Left	18.28	10/15/2021 10/15/2021	Brooks Weisser

LM Start	10.72	Rating **	M	Issue No.	74
LM End	10.76	Issue Type +	En	Location *	WS
Category	Earthen Levee			GPS Latitude/Longitude	
				Start	End
Item	Vegetation			38.648127 °	38.647663 °
				-121.595872 °	-121.595483 °
DWR ID	DWR_RD1000_01_s_2012_74				
Comment Code					
V6 : Landscaping					
Inspector Comment					
The landscape vegetation prevents the ability to see waterside slope and will make it difficult to access for flood fight, Fall 2021.					

Photo 1 of 1 : FA_2021_RD1000_31_74_20210901_00040.jpg



This photo was taken from the crown facing downstream looking down the waterward levee slope at unacceptable landscaping.

LM Start	10.78	Rating **	M	Issue No.	73
LM End	10.83	Issue Type +	En	Location *	WS
Category	Earthen Levee			GPS Latitude/Longitude	
				Start	End
Item	Vegetation			38.647373 °	38.646825 °
				-121.595248 °	-121.594800 °
DWR ID	DWR_RD1000_01_s_2012_73				
Comment Code					
V6 : Landscaping					
Inspector Comment					
The landscape vegetation prevents the ability to see waterside slope and will make it difficult to access for flood fight, Fall 2021.					

Photo 1 of 1 : FA_2021_RD1000_31_73_20210901_00039.jpg



This photo was taken from the crown facing downstream looking down the waterward levee slope at the landscaping.

* Location
LS : Land Side N/A : Not Applicable
WS : Water Side
CR : Crown

** Rating
A : Acceptable N : Not Inspected/Rated
M : Minimally Acceptable C : Corrected
U : Unacceptable A/W : Acceptable but Monitor & Maintain

+ Issue Type
Ma : Maintenance Deficiency
Ob : Design & System Obsolescence
En : Enforcement

**Flood Control Project Maintenance
Levee Inspections**

Levee Inspection Report By Mile - Fall 2021

Reclamation District No. 1000 Natomas

Waterway	Bank	Unit Miles	Inspection Start/End	Inspector
Unit No. 01 Sacramento River	Left	18.28	10/15/2021 10/15/2021	Brooks Weisser

LM Start	11.06	Rating **	M	Issue No.	72
LM End	11.13	Issue Type +	En	Location *	WS
Category	Earthen Levee			GPS Latitude/Longitude	
				Start	End
Item	Vegetation			38.644548 °	38.644302 °
				-121.591768 °	-121.590572 °
DWR ID	DWR_RD1000_01_s_2012_72				
Comment Code					
V6 : Landscaping					
Inspector Comment					
The landscape vegetation prevents the ability to see waterside slope and will make it difficult to access for flood fight, Fall 2021.					

Photo 1 of 1 : FA_2021_RD1000_31_72_20211019_00067.jpg



View taken from the crown facing downstream looking at the waterward levee slope at the landscaping, Fall 2021.

LM Start	11.28	Rating **	M	Issue No.	70
LM End	11.33	Issue Type +	En	Location *	WS
Category	Earthen Levee			GPS Latitude/Longitude	
				Start	End
Item	Vegetation			38.644392 °	38.644702 °
				-121.587852 °	-121.586992 °
DWR ID	DWR_RD1000_01_s_2012_70				
Comment Code					
V6 : Landscaping					
Inspector Comment					
The landscape vegetation prevents the ability to see waterside slope and will make it difficult to access for flood fight, Fall 2021.					

Photo 1 of 1 : FA_2021_RD1000_31_70_20210901_00037.jpg



This photo was taken from the crown facing downstream looking down the waterward levee slope at the landscaping.

*** Location**
LS : Land Side N/A : Not Applicable
WS : Water Side
CR : Crown

**** Rating**
A : Acceptable N : Not Inspected/Rated
M : Minimally Acceptable C : Corrected
U : Unacceptable A/W : Acceptable but Monitor & Maintain

+ Issue Type
Ma : Maintenance Deficiency
Ob : Design & System Obsolescence
En : Enforcement

Reclamation District No. 1000 Natomas

View of landscape vegetation that blocks access and visibility.

No Photos

View of the landscaping on the waterside levee slope.

Page 21 of 40

**Flood Control Project Maintenance
Levee Inspections**

Levee Inspection Report By Mile - Fall 2021

Reclamation District No. 1000 Natomas

Waterway	Bank	Unit Miles	Inspection Start/End	Inspector
Unit No. 01 Sacramento River	Left	18.28	10/15/2021 10/15/2021	Brooks Weisser

LM Start	12.35	Rating **	M	Issue No.	62
LM End	12.44	Issue Type +	En	Location *	WS
Category	Earthen Levee			GPS Latitude/Longitude	
				Start	End
Item	Vegetation			38.649560 °	38.648895 °
				-121.570438 °	-121.569043 °
DWR ID	DWR_RD1000_01_s _ 2012_62				
Comment Code					
V6 : Landscaping					
Inspector Comment					
The landscape vegetation prevents the ability to see waterside slope and will make it difficult to access for flood fight, Fall 2021.					

Photo 1 of 1 : FA_2021_RD1000_31_62_20210901_00033.jpg



This photo was taken from the crown facing downstream looking down the waterward levee slope at the landscaping.

LM Start	12.44	Rating **	M	Issue No.	61
LM End	12.47	Issue Type +	En	Location *	WS
Category	Earthen Levee			GPS Latitude/Longitude	
				Start	End
Item	Vegetation			38.648897 °	38.648588 °
				-121.569030 °	-121.568467 °
DWR ID	DWR_RD1000_01_s _ 2012_61				
Comment Code					
V6 : Landscaping					
Inspector Comment					
The landscape vegetation prevents the ability to see waterside slope and will make it difficult to access for flood fight, Fall 2021.					

No Photos

* Location LS : Land Side N/A : Not Applicable WS : Water Side CR : Crown	** Rating A : Acceptable M : Minimally Acceptable U : Unacceptable	N : Not Inspected/Rated C : Corrected A/W : Acceptable but Monitor & Maintain	+ Issue Type Ma : Maintenance Deficiency Ob : Design & System Obsolescence En : Enforcement
--	--	---	---

**Flood Control Project Maintenance
Levee Inspections**

Levee Inspection Report By Mile - Fall 2021

Reclamation District No. 1000 Natomas

Waterway	Bank	Unit Miles	Inspection Start/End	Inspector
Unit No. 01 Sacramento River	Left	18.28	10/15/2021 10/15/2021	Brooks Weisser

LM Start	12.52	Rating **	U	Issue No.	5
LM End	12.61	Issue Type +	En	Location *	WS
Category	Earthen Levee			GPS Latitude/Longitude	
				Start	End
Item	Vegetation			38.648056 °	38.647220 °
				-121.567900 °	-121.566708 °
DWR ID	DWR_RD1000_01_s_2020_5				
Comment Code					
V6 : Landscaping					
Inspector Comment					
The landscape vegetation prevents the ability to see waterside slope and will make it difficult to access for flood fight, Fall 2021.					

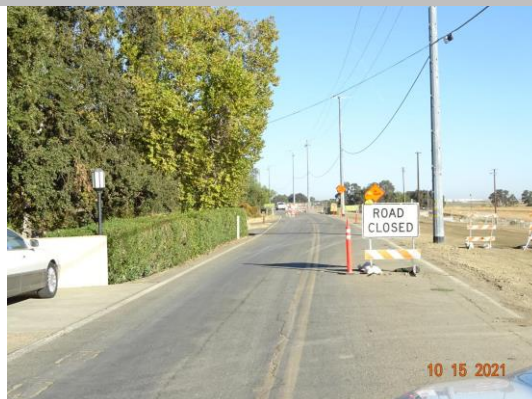
Photo 1 of 1 : FA_2021_RD1000_31_5_20210901_00006.jpg



View taken from the crown facing upstream looking at the waterward levee slope at unacceptable landscaping, Spring 2020.

LM Start	12.53	Rating **	A/W	Issue No.	11
LM End	14.53	Issue Type +	Ma	Location *	CR
Category	Earthen Levee			GPS Latitude/Longitude	
				Start	End
Item	Crown Surface / Depressions / Rutting			38.647855 °	38.620405 °
				-121.567796 °	-121.560157 °
DWR ID	DWR_RD1000_01_f_2020_11				
Comment Code					
C1 : Add appropriate material and re-grade the levee to bring the crown above the design elevation.					
Inspector Comment					
Current section of Unit 1 under construction (Reach B), Fall 2021.					

Photo 1 of 1 : FA_2021_RD1000_31_11_20211019_00082.jpg



View of construction in Reach B looking upstream, Fall 2021.

*** Location**
LS : Land Side N/A : Not Applicable
WS : Water Side
CR : Crown

**** Rating**
A : Acceptable N : Not Inspected/Rated
M : Minimally Acceptable C : Corrected
U : Unacceptable A/W : Acceptable but Monitor & Maintain

+ Issue Type
Ma : Maintenance Deficiency
Ob : Design & System Obsolescence
En : Enforcement

**Flood Control Project Maintenance
Levee Inspections**

Levee Inspection Report By Mile - Fall 2021

Reclamation District No. 1000 Natomas

Waterway	Bank	Unit Miles	Inspection Start/End	Inspector
Unit No. 01 Sacramento River	Left	18.28	10/15/2021 10/15/2021	Brooks Weisser

LM Start	12.68	Rating **	U	Issue No.	58
LM End	12.72	Issue Type +	En	Location *	WS
Category	Earthen Levee			GPS Latitude/Longitude	
				Start	End
Item	Vegetation			38.646400 °	38.645926 °
				-121.565695 °	-121.565297 °
DWR ID	DWR_RD1000_01_f_2020_58				
Comment Code					
V6 : Landscaping					
Inspector Comment					
The landscape vegetation prevents the ability to see waterside slope and will make it difficult to access for flood fight, Fall 2021.					

Photo 1 of 1 : FA_2021_RD1000_31_58_20211019_00068.jpg



View taken from the crown facing downstream looking at the waterward levee slope at unacceptable landscaping, Fall 2021.

LM Start	12.91	Rating **	M	Issue No.	55
LM End	12.93	Issue Type +	En	Location *	WS
Category	Earthen Levee			GPS Latitude/Longitude	
				Start	End
Item	Vegetation			38.643527 °	38.643306 °
				-121.563518 °	-121.563462 °
DWR ID	DWR_RD1000_01_s_2012_55				
Comment Code					
V6 : Landscaping					
Inspector Comment					

No Photos

LM Start	12.93	Rating **	M	Issue No.	54
LM End	12.94	Issue Type +	En	Location *	WS
Category	Earthen Levee			GPS Latitude/Longitude	
				Start	End
Item	Encroachments			38.643380 °	38.643275 °
				-121.563400 °	-121.563307 °
DWR ID	DWR_RD1000_01_s_2012_54				
Comment Code					
FE : Fence					
Inspector Comment					

No Photos

* Location LS : Land Side N/A : Not Applicable WS : Water Side CR : Crown	** Rating A : Acceptable M : Minimally Acceptable U : Unacceptable	N : Not Inspected/Rated C : Corrected A/W : Acceptable but Monitor & Maintain	+ Issue Type Ma : Maintenance Deficiency Ob : Design & System Obsolescence En : Enforcement
--	--	---	---

**Flood Control Project Maintenance
Levee Inspections**

Levee Inspection Report By Mile - Fall 2021

Reclamation District No. 1000 Natomas

Waterway	Bank	Unit Miles	Inspection Start/End	Inspector
Unit No. 01 Sacramento River	Left	18.28	10/15/2021 10/15/2021	Brooks Weisser

LM Start	13.15	Rating **	U	Issue No.	51
LM End	13.20	Issue Type +	En	Location *	WS
Category	Earthen Levee			GPS Latitude/Longitude	
				Start	End
Item	Vegetation			38.640205 °	38.639540 °
				-121.562370 °	-121.562238 °
DWR ID	DWR_RD1000_01_s_2012_51				
Comment Code					
V6 : Landscaping					
Inspector Comment					
The landscape vegetation prevents the ability to see waterside slope and will make it difficult to access for flood fight, Fall 2021.					

Photo 1 of 1 : FA_2021_RD1000_31_51_20210901_00030.jpg



View of the landscaping on the waterside levee slope.

LM Start	13.26	Rating **	M	Issue No.	50
LM End	13.30	Issue Type +	En	Location *	WS
Category	Earthen Levee			GPS Latitude/Longitude	
				Start	End
Item	Vegetation			38.638668 °	38.638065 °
				-121.562085 °	-121.562015 °
DWR ID	DWR_RD1000_01_s_2012_50				
Comment Code					
V6 : Landscaping					
Inspector Comment					

No Photos

LM Start	13.30	Rating **	M	Issue No.	49
LM End	13.33	Issue Type +	En	Location *	WS
Category	Earthen Levee			GPS Latitude/Longitude	
				Start	End
Item	Vegetation			38.638067 °	38.637600 °
				-121.562013 °	-121.561932 °
DWR ID	DWR_RD1000_01_s_2012_49				
Comment Code					
V6 : Landscaping					
Inspector Comment					

No Photos

* Location
LS : Land Side N/A : Not Applicable
WS : Water Side
CR : Crown

** Rating
A : Acceptable N : Not Inspected/Rated
M : Minimally Acceptable C : Corrected
U : Unacceptable A/W : Acceptable but Monitor & Maintain

+ Issue Type
Ma : Maintenance Deficiency
Ob : Design & System Obsolescence
En : Enforcement

**Flood Control Project Maintenance
Levee Inspections**

Levee Inspection Report By Mile - Fall 2021

Reclamation District No. 1000 Natomas

Waterway	Bank	Unit Miles	Inspection Start/End	Inspector
Unit No. 01 Sacramento River	Left	18.28	10/15/2021 10/15/2021	Brooks Weisser

LM Start	13.33	Rating **	M	Issue No.	48
LM End	13.37	Issue Type +	En	Location *	WS
Category	Earthen Levee			GPS Latitude/Longitude	
				Start	End
Item	Vegetation			38.637602 °	38.637060 °
				-121.561930 °	-121.561833 °
DWR ID	DWR_RD1000_01_s_2012_48				
Comment Code					
V6 : Landscaping					
Inspector Comment					
The landscape vegetation prevents the ability to see waterside slope and will make it difficult to access for flood fight, Fall 2021.					

Photo 1 of 1 : FA_2021_RD1000_31_48_20211019_00069.jpg



View taken from the crown facing downstream looking at the waterward levee slope at the landscaping, Fall 2021.

LM Start	13.37	Rating **	M	Issue No.	47
LM End	13.41	Issue Type +	En	Location *	WS
Category	Earthen Levee			GPS Latitude/Longitude	
				Start	End
Item	Vegetation			38.637052 °	38.636527 °
				-121.561833 °	-121.561743 °
DWR ID	DWR_RD1000_01_s_2012_47				
Comment Code					
V6 : Landscaping					
Inspector Comment					

No Photos

*** Location**
LS : Land Side N/A : Not Applicable
WS : Water Side
CR : Crown

**** Rating**
A : Acceptable N : Not Inspected/Rated
M : Minimally Acceptable C : Corrected
U : Unacceptable A/W : Acceptable but Monitor & Maintain

+ Issue Type
Ma : Maintenance Deficiency
Ob : Design & System Obsolescence
En : Enforcement

**Flood Control Project Maintenance
Levee Inspections**

Levee Inspection Report By Mile - Fall 2021

Reclamation District No. 1000 Natomas

Waterway	Bank	Unit Miles	Inspection Start/End	Inspector
Unit No. 01 Sacramento River	Left	18.28	10/15/2021 10/15/2021	Brooks Weisser

LM Start	13.41	Rating **	M	Issue No.	46
LM End	13.43	Issue Type +	En	Location *	WS
Category	Earthen Levee			GPS Latitude/Longitude	
				Start	End
Item	Vegetation			38.636522 °	38.636250 °
				-121.561743 °	-121.561667 °
DWR ID	DWR_RD1000_01_s_2012_46				
Comment Code					
V6 : Landscaping					
Inspector Comment					
The landscape vegetation prevents the ability to see waterside slope and will make it difficult to access for flood fight, Fall 2021.					

Photo 1 of 1 : FA_2021_RD1000_31_46_20211019_00070.jpg



View on waterside looking downstream of where the vegetation covers the front of the fence, Fall 2021

LM Start	13.47	Rating **	M	Issue No.	45
LM End	13.49	Issue Type +	En	Location *	WS
Category	Earthen Levee			GPS Latitude/Longitude	
				Start	End
Item	Vegetation			38.635638 °	38.635387 °
				-121.561570 °	-121.561497 °
DWR ID	DWR_RD1000_01_s_2012_45				
Comment Code					
V6 : Landscaping					
Inspector Comment					

No Photos

LM Start	13.52	Rating **	M	Issue No.	44
LM End	13.55	Issue Type +	En	Location *	WS
Category	Earthen Levee			GPS Latitude/Longitude	
				Start	End
Item	Vegetation			38.634951 °	38.634531 °
				-121.561454 °	-121.561367 °
DWR ID	DWR_RD1000_01_s_2012_44				
Comment Code					
V6 : Landscaping					
Inspector Comment					

No Photos

* Location		** Rating		+ Issue Type	
LS : Land Side	N/A : Not Applicable	A : Acceptable	N : Not Inspected/Rated	Ma : Maintenance Deficiency	
WS : Water Side		M : Minimally Acceptable	C : Corrected	Ob : Design & System Obsolescence	
CR : Crown		U : Unacceptable	A/W : Acceptable but Monitor & Maintain	En : Enforcement	

**Flood Control Project Maintenance
Levee Inspections**

Levee Inspection Report By Mile - Fall 2021

Reclamation District No. 1000 Natomas

Waterway	Bank	Unit Miles	Inspection Start/End	Inspector
Unit No. 01 Sacramento River	Left	18.28	10/15/2021 10/15/2021	Brooks Weisser

LM Start	13.64	Rating **	U	Issue No.	43
LM End	13.68	Issue Type +	En	Location *	WS
Category	Earthen Levee			GPS Latitude/Longitude	
				Start	End
Item	Encroachments			38.633238 °	38.632590 °
				-121.561097 °	-121.560915 °
DWR ID	DWR_RD1000_01_s_2012_43				
Comment Code					
FE : Fence					
Inspector Comment					

Photo 1 of 1 : FA_2021_RD1000_31_43_20210901_00027.jpg



This photo was taken from the crown facing downstream looking down the waterward levee slope at an unacceptable fence.

LM Start	13.98	Rating **	U	Issue No.	42
LM End	14.01	Issue Type +	En	Location *	WS
Category	Earthen Levee			GPS Latitude/Longitude	
				Start	End
Item	Vegetation			38.628300 °	38.627873 °
				-121.560180 °	-121.560202 °
DWR ID	DWR_RD1000_01_s_2012_42				
Comment Code					
V6 : Landscaping					
Inspector Comment					
The landscape vegetation prevents the ability to see waterside slope and will make it difficult to access for flood fight, Fall 2021.					

Photo 1 of 1 : FA_2021_RD1000_31_42_20211019_00071.jpg



View on waterside looking downstream of where the vegetation covers the front of the fence, Fall 2021.

*** Location**
LS : Land Side N/A : Not Applicable
WS : Water Side
CR : Crown

**** Rating**
A : Acceptable N : Not Inspected/Rated
M : Minimally Acceptable C : Corrected
U : Unacceptable A/W : Acceptable but Monitor & Maintain

+ Issue Type
Ma : Maintenance Deficiency
Ob : Design & System Obsolescence
En : Enforcement

**Flood Control Project Maintenance
Levee Inspections**

Levee Inspection Report By Mile - Fall 2021

Reclamation District No. 1000 Natomas

Waterway	Bank	Unit Miles	Inspection Start/End	Inspector
Unit No. 01 Sacramento River	Left	18.28	10/15/2021 10/15/2021	Brooks Weisser

LM Start	14.03	Rating **	U	Issue No.	40
LM End	14.17	Issue Type +	En	Location *	WS
Category	Earthen Levee			GPS Latitude/Longitude	
				Start	End
Item	Vegetation			38.627543 °	38.625614 °
				-121.560111 °	-121.560245 °
DWR ID	DWR_RD1000_01_s _ 2015_40				
Comment Code					
V6 : Landscaping					
Inspector Comment					
The landscape vegetation prevents the ability to see waterside slope and will make it difficult to access for flood fight, Fall 2021.					

Photo 1 of 1 : FA_2021_RD1000_31_40_20211019_00072.jpg



View taken from the crown facing downstream looking at the waterward levee slope at unacceptable landscaping, Fall 2021.

LM Start	14.55	Rating **	M	Issue No.	38
LM End	14.58	Issue Type +	En	Location *	WS
Category	Earthen Levee			GPS Latitude/Longitude	
				Start	End
Item	Vegetation			38.620077 °	38.619630 °
				-121.560120 °	-121.560067 °
DWR ID	DWR_RD1000_01_s _ 2012_38				
Comment Code					
V6 : Landscaping					
Inspector Comment					

No Photos

* Location LS : Land Side N/A : Not Applicable WS : Water Side CR : Crown	** Rating A : Acceptable M : Minimally Acceptable U : Unacceptable	N : Not Inspected/Rated C : Corrected A/W : Acceptable but Monitor & Maintain	+ Issue Type Ma : Maintenance Deficiency Ob : Design & System Obsolescence En : Enforcement
--	--	---	---

**Flood Control Project Maintenance
Levee Inspections**

Levee Inspection Report By Mile - Fall 2021

Reclamation District No. 1000 Natomas

Waterway	Bank	Unit Miles	Inspection Start/End	Inspector
Unit No. 01 Sacramento River	Left	18.28	10/15/2021 10/15/2021	Brooks Weisser

LM Start	14.61	Rating **	M	Issue No.	53
LM End	14.61	Issue Type +	En	Location *	WS
Category	Earthen Levee			GPS Latitude/Longitude	
				Start	End
Item	Encroachments			38.619219 °	38.619219 °
				-121.560130 °	-121.560130 °
DWR ID	DWR_RD1000_01_f _ 2018_53				
Comment Code					
BU : Building					
Inspector Comment					
Storage container should be removed, Fall 2021.					

Photo 1 of 1 : FA_2021_RD1000_31_53_20210901_00031.jpg



View of storage container from the landside of the crown facing the waterside of the levee.

LM Start	14.62	Rating **	M	Issue No.	37
LM End	14.66	Issue Type +	En	Location *	WS
Category	Earthen Levee			GPS Latitude/Longitude	
				Start	End
Item	Vegetation			38.619112 °	38.618493 °
				-121.560113 °	-121.560070 °
DWR ID	DWR_RD1000_01_s_2012_37				
Comment Code					
V6 : Landscaping					
Inspector Comment					
The landscape vegetation prevents the ability to see waterside slope and will make it difficult to access for flood fight, Fall 2021.					

Photo 1 of 1 : FA_2021_RD1000_31_37_20211019_00073.jpg



View taken from the crown facing downstream looking at the waterward levee slope at landscaping, Fall 2021.

* Location LS : Land Side N/A : Not Applicable WS : Water Side CR : Crown		** Rating A : Acceptable N : Not Inspected/Rated M : Minimally Acceptable C : Corrected U : Unacceptable A/W : Acceptable but Monitor & Maintain		+ Issue Type Ma : Maintenance Deficiency Ob : Design & System Obsolescence En : Enforcement	
--	--	---	--	---	--

**Flood Control Project Maintenance
Levee Inspections**

Levee Inspection Report By Mile - Fall 2021

Reclamation District No. 1000 Natomas

Waterway	Bank	Unit Miles	Inspection Start/End	Inspector
Unit No. 01 Sacramento River	Left	18.28	10/15/2021 10/15/2021	Brooks Weisser

LM Start	14.69	Rating **	M	Issue No.	35
LM End	14.77	Issue Type +	En	Location *	WS
Category	Earthen Levee			GPS Latitude/Longitude	
				Start	End
Item	Vegetation			38.617972 °	38.616835 °
				-121.560044 °	-121.559807 °
DWR ID	DWR_RD1000_01_s_2012_35				
Comment Code					
V6 : Landscaping					
Inspector Comment					
The landscape vegetation prevents the ability to see waterside slope and will make it difficult to access for flood fight, Fall 2021.					

Photo 1 of 1 : FA_2021_RD1000_31_35_20210901_00023.jpg



View of the landscaping on the waterside levee slope.

LM Start	15.08	Rating **	M	Issue No.	34
LM End	15.13	Issue Type +	En	Location *	WS
Category	Earthen Levee			GPS Latitude/Longitude	
				Start	End
Item	Vegetation			38.612555 °	38.611900 °
				-121.558258 °	-121.558303 °
DWR ID	DWR_RD1000_01_s_2012_34				
Comment Code					
V6 : Landscaping					
Inspector Comment					

No Photos

LM Start	15.09	Rating **	M	Issue No.	76
LM End	15.09	Issue Type +	En	Location *	WS
Category	Earthen Levee			GPS Latitude/Longitude	
				Start	End
Item	Encroachments			38.612340 °	38.612340 °
				-121.558633 °	-121.558633 °
DWR ID	DWR_RD1000_01_f_2012_76				
Comment Code					
BU : Building					
Inspector Comment					
Cargo container on the waterside slope is blocking visibility and needs to be removed. Fall 2021.					

Photo 1 of 1 : FA_2021_RD1000_31_76_20211019_00074.jpg



Cargo container on levee shoulder, the property appears to be on fill material, Fall 2021.

* Location LS : Land Side N/A : Not Applicable WS : Water Side CR : Crown		** Rating A : Acceptable M : Minimally Acceptable U : Unacceptable		N : Not Inspected/Rated C : Corrected A/W : Acceptable but Monitor & Maintain		+ Issue Type Ma : Maintenance Deficiency Ob : Design & System Obsolescence En : Enforcement	
--	--	--	--	---	--	---	--

**Flood Control Project Maintenance
Levee Inspections**

Levee Inspection Report By Mile - Fall 2021

Reclamation District No. 1000 Natomas

Waterway	Bank	Unit Miles	Inspection Start/End	Inspector
Unit No. 01 Sacramento River	Left	18.28	10/15/2021 10/15/2021	Brooks Weisser

LM Start	15.09	Rating **	U	Issue No.	3
LM End	15.13	Issue Type +	En	Location *	WS
Category	Earthen Levee			GPS Latitude/Longitude	
				Start	End
Item	Vegetation			38.612357 °	38.611874 °
				-121.558500 °	-121.558348 °
DWR ID	DWR_RD1000_01_s_2020_3				
Comment Code					
V6 : Landscaping					
Inspector Comment					
The landscape vegetation prevents the ability to see waterside slope and will make it difficult to access for flood fight, Fall 2021.					

Photo 1 of 1 : FA_2021_RD1000_31_3_20211019_00075.jpg



View taken from the crown facing downstream looking at the waterward levee slope at unacceptable landscaping, Fall 2021.

LM Start	15.21	Rating **	M	Issue No.	33
LM End	15.23	Issue Type +	En	Location *	WS
Category	Earthen Levee			GPS Latitude/Longitude	
				Start	End
Item	Encroachments			38.610787 °	38.610455 °
				-121.557817 °	-121.557638 °
DWR ID	DWR_RD1000_01_s_2012_33				
Comment Code					
FE : Fence					
Inspector Comment					

No Photos

*** Location**
LS : Land Side N/A : Not Applicable
WS : Water Side
CR : Crown

**** Rating**
A : Acceptable N : Not Inspected/Rated
M : Minimally Acceptable C : Corrected
U : Unacceptable A/W : Acceptable but Monitor & Maintain

+ Issue Type
Ma : Maintenance Deficiency
Ob : Design & System Obsolescence
En : Enforcement

**Flood Control Project Maintenance
Levee Inspections**

Levee Inspection Report By Mile - Fall 2021

Reclamation District No. 1000 Natomas

Waterway	Bank	Unit Miles	Inspection Start/End	Inspector
Unit No. 01 Sacramento River	Left	18.28	10/15/2021 10/15/2021	Brooks Weisser

LM Start	15.25	Rating **	M	Issue No.	32
LM End	15.27	Issue Type +	En	Location *	WS
Category	Earthen Levee			GPS Latitude/Longitude	
				Start	End
Item	Encroachments			38.610180 °	38.609908 °
				-121.557453 °	-121.557328 °
DWR ID	DWR_RD1000_01_s_2012_32				
Comment Code					
FE : Fence					
Inspector Comment					
This rock and wrought iron fence partially blocks visibility and access, Fall 2021.					

Photo 1 of 1 : FA_2021_RD1000_31_32_20210901_00022.jpg



View on waterside looking upstream of a rock and wrought iron fence that partially blocks visibility and access.

LM Start	15.29	Rating **	U	Issue No.	31
LM End	15.32	Issue Type +	En	Location *	WS
Category	Earthen Levee			GPS Latitude/Longitude	
				Start	End
Item	Vegetation			38.609743 °	38.609315 °
				-121.557252 °	-121.557000 °
DWR ID	DWR_RD1000_01_s_2012_31				
Comment Code					
V6 : Landscaping					
Inspector Comment					
The landscape vegetation prevents the ability to see waterside slope and will make it difficult to access for flood fight, Fall 2021.					

Photo 1 of 1 : FA_2021_RD1000_31_31_20211019_00076.jpg



View taken from the crown facing downstream looking at the waterward levee slope at unacceptable landscaping, Fall 2021.

*** Location**
LS : Land Side N/A : Not Applicable
WS : Water Side
CR : Crown

**** Rating**
A : Acceptable N : Not Inspected/Rated
M : Minimally Acceptable C : Corrected
U : Unacceptable A/W : Acceptable but Monitor & Maintain

+ Issue Type
Ma : Maintenance Deficiency
Ob : Design & System Obsolescence
En : Enforcement

**Flood Control Project Maintenance
Levee Inspections**

Levee Inspection Report By Mile - Fall 2021

Reclamation District No. 1000 Natomas

Waterway	Bank	Unit Miles	Inspection Start/End	Inspector
Unit No. 01 Sacramento River	Left	18.28	10/15/2021 10/15/2021	Brooks Weisser

LM Start	15.44	Rating **	U	Issue No.	30
LM End	15.48	Issue Type +	En	Location *	WS
Category	Earthen Levee			GPS Latitude/Longitude	
				Start	End
Item	Vegetation			38.607715 °	38.607345 °
				-121.555847 °	-121.555538 °
DWR ID	DWR_RD1000_01_s_2012_30				
Comment Code					
V6 : Landscaping					
Inspector Comment					
The landscape vegetation prevents the ability to see waterside slope and will make it difficult to access for flood fight, Fall 2021.					

Photo 1 of 1 : FA_2021_RD1000_31_30_20210901_00020.jpg



This photo was taken from the crown facing downstream looking down the waterward levee slope at unacceptable landscaping.

LM Start	15.49	Rating **	U	Issue No.	29
LM End	15.57	Issue Type +	En	Location *	WS
Category	Earthen Levee			GPS Latitude/Longitude	
				Start	End
Item	Encroachments			38.607207 °	38.606255 °
				-121.555465 °	-121.554582 °
DWR ID	DWR_RD1000_01_s_2012_29				
Comment Code					
FE : Fence					
Inspector Comment					
The fence blocks visibility and access. Fall 2021.					

Photo 1 of 1 : FA_2021_RD1000_31_29_20211019_00077.jpg



View taken from the crown facing downstream looking at the waterward levee slope at an unacceptable fence, Fall 2021.

* Location
LS : Land Side N/A : Not Applicable
WS : Water Side
CR : Crown

** Rating
A : Acceptable N : Not Inspected/Rated
M : Minimally Acceptable C : Corrected
U : Unacceptable A/W : Acceptable but Monitor & Maintain

+ Issue Type
Ma : Maintenance Deficiency
Ob : Design & System Obsolescence
En : Enforcement

**Flood Control Project Maintenance
Levee Inspections**

Levee Inspection Report By Mile - Fall 2021

Reclamation District No. 1000 Natomas

Waterway	Bank	Unit Miles	Inspection Start/End	Inspector
Unit No. 01 Sacramento River	Left	18.28	10/15/2021 10/15/2021	Brooks Weisser

LM Start	15.59	Rating **	M	Issue No.	28
LM End	15.61	Issue Type +	En	Location *	WS
Category	Earthen Levee			GPS Latitude/Longitude	
				Start	End
Item	Vegetation			38.605915 °	38.605687 °
				-121.554290 °	-121.554070 °
DWR ID	DWR_RD1000_01_s_2012_28				
Comment Code					
V6 : Landscaping					
Inspector Comment					

No Photos

LM Start	15.62	Rating **	M	Issue No.	27
LM End	15.65	Issue Type +	En	Location *	WS
Category	Earthen Levee			GPS Latitude/Longitude	
				Start	End
Item	Vegetation			38.605585 °	38.605273 °
				-121.553983 °	-121.553663 °
DWR ID	DWR_RD1000_01_s_2012_27				
Comment Code					
V6 : Landscaping					
Inspector Comment					

No Photos

LM Start	15.65	Rating **	M	Issue No.	26
LM End	15.67	Issue Type +	En	Location *	WS
Category	Earthen Levee			GPS Latitude/Longitude	
				Start	End
Item	Vegetation			38.605265 °	38.605032 °
				-121.553647 °	-121.553437 °
DWR ID	DWR_RD1000_01_s_2012_26				
Comment Code					
V6 : Landscaping					
Inspector Comment					
The landscape vegetation prevents the ability to see waterside slope and will make it difficult to access for flood fight, Fall 2021.					

Photo 1 of 1 : FA_2021_RD1000_31_26_20211019_00078.jpg



View looking upstream at landscape vegetation blocking visibility and access, Fall 2021.

* Location LS : Land Side N/A : Not Applicable WS : Water Side CR : Crown	** Rating A : Acceptable M : Minimally Acceptable U : Unacceptable	N : Not Inspected/Rated C : Corrected A/W : Acceptable but Monitor & Maintain	+ Issue Type Ma : Maintenance Deficiency Ob : Design & System Obsolescence En : Enforcement
--	--	--	---

**Flood Control Project Maintenance
Levee Inspections**

Levee Inspection Report By Mile - Fall 2021

Reclamation District No. 1000 Natomas

Waterway	Bank	Unit Miles	Inspection Start/End	Inspector
Unit No. 01 Sacramento River	Left	18.28	10/15/2021 10/15/2021	Brooks Weisser

LM Start	15.67	Rating **	M	Issue No.	25
LM End	15.71	Issue Type +	En	Location *	WS
Category	Earthen Levee			GPS Latitude/Longitude	
				Start	End
Item	Vegetation			38.605002 °	38.604598 °
				-121.553413 °	-121.553008 °
DWR ID	DWR_RD1000_01_s _ 2012_25				
Comment Code					
V6 : Landscaping					
Inspector Comment					

No Photos

LM Start	15.84	Rating **	M	Issue No.	23
LM End	15.85	Issue Type +	En	Location *	WS
Category	Earthen Levee			GPS Latitude/Longitude	
				Start	End
Item	Vegetation			38.603083 °	38.602943 °
				-121.551690 °	-121.551593 °
DWR ID	DWR_RD1000_01_s _ 2012_23				
Comment Code					
V6 : Landscaping					
Inspector Comment					

No Photos

LM Start	15.85	Rating **	M	Issue No.	22
LM End	15.87	Issue Type +	En	Location *	WS
Category	Earthen Levee			GPS Latitude/Longitude	
				Start	End
Item	Vegetation			38.602870 °	38.602617 °
				-121.551598 °	-121.551330 °
DWR ID	DWR_RD1000_01_s _ 2015_22				
Comment Code					
V6 : Landscaping					
Inspector Comment					

No Photos

* Location LS : Land Side N/A : Not Applicable WS : Water Side CR : Crown	** Rating A : Acceptable M : Minimally Acceptable U : Unacceptable	N : Not Inspected/Rated C : Corrected A/W : Acceptable but Monitor & Maintain	+ Issue Type Ma : Maintenance Deficiency Ob : Design & System Obsolescence En : Enforcement
--	--	---	---

**Flood Control Project Maintenance
Levee Inspections**

Levee Inspection Report By Mile - Fall 2021

Reclamation District No. 1000 Natomas

Waterway	Bank	Unit Miles	Inspection Start/End	Inspector
Unit No. 01 Sacramento River	Left	18.28	10/15/2021 10/15/2021	Brooks Weisser

LM Start	15.88	Rating **	M	Issue No.	21
LM End	15.90	Issue Type +	En	Location *	WS
Category	Earthen Levee			GPS Latitude/Longitude	
				Start	End
Item	Vegetation			38.602517 °	38.602373 °
				-121.551248 °	-121.550963 °
DWR ID	DWR_RD1000_01_s _ 2012_21				
Comment Code					
V6 : Landscaping					
Inspector Comment					
The landscape vegetation prevents the ability to see waterside slope and will make it difficult to access for flood fight, Fall 2021.					

Photo 1 of 1 : FA_2021_RD1000_31_21_20211019_00079.jpg



View looking upstream at landscape vegetation blocking visibility and access, Fall 2021.

LM Start	15.94	Rating **	M	Issue No.	20
LM End	15.96	Issue Type +	En	Location *	WS
Category	Earthen Levee			GPS Latitude/Longitude	
				Start	End
Item	Encroachments			38.601977 °	38.601678 °
				-121.550473 °	-121.550142 °
DWR ID	DWR_RD1000_01_s _ 2012_20				
Comment Code					
FE : Fence					
Inspector Comment					

No Photos

* Location
LS : Land Side N/A : Not Applicable
WS : Water Side
CR : Crown

** Rating
A : Acceptable N : Not Inspected/Rated
M : Minimally Acceptable C : Corrected
U : Unacceptable A/W : Acceptable but Monitor & Maintain

+ Issue Type
Ma : Maintenance Deficiency
Ob : Design & System Obsolescence
En : Enforcement

**Flood Control Project Maintenance
Levee Inspections**

Levee Inspection Report By Mile - Fall 2021

Reclamation District No. 1000 Natomas

Waterway	Bank	Unit Miles	Inspection Start/End	Inspector
Unit No. 01 Sacramento River	Left	18.28	10/15/2021 10/15/2021	Brooks Weisser

LM Start	16.03	Rating **	U	Issue No.	19
LM End	16.06	Issue Type +	En	Location *	WS
Category	Earthen Levee			GPS Latitude/Longitude	
				Start	End
Item	Vegetation			38.600988 °	38.600665 °
				-121.549198 °	-121.548795 °
DWR ID	DWR_RD1000_01_s _ 2012_19				
Comment Code					
V6 : Landscaping					
Inspector Comment					
The landscape vegetation prevents the ability to see waterside slope and will make it difficult to access for flood fight, Fall 2021.					

Photo 1 of 1 : FA_2021_RD1000_31_19_20210901_00016.jpg



View on waterside looking downstream of property covered by Oleander Bushes.

LM Start	16.58	Rating **	M	Issue No.	16
LM End	16.63	Issue Type +	En	Location *	WS
Category	Earthen Levee			GPS Latitude/Longitude	
				Start	End
Item	Encroachments			38.602328 °	38.602688 °
				-121.540788 °	-121.540157 °
DWR ID	DWR_RD1000_01_s _ 2012_16				
Comment Code					
FE : Fence					
Inspector Comment					

No Photos

*** Location**
LS : Land Side N/A : Not Applicable
WS : Water Side
CR : Crown

**** Rating**
A : Acceptable N : Not Inspected/Rated
M : Minimally Acceptable C : Corrected
U : Unacceptable A/W : Acceptable but Monitor & Maintain

+ Issue Type
Ma : Maintenance Deficiency
Ob : Design & System Obsolescence
En : Enforcement

**Flood Control Project Maintenance
Levee Inspections**

Levee Inspection Report By Mile - Fall 2021

Reclamation District No. 1000 Natomas

Waterway	Bank	Unit Miles	Inspection Start/End	Inspector
Unit No. 01 Sacramento River	Left	18.28	10/15/2021 10/15/2021	Brooks Weisser

LM Start	16.63	Rating **	M	Issue No.	15
LM End	16.67	Issue Type +	En	Location *	WS
Category	Earthen Levee			GPS Latitude/Longitude	
				Start	End
Item	Vegetation			38.602693 °	38.603092 °
				-121.540165 °	-121.539490 °
DWR ID	DWR_RD1000_01_s_2012_15				
Comment Code					
V6 : Landscaping					
Inspector Comment					
The landscape vegetation prevents the ability to see waterside slope and will make it difficult to access for flood fight, Fall 2021.					

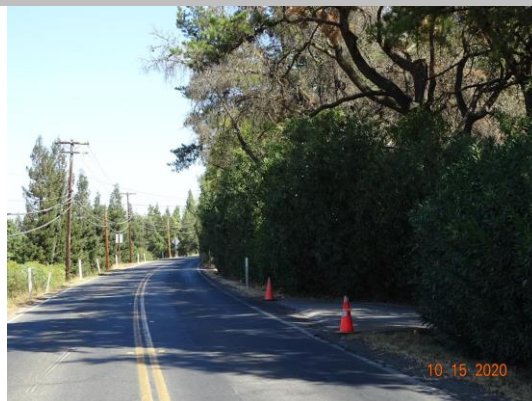
Photo 1 of 1 : FA_2021_RD1000_31_15_20211019_00080.jpg



View looking upstream waterside at landscaping that needs to be removed, Fall 2021.

LM Start	16.68	Rating **	M	Issue No.	14
LM End	16.72	Issue Type +	En	Location *	WS
Category	Earthen Levee			GPS Latitude/Longitude	
				Start	End
Item	Encroachments			38.603242 °	38.603597 °
				-121.539318 °	-121.538875 °
DWR ID	DWR_RD1000_01_s_2012_14				
Comment Code					
FE : Fence					
Inspector Comment					
The vegetation needs to be removed from fence for visibility and access, Fall 2021.					

Photo 1 of 1 : FA_2021_RD1000_31_14_20210901_00014.jpg



View on waterside looking across at the fence covered by vegetation.

LM Start	16.78	Rating **	M	Issue No.	13
LM End	16.89	Issue Type +	En	Location *	WS
Category	Earthen Levee			GPS Latitude/Longitude	
				Start	End
Item	Encroachments			38.604188 °	38.604890 °
				-121.538027 °	-121.536105 °
DWR ID	DWR_RD1000_01_s_2012_13				
Comment Code					
FE : Fence					
Inspector Comment					
Oleander Bushes need to be removed for visibility and access, Fall 2021.					

Photo 1 of 1 : FA_2021_RD1000_31_13_20210901_00013.jpg



View of fence covered by Oleander Bushes.

* Location LS : Land Side N/A : Not Applicable WS : Water Side CR : Crown		** Rating A : Acceptable M : Minimally Acceptable U : Unacceptable		+ Issue Type Ma : Maintenance Deficiency Ob : Design & System Obsolescence En : Enforcement	
		N : Not Inspected/Rated C : Corrected A/W : Acceptable but Monitor & Maintain			

**Flood Control Project Maintenance
Levee Inspections**

Levee Inspection Report By Mile - Fall 2021

Reclamation District No. 1000 Natomas

Waterway	Bank	Unit Miles	Inspection Start/End	Inspector
Unit No. 01 Sacramento River	Left	18.28	10/15/2021 10/15/2021	Brooks Weisser

LM Start	17.49	Rating **	M	Issue No.	17
LM End	17.52	Issue Type +	En	Location *	WS
Category	Earthen Levee			GPS Latitude/Longitude	
				Start	End
Item	Encroachments			38.605476 °	38.605445 °
				-121.525173 °	-121.524620 °
DWR ID	DWR_RD1000_01_s_2020_17				
Comment Code					
BU : Building					
Inspector Comment					
Unpermitted building on the waterside, Fall 2021.					

No Photos

LM Start	17.52	Rating **	U	Issue No.	8
LM End	17.61	Issue Type +	En	Location *	WS
Category	Earthen Levee			GPS Latitude/Longitude	
				Start	End
Item	Encroachments			38.605445 °	38.605305 °
				-121.524675 °	-121.522958 °
DWR ID	DWR_RD1000_01_s_2012_8				
Comment Code					
BU : Building					
Inspector Comment					

Photo 1 of 1 : FA_2021_RD1000_31_8_20211019_00081.jpg



This photo was taken from the crown facing downstream looking down the waterward levee slope at an unpermitted building, Fall 2021.

*** Location**
LS : Land Side N/A : Not Applicable
WS : Water Side
CR : Crown

**** Rating**
A : Acceptable N : Not Inspected/Rated
M : Minimally Acceptable C : Corrected
U : Unacceptable A/W : Acceptable but Monitor & Maintain

+ Issue Type
Ma : Maintenance Deficiency
Ob : Design & System Obsolescence
En : Enforcement

**Flood Control Project Maintenance
Levee Inspections
Unit Cover Sheet**

Reclamation District No. 1000 Natomas

Waterway			Bank	Unit Miles
Unit No. 02 American River			Right	2.32
	Spring (March - May)	Summer (June - August)	(September - November) Fall	Winter (December - February)
Unit Maintenance Rating (Fall Only)			U	
Date of Inspection	5/12/2021 - 5/12/2021		10/15/2021 - 10/15/2021	
DWR Inspector	Brooks Weisser		Brooks Weisser	
Accompanied By	Don Caldwell RD1000		Don Caldwell RD1000	

Summer & Winter Inspections

The Local Maintaining Agency (LMA) is responsible for summer and winter inspections. The LMA is required to submit a report regarding summer and winter inspections to the California Department of Water Resources (DWR).

DWR must be informed on the:

- a) completion of the inspection
- b) any changes other than the results of normal maintenance
- c) corrections to deficiencies noted in this report

If additional items are noted, further documentation of those items must also be submitted.

The LMA should submit this information to DWR using the LMA web application tool available at:

<http://cdec.water.ca.gov/lma.html>

If the LMA is unable to submit information on this webpage, please contact DWR for assistance.

The LMA should submit the information and any associated documentation by September 30 for summer inspections and March 31 for winter inspections.

**Flood Control Project Maintenance
Levee Inspections**

Levee Inspection Report By Mile - Fall 2021

Reclamation District No. 1000 Natomas

Waterway	Bank	Unit Miles	Inspection Start/End	Inspector
Unit No. 02 American River	Right	2.32	10/15/2021 10/15/2021	Brooks Weisser

LM Start	0.17	Rating **	M	Issue No.	5
LM End	0.17	Issue Type +	En	Location *	CR
Category	Earthen Levee			GPS Latitude/Longitude	
				Start	End
Item	Encroachments			38.605547 °	38.605547 °
				-121.508566 °	-121.508566 °
DWR ID	DWR_RD1000_02_s_2021_5				
Comment Code					
DE : Debris					
Inspector Comment					
Campers are on the levee crown under freeway bridge, Fall 2021.					

Photo 1 of 1 : FA_2021_RD1000_32_5_20211020_00005.jpg



View of debris and tents from campers on the levee crown, Fall 2021.

LM Start	0.70	Rating **	M	Issue No.	4
LM End	0.70	Issue Type +	Ma	Location *	LS
Category	Earthen Levee			GPS Latitude/Longitude	
				Start	End
Item	Trim / Thin Trees			38.608015 °	38.608015 °
				-121.499402 °	-121.499402 °
DWR ID	DWR_RD1000_02_s_2021_4				
Comment Code					
T2 : Thin trees to allow visibility of the ground and room to flood fight.					
Inspector Comment					
Downed tree on the landside slope should be removed, Fall 2021.					

Photo 1 of 1 : FA_2021_RD1000_32_4_20211020_00006.jpg



View of downed tree on landside slope, Fall 2021.

LM Start	1.03	Rating **	M	Issue No.	2
LM End	1.43	Issue Type +	Ma	Location *	LS
Category	Earthen Levee			GPS Latitude/Longitude	
				Start	End
Item	Trim / Thin Trees			38.608482 °	38.608148 °
				-121.493318 °	-121.485964 °
DWR ID	DWR_RD1000_02_s_2021_2				
Comment Code					
T1 : Trim trees to at least five feet above ground level.					
Inspector Comment					
Trees on the landside slope should be trimmed to 5 feet above the slope grade for visibility, Fall 2021.					

Photo 1 of 1 : FA_2021_RD1000_32_2_20211020_00007.jpg



View of low hanging trees on the landside slope, Fall 2021.

* Location
LS : Land Side N/A : Not Applicable
WS : Water Side
CR : Crown

** Rating
A : Acceptable N : Not Inspected/Rated
M : Minimally Acceptable C : Corrected
U : Unacceptable A/W : Acceptable but Monitor & Maintain

+ Issue Type
Ma : Maintenance Deficiency
Ob : Design & System Obsolescence
En : Enforcement

**Flood Control Project Maintenance
Levee Inspections**

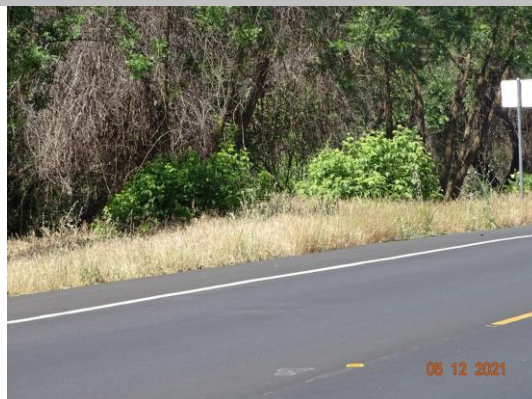
Levee Inspection Report By Mile - Fall 2021

Reclamation District No. 1000 Natomas

Waterway	Bank	Unit Miles	Inspection Start/End	Inspector
Unit No. 02 American River	Right	2.32	10/15/2021 10/15/2021	Brooks Weisser

LM Start	1.31	Rating **	M	Issue No.	3
LM End	1.43	Issue Type +	Ma	Location *	WS
Category	Earthen Levee			GPS Latitude/Longitude	
				Start	End
Item	Trim / Thin Trees			38.608310 °	38.608155 °
				-121.488096 °	-121.485930 °
DWR ID	DWR_RD1000_02_s_2021_3				
Comment Code					
T3 : Trim and thin trees to allow visibility of the ground and room to flood fight.					
Inspector Comment					
Remove starter trees on the waterside slope, Fall 2021.					

Photo 1 of 1 : FA_2021_RD1000_32_3_20210901_00002.jpg



View of starter trees on the waterside slope, Spring 2021.

LM Start	1.74	Rating **	M	Issue No.	1
LM End	1.92	Issue Type +	Ma	Location *	LS
Category	Earthen Levee			GPS Latitude/Longitude	
				Start	End
Item	Trim / Thin Trees			38.606986 °	38.605841 °
				-121.480402 °	-121.477402 °
DWR ID	DWR_RD1000_02_f_2021_1				
Comment Code					
T1 : Trim trees to at least five feet above ground level.					
Inspector Comment					
Trees on the landside slope should be trimmed to 5 feet above the slope grade for visibility, Fall 2021.					

Photo 1 of 1 : FA_2021_RD1000_32_1_20211020_00008.jpg



View of low hanging trees on the landside slope, Fall 2021.

*** Location**
LS : Land Side N/A : Not Applicable
WS : Water Side
CR : Crown

**** Rating**
A : Acceptable N : Not Inspected/Rated
M : Minimally Acceptable C : Corrected
U : Unacceptable A/W : Acceptable but Monitor & Maintain

+ Issue Type
Ma : Maintenance Deficiency
Ob : Design & System Obsolescence
En : Enforcement

**Flood Control Project Maintenance
Levee Inspections
Unit Cover Sheet**

Reclamation District No. 1000 Natomas

Waterway			Bank	Unit Miles
Unit No. 03 Natomas East Canal			Right	16.93
	Spring (March - May)	Summer (June - August)	(September - November) Fall	Winter (December - February)
Unit Maintenance Rating (Fall Only)			A	
Date of Inspection	3/29/2021 - 3/29/2021		10/15/2021 - 10/15/2021	
DWR Inspector	Brooks Weisser		Brooks Weisser	
Accompanied By	Don Caldwell RD1000		Don Caldwell RD1000	

Summer & Winter Inspections

The Local Maintaining Agency (LMA) is responsible for summer and winter inspections. The LMA is required to submit a report regarding summer and winter inspections to the California Department of Water Resources (DWR).

DWR must be informed on the:

- a) completion of the inspection
- b) any changes other than the results of normal maintenance
- c) corrections to deficiencies noted in this report

If additional items are noted, further documentation of those items must also be submitted.

The LMA should submit this information to DWR using the LMA web application tool available at:

<http://cdec.water.ca.gov/lma.html>

If the LMA is unable to submit information on this webpage, please contact DWR for assistance.

The LMA should submit the information and any associated documentation by September 30 for summer inspections and March 31 for winter inspections.

**Flood Control Project Maintenance
Levee Inspections**

Levee Inspection Report By Mile - Fall 2021

Reclamation District No. 1000 Natomas

Waterway	Bank	Unit Miles	Inspection Start/End	Inspector
Unit No. 03 Natomas East Canal	Right	16.93	10/15/2021 10/15/2021	Brooks Weisser

LM Start	0.05	Rating **	A/W	Issue No.	11
LM End	4.20	Issue Type +	Ob	Location *	CR
Category	Earthen Levee			GPS Latitude/Longitude	
				Start	End
Item	Slope Stability			38.606454 °	38.665724 °
				-121.469943 °	-121.477500 °
DWR ID	DWR_RD1000_03_f_2020_11				
Comment Code					
S1 : Repair slope instability.					
Inspector Comment					
Still under construction, Reach H- USACE Project, Fall 2021.					

Photo 1 of 1 : FA_2021_RD1000_33_11_20211019_00010.jpg



View of the levee under construction, Reach H-USACE Project, Spring 2021.

LM Start	6.27	Rating **	M	Issue No.	8
LM End	6.36	Issue Type +	En	Location *	LS
Category	Earthen Levee			GPS Latitude/Longitude	
				Start	End
Item	Encroachments			38.692847 °	38.694141 °
				-121.485595 °	-121.485596 °
DWR ID	DWR_RD1000_03_f_2015_8				
Comment Code					
FE : Fence					
Inspector Comment					
A fence is located on the landside levee slope, Fall 2021.					

Photo 1 of 1 : FA_2021_RD1000_33_8_20211020_00011.jpg



View of fence on landside levee slope, looking downstream, Fall 2021.

LM Start	6.96	Rating **	M	Issue No.	2
LM End	6.96	Issue Type +	En	Location *	LS
Category	Earthen Levee			GPS Latitude/Longitude	
				Start	End
Item	Vegetation			38.702801 °	38.702801 °
				-121.485652 °	-121.485652 °
DWR ID	DWR_RD1000_03_f_2015_2				
Comment Code					
V6 : Landscaping					
Inspector Comment					
Landscaping on the landside slope needs to be removed, Fall 2021.					

Photo 1 of 1 : FA_2021_RD1000_33_2_20211020_00012.jpg



View of the landscaping at the landside levee toe, Fall 2021.

* Location LS : Land Side N/A : Not Applicable WS : Water Side CR : Crown		** Rating A : Acceptable M : Minimally Acceptable U : Unacceptable N : Not Inspected/Rated C : Corrected A/W : Acceptable but Monitor & Maintain		+ Issue Type Ma : Maintenance Deficiency Ob : Design & System Obsolescence En : Enforcement	
--	--	---	--	---	--

**Flood Control Project Maintenance
Levee Inspections**

Levee Inspection Report By Mile - Fall 2021

Reclamation District No. 1000 Natomas

Waterway	Bank	Unit Miles	Inspection Start/End	Inspector
Unit No. 03 Natomas East Canal	Right	16.93	10/15/2021 10/15/2021	Brooks Weisser

LM Start	12.41	Rating **	M	Issue No.	10
LM End	12.46	Issue Type +	En	Location *	WS
Category	Earthen Levee			GPS Latitude/Longitude	
				Start	End
Item	Vegetation			38.779037 °	38.779505 °
				-121.500397 °	-121.500955 °
DWR ID	DWR_RD1000_03_s_2012_10				
Comment Code					
V6 : Landscaping					
Inspector Comment					
This is high ground and the channel flows away, both directions.					

Photo 1 of 1 : FA_2021_RD1000_33_10_20211019_00009.jpg



View of landscaping on the waterside levee slope, Fall 2021.

LM Start	14.01	Rating **	M	Issue No.	22
LM End	14.70	Issue Type +	En	Location *	LS
Category	Earthen Levee			GPS Latitude/Longitude	
				Start	End
Item	Encroachments			38.799892 °	38.808969 °
				-121.513194 °	-121.518536 °
DWR ID	DWR_RD1000_03_f_2016_22				
Comment Code					
DT : Ditch					
Inspector Comment					
A ditch is located at toe of slope, Fall 2021.					

Photo 1 of 1 : FA_2021_RD1000_33_22_20211019_00008.jpg



View of landside ditch at toe of levee, looking downstream, Fall 2021.

LM Start	15.25	Rating **	M	Issue No.	9
LM End	15.79	Issue Type +	En	Location *	LS
Category	Earthen Levee			GPS Latitude/Longitude	
				Start	End
Item	Encroachments			38.816259 °	38.823314 °
				-121.522787 °	-121.526942 °
DWR ID	DWR_RD1000_03_s_2012_9				
Comment Code					
DT : Ditch					
Inspector Comment					
There is an agricultural ditch located at the levee toe, Fall 2021.					

Photo 1 of 1 : FA_2021_RD1000_33_9_20211019_00007.jpg



View looking downstream landside at a ditch at the toe, Fall 2021.

*** Location**
LS : Land Side N/A : Not Applicable
WS : Water Side
CR : Crown

**** Rating**
A : Acceptable N : Not Inspected/Rated
M : Minimally Acceptable C : Corrected
U : Unacceptable A/W : Acceptable but Monitor & Maintain

+ Issue Type
Ma : Maintenance Deficiency
Ob : Design & System Obsolescence
En : Enforcement

**Flood Control Project Maintenance
Levee Inspections
Unit Cover Sheet**

Reclamation District No. 1000 Natomas

Waterway			Bank	Unit Miles
Unit No. 04 Natomas Cross Canal			Left	4.30
	Spring (March - May)	Summer (June - August)	(September - November) Fall	Winter (December - February)
Unit Maintenance Rating (Fall Only)			A	
Date of Inspection	3/29/2021 - 3/29/2021		10/15/2021 - 10/15/2021	
DWR Inspector	Brooks Weisser		Brooks Weisser	
Accompanied By	Don Caldwell RD1000		Don Caldwell RD1000	

Summer & Winter Inspections

The Local Maintaining Agency (LMA) is responsible for summer and winter inspections. The LMA is required to submit a report regarding summer and winter inspections to the California Department of Water Resources (DWR).

DWR must be informed on the:

- a) completion of the inspection
- b) any changes other than the results of normal maintenance
- c) corrections to deficiencies noted in this report

If additional items are noted, further documentation of those items must also be submitted.

The LMA should submit this information to DWR using the LMA web application tool available at:

<http://cdec.water.ca.gov/lma.html>

If the LMA is unable to submit information on this webpage, please contact DWR for assistance.

The LMA should submit the information and any associated documentation by September 30 for summer inspections and March 31 for winter inspections.

**Flood Control Project Maintenance
Levee Inspections**

Levee Inspection Report By Mile - Fall 2021

Reclamation District No. 1000 Natomas

Waterway	Bank	Unit Miles	Inspection Start/End	Inspector
Unit No. 04 Natomas Cross Canal	Left	4.30	10/15/2021 10/15/2021	Brooks Weisser

LM Start	0.00	Rating **	M	Issue No.	15
LM End	0.00	Issue Type +	En	Location *	
Category	Supplemental		GPS Latitude/Longitude		
			Start	End	
Item	DWR UCIP Field Study		38.802865 °	38.802865 °	
			-121.573460 °	-121.573460 °	
DWR ID	25400				
Comment Code					
Inspector Comment					
DS_ID:25400 FS_ID:46898 EP_NO: 9779 Repair Type: Non-Urgent EVAL Issue: Crossing Status: Found UCIP Comments: FIELD_STRUCT_DESC: 1 of 5. [Natomas Mutual Water Company Northern Pumping Station]. 30-inch pipe through levee, 16.4 feet below the crown. Pump located on steel platform in the channel. Siphon breaker in CM pipe riser on the landward shoulder. Discharges in concrete distribution box in irrigation ditch on the landward side. (Permit No. 9779-1974, Natomas Central Mutual Water Company) Pipe remains in levee as per C3980 Vol 3A NCC Phase 2 Record Set for Natomas Levee Improvement Program/Natomas Post-Authorization. (Permit No. 18159-2-2009, Sacramento Area Flood Control Agency) FS Date: 12/10/2015					

No Photos

* Location LS : Land Side N/A : Not Applicable WS : Water Side CR : Crown	** Rating A : Acceptable M : Minimally Acceptable U : Unacceptable	N : Not Inspected/Rated C : Corrected A/W : Acceptable but Monitor & Maintain	+ Issue Type Ma : Maintenance Deficiency Ob : Design & System Obsolescence En : Enforcement
--	--	---	---

**Flood Control Project Maintenance
Levee Inspections**

Levee Inspection Report By Mile - Fall 2021

Reclamation District No. 1000 Natomas

Waterway	Bank	Unit Miles	Inspection Start/End	Inspector
Unit No. 04 Natomas Cross Canal	Left	4.30	10/15/2021 10/15/2021	Brooks Weisser

LM Start	0.00	Rating **	M	Issue No.	16
LM End	0.00	Issue Type +	En	Location *	
Category	Supplemental		GPS Latitude/Longitude		
			Start	End	
Item	DWR UCIP Field Study		38.802839 °	38.802839 °	
			-121.573505 °	-121.573505 °	
DWR ID	25401				
Comment Code					
Inspector Comment					
DS_ID:25401 FS_ID:46899 EP_NO: 5490 Repair Type: Non-Urgent EVAL Issue: Crossing Status: Found UCIP Comments: FIELD_STRUCT_DESC: 2 of 5. [Natomas Mutual Water Company Northern Pumping Station]. 42-inch pipe through the levee, 16.4 feet below the crown. Pump located on steel platform in the channel. Siphon breaker on the landward side. Discharges into irrigation ditch on the landward side. (Permit No. 5490-1974, Natomas Central Mutual Water Company) Pipe remains in levee as per C3980 Vol 3A NCC Phase 2 Record Set for Natomas Levee Improvement Program/Natomas Post-Authorization. (Permit No. 18159-2-2009, Sacramento Area Flood Control Agency) FS Date: 12/10/2015					

No Photos

* Location LS : Land Side N/A : Not Applicable WS : Water Side CR : Crown	** Rating A : Acceptable M : Minimally Acceptable U : Unacceptable N : Not Inspected/Rated C : Corrected A/W : Acceptable but Monitor & Maintain	+ Issue Type Ma : Maintenance Deficiency Ob : Design & System Obsolescence En : Enforcement
--	---	---

**Flood Control Project Maintenance
Levee Inspections**

Levee Inspection Report By Mile - Fall 2021

Reclamation District No. 1000 Natomas

Waterway	Bank	Unit Miles	Inspection Start/End	Inspector
Unit No. 04 Natomas Cross Canal	Left	4.30	10/15/2021 10/15/2021	Brooks Weisser

LM Start	0.00	Rating **	M	Issue No.	17	
LM End	0.00	Issue Type +	En	Location *		
Category	Supplemental			GPS Latitude/Longitude		
				Start	End	
Item	DWR UCIP Field Study			38.802831 °	38.802831 °	
				-121.573522 °	-121.573522 °	
DWR ID	25264					
Comment Code						
Inspector Comment						
DS_ID:25264 FS_ID:46900 EP_NO: 15955 Repair Type: Non-Urgent EVAL Issue: Crossing Status: Found UCIP Comments: FIELD_STRUCT_DESC: 3 of 5. [Natomas Mutual Water Company Northern Pumping Station]. 30-inch pipe through the levee, 16.4 feet below the crown. Pump located on steel platform in the channel. Siphon breaker on the landward side. Discharges into irrigation ditch on the landward side. (Permit No. 15955-1992, Natomas Central Mutual Water Company) Pipe remains in levee as per C3980 Vol 3A NCC Phase 2 Record Set for Natomas Levee Improvement Program/Natomas Post-Authorization. (Permit No. 18159-2-2009, Sacramento Area Flood Control Agency) FS Date: 12/10/2015						

No Photos

* Location LS : Land Side N/A : Not Applicable WS : Water Side CR : Crown	** Rating A : Acceptable M : Minimally Acceptable U : Unacceptable	N : Not Inspected/Rated C : Corrected A/W : Acceptable but Monitor & Maintain	+ Issue Type Ma : Maintenance Deficiency Ob : Design & System Obsolescence En : Enforcement
--	--	---	---

**Flood Control Project Maintenance
Levee Inspections**

Levee Inspection Report By Mile - Fall 2021

Reclamation District No. 1000 Natomas

Waterway	Bank	Unit Miles	Inspection Start/End	Inspector
Unit No. 04 Natomas Cross Canal	Left	4.30	10/15/2021 10/15/2021	Brooks Weisser

LM Start	0.00	Rating **	M	Issue No.	18
LM End	0.00	Issue Type +	En	Location *	
Category	Supplemental		GPS Latitude/Longitude		
			Start	End	
Item	DWR UCIP Field Study		38.802816 °	38.802816 °	
			-121.573545 °	-121.573545 °	
DWR ID	25410				
Comment Code					
Inspector Comment					
DS_ID:25410 FS_ID:46901 EP_NO: 15955 Repair Type: Non-Urgent EVAL Issue: Crossing Status: Found UCIP Comments: FIELD_STRUCT_DESC: 4 of 5. [Natomas Mutual Water Company Northern Pump Station]. 30-inch pipe through the levee, 16.4 feet below the crown. Pump located on steel platform in the channel. Siphon breaker on the landward side. Discharges into irrigation ditch on the landward side. (Permit No. 15955-1992, Natomas Central Mutual Water Company) Pipe remains in levee as per C3980 Vol 3A NCC Phase 2 Record Set for Natomas Levee Improvement Program/Natomas Post-Authorization. (Permit No. 18159-2-2009, Sacramento Area Flood Control Agency) FS Date: 12/10/2015					

No Photos

* Location LS : Land Side N/A : Not Applicable WS : Water Side CR : Crown	** Rating A : Acceptable M : Minimally Acceptable U : Unacceptable N : Not Inspected/Rated C : Corrected A/W : Acceptable but Monitor & Maintain	+ Issue Type Ma : Maintenance Deficiency Ob : Design & System Obsolescence En : Enforcement
--	---	---

**Flood Control Project Maintenance
Levee Inspections**

Levee Inspection Report By Mile - Fall 2021

Reclamation District No. 1000 Natomas

Waterway	Bank	Unit Miles	Inspection Start/End	Inspector
Unit No. 04 Natomas Cross Canal	Left	4.30	10/15/2021 10/15/2021	Brooks Weisser

LM Start	0.00	Rating **	M	Issue No.	19
LM End	0.00	Issue Type +	En	Location *	
Category	Supplemental		GPS Latitude/Longitude		
			Start	End	
Item	DWR UCIP Field Study		38.802808 °	38.802808 °	
			-121.573561 °	-121.573561 °	
DWR ID	25411				
Comment Code					
Inspector Comment					
DS_ID:25411 FS_ID:46902 EP_NO: 5490 Repair Type: Non-Urgent EVAL Issue: Crossing Status: Found UCIP Comments: FIELD_STRUCT_DESC: 5 of 5. [Natomas Mutual Water Company Northern Pump Station]. 42-inch pipe through the levee, 16.4 feet below the crown. Pump located on steel platform in the channel. Siphon breaker on the landward side. Discharges into irrigation ditch on the landward side. (Permit No. 5490-1974, Natomas Central Mutual Water Company) Pipe remains in levee as per C3980 Vol 3A NCC Phase 2 Record Set for Natomas Levee Improvement Program/Natomas Post-Authorization. (Permit No. 18159-2-2009, Sacramento Area Flood Control Agency) FS Date: 12/10/2015					

No Photos

LM Start	0.00	Rating **	M	Issue No.	20
LM End	0.00	Issue Type +	En	Location *	
Category	Supplemental		GPS Latitude/Longitude		
			Start	End	
Item	DWR UCIP Field Study		38.781597 °	38.781597 °	
			-121.603382 °	-121.603382 °	
DWR ID	25261				
Comment Code					
Inspector Comment					
DS_ID:25261 FS_ID:46912 EP_NO: 16273 Repair Type: Non-Urgent EVAL Issue: Crossing Status: Found UCIP Comments: FIELD_STRUCT_DESC: [Odysseus Farms] 18-inch drainage pipe through the levee 1.9 feet below the crown. Pump on the waterward bank. Service pole and switch box on the waterward slope. 36-inch concrete standpipe on landward side. Pipe replaced in Nov 1994. (Permit No. 16273-1994, Natomas Mutual Water Co.) FS Date: 12/10/2015					

No Photos

* Location LS : Land Side N/A : Not Applicable WS : Water Side CR : Crown	** Rating A : Acceptable M : Minimally Acceptable U : Unacceptable	N : Not Inspected/Rated C : Corrected A/W : Acceptable but Monitor & Maintain	+ Issue Type Ma : Maintenance Deficiency Ob : Design & System Obsolescence En : Enforcement
--	--	---	---

**Flood Control Project Maintenance
Levee Inspections**

Levee Inspection Report By Mile - Fall 2021

Reclamation District No. 1000 Natomas

Waterway	Bank	Unit Miles	Inspection Start/End	Inspector
Unit No. 04 Natomas Cross Canal	Left	4.30	10/15/2021 10/15/2021	Brooks Weisser

LM Start	0.00	Rating **	M	Issue No.	21
LM End	0.00	Issue Type +	En	Location *	
Category	Supplemental		GPS Latitude/Longitude		
			Start	End	
Item	DWR UCIP Field Study		38.798993 °	38.798993 °	
			-121.579847 °	-121.579847 °	
DWR ID	25412				
Comment Code					
Inspector Comment					
DS_ID:25412 FS_ID:46904 EP_NO: N/A Repair Type: Non-Urgent EVAL Issue: Crossing Status: Found UCIP Comments: FIELD_STRUCT_DESC: 2 of 3. [RD1000 Pumping Plant] 48-inch pipes through the levee, 4.2 feet below the crown. Pump in pump house on the landward side. Siphon breaker on the waterward shoulder. Flap gate on one pipe, two pipes open on waterward end. Bank rock revetted. One CM cutoff wall. Pad over levee crown. Pipe remains in levee as per C3980 Vol 3A NCC Phase 2 Record Set for Natomas Levee Improvement Program/Natomas Post-Authorization. (Permit No. 18159-2-2009, Sacramento Area Flood Control Agency) FS Date: 12/10/2015					

No Photos

* Location LS : Land Side N/A : Not Applicable WS : Water Side CR : Crown	** Rating A : Acceptable M : Minimally Acceptable U : Unacceptable	N : Not Inspected/Rated C : Corrected A/W : Acceptable but Monitor & Maintain	+ Issue Type Ma : Maintenance Deficiency Ob : Design & System Obsolescence En : Enforcement
--	--	---	---

**Flood Control Project Maintenance
Levee Inspections**

Levee Inspection Report By Mile - Fall 2021

Reclamation District No. 1000 Natomas

Waterway	Bank	Unit Miles	Inspection Start/End	Inspector
Unit No. 04 Natomas Cross Canal	Left	4.30	10/15/2021 10/15/2021	Brooks Weisser

LM Start	0.00	Rating **	M	Issue No.	22
LM End	0.00	Issue Type +	En	Location *	
Category	Supplemental		GPS Latitude/Longitude		
			Start	End	
Item	DWR UCIP Field Study		38.798976 °	38.798976 °	
			-121.579871 °	-121.579871 °	
DWR ID	25413				
Comment Code					
Inspector Comment					
DS_ID:25413 FS_ID:46905 EP_NO: N/A Repair Type: Non-Urgent EVAL Issue: Crossing Status: Found UCIP Comments: FIELD_STRUCT_DESC: 3 of 3. [RD1000 Pumping Plant] 48-inch pipes through the levee, 4.2 feet below the crown. Pump in pump house on the landward side. Siphon breaker on the waterward shoulder. Flap gate on one pipe, two pipes open on waterward end. Bank rock revetted. One CM cutoff wall. Pad over levee crown. Pipe remains in levee as per C3980 Vol 3A NCC Phase 2 Record Set for Natomas Levee Improvement Program/Natomas Post-Authorization. (Permit No. 18159-2-2009, Sacramento Area Flood Control Agency) FS Date: 12/10/2015					

No Photos

LM Start	0.00	Rating **	M	Issue No.	23
LM End	0.00	Issue Type +	En	Location *	
Category	Supplemental		GPS Latitude/Longitude		
			Start	End	
Item	DWR UCIP Field Study		38.792558 °	38.792558 °	
			-121.590739 °	-121.590739 °	
DWR ID	25267				
Comment Code					
Inspector Comment					
DS_ID:25267 FS_ID:46909 EP_NO: N/A Repair Type: Non-Urgent EVAL Issue: Crossing Status: Found UCIP Comments: FIELD_STRUCT_DESC: 1 of 3. [Natomas Mutual Water Company Bennett Pumping Plant] 36-inch pipe through the levee, 6 feet below the crown. Siphon breaker on the landward shoulder. Vertical pump mounted on the bank. FS Date: 12/10/2015					

No Photos

* Location LS : Land Side N/A : Not Applicable WS : Water Side CR : Crown	** Rating A : Acceptable M : Minimally Acceptable U : Unacceptable	N : Not Inspected/Rated C : Corrected A/W : Acceptable but Monitor & Maintain	+ Issue Type Ma : Maintenance Deficiency Ob : Design & System Obsolescence En : Enforcement
--	--	---	---

**Flood Control Project Maintenance
Levee Inspections**

Levee Inspection Report By Mile - Fall 2021

Reclamation District No. 1000 Natomas

Waterway	Bank	Unit Miles	Inspection Start/End	Inspector
Unit No. 04 Natomas Cross Canal	Left	4.30	10/15/2021 10/15/2021	Brooks Weisser

LM Start	0.00	Rating **	M	Issue No.	24	
LM End	0.00	Issue Type +	En	Location *		
Category	Supplemental			GPS Latitude/Longitude		
				Start		End
Item	DWR UCIP Field Study			38.792536 °	38.792536 °	
				-121.590779 °	-121.590779 °	
DWR ID	25266					
Comment Code						
Inspector Comment						
DS_ID:25266 FS_ID:46910 EP_NO: N/A Repair Type: Non-Urgent EVAL Issue: Crossing Status: Found UCIP Comments: FIELD_STRUCT_DESC: 2 of 3. [Natomas Mutual Water Company Bennett Pumping Plant] 42-inch pipe through the levee, 18 feet below the crown. Two pumps on steel piling on the bank. Slide gate in concrete well on the waterward side. Discharges into cobble-grouted ditch on the landward berm. FS Date: 12/10/2015						

No Photos

LM Start	0.00	Rating **	M	Issue No.	25
LM End	0.00	Issue Type +	En	Location *	
Category	Supplemental			GPS Latitude/Longitude	
				Start	End
Item	DWR UCIP Field Study			38.792516 °	38.792516 °
				-121.590805 °	-121.590805 °
DWR ID	25414				
Comment Code					
Inspector Comment					
DS_ID:25414 FS_ID:46911 EP_NO: N/A Repair Type: Non-Urgent EVAL Issue: Crossing Status: Found UCIP Comments: FIELD_STRUCT_DESC: 3 of 3. [Natomas Mutual Water Company Bennett Pumping Plant] 36-inch pipe through the levee, 6 feet below the crown. Siphon breaker on the landward shoulder. Vertical pump mounted on the bank. FS Date: 12/10/2015					

No Photos

* Location LS : Land Side N/A : Not Applicable WS : Water Side CR : Crown	** Rating A : Acceptable M : Minimally Acceptable U : Unacceptable	N : Not Inspected/Rated C : Corrected A/W : Acceptable but Monitor & Maintain	+ Issue Type Ma : Maintenance Deficiency Ob : Design & System Obsolescence En : Enforcement
--	--	---	---

**Flood Control Project Maintenance
Levee Inspections**

Levee Inspection Report By Mile - Fall 2021

Reclamation District No. 1000 Natomas

Waterway	Bank	Unit Miles	Inspection Start/End	Inspector
Unit No. 04 Natomas Cross Canal	Left	4.30	10/15/2021 10/15/2021	Brooks Weisser

LM Start	0.00	Rating **	M	Issue No.	26
LM End	0.00	Issue Type +	En	Location *	
Category	Supplemental			GPS Latitude/Longitude	
				Start	End
Item	DWR UCIP Field Study			38.799011 °	38.799011 °
				-121.579820 °	-121.579820 °
DWR ID	25265				
Comment Code					
Inspector Comment					
DS_ID:25265 FS_ID:46903 EP_NO: N/A Repair Type: Non-Urgent EVAL Issue: Crossing Status: Found UCIP Comments: FIELD_STRUCT_DESC: 1 of 3. [RD1000 Pumping Plant] 48-inch pipes through the levee, 4.2 feet below the crown. Pump in pump house on the landward side. Siphon breaker on the waterward shoulder. Flap gate on one pipe, two pipes open on waterward end. Bank rock revetted. One CM cutoff wall. Pad over levee crown. Pipe remains in levee as per C3980 Vol 3A NCC Phase 2 Record Set for Natomas Levee Improvement Program/Natomas Post-Authorization. (Permit No. 18159-2-2009, Sacramento Area Flood Control Agency) FS Date: 12/10/2015					

No Photos

LM Start	0.01	Rating **	A	Issue No.	13
LM End	3.84	Issue Type +	Ma	Location *	LS
Category	Earthen Levee			GPS Latitude/Longitude	
				Start	End
Item	Vegetation			38.820549 °	38.786427 °
				-121.543915 °	-121.599647 °
DWR ID	DWR_RD1000_04_f_2021_13				
Comment Code					
V1 : Control annual grass and weeds on the levee slopes and easements.					
Inspector Comment					
Annual vegetation is well maintained, Fall 2021.					

Photo 1 of 1 : FA_2021_RD1000_34_13_20211019_00001.jpg



View of well maintained vegetation on the landside slope, Fall 2021.

* Location LS : Land Side N/A : Not Applicable WS : Water Side CR : Crown	** Rating A : Acceptable M : Minimally Acceptable U : Unacceptable	N : Not Inspected/Rated C : Corrected A/W : Acceptable but Monitor & Maintain	+ Issue Type Ma : Maintenance Deficiency Ob : Design & System Obsolescence En : Enforcement
--	--	---	---

**Flood Control Project Maintenance
Levee Inspections**

Levee Inspection Report By Mile - Fall 2021

Reclamation District No. 1000 Natomas

Waterway	Bank	Unit Miles	Inspection Start/End	Inspector
Unit No. 04 Natomas Cross Canal	Left	4.30	10/15/2021 10/15/2021	Brooks Weisser

LM Start	0.01	Rating **	A	Issue No.	14
LM End	3.84	Issue Type +	Ma	Location *	WS
Category	Earthen Levee			GPS Latitude/Longitude	
				Start	End
Item	Vegetation			38.820549 °	38.786426 °
				-121.543915 °	-121.599653 °
DWR ID	DWR_RD1000_04_f _ 2021_14				
Comment Code					
V1 : Control annual grass and weeds on the levee slopes and easements.					
Inspector Comment					
Annual vegetation is well maintained, Fall 2021.					

Photo 1 of 1 : FA_2021_RD1000_34_14_20211019_00002.jpg



View of well maintained vegetation on the waterside slope, Fall 2021.

* Location LS : Land Side N/A : Not Applicable WS : Water Side CR : Crown	** Rating A : Acceptable M : Minimally Acceptable U : Unacceptable	N : Not Inspected/Rated C : Corrected A/W : Acceptable but Monitor & Maintain	+ Issue Type Ma : Maintenance Deficiency Ob : Design & System Obsolescence En : Enforcement
--	--	---	---