

**Flood Control Project Maintenance
Levee Inspections**

Fall 2017 Levee Maintenance Deficiency Summary Report

Overall LMA & Unit Ratings, including USACE Erosion Survey

Sacramento River Basin

RD1000	Overall LMA Rating	Total LMA Miles						
Reclamation District No. 1000 Natomas	M	41.84						
Rated Item	Maintenance Deficiency				Enforcement		Design & System Obsolescence	
	M Miles	U Miles	M + 4U Miles	Threshold %	M Miles	U Miles	M Miles	U Miles
<i>Earthen Levee</i>								
Vegetation	2.72		2.72	6.50%	5.93	0.80		
Trim / Thin Trees	2.59		2.59	6.19%				
Encroachments					5.90	0.31		
Animal Control	0.01		0.01	0.02%				
Slope Stability	0.01		0.01	0.02%				
<i>Supplemental</i>								
2015 USACE Erosion Survey, DRAFT	0.13		0.13	0.31%				
DWR UCIP Field Study					0.12			
<i>LMA Totals:</i>	5.46	0.00	5.46	13.05%	11.95	1.11	0.00	0.00
Unit No. 01 Sacramento River LB	Overall Unit Rating	Total Unit Miles						
RD1000	A	18.28						
Rated Item	Maintenance Deficiency				Enforcement		Design & System Obsolescence	
	M Miles	U Miles	M + 4U Miles	Threshold %	M Miles	U Miles	M Miles	U Miles
<i>Earthen Levee</i>								
Vegetation					5.81	0.80		
Trim / Thin Trees	0.02		0.02	0.11%				
Encroachments					4.31	0.31		
<i>Supplemental</i>								
2015 USACE Erosion Survey, DRAFT	0.13		0.13	0.71%				
<i>Unit Totals:</i>	0.15	0.00	0.15	0.82%	10.12	1.11	0.00	0.00
Unit No. 02 American River RB	Overall Unit Rating	Total Unit Miles						
RD1000	U	2.32						
Rated Item	Maintenance Deficiency				Enforcement		Design & System Obsolescence	
	M Miles	U Miles	M + 4U Miles	Threshold %	M Miles	U Miles	M Miles	U Miles
<i>Earthen Levee</i>								
Vegetation	2.72		2.72	117.13%				
Trim / Thin Trees	2.57		2.57	110.67%				
<i>Unit Totals:</i>	5.29	0.00	5.29	227.80%	0.00	0.00	0.00	0.00
Unit No. 03 Natomas East Canal RB	Overall Unit Rating	Total Unit Miles						
RD1000	A	16.93						
Rated Item	Maintenance Deficiency				Enforcement		Design & System Obsolescence	
	M Miles	U Miles	M + 4U Miles	Threshold %	M Miles	U Miles	M Miles	U Miles
<i>Earthen Levee</i>								
Vegetation					0.12			
Encroachments					1.59			
Animal Control	0.01		0.01	0.06%				
Slope Stability	0.01		0.01	0.06%				
<i>Unit Totals:</i>	0.02	0.00	0.02	0.12%	1.71	0.00	0.00	0.00

**Flood Control Project Maintenance
Levee Inspections**

Fall 2017 Levee Maintenance Deficiency Summary Report

Overall LMA & Unit Ratings, including USACE Erosion Survey

Sacramento River Basin (cont.)

Unit No. 04 Natomas Cross Canal LB	Overall Unit Rating	Total Unit Miles						
	A	4.30						
RD1000								
Rated Item	Maintenance Deficiency				Enforcement		Design & System Obsolescence	
	M Miles	U Miles	M + 4U Miles	Threshold %	M Miles	U Miles	M Miles	U Miles
Supplemental								
DWR UCIP Field Study					0.12			
Unit Totals:	0.00	0.00	0.00	0.00%	0.12	0.00	0.00	0.00

**Flood Control Project Maintenance
Levee Inspections**
LMA District Cover Sheet
Fall 2017 Levee Inspection Results

Reclamation District No. 1000 Natomas

	Spring (March - May)	Summer ** (June - August)	Fall (September - November)	Winter ** (December - February)
† Overall LMA Rating (Fall Only)			M	

** Non-receipt of Summer or Winter Inspection
Reports may effect overall annual rating.

† SPRING INSPECTIONS: Overall maintenance ratings are not determined for the spring inspection results. Individual maintenance deficiencies are rated using the same criteria in the spring and in the fall.

FALL INSPECTIONS: The overall maintenance rating shown above is based on operation and maintenance deficiencies identified within the attached unit inspection reports. This rating is not intended to be an indication of risk.

Comments

**Flood Control Project Maintenance
Levee Inspections**

Unit Cover Sheet

Fall 2017 Levee Inspection Results

Reclamation District No. 1000 Natomas

Waterway			Bank	Unit Miles
Unit No. 01 Sacramento River			Left	18.28
	Spring (March - May)	Summer (June - August)	(September - November) Fall	Winter (December - February)
Unit Maintenance Rating (Fall Only)			A	
Date of Inspection	3/17/2017 - 3/17/2017		9/14/2017 - 9/15/2017	
DWR Inspector	Sterling York		Sterling York	
Accompanied By	Don Caldwell RD1000		Don Caldwell RD1000	

Summer & Winter Inspections

The Local Maintaining Agency (LMA) is responsible for summer and winter inspections. The LMA is required to submit a report regarding summer and winter inspections to the California Department of Water Resources (DWR).

DWR must be informed on the:

- a) completion of the inspection
- b) any changes other than the results of normal maintenance
- c) corrections to deficiencies noted in this report

If additional items are noted, further documentation of those items must also be submitted.

The LMA should submit this information to DWR using the LMA web application tool available at:

<http://cdec.water.ca.gov/lma.html>

If the LMA is unable to submit information on this webpage, please contact DWR for assistance.

The LMA should submit the information and any associated documentation by September 30 for summer inspections and March 31 for winter inspections.

**Flood Control Project Maintenance
Levee Inspections**

Levee Inspection Report By Mile - Fall 2017

Reclamation District No. 1000 Natomas

Waterway	Bank	Unit Miles	Inspection Start/End	Inspector
Unit No. 01 Sacramento River	Left	18.28	09/14/2017 09/15/2017	Sterling York

LM Start		Rating **	A	Issue No.	18
LM End		Issue Type +	Ma	Location *	
Category	Earthen Levee		GPS Latitude/Longitude		
			Start	End	
Item	Operations & Maintenance Manuals				
DWR ID	DWR_RD1000_01_f_2014_18				
Comment Code					
Inspector Comment					
RD 1000 has a copy of the O&M manuals at their district office.					

No Photos

LM Start		Rating **	A	Issue No.	24
LM End		Issue Type +	Ma	Location *	
Category	Earthen Levee		GPS Latitude/Longitude		
			Start	End	
Item	Emergency Supplies & Equipment				
DWR ID	DWR_RD1000_01_f_2014_24				
Comment Code					
Inspector Comment					
RD 1000 has flood fight supplies on hand at their equipment yard located near Unit 4.					

No Photos

LM Start		Rating **	A	Issue No.	39
LM End		Issue Type +	Ma	Location *	
Category	Earthen Levee		GPS Latitude/Longitude		
			Start	End	
Item	Flood Preparedness & Training				
DWR ID	DWR_RD1000_01_f_2014_39				
Comment Code					
Inspector Comment					
RD 1000 employees attend the DWR flood fight class held at CalExpo annually.					

No Photos

* Location LS : Land Side N/A : Not Applicable WS : Water Side CR : Crown	** Rating A : Acceptable M : Minimally Acceptable U : Unacceptable	N : Not Inspected/Rated C : Corrected A/W : Acceptable but Monitor & Maintain	+ Issue Type Ma : Maintenance Deficiency Ob : Design & System Obsolescence En : Enforcement
--	--	---	---

**Flood Control Project Maintenance
Levee Inspections**

Levee Inspection Report By Mile - Fall 2017

Reclamation District No. 1000 Natomas

Waterway	Bank	Unit Miles	Inspection Start/End	Inspector
Unit No. 01 Sacramento River	Left	18.28	09/14/2017 09/15/2017	Sterling York

LM Start	0.01	Rating **	A	Issue No.	7
LM End	11.99	Issue Type +	Ma	Location *	LS
Category	Earthen Levee			GPS Latitude/Longitude	
				Start	End
Item	Vegetation			38.780402 °	38.650141 °
				-121.603267 °	-121.576936 °
DWR ID	DWR_RD1000_01_f_2017_7				
Comment Code					
V1 : Control annual grass and weeds on the levee slopes and easements.					
Inspector Comment					
Well maintained annual vegetation, Fall 2017.					

Photo 1 of 2 : FA_2017_RD1000_31_7_20170919_00037.jpg



View of the landside looking upstream of the well maintained annual vegetation, Fall 2017.

LM Start	0.01	Rating **	A	Issue No.	7 (cont)
LM End	11.99	Issue Type +	Ma	Location *	LS

Photo 2 of 2 : FA_2017_RD1000_31_7_20170919_00038.jpg



Second view of the landside looking upstream of the well maintained annual vegetation, Fall 2017.

LM Start	0.01	Rating **	A	Issue No.	6
LM End	11.99	Issue Type +	Ma	Location *	WS
Category	Earthen Levee			GPS Latitude/Longitude	
				Start	End
Item	Vegetation			38.780402 °	38.650141 °
				-121.603267 °	-121.576935 °
DWR ID	DWR_RD1000_01_f_2017_6				
Comment Code					
V1 : Control annual grass and weeds on the levee slopes and easements.					
Inspector Comment					
Well maintained annual vegetation, Fall 2017.					

Photo 1 of 2 : FA_2017_RD1000_31_6_20170919_00039.jpg



View of the waterside looking upstream of the well maintained annual vegetation, Fall 2017.

*** Location**
 LS : Land Side N/A : Not Applicable
 WS : Water Side
 CR : Crown

**** Rating**
 A : Acceptable
 M : Minimally Acceptable
 U : Unacceptable
 N : Not Inspected/Rated
 C : Corrected
 A/W : Acceptable but Monitor & Maintain

+ Issue Type
 Ma : Maintenance Deficiency
 Ob : Design & System Obsolescence
 En : Enforcement

**Flood Control Project Maintenance
Levee Inspections**

Levee Inspection Report By Mile - Fall 2017

Reclamation District No. 1000 Natomas

Waterway	Bank	Unit Miles	Inspection Start/End	Inspector
Unit No. 01 Sacramento River	Left	18.28	09/14/2017 09/15/2017	Sterling York

LM Start	0.01	Rating **	A	Issue No.	6 (cont)	
LM End	11.99	Issue Type +	Ma	Location *	WS	
Category	Earthen Levee			GPS Latitude/Longitude		
				Start		End
Item	Vegetation			38.780402 °		38.650141 °
				-121.603267 °		-121.576935 °
DWR ID	DWR_RD1000_01_f_2017_6					
Comment Code						
V1 : Control annual grass and weeds on the levee slopes and easements.						
Inspector Comment						
Well maintained annual vegetation, Fall 2017.						

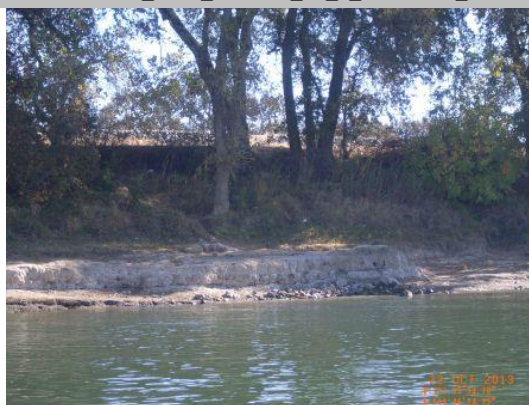
Photo 2 of 2 : FA_2017_RD1000_31_6_20170919_00040.jpg



Second view of the landside looking upstream of the well maintained annual vegetation, Fall 2017.

LM Start	0.48	Rating **	M	Issue No.	3
LM End	0.61	Issue Type +	Ma	Location *	WS
Category	Supplemental			GPS Latitude/Longitude	
				Start	End
Item	2015 USACE Erosion Survey, DRAFT			38.774507 °	38.772921 °
				-121.598865 °	-121.597788 °
DWR ID	DWR_RD1000_01_s_2016_3				
Comment Code					
Inspector Comment					
1997 - Very cohesive toe. 2005 - Site was staked and rock was stockpiled along the top of the bank. 2010 - New adjacent levee under construction. 2011 - New animal burrow. 2015: No observed changes. [2015 Site ID: SAC_78-3_L]					

Photo 1 of 1 : FA_2017_RD1000_31_3_20170911_00002.jpg



USACE 2013 Photo #1

LM Start	1.63	Rating **	M	Issue No.	136
LM End	1.63	Issue Type +	En	Location *	WS
Category	Earthen Levee			GPS Latitude/Longitude	
				Start	End
Item	Encroachments			38.759320 °	38.759320 °
				-121.591343 °	-121.591343 °
DWR ID	DWR_RD1000_01_s_2012_136				
Comment Code					
FE : Fence					
Inspector Comment					

Photo 1 of 1 : FA_2017_RD1000_31_136_20170911_00033.jpg



View of an encroachment, 'Fence'. Fall 2016.

* Location		** Rating		+ Issue Type	
LS : Land Side	N/A : Not Applicable	A : Acceptable	N : Not Inspected/Rated	Ma : Maintenance Deficiency	
WS : Water Side		M : Minimally Acceptable	C : Corrected	Ob : Design & System Obsolescence	
CR : Crown		U : Unacceptable	A/W : Acceptable but Monitor & Maintain	En : Enforcement	

**Flood Control Project Maintenance
Levee Inspections**

Levee Inspection Report By Mile - Fall 2017

Reclamation District No. 1000 Natomas

Waterway	Bank	Unit Miles	Inspection Start/End	Inspector
Unit No. 01 Sacramento River	Left	18.28	09/14/2017 09/15/2017	Sterling York

LM Start	1.72	Rating **	M	Issue No.	135
LM End	1.75	Issue Type +	En	Location *	WS
Category	Earthen Levee			GPS Latitude/Longitude	
				Start	End
Item	Vegetation			38.757962 °	38.757480 °
				-121.591342 °	-121.591147 °
DWR ID	DWR_RD1000_01_s_2012_135				
Comment Code					
V6 : Landscaping					
Inspector Comment					

No Photos

LM Start	1.75	Rating **	M	Issue No.	134
LM End	1.77	Issue Type +	En	Location *	WS
Category	Earthen Levee			GPS Latitude/Longitude	
				Start	End
Item	Vegetation			38.757478 °	38.757238 °
				-121.591140 °	-121.591272 °
DWR ID	DWR_RD1000_01_s_2012_134				
Comment Code					
V6 : Landscaping					
Inspector Comment					

No Photos

LM Start	1.87	Rating **	M	Issue No.	133
LM End	1.89	Issue Type +	En	Location *	WS
Category	Earthen Levee			GPS Latitude/Longitude	
				Start	End
Item	Vegetation			38.755824 °	38.755585 °
				-121.591569 °	-121.591530 °
DWR ID	DWR_RD1000_01_s_2012_133				
Comment Code					
V6 : Landscaping					
Inspector Comment					

Photo 1 of 1 : FA_2017_RD1000_31_133_20170911_00032.jpg



Typical Garden Hwy 'Landscaping'. Fall 2016.

* Location LS : Land Side N/A : Not Applicable WS : Water Side CR : Crown		** Rating A : Acceptable N : Not Inspected/Rated M : Minimally Acceptable C : Corrected U : Unacceptable A/W : Acceptable but Monitor & Maintain		+ Issue Type Ma : Maintenance Deficiency Ob : Design & System Obsolescence En : Enforcement
--	--	---	--	---

**Flood Control Project Maintenance
Levee Inspections**

Levee Inspection Report By Mile - Fall 2017

Reclamation District No. 1000 Natomas

Waterway	Bank	Unit Miles	Inspection Start/End	Inspector
Unit No. 01 Sacramento River	Left	18.28	09/14/2017 09/15/2017	Sterling York

LM Start	1.94	Rating **	M	Issue No.	132
LM End	1.96	Issue Type +	En	Location *	WS
Category	Earthen Levee		GPS Latitude/Longitude		
			Start	End	
Item	Vegetation		38.754848 °	38.754562 °	
			-121.591742 °	-121.591795 °	
DWR ID	DWR_RD1000_01_s _ 2012_132				
Comment Code					
V6 : Landscaping					
Inspector Comment					

No Photos

LM Start	2.00	Rating **	M	Issue No.	129
LM End	2.01	Issue Type +	En	Location *	WS
Category	Earthen Levee		GPS Latitude/Longitude		
			Start	End	
Item	Vegetation		38.753983 °	38.753848 °	
			-121.591737 °	-121.591797 °	
DWR ID	DWR_RD1000_01_s _ 2012_129				
Comment Code					
V6 : Landscaping					
Inspector Comment					

No Photos

LM Start	2.10	Rating **	M	Issue No.	122
LM End	2.16	Issue Type +	En	Location *	WS
Category	Earthen Levee		GPS Latitude/Longitude		
			Start	End	
Item	Vegetation		38.752540 °	38.751822 °	
			-121.592563 °	-121.592857 °	
DWR ID	DWR_RD1000_01_s _ 2012_122				
Comment Code					
V6 : Landscaping					
Inspector Comment					

No Photos

* Location LS : Land Side N/A : Not Applicable WS : Water Side CR : Crown	** Rating A : Acceptable M : Minimally Acceptable U : Unacceptable	N : Not Inspected/Rated C : Corrected A/W : Acceptable but Monitor & Maintain	+ Issue Type Ma : Maintenance Deficiency Ob : Design & System Obsolescence En : Enforcement
--	--	---	---

**Flood Control Project Maintenance
Levee Inspections**

Levee Inspection Report By Mile - Fall 2017

Reclamation District No. 1000 Natomas

Waterway	Bank	Unit Miles	Inspection Start/End	Inspector
Unit No. 01 Sacramento River	Left	18.28	09/14/2017 09/15/2017	Sterling York

LM Start	2.52	Rating **	M	Issue No.	121
LM End	2.67	Issue Type +	En	Location *	WS
Category	Earthen Levee			GPS Latitude/Longitude	
				Start	End
Item	Vegetation			38.747087 °	38.745127 °
				-121.595582 °	-121.596793 °
DWR ID	DWR_RD1000_01_s_2012_121				
Comment Code					
V6 : Landscaping					
Inspector Comment					

No Photos

LM Start	5.17	Rating **	M	Issue No.	120
LM End	5.21	Issue Type +	En	Location *	WS
Category	Earthen Levee			GPS Latitude/Longitude	
				Start	End
Item	Vegetation			38.711248 °	38.710806 °
				-121.610500 °	-121.611110 °
DWR ID	DWR_RD1000_01_s_2012_120				
Comment Code					
V6 : Landscaping					
Inspector Comment					

Photo 1 of 1 : FA_2017_RD1000_31_120_20170911_00031.jpg



Typical vegetation along the waterside in front of residences. Fall 2016.

* Location LS : Land Side N/A : Not Applicable WS : Water Side CR : Crown		** Rating A : Acceptable N : Not Inspected/Rated M : Minimally Acceptable C : Corrected U : Unacceptable A/W : Acceptable but Monitor & Maintain		+ Issue Type Ma : Maintenance Deficiency Ob : Design & System Obsolescence En : Enforcement
--	--	---	--	---

**Flood Control Project Maintenance
Levee Inspections**

Levee Inspection Report By Mile - Fall 2017

Reclamation District No. 1000 Natomas

Waterway	Bank	Unit Miles	Inspection Start/End	Inspector
Unit No. 01 Sacramento River	Left	18.28	09/14/2017 09/15/2017	Sterling York

LM Start	5.21	Rating **	A/W	Issue No.	4	
LM End	5.21	Issue Type +	Ma	Location *		
Category	Supplemental			GPS Latitude/Longitude		
				Start	End	
Item	2017 Storm Damage			38.710830 °	38.710830 °	
				-121.611100 °	-121.611100 °	
DWR ID	DWR_RD1000_01_f_2017_4					
Comment Code						
Inspector Comment						
Levee Evaluation Comments						
Description:						
Site ID No:45						
Site Designation:LMA-12						
Repair Type: Erosion						
Rating:Area of Concern						
Field Date:6/6/2017						
Notes: private residence						

LM Start	5.21	Rating **	A/W	Issue No.	4 (cont)
LM End	5.21	Issue Type +	Ma	Location *	

Photo 1 of 3 : LEVAL_FA_2017_45_1257.jpg



Photo 2 of 3 : LEVAL_FA_2017_45_1259.jpg



* Location		** Rating		+ Issue Type	
LS : Land Side	N/A : Not Applicable	A : Acceptable	N : Not Inspected/Rated	Ma : Maintenance Deficiency	
WS : Water Side		M : Minimally Acceptable	C : Corrected	Ob : Design & System Obsolescence	
CR : Crown		U : Unacceptable	A/W : Acceptable but Monitor & Maintain	En : Enforcement	

**Flood Control Project Maintenance
Levee Inspections**

Levee Inspection Report By Mile - Fall 2017

Reclamation District No. 1000 Natomas

Waterway	Bank	Unit Miles	Inspection Start/End	Inspector
Unit No. 01 Sacramento River	Left	18.28	09/14/2017 09/15/2017	Sterling York

LM Start	5.21	Rating **	A/W	Issue No.	4 (cont)							
LM End	5.21	Issue Type +	Ma	Location *								
Category	Supplemental		GPS Latitude/Longitude									
			Start	End								
Item	2017 Storm Damage		38.710830 °	38.710830 °								
			-121.611100 °	-121.611100 °								
DWR ID	DWR_RD1000_01_f_2017_4											
Comment Code												
Inspector Comment												
Levee Evaluation Comments Description: Site ID No:45 Site Designation:LMA-12 Repair Type: Erosion Rating:Area of Concern Field Date:6/6/2017 Notes: private residence												

Photo 3 of 3 : LEVAL_FA_2017_45_1261.jpg



LM Start	5.24	Rating **	M	Issue No.	119							
LM End	5.28	Issue Type +	En	Location *	WS							
Category	Earthen Levee		GPS Latitude/Longitude									
			Start	End								
Item	Vegetation		38.710508 °	38.710132 °								
			-121.611450 °	-121.611882 °								
DWR ID	DWR_RD1000_01_s_2012_119											
Comment Code												
V6 : Landscaping												
Inspector Comment												

No Photos

* Location LS : Land Side N/A : Not Applicable WS : Water Side CR : Crown	** Rating A : Acceptable M : Minimally Acceptable U : Unacceptable N : Not Inspected/Rated C : Corrected A/W : Acceptable but Monitor & Maintain	+ Issue Type Ma : Maintenance Deficiency Ob : Design & System Obsolescence En : Enforcement
--	---	---

**Flood Control Project Maintenance
Levee Inspections**

Levee Inspection Report By Mile - Fall 2017

Reclamation District No. 1000 Natomas

Waterway	Bank	Unit Miles	Inspection Start/End	Inspector
Unit No. 01 Sacramento River	Left	18.28	09/14/2017 09/15/2017	Sterling York

LM Start	5.62	Rating **	U	Issue No.	118
LM End	5.65	Issue Type +	En	Location *	WS
Category	Earthen Levee			GPS Latitude/Longitude	
				Start	End
Item	Vegetation			38.706456 °	38.706082 °
				-121.616223 °	-121.616385 °
DWR ID	DWR_RD1000_01_s_2012_118				
Comment Code					
V6 : Landscaping					
Inspector Comment					
The landscape vegetation prevents the ability to see waterside slope and will make it difficult to access if a flood fight is needed.					

Photo 1 of 1 : FA_2017_RD1000_31_118_20170911_00030.jpg



This photo was taken from the crown facing downstream looking down the waterward levee slope at unacceptable landscaping. Fall 2016.

LM Start	5.97	Rating **	M	Issue No.	116
LM End	6.00	Issue Type +	En	Location *	WS
Category	Earthen Levee			GPS Latitude/Longitude	
				Start	End
Item	Vegetation			38.702742 °	38.702467 °
				-121.620557 °	-121.620947 °
DWR ID	DWR_RD1000_01_s_2012_116				
Comment Code					
V6 : Landscaping					
Inspector Comment					

No Photos

LM Start	6.12	Rating **	M	Issue No.	113
LM End	6.17	Issue Type +	En	Location *	WS
Category	Earthen Levee			GPS Latitude/Longitude	
				Start	End
Item	Vegetation			38.701422 °	38.700987 °
				-121.622755 °	-121.623564 °
DWR ID	DWR_RD1000_01_s_2012_113				
Comment Code					
V6 : Landscaping					
Inspector Comment					

No Photos

* Location		** Rating		+ Issue Type	
LS : Land Side	N/A : Not Applicable	A : Acceptable	N : Not Inspected/Rated	Ma : Maintenance Deficiency	
WS : Water Side		M : Minimally Acceptable	C : Corrected	Ob : Design & System Obsolescence	
CR : Crown		U : Unacceptable	A/W : Acceptable but Monitor & Maintain	En : Enforcement	

**Flood Control Project Maintenance
Levee Inspections**

Levee Inspection Report By Mile - Fall 2017

Reclamation District No. 1000 Natomas

Waterway	Bank	Unit Miles	Inspection Start/End	Inspector
Unit No. 01 Sacramento River	Left	18.28	09/14/2017 09/15/2017	Sterling York

LM Start	6.28	Rating **	U	Issue No.	111
LM End	6.32	Issue Type +	En	Location *	WS
Category	Earthen Levee			GPS Latitude/Longitude	
				Start	End
Item	Vegetation			38.699877 °	38.699575 °
				-121.624948 °	-121.625475 °
DWR ID	DWR_RD1000_01_s_2012_111				
Comment Code					
V6 : Landscaping					
Inspector Comment					
The landscape vegetation prevents the ability to see waterside slope and will make it difficult to access if a flood fight is needed.					

Photo 1 of 1 : FA_2017_RD1000_31_111_20170911_00029.jpg



This photo was taken from the crown facing downstream looking down the waterward levee slope at unacceptable landscaping. Fall 2016.

LM Start	6.36	Rating **	M	Issue No.	68
LM End	6.40	Issue Type +	En	Location *	WS
Category	Earthen Levee			GPS Latitude/Longitude	
				Start	End
Item	Vegetation			38.699313 °	38.698978 °
				-121.626281 °	-121.626777 °
DWR ID	DWR_RD1000_01_s_2015_68				
Comment Code					
V6 : Landscaping					
Inspector Comment					

No Photos

LM Start	6.49	Rating **	M	Issue No.	125
LM End	6.49	Issue Type +	En	Location *	WS
Category	Earthen Levee			GPS Latitude/Longitude	
				Start	End
Item	Vegetation			38.758607 °	38.758607 °
				-121.601933 °	-121.601933 °
DWR ID	DWR_RD1000_01_s_2012_125				
Comment Code					
V6 : Landscaping					
Inspector Comment					

No Photos

* Location		** Rating		+ Issue Type	
LS : Land Side	N/A : Not Applicable	A : Acceptable	N : Not Inspected/Rated	Ma : Maintenance Deficiency	
WS : Water Side		M : Minimally Acceptable	C : Corrected	Ob : Design & System Obsolescence	
CR : Crown		U : Unacceptable	A/W : Acceptable but Monitor & Maintain	En : Enforcement	

**Flood Control Project Maintenance
Levee Inspections**

Levee Inspection Report By Mile - Fall 2017

Reclamation District No. 1000 Natomas

Waterway	Bank	Unit Miles	Inspection Start/End	Inspector
Unit No. 01 Sacramento River	Left	18.28	09/14/2017 09/15/2017	Sterling York

LM Start	6.50	Rating **	M	Issue No.	109
LM End	6.53	Issue Type +	En	Location *	WS
Category	Earthen Levee			GPS Latitude/Longitude	
				Start	End
Item	Vegetation			38.697958 °	38.697773 °
				-121.628273 °	-121.628682 °
DWR ID	DWR_RD1000_01_s_2012_109				
Comment Code					
V6 : Landscaping					
Inspector Comment					

No Photos

LM Start	6.56	Rating **	M	Issue No.	108
LM End	6.62	Issue Type +	En	Location *	WS
Category	Earthen Levee			GPS Latitude/Longitude	
				Start	End
Item	Encroachments			38.697386 °	38.696618 °
				-121.628892 °	-121.629425 °
DWR ID	DWR_RD1000_01_s_2012_108				
Comment Code					
FE : Fence					
Inspector Comment					

Photo 1 of 1 : FA_2017_RD1000_31_108_20170911_00028.jpg



View of an encroachment fence. Fall 2016.

LM Start	6.67	Rating **	M	Issue No.	107
LM End	6.68	Issue Type +	En	Location *	WS
Category	Earthen Levee			GPS Latitude/Longitude	
				Start	End
Item	Vegetation			38.696010 °	38.695821 °
				-121.630007 °	-121.630142 °
DWR ID	DWR_RD1000_01_s_2012_107				
Comment Code					
V6 : Landscaping					
Inspector Comment					

No Photos

* Location LS : Land Side N/A : Not Applicable WS : Water Side CR : Crown		** Rating A : Acceptable N : Not Inspected/Rated M : Minimally Acceptable C : Corrected U : Unacceptable A/W : Acceptable but Monitor & Maintain		+ Issue Type Ma : Maintenance Deficiency Ob : Design & System Obsolescence En : Enforcement
--	--	---	--	---

**Flood Control Project Maintenance
Levee Inspections**

Levee Inspection Report By Mile - Fall 2017

Reclamation District No. 1000 Natomas

Waterway	Bank	Unit Miles	Inspection Start/End	Inspector
Unit No. 01 Sacramento River	Left	18.28	09/14/2017 09/15/2017	Sterling York

LM Start	6.79	Rating **	M	Issue No.	106
LM End	6.81	Issue Type +	En	Location *	WS
Category	Earthen Levee			GPS Latitude/Longitude	
				Start	End
Item	Vegetation			38.694348 °	38.694187 °
				-121.631007 °	-121.631200 °
DWR ID	DWR_RD1000_01_s_2012_106				
Comment Code					
V6 : Landscaping					
Inspector Comment					

No Photos

LM Start	6.81	Rating **	A/W	Issue No.	105
LM End	6.83	Issue Type +	En	Location *	WS
Category	Earthen Levee			GPS Latitude/Longitude	
				Start	End
Item	Vegetation			38.694192 °	38.693932 °
				-121.631203 °	-121.631470 °
DWR ID	DWR_RD1000_01_s_2012_105				
Comment Code					
V6 : Landscaping					
Inspector Comment					
Vegetation has been trimmed back by property owner and there is clear line of sight.					

Photo 1 of 1 : FA_2017_RD1000_31_105_20170911_00027.jpg



View of vegetation that has been trimmed back by property owner and there is clear line of sight.

LM Start	6.83	Rating **	M	Issue No.	104
LM End	6.87	Issue Type +	En	Location *	WS
Category	Earthen Levee			GPS Latitude/Longitude	
				Start	End
Item	Vegetation			38.693935 °	38.693412 °
				-121.631478 °	-121.631765 °
DWR ID	DWR_RD1000_01_s_2012_104				
Comment Code					
V6 : Landscaping					
Inspector Comment					

No Photos

* Location		** Rating		+ Issue Type	
LS : Land Side	N/A : Not Applicable	A : Acceptable	N : Not Inspected/Rated	Ma : Maintenance Deficiency	
WS : Water Side		M : Minimally Acceptable	C : Corrected	Ob : Design & System Obsolescence	
CR : Crown		U : Unacceptable	A/W : Acceptable but Monitor & Maintain	En : Enforcement	

**Flood Control Project Maintenance
Levee Inspections**

Levee Inspection Report By Mile - Fall 2017

Reclamation District No. 1000 Natomas

Waterway	Bank	Unit Miles	Inspection Start/End	Inspector
Unit No. 01 Sacramento River	Left	18.28	09/14/2017 09/15/2017	Sterling York

LM Start	6.90	Rating **	M	Issue No.	102
LM End	6.98	Issue Type +	En	Location *	WS
Category	Earthen Levee		GPS Latitude/Longitude		
			Start	End	
Item	Vegetation		38.693037 °	38.691872 °	
			-121.632097 °	-121.632490 °	
DWR ID	DWR_RD1000_01_s_2012_102				
Comment Code					
V6 : Landscaping					
Inspector Comment					

No Photos

LM Start	7.02	Rating **	M	Issue No.	100
LM End	7.09	Issue Type +	En	Location *	WS
Category	Earthen Levee		GPS Latitude/Longitude		
			Start	End	
Item	Vegetation		38.691363 °	38.690367 °	
			-121.632652 °	-121.632797 °	
DWR ID	DWR_RD1000_01_s_2012_100				
Comment Code					
V6 : Landscaping					
Inspector Comment					

No Photos

LM Start	7.19	Rating **	U	Issue No.	63
LM End	7.23	Issue Type +	En	Location *	WS
Category	Earthen Levee		GPS Latitude/Longitude		
			Start	End	
Item	Vegetation		38.688937 °	38.688281 °	
			-121.632646 °	-121.632542 °	
DWR ID	DWR_RD1000_01_s_2015_63				
Comment Code					
V6 : Landscaping					
Inspector Comment					
The landscape vegetation prevents the ability to see waterside slope and will make it difficult to access if a flood fight is needed.					

Photo 1 of 1 : FA_2017_RD1000_31_63_20170911_00018.jpg



This photo was taken facing the waterside of the levee looking downstream of typical vegetation in front of residence. Fall 2016.

* Location	** Rating	+ Issue Type
LS : Land Side WS : Water Side CR : Crown	A : Acceptable M : Minimally Acceptable U : Unacceptable	Ma : Maintenance Deficiency Ob : Design & System Obsolescence En : Enforcement
N/A : Not Applicable	N : Not Inspected/Rated C : Corrected A/W : Acceptable but Monitor & Maintain	

**Flood Control Project Maintenance
Levee Inspections**

Levee Inspection Report By Mile - Fall 2017

Reclamation District No. 1000 Natomas

Waterway	Bank	Unit Miles	Inspection Start/End	Inspector
Unit No. 01 Sacramento River	Left	18.28	09/14/2017 09/15/2017	Sterling York

LM Start	7.27	Rating **	M	Issue No.	98
LM End	7.27	Issue Type +	En	Location *	WS
Category	Earthen Levee			GPS Latitude/Longitude	
				Start	End
Item	Vegetation			38.687808 °	38.687808 °
				-121.632495 °	-121.632495 °
DWR ID	DWR_RD1000_01_s _ 2012_98				
Comment Code					
V6 : Landscaping					
Inspector Comment					

No Photos

LM Start	7.30	Rating **	M	Issue No.	96
LM End	7.34	Issue Type +	En	Location *	WS
Category	Earthen Levee			GPS Latitude/Longitude	
				Start	End
Item	Vegetation			38.687347 °	38.686780 °
				-121.632433 °	-121.632138 °
DWR ID	DWR_RD1000_01_s _ 2012_96				
Comment Code					
V6 : Landscaping					
Inspector Comment					

No Photos

LM Start	7.41	Rating **	M	Issue No.	1
LM End	7.41	Issue Type +	En	Location *	WS
Category	Earthen Levee			GPS Latitude/Longitude	
				Start	End
Item	Vegetation			38.685843 °	38.685843 °
				-121.632012 °	-121.632012 °
DWR ID	DWR_RD1000_01_s _ 2012_1				
Comment Code					
V6 : Landscaping					
Inspector Comment					

No Photos

* Location LS : Land Side N/A : Not Applicable WS : Water Side CR : Crown	** Rating A : Acceptable M : Minimally Acceptable U : Unacceptable	N : Not Inspected/Rated C : Corrected A/W : Acceptable but Monitor & Maintain	+ Issue Type Ma : Maintenance Deficiency Ob : Design & System Obsolescence En : Enforcement
--	--	---	---

**Flood Control Project Maintenance
Levee Inspections**

Levee Inspection Report By Mile - Fall 2017

Reclamation District No. 1000 Natomas

Waterway	Bank	Unit Miles	Inspection Start/End	Inspector
Unit No. 01 Sacramento River	Left	18.28	09/14/2017 09/15/2017	Sterling York

LM Start	7.56	Rating **	M	Issue No.	95
LM End	7.62	Issue Type +	En	Location *	WS
Category	Earthen Levee		GPS Latitude/Longitude		
			Start	End	
Item	Vegetation		38.683620 °	38.682742 °	
			-121.631180 °	-121.631190 °	
DWR ID	DWR_RD1000_01_s _ 2012_95				
Comment Code					
V6 : Landscaping					
Inspector Comment					

No Photos

LM Start	7.62	Rating **	M	Issue No.	94
LM End	7.65	Issue Type +	En	Location *	WS
Category	Earthen Levee		GPS Latitude/Longitude		
			Start	End	
Item	Vegetation		38.682742 °	38.682310 °	
			-121.631168 °	-121.631085 °	
DWR ID	DWR_RD1000_01_s _ 2012_94				
Comment Code					
V6 : Landscaping					
Inspector Comment					

No Photos

LM Start	7.71	Rating **	M	Issue No.	93
LM End	7.76	Issue Type +	En	Location *	WS
Category	Earthen Levee		GPS Latitude/Longitude		
			Start	End	
Item	Vegetation		38.681592 °	38.680837 °	
			-121.630768 °	-121.630530 °	
DWR ID	DWR_RD1000_01_s _ 2012_93				
Comment Code					
V6 : Landscaping					
Inspector Comment					

No Photos

* Location LS : Land Side N/A : Not Applicable WS : Water Side CR : Crown	** Rating A : Acceptable M : Minimally Acceptable U : Unacceptable	N : Not Inspected/Rated C : Corrected A/W : Acceptable but Monitor & Maintain	+ Issue Type Ma : Maintenance Deficiency Ob : Design & System Obsolescence En : Enforcement
--	--	---	---

**Flood Control Project Maintenance
Levee Inspections**

Levee Inspection Report By Mile - Fall 2017

Reclamation District No. 1000 Natomas

Waterway	Bank	Unit Miles	Inspection Start/End	Inspector
Unit No. 01 Sacramento River	Left	18.28	09/14/2017 09/15/2017	Sterling York

LM Start	7.91	Rating **	M	Issue No.	92
LM End	8.01	Issue Type +	En	Location *	WS
Category	Earthen Levee			GPS Latitude/Longitude	
				Start	End
Item	Vegetation			38.678859 °	38.677672 °
				-121.629345 °	-121.628432 °
DWR ID	DWR_RD1000_01_s _ 2012_92				
Comment Code					
V6 : Landscaping					
Inspector Comment					

No Photos

LM Start	8.07	Rating **	M	Issue No.	91
LM End	8.08	Issue Type +	En	Location *	WS
Category	Earthen Levee			GPS Latitude/Longitude	
				Start	End
Item	Vegetation			38.676893 °	38.676747 °
				-121.627860 °	-121.627725 °
DWR ID	DWR_RD1000_01_s _ 2012_91				
Comment Code					
V6 : Landscaping					
Inspector Comment					

No Photos

* Location LS : Land Side N/A : Not Applicable WS : Water Side CR : Crown	** Rating A : Acceptable M : Minimally Acceptable U : Unacceptable	N : Not Inspected/Rated C : Corrected A/W : Acceptable but Monitor & Maintain	+ Issue Type Ma : Maintenance Deficiency Ob : Design & System Obsolescence En : Enforcement
--	--	---	---

**Flood Control Project Maintenance
Levee Inspections**

Levee Inspection Report By Mile - Fall 2017

Reclamation District No. 1000 Natomas

Waterway	Bank	Unit Miles	Inspection Start/End	Inspector
Unit No. 01 Sacramento River	Left	18.28	09/14/2017 09/15/2017	Sterling York

LM Start	8.11	Rating **	U	Issue No.	90
LM End	8.14	Issue Type +	En	Location *	WS
Category	Earthen Levee			GPS Latitude/Longitude	
				Start	End
Item	Vegetation			38.676425 °	38.676038 °
				-121.627462 °	-121.627063 °
DWR ID	DWR_RD1000_01_s _ 2012_90				
Comment Code					
V6 : Landscaping					
Inspector Comment					
The landscape vegetation prevents the ability to see waterside slope and will make it difficult to access if a flood fight is ever needed.					

Photo 1 of 1 : FA_2017_RD1000_31_90_20170911_00025.jpg



This photo was taken from the crown facing downstream looking downstream. Landowner maintained vegetation completely block visibility of or access to the levee. Fall 2016.

LM Start	8.14	Rating **	M	Issue No.	89
LM End	8.17	Issue Type +	En	Location *	WS
Category	Earthen Levee			GPS Latitude/Longitude	
				Start	End
Item	Vegetation			38.676040 °	38.675772 °
				-121.627063 °	-121.626785 °
DWR ID	DWR_RD1000_01_s _ 2012_89				
Comment Code					
V6 : Landscaping					
Inspector Comment					

No Photos

* Location
LS : Land Side N/A : Not Applicable
WS : Water Side
CR : Crown

** Rating
A : Acceptable N : Not Inspected/Rated
M : Minimally Acceptable C : Corrected
U : Unacceptable A/W : Acceptable but Monitor & Maintain

+ Issue Type
Ma : Maintenance Deficiency
Ob : Design & System Obsolescence
En : Enforcement

**Flood Control Project Maintenance
Levee Inspections**

Levee Inspection Report By Mile - Fall 2017

Reclamation District No. 1000 Natomas

Waterway	Bank	Unit Miles	Inspection Start/End	Inspector
Unit No. 01 Sacramento River	Left	18.28	09/14/2017 09/15/2017	Sterling York

LM Start	8.24	Rating **	M	Issue No.	87
LM End	8.31	Issue Type +	En	Location *	WS
Category	Earthen Levee		GPS Latitude/Longitude		
			Start	End	
Item	Vegetation		38.674866 °	38.674117 °	
			-121.625918 °	-121.625143 °	
DWR ID	DWR_RD1000_01_s _ 2012_87				
Comment Code					
V6 : Landscaping					
Inspector Comment					

No Photos

LM Start	8.45	Rating **	M	Issue No.	86
LM End	8.47	Issue Type +	En	Location *	WS
Category	Earthen Levee		GPS Latitude/Longitude		
			Start	End	
Item	Vegetation		38.672878 °	38.672603 °	
			-121.623203 °	-121.622892 °	
DWR ID	DWR_RD1000_01_s _ 2012_86				
Comment Code					
V6 : Landscaping					
Inspector Comment					

No Photos

LM Start	8.49	Rating **	M	Issue No.	85
LM End	8.54	Issue Type +	En	Location *	WS
Category	Earthen Levee		GPS Latitude/Longitude		
			Start	End	
Item	Vegetation		38.672263 °	38.671790 °	
			-121.622784 °	-121.622118 °	
DWR ID	DWR_RD1000_01_s _ 2012_85				
Comment Code					
V6 : Landscaping					
Inspector Comment					

No Photos

* Location LS : Land Side N/A : Not Applicable WS : Water Side CR : Crown	** Rating A : Acceptable M : Minimally Acceptable U : Unacceptable	N : Not Inspected/Rated C : Corrected A/W : Acceptable but Monitor & Maintain	+ Issue Type Ma : Maintenance Deficiency Ob : Design & System Obsolescence En : Enforcement
--	--	---	---

**Flood Control Project Maintenance
Levee Inspections**

Levee Inspection Report By Mile - Fall 2017

Reclamation District No. 1000 Natomas

Waterway	Bank	Unit Miles	Inspection Start/End	Inspector
Unit No. 01 Sacramento River	Left	18.28	09/14/2017 09/15/2017	Sterling York

LM Start	8.65	Rating **	M	Issue No.	84
LM End	8.74	Issue Type +	En	Location *	WS
Category	Earthen Levee			GPS Latitude/Longitude	
				Start	End
Item	Vegetation			38.670647 °	38.669790 °
				-121.620632 °	-121.619482 °
DWR ID	DWR_RD1000_01_s _ 2012_84				
Comment Code					
V6 : Landscaping					
Inspector Comment					

No Photos

LM Start	8.83	Rating **	M	Issue No.	83
LM End	8.86	Issue Type +	En	Location *	WS
Category	Earthen Levee			GPS Latitude/Longitude	
				Start	End
Item	Vegetation			38.668898 °	38.668672 °
				-121.618195 °	-121.617775 °
DWR ID	DWR_RD1000_01_s _ 2012_83				
Comment Code					
V6 : Landscaping					
Inspector Comment					

No Photos

LM Start	8.86	Rating **	U	Issue No.	82
LM End	8.89	Issue Type +	En	Location *	WS
Category	Earthen Levee			GPS Latitude/Longitude	
				Start	End
Item	Vegetation			38.668673 °	38.668405 °
				-121.617772 °	-121.617278 °
DWR ID	DWR_RD1000_01_s _ 2012_82				
Comment Code					
V6 : Landscaping					
Inspector Comment					
The landscape vegetation prevents the ability to see waterside slope and will make it difficult to access if a flood fight is ever needed.					

Photo 1 of 1 : FA_2017_RD1000_31_82_20170911_00024.jpg



This photo was taken from the crown facing downstream waterside levee slope at unacceptable landscaping. Fall 2016.

* Location LS : Land Side N/A : Not Applicable WS : Water Side CR : Crown		** Rating A : Acceptable N : Not Inspected/Rated M : Minimally Acceptable C : Corrected U : Unacceptable A/W : Acceptable but Monitor & Maintain		+ Issue Type Ma : Maintenance Deficiency Ob : Design & System Obsolescence En : Enforcement	
--	--	---	--	---	--

**Flood Control Project Maintenance
Levee Inspections**

Levee Inspection Report By Mile - Fall 2017

Reclamation District No. 1000 Natomas

Waterway	Bank	Unit Miles	Inspection Start/End	Inspector
Unit No. 01 Sacramento River	Left	18.28	09/14/2017 09/15/2017	Sterling York

LM Start	8.90	Rating **	M	Issue No.	81
LM End	8.96	Issue Type +	En	Location *	WS
Category	Earthen Levee		GPS Latitude/Longitude		
			Start	End	
Item	Vegetation		38.668312 °	38.667783 °	
			-121.617138 °	-121.616382 °	
DWR ID	DWR_RD1000_01_s _ 2012_81				
Comment Code					
V6 : Landscaping					
Inspector Comment					

No Photos

LM Start	8.97	Rating **	M	Issue No.	80
LM End	8.98	Issue Type +	En	Location *	WS
Category	Earthen Levee		GPS Latitude/Longitude		
			Start	End	
Item	Vegetation		38.667672 °	38.667552 °	
			-121.616215 °	-121.616018 °	
DWR ID	DWR_RD1000_01_s _ 2012_80				
Comment Code					
V6 : Landscaping					
Inspector Comment					

No Photos

LM Start	8.99	Rating **	M	Issue No.	79
LM End	9.02	Issue Type +	En	Location *	WS
Category	Earthen Levee		GPS Latitude/Longitude		
			Start	End	
Item	Vegetation		38.667505 °	38.667255 °	
			-121.615912 °	-121.615525 °	
DWR ID	DWR_RD1000_01_s _ 2012_79				
Comment Code					
V6 : Landscaping					
Inspector Comment					

No Photos

* Location LS : Land Side N/A : Not Applicable WS : Water Side CR : Crown	** Rating A : Acceptable M : Minimally Acceptable U : Unacceptable	N : Not Inspected/Rated C : Corrected A/W : Acceptable but Monitor & Maintain	+ Issue Type Ma : Maintenance Deficiency Ob : Design & System Obsolescence En : Enforcement
--	--	---	---

**Flood Control Project Maintenance
Levee Inspections**

Levee Inspection Report By Mile - Fall 2017

Reclamation District No. 1000 Natomas

Waterway	Bank	Unit Miles	Inspection Start/End	Inspector
Unit No. 01 Sacramento River	Left	18.28	09/14/2017 09/15/2017	Sterling York

LM Start	9.02	Rating **	M	Issue No.	78
LM End	9.04	Issue Type +	En	Location *	WS
Category	Earthen Levee			GPS Latitude/Longitude	
				Start	End
Item	Vegetation			38.667250 °	38.667028 °
				-121.615522 °	-121.615115 °
DWR ID	DWR_RD1000_01_s_2012_78				
Comment Code					
V6 : Landscaping					
Inspector Comment					

No Photos

LM Start	9.06	Rating **	M	Issue No.	2
LM End	9.08	Issue Type +	En	Location *	WS
Category	Earthen Levee			GPS Latitude/Longitude	
				Start	End
Item	Encroachments			38.666821 °	38.666604 °
				-121.615019 °	-121.614672 °
DWR ID	DWR_RD1000_01_s_2012_2				
Comment Code					
FE : Fence					
Inspector Comment					
An unacceptable fence, per the NOV all panels of the fence are to be removed. Spring 2017.					

Photo 1 of 1 : FA_2017_RD1000_31_2_20170911_00001.jpg



This photo was taken during Fall 2015 from the crown facing downstream on the waterward levee slope at an enforcement issue with this fence, per the NOV all panels of the fence are to be removed. The owner has remove some of the panels between the post. Spring 2017.

* Location LS : Land Side N/A : Not Applicable WS : Water Side CR : Crown		** Rating A : Acceptable N : Not Inspected/Rated M : Minimally Acceptable C : Corrected U : Unacceptable A/W : Acceptable but Monitor & Maintain		+ Issue Type Ma : Maintenance Deficiency Ob : Design & System Obsolescence En : Enforcement
--	--	---	--	---

**Flood Control Project Maintenance
Levee Inspections**

Levee Inspection Report By Mile - Fall 2017

Reclamation District No. 1000 Natomas

Waterway	Bank	Unit Miles	Inspection Start/End	Inspector
Unit No. 01 Sacramento River	Left	18.28	09/14/2017 09/15/2017	Sterling York

LM Start	9.09	Rating **	M	Issue No.	10
LM End	9.18	Issue Type +	En	Location *	WS
Category	Earthen Levee			GPS Latitude/Longitude	
				Start	End
Item	Encroachments			38.666650 °	38.665750 °
				-121.614461 °	-121.613078 °
DWR ID	DWR_RD1000_01_f_2017_10				
Comment Code					
FE : Fence					
Inspector Comment					

Photo 1 of 1 : FA_2017_RD1000_31_10_20170919_00041.jpg



View on waterside of a non-permitted fence, Fall 2017.

LM Start	10.72	Rating **	U	Issue No.	74
LM End	10.76	Issue Type +	En	Location *	WS
Category	Earthen Levee			GPS Latitude/Longitude	
				Start	End
Item	Vegetation			38.648127 °	38.647663 °
				-121.595872 °	-121.595483 °
DWR ID	DWR_RD1000_01_s_2012_74				
Comment Code					
V6 : Landscaping					
Inspector Comment					
The landscape vegetation prevents the ability to see waterside slope and will make it difficult to access if a flood fight is ever needed.					

Photo 1 of 1 : FA_2017_RD1000_31_74_20170911_00022.jpg



This photo was taken from the crown facing downstream looking down the waterward levee slope at unacceptable landscaping. Fall 2016.

LM Start	10.78	Rating **	U	Issue No.	73
LM End	10.83	Issue Type +	En	Location *	WS
Category	Earthen Levee			GPS Latitude/Longitude	
				Start	End
Item	Vegetation			38.647373 °	38.646825 °
				-121.595248 °	-121.594800 °
DWR ID	DWR_RD1000_01_s_2012_73				
Comment Code					
V6 : Landscaping					
Inspector Comment					
The landscape vegetation prevents the ability to see waterside slope and will make it difficult to access if a flood fight is ever needed.					

Photo 1 of 1 : FA_2017_RD1000_31_73_20170911_00021.jpg



This photo was taken from the crown facing downstream looking down the waterward levee slope at unacceptable landscaping. Fall 2016.

* Location		** Rating		+ Issue Type	
LS : Land Side	N/A : Not Applicable	A : Acceptable	N : Not Inspected/Rated	Ma : Maintenance Deficiency	
WS : Water Side		M : Minimally Acceptable	C : Corrected	Ob : Design & System Obsolescence	
CR : Crown		U : Unacceptable	A/W : Acceptable but Monitor & Maintain	En : Enforcement	

**Flood Control Project Maintenance
Levee Inspections**

Levee Inspection Report By Mile - Fall 2017

Reclamation District No. 1000 Natomas

Waterway	Bank	Unit Miles	Inspection Start/End	Inspector
Unit No. 01 Sacramento River	Left	18.28	09/14/2017 09/15/2017	Sterling York

LM Start	11.06	Rating **	M	Issue No.	72
LM End	11.13	Issue Type +	En	Location *	WS
Category	Earthen Levee			GPS Latitude/Longitude	
				Start	End
Item	Vegetation			38.644548 °	38.644302 °
				-121.591768 °	-121.590572 °
DWR ID	DWR_RD1000_01_s_2012_72				
Comment Code					
V6 : Landscaping					
Inspector Comment					

No Photos

LM Start	11.28	Rating **	U	Issue No.	70
LM End	11.33	Issue Type +	En	Location *	WS
Category	Earthen Levee			GPS Latitude/Longitude	
				Start	End
Item	Vegetation			38.644392 °	38.644702 °
				-121.587852 °	-121.586992 °
DWR ID	DWR_RD1000_01_s_2012_70				
Comment Code					
V6 : Landscaping					
Inspector Comment					
The landscape vegetation prevents the ability to see waterside slope and will make it difficult to access if a flood fight is ever needed.					

Photo 1 of 1 : FA_2017_RD1000_31_70_20170911_00020.jpg



This photo was taken from the crown facing downstream looking down the waterward levee slope at unacceptable landscaping. Fall 2016.

LM Start	11.66	Rating **	M	Issue No.	69
LM End	11.70	Issue Type +	En	Location *	WS
Category	Earthen Levee			GPS Latitude/Longitude	
				Start	End
Item	Vegetation			38.647392 °	38.647773 °
				-121.581946 °	-121.581423 °
DWR ID	DWR_RD1000_01_s_2012_69				
Comment Code					
V6 : Landscaping					
Inspector Comment					

No Photos

* Location LS : Land Side N/A : Not Applicable WS : Water Side CR : Crown		** Rating A : Acceptable N : Not Inspected/Rated M : Minimally Acceptable C : Corrected U : Unacceptable A/W : Acceptable but Monitor & Maintain		+ Issue Type Ma : Maintenance Deficiency Ob : Design & System Obsolescence En : Enforcement	
--	--	---	--	---	--

**Flood Control Project Maintenance
Levee Inspections**

Levee Inspection Report By Mile - Fall 2017

Reclamation District No. 1000 Natomas

Waterway	Bank	Unit Miles	Inspection Start/End	Inspector
Unit No. 01 Sacramento River	Left	18.28	09/14/2017 09/15/2017	Sterling York

LM Start	12.12	Rating **	M	Issue No.	67
LM End	12.23	Issue Type +	En	Location *	WS
Category	Earthen Levee			GPS Latitude/Longitude	
				Start	End
Item	Vegetation			38.650419 °	38.650198 °
				-121.574541 °	-121.572531 °
DWR ID	DWR_RD1000_01_s_2012_67				
Comment Code					
V6 : Landscaping					
Inspector Comment					

No Photos

LM Start	12.24	Rating **	M	Issue No.	66
LM End	12.33	Issue Type +	En	Location *	WS
Category	Earthen Levee			GPS Latitude/Longitude	
				Start	End
Item	Vegetation			38.650245 °	38.653208 °
				-121.572188 °	-121.573895 °
DWR ID	DWR_RD1000_01_s_2012_66				
Comment Code					
V6 : Landscaping					
Inspector Comment					

Photo 1 of 1 : FA_2017_RD1000_31_66_20170911_00019.jpg



View of the landscaping on the waterside levee slope.

LM Start	12.35	Rating **	U	Issue No.	62
LM End	12.44	Issue Type +	En	Location *	WS
Category	Earthen Levee			GPS Latitude/Longitude	
				Start	End
Item	Vegetation			38.649560 °	38.648895 °
				-121.570438 °	-121.569043 °
DWR ID	DWR_RD1000_01_s_2012_62				
Comment Code					
V6 : Landscaping					
Inspector Comment					
The landscape vegetation prevents the ability to see waterside slope and will make it difficult to access if a flood fight is ever needed.					

Photo 1 of 1 : FA_2017_RD1000_31_62_20170911_00017.jpg



This photo was taken from the crown facing downstream looking down the waterward levee slope at unacceptable landscaping. Fall 2014.

* Location LS : Land Side N/A : Not Applicable WS : Water Side CR : Crown		** Rating A : Acceptable M : Minimally Acceptable U : Unacceptable N : Not Inspected/Rated C : Corrected A/W : Acceptable but Monitor & Maintain		+ Issue Type Ma : Maintenance Deficiency Ob : Design & System Obsolescence En : Enforcement	
--	--	---	--	---	--

**Flood Control Project Maintenance
Levee Inspections**

Levee Inspection Report By Mile - Fall 2017

Reclamation District No. 1000 Natomas

Waterway	Bank	Unit Miles	Inspection Start/End	Inspector
Unit No. 01 Sacramento River	Left	18.28	09/14/2017 09/15/2017	Sterling York

LM Start	12.44	Rating **	M	Issue No.	61
LM End	12.47	Issue Type +	En	Location *	WS
Category	Earthen Levee			GPS Latitude/Longitude	
				Start	End
Item	Vegetation			38.648897 °	38.648588 °
				-121.569030 °	-121.568467 °
DWR ID	DWR_RD1000_01_s_2012_61				
Comment Code					
V6 : Landscaping					
Inspector Comment					

No Photos

LM Start	12.52	Rating **	U	Issue No.	60
LM End	12.56	Issue Type +	En	Location *	WS
Category	Earthen Levee			GPS Latitude/Longitude	
				Start	End
Item	Vegetation			38.648172 °	38.647738 °
				-121.567843 °	-121.567167 °
DWR ID	DWR_RD1000_01_s_2012_60				
Comment Code					
V6 : Landscaping					
Inspector Comment					
The landscape vegetation prevents the ability to see waterside slope and will make it difficult to access if a flood fight is ever needed.					

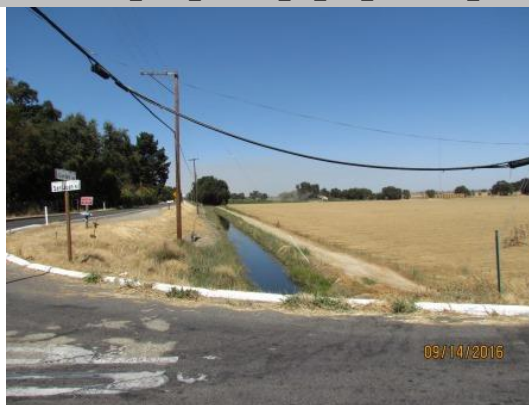
Photo 1 of 1 : FA_2017_RD1000_31_60_20170911_00016.jpg



This photo was taken from the crown facing downstream looking down the waterward levee slope at unacceptable landscaping. Fall 2014.

LM Start	12.54	Rating **	M	Issue No.	101
LM End	16.24	Issue Type +	En	Location *	LS
Category	Earthen Levee			GPS Latitude/Longitude	
				Start	End
Item	Encroachments			38.647942 °	38.599628 °
				-121.567605 °	-121.545906 °
DWR ID	DWR_RD1000_01_f_2016_101				
Comment Code					
DT : Ditch					
Inspector Comment					

Photo 1 of 1 : FA_2017_RD1000_31_101_20170911_00026.jpg



View looking upstream at ditch on landside toe.

* Location
LS : Land Side N/A : Not Applicable
WS : Water Side
CR : Crown

** Rating
A : Acceptable N : Not Inspected/Rated
M : Minimally Acceptable C : Corrected
U : Unacceptable A/W : Acceptable but Monitor & Maintain

+ Issue Type
Ma : Maintenance Deficiency
Ob : Design & System Obsolescence
En : Enforcement

**Flood Control Project Maintenance
Levee Inspections**

Levee Inspection Report By Mile - Fall 2017

Reclamation District No. 1000 Natomas

Waterway	Bank	Unit Miles	Inspection Start/End	Inspector
Unit No. 01 Sacramento River	Left	18.28	09/14/2017 09/15/2017	Sterling York

LM Start	12.57	Rating **	C	Issue No.	59
LM End	12.65	Issue Type +	En	Location *	WS
Category	Earthen Levee			GPS Latitude/Longitude	
				Start	End
Item	Vegetation			38.647665 °	38.646812 °
				-121.567045 °	-121.566135 °
DWR ID	DWR_RD1000_01_s _ 2012_59				
Comment Code					
V6 : Landscaping					
Inspector Comment					
Vegetation is gone from in front of the fence, Fall 2017.					

No Photos

LM Start	12.68	Rating **	U	Issue No.	58
LM End	12.72	Issue Type +	En	Location *	WS
Category	Earthen Levee			GPS Latitude/Longitude	
				Start	End
Item	Vegetation			38.646400 °	38.645926 °
				-121.565695 °	-121.565297 °
DWR ID	DWR_RD1000_01_s _ 2012_58				
Comment Code					
V6 : Landscaping					
Inspector Comment					
The landscape vegetation prevents the ability to see waterside slope and will make it difficult to access if a flood fight is ever needed.					

Photo 1 of 1 : FA_2017_RD1000_31_58_20170911_00015.jpg



This photo was taken from the crown facing downstream looking down the waterward levee slope at unacceptable landscaping. Fall 2014.

LM Start	12.88	Rating **	C	Issue No.	56
LM End	12.88	Issue Type +	En	Location *	WS
Category	Earthen Levee			GPS Latitude/Longitude	
				Start	End
Item	Vegetation			38.644028 °	38.644028 °
				-121.563823 °	-121.563823 °
DWR ID	DWR_RD1000_01_s _ 2012_56				
Comment Code					
V6 : Landscaping					
Inspector Comment					
Vegetation is gone from in front of the fence, Fall 2017.					

No Photos

* Location		** Rating		+ Issue Type	
LS : Land Side	N/A : Not Applicable	A : Acceptable	N : Not Inspected/Rated	Ma : Maintenance Deficiency	
WS : Water Side		M : Minimally Acceptable	C : Corrected	Ob : Design & System Obsolescence	
CR : Crown		U : Unacceptable	A/W : Acceptable but Monitor & Maintain	En : Enforcement	

**Flood Control Project Maintenance
Levee Inspections**

Levee Inspection Report By Mile - Fall 2017

Reclamation District No. 1000 Natomas

Waterway	Bank	Unit Miles	Inspection Start/End	Inspector
Unit No. 01 Sacramento River	Left	18.28	09/14/2017 09/15/2017	Sterling York

LM Start	12.91	Rating **	M	Issue No.	55
LM End	16.23	Issue Type +	En	Location *	WS
Category	Earthen Levee			GPS Latitude/Longitude	
				Start	End
Item	Vegetation			38.643527 °	38.599626 °
				-121.563518 °	-121.546174 °
DWR ID	DWR_RD1000_01_s _ 2012_55				
Comment Code					
V6 : Landscaping					
Inspector Comment					

No Photos

LM Start	12.93	Rating **	M	Issue No.	54
LM End	12.94	Issue Type +	En	Location *	WS
Category	Earthen Levee			GPS Latitude/Longitude	
				Start	End
Item	Encroachments			38.643380 °	38.643275 °
				-121.563400 °	-121.563307 °
DWR ID	DWR_RD1000_01_s _ 2012_54				
Comment Code					
FE : Fence					
Inspector Comment					

No Photos

LM Start	13.05	Rating **	M	Issue No.	52
LM End	13.09	Issue Type +	En	Location *	WS
Category	Earthen Levee			GPS Latitude/Longitude	
				Start	End
Item	Vegetation			38.641620 °	38.641113 °
				-121.562753 °	-121.562557 °
DWR ID	DWR_RD1000_01_s _ 2012_52				
Comment Code					
V6 : Landscaping					
Inspector Comment					

No Photos

* Location LS : Land Side N/A : Not Applicable WS : Water Side CR : Crown	** Rating A : Acceptable M : Minimally Acceptable U : Unacceptable	N : Not Inspected/Rated C : Corrected A/W : Acceptable but Monitor & Maintain	+ Issue Type Ma : Maintenance Deficiency Ob : Design & System Obsolescence En : Enforcement
--	--	---	---

**Flood Control Project Maintenance
Levee Inspections**

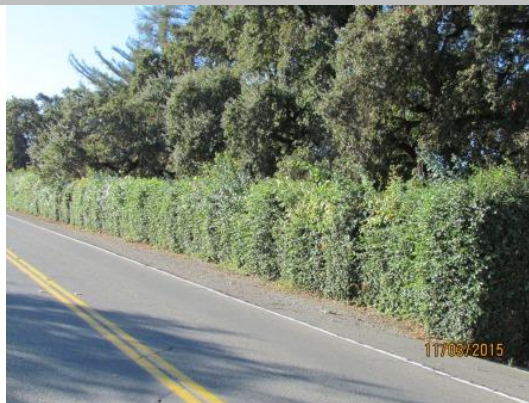
Levee Inspection Report By Mile - Fall 2017

Reclamation District No. 1000 Natomas

Waterway	Bank	Unit Miles	Inspection Start/End	Inspector
Unit No. 01 Sacramento River	Left	18.28	09/14/2017 09/15/2017	Sterling York

LM Start	13.15	Rating **	U	Issue No.	51
LM End	13.20	Issue Type +	En	Location *	WS
Category	Earthen Levee			GPS Latitude/Longitude	
				Start	End
Item	Vegetation			38.640205 °	38.639540 °
				-121.562370 °	-121.562238 °
DWR ID	DWR_RD1000_01_s _ 2012_51				
Comment Code					
V6 : Landscaping					
Inspector Comment					
The landscape vegetation prevents the ability to see waterside slope and will make it difficult to access if a flood fight is ever needed.					

Photo 1 of 1 : FA_2017_RD1000_31_51_20170911_00013.jpg



View of the landscaping on the waterside levee slope.

LM Start	13.26	Rating **	M	Issue No.	50
LM End	13.30	Issue Type +	En	Location *	WS
Category	Earthen Levee			GPS Latitude/Longitude	
				Start	End
Item	Vegetation			38.638668 °	38.638065 °
				-121.562085 °	-121.562015 °
DWR ID	DWR_RD1000_01_s _ 2012_50				
Comment Code					
V6 : Landscaping					
Inspector Comment					

No Photos

LM Start	13.30	Rating **	M	Issue No.	49
LM End	13.33	Issue Type +	En	Location *	WS
Category	Earthen Levee			GPS Latitude/Longitude	
				Start	End
Item	Vegetation			38.638067 °	38.637600 °
				-121.562013 °	-121.561932 °
DWR ID	DWR_RD1000_01_s _ 2012_49				
Comment Code					
V6 : Landscaping					
Inspector Comment					

No Photos

* Location		** Rating		+ Issue Type	
LS : Land Side	N/A : Not Applicable	A : Acceptable	N : Not Inspected/Rated	Ma : Maintenance Deficiency	
WS : Water Side		M : Minimally Acceptable	C : Corrected	Ob : Design & System Obsolescence	
CR : Crown		U : Unacceptable	A/W : Acceptable but Monitor & Maintain	En : Enforcement	

**Flood Control Project Maintenance
Levee Inspections**

Levee Inspection Report By Mile - Fall 2017

Reclamation District No. 1000 Natomas

Waterway	Bank	Unit Miles	Inspection Start/End	Inspector
Unit No. 01 Sacramento River	Left	18.28	09/14/2017 09/15/2017	Sterling York

LM Start	13.33	Rating **	M	Issue No.	48
LM End	13.37	Issue Type +	En	Location *	WS
Category	Earthen Levee		GPS Latitude/Longitude		
			Start	End	
Item	Vegetation		38.637602 °	38.637060 °	
			-121.561930 °	-121.561833 °	
DWR ID	DWR_RD1000_01_s_2012_48				
Comment Code					
V6 : Landscaping					
Inspector Comment					

No Photos

LM Start	13.37	Rating **	M	Issue No.	47
LM End	13.41	Issue Type +	En	Location *	WS
Category	Earthen Levee		GPS Latitude/Longitude		
			Start	End	
Item	Vegetation		38.637052 °	38.636527 °	
			-121.561833 °	-121.561743 °	
DWR ID	DWR_RD1000_01_s_2012_47				
Comment Code					
V6 : Landscaping					
Inspector Comment					

No Photos

LM Start	13.41	Rating **	M	Issue No.	46
LM End	13.43	Issue Type +	En	Location *	WS
Category	Earthen Levee		GPS Latitude/Longitude		
			Start	End	
Item	Vegetation		38.636522 °	38.636250 °	
			-121.561743 °	-121.561667 °	
DWR ID	DWR_RD1000_01_s_2012_46				
Comment Code					
V6 : Landscaping					
Inspector Comment					
Vegetation and bushes need to be removed for visibility and access, Fall 2017.					

Photo 1 of 1 : FA_2017_RD1000_31_46_20170919_00048.jpg



View on waterside looking upstream of where the vegetation covers the front of the fence, Fall 2017.

* Location LS : Land Side N/A : Not Applicable WS : Water Side CR : Crown	** Rating A : Acceptable M : Minimally Acceptable U : Unacceptable	N : Not Inspected/Rated C : Corrected A/W : Acceptable but Monitor & Maintain	+ Issue Type Ma : Maintenance Deficiency Ob : Design & System Obsolescence En : Enforcement
--	--	---	---

**Flood Control Project Maintenance
Levee Inspections**

Levee Inspection Report By Mile - Fall 2017

Reclamation District No. 1000 Natomas

Waterway	Bank	Unit Miles	Inspection Start/End	Inspector
Unit No. 01 Sacramento River	Left	18.28	09/14/2017 09/15/2017	Sterling York

LM Start	13.47	Rating **	M	Issue No.	45
LM End	13.49	Issue Type +	En	Location *	WS
Category	Earthen Levee			GPS Latitude/Longitude	
				Start	End
Item	Vegetation			38.635638 °	38.635387 °
				-121.561570 °	-121.561497 °
DWR ID	DWR_RD1000_01_s _ 2012_45				
Comment Code					
V6 : Landscaping					
Inspector Comment					

No Photos

LM Start	13.52	Rating **	M	Issue No.	44
LM End	13.55	Issue Type +	En	Location *	WS
Category	Earthen Levee			GPS Latitude/Longitude	
				Start	End
Item	Vegetation			38.634951 °	38.634531 °
				-121.561454 °	-121.561367 °
DWR ID	DWR_RD1000_01_s _ 2012_44				
Comment Code					
V6 : Landscaping					
Inspector Comment					

No Photos

LM Start	13.64	Rating **	U	Issue No.	43
LM End	13.68	Issue Type +	En	Location *	WS
Category	Earthen Levee			GPS Latitude/Longitude	
				Start	End
Item	Encroachments			38.633238 °	38.632590 °
				-121.561097 °	-121.560915 °
DWR ID	DWR_RD1000_01_s _ 2012_43				
Comment Code					
FE : Fence					
Inspector Comment					

Photo 1 of 1 : FA_2017_RD1000_31_43_20170911_00012.jpg



This photo was taken from the crown facing downstream looking down the waterward levee slope at an unacceptable fence. Fall 2014.

* Location LS : Land Side N/A : Not Applicable WS : Water Side CR : Crown	** Rating A : Acceptable M : Minimally Acceptable U : Unacceptable	N : Not Inspected/Rated C : Corrected A/W : Acceptable but Monitor & Maintain	+ Issue Type Ma : Maintenance Deficiency Ob : Design & System Obsolescence En : Enforcement
--	--	---	---

**Flood Control Project Maintenance
Levee Inspections**

Levee Inspection Report By Mile - Fall 2017

Reclamation District No. 1000 Natomas

Waterway	Bank	Unit Miles	Inspection Start/End	Inspector
Unit No. 01 Sacramento River	Left	18.28	09/14/2017 09/15/2017	Sterling York

LM Start	13.98	Rating **	U	Issue No.	42
LM End	14.01	Issue Type +	En	Location *	WS
Category	Earthen Levee			GPS Latitude/Longitude	
				Start	End
Item	Vegetation			38.628300 °	38.627873 °
				-121.560180 °	-121.560202 °
DWR ID	DWR_RD1000_01_s_2012_42				
Comment Code					
V6 : Landscaping					
Inspector Comment					
The landscape vegetation prevents the ability to see waterside slope and will make it difficult to access if a flood fight is ever needed.					

Photo 1 of 1 : FA_2017_RD1000_31_42_20170911_00011.jpg



This photo was taken from the crown facing downstream looking down the waterward levee slope at unacceptable landscaping. Fall 2014.

LM Start	14.03	Rating **	U	Issue No.	40
LM End	14.17	Issue Type +	En	Location *	WS
Category	Earthen Levee			GPS Latitude/Longitude	
				Start	End
Item	Vegetation			38.627543 °	38.625614 °
				-121.560111 °	-121.560245 °
DWR ID	DWR_RD1000_01_s_2015_40				
Comment Code					
V6 : Landscaping					
Inspector Comment					
The landscape vegetation prevents the ability to see waterside slope and will make it difficult to access if a flood fight is ever needed.					

Photo 1 of 1 : FA_2017_RD1000_31_40_20170911_00010.jpg



This photo was taken from the crown facing downstream looking down the waterward levee slope at unacceptable landscaping. Fall 2014.

LM Start	14.25	Rating **	M	Issue No.	57
LM End	14.27	Issue Type +	Ma	Location *	WS
Category	Earthen Levee			GPS Latitude/Longitude	
				Start	End
Item	Trim / Thin Trees			38.624446 °	38.624073 °
				-121.560337 °	-121.560346 °
DWR ID	DWR_RD1000_01_s_2015_57				
Comment Code					
T1 : Trim trees to at least five feet above ground level.					
Inspector Comment					

No Photos

* Location		** Rating		+ Issue Type	
LS : Land Side	N/A : Not Applicable	A : Acceptable	N : Not Inspected/Rated	Ma : Maintenance Deficiency	
WS : Water Side		M : Minimally Acceptable	C : Corrected	Ob : Design & System Obsolescence	
CR : Crown		U : Unacceptable	A/W : Acceptable but Monitor & Maintain	En : Enforcement	

**Flood Control Project Maintenance
Levee Inspections**

Levee Inspection Report By Mile - Fall 2017

Reclamation District No. 1000 Natomas

Waterway	Bank	Unit Miles	Inspection Start/End	Inspector
Unit No. 01 Sacramento River	Left	18.28	09/14/2017 09/15/2017	Sterling York

LM Start	14.28	Rating **	M	Issue No.	41
LM End	14.32	Issue Type +	En	Location *	WS
Category	Earthen Levee			GPS Latitude/Longitude	
				Start	End
Item	Vegetation			38.624001 °	38.626863 °
				-121.560348 °	-121.561015 °
DWR ID	DWR_RD1000_01_s_2012_41				
Comment Code					
V6 : Landscaping					
Inspector Comment					

No Photos

LM Start	14.55	Rating **	M	Issue No.	38
LM End	14.58	Issue Type +	En	Location *	WS
Category	Earthen Levee			GPS Latitude/Longitude	
				Start	End
Item	Vegetation			38.620077 °	38.619630 °
				-121.560120 °	-121.560067 °
DWR ID	DWR_RD1000_01_s_2012_38				
Comment Code					
V6 : Landscaping					
Inspector Comment					

No Photos

LM Start	14.61	Rating **	M	Issue No.	53
LM End	14.61	Issue Type +	En	Location *	WS
Category	Earthen Levee			GPS Latitude/Longitude	
				Start	End
Item	Encroachments			38.619219 °	38.619219 °
				-121.560130 °	-121.560130 °
DWR ID	DWR_RD1000_01_s_2015_53				
Comment Code					
BU : Building					
Inspector Comment					

Photo 1 of 1 : FA_2017_RD1000_31_53_20170911_00014.jpg



View of storage container from the landside of the crown facing the waterside of the levee.

* Location		** Rating		+ Issue Type	
LS : Land Side	N/A : Not Applicable	A : Acceptable	N : Not Inspected/Rated	Ma : Maintenance Deficiency	
WS : Water Side		M : Minimally Acceptable	C : Corrected	Ob : Design & System Obsolescence	
CR : Crown		U : Unacceptable	A/W : Acceptable but Monitor & Maintain	En : Enforcement	

**Flood Control Project Maintenance
Levee Inspections**

Levee Inspection Report By Mile - Fall 2017

Reclamation District No. 1000 Natomas

Waterway	Bank	Unit Miles	Inspection Start/End	Inspector
Unit No. 01 Sacramento River	Left	18.28	09/14/2017 09/15/2017	Sterling York

LM Start	14.62	Rating **	M	Issue No.	37
LM End	14.66	Issue Type +	En	Location *	WS
Category	Earthen Levee			GPS Latitude/Longitude	
				Start	End
Item	Vegetation			38.619112 °	38.618493 °
				-121.560113 °	-121.560070 °
DWR ID	DWR_RD1000_01_s_2012_37				
Comment Code					
V6 : Landscaping					
Inspector Comment					

No Photos

LM Start	14.68	Rating **	C	Issue No.	36
LM End	14.68	Issue Type +	En	Location *	WS
Category	Earthen Levee			GPS Latitude/Longitude	
				Start	End
Item	Vegetation			38.618163 °	38.618163 °
				-121.560113 °	-121.560113 °
DWR ID	DWR_RD1000_01_s_2012_36				
Comment Code					
V6 : Landscaping					
Inspector Comment					
Vegetation is gone and maintained from in front of the fence, Fall 2017.					

No Photos

LM Start	14.69	Rating **	M	Issue No.	35
LM End	14.77	Issue Type +	En	Location *	WS
Category	Earthen Levee			GPS Latitude/Longitude	
				Start	End
Item	Vegetation			38.617972 °	38.616835 °
				-121.560044 °	-121.559807 °
DWR ID	DWR_RD1000_01_s_2012_35				
Comment Code					
V6 : Landscaping					
Inspector Comment					

Photo 1 of 1 : FA_2017_RD1000_31_35_20170911_00009.jpg



View of the landscaping on the waterside levee slope.

* Location		** Rating		+ Issue Type	
LS : Land Side	N/A : Not Applicable	A : Acceptable	N : Not Inspected/Rated	Ma : Maintenance Deficiency	
WS : Water Side		M : Minimally Acceptable	C : Corrected	Ob : Design & System Obsolescence	
CR : Crown		U : Unacceptable	A/W : Acceptable but Monitor & Maintain	En : Enforcement	

**Flood Control Project Maintenance
Levee Inspections**

Levee Inspection Report By Mile - Fall 2017

Reclamation District No. 1000 Natomas

Waterway	Bank	Unit Miles	Inspection Start/End	Inspector
Unit No. 01 Sacramento River	Left	18.28	09/14/2017 09/15/2017	Sterling York

LM Start	15.08	Rating **	M	Issue No.	34
LM End	15.13	Issue Type +	En	Location *	WS
Category	Earthen Levee			GPS Latitude/Longitude	
				Start	End
Item	Vegetation			38.612555 °	38.611900 °
				-121.558258 °	-121.558303 °
DWR ID	DWR_RD1000_01_s_2012_34				
Comment Code					
V6 : Landscaping					
Inspector Comment					

No Photos

LM Start	15.09	Rating **	M	Issue No.	76
LM End	15.09	Issue Type +	En	Location *	WS
Category	Earthen Levee			GPS Latitude/Longitude	
				Start	End
Item	Encroachments			38.612340 °	38.612340 °
				-121.558633 °	-121.558633 °
DWR ID	DWR_RD1000_01_f_2012_76				
Comment Code					
BU : Building					
Inspector Comment					

Photo 1 of 1 : FA_2017_RD1000_31_76_20170911_00023.jpg



Cargo container on levee shoulder, the property appears to be on fill material.

LM Start	15.21	Rating **	M	Issue No.	33
LM End	15.23	Issue Type +	En	Location *	WS
Category	Earthen Levee			GPS Latitude/Longitude	
				Start	End
Item	Encroachments			38.610787 °	38.610455 °
				-121.557817 °	-121.557638 °
DWR ID	DWR_RD1000_01_s_2012_33				
Comment Code					
FE : Fence					
Inspector Comment					

No Photos

* Location		** Rating		+ Issue Type	
LS : Land Side	N/A : Not Applicable	A : Acceptable	N : Not Inspected/Rated	Ma : Maintenance Deficiency	
WS : Water Side		M : Minimally Acceptable	C : Corrected	Ob : Design & System Obsolescence	
CR : Crown		U : Unacceptable	A/W : Acceptable but Monitor & Maintain	En : Enforcement	

**Flood Control Project Maintenance
Levee Inspections**

Levee Inspection Report By Mile - Fall 2017

Reclamation District No. 1000 Natomas

Waterway	Bank	Unit Miles	Inspection Start/End	Inspector
Unit No. 01 Sacramento River	Left	18.28	09/14/2017 09/15/2017	Sterling York

LM Start	15.25	Rating **	M	Issue No.	32
LM End	15.27	Issue Type +	En	Location *	WS
Category	Earthen Levee			GPS Latitude/Longitude	
				Start	End
Item	Encroachments			38.610180 °	38.609908 °
				-121.557453 °	-121.557328 °
DWR ID	DWR_RD1000_01_s_2012_32				
Comment Code					
FE : Fence					
Inspector Comment					
This rock and wrought iron fence partially blocks visibility and access, Fall 2017.					

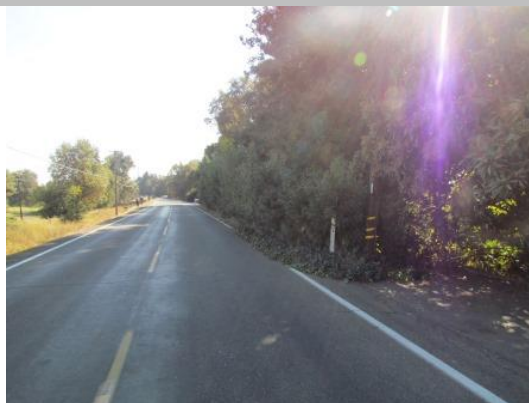
Photo 1 of 1 : FA_2017_RD1000_31_32_20170919_00050.jpg



View on waterside looking upstream of a rock and wrought iron fence that partially blocks visibility and access, Fall 2017.

LM Start	15.29	Rating **	U	Issue No.	31
LM End	15.32	Issue Type +	En	Location *	WS
Category	Earthen Levee			GPS Latitude/Longitude	
				Start	End
Item	Vegetation			38.609743 °	38.609315 °
				-121.557252 °	-121.557000 °
DWR ID	DWR_RD1000_01_s_2012_31				
Comment Code					
V6 : Landscaping					
Inspector Comment					
The landscape vegetation prevents the ability to see waterside slope and will make it difficult to access if a flood fight is ever needed.					

Photo 1 of 1 : FA_2017_RD1000_31_31_20170911_00008.jpg



This photo was taken from the crown facing downstream looking down the waterward levee slope at unacceptable landscaping. Fall 2014.

* Location LS : Land Side N/A : Not Applicable WS : Water Side CR : Crown		** Rating A : Acceptable M : Minimally Acceptable U : Unacceptable N : Not Inspected/Rated C : Corrected A/W : Acceptable but Monitor & Maintain		+ Issue Type Ma : Maintenance Deficiency Ob : Design & System Obsolescence En : Enforcement	
---	--	--	--	--	--

**Flood Control Project Maintenance
Levee Inspections**

Levee Inspection Report By Mile - Fall 2017

Reclamation District No. 1000 Natomas

Waterway	Bank	Unit Miles	Inspection Start/End	Inspector
Unit No. 01 Sacramento River	Left	18.28	09/14/2017 09/15/2017	Sterling York

LM Start	15.44	Rating **	U	Issue No.	30
LM End	15.48	Issue Type +	En	Location *	WS
Category	Earthen Levee			GPS Latitude/Longitude	
				Start	End
Item	Vegetation			38.607715 °	38.607345 °
				-121.555847 °	-121.555538 °
DWR ID	DWR_RD1000_01_s_2012_30				
Comment Code					
V6 : Landscaping					
Inspector Comment					
The landscape vegetation prevents the ability to see waterside slope and will make it difficult to access if a flood fight is ever needed.					

Photo 1 of 1 : FA_2017_RD1000_31_30_20170911_00007.jpg



This photo was taken from the crown facing down stream looking down the waterward levee slope at unacceptable landscaping. Fall 2014.

LM Start	15.49	Rating **	U	Issue No.	29
LM End	15.57	Issue Type +	En	Location *	WS
Category	Earthen Levee			GPS Latitude/Longitude	
				Start	End
Item	Encroachments			38.607207 °	38.606255 °
				-121.555465 °	-121.554582 °
DWR ID	DWR_RD1000_01_s_2012_29				
Comment Code					
FE : Fence					
Inspector Comment					

Photo 1 of 1 : FA_2017_RD1000_31_29_20170911_00006.jpg



This photo was taken from the crown facing downstream looking down the waterward levee slope at an unacceptable fence. Fall 2014.

LM Start	15.59	Rating **	M	Issue No.	28
LM End	15.61	Issue Type +	En	Location *	WS
Category	Earthen Levee			GPS Latitude/Longitude	
				Start	End
Item	Vegetation			38.605915 °	38.605687 °
				-121.554290 °	-121.554070 °
DWR ID	DWR_RD1000_01_s_2012_28				
Comment Code					
V6 : Landscaping					
Inspector Comment					

No Photos

* Location		** Rating		+ Issue Type	
LS : Land Side	N/A : Not Applicable	A : Acceptable	N : Not Inspected/Rated	Ma : Maintenance Deficiency	
WS : Water Side		M : Minimally Acceptable	C : Corrected	Ob : Design & System Obsolescence	
CR : Crown		U : Unacceptable	A/W : Acceptable but Monitor & Maintain	En : Enforcement	

**Flood Control Project Maintenance
Levee Inspections**

Levee Inspection Report By Mile - Fall 2017

Reclamation District No. 1000 Natomas

Waterway	Bank	Unit Miles	Inspection Start/End	Inspector
Unit No. 01 Sacramento River	Left	18.28	09/14/2017 09/15/2017	Sterling York

LM Start	15.62	Rating **	M	Issue No.	27
LM End	15.65	Issue Type +	En	Location *	WS
Category	Earthen Levee		GPS Latitude/Longitude		
			Start	End	
Item	Vegetation		38.605585 °	38.605273 °	
			-121.553983 °	-121.553663 °	
DWR ID	DWR_RD1000_01_s _ 2012_27				
Comment Code					
V6 : Landscaping					
Inspector Comment					

No Photos

LM Start	15.65	Rating **	M	Issue No.	26
LM End	15.67	Issue Type +	En	Location *	WS
Category	Earthen Levee		GPS Latitude/Longitude		
			Start	End	
Item	Vegetation		38.605265 °	38.605032 °	
			-121.553647 °	-121.553437 °	
DWR ID	DWR_RD1000_01_s _ 2012_26				
Comment Code					
V6 : Landscaping					
Inspector Comment					

No Photos

LM Start	15.67	Rating **	M	Issue No.	25
LM End	15.71	Issue Type +	En	Location *	WS
Category	Earthen Levee		GPS Latitude/Longitude		
			Start	End	
Item	Vegetation		38.605002 °	38.604598 °	
			-121.553413 °	-121.553008 °	
DWR ID	DWR_RD1000_01_s _ 2012_25				
Comment Code					
V6 : Landscaping					
Inspector Comment					

No Photos

* Location LS : Land Side N/A : Not Applicable WS : Water Side CR : Crown	** Rating A : Acceptable M : Minimally Acceptable U : Unacceptable	N : Not Inspected/Rated C : Corrected A/W : Acceptable but Monitor & Maintain	+ Issue Type Ma : Maintenance Deficiency Ob : Design & System Obsolescence En : Enforcement
--	--	---	---

**Flood Control Project Maintenance
Levee Inspections**

Levee Inspection Report By Mile - Fall 2017

Reclamation District No. 1000 Natomas

Waterway	Bank	Unit Miles	Inspection Start/End	Inspector
Unit No. 01 Sacramento River	Left	18.28	09/14/2017 09/15/2017	Sterling York

LM Start	15.84	Rating **	M	Issue No.	23
LM End	15.85	Issue Type +	En	Location *	WS
Category	Earthen Levee		GPS Latitude/Longitude		
			Start	End	
Item	Vegetation		38.603083 °	38.602943 °	
			-121.551690 °	-121.551593 °	
DWR ID	DWR_RD1000_01_s _ 2012_23				
Comment Code					
V6 : Landscaping					
Inspector Comment					

No Photos

LM Start	15.85	Rating **	M	Issue No.	22
LM End	15.87	Issue Type +	En	Location *	WS
Category	Earthen Levee		GPS Latitude/Longitude		
			Start	End	
Item	Vegetation		38.602870 °	38.602617 °	
			-121.551598 °	-121.551330 °	
DWR ID	DWR_RD1000_01_s _ 2015_22				
Comment Code					
V6 : Landscaping					
Inspector Comment					

No Photos

LM Start	15.88	Rating **	M	Issue No.	21
LM End	15.90	Issue Type +	En	Location *	WS
Category	Earthen Levee		GPS Latitude/Longitude		
			Start	End	
Item	Vegetation		38.602517 °	38.602373 °	
			-121.551248 °	-121.550963 °	
DWR ID	DWR_RD1000_01_s _ 2012_21				
Comment Code					
V6 : Landscaping					
Inspector Comment					

No Photos

* Location LS : Land Side N/A : Not Applicable WS : Water Side CR : Crown	** Rating A : Acceptable M : Minimally Acceptable U : Unacceptable	N : Not Inspected/Rated C : Corrected A/W : Acceptable but Monitor & Maintain	+ Issue Type Ma : Maintenance Deficiency Ob : Design & System Obsolescence En : Enforcement
--	--	---	---

**Flood Control Project Maintenance
Levee Inspections**

Levee Inspection Report By Mile - Fall 2017

Reclamation District No. 1000 Natomas

Waterway	Bank	Unit Miles	Inspection Start/End	Inspector
Unit No. 01 Sacramento River	Left	18.28	09/14/2017 09/15/2017	Sterling York

LM Start	15.94	Rating **	M	Issue No.	20
LM End	15.96	Issue Type +	En	Location *	WS
Category	Earthen Levee			GPS Latitude/Longitude	
				Start	End
Item	Encroachments			38.601977 °	38.601678 °
				-121.550473 °	-121.550142 °
DWR ID	DWR_RD1000_01_s _ 2012_20				
Comment Code					
FE : Fence					
Inspector Comment					

No Photos

LM Start	16.03	Rating **	U	Issue No.	19
LM End	16.06	Issue Type +	En	Location *	WS
Category	Earthen Levee			GPS Latitude/Longitude	
				Start	End
Item	Vegetation			38.600988 °	38.600665 °
				-121.549198 °	-121.548795 °
DWR ID	DWR_RD1000_01_s _ 2012_19				
Comment Code					
V6 : Landscaping					
Inspector Comment					

Photo 1 of 1 : FA_2017_RD1000_31_19_20170919_00051.jpg



View on waterside looking upstream of property covered by Oleander Bushes, Fall 2017.

LM Start	16.58	Rating **	M	Issue No.	16
LM End	16.63	Issue Type +	En	Location *	WS
Category	Earthen Levee			GPS Latitude/Longitude	
				Start	End
Item	Encroachments			38.602328 °	38.602688 °
				-121.540788 °	-121.540157 °
DWR ID	DWR_RD1000_01_s _ 2012_16				
Comment Code					
FE : Fence					
Inspector Comment					

No Photos

* Location		** Rating		+ Issue Type	
LS : Land Side	N/A : Not Applicable	A : Acceptable	N : Not Inspected/Rated	Ma : Maintenance Deficiency	
WS : Water Side		M : Minimally Acceptable	C : Corrected	Ob : Design & System Obsolescence	
CR : Crown		U : Unacceptable	A/W : Acceptable but Monitor & Maintain	En : Enforcement	

**Flood Control Project Maintenance
Levee Inspections**

Levee Inspection Report By Mile - Fall 2017

Reclamation District No. 1000 Natomas

Waterway	Bank	Unit Miles	Inspection Start/End	Inspector
Unit No. 01 Sacramento River	Left	18.28	09/14/2017 09/15/2017	Sterling York

LM Start	16.63	Rating **	M	Issue No.	15
LM End	16.67	Issue Type +	En	Location *	WS
Category	Earthen Levee			GPS Latitude/Longitude	
				Start	End
Item	Encroachments			38.602693 °	38.603092 °
				-121.540165 °	-121.539490 °
DWR ID	DWR_RD1000_01_s_2012_15				
Comment Code					
FE : Fence					
Inspector Comment					

No Photos

LM Start	16.68	Rating **	M	Issue No.	14
LM End	16.72	Issue Type +	En	Location *	WS
Category	Earthen Levee			GPS Latitude/Longitude	
				Start	End
Item	Encroachments			38.603242 °	38.603597 °
				-121.539318 °	-121.538875 °
DWR ID	DWR_RD1000_01_s_2012_14				
Comment Code					
FE : Fence					
Inspector Comment					
The vegetation needs to be removed from fence for visibility and access, Fall 2017.					

Photo 1 of 1 : FA_2017_RD1000_31_14_20170919_00052.jpg



View on waterside looking across at the fence covered by vegetation, Fall 2017.

LM Start	16.78	Rating **	M	Issue No.	13
LM End	16.89	Issue Type +	En	Location *	WS
Category	Earthen Levee			GPS Latitude/Longitude	
				Start	End
Item	Encroachments			38.604188 °	38.604890 °
				-121.538027 °	-121.536105 °
DWR ID	DWR_RD1000_01_s_2012_13				
Comment Code					
FE : Fence					
Inspector Comment					
Oleander Bushes need to be removed for visibility and access, Fall 2017.					

Photo 1 of 1 : FA_2017_RD1000_31_13_20170919_00053.jpg



View of fence covered by Oleander Bushes, Fall 2017.

* Location LS : Land Side N/A : Not Applicable WS : Water Side CR : Crown		** Rating A : Acceptable M : Minimally Acceptable U : Unacceptable		+ Issue Type Ma : Maintenance Deficiency Ob : Design & System Obsolescence En : Enforcement	
		N : Not Inspected/Rated C : Corrected A/W : Acceptable but Monitor & Maintain			

**Flood Control Project Maintenance
Levee Inspections**

Levee Inspection Report By Mile - Fall 2017

Reclamation District No. 1000 Natomas

Waterway	Bank	Unit Miles	Inspection Start/End	Inspector
Unit No. 01 Sacramento River	Left	18.28	09/14/2017 09/15/2017	Sterling York

LM Start	17.34	Rating **	M	Issue No.	11
LM End	17.44	Issue Type +	En	Location *	WS
Category	Earthen Levee			GPS Latitude/Longitude	
				Start	End
Item	Encroachments			38.605645 °	38.605542 °
				-121.527902 °	-121.526112 °
DWR ID	DWR_RD1000_01_s_2012_11				
Comment Code					
FE : Fence					
Inspector Comment					

No Photos

LM Start	17.52	Rating **	U	Issue No.	8
LM End	17.61	Issue Type +	En	Location *	WS
Category	Earthen Levee			GPS Latitude/Longitude	
				Start	End
Item	Encroachments			38.605445 °	38.605305 °
				-121.524675 °	-121.522958 °
DWR ID	DWR_RD1000_01_s_2012_8				
Comment Code					
BU : Building					
Inspector Comment					

Photo 1 of 1 : FA_2017_RD1000_31_8_20170911_00004.jpg



This photo was taken from the crown facing downstream looking down the waterward levee slope at an unacceptable building. Fall 2014.

LM Start	17.53	Rating **	U	Issue No.	9
LM End	17.56	Issue Type +	En	Location *	LS
Category	Earthen Levee			GPS Latitude/Longitude	
				Start	End
Item	Encroachments			38.605420 °	38.605462 °
				-121.524375 °	-121.523852 °
DWR ID	DWR_RD1000_01_s_2012_9				
Comment Code					
BU : Building					
Inspector Comment					

Photo 1 of 1 : FA_2017_RD1000_31_9_20170911_00005.jpg



This photo was taken from the crown facing upstream looking down the landward levee slope at an unacceptable building. Fall 2014.

* Location		** Rating		+ Issue Type	
LS : Land Side	N/A : Not Applicable	A : Acceptable	N : Not Inspected/Rated	Ma : Maintenance Deficiency	
WS : Water Side		M : Minimally Acceptable	C : Corrected	Ob : Design & System Obsolescence	
CR : Crown		U : Unacceptable	A/W : Acceptable but Monitor & Maintain	En : Enforcement	

**Flood Control Project Maintenance
Levee Inspections**

Levee Inspection Report By Mile - Fall 2017

Reclamation District No. 1000 Natomas

Waterway	Bank	Unit Miles	Inspection Start/End	Inspector
Unit No. 01 Sacramento River	Left	18.28	09/14/2017 09/15/2017	Sterling York

LM Start	17.80	Rating **	U	Issue No.	5
LM End	17.87	Issue Type +	En	Location *	WS
Category	Earthen Levee			GPS Latitude/Longitude	
				Start	End
Item	Encroachments			38.604758 °	38.604532 °
				-121.519610 °	-121.518190 °
DWR ID	DWR_RD1000_01_s_2012_5				
Comment Code					
BU : Building					
Inspector Comment					

Photo 1 of 1 : FA_2017_RD1000_31_5_20170911_00003.jpg



This photo was taken from the crown facing downstream looking down the waterward levee slope at an unacceptable building. Fall 2014.

* Location LS : Land Side N/A : Not Applicable WS : Water Side CR : Crown		** Rating A : Acceptable M : Minimally Acceptable U : Unacceptable N : Not Inspected/Rated C : Corrected A/W : Acceptable but Monitor & Maintain		+ Issue Type Ma : Maintenance Deficiency Ob : Design & System Obsolescence En : Enforcement
--	--	---	--	---

**Flood Control Project Maintenance
Levee Inspections**

Unit Cover Sheet

Fall 2017 Levee Inspection Results

Reclamation District No. 1000 Natomas

Waterway			Bank	Unit Miles
Unit No. 02 American River			Right	2.32
	Spring (March - May)	Summer (June - August)	(September - November) Fall	Winter (December - February)
Unit Maintenance Rating (Fall Only)			U	
Date of Inspection	3/17/2017 - 3/17/2017		9/14/2017 - 9/15/2017	
DWR Inspector	Sterling York		Sterling York	
Accompanied By	Don Caldwell RD1000		Don Caldwell RD1000	

Summer & Winter Inspections

The Local Maintaining Agency (LMA) is responsible for summer and winter inspections. The LMA is required to submit a report regarding summer and winter inspections to the California Department of Water Resources (DWR).

DWR must be informed on the:

- a) completion of the inspection
- b) any changes other than the results of normal maintenance
- c) corrections to deficiencies noted in this report

If additional items are noted, further documentation of those items must also be submitted.

The LMA should submit this information to DWR using the LMA web application tool available at:

<http://cdec.water.ca.gov/lma.html>

If the LMA is unable to submit information on this webpage, please contact DWR for assistance.

The LMA should submit the information and any associated documentation by September 30 for summer inspections and March 31 for winter inspections.

**Flood Control Project Maintenance
Levee Inspections**

Levee Inspection Report By Mile - Fall 2017

Reclamation District No. 1000 Natomas

Waterway	Bank	Unit Miles	Inspection Start/End	Inspector
Unit No. 02 American River	Right	2.32	09/14/2017 09/15/2017	Sterling York

LM Start	0.07	Rating **	A	Issue No.	6
LM End	0.52	Issue Type +	Ma	Location *	WS
Category	Earthen Levee			GPS Latitude/Longitude	
				Start	End
Item	Vegetation			38.604713 °	38.607403 °
				-121.510081 °	-121.502678 °
DWR ID	DWR_RD1000_02_f_2017_6				
Comment Code					
V1 : Control annual grass and weeds on the levee slopes and easements.					
Inspector Comment					
Well maintained vegetation, Fall 2017.					

Photo 1 of 1 : FA_2017_RD1000_32_6_20170918_00008.jpg



View of waterside looking downstream of where annual vegetation has been mowed, Fall 2017.

LM Start	0.07	Rating **	A	Issue No.	5
LM End	0.52	Issue Type +	Ma	Location *	LS
Category	Earthen Levee			GPS Latitude/Longitude	
				Start	End
Item	Vegetation			38.604713 °	38.607404 °
				-121.510080 °	-121.502677 °
DWR ID	DWR_RD1000_02_f_2017_5				
Comment Code					
V1 : Control annual grass and weeds on the levee slopes and easements.					
Inspector Comment					
Well maintained vegetation, Fall 2017.					

Photo 1 of 1 : FA_2017_RD1000_32_5_20170918_00007.jpg



View of landside looking upstream of well maintained vegetation, Fall 2017.

* Location
LS : Land Side N/A : Not Applicable
WS : Water Side
CR : Crown

** Rating
A : Acceptable
M : Minimally Acceptable
U : Unacceptable
N : Not Inspected/Rated
C : Corrected
A/W : Acceptable but Monitor & Maintain

+ Issue Type
Ma : Maintenance Deficiency
Ob : Design & System Obsolescence
En : Enforcement

**Flood Control Project Maintenance
Levee Inspections**

Levee Inspection Report By Mile - Fall 2017

Reclamation District No. 1000 Natomas

Waterway	Bank	Unit Miles	Inspection Start/End	Inspector
Unit No. 02 American River	Right	2.32	09/14/2017 09/15/2017	Sterling York

LM Start	0.52	Rating **	A	Issue No.	7
LM End	0.81	Issue Type +	Ma	Location *	LS
Category	Earthen Levee			GPS Latitude/Longitude	
				Start	End
Item	Vegetation			38.607403 °	38.608168 °
				-121.502677 °	-121.497380 °
DWR ID	DWR_RD1000_02_f_2017_7				
Comment Code					
V1 : Control annual grass and weeds on the levee slopes and easements.					
Inspector Comment					
Well maintained vegetation, Fall 2017.					

Photo 1 of 1 : FA_2017_RD1000_32_7_20170918_00010.jpg



View of landside looking downstream of well maintained vegetation, Fall 2017.

LM Start	0.52	Rating **	M	Issue No.	8
LM End	2.32	Issue Type +	Ma	Location *	WS
Category	Earthen Levee			GPS Latitude/Longitude	
				Start	End
Item	Vegetation			38.607403 °	38.605968 °
				-121.502677 °	-121.470668 °
DWR ID	DWR_RD1000_02_f_2017_8				
Comment Code					
V1 : Control annual grass and weeds on the levee slopes and easements.					
Inspector Comment					
Annual vegetation need to be maintained, Fall 2017.					

Photo 1 of 1 : FA_2017_RD1000_32_8_20170918_00009.jpg



View of waterside looking downstream at annual vegetation that needs to be mowed, Fall 2017.

* Location
LS : Land Side N/A : Not Applicable
WS : Water Side
CR : Crown

** Rating
A : Acceptable
M : Minimally Acceptable
U : Unacceptable
N : Not Inspected/Rated
C : Corrected
A/W : Acceptable but Monitor & Maintain

+ Issue Type
Ma : Maintenance Deficiency
Ob : Design & System Obsolescence
En : Enforcement

**Flood Control Project Maintenance
Levee Inspections**

Levee Inspection Report By Mile - Fall 2017

Reclamation District No. 1000 Natomas

Waterway	Bank	Unit Miles	Inspection Start/End	Inspector
Unit No. 02 American River	Right	2.32	09/14/2017 09/15/2017	Sterling York

LM Start	0.60	Rating **	M	Issue No.	9
LM End	2.23	Issue Type +	Ma	Location *	WS
Category	Earthen Levee			GPS Latitude/Longitude	
				Start	End
Item	Trim / Thin Trees			38.607764 °	38.605372 °
				-121.501124 °	-121.471962 °
DWR ID	DWR_RD1000_02_f_2017_9				
Comment Code					
T1 : Trim trees to at least five feet above ground level.					
Inspector Comment					
Trees need to be trimmed for visibility and access, Fall 2017.					

Photo 1 of 1 : FA_2017_RD1000_32_9_20170918_00011.jpg



View of waterside looking upstream of trees that need to be trimmed for visibility and access, Fall 2017.

LM Start	0.76	Rating **	M	Issue No.	12
LM End	1.70	Issue Type +	Ma	Location *	LS
Category	Earthen Levee			GPS Latitude/Longitude	
				Start	End
Item	Trim / Thin Trees			38.608038 °	38.607139 °
				-121.498214 °	-121.481040 °
DWR ID	DWR_RD1000_02_f_2017_12				
Comment Code					
T1 : Trim trees to at least five feet above ground level.					
Inspector Comment					
Trees need to be trimmed for visibility and access, Fall 2017.					

Photo 1 of 1 : FA_2017_RD1000_32_12_20170918_00012.jpg



View of landside looking downstream of trees that need to be trimmed for visibility and access, Fall 2017.

LM Start	0.78	Rating **	M	Issue No.	11
LM End	1.70	Issue Type +	Ma	Location *	LS
Category	Earthen Levee			GPS Latitude/Longitude	
				Start	End
Item	Vegetation			38.608081 °	38.607139 °
				-121.497855 °	-121.481041 °
DWR ID	DWR_RD1000_02_f_2017_11				
Comment Code					
V1 : Control annual grass and weeds on the levee slopes and easements.					
Inspector Comment					
Annual vegetation need to be mowed, Fall 2017.					

Photo 1 of 1 : FA_2017_RD1000_32_11_20170918_00013.jpg



View of landside looking upstream of vegetation, Fall 2017.

* Location		** Rating		+ Issue Type	
LS : Land Side	N/A : Not Applicable	A : Acceptable	N : Not Inspected/Rated	Ma : Maintenance Deficiency	
WS : Water Side		M : Minimally Acceptable	C : Corrected	Ob : Design & System Obsolescence	
CR : Crown		U : Unacceptable	A/W : Acceptable but Monitor & Maintain	En : Enforcement	

**Flood Control Project Maintenance
Levee Inspections**

Levee Inspection Report By Mile - Fall 2017

Reclamation District No. 1000 Natomas

Waterway	Bank	Unit Miles	Inspection Start/End	Inspector
Unit No. 02 American River	Right	2.32	09/14/2017 09/15/2017	Sterling York

LM Start	1.74	Rating **	A	Issue No.	10
LM End	2.32	Issue Type +	Ma	Location *	LS
Category	Earthen Levee			GPS Latitude/Longitude	
				Start	End
Item	Vegetation			38.606963 °	38.605969 °
				-121.480301 °	-121.470669 °
DWR ID	DWR_RD1000_02_f_2017_10				
Comment Code					
V1 : Control annual grass and weeds on the levee slopes and easements.					
Inspector Comment					
Well maintained vegetation, Fall 2017.					

Photo 1 of 1 : FA_2017_RD1000_32_10_20170918_00014.jpg



View of landside looking upstream at well maintained vegetation, Fall 2017.

LM Start	1.79	Rating **	A/W	Issue No.	3
LM End	2.07	Issue Type +	Ma	Location *	WS
Category	Earthen Levee			GPS Latitude/Longitude	
				Start	End
Item	Trim / Thin Trees			38.606566 °	38.605012 °
				-121.479695 °	-121.474813 °
DWR ID	DWR_RD1000_02_f_2016_3				
Comment Code					
T1 : Trim trees to at least five feet above ground level.					
Inspector Comment					
Trees have been trimmed high enough to allow visibility over 20 feet down the water side slope. Spring 2017.					

Photo 1 of 1 : FA_2017_RD1000_32_3_20170911_00005.jpg



View looking upstream waterside of trees that need to be trimmed. Fall 2016.

* Location LS : Land Side N/A : Not Applicable WS : Water Side CR : Crown	** Rating A : Acceptable M : Minimally Acceptable U : Unacceptable	N : Not Inspected/Rated C : Corrected A/W : Acceptable but Monitor & Maintain	+ Issue Type Ma : Maintenance Deficiency Ob : Design & System Obsolescence En : Enforcement
--	--	---	---

**Flood Control Project Maintenance
Levee Inspections**

Unit Cover Sheet

Fall 2017 Levee Inspection Results

Reclamation District No. 1000 Natomas

Waterway			Bank	Unit Miles
Unit No. 03 Natomas East Canal			Right	16.93
	Spring (March - May)	Summer (June - August)	(September - November) Fall	Winter (December - February)
Unit Maintenance Rating (Fall Only)			A	
Date of Inspection	3/17/2017 - 3/17/2017		9/14/2017 - 9/14/2017	
DWR Inspector	Sterling York		Sterling York	
Accompanied By	Don Caldwell RD1000		Don Caldwell RD1000	

Summer & Winter Inspections

The Local Maintaining Agency (LMA) is responsible for summer and winter inspections. The LMA is required to submit a report regarding summer and winter inspections to the California Department of Water Resources (DWR).

DWR must be informed on the:

- a) completion of the inspection
- b) any changes other than the results of normal maintenance
- c) corrections to deficiencies noted in this report

If additional items are noted, further documentation of those items must also be submitted.

The LMA should submit this information to DWR using the LMA web application tool available at:

<http://cdec.water.ca.gov/lma.html>

If the LMA is unable to submit information on this webpage, please contact DWR for assistance.

The LMA should submit the information and any associated documentation by September 30 for summer inspections and March 31 for winter inspections.

**Flood Control Project Maintenance
Levee Inspections**

Levee Inspection Report By Mile - Fall 2017

Reclamation District No. 1000 Natomas

Waterway	Bank	Unit Miles	Inspection Start/End	Inspector
Unit No. 03 Natomas East Canal	Right	16.93	09/14/2017 09/14/2017	Sterling York

LM Start	0.02	Rating **	A	Issue No.	6
LM End	16.83	Issue Type +	Ma	Location *	LS
Category	Earthen Levee			GPS Latitude/Longitude	
				Start	End
Item	Vegetation			38.606061 °	38.821606 °
				-121.470227 °	-121.542336 °
DWR ID	DWR_RD1000_03_f_2017_6				
Comment Code					
V1 : Control annual grass and weeds on the levee slopes and easements.					
Inspector Comment					
Well maintained vegetation, Fall 2017.					

Photo 1 of 1 : FA_2017_RD1000_33_6_20170918_00017.jpg



View of landside looking upstream at the well maintained vegetation, Fall 2017.

LM Start	0.02	Rating **	A	Issue No.	11
LM End	16.83	Issue Type +	Ma	Location *	WS
Category	Earthen Levee			GPS Latitude/Longitude	
				Start	End
Item	Vegetation			38.606061 °	38.821605 °
				-121.470227 °	-121.542336 °
DWR ID	DWR_RD1000_03_f_2017_11				
Comment Code					
V1 : Control annual grass and weeds on the levee slopes and easements.					
Inspector Comment					
Well maintained vegetation, Fall 2017.					

Photo 1 of 1 : FA_2017_RD1000_33_11_20170918_00016.jpg



View of waterside looking upstream at the well maintained vegetation, Fall 2017.

LM Start	0.09	Rating **	M	Issue No.	7
LM End	0.14	Issue Type +	En	Location *	LS
Category	Earthen Levee			GPS Latitude/Longitude	
				Start	End
Item	Vegetation			38.606882 °	38.607523 °
				-121.469480 °	-121.469033 °
DWR ID	DWR_RD1000_03_s_2012_7				
Comment Code					
V6 : Landscaping					
Inspector Comment					
Landscaping vegetation still exist at the landside levee toe, Fall 2017.					

Photo 1 of 2 : FA_2017_RD1000_33_7_20170911_00005.jpg



Taken facing the landside looking downstream.

* Location		** Rating		+ Issue Type	
LS : Land Side	N/A : Not Applicable	A : Acceptable	N : Not Inspected/Rated	Ma : Maintenance Deficiency	
WS : Water Side		M : Minimally Acceptable	C : Corrected	Ob : Design & System Obsolescence	
CR : Crown		U : Unacceptable	A/W : Acceptable but Monitor & Maintain	En : Enforcement	

**Flood Control Project Maintenance
Levee Inspections**

Levee Inspection Report By Mile - Fall 2017

Reclamation District No. 1000 Natomas

Waterway	Bank	Unit Miles	Inspection Start/End	Inspector
Unit No. 03 Natomas East Canal	Right	16.93	09/14/2017 09/14/2017	Sterling York

LM Start	0.09	Rating **	M	Issue No.	7 (cont)	
LM End	0.14	Issue Type +	En	Location *	LS	
Category	Earthen Levee			GPS Latitude/Longitude		
				Start		End
Item	Vegetation			38.606882 °		38.607523 °
				-121.469480 °		-121.469033 °
DWR ID	DWR_RD1000_03_s_2012_7					
Comment Code						
V6 : Landscaping						
Inspector Comment						
Landscaping vegetation still exist at the landside levee toe, Fall 2017.						

Photo 2 of 2 : FA_2017_RD1000_33_7_20170911_00006.jpg



Fence with vegetation at L/S toe.

LM Start	0.23	Rating **	A/W	Issue No.	20
LM End	0.23	Issue Type +	Ma	Location *	LS
Category	Earthen Levee			GPS Latitude/Longitude	
				Start	End
Item	Slope Stability			38.608814 °	38.608814 °
				-121.468469 °	-121.468469 °
DWR ID	DWR_RD1000_03_f_2015_20				
Comment Code					
S2 : Repair the levee slope damaged by foot traffic and prevent access where possible.					
Inspector Comment					
There is a foot path up the slope of the levee but it has not damaged the integrity of the levee enough to warrant an M rating. This path should be monitored and maintained to avoid a future maintenance issue.					

No Photos

LM Start	0.31	Rating **	M	Issue No.	5
LM End	0.33	Issue Type +	En	Location *	LS
Category	Earthen Levee			GPS Latitude/Longitude	
				Start	End
Item	Encroachments			38.609865 °	38.610162 °
				-121.468183 °	-121.468122 °
DWR ID	DWR_RD1000_03_s_2012_5				
Comment Code					
FE : Fence					
Inspector Comment					

No Photos

* Location		** Rating		+ Issue Type	
LS : Land Side	N/A : Not Applicable	A : Acceptable	N : Not Inspected/Rated	Ma : Maintenance Deficiency	
WS : Water Side		M : Minimally Acceptable	C : Corrected	Ob : Design & System Obsolescence	
CR : Crown		U : Unacceptable	A/W : Acceptable but Monitor & Maintain	En : Enforcement	

**Flood Control Project Maintenance
Levee Inspections**

Levee Inspection Report By Mile - Fall 2017

Reclamation District No. 1000 Natomas

Waterway	Bank	Unit Miles	Inspection Start/End	Inspector
Unit No. 03 Natomas East Canal	Right	16.93	09/14/2017 09/14/2017	Sterling York

LM Start	0.38	Rating **	M	Issue No.	19
LM End	0.38	Issue Type +	Ma	Location *	LS
Category	Earthen Levee			GPS Latitude/Longitude	
				Start	End
Item	Animal Control			38.610854 °	38.610854 °
				-121.467961 °	-121.467961 °
DWR ID	DWR_RD1000_03_f_2015_19				
Comment Code					
A3 : No rodents visible, but rodent burrows visible; need to backfill and compact or grout burrows.					
Inspector Comment					
Bait injection into rodent hole for control. No sign of rodents Fall 2016.					

Photo 1 of 2 : FA_2017_RD1000_33_19_20170911_00013.jpg



View of the rodent on the waterside levee slope ready to retreat into the den, penetrating the levee prism.

LM Start	0.38	Rating **	M	Issue No.	19 (cont)
LM End	0.38	Issue Type +	Ma	Location *	LS

Photo 2 of 2 : FA_2017_RD1000_33_19_20170911_00014.jpg



View of the rodent holes on the waterside levee slope. Fall 2015. Bait injection into rodent hole for control, no sign of rodents Fall 2016.

LM Start	0.53	Rating **	M	Issue No.	4
LM End	0.58	Issue Type +	En	Location *	LS
Category	Earthen Levee			GPS Latitude/Longitude	
				Start	End
Item	Encroachments			38.613077 °	38.613700 °
				-121.468133 °	-121.468263 °
DWR ID	DWR_RD1000_03_s_2012_4				
Comment Code					
FE : Fence					
Inspector Comment					

No Photos

* Location		** Rating		+ Issue Type	
LS : Land Side	N/A : Not Applicable	A : Acceptable	N : Not Inspected/Rated	Ma : Maintenance Deficiency	
WS : Water Side		M : Minimally Acceptable	C : Corrected	Ob : Design & System Obsolescence	
CR : Crown		U : Unacceptable	A/W : Acceptable but Monitor & Maintain	En : Enforcement	

**Flood Control Project Maintenance
Levee Inspections**

Levee Inspection Report By Mile - Fall 2017

Reclamation District No. 1000 Natomas

Waterway	Bank	Unit Miles	Inspection Start/End	Inspector
Unit No. 03 Natomas East Canal	Right	16.93	09/14/2017 09/14/2017	Sterling York

LM Start	1.44	Rating **	A/W	Issue No.	18
LM End	1.44	Issue Type +	Ma	Location *	LS
Category	Earthen Levee			GPS Latitude/Longitude	
				Start	End
Item	Slope Stability			38.626111 °	38.626111 °
				-121.470575 °	-121.470575 °
DWR ID	DWR_RD1000_03_f_2015_18				
Comment Code					
S2 : Repair the levee slope damaged by foot traffic and prevent access where possible.					
Inspector Comment					
There is a foot path up the slope of the levee but it has not damaged the integrity of the levee enough to warrant an M rating. This path should be monitored and maintained to avoid a future maintenance issue.					

No Photos

LM Start	2.10	Rating **	M	Issue No.	17
LM End	2.24	Issue Type +	En	Location *	LS
Category	Earthen Levee			GPS Latitude/Longitude	
				Start	End
Item	Encroachments			38.635597 °	38.637610 °
				-121.472389 °	-121.472774 °
DWR ID	DWR_RD1000_03_f_2015_17				
Comment Code					
FE : Fence					
Inspector Comment					

Photo 1 of 1 : FA_2017_RD1000_33_17_20170911_00012.jpg



View of fence at landside levee toe.

LM Start	2.36	Rating **	M	Issue No.	15
LM End	2.36	Issue Type +	Ma	Location *	LS
Category	Earthen Levee			GPS Latitude/Longitude	
				Start	End
Item	Slope Stability			38.639326 °	38.639326 °
				-121.473107 °	-121.473107 °
DWR ID	DWR_RD1000_03_f_2015_15				
Comment Code					
S2 : Repair the levee slope damaged by foot traffic and prevent access where possible.					
Inspector Comment					

Photo 1 of 1 : FA_2017_RD1000_33_15_20170911_00011.jpg



View of the landside levee slope damaged by foot traffic.

* Location LS : Land Side N/A : Not Applicable WS : Water Side CR : Crown		** Rating A : Acceptable M : Minimally Acceptable U : Unacceptable N : Not Inspected/Rated C : Corrected A/W : Acceptable but Monitor & Maintain		+ Issue Type Ma : Maintenance Deficiency Ob : Design & System Obsolescence En : Enforcement	
--	--	---	--	---	--

**Flood Control Project Maintenance
Levee Inspections**

Levee Inspection Report By Mile - Fall 2017

Reclamation District No. 1000 Natomas

Waterway	Bank	Unit Miles	Inspection Start/End	Inspector
Unit No. 03 Natomas East Canal	Right	16.93	09/14/2017 09/14/2017	Sterling York

LM Start	2.74	Rating **	A/W	Issue No.	16
LM End	2.74	Issue Type +	Ma	Location *	LS
Category	Earthen Levee			GPS Latitude/Longitude	
				Start	End
Item	Slope Stability			38.644796 °	38.644796 °
				-121.474135 °	-121.474135 °
DWR ID	DWR_RD1000_03_f_2015_16				
Comment Code					
S2 : Repair the levee slope damaged by foot traffic and prevent access where possible.					
Inspector Comment					
There is a foot path up the slope of the levee but it has not damaged the integrity of the levee enough to warrant an M rating. This path should be monitored and maintained to avoid a future maintenance issue.					

No Photos

LM Start	3.01	Rating **	M	Issue No.	3
LM End	3.07	Issue Type +	En	Location *	LS
Category	Earthen Levee			GPS Latitude/Longitude	
				Start	End
Item	Encroachments			38.648677 °	38.649412 °
				-121.474882 °	-121.475005 °
DWR ID	DWR_RD1000_03_s_2012_3				
Comment Code					
FE : Fence					
Inspector Comment					
Fence encroaches landside levee toe, Fall 2017.					

Photo 1 of 1 : FA_2017_RD1000_33_3_20170918_00020.jpg



View looking downstream landside of fence that encroaches at levee toe, Fall 2017.

* Location LS : Land Side N/A : Not Applicable WS : Water Side CR : Crown		** Rating A : Acceptable M : Minimally Acceptable U : Unacceptable N : Not Inspected/Rated C : Corrected A/W : Acceptable but Monitor & Maintain		+ Issue Type Ma : Maintenance Deficiency Ob : Design & System Obsolescence En : Enforcement
--	--	---	--	---

**Flood Control Project Maintenance
Levee Inspections**

Levee Inspection Report By Mile - Fall 2017

Reclamation District No. 1000 Natomas

Waterway	Bank	Unit Miles	Inspection Start/End	Inspector
Unit No. 03 Natomas East Canal	Right	16.93	09/14/2017 09/14/2017	Sterling York

LM Start	4.78	Rating **	A/W	Issue No.	1
LM End	4.89	Issue Type +	Ma	Location *	LS
Category	Earthen Levee			GPS Latitude/Longitude	
				Start	End
Item	Animal Control			38.672913 °	38.673685 °
				-121.481364 °	-121.483115 °
DWR ID	DWR_RD1000_03_f_2013_1				
Comment Code					
A3 : No rodents visible, but rodent burrows visible; need to backfill and compact or grout burrows.					
Inspector Comment					
Several bait traps line the levee toe, no sign of rodents.					

Photo 1 of 1 : FA_2017_RD1000_33_1_20170918_00019.jpg



View taken facing the landside looking downstream at location where there was rodent activity in past years. Rodent holes have been filled and no new activity was observed. Several bait traps at landside levee toe. Fall 2017.

LM Start	6.27	Rating **	M	Issue No.	8
LM End	6.36	Issue Type +	En	Location *	LS
Category	Earthen Levee			GPS Latitude/Longitude	
				Start	End
Item	Encroachments			38.692847 °	38.694141 °
				-121.485595 °	-121.485596 °
DWR ID	DWR_RD1000_03_f_2015_8				
Comment Code					
FE : Fence					
Inspector Comment					
Fence on landside levee slope.					

Photo 1 of 1 : FA_2017_RD1000_33_8_20170911_00007.jpg



View of fence on landside levee slope, looking downstream.

* Location
LS : Land Side N/A : Not Applicable
WS : Water Side
CR : Crown

** Rating
A : Acceptable
M : Minimally Acceptable
U : Unacceptable
N : Not Inspected/Rated
C : Corrected
A/W : Acceptable but Monitor & Maintain

+ Issue Type
Ma : Maintenance Deficiency
Ob : Design & System Obsolescence
En : Enforcement

**Flood Control Project Maintenance
Levee Inspections**

Levee Inspection Report By Mile - Fall 2017

Reclamation District No. 1000 Natomas

Waterway	Bank	Unit Miles	Inspection Start/End	Inspector
Unit No. 03 Natomas East Canal	Right	16.93	09/14/2017 09/14/2017	Sterling York

LM Start	6.96	Rating **	M	Issue No.	2
LM End	6.96	Issue Type +	En	Location *	LS
Category	Earthen Levee			GPS Latitude/Longitude	
				Start	End
Item	Vegetation			38.702801 °	38.702801 °
				-121.485652 °	-121.485652 °
DWR ID	DWR_RD1000_03_f_2015_2				
Comment Code					
V6 : Landscaping					
Inspector Comment					

Photo 1 of 1 : FA_2017_RD1000_33_2_20170911_00003.jpg



View of the landscaping at the landside levee toe.

LM Start	12.41	Rating **	M	Issue No.	10
LM End	12.46	Issue Type +	En	Location *	WS
Category	Earthen Levee			GPS Latitude/Longitude	
				Start	End
Item	Vegetation			38.779037 °	38.779505 °
				-121.500397 °	-121.500955 °
DWR ID	DWR_RD1000_03_s_2012_10				
Comment Code					
V6 : Landscaping					
Inspector Comment					
This is high ground and the channel flows away, both directions.					

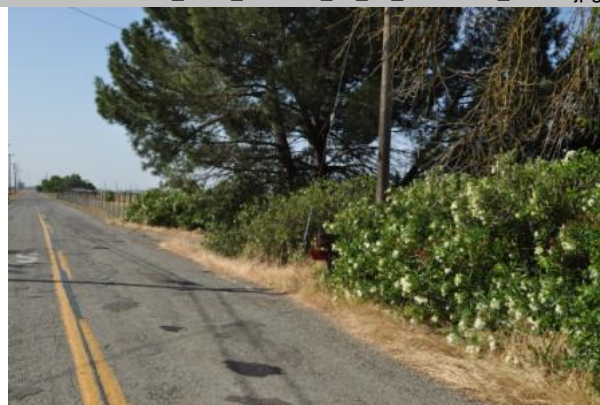
Photo 1 of 1 : FA_2017_RD1000_33_10_20170911_00009.jpg



WS vegetation.

LM Start	12.42	Rating **	M	Issue No.	13
LM End	12.42	Issue Type +	En	Location *	LS
Category	Earthen Levee			GPS Latitude/Longitude	
				Start	End
Item	Vegetation			38.779083 °	38.779083 °
				-121.500392 °	-121.500392 °
DWR ID	DWR_RD1000_03_s_2012_13				
Comment Code					
V6 : Landscaping					
Inspector Comment					
This is high ground and the channel flows away, both directions.					

Photo 1 of 1 : FA_2017_RD1000_33_13_20170911_00010.jpg



LS landscaping.

* Location LS : Land Side N/A : Not Applicable WS : Water Side CR : Crown		** Rating A : Acceptable M : Minimally Acceptable U : Unacceptable N : Not Inspected/Rated C : Corrected A/W : Acceptable but Monitor & Maintain		+ Issue Type Ma : Maintenance Deficiency Ob : Design & System Obsolescence En : Enforcement	
--	--	---	--	---	--

**Flood Control Project Maintenance
Levee Inspections**

Levee Inspection Report By Mile - Fall 2017

Reclamation District No. 1000 Natomas

Waterway	Bank	Unit Miles	Inspection Start/End	Inspector
Unit No. 03 Natomas East Canal	Right	16.93	09/14/2017 09/14/2017	Sterling York

LM Start	14.01	Rating **	M	Issue No.	22
LM End	14.70	Issue Type +	En	Location *	LS
Category	Earthen Levee			GPS Latitude/Longitude	
				Start	End
Item	Encroachments			38.799892 °	38.808969 °
				-121.513194 °	-121.518536 °
DWR ID	DWR_RD1000_03_f_2016_22				
Comment Code					
DT : Ditch					
Inspector Comment					
Ditch at toe of slope.					

Photo 1 of 1 : FA_2017_RD1000_33_22_20170918_00018.jpg



View of landside ditch at toe of levee, looking downstream, Fall 2017.

LM Start	15.25	Rating **	M	Issue No.	9
LM End	15.79	Issue Type +	En	Location *	LS
Category	Earthen Levee			GPS Latitude/Longitude	
				Start	End
Item	Encroachments			38.816259 °	38.823314 °
				-121.522787 °	-121.526942 °
DWR ID	DWR_RD1000_03_s_2012_9				
Comment Code					
DT : Ditch					
Inspector Comment					

Photo 1 of 1 : FA_2017_RD1000_33_9_20170911_00008.jpg



LS Ag ditch at the LS toe.

* Location LS : Land Side N/A : Not Applicable WS : Water Side CR : Crown	** Rating A : Acceptable M : Minimally Acceptable U : Unacceptable	N : Not Inspected/Rated C : Corrected A/W : Acceptable but Monitor & Maintain	+ Issue Type Ma : Maintenance Deficiency Ob : Design & System Obsolescence En : Enforcement
--	--	---	---

**Flood Control Project Maintenance
Levee Inspections**

Unit Cover Sheet

Fall 2017 Levee Inspection Results

Reclamation District No. 1000 Natomas

Waterway			Bank	Unit Miles
Unit No. 04 Natomas Cross Canal			Left	4.30
	Spring (March - May)	Summer (June - August)	(September - November) Fall	Winter (December - February)
Unit Maintenance Rating (Fall Only)			A	
Date of Inspection	3/17/2017 - 3/17/2017		9/14/2017 - 9/14/2017	
DWR Inspector	Sterling York		Sterling York	
Accompanied By	Don Caldwell RD1000		Don Caldwell RD1000	

Summer & Winter Inspections

The Local Maintaining Agency (LMA) is responsible for summer and winter inspections. The LMA is required to submit a report regarding summer and winter inspections to the California Department of Water Resources (DWR).

DWR must be informed on the:

- a) completion of the inspection
- b) any changes other than the results of normal maintenance
- c) corrections to deficiencies noted in this report

If additional items are noted, further documentation of those items must also be submitted.

The LMA should submit this information to DWR using the LMA web application tool available at:

<http://cdec.water.ca.gov/lma.html>

If the LMA is unable to submit information on this webpage, please contact DWR for assistance.

The LMA should submit the information and any associated documentation by September 30 for summer inspections and March 31 for winter inspections.

**Flood Control Project Maintenance
Levee Inspections**

Levee Inspection Report By Mile - Fall 2017

Reclamation District No. 1000 Natomas

Waterway	Bank	Unit Miles	Inspection Start/End	Inspector
Unit No. 04 Natomas Cross Canal	Left	4.30	09/14/2017 09/14/2017	Sterling York

LM Start	0.00	Rating **	M	Issue No.	15
LM End	0.00	Issue Type +	En	Location *	
Category	Supplemental		GPS Latitude/Longitude		
			Start	End	
Item	DWR UCIP Field Study		38.802865 °	38.802865 °	
			-121.573460 °	-121.573460 °	
DWR ID					
Comment Code					
Inspector Comment					
FS_ID:46898 DS_ID:25400 EP_NO: 9779 Repair Type: Non-Urgent Crossing Status: Found UCIP Comments: FIELD_STRUCT_DESC: 1 of 5. [Natomas Mutual Water Company Northern Pumping Station]. 30-inch pipe through levee, 16.4 feet below the crown. Pump located on steel platform in the channel. Siphon breaker in CM pipe riser on the landward shoulder. Discharges in concrete distribution box in irrigation ditch on the landward side. (Permit No. 9779-1974, Natomas Central Mutual Water Company) Pipe remains in levee as per C3980 Vol 3A NCC Phase 2 Record Set for Natomas Levee Improvement Program/Natomas Post-Authorization. (Permit No. 18159-2-2009, Sacramento Area Flood Control Agency) FS Date: 12/10/2015					

No Photos

* Location LS : Land Side N/A : Not Applicable WS : Water Side CR : Crown	** Rating A : Acceptable M : Minimally Acceptable U : Unacceptable N : Not Inspected/Rated C : Corrected A/W : Acceptable but Monitor & Maintain	+ Issue Type Ma : Maintenance Deficiency Ob : Design & System Obsolescence En : Enforcement
--	---	---

**Flood Control Project Maintenance
Levee Inspections**

Levee Inspection Report By Mile - Fall 2017

Reclamation District No. 1000 Natomas

Waterway	Bank	Unit Miles	Inspection Start/End	Inspector
Unit No. 04 Natomas Cross Canal	Left	4.30	09/14/2017 09/14/2017	Sterling York

LM Start	0.00	Rating **	M	Issue No.	16
LM End	0.00	Issue Type +	En	Location *	
Category	Supplemental		GPS Latitude/Longitude		
			Start	End	
Item	DWR UCIP Field Study		38.802839 °	38.802839 °	
			-121.573505 °	-121.573505 °	
DWR ID					
Comment Code					
Inspector Comment					
FS_ID:46899 DS_ID:25401 EP_NO: 5490 Repair Type: Non-Urgent Crossing Status: Found UCIP Comments: FIELD_STRUCT_DESC: 2 of 5. [Natomas Mutual Water Company Northern Pumping Station]. 42-inch pipe through the levee, 16.4 feet below the crown. Pump located on steel platform in the channel. Siphon breaker on the landward side. Discharges into irrigation ditch on the landward side. (Permit No. 5490-1974, Natomas Central Mutual Water Company) Pipe remains in levee as per C3980 Vol 3A NCC Phase 2 Record Set for Natomas Levee Improvement Program/Natomas Post-Authorization. (Permit No. 18159-2-2009, Sacramento Area Flood Control Agency) FS Date: 12/10/2015					

No Photos

* Location LS : Land Side N/A : Not Applicable WS : Water Side CR : Crown	** Rating A : Acceptable M : Minimally Acceptable U : Unacceptable N : Not Inspected/Rated C : Corrected A/W : Acceptable but Monitor & Maintain	+ Issue Type Ma : Maintenance Deficiency Ob : Design & System Obsolescence En : Enforcement
--	---	---

**Flood Control Project Maintenance
Levee Inspections**

Levee Inspection Report By Mile - Fall 2017

Reclamation District No. 1000 Natomas

Waterway	Bank	Unit Miles	Inspection Start/End	Inspector
Unit No. 04 Natomas Cross Canal	Left	4.30	09/14/2017 09/14/2017	Sterling York

LM Start	0.00	Rating **	M	Issue No.	17
LM End	0.00	Issue Type +	En	Location *	
Category	Supplemental		GPS Latitude/Longitude		
			Start	End	
Item	DWR UCIP Field Study		38.802831 °	38.802831 °	
			-121.573522 °	-121.573522 °	
DWR ID					
Comment Code					
Inspector Comment					
FS_ID:46900 DS_ID:25264 EP_NO: 15955 Repair Type: Non-Urgent Crossing Status: Found UCIP Comments: FIELD_STRUCT_DESC: 3 of 5. [Natomas Mutual Water Company Northern Pumping Station]. 30-inch pipe through the levee, 16.4 feet below the crown. Pump located on steel platform in the channel. Siphon breaker on the landward side. Discharges into irrigation ditch on the landward side. (Permit No. 15955-1992, Natomas Central Mutual Water Company) Pipe remains in levee as per C3980 Vol 3A NCC Phase 2 Record Set for Natomas Levee Improvement Program/Natomas Post-Authorization. (Permit No. 18159-2-2009, Sacramento Area Flood Control Agency) FS Date: 12/10/2015					

No Photos

* Location LS : Land Side N/A : Not Applicable WS : Water Side CR : Crown	** Rating A : Acceptable M : Minimally Acceptable U : Unacceptable N : Not Inspected/Rated C : Corrected A/W : Acceptable but Monitor & Maintain	+ Issue Type Ma : Maintenance Deficiency Ob : Design & System Obsolescence En : Enforcement
--	---	---

**Flood Control Project Maintenance
Levee Inspections**

Levee Inspection Report By Mile - Fall 2017

Reclamation District No. 1000 Natomas

Waterway	Bank	Unit Miles	Inspection Start/End	Inspector
Unit No. 04 Natomas Cross Canal	Left	4.30	09/14/2017 09/14/2017	Sterling York

LM Start	0.00	Rating **	M	Issue No.	18
LM End	0.00	Issue Type +	En	Location *	
Category	Supplemental		GPS Latitude/Longitude		
			Start	End	
Item	DWR UCIP Field Study		38.802816 °	38.802816 °	
			-121.573545 °	-121.573545 °	
DWR ID					
Comment Code					
Inspector Comment					
FS_ID:46901 DS_ID:25410 EP_NO: 15955 Repair Type: Non-Urgent Crossing Status: Found UCIP Comments: FIELD_STRUCT_DESC: 4 of 5. [Natomas Mutual Water Company Northern Pump Station]. 30-inch pipe through the levee, 16.4 feet below the crown. Pump located on steel platform in the channel. Siphon breaker on the landward side. Discharges into irrigation ditch on the landward side. (Permit No. 15955-1992, Natomas Central Mutual Water Company) Pipe remains in levee as per C3980 Vol 3A NCC Phase 2 Record Set for Natomas Levee Improvement Program/Natomas Post-Authorization. (Permit No. 18159-2-2009, Sacramento Area Flood Control Agency) FS Date: 12/10/2015					

No Photos

* Location LS : Land Side N/A : Not Applicable WS : Water Side CR : Crown	** Rating A : Acceptable M : Minimally Acceptable U : Unacceptable N : Not Inspected/Rated C : Corrected A/W : Acceptable but Monitor & Maintain	+ Issue Type Ma : Maintenance Deficiency Ob : Design & System Obsolescence En : Enforcement
--	---	---

**Flood Control Project Maintenance
Levee Inspections**

Levee Inspection Report By Mile - Fall 2017

Reclamation District No. 1000 Natomas

Waterway	Bank	Unit Miles	Inspection Start/End	Inspector
Unit No. 04 Natomas Cross Canal	Left	4.30	09/14/2017 09/14/2017	Sterling York

LM Start	0.00	Rating **	M	Issue No.	19
LM End	0.00	Issue Type +	En	Location *	
Category	Supplemental		GPS Latitude/Longitude		
			Start	End	
Item	DWR UCIP Field Study		38.802808 °	38.802808 °	
			-121.573561 °	-121.573561 °	
DWR ID					
Comment Code					
Inspector Comment					
FS_ID:46902 DS_ID:25411 EP_NO: 5490 Repair Type: Non-Urgent Crossing Status: Found UCIP Comments: FIELD_STRUCT_DESC: 5 of 5. [Natomas Mutual Water Company Northern Pump Station]. 42-inch pipe through the levee, 16.4 feet below the crown. Pump located on steel platform in the channel. Siphon breaker on the landward side. Discharges into irrigation ditch on the landward side. (Permit No. 5490-1974, Natomas Central Mutual Water Company) Pipe remains in levee as per C3980 Vol 3A NCC Phase 2 Record Set for Natomas Levee Improvement Program/Natomas Post-Authorization. (Permit No. 18159-2-2009, Sacramento Area Flood Control Agency) FS Date: 12/10/2015					

No Photos

LM Start	0.00	Rating **	M	Issue No.	20
LM End	0.00	Issue Type +	En	Location *	
Category	Supplemental		GPS Latitude/Longitude		
			Start	End	
Item	DWR UCIP Field Study		38.781597 °	38.781597 °	
			-121.603382 °	-121.603382 °	
DWR ID					
Comment Code					
Inspector Comment					
FS_ID:46912 DS_ID:25261 EP_NO: 16273 Repair Type: Non-Urgent Crossing Status: Found UCIP Comments: FIELD_STRUCT_DESC: [Odysseus Farms] 18-inch drainage pipe through the levee 1.9 feet below the crown. Pump on the waterward bank. Service pole and switch box on the waterward slope. 36-inch concrete standpipe on landward side. Pipe replaced in Nov 1994. (Permit No. 16273-1994, Natomas Mutual Water Co.) FS Date: 12/10/2015					

No Photos

* Location LS : Land Side N/A : Not Applicable WS : Water Side CR : Crown	** Rating A : Acceptable M : Minimally Acceptable U : Unacceptable	N : Not Inspected/Rated C : Corrected A/W : Acceptable but Monitor & Maintain	+ Issue Type Ma : Maintenance Deficiency Ob : Design & System Obsolescence En : Enforcement
--	--	---	---

**Flood Control Project Maintenance
Levee Inspections**

Levee Inspection Report By Mile - Fall 2017

Reclamation District No. 1000 Natomas

Waterway	Bank	Unit Miles	Inspection Start/End	Inspector
Unit No. 04 Natomas Cross Canal	Left	4.30	09/14/2017 09/14/2017	Sterling York

LM Start	0.00	Rating **	M	Issue No.	21
LM End	0.00	Issue Type +	En	Location *	
Category	Supplemental			GPS Latitude/Longitude	
				Start	End
Item	DWR UCIP Field Study			38.798993 °	38.798993 °
				-121.579847 °	-121.579847 °
DWR ID					
Comment Code					
Inspector Comment					
FS_ID:46904 DS_ID:25412 EP_NO: N/A Repair Type: Non-Urgent Crossing Status: Found UCIP Comments: FIELD_STRUCT_DESC: 2 of 3. [RD1000 Pumping Plant] 48-inch pipes through the levee, 4.2 feet below the crown. Pump in pump house on the landward side. Siphon breaker on the waterward shoulder. Flap gate on one pipe, two pipes open on waterward end. Bank rock revetted. One CM cutoff wall. Pad over levee crown. Pipe remains in levee as per C3980 Vol 3A NCC Phase 2 Record Set for Natomas Levee Improvement Program/Natomas Post-Authorization. (Permit No. 18159-2-2009, Sacramento Area Flood Control Agency) FS Date: 12/10/2015					

No Photos

LM Start	0.00	Rating **	M	Issue No.	22
LM End	0.00	Issue Type +	En	Location *	
Category	Supplemental			GPS Latitude/Longitude	
				Start	End
Item	DWR UCIP Field Study			38.798976 °	38.798976 °
				-121.579871 °	-121.579871 °
DWR ID					
Comment Code					
Inspector Comment					
FS_ID:46905 DS_ID:25413 EP_NO: N/A Repair Type: Non-Urgent Crossing Status: Found UCIP Comments: FIELD_STRUCT_DESC: 3 of 3. [RD1000 Pumping Plant] 48-inch pipes through the levee, 4.2 feet below the crown. Pump in pump house on the landward side. Siphon breaker on the waterward shoulder. Flap gate on one pipe, two pipes open on waterward end. Bank rock revetted. One CM cutoff wall. Pad over levee crown. Pipe remains in levee as per C3980 Vol 3A NCC Phase 2 Record Set for Natomas Levee Improvement Program/Natomas Post-Authorization. (Permit No. 18159-2-2009, Sacramento Area Flood Control Agency) FS Date: 12/10/2015					

No Photos

* Location LS : Land Side N/A : Not Applicable WS : Water Side CR : Crown	** Rating A : Acceptable M : Minimally Acceptable U : Unacceptable	N : Not Inspected/Rated C : Corrected A/W : Acceptable but Monitor & Maintain	+ Issue Type Ma : Maintenance Deficiency Ob : Design & System Obsolescence En : Enforcement
--	--	---	---

**Flood Control Project Maintenance
Levee Inspections**

Levee Inspection Report By Mile - Fall 2017

Reclamation District No. 1000 Natomas

Waterway	Bank	Unit Miles	Inspection Start/End	Inspector
Unit No. 04 Natomas Cross Canal	Left	4.30	09/14/2017 09/14/2017	Sterling York

LM Start	0.00	Rating **	M	Issue No.	23
LM End	0.00	Issue Type +	En	Location *	
Category	Supplemental		GPS Latitude/Longitude		
			Start	End	
Item	DWR UCIP Field Study		38.792558 °	38.792558 °	
			-121.590739 °	-121.590739 °	
DWR ID					
Comment Code					
Inspector Comment					
FS_ID:46909 DS_ID:25267 EP_NO: N/A Repair Type: Non-Urgent Crossing Status: Found UCIP Comments: FIELD_STRUCT_DESC: 1 of 3. [Natomas Mutual Water Company Bennett Pumping Plant] 36-inch pipe through the levee, 6 feet below the crown. Siphon breaker on the landward shoulder. Vertical pump mounted on the bank. FS Date: 12/10/2015					

No Photos

LM Start	0.00	Rating **	M	Issue No.	24
LM End	0.00	Issue Type +	En	Location *	
Category	Supplemental		GPS Latitude/Longitude		
			Start	End	
Item	DWR UCIP Field Study		38.792536 °	38.792536 °	
			-121.590779 °	-121.590779 °	
DWR ID					
Comment Code					
Inspector Comment					
FS_ID:46910 DS_ID:25266 EP_NO: N/A Repair Type: Non-Urgent Crossing Status: Found UCIP Comments: FIELD_STRUCT_DESC: 2 of 3. [Natomas Mutual Water Company Bennett Pumping Plant] 42-inch pipe through the levee, 18 feet below the crown. Two pumps on steel piling on the bank. Slide gate in concrete well on the waterward side. Discharges into cobble-grouted ditch on the landward berm. FS Date: 12/10/2015					

No Photos

* Location LS : Land Side N/A : Not Applicable WS : Water Side CR : Crown		** Rating A : Acceptable N : Not Inspected/Rated M : Minimally Acceptable C : Corrected U : Unacceptable A/W : Acceptable but Monitor & Maintain		+ Issue Type Ma : Maintenance Deficiency Ob : Design & System Obsolescence En : Enforcement	
--	--	---	--	---	--

**Flood Control Project Maintenance
Levee Inspections**

Levee Inspection Report By Mile - Fall 2017

Reclamation District No. 1000 Natomas

Waterway	Bank	Unit Miles	Inspection Start/End	Inspector
Unit No. 04 Natomas Cross Canal	Left	4.30	09/14/2017 09/14/2017	Sterling York

LM Start	0.00	Rating **	M	Issue No.	25
LM End	0.00	Issue Type +	En	Location *	
Category	Supplemental		GPS Latitude/Longitude		
			Start	End	
Item	DWR UCIP Field Study		38.792516 °	38.792516 °	
			-121.590805 °	-121.590805 °	
DWR ID					
Comment Code					
Inspector Comment					
FS_ID:46911 DS_ID:25414 EP_NO: N/A Repair Type: Non-Urgent Crossing Status: Found UCIP Comments: FIELD_STRUCT_DESC: 3 of 3. [Natomas Mutual Water Company Bennett Pumping Plant] 36-inch pipe through the levee, 6 feet below the crown. Siphon breaker on the landward shoulder. Vertical pump mounted on the bank. FS Date: 12/10/2015					

No Photos

LM Start	0.00	Rating **	M	Issue No.	26
LM End	0.00	Issue Type +	En	Location *	
Category	Supplemental		GPS Latitude/Longitude		
			Start	End	
Item	DWR UCIP Field Study		38.799011 °	38.799011 °	
			-121.579820 °	-121.579820 °	
DWR ID					
Comment Code					
Inspector Comment					
FS_ID:46903 DS_ID:25265 EP_NO: N/A Repair Type: Non-Urgent Crossing Status: Found UCIP Comments: FIELD_STRUCT_DESC: 1 of 3. [RD1000 Pumping Plant] 48-inch pipes through the levee, 4.2 feet below the crown. Pump in pump house on the landward side. Siphon breaker on the waterward shoulder. Flap gate on one pipe, two pipes open on waterward end. Bank rock revetted. One CM cutoff wall. Pad over levee crown. Pipe remains in levee as per C3980 Vol 3A NCC Phase 2 Record Set for Natomas Levee Improvement Program/Natomas Post-Authorization. (Permit No. 18159-2-2009, Sacramento Area Flood Control Agency) FS Date: 12/10/2015					

No Photos

* Location LS : Land Side N/A : Not Applicable WS : Water Side CR : Crown		** Rating A : Acceptable N : Not Inspected/Rated M : Minimally Acceptable C : Corrected U : Unacceptable A/W : Acceptable but Monitor & Maintain		+ Issue Type Ma : Maintenance Deficiency Ob : Design & System Obsolescence En : Enforcement
--	--	---	--	---

**Flood Control Project Maintenance
Levee Inspections**

Levee Inspection Report By Mile - Fall 2017

Reclamation District No. 1000 Natomas

Waterway	Bank	Unit Miles	Inspection Start/End	Inspector
Unit No. 04 Natomas Cross Canal	Left	4.30	09/14/2017 09/14/2017	Sterling York

LM Start	0.02	Rating **	A	Issue No.	13
LM End	4.21	Issue Type +	Ma	Location *	LS
Category	Earthen Levee			GPS Latitude/Longitude	
				Start	End
Item	Vegetation			38.820465 °	38.781834 °
				-121.544003 °	-121.603284 °
DWR ID	DWR_RD1000_04_f_2017_13				
Comment Code					
V1 : Control annual grass and weeds on the levee slopes and easements.					
Inspector Comment					
Well maintained vegetation, Fall 2017.					

Photo 1 of 1 : FA_2017_RD1000_34_13_20170918_00002.jpg



View looking upstream on the landside at the well maintained vegetation, Fall 2017.

LM Start	0.02	Rating **	A	Issue No.	14	
LM End	4.21	Issue Type +	Ma	Location *	WS	
Category	Earthen Levee			GPS Latitude/Longitude		
				Start		End
Item	Vegetation			38.820465 °		38.781834 °
				-121.544003 °		-121.603284 °
DWR ID	DWR_RD1000_04_f_2017_14					
Comment Code						
V1 : Control annual grass and weeds on the levee slopes and easements.						
Inspector Comment						
Well maintained vegetation, Fall 2017.						

Photo 1 of 1 : FA_2017_RD1000_34_14_20170918_00001.jpg



View looking upstream on the waterside at the well maintained vegetation, Fall 2017.

* Location LS : Land Side N/A : Not Applicable WS : Water Side CR : Crown		** Rating A : Acceptable M : Minimally Acceptable U : Unacceptable		N : Not Inspected/Rated C : Corrected A/W : Acceptable but Monitor & Maintain		+ Issue Type Ma : Maintenance Deficiency Ob : Design & System Obsolescence En : Enforcement	
--	--	--	--	---	--	---	--