

**Flood Control Project Maintenance  
Levee Inspections**

## Maintenance Issue Types Only, Levee Inspection Report By Mile - Spring 2020

### Reclamation District No. 0999 Netherlands

Waterway	Bank	Unit Miles	Inspection Start/End	Inspector
Unit No. 01 Yolo Bypass	Left	15.41	04/30/2020 05/05/2020	Luz Dial

LM Start	<b>0.00</b>	Rating **	A	Issue No.	<b>53</b>
LM End	<b>0.00</b>	Issue Type +	Ma	Location *	N/A
Category	Earthen Levee			GPS Latitude/Longitude	
				Start	End
Item	Operations & Maintenance Manuals			°	°
				°	°
DWR ID	DWR_RD0999_01_s_2013_53				
Comment Code					
Inspector Comment					
The LMA has a copy of the O & M manual on file.					

No Photos

LM Start	<b>0.00</b>	Rating **	A	Issue No.	<b>54</b>
LM End	<b>0.00</b>	Issue Type +	Ma	Location *	N/A
Category	Earthen Levee			GPS Latitude/Longitude	
				Start	End
Item	Emergency Supplies & Equipment			°	°
				°	°
DWR ID	DWR_RD0999_01_s_2019_54				
Comment Code					
Inspector Comment					
The LMA has adequate floodfight supplies and equipment on hand.					

No Photos

LM Start	<b>0.00</b>	Rating **	A	Issue No.	<b>55</b>
LM End	<b>0.00</b>	Issue Type +	Ma	Location *	N/A
Category	Earthen Levee			GPS Latitude/Longitude	
				Start	End
Item	Flood Preparedness & Training			°	°
				°	°
DWR ID	DWR_RD0999_01_s_2013_55				
Comment Code					
Inspector Comment					
The LMA is prepared for responding to floods and has received training in 2020.					

No Photos

<b>* Location</b> LS : Land Side    N/A : Not Applicable WS : Water Side CR : Crown	<b>** Rating</b> A : Acceptable M : Minimally Acceptable U : Unacceptable	N : Not Inspected/Rated C : Corrected A/W : Acceptable but Monitor & Maintain	<b>+ Issue Type</b> Ma : Maintenance Deficiency Ob : Design & System Obsolescence En : Enforcement
--	--	---	---

**Flood Control Project Maintenance  
Levee Inspections**

**Maintenance Issue Types Only, Levee Inspection Report By Mile - Spring 2020**

**Reclamation District No. 0999 Netherlands**

Waterway	Bank	Unit Miles	Inspection Start/End	Inspector
Unit No. 01 Yolo Bypass	Left	15.41	04/30/2020 05/05/2020	Luz Dial

LM Start	0.04	Rating **	M	Issue No.	98
LM End	0.64	Issue Type +	Ma	Location *	LS
Category	Earthen Levee			GPS Latitude/Longitude	
				Start	End
Item	Vegetation			38.504575 °	38.495845 °
				-121.582178 °	-121.581652 °
DWR ID	DWR_RD0999_01_s _ 2020_98				
Comment Code					
V2 : Remove the wild growth other than native grasses from the levee slopes.					
Inspector Comment					
Remove bull thistle.					

No Photos

LM Start	0.27	Rating **	M	Issue No.	3
LM End	0.27	Issue Type +	Ma	Location *	LS
Category	Earthen Levee			GPS Latitude/Longitude	
				Start	End
Item	Vegetation			38.501113 °	38.501113 °
				-121.581975 °	-121.581975 °
DWR ID	DWR_RD0999_01_s _ 2012_3				
Comment Code					
V4 : Elderberries are blocking visibility and flood fight capability.					
Inspector Comment					

No Photos

LM Start	0.79	Rating **	M	Issue No.	32
LM End	1.69	Issue Type +	Ma	Location *	LS
Category	Earthen Levee			GPS Latitude/Longitude	
				Start	End
Item	Vegetation			38.493577 °	38.480560 °
				-121.581518 °	-121.580867 °
DWR ID	DWR_RD0999_01_s_2020_32				
Comment Code					
V1 : Control annual grass and weeds on the levee slopes and easements.					
Inspector Comment					

No Photos

<b>* Location</b> LS : Land Side    N/A : Not Applicable WS : Water Side CR : Crown	<b>** Rating</b> A : Acceptable M : Minimally Acceptable U : Unacceptable	N : Not Inspected/Rated C : Corrected A/W : Acceptable but Monitor & Maintain	<b>+ Issue Type</b> Ma : Maintenance Deficiency Ob : Design & System Obsolescence En : Enforcement
--	--	---	---

**Flood Control Project Maintenance  
Levee Inspections**

## Maintenance Issue Types Only, Levee Inspection Report By Mile - Spring 2020

### Reclamation District No. 0999 Netherlands

Waterway	Bank	Unit Miles	Inspection Start/End	Inspector
Unit No. 01 Yolo Bypass	Left	15.41	04/30/2020 05/05/2020	Luz Dial

LM Start	1.69	Rating **	M	Issue No.	97
LM End	1.71	Issue Type +	Ma	Location *	WS
Category	Earthen Levee			GPS Latitude/Longitude	
				Start	End
Item	Vegetation			38.480560 °	38.480255 °
				-121.580867 °	-121.580853 °
DWR ID	DWR_RD0999_01_s_2020_97				
Comment Code					
V2 : Remove the wild growth other than native grasses from the levee slopes.					
Inspector Comment					

No Photos

LM Start	1.73	Rating **	M	Issue No.	919	
LM End	1.73	Issue Type +	Ma	Location *		
Category	Supplemental			GPS Latitude/Longitude		
				Start	End	
Item	DWR UCIP LMA Responsibility			38.480097 °	38.480097 °	
				-121.580844 °	-121.580844 °	
DWR ID	22743					
Comment Code						
Inspector Comment						
DS_ID:22743 FS_ID:53368 EP_NO: N/A Repair Type: Non-Urgent Crossing Status: Found UCIP Comments: 07/26/2018 Same as last inspection. Pipe open on WS, but no visual signs of pipe or levee integrity issues so downgrading crossing to Non-Urgent (D. Sanoski - DWR UCIP).07/07/2016 Condition largely unchanged from previous inspection. Pipe open on the WS, waterward of the siphon breaker. Dense vegetation and steep slope limited inspection of WS outlet into Ship Channel. (T. Hatch/UCIP) 06/25/2013 Pipe abandoned and open on WS slope. Pipe should be abandoned properly. (W. Wylie/UCIP) FIELD_STRUCT_DESC: *ABANDONED* 30-inch steel drainage pipe through the levee, 6.5 feet below the crown. Pump on a platform in the canal off the landside (LS) toe, not found. Flap gate on the waterside (WS), not found. Siphon breaker and an air vent on the WS shoulder. 1- inch galvanized iron filler pipe visible on the WS shoulder along same alignment. [Additional Reference(s): DWR Levee Log, 1992. USACE Sacramento O&M Manual 113 (Revised), October 1966, (HLM 1.73)]. FS Date: 7/26/2018 10:10:00 AM						

Photo 1 of 3 : UCIP\_SP\_2020\_53368\_25191.jpg



Pipe open on WS slope

<b>* Location</b> LS : Land Side    N/A : Not Applicable WS : Water Side CR : Crown	<b>** Rating</b> A : Acceptable M : Minimally Acceptable U : Unacceptable	N : Not Inspected/Rated C : Corrected A/W : Acceptable but Monitor & Maintain	<b>+ Issue Type</b> Ma : Maintenance Deficiency Ob : Design & System Obsolescence En : Enforcement
--	--	---	---

**Flood Control Project Maintenance  
Levee Inspections**

## Maintenance Issue Types Only, Levee Inspection Report By Mile - Spring 2020

### Reclamation District No. 0999 Netherlands

Waterway	Bank	Unit Miles	Inspection Start/End	Inspector
Unit No. 01 Yolo Bypass	Left	15.41	04/30/2020 05/05/2020	Luz Dial

LM Start	1.73	Rating **	M	Issue No.	919 (cont)	
LM End	1.73	Issue Type +	Ma	Location *		
Category	Supplemental			GPS Latitude/Longitude		
				Start	End	
Item	DWR UCIP LMA Responsibility			38.480097 °	38.480097 °	
				-121.580844 °	-121.580844 °	
DWR ID	22743					

Photo 2 of 3 : UCIP\_SP\_2020\_53368\_25190.jpg



Pump platform visible off LS toe, but no appurtenances remain.

LM Start	<b>1.73</b>	Rating **	M	Issue No.	<b>919 (cont)</b>
LM End	<b>1.73</b>	Issue Type +	Ma	Location *	

Photo 3 of 3 : UCIP\_SP\_2020\_53368\_25189.jpg



Pump platform visible off LS toe, but no appurtenances remain.

LM Start	1.76	Rating **	M	Issue No.	96
LM End	2.35	Issue Type +	Ma	Location *	LS
Category	Earthen Levee			GPS Latitude/Longitude	
				Start	End
Item	Vegetation			38.479620 °	38.471202 °
				-121.580787 °	-121.582048 °
DWR ID	DWR_RD0999_01_s_2020_96				
Comment Code					
V2 : Remove the wild growth other than native grasses from the levee slopes.					
Inspector Comment					
Remove bull thistle.					

No Photos

<b>* Location</b> LS : Land Side    N/A : Not Applicable WS : Water Side CR : Crown	<b>** Rating</b> A : Acceptable M : Minimally Acceptable U : Unacceptable	N : Not Inspected/Rated C : Corrected A/W : Acceptable but Monitor & Maintain	<b>+ Issue Type</b> Ma : Maintenance Deficiency Ob : Design & System Obsolescence En : Enforcement
--	--	---	---

**Flood Control Project Maintenance  
Levee Inspections**

**Maintenance Issue Types Only, Levee Inspection Report By Mile - Spring 2020**

**Reclamation District No. 0999 Netherlands**

Waterway	Bank	Unit Miles	Inspection Start/End	Inspector
Unit No. 01 Yolo Bypass	Left	15.41	04/30/2020 05/05/2020	Luz Dial

LM Start	1.76	Rating **	M	Issue No.	95
LM End	2.49	Issue Type +	Ma	Location *	WS
Category	Earthen Levee			GPS Latitude/Longitude	
				Start	End
Item	Vegetation			38.479620 °	38.469330 °
				-121.580787 °	-121.582955 °
DWR ID	DWR_RD0999_01_s_2020_95				
Comment Code					
V2 : Remove the wild growth other than native grasses from the levee slopes.					
Inspector Comment					
Remove bull thistle.					

No Photos

LM Start	1.79	Rating **	M	Issue No.	30
LM End	2.13	Issue Type +	Ma	Location *	LS
Category	Earthen Levee			GPS Latitude/Longitude	
				Start	End
Item	Trim / Thin Trees			38.479165 °	38.474200 °
				-121.580640 °	-121.580480 °
DWR ID	DWR_RD0999_01_s_2012_30				
Comment Code					
T1 : Trim trees to at least five feet above ground level.					
Inspector Comment					
The LMA claimed that RD765 is responsible for maintenance for the landside section approximately between LM 1.79-2.25, but DWR forwarded the LMA their boundary map located in the USACE Unit 113 O&M Manual.					

Photo 1 of 1 : SP\_2020\_RD0999\_232\_30\_20200302\_00011.jpg



View of untrimmed trees on landside slope. LMA claims that RD 765 is responsible for maintenance. Fall 2018

LM Start	2.45	Rating **	M	Issue No.	28
LM End	2.45	Issue Type +	Ma	Location *	WS
Category	Earthen Levee			GPS Latitude/Longitude	
				Start	End
Item	Trim / Thin Trees			38.469875 °	38.469875 °
				-121.582733 °	-121.582733 °
DWR ID	DWR_RD0999_01_s_2019_28				
Comment Code					
T1 : Trim trees to at least five feet above ground level.					
Inspector Comment					

No Photos

<b>* Location</b> LS : Land Side    N/A : Not Applicable WS : Water Side CR : Crown	<b>** Rating</b> A : Acceptable M : Minimally Acceptable U : Unacceptable	N : Not Inspected/Rated C : Corrected A/W : Acceptable but Monitor & Maintain	<b>+ Issue Type</b> Ma : Maintenance Deficiency Ob : Design & System Obsolescence En : Enforcement
--	--	---	---

**Flood Control Project Maintenance  
Levee Inspections**

**Maintenance Issue Types Only, Levee Inspection Report By Mile - Spring 2020**

**Reclamation District No. 0999 Netherlands**

Waterway	Bank	Unit Miles	Inspection Start/End	Inspector
Unit No. 01 Yolo Bypass	Left	15.41	04/30/2020 05/05/2020	Luz Dial

LM Start	<b>2.54</b>	Rating **	M	Issue No.	<b>93</b>
LM End	<b>2.97</b>	Issue Type +	Ma	Location *	LS
Category	Earthen Levee		GPS Latitude/Longitude		
			Start	End	
Item	Vegetation		38.468732 °	38.462760 °	
			-121.583247 °	-121.585947 °	
DWR ID	DWR_RD0999_01_s _ 2020_93				
Comment Code					
V1 : Control annual grass and weeds on the levee slopes and easements.					
Inspector Comment					

No Photos

LM Start	<b>2.54</b>	Rating **	M	Issue No.	<b>94</b>
LM End	<b>2.82</b>	Issue Type +	Ma	Location *	CR
Category	Earthen Levee		GPS Latitude/Longitude		
			Start	End	
Item	Vegetation		38.468727 °	38.464903 °	
			-121.583248 °	-121.584975 °	
DWR ID	DWR_RD0999_01_s _ 2020_94				
Comment Code					
V9 : Keep the crown roadway free of vegetation.					
Inspector Comment					

No Photos

LM Start	<b>3.05</b>	Rating **	M	Issue No.	<b>92</b>
LM End	<b>3.26</b>	Issue Type +	Ma	Location *	LS
Category	Earthen Levee		GPS Latitude/Longitude		
			Start	End	
Item	Vegetation		38.461677 °	38.458865 °	
			-121.586453 °	-121.587783 °	
DWR ID	DWR_RD0999_01_s _ 2020_92				
Comment Code					
V2 : Remove the wild growth other than native grasses from the levee slopes.					
Inspector Comment					
Remove bull thistle.					

No Photos

<b>* Location</b> LS : Land Side    N/A : Not Applicable WS : Water Side CR : Crown	<b>** Rating</b> A : Acceptable M : Minimally Acceptable U : Unacceptable	N : Not Inspected/Rated C : Corrected A/W : Acceptable but Monitor & Maintain	<b>+ Issue Type</b> Ma : Maintenance Deficiency Ob : Design & System Obsolescence En : Enforcement
--	--	---	---



**Flood Control Project Maintenance  
Levee Inspections**

## Maintenance Issue Types Only, Levee Inspection Report By Mile - Spring 2020

### Reclamation District No. 0999 Netherlands

Waterway	Bank	Unit Miles	Inspection Start/End	Inspector
Unit No. 01 Yolo Bypass	Left	15.41	04/30/2020 05/05/2020	Luz Dial

LM Start	<b>3.08</b>	Rating **	M	Issue No.	<b>90</b>
LM End	<b>4.06</b>	Issue Type +	Ma	Location *	WS
Category	Earthen Levee		GPS Latitude/Longitude		
			Start	End	
Item	Vegetation		38.461265 °	38.447925 °	
			-121.586625 °	-121.592852 °	
DWR ID	DWR_RD0999_01_s_2020_90				
Comment Code					
V1 : Control annual grass and weeds on the levee slopes and easements.					
Inspector Comment					

No Photos

LM Start	<b>3.22</b>	Rating **	M	Issue No.	<b>51</b>
LM End	<b>3.22</b>	Issue Type +	Ma	Location *	LS
Category	Earthen Levee		GPS Latitude/Longitude		
			Start	End	
Item	Slope Stability		38.459399 °	38.459399 °	
			-121.587523 °	-121.587523 °	
DWR ID	DWR_RD0999_01_s_2013_51				
Comment Code					
S1 : Repair slope instability.					
Inspector Comment					
Repair depression on landward shoulder and slope approximately 40' x 20'. Earthen material appears to be sliding toward levee toe.					

Photo 1 of 1 : SP\_2020\_RD0999\_232\_51\_20200302\_00030.jpg



View of landside slope looking south. Fall 2017

LM Start	<b>3.30</b>	Rating **	M	Issue No.	<b>91</b>
LM End	<b>4.01</b>	Issue Type +	Ma	Location *	CR
Category	Earthen Levee		GPS Latitude/Longitude		
			Start	End	
Item	Vegetation		38.458292 °	38.448653 °	
			-121.588053 °	-121.592533 °	
DWR ID	DWR_RD0999_01_s_2020_91				
Comment Code					
V9 : Keep the crown roadway free of vegetation.					
Inspector Comment					

No Photos

<b>* Location</b> LS : Land Side    N/A : Not Applicable WS : Water Side CR : Crown	<b>** Rating</b> A : Acceptable M : Minimally Acceptable U : Unacceptable	N : Not Inspected/Rated C : Corrected A/W : Acceptable but Monitor & Maintain	<b>+ Issue Type</b> Ma : Maintenance Deficiency Ob : Design & System Obsolescence En : Enforcement
--	--	---	---

**Flood Control Project Maintenance  
Levee Inspections**

## Maintenance Issue Types Only, Levee Inspection Report By Mile - Spring 2020

### Reclamation District No. 0999 Netherlands

Waterway	Bank	Unit Miles	Inspection Start/End	Inspector
Unit No. 01 Yolo Bypass	Left	15.41	04/30/2020 05/05/2020	Luz Dial

LM Start	<b>3.61</b>	Rating **	M	Issue No.	<b>40</b>
LM End	<b>3.63</b>	Issue Type +	Ma	Location *	LS
Category	Earthen Levee		GPS Latitude/Longitude		
			Start	End	
Item	Vegetation		38.454113 °	38.453857 °	
			-121.589963 °	-121.590077 °	
DWR ID	DWR_RD0999_01_s_2019_40				
Comment Code					
V2 : Remove the wild growth other than native grasses from the levee slopes.					
Inspector Comment					

No Photos

LM Start	<b>3.72</b>	Rating **	M	Issue No.	<b>89</b>
LM End	<b>4.06</b>	Issue Type +	Ma	Location *	LS
Category	Earthen Levee		GPS Latitude/Longitude		
			Start	End	
Item	Vegetation		38.452590 °	38.447925 °	
			-121.590697 °	-121.592852 °	
DWR ID	DWR_RD0999_01_s_2020_89				
Comment Code					
V1 : Control annual grass and weeds on the levee slopes and easements.					
Inspector Comment					

No Photos

LM Start	<b>4.16</b>	Rating **	M	Issue No.	<b>88</b>
LM End	<b>4.16</b>	Issue Type +	Ma	Location *	WS
Category	Earthen Levee		GPS Latitude/Longitude		
			Start	End	
Item	Trim / Thin Trees		38.446640 °	38.446640 °	
			-121.593457 °	-121.593457 °	
DWR ID	DWR_RD0999_01_s_2020_88				
Comment Code					
T1 : Trim trees to at least five feet above ground level.					
Inspector Comment					

No Photos

<b>* Location</b> LS : Land Side    N/A : Not Applicable WS : Water Side CR : Crown	<b>** Rating</b> A : Acceptable M : Minimally Acceptable U : Unacceptable	N : Not Inspected/Rated C : Corrected A/W : Acceptable but Monitor & Maintain	<b>+ Issue Type</b> Ma : Maintenance Deficiency Ob : Design & System Obsolescence En : Enforcement
--	--	---	---



**Flood Control Project Maintenance  
Levee Inspections**

**Maintenance Issue Types Only, Levee Inspection Report By Mile - Spring 2020**

**Reclamation District No. 0999 Netherlands**

Waterway	Bank	Unit Miles	Inspection Start/End	Inspector
Unit No. 01 Yolo Bypass	Left	15.41	04/30/2020 05/05/2020	Luz Dial

LM Start	<b>4.16</b>	Rating **	N	Issue No.	<b>14</b>
LM End	<b>4.16</b>	Issue Type +	Ma	Location *	WS
Category	Earthen Levee		GPS Latitude/Longitude		
			Start	End	
Item	Trim / Thin Trees		38.446619 °	38.446619 °	
			-121.593442 °	-121.593442 °	
DWR ID	DWR_RD0999_01_s_2012_14				
Comment Code					
T5 : Tree stumps.					
Inspector Comment					

No Photos

LM Start	<b>4.19</b>	Rating **	M	Issue No.	<b>87</b>
LM End	<b>5.13</b>	Issue Type +	Ma	Location *	LS
Category	Earthen Levee		GPS Latitude/Longitude		
			Start	End	
Item	Vegetation		38.446252 °	38.433357 °	
			-121.593583 °	-121.599615 °	
DWR ID	DWR_RD0999_01_s_2020_87				
Comment Code					
V1 : Control annual grass and weeds on the levee slopes and easements.					
Inspector Comment					

No Photos

LM Start	<b>4.30</b>	Rating **	M	Issue No.	<b>84</b>
LM End	<b>5.36</b>	Issue Type +	Ma	Location *	WS
Category	Earthen Levee		GPS Latitude/Longitude		
			Start	End	
Item	Vegetation		38.444700 °	38.430300 °	
			-121.594410 °	-121.601058 °	
DWR ID	DWR_RD0999_01_s_2020_84				
Comment Code					
V1 : Control annual grass and weeds on the levee slopes and easements.					
Inspector Comment					

No Photos

<b>* Location</b> LS : Land Side    N/A : Not Applicable WS : Water Side CR : Crown	<b>** Rating</b> A : Acceptable M : Minimally Acceptable U : Unacceptable	N : Not Inspected/Rated C : Corrected A/W : Acceptable but Monitor & Maintain	<b>+ Issue Type</b> Ma : Maintenance Deficiency Ob : Design & System Obsolescence En : Enforcement
--	--	---	---

**Flood Control Project Maintenance  
Levee Inspections**

## Maintenance Issue Types Only, Levee Inspection Report By Mile - Spring 2020

### Reclamation District No. 0999 Netherlands

Waterway	Bank	Unit Miles	Inspection Start/End	Inspector
Unit No. 01 Yolo Bypass	Left	15.41	04/30/2020 05/05/2020	Luz Dial

LM Start	4.31	Rating **	M	Issue No.	27
LM End	4.31	Issue Type +	Ma	Location *	WS
Category	Earthen Levee			GPS Latitude/Longitude	
				Start	End
Item	Slope Stability			38.444560 °	38.444560 °
				-121.594440 °	-121.594440 °
DWR ID	DWR_RD0999_01_f_2012_27				
Comment Code					
S3 : Repair the levee slope damaged by vehicle traffic and prevent access where possible.					
Inspector Comment					
Instruct farmer to stop driving equipment and trucks onto the slope.					

Photo 1 of 1 : SP\_2020\_RD0999\_232\_27\_20200302\_00007.jpg



Looking at slope damage cause by vehicle traffic on waterward slope.  
(Fall 2016)

LM Start	5.19	Rating **	M	Issue No.	86
LM End	5.21	Issue Type +	Ma	Location *	LS
Category	Earthen Levee			GPS Latitude/Longitude	
				Start	End
Item	Vegetation			38.432548 °	38.432387 °
				-121.600040 °	-121.600102 °
DWR ID	DWR_RD0999_01_s_2020_86				
Comment Code					
V1 : Control annual grass and weeds on the levee slopes and easements.					
Inspector Comment					

No Photos

LM Start	5.28	Rating **	M	Issue No.	85
LM End	5.31	Issue Type +	Ma	Location *	CR
Category	Earthen Levee			GPS Latitude/Longitude	
				Start	End
Item	Vegetation			38.431313 °	38.430918 °
				-121.600618 °	-121.600770 °
DWR ID	DWR_RD0999_01_s_2020_85				
Comment Code					
V9 : Keep the crown roadway free of vegetation.					
Inspector Comment					

No Photos

<b>* Location</b> LS : Land Side    N/A : Not Applicable WS : Water Side CR : Crown	<b>** Rating</b> A : Acceptable M : Minimally Acceptable U : Unacceptable	N : Not Inspected/Rated C : Corrected A/W : Acceptable but Monitor & Maintain	<b>+ Issue Type</b> Ma : Maintenance Deficiency Ob : Design & System Obsolescence En : Enforcement
--	--	---	---

**Flood Control Project Maintenance  
Levee Inspections**

## Maintenance Issue Types Only, Levee Inspection Report By Mile - Spring 2020

### Reclamation District No. 0999 Netherlands

Waterway	Bank	Unit Miles	Inspection Start/End	Inspector
Unit No. 01 Yolo Bypass	Left	15.41	04/30/2020 05/05/2020	Luz Dial

LM Start	<b>5.45</b>	Rating **	M	Issue No.	<b>99</b>
LM End	<b>5.50</b>	Issue Type +	Ma	Location *	LS
Category	Earthen Levee		GPS Latitude/Longitude		
			Start	End	
Item	Vegetation		38.429010 °	38.428433 °	
			-121.601610 °	-121.601908 °	
DWR ID	DWR_RD0999_01_s _ 2020_99				
Comment Code					
V1 : Control annual grass and weeds on the levee slopes and easements.					
Inspector Comment					

No Photos

LM Start	<b>5.63</b>	Rating **	M	Issue No.	<b>82</b>
LM End	<b>6.01</b>	Issue Type +	Ma	Location *	LS
Category	Earthen Levee		GPS Latitude/Longitude		
			Start	End	
Item	Vegetation		38.426610 °	38.421358 °	
			-121.602777 °	-121.605188 °	
DWR ID	DWR_RD0999_01_s _ 2020_82				
Comment Code					
V1 : Control annual grass and weeds on the levee slopes and easements.					
Inspector Comment					

No Photos

LM Start	<b>6.09</b>	Rating **	M	Issue No.	<b>81</b>
LM End	<b>6.09</b>	Issue Type +	Ma	Location *	CR
Category	Earthen Levee		GPS Latitude/Longitude		
			Start	End	
Item	Vegetation		38.420315 °	38.420315 °	
			-121.605687 °	-121.605687 °	
DWR ID	DWR_RD0999_01_s _ 2020_81				
Comment Code					
V9 : Keep the crown roadway free of vegetation.					
Inspector Comment					

No Photos

<b>* Location</b> LS : Land Side    N/A : Not Applicable WS : Water Side CR : Crown	<b>** Rating</b> A : Acceptable M : Minimally Acceptable U : Unacceptable	N : Not Inspected/Rated C : Corrected A/W : Acceptable but Monitor & Maintain	<b>+ Issue Type</b> Ma : Maintenance Deficiency Ob : Design & System Obsolescence En : Enforcement
--	--	---	---

**Flood Control Project Maintenance  
Levee Inspections**

**Maintenance Issue Types Only, Levee Inspection Report By Mile - Spring 2020**

**Reclamation District No. 0999 Netherlands**

Waterway	Bank	Unit Miles	Inspection Start/End	Inspector
Unit No. 01 Yolo Bypass	Left	15.41	04/30/2020 05/05/2020	Luz Dial

LM Start	<b>6.23</b>	Rating **	M	Issue No.	<b>80</b>
LM End	<b>6.54</b>	Issue Type +	Ma	Location *	LS
Category	Earthen Levee		GPS Latitude/Longitude		
			Start	End	
Item	Vegetation		38.418428 °	38.414210 °	
			-121.606555 °	-121.608498 °	
DWR ID	DWR_RD0999_01_s _ 2020_80				
Comment Code					
V1 : Control annual grass and weeds on the levee slopes and easements.					
Inspector Comment					

No Photos

LM Start	<b>6.63</b>	Rating **	M	Issue No.	<b>78</b>
LM End	<b>6.87</b>	Issue Type +	Ma	Location *	LS
Category	Earthen Levee		GPS Latitude/Longitude		
			Start	End	
Item	Vegetation		38.413017 °	38.409658 °	
			-121.609050 °	-121.610642 °	
DWR ID	DWR_RD0999_01_s _ 2020_78				
Comment Code					
V1 : Control annual grass and weeds on the levee slopes and easements.					
Inspector Comment					

No Photos

LM Start	<b>6.63</b>	Rating **	M	Issue No.	<b>79</b>
LM End	<b>6.63</b>	Issue Type +	Ma	Location *	LS
Category	Earthen Levee		GPS Latitude/Longitude		
			Start	End	
Item	Vegetation		38.413017 °	38.413017 °	
			-121.609050 °	-121.609050 °	
DWR ID	DWR_RD0999_01_s _ 2020_79				
Comment Code					
V2 : Remove the wild growth other than native grasses from the levee slopes.					
Inspector Comment					
Remove bull thistle.					

No Photos

<b>* Location</b> LS : Land Side    N/A : Not Applicable WS : Water Side CR : Crown	<b>** Rating</b> A : Acceptable M : Minimally Acceptable U : Unacceptable	N : Not Inspected/Rated C : Corrected A/W : Acceptable but Monitor & Maintain	<b>+ Issue Type</b> Ma : Maintenance Deficiency Ob : Design & System Obsolescence En : Enforcement
--	--	---	---

**Flood Control Project Maintenance  
Levee Inspections**

**Maintenance Issue Types Only, Levee Inspection Report By Mile - Spring 2020**

**Reclamation District No. 0999 Netherlands**

Waterway	Bank	Unit Miles	Inspection Start/End	Inspector
Unit No. 01 Yolo Bypass	Left	15.41	04/30/2020 05/05/2020	Luz Dial

LM Start	<b>6.76</b>	Rating **	M	Issue No.	<b>72</b>
LM End	<b>8.50</b>	Issue Type +	Ma	Location *	CR
Category	Earthen Levee		GPS Latitude/Longitude		
			Start	End	
Item	Vegetation		38.411188 °	38.387563 °	
			-121.609850 °	-121.620850 °	
DWR ID	DWR_RD0999_01_s _ 2020_72				
Comment Code					
V9 : Keep the crown roadway free of vegetation.					
Inspector Comment					

No Photos

LM Start	<b>7.23</b>	Rating **	M	Issue No.	<b>77</b>
LM End	<b>7.45</b>	Issue Type +	Ma	Location *	WS
Category	Earthen Levee		GPS Latitude/Longitude		
			Start	End	
Item	Vegetation		38.404850 °	38.401835 °	
			-121.612810 °	-121.614200 °	
DWR ID	DWR_RD0999_01_s _ 2020_77				
Comment Code					
V1 : Control annual grass and weeds on the levee slopes and easements.					
Inspector Comment					

No Photos

LM Start	<b>7.33</b>	Rating **	M	Issue No.	<b>75</b>
LM End	<b>7.96</b>	Issue Type +	Ma	Location *	LS
Category	Earthen Levee		GPS Latitude/Longitude		
			Start	End	
Item	Vegetation		38.403370 °	38.394835 °	
			-121.613458 °	-121.617443 °	
DWR ID	DWR_RD0999_01_s _ 2020_75				
Comment Code					
V1 : Control annual grass and weeds on the levee slopes and easements.					
Inspector Comment					

No Photos

<b>* Location</b> LS : Land Side    N/A : Not Applicable WS : Water Side CR : Crown	<b>** Rating</b> A : Acceptable M : Minimally Acceptable U : Unacceptable	N : Not Inspected/Rated C : Corrected A/W : Acceptable but Monitor & Maintain	<b>+ Issue Type</b> Ma : Maintenance Deficiency Ob : Design & System Obsolescence En : Enforcement
--	--	---	---

**Flood Control Project Maintenance  
Levee Inspections**

**Maintenance Issue Types Only, Levee Inspection Report By Mile - Spring 2020**

**Reclamation District No. 0999 Netherlands**

Waterway	Bank	Unit Miles	Inspection Start/End	Inspector
Unit No. 01 Yolo Bypass	Left	15.41	04/30/2020 05/05/2020	Luz Dial

LM Start	7.77	Rating **	M	Issue No.	76
LM End	7.94	Issue Type +	Ma	Location *	WS
Category	Earthen Levee			GPS Latitude/Longitude	
				Start	End
Item	Vegetation			38.397435 °	38.395125 °
				-121.616287 °	-121.617315 °
DWR ID	DWR_RD0999_01_s_2020_76				
Comment Code					
V1 : Control annual grass and weeds on the levee slopes and easements.					
Inspector Comment					

No Photos

LM Start	8.01	Rating **	M	Issue No.	74
LM End	8.01	Issue Type +	Ma	Location *	LS
Category	Earthen Levee			GPS Latitude/Longitude	
				Start	End
Item	Vegetation			38.394150 °	38.394150 °
				-121.617805 °	-121.617805 °
DWR ID	DWR_RD0999_01_s_2020_74				
Comment Code					
V2 : Remove the wild growth other than native grasses from the levee slopes.					
Inspector Comment					
Remove Arundo growth at the landside toe.					

Photo 1 of 1 : SP\_2020\_RD0999\_232\_74\_20200507\_00066.jpg



View of Arundo growth at the landside toe. Spring 2020

LM Start	8.01	Rating **	M	Issue No.	73
LM End	8.12	Issue Type +	Ma	Location *	LS
Category	Earthen Levee			GPS Latitude/Longitude	
				Start	End
Item	Vegetation			38.394150 °	38.392727 °
				-121.617805 °	-121.618437 °
DWR ID	DWR_RD0999_01_s_2020_73				
Comment Code					
V1 : Control annual grass and weeds on the levee slopes and easements.					
Inspector Comment					

No Photos

<b>* Location</b> LS : Land Side    N/A : Not Applicable WS : Water Side CR : Crown		<b>** Rating</b> A : Acceptable                      N : Not Inspected/Rated M : Minimally Acceptable        C : Corrected U : Unacceptable                  A/W : Acceptable but Monitor & Maintain		<b>+ Issue Type</b> Ma : Maintenance Deficiency Ob : Design & System Obsolescence En : Enforcement
--	--	---	--	---



**Flood Control Project Maintenance  
Levee Inspections**

## Maintenance Issue Types Only, Levee Inspection Report By Mile - Spring 2020

### Reclamation District No. 0999 Netherlands

Waterway	Bank	Unit Miles	Inspection Start/End	Inspector
Unit No. 01 Yolo Bypass	Left	15.41	04/30/2020 05/05/2020	Luz Dial

LM Start	8.01	Rating **	M	Issue No.	71
LM End	8.50	Issue Type +	Ma	Location *	WS
Category	Earthen Levee			GPS Latitude/Longitude	
				Start	End
Item	Vegetation			38.394150 °	38.387458 °
				-121.617805 °	-121.620902 °
DWR ID	DWR_RD0999_01_s_2020_71				
Comment Code					
V2 : Remove the wild growth other than native grasses from the levee slopes.					
Inspector Comment					

No Photos

LM Start	8.51	Rating **	U	Issue No.	70
LM End	8.64	Issue Type +	Ma	Location *	CR
Category	Earthen Levee			GPS Latitude/Longitude	
				Start	End
Item	Vegetation			38.387358 °	38.385600 °
				-121.620923 °	-121.621755 °
DWR ID	DWR_RD0999_01_s_2020_70				
Comment Code					
V9 : Keep the crown roadway free of vegetation.					
Inspector Comment					

Photo 1 of 1 : SP\_2020\_RD0999\_232\_70\_20200507\_00065.jpg



View of crown vegetation. Spring 2020

LM Start	8.98	Rating **	M	Issue No.	69
LM End	9.28	Issue Type +	Ma	Location *	CR
Category	Earthen Levee			GPS Latitude/Longitude	
				Start	End
Item	Vegetation			38.380972 °	38.376925 °
				-121.623873 °	-121.625773 °
DWR ID	DWR_RD0999_01_s_2020_69				
Comment Code					
V9 : Keep the crown roadway free of vegetation.					
Inspector Comment					

No Photos

<b>* Location</b> LS : Land Side    N/A : Not Applicable WS : Water Side CR : Crown	<b>** Rating</b> A : Acceptable M : Minimally Acceptable U : Unacceptable	N : Not Inspected/Rated C : Corrected A/W : Acceptable but Monitor & Maintain	<b>+ Issue Type</b> Ma : Maintenance Deficiency Ob : Design & System Obsolescence En : Enforcement
--	--	---	---

**Flood Control Project Maintenance  
Levee Inspections**

**Maintenance Issue Types Only, Levee Inspection Report By Mile - Spring 2020**

**Reclamation District No. 0999 Netherlands**

Waterway	Bank	Unit Miles	Inspection Start/End	Inspector
Unit No. 01 Yolo Bypass	Left	15.41	04/30/2020 05/05/2020	Luz Dial

LM Start	9.34	Rating **	A/W	Issue No.	24
LM End	9.34	Issue Type +	Ma	Location *	LS
Category	Earthen Levee			GPS Latitude/Longitude	
				Start	End
Item	Animal Control			38.376127 °	38.376127 °
				-121.626140 °	-121.626140 °
DWR ID	DWR_RD0999_01_s_2019_24				
Comment Code					
A3 : No rodents visible, but rodent burrows visible; need to backfill and compact or grout burrows.					
Inspector Comment					
Backfill the animal burrow, and monitor the area.					

No Photos

LM Start	9.37	Rating **	M	Issue No.	68
LM End	9.51	Issue Type +	Ma	Location *	CR
Category	Earthen Levee			GPS Latitude/Longitude	
				Start	End
Item	Vegetation			38.375617 °	38.373777 °
				-121.626407 °	-121.627245 °
DWR ID	DWR_RD0999_01_s_2020_68				
Comment Code					
V9 : Keep the crown roadway free of vegetation.					
Inspector Comment					

Photo 1 of 1 : SP\_2020\_RD0999\_232\_68\_20200507\_00064.jpg



View of crown vegetation. Spring 2020

LM Start	9.67	Rating **	M	Issue No.	13
LM End	9.74	Issue Type +	Ma	Location *	LS
Category	Earthen Levee			GPS Latitude/Longitude	
				Start	End
Item	Vegetation			38.371553 °	38.370563 °
				-121.628265 °	-121.628743 °
DWR ID	DWR_RD0999_01_f_2019_13				
Comment Code					
V1 : Control annual grass and weeds on the levee slopes and easements.					
Inspector Comment					

Photo 1 of 1 : SP\_2020\_RD0999\_232\_13\_20200302\_00004.jpg



View looking upstream at landside vegetation. Fall 2019

**\* Location**

LS : Land Side    N/A : Not Applicable  
WS : Water Side  
CR : Crown

**\*\* Rating**

A : Acceptable                      N : Not Inspected/Rated  
M : Minimally Acceptable        C : Corrected  
U : Unacceptable                  A/W : Acceptable but Monitor & Maintain

**+ Issue Type**

Ma : Maintenance Deficiency  
Ob : Design & System Obsolescence  
En : Enforcement

**Flood Control Project Maintenance  
Levee Inspections**

**Maintenance Issue Types Only, Levee Inspection Report By Mile - Spring 2020**

**Reclamation District No. 0999 Netherlands**

Waterway	Bank	Unit Miles	Inspection Start/End	Inspector
Unit No. 01 Yolo Bypass	Left	15.41	04/30/2020 05/05/2020	Luz Dial

LM Start	<b>10.96</b>	Rating **	M	Issue No.	<b>60</b>
LM End	<b>11.04</b>	Issue Type +	Ma	Location *	LS
Category	Earthen Levee		GPS Latitude/Longitude		
			Start	End	
Item	Vegetation		38.353972 °	38.352873 °	
			-121.636413 °	-121.636925 °	
DWR ID	DWR_RD0999_01_s _ 2020_60				
Comment Code					
V1 : Control annual grass and weeds on the levee slopes and easements.					
Inspector Comment					

No Photos

LM Start	<b>11.03</b>	Rating **	M	Issue No.	<b>61</b>
LM End	<b>11.03</b>	Issue Type +	Ma	Location *	WS
Category	Earthen Levee		GPS Latitude/Longitude		
			Start	End	
Item	Trim / Thin Trees		38.353050 °	38.353050 °	
			-121.636833 °	-121.636833 °	
DWR ID	DWR_RD0999_01_s _ 2020_61				
Comment Code					
T1 : Trim trees to at least five feet above ground level.					
Inspector Comment					

No Photos

LM Start	<b>11.12</b>	Rating **	M	Issue No.	<b>59</b>
LM End	<b>11.17</b>	Issue Type +	Ma	Location *	CR
Category	Earthen Levee		GPS Latitude/Longitude		
			Start	End	
Item	Vegetation		38.351847 °	38.351088 °	
			-121.637395 °	-121.637748 °	
DWR ID	DWR_RD0999_01_s _ 2020_59				
Comment Code					
V1 : Control annual grass and weeds on the levee slopes and easements.					
Inspector Comment					

No Photos

<b>* Location</b> LS : Land Side    N/A : Not Applicable WS : Water Side CR : Crown	<b>** Rating</b> A : Acceptable M : Minimally Acceptable U : Unacceptable	N : Not Inspected/Rated C : Corrected A/W : Acceptable but Monitor & Maintain	<b>+ Issue Type</b> Ma : Maintenance Deficiency Ob : Design & System Obsolescence En : Enforcement
--	--	---	---

**Flood Control Project Maintenance  
Levee Inspections**

**Maintenance Issue Types Only, Levee Inspection Report By Mile - Spring 2020**

**Reclamation District No. 0999 Netherlands**

Waterway	Bank	Unit Miles	Inspection Start/End	Inspector
Unit No. 01 Yolo Bypass	Left	15.41	04/30/2020 05/05/2020	Luz Dial

LM Start	11.16	Rating **	M	Issue No.	35
LM End	11.16	Issue Type +	Ma	Location *	LS
Category	Earthen Levee			GPS Latitude/Longitude	
				Start	End
Item	Animal Control			38.351308 °	38.351308 °
				-121.637642 °	-121.637642 °
DWR ID	DWR_RD0999_01_f_2018_35				
Comment Code					
A3 : No rodents visible, but rodent burrows visible; need to backfill and compact or grout burrows.					
Inspector Comment					
Backfill the animal burrow.					

Photo 1 of 1 : SP\_2020\_RD0999\_232\_35\_20200302\_00016.jpg



View of animal hole on the landside slope. Fall 2019

LM Start	11.28	Rating **	M	Issue No.	47
LM End	11.58	Issue Type +	Ma	Location *	WS
Category	Earthen Levee			GPS Latitude/Longitude	
				Start	End
Item	Vegetation			38.349687 °	38.345612 °
				-121.638373 °	-121.640293 °
DWR ID	DWR_RD0999_01_s_2020_47				
Comment Code					
V1 : Control annual grass and weeds on the levee slopes and easements.					
Inspector Comment					

No Photos

LM Start	11.28	Rating **	M	Issue No.	43
LM End	11.60	Issue Type +	Ma	Location *	CR
Category	Earthen Levee			GPS Latitude/Longitude	
				Start	End
Item	Vegetation			38.349687 °	38.345340 °
				-121.638373 °	-121.640425 °
DWR ID	DWR_RD0999_01_s_2020_43				
Comment Code					
V9 : Keep the crown roadway free of vegetation.					
Inspector Comment					

No Photos

<b>* Location</b> LS : Land Side    N/A : Not Applicable WS : Water Side CR : Crown	<b>** Rating</b> A : Acceptable M : Minimally Acceptable U : Unacceptable	N : Not Inspected/Rated C : Corrected A/W : Acceptable but Monitor & Maintain	<b>+ Issue Type</b> Ma : Maintenance Deficiency Ob : Design & System Obsolescence En : Enforcement
--	--	---	---

**Flood Control Project Maintenance  
Levee Inspections**

**Maintenance Issue Types Only, Levee Inspection Report By Mile - Spring 2020**

**Reclamation District No. 0999 Netherlands**

Waterway	Bank	Unit Miles	Inspection Start/End	Inspector
Unit No. 01 Yolo Bypass	Left	15.41	04/30/2020 05/05/2020	Luz Dial

LM Start	<b>11.53</b>	Rating **	M	Issue No.	<b>46</b>
LM End	<b>11.59</b>	Issue Type +	Ma	Location *	LS
Category	Earthen Levee		GPS Latitude/Longitude		
			Start	End	
Item	Vegetation		38.346203 °	38.345402 °	
			-121.640005 °	-121.640400 °	
DWR ID	DWR_RD0999_01_s _ 2020_46				
Comment Code					
V1 : Control annual grass and weeds on the levee slopes and easements.					
Inspector Comment					

No Photos

LM Start	<b>11.62</b>	Rating **	M	Issue No.	<b>31</b>
LM End	<b>12.26</b>	Issue Type +	Ma	Location *	WS
Category	Earthen Levee		GPS Latitude/Longitude		
			Start	End	
Item	Vegetation		38.345053 °	38.336125 °	
			-121.640540 °	-121.643897 °	
DWR ID	DWR_RD0999_01_s _ 2020_31				
Comment Code					
V1 : Control annual grass and weeds on the levee slopes and easements.					
Inspector Comment					

No Photos

LM Start	<b>11.62</b>	Rating **	M	Issue No.	<b>36</b>
LM End	<b>12.01</b>	Issue Type +	Ma	Location *	LS
Category	Earthen Levee		GPS Latitude/Longitude		
			Start	End	
Item	Vegetation		38.345053 °	38.339582 °	
			-121.640543 °	-121.642863 °	
DWR ID	DWR_RD0999_01_s _ 2020_36				
Comment Code					
V1 : Control annual grass and weeds on the levee slopes and easements.					
Inspector Comment					

No Photos

<b>* Location</b> LS : Land Side    N/A : Not Applicable WS : Water Side CR : Crown	<b>** Rating</b> A : Acceptable M : Minimally Acceptable U : Unacceptable	N : Not Inspected/Rated C : Corrected A/W : Acceptable but Monitor & Maintain	<b>+ Issue Type</b> Ma : Maintenance Deficiency Ob : Design & System Obsolescence En : Enforcement
--	--	---	---

**Flood Control Project Maintenance  
Levee Inspections**

**Maintenance Issue Types Only, Levee Inspection Report By Mile - Spring 2020**

**Reclamation District No. 0999 Netherlands**

Waterway	Bank	Unit Miles	Inspection Start/End	Inspector
Unit No. 01 Yolo Bypass	Left	15.41	04/30/2020 05/05/2020	Luz Dial

LM Start	12.09	Rating **	U	Issue No.	25
LM End	12.26	Issue Type +	Ma	Location *	LS
Category	Earthen Levee			GPS Latitude/Longitude	
				Start	End
Item	Vegetation			38.338515 °	38.336125 °
				-121.643225 °	-121.643897 °
DWR ID	DWR_RD0999_01_s _ 2020_25				
Comment Code					
V1 : Control annual grass and weeds on the levee slopes and easements.					
Inspector Comment					

Photo 1 of 1 : SP\_2020\_RD0999\_232\_25\_20200507\_00059.jpg



View of tall landside vegetation. Spring 2020

LM Start	12.68	Rating **	M	Issue No.	22
LM End	12.68	Issue Type +	Ma	Location *	WS
Category	Earthen Levee			GPS Latitude/Longitude	
				Start	End
Item	Animal Control			38.330118 °	38.330118 °
				-121.644847 °	-121.644847 °
DWR ID	DWR_RD0999_01_s _ 2020_22				
Comment Code					
A3 : No rodents visible, but rodent burrows visible; need to backfill and compact or grout burrows.					
Inspector Comment					
Backfill animal holes at the waterside toe.					

No Photos

LM Start	13.05	Rating **	M	Issue No.	18
LM End	13.05	Issue Type +	Ma	Location *	WS
Category	Earthen Levee			GPS Latitude/Longitude	
				Start	End
Item	Vegetation			38.324767 °	38.324767 °
				-121.644942 °	-121.644942 °
DWR ID	DWR_RD0999_01_s _ 2020_18				
Comment Code					
V2 : Remove the wild growth other than native grasses from the levee slopes.					
Inspector Comment					
Growth at the waterside toe blocks visibility.					

No Photos

<b>* Location</b> LS : Land Side    N/A : Not Applicable WS : Water Side CR : Crown		<b>** Rating</b> A : Acceptable                      N : Not Inspected/Rated M : Minimally Acceptable        C : Corrected U : Unacceptable                  A/W : Acceptable but Monitor & Maintain		<b>+ Issue Type</b> Ma : Maintenance Deficiency Ob : Design & System Obsolescence En : Enforcement
--	--	---	--	---



**Flood Control Project Maintenance  
Levee Inspections**

## Maintenance Issue Types Only, Levee Inspection Report By Mile - Spring 2020

### Reclamation District No. 0999 Netherlands

Waterway	Bank	Unit Miles	Inspection Start/End	Inspector
Unit No. 01 Yolo Bypass	Left	15.41	04/30/2020 05/05/2020	Luz Dial

LM Start	13.17	Rating **	A/W	Issue No.	29
LM End	13.19	Issue Type +	Ma	Location *	CR
Category	Earthen Levee			GPS Latitude/Longitude	
				Start	End
Item	Cracking			38.322938 °	38.322690 °
				-121.644940 °	-121.644953 °
DWR ID	DWR_RD0999_01_f_2019_29				
Comment Code					
CR1 : Monitor and have inspected by geotechnical engineer.					
Inspector Comment					
Monitor cracks as deep as 4" on the landside shoulder.					



LM Start	13.26	Rating **	A/W	Issue No.	37
LM End	13.27	Issue Type +	Ma	Location *	CR
Category	Earthen Levee			GPS Latitude/Longitude	
				Start	End
Item	Cracking			38.321620 °	38.321490 °
				-121.644968 °	-121.644968 °
DWR ID	DWR_RD0999_01_f_2019_37				
Comment Code					
CR1 : Monitor and have inspected by geotechnical engineer.					
Inspector Comment					
Monitor cracks as deep as 8" on the landside shoulder.					



LM Start	13.33	Rating **	M	Issue No.	17
LM End	13.61	Issue Type +	Ma	Location *	WS
Category	Earthen Levee			GPS Latitude/Longitude	
				Start	End
Item	Vegetation			38.320595 °	38.316615 °
				-121.644967 °	-121.644938 °
DWR ID	DWR_RD0999_01_s_2020_17				
Comment Code					
V1 : Control annual grass and weeds on the levee slopes and easements.					
Inspector Comment					

No Photos

<b>* Location</b> LS : Land Side    N/A : Not Applicable WS : Water Side CR : Crown		<b>** Rating</b> A : Acceptable M : Minimally Acceptable U : Unacceptable N : Not Inspected/Rated C : Corrected A/W : Acceptable but Monitor & Maintain		<b>+ Issue Type</b> Ma : Maintenance Deficiency Ob : Design & System Obsolescence En : Enforcement	
--	--	---	--	---	--

**Flood Control Project Maintenance  
Levee Inspections**

## Maintenance Issue Types Only, Levee Inspection Report By Mile - Spring 2020

### Reclamation District No. 0999 Netherlands

Waterway	Bank	Unit Miles	Inspection Start/End	Inspector
Unit No. 01 Yolo Bypass	Left	15.41	04/30/2020 05/05/2020	Luz Dial

LM Start	13.44	Rating **	A/W	Issue No.	38
LM End	13.45	Issue Type +	Ma	Location *	CR
Category	Earthen Levee			GPS Latitude/Longitude	
				Start	End
Item	Cracking			38.319025 °	38.318867 °
				-121.644967 °	-121.644922 °
DWR ID	DWR_RD0999_01_f_2019_38				
Comment Code					
CR1 : Monitor and have inspected by geotechnical engineer.					
Inspector Comment					
Monitor small cracks less than 2" deep.					

No Photos

LM Start	13.83	Rating **	M	Issue No.	16
LM End	13.83	Issue Type +	Ma	Location *	LS
Category	Earthen Levee			GPS Latitude/Longitude	
				Start	End
Item	Encroachments			38.313332 °	38.313332 °
				-121.644947 °	-121.644947 °
DWR ID	DWR_RD0999_01_s_2020_16				
Comment Code					
PR : Prunings					
Inspector Comment					
Remove prunings and tree debris from the landside toe.					

Photo 1 of 1 : SP\_2020\_RD0999\_232\_16\_20200507\_00055.jpg



View of prunings at the landside toe. Spring 2020

LM Start	14.00	Rating **	C	Issue No.	41
LM End	14.00	Issue Type +	Ma	Location *	CR
Category	Earthen Levee			GPS Latitude/Longitude	
				Start	End
Item	Cracking			38.310882 °	38.310882 °
				-121.644982 °	-121.644982 °
DWR ID	DWR_RD0999_01_f_2019_41				
Comment Code					
CR1 : Monitor and have inspected by geotechnical engineer.					
Inspector Comment					

No Photos

<b>* Location</b> LS : Land Side    N/A : Not Applicable WS : Water Side CR : Crown	<b>** Rating</b> A : Acceptable M : Minimally Acceptable U : Unacceptable	N : Not Inspected/Rated C : Corrected A/W : Acceptable but Monitor & Maintain	<b>+ Issue Type</b> Ma : Maintenance Deficiency Ob : Design & System Obsolescence En : Enforcement
--	--	---	---

**Flood Control Project Maintenance  
Levee Inspections**

## Maintenance Issue Types Only, Levee Inspection Report By Mile - Spring 2020

### Reclamation District No. 0999 Netherlands

Waterway	Bank	Unit Miles	Inspection Start/End	Inspector
Unit No. 01 Yolo Bypass	Left	15.41	04/30/2020 05/05/2020	Luz Dial

LM Start	14.04	Rating **	M	Issue No.	49
LM End	14.04	Issue Type +	Ma	Location *	LS
Category	Earthen Levee			GPS Latitude/Longitude	
				Start	End
Item	Erosion / Bank Caving			38.310347 °	38.310347 °
				-121.644955 °	-121.644955 °
DWR ID	DWR_RD0999_01_f_2012_49				
Comment Code					
E1 : Note and monitor erosion site.					
Inspector Comment					
Repair caving, 4' x 10', on the landside slope.					

Photo 1 of 1 : SP\_2020\_RD0999\_232\_49\_20200302\_00028.jpg



View of caving on landward slope. Fall 2018

LM Start	14.52	Rating **	M	Issue No.	12
LM End	14.54	Issue Type +	Ma	Location *	WS
Category	Earthen Levee			GPS Latitude/Longitude	
				Start	End
Item	Vegetation			38.303338 °	38.303047 °
				-121.644953 °	-121.644973 °
DWR ID	DWR_RD0999_01_s_2020_12				
Comment Code					
V1 : Control annual grass and weeds on the levee slopes and easements.					
Inspector Comment					

No Photos

LM Start	15.20	Rating **	M	Issue No.	11
LM End	15.25	Issue Type +	Ma	Location *	LS
Category	Earthen Levee			GPS Latitude/Longitude	
				Start	End
Item	Vegetation			38.293547 °	38.292830 °
				-121.644890 °	-121.644892 °
DWR ID	DWR_RD0999_01_s_2020_11				
Comment Code					
V2 : Remove the wild growth other than native grasses from the levee slopes.					
Inspector Comment					

No Photos

<b>* Location</b> LS : Land Side    N/A : Not Applicable WS : Water Side CR : Crown	<b>** Rating</b> A : Acceptable M : Minimally Acceptable U : Unacceptable	N : Not Inspected/Rated C : Corrected A/W : Acceptable but Monitor & Maintain	<b>+ Issue Type</b> Ma : Maintenance Deficiency Ob : Design & System Obsolescence En : Enforcement
--	--	---	---



**Flood Control Project Maintenance  
Levee Inspections**

## Maintenance Issue Types Only, Levee Inspection Report By Mile - Spring 2020

### Reclamation District No. 0999 Netherlands

Waterway	Bank	Unit Miles	Inspection Start/End	Inspector
Unit No. 01 Yolo Bypass	Left	15.41	04/30/2020 05/05/2020	Luz Dial

LM Start	15.24	Rating **	A/W	Issue No.	925
LM End	15.24	Issue Type +	Ma	Location *	
Category	Supplemental			GPS Latitude/Longitude	
				Start	End
Item	DWR UCIP LMA Responsibility			38.292973 °	38.292973 °
				-121.644977 °	-121.644977 °
DWR ID	22756				
Comment Code					
Inspector Comment					
DS_ID:22756 FS_ID:15365 EP_NO: N/A Repair Type: No Action Needed Crossing Status: Found UCIP Comments: FIELD_STRUCT_DESC: 30-inch steel drainage pipe through the levee, 7 feet below the crown. Flap gate on the waterside (WS) end. Pump in pump house on the landside (LS) toe. Siphon breaker in a corrugated metal pipe (CMP) riser on the WS shoulder. [Additional Reference(s): DWR Levee Log, 1992. USACE Sacramento O&M Manual 113 (Revised), October 1966, (HLM 15.25) (36-inch pipe listed)]. FS Date: 6/25/2013					

Photo 1 of 3 : UCIP\_SP\_2020\_15365\_25227.jpg



Pumphouse on LS toe.

LM Start	15.24	Rating **	A/W	Issue No.	925 (cont)
LM End	15.24	Issue Type +	Ma	Location *	

Photo 2 of 3 : UCIP\_SP\_2020\_15365\_25226.jpg



Siphon breaker in CMP riser on WS shoulder.

<b>* Location</b> LS : Land Side    N/A : Not Applicable WS : Water Side CR : Crown	<b>** Rating</b> A : Acceptable M : Minimally Acceptable U : Unacceptable	N : Not Inspected/Rated C : Corrected A/W : Acceptable but Monitor & Maintain	<b>+ Issue Type</b> Ma : Maintenance Deficiency Ob : Design & System Obsolescence En : Enforcement
--	--	---	---

**Flood Control Project Maintenance  
Levee Inspections**

## Maintenance Issue Types Only, Levee Inspection Report By Mile - Spring 2020

### Reclamation District No. 0999 Netherlands

Waterway	Bank	Unit Miles	Inspection Start/End	Inspector
Unit No. 01 Yolo Bypass	Left	15.41	04/30/2020 05/05/2020	Luz Dial

LM Start	<b>15.24</b>	Rating **	A/W	Issue No.	<b>925 (cont)</b>
LM End	<b>15.24</b>	Issue Type +	Ma	Location *	
Category	Supplemental			GPS Latitude/Longitude	
				Start	End
Item	DWR UCIP LMA Responsibility			38.292973 °	38.292973 °
				-121.644977 °	-121.644977 °
DWR ID	22756				

Photo 3 of 3 : UCIP\_SP\_2020\_15365\_25225.jpg



Closeup of pipe at pumphouse on LS toe.

<b>* Location</b> LS : Land Side    N/A : Not Applicable WS : Water Side CR : Crown	<b>** Rating</b> A : Acceptable M : Minimally Acceptable U : Unacceptable	N : Not Inspected/Rated C : Corrected A/W : Acceptable but Monitor & Maintain	<b>+ Issue Type</b> Ma : Maintenance Deficiency Ob : Design & System Obsolescence En : Enforcement
--	--	---	---

**Flood Control Project Maintenance  
Levee Inspections**

**Maintenance Issue Types Only, Levee Inspection Report By Mile - Spring 2020**

**Reclamation District No. 0999 Netherlands**

Waterway	Bank	Unit Miles	Inspection Start/End	Inspector
Unit No. 02 Miner Slough	Right	2.31	04/30/2020 04/30/2020	Luz Dial

LM Start	0.06	Rating **	M	Issue No.	21
LM End	0.06	Issue Type +	Ma	Location *	LS
Category	Earthen Levee			GPS Latitude/Longitude	
				Start	End
Item	Trim / Thin Trees			38.290434 °	38.290434 °
				-121.643873 °	-121.643873 °
DWR ID	DWR_RD0999_02_f_2017_21				
Comment Code					
T1 : Trim trees to at least five feet above ground level.					
Inspector Comment					

Photo 1 of 1 : SP\_2020\_RD0999\_233\_21\_20200302\_00011.jpg



View of trees on landside slope looking north. Fall 2017

LM Start	0.07	Rating **	M	Issue No.	39
LM End	0.07	Issue Type +	Ma	Location *	WS
Category	Earthen Levee			GPS Latitude/Longitude	
				Start	End
Item	Trim / Thin Trees			38.290407 °	38.290407 °
				-121.643710 °	-121.643710 °
DWR ID	DWR_RD0999_02_s_2020_39				
Comment Code					
T1 : Trim trees to at least five feet above ground level.					
Inspector Comment					

No Photos

LM Start	0.07	Rating **	M	Issue No.	36
LM End	0.49	Issue Type +	Ma	Location *	WS
Category	Earthen Levee			GPS Latitude/Longitude	
				Start	End
Item	Vegetation			38.290465 °	38.291403 °
				-121.643655 °	-121.636318 °
DWR ID	DWR_RD0999_02_s_2020_36				
Comment Code					
V1 : Control annual grass and weeds on the levee slopes and easements.					
Inspector Comment					

No Photos

<b>* Location</b> LS : Land Side    N/A : Not Applicable WS : Water Side CR : Crown	<b>** Rating</b> A : Acceptable M : Minimally Acceptable U : Unacceptable	N : Not Inspected/Rated C : Corrected A/W : Acceptable but Monitor & Maintain	<b>+ Issue Type</b> Ma : Maintenance Deficiency Ob : Design & System Obsolescence En : Enforcement
--	--	---	---



**Flood Control Project Maintenance  
Levee Inspections**

**Maintenance Issue Types Only, Levee Inspection Report By Mile - Spring 2020**

**Reclamation District No. 0999 Netherlands**

Waterway	Bank	Unit Miles	Inspection Start/End	Inspector
Unit No. 02 Miner Slough	Right	2.31	04/30/2020 04/30/2020	Luz Dial

LM Start	<b>0.07</b>	Rating **	M	Issue No.	<b>38</b>
LM End	<b>0.14</b>	Issue Type +	Ma	Location *	LS
Category	Earthen Levee		GPS Latitude/Longitude		
			Start	End	
Item	Vegetation		38.290467 °	38.290713 °	
			-121.643648 °	-121.642408 °	
DWR ID	DWR_RD0999_02_s _ 2020_38				
Comment Code					
V2 : Remove the wild growth other than native grasses from the levee slopes.					
Inspector Comment					

No Photos

LM Start	<b>0.26</b>	Rating **	M	Issue No.	<b>32</b>
LM End	<b>0.69</b>	Issue Type +	Ma	Location *	LS
Category	Earthen Levee		GPS Latitude/Longitude		
			Start	End	
Item	Vegetation		38.290697 °	38.292533 °	
			-121.640220 °	-121.633095 °	
DWR ID	DWR_RD0999_02_s _ 2020_32				
Comment Code					
V1 : Control annual grass and weeds on the levee slopes and easements.					
Inspector Comment					

No Photos

LM Start	<b>0.54</b>	Rating **	M	Issue No.	<b>35</b>
LM End	<b>0.54</b>	Issue Type +	Ma	Location *	WS
Category	Earthen Levee		GPS Latitude/Longitude		
			Start	End	
Item	Trim / Thin Trees		38.291408 °	38.291408 °	
			-121.635417 °	-121.635417 °	
DWR ID	DWR_RD0999_02_s _ 2020_35				
Comment Code					
T1 : Trim trees to at least five feet above ground level.					
Inspector Comment					

No Photos

**\* Location**  
 LS : Land Side    N/A : Not Applicable  
 WS : Water Side  
 CR : Crown

**\*\* Rating**  
 A : Acceptable                      N : Not Inspected/Rated  
 M : Minimally Acceptable        C : Corrected  
 U : Unacceptable                  A/W : Acceptable but Monitor & Maintain

**+ Issue Type**  
 Ma : Maintenance Deficiency  
 Ob : Design & System Obsolescence  
 En : Enforcement

## Reclamation District No. 0999 Netherlands

No Photos

Photo 1 of 1 : SP\_2020\_RD0999\_233\_14\_20200302\_00006.jpg



Looking north at century plant at landward toe. Fall 2015.

Photo 1 of 1 : SP\_2020\_RD0999\_233\_22\_20200508\_00039.jpg



View of waterside vegetation. Spring 2020

Page 3 of 8

**Flood Control Project Maintenance  
Levee Inspections**

**Maintenance Issue Types Only, Levee Inspection Report By Mile - Spring 2020**

**Reclamation District No. 0999 Netherlands**

Waterway	Bank	Unit Miles	Inspection Start/End	Inspector
Unit No. 02 Miner Slough	Right	2.31	04/30/2020 04/30/2020	Luz Dial

LM Start	0.84	Rating **	U	Issue No.	25
LM End	1.19	Issue Type +	Ma	Location *	LS
Category	Earthen Levee			GPS Latitude/Longitude	
				Start	End
Item	Vegetation			38.292345 °	38.291212 °
				-121.630413 °	-121.624248 °
DWR ID	DWR_RD0999_02_s _ 2020_25				
Comment Code					
V2 : Remove the wild growth other than native grasses from the levee slopes.					
Inspector Comment					
Remove bull thistle.					

Photo 1 of 1 : SP\_2020\_RD0999\_233\_25\_20200508\_00040.jpg



View of landside vegetation. Spring 2020

LM Start	0.85	Rating **	M	Issue No.	20
LM End	0.85	Issue Type +	Ma	Location *	WS
Category	Earthen Levee			GPS Latitude/Longitude	
				Start	End
Item	Trim / Thin Trees			38.292318 °	38.292318 °
				-121.630172 °	-121.630172 °
DWR ID	DWR_RD0999_02_s _ 2019_20				
Comment Code					
T1 : Trim trees to at least five feet above ground level.					
Inspector Comment					

No Photos

LM Start	1.15	Rating **	M	Issue No.	26	
LM End	1.15	Issue Type +	Ma	Location *	WS	
Category	Earthen Levee			GPS Latitude/Longitude		
				Start		End
Item	Trim / Thin Trees			38.291070 °		38.291070 °
				-121.625118 °		-121.625118 °
DWR ID	DWR_RD0999_02_s _ 2020_26					
Comment Code						
T1 : Trim trees to at least five feet above ground level.						
Inspector Comment						

No Photos

<b>* Location</b> LS : Land Side    N/A : Not Applicable WS : Water Side CR : Crown	<b>** Rating</b> A : Acceptable M : Minimally Acceptable U : Unacceptable	N : Not Inspected/Rated C : Corrected A/W : Acceptable but Monitor & Maintain	<b>+ Issue Type</b> Ma : Maintenance Deficiency Ob : Design & System Obsolescence En : Enforcement
--	--	---	---

**Flood Control Project Maintenance  
Levee Inspections**

## Maintenance Issue Types Only, Levee Inspection Report By Mile - Spring 2020

### Reclamation District No. 0999 Netherlands

Waterway	Bank	Unit Miles	Inspection Start/End	Inspector
Unit No. 02 Miner Slough	Right	2.31	04/30/2020 04/30/2020	Luz Dial

LM Start	<b>1.19</b>	Rating **	M	Issue No.	<b>23</b>
LM End	<b>1.59</b>	Issue Type +	Ma	Location *	LS
Category	Earthen Levee		GPS Latitude/Longitude		
			Start	End	
Item	Vegetation		38.291212 °	38.290647 °	
			-121.624248 °	-121.617040 °	
DWR ID	DWR_RD0999_02_s _ 2020_23				
Comment Code					
V1 : Control annual grass and weeds on the levee slopes and easements.					
Inspector Comment					

No Photos

LM Start	<b>1.24</b>	Rating **	M	Issue No.	<b>34</b>
LM End	<b>1.24</b>	Issue Type +	Ma	Location *	WS
Category	Earthen Levee		GPS Latitude/Longitude		
			Start	End	
Item	Trim / Thin Trees		38.291370 °	38.291370 °	
			-121.623467 °	-121.623467 °	
DWR ID	DWR_RD0999_02_s _ 2019_34				
Comment Code					
T1 : Trim trees to at least five feet above ground level.					
Inspector Comment					

No Photos

LM Start	<b>1.73</b>	Rating **	M	Issue No.	<b>8</b>
LM End	<b>1.76</b>	Issue Type +	Ma	Location *	LS
Category	Earthen Levee		GPS Latitude/Longitude		
			Start	End	
Item	Vegetation		38.289895 °	38.289595 °	
			-121.614688 °	-121.614337 °	
DWR ID	DWR_RD0999_02_s _ 2012_8				
Comment Code					
V4 : Elderberries are blocking visibility and flood fight capability.					
Inspector Comment					

No Photos

<b>* Location</b> LS : Land Side    N/A : Not Applicable WS : Water Side CR : Crown	<b>** Rating</b> A : Acceptable M : Minimally Acceptable U : Unacceptable	N : Not Inspected/Rated C : Corrected A/W : Acceptable but Monitor & Maintain	<b>+ Issue Type</b> Ma : Maintenance Deficiency Ob : Design & System Obsolescence En : Enforcement
--	--	---	---

**Flood Control Project Maintenance  
Levee Inspections**

**Maintenance Issue Types Only, Levee Inspection Report By Mile - Spring 2020**

**Reclamation District No. 0999 Netherlands**

Waterway	Bank	Unit Miles	Inspection Start/End	Inspector
Unit No. 02 Miner Slough	Right	2.31	04/30/2020 04/30/2020	Luz Dial

LM Start	1.78	Rating **	M	Issue No.	30
LM End	1.81	Issue Type +	Ma	Location *	WS
Category	Earthen Levee			GPS Latitude/Longitude	
				Start	End
Item	Vegetation			38.289340 °	38.289079 °
				-121.614030 °	-121.613765 °
DWR ID	DWR_RD0999_02_f_2017_30				
Comment Code					
V4 : Elderberries are blocking visibility and flood fight capability.					
Inspector Comment					
Elderberry bushes block visibility of the levee toe.					

No Photos

LM Start	1.90	Rating **	M	Issue No.	19
LM End	2.03	Issue Type +	Ma	Location *	WS
Category	Earthen Levee			GPS Latitude/Longitude	
				Start	End
Item	Vegetation			38.288740 °	38.288878 °
				-121.612190 °	-121.609723 °
DWR ID	DWR_RD0999_02_s_2020_19				
Comment Code					
V1 : Control annual grass and weeds on the levee slopes and easements.					
Inspector Comment					

No Photos

LM Start	1.93	Rating **	M	Issue No.	16
LM End	1.93	Issue Type +	Ma	Location *	WS
Category	Earthen Levee			GPS Latitude/Longitude	
				Start	End
Item	Vegetation			38.288713 °	38.288713 °
				-121.611620 °	-121.611620 °
DWR ID	DWR_RD0999_02_s_2012_16				
Comment Code					
V4 : Elderberries are blocking visibility and flood fight capability.					
Inspector Comment					

No Photos

<b>* Location</b> LS : Land Side    N/A : Not Applicable WS : Water Side CR : Crown	<b>** Rating</b> A : Acceptable M : Minimally Acceptable U : Unacceptable	N : Not Inspected/Rated C : Corrected A/W : Acceptable but Monitor & Maintain	<b>+ Issue Type</b> Ma : Maintenance Deficiency Ob : Design & System Obsolescence En : Enforcement
--	--	---	---

**Flood Control Project Maintenance  
Levee Inspections**

**Maintenance Issue Types Only, Levee Inspection Report By Mile - Spring 2020**

**Reclamation District No. 0999 Netherlands**

Waterway	Bank	Unit Miles	Inspection Start/End	Inspector
Unit No. 02 Miner Slough	Right	2.31	04/30/2020 04/30/2020	Luz Dial

LM Start	1.97	Rating **	A/W	Issue No.	33
LM End	1.97	Issue Type +	Ma	Location *	LS
Category	Earthen Levee			GPS Latitude/Longitude	
				Start	End
Item	Animal Control			38.288712 °	38.288712 °
				-121.610920 °	-121.610920 °
DWR ID	DWR_RD0999_02_s_2017_33				
Comment Code					
A3 : No rodents visible, but rodent burrows visible; need to backfill and compact or grout burrows.					
Inspector Comment					
Monitor animal activity.					

No Photos

LM Start	2.07	Rating **	M	Issue No.	18
LM End	2.09	Issue Type +	Ma	Location *	LS
Category	Earthen Levee			GPS Latitude/Longitude	
				Start	End
Item	Vegetation			38.288845 °	38.288777 °
				-121.609100 °	-121.608757 °
DWR ID	DWR_RD0999_02_s_2020_18				
Comment Code					
V1 : Control annual grass and weeds on the levee slopes and easements.					
Inspector Comment					

No Photos

LM Start	2.10	Rating **	M	Issue No.	15	
LM End	2.10	Issue Type +	Ma	Location *	WS	
Category	Earthen Levee			GPS Latitude/Longitude		
				Start		End
Item	Trim / Thin Trees			38.288712 °		38.288712 °
				-121.608575 °		-121.608575 °
DWR ID	DWR_RD0999_02_s_2020_15					
Comment Code						
T3 : Trim and thin trees to allow visibility of the ground and room to flood fight.						
Inspector Comment						

No Photos

<b>* Location</b> LS : Land Side    N/A : Not Applicable WS : Water Side CR : Crown	<b>** Rating</b> A : Acceptable M : Minimally Acceptable U : Unacceptable	N : Not Inspected/Rated C : Corrected A/W : Acceptable but Monitor & Maintain	<b>+ Issue Type</b> Ma : Maintenance Deficiency Ob : Design & System Obsolescence En : Enforcement
--	--	---	---



**Flood Control Project Maintenance  
Levee Inspections**

**Maintenance Issue Types Only, Levee Inspection Report By Mile - Spring 2020**

**Reclamation District No. 0999 Netherlands**

Waterway	Bank	Unit Miles	Inspection Start/End	Inspector
Unit No. 02 Miner Slough	Right	2.31	04/30/2020 04/30/2020	Luz Dial

LM Start	2.14	Rating **	M	Issue No.	37
LM End	2.14	Issue Type +	Ma	Location *	WS
Category	Earthen Levee			GPS Latitude/Longitude	
				Start	End
Item	Encroachments			38.288258 °	38.288258 °
				-121.607925 °	-121.607925 °
DWR ID	DWR_RD0999_02_s _ 2019_37				
Comment Code					
DE : Debris					
Inspector Comment					
Remove sofa debris on the waterside slope.					

Photo 1 of 1 : SP\_2020\_RD0999\_233\_37\_20200302\_00015.jpg



View looking southward at debris on the waterside slope. Fall 2019

LM Start	2.18	Rating **	M	Issue No.	13
LM End	2.25	Issue Type +	Ma	Location *	LS
Category	Earthen Levee			GPS Latitude/Longitude	
				Start	End
Item	Vegetation			38.287788 °	38.286872 °
				-121.607668 °	-121.607220 °
DWR ID	DWR_RD0999_02_s _ 2020_13				
Comment Code					
V2 : Remove the wild growth other than native grasses from the levee slopes.					
Inspector Comment					

No Photos

**\* Location**  
LS : Land Side    N/A : Not Applicable  
WS : Water Side  
CR : Crown

**\*\* Rating**  
A : Acceptable                      N : Not Inspected/Rated  
M : Minimally Acceptable        C : Corrected  
U : Unacceptable                  A/W : Acceptable but Monitor & Maintain

**+ Issue Type**  
Ma : Maintenance Deficiency  
Ob : Design & System Obsolescence  
En : Enforcement

**Flood Control Project Maintenance  
Levee Inspections**

**Maintenance Issue Types Only, Levee Inspection Report By Mile - Spring 2020**

**Reclamation District No. 0999 Netherlands**

Waterway	Bank	Unit Miles	Inspection Start/End	Inspector
Unit No. 03 Sutter Slough	Right	3.74	04/30/2020 04/30/2020	Luz Dial

LM Start	0.04	Rating **	M	Issue No.	32
LM End	0.04	Issue Type +	Ma	Location *	WS
Category	Earthen Levee			GPS Latitude/Longitude	
				Start	End
Item	Encroachments			38.287040 °	38.287040 °
				-121.605667 °	-121.605667 °
DWR ID	DWR_RD0999_03_f_2017_32				
Comment Code					
PR : Prunings					
Inspector Comment					
Remove the large pruning pile on the waterside slope.					

Photo 1 of 1 : SP\_2020\_RD0999\_234\_32\_20200302\_00021.jpg



View of waterside slope looking east. Fall 2017

LM Start	0.06	Rating **	M	Issue No.	17
LM End	0.06	Issue Type +	Ma	Location *	WS
Category	Earthen Levee			GPS Latitude/Longitude	
				Start	End
Item	Vegetation			38.287290 °	38.287290 °
				-121.605472 °	-121.605472 °
DWR ID	DWR_RD0999_03_s_2017_17				
Comment Code					
V2 : Remove the wild growth other than native grasses from the levee slopes.					
Inspector Comment					
Remove Century plants that are not allowed on the waterward slope.					

Photo 1 of 1 : SP\_2020\_RD0999\_234\_17\_20200302\_00013.jpg



Looking east at century plants on waterward slope.

LM Start	0.08	Rating **	M	Issue No.	37
LM End	0.34	Issue Type +	Ma	Location *	WS
Category	Earthen Levee			GPS Latitude/Longitude	
				Start	End
Item	Vegetation			38.287548 °	38.291197 °
				-121.605295 °	-121.604710 °
DWR ID	DWR_RD0999_03_s_2020_37				
Comment Code					
V1 : Control annual grass and weeds on the levee slopes and easements.					
Inspector Comment					

No Photos

<b>* Location</b> LS : Land Side    N/A : Not Applicable WS : Water Side CR : Crown	<b>** Rating</b> A : Acceptable M : Minimally Acceptable U : Unacceptable	N : Not Inspected/Rated C : Corrected A/W : Acceptable but Monitor & Maintain	<b>+ Issue Type</b> Ma : Maintenance Deficiency Ob : Design & System Obsolescence En : Enforcement
--	--	---	---

**Flood Control Project Maintenance  
Levee Inspections**

**Maintenance Issue Types Only, Levee Inspection Report By Mile - Spring 2020**

**Reclamation District No. 0999 Netherlands**

Waterway	Bank	Unit Miles	Inspection Start/End	Inspector
Unit No. 03 Sutter Slough	Right	3.74	04/30/2020 04/30/2020	Luz Dial

LM Start	0.09	Rating **	C	Issue No.	23
LM End	0.09	Issue Type +	Ma	Location *	WS
Category	Earthen Levee			GPS Latitude/Longitude	
				Start	End
Item	Encroachments			38.287595 °	38.287595 °
				-121.605275 °	-121.605275 °
DWR ID	DWR_RD0999_03_s_2017_23				
Comment Code					
PR : Prunings					
Inspector Comment					

No Photos

LM Start	0.24	Rating **	U	Issue No.	5
LM End	0.65	Issue Type +	Ma	Location *	WS
Category	Supplemental			GPS Latitude/Longitude	
				Start	End
Item	2017 USACE Erosion Survey			38.289634 °	38.295505 °
				-121.604343 °	-121.605648 °
DWR ID	DWR_RD0999_03_s_2019_5				
Comment Code					
Inspector Comment					
2017 Site ID: STR 24.7 R					
Status: Critical					
2017 Field Notes: Locals have placed rock in worst sections. Fresh erosion at toe. New tall vertical sections observed.					
Site History: 1997 - Intermittent over-steepened sections. Large riparian vegetation along the length of the entire reach. Attempts to repair with rock on bank have failed. 1999 - New rock repair at the downstream end. 2002 - Some minor spot repairs. 2009 - Minimal new erosion. 2010 - Appears that fresh rock placed on downstream portion of site. Toe scour and overhanging trees with some overturned. 2012 - Minor new erosion at the toe. 2013 - Site upgraded to CRITICAL. Severe slumping into levee at downstream end of site. Fresh erosion into bank toe. 2015 - New slumping, tall vertical sections. 2016 - Upper slumped section continues to worsen.					

No Photos

<b>* Location</b> LS : Land Side    N/A : Not Applicable WS : Water Side CR : Crown	<b>** Rating</b> A : Acceptable M : Minimally Acceptable U : Unacceptable	N : Not Inspected/Rated C : Corrected A/W : Acceptable but Monitor & Maintain	<b>+ Issue Type</b> Ma : Maintenance Deficiency Ob : Design & System Obsolescence En : Enforcement
--	--	---	---

**Flood Control Project Maintenance  
Levee Inspections**

**Maintenance Issue Types Only, Levee Inspection Report By Mile - Spring 2020**

**Reclamation District No. 0999 Netherlands**

Waterway	Bank	Unit Miles	Inspection Start/End	Inspector
Unit No. 03 Sutter Slough	Right	3.74	04/30/2020 04/30/2020	Luz Dial

LM Start	<b>0.44</b>	Rating **	M	Issue No.	<b>33</b>
LM End	<b>0.95</b>	Issue Type +	Ma	Location *	LS
Category	Earthen Levee		GPS Latitude/Longitude		
			Start	End	
Item	Vegetation		38.292527 °	38.299317 °	
			-121.604943 °	-121.603558 °	
DWR ID	DWR_RD0999_03_s_2020_33				
Comment Code					
V1 : Control annual grass and weeds on the levee slopes and easements.					
Inspector Comment					

No Photos

LM Start	<b>0.66</b>	Rating **	U	Issue No.	<b>8</b>
LM End	<b>0.66</b>	Issue Type +	Ma	Location *	LS
Category	Earthen Levee		GPS Latitude/Longitude		
			Start	End	
Item	Vegetation		38.295618 °	38.295618 °	
			-121.605923 °	-121.605923 °	
DWR ID	DWR_RD0999_03_s_2012_8				
Comment Code					
V4 : Elderberries are blocking visibility and flood fight capability.					
Inspector Comment					

No Photos

LM Start	<b>0.70</b>	Rating **	M	Issue No.	<b>36</b>
LM End	<b>0.70</b>	Issue Type +	Ma	Location *	WS
Category	Earthen Levee		GPS Latitude/Longitude		
			Start	End	
Item	Vegetation		38.296175 °	38.296175 °	
			-121.605893 °	-121.605893 °	
DWR ID	DWR_RD0999_03_s_2020_36				
Comment Code					
V4 : Elderberries are blocking visibility and flood fight capability.					
Inspector Comment					

No Photos

<b>* Location</b> LS : Land Side    N/A : Not Applicable WS : Water Side CR : Crown	<b>** Rating</b> A : Acceptable M : Minimally Acceptable U : Unacceptable	N : Not Inspected/Rated C : Corrected A/W : Acceptable but Monitor & Maintain	<b>+ Issue Type</b> Ma : Maintenance Deficiency Ob : Design & System Obsolescence En : Enforcement
--	--	---	---

**Flood Control Project Maintenance  
Levee Inspections**

**Maintenance Issue Types Only, Levee Inspection Report By Mile - Spring 2020**

**Reclamation District No. 0999 Netherlands**

Waterway	Bank	Unit Miles	Inspection Start/End	Inspector
Unit No. 03 Sutter Slough	Right	3.74	04/30/2020 04/30/2020	Luz Dial

LM Start	0.82	Rating **	M	Issue No.	34
LM End	0.82	Issue Type +	Ma	Location *	WS
Category	Earthen Levee			GPS Latitude/Longitude	
				Start	End
Item	Trim / Thin Trees			38.297828 °	38.297828 °
				-121.605050 °	-121.605050 °
DWR ID	DWR_RD0999_03_s_2020_34				
Comment Code					
T1 : Trim trees to at least five feet above ground level.					
Inspector Comment					

No Photos

LM Start	0.96	Rating **	M	Issue No.	14
LM End	0.96	Issue Type +	Ma	Location *	WS
Category	Earthen Levee			GPS Latitude/Longitude	
				Start	End
Item	Trim / Thin Trees			38.299372 °	38.299372 °
				-121.603397 °	-121.603397 °
DWR ID	DWR_RD0999_03_f_2019_14				
Comment Code					
T1 : Trim trees to at least five feet above ground level.					
Inspector Comment					

No Photos

LM Start	0.97	Rating **	M	Issue No.	6
LM End	1.10	Issue Type +	Ma	Location *	WS
Category	Supplemental			GPS Latitude/Longitude	
				Start	End
Item	2017 USACE Erosion Survey			38.299402 °	38.300542 °
				-121.603056 °	-121.601118 °
DWR ID	DWR_RD0999_03_s_2019_6				
Comment Code					
Inspector Comment					
2017 Site ID: STR 25.2 R					
Status: Eroding					
2017 Field Notes: Minor new erosion at toe.					
Site History: 2008 - Over steepened levee section. 2009 - Significant new erosion. 2010 - Minor new erosion.					

No Photos

<b>* Location</b> LS : Land Side    N/A : Not Applicable WS : Water Side CR : Crown		<b>** Rating</b> A : Acceptable                      N : Not Inspected/Rated M : Minimally Acceptable        C : Corrected U : Unacceptable                  A/W : Acceptable but Monitor & Maintain		<b>+ Issue Type</b> Ma : Maintenance Deficiency Ob : Design & System Obsolescence En : Enforcement	
--	--	---	--	---	--

**Flood Control Project Maintenance  
Levee Inspections**

**Maintenance Issue Types Only, Levee Inspection Report By Mile - Spring 2020**

**Reclamation District No. 0999 Netherlands**

Waterway	Bank	Unit Miles	Inspection Start/End	Inspector
Unit No. 03 Sutter Slough	Right	3.74	04/30/2020 04/30/2020	Luz Dial

LM Start	<b>1.03</b>	Rating **	M	Issue No.	<b>31</b>
LM End	<b>1.58</b>	Issue Type +	Ma	Location *	WS
Category	Earthen Levee		GPS Latitude/Longitude		
			Start	End	
Item	Vegetation		38.300083 °	38.306827 °	
			-121.602307 °	-121.598447 °	
DWR ID	DWR_RD0999_03_s_2020_31				
Comment Code					
V1 : Control annual grass and weeds on the levee slopes and easements.					
Inspector Comment					

No Photos

LM Start	<b>1.37</b>	Rating **	M	Issue No.	<b>30</b>
LM End	<b>1.62</b>	Issue Type +	Ma	Location *	LS
Category	Earthen Levee		GPS Latitude/Longitude		
			Start	End	
Item	Vegetation		38.304412 °	38.307412 °	
			-121.600465 °	-121.598232 °	
DWR ID	DWR_RD0999_03_s_2020_30				
Comment Code					
V1 : Control annual grass and weeds on the levee slopes and easements.					
Inspector Comment					

No Photos

<b>* Location</b> LS : Land Side    N/A : Not Applicable WS : Water Side CR : Crown	<b>** Rating</b> A : Acceptable M : Minimally Acceptable U : Unacceptable	N : Not Inspected/Rated C : Corrected A/W : Acceptable but Monitor & Maintain	<b>+ Issue Type</b> Ma : Maintenance Deficiency Ob : Design & System Obsolescence En : Enforcement
--	--	---	---



**Flood Control Project Maintenance  
Levee Inspections**

## Maintenance Issue Types Only, Levee Inspection Report By Mile - Spring 2020

### Reclamation District No. 0999 Netherlands

Waterway	Bank	Unit Miles	Inspection Start/End	Inspector
Unit No. 03 Sutter Slough	Right	3.74	04/30/2020 04/30/2020	Luz Dial

LM Start	1.43	Rating **	A/W	Issue No.	10
LM End	1.58	Issue Type +	Ma	Location *	WS
Category	Supplemental			GPS Latitude/Longitude	
				Start	End
Item	2017 USACE Erosion Survey			38.305229 °	38.306667 °
				-121.599933 °	-121.598266 °
DWR ID	DWR_RD0999_03_s_2019_10				
Comment Code					
Inspector Comment					
The levee bank erosion was not visible due to vegetation, but there is at least 20' of slope from the shoulder. At LM 1.58, there is a waterside bank. 2017 Site ID: STR 25.7 R 2017 Field Notes: Large erosion scarp near downstream end. Site History: 2011 - Toe scour along length of site and erosion pockets. 2012 - Site extended slightly upstream due to new erosion pocket. 2013 - Tall vertical sections at upstream end of site.					

Photo 1 of 1 : SP\_2020\_RD0999\_234\_10\_20200508\_00035.jpg



View of erosion site that appears to be at least 20' from the waterside shoulder. Spring 2020

LM Start	1.61	Rating **	M	Issue No.	29
LM End	1.61	Issue Type +	Ma	Location *	WS
Category	Earthen Levee			GPS Latitude/Longitude	
				Start	End
Item	Encroachments			38.307288 °	38.307288 °
				-121.598100 °	-121.598100 °
DWR ID	DWR_RD0999_03_s_2019_29				
Comment Code					
DE : Debris					
Inspector Comment					
Remove pruning debris left at the turnout.					

Photo 1 of 1 : SP\_2020\_RD0999\_234\_29\_20200302\_00020.jpg



View of debris on the waterside turnout. Fall 2019

\* Location  
LS : Land Side N/A : Not Applicable  
WS : Water Side  
CR : Crown

\*\* Rating  
A : Acceptable N : Not Inspected/Rated  
M : Minimally Acceptable C : Corrected  
U : Unacceptable A/W : Acceptable but Monitor & Maintain

+ Issue Type  
Ma : Maintenance Deficiency  
Ob : Design & System Obsolescence  
En : Enforcement

**Flood Control Project Maintenance  
Levee Inspections**

**Maintenance Issue Types Only, Levee Inspection Report By Mile - Spring 2020**

**Reclamation District No. 0999 Netherlands**

Waterway	Bank	Unit Miles	Inspection Start/End	Inspector
Unit No. 03 Sutter Slough	Right	3.74	04/30/2020 04/30/2020	Luz Dial

LM Start	<b>1.71</b>	Rating **	M	Issue No.	<b>28</b>
LM End	<b>1.83</b>	Issue Type +	Ma	Location *	WS
Category	Earthen Levee		GPS Latitude/Longitude		
			Start	End	
Item	Vegetation		38.308630 °	38.310238 °	
			-121.598963 °	-121.599150 °	
DWR ID	DWR_RD0999_03_s_2020_28				
Comment Code					
V1 : Control annual grass and weeds on the levee slopes and easements.					
Inspector Comment					

No Photos

LM Start	<b>1.75</b>	Rating **	M	Issue No.	<b>25</b>
LM End	<b>1.93</b>	Issue Type +	Ma	Location *	LS
Category	Earthen Levee		GPS Latitude/Longitude		
			Start	End	
Item	Vegetation		38.309145 °	38.311263 °	
			-121.599243 °	-121.597910 °	
DWR ID	DWR_RD0999_03_s_2020_25				
Comment Code					
V2 : Remove the wild growth other than native grasses from the levee slopes.					
Inspector Comment					

No Photos

LM Start	<b>1.93</b>	Rating **	M	Issue No.	<b>45</b>
LM End	<b>1.97</b>	Issue Type +	Ma	Location *	WS
Category	Supplemental		GPS Latitude/Longitude		
			Start	End	
Item	2017 USACE Erosion Survey		38.311013 °	38.311342 °	
			-121.597751 °	-121.596976 °	
DWR ID	DWR_RD0999_03_s_2020_45				
Comment Code					
Inspector Comment					
2017 Site ID: STR 26.1 R					
2017 Field Notes: No observed change.					
Site History: 2015 - Tall vertical sections into the levee slope and erosion along the toe. 2016 - New tree pop-out observed.					

No Photos

<b>* Location</b> LS : Land Side    N/A : Not Applicable WS : Water Side CR : Crown	<b>** Rating</b> A : Acceptable M : Minimally Acceptable U : Unacceptable	N : Not Inspected/Rated C : Corrected A/W : Acceptable but Monitor & Maintain	<b>+ Issue Type</b> Ma : Maintenance Deficiency Ob : Design & System Obsolescence En : Enforcement
--	--	---	---

**Flood Control Project Maintenance  
Levee Inspections**

**Maintenance Issue Types Only, Levee Inspection Report By Mile - Spring 2020**

**Reclamation District No. 0999 Netherlands**

Waterway	Bank	Unit Miles	Inspection Start/End	Inspector
Unit No. 03 Sutter Slough	Right	3.74	04/30/2020 04/30/2020	Luz Dial

LM Start	<b>2.00</b>	Rating **	M	Issue No.	<b>15</b>
LM End	<b>2.45</b>	Issue Type +	Ma	Location *	WS
Category	Earthen Levee		GPS Latitude/Longitude		
			Start	End	
Item	Vegetation		38.311732 °	38.316778 °	
			-121.596618 °	-121.591762 °	
DWR ID	DWR_RD0999_03_s_2020_15				
Comment Code					
V1 : Control annual grass and weeds on the levee slopes and easements.					
Inspector Comment					

No Photos

LM Start	<b>2.11</b>	Rating **	M	Issue No.	<b>24</b>
LM End	<b>2.11</b>	Issue Type +	Ma	Location *	LS
Category	Earthen Levee		GPS Latitude/Longitude		
			Start	End	
Item	Vegetation			38.312747 °	
				-121.595067 °	
DWR ID	DWR_RD0999_03_s_2020_24				
Comment Code					
V2 : Remove the wild growth other than native grasses from the levee slopes.					
Inspector Comment					

No Photos

LM Start	<b>2.74</b>	Rating **	M	Issue No.	<b>11</b>
LM End	<b>3.61</b>	Issue Type +	Ma	Location *	WS
Category	Earthen Levee		GPS Latitude/Longitude		
			Start	End	
Item	Vegetation		38.320735 °	38.331018 °	
			-121.590825 °	-121.585870 °	
DWR ID	DWR_RD0999_03_s_2020_11				
Comment Code					
V1 : Control annual grass and weeds on the levee slopes and easements.					
Inspector Comment					

No Photos

<b>* Location</b> LS : Land Side    N/A : Not Applicable WS : Water Side CR : Crown	<b>** Rating</b> A : Acceptable M : Minimally Acceptable U : Unacceptable	N : Not Inspected/Rated C : Corrected A/W : Acceptable but Monitor & Maintain	<b>+ Issue Type</b> Ma : Maintenance Deficiency Ob : Design & System Obsolescence En : Enforcement
--	--	---	---

**Flood Control Project Maintenance  
Levee Inspections**

**Maintenance Issue Types Only, Levee Inspection Report By Mile - Spring 2020**

**Reclamation District No. 0999 Netherlands**

Waterway	Bank	Unit Miles	Inspection Start/End	Inspector
Unit No. 03 Sutter Slough	Right	3.74	04/30/2020 04/30/2020	Luz Dial

LM Start	<b>2.74</b>	Rating **	M	Issue No.	<b>21</b>
LM End	<b>2.80</b>	Issue Type +	Ma	Location *	LS
Category	Earthen Levee		GPS Latitude/Longitude		
			Start	End	
Item	Vegetation		38.320757 °	38.321580 °	
			-121.590868 °	-121.591040 °	
DWR ID	DWR_RD0999_03_s _ 2020_21				
Comment Code					
V1 : Control annual grass and weeds on the levee slopes and easements.					
Inspector Comment					

No Photos

LM Start	<b>2.89</b>	Rating **	M	Issue No.	<b>20</b>
LM End	<b>2.89</b>	Issue Type +	Ma	Location *	LS
Category	Earthen Levee		GPS Latitude/Longitude		
			Start	End	
Item	Trim / Thin Trees		38.322802 °	38.322802 °	
			-121.590773 °	-121.590773 °	
DWR ID	DWR_RD0999_03_s _ 2020_20				
Comment Code					
T1 : Trim trees to at least five feet above ground level.					
Inspector Comment					

No Photos

LM Start	<b>2.91</b>	Rating **	M	Issue No.	<b>18</b>
LM End	<b>3.59</b>	Issue Type +	Ma	Location *	LS
Category	Earthen Levee		GPS Latitude/Longitude		
			Start	End	
Item	Vegetation		38.323040 °	38.330763 °	
			-121.590582 °	-121.586020 °	
DWR ID	DWR_RD0999_03_s _ 2020_18				
Comment Code					
V1 : Control annual grass and weeds on the levee slopes and easements.					
Inspector Comment					

No Photos

**\* Location**  
 LS : Land Side    N/A : Not Applicable  
 WS : Water Side  
 CR : Crown

**\*\* Rating**  
 A : Acceptable                      N : Not Inspected/Rated  
 M : Minimally Acceptable        C : Corrected  
 U : Unacceptable                  A/W : Acceptable but Monitor & Maintain

**+ Issue Type**  
 Ma : Maintenance Deficiency  
 Ob : Design & System Obsolescence  
 En : Enforcement

**Flood Control Project Maintenance  
Levee Inspections**

**Maintenance Issue Types Only, Levee Inspection Report By Mile - Spring 2020**

**Reclamation District No. 0999 Netherlands**

Waterway	Bank	Unit Miles	Inspection Start/End	Inspector
Unit No. 03 Sutter Slough	Right	3.74	04/30/2020 04/30/2020	Luz Dial

LM Start	2.97	Rating **	A/W	Issue No.	12
LM End	3.23	Issue Type +	Ma	Location *	WS
Category	Supplemental			GPS Latitude/Longitude	
				Start	End
Item	2017 USACE Erosion Survey			38.323419 °	38.325592 °
				-121.589645 °	-121.585925 °
DWR ID	DWR_RD0999_03_s_2019_12				
Comment Code					
Inspector Comment					
2017 Site ID: STR 27.3 R					
Status: Eroding					
2017 Field Notes: site extended downstream. section of lower bank has slumped off. fresh toe erosion. pipe encroachment. fresh tree popout					
Site History: 2011 - Multiple erosion pockets. Some likely from tree popouts. 2013 - Tall vertical sections. 2015 - New tree pop-out and significant new erosion. 2016 - New erosion at toe.					

No Photos

LM Start	3.15	Rating **	M	Issue No.	19
LM End	3.15	Issue Type +	Ma	Location *	LS
Category	Earthen Levee			GPS Latitude/Longitude	
				Start	End
Item	Trim / Thin Trees			38.324722 °	38.324722 °
				-121.586812 °	-121.586812 °
DWR ID	DWR_RD0999_03_f_2019_19				
Comment Code					
T1 : Trim trees to at least five feet above ground level.					
Inspector Comment					

No Photos

<b>* Location</b> LS : Land Side    N/A : Not Applicable WS : Water Side CR : Crown	<b>** Rating</b> A : Acceptable M : Minimally Acceptable U : Unacceptable	N : Not Inspected/Rated C : Corrected A/W : Acceptable but Monitor & Maintain	<b>+ Issue Type</b> Ma : Maintenance Deficiency Ob : Design & System Obsolescence En : Enforcement
--	--	---	---

**Flood Control Project Maintenance  
Levee Inspections**

**Maintenance Issue Types Only, Levee Inspection Report By Mile - Spring 2020**

**Reclamation District No. 0999 Netherlands**

Waterway	Bank	Unit Miles	Inspection Start/End	Inspector
Unit No. 04 Sacramento River	Right	1.22	03/03/2020 04/30/2020	Luz Dial

LM Start	0.00	Rating **	A/W	Issue No.	54	
LM End	0.00	Issue Type +	Ma	Location *		
Category	Supplemental			GPS Latitude/Longitude		
				Start	End	
Item	DWR UCIP LMA Responsibility			38.414022 °	38.414022 °	
				-121.522986 °	-121.522986 °	
DWR ID	22788					
Comment Code						
Inspector Comment						
DS_ID:22788						
FS_ID:15708						
EP_NO: N/A						
Repair Type: No Action Needed						
Crossing Status: Found						
UCIP Comments: 10/27/2017 This structure is inspected annually under the Structure and Channel Summer Inspection (part of the Levee Inspection Program) conducted by the DWR Flood Project Integrity and Inspection Branch (FPIIB). (DWR UCIP - O. Magana)						
FIELD_STRUCT_DESC: [Elk Slough Inlet Structure] 60-inch by 60-inch reinforced concrete drainage culvert through the levee, 30 feet below the crown. Slide gate in a 6-foot by 8-foot concrete vault on the waterside (WS) shoulder. [Additional Reference(s): DWR Levee Log, 1992. USACE Sacramento O&M Manual 113 (Revised), October 1966, (HLM 0.00)].						
FS Date: 7/12/2013						

LM Start	<b>0.00</b>	Rating **	A/W	Issue No.	<b>54 (cont)</b>
LM End	<b>0.00</b>	Issue Type +	Ma	Location *	

Photo 1 of 2 : UCIP\_SP\_2020\_15708\_26137.jpg



Slide gate in concrete vault on WS shoulder.

Photo 2 of 2 : UCIP\_SP\_2020\_15708\_26136.jpg



Toe of LS at approximate location of outlet/inlet.

<b>* Location</b> LS : Land Side    N/A : Not Applicable WS : Water Side CR : Crown	<b>** Rating</b> A : Acceptable M : Minimally Acceptable U : Unacceptable	N : Not Inspected/Rated C : Corrected A/W : Acceptable but Monitor & Maintain	<b>+ Issue Type</b> Ma : Maintenance Deficiency Ob : Design & System Obsolescence En : Enforcement
--	--	---	---



**Flood Control Project Maintenance  
Levee Inspections**

## Maintenance Issue Types Only, Levee Inspection Report By Mile - Spring 2020

### Reclamation District No. 0999 Netherlands

Waterway	Bank	Unit Miles	Inspection Start/End	Inspector
Unit No. 04 Sacramento River	Right	1.22	03/03/2020 04/30/2020	Luz Dial

LM Start	0.02	Rating **	U	Issue No.	23
LM End	0.28	Issue Type +	Ma	Location *	WS
Category	Supplemental			GPS Latitude/Longitude	
				Start	End
Item	2017 USACE Erosion Survey			38.414387 °	38.417692 °
				-121.522871 °	-121.525083 °
DWR ID	DWR_RD0999_04_f_2019_23				
Comment Code					
Inspector Comment					
Planned For Repair 2017 Site ID: SAC 41.9 R Site ID No:357 Site Designation:LMA-184 2017 Field Notes: Fresh erosion on entire bank. Upgraded to critical. Site History: 1997 - Structural problem rather than erosional, failed cobble at downstream end. 2005 - New brush boxes at waterline for several hundred feet downstream, No toe or bank protection present. 2006 - Some minor new erosion. Brush boxes not working well; most of the brush has floated out. 2007 - Brush boxes have recently been repaired. 2016 - Minor new slumping.					

Photo 1 of 1 : SP\_2020\_RD0999\_235\_23\_20200302\_00009.jpg



USACE 2013 Photo #1

LM Start	0.04	Rating **	U	Issue No.	53
LM End	0.06	Issue Type +	Ma	Location *	WS
Category	Earthen Levee			GPS Latitude/Longitude	
				Start	End
Item	Vegetation			38.414533 °	38.414750 °
				-121.523394 °	-121.523543 °
DWR ID	DWR_RD0999_04_f_2017_53				
Comment Code					
V2 : Remove the wild growth other than native grasses from the levee slopes.					
Inspector Comment					
Remove wild growth vegetation on the waterside slope.					

Photo 1 of 1 : SP\_2020\_RD0999\_235\_53\_20200302\_00023.jpg



Looking southeast at the waterside slope. Fall 2017

\* Location  
LS : Land Side N/A : Not Applicable  
WS : Water Side  
CR : Crown

\*\* Rating  
A : Acceptable N : Not Inspected/Rated  
M : Minimally Acceptable C : Corrected  
U : Unacceptable A/W : Acceptable but Monitor & Maintain

+ Issue Type  
Ma : Maintenance Deficiency  
Ob : Design & System Obsolescence  
En : Enforcement

# Reclamation District No. 0999 Netherlands

No Photos

No Photos

View of vegetation on the waterside slope. Spring 2020

Page 3 of 5

**Flood Control Project Maintenance  
Levee Inspections**

## Maintenance Issue Types Only, Levee Inspection Report By Mile - Spring 2020

### Reclamation District No. 0999 Netherlands

Waterway	Bank	Unit Miles	Inspection Start/End	Inspector
Unit No. 04 Sacramento River	Right	1.22	03/03/2020 04/30/2020	Luz Dial

LM Start	0.96	Rating **	M	Issue No.	25
LM End	0.99	Issue Type +	Ma	Location *	WS
Category	Earthen Levee			GPS Latitude/Longitude	
				Start	End
Item	Trim / Thin Trees			38.426310 °	38.426627 °
				-121.531460 °	-121.531577 °
DWR ID	DWR_RD0999_04_s_2019_25				
Comment Code					
T1 : Trim trees to at least five feet above ground level.					
Inspector Comment					

Photo 1 of 1 : SP\_2020\_RD0999\_235\_25\_20200302\_00010.jpg

View looking downstream at low-hanging tree branches on levee slope.  
Spring 2019

LM Start	1.10	Rating **	M	Issue No.	47
LM End	1.10	Issue Type +	Ma	Location *	WS
Category	Earthen Levee			GPS Latitude/Longitude	
				Start	End
Item	Erosion / Bank Caving			38.428152 °	38.428152 °
				-121.532502 °	-121.532502 °
DWR ID	DWR_RD0999_04_s_2017_47				
Comment Code					
E1 : Note and monitor erosion site.					
Inspector Comment					
Small erosion just above the riprap and runoff erosion exist on the waterside slope.					

Photo 1 of 1 : SP\_2020\_RD0999\_235\_47\_20200302\_00021.jpg



Looking east at the waterside slope.

LM Start	1.18	Rating **	C	Issue No.	46
LM End	1.18	Issue Type +	Ma	Location *	WS
Category	Earthen Levee			GPS Latitude/Longitude	
				Start	End
Item	Erosion / Bank Caving			38.429201 °	38.429201 °
				-121.533012 °	-121.533012 °
DWR ID	DWR_RD0999_04_s_2016_46				
Comment Code					
E2 : Schedule repair of erosion site prior to the next inspection.					
Inspector Comment					

No Photos

<b>* Location</b> LS : Land Side    N/A : Not Applicable WS : Water Side CR : Crown		<b>** Rating</b> A : Acceptable                      N : Not Inspected/Rated M : Minimally Acceptable        C : Corrected U : Unacceptable                  A/W : Acceptable but Monitor & Maintain		<b>+ Issue Type</b> Ma : Maintenance Deficiency Ob : Design & System Obsolescence En : Enforcement
--	--	---	--	---

**Flood Control Project Maintenance  
Levee Inspections**

**Maintenance Issue Types Only, Levee Inspection Report By Mile - Spring 2020**

**Reclamation District No. 0999 Netherlands**

Waterway	Bank	Unit Miles	Inspection Start/End	Inspector
Unit No. 04 Sacramento River	Right	1.22	03/03/2020 04/30/2020	Luz Dial

LM Start	<b>1.20</b>	Rating **	<b>C</b>	Issue No.	<b>22</b>
LM End	<b>1.22</b>	Issue Type +	<b>Ma</b>	Location *	<b>LS</b>
Category	Earthen Levee		GPS Latitude/Longitude		
			Start	End	
Item	Trim / Thin Trees		38.429467 °	38.429750 °	
			-121.533110 °	-121.533188 °	
DWR ID	DWR_RD0999_04_f_2013_22				
Comment Code					
T3 : Trim and thin trees to allow visibility of the ground and room to flood fight.					
Inspector Comment					

No Photos

**\* Location**  
 LS : Land Side    N/A : Not Applicable  
 WS : Water Side  
 CR : Crown

**\*\* Rating**  
 A : Acceptable                      N : Not Inspected/Rated  
 M : Minimally Acceptable        C : Corrected  
 U : Unacceptable                  A/W : Acceptable but Monitor & Maintain

**+ Issue Type**  
 Ma : Maintenance Deficiency  
 Ob : Design & System Obsolescence  
 En : Enforcement





**Flood Control Project Maintenance  
Levee Inspections**

**Maintenance Issue Types Only, Levee Inspection Report By Mile - Spring 2020**

**Reclamation District No. 0999 Netherlands**

Waterway	Bank	Unit Miles	Inspection Start/End	Inspector
Unit No. 05 Elk Slough	Right	9.48	04/29/2020 04/30/2020	Luz Dial

LM Start	<b>0.09</b>	Rating **	M	Issue No.	<b>279</b>
LM End	<b>0.12</b>	Issue Type +	Ma	Location *	WS
Category	Earthen Levee		GPS Latitude/Longitude		
			Start	End	
Item	Vegetation		38.334005 °	38.334445 °	
			-121.584367 °	-121.584310 °	
DWR ID	DWR_RD0999_05_s _ 2020_279				
Comment Code					
V1 : Control annual grass and weeds on the levee slopes and easements.					
Inspector Comment					

No Photos

LM Start	<b>0.12</b>	Rating **	M	Issue No.	<b>278</b>
LM End	<b>0.21</b>	Issue Type +	Ma	Location *	LS
Category	Earthen Levee		GPS Latitude/Longitude		
			Start	End	
Item	Vegetation		38.334412 °	38.335638 °	
			-121.584267 °	-121.583747 °	
DWR ID	DWR_RD0999_05_s _ 2020_278				
Comment Code					
V1 : Control annual grass and weeds on the levee slopes and easements.					
Inspector Comment					

No Photos

LM Start	<b>0.21</b>	Rating **	M	Issue No.	<b>277</b>
LM End	<b>0.33</b>	Issue Type +	Ma	Location *	WS
Category	Earthen Levee		GPS Latitude/Longitude		
			Start	End	
Item	Vegetation		38.335638 °	38.337203 °	
			-121.583747 °	-121.582647 °	
DWR ID	DWR_RD0999_05_s _ 2020_277				
Comment Code					
V1 : Control annual grass and weeds on the levee slopes and easements.					
Inspector Comment					

No Photos

<b>* Location</b> LS : Land Side    N/A : Not Applicable WS : Water Side CR : Crown	<b>** Rating</b> A : Acceptable M : Minimally Acceptable U : Unacceptable	N : Not Inspected/Rated C : Corrected A/W : Acceptable but Monitor & Maintain	<b>+ Issue Type</b> Ma : Maintenance Deficiency Ob : Design & System Obsolescence En : Enforcement
--	--	---	---



**Flood Control Project Maintenance  
Levee Inspections**

**Maintenance Issue Types Only, Levee Inspection Report By Mile - Spring 2020**

**Reclamation District No. 0999 Netherlands**

Waterway	Bank	Unit Miles	Inspection Start/End	Inspector
Unit No. 05 Elk Slough	Right	9.48	04/29/2020 04/30/2020	Luz Dial

LM Start	<b>0.34</b>	Rating **	M	Issue No.	<b>276</b>
LM End	<b>0.36</b>	Issue Type +	Ma	Location *	LS
Category	Earthen Levee		GPS Latitude/Longitude		
			Start	End	
Item	Vegetation		38.337217 °	38.337577 °	
			-121.582615 °	-121.582430 °	
DWR ID	DWR_RD0999_05_s _ 2020_276				
Comment Code					
V1 : Control annual grass and weeds on the levee slopes and easements.					
Inspector Comment					

No Photos

LM Start	<b>0.42</b>	Rating **	M	Issue No.	<b>57</b>
LM End	<b>0.42</b>	Issue Type +	Ma	Location *	LS
Category	Earthen Levee		GPS Latitude/Longitude		
			Start	End	
Item	Vegetation		38.338428 °	38.338428 °	
			-121.582265 °	-121.582265 °	
DWR ID	DWR_RD0999_05_s _ 2020_57				
Comment Code					
V2 : Remove the wild growth other than native grasses from the levee slopes.					
Inspector Comment					

No Photos

LM Start	<b>0.68</b>	Rating **	M	Issue No.	<b>274</b>
LM End	<b>0.68</b>	Issue Type +	Ma	Location *	LS
Category	Earthen Levee		GPS Latitude/Longitude		
			Start	End	
Item	Vegetation		38.342022 °	38.342138 °	
			-121.581397 °	-121.581345 °	
DWR ID	DWR_RD0999_05_s _ 2020_274				
Comment Code					
V1 : Control annual grass and weeds on the levee slopes and easements.					
Inspector Comment					

No Photos

<b>* Location</b> LS : Land Side    N/A : Not Applicable WS : Water Side CR : Crown	<b>** Rating</b> A : Acceptable M : Minimally Acceptable U : Unacceptable	N : Not Inspected/Rated C : Corrected A/W : Acceptable but Monitor & Maintain	<b>+ Issue Type</b> Ma : Maintenance Deficiency Ob : Design & System Obsolescence En : Enforcement
--	--	---	---

**Flood Control Project Maintenance  
Levee Inspections**

## Maintenance Issue Types Only, Levee Inspection Report By Mile - Spring 2020

### Reclamation District No. 0999 Netherlands

Waterway	Bank	Unit Miles	Inspection Start/End	Inspector
Unit No. 05 Elk Slough	Right	9.48	04/29/2020 04/30/2020	Luz Dial

LM Start	0.78	Rating **	M	Issue No.	128
LM End	0.79	Issue Type +	Ma	Location *	LS
Category	Earthen Levee			GPS Latitude/Longitude	
				Start	End
Item	Trim / Thin Trees			38.343495 °	38.343617 °
				-121.581282 °	-121.581249 °
DWR ID	DWR_RD0999_05_s_2012_128				
Comment Code					
T3 : Trim and thin trees to allow visibility of the ground and room to flood fight.					
Inspector Comment					

Photo 1 of 1 : SP\_2020\_RD0999\_236\_128\_20200302\_00050.jpg



Looking northwest at untrimmed trees on landward slope. (Spring 2015)

LM Start	0.84	Rating **	M	Issue No.	10
LM End	0.84	Issue Type +	Ma	Location *	WS
Category	Earthen Levee			GPS Latitude/Longitude	
				Start	End
Item	Vegetation			38.344294 °	38.344294 °
				-121.581054 °	-121.581054 °
DWR ID	DWR_RD0999_05_s_2018_10				
Comment Code					
V2 : Remove the wild growth other than native grasses from the levee slopes.					
Inspector Comment					
Clear vegetation from the WS slope within the vegetation management zone.					

Photo 1 of 1 : SP\_2020\_RD0999\_236\_10\_20200302\_00005.jpg



Vegetation waterside looking north. Spring 2018

LM Start	0.87	Rating **	M	Issue No.	53
LM End	0.87	Issue Type +	Ma	Location *	WS
Category	Earthen Levee			GPS Latitude/Longitude	
				Start	End
Item	Vegetation			38.344833 °	38.344833 °
				-121.580932 °	-121.580932 °
DWR ID	DWR_RD0999_05_s_2019_53				
Comment Code					
V2 : Remove the wild growth other than native grasses from the levee slopes.					
Inspector Comment					

No Photos

<b>* Location</b> LS : Land Side    N/A : Not Applicable WS : Water Side CR : Crown	<b>** Rating</b> A : Acceptable M : Minimally Acceptable U : Unacceptable	N : Not Inspected/Rated C : Corrected A/W : Acceptable but Monitor & Maintain	<b>+ Issue Type</b> Ma : Maintenance Deficiency Ob : Design & System Obsolescence En : Enforcement
--	--	---	---

**Flood Control Project Maintenance  
Levee Inspections**

**Maintenance Issue Types Only, Levee Inspection Report By Mile - Spring 2020**

**Reclamation District No. 0999 Netherlands**

Waterway	Bank	Unit Miles	Inspection Start/End	Inspector
Unit No. 05 Elk Slough	Right	9.48	04/29/2020 04/30/2020	Luz Dial

LM Start	1.03	Rating **	M	Issue No.	146
LM End	1.06	Issue Type +	Ma	Location *	LS
Category	Earthen Levee			GPS Latitude/Longitude	
				Start	End
Item	Trim / Thin Trees			38.346888 °	38.347331 °
				-121.579868 °	-121.579582 °
DWR ID	DWR_RD0999_05_f_2013_146				
Comment Code					
T3 : Trim and thin trees to allow visibility of the ground and room to flood fight.					
Inspector Comment					

No Photos

LM Start	1.03	Rating **	M	Issue No.	54
LM End	1.03	Issue Type +	Ma	Location *	WS
Category	Earthen Levee			GPS Latitude/Longitude	
				Start	End
Item	Vegetation			38.346937 °	38.346937 °
				-121.579840 °	-121.579840 °
DWR ID	DWR_RD0999_05_s_2019_54				
Comment Code					
V2 : Remove the wild growth other than native grasses from the levee slopes.					
Inspector Comment					

No Photos

LM Start	1.06	Rating **	M	Issue No.	55
LM End	1.06	Issue Type +	Ma	Location *	WS
Category	Earthen Levee			GPS Latitude/Longitude	
				Start	End
Item	Vegetation			38.347332 °	38.347332 °
				-121.579503 °	-121.579503 °
DWR ID	DWR_RD0999_05_s_2019_55				
Comment Code					
V2 : Remove the wild growth other than native grasses from the levee slopes.					
Inspector Comment					

No Photos

<b>* Location</b> LS : Land Side    N/A : Not Applicable WS : Water Side CR : Crown	<b>** Rating</b> A : Acceptable M : Minimally Acceptable U : Unacceptable	N : Not Inspected/Rated C : Corrected A/W : Acceptable but Monitor & Maintain	<b>+ Issue Type</b> Ma : Maintenance Deficiency Ob : Design & System Obsolescence En : Enforcement
--	--	---	---

**Flood Control Project Maintenance  
Levee Inspections**

## Maintenance Issue Types Only, Levee Inspection Report By Mile - Spring 2020

### Reclamation District No. 0999 Netherlands

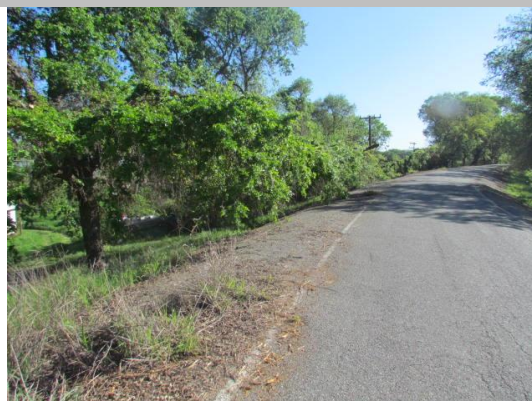
Waterway	Bank	Unit Miles	Inspection Start/End	Inspector
Unit No. 05 Elk Slough	Right	9.48	04/29/2020 04/30/2020	Luz Dial

LM Start	1.15	Rating **	M	Issue No.	272
LM End	1.18	Issue Type +	Ma	Location *	WS
Category	Earthen Levee			GPS Latitude/Longitude	
				Start	End
Item	Vegetation			38.348225 °	38.348305 °
				-121.578525 °	-121.577957 °
DWR ID	DWR_RD0999_05_s _ 2020_272				
Comment Code					
V1 : Control annual grass and weeds on the levee slopes and easements.					
Inspector Comment					

No Photos

LM Start	1.15	Rating **	M	Issue No.	15
LM End	1.19	Issue Type +	Ma	Location *	LS
Category	Earthen Levee			GPS Latitude/Longitude	
				Start	End
Item	Trim / Thin Trees			38.348237 °	38.348328 °
				-121.578440 °	-121.577735 °
DWR ID	DWR_RD0999_05_s _ 2012_15				
Comment Code					
T3 : Trim and thin trees to allow visibility of the ground and room to flood fight.					
Inspector Comment					

Photo 1 of 1 : SP\_2020\_RD0999\_236\_15\_20200302\_00011.jpg



Looking north at untrimmed trees on landward slope and toe.

LM Start	1.17	Rating **	M	Issue No.	273
LM End	1.17	Issue Type +	Ma	Location *	WS
Category	Earthen Levee			GPS Latitude/Longitude	
				Start	End
Item	Encroachments			38.348307 °	38.348307 °
				-121.578045 °	-121.578045 °
DWR ID	DWR_RD0999_05_s _ 2020_273				
Comment Code					
TR : Tree or limb					
Inspector Comment					
Remove the large tree debris on the waterside slope,					

No Photos

<b>* Location</b> LS : Land Side    N/A : Not Applicable WS : Water Side CR : Crown	<b>** Rating</b> A : Acceptable M : Minimally Acceptable U : Unacceptable	N : Not Inspected/Rated C : Corrected A/W : Acceptable but Monitor & Maintain	<b>+ Issue Type</b> Ma : Maintenance Deficiency Ob : Design & System Obsolescence En : Enforcement
--	--	---	---

**Flood Control Project Maintenance  
Levee Inspections**

**Maintenance Issue Types Only, Levee Inspection Report By Mile - Spring 2020**

**Reclamation District No. 0999 Netherlands**

Waterway	Bank	Unit Miles	Inspection Start/End	Inspector
Unit No. 05 Elk Slough	Right	9.48	04/29/2020 04/30/2020	Luz Dial

LM Start	<b>1.22</b>	Rating **	M	Issue No.	<b>271</b>
LM End	<b>1.25</b>	Issue Type +	Ma	Location *	LS
Category	Earthen Levee		GPS Latitude/Longitude		
			Start	End	
Item	Trim / Thin Trees		38.348375 °	38.348352 °	
			-121.577227 °	-121.576583 °	
DWR ID	DWR_RD0999_05_s _ 2020_271				
Comment Code					
T3 : Trim and thin trees to allow visibility of the ground and room to flood fight.					
Inspector Comment					

No Photos

LM Start	<b>1.30</b>	Rating **	M	Issue No.	<b>36</b>
LM End	<b>1.30</b>	Issue Type +	Ma	Location *	WS
Category	Earthen Levee		GPS Latitude/Longitude		
			Start	End	
Item	Trim / Thin Trees		38.348252 °	38.348252 °	
			-121.575704 °	-121.575704 °	
DWR ID	DWR_RD0999_05_s _ 2020_36				
Comment Code					
T1 : Trim trees to at least five feet above ground level.					
Inspector Comment					

No Photos

LM Start	<b>1.33</b>	Rating **	M	Issue No.	<b>59</b>
LM End	<b>1.37</b>	Issue Type +	Ma	Location *	WS
Category	Earthen Levee		GPS Latitude/Longitude		
			Start	End	
Item	Vegetation		38.348223 °	38.348160 °	
			-121.575145 °	-121.574472 °	
DWR ID	DWR_RD0999_05_s _ 2019_59				
Comment Code					
V2 : Remove the wild growth other than native grasses from the levee slopes.					
Inspector Comment					

No Photos

<b>* Location</b> LS : Land Side    N/A : Not Applicable WS : Water Side CR : Crown	<b>** Rating</b> A : Acceptable M : Minimally Acceptable U : Unacceptable	N : Not Inspected/Rated C : Corrected A/W : Acceptable but Monitor & Maintain	<b>+ Issue Type</b> Ma : Maintenance Deficiency Ob : Design & System Obsolescence En : Enforcement
--	--	---	---

**Flood Control Project Maintenance  
Levee Inspections**

**Maintenance Issue Types Only, Levee Inspection Report By Mile - Spring 2020**

**Reclamation District No. 0999 Netherlands**

Waterway	Bank	Unit Miles	Inspection Start/End	Inspector
Unit No. 05 Elk Slough	Right	9.48	04/29/2020 04/30/2020	Luz Dial

LM Start	<b>1.42</b>	Rating **	M	Issue No.	<b>60</b>
LM End	<b>1.42</b>	Issue Type +	Ma	Location *	WS
Category	Earthen Levee		GPS Latitude/Longitude		
			Start	End	
Item	Vegetation		38.348152 °	38.348152 °	
			-121.573605 °	-121.573605 °	
DWR ID	DWR_RD0999_05_s _ 2019_60				
Comment Code					
V2 : Remove the wild growth other than native grasses from the levee slopes.					
Inspector Comment					

No Photos

LM Start	<b>1.43</b>	Rating **	M	Issue No.	<b>268</b>
LM End	<b>1.61</b>	Issue Type +	Ma	Location *	WS
Category	Earthen Levee		GPS Latitude/Longitude		
			Start	End	
Item	Vegetation		38.348148 °	38.350795 °	
			-121.573398 °	-121.573960 °	
DWR ID	DWR_RD0999_05_s _ 2020_268				
Comment Code					
V1 : Control annual grass and weeds on the levee slopes and easements.					
Inspector Comment					

No Photos

LM Start	<b>1.43</b>	Rating **	A/W	Issue No.	<b>61</b>
LM End	<b>1.43</b>	Issue Type +	Ma	Location *	WS
Category	Earthen Levee		GPS Latitude/Longitude		
			Start	End	
Item	Slope Stability		38.348283 °	38.348283 °	
			-121.573347 °	-121.573347 °	
DWR ID	DWR_RD0999_05_s _ 2020_61				
Comment Code					
S2 : Repair the levee slope damaged by foot traffic and prevent access where possible.					
Inspector Comment					
Monitor two footpaths.					

No Photos

<b>* Location</b> LS : Land Side    N/A : Not Applicable WS : Water Side CR : Crown	<b>** Rating</b> A : Acceptable M : Minimally Acceptable U : Unacceptable	N : Not Inspected/Rated C : Corrected A/W : Acceptable but Monitor & Maintain	<b>+ Issue Type</b> Ma : Maintenance Deficiency Ob : Design & System Obsolescence En : Enforcement
--	--	---	---



**Flood Control Project Maintenance  
Levee Inspections**

**Maintenance Issue Types Only, Levee Inspection Report By Mile - Spring 2020**

**Reclamation District No. 0999 Netherlands**

Waterway	Bank	Unit Miles	Inspection Start/End	Inspector
Unit No. 05 Elk Slough	Right	9.48	04/29/2020 04/30/2020	Luz Dial

LM Start	1.44	Rating **	M	Issue No.	270
LM End	1.44	Issue Type +	Ma	Location *	WS
Category	Earthen Levee			GPS Latitude/Longitude	
				Start	End
Item	Trim / Thin Trees			38.348368 °	38.348368 °
				-121.573232 °	-121.573232 °
DWR ID	DWR_RD0999_05_s _ 2020_270				
Comment Code					
T1 : Trim trees to at least five feet above ground level.					
Inspector Comment					

No Photos

LM Start	1.58	Rating **	M	Issue No.	269
LM End	1.58	Issue Type +	Ma	Location *	WS
Category	Earthen Levee			GPS Latitude/Longitude	
				Start	End
Item	Encroachments			38.350278 °	38.350278 °
				-121.573823 °	-121.573823 °
DWR ID	DWR_RD0999_05_s _ 2020_269				
Comment Code					
PR : Prunings					
Inspector Comment					

No Photos

LM Start	1.64	Rating **	M	Issue No.	267
LM End	1.67	Issue Type +	Ma	Location *	LS
Category	Earthen Levee			GPS Latitude/Longitude	
				Start	End
Item	Vegetation			38.351092 °	38.351643 °
				-121.573992 °	-121.574078 °
DWR ID	DWR_RD0999_05_s_ 2020_267				
Comment Code					
V1 : Control annual grass and weeds on the levee slopes and easements.					
Inspector Comment					

No Photos

<b>* Location</b> LS : Land Side    N/A : Not Applicable WS : Water Side CR : Crown	<b>** Rating</b> A : Acceptable M : Minimally Acceptable U : Unacceptable	N : Not Inspected/Rated C : Corrected A/W : Acceptable but Monitor & Maintain	<b>+ Issue Type</b> Ma : Maintenance Deficiency Ob : Design & System Obsolescence En : Enforcement
--	--	---	---

**Flood Control Project Maintenance  
Levee Inspections**

## Maintenance Issue Types Only, Levee Inspection Report By Mile - Spring 2020

### Reclamation District No. 0999 Netherlands

Waterway	Bank	Unit Miles	Inspection Start/End	Inspector
Unit No. 05 Elk Slough	Right	9.48	04/29/2020 04/30/2020	Luz Dial

LM Start	1.69	Rating **	M	Issue No.	65
LM End	1.69	Issue Type +	Ma	Location *	CR
Category	Earthen Levee			GPS Latitude/Longitude	
				Start	End
Item	Trim / Thin Trees			38.351837 °	38.351837 °
				-121.574058 °	-121.574058 °
DWR ID	DWR_RD0999_05_f_2019_65				
Comment Code					
T4 : Trim trees over roadway to at least 12 feet above ground level.					
Inspector Comment					

No Photos

LM Start	1.69	Rating **	U	Issue No.	199
LM End	1.69	Issue Type +	Ma	Location *	LS
Category	Earthen Levee			GPS Latitude/Longitude	
				Start	End
Item	Vegetation			38.351957 °	38.351957 °
				-121.574096 °	-121.574096 °
DWR ID	DWR_RD0999_05_f_2014_199				
Comment Code					
V4 : Elderberries are blocking visibility and flood fight capability.					
Inspector Comment					

Photo 1 of 1 : SP\_2020\_RD0999\_236\_199\_20200302\_00080.jpg



Looking northwest at dense vegetation on landward slope.

LM Start	1.70	Rating **	M	Issue No.	21
LM End	1.75	Issue Type +	Ma	Location *	WS
Category	Earthen Levee			GPS Latitude/Longitude	
				Start	End
Item	Trim / Thin Trees			38.352088 °	38.352683 °
				-121.574052 °	-121.574090 °
DWR ID	DWR_RD0999_05_s_2012_21				
Comment Code					
T1 : Trim trees to at least five feet above ground level.					
Inspector Comment					
LMA sprayed vegetation but needs to clear debris.					

No Photos

<b>* Location</b> LS : Land Side    N/A : Not Applicable WS : Water Side CR : Crown	<b>** Rating</b> A : Acceptable M : Minimally Acceptable U : Unacceptable	N : Not Inspected/Rated C : Corrected A/W : Acceptable but Monitor & Maintain	<b>+ Issue Type</b> Ma : Maintenance Deficiency Ob : Design & System Obsolescence En : Enforcement
--	--	---	---

**Flood Control Project Maintenance  
Levee Inspections**

**Maintenance Issue Types Only, Levee Inspection Report By Mile - Spring 2020**

**Reclamation District No. 0999 Netherlands**

Waterway	Bank	Unit Miles	Inspection Start/End	Inspector
Unit No. 05 Elk Slough	Right	9.48	04/29/2020 04/30/2020	Luz Dial

LM Start	<b>1.74</b>	Rating **	M	Issue No.	<b>266</b>
LM End	<b>1.78</b>	Issue Type +	Ma	Location *	LS
Category	Earthen Levee		GPS Latitude/Longitude		
			Start	End	
Item	Vegetation		38.352630 °	38.353202 °	
			-121.574148 °	-121.574007 °	
DWR ID	DWR_RD0999_05_s_2020_266				
Comment Code					
V1 : Control annual grass and weeds on the levee slopes and easements.					
Inspector Comment					

No Photos

LM Start	<b>2.27</b>	Rating **	M	Issue No.	<b>265</b>
LM End	<b>2.28</b>	Issue Type +	Ma	Location *	WS
Category	Earthen Levee		GPS Latitude/Longitude		
			Start	End	
Item	Vegetation		38.354433 °	38.354447 °	
			-121.566843 °	-121.566637 °	
DWR ID	DWR_RD0999_05_s_2020_265				
Comment Code					
V2 : Remove the wild growth other than native grasses from the levee slopes.					
Inspector Comment					

No Photos

LM Start	<b>2.32</b>	Rating **	M	Issue No.	<b>69</b>
LM End	<b>2.32</b>	Issue Type +	Ma	Location *	WS
Category	Earthen Levee		GPS Latitude/Longitude		
			Start	End	
Item	Encroachments		38.354655 °	38.354655 °	
			-121.565955 °	-121.565955 °	
DWR ID	DWR_RD0999_05_f_2019_69				
Comment Code					
TR : Tree or limb					
Inspector Comment					
Remove cut tree logs from the waterside slope.					

No Photos

<b>* Location</b> LS : Land Side    N/A : Not Applicable WS : Water Side CR : Crown	<b>** Rating</b> A : Acceptable M : Minimally Acceptable U : Unacceptable	N : Not Inspected/Rated C : Corrected A/W : Acceptable but Monitor & Maintain	<b>+ Issue Type</b> Ma : Maintenance Deficiency Ob : Design & System Obsolescence En : Enforcement
--	--	---	---

**Flood Control Project Maintenance  
Levee Inspections**

**Maintenance Issue Types Only, Levee Inspection Report By Mile - Spring 2020**

**Reclamation District No. 0999 Netherlands**

Waterway	Bank	Unit Miles	Inspection Start/End	Inspector
Unit No. 05 Elk Slough	Right	9.48	04/29/2020 04/30/2020	Luz Dial

LM Start	2.56	Rating **	M	Issue No.	264
LM End	2.56	Issue Type +	Ma	Location *	WS
Category	Earthen Levee			GPS Latitude/Longitude	
				Start	End
Item	Erosion / Bank Caving			38.356910 °	38.356910 °
				-121.562635 °	-121.562635 °
DWR ID	DWR_RD0999_05_s_2020_264				
Comment Code					
E2 : Schedule repair of erosion site prior to the next inspection.					
Inspector Comment					
Repair erosion due to a fallen tree with exposed rootball.					

Photo 1 of 1 : SP\_2020\_RD0999\_236\_264\_20200508\_00174.jpg



View of erosion caused by a fallen tree with exposed rootball. Spring 2020

LM Start	2.92	Rating **	M	Issue No.	68
LM End	2.92	Issue Type +	Ma	Location *	WS
Category	Earthen Levee			GPS Latitude/Longitude	
				Start	End
Item	Encroachments			38.361977 °	38.361977 °
				-121.563343 °	-121.563343 °
DWR ID	DWR_RD0999_05_s_2019_68				
Comment Code					
PR : Prunings					
Inspector Comment					
Prunings need to be cleared from the waterside slope.					

No Photos

LM Start	2.96	Rating **	A/W	Issue No.	263
LM End	2.96	Issue Type +	Ma	Location *	WS
Category	Earthen Levee			GPS Latitude/Longitude	
				Start	End
Item	Erosion / Bank Caving			38.362492 °	38.362492 °
				-121.563362 °	-121.563362 °
DWR ID	DWR_RD0999_05_s_2020_263				
Comment Code					
E1 : Note and monitor erosion site.					
Inspector Comment					
Monitor the bank where a large tree has fallen.					

No Photos

<b>* Location</b> LS : Land Side    N/A : Not Applicable WS : Water Side CR : Crown		<b>** Rating</b> A : Acceptable                      N : Not Inspected/Rated M : Minimally Acceptable        C : Corrected U : Unacceptable                  A/W : Acceptable but Monitor & Maintain		<b>+ Issue Type</b> Ma : Maintenance Deficiency Ob : Design & System Obsolescence En : Enforcement	
--	--	---	--	---	--

**Flood Control Project Maintenance  
Levee Inspections**

**Maintenance Issue Types Only, Levee Inspection Report By Mile - Spring 2020**

**Reclamation District No. 0999 Netherlands**

Waterway	Bank	Unit Miles	Inspection Start/End	Inspector
Unit No. 05 Elk Slough	Right	9.48	04/29/2020 04/30/2020	Luz Dial

LM Start	<b>3.06</b>	Rating **	M	Issue No.	<b>262</b>							
LM End	<b>3.06</b>	Issue Type +	Ma	Location *	LS							
Category	Earthen Levee		GPS Latitude/Longitude									
			Start	End								
Item	Encroachments		38.363865 °	38.363865 °								
			-121.562858 °	-121.562858 °								
DWR ID	DWR_RD0999_05_s _ 2020_262											
Comment Code												
TR : Tree or limb												
Inspector Comment												
Remove large tree debris from the landside slope.												

No Photos

LM Start	<b>3.19</b>	Rating **	M	Issue No.	<b>261</b>							
LM End	<b>3.19</b>	Issue Type +	Ma	Location *	LS							
Category	Earthen Levee		GPS Latitude/Longitude									
			Start	End								
Item	Trim / Thin Trees		38.364702 °	38.364702 °								
			-121.560667 °	-121.560667 °								
DWR ID	DWR_RD0999_05_s _ 2020_261											
Comment Code												
T1 : Trim trees to at least five feet above ground level.												
Inspector Comment												

No Photos

LM Start	<b>3.20</b>	Rating **	M	Issue No.	<b>260</b>							
LM End	<b>3.20</b>	Issue Type +	Ma	Location *	WS							
Category	Earthen Levee		GPS Latitude/Longitude									
			Start	End								
Item	Erosion / Bank Caving		38.364702 °	38.364702 °								
			-121.560565 °	-121.560565 °								
DWR ID	DWR_RD0999_05_s _ 2020_260											
Comment Code												
E2 : Schedule repair of erosion site prior to the next inspection.												
Inspector Comment												
Repair erosion caused by a fallen tree with an exposed rootball.												

Photo 1 of 1 : SP\_2020\_RD0999\_236\_260\_20200508\_00173.jpg



View of erosion caused by a fallen tree with exposed rootball. Spring 2020

<b>* Location</b> LS : Land Side    N/A : Not Applicable WS : Water Side CR : Crown	<b>** Rating</b> A : Acceptable M : Minimally Acceptable U : Unacceptable	N : Not Inspected/Rated C : Corrected A/W : Acceptable but Monitor & Maintain	<b>+ Issue Type</b> Ma : Maintenance Deficiency Ob : Design & System Obsolescence En : Enforcement
--	--	---	---

**Flood Control Project Maintenance  
Levee Inspections**

**Maintenance Issue Types Only, Levee Inspection Report By Mile - Spring 2020**

**Reclamation District No. 0999 Netherlands**

Waterway	Bank	Unit Miles	Inspection Start/End	Inspector
Unit No. 05 Elk Slough	Right	9.48	04/29/2020 04/30/2020	Luz Dial

LM Start	<b>3.20</b>	Rating **	M	Issue No.	<b>258</b>
LM End	<b>3.33</b>	Issue Type +	Ma	Location *	LS
Category	Earthen Levee		GPS Latitude/Longitude		
			Start	End	
Item	Vegetation		38.364713 °	38.364162 °	
			-121.560398 °	-121.558260 °	
DWR ID	DWR_RD0999_05_s _ 2020_258				
Comment Code					
V1 : Control annual grass and weeds on the levee slopes and easements.					
Inspector Comment					

No Photos

LM Start	<b>3.22</b>	Rating **	M	Issue No.	<b>259</b>
LM End	<b>3.29</b>	Issue Type +	Ma	Location *	WS
Category	Earthen Levee		GPS Latitude/Longitude		
			Start	End	
Item	Vegetation		38.364672 °	38.364367 °	
			-121.560042 °	-121.558955 °	
DWR ID	DWR_RD0999_05_s _ 2020_259				
Comment Code					
V1 : Control annual grass and weeds on the levee slopes and easements.					
Inspector Comment					

No Photos

LM Start	<b>3.34</b>	Rating **	M	Issue No.	<b>257</b>
LM End	<b>3.34</b>	Issue Type +	Ma	Location *	WS
Category	Earthen Levee		GPS Latitude/Longitude		
			Start	End	
Item	Encroachments		38.364070 °	38.364070 °	
			-121.557948 °	-121.557948 °	
DWR ID	DWR_RD0999_05_s _ 2020_257				
Comment Code					
PR : Prunings					
Inspector Comment					

No Photos

<b>* Location</b> LS : Land Side    N/A : Not Applicable WS : Water Side CR : Crown	<b>** Rating</b> A : Acceptable M : Minimally Acceptable U : Unacceptable	N : Not Inspected/Rated C : Corrected A/W : Acceptable but Monitor & Maintain	<b>+ Issue Type</b> Ma : Maintenance Deficiency Ob : Design & System Obsolescence En : Enforcement
--	--	---	---



**Flood Control Project Maintenance  
Levee Inspections**

## Maintenance Issue Types Only, Levee Inspection Report By Mile - Spring 2020

### Reclamation District No. 0999 Netherlands

Waterway	Bank	Unit Miles	Inspection Start/End	Inspector
Unit No. 05 Elk Slough	Right	9.48	04/29/2020 04/30/2020	Luz Dial

LM Start	3.38	Rating **	M	Issue No.	256
LM End	3.40	Issue Type +	Ma	Location *	WS
Category	Earthen Levee			GPS Latitude/Longitude	
				Start	End
Item	Encroachments			38.363945 °	38.363913 °
				-121.557293 °	-121.557030 °
DWR ID	DWR_RD0999_05_s_2020_256				
Comment Code					
PR : Prunings					
Inspector Comment					

No Photos

LM Start	3.53	Rating **	U	Issue No.	254
LM End	3.65	Issue Type +	Ma	Location *	LS
Category	Earthen Levee			GPS Latitude/Longitude	
				Start	End
Item	Vegetation			38.365392 °	38.367172 °
				-121.556632 °	-121.556707 °
DWR ID	DWR_RD0999_05_s_2020_254				
Comment Code					
V2 : Remove the wild growth other than native grasses from the levee slopes.					
Inspector Comment					

Photo 1 of 1 : SP\_2020\_RD0999\_236\_254\_20200508\_00172.jpg



View of landside vegetation. Spring 2020

LM Start	3.55	Rating **	M	Issue No.	83
LM End	3.55	Issue Type +	Ma	Location *	WS
Category	Earthen Levee			GPS Latitude/Longitude	
				Start	End
Item	Erosion / Bank Caving			38.365742 °	38.365742 °
				-121.556778 °	-121.556778 °
DWR ID	DWR_RD0999_05_f_2018_83				
Comment Code					
E1 : Note and monitor erosion site.					
Inspector Comment					
Repair slope damage caused by a large fallen tree.					

Photo 1 of 1 : SP\_2020\_RD0999\_236\_83\_20200302\_00031.jpg



View of a fallen tree and slope damage. Fall 2018

**\* Location**

LS : Land Side    N/A : Not Applicable  
WS : Water Side  
CR : Crown

**\*\* Rating**

A : Acceptable                      N : Not Inspected/Rated  
M : Minimally Acceptable        C : Corrected  
U : Unacceptable                  A/W : Acceptable but Monitor & Maintain

**+ Issue Type**

Ma : Maintenance Deficiency  
Ob : Design & System Obsolescence  
En : Enforcement

**Flood Control Project Maintenance  
Levee Inspections**

**Maintenance Issue Types Only, Levee Inspection Report By Mile - Spring 2020**

**Reclamation District No. 0999 Netherlands**

Waterway	Bank	Unit Miles	Inspection Start/End	Inspector
Unit No. 05 Elk Slough	Right	9.48	04/29/2020 04/30/2020	Luz Dial

LM Start	<b>3.55</b>	Rating **	M	Issue No.	<b>255</b>
LM End	<b>3.62</b>	Issue Type +	Ma	Location *	WS
Category	Earthen Levee		GPS Latitude/Longitude		
			Start	End	
Item	Vegetation		38.365762 °	38.366698 °	
			-121.556753 °	-121.556843 °	
DWR ID	DWR_RD0999_05_s _ 2020_255				
Comment Code					
V2 : Remove the wild growth other than native grasses from the levee slopes.					
Inspector Comment					

No Photos

LM Start	<b>3.66</b>	Rating **	M	Issue No.	<b>250</b>
LM End	<b>3.96</b>	Issue Type +	Ma	Location *	WS
Category	Earthen Levee		GPS Latitude/Longitude		
			Start	End	
Item	Vegetation		38.367323 °	38.369168 °	
			-121.556597 °	-121.552590 °	
DWR ID	DWR_RD0999_05_s _ 2020_250				
Comment Code					
V2 : Remove the wild growth other than native grasses from the levee slopes.					
Inspector Comment					

No Photos

LM Start	<b>3.67</b>	Rating **	M	Issue No.	<b>72</b>
LM End	<b>3.67</b>	Issue Type +	Ma	Location *	WS
Category	Earthen Levee		GPS Latitude/Longitude		
			Start	End	
Item	Trim / Thin Trees		38.367430 °	38.367430 °	
			-121.556580 °	-121.556580 °	
DWR ID	DWR_RD0999_05_s _ 2019_72				
Comment Code					
T1 : Trim trees to at least five feet above ground level.					
Inspector Comment					

No Photos

<b>* Location</b> LS : Land Side    N/A : Not Applicable WS : Water Side CR : Crown	<b>** Rating</b> A : Acceptable M : Minimally Acceptable U : Unacceptable	N : Not Inspected/Rated C : Corrected A/W : Acceptable but Monitor & Maintain	<b>+ Issue Type</b> Ma : Maintenance Deficiency Ob : Design & System Obsolescence En : Enforcement
--	--	---	---



**Flood Control Project Maintenance  
Levee Inspections**

**Maintenance Issue Types Only, Levee Inspection Report By Mile - Spring 2020**

**Reclamation District No. 0999 Netherlands**

Waterway	Bank	Unit Miles	Inspection Start/End	Inspector
Unit No. 05 Elk Slough	Right	9.48	04/29/2020 04/30/2020	Luz Dial

LM Start	<b>3.82</b>	Rating **	M	Issue No.	<b>251</b>
LM End	<b>3.93</b>	Issue Type +	Ma	Location *	LS
Category	Earthen Levee		GPS Latitude/Longitude		
			Start	End	
Item	Vegetation		38.368180 °	38.368758 °	
			-121.554080 °	-121.552457 °	
DWR ID	DWR_RD0999_05_s_2020_251				
Comment Code					
V2 : Remove the wild growth other than native grasses from the levee slopes.					
Inspector Comment					

No Photos

LM Start	<b>3.93</b>	Rating **	M	Issue No.	<b>79</b>
LM End	<b>3.93</b>	Issue Type +	Ma	Location *	CR
Category	Earthen Levee		GPS Latitude/Longitude		
			Start	End	
Item	Trim / Thin Trees		38.368767 °	38.368767 °	
			-121.552425 °	-121.552425 °	
DWR ID	DWR_RD0999_05_f_2019_79				
Comment Code					
T1 : Trim trees to at least five feet above ground level.					
Inspector Comment					

No Photos

LM Start	<b>4.01</b>	Rating **	C	Issue No.	<b>90</b>
LM End	<b>4.01</b>	Issue Type +	Ma	Location *	WS
Category	Earthen Levee		GPS Latitude/Longitude		
			Start	End	
Item	Encroachments		38.369813 °	38.369813 °	
			-121.552985 °	-121.552985 °	
DWR ID	DWR_RD0999_05_f_2018_90				
Comment Code					
TR : Tree or limb					
Inspector Comment					

No Photos

<b>* Location</b> LS : Land Side    N/A : Not Applicable WS : Water Side CR : Crown	<b>** Rating</b> A : Acceptable M : Minimally Acceptable U : Unacceptable	N : Not Inspected/Rated C : Corrected A/W : Acceptable but Monitor & Maintain	<b>+ Issue Type</b> Ma : Maintenance Deficiency Ob : Design & System Obsolescence En : Enforcement
--	--	---	---

**Flood Control Project Maintenance  
Levee Inspections**

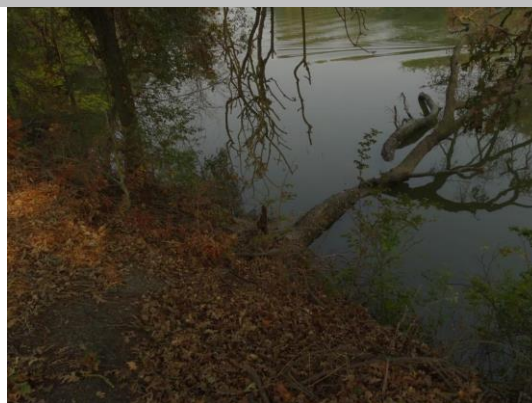
**Maintenance Issue Types Only, Levee Inspection Report By Mile - Spring 2020**

**Reclamation District No. 0999 Netherlands**

Waterway	Bank	Unit Miles	Inspection Start/End	Inspector
Unit No. 05 Elk Slough	Right	9.48	04/29/2020 04/30/2020	Luz Dial

LM Start	4.08	Rating **	M	Issue No.	91
LM End	4.08	Issue Type +	Ma	Location *	WS
Category	Earthen Levee			GPS Latitude/Longitude	
				Start	End
Item	Erosion / Bank Caving			38.370853 °	38.370853 °
				-121.553605 °	-121.553605 °
DWR ID	DWR_RD0999_05_f_2018_91				
Comment Code					
E2 : Schedule repair of erosion site prior to the next inspection.					
Inspector Comment					
Repair erosion caused by a fallen tree with exposed rootball.					

Photo 1 of 1 : SP\_2020\_RD0999\_236\_91\_20200302\_00034.jpg



View of tree with rootball exposed. Fall 2018

LM Start	4.13	Rating **	A/W	Issue No.	82
LM End	4.13	Issue Type +	Ma	Location *	WS
Category	Earthen Levee			GPS Latitude/Longitude	
				Start	End
Item	Erosion / Bank Caving			38.371470 °	38.371470 °
				-121.553528 °	-121.553528 °
DWR ID	DWR_RD0999_05_f_2019_82				
Comment Code					
E1 : Note and monitor erosion site.					
Inspector Comment					
Monitor erosion at the water's edge due to a fallen tree with exposed rootball.					

No Photos

LM Start	4.14	Rating **	M	Issue No.	249
LM End	4.18	Issue Type +	Ma	Location *	LS
Category	Earthen Levee			GPS Latitude/Longitude	
				Start	End
Item	Vegetation			38.371672 °	38.372192 °
				-121.553423 °	-121.553005 °
DWR ID	DWR_RD0999_05_s_2020_249				
Comment Code					
V1 : Control annual grass and weeds on the levee slopes and easements.					
Inspector Comment					

No Photos

<b>* Location</b> LS : Land Side    N/A : Not Applicable WS : Water Side CR : Crown	<b>** Rating</b> A : Acceptable M : Minimally Acceptable U : Unacceptable	N : Not Inspected/Rated C : Corrected A/W : Acceptable but Monitor & Maintain	<b>+ Issue Type</b> Ma : Maintenance Deficiency Ob : Design & System Obsolescence En : Enforcement
--	--	---	---



**Flood Control Project Maintenance  
Levee Inspections**

**Maintenance Issue Types Only, Levee Inspection Report By Mile - Spring 2020**

**Reclamation District No. 0999 Netherlands**

Waterway	Bank	Unit Miles	Inspection Start/End	Inspector
Unit No. 05 Elk Slough	Right	9.48	04/29/2020 04/30/2020	Luz Dial

LM Start	4.25	Rating **	M	Issue No.	12
LM End	4.25	Issue Type +	Ma	Location *	WS
Category	Earthen Levee			GPS Latitude/Longitude	
				Start	End
Item	Slope Stability			38.372872 °	38.372872 °
				-121.552185 °	-121.552185 °
DWR ID	DWR_RD0999_05_s_2017_12				
Comment Code					
S1 : Repair slope instability.					
Inspector Comment					
Sloughing damage needs to be repaired.					

Photo 1 of 1 : SP\_2020\_RD0999\_236\_12\_20200302\_00008.jpg



Looking downstream at finger erosion on downstream side of slough.

LM Start	4.27	Rating **	M	Issue No.	88
LM End	4.33	Issue Type +	Ma	Location *	WS
Category	Earthen Levee			GPS Latitude/Longitude	
				Start	End
Item	Vegetation			38.373167 °	38.374023 °
				-121.552118 °	-121.551540 °
DWR ID	DWR_RD0999_05_s_2020_88				
Comment Code					
V2 : Remove the wild growth other than native grasses from the levee slopes.					
Inspector Comment					

No Photos

LM Start	4.32	Rating **	M	Issue No.	95
LM End	4.32	Issue Type +	Ma	Location *	LS
Category	Earthen Levee			GPS Latitude/Longitude	
				Start	End
Item	Vegetation			38.373883 °	38.373883 °
				-121.551642 °	-121.551642 °
DWR ID	DWR_RD0999_05_s_2020_95				
Comment Code					
V1 : Control annual grass and weeds on the levee slopes and easements.					
Inspector Comment					

No Photos

<b>* Location</b> LS : Land Side    N/A : Not Applicable WS : Water Side CR : Crown	<b>** Rating</b> A : Acceptable M : Minimally Acceptable U : Unacceptable	N : Not Inspected/Rated C : Corrected A/W : Acceptable but Monitor & Maintain	<b>+ Issue Type</b> Ma : Maintenance Deficiency Ob : Design & System Obsolescence En : Enforcement
--	--	---	---



**Flood Control Project Maintenance  
Levee Inspections**

**Maintenance Issue Types Only, Levee Inspection Report By Mile - Spring 2020**

**Reclamation District No. 0999 Netherlands**

Waterway	Bank	Unit Miles	Inspection Start/End	Inspector
Unit No. 05 Elk Slough	Right	9.48	04/29/2020 04/30/2020	Luz Dial

LM Start	4.38	Rating **	C	Issue No.	44
LM End	4.39	Issue Type +	Ma	Location *	WS
Category	Earthen Levee			GPS Latitude/Longitude	
				Start	End
Item	Encroachments			38.374591 °	38.374617 °
				-121.550936 °	-121.550903 °
DWR ID	DWR_RD0999_05_s_2018_44				
Comment Code					
PR : Prunings					
Inspector Comment					

No Photos

LM Start	4.40	Rating **	M	Issue No.	248
LM End	4.40	Issue Type +	Ma	Location *	LS
Category	Earthen Levee			GPS Latitude/Longitude	
				Start	End
Item	Vegetation			38.374740 °	38.374740 °
				-121.550637 °	-121.550637 °
DWR ID	DWR_RD0999_05_s_2020_248				
Comment Code					
V2 : Remove the wild growth other than native grasses from the levee slopes.					
Inspector Comment					

No Photos

LM Start	4.42	Rating **	U	Issue No.	247
LM End	4.47	Issue Type +	Ma	Location *	WS
Category	Earthen Levee			GPS Latitude/Longitude	
				Start	End
Item	Vegetation			38.374920 °	38.375112 °
				-121.550397 °	-121.549525 °
DWR ID	DWR_RD0999_05_s_2020_247				
Comment Code					
V1 : Control annual grass and weeds on the levee slopes and easements.					
Inspector Comment					

Photo 1 of 1 : SP\_2020\_RD0999\_236\_247\_20200508\_00170.jpg



View of waterside vegetation. Spring 2020

<b>* Location</b> LS : Land Side    N/A : Not Applicable WS : Water Side CR : Crown	<b>** Rating</b> A : Acceptable M : Minimally Acceptable U : Unacceptable	N : Not Inspected/Rated C : Corrected A/W : Acceptable but Monitor & Maintain	<b>+ Issue Type</b> Ma : Maintenance Deficiency Ob : Design & System Obsolescence En : Enforcement
--	--	---	---

**Flood Control Project Maintenance  
Levee Inspections**

## Maintenance Issue Types Only, Levee Inspection Report By Mile - Spring 2020

### Reclamation District No. 0999 Netherlands

Waterway	Bank	Unit Miles	Inspection Start/End	Inspector
Unit No. 05 Elk Slough	Right	9.48	04/29/2020 04/30/2020	Luz Dial

LM Start	4.44	Rating **	M	Issue No.	80
LM End	4.44	Issue Type +	Ma	Location *	CR
Category	Earthen Levee			GPS Latitude/Longitude	
				Start	End
Item	Trim / Thin Trees			38.375050 °	38.375050 °
				-121.550045 °	-121.550045 °
DWR ID	DWR_RD0999_05_f_2019_80				
Comment Code					
T4 : Trim trees over roadway to at least 12 feet above ground level.					
Inspector Comment					

No Photos

LM Start	4.50	Rating **	M	Issue No.	246
LM End	4.52	Issue Type +	Ma	Location *	LS
Category	Earthen Levee			GPS Latitude/Longitude	
				Start	End
Item	Vegetation			38.375100 °	38.375077 °
				-121.548967 °	-121.548630 °
DWR ID	DWR_RD0999_05_s_2020_246				
Comment Code					
V1 : Control annual grass and weeds on the levee slopes and easements.					
Inspector Comment					

No Photos

LM Start	4.50	Rating **	M	Issue No.	245
LM End	4.59	Issue Type +	Ma	Location *	WS
Category	Earthen Levee			GPS Latitude/Longitude	
				Start	End
Item	Vegetation			38.375100 °	38.375145 °
				-121.548967 °	-121.547425 °
DWR ID	DWR_RD0999_05_s_2020_245				
Comment Code					
V1 : Control annual grass and weeds on the levee slopes and easements.					
Inspector Comment					

No Photos

<b>* Location</b> LS : Land Side    N/A : Not Applicable WS : Water Side CR : Crown	<b>** Rating</b> A : Acceptable M : Minimally Acceptable U : Unacceptable	N : Not Inspected/Rated C : Corrected A/W : Acceptable but Monitor & Maintain	<b>+ Issue Type</b> Ma : Maintenance Deficiency Ob : Design & System Obsolescence En : Enforcement
--	--	---	---

**Flood Control Project Maintenance  
Levee Inspections**

**Maintenance Issue Types Only, Levee Inspection Report By Mile - Spring 2020**

**Reclamation District No. 0999 Netherlands**

Waterway	Bank	Unit Miles	Inspection Start/End	Inspector
Unit No. 05 Elk Slough	Right	9.48	04/29/2020 04/30/2020	Luz Dial

LM Start	4.54	Rating **	M	Issue No.	98
LM End	4.54	Issue Type +	Ma	Location *	WS
Category	Earthen Levee			GPS Latitude/Longitude	
				Start	End
Item	Trim / Thin Trees			38.375077 °	38.375077 °
				-121.548225 °	-121.548225 °
DWR ID	DWR_RD0999_05_s_2019_98				
Comment Code					
T1 : Trim trees to at least five feet above ground level.					
Inspector Comment					

No Photos

LM Start	4.57	Rating **	A/W	Issue No.	102
LM End	4.57	Issue Type +	Ma	Location *	WS
Category	Earthen Levee			GPS Latitude/Longitude	
				Start	End
Item	Erosion / Bank Caving			38.375127 °	38.375127 °
				-121.547703 °	-121.547703 °
DWR ID	DWR_RD0999_05_f_2019_102				
Comment Code					
E1 : Note and monitor erosion site.					
Inspector Comment					
Monitor split tree which may have eroded the waterside slope.					

No Photos

LM Start	4.62	Rating **	U	Issue No.	28
LM End	4.62	Issue Type +	Ma	Location *	WS
Category	Earthen Levee			GPS Latitude/Longitude	
				Start	End
Item	Encroachments			38.375308 °	38.375308 °
				-121.546828 °	-121.546828 °
DWR ID	DWR_RD0999_05_s_2017_28				
Comment Code					
TR : Tree or limb					
Inspector Comment					
A fallen tree on the waterside slope is partly in the water. There is a large hole on the waterside slope.					

Photo 1 of 1 : SP\_2020\_RD0999\_236\_28\_20200302\_00016.jpg



View of dead tree on slope. Fall 2018

<b>* Location</b> LS : Land Side    N/A : Not Applicable WS : Water Side CR : Crown	<b>** Rating</b> A : Acceptable M : Minimally Acceptable U : Unacceptable	N : Not Inspected/Rated C : Corrected A/W : Acceptable but Monitor & Maintain	<b>+ Issue Type</b> Ma : Maintenance Deficiency Ob : Design & System Obsolescence En : Enforcement
--	--	---	---

**Flood Control Project Maintenance  
Levee Inspections**

**Maintenance Issue Types Only, Levee Inspection Report By Mile - Spring 2020**

**Reclamation District No. 0999 Netherlands**

Waterway	Bank	Unit Miles	Inspection Start/End	Inspector
Unit No. 05 Elk Slough	Right	9.48	04/29/2020 04/30/2020	Luz Dial

LM Start	4.65	Rating **	N	Issue No.	62
LM End	4.65	Issue Type +	Ma	Location *	WS
Category	Earthen Levee			GPS Latitude/Longitude	
				Start	End
Item	Trim / Thin Trees			38.375365 °	38.375365 °
				-121.546305 °	-121.546305 °
DWR ID	DWR_RD0999_05_s_2012_62				
Comment Code					
T5 : Tree stumps.					
Inspector Comment					

Photo 1 of 1 : SP\_2020\_RD0999\_236\_62\_20200302\_00025.jpg



View of tree stump on levee slope. Fall 2018

LM Start	4.65	Rating **	M	Issue No.	240
LM End	4.83	Issue Type +	Ma	Location *	LS
Category	Earthen Levee			GPS Latitude/Longitude	
				Start	End
Item	Vegetation			38.375392 °	38.377018 °
				-121.546180 °	-121.543738 °
DWR ID	DWR_RD0999_05_s_2020_240				
Comment Code					
V1 : Control annual grass and weeds on the levee slopes and easements.					
Inspector Comment					

No Photos

LM Start	4.68	Rating **	M	Issue No.	242
LM End	4.78	Issue Type +	Ma	Location *	CR
Category	Earthen Levee			GPS Latitude/Longitude	
				Start	End
Item	Vegetation			38.375417 °	38.376408 °
				-121.545705 °	-121.544352 °
DWR ID	DWR_RD0999_05_s_2020_242				
Comment Code					
V9 : Keep the crown roadway free of vegetation.					
Inspector Comment					

No Photos

<b>* Location</b> LS : Land Side    N/A : Not Applicable WS : Water Side CR : Crown	<b>** Rating</b> A : Acceptable M : Minimally Acceptable U : Unacceptable	N : Not Inspected/Rated C : Corrected A/W : Acceptable but Monitor & Maintain	<b>+ Issue Type</b> Ma : Maintenance Deficiency Ob : Design & System Obsolescence En : Enforcement
--	--	---	---

**Flood Control Project Maintenance  
Levee Inspections**

**Maintenance Issue Types Only, Levee Inspection Report By Mile - Spring 2020**

**Reclamation District No. 0999 Netherlands**

Waterway	Bank	Unit Miles	Inspection Start/End	Inspector
Unit No. 05 Elk Slough	Right	9.48	04/29/2020 04/30/2020	Luz Dial

LM Start	4.68	Rating **	U	Issue No.	243
LM End	4.74	Issue Type +	Ma	Location *	WS
Category	Earthen Levee			GPS Latitude/Longitude	
				Start	End
Item	Vegetation			38.375572 °	38.375995 °
				-121.545738 °	-121.544907 °
DWR ID	DWR_RD0999_05_s _ 2020_243				
Comment Code					
V2 : Remove the wild growth other than native grasses from the levee slopes.					
Inspector Comment					

Photo 1 of 1 : SP\_2020\_RD0999\_236\_243\_20200508\_00169.jpg



View of waterside vegetation. Spring 2020

LM Start	4.81	Rating **	M	Issue No.	241
LM End	4.81	Issue Type +	Ma	Location *	CR
Category	Earthen Levee			GPS Latitude/Longitude	
				Start	End
Item	Trim / Thin Trees			38.376733 °	38.376733 °
				-121.544020 °	-121.544020 °
DWR ID	DWR_RD0999_05_s _ 2020_241				
Comment Code					
T4 : Trim trees over roadway to at least 12 feet above ground level.					
Inspector Comment					

No Photos

LM Start	4.81	Rating **	M	Issue No.	238
LM End	4.99	Issue Type +	Ma	Location *	WS
Category	Earthen Levee			GPS Latitude/Longitude	
				Start	End
Item	Vegetation			38.376768 °	38.378635 °
				-121.543990 °	-121.541755 °
DWR ID	DWR_RD0999_05_s _ 2020_238				
Comment Code					
V1 : Control annual grass and weeds on the levee slopes and easements.					
Inspector Comment					

No Photos

<b>* Location</b> LS : Land Side    N/A : Not Applicable WS : Water Side CR : Crown	<b>** Rating</b> A : Acceptable M : Minimally Acceptable U : Unacceptable	N : Not Inspected/Rated C : Corrected A/W : Acceptable but Monitor & Maintain	<b>+ Issue Type</b> Ma : Maintenance Deficiency Ob : Design & System Obsolescence En : Enforcement
--	--	---	---

**Flood Control Project Maintenance  
Levee Inspections**

## Maintenance Issue Types Only, Levee Inspection Report By Mile - Spring 2020

### Reclamation District No. 0999 Netherlands

Waterway	Bank	Unit Miles	Inspection Start/End	Inspector
Unit No. 05 Elk Slough	Right	9.48	04/29/2020 04/30/2020	Luz Dial

LM Start	4.84	Rating **	M	Issue No.	239
LM End	4.84	Issue Type +	Ma	Location *	WS
Category	Earthen Levee			GPS Latitude/Longitude	
				Start	End
Item	Trim / Thin Trees			38.377070 °	38.377070 °
				-121.543637 °	-121.543637 °
DWR ID	DWR_RD0999_05_s _ 2020_239				
Comment Code					
T3 : Trim and thin trees to allow visibility of the ground and room to flood fight.					
Inspector Comment					

No Photos

LM Start	5.03	Rating **	M	Issue No.	237
LM End	5.04	Issue Type +	Ma	Location *	WS
Category	Earthen Levee			GPS Latitude/Longitude	
				Start	End
Item	Vegetation			38.379130 °	38.379235 °
				-121.541327 °	-121.541242 °
DWR ID	DWR_RD0999_05_s _ 2020_237				
Comment Code					
V2 : Remove the wild growth other than native grasses from the levee slopes.					
Inspector Comment					

No Photos

LM Start	5.04	Rating **	M	Issue No.	105
LM End	5.06	Issue Type +	Ma	Location *	WS
Category	Earthen Levee			GPS Latitude/Longitude	
				Start	End
Item	Trim / Thin Trees			38.379273 °	38.379522 °
				-121.541150 °	-121.541045 °
DWR ID	DWR_RD0999_05_s _ 2019_105				
Comment Code					
T1 : Trim trees to at least five feet above ground level.					
Inspector Comment					

No Photos

<b>* Location</b> LS : Land Side    N/A : Not Applicable WS : Water Side CR : Crown	<b>** Rating</b> A : Acceptable M : Minimally Acceptable U : Unacceptable	N : Not Inspected/Rated C : Corrected A/W : Acceptable but Monitor & Maintain	<b>+ Issue Type</b> Ma : Maintenance Deficiency Ob : Design & System Obsolescence En : Enforcement
--	--	---	---



**Flood Control Project Maintenance  
Levee Inspections**

**Maintenance Issue Types Only, Levee Inspection Report By Mile - Spring 2020**

**Reclamation District No. 0999 Netherlands**

Waterway	Bank	Unit Miles	Inspection Start/End	Inspector
Unit No. 05 Elk Slough	Right	9.48	04/29/2020 04/30/2020	Luz Dial

LM Start	<b>5.05</b>	Rating **	M	Issue No.	<b>235</b>
LM End	<b>5.29</b>	Issue Type +	Ma	Location *	WS
Category	Earthen Levee		GPS Latitude/Longitude		
			Start	End	
Item	Vegetation		38.379373 °	38.381105 °	
			-121.541165 °	-121.543883 °	
DWR ID	DWR_RD0999_05_s _ 2020_235				
Comment Code					
V1 : Control annual grass and weeds on the levee slopes and easements.					
Inspector Comment					

No Photos

LM Start	<b>5.05</b>	Rating **	M	Issue No.	<b>51</b>
LM End	<b>5.33</b>	Issue Type +	Ma	Location *	LS
Category	Earthen Levee		GPS Latitude/Longitude		
			Start	End	
Item	Vegetation		38.379373 °	38.381275 °	
			-121.541165 °	-121.544673 °	
DWR ID	DWR_RD0999_05_s _ 2020_51				
Comment Code					
V1 : Control annual grass and weeds on the levee slopes and easements.					
Inspector Comment					

No Photos

LM Start	<b>5.06</b>	Rating **	M	Issue No.	<b>106</b>
LM End	<b>5.08</b>	Issue Type +	Ma	Location *	CR
Category	Earthen Levee		GPS Latitude/Longitude		
			Start	End	
Item	Encroachments		38.379540 °	38.379742 °	
			-121.541050 °	-121.541010 °	
DWR ID	DWR_RD0999_05_s _ 2019_106				
Comment Code					
DE : Debris					
Inspector Comment					
Clear debris and prunings on the levee crown.					

No Photos

<b>* Location</b> LS : Land Side    N/A : Not Applicable WS : Water Side CR : Crown	<b>** Rating</b> A : Acceptable M : Minimally Acceptable U : Unacceptable	N : Not Inspected/Rated C : Corrected A/W : Acceptable but Monitor & Maintain	<b>+ Issue Type</b> Ma : Maintenance Deficiency Ob : Design & System Obsolescence En : Enforcement
--	--	---	---

**Flood Control Project Maintenance  
Levee Inspections**

**Maintenance Issue Types Only, Levee Inspection Report By Mile - Spring 2020**

**Reclamation District No. 0999 Netherlands**

Waterway	Bank	Unit Miles	Inspection Start/End	Inspector
Unit No. 05 Elk Slough	Right	9.48	04/29/2020 04/30/2020	Luz Dial

LM Start	5.14	Rating **	M	Issue No.	236
LM End	5.14	Issue Type +	Ma	Location *	CR
Category	Earthen Levee			GPS Latitude/Longitude	
				Start	End
Item	Trim / Thin Trees			38.380632 °	38.380632 °
				-121.541217 °	-121.541217 °
DWR ID	DWR_RD0999_05_s _ 2020_236				
Comment Code					
T4 : Trim trees over roadway to at least 12 feet above ground level.					
Inspector Comment					

No Photos

LM Start	5.30	Rating **	M	Issue No.	234
LM End	5.30	Issue Type +	Ma	Location *	WS
Category	Earthen Levee			GPS Latitude/Longitude	
				Start	End
Item	Encroachments			38.381133 °	38.381133 °
				-121.544007 °	-121.544007 °
DWR ID	DWR_RD0999_05_s _ 2020_234				
Comment Code					
TR : Tree or limb					
Inspector Comment					
Remove large tree branches from the slope.					

No Photos

LM Start	5.33	Rating **	M	Issue No.	233
LM End	5.33	Issue Type +	Ma	Location *	CR
Category	Earthen Levee			GPS Latitude/Longitude	
				Start	End
Item	Trim / Thin Trees			38.381250 °	38.381250 °
				-121.544513 °	-121.544513 °
DWR ID	DWR_RD0999_05_s _ 2020_233				
Comment Code					
T4 : Trim trees over roadway to at least 12 feet above ground level.					
Inspector Comment					

No Photos

<b>* Location</b> LS : Land Side    N/A : Not Applicable WS : Water Side CR : Crown		<b>** Rating</b> A : Acceptable                      N : Not Inspected/Rated M : Minimally Acceptable        C : Corrected U : Unacceptable                  A/W : Acceptable but Monitor & Maintain		<b>+ Issue Type</b> Ma : Maintenance Deficiency Ob : Design & System Obsolescence En : Enforcement	
--	--	---	--	---	--

**Flood Control Project Maintenance  
Levee Inspections**

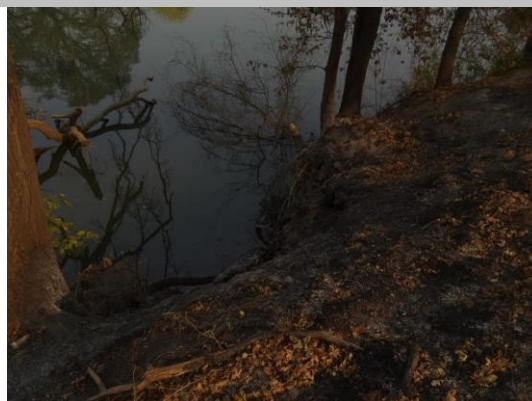
**Maintenance Issue Types Only, Levee Inspection Report By Mile - Spring 2020**

**Reclamation District No. 0999 Netherlands**

Waterway	Bank	Unit Miles	Inspection Start/End	Inspector
Unit No. 05 Elk Slough	Right	9.48	04/29/2020 04/30/2020	Luz Dial

LM Start	5.35	Rating **	U	Issue No.	97
LM End	5.35	Issue Type +	Ma	Location *	WS
Category	Earthen Levee			GPS Latitude/Longitude	
				Start	End
Item	Erosion / Bank Caving			38.381297 °	38.381297 °
				-121.545037 °	-121.545037 °
DWR ID	DWR_RD0999_05_f_2018_97				
Comment Code					
E2 : Schedule repair of erosion site prior to the next inspection.					
Inspector Comment					
Repair the levee toe damaged by fallen trees.					

Photo 1 of 1 : SP\_2020\_RD0999\_236\_97\_20200302\_00042.jpg



View of fallen tree and levee scarp. Fall 2018

LM Start	5.50	Rating **	U	Issue No.	71
LM End	5.55	Issue Type +	Ma	Location *	WS
Category	Earthen Levee			GPS Latitude/Longitude	
				Start	End
Item	Vegetation			38.382790 °	38.383548 °
				-121.546754 °	-121.546728 °
DWR ID	DWR_RD0999_05_s_2012_71				
Comment Code					
V2 : Remove the wild growth other than native grasses from the levee slopes.					
Inspector Comment					

Photo 1 of 1 : SP\_2020\_RD0999\_236\_71\_20200302\_00029.jpg



Looking northeast at dense vegetation on waterside slope.

LM Start	5.58	Rating **	M	Issue No.	230
LM End	5.61	Issue Type +	Ma	Location *	WS
Category	Earthen Levee			GPS Latitude/Longitude	
				Start	End
Item	Vegetation			38.383903 °	38.384230 °
				-121.546480 °	-121.546092 °
DWR ID	DWR_RD0999_05_s_2020_230				
Comment Code					
V2 : Remove the wild growth other than native grasses from the levee slopes.					
Inspector Comment					

No Photos

<b>* Location</b> LS : Land Side    N/A : Not Applicable WS : Water Side CR : Crown	<b>** Rating</b> A : Acceptable M : Minimally Acceptable U : Unacceptable	N : Not Inspected/Rated C : Corrected A/W : Acceptable but Monitor & Maintain	<b>+ Issue Type</b> Ma : Maintenance Deficiency Ob : Design & System Obsolescence En : Enforcement
--	--	---	---

# Reclamation District No. 0999 Netherlands

* Location	** Rating	+ Issue Type
LS : Land Side    N/A : Not Applicable	A : Acceptable                      N : Not Inspected/Rated	Ma : Maintenance Deficiency
WS : Water Side	M : Minimally Acceptable              C : Corrected	Ob : Design & System Obsolescence
CR : Crown	U : Unacceptable              A/W : Acceptable but Monitor & Maintain	En : Enforcement

**Flood Control Project Maintenance  
Levee Inspections**

## Maintenance Issue Types Only, Levee Inspection Report By Mile - Spring 2020

### Reclamation District No. 0999 Netherlands

Waterway	Bank	Unit Miles	Inspection Start/End	Inspector
Unit No. 05 Elk Slough	Right	9.48	04/29/2020 04/30/2020	Luz Dial

LM Start	5.74	Rating **	M	Issue No.	228
LM End	5.74	Issue Type +	Ma	Location *	WS
Category	Earthen Levee			GPS Latitude/Longitude	
				Start	End
Item	Encroachments			38.384592 °	38.384592 °
				-121.543712 °	-121.543712 °
DWR ID	DWR_RD0999_05_s _ 2020_228				
Comment Code					
TR : Tree or limb					
Inspector Comment					
Remove a large tree branch from the slope.					

No Photos

LM Start	5.79	Rating **	M	Issue No.	227
LM End	5.79	Issue Type +	Ma	Location *	WS
Category	Earthen Levee			GPS Latitude/Longitude	
				Start	End
Item	Encroachments			38.384725 °	38.384725 °
				-121.542887 °	-121.542887 °
DWR ID	DWR_RD0999_05_s _ 2020_227				
Comment Code					
TR : Tree or limb					
Inspector Comment					
Remove a fallen tree from the slope.					

Photo 1 of 1 : SP\_2020\_RD0999\_236\_227\_20200507\_00166.jpg



View of a fallen tree on the waterside slope. Spring 2020

LM Start	5.81	Rating **	M	Issue No.	225	
LM End	5.81	Issue Type +	Ma	Location *	WS	
Category	Earthen Levee			GPS Latitude/Longitude		
				Start		End
Item	Vegetation			38.384772 °		38.384772 °
				-121.542440 °		-121.542440 °
DWR ID	DWR_RD0999_05_s_ 2020_225					
Comment Code						
V2 : Remove the wild growth other than native grasses from the levee slopes.						
Inspector Comment						

No Photos

<b>* Location</b> LS : Land Side    N/A : Not Applicable WS : Water Side CR : Crown	<b>** Rating</b> A : Acceptable M : Minimally Acceptable U : Unacceptable	N : Not Inspected/Rated C : Corrected A/W : Acceptable but Monitor & Maintain	<b>+ Issue Type</b> Ma : Maintenance Deficiency Ob : Design & System Obsolescence En : Enforcement
--	--	---	---



**Flood Control Project Maintenance  
Levee Inspections**

**Maintenance Issue Types Only, Levee Inspection Report By Mile - Spring 2020**

**Reclamation District No. 0999 Netherlands**

Waterway	Bank	Unit Miles	Inspection Start/End	Inspector
Unit No. 05 Elk Slough	Right	9.48	04/29/2020 04/30/2020	Luz Dial

LM Start	<b>5.87</b>	Rating **	M	Issue No.	<b>223</b>
LM End	<b>5.88</b>	Issue Type +	Ma	Location *	WS
Category	Earthen Levee		GPS Latitude/Longitude		
			Start	End	
Item	Vegetation		38.385132 °	38.385147 °	
			-121.541463 °	-121.541327 °	
DWR ID	DWR_RD0999_05_s _ 2020_223				
Comment Code					
V1 : Control annual grass and weeds on the levee slopes and easements.					
Inspector Comment					

No Photos

LM Start	<b>5.89</b>	Rating **	M	Issue No.	<b>220</b>
LM End	<b>5.89</b>	Issue Type +	Ma	Location *	WS
Category	Earthen Levee		GPS Latitude/Longitude		
			Start	End	
Item	Vegetation		38.385308 °	38.385308 °	
			-121.541207 °	-121.541207 °	
DWR ID	DWR_RD0999_05_s _ 2020_220				
Comment Code					
V2 : Remove the wild growth other than native grasses from the levee slopes.					
Inspector Comment					
Remove vines that block visibility of the waterside slope.					

No Photos

LM Start	<b>5.92</b>	Rating **	M	Issue No.	<b>217</b>
LM End	<b>6.11</b>	Issue Type +	Ma	Location *	LS
Category	Earthen Levee		GPS Latitude/Longitude		
			Start	End	
Item	Vegetation		38.385615 °	38.387995 °	
			-121.540905 °	-121.542440 °	
DWR ID	DWR_RD0999_05_s _ 2020_217				
Comment Code					
V1 : Control annual grass and weeds on the levee slopes and easements.					
Inspector Comment					

No Photos

<b>* Location</b> LS : Land Side    N/A : Not Applicable WS : Water Side CR : Crown	<b>** Rating</b> A : Acceptable M : Minimally Acceptable U : Unacceptable	N : Not Inspected/Rated C : Corrected A/W : Acceptable but Monitor & Maintain	<b>+ Issue Type</b> Ma : Maintenance Deficiency Ob : Design & System Obsolescence En : Enforcement
--	--	---	---



**Flood Control Project Maintenance  
Levee Inspections**

**Maintenance Issue Types Only, Levee Inspection Report By Mile - Spring 2020**

**Reclamation District No. 0999 Netherlands**

Waterway	Bank	Unit Miles	Inspection Start/End	Inspector
Unit No. 05 Elk Slough	Right	9.48	04/29/2020 04/30/2020	Luz Dial

LM Start	<b>5.93</b>	Rating **	M	Issue No.	<b>219</b>
LM End	<b>5.93</b>	Issue Type +	Ma	Location *	CR
Category	Earthen Levee		GPS Latitude/Longitude		
			Start	End	
Item	Trim / Thin Trees		38.385802 °	38.385802 °	
			-121.540807 °	-121.540807 °	
DWR ID	DWR_RD0999_05_s_2020_219				
Comment Code					
T4 : Trim trees over roadway to at least 12 feet above ground level.					
Inspector Comment					

No Photos

LM Start	<b>5.94</b>	Rating **	M	Issue No.	<b>218</b>
LM End	<b>6.00</b>	Issue Type +	Ma	Location *	WS
Category	Earthen Levee		GPS Latitude/Longitude		
			Start	End	
Item	Vegetation		38.385980 °	38.386718 °	
			-121.540728 °	-121.541145 °	
DWR ID	DWR_RD0999_05_s_2020_218				
Comment Code					
V1 : Control annual grass and weeds on the levee slopes and easements.					
Inspector Comment					

No Photos

LM Start	<b>6.05</b>	Rating **	M	Issue No.	<b>108</b>
LM End	<b>6.05</b>	Issue Type +	Ma	Location *	LS
Category	Earthen Levee		GPS Latitude/Longitude		
			Start	End	
Item	Trim / Thin Trees		38.387158 °	38.387158 °	
			-121.541760 °	-121.541760 °	
DWR ID	DWR_RD0999_05_f_2019_108				
Comment Code					
T1 : Trim trees to at least five feet above ground level.					
Inspector Comment					

No Photos

<b>* Location</b> LS : Land Side    N/A : Not Applicable WS : Water Side CR : Crown	<b>** Rating</b> A : Acceptable M : Minimally Acceptable U : Unacceptable	N : Not Inspected/Rated C : Corrected A/W : Acceptable but Monitor & Maintain	<b>+ Issue Type</b> Ma : Maintenance Deficiency Ob : Design & System Obsolescence En : Enforcement
--	--	---	---

**Flood Control Project Maintenance  
Levee Inspections**

**Maintenance Issue Types Only, Levee Inspection Report By Mile - Spring 2020**

**Reclamation District No. 0999 Netherlands**

Waterway	Bank	Unit Miles	Inspection Start/End	Inspector
Unit No. 05 Elk Slough	Right	9.48	04/29/2020 04/30/2020	Luz Dial

LM Start	<b>6.18</b>	Rating **	M	Issue No.	<b>215</b>
LM End	<b>6.19</b>	Issue Type +	Ma	Location *	WS
Category	Earthen Levee		GPS Latitude/Longitude		
			Start	End	
Item	Vegetation		38.388860 °	38.388937 °	
			-121.542968 °	-121.542975 °	
DWR ID	DWR_RD0999_05_s _ 2020_215				
Comment Code					
V1 : Control annual grass and weeds on the levee slopes and easements.					
Inspector Comment					

No Photos

LM Start	<b>6.24</b>	Rating **	U	Issue No.	<b>214</b>
LM End	<b>6.25</b>	Issue Type +	Ma	Location *	LS
Category	Earthen Levee		GPS Latitude/Longitude		
			Start	End	
Item	Vegetation		38.389622 °	38.389842 °	
			-121.542803 °	-121.542615 °	
DWR ID	DWR_RD0999_05_s _ 2020_214				
Comment Code					
V1 : Control annual grass and weeds on the levee slopes and easements.					
Inspector Comment					

No Photos

LM Start	<b>6.31</b>	Rating **	M	Issue No.	<b>213</b>
LM End	<b>6.31</b>	Issue Type +	Ma	Location *	LS
Category	Earthen Levee		GPS Latitude/Longitude		
			Start	End	
Item	Trim / Thin Trees		38.390320 °	38.390320 °	
			-121.541862 °	-121.541862 °	
DWR ID	DWR_RD0999_05_s _ 2020_213				
Comment Code					
T1 : Trim trees to at least five feet above ground level.					
Inspector Comment					

No Photos

<b>* Location</b> LS : Land Side    N/A : Not Applicable WS : Water Side CR : Crown	<b>** Rating</b> A : Acceptable M : Minimally Acceptable U : Unacceptable	N : Not Inspected/Rated C : Corrected A/W : Acceptable but Monitor & Maintain	<b>+ Issue Type</b> Ma : Maintenance Deficiency Ob : Design & System Obsolescence En : Enforcement
--	--	---	---

**Flood Control Project Maintenance  
Levee Inspections**

**Maintenance Issue Types Only, Levee Inspection Report By Mile - Spring 2020**

**Reclamation District No. 0999 Netherlands**

Waterway	Bank	Unit Miles	Inspection Start/End	Inspector
Unit No. 05 Elk Slough	Right	9.48	04/29/2020 04/30/2020	Luz Dial

LM Start	<b>6.35</b>	Rating **	M	Issue No.	<b>211</b>
LM End	<b>6.44</b>	Issue Type +	Ma	Location *	WS
Category	Earthen Levee		GPS Latitude/Longitude		
			Start	End	
Item	Vegetation		38.390670 °	38.391533 °	
			-121.541127 °	-121.539887 °	
DWR ID	DWR_RD0999_05_s_2020_211				
Comment Code					
V1 : Control annual grass and weeds on the levee slopes and easements.					
Inspector Comment					

No Photos

LM Start	<b>6.39</b>	Rating **	M	Issue No.	<b>129</b>
LM End	<b>6.44</b>	Issue Type +	Ma	Location *	LS
Category	Earthen Levee		GPS Latitude/Longitude		
			Start	End	
Item	Trim / Thin Trees		38.390935 °	38.391527 °	
			-121.540572 °	-121.539895 °	
DWR ID	DWR_RD0999_05_f_2019_129				
Comment Code					
T1 : Trim trees to at least five feet above ground level.					
Inspector Comment					

No Photos

LM Start	<b>6.48</b>	Rating **	U	Issue No.	<b>208</b>
LM End	<b>6.64</b>	Issue Type +	Ma	Location *	LS
Category	Earthen Levee		GPS Latitude/Longitude		
			Start	End	
Item	Vegetation		38.391793 °	38.393895 °	
			-121.539350 °	-121.539448 °	
DWR ID	DWR_RD0999_05_s_2020_208				
Comment Code					
V1 : Control annual grass and weeds on the levee slopes and easements.					
Inspector Comment					

No Photos

<b>* Location</b> LS : Land Side    N/A : Not Applicable WS : Water Side CR : Crown	<b>** Rating</b> A : Acceptable M : Minimally Acceptable U : Unacceptable	N : Not Inspected/Rated C : Corrected A/W : Acceptable but Monitor & Maintain	<b>+ Issue Type</b> Ma : Maintenance Deficiency Ob : Design & System Obsolescence En : Enforcement
--	--	---	---

**Flood Control Project Maintenance  
Levee Inspections**

**Maintenance Issue Types Only, Levee Inspection Report By Mile - Spring 2020**

**Reclamation District No. 0999 Netherlands**

Waterway	Bank	Unit Miles	Inspection Start/End	Inspector
Unit No. 05 Elk Slough	Right	9.48	04/29/2020 04/30/2020	Luz Dial

LM Start	<b>6.53</b>	Rating **	U	Issue No.	<b>209</b>
LM End	<b>6.63</b>	Issue Type +	Ma	Location *	WS
Category	Earthen Levee		GPS Latitude/Longitude		
			Start	End	
Item	Vegetation		38.392417 °	38.393827 °	
			-121.538973 °	-121.539513 °	
DWR ID	DWR_RD0999_05_s _ 2020_209				
Comment Code					
V1 : Control annual grass and weeds on the levee slopes and easements.					
Inspector Comment					

No Photos

LM Start	<b>6.55</b>	Rating **	M	Issue No.	<b>210</b>
LM End	<b>6.55</b>	Issue Type +	Ma	Location *	LS
Category	Earthen Levee		GPS Latitude/Longitude		
			Start	End	
Item	Trim / Thin Trees		38.392658 °	38.392658 °	
			-121.539055 °	-121.539055 °	
DWR ID	DWR_RD0999_05_s _ 2020_210				
Comment Code					
T1 : Trim trees to at least five feet above ground level.					
Inspector Comment					

No Photos

LM Start	<b>6.64</b>	Rating **	M	Issue No.	<b>207</b>
LM End	<b>6.64</b>	Issue Type +	Ma	Location *	CR
Category	Earthen Levee		GPS Latitude/Longitude		
			Start	End	
Item	Trim / Thin Trees		38.393905 °	38.393905 °	
			-121.539448 °	-121.539448 °	
DWR ID	DWR_RD0999_05_s _ 2020_207				
Comment Code					
T4 : Trim trees over roadway to at least 12 feet above ground level.					
Inspector Comment					

No Photos

<b>* Location</b> LS : Land Side    N/A : Not Applicable WS : Water Side CR : Crown	<b>** Rating</b> A : Acceptable M : Minimally Acceptable U : Unacceptable	N : Not Inspected/Rated C : Corrected A/W : Acceptable but Monitor & Maintain	<b>+ Issue Type</b> Ma : Maintenance Deficiency Ob : Design & System Obsolescence En : Enforcement
--	--	---	---

**Flood Control Project Maintenance  
Levee Inspections**

## Maintenance Issue Types Only, Levee Inspection Report By Mile - Spring 2020

### Reclamation District No. 0999 Netherlands

Waterway	Bank	Unit Miles	Inspection Start/End	Inspector
Unit No. 05 Elk Slough	Right	9.48	04/29/2020 04/30/2020	Luz Dial

LM Start	6.68	Rating **	M	Issue No.	205
LM End	6.68	Issue Type +	Ma	Location *	WS
Category	Earthen Levee			GPS Latitude/Longitude	
				Start	End
Item	Trim / Thin Trees			38.394478 °	38.394478 °
				-121.539478 °	-121.539478 °
DWR ID	DWR_RD0999_05_s_2020_205				
Comment Code					
T1 : Trim trees to at least five feet above ground level.					
Inspector Comment					

No Photos

LM Start	6.69	Rating **	C	Issue No.	135
LM End	6.69	Issue Type +	Ma	Location *	WS
Category	Earthen Levee			GPS Latitude/Longitude	
				Start	End
Item	Encroachments			38.394637 °	38.394637 °
				-121.539480 °	-121.539480 °
DWR ID	DWR_RD0999_05_f_2019_135				
Comment Code					
PR : Prunings					
Inspector Comment					

No Photos

LM Start	6.70	Rating **	M	Issue No.	204
LM End	6.72	Issue Type +	Ma	Location *	WS
Category	Earthen Levee			GPS Latitude/Longitude	
				Start	End
Item	Vegetation			38.394885 °	38.395175 °
				-121.539432 °	-121.539350 °
DWR ID	DWR_RD0999_05_s_2020_204				
Comment Code					
V2 : Remove the wild growth other than native grasses from the levee slopes.					
Inspector Comment					

No Photos

<b>* Location</b> LS : Land Side    N/A : Not Applicable WS : Water Side CR : Crown	<b>** Rating</b> A : Acceptable M : Minimally Acceptable U : Unacceptable	N : Not Inspected/Rated C : Corrected A/W : Acceptable but Monitor & Maintain	<b>+ Issue Type</b> Ma : Maintenance Deficiency Ob : Design & System Obsolescence En : Enforcement
--	--	---	---

**Flood Control Project Maintenance  
Levee Inspections**

**Maintenance Issue Types Only, Levee Inspection Report By Mile - Spring 2020**

**Reclamation District No. 0999 Netherlands**

Waterway	Bank	Unit Miles	Inspection Start/End	Inspector
Unit No. 05 Elk Slough	Right	9.48	04/29/2020 04/30/2020	Luz Dial

LM Start	<b>6.74</b>	Rating **	M	Issue No.	<b>195</b>
LM End	<b>7.03</b>	Issue Type +	Ma	Location *	WS
Category	Earthen Levee		GPS Latitude/Longitude		
			Start	End	
Item	Vegetation		38.395435 °	38.398052 °	
			-121.539278 °	-121.536070 °	
DWR ID	DWR_RD0999_05_s _ 2020_195				
Comment Code					
V1 : Control annual grass and weeds on the levee slopes and easements.					
Inspector Comment					

No Photos

LM Start	<b>6.76</b>	Rating **	M	Issue No.	<b>203</b>
LM End	<b>6.78</b>	Issue Type +	Ma	Location *	LS
Category	Earthen Levee		GPS Latitude/Longitude		
			Start	End	
Item	Trim / Thin Trees		38.395627 °	38.395913 °	
			-121.539183 °	-121.538887 °	
DWR ID	DWR_RD0999_05_s _ 2020_203				
Comment Code					
T1 : Trim trees to at least five feet above ground level.					
Inspector Comment					

No Photos

LM Start	<b>6.79</b>	Rating **	M	Issue No.	<b>198</b>
LM End	<b>6.96</b>	Issue Type +	Ma	Location *	LS
Category	Earthen Levee		GPS Latitude/Longitude		
			Start	End	
Item	Vegetation		38.395980 °	38.397038 °	
			-121.538790 °	-121.536020 °	
DWR ID	DWR_RD0999_05_s _ 2020_198				
Comment Code					
V1 : Control annual grass and weeds on the levee slopes and easements.					
Inspector Comment					

No Photos

<b>* Location</b> LS : Land Side    N/A : Not Applicable WS : Water Side CR : Crown	<b>** Rating</b> A : Acceptable M : Minimally Acceptable U : Unacceptable	N : Not Inspected/Rated C : Corrected A/W : Acceptable but Monitor & Maintain	<b>+ Issue Type</b> Ma : Maintenance Deficiency Ob : Design & System Obsolescence En : Enforcement
--	--	---	---



**Flood Control Project Maintenance  
Levee Inspections**

**Maintenance Issue Types Only, Levee Inspection Report By Mile - Spring 2020**

**Reclamation District No. 0999 Netherlands**

Waterway	Bank	Unit Miles	Inspection Start/End	Inspector
Unit No. 05 Elk Slough	Right	9.48	04/29/2020 04/30/2020	Luz Dial

LM Start	<b>6.84</b>	Rating **	M	Issue No.	<b>115</b>
LM End	<b>6.89</b>	Issue Type +	Ma	Location *	WS
Category	Earthen Levee		GPS Latitude/Longitude		
			Start	End	
Item	Trim / Thin Trees		38.396357 °	38.396612 °	
			-121.537892 °	-121.537072 °	
DWR ID	DWR_RD0999_05_s_2019_115				
Comment Code					
T1 : Trim trees to at least five feet above ground level.					
Inspector Comment					

No Photos

LM Start	<b>6.91</b>	Rating **	M	Issue No.	<b>116</b>
LM End	<b>6.91</b>	Issue Type +	Ma	Location *	WS
Category	Earthen Levee		GPS Latitude/Longitude		
			Start	End	
Item	Trim / Thin Trees		38.396708 °	38.396708 °	
			-121.536747 °	-121.536747 °	
DWR ID	DWR_RD0999_05_s_2019_116				
Comment Code					
T2 : Thin trees to allow visibility of the ground and room to flood fight.					
Inspector Comment					

No Photos

LM Start	<b>6.95</b>	Rating **	M	Issue No.	<b>201</b>
LM End	<b>6.95</b>	Issue Type +	Ma	Location *	WS
Category	Earthen Levee		GPS Latitude/Longitude		
			Start	End	
Item	Trim / Thin Trees		38.396898 °	38.396898 °	
			-121.536147 °	-121.536147 °	
DWR ID	DWR_RD0999_05_s_2020_201				
Comment Code					
T3 : Trim and thin trees to allow visibility of the ground and room to flood fight.					
Inspector Comment					

No Photos

<b>* Location</b> LS : Land Side    N/A : Not Applicable WS : Water Side CR : Crown	<b>** Rating</b> A : Acceptable M : Minimally Acceptable U : Unacceptable	N : Not Inspected/Rated C : Corrected A/W : Acceptable but Monitor & Maintain	<b>+ Issue Type</b> Ma : Maintenance Deficiency Ob : Design & System Obsolescence En : Enforcement
--	--	---	---

**Flood Control Project Maintenance  
Levee Inspections**

## Maintenance Issue Types Only, Levee Inspection Report By Mile - Spring 2020

### Reclamation District No. 0999 Netherlands

Waterway	Bank	Unit Miles	Inspection Start/End	Inspector
Unit No. 05 Elk Slough	Right	9.48	04/29/2020 04/30/2020	Luz Dial

LM Start	<b>6.98</b>	Rating **	M	Issue No.	<b>197</b>
LM End	<b>6.98</b>	Issue Type +	Ma	Location *	CR
Category	Earthen Levee		GPS Latitude/Longitude		
			Start	End	
Item	Trim / Thin Trees		38.397308 °	38.397308 °	
			-121.535957 °	-121.535957 °	
DWR ID	DWR_RD0999_05_s _ 2020_197				
Comment Code					
T4 : Trim trees over roadway to at least 12 feet above ground level.					
Inspector Comment					

No Photos

LM Start	<b>7.04</b>	Rating **	U	Issue No.	<b>192</b>
LM End	<b>7.50</b>	Issue Type +	Ma	Location *	WS
Category	Earthen Levee		GPS Latitude/Longitude		
			Start	End	
Item	Vegetation		38.398180 °	38.403713 °	
			-121.536093 °	-121.540513 °	
DWR ID	DWR_RD0999_05_s _ 2020_192				
Comment Code					
V1 : Control annual grass and weeds on the levee slopes and easements.					
Inspector Comment					

No Photos

LM Start	<b>7.11</b>	Rating **	M	Issue No.	<b>194</b>
LM End	<b>7.17</b>	Issue Type +	Ma	Location *	LS
Category	Earthen Levee		GPS Latitude/Longitude		
			Start	End	
Item	Vegetation		38.399177 °	38.400062 °	
			-121.536365 °	-121.536703 °	
DWR ID	DWR_RD0999_05_s _ 2020_194				
Comment Code					
V1 : Control annual grass and weeds on the levee slopes and easements.					
Inspector Comment					

No Photos

<b>* Location</b> LS : Land Side    N/A : Not Applicable WS : Water Side CR : Crown	<b>** Rating</b> A : Acceptable M : Minimally Acceptable U : Unacceptable	N : Not Inspected/Rated C : Corrected A/W : Acceptable but Monitor & Maintain	<b>+ Issue Type</b> Ma : Maintenance Deficiency Ob : Design & System Obsolescence En : Enforcement
--	--	---	---

**Flood Control Project Maintenance  
Levee Inspections**

**Maintenance Issue Types Only, Levee Inspection Report By Mile - Spring 2020**

**Reclamation District No. 0999 Netherlands**

Waterway	Bank	Unit Miles	Inspection Start/End	Inspector
Unit No. 05 Elk Slough	Right	9.48	04/29/2020 04/30/2020	Luz Dial

LM Start	<b>7.16</b>	Rating **	M	Issue No.	<b>117</b>
LM End	<b>7.16</b>	Issue Type +	Ma	Location *	LS
Category	Earthen Levee		GPS Latitude/Longitude		
			Start	End	
Item	Trim / Thin Trees		38.399892 °	38.399892 °	
			-121.536560 °	-121.536560 °	
DWR ID	DWR_RD0999_05_s_2019_117				
Comment Code					
T1 : Trim trees to at least five feet above ground level.					
Inspector Comment					

No Photos

LM Start	<b>7.18</b>	Rating **	M	Issue No.	<b>193</b>
LM End	<b>7.18</b>	Issue Type +	Ma	Location *	LS
Category	Earthen Levee		GPS Latitude/Longitude		
			Start	End	
Item	Trim / Thin Trees		38.400200 °	38.400200 °	
			-121.536768 °	-121.536768 °	
DWR ID	DWR_RD0999_05_s_2020_193				
Comment Code					
T1 : Trim trees to at least five feet above ground level.					
Inspector Comment					

No Photos

LM Start	<b>7.21</b>	Rating **	M	Issue No.	<b>118</b>
LM End	<b>7.21</b>	Issue Type +	Ma	Location *	WS
Category	Earthen Levee		GPS Latitude/Longitude		
			Start	End	
Item	Trim / Thin Trees		38.400610 °	38.400610 °	
			-121.537037 °	-121.537037 °	
DWR ID	DWR_RD0999_05_s_2019_118				
Comment Code					
T1 : Trim trees to at least five feet above ground level.					
Inspector Comment					

No Photos

<b>* Location</b> LS : Land Side    N/A : Not Applicable WS : Water Side CR : Crown	<b>** Rating</b> A : Acceptable M : Minimally Acceptable U : Unacceptable	N : Not Inspected/Rated C : Corrected A/W : Acceptable but Monitor & Maintain	<b>+ Issue Type</b> Ma : Maintenance Deficiency Ob : Design & System Obsolescence En : Enforcement
--	--	---	---

**Flood Control Project Maintenance  
Levee Inspections**

**Maintenance Issue Types Only, Levee Inspection Report By Mile - Spring 2020**

**Reclamation District No. 0999 Netherlands**

Waterway	Bank	Unit Miles	Inspection Start/End	Inspector
Unit No. 05 Elk Slough	Right	9.48	04/29/2020 04/30/2020	Luz Dial

LM Start	<b>7.25</b>	Rating **	U	Issue No.	<b>190</b>
LM End	<b>7.52</b>	Issue Type +	Ma	Location *	LS
Category	Earthen Levee		GPS Latitude/Longitude		
			Start	End	
Item	Vegetation		38.401005 °	38.403818 °	
			-121.537348 °	-121.540797 °	
DWR ID	DWR_RD0999_05_s _ 2020_190				
Comment Code					
V1 : Control annual grass and weeds on the levee slopes and easements.					
Inspector Comment					

No Photos

LM Start	<b>7.26</b>	Rating **	M	Issue No.	<b>119</b>
LM End	<b>7.26</b>	Issue Type +	Ma	Location *	WS
Category	Earthen Levee		GPS Latitude/Longitude		
			Start	End	
Item	Trim / Thin Trees		38.401150 °	38.401150 °	
			-121.537595 °	-121.537595 °	
DWR ID	DWR_RD0999_05_s _ 2019_119				
Comment Code					
T3 : Trim and thin trees to allow visibility of the ground and room to flood fight.					
Inspector Comment					

No Photos

LM Start	<b>7.33</b>	Rating **	M	Issue No.	<b>120</b>
LM End	<b>7.33</b>	Issue Type +	Ma	Location *	WS
Category	Earthen Levee		GPS Latitude/Longitude		
			Start	End	
Item	Trim / Thin Trees		38.401867 °	38.401867 °	
			-121.538453 °	-121.538453 °	
DWR ID	DWR_RD0999_05_s _ 2019_120				
Comment Code					
T1 : Trim trees to at least five feet above ground level.					
Inspector Comment					

No Photos

<b>* Location</b> LS : Land Side    N/A : Not Applicable WS : Water Side CR : Crown	<b>** Rating</b> A : Acceptable M : Minimally Acceptable U : Unacceptable	N : Not Inspected/Rated C : Corrected A/W : Acceptable but Monitor & Maintain	<b>+ Issue Type</b> Ma : Maintenance Deficiency Ob : Design & System Obsolescence En : Enforcement
--	--	---	---

**Flood Control Project Maintenance  
Levee Inspections**

**Maintenance Issue Types Only, Levee Inspection Report By Mile - Spring 2020**

**Reclamation District No. 0999 Netherlands**

Waterway	Bank	Unit Miles	Inspection Start/End	Inspector
Unit No. 05 Elk Slough	Right	9.48	04/29/2020 04/30/2020	Luz Dial

LM Start	<b>7.46</b>	Rating **	M	Issue No.	<b>137</b>
LM End	<b>7.48</b>	Issue Type +	Ma	Location *	CR
Category	Earthen Levee		GPS Latitude/Longitude		
			Start	End	
Item	Trim / Thin Trees		38.403375 °	38.403533 °	
			-121.539888 °	-121.540083 °	
DWR ID	DWR_RD0999_05_f_2019_137				
Comment Code					
T4 : Trim trees over roadway to at least 12 feet above ground level.					
Inspector Comment					

No Photos

LM Start	<b>7.52</b>	Rating **	M	Issue No.	<b>121</b>
LM End	<b>7.52</b>	Issue Type +	Ma	Location *	CR
Category	Earthen Levee		GPS Latitude/Longitude		
			Start	End	
Item	Trim / Thin Trees		38.403772 °	38.403772 °	
			-121.540750 °	-121.540750 °	
DWR ID	DWR_RD0999_05_s_2019_121				
Comment Code					
T4 : Trim trees over roadway to at least 12 feet above ground level.					
Inspector Comment					

No Photos

LM Start	<b>7.54</b>	Rating **	N	Issue No.	<b>191</b>
LM End	<b>7.54</b>	Issue Type +	Ma	Location *	WS
Category	Earthen Levee		GPS Latitude/Longitude		
			Start	End	
Item	Trim / Thin Trees		38.403843 °	38.403843 °	
			-121.541233 °	-121.541233 °	
DWR ID	DWR_RD0999_05_s_2020_191				
Comment Code					
T5 : Tree stumps.					
Inspector Comment					

No Photos

<b>* Location</b> LS : Land Side    N/A : Not Applicable WS : Water Side CR : Crown	<b>** Rating</b> A : Acceptable M : Minimally Acceptable U : Unacceptable	N : Not Inspected/Rated C : Corrected A/W : Acceptable but Monitor & Maintain	<b>+ Issue Type</b> Ma : Maintenance Deficiency Ob : Design & System Obsolescence En : Enforcement
--	--	---	---

**Flood Control Project Maintenance  
Levee Inspections**

**Maintenance Issue Types Only, Levee Inspection Report By Mile - Spring 2020**

**Reclamation District No. 0999 Netherlands**

Waterway	Bank	Unit Miles	Inspection Start/End	Inspector
Unit No. 05 Elk Slough	Right	9.48	04/29/2020 04/30/2020	Luz Dial

LM Start	7.59	Rating **	A/W	Issue No.	138
LM End	8.12	Issue Type +	Ma	Location *	CR
Category	Earthen Levee			GPS Latitude/Longitude	
				Start	End
Item	Vegetation			38.404168 °	38.409867 °
				-121.541893 °	-121.539667 °
DWR ID	DWR_RD0999_05_f_2019_138				
Comment Code					
V1 : Control annual grass and weeds on the levee slopes and easements.					
Inspector Comment					
This section contains a house on top of the levee with no access on either side of the crown. Vehicle access resumes at LM 8.13 between two trees next to a private gate.					

Photo 1 of 1 : SP\_2020\_RD0999\_236\_138\_20200302\_00055.jpg



View of levee access between trees next to a private gate at LM 8.13.

LM Start	8.14	Rating **	M	Issue No.	188
LM End	8.14	Issue Type +	Ma	Location *	CR
Category	Earthen Levee			GPS Latitude/Longitude	
				Start	End
Item	Trim / Thin Trees			38.409873 °	38.409873 °
				-121.539280 °	-121.539280 °
DWR ID	DWR_RD0999_05_s_2020_188				
Comment Code					
T4 : Trim trees over roadway to at least 12 feet above ground level.					
Inspector Comment					

No Photos

LM Start	8.18	Rating **	M	Issue No.	186
LM End	8.18	Issue Type +	Ma	Location *	WS
Category	Earthen Levee			GPS Latitude/Longitude	
				Start	End
Item	Encroachments			38.409818 °	38.409818 °
				-121.538585 °	-121.538585 °
DWR ID	DWR_RD0999_05_s_2020_186				
Comment Code					
TR : Tree or limb					
Inspector Comment					

Photo 1 of 1 : SP\_2020\_RD0999\_236\_186\_20200507\_00163.jpg



View of a tree log on the waterside slope. Spring 2020

**\* Location**

LS : Land Side N/A : Not Applicable  
WS : Water Side  
CR : Crown

**\*\* Rating**

A : Acceptable N : Not Inspected/Rated  
M : Minimally Acceptable C : Corrected  
U : Unacceptable A/W : Acceptable but Monitor & Maintain

**+ Issue Type**

Ma : Maintenance Deficiency  
Ob : Design & System Obsolescence  
En : Enforcement



**Flood Control Project Maintenance  
Levee Inspections**

## Maintenance Issue Types Only, Levee Inspection Report By Mile - Spring 2020

### Reclamation District No. 0999 Netherlands

Waterway	Bank	Unit Miles	Inspection Start/End	Inspector
Unit No. 05 Elk Slough	Right	9.48	04/29/2020 04/30/2020	Luz Dial

LM Start	<b>8.20</b>	Rating **	M	Issue No.	<b>185</b>
LM End	<b>8.21</b>	Issue Type +	Ma	Location *	WS
Category	Earthen Levee		GPS Latitude/Longitude		
			Start	End	
Item	Vegetation		38.409768 °	38.409682 °	
			-121.538278 °	-121.537985 °	
DWR ID	DWR_RD0999_05_s _ 2020_185				
Comment Code					
V1 : Control annual grass and weeds on the levee slopes and easements.					
Inspector Comment					

No Photos

LM Start	<b>8.23</b>	Rating **	N	Issue No.	<b>184</b>
LM End	<b>8.23</b>	Issue Type +	Ma	Location *	WS
Category	Earthen Levee		GPS Latitude/Longitude		
			Start	End	
Item	Trim / Thin Trees		38.409598 °	38.409598 °	
			-121.537632 °	-121.537632 °	
DWR ID	DWR_RD0999_05_s _ 2020_184				
Comment Code					
T5 : Tree stumps.					
Inspector Comment					

No Photos

LM Start	<b>8.25</b>	Rating **	M	Issue No.	<b>183</b>
LM End	<b>8.25</b>	Issue Type +	Ma	Location *	CR
Category	Earthen Levee		GPS Latitude/Longitude		
			Start	End	
Item	Trim / Thin Trees		38.409543 °	38.409543 °	
			-121.537353 °	-121.537353 °	
DWR ID	DWR_RD0999_05_s _ 2020_183				
Comment Code					
T4 : Trim trees over roadway to at least 12 feet above ground level.					
Inspector Comment					

No Photos

<b>* Location</b> LS : Land Side    N/A : Not Applicable WS : Water Side CR : Crown	<b>** Rating</b> A : Acceptable M : Minimally Acceptable U : Unacceptable	N : Not Inspected/Rated C : Corrected A/W : Acceptable but Monitor & Maintain	<b>+ Issue Type</b> Ma : Maintenance Deficiency Ob : Design & System Obsolescence En : Enforcement
--	--	---	---

**Flood Control Project Maintenance  
Levee Inspections**

**Maintenance Issue Types Only, Levee Inspection Report By Mile - Spring 2020**

**Reclamation District No. 0999 Netherlands**

Waterway	Bank	Unit Miles	Inspection Start/End	Inspector
Unit No. 05 Elk Slough	Right	9.48	04/29/2020 04/30/2020	Luz Dial

LM Start	8.28	Rating **	M	Issue No.	182
LM End	8.29	Issue Type +	Ma	Location *	WS
Category	Earthen Levee			GPS Latitude/Longitude	
				Start	End
Item	Vegetation			38.409375 °	38.409245 °
				-121.536870 °	-121.536630 °
DWR ID	DWR_RD0999_05_s_2020_182				
Comment Code					
V2 : Remove the wild growth other than native grasses from the levee slopes.					
Inspector Comment					

No Photos

LM Start	8.31	Rating **	M	Issue No.	181
LM End	8.31	Issue Type +	Ma	Location *	WS
Category	Earthen Levee			GPS Latitude/Longitude	
				Start	End
Item	Encroachments			38.409118 °	38.409118 °
				-121.536298 °	-121.536298 °
DWR ID	DWR_RD0999_05_s_2020_181				
Comment Code					
TR : Tree or limb					
Inspector Comment					
Remove a fallen tree from the waterside slope.					

Photo 1 of 1 : SP\_2020\_RD0999\_236\_181\_20200507\_00162.jpg



View of fallen tree on the waterside slope. Spring 2020

LM Start	8.37	Rating **	U	Issue No.	140
LM End	8.38	Issue Type +	Ma	Location *	WS
Category	Earthen Levee			GPS Latitude/Longitude	
				Start	End
Item	Vegetation			38.408725 °	38.408683 °
				-121.535435 °	-121.535283 °
DWR ID	DWR_RD0999_05_f_2019_140				
Comment Code					
V1 : Control annual grass and weeds on the levee slopes and easements.					
Inspector Comment					

No Photos

<b>* Location</b> LS : Land Side    N/A : Not Applicable WS : Water Side CR : Crown	<b>** Rating</b> A : Acceptable M : Minimally Acceptable U : Unacceptable	N : Not Inspected/Rated C : Corrected A/W : Acceptable but Monitor & Maintain	<b>+ Issue Type</b> Ma : Maintenance Deficiency Ob : Design & System Obsolescence En : Enforcement
--	--	---	---

**Flood Control Project Maintenance  
Levee Inspections**

**Maintenance Issue Types Only, Levee Inspection Report By Mile - Spring 2020**

**Reclamation District No. 0999 Netherlands**

Waterway	Bank	Unit Miles	Inspection Start/End	Inspector
Unit No. 05 Elk Slough	Right	9.48	04/29/2020 04/30/2020	Luz Dial

LM Start	<b>8.38</b>	Rating **	M	Issue No.	<b>178</b>
LM End	<b>8.42</b>	Issue Type +	Ma	Location *	WS
Category	Earthen Levee		GPS Latitude/Longitude		
			Start	End	
Item	Vegetation		38.408682 °	38.408577 °	
			-121.535277 °	-121.534583 °	
DWR ID	DWR_RD0999_05_s _ 2020_178				
Comment Code					
V1 : Control annual grass and weeds on the levee slopes and easements.					
Inspector Comment					

No Photos

LM Start	<b>8.41</b>	Rating **	M	Issue No.	<b>179</b>
LM End	<b>8.41</b>	Issue Type +	Ma	Location *	CR
Category	Earthen Levee		GPS Latitude/Longitude		
			Start	End	
Item	Vegetation		38.408565 °	38.408565 °	
			-121.534798 °	-121.534798 °	
DWR ID	DWR_RD0999_05_s _ 2020_179				
Comment Code					
V9 : Keep the crown roadway free of vegetation.					
Inspector Comment					

No Photos

LM Start	<b>8.53</b>	Rating **	M	Issue No.	<b>176</b>
LM End	<b>8.53</b>	Issue Type +	Ma	Location *	CR
Category	Earthen Levee		GPS Latitude/Longitude		
			Start	End	
Item	Trim / Thin Trees		38.409692 °	38.409692 °	
			-121.533178 °	-121.533178 °	
DWR ID	DWR_RD0999_05_s _ 2020_176				
Comment Code					
T4 : Trim trees over roadway to at least 12 feet above ground level.					
Inspector Comment					

No Photos

<b>* Location</b> LS : Land Side    N/A : Not Applicable WS : Water Side CR : Crown	<b>** Rating</b> A : Acceptable M : Minimally Acceptable U : Unacceptable	N : Not Inspected/Rated C : Corrected A/W : Acceptable but Monitor & Maintain	<b>+ Issue Type</b> Ma : Maintenance Deficiency Ob : Design & System Obsolescence En : Enforcement
--	--	---	---

**Flood Control Project Maintenance  
Levee Inspections**

**Maintenance Issue Types Only, Levee Inspection Report By Mile - Spring 2020**

**Reclamation District No. 0999 Netherlands**

Waterway	Bank	Unit Miles	Inspection Start/End	Inspector
Unit No. 05 Elk Slough	Right	9.48	04/29/2020 04/30/2020	Luz Dial

LM Start	8.56	Rating **	M	Issue No.	141
LM End	8.56	Issue Type +	Ma	Location *	CR
Category	Earthen Levee			GPS Latitude/Longitude	
				Start	End
Item	Trim / Thin Trees			38.410045 °	38.410045 °
				-121.532755 °	-121.532755 °
DWR ID	DWR_RD0999_05_s _ 2020_141				
Comment Code					
T4 : Trim trees over roadway to at least 12 feet above ground level.					
Inspector Comment					

No Photos

LM Start	8.59	Rating **	M	Issue No.	168
LM End	8.69	Issue Type +	Ma	Location *	LS
Category	Earthen Levee			GPS Latitude/Longitude	
				Start	End
Item	Vegetation			38.410233 °	38.411190 °
				-121.532318 °	-121.530832 °
DWR ID	DWR_RD0999_05_s _ 2020_168				
Comment Code					
V1 : Control annual grass and weeds on the levee slopes and easements.					
Inspector Comment					

No Photos

LM Start	8.60	Rating **	M	Issue No.	174
LM End	8.60	Issue Type +	Ma	Location *	CR
Category	Earthen Levee			GPS Latitude/Longitude	
				Start	End
Item	Trim / Thin Trees			38.410355 °	38.410355 °
				-121.532107 °	-121.532107 °
DWR ID	DWR_RD0999_05_s _ 2020_174				
Comment Code					
T4 : Trim trees over roadway to at least 12 feet above ground level.					
Inspector Comment					

No Photos

<b>* Location</b> LS : Land Side    N/A : Not Applicable WS : Water Side CR : Crown	<b>** Rating</b> A : Acceptable M : Minimally Acceptable U : Unacceptable	N : Not Inspected/Rated C : Corrected A/W : Acceptable but Monitor & Maintain	<b>+ Issue Type</b> Ma : Maintenance Deficiency Ob : Design & System Obsolescence En : Enforcement
--	--	---	---

**Flood Control Project Maintenance  
Levee Inspections**

**Maintenance Issue Types Only, Levee Inspection Report By Mile - Spring 2020**

**Reclamation District No. 0999 Netherlands**

Waterway	Bank	Unit Miles	Inspection Start/End	Inspector
Unit No. 05 Elk Slough	Right	9.48	04/29/2020 04/30/2020	Luz Dial

LM Start	<b>8.61</b>	Rating **	M	Issue No.	<b>123</b>
LM End	<b>8.61</b>	Issue Type +	Ma	Location *	LS
Category	Earthen Levee		GPS Latitude/Longitude		
			Start	End	
Item	Trim / Thin Trees		38.410434 °	38.410434 °	
			-121.532050 °	-121.532050 °	
DWR ID	DWR_RD0999_05_s _ 2012_123				
Comment Code					
T4 : Trim trees over roadway to at least 12 feet above ground level.					
Inspector Comment					

No Photos

LM Start	<b>8.66</b>	Rating **	M	Issue No.	<b>173</b>
LM End	<b>8.66</b>	Issue Type +	Ma	Location *	CR
Category	Earthen Levee		GPS Latitude/Longitude		
			Start	End	
Item	Trim / Thin Trees		38.410865 °	38.410865 °	
			-121.531282 °	-121.531282 °	
DWR ID	DWR_RD0999_05_s _ 2020_173				
Comment Code					
T4 : Trim trees over roadway to at least 12 feet above ground level.					
Inspector Comment					

No Photos

LM Start	<b>8.71</b>	Rating **	M	Issue No.	<b>166</b>
LM End	<b>8.71</b>	Issue Type +	Ma	Location *	WS
Category	Earthen Levee		GPS Latitude/Longitude		
			Start	End	
Item	Vegetation		38.411340 °	38.411340 °	
			-121.530652 °	-121.530652 °	
DWR ID	DWR_RD0999_05_s _ 2020_166				
Comment Code					
V2 : Remove the wild growth other than native grasses from the levee slopes.					
Inspector Comment					

No Photos

<b>* Location</b> LS : Land Side    N/A : Not Applicable WS : Water Side CR : Crown	<b>** Rating</b> A : Acceptable M : Minimally Acceptable U : Unacceptable	N : Not Inspected/Rated C : Corrected A/W : Acceptable but Monitor & Maintain	<b>+ Issue Type</b> Ma : Maintenance Deficiency Ob : Design & System Obsolescence En : Enforcement
--	--	---	---

**Flood Control Project Maintenance  
Levee Inspections**

**Maintenance Issue Types Only, Levee Inspection Report By Mile - Spring 2020**

**Reclamation District No. 0999 Netherlands**

Waterway	Bank	Unit Miles	Inspection Start/End	Inspector
Unit No. 05 Elk Slough	Right	9.48	04/29/2020 04/30/2020	Luz Dial

LM Start	8.73	Rating **	M	Issue No.	89
LM End	8.77	Issue Type +	Ma	Location *	CR
Category	Earthen Levee			GPS Latitude/Longitude	
				Start	End
Item	Trim / Thin Trees			38.411637 °	38.411959 °
				-121.530312 °	-121.529838 °
DWR ID	DWR_RD0999_05_s_2018_89				
Comment Code					
T4 : Trim trees over roadway to at least 12 feet above ground level.					
Inspector Comment					

No Photos

LM Start	8.74	Rating **	N	Issue No.	164
LM End	8.74	Issue Type +	Ma	Location *	WS
Category	Earthen Levee			GPS Latitude/Longitude	
				Start	End
Item	Trim / Thin Trees			38.411668 °	38.411668 °
				-121.530162 °	-121.530162 °
DWR ID	DWR_RD0999_05_s_2020_164				
Comment Code					
T5 : Tree stumps.					
Inspector Comment					

Photo 1 of 1 : SP\_2020\_RD0999\_236\_164\_20200507\_00161.jpg



View of a large tree stump on the waterside slope. Spring 2020

LM Start	8.74	Rating **	M	Issue No.	163
LM End	8.76	Issue Type +	Ma	Location *	CR
Category	Earthen Levee			GPS Latitude/Longitude	
				Start	End
Item	Trim / Thin Trees			38.411668 °	38.411828 °
				-121.530162 °	-121.529902 °
DWR ID	DWR_RD0999_05_s_2020_163				
Comment Code					
T4 : Trim trees over roadway to at least 12 feet above ground level.					
Inspector Comment					

No Photos

* Location		** Rating		+ Issue Type	
LS : Land Side	N/A : Not Applicable	A : Acceptable	N : Not Inspected/Rated	Ma : Maintenance Deficiency	
WS : Water Side		M : Minimally Acceptable	C : Corrected	Ob : Design & System Obsolescence	
CR : Crown		U : Unacceptable	A/W : Acceptable but Monitor & Maintain	En : Enforcement	



**Flood Control Project Maintenance  
Levee Inspections**

**Maintenance Issue Types Only, Levee Inspection Report By Mile - Spring 2020**

**Reclamation District No. 0999 Netherlands**

Waterway	Bank	Unit Miles	Inspection Start/End	Inspector
Unit No. 05 Elk Slough	Right	9.48	04/29/2020 04/30/2020	Luz Dial

LM Start	<b>8.81</b>	Rating **	M	Issue No.	<b>162</b>
LM End	<b>8.81</b>	Issue Type +	Ma	Location *	CR
Category	Earthen Levee		GPS Latitude/Longitude		
			Start	End	
Item	Trim / Thin Trees		38.412585 °	38.412585 °	
			-121.529707 °	-121.529707 °	
DWR ID	DWR_RD0999_05_s _ 2020_162				
Comment Code					
T4 : Trim trees over roadway to at least 12 feet above ground level.					
Inspector Comment					

No Photos

LM Start	<b>8.83</b>	Rating **	M	Issue No.	<b>130</b>
LM End	<b>8.83</b>	Issue Type +	Ma	Location *	WS
Category	Earthen Levee		GPS Latitude/Longitude		
			Start	End	
Item	Vegetation		38.412788 °	38.412788 °	
			-121.529682 °	-121.529682 °	
DWR ID	DWR_RD0999_05_s _ 2019_130				
Comment Code					
V2 : Remove the wild growth other than native grasses from the levee slopes.					
Inspector Comment					

No Photos

LM Start	<b>8.87</b>	Rating **	M	Issue No.	<b>159</b>
LM End	<b>8.88</b>	Issue Type +	Ma	Location *	WS
Category	Earthen Levee		GPS Latitude/Longitude		
			Start	End	
Item	Vegetation		38.413335 °	38.413558 °	
			-121.529775 °	-121.529777 °	
DWR ID	DWR_RD0999_05_s _ 2020_159				
Comment Code					
V1 : Control annual grass and weeds on the levee slopes and easements.					
Inspector Comment					

No Photos

<b>* Location</b> LS : Land Side    N/A : Not Applicable WS : Water Side CR : Crown	<b>** Rating</b> A : Acceptable M : Minimally Acceptable U : Unacceptable	N : Not Inspected/Rated C : Corrected A/W : Acceptable but Monitor & Maintain	<b>+ Issue Type</b> Ma : Maintenance Deficiency Ob : Design & System Obsolescence En : Enforcement
--	--	---	---

**Flood Control Project Maintenance  
Levee Inspections**

## Maintenance Issue Types Only, Levee Inspection Report By Mile - Spring 2020

### Reclamation District No. 0999 Netherlands

Waterway	Bank	Unit Miles	Inspection Start/End	Inspector
Unit No. 05 Elk Slough	Right	9.48	04/29/2020 04/30/2020	Luz Dial

LM Start	<b>8.88</b>	Rating **	M	Issue No.	<b>157</b>
LM End	<b>8.90</b>	Issue Type +	Ma	Location *	WS
Category	Earthen Levee		GPS Latitude/Longitude		
			Start	End	
Item	Trim / Thin Trees		38.413573 °	38.413813 °	
			-121.529765 °	-121.529785 °	
DWR ID	DWR_RD0999_05_s _ 2020_157				
Comment Code					
T1 : Trim trees to at least five feet above ground level.					
Inspector Comment					

No Photos

LM Start	<b>8.95</b>	Rating **	M	Issue No.	<b>153</b>
LM End	<b>8.95</b>	Issue Type +	Ma	Location *	WS
Category	Earthen Levee		GPS Latitude/Longitude		
			Start	End	
Item	Trim / Thin Trees		38.414607 °	38.414607 °	
			-121.529742 °	-121.529742 °	
DWR ID	DWR_RD0999_05_s _ 2020_153				
Comment Code					
T1 : Trim trees to at least five feet above ground level.					
Inspector Comment					

No Photos

LM Start	<b>8.99</b>	Rating **	M	Issue No.	<b>151</b>
LM End	<b>8.99</b>	Issue Type +	Ma	Location *	CR
Category	Earthen Levee		GPS Latitude/Longitude		
			Start	End	
Item	Trim / Thin Trees		38.415123 °	38.415123 °	
			-121.529690 °	-121.529690 °	
DWR ID	DWR_RD0999_05_s _ 2020_151				
Comment Code					
T4 : Trim trees over roadway to at least 12 feet above ground level.					
Inspector Comment					

No Photos

<b>* Location</b> LS : Land Side    N/A : Not Applicable WS : Water Side CR : Crown	<b>** Rating</b> A : Acceptable M : Minimally Acceptable U : Unacceptable	N : Not Inspected/Rated C : Corrected A/W : Acceptable but Monitor & Maintain	<b>+ Issue Type</b> Ma : Maintenance Deficiency Ob : Design & System Obsolescence En : Enforcement
--	--	---	---

**Flood Control Project Maintenance  
Levee Inspections**

**Maintenance Issue Types Only, Levee Inspection Report By Mile - Spring 2020**

**Reclamation District No. 0999 Netherlands**

Waterway	Bank	Unit Miles	Inspection Start/End	Inspector
Unit No. 05 Elk Slough	Right	9.48	04/29/2020 04/30/2020	Luz Dial

LM Start	<b>9.03</b>	Rating **	M	Issue No.	<b>133</b>
LM End	<b>9.03</b>	Issue Type +	Ma	Location *	WS
Category	Earthen Levee		GPS Latitude/Longitude		
			Start	End	
Item	Encroachments		38.415522 °	38.415522 °	
			-121.529272 °	-121.529272 °	
DWR ID	DWR_RD0999_05_s_2019_133				
Comment Code					
PR : Prunings					
Inspector Comment					

No Photos

LM Start	<b>9.05</b>	Rating **	M	Issue No.	<b>150</b>
LM End	<b>9.06</b>	Issue Type +	Ma	Location *	WS
Category	Earthen Levee		GPS Latitude/Longitude		
			Start	End	
Item	Vegetation		38.415808 °	38.415903 °	
			-121.528980 °	-121.528762 °	
DWR ID	DWR_RD0999_05_s_2020_150				
Comment Code					
V1 : Control annual grass and weeds on the levee slopes and easements.					
Inspector Comment					

No Photos

LM Start	<b>9.08</b>	Rating **	M	Issue No.	<b>148</b>
LM End	<b>9.08</b>	Issue Type +	Ma	Location *	CR
Category	Earthen Levee		GPS Latitude/Longitude		
			Start	End	
Item	Trim / Thin Trees		38.416013 °	38.416013 °	
			-121.528527 °	-121.528527 °	
DWR ID	DWR_RD0999_05_s_2020_148				
Comment Code					
T4 : Trim trees over roadway to at least 12 feet above ground level.					
Inspector Comment					

No Photos

<b>* Location</b> LS : Land Side    N/A : Not Applicable WS : Water Side CR : Crown	<b>** Rating</b> A : Acceptable M : Minimally Acceptable U : Unacceptable	N : Not Inspected/Rated C : Corrected A/W : Acceptable but Monitor & Maintain	<b>+ Issue Type</b> Ma : Maintenance Deficiency Ob : Design & System Obsolescence En : Enforcement
--	--	---	---

**Flood Control Project Maintenance  
Levee Inspections**

**Maintenance Issue Types Only, Levee Inspection Report By Mile - Spring 2020**

**Reclamation District No. 0999 Netherlands**

Waterway	Bank	Unit Miles	Inspection Start/End	Inspector
Unit No. 05 Elk Slough	Right	9.48	04/29/2020 04/30/2020	Luz Dial

LM Start	<b>9.12</b>	Rating **	M	Issue No.	<b>147</b>
LM End	<b>9.14</b>	Issue Type +	Ma	Location *	LS
Category	Earthen Levee		GPS Latitude/Longitude		
			Start	End	
Item	Trim / Thin Trees		38.415998 °	38.415778 °	
			-121.527827 °	-121.527468 °	
DWR ID	DWR_RD0999_05_s _ 2020_147				
Comment Code					
T3 : Trim and thin trees to allow visibility of the ground and room to flood fight.					
Inspector Comment					

No Photos

LM Start	<b>9.12</b>	Rating **	M	Issue No.	<b>144</b>
LM End	<b>9.18</b>	Issue Type +	Ma	Location *	WS
Category	Earthen Levee		GPS Latitude/Longitude		
			Start	End	
Item	Vegetation		38.415998 °	38.415337 °	
			-121.527827 °	-121.527035 °	
DWR ID	DWR_RD0999_05_s _ 2020_144				
Comment Code					
V1 : Control annual grass and weeds on the levee slopes and easements.					
Inspector Comment					

No Photos

LM Start	<b>9.12</b>	Rating **	U	Issue No.	<b>143</b>
LM End	<b>9.19</b>	Issue Type +	Ma	Location *	LS
Category	Earthen Levee		GPS Latitude/Longitude		
			Start	End	
Item	Vegetation		38.415998 °	38.415223 °	
			-121.527827 °	-121.526930 °	
DWR ID	DWR_RD0999_05_s _ 2020_143				
Comment Code					
V1 : Control annual grass and weeds on the levee slopes and easements.					
Inspector Comment					

No Photos

<b>* Location</b> LS : Land Side    N/A : Not Applicable WS : Water Side CR : Crown	<b>** Rating</b> A : Acceptable M : Minimally Acceptable U : Unacceptable	N : Not Inspected/Rated C : Corrected A/W : Acceptable but Monitor & Maintain	<b>+ Issue Type</b> Ma : Maintenance Deficiency Ob : Design & System Obsolescence En : Enforcement
--	--	---	---

**Flood Control Project Maintenance  
Levee Inspections**

**Maintenance Issue Types Only, Levee Inspection Report By Mile - Spring 2020**

**Reclamation District No. 0999 Netherlands**

Waterway	Bank	Unit Miles	Inspection Start/End	Inspector
Unit No. 05 Elk Slough	Right	9.48	04/29/2020 04/30/2020	Luz Dial

LM Start	<b>9.13</b>	Rating **	M	Issue No.	<b>142</b>
LM End	<b>9.13</b>	Issue Type +	Ma	Location *	CR
Category	Earthen Levee		GPS Latitude/Longitude		
			Start	End	
Item	Trim / Thin Trees		38.415937 °	38.415937 °	
			-121.527635 °	-121.527635 °	
DWR ID	DWR_RD0999_05_f_2019_142				
Comment Code					
T1 : Trim trees to at least five feet above ground level.					
Inspector Comment					

No Photos

LM Start	<b>9.21</b>	Rating **	M	Issue No.	<b>113</b>
LM End	<b>9.21</b>	Issue Type +	Ma	Location *	CR
Category	Earthen Levee		GPS Latitude/Longitude		
			Start	End	
Item	Trim / Thin Trees		38.415008 °	38.415008 °	
			-121.526812 °	-121.526812 °	
DWR ID	DWR_RD0999_05_s_2020_113				
Comment Code					
T4 : Trim trees over roadway to at least 12 feet above ground level.					
Inspector Comment					

No Photos

LM Start	<b>9.22</b>	Rating **	M	Issue No.	<b>94</b>
LM End	<b>9.29</b>	Issue Type +	Ma	Location *	LS
Category	Earthen Levee		GPS Latitude/Longitude		
			Start	End	
Item	Vegetation		38.414872 °	38.414063 °	
			-121.526700 °	-121.525990 °	
DWR ID	DWR_RD0999_05_s_2020_94				
Comment Code					
V1 : Control annual grass and weeds on the levee slopes and easements.					
Inspector Comment					

No Photos

<b>* Location</b> LS : Land Side    N/A : Not Applicable WS : Water Side CR : Crown	<b>** Rating</b> A : Acceptable M : Minimally Acceptable U : Unacceptable	N : Not Inspected/Rated C : Corrected A/W : Acceptable but Monitor & Maintain	<b>+ Issue Type</b> Ma : Maintenance Deficiency Ob : Design & System Obsolescence En : Enforcement
--	--	---	---

**Flood Control Project Maintenance  
Levee Inspections**

**Maintenance Issue Types Only, Levee Inspection Report By Mile - Spring 2020**

**Reclamation District No. 0999 Netherlands**

Waterway	Bank	Unit Miles	Inspection Start/End	Inspector
Unit No. 05 Elk Slough	Right	9.48	04/29/2020 04/30/2020	Luz Dial

LM Start	<b>9.25</b>	Rating **	M	Issue No.	<b>47</b>
LM End	<b>9.45</b>	Issue Type +	Ma	Location *	WS
Category	Earthen Levee		GPS Latitude/Longitude		
			Start	End	
Item	Vegetation		38.414557 °	38.413830 °	
			-121.526430 °	-121.523530 °	
DWR ID	DWR_RD0999_05_s _ 2020_47				
Comment Code					
V1 : Control annual grass and weeds on the levee slopes and easements.					
Inspector Comment					

No Photos

LM Start	<b>9.28</b>	Rating **	M	Issue No.	<b>111</b>
LM End	<b>9.28</b>	Issue Type +	Ma	Location *	CR
Category	Earthen Levee		GPS Latitude/Longitude		
			Start	End	
Item	Trim / Thin Trees		38.414148 °	38.414148 °	
			-121.526048 °	-121.526048 °	
DWR ID	DWR_RD0999_05_s _ 2020_111				
Comment Code					
T4 : Trim trees over roadway to at least 12 feet above ground level.					
Inspector Comment					

No Photos

LM Start	<b>9.32</b>	Rating **	M	Issue No.	<b>77</b>
LM End	<b>9.36</b>	Issue Type +	Ma	Location *	CR
Category	Earthen Levee		GPS Latitude/Longitude		
			Start	End	
Item	Trim / Thin Trees		38.413645 °	38.413353 °	
			-121.525555 °	-121.525073 °	
DWR ID	DWR_RD0999_05_s _ 2020_77				
Comment Code					
T4 : Trim trees over roadway to at least 12 feet above ground level.					
Inspector Comment					

No Photos

<b>* Location</b> LS : Land Side    N/A : Not Applicable WS : Water Side CR : Crown	<b>** Rating</b> A : Acceptable M : Minimally Acceptable U : Unacceptable	N : Not Inspected/Rated C : Corrected A/W : Acceptable but Monitor & Maintain	<b>+ Issue Type</b> Ma : Maintenance Deficiency Ob : Design & System Obsolescence En : Enforcement
--	--	---	---



**Flood Control Project Maintenance  
Levee Inspections**

**Maintenance Issue Types Only, Levee Inspection Report By Mile - Spring 2020**

**Reclamation District No. 0999 Netherlands**

Waterway	Bank	Unit Miles	Inspection Start/End	Inspector
Unit No. 05 Elk Slough	Right	9.48	04/29/2020 04/30/2020	Luz Dial

LM Start	<b>9.38</b>	Rating **	M	Issue No.	<b>58</b>
LM End	<b>9.43</b>	Issue Type +	Ma	Location *	CR
Category	Earthen Levee		GPS Latitude/Longitude		
			Start	End	
Item	Trim / Thin Trees		38.413353 °	38.413642 °	
			-121.524707 °	-121.523833 °	
DWR ID	DWR_RD0999_05_s _ 2020_58				
Comment Code					
T4 : Trim trees over roadway to at least 12 feet above ground level.					
Inspector Comment					

No Photos

LM Start	<b>9.38</b>	Rating **	M	Issue No.	<b>48</b>
LM End	<b>9.43</b>	Issue Type +	Ma	Location *	LS
Category	Earthen Levee		GPS Latitude/Longitude		
			Start	End	
Item	Vegetation		38.413353 °	38.413638 °	
			-121.524707 °	-121.523770 °	
DWR ID	DWR_RD0999_05_s _ 2020_48				
Comment Code					
V2 : Remove the wild growth other than native grasses from the levee slopes.					
Inspector Comment					

No Photos

LM Start	<b>9.39</b>	Rating **	A/W	Issue No.	<b>114</b>
LM End	<b>9.39</b>	Issue Type +	Ma	Location *	LS
Category	Earthen Levee		GPS Latitude/Longitude		
			Start	End	
Item	Vegetation		38.413377 °	38.413377 °	
			-121.524500 °	-121.524500 °	
DWR ID	DWR_RD0999_05_s _ 2012_114				
Comment Code					
V4 : Elderberries are blocking visibility and flood fight capability.					
Inspector Comment					

No Photos

<b>* Location</b> LS : Land Side    N/A : Not Applicable WS : Water Side CR : Crown	<b>** Rating</b> A : Acceptable M : Minimally Acceptable U : Unacceptable	N : Not Inspected/Rated C : Corrected A/W : Acceptable but Monitor & Maintain	<b>+ Issue Type</b> Ma : Maintenance Deficiency Ob : Design & System Obsolescence En : Enforcement
--	--	---	---