

**Flood Control Project Maintenance
Levee Inspections**

Maintenance Issue Types Only, Levee Inspection Report By Mile - Spring 2019

Reclamation District No. 0999 Netherlands

Waterway	Bank	Unit Miles	Inspection Start/End	Inspector
Unit No. 01 Yolo Bypass	Left	15.41	03/21/2019 03/21/2019	Luz Dial

LM Start	0.00	Rating **	A	Issue No.	53
LM End	0.00	Issue Type +	Ma	Location *	N/A
Category	Earthen Levee		GPS Latitude/Longitude		
			Start	End	
Item	Operations & Maintenance Manuals			°	°
				°	°
DWR ID	DWR_RD0999_01_s_2013_53				
Comment Code					
Inspector Comment					
The LMA has a copy of the O & M manual on file.					

No Photos

LM Start	0.00	Rating **	A	Issue No.	54
LM End	0.00	Issue Type +	Ma	Location *	N/A
Category	Earthen Levee		GPS Latitude/Longitude		
			Start	End	
Item	Emergency Supplies & Equipment			°	°
				°	°
DWR ID	DWR_RD0999_01_s_2019_54				
Comment Code					
Inspector Comment					
The LMA has adequate floodfight supplies and equipment on hand.					

No Photos

LM Start	0.00	Rating **	A	Issue No.	55
LM End	0.00	Issue Type +	Ma	Location *	N/A
Category	Earthen Levee		GPS Latitude/Longitude		
			Start	End	
Item	Flood Preparedness & Training			°	°
				°	°
DWR ID	DWR_RD0999_01_s_2013_55				
Comment Code					
Inspector Comment					
The LMA is prepared for responding to floods and has received training.					

No Photos

* Location LS : Land Side N/A : Not Applicable WS : Water Side CR : Crown	** Rating A : Acceptable M : Minimally Acceptable U : Unacceptable	N : Not Inspected/Rated C : Corrected A/W : Acceptable but Monitor & Maintain	+ Issue Type Ma : Maintenance Deficiency Ob : Design & System Obsolescence En : Enforcement
----------------------------------------------------------------------------------------------	------------------------------------------------------------------------------------	-------------------------------------------------------------------------------------	-------------------------------------------------------------------------------------------------------------

**Flood Control Project Maintenance
Levee Inspections**

Maintenance Issue Types Only, Levee Inspection Report By Mile - Spring 2019

Reclamation District No. 0999 Netherlands

Waterway	Bank	Unit Miles	Inspection Start/End	Inspector
Unit No. 01 Yolo Bypass	Left	15.41	03/21/2019 03/21/2019	Luz Dial

LM Start	0.27	Rating **	M	Issue No.	3
LM End	0.27	Issue Type +	Ma	Location *	LS
Category	Earthen Levee			GPS Latitude/Longitude	
				Start	End
Item	Vegetation			38.501113 °	38.501113 °
				-121.581975 °	-121.581975 °
DWR ID	DWR_RD0999_01_s_2012_3				
Comment Code					
V4 : Elderberries are blocking visibility and flood fight capability.					
Inspector Comment					

Photo 1 of 1 : SP_2019_RD0999_232_3_20190307_00004.jpg



View of landside slope looking south. Fall 2017

LM Start	1.73	Rating **	M	Issue No.	919
LM End	1.73	Issue Type +	Ma	Location *	
Category	Supplemental			GPS Latitude/Longitude	
				Start	End
Item	DWR UCIP LMA Responsibility			38.480097 °	38.480097 °
				-121.580844 °	-121.580844 °
DWR ID	22743				
Comment Code					
Inspector Comment					
FS_ID:53368 DS_ID:22743 EP_NO: N/A Repair Type: Non-Urgent Crossing Status: Found UCIP Comments: 07/26/2018 Same as last inspection. Pipe open on WS, but no visual signs of pipe or levee integrity issues so downgrading crossing to Non-Urgent (D. Sanoski - DWR UCIP).07/07/2016 Condition largely unchanged from previous inspection. Pipe open on the WS, waterward of the siphon breaker. Dense vegetation and steep slope limited inspection of WS outlet into Ship Channel. (T. Hatch/UCIP) 06/25/2013 Pipe abandoned and open on WS slope. Pipe should be abandoned properly. (W. Wylie/UCIP) FIELD_STRUCT_DESC: *ABANDONED* 30-inch steel drainage pipe through the levee, 6.5 feet below the crown. Pump on a platform in the canal off the landside (LS) toe, not found. Flap gate on the waterside (WS), not found. Siphon breaker and an air vent on the WS shoulder. 1-inch galvanized iron filler pipe visible on the WS shoulder along same alignment. [Additional Reference(s): DWR Levee Log, 1992. USACE Sacramento O&M Manual 113 (Revised), October 1966, (HLM 1.73)]. FS Date: 7/26/2018 10:10:00 AM					

Photo 1 of 3 : UCIP_SP_2019_53368_25191.jpg



Pipe open on WS slope

* Location LS : Land Side N/A : Not Applicable WS : Water Side CR : Crown	** Rating A : Acceptable M : Minimally Acceptable U : Unacceptable	N : Not Inspected/Rated C : Corrected A/W : Acceptable but Monitor & Maintain	+ Issue Type Ma : Maintenance Deficiency Ob : Design & System Obsolescence En : Enforcement
----------------------------------------------------------------------------------------------	------------------------------------------------------------------------------------	-------------------------------------------------------------------------------------	-------------------------------------------------------------------------------------------------------------

**Flood Control Project Maintenance
Levee Inspections**

Maintenance Issue Types Only, Levee Inspection Report By Mile - Spring 2019

Reclamation District No. 0999 Netherlands

Waterway	Bank	Unit Miles	Inspection Start/End	Inspector
Unit No. 01 Yolo Bypass	Left	15.41	03/21/2019 03/21/2019	Luz Dial

LM Start	1.73	Rating **	M	Issue No.	919 (cont)	
LM End	1.73	Issue Type +	Ma	Location *		
Category	Supplemental			GPS Latitude/Longitude		
				Start	End	
Item	DWR UCIP LMA Responsibility			38.480097 °	38.480097 °	
				-121.580844 °	-121.580844 °	
DWR ID	22743					
Comment Code						
Inspector Comment						
FS_ID:53368 DS_ID:22743 EP_NO: N/A Repair Type: Non-Urgent Crossing Status: Found UCIP Comments: 07/26/2018 Same as last inspection. Pipe open on WS, but no visual signs of pipe or levee integrity issues so downgrading crossing to Non-Urgent (D. Sanoski - DWR UCIP).07/07/2016 Condition largely unchanged from previous inspection. Pipe open on the WS, waterward of the siphon breaker. Dense vegetation and steep slope limited inspection of WS outlet into Ship Channel. (T. Hatch/UCIP) 06/25/2013 Pipe abandoned and open on WS slope. Pipe should be abandoned properly. (W. Wylie/UCIP) FIELD_STRUCT_DESC: *ABANDONED* 30-inch steel drainage pipe through the levee, 6.5 feet below the crown. Pump on a platform in the canal off the landside (LS) toe, not found. Flap gate on the waterside (WS), not found. Siphon breaker and an air vent on the WS shoulder. 1-inch galvanized iron filler pipe visible on the WS shoulder along same alignment. [Additional Reference(s): DWR Levee Log, 1992. USACE Sacramento O&M Manual 113 (Revised), October 1966, (HLM 1.73)]. FS Date: 7/26/2018 10:10:00 AM						

LM Start	1.73	Rating **	M	Issue No.	919 (cont)
LM End	1.73	Issue Type +	Ma	Location *	

Photo 2 of 3 : UCIP_SP_2019_53368_25190.jpg



Pump platform visible off LS toe, but no appurtenances remain.

Photo 3 of 3 : UCIP_SP_2019_53368_25189.jpg



Pump platform visible off LS toe, but no appurtenances remain.

* Location LS : Land Side N/A : Not Applicable WS : Water Side CR : Crown		** Rating A : Acceptable N : Not Inspected/Rated M : Minimally Acceptable C : Corrected U : Unacceptable A/W : Acceptable but Monitor & Maintain		+ Issue Type Ma : Maintenance Deficiency Ob : Design & System Obsolescence En : Enforcement
----------------------------------------------------------------------------------------------	--	---------------------------------------------------------------------------------------------------------------------------------------------------------------------------------------------------------------	--	-------------------------------------------------------------------------------------------------------------

**Flood Control Project Maintenance
Levee Inspections**

Maintenance Issue Types Only, Levee Inspection Report By Mile - Spring 2019

Reclamation District No. 0999 Netherlands

Waterway	Bank	Unit Miles	Inspection Start/End	Inspector
Unit No. 01 Yolo Bypass	Left	15.41	03/21/2019 03/21/2019	Luz Dial

LM Start	1.79	Rating **	M	Issue No.	30
LM End	2.04	Issue Type +	Ma	Location *	LS
Category	Earthen Levee			GPS Latitude/Longitude	
				Start	End
Item	Trim / Thin Trees			38.479165 °	38.475463 °
				-121.580640 °	-121.580722 °
DWR ID	DWR_RD0999_01_s_2012_30				
Comment Code					
T1 : Trim trees to at least five feet above ground level.					
Inspector Comment					
LMA claimed that RD765 is responsible for maintenance for landside section approximately between LM 1.79-2.25, but DWR forwarded the LMA their boundary map located in the USACE Unit 113 O&M Manual.					

Photo 1 of 2 : SP_2019_RD0999_232_30_20190307_00015.jpg



View of untrimmed trees on landside slope. LMA claims that RD 765 is responsible for maintenance. Fall 2018

LM Start	1.79	Rating **	M	Issue No.	30 (cont)
LM End	2.04	Issue Type +	Ma	Location *	LS

Photo 2 of 2 : SP_2019_RD0999_232_30_20190307_00016.jpg



Looking southeast at dense trees on landward slope. (Fall 2016)

LM Start	2.09	Rating **	M	Issue No.	13
LM End	2.12	Issue Type +	Ma	Location *	WS
Category	Earthen Levee			GPS Latitude/Longitude	
				Start	End
Item	Vegetation			38.474818 °	38.474352 °
				-121.580512 °	-121.580497 °
DWR ID	DWR_RD0999_01_s_2019_13				
Comment Code					
V1 : Control annual grass and weeds on the levee slopes and easements.					
Inspector Comment					

No Photos

* Location LS : Land Side N/A : Not Applicable WS : Water Side CR : Crown		** Rating A : Acceptable M : Minimally Acceptable U : Unacceptable		N : Not Inspected/Rated C : Corrected A/W : Acceptable but Monitor & Maintain		+ Issue Type Ma : Maintenance Deficiency Ob : Design & System Obsolescence En : Enforcement	
---------------------------------------------------------------------------------------	--	-----------------------------------------------------------------------------	--	-------------------------------------------------------------------------------------	--	------------------------------------------------------------------------------------------------------	--

**Flood Control Project Maintenance
Levee Inspections**

Maintenance Issue Types Only, Levee Inspection Report By Mile - Spring 2019

Reclamation District No. 0999 Netherlands

Waterway	Bank	Unit Miles	Inspection Start/End	Inspector
Unit No. 01 Yolo Bypass	Left	15.41	03/21/2019 03/21/2019	Luz Dial

LM Start	2.13	Rating **	M	Issue No.	31
LM End	2.13	Issue Type +	Ma	Location *	LS
Category	Earthen Levee			GPS Latitude/Longitude	
				Start	End
Item	Trim / Thin Trees			38.474200 °	38.474200 °
				-121.580480 °	-121.580480 °
DWR ID	DWR_RD0999_01_f_2018_31				
Comment Code					
T3 : Trim and thin trees to allow visibility of the ground and room to flood fight.					
Inspector Comment					
LMA claims that RD765 is responsible for maintenance and is searching for documentation.					

Photo 1 of 3 : SP_2019_RD0999_232_31_20190307_00017.jpg



View of untrimmed trees on landside slope. LMA claims that RD 765 is responsible for maintenance. Fall 2018

LM Start	2.13	Rating **	M	Issue No.	31 (cont)
LM End	2.13	Issue Type +	Ma	Location *	LS

Photo 2 of 3 : SP_2019_RD0999_232_31_20190307_00018.jpg



Looking north at untrimmed trees on landward slope. (Fall 2016)

LM Start	2.13	Rating **	M	Issue No.	31 (cont)
LM End	2.13	Issue Type +	Ma	Location *	LS

Photo 3 of 3 : SP_2019_RD0999_232_31_20190307_00019.jpg



Looking southeast at untrimmed trees on landward slope. (Spring 2016)

* Location LS : Land Side N/A : Not Applicable WS : Water Side CR : Crown		** Rating A : Acceptable M : Minimally Acceptable U : Unacceptable N : Not Inspected/Rated C : Corrected A/W : Acceptable but Monitor & Maintain		+ Issue Type Ma : Maintenance Deficiency Ob : Design & System Obsolescence En : Enforcement
----------------------------------------------------------------------------------------------	--	---------------------------------------------------------------------------------------------------------------------------------------------------------------------------	--	-------------------------------------------------------------------------------------------------------------

**Flood Control Project Maintenance
Levee Inspections**

Maintenance Issue Types Only, Levee Inspection Report By Mile - Spring 2019

Reclamation District No. 0999 Netherlands

Waterway	Bank	Unit Miles	Inspection Start/End	Inspector
Unit No. 01 Yolo Bypass	Left	15.41	03/21/2019 03/21/2019	Luz Dial

LM Start	2.17	Rating **	M	Issue No.	32
LM End	2.17	Issue Type +	Ma	Location *	WS
Category	Earthen Levee			GPS Latitude/Longitude	
				Start	End
Item	Vegetation			38.473650 °	38.473650 °
				-121.580756 °	-121.580756 °
DWR ID	DWR_RD0999_01_f_2017_32				
Comment Code					
V2 : Remove the wild growth other than native grasses from the levee slopes.					
Inspector Comment					
Trim wild growth on levee slope, and monitor Arundo in area.					

Photo 1 of 2 : SP_2019_RD0999_232_32_20190307_00020.jpg



View of tall weeds on levee slope. Fall 2018

LM Start	2.17	Rating **	M	Issue No.	32 (cont)
LM End	2.17	Issue Type +	Ma	Location *	WS

Photo 2 of 2 : SP_2019_RD0999_232_32_20190307_00021.jpg



View of Arundo further down levee slope. Fall 2018

LM Start	2.24	Rating **	M	Issue No.	15
LM End	2.30	Issue Type +	Ma	Location *	WS
Category	Earthen Levee			GPS Latitude/Longitude	
				Start	End
Item	Vegetation			38.472842 °	38.471937 °
				-121.581348 °	-121.581760 °
DWR ID	DWR_RD0999_01_s_2019_15				
Comment Code					
V1 : Control annual grass and weeds on the levee slopes and easements.					
Inspector Comment					

Photo 1 of 1 : SP_2019_RD0999_232_15_20190325_00064.jpg



View of tall weeds on waterside slope. Spring 2019

* Location LS : Land Side N/A : Not Applicable WS : Water Side CR : Crown		** Rating A : Acceptable N : Not Inspected/Rated M : Minimally Acceptable C : Corrected U : Unacceptable A/W : Acceptable but Monitor & Maintain		+ Issue Type Ma : Maintenance Deficiency Ob : Design & System Obsolescence En : Enforcement
----------------------------------------------------------------------------------------------	--	---------------------------------------------------------------------------------------------------------------------------------------------------------------------------------------------------------------	--	-------------------------------------------------------------------------------------------------------------

**Flood Control Project Maintenance
Levee Inspections**

Maintenance Issue Types Only, Levee Inspection Report By Mile - Spring 2019

Reclamation District No. 0999 Netherlands

Waterway	Bank	Unit Miles	Inspection Start/End	Inspector
Unit No. 01 Yolo Bypass	Left	15.41	03/21/2019 03/21/2019	Luz Dial

LM Start	2.39	Rating **	M	Issue No.	21
LM End	2.42	Issue Type +	Ma	Location *	WS
Category	Earthen Levee		GPS Latitude/Longitude		
			Start	End	
Item	Vegetation		38.470793 °	38.470280 °	
			-121.582295 °	-121.582533 °	
DWR ID	DWR_RD0999_01_s_2019_21				
Comment Code					
V1 : Control annual grass and weeds on the levee slopes and easements.					
Inspector Comment					

No Photos

LM Start	2.45	Rating **	M	Issue No.	28
LM End	2.45	Issue Type +	Ma	Location *	WS
Category	Earthen Levee		GPS Latitude/Longitude		
			Start	End	
Item	Trim / Thin Trees		38.469875 °	38.469875 °	
			-121.582733 °	-121.582733 °	
DWR ID	DWR_RD0999_01_s_2019_28				
Comment Code					
T1 : Trim trees to at least five feet above ground level.					
Inspector Comment					

No Photos

LM Start	2.48	Rating **	M	Issue No.	37
LM End	2.50	Issue Type +	Ma	Location *	WS
Category	Earthen Levee		GPS Latitude/Longitude		
			Start	End	
Item	Vegetation		38.469467 °	38.469243 °	
			-121.582897 °	-121.583000 °	
DWR ID	DWR_RD0999_01_s_2019_37				
Comment Code					
V1 : Control annual grass and weeds on the levee slopes and easements.					
Inspector Comment					

No Photos

* Location LS : Land Side N/A : Not Applicable WS : Water Side CR : Crown	** Rating A : Acceptable M : Minimally Acceptable U : Unacceptable	N : Not Inspected/Rated C : Corrected A/W : Acceptable but Monitor & Maintain	+ Issue Type Ma : Maintenance Deficiency Ob : Design & System Obsolescence En : Enforcement
----------------------------------------------------------------------------------------------	------------------------------------------------------------------------------------	-------------------------------------------------------------------------------------	-------------------------------------------------------------------------------------------------------------

**Flood Control Project Maintenance
Levee Inspections**

Maintenance Issue Types Only, Levee Inspection Report By Mile - Spring 2019

Reclamation District No. 0999 Netherlands

Waterway	Bank	Unit Miles	Inspection Start/End	Inspector
Unit No. 01 Yolo Bypass	Left	15.41	03/21/2019 03/21/2019	Luz Dial

LM Start	2.72	Rating **	M	Issue No.	38
LM End	2.77	Issue Type +	Ma	Location *	WS
Category	Earthen Levee			GPS Latitude/Longitude	
				Start	End
Item	Vegetation			38.466242 °	38.465495 °
				-121.584372 °	-121.584717 °
DWR ID	DWR_RD0999_01_s_2019_38				
Comment Code					
V1 : Control annual grass and weeds on the levee slopes and easements.					
Inspector Comment					

No Photos

LM Start	3.22	Rating **	M	Issue No.	51
LM End	3.22	Issue Type +	Ma	Location *	LS
Category	Earthen Levee			GPS Latitude/Longitude	
				Start	End
Item	Slope Stability			38.459399 °	38.459399 °
				-121.587523 °	-121.587523 °
DWR ID	DWR_RD0999_01_s_2013_51				
Comment Code					
S1 : Repair slope instability.					
Inspector Comment					
Depression on landward shoulder and slope 40' x 20'. Earthen material appears to be sliding toward levee toe.					

Photo 1 of 3 : SP_2019_RD0999_232_51_20190307_00031.jpg



View of landside slope looking south. Fall 2017

LM Start	3.22	Rating **	M	Issue No.	51 (cont)
LM End	3.22	Issue Type +	Ma	Location *	LS

Photo 2 of 3 : SP_2019_RD0999_232_51_20190307_00032.jpg



Looking northeast at depression on landward slope. Fall 2016

* Location LS : Land Side N/A : Not Applicable WS : Water Side CR : Crown		** Rating A : Acceptable M : Minimally Acceptable U : Unacceptable N : Not Inspected/Rated C : Corrected A/W : Acceptable but Monitor & Maintain		+ Issue Type Ma : Maintenance Deficiency Ob : Design & System Obsolescence En : Enforcement	
---------------------------------------------------------------------------------------	--	--------------------------------------------------------------------------------------------------------------------------------------------------------------------	--	------------------------------------------------------------------------------------------------------	--

**Flood Control Project Maintenance
Levee Inspections**

Maintenance Issue Types Only, Levee Inspection Report By Mile - Spring 2019

Reclamation District No. 0999 Netherlands

Waterway	Bank	Unit Miles	Inspection Start/End	Inspector
Unit No. 01 Yolo Bypass	Left	15.41	03/21/2019 03/21/2019	Luz Dial

LM Start	3.22	Rating **	M	Issue No.	51 (cont)	
LM End	3.22	Issue Type +	Ma	Location *	LS	
Category	Earthen Levee			GPS Latitude/Longitude		
				Start		End
Item	Slope Stability			38.459399 °		38.459399 °
				-121.587523 °		-121.587523 °
DWR ID	DWR_RD0999_01_s_2013_51					
Comment Code						
S1 : Repair slope instability.						
Inspector Comment						
Depression on landward shoulder and slope 40' x 20'. Earthen material appears to be sliding toward levee toe.						

Photo 3 of 3 : SP_2019_RD0999_232_51_20190307_00033.jpg



Looking north at depression on landside shoulder and slope. Spring 2016

LM Start	3.61	Rating **	M	Issue No.	40
LM End	3.63	Issue Type +	Ma	Location *	LS
Category	Earthen Levee			GPS Latitude/Longitude	
				Start	End
Item	Vegetation			38.454113 °	38.453857 °
				-121.589963 °	-121.590077 °
DWR ID	DWR_RD0999_01_s_2019_40				
Comment Code					
V2 : Remove the wild growth other than native grasses from the levee slopes.					
Inspector Comment					

No Photos

LM Start	3.93	Rating **	M	Issue No.	41
LM End	3.93	Issue Type +	Ma	Location *	WS
Category	Earthen Levee			GPS Latitude/Longitude	
				Start	End
Item	Vegetation			38.449732 °	38.449732 °
				-121.591975 °	-121.591975 °
DWR ID	DWR_RD0999_01_s_2019_41				
Comment Code					
V1 : Control annual grass and weeds on the levee slopes and easements.					
Inspector Comment					

No Photos

* Location		** Rating		+ Issue Type	
LS : Land Side	N/A : Not Applicable	A : Acceptable	N : Not Inspected/Rated	Ma : Maintenance Deficiency	
WS : Water Side		M : Minimally Acceptable	C : Corrected	Ob : Design & System Obsolescence	
CR : Crown		U : Unacceptable	A/W : Acceptable but Monitor & Maintain	En : Enforcement	

**Flood Control Project Maintenance
Levee Inspections**

Maintenance Issue Types Only, Levee Inspection Report By Mile - Spring 2019

Reclamation District No. 0999 Netherlands

Waterway	Bank	Unit Miles	Inspection Start/End	Inspector
Unit No. 01 Yolo Bypass	Left	15.41	03/21/2019 03/21/2019	Luz Dial

LM Start	4.16	Rating **	N	Issue No.	14
LM End	4.16	Issue Type +	Ma	Location *	WS
Category	Earthen Levee			GPS Latitude/Longitude	
				Start	End
Item	Trim / Thin Trees			38.446619 °	38.446619 °
				-121.593442 °	-121.593442 °
DWR ID	DWR_RD0999_01_s_2012_14				
Comment Code					
T5 : Tree stumps.					
Inspector Comment					

No Photos

LM Start	4.31	Rating **	M	Issue No.	27
LM End	4.31	Issue Type +	Ma	Location *	WS
Category	Earthen Levee			GPS Latitude/Longitude	
				Start	End
Item	Slope Stability			38.444560 °	38.444560 °
				-121.594440 °	-121.594440 °
DWR ID	DWR_RD0999_01_f_2012_27				
Comment Code					
S3 : Repair the levee slope damaged by vehicle traffic and prevent access where possible.					
Inspector Comment					
Instruct farmer to stop driving equipment and trucks on slope.					

Photo 1 of 2 : SP_2019_RD0999_232_27_20190307_00012.jpg

Looking at slope damage cause by vehicle traffic on waterward slope.
(Fall 2016)

LM Start	4.31	Rating **	M	Issue No.	27 (cont)
LM End	4.31	Issue Type +	Ma	Location *	WS

Photo 2 of 2 : SP_2019_RD0999_232_27_20190307_00013.jpg

Looking at slope damage cause by vehicle traffic on waterward slope.
(Spring 2015)

* Location LS : Land Side N/A : Not Applicable WS : Water Side CR : Crown		** Rating A : Acceptable M : Minimally Acceptable U : Unacceptable		N : Not Inspected/Rated C : Corrected A/W : Acceptable but Monitor & Maintain		+ Issue Type Ma : Maintenance Deficiency Ob : Design & System Obsolescence En : Enforcement	
---------------------------------------------------------------------------------------	--	-----------------------------------------------------------------------------	--	-------------------------------------------------------------------------------------	--	------------------------------------------------------------------------------------------------------	--

**Flood Control Project Maintenance
Levee Inspections**

Maintenance Issue Types Only, Levee Inspection Report By Mile - Spring 2019

Reclamation District No. 0999 Netherlands

Waterway	Bank	Unit Miles	Inspection Start/End	Inspector
Unit No. 01 Yolo Bypass	Left	15.41	03/21/2019 03/21/2019	Luz Dial

LM Start	5.21	Rating **	M	Issue No.	43
LM End	5.21	Issue Type +	Ma	Location *	LS
Category	Earthen Levee			GPS Latitude/Longitude	
				Start	End
Item	Slope Stability			38.432322 °	38.432322 °
				-121.600123 °	-121.600123 °
DWR ID	DWR_RD0999_01_s_2019_43				
Comment Code					
S1 : Repair slope instability.					
Inspector Comment					
Complete repair of a ~60' length of slip.					

Photo 1 of 1 : SP_2019_RD0999_232_43_20190325_00066.jpg



View of slip on landside slope. Spring 2019

LM Start	6.56	Rating **	M	Issue No.	46
LM End	6.56	Issue Type +	Ma	Location *	LS
Category	Earthen Levee			GPS Latitude/Longitude	
				Start	End
Item	Vegetation			38.413957 °	38.413957 °
				-121.608555 °	-121.608555 °
DWR ID	DWR_RD0999_01_s_2019_46				
Comment Code					
V1 : Control annual grass and weeds on the levee slopes and easements.					
Inspector Comment					

No Photos

LM Start	6.63	Rating **	M	Issue No.	47
LM End	6.63	Issue Type +	Ma	Location *	LS
Category	Earthen Levee			GPS Latitude/Longitude	
				Start	End
Item	Vegetation			38.412998 °	38.412998 °
				-121.608980 °	-121.608980 °
DWR ID	DWR_RD0999_01_s_2019_47				
Comment Code					
V1 : Control annual grass and weeds on the levee slopes and easements.					
Inspector Comment					

No Photos

* Location		** Rating		+ Issue Type	
LS : Land Side	N/A : Not Applicable	A : Acceptable	N : Not Inspected/Rated	Ma : Maintenance Deficiency	
WS : Water Side		M : Minimally Acceptable	C : Corrected	Ob : Design & System Obsolescence	
CR : Crown		U : Unacceptable	A/W : Acceptable but Monitor & Maintain	En : Enforcement	

**Flood Control Project Maintenance
Levee Inspections**

Maintenance Issue Types Only, Levee Inspection Report By Mile - Spring 2019

Reclamation District No. 0999 Netherlands

Waterway	Bank	Unit Miles	Inspection Start/End	Inspector
Unit No. 01 Yolo Bypass	Left	15.41	03/21/2019 03/21/2019	Luz Dial

LM Start	8.17	Rating **	A/W	Issue No.	16
LM End	8.17	Issue Type +	Ma	Location *	LS
Category	Earthen Levee			GPS Latitude/Longitude	
				Start	End
Item	Cracking			38.391963 °	38.391963 °
				-121.618782 °	-121.618782 °
DWR ID	DWR_RD0999_01_f_2018_16				
Comment Code					
CR1 : Monitor and have inspected by geotechnical engineer.					
Inspector Comment					
Monitor desiccation cracks on slope.					

Photo 1 of 1 : SP_2019_RD0999_232_16_20190307_00005.jpg



View of desiccation cracks on levee slope. Fall 2018

LM Start	8.49	Rating **	A/W	Issue No.	17
LM End	8.49	Issue Type +	Ma	Location *	LS
Category	Earthen Levee			GPS Latitude/Longitude	
				Start	End
Item	Cracking			38.387645 °	38.387645 °
				-121.620810 °	-121.620810 °
DWR ID	DWR_RD0999_01_f_2018_17				
Comment Code					
CR1 : Monitor and have inspected by geotechnical engineer.					
Inspector Comment					
Monitor desiccation cracks on landside shoulder.					

Photo 1 of 1 : SP_2019_RD0999_232_17_20190307_00006.jpg



View of desiccation cracks on levee shoulder. Fall 2018

LM Start	8.80	Rating **	U	Issue No.	18
LM End	8.80	Issue Type +	Ma	Location *	LS
Category	Earthen Levee			GPS Latitude/Longitude	
				Start	End
Item	Animal Control			38.383468 °	38.383468 °
				-121.622748 °	-121.622748 °
DWR ID	DWR_RD0999_01_f_2018_18				
Comment Code					
A3 : No rodents visible, but rodent burrows visible; need to backfill and compact or grout burrows.					
Inspector Comment					
Backfill large animal burrows at shoulder and slope.					

Photo 1 of 1 : SP_2019_RD0999_232_18_20190307_00007.jpg



View of large animal burrows at shoulder and slope. Fall 2018

* Location LS : Land Side N/A : Not Applicable WS : Water Side CR : Crown		** Rating A : Acceptable M : Minimally Acceptable U : Unacceptable		N : Not Inspected/Rated C : Corrected A/W : Acceptable but Monitor & Maintain		+ Issue Type Ma : Maintenance Deficiency Ob : Design & System Obsolescence En : Enforcement	
----------------------------------------------------------------------------------------------	--	------------------------------------------------------------------------------------	--	-------------------------------------------------------------------------------------	--	-------------------------------------------------------------------------------------------------------------	--

**Flood Control Project Maintenance
Levee Inspections**

Maintenance Issue Types Only, Levee Inspection Report By Mile - Spring 2019

Reclamation District No. 0999 Netherlands

Waterway	Bank	Unit Miles	Inspection Start/End	Inspector
Unit No. 01 Yolo Bypass	Left	15.41	03/21/2019 03/21/2019	Luz Dial

LM Start	8.89	Rating **	A/W	Issue No.	22
LM End	8.89	Issue Type +	Ma	Location *	LS
Category	Earthen Levee			GPS Latitude/Longitude	
				Start	End
Item	Cracking			38.382145 °	38.382145 °
				-121.623363 °	-121.623363 °
DWR ID	DWR_RD0999_01_f_2018_22				
Comment Code					
CR1 : Monitor and have inspected by geotechnical engineer.					
Inspector Comment					
Desiccation cracks should be monitored.					

Photo 1 of 1 : SP_2019_RD0999_232_22_20190307_00008.jpg



View of cracking on slope. Fall 2018

LM Start	9.15	Rating **	M	Issue No.	23
LM End	9.17	Issue Type +	Ma	Location *	LS
Category	Earthen Levee			GPS Latitude/Longitude	
				Start	End
Item	Vegetation			38.378623 °	38.378345 °
				-121.624962 °	-121.625092 °
DWR ID	DWR_RD0999_01_f_2018_23				
Comment Code					
V2 : Remove the wild growth other than native grasses from the levee slopes.					
Inspector Comment					

No Photos

LM Start	9.34	Rating **	A/W	Issue No.	24
LM End	9.34	Issue Type +	Ma	Location *	LS
Category	Earthen Levee			GPS Latitude/Longitude	
				Start	End
Item	Animal Control			38.376127 °	38.376127 °
				-121.626140 °	-121.626140 °
DWR ID	DWR_RD0999_01_s_2019_24				
Comment Code					
A3 : No rodents visible, but rodent burrows visible; need to backfill and compact or grout burrows.					
Inspector Comment					
Backfill animal burrow and monitor area.					

No Photos

* Location		** Rating		+ Issue Type	
LS : Land Side	N/A : Not Applicable	A : Acceptable	N : Not Inspected/Rated	Ma : Maintenance Deficiency	
WS : Water Side		M : Minimally Acceptable	C : Corrected	Ob : Design & System Obsolescence	
CR : Crown		U : Unacceptable	A/W : Acceptable but Monitor & Maintain	En : Enforcement	

**Flood Control Project Maintenance
Levee Inspections**

Maintenance Issue Types Only, Levee Inspection Report By Mile - Spring 2019

Reclamation District No. 0999 Netherlands

Waterway	Bank	Unit Miles	Inspection Start/End	Inspector
Unit No. 01 Yolo Bypass	Left	15.41	03/21/2019 03/21/2019	Luz Dial

LM Start	9.64	Rating **	M	Issue No.	29
LM End	9.69	Issue Type +	Ma	Location *	WS
Category	Earthen Levee			GPS Latitude/Longitude	
				Start	End
Item	Vegetation			38.372002 °	38.371283 °
				-121.627998 °	-121.628382 °
DWR ID	DWR_RD0999_01_f_2018_29				
Comment Code					
V1 : Control annual grass and weeds on the levee slopes and easements.					
Inspector Comment					
Trim vegetation on slope.					

Photo 1 of 1 : SP_2019_RD0999_232_29_20190307_00014.jpg



View of slope vegetation that needs to be trimmed. Fall 2018

LM Start	9.68	Rating **	M	Issue No.	25
LM End	9.72	Issue Type +	Ma	Location *	LS
Category	Earthen Levee			GPS Latitude/Longitude	
				Start	End
Item	Vegetation			38.371462 °	38.370848 °
				-121.628370 °	-121.628610 °
DWR ID	DWR_RD0999_01_f_2018_25				
Comment Code					
V1 : Control annual grass and weeds on the levee slopes and easements.					
Inspector Comment					
Trim vegetation on slopes.					

Photo 1 of 1 : SP_2019_RD0999_232_25_20190307_00010.jpg



View of landside vegetation that needs to be trimmed. Fall 2018

LM Start	9.98	Rating **	M	Issue No.	33
LM End	9.98	Issue Type +	Ma	Location *	LS
Category	Earthen Levee			GPS Latitude/Longitude	
				Start	End
Item	Animal Control			38.367303 °	38.367303 °
				-121.630278 °	-121.630278 °
DWR ID	DWR_RD0999_01_f_2018_33				
Comment Code					
A3 : No rodents visible, but rodent burrows visible; need to backfill and compact or grout burrows.					
Inspector Comment					
Backfill recent rodent holes.					

Photo 1 of 1 : SP_2019_RD0999_232_33_20190307_00022.jpg



View of rodent holes that need to be backfilled. Fall 2018

* Location LS : Land Side N/A : Not Applicable WS : Water Side CR : Crown		** Rating A : Acceptable M : Minimally Acceptable U : Unacceptable		N : Not Inspected/Rated C : Corrected A/W : Acceptable but Monitor & Maintain		+ Issue Type Ma : Maintenance Deficiency Ob : Design & System Obsolescence En : Enforcement	
----------------------------------------------------------------------------------------------	--	------------------------------------------------------------------------------------	--	-------------------------------------------------------------------------------------	--	-------------------------------------------------------------------------------------------------------------	--

**Flood Control Project Maintenance
Levee Inspections**

Maintenance Issue Types Only, Levee Inspection Report By Mile - Spring 2019

Reclamation District No. 0999 Netherlands

Waterway	Bank	Unit Miles	Inspection Start/End	Inspector
Unit No. 01 Yolo Bypass	Left	15.41	03/21/2019 03/21/2019	Luz Dial

LM Start	10.93	Rating **	M	Issue No.	48
LM End	10.93	Issue Type +	Ma	Location *	WS
Category	Earthen Levee			GPS Latitude/Longitude	
				Start	End
Item	Encroachments			38.354377 °	38.354377 °
				-121.636255 °	-121.636255 °
DWR ID	DWR_RD0999_01_s_2019_48				
Comment Code					
TR : Tree or limb					
Inspector Comment					
Remove fallen tree from waterside slope.					

No Photos

LM Start	11.16	Rating **	A/W	Issue No.	35
LM End	11.16	Issue Type +	Ma	Location *	LS
Category	Earthen Levee			GPS Latitude/Longitude	
				Start	End
Item	Animal Control			38.351308 °	38.351308 °
				-121.637642 °	-121.637642 °
DWR ID	DWR_RD0999_01_f_2018_35				
Comment Code					
A3 : No rodents visible, but rodent burrows visible; need to backfill and compact or grout burrows.					
Inspector Comment					
Backfill animal burrow.					

No Photos

LM Start	14.04	Rating **	M	Issue No.	49
LM End	14.04	Issue Type +	Ma	Location *	LS
Category	Earthen Levee			GPS Latitude/Longitude	
				Start	End
Item	Erosion / Bank Caving			38.310347 °	38.310347 °
				-121.644955 °	-121.644955 °
DWR ID	DWR_RD0999_01_f_2012_49				
Comment Code					
E1 : Note and monitor erosion site.					
Inspector Comment					
Repair caving, 4' x 10', on landside slope.					

Photo 1 of 1 : SP_2019_RD0999_232_49_20190307_00029.jpg



View of caving on landward slope. Fall 2018

* Location LS : Land Side N/A : Not Applicable WS : Water Side CR : Crown		** Rating A : Acceptable M : Minimally Acceptable U : Unacceptable N : Not Inspected/Rated C : Corrected A/W : Acceptable but Monitor & Maintain		+ Issue Type Ma : Maintenance Deficiency Ob : Design & System Obsolescence En : Enforcement	
---------------------------------------------------------------------------------------	--	--------------------------------------------------------------------------------------------------------------------------------------------------------------------	--	------------------------------------------------------------------------------------------------------	--

**Flood Control Project Maintenance
Levee Inspections**

Maintenance Issue Types Only, Levee Inspection Report By Mile - Spring 2019

Reclamation District No. 0999 Netherlands

Waterway	Bank	Unit Miles	Inspection Start/End	Inspector
Unit No. 01 Yolo Bypass	Left	15.41	03/21/2019 03/21/2019	Luz Dial

LM Start	15.24	Rating **	A/W	Issue No.	925
LM End	15.24	Issue Type +	Ma	Location *	
Category	Supplemental			GPS Latitude/Longitude	
				Start	End
Item	DWR UCIP LMA Responsibility			38.292973 °	38.292973 °
				-121.644977 °	-121.644977 °
DWR ID	22756				
Comment Code					
Inspector Comment					
FS_ID:15365 DS_ID:22756 EP_NO: N/A Repair Type: No Action Needed Crossing Status: Found UCIP Comments: FIELD_STRUCT_DESC: 30-inch steel drainage pipe through the levee, 7 feet below the crown. Flap gate on the waterside (WS) end. Pump in pump house on the landside (LS) toe. Siphon breaker in a corrugated metal pipe (CMP) riser on the WS shoulder. [Additional Reference(s): DWR Levee Log, 1992. USACE Sacramento O&M Manual 113 (Revised), October 1966, (HLM 15.25) (36-inch pipe listed)]. FS Date: 6/25/2013					

Photo 1 of 3 : UCIP_SP_2019_15365_25227.jpg



Pumphouse on LS toe.

LM Start	15.24	Rating **	A/W	Issue No.	925 (cont)
LM End	15.24	Issue Type +	Ma	Location *	

Photo 2 of 3 : UCIP_SP_2019_15365_25226.jpg



Siphon breaker in CMP riser on WS shoulder.

* Location LS : Land Side N/A : Not Applicable WS : Water Side CR : Crown	** Rating A : Acceptable M : Minimally Acceptable U : Unacceptable	N : Not Inspected/Rated C : Corrected A/W : Acceptable but Monitor & Maintain	+ Issue Type Ma : Maintenance Deficiency Ob : Design & System Obsolescence En : Enforcement
----------------------------------------------------------------------------------------------	------------------------------------------------------------------------------------	-------------------------------------------------------------------------------------	-------------------------------------------------------------------------------------------------------------

**Flood Control Project Maintenance
Levee Inspections**

Maintenance Issue Types Only, Levee Inspection Report By Mile - Spring 2019

Reclamation District No. 0999 Netherlands

Waterway	Bank	Unit Miles	Inspection Start/End	Inspector
Unit No. 01 Yolo Bypass	Left	15.41	03/21/2019 03/21/2019	Luz Dial

LM Start	15.24	Rating **	A/W	Issue No.	925 (cont)	
LM End	15.24	Issue Type +	Ma	Location *		
Category	Supplemental			GPS Latitude/Longitude		
				Start		End
Item	DWR UCIP LMA Responsibility			38.292973 °		38.292973 °
				-121.644977 °		-121.644977 °
DWR ID	22756					
Comment Code						
Inspector Comment						
FS_ID:15365 DS_ID:22756 EP_NO: N/A Repair Type: No Action Needed Crossing Status: Found UCIP Comments: FIELD_STRUCT_DESC: 30-inch steel drainage pipe through the levee, 7 feet below the crown. Flap gate on the waterside (WS) end. Pump in pump house on the landside (LS) toe. Siphon breaker in a corrugated metal pipe (CMP) riser on the WS shoulder. [Additional Reference(s): DWR Levee Log, 1992. USACE Sacramento O&M Manual 113 (Revised), October 1966, (HLM 15.25) (36-inch pipe listed)]. FS Date: 6/25/2013						

Photo 3 of 3 : UCIP_SP_2019_15365_25225.jpg



Closeup of pipe at pumphouse on LS toe.

* Location LS : Land Side N/A : Not Applicable WS : Water Side CR : Crown	** Rating A : Acceptable M : Minimally Acceptable U : Unacceptable N : Not Inspected/Rated C : Corrected A/W : Acceptable but Monitor & Maintain	+ Issue Type Ma : Maintenance Deficiency Ob : Design & System Obsolescence En : Enforcement
----------------------------------------------------------------------------------------------	---------------------------------------------------------------------------------------------------------------------------------------------------------------------------	-------------------------------------------------------------------------------------------------------------

**Flood Control Project Maintenance
Levee Inspections**

Maintenance Issue Types Only, Levee Inspection Report By Mile - Spring 2019

Reclamation District No. 0999 Netherlands

Waterway	Bank	Unit Miles	Inspection Start/End	Inspector
Unit No. 02 Miner Slough	Right	2.31	03/21/2019 03/21/2019	Luz Dial

LM Start	0.06	Rating **	M	Issue No.	21
LM End	0.06	Issue Type +	Ma	Location *	LS
Category	Earthen Levee			GPS Latitude/Longitude	
				Start	End
Item	Trim / Thin Trees			38.290434 °	38.290434 °
				-121.643873 °	-121.643873 °
DWR ID	DWR_RD0999_02_f_2017_21				
Comment Code					
T1 : Trim trees to at least five feet above ground level.					
Inspector Comment					

Photo 1 of 1 : SP_2019_RD0999_233_21_20190307_00019.jpg



View of landside slope looking north. Fall 2017

LM Start	0.72	Rating **	M	Issue No.	18
LM End	0.74	Issue Type +	Ma	Location *	WS
Category	Earthen Levee			GPS Latitude/Longitude	
				Start	End
Item	Vegetation			38.292740 °	38.292777 °
				-121.632517 °	-121.632240 °
DWR ID	DWR_RD0999_02_s_2019_18				
Comment Code					
V1 : Control annual grass and weeds on the levee slopes and easements.					
Inspector Comment					

No Photos

LM Start	0.82	Rating **	M	Issue No.	14
LM End	0.82	Issue Type +	Ma	Location *	LS
Category	Earthen Levee			GPS Latitude/Longitude	
				Start	End
Item	Vegetation			38.292439 °	38.292439 °
				-121.630781 °	-121.630781 °
DWR ID	DWR_RD0999_02_f_2012_14				
Comment Code					
V2 : Remove the wild growth other than native grasses from the levee slopes.					
Inspector Comment					
LMA has not removed Century plant on landside slope.					

Photo 1 of 2 : SP_2019_RD0999_233_14_20190307_00012.jpg



Looking north at century plant at landward toe. Fall 2015.

* Location LS : Land Side N/A : Not Applicable WS : Water Side CR : Crown		** Rating A : Acceptable M : Minimally Acceptable U : Unacceptable		N : Not Inspected/Rated C : Corrected A/W : Acceptable but Monitor & Maintain		+ Issue Type Ma : Maintenance Deficiency Ob : Design & System Obsolescence En : Enforcement	
----------------------------------------------------------------------------------------------	--	------------------------------------------------------------------------------------	--	-------------------------------------------------------------------------------------	--	-------------------------------------------------------------------------------------------------------------	--

**Flood Control Project Maintenance
Levee Inspections**

Maintenance Issue Types Only, Levee Inspection Report By Mile - Spring 2019

Reclamation District No. 0999 Netherlands

Waterway	Bank	Unit Miles	Inspection Start/End	Inspector
Unit No. 02 Miner Slough	Right	2.31	03/21/2019 03/21/2019	Luz Dial

LM Start	0.82	Rating **	M	Issue No.	14 (cont)	
LM End	0.82	Issue Type +	Ma	Location *	LS	
Category	Earthen Levee			GPS Latitude/Longitude		
				Start		End
Item	Vegetation			38.292439 °		38.292439 °
				-121.630781 °		-121.630781 °
DWR ID	DWR_RD0999_02_f_2012_14					
Comment Code						
V2 : Remove the wild growth other than native grasses from the levee slopes.						
Inspector Comment						
LMA has not removed Century plant on landside slope.						

Photo 2 of 2 : SP_2019_RD0999_233_14_20190307_00013.jpg



Looking north at century plant at landside toe.

LM Start	0.83	Rating **	M	Issue No.	19
LM End	0.83	Issue Type +	Ma	Location *	LS
Category	Earthen Levee			GPS Latitude/Longitude	
				Start	End
Item	Trim / Thin Trees			38.292386 °	38.292386 °
				-121.630543 °	-121.630543 °
DWR ID	DWR_RD0999_02_f_2012_19				
Comment Code					
T2 : Thin trees to allow visibility of the ground and room to flood fight.					
Inspector Comment					

Photo 1 of 2 : SP_2019_RD0999_233_19_20190307_00017.jpg



View of landside slope looking north. Fall 2017

LM Start	0.83	Rating **	M	Issue No.	19 (cont)
LM End	0.83	Issue Type +	Ma	Location *	LS

Photo 2 of 2 : SP_2019_RD0999_233_19_20190307_00018.jpg



Looking north at untrimmed and trees to be thinned at landward toe fall 2015.

* Location LS : Land Side N/A : Not Applicable WS : Water Side CR : Crown		** Rating A : Acceptable M : Minimally Acceptable U : Unacceptable		N : Not Inspected/Rated C : Corrected A/W : Acceptable but Monitor & Maintain		+ Issue Type Ma : Maintenance Deficiency Ob : Design & System Obsolescence En : Enforcement	
---------------------------------------------------------------------------------------	--	-----------------------------------------------------------------------------	--	-------------------------------------------------------------------------------------	--	------------------------------------------------------------------------------------------------------	--

**Flood Control Project Maintenance
Levee Inspections**

Maintenance Issue Types Only, Levee Inspection Report By Mile - Spring 2019

Reclamation District No. 0999 Netherlands

Waterway	Bank	Unit Miles	Inspection Start/End	Inspector
Unit No. 02 Miner Slough	Right	2.31	03/21/2019 03/21/2019	Luz Dial

LM Start	0.84	Rating **	C	Issue No.	13
LM End	0.84	Issue Type +	Ma	Location *	LS
Category	Earthen Levee			GPS Latitude/Longitude	
				Start	End
Item	Encroachments			38.292352 °	38.292352 °
				-121.630452 °	-121.630452 °
DWR ID	DWR_RD0999_02_s_2012_13				
Comment Code					
TR : Tree or limb					
Inspector Comment					

No Photos

LM Start	0.85	Rating **	M	Issue No.	20
LM End	0.85	Issue Type +	Ma	Location *	WS
Category	Earthen Levee			GPS Latitude/Longitude	
				Start	End
Item	Trim / Thin Trees			38.292318 °	38.292318 °
				-121.630172 °	-121.630172 °
DWR ID	DWR_RD0999_02_s_2019_20				
Comment Code					
T1 : Trim trees to at least five feet above ground level.					
Inspector Comment					

No Photos

LM Start	0.85	Rating **	C	Issue No.	22
LM End	0.85	Issue Type +	Ma	Location *	LS
Category	Earthen Levee			GPS Latitude/Longitude	
				Start	End
Item	Encroachments			38.292290 °	38.292290 °
				-121.630167 °	-121.630167 °
DWR ID	DWR_RD0999_02_f_2017_22				
Comment Code					
PR : Prunings					
Inspector Comment					
LMA plans to clear prunings.					

No Photos

* Location		** Rating		+ Issue Type	
LS : Land Side	N/A : Not Applicable	A : Acceptable	N : Not Inspected/Rated	Ma : Maintenance Deficiency	
WS : Water Side		M : Minimally Acceptable	C : Corrected	Ob : Design & System Obsolescence	
CR : Crown		U : Unacceptable	A/W : Acceptable but Monitor & Maintain	En : Enforcement	

**Flood Control Project Maintenance
Levee Inspections**

Maintenance Issue Types Only, Levee Inspection Report By Mile - Spring 2019

Reclamation District No. 0999 Netherlands

Waterway	Bank	Unit Miles	Inspection Start/End	Inspector
Unit No. 02 Miner Slough	Right	2.31	03/21/2019 03/21/2019	Luz Dial

LM Start	0.87	Rating **	C	Issue No.	23
LM End	0.87	Issue Type +	Ma	Location *	WS
Category	Earthen Levee			GPS Latitude/Longitude	
				Start	End
Item	Encroachments			38.292211 °	38.292211 °
				-121.629950 °	-121.629950 °
DWR ID	DWR_RD0999_02_f_2017_23				
Comment Code					
PR : Prunings					
Inspector Comment					
LMA plans to clear prunings.					

No Photos

LM Start	0.93	Rating **	A/W	Issue No.	2
LM End	1.03	Issue Type +	Ma	Location *	LS
Category	Earthen Levee			GPS Latitude/Longitude	
				Start	End
Item	Animal Control			38.291823 °	38.291250 °
				-121.628973 °	-121.627285 °
DWR ID	DWR_RD0999_02_s_2012_2				
Comment Code					
A1 : Exterminate rodents and backfill and compact or grout burrows.					
Inspector Comment					
LMA backfilled holes and has an active baiting program.					

Photo 1 of 2 : SP_2019_RD0999_233_2_20190307_00001.jpg



View of backfilled rodent holes. Fall 2018

LM Start	0.93	Rating **	A/W	Issue No.	2 (cont)
LM End	1.03	Issue Type +	Ma	Location *	LS

Photo 2 of 2 : SP_2019_RD0999_233_2_20190307_00002.jpg



Looking at several rodent holes on landside slope.

* Location LS : Land Side N/A : Not Applicable WS : Water Side CR : Crown		** Rating A : Acceptable M : Minimally Acceptable U : Unacceptable N : Not Inspected/Rated C : Corrected A/W : Acceptable but Monitor & Maintain		+ Issue Type Ma : Maintenance Deficiency Ob : Design & System Obsolescence En : Enforcement	
---------------------------------------------------------------------------------------	--	--------------------------------------------------------------------------------------------------------------------------------------------------------------------	--	------------------------------------------------------------------------------------------------------	--

**Flood Control Project Maintenance
Levee Inspections**

Maintenance Issue Types Only, Levee Inspection Report By Mile - Spring 2019

Reclamation District No. 0999 Netherlands

Waterway	Bank	Unit Miles	Inspection Start/End	Inspector
Unit No. 02 Miner Slough	Right	2.31	03/21/2019 03/21/2019	Luz Dial

LM Start	0.97	Rating **	M	Issue No.	26
LM End	1.04	Issue Type +	Ma	Location *	WS
Category	Earthen Levee			GPS Latitude/Longitude	
				Start	End
Item	Vegetation			38.291512 °	38.291212 °
				-121.628248 °	-121.626993 °
DWR ID	DWR_RD0999_02_s_2019_26				
Comment Code					
V1 : Control annual grass and weeds on the levee slopes and easements.					
Inspector Comment					

No Photos

LM Start	1.08	Rating **	M	Issue No.	29
LM End	1.10	Issue Type +	Ma	Location *	WS
Category	Earthen Levee			GPS Latitude/Longitude	
				Start	End
Item	Vegetation			38.291132 °	38.291068 °
				-121.626338 °	-121.625878 °
DWR ID	DWR_RD0999_02_s_2019_29				
Comment Code					
V1 : Control annual grass and weeds on the levee slopes and easements.					
Inspector Comment					

No Photos

LM Start	1.16	Rating **	M	Issue No.	32
LM End	1.16	Issue Type +	Ma	Location *	WS
Category	Earthen Levee			GPS Latitude/Longitude	
				Start	End
Item	Vegetation			38.291090 °	38.291117 °
				-121.624908 °	-121.624815 °
DWR ID	DWR_RD0999_02_s_2019_32				
Comment Code					
V1 : Control annual grass and weeds on the levee slopes and easements.					
Inspector Comment					

No Photos

* Location LS : Land Side N/A : Not Applicable WS : Water Side CR : Crown		** Rating A : Acceptable N : Not Inspected/Rated M : Minimally Acceptable C : Corrected U : Unacceptable A/W : Acceptable but Monitor & Maintain		+ Issue Type Ma : Maintenance Deficiency Ob : Design & System Obsolescence En : Enforcement
----------------------------------------------------------------------------------------------	--	---------------------------------------------------------------------------------------------------------------------------------------------------------------------------------------------------------------	--	-------------------------------------------------------------------------------------------------------------

**Flood Control Project Maintenance
Levee Inspections**

Maintenance Issue Types Only, Levee Inspection Report By Mile - Spring 2019

Reclamation District No. 0999 Netherlands

Waterway	Bank	Unit Miles	Inspection Start/End	Inspector
Unit No. 02 Miner Slough	Right	2.31	03/21/2019 03/21/2019	Luz Dial

LM Start	1.24	Rating **	M	Issue No.	34
LM End	1.24	Issue Type +	Ma	Location *	WS
Category	Earthen Levee			GPS Latitude/Longitude	
				Start	End
Item	Trim / Thin Trees			38.291370 °	38.291370 °
				-121.623467 °	-121.623467 °
DWR ID	DWR_RD0999_02_s _ 2019_34				
Comment Code					
T1 : Trim trees to at least five feet above ground level.					
Inspector Comment					

No Photos

LM Start	1.40	Rating **	M	Issue No.	35
LM End	1.57	Issue Type +	Ma	Location *	WS
Category	Earthen Levee			GPS Latitude/Longitude	
				Start	End
Item	Vegetation			38.291197 °	38.290750 °
				-121.620428 °	-121.617348 °
DWR ID	DWR_RD0999_02_s _ 2019_35				
Comment Code					
V1 : Control annual grass and weeds on the levee slopes and easements.					
Inspector Comment					

No Photos

LM Start	1.63	Rating **	M	Issue No.	36
LM End	1.67	Issue Type +	Ma	Location *	WS
Category	Earthen Levee			GPS Latitude/Longitude	
				Start	End
Item	Vegetation			38.290492 °	38.290318 °
				-121.616295 °	-121.615690 °
DWR ID	DWR_RD0999_02_s _ 2019_36				
Comment Code					
V1 : Control annual grass and weeds on the levee slopes and easements.					
Inspector Comment					

No Photos

* Location LS : Land Side N/A : Not Applicable WS : Water Side CR : Crown		** Rating A : Acceptable N : Not Inspected/Rated M : Minimally Acceptable C : Corrected U : Unacceptable A/W : Acceptable but Monitor & Maintain		+ Issue Type Ma : Maintenance Deficiency Ob : Design & System Obsolescence En : Enforcement
----------------------------------------------------------------------------------------------	--	---------------------------------------------------------------------------------------------------------------------------------------------------------------------------------------------------------------	--	-------------------------------------------------------------------------------------------------------------

**Flood Control Project Maintenance
Levee Inspections**

Maintenance Issue Types Only, Levee Inspection Report By Mile - Spring 2019

Reclamation District No. 0999 Netherlands

Waterway	Bank	Unit Miles	Inspection Start/End	Inspector
Unit No. 02 Miner Slough	Right	2.31	03/21/2019 03/21/2019	Luz Dial

LM Start	1.81	Rating **	M	Issue No.	30
LM End	1.81	Issue Type +	Ma	Location *	WS
Category	Earthen Levee			GPS Latitude/Longitude	
				Start	End
Item	Vegetation			38.289079 °	38.289079 °
				-121.613765 °	-121.613765 °
DWR ID	DWR_RD0999_02_f_2017_30				
Comment Code					
V4 : Elderberries are blocking visibility and flood fight capability.					
Inspector Comment					
Elderberry bushes block visibility of levee toe.					

No Photos

LM Start	1.93	Rating **	M	Issue No.	16
LM End	1.93	Issue Type +	Ma	Location *	WS
Category	Earthen Levee			GPS Latitude/Longitude	
				Start	End
Item	Vegetation			38.288713 °	38.288713 °
				-121.611620 °	-121.611620 °
DWR ID	DWR_RD0999_02_s_2012_16				
Comment Code					
V4 : Elderberries are blocking visibility and flood fight capability.					
Inspector Comment					

No Photos

LM Start	1.97	Rating **	A/W	Issue No.	33
LM End	1.97	Issue Type +	Ma	Location *	LS
Category	Earthen Levee			GPS Latitude/Longitude	
				Start	End
Item	Animal Control			38.288712 °	38.288712 °
				-121.610920 °	-121.610920 °
DWR ID	DWR_RD0999_02_s_2017_33				
Comment Code					
A1 : Exterminate rodents and backfill and compact or grout burrows.					
Inspector Comment					
No visible holes or activity were seen during the inspection.					

No Photos

* Location		** Rating		+ Issue Type	
LS : Land Side	N/A : Not Applicable	A : Acceptable	N : Not Inspected/Rated	Ma : Maintenance Deficiency	
WS : Water Side		M : Minimally Acceptable	C : Corrected	Ob : Design & System Obsolescence	
CR : Crown		U : Unacceptable	A/W : Acceptable but Monitor & Maintain	En : Enforcement	

**Flood Control Project Maintenance
Levee Inspections**

Maintenance Issue Types Only, Levee Inspection Report By Mile - Spring 2019

Reclamation District No. 0999 Netherlands

Waterway	Bank	Unit Miles	Inspection Start/End	Inspector
Unit No. 02 Miner Slough	Right	2.31	03/21/2019 03/21/2019	Luz Dial

LM Start	2.14	Rating **	M	Issue No.	37
LM End	2.14	Issue Type +	Ma	Location *	WS
Category	Earthen Levee			GPS Latitude/Longitude	
				Start	End
Item	Encroachments			38.288258 °	38.288258 °
				-121.607925 °	-121.607925 °
DWR ID	DWR_RD0999_02_s_2019_37				
Comment Code					
DE : Debris					
Inspector Comment					
Remove sofa debris on waterside slope.					

No Photos

LM Start	2.17	Rating **	A	Issue No.	38
LM End	2.30	Issue Type +	Ma	Location *	LS
Category	Earthen Levee			GPS Latitude/Longitude	
				Start	End
Item	Vegetation			38.287928 °	38.286575 °
				-121.607800 °	-121.606290 °
DWR ID	DWR_RD0999_02_s_2019_38				
Comment Code					
V1 : Control annual grass and weeds on the levee slopes and easements.					
Inspector Comment					
Vegetation in this section is well-maintained.					

Photo 1 of 1 : SP_2019_RD0999_233_38_20190327_00048.jpg



View of well-maintained landside vegetation. Spring 2019

* Location LS : Land Side N/A : Not Applicable WS : Water Side CR : Crown		** Rating A : Acceptable N : Not Inspected/Rated M : Minimally Acceptable C : Corrected U : Unacceptable A/W : Acceptable but Monitor & Maintain		+ Issue Type Ma : Maintenance Deficiency Ob : Design & System Obsolescence En : Enforcement
----------------------------------------------------------------------------------------------	--	---------------------------------------------------------------------------------------------------------------------------------------------------------------------------------------------------------------	--	-------------------------------------------------------------------------------------------------------------

**Flood Control Project Maintenance
Levee Inspections**

Maintenance Issue Types Only, Levee Inspection Report By Mile - Spring 2019

Reclamation District No. 0999 Netherlands

Waterway	Bank	Unit Miles	Inspection Start/End	Inspector
Unit No. 03 Sutter Slough	Right	3.74	03/21/2019 03/22/2019	Luz Dial

LM Start	0.01	Rating **	C	Issue No.	16
LM End	0.01	Issue Type +	Ma	Location *	WS
Category	Earthen Levee			GPS Latitude/Longitude	
				Start	End
Item	Encroachments			38.286678 °	38.286678 °
				-121.605971 °	-121.605971 °
DWR ID	DWR_RD0999_03_f_2017_16				
Comment Code					
TR : Tree or limb					
Inspector Comment					

No Photos

LM Start	0.04	Rating **	M	Issue No.	32
LM End	0.04	Issue Type +	Ma	Location *	WS
Category	Earthen Levee			GPS Latitude/Longitude	
				Start	End
Item	Encroachments			38.287040 °	38.287040 °
				-121.605667 °	-121.605667 °
DWR ID	DWR_RD0999_03_f_2017_32				
Comment Code					
PR : Prunings					
Inspector Comment					
Remove large pruning pile on waterside slope.					

Photo 1 of 1 : SP_2019_RD0999_234_32_20190307_00020.jpg



View of waterside slope looking east. Fall 2017

LM Start	0.06	Rating **	M	Issue No.	17
LM End	0.06	Issue Type +	Ma	Location *	WS
Category	Earthen Levee			GPS Latitude/Longitude	
				Start	End
Item	Vegetation			38.287290 °	38.287290 °
				-121.605472 °	-121.605472 °
DWR ID	DWR_RD0999_03_s_2017_17				
Comment Code					
V2 : Remove the wild growth other than native grasses from the levee slopes.					
Inspector Comment					
Remove Century plants that are not allowed on waterward slope.					

Photo 1 of 1 : SP_2019_RD0999_234_17_20190307_00012.jpg



Looking east at century plants on waterward slope.

* Location
LS : Land Side N/A : Not Applicable
WS : Water Side
CR : Crown

** Rating
A : Acceptable N : Not Inspected/Rated
M : Minimally Acceptable C : Corrected
U : Unacceptable A/W : Acceptable but Monitor & Maintain

+ Issue Type
Ma : Maintenance Deficiency
Ob : Design & System Obsolescence
En : Enforcement

**Flood Control Project Maintenance
Levee Inspections**

Maintenance Issue Types Only, Levee Inspection Report By Mile - Spring 2019

Reclamation District No. 0999 Netherlands

Waterway	Bank	Unit Miles	Inspection Start/End	Inspector
Unit No. 03 Sutter Slough	Right	3.74	03/21/2019 03/22/2019	Luz Dial

LM Start	0.09	Rating **	M	Issue No.	23
LM End	0.09	Issue Type +	Ma	Location *	WS
Category	Earthen Levee			GPS Latitude/Longitude	
				Start	End
Item	Encroachments			38.287595 °	38.287595 °
				-121.605275 °	-121.605275 °
DWR ID	DWR_RD0999_03_s_2017_23				
Comment Code					
PR : Prunings					
Inspector Comment					
Remove large pruning piles on waterward slope.					

Photo 1 of 1 : SP_2019_RD0999_234_23_20190307_00015.jpg



Looking east at large pruning piles on waterward slope.

LM Start	0.24	Rating **	U	Issue No.	5
LM End	0.65	Issue Type +	Ma	Location *	WS
Category	Supplemental			GPS Latitude/Longitude	
				Start	End
Item	2017 USACE Erosion Survey, DRAFT			38.289634 °	38.295505 °
				-121.604343 °	-121.605648 °
DWR ID	DWR_RD0999_03_s_2019_5				
Comment Code					
Inspector Comment					
2017 Site ID: STR 24.7 R					
Status: Critical					
2017 Field Notes: Locals have placed rock in worst sections. Fresh erosion at toe. New tall vertical sections observed.					
Site History: 1997 - Intermittent over-steepened sections. Large riparian vegetation along the length of the entire reach. Attempts to repair with rock on bank have failed. 1999 - New rock repair at the downstream end. 2002 - Some minor spot repairs. 2009 - Minimal new erosion. 2010 - Appears that fresh rock placed on downstream portion of site. Toe scour and overhanging trees with some overturned. 2012 - Minor new erosion at the toe. 2013 - Site upgraded to CRITICAL. Severe slumping into levee at downstream end of site. Fresh erosion into bank toe. 2015 - New slumping, tall vertical sections. 2016 - Upper slumped section continues to worsen. Spring 2019 DWR Inspection: Sparse riprap remains intact.					

No Photos

* Location LS : Land Side N/A : Not Applicable WS : Water Side CR : Crown	** Rating A : Acceptable M : Minimally Acceptable U : Unacceptable	N : Not Inspected/Rated C : Corrected A/W : Acceptable but Monitor & Maintain	+ Issue Type Ma : Maintenance Deficiency Ob : Design & System Obsolescence En : Enforcement
----------------------------------------------------------------------------------------------	------------------------------------------------------------------------------------	-------------------------------------------------------------------------------------	-------------------------------------------------------------------------------------------------------------

**Flood Control Project Maintenance
Levee Inspections**

Maintenance Issue Types Only, Levee Inspection Report By Mile - Spring 2019

Reclamation District No. 0999 Netherlands

Waterway	Bank	Unit Miles	Inspection Start/End	Inspector
Unit No. 03 Sutter Slough	Right	3.74	03/21/2019 03/22/2019	Luz Dial

LM Start	0.37	Rating **	M	Issue No.	13
LM End	0.39	Issue Type +	Ma	Location *	WS
Category	Earthen Levee		GPS Latitude/Longitude		
			Start	End	
Item	Vegetation		38.291513 °	38.291858 °	
			-121.604745 °	-121.604810 °	
DWR ID	DWR_RD0999_03_s_2019_13				
Comment Code					
V1 : Control annual grass and weeds on the levee slopes and easements.					
Inspector Comment					

No Photos

LM Start	0.44	Rating **	M	Issue No.	14
LM End	0.65	Issue Type +	Ma	Location *	LS
Category	Earthen Levee		GPS Latitude/Longitude		
			Start	End	
Item	Vegetation		38.292512 °	38.295555 °	
			-121.604967 °	-121.605945 °	
DWR ID	DWR_RD0999_03_s_2019_14				
Comment Code					
V1 : Control annual grass and weeds on the levee slopes and easements.					
Inspector Comment					

No Photos

LM Start	0.66	Rating **	U	Issue No.	8
LM End	0.66	Issue Type +	Ma	Location *	LS
Category	Earthen Levee		GPS Latitude/Longitude		
			Start	End	
Item	Vegetation		38.295618 °	38.295618 °	
			-121.605923 °	-121.605923 °	
DWR ID	DWR_RD0999_03_s_2012_8				
Comment Code					
V4 : Elderberries are blocking visibility and flood fight capability.					
Inspector Comment					
I recommend requesting permission from U.S. Fish and Wildlife to thin out brush.					

No Photos

* Location LS : Land Side N/A : Not Applicable WS : Water Side CR : Crown	** Rating A : Acceptable M : Minimally Acceptable U : Unacceptable	N : Not Inspected/Rated C : Corrected A/W : Acceptable but Monitor & Maintain	+ Issue Type Ma : Maintenance Deficiency Ob : Design & System Obsolescence En : Enforcement
----------------------------------------------------------------------------------------------	------------------------------------------------------------------------------------	-------------------------------------------------------------------------------------	-------------------------------------------------------------------------------------------------------------

**Flood Control Project Maintenance
Levee Inspections**

Maintenance Issue Types Only, Levee Inspection Report By Mile - Spring 2019

Reclamation District No. 0999 Netherlands

Waterway	Bank	Unit Miles	Inspection Start/End	Inspector
Unit No. 03 Sutter Slough	Right	3.74	03/21/2019 03/22/2019	Luz Dial

LM Start	0.67	Rating **	M	Issue No.	18
LM End	0.74	Issue Type +	Ma	Location *	LS
Category	Earthen Levee		GPS Latitude/Longitude		
			Start	End	
Item	Vegetation		38.295778 °	38.296782 °	
			-121.605932 °	-121.605637 °	
DWR ID	DWR_RD0999_03_s_2019_18				
Comment Code					
V1 : Control annual grass and weeds on the levee slopes and easements.					
Inspector Comment					

No Photos

LM Start	0.76	Rating **	M	Issue No.	19
LM End	0.77	Issue Type +	Ma	Location *	LS
Category	Earthen Levee		GPS Latitude/Longitude		
			Start	End	
Item	Vegetation		38.297013 °	38.297242 °	
			-121.605493 °	-121.605377 °	
DWR ID	DWR_RD0999_03_s_2019_19				
Comment Code					
V1 : Control annual grass and weeds on the levee slopes and easements.					
Inspector Comment					

No Photos

LM Start	0.92	Rating **	M	Issue No.	21
LM End	0.97	Issue Type +	Ma	Location *	WS
Category	Earthen Levee		GPS Latitude/Longitude		
			Start	End	
Item	Vegetation		38.298990 °	38.299523 °	
			-121.603927 °	-121.603155 °	
DWR ID	DWR_RD0999_03_s_2019_21				
Comment Code					
V1 : Control annual grass and weeds on the levee slopes and easements.					
Inspector Comment					

No Photos

* Location LS : Land Side N/A : Not Applicable WS : Water Side CR : Crown	** Rating A : Acceptable M : Minimally Acceptable U : Unacceptable	N : Not Inspected/Rated C : Corrected A/W : Acceptable but Monitor & Maintain	+ Issue Type Ma : Maintenance Deficiency Ob : Design & System Obsolescence En : Enforcement
----------------------------------------------------------------------------------------------	------------------------------------------------------------------------------------	-------------------------------------------------------------------------------------	-------------------------------------------------------------------------------------------------------------

**Flood Control Project Maintenance
Levee Inspections**

Maintenance Issue Types Only, Levee Inspection Report By Mile - Spring 2019

Reclamation District No. 0999 Netherlands

Waterway	Bank	Unit Miles	Inspection Start/End	Inspector
Unit No. 03 Sutter Slough	Right	3.74	03/21/2019 03/22/2019	Luz Dial

LM Start	0.97	Rating **	M	Issue No.	6
LM End	1.10	Issue Type +	Ma	Location *	WS
Category	Supplemental			GPS Latitude/Longitude	
				Start	End
Item	2017 USACE Erosion Survey, DRAFT			38.299402 °	38.300542 °
				-121.603056 °	-121.601118 °
DWR ID	DWR_RD0999_03_s_2019_6				
Comment Code					
Inspector Comment					
2017 Site ID: STR 25.2 R					
Status: Eroding					
2017 Field Notes: Minor new erosion at toe.					
Site History: 2008 - Over steepened levee section. 2009 - Significant new erosion. 2010 - Minor new erosion.					

No Photos

LM Start	1.08	Rating **	M	Issue No.	24
LM End	1.09	Issue Type +	Ma	Location *	WS
Category	Earthen Levee			GPS Latitude/Longitude	
				Start	End
Item	Vegetation			38.300458 °	38.300610 °
				-121.601720 °	-121.601533 °
DWR ID	DWR_RD0999_03_s_2019_24				
Comment Code					
V1 : Control annual grass and weeds on the levee slopes and easements.					
Inspector Comment					

No Photos

LM Start	1.43	Rating **	M	Issue No.	10
LM End	1.58	Issue Type +	Ma	Location *	WS
Category	Supplemental			GPS Latitude/Longitude	
				Start	End
Item	2017 USACE Erosion Survey, DRAFT			38.305229 °	38.306667 °
				-121.599933 °	-121.598266 °
DWR ID	DWR_RD0999_03_s_2019_10				
Comment Code					
Inspector Comment					
2017 Site ID: STR 25.7 R					
Status: Eroding					
2017 Field Notes: Large erosion scarp near downstream end.					
Site History: 2011 - Toe scour along length of site and erosion pockets.					
2012 - Site extended slightly upstream due to new erosion pocket.					
2013 - Tall vertical sections at upstream end of site.					

No Photos

* Location		** Rating		+ Issue Type	
LS : Land Side	N/A : Not Applicable	A : Acceptable	N : Not Inspected/Rated	Ma : Maintenance Deficiency	
WS : Water Side		M : Minimally Acceptable	C : Corrected	Ob : Design & System Obsolescence	
CR : Crown		U : Unacceptable	A/W : Acceptable but Monitor & Maintain	En : Enforcement	

**Flood Control Project Maintenance
Levee Inspections**

Maintenance Issue Types Only, Levee Inspection Report By Mile - Spring 2019

Reclamation District No. 0999 Netherlands

Waterway	Bank	Unit Miles	Inspection Start/End	Inspector
Unit No. 03 Sutter Slough	Right	3.74	03/21/2019 03/22/2019	Luz Dial

LM Start	1.52	Rating **	M	Issue No.	25
LM End	1.53	Issue Type +	Ma	Location *	WS
Category	Earthen Levee		GPS Latitude/Longitude		
			Start	End	
Item	Vegetation		38.306245 °	38.306328 °	
			-121.599227 °	-121.599143 °	
DWR ID	DWR_RD0999_03_s_2019_25				
Comment Code					
V1 : Control annual grass and weeds on the levee slopes and easements.					
Inspector Comment					

No Photos

LM Start	1.59	Rating **	M	Issue No.	28
LM End	1.60	Issue Type +	Ma	Location *	WS
Category	Earthen Levee		GPS Latitude/Longitude		
			Start	End	
Item	Vegetation		38.306960 °	38.307122 °	
			-121.598340 °	-121.598173 °	
DWR ID	DWR_RD0999_03_s_2019_28				
Comment Code					
V1 : Control annual grass and weeds on the levee slopes and easements.					
Inspector Comment					

No Photos

LM Start	1.61	Rating **	M	Issue No.	29
LM End	1.61	Issue Type +	Ma	Location *	WS
Category	Earthen Levee		GPS Latitude/Longitude		
			Start	End	
Item	Encroachments		38.307288 °	38.307288 °	
			-121.598100 °	-121.598100 °	
DWR ID	DWR_RD0999_03_s_2019_29				
Comment Code					
DE : Debris					
Inspector Comment					
Remove trash and pruning debris at turnout.					

No Photos

* Location LS : Land Side N/A : Not Applicable WS : Water Side CR : Crown	** Rating A : Acceptable M : Minimally Acceptable U : Unacceptable	N : Not Inspected/Rated C : Corrected A/W : Acceptable but Monitor & Maintain	+ Issue Type Ma : Maintenance Deficiency Ob : Design & System Obsolescence En : Enforcement
----------------------------------------------------------------------------------------------	------------------------------------------------------------------------------------	-------------------------------------------------------------------------------------	-------------------------------------------------------------------------------------------------------------

**Flood Control Project Maintenance
Levee Inspections**

Maintenance Issue Types Only, Levee Inspection Report By Mile - Spring 2019

Reclamation District No. 0999 Netherlands

Waterway	Bank	Unit Miles	Inspection Start/End	Inspector
Unit No. 03 Sutter Slough	Right	3.74	03/21/2019 03/22/2019	Luz Dial

LM Start	2.31	Rating **	M	Issue No.	30
LM End	2.36	Issue Type +	Ma	Location *	LS
Category	Earthen Levee		GPS Latitude/Longitude		
			Start	End	
Item	Vegetation		38.314893 °	38.315505 °	
			-121.592705 °	-121.592490 °	
DWR ID	DWR_RD0999_03_s_2019_30				
Comment Code					
V1 : Control annual grass and weeds on the levee slopes and easements.					
Inspector Comment					

No Photos

LM Start	2.38	Rating **	M	Issue No.	31
LM End	2.42	Issue Type +	Ma	Location *	LS
Category	Earthen Levee		GPS Latitude/Longitude		
			Start	End	
Item	Vegetation		38.315872 °	38.316295 °	
			-121.592310 °	-121.592072 °	
DWR ID	DWR_RD0999_03_s_2019_31				
Comment Code					
V1 : Control annual grass and weeds on the levee slopes and easements.					
Inspector Comment					

No Photos

LM Start	2.43	Rating **	M	Issue No.	33
LM End	2.47	Issue Type +	Ma	Location *	LS
Category	Earthen Levee		GPS Latitude/Longitude		
			Start	End	
Item	Vegetation		38.316517 °	38.316970 °	
			-121.591920 °	-121.591588 °	
DWR ID	DWR_RD0999_03_s_2019_33				
Comment Code					
V1 : Control annual grass and weeds on the levee slopes and easements.					
Inspector Comment					

No Photos

* Location LS : Land Side N/A : Not Applicable WS : Water Side CR : Crown	** Rating A : Acceptable M : Minimally Acceptable U : Unacceptable	N : Not Inspected/Rated C : Corrected A/W : Acceptable but Monitor & Maintain	+ Issue Type Ma : Maintenance Deficiency Ob : Design & System Obsolescence En : Enforcement
----------------------------------------------------------------------------------------------	------------------------------------------------------------------------------------	-------------------------------------------------------------------------------------	-------------------------------------------------------------------------------------------------------------

**Flood Control Project Maintenance
Levee Inspections**

Maintenance Issue Types Only, Levee Inspection Report By Mile - Spring 2019

Reclamation District No. 0999 Netherlands

Waterway	Bank	Unit Miles	Inspection Start/End	Inspector
Unit No. 03 Sutter Slough	Right	3.74	03/21/2019 03/22/2019	Luz Dial

LM Start	2.51	Rating **	M	Issue No.	34
LM End	2.53	Issue Type +	Ma	Location *	LS
Category	Earthen Levee			GPS Latitude/Longitude	
				Start	End
Item	Vegetation			38.317493 °	38.317757 °
				-121.591158 °	-121.590940 °
DWR ID	DWR_RD0999_03_s_2019_34				
Comment Code					
V1 : Control annual grass and weeds on the levee slopes and easements.					
Inspector Comment					

No Photos

LM Start	2.97	Rating **	A/W	Issue No.	12
LM End	3.23	Issue Type +	Ma	Location *	WS
Category	Supplemental			GPS Latitude/Longitude	
				Start	End
Item	2017 USACE Erosion Survey, DRAFT			38.323419 °	38.325592 °
				-121.589645 °	-121.585925 °
DWR ID	DWR_RD0999_03_s_2019_12				
Comment Code					
Inspector Comment					
2017 Site ID: STR 27.3 R					
Status: Eroding					
2017 Field Notes: site extended downstream. section of lower bank has slumped off. fresh toe erosion. pipe encroachment. fresh tree popout					
Site History: 2011 - Multiple erosion pockets. Some likely from tree popouts. 2013 - Tall vertical sections. 2015 - New tree pop-out and significant new erosion. 2016 - New erosion at toe.					

No Photos

* Location LS : Land Side N/A : Not Applicable WS : Water Side CR : Crown	** Rating A : Acceptable M : Minimally Acceptable U : Unacceptable	N : Not Inspected/Rated C : Corrected A/W : Acceptable but Monitor & Maintain	+ Issue Type Ma : Maintenance Deficiency Ob : Design & System Obsolescence En : Enforcement
----------------------------------------------------------------------------------------------	------------------------------------------------------------------------------------	-------------------------------------------------------------------------------------	-------------------------------------------------------------------------------------------------------------

**Flood Control Project Maintenance
Levee Inspections**

Maintenance Issue Types Only, Levee Inspection Report By Mile - Spring 2019

Reclamation District No. 0999 Netherlands

Waterway	Bank	Unit Miles	Inspection Start/End	Inspector
Unit No. 03 Sutter Slough	Right	3.74	03/21/2019 03/22/2019	Luz Dial

LM Start	3.09	Rating **	A/W	Issue No.	9
LM End	3.12	Issue Type +	Ma	Location *	WS
Category	Supplemental			GPS Latitude/Longitude	
				Start	End
Item	2017 Storm Damage			38.323986 °	38.324275 °
				-121.587403 °	-121.586967 °
DWR ID	DWR_RD0999_03_f_2017_9				
Comment Code					
Inspector Comment					
Levee Evaluation Comments					
Description:The damage consists of erosion of the lower waterside levee slope and bank approximately 147 feet in length along the west (right) bank of Sutter Slough. See attached pages for photos. Site location T06N R03E Section 36 and 25.					
Site ID No:355					
Site Designation:LMA-182					
Repair Type: Erosion					
Rating:Area of Concern					
Field Date:7/27/2017					
Notes: Fall 2018 DWR Inspector: Observed erosion into the bank and fallen tree. End LM not given on report.					

Photo 1 of 5 : SP_2019_RD0999_234_9_20190307_00003.jpg



View of some erosion on slope. Fall 2018

LM Start	3.09	Rating **	A/W	Issue No.	9 (cont)
LM End	3.12	Issue Type +	Ma	Location *	WS

Photo 2 of 5 : SP_2019_RD0999_234_9_20190307_00004.jpg



View of fallen tree at water's edge. Fall 2018

* Location LS : Land Side N/A : Not Applicable WS : Water Side CR : Crown		** Rating A : Acceptable N : Not Inspected/Rated M : Minimally Acceptable C : Corrected U : Unacceptable A/W : Acceptable but Monitor & Maintain		+ Issue Type Ma : Maintenance Deficiency Ob : Design & System Obsolescence En : Enforcement	
----------------------------------------------------------------------------------------------	--	---------------------------------------------------------------------------------------------------------------------------------------------------------------------------------------------------------------	--	-------------------------------------------------------------------------------------------------------------	--

**Flood Control Project Maintenance
Levee Inspections**

Maintenance Issue Types Only, Levee Inspection Report By Mile - Spring 2019

Reclamation District No. 0999 Netherlands

Waterway	Bank	Unit Miles	Inspection Start/End	Inspector
Unit No. 03 Sutter Slough	Right	3.74	03/21/2019 03/22/2019	Luz Dial

LM Start	3.09	Rating **	A/W	Issue No.	9 (cont)	
LM End	3.12	Issue Type +	Ma	Location *	WS	
Category	Supplemental			GPS Latitude/Longitude		
				Start	End	
Item	2017 Storm Damage			38.323986 °	38.324275 °	
				-121.587403 °	-121.586967 °	
DWR ID	DWR_RD0999_03_f_2017_9					
Comment Code						
Inspector Comment						
Levee Evaluation Comments						
Description:The damage consists of erosion of the lower waterside levee slope and bank approximately 147 feet in length along the west (right) bank of Sutter Slough. See attached pages for photos. Site location T06N R03E Section 36 and 25.						
Site ID No:355						
Site Designation:LMA-182						
Repair Type: Erosion						
Rating:Area of Concern						
Field Date:7/27/2017						
Notes: Fall 2018 DWR Inspector: Observed erosion into the bank and fallen tree. End LM not given on report.						

Photo 3 of 5 : LEVAL_SP_2019_355_2523.jpg



LM Start	3.09	Rating **	A/W	Issue No.	9 (cont)
LM End	3.12	Issue Type +	Ma	Location *	WS

Photo 4 of 5 : LEVAL_SP_2019_355_2525.jpg



* Location LS : Land Side N/A : Not Applicable WS : Water Side CR : Crown		** Rating A : Acceptable N : Not Inspected/Rated M : Minimally Acceptable C : Corrected U : Unacceptable A/W : Acceptable but Monitor & Maintain		+ Issue Type Ma : Maintenance Deficiency Ob : Design & System Obsolescence En : Enforcement
----------------------------------------------------------------------------------------------	--	---------------------------------------------------------------------------------------------------------------------------------------------------------------------------------------------------------------	--	-------------------------------------------------------------------------------------------------------------

**Flood Control Project Maintenance
Levee Inspections**

Maintenance Issue Types Only, Levee Inspection Report By Mile - Spring 2019

Reclamation District No. 0999 Netherlands

Waterway	Bank	Unit Miles	Inspection Start/End	Inspector
Unit No. 03 Sutter Slough	Right	3.74	03/21/2019 03/22/2019	Luz Dial

LM Start	3.09	Rating **	A/W	Issue No.	9 (cont)	
LM End	3.12	Issue Type +	Ma	Location *	WS	
Category	Supplemental			GPS Latitude/Longitude		
				Start	End	
Item	2017 Storm Damage			38.323986 °	38.324275 °	
				-121.587403 °	-121.586967 °	
DWR ID	DWR_RD0999_03_f_2017_9					
Comment Code						
Inspector Comment						
Levee Evaluation Comments						
Description:The damage consists of erosion of the lower waterside levee slope and bank approximately 147 feet in length along the west (right) bank of Sutter Slough. See attached pages for photos. Site location T06N R03E Section 36 and 25.						
Site ID No:355						
Site Designation:LMA-182						
Repair Type: Erosion						
Rating:Area of Concern						
Field Date:7/27/2017						
Notes: Fall 2018 DWR Inspector: Observed erosion into the bank and fallen tree. End LM not given on report.						

Photo 5 of 5 : LEVAL_SP_2019_355_2529.jpg



LM Start	3.18	Rating **	A/W	Issue No.	15
LM End	3.21	Issue Type +	Ma	Location *	WS
Category	Supplemental			GPS Latitude/Longitude	
				Start	End
Item	2017 Storm Damage			38.325053 °	38.325489 °
				-121.586347 °	-121.586100 °
DWR ID	DWR_RD0999_03_f_2017_15				
Comment Code					
Inspector Comment					
Levee Evaluation Comments					
Description:The damage consists of erosion of the lower waterside levee slope and bank approximately 172 feet in length along the west (right) bank of Sutter Slough. See attached pages for photos. Site location T06N R04E Section 3 and 4.					
Site ID No:356					
Site Designation:LMA-183					
Repair Type: Erosion					
Rating:Area of Concern					
Field Date:7/27/2017					
Notes: 2018 DWR Inspector: Erosion not visible from levee slope.					

Photo 1 of 3 : LEVAL_SP_2019_356_2492.jpg



* Location LS : Land Side N/A : Not Applicable WS : Water Side CR : Crown		** Rating A : Acceptable N : Not Inspected/Rated M : Minimally Acceptable C : Corrected U : Unacceptable A/W : Acceptable but Monitor & Maintain		+ Issue Type Ma : Maintenance Deficiency Ob : Design & System Obsolescence En : Enforcement
----------------------------------------------------------------------------------------------	--	---------------------------------------------------------------------------------------------------------------------------------------------------------------------------------------------------------------	--	-------------------------------------------------------------------------------------------------------------

**Flood Control Project Maintenance
Levee Inspections**

Maintenance Issue Types Only, Levee Inspection Report By Mile - Spring 2019

Reclamation District No. 0999 Netherlands

Waterway	Bank	Unit Miles	Inspection Start/End	Inspector
Unit No. 03 Sutter Slough	Right	3.74	03/21/2019 03/22/2019	Luz Dial

LM Start	3.18	Rating **	A/W	Issue No.	15 (cont)	
LM End	3.21	Issue Type +	Ma	Location *	WS	
Category	Supplemental			GPS Latitude/Longitude		
				Start	End	
Item	2017 Storm Damage			38.325053 °	38.325489 °	
				-121.586347 °	-121.586100 °	
DWR ID	DWR_RD0999_03_f_2017_15					
Comment Code						
Inspector Comment						
Levee Evaluation Comments						
Description:The damage consists of erosion of the lower waterside levee slope and bank approximately 172 feet in length along the west (right) bank of Sutter Slough. See attached pages for photos. Site location T06N R04E Section 3 and 4.						
Site ID No:356						
Site Designation:LMA-183						
Repair Type: Erosion						
Rating:Area of Concern						
Field Date:7/27/2017						
Notes: 2018 DWR Inspector: Erosion not visible from levee slope.						

Photo 2 of 3 : LEVAL_SP_2019_356_2493.jpg



Photo 3 of 3 : LEVAL_SP_2019_356_2499.jpg



LM Start	3.18	Rating **	A/W	Issue No.	15 (cont)
LM End	3.21	Issue Type +	Ma	Location *	WS

* Location
LS : Land Side N/A : Not Applicable
WS : Water Side
CR : Crown

** Rating
A : Acceptable N : Not Inspected/Rated
M : Minimally Acceptable C : Corrected
U : Unacceptable A/W : Acceptable but Monitor & Maintain

+ Issue Type
Ma : Maintenance Deficiency
Ob : Design & System Obsolescence
En : Enforcement

**Flood Control Project Maintenance
Levee Inspections**

Maintenance Issue Types Only, Levee Inspection Report By Mile - Spring 2019

Reclamation District No. 0999 Netherlands

Waterway	Bank	Unit Miles	Inspection Start/End	Inspector
Unit No. 03 Sutter Slough	Right	3.74	03/21/2019 03/22/2019	Luz Dial

LM Start	4.56	Rating **	M	Issue No.	11
LM End	4.68	Issue Type +	Ma	Location *	WS
Category	Supplemental			GPS Latitude/Longitude	
				Start	End
Item	2017 USACE Erosion Survey, DRAFT			38.313836 °	38.315407 °
				-121.592259 °	-121.591433 °
DWR ID	DWR_RD0999_03_s_2019_11				
Comment Code					
Inspector Comment					
2017 Site ID: STR 26.5 L					
Status: Eroding					
2017 Field Notes: There appears soil under geotech fabric that appears to be failing but hard to tell.					
Site History: 2002 - Original rock over geotextile is sliding off and the end is coming unraveled. 2003 - Some minor new erosion on the downstream end. 2004 - Site has gotten worse. Underlined geofabric is exposed. 2005 - Still looks bad with exposed geotextile fabric. 2006 - Still have some new unraveling and exposed fabric. Site lengthened upstream. 2009 - Minimal new erosion. 2010 - geotextile fabric placed since last year, possible flood fight. 2012 - Exposed geotech style fabric, assume rock on top slid off. 2015 - Erosion pockets covered with plastic. 2019 DWR Spring Inspection: This issue is on the wrong Unit.					

No Photos

* Location LS : Land Side N/A : Not Applicable WS : Water Side CR : Crown	** Rating A : Acceptable M : Minimally Acceptable U : Unacceptable N : Not Inspected/Rated C : Corrected A/W : Acceptable but Monitor & Maintain	+ Issue Type Ma : Maintenance Deficiency Ob : Design & System Obsolescence En : Enforcement
----------------------------------------------------------------------------------------------	-------------------------------------------------------------------------------------------------------------------------------------------------------------------------------	-------------------------------------------------------------------------------------------------------------

**Flood Control Project Maintenance
Levee Inspections**

Maintenance Issue Types Only, Levee Inspection Report By Mile - Spring 2019

Reclamation District No. 0999 Netherlands

Waterway	Bank	Unit Miles	Inspection Start/End	Inspector
Unit No. 04 Sacramento River	Right	1.22	03/22/2019 03/22/2019	Luz Dial

LM Start	0.00	Rating **	A/W	Issue No.	54
LM End	0.00	Issue Type +	Ma	Location *	
Category	Supplemental			GPS Latitude/Longitude	
				Start	End
Item	DWR UCIP LMA Responsibility			38.414022 °	38.414022 °
				-121.522986 °	-121.522986 °
DWR ID	22788				
Comment Code					
Inspector Comment					
FS_ID:15708 DS_ID:22788 EP_NO: N/A Repair Type: No Action Needed Crossing Status: Found UCIP Comments: 10/27/2017 This structure is inspected annually under the Structure and Channel Summer Inspection (part of the Levee Inspection Program) conducted by the DWR Flood Project Integrity and Inspection Branch (FPIIB). (DWR UCIP - O. Magana) FIELD_STRUCT_DESC: [Elk Slough Inlet Structure] 60-inch by 60-inch reinforced concrete drainage culvert through the levee, 30 feet below the crown. Slide gate in a 6-foot by 8-foot concrete vault on the waterside (WS) shoulder. [Additional Reference(s): DWR Levee Log, 1992. USACE Sacramento O&M Manual 113 (Revised), October 1966, (HLM 0.00)]. FS Date: 7/12/2013					

Photo 1 of 2 : UCIP_SP_2019_15708_26137.jpg



Slide gate in concrete vault on WS shoulder.

LM Start	0.00	Rating **	A/W	Issue No.	54 (cont)
LM End	0.00	Issue Type +	Ma	Location *	

Photo 2 of 2 : UCIP_SP_2019_15708_26136.jpg



Toe of LS at approximate location of outlet/inlet.

* Location LS : Land Side N/A : Not Applicable WS : Water Side CR : Crown	** Rating A : Acceptable M : Minimally Acceptable U : Unacceptable N : Not Inspected/Rated C : Corrected A/W : Acceptable but Monitor & Maintain	+ Issue Type Ma : Maintenance Deficiency Ob : Design & System Obsolescence En : Enforcement
----------------------------------------------------------------------------------------------	---------------------------------------------------------------------------------------------------------------------------------------------------------------------------	-------------------------------------------------------------------------------------------------------------

**Flood Control Project Maintenance
Levee Inspections**

Maintenance Issue Types Only, Levee Inspection Report By Mile - Spring 2019

Reclamation District No. 0999 Netherlands

Waterway	Bank	Unit Miles	Inspection Start/End	Inspector
Unit No. 04 Sacramento River	Right	1.22	03/22/2019 03/22/2019	Luz Dial

LM Start	0.02	Rating **	U	Issue No.	23
LM End	0.28	Issue Type +	Ma	Location *	WS
Category	Supplemental			GPS Latitude/Longitude	
				Start	End
Item	2017 USACE Erosion Survey, DRAFT			38.414387 °	38.417692 °
				-121.522871 °	-121.525083 °
DWR ID	DWR_RD0999_04_s_2019_23				
Comment Code					
Inspector Comment					
2017 Site ID: SAC 41.9 R					
Status: Critical					
2017 Field Notes: Fresh erosion on entire bank. Upgraded to critical.					
Site History: 1997 - Structural problem rather than erosional, failed cobble at downstream end. 2005 - New brush boxes at waterline for several hundred feet downstream, No toe or bank protection present.					
2006 - Some minor new erosion. Brush boxes not working well; most of the brush has floated out. 2007 - Brush boxes have recently been repaired. 2016 - Minor new slumping. Spring 2019 DWR Inspection: Erosion was not visible during this inspection.					

Photo 1 of 1 : SP_2019_RD0999_235_23_20190408_00070.jpg



USACE 2013 Photo #1

LM Start	0.04	Rating **	U	Issue No.	53
LM End	0.06	Issue Type +	Ma	Location *	WS
Category	Earthen Levee			GPS Latitude/Longitude	
				Start	End
Item	Vegetation			38.414533 °	38.414750 °
				-121.523394 °	-121.523543 °
DWR ID	DWR_RD0999_04_f_2017_53				
Comment Code					
V2 : Remove the wild growth other than native grasses from the levee slopes.					
Inspector Comment					
Remove wild growth vegetation on waterside slope.					

Photo 1 of 1 : SP_2019_RD0999_235_53_20190307_00026.jpg



Looking southeast at the waterside slope.

* Location LS : Land Side N/A : Not Applicable WS : Water Side CR : Crown	** Rating A : Acceptable M : Minimally Acceptable U : Unacceptable	N : Not Inspected/Rated C : Corrected A/W : Acceptable but Monitor & Maintain	+ Issue Type Ma : Maintenance Deficiency Ob : Design & System Obsolescence En : Enforcement
----------------------------------------------------------------------------------------------	------------------------------------------------------------------------------------	-------------------------------------------------------------------------------------	-------------------------------------------------------------------------------------------------------------

**Flood Control Project Maintenance
Levee Inspections**

Maintenance Issue Types Only, Levee Inspection Report By Mile - Spring 2019

Reclamation District No. 0999 Netherlands

Waterway	Bank	Unit Miles	Inspection Start/End	Inspector
Unit No. 04 Sacramento River	Right	1.22	03/22/2019 03/22/2019	Luz Dial

LM Start	0.10	Rating **	A/W	Issue No.	42
LM End	0.29	Issue Type +	Ma	Location *	WS
Category	Supplemental			GPS Latitude/Longitude	
				Start	End
Item	2017 Storm Damage			38.415319 °	38.417744 °
				-121.523717 °	-121.525344 °
DWR ID	DWR_RD0999_04_f_2017_42				
Comment Code					
Inspector Comment					
Levee Evaluation Comments					
Description:The damage consists of erosion of the lower and mid waterside levee slope approximately 997 feet in length along the west (right) bank of the Sacramento River. See attached pages for photos.					
Site location T06N R04E Section 3 and 4.					
Site ID No:357					
Site Designation:LMA-184					
Repair Type: Erosion					
Rating:Serious					
Field Date:7/27/2017					
Notes: on bank slope, big trees with exposed tree roots observed 2018 DWR Inspector: Fallen tree on water's edge.					
Erosion not visible from slope.					

Photo 1 of 4 : SP_2019_RD0999_235_42_20190307_00016.jpg



View of fallen tree. Fall 2018

LM Start	0.10	Rating **	A/W	Issue No.	42 (cont)
LM End	0.29	Issue Type +	Ma	Location *	WS

Photo 2 of 4 : LEVAL_SP_2019_357_2461.jpg



* Location LS : Land Side N/A : Not Applicable WS : Water Side CR : Crown		** Rating A : Acceptable N : Not Inspected/Rated M : Minimally Acceptable C : Corrected U : Unacceptable A/W : Acceptable but Monitor & Maintain		+ Issue Type Ma : Maintenance Deficiency Ob : Design & System Obsolescence En : Enforcement
----------------------------------------------------------------------------------------------	--	---------------------------------------------------------------------------------------------------------------------------------------------------------------------------------------------------------------	--	-------------------------------------------------------------------------------------------------------------

**Flood Control Project Maintenance
Levee Inspections**

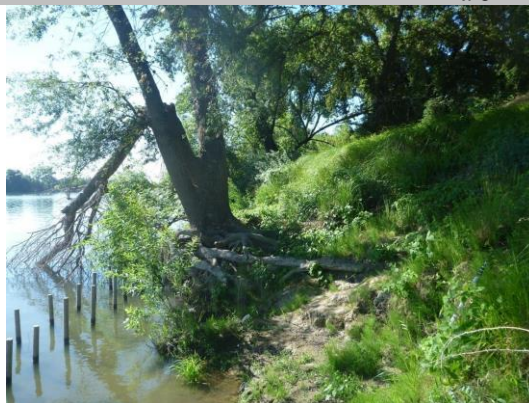
Maintenance Issue Types Only, Levee Inspection Report By Mile - Spring 2019

Reclamation District No. 0999 Netherlands

Waterway	Bank	Unit Miles	Inspection Start/End	Inspector
Unit No. 04 Sacramento River	Right	1.22	03/22/2019 03/22/2019	Luz Dial

LM Start	0.10	Rating **	A/W	Issue No.	42 (cont)	
LM End	0.29	Issue Type +	Ma	Location *	WS	
Category	Supplemental			GPS Latitude/Longitude		
				Start		End
Item	2017 Storm Damage			38.415319 °		38.417744 °
				-121.523717 °		-121.525344 °
DWR ID	DWR_RD0999_04_f_2017_42					
Comment Code						
Inspector Comment						
Levee Evaluation Comments						
Description:The damage consists of erosion of the lower and mid waterside levee slope approximately 997 feet in length along the west (right) bank of the Sacramento River. See attached pages for photos.						
Site location T06N R04E Section 3 and 4.						
Site ID No:357						
Site Designation:LMA-184						
Repair Type: Erosion						
Rating:Serious						
Field Date:7/27/2017						
Notes: on bank slope, big trees with exposed tree roots observed 2018 DWR Inspector: Fallen tree on water's edge.						
Erosion not visible from slope.						

Photo 3 of 4 : LEVAL_SP_2019_357_2465.jpg



LM Start	0.10	Rating **	A/W	Issue No.	42 (cont)
LM End	0.29	Issue Type +	Ma	Location *	WS

Photo 4 of 4 : LEVAL_SP_2019_357_2475.jpg



* Location LS : Land Side N/A : Not Applicable WS : Water Side CR : Crown		** Rating A : Acceptable N : Not Inspected/Rated M : Minimally Acceptable C : Corrected U : Unacceptable A/W : Acceptable but Monitor & Maintain		+ Issue Type Ma : Maintenance Deficiency Ob : Design & System Obsolescence En : Enforcement
----------------------------------------------------------------------------------------------	--	---------------------------------------------------------------------------------------------------------------------------------------------------------------------------------------------------------------	--	-------------------------------------------------------------------------------------------------------------

**Flood Control Project Maintenance
Levee Inspections**

Maintenance Issue Types Only, Levee Inspection Report By Mile - Spring 2019

Reclamation District No. 0999 Netherlands

Waterway	Bank	Unit Miles	Inspection Start/End	Inspector
Unit No. 04 Sacramento River	Right	1.22	03/22/2019 03/22/2019	Luz Dial

LM Start	0.11	Rating **	A/W	Issue No.	15
LM End	0.21	Issue Type +	Ma	Location *	WS
Category	Earthen Levee			GPS Latitude/Longitude	
				Start	End
Item	Erosion / Bank Caving			38.415425 °	38.416733 °
				-121.523920 °	-121.524705 °
DWR ID	DWR_RD0999_04_s_2017_15				
Comment Code					
E2 : Schedule repair of erosion site prior to the next inspection.					
Inspector Comment					
Waterside erosion 2ft vertical cut was not visible during this inspection.					

Photo 1 of 2 : SP_2019_RD0999_235_15_20190307_00007.jpg



Looking downstream at 2ft plus vertical erosion on waterward slope.

LM Start	0.11	Rating **	A/W	Issue No.	15 (cont)
LM End	0.21	Issue Type +	Ma	Location *	WS

Photo 2 of 2 : SP_2019_RD0999_235_15_20190307_00008.jpg



Looking upstream at 2ft plus vertical erosion on waterward slope.

LM Start	0.20	Rating **	M	Issue No.	24
LM End	0.24	Issue Type +	Ma	Location *	WS
Category	Earthen Levee			GPS Latitude/Longitude	
				Start	End
Item	Trim / Thin Trees			38.416653 °	38.417070 °
				-121.524656 °	-121.525006 °
DWR ID	DWR_RD0999_04_s_2012_24				
Comment Code					
T3 : Trim and thin trees to allow visibility of the ground and room to flood fight.					
Inspector Comment					

No Photos

* Location LS : Land Side N/A : Not Applicable WS : Water Side CR : Crown		** Rating A : Acceptable N : Not Inspected/Rated M : Minimally Acceptable C : Corrected U : Unacceptable A/W : Acceptable but Monitor & Maintain		+ Issue Type Ma : Maintenance Deficiency Ob : Design & System Obsolescence En : Enforcement
----------------------------------------------------------------------------------------------	--	---------------------------------------------------------------------------------------------------------------------------------------------------------------------------------------------------------------	--	-------------------------------------------------------------------------------------------------------------

**Flood Control Project Maintenance
Levee Inspections**

Maintenance Issue Types Only, Levee Inspection Report By Mile - Spring 2019

Reclamation District No. 0999 Netherlands

Waterway	Bank	Unit Miles	Inspection Start/End	Inspector
Unit No. 04 Sacramento River	Right	1.22	03/22/2019 03/22/2019	Luz Dial

LM Start	0.60	Rating **	C	Issue No.	19
LM End	0.63	Issue Type +	Ma	Location *	LS
Category	Earthen Levee			GPS Latitude/Longitude	
				Start	End
Item	Trim / Thin Trees			38.421647 °	38.421997 °
				-121.528235 °	-121.528470 °
DWR ID	DWR_RD0999_04_s_2012_19				
Comment Code					
T1 : Trim trees to at least five feet above ground level.					
Inspector Comment					

No Photos

LM Start	0.65	Rating **	C	Issue No.	35
LM End	0.65	Issue Type +	Ma	Location *	LS
Category	Earthen Levee			GPS Latitude/Longitude	
				Start	End
Item	Trim / Thin Trees			38.422337 °	38.422337 °
				-121.528690 °	-121.528690 °
DWR ID	DWR_RD0999_04_s_2018_35				
Comment Code					
T2 : Thin trees to allow visibility of the ground and room to flood fight.					
Inspector Comment					

No Photos

LM Start	0.96	Rating **	M	Issue No.	25
LM End	0.99	Issue Type +	Ma	Location *	WS
Category	Earthen Levee			GPS Latitude/Longitude	
				Start	End
Item	Trim / Thin Trees			38.426310 °	38.426627 °
				-121.531460 °	-121.531577 °
DWR ID	DWR_RD0999_04_s_2019_25				
Comment Code					
T1 : Trim trees to at least five feet above ground level.					
Inspector Comment					

Photo 1 of 1 : SP_2019_RD0999_235_25_20190405_00069.jpg



View looking downstream of low-hanging tree branches on levee slope.
Spring 2019

* Location		** Rating		+ Issue Type	
LS : Land Side	N/A : Not Applicable	A : Acceptable	N : Not Inspected/Rated	Ma : Maintenance Deficiency	
WS : Water Side		M : Minimally Acceptable	C : Corrected	Ob : Design & System Obsolescence	
CR : Crown		U : Unacceptable	A/W : Acceptable but Monitor & Maintain	En : Enforcement	

**Flood Control Project Maintenance
Levee Inspections**

Maintenance Issue Types Only, Levee Inspection Report By Mile - Spring 2019

Reclamation District No. 0999 Netherlands

Waterway	Bank	Unit Miles	Inspection Start/End	Inspector
Unit No. 04 Sacramento River	Right	1.22	03/22/2019 03/22/2019	Luz Dial

LM Start	1.10	Rating **	M	Issue No.	47
LM End	1.10	Issue Type +	Ma	Location *	WS
Category	Earthen Levee			GPS Latitude/Longitude	
				Start	End
Item	Erosion / Bank Caving			38.428152 °	38.428152 °
				-121.532502 °	-121.532502 °
DWR ID	DWR_RD0999_04_s_2017_47				
Comment Code					
E1 : Note and monitor erosion site.					
Inspector Comment					
Small erosion just above riprap and runoff erosion on waterside slope.					

Photo 1 of 3 : SP_2019_RD0999_235_47_20190307_00023.jpg



Looking southeast at the waterside slope.

LM Start	1.10	Rating **	M	Issue No.	47 (cont)
LM End	1.10	Issue Type +	Ma	Location *	WS

Photo 2 of 3 : SP_2019_RD0999_235_47_20190307_00024.jpg



Looking east at the waterside slope.

LM Start	1.10	Rating **	M	Issue No.	47 (cont)
LM End	1.10	Issue Type +	Ma	Location *	WS

Photo 3 of 3 : SP_2019_RD0999_235_47_20190307_00025.jpg



Looking west at runoff erosion on waterward slope.

* Location LS : Land Side N/A : Not Applicable WS : Water Side CR : Crown		** Rating A : Acceptable M : Minimally Acceptable U : Unacceptable N : Not Inspected/Rated C : Corrected A/W : Acceptable but Monitor & Maintain		+ Issue Type Ma : Maintenance Deficiency Ob : Design & System Obsolescence En : Enforcement	
---------------------------------------------------------------------------------------	--	--------------------------------------------------------------------------------------------------------------------------------------------------------------------	--	------------------------------------------------------------------------------------------------------	--

**Flood Control Project Maintenance
Levee Inspections**

Maintenance Issue Types Only, Levee Inspection Report By Mile - Spring 2019

Reclamation District No. 0999 Netherlands

Waterway	Bank	Unit Miles	Inspection Start/End	Inspector
Unit No. 04 Sacramento River	Right	1.22	03/22/2019 03/22/2019	Luz Dial

LM Start	1.11	Rating **	C	Issue No.	30
LM End	1.11	Issue Type +	Ma	Location *	WS
Category	Earthen Levee			GPS Latitude/Longitude	
				Start	End
Item	Encroachments			38.428242 °	38.428242 °
				-121.532580 °	-121.532580 °
DWR ID	DWR_RD0999_04_f_2018_30				
Comment Code					
DE : Debris					
Inspector Comment					
Remove mattress and landscaping materials dumped on slope.					

No Photos

LM Start	1.18	Rating **	M	Issue No.	46
LM End	1.18	Issue Type +	Ma	Location *	WS
Category	Earthen Levee			GPS Latitude/Longitude	
				Start	End
Item	Erosion / Bank Caving			38.429201 °	38.429201 °
				-121.533012 °	-121.533012 °
DWR ID	DWR_RD0999_04_s_2016_46				
Comment Code					
E2 : Schedule repair of erosion site prior to the next inspection.					
Inspector Comment					
Erosion located just below asphalt on waterside shoulder.					

Photo 1 of 3 : SP_2019_RD0999_235_46_20190307_00020.jpg



View of erosion on shoulder and slope. Fall 2018

LM Start	1.18	Rating **	M	Issue No.	46 (cont)
LM End	1.18	Issue Type +	Ma	Location *	WS

Photo 2 of 3 : SP_2019_RD0999_235_46_20190307_00021.jpg



Looking east at the erosion on the waterside slope. Fall 2017

* Location LS : Land Side N/A : Not Applicable WS : Water Side CR : Crown		** Rating A : Acceptable M : Minimally Acceptable U : Unacceptable N : Not Inspected/Rated C : Corrected A/W : Acceptable but Monitor & Maintain		+ Issue Type Ma : Maintenance Deficiency Ob : Design & System Obsolescence En : Enforcement	
---------------------------------------------------------------------------------------	--	--------------------------------------------------------------------------------------------------------------------------------------------------------------------	--	------------------------------------------------------------------------------------------------------	--

**Flood Control Project Maintenance
Levee Inspections**

Maintenance Issue Types Only, Levee Inspection Report By Mile - Spring 2019

Reclamation District No. 0999 Netherlands

Waterway	Bank	Unit Miles	Inspection Start/End	Inspector
Unit No. 04 Sacramento River	Right	1.22	03/22/2019 03/22/2019	Luz Dial

LM Start	1.18	Rating **	M	Issue No.	46 (cont)	
LM End	1.18	Issue Type +	Ma	Location *	WS	
Category	Earthen Levee			GPS Latitude/Longitude		
				Start		End
Item	Erosion / Bank Caving			38.429201 °	38.429201 °	
				-121.533012 °	-121.533012 °	
DWR ID	DWR_RD0999_04_s_2016_46					
Comment Code						
E2 : Schedule repair of erosion site prior to the next inspection.						
Inspector Comment						
Erosion located just below asphalt on waterside shoulder.						

Photo 3 of 3 : SP_2019_RD0999_235_46_20190307_00022.jpg



Looking west at foot erosion on waterward shoulder and slope.

LM Start	1.20	Rating **	M	Issue No.	22
LM End	1.22	Issue Type +	Ma	Location *	LS
Category	Earthen Levee			GPS Latitude/Longitude	
				Start	End
Item	Trim / Thin Trees			38.429467 °	38.429750 °
				-121.533110 °	-121.533188 °
DWR ID	DWR_RD0999_04_f_2013_22				
Comment Code					
T3 : Trim and thin trees to allow visibility of the ground and room to flood fight.					
Inspector Comment					

Photo 1 of 2 : SP_2019_RD0999_235_22_20190307_00009.jpg



Looking south at dense trees on landside slope.

LM Start	1.20	Rating **	M	Issue No.	22 (cont)
LM End	1.22	Issue Type +	Ma	Location *	LS

Photo 2 of 2 : SP_2019_RD0999_235_22_20190307_00010.jpg



Looking south at dense trees on landward slope.

* Location		** Rating		+ Issue Type	
LS : Land Side	N/A : Not Applicable	A : Acceptable	N : Not Inspected/Rated	Ma : Maintenance Deficiency	
WS : Water Side		M : Minimally Acceptable	C : Corrected	Ob : Design & System Obsolescence	
CR : Crown		U : Unacceptable	A/W : Acceptable but Monitor & Maintain	En : Enforcement	

**Flood Control Project Maintenance
Levee Inspections**

Maintenance Issue Types Only, Levee Inspection Report By Mile - Spring 2019

Reclamation District No. 0999 Netherlands

Waterway	Bank	Unit Miles	Inspection Start/End	Inspector
Unit No. 05 Elk Slough	Right	9.48	03/22/2019 03/22/2019	Luz Dial

LM Start	0.00	Rating **	M	Issue No.	49
LM End	0.01	Issue Type +	Ma	Location *	WS
Category	Supplemental			GPS Latitude/Longitude	
				Start	End
Item	2017 USACE Erosion Survey, DRAFT			38.332643 °	38.414157 °
				-121.584449 °	-121.523156 °
DWR ID	DWR_RD0999_05_s_2019_49				
Comment Code					
Inspector Comment					
2017 Site ID: ELK 0.2 R					
Status: Eroding					
2017 Field Notes: Fresh erosion; site continues to worsen.					
Site History: 1997 - Most of lower Elk Slough contains high near vertical banks, with erosion into the levee slope. Channel almost appears incised. 2002 - Sites where the levee slope is near vertical and severely eroding. It could fail catastrophically. 2004 - Looks bad in terms of vertical slopes and fallen trees. 2005 - Banks are still over steepened in most places and potentially susceptible to geotechnical failures. 2006 - Both banks are still over steepened in most places and potentially susceptible to geotechnical failures. 2010 - The entire reach is in poor condition, with severely eroding near vertical slopes, needs a regional repair. 2011 - Channel banks are still over steepened with erosion continuing. 2012 - New cracks and animal holes observed. 2013 - Fresh erosion around pump structure.					

No Photos

LM Start	0.11	Rating **	M	Issue No.	165
LM End	0.12	Issue Type +	Ma	Location *	WS
Category	Earthen Levee			GPS Latitude/Longitude	
				Start	End
Item	Slope Stability			38.334198 °	38.334327 °
				-121.584308 °	-121.584275 °
DWR ID	DWR_RD0999_05_s_2017_165				
Comment Code					
S1 : Repair slope instability.					
Inspector Comment					
Crack greater than two inches along top half of waterward slope. Three dead trees along slope damage section. Trees should be removed.					

Photo 1 of 3 : SP_2019_RD0999_236_165_20190307_00070.jpg



Looking at two inch plus crack on waterward shoulder.

* Location LS : Land Side N/A : Not Applicable WS : Water Side CR : Crown		** Rating A : Acceptable N : Not Inspected/Rated M : Minimally Acceptable C : Corrected U : Unacceptable A/W : Acceptable but Monitor & Maintain		+ Issue Type Ma : Maintenance Deficiency Ob : Design & System Obsolescence En : Enforcement
----------------------------------------------------------------------------------------------	--	---------------------------------------------------------------------------------------------------------------------------------------------------------------------------------------------------------------	--	-------------------------------------------------------------------------------------------------------------

**Flood Control Project Maintenance
Levee Inspections**

Maintenance Issue Types Only, Levee Inspection Report By Mile - Spring 2019

Reclamation District No. 0999 Netherlands

Waterway	Bank	Unit Miles	Inspection Start/End	Inspector
Unit No. 05 Elk Slough	Right	9.48	03/22/2019 03/22/2019	Luz Dial

LM Start	0.11	Rating **	M	Issue No.	165 (cont)	
LM End	0.12	Issue Type +	Ma	Location *	WS	
Category	Earthen Levee			GPS Latitude/Longitude		
				Start		End
Item	Slope Stability			38.334198°		38.334327°
				-121.584308°		-121.584275°
DWR ID	DWR_RD0999_05_s_2017_165					
Comment Code						
S1 : Repair slope instability.						
Inspector Comment						
Crack greater than two inches along top half of waterward slope. Three dead trees along slope damage section. Trees should be removed.						

Photo 2 of 3 : SP_2019_RD0999_236_165_20190307_00071.jpg



Looking upstream at cracking along waterward shoulder.

LM Start	0.11	Rating **	M	Issue No.	165 (cont)
LM End	0.12	Issue Type +	Ma	Location *	WS

Photo 3 of 3 : SP_2019_RD0999_236_165_20190307_00072.jpg



Looking downstream at crack along waterward shoulder.

LM Start	0.56	Rating **	M	Issue No.	7
LM End	0.56	Issue Type +	Ma	Location *	LS
Category	Earthen Levee			GPS Latitude/Longitude	
				Start	End
Item	Trim / Thin Trees			38.340475 °	38.340475 °
				-121.581942 °	-121.581942 °
DWR ID	DWR_RD0999_05_s_2012_7				
Comment Code					
T3 : Trim and thin trees to allow visibility of the ground and room to flood fight.					
Inspector Comment					

No Photos

* Location LS : Land Side N/A : Not Applicable WS : Water Side CR : Crown		** Rating A : Acceptable M : Minimally Acceptable U : Unacceptable		N : Not Inspected/Rated C : Corrected A/W : Acceptable but Monitor & Maintain		+ Issue Type Ma : Maintenance Deficiency Ob : Design & System Obsolescence En : Enforcement	
----------------------------------------------------------------------------------------------	--	------------------------------------------------------------------------------------	--	-------------------------------------------------------------------------------------	--	-------------------------------------------------------------------------------------------------------------	--

**Flood Control Project Maintenance
Levee Inspections**

Maintenance Issue Types Only, Levee Inspection Report By Mile - Spring 2019

Reclamation District No. 0999 Netherlands

Waterway	Bank	Unit Miles	Inspection Start/End	Inspector
Unit No. 05 Elk Slough	Right	9.48	03/22/2019 03/22/2019	Luz Dial

LM Start	0.78	Rating **	M	Issue No.	128
LM End	0.79	Issue Type +	Ma	Location *	LS
Category	Earthen Levee			GPS Latitude/Longitude	
				Start	End
Item	Trim / Thin Trees			38.343495 °	38.343617 °
				-121.581282 °	-121.581249 °
DWR ID	DWR_RD0999_05_s_2012_128				
Comment Code					
T3 : Trim and thin trees to allow visibility of the ground and room to flood fight.					
Inspector Comment					

Photo 1 of 2 : SP_2019_RD0999_236_128_20190307_00053.jpg



Looking northwest at untrimmed trees on landward slope. (Spring 2015)

LM Start	0.78	Rating **	M	Issue No.	128 (cont)
LM End	0.79	Issue Type +	Ma	Location *	LS

Photo 2 of 2 : SP_2019_RD0999_236_128_20190307_00054.jpg



Looking at dense trees on landside slope and toe.

LM Start	0.84	Rating **	M	Issue No.	10
LM End	0.84	Issue Type +	Ma	Location *	WS
Category	Earthen Levee			GPS Latitude/Longitude	
				Start	End
Item	Vegetation			38.344294 °	38.344294 °
				-121.581054 °	-121.581054 °
DWR ID	DWR_RD0999_05_s_2018_10				
Comment Code					
V2 : Remove the wild growth other than native grasses from the levee slopes.					
Inspector Comment					
LMA sprayed vegetation but needs to clear dead vegetation.					

Photo 1 of 1 : SP_2019_RD0999_236_10_20190307_00005.jpg



Vegetation waterside looking north. Spring 2018

*** Location**
LS : Land Side N/A : Not Applicable
WS : Water Side
CR : Crown

**** Rating**
A : Acceptable N : Not Inspected/Rated
M : Minimally Acceptable C : Corrected
U : Unacceptable A/W : Acceptable but Monitor & Maintain

+ Issue Type
Ma : Maintenance Deficiency
Ob : Design & System Obsolescence
En : Enforcement

**Flood Control Project Maintenance
Levee Inspections**

Maintenance Issue Types Only, Levee Inspection Report By Mile - Spring 2019

Reclamation District No. 0999 Netherlands

Waterway	Bank	Unit Miles	Inspection Start/End	Inspector
Unit No. 05 Elk Slough	Right	9.48	03/22/2019 03/22/2019	Luz Dial

LM Start	0.87	Rating **	M	Issue No.	53
LM End	0.87	Issue Type +	Ma	Location *	WS
Category	Earthen Levee			GPS Latitude/Longitude	
				Start	End
Item	Vegetation			38.344833 °	38.344833 °
				-121.580932 °	-121.580932 °
DWR ID	DWR_RD0999_05_s_2019_53				
Comment Code					
V2 : Remove the wild growth other than native grasses from the levee slopes.					
Inspector Comment					

No Photos

LM Start	1.03	Rating **	M	Issue No.	54
LM End	1.03	Issue Type +	Ma	Location *	WS
Category	Earthen Levee			GPS Latitude/Longitude	
				Start	End
Item	Vegetation			38.346937 °	38.346937 °
				-121.579840 °	-121.579840 °
DWR ID	DWR_RD0999_05_s_2019_54				
Comment Code					
V2 : Remove the wild growth other than native grasses from the levee slopes.					
Inspector Comment					

No Photos

LM Start	1.04	Rating **	M	Issue No.	146
LM End	1.06	Issue Type +	Ma	Location *	LS
Category	Earthen Levee			GPS Latitude/Longitude	
				Start	End
Item	Trim / Thin Trees			38.347067 °	38.347331 °
				-121.579735 °	-121.579582 °
DWR ID	DWR_RD0999_05_f_2013_146				
Comment Code					
T3 : Trim and thin trees to allow visibility of the ground and room to flood fight.					
Inspector Comment					

No Photos

* Location		** Rating		+ Issue Type	
LS : Land Side	N/A : Not Applicable	A : Acceptable	N : Not Inspected/Rated	Ma : Maintenance Deficiency	
WS : Water Side		M : Minimally Acceptable	C : Corrected	Ob : Design & System Obsolescence	
CR : Crown		U : Unacceptable	A/W : Acceptable but Monitor & Maintain	En : Enforcement	

**Flood Control Project Maintenance
Levee Inspections**

Maintenance Issue Types Only, Levee Inspection Report By Mile - Spring 2019

Reclamation District No. 0999 Netherlands

Waterway	Bank	Unit Miles	Inspection Start/End	Inspector
Unit No. 05 Elk Slough	Right	9.48	03/22/2019 03/22/2019	Luz Dial

LM Start	1.06	Rating **	M	Issue No.	55
LM End	1.06	Issue Type +	Ma	Location *	WS
Category	Earthen Levee			GPS Latitude/Longitude	
				Start	End
Item	Vegetation			38.347332 °	38.347332 °
				-121.579503 °	-121.579503 °
DWR ID	DWR_RD0999_05_s_2019_55				
Comment Code					
V2 : Remove the wild growth other than native grasses from the levee slopes.					
Inspector Comment					

No Photos

LM Start	1.15	Rating **	U	Issue No.	15
LM End	1.19	Issue Type +	Ma	Location *	LS
Category	Earthen Levee			GPS Latitude/Longitude	
				Start	End
Item	Trim / Thin Trees			38.348237 °	38.348328 °
				-121.578440 °	-121.577735 °
DWR ID	DWR_RD0999_05_s_2012_15				
Comment Code					
T1 : Trim trees to at least five feet above ground level.					
Inspector Comment					

Photo 1 of 1 : SP_2019_RD0999_236_15_20190307_00011.jpg



Looking north at untrimmed trees on landward slope and toe.

LM Start	1.30	Rating **	M	Issue No.	36
LM End	1.30	Issue Type +	Ma	Location *	WS
Category	Earthen Levee			GPS Latitude/Longitude	
				Start	End
Item	Trim / Thin Trees			38.348252 °	38.348252 °
				-121.575704 °	-121.575704 °
DWR ID	DWR_RD0999_05_s_2012_36				
Comment Code					
T1 : Trim trees to at least five feet above ground level.					
Inspector Comment					

No Photos

* Location LS : Land Side N/A : Not Applicable WS : Water Side CR : Crown		** Rating A : Acceptable N : Not Inspected/Rated M : Minimally Acceptable C : Corrected U : Unacceptable A/W : Acceptable but Monitor & Maintain		+ Issue Type Ma : Maintenance Deficiency Ob : Design & System Obsolescence En : Enforcement
----------------------------------------------------------------------------------------------	--	---------------------------------------------------------------------------------------------------------------------------------------------------------------------------------------------------------------	--	-------------------------------------------------------------------------------------------------------------

**Flood Control Project Maintenance
Levee Inspections**

Maintenance Issue Types Only, Levee Inspection Report By Mile - Spring 2019

Reclamation District No. 0999 Netherlands

Waterway	Bank	Unit Miles	Inspection Start/End	Inspector
Unit No. 05 Elk Slough	Right	9.48	03/22/2019 03/22/2019	Luz Dial

LM Start	1.33	Rating **	M	Issue No.	59
LM End	1.37	Issue Type +	Ma	Location *	WS
Category	Earthen Levee			GPS Latitude/Longitude	
				Start	End
Item	Vegetation			38.348223 °	38.348160 °
				-121.575145 °	-121.574472 °
DWR ID	DWR_RD0999_05_s_2019_59				
Comment Code					
V2 : Remove the wild growth other than native grasses from the levee slopes.					
Inspector Comment					

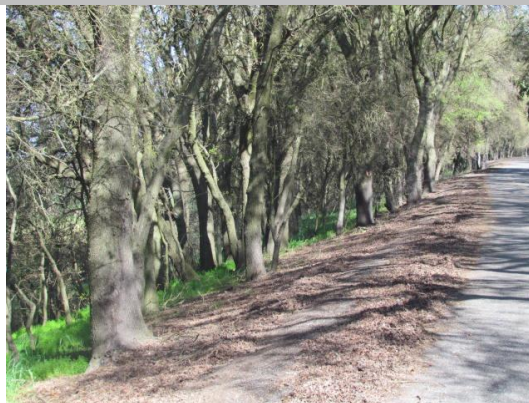
No Photos

LM Start	1.42	Rating **	M	Issue No.	60
LM End	1.42	Issue Type +	Ma	Location *	WS
Category	Earthen Levee			GPS Latitude/Longitude	
				Start	End
Item	Vegetation			38.348152 °	38.348152 °
				-121.573605 °	-121.573605 °
DWR ID	DWR_RD0999_05_s_2019_60				
Comment Code					
V2 : Remove the wild growth other than native grasses from the levee slopes.					
Inspector Comment					

No Photos

LM Start	1.55	Rating **	M	Issue No.	18
LM End	1.61	Issue Type +	Ma	Location *	LS
Category	Earthen Levee			GPS Latitude/Longitude	
				Start	End
Item	Trim / Thin Trees			38.349848 °	38.350757 °
				-121.573648 °	-121.573910 °
DWR ID	DWR_RD0999_05_s_2012_18				
Comment Code					
T3 : Trim and thin trees to allow visibility of the ground and room to flood fight.					
Inspector Comment					
LMA trimmed some trees but more trimming is still needed.					

Photo 1 of 1 : SP_2019_RD0999_236_18_20190307_00014.jpg



Looking east at dense trees on landward slope.

* Location		** Rating		+ Issue Type	
LS : Land Side	N/A : Not Applicable	A : Acceptable	N : Not Inspected/Rated	Ma : Maintenance Deficiency	
WS : Water Side		M : Minimally Acceptable	C : Corrected	Ob : Design & System Obsolescence	
CR : Crown		U : Unacceptable	A/W : Acceptable but Monitor & Maintain	En : Enforcement	

**Flood Control Project Maintenance
Levee Inspections**

Maintenance Issue Types Only, Levee Inspection Report By Mile - Spring 2019

Reclamation District No. 0999 Netherlands

Waterway	Bank	Unit Miles	Inspection Start/End	Inspector
Unit No. 05 Elk Slough	Right	9.48	03/22/2019 03/22/2019	Luz Dial

LM Start	1.69	Rating **	U	Issue No.	199
LM End	1.69	Issue Type +	Ma	Location *	LS
Category	Earthen Levee			GPS Latitude/Longitude	
				Start	End
Item	Vegetation			38.351957 °	38.351957 °
				-121.574096 °	-121.574096 °
DWR ID	DWR_RD0999_05_f_2014_199				
Comment Code					
V2 : Remove the wild growth other than native grasses from the levee slopes.					
Inspector Comment					
Remove wild vegetation on landward easement. Poison oak is in area, according to LMA.					

Photo 1 of 1 : SP_2019_RD0999_236_199_20190307_00092.jpg



Looking northwest at dense vegetation on landward slope.

LM Start	1.70	Rating **	M	Issue No.	21
LM End	1.77	Issue Type +	Ma	Location *	WS
Category	Earthen Levee			GPS Latitude/Longitude	
				Start	End
Item	Trim / Thin Trees			38.352088 °	38.352968 °
				-121.574052 °	-121.574008 °
DWR ID	DWR_RD0999_05_s_2012_21				
Comment Code					
T1 : Trim trees to at least five feet above ground level.					
Inspector Comment					
LMA sprayed vegetation but needs to clear debris.					

No Photos

LM Start	2.49	Rating **	C	Issue No.	82
LM End	2.65	Issue Type +	Ma	Location *	LS
Category	Earthen Levee			GPS Latitude/Longitude	
				Start	End
Item	Trim / Thin Trees			38.356177 °	38.358132 °
				-121.563452 °	-121.562347 °
DWR ID	DWR_RD0999_05_s_2012_82				
Comment Code					
T3 : Trim and thin trees to allow visibility of the ground and room to flood fight.					
Inspector Comment					
Landowner sprayed vegetation and cleared debris.					

No Photos

* Location LS : Land Side N/A : Not Applicable WS : Water Side CR : Crown		** Rating A : Acceptable N : Not Inspected/Rated M : Minimally Acceptable C : Corrected U : Unacceptable A/W : Acceptable but Monitor & Maintain		+ Issue Type Ma : Maintenance Deficiency Ob : Design & System Obsolescence En : Enforcement	
----------------------------------------------------------------------------------------------	--	---------------------------------------------------------------------------------------------------------------------------------------------------------------------------------------------------------------	--	-------------------------------------------------------------------------------------------------------------	--

**Flood Control Project Maintenance
Levee Inspections**

Maintenance Issue Types Only, Levee Inspection Report By Mile - Spring 2019

Reclamation District No. 0999 Netherlands

Waterway	Bank	Unit Miles	Inspection Start/End	Inspector
Unit No. 05 Elk Slough	Right	9.48	03/22/2019 03/22/2019	Luz Dial

LM Start	2.92	Rating **	M	Issue No.	68
LM End	2.92	Issue Type +	Ma	Location *	WS
Category	Earthen Levee			GPS Latitude/Longitude	
				Start	End
Item	Encroachments			38.361977 °	38.361977 °
				-121.563343 °	-121.563343 °
DWR ID	DWR_RD0999_05_s_2019_68				
Comment Code					
PR : Prunings					
Inspector Comment					
Prunings need to be cleared from waterside slope.					

No Photos

LM Start	3.55	Rating **	M	Issue No.	83
LM End	3.55	Issue Type +	Ma	Location *	WS
Category	Earthen Levee			GPS Latitude/Longitude	
				Start	End
Item	Erosion / Bank Caving			38.365742 °	38.365742 °
				-121.556778 °	-121.556778 °
DWR ID	DWR_RD0999_05_f_2018_83				
Comment Code					
E1 : Note and monitor erosion site.					
Inspector Comment					
Repair slope damage caused by large fallen tree.					

Photo 1 of 1 : SP_2019_RD0999_236_83_20190307_00034.jpg



View of a fallen tree and slope damage. Fall 2018

LM Start	3.67	Rating **	M	Issue No.	72
LM End	3.67	Issue Type +	Ma	Location *	WS
Category	Earthen Levee			GPS Latitude/Longitude	
				Start	End
Item	Trim / Thin Trees			38.367430 °	38.367430 °
				-121.556580 °	-121.556580 °
DWR ID	DWR_RD0999_05_s_2019_72				
Comment Code					
T1 : Trim trees to at least five feet above ground level.					
Inspector Comment					

No Photos

* Location LS : Land Side N/A : Not Applicable WS : Water Side CR : Crown		** Rating A : Acceptable M : Minimally Acceptable U : Unacceptable		N : Not Inspected/Rated C : Corrected A/W : Acceptable but Monitor & Maintain		+ Issue Type Ma : Maintenance Deficiency Ob : Design & System Obsolescence En : Enforcement	
---------------------------------------------------------------------------------------	--	-----------------------------------------------------------------------------	--	-------------------------------------------------------------------------------------	--	------------------------------------------------------------------------------------------------------	--

**Flood Control Project Maintenance
Levee Inspections**

Maintenance Issue Types Only, Levee Inspection Report By Mile - Spring 2019

Reclamation District No. 0999 Netherlands

Waterway	Bank	Unit Miles	Inspection Start/End	Inspector
Unit No. 05 Elk Slough	Right	9.48	03/22/2019 03/22/2019	Luz Dial

LM Start	3.68	Rating **	C	Issue No.	69
LM End	3.68	Issue Type +	Ma	Location *	LS
Category	Earthen Levee			GPS Latitude/Longitude	
				Start	End
Item	Erosion / Bank Caving			38.367529 °	38.367529 °
				-121.556455 °	-121.556455 °
DWR ID	DWR_RD0999_05_s_2018_69				
Comment Code					
E2 : Schedule repair of erosion site prior to the next inspection.					
Inspector Comment					
Repair hole caused by removal of fencepost.					

No Photos

LM Start	3.80	Rating **	M	Issue No.	85
LM End	3.80	Issue Type +	Ma	Location *	WS
Category	Earthen Levee			GPS Latitude/Longitude	
				Start	End
Item	Erosion / Bank Caving			38.368175 °	38.368175 °
				-121.554392 °	-121.554392 °
DWR ID	DWR_RD0999_05_f_2018_85				
Comment Code					
E2 : Schedule repair of erosion site prior to the next inspection.					
Inspector Comment					
Repair levee slope damaged by fallen tree.					

Photo 1 of 1 : SP_2019_RD0999_236_85_20190307_00035.jpg



View of fallen tree and slope damage. Fall 2018

LM Start	3.80	Rating **	M	Issue No.	174
LM End	3.80	Issue Type +	Ma	Location *	WS
Category	Earthen Levee			GPS Latitude/Longitude	
				Start	End
Item	Encroachments			38.368207 °	38.368207 °
				-121.554360 °	-121.554360 °
DWR ID	DWR_RD0999_05_s_2019_174				
Comment Code					
TR : Tree or limb					
Inspector Comment					
Remove tree branch and limbs on waterside slope.					

Photo 1 of 1 : SP_2019_RD0999_236_174_20190307_00082.jpg



Looking at tree branch on waterward slope.

* Location
LS : Land Side N/A : Not Applicable
WS : Water Side
CR : Crown

** Rating
A : Acceptable N : Not Inspected/Rated
M : Minimally Acceptable C : Corrected
U : Unacceptable A/W : Acceptable but Monitor & Maintain

+ Issue Type
Ma : Maintenance Deficiency
Ob : Design & System Obsolescence
En : Enforcement

**Flood Control Project Maintenance
Levee Inspections**

Maintenance Issue Types Only, Levee Inspection Report By Mile - Spring 2019

Reclamation District No. 0999 Netherlands

Waterway	Bank	Unit Miles	Inspection Start/End	Inspector
Unit No. 05 Elk Slough	Right	9.48	03/22/2019 03/22/2019	Luz Dial

LM Start	3.87	Rating **	M	Issue No.	74
LM End	3.92	Issue Type +	Ma	Location *	LS
Category	Earthen Levee			GPS Latitude/Longitude	
				Start	End
Item	Vegetation			38.368277 °	38.368698 °
				-121.553085 °	-121.552413 °
DWR ID	DWR_RD0999_05_s_2019_74				
Comment Code					
V1 : Control annual grass and weeds on the levee slopes and easements.					
Inspector Comment					

No Photos

LM Start	4.01	Rating **	M	Issue No.	90
LM End	4.01	Issue Type +	Ma	Location *	WS
Category	Earthen Levee			GPS Latitude/Longitude	
				Start	End
Item	Encroachments			38.369813 °	38.369813 °
				-121.552985 °	-121.552985 °
DWR ID	DWR_RD0999_05_f_2018_90				
Comment Code					
TR : Tree or limb					
Inspector Comment					
Tree debris needs to be cleared from levee slope easement.					

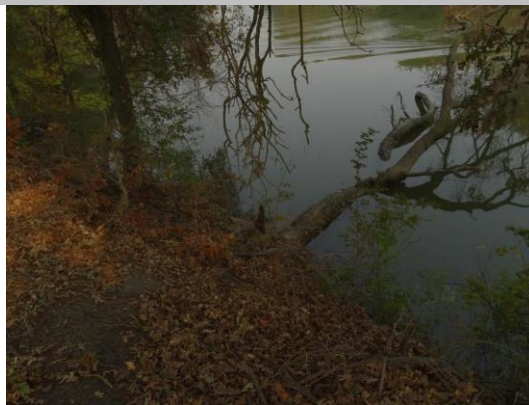
Photo 1 of 1 : SP_2019_RD0999_236_90_20190307_00036.jpg



View of tree debris on levee easement. Fall 2018

LM Start	4.08	Rating **	M	Issue No.	91
LM End	4.08	Issue Type +	Ma	Location *	WS
Category	Earthen Levee			GPS Latitude/Longitude	
				Start	End
Item	Erosion / Bank Caving			38.370853 °	38.370853 °
				-121.553605 °	-121.553605 °
DWR ID	DWR_RD0999_05_f_2018_91				
Comment Code					
E2 : Schedule repair of erosion site prior to the next inspection.					
Inspector Comment					
Repair erosion caused by fallen tree with exposed rootball.					

Photo 1 of 1 : SP_2019_RD0999_236_91_20190307_00037.jpg



View of tree with rootball exposed. Fall 2018

* Location
LS : Land Side N/A : Not Applicable
WS : Water Side
CR : Crown

** Rating
A : Acceptable N : Not Inspected/Rated
M : Minimally Acceptable C : Corrected
U : Unacceptable A/W : Acceptable but Monitor & Maintain

+ Issue Type
Ma : Maintenance Deficiency
Ob : Design & System Obsolescence
En : Enforcement

**Flood Control Project Maintenance
Levee Inspections**

Maintenance Issue Types Only, Levee Inspection Report By Mile - Spring 2019

Reclamation District No. 0999 Netherlands

Waterway	Bank	Unit Miles	Inspection Start/End	Inspector
Unit No. 05 Elk Slough	Right	9.48	03/22/2019 03/22/2019	Luz Dial

LM Start	4.25	Rating **	U	Issue No.	12
LM End	4.25	Issue Type +	Ma	Location *	WS
Category	Earthen Levee			GPS Latitude/Longitude	
				Start	End
Item	Slope Stability			38.372872 °	38.372872 °
				-121.552185 °	-121.552185 °
DWR ID	DWR_RD0999_05_s_2017_12				
Comment Code					
S1 : Repair slope instability.					
Inspector Comment					
LMA repaired cracks, but sloughing damage still needs to be repaired.					

Photo 1 of 1 : SP_2019_RD0999_236_12_20190307_00008.jpg



Looking downstream at finger erosion on downstream side of slough.

LM Start	4.35	Rating **	M	Issue No.	80
LM End	4.35	Issue Type +	Ma	Location *	WS
Category	Earthen Levee			GPS Latitude/Longitude	
				Start	End
Item	Vegetation			38.374253 °	38.374253 °
				-121.551358 °	-121.551358 °
DWR ID	DWR_RD0999_05_s_2019_80				
Comment Code					
V2 : Remove the wild growth other than native grasses from the levee slopes.					
Inspector Comment					

No Photos

LM Start	4.38	Rating **	M	Issue No.	44
LM End	4.38	Issue Type +	Ma	Location *	WS
Category	Earthen Levee			GPS Latitude/Longitude	
				Start	End
Item	Encroachments			38.374591 °	38.374591 °
				-121.550936 °	-121.550936 °
DWR ID	DWR_RD0999_05_s_2018_44				
Comment Code					
PR : Prunings					
Inspector Comment					
LMA will remove prunings.					

No Photos

* Location		** Rating		+ Issue Type	
LS : Land Side	N/A : Not Applicable	A : Acceptable	N : Not Inspected/Rated	Ma : Maintenance Deficiency	
WS : Water Side		M : Minimally Acceptable	C : Corrected	Ob : Design & System Obsolescence	
CR : Crown		U : Unacceptable	A/W : Acceptable but Monitor & Maintain	En : Enforcement	

**Flood Control Project Maintenance
Levee Inspections**

Maintenance Issue Types Only, Levee Inspection Report By Mile - Spring 2019

Reclamation District No. 0999 Netherlands

Waterway	Bank	Unit Miles	Inspection Start/End	Inspector
Unit No. 05 Elk Slough	Right	9.48	03/22/2019 03/22/2019	Luz Dial

LM Start	4.54	Rating **	M	Issue No.	98
LM End	4.54	Issue Type +	Ma	Location *	WS
Category	Earthen Levee			GPS Latitude/Longitude	
				Start	End
Item	Trim / Thin Trees			38.375077 °	38.375077 °
				-121.548225 °	-121.548225 °
DWR ID	DWR_RD0999_05_s_2019_98				
Comment Code					
T1 : Trim trees to at least five feet above ground level.					
Inspector Comment					

No Photos

LM Start	4.62	Rating **	U	Issue No.	28
LM End	4.62	Issue Type +	Ma	Location *	WS
Category	Earthen Levee			GPS Latitude/Longitude	
				Start	End
Item	Encroachments			38.375308 °	38.375308 °
				-121.546828 °	-121.546828 °
DWR ID	DWR_RD0999_05_s_2017_28				
Comment Code					
TR : Tree or limb					
Inspector Comment					
Fallen tree on waterside slope and is partly in water. Large hole on waterside slope previously noted was not visible during this inspection.					

Photo 1 of 1 : SP_2019_RD0999_236_28_20190307_00017.jpg



View of dead tree on slope. Fall 2018

LM Start	4.65	Rating **	N	Issue No.	62
LM End	4.65	Issue Type +	Ma	Location *	WS
Category	Earthen Levee			GPS Latitude/Longitude	
				Start	End
Item	Trim / Thin Trees			38.375365 °	38.375365 °
				-121.546305 °	-121.546305 °
DWR ID	DWR_RD0999_05_s_2012_62				
Comment Code					
T5 : Tree stumps.					
Inspector Comment					

Photo 1 of 1 : SP_2019_RD0999_236_62_20190307_00025.jpg



View of tree stump on levee slope. Fall 2018

* Location LS : Land Side N/A : Not Applicable WS : Water Side CR : Crown		** Rating A : Acceptable M : Minimally Acceptable U : Unacceptable N : Not Inspected/Rated C : Corrected A/W : Acceptable but Monitor & Maintain		+ Issue Type Ma : Maintenance Deficiency Ob : Design & System Obsolescence En : Enforcement	
---------------------------------------------------------------------------------------	--	--------------------------------------------------------------------------------------------------------------------------------------------------------------------	--	------------------------------------------------------------------------------------------------------	--

**Flood Control Project Maintenance
Levee Inspections**

Maintenance Issue Types Only, Levee Inspection Report By Mile - Spring 2019

Reclamation District No. 0999 Netherlands

Waterway	Bank	Unit Miles	Inspection Start/End	Inspector
Unit No. 05 Elk Slough	Right	9.48	03/22/2019 03/22/2019	Luz Dial

LM Start	5.04	Rating **	M	Issue No.	105
LM End	5.06	Issue Type +	Ma	Location *	WS
Category	Earthen Levee			GPS Latitude/Longitude	
				Start	End
Item	Trim / Thin Trees			38.379273 °	38.379522 °
				-121.541150 °	-121.541045 °
DWR ID	DWR_RD0999_05_s_2019_105				
Comment Code					
T1 : Trim trees to at least five feet above ground level.					
Inspector Comment					

No Photos

LM Start	5.06	Rating **	M	Issue No.	106
LM End	5.06	Issue Type +	Ma	Location *	CR
Category	Earthen Levee			GPS Latitude/Longitude	
				Start	End
Item	Encroachments			38.379540 °	38.379540 °
				-121.541050 °	-121.541050 °
DWR ID	DWR_RD0999_05_s_2019_106				
Comment Code					
DE : Debris					
Inspector Comment					
Clear debris and prunings on levee crown.					

No Photos

LM Start	5.11	Rating **	C	Issue No.	95
LM End	5.11	Issue Type +	Ma	Location *	WS
Category	Earthen Levee			GPS Latitude/Longitude	
				Start	End
Item	Vegetation			38.380262 °	38.380262 °
				-121.541088 °	-121.541088 °
DWR ID	DWR_RD0999_05_f_2018_95				
Comment Code					
V2 : Remove the wild growth other than native grasses from the levee slopes.					
Inspector Comment					
LMA sprayed vegetation on slope but needs to clear dead vegetation.					

No Photos

* Location		** Rating		+ Issue Type	
LS : Land Side	N/A : Not Applicable	A : Acceptable	N : Not Inspected/Rated	Ma : Maintenance Deficiency	
WS : Water Side		M : Minimally Acceptable	C : Corrected	Ob : Design & System Obsolescence	
CR : Crown		U : Unacceptable	A/W : Acceptable but Monitor & Maintain	En : Enforcement	

**Flood Control Project Maintenance
Levee Inspections**

Maintenance Issue Types Only, Levee Inspection Report By Mile - Spring 2019

Reclamation District No. 0999 Netherlands

Waterway	Bank	Unit Miles	Inspection Start/End	Inspector
Unit No. 05 Elk Slough	Right	9.48	03/22/2019 03/22/2019	Luz Dial

LM Start	5.12	Rating **	M	Issue No.	176
LM End	5.12	Issue Type +	Ma	Location *	WS
Category	Earthen Levee			GPS Latitude/Longitude	
				Start	End
Item	Slope Stability			38.380420 °	38.380420 °
				-121.541102 °	-121.541102 °
DWR ID	DWR_RD0999_05_f_2015_176				
Comment Code					
S1 : Repair slope instability.					
Inspector Comment					
Large hole on waterside shoulder remains, but tree was removed.					

LM Start	5.12	Rating **	M	Issue No.	176 (cont)
LM End	5.12	Issue Type +	Ma	Location *	WS

Photo 1 of 3 : SP_2019_RD0999_236_176_20190307_00083.jpg



Looking at hole from fallen tree on waterward shoulder. (Fall 2016)

Photo 2 of 3 : SP_2019_RD0999_236_176_20190307_00084.jpg



Looking at hole on waterward shoulder caused by fallen tree.

Photo 3 of 3 : SP_2019_RD0999_236_176_20190307_00085.jpg



Looking at fallen tree and hole on waterward slope and shoulder.

LM Start	5.12	Rating **	M	Issue No.	176 (cont)
LM End	5.12	Issue Type +	Ma	Location *	WS

* Location LS : Land Side N/A : Not Applicable WS : Water Side CR : Crown		** Rating A : Acceptable M : Minimally Acceptable U : Unacceptable N : Not Inspected/Rated C : Corrected A/W : Acceptable but Monitor & Maintain		+ Issue Type Ma : Maintenance Deficiency Ob : Design & System Obsolescence En : Enforcement
----------------------------------------------------------------------------------------------	--	---------------------------------------------------------------------------------------------------------------------------------------------------------------------------	--	-------------------------------------------------------------------------------------------------------------

**Flood Control Project Maintenance
Levee Inspections**

Maintenance Issue Types Only, Levee Inspection Report By Mile - Spring 2019

Reclamation District No. 0999 Netherlands

Waterway	Bank	Unit Miles	Inspection Start/End	Inspector
Unit No. 05 Elk Slough	Right	9.48	03/22/2019 03/22/2019	Luz Dial

LM Start	5.35	Rating **	U	Issue No.	97
LM End	5.35	Issue Type +	Ma	Location *	WS
Category	Earthen Levee			GPS Latitude/Longitude	
				Start	End
Item	Erosion / Bank Caving			38.381297 °	38.381297 °
				-121.545037 °	-121.545037 °
DWR ID	DWR_RD0999_05_f_2018_97				
Comment Code					
E2 : Schedule repair of erosion site prior to the next inspection.					
Inspector Comment					
Fallen trees removed a section of the levee toe.					

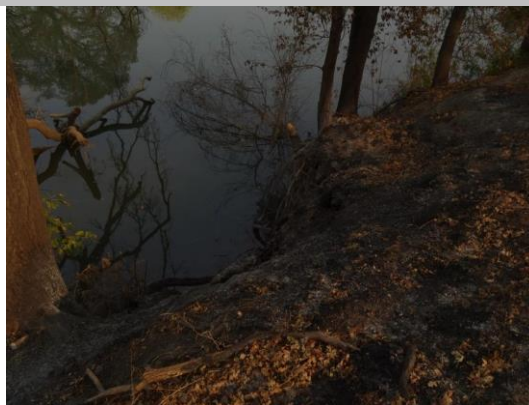
Photo 1 of 2 : SP_2019_RD0999_236_97_20190307_00044.jpg



View of fallen tree and levee scarp. Fall 2018

LM Start	5.35	Rating **	U	Issue No.	97 (cont)
LM End	5.35	Issue Type +	Ma	Location *	WS

Photo 2 of 2 : SP_2019_RD0999_236_97_20190307_00045.jpg



View of fallen tree and levee scarp. Fall 2018

LM Start	5.43	Rating **	M	Issue No.	108
LM End	5.43	Issue Type +	Ma	Location *	LS
Category	Earthen Levee			GPS Latitude/Longitude	
				Start	End
Item	Vegetation			38.381957 °	38.381957 °
				-121.546200 °	-121.546200 °
DWR ID	DWR_RD0999_05_s_2019_108				
Comment Code					
V1 : Control annual grass and weeds on the levee slopes and easements.					
Inspector Comment					

No Photos

* Location LS : Land Side N/A : Not Applicable WS : Water Side CR : Crown		** Rating A : Acceptable N : Not Inspected/Rated M : Minimally Acceptable C : Corrected U : Unacceptable A/W : Acceptable but Monitor & Maintain		+ Issue Type Ma : Maintenance Deficiency Ob : Design & System Obsolescence En : Enforcement
----------------------------------------------------------------------------------------------	--	---------------------------------------------------------------------------------------------------------------------------------------------------------------------------------------------------------------	--	-------------------------------------------------------------------------------------------------------------

**Flood Control Project Maintenance
Levee Inspections**

Maintenance Issue Types Only, Levee Inspection Report By Mile - Spring 2019

Reclamation District No. 0999 Netherlands

Waterway	Bank	Unit Miles	Inspection Start/End	Inspector
Unit No. 05 Elk Slough	Right	9.48	03/22/2019 03/22/2019	Luz Dial

LM Start	5.50	Rating **	U	Issue No.	71
LM End	5.55	Issue Type +	Ma	Location *	WS
Category	Earthen Levee			GPS Latitude/Longitude	
				Start	End
Item	Vegetation			38.382790 °	38.383548 °
				-121.546754 °	-121.546728 °
DWR ID	DWR_RD0999_05_s_2012_71				
Comment Code					
V2 : Remove the wild growth other than native grasses from the levee slopes.					
Inspector Comment					

Photo 1 of 1 : SP_2019_RD0999_236_71_20190307_00030.jpg



Looking northeast at dense vegetation on waterside slope.

LM Start	5.67	Rating **	M	Issue No.	110
LM End	5.67	Issue Type +	Ma	Location *	WS
Category	Earthen Levee			GPS Latitude/Longitude	
				Start	End
Item	Encroachments			38.384468 °	38.384468 °
				-121.545038 °	-121.545038 °
DWR ID	DWR_RD0999_05_s_2019_110				
Comment Code					
TR : Tree or limb					
Inspector Comment					
Tree logs and debris need to be cleared from levee easement.					

No Photos

LM Start	5.72	Rating **	M	Issue No.	99
LM End	5.72	Issue Type +	Ma	Location *	WS
Category	Earthen Levee			GPS Latitude/Longitude	
				Start	End
Item	Erosion / Bank Caving			38.384578 °	38.384578 °
				-121.544173 °	-121.544173 °
DWR ID	DWR_RD0999_05_f_2018_99				
Comment Code					
E2 : Schedule repair of erosion site prior to the next inspection.					
Inspector Comment					
Fallen tree lifted portion of levee toe.					

Photo 1 of 1 : SP_2019_RD0999_236_99_20190307_00046.jpg



View of fallen tree and slope damage. Fall 2018

* Location LS : Land Side N/A : Not Applicable WS : Water Side CR : Crown		** Rating A : Acceptable M : Minimally Acceptable U : Unacceptable		N : Not Inspected/Rated C : Corrected A/W : Acceptable but Monitor & Maintain		+ Issue Type Ma : Maintenance Deficiency Ob : Design & System Obsolescence En : Enforcement	
----------------------------------------------------------------------------------------------	--	------------------------------------------------------------------------------------	--	-------------------------------------------------------------------------------------	--	-------------------------------------------------------------------------------------------------------------	--

**Flood Control Project Maintenance
Levee Inspections**

Maintenance Issue Types Only, Levee Inspection Report By Mile - Spring 2019

Reclamation District No. 0999 Netherlands

Waterway	Bank	Unit Miles	Inspection Start/End	Inspector
Unit No. 05 Elk Slough	Right	9.48	03/22/2019 03/22/2019	Luz Dial

LM Start	6.20	Rating **	M	Issue No.	111
LM End	6.21	Issue Type +	Ma	Location *	WS
Category	Earthen Levee			GPS Latitude/Longitude	
				Start	End
Item	Vegetation			38.389112 °	38.389313 °
				-121.542912 °	-121.542955 °
DWR ID	DWR_RD0999_05_s_2019_111				
Comment Code					
V2 : Remove the wild growth other than native grasses from the levee slopes.					
Inspector Comment					

No Photos

LM Start	6.44	Rating **	C	Issue No.	181
LM End	6.44	Issue Type +	Ma	Location *	LS
Category	Earthen Levee			GPS Latitude/Longitude	
				Start	End
Item	Trim / Thin Trees			38.391502 °	38.391502 °
				-121.539897 °	-121.539897 °
DWR ID	DWR_RD0999_05_f_2015_181				
Comment Code					
T1 : Trim trees to at least five feet above ground level.					
Inspector Comment					
Trim trees on landside slope and toe.					

No Photos

LM Start	6.84	Rating **	M	Issue No.	115
LM End	6.89	Issue Type +	Ma	Location *	WS
Category	Earthen Levee			GPS Latitude/Longitude	
				Start	End
Item	Trim / Thin Trees			38.396357 °	38.396612 °
				-121.537892 °	-121.537072 °
DWR ID	DWR_RD0999_05_s_2019_115				
Comment Code					
T1 : Trim trees to at least five feet above ground level.					
Inspector Comment					

No Photos

* Location		** Rating		+ Issue Type	
LS : Land Side	N/A : Not Applicable	A : Acceptable	N : Not Inspected/Rated	Ma : Maintenance Deficiency	
WS : Water Side		M : Minimally Acceptable	C : Corrected	Ob : Design & System Obsolescence	
CR : Crown		U : Unacceptable	A/W : Acceptable but Monitor & Maintain	En : Enforcement	

**Flood Control Project Maintenance
Levee Inspections**

Maintenance Issue Types Only, Levee Inspection Report By Mile - Spring 2019

Reclamation District No. 0999 Netherlands

Waterway	Bank	Unit Miles	Inspection Start/End	Inspector
Unit No. 05 Elk Slough	Right	9.48	03/22/2019 03/22/2019	Luz Dial

LM Start	6.91	Rating **	M	Issue No.	116
LM End	6.91	Issue Type +	Ma	Location *	WS
Category	Earthen Levee			GPS Latitude/Longitude	
				Start	End
Item	Trim / Thin Trees			38.396708 °	38.396708 °
				-121.536747 °	-121.536747 °
DWR ID	DWR_RD0999_05_s _ 2019_116				
Comment Code					
T2 : Thin trees to allow visibility of the ground and room to flood fight.					
Inspector Comment					

No Photos

LM Start	7.16	Rating **	M	Issue No.	117
LM End	7.16	Issue Type +	Ma	Location *	LS
Category	Earthen Levee			GPS Latitude/Longitude	
				Start	End
Item	Trim / Thin Trees			38.399892 °	38.399892 °
				-121.536560 °	-121.536560 °
DWR ID	DWR_RD0999_05_s _2019_117				
Comment Code					
T1 : Trim trees to at least five feet above ground level.					
Inspector Comment					

No Photos

LM Start	7.21	Rating **	M	Issue No.	118
LM End	7.21	Issue Type +	Ma	Location *	WS
Category	Earthen Levee			GPS Latitude/Longitude	
				Start	End
Item	Trim / Thin Trees			38.400610 °	38.400610 °
				-121.537037 °	-121.537037 °
DWR ID	DWR_RD0999_05_s _ 2019_118				
Comment Code					
T1 : Trim trees to at least five feet above ground level.					
Inspector Comment					

No Photos

* Location		** Rating		+ Issue Type	
LS : Land Side	N/A : Not Applicable	A : Acceptable	N : Not Inspected/Rated	Ma : Maintenance Deficiency	
WS : Water Side		M : Minimally Acceptable	C : Corrected	Ob : Design & System Obsolescence	
CR : Crown		U : Unacceptable	A/W : Acceptable but Monitor & Maintain	En : Enforcement	

**Flood Control Project Maintenance
Levee Inspections**

Maintenance Issue Types Only, Levee Inspection Report By Mile - Spring 2019

Reclamation District No. 0999 Netherlands

Waterway	Bank	Unit Miles	Inspection Start/End	Inspector
Unit No. 05 Elk Slough	Right	9.48	03/22/2019 03/22/2019	Luz Dial

LM Start	7.26	Rating **	M	Issue No.	119
LM End	7.26	Issue Type +	Ma	Location *	WS
Category	Earthen Levee			GPS Latitude/Longitude	
				Start	End
Item	Trim / Thin Trees			38.401150 °	38.401150 °
				-121.537595 °	-121.537595 °
DWR ID	DWR_RD0999_05_s _ 2019_119				
Comment Code					
T3 : Trim and thin trees to allow visibility of the ground and room to flood fight.					
Inspector Comment					

No Photos

LM Start	7.33	Rating **	M	Issue No.	120
LM End	7.33	Issue Type +	Ma	Location *	WS
Category	Earthen Levee			GPS Latitude/Longitude	
				Start	End
Item	Trim / Thin Trees			38.401867 °	38.401867 °
				-121.538453 °	-121.538453 °
DWR ID	DWR_RD0999_05_s _ 2019_120				
Comment Code					
T1 : Trim trees to at least five feet above ground level.					
Inspector Comment					

No Photos

LM Start	7.52	Rating **	M	Issue No.	121
LM End	7.52	Issue Type +	Ma	Location *	CR
Category	Earthen Levee			GPS Latitude/Longitude	
				Start	End
Item	Trim / Thin Trees			38.403772 °	38.403772 °
				-121.540750 °	-121.540750 °
DWR ID	DWR_RD0999_05_s _ 2019_121				
Comment Code					
T4 : Trim trees over roadway to at least 12 feet above ground level.					
Inspector Comment					

No Photos

* Location LS : Land Side N/A : Not Applicable WS : Water Side CR : Crown		** Rating A : Acceptable N : Not Inspected/Rated M : Minimally Acceptable C : Corrected U : Unacceptable A/W : Acceptable but Monitor & Maintain		+ Issue Type Ma : Maintenance Deficiency Ob : Design & System Obsolescence En : Enforcement
----------------------------------------------------------------------------------------------	--	---------------------------------------------------------------------------------------------------------------------------------------------------------------------------------------------------------------	--	-------------------------------------------------------------------------------------------------------------

**Flood Control Project Maintenance
Levee Inspections**

Maintenance Issue Types Only, Levee Inspection Report By Mile - Spring 2019

Reclamation District No. 0999 Netherlands

Waterway	Bank	Unit Miles	Inspection Start/End	Inspector
Unit No. 05 Elk Slough	Right	9.48	03/22/2019 03/22/2019	Luz Dial

LM Start	8.44	Rating **	C	Issue No.	88
LM End	8.54	Issue Type +	Ma	Location *	CR
Category	Earthen Levee			GPS Latitude/Longitude	
				Start	End
Item	Crown Surface / Depressions / Rutting			38.408800 °	38.409835 °
				-121.534284 °	-121.533124 °
DWR ID	DWR_RD0999_05_s_2018_88				
Comment Code					
C1 : Add appropriate material and re-grade the levee to bring the crown above the design elevation.					
Inspector Comment					
Crown is degraded by animal traffic.					

No Photos

LM Start	8.50	Rating **	C	Issue No.	102
LM End	8.50	Issue Type +	Ma	Location *	CR
Category	Earthen Levee			GPS Latitude/Longitude	
				Start	End
Item	Repair Gates			38.409421 °	38.409421 °
				-121.533520 °	-121.533520 °
DWR ID	DWR_RD0999_05_f_2018_102				
Comment Code					
Inspector Comment					
Levee segment LM 8.50-8.82 was inaccessible due to landowner's new locks. LMA needs to get the combinations.					

No Photos

LM Start	8.61	Rating **	M	Issue No.	123
LM End	8.61	Issue Type +	Ma	Location *	LS
Category	Earthen Levee			GPS Latitude/Longitude	
				Start	End
Item	Trim / Thin Trees			38.410434 °	38.410434 °
				-121.532050 °	-121.532050 °
DWR ID	DWR_RD0999_05_s_2012_123				
Comment Code					
T4 : Trim trees over roadway to at least 12 feet above ground level.					
Inspector Comment					

No Photos

* Location		** Rating		+ Issue Type	
LS : Land Side	N/A : Not Applicable	A : Acceptable	N : Not Inspected/Rated	Ma : Maintenance Deficiency	
WS : Water Side		M : Minimally Acceptable	C : Corrected	Ob : Design & System Obsolescence	
CR : Crown		U : Unacceptable	A/W : Acceptable but Monitor & Maintain	En : Enforcement	

**Flood Control Project Maintenance
Levee Inspections**

Maintenance Issue Types Only, Levee Inspection Report By Mile - Spring 2019

Reclamation District No. 0999 Netherlands

Waterway	Bank	Unit Miles	Inspection Start/End	Inspector
Unit No. 05 Elk Slough	Right	9.48	03/22/2019 03/22/2019	Luz Dial

LM Start	8.73	Rating **	M	Issue No.	89
LM End	8.77	Issue Type +	Ma	Location *	CR
Category	Earthen Levee			GPS Latitude/Longitude	
				Start	End
Item	Trim / Thin Trees			38.411637 °	38.411959 °
				-121.530312 °	-121.529838 °
DWR ID	DWR_RD0999_05_s _ 2018_89				
Comment Code					
T4 : Trim trees over roadway to at least 12 feet above ground level.					
Inspector Comment					

No Photos

LM Start	8.77	Rating **	M	Issue No.	129
LM End	8.77	Issue Type +	Ma	Location *	WS
Category	Earthen Levee			GPS Latitude/Longitude	
				Start	End
Item	Vegetation			38.411977 °	38.411977 °
				-121.529730 °	-121.529730 °
DWR ID	DWR_RD0999_05_s _ 2019_129				
Comment Code					
V1 : Control annual grass and weeds on the levee slopes and easements.					
Inspector Comment					

No Photos

LM Start	8.83	Rating **	M	Issue No.	130
LM End	8.83	Issue Type +	Ma	Location *	WS
Category	Earthen Levee			GPS Latitude/Longitude	
				Start	End
Item	Vegetation			38.412788 °	38.412788 °
				-121.529682 °	-121.529682 °
DWR ID	DWR_RD0999_05_s _ 2019_130				
Comment Code					
V2 : Remove the wild growth other than native grasses from the levee slopes.					
Inspector Comment					

No Photos

* Location		** Rating		+ Issue Type	
LS : Land Side	N/A : Not Applicable	A : Acceptable	N : Not Inspected/Rated	Ma : Maintenance Deficiency	
WS : Water Side		M : Minimally Acceptable	C : Corrected	Ob : Design & System Obsolescence	
CR : Crown		U : Unacceptable	A/W : Acceptable but Monitor & Maintain	En : Enforcement	

**Flood Control Project Maintenance
Levee Inspections**

Maintenance Issue Types Only, Levee Inspection Report By Mile - Spring 2019

Reclamation District No. 0999 Netherlands

Waterway	Bank	Unit Miles	Inspection Start/End	Inspector
Unit No. 05 Elk Slough	Right	9.48	03/22/2019 03/22/2019	Luz Dial

LM Start	9.03	Rating **	M	Issue No.	133
LM End	9.03	Issue Type +	Ma	Location *	WS
Category	Earthen Levee		GPS Latitude/Longitude		
			Start	End	
Item	Encroachments		38.415572 °	38.415572 °	
			-121.529318 °	-121.529318 °	
DWR ID	DWR_RD0999_05_s _ 2019_133				
Comment Code					
PR : Prunings					
Inspector Comment					

No Photos

LM Start	9.27	Rating **	M	Issue No.	135
LM End	9.27	Issue Type +	Ma	Location *	LS
Category	Earthen Levee		GPS Latitude/Longitude		
			Start	End	
Item	Vegetation		38.414280 °	38.414280 °	
			-121.526138 °	-121.526138 °	
DWR ID	DWR_RD0999_05_s _ 2019_135				
Comment Code					
V1 : Control annual grass and weeds on the levee slopes and easements.					
Inspector Comment					

No Photos

LM Start	9.39	Rating **	A/W	Issue No.	114
LM End	9.39	Issue Type +	Ma	Location *	LS
Category	Earthen Levee		GPS Latitude/Longitude		
			Start	End	
Item	Vegetation		38.413377 °	38.413377 °	
			-121.524500 °	-121.524500 °	
DWR ID	DWR_RD0999_05_s _ 2012_114				
Comment Code					
V4 : Elderberries are blocking visibility and flood fight capability.					
Inspector Comment					

No Photos

* Location LS : Land Side N/A : Not Applicable WS : Water Side CR : Crown	** Rating A : Acceptable M : Minimally Acceptable U : Unacceptable	N : Not Inspected/Rated C : Corrected A/W : Acceptable but Monitor & Maintain	+ Issue Type Ma : Maintenance Deficiency Ob : Design & System Obsolescence En : Enforcement
----------------------------------------------------------------------------------------------	------------------------------------------------------------------------------------	-------------------------------------------------------------------------------------	-------------------------------------------------------------------------------------------------------------