

**Flood Control Project Maintenance
Levee Inspections**

Maintenance Issue Types Only, Levee Inspection Report By Mile - Fall 2024

Reclamation District No. 0999 Netherlands

Waterway	Bank	Unit Miles	Inspection Start/End	Inspector
Unit No. 01 Yolo Bypass	Left	15.41	10/22/2024 10/22/2024	Marvin Marshall

LM Start	0.00	Rating **	A	Issue No.	53
LM End	0.00	Issue Type +	Ma	Location *	N/A
Category	Earthen Levee			GPS Latitude/Longitude	
				Start	End
Item	Operations & Maintenance Manuals				
DWR ID	DWR_RD0999_01_s _ 2013_53				
Comment Code					
OM : O&M Manuals					
Inspector Comment					
The LMA has a copy of the O & M manual on file.					

No Photos

LM Start	0.00	Rating **	A	Issue No.	54
LM End	0.00	Issue Type +	Ma	Location *	N/A
Category	Earthen Levee			GPS Latitude/Longitude	
				Start	End
Item	Emergency Supplies & Equipment				
DWR ID	DWR_RD0999_01_s _ 2019_54				
Comment Code					
ES : Emergency Supplies & Equipment					
Inspector Comment					
The LMA has adequate floodfight supplies and equipment on hand.					

No Photos

LM Start	0.00	Rating **	A	Issue No.	55
LM End	0.00	Issue Type +	Ma	Location *	N/A
Category	Earthen Levee			GPS Latitude/Longitude	
				Start	End
Item	Flood Preparedness & Training				
DWR ID	DWR_RD0999_01_s _ 2013_55				
Comment Code					
FP : Flood Preparedness & Training					
Inspector Comment					
The LMA is prepared for responding to floods and has received training.					

No Photos

* Location LS : Land Side N/A : Not Applicable WS : Water Side CR : Crown	** Rating A : Acceptable M : Minimally Acceptable U : Unacceptable	N : Not Inspected/Rated C : Corrected A/W : Acceptable but Monitor & Maintain	+ Issue Type Ma : Maintenance Deficiency Ob : Design & System Obsolescence En : Enforcement
--	--	---	---

**Flood Control Project Maintenance
Levee Inspections****Maintenance Issue Types Only, Levee Inspection Report By Mile - Fall 2024****Reclamation District No. 0999 Netherlands**

Waterway	Bank	Unit Miles	Inspection Start/End	Inspector
Unit No. 01 Yolo Bypass	Left	15.41	10/22/2024 10/22/2024	Marvin Marshall

LM Start	0.27	Rating **	M	Issue No.	3
LM End	0.27	Issue Type +	Ma	Location *	LS
Category	Earthen Levee			GPS Latitude/Longitude	
				Start	End
Item	Vegetation			38.501113°	38.501113°
				-121.581975°	-121.581975°
DWR ID	DWR_RD0999_01_s_2022_3				
Comment Code					
V4 : Elderberries are blocking visibility and flood fight capability.					
Inspector Comment					

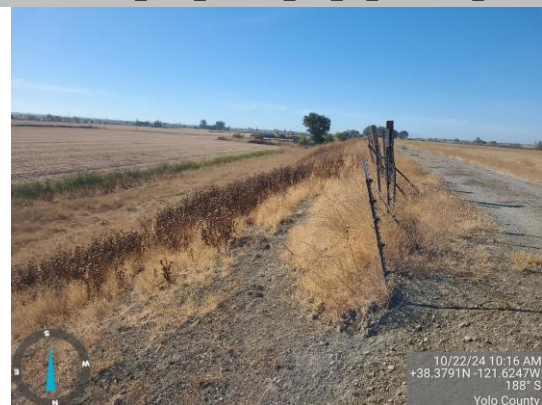
No Photos

LM Start	8.79	Rating **	C	Issue No.	16
LM End	8.79	Issue Type +	Ma	Location *	LS
Category	Earthen Levee			GPS Latitude/Longitude	
				Start	End
Item	Animal Control			38.383500°	38.383500°
				-121.622700°	-121.622700°
DWR ID	DWR_RD0999_01_s_2024_16				
Comment Code					
A3 : No rodents visible, but rodent burrows visible; need to backfill and compact or grout burrows.					
Inspector Comment					

No Photos

LM Start	9.12	Rating **	M	Issue No.	11
LM End	9.51	Issue Type +	Ma	Location *	LS
Category	Earthen Levee			GPS Latitude/Longitude	
				Start	End
Item	Vegetation			38.379072°	38.373782°
				-121.624763°	-121.627230°
DWR ID	DWR_RD0999_01_f_2024_11				
Comment Code					
V1 : Control annual grass and weeds on the levee slopes and easements.					
Inspector Comment					

Photo 1 of 1 : FA_2024_RD0999_232_11_20241025_00043.jpg



Annual vegetation on the LS slope. Fall 2024

* Location	** Rating	+ Issue Type
LS : Land Side WS : Water Side CR : Crown	A : Acceptable M : Minimally Acceptable U : Unacceptable	Ma : Maintenance Deficiency Ob : Design & System Obsolescence En : Enforcement
N : Not Inspected/Rated C : Corrected A/W : Acceptable but Monitor & Maintain		

**Flood Control Project Maintenance
Levee Inspections****Maintenance Issue Types Only, Levee Inspection Report By Mile - Fall 2024****Reclamation District No. 0999 Netherlands**

Waterway	Bank	Unit Miles	Inspection Start/End	Inspector
Unit No. 01 Yolo Bypass	Left	15.41	10/22/2024 10/22/2024	Marvin Marshall

LM Start	11.63	Rating **	M	Issue No.	7
LM End	11.63	Issue Type +	Ma	Location *	LS
Category	Earthen Levee			GPS Latitude/Longitude	
				Start	End
Item	Erosion / Vehicle Traffic			38.344942°	38.344942°
				-121.640647°	-121.640647°
DWR ID	DWR_RD0999_01_s_2023_7				
Comment Code					
E6 : Repair the levee slope damaged by vehicle traffic and prevent access where possible.					
Inspector Comment					
Repair slope damage from vehicle traffic. Remove tires from toe.					

Photo 1 of 1 : FA_2024_RD0999_232_7_20241025_00045.jpg



Rutting and tires on the LS slope. Fall 2024

LM Start	13.47	Rating **	M	Issue No.	38
LM End	13.47	Issue Type +	Ma	Location *	LS
Category	Earthen Levee			GPS Latitude/Longitude	
				Start	End
Item	Slope Stability			38.318667°	38.318667°
				-121.644948°	-121.644948°
DWR ID	DWR_RD0999_01_f_2021_38				
Comment Code					
S1 : Repair slope instability.					
Inspector Comment					
Repair slope sloughing, approximately 50' long 12" deep.					

Photo 1 of 1 : FA_2024_RD0999_232_38_20240911_00017.jpg



LS slope sloughing. Fall 2021

* Location	** Rating	+ Issue Type
LS : Land Side WS : Water Side CR : Crown	A : Acceptable M : Minimally Acceptable U : Unacceptable	Ma : Maintenance Deficiency Ob : Design & System Obsolescence En : Enforcement
N/A : Not Applicable	N : Not Inspected/Rated C : Corrected A/W : Acceptable but Monitor & Maintain	

**Flood Control Project Maintenance
Levee Inspections**

Maintenance Issue Types Only, Levee Inspection Report By Mile - Fall 2024

Reclamation District No. 0999 Netherlands

Waterway	Bank	Unit Miles	Inspection Start/End	Inspector
Unit No. 01 Yolo Bypass	Left	15.41	10/22/2024 10/22/2024	Marvin Marshall

LM Start	15.24	Rating **	A	Issue No.	922
LM End	15.24	Issue Type +	Ma	Location *	
Category	Supplemental			GPS Latitude/Longitude	
				Start	End
Item	DWR UCIP LMA Responsibility			38.292973°	38.292973°
				-121.644977°	-121.644977°
DWR ID	22756				
Comment Code					
Inspector Comment					
DS_ID:22756 FS_ID:81690 EP_NO: N/A Repair Type: No Action Needed EVAL Issue: Crossing Status: Found UCIP Comments: 11/20/2023 Record remains No Action Needed. (J. Taylor - DWR UCIP) 11/16/2020 Record remains No Action Needed. No issues observed during inspection. System Feature. (D.Sanoski - DWR UCIP) FIELD_STRUCT_DESC: 2 of 3: 30-inch steel drainage pipe through the levee, 7 feet below the crown. Flap gate on the waterside (WS) end. Pump in pump house on the landside (LS) toe. Siphon breaker in a corrugated metal pipe (CMP) riser on the WS shoulder. [Additional Reference(s): DWR Levee Log, 1992 (HLM 15.25). USACE Sacramento O&M Manual, Unit 113, October 1966, Revised 29 December 2016, (15.25), listed as 36-inch pipe]. FS Date: 11/20/2023 1:43:08 PM					

LM Start	15.24	Rating **	A	Issue No.	922 (cont)
LM End	15.24	Issue Type +	Ma	Location *	

Photo 1 of 3 : UCIP_FA_2024_81690_118446.jpg



Overview of levee crown looking D/S.

Photo 2 of 3 : UCIP_FA_2024_81690_118447.jpg



WS view: overview of WS.

* Location LS : Land Side N/A : Not Applicable WS : Water Side CR : Crown	** Rating A : Acceptable M : Minimally Acceptable U : Unacceptable	N : Not Inspected/Rated C : Corrected A/W : Acceptable but Monitor & Maintain	+ Issue Type Ma : Maintenance Deficiency Ob : Design & System Obsolescence En : Enforcement
--	--	---	---

**Flood Control Project Maintenance
Levee Inspections****Maintenance Issue Types Only, Levee Inspection Report By Mile - Fall 2024****Reclamation District No. 0999 Netherlands**

Waterway	Bank	Unit Miles	Inspection Start/End	Inspector
Unit No. 01 Yolo Bypass	Left	15.41	10/22/2024 10/22/2024	Marvin Marshall

LM Start	15.24	Rating **	A	Issue No.	922 (cont)
LM End	15.24	Issue Type +	Ma	Location *	
Category	Supplemental			GPS Latitude/Longitude	
				Start	End
Item	DWR UCIP LMA Responsibility			38.292973°	38.292973°
				-121.644977°	-121.644977°
DWR ID	22756				

Photo 3 of 3 : UCIP_FA_2024_81690_118443.jpg



WS view: CMP riser with siphon breaker inside.

* Location LS : Land Side N/A : Not Applicable WS : Water Side CR : Crown	** Rating A : Acceptable M : Minimally Acceptable U : Unacceptable N : Not Inspected/Rated C : Corrected A/W : Acceptable but Monitor & Maintain	+ Issue Type Ma : Maintenance Deficiency Ob : Design & System Obsolescence En : Enforcement
--	---	---

**Flood Control Project Maintenance
Levee Inspections****Maintenance Issue Types Only, Levee Inspection Report By Mile - Fall 2024****Reclamation District No. 0999 Netherlands**

Waterway	Bank	Unit Miles	Inspection Start/End	Inspector
Unit No. 02 Miner Slough	Right	2.31	10/22/2024 10/22/2024	Marvin Marshall

LM Start	0.58	Rating **	M	Issue No.	1
LM End	0.58	Issue Type +	Ma	Location *	LS
Category	Earthen Levee			GPS Latitude/Longitude	
				Start	End
Item	Trim / Thin Trees			38.291674°	38.291674°
				-121.634624°	-121.634624°
DWR ID	DWR_RD0999_02_f_2023_1				
Comment Code					
T1 : Trim and thin trees to at least five feet above ground level to allow visibility of the ground and room to flood fight.					
Inspector Comment					
Remove tree or trim to 5' above grade.					

Photo 1 of 1 : FA_2024_RD0999_233_1_20240911_00001.jpg



Tree on the LS slope. Fall 2023

LM Start	1.15	Rating **	M	Issue No.	2
LM End	1.15	Issue Type +	Ma	Location *	WS
Category	Earthen Levee			GPS Latitude/Longitude	
				Start	End
Item	Erosion / Bank Caving			38.291045°	38.291045°
				-121.625112°	-121.625112°
DWR ID	DWR_RD0999_02_f_2023_2				
Comment Code					
E2 : Schedule repair of erosion site prior to the next inspection.					
Inspector Comment					
Repair benching cut in the WS slope.					

Photo 1 of 1 : FA_2024_RD0999_233_2_20241025_00009.jpg



Bench in the WS slope. Fall 2024

LM Start	1.73	Rating **	M	Issue No.	8
LM End	1.76	Issue Type +	Ma	Location *	LS
Category	Earthen Levee			GPS Latitude/Longitude	
				Start	End
Item	Vegetation			38.289895°	38.289595°
				-121.614688°	-121.614337°
DWR ID	DWR_RD0999_02_s_2012_8				
Comment Code					
V4 : Elderberries are blocking visibility and flood fight capability.					
Inspector Comment					

No Photos

* Location	** Rating	+ Issue Type
LS : Land Side WS : Water Side CR : Crown	A : Acceptable M : Minimally Acceptable U : Unacceptable	Ma : Maintenance Deficiency Ob : Design & System Obsolescence En : Enforcement
N/A : Not Applicable	N : Not Inspected/Rated C : Corrected A/W : Acceptable but Monitor & Maintain	

**Flood Control Project Maintenance
Levee Inspections****Maintenance Issue Types Only, Levee Inspection Report By Mile - Fall 2024****Reclamation District No. 0999 Netherlands**

Waterway	Bank	Unit Miles	Inspection Start/End	Inspector
Unit No. 02 Miner Slough	Right	2.31	10/22/2024 10/22/2024	Marvin Marshall

LM Start	1.78	Rating **	M	Issue No.	30
LM End	1.81	Issue Type +	Ma	Location *	WS
Category	Earthen Levee			GPS Latitude/Longitude	
				Start	End
Item	Vegetation			38.289340°	38.289079°
				-121.614030°	-121.613765°
DWR ID	DWR_RD0999_02_f_2017_30				
Comment Code					
V4 : Elderberries are blocking visibility and flood fight capability.					
Inspector Comment					
Elderberry bushes block visibility of the levee toe.					

No Photos

LM Start	1.93	Rating **	M	Issue No.	16
LM End	1.93	Issue Type +	Ma	Location *	WS
Category	Earthen Levee			GPS Latitude/Longitude	
				Start	End
Item	Vegetation			38.288713°	38.288713°
				-121.611620°	-121.611620°
DWR ID	DWR_RD0999_02_s_2012_16				
Comment Code					
V4 : Elderberries are blocking visibility and flood fight capability.					
Inspector Comment					

No Photos

* Location LS : Land Side N/A : Not Applicable WS : Water Side CR : Crown	** Rating A : Acceptable M : Minimally Acceptable U : Unacceptable N : Not Inspected/Rated C : Corrected A/W : Acceptable but Monitor & Maintain	+ Issue Type Ma : Maintenance Deficiency Ob : Design & System Obsolescence En : Enforcement
--	---	---

**Flood Control Project Maintenance
Levee Inspections****Maintenance Issue Types Only, Levee Inspection Report By Mile - Fall 2024****Reclamation District No. 0999 Netherlands**

Waterway	Bank	Unit Miles	Inspection Start/End	Inspector
Unit No. 03 Sutter Slough	Right	3.74	10/22/2024 10/22/2024	Marvin Marshall

LM Start	0.05	Rating **	M	Issue No.	1
LM End	0.05	Issue Type +	Ma	Location *	LS
Category	Earthen Levee			GPS Latitude/Longitude	
				Start	End
Item	Trim / Thin Trees			38.287081°	38.287081°
				-121.605658°	-121.605658°
DWR ID	DWR_RD0999_03_f_2024_1				
Comment Code					
T1 : Trim and thin trees to at least five feet above ground level to allow visibility of the ground and room to flood fight.					
Inspector Comment					
Trim or remove fig trees from LS slope.					

Photo 1 of 1 : FA_2024_RD0999_234_1_20241025_00016.jpg



Trees on the LS slope. Fall 2024

LM Start	0.18	Rating **	M	Issue No.	11
LM End	0.18	Issue Type +	Ma	Location *	LS
Category	Earthen Levee			GPS Latitude/Longitude	
				Start	End
Item	Trim / Thin Trees			38.288893°	38.288893°
				-121.604663°	-121.604663°
DWR ID	DWR_RD0999_03_f_2021_11				
Comment Code					
T1 : Trim and thin trees to at least five feet above ground level to allow visibility of the ground and room to flood fight.					
Inspector Comment					
Remove trees or trim to 5' above the slope.					

Photo 1 of 1 : FA_2024_RD0999_234_11_20240911_00008.jpg



Trees on the LS slope. Spring 2024

* Location	** Rating	+ Issue Type
LS : Land Side WS : Water Side CR : Crown	A : Acceptable M : Minimally Acceptable U : Unacceptable	Ma : Maintenance Deficiency Ob : Design & System Obsolescence En : Enforcement
N/A : Not Applicable	N : Not Inspected/Rated C : Corrected A/W : Acceptable but Monitor & Maintain	

**Flood Control Project Maintenance
Levee Inspections****Maintenance Issue Types Only, Levee Inspection Report By Mile - Fall 2024****Reclamation District No. 0999 Netherlands**

Waterway	Bank	Unit Miles	Inspection Start/End	Inspector
Unit No. 03 Sutter Slough	Right	3.74	10/22/2024 10/22/2024	Marvin Marshall

LM Start	0.24	Rating **	U	Issue No.	5
LM End	0.65	Issue Type +	Ma	Location *	WS
Category	Supplemental			GPS Latitude/Longitude	
				Start	End
Item	2018 USACE Erosion Survey			38.289634°	38.295505°
				-121.604343°	-121.605648°
DWR ID	DWR_RD0999_03_s_2022_5				
Comment Code					
Inspector Comment					
2018 Site ID: STR 24.7 R					
Status: Critical					
2022 Field Notes: No observed changes.					
Site History: 1997 - Intermittent over-steepened sections. Large riparian vegetation along the length of the entire reach. Attempts to repair with rock on bank have failed. 1999 - New rock repair at the downstream end. 2002 - Some minor spot repairs. 2009 - Minimal new erosion. 2010 - Appears that fresh rock placed on downstream portion of site. Toe scour and overhanging trees with some overturned. 2012 - Minor new erosion at the toe. 2013 - Site upgraded to CRITICAL. Severe slumping into levee at downstream end of site. Fresh erosion into bank toe. 2015 - New slumping, tall vertical sections. 2016 - Upper slumped section continues to worsen. 2017 - Locals have placed rock in worst sections. Fresh erosion at toe. New tall vertical sections observed. 2018 -Length reduced on downstream side to account for repaired section.					

LM Start	0.24	Rating **	U	Issue No.	5 (cont)
LM End	0.65	Issue Type +	Ma	Location *	WS

Photo 1 of 2 : FA_2024_RD0999_234_5_20240911_00001.jpg



USACE 2018 Erosion Photo #1

Photo 2 of 2 : FA_2024_RD0999_234_5_20240911_00002.jpg



USACE 2018 Erosion Photo #2

* Location	** Rating	+ Issue Type
LS : Land Side WS : Water Side CR : Crown	A : Acceptable M : Minimally Acceptable U : Unacceptable	Ma : Maintenance Deficiency Ob : Design & System Obsolescence En : Enforcement
N/A : Not Applicable	N : Not Inspected/Rated C : Corrected A/W : Acceptable but Monitor & Maintain	

**Flood Control Project Maintenance
Levee Inspections****Maintenance Issue Types Only, Levee Inspection Report By Mile - Fall 2024****Reclamation District No. 0999 Netherlands**

Waterway	Bank	Unit Miles	Inspection Start/End	Inspector
Unit No. 03 Sutter Slough	Right	3.74	10/22/2024 10/22/2024	Marvin Marshall

LM Start	0.66	Rating **	U	Issue No.	8
LM End	0.66	Issue Type +	Ma	Location *	LS
Category	Earthen Levee			GPS Latitude/Longitude	
				Start	End
Item	Vegetation			38.295618°	38.295618°
				-121.605923°	-121.605923°
DWR ID	DWR_RD0999_03_s_2012_8				
Comment Code					
V4 : Elderberries are blocking visibility and flood fight capability.					
Inspector Comment					

No Photos

LM Start	0.70	Rating **	M	Issue No.	36
LM End	0.70	Issue Type +	Ma	Location *	WS
Category	Earthen Levee			GPS Latitude/Longitude	
				Start	End
Item	Vegetation			38.296175°	38.296175°
				-121.605893°	-121.605893°
DWR ID	DWR_RD0999_03_s_2020_36				
Comment Code					
V4 : Elderberries are blocking visibility and flood fight capability.					
Inspector Comment					

No Photos

LM Start	0.97	Rating **	M	Issue No.	6
LM End	1.10	Issue Type +	Ma	Location *	WS
Category	Supplemental			GPS Latitude/Longitude	
				Start	End
Item	2018 USACE Erosion Survey			38.299402°	38.300542°
				-121.603056°	-121.601118°
DWR ID	DWR_RD0999_03_s_2022_6				
Comment Code					
Inspector Comment					
2018 Site ID: STR 25.2 R					
Status: Eroding					
2022 Field Notes: No observed changes.					
Site History: 2008 - Over steepened levee section. 2009 - Significant new erosion. 2010 - Minor new erosion. 2017 - Minor new erosion at toe. 2018 - New large slump on upper levee slope.					

Photo 1 of 2 : FA_2024_RD0999_234_6_20240911_00003.jpg



USACE 2018 Erosion Photo #1

* Location	** Rating	+ Issue Type
LS : Land Side WS : Water Side CR : Crown	A : Acceptable M : Minimally Acceptable U : Unacceptable	Ma : Maintenance Deficiency Ob : Design & System Obsolescence En : Enforcement
	N : Not Inspected/Rated C : Corrected A/W : Acceptable but Monitor & Maintain	

**Flood Control Project Maintenance
Levee Inspections****Maintenance Issue Types Only, Levee Inspection Report By Mile - Fall 2024****Reclamation District No. 0999 Netherlands**

Waterway	Bank	Unit Miles	Inspection Start/End	Inspector
Unit No. 03 Sutter Slough	Right	3.74	10/22/2024 10/22/2024	Marvin Marshall

LM Start	0.97	Rating **	M	Issue No.	6 (cont)
LM End	1.10	Issue Type +	Ma	Location *	WS
Category	Supplemental			GPS Latitude/Longitude	
				Start	End
Item	2018 USACE Erosion Survey			38.299402°	38.300542°
				-121.603056°	-121.601118°
DWR ID	DWR_RD0999_03_s_2022_6				

Photo 2 of 2 : FA_2024_RD0999_234_6_20240911_00004.jpg



USACE 2018 Erosion Photo #2

LM Start	1.43	Rating **	A/W	Issue No.	10
LM End	1.57	Issue Type +	Ma	Location *	WS
Category	Supplemental			GPS Latitude/Longitude	
				Start	End
Item	2018 USACE Erosion Survey			38.305229°	38.306667°
				-121.599933°	-121.598266°
DWR ID	DWR_RD0999_03_s_2022_10				

Comment Code**Inspector Comment**

2018 Site ID: STR 25.7 R
Status: Eroding
2022 Field Notes: No observed changes.
Site History: 2011 - Toe scour along length of site and erosion pockets.
2012 - Site extended slightly upstream due to new erosion pocket.
2013 - Tall vertical sections at upstream end of site. 2017 - Large erosion scarp near downstream end. 2018 - Site extended upstream.

Photo 1 of 2 : FA_2024_RD0999_234_10_20240911_00006.jpg



USACE 2018 Erosion Photo #1

* Location	** Rating	+ Issue Type
LS: Land Side WS: Water Side CR: Crown	A: Acceptable M: Minimally Acceptable U: Unacceptable	Ma: Maintenance Deficiency Ob: Design & System Obsolescence En: Enforcement
N/A: Not Applicable	N: Not Inspected/Rated C: Corrected A/W: Acceptable but Monitor & Maintain	

**Flood Control Project Maintenance
Levee Inspections****Maintenance Issue Types Only, Levee Inspection Report By Mile - Fall 2024****Reclamation District No. 0999 Netherlands**

Waterway	Bank	Unit Miles	Inspection Start/End	Inspector
Unit No. 03 Sutter Slough	Right	3.74	10/22/2024 10/22/2024	Marvin Marshall

LM Start	1.43	Rating **	A/W	Issue No.	10 (cont)
LM End	1.57	Issue Type +	Ma	Location *	WS
Category	Supplemental			GPS Latitude/Longitude	
				Start	End
Item	2018 USACE Erosion Survey			38.305229°	38.306667°
				-121.599933°	-121.598266°
DWR ID	DWR_RD0999_03_s_2022_10				

Photo 2 of 2 : FA_2024_RD0999_234_10_20240911_00007.jpg



USACE 2018 Erosion Photo #2

LM Start	1.93	Rating **	M	Issue No.	12
LM End	1.97	Issue Type +	Ma	Location *	WS
Category	Supplemental			GPS Latitude/Longitude	
				Start	End
Item	2018 USACE Erosion Survey			38.311013°	38.311342°
				-121.597751°	-121.596976°
DWR ID	DWR_RD0999_03_s_2022_12				

Comment Code**Inspector Comment**

2018 Site ID: STR 26.1 R
Status: Eroding
2022 Field Notes: No observed change.
Site History: 2015 - Tall vertical sections into the levee slope and erosion along the toe. 2016 - New tree pop-out observed. 2018 - No observed change.

LM Start	1.93	Rating **	M	Issue No.	12 (cont)
LM End	1.97	Issue Type +	Ma	Location *	WS

Photo 1 of 2 : FA_2024_RD0999_234_12_20240911_00009.jpg



USACE 2018 Erosion Photo #1

Photo 2 of 2 : FA_2024_RD0999_234_12_20240911_00010.jpg



USACE 2018 Erosion Photo #2

* Location	** Rating	+ Issue Type
LS : Land Side WS : Water Side CR : Crown	A : Acceptable M : Minimally Acceptable U : Unacceptable	Ma : Maintenance Deficiency Ob : Design & System Obsolescence En : Enforcement
N/A : Not Applicable	N : Not Inspected/Rated C : Corrected A/W : Acceptable but Monitor & Maintain	

**Flood Control Project Maintenance
Levee Inspections****Maintenance Issue Types Only, Levee Inspection Report By Mile - Fall 2024****Reclamation District No. 0999 Netherlands**

Waterway	Bank	Unit Miles	Inspection Start/End	Inspector
Unit No. 03 Sutter Slough	Right	3.74	10/22/2024 10/22/2024	Marvin Marshall

LM Start	2.97	Rating **	A/W	Issue No.	14
LM End	3.22	Issue Type +	Ma	Location *	WS
Category	Supplemental			GPS Latitude/Longitude	
				Start	End
Item	2018 USACE Erosion Survey			38.323419°	38.325592°
				-121.589645°	-121.585925°
DWR ID	DWR_RD0999_03_s_2022_14				
Comment Code					
Inspector Comment					
2018 Site ID: STR 27.3 R					
Status: Eroding					
2022 Field Notes: No observed change.					
Site History: 2011 - Multiple erosion pockets. Some likely from tree popouts. 2013 - Tall vertical sections. 2015 - New tree pop-out and significant new erosion. 2016 - New erosion at toe. 2017 - Site extended downstream, section of lower bank has slumped off. Fresh toe erosion and fresh tree popout. 2018 - No observed change.					

Photo 1 of 1 : FA_2024_RD0999_234_14_20240911_00011.jpg



USACE 2018 Erosion Photo #1

* Location LS: Land Side N/A: Not Applicable WS: Water Side CR: Crown	** Rating A: Acceptable M: Minimally Acceptable U: Unacceptable N: Not Inspected/Rated C: Corrected A/W: Acceptable but Monitor & Maintain	+ Issue Type Ma: Maintenance Deficiency Ob: Design & System Obsolescence En: Enforcement
--	---	--

**Flood Control Project Maintenance
Levee Inspections****Maintenance Issue Types Only, Levee Inspection Report By Mile - Fall 2024****Reclamation District No. 0999 Netherlands**

Waterway	Bank	Unit Miles	Inspection Start/End	Inspector
Unit No. 04 Sacramento River	Right	1.22	09/17/2024 09/17/2024	Marvin Marshall

LM Start	0.00	Rating **	A	Issue No.	40	
LM End	0.00	Issue Type +	Ma	Location *		
Category	Supplemental			GPS Latitude/Longitude		
				Start	End	
Item	DWR UCIP LMA Responsibility			38.414022°	38.414022°	
				-121.522986°	-121.522986°	
DWR ID	22788					
Comment Code						
Inspector Comment						
DS_ID:22788 FS_ID:82532 EP_NO: N/A Repair Type: No Action Needed EVAL Issue: Crossing Status: Found UCIP Comments: 03/14/2024 Record remains No Action Needed. (J. Taylor - DWR UCIP) 07/01/2020 Record remains No Action Needed. No issues observed during inspection. This crossing was identified as a System Feature. (D.Sanoski - DWR UCIP) 10/27/2017 This structure is inspected annually under the Structure and Channel Summer Inspection (part of the Levee Inspection Program) conducted by the DWR Flood Project Integrity and Inspection Branch (FPIIB). (DWR UCIP - O. Magana) FIELD_STRUCT_DESC: [Elk Slough Inlet Structure] 60-inch by 60-inch reinforced concrete drainage culvert through the levee, 30 feet below the crown. Slide gate in a 6-foot by 8-foot concrete vault on the waterside (WS) shoulder. [Additional Reference(s): DWR Levee Log, 1992 (HLM 0.00). USACE Sacramento O&M Manual, Unit 113, October 1966, Revised 29 December 2016, (0.00), listed as 5-foot by 5-foot culvert.] FS Date: 3/14/2024 12:02:28 PM						

LM Start	0.00	Rating **	A	Issue No.	40 (cont)
LM End	0.00	Issue Type +	Ma	Location *	

Photo 1 of 3 : UCIP_FA_2024_82532_119642.jpg



Overview of levee crown looking D/S.

Photo 2 of 3 : UCIP_FA_2024_82532_119643.jpg



WS view: Overview of WS with concrete vault on shoulder.

* Location	** Rating	+ Issue Type
LS: Land Side WS: Water Side CR: Crown	A: Acceptable M: Minimally Acceptable U: Unacceptable	Ma: Maintenance Deficiency Ob: Design & System Obsolescence En: Enforcement
N/A: Not Applicable	N: Not Inspected/Rated C: Corrected A/W: Acceptable but Monitor & Maintain	

**Flood Control Project Maintenance
Levee Inspections****Maintenance Issue Types Only, Levee Inspection Report By Mile - Fall 2024****Reclamation District No. 0999 Netherlands**

Waterway	Bank	Unit Miles	Inspection Start/End	Inspector
Unit No. 04 Sacramento River	Right	1.22	09/17/2024 09/17/2024	Marvin Marshall

LM Start	0.00	Rating **	A	Issue No.	40 (cont)
LM End	0.00	Issue Type +	Ma	Location *	
Category	Supplemental			GPS Latitude/Longitude	
				Start	End
Item	DWR UCIP LMA Responsibility			38.414022°	38.414022°
				-121.522986°	-121.522986°
DWR ID	22788				

Photo 3 of 3 : UCIP_FA_2024_82532_119644.jpg



LS view: overview of LS slope and drainage channel.

LM Start	0.55	Rating **	M	Issue No.	39
LM End	0.55	Issue Type +	Ma	Location *	WS
Category	Earthen Levee			GPS Latitude/Longitude	
				Start	End
Item	Erosion / Foot Traffic			38.421051°	38.421051°
				-121.527692°	-121.527692°
DWR ID	DWR_RD0999_04_s_2022_39				
Comment Code					
E3 : Repair the levee slope damaged by foot traffic and prevent access where possible.					
Inspector Comment					
Repair two footpaths on the WS slope.					

Photo 1 of 1 : FA_2024_RD0999_235_39_20240911_00009.jpg



Footpath on the WS slope. Fall 2023

LM Start	0.57	Rating **	U	Issue No.	35
LM End	0.57	Issue Type +	Ma	Location *	LS
Category	Earthen Levee			GPS Latitude/Longitude	
				Start	End
Item	Trim / Thin Trees			38.421348°	38.421348°
				-121.527928°	-121.527928°
DWR ID	DWR_RD0999_04_s_2022_35				
Comment Code					
T3 : Fallen tree with root ball.					
Inspector Comment					
Remove fallen tree from landside slope.					

Photo 1 of 1 : FA_2024_RD0999_235_35_20240911_00006.jpg



Fallen tree on the LS slope. Fall 2023

* Location	** Rating	+ Issue Type
LS : Land Side WS : Water Side CR : Crown	A : Acceptable M : Minimally Acceptable U : Unacceptable	Ma : Maintenance Deficiency Ob : Design & System Obsolescence En : Enforcement
N : Not Inspected/Rated C : Corrected A/W : Acceptable but Monitor & Maintain		

**Flood Control Project Maintenance
Levee Inspections**

Maintenance Issue Types Only, Levee Inspection Report By Mile - Fall 2024

Reclamation District No. 0999 Netherlands

Waterway	Bank	Unit Miles	Inspection Start/End	Inspector
Unit No. 04 Sacramento River	Right	1.22	09/17/2024 09/17/2024	Marvin Marshall

LM Start	1.13	Rating **	A	Issue No.	48	
LM End	1.13	Issue Type +	Ma	Location *		
Category	Supplemental			GPS Latitude/Longitude		
				Start	End	
Item	DWR UCIP LMA Responsibility			38.428478°	38.428478°	
				-121.532739°	-121.532739°	
DWR ID	22803					
Comment Code						
Inspector Comment						
DS_ID:22803 FS_ID:82565 EP_NO: N/A Repair Type: No Action Needed EVAL Issue: Crossing Status: Indicator Found UCIP Comments: 03/14/2024 Record remains No Action Needed. (J. Taylor - DWR UCIP) 07/01/2020 Record remains No Action Needed. No issues observed during inspection. (D.Sanoski - DWR UCIP) FIELD_STRUCT_DESC: *ABANDONED* 16-inch steel drainage pipe through the levee, 20 feet below the crown. (16-inch pipe abandoned and grouted in place authorized under Permit No. 6685, 1969 - American Crystal Sugar Company). Location identified by electromagnetic survey. [Additional Reference(s): USACE Sacramento O&M Manual, Unit 113, October 1966, Revised 29 December 2016, (1.13), listed as 16-inch pipe.] FS Date: 3/14/2024 3:17:13 PM						

LM Start	1.13	Rating **	A	Issue No.	48 (cont)
LM End	1.13	Issue Type +	Ma	Location *	

Photo 1 of 3 : UCIP_FA_2024_82565_119733.jpg



Overview of levee crown looking D/S.

Photo 2 of 3 : UCIP_FA_2024_82565_119734.jpg



WS view: overview of WS.

* Location	** Rating	+ Issue Type
LS: Land Side WS: Water Side CR: Crown	A: Acceptable M: Minimally Acceptable U: Unacceptable	Ma: Maintenance Deficiency Ob: Design & System Obsolescence En: Enforcement
	N: Not Inspected/Rated C: Corrected A/W: Acceptable but Monitor & Maintain	

**Flood Control Project Maintenance
Levee Inspections**

Maintenance Issue Types Only, Levee Inspection Report By Mile - Fall 2024

Reclamation District No. 0999 Netherlands

Waterway	Bank	Unit Miles	Inspection Start/End	Inspector
Unit No. 04 Sacramento River	Right	1.22	09/17/2024 09/17/2024	Marvin Marshall

LM Start	1.13	Rating **	A	Issue No.	48 (cont)
LM End	1.13	Issue Type +	Ma	Location *	
Category	Supplemental			GPS Latitude/Longitude	
				Start	End
Item	DWR UCIP LMA Responsibility			38.428478°	38.428478°
				-121.532739°	-121.532739°
DWR ID	22803				

Photo 3 of 3 : UCIP_FA_2024_82565_119735.jpg



LS view: overview of LS.

* Location LS : Land Side N/A : Not Applicable WS : Water Side CR : Crown	** Rating A : Acceptable M : Minimally Acceptable U : Unacceptable N : Not Inspected/Rated C : Corrected A/W : Acceptable but Monitor & Maintain	+ Issue Type Ma : Maintenance Deficiency Ob : Design & System Obsolescence En : Enforcement
--	---	---

**Flood Control Project Maintenance
Levee Inspections****Maintenance Issue Types Only, Levee Inspection Report By Mile - Fall 2024****Reclamation District No. 0999 Netherlands**

Waterway	Bank	Unit Miles	Inspection Start/End	Inspector
Unit No. 05 Elk Slough	Right	9.48	10/22/2024 10/22/2024	Marvin Marshall

LM Start	0.00	Rating **	M	Issue No.	49
LM End	0.01	Issue Type +	Ma	Location *	WS
Category	Supplemental			GPS Latitude/Longitude	
				Start	End
Item	2018 USACE Erosion Survey			38.332643°	38.414157°
				-121.584449°	-121.523156°
DWR ID	DWR_RD0999_05_s_2022_49				
Comment Code					
Inspector Comment					
2018 Site ID: ELK 0.2 R					
Status: Eroding					
2018 Field Notes: Deteriorating levee reach.					
Site History: 1997 - Most of lower Elk Slough contains high near vertical banks, with erosion into the levee slope. Channel almost appears incised. 2002 - Sites where the levee slope is near vertical and severely eroding. It could fail catastrophically. 2004 - Looks bad in terms of vertical slopes and fallen trees. 2005 - Banks are still over steepened in most places and potentially susceptible to geotechnical failures. 2006 - Both banks are still over steepened in most places and potentially susceptible to geotechnical failures. 2010 - The entire reach is in poor condition, with severely eroding near vertical slopes, needs a regional repair. 2011 - Channel banks are still oversteepened with erosion continuing. 2012 - New cracks and animal holes observed. 2013 - Fresh erosion around pump structure. 2017 - Fresh erosion observed.					

No Photos

LM Start	0.32	Rating **	N	Issue No.	75
LM End	0.32	Issue Type +	Ma	Location *	LS
Category	Earthen Levee			GPS Latitude/Longitude	
				Start	End
Item	Trim / Thin Trees			38.337057°	38.337057°
				-121.582721°	-121.582721°
DWR ID	DWR_RD0999_05_s_2021_75				
Comment Code					
T5 : Tree stumps.					
Inspector Comment					
Remove stumps.					

Photo 1 of 1 : FA_2024_RD0999_236_75_20240911_00030.jpg



Stumps on the landside slope. Spring 2022

* Location	** Rating	+ Issue Type
LS : Land Side WS : Water Side CR : Crown	A : Acceptable M : Minimally Acceptable U : Unacceptable	Ma : Maintenance Deficiency Ob : Design & System Obsolescence En : Enforcement
	N : Not Inspected/Rated C : Corrected A/W : Acceptable but Monitor & Maintain	

**Flood Control Project Maintenance
Levee Inspections**

Maintenance Issue Types Only, Levee Inspection Report By Mile - Fall 2024

Reclamation District No. 0999 Netherlands

Waterway	Bank	Unit Miles	Inspection Start/End	Inspector
Unit No. 05 Elk Slough	Right	9.48	10/22/2024 10/22/2024	Marvin Marshall

LM Start	0.62	Rating **	M	Issue No.	31
LM End	0.62	Issue Type +	Ma	Location *	LS
Category	Earthen Levee			GPS Latitude/Longitude	
				Start	End
Item	Trim / Thin Trees			38.341226°	38.341226°
				-121.581587°	-121.581587°
DWR ID	DWR_RD0999_05_f_2024_31				
Comment Code					
T3 : Fallen tree with root ball.					
Inspector Comment					
Remove tree from LS slope.					

Photo 1 of 1 : FA_2024_RD0999_236_31_20241025_00155.jpg



Tree on the LS slope. Fall 2024

LM Start	1.10	Rating **	U	Issue No.	55
LM End	1.14	Issue Type +	Ma	Location *	CR
Category	Earthen Levee			GPS Latitude/Longitude	
				Start	End
Item	Crown Surface / Depressions / Rutting			38.347889°	38.348159°
				-121.579191°	-121.578665°
DWR ID	DWR_RD0999_05_f_2021_55				
Comment Code					
C2 : Repair depressions or ruts in the crown or slope.					
Inspector Comment					
Crown sloughing at roadway edge. Approximately 500' long and 6" deep.					

Photo 1 of 2 : FA_2024_RD0999_236_55_20240911_00018.jpg



Depth of sloughing on WS crown. Fall 2021

LM Start	1.10	Rating **	U	Issue No.	55 (cont)
LM End	1.14	Issue Type +	Ma	Location *	CR

Photo 2 of 2 : FA_2024_RD0999_236_55_20240911_00019.jpg



Length of sloughing on WS crown. Fall 2021

* Location LS : Land Side N/A : Not Applicable WS : Water Side CR : Crown		** Rating A : Acceptable M : Minimally Acceptable U : Unacceptable N : Not Inspected/Rated C : Corrected A/W : Acceptable but Monitor & Maintain		+ Issue Type Ma : Maintenance Deficiency Ob : Design & System Obsolescence En : Enforcement
---	--	--	--	--

**Flood Control Project Maintenance
Levee Inspections**

Maintenance Issue Types Only, Levee Inspection Report By Mile - Fall 2024

Reclamation District No. 0999 Netherlands

Waterway	Bank	Unit Miles	Inspection Start/End	Inspector
Unit No. 05 Elk Slough	Right	9.48	10/22/2024 10/22/2024	Marvin Marshall

LM Start	1.17	Rating **	M	Issue No.	273
LM End	1.17	Issue Type +	Ma	Location *	WS
Category	Earthen Levee			GPS Latitude/Longitude	
				Start	End
Item	Trim / Thin Trees			38.348307°	38.348307°
				-121.578045°	-121.578045°
DWR ID	DWR_RD0999_05_f_2021_273				
Comment Code					
T3 : Fallen tree with root ball.					
Inspector Comment					
Remove the large tree debris on the waterside slope.					

Photo 1 of 1 : FA_2024_RD0999_236_273_20240911_00099.jpg



Fallen tree in channel. Fall 2021

LM Start	1.43	Rating **	M	Issue No.	61
LM End	1.43	Issue Type +	Ma	Location *	WS
Category	Earthen Levee			GPS Latitude/Longitude	
				Start	End
Item	Erosion / Foot Traffic			38.348283°	38.348283°
				-121.573347°	-121.573347°
DWR ID	DWR_RD0999_05_s_2020_61				
Comment Code					
E3 : Repair the levee slope damaged by foot traffic and prevent access where possible.					
Inspector Comment					
Repair the three footpaths in the area.					

Photo 1 of 1 : FA_2024_RD0999_236_61_20241025_00156.jpg



Footpaths on the WS slope. Fall 2024

LM Start	1.59	Rating **	U	Issue No.	8
LM End	1.59	Issue Type +	Ma	Location *	WS
Category	Earthen Levee			GPS Latitude/Longitude	
				Start	End
Item	Trim / Thin Trees			38.350387°	38.350387°
				-121.573785°	-121.573785°
DWR ID	DWR_RD0999_05_s_2023_8				
Comment Code					
T3 : Fallen tree with root ball.					
Inspector Comment					
Remove tree from slope and fill void from root ball.					

Photo 1 of 1 : FA_2024_RD0999_236_8_20240911_00003.jpg



Tree with root ball on the WS slope. Spring 2023

* Location LS : Land Side N/A : Not Applicable WS : Water Side CR : Crown		** Rating A : Acceptable M : Minimally Acceptable U : Unacceptable		N : Not Inspected/Rated C : Corrected A/W : Acceptable but Monitor & Maintain		+ Issue Type Ma : Maintenance Deficiency Ob : Design & System Obsolescence En : Enforcement	
--	--	--	--	---	--	---	--

**Flood Control Project Maintenance
Levee Inspections**

Maintenance Issue Types Only, Levee Inspection Report By Mile - Fall 2024

Reclamation District No. 0999 Netherlands

Waterway	Bank	Unit Miles	Inspection Start/End	Inspector
Unit No. 05 Elk Slough	Right	9.48	10/22/2024 10/22/2024	Marvin Marshall

LM Start	1.98	Rating **	U	Issue No.	9
LM End	1.98	Issue Type +	Ma	Location *	WS
Category	Earthen Levee			GPS Latitude/Longitude	
				Start	End
Item	Trim / Thin Trees			38.355434°	38.355434°
				-121.571767°	-121.571767°
DWR ID	DWR_RD0999_05_s_2023_9				
Comment Code					
T3 : Fallen tree with root ball.					
Inspector Comment					
Remove tree from slope and repair void from root ball.					

Photo 1 of 1 : FA_2024_RD0999_236_9_20240911_00004.jpg



Tree with root ball on the WS slope. Spring 2023

LM Start	2.01	Rating **	N	Issue No.	79
LM End	2.01	Issue Type +	Ma	Location *	LS
Category	Earthen Levee			GPS Latitude/Longitude	
				Start	End
Item	Trim / Thin Trees			38.355585°	38.355585°
				-121.571135°	-121.571135°
DWR ID	DWR_RD0999_05_s_2021_79				
Comment Code					
T5 : Tree stumps.					
Inspector Comment					
Three tree stumps are located on the LS leve slope.					

Photo 1 of 1 : FA_2024_RD0999_236_79_20240911_00032.jpg



View of the tree stumps on the LS levee slope. Spring 2021.

LM Start	2.04	Rating **	N	Issue No.	90
LM End	2.04	Issue Type +	Ma	Location *	LS
Category	Earthen Levee			GPS Latitude/Longitude	
				Start	End
Item	Trim / Thin Trees			38.355616°	38.355616°
				-121.570675°	-121.570675°
DWR ID	DWR_RD0999_05_s_2021_90				
Comment Code					
T5 : Tree stumps.					
Inspector Comment					
A tree stump on the LS levee slope.					

Photo 1 of 1 : FA_2024_RD0999_236_90_20240911_00038.jpg



Tree stump and logs on the landside slope. Spring 2022

* Location		** Rating		+ Issue Type	
LS : Land Side	N/A : Not Applicable	A : Acceptable	N : Not Inspected/Rated	Ma : Maintenance Deficiency	
WS : Water Side		M : Minimally Acceptable	C : Corrected	Ob : Design & System Obsolescence	
CR : Crown		U : Unacceptable	A/W : Acceptable but Monitor & Maintain	En : Enforcement	

**Flood Control Project Maintenance
Levee Inspections**

Maintenance Issue Types Only, Levee Inspection Report By Mile - Fall 2024

Reclamation District No. 0999 Netherlands

Waterway	Bank	Unit Miles	Inspection Start/End	Inspector
Unit No. 05 Elk Slough	Right	9.48	10/22/2024 10/22/2024	Marvin Marshall

LM Start	2.51	Rating **	M	Issue No.	218
LM End	2.51	Issue Type +	Ma	Location *	WS
Category	Earthen Levee			GPS Latitude/Longitude	
				Start	End
Item	Trim / Thin Trees			38.356378°	38.356378°
				-121.563185°	-121.563185°
DWR ID	DWR_RD0999_05_f_2020_218				
Comment Code					
T2 : Tree or limb.					
Inspector Comment					
Tree has split and stump will decay.					

Photo 1 of 1 : FA_2024_RD0999_236_218_20240911_00088.jpg



Fallen tree on the waterside slope. Spring 2022

LM Start	2.56	Rating **	M	Issue No.	264
LM End	2.56	Issue Type +	Ma	Location *	WS
Category	Earthen Levee			GPS Latitude/Longitude	
				Start	End
Item	Trim / Thin Trees			38.356910°	38.356910°
				-121.562635°	-121.562635°
DWR ID	DWR_RD0999_05_s_2020_264				
Comment Code					
T3 : Fallen tree with root ball.					
Inspector Comment					
Repair erosion due to a fallen tree with exposed root ball.					

Photo 1 of 1 : FA_2024_RD0999_236_264_20240911_00098.jpg



Void from root ball on the waterside slope. Spring 2022

LM Start	2.98	Rating **	N	Issue No.	56
LM End	2.98	Issue Type +	Ma	Location *	LS
Category	Earthen Levee			GPS Latitude/Longitude	
				Start	End
Item	Trim / Thin Trees			38.362749°	38.362749°
				-121.563338°	-121.563338°
DWR ID	DWR_RD0999_05_f_2021_56				
Comment Code					
T5 : Tree stumps.					
Inspector Comment					
Remove stumps.					

Photo 1 of 1 : FA_2024_RD0999_236_56_20240911_00020.jpg



Stumps on the LS toe. Fall 2022

* Location		** Rating		+ Issue Type	
LS : Land Side	N/A : Not Applicable	A : Acceptable	N : Not Inspected/Rated	Ma : Maintenance Deficiency	
WS : Water Side		M : Minimally Acceptable	C : Corrected	Ob : Design & System Obsolescence	
CR : Crown		U : Unacceptable	A/W : Acceptable but Monitor & Maintain	En : Enforcement	

**Flood Control Project Maintenance
Levee Inspections**

Maintenance Issue Types Only, Levee Inspection Report By Mile - Fall 2024

Reclamation District No. 0999 Netherlands

Waterway	Bank	Unit Miles	Inspection Start/End	Inspector
Unit No. 05 Elk Slough	Right	9.48	10/22/2024 10/22/2024	Marvin Marshall

LM Start	3.05	Rating **	M	Issue No.	51
LM End	3.09	Issue Type +	Ma	Location *	CR
Category	Earthen Levee			GPS Latitude/Longitude	
				Start	End
Item	Crown Surface / Depressions / Rutting			38.363789°	38.364151°
				-121.562826°	-121.562424°
DWR ID	DWR_RD0999_05_f_2022_51				
Comment Code					
C2 : Repair depressions or ruts in the crown or slope.					
Inspector Comment					
Repair crown road depression.					

Photo 1 of 1 : FA_2024_RD0999_236_51_20240911_00015.jpg



Crown depression. Fall 2022

LM Start	3.11	Rating **	N	Issue No.	95
LM End	3.11	Issue Type +	Ma	Location *	LS
Category	Earthen Levee			GPS Latitude/Longitude	
				Start	End
Item	Trim / Thin Trees			38.364356°	38.364356°
				-121.562021°	-121.562021°
DWR ID	DWR_RD0999_05_s_2021_95				
Comment Code					
T5 : Tree stumps.					
Inspector Comment					
A large tree stump is located on lower LS levee slope.					

Photo 1 of 1 : FA_2024_RD0999_236_95_20240911_00041.jpg



Tree stump at the landside toe. Spring 2022

LM Start	3.55	Rating **	M	Issue No.	83
LM End	3.55	Issue Type +	Ma	Location *	WS
Category	Earthen Levee			GPS Latitude/Longitude	
				Start	End
Item	Trim / Thin Trees			38.365742°	38.365742°
				-121.556778°	-121.556778°
DWR ID	DWR_RD0999_05_f_2018_83				
Comment Code					
T3 : Fallen tree with root ball.					
Inspector Comment					
Repair slope damage caused by a large fallen tree.					

Photo 1 of 1 : FA_2024_RD0999_236_83_20240911_00036.jpg



View of a fallen tree with exposed root ball. Summer 2020

* Location		** Rating		+ Issue Type	
LS : Land Side	N/A : Not Applicable	A : Acceptable	N : Not Inspected/Rated	Ma : Maintenance Deficiency	
WS : Water Side		M : Minimally Acceptable	C : Corrected	Ob : Design & System Obsolescence	
CR : Crown		U : Unacceptable	A/W : Acceptable but Monitor & Maintain	En : Enforcement	

**Flood Control Project Maintenance
Levee Inspections**

Maintenance Issue Types Only, Levee Inspection Report By Mile - Fall 2024

Reclamation District No. 0999 Netherlands

Waterway	Bank	Unit Miles	Inspection Start/End	Inspector
Unit No. 05 Elk Slough	Right	9.48	10/22/2024 10/22/2024	Marvin Marshall

LM Start	3.63	Rating **	M	Issue No.	1
LM End	3.63	Issue Type +	Ma	Location *	WS
Category	Earthen Levee			GPS Latitude/Longitude	
				Start	End
Item	Trim / Thin Trees			38.366880°	38.366880°
				-121.556430°	-121.556430°
DWR ID	DWR_RD0999_05_s_2020_1				
Comment Code					
T3 : Fallen tree with root ball.					
Inspector Comment					
A large scarp exists around a fallen tree.					

Photo 1 of 1 : FA_2024_RD0999_236_1_20240911_00001.jpg



View of large, fallen tree on the waterside slope. Summer 2020

LM Start	3.80	Rating **	A/W	Issue No.	85
LM End	3.80	Issue Type +	Ma	Location *	WS
Category	Earthen Levee			GPS Latitude/Longitude	
				Start	End
Item	Trim / Thin Trees			38.368175°	38.368175°
				-121.554392°	-121.554392°
DWR ID	DWR_RD0999_05_f_2018_85				
Comment Code					
T3 : Fallen tree with root ball.					
Inspector Comment					
Continue to monitor however the slope damage caused by the fallen tree should be repaired.					

Photo 1 of 1 : FA_2024_RD0999_236_85_20240911_00037.jpg



View of fallen tree and slope damage. Summer 2020

LM Start	4.08	Rating **	A/W	Issue No.	91
LM End	4.08	Issue Type +	Ma	Location *	WS
Category	Earthen Levee			GPS Latitude/Longitude	
				Start	End
Item	Trim / Thin Trees			38.370853°	38.370853°
				-121.553605°	-121.553605°
DWR ID	DWR_RD0999_05_f_2018_91				
Comment Code					
T3 : Fallen tree with root ball.					
Inspector Comment					
Continue to monitor however the slope damage caused by the fallen tree and root ball should be repaired.					

Photo 1 of 1 : FA_2024_RD0999_236_91_20240911_00039.jpg



View of fallen tree with exposed root ball. Summer 2020

* Location LS : Land Side N/A : Not Applicable WS : Water Side CR : Crown		** Rating A : Acceptable M : Minimally Acceptable U : Unacceptable N : Not Inspected/Rated C : Corrected A/W : Acceptable but Monitor & Maintain		+ Issue Type Ma : Maintenance Deficiency Ob : Design & System Obsolescence En : Enforcement	
--	--	---	--	---	--

**Flood Control Project Maintenance
Levee Inspections**

Maintenance Issue Types Only, Levee Inspection Report By Mile - Fall 2024

Reclamation District No. 0999 Netherlands

Waterway	Bank	Unit Miles	Inspection Start/End	Inspector
Unit No. 05 Elk Slough	Right	9.48	10/22/2024 10/22/2024	Marvin Marshall

LM Start	4.13	Rating **	A/W	Issue No.	82
LM End	4.13	Issue Type +	Ma	Location *	WS
Category	Earthen Levee			GPS Latitude/Longitude	
				Start	End
Item	Trim / Thin Trees			38.371470°	38.371470°
				-121.553528°	-121.553528°
DWR ID	DWR_RD0999_05_f_2019_82				
Comment Code					
T3 : Fallen tree with root ball.					
Inspector Comment					
Monitor erosion at the waters edge due to a fallen tree with exposed root ball.					

LM Start	4.13	Rating **	A/W	Issue No.	82 (cont)
LM End	4.13	Issue Type +	Ma	Location *	WS

Photo 1 of 2 : FA_2024_RD0999_236_82_20240911_00034.jpg



View of large, fallen tree with exposed root ball. Summer 2020

Photo 2 of 2 : FA_2024_RD0999_236_82_20240911_00035.jpg



View of scarp around fallen tree. Summer 2020

LM Start	4.57	Rating **	A/W	Issue No.	102
LM End	4.57	Issue Type +	Ma	Location *	WS
Category	Earthen Levee			GPS Latitude/Longitude	
				Start	End
Item	Trim / Thin Trees			38.375127°	38.375127°
				-121.547703°	-121.547703°
DWR ID	DWR_RD0999_05_f_2019_102				
Comment Code					
T3 : Fallen tree with root ball.					
Inspector Comment					
Continue to monitor split tree and verify if any erosion to the waterside slope has occurred.					

Photo 1 of 1 : FA_2024_RD0999_236_102_20240911_00046.jpg



View of fallen tree split at the base. Summer 2020

* Location		** Rating		+ Issue Type	
LS : Land Side	N/A : Not Applicable	A : Acceptable	N : Not Inspected/Rated	Ma : Maintenance Deficiency	
WS : Water Side		M : Minimally Acceptable	C : Corrected	Ob : Design & System Obsolescence	
CR : Crown		U : Unacceptable	A/W : Acceptable but Monitor & Maintain	En : Enforcement	

**Flood Control Project Maintenance
Levee Inspections**

Maintenance Issue Types Only, Levee Inspection Report By Mile - Fall 2024

Reclamation District No. 0999 Netherlands

Waterway	Bank	Unit Miles	Inspection Start/End	Inspector
Unit No. 05 Elk Slough	Right	9.48	10/22/2024 10/22/2024	Marvin Marshall

LM Start	5.06	Rating **	M	Issue No.	106
LM End	5.06	Issue Type +	Ma	Location *	LS
Category	Earthen Levee			GPS Latitude/Longitude	
				Start	End
Item	Encroachments			38.379604°	38.379604°
				-121.541102°	-121.541102°
DWR ID	DWR_RD0999_05_s_2019_106				
Comment Code					
DE : Debris					
Inspector Comment					
Remove the debris and prunings on the LS levee slope.					

Photo 1 of 1 : FA_2024_RD0999_236_106_20241025_00159.jpg



Pruning pile on the LS slope. Fall 2024

LM Start	5.14	Rating **	N	Issue No.	117
LM End	5.14	Issue Type +	Ma	Location *	WS
Category	Earthen Levee			GPS Latitude/Longitude	
				Start	End
Item	Trim / Thin Trees			38.380599°	38.380599°
				-121.541227°	-121.541227°
DWR ID	DWR_RD0999_05_s_2021_117				
Comment Code					
T5 : Tree stumps.					
Inspector Comment					
A tree stump is located on the WS levee slope.					

Photo 1 of 1 : FA_2024_RD0999_236_117_20240911_00052.jpg



View of the tree stump on the WS levee slope. Spring 2021.

LM Start	5.35	Rating **	A/W	Issue No.	97
LM End	5.35	Issue Type +	Ma	Location *	WS
Category	Earthen Levee			GPS Latitude/Longitude	
				Start	End
Item	Trim / Thin Trees			38.381297°	38.381297°
				-121.545037°	-121.545037°
DWR ID	DWR_RD0999_05_f_2018_97				
Comment Code					
T3 : Fallen tree with root ball.					
Inspector Comment					
Continue to monitor however the levee toe damage caused by the fallen tree should be repaired.					

Photo 1 of 1 : FA_2024_RD0999_236_97_20240911_00043.jpg



View of fallen trees and scarp. Summer 2020

* Location LS : Land Side N/A : Not Applicable WS : Water Side CR : Crown		** Rating A : Acceptable M : Minimally Acceptable U : Unacceptable N : Not Inspected/Rated C : Corrected A/W : Acceptable but Monitor & Maintain		+ Issue Type Ma : Maintenance Deficiency Ob : Design & System Obsolescence En : Enforcement	
--	--	---	--	---	--

**Flood Control Project Maintenance
Levee Inspections**

Maintenance Issue Types Only, Levee Inspection Report By Mile - Fall 2024

Reclamation District No. 0999 Netherlands

Waterway	Bank	Unit Miles	Inspection Start/End	Inspector
Unit No. 05 Elk Slough	Right	9.48	10/22/2024 10/22/2024	Marvin Marshall

LM Start	5.61	Rating **	N	Issue No.	62
LM End	5.61	Issue Type +	Ma	Location *	LS
Category	Earthen Levee			GPS Latitude/Longitude	
				Start	End
Item	Trim / Thin Trees			38.384231°	38.384231°
				-121.546074°	-121.546074°
DWR ID	DWR_RD0999_05_f_2021_62				
Comment Code					
T5 : Tree stumps.					
Inspector Comment					

Photo 1 of 1 : FA_2024_RD0999_236_62_20240911_00024.jpg



Stumps on the LS slope. Spring 2023

LM Start	5.64	Rating **	A/W	Issue No.	229
LM End	5.64	Issue Type +	Ma	Location *	WS
Category	Earthen Levee			GPS Latitude/Longitude	
				Start	End
Item	Trim / Thin Trees			38.384442°	38.384442°
				-121.545580°	-121.545580°
DWR ID	DWR_RD0999_05_s_2020_229				
Comment Code					
T3 : Fallen tree with root ball.					
Inspector Comment					
Continue to monitor however the slope damage caused by the fallen tree and root ball should be repaired.					

Photo 1 of 2 : FA_2024_RD0999_236_229_20240911_00094.jpg



View of two fallen trees. Summer 2020

LM Start	5.64	Rating **	A/W	Issue No.	229 (cont)
LM End	5.64	Issue Type +	Ma	Location *	WS

Photo 2 of 2 : FA_2024_RD0999_236_229_20240911_00095.jpg



View of large scarp near two fallen trees. Summer 2020

* Location LS : Land Side N/A : Not Applicable WS : Water Side CR : Crown		** Rating A : Acceptable M : Minimally Acceptable U : Unacceptable		N : Not Inspected/Rated C : Corrected A/W : Acceptable but Monitor & Maintain		+ Issue Type Ma : Maintenance Deficiency Ob : Design & System Obsolescence En : Enforcement	
--	--	--	--	---	--	---	--

**Flood Control Project Maintenance
Levee Inspections**

Maintenance Issue Types Only, Levee Inspection Report By Mile - Fall 2024

Reclamation District No. 0999 Netherlands

Waterway	Bank	Unit Miles	Inspection Start/End	Inspector
Unit No. 05 Elk Slough	Right	9.48	10/22/2024 10/22/2024	Marvin Marshall

LM Start	5.67	Rating **	N	Issue No.	129
LM End	5.67	Issue Type +	Ma	Location *	LS
Category	Earthen Levee			GPS Latitude/Longitude	
				Start	End
Item	Trim / Thin Trees			38.384465°	38.384465°
				-121.545091°	-121.545091°
DWR ID	DWR_RD0999_05_s_2021_129				
Comment Code					
T5 : Tree stumps.					
Inspector Comment					
Four tree stumps are located on the LS levee slope and toe.					

Photo 1 of 1 : FA_2024_RD0999_236_129_20240911_00056.jpg



View of the tree stumps on the LS levee slope and toe. Spring 2021.

LM Start	5.72	Rating **	A/W	Issue No.	99
LM End	5.72	Issue Type +	Ma	Location *	WS
Category	Earthen Levee			GPS Latitude/Longitude	
				Start	End
Item	Trim / Thin Trees			38.384578°	38.384578°
				-121.544173°	-121.544173°
DWR ID	DWR_RD0999_05_f_2018_99				
Comment Code					
T3 : Fallen tree with root ball.					
Inspector Comment					
Continue to monitor however the levee toe damage caused by the fallen tree should be repaired.					

Photo 1 of 1 : FA_2024_RD0999_236_99_20240911_00044.jpg



View of slope damage near fallen tree. Summer 2020

LM Start	5.79	Rating **	M	Issue No.	227
LM End	5.79	Issue Type +	Ma	Location *	WS
Category	Earthen Levee			GPS Latitude/Longitude	
				Start	End
Item	Trim / Thin Trees			38.384725°	38.384725°
				-121.542887°	-121.542887°
DWR ID	DWR_RD0999_05_s_2020_227				
Comment Code					
T2 : Tree or limb.					
Inspector Comment					
Remove a fallen tree from the slope.					

Photo 1 of 1 : FA_2024_RD0999_236_227_20240911_00093.jpg



View of a fallen tree on the waterside slope. Spring 2020

* Location		** Rating		+ Issue Type	
LS : Land Side	N/A : Not Applicable	A : Acceptable	N : Not Inspected/Rated	Ma : Maintenance Deficiency	
WS : Water Side		M : Minimally Acceptable	C : Corrected	Ob : Design & System Obsolescence	
CR : Crown		U : Unacceptable	A/W : Acceptable but Monitor & Maintain	En : Enforcement	

**Flood Control Project Maintenance
Levee Inspections****Maintenance Issue Types Only, Levee Inspection Report By Mile - Fall 2024****Reclamation District No. 0999 Netherlands**

Waterway	Bank	Unit Miles	Inspection Start/End	Inspector
Unit No. 05 Elk Slough	Right	9.48	10/22/2024 10/22/2024	Marvin Marshall

LM Start	6.52	Rating **	M	Issue No.	14
LM End	6.52	Issue Type +	Ma	Location *	LS
Category	Earthen Levee			GPS Latitude/Longitude	
				Start	End
Item	Trim / Thin Trees			38.392214°	38.392214°
				-121.538940°	-121.538940°
DWR ID	DWR_RD0999_05_s_2023_14				
Comment Code					
T2 : Tree or limb.					
Inspector Comment					
Remove logs and prunings from LS slope.					

Photo 1 of 1 : FA_2024_RD0999_236_14_20240911_00008.jpg



Logs and prunings on the LS slope. Spring 2023

LM Start	6.77	Rating **	M	Issue No.	208
LM End	6.77	Issue Type +	Ma	Location *	WS
Category	Earthen Levee			GPS Latitude/Longitude	
				Start	End
Item	Encroachments			38.395742°	38.395742°
				-121.539080°	-121.539080°
DWR ID	DWR_RD0999_05_f_2020_208				
Comment Code					
PR : Prunings					
Inspector Comment					
Remove prunings from the waterside shoulder.					

Photo 1 of 1 : FA_2024_RD0999_236_208_20240911_00083.jpg



Prunings on the WS shoulder. Spring 2023

LM Start	7.54	Rating **	N	Issue No.	191
LM End	7.54	Issue Type +	Ma	Location *	WS
Category	Earthen Levee			GPS Latitude/Longitude	
				Start	End
Item	Trim / Thin Trees			38.403843°	38.403843°
				-121.541233°	-121.541233°
DWR ID	DWR_RD0999_05_s_2020_191				
Comment Code					
T5 : Tree stumps.					
Inspector Comment					

No Photos

* Location LS : Land Side N/A : Not Applicable WS : Water Side CR : Crown		** Rating A : Acceptable M : Minimally Acceptable U : Unacceptable N : Not Inspected/Rated C : Corrected A/W : Acceptable but Monitor & Maintain		+ Issue Type Ma : Maintenance Deficiency Ob : Design & System Obsolescence En : Enforcement	
--	--	---	--	---	--

**Flood Control Project Maintenance
Levee Inspections**

Maintenance Issue Types Only, Levee Inspection Report By Mile - Fall 2024

Reclamation District No. 0999 Netherlands

Waterway	Bank	Unit Miles	Inspection Start/End	Inspector
Unit No. 05 Elk Slough	Right	9.48	10/22/2024 10/22/2024	Marvin Marshall

LM Start	7.69	Rating **	M	Issue No.	214
LM End	7.69	Issue Type +	Ma	Location *	LS
Category	Earthen Levee			GPS Latitude/Longitude	
				Start	End
Item	Slope Stability			38.405117°	38.405117°
				-121.543407°	-121.543407°
DWR ID	DWR_RD0999_05_f_2021_214				
Comment Code					
S1 : Repair slope instability.					
Inspector Comment					
Repair large hole on the landside slope.					

Photo 1 of 1 : FA_2024_RD0999_236_214_20240911_00084.jpg



View of a large hole on the landside slope. Fall 2020

LM Start	8.18	Rating **	M	Issue No.	186
LM End	8.18	Issue Type +	Ma	Location *	WS
Category	Earthen Levee			GPS Latitude/Longitude	
				Start	End
Item	Trim / Thin Trees			38.409818°	38.409818°
				-121.538585°	-121.538585°
DWR ID	DWR_RD0999_05_s_2020_186				
Comment Code					
T3 : Fallen tree with root ball.					
Inspector Comment					

Photo 1 of 1 : FA_2024_RD0999_236_186_20240911_00078.jpg



View of a tree log on the waterside slope. Spring 2020

LM Start	8.28	Rating **	M	Issue No.	177
LM End	8.28	Issue Type +	Ma	Location *	WS
Category	Earthen Levee			GPS Latitude/Longitude	
				Start	End
Item	Trim / Thin Trees			38.409355°	38.409355°
				-121.536780°	-121.536780°
DWR ID	DWR_RD0999_05_f_2020_177				
Comment Code					
T2 : Tree or limb.					
Inspector Comment					
Remove tree log debris from the waterside slope.					

Photo 1 of 1 : FA_2024_RD0999_236_177_20240911_00075.jpg



View of tree logs and limbs on the waterside slope. Fall 2020

* Location LS : Land Side N/A : Not Applicable WS : Water Side CR : Crown		** Rating A : Acceptable M : Minimally Acceptable U : Unacceptable N : Not Inspected/Rated C : Corrected A/W : Acceptable but Monitor & Maintain		+ Issue Type Ma : Maintenance Deficiency Ob : Design & System Obsolescence En : Enforcement	
--	--	---	--	---	--

**Flood Control Project Maintenance
Levee Inspections****Maintenance Issue Types Only, Levee Inspection Report By Mile - Fall 2024****Reclamation District No. 0999 Netherlands**

Waterway	Bank	Unit Miles	Inspection Start/End	Inspector
Unit No. 05 Elk Slough	Right	9.48	10/22/2024 10/22/2024	Marvin Marshall

LM Start	8.31	Rating **	M	Issue No.	181
LM End	8.31	Issue Type +	Ma	Location *	WS
Category	Earthen Levee			GPS Latitude/Longitude	
				Start	End
Item	Trim / Thin Trees			38.409118°	38.409118°
				-121.536298°	-121.536298°
DWR ID	DWR_RD0999_05_s_2020_181				
Comment Code					
T2 : Tree or limb.					
Inspector Comment					
Remove a fallen tree from the waterside slope.					

Photo 1 of 1 : FA_2024_RD0999_236_181_20240911_00077.jpg



View of fallen tree on the waterside slope. Spring 2020

LM Start	8.74	Rating **	N	Issue No.	164
LM End	8.74	Issue Type +	Ma	Location *	WS
Category	Earthen Levee			GPS Latitude/Longitude	
				Start	End
Item	Trim / Thin Trees			38.411668°	38.411668°
				-121.530162°	-121.530162°
DWR ID	DWR_RD0999_05_s_2020_164				
Comment Code					
T5 : Tree stumps.					
Inspector Comment					

Photo 1 of 1 : FA_2024_RD0999_236_164_20240911_00070.jpg



View of a large tree stump on the waterside slope. Spring 2020

LM Start	9.03	Rating **	M	Issue No.	33
LM End	9.03	Issue Type +	Ma	Location *	WS
Category	Earthen Levee	GPS Latitude/Longitude			
		Start		End	
Item	Encroachments	38.415653°		38.415653°	
		-121.529201°		-121.529201°	
DWR ID	DWR_RD0999_05_f_2024_33				
Comment Code					
PR : Prunings					
Inspector Comment					
Remove prunings from WS shoulder.					

Photo 1 of 1 : FA_2024_RD0999_236_33_20241025_00169.jpg



Prunings on the WS shoulder. Fall 2024

* Location	** Rating	+ Issue Type
LS : Land Side WS : Water Side CR : Crown	A : Acceptable M : Minimally Acceptable U : Unacceptable	Ma : Maintenance Deficiency Ob : Design & System Obsolescence En : Enforcement
	N : Not Inspected/Rated C : Corrected A/W : Acceptable but Monitor & Maintain	

**Flood Control Project Maintenance
Levee Inspections****Maintenance Issue Types Only, Levee Inspection Report By Mile - Fall 2024****Reclamation District No. 0999 Netherlands**

Waterway	Bank	Unit Miles	Inspection Start/End	Inspector
Unit No. 05 Elk Slough	Right	9.48	10/22/2024 10/22/2024	Marvin Marshall

LM Start	9.39	Rating **	A/W	Issue No.	114
LM End	9.39	Issue Type +	Ma	Location *	LS
Category	Earthen Levee			GPS Latitude/Longitude	
				Start	End
Item	Vegetation			38.413377°	38.413377°
				-121.524500°	-121.524500°
DWR ID	DWR_RD0999_05_s_2012_114				
Comment Code					
V4 : Elderberries are blocking visibility and flood fight capability.					
Inspector Comment					

No Photos

* Location LS : Land Side N/A : Not Applicable WS : Water Side CR : Crown	** Rating A : Acceptable M : Minimally Acceptable U : Unacceptable N : Not Inspected/Rated C : Corrected A/W : Acceptable but Monitor & Maintain	+ Issue Type Ma : Maintenance Deficiency Ob : Design & System Obsolescence En : Enforcement
--	---	---