

**Flood Control Project Maintenance  
Levee Inspections**

## Maintenance Issue Types Only, Levee Inspection Report By Mile - Fall 2021

### Reclamation District No. 0999 Netherlands

Waterway	Bank	Unit Miles	Inspection Start/End	Inspector
Unit No. 01 Yolo Bypass	Left	15.41	09/30/2021 09/30/2021	Marvin Marshall

LM Start	<b>0.00</b>	Rating **	A	Issue No.	<b>53</b>
LM End	<b>0.00</b>	Issue Type +	Ma	Location *	N/A
Category	Earthen Levee		GPS Latitude/Longitude		
			Start	End	
Item	Operations & Maintenance Manuals			°	°
DWR ID	DWR_RD0999_01_s_2013_53				
Comment Code					
Inspector Comment					
The LMA has a copy of the O & M manual on file.					

No Photos

LM Start	<b>0.00</b>	Rating **	A	Issue No.	<b>54</b>
LM End	<b>0.00</b>	Issue Type +	Ma	Location *	N/A
Category	Earthen Levee		GPS Latitude/Longitude		
			Start	End	
Item	Emergency Supplies & Equipment			°	°
DWR ID	DWR_RD0999_01_s_2019_54				
Comment Code					
Inspector Comment					
The LMA has adequate floodfight supplies and equipment on hand.					

No Photos

LM Start	<b>0.00</b>	Rating **	A	Issue No.	<b>55</b>
LM End	<b>0.00</b>	Issue Type +	Ma	Location *	N/A
Category	Earthen Levee		GPS Latitude/Longitude		
			Start	End	
Item	Flood Preparedness & Training			°	°
DWR ID	DWR_RD0999_01_s_2013_55				
Comment Code					
Inspector Comment					
The LMA is prepared for responding to floods and has received training in 2020.					

No Photos

<b>* Location</b> LS : Land Side    N/A : Not Applicable WS : Water Side CR : Crown	<b>** Rating</b> A : Acceptable M : Minimally Acceptable U : Unacceptable	N : Not Inspected/Rated C : Corrected A/W : Acceptable but Monitor & Maintain	<b>+ Issue Type</b> Ma : Maintenance Deficiency Ob : Design & System Obsolescence En : Enforcement
--	--	---	---

**Flood Control Project Maintenance  
Levee Inspections**

## Maintenance Issue Types Only, Levee Inspection Report By Mile - Fall 2021

### Reclamation District No. 0999 Netherlands

Waterway	Bank	Unit Miles	Inspection Start/End	Inspector
Unit No. 01 Yolo Bypass	Left	15.41	09/30/2021 09/30/2021	Marvin Marshall

LM Start	0.27	Rating **	M	Issue No.	3
LM End	0.27	Issue Type +	Ma	Location *	LS
Category	Earthen Levee			GPS Latitude/Longitude	
				Start	End
Item	Vegetation			38.501113 °	38.501113 °
				-121.581975 °	-121.581975 °
DWR ID	DWR_RD0999_01_s _ 2012_3				
Comment Code					
V4 : Elderberries are blocking visibility and flood fight capability.					
Inspector Comment					

No Photos

LM Start	1.69	Rating **	C	Issue No.	97
LM End	1.72	Issue Type +	Ma	Location *	WS
Category	Earthen Levee			GPS Latitude/Longitude	
				Start	End
Item	Vegetation			38.480560 °	38.480210 °
				-121.580867 °	-121.580845 °
DWR ID	DWR_RD0999_01_s _ 2020_97				
Comment Code					
V2 : Remove the wild growth other than native grasses from the levee slopes.					
Inspector Comment					

No Photos

LM Start	1.70	Rating **	C	Issue No.	95
LM End	1.70	Issue Type +	Ma	Location *	WS
Category	Earthen Levee			GPS Latitude/Longitude	
				Start	End
Item	Vegetation			38.480414 °	38.480414 °
				-121.580841 °	-121.580841 °
DWR ID	DWR_RD0999_01_s _ 2020_95				
Comment Code					
V2 : Remove the wild growth other than native grasses from the levee slopes.					
Inspector Comment					
Remove bull thistle and Arundo.					

No Photos

<b>* Location</b> LS : Land Side    N/A : Not Applicable WS : Water Side CR : Crown		<b>** Rating</b> A : Acceptable M : Minimally Acceptable U : Unacceptable N : Not Inspected/Rated C : Corrected A/W : Acceptable but Monitor & Maintain		<b>+ Issue Type</b> Ma : Maintenance Deficiency Ob : Design & System Obsolescence En : Enforcement	
--	--	---	--	---	--

**Flood Control Project Maintenance  
Levee Inspections**

**Maintenance Issue Types Only, Levee Inspection Report By Mile - Fall 2021**

**Reclamation District No. 0999 Netherlands**

Waterway	Bank	Unit Miles	Inspection Start/End	Inspector
Unit No. 01 Yolo Bypass	Left	15.41	09/30/2021 09/30/2021	Marvin Marshall

LM Start	1.73	Rating **	M	Issue No.	920	
LM End	1.73	Issue Type +	Ma	Location *		
Category	Supplemental			GPS Latitude/Longitude		
				Start	End	
Item	DWR UCIP LMA Responsibility			38.480097 °	38.480097 °	
				-121.580844 °	-121.580844 °	
DWR ID	22743					
Comment Code						
Inspector Comment						
DS_ID:22743 FS_ID:69815 EP_NO: N/A Repair Type: Non-Urgent EVAL Issue: Unauthorized Encroachment, installed decades prior Crossing Status: Found UCIP Comments: 06/16/2020 Record remains Non-Urgent. No permit has been identified authorizing pipe. Crossing appears abandoned. Recommend owner to contact CVFPB to abandon or remove pipe from levee. (D.Sanoski - DWR UCIP) 07/26/2018 Same as last inspection. Pipe open on WS, but no visual signs of pipe or levee integrity issues so downgrading crossing to Non-Urgent (D. Sanoski - DWR UCIP).07/07/2016 Condition largely unchanged from previous inspection. Pipe open on the WS, waterward of the siphon breaker. Dense vegetation and steep slope limited inspection of WS outlet into Ship Channel. (T. Hatch/UCIP) 06/25/2013 Pipe abandoned and open on WS slope. Pipe should be abandoned properly. (W. Wylie/UCIP) FIELD_STRUCT_DESC: *ABANDONED* 30-inch steel drainage pipe through the levee, 6.5 feet below the crown. Pump on a platform in the canal off the landside (LS) toe. Flap gate on the waterside (WS). Siphon breaker and an air vent on the WS shoulder. 1-inch galvanized iron filler pipe visible on the WS shoulder along same alignment. [Additional Reference(s): DWR Levee Log, 1992 (HLM 1.73). USACE Sacramento O&M Manual, Unit 113, October 1966, Revised 29 December 2016, (1.73), listed as 30-inch pipe]. FS Date: 6/16/2020 2:16:00 PM						

LM Start	1.73	Rating **	M	Issue No.	920 (cont)
LM End	1.73	Issue Type +	Ma	Location *	

Photo 1 of 3 : UCIP\_FA\_2021\_69815\_88522.jpg



Top of Levee: view of crown.

Photo 2 of 3 : UCIP\_FA\_2021\_69815\_88523.jpg



Water-Side: view of WS slope and broken crossing at toe.

* Location		** Rating		+ Issue Type	
LS : Land Side	N/A : Not Applicable	A : Acceptable	N : Not Inspected/Rated	Ma : Maintenance Deficiency	
WS : Water Side		M : Minimally Acceptable	C : Corrected	Ob : Design & System Obsolescence	
CR : Crown		U : Unacceptable	A/W : Acceptable but Monitor & Maintain	En : Enforcement	

**Flood Control Project Maintenance  
Levee Inspections**

## Maintenance Issue Types Only, Levee Inspection Report By Mile - Fall 2021

### Reclamation District No. 0999 Netherlands

Waterway	Bank	Unit Miles	Inspection Start/End	Inspector
Unit No. 01 Yolo Bypass	Left	15.41	09/30/2021 09/30/2021	Marvin Marshall

LM Start	<b>1.73</b>	Rating **	M	Issue No.	<b>920 (cont)</b>
LM End	<b>1.73</b>	Issue Type +	Ma	Location *	
Category	Supplemental		GPS Latitude/Longitude		
			Start	End	
Item	DWR UCIP LMA Responsibility		38.480097 °	38.480097 °	
			-121.580844 °	-121.580844 °	
DWR ID	22743				

Photo 3 of 3 : UCIP\_FA\_2021\_69815\_88524.jpg



Land-Side: view of LS slope and pump platform off in distance.

LM Start	1.90	Rating **	C	Issue No.	96
LM End	1.95	Issue Type +	Ma	Location *	LS
Category	Earthen Levee			GPS Latitude/Longitude	
				Start	End
Item	Vegetation			38.477612 °	38.476803 °
				-121.580761 °	-121.580670 °
DWR ID	DWR_RD0999_01_s_2020_96				
Comment Code					
V2 : Remove the wild growth other than native grasses from the levee slopes.					
Inspector Comment					

No Photos

LM Start	3.60	Rating **	C	Issue No.	83
LM End	3.60	Issue Type +	Ma	Location *	WS
Category	Earthen Levee			GPS Latitude/Longitude	
				Start	End
Item	Animal Control			38.454218 °	38.454218 °
				-121.589922 °	-121.589922 °
DWR ID	DWR_RD0999_01_f_2020_83				
Comment Code					
A3 : No rodents visible, but rodent burrows visible; need to backfill and compact or grout burrows.					
Inspector Comment					
Monitor animal activity in the area.					

No Photos

* Location		** Rating		+ Issue Type	
LS : Land Side	N/A : Not Applicable	A : Acceptable	N : Not Inspected/Rated	Ma : Maintenance Deficiency	
WS : Water Side		M : Minimally Acceptable	C : Corrected	Ob : Design & System Obsolescence	
CR : Crown		U : Unacceptable	A/W : Acceptable but Monitor & Maintain	En : Enforcement	



**Flood Control Project Maintenance  
Levee Inspections**

**Maintenance Issue Types Only, Levee Inspection Report By Mile - Fall 2021**

**Reclamation District No. 0999 Netherlands**

Waterway	Bank	Unit Miles	Inspection Start/End	Inspector
Unit No. 01 Yolo Bypass	Left	15.41	09/30/2021 09/30/2021	Marvin Marshall

LM Start	3.93	Rating **	A/W	Issue No.	28
LM End	3.93	Issue Type +	Ma	Location *	WS
Category	Earthen Levee			GPS Latitude/Longitude	
				Start	End
Item	Animal Control			38.449753 °	38.449753 °
				-121.592023 °	-121.592023 °
DWR ID	DWR_RD0999_01_s_2021_28				
Comment Code					
A3 : No rodents visible, but rodent burrows visible; need to backfill and compact or grout burrows.					
Inspector Comment					

Photo 1 of 1 : FA\_2021\_RD0999\_232\_28\_20210823\_00010.jpg



View of the signs of rodent activity. Spring 2021.

LM Start	3.97	Rating **	A/W	Issue No.	82
LM End	3.97	Issue Type +	Ma	Location *	WS
Category	Earthen Levee			GPS Latitude/Longitude	
				Start	End
Item	Animal Control			38.449217 °	38.449217 °
				-121.592267 °	-121.592267 °
DWR ID	DWR_RD0999_01_f_2020_82				
Comment Code					
A3 : No rodents visible, but rodent burrows visible; need to backfill and compact or grout burrows.					
Inspector Comment					

Photo 1 of 1 : FA\_2021\_RD0999\_232\_82\_20210823\_00040.jpg



View of animal holes at the waterside toe. Fall 2020

LM Start	4.04	Rating **	A/W	Issue No.	80
LM End	4.04	Issue Type +	Ma	Location *	WS
Category	Earthen Levee			GPS Latitude/Longitude	
				Start	End
Item	Animal Control			38.448275 °	38.448275 °
				-121.592692 °	-121.592692 °
DWR ID	DWR_RD0999_01_f_2020_80				
Comment Code					
A3 : No rodents visible, but rodent burrows visible; need to backfill and compact or grout burrows.					
Inspector Comment					

Photo 1 of 1 : FA\_2021\_RD0999\_232\_80\_20210823\_00039.jpg



View of animal holes at the waterside toe. Fall 2020

<b>* Location</b> LS : Land Side    N/A : Not Applicable WS : Water Side CR : Crown		<b>** Rating</b> A : Acceptable M : Minimally Acceptable U : Unacceptable N : Not Inspected/Rated C : Corrected A/W : Acceptable but Monitor & Maintain		<b>+ Issue Type</b> Ma : Maintenance Deficiency Ob : Design & System Obsolescence En : Enforcement	
--	--	---	--	---	--

**Flood Control Project Maintenance  
Levee Inspections**

## Maintenance Issue Types Only, Levee Inspection Report By Mile - Fall 2021

### Reclamation District No. 0999 Netherlands

Waterway	Bank	Unit Miles	Inspection Start/End	Inspector
Unit No. 01 Yolo Bypass	Left	15.41	09/30/2021 09/30/2021	Marvin Marshall

LM Start	4.16	Rating **	C	Issue No.	14
LM End	4.16	Issue Type +	Ma	Location *	WS
Category	Earthen Levee			GPS Latitude/Longitude	
				Start	End
Item	Trim / Thin Trees			38.446619 °	38.446619 °
				-121.593442 °	-121.593442 °
DWR ID	DWR_RD0999_01_s_2012_14				
Comment Code					
T5 : Tree stumps.					
Inspector Comment					

No Photos

LM Start	6.63	Rating **	C	Issue No.	35
LM End	6.63	Issue Type +	Ma	Location *	LS
Category	Earthen Levee			GPS Latitude/Longitude	
				Start	End
Item	Vegetation			38.413010 °	38.413010 °
				-121.609040 °	-121.609040 °
DWR ID	DWR_RD0999_01_s_2021_35				
Comment Code					
V2 : Remove the wild growth other than native grasses from the levee slopes.					
Inspector Comment					
Bull thistle is growing on the LS levee slope. Spring 2021.					

No Photos

LM Start	8.01	Rating **	M	Issue No.	74
LM End	8.01	Issue Type +	Ma	Location *	LS
Category	Earthen Levee			GPS Latitude/Longitude	
				Start	End
Item	Vegetation			38.394150 °	38.394150 °
				-121.617805 °	-121.617805 °
DWR ID	DWR_RD0999_01_s_2020_74				
Comment Code					
V2 : Remove the wild growth other than native grasses from the levee slopes.					
Inspector Comment					
Remove Arundo growth at the landside toe.					

Photo 1 of 1 : FA\_2021\_RD0999\_232\_74\_20210823\_00037.jpg



View of Arundo growth at the landside toe. Spring 2020

<b>* Location</b> LS : Land Side    N/A : Not Applicable WS : Water Side CR : Crown		<b>** Rating</b> A : Acceptable M : Minimally Acceptable U : Unacceptable N : Not Inspected/Rated C : Corrected A/W : Acceptable but Monitor & Maintain		<b>+ Issue Type</b> Ma : Maintenance Deficiency Ob : Design & System Obsolescence En : Enforcement	
--	--	---	--	---	--

**Flood Control Project Maintenance  
Levee Inspections**

**Maintenance Issue Types Only, Levee Inspection Report By Mile - Fall 2021**

**Reclamation District No. 0999 Netherlands**

Waterway	Bank	Unit Miles	Inspection Start/End	Inspector
Unit No. 01 Yolo Bypass	Left	15.41	09/30/2021 09/30/2021	Marvin Marshall

LM Start	8.80	Rating **	M	Issue No.	30
LM End	8.80	Issue Type +	Ma	Location *	LS
Category	Earthen Levee			GPS Latitude/Longitude	
				Start	End
Item	Animal Control			38.383457 °	38.383457 °
				-121.622739 °	-121.622739 °
DWR ID	DWR_RD0999_01_f_2021_30				
Comment Code					
A3 : No rodents visible, but rodent burrows visible; need to backfill and compact or grout burrows.					
Inspector Comment					
Fill rodent holes on WS slope.					

Photo 1 of 1 : FA\_2021\_RD0999\_232\_30\_20211004\_00088.jpg



Rodent burrows on LS slope. Fall 2021

LM Start	9.29	Rating **	C	Issue No.	36
LM End	9.50	Issue Type +	Ma	Location *	CR
Category	Earthen Levee			GPS Latitude/Longitude	
				Start	End
Item	Vegetation			38.376710 °	38.373832 °
				-121.625896 °	-121.627226 °
DWR ID	DWR_RD0999_01_s_2021_36				
Comment Code					
V9 : Keep the crown roadway free of vegetation.					
Inspector Comment					
The levee crown in this area has become too grassy and should be sprayed. Spring 2021.					

No Photos

LM Start	9.34	Rating **	M	Issue No.	24
LM End	9.34	Issue Type +	Ma	Location *	LS
Category	Earthen Levee			GPS Latitude/Longitude	
				Start	End
Item	Animal Control			38.376127 °	38.376127 °
				-121.626140 °	-121.626140 °
DWR ID	DWR_RD0999_01_s_2019_24				
Comment Code					
A3 : No rodents visible, but rodent burrows visible; need to backfill and compact or grout burrows.					
Inspector Comment					
Backfill the animal burrows on the landside slope and one hole on the waterside shoulder.					

Photo 1 of 1 : FA\_2021\_RD0999\_232\_24\_20210823\_00007.jpg



View of large animal holes on the landside slope. Fall 2020

<b>* Location</b>		<b>** Rating</b>		<b>+ Issue Type</b>	
LS : Land Side	N/A : Not Applicable	A : Acceptable	N : Not Inspected/Rated	Ma : Maintenance Deficiency	
WS : Water Side		M : Minimally Acceptable	C : Corrected	Ob : Design & System Obsolescence	
CR : Crown		U : Unacceptable	A/W : Acceptable but Monitor & Maintain	En : Enforcement	



**Flood Control Project Maintenance  
Levee Inspections**

## Maintenance Issue Types Only, Levee Inspection Report By Mile - Fall 2021

### Reclamation District No. 0999 Netherlands

Waterway	Bank	Unit Miles	Inspection Start/End	Inspector
Unit No. 01 Yolo Bypass	Left	15.41	09/30/2021 09/30/2021	Marvin Marshall

LM Start	12.68	Rating **	C	Issue No.	22
LM End	12.68	Issue Type +	Ma	Location *	WS
Category	Earthen Levee			GPS Latitude/Longitude	
				Start	End
Item	Animal Control			38.330118 °	38.330118 °
				-121.644847 °	-121.644847 °
DWR ID	DWR_RD0999_01_s_2020_22				
Comment Code					
A3 : No rodents visible, but rodent burrows visible; need to backfill and compact or grout burrows.					
Inspector Comment					

No Photos

LM Start	13.27	Rating **	M	Issue No.	59
LM End	13.27	Issue Type +	Ma	Location *	LS
Category	Earthen Levee			GPS Latitude/Longitude	
				Start	End
Item	Animal Control			38.321530 °	38.321530 °
				-121.644925 °	-121.644925 °
DWR ID	DWR_RD0999_01_f_2020_59				
Comment Code					
A3 : No rodents visible, but rodent burrows visible; need to backfill and compact or grout burrows.					
Inspector Comment					
Backfill two large holes on the landside slope.					

Photo 1 of 1 : FA\_2021\_RD0999\_232\_59\_20210823\_00033.jpg



View of a large animal hole on the landside slope. Fall 2020

LM Start	13.29	Rating **	M	Issue No.	47
LM End	13.30	Issue Type +	Ma	Location *	WS
Category	Earthen Levee			GPS Latitude/Longitude	
				Start	End
Item	Slope Stability			38.321180 °	38.321043 °
				-121.644962 °	-121.644960 °
DWR ID	DWR_RD0999_01_f_2020_47				
Comment Code					
S1 : Repair slope instability.					
Inspector Comment					
A separation of soil up to 12" deep and 40' long exists on the waterside slope.					

Photo 1 of 2 : FA\_2021\_RD0999\_232\_47\_20210823\_00025.jpg



View of soil separation on the waterside slope. Fall 2020

<b>* Location</b> LS : Land Side    N/A : Not Applicable WS : Water Side CR : Crown		<b>** Rating</b> A : Acceptable                      N : Not Inspected/Rated M : Minimally Acceptable        C : Corrected U : Unacceptable                  A/W : Acceptable but Monitor & Maintain		<b>+ Issue Type</b> Ma : Maintenance Deficiency Ob : Design & System Obsolescence En : Enforcement	
--	--	---	--	---	--



**Flood Control Project Maintenance  
Levee Inspections**

**Maintenance Issue Types Only, Levee Inspection Report By Mile - Fall 2021**

**Reclamation District No. 0999 Netherlands**

Waterway	Bank	Unit Miles	Inspection Start/End	Inspector
Unit No. 01 Yolo Bypass	Left	15.41	09/30/2021 09/30/2021	Marvin Marshall

LM Start	13.29	Rating **	M	Issue No.	47 (cont)
LM End	13.30	Issue Type +	Ma	Location *	WS
Category	Earthen Levee			GPS Latitude/Longitude	
				Start	End
Item	Slope Stability			38.321180 °	38.321043 °
				-121.644962 °	-121.644960 °
DWR ID	DWR_RD0999_01_f_2020_47				

Photo 2 of 2 : FA\_2021\_RD0999\_232\_47\_20210823\_00026.jpg



View of soil separation on the waterside slope. Fall 2020

LM Start	13.47	Rating **	M	Issue No.	38
LM End	13.47	Issue Type +	Ma	Location *	LS
Category	Earthen Levee			GPS Latitude/Longitude	
				Start	End
Item	Slope Stability			38.318667 °	38.318667 °
				-121.644948 °	-121.644948 °
DWR ID	DWR_RD0999_01 f _ 2021 38				

**Comment Code**

S1 : Repair slope instability.

**Inspector Comment**

Repair slope sloughing, approximately 50' long 12" deep.

Photo 1 of 1 : FA\_2021\_RD0999\_232\_38\_20211004\_00090.jpg



LS slope sloughing. Fall 2021

LM Start	13.83	Rating **	M	Issue No.	16
LM End	13.83	Issue Type +	Ma	Location *	LS
Category	Earthen Levee			GPS Latitude/Longitude	
				Start	End
Item	Encroachments			38.313332 °	38.313332 °
				-121.644947 °	-121.644947 °
DWR ID	DWR_RD0999_01_s_2020_16				

**Comment Code**

PR : Prunings

**Inspector Comment**

Remove prunings and tree debris from the landside toe.

Photo 1 of 1 : FA\_2021\_RD0999\_232\_16\_20210823\_00003.jpg



View of prunings at the landside toe. Spring 2020

**\* Location**

LS : Land Side    N/A : Not Applicable  
WS : Water Side  
CR : Crown

**\*\* Rating**

A : Acceptable                      N : Not Inspected/Rated  
M : Minimally Acceptable        C : Corrected  
U : Unacceptable                  A/W : Acceptable but Monitor & Maintain

**+ Issue Type**

Ma : Maintenance Deficiency  
Ob : Design & System Obsolescence  
En : Enforcement

**Flood Control Project Maintenance  
Levee Inspections**

## Maintenance Issue Types Only, Levee Inspection Report By Mile - Fall 2021

### Reclamation District No. 0999 Netherlands

Waterway	Bank	Unit Miles	Inspection Start/End	Inspector
Unit No. 01 Yolo Bypass	Left	15.41	09/30/2021 09/30/2021	Marvin Marshall

LM Start	14.04	Rating **	M	Issue No.	49
LM End	14.04	Issue Type +	Ma	Location *	LS
Category	Earthen Levee			GPS Latitude/Longitude	
				Start	End
Item	Erosion / Bank Caving			38.310347 °	38.310347 °
				-121.644955 °	-121.644955 °
DWR ID	DWR_RD0999_01_f_2012_49				
Comment Code					
E1 : Note and monitor erosion site.					
Inspector Comment					
Repair caving, 4' x 10', on the landside slope.					

Photo 1 of 1 : FA\_2021\_RD0999\_232\_49\_20210823\_00027.jpg



View of caving on landward slope. Fall 2018

LM Start	15.06	Rating **	N	Issue No.	43
LM End	15.06	Issue Type +	Ma	Location *	WS
Category	Earthen Levee			GPS Latitude/Longitude	
				Start	End
Item	Trim / Thin Trees			38.295526 °	38.295526 °
				-121.644993 °	-121.644993 °
DWR ID	DWR_RD0999_01_s_2021_43				
Comment Code					
T5 : Tree stumps.					
Inspector Comment					
The stump and small tree should be removed. Spring 2021.					

Photo 1 of 1 : FA\_2021\_RD0999\_232\_43\_20210823\_00021.jpg



View of the tree and stump at the WS levee toe. Spring 2021.

<b>* Location</b> LS : Land Side    N/A : Not Applicable WS : Water Side CR : Crown		<b>** Rating</b> A : Acceptable                      N : Not Inspected/Rated M : Minimally Acceptable        C : Corrected U : Unacceptable                  A/W : Acceptable but Monitor & Maintain		<b>+ Issue Type</b> Ma : Maintenance Deficiency Ob : Design & System Obsolescence En : Enforcement
--	--	---	--	---

**Flood Control Project Maintenance  
Levee Inspections**

**Maintenance Issue Types Only, Levee Inspection Report By Mile - Fall 2021**

**Reclamation District No. 0999 Netherlands**

Waterway	Bank	Unit Miles	Inspection Start/End	Inspector
Unit No. 01 Yolo Bypass	Left	15.41	09/30/2021 09/30/2021	Marvin Marshall

LM Start	15.24	Rating **	M	Issue No.	931
LM End	15.24	Issue Type +	Ma	Location *	
Category	Supplemental			GPS Latitude/Longitude	
				Start	End
Item	DWR UCIP LMA Responsibility			38.292973 °	38.292973 °
				-121.644977 °	-121.644977 °
DWR ID	22756				
Comment Code					
Inspector Comment					
DS_ID:22756 FS_ID:69886 EP_NO: N/A Repair Type: Non-Urgent EVAL Issue: Unauthorized Encroachment, installed decades prior Crossing Status: Found UCIP Comments: 06/16/2020 Record updated from No Action Needed to Non-Urgent. No permit has been identified authorizing pipe. (D.Sanoski - DWR UCIP) FIELD_STRUCT_DESC: 30-inch steel drainage pipe through the levee, 7 feet below the crown. Flap gate on the waterside (WS) end. Pump in pump house on the landside (LS) toe. Siphon breaker in a corrugated metal pipe (CMP) riser on the WS shoulder. [Additional Reference(s): DWR Levee Log, 1992 (HLM 15.25). USACE Sacramento O&M Manual, Unit 113, October 1966, Revised 29 December 2016, (15.25), listed as 36-inch pipe]. FS Date: 6/16/2020 2:26:00 PM					

Photo 1 of 3 : UCIP\_FA\_2021\_69886\_88563.jpg



Top of Levee: view of crown with riser to this pipe on WS shoulder.

LM Start	15.24	Rating **	M	Issue No.	931 (cont)
LM End	15.24	Issue Type +	Ma	Location *	

Photo 2 of 3 : UCIP\_FA\_2021\_69886\_88565.jpg



Land-Side: view of LS slope and pumphouse at toe.

<b>* Location</b> LS : Land Side    N/A : Not Applicable WS : Water Side CR : Crown		<b>** Rating</b> A : Acceptable                      N : Not Inspected/Rated M : Minimally Acceptable        C : Corrected U : Unacceptable                  A/W : Acceptable but Monitor & Maintain		<b>+ Issue Type</b> Ma : Maintenance Deficiency Ob : Design & System Obsolescence En : Enforcement
--	--	---	--	---



**Flood Control Project Maintenance  
Levee Inspections**

**Maintenance Issue Types Only, Levee Inspection Report By Mile - Fall 2021**

**Reclamation District No. 0999 Netherlands**

Waterway	Bank	Unit Miles	Inspection Start/End	Inspector
Unit No. 01 Yolo Bypass	Left	15.41	09/30/2021 09/30/2021	Marvin Marshall

LM Start	15.24	Rating **	M	Issue No.	931 (cont)	
LM End	15.24	Issue Type +	Ma	Location *		
Category	Supplemental			GPS Latitude/Longitude		
				Start	End	
Item	DWR UCIP LMA Responsibility			38.292973 °	38.292973 °	
				-121.644977 °	-121.644977 °	
DWR ID	22756					

Photo 3 of 3 : UCIP\_FA\_2021\_69886\_88564.jpg



Water-Side: view of WS slope and pipe riser.

<b>* Location</b> LS : Land Side    N/A : Not Applicable WS : Water Side CR : Crown		<b>** Rating</b> A : Acceptable                      N : Not Inspected/Rated M : Minimally Acceptable        C : Corrected U : Unacceptable                  A/W : Acceptable but Monitor & Maintain		<b>+ Issue Type</b> Ma : Maintenance Deficiency Ob : Design & System Obsolescence En : Enforcement
--	--	---	--	---



**Flood Control Project Maintenance  
Levee Inspections**

## Maintenance Issue Types Only, Levee Inspection Report By Mile - Fall 2021

### Reclamation District No. 0999 Netherlands

Waterway	Bank	Unit Miles	Inspection Start/End	Inspector
Unit No. 02 Miner Slough	Right	2.31	09/30/2021 09/30/2021	Marvin Marshall

LM Start	0.06	Rating **	M	Issue No.	21
LM End	0.06	Issue Type +	Ma	Location *	LS
Category	Earthen Levee			GPS Latitude/Longitude	
				Start	End
Item	Trim / Thin Trees			38.290434 °	38.290434 °
				-121.643873 °	-121.643873 °
DWR ID	DWR_RD0999_02_f _ 2017_21				
Comment Code					
T1 : Trim trees to at least five feet above ground level.					
Inspector Comment					

Photo 1 of 1 : FA\_2021\_RD0999\_233\_21\_20210823\_00007.jpg



View of trees on landside slope looking north. Fall 2017

LM Start	0.47	Rating **	M	Issue No.	35
LM End	0.53	Issue Type +	Ma	Location *	WS
Category	Earthen Levee			GPS Latitude/Longitude	
				Start	End
Item	Trim / Thin Trees			38.291473 °	38.291362 °
				-121.636694 °	-121.635629 °
DWR ID	DWR_RD0999_02_s_2020_35				
Comment Code					
T1 : Trim trees to at least five feet above ground level.					
Inspector Comment					
Remove willow growth within 20' of the WS crown.					

Photo 1 of 1 : FA\_2021\_RD0999\_233\_35\_20210823\_00011.jpg



View of the trees on the WS levee slope. Spring 2021.

LM Start	0.73	Rating **	M	Issue No.	29
LM End	0.75	Issue Type +	Ma	Location *	WS
Category	Earthen Levee			GPS Latitude/Longitude	
				Start	End
Item	Trim / Thin Trees			38.292733 °	38.292704 °
				-121.632325 °	-121.631994 °
DWR ID	DWR_RD0999_02_s_2020_29				
Comment Code					
T3 : Trim and thin trees to allow visibility of the ground and room to flood fight.					
Inspector Comment					
Thin and trim trees to 5' above grade for visibility and access.					

No Photos

* Location		** Rating		+ Issue Type	
LS : Land Side	N/A : Not Applicable	A : Acceptable	N : Not Inspected/Rated	Ma : Maintenance Deficiency	
WS : Water Side		M : Minimally Acceptable	C : Corrected	Ob : Design & System Obsolescence	
CR : Crown		U : Unacceptable	A/W : Acceptable but Monitor & Maintain	En : Enforcement	

**Flood Control Project Maintenance  
Levee Inspections**

## Maintenance Issue Types Only, Levee Inspection Report By Mile - Fall 2021

### Reclamation District No. 0999 Netherlands

Waterway	Bank	Unit Miles	Inspection Start/End	Inspector
Unit No. 02 Miner Slough	Right	2.31	09/30/2021 09/30/2021	Marvin Marshall

LM Start	0.82	Rating **	C	Issue No.	14
LM End	0.82	Issue Type +	Ma	Location *	LS
Category	Earthen Levee			GPS Latitude/Longitude	
				Start	End
Item	Vegetation			38.292439 °	38.292439 °
				-121.630781 °	-121.630781 °
DWR ID	DWR_RD0999_02_f_2012_14				
Comment Code					
V2 : Remove the wild growth other than native grasses from the levee slopes.					
Inspector Comment					
Century plant has been remo.ved					

No Photos

LM Start	0.84	Rating **	U	Issue No.	18
LM End	0.84	Issue Type +	Ma	Location *	LS
Category	Earthen Levee			GPS Latitude/Longitude	
				Start	End
Item	Vegetation			38.292363 °	38.292363 °
				-121.630472 °	-121.630472 °
DWR ID	DWR_RD0999_02_s_2021_18				
Comment Code					
V7 : Trees / Woody Vegetation					
Inspector Comment					
There are two downed trees on the LS slope that need to be removed. Fall.					

Photo 1 of 1 : FA\_2021\_RD0999\_233\_18\_20210823\_00006.jpg



View of the fallen trees on the LS levee slope. Spring 2021.

LM Start	1.15	Rating **	C	Issue No.	26
LM End	1.15	Issue Type +	Ma	Location *	WS
Category	Earthen Levee			GPS Latitude/Longitude	
				Start	End
Item	Trim / Thin Trees			38.291070 °	38.291070 °
				-121.625118 °	-121.625118 °
DWR ID	DWR_RD0999_02_s_2020_26				
Comment Code					
T1 : Trim trees to at least five feet above ground level.					
Inspector Comment					

No Photos

* Location		** Rating		+ Issue Type	
LS : Land Side	N/A : Not Applicable	A : Acceptable	N : Not Inspected/Rated	Ma : Maintenance Deficiency	
WS : Water Side		M : Minimally Acceptable	C : Corrected	Ob : Design & System Obsolescence	
CR : Crown		U : Unacceptable	A/W : Acceptable but Monitor & Maintain	En : Enforcement	

**Flood Control Project Maintenance  
Levee Inspections**

## Maintenance Issue Types Only, Levee Inspection Report By Mile - Fall 2021

### Reclamation District No. 0999 Netherlands

Waterway	Bank	Unit Miles	Inspection Start/End	Inspector
Unit No. 02 Miner Slough	Right	2.31	09/30/2021 09/30/2021	Marvin Marshall

LM Start	1.24	Rating **	C	Issue No.	34
LM End	1.24	Issue Type +	Ma	Location *	WS
Category	Earthen Levee			GPS Latitude/Longitude	
				Start	End
Item	Trim / Thin Trees			38.291370 °	38.291370 °
				-121.623467 °	-121.623467 °
DWR ID	DWR_RD0999_02_s_2019_34				
Comment Code					
T1 : Trim trees to at least five feet above ground level.					
Inspector Comment					

No Photos

LM Start	1.73	Rating **	M	Issue No.	8
LM End	1.76	Issue Type +	Ma	Location *	LS
Category	Earthen Levee			GPS Latitude/Longitude	
				Start	End
Item	Vegetation			38.289895 °	38.289595 °
				-121.614688 °	-121.614337 °
DWR ID	DWR_RD0999_02_s_2012_8				
Comment Code					
V4 : Elderberries are blocking visibility and flood fight capability.					
Inspector Comment					

No Photos

LM Start	1.78	Rating **	M	Issue No.	30
LM End	1.81	Issue Type +	Ma	Location *	WS
Category	Earthen Levee			GPS Latitude/Longitude	
				Start	End
Item	Vegetation			38.289340 °	38.289079 °
				-121.614030 °	-121.613765 °
DWR ID	DWR_RD0999_02_f_2017_30				
Comment Code					
V4 : Elderberries are blocking visibility and flood fight capability.					
Inspector Comment					
Elderberry bushes block visibility of the levee toe.					

No Photos

<b>* Location</b> LS : Land Side    N/A : Not Applicable WS : Water Side CR : Crown		<b>** Rating</b> A : Acceptable                      N : Not Inspected/Rated M : Minimally Acceptable        C : Corrected U : Unacceptable                  A/W : Acceptable but Monitor & Maintain		<b>+ Issue Type</b> Ma : Maintenance Deficiency Ob : Design & System Obsolescence En : Enforcement
--	--	---	--	---

**Flood Control Project Maintenance  
Levee Inspections**

## Maintenance Issue Types Only, Levee Inspection Report By Mile - Fall 2021

### Reclamation District No. 0999 Netherlands

Waterway	Bank	Unit Miles	Inspection Start/End	Inspector
Unit No. 02 Miner Slough	Right	2.31	09/30/2021 09/30/2021	Marvin Marshall

LM Start	1.79	Rating **	M	Issue No.	12
LM End	2.01	Issue Type +	Ma	Location *	LS
Category	Earthen Levee			GPS Latitude/Longitude	
				Start	End
Item	Vegetation			38.289281 °	38.288796 °
				-121.614003 °	-121.610198 °
DWR ID	DWR_RD0999_02_f _ 2021_12				
Comment Code					
V1 : Control annual grass and weeds on the levee slopes and easements.					
Inspector Comment					
Mow lower half of levee slope on the land side.					

Photo 1 of 1 : FA\_2021\_RD0999\_233\_12\_20211004\_00032.jpg



LS slope annual growth on lower portion. Fall 2021

LM Start	1.93	Rating **	M	Issue No.	16
LM End	1.93	Issue Type +	Ma	Location *	WS
Category	Earthen Levee			GPS Latitude/Longitude	
				Start	End
Item	Vegetation			38.288713 °	38.288713 °
				-121.611620 °	-121.611620 °
DWR ID	DWR_RD0999_02_s_2012_16				
Comment Code					
V4 : Elderberries are blocking visibility and flood fight capability.					
Inspector Comment					

No Photos

LM Start	1.97	Rating **	A/W	Issue No.	33
LM End	1.97	Issue Type +	Ma	Location *	LS
Category	Earthen Levee			GPS Latitude/Longitude	
				Start	End
Item	Animal Control			38.288712 °	38.288712 °
				-121.610920 °	-121.610920 °
DWR ID	DWR_RD0999_02_s_2017_33				
Comment Code					
A3 : No rodents visible, but rodent burrows visible; need to backfill and compact or grout burrows.					
Inspector Comment					
Monitor animal activity.					

No Photos

<b>* Location</b> LS : Land Side    N/A : Not Applicable WS : Water Side CR : Crown		<b>** Rating</b> A : Acceptable M : Minimally Acceptable U : Unacceptable		N : Not Inspected/Rated C : Corrected A/W : Acceptable but Monitor & Maintain		<b>+ Issue Type</b> Ma : Maintenance Deficiency Ob : Design & System Obsolescence En : Enforcement	
--	--	--	--	---	--	---	--



**Flood Control Project Maintenance  
Levee Inspections**

**Maintenance Issue Types Only, Levee Inspection Report By Mile - Fall 2021**

**Reclamation District No. 0999 Netherlands**

Waterway	Bank	Unit Miles	Inspection Start/End	Inspector
Unit No. 02 Miner Slough	Right	2.31	09/30/2021 09/30/2021	Marvin Marshall

LM Start	2.24	Rating **	M	Issue No.	15
LM End	2.24	Issue Type +	Ma	Location *	LS
Category	Earthen Levee			GPS Latitude/Longitude	
				Start	End
Item	Trim / Thin Trees			38.286999 °	38.286999 °
				-121.607335 °	-121.607335 °
DWR ID	DWR_RD0999_02_f_2021_15				
Comment Code					
T3 : Trim and thin trees to allow visibility of the ground and room to flood fight.					
Inspector Comment					
Remove small saplings and annual growth growing on toe of landside slope through the corner.					

Photo 1 of 1 : FA\_2021\_RD0999\_233\_15\_20211004\_00033.jpg



Sapling growth on the LS slope/toe. Fall 2021

<b>* Location</b> LS : Land Side    N/A : Not Applicable WS : Water Side CR : Crown	<b>** Rating</b> A : Acceptable M : Minimally Acceptable U : Unacceptable N : Not Inspected/Rated C : Corrected A/W : Acceptable but Monitor & Maintain	<b>+ Issue Type</b> Ma : Maintenance Deficiency Ob : Design & System Obsolescence En : Enforcement
--	---	---

**Flood Control Project Maintenance  
Levee Inspections**

## Maintenance Issue Types Only, Levee Inspection Report By Mile - Fall 2021

### Reclamation District No. 0999 Netherlands

Waterway	Bank	Unit Miles	Inspection Start/End	Inspector
Unit No. 03 Sutter Slough	Right	3.74	09/30/2021 09/30/2021	Marvin Marshall

LM Start	0.04	Rating **	A/W	Issue No.	32
LM End	0.04	Issue Type +	Ma	Location *	WS
Category	Earthen Levee			GPS Latitude/Longitude	
				Start	End
Item	Encroachments			38.287040 °	38.287040 °
				-121.605667 °	-121.605667 °
DWR ID	DWR_RD0999_03_f_2017_32				
Comment Code					
PR : Prunings					
Inspector Comment					
Remove the large pruning pile on the waterside slope.					

Photo 1 of 1 : FA\_2021\_RD0999\_234\_32\_20210823\_00016.jpg



View of waterside slope looking east. Fall 2017

LM Start	0.06	Rating **	M	Issue No.	17
LM End	0.06	Issue Type +	Ma	Location *	WS
Category	Earthen Levee			GPS Latitude/Longitude	
				Start	End
Item	Vegetation			38.287290 °	38.287290 °
				-121.605472 °	-121.605472 °
DWR ID	DWR_RD0999_03_s_2017_17				
Comment Code					
V2 : Remove the wild growth other than native grasses from the levee slopes.					
Inspector Comment					
Remove Century plants that are not allowed on the waterward slope.					

Photo 1 of 1 : FA\_2021\_RD0999\_234\_17\_20210823\_00008.jpg



Looking east at century plants on waterward slope.

LM Start	0.18	Rating **	M	Issue No.	11
LM End	0.18	Issue Type +	Ma	Location *	LS
Category	Earthen Levee			GPS Latitude/Longitude	
				Start	End
Item	Trim / Thin Trees			38.288893 °	38.288893 °
				-121.604663 °	-121.604663 °
DWR ID	DWR_RD0999_03_f_2021_11				
Comment Code					
T2 : Thin trees to allow visibility of the ground and room to flood fight.					
Inspector Comment					
Remove/trim tree at guy wire for visibility.					

Photo 1 of 1 : FA\_2021\_RD0999\_234\_11\_20211004\_00034.jpg



Tree near pole/guy wire on the LS. Fall 2021

<b>* Location</b> LS : Land Side    N/A : Not Applicable WS : Water Side CR : Crown		<b>** Rating</b> A : Acceptable M : Minimally Acceptable U : Unacceptable N : Not Inspected/Rated C : Corrected A/W : Acceptable but Monitor & Maintain		<b>+ Issue Type</b> Ma : Maintenance Deficiency Ob : Design & System Obsolescence En : Enforcement	
--	--	---	--	---	--

**Flood Control Project Maintenance  
Levee Inspections**

## Maintenance Issue Types Only, Levee Inspection Report By Mile - Fall 2021

### Reclamation District No. 0999 Netherlands

Waterway	Bank	Unit Miles	Inspection Start/End	Inspector
Unit No. 03 Sutter Slough	Right	3.74	09/30/2021 09/30/2021	Marvin Marshall

LM Start	0.24	Rating **	U	Issue No.	5
LM End	0.65	Issue Type +	Ma	Location *	WS
Category	Supplemental			GPS Latitude/Longitude	
				Start	End
Item	2018 USACE Erosion Survey			38.289634 °	38.295505 °
				-121.604343 °	-121.605648 °
DWR ID					

**Comment Code**

**Inspector Comment**

2018 Site ID: STR 24.7 R

Status: Critical

2018 Field Notes: Length reduced on downstream side to account for repaired section.

Site History: 1997 - Intermittent over-steepened sections. Large riparian vegetation along the length of the entire reach. Attempts to repair with rock on bank have failed. 1999 - New rock repair at the downstream end. 2002 - Some minor spot repairs. 2009 - Minimal new erosion. 2010 - Appears that fresh rock placed on downstream portion of site. Toe scour and overhanging trees with some overturned. 2012 - Minor new erosion at the toe. 2013 - Site upgraded to CRITICAL. Severe slumping into levee at downstream end of site. Fresh erosion into bank toe. 2015 - New slumping, tall vertical sections. 2016 - Upper slumped section continues to worsen. 2017 - Locals have placed rock in worst sections. Fresh erosion at toe. New tall vertical sections observed.

LM Start	<b>0.24</b>	Rating **	U	Issue No.	<b>5 (cont)</b>
LM End	<b>0.65</b>	Issue Type +	Ma	Location *	WS

DWR ID	
--------	--

Photo 1 of 2 : FA\_2021\_RD0999\_234\_5\_20211218\_1.jpg



USACE 2018 Erosion Photo #1

Photo 2 of 2 : FA\_2021\_RD0999\_234\_5\_20211218\_2.jpg



USACE 2018 Erosion Photo #2

<b>* Location</b> LS : Land Side    N/A : Not Applicable WS : Water Side CR : Crown		<b>** Rating</b> A : Acceptable                      N : Not Inspected/Rated M : Minimally Acceptable        C : Corrected U : Unacceptable                  A/W : Acceptable but Monitor & Maintain		<b>+ Issue Type</b> Ma : Maintenance Deficiency Ob : Design & System Obsolescence En : Enforcement
--	--	---	--	---

**Flood Control Project Maintenance  
Levee Inspections**

## Maintenance Issue Types Only, Levee Inspection Report By Mile - Fall 2021

### Reclamation District No. 0999 Netherlands

Waterway	Bank	Unit Miles	Inspection Start/End	Inspector
Unit No. 03 Sutter Slough	Right	3.74	09/30/2021 09/30/2021	Marvin Marshall

LM Start	0.66	Rating **	U	Issue No.	8
LM End	0.66	Issue Type +	Ma	Location *	LS
Category	Earthen Levee			GPS Latitude/Longitude	
				Start	End
Item	Vegetation			38.295618 °	38.295618 °
				-121.605923 °	-121.605923 °
DWR ID	DWR_RD0999_03_s_2012_8				
Comment Code					
V4 : Elderberries are blocking visibility and flood fight capability.					
Inspector Comment					

No Photos

LM Start	0.70	Rating **	M	Issue No.	36
LM End	0.70	Issue Type +	Ma	Location *	WS
Category	Earthen Levee			GPS Latitude/Longitude	
				Start	End
Item	Vegetation			38.296175 °	38.296175 °
				-121.605893 °	-121.605893 °
DWR ID	DWR_RD0999_03_s_2020_36				
Comment Code					
V4 : Elderberries are blocking visibility and flood fight capability.					
Inspector Comment					

No Photos

LM Start	0.97	Rating **	M	Issue No.	6
LM End	1.10	Issue Type +	Ma	Location *	WS
Category	Supplemental			GPS Latitude/Longitude	
				Start	End
Item	2018 USACE Erosion Survey			38.299402 °	38.300542 °
				-121.603056 °	-121.601118 °
DWR ID					
Comment Code					
Inspector Comment					
2018 Site ID: STR 25.2 R					
Status: Eroding					
2018 Field Notes: New large slump on upper levee slope.					
Site History: 2008 - Over steepened levee section. 2009 - Significant new erosion. 2010 - Minor new erosion. 2017 - Minor new erosion at toe.					

Photo 1 of 2 : FA\_2021\_RD0999\_234\_6\_20211218\_4.jpg



USACE 2018 Erosion Photo #1

<b>* Location</b> LS : Land Side    N/A : Not Applicable WS : Water Side CR : Crown	<b>** Rating</b> A : Acceptable M : Minimally Acceptable U : Unacceptable	N : Not Inspected/Rated C : Corrected A/W : Acceptable but Monitor & Maintain	<b>+ Issue Type</b> Ma : Maintenance Deficiency Ob : Design & System Obsolescence En : Enforcement
--	--	---	---



**Flood Control Project Maintenance  
Levee Inspections**

**Maintenance Issue Types Only, Levee Inspection Report By Mile - Fall 2021**

**Reclamation District No. 0999 Netherlands**

Waterway	Bank	Unit Miles	Inspection Start/End	Inspector
Unit No. 03 Sutter Slough	Right	3.74	09/30/2021 09/30/2021	Marvin Marshall

LM Start	0.97	Rating **	M	Issue No.	6 (cont)
LM End	1.10	Issue Type +	Ma	Location *	WS
Category	Supplemental			GPS Latitude/Longitude	
				Start	End
Item	2018 USACE Erosion Survey			38.299402 °	38.300542 °
				-121.603056 °	-121.601118 °
DWR ID					

Photo 2 of 2 : FA\_2021\_RD0999\_234\_6\_20211218\_5.jpg



USACE 2018 Erosion Photo #2

LM Start	1.43	Rating **	A/W	Issue No.	10
LM End	1.57	Issue Type +	Ma	Location *	WS
Category	Supplemental			GPS Latitude/Longitude	
				Start	End
Item	2018 USACE Erosion Survey			38.305229 °	38.306667 °
				-121.599933 °	-121.598266 °
DWR ID					

**Comment Code**

**Inspector Comment**

2018 Site ID: STR 25.7 R  
 Status: Eroding  
 2018 Field Notes: Site extended upstream.  
 Site History: 2011 - Toe scour along length of site and erosion pockets.  
 2012 - Site extended slightly upstream due to new erosion pocket.  
 2013 - Tall vertical sections at upstream end of site. 2017 - Large erosion scarp near downstream end.

Photo 1 of 2 : FA\_2021\_RD0999\_234\_10\_20211218\_18.jpg



USACE 2018 Erosion Photo #1

<b>* Location</b> LS : Land Side    N/A : Not Applicable WS : Water Side CR : Crown		<b>** Rating</b> A : Acceptable                      N : Not Inspected/Rated M : Minimally Acceptable        C : Corrected U : Unacceptable                  A/W : Acceptable but Monitor & Maintain		<b>+ Issue Type</b> Ma : Maintenance Deficiency Ob : Design & System Obsolescence En : Enforcement
--	--	---	--	---

**Flood Control Project Maintenance  
Levee Inspections**

**Maintenance Issue Types Only, Levee Inspection Report By Mile - Fall 2021**

**Reclamation District No. 0999 Netherlands**

Waterway	Bank	Unit Miles	Inspection Start/End	Inspector
Unit No. 03 Sutter Slough	Right	3.74	09/30/2021 09/30/2021	Marvin Marshall

LM Start	<b>1.43</b>	Rating **	A/W	Issue No.	<b>10 (cont)</b>
LM End	<b>1.57</b>	Issue Type +	Ma	Location *	WS
Category	Supplemental		GPS Latitude/Longitude		
			Start	End	
Item	2018 USACE Erosion Survey		38.305229 °	38.306667 °	
			-121.599933 °	-121.598266 °	
DWR ID					

Photo 2 of 2 : FA\_2021\_RD0999\_234\_10\_20211218\_19.jpg



USACE 2018 Erosion Photo #2

LM Start	<b>1.93</b>	Rating **	M	Issue No.	<b>12</b>
LM End	<b>1.97</b>	Issue Type +	Ma	Location *	WS
Category	Supplemental		GPS Latitude/Longitude		
			Start	End	
Item	2018 USACE Erosion Survey		38.311013 °	38.311342 °	
			-121.597751 °	-121.596976 °	
DWR ID					

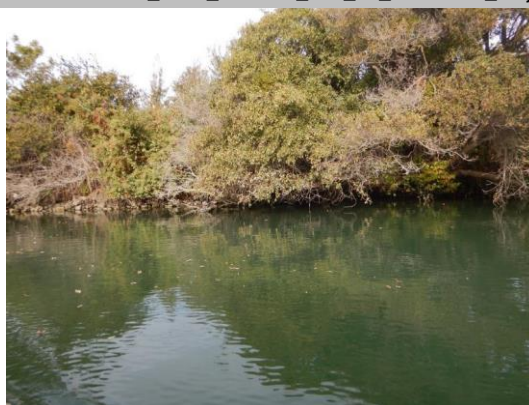
**Comment Code**

**Inspector Comment**

2018 Site ID: STR 26.1 R  
Status: Eroding  
2018 Field Notes: No observed change.  
Site History: 2015 - Tall vertical sections into the levee slope and erosion along the toe. 2016 - New tree pop-out observed.

LM Start	<b>1.93</b>	Rating **	M	Issue No.	<b>12 (cont)</b>
LM End	<b>1.97</b>	Issue Type +	Ma	Location *	WS

Photo 1 of 2 : FA\_2021\_RD0999\_234\_12\_20211218\_20.jpg



USACE 2018 Erosion Photo #1

Photo 2 of 2 : FA\_2021\_RD0999\_234\_12\_20211218\_21.jpg



USACE 2018 Erosion Photo #2

DWR ID	
--------	--

<b>* Location</b> LS : Land Side    N/A : Not Applicable WS : Water Side CR : Crown		<b>** Rating</b> A : Acceptable M : Minimally Acceptable U : Unacceptable		N : Not Inspected/Rated C : Corrected A/W : Acceptable but Monitor & Maintain		<b>+ Issue Type</b> Ma : Maintenance Deficiency Ob : Design & System Obsolescence En : Enforcement	
--	--	--	--	---	--	---	--

**Flood Control Project Maintenance  
Levee Inspections**

**Maintenance Issue Types Only, Levee Inspection Report By Mile - Fall 2021**

**Reclamation District No. 0999 Netherlands**

Waterway	Bank	Unit Miles	Inspection Start/End	Inspector
Unit No. 03 Sutter Slough	Right	3.74	09/30/2021 09/30/2021	Marvin Marshall

LM Start	1.99	Rating **	M	Issue No.	13
LM End	1.99	Issue Type +	Ma	Location *	WS
Category	Earthen Levee			GPS Latitude/Longitude	
				Start	End
Item	Slope Stability			38.311618 °	38.311618 °
				-121.596887 °	-121.596887 °
DWR ID	DWR_RD0999_03_f_2020_13				
Comment Code					
S3 : Repair the levee slope damaged by vehicle traffic and prevent access where possible.					
Inspector Comment					
Repair slope depression due to vehicle traffic.					

Photo 1 of 1 : FA\_2021\_RD0999\_234\_13\_20210823\_00006.jpg



View of slope damage on the waterside slope due to vehicle traffic. Fall 2020

LM Start	2.97	Rating **	A/W	Issue No.	14	
LM End	3.22	Issue Type +	Ma	Location *	WS	
Category	Supplemental			GPS Latitude/Longitude		
				Start		End
Item	2018 USACE Erosion Survey			38.323419 °		38.325592 °
				-121.589645 °		-121.585925 °
DWR ID						
Comment Code						
Inspector Comment						
2018 Site ID: STR 27.3 R						
Status: Eroding						
2018 Field Notes: No observed change.						
Site History: 2011 - Multiple erosion pockets. Some likely from tree popouts. 2013 - Tall vertical sections. 2015 - New tree pop-out and significant new erosion. 2016 - New erosion at toe. 2017 - Site extended downstream, section of lower bank has slumped off. Fresh toe erosion and fresh tree popout.						

Photo 1 of 1 : FA\_2021\_RD0999\_234\_14\_20211218\_22.jpg



USACE 2018 Erosion Photo #1

* Location LS : Land Side    N/A : Not Applicable WS : Water Side CR : Crown		** Rating A : Acceptable M : Minimally Acceptable U : Unacceptable N : Not Inspected/Rated C : Corrected A/W : Acceptable but Monitor & Maintain		+ Issue Type Ma : Maintenance Deficiency Ob : Design & System Obsolescence En : Enforcement	
---	--	--	--	--	--

**Flood Control Project Maintenance  
Levee Inspections**

## Maintenance Issue Types Only, Levee Inspection Report By Mile - Fall 2021

### Reclamation District No. 0999 Netherlands

Waterway	Bank	Unit Miles	Inspection Start/End	Inspector
Unit No. 03 Sutter Slough	Right	3.74	09/30/2021 09/30/2021	Marvin Marshall

LM Start	3.10	Rating **	C	Issue No.	19
LM End	3.10	Issue Type +	Ma	Location *	LS
Category	Earthen Levee			GPS Latitude/Longitude	
				Start	End
Item	Trim / Thin Trees			38.324132 °	38.324132 °
				-121.587392 °	-121.587392 °
DWR ID	DWR_RD0999_03_f_2019_19				
Comment Code					
T1 : Trim trees to at least five feet above ground level.					
Inspector Comment					

No Photos

LM Start	3.43	Rating **	C	Issue No.	21
LM End	3.43	Issue Type +	Ma	Location *	WS
Category	Earthen Levee			GPS Latitude/Longitude	
				Start	End
Item	Slope Stability			38.328518 °	38.328518 °
				-121.586683 °	-121.586683 °
DWR ID	DWR_RD0999_03_s_2021_21				
Comment Code					
S1 : Repair slope instability.					
Inspector Comment					
There is some visible sloughing at the WS below the edge of the pavement. The site is marked with several iron fence posts. Spring 2021.					

No Photos

LM Start	3.50	Rating **	C	Issue No.	23
LM End	3.50	Issue Type +	Ma	Location *	WS
Category	Earthen Levee			GPS Latitude/Longitude	
				Start	End
Item	Slope Stability			38.329476 °	38.329476 °
				-121.586506 °	-121.586506 °
DWR ID	DWR_RD0999_03_s_2021_23				
Comment Code					
S1 : Repair slope instability.					
Inspector Comment					
There is some visible sloughing at the WS below the edge of the pavement. The site is marked with several iron fence posts. Spring 2021.					

No Photos

* Location		** Rating		+ Issue Type	
LS : Land Side	N/A : Not Applicable	A : Acceptable	N : Not Inspected/Rated	Ma : Maintenance Deficiency	
WS : Water Side		M : Minimally Acceptable	C : Corrected	Ob : Design & System Obsolescence	
CR : Crown		U : Unacceptable	A/W : Acceptable but Monitor & Maintain	En : Enforcement	





**Flood Control Project Maintenance  
Levee Inspections**

**Maintenance Issue Types Only, Levee Inspection Report By Mile - Fall 2021**

**Reclamation District No. 0999 Netherlands**

Waterway	Bank	Unit Miles	Inspection Start/End	Inspector
Unit No. 04 Sacramento River	Right	1.22	09/30/2021 09/30/2021	Marvin Marshall

LM Start	<b>0.00</b>	Rating **	M	Issue No.	<b>54 (cont)</b>
LM End	<b>0.00</b>	Issue Type +	Ma	Location *	
Category	Supplemental		GPS Latitude/Longitude		
			Start	End	
Item	DWR UCIP LMA Responsibility		38.414022 °	38.414022 °	
			-121.522986 °	-121.522986 °	
DWR ID	22788				

Photo 3 of 3 : UCIP\_FA\_2021\_69326\_88714.jpg



Land-Side: view of LS slope and channel at toe.

LM Start	<b>0.02</b>	Rating **	A/W	Issue No.	<b>23</b>
LM End	<b>0.28</b>	Issue Type +	Ma	Location *	WS
Category	Supplemental		GPS Latitude/Longitude		
			Start	End	
Item	2018 USACE Erosion Survey		38.414387 °	38.417692 °	
			-121.522871 °	-121.525083 °	
DWR ID					

**Comment Code**

**Inspector Comment**

2018 Site ID: SAC 41.9 R  
 Status: Critical  
 2018 Field Notes: Site continues to look worse.  
 Site History: 1997 - Structural problem rather than erosional, failed cobble at downstream end. 2005 - New brush boxes at waterline for several hundred feet downstream, No toe or bank protection present. 2006 - Some minor new erosion. Brush boxes not working well; most of the brush has floated out. 2007 - Brush boxes have recently been repaired. 2016 - Minor new slumping. 2017 - Fresh erosion on entire bank. Upgraded to CRITICAL.

Photo 1 of 2 : FA\_2021\_RD0999\_235\_23\_20211218\_4.jpg



USACE 2018 Erosion Photo #1

<b>* Location</b> LS : Land Side    N/A : Not Applicable WS : Water Side CR : Crown		<b>** Rating</b> A : Acceptable                      N : Not Inspected/Rated M : Minimally Acceptable        C : Corrected U : Unacceptable                  A/W : Acceptable but Monitor & Maintain		<b>+ Issue Type</b> Ma : Maintenance Deficiency Ob : Design & System Obsolescence En : Enforcement
--	--	---	--	---

**Flood Control Project Maintenance  
Levee Inspections**

## Maintenance Issue Types Only, Levee Inspection Report By Mile - Fall 2021

### Reclamation District No. 0999 Netherlands

Waterway	Bank	Unit Miles	Inspection Start/End	Inspector
Unit No. 04 Sacramento River	Right	1.22	09/30/2021 09/30/2021	Marvin Marshall

LM Start	0.02	Rating **	A/W	Issue No.	23 (cont)
LM End	0.28	Issue Type +	Ma	Location *	WS
Category	Supplemental			GPS Latitude/Longitude	
				Start	End
Item	2018 USACE Erosion Survey			38.414387 °	38.417692 °
				-121.522871 °	-121.525083 °
DWR ID					

Photo 2 of 2 : FA\_2021\_RD0999\_235\_23\_20211218\_81.jpg



USACE 2018 Erosion Photo #2

LM Start	0.04	Rating **	C	Issue No.	53
LM End	0.06	Issue Type +	Ma	Location *	WS
Category	Earthen Levee			GPS Latitude/Longitude	
				Start	End
Item	Vegetation			38.414533 °	38.414750 °
				-121.523394 °	-121.523543 °
DWR ID	DWR_RD0999_04_f_2017_53				
Comment Code					
V2 : Remove the wild growth other than native grasses from the levee slopes.					
Inspector Comment					
Remove wild growth vegetation on the waterside slope.					

No Photos

LM Start	0.20	Rating **	C	Issue No.	24
LM End	0.23	Issue Type +	Ma	Location *	WS
Category	Earthen Levee			GPS Latitude/Longitude	
				Start	End
Item	Trim / Thin Trees			38.416653 °	38.416927 °
				-121.524656 °	-121.524898 °
DWR ID	DWR_RD0999_04_s_2012_24				
Comment Code					
T2 : Thin trees to allow visibility of the ground and room to flood fight.					
Inspector Comment					

No Photos

* Location		** Rating		+ Issue Type	
LS : Land Side	N/A : Not Applicable	A : Acceptable	N : Not Inspected/Rated	Ma : Maintenance Deficiency	
WS : Water Side		M : Minimally Acceptable	C : Corrected	Ob : Design & System Obsolescence	
CR : Crown		U : Unacceptable	A/W : Acceptable but Monitor & Maintain	En : Enforcement	

**Flood Control Project Maintenance  
Levee Inspections**

**Maintenance Issue Types Only, Levee Inspection Report By Mile - Fall 2021**

**Reclamation District No. 0999 Netherlands**

Waterway	Bank	Unit Miles	Inspection Start/End	Inspector
Unit No. 04 Sacramento River	Right	1.22	09/30/2021 09/30/2021	Marvin Marshall

LM Start	0.96	Rating **	C	Issue No.	25
LM End	0.99	Issue Type +	Ma	Location *	WS
Category	Earthen Levee			GPS Latitude/Longitude	
				Start	End
Item	Trim / Thin Trees			38.426310 °	38.426627 °
				-121.531460 °	-121.531577 °
DWR ID	DWR_RD0999_04_s_2019_25				
Comment Code					
T1 : Trim trees to at least five feet above ground level.					
Inspector Comment					

No Photos

LM Start	1.10	Rating **	A/W	Issue No.	47
LM End	1.10	Issue Type +	Ma	Location *	WS
Category	Earthen Levee			GPS Latitude/Longitude	
				Start	End
Item	Erosion / Bank Caving			38.428152 °	38.428152 °
				-121.532502 °	-121.532502 °
DWR ID	DWR_RD0999_04_s_2017_47				
Comment Code					
E1 : Note and monitor erosion site.					
Inspector Comment					
Small erosion just above the riprap and runoff erosion exist on the waterside slope. The LMA placed some broken concrete on the slope.					

Photo 1 of 1 : FA\_2021\_RD0999\_235\_47\_20210823\_00010.jpg



View of erosion on the waterside slope with broken concrete riprap. Fall 2020

* Location LS : Land Side    N/A : Not Applicable WS : Water Side CR : Crown		** Rating A : Acceptable M : Minimally Acceptable U : Unacceptable N : Not Inspected/Rated C : Corrected A/W : Acceptable but Monitor & Maintain		+ Issue Type Ma : Maintenance Deficiency Ob : Design & System Obsolescence En : Enforcement	
---	--	--	--	--	--



**Flood Control Project Maintenance  
Levee Inspections**

## Maintenance Issue Types Only, Levee Inspection Report By Mile - Fall 2021

### Reclamation District No. 0999 Netherlands

Waterway	Bank	Unit Miles	Inspection Start/End	Inspector
Unit No. 05 Elk Slough	Right	9.48	09/30/2021 09/30/2021	Marvin Marshall

LM Start	0.00	Rating **	M	Issue No.	49
LM End	0.01	Issue Type +	Ma	Location *	WS
Category	Supplemental			GPS Latitude/Longitude	
				Start	End
Item	2018 USACE Erosion Survey			38.332643 °	38.414157 °
				-121.584449 °	-121.523156 °
DWR ID					
Comment Code					
Inspector Comment					
2018 Site ID: ELK 0.2 R					
Status: Eroding					
2018 Field Notes: Deteriorating levee reach.					
Site History: 1997 - Most of lower Elk Slough contains high near vertical banks, with erosion into the levee slope. Channel almost appears incised. 2002 - Sites where the levee slope is near vertical and severely eroding. It could fail catastrophically. 2004 - Looks bad in terms of vertical slopes and fallen trees. 2005 - Banks are still over steepened in most places and potentially susceptible to geotechnical failures. 2006 - Both banks are still over steepened in most places and potentially susceptible to geotechnical failures. 2010 - The entire reach is in poor condition, with severely eroding near vertical slopes, needs a regional repair. 2011 - Channel banks are still oversteepened with erosion continuing. 2012 - New cracks and animal holes observed. 2013 - Fresh erosion around pump structure. 2017 - Fresh erosion observed.					

No Photos

LM Start	0.13	Rating **	A/W	Issue No.	165
LM End	0.13	Issue Type +	Ma	Location *	WS
Category	Earthen Levee			GPS Latitude/Longitude	
				Start	End
Item	Slope Stability			38.334473 °	38.334473 °
				-121.584226 °	-121.584226 °
DWR ID	DWR_RD0999_05_s_2020_165				
Comment Code					
S1 : Repair slope instability.					
Inspector Comment					
Minor cracks appear within the pavement next to a ramp.					

Photo 1 of 1 : FA\_2021\_RD0999\_236\_165\_20210823\_00055.jpg



View of minor cracks near a ramp. Spring 2020

<b>* Location</b> LS : Land Side    N/A : Not Applicable WS : Water Side CR : Crown	<b>** Rating</b> A : Acceptable M : Minimally Acceptable U : Unacceptable	N : Not Inspected/Rated C : Corrected A/W : Acceptable but Monitor & Maintain	<b>+ Issue Type</b> Ma : Maintenance Deficiency Ob : Design & System Obsolescence En : Enforcement
--	--	---	---

**Flood Control Project Maintenance  
Levee Inspections**

## Maintenance Issue Types Only, Levee Inspection Report By Mile - Fall 2021

### Reclamation District No. 0999 Netherlands

Waterway	Bank	Unit Miles	Inspection Start/End	Inspector
Unit No. 05 Elk Slough	Right	9.48	09/30/2021 09/30/2021	Marvin Marshall

LM Start	0.15	Rating **	C	Issue No.	60
LM End	0.15	Issue Type +	Ma	Location *	WS
Category	Earthen Levee			GPS Latitude/Longitude	
				Start	End
Item	Encroachments			38.334857 °	38.334857 °
				-121.584106 °	-121.584106 °
DWR ID	DWR_RD0999_05_s_2021_60				
Comment Code					
TR : Tree or limb					
Inspector Comment					
There is a fallen tree on the WS levee slope. Spring 2021.					

No Photos

LM Start	0.32	Rating **	N	Issue No.	75	
LM End	0.32	Issue Type +	Ma	Location *	LS	
Category	Earthen Levee			GPS Latitude/Longitude		
				Start		End
Item	Trim / Thin Trees			38.337057 °		38.337057 °
				-121.582721 °		-121.582721 °
DWR ID	DWR_RD0999_05_s_2021_75					
Comment Code						
T5 : Tree stumps.						
Inspector Comment						

No Photos

LM Start	1.10	Rating **	U	Issue No.	55
LM End	1.14	Issue Type +	Ma	Location *	CR
Category	Earthen Levee			GPS Latitude/Longitude	
				Start	End
Item	Crown Surface / Depressions / Rutting			38.347889 °	38.348159 °
				-121.579191 °	-121.578665 °
DWR ID	DWR_RD0999_05_f_2021_55				
Comment Code					
C2 : Repair depressions or ruts in the crown or slope.					
Inspector Comment					
Crown sloughing at roadway edge. Approximately 500' >6"					

Photo 1 of 2 : FA\_2021\_RD0999\_236\_55\_20211004\_00206.jpg



Depth of sloughing on WS crown. Fall 2021

<b>* Location</b> LS : Land Side    N/A : Not Applicable WS : Water Side CR : Crown		<b>** Rating</b> A : Acceptable M : Minimally Acceptable U : Unacceptable N : Not Inspected/Rated C : Corrected A/W : Acceptable but Monitor & Maintain		<b>+ Issue Type</b> Ma : Maintenance Deficiency Ob : Design & System Obsolescence En : Enforcement	
--	--	---	--	---	--

**Flood Control Project Maintenance  
Levee Inspections**

**Maintenance Issue Types Only, Levee Inspection Report By Mile - Fall 2021**

**Reclamation District No. 0999 Netherlands**

Waterway	Bank	Unit Miles	Inspection Start/End	Inspector
Unit No. 05 Elk Slough	Right	9.48	09/30/2021 09/30/2021	Marvin Marshall

LM Start	1.10	Rating **	U	Issue No.	55 (cont)
LM End	1.14	Issue Type +	Ma	Location *	CR
Category	Earthen Levee			GPS Latitude/Longitude	
				Start	End
Item	Crown Surface / Depressions / Rutting			38.347889 °	38.348159 °
				-121.579191 °	-121.578665 °
DWR ID	DWR_RD0999_05_f_2021_55				

Photo 2 of 2 : FA\_2021\_RD0999\_236\_55\_20211004\_00207.jpg



Length of sloughing on WS crown. Fall 2021

LM Start	1.15	Rating **	M	Issue No.	15
LM End	1.19	Issue Type +	Ma	Location *	LS
Category	Earthen Levee			GPS Latitude/Longitude	
				Start	End
Item	Trim / Thin Trees			38.348259 °	38.348328 °
				-121.578405 °	-121.577735 °
DWR ID	DWR_RD0999_05_s_2012_15				

**Comment Code**

T3 : Trim and thin trees to allow visibility of the ground and room to flood fight.

**Inspector Comment**

Photo 1 of 1 : FA\_2021\_RD0999\_236\_15\_20210823\_00006.jpg



Looking north at untrimmed trees on landward slope and toe.

LM Start	1.17	Rating **	M	Issue No.	273
LM End	1.17	Issue Type +	Ma	Location *	WS
Category	Earthen Levee			GPS Latitude/Longitude	
				Start	End
Item	Encroachments			38.348307 °	38.348307 °
				-121.578045 °	-121.578045 °
DWR ID	DWR_RD0999_05 f _ 2021 273				

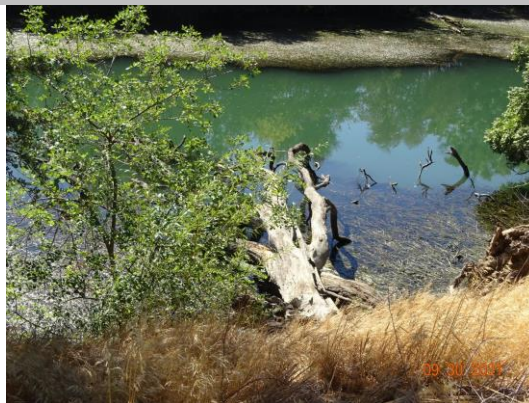
**Comment Code**

TR : Tree or limb

**Inspector Comment**

Remove the large tree debris on the waterside slope,

Photo 1 of 1 : FA\_2021\_RD0999\_236\_273\_20211004\_00208.jpg



Fallen tree in channel. Fall 2021

<b>* Location</b> LS : Land Side    N/A : Not Applicable WS : Water Side CR : Crown		<b>** Rating</b> A : Acceptable M : Minimally Acceptable U : Unacceptable		<b>+ Issue Type</b> Ma : Maintenance Deficiency Ob : Design & System Obsolescence En : Enforcement	
		N : Not Inspected/Rated C : Corrected A/W : Acceptable but Monitor & Maintain			

**Flood Control Project Maintenance  
Levee Inspections**

## Maintenance Issue Types Only, Levee Inspection Report By Mile - Fall 2021

### Reclamation District No. 0999 Netherlands

Waterway	Bank	Unit Miles	Inspection Start/End	Inspector
Unit No. 05 Elk Slough	Right	9.48	09/30/2021 09/30/2021	Marvin Marshall

LM Start	1.25	Rating **	M	Issue No.	271
LM End	1.25	Issue Type +	Ma	Location *	LS
Category	Earthen Levee			GPS Latitude/Longitude	
				Start	End
Item	Trim / Thin Trees			38.348331 °	38.348331 °
				-121.576547 °	-121.576547 °
DWR ID	DWR_RD0999_05_s _ 2020_271				
Comment Code					
T3 : Trim and thin trees to allow visibility of the ground and room to flood fight.					
Inspector Comment					

No Photos

LM Start	1.43	Rating **	A/W	Issue No.	61
LM End	1.43	Issue Type +	Ma	Location *	WS
Category	Earthen Levee			GPS Latitude/Longitude	
				Start	End
Item	Slope Stability			38.348283 °	38.348283 °
				-121.573347 °	-121.573347 °
DWR ID	DWR_RD0999_05_s _ 2020_61				
Comment Code					
S2 : Repair the levee slope damaged by foot traffic and prevent access where possible.					
Inspector Comment					
Monitor two footpaths.					

No Photos

LM Start	2.01	Rating **	N	Issue No.	79
LM End	2.01	Issue Type +	Ma	Location *	LS
Category	Earthen Levee			GPS Latitude/Longitude	
				Start	End
Item	Trim / Thin Trees			38.355585 °	38.355585 °
				-121.571135 °	-121.571135 °
DWR ID	DWR_RD0999_05_s _ 2021_79				
Comment Code					
T5 : Tree stumps.					
Inspector Comment					
Three tree stumps are located on the LS leve slope. Spring 2021.					

Photo 1 of 1 : FA\_2021\_RD0999\_236\_79\_20210823\_00020.jpg



View of the tree stumps on the LS levee slope. Spring 2021.

* Location		** Rating		+ Issue Type	
LS : Land Side	N/A : Not Applicable	A : Acceptable	N : Not Inspected/Rated	Ma : Maintenance Deficiency	
WS : Water Side		M : Minimally Acceptable	C : Corrected	Ob : Design & System Obsolescence	
CR : Crown		U : Unacceptable	A/W : Acceptable but Monitor & Maintain	En : Enforcement	



**Flood Control Project Maintenance  
Levee Inspections**

## Maintenance Issue Types Only, Levee Inspection Report By Mile - Fall 2021

### Reclamation District No. 0999 Netherlands

Waterway	Bank	Unit Miles	Inspection Start/End	Inspector
Unit No. 05 Elk Slough	Right	9.48	09/30/2021 09/30/2021	Marvin Marshall

LM Start	2.04	Rating **	N	Issue No.	90
LM End	2.04	Issue Type +	Ma	Location *	LS
Category	Earthen Levee			GPS Latitude/Longitude	
				Start	End
Item	Trim / Thin Trees			38.355616 °	38.355616 °
				-121.570675 °	-121.570675 °
DWR ID	DWR_RD0999_05_s_2021_90				
Comment Code					
T5 : Tree stumps.					
Inspector Comment					
A tree stump and two tree logs are located on the LS levee slope. Spring 2021.					

No Photos

LM Start	2.30	Rating **	C	Issue No.	94
LM End	2.30	Issue Type +	Ma	Location *	WS
Category	Earthen Levee			GPS Latitude/Longitude	
				Start	End
Item	Encroachments			38.354521 °	38.354521 °
				-121.566201 °	-121.566201 °
DWR ID	DWR_RD0999_05_s_2021_94				
Comment Code					
PR : Prunings					
Inspector Comment					

No Photos

LM Start	2.32	Rating **	C	Issue No.	69
LM End	2.32	Issue Type +	Ma	Location *	WS
Category	Earthen Levee			GPS Latitude/Longitude	
				Start	End
Item	Encroachments			38.354655 °	38.354655 °
				-121.565955 °	-121.565955 °
DWR ID	DWR_RD0999_05_f_2019_69				
Comment Code					
TR : Tree or limb					
Inspector Comment					
A small fallen tree is on the WS levee slope. Spring 2021.					

No Photos

<b>* Location</b> LS : Land Side    N/A : Not Applicable WS : Water Side CR : Crown		<b>** Rating</b> A : Acceptable M : Minimally Acceptable U : Unacceptable N : Not Inspected/Rated C : Corrected A/W : Acceptable but Monitor & Maintain		<b>+ Issue Type</b> Ma : Maintenance Deficiency Ob : Design & System Obsolescence En : Enforcement	
--	--	---	--	---	--

**Flood Control Project Maintenance  
Levee Inspections**

## Maintenance Issue Types Only, Levee Inspection Report By Mile - Fall 2021

### Reclamation District No. 0999 Netherlands

Waterway	Bank	Unit Miles	Inspection Start/End	Inspector
Unit No. 05 Elk Slough	Right	9.48	09/30/2021 09/30/2021	Marvin Marshall

LM Start	2.51	Rating **	A/W	Issue No.	218
LM End	2.51	Issue Type +	Ma	Location *	WS
Category	Earthen Levee			GPS Latitude/Longitude	
				Start	End
Item	Encroachments			38.356378 °	38.356378 °
				-121.563185 °	-121.563185 °
DWR ID	DWR_RD0999_05_f _ 2020_218				
Comment Code					
TR : Tree or limb					
Inspector Comment					
A tree splitting at the trunk may fall soon and damage the slope.					

Photo 1 of 1 : FA\_2021\_RD0999\_236\_218\_20210823\_00078.jpg



View of a tree on the waterside slope that split at the trunk. Fall 2020

LM Start	2.56	Rating **	M	Issue No.	264
LM End	2.56	Issue Type +	Ma	Location *	WS
Category	Earthen Levee			GPS Latitude/Longitude	
				Start	End
Item	Slope Stability			38.356910 °	38.356910 °
				-121.562635 °	-121.562635 °
DWR ID	DWR_RD0999_05_s_2020_264				
Comment Code					
S1 : Repair slope instability.					
Inspector Comment					
Repair erosion due to a fallen tree with exposed rootball.					

Photo 1 of 1 : FA\_2021\_RD0999\_236\_264\_20210823\_00090.jpg



View of fallen tree with exposed rootball. Summer 2020

LM Start	2.96	Rating **	C	Issue No.	263
LM End	2.96	Issue Type +	Ma	Location *	WS
Category	Earthen Levee			GPS Latitude/Longitude	
				Start	End
Item	Erosion / Bank Caving			38.362492 °	38.362492 °
				-121.563362 °	-121.563362 °
DWR ID	DWR_RD0999_05_s_2020_263				
Comment Code					
E1 : Note and monitor erosion site.					
Inspector Comment					
Monitor the bank where a large tree has fallen. Summer 2020: tree does not appear to have caused erosion.					

No Photos

* Location		** Rating		+ Issue Type	
LS : Land Side	N/A : Not Applicable	A : Acceptable	N : Not Inspected/Rated	Ma : Maintenance Deficiency	
WS : Water Side		M : Minimally Acceptable	C : Corrected	Ob : Design & System Obsolescence	
CR : Crown		U : Unacceptable	A/W : Acceptable but Monitor & Maintain	En : Enforcement	

**Flood Control Project Maintenance  
Levee Inspections**

## Maintenance Issue Types Only, Levee Inspection Report By Mile - Fall 2021

### Reclamation District No. 0999 Netherlands

Waterway	Bank	Unit Miles	Inspection Start/End	Inspector
Unit No. 05 Elk Slough	Right	9.48	09/30/2021 09/30/2021	Marvin Marshall

LM Start	2.98	Rating **	N	Issue No.	56
LM End	2.98	Issue Type +	Ma	Location *	LS
Category	Earthen Levee			GPS Latitude/Longitude	
				Start	End
Item	Trim / Thin Trees			38.362749 °	38.362749 °
				-121.563338 °	-121.563338 °
DWR ID	DWR_RD0999_05_f_2021_56				
Comment Code					
T5 : Tree stumps.					
Inspector Comment					
Several Stumps and fallen trees.					

No Photos

LM Start	3.10	Rating **	C	Issue No.	262
LM End	3.10	Issue Type +	Ma	Location *	LS
Category	Earthen Levee			GPS Latitude/Longitude	
				Start	End
Item	Encroachments			38.364253 °	38.364253 °
				-121.562257 °	-121.562257 °
DWR ID	DWR_RD0999_05_s_2020_262				
Comment Code					
TR : Tree or limb					
Inspector Comment					
Remove large tree debris from the landside slope.					

No Photos

LM Start	3.11	Rating **	N	Issue No.	95
LM End	3.11	Issue Type +	Ma	Location *	LS
Category	Earthen Levee			GPS Latitude/Longitude	
				Start	End
Item	Trim / Thin Trees			38.364356 °	38.364356 °
				-121.562021 °	-121.562021 °
DWR ID	DWR_RD0999_05_s_2021_95				
Comment Code					
T5 : Tree stumps.					
Inspector Comment					
A large tree stump is located on lower LS levee slope. Spring 2021.					

No Photos

<b>* Location</b> LS : Land Side    N/A : Not Applicable WS : Water Side CR : Crown		<b>** Rating</b> A : Acceptable M : Minimally Acceptable U : Unacceptable N : Not Inspected/Rated C : Corrected A/W : Acceptable but Monitor & Maintain		<b>+ Issue Type</b> Ma : Maintenance Deficiency Ob : Design & System Obsolescence En : Enforcement	
--	--	---	--	---	--

**Flood Control Project Maintenance  
Levee Inspections**

**Maintenance Issue Types Only, Levee Inspection Report By Mile - Fall 2021**

**Reclamation District No. 0999 Netherlands**

Waterway	Bank	Unit Miles	Inspection Start/End	Inspector
Unit No. 05 Elk Slough	Right	9.48	09/30/2021 09/30/2021	Marvin Marshall

LM Start	3.19	Rating **	C	Issue No.	261
LM End	3.19	Issue Type +	Ma	Location *	LS
Category	Earthen Levee			GPS Latitude/Longitude	
				Start	End
Item	Trim / Thin Trees			38.364702 °	38.364702 °
				-121.560667 °	-121.560667 °
DWR ID	DWR_RD0999_05_s_2020_261				
Comment Code					
T1 : Trim trees to at least five feet above ground level.					
Inspector Comment					

No Photos

LM Start	3.20	Rating **	M	Issue No.	260
LM End	3.20	Issue Type +	Ma	Location *	WS
Category	Earthen Levee			GPS Latitude/Longitude	
				Start	End
Item	Slope Stability			38.364702 °	38.364702 °
				-121.560565 °	-121.560565 °
DWR ID	DWR_RD0999_05_s_2020_260				
Comment Code					
S1 : Repair slope instability.					
Inspector Comment					
Repair erosion caused by a fallen tree with an exposed rootball.					

Photo 1 of 1 : FA\_2021\_RD0999\_236\_260\_20210823\_00088.jpg



View of slope erosion around fallen tree from the waterside. Summer 2020

LM Start	3.55	Rating **	M	Issue No.	83
LM End	3.55	Issue Type +	Ma	Location *	WS
Category	Earthen Levee			GPS Latitude/Longitude	
				Start	End
Item	Slope Stability			38.365742 °	38.365742 °
				-121.556778 °	-121.556778 °
DWR ID	DWR_RD0999_05_f_2018_83				
Comment Code					
S1 : Repair slope instability.					
Inspector Comment					
Repair slope damage caused by a large fallen tree.					

Photo 1 of 1 : FA\_2021\_RD0999\_236\_83\_20210823\_00023.jpg



View of a fallen tree with exposed rootball. Summer 2020

\* Location  
LS : Land Side N/A : Not Applicable  
WS : Water Side  
CR : Crown

\*\* Rating  
A : Acceptable N : Not Inspected/Rated  
M : Minimally Acceptable C : Corrected  
U : Unacceptable A/W : Acceptable but Monitor & Maintain

+ Issue Type  
Ma : Maintenance Deficiency  
Ob : Design & System Obsolescence  
En : Enforcement



**Flood Control Project Maintenance  
Levee Inspections**

**Maintenance Issue Types Only, Levee Inspection Report By Mile - Fall 2021**

**Reclamation District No. 0999 Netherlands**

Waterway	Bank	Unit Miles	Inspection Start/End	Inspector
Unit No. 05 Elk Slough	Right	9.48	09/30/2021 09/30/2021	Marvin Marshall

LM Start	3.63	Rating **	M	Issue No.	1
LM End	3.63	Issue Type +	Ma	Location *	WS
Category	Earthen Levee			GPS Latitude/Longitude	
				Start	End
Item	Slope Stability			38.366880 °	38.366880 °
				-121.556430 °	-121.556430 °
DWR ID	DWR_RD0999_05_s_2020_1				
Comment Code					
S1 : Repair slope instability.					
Inspector Comment					
A large scarp exists around a fallen tree.					

Photo 1 of 1 : FA\_2021\_RD0999\_236\_1\_20210823\_00001.jpg



View of large, fallen tree on the waterside slope. Summer 2020

LM Start	3.66	Rating **	C	Issue No.	250
LM End	3.66	Issue Type +	Ma	Location *	WS
Category	Earthen Levee			GPS Latitude/Longitude	
				Start	End
Item	Vegetation			38.367335 °	38.367335 °
				-121.556588 °	-121.556588 °
DWR ID	DWR_RD0999_05_s_2020_250				
Comment Code					
V2 : Remove the wild growth other than native grasses from the levee slopes.					
Inspector Comment					

No Photos

LM Start	3.80	Rating **	A/W	Issue No.	85
LM End	3.80	Issue Type +	Ma	Location *	WS
Category	Earthen Levee			GPS Latitude/Longitude	
				Start	End
Item	Vegetation			38.368175 °	38.368175 °
				-121.554392 °	-121.554392 °
DWR ID	DWR_RD0999_05_f_2018_85				
Comment Code					
V7 : Trees / Woody Vegetation					
Inspector Comment					
Repair the levee slope damaged by a fallen tree.					

Photo 1 of 1 : FA\_2021\_RD0999\_236\_85\_20210823\_00024.jpg



View of fallen tree and slope damage. Summer 2020

<b>* Location</b> LS : Land Side    N/A : Not Applicable WS : Water Side CR : Crown		<b>** Rating</b> A : Acceptable M : Minimally Acceptable U : Unacceptable N : Not Inspected/Rated C : Corrected A/W : Acceptable but Monitor & Maintain		<b>+ Issue Type</b> Ma : Maintenance Deficiency Ob : Design & System Obsolescence En : Enforcement	
--	--	---	--	---	--

**Flood Control Project Maintenance  
Levee Inspections**

**Maintenance Issue Types Only, Levee Inspection Report By Mile - Fall 2021**

**Reclamation District No. 0999 Netherlands**

Waterway	Bank	Unit Miles	Inspection Start/End	Inspector
Unit No. 05 Elk Slough	Right	9.48	09/30/2021 09/30/2021	Marvin Marshall

LM Start	4.08	Rating **	A/W	Issue No.	91	
LM End	4.08	Issue Type +	Ma	Location *	WS	
Category	Earthen Levee			GPS Latitude/Longitude		
				Start		End
Item	Vegetation			38.370853 °		38.370853 °
				-121.553605 °		-121.553605 °
DWR ID	DWR_RD0999_05_f_2018_91					
Comment Code						
V7 : Trees / Woody Vegetation						
Inspector Comment						
Repair erosion caused by a fallen tree with exposed rootball.						

Photo 1 of 1 : FA\_2021\_RD0999\_236\_91\_20210823\_00026.jpg



View of fallen tree with exposed rootball. Summer 2020

LM Start	4.13	Rating **	A/W	Issue No.	82
LM End	4.13	Issue Type +	Ma	Location *	WS
Category	Earthen Levee			GPS Latitude/Longitude	
				Start	End
Item	Vegetation			38.371470 °	38.371470 °
				-121.553528 °	-121.553528 °
DWR ID	DWR_RD0999_05_f_2019_82				
Comment Code					
V7 : Trees / Woody Vegetation					
Inspector Comment					
Monitor erosion at the water's edge due to a fallen tree with exposed rootball.					

Photo 1 of 2 : FA\_2021\_RD0999\_236\_82\_20210823\_00021.jpg



View of large, fallen tree with exposed rootball. Summer 2020

LM Start	<b>4.13</b>	Rating **	A/W	Issue No.	<b>82 (cont)</b>
LM End	<b>4.13</b>	Issue Type +	Ma	Location *	WS

Photo 2 of 2 : FA\_2021\_RD0999\_236\_82\_20210823\_00022.jpg



View of scarp around fallen tree. Summer 2020

<b>* Location</b> LS : Land Side    N/A : Not Applicable WS : Water Side CR : Crown		<b>** Rating</b> A : Acceptable M : Minimally Acceptable U : Unacceptable N : Not Inspected/Rated C : Corrected A/W : Acceptable but Monitor & Maintain		<b>+ Issue Type</b> Ma : Maintenance Deficiency Ob : Design & System Obsolescence En : Enforcement	
--	--	---	--	---	--



**Flood Control Project Maintenance  
Levee Inspections**

## Maintenance Issue Types Only, Levee Inspection Report By Mile - Fall 2021

### Reclamation District No. 0999 Netherlands

Waterway	Bank	Unit Miles	Inspection Start/End	Inspector
Unit No. 05 Elk Slough	Right	9.48	09/30/2021 09/30/2021	Marvin Marshall

LM Start	4.25	Rating **	M	Issue No.	12
LM End	4.25	Issue Type +	Ma	Location *	WS
Category	Earthen Levee			GPS Latitude/Longitude	
				Start	End
Item	Slope Stability			38.372872 °	38.372872 °
				-121.552185 °	-121.552185 °
DWR ID	DWR_RD0999_05_s_2017_12				
Comment Code					
S1 : Repair slope instability.					
Inspector Comment					
Sloughing damage needs to be repaired.					

Photo 1 of 1 : FA\_2021\_RD0999\_236\_12\_20210823\_00004.jpg



Looking downstream at finger erosion on downstream side of slough.

LM Start	4.57	Rating **	A/W	Issue No.	102
LM End	4.57	Issue Type +	Ma	Location *	WS
Category	Earthen Levee			GPS Latitude/Longitude	
				Start	End
Item	Vegetation			38.375127 °	38.375127 °
				-121.547703 °	-121.547703 °
DWR ID	DWR_RD0999_05_f_2019_102				
Comment Code					
V7 : Trees / Woody Vegetation					
Inspector Comment					
Monitor split tree which may have eroded the waterside slope.					

Photo 1 of 1 : FA\_2021\_RD0999\_236\_102\_20210823\_00032.jpg



View of fallen tree split at the base. Summer 2020

LM Start	4.62	Rating **	A/W	Issue No.	28
LM End	4.62	Issue Type +	Ma	Location *	WS
Category	Earthen Levee			GPS Latitude/Longitude	
				Start	End
Item	Vegetation			38.375308 °	38.375308 °
				-121.546828 °	-121.546828 °
DWR ID	DWR_RD0999_05_s_2017_28				
Comment Code					
V7 : Trees / Woody Vegetation					
Inspector Comment					
A fallen tree on the waterside slope is partly in the water. There is a large hole on the waterside slope.					

Photo 1 of 1 : FA\_2021\_RD0999\_236\_28\_20210823\_00009.jpg



View of dead tree on slope. Fall 2018

* Location		** Rating		+ Issue Type	
LS : Land Side	N/A : Not Applicable	A : Acceptable	N : Not Inspected/Rated	Ma : Maintenance Deficiency	
WS : Water Side		M : Minimally Acceptable	C : Corrected	Ob : Design & System Obsolescence	
CR : Crown		U : Unacceptable	A/W : Acceptable but Monitor & Maintain	En : Enforcement	

**Flood Control Project Maintenance  
Levee Inspections**

## Maintenance Issue Types Only, Levee Inspection Report By Mile - Fall 2021

### Reclamation District No. 0999 Netherlands

Waterway	Bank	Unit Miles	Inspection Start/End	Inspector
Unit No. 05 Elk Slough	Right	9.48	09/30/2021 09/30/2021	Marvin Marshall

LM Start	5.06	Rating **	M	Issue No.	106
LM End	5.06	Issue Type +	Ma	Location *	LS
Category	Earthen Levee			GPS Latitude/Longitude	
				Start	End
Item	Encroachments			38.379604 °	38.379604 °
				-121.541102 °	-121.541102 °
DWR ID	DWR_RD0999_05_s_2019_106				
Comment Code					
DE : Debris					
Inspector Comment					
Remove the debris and prunings on the LS levee slope. Spring 2021.					

Photo 1 of 1 : FA\_2021\_RD0999\_236\_106\_20210823\_00035.jpg



View of the debris and pruning pile on the LS levee slope. Spring 2021.

LM Start	5.14	Rating **	N	Issue No.	117
LM End	5.14	Issue Type +	Ma	Location *	WS
Category	Earthen Levee			GPS Latitude/Longitude	
				Start	End
Item	Trim / Thin Trees			38.380599 °	38.380599 °
				-121.541227 °	-121.541227 °
DWR ID	DWR_RD0999_05_s_2021_117				
Comment Code					
T5 : Tree stumps.					
Inspector Comment					
A tree stump is located on the WS levee slope. Spring 2021.					

Photo 1 of 1 : FA\_2021\_RD0999\_236\_117\_20210823\_00037.jpg



View of the tree stump on the WS levee slope. Spring 2021.

LM Start	5.35	Rating **	A/W	Issue No.	97
LM End	5.35	Issue Type +	Ma	Location *	WS
Category	Earthen Levee			GPS Latitude/Longitude	
				Start	End
Item	Vegetation			38.381297 °	38.381297 °
				-121.545037 °	-121.545037 °
DWR ID	DWR_RD0999_05_f_2018_97				
Comment Code					
V7 : Trees / Woody Vegetation					
Inspector Comment					
Repair the levee toe damaged by fallen trees.					

Photo 1 of 1 : FA\_2021\_RD0999\_236\_97\_20210823\_00029.jpg



View of fallen trees and scarp. Summer 2020

<b>* Location</b> LS : Land Side    N/A : Not Applicable WS : Water Side CR : Crown		<b>** Rating</b> A : Acceptable M : Minimally Acceptable U : Unacceptable		N : Not Inspected/Rated C : Corrected A/W : Acceptable but Monitor & Maintain		<b>+ Issue Type</b> Ma : Maintenance Deficiency Ob : Design & System Obsolescence En : Enforcement	
--	--	--	--	---	--	---	--



**Flood Control Project Maintenance  
Levee Inspections**

## Maintenance Issue Types Only, Levee Inspection Report By Mile - Fall 2021

### Reclamation District No. 0999 Netherlands

Waterway	Bank	Unit Miles	Inspection Start/End	Inspector
Unit No. 05 Elk Slough	Right	9.48	09/30/2021 09/30/2021	Marvin Marshall

LM Start	5.50	Rating **	C	Issue No.	71
LM End	5.55	Issue Type +	Ma	Location *	WS
Category	Earthen Levee			GPS Latitude/Longitude	
				Start	End
Item	Vegetation			38.382790 °	38.383548 °
				-121.546754 °	-121.546728 °
DWR ID	DWR_RD0999_05_s_2012_71				
Comment Code					
V2 : Remove the wild growth other than native grasses from the levee slopes.					
Inspector Comment					

No Photos

LM Start	5.64	Rating **	A/W	Issue No.	229
LM End	5.64	Issue Type +	Ma	Location *	WS
Category	Earthen Levee			GPS Latitude/Longitude	
				Start	End
Item	Vegetation			38.384442 °	38.384442 °
				-121.545580 °	-121.545580 °
DWR ID	DWR_RD0999_05_s_2020_229				
Comment Code					
V7 : Trees / Woody Vegetation					
Inspector Comment					
Erosion is caused by a fallen tree with exposed rootball.					

Photo 1 of 2 : FA\_2021\_RD0999\_236\_229\_20210823\_00084.jpg



View of two fallen trees. Summer 2020

LM Start	<b>5.64</b>	Rating **	A/W	Issue No.	<b>229 (cont)</b>
LM End	<b>5.64</b>	Issue Type +	Ma	Location *	WS

Photo 2 of 2 : FA\_2021\_RD0999\_236\_229\_20210823\_00085.jpg



View of large scarp near two fallen trees. Summer 2020

<b>* Location</b> LS : Land Side    N/A : Not Applicable WS : Water Side CR : Crown		<b>** Rating</b> A : Acceptable M : Minimally Acceptable U : Unacceptable		N : Not Inspected/Rated C : Corrected A/W : Acceptable but Monitor & Maintain		<b>+ Issue Type</b> Ma : Maintenance Deficiency Ob : Design & System Obsolescence En : Enforcement	
--	--	--	--	---	--	---	--

**Flood Control Project Maintenance  
Levee Inspections**

## Maintenance Issue Types Only, Levee Inspection Report By Mile - Fall 2021

### Reclamation District No. 0999 Netherlands

Waterway	Bank	Unit Miles	Inspection Start/End	Inspector
Unit No. 05 Elk Slough	Right	9.48	09/30/2021 09/30/2021	Marvin Marshall

LM Start	5.67	Rating **	N	Issue No.	129
LM End	5.67	Issue Type +	Ma	Location *	LS
Category	Earthen Levee			GPS Latitude/Longitude	
				Start	End
Item	Trim / Thin Trees			38.384465 °	38.384465 °
				-121.545091 °	-121.545091 °
DWR ID	DWR_RD0999_05_s_2021_129				
Comment Code					
T5 : Tree stumps.					
Inspector Comment					
Four tree stumps are located on the LS levee slope and toe. Spring 2021.					

Photo 1 of 1 : FA\_2021\_RD0999\_236\_129\_20210823\_00041.jpg



View of the tree stumps on the LS levee slope and toe. Spring 2021.

LM Start	5.72	Rating **	A/W	Issue No.	99
LM End	5.72	Issue Type +	Ma	Location *	WS
Category	Earthen Levee			GPS Latitude/Longitude	
				Start	End
Item	Vegetation			38.384578 °	38.384578 °
				-121.544173 °	-121.544173 °
DWR ID	DWR_RD0999_05_f_2018_99				
Comment Code					
V7 : Trees / Woody Vegetation					
Inspector Comment					
Repair damage to the levee toe from a fallen tree.					

Photo 1 of 1 : FA\_2021\_RD0999\_236\_99\_20210823\_00030.jpg



View of slope damage near fallen tree. Summer 2020

LM Start	5.79	Rating **	M	Issue No.	227
LM End	5.79	Issue Type +	Ma	Location *	WS
Category	Earthen Levee			GPS Latitude/Longitude	
				Start	End
Item	Encroachments			38.384725 °	38.384725 °
				-121.542887 °	-121.542887 °
DWR ID	DWR_RD0999_05_s_2020_227				
Comment Code					
TR : Tree or limb					
Inspector Comment					
Remove a fallen tree from the slope.					

Photo 1 of 1 : FA\_2021\_RD0999\_236\_227\_20210823\_00083.jpg



View of a fallen tree on the waterside slope. Spring 2020

<b>* Location</b> LS : Land Side    N/A : Not Applicable WS : Water Side CR : Crown		<b>** Rating</b> A : Acceptable M : Minimally Acceptable U : Unacceptable		N : Not Inspected/Rated C : Corrected A/W : Acceptable but Monitor & Maintain		<b>+ Issue Type</b> Ma : Maintenance Deficiency Ob : Design & System Obsolescence En : Enforcement	
--	--	--	--	---	--	---	--

**Flood Control Project Maintenance  
Levee Inspections**

## Maintenance Issue Types Only, Levee Inspection Report By Mile - Fall 2021

### Reclamation District No. 0999 Netherlands

Waterway	Bank	Unit Miles	Inspection Start/End	Inspector
Unit No. 05 Elk Slough	Right	9.48	09/30/2021 09/30/2021	Marvin Marshall

LM Start	6.18	Rating **	C	Issue No.	195
LM End	6.18	Issue Type +	Ma	Location *	CR
Category	Earthen Levee			GPS Latitude/Longitude	
				Start	End
Item	Trim / Thin Trees			38.388895 °	38.388895 °
				-121.542983 °	-121.542983 °
DWR ID	DWR_RD0999_05_f_2020_195				
Comment Code					
T4 : Trim trees over roadway to at least 12 feet above ground level.					
Inspector Comment					

No Photos

LM Start	6.77	Rating **	M	Issue No.	208
LM End	6.77	Issue Type +	Ma	Location *	WS
Category	Earthen Levee			GPS Latitude/Longitude	
				Start	End
Item	Encroachments			38.395742 °	38.395742 °
				-121.539080 °	-121.539080 °
DWR ID	DWR_RD0999_05_f_2020_208				
Comment Code					
PR : Prunings					
Inspector Comment					
Remove prunings from the waterside shoulder.					

No Photos

LM Start	7.54	Rating **	N	Issue No.	191
LM End	7.54	Issue Type +	Ma	Location *	WS
Category	Earthen Levee			GPS Latitude/Longitude	
				Start	End
Item	Trim / Thin Trees			38.403843 °	38.403843 °
				-121.541233 °	-121.541233 °
DWR ID	DWR_RD0999_05_s_2020_191				
Comment Code					
T5 : Tree stumps.					
Inspector Comment					

No Photos

* Location		** Rating		+ Issue Type	
LS : Land Side	N/A : Not Applicable	A : Acceptable	N : Not Inspected/Rated	Ma : Maintenance Deficiency	
WS : Water Side		M : Minimally Acceptable	C : Corrected	Ob : Design & System Obsolescence	
CR : Crown		U : Unacceptable	A/W : Acceptable but Monitor & Maintain	En : Enforcement	



**Flood Control Project Maintenance  
Levee Inspections**

**Maintenance Issue Types Only, Levee Inspection Report By Mile - Fall 2021**

**Reclamation District No. 0999 Netherlands**

Waterway	Bank	Unit Miles	Inspection Start/End	Inspector
Unit No. 05 Elk Slough	Right	9.48	09/30/2021 09/30/2021	Marvin Marshall

LM Start	7.69	Rating **	M	Issue No.	214
LM End	7.69	Issue Type +	Ma	Location *	LS
Category	Earthen Levee			GPS Latitude/Longitude	
				Start	End
Item	Slope Stability			38.405117 °	38.405117 °
				-121.543407 °	-121.543407 °
DWR ID	DWR_RD0999_05_f_2021_214				
Comment Code					
S1 : Repair slope instability.					
Inspector Comment					
Repair large hole on the landside slope.					

Photo 1 of 1 : FA\_2021\_RD0999\_236\_214\_20210823\_00075.jpg



View of a large hole on the landside slope. Fall 2020

LM Start	8.14	Rating **	M	Issue No.	188
LM End	8.14	Issue Type +	Ma	Location *	CR
Category	Earthen Levee			GPS Latitude/Longitude	
				Start	End
Item	Trim / Thin Trees			38.409873 °	38.409873 °
				-121.539280 °	-121.539280 °
DWR ID	DWR_RD0999_05_s_2020_188				
Comment Code					
T4 : Trim trees over roadway to at least 12 feet above ground level.					
Inspector Comment					

No Photos

LM Start	8.18	Rating **	M	Issue No.	186
LM End	8.18	Issue Type +	Ma	Location *	WS
Category	Earthen Levee			GPS Latitude/Longitude	
				Start	End
Item	Encroachments			38.409818 °	38.409818 °
				-121.538585 °	-121.538585 °
DWR ID	DWR_RD0999_05_s_2020_186				
Comment Code					
TR : Tree or limb					
Inspector Comment					

Photo 1 of 1 : FA\_2021\_RD0999\_236\_186\_20210823\_00066.jpg



View of a tree log on the waterside slope. Spring 2020

<b>* Location</b>		<b>** Rating</b>		<b>+ Issue Type</b>	
LS : Land Side	N/A : Not Applicable	A : Acceptable	N : Not Inspected/Rated	Ma : Maintenance Deficiency	
WS : Water Side		M : Minimally Acceptable	C : Corrected	Ob : Design & System Obsolescence	
CR : Crown		U : Unacceptable	A/W : Acceptable but Monitor & Maintain	En : Enforcement	



**Flood Control Project Maintenance  
Levee Inspections**

## Maintenance Issue Types Only, Levee Inspection Report By Mile - Fall 2021

### Reclamation District No. 0999 Netherlands

Waterway	Bank	Unit Miles	Inspection Start/End	Inspector
Unit No. 05 Elk Slough	Right	9.48	09/30/2021 09/30/2021	Marvin Marshall

LM Start	8.28	Rating **	M	Issue No.	177
LM End	8.28	Issue Type +	Ma	Location *	WS
Category	Earthen Levee			GPS Latitude/Longitude	
				Start	End
Item	Encroachments			38.409355 °	38.409355 °
				-121.536780 °	-121.536780 °
DWR ID	DWR_RD0999_05_f_2020_177				
Comment Code					
TR : Tree or limb					
Inspector Comment					
Remove tree log debris from the waterside slope.					

Photo 1 of 1 : FA\_2021\_RD0999\_236\_177\_20210823\_00063.jpg



View of tree logs and limbs on the waterside slope. Fall 2020

LM Start	8.31	Rating **	M	Issue No.	181
LM End	8.31	Issue Type +	Ma	Location *	WS
Category	Earthen Levee			GPS Latitude/Longitude	
				Start	End
Item	Encroachments			38.409118 °	38.409118 °
				-121.536298 °	-121.536298 °
DWR ID	DWR_RD0999_05_s_2020_181				
Comment Code					
TR : Tree or limb					
Inspector Comment					
Remove a fallen tree from the waterside slope.					

Photo 1 of 1 : FA\_2021\_RD0999\_236\_181\_20210823\_00065.jpg



View of fallen tree on the waterside slope. Spring 2020

LM Start	8.74	Rating **	N	Issue No.	164
LM End	8.74	Issue Type +	Ma	Location *	WS
Category	Earthen Levee			GPS Latitude/Longitude	
				Start	End
Item	Trim / Thin Trees			38.411668 °	38.411668 °
				-121.530162 °	-121.530162 °
DWR ID	DWR_RD0999_05_s_2020_164				
Comment Code					
T5 : Tree stumps.					
Inspector Comment					

Photo 1 of 1 : FA\_2021\_RD0999\_236\_164\_20210823\_00054.jpg



View of a large tree stump on the waterside slope. Spring 2020

<b>* Location</b> LS : Land Side    N/A : Not Applicable WS : Water Side CR : Crown		<b>** Rating</b> A : Acceptable M : Minimally Acceptable U : Unacceptable		N : Not Inspected/Rated C : Corrected A/W : Acceptable but Monitor & Maintain		<b>+ Issue Type</b> Ma : Maintenance Deficiency Ob : Design & System Obsolescence En : Enforcement	
--	--	--	--	---	--	---	--

**Flood Control Project Maintenance  
Levee Inspections**

## Maintenance Issue Types Only, Levee Inspection Report By Mile - Fall 2021

### Reclamation District No. 0999 Netherlands

Waterway	Bank	Unit Miles	Inspection Start/End	Inspector
Unit No. 05 Elk Slough	Right	9.48	09/30/2021 09/30/2021	Marvin Marshall

LM Start	8.83	Rating **	M	Issue No.	130
LM End	8.83	Issue Type +	Ma	Location *	WS
Category	Earthen Levee			GPS Latitude/Longitude	
				Start	End
Item	Vegetation			38.412788 °	38.412788 °
				-121.529682 °	-121.529682 °
DWR ID	DWR_RD0999_05_s_2019_130				
Comment Code					
V2 : Remove the wild growth other than native grasses from the levee slopes.					
Inspector Comment					

No Photos

LM Start	8.84	Rating **	M	Issue No.	159
LM End	8.84	Issue Type +	Ma	Location *	CR
Category	Earthen Levee			GPS Latitude/Longitude	
				Start	End
Item	Encroachments			38.412893 °	38.412893 °
				-121.529670 °	-121.529670 °
DWR ID	DWR_RD0999_05_f_2020_159				
Comment Code					
PR : Prunings					
Inspector Comment					

No Photos

LM Start	9.39	Rating **	A/W	Issue No.	114
LM End	9.39	Issue Type +	Ma	Location *	LS
Category	Earthen Levee			GPS Latitude/Longitude	
				Start	End
Item	Vegetation			38.413377 °	38.413377 °
				-121.524500 °	-121.524500 °
DWR ID	DWR_RD0999_05_s_2012_114				
Comment Code					
V4 : Elderberries are blocking visibility and flood fight capability.					
Inspector Comment					

No Photos

<b>* Location</b> LS : Land Side    N/A : Not Applicable WS : Water Side CR : Crown		<b>** Rating</b> A : Acceptable                      N : Not Inspected/Rated M : Minimally Acceptable        C : Corrected U : Unacceptable                  A/W : Acceptable but Monitor & Maintain		<b>+ Issue Type</b> Ma : Maintenance Deficiency Ob : Design & System Obsolescence En : Enforcement
--	--	---	--	---