

**Flood Control Project Maintenance
Levee Inspections**

Maintenance Issue Types Only, Levee Inspection Report By Mile - Fall 2016

Reclamation District No. 0999 Netherlands

Waterway	Bank	Unit Miles	Inspection Start/End	Inspector
Unit No. 01 Yolo Bypass	Left	15.41	09/19/2016 09/20/2016	Richard Willoughby

LM Start	0.00	Rating **	A	Issue No.	53
LM End	0.00	Issue Type +	Ma	Location *	N/A
Category	Earthen Levee			GPS Latitude/Longitude	
				Start	End
Item	Operations & Maintenance Manuals			°	°
				°	°
DWR ID	DWR_RD0999_01_s _ 2013_53				
Comment Code					
Inspector Comment					
The LMA has copy of the O & M manual on file.					

No Photos

LM Start	0.00	Rating **	A	Issue No.	54
LM End	0.00	Issue Type +	Ma	Location *	N/A
Category	Earthen Levee			GPS Latitude/Longitude	
				Start	End
Item	Emergency Supplies & Equipment			°	°
				°	°
DWR ID	DWR_RD0999_01_s _ 2013_54				
Comment Code					
Inspector Comment					
The LMA has adequate floodfight supplies and equipment on hand.					

No Photos

* Location LS : Land Side N/A : Not Applicable WS : Water Side CR : Crown	** Rating A : Acceptable M : Minimally Acceptable U : Unacceptable	N : Not Inspected/Rated C : Corrected A/W : Acceptable but Monitor & Maintain	+ Issue Type Ma : Maintenance Deficiency Ob : Design & System Obsolescence En : Enforcement
--	--	---	---

Reclamation District No. 0999 Netherlands

No Photos

No Photos

Looking west at garbage on waterward shoulder.

Page 2 of 32

**Flood Control Project Maintenance
Levee Inspections**

Maintenance Issue Types Only, Levee Inspection Report By Mile - Fall 2016

Reclamation District No. 0999 Netherlands

Waterway	Bank	Unit Miles	Inspection Start/End	Inspector
Unit No. 01 Yolo Bypass	Left	15.41	09/19/2016 09/20/2016	Richard Willoughby

LM Start	1.71	Rating **	M	Issue No.	37
LM End	1.75	Issue Type +	Ma	Location *	LS
Category	Earthen Levee			GPS Latitude/Longitude	
				Start	End
Item	Trim / Thin Trees			38.480308 °	38.479740 °
				-121.580876 °	-121.580842 °
DWR ID	DWR_RD0999_01_f_2016_37				
Comment Code					
T1 : Trim trees to at least five feet above ground level.					
Inspector Comment					

No Photos

LM Start	1.73	Rating **	M	Issue No.	4
LM End	1.75	Issue Type +	Ma	Location *	WS
Category	Earthen Levee			GPS Latitude/Longitude	
				Start	End
Item	Trim / Thin Trees			38.480082 °	38.479788 °
				-121.580930 °	-121.580918 °
DWR ID	DWR_RD0999_01_s_2012_4				
Comment Code					
T1 : Trim trees to at least five feet above ground level.					
Inspector Comment					

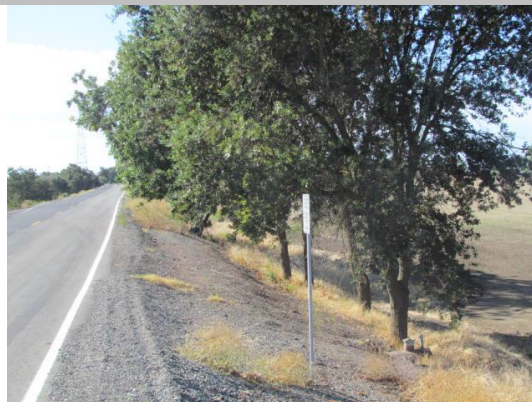
Photo 1 of 2 : FA_2016_RD0999_232_4_20160915_00011.jpg



Looking northwest at trimmed trees on waterward slope.

LM Start	1.73	Rating **	M	Issue No.	4 (cont)
LM End	1.75	Issue Type +	Ma	Location *	WS

Photo 2 of 2 : FA_2016_RD0999_232_4_20160915_00012.jpg



Looking southwest at trimmed trees on waterward slope.

* Location LS : Land Side N/A : Not Applicable WS : Water Side CR : Crown		** Rating A : Acceptable M : Minimally Acceptable U : Unacceptable N : Not Inspected/Rated C : Corrected A/W : Acceptable but Monitor & Maintain		+ Issue Type Ma : Maintenance Deficiency Ob : Design & System Obsolescence En : Enforcement	
--	--	---	--	---	--

**Flood Control Project Maintenance
Levee Inspections**

Maintenance Issue Types Only, Levee Inspection Report By Mile - Fall 2016

Reclamation District No. 0999 Netherlands

Waterway	Bank	Unit Miles	Inspection Start/End	Inspector
Unit No. 01 Yolo Bypass	Left	15.41	09/19/2016 09/20/2016	Richard Willoughby

LM Start	1.73	Rating **	A/W	Issue No.	66
LM End	1.73	Issue Type +	Ma	Location *	WS
Category	Earthen Levee			GPS Latitude/Longitude	
				Start	End
Item	Encroachments			38.480009 °	38.480009 °
				-121.580865 °	-121.580865 °
DWR ID	DWR_RD0999_01_s_2016_66				
Comment Code					
GA : Garbage					
Inspector Comment					
Garbage on waterward slope.					

Photo 1 of 1 : FA_2016_RD0999_232_66_20160915_00083.jpg



Looking northwest at garbage on waterward slope and toe.

LM Start	1.79	Rating **	U	Issue No.	30
LM End	2.04	Issue Type +	Ma	Location *	LS
Category	Earthen Levee			GPS Latitude/Longitude	
				Start	End
Item	Trim / Thin Trees			38.479165 °	38.475463 °
				-121.580640 °	-121.580722 °
DWR ID	DWR_RD0999_01_s_2012_30				
Comment Code					
T1 : Trim trees to at least five feet above ground level.					
Inspector Comment					

Photo 1 of 2 : FA_2016_RD0999_232_30_20160923_00110.jpg



Looking southeast at dense trees on landward slope. (Fall 2016)

LM Start	1.79	Rating **	U	Issue No.	30 (cont)
LM End	2.04	Issue Type +	Ma	Location *	LS

Photo 2 of 2 : FA_2016_RD0999_232_30_20160915_00034.jpg



Looking southeast at dense trees on landward slope. (Spring 2016)

* Location LS : Land Side N/A : Not Applicable WS : Water Side CR : Crown		** Rating A : Acceptable M : Minimally Acceptable U : Unacceptable N : Not Inspected/Rated C : Corrected A/W : Acceptable but Monitor & Maintain		+ Issue Type Ma : Maintenance Deficiency Ob : Design & System Obsolescence En : Enforcement	
--	--	---	--	---	--

**Flood Control Project Maintenance
Levee Inspections**

Maintenance Issue Types Only, Levee Inspection Report By Mile - Fall 2016

Reclamation District No. 0999 Netherlands

Waterway	Bank	Unit Miles	Inspection Start/End	Inspector
Unit No. 01 Yolo Bypass	Left	15.41	09/19/2016 09/20/2016	Richard Willoughby

LM Start	2.13	Rating **	U	Issue No.	7
LM End	2.13	Issue Type +	Ma	Location *	WS
Category	Earthen Levee			GPS Latitude/Longitude	
				Start	End
Item	Trim / Thin Trees			38.474258 °	38.474258 °
				-121.580528 °	-121.580528 °
DWR ID	DWR_RD0999_01_s_2012_7				
Comment Code					
T1 : Trim trees to at least five feet above ground level.					
Inspector Comment					

Photo 1 of 2 : FA_2016_RD0999_232_7_20160923_00111.jpg



Looking north at untrimmed trees on waterward slope. (Fall 2016)

LM Start	2.13	Rating **	U	Issue No.	7 (cont)
LM End	2.13	Issue Type +	Ma	Location *	WS

Photo 2 of 2 : FA_2016_RD0999_232_7_20160915_00015.jpg



Looking south at untrimmed trees on waterward slope. (Spring 2016)

LM Start	2.13	Rating **	U	Issue No.	31
LM End	2.13	Issue Type +	Ma	Location *	LS
Category	Earthen Levee			GPS Latitude/Longitude	
				Start	End
Item	Trim / Thin Trees			38.474200 °	38.474200 °
				-121.580480 °	-121.580480 °
DWR ID	DWR_RD0999_01_s_2012_31				
Comment Code					
T1 : Trim trees to at least five feet above ground level.					
Inspector Comment					

Photo 1 of 2 : FA_2016_RD0999_232_31_20160923_00112.jpg



Looking north at untrimmed trees on landward slope. (Fall 2016)

*** Location**

LS : Land Side N/A : Not Applicable
WS : Water Side
CR : Crown

**** Rating**

A : Acceptable N : Not Inspected/Rated
M : Minimally Acceptable C : Corrected
U : Unacceptable A/W : Acceptable but Monitor & Maintain

+ Issue Type

Ma : Maintenance Deficiency
Ob : Design & System Obsolescence
En : Enforcement

Maintenance Issue Types Only, Levee Inspection Report By Mile - Fall 2016

Waterway	Bank	Unit Miles	Inspection Start/End	Inspector
Unit No. 01 Yolo Bypass	Left	15.41	09/19/2016 09/20/2016	Richard Willoughby

Photo 2 of 2 : FA_2016_RD0999_232_31_20160915_00038.jpg



Looking southeast at untrimmed trees on landward slope. (Spring 2016)

Photo 1 of 1 : FA_2016_RD0999_232_8_20160915_00018.jpg



Looking southwest at trimmed trees on waterside slope. (Spring 2012)

Photo 1 of 4 : FA_2016_RD0999_232_40_20160915_00049.jpg



Looking south at trench along landward shoulder. (spring 2016)

* Location	** Rating	+ Issue Type
LS : Land Side N/A : Not Applicable WS : Water Side CR : Crown	A : Acceptable N : Not Inspected/Rated M : Minimally Acceptable C : Corrected U : Unacceptable A/W : Acceptable but Monitor & Maintain	Ma : Maintenance Deficiency Ob : Design & System Obsolescence En : Enforcement

Maintenance Issue Types Only, Levee Inspection Report By Mile - Fall 2016

Waterway	Bank	Unit Miles	Inspection Start/End	Inspector
Unit No. 01 Yolo Bypass	Left	15.41	09/19/2016 09/20/2016	Richard Willoughby



* Location	** Rating	+ Issue Type
LS : Land Side	A : Acceptable	Ma : Maintenance Deficiency
N/A : Not Applicable	N : Not Inspected/Rated	Ob : Design & System Obsolescence
WS : Water Side	M : Minimally Acceptable	En : Enforcement
CR : Crown	U : Unacceptable	
	A/W : Acceptable but Monitor & Maintain	

**Flood Control Project Maintenance
Levee Inspections**

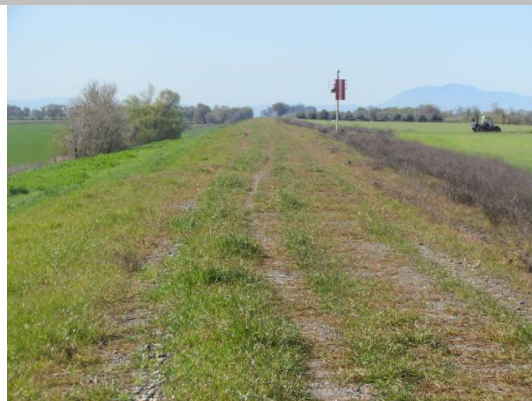
Maintenance Issue Types Only, Levee Inspection Report By Mile - Fall 2016

Reclamation District No. 0999 Netherlands

Waterway	Bank	Unit Miles	Inspection Start/End	Inspector
Unit No. 01 Yolo Bypass	Left	15.41	09/19/2016 09/20/2016	Richard Willoughby

LM Start	2.53	Rating **	A/W	Issue No.	46
LM End	4.98	Issue Type +	Ma	Location *	CR
Category	Earthen Levee			GPS Latitude/Longitude	
				Start	End
Item	Crown Surface / Depressions / Rutting			38.468801 °	38.435378 °
				-121.583189 °	-121.598664 °
DWR ID	DWR_RD0999_01_f_2013_46				
Comment Code					
C2 : Repair depressions or ruts in the crown or slope.					
Inspector Comment					
Control growth on levee crown and repair ruts on levee crown. And add appropriate gravel or road base.					

Photo 1 of 1 : FA_2016_RD0999_232_46_20160915_00059.jpg



Looking south at growth on levee crown.

LM Start	3.22	Rating **	M	Issue No.	51
LM End	3.22	Issue Type +	Ma	Location *	LS
Category	Earthen Levee			GPS Latitude/Longitude	
				Start	End
Item	Slope Stability			38.459399 °	38.459399 °
				-121.587523 °	-121.587523 °
DWR ID	DWR_RD0999_01_s_2013_51				
Comment Code					
S1 : Repair slope instability.					
Inspector Comment					
Depression on landward shoulder and slope 40' x 20'. Earthen material appears to be sliding toward levee toe.					

Photo 1 of 2 : FA_2016_RD0999_232_51_20160923_00113.jpg



Looking northeast at depression on landward slope. (Fall 2016)

LM Start	3.22	Rating **	M	Issue No.	51 (cont)
LM End	3.22	Issue Type +	Ma	Location *	LS

Photo 2 of 2 : FA_2016_RD0999_232_51_20160915_00070.jpg



Looking north at depression on landside shoulder and slope. (Spring 2016)

* Location LS : Land Side N/A : Not Applicable WS : Water Side CR : Crown	** Rating A : Acceptable M : Minimally Acceptable U : Unacceptable	N : Not Inspected/Rated C : Corrected A/W : Acceptable but Monitor & Maintain	+ Issue Type Ma : Maintenance Deficiency Ob : Design & System Obsolescence En : Enforcement
--	--	---	---

**Flood Control Project Maintenance
Levee Inspections**

Maintenance Issue Types Only, Levee Inspection Report By Mile - Fall 2016

Reclamation District No. 0999 Netherlands

Waterway	Bank	Unit Miles	Inspection Start/End	Inspector
Unit No. 01 Yolo Bypass	Left	15.41	09/19/2016 09/20/2016	Richard Willoughby

LM Start	4.07	Rating **	A/W	Issue No.	11
LM End	4.07	Issue Type +	Ma	Location *	WS
Category	Earthen Levee			GPS Latitude/Longitude	
				Start	End
Item	Trim / Thin Trees			38.447772 °	38.447772 °
				-121.592912 °	-121.592912 °
DWR ID	DWR_RD0999_01_s _ 2012_11				
Comment Code					
T1 : Trim trees to at least five feet above ground level.					
Inspector Comment					

No Photos

LM Start	4.16	Rating **	N	Issue No.	14
LM End	4.16	Issue Type +	Ma	Location *	WS
Category	Earthen Levee			GPS Latitude/Longitude	
				Start	End
Item	Trim / Thin Trees			38.446619 °	38.446619 °
				-121.593442 °	-121.593442 °
DWR ID	DWR_RD0999_01_s _ 2012_14				
Comment Code					
T5 : Tree stumps.					
Inspector Comment					

No Photos

* Location LS : Land Side N/A : Not Applicable WS : Water Side CR : Crown	** Rating A : Acceptable M : Minimally Acceptable U : Unacceptable	N : Not Inspected/Rated C : Corrected A/W : Acceptable but Monitor & Maintain	+ Issue Type Ma : Maintenance Deficiency Ob : Design & System Obsolescence En : Enforcement
--	--	---	---

**Flood Control Project Maintenance
Levee Inspections**

Maintenance Issue Types Only, Levee Inspection Report By Mile - Fall 2016

Reclamation District No. 0999 Netherlands

Waterway	Bank	Unit Miles	Inspection Start/End	Inspector
Unit No. 01 Yolo Bypass	Left	15.41	09/19/2016 09/20/2016	Richard Willoughby

LM Start	4.17	Rating **	N	Issue No.	15
LM End	4.17	Issue Type +	Ma	Location *	WS
Category	Earthen Levee			GPS Latitude/Longitude	
				Start	End
Item	Trim / Thin Trees			38.446478 °	38.446478 °
				-121.593508 °	-121.593508 °
DWR ID	DWR_RD0999_01_s_2012_15				
Comment Code					
T5 : Tree stumps.					
Inspector Comment					

No Photos

LM Start	4.31	Rating **	M	Issue No.	35
LM End	4.31	Issue Type +	Ma	Location *	LS
Category	Earthen Levee			GPS Latitude/Longitude	
				Start	End
Item	Slope Stability			38.444561 °	38.444561 °
				-121.594438 °	-121.594438 °
DWR ID	DWR_RD0999_01_f_2012_35				
Comment Code					
S3 : Repair the levee slope damaged by vehicle traffic and prevent access where possible.					
Inspector Comment					
Depression is caused by vehicle traffic.					

Photo 1 of 2 : FA_2016_RD0999_232_35_20160923_00114.jpg



Looking southeast at slope damage cause by vehicle traffic on landward slope. (Fall 2016)

* Location LS : Land Side N/A : Not Applicable WS : Water Side CR : Crown	** Rating A : Acceptable M : Minimally Acceptable U : Unacceptable N : Not Inspected/Rated C : Corrected A/W : Acceptable but Monitor & Maintain	+ Issue Type Ma : Maintenance Deficiency Ob : Design & System Obsolescence En : Enforcement
--	---	---

**Flood Control Project Maintenance
Levee Inspections**

Maintenance Issue Types Only, Levee Inspection Report By Mile - Fall 2016

Reclamation District No. 0999 Netherlands

Waterway	Bank	Unit Miles	Inspection Start/End	Inspector
Unit No. 01 Yolo Bypass	Left	15.41	09/19/2016 09/20/2016	Richard Willoughby

LM Start	4.31	Rating **	M	Issue No.	35 (cont)	
LM End	4.31	Issue Type +	Ma	Location *	LS	
Category	Earthen Levee			GPS Latitude/Longitude		
				Start		End
Item	Slope Stability			38.444561 °		38.444561 °
				-121.594438 °		-121.594438 °
DWR ID	DWR_RD0999_01_f_2012_35					
Comment Code						
S3 : Repair the levee slope damaged by vehicle traffic and prevent access where possible.						
Inspector Comment						
Depression is caused by vehicle traffic.						

Photo 2 of 2 : FA_2016_RD0999_232_35_20160915_00041.jpg



Looking southeast at slope damage cause by vehicle traffic on landward slope. (Spring 2015)

LM Start	4.31	Rating **	M	Issue No.	27
LM End	4.31	Issue Type +	Ma	Location *	WS
Category	Earthen Levee			GPS Latitude/Longitude	
				Start	End
Item	Slope Stability			38.444560 °	38.444560 °
				-121.594440 °	-121.594440 °
DWR ID	DWR_RD0999_01_f_2012_27				
Comment Code					
S3 : Repair the levee slope damaged by vehicle traffic and prevent access where possible.					
Inspector Comment					
Local farmer causing slope damage by driving equipment and trucks on slope.					

Photo 1 of 2 : FA_2016_RD0999_232_27_20160923_00115.jpg



Looking at slope damage cause by vehicle traffic on waterward slope. (Fall 2016)

* Location LS : Land Side N/A : Not Applicable WS : Water Side CR : Crown	** Rating A : Acceptable M : Minimally Acceptable U : Unacceptable N : Not Inspected/Rated C : Corrected A/W : Acceptable but Monitor & Maintain	+ Issue Type Ma : Maintenance Deficiency Ob : Design & System Obsolescence En : Enforcement
--	---	---

**Flood Control Project Maintenance
Levee Inspections**

Maintenance Issue Types Only, Levee Inspection Report By Mile - Fall 2016

Reclamation District No. 0999 Netherlands

Waterway	Bank	Unit Miles	Inspection Start/End	Inspector
Unit No. 01 Yolo Bypass	Left	15.41	09/19/2016 09/20/2016	Richard Willoughby

LM Start	4.31	Rating **	M	Issue No.	27 (cont)	
LM End	4.31	Issue Type +	Ma	Location *	WS	
Category	Earthen Levee			GPS Latitude/Longitude		
				Start		End
Item	Slope Stability			38.444560 °		38.444560 °
				-121.594440 °		-121.594440 °
DWR ID	DWR_RD0999_01_f_2012_27					
Comment Code						
S3 : Repair the levee slope damaged by vehicle traffic and prevent access where possible.						
Inspector Comment						
Local farmer causing slope damage by driving equipment and trucks on slope.						

Photo 2 of 2 : FA_2016_RD0999_232_27_20160915_00028.jpg



Looking at slope damage cause by vehicle traffice on waterward slope.
(Spring 2015)

LM Start	4.36	Rating **	C	Issue No.	45
LM End	4.36	Issue Type +	Ma	Location *	WS
Category	Earthen Levee			GPS Latitude/Longitude	
				Start	End
Item	Vegetation			38.443896 °	38.443896 °
				-121.594739 °	-121.594739 °
DWR ID	DWR_RD0999_01_f_2013_45				
Comment Code					
V2 : Remove the wild growth other than native grasses from the levee slopes.					
Inspector Comment					
Landowner has planted cactus on waterward toe.					

No Photos

*** Location**
LS : Land Side N/A : Not Applicable
WS : Water Side
CR : Crown

**** Rating**
A : Acceptable N : Not Inspected/Rated
M : Minimally Acceptable C : Corrected
U : Unacceptable A/W : Acceptable but Monitor & Maintain

+ Issue Type
Ma : Maintenance Deficiency
Ob : Design & System Obsolescence
En : Enforcement

**Flood Control Project Maintenance
Levee Inspections**

Maintenance Issue Types Only, Levee Inspection Report By Mile - Fall 2016

Reclamation District No. 0999 Netherlands

Waterway	Bank	Unit Miles	Inspection Start/End	Inspector
Unit No. 01 Yolo Bypass	Left	15.41	09/19/2016 09/20/2016	Richard Willoughby

LM Start	4.57	Rating **	N	Issue No.	16
LM End	4.57	Issue Type +	Ma	Location *	WS
Category	Earthen Levee			GPS Latitude/Longitude	
				Start	End
Item	Trim / Thin Trees			38.441063°	38.441063°
				-121.596038°	-121.596038°
DWR ID	DWR_RD0999_01_s_2012_16				
Comment Code					
T5 : Tree stumps.					
Inspector Comment					

No Photos

LM Start	4.59	Rating **	N	Issue No.	17
LM End	4.59	Issue Type +	Ma	Location *	WS
Category	Earthen Levee			GPS Latitude/Longitude	
				Start	End
Item	Trim / Thin Trees			38.440748 °	38.440748 °
				-121.596187 °	-121.596187 °
DWR ID	DWR_RD0999_01_s_2012_17				
Comment Code					
T5 : Tree stumps.					
Inspector Comment					

No Photos

* Location LS : Land Side N/A : Not Applicable WS : Water Side CR : Crown	** Rating A : Acceptable M : Minimally Acceptable U : Unacceptable N : Not Inspected/Rated C : Corrected A/W : Acceptable but Monitor & Maintain	+ Issue Type Ma : Maintenance Deficiency Ob : Design & System Obsolescence En : Enforcement
--	---	---

**Flood Control Project Maintenance
Levee Inspections**

Maintenance Issue Types Only, Levee Inspection Report By Mile - Fall 2016

Reclamation District No. 0999 Netherlands

Waterway	Bank	Unit Miles	Inspection Start/End	Inspector
Unit No. 01 Yolo Bypass	Left	15.41	09/19/2016 09/20/2016	Richard Willoughby

LM Start	4.83	Rating **	M	Issue No.	5
LM End	4.85	Issue Type +	Ma	Location *	WS
Category	Supplemental			GPS Latitude/Longitude	
				Start	End
Item	2015 USACE Erosion Survey, DRAFT			38.437506 °	38.437296 °
				-121.597707 °	-121.597803 °
DWR ID	DWR_RD0999_01_s_2016_5				
Comment Code					
Inspector Comment					
2006 - Slump failure of lower slope. Longitudinal cracks present along the levee slope. 2011 - Difficult to see due to overgrown vegetation. A small section of the levee has slumped. Sties DWS 5.0 and DWS 5.01 were combined. 2015: Site is part of the extended inventory, last inspected 2011. [2015 Site ID: DWS_5-0_L]					

No Photos

LM Start	5.18	Rating **	C	Issue No.	12
LM End	6.52	Issue Type +	Ma	Location *	CR
Category	Earthen Levee			GPS Latitude/Longitude	
				Start	End
Item	Crown Surface / Depressions / Rutting			38.432700 °	38.414406 °
				-121.599950 °	-121.608373 °
DWR ID	DWR_RD0999_01_s_2012_12				
Comment Code					
C3 : Add appropriate gravel or road base. Grade and compact.					
Inspector Comment					

No Photos

* Location LS : Land Side N/A : Not Applicable WS : Water Side CR : Crown	** Rating A : Acceptable M : Minimally Acceptable U : Unacceptable N : Not Inspected/Rated C : Corrected A/W : Acceptable but Monitor & Maintain	+ Issue Type Ma : Maintenance Deficiency Ob : Design & System Obsolescence En : Enforcement
--	---	---

**Flood Control Project Maintenance
Levee Inspections**

Maintenance Issue Types Only, Levee Inspection Report By Mile - Fall 2016

Reclamation District No. 0999 Netherlands

Waterway	Bank	Unit Miles	Inspection Start/End	Inspector
Unit No. 01 Yolo Bypass	Left	15.41	09/19/2016 09/20/2016	Richard Willoughby

LM Start	6.45	Rating **	A/W	Issue No.	52
LM End	6.45	Issue Type +	Ma	Location *	LS
Category	Earthen Levee			GPS Latitude/Longitude	
				Start	End
Item	Encroachments			38.415408 °	38.415408 °
				-121.608002 °	-121.608002 °
DWR ID	DWR_RD0999_01_s_2013_52				
Comment Code					
TR : Tree or limb					
Inspector Comment					
Downed tree limbs on landside slope.					

No Photos

LM Start	6.53	Rating **	C	Issue No.	18
LM End	6.58	Issue Type +	Ma	Location *	LS
Category	Earthen Levee			GPS Latitude/Longitude	
				Start	End
Item	Encroachments			38.414367 °	38.413698 °
				-121.608430 °	-121.608762 °
DWR ID	DWR_RD0999_01_s_2012_18				
Comment Code					
PR : Prunings					
Inspector Comment					
Pruning piles at landward toe.					

No Photos

LM Start	6.53	Rating **	C	Issue No.	38
LM End	6.53	Issue Type +	Ma	Location *	LS
Category	Earthen Levee			GPS Latitude/Longitude	
				Start	End
Item	Vegetation			38.414332 °	38.414332 °
				-121.608413 °	-121.608413 °
DWR ID	DWR_RD0999_01_f_2015_38				
Comment Code					
V2 : Remove the wild growth other than native grasses from the levee slopes.					
Inspector Comment					
Remove young oleander from landward shoulder and slope.					

No Photos

* Location LS : Land Side N/A : Not Applicable WS : Water Side CR : Crown	** Rating A : Acceptable M : Minimally Acceptable U : Unacceptable	N : Not Inspected/Rated C : Corrected A/W : Acceptable but Monitor & Maintain	+ Issue Type Ma : Maintenance Deficiency Ob : Design & System Obsolescence En : Enforcement
--	--	---	---

**Flood Control Project Maintenance
Levee Inspections**

Maintenance Issue Types Only, Levee Inspection Report By Mile - Fall 2016

Reclamation District No. 0999 Netherlands

Waterway	Bank	Unit Miles	Inspection Start/End	Inspector
Unit No. 01 Yolo Bypass	Left	15.41	09/19/2016 09/20/2016	Richard Willoughby

LM Start	6.56	Rating **	M	Issue No.	42
LM End	6.56	Issue Type +	Ma	Location *	LS
Category	Earthen Levee			GPS Latitude/Longitude	
				Start	End
Item	Animal Control			38.413858 °	38.413858 °
				-121.608638 °	-121.608638 °
DWR ID	DWR_RD0999_01_s_2012_42				
Comment Code					
A1 : Exterminate rodents and backfill and compact or grout burrows.					
Inspector Comment					
More than five holes within 25' of levee.					

Photo 1 of 2 : FA_2016_RD0999_232_42_20160915_00054.jpg



Looking east at rodent holes on landside slope.

LM Start	6.56	Rating **	M	Issue No.	42 (cont)
LM End	6.56	Issue Type +	Ma	Location *	LS

Photo 2 of 2 : FA_2016_RD0999_232_42_20160915_00055.jpg



Looking at typical rodent hole on landside slope.

LM Start	6.56	Rating **	M	Issue No.	41
LM End	6.59	Issue Type +	Ma	Location *	LS
Category	Earthen Levee			GPS Latitude/Longitude	
				Start	End
Item	Encroachments			38.413856 °	38.413475 °
				-121.608635 °	-121.608817 °
DWR ID	DWR_RD0999_01_s_2016_41				
Comment Code					
PR : Prunings					
Inspector Comment					
Pruning piles on landward toe.					

Photo 1 of 2 : FA_2016_RD0999_232_41_20160923_00116.jpg



Looking east at prunings at landward toe and berm. (Fall 2016)

*** Location**

LS : Land Side N/A : Not Applicable
WS : Water Side
CR : Crown

**** Rating**

A : Acceptable N : Not Inspected/Rated
M : Minimally Acceptable C : Corrected
U : Unacceptable A/W : Acceptable but Monitor & Maintain

+ Issue Type

Ma : Maintenance Deficiency
Ob : Design & System Obsolescence
En : Enforcement

Maintenance Issue Types Only, Levee Inspection Report By Mile - Fall 2016

Waterway	Bank	Unit Miles	Inspection Start/End	Inspector
Unit No. 01 Yolo Bypass	Left	15.41	09/19/2016 09/20/2016	Richard Willoughby

Photo 2 of 2 : FA_2016_RD0999_232_41_20160915_00053.jpg



Looking east at prunings on landward toe and berm. (Spring 2016)

Photo 1 of 2 : FA_2016_RD0999_232_22_20160915_00022.jpg



Looking south at levee crown. (Spring 2016)

Photo 2 of 2 : FA_2016_RD0999_232_22_20160915_00023.jpg



Looking south at levee crown. (Spring 2015)

* Location	** Rating	+ Issue Type
LS : Land Side	A : Acceptable	Ma : Maintenance Deficiency
N/A : Not Applicable	N : Not Inspected/Rated	Ob : Design & System Obsolescence
WS : Water Side	M : Minimally Acceptable	En : Enforcement
CR : Crown	U : Unacceptable	
	A/W : Acceptable but Monitor & Maintain	

**Flood Control Project Maintenance
Levee Inspections**

Maintenance Issue Types Only, Levee Inspection Report By Mile - Fall 2016

Reclamation District No. 0999 Netherlands

Waterway	Bank	Unit Miles	Inspection Start/End	Inspector
Unit No. 01 Yolo Bypass	Left	15.41	09/19/2016 09/20/2016	Richard Willoughby

LM Start	7.61	Rating **	U	Issue No.	58
LM End	7.61	Issue Type +	Ma	Location *	LS
Category	Earthen Levee			GPS Latitude/Longitude	
				Start	End
Item	Erosion / Bank Caving			38.399600°	38.399600°
				-121.615224°	-121.615224°
DWR ID	DWR_RD0999_01_f_2016_58				
Comment Code					
Inspector Comment					
Depression 10' by 20' on landward slope.					

Photo 1 of 2 : FA_2016_RD0999_232_58_20160923_00117.jpg



Looking northeast at depression on landward slope.

LM Start	7.61	Rating **	U	Issue No.	58 (cont)
LM End	7.61	Issue Type +	Ma	Location *	LS

Photo 2 of 2 : FA_2016_RD0999_232_58_20160923_00118.jpg



LM Start	9.34	Rating **	M	Issue No.	69
LM End	9.34	Issue Type +	Ma	Location *	CR
Category	Earthen Levee			GPS Latitude/Longitude	
				Start	End
Item	Animal Control			38.376094 °	38.376094 °
				-121.626178 °	-121.626178 °
DWR ID	DWR_RD0999_01_s_2016_69				
Comment Code					
A1 : Exterminate rodents and backfill and compact or grout burrows.					
Inspector Comment					
Rodent holes noted on levee crown, shoulder and landward slope					

Photo 1 of 3 : FA_2016_RD0999_232_69_20160923_00120.jpg



Looking at typical rodent hole on landward slope. (Fall 2016)

*** Location**

LS : Land Side N/A : Not Applicable
WS : Water Side
CR : Crown

**** Rating**

A : Acceptable N : Not Inspected/Rated
M : Minimally Acceptable C : Corrected
U : Unacceptable A/W : Acceptable but Monitor & Maintain

+ Issue Type

Ma : Maintenance Deficiency
Ob : Design & System Obsolescence
En : Enforcement

**Flood Control Project Maintenance
Levee Inspections**

Maintenance Issue Types Only, Levee Inspection Report By Mile - Fall 2016

Reclamation District No. 0999 Netherlands

Waterway	Bank	Unit Miles	Inspection Start/End	Inspector
Unit No. 01 Yolo Bypass	Left	15.41	09/19/2016 09/20/2016	Richard Willoughby

LM Start	9.94	Rating **	A/W	Issue No.	920
LM End	11.60	Issue Type +	Ma	Location *	CR
Category	Earthen Levee			GPS Latitude/Longitude	
				Start	End
Item	Crown Surface / Depressions / Rutting			38.367831°	38.345274°
				-121.629990°	-121.640482°
DWR ID	DWR_RD0999_01_s_2012_920				
Comment Code					
C1 : Add appropriate material and re-grade the levee to bring the crown above the design elevation.					
Inspector Comment					

Photo 1 of 3 : FA_2016_RD0999_232_920_20160915_00093.jpg



Looking south at growth on levee crown (Spring 2016)

LM Start	9.94	Rating **	A/W	Issue No.	920 (cont)
LM End	11.60	Issue Type +	Ma	Location *	CR

Photo 2 of 3 : FA_2016_RD0999_232_920_20160915_00094.jpg



Looking south at levee crown. (Spring 2015)

LM Start	9.94	Rating **	A/W	Issue No.	920 (cont)
LM End	11.60	Issue Type +	Ma	Location *	CR

Photo 3 of 3 : FA_2016_RD0999_232_920_20160915_00095.jpg



Looking south at crown roadway. (Spring 2014)

*** Location**

LS : Land Side N/A : Not Applicable
WS : Water Side
CR : Crown

**** Rating**

A : Acceptable N : Not Inspected/Rated
M : Minimally Acceptable C : Corrected
U : Unacceptable A/W : Acceptable but Monitor & Maintain

+ Issue Type

Ma : Maintenance Deficiency
Ob : Design & System Obsolescence
En : Enforcement

**Flood Control Project Maintenance
Levee Inspections**

Maintenance Issue Types Only, Levee Inspection Report By Mile - Fall 2016

Reclamation District No. 0999 Netherlands

Waterway	Bank	Unit Miles	Inspection Start/End	Inspector
Unit No. 01 Yolo Bypass	Left	15.41	09/19/2016 09/20/2016	Richard Willoughby

LM Start	9.95	Rating **	U	Issue No.	2
LM End	9.95	Issue Type +	Ma	Location *	LS
Category	Earthen Levee			GPS Latitude/Longitude	
				Start	End
Item	Animal Control			38.367750 °	38.367750 °
				-121.630025 °	-121.630025 °
DWR ID	DWR_RD0999_01_s_2012_2				
Comment Code					
A1 : Exterminate rodents and backfill and compact or grout burrows.					
Inspector Comment					
Several large rodent holes on landward shoulder.					

Photo 1 of 5 : FA_2016_RD0999_232_2_20160915_00006.jpg



Looking southeast at large rodent hole on landward shoulder. (Spring 2016)

LM Start	9.95	Rating **	U	Issue No.	2 (cont)
LM End	9.95	Issue Type +	Ma	Location *	LS

Photo 2 of 5 : FA_2016_RD0999_232_2_20160915_00007.jpg



Looking southeast at rodent holes on landward shoulder fall 2015.

LM Start	9.95	Rating **	U	Issue No.	2 (cont)
LM End	9.95	Issue Type +	Ma	Location *	LS

Photo 3 of 5 : FA_2016_RD0999_232_2_20160915_00008.jpg



Looking northeast at rodent holes on landward shoulder fall 2015.

* Location LS : Land Side N/A : Not Applicable WS : Water Side CR : Crown	** Rating A : Acceptable M : Minimally Acceptable U : Unacceptable	N : Not Inspected/Rated C : Corrected A/W : Acceptable but Monitor & Maintain	+ Issue Type Ma : Maintenance Deficiency Ob : Design & System Obsolescence En : Enforcement
--	--	---	---

**Flood Control Project Maintenance
Levee Inspections**

Maintenance Issue Types Only, Levee Inspection Report By Mile - Fall 2016

Reclamation District No. 0999 Netherlands

Waterway	Bank	Unit Miles	Inspection Start/End	Inspector
Unit No. 01 Yolo Bypass	Left	15.41	09/19/2016 09/20/2016	Richard Willoughby

LM Start	9.95	Rating **	U	Issue No.	2 (cont)	
LM End	9.95	Issue Type +	Ma	Location *	LS	
Category	Earthen Levee			GPS Latitude/Longitude		
				Start		End
Item	Animal Control			38.367750 °		38.367750 °
				-121.630025 °		-121.630025 °
DWR ID	DWR_RD0999_01_s_2012_2					
Comment Code						
A1 : Exterminate rodents and backfill and compact or grout burrows.						
Inspector Comment						
Several large rodent holes on landward shoulder.						

Photo 4 of 5 : FA_2016_RD0999_232_2_20160915_00009.jpg



Looking at typical rodent holes on landward shoulder. (Spring 2015)

LM Start	9.95	Rating **	U	Issue No.	2 (cont)
LM End	9.95	Issue Type +	Ma	Location *	LS

Photo 5 of 5 : FA_2016_RD0999_232_2_20160915_00010.jpg



Looking south at rodent hole on landside shoulder. (Fall 2014)

LM Start	10.21	Rating **	A/W	Issue No.	70
LM End	10.21	Issue Type +	Ma	Location *	CR
Category	Earthen Levee			GPS Latitude/Longitude	
				Start	End
Item	Repair Gates			38.364229 °	38.364229 °
				-121.631673 °	-121.631673 °
DWR ID	DWR_RD0999_01_s_2016_70				
Comment Code					
Inspector Comment					
Gate drags difficult to open and close. Gate pole leaning.					

Photo 1 of 3 : FA_2016_RD0999_232_70_20160915_00088.jpg

*** Location**

LS : Land Side N/A : Not Applicable
WS : Water Side
CR : Crown

**** Rating**

A : Acceptable N : Not Inspected/Rated
M : Minimally Acceptable C : Corrected
U : Unacceptable A/W : Acceptable but Monitor & Maintain

+ Issue Type

Ma : Maintenance Deficiency
Ob : Design & System Obsolescence
En : Enforcement

**Flood Control Project Maintenance
Levee Inspections**

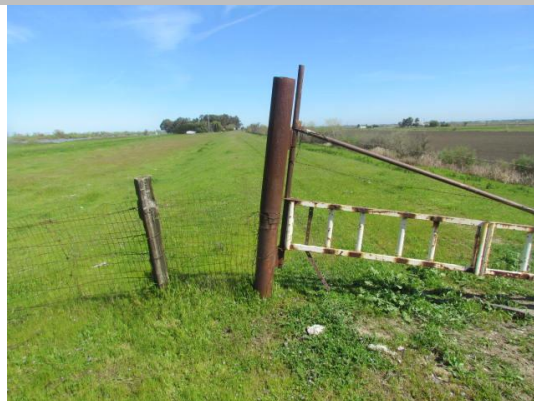
Maintenance Issue Types Only, Levee Inspection Report By Mile - Fall 2016

Reclamation District No. 0999 Netherlands

Waterway	Bank	Unit Miles	Inspection Start/End	Inspector
Unit No. 01 Yolo Bypass	Left	15.41	09/19/2016 09/20/2016	Richard Willoughby

LM Start	10.21	Rating **	A/W	Issue No.	70 (cont)	
LM End	10.21	Issue Type +	Ma	Location *	CR	
Category	Earthen Levee			GPS Latitude/Longitude		
				Start		End
Item	Repair Gates			38.364229°		38.364229°
				-121.631673°		-121.631673°
DWR ID	DWR_RD0999_01_s_2016_70					
Comment Code						
Inspector Comment						
Gate drags difficult to open and close. Gate pole leaning.						

Photo 2 of 3 : FA_2016_RD0999_232_70_20160915_00089.jpg



LM Start	10.21	Rating **	A/W	Issue No.	70 (cont)
LM End	10.21	Issue Type +	Ma	Location *	CR

Photo 3 of 3 : FA_2016_RD0999_232_70_20160915_00090.jpg



Looking south at fence pole.

LM Start	10.75	Rating **	A/W	Issue No.	61
LM End	10.75	Issue Type +	Ma	Location *	WS
Category	Earthen Levee			GPS Latitude/Longitude	
				Start	End
Item	Encroachments			38.356844 °	38.356844 °
				-121.635101 °	-121.635101 °
DWR ID	DWR_RD0999_01_f_2014_61				
Comment Code					
TR : Tree or limb					
Inspector Comment					
Downed tree on waterward slope has been removed, but should be monitored.					

Photo 1 of 1 : FA_2016_RD0999_232_61_20160915_00077.jpg



Looking southwest at downed tree on waterward slope.

*** Location**

LS : Land Side N/A : Not Applicable
WS : Water Side
CR : Crown

**** Rating**

A : Acceptable N : Not Inspected/Rated
M : Minimally Acceptable C : Corrected
U : Unacceptable A/W : Acceptable but Monitor & Maintain

+ Issue Type

Ma : Maintenance Deficiency
Ob : Design & System Obsolescence
En : Enforcement

**Flood Control Project Maintenance
Levee Inspections**

Maintenance Issue Types Only, Levee Inspection Report By Mile - Fall 2016

Reclamation District No. 0999 Netherlands

Waterway	Bank	Unit Miles	Inspection Start/End	Inspector
Unit No. 01 Yolo Bypass	Left	15.41	09/19/2016 09/20/2016	Richard Willoughby

LM Start	10.81	Rating **	A/W	Issue No.	23
LM End	11.06	Issue Type +	Ma	Location *	WS
Category	Earthen Levee			GPS Latitude/Longitude	
				Start	End
Item	Trim / Thin Trees			38.356077°	38.352640°
				-121.635598°	-121.637078°
DWR ID	DWR_RD0999_01_s_2012_23				
Comment Code					
T1 : Trim trees to at least five feet above ground level.					
Inspector Comment					

Photo 1 of 2 : FA_2016_RD0999_232_23_20160915_00024.jpg



Looking south at trimmed pine trees on waterside shoulder and slope. (Spring 2012)

LM Start	10.81	Rating **	A/W	Issue No.	23 (cont)
LM End	11.06	Issue Type +	Ma	Location *	WS

Photo 2 of 2 : FA_2016_RD0999_232_23_20160915_00025.jpg



Pine trees along waterside shoulder & slope. (Site of a old christmas tree farm). (Spring 2011)

* Location LS : Land Side N/A : Not Applicable WS : Water Side CR : Crown		** Rating A : Acceptable N : Not Inspected/Rated M : Minimally Acceptable C : Corrected U : Unacceptable A/W : Acceptable but Monitor & Maintain		+ Issue Type Ma : Maintenance Deficiency Ob : Design & System Obsolescence En : Enforcement
--	--	---	--	---

**Flood Control Project Maintenance
Levee Inspections**

Maintenance Issue Types Only, Levee Inspection Report By Mile - Fall 2016

Reclamation District No. 0999 Netherlands

Waterway	Bank	Unit Miles	Inspection Start/End	Inspector
Unit No. 01 Yolo Bypass	Left	15.41	09/19/2016 09/20/2016	Richard Willoughby

LM Start	11.30	Rating **	M	Issue No.	43
LM End	11.66	Issue Type +	Ma	Location *	CR
Category	Earthen Levee			GPS Latitude/Longitude	
				Start	End
Item	Crown Surface / Depressions / Rutting			38.349380 °	38.344455 °
				-121.638540 °	-121.640845 °
DWR ID	DWR_RD0999_01_s_2012_43				
Comment Code					
C3 : Add appropriate gravel or road base. Grade and compact.					
Inspector Comment					
Also control vegetation on crown roadway.					

Photo 1 of 1 : FA_2016_RD0999_232_43_20160915_00056.jpg



Looking north at growth on levee crown.

LM Start	11.84	Rating **	M	Issue No.	48
LM End	11.84	Issue Type +	Ma	Location *	WS
Category	Earthen Levee			GPS Latitude/Longitude	
				Start	End
Item	Slope Stability			38.342068 °	38.342068 °
				-121.641944 °	-121.641944 °
DWR ID	DWR_RD0999_01_f_2012_48				
Comment Code					
S3 : Repair the levee slope damaged by vehicle traffic and prevent access where possible.					
Inspector Comment					
Slope damage caused by vehicle traffic.					

Photo 1 of 2 : FA_2016_RD0999_232_48_20160915_00061.jpg



Looking southwest at slope damage caused by vehicle traffic. 2013

LM Start	11.84	Rating **	M	Issue No.	48 (cont)
LM End	11.84	Issue Type +	Ma	Location *	WS

Photo 2 of 2 : FA_2016_RD0999_232_48_20160915_00062.jpg



Looking southwest at slope damage caused by vehicle traffic on waterside slope.

* Location LS : Land Side N/A : Not Applicable WS : Water Side CR : Crown		** Rating A : Acceptable N : Not Inspected/Rated M : Minimally Acceptable C : Corrected U : Unacceptable A/W : Acceptable but Monitor & Maintain		+ Issue Type Ma : Maintenance Deficiency Ob : Design & System Obsolescence En : Enforcement
--	--	---	--	---

**Flood Control Project Maintenance
Levee Inspections**

Maintenance Issue Types Only, Levee Inspection Report By Mile - Fall 2016

Reclamation District No. 0999 Netherlands

Waterway	Bank	Unit Miles	Inspection Start/End	Inspector
Unit No. 01 Yolo Bypass	Left	15.41	09/19/2016 09/20/2016	Richard Willoughby

LM Start	12.13	Rating **	A/W	Issue No.	19
LM End	12.61	Issue Type +	Ma	Location *	CR
Category	Earthen Levee			GPS Latitude/Longitude	
				Start	End
Item	Crown Surface / Depressions / Rutting			38.337980 °	38.331138 °
				-121.643403 °	-121.644781 °
DWR ID	DWR_RD0999_01_f_2014_19				
Comment Code					
C2 : Repair depressions or ruts in the crown or slope.					
Inspector Comment					

No Photos

LM Start	12.53	Rating **	A/W	Issue No.	21
LM End	12.60	Issue Type +	Ma	Location *	CR
Category	Earthen Levee			GPS Latitude/Longitude	
				Start	End
Item	Crown Surface / Depressions / Rutting			38.332288 °	38.331247 °
				-121.644640 °	-121.644765 °
DWR ID	DWR_RD0999_01_s_2012_21				
Comment Code					
C3 : Add appropriate gravel or road base. Grade and compact.					
Inspector Comment					
Ruts have been fixed, but need to add appropriate gravel or road base.					

Photo 1 of 1 : FA_2016_RD0999_232_21_20160915_00021.jpg



Looking south at graded levee crown.(Fall 2014)

* Location LS : Land Side N/A : Not Applicable WS : Water Side CR : Crown	** Rating A : Acceptable M : Minimally Acceptable U : Unacceptable	N : Not Inspected/Rated C : Corrected A/W : Acceptable but Monitor & Maintain	+ Issue Type Ma : Maintenance Deficiency Ob : Design & System Obsolescence En : Enforcement
--	--	---	---

**Flood Control Project Maintenance
Levee Inspections**

Maintenance Issue Types Only, Levee Inspection Report By Mile - Fall 2016

Reclamation District No. 0999 Netherlands

Waterway	Bank	Unit Miles	Inspection Start/End	Inspector
Unit No. 01 Yolo Bypass	Left	15.41	09/19/2016 09/20/2016	Richard Willoughby

LM Start	12.93	Rating **	A/W	Issue No.	24
LM End	13.55	Issue Type +	Ma	Location *	CR
Category	Earthen Levee			GPS Latitude/Longitude	
				Start	End
Item	Crown Surface / Depressions / Rutting			38.326433°	38.317400°
				-121.644960°	-121.644920°
DWR ID	DWR_RD0999_01_s_2012_24				
Comment Code					
C1 : Add appropriate material and re-grade the levee to bring the crown above the design elevation.					
Inspector Comment					

No Photos

LM Start	13.46	Rating **	C	Issue No.	59
LM End	13.46	Issue Type +	Ma	Location *	LS
Category	Earthen Levee			GPS Latitude/Longitude	
				Start	End
Item	Encroachments			38.318717 °	38.318717 °
				-121.644955 °	-121.644955 °
DWR ID	DWR_RD0999_01_s_2015_59				
Comment Code					
PR : Prunings					
Inspector Comment					
Pruning pile on landward berm.					

No Photos

LM Start	13.49	Rating **	C	Issue No.	60
LM End	13.49	Issue Type +	Ma	Location *	WS
Category	Earthen Levee			GPS Latitude/Longitude	
				Start	End
Item	Encroachments			38.318388 °	38.318388 °
				-121.644958 °	-121.644958 °
DWR ID	DWR_RD0999_01_s_2015_60				
Comment Code					
PR : Prunings					
Inspector Comment					
Pruning pile on waterward toe and berm.					

No Photos

* Location LS : Land Side N/A : Not Applicable WS : Water Side CR : Crown		** Rating A : Acceptable N : Not Inspected/Rated M : Minimally Acceptable C : Corrected U : Unacceptable A/W : Acceptable but Monitor & Maintain		+ Issue Type Ma : Maintenance Deficiency Ob : Design & System Obsolescence En : Enforcement	
--	--	---	--	---	--

**Flood Control Project Maintenance
Levee Inspections**

Maintenance Issue Types Only, Levee Inspection Report By Mile - Fall 2016

Reclamation District No. 0999 Netherlands

Waterway	Bank	Unit Miles	Inspection Start/End	Inspector
Unit No. 01 Yolo Bypass	Left	15.41	09/19/2016 09/20/2016	Richard Willoughby

LM Start	14.04	Rating **	U	Issue No.	49 (cont)	
LM End	14.04	Issue Type +	Ma	Location *	LS	
Category	Earthen Levee			GPS Latitude/Longitude		
				Start		End
Item	Erosion / Bank Caving			38.310347 °		38.310347 °
				-121.644955 °		-121.644955 °
DWR ID	DWR_RD0999_01_f_2012_49					
Comment Code						
E1 : Note and monitor erosion site.						
Inspector Comment						
Caving, 4' x 10', on landside slope.						

LM Start	14.04	Rating **	U	Issue No.	49 (cont)
LM End	14.04	Issue Type +	Ma	Location *	LS

Photo 2 of 4 : FA_2016_RD0999_232_49_20160915_00064.jpg



Looking east at caving on landward shoulder and slope. (Spring 2015)

Photo 3 of 4 : FA_2016_RD0999_232_49_20160915_00065.jpg



Looking east caving on landside slope.

LM Start	14.04	Rating **	U	Issue No.	49 (cont)
LM End	14.04	Issue Type +	Ma	Location *	LS

Photo 4 of 4 : FA_2016_RD0999_232_49_20160915_00066.jpg



Looking southeast at caving on landside slope.

*** Location**

LS : Land Side N/A : Not Applicable
WS : Water Side
CR : Crown

**** Rating**

A : Acceptable N : Not Inspected/Rated
M : Minimally Acceptable C : Corrected
U : Unacceptable A/W : Acceptable but Monitor & Maintain

+ Issue Type

Ma : Maintenance Deficiency
Ob : Design & System Obsolescence
En : Enforcement

**Flood Control Project Maintenance
Levee Inspections**

Maintenance Issue Types Only, Levee Inspection Report By Mile - Fall 2016

Reclamation District No. 0999 Netherlands

Waterway	Bank	Unit Miles	Inspection Start/End	Inspector
Unit No. 01 Yolo Bypass	Left	15.41	09/19/2016 09/20/2016	Richard Willoughby

LM Start	15.33	Rating **	M	Issue No.	50
LM End	15.33	Issue Type +	Ma	Location *	LS
Category	Earthen Levee			GPS Latitude/Longitude	
				Start	End
Item	Encroachments			38.291663°	38.291663°
				-121.644962°	-121.644962°
DWR ID	DWR_RD0999_01_f_2012_50				
Comment Code					
TR : Tree or limb					
Inspector Comment					
Planted palm trees on landside shoulder.					

Photo 1 of 3 : FA_2016_RD0999_232_50_20160915_00067.jpg



Looking northeast at a mature palm trees on landward shoulder and slope. (Spring 2015)

LM Start	15.33	Rating **	M	Issue No.	50 (cont)
LM End	15.33	Issue Type +	Ma	Location *	LS

Photo 2 of 3 : FA_2016_RD0999_232_50_20160915_00068.jpg



Looking east at a maturing palm trees on landward shoulder and slope. (Fall 2014)

* Location LS : Land Side N/A : Not Applicable WS : Water Side CR : Crown	** Rating A : Acceptable M : Minimally Acceptable U : Unacceptable	N : Not Inspected/Rated C : Corrected A/W : Acceptable but Monitor & Maintain	+ Issue Type Ma : Maintenance Deficiency Ob : Design & System Obsolescence En : Enforcement
--	--	---	---

**Flood Control Project Maintenance
Levee Inspections**

Maintenance Issue Types Only, Levee Inspection Report By Mile - Fall 2016

Reclamation District No. 0999 Netherlands

Waterway	Bank	Unit Miles	Inspection Start/End	Inspector
Unit No. 01 Yolo Bypass	Left	15.41	09/19/2016 09/20/2016	Richard Willoughby

LM Start	15.33	Rating **	M	Issue No.	50 (cont)
LM End	15.33	Issue Type +	Ma	Location *	LS
Category	Earthen Levee			GPS Latitude/Longitude	
				Start	End
Item	Encroachments			38.291663 °	38.291663 °
				-121.644962 °	-121.644962 °
DWR ID	DWR_RD0999_01_f _ 2012_50				
Comment Code					
TR : Tree or limb					
Inspector Comment					
Planted palm trees on landside shoulder.					

Photo 3 of 3 : FA_2016_RD0999_232_50_20160915_00069.jpg



Looking east at newly planted palm trees on landside shoulder and slope.

* Location LS : Land Side N/A : Not Applicable WS : Water Side CR : Crown	** Rating A : Acceptable M : Minimally Acceptable U : Unacceptable	N : Not Inspected/Rated C : Corrected A/W : Acceptable but Monitor & Maintain	+ Issue Type Ma : Maintenance Deficiency Ob : Design & System Obsolescence En : Enforcement
--	--	---	---

**Flood Control Project Maintenance
Levee Inspections**

Maintenance Issue Types Only, Levee Inspection Report By Mile - Fall 2016

Reclamation District No. 0999 Netherlands

Waterway	Bank	Unit Miles	Inspection Start/End	Inspector
Unit No. 02 Miner Slough	Right	2.31	09/20/2016 09/20/2016	Richard Willoughby

LM Start	0.18	Rating **	A/W	Issue No.	25
LM End	0.18	Issue Type +	Ma	Location *	LS
Category	Earthen Levee			GPS Latitude/Longitude	
				Start	End
Item	Vegetation			38.290866°	38.290866°
				-121.641650°	-121.641650°
DWR ID	DWR_RD0999_02_f_2013_25				
Comment Code					
V2 : Remove the wild growth other than native grasses from the levee slopes.					
Inspector Comment					

No Photos

LM Start	0.23	Rating **	A/W	Issue No.	12
LM End	0.23	Issue Type +	Ma	Location *	LS
Category	Earthen Levee			GPS Latitude/Longitude	
				Start	End
Item	Trim / Thin Trees			38.290787 °	38.290787 °
				-121.640725 °	-121.640725 °
DWR ID	DWR_RD0999_02_s_2012_12				
Comment Code					
T2 : Thin trees to allow visibility of the ground and room to flood fight.					
Inspector Comment					

No Photos

* Location LS : Land Side N/A : Not Applicable WS : Water Side CR : Crown	** Rating A : Acceptable M : Minimally Acceptable U : Unacceptable N : Not Inspected/Rated C : Corrected A/W : Acceptable but Monitor & Maintain	+ Issue Type Ma : Maintenance Deficiency Ob : Design & System Obsolescence En : Enforcement
--	---	---

**Flood Control Project Maintenance
Levee Inspections**

Maintenance Issue Types Only, Levee Inspection Report By Mile - Fall 2016

Reclamation District No. 0999 Netherlands

Waterway	Bank	Unit Miles	Inspection Start/End	Inspector
Unit No. 02 Miner Slough	Right	2.31	09/20/2016 09/20/2016	Richard Willoughby

LM Start	0.54	Rating **	A/W	Issue No.	43
LM End	0.54	Issue Type +	Ma	Location *	WS
Category	Earthen Levee			GPS Latitude/Longitude	
				Start	End
Item	Trim / Thin Trees			38.291440 °	38.291440 °
				-121.635411 °	-121.635411 °
DWR ID	DWR_RD0999_02_f_2015_43				
Comment Code					
T1 : Trim trees to at least five feet above ground level.					
Inspector Comment					

No Photos

LM Start	0.71	Rating **	M	Issue No.	44
LM End	0.71	Issue Type +	Ma	Location *	WS
Category	Earthen Levee			GPS Latitude/Longitude	
				Start	End
Item	Trim / Thin Trees			38.292689 °	38.292689 °
				-121.632730 °	-121.632730 °
DWR ID	DWR_RD0999_02_f_2015_44				
Comment Code					
T1 : Trim trees to at least five feet above ground level.					
Inspector Comment					

No Photos

LM Start	0.73	Rating **	U	Issue No.	37
LM End	0.73	Issue Type +	Ma	Location *	LS
Category	Earthen Levee			GPS Latitude/Longitude	
				Start	End
Item	Trim / Thin Trees			38.292783 °	38.292783 °
				-121.632317 °	-121.632317 °
DWR ID	DWR_RD0999_02_s_2014_37				
Comment Code					
T1 : Trim trees to at least five feet above ground level.					
Inspector Comment					

Photo 1 of 2 : FA_2016_RD0999_233_37_20160923_00060.jpg



Looking at untrimmed tree on landward slope and toe. (Fall 2016)

*** Location**

LS : Land Side N/A : Not Applicable
WS : Water Side
CR : Crown

**** Rating**

A : Acceptable N : Not Inspected/Rated
M : Minimally Acceptable C : Corrected
U : Unacceptable A/W : Acceptable but Monitor & Maintain

+ Issue Type

Ma : Maintenance Deficiency
Ob : Design & System Obsolescence
En : Enforcement

**Flood Control Project Maintenance
Levee Inspections**

Maintenance Issue Types Only, Levee Inspection Report By Mile - Fall 2016

Reclamation District No. 0999 Netherlands

Waterway	Bank	Unit Miles	Inspection Start/End	Inspector
Unit No. 02 Miner Slough	Right	2.31	09/20/2016 09/20/2016	Richard Willoughby

LM Start	0.82	Rating **	U	Issue No.	14 (cont)	
LM End	0.82	Issue Type +	Ma	Location *	LS	
Category	Earthen Levee			GPS Latitude/Longitude		
				Start		End
Item	Vegetation			38.292439 °		38.292439 °
				-121.630781 °		-121.630781 °
DWR ID	DWR_RD0999_02_f_2012_14					
Comment Code						
V2 : Remove the wild growth other than native grasses from the levee slopes.						
Inspector Comment						
Century plant on landside slope.						

Photo 2 of 2 : FA_2016_RD0999_233_14_20160915_00016.jpg



Looking north at century plant at landside toe.

LM Start	0.83	Rating **	U	Issue No.	19
LM End	0.83	Issue Type +	Ma	Location *	LS
Category	Earthen Levee			GPS Latitude/Longitude	
				Start	End
Item	Trim / Thin Trees			38.292386 °	38.292386 °
				-121.630543 °	-121.630543 °
DWR ID	DWR_RD0999_02_f_2012_19				
Comment Code					
T2 : Thin trees to allow visibility of the ground and room to flood fight.					
Inspector Comment					

Photo 1 of 2 : FA_2016_RD0999_233_19_20160915_00021.jpg



Looking north at untrimmed and trees to be thinned at landward toe fall 2015.

LM Start	0.83	Rating **	U	Issue No.	19 (cont)
LM End	0.83	Issue Type +	Ma	Location *	LS

Photo 2 of 2 : FA_2016_RD0999_233_19_20160915_00022.jpg



Looking west at dense trees on landside slope and toe.

* Location LS : Land Side N/A : Not Applicable WS : Water Side CR : Crown		** Rating A : Acceptable N : Not Inspected/Rated M : Minimally Acceptable C : Corrected U : Unacceptable A/W : Acceptable but Monitor & Maintain		+ Issue Type Ma : Maintenance Deficiency Ob : Design & System Obsolescence En : Enforcement	
--	--	---	--	---	--

**Flood Control Project Maintenance
Levee Inspections**

Maintenance Issue Types Only, Levee Inspection Report By Mile - Fall 2016

Reclamation District No. 0999 Netherlands

Waterway	Bank	Unit Miles	Inspection Start/End	Inspector
Unit No. 02 Miner Slough	Right	2.31	09/20/2016 09/20/2016	Richard Willoughby

LM Start	1.04	Rating **	A/W	Issue No.	20
LM End	1.53	Issue Type +	Ma	Location *	CR
Category	Earthen Levee			GPS Latitude/Longitude	
				Start	End
Item	Crown Surface / Depressions / Rutting			38.291206°	38.290915°
				-121.627030°	-121.618227°
DWR ID	DWR_RD0999_02_f_2012_20				
Comment Code					
C1 : Add appropriate material and re-grade the levee to bring the crown above the design elevation.					
Inspector Comment					

No Photos

LM Start	1.15	Rating **	A/W	Issue No.	40
LM End	1.15	Issue Type +	Ma	Location *	WS
Category	Earthen Levee			GPS Latitude/Longitude	
				Start	End
Item	Trim / Thin Trees			38.291069 °	38.291069 °
				-121.625138 °	-121.625138 °
DWR ID	DWR_RD0999_02_f_2014_40				
Comment Code					
T1 : Trim trees to at least five feet above ground level.					
Inspector Comment					

No Photos

LM Start	1.19	Rating **	C	Issue No.	41
LM End	1.19	Issue Type +	Ma	Location *	LS
Category	Earthen Levee			GPS Latitude/Longitude	
				Start	End
Item	Vegetation			38.291185 °	38.291185 °
				-121.624344 °	-121.624344 °
DWR ID	DWR_RD0999_02_f_2014_41				
Comment Code					
V2 : Remove the wild growth other than native grasses from the levee slopes.					
Inspector Comment					
Dense wild roses on landward slope.					

No Photos

* Location LS : Land Side N/A : Not Applicable WS : Water Side CR : Crown	** Rating A : Acceptable M : Minimally Acceptable U : Unacceptable	N : Not Inspected/Rated C : Corrected A/W : Acceptable but Monitor & Maintain	+ Issue Type Ma : Maintenance Deficiency Ob : Design & System Obsolescence En : Enforcement
--	--	---	---

**Flood Control Project Maintenance
Levee Inspections**

Maintenance Issue Types Only, Levee Inspection Report By Mile - Fall 2016

Reclamation District No. 0999 Netherlands

Waterway	Bank	Unit Miles	Inspection Start/End	Inspector
Unit No. 02 Miner Slough	Right	2.31	09/20/2016 09/20/2016	Richard Willoughby

LM Start	1.70	Rating **	U	Issue No.	11
LM End	1.70	Issue Type +	Ma	Location *	LS
Category	Earthen Levee			GPS Latitude/Longitude	
				Start	End
Item	Trim / Thin Trees			38.290171 °	38.290171 °
				-121.615260 °	-121.615260 °
DWR ID	DWR_RD0999_02_s_2012_11				
Comment Code					
T1 : Trim trees to at least five feet above ground level.					
Inspector Comment					

Photo 1 of 2 : FA_2016_RD0999_233_11_20160915_00012.jpg



Looking at dense trees on landward slope.

LM Start	1.70	Rating **	U	Issue No.	11 (cont)
LM End	1.70	Issue Type +	Ma	Location *	LS

Photo 2 of 2 : FA_2016_RD0999_233_11_20160915_00013.jpg



Looking southwest at dense trees on landward slope.

* Location LS : Land Side N/A : Not Applicable WS : Water Side CR : Crown	** Rating A : Acceptable M : Minimally Acceptable U : Unacceptable	N : Not Inspected/Rated C : Corrected A/W : Acceptable but Monitor & Maintain	+ Issue Type Ma : Maintenance Deficiency Ob : Design & System Obsolescence En : Enforcement
--	--	---	---

**Flood Control Project Maintenance
Levee Inspections**

Maintenance Issue Types Only, Levee Inspection Report By Mile - Fall 2016

Reclamation District No. 0999 Netherlands

Waterway	Bank	Unit Miles	Inspection Start/End	Inspector
Unit No. 02 Miner Slough	Right	2.31	09/20/2016 09/20/2016	Richard Willoughby

LM Start	1.73	Rating **	A/W	Issue No.	8
LM End	1.76	Issue Type +	Ma	Location *	LS
Category	Earthen Levee			GPS Latitude/Longitude	
				Start	End
Item	Vegetation			38.289895°	38.289595°
				-121.614688°	-121.614337°
DWR ID	DWR_RD0999_02_s_2012_8				
Comment Code					
V2 : Remove the wild growth other than native grasses from the levee slopes.					
Inspector Comment					

Photo 1 of 3 : FA_2016_RD0999_233_8_20160915_00008.jpg



Looking east at dense vegetation on landward shoulder and slope.
(Spring 2016)

LM Start	1.73	Rating **	A/W	Issue No.	8 (cont)
LM End	1.76	Issue Type +	Ma	Location *	LS

Photo 2 of 3 : FA_2016_RD0999_233_8_20160915_00009.jpg



Looking west at dense vegetation on landward shoulder and slope.
(Spring 2015)

* Location LS : Land Side N/A : Not Applicable WS : Water Side CR : Crown	** Rating A : Acceptable M : Minimally Acceptable U : Unacceptable N : Not Inspected/Rated C : Corrected A/W : Acceptable but Monitor & Maintain	+ Issue Type Ma : Maintenance Deficiency Ob : Design & System Obsolescence En : Enforcement
--	---	---

**Flood Control Project Maintenance
Levee Inspections**

Maintenance Issue Types Only, Levee Inspection Report By Mile - Fall 2016

Reclamation District No. 0999 Netherlands

Waterway	Bank	Unit Miles	Inspection Start/End	Inspector
Unit No. 02 Miner Slough	Right	2.31	09/20/2016 09/20/2016	Richard Willoughby

LM Start	1.73	Rating **	A/W	Issue No.	8 (cont)	
LM End	1.76	Issue Type +	Ma	Location *	LS	
Category	Earthen Levee			GPS Latitude/Longitude		
				Start		End
Item	Vegetation			38.289895 °		38.289595 °
				-121.614688 °		-121.614337 °
DWR ID	DWR_RD0999_02_s_2012_8					
Comment Code						
V2 : Remove the wild growth other than native grasses from the levee slopes.						
Inspector Comment						

Photo 3 of 3 : FA_2016_RD0999_233_8_20160915_00010.jpg



Looking east at elderberry bush on landside shoulder and slope. (Fall 2014)

LM Start	1.74	Rating **	A/W	Issue No.	34
LM End	1.74	Issue Type +	Ma	Location *	WS
Category	Earthen Levee			GPS Latitude/Longitude	
				Start	End
Item	Vegetation			38.289773 °	38.289773 °
				-121.614587 °	-121.614587 °
DWR ID	DWR_RD0999_02_s_2016_34				
Comment Code					
V4 : Elderberries are blocking visibility and flood fight capability.					
Inspector Comment					

No Photos

* Location LS : Land Side N/A : Not Applicable WS : Water Side CR : Crown	** Rating A : Acceptable M : Minimally Acceptable U : Unacceptable	N : Not Inspected/Rated C : Corrected A/W : Acceptable but Monitor & Maintain	+ Issue Type Ma : Maintenance Deficiency Ob : Design & System Obsolescence En : Enforcement
--	--	---	---

**Flood Control Project Maintenance
Levee Inspections**

Maintenance Issue Types Only, Levee Inspection Report By Mile - Fall 2016

Reclamation District No. 0999 Netherlands

Waterway	Bank	Unit Miles	Inspection Start/End	Inspector
Unit No. 02 Miner Slough	Right	2.31	09/20/2016 09/20/2016	Richard Willoughby

LM Start	1.78	Rating **	A/W	Issue No.	38
LM End	1.82	Issue Type +	Ma	Location *	WS
Category	Earthen Levee			GPS Latitude/Longitude	
				Start	End
Item	Vegetation			38.289360 °	38.289006 °
				-121.614086 °	-121.613639 °
DWR ID	DWR_RD0999_02_s_2014_38				
Comment Code					
V4 : Elderberries are blocking visibility and flood fight capability.					
Inspector Comment					

Photo 1 of 3 : FA_2016_RD0999_233_38_20160915_00030.jpg



Looking east at dense vegetation on waterward shoulder and slope. (Spring 2016)

LM Start	1.78	Rating **	A/W	Issue No.	38 (cont)
LM End	1.82	Issue Type +	Ma	Location *	WS

Photo 2 of 3 : FA_2016_RD0999_233_38_20160915_00031.jpg



Looking west at dense vegetation on waterside slope. (Spring 2015)

LM Start	1.78	Rating **	A/W	Issue No.	38 (cont)
LM End	1.82	Issue Type +	Ma	Location *	WS

Photo 3 of 3 : FA_2016_RD0999_233_38_20160915_00032.jpg



Looking east at dense vegetation on waterside slope. (Spring 2014)

* Location LS : Land Side N/A : Not Applicable WS : Water Side CR : Crown	** Rating A : Acceptable M : Minimally Acceptable U : Unacceptable	N : Not Inspected/Rated C : Corrected A/W : Acceptable but Monitor & Maintain	+ Issue Type Ma : Maintenance Deficiency Ob : Design & System Obsolescence En : Enforcement
--	--	--	---

**Flood Control Project Maintenance
Levee Inspections**

Maintenance Issue Types Only, Levee Inspection Report By Mile - Fall 2016

Reclamation District No. 0999 Netherlands

Waterway	Bank	Unit Miles	Inspection Start/End	Inspector
Unit No. 02 Miner Slough	Right	2.31	09/20/2016 09/20/2016	Richard Willoughby

LM Start	1.80	Rating **	A/W	Issue No.	6
LM End	1.90	Issue Type +	Ma	Location *	LS
Category	Earthen Levee			GPS Latitude/Longitude	
				Start	End
Item	Vegetation			38.289117°	38.288718°
				-121.613777°	-121.612227°
DWR ID	DWR_RD0999_02_s_2012_6				
Comment Code					
V2 : Remove the wild growth other than native grasses from the levee slopes.					
Inspector Comment					
LMA is maintaining vegetation, but should be monitored.					

No Photos

LM Start	1.93	Rating **	A/W	Issue No.	16
LM End	1.93	Issue Type +	Ma	Location *	WS
Category	Earthen Levee			GPS Latitude/Longitude	
				Start	End
Item	Vegetation			38.288713 °	38.288713 °
				-121.611620 °	-121.611620 °
DWR ID	DWR_RD0999_02_s_2012_16				
Comment Code					
V4 : Elderberries are blocking visibility and flood fight capability.					
Inspector Comment					

No Photos

LM Start	1.96	Rating **	A	Issue No.	7
LM End	2.01	Issue Type +	Ma	Location *	CR
Category	Earthen Levee			GPS Latitude/Longitude	
				Start	End
Item	Crown Surface / Depressions / Rutting			38.288700 °	38.288798 °
				-121.611105 °	-121.610050 °
DWR ID	DWR_RD0999_02_s_2012_7				
Comment Code					
C2 : Repair depressions or ruts in the crown or slope.					
Inspector Comment					

No Photos

* Location LS : Land Side N/A : Not Applicable WS : Water Side CR : Crown	** Rating A : Acceptable M : Minimally Acceptable U : Unacceptable	N : Not Inspected/Rated C : Corrected A/W : Acceptable but Monitor & Maintain	+ Issue Type Ma : Maintenance Deficiency Ob : Design & System Obsolescence En : Enforcement
--	--	---	---

**Flood Control Project Maintenance
Levee Inspections**

Maintenance Issue Types Only, Levee Inspection Report By Mile - Fall 2016

Reclamation District No. 0999 Netherlands

Waterway	Bank	Unit Miles	Inspection Start/End	Inspector
Unit No. 02 Miner Slough	Right	2.31	09/20/2016 09/20/2016	Richard Willoughby

LM Start	2.06	Rating **	U	Issue No.	29
LM End	2.07	Issue Type +	Ma	Location *	LS
Category	Earthen Levee			GPS Latitude/Longitude	
				Start	End
Item	Trim / Thin Trees			38.288870°	38.288844°
				-121.609259°	-121.609008°
DWR ID	DWR_RD0999_02_f_2013_29				
Comment Code					
T1 : Trim trees to at least five feet above ground level.					
Inspector Comment					

Photo 1 of 1 : FA_2016_RD0999_233_29_20160915_00028.jpg



Looking at untrimmed trees on landward slope fall 2015.

* Location LS : Land Side N/A : Not Applicable WS : Water Side CR : Crown	** Rating A : Acceptable M : Minimally Acceptable U : Unacceptable N : Not Inspected/Rated C : Corrected A/W : Acceptable but Monitor & Maintain	+ Issue Type Ma : Maintenance Deficiency Ob : Design & System Obsolescence En : Enforcement
--	---	---

**Flood Control Project Maintenance
Levee Inspections**

Maintenance Issue Types Only, Levee Inspection Report By Mile - Fall 2016

Reclamation District No. 0999 Netherlands

Waterway	Bank	Unit Miles	Inspection Start/End	Inspector
Unit No. 03 Sutter Slough	Right	3.74	09/21/2016 09/21/2016	Richard Willoughby

LM Start	0.04	Rating **	A	Issue No.	4
LM End	0.04	Issue Type +	Ma	Location *	LS
Category	Earthen Levee			GPS Latitude/Longitude	
				Start	End
Item	Trim / Thin Trees			38.287025 °	38.287025 °
				-121.605690 °	-121.605690 °
DWR ID	DWR_RD0999_03_s_2012_4				
Comment Code					
T1 : Trim trees to at least five feet above ground level.					
Inspector Comment					
Dense fig trees on landward slope and toe. Fig tree has been removed. GREAT JOB!					

Photo 1 of 5 : FA_2016_RD0999_234_4_20160915_00004.jpg



Looking southwest at cleared fig tree from landward slope and toe.
(Spring 2016) GREAT JOB!

LM Start	0.04	Rating **	A	Issue No.	4 (cont)
LM End	0.04	Issue Type +	Ma	Location *	LS

Photo 2 of 5 : FA_2016_RD0999_234_4_20160915_00005.jpg



Looking northwest at dense fig tree on landward toe. 2014

LM Start	0.04	Rating **	A	Issue No.	4 (cont)
LM End	0.04	Issue Type +	Ma	Location *	LS

Photo 3 of 5 : FA_2016_RD0999_234_4_20160915_00006.jpg



Looking northwest at dense fig tree on landward slope and toe. 2013

* Location LS : Land Side N/A : Not Applicable WS : Water Side CR : Crown		** Rating A : Acceptable M : Minimally Acceptable U : Unacceptable N : Not Inspected/Rated C : Corrected A/W : Acceptable but Monitor & Maintain		+ Issue Type Ma : Maintenance Deficiency Ob : Design & System Obsolescence En : Enforcement	
--	--	---	--	---	--

**Flood Control Project Maintenance
Levee Inspections**

Maintenance Issue Types Only, Levee Inspection Report By Mile - Fall 2016

Reclamation District No. 0999 Netherlands

Waterway	Bank	Unit Miles	Inspection Start/End	Inspector
Unit No. 03 Sutter Slough	Right	3.74	09/21/2016 09/21/2016	Richard Willoughby

LM Start	0.04	Rating **	A	Issue No.	4 (cont)	
LM End	0.04	Issue Type +	Ma	Location *	LS	
Category	Earthen Levee			GPS Latitude/Longitude		
				Start		End
Item	Trim / Thin Trees			38.287025 °		38.287025 °
				-121.605690 °		-121.605690 °
DWR ID	DWR_RD0999_03_s_2012_4					
Comment Code						
T1 : Trim trees to at least five feet above ground level.						
Inspector Comment						
Dense fig trees on landward slope and toe. Fig tree has been removed. GREAT JOB!						

Photo 4 of 5 : FA_2016_RD0999_234_4_20160915_00007.jpg



Looking southwest at trimmed trees on landside toe. (Spring 2012)

LM Start	0.04	Rating **	A	Issue No.	4 (cont)
LM End	0.04	Issue Type +	Ma	Location *	LS

Photo 5 of 5 : FA_2016_RD0999_234_4_20160915_00008.jpg



Looking west at dense fig trees at landside toe.

LM Start	0.04	Rating **	C	Issue No.	36
LM End	0.04	Issue Type +	Ma	Location *	WS
Category	Earthen Levee			GPS Latitude/Longitude	
				Start	End
Item	Encroachments			38.287025 °	38.287025 °
				-121.605690 °	-121.605690 °
DWR ID	DWR_RD0999_03_f_2013_36				
Comment Code					
PR : Prunings					
Inspector Comment					
Prunings on waterward slope outside the twenty feet zone should be burned or removed from levee slope.					

No Photos

* Location LS : Land Side N/A : Not Applicable WS : Water Side CR : Crown	** Rating A : Acceptable M : Minimally Acceptable U : Unacceptable	N : Not Inspected/Rated C : Corrected A/W : Acceptable but Monitor & Maintain	+ Issue Type Ma : Maintenance Deficiency Ob : Design & System Obsolescence En : Enforcement
--	--	---	---

**Flood Control Project Maintenance
Levee Inspections**

Maintenance Issue Types Only, Levee Inspection Report By Mile - Fall 2016

Reclamation District No. 0999 Netherlands

Waterway	Bank	Unit Miles	Inspection Start/End	Inspector
Unit No. 03 Sutter Slough	Right	3.74	09/21/2016 09/21/2016	Richard Willoughby

LM Start	0.11	Rating **	A	Issue No.	9
LM End	1.37	Issue Type +	Ma	Location *	CR
Category	Earthen Levee			GPS Latitude/Longitude	
				Start	End
Item	Crown Surface / Depressions / Rutting			38.287873°	38.304451°
				-121.605108°	-121.600419°
DWR ID	DWR_RD0999_03_f_2012_9				
Comment Code					
C2 : Repair depressions or ruts in the crown or slope.					
Inspector Comment					

Photo 1 of 1 : FA_2016_RD0999_234_9_20160915_00014.jpg



Looking south at levee crown. (Spring 2015)

LM Start	0.24	Rating **	U	Issue No.	29
LM End	0.65	Issue Type +	Ma	Location *	WS
Category	Supplemental			GPS Latitude/Longitude	
				Start	End
Item	2015 USACE Erosion Survey, DRAFT			38.289634°	38.295505°
				-121.604343°	-121.605648°
DWR ID	DWR_RD0999_03_s_2016_29				
Comment Code					
Inspector Comment					
1997 - Intermittent over-steepened sections. Large riparian vegetation along the length of the entire reach. Attempts to repair with rock on bank have failed. 1999 - New rock repair at the downstream end. 2002 - Some minor spot repairs. 2009 - Minimal new erosion. 2010 - Appears that fresh rock placed on downstream portion of site. Toe scour and overhanging trees with some overturned. 2012 - Minor new erosion at the toe. 2013 - Site upgraded to CRITICAL. Severe slumping into levee at downstream end of site. Fresh erosion into bank toe. 2015: New slumping, tall vertical sections. [2015 Site ID: STR_24-7 R]					

Photo 1 of 1 : FA_2016_RD0999_234_29_20160915_00031.jpg



USACE 2013 Photo #1

* Location LS : Land Side N/A : Not Applicable WS : Water Side CR : Crown	** Rating A : Acceptable M : Minimally Acceptable U : Unacceptable	N : Not Inspected/Rated C : Corrected A/W : Acceptable but Monitor & Maintain	+ Issue Type Ma : Maintenance Deficiency Ob : Design & System Obsolescence En : Enforcement
--	--	---	---

**Flood Control Project Maintenance
Levee Inspections**

Maintenance Issue Types Only, Levee Inspection Report By Mile - Fall 2016

Reclamation District No. 0999 Netherlands

Waterway	Bank	Unit Miles	Inspection Start/End	Inspector
Unit No. 03 Sutter Slough	Right	3.74	09/21/2016 09/21/2016	Richard Willoughby

LM Start	0.45	Rating **	C	Issue No.	7
LM End	0.45	Issue Type +	Ma	Location *	WS
Category	Earthen Levee			GPS Latitude/Longitude	
				Start	End
Item	Vegetation			38.292748°	38.292748°
				-121.604972°	-121.604972°
DWR ID	DWR_RD0999_03_s_2012_7				
Comment Code					
V4 : Elderberries are blocking visibility and flood fight capability.					
Inspector Comment					

No Photos

LM Start	0.66	Rating **	M	Issue No.	8
LM End	0.66	Issue Type +	Ma	Location *	LS
Category	Earthen Levee			GPS Latitude/Longitude	
				Start	End
Item	Vegetation			38.295618 °	38.295618 °
				-121.605923 °	-121.605923 °
DWR ID	DWR_RD0999_03_s_2012_8				
Comment Code					
V4 : Elderberries are blocking visibility and flood fight capability.					
Inspector Comment					
LMA trimmed back brush.					

Photo 1 of 2 : FA_2016_RD0999_234_8_20160923_00054.jpg



Looking east at brush on landward slope and toe. (Fall 2016)

LM Start	0.66	Rating **	M	Issue No.	8 (cont)
LM End	0.66	Issue Type +	Ma	Location *	LS

Photo 2 of 2 : FA_2016_RD0999_234_8_20160915_00012.jpg



Looking east at elderberry at landward slope and toe. (Spring 2016)

*** Location**

LS : Land Side N/A : Not Applicable
WS : Water Side
CR : Crown

**** Rating**

A : Acceptable N : Not Inspected/Rated
M : Minimally Acceptable C : Corrected
U : Unacceptable A/W : Acceptable but Monitor & Maintain

+ Issue Type

Ma : Maintenance Deficiency
Ob : Design & System Obsolescence
En : Enforcement

Reclamation District No. 0999 Netherlands

No Photos

Page 5 of 21

**Flood Control Project Maintenance
Levee Inspections**

Maintenance Issue Types Only, Levee Inspection Report By Mile - Fall 2016

Reclamation District No. 0999 Netherlands

Waterway	Bank	Unit Miles	Inspection Start/End	Inspector
Unit No. 03 Sutter Slough	Right	3.74	09/21/2016 09/21/2016	Richard Willoughby

LM Start	0.73	Rating **	C	Issue No.	17
LM End	0.73	Issue Type +	Ma	Location *	LS
Category	Earthen Levee			GPS Latitude/Longitude	
				Start	End
Item	Animal Control			38.296632 °	38.296632 °
				-121.605692 °	-121.605692 °
DWR ID	DWR_RD0999_03_s_2012_17				
Comment Code					
A3 : No rodents visible, but rodent burrows visible; need to backfill and compact or grout burrows.					
Inspector Comment					

No Photos

LM Start	0.75	Rating **	A/W	Issue No.	2
LM End	0.75	Issue Type +	Ma	Location *	LS
Category	Earthen Levee			GPS Latitude/Longitude	
				Start	End
Item	Encroachments			38.296942 °	38.296942 °
				-121.605528 °	-121.605528 °
DWR ID	DWR_RD0999_03_s_2012_2				
Comment Code					
PR : Prunings					
Inspector Comment					
Pruning pile is outside the fifteen foot zone on landside berm.					

Photo 1 of 2 : FA_2016_RD0999_234_2_20160915_00002.jpg



Looing west at prunings at landward toe and berm. (Spring 2016)

LM Start	0.75	Rating **	A/W	Issue No.	2 (cont)
LM End	0.75	Issue Type +	Ma	Location *	LS

Photo 2 of 2 : FA_2016_RD0999_234_2_20160915_00003.jpg



Looking at prunings at landward toe.

* Location LS : Land Side N/A : Not Applicable WS : Water Side CR : Crown		** Rating A : Acceptable N : Not Inspected/Rated M : Minimally Acceptable C : Corrected U : Unacceptable A/W : Acceptable but Monitor & Maintain		+ Issue Type Ma : Maintenance Deficiency Ob : Design & System Obsolescence En : Enforcement
--	--	---	--	---

**Flood Control Project Maintenance
Levee Inspections**

Maintenance Issue Types Only, Levee Inspection Report By Mile - Fall 2016

Reclamation District No. 0999 Netherlands

Waterway	Bank	Unit Miles	Inspection Start/End	Inspector
Unit No. 03 Sutter Slough	Right	3.74	09/21/2016 09/21/2016	Richard Willoughby

LM Start	0.93	Rating **	U	Issue No.	43
LM End	0.95	Issue Type +	Ma	Location *	LS
Category	Earthen Levee			GPS Latitude/Longitude	
				Start	End
Item	Trim / Thin Trees			38.299130°	38.299362°
				-121.603768°	-121.603462°
DWR ID	DWR_RD0999_03_f_2014_43				
Comment Code					
T1 : Trim trees to at least five feet above ground level.					
Inspector Comment					

Photo 1 of 1 : FA_2016_RD0999_234_43_20160915_00038.jpg



Looking at untrimmed trees on landward slope and toe.

LM Start	0.94	Rating **	C	Issue No.	6
LM End	0.94	Issue Type +	Ma	Location *	LS
Category	Earthen Levee			GPS Latitude/Longitude	
				Start	End
Item	Vegetation			38.299197°	38.299197°
				-121.603685°	-121.603685°
DWR ID	DWR_RD0999_03_s_2012_6				
Comment Code					
V2 : Remove the wild growth other than native grasses from the levee slopes.					
Inspector Comment					
Wild roses on landside slope.					

No Photos

* Location
LS : Land Side N/A : Not Applicable
WS : Water Side
CR : Crown

** Rating
A : Acceptable
M : Minimally Acceptable
U : Unacceptable
N : Not Inspected/Rated
C : Corrected
A/W : Acceptable but Monitor & Maintain

+ Issue Type
Ma : Maintenance Deficiency
Ob : Design & System Obsolescence
En : Enforcement

**Flood Control Project Maintenance
Levee Inspections**

Maintenance Issue Types Only, Levee Inspection Report By Mile - Fall 2016

Reclamation District No. 0999 Netherlands

Waterway	Bank	Unit Miles	Inspection Start/End	Inspector
Unit No. 03 Sutter Slough	Right	3.74	09/21/2016 09/21/2016	Richard Willoughby

LM Start	0.97	Rating **	M	Issue No.	30
LM End	1.10	Issue Type +	Ma	Location *	WS
Category	Supplemental			GPS Latitude/Longitude	
				Start	End
Item	2015 USACE Erosion Survey, DRAFT			38.299402 °	38.300542 °
				-121.603056 °	-121.601118 °
DWR ID	DWR_RD0999_03_s_2016_30				
Comment Code					
Inspector Comment					
2008 - Over steepened levee section. 2009 - Significant new erosion. 2010 - Minor new erosion. 2015: No observed changes. [2015 Site ID: STR_25-2_R]					

Photo 1 of 1 : FA_2016_RD0999_234_30_20160915_00032.jpg



USACE 2013 Photo #1

LM Start	1.43	Rating **	M	Issue No.	1
LM End	1.58	Issue Type +	Ma	Location *	WS
Category	Supplemental			GPS Latitude/Longitude	
				Start	End
Item	2015 USACE Erosion Survey, DRAFT			38.305229 °	38.306667 °
				-121.599933 °	-121.598266 °
DWR ID	DWR_RD0999_03_s_2016_1				
Comment Code					
Inspector Comment					
2011 - Toe scour along length of site and erosion pockets. 2012 - Site extended slightly upstream due to new erosion pocket. 2013 - Tall vertical sections at upstream end of site. 2015: No observed changes. [2015 Site ID: STR_25-7_R]					

Photo 1 of 1 : FA_2016_RD0999_234_1_20160915_00001.jpg



USACE 2013 Photo #1

LM Start	1.50	Rating **	M	Issue No.	11
LM End	1.50	Issue Type +	Ma	Location *	LS
Category	Earthen Levee			GPS Latitude/Longitude	
				Start	End
Item	Trim / Thin Trees			38.306062 °	38.306062 °
				-121.599495 °	-121.599495 °
DWR ID	DWR_RD0999_03_s_2012_11				
Comment Code					
T1 : Trim trees to at least five feet above ground level.					
Inspector Comment					

Photo 1 of 2 : FA_2016_RD0999_234_11_20160923_00056.jpg



Looking at untrimmed trees on landward slope and toe. (Fall 2016)

* Location LS : Land Side N/A : Not Applicable WS : Water Side CR : Crown		** Rating A : Acceptable N : Not Inspected/Rated M : Minimally Acceptable C : Corrected U : Unacceptable A/W : Acceptable but Monitor & Maintain		+ Issue Type Ma : Maintenance Deficiency Ob : Design & System Obsolescence En : Enforcement
--	--	---	--	---

Reclamation District No. 0999 Netherlands

Looking at untrimmed trees on landward slope and toe. (Spring 2016)

Looking east at untrimmed trees on landward slope.

Looking north at untrimmed trees on landward toe. (Spring 2015)

Page 9 of 21

**Flood Control Project Maintenance
Levee Inspections**

Maintenance Issue Types Only, Levee Inspection Report By Mile - Fall 2016

Reclamation District No. 0999 Netherlands

Waterway	Bank	Unit Miles	Inspection Start/End	Inspector
Unit No. 03 Sutter Slough	Right	3.74	09/21/2016 09/21/2016	Richard Willoughby

LM Start	1.61	Rating **	C	Issue No.	23
LM End	1.61	Issue Type +	Ma	Location *	WS
Category	Earthen Levee			GPS Latitude/Longitude	
				Start	End
Item	Encroachments			38.307289 °	38.307289 °
				-121.598082 °	-121.598082 °
DWR ID	DWR_RD0999_03_f_2015_23				
Comment Code					
PR : Prunings					
Inspector Comment					
Large pruning piles on waterward slope.					

No Photos

LM Start	1.68	Rating **	M	Issue No.	14
LM End	1.68	Issue Type +	Ma	Location *	LS
Category	Earthen Levee			GPS Latitude/Longitude	
				Start	End
Item	Trim / Thin Trees			38.308129°	38.308129°
				-121.598610°	-121.598610°
DWR ID	DWR_RD0999_03_s_2012_14				
Comment Code					
T1 : Trim trees to at least five feet above ground level.					
Inspector Comment					

No Photos

* Location LS : Land Side N/A : Not Applicable WS : Water Side CR : Crown	** Rating A : Acceptable M : Minimally Acceptable U : Unacceptable	N : Not Inspected/Rated C : Corrected A/W : Acceptable but Monitor & Maintain	+ Issue Type Ma : Maintenance Deficiency Ob : Design & System Obsolescence En : Enforcement
--	--	---	---

**Flood Control Project Maintenance
Levee Inspections**

Maintenance Issue Types Only, Levee Inspection Report By Mile - Fall 2016

Reclamation District No. 0999 Netherlands

Waterway	Bank	Unit Miles	Inspection Start/End	Inspector
Unit No. 03 Sutter Slough	Right	3.74	09/21/2016 09/21/2016	Richard Willoughby

LM Start	1.96	Rating **	M	Issue No.	20
LM End	1.96	Issue Type +	Ma	Location *	LS
Category	Earthen Levee			GPS Latitude/Longitude	
				Start	End
Item	Trim / Thin Trees			38.311447°	38.311447°
				-121.597358°	-121.597358°
DWR ID	DWR_RD0999_03_s_2012_20				
Comment Code					
T1 : Trim trees to at least five feet above ground level.					
Inspector Comment					

No Photos

LM Start	2.02	Rating **	A	Issue No.	46
LM End	2.02	Issue Type +	Ma	Location *	WS
Category	Earthen Levee			GPS Latitude/Longitude	
				Start	End
Item	Trim / Thin Trees			38.311898 °	38.311898 °
				-121.596379 °	-121.596379 °
DWR ID	DWR_RD0999_03_s_2014_46				
Comment Code					
T1 : Trim trees to at least five feet above ground level.					
Inspector Comment					

No Photos

LM Start	2.15	Rating **	C	Issue No.	25
LM End	2.15	Issue Type +	Ma	Location *	LS
Category	Earthen Levee			GPS Latitude/Longitude	
				Start	End
Item	Trim / Thin Trees			38.313099°	38.313099°
				-121.594568°	-121.594568°
DWR ID	DWR_RD0999_03_s_2012_25				
Comment Code					
T1 : Trim trees to at least five feet above ground level.					
Inspector Comment					

No Photos

* Location LS : Land Side N/A : Not Applicable WS : Water Side CR : Crown		** Rating A : Acceptable N : Not Inspected/Rated M : Minimally Acceptable C : Corrected U : Unacceptable A/W : Acceptable but Monitor & Maintain		+ Issue Type Ma : Maintenance Deficiency Ob : Design & System Obsolescence En : Enforcement	
--	--	---	--	---	--

**Flood Control Project Maintenance
Levee Inspections**

Maintenance Issue Types Only, Levee Inspection Report By Mile - Fall 2016

Reclamation District No. 0999 Netherlands

Waterway	Bank	Unit Miles	Inspection Start/End	Inspector
Unit No. 03 Sutter Slough	Right	3.74	09/21/2016 09/21/2016	Richard Willoughby

LM Start	2.20	Rating **	M	Issue No.	40
LM End	2.22	Issue Type +	Ma	Location *	LS
Category	Earthen Levee			GPS Latitude/Longitude	
				Start	End
Item	Trim / Thin Trees			38.313566 °	38.313777 °
				-121.593910 °	-121.593608 °
DWR ID	DWR_RD0999_03_s_2015_40				
Comment Code					
T1 : Trim trees to at least five feet above ground level.					
Inspector Comment					

No Photos

LM Start	2.54	Rating **	U	Issue No.	27
LM End	2.54	Issue Type +	Ma	Location *	LS
Category	Earthen Levee			GPS Latitude/Longitude	
				Start	End
Item	Encroachments			38.317840 °	38.317840 °
				-121.590895 °	-121.590895 °
DWR ID	DWR_RD0999_03_s_2012_27				
Comment Code					
EQ : Equipment					
Inspector Comment					
Diesel tank stored at landside toe.					

Photo 1 of 3 : FA_2016_RD0999_234_27_20160915_00028.jpg



Looking northwest at diesel tank and other farm equipment stored at landward toe. (Spring 2016)

* Location LS : Land Side N/A : Not Applicable WS : Water Side CR : Crown	** Rating A : Acceptable M : Minimally Acceptable U : Unacceptable	N : Not Inspected/Rated C : Corrected A/W : Acceptable but Monitor & Maintain	+ Issue Type Ma : Maintenance Deficiency Ob : Design & System Obsolescence En : Enforcement
--	--	---	---

**Flood Control Project Maintenance
Levee Inspections**

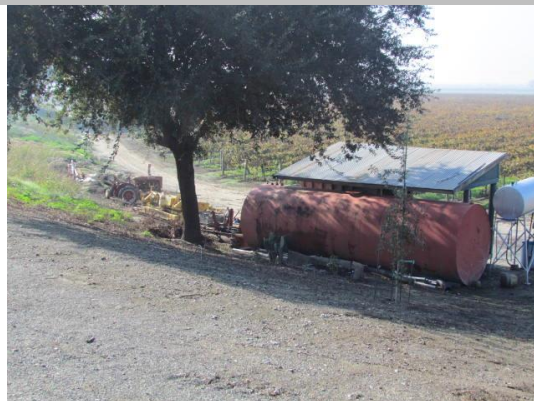
Maintenance Issue Types Only, Levee Inspection Report By Mile - Fall 2016

Reclamation District No. 0999 Netherlands

Waterway	Bank	Unit Miles	Inspection Start/End	Inspector
Unit No. 03 Sutter Slough	Right	3.74	09/21/2016 09/21/2016	Richard Willoughby

LM Start	2.54	Rating **	U	Issue No.	27 (cont)	
LM End	2.54	Issue Type +	Ma	Location *	LS	
Category	Earthen Levee			GPS Latitude/Longitude		
				Start		End
Item	Encroachments			38.317840 °		38.317840 °
				-121.590895 °		-121.590895 °
DWR ID	DWR_RD0999_03_s_2012_27					
Comment Code						
EQ : Equipment						
Inspector Comment						
Diesel tank stored at landside toe.						

Photo 2 of 3 : FA_2016_RD0999_234_27_20160915_00029.jpg



Looking southwest at farm equipment stored at landside toe. (Fall Inspection 2012)

LM Start	2.54	Rating **	U	Issue No.	27 (cont)
LM End	2.54	Issue Type +	Ma	Location *	LS

Photo 3 of 3 : FA_2016_RD0999_234_27_20160915_00030.jpg



Looking northwest at equipment at landside toe.

LM Start	2.61	Rating **	A	Issue No.	37
LM End	2.61	Issue Type +	Ma	Location *	WS
Category	Earthen Levee			GPS Latitude/Longitude	
				Start	End
Item	Trim / Thin Trees			38.318785 °	38.318785 °
				-121.590763 °	-121.590763 °
DWR ID	DWR_RD0999_03_f_2015_37				
Comment Code					
T1 : Trim trees to at least five feet above ground level.					
Inspector Comment					

No Photos

* Location LS : Land Side N/A : Not Applicable WS : Water Side CR : Crown	** Rating A : Acceptable M : Minimally Acceptable U : Unacceptable	N : Not Inspected/Rated C : Corrected A/W : Acceptable but Monitor & Maintain	+ Issue Type Ma : Maintenance Deficiency Ob : Design & System Obsolescence En : Enforcement
--	--	---	---

**Flood Control Project Maintenance
Levee Inspections**

Maintenance Issue Types Only, Levee Inspection Report By Mile - Fall 2016

Reclamation District No. 0999 Netherlands

Waterway	Bank	Unit Miles	Inspection Start/End	Inspector
Unit No. 03 Sutter Slough	Right	3.74	09/21/2016 09/21/2016	Richard Willoughby

LM Start	2.78	Rating **	M	Issue No.	28
LM End	2.94	Issue Type +	Ma	Location *	LS
Category	Earthen Levee			GPS Latitude/Longitude	
				Start	End
Item	Trim / Thin Trees			38.321244°	38.323362°
				-121.590969°	-121.590208°
DWR ID	DWR_RD0999_03_s_2012_28				
Comment Code					
T1 : Trim trees to at least five feet above ground level.					
Inspector Comment					

No Photos

LM Start	2.87	Rating **	M	Issue No.	21
LM End	2.92	Issue Type +	Ma	Location *	WS
Category	Supplemental			GPS Latitude/Longitude	
				Start	End
Item	2015 USACE Erosion Survey, DRAFT			38.322457 °	38.323042 °
				-121.590693 °	-121.590209 °
DWR ID	DWR_RD0999_03_s_2016_21				
Comment Code					
Inspector Comment					
2012 - Slumping of upper levee slope. 2015: No observed changes. [2015 Site ID: STR_27-1_R]					

Photo 1 of 1 : FA_2016_RD0999_234_21_20160915_00025.jpg



USACE 2013 Photo #1

* Location LS : Land Side N/A : Not Applicable WS : Water Side CR : Crown	** Rating A : Acceptable M : Minimally Acceptable U : Unacceptable N : Not Inspected/Rated C : Corrected A/W : Acceptable but Monitor & Maintain	+ Issue Type Ma : Maintenance Deficiency Ob : Design & System Obsolescence En : Enforcement
--	---	---

**Flood Control Project Maintenance
Levee Inspections**

Maintenance Issue Types Only, Levee Inspection Report By Mile - Fall 2016

Reclamation District No. 0999 Netherlands

Waterway	Bank	Unit Miles	Inspection Start/End	Inspector
Unit No. 03 Sutter Slough	Right	3.74	09/21/2016 09/21/2016	Richard Willoughby

LM Start	2.88	Rating **	U	Issue No.	10
LM End	2.88	Issue Type +	Ma	Location *	LS
Category	Earthen Levee			GPS Latitude/Longitude	
				Start	End
Item	Trim / Thin Trees			38.322757 °	38.322757 °
				-121.590817 °	-121.590817 °
DWR ID	DWR_RD0999_03_f _ 2012_10				
Comment Code					
T3 : Trim and thin trees to allow visibility of the ground and room to flood fight.					
Inspector Comment					
Wild growth at landside slope and toe.					

Photo 1 of 4 : FA_2016_RD0999_234_10_20160915_00015.jpg

Looking northwest at dense vegetation on landward slope and toe.
(Spring 2016)

LM Start	2.88	Rating **	U	Issue No.	10 (cont)
LM End	2.88	Issue Type +	Ma	Location *	LS

Photo 2 of 4 : FA_2016_RD0999_234_10_20160915_00016.jpg



Looking west at trimmed trees at landward toe. (Fall 2014)

LM Start	2.88	Rating **	U	Issue No.	10 (cont)
LM End	2.88	Issue Type +	Ma	Location *	LS

Photo 3 of 4 : FA_2016_RD0999_234_10_20160915_00017.jpg



Looking west at dense trees on landside toe.

* Location LS : Land Side N/A : Not Applicable WS : Water Side CR : Crown		** Rating A : Acceptable N : Not Inspected/Rated M : Minimally Acceptable C : Corrected U : Unacceptable A/W : Acceptable but Monitor & Maintain		+ Issue Type Ma : Maintenance Deficiency Ob : Design & System Obsolescence En : Enforcement	
--	--	---	--	---	--

Reclamation District No. 0999 Netherlands

Looking northwest at dense vegetation at landside slope and toe.

No Photos

Looking northwest at untrimmed trees on landward slope. (Spring 2016)

Page 17 of 21

**Flood Control Project Maintenance
Levee Inspections**

Maintenance Issue Types Only, Levee Inspection Report By Mile - Fall 2016

Reclamation District No. 0999 Netherlands

Waterway	Bank	Unit Miles	Inspection Start/End	Inspector
Unit No. 03 Sutter Slough	Right	3.74	09/21/2016 09/21/2016	Richard Willoughby

LM Start	3.01	Rating **	U	Issue No.	31 (cont)
LM End	3.25	Issue Type +	Ma	Location *	LS
Category	Earthen Levee			GPS Latitude/Longitude	
				Start	End
Item	Trim / Thin Trees			38.323770 °	38.326061 °
				-121.589035 °	-121.586028 °
DWR ID	DWR_RD0999_03_s_2012_31				
Comment Code					
T3 : Trim and thin trees to allow visibility of the ground and room to flood fight.					
Inspector Comment					

Photo 2 of 2 : FA_2016_RD0999_234_31_20160915_00034.jpg



Looking north at trimmed trees on landward slope.

LM Start	3.05	Rating **	M	Issue No.	5
LM End	3.23	Issue Type +	Ma	Location *	WS
Category	Supplemental			GPS Latitude/Longitude	
				Start	End
Item	2015 USACE Erosion Survey, DRAFT			38.323667 °	38.325592 °
				-121.588226 °	-121.585925 °
DWR ID	DWR_RD0999_03_s_2016_5				
Comment Code					
Inspector Comment					
2011 - Multiple erosion pockets. Some likely from tree popouts. 2013 - Tall vertical sections. 2015: New tree popout and significant new erosion. [2015 Site ID: STR_27-3_R]					

Photo 1 of 1 : FA_2016_RD0999_234_5_20160915_00009.jpg



USACE 2013 Photo #1

LM Start	3.13	Rating **	C	Issue No.	42
LM End	3.13	Issue Type +	Ma	Location *	LS
Category	Earthen Levee			GPS Latitude/Longitude	
				Start	End
Item	Encroachments			38.324510 °	38.324510 °
				-121.587015 °	-121.587015 °
DWR ID	DWR_RD0999_03_s_2015_42				
Comment Code					
PR : Prunings					
Inspector Comment					
Prunings on landward shoulder.					

No Photos

* Location LS : Land Side N/A : Not Applicable WS : Water Side CR : Crown		** Rating A : Acceptable M : Minimally Acceptable U : Unacceptable		N : Not Inspected/Rated C : Corrected A/W : Acceptable but Monitor & Maintain		+ Issue Type Ma : Maintenance Deficiency Ob : Design & System Obsolescence En : Enforcement	
---	--	---	--	---	--	--	--

**Flood Control Project Maintenance
Levee Inspections**

Maintenance Issue Types Only, Levee Inspection Report By Mile - Fall 2016

Reclamation District No. 0999 Netherlands

Waterway	Bank	Unit Miles	Inspection Start/End	Inspector
Unit No. 03 Sutter Slough	Right	3.74	09/21/2016 09/21/2016	Richard Willoughby

LM Start	3.21	Rating **	M	Issue No.	19
LM End	3.21	Issue Type +	Ma	Location *	WS
Category	Earthen Levee			GPS Latitude/Longitude	
				Start	End
Item	Trim / Thin Trees			38.325534 °	38.325534 °
				-121.586273 °	-121.586273 °
DWR ID	DWR_RD0999_03_s_2012_19				
Comment Code					
T1 : Trim trees to at least five feet above ground level.					
Inspector Comment					

No Photos

LM Start	3.49	Rating **	M	Issue No.	49
LM End	3.49	Issue Type +	Ma	Location *	LS
Category	Earthen Levee			GPS Latitude/Longitude	
				Start	End
Item	Trim / Thin Trees			38.329452 °	38.329452 °
				-121.586560 °	-121.586560 °
DWR ID	DWR_RD0999_03_f_2015_49				
Comment Code					
T1 : Trim trees to at least five feet above ground level.					
Inspector Comment					

No Photos

* Location LS : Land Side N/A : Not Applicable WS : Water Side CR : Crown	** Rating A : Acceptable M : Minimally Acceptable U : Unacceptable	N : Not Inspected/Rated C : Corrected A/W : Acceptable but Monitor & Maintain	+ Issue Type Ma : Maintenance Deficiency Ob : Design & System Obsolescence En : Enforcement
--	--	---	---

**Flood Control Project Maintenance
Levee Inspections**

Maintenance Issue Types Only, Levee Inspection Report By Mile - Fall 2016

Reclamation District No. 0999 Netherlands

Waterway	Bank	Unit Miles	Inspection Start/End	Inspector
Unit No. 03 Sutter Slough	Right	3.74	09/21/2016 09/21/2016	Richard Willoughby

LM Start	3.56	Rating **	M	Issue No.	50
LM End	3.60	Issue Type +	Ma	Location *	LS
Category	Earthen Levee			GPS Latitude/Longitude	
				Start	End
Item	Trim / Thin Trees			38.330326°	38.330994°
				-121.586222°	-121.585908°
DWR ID	DWR_RD0999_03_f_2015_50				
Comment Code					
T1 : Trim trees to at least five feet above ground level.					
Inspector Comment					

No Photos

LM Start	3.60	Rating **	M	Issue No.	44
LM End	3.64	Issue Type +	Ma	Location *	LS
Category	Earthen Levee			GPS Latitude/Longitude	
				Start	End
Item	Trim / Thin Trees			38.330946°	38.331415°
				-121.585932°	-121.585534°
DWR ID	DWR_RD0999_03_s_2015_44				
Comment Code					
T2 : Thin trees to allow visibility of the ground and room to flood fight.					
Inspector Comment					
Remove trees under an inch in diameter. Don't allow young trees to get establish on levee slope.					

Photo 1 of 1 : FA_2016_RD0999_234_44_20160915_00039.jpg



Looking southwest at typical view of young oak trees on landward slope.
(Spring 2015)

* Location LS : Land Side N/A : Not Applicable WS : Water Side CR : Crown	** Rating A : Acceptable M : Minimally Acceptable U : Unacceptable N : Not Inspected/Rated C : Corrected A/W : Acceptable but Monitor & Maintain	+ Issue Type Ma : Maintenance Deficiency Ob : Design & System Obsolescence En : Enforcement
--	---	---

**Flood Control Project Maintenance
Levee Inspections**

Maintenance Issue Types Only, Levee Inspection Report By Mile - Fall 2016

Reclamation District No. 0999 Netherlands

Waterway	Bank	Unit Miles	Inspection Start/End	Inspector
Unit No. 03 Sutter Slough	Right	3.74	09/21/2016 09/21/2016	Richard Willoughby

LM Start	4.56	Rating **	M	Issue No.	18
LM End	4.68	Issue Type +	Ma	Location *	WS
Category	Supplemental			GPS Latitude/Longitude	
				Start	End
Item	2015 USACE Erosion Survey, DRAFT			38.313836°	38.315407°
				-121.592259°	-121.591433°
DWR ID	DWR_RD0999_03_s_2016_18				

Comment Code

Inspector Comment

2002 - Original rock over geotextile is sliding off and the end is coming unraveled. 2003 - Some minor new erosion on the downstream end. 2004 - Site has gotten worse. Underlined geofabric is exposed. 2005 - Still looks bad with exposed geotextile fabric. 2006 - Still have some new unraveling and exposed fabric. Site lengthened upstream. 2009 - Minimal new erosion. 2010 - geotextile fabric placed since last year, possible flood fight. 2012 - Exposed geotech style fabric, assume rock on top slid off. 2015: Erosion pockets covered with plastic. [2015 Site ID: STR_26-5_L]

Photo 1 of 1 : FA_2016_RD0999_234_18_20160915_00024.jpg



USACE 2013 Photo #1

* Location LS : Land Side N/A : Not Applicable WS : Water Side CR : Crown	** Rating A : Acceptable M : Minimally Acceptable U : Unacceptable N : Not Inspected/Rated C : Corrected A/W : Acceptable but Monitor & Maintain	+ Issue Type Ma : Maintenance Deficiency Ob : Design & System Obsolescence En : Enforcement
--	---	---

**Flood Control Project Maintenance
Levee Inspections**

Maintenance Issue Types Only, Levee Inspection Report By Mile - Fall 2016

Reclamation District No. 0999 Netherlands

Waterway	Bank	Unit Miles	Inspection Start/End	Inspector
Unit No. 04 Sacramento River	Right	1.22	09/22/2016 09/22/2016	Richard Willoughby

LM Start	0.02	Rating **	M	Issue No.	8
LM End	0.28	Issue Type +	Ma	Location *	WS
Category	Supplemental			GPS Latitude/Longitude	
				Start	End
Item	2015 USACE Erosion Survey, DRAFT			38.414387 °	38.417692 °
				-121.522871 °	-121.525083 °
DWR ID	DWR_RD0999_04_s_2016_8				
Comment Code					
Inspector Comment					
1997 - Structural problem rather than erosional, failed cobble at downstream end. 2005 - New brush boxes at waterline for several hundred feet downstream, No toe or bank protection present. 2006 - Some minor new erosion. Brush boxes not working well; most of the brush has floated out. 2007 - Brush boxes have recently been repaired. 2015: No observed changes. [2015 Site ID: SAC 41-9 R]					

Photo 1 of 1 : FA_2016_RD0999_235_8_20160915_00007.jpg



USACE 2013 Photo #1

LM Start	0.03	Rating **	M	Issue No.	35
LM End	0.03	Issue Type +	Ma	Location *	LS
Category	Earthen Levee			GPS Latitude/Longitude	
				Start	End
Item	Trim / Thin Trees			38.414450 °	38.414450 °
				-121.523308 °	-121.523308 °
DWR ID	DWR_RD0999_04_f_2014_35				
Comment Code					
T1 : Trim trees to at least five feet above ground level.					
Inspector Comment					
Untrimmed trees on landward slope and toe.					

Photo 1 of 1 : FA_2016_RD0999_235_35_20160915_00022.jpg



Looking at untrimmed trees on landward slope.

* Location LS : Land Side N/A : Not Applicable WS : Water Side CR : Crown	** Rating A : Acceptable M : Minimally Acceptable U : Unacceptable	N : Not Inspected/Rated C : Corrected A/W : Acceptable but Monitor & Maintain	+ Issue Type Ma : Maintenance Deficiency Ob : Design & System Obsolescence En : Enforcement
--	--	---	---

**Flood Control Project Maintenance
Levee Inspections**

Maintenance Issue Types Only, Levee Inspection Report By Mile - Fall 2016

Reclamation District No. 0999 Netherlands

Waterway	Bank	Unit Miles	Inspection Start/End	Inspector
Unit No. 04 Sacramento River	Right	1.22	09/22/2016 09/22/2016	Richard Willoughby

LM Start	0.05	Rating **	M	Issue No.	15
LM End	0.05	Issue Type +	Ma	Location *	WS
Category	Earthen Levee		GPS Latitude/Longitude		
			Start	End	
Item	Vegetation		38.414642 °	38.414642 °	
			-121.523430 °	-121.523430 °	
DWR ID	DWR_RD0999_04_s_2012_15				
Comment Code					
V2 : Remove the wild growth other than native grasses from the levee slopes.					
Inspector Comment					

No Photos

LM Start	0.19	Rating **	M	Issue No.	24
LM End	0.27	Issue Type +	Ma	Location *	WS
Category	Earthen Levee		GPS Latitude/Longitude		
			Start	End	
Item	Trim / Thin Trees		38.416518 °	38.417519 °	
			-121.524502 °	-121.525368 °	
DWR ID	DWR_RD0999_04_s_2012_24				
Comment Code					
T3 : Trim and thin trees to allow visibility of the ground and room to flood fight.					
Inspector Comment					

No Photos

LM Start	0.38	Rating **	M	Issue No.	10
LM End	0.50	Issue Type +	Ma	Location *	LS
Category	Earthen Levee		GPS Latitude/Longitude		
			Start	End	
Item	Trim / Thin Trees		38.418838 °	38.420447 °	
			-121.526225 °	-121.527380 °	
DWR ID	DWR_RD0999_04_s_2012_10				
Comment Code					
T1 : Trim trees to at least five feet above ground level.					
Inspector Comment					

Photo 1 of 2 : FA_2016_RD0999_235_10_20160915_00008.jpg



Looking northwest at dense trees on landside slope and toe.

*** Location**

LS : Land Side N/A : Not Applicable
WS : Water Side
CR : Crown

**** Rating**

A : Acceptable N : Not Inspected/Rated
M : Minimally Acceptable C : Corrected
U : Unacceptable A/W : Acceptable but Monitor & Maintain

+ Issue Type

Ma : Maintenance Deficiency
Ob : Design & System Obsolescence
En : Enforcement

Reclamation District No. 0999 Netherlands

Photo 2 of 2 : FA_2016_RD0999_235_10_20160915_00009.jpg



Looking west at dense trees on waterside slope.

No Photos

Photo 1 of 2 : FA_2016_RD0999_235_21_20160923_00079.jpg



Looking southwest at dead tree at landward toe.

Page 3 of 12

**Flood Control Project Maintenance
Levee Inspections**

Maintenance Issue Types Only, Levee Inspection Report By Mile - Fall 2016

Reclamation District No. 0999 Netherlands

Waterway	Bank	Unit Miles	Inspection Start/End	Inspector
Unit No. 04 Sacramento River	Right	1.22	09/22/2016 09/22/2016	Richard Willoughby

LM Start	0.66	Rating **	N	Issue No.	18
LM End	0.66	Issue Type +	Ma	Location *	LS
Category	Earthen Levee			GPS Latitude/Longitude	
				Start	End
Item	Trim / Thin Trees			38.422377 °	38.422377 °
				-121.528792 °	-121.528792 °
DWR ID	DWR_RD0999_04_s_2012_18				
Comment Code					
T5 : Tree stumps.					
Inspector Comment					

No Photos

LM Start	0.67	Rating **	C	Issue No.	7
LM End	0.71	Issue Type +	Ma	Location *	LS
Category	Earthen Levee			GPS Latitude/Longitude	
				Start	End
Item	Trim / Thin Trees			38.422517°	38.423133°
				-121.528858°	-121.529210°
DWR ID	DWR_RD0999_04_s_2012_7				
Comment Code					
T1 : Trim trees to at least five feet above ground level.					
Inspector Comment					

No Photos

* Location LS : Land Side N/A : Not Applicable WS : Water Side CR : Crown	** Rating A : Acceptable M : Minimally Acceptable U : Unacceptable	N : Not Inspected/Rated C : Corrected A/W : Acceptable but Monitor & Maintain	+ Issue Type Ma : Maintenance Deficiency Ob : Design & System Obsolescence En : Enforcement
--	--	---	---

**Flood Control Project Maintenance
Levee Inspections**

Maintenance Issue Types Only, Levee Inspection Report By Mile - Fall 2016

Reclamation District No. 0999 Netherlands

Waterway	Bank	Unit Miles	Inspection Start/End	Inspector
Unit No. 04 Sacramento River	Right	1.22	09/22/2016 09/22/2016	Richard Willoughby

LM Start	0.71	Rating **	A	Issue No.	6
LM End	0.87	Issue Type +	Ma	Location *	LS
Category	Earthen Levee			GPS Latitude/Longitude	
				Start	End
Item	Trim / Thin Trees			38.423035 °	38.425140 °
				-121.529255 °	-121.530742 °
DWR ID	DWR_RD0999_04_s_2012_6				
Comment Code					
T1 : Trim trees to at least five feet above ground level.					
Inspector Comment					
Acceptable vegetation					

Photo 1 of 2 : FA_2016_RD0999_235_6_20160915_00005.jpg



Looking north at trimmed trees and removed fence on landside slope.

LM Start	0.71	Rating **	A	Issue No.	6 (cont)
LM End	0.87	Issue Type +	Ma	Location *	LS

Photo 2 of 2 : FA_2016_RD0999_235_6_20160915_00006.jpg



Looking south at trimmed trees on landside slope and removed fence.

LM Start	0.75	Rating **	N	Issue No.	17
LM End	0.75	Issue Type +	Ma	Location *	LS
Category	Earthen Levee			GPS Latitude/Longitude	
				Start	End
Item	Trim / Thin Trees			38.423560 °	38.423560 °
				-121.529653 °	-121.529653 °
DWR ID	DWR_RD0999_04_s_2012_17				
Comment Code					
T5 : Tree stumps.					
Inspector Comment					

No Photos

* Location
LS : Land Side N/A : Not Applicable
WS : Water Side
CR : Crown

** Rating
A : Acceptable N : Not Inspected/Rated
M : Minimally Acceptable C : Corrected
U : Unacceptable A/W : Acceptable but Monitor & Maintain

+ Issue Type
Ma : Maintenance Deficiency
Ob : Design & System Obsolescence
En : Enforcement

**Flood Control Project Maintenance
Levee Inspections**

Maintenance Issue Types Only, Levee Inspection Report By Mile - Fall 2016

Reclamation District No. 0999 Netherlands

Waterway	Bank	Unit Miles	Inspection Start/End	Inspector
Unit No. 04 Sacramento River	Right	1.22	09/22/2016 09/22/2016	Richard Willoughby

LM Start	0.82	Rating **	N	Issue No.	14
LM End	0.82	Issue Type +	Ma	Location *	LS
Category	Earthen Levee			GPS Latitude/Longitude	
				Start	End
Item	Trim / Thin Trees			38.424432°	38.424432°
				-121.530265°	-121.530265°
DWR ID	DWR_RD0999_04_s_2012_14				
Comment Code					
T5 : Tree stumps.					
Inspector Comment					

No Photos

LM Start	0.84	Rating **	N	Issue No.	9
LM End	0.84	Issue Type +	Ma	Location *	LS
Category	Earthen Levee			GPS Latitude/Longitude	
				Start	End
Item	Trim / Thin Trees			38.424722 °	38.424722 °
				-121.530470 °	-121.530470 °
DWR ID	DWR_RD0999_04_s_2012_9				
Comment Code					
T5 : Tree stumps.					
Inspector Comment					

No Photos

LM Start	0.99	Rating **	M	Issue No.	39
LM End	0.99	Issue Type +	Ma	Location *	LS
Category	Earthen Levee			GPS Latitude/Longitude	
				Start	End
Item	Trim / Thin Trees			38.426644 °	38.426644 °
				-121.531675 °	-121.531675 °
DWR ID	DWR_RD0999_04_f_2015_39				
Comment Code					
T1 : Trim trees to at least five feet above ground level.					
Inspector Comment					

No Photos

* Location LS : Land Side N/A : Not Applicable WS : Water Side CR : Crown	** Rating A : Acceptable M : Minimally Acceptable U : Unacceptable	N : Not Inspected/Rated C : Corrected A/W : Acceptable but Monitor & Maintain	+ Issue Type Ma : Maintenance Deficiency Ob : Design & System Obsolescence En : Enforcement
--	--	---	---

**Flood Control Project Maintenance
Levee Inspections**

Maintenance Issue Types Only, Levee Inspection Report By Mile - Fall 2016

Reclamation District No. 0999 Netherlands

Waterway	Bank	Unit Miles	Inspection Start/End	Inspector
Unit No. 04 Sacramento River	Right	1.22	09/22/2016 09/22/2016	Richard Willoughby

LM Start	1.01	Rating **	U	Issue No.	16
LM End	1.04	Issue Type +	Ma	Location *	LS
Category	Earthen Levee			GPS Latitude/Longitude	
				Start	End
Item	Vegetation			38.426873 °	38.427295 °
				-121.531778 °	-121.532164 °
DWR ID	DWR_RD0999_04_f_2012_16				
Comment Code					
V2 : Remove the wild growth other than native grasses from the levee slopes.					
Inspector Comment					
Blackberries blocking view of landward toe.					

Photo 1 of 4 : FA_2016_RD0999_235_16_20160915_00015.jpg

Looking southwest at dense vegetation on landward slope and toe.
(Spring 2016)

LM Start	1.01	Rating **	U	Issue No.	16 (cont)
LM End	1.04	Issue Type +	Ma	Location *	LS

Photo 2 of 4 : FA_2016_RD0999_235_16_20160915_00016.jpg



Looking northwest at dense vines at landward toe. Fall 2015

LM Start	1.01	Rating **	U	Issue No.	16 (cont)
LM End	1.04	Issue Type +	Ma	Location *	LS

Photo 3 of 4 : FA_2016_RD0999_235_16_20160915_00017.jpg



Looking southwest at dense berry vines at landward toe. 2013

* Location LS : Land Side N/A : Not Applicable WS : Water Side CR : Crown		** Rating A : Acceptable M : Minimally Acceptable U : Unacceptable N : Not Inspected/Rated C : Corrected A/W : Acceptable but Monitor & Maintain		+ Issue Type Ma : Maintenance Deficiency Ob : Design & System Obsolescence En : Enforcement	
--	--	---	--	---	--

**Flood Control Project Maintenance
Levee Inspections**

Maintenance Issue Types Only, Levee Inspection Report By Mile - Fall 2016

Reclamation District No. 0999 Netherlands

Waterway	Bank	Unit Miles	Inspection Start/End	Inspector
Unit No. 04 Sacramento River	Right	1.22	09/22/2016 09/22/2016	Richard Willoughby

LM Start	1.01	Rating **	U	Issue No.	16 (cont)	
LM End	1.04	Issue Type +	Ma	Location *	LS	
Category	Earthen Levee			GPS Latitude/Longitude		
				Start		End
Item	Vegetation			38.426873 °		38.427295 °
				-121.531778 °		-121.532164 °
DWR ID	DWR_RD0999_04_f_2012_16					
Comment Code						
V2 : Remove the wild growth other than native grasses from the levee slopes.						
Inspector Comment						
Blackberries blocking view of landward toe.						

Photo 4 of 4 : FA_2016_RD0999_235_16_20160915_00018.jpg



Looking south at dense berryvines on landside toe. 2012

LM Start	1.15	Rating **	U	Issue No.	5
LM End	1.15	Issue Type +	Ma	Location *	LS
Category	Earthen Levee			GPS Latitude/Longitude	
				Start	End
Item	Vegetation			38.428823 °	38.428823 °
				-121.532885 °	-121.532885 °
DWR ID	DWR_RD0999_04_s_2012_5				
Comment Code					
V2 : Remove the wild growth other than native grasses from the levee slopes.					
Inspector Comment					
Berry vines and wild roses on landside toe.					

Photo 1 of 3 : FA_2016_RD0999_235_5_20160915_00002.jpg



Looking at dense vines at landward toe. Fall 2015.

LM Start	1.15	Rating **	U	Issue No.	5 (cont)
LM End	1.15	Issue Type +	Ma	Location *	LS

Photo 2 of 3 : FA_2016_RD0999_235_5_20160915_00003.jpg



Looking north at dense vegetation on landside slope near ramp.

*** Location**

LS : Land Side N/A : Not Applicable
WS : Water Side
CR : Crown

**** Rating**

A : Acceptable N : Not Inspected/Rated
M : Minimally Acceptable C : Corrected
U : Unacceptable A/W : Acceptable but Monitor & Maintain

+ Issue Type

Ma : Maintenance Deficiency
Ob : Design & System Obsolescence
En : Enforcement

**Flood Control Project Maintenance
Levee Inspections**

Maintenance Issue Types Only, Levee Inspection Report By Mile - Fall 2016

Reclamation District No. 0999 Netherlands

Waterway	Bank	Unit Miles	Inspection Start/End	Inspector
Unit No. 04 Sacramento River	Right	1.22	09/22/2016 09/22/2016	Richard Willoughby

LM Start	1.15	Rating **	U	Issue No.	5 (cont)	
LM End	1.15	Issue Type +	Ma	Location *	LS	
Category	Earthen Levee			GPS Latitude/Longitude		
				Start	End	
Item	Vegetation			38.428823 °	38.428823 °	
				-121.532885 °	-121.532885 °	
DWR ID	DWR_RD0999_04_s_2012_5					
Comment Code						
V2 : Remove the wild growth other than native grasses from the levee slopes.						
Inspector Comment						
Berry vines and wild roses on landside toe.						

Photo 3 of 3 : FA_2016_RD0999_235_5_20160915_00004.jpg



Looking northwest at dense wild roses and berry vines on landside toe near ramp.

LM Start	1.16	Rating **	U	Issue No.	40
LM End	1.16	Issue Type +	Ma	Location *	LS
Category	Earthen Levee			GPS Latitude/Longitude	
				Start	End
Item	Erosion / Bank Caving			38.428877 °	38.428877 °
				-121.532922 °	-121.532922 °
DWR ID	DWR_RD0999_04_f_2015_40				
Comment Code					
E2 : Schedule repair of erosion site prior to the next inspection.					
Inspector Comment					
Large hole and erosion on landward shoulder, slope and toe.					

Photo 1 of 4 : FA_2016_RD0999_235_40_20160915_00028.jpg



Looking east at erosion on landward shoulder and slope. (Spring 2016)

LM Start	1.16	Rating **	U	Issue No.	40 (cont)
LM End	1.16	Issue Type +	Ma	Location *	LS

Photo 2 of 4 : FA_2016_RD0999_235_40_20160915_00031.jpg



Looking east at erosion on landward shoulder.

* Location LS : Land Side N/A : Not Applicable WS : Water Side CR : Crown		** Rating A : Acceptable N : Not Inspected/Rated M : Minimally Acceptable C : Corrected U : Unacceptable A/W : Acceptable but Monitor & Maintain		+ Issue Type Ma : Maintenance Deficiency Ob : Design & System Obsolescence En : Enforcement	
--	--	---	--	---	--

**Flood Control Project Maintenance
Levee Inspections**

Maintenance Issue Types Only, Levee Inspection Report By Mile - Fall 2016

Reclamation District No. 0999 Netherlands

Waterway	Bank	Unit Miles	Inspection Start/End	Inspector
Unit No. 04 Sacramento River	Right	1.22	09/22/2016 09/22/2016	Richard Willoughby

LM Start	1.16	Rating **	U	Issue No.	40 (cont)	
LM End	1.16	Issue Type +	Ma	Location *	LS	
Category	Earthen Levee			GPS Latitude/Longitude		
				Start		End
Item	Erosion / Bank Caving			38.428877 °		38.428877 °
				-121.532922 °		-121.532922 °
DWR ID	DWR_RD0999_04_f_2015_40					
Comment Code						
E2 : Schedule repair of erosion site prior to the next inspection.						
Inspector Comment						
Large hole and erosion on landward shoulder, slope and toe.						

Photo 3 of 4 : FA_2016_RD0999_235_40_20160915_00032.jpg



Looking west at caving at landward slope and toe.

LM Start	1.16	Rating **	U	Issue No.	40 (cont)
LM End	1.16	Issue Type +	Ma	Location *	LS

Photo 4 of 4 : FA_2016_RD0999_235_40_20160915_00033.jpg



Looking southwest at shoulder erosion and caving at landward slope and toe.

LM Start	1.18	Rating **	U	Issue No.	46
LM End	1.18	Issue Type +	Ma	Location *	WS
Category	Earthen Levee			GPS Latitude/Longitude	
				Start	End
Item	Erosion / Bank Caving			38.429201 °	38.429201 °
				-121.533012 °	-121.533012 °
DWR ID	DWR_RD0999_04_s_2016_46				
Comment Code					
E2 : Schedule repair of erosion site prior to the next inspection.					
Inspector Comment					
Erosion located just below asphalt on waterward shoulder.					

Photo 1 of 2 : FA_2016_RD0999_235_46_20160915_00034.jpg



Looking west at foot erosion on waterward shoulder and slope.

*** Location**

LS : Land Side N/A : Not Applicable
WS : Water Side
CR : Crown

**** Rating**

A : Acceptable N : Not Inspected/Rated
M : Minimally Acceptable C : Corrected
U : Unacceptable A/W : Acceptable but Monitor & Maintain


+ Issue Type

Ma : Maintenance Deficiency
Ob : Design & System Obsolescence
En : Enforcement

Maintenance Issue Types Only, Levee Inspection Report By Mile - Fall 2016

Waterway	Bank	Unit Miles	Inspection Start/End	Inspector
Unit No. 04 Sacramento River	Right	1.22	09/22/2016 09/22/2016	Richard Willoughby

Photo 2 of 2 : FA_2016_RD0999_235_46_20160915_00035.jpg



Looking south at foot erosion on waterward shoulder and slope.

Photo 1 of 1 : FA_201999_235_22_20160915_00021.jpg

NOTICE
The Lanes Air Force Property
No Trespassing
No Vandalism
No Hunting
No Dumping

Looking south at dense trees on landward slope.

* Location	** Rating	+ Issue Type
LS : Land Side	A : Acceptable	Ma : Maintenance Deficiency
N/A : Not Applicable	N : Not Inspected/Rated	Ob : Design & System Obsolescence
WS : Water Side	M : Minimally Acceptable	En : Enforcement
CR : Crown	U : Unacceptable	
	A/W : Acceptable but Monitor & Maintain	

**Flood Control Project Maintenance
Levee Inspections**

Maintenance Issue Types Only, Levee Inspection Report By Mile - Fall 2016

Reclamation District No. 0999 Netherlands

Waterway	Bank	Unit Miles	Inspection Start/End	Inspector
Unit No. 05 Elk Slough	Right	9.48	09/21/2016 09/22/2016	Richard Willoughby

LM Start	0.02	Rating **	M	Issue No.	178
LM End	0.05	Issue Type +	Ma	Location *	LS
Category	Earthen Levee			GPS Latitude/Longitude	
				Start	End
Item	Trim / Thin Trees			38.332946°	38.333308°
				-121.584502°	-121.584494°
DWR ID	DWR_RD0999_05_s_2015_178				
Comment Code					
T2 : Thin trees to allow visibility of the ground and room to flood fight.					
Inspector Comment					
Remove trees under an inch in diameter on landward slope. Don't allow young trees to get established.					

Photo 1 of 1 : FA_2016_RD0999_236_178_20160915_00129.jpg



Looking at typical view of young oak trees on landward slope. (Spring 2015)

LM Start	0.04	Rating **	M	Issue No.	211
LM End	0.06	Issue Type +	Ma	Location *	WS
Category	Earthen Levee			GPS Latitude/Longitude	
				Start	End
Item	Trim / Thin Trees			38.333160°	38.333449°
				-121.584481°	-121.584431°
DWR ID	DWR_RD0999_05_s_2016_211				
Comment Code					
T1 : Trim trees to at least five feet above ground level.					
Inspector Comment					

No Photos

* Location
LS : Land Side N/A : Not Applicable
WS : Water Side
CR : Crown

** Rating
A : Acceptable N : Not Inspected/Rated
M : Minimally Acceptable C : Corrected
U : Unacceptable A/W : Acceptable but Monitor & Maintain

+ Issue Type
Ma : Maintenance Deficiency
Ob : Design & System Obsolescence
En : Enforcement

**Flood Control Project Maintenance
Levee Inspections**

Maintenance Issue Types Only, Levee Inspection Report By Mile - Fall 2016

Reclamation District No. 0999 Netherlands

Waterway	Bank	Unit Miles	Inspection Start/End	Inspector
Unit No. 05 Elk Slough	Right	9.48	09/21/2016 09/22/2016	Richard Willoughby

LM Start	0.37	Rating **	M	Issue No.	3
LM End	0.39	Issue Type +	Ma	Location *	WS
Category	Earthen Levee			GPS Latitude/Longitude	
				Start	End
Item	Trim / Thin Trees			38.337697°	38.337963°
				-121.582420°	-121.582352°
DWR ID	DWR_RD0999_05_s_2012_3				
Comment Code					
T1 : Trim trees to at least five feet above ground level.					
Inspector Comment					

No Photos

LM Start	0.37	Rating **	U	Issue No.	53
LM End	0.37	Issue Type +	Ma	Location *	LS
Category	Earthen Levee			GPS Latitude/Longitude	
				Start	End
Item	Vegetation			38.337753 °	38.337753 °
				-121.582445 °	-121.582445 °
DWR ID	DWR_RD0999_05_s_2012_53				
Comment Code					
V2 : Remove the wild growth other than native grasses from the levee slopes.					
Inspector Comment					

Photo 1 of 1 : FA_2016_RD0999_236_53_20160915_00055.jpg



Looking west at dense vegetation on landward slope.

* Location LS : Land Side N/A : Not Applicable WS : Water Side CR : Crown	** Rating A : Acceptable M : Minimally Acceptable U : Unacceptable	N : Not Inspected/Rated C : Corrected A/W : Acceptable but Monitor & Maintain	+ Issue Type Ma : Maintenance Deficiency Ob : Design & System Obsolescence En : Enforcement
--	--	---	---

**Flood Control Project Maintenance
Levee Inspections**

Maintenance Issue Types Only, Levee Inspection Report By Mile - Fall 2016

Reclamation District No. 0999 Netherlands

Waterway	Bank	Unit Miles	Inspection Start/End	Inspector
Unit No. 05 Elk Slough	Right	9.48	09/21/2016 09/22/2016	Richard Willoughby

LM Start	0.40	Rating **	U	Issue No.	25
LM End	0.44	Issue Type +	Ma	Location *	LS
Category	Earthen Levee			GPS Latitude/Longitude	
				Start	End
Item	Vegetation			38.338075 °	38.338688 °
				-121.582322 °	-121.582193 °
DWR ID	DWR_RD0999_05_s_2012_25				
Comment Code					
V2 : Remove the wild growth other than native grasses from the levee slopes.					
Inspector Comment					
Willows within vegetation area.					

Photo 1 of 1 : FA_2016_RD0999_236_25_20160923_00223.jpg



Looking southwest at dense vegetation (willows) on landward slope.

LM Start	0.44	Rating **	A/W	Issue No.	26
LM End	0.45	Issue Type +	Ma	Location *	WS
Category	Earthen Levee			GPS Latitude/Longitude	
				Start	End
Item	Encroachments			38.338647 °	38.338868 °
				-121.582217 °	-121.582163 °
DWR ID	DWR_RD0999_05_s_2012_26				
Comment Code					
PR : Prunings					
Inspector Comment					

Photo 1 of 1 : FA_2016_RD0999_236_26_20160915_00030.jpg



Looking northeast at prunings on waterside slope.

LM Start	0.50	Rating **	A/W	Issue No.	135
LM End	0.50	Issue Type +	Ma	Location *	LS
Category	Earthen Levee			GPS Latitude/Longitude	
				Start	End
Item	Trim / Thin Trees			38.339510 °	38.339510 °
				-121.582081 °	-121.582081 °
DWR ID	DWR_RD0999_05_f_2013_135				
Comment Code					
T1 : Trim trees to at least five feet above ground level.					
Inspector Comment					

No Photos

* Location
LS : Land Side N/A : Not Applicable
WS : Water Side
CR : Crown

** Rating
A : Acceptable N : Not Inspected/Rated
M : Minimally Acceptable C : Corrected
U : Unacceptable A/W : Acceptable but Monitor & Maintain

+ Issue Type
Ma : Maintenance Deficiency
Ob : Design & System Obsolescence
En : Enforcement

**Flood Control Project Maintenance
Levee Inspections**

Maintenance Issue Types Only, Levee Inspection Report By Mile - Fall 2016

Reclamation District No. 0999 Netherlands

Waterway	Bank	Unit Miles	Inspection Start/End	Inspector
Unit No. 05 Elk Slough	Right	9.48	09/21/2016 09/22/2016	Richard Willoughby

LM Start	0.54	Rating **	M	Issue No.	27
LM End	0.57	Issue Type +	Ma	Location *	WS
Category	Earthen Levee			GPS Latitude/Longitude	
				Start	End
Item	Trim / Thin Trees			38.340124 °	38.340560 °
				-121.582039 °	-121.581905 °
DWR ID	DWR_RD0999_05_s_2012_27				
Comment Code					
T3 : Trim and thin trees to allow visibility of the ground and room to flood fight.					
Inspector Comment					

No Photos

LM Start	0.68	Rating **	U	Issue No.	189
LM End	0.68	Issue Type +	Ma	Location *	LS
Category	Earthen Levee			GPS Latitude/Longitude	
				Start	End
Item	Vegetation			38.342032 °	38.342032 °
				-121.581372 °	-121.581372 °
DWR ID	DWR_RD0999_05_f_2014_189				
Comment Code					
V2 : Remove the wild growth other than native grasses from the levee slopes.					
Inspector Comment					
Dense wild grapevines on landward slope.					

Photo 1 of 2 : FA_2016_RD0999_236_189_20160923_00224.jpg



Looking southwest at dense vegetation on landward slope and toe. (Fall 2016)

* Location LS : Land Side N/A : Not Applicable WS : Water Side CR : Crown	** Rating A : Acceptable M : Minimally Acceptable U : Unacceptable N : Not Inspected/Rated C : Corrected A/W : Acceptable but Monitor & Maintain	+ Issue Type Ma : Maintenance Deficiency Ob : Design & System Obsolescence En : Enforcement
--	---	---

**Flood Control Project Maintenance
Levee Inspections**

Maintenance Issue Types Only, Levee Inspection Report By Mile - Fall 2016

Reclamation District No. 0999 Netherlands

Waterway	Bank	Unit Miles	Inspection Start/End	Inspector
Unit No. 05 Elk Slough	Right	9.48	09/21/2016 09/22/2016	Richard Willoughby

LM Start	0.68	Rating **	U	Issue No.	189 (cont)	
LM End	0.68	Issue Type +	Ma	Location *	LS	
Category	Earthen Levee			GPS Latitude/Longitude		
				Start		End
Item	Vegetation			38.342032°		38.342032°
				-121.581372°		-121.581372°
DWR ID	DWR_RD0999_05_f_2014_189					
Comment Code						
V2 : Remove the wild growth other than native grasses from the levee slopes.						
Inspector Comment						
Dense wild grapevines on landward slope.						

Photo 2 of 2 : FA_2016_RD0999_236_189_20160915_00132.jpg



Looking northwest at dense vegetation on landward slope. (Spring 2016)

LM Start	0.69	Rating **	A/W	Issue No.	9
LM End	0.71	Issue Type +	Ma	Location *	LS
Category	Earthen Levee			GPS Latitude/Longitude	
				Start	End
Item	Trim / Thin Trees			38.342180 °	38.342537 °
				-121.581230 °	-121.581263 °
DWR ID	DWR_RD0999_05_s_2012_9				
Comment Code					
T3 : Trim and thin trees to allow visibility of the ground and room to flood fight.					
Inspector Comment					
District or landowner trimmed trees to comply with standards.					

Photo 1 of 6 : FA_2016_RD0999_236_9_20160915_00007.jpg



Looking northwest at landward slope. (Spring 2015)

LM Start	0.69	Rating **	A/W	Issue No.	9 (cont)
LM End	0.71	Issue Type +	Ma	Location *	LS

Photo 2 of 6 : FA_2016_RD0999_236_9_20160915_00008.jpg



Looking south at landward slope. (Spring 2015)

* Location LS : Land Side N/A : Not Applicable WS : Water Side CR : Crown		** Rating A : Acceptable N : Not Inspected/Rated M : Minimally Acceptable C : Corrected U : Unacceptable A/W : Acceptable but Monitor & Maintain		+ Issue Type Ma : Maintenance Deficiency Ob : Design & System Obsolescence En : Enforcement	
--	--	---	--	---	--

**Flood Control Project Maintenance
Levee Inspections**

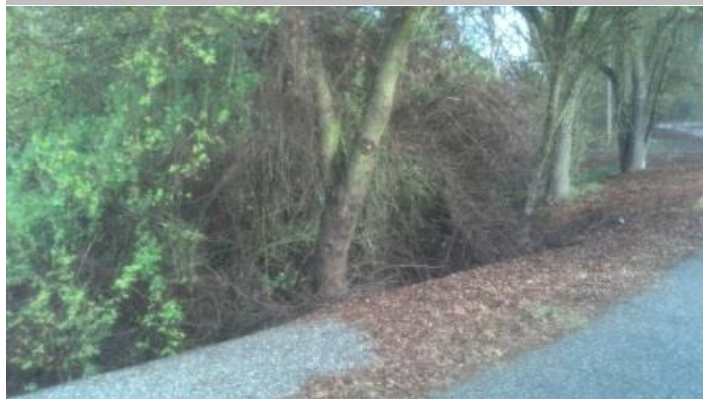
Maintenance Issue Types Only, Levee Inspection Report By Mile - Fall 2016

Reclamation District No. 0999 Netherlands

Waterway	Bank	Unit Miles	Inspection Start/End	Inspector
Unit No. 05 Elk Slough	Right	9.48	09/21/2016 09/22/2016	Richard Willoughby

LM Start	0.69	Rating **	A/W	Issue No.	9 (cont)	
LM End	0.71	Issue Type +	Ma	Location *	LS	
Category	Earthen Levee			GPS Latitude/Longitude		
				Start		End
Item	Trim / Thin Trees			38.342180°		38.342537°
				-121.581230°		-121.581263°
DWR ID	DWR_RD0999_05_s_2012_9					
Comment Code						
T3 : Trim and thin trees to allow visibility of the ground and room to flood fight.						
Inspector Comment						
District or landowner trimmed trees to comply with standards.						

Photo 3 of 6 : FA_2016_RD0999_236_9_20160915_00009.jpg



Looking northwest at dense trees at landside slope and toe. (Spring 2013)

LM Start	0.69	Rating **	A/W	Issue No.	9 (cont)
LM End	0.71	Issue Type +	Ma	Location *	LS

Photo 4 of 6 : FA_2016_RD0999_236_9_20160915_00010.jpg



Looking west at trimmed trees on landside slope. (Spring 2012)

LM Start	0.69	Rating **	A/W	Issue No.	9 (cont)
LM End	0.71	Issue Type +	Ma	Location *	LS

Photo 5 of 6 : FA_2016_RD0999_236_9_20160915_00011.jpg



Looking west at dense trees on landside slope and toe. (Spring 2011)

* Location LS : Land Side N/A : Not Applicable WS : Water Side CR : Crown		** Rating A : Acceptable N : Not Inspected/Rated M : Minimally Acceptable C : Corrected U : Unacceptable A/W : Acceptable but Monitor & Maintain		+ Issue Type Ma : Maintenance Deficiency Ob : Design & System Obsolescence En : Enforcement	
--	--	---	--	---	--

Reclamation District No. 0999 Netherlands

Front view of dense trees at landside shoulder. (Spring 2011)

No Photos

Looking northwest at untrimmed trees on landward slope. (Spring 2015)

Page 8 of 54

**Flood Control Project Maintenance
Levee Inspections**

Maintenance Issue Types Only, Levee Inspection Report By Mile - Fall 2016

Reclamation District No. 0999 Netherlands

Waterway	Bank	Unit Miles	Inspection Start/End	Inspector
Unit No. 05 Elk Slough	Right	9.48	09/21/2016 09/22/2016	Richard Willoughby

LM Start	0.78	Rating **	M	Issue No.	128 (cont)	
LM End	0.78	Issue Type +	Ma	Location *	LS	
Category	Earthen Levee			GPS Latitude/Longitude		
				Start		End
Item	Trim / Thin Trees			38.343495 °		38.343495 °
				-121.581282 °		-121.581282 °
DWR ID	DWR_RD0999_05_s_2012_128					
Comment Code						
T3 : Trim and thin trees to allow visibility of the ground and room to flood fight.						
Inspector Comment						

Photo 2 of 2 : FA_2016_RD0999_236_128_20160915_00095.jpg



Looking at dense trees on landside slope and toe.

LM Start	0.79	Rating **	U	Issue No.	190
LM End	0.79	Issue Type +	Ma	Location *	LS
Category	Earthen Levee			GPS Latitude/Longitude	
				Start	End
Item	Trim / Thin Trees			38.343606 °	38.343606 °
				-121.581279 °	-121.581279 °
DWR ID	DWR_RD0999_05_f_2014_190				
Comment Code					
T3 : Trim and thin trees to allow visibility of the ground and room to flood fight.					
Inspector Comment					

Photo 1 of 1 : FA_2016_RD0999_236_190_20160915_00133.jpg



Looking west at dense vegetation on landward slope and toe.

LM Start	0.93	Rating **	M	Issue No.	197
LM End	0.95	Issue Type +	Ma	Location *	LS
Category	Earthen Levee			GPS Latitude/Longitude	
				Start	End
Item	Trim / Thin Trees			38.345564°	38.345844°
				-121.580614°	-121.580458°
DWR ID	DWR_RD0999_05_f_2014_197				
Comment Code					
T1 : Trim trees to at least five feet above ground level.					
Inspector Comment					

No Photos

* Location
LS : Land Side N/A : Not Applicable
WS : Water Side
CR : Crown

** Rating
A : Acceptable N : Not Inspected/Rated
M : Minimally Acceptable C : Corrected
U : Unacceptable A/W : Acceptable but Monitor & Maintain

+ Issue Type
Ma : Maintenance Deficiency
Ob : Design & System Obsolescence
En : Enforcement

**Flood Control Project Maintenance
Levee Inspections**

Maintenance Issue Types Only, Levee Inspection Report By Mile - Fall 2016

Reclamation District No. 0999 Netherlands

Waterway	Bank	Unit Miles	Inspection Start/End	Inspector
Unit No. 05 Elk Slough	Right	9.48	09/21/2016 09/22/2016	Richard Willoughby

LM Start	1.00	Rating **	M	Issue No.	180
LM End	1.02	Issue Type +	Ma	Location *	LS
Category	Earthen Levee			GPS Latitude/Longitude	
				Start	End
Item	Trim / Thin Trees			38.346477 °	38.346864 °
				-121.580086 °	-121.579864 °
DWR ID	DWR_RD0999_05_s_2015_180				
Comment Code					
T1 : Trim trees to at least five feet above ground level.					
Inspector Comment					

No Photos

LM Start	1.04	Rating **	M	Issue No.	146
LM End	1.06	Issue Type +	Ma	Location *	LS
Category	Earthen Levee			GPS Latitude/Longitude	
				Start	End
Item	Trim / Thin Trees			38.347067°	38.347331°
				-121.579735°	-121.579582°
DWR ID	DWR_RD0999_05_f_2013_146				
Comment Code					
T3 : Trim and thin trees to allow visibility of the ground and room to flood fight.					
Inspector Comment					

No Photos

* Location LS : Land Side N/A : Not Applicable WS : Water Side CR : Crown	** Rating A : Acceptable M : Minimally Acceptable U : Unacceptable N : Not Inspected/Rated C : Corrected A/W : Acceptable but Monitor & Maintain	+ Issue Type Ma : Maintenance Deficiency Ob : Design & System Obsolescence En : Enforcement
--	---	---

Reclamation District No. 0999 Netherlands

**Flood Control Project Maintenance
Levee Inspections**

Maintenance Issue Types Only, Levee Inspection Report By Mile - Fall 2016

Reclamation District No. 0999 Netherlands

Waterway	Bank	Unit Miles	Inspection Start/End	Inspector
Unit No. 05 Elk Slough	Right	9.48	09/21/2016 09/22/2016	Richard Willoughby

LM Start	1.30	Rating **	M	Issue No.	36
LM End	1.30	Issue Type +	Ma	Location *	WS
Category	Earthen Levee			GPS Latitude/Longitude	
				Start	End
Item	Trim / Thin Trees			38.348252°	38.348252°
				-121.575704°	-121.575704°
DWR ID	DWR_RD0999_05_s_2012_36				
Comment Code					
T1 : Trim trees to at least five feet above ground level.					
Inspector Comment					

No Photos

LM Start	1.38	Rating **	M	Issue No.	198
LM End	1.38	Issue Type +	Ma	Location *	LS
Category	Earthen Levee			GPS Latitude/Longitude	
				Start	End
Item	Trim / Thin Trees			38.348133°	38.348133°
				-121.574319°	-121.574319°
DWR ID	DWR_RD0999_05_f_2014_198				
Comment Code					
T1 : Trim trees to at least five feet above ground level.					
Inspector Comment					

No Photos

*** Location**
LS : Land Side N/A : Not Applicable
WS : Water Side
CR : Crown

**** Rating**
A : Acceptable N : Not Inspected/Rated
M : Minimally Acceptable C : Corrected
U : Unacceptable A/W : Acceptable but Monitor & Maintain

+ Issue Type
Ma : Maintenance Deficiency
Ob : Design & System Obsolescence
En : Enforcement

Reclamation District No. 0999 Netherlands

Looking west at century plants on landward slope.

Looking east at dense trees on landward slope.

Page 13 of 54

**Flood Control Project Maintenance
Levee Inspections**

Maintenance Issue Types Only, Levee Inspection Report By Mile - Fall 2016

Reclamation District No. 0999 Netherlands

Waterway	Bank	Unit Miles	Inspection Start/End	Inspector
Unit No. 05 Elk Slough	Right	9.48	09/21/2016 09/22/2016	Richard Willoughby

LM Start	1.70	Rating **	M	Issue No.	21
LM End	1.77	Issue Type +	Ma	Location *	WS
Category	Earthen Levee			GPS Latitude/Longitude	
				Start	End
Item	Trim / Thin Trees			38.352088 °	38.352968 °
				-121.574052 °	-121.574008 °
DWR ID	DWR_RD0999_05_s_2012_21				
Comment Code					
T1 : Trim trees to at least five feet above ground level.					
Inspector Comment					

No Photos

LM Start	2.14	Rating **	M	Issue No.	24
LM End	2.16	Issue Type +	Ma	Location *	LS
Category	Earthen Levee			GPS Latitude/Longitude	
				Start	End
Item	Trim / Thin Trees			38.355402 °	38.355282 °
				-121.568893 °	-121.568547 °
DWR ID	DWR_RD0999_05_s_2012_24				
Comment Code					
T3 : Trim and thin trees to allow visibility of the ground and room to flood fight.					
Inspector Comment					

Photo 1 of 1 : FA_2016_RD0999_236_24_20160915_00025.jpg



Looking west at dense trees on landward slope. (Spring 2015)

* Location LS : Land Side N/A : Not Applicable WS : Water Side CR : Crown	** Rating A : Acceptable M : Minimally Acceptable U : Unacceptable N : Not Inspected/Rated C : Corrected A/W : Acceptable but Monitor & Maintain	+ Issue Type Ma : Maintenance Deficiency Ob : Design & System Obsolescence En : Enforcement
--	---	---

**Flood Control Project Maintenance
Levee Inspections**

Maintenance Issue Types Only, Levee Inspection Report By Mile - Fall 2016

Reclamation District No. 0999 Netherlands

Waterway	Bank	Unit Miles	Inspection Start/End	Inspector
Unit No. 05 Elk Slough	Right	9.48	09/21/2016 09/22/2016	Richard Willoughby

LM Start	2.28	Rating **	M	Issue No.	40
LM End	2.30	Issue Type +	Ma	Location *	WS
Category	Earthen Levee			GPS Latitude/Longitude	
				Start	End
Item	Trim / Thin Trees			38.354474 °	38.354555 °
				-121.566701 °	-121.566191 °
DWR ID	DWR_RD0999_05_s_2012_40				
Comment Code					
T1 : Trim trees to at least five feet above ground level.					
Inspector Comment					

No Photos

LM Start	2.36	Rating **	M	Issue No.	42
LM End	2.48	Issue Type +	Ma	Location *	WS
Category	Earthen Levee			GPS Latitude/Longitude	
				Start	End
Item	Trim / Thin Trees			38.354916 °	38.355982 °
				-121.565167 °	-121.563561 °
DWR ID	DWR_RD0999_05_s_2012_42				
Comment Code					
T2 : Thin trees to allow visibility of the ground and room to flood fight.					
Inspector Comment					

No Photos

LM Start	2.51	Rating **	M	Issue No.	82
LM End	2.65	Issue Type +	Ma	Location *	LS
Category	Earthen Levee			GPS Latitude/Longitude	
				Start	End
Item	Trim / Thin Trees			38.356270 °	38.358132 °
				-121.563218 °	-121.562347 °
DWR ID	DWR_RD0999_05_s_2012_82				
Comment Code					
T3 : Trim and thin trees to allow visibility of the ground and room to flood fight.					
Inspector Comment					

Photo 1 of 1 : FA_2016_RD0999_236_82_20160915_00076.jpg



Looking northwest at dense trees on landward slope. (Spring 2015)

* Location LS : Land Side N/A : Not Applicable WS : Water Side CR : Crown	** Rating A : Acceptable M : Minimally Acceptable U : Unacceptable	N : Not Inspected/Rated C : Corrected A/W : Acceptable but Monitor & Maintain	+ Issue Type Ma : Maintenance Deficiency Ob : Design & System Obsolescence En : Enforcement
--	--	---	---

**Flood Control Project Maintenance
Levee Inspections**

Maintenance Issue Types Only, Levee Inspection Report By Mile - Fall 2016

Reclamation District No. 0999 Netherlands

Waterway	Bank	Unit Miles	Inspection Start/End	Inspector
Unit No. 05 Elk Slough	Right	9.48	09/21/2016 09/22/2016	Richard Willoughby

LM Start	2.70	Rating **	A/W	Issue No.	73
LM End	2.70	Issue Type +	Ma	Location *	WS
Category	Earthen Levee			GPS Latitude/Longitude	
				Start	End
Item	Trim / Thin Trees			38.358888 °	38.358888 °
				-121.562280 °	-121.562280 °
DWR ID	DWR_RD0999_05_s _ 2012_73				
Comment Code					
T2 : Thin trees to allow visibility of the ground and room to flood fight.					
Inspector Comment					

No Photos

LM Start	2.87	Rating **	M	Issue No.	29
LM End	3.12	Issue Type +	Ma	Location *	LS
Category	Earthen Levee			GPS Latitude/Longitude	
				Start	End
Item	Trim / Thin Trees			38.361268 °	38.364373 °
				-121.563263 °	-121.561947 °
DWR ID	DWR_RD0999_05_s _ 2012_29				
Comment Code					
T3 : Trim and thin trees to allow visibility of the ground and room to flood fight.					
Inspector Comment					

No Photos

* Location LS : Land Side N/A : Not Applicable WS : Water Side CR : Crown	** Rating A : Acceptable M : Minimally Acceptable U : Unacceptable	N : Not Inspected/Rated C : Corrected A/W : Acceptable but Monitor & Maintain	+ Issue Type Ma : Maintenance Deficiency Ob : Design & System Obsolescence En : Enforcement
--	--	---	---

**Flood Control Project Maintenance
Levee Inspections**

Maintenance Issue Types Only, Levee Inspection Report By Mile - Fall 2016

Reclamation District No. 0999 Netherlands

Waterway	Bank	Unit Miles	Inspection Start/End	Inspector
Unit No. 05 Elk Slough	Right	9.48	09/21/2016 09/22/2016	Richard Willoughby

LM Start	3.22	Rating **	A/W	Issue No.	33
LM End	3.29	Issue Type +	Ma	Location *	LS
Category	Earthen Levee			GPS Latitude/Longitude	
				Start	End
Item	Trim / Thin Trees			38.364552°	38.364225°
				-121.560137°	-121.558852°
DWR ID	DWR_RD0999_05_s_2012_33				
Comment Code					
T1 : Trim trees to at least five feet above ground level.					
Inspector Comment					

No Photos

LM Start	3.26	Rating **	M	Issue No.	191
LM End	3.63	Issue Type +	Ma	Location *	CR
Category	Earthen Levee			GPS Latitude/Longitude	
				Start	End
Item	Crown Surface / Depressions / Rutting			38.364522°	38.366911°
				-121.559423°	-121.556784°
DWR ID	DWR_RD0999_05_s_2014_191				
Comment Code					
C3 : Add appropriate gravel or road base. Grade and compact.					
Inspector Comment					

No Photos

LM Start	3.39	Rating **	U	Issue No.	213
LM End	3.39	Issue Type +	Ma	Location *	LS
Category	Earthen Levee			GPS Latitude/Longitude	
				Start	End
Item	Trim / Thin Trees			38.363906 °	38.363906 °
				-121.557220 °	-121.557220 °
DWR ID	DWR_RD0999_05_s_2016_213				
Comment Code					
T1 : Trim trees to at least five feet above ground level.					
Inspector Comment					

Photo 1 of 2 : FA_2016_RD0999_236_213_20160926_00229.jpg



Looking northwest at untrimmed trees on landward toe. (Fall 2016)

* Location LS : Land Side N/A : Not Applicable WS : Water Side CR : Crown	** Rating A : Acceptable M : Minimally Acceptable U : Unacceptable	N : Not Inspected/Rated C : Corrected A/W : Acceptable but Monitor & Maintain	+ Issue Type Ma : Maintenance Deficiency Ob : Design & System Obsolescence En : Enforcement
--	--	---	---

Reclamation District No. 0999 Netherlands

Looking northwest at untrimmed trees at landward toe. (Spring 2016)

No Photos

Looking at the tree overhanging the levee crown.

Page 19 of 54

**Flood Control Project Maintenance
Levee Inspections**

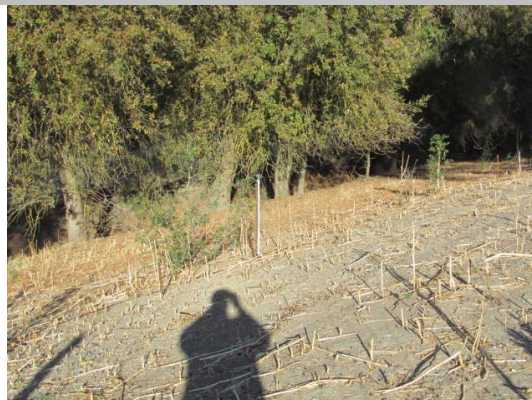
Maintenance Issue Types Only, Levee Inspection Report By Mile - Fall 2016

Reclamation District No. 0999 Netherlands

Waterway	Bank	Unit Miles	Inspection Start/End	Inspector
Unit No. 05 Elk Slough	Right	9.48	09/21/2016 09/22/2016	Richard Willoughby

LM Start	3.58	Rating **	M	Issue No.	201
LM End	3.64	Issue Type +	Ma	Location *	LS
Category	Earthen Levee			GPS Latitude/Longitude	
				Start	End
Item	Trim / Thin Trees			38.366103°	38.367035°
				-121.556820°	-121.556781°
DWR ID	DWR_RD0999_05_f_2014_201				
Comment Code					
T2 : Thin trees to allow visibility of the ground and room to flood fight.					
Inspector Comment					
Landowner has planted oak trees and installed sprinklers on landward slope. Oak trees should be removed.					

Photo 1 of 2 : FA_2016_RD0999_236_201_20160915_00141.jpg



Looking west a several small oak trees planted on landward slope.

LM Start	3.58	Rating **	M	Issue No.	201 (cont)
LM End	3.64	Issue Type +	Ma	Location *	LS

Photo 2 of 2 : FA_2016_RD0999_236_201_20160915_00142.jpg



Looking northwest at several small oak trees planted along landward slope.

* Location LS : Land Side N/A : Not Applicable WS : Water Side CR : Crown	** Rating A : Acceptable M : Minimally Acceptable U : Unacceptable N : Not Inspected/Rated C : Corrected A/W : Acceptable but Monitor & Maintain	+ Issue Type Ma : Maintenance Deficiency Ob : Design & System Obsolescence En : Enforcement
--	---	---

**Flood Control Project Maintenance
Levee Inspections**

Maintenance Issue Types Only, Levee Inspection Report By Mile - Fall 2016

Reclamation District No. 0999 Netherlands

Waterway	Bank	Unit Miles	Inspection Start/End	Inspector
Unit No. 05 Elk Slough	Right	9.48	09/21/2016 09/22/2016	Richard Willoughby

LM Start	3.67	Rating **	U	Issue No.	188 (cont)	
LM End	3.67	Issue Type +	Ma	Location *	WS	
Category	Interior Drainage & Piping Systems			GPS Latitude/Longitude		
				Start		End
Item	Metal Pipes			38.367444 °		38.367444 °
				-121.556513 °		-121.556513 °
DWR ID	DWR_RD0999_05_f_2016_188					
Comment Code						
Inspector Comment						
Pipe leaking on waterside of levee.						

Photo 2 of 2 : FA_2016_RD0999_236_188_20160926_00231.jpg



LM Start	3.80	Rating **	M	Issue No.	174
LM End	3.80	Issue Type +	Ma	Location *	WS
Category	Earthen Levee			GPS Latitude/Longitude	
				Start	End
Item	Encroachments			38.368207 °	38.368207 °
				-121.554360 °	-121.554360 °
DWR ID	DWR_RD0999_05_f_2015_174				
Comment Code					
TR : Tree or limb					
Inspector Comment					
Downed tree branch and limbs on waterward slope.					

Photo 1 of 1 : FA_2016_RD0999_236_174_20160915_00125.jpg



Looking at downed tree branch on waterward slope.

LM Start	3.93	Rating **	M	Issue No.	210
LM End	3.93	Issue Type +	Ma	Location *	LS
Category	Earthen Levee			GPS Latitude/Longitude	
				Start	End
Item	Slope Stability			38.368749 °	38.368749 °
				-121.552463 °	-121.552463 °
DWR ID	DWR_RD0999_05_f_2016_210				
Comment Code					
S3 : Repair the levee slope damaged by vehicle traffic and prevent access where possible.					
Inspector Comment					

No Photos

* Location		** Rating		+ Issue Type	
LS : Land Side	N/A : Not Applicable	A : Acceptable	N : Not Inspected/Rated	Ma : Maintenance Deficiency	
WS : Water Side		M : Minimally Acceptable	C : Corrected	Ob : Design & System Obsolescence	
CR : Crown		U : Unacceptable	A/W : Acceptable but Monitor & Maintain	En : Enforcement	

**Flood Control Project Maintenance
Levee Inspections**

Maintenance Issue Types Only, Levee Inspection Report By Mile - Fall 2016

Reclamation District No. 0999 Netherlands

Waterway	Bank	Unit Miles	Inspection Start/End	Inspector
Unit No. 05 Elk Slough	Right	9.48	09/21/2016 09/22/2016	Richard Willoughby

LM Start	3.94	Rating **	U	Issue No.	175
LM End	3.94	Issue Type +	Ma	Location *	LS
Category	Earthen Levee			GPS Latitude/Longitude	
				Start	End
Item	Trim / Thin Trees			38.368928 °	38.368928 °
				-121.552473 °	-121.552473 °
DWR ID	DWR_RD0999_05_f_2015_175				
Comment Code					
T2 : Thin trees to allow visibility of the ground and room to flood fight.					
Inspector Comment					
Thin or remove young tree from landward shoulder and slope.					

Photo 1 of 2 : FA_2016_RD0999_236_175_20160926_00233.jpg



Looking west at untrimmed trees along fenceline on landward slope.
(Fall 2016)

LM Start	3.94	Rating **	U	Issue No.	175 (cont)
LM End	3.94	Issue Type +	Ma	Location *	LS

Photo 2 of 2 : FA_2016_RD0999_236_175_20160915_00126.jpg



Looking at young trees on waterward shoulder and slope. (Spring 2016)

* Location LS : Land Side N/A : Not Applicable WS : Water Side CR : Crown	** Rating A : Acceptable M : Minimally Acceptable U : Unacceptable	N : Not Inspected/Rated C : Corrected A/W : Acceptable but Monitor & Maintain	+ Issue Type Ma : Maintenance Deficiency Ob : Design & System Obsolescence En : Enforcement
--	--	---	---

**Flood Control Project Maintenance
Levee Inspections**

Maintenance Issue Types Only, Levee Inspection Report By Mile - Fall 2016

Reclamation District No. 0999 Netherlands

Waterway	Bank	Unit Miles	Inspection Start/End	Inspector
Unit No. 05 Elk Slough	Right	9.48	09/21/2016 09/22/2016	Richard Willoughby

LM Start	4.37	Rating **	A/W	Issue No.	37
LM End	4.44	Issue Type +	Ma	Location *	LS
Category	Earthen Levee			GPS Latitude/Longitude	
				Start	End
Item	Vegetation			38.374393 °	38.375008 °
				-121.551187 °	-121.550085 °
DWR ID	DWR_RD0999_05_s_2012_37				
Comment Code					
V2 : Remove the wild growth other than native grasses from the levee slopes.					
Inspector Comment					

No Photos

LM Start	4.42	Rating **	A/W	Issue No.	57
LM End	4.46	Issue Type +	Ma	Location *	LS
Category	Earthen Levee			GPS Latitude/Longitude	
				Start	End
Item	Trim / Thin Trees			38.374866 °	38.375061 °
				-121.550491 °	-121.549800 °
DWR ID	DWR_RD0999_05_s_2012_57				
Comment Code					
T3 : Trim and thin trees to allow visibility of the ground and room to flood fight.					
Inspector Comment					

Photo 1 of 1 : FA_2016_RD0999_236_57_20160915_00058.jpg



Looking northwest at dense trees on landward slope. (Spring 2015)

* Location LS : Land Side N/A : Not Applicable WS : Water Side CR : Crown	** Rating A : Acceptable M : Minimally Acceptable U : Unacceptable	N : Not Inspected/Rated C : Corrected A/W : Acceptable but Monitor & Maintain	+ Issue Type Ma : Maintenance Deficiency Ob : Design & System Obsolescence En : Enforcement
--	--	---	---

**Flood Control Project Maintenance
Levee Inspections**

Maintenance Issue Types Only, Levee Inspection Report By Mile - Fall 2016

Reclamation District No. 0999 Netherlands

Waterway	Bank	Unit Miles	Inspection Start/End	Inspector
Unit No. 05 Elk Slough	Right	9.48	09/21/2016 09/22/2016	Richard Willoughby

LM Start	4.45	Rating **	A/W	Issue No.	130
LM End	4.45	Issue Type +	Ma	Location *	LS
Category	Earthen Levee			GPS Latitude/Longitude	
				Start	End
Item	Trim / Thin Trees			38.375034 °	38.375034 °
				-121.549892 °	-121.549892 °
DWR ID	DWR_RD0999_05_f_2013_130				
Comment Code					
T1 : Trim trees to at least five feet above ground level.					
Inspector Comment					

No Photos

LM Start	4.47	Rating **	A/W	Issue No.	47
LM End	4.53	Issue Type +	Ma	Location *	LS
Category	Earthen Levee			GPS Latitude/Longitude	
				Start	End
Item	Trim / Thin Trees			38.375072 °	38.375057 °
				-121.549547 °	-121.548357 °
DWR ID	DWR_RD0999_05_s_2012_47				
Comment Code					
T3 : Trim and thin trees to allow visibility of the ground and room to flood fight.					
Inspector Comment					

No Photos

LM Start	4.50	Rating **	A/W	Issue No.	58
LM End	4.60	Issue Type +	Ma	Location *	WS
Category	Earthen Levee			GPS Latitude/Longitude	
				Start	End
Item	Trim / Thin Trees			38.375099 °	38.375211 °
				-121.549068 °	-121.547158 °
DWR ID	DWR_RD0999_05_s_2012_58				
Comment Code					
T3 : Trim and thin trees to allow visibility of the ground and room to flood fight.					
Inspector Comment					

No Photos

* Location LS : Land Side N/A : Not Applicable WS : Water Side CR : Crown	** Rating A : Acceptable M : Minimally Acceptable U : Unacceptable	N : Not Inspected/Rated C : Corrected A/W : Acceptable but Monitor & Maintain	+ Issue Type Ma : Maintenance Deficiency Ob : Design & System Obsolescence En : Enforcement
--	--	---	---

**Flood Control Project Maintenance
Levee Inspections**

Maintenance Issue Types Only, Levee Inspection Report By Mile - Fall 2016

Reclamation District No. 0999 Netherlands

Waterway	Bank	Unit Miles	Inspection Start/End	Inspector
Unit No. 05 Elk Slough	Right	9.48	09/21/2016 09/22/2016	Richard Willoughby

LM Start	4.51	Rating **	A/W	Issue No.	38
LM End	4.64	Issue Type +	Ma	Location *	LS
Category	Earthen Levee			GPS Latitude/Longitude	
				Start	End
Item	Trim / Thin Trees			38.375055 °	38.375313 °
				-121.548792 °	-121.546438 °
DWR ID	DWR_RD0999_05_s_2012_38				
Comment Code					
T2 : Thin trees to allow visibility of the ground and room to flood fight.					
Inspector Comment					

LM Start	4.51	Rating **	A/W	Issue No.	38 (cont)
LM End	4.64	Issue Type +	Ma	Location *	LS

Photo 1 of 3 : FA_2016_RD0999_236_38_20160915_00036.jpg



Looking northwest at dense trees on landside slope. (Spring 2011)

Photo 2 of 3 : FA_2016_RD0999_236_38_20160915_00037.jpg



Looking west at trimmed trees on landside slope. (Spring 2012)

LM Start	4.51	Rating **	A/W	Issue No.	38 (cont)
LM End	4.64	Issue Type +	Ma	Location *	LS

Photo 3 of 3 : FA_2016_RD0999_236_38_20160915_00038.jpg



Looking west at dense trees on landside slope. (Spring 2011)

*** Location**

LS : Land Side N/A : Not Applicable
WS : Water Side
CR : Crown

**** Rating**

A : Acceptable N : Not Inspected/Rated
M : Minimally Acceptable C : Corrected
U : Unacceptable A/W : Acceptable but Monitor & Maintain

+ Issue Type

Ma : Maintenance Deficiency
Ob : Design & System Obsolescence
En : Enforcement

**Flood Control Project Maintenance
Levee Inspections**

Maintenance Issue Types Only, Levee Inspection Report By Mile - Fall 2016

Reclamation District No. 0999 Netherlands

Waterway	Bank	Unit Miles	Inspection Start/End	Inspector
Unit No. 05 Elk Slough	Right	9.48	09/21/2016 09/22/2016	Richard Willoughby

LM Start	4.65	Rating **	A/W	Issue No.	50
LM End	4.65	Issue Type +	Ma	Location *	LS
Category	Earthen Levee			GPS Latitude/Longitude	
				Start	End
Item	Encroachments			38.375373 °	38.375373 °
				-121.546200 °	-121.546200 °
DWR ID	DWR_RD0999_05_s_2012_50				
Comment Code					
TR : Tree or limb					
Inspector Comment					
Old tree limbs on landward shoulder blocking access.					

Photo 1 of 1 : FA_2016_RD0999_236_50_20160915_00052.jpg



Looking southwest at tree limbs on landward shoulder.

LM Start	4.67	Rating **	A/W	Issue No.	52
LM End	4.67	Issue Type +	Ma	Location *	LS
Category	Earthen Levee			GPS Latitude/Longitude	
				Start	End
Item	Trim / Thin Trees			38.375478 °	38.375478 °
				-121.545852 °	-121.545852 °
DWR ID	DWR_RD0999_05_s_2012_52				
Comment Code					
T1 : Trim trees to at least five feet above ground level.					
Inspector Comment					

Photo 1 of 1 : FA_2016_RD0999_236_52_20160915_00054.jpg



Looking west at untrimmed trees on landward toe. (Spring 2015)

* Location LS : Land Side N/A : Not Applicable WS : Water Side CR : Crown	** Rating A : Acceptable M : Minimally Acceptable U : Unacceptable	N : Not Inspected/Rated C : Corrected A/W : Acceptable but Monitor & Maintain	+ Issue Type Ma : Maintenance Deficiency Ob : Design & System Obsolescence En : Enforcement
--	--	---	---

**Flood Control Project Maintenance
Levee Inspections**

Maintenance Issue Types Only, Levee Inspection Report By Mile - Fall 2016

Reclamation District No. 0999 Netherlands

Waterway	Bank	Unit Miles	Inspection Start/End	Inspector
Unit No. 05 Elk Slough	Right	9.48	09/21/2016 09/22/2016	Richard Willoughby

LM Start	4.68	Rating **	M	Issue No.	46
LM End	4.68	Issue Type +	Ma	Location *	WS
Category	Earthen Levee			GPS Latitude/Longitude	
				Start	End
Item	Encroachments			38.375548 °	38.375548 °
				-121.545693 °	-121.545693 °
DWR ID	DWR_RD0999_05_f_2012_46				
Comment Code					
PI : Pipe					
Inspector Comment					
Pipe is disconnected from pump and should be reconnected or removed.					

Photo 1 of 1 : FA_2016_RD0999_236_46_20160915_00049.jpg



Looking east at pipe disconnected from pump.

LM Start	4.69	Rating **	A/W	Issue No.	63
LM End	4.71	Issue Type +	Ma	Location *	WS
Category	Earthen Levee			GPS Latitude/Longitude	
				Start	End
Item	Trim / Thin Trees			38.375566 °	38.375775 °
				-121.545676 °	-121.545255 °
DWR ID	DWR_RD0999_05_s_2012_63				
Comment Code					
T3 : Trim and thin trees to allow visibility of the ground and room to flood fight.					
Inspector Comment					

No Photos

LM Start	4.71	Rating **	A/W	Issue No.	61
LM End	4.75	Issue Type +	Ma	Location *	LS
Category	Earthen Levee			GPS Latitude/Longitude	
				Start	End
Item	Vegetation			38.375769 °	38.376074 °
				-121.545258 °	-121.544799 °
DWR ID	DWR_RD0999_05_f_2012_61				
Comment Code					
V2 : Remove the wild growth other than native grasses from the levee slopes.					
Inspector Comment					
Dense vegetation at landside toe.					

No Photos

*** Location**
LS : Land Side N/A : Not Applicable
WS : Water Side
CR : Crown

**** Rating**
A : Acceptable N : Not Inspected/Rated
M : Minimally Acceptable C : Corrected
U : Unacceptable A/W : Acceptable but Monitor & Maintain

+ Issue Type
Ma : Maintenance Deficiency
Ob : Design & System Obsolescence
En : Enforcement

**Flood Control Project Maintenance
Levee Inspections**

Maintenance Issue Types Only, Levee Inspection Report By Mile - Fall 2016

Reclamation District No. 0999 Netherlands

Waterway	Bank	Unit Miles	Inspection Start/End	Inspector
Unit No. 05 Elk Slough	Right	9.48	09/21/2016 09/22/2016	Richard Willoughby

LM Start	4.76	Rating **	A/W	Issue No.	154
LM End	4.76	Issue Type +	Ma	Location *	LS
Category	Earthen Levee			GPS Latitude/Longitude	
				Start	End
Item	Slope Stability			38.376257°	38.376257°
				-121.544578°	-121.544578°
DWR ID	DWR_RD0999_05_f_2013_154				
Comment Code					
S3 : Repair the levee slope damaged by vehicle traffic and prevent access where possible.					
Inspector Comment					
Levee damaged by vehicle traffic.					

Photo 1 of 1 : FA_2016_RD0999_236_154_20160915_00112.jpg



Looking west at levee damage due to vehicle traffic.

LM Start	4.78	Rating **	A/W	Issue No.	64
LM End	4.78	Issue Type +	Ma	Location *	LS
Category	Earthen Levee			GPS Latitude/Longitude	
				Start	End
Item	Trim / Thin Trees			38.376432°	38.376432°
				-121.544382°	-121.544382°
DWR ID	DWR_RD0999_05_s_2012_64				
Comment Code					
T1 : Trim trees to at least five feet above ground level.					
Inspector Comment					

No Photos

* Location LS : Land Side N/A : Not Applicable WS : Water Side CR : Crown	** Rating A : Acceptable M : Minimally Acceptable U : Unacceptable	N : Not Inspected/Rated C : Corrected A/W : Acceptable but Monitor & Maintain	+ Issue Type Ma : Maintenance Deficiency Ob : Design & System Obsolescence En : Enforcement
--	--	---	---

**Flood Control Project Maintenance
Levee Inspections**

Maintenance Issue Types Only, Levee Inspection Report By Mile - Fall 2016

Reclamation District No. 0999 Netherlands

Waterway	Bank	Unit Miles	Inspection Start/End	Inspector
Unit No. 05 Elk Slough	Right	9.48	09/21/2016 09/22/2016	Richard Willoughby

LM Start	4.81	Rating **	A/W	Issue No.	54
LM End	4.81	Issue Type +	Ma	Location *	LS
Category	Earthen Levee			GPS Latitude/Longitude	
				Start	End
Item	Trim / Thin Trees			38.376717 °	38.376717 °
				-121.544017 °	-121.544017 °
DWR ID	DWR_RD0999_05_s _ 2012_54				
Comment Code					
T4 : Trim trees over roadway to at least 12 feet above ground level.					
Inspector Comment					

No Photos

LM Start	5.07	Rating **	U	Issue No.	65
LM End	5.07	Issue Type +	Ma	Location *	LS
Category	Earthen Levee			GPS Latitude/Longitude	
				Start	End
Item	Encroachments			38.379711 °	38.379711 °
				-121.541070 °	-121.541070 °
DWR ID	DWR_RD0999_05_s _ 2012_65				
Comment Code					
PR : Prunings					
Inspector Comment					
Prunings and garbage pile on landside shoulder and slope.					

Photo 1 of 2 : FA_2016_RD0999_236_65_20160926_00235.jpg



Looking south at prunings and garbage on landward shoulder and slope.
(Fall 2016)

*** Location**
LS : Land Side N/A : Not Applicable
WS : Water Side
CR : Crown

**** Rating**
A : Acceptable N : Not Inspected/Rated
M : Minimally Acceptable C : Corrected
U : Unacceptable A/W : Acceptable but Monitor & Maintain

+ Issue Type
Ma : Maintenance Deficiency
Ob : Design & System Obsolescence
En : Enforcement

**Flood Control Project Maintenance
Levee Inspections**

Maintenance Issue Types Only, Levee Inspection Report By Mile - Fall 2016

Reclamation District No. 0999 Netherlands

Waterway	Bank	Unit Miles	Inspection Start/End	Inspector
Unit No. 05 Elk Slough	Right	9.48	09/21/2016 09/22/2016	Richard Willoughby

LM Start	5.07	Rating **	U	Issue No.	65 (cont)	
LM End	5.07	Issue Type +	Ma	Location *	LS	
Category	Earthen Levee			GPS Latitude/Longitude		
				Start		End
Item	Encroachments			38.379711 °		38.379711 °
				-121.541070 °		-121.541070 °
DWR ID	DWR_RD0999_05_s_2012_65					
Comment Code						
PR : Prunings						
Inspector Comment						
Prunings and garbage pile on landside shoulder and slope.						

Photo 2 of 2 : FA_2016_RD0999_236_65_20160915_00060.jpg



Looking east at garbage and prunings on landward shoulder. (Spring 2016)

LM Start	5.12	Rating **	U	Issue No.	176
LM End	5.12	Issue Type +	Ma	Location *	WS
Category	Earthen Levee			GPS Latitude/Longitude	
				Start	End
Item	Slope Stability			38.380420 °	38.380420 °
				-121.541102 °	-121.541102 °
DWR ID	DWR_RD0999_05_f_2015_176				
Comment Code					
S1 : Repair slope instability.					
Inspector Comment					
Large hole on waterward shoulder caused by fallen tree.					

Photo 1 of 3 : FA_2016_RD0999_236_176_20160926_00236.jpg



Looking at hole from falling tree on waterward shoulder. (Fall 2016)

LM Start	5.12	Rating **	U	Issue No.	176 (cont)
LM End	5.12	Issue Type +	Ma	Location *	WS

Photo 2 of 3 : FA_2016_RD0999_236_176_20160915_00127.jpg



Looking at hole on waterward shoulder caused by fallen tree.

* Location LS : Land Side N/A : Not Applicable WS : Water Side CR : Crown		** Rating A : Acceptable N : Not Inspected/Rated M : Minimally Acceptable C : Corrected U : Unacceptable A/W : Acceptable but Monitor & Maintain		+ Issue Type Ma : Maintenance Deficiency Ob : Design & System Obsolescence En : Enforcement	
--	--	---	--	---	--

Reclamation District No. 0999 Netherlands

* Location	** Rating	+ Issue Type
LS : Land Side WS : Water Side CR : Crown	N/A : Not Applicable A : Acceptable M : Minimally Acceptable U : Unacceptable	Ma : Maintenance Deficiency Ob : Design & System Obsolescence En : Enforcement
	N : Not Inspected/Rated C : Corrected A/W : Acceptable but Monitor & Maintain	

Reclamation District No. 0999 Netherlands

Looking southwest at untrimmed tree on waterside shoulder and slope.

Page 35 of 54

**Flood Control Project Maintenance
Levee Inspections**

Maintenance Issue Types Only, Levee Inspection Report By Mile - Fall 2016

Reclamation District No. 0999 Netherlands

Waterway	Bank	Unit Miles	Inspection Start/End	Inspector
Unit No. 05 Elk Slough	Right	9.48	09/21/2016 09/22/2016	Richard Willoughby

LM Start	5.50	Rating **	U	Issue No.	71
LM End	5.55	Issue Type +	Ma	Location *	WS
Category	Earthen Levee			GPS Latitude/Longitude	
				Start	End
Item	Vegetation			38.382790 °	38.383548 °
				-121.546754 °	-121.546728 °
DWR ID	DWR_RD0999_05_s_2012_71				
Comment Code					
V2 : Remove the wild growth other than native grasses from the levee slopes.					
Inspector Comment					

Photo 1 of 1 : FA_2016_RD0999_236_71_20160915_00068.jpg



Looking northeast at dense vegetation on waterside slope.

LM Start	5.56	Rating **	A/W	Issue No.	203
LM End	5.61	Issue Type +	Ma	Location *	LS
Category	Earthen Levee			GPS Latitude/Longitude	
				Start	End
Item	Trim / Thin Trees			38.383740 °	38.384218 °
				-121.546628 °	-121.546095 °
DWR ID	DWR_RD0999_05_f_2014_203				
Comment Code					
T1 : Trim trees to at least five feet above ground level.					
Inspector Comment					

Photo 1 of 1 : FA_2016_RD0999_236_203_20160915_00144.jpg



Looking at untrimmed trees on landward slope and toe.

LM Start	5.58	Rating **	A/W	Issue No.	182
LM End	5.58	Issue Type +	Ma	Location *	LS
Category	Earthen Levee			GPS Latitude/Longitude	
				Start	End
Item	Trim / Thin Trees			38.383911 °	38.383911 °
				-121.546516 °	-121.546516 °
DWR ID	DWR_RD0999_05_s_2015_182				
Comment Code					
T4 : Trim trees over roadway to at least 12 feet above ground level.					
Inspector Comment					

No Photos

* Location
LS : Land Side N/A : Not Applicable
WS : Water Side
CR : Crown

** Rating
A : Acceptable N : Not Inspected/Rated
M : Minimally Acceptable C : Corrected
U : Unacceptable A/W : Acceptable but Monitor & Maintain

+ Issue Type
Ma : Maintenance Deficiency
Ob : Design & System Obsolescence
En : Enforcement

**Flood Control Project Maintenance
Levee Inspections**

Maintenance Issue Types Only, Levee Inspection Report By Mile - Fall 2016

Reclamation District No. 0999 Netherlands

Waterway	Bank	Unit Miles	Inspection Start/End	Inspector
Unit No. 05 Elk Slough	Right	9.48	09/21/2016 09/22/2016	Richard Willoughby

LM Start	5.58	Rating **	A/W	Issue No.	192
LM End	5.58	Issue Type +	Ma	Location *	LS
Category	Earthen Levee			GPS Latitude/Longitude	
				Start	End
Item	Encroachments			38.383978 °	38.383978 °
				-121.546435 °	-121.546435 °
DWR ID	DWR_RD0999_05_s_2014_192				
Comment Code					
PR : Prunings					
Inspector Comment					
Landowner pile prunings on landside slope.					

Photo 1 of 1 : FA_2016_RD0999_236_192_20160915_00134.jpg



Looking west at prunings on landward slope and toe.

LM Start	5.80	Rating **	A/W	Issue No.	48
LM End	5.84	Issue Type +	Ma	Location *	LS
Category	Earthen Levee			GPS Latitude/Longitude	
				Start	End
Item	Vegetation			38.384718 °	38.384930 °
				-121.542590 °	-121.541883 °
DWR ID	DWR_RD0999_05_s_2012_48				
Comment Code					
V2 : Remove the wild growth other than native grasses from the levee slopes.					
Inspector Comment					
Dense vegetation at landward slope and toe.					

Photo 1 of 2 : FA_2016_RD0999_236_48_20160915_00050.jpg



Looking west at dense vegetation on landward slope and toe. Fall 2015

LM Start	5.80	Rating **	A/W	Issue No.	48 (cont)
LM End	5.84	Issue Type +	Ma	Location *	LS

Photo 2 of 2 : FA_2016_RD0999_236_48_20160915_00051.jpg



Looking east at dense vegetation on landward slope. (Spring 2015)

* Location LS : Land Side N/A : Not Applicable WS : Water Side CR : Crown		** Rating A : Acceptable M : Minimally Acceptable U : Unacceptable N : Not Inspected/Rated C : Corrected A/W : Acceptable but Monitor & Maintain		+ Issue Type Ma : Maintenance Deficiency Ob : Design & System Obsolescence En : Enforcement	
--	--	---	--	---	--

**Flood Control Project Maintenance
Levee Inspections**

Maintenance Issue Types Only, Levee Inspection Report By Mile - Fall 2016

Reclamation District No. 0999 Netherlands

Waterway	Bank	Unit Miles	Inspection Start/End	Inspector
Unit No. 05 Elk Slough	Right	9.48	09/21/2016 09/22/2016	Richard Willoughby

LM Start	5.84	Rating **	A/W	Issue No.	59
LM End	5.84	Issue Type +	Ma	Location *	WS
Category	Earthen Levee			GPS Latitude/Longitude	
				Start	End
Item	Animal Control			38.384867 °	38.384867 °
				-121.541845 °	-121.541845 °
DWR ID	DWR_RD0999_05_s _ 2012_59				
Comment Code					
A1 : Exterminate rodents and backfill and compact or grout burrows.					
Inspector Comment					

No Photos

LM Start	5.89	Rating **	M	Issue No.	217
LM End	7.58	Issue Type +	Ma	Location *	CR
Category	Earthen Levee			GPS Latitude/Longitude	
				Start	End
Item	Crown Surface / Depressions / Rutting			38.385307 °	38.404057 °
				-121.541157 °	-121.541789 °
DWR ID	DWR_RD0999_05_s _ 2016_217				
Comment Code					
C3 : Add appropriate gravel or road base. Grade and compact.					
Inspector Comment					

No Photos

* Location LS : Land Side N/A : Not Applicable WS : Water Side CR : Crown	** Rating A : Acceptable M : Minimally Acceptable U : Unacceptable	N : Not Inspected/Rated C : Corrected A/W : Acceptable but Monitor & Maintain	+ Issue Type Ma : Maintenance Deficiency Ob : Design & System Obsolescence En : Enforcement
--	--	---	---

**Flood Control Project Maintenance
Levee Inspections**

Maintenance Issue Types Only, Levee Inspection Report By Mile - Fall 2016

Reclamation District No. 0999 Netherlands

Waterway	Bank	Unit Miles	Inspection Start/End	Inspector
Unit No. 05 Elk Slough	Right	9.48	09/21/2016 09/22/2016	Richard Willoughby

LM Start	6.20	Rating **	C	Issue No.	74
LM End	6.25	Issue Type +	Ma	Location *	WS
Category	Earthen Levee			GPS Latitude/Longitude	
				Start	End
Item	Encroachments			38.389116 °	38.389766 °
				-121.542986 °	-121.542673 °
DWR ID	DWR_RD0999_05_s_2012_74				
Comment Code					
PR : Prunings					
Inspector Comment					
Prunings are outside the twenty foot zone should be burned or removed from waterward slope.					

No Photos

LM Start	6.20	Rating **	A/W	Issue No.	115
LM End	6.24	Issue Type +	Ma	Location *	CR
Category	Earthen Levee			GPS Latitude/Longitude	
				Start	End
Item	Crown Surface / Depressions / Rutting			38.389182°	38.389725°
				-121.542982°	-121.542732°
DWR ID	DWR_RD0999_05_s_2012_115				
Comment Code					
C2 : Repair depressions or ruts in the crown or slope.					
Inspector Comment					

No Photos

* Location LS : Land Side N/A : Not Applicable WS : Water Side CR : Crown	** Rating A : Acceptable M : Minimally Acceptable U : Unacceptable	N : Not Inspected/Rated C : Corrected A/W : Acceptable but Monitor & Maintain	+ Issue Type Ma : Maintenance Deficiency Ob : Design & System Obsolescence En : Enforcement
--	--	---	---

Reclamation District No. 0999 Netherlands

No Photos

No Photos

Looking northwest at untrimmed trees on landward slope and toe.

Page 41 of 54

**Flood Control Project Maintenance
Levee Inspections**

Maintenance Issue Types Only, Levee Inspection Report By Mile - Fall 2016

Reclamation District No. 0999 Netherlands

Waterway	Bank	Unit Miles	Inspection Start/End	Inspector
Unit No. 05 Elk Slough	Right	9.48	09/21/2016 09/22/2016	Richard Willoughby

LM Start	6.48	Rating **	U	Issue No.	92
LM End	6.48	Issue Type +	Ma	Location *	LS
Category	Earthen Levee			GPS Latitude/Longitude	
				Start	End
Item	Encroachments			38.391776 °	38.391776 °
				-121.539295 °	-121.539295 °
DWR ID	DWR_RD0999_05_s_2012_92				
Comment Code					
PR : Prunings					
Inspector Comment					

Photo 1 of 1 : FA_2016_RD0999_236_92_20160926_00238.jpg



Looking east at pruning pile on landward shoulder and slope.

LM Start	6.60	Rating **	A/W	Issue No.	219
LM End	6.60	Issue Type +	Ma	Location *	LS
Category	Earthen Levee			GPS Latitude/Longitude	
				Start	End
Item	Encroachments			38.393356 °	38.393356 °
				-121.539213 °	-121.539213 °
DWR ID	DWR_RD0999_05_s_2016_219				
Comment Code					
TR : Tree or limb					
Inspector Comment					
Tree branch and limbs on landward slope.					

Photo 1 of 1 : FA_2016_RD0999_236_219_20160915_00154.jpg



Looking northeast at tree branch and limbs on landward slope.

* Location LS : Land Side N/A : Not Applicable WS : Water Side CR : Crown	** Rating A : Acceptable M : Minimally Acceptable U : Unacceptable	N : Not Inspected/Rated C : Corrected A/W : Acceptable but Monitor & Maintain	+ Issue Type Ma : Maintenance Deficiency Ob : Design & System Obsolescence En : Enforcement
--	--	---	---

**Flood Control Project Maintenance
Levee Inspections**

Maintenance Issue Types Only, Levee Inspection Report By Mile - Fall 2016

Reclamation District No. 0999 Netherlands

Waterway	Bank	Unit Miles	Inspection Start/End	Inspector
Unit No. 05 Elk Slough	Right	9.48	09/21/2016 09/22/2016	Richard Willoughby

LM Start	6.73	Rating **	M	Issue No.	96
LM End	6.73	Issue Type +	Ma	Location *	LS
Category	Earthen Levee			GPS Latitude/Longitude	
				Start	End
Item	Encroachments			38.395234 °	38.395234 °
				-121.539323 °	-121.539323 °
DWR ID	DWR_RD0999_05_s_2012_96				
Comment Code					
MA : Material					
Inspector Comment					
Firewood and other material on landside shoulder.					

Photo 1 of 4 : FA_2016_RD0999_236_96_20160915_00083.jpg



Fence, firewood and material at landside shoulder.

LM Start	6.73	Rating **	M	Issue No.	96 (cont)
LM End	6.73	Issue Type +	Ma	Location *	LS

Photo 2 of 4 : FA_2016_RD0999_236_96_20160915_00084.jpg

Looking northeast at firewood and other material on landside shoulder.
(Spring 2012)

LM Start	6.73	Rating **	M	Issue No.	96 (cont)
LM End	6.73	Issue Type +	Ma	Location *	LS

Photo 3 of 4 : FA_2016_RD0999_236_96_20160915_00085.jpg



Looking south at firewood and other material on landside shoulder and crown.

* Location LS : Land Side N/A : Not Applicable WS : Water Side CR : Crown		** Rating A : Acceptable N : Not Inspected/Rated M : Minimally Acceptable C : Corrected U : Unacceptable A/W : Acceptable but Monitor & Maintain		+ Issue Type Ma : Maintenance Deficiency Ob : Design & System Obsolescence En : Enforcement	
---	--	--	--	--	--

**Flood Control Project Maintenance
Levee Inspections**

Maintenance Issue Types Only, Levee Inspection Report By Mile - Fall 2016

Reclamation District No. 0999 Netherlands

Waterway	Bank	Unit Miles	Inspection Start/End	Inspector
Unit No. 05 Elk Slough	Right	9.48	09/21/2016 09/22/2016	Richard Willoughby

LM Start	6.73	Rating **	M	Issue No.	96 (cont)	
LM End	6.73	Issue Type +	Ma	Location *	LS	
Category	Earthen Levee			GPS Latitude/Longitude		
				Start		End
Item	Encroachments			38.395234 °		38.395234 °
				-121.539323 °		-121.539323 °
DWR ID	DWR_RD0999_05_s_2012_96					
Comment Code						
MA : Material						
Inspector Comment						
Firewood and other material on landside shoulder.						

Photo 4 of 4 : FA_2016_RD0999_236_96_20160915_00086.jpg



Looking north at firewood and other material on landside shoulder and crown.

LM Start	6.78	Rating **	M	Issue No.	186
LM End	6.78	Issue Type +	Ma	Location *	LS
Category	Earthen Levee			GPS Latitude/Longitude	
				Start	End
Item	Trim / Thin Trees			38.395890 °	38.395890 °
				-121.538917 °	-121.538917 °
DWR ID	DWR_RD0999_05_f_2015_186				
Comment Code					
T1 : Trim trees to at least five feet above ground level.					
Inspector Comment					

No Photos

* Location LS : Land Side N/A : Not Applicable WS : Water Side CR : Crown	** Rating A : Acceptable M : Minimally Acceptable U : Unacceptable	N : Not Inspected/Rated C : Corrected A/W : Acceptable but Monitor & Maintain	+ Issue Type Ma : Maintenance Deficiency Ob : Design & System Obsolescence En : Enforcement
--	--	---	---

**Flood Control Project Maintenance
Levee Inspections**

Maintenance Issue Types Only, Levee Inspection Report By Mile - Fall 2016

Reclamation District No. 0999 Netherlands

Waterway	Bank	Unit Miles	Inspection Start/End	Inspector
Unit No. 05 Elk Slough	Right	9.48	09/21/2016 09/22/2016	Richard Willoughby

LM Start	6.85	Rating **	U	Issue No.	204
LM End	7.49	Issue Type +	Ma	Location *	LS
Category	Earthen Levee			GPS Latitude/Longitude	
				Start	End
Item	Trim / Thin Trees			38.396379 °	38.403600 °
				-121.537814 °	-121.540311 °
DWR ID	DWR_RD0999_05_f_2014_204				
Comment Code					
T1 : Trim trees to at least five feet above ground level.					
Inspector Comment					
Trees at landward toe blocking visibility.					

Photo 1 of 1 : FA_2016_RD0999_236_204_20160926_00239.jpg



Looking northwest at dense trees at landward toe.

LM Start	6.95	Rating **	A/W	Issue No.	142
LM End	6.95	Issue Type +	Ma	Location *	LS
Category	Earthen Levee			GPS Latitude/Longitude	
				Start	End
Item	Encroachments			38.396958 °	38.396958 °
				-121.536148 °	-121.536148 °
DWR ID	DWR_RD0999_05_s_2013_142				
Comment Code					
PR : Prunings					
Inspector Comment					
Large pruning pile on landward shoulder and slope.					

Photo 1 of 1 : FA_2016_RD0999_236_142_20160915_00104.jpg



Looking northeast at prunings on landward shoulder.

LM Start	7.15	Rating **	M	Issue No.	184
LM End	7.15	Issue Type +	Ma	Location *	LS
Category	Earthen Levee			GPS Latitude/Longitude	
				Start	End
Item	Trim / Thin Trees			38.399761 °	38.399761 °
				-121.536565 °	-121.536565 °
DWR ID	DWR_RD0999_05_s_2015_184				
Comment Code					
T1 : Trim trees to at least five feet above ground level.					
Inspector Comment					

No Photos

*** Location**
LS : Land Side N/A : Not Applicable
WS : Water Side
CR : Crown

**** Rating**
A : Acceptable N : Not Inspected/Rated
M : Minimally Acceptable C : Corrected
U : Unacceptable A/W : Acceptable but Monitor & Maintain

+ Issue Type
Ma : Maintenance Deficiency
Ob : Design & System Obsolescence
En : Enforcement

**Flood Control Project Maintenance
Levee Inspections**

Maintenance Issue Types Only, Levee Inspection Report By Mile - Fall 2016

Reclamation District No. 0999 Netherlands

Waterway	Bank	Unit Miles	Inspection Start/End	Inspector
Unit No. 05 Elk Slough	Right	9.48	09/21/2016 09/22/2016	Richard Willoughby

LM Start	8.03	Rating **	A/W	Issue No.	185
LM End	8.03	Issue Type +	Ma	Location *	LS
Category	Earthen Levee			GPS Latitude/Longitude	
				Start	End
Item	Encroachments			38.409324 °	38.409324 °
				-121.541223 °	-121.541223 °
DWR ID	DWR_RD0999_05_s_2015_185				
Comment Code					
PR : Prunings					
Inspector Comment					
Garbage within prunings piles.					

Photo 1 of 1 : FA_2016_RD0999_236_185_20160915_00130.jpg



Looking west at pruning piles on landward slope. (Spring 2015)

LM Start	8.14	Rating **	A/W	Issue No.	117
LM End	8.14	Issue Type +	Ma	Location *	LS
Category	Earthen Levee			GPS Latitude/Longitude	
				Start	End
Item	Trim / Thin Trees			38.409855 °	38.409855 °
				-121.539382 °	-121.539382 °
DWR ID	DWR_RD0999_05_s_2012_117				
Comment Code					
T1 : Trim trees to at least five feet above ground level.					
Inspector Comment					

No Photos

* Location LS : Land Side N/A : Not Applicable WS : Water Side CR : Crown	** Rating A : Acceptable M : Minimally Acceptable U : Unacceptable	N : Not Inspected/Rated C : Corrected A/W : Acceptable but Monitor & Maintain	+ Issue Type Ma : Maintenance Deficiency Ob : Design & System Obsolescence En : Enforcement
--	--	---	---

**Flood Control Project Maintenance
Levee Inspections**

Maintenance Issue Types Only, Levee Inspection Report By Mile - Fall 2016

Reclamation District No. 0999 Netherlands

Waterway	Bank	Unit Miles	Inspection Start/End	Inspector
Unit No. 05 Elk Slough	Right	9.48	09/21/2016 09/22/2016	Richard Willoughby

LM Start	8.14	Rating **	A/W	Issue No.	205
LM End	8.14	Issue Type +	Ma	Location *	WS
Category	Earthen Levee			GPS Latitude/Longitude	
				Start	End
Item	Trim / Thin Trees			38.409876 °	38.409876 °
				-121.539348 °	-121.539348 °
DWR ID	DWR_RD0999_05_f_2014_205				
Comment Code					
T4 : Trim trees over roadway to at least 12 feet above ground level.					
Inspector Comment					

No Photos

LM Start	8.15	Rating **	A/W	Issue No.	220
LM End	8.42	Issue Type +	Ma	Location *	CR
Category	Earthen Levee			GPS Latitude/Longitude	
				Start	End
Item	Crown Surface / Depressions / Rutting			38.409892 °	38.408612 °
				-121.539225 °	-121.534570 °
DWR ID	DWR_RD0999_05_s_2016_220				
Comment Code					
C1 : Add appropriate material and re-grade the levee to bring the crown above the design elevation.					
Inspector Comment					

No Photos

LM Start	8.22	Rating **	U	Issue No.	206
LM End	8.22	Issue Type +	Ma	Location *	LS
Category	Earthen Levee			GPS Latitude/Longitude	
				Start	End
Item	Trim / Thin Trees			38.409679 °	38.409679 °
				-121.537920 °	-121.537920 °
DWR ID	DWR_RD0999_05_f_2014_206				
Comment Code					
T1 : Trim trees to at least five feet above ground level.					
Inspector Comment					

Photo 1 of 1 : FA_2016_RD0999_236_206_20160926_00240.jpg



Looking west at untrimmed trees on landward toe.

* Location LS : Land Side N/A : Not Applicable WS : Water Side CR : Crown	** Rating A : Acceptable M : Minimally Acceptable U : Unacceptable	N : Not Inspected/Rated C : Corrected A/W : Acceptable but Monitor & Maintain	+ Issue Type Ma : Maintenance Deficiency Ob : Design & System Obsolescence En : Enforcement
--	--	---	---

**Flood Control Project Maintenance
Levee Inspections**

Maintenance Issue Types Only, Levee Inspection Report By Mile - Fall 2016

Reclamation District No. 0999 Netherlands

Waterway	Bank	Unit Miles	Inspection Start/End	Inspector
Unit No. 05 Elk Slough	Right	9.48	09/21/2016 09/22/2016	Richard Willoughby

LM Start	8.22	Rating **	U	Issue No.	118
LM End	8.22	Issue Type +	Ma	Location *	WS
Category	Earthen Levee			GPS Latitude/Longitude	
				Start	End
Item	Trim / Thin Trees			38.409665 °	38.409665 °
				-121.537898 °	-121.537898 °
DWR ID	DWR_RD0999_05_s_2012_118				
Comment Code					
T1 : Trim trees to at least five feet above ground level.					
Inspector Comment					

Photo 1 of 1 : FA_2016_RD0999_236_118_20160926_00241.jpg



Looking northeast at untrimmed trees on watward slope.

LM Start	8.24	Rating **	A/W	Issue No.	119
LM End	8.24	Issue Type +	Ma	Location *	WS
Category	Earthen Levee			GPS Latitude/Longitude	
				Start	End
Item	Encroachments			38.409580 °	38.409580 °
				-121.537587 °	-121.537587 °
DWR ID	DWR_RD0999_05_s_2012_119				
Comment Code					
PR : Prunings					
Inspector Comment					

No Photos

* Location LS : Land Side N/A : Not Applicable WS : Water Side CR : Crown	** Rating A : Acceptable M : Minimally Acceptable U : Unacceptable	N : Not Inspected/Rated C : Corrected A/W : Acceptable but Monitor & Maintain	+ Issue Type Ma : Maintenance Deficiency Ob : Design & System Obsolescence En : Enforcement
--	--	---	---

**Flood Control Project Maintenance
Levee Inspections**

Maintenance Issue Types Only, Levee Inspection Report By Mile - Fall 2016

Reclamation District No. 0999 Netherlands

Waterway	Bank	Unit Miles	Inspection Start/End	Inspector
Unit No. 05 Elk Slough	Right	9.48	09/21/2016 09/22/2016	Richard Willoughby

LM Start	8.53	Rating **	A/W	Issue No.	122
LM End	8.53	Issue Type +	Ma	Location *	LS
Category	Earthen Levee			GPS Latitude/Longitude	
				Start	End
Item	Encroachments			38.409700 °	38.409700 °
				-121.533217 °	-121.533217 °
DWR ID	DWR_RD0999_05_s_2012_122				
Comment Code					
TR : Tree or limb					
Inspector Comment					

No Photos

LM Start	8.61	Rating **	M	Issue No.	123
LM End	8.61	Issue Type +	Ma	Location *	LS
Category	Earthen Levee			GPS Latitude/Longitude	
				Start	End
Item	Trim / Thin Trees			38.410434°	38.410434°
				-121.532050°	-121.532050°
DWR ID	DWR_RD0999_05_s_2012_123				
Comment Code					
T4 : Trim trees over roadway to at least 12 feet above ground level.					
Inspector Comment					

No Photos

* Location LS : Land Side N/A : Not Applicable WS : Water Side CR : Crown	** Rating A : Acceptable M : Minimally Acceptable U : Unacceptable	N : Not Inspected/Rated C : Corrected A/W : Acceptable but Monitor & Maintain	+ Issue Type Ma : Maintenance Deficiency Ob : Design & System Obsolescence En : Enforcement
--	--	---	---

**Flood Control Project Maintenance
Levee Inspections**

Maintenance Issue Types Only, Levee Inspection Report By Mile - Fall 2016

Reclamation District No. 0999 Netherlands

Waterway	Bank	Unit Miles	Inspection Start/End	Inspector
Unit No. 05 Elk Slough	Right	9.48	09/21/2016 09/22/2016	Richard Willoughby

LM Start	8.63	Rating **	A/W	Issue No.	208
LM End	8.63	Issue Type +	Ma	Location *	WS
Category	Earthen Levee			GPS Latitude/Longitude	
				Start	End
Item	Trim / Thin Trees			38.410650 °	38.410650 °
				-121.531635 °	-121.531635 °
DWR ID	DWR_RD0999_05_f_2014_208				
Comment Code					
T4 : Trim trees over roadway to at least 12 feet above ground level.					
Inspector Comment					

No Photos

LM Start	8.64	Rating **	M	Issue No.	223
LM End	8.72	Issue Type +	Ma	Location *	CR
Category	Earthen Levee			GPS Latitude/Longitude	
				Start	End
Item	Vegetation			38.410696 °	38.411560 °
				-121.531584 °	-121.530479 °
DWR ID	DWR_RD0999_05_f_2016_223				
Comment Code					
V9 : Keep the crown roadway free of vegetation.					
Inspector Comment					
Control growth on levee crown					

Photo 1 of 1 : FA_2016_RD0999_236_223_20160926_00248.jpg



Looking east at overgrowth on levee crown.

LM Start	8.75	Rating **	A/W	Issue No.	91
LM End	8.75	Issue Type +	Ma	Location *	WS
Category	Earthen Levee			GPS Latitude/Longitude	
				Start	End
Item	Trim / Thin Trees			38.411567 °	38.411567 °
				-121.529902 °	-121.529902 °
DWR ID	DWR_RD0999_05_s_2012_91				
Comment Code					
T1 : Trim trees to at least five feet above ground level.					
Inspector Comment					

No Photos

* Location
LS : Land Side N/A : Not Applicable
WS : Water Side
CR : Crown

** Rating
A : Acceptable N : Not Inspected/Rated
M : Minimally Acceptable C : Corrected
U : Unacceptable A/W : Acceptable but Monitor & Maintain

+ Issue Type
Ma : Maintenance Deficiency
Ob : Design & System Obsolescence
En : Enforcement

**Flood Control Project Maintenance
Levee Inspections**

Maintenance Issue Types Only, Levee Inspection Report By Mile - Fall 2016

Reclamation District No. 0999 Netherlands

Waterway	Bank	Unit Miles	Inspection Start/End	Inspector
Unit No. 05 Elk Slough	Right	9.48	09/21/2016 09/22/2016	Richard Willoughby

LM Start	8.78	Rating **	A/W	Issue No.	108
LM End	8.78	Issue Type +	Ma	Location *	WS
Category	Earthen Levee			GPS Latitude/Longitude	
				Start	End
Item	Encroachments			38.412053 °	38.412053 °
				-121.529752 °	-121.529752 °
DWR ID	DWR_RD0999_05_s_2012_108				
Comment Code					
PR : Prunings					
Inspector Comment					

No Photos

LM Start	9.00	Rating **	A/W	Issue No.	209
LM End	9.03	Issue Type +	Ma	Location *	LS
Category	Earthen Levee			GPS Latitude/Longitude	
				Start	End
Item	Trim / Thin Trees			38.415201 °	38.415628 °
				-121.529612 °	-121.529262 °
DWR ID	DWR_RD0999_05_f_2014_209				
Comment Code					
T4 : Trim trees over roadway to at least 12 feet above ground level.					
Inspector Comment					

No Photos

*** Location**
LS : Land Side N/A : Not Applicable
WS : Water Side
CR : Crown

**** Rating**
A : Acceptable N : Not Inspected/Rated
M : Minimally Acceptable C : Corrected
U : Unacceptable A/W : Acceptable but Monitor & Maintain

+ Issue Type
Ma : Maintenance Deficiency
Ob : Design & System Obsolescence
En : Enforcement

**Flood Control Project Maintenance
Levee Inspections**

Maintenance Issue Types Only, Levee Inspection Report By Mile - Fall 2016

Reclamation District No. 0999 Netherlands

Waterway	Bank	Unit Miles	Inspection Start/End	Inspector
Unit No. 05 Elk Slough	Right	9.48	09/21/2016 09/22/2016	Richard Willoughby

LM Start	9.17	Rating **	M	Issue No.	109
LM End	9.19	Issue Type +	Ma	Location *	LS
Category	Earthen Levee			GPS Latitude/Longitude	
				Start	End
Item	Trim / Thin Trees			38.415495°	38.415278°
				-121.527217°	-121.527005°
DWR ID	DWR_RD0999_05_s_2012_109				
Comment Code					
T1 : Trim trees to at least five feet above ground level.					
Inspector Comment					

No Photos

LM Start	9.25	Rating **	A/W	Issue No.	110
LM End	9.30	Issue Type +	Ma	Location *	LS
Category	Earthen Levee			GPS Latitude/Longitude	
				Start	End
Item	Trim / Thin Trees			38.414550 °	38.413940 °
				-121.526398 °	-121.525902 °
DWR ID	DWR_RD0999_05_s_2012_110				
Comment Code					
T1 : Trim trees to at least five feet above ground level.					
Inspector Comment					

No Photos

LM Start	9.32	Rating **	M	Issue No.	112
LM End	9.35	Issue Type +	Ma	Location *	LS
Category	Earthen Levee			GPS Latitude/Longitude	
				Start	End
Item	Trim / Thin Trees			38.413673 °	38.413412 °
				-121.525558 °	-121.525190 °
DWR ID	DWR_RD0999_05_s_2012_112				
Comment Code					
T2 : Thin trees to allow visibility of the ground and room to flood fight.					
Inspector Comment					

No Photos

* Location LS : Land Side N/A : Not Applicable WS : Water Side CR : Crown		** Rating A : Acceptable N : Not Inspected/Rated M : Minimally Acceptable C : Corrected U : Unacceptable A/W : Acceptable but Monitor & Maintain		+ Issue Type Ma : Maintenance Deficiency Ob : Design & System Obsolescence En : Enforcement	
--	--	---	--	---	--

**Flood Control Project Maintenance
Levee Inspections**

Maintenance Issue Types Only, Levee Inspection Report By Mile - Fall 2016

Reclamation District No. 0999 Netherlands

Waterway	Bank	Unit Miles	Inspection Start/End	Inspector
Unit No. 05 Elk Slough	Right	9.48	09/21/2016 09/22/2016	Richard Willoughby

LM Start	9.39	Rating **	M	Issue No.	114
LM End	9.39	Issue Type +	Ma	Location *	LS
Category	Earthen Levee			GPS Latitude/Longitude	
				Start	End
Item	Vegetation			38.413377 °	38.413377 °
				-121.524500 °	-121.524500 °
DWR ID	DWR_RD0999_05_s_2012_114				
Comment Code					
V4 : Elderberries are blocking visibility and flood fight capability.					
Inspector Comment					

No Photos

*** Location**
 LS : Land Side N/A : Not Applicable
 WS : Water Side
 CR : Crown

**** Rating**
 A : Acceptable N : Not Inspected/Rated
 M : Minimally Acceptable C : Corrected
 U : Unacceptable A/W : Acceptable but Monitor & Maintain

+ Issue Type
 Ma : Maintenance Deficiency
 Ob : Design & System Obsolescence
 En : Enforcement