

**Flood Control Project Maintenance  
Levee Inspections**

**Maintenance Issue Types Only, Levee Inspection Report By Mile - Fall 2014**

**Reclamation District No. 0999 Netherlands**

Waterway	Bank	Unit Miles	Inspection Start/End	Inspector
Unit No. 01 Yolo Bypass	Left	15.41	10/28/2014 10/28/2014	Richard Willoughby

LM Start	0.00	Rating **	A	Issue No.	53		
LM End	0.00	Issue Type +	Ma	Location *	N/A		
Category	Earthen Levee			GPS Latitude/Longitude			
				Start		End	
Item	Operations & Maintenance Manuals				°		°
					°		°
DWR ID	DWR_RD0999_01_s_2013_53						
Action/Comments							
Inspector Comments: The LMA has copy of the O & M manual on file.							

No Photos

LM Start	0.00	Rating **	A	Issue No.	54
LM End	0.00	Issue Type +	Ma	Location *	N/A
Category	Earthen Levee			GPS Latitude/Longitude	
				Start	End
Item	Emergency Supplies & Equipment				°
					°
DWR ID	DWR_RD0999_01_s_2013_54				
Action/Comments					
Inspector Comments: LMA has adequate floodfight supplies and equipment on hand.					

No Photos

LM Start	0.00	Rating **	A	Issue No.	55
LM End	0.00	Issue Type +	Ma	Location *	N/A
Category	Earthen Levee			GPS Latitude/Longitude	
				Start	End
Item	Flood Preparedness & Training				°
					°
DWR ID	DWR_RD0999_01_s_2013_55				
Action/Comments					
Inspector Comments: LMA is prepared for responding to floods and has received training.					

No Photos

<b>* Location</b> LS : Land Side    N/A : Not Applicable WS : Water Side CR : Crown	<b>** Rating</b> A : Acceptable M : Minimally Acceptable U : Unacceptable	N : Not Inspected/Rated C : Corrected A/W : Acceptable but Monitor & Maintain	<b>+ Issue Type</b> Ma : Maintenance Deficiency Ob : Design & System Obsolescence En : Enforcement
--	--	---	---

**Flood Control Project Maintenance  
Levee Inspections**

**Maintenance Issue Types Only, Levee Inspection Report By Mile - Fall 2014**

**Reclamation District No. 0999 Netherlands**

Waterway	Bank	Unit Miles	Inspection Start/End	Inspector
Unit No. 01 Yolo Bypass	Left	15.41	10/28/2014 10/28/2014	Richard Willoughby

LM Start	0.29	Rating **	M	Issue No.	3
LM End	0.29	Issue Type +	Ma	Location *	LS
Category	Earthen Levee			GPS Latitude/Longitude	
				Start	End
Item	Vegetation			38.501113 °	38.501113 °
				-121.581975 °	-121.581975 °
DWR ID	DWR_RD0999_01_s_2012_3				
Action/Comments					
Elderberries are blocking visibility and flood fight capability.					

No Photos

LM Start	0.75	Rating **	C	Issue No.	13
LM End	0.75	Issue Type +	Ma	Location *	WS
Category	Earthen Levee			GPS Latitude/Longitude	
				Start	End
Item	Encroachments			38.494401 °	38.494401 °
				-121.581620 °	-121.581620 °
DWR ID	DWR_RD0999_01_f_2012_13				
Action/Comments					
Garbage					
Inspector Comments: Garbage on waterside shoulder.					

No Photos

LM Start	1.75	Rating **	A/W	Issue No.	4
LM End	1.77	Issue Type +	Ma	Location *	WS
Category	Earthen Levee			GPS Latitude/Longitude	
				Start	End
Item	Trim / Thin Trees			38.480082 °	38.479788 °
				-121.580930 °	-121.580918 °
DWR ID	DWR_RD0999_01_s_2012_4				
Action/Comments					
Trim trees to at least five feet above ground level.					

Photo 1 of 2 : FA\_2014\_RD0999\_232\_4\_20141020\_00006.jpg



Looking northwest at trimmed trees on waterward slope.

<b>* Location</b> LS : Land Side    N/A : Not Applicable WS : Water Side CR : Crown	<b>** Rating</b> A : Acceptable M : Minimally Acceptable U : Unacceptable	N : Not Inspected/Rated C : Corrected A/W : Acceptable but Monitor & Maintain	<b>+ Issue Type</b> Ma : Maintenance Deficiency Ob : Design & System Obsolescence En : Enforcement
--	--	---	---

**Flood Control Project Maintenance  
Levee Inspections**

## Maintenance Issue Types Only, Levee Inspection Report By Mile - Fall 2014

### Reclamation District No. 0999 Netherlands

Waterway	Bank	Unit Miles	Inspection Start/End	Inspector
Unit No. 01 Yolo Bypass	Left	15.41	10/28/2014 10/28/2014	Richard Willoughby

LM Start	1.75	Rating **	A/W	Issue No.	4 (cont)
LM End	1.77	Issue Type +	Ma	Location *	WS
Category	Earthen Levee			GPS Latitude/Longitude	
				Start	End
Item	Trim / Thin Trees			38.480082 °	38.479788 °
				-121.580930 °	-121.580918 °
DWR ID	DWR_RD0999_01_s_2012_4				
Action/Comments					
Trim trees to at least five feet above ground level.					

Photo 2 of 2 : FA\_2014\_RD0999\_232\_4\_20141020\_00007.jpg



Looking southwest at trimmed trees on waterward slope.

LM Start	1.81	Rating **	M	Issue No.	30
LM End	2.07	Issue Type +	Ma	Location *	LS
Category	Earthen Levee			GPS Latitude/Longitude	
				Start	End
Item	Trim / Thin Trees			38.479165 °	38.475463 °
				-121.580640 °	-121.580722 °
DWR ID	DWR_RD0999_01_s_2012_30				
Action/Comments					
Trim trees to at least five feet above ground level.					

Photo 1 of 3 : FA\_2014\_RD0999\_232\_30\_20141030\_00070.jpg



Looking south at typical view of untrimmed trees on landward slope.

LM Start	<b>1.81</b>	Rating **	M	Issue No.	<b>30 (cont)</b>
LM End	<b>2.07</b>	Issue Type +	Ma	Location *	LS

Photo 2 of 3 : FA\_2014\_RD0999\_232\_30\_20141020\_00032.jpg



Looking north at several untrimmed trees on landside slope.

<b>* Location</b> LS : Land Side    N/A : Not Applicable WS : Water Side CR : Crown		<b>** Rating</b> A : Acceptable                      N : Not Inspected/Rated M : Minimally Acceptable        C : Corrected U : Unacceptable                  A/W : Acceptable but Monitor & Maintain		<b>+ Issue Type</b> Ma : Maintenance Deficiency Ob : Design & System Obsolescence En : Enforcement	
--	--	---	--	---	--

# Reclamation District No. 0999 Netherlands

Waterway	Bank	Unit Miles	Inspection Start/End	Inspector
Unit No. 01 Yolo Bypass	Left	15.41	10/28/2014 10/28/2014	Richard Willoughby

LM Start	<b>1.81</b>	Rating **	M	Issue No.	<b>30 (cont)</b>	
LM End	<b>2.07</b>	Issue Type +	Ma	Location *	LS	
Category	Earthen Levee			GPS Latitude/Longitude		
				Start	End	
Item	Trim / Thin Trees			38.479165 °	38.475463 °	
				-121.580640 °	-121.580722 °	
DWR ID	DWR_RD0999_01_s_2012_30					
Action/Comments						
Trim trees to at least five feet above ground level.						



Looking southeast at dense trees on landside slope and toe. (2013)

LM Start	2.15	Rating **	M	Issue No.	7
LM End	2.15	Issue Type +	Ma	Location *	WS
Category	Earthen Levee			GPS Latitude/Longitude	
				Start	End
Item	Trim / Thin Trees			38.474258 °	38.474258 °
				-121.580528 °	-121.580528 °
DWR ID	DWR_RD0999_01_s_2012_7				
Action/Comments					
Trim trees to at least five feet above ground level.					



Looking south at untrimmed trees on waterward slope. (Fall 2014)

LM Start	2.15	Rating **	M	Issue No.	7 (cont)
LM End	2.15	Issue Type +	Ma	Location *	WS



Looking southwest at untrimmed trees on waterside slope.

* Location	** Rating	+ Issue Type
LS : Land Side    N/A : Not Applicable WS : Water Side CR : Crown	A : Acceptable                      N : Not Inspected/Rated M : Minimally Acceptable        C : Corrected U : Unacceptable                  A/W : Acceptable but Monitor & Maintain	Ma : Maintenance Deficiency Ob : Design & System Obsolescence En : Enforcement





**Flood Control Project Maintenance  
Levee Inspections**

**Maintenance Issue Types Only, Levee Inspection Report By Mile - Fall 2014**

**Reclamation District No. 0999 Netherlands**

Waterway	Bank	Unit Miles	Inspection Start/End	Inspector
Unit No. 01 Yolo Bypass	Left	15.41	10/28/2014 10/28/2014	Richard Willoughby

LM Start	2.27	Rating **	A/W	Issue No.	47
LM End	2.27	Issue Type +	Ma	Location *	WS
Category	Earthen Levee			GPS Latitude/Longitude	
				Start	End
Item	Encroachments				°
					°
DWR ID	DWR_RD0999_01_s_2013_47				
Action/Comments					
Garbage					
Inspector Comments: Garbage (sofa) on waterside toe.					

Photo 1 of 1 : FA\_2014\_RD0999\_232\_47\_20141020\_00049.jpg



Looking west at garbage (sofa) on waterward toe.

LM Start	2.78	Rating **	A/W	Issue No.	46
LM End	5.00	Issue Type +	Ma	Location *	CR
Category	Earthen Levee			GPS Latitude/Longitude	
				Start	End
Item	Crown Surface / Depressions / Rutting			38.465627 °	38.435378 °
				-121.584634 °	-121.598664 °
DWR ID	DWR_RD0999_01_f_2013_46				
Action/Comments					
Repair depressions or ruts in the crown or slope. Inspector Comments: Control growth on levee crown and repair ruts on levee crown.					

Photo 1 of 3 : FA\_2014\_RD0999\_232\_46\_20141020\_00046.jpg



Looking north at rutting on levee crown.

LM Start	<b>2.78</b>	Rating **	A/W	Issue No.	<b>46 (cont)</b>
LM End	<b>5.00</b>	Issue Type +	Ma	Location *	CR

Photo 2 of 3 : FA\_2014\_RD0999\_232\_46\_20141020\_00047.jpg



Looking south at growth and ruts on levee crown.

**\* Location**

LS : Land Side    N/A : Not Applicable  
WS : Water Side  
CR : Crown

**\*\* Rating**

A : Acceptable                      N : Not Inspected/Rated  
M : Minimally Acceptable        C : Corrected  
U : Unacceptable                  A/W : Acceptable but Monitor & Maintain

**+ Issue Type**

Ma : Maintenance Deficiency  
Ob : Design & System Obsolescence  
En : Enforcement



**Flood Control Project Maintenance  
Levee Inspections**

**Maintenance Issue Types Only, Levee Inspection Report By Mile - Fall 2014**

**Reclamation District No. 0999 Netherlands**

Waterway	Bank	Unit Miles	Inspection Start/End	Inspector
Unit No. 01 Yolo Bypass	Left	15.41	10/28/2014 10/28/2014	Richard Willoughby

LM Start	2.78	Rating **	A/W	Issue No.	46 (cont)
LM End	5.00	Issue Type +	Ma	Location *	CR
Category	Earthen Levee			GPS Latitude/Longitude	
				Start	End
Item	Crown Surface / Depressions / Rutting			38.465627 °	38.435378 °
				-121.584634 °	-121.598664 °
DWR ID	DWR_RD0999_01_f_2013_46				
Action/Comments					
Repair depressions or ruts in the crown or slope.					
Inspector Comments: Control growth on levee crown and repair ruts on levee crown.					

Photo 3 of 3 : FA\_2014\_RD0999\_232\_46\_20141020\_00048.jpg



Looking south at rutting on levee crown.

LM Start	3.24	Rating **	M	Issue No.	51
LM End	3.26	Issue Type +	Ma	Location *	LS
Category	Earthen Levee			GPS Latitude/Longitude	
				Start	End
Item	Slope Stability				°
					°
DWR ID	DWR_RD0999_01_s_2013_51				
Action/Comments					
Repair slope instability. Inspector Comments: Depression on waterside shoulder and slope 60' x 20'. Earthen material appears to be sliding toward levee toe.					

Photo 1 of 2 : FA\_2014\_RD0999\_232\_51\_20141020\_00055.jpg



Looking north at depression on landside should and slope.

LM Start	<b>3.24</b>	Rating **	M	Issue No.	<b>51 (cont)</b>
LM End	<b>3.26</b>	Issue Type +	Ma	Location *	LS

Photo 2 of 2 : FA\_2014\_RD0999\_232\_51\_20141020\_00056.jpg



Looking northeast at depression on landside shoulder.

**\* Location**

LS : Land Side    N/A : Not Applicable  
WS : Water Side  
CR : Crown

**\*\* Rating**

A : Acceptable                      N : Not Inspected/Rated  
M : Minimally Acceptable        C : Corrected  
U : Unacceptable                  A/W : Acceptable but Monitor & Maintain

**+ Issue Type**

Ma : Maintenance Deficiency  
Ob : Design & System Obsolescence  
En : Enforcement

**Flood Control Project Maintenance  
Levee Inspections**

**Maintenance Issue Types Only, Levee Inspection Report By Mile - Fall 2014**

**Reclamation District No. 0999 Netherlands**

Waterway	Bank	Unit Miles	Inspection Start/End	Inspector
Unit No. 01 Yolo Bypass	Left	15.41	10/28/2014 10/28/2014	Richard Willoughby

LM Start	4.09	Rating **	A/W	Issue No.	11
LM End	4.09	Issue Type +	Ma	Location *	WS
Category	Earthen Levee			GPS Latitude/Longitude	
				Start	End
Item	Trim / Thin Trees			38.447772 °	38.447772 °
				-121.592912 °	-121.592912 °
DWR ID	DWR_RD0999_01_s_2012_11				
Action/Comments					
Trim trees to at least five feet above ground level.					

No Photos

LM Start	4.18	Rating **	N	Issue No.	14
LM End	4.18	Issue Type +	Ma	Location *	WS
Category	Earthen Levee			GPS Latitude/Longitude	
				Start	End
Item	Trim / Thin Trees			38.446619 °	38.446619 °
				-121.593442 °	-121.593442 °
DWR ID	DWR_RD0999_01_s_2012_14				
Action/Comments					
Tree stumps.					

No Photos

LM Start	4.19	Rating **	N	Issue No.	15
LM End	4.19	Issue Type +	Ma	Location *	WS
Category	Earthen Levee			GPS Latitude/Longitude	
				Start	End
Item	Trim / Thin Trees			38.446478 °	38.446478 °
				-121.593508 °	-121.593508 °
DWR ID	DWR_RD0999_01_s_2012_15				
Action/Comments					
Tree stumps.					

No Photos

<b>* Location</b> LS : Land Side    N/A : Not Applicable WS : Water Side CR : Crown	<b>** Rating</b> A : Acceptable M : Minimally Acceptable U : Unacceptable	N : Not Inspected/Rated C : Corrected A/W : Acceptable but Monitor & Maintain	<b>+ Issue Type</b> Ma : Maintenance Deficiency Ob : Design & System Obsolescence En : Enforcement
--	--	---	---



**Flood Control Project Maintenance  
Levee Inspections**

## Maintenance Issue Types Only, Levee Inspection Report By Mile - Fall 2014

### Reclamation District No. 0999 Netherlands

Waterway	Bank	Unit Miles	Inspection Start/End	Inspector
Unit No. 01 Yolo Bypass	Left	15.41	10/28/2014 10/28/2014	Richard Willoughby

LM Start	4.33	Rating **	M	Issue No.	35
LM End	4.33	Issue Type +	Ma	Location *	LS
Category	Earthen Levee			GPS Latitude/Longitude	
				Start	End
Item	Slope Stability			38.444561 °	38.444561 °
				-121.594438 °	-121.594438 °
DWR ID	DWR_RD0999_01_f_2012_35				
Action/Comments					
Repair the levee slope damaged by vehicle traffic and prevent access where possible.					



Looking north at slope damage caused by vehicle traffic.

LM Start	<b>4.33</b>	Rating **	M	Issue No.	<b>35 (cont)</b>
LM End	<b>4.33</b>	Issue Type +	Ma	Location *	LS



Looking east at slope damage on landside slope.

LM Start	4.33	Rating **	M	Issue No.	27
LM End	4.33	Issue Type +	Ma	Location *	WS
Category	Earthen Levee			GPS Latitude/Longitude	
				Start	End
Item	Slope Stability			38.444560 °	38.444560 °
				-121.594440 °	-121.594440 °
DWR ID	DWR_RD0999_01_f_2012_27				
Action/Comments					
Repair the levee slope damaged by vehicle traffic and prevent access where possible.					
Inspector Comments: Local farmer causing slope damage by driving equipment and trucks on slope.					



Looking west at slope damage on waterside slope.

<b>* Location</b> LS : Land Side    N/A : Not Applicable WS : Water Side CR : Crown		<b>** Rating</b> A : Acceptable M : Minimally Acceptable U : Unacceptable N : Not Inspected/Rated C : Corrected A/W : Acceptable but Monitor & Maintain		<b>+ Issue Type</b> Ma : Maintenance Deficiency Ob : Design & System Obsolescence En : Enforcement	
--	--	---	--	---	--

**Flood Control Project Maintenance  
Levee Inspections**

**Maintenance Issue Types Only, Levee Inspection Report By Mile - Fall 2014**

**Reclamation District No. 0999 Netherlands**

Waterway	Bank	Unit Miles	Inspection Start/End	Inspector
Unit No. 01 Yolo Bypass	Left	15.41	10/28/2014 10/28/2014	Richard Willoughby

LM Start	4.33	Rating **	M	Issue No.	27 (cont)
LM End	4.33	Issue Type +	Ma	Location *	WS
Category	Earthen Levee			GPS Latitude/Longitude	
				Start	End
Item	Slope Stability			38.444560 °	38.444560 °
				-121.594440 °	-121.594440 °
DWR ID	DWR_RD0999_01_f_2012_27				
Action/Comments					
Repair the levee slope damaged by vehicle traffic and prevent access where possible.					
Inspector Comments: Local farmer causing slope damage by driving equipment and trucks on slope.					

Photo 2 of 2 : FA\_2014\_RD0999\_232\_27\_20141020\_00028.jpg



Looking northwest at slope damage caused by vehicle traffic.

LM Start	4.36	Rating **	A/W	Issue No.	45
LM End	4.36	Issue Type +	Ma	Location *	WS
Category	Earthen Levee			GPS Latitude/Longitude	
				Start	End
Item	Vegetation				°
					°
DWR ID	DWR_RD0999_01_f_2013_45				
Action/Comments					
Remove the wild growth other than native grasses from the levee slopes. Inspector Comments: Landowner has planted cactus on waterward toe.					

Photo 1 of 1 : FA\_2014\_RD0999\_232\_45\_20141020\_00045.jpg



Looking west at cactus on waterward toe.

LM Start	4.58	Rating **	N	Issue No.	16
LM End	4.58	Issue Type +	Ma	Location *	WS
Category	Earthen Levee			GPS Latitude/Longitude	
				Start	End
Item	Trim / Thin Trees			38.441063 °	38.441063 °
				-121.596038 °	-121.596038 °
DWR ID	DWR_RD0999_01_s_2012_16				
Action/Comments					
Tree stumps.					

No Photos

<b>* Location</b> LS : Land Side    N/A : Not Applicable WS : Water Side CR : Crown	<b>** Rating</b> A : Acceptable M : Minimally Acceptable U : Unacceptable	N : Not Inspected/Rated C : Corrected A/W : Acceptable but Monitor & Maintain	<b>+ Issue Type</b> Ma : Maintenance Deficiency Ob : Design & System Obsolescence En : Enforcement
--	--	---	---

**Flood Control Project Maintenance  
Levee Inspections**

**Maintenance Issue Types Only, Levee Inspection Report By Mile - Fall 2014**

**Reclamation District No. 0999 Netherlands**

Waterway	Bank	Unit Miles	Inspection Start/End	Inspector
Unit No. 01 Yolo Bypass	Left	15.41	10/28/2014 10/28/2014	Richard Willoughby

LM Start	4.61	Rating **	N	Issue No.	17
LM End	4.61	Issue Type +	Ma	Location *	WS
Category	Earthen Levee			GPS Latitude/Longitude	
				Start	End
Item	Trim / Thin Trees			38.440748 °	38.440748 °
				-121.596187 °	-121.596187 °
DWR ID	DWR_RD0999_01_s_2012_17				
Action/Comments					
Tree stumps.					

No Photos

LM Start	4.84	Rating **	M	Issue No.	34
LM End	4.86	Issue Type +	Ma	Location *	WS
Category	Supplemental			GPS Latitude/Longitude	
				Start	End
Item	USACE Erosion Survey			38.437506 °	38.437296 °
				-121.597707 °	-121.597803 °
DWR ID	DWR_RD0999_01_f_2014_34				
Action/Comments					
Inspector Comments: 2006 - Slump failure of lower slope. Longitudinal cracks present along the levee slope. 2011 - Difficult to see due to overgrown vegetation. A small section of the levee has slumped. Sties DWS 5.0 and DWS 5.01 were combined. 2013: Site is part of the extended inventory, last inspected 2011. [2013 Site ID: DWS_5-0_L]					

No Photos

LM Start	4.85	Rating **	M	Issue No.	65
LM End	4.85	Issue Type +	Ma	Location *	WS
Category	Earthen Levee			GPS Latitude/Longitude	
				Start	End
Item	Slope Stability			38.437388 °	38.437388 °
				-121.597741 °	-121.597741 °
DWR ID	DWR_RD0999_01_s_2014_65				
Action/Comments					
Repair slope instability. Inspector Comments: Slope depression on waterward near toe of levee. Depression is approx. 18' x 14' x 4' in area.					

Photo 1 of 2 : FA\_2014\_RD0999\_232\_65\_20141020\_00059.jpg



Looking southeast at depression on waterward toe.

<b>* Location</b> LS : Land Side    N/A : Not Applicable WS : Water Side CR : Crown	<b>** Rating</b> A : Acceptable M : Minimally Acceptable U : Unacceptable	N : Not Inspected/Rated C : Corrected A/W : Acceptable but Monitor & Maintain	<b>+ Issue Type</b> Ma : Maintenance Deficiency Ob : Design & System Obsolescence En : Enforcement
--	--	---	---

**Flood Control Project Maintenance  
Levee Inspections**

**Maintenance Issue Types Only, Levee Inspection Report By Mile - Fall 2014**

**Reclamation District No. 0999 Netherlands**

Waterway	Bank	Unit Miles	Inspection Start/End	Inspector
Unit No. 01 Yolo Bypass	Left	15.41	10/28/2014 10/28/2014	Richard Willoughby

LM Start	4.85	Rating **	M	Issue No.	65 (cont)	
LM End	4.85	Issue Type +	Ma	Location *	WS	
Category	Earthen Levee			GPS Latitude/Longitude		
				Start	End	
Item	Slope Stability			38.437388 °	38.437388 °	
				-121.597741 °	-121.597741 °	
DWR ID	DWR_RD0999_01_s_2014_65					
Action/Comments						
Repair slope instability. Inspector Comments: Slope depression on waterward near toe of levee. Depression is approx. 18' x 14' x 4' in area.						

Photo 2 of 2 : FA\_2014\_RD0999\_232\_65\_20141020\_00060.jpg



Looking southwest at depression on waterward toe.

LM Start	5.20	Rating **	M	Issue No.	12
LM End	5.29	Issue Type +	Ma	Location *	CR
Category	Earthen Levee			GPS Latitude/Longitude	
				Start	End
Item	Crown Surface / Depressions / Rutting			38.432700 °	38.431425 °
				-121.599950 °	-121.600528 °
DWR ID	DWR_RD0999_01_s_2012_12				
Action/Comments					
Add appropriate gravel or road base. Grade and compact.					

No Photos

LM Start	5.38	Rating **	C	Issue No.	66
LM End	5.38	Issue Type +	Ma	Location *	CR
Category	Earthen Levee			GPS Latitude/Longitude	
				Start	End
Item	Repair Gates			38.430209 °	38.430209 °
				-121.601109 °	-121.601109 °
DWR ID	DWR_RD0999_01_s_2014_66				
Action/Comments					
Inspector Comments: Steel chain across gate opening is not according to Title 23 standards.					

No Photos

**\* Location**

LS : Land Side    N/A : Not Applicable  
WS : Water Side  
CR : Crown

**\*\* Rating**

A : Acceptable                      N : Not Inspected/Rated  
M : Minimally Acceptable        C : Corrected  
U : Unacceptable                  A/W : Acceptable but Monitor & Maintain

**+ Issue Type**

Ma : Maintenance Deficiency  
Ob : Design & System Obsolescence  
En : Enforcement



**Flood Control Project Maintenance  
Levee Inspections**

## Maintenance Issue Types Only, Levee Inspection Report By Mile - Fall 2014

### Reclamation District No. 0999 Netherlands

Waterway	Bank	Unit Miles	Inspection Start/End	Inspector
Unit No. 01 Yolo Bypass	Left	15.41	10/28/2014 10/28/2014	Richard Willoughby

LM Start	6.04	Rating **	M	Issue No.	41
LM End	6.49	Issue Type +	Ma	Location *	CR
Category	Earthen Levee			GPS Latitude/Longitude	
				Start	End
Item	Crown Surface / Depressions / Rutting			38.421228 °	38.415043 °
				-121.605263 °	-121.608115 °
DWR ID	DWR_RD0999_01_s_2012_41				
Action/Comments					
Add appropriate gravel or road base. Grade and compact.					

No Photos

LM Start	6.45	Rating **	A/W	Issue No.	52
LM End	6.45	Issue Type +	Ma	Location *	LS
Category	Earthen Levee			GPS Latitude/Longitude	
				Start	End
Item	Encroachments				°
					°
DWR ID	DWR_RD0999_01_s_2013_52				
Action/Comments					
Tree or limb					
Inspector Comments: Downed tree limbs on landside slope.					

No Photos

LM Start	6.55	Rating **	U	Issue No.	18
LM End	6.60	Issue Type +	Ma	Location *	LS
Category	Earthen Levee			GPS Latitude/Longitude	
				Start	End
Item	Encroachments			38.414367 °	38.413698 °
				-121.608430 °	-121.608762 °
DWR ID	DWR_RD0999_01_s_2012_18				
Action/Comments					
Prunings					
Inspector Comments: Large pruning piles on landward shoulder. Part of pruning pile blocking levee crown.					

Photo 1 of 2 : FA\_2014\_RD0999\_232\_18\_20141030\_00073.jpg



Looking south at pruning piles on landward shoulder. (Fall 2014)

**\* Location**

LS : Land Side    N/A : Not Applicable  
WS : Water Side  
CR : Crown

**\*\* Rating**

A : Acceptable                      N : Not Inspected/Rated  
M : Minimally Acceptable        C : Corrected  
U : Unacceptable                  A/W : Acceptable but Monitor & Maintain

**+ Issue Type**

Ma : Maintenance Deficiency  
Ob : Design & System Obsolescence  
En : Enforcement

# Reclamation District No. 0999 Netherlands

Looking northwest at large pruning piles on landward shoulder and slope. (Fall 2014)

Looking northeast at untrimmed trees on landside shoulder and slope.

Looking east at rodent holes on landside slope.

Page 14 of 24









**Flood Control Project Maintenance  
Levee Inspections**

**Maintenance Issue Types Only, Levee Inspection Report By Mile - Fall 2014**

**Reclamation District No. 0999 Netherlands**

Waterway	Bank	Unit Miles	Inspection Start/End	Inspector
Unit No. 01 Yolo Bypass	Left	15.41	10/28/2014 10/28/2014	Richard Willoughby

LM Start	10.64	Rating **	C	Issue No.	36
LM End	10.64	Issue Type +	Ma	Location *	CR
Category	Earthen Levee			GPS Latitude/Longitude	
				Start	End
Item	Crown Surface / Depressions / Rutting			38.358523 °	38.358523 °
				-121.634303 °	-121.634303 °
DWR ID	DWR_RD0999_01_s_2012_36				
Action/Comments					
Add appropriate material and re-grade the levee to bring the crown above the design elevation.					

No Photos

LM Start	10.76	Rating **	M	Issue No.	61
LM End	10.76	Issue Type +	Ma	Location *	WS
Category	Earthen Levee			GPS Latitude/Longitude	
				Start	End
Item	Encroachments			38.356844 °	38.356844 °
				-121.635101 °	-121.635101 °
DWR ID	DWR_RD0999_01_f_2014_61				
Action/Comments					
Tree or limb					
Inspector Comments: Downed tree on waterward slope.					

Photo 1 of 1 : FA\_2014\_RD0999\_232\_61\_20141030\_00075.jpg



Looking southwest at downed tree on waterward slope.

LM Start	10.83	Rating **	A/W	Issue No.	23
LM End	11.07	Issue Type +	Ma	Location *	WS
Category	Earthen Levee			GPS Latitude/Longitude	
				Start	End
Item	Trim / Thin Trees			38.356077 °	38.352640 °
				-121.635598 °	-121.637078 °
DWR ID	DWR_RD0999_01_s_2012_23				
Action/Comments					
Trim trees to at least five feet above ground level.					

Photo 1 of 2 : FA\_2014\_RD0999\_232\_23\_20141020\_00023.jpg

Looking south at trimmed pine trees on waterside shoulder and slope.  
(Spring 2012)**\* Location**

LS : Land Side    N/A : Not Applicable  
WS : Water Side  
CR : Crown

**\*\* Rating**

A : Acceptable                      N : Not Inspected/Rated  
M : Minimally Acceptable        C : Corrected  
U : Unacceptable                  A/W : Acceptable but Monitor & Maintain

**+ Issue Type**

Ma : Maintenance Deficiency  
Ob : Design & System Obsolescence  
En : Enforcement











**Flood Control Project Maintenance  
Levee Inspections**

**Maintenance Issue Types Only, Levee Inspection Report By Mile - Fall 2014**

**Reclamation District No. 0999 Netherlands**

Waterway	Bank	Unit Miles	Inspection Start/End	Inspector
Unit No. 01 Yolo Bypass	Left	15.41	10/28/2014 10/28/2014	Richard Willoughby

LM Start	12.94	Rating **	A/W	Issue No.	24
LM End	13.57	Issue Type +	Ma	Location *	CR
Category	Earthen Levee			GPS Latitude/Longitude	
				Start	End
Item	Crown Surface / Depressions / Rutting			38.326433 °	38.317400 °
				-121.644960 °	-121.644920 °
DWR ID	DWR_RD0999_01_s _ 2012_24				
Action/Comments					
Add appropriate material and re-grade the levee to bring the crown above the design elevation.					

No Photos

LM Start	13.37	Rating **	A/W	Issue No.	37
LM End	13.37	Issue Type +	Ma	Location *	WS
Category	Earthen Levee			GPS Latitude/Longitude	
				Start	End
Item	Trim / Thin Trees			38.320285 °	38.320285 °
				-121.644957 °	-121.644957 °
DWR ID	DWR_RD0999_01_s _ 2012_37				
Action/Comments					
Trim trees to at least five feet above ground level.					

No Photos

LM Start	13.48	Rating **	M	Issue No.	38
LM End	13.48	Issue Type +	Ma	Location *	LS
Category	Earthen Levee			GPS Latitude/Longitude	
				Start	End
Item	Trim / Thin Trees			38.318648 °	38.318648 °
				-121.644952 °	-121.644952 °
DWR ID	DWR_RD0999_01_s _ 2012_38				
Action/Comments					
Trim trees to at least five feet above ground level.					

No Photos

<b>* Location</b> LS : Land Side    N/A : Not Applicable WS : Water Side CR : Crown		<b>** Rating</b> A : Acceptable                      N : Not Inspected/Rated M : Minimally Acceptable        C : Corrected U : Unacceptable                  A/W : Acceptable but Monitor & Maintain		<b>+ Issue Type</b> Ma : Maintenance Deficiency Ob : Design & System Obsolescence En : Enforcement
--	--	---	--	---



**Flood Control Project Maintenance  
Levee Inspections**

**Maintenance Issue Types Only, Levee Inspection Report By Mile - Fall 2014**

**Reclamation District No. 0999 Netherlands**

Waterway	Bank	Unit Miles	Inspection Start/End	Inspector
Unit No. 01 Yolo Bypass	Left	15.41	10/28/2014 10/28/2014	Richard Willoughby

LM Start	15.07	Rating **	M	Issue No.	32
LM End	15.07	Issue Type +	Ma	Location *	WS
Category	Earthen Levee			GPS Latitude/Longitude	
				Start	End
Item	Trim / Thin Trees			38.295524 °	38.295524 °
				-121.644951 °	-121.644951 °
DWR ID	DWR_RD0999_01_s_2012_32				
Action/Comments					
Trim trees to at least five feet above ground level.					

No Photos

LM Start	15.28	Rating **	M	Issue No.	33
LM End	15.28	Issue Type +	Ma	Location *	WS
Category	Earthen Levee			GPS Latitude/Longitude	
				Start	End
Item	Trim / Thin Trees			38.292544 °	38.292544 °
				-121.644960 °	-121.644960 °
DWR ID	DWR_RD0999_01_s_2012_33				
Action/Comments					
Trim trees to at least five feet above ground level.					

No Photos

LM Start	15.32	Rating **	M	Issue No.	62
LM End	15.32	Issue Type +	Ma	Location *	LS
Category	Earthen Levee			GPS Latitude/Longitude	
				Start	End
Item	Trim / Thin Trees			38.292030 °	38.292030 °
				-121.644971 °	-121.644971 °
DWR ID	DWR_RD0999_01_f_2014_62				
Action/Comments					
Thin trees to allow visibility of the ground and room to flood fight.					

No Photos

<b>* Location</b> LS : Land Side    N/A : Not Applicable WS : Water Side CR : Crown	<b>** Rating</b> A : Acceptable M : Minimally Acceptable U : Unacceptable	N : Not Inspected/Rated C : Corrected A/W : Acceptable but Monitor & Maintain	<b>+ Issue Type</b> Ma : Maintenance Deficiency Ob : Design & System Obsolescence En : Enforcement
--	--	---	---



**Flood Control Project Maintenance  
Levee Inspections**

**Maintenance Issue Types Only, Levee Inspection Report By Mile - Fall 2014**

**Reclamation District No. 0999 Netherlands**

Waterway	Bank	Unit Miles	Inspection Start/End	Inspector
Unit No. 01 Yolo Bypass	Left	15.41	10/28/2014 10/28/2014	Richard Willoughby

LM Start	15.34	Rating **	M	Issue No.	50
LM End	15.34	Issue Type +	Ma	Location *	LS
Category	Earthen Levee			GPS Latitude/Longitude	
				Start	End
Item	Encroachments			38.291663 °	38.291663 °
				-121.644962 °	-121.644962 °
DWR ID	DWR_RD0999_01_f_2012_50				
Action/Comments					
Tree or limb					
Inspector Comments: Newly planted palm trees on landside shoulder.					

Photo 1 of 2 : FA\_2014\_RD0999\_232\_50\_20141030\_00077.jpg



Looking east at maturing plam trees on landward shoulder and slope.  
(Fall 2014)

LM Start	<b>15.34</b>	Rating **	M	Issue No.	<b>50 (cont)</b>
LM End	<b>15.34</b>	Issue Type +	Ma	Location *	LS

Photo 2 of 2 : FA\_2014\_RD0999\_232\_50\_20141020\_00054.jpg



Looking east at newly planted palm trees on landside shoulder and slope.

<b>* Location</b> LS : Land Side    N/A : Not Applicable WS : Water Side CR : Crown		<b>** Rating</b> A : Acceptable                      N : Not Inspected/Rated M : Minimally Acceptable        C : Corrected U : Unacceptable                  A/W : Acceptable but Monitor & Maintain		<b>+ Issue Type</b> Ma : Maintenance Deficiency Ob : Design & System Obsolescence En : Enforcement
--	--	---	--	---

**Flood Control Project Maintenance  
Levee Inspections**

**Maintenance Issue Types Only, Levee Inspection Report By Mile - Fall 2014**

**Reclamation District No. 0999 Netherlands**

Waterway	Bank	Unit Miles	Inspection Start/End	Inspector
Unit No. 02 Miner Slough	Right	2.31	10/28/2014 10/28/2014	Richard Willoughby

LM Start	0.15	Rating **	M	Issue No.	18
LM End	0.15	Issue Type +	Ma	Location *	LS
Category	Earthen Levee			GPS Latitude/Longitude	
				Start	End
Item	Encroachments			38.290793 °	38.290793 °
				-121.642100 °	-121.642100 °
DWR ID	DWR_RD0999_02_s_2012_18				
Action/Comments					
Prunings					

Photo 1 of 2 : FA\_2014\_RD0999\_233\_18\_20141020\_00018.jpg



Looking west at prunings on landside toe. (Fall Inspection 2012)

Photo 2 of 2 : FA\_2014\_RD0999\_233\_18\_20141020\_00019.jpg



Looking west at prunings on landside berm.

LM Start	0.18	Rating **	M	Issue No.	35
LM End	0.18	Issue Type +	Ma	Location *	LS
Category	Earthen Levee			GPS Latitude/Longitude	
				Start	End
Item	Encroachments			38.290866 °	38.290866 °
				-121.641653 °	-121.641653 °
DWR ID	DWR_RD0999_02_f_2014_35				
Action/Comments					
Tree or limb					
Inspector Comments: Discarded tree limbs on landward shoulder and slope.					

No Photos

<b>* Location</b> LS : Land Side    N/A : Not Applicable WS : Water Side CR : Crown	<b>** Rating</b> A : Acceptable M : Minimally Acceptable U : Unacceptable	N : Not Inspected/Rated C : Corrected A/W : Acceptable but Monitor & Maintain	<b>+ Issue Type</b> Ma : Maintenance Deficiency Ob : Design & System Obsolescence En : Enforcement
--	--	---	---

**Flood Control Project Maintenance  
Levee Inspections**

**Maintenance Issue Types Only, Levee Inspection Report By Mile - Fall 2014**

**Reclamation District No. 0999 Netherlands**

Waterway	Bank	Unit Miles	Inspection Start/End	Inspector
Unit No. 02 Miner Slough	Right	2.31	10/28/2014 10/28/2014	Richard Willoughby

LM Start	0.18	Rating **	M	Issue No.	25
LM End	0.18	Issue Type +	Ma	Location *	LS
Category	Earthen Levee			GPS Latitude/Longitude	
				Start	End
Item	Vegetation				°
					°
DWR ID	DWR_RD0999_02_f_2013_25				
Action/Comments					
Remove the wild growth other than native grasses from the levee slopes.					

No Photos

LM Start	0.23	Rating **	M	Issue No.	12
LM End	0.23	Issue Type +	Ma	Location *	LS
Category	Earthen Levee			GPS Latitude/Longitude	
				Start	End
Item	Trim / Thin Trees			38.290787 °	38.290787 °
				-121.640725 °	-121.640725 °
DWR ID	DWR_RD0999_02_s_2012_12				
Action/Comments					
Thin trees to allow visibility of the ground and room to flood fight.					

No Photos

LM Start	0.72	Rating **	M	Issue No.	37
LM End	0.72	Issue Type +	Ma	Location *	LS
Category	Earthen Levee			GPS Latitude/Longitude	
				Start	End
Item	Trim / Thin Trees			38.292783 °	38.292783 °
				-121.632317 °	-121.632317 °
DWR ID	DWR_RD0999_02_s_2014_37				
Action/Comments					
Trim trees to at least five feet above ground level.					

No Photos

**\* Location**  
 LS : Land Side    N/A : Not Applicable  
 WS : Water Side  
 CR : Crown

**\*\* Rating**  
 A : Acceptable                      N : Not Inspected/Rated  
 M : Minimally Acceptable        C : Corrected  
 U : Unacceptable                  A/W : Acceptable but Monitor & Maintain

**+ Issue Type**  
 Ma : Maintenance Deficiency  
 Ob : Design & System Obsolescence  
 En : Enforcement



**Flood Control Project Maintenance  
Levee Inspections**

**Maintenance Issue Types Only, Levee Inspection Report By Mile - Fall 2014**

**Reclamation District No. 0999 Netherlands**

Waterway	Bank	Unit Miles	Inspection Start/End	Inspector
Unit No. 02 Miner Slough	Right	2.31	10/28/2014 10/28/2014	Richard Willoughby

LM Start	0.72	Rating **	M	Issue No.	36
LM End	0.72	Issue Type +	Ma	Location *	WS
Category	Earthen Levee			GPS Latitude/Longitude	
				Start	End
Item	Trim / Thin Trees			38.292783 °	38.292783 °
				-121.632346 °	-121.632346 °
DWR ID	DWR_RD0999_02_f_2014_36				
Action/Comments					
Thin trees to allow visibility of the ground and room to flood fight.					

No Photos

LM Start	0.76	Rating **	M	Issue No.	26
LM End	0.76	Issue Type +	Ma	Location *	WS
Category	Earthen Levee			GPS Latitude/Longitude	
				Start	End
Item	Trim / Thin Trees			38.292668 °	38.292668 °
				-121.631755 °	-121.631755 °
DWR ID	DWR_RD0999_02_f_2013_26				
Action/Comments					
Trim trees to at least five feet above ground level.					

No Photos

LM Start	0.77	Rating **	M	Issue No.	27
LM End	0.80	Issue Type +	Ma	Location *	WS
Category	Earthen Levee			GPS Latitude/Longitude	
				Start	End
Item	Trim / Thin Trees				°
					°
DWR ID	DWR_RD0999_02_s_2013_27				
Action/Comments					
Thin trees to allow visibility of the ground and room to flood fight.					

No Photos

<b>* Location</b> LS : Land Side    N/A : Not Applicable WS : Water Side CR : Crown	<b>** Rating</b> A : Acceptable M : Minimally Acceptable U : Unacceptable	N : Not Inspected/Rated C : Corrected A/W : Acceptable but Monitor & Maintain	<b>+ Issue Type</b> Ma : Maintenance Deficiency Ob : Design & System Obsolescence En : Enforcement
--	--	---	---

# Reclamation District No. 0999 Netherlands

Waterway	Bank	Unit Miles	Inspection Start/End	Inspector
Unit No. 02 Miner Slough	Right	2.31	10/28/2014 10/28/2014	Richard Willoughby

LM Start	0.81	Rating **	M	Issue No.	14
LM End	0.81	Issue Type +	Ma	Location *	LS
Category	Earthen Levee			GPS Latitude/Longitude	
				Start	End
Item	Vegetation			38.292439 °	38.292439 °
				-121.630781 °	-121.630781 °
DWR ID	DWR_RD0999_02_f_2012_14				
Action/Comments					
Remove the wild growth other than native grasses from the levee slopes.					
Inspector Comments: Century plant on landside slope.					

Looking east at century plant at landside toe.

LM Start	0.82	Rating **	M	Issue No.	19
LM End	0.82	Issue Type +	Ma	Location *	LS
Category	Earthen Levee			GPS Latitude/Longitude	
				Start	End
Item	Trim / Thin Trees			38.292386 °	38.292386 °
				-121.630543 °	-121.630543 °
DWR ID	DWR_RD0999_02_f _ 2012_19				
Action/Comments					
Thin trees to allow visibility of the ground and room to flood fight.					

A gravel driveway leads to a red stop sign. A large, fallen tree trunk lies across the foreground. The background is filled with dense green foliage and trees.

Looking southeast at dense trees on landside slope and toe.

LM Start	0.92	Rating **	M	Issue No.	2
LM End	1.02	Issue Type +	Ma	Location *	LS
Category	Earthen Levee			GPS Latitude/Longitude	
				Start	End
Item	Animal Control			38.291823 °	38.291250 °
				-121.628973 °	-121.627285 °
DWR ID	DWR_RD0999_02_s_2012_2				
Action/Comments					
Exterminate rodents and backfill and compact or grout burrows.					

Looking at several rodent holes on landside slope.

* Location	** Rating	+ Issue Type
LS : Land Side    N/A : Not Applicable WS : Water Side CR : Crown	A : Acceptable                      N : Not Inspected/Rated M : Minimally Acceptable        C : Corrected U : Unacceptable                  A/W : Acceptable but Monitor & Maintain	Ma : Maintenance Deficiency Ob : Design & System Obsolescence En : Enforcement

**Flood Control Project Maintenance  
Levee Inspections**

**Maintenance Issue Types Only, Levee Inspection Report By Mile - Fall 2014**

**Reclamation District No. 0999 Netherlands**

Waterway	Bank	Unit Miles	Inspection Start/End	Inspector
Unit No. 02 Miner Slough	Right	2.31	10/28/2014 10/28/2014	Richard Willoughby

LM Start	1.00	Rating **	M	Issue No.	39
LM End	1.00	Issue Type +	Ma	Location *	LS
Category	Earthen Levee			GPS Latitude/Longitude	
				Start	End
Item	Trim / Thin Trees			38.291292 °	38.291292 °
				-121.627577 °	-121.627577 °
DWR ID	DWR_RD0999_02_f_2014_39				
Action/Comments					
Trim trees to at least five feet above ground level.					

No Photos

LM Start	1.03	Rating **	M	Issue No.	20
LM End	1.51	Issue Type +	Ma	Location *	CR
Category	Earthen Levee			GPS Latitude/Longitude	
				Start	End
Item	Crown Surface / Depressions / Rutting			38.291206 °	38.290915 °
				-121.627030 °	-121.618227 °
DWR ID	DWR_RD0999_02_f_2012_20				
Action/Comments					
Add appropriate material and re-grade the levee to bring the crown above the design elevation.					

No Photos

LM Start	1.14	Rating **	M	Issue No.	40
LM End	1.14	Issue Type +	Ma	Location *	WS
Category	Earthen Levee			GPS Latitude/Longitude	
				Start	End
Item	Trim / Thin Trees			38.291069 °	38.291069 °
				-121.625138 °	-121.625138 °
DWR ID	DWR_RD0999_02_f_2014_40				
Action/Comments					
Trim trees to at least five feet above ground level.					

No Photos

<b>* Location</b> LS : Land Side    N/A : Not Applicable WS : Water Side CR : Crown		<b>** Rating</b> A : Acceptable                      N : Not Inspected/Rated M : Minimally Acceptable        C : Corrected U : Unacceptable                  A/W : Acceptable but Monitor & Maintain		<b>+ Issue Type</b> Ma : Maintenance Deficiency Ob : Design & System Obsolescence En : Enforcement
--	--	---	--	---



# Reclamation District No. 0999 Netherlands

# Reclamation District No. 0999 Netherlands

Waterway	Bank	Unit Miles	Inspection Start/End	Inspector
Unit No. 02 Miner Slough	Right	2.31	10/28/2014 10/28/2014	Richard Willoughby

LM Start	1.73	Rating **	U	Issue No.	23
LM End	1.73	Issue Type +	Ma	Location *	LS
Category	Earthen Levee			GPS Latitude/Longitude	
				Start	End
Item	Trim / Thin Trees			38.289755 °	38.289755 °
				-121.614653 °	-121.614653 °
DWR ID	DWR_RD0999_02_s_2012_23				
Action/Comments					
Trim and thin trees to allow visibility of the ground and room to flood fight.					

LM Start	<b>1.73</b>	Rating **	U	Issue No.	<b>23 (cont)</b>
LM End	<b>1.73</b>	Issue Type +	Ma	Location *	LS

Photo 2 of 2 : FA\_2014\_RD0999\_233\_23\_20141020\_00028.jpg



Looking north at dense trees on landward slope and toe.

LM Start	1.73	Rating **	A/W	Issue No.	21
LM End	1.73	Issue Type +	Ma	Location *	WS
Category	Earthen Levee			GPS Latitude/Longitude	
				Start	End
Item	Encroachments			38.289747 °	38.289747 °
				-121.614587 °	-121.614587 °
DWR ID	DWR_RD0999_02_s_2012_21				
Action/Comments					
Prunings					

Photo 1 of 1 : FA\_2014\_RD0999\_233\_21\_20141020\_00021.jpg



Looking northeast at prunings on waterside slope.

* Location	** Rating	+ Issue Type
LS : Land Side    N/A : Not Applicable	A : Acceptable                      N : Not Inspected/Rated	Ma : Maintenance Deficiency
WS : Water Side	M : Minimally Acceptable        C : Corrected	Ob : Design & System Obsolescence
CR : Crown	U : Unacceptable                  A/W : Acceptable but Monitor & Maintain	En : Enforcement



# Reclamation District No. 0999 Netherlands

Looking east at dense vegetation on waterside slope.

Page 8 of 10



**Flood Control Project Maintenance  
Levee Inspections**

**Maintenance Issue Types Only, Levee Inspection Report By Mile - Fall 2014**

**Reclamation District No. 0999 Netherlands**

Waterway	Bank	Unit Miles	Inspection Start/End	Inspector
Unit No. 02 Miner Slough	Right	2.31	10/28/2014 10/28/2014	Richard Willoughby

LM Start	1.79	Rating **	A/W	Issue No.	6
LM End	1.89	Issue Type +	Ma	Location *	LS
Category	Earthen Levee			GPS Latitude/Longitude	
				Start	End
Item	Vegetation			38.289117 °	38.288718 °
				-121.613777 °	-121.612227 °
DWR ID	DWR_RD0999_02_s_2012_6				
Action/Comments					
Remove the wild growth other than native grasses from the levee slopes.					
Inspector Comments: Wild roses and berry vines at landside toe.					

Photo 1 of 3 : FA\_2014\_RD0999\_233\_6\_20141020\_00006.jpg



Looking east at dense wild roses on landside toe. (Spring 2011)

Photo 2 of 3 : FA\_2014\_RD0999\_233\_6\_20141020\_00007.jpg



Looking southeast to wild roses on landside slope and toe. (Spring 2012)

Photo 3 of 3 : FA\_2014\_RD0999\_233\_6\_20141020\_00008.jpg



Looking north at wild roses on landside toe. (Spring 2011)

LM Start	<b>1.79</b>	Rating **	A/W	Issue No.	<b>6 (cont)</b>
LM End	<b>1.89</b>	Issue Type +	Ma	Location *	LS

LM Start	<b>1.79</b>	Rating **	A/W	Issue No.	<b>6 (cont)</b>
LM End	<b>1.89</b>	Issue Type +	Ma	Location *	LS

**\* Location**

LS : Land Side    N/A : Not Applicable  
WS : Water Side  
CR : Crown

**\*\* Rating**

A : Acceptable                      N : Not Inspected/Rated  
M : Minimally Acceptable        C : Corrected  
U : Unacceptable                  A/W : Acceptable but Monitor & Maintain

**+ Issue Type**

Ma : Maintenance Deficiency  
Ob : Design & System Obsolescence  
En : Enforcement

**Flood Control Project Maintenance  
Levee Inspections**

**Maintenance Issue Types Only, Levee Inspection Report By Mile - Fall 2014**

**Reclamation District No. 0999 Netherlands**

Waterway	Bank	Unit Miles	Inspection Start/End	Inspector
Unit No. 02 Miner Slough	Right	2.31	10/28/2014 10/28/2014	Richard Willoughby

LM Start	1.92	Rating **	M	Issue No.	16
LM End	1.92	Issue Type +	Ma	Location *	WS
Category	Earthen Levee			GPS Latitude/Longitude	
				Start	End
Item	Vegetation			38.288713 °	38.288713 °
				-121.611620 °	-121.611620 °
DWR ID	DWR_RD0999_02_s_2012_16				
Action/Comments					
Elderberries are blocking visibility and flood fight capability.					

No Photos

LM Start	1.95	Rating **	A/W	Issue No.	7
LM End	2.00	Issue Type +	Ma	Location *	CR
Category	Earthen Levee			GPS Latitude/Longitude	
				Start	End
Item	Crown Surface / Depressions / Rutting			38.288700 °	38.288798 °
				-121.611105 °	-121.610050 °
DWR ID	DWR_RD0999_02_s_2012_7				
Action/Comments					
Repair depressions or ruts in the crown or slope.					

No Photos

LM Start	2.06	Rating **	M	Issue No.	29
LM End	2.06	Issue Type +	Ma	Location *	LS
Category	Earthen Levee			GPS Latitude/Longitude	
				Start	End
Item	Trim / Thin Trees				°
					°
DWR ID	DWR_RD0999_02_f_2013_29				
Action/Comments					
Trim trees to at least five feet above ground level.					

No Photos

<b>* Location</b> LS : Land Side    N/A : Not Applicable WS : Water Side CR : Crown	<b>** Rating</b> A : Acceptable M : Minimally Acceptable U : Unacceptable	N : Not Inspected/Rated C : Corrected A/W : Acceptable but Monitor & Maintain	<b>+ Issue Type</b> Ma : Maintenance Deficiency Ob : Design & System Obsolescence En : Enforcement
--	--	---	---

**Flood Control Project Maintenance  
Levee Inspections**

**Maintenance Issue Types Only, Levee Inspection Report By Mile - Fall 2014**

**Reclamation District No. 0999 Netherlands**

Waterway	Bank	Unit Miles	Inspection Start/End	Inspector
Unit No. 03 Sutter Slough	Right	3.74	10/28/2014 10/28/2014	Richard Willoughby

LM Start	0.03	Rating **	U	Issue No.	4
LM End	0.04	Issue Type +	Ma	Location *	LS
Category	Earthen Levee			GPS Latitude/Longitude	
				Start	End
Item	Trim / Thin Trees			38.287145 °	38.287267 °
				-121.605572 °	-121.605478 °
DWR ID	DWR_RD0999_03_s_2012_4				
Action/Comments					
Trim trees to at least five feet above ground level. Inspector Comments: Dense fig trees on landward slope and toe.					

Photo 1 of 4 : FA\_2014\_RD0999\_234\_4\_20141030\_00038.jpg



Looking northwest at dense fig tree on landward toe. 2014

LM Start	<b>0.03</b>	Rating **	U	Issue No.	<b>4 (cont)</b>
LM End	<b>0.04</b>	Issue Type +	Ma	Location *	LS

Photo 2 of 4 : FA\_2014\_RD0999\_234\_4\_20141020\_00008.jpg



Looking northwest at dense fig tree on landward slope and toe. 2013

LM Start	<b>0.03</b>	Rating **	U	Issue No.	<b>4 (cont)</b>
LM End	<b>0.04</b>	Issue Type +	Ma	Location *	LS

Photo 3 of 4 : FA\_2014\_RD0999\_234\_4\_20141020\_00006.jpg



Looking southwest at trimmed trees on landside toe. (Spring 2012)

<b>* Location</b> LS : Land Side    N/A : Not Applicable WS : Water Side CR : Crown		<b>** Rating</b> A : Acceptable                      N : Not Inspected/Rated M : Minimally Acceptable        C : Corrected U : Unacceptable                  A/W : Acceptable but Monitor & Maintain		<b>+ Issue Type</b> Ma : Maintenance Deficiency Ob : Design & System Obsolescence En : Enforcement	
--	--	---	--	---	--



**Flood Control Project Maintenance  
Levee Inspections**

**Maintenance Issue Types Only, Levee Inspection Report By Mile - Fall 2014**

**Reclamation District No. 0999 Netherlands**

Waterway	Bank	Unit Miles	Inspection Start/End	Inspector
Unit No. 03 Sutter Slough	Right	3.74	10/28/2014 10/28/2014	Richard Willoughby

LM Start	0.03	Rating **	U	Issue No.	4 (cont)	
LM End	0.04	Issue Type +	Ma	Location *	LS	
Category	Earthen Levee			GPS Latitude/Longitude		
				Start		End
Item	Trim / Thin Trees			38.287145 °		38.287267 °
				-121.605572 °		-121.605478 °
DWR ID	DWR_RD0999_03_s_2012_4					
Action/Comments						
Trim trees to at least five feet above ground level.						
Inspector Comments: Dense fig trees on landward slope and toe.						

Photo 4 of 4 : FA\_2014\_RD0999\_234\_4\_20141020\_00007.jpg



Looking west at dense fig trees at landside toe.

LM Start	0.04	Rating **	A/W	Issue No.	36
LM End	0.04	Issue Type +	Ma	Location *	WS
Category	Earthen Levee			GPS Latitude/Longitude	
				Start	End
Item	Encroachments				°
					°
DWR ID	DWR_RD0999_03_f_2013_36				
Action/Comments					
Prunings Inspector Comments: Prunings on waterward slope outside the twenty feet zone should be burned or removed from levee slope.					

Photo 1 of 1 : FA\_2014\_RD0999\_234\_36\_20141020\_00029.jpg



Looking east at prunings on waterward slope.

LM Start	0.04	Rating **	C	Issue No.	5
LM End	0.05	Issue Type +	Ma	Location *	LS
Category	Earthen Levee			GPS Latitude/Longitude	
				Start	End
Item	Vegetation			38.287267 °	38.287395 °
				-121.605477 °	-121.605378 °
DWR ID	DWR_RD0999_03_s_2012_5				
Action/Comments					
Landscaping					

No Photos

* Location LS : Land Side    N/A : Not Applicable WS : Water Side CR : Crown		** Rating A : Acceptable                      N : Not Inspected/Rated M : Minimally Acceptable        C : Corrected U : Unacceptable                  A/W : Acceptable but Monitor & Maintain		+ Issue Type Ma : Maintenance Deficiency Ob : Design & System Obsolescence En : Enforcement	
---	--	--	--	--	--



**Flood Control Project Maintenance  
Levee Inspections**

## Maintenance Issue Types Only, Levee Inspection Report By Mile - Fall 2014

### Reclamation District No. 0999 Netherlands

Waterway	Bank	Unit Miles	Inspection Start/End	Inspector
Unit No. 03 Sutter Slough	Right	3.74	10/28/2014 10/28/2014	Richard Willoughby

LM Start	0.06	Rating **	A/W	Issue No.	1
LM End	0.06	Issue Type +	Ma	Location *	LS
Category	Earthen Levee			GPS Latitude/Longitude	
				Start	End
Item	Vegetation			38.287540 °	38.287540 °
				-121.605283 °	-121.605283 °
DWR ID	DWR_RD0999_03_s_2012_1				
Action/Comments					
Remove the wild growth other than native grasses from the levee slopes.					

Photo 1 of 3 : FA\_2014\_RD0999\_234\_1\_20141020\_00001.jpg



Looking west at dense vegetation on landside slope near ramp. (Spring 2011)

LM Start	<b>0.06</b>	Rating **	A/W	Issue No.	<b>1 (cont)</b>
LM End	<b>0.06</b>	Issue Type +	Ma	Location *	LS

Photo 2 of 3 : FA\_2014\_RD0999\_234\_1\_20141020\_00002.jpg



Looking northeast at vegetation on landside slope and toe. (Fall Inspection 2012)

LM Start	<b>0.06</b>	Rating **	A/W	Issue No.	<b>1 (cont)</b>
LM End	<b>0.06</b>	Issue Type +	Ma	Location *	LS

Photo 3 of 3 : FA\_2014\_RD0999\_234\_1\_20141020\_00003.jpg



Looking southwest at dense vegetation and cactus on landside slope. (Spring 2012)

<b>* Location</b> LS : Land Side    N/A : Not Applicable WS : Water Side CR : Crown	<b>** Rating</b> A : Acceptable M : Minimally Acceptable U : Unacceptable	N : Not Inspected/Rated C : Corrected A/W : Acceptable but Monitor & Maintain	<b>+ Issue Type</b> Ma : Maintenance Deficiency Ob : Design & System Obsolescence En : Enforcement
--	--	---	---

# Reclamation District No. 0999 Netherlands

No Photos

USACE 2013 Photo #1

Looking south at thinned Elderberry on waterside slope.

Page 4 of 15

# Reclamation District No. 0999 Netherlands



**Flood Control Project Maintenance  
Levee Inspections**

## Maintenance Issue Types Only, Levee Inspection Report By Mile - Fall 2014

### Reclamation District No. 0999 Netherlands

Waterway	Bank	Unit Miles	Inspection Start/End	Inspector
Unit No. 03 Sutter Slough	Right	3.74	10/28/2014 10/28/2014	Richard Willoughby

LM Start	0.71	Rating **	M	Issue No.	17
LM End	0.71	Issue Type +	Ma	Location *	LS
Category	Earthen Levee			GPS Latitude/Longitude	
				Start	End
Item	Animal Control			38.296632 °	38.296632 °
				-121.605692 °	-121.605692 °
DWR ID	DWR_RD0999_03_s_2012_17				
Action/Comments					
No rodents visible, but rodent burrows visible; need to backfill and compact or grout burrows.					

No Photos

LM Start	0.73	Rating **	A/W	Issue No.	2
LM End	0.73	Issue Type +	Ma	Location *	LS
Category	Earthen Levee			GPS Latitude/Longitude	
				Start	End
Item	Encroachments			38.296942 °	38.296942 °
				-121.605528 °	-121.605528 °
DWR ID	DWR_RD0999_03_s_2012_2				
Action/Comments					
Prunings					

Photo 1 of 2 : FA\_2014\_RD0999\_234\_2\_20141020\_00004.jpg



Looking west at burned prunings on landward berm.

LM Start	<b>0.73</b>	Rating **	A/W	Issue No.	<b>2 (cont)</b>
LM End	<b>0.73</b>	Issue Type +	Ma	Location *	LS

Photo 2 of 2 : FA\_2014\_RD0999\_234\_2\_20141020\_00005.jpg



Looking west at prunings on landward berm.

<b>* Location</b> LS : Land Side    N/A : Not Applicable WS : Water Side CR : Crown	<b>** Rating</b> A : Acceptable M : Minimally Acceptable U : Unacceptable	N : Not Inspected/Rated C : Corrected A/W : Acceptable but Monitor & Maintain	<b>+ Issue Type</b> Ma : Maintenance Deficiency Ob : Design & System Obsolescence En : Enforcement
--	--	---	---



**Flood Control Project Maintenance  
Levee Inspections**

## Maintenance Issue Types Only, Levee Inspection Report By Mile - Fall 2014

### Reclamation District No. 0999 Netherlands

Waterway	Bank	Unit Miles	Inspection Start/End	Inspector
Unit No. 03 Sutter Slough	Right	3.74	10/28/2014 10/28/2014	Richard Willoughby

LM Start	0.92	Rating **	M	Issue No.	43
LM End	0.94	Issue Type +	Ma	Location *	LS
Category	Earthen Levee			GPS Latitude/Longitude	
				Start	End
Item	Trim / Thin Trees			38.299130 °	38.299362 °
				-121.603768 °	-121.603462 °
DWR ID	DWR_RD0999_03_f_2014_43				
Action/Comments					
Trim trees to at least five feet above ground level.					

No Photos

LM Start	0.93	Rating **	A/W	Issue No.	6
LM End	0.93	Issue Type +	Ma	Location *	LS
Category	Earthen Levee			GPS Latitude/Longitude	
				Start	End
Item	Vegetation			38.299197 °	38.299197 °
				-121.603685 °	-121.603685 °
DWR ID	DWR_RD0999_03_s_2012_6				
Action/Comments					
Remove the wild growth other than native grasses from the levee slopes.					
Inspector Comments: Wild roses on landside slope.					

No Photos

LM Start	0.96	Rating **	M	Issue No.	30
LM End	0.96	Issue Type +	Ma	Location *	WS
Category	Supplemental			GPS Latitude/Longitude	
				Start	End
Item	USACE Erosion Survey			38.299402 °	38.300542 °
				-121.603056 °	-121.601118 °
DWR ID	DWR_RD0999_03_f_2014_30				
Action/Comments					
Inspector Comments: 2008 - Over steepened levee section. 2009 - Significant new erosion. 2010 - Minor new erosion. 2013: No observed changes. [2013 Site ID: STR_25-2_R]					

Photo 1 of 1 : FA\_2014\_RD0999\_234\_30\_20141020\_00025.jpg



USACE 2013 Photo #1

<b>* Location</b> LS : Land Side    N/A : Not Applicable WS : Water Side CR : Crown	<b>** Rating</b> A : Acceptable M : Minimally Acceptable U : Unacceptable	N : Not Inspected/Rated C : Corrected A/W : Acceptable but Monitor & Maintain	<b>+ Issue Type</b> Ma : Maintenance Deficiency Ob : Design & System Obsolescence En : Enforcement
--	--	---	---

**Flood Control Project Maintenance  
Levee Inspections**

**Maintenance Issue Types Only, Levee Inspection Report By Mile - Fall 2014**

**Reclamation District No. 0999 Netherlands**

Waterway	Bank	Unit Miles	Inspection Start/End	Inspector
Unit No. 03 Sutter Slough	Right	3.74	10/28/2014 10/28/2014	Richard Willoughby

LM Start	1.31	Rating **	M	Issue No.	33
LM End	1.31	Issue Type +	Ma	Location *	WS
Category	Supplemental			GPS Latitude/Longitude	
				Start	End
Item	USACE Erosion Survey			38.305229 °	38.306667 °
				-121.599933 °	-121.598266 °
DWR ID	DWR_RD0999_03_f_2014_33				
Action/Comments					
Inspector Comments: 2011 - Toe scour along length of site and erosion pockets. 2012 - Site extended slightly upstream due to new erosion pocket. 2013: Tall vertical sections at upstream end of site. [2013 Site ID: STR_25-7_R]					

Photo 1 of 1 : FA\_2014\_RD0999\_234\_33\_20141020\_00026.jpg



USACE 2013 Photo #1

LM Start	1.49	Rating **	M	Issue No.	11
LM End	1.49	Issue Type +	Ma	Location *	LS
Category	Earthen Levee			GPS Latitude/Longitude	
				Start	End
Item	Trim / Thin Trees			38.306062 °	38.306062 °
				-121.599495 °	-121.599495 °
DWR ID	DWR_RD0999_03_s_2012_11				
Action/Comments					
Trim trees to at least five feet above ground level.					

No Photos

LM Start	1.52	Rating **	M	Issue No.	12
LM End	1.52	Issue Type +	Ma	Location *	LS
Category	Earthen Levee			GPS Latitude/Longitude	
				Start	End
Item	Trim / Thin Trees			38.306332 °	38.306332 °
				-121.599109 °	-121.599109 °
DWR ID	DWR_RD0999_03_s_2012_12				
Action/Comments					
Trim trees to at least five feet above ground level.					

No Photos

<b>* Location</b> LS : Land Side    N/A : Not Applicable WS : Water Side CR : Crown	<b>** Rating</b> A : Acceptable M : Minimally Acceptable U : Unacceptable	N : Not Inspected/Rated C : Corrected A/W : Acceptable but Monitor & Maintain	<b>+ Issue Type</b> Ma : Maintenance Deficiency Ob : Design & System Obsolescence En : Enforcement
--	--	---	---

**Flood Control Project Maintenance  
Levee Inspections**

**Maintenance Issue Types Only, Levee Inspection Report By Mile - Fall 2014**

**Reclamation District No. 0999 Netherlands**

Waterway	Bank	Unit Miles	Inspection Start/End	Inspector
Unit No. 03 Sutter Slough	Right	3.74	10/28/2014 10/28/2014	Richard Willoughby

LM Start	1.56	Rating **	M	Issue No.	13
LM End	1.58	Issue Type +	Ma	Location *	LS
Category	Earthen Levee			GPS Latitude/Longitude	
				Start	End
Item	Trim / Thin Trees			38.306762 °	38.306948 °
				-121.598541 °	-121.598320 °
DWR ID	DWR_RD0999_03_s_2012_13				
Action/Comments					
Trim and thin trees to allow visibility of the ground and room to flood fight.					

No Photos

LM Start	1.67	Rating **	M	Issue No.	14
LM End	1.67	Issue Type +	Ma	Location *	LS
Category	Earthen Levee			GPS Latitude/Longitude	
				Start	End
Item	Trim / Thin Trees			38.308129 °	38.308129 °
				-121.598610 °	-121.598610 °
DWR ID	DWR_RD0999_03_s_2012_14				
Action/Comments					
Trim trees to at least five feet above ground level.					

No Photos

LM Start	1.96	Rating **	A/W	Issue No.	20
LM End	1.96	Issue Type +	Ma	Location *	LS
Category	Earthen Levee			GPS Latitude/Longitude	
				Start	End
Item	Trim / Thin Trees			38.311447 °	38.311447 °
				-121.597358 °	-121.597358 °
DWR ID	DWR_RD0999_03_s_2012_20				
Action/Comments					
Trim trees to at least five feet above ground level.					

No Photos

<b>* Location</b> LS : Land Side    N/A : Not Applicable WS : Water Side CR : Crown	<b>** Rating</b> A : Acceptable M : Minimally Acceptable U : Unacceptable	N : Not Inspected/Rated C : Corrected A/W : Acceptable but Monitor & Maintain	<b>+ Issue Type</b> Ma : Maintenance Deficiency Ob : Design & System Obsolescence En : Enforcement
--	--	---	---

**Flood Control Project Maintenance  
Levee Inspections**

**Maintenance Issue Types Only, Levee Inspection Report By Mile - Fall 2014**

**Reclamation District No. 0999 Netherlands**

Waterway	Bank	Unit Miles	Inspection Start/End	Inspector
Unit No. 03 Sutter Slough	Right	3.74	10/28/2014 10/28/2014	Richard Willoughby

LM Start	2.02	Rating **	C	Issue No.	21
LM End	2.02	Issue Type +	Ma	Location *	LS
Category	Earthen Levee			GPS Latitude/Longitude	
				Start	End
Item	Trim / Thin Trees			38.311897 °	38.311897 °
				-121.596394 °	-121.596394 °
DWR ID	DWR_RD0999_03_s_2012_21				
Action/Comments					
Trim and thin trees to allow visibility of the ground and room to flood fight.					

No Photos

LM Start	2.02	Rating **	A/W	Issue No.	46
LM End	2.02	Issue Type +	Ma	Location *	WS
Category	Earthen Levee			GPS Latitude/Longitude	
				Start	End
Item	Trim / Thin Trees			38.311898 °	38.311898 °
				-121.596379 °	-121.596379 °
DWR ID	DWR_RD0999_03_s_2014_46				
Action/Comments					
Trim trees to at least five feet above ground level.					

No Photos

LM Start	2.25	Rating **	M	Issue No.	34
LM End	2.36	Issue Type +	Ma	Location *	WS
Category	Supplemental			GPS Latitude/Longitude	
				Start	End
Item	USACE Erosion Survey			38.315407 °	38.313836 °
				-121.591433 °	-121.592259 °
DWR ID	DWR_RD0999_03_f _ 2014_34				
Action/Comments					
Inspector Comments: 2002 - Original rock over geotextile is sliding off and the end is coming unraveled. 2003 - Some minor new erosion on the downstream end. 2004 - Site has gotten worse. Underlined geofabric is exposed. 2005 - Still looks bad with exposed geotextile fabric. 2006 - Still have some new unraveling and exposed fabric. Site lengthened upstream. 2009 - Minimal new erosion. 2010 - geotextile fabric placed since last year, possible flood fight. 2012 - Exposed geotech style fabric, assume rock on top slid off. 2013: No observed changes. [2013 Site ID: STR_26-5_L]					

Photo 1 of 1 : FA\_2014\_RD0999\_234\_34\_20141020\_00027.jpg



USACE 2013 Photo #1

<b>* Location</b> LS : Land Side    N/A : Not Applicable WS : Water Side CR : Crown	<b>** Rating</b> A : Acceptable M : Minimally Acceptable U : Unacceptable	N : Not Inspected/Rated C : Corrected A/W : Acceptable but Monitor & Maintain	<b>+ Issue Type</b> Ma : Maintenance Deficiency Ob : Design & System Obsolescence En : Enforcement
--	--	---	---



**Flood Control Project Maintenance  
Levee Inspections**

**Maintenance Issue Types Only, Levee Inspection Report By Mile - Fall 2014**

**Reclamation District No. 0999 Netherlands**

Waterway	Bank	Unit Miles	Inspection Start/End	Inspector
Unit No. 03 Sutter Slough	Right	3.74	10/28/2014 10/28/2014	Richard Willoughby

LM Start	2.54	Rating **	M	Issue No.	27
LM End	2.54	Issue Type +	Ma	Location *	LS
Category	Earthen Levee			GPS Latitude/Longitude	
				Start	End
Item	Encroachments			38.317840 °	38.317840 °
				-121.590895 °	-121.590895 °
DWR ID	DWR_RD0999_03_s_2012_27				
Action/Comments					
Equipment					
Inspector Comments: Diesel tank stored at landside toe.					

Photo 1 of 2 : FA\_2014\_RD0999\_234\_27\_20141020\_00022.jpg



Looking southwest at farm equipment stored at landside toe. (Fall Inspection 2012)

LM Start	<b>2.54</b>	Rating **	M	Issue No.	<b>27 (cont)</b>
LM End	<b>2.54</b>	Issue Type +	Ma	Location *	LS

Photo 2 of 2 : FA\_2014\_RD0999\_234\_27\_20141020\_00023.jpg



Looking northwest at equipment at landside toe.

LM Start	2.69	Rating **	M	Issue No.	32
LM End	2.74	Issue Type +	Ma	Location *	LS
Category	Earthen Levee			GPS Latitude/Longitude	
				Start	End
Item	Trim / Thin Trees			38.319943 °	38.320670 °
				-121.590737 °	-121.590802 °
DWR ID	DWR_RD0999_03_s_2012_32				
Action/Comments					
Trim trees to at least five feet above ground level.					

No Photos

<b>* Location</b> LS : Land Side    N/A : Not Applicable WS : Water Side CR : Crown	<b>** Rating</b> A : Acceptable M : Minimally Acceptable U : Unacceptable	N : Not Inspected/Rated C : Corrected A/W : Acceptable but Monitor & Maintain	<b>+ Issue Type</b> Ma : Maintenance Deficiency Ob : Design & System Obsolescence En : Enforcement
--	--	---	---

**Flood Control Project Maintenance  
Levee Inspections**

**Maintenance Issue Types Only, Levee Inspection Report By Mile - Fall 2014**

**Reclamation District No. 0999 Netherlands**

Waterway	Bank	Unit Miles	Inspection Start/End	Inspector
Unit No. 03 Sutter Slough	Right	3.74	10/28/2014 10/28/2014	Richard Willoughby

LM Start	2.79	Rating **	M	Issue No.	28
LM End	2.95	Issue Type +	Ma	Location *	LS
Category	Earthen Levee			GPS Latitude/Longitude	
				Start	End
Item	Trim / Thin Trees			38.321244 °	38.323362 °
				-121.590969 °	-121.590208 °
DWR ID	DWR_RD0999_03_s_2012_28				
Action/Comments					
Trim and thin trees to allow visibility of the ground and room to flood fight.					

No Photos

LM Start	2.79	Rating **	M	Issue No.	35
LM End	2.79	Issue Type +	Ma	Location *	WS
Category	Supplemental			GPS Latitude/Longitude	
				Start	End
Item	USACE Erosion Survey			38.322457 °	38.323042 °
				-121.590693 °	-121.590209 °
DWR ID	DWR_RD0999_03_f_2014_35				
Action/Comments					
Inspector Comments: 2012 - Slumping of upper levee slope. 2013: No observed changes. [2013 Site ID: STR_27-1_R]					

Photo 1 of 1 : FA\_2014\_RD0999\_234\_35\_20141020\_00028.jpg



USACE 2013 Photo #1

LM Start	2.89	Rating **	A/W	Issue No.	10
LM End	2.89	Issue Type +	Ma	Location *	LS
Category	Earthen Levee			GPS Latitude/Longitude	
				Start	End
Item	Vegetation			38.322757 °	38.322757 °
				-121.590817 °	-121.590817 °
DWR ID	DWR_RD0999_03_f_2012_10				
Action/Comments					
Remove the wild growth other than native grasses from the levee slopes.					
Inspector Comments: Wild growth at landside slope and toe.					

Photo 1 of 3 : FA\_2014\_RD0999\_234\_10\_20141030\_00040.jpg



Looking west at trimmed trees at landward toe. (Fall 2014)

**\* Location**

LS : Land Side    N/A : Not Applicable  
WS : Water Side  
CR : Crown

**\*\* Rating**

A : Acceptable                      N : Not Inspected/Rated  
M : Minimally Acceptable        C : Corrected  
U : Unacceptable                  A/W : Acceptable but Monitor & Maintain

**+ Issue Type**

Ma : Maintenance Deficiency  
Ob : Design & System Obsolescence  
En : Enforcement

**Flood Control Project Maintenance  
Levee Inspections**

**Maintenance Issue Types Only, Levee Inspection Report By Mile - Fall 2014**

**Reclamation District No. 0999 Netherlands**

Waterway	Bank	Unit Miles	Inspection Start/End	Inspector
Unit No. 03 Sutter Slough	Right	3.74	10/28/2014 10/28/2014	Richard Willoughby

LM Start	2.89	Rating **	A/W	Issue No.	10 (cont)
LM End	2.89	Issue Type +	Ma	Location *	LS
Category	Earthen Levee			GPS Latitude/Longitude	
				Start	End
Item	Vegetation			38.322757 °	38.322757 °
				-121.590817 °	-121.590817 °
DWR ID	DWR_RD0999_03_f_2012_10				
Action/Comments					
Remove the wild growth other than native grasses from the levee slopes.					
Inspector Comments: Wild growth at landside slope and toe.					



Looking west at dense trees on landside toe.

LM Start	<b>2.89</b>	Rating **	A/W	Issue No.	<b>10 (cont)</b>
LM End	<b>2.89</b>	Issue Type +	Ma	Location *	LS



Looking northwest at dense vegetation at landside slope and toe.

LM Start	2.98	Rating **	M	Issue No.	47
LM End	2.98	Issue Type +	Ma	Location *	WS
Category	Supplemental			GPS Latitude/Longitude	
				Start	End
Item	USACE Erosion Survey			38.323667 °	38.325592 °
				-121.588226 °	-121.585925 °
DWR ID	DWR_RD0999_03_f_2014_47				
Action/Comments					
Inspector Comments: 2011 - Multiple erosion pockets. Some likely from tree popouts. 2013: Tall vertical sections. [2013 Site ID: STR_27-3_R]					



USACE 2013 Photo #1

<b>* Location</b> LS : Land Side    N/A : Not Applicable WS : Water Side CR : Crown	<b>** Rating</b> A : Acceptable M : Minimally Acceptable U : Unacceptable	N : Not Inspected/Rated C : Corrected A/W : Acceptable but Monitor & Maintain	<b>+ Issue Type</b> Ma : Maintenance Deficiency Ob : Design & System Obsolescence En : Enforcement
--	--	---	---



**Flood Control Project Maintenance  
Levee Inspections**

**Maintenance Issue Types Only, Levee Inspection Report By Mile - Fall 2014**

**Reclamation District No. 0999 Netherlands**

Waterway	Bank	Unit Miles	Inspection Start/End	Inspector
Unit No. 03 Sutter Slough	Right	3.74	10/28/2014 10/28/2014	Richard Willoughby

LM Start	3.00	Rating **	C	Issue No.	18
LM End	3.00	Issue Type +	Ma	Location *	WS
Category	Earthen Levee			GPS Latitude/Longitude	
				Start	End
Item	Encroachments			38.323712 °	38.323712 °
				-121.589255 °	-121.589255 °
DWR ID	DWR_RD0999_03_s_2012_18				
Action/Comments					
Prunings					

No Photos

LM Start	3.02	Rating **	A/W	Issue No.	31
LM End	3.27	Issue Type +	Ma	Location *	LS
Category	Earthen Levee			GPS Latitude/Longitude	
				Start	End
Item	Trim / Thin Trees			38.323770 °	38.326061 °
				-121.589035 °	-121.586028 °
DWR ID	DWR_RD0999_03_s_2012_31				
Action/Comments					
Trim and thin trees to allow visibility of the ground and room to flood fight.					

Photo 1 of 1 : FA\_2014\_RD0999\_234\_31\_20141030\_00041.jpg



Looking north at trimmed trees on landward slope.

LM Start	3.23	Rating **	A/W	Issue No.	19
LM End	3.23	Issue Type +	Ma	Location *	WS
Category	Earthen Levee			GPS Latitude/Longitude	
				Start	End
Item	Trim / Thin Trees			38.325534 °	38.325534 °
				-121.586273 °	-121.586273 °
DWR ID	DWR_RD0999_03_s_2012_19				
Action/Comments					
Trim trees to at least five feet above ground level.					

No Photos

<b>* Location</b> LS : Land Side    N/A : Not Applicable WS : Water Side CR : Crown		<b>** Rating</b> A : Acceptable                      N : Not Inspected/Rated M : Minimally Acceptable        C : Corrected U : Unacceptable                  A/W : Acceptable but Monitor & Maintain		<b>+ Issue Type</b> Ma : Maintenance Deficiency Ob : Design & System Obsolescence En : Enforcement
--	--	---	--	---

**Flood Control Project Maintenance  
Levee Inspections**

**Maintenance Issue Types Only, Levee Inspection Report By Mile - Fall 2014**

**Reclamation District No. 0999 Netherlands**

Waterway	Bank	Unit Miles	Inspection Start/End	Inspector
Unit No. 04 Sacramento River	Right	1.22	10/29/2014 10/29/2014	Richard Willoughby

LM Start	0.01	Rating **	M	Issue No.	8
LM End	0.01	Issue Type +	Ma	Location *	WS
Category	Supplemental			GPS Latitude/Longitude	
				Start	End
Item	USACE Erosion Survey			38.414387 °	38.417692 °
				-121.522871 °	-121.525083 °
DWR ID	DWR_RD0999_04_f_2014_8				
Action/Comments					
Inspector Comments: 1997 - Structural problem rather than erosional, failed cobble at downstream end. 2005 - New brush boxes at waterline for several hundred feet downstream, No toe or bank protection present. 2006 - Some minor new erosion. Brush boxes not working well; most of the brush has floated out. 2007 - Brush boxes have recently been repaired. 2013: No observed changes. [2013 Site ID: SAC_41-9_R]					

Photo 1 of 1 : FA\_2014\_RD0999\_235\_8\_20141020\_00006.jpg



USACE 2013 Photo #1

LM Start	0.03	Rating **	M	Issue No.	35
LM End	0.03	Issue Type +	Ma	Location *	LS
Category	Earthen Levee			GPS Latitude/Longitude	
				Start	End
Item	Trim / Thin Trees			38.414450 °	38.414450 °
				-121.523308 °	-121.523308 °
DWR ID	DWR_RD0999_04_f_2014_35				
Action/Comments					
Trim trees to at least five feet above ground level.					

No Photos

LM Start	0.05	Rating **	M	Issue No.	15
LM End	0.05	Issue Type +	Ma	Location *	WS
Category	Earthen Levee			GPS Latitude/Longitude	
				Start	End
Item	Trim / Thin Trees			38.414642 °	38.414642 °
				-121.523430 °	-121.523430 °
DWR ID	DWR_RD0999_04_s_2012_15				
Action/Comments					
Trim trees to at least five feet above ground level.					

No Photos

<b>* Location</b> LS : Land Side    N/A : Not Applicable WS : Water Side CR : Crown	<b>** Rating</b> A : Acceptable M : Minimally Acceptable U : Unacceptable	N : Not Inspected/Rated C : Corrected A/W : Acceptable but Monitor & Maintain	<b>+ Issue Type</b> Ma : Maintenance Deficiency Ob : Design & System Obsolescence En : Enforcement
--	--	---	---

**Flood Control Project Maintenance  
Levee Inspections**

**Maintenance Issue Types Only, Levee Inspection Report By Mile - Fall 2014**

**Reclamation District No. 0999 Netherlands**

Waterway	Bank	Unit Miles	Inspection Start/End	Inspector
Unit No. 04 Sacramento River	Right	1.22	10/29/2014 10/29/2014	Richard Willoughby

LM Start	0.19	Rating **	M	Issue No.	24
LM End	0.21	Issue Type +	Ma	Location *	WS
Category	Earthen Levee			GPS Latitude/Longitude	
				Start	End
Item	Trim / Thin Trees			38.416518 °	38.416808 °
				-121.524502 °	-121.524767 °
DWR ID	DWR_RD0999_04_s_2012_24				
Action/Comments					
Trim and thin trees to allow visibility of the ground and room to flood fight.					

No Photos

LM Start	0.37	Rating **	M	Issue No.	10
LM End	0.50	Issue Type +	Ma	Location *	LS
Category	Earthen Levee			GPS Latitude/Longitude	
				Start	End
Item	Trim / Thin Trees			38.418838 °	38.420447 °
				-121.526225 °	-121.527380 °
DWR ID	DWR_RD0999_04_s_2012_10				
Action/Comments					
Trim trees to at least five feet above ground level.					



Looking northwest at dense trees on landside slope and toe.

LM Start	<b>0.37</b>	Rating **	M	Issue No.	<b>10 (cont)</b>
LM End	<b>0.50</b>	Issue Type +	Ma	Location *	LS



Looking west at dense trees on waterside slope.

<b>* Location</b> LS : Land Side    N/A : Not Applicable WS : Water Side CR : Crown		<b>** Rating</b> A : Acceptable M : Minimally Acceptable U : Unacceptable N : Not Inspected/Rated C : Corrected A/W : Acceptable but Monitor & Maintain		<b>+ Issue Type</b> Ma : Maintenance Deficiency Ob : Design & System Obsolescence En : Enforcement	
--	--	---	--	---	--



**Flood Control Project Maintenance  
Levee Inspections**

**Maintenance Issue Types Only, Levee Inspection Report By Mile - Fall 2014**

**Reclamation District No. 0999 Netherlands**

Waterway	Bank	Unit Miles	Inspection Start/End	Inspector
Unit No. 04 Sacramento River	Right	1.22	10/29/2014 10/29/2014	Richard Willoughby

LM Start	0.60	Rating **	M	Issue No.	21
LM End	0.60	Issue Type +	Ma	Location *	LS
Category	Earthen Levee			GPS Latitude/Longitude	
				Start	End
Item	Encroachments				°
					°
DWR ID	DWR_RD0999_04_f_2013_21				
Action/Comments					
Tree or limb					
Inspector Comments: Downed tree on landward toe and berm.					

Photo 1 of 1 : FA\_2014\_RD0999\_235\_21\_20141020\_00016.jpg



Looking west at dead tree on landward toe and berm.

LM Start	0.62	Rating **	N	Issue No.	19
LM End	0.62	Issue Type +	Ma	Location *	LS
Category	Earthen Levee			GPS Latitude/Longitude	
				Start	End
Item	Trim / Thin Trees			38.421997 °	38.421997 °
				-121.528470 °	-121.528470 °
DWR ID	DWR_RD0999_04_s_2012_19				
Action/Comments					
Tree stumps.					

No Photos

LM Start	0.65	Rating **	N	Issue No.	18
LM End	0.65	Issue Type +	Ma	Location *	LS
Category	Earthen Levee			GPS Latitude/Longitude	
				Start	End
Item	Trim / Thin Trees			38.422377 °	38.422377 °
				-121.528792 °	-121.528792 °
DWR ID	DWR_RD0999_04_s_2012_18				
Action/Comments					
Tree stumps.					

No Photos

<b>* Location</b> LS : Land Side    N/A : Not Applicable WS : Water Side CR : Crown		<b>** Rating</b> A : Acceptable                      N : Not Inspected/Rated M : Minimally Acceptable        C : Corrected U : Unacceptable                  A/W : Acceptable but Monitor & Maintain		<b>+ Issue Type</b> Ma : Maintenance Deficiency Ob : Design & System Obsolescence En : Enforcement
--	--	---	--	---

**Flood Control Project Maintenance  
Levee Inspections**

**Maintenance Issue Types Only, Levee Inspection Report By Mile - Fall 2014**

**Reclamation District No. 0999 Netherlands**

Waterway	Bank	Unit Miles	Inspection Start/End	Inspector
Unit No. 04 Sacramento River	Right	1.22	10/29/2014 10/29/2014	Richard Willoughby

LM Start	0.66	Rating **	A/W	Issue No.	7
LM End	0.71	Issue Type +	Ma	Location *	LS
Category	Earthen Levee			GPS Latitude/Longitude	
				Start	End
Item	Trim / Thin Trees			38.422517 °	38.423133 °
				-121.528858 °	-121.529210 °
DWR ID	DWR_RD0999_04_s_2012_7				
Action/Comments					
Trim trees to at least five feet above ground level.					

No Photos

LM Start	0.71	Rating **	A/W	Issue No.	6
LM End	0.87	Issue Type +	Ma	Location *	LS
Category	Earthen Levee			GPS Latitude/Longitude	
				Start	End
Item	Trim / Thin Trees			38.423035 °	38.425140 °
				-121.529255 °	-121.530742 °
DWR ID	DWR_RD0999_04_s_2012_6				
Action/Comments					
Trim trees to at least five feet above ground level.					

Photo 1 of 2 : FA\_2014\_RD0999\_235\_6\_20141020\_00004.jpg



Looking north at trimmed trees and removed fence on landside slope.

Photo 2 of 2 : FA\_2014\_RD0999\_235\_6\_20141020\_00005.jpg



Looking south at trimmed trees on landside slope and removed fence.

<b>* Location</b> LS : Land Side    N/A : Not Applicable WS : Water Side CR : Crown		<b>** Rating</b> A : Acceptable                      N : Not Inspected/Rated M : Minimally Acceptable        C : Corrected U : Unacceptable                  A/W : Acceptable but Monitor & Maintain		<b>+ Issue Type</b> Ma : Maintenance Deficiency Ob : Design & System Obsolescence En : Enforcement	
--	--	---	--	---	--

**Flood Control Project Maintenance  
Levee Inspections**

**Maintenance Issue Types Only, Levee Inspection Report By Mile - Fall 2014**

**Reclamation District No. 0999 Netherlands**

Waterway	Bank	Unit Miles	Inspection Start/End	Inspector
Unit No. 04 Sacramento River	Right	1.22	10/29/2014 10/29/2014	Richard Willoughby

LM Start	0.75	Rating **	N	Issue No.	17
LM End	0.75	Issue Type +	Ma	Location *	LS
Category	Earthen Levee			GPS Latitude/Longitude	
				Start	End
Item	Trim / Thin Trees			38.423560 °	38.423560 °
				-121.529653 °	-121.529653 °
DWR ID	DWR_RD0999_04_s_2012_17				
Action/Comments					
Tree stumps.					

No Photos

LM Start	0.82	Rating **	N	Issue No.	14
LM End	0.82	Issue Type +	Ma	Location *	LS
Category	Earthen Levee			GPS Latitude/Longitude	
				Start	End
Item	Trim / Thin Trees			38.424432 °	38.424432 °
				-121.530265 °	-121.530265 °
DWR ID	DWR_RD0999_04_s_2012_14				
Action/Comments					
Tree stumps.					

No Photos

LM Start	0.83	Rating **	N	Issue No.	9
LM End	0.83	Issue Type +	Ma	Location *	LS
Category	Earthen Levee			GPS Latitude/Longitude	
				Start	End
Item	Trim / Thin Trees			38.424722 °	38.424722 °
				-121.530470 °	-121.530470 °
DWR ID	DWR_RD0999_04_s_2012_9				
Action/Comments					
Tree stumps.					

No Photos

<b>* Location</b> LS : Land Side    N/A : Not Applicable WS : Water Side CR : Crown	<b>** Rating</b> A : Acceptable M : Minimally Acceptable U : Unacceptable	N : Not Inspected/Rated C : Corrected A/W : Acceptable but Monitor & Maintain	<b>+ Issue Type</b> Ma : Maintenance Deficiency Ob : Design & System Obsolescence En : Enforcement
--	--	---	---





**Flood Control Project Maintenance  
Levee Inspections**

**Maintenance Issue Types Only, Levee Inspection Report By Mile - Fall 2014**

**Reclamation District No. 0999 Netherlands**

Waterway	Bank	Unit Miles	Inspection Start/End	Inspector
Unit No. 04 Sacramento River	Right	1.22	10/29/2014 10/29/2014	Richard Willoughby

LM Start	1.15	Rating **	M	Issue No.	5 (cont)	
LM End	1.15	Issue Type +	Ma	Location *	LS	
Category	Earthen Levee			GPS Latitude/Longitude		
				Start		End
Item	Vegetation			38.428823 °		38.428823 °
				-121.532885 °		-121.532885 °
DWR ID	DWR_RD0999_04_s_2012_5					
Action/Comments						
Remove the wild growth other than native grasses from the levee slopes.						
Inspector Comments: Berry vines and wild roses on landside toe.						

Photo 2 of 2 : FA\_2014\_RD0999\_235\_5\_20141020\_00003.jpg



Looking northwest at dense wild roses and berry vines on landside toe near ramp.

LM Start	1.20	Rating **	M	Issue No.	22
LM End	1.22	Issue Type +	Ma	Location *	LS
Category	Earthen Levee			GPS Latitude/Longitude	
				Start	End
Item	Trim / Thin Trees				°
					°
DWR ID	DWR_RD0999_04_f_2013_22				
Action/Comments					
Trim and thin trees to allow visibility of the ground and room to flood fight.					

Photo 1 of 1 : FA\_2014\_RD0999\_235\_22\_20141020\_00017.jpg



Looking south at dense trees on landward slope.

**\* Location**

LS : Land Side    N/A : Not Applicable  
WS : Water Side  
CR : Crown

**\*\* Rating**

A : Acceptable                      N : Not Inspected/Rated  
M : Minimally Acceptable        C : Corrected  
U : Unacceptable                  A/W : Acceptable but Monitor & Maintain

**+ Issue Type**

Ma : Maintenance Deficiency  
Ob : Design & System Obsolescence  
En : Enforcement

**Flood Control Project Maintenance  
Levee Inspections**

**Maintenance Issue Types Only, Levee Inspection Report By Mile - Fall 2014**

**Reclamation District No. 0999 Netherlands**

Waterway	Bank	Unit Miles	Inspection Start/End	Inspector
Unit No. 05 Elk Slough	Right	9.48	10/28/2014 10/29/2014	Richard Willoughby

LM Start	0.10	Rating **	M	Issue No.	72
LM End	0.10	Issue Type +	Ma	Location *	LS
Category	Earthen Levee			GPS Latitude/Longitude	
				Start	End
Item	Trim / Thin Trees				°
					°
DWR ID	DWR_RD0999_05_f_2013_72				
Action/Comments					
Trim and thin trees to allow visibility of the ground and room to flood fight.					
Inspector Comments: Remove small oak trees from landward slope before trees are establish.					

Photo 1 of 1 : FA\_2014\_RD0999\_236\_72\_20141020\_00049.jpg



Looking west at small oak trees on landward slope.

LM Start	0.20	Rating **	C	Issue No.	4
LM End	0.20	Issue Type +	Ma	Location *	LS
Category	Earthen Levee			GPS Latitude/Longitude	
				Start	End
Item	Trim / Thin Trees			38.335209 °	38.335209 °
				-121.583966 °	-121.583966 °
DWR ID	DWR_RD0999_05_s_2012_4				
Action/Comments					
Tree stumps.					

No Photos

LM Start	0.27	Rating **	M	Issue No.	1
LM End	0.32	Issue Type +	Ma	Location *	LS
Category	Earthen Levee			GPS Latitude/Longitude	
				Start	End
Item	Animal Control			38.336113 °	38.336663 °
				-121.583418 °	-121.583027 °
DWR ID	DWR_RD0999_05_s_2012_1				
Action/Comments					
Exterminate rodents and backfill and compact or grout burrows.					

No Photos

<b>* Location</b> LS : Land Side    N/A : Not Applicable WS : Water Side CR : Crown		<b>** Rating</b> A : Acceptable                      N : Not Inspected/Rated M : Minimally Acceptable        C : Corrected U : Unacceptable                  A/W : Acceptable but Monitor & Maintain		<b>+ Issue Type</b> Ma : Maintenance Deficiency Ob : Design & System Obsolescence En : Enforcement
--	--	---	--	---

**Flood Control Project Maintenance  
Levee Inspections**

**Maintenance Issue Types Only, Levee Inspection Report By Mile - Fall 2014**

**Reclamation District No. 0999 Netherlands**

Waterway	Bank	Unit Miles	Inspection Start/End	Inspector
Unit No. 05 Elk Slough	Right	9.48	10/28/2014 10/29/2014	Richard Willoughby

LM Start	0.35	Rating **	C	Issue No.	5
LM End	0.35	Issue Type +	Ma	Location *	LS
Category	Earthen Levee			GPS Latitude/Longitude	
				Start	End
Item	Trim / Thin Trees			38.337089 °	38.337089 °
				-121.582756 °	-121.582756 °
DWR ID	DWR_RD0999_05_s_2012_5				
Action/Comments					
Tree stumps.					

No Photos

LM Start	0.40	Rating **	A/W	Issue No.	3
LM End	0.41	Issue Type +	Ma	Location *	WS
Category	Earthen Levee			GPS Latitude/Longitude	
				Start	End
Item	Trim / Thin Trees			38.337697 °	38.337963 °
				-121.582420 °	-121.582352 °
DWR ID	DWR_RD0999_05_s_2012_3				
Action/Comments					
Trim trees to at least five feet above ground level.					

No Photos

LM Start	0.40	Rating **	M	Issue No.	53
LM End	0.40	Issue Type +	Ma	Location *	LS
Category	Earthen Levee			GPS Latitude/Longitude	
				Start	End
Item	Vegetation			38.337753 °	38.337753 °
				-121.582445 °	-121.582445 °
DWR ID	DWR_RD0999_05_s_2012_53				
Action/Comments					
Remove the wild growth other than native grasses from the levee slopes.					

No Photos

<b>* Location</b> LS : Land Side    N/A : Not Applicable WS : Water Side CR : Crown	<b>** Rating</b> A : Acceptable M : Minimally Acceptable U : Unacceptable	N : Not Inspected/Rated C : Corrected A/W : Acceptable but Monitor & Maintain	<b>+ Issue Type</b> Ma : Maintenance Deficiency Ob : Design & System Obsolescence En : Enforcement
--	--	---	---





**Flood Control Project Maintenance  
Levee Inspections**

**Maintenance Issue Types Only, Levee Inspection Report By Mile - Fall 2014**

**Reclamation District No. 0999 Netherlands**

Waterway	Bank	Unit Miles	Inspection Start/End	Inspector
Unit No. 05 Elk Slough	Right	9.48	10/28/2014 10/29/2014	Richard Willoughby

LM Start	0.43	Rating **	M	Issue No.	25 (cont)
LM End	0.47	Issue Type +	Ma	Location *	LS
Category	Earthen Levee			GPS Latitude/Longitude	
				Start	End
Item	Vegetation			38.338075 °	38.338688 °
				-121.582322 °	-121.582193 °
DWR ID	DWR_RD0999_05_s_2012_25				
Action/Comments					
Remove the wild growth other than native grasses from the levee slopes.					
Inspector Comments: Elderberries within vegetation area.					

Photo 4 of 4 : FA\_2014\_RD0999\_236\_25\_20141020\_00024.jpg



Looking southwest at dense berry vines on landside toe.

LM Start	0.47	Rating **	M	Issue No.	26
LM End	0.48	Issue Type +	Ma	Location *	WS
Category	Earthen Levee			GPS Latitude/Longitude	
				Start	End
Item	Encroachments			38.338647 °	38.338868 °
				-121.582217 °	-121.582163 °
DWR ID	DWR_RD0999_05_s_2012_26				
Action/Comments					
Prunings					

Photo 1 of 1 : FA\_2014\_RD0999\_236\_26\_20141020\_00025.jpg



Looking northeast at prunings on waterside slope.

LM Start	0.50	Rating **	M	Issue No.	135
LM End	0.54	Issue Type +	Ma	Location *	LS
Category	Earthen Levee			GPS Latitude/Longitude	
				Start	End
Item	Trim / Thin Trees				°
					°
DWR ID	DWR_RD0999_05_f_2013_135				
Action/Comments					
Trim trees to at least five feet above ground level.					

No Photos

**\* Location**  
LS : Land Side    N/A : Not Applicable  
WS : Water Side  
CR : Crown

**\*\* Rating**  
A : Acceptable                      N : Not Inspected/Rated  
M : Minimally Acceptable        C : Corrected  
U : Unacceptable                  A/W : Acceptable but Monitor & Maintain

**+ Issue Type**  
Ma : Maintenance Deficiency  
Ob : Design & System Obsolescence  
En : Enforcement

**Flood Control Project Maintenance  
Levee Inspections**

**Maintenance Issue Types Only, Levee Inspection Report By Mile - Fall 2014**

**Reclamation District No. 0999 Netherlands**

Waterway	Bank	Unit Miles	Inspection Start/End	Inspector
Unit No. 05 Elk Slough	Right	9.48	10/28/2014 10/29/2014	Richard Willoughby

LM Start	0.56	Rating **	M	Issue No.	27
LM End	0.60	Issue Type +	Ma	Location *	WS
Category	Earthen Levee			GPS Latitude/Longitude	
				Start	End
Item	Trim / Thin Trees			38.340124 °	38.340560 °
				-121.582039 °	-121.581905 °
DWR ID	DWR_RD0999_05_s_2012_27				
Action/Comments					
Trim and thin trees to allow visibility of the ground and room to flood fight.					

No Photos

LM Start	0.71	Rating **	U	Issue No.	189
LM End	0.71	Issue Type +	Ma	Location *	LS
Category	Earthen Levee			GPS Latitude/Longitude	
				Start	End
Item	Vegetation			38.342032 °	38.342032 °
				-121.581372 °	-121.581372 °
DWR ID	DWR_RD0999_05_f_2014_189				
Action/Comments					
Remove the wild growth other than native grasses from the levee slopes.					
Inspector Comments: Dense wild grapevines on landward slope.					

Photo 1 of 1 : FA\_2014\_RD0999\_236\_189\_20141030\_00125.jpg



Looking northwest at dense vegetation on landward slope.

LM Start	0.72	Rating **	M	Issue No.	9
LM End	0.74	Issue Type +	Ma	Location *	LS
Category	Earthen Levee			GPS Latitude/Longitude	
				Start	End
Item	Trim / Thin Trees			38.342180 °	38.342537 °
				-121.581230 °	-121.581263 °
DWR ID	DWR_RD0999_05_s_2012_9				
Action/Comments					
Trim and thin trees to allow visibility of the ground and room to flood fight.					
Inspector Comments: District or Landowner trimmed trees to a moderate density. Still need to remove more limbs.					

Photo 1 of 4 : FA\_2014\_RD0999\_236\_9\_20141020\_00005.jpg



Front view of dense trees at landside shoulder.(Spring 2011)

**\* Location**

LS : Land Side    N/A : Not Applicable  
WS : Water Side  
CR : Crown

**\*\* Rating**

A : Acceptable                      N : Not Inspected/Rated  
M : Minimally Acceptable        C : Corrected  
U : Unacceptable                  A/W : Acceptable but Monitor & Maintain

**+ Issue Type**

Ma : Maintenance Deficiency  
Ob : Design & System Obsolescence  
En : Enforcement



**Flood Control Project Maintenance  
Levee Inspections**

## Maintenance Issue Types Only, Levee Inspection Report By Mile - Fall 2014

### Reclamation District No. 0999 Netherlands

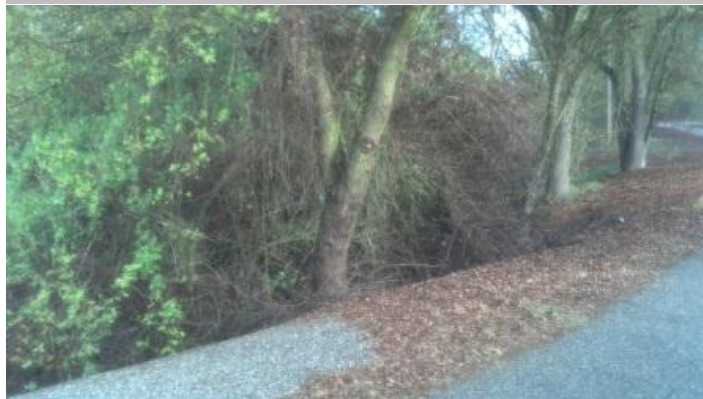
Waterway	Bank	Unit Miles	Inspection Start/End	Inspector
Unit No. 05 Elk Slough	Right	9.48	10/28/2014 10/29/2014	Richard Willoughby

LM Start	0.72	Rating **	M	Issue No.	9 (cont)	
LM End	0.74	Issue Type +	Ma	Location *	LS	
Category	Earthen Levee			GPS Latitude/Longitude		
				Start		End
Item	Trim / Thin Trees			38.342180 °		38.342537 °
				-121.581230 °		-121.581263 °
DWR ID	DWR_RD0999_05_s_2012_9					
Action/Comments						
Trim and thin trees to allow visibility of the ground and room to flood fight.						
Inspector Comments: District or Landowner trimmed trees to a moderate density. Still need to remove more limbs.						

LM Start	<b>0.72</b>	Rating **	M	Issue No.	<b>9 (cont)</b>
LM End	<b>0.74</b>	Issue Type +	Ma	Location *	LS

LM Start	<b>0.72</b>	Rating **	M	Issue No.	<b>9 (cont)</b>
LM End	<b>0.74</b>	Issue Type +	Ma	Location *	LS

Photo 2 of 4 : FA\_2014\_RD0999\_236\_9\_20141020\_00006.jpg



Looking northwest at dense trees at landside slope and toe. Spring 2013

Photo 3 of 4 : FA\_2014\_RD0999\_236\_9\_20141020\_00007.jpg



Looking west at trimmed trees on landside slope.(Spring 2012)

Photo 4 of 4 : FA\_2014\_RD0999\_236\_9\_20141020\_00008.jpg



Looking west at dense trees on landside slope and toe.(Spring 2011)

**\* Location**

LS : Land Side    N/A : Not Applicable  
WS : Water Side  
CR : Crown

**\*\* Rating**

A : Acceptable                      N : Not Inspected/Rated  
M : Minimally Acceptable        C : Corrected  
U : Unacceptable                  A/W : Acceptable but Monitor & Maintain

**+ Issue Type**

Ma : Maintenance Deficiency  
Ob : Design & System Obsolescence  
En : Enforcement



**Flood Control Project Maintenance  
Levee Inspections**

**Maintenance Issue Types Only, Levee Inspection Report By Mile - Fall 2014**

**Reclamation District No. 0999 Netherlands**

Waterway	Bank	Unit Miles	Inspection Start/End	Inspector
Unit No. 05 Elk Slough	Right	9.48	10/28/2014 10/29/2014	Richard Willoughby

LM Start	0.78	Rating **	A/W	Issue No.	10
LM End	0.94	Issue Type +	Ma	Location *	WS
Category	Earthen Levee			GPS Latitude/Longitude	
				Start	End
Item	Trim / Thin Trees			38.343058 °	38.345210 °
				-121.581263 °	-121.580713 °
DWR ID	DWR_RD0999_05_s_2012_10				
Action/Comments					
Trim and thin trees to allow visibility of the ground and room to flood fight.					

No Photos

LM Start	0.81	Rating **	M	Issue No.	128
LM End	0.81	Issue Type +	Ma	Location *	LS
Category	Earthen Levee			GPS Latitude/Longitude	
				Start	End
Item	Trim / Thin Trees			38.343495 °	38.343495 °
				-121.581282 °	-121.581282 °
DWR ID	DWR_RD0999_05_s_2012_128				
Action/Comments					
Trim and thin trees to allow visibility of the ground and room to flood fight.					

Photo 1 of 1 : FA\_2014\_RD0999\_236\_128\_20141020\_00069.jpg



Looking at dense trees on landside slope and toe.

LM Start	0.82	Rating **	U	Issue No.	190
LM End	0.82	Issue Type +	Ma	Location *	LS
Category	Earthen Levee			GPS Latitude/Longitude	
				Start	End
Item	Trim / Thin Trees			38.343606 °	38.343606 °
				-121.581279 °	-121.581279 °
DWR ID	DWR_RD0999_05_f_2014_190				
Action/Comments					
Trim and thin trees to allow visibility of the ground and room to flood fight.					

Photo 1 of 1 : FA\_2014\_RD0999\_236\_190\_20141030\_00126.jpg



Looking west at dense vegetation on landward slope and toe.

**\* Location**

LS : Land Side    N/A : Not Applicable  
WS : Water Side  
CR : Crown

**\*\* Rating**

A : Acceptable                      N : Not Inspected/Rated  
M : Minimally Acceptable        C : Corrected  
U : Unacceptable                  A/W : Acceptable but Monitor & Maintain

**+ Issue Type**

Ma : Maintenance Deficiency  
Ob : Design & System Obsolescence  
En : Enforcement

**Flood Control Project Maintenance  
Levee Inspections**

**Maintenance Issue Types Only, Levee Inspection Report By Mile - Fall 2014**

**Reclamation District No. 0999 Netherlands**

Waterway	Bank	Unit Miles	Inspection Start/End	Inspector
Unit No. 05 Elk Slough	Right	9.48	10/28/2014 10/29/2014	Richard Willoughby

LM Start	0.96	Rating **	M	Issue No.	197
LM End	0.98	Issue Type +	Ma	Location *	LS
Category	Earthen Levee			GPS Latitude/Longitude	
				Start	End
Item	Trim / Thin Trees			38.345564 °	38.345844 °
				-121.580614 °	-121.580458 °
DWR ID	DWR_RD0999_05_f_2014_197				
Action/Comments					
Trim trees to at least five feet above ground level.					

No Photos

LM Start	1.04	Rating **	M	Issue No.	146
LM End	1.06	Issue Type +	Ma	Location *	LS
Category	Earthen Levee			GPS Latitude/Longitude	
				Start	End
Item	Trim / Thin Trees				°
					°
DWR ID	DWR_RD0999_05_f_2013_146				
Action/Comments					
Trim and thin trees to allow visibility of the ground and room to flood fight.					

No Photos

LM Start	1.11	Rating **	M	Issue No.	14
LM End	1.15	Issue Type +	Ma	Location *	LS
Category	Earthen Levee			GPS Latitude/Longitude	
				Start	End
Item	Trim / Thin Trees			38.347427 °	38.347863 °
				-121.579395 °	-121.579113 °
DWR ID	DWR_RD0999_05_s_2012_14				
Action/Comments					
Trim trees to at least five feet above ground level.					

Photo 1 of 1 : FA\_2014\_RD0999\_236\_14\_20141020\_00011.jpg



Looking west at dense trees on landside slope and toe.

**\* Location**

LS : Land Side    N/A : Not Applicable  
WS : Water Side  
CR : Crown

**\*\* Rating**

A : Acceptable                      N : Not Inspected/Rated  
M : Minimally Acceptable        C : Corrected  
U : Unacceptable                  A/W : Acceptable but Monitor & Maintain

**+ Issue Type**

Ma : Maintenance Deficiency  
Ob : Design & System Obsolescence  
En : Enforcement

**Flood Control Project Maintenance  
Levee Inspections**

**Maintenance Issue Types Only, Levee Inspection Report By Mile - Fall 2014**

**Reclamation District No. 0999 Netherlands**

Waterway	Bank	Unit Miles	Inspection Start/End	Inspector
Unit No. 05 Elk Slough	Right	9.48	10/28/2014 10/29/2014	Richard Willoughby

LM Start	1.19	Rating **	M	Issue No.	147		
LM End	1.19	Issue Type +	Ma	Location *	LS		
Category	Earthen Levee			GPS Latitude/Longitude			
				Start		End	
Item	Vegetation				°		°
					°		°
DWR ID	DWR_RD0999_05_f_2013_147						
Action/Comments							
Remove the wild growth other than native grasses from the levee slopes.							

No Photos

LM Start	1.20	Rating **	M	Issue No.	15
LM End	1.24	Issue Type +	Ma	Location *	LS
Category	Earthen Levee			GPS Latitude/Longitude	
				Start	End
Item	Trim / Thin Trees			38.348237 °	38.348328 °
				-121.578440 °	-121.577735 °
DWR ID	DWR_RD0999_05_s_2012_15				
Action/Comments					
Trim trees to at least five feet above ground level.					

No Photos

LM Start	1.34	Rating **	M	Issue No.	36
LM End	1.34	Issue Type +	Ma	Location *	WS
Category	Earthen Levee			GPS Latitude/Longitude	
				Start	End
Item	Trim / Thin Trees			38.348252 °	38.348252 °
				-121.575704 °	-121.575704 °
DWR ID	DWR_RD0999_05_s_2012_36				
Action/Comments					
Trim trees to at least five feet above ground level.					

No Photos

<b>* Location</b> LS : Land Side    N/A : Not Applicable WS : Water Side CR : Crown	<b>** Rating</b> A : Acceptable M : Minimally Acceptable U : Unacceptable	N : Not Inspected/Rated C : Corrected A/W : Acceptable but Monitor & Maintain	<b>+ Issue Type</b> Ma : Maintenance Deficiency Ob : Design & System Obsolescence En : Enforcement
--	--	---	---

# Reclamation District No. 0999 Netherlands

No Photos

Looking west at century plants on landward slope.

Page 10 of 43



**Flood Control Project Maintenance  
Levee Inspections**

**Maintenance Issue Types Only, Levee Inspection Report By Mile - Fall 2014**

**Reclamation District No. 0999 Netherlands**

Waterway	Bank	Unit Miles	Inspection Start/End	Inspector
Unit No. 05 Elk Slough	Right	9.48	10/28/2014 10/29/2014	Richard Willoughby

LM Start	1.51	Rating **	M	Issue No.	18
LM End	1.88	Issue Type +	Ma	Location *	LS
Category	Earthen Levee			GPS Latitude/Longitude	
				Start	End
Item	Trim / Thin Trees			38.348670 °	38.353852 °
				-121.573320 °	-121.573570 °
DWR ID	DWR_RD0999_05_s_2012_18				
Action/Comments					
Trim and thin trees to allow visibility of the ground and room to flood fight.					

Photo 1 of 2 : FA\_2014\_RD0999\_236\_18\_20141020\_00017.jpg



Side view of dense trees along waterside slope.

LM Start	<b>1.51</b>	Rating **	M	Issue No.	<b>18 (cont)</b>
LM End	<b>1.88</b>	Issue Type +	Ma	Location *	LS

Photo 2 of 2 : FA\_2014\_RD0999\_236\_18\_20141020\_00018.jpg



Front view of dense trees along waterside slope.

LM Start	1.54	Rating **	M	Issue No.	19
LM End	1.57	Issue Type +	Ma	Location *	WS
Category	Earthen Levee			GPS Latitude/Longitude	
				Start	End
Item	Animal Control			38.349152 °	38.349582 °
				-121.573493 °	-121.573538 °
DWR ID	DWR_RD0999_05_s_2012_19				
Action/Comments					
Exterminate rodents and backfill and compact or grout burrows.					

No Photos

<b>* Location</b> LS : Land Side    N/A : Not Applicable WS : Water Side CR : Crown	<b>** Rating</b> A : Acceptable M : Minimally Acceptable U : Unacceptable	N : Not Inspected/Rated C : Corrected A/W : Acceptable but Monitor & Maintain	<b>+ Issue Type</b> Ma : Maintenance Deficiency Ob : Design & System Obsolescence En : Enforcement
--	--	---	---

**Flood Control Project Maintenance  
Levee Inspections**

## Maintenance Issue Types Only, Levee Inspection Report By Mile - Fall 2014

### Reclamation District No. 0999 Netherlands

Waterway	Bank	Unit Miles	Inspection Start/End	Inspector
Unit No. 05 Elk Slough	Right	9.48	10/28/2014 10/29/2014	Richard Willoughby

LM Start	1.59	Rating **	A/W	Issue No.	20
LM End	1.65	Issue Type +	Ma	Location *	WS
Category	Earthen Levee			GPS Latitude/Longitude	
				Start	End
Item	Trim / Thin Trees			38.349835 °	38.350717 °
				-121.573643 °	-121.573887 °
DWR ID	DWR_RD0999_05_s_2012_20				
Action/Comments					
Trim trees to at least five feet above ground level.					

No Photos

LM Start	1.69	Rating **	C	Issue No.	6
LM End	1.69	Issue Type +	Ma	Location *	WS
Category	Earthen Levee			GPS Latitude/Longitude	
				Start	End
Item	Encroachments			38.351250 °	38.351250 °
				-121.573986 °	-121.573986 °
DWR ID	DWR_RD0999_05_s_2014_6				
Action/Comments					
Garbage					

No Photos

LM Start	1.74	Rating **	M	Issue No.	199
LM End	1.74	Issue Type +	Ma	Location *	LS
Category	Earthen Levee			GPS Latitude/Longitude	
				Start	End
Item	Vegetation			38.351957 °	38.351957 °
				-121.574096 °	-121.574096 °
DWR ID	DWR_RD0999_05_f_2014_199				
Action/Comments					
Elderberries are blocking visibility and flood fight capability.					

No Photos

<b>* Location</b> LS : Land Side    N/A : Not Applicable WS : Water Side CR : Crown	<b>** Rating</b> A : Acceptable M : Minimally Acceptable U : Unacceptable	N : Not Inspected/Rated C : Corrected A/W : Acceptable but Monitor & Maintain	<b>+ Issue Type</b> Ma : Maintenance Deficiency Ob : Design & System Obsolescence En : Enforcement
--	--	---	---

**Flood Control Project Maintenance  
Levee Inspections**

**Maintenance Issue Types Only, Levee Inspection Report By Mile - Fall 2014**

**Reclamation District No. 0999 Netherlands**

Waterway	Bank	Unit Miles	Inspection Start/End	Inspector
Unit No. 05 Elk Slough	Right	9.48	10/28/2014 10/29/2014	Richard Willoughby

LM Start	1.75	Rating **	A/W	Issue No.	21
LM End	1.81	Issue Type +	Ma	Location *	WS
Category	Earthen Levee			GPS Latitude/Longitude	
				Start	End
Item	Trim / Thin Trees			38.352088 °	38.352968 °
				-121.574052 °	-121.574008 °
DWR ID	DWR_RD0999_05_s_2012_21				
Action/Comments					
Trim trees to at least five feet above ground level.					

No Photos

LM Start	1.84	Rating **	M	Issue No.	200
LM End	1.84	Issue Type +	Ma	Location *	WS
Category	Earthen Levee			GPS Latitude/Longitude	
				Start	End
Item	Encroachments			38.353507 °	38.353507 °
				-121.573830 °	-121.573830 °
DWR ID	DWR_RD0999_05_f_2014_200				
Action/Comments					
Garbage					
Inspector Comments: Sofa on waterward slope.					

Photo 1 of 1 : FA\_2014\_RD0999\_236\_200\_20141030\_00127.jpg



Looking east at garbage (sofa) on waterward slope.

LM Start	1.97	Rating **	A/W	Issue No.	150
LM End	1.97	Issue Type +	Ma	Location *	WS
Category	Earthen Levee			GPS Latitude/Longitude	
				Start	End
Item	Encroachments				o
					o
DWR ID	DWR_RD0999_05_f_2013_150				
Action/Comments					
Garbage Inspector Comments: Sofa on waterward shoulder.					

Photo 1 of 1 : FA\_2014\_RD0999\_236\_150\_20141020\_00084.jpg



Looking northeast at garbage (sofa) on waterward slope.

**\* Location**

LS : Land Side    N/A : Not Applicable  
WS : Water Side  
CR : Crown

**\*\* Rating**

A : Acceptable                      N : Not Inspected/Rated  
M : Minimally Acceptable        C : Corrected  
U : Unacceptable                  A/W : Acceptable but Monitor & Maintain

**+ Issue Type**

Ma : Maintenance Deficiency  
Ob : Design & System Obsolescence  
En : Enforcement

**Flood Control Project Maintenance  
Levee Inspections**

**Maintenance Issue Types Only, Levee Inspection Report By Mile - Fall 2014**

**Reclamation District No. 0999 Netherlands**

Waterway	Bank	Unit Miles	Inspection Start/End	Inspector
Unit No. 05 Elk Slough	Right	9.48	10/28/2014 10/29/2014	Richard Willoughby

LM Start	1.97	Rating **	M	Issue No.	22
LM End	1.97	Issue Type +	Ma	Location *	WS
Category	Earthen Levee			GPS Latitude/Longitude	
				Start	End
Item	Encroachments			38.354888 °	38.354888 °
				-121.572540 °	-121.572540 °
DWR ID	DWR_RD0999_05_s _ 2012_22				
Action/Comments					
Material					
Inspector Comments: Concrete rubble should be removed or broken up and spread out at waterward toe.					

Photo 1 of 1 : FA\_2014\_RD0999\_236\_22\_20141020\_00019.jpg



Concrete rubble on waterside sholder at LM 1.97

LM Start	2.06	Rating **	M	Issue No.	80
LM End	2.06	Issue Type +	Ma	Location *	WS
Category	Earthen Levee			GPS Latitude/Longitude	
				Start	End
Item	Encroachments			38.355531 °	38.355531 °
				-121.571374 °	-121.571374 °
DWR ID	DWR_RD0999_05_s _ 2012_80				
Action/Comments					
Material Inspector Comments: District placed large concrete rubble on ramp to block access. District should remove concrete rubble and use a different method to block access.					

Photo 1 of 1 : FA\_2014\_RD0999\_236\_80\_20141020\_00052.jpg



Looking east at large concrete blocks at the top of ramp on waterside shoulder.

LM Start	2.20	Rating **	M	Issue No.	24
LM End	2.22	Issue Type +	Ma	Location *	LS
Category	Earthen Levee			GPS Latitude/Longitude	
				Start	End
Item	Trim / Thin Trees			38.355402 °	38.355282 °
				-121.568893 °	-121.568547 °
DWR ID	DWR_RD0999_05_s _ 2012_24				
Action/Comments					
Trim and thin trees to allow visibility of the ground and room to flood fight.					

No Photos

* Location LS : Land Side    N/A : Not Applicable WS : Water Side CR : Crown		** Rating A : Acceptable M : Minimally Acceptable U : Unacceptable		N : Not Inspected/Rated C : Corrected A/W : Acceptable but Monitor & Maintain		+ Issue Type Ma : Maintenance Deficiency Ob : Design & System Obsolescence En : Enforcement	
---	--	---	--	---	--	--	--



**Flood Control Project Maintenance  
Levee Inspections**

**Maintenance Issue Types Only, Levee Inspection Report By Mile - Fall 2014**

**Reclamation District No. 0999 Netherlands**

Waterway	Bank	Unit Miles	Inspection Start/End	Inspector
Unit No. 05 Elk Slough	Right	9.48	10/28/2014 10/29/2014	Richard Willoughby

LM Start	2.33	Rating **	A/W	Issue No.	40
LM End	2.35	Issue Type +	Ma	Location *	WS
Category	Earthen Levee			GPS Latitude/Longitude	
				Start	End
Item	Trim / Thin Trees			38.354474 °	38.354555 °
				-121.566701 °	-121.566191 °
DWR ID	DWR_RD0999_05_s_2012_40				
Action/Comments					
Trim trees to at least five feet above ground level.					

No Photos

LM Start	2.41	Rating **	M	Issue No.	42
LM End	2.53	Issue Type +	Ma	Location *	WS
Category	Earthen Levee			GPS Latitude/Longitude	
				Start	End
Item	Trim / Thin Trees			38.354916 °	38.355982 °
				-121.565167 °	-121.563561 °
DWR ID	DWR_RD0999_05_s_2012_42				
Action/Comments					
Thin trees to allow visibility of the ground and room to flood fight.					

No Photos

LM Start	2.50	Rating **	C	Issue No.	151
LM End	2.50	Issue Type +	Ma	Location *	LS
Category	Earthen Levee			GPS Latitude/Longitude	
				Start	End
Item	Encroachments				°
					°
DWR ID	DWR_RD0999_05_f_2013_151				
Action/Comments					
Tree or limb					
Inspector Comments: Downed tree limbs on landward shoulder.					

No Photos

<b>* Location</b> LS : Land Side    N/A : Not Applicable WS : Water Side CR : Crown	<b>** Rating</b> A : Acceptable M : Minimally Acceptable U : Unacceptable	N : Not Inspected/Rated C : Corrected A/W : Acceptable but Monitor & Maintain	<b>+ Issue Type</b> Ma : Maintenance Deficiency Ob : Design & System Obsolescence En : Enforcement
--	--	---	---

**Flood Control Project Maintenance  
Levee Inspections**

**Maintenance Issue Types Only, Levee Inspection Report By Mile - Fall 2014**

**Reclamation District No. 0999 Netherlands**

Waterway	Bank	Unit Miles	Inspection Start/End	Inspector
Unit No. 05 Elk Slough	Right	9.48	10/28/2014 10/29/2014	Richard Willoughby

LM Start	2.57	Rating **	M	Issue No.	82
LM End	2.70	Issue Type +	Ma	Location *	LS
Category	Earthen Levee			GPS Latitude/Longitude	
				Start	End
Item	Trim / Thin Trees			38.356270 °	38.358132 °
				-121.563218 °	-121.562347 °
DWR ID	DWR_RD0999_05_s _ 2012_82				
Action/Comments					
Trim and thin trees to allow visibility of the ground and room to flood fight.					

No Photos

LM Start	2.76	Rating **	A/W	Issue No.	73
LM End	2.76	Issue Type +	Ma	Location *	WS
Category	Earthen Levee			GPS Latitude/Longitude	
				Start	End
Item	Trim / Thin Trees			38.358888 °	38.358888 °
				-121.562280 °	-121.562280 °
DWR ID	DWR_RD0999_05_s _ 2012_73				
Action/Comments					
Thin trees to allow visibility of the ground and room to flood fight.					

No Photos

LM Start	2.93	Rating **	M	Issue No.	29
LM End	3.19	Issue Type +	Ma	Location *	LS
Category	Earthen Levee			GPS Latitude/Longitude	
				Start	End
Item	Trim / Thin Trees			38.361268 °	38.364373 °
				-121.563263 °	-121.561947 °
DWR ID	DWR_RD0999_05_s _ 2012_29				
Action/Comments					
Trim and thin trees to allow visibility of the ground and room to flood fight.					

No Photos

<b>* Location</b> LS : Land Side    N/A : Not Applicable WS : Water Side CR : Crown	<b>** Rating</b> A : Acceptable M : Minimally Acceptable U : Unacceptable	N : Not Inspected/Rated C : Corrected A/W : Acceptable but Monitor & Maintain	<b>+ Issue Type</b> Ma : Maintenance Deficiency Ob : Design & System Obsolescence En : Enforcement
--	--	---	---

**Flood Control Project Maintenance  
Levee Inspections**

**Maintenance Issue Types Only, Levee Inspection Report By Mile - Fall 2014**

**Reclamation District No. 0999 Netherlands**

Waterway	Bank	Unit Miles	Inspection Start/End	Inspector
Unit No. 05 Elk Slough	Right	9.48	10/28/2014 10/29/2014	Richard Willoughby

LM Start	3.04	Rating **	C	Issue No.	30
LM End	3.10	Issue Type +	Ma	Location *	WS
Category	Earthen Levee			GPS Latitude/Longitude	
				Start	End
Item	Trim / Thin Trees			38.362813 °	38.363558 °
				-121.563332 °	-121.563017 °
DWR ID	DWR_RD0999_05_s_2012_30				
Action/Comments					
Trim and thin trees to allow visibility of the ground and room to flood fight.					

No Photos

LM Start	3.29	Rating **	A/W	Issue No.	33
LM End	3.37	Issue Type +	Ma	Location *	LS
Category	Earthen Levee			GPS Latitude/Longitude	
				Start	End
Item	Trim / Thin Trees			38.364552 °	38.364225 °
				-121.560137 °	-121.558852 °
DWR ID	DWR_RD0999_05_s_2012_33				
Action/Comments					
Trim trees to at least five feet above ground level.					

No Photos

LM Start	3.32	Rating **	A/W	Issue No.	191
LM End	3.70	Issue Type +	Ma	Location *	CR
Category	Earthen Levee			GPS Latitude/Longitude	
				Start	End
Item	Crown Surface / Depressions / Rutting			38.364522 °	38.366911 °
				-121.559423 °	-121.556784 °
DWR ID	DWR_RD0999_05_s_2014_191				
Action/Comments					
Add appropriate gravel or road base. Grade and compact.					

No Photos

<b>* Location</b> LS : Land Side    N/A : Not Applicable WS : Water Side CR : Crown	<b>** Rating</b> A : Acceptable M : Minimally Acceptable U : Unacceptable	N : Not Inspected/Rated C : Corrected A/W : Acceptable but Monitor & Maintain	<b>+ Issue Type</b> Ma : Maintenance Deficiency Ob : Design & System Obsolescence En : Enforcement
--	--	---	---

**Flood Control Project Maintenance  
Levee Inspections**

## Maintenance Issue Types Only, Levee Inspection Report By Mile - Fall 2014

### Reclamation District No. 0999 Netherlands

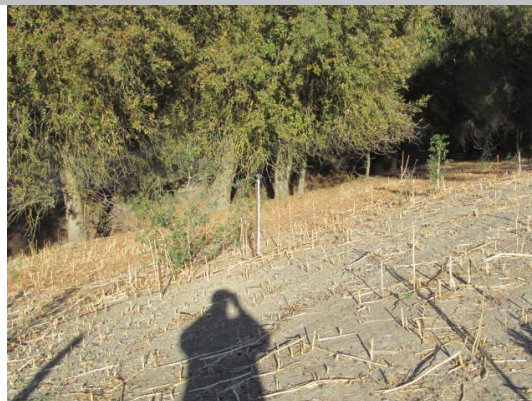
Waterway	Bank	Unit Miles	Inspection Start/End	Inspector
Unit No. 05 Elk Slough	Right	9.48	10/28/2014 10/29/2014	Richard Willoughby

LM Start	3.50	Rating **	A/W	Issue No.	34
LM End	3.53	Issue Type +	Ma	Location *	WS
Category	Earthen Levee			GPS Latitude/Longitude	
				Start	End
Item	Trim / Thin Trees			38.364113 °	38.364542 °
				-121.556507 °	-121.556402 °
DWR ID	DWR_RD0999_05_s_2012_34				
Action/Comments					
Trim trees to at least five feet above ground level.					

No Photos

LM Start	3.63	Rating **	M	Issue No.	201
LM End	3.70	Issue Type +	Ma	Location *	LS
Category	Earthen Levee			GPS Latitude/Longitude	
				Start	End
Item	Trim / Thin Trees			38.366103 °	38.367035 °
				-121.556820 °	-121.556781 °
DWR ID	DWR_RD0999_05_f_2014_201				
Action/Comments					
Thin trees to allow visibility of the ground and room to flood fight. Inspector Comments: Landowner has planted oak trees and installed sprinklers on landward slope. Oak trees should be removed.					

Photo 1 of 2 : FA\_2014\_RD0999\_236\_201\_20141030\_00129.jpg



Looking west a several small oak trees planted on landward slope.

LM Start	<b>3.63</b>	Rating **	M	Issue No.	<b>201 (cont)</b>
LM End	<b>3.70</b>	Issue Type +	Ma	Location *	LS

Photo 2 of 2 : FA\_2014\_RD0999\_236\_201\_20141030\_00130.jpg



Looking northwest at several small oak trees planted along landward slope.

<b>* Location</b> LS : Land Side    N/A : Not Applicable WS : Water Side CR : Crown		<b>** Rating</b> A : Acceptable                      N : Not Inspected/Rated M : Minimally Acceptable        C : Corrected U : Unacceptable                  A/W : Acceptable but Monitor & Maintain		<b>+ Issue Type</b> Ma : Maintenance Deficiency Ob : Design & System Obsolescence En : Enforcement
--	--	---	--	---











**Flood Control Project Maintenance  
Levee Inspections**

**Maintenance Issue Types Only, Levee Inspection Report By Mile - Fall 2014**

**Reclamation District No. 0999 Netherlands**

Waterway	Bank	Unit Miles	Inspection Start/End	Inspector
Unit No. 05 Elk Slough	Right	9.48	10/28/2014 10/29/2014	Richard Willoughby

LM Start	4.44	Rating **	M	Issue No.	37
LM End	4.52	Issue Type +	Ma	Location *	LS
Category	Earthen Levee			GPS Latitude/Longitude	
				Start	End
Item	Vegetation			38.374393 °	38.375008 °
				-121.551187 °	-121.550085 °
DWR ID	DWR_RD0999_05_s_2012_37				
Action/Comments					
Remove the wild growth other than native grasses from the levee slopes.					

No Photos

LM Start	4.45	Rating **	M	Issue No.	130
LM End	4.45	Issue Type +	Ma	Location *	LS
Category	Earthen Levee			GPS Latitude/Longitude	
				Start	End
Item	Trim / Thin Trees				°
					°
DWR ID	DWR_RD0999_05_f_2013_130				
Action/Comments					
Trim trees to at least five feet above ground level.					

No Photos

LM Start	4.48	Rating **	M	Issue No.	57
LM End	4.53	Issue Type +	Ma	Location *	LS
Category	Earthen Levee			GPS Latitude/Longitude	
				Start	End
Item	Trim / Thin Trees			38.374866 °	38.375061 °
				-121.550491 °	-121.549800 °
DWR ID	DWR_RD0999_05_s_2012_57				
Action/Comments					
Trim and thin trees to allow visibility of the ground and room to flood fight.					

No Photos

<b>* Location</b> LS : Land Side    N/A : Not Applicable WS : Water Side CR : Crown	<b>** Rating</b> A : Acceptable M : Minimally Acceptable U : Unacceptable	N : Not Inspected/Rated C : Corrected A/W : Acceptable but Monitor & Maintain	<b>+ Issue Type</b> Ma : Maintenance Deficiency Ob : Design & System Obsolescence En : Enforcement
--	--	---	---



**Flood Control Project Maintenance  
Levee Inspections**

**Maintenance Issue Types Only, Levee Inspection Report By Mile - Fall 2014**

**Reclamation District No. 0999 Netherlands**

Waterway	Bank	Unit Miles	Inspection Start/End	Inspector
Unit No. 05 Elk Slough	Right	9.48	10/28/2014 10/29/2014	Richard Willoughby

LM Start	4.55	Rating **	A/W	Issue No.	47
LM End	4.61	Issue Type +	Ma	Location *	LS
Category	Earthen Levee			GPS Latitude/Longitude	
				Start	End
Item	Trim / Thin Trees			38.375072 °	38.375057 °
				-121.549547 °	-121.548357 °
DWR ID	DWR_RD0999_05_s_2012_47				
Action/Comments					
Trim and thin trees to allow visibility of the ground and room to flood fight.					

No Photos

LM Start	4.57	Rating **	A/W	Issue No.	58
LM End	4.68	Issue Type +	Ma	Location *	WS
Category	Earthen Levee			GPS Latitude/Longitude	
				Start	End
Item	Trim / Thin Trees			38.375099 °	38.375211 °
				-121.549068 °	-121.547158 °
DWR ID	DWR_RD0999_05_s_2012_58				
Action/Comments					
Trim and thin trees to allow visibility of the ground and room to flood fight.					

No Photos

LM Start	4.59	Rating **	A/W	Issue No.	38
LM End	4.72	Issue Type +	Ma	Location *	LS
Category	Earthen Levee			GPS Latitude/Longitude	
				Start	End
Item	Trim / Thin Trees			38.375055 °	38.375313 °
				-121.548792 °	-121.546438 °
DWR ID	DWR_RD0999_05_s_2012_38				
Action/Comments					
Thin trees to allow visibility of the ground and room to flood fight.					

Photo 1 of 3 : FA\_2014\_RD0999\_236\_38\_20141020\_00030.jpg



Looking northwest at dense trees on landside slope.(Spring 2011)

**\* Location**  
 LS : Land Side    N/A : Not Applicable  
 WS : Water Side  
 CR : Crown

**\*\* Rating**  
 A : Acceptable                      N : Not Inspected/Rated  
 M : Minimally Acceptable        C : Corrected  
 U : Unacceptable                  A/W : Acceptable but Monitor & Maintain

**+ Issue Type**  
 Ma : Maintenance Deficiency  
 Ob : Design & System Obsolescence  
 En : Enforcement

# Reclamation District No. 0999 Netherlands

Looking north at vegetation on levee crown.

Page 24 of 43

**Flood Control Project Maintenance  
Levee Inspections**

**Maintenance Issue Types Only, Levee Inspection Report By Mile - Fall 2014**

**Reclamation District No. 0999 Netherlands**

Waterway	Bank	Unit Miles	Inspection Start/End	Inspector
Unit No. 05 Elk Slough	Right	9.48	10/28/2014 10/29/2014	Richard Willoughby

LM Start	4.60	Rating **	M	Issue No.	49
LM End	4.66	Issue Type +	Ma	Location *	LS
Category	Earthen Levee			GPS Latitude/Longitude	
				Start	End
Item	Animal Control			38.375050 °	38.375077 °
				-121.548717 °	-121.547512 °
DWR ID	DWR_RD0999_05_s_2012_49				
Action/Comments					
Exterminate rodents and backfill and compact or grout burrows.					

No Photos

LM Start	4.73	Rating **	N	Issue No.	62
LM End	4.73	Issue Type +	Ma	Location *	WS
Category	Earthen Levee			GPS Latitude/Longitude	
				Start	End
Item	Trim / Thin Trees			38.375360 °	38.375360 °
				-121.546291 °	-121.546291 °
DWR ID	DWR_RD0999_05_s_2012_62				
Action/Comments					
Tree stumps.					

No Photos

LM Start	4.73	Rating **	M	Issue No.	50
LM End	4.73	Issue Type +	Ma	Location *	LS
Category	Earthen Levee			GPS Latitude/Longitude	
				Start	End
Item	Encroachments			38.375373 °	38.375373 °
				-121.546200 °	-121.546200 °
DWR ID	DWR_RD0999_05_s_2012_50				
Action/Comments					
Tree or limb					
Inspector Comments: Old tree limbs on landward shoulder blocking access.					

Photo 1 of 1 : FA\_2014\_RD0999\_236\_50\_20141030\_00137.jpg



Looking southwest at tree limbs on landward shoulder.

**\* Location**

LS : Land Side    N/A : Not Applicable  
WS : Water Side  
CR : Crown

**\*\* Rating**

A : Acceptable                      N : Not Inspected/Rated  
M : Minimally Acceptable        C : Corrected  
U : Unacceptable                  A/W : Acceptable but Monitor & Maintain

**+ Issue Type**

Ma : Maintenance Deficiency  
Ob : Design & System Obsolescence  
En : Enforcement



**Flood Control Project Maintenance  
Levee Inspections**

## Maintenance Issue Types Only, Levee Inspection Report By Mile - Fall 2014

### Reclamation District No. 0999 Netherlands

Waterway	Bank	Unit Miles	Inspection Start/End	Inspector
Unit No. 05 Elk Slough	Right	9.48	10/28/2014 10/29/2014	Richard Willoughby

LM Start	4.75	Rating **	M	Issue No.	52
LM End	4.82	Issue Type +	Ma	Location *	LS
Category	Earthen Levee			GPS Latitude/Longitude	
				Start	End
Item	Trim / Thin Trees			38.375418 °	38.375989 °
				-121.546043 °	-121.544934 °
DWR ID	DWR_RD0999_05_s_2012_52				
Action/Comments					
Trim trees to at least five feet above ground level.					

No Photos

LM Start	4.76	Rating **	M	Issue No.	154
LM End	4.76	Issue Type +	Ma	Location *	LS
Category	Earthen Levee			GPS Latitude/Longitude	
				Start	End
Item	Slope Stability				°
					°
DWR ID	DWR_RD0999_05_f_2013_154				
Action/Comments					
Repair the levee slope damaged by vehicle traffic and prevent access where possible.					
Inspector Comments: Levee damaged by vehicle traffic.					

Photo 1 of 1 : FA\_2014\_RD0999\_236\_154\_20141020\_00090.jpg



Looking west at levee damage due to vehicle traffic.

LM Start	4.76	Rating **	M	Issue No.	46
LM End	4.76	Issue Type +	Ma	Location *	WS
Category	Earthen Levee			GPS Latitude/Longitude	
				Start	End
Item	Encroachments			38.375548 °	38.375548 °
				-121.545693 °	-121.545693 °
DWR ID	DWR_RD0999_05_f_2012_46				
Action/Comments					
Pipe Inspector Comments: Pipe is disconnected from pump and should be reconnected or removed.					

Photo 1 of 1 : FA\_2014\_RD0999\_236\_46\_20141020\_00040.jpg



Looking east at pipe disconnected from pump.

**\* Location**

LS : Land Side    N/A : Not Applicable  
WS : Water Side  
CR : Crown

**\*\* Rating**

A : Acceptable                      N : Not Inspected/Rated  
M : Minimally Acceptable        C : Corrected  
U : Unacceptable                  A/W : Acceptable but Monitor & Maintain

**+ Issue Type**

Ma : Maintenance Deficiency  
Ob : Design & System Obsolescence  
En : Enforcement



**Flood Control Project Maintenance  
Levee Inspections**

**Maintenance Issue Types Only, Levee Inspection Report By Mile - Fall 2014**

**Reclamation District No. 0999 Netherlands**

Waterway	Bank	Unit Miles	Inspection Start/End	Inspector
Unit No. 05 Elk Slough	Right	9.48	10/28/2014 10/29/2014	Richard Willoughby

LM Start	4.76	Rating **	A/W	Issue No.	63
LM End	4.79	Issue Type +	Ma	Location *	WS
Category	Earthen Levee			GPS Latitude/Longitude	
				Start	End
Item	Trim / Thin Trees			38.375566 °	38.375775 °
				-121.545676 °	-121.545255 °
DWR ID	DWR_RD0999_05_s_2012_63				
Action/Comments					
Trim and thin trees to allow visibility of the ground and room to flood fight.					

No Photos

LM Start	4.79	Rating **	A/W	Issue No.	61
LM End	4.83	Issue Type +	Ma	Location *	LS
Category	Earthen Levee			GPS Latitude/Longitude	
				Start	End
Item	Vegetation			38.375769 °	38.376074 °
				-121.545258 °	-121.544799 °
DWR ID	DWR_RD0999_05_f_2012_61				
Action/Comments					
Remove the wild growth other than native grasses from the levee slopes.					
Inspector Comments: Dense vegetation at landside toe.					

No Photos

LM Start	4.86	Rating **	A/W	Issue No.	64
LM End	4.86	Issue Type +	Ma	Location *	LS
Category	Earthen Levee			GPS Latitude/Longitude	
				Start	End
Item	Trim / Thin Trees			38.376432 °	38.376432 °
				-121.544382 °	-121.544382 °
DWR ID	DWR_RD0999_05_s_2012_64				
Action/Comments					
Trim trees to at least five feet above ground level.					

No Photos

<b>* Location</b> LS : Land Side    N/A : Not Applicable WS : Water Side CR : Crown	<b>** Rating</b> A : Acceptable M : Minimally Acceptable U : Unacceptable	N : Not Inspected/Rated C : Corrected A/W : Acceptable but Monitor & Maintain	<b>+ Issue Type</b> Ma : Maintenance Deficiency Ob : Design & System Obsolescence En : Enforcement
--	--	---	---

**Flood Control Project Maintenance  
Levee Inspections**

**Maintenance Issue Types Only, Levee Inspection Report By Mile - Fall 2014**

**Reclamation District No. 0999 Netherlands**

Waterway	Bank	Unit Miles	Inspection Start/End	Inspector
Unit No. 05 Elk Slough	Right	9.48	10/28/2014 10/29/2014	Richard Willoughby

LM Start	4.89	Rating **	A/W	Issue No.	54
LM End	4.89	Issue Type +	Ma	Location *	LS
Category	Earthen Levee			GPS Latitude/Longitude	
				Start	End
Item	Trim / Thin Trees			38.376717 °	38.376717 °
				-121.544017 °	-121.544017 °
DWR ID	DWR_RD0999_05_s_2012_54				
Action/Comments					
Trim trees to at least five feet above ground level.					

No Photos

LM Start	5.16	Rating **	M	Issue No.	65
LM End	5.23	Issue Type +	Ma	Location *	LS
Category	Earthen Levee			GPS Latitude/Longitude	
				Start	End
Item	Encroachments			38.379752 °	38.380640 °
				-121.541048 °	-121.541325 °
DWR ID	DWR_RD0999_05_s_2012_65				
Action/Comments					
Prunings					
Inspector Comments: Prunings on landside slope.					

Photo 1 of 2 : FA\_2014\_RD0999\_236\_65\_20141030\_00138.jpg



Looking northeast at prunings on landward slope. (Fall 2014)

LM Start	<b>5.16</b>	Rating **	M	Issue No.	<b>65 (cont)</b>
LM End	<b>5.23</b>	Issue Type +	Ma	Location *	LS

Photo 2 of 2 : FA\_2014\_RD0999\_236\_65\_20141020\_00044.jpg



Looking northeast at prunings on landward slope.

**\* Location**

LS : Land Side    N/A : Not Applicable  
WS : Water Side  
CR : Crown

**\*\* Rating**

A : Acceptable                      N : Not Inspected/Rated  
M : Minimally Acceptable        C : Corrected  
U : Unacceptable                  A/W : Acceptable but Monitor & Maintain

**+ Issue Type**

Ma : Maintenance Deficiency  
Ob : Design & System Obsolescence  
En : Enforcement









**Flood Control Project Maintenance  
Levee Inspections**

**Maintenance Issue Types Only, Levee Inspection Report By Mile - Fall 2014**

**Reclamation District No. 0999 Netherlands**

Waterway	Bank	Unit Miles	Inspection Start/End	Inspector
Unit No. 05 Elk Slough	Right	9.48	10/28/2014 10/29/2014	Richard Willoughby

LM Start	5.65	Rating **	M	Issue No.	203
LM End	5.70	Issue Type +	Ma	Location *	LS
Category	Earthen Levee			GPS Latitude/Longitude	
				Start	End
Item	Trim / Thin Trees			38.383740 °	38.384218 °
				-121.546628 °	-121.546095 °
DWR ID	DWR_RD0999_05_f_2014_203				
Action/Comments					
Trim trees to at least five feet above ground level.					

No Photos

LM Start	5.67	Rating **	A/W	Issue No.	192
LM End	5.67	Issue Type +	Ma	Location *	LS
Category	Earthen Levee			GPS Latitude/Longitude	
				Start	End
Item	Encroachments			38.383978 °	38.383978 °
				-121.546435 °	-121.546435 °
DWR ID	DWR_RD0999_05_s_2014_192				
Action/Comments					
Prunings					
Inspector Comments: Landowner pile prunings on landside slope.					

Photo 1 of 1 : FA\_2014\_RD0999\_236\_192\_20141020\_00096.jpg



Looking west at prunings on landward slope and toe.

LM Start	5.90	Rating **	M	Issue No.	48
LM End	5.94	Issue Type +	Ma	Location *	LS
Category	Earthen Levee			GPS Latitude/Longitude	
				Start	End
Item	Vegetation			38.384718 °	38.384930 °
				-121.542590 °	-121.541883 °
DWR ID	DWR_RD0999_05_s_2012_48				
Action/Comments					
Remove the wild growth other than native grasses from the levee slopes.					

No Photos

<b>* Location</b> LS : Land Side    N/A : Not Applicable WS : Water Side CR : Crown	<b>** Rating</b> A : Acceptable M : Minimally Acceptable U : Unacceptable	N : Not Inspected/Rated C : Corrected A/W : Acceptable but Monitor & Maintain	<b>+ Issue Type</b> Ma : Maintenance Deficiency Ob : Design & System Obsolescence En : Enforcement
--	--	---	---

**Flood Control Project Maintenance  
Levee Inspections**

**Maintenance Issue Types Only, Levee Inspection Report By Mile - Fall 2014**

**Reclamation District No. 0999 Netherlands**

Waterway	Bank	Unit Miles	Inspection Start/End	Inspector
Unit No. 05 Elk Slough	Right	9.48	10/28/2014 10/29/2014	Richard Willoughby

LM Start	5.95	Rating **	M	Issue No.	59
LM End	5.95	Issue Type +	Ma	Location *	WS
Category	Earthen Levee			GPS Latitude/Longitude	
				Start	End
Item	Animal Control			38.384867 °	38.384867 °
				-121.541845 °	-121.541845 °
DWR ID	DWR_RD0999_05_s_2012_59				
Action/Comments					
Exterminate rodents and backfill and compact or grout burrows.					

No Photos

LM Start	6.03	Rating **	U	Issue No.	39
LM End	6.03	Issue Type +	Ma	Location *	LS
Category	Earthen Levee			GPS Latitude/Longitude	
				Start	End
Item	Encroachments				°
					°
DWR ID	DWR_RD0999_05_s_2013_39				
Action/Comments					
Tree or limb Inspector Comments: Large downed trees and limbs on landside slope and toe.					

Photo 1 of 3 : FA\_2014\_RD0999\_236\_39\_20141030\_00140.jpg



Looking southwest at downed tree on landward toe. (Fall 2014)

LM Start	<b>6.03</b>	Rating **	U	Issue No.	<b>39 (cont)</b>
LM End	<b>6.03</b>	Issue Type +	Ma	Location *	LS

Photo 2 of 3 : FA\_2014\_RD0999\_236\_39\_20141020\_00033.jpg



Looking west at large tree on landside slope and toe.

**\* Location**

LS : Land Side    N/A : Not Applicable  
WS : Water Side  
CR : Crown

**\*\* Rating**

A : Acceptable                      N : Not Inspected/Rated  
M : Minimally Acceptable        C : Corrected  
U : Unacceptable                  A/W : Acceptable but Monitor & Maintain

**+ Issue Type**

Ma : Maintenance Deficiency  
Ob : Design & System Obsolescence  
En : Enforcement

# Reclamation District No. 0999 Netherlands

Waterway	Bank	Unit Miles	Inspection Start/End	Inspector
Unit No. 05 Elk Slough	Right	9.48	10/28/2014 10/29/2014	Richard Willoughby

LM Start	6.03	Rating **	U	Issue No.	39 (cont)		
LM End	6.03	Issue Type +	Ma	Location *	LS		
Category	Earthen Levee			GPS Latitude/Longitude			
				Start		End	
Item	Encroachments				o		o
					o		o
DWR ID	DWR_RD0999_05_s _2013_39						
Action/Comments							
Tree or limb							
Inspector Comments: Large downed trees and limbs on landside slope and toe.							

A photograph of a gravel path in a park, bordered by a dense layer of brown mulch and a line of trees. The path leads into the distance, flanked by green grass and more trees.

Looking northwest at large tree limb on landside toe and slope.

LM Start	6.20	Rating **	M	Issue No.	60
LM End	6.34	Issue Type +	Ma	Location *	LS
Category	Earthen Levee			GPS Latitude/Longitude	
				Start	End
Item	Trim / Thin Trees			38.387825 °	38.389775 °
				-121.542335 °	-121.542687 °
DWR ID	DWR_RD0999_05_s _ 2012_60				
Action/Comments					
Trim and thin trees to allow visibility of the ground and room to flood fight.					

No Photos

LM Start	6.30	Rating **	M	Issue No.	74
LM End	6.34	Issue Type +	Ma	Location *	WS
Category	Earthen Levee			GPS Latitude/Longitude	
				Start	End
Item	Encroachments			38.389116 °	38.389766 °
				-121.542986 °	-121.542673 °
DWR ID	DWR_RD0999_05_s_2012_74				
Action/Comments					
Prunings					
Inspector Comments: Prunings are outside the twenty foot zone should be removed or removed from waterward slope.					

Looking southeast at prunings on waterward slope.

* Location	** Rating	+ Issue Type
LS : Land Side    N/A : Not Applicable	A : Acceptable                      N : Not Inspected/Rated	Ma : Maintenance Deficiency
WS : Water Side	M : Minimally Acceptable        C : Corrected	Ob : Design & System Obsolescence
CR : Crown	U : Unacceptable                  A/W : Acceptable but Monitor & Maintain	En : Enforcement

**Flood Control Project Maintenance  
Levee Inspections**

**Maintenance Issue Types Only, Levee Inspection Report By Mile - Fall 2014**

**Reclamation District No. 0999 Netherlands**

Waterway	Bank	Unit Miles	Inspection Start/End	Inspector
Unit No. 05 Elk Slough	Right	9.48	10/28/2014 10/29/2014	Richard Willoughby

LM Start	6.30	Rating **	A/W	Issue No.	115
LM End	6.34	Issue Type +	Ma	Location *	CR
Category	Earthen Levee			GPS Latitude/Longitude	
				Start	End
Item	Crown Surface / Depressions / Rutting			38.389182 °	38.389725 °
				-121.542982 °	-121.542732 °
DWR ID	DWR_RD0999_05_s_2012_115				
Action/Comments					
Repair depressions or ruts in the crown or slope.					

No Photos

LM Start	6.35	Rating **	M	Issue No.	90
LM End	6.35	Issue Type +	Ma	Location *	CR
Category	Earthen Levee			GPS Latitude/Longitude	
				Start	End
Item	Repair Gates			38.389851 °	38.389851 °
				-121.542583 °	-121.542583 °
DWR ID	DWR_RD0999_05_f_2012_90				
Action/Comments					
Inspector Comments: Gate should be repaired or removed.					

Photo 1 of 1 : FA\_2014\_RD0999\_236\_90\_20141020\_00056.jpg



Looking northwest at damaged gate on levee crown.

LM Start	6.44	Rating **	A/W	Issue No.	75
LM End	6.52	Issue Type +	Ma	Location *	LS
Category	Earthen Levee			GPS Latitude/Longitude	
				Start	End
Item	Trim / Thin Trees			38.390541 °	38.391396 °
				-121.541360 °	-121.540038 °
DWR ID	DWR_RD0999_05_s_2012_75				
Action/Comments					
Trim and thin trees to allow visibility of the ground and room to flood fight.					

No Photos

<b>* Location</b> LS : Land Side    N/A : Not Applicable WS : Water Side CR : Crown		<b>** Rating</b> A : Acceptable                      N : Not Inspected/Rated M : Minimally Acceptable        C : Corrected U : Unacceptable                  A/W : Acceptable but Monitor & Maintain		<b>+ Issue Type</b> Ma : Maintenance Deficiency Ob : Design & System Obsolescence En : Enforcement
--	--	---	--	---



**Flood Control Project Maintenance  
Levee Inspections**

**Maintenance Issue Types Only, Levee Inspection Report By Mile - Fall 2014**

**Reclamation District No. 0999 Netherlands**

Waterway	Bank	Unit Miles	Inspection Start/End	Inspector
Unit No. 05 Elk Slough	Right	9.48	10/28/2014 10/29/2014	Richard Willoughby

LM Start	6.58	Rating **	M	Issue No.	92
LM End	6.58	Issue Type +	Ma	Location *	LS
Category	Earthen Levee			GPS Latitude/Longitude	
				Start	End
Item	Encroachments			38.391776 °	38.391776 °
				-121.539295 °	-121.539295 °
DWR ID	DWR_RD0999_05_s _ 2012_92				
Action/Comments					
Prunings					

Photo 1 of 1 : FA\_2014\_RD0999\_236\_92\_20141020\_00057.jpg



Looking east prunings on landward slope.

LM Start	6.79	Rating **	A/W	Issue No.	141
LM End	6.79	Issue Type +	Ma	Location *	WS
Category	Earthen Levee			GPS Latitude/Longitude	
				Start	End
Item	Encroachments				°
					°
DWR ID	DWR_RD0999_05_s _ 2013_141				
Action/Comments					
Prunings					

No Photos

LM Start	6.83	Rating **	M	Issue No.	96
LM End	6.83	Issue Type +	Ma	Location *	LS
Category	Earthen Levee			GPS Latitude/Longitude	
				Start	End
Item	Encroachments			38.395234 °	38.395234 °
				-121.539323 °	-121.539323 °
DWR ID	DWR_RD0999_05_s _ 2012_96				
Action/Comments					
Material					
Inspector Comments: Firewood and other material on landside shoulder.					

Photo 1 of 4 : FA\_2014\_RD0999\_236\_96\_20141020\_00059.jpg



Fence, firewood and material at landside shoulder.

**\* Location**

LS : Land Side    N/A : Not Applicable  
WS : Water Side  
CR : Crown

**\*\* Rating**

A : Acceptable                      N : Not Inspected/Rated  
M : Minimally Acceptable        C : Corrected  
U : Unacceptable                  A/W : Acceptable but Monitor & Maintain

**+ Issue Type**

Ma : Maintenance Deficiency  
Ob : Design & System Obsolescence  
En : Enforcement

**Flood Control Project Maintenance  
Levee Inspections**

## Maintenance Issue Types Only, Levee Inspection Report By Mile - Fall 2014

### Reclamation District No. 0999 Netherlands

Waterway	Bank	Unit Miles	Inspection Start/End	Inspector
Unit No. 05 Elk Slough	Right	9.48	10/28/2014 10/29/2014	Richard Willoughby

LM Start	6.83	Rating **	M	Issue No.	96 (cont)
LM End	6.83	Issue Type +	Ma	Location *	LS
Category	Earthen Levee			GPS Latitude/Longitude	
				Start	End
Item	Encroachments			38.395234 °	38.395234 °
				-121.539323 °	-121.539323 °
DWR ID	DWR_RD0999_05_s_2012_96				
Action/Comments					
Material					
Inspector Comments: Firewood and other material on landside shoulder.					

Photo 2 of 4 : FA\_2014\_RD0999\_236\_96\_20141020\_00060.jpg



Looking northeast at firewood and other material on landside shoulder.  
(Spring 2012)

LM Start	<b>6.83</b>	Rating **	M	Issue No.	<b>96 (cont)</b>
LM End	<b>6.83</b>	Issue Type +	Ma	Location *	LS

Photo 3 of 4 : FA\_2014\_RD0999\_236\_96\_20141020\_00061.jpg



Looking south at firewood and other material on landside shoulder and crown.

LM Start	<b>6.83</b>	Rating **	M	Issue No.	<b>96 (cont)</b>
LM End	<b>6.83</b>	Issue Type +	Ma	Location *	LS

Photo 4 of 4 : FA\_2014\_RD0999\_236\_96\_20141020\_00062.jpg



Looking north at firewood and other material on landside shoulder and crown.

<b>* Location</b> LS : Land Side    N/A : Not Applicable WS : Water Side CR : Crown		<b>** Rating</b> A : Acceptable                      N : Not Inspected/Rated M : Minimally Acceptable        C : Corrected U : Unacceptable                  A/W : Acceptable but Monitor & Maintain		<b>+ Issue Type</b> Ma : Maintenance Deficiency Ob : Design & System Obsolescence En : Enforcement
--	--	---	--	---

**Flood Control Project Maintenance  
Levee Inspections**

**Maintenance Issue Types Only, Levee Inspection Report By Mile - Fall 2014**

**Reclamation District No. 0999 Netherlands**

Waterway	Bank	Unit Miles	Inspection Start/End	Inspector
Unit No. 05 Elk Slough	Right	9.48	10/28/2014 10/29/2014	Richard Willoughby

LM Start	6.95	Rating **	M	Issue No.	204
LM End	7.60	Issue Type +	Ma	Location *	LS
Category	Earthen Levee			GPS Latitude/Longitude	
				Start	End
Item	Trim / Thin Trees			38.396379 °	38.403600 °
				-121.537814 °	-121.540311 °
DWR ID	DWR_RD0999_05_f_2014_204				
Action/Comments					
Trim trees to at least five feet above ground level.					
Inspector Comments: Trees at landward toe blocking visibility.					

No Photos

LM Start	7.06	Rating **	A/W	Issue No.	142
LM End	7.06	Issue Type +	Ma	Location *	LS
Category	Earthen Levee			GPS Latitude/Longitude	
				Start	End
Item	Encroachments				°
					°
DWR ID	DWR_RD0999_05_s_2013_142				
Action/Comments					
Prunings Inspector Comments: Large pruning pile on landward shoulder and slope.					

Photo 1 of 1 : FA\_2014\_RD0999\_236\_142\_20141020\_00079.jpg



Looking northeast at large prunings on landward slope.

LM Start	7.57	Rating **	A/W	Issue No.	116
LM End	7.57	Issue Type +	Ma	Location *	WS
Category	Earthen Levee			GPS Latitude/Longitude	
				Start	End
Item	Encroachments			38.403443 °	38.403443 °
				-121.540007 °	-121.540007 °
DWR ID	DWR_RD0999_05_s_2012_116				
Action/Comments					
Prunings					

No Photos

<b>* Location</b> LS : Land Side    N/A : Not Applicable WS : Water Side CR : Crown	<b>** Rating</b> A : Acceptable M : Minimally Acceptable U : Unacceptable	N : Not Inspected/Rated C : Corrected A/W : Acceptable but Monitor & Maintain	<b>+ Issue Type</b> Ma : Maintenance Deficiency Ob : Design & System Obsolescence En : Enforcement
--	--	---	---

**Flood Control Project Maintenance  
Levee Inspections**

**Maintenance Issue Types Only, Levee Inspection Report By Mile - Fall 2014**

**Reclamation District No. 0999 Netherlands**

Waterway	Bank	Unit Miles	Inspection Start/End	Inspector
Unit No. 05 Elk Slough	Right	9.48	10/28/2014 10/29/2014	Richard Willoughby

LM Start	8.26	Rating **	M	Issue No.	205
LM End	8.26	Issue Type +	Ma	Location *	WS
Category	Earthen Levee			GPS Latitude/Longitude	
				Start	End
Item	Trim / Thin Trees			38.409876 °	38.409876 °
				-121.539348 °	-121.539348 °
DWR ID	DWR_RD0999_05_f_2014_205				
Action/Comments					
Trim trees over roadway to at least 12 feet above ground level.					

No Photos

LM Start	8.27	Rating **	M	Issue No.	117
LM End	8.27	Issue Type +	Ma	Location *	LS
Category	Earthen Levee			GPS Latitude/Longitude	
				Start	End
Item	Trim / Thin Trees			38.409855 °	38.409855 °
				-121.539382 °	-121.539382 °
DWR ID	DWR_RD0999_05_s_2012_117				
Action/Comments					
Trim trees to at least five feet above ground level.					

No Photos

LM Start	8.35	Rating **	M	Issue No.	206
LM End	8.35	Issue Type +	Ma	Location *	LS
Category	Earthen Levee			GPS Latitude/Longitude	
				Start	End
Item	Trim / Thin Trees			38.409679 °	38.409679 °
				-121.537920 °	-121.537920 °
DWR ID	DWR_RD0999_05_f_2014_206				
Action/Comments					
Trim trees to at least five feet above ground level.					

No Photos

<b>* Location</b> LS : Land Side    N/A : Not Applicable WS : Water Side CR : Crown		<b>** Rating</b> A : Acceptable                      N : Not Inspected/Rated M : Minimally Acceptable        C : Corrected U : Unacceptable                  A/W : Acceptable but Monitor & Maintain		<b>+ Issue Type</b> Ma : Maintenance Deficiency Ob : Design & System Obsolescence En : Enforcement
--	--	---	--	---



**Flood Control Project Maintenance  
Levee Inspections**

**Maintenance Issue Types Only, Levee Inspection Report By Mile - Fall 2014**

**Reclamation District No. 0999 Netherlands**

Waterway	Bank	Unit Miles	Inspection Start/End	Inspector
Unit No. 05 Elk Slough	Right	9.48	10/28/2014 10/29/2014	Richard Willoughby

LM Start	8.36	Rating **	M	Issue No.	118
LM End	8.36	Issue Type +	Ma	Location *	WS
Category	Earthen Levee			GPS Latitude/Longitude	
				Start	End
Item	Trim / Thin Trees			38.409665 °	38.409665 °
				-121.537898 °	-121.537898 °
DWR ID	DWR_RD0999_05_s_2012_118				
Action/Comments					
Trim trees to at least five feet above ground level.					

No Photos

LM Start	8.37	Rating **	A/W	Issue No.	119
LM End	8.37	Issue Type +	Ma	Location *	WS
Category	Earthen Levee			GPS Latitude/Longitude	
				Start	End
Item	Encroachments			38.409580 °	38.409580 °
				-121.537587 °	-121.537587 °
DWR ID	DWR_RD0999_05_s_2012_119				
Action/Comments					
Prunings					

No Photos

LM Start	8.40	Rating **	A/W	Issue No.	120
LM End	8.45	Issue Type +	Ma	Location *	LS
Category	Earthen Levee			GPS Latitude/Longitude	
				Start	End
Item	Trim / Thin Trees			38.409467 °	38.409145 °
				-121.537157 °	-121.536390 °
DWR ID	DWR_RD0999_05_s_2012_120				
Action/Comments					
Trim trees to at least five feet above ground level.					

No Photos

<b>* Location</b> LS : Land Side    N/A : Not Applicable WS : Water Side CR : Crown	<b>** Rating</b> A : Acceptable M : Minimally Acceptable U : Unacceptable	N : Not Inspected/Rated C : Corrected A/W : Acceptable but Monitor & Maintain	<b>+ Issue Type</b> Ma : Maintenance Deficiency Ob : Design & System Obsolescence En : Enforcement
--	--	---	---

**Flood Control Project Maintenance  
Levee Inspections**

**Maintenance Issue Types Only, Levee Inspection Report By Mile - Fall 2014**

**Reclamation District No. 0999 Netherlands**

Waterway	Bank	Unit Miles	Inspection Start/End	Inspector
Unit No. 05 Elk Slough	Right	9.48	10/28/2014 10/29/2014	Richard Willoughby

LM Start	8.43	Rating **	M	Issue No.	194
LM End	8.44	Issue Type +	Ma	Location *	LS
Category	Earthen Levee			GPS Latitude/Longitude	
				Start	End
Item	Trim / Thin Trees			38.409306 °	38.409184 °
				-121.536714 °	-121.536436 °
DWR ID	DWR_RD0999_05_s_2014_194				
Action/Comments					
Trim trees to at least five feet above ground level.					

No Photos

LM Start	8.45	Rating **	M	Issue No.	69
LM End	9.61	Issue Type +	Ma	Location *	LS
Category	Earthen Levee			GPS Latitude/Longitude	
				Start	End
Item	Animal Control			38.409445 °	38.413717 °
				-121.536980 °	-121.523813 °
DWR ID	DWR_RD0999_05_s_2012_69				
Action/Comments					
Exterminate rodents and backfill and compact or grout burrows.					

No Photos

LM Start	8.66	Rating **	A/W	Issue No.	121
LM End	8.66	Issue Type +	Ma	Location *	WS
Category	Earthen Levee			GPS Latitude/Longitude	
				Start	End
Item	Encroachments			38.409637 °	38.409637 °
				-121.533312 °	-121.533312 °
DWR ID	DWR_RD0999_05_s_2012_121				
Action/Comments					
Tree or limb					

No Photos

<b>* Location</b> LS : Land Side    N/A : Not Applicable WS : Water Side CR : Crown	<b>** Rating</b> A : Acceptable M : Minimally Acceptable U : Unacceptable	N : Not Inspected/Rated C : Corrected A/W : Acceptable but Monitor & Maintain	<b>+ Issue Type</b> Ma : Maintenance Deficiency Ob : Design & System Obsolescence En : Enforcement
--	--	---	---

**Flood Control Project Maintenance  
Levee Inspections**

**Maintenance Issue Types Only, Levee Inspection Report By Mile - Fall 2014**

**Reclamation District No. 0999 Netherlands**

Waterway	Bank	Unit Miles	Inspection Start/End	Inspector
Unit No. 05 Elk Slough	Right	9.48	10/28/2014 10/29/2014	Richard Willoughby

LM Start	8.67	Rating **	A/W	Issue No.	122
LM End	8.67	Issue Type +	Ma	Location *	LS
Category	Earthen Levee			GPS Latitude/Longitude	
				Start	End
Item	Encroachments			38.409700 °	38.409700 °
				-121.533217 °	-121.533217 °
DWR ID	DWR_RD0999_05_s_2012_122				
Action/Comments					
Tree or limb					

No Photos

LM Start	8.75	Rating **	M	Issue No.	123
LM End	8.77	Issue Type +	Ma	Location *	LS
Category	Earthen Levee			GPS Latitude/Longitude	
				Start	End
Item	Trim / Thin Trees			38.410368 °	38.410595 °
				-121.532147 °	-121.531672 °
DWR ID	DWR_RD0999_05_s_2012_123				
Action/Comments					
Trim trees over roadway to at least 12 feet above ground level.					

No Photos

LM Start	8.77	Rating **	M	Issue No.	208
LM End	8.77	Issue Type +	Ma	Location *	WS
Category	Earthen Levee			GPS Latitude/Longitude	
				Start	End
Item	Trim / Thin Trees			38.410650 °	38.410650 °
				-121.531635 °	-121.531635 °
DWR ID	DWR_RD0999_05_f_2014_208				
Action/Comments					
Trim trees over roadway to at least 12 feet above ground level.					

No Photos

**\* Location**  
 LS : Land Side    N/A : Not Applicable  
 WS : Water Side  
 CR : Crown

**\*\* Rating**  
 A : Acceptable                      N : Not Inspected/Rated  
 M : Minimally Acceptable        C : Corrected  
 U : Unacceptable                  A/W : Acceptable but Monitor & Maintain

**+ Issue Type**  
 Ma : Maintenance Deficiency  
 Ob : Design & System Obsolescence  
 En : Enforcement

**Flood Control Project Maintenance  
Levee Inspections**

**Maintenance Issue Types Only, Levee Inspection Report By Mile - Fall 2014**

**Reclamation District No. 0999 Netherlands**

Waterway	Bank	Unit Miles	Inspection Start/End	Inspector
Unit No. 05 Elk Slough	Right	9.48	10/28/2014 10/29/2014	Richard Willoughby

LM Start	8.89	Rating **	A/W	Issue No.	91
LM End	8.89	Issue Type +	Ma	Location *	WS
Category	Earthen Levee			GPS Latitude/Longitude	
				Start	End
Item	Trim / Thin Trees			38.411567 °	38.411567 °
				-121.529902 °	-121.529902 °
DWR ID	DWR_RD0999_05_s_2012_91				
Action/Comments					
Trim trees to at least five feet above ground level.					

No Photos

LM Start	8.93	Rating **	A/W	Issue No.	108
LM End	8.93	Issue Type +	Ma	Location *	WS
Category	Earthen Levee			GPS Latitude/Longitude	
				Start	End
Item	Encroachments			38.412053 °	38.412053 °
				-121.529752 °	-121.529752 °
DWR ID	DWR_RD0999_05_s_2012_108				
Action/Comments					
Prunings					

No Photos

LM Start	9.16	Rating **	M	Issue No.	209
LM End	9.19	Issue Type +	Ma	Location *	LS
Category	Earthen Levee			GPS Latitude/Longitude	
				Start	End
Item	Trim / Thin Trees			38.415201 °	38.415628 °
				-121.529612 °	-121.529262 °
DWR ID	DWR_RD0999_05_f_2014_209				
Action/Comments					
Trim trees over roadway to at least 12 feet above ground level.					

No Photos

<b>* Location</b> LS : Land Side    N/A : Not Applicable WS : Water Side CR : Crown	<b>** Rating</b> A : Acceptable M : Minimally Acceptable U : Unacceptable	N : Not Inspected/Rated C : Corrected A/W : Acceptable but Monitor & Maintain	<b>+ Issue Type</b> Ma : Maintenance Deficiency Ob : Design & System Obsolescence En : Enforcement
--	--	---	---



**Flood Control Project Maintenance  
Levee Inspections**

**Maintenance Issue Types Only, Levee Inspection Report By Mile - Fall 2014**

**Reclamation District No. 0999 Netherlands**

Waterway	Bank	Unit Miles	Inspection Start/End	Inspector
Unit No. 05 Elk Slough	Right	9.48	10/28/2014 10/29/2014	Richard Willoughby

LM Start	9.33	Rating **	M	Issue No.	109
LM End	9.35	Issue Type +	Ma	Location *	LS
Category	Earthen Levee			GPS Latitude/Longitude	
				Start	End
Item	Trim / Thin Trees			38.415495 °	38.415278 °
				-121.527217 °	-121.527005 °
DWR ID	DWR_RD0999_05_s_2012_109				
Action/Comments					
Trim trees to at least five feet above ground level.					

No Photos

LM Start	9.42	Rating **	A/W	Issue No.	110
LM End	9.47	Issue Type +	Ma	Location *	LS
Category	Earthen Levee			GPS Latitude/Longitude	
				Start	End
Item	Trim / Thin Trees			38.414550 °	38.413940 °
				-121.526398 °	-121.525902 °
DWR ID	DWR_RD0999_05_s_2012_110				
Action/Comments					
Trim trees to at least five feet above ground level.					

No Photos

LM Start	9.56	Rating **	M	Issue No.	114
LM End	9.56	Issue Type +	Ma	Location *	LS
Category	Earthen Levee			GPS Latitude/Longitude	
				Start	End
Item	Trim / Thin Trees			38.413377 °	38.413377 °
				-121.524500 °	-121.524500 °
DWR ID	DWR_RD0999_05_s_2012_114				
Action/Comments					
Trim trees to at least five feet above ground level.					

No Photos

<b>* Location</b> LS : Land Side    N/A : Not Applicable WS : Water Side CR : Crown	<b>** Rating</b> A : Acceptable M : Minimally Acceptable U : Unacceptable	N : Not Inspected/Rated C : Corrected A/W : Acceptable but Monitor & Maintain	<b>+ Issue Type</b> Ma : Maintenance Deficiency Ob : Design & System Obsolescence En : Enforcement
--	--	---	---