

**Flood Control Project Maintenance
Levee Inspections**

Fall 2011 Levee Maintenance Deficiency Summary Report

Overall LMA & Unit Ratings, including USACE Erosion Survey

Sacramento River Basin

RD0827	Overall LMA Rating	Total LMA Miles				
Reclamation District No. 0827 Elkhorn	U	4.19				
Rated Item	M Miles	U Miles	M + 4U Miles	Threshold %	Encroachments	
					PO Miles	CO Miles
<i>Earthen Levee</i>						
Encroachments	0.02		0.02	0.48%	0.24	
Animal Control	0.01		0.01	0.24%		
Erosion / Bank Caving	0.02		0.02	0.48%		
Crown Surface / Depressions / Rutting	1.61		1.61	38.43%		
<i>LMA Totals:</i>	1.66	0.00	1.66	39.62%	0.24	0.00

Unit No. 01 Sacramento River RB	Overall Unit Rating	Total Unit Miles				
RD0827	A	1.35				
Rated Item	M Miles	U Miles	M + 4U Miles	Threshold %	Encroachments	
					PO Miles	CO Miles
<i>Earthen Levee</i>						
Encroachments	0.02		0.02	1.48%		
Animal Control	0.01		0.01	0.74%		
Erosion / Bank Caving	0.02		0.02	1.48%		
<i>Unit Totals:</i>	0.05	0.00	0.05	3.70%	0.00	0.00

Unit No. 02 Yolo Bypass LB	Overall Unit Rating	Total Unit Miles				
RD0827	U	2.84				
Rated Item	M Miles	U Miles	M + 4U Miles	Threshold %	Encroachments	
					PO Miles	CO Miles
<i>Earthen Levee</i>						
Encroachments					0.24	
Crown Surface / Depressions / Rutting	1.61		1.61	56.69%		
<i>Unit Totals:</i>	1.61	0.00	1.61	56.69%	0.24	0.00

**Flood Control Project Maintenance
Levee Inspections**
LMA District Cover Sheet
Fall 2011 Levee Inspection Results

Reclamation District No. 0827 Elkhorn

	Spring (March - May)	Summer ** (June - August)	Fall (September - November)	Winter ** (December - February)
* Overall LMA Rating (Fall Only)			U	

** Non-receipt of Summer or Winter Inspection Reports may effect overall annual rating.

*
SPRING INSPECTIONS: Overall maintenance ratings are not determined for the spring inspection results. Individual maintenance deficiencies are rated using the same criteria in the spring and in the fall.

FALL INSPECTIONS: The overall maintenance rating shown above is based on operation and maintenance deficiencies identified within the attached unit inspection reports.

Comments

**Flood Control Project Maintenance
Levee Inspections**

Unit Cover Sheet

Fall 2011 Levee Inspection Results

Reclamation District No. 0827 Elkhorn

Waterway			Bank	Unit Miles
Unit No. 01 Sacramento River			Right	1.35
	Spring (March - May)	Summer (June - August)	(September - November) Fall	Winter (December - February)
Unit Maintenance Rating (Fall Only)			A	
Date of Inspection	3/17/2011 - 3/17/2011		11/10/2011 - 11/10/2011	
DWR Inspector	John Williamson		John Williamson	
Accompanied By	Dan Ramos Ramco, RD 827		Dan Ramos Ramco, RD 827	

Check one:

- ☐ During the current winter (or summer) inspection period, my staff or I have inspected the levee and associated flood project components identified in the attached Levee Inspection Report by Mile. We have found no changes in flood project conditions other than the results of our normal maintenance and the corrections we have made to maintenance deficiencies identified in the enclosed report.
- ☐ During the current winter (or summer) inspection period, my staff or I have inspected the levee and associated flood project components identified in the attached Levee Inspection Report by Mile. In addition to the results of our normal maintenance and the corrections we have made to maintenance deficiencies identified in the report, we have found the following changes in flood project conditions.

(In the comment section below or on additional sheet(s), identify change of condition by: Start to End Levee Mile or GPS coordinates, location (Land Side, Water Side, or Crown), Item identification, and description of the current condition).

Comments

One of the boxes above is to be checked by the Local Maintaining Agency (LMA). If the second box is checked, additional information must also be submitted. This Unit Cover Sheet should be signed and dated by the LMA Representative and returned to DWR with any additional sheets by September 30 (Summer Inspection) or March 31 (Winter Inspection). Please retain a copy for your records. Please mail all of this information to :

DWR Summer/Winter Inspection Reports
3310 El Camino Avenue, Suite 200
Sacramento, CA 95821-9000

X

Signature of LMA Representative

Date

**Flood Control Project Maintenance
Levee Inspections**

Levee Inspection Report By Mile - Fall 2011

Reclamation District No. 0827 Elkhorn

Waterway					Bank	Unit Miles	Inspection Start/End	Inspector	
Unit No. 01 Sacramento River					Right	1.35	11/10/2011 11/10/2011	John Williamson	

LMR No.	Levee Mile		Category	Item	Location *	Rating **	Action/Comment	GPS Latitude/Longitude		Issue No.
	Start	End						Start	End	
1	0.27	0.27	Earthen Levee	Erosion / Bank Caving	WS	M	Schedule repair of erosion site prior to the next inspection.	38.672436 ° -121.626851 °	38.672436 ° -121.626851 °	3 Y
2	0.29	0.29	Earthen Levee	Animal Control	LS	M	No rodents visible, but rodent burrows visible; need to backfill and compact or grout burrows.	38.672010 ° -121.626847 °	38.672010 ° -121.626847 °	15 Y
3	0.31	0.37	Earthen Levee	Trim / Thin Trees	WS	W	Thin trees to allow visibility of the ground and room to flood fight.	38.671959 ° -121.626305 °	38.671376 ° -121.625608 °	2 Y
4	0.54	0.54	Earthen Levee	Trim / Thin Trees	LS	N	Tree stumps.	38.669445 ° -121.623574 °	38.669445 ° -121.623574 °	13
5	0.60	0.60	Earthen Levee	Encroachments	LS	M	Prunings	38.668820 ° -121.622829 °	38.668820 ° -121.622829 °	8 Y
6	0.61	0.61	Earthen Levee	Trim / Thin Trees	LS	N	Tree stumps.	38.668665 ° -121.622584 °	38.668665 ° -121.622584 °	11
7	0.69	0.69	Earthen Levee	Trim / Thin Trees	LS	N	Tree stumps.	38.667856 ° -121.621558 °	38.667856 ° -121.621558 °	10
8	0.83	0.83	Earthen Levee	Encroachments	LS	M	Prunings	38.666475 ° -121.619835 °	38.666475 ° -121.619835 °	6 Y
9	0.85	0.85	Earthen Levee	Trim / Thin Trees	LS	N	Tree stumps.	38.666262 ° -121.619546 °	38.666262 ° -121.619546 °	7
10	1.07	1.19	Earthen Levee	Vegetation	WS	C	Remove the wild growth other than native grasses from the levee slopes. Inspector Comments: Continue to make great progress with the use of chemicals and brush cutting. Still need to brush cut farther down the waterside slope.	38.664196 ° -121.616765 °	38.662856 ° -121.615347 °	4
11	1.13	1.13	Earthen Levee	Erosion / Bank Caving	WS	M	Schedule repair of erosion site prior to the next inspection.	38.663553 ° -121.616044 °	38.663553 ° -121.616044 °	5 Y

*** Location**

LS : Land Side
WS : Water Side
CR : Crown

**** Rating**

A : Acceptable PO : Partially Obstructing N : Not Inspected, see Inspector Comment C : Corrected
M : Minimally Acceptable CO : Completely Obstructing
U : Unacceptable W : Watch/Monitor

**Flood Control Project Maintenance
Levee Inspections**

Levee Inspection Report By Mile - Fall 2011

Reclamation District No. 0827 Elkhorn

Waterway	Bank	Unit Miles	Inspection Start/End	Inspector
Unit No. 01 Sacramento River	Right	1.35	11/10/2011 11/10/2011	John Williamson

Levee Mile Report Line	1
Start Levee Mile	0.27
End Levee Mile	0.27
Location	Water Side
Category	Earthen Levee
Item	Erosion / Bank Caving

There is erosion on the waterside shoulder. Fall 2011

johngw_f_20111116_546.jpg



Levee Mile Report Line	2
Start Levee Mile	0.29
End Levee Mile	0.29
Location	Land Side
Category	Earthen Levee
Item	Animal Control

Rodent burrows on the landside levee a large amount of material.

johngw_f_20110923_379.jpg



Levee Mile Report Line	2
Start Levee Mile	0.29
End Levee Mile	0.29
Location	Land Side
Category	Earthen Levee
Item	Animal Control

More rodents in the same area with large quantities of material excavated.

johngw_f_20110923_380.jpg



*** Location**

LS : Land Side
WS : Water Side
CR : Crown

**** Rating**

A : Acceptable
M : Minimally Acceptable
U : Unacceptable

PO : Partially Obstructing
CO : Completely Obstructing
W : Watch/Monitor

N : Not Inspected, see Inspector Comment C : Corrected

**Flood Control Project Maintenance
Levee Inspections**

Levee Inspection Report By Mile - Fall 2011

Reclamation District No. 0827 Elkhorn

Waterway	Bank	Unit Miles	Inspection Start/End	Inspector
Unit No. 01 Sacramento River	Right	1.35	11/10/2011 11/10/2011	John Williamson

Levee Mile Report Line	3
Start Levee Mile	0.31
End Levee Mile	0.37
Location	Water Side
Category	Earthen Levee
Item	Trim / Thin Trees

Thick vegetation on the waterside. Fall 2011

johngw_f_20111116_547.jpg



Levee Mile Report Line	5
Start Levee Mile	0.60
End Levee Mile	0.60
Location	Land Side
Category	Earthen Levee
Item	Encroachments

Prunings along the toe of the levee. Fall 2011

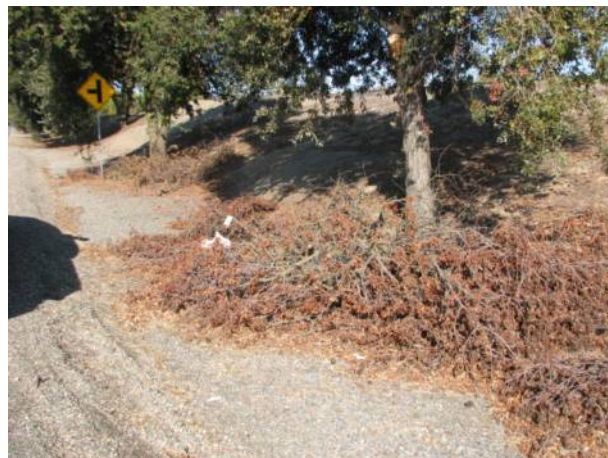
johngw_f_20111116_550.jpg



Levee Mile Report Line	8
Start Levee Mile	0.83
End Levee Mile	0.83
Location	Land Side
Category	Earthen Levee
Item	Encroachments

Piles of prunings along the roadside at the toe. Fall 2011

johngw_f_20111116_548.jpg



*** Location**

LS : Land Side
WS : Water Side
CR : Crown

**** Rating**

A : Acceptable
M : Minimally Acceptable
U : Unacceptable

PO : Partially Obstructing
CO : Completely Obstructing
W : Watch/Monitor

N : Not Inspected, see Inspector Comment

C : Corrected

**Flood Control Project Maintenance
Levee Inspections**

Levee Inspection Report By Mile - Fall 2011

Reclamation District No. 0827 Elkhorn

Waterway	Bank	Unit Miles	Inspection Start/End	Inspector
Unit No. 01 Sacramento River	Right	1.35	11/10/2011 11/10/2011	John Williamson

Levee Mile Report Line	11
Start Levee Mile	1.13
End Levee Mile	1.13
Location	Water Side
Category	Earthen Levee
Item	Erosion / Bank Caving

Erosion on the crown that followed a rodent tunnel and eroded the shoulder. Fall 2011

johngw_f_20111116_551.jpg



Levee Mile Report Line	11
Start Levee Mile	1.13
End Levee Mile	1.13
Location	Water Side
Category	Earthen Levee
Item	Erosion / Bank Caving

More erosion caused by rodents in the area. Fall 2011

johngw_f_20111116_552.jpg



*** Location**

LS : Land Side
WS : Water Side
CR : Crown

**** Rating**

A : Acceptable PO : Partially Obstructing N : Not Inspected, see Inspector Comment C : Corrected
M : Minimally Acceptable CO : Completely Obstructing
U : Unacceptable W : Watch/Monitor

**Flood Control Project Maintenance
Levee Inspections**

Unit Cover Sheet

Fall 2011 Levee Inspection Results

Reclamation District No. 0827 Elkhorn

Waterway			Bank	Unit Miles
Unit No. 02 Yolo Bypass			Left	2.84
	Spring (March - May)	Summer (June - August)	(September - November) Fall	Winter (December - February)
Unit Maintenance Rating (Fall Only)			U	
Date of Inspection	3/29/2011 - 3/29/2011		11/10/2011 - 11/10/2011	
DWR Inspector	John Williamson		John Williamson	
Accompanied By	Dan Ramos Ramco		Dan Ramos Ramco	

Check one:

- ☐ During the current winter (or summer) inspection period, my staff or I have inspected the levee and associated flood project components identified in the attached Levee Inspection Report by Mile. We have found no changes in flood project conditions other than the results of our normal maintenance and the corrections we have made to maintenance deficiencies identified in the enclosed report.
- ☐ During the current winter (or summer) inspection period, my staff or I have inspected the levee and associated flood project components identified in the attached Levee Inspection Report by Mile. In addition to the results of our normal maintenance and the corrections we have made to maintenance deficiencies identified in the report, we have found the following changes in flood project conditions.

(In the comment section below or on additional sheet(s), identify change of condition by: Start to End Levee Mile or GPS coordinates, location (Land Side, Water Side, or Crown), Item identification, and description of the current condition).

Comments

One of the boxes above is to be checked by the Local Maintaining Agency (LMA). If the second box is checked, additional information must also be submitted. This Unit Cover Sheet should be signed and dated by the LMA Representative and returned to DWR with any additional sheets by September 30 (Summer Inspection) or March 31 (Winter Inspection). Please retain a copy for your records. Please mail all of this information to :

DWR Summer/Winter Inspection Reports
3310 El Camino Avenue, Suite 200
Sacramento, CA 95821-9000

X

Signature of LMA Representative

Date

**Flood Control Project Maintenance
Levee Inspections**

Levee Inspection Report By Mile - Fall 2011

Reclamation District No. 0827 Elkhorn

Waterway						Bank	Unit Miles	Inspection Start/End	Inspector
Unit No. 02 Yolo Bypass						Left	2.84	11/10/2011 11/10/2011	John Williamson

LMR No.	Levee Mile		Category	Item	Location *	Rating **	Action/Comment	GPS Latitude/Longitude		Issue No. Photo
	Start	End						Start	End	
1	0.06	0.19	Earthen Levee	Vegetation	WS	C	Remove the wild growth other than native grasses from the levee slopes.	38.675931 ° -121.643039 °	38.673957 ° -121.642652 °	8
2	0.11	0.11	Earthen Levee	Trim / Thin Trees	WS	N	Tree stumps.	38.675236 ° -121.642985 °	38.675236 ° -121.642985 °	4
3	0.27	0.51	Earthen Levee	Encroachments	LS	PO	Agricultural Ditch	38.673035 ° -121.642390 °	38.669597 ° -121.641600 °	1
4	0.34	2.78	Earthen Levee	Vegetation	LS	A	Remove the wild growth other than native grasses from the levee slopes.	38.672005 ° -121.642178 °	38.641780 ° -121.620787 °	2 Y
5	0.34	2.78	Earthen Levee	Vegetation	WS	A	Remove the wild growth other than native grasses from the levee slopes.	38.672005 ° -121.642178 °	38.641779 ° -121.620787 °	3 Y
6	0.38	0.65	Earthen Levee	Vegetation	LS	C	Remove the wild growth other than native grasses from the levee slopes.	38.671539 ° -121.642060 °	38.667704 ° -121.640449 °	9
7	0.80	2.41	Earthen Levee	Crown Surface / Depressions / Rutting	CR	M	Add appropriate gravel or road base. Grade and compact.	38.665917 ° -121.639188 °	38.646564 ° -121.623705 °	6 Y

*** Location**

LS : Land Side
WS : Water Side
CR : Crown

**** Rating**

A : Acceptable PO : Partially Obstructing N : Not Inspected, see Inspector Comment C : Corrected
M : Minimally Acceptable CO : Completely Obstructing
U : Unacceptable W : Watch/Monitor

**Flood Control Project Maintenance
Levee Inspections**

Levee Inspection Report By Mile - Fall 2011

Reclamation District No. 0827 Elkhorn

Waterway	Bank	Unit Miles	Inspection Start/End	Inspector
Unit No. 02 Yolo Bypass	Left	2.84	11/10/2011 11/10/2011	John Williamson

Levee Mile Report Line	4
Start Levee Mile	0.34
End Levee Mile	2.78
Location	Land Side
Category	Earthen Levee
Item	Vegetation

The vegetation after the goats have grazed on the levee. Fall 2011

johngw_f_20111116_553.jpg



Levee Mile Report Line	5
Start Levee Mile	0.34
End Levee Mile	2.78
Location	Water Side
Category	Earthen Levee
Item	Vegetation

The levee after the goats have grazed. Fall 2011

johngw_f_20111116_554.jpg



Levee Mile Report Line	7
Start Levee Mile	0.80
End Levee Mile	2.41
Location	Crown
Category	Earthen Levee
Item	Crown Surface / Depressions / Rutting

Crown needs grading and AB added.

johngw_f_20110923_381.jpg



*** Location**

LS : Land Side
WS : Water Side
CR : Crown

**** Rating**

A : Acceptable
M : Minimally Acceptable
U : Unacceptable

PO : Partially Obstructing
CO : Completely Obstructing
W : Watch/Monitor

N : Not Inspected, see Inspector Comment C : Corrected