

**Flood Control Project Maintenance
Levee Inspections**

Maintenance Issue Types Only, Levee Inspection Report By Mile - Spring 2020

Reclamation District No. 0787 Fair

Waterway	Bank	Unit Miles	Inspection Start/End	Inspector
Unit No. 01 Colusa Basin Drain	Left	4.45	04/01/2020 04/01/2020	Zach Jojola

LM Start		Rating **	A	Issue No.	7
LM End		Issue Type +	Ma	Location *	N/A
Category	Earthen Levee		GPS Latitude/Longitude		
			Start	End	
Item	Emergency Supplies & Equipment			°	°
				°	°
DWR ID	DWR_RD0787_01_s_2013_7				
Comment Code					
Inspector Comment					
RD 787 shares flood resources with RD 108 with a stockpile of flood response materials.					

No Photos

LM Start		Rating **	A	Issue No.	8
LM End		Issue Type +	Ma	Location *	N/A
Category	Earthen Levee		GPS Latitude/Longitude		
			Start	End	
Item	Operations & Maintenance Manuals			°	°
				°	°
DWR ID	DWR_RD0787_01_s_2013_8				
Comment Code					
Inspector Comment					
RD 787 is current with O&M manuals.					

No Photos

LM Start		Rating **	A	Issue No.	10
LM End		Issue Type +	Ma	Location *	N/A
Category	Earthen Levee		GPS Latitude/Longitude		
			Start	End	
Item	Flood Preparedness & Training			°	°
				°	°
DWR ID	DWR_RD0787_01_s_2012_10				
Comment Code					
Inspector Comment					
RD 787 works jointly with RD 108 on training and flood response.					

No Photos

* Location LS : Land Side N/A : Not Applicable WS : Water Side CR : Crown	** Rating A : Acceptable M : Minimally Acceptable U : Unacceptable	N : Not Inspected/Rated C : Corrected A/W : Acceptable but Monitor & Maintain	+ Issue Type Ma : Maintenance Deficiency Ob : Design & System Obsolescence En : Enforcement
--	--	---	---

**Flood Control Project Maintenance
Levee Inspections**

Maintenance Issue Types Only, Levee Inspection Report By Mile - Spring 2020

Reclamation District No. 0787 Fair

Waterway	Bank	Unit Miles	Inspection Start/End	Inspector
Unit No. 01 Colusa Basin Drain	Left	4.45	04/01/2020 04/01/2020	Zach Jojola

LM Start	0.02	Rating **	M	Issue No.	6
LM End	0.64	Issue Type +	Ma	Location *	LS
Category	Earthen Levee			GPS Latitude/Longitude	
				Start	End
Item	Vegetation			38.799447 °	38.795539 °
				-121.725596 °	-121.735065 °
DWR ID	DWR_RD0787_01_s_2020_6				
Comment Code					
V1 : Control annual grass and weeds on the levee slopes and easements.					
Inspector Comment					

No Photos

LM Start	0.02	Rating **	M	Issue No.	13
LM End	4.44	Issue Type +	Ma	Location *	WS
Category	Earthen Levee			GPS Latitude/Longitude	
				Start	End
Item	Vegetation			38.799447 °	38.822495 °
				-121.725596 °	-121.795881 °
DWR ID	DWR_RD0787_01_s_2020_13				
Comment Code					
V1 : Control annual grass and weeds on the levee slopes and easements.					
Inspector Comment					

Photo 1 of 1 : SP_2020_RD0787_212_13_20200401_00022.jpg

View of vegetation on waterside slope adjacent to waterside toe road.
Spring 2020.

* Location LS : Land Side N/A : Not Applicable WS : Water Side CR : Crown	** Rating A : Acceptable M : Minimally Acceptable U : Unacceptable	N : Not Inspected/Rated C : Corrected A/W : Acceptable but Monitor & Maintain	+ Issue Type Ma : Maintenance Deficiency Ob : Design & System Obsolescence En : Enforcement
--	--	---	---

**Flood Control Project Maintenance
Levee Inspections**

Maintenance Issue Types Only, Levee Inspection Report By Mile - Spring 2020

Reclamation District No. 0787 Fair

Waterway	Bank	Unit Miles	Inspection Start/End	Inspector
Unit No. 01 Colusa Basin Drain	Left	4.45	04/01/2020 04/01/2020	Zach Jojola

LM Start	0.39	Rating **	A/W	Issue No.	2
LM End	0.50	Issue Type +	Ma	Location *	WS
Category	Supplemental			GPS Latitude/Longitude	
				Start	End
Item	2017 USACE Erosion Survey			38.795931 °	38.795268 °
				-121.730627 °	-121.732566 °
DWR ID	DWR_RD0787_01_f_2018_2				
Comment Code					
Inspector Comment					
2017 Site ID: CBD 0.5 L					
Status: Eroding					
2017 Field Notes: Wide levee section, roughly 40 ft.					
Site History: 2011 - Large scallops throughout the entire reach. Toe					
scour due to tree pop-outs, resulting in a steepening slope. The					
reduced resistive forces plus clay levee may increase the loading.					
Additional erosion due to human use.					

No Photos

LM Start	0.67	Rating **	A/W	Issue No.	3
LM End	0.85	Issue Type +	Ma	Location *	WS
Category	Supplemental			GPS Latitude/Longitude	
				Start	End
Item	2017 USACE Erosion Survey			38.795486 °	38.796225 °
				-121.735647 °	-121.738902 °
DWR ID	DWR_RD0787_01_f_2018_3				
Comment Code					
Inspector Comment					
2017 Site ID: CBD 0.9 L					
Status: Eroding					
2017 Field Notes: Oversized embankment.					
Site History: 2011 - Large scallops throughout the entire reach. Toe scour due to tree pop-outs, resulting in a steepening slope. The reduced resistive forces plus clay levee may increase the loading.					

No Photos

* Location
 LS : Land Side N/A : Not Applicable
 WS : Water Side
 CR : Crown

** Rating
 A : Acceptable N : Not Inspected/Rated
 M : Minimally Acceptable C : Corrected
 U : Unacceptable A/W : Acceptable but Monitor & Maintain

+ Issue Type
 Ma : Maintenance Deficiency
 Ob : Design & System Obsolescence
 En : Enforcement

**Flood Control Project Maintenance
Levee Inspections**

Maintenance Issue Types Only, Levee Inspection Report By Mile - Spring 2020

Reclamation District No. 0787 Fair

Waterway	Bank	Unit Miles	Inspection Start/End	Inspector
Unit No. 01 Colusa Basin Drain	Left	4.45	04/01/2020 04/01/2020	Zach Jojola

LM Start	0.73	Rating **	M	Issue No.	9
LM End	0.73	Issue Type +	Ma	Location *	WS
Category	Earthen Levee			GPS Latitude/Longitude	
				Start	End
Item	Erosion / Bank Caving			38.795814 °	38.795814 °
				-121.736799 °	-121.736799 °
DWR ID	DWR_RD0787_01_s_2017_9				
Comment Code					
E2 : Schedule repair of erosion site prior to the next inspection.					
Inspector Comment					
Erosion on the waterside slope from 2017 storms.					
Site ID No:182					
Site Designation:RD 787-01					

LM Start	0.73	Rating **	M	Issue No.	9 (cont)
LM End	0.73	Issue Type +	Ma	Location *	WS

Photo 1 of 3 : SP_2020_RD0787_212_9_20200228_00007.jpg



View of erosion on the waterside slope, facing upstream. Fall 2018.

Photo 2 of 3 : SP_2020_RD0787_212_9_20200228_00008.jpg



Additional view of erosion, facing upstream. Fall 2018.

LM Start	0.73	Rating **	M	Issue No.	9 (cont)
LM End	0.73	Issue Type +	Ma	Location *	WS

Photo 3 of 3 : SP_2020_RD0787_212_9_20200228_00009.jpg



View of erosion, facing downstream. Fall 2018.

*** Location**

LS : Land Side N/A : Not Applicable
WS : Water Side
CR : Crown

**** Rating**

A : Acceptable N : Not Inspected/Rated
M : Minimally Acceptable C : Corrected
U : Unacceptable A/W : Acceptable but Monitor & Maintain

+ Issue Type

Ma : Maintenance Deficiency
Ob : Design & System Obsolescence
En : Enforcement

Reclamation District No. 0787 Fair

Page 5 of 7

**Flood Control Project Maintenance
Levee Inspections**

Maintenance Issue Types Only, Levee Inspection Report By Mile - Spring 2020

Reclamation District No. 0787 Fair

Waterway	Bank	Unit Miles	Inspection Start/End	Inspector
Unit No. 01 Colusa Basin Drain	Left	4.45	04/01/2020 04/01/2020	Zach Jojola

LM Start	0.77	Rating **	M	Issue No.	15 (cont)
LM End	0.77	Issue Type +	Ma	Location *	WS
Category	Earthen Levee			GPS Latitude/Longitude	
				Start	End
Item	Erosion / Bank Caving			38.795996 °	38.795996 °
				-121.737493 °	-121.737493 °
DWR ID	DWR_RD0787_01_f_2018_15				

Photo 2 of 2 : SP_2020_RD0787_212_15_20200228_00014.jpg



View of sloughing on waterside slope. Spring 2017.

LM Start	0.78	Rating **	M	Issue No.	16
LM End	0.78	Issue Type +	Ma	Location *	WS
Category	Earthen Levee			GPS Latitude/Longitude	
				Start	End
Item	Erosion / Bank Caving			38.796042 °	38.796042 °
				-121.737661 °	-121.737661 °
DWR ID	DWR_RD0787_01_s_2017_16				

Comment Code

E2 : Schedule repair of erosion site prior to the next inspection.

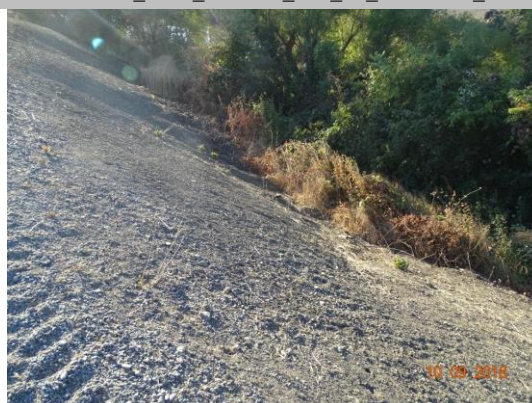
Inspector Comment

Erosion on the waterside slope from 2017 storms.

Site ID No:182

Site Designation:RD 787-01

Photo 1 of 1 : SP_2020_RD0787_212_16_20200228_00015.jpg



View of erosion on the waterside slope, facing downstream. Fall 2018.

LM Start	1.09	Rating **	M	Issue No.	4
LM End	1.20	Issue Type +	Ma	Location *	LS
Category	Earthen Levee			GPS Latitude/Longitude	
				Start	End
Item	Vegetation			38.797860 °	38.798980 °
				-121.742798 °	-121.744314 °
DWR ID	DWR_RD0787_01_s_2020_4				

Comment Code

V1 : Control annual grass and weeds on the levee slopes and easements.

Inspector Comment

No Photos

* Location LS : Land Side N/A : Not Applicable WS : Water Side CR : Crown	** Rating A : Acceptable M : Minimally Acceptable U : Unacceptable	N : Not Inspected/Rated C : Corrected A/W : Acceptable but Monitor & Maintain	+ Issue Type Ma : Maintenance Deficiency Ob : Design & System Obsolescence En : Enforcement
--	--	---	---

**Flood Control Project Maintenance
Levee Inspections**

Maintenance Issue Types Only, Levee Inspection Report By Mile - Spring 2020

Reclamation District No. 0787 Fair

Waterway	Bank	Unit Miles	Inspection Start/End	Inspector
Unit No. 01 Colusa Basin Drain	Left	4.45	04/01/2020 04/01/2020	Zach Jojola

LM Start	2.93	Rating **	M	Issue No.	14
LM End	3.25	Issue Type +	Ma	Location *	LS
Category	Earthen Levee		GPS Latitude/Longitude		
			Start	End	
Item	Vegetation		38.811287 °	38.813853 °	
			-121.771950 °	-121.776862 °	
DWR ID	DWR_RD0787_01_s_2020_14				
Comment Code					
V1 : Control annual grass and weeds on the levee slopes and easements.					
Inspector Comment					

No Photos

LM Start	3.38	Rating **	C	Issue No.	11
LM End	3.38	Issue Type +	Ma	Location *	WS
Category	Earthen Levee		GPS Latitude/Longitude		
			Start	End	
Item	Encroachments		38.814734 °	38.814734 °	
			-121.778979 °	-121.778979 °	
DWR ID	DWR_RD0787_01_f_2019_11				
Comment Code					
DE : Debris					
Inspector Comment					
A cabinet was dumped on the waterside slope.					

No Photos

* Location LS : Land Side N/A : Not Applicable WS : Water Side CR : Crown	** Rating A : Acceptable M : Minimally Acceptable U : Unacceptable	N : Not Inspected/Rated C : Corrected A/W : Acceptable but Monitor & Maintain	+ Issue Type Ma : Maintenance Deficiency Ob : Design & System Obsolescence En : Enforcement
--	--	---	---