

**Flood Control Project Maintenance  
Levee Inspections**

## Maintenance Issue Types Only, Levee Inspection Report By Mile - Fall 2016

### Reclamation District No. 0785 Driver

Waterway	Bank	Unit Miles	Inspection Start/End	Inspector
Unit No. 01 Sacramento River	Right	2.26	10/24/2016 10/24/2016	Oleg Yakimov

LM Start		Rating **	A	Issue No.	3
LM End		Issue Type +	Ma	Location *	LS
Category	Earthen Levee			GPS Latitude/Longitude	
				Start	End
Item	Emergency Supplies & Equipment			°	°
				°	°
DWR ID	DWR_RD0785_01_s _ 2013_3				
Comment Code					
Inspector Comment					
LMA has emergency supplies and equipment at the firehouse.					

No Photos

LM Start		Rating **	A	Issue No.	7
LM End		Issue Type +	Ma	Location *	LS
Category	Earthen Levee			GPS Latitude/Longitude	
				Start	End
Item	Flood Preparedness & Training			°	°
				°	°
DWR ID	DWR_RD0785_01_s _ 2013_7				
Comment Code					
Inspector Comment					
LMA had flood preparedness & training with RD 827.					

No Photos

<b>* Location</b> LS : Land Side    N/A : Not Applicable WS : Water Side CR : Crown	<b>** Rating</b> A : Acceptable M : Minimally Acceptable U : Unacceptable	N : Not Inspected/Rated C : Corrected A/W : Acceptable but Monitor & Maintain	<b>+ Issue Type</b> Ma : Maintenance Deficiency Ob : Design & System Obsolescence En : Enforcement
----------------------------------------------------------------------------------------------	------------------------------------------------------------------------------------	-------------------------------------------------------------------------------------	-------------------------------------------------------------------------------------------------------------

**Flood Control Project Maintenance  
Levee Inspections**

**Maintenance Issue Types Only, Levee Inspection Report By Mile - Fall 2016**

**Reclamation District No. 0785 Driver**

Waterway	Bank	Unit Miles	Inspection Start/End	Inspector
Unit No. 01 Sacramento River	Right	2.26	10/24/2016 10/24/2016	Oleg Yakimov

LM Start		Rating **	A	Issue No.	10
LM End		Issue Type +	Ma	Location *	LS
Category	Earthen Levee			GPS Latitude/Longitude	
				Start	End
Item	Operations & Maintenance Manuals			°	°
				°	°
DWR ID	DWR_RD0785_01_s _ 2012_10				
Comment Code					
Inspector Comment					
LMA has the O&M Manual at the firehouse.					

No Photos

LM Start	0.10	Rating **	C	Issue No.	19
LM End	0.10	Issue Type +	Ma	Location *	LS
Category	Earthen Levee			GPS Latitude/Longitude	
				Start	End
Item	Trim / Thin Trees			38.660320°	38.660320°
				-121.611973°	-121.611973°
DWR ID	DWR_RD0785_01_s _ 2016_19				
Comment Code					
T1 : Trim trees to at least five feet above ground level.					
Inspector Comment					

No Photos

<b>* Location</b> LS : Land Side    N/A : Not Applicable WS : Water Side CR : Crown	<b>** Rating</b> A : Acceptable M : Minimally Acceptable U : Unacceptable N : Not Inspected/Rated C : Corrected A/W : Acceptable but Monitor & Maintain	<b>+ Issue Type</b> Ma : Maintenance Deficiency Ob : Design & System Obsolescence En : Enforcement
----------------------------------------------------------------------------------------------	---------------------------------------------------------------------------------------------------------------------------------------------------------------------------	-------------------------------------------------------------------------------------------------------------

**Flood Control Project Maintenance  
Levee Inspections**

**Maintenance Issue Types Only, Levee Inspection Report By Mile - Fall 2016**

**Reclamation District No. 0785 Driver**

Waterway	Bank	Unit Miles	Inspection Start/End	Inspector
Unit No. 01 Sacramento River	Right	2.26	10/24/2016 10/24/2016	Oleg Yakimov

LM Start	0.12	Rating **	N	Issue No.	4
LM End	1.34	Issue Type +	Ma	Location *	LS
Category	Earthen Levee			GPS Latitude/Longitude	
				Start	End
Item	Trim / Thin Trees			38.660160°	38.646214°
				-121.611619°	-121.598596°
DWR ID	DWR_RD0785_01_s_2012_4				
Comment Code					
T5 : Tree stumps.					
Inspector Comment					

Photo 1 of 1 : FA\_2016\_RD0785\_185\_4\_20160913\_00001.jpg



The trees were cut by PG&E'S tree contractor. The district will take care of the stumps in the future.

LM Start	0.18	Rating **	M	Issue No.	54
LM End	0.21	Issue Type +	Ma	Location *	WS
Category	Earthen Levee			GPS Latitude/Longitude	
				Start	End
Item	Vegetation			38.659673 °	38.659289 °
				-121.610773 °	-121.610441 °
DWR ID	DWR_RD0785_01_f_2016_54				
Comment Code					
V2 : Remove the wild growth other than native grasses from the levee slopes.					
Inspector Comment					

No Photos

**\* Location**  
LS : Land Side    N/A : Not Applicable  
WS : Water Side  
CR : Crown

**\*\* Rating**  
A : Acceptable                      N : Not Inspected/Rated  
M : Minimally Acceptable        C : Corrected  
U : Unacceptable                  A/W : Acceptable but Monitor & Maintain

**+ Issue Type**  
Ma : Maintenance Deficiency  
Ob : Design & System Obsolescence  
En : Enforcement

**Flood Control Project Maintenance  
Levee Inspections**

## Maintenance Issue Types Only, Levee Inspection Report By Mile - Fall 2016

### Reclamation District No. 0785 Driver

Waterway	Bank	Unit Miles	Inspection Start/End	Inspector
Unit No. 01 Sacramento River	Right	2.26	10/24/2016 10/24/2016	Oleg Yakimov

LM Start	0.21	Rating **	M	Issue No.	16
LM End	1.35	Issue Type +	Ma	Location *	WS
Category	Earthen Levee			GPS Latitude/Longitude	
				Start	End
Item	Vegetation			38.659340 °	38.646093 °
				-121.610405 °	-121.598518 °
DWR ID	DWR_RD0785_01_f_2013_16				
Comment Code					
V2 : Remove the wild growth other than native grasses from the levee slopes.					
Inspector Comment					

Photo 1 of 2 : FA\_2016\_RD0785\_185\_16\_20160913\_00007.jpg



Brush and other vegetation partially blocks visibility or access to the levee slope. Fall 2013

LM Start	<b>0.21</b>	Rating **	M	Issue No.	<b>16 (cont)</b>
LM End	<b>1.35</b>	Issue Type +	Ma	Location *	WS

Photo 2 of 2 : FA\_2016\_RD0785\_185\_16\_20160913\_00008.jpg



Brush and other vegetation partially blocks visibility. Spring 2014

LM Start	0.28	Rating **	A/W	Issue No.	1
LM End	0.28	Issue Type +	Ma	Location *	LS
Category	Earthen Levee			GPS Latitude/Longitude	
				Start	End
Item	Vegetation			38.658467°	38.658467°
				-121.609573°	-121.609573°
DWR ID	DWR_RD0785_01_s_2012_1				
Comment Code					
V4 : Elderberries are blocking visibility and flood fight capability.					
Inspector Comment					

Photo 1 of 1 : FA\_2016\_RD0785\_185\_1\_20161024\_00034.jpg



Elderberry tree on LS slope. Fall 2016.

* Location		** Rating		+ Issue Type	
LS : Land Side	N/A : Not Applicable	A : Acceptable	N : Not Inspected/Rated	Ma : Maintenance Deficiency	
WS : Water Side		M : Minimally Acceptable	C : Corrected	Ob : Design & System Obsolescence	
CR : Crown		U : Unacceptable	A/W : Acceptable but Monitor & Maintain	En : Enforcement	

**Flood Control Project Maintenance  
Levee Inspections**

**Maintenance Issue Types Only, Levee Inspection Report By Mile - Fall 2016**

**Reclamation District No. 0785 Driver**

Waterway	Bank	Unit Miles	Inspection Start/End	Inspector
Unit No. 01 Sacramento River	Right	2.26	10/24/2016 10/24/2016	Oleg Yakimov

LM Start	0.30	Rating **	M	Issue No.	20
LM End	0.30	Issue Type +	Ma	Location *	LS
Category	Earthen Levee			GPS Latitude/Longitude	
				Start	End
Item	Encroachments			38.658319 °	38.658319 °
				-121.609443 °	-121.609443 °
DWR ID	DWR_RD0785_01_f_2016_20				
Comment Code					
TR : Tree or limb					
Inspector Comment					

Photo 1 of 1 : FA\_2016\_RD0785\_185\_20\_20161024\_00032.jpg



View of a tree on LS slope. Fall 2016.

LM Start	0.34	Rating **	M	Issue No.	349
LM End	0.34	Issue Type +	Ma	Location *	LS
Category	Earthen Levee			GPS Latitude/Longitude	
				Start	End
Item	Slope Stability			38.657798 °	38.657798 °
				-121.608898 °	-121.608898 °
DWR ID	DWR_RD0785_01_s_2015_349				
Comment Code					
S1 : Repair slope instability.					
Inspector Comment					

Photo 1 of 2 : FA\_2016\_RD0785\_185\_349\_20161024\_00033.jpg



An updated view of a slope stability issue on LS slope. Fall 2016.

**\* Location**  
LS : Land Side    N/A : Not Applicable  
WS : Water Side  
CR : Crown

**\*\* Rating**  
A : Acceptable                      N : Not Inspected/Rated  
M : Minimally Acceptable        C : Corrected  
U : Unacceptable                  A/W : Acceptable but Monitor & Maintain

**+ Issue Type**  
Ma : Maintenance Deficiency  
Ob : Design & System Obsolescence  
En : Enforcement



**Flood Control Project Maintenance  
Levee Inspections**

**Maintenance Issue Types Only, Levee Inspection Report By Mile - Fall 2016**

**Reclamation District No. 0785 Driver**

Waterway	Bank	Unit Miles	Inspection Start/End	Inspector
Unit No. 01 Sacramento River	Right	2.26	10/24/2016 10/24/2016	Oleg Yakimov

LM Start	0.34	Rating **	M	Issue No.	349 (cont)	
LM End	0.34	Issue Type +	Ma	Location *	LS	
Category	Earthen Levee			GPS Latitude/Longitude		
				Start		End
Item	Slope Stability			38.657798°		38.657798°
				-121.608898°		-121.608898°
DWR ID	DWR_RD0785_01_s_2015_349					
Comment Code						
S1 : Repair slope instability.						
Inspector Comment						

Photo 2 of 2 : FA\_2016\_RD0785\_185\_349\_20160913\_00019.jpg



View of the slope stability on the landward side of the levee looking downstream. Spring 2015.

LM Start	0.40	Rating **	A/W	Issue No.	2
LM End	0.44	Issue Type +	Ma	Location *	LS
Category	Earthen Levee			GPS Latitude/Longitude	
				Start	End
Item	Vegetation			38.657168°	38.656697°
				-121.608270°	-121.607845°
DWR ID	DWR_RD0785_01_s_2012_2				
Comment Code					
V4 : Elderberries are blocking visibility and flood fight capability.					
Inspector Comment					

Photo 1 of 1 : FA\_2016\_RD0785\_185\_2\_20161024\_00035.jpg



Elderberry tree on LS slope. Fall 2016.

<b>* Location</b> LS : Land Side    N/A : Not Applicable WS : Water Side CR : Crown	<b>** Rating</b> A : Acceptable M : Minimally Acceptable U : Unacceptable N : Not Inspected/Rated C : Corrected A/W : Acceptable but Monitor & Maintain	<b>+ Issue Type</b> Ma : Maintenance Deficiency Ob : Design & System Obsolescence En : Enforcement
----------------------------------------------------------------------------------------------	---------------------------------------------------------------------------------------------------------------------------------------------------------------------------	-------------------------------------------------------------------------------------------------------------

**Flood Control Project Maintenance  
Levee Inspections**

**Maintenance Issue Types Only, Levee Inspection Report By Mile - Fall 2016**

**Reclamation District No. 0785 Driver**

Waterway	Bank	Unit Miles	Inspection Start/End	Inspector
Unit No. 01 Sacramento River	Right	2.26	10/24/2016 10/24/2016	Oleg Yakimov

LM Start	0.45	Rating **	A/W	Issue No.	50
LM End	0.46	Issue Type +	Ma	Location *	WS
Category	Earthen Levee			GPS Latitude/Longitude	
				Start	End
Item	Vegetation			38.656502°	38.656440°
				-121.607623°	-121.607571°
DWR ID	DWR_RD0785_01_f_2016_50				
Comment Code					
V4 : Elderberries are blocking visibility and flood fight capability.					
Inspector Comment					

No Photos

LM Start	0.58	Rating **	M	Issue No.	21
LM End	0.58	Issue Type +	Ma	Location *	CR
Category	Earthen Levee			GPS Latitude/Longitude	
				Start	End
Item	Crown Surface / Depressions / Rutting			38.655077 °	38.655077 °
				-121.606237 °	-121.606237 °
DWR ID	DWR_RD0785_01_s_2016_21				
Comment Code					
C2 : Repair depressions or ruts in the crown or slope.					
Inspector Comment					

Photo 1 of 1 : FA\_2016\_RD0785\_185\_21\_20160913\_00010.jpg



View of the ruts on the crown of the levee. The direction of the river is upstream which is to the left of the picture. Spring 2016.

<b>* Location</b> LS : Land Side    N/A : Not Applicable WS : Water Side CR : Crown	<b>** Rating</b> A : Acceptable M : Minimally Acceptable U : Unacceptable N : Not Inspected/Rated C : Corrected A/W : Acceptable but Monitor & Maintain	<b>+ Issue Type</b> Ma : Maintenance Deficiency Ob : Design & System Obsolescence En : Enforcement
----------------------------------------------------------------------------------------------	---------------------------------------------------------------------------------------------------------------------------------------------------------------------------	-------------------------------------------------------------------------------------------------------------

**Flood Control Project Maintenance  
Levee Inspections**

## Maintenance Issue Types Only, Levee Inspection Report By Mile - Fall 2016

### Reclamation District No. 0785 Driver

Waterway	Bank	Unit Miles	Inspection Start/End	Inspector
Unit No. 01 Sacramento River	Right	2.26	10/24/2016 10/24/2016	Oleg Yakimov

LM Start	0.66	Rating **	M	Issue No.	51
LM End	0.66	Issue Type +	Ma	Location *	WS
Category	Earthen Levee			GPS Latitude/Longitude	
				Start	End
Item	Vegetation			38.654378 °	38.654378 °
				-121.605272 °	-121.605272 °
DWR ID	DWR_RD0785_01_f_2016_51				
Comment Code					
V2 : Remove the wild growth other than native grasses from the levee slopes.					
Inspector Comment					

Photo 1 of 1 : FA\_2016\_RD0785\_185\_51\_20161024\_00046.jpg



View of vegetation site on WS slope. Fall 2016.

LM Start	0.70	Rating **	M	Issue No.	45
LM End	0.73	Issue Type +	Ma	Location *	WS
Category	Earthen Levee			GPS Latitude/Longitude	
				Start	End
Item	Trim / Thin Trees			38.653882 °	38.653357 °
				-121.605007 °	-121.605043 °
DWR ID	DWR_RD0785_01_f_2016_45				
Comment Code					
T3 : Trim and thin trees to allow visibility of the ground and room to flood fight.					
Inspector Comment					

Photo 1 of 1 : FA\_2016\_RD0785\_185\_45\_20161024\_00049.jpg



View of a site where tree trimming is needed. Fall 2016.

<b>* Location</b> LS : Land Side    N/A : Not Applicable WS : Water Side CR : Crown	<b>** Rating</b> A : Acceptable M : Minimally Acceptable U : Unacceptable	N : Not Inspected/Rated C : Corrected A/W : Acceptable but Monitor & Maintain	<b>+ Issue Type</b> Ma : Maintenance Deficiency Ob : Design & System Obsolescence En : Enforcement
----------------------------------------------------------------------------------------------	------------------------------------------------------------------------------------	-------------------------------------------------------------------------------------	-------------------------------------------------------------------------------------------------------------



**Flood Control Project Maintenance  
Levee Inspections**

## Maintenance Issue Types Only, Levee Inspection Report By Mile - Fall 2016

### Reclamation District No. 0785 Driver

Waterway	Bank	Unit Miles	Inspection Start/End	Inspector
Unit No. 01 Sacramento River	Right	2.26	10/24/2016 10/24/2016	Oleg Yakimov

LM Start	0.76	Rating **	N	Issue No.	181
LM End	0.76	Issue Type +	Ma	Location *	LS
Category	Earthen Levee			GPS Latitude/Longitude	
				Start	End
Item	Trim / Thin Trees			38.653003°	38.653003°
				-121.605061°	-121.605061°
DWR ID	DWR_RD0785_01_s_2014_181				
Comment Code					
T5 : Tree stumps.					
Inspector Comment					

Photo 1 of 1 : FA\_2016\_RD0785\_185\_181\_20160913\_00017.jpg



View of the tree stumps on the landward side of the levee looking upstream. Spring 2016.

LM Start	0.85	Rating **	A/W	Issue No.	5
LM End	0.94	Issue Type +	Ma	Location *	LS
Category	Earthen Levee			GPS Latitude/Longitude	
				Start	End
Item	Vegetation			38.651863°	38.650777°
				-121.604158°	-121.603182°
DWR ID	DWR_RD0785_01_s_2012_5				
Comment Code					
V4 : Elderberries are blocking visibility and flood fight capability.					
Inspector Comment					

No Photos

\* Location  
LS : Land Side    N/A : Not Applicable  
WS : Water Side  
CR : Crown

\*\* Rating  
A : Acceptable                      N : Not Inspected/Rated  
M : Minimally Acceptable        C : Corrected  
U : Unacceptable                  A/W : Acceptable but Monitor & Maintain

+ Issue Type  
Ma : Maintenance Deficiency  
Ob : Design & System Obsolescence  
En : Enforcement

## Reclamation District No. 0785 Driver

The fallen tree and brush on the waterside of the roadway needs to be removed. Photo taken spring 2012.


Two decomposing tree stumps near levee toe on landside. Fall 2016.

Page 10 of 23

## Maintenance Issue Types Only, Levee Inspection Report By Mile - Fall 2016


Waterway	Bank	Unit Miles	Inspection Start/End	Inspector
Unit No. 01 Sacramento River	Right	2.26	10/24/2016 10/24/2016	Oleg Yakimov

Photo 1 of 2 : FA\_2016\_RD0785\_185\_29\_20161024\_00037.jpg



View of rodent holes on LS slope. Fall 2016.

Photo 2 of 2 : FA\_2016\_RD0785\_185\_29\_20161024\_00038.jpg



Another view of rodent holes. Fall 2016.

Photo 1 of 1 : FA\_2016\_RD0785\_185\_30\_20161024\_00036.jpg



View of a decomposing stump near levee toe on landside. Fall 2016.

* Location	** Rating	+ Issue Type
LS : Land Side    N/A : Not Applicable WS : Water Side CR : Crown	A : Acceptable                      N : Not Inspected/Rated M : Minimally Acceptable        C : Corrected U : Unacceptable                  A/W : Acceptable but Monitor & Maintain	Ma : Maintenance Deficiency Ob : Design & System Obsolescence En : Enforcement



**Flood Control Project Maintenance  
Levee Inspections**

## Maintenance Issue Types Only, Levee Inspection Report By Mile - Fall 2016

### Reclamation District No. 0785 Driver

Waterway	Bank	Unit Miles	Inspection Start/End	Inspector
Unit No. 01 Sacramento River	Right	2.26	10/24/2016 10/24/2016	Oleg Yakimov

LM Start	1.07	Rating **	M	Issue No.	48
LM End	1.07	Issue Type +	Ma	Location *	LS
Category	Earthen Levee			GPS Latitude/Longitude	
				Start	End
Item	Erosion / Bank Caving			38.649392°	38.649392°
				-121.601636°	-121.601636°
DWR ID	DWR_RD0785_01_s_2012_48				
Comment Code					
E2 : Schedule repair of erosion site prior to the next inspection.					
Inspector Comment					

Photo 1 of 3 : FA\_2016\_RD0785\_185\_48\_20160913\_00014.jpg



View of the erosion at the toe of the levee on the landward side of the levee looking downstream. Fall 2015.

LM Start	<b>1.07</b>	Rating **	M	Issue No.	<b>48 (cont)</b>
LM End	<b>1.07</b>	Issue Type +	Ma	Location *	LS

Photo 2 of 3 : FA\_2016\_RD0785\_185\_48\_20160913\_00015.jpg



Drain pipe is causing erosion on the landward side of the levee between the Isope and railroad tracks. Spring 2016.

* Location LS : Land Side    N/A : Not Applicable WS : Water Side CR : Crown		** Rating A : Acceptable                      N : Not Inspected/Rated M : Minimally Acceptable        C : Corrected U : Unacceptable                  A/W : Acceptable but Monitor & Maintain		+ Issue Type Ma : Maintenance Deficiency Ob : Design & System Obsolescence En : Enforcement	
---------------------------------------------------------------------------------------	--	--------------------------------------------------------------------------------------------------------------------------------------------------------------------------------------------------------	--	------------------------------------------------------------------------------------------------------	--



**Flood Control Project Maintenance  
Levee Inspections**

## Maintenance Issue Types Only, Levee Inspection Report By Mile - Fall 2016

### Reclamation District No. 0785 Driver

Waterway	Bank	Unit Miles	Inspection Start/End	Inspector
Unit No. 01 Sacramento River	Right	2.26	10/24/2016 10/24/2016	Oleg Yakimov

LM Start	1.07	Rating **	M	Issue No.	48 (cont)	
LM End	1.07	Issue Type +	Ma	Location *	LS	
Category	Earthen Levee			GPS Latitude/Longitude		
				Start		End
Item	Erosion / Bank Caving			38.649392°		38.649392°
				-121.601636°		-121.601636°
DWR ID	DWR_RD0785_01_s_2012_48					
Comment Code						
E2 : Schedule repair of erosion site prior to the next inspection.						
Inspector Comment						

Photo 3 of 3 : FA\_2016\_RD0785\_185\_48\_20160913\_00016.jpg



Perspective view of the erosion on the landward side of the levee looking downstream. Spring 2016.

LM Start	1.11	Rating **	U	Issue No.	31
LM End	1.11	Issue Type +	Ma	Location *	LS
Category	Earthen Levee			GPS Latitude/Longitude	
				Start	End
Item	Trim / Thin Trees			38.648813 °	38.648813 °
				-121.601380 °	-121.601380 °
DWR ID	DWR_RD0785_01_f_2016_31				
Comment Code					
T5 : Tree stumps.					
Inspector Comment					
Decomposing tree stump					

Photo 1 of 1 : FA\_2016\_RD0785\_185\_31\_20161024\_00050.jpg



Decomposing tree stump near levee toe on landside. Fall 2016.

**\* Location**

LS : Land Side    N/A : Not Applicable  
WS : Water Side  
CR : Crown

**\*\* Rating**

A : Acceptable                      N : Not Inspected/Rated  
M : Minimally Acceptable        C : Corrected  
U : Unacceptable                  A/W : Acceptable but Monitor & Maintain

**+ Issue Type**

Ma : Maintenance Deficiency  
Ob : Design & System Obsolescence  
En : Enforcement











**Flood Control Project Maintenance  
Levee Inspections**

## Maintenance Issue Types Only, Levee Inspection Report By Mile - Fall 2016

### Reclamation District No. 0785 Driver

Waterway	Bank	Unit Miles	Inspection Start/End	Inspector
Unit No. 01 Sacramento River	Right	2.26	10/24/2016 10/24/2016	Oleg Yakimov

LM Start	1.30	Rating **	A/W	Issue No.	6
LM End	1.30	Issue Type +	Ma	Location *	LS
Category	Earthen Levee			GPS Latitude/Longitude	
				Start	End
Item	Vegetation			38.646712 °	38.646712 °
				-121.599095 °	-121.599095 °
DWR ID	DWR_RD0785_01_s_2012_6				
Comment Code					
V4 : Elderberries are blocking visibility and flood fight capability.					
Inspector Comment					

Photo 1 of 1 : FA\_2016\_RD0785\_185\_6\_20161024\_00040.jpg



View of elderberry trees on LS slope. Fall 2016.

LM Start	1.31	Rating **	M	Issue No.	13
LM End	1.31	Issue Type +	Ma	Location *	WS
Category	Earthen Levee			GPS Latitude/Longitude	
				Start	End
Item	Slope Stability			38.646671 °	38.646671 °
				-121.598915 °	-121.598915 °
DWR ID	DWR_RD0785_01_s_2013_13				
Comment Code					
S2 : Repair the levee slope damaged by foot traffic and prevent access where possible.					
Inspector Comment					

Photo 1 of 3 : FA\_2016\_RD0785\_185\_13\_20161024\_00061.jpg



Updated view of the slope stability site. Fall 2016.

LM Start	<b>1.31</b>	Rating **	M	Issue No.	<b>13 (cont)</b>
LM End	<b>1.31</b>	Issue Type +	Ma	Location *	WS

Photo 2 of 3 : FA\_2016\_RD0785\_185\_13\_20161024\_00060.jpg



Updated view of the slope stability site. Fall 2016.

* Location		** Rating		+ Issue Type	
LS : Land Side	N/A : Not Applicable	A : Acceptable	N : Not Inspected/Rated	Ma : Maintenance Deficiency	
WS : Water Side		M : Minimally Acceptable	C : Corrected	Ob : Design & System Obsolescence	
CR : Crown		U : Unacceptable	A/W : Acceptable but Monitor & Maintain	En : Enforcement	

**Flood Control Project Maintenance  
Levee Inspections**

## Maintenance Issue Types Only, Levee Inspection Report By Mile - Fall 2016

### Reclamation District No. 0785 Driver

Waterway	Bank	Unit Miles	Inspection Start/End	Inspector
Unit No. 01 Sacramento River	Right	2.26	10/24/2016 10/24/2016	Oleg Yakimov

LM Start	1.31	Rating **	M	Issue No.	13 (cont)
LM End	1.31	Issue Type +	Ma	Location *	WS
Category	Earthen Levee			GPS Latitude/Longitude	
				Start	End
Item	Slope Stability			38.646671 °	38.646671 °
				-121.598915 °	-121.598915 °
DWR ID	DWR_RD0785_01_s_2013_13				
Comment Code					
S2 : Repair the levee slope damaged by foot traffic and prevent access where possible.					
Inspector Comment					

Photo 3 of 3 : FA\_2016\_RD0785\_185\_13\_20160913\_00005.jpg



View of the slope stability on the waterward side of the levee. Fall 2015.

LM Start	1.34	Rating **	M	Issue No.	25
LM End	1.34	Issue Type +	Ma	Location *	WS
Category	Earthen Levee			GPS Latitude/Longitude	
				Start	End
Item	Slope Stability			38.646240 °	38.646240 °
				-121.598505 °	-121.598505 °
DWR ID	DWR_RD0785_01_s_2016_25				
Comment Code					
S2 : Repair the levee slope damaged by foot traffic and prevent access where possible.					
Inspector Comment					

Photo 1 of 4 : FA\_2016\_RD0785\_185\_25\_20161024\_00041.jpg



An updated view of the slope stability caused by foot traffic on the waterward side of the levee. Fall 2016.

**\* Location**

LS : Land Side    N/A : Not Applicable  
WS : Water Side  
CR : Crown

**\*\* Rating**

A : Acceptable                      N : Not Inspected/Rated  
M : Minimally Acceptable        C : Corrected  
U : Unacceptable                  A/W : Acceptable but Monitor & Maintain

**+ Issue Type**

Ma : Maintenance Deficiency  
Ob : Design & System Obsolescence  
En : Enforcement

**Flood Control Project Maintenance  
Levee Inspections**

## Maintenance Issue Types Only, Levee Inspection Report By Mile - Fall 2016

### Reclamation District No. 0785 Driver

Waterway	Bank	Unit Miles	Inspection Start/End	Inspector
Unit No. 01 Sacramento River	Right	2.26	10/24/2016 10/24/2016	Oleg Yakimov

LM Start	1.34	Rating **	M	Issue No.	25 (cont)	
LM End	1.34	Issue Type +	Ma	Location *	WS	
Category	Earthen Levee			GPS Latitude/Longitude		
				Start		End
Item	Slope Stability			38.646240 °		38.646240 °
				-121.598505 °		-121.598505 °
DWR ID	DWR_RD0785_01_s_2016_25					
Comment Code						
S2 : Repair the levee slope damaged by foot traffic and prevent access where possible.						
Inspector Comment						

Photo 2 of 4 : FA\_2016\_RD0785\_185\_25\_20161024\_00043.jpg



An updated view of the slope stability caused by foot traffic on the waterward side of the levee. Fall 2016.

LM Start	<b>1.34</b>	Rating **	M	Issue No.	<b>25 (cont)</b>
LM End	<b>1.34</b>	Issue Type +	Ma	Location *	WS

Photo 3 of 4 : FA\_2016\_RD0785\_185\_25\_20160913\_00011.jpg



View of the slope stability caused by foot traffic on the waterward side of the levee. Spring 2016.

LM Start	<b>1.34</b>	Rating **	M	Issue No.	<b>25 (cont)</b>
LM End	<b>1.34</b>	Issue Type +	Ma	Location *	WS

Photo 4 of 4 : FA\_2016\_RD0785\_185\_25\_20160913\_00012.jpg



Perspective view of the slope stability looking upstream. Spring 2016.

<b>* Location</b> LS : Land Side    N/A : Not Applicable WS : Water Side CR : Crown		<b>** Rating</b> A : Acceptable M : Minimally Acceptable U : Unacceptable N : Not Inspected/Rated C : Corrected A/W : Acceptable but Monitor & Maintain		<b>+ Issue Type</b> Ma : Maintenance Deficiency Ob : Design & System Obsolescence En : Enforcement	
----------------------------------------------------------------------------------------------	--	---------------------------------------------------------------------------------------------------------------------------------------------------------------------------	--	-------------------------------------------------------------------------------------------------------------	--



**Flood Control Project Maintenance  
Levee Inspections**

## Maintenance Issue Types Only, Levee Inspection Report By Mile - Fall 2016

### Reclamation District No. 0785 Driver

Waterway	Bank	Unit Miles	Inspection Start/End	Inspector
Unit No. 01 Sacramento River	Right	2.26	10/24/2016 10/24/2016	Oleg Yakimov

LM Start	1.61	Rating **	M	Issue No.	22
LM End	1.62	Issue Type +	Ma	Location *	LS
Category	Earthen Levee			GPS Latitude/Longitude	
				Start	End
Item	Trim / Thin Trees			38.643359 °	38.643229 °
				-121.595237 °	-121.595011 °
DWR ID	DWR_RD0785_01_s_2016_22				
Comment Code					
T1 : Trim trees to at least five feet above ground level.					
Inspector Comment					

Photo 1 of 1 : FA\_2016\_RD0785\_185\_22\_20161024\_00044.jpg



Fall 2016.

LM Start	1.68	Rating **	C	Issue No.	24
LM End	1.68	Issue Type +	Ma	Location *	WS
Category	Earthen Levee			GPS Latitude/Longitude	
				Start	End
Item	Trim / Thin Trees			38.642751 °	38.642751 °
				-121.594232 °	-121.594232 °
DWR ID	DWR_RD0785_01_s_2016_24				
Comment Code					
T1 : Trim trees to at least five feet above ground level.					
Inspector Comment					

No Photos

<b>* Location</b> LS : Land Side    N/A : Not Applicable WS : Water Side CR : Crown	<b>** Rating</b> A : Acceptable M : Minimally Acceptable U : Unacceptable	N : Not Inspected/Rated C : Corrected A/W : Acceptable but Monitor & Maintain	<b>+ Issue Type</b> Ma : Maintenance Deficiency Ob : Design & System Obsolescence En : Enforcement
----------------------------------------------------------------------------------------------	------------------------------------------------------------------------------------	-------------------------------------------------------------------------------------	-------------------------------------------------------------------------------------------------------------



## Reclamation District No. 0785 Driver

No Photos

No Photos

Rodent holes on LS slope. Fall 2016.

Page 21 of 23

**Flood Control Project Maintenance  
Levee Inspections**

## Maintenance Issue Types Only, Levee Inspection Report By Mile - Fall 2016

### Reclamation District No. 0785 Driver

Waterway	Bank	Unit Miles	Inspection Start/End	Inspector
Unit No. 01 Sacramento River	Right	2.26	10/24/2016 10/24/2016	Oleg Yakimov

LM Start	1.79	Rating **	M	Issue No.	39
LM End	1.79	Issue Type +	Ma	Location *	LS
Category	Earthen Levee			GPS Latitude/Longitude	
				Start	End
Item	Vegetation			38.641910 °	38.641910 °
				-121.592389 °	-121.592389 °
DWR ID	DWR_RD0785_01_f_2016_39				
Comment Code					
V2 : Remove the wild growth other than native grasses from the levee slopes.					
Inspector Comment					

Photo 1 of 1 : FA\_2016\_RD0785\_185\_39\_20161024\_00062.jpg



View of vegetation of LS slope. Fall 2016.

LM Start	1.87	Rating **	M	Issue No.	42
LM End	1.92	Issue Type +	Ma	Location *	WS
Category	Earthen Levee			GPS Latitude/Longitude	
				Start	End
Item	Vegetation			38.641757°	38.641680°
				-121.591045°	-121.589997°
DWR ID	DWR_RD0785_01_f_2016_42				
Comment Code					
V2 : Remove the wild growth other than native grasses from the levee slopes.					
Inspector Comment					

No Photos

\* Location  
LS : Land Side    N/A : Not Applicable  
WS : Water Side  
CR : Crown

\*\* Rating  
A : Acceptable                      N : Not Inspected/Rated  
M : Minimally Acceptable        C : Corrected  
U : Unacceptable                  A/W : Acceptable but Monitor & Maintain

+ Issue Type  
Ma : Maintenance Deficiency  
Ob : Design & System Obsolescence  
En : Enforcement

**Flood Control Project Maintenance  
Levee Inspections**

**Maintenance Issue Types Only, Levee Inspection Report By Mile - Fall 2016**

**Reclamation District No. 0785 Driver**

Waterway	Bank	Unit Miles	Inspection Start/End	Inspector
Unit No. 01 Sacramento River	Right	2.26	10/24/2016 10/24/2016	Oleg Yakimov

LM Start	2.01	Rating **	M	Issue No.	40
LM End	2.01	Issue Type +	Ma	Location *	LS
Category	Earthen Levee			GPS Latitude/Longitude	
				Start	End
Item	Animal Control			38.641610 °	38.641610 °
				-121.588428 °	-121.588428 °
DWR ID	DWR_RD0785_01_f_2016_40				
Comment Code					
A3 : No rodents visible, but rodent burrows visible; need to backfill and compact or grout burrows.					
Inspector Comment					

Photo 1 of 1 : FA\_2016\_RD0785\_185\_40\_20161024\_00064.jpg



Rodent burrows on LS slope of the levee. Fall 2016.

**\* Location**  
LS : Land Side    N/A : Not Applicable  
WS : Water Side  
CR : Crown

**\*\* Rating**  
A : Acceptable                      N : Not Inspected/Rated  
M : Minimally Acceptable        C : Corrected  
U : Unacceptable                  A/W : Acceptable but Monitor & Maintain

**+ Issue Type**  
Ma : Maintenance Deficiency  
Ob : Design & System Obsolescence  
En : Enforcement

**Flood Control Project Maintenance  
Levee Inspections**

## Maintenance Issue Types Only, Levee Inspection Report By Mile - Fall 2016

### Reclamation District No. 0785 Driver

Waterway	Bank	Unit Miles	Inspection Start/End	Inspector
Unit No. 02 Yolo Bypass	Left	3.31	10/24/2016 10/24/2016	Oleg Yakimov

LM Start	0.00	Rating **	U	Issue No.	5
LM End	0.64	Issue Type +	Ma	Location *	WS
Category	Earthen Levee			GPS Latitude/Longitude	
				Start	End
Item	Vegetation			38.641206°	38.632842°
				-121.620482°	-121.615392°
DWR ID	DWR_RD0785_02_f_2016_5				
Comment Code					
V2 : Remove the wild growth other than native grasses from the levee slopes.					
Inspector Comment					

Photo 1 of 1 : FA\_2016\_RD0785\_186\_5\_20161024\_00024.jpg



View of vegetation on WS slope. Unable to see through vegetation. Fall 2016.

LM Start	0.01	Rating **	M	Issue No.	8
LM End	0.01	Issue Type +	Ma	Location *	CR
Category	Earthen Levee			GPS Latitude/Longitude	
				Start	End
Item	Crown Surface / Depressions / Rutting			38.641105°	38.641105°
				-121.620402°	-121.620402°
DWR ID	DWR_RD0785_02_s_2016_8				
Comment Code					
C2 : Repair depressions or ruts in the crown or slope.					
Inspector Comment					

Photo 1 of 1 : FA\_2016\_RD0785\_186\_8\_20160913\_00002.jpg



View of the ruts on the crown of the levee looking downstream. Spring 2016.

<b>* Location</b> LS : Land Side    N/A : Not Applicable WS : Water Side CR : Crown	<b>** Rating</b> A : Acceptable M : Minimally Acceptable U : Unacceptable  N : Not Inspected/Rated C : Corrected A/W : Acceptable but Monitor & Maintain	<b>+ Issue Type</b> Ma : Maintenance Deficiency Ob : Design & System Obsolescence En : Enforcement
----------------------------------------------------------------------------------------------	-------------------------------------------------------------------------------------------------------------------------------------------------------------------------------	-------------------------------------------------------------------------------------------------------------



**Flood Control Project Maintenance  
Levee Inspections**

## Maintenance Issue Types Only, Levee Inspection Report By Mile - Fall 2016

### Reclamation District No. 0785 Driver

Waterway	Bank	Unit Miles	Inspection Start/End	Inspector
Unit No. 02 Yolo Bypass	Left	3.31	10/24/2016 10/24/2016	Oleg Yakimov

LM Start	0.05	Rating **	U	Issue No.	6
LM End	0.64	Issue Type +	Ma	Location *	LS
Category	Earthen Levee			GPS Latitude/Longitude	
				Start	End
Item	Vegetation			38.640649 °	38.632842 °
				-121.620039 °	-121.615392 °
DWR ID	DWR_RD0785_02_f _ 2016_6				
Comment Code					
V2 : Remove the wild growth other than native grasses from the levee slopes.					
Inspector Comment					

Photo 1 of 1 : FA\_2016\_RD0785\_186\_6\_20161027\_00038.jpg



View of dense vegetation on landside slope. Fall 2016.

LM Start	0.12	Rating **	M	Issue No.	25
LM End	0.12	Issue Type +	Ma	Location *	LS
Category	Earthen Levee			GPS Latitude/Longitude	
				Start	End
Item	Animal Control			38.639670 °	38.639670 °
				-121.619460 °	-121.619460 °
DWR ID	DWR_RD0785_02_s_2012_25				
Comment Code					
A3 : No rodents visible, but rodent burrows visible; need to backfill and compact or grout burrows.					
Inspector Comment					
Unable to see slope.					

Photo 1 of 1 : FA\_2016\_RD0785\_186\_25\_20160913\_00007.jpg



Rodent holes on the landside levee slope, photo taken spring 2012.

LM Start	0.26	Rating **	M	Issue No.	26
LM End	0.26	Issue Type +	Ma	Location *	LS
Category	Earthen Levee			GPS Latitude/Longitude	
				Start	End
Item	Animal Control			38.637913 °	38.637913 °
				-121.618388 °	-121.618388 °
DWR ID	DWR_RD0785_02_s_2012_26				
Comment Code					
A3 : No rodents visible, but rodent burrows visible; need to backfill and compact or grout burrows.					
Inspector Comment					
Unable to see slope.					

No Photos

* Location LS : Land Side    N/A : Not Applicable WS : Water Side CR : Crown		** Rating A : Acceptable                      N : Not Inspected/Rated M : Minimally Acceptable        C : Corrected U : Unacceptable                  A/W : Acceptable but Monitor & Maintain		+ Issue Type Ma : Maintenance Deficiency Ob : Design & System Obsolescence En : Enforcement	
---------------------------------------------------------------------------------------	--	--------------------------------------------------------------------------------------------------------------------------------------------------------------------------------------------------------	--	------------------------------------------------------------------------------------------------------	--

**Flood Control Project Maintenance  
Levee Inspections**

**Maintenance Issue Types Only, Levee Inspection Report By Mile - Fall 2016**

**Reclamation District No. 0785 Driver**

Waterway	Bank	Unit Miles	Inspection Start/End	Inspector
Unit No. 02 Yolo Bypass	Left	3.31	10/24/2016 10/24/2016	Oleg Yakimov

LM Start	0.38	Rating **	M	Issue No.	280
LM End	0.38	Issue Type +	Ma	Location *	LS
Category	Earthen Levee			GPS Latitude/Longitude	
				Start	End
Item	Slope Stability			38.636265 °	38.636265 °
				-121.617422 °	-121.617422 °
DWR ID	DWR_RD0785_02_s_2015_280				
Comment Code					
S1 : Repair slope instability.					
Inspector Comment					
Seems to be a bulge at the toe of the levee. Dense vegetation.					

Photo 1 of 1 : FA\_2016\_RD0785\_186\_280\_20160913\_00021.jpg



View of the slope stability on the landward side of the levee looking upstream. Spring 2016.

LM Start	0.40	Rating **	M	Issue No.	27
LM End	0.40	Issue Type +	Ma	Location *	LS
Category	Earthen Levee			GPS Latitude/Longitude	
				Start	End
Item	Animal Control			38.636065 °	38.636065 °
				-121.617295 °	-121.617295 °
DWR ID	DWR_RD0785_02_s_2012_27				
Comment Code					
A3 : No rodents visible, but rodent burrows visible; need to backfill and compact or grout burrows.					
Inspector Comment					
Unable to see slope. Vegetation to tall to see.					

Photo 1 of 1 : FA\_2016\_RD0785\_186\_27\_20160913\_00008.jpg



Rodent holes on the landside levee slope, photo taken spring 2012.

\* Location  
LS : Land Side    N/A : Not Applicable  
WS : Water Side  
CR : Crown

\*\* Rating  
A : Acceptable                      N : Not Inspected/Rated  
M : Minimally Acceptable        C : Corrected  
U : Unacceptable                  A/W : Acceptable but Monitor & Maintain

+ Issue Type  
Ma : Maintenance Deficiency  
Ob : Design & System Obsolescence  
En : Enforcement

## Reclamation District No. 0785 Driver





**Flood Control Project Maintenance  
Levee Inspections**

## Maintenance Issue Types Only, Levee Inspection Report By Mile - Fall 2016

### Reclamation District No. 0785 Driver

Waterway	Bank	Unit Miles	Inspection Start/End	Inspector
Unit No. 02 Yolo Bypass	Left	3.31	10/24/2016 10/24/2016	Oleg Yakimov

LM Start	0.84	Rating **	M	Issue No.	11
LM End	0.90	Issue Type +	Ma	Location *	CR
Category	Earthen Levee			GPS Latitude/Longitude	
				Start	End
Item	Crown Surface / Depressions / Rutting			38.630203 °	38.629503 °
				-121.613761 °	-121.613317 °
DWR ID	DWR_RD0785_02_f_2016_11				
Comment Code					
C2 : Repair depressions or ruts in the crown or slope.					
Inspector Comment					

Photo 1 of 1 : FA\_2016\_RD0785\_186\_11\_20161024\_00026.jpg



Ruts on levee crown. Fall 2016.

LM Start	0.88	Rating **	C	Issue No.	143
LM End	0.88	Issue Type +	Ma	Location *	LS
Category	Earthen Levee			GPS Latitude/Longitude	
				Start	End
Item	Slope Stability			38.629693 °	38.629693 °
				-121.613436 °	-121.613436 °
DWR ID	DWR_RD0785_02_s_2014_143				
Comment Code					
S1 : Repair slope instability.					
Inspector Comment					

No Photos

<b>* Location</b> LS : Land Side    N/A : Not Applicable WS : Water Side CR : Crown	<b>** Rating</b> A : Acceptable M : Minimally Acceptable U : Unacceptable	N : Not Inspected/Rated C : Corrected A/W : Acceptable but Monitor & Maintain	<b>+ Issue Type</b> Ma : Maintenance Deficiency Ob : Design & System Obsolescence En : Enforcement
----------------------------------------------------------------------------------------------	------------------------------------------------------------------------------------	-------------------------------------------------------------------------------------	-------------------------------------------------------------------------------------------------------------

**Flood Control Project Maintenance  
Levee Inspections**

## Maintenance Issue Types Only, Levee Inspection Report By Mile - Fall 2016

### Reclamation District No. 0785 Driver

Waterway	Bank	Unit Miles	Inspection Start/End	Inspector
Unit No. 02 Yolo Bypass	Left	3.31	10/24/2016 10/24/2016	Oleg Yakimov

LM Start	0.90	Rating **	M	Issue No.	42
LM End	0.90	Issue Type +	Ma	Location *	LS
Category	Earthen Levee			GPS Latitude/Longitude	
				Start	End
Item	Animal Control			38.629485°	38.629485°
				-121.613287°	-121.613287°
DWR ID	DWR_RD0785_02_s_2014_42				
Comment Code					
A3 : No rodents visible, but rodent burrows visible; need to backfill and compact or grout burrows.					
Inspector Comment					

Photo 1 of 2 : FA\_2016\_RD0785\_186\_42\_20161024\_00027.jpg



View of rodent holes on LS slope. Holes are partially filled with soil and dry weeds/ grass. No evidence of rodent activity. Fall 2016.

LM Start	<b>0.90</b>	Rating **	M	Issue No.	<b>42 (cont)</b>
LM End	<b>0.90</b>	Issue Type +	Ma	Location *	LS

Photo 2 of 2 : FA\_2016\_RD0785\_186\_42\_20160913\_00017.jpg



Large rodent hole close to the toe of the levee. Spring 2014

LM Start	0.96	Rating **	M	Issue No.	12
LM End	1.01	Issue Type +	Ma	Location *	CR
Category	Earthen Levee			GPS Latitude/Longitude	
				Start	End
Item	Crown Surface / Depressions / Rutting			38.628676 °	38.628020 °
				-121.612801 °	-121.612360 °
DWR ID	DWR_RD0785_02_f_2016_12				
Comment Code					
C2 : Repair depressions or ruts in the crown or slope.					
Inspector Comment					

No Photos

* Location LS : Land Side    N/A : Not Applicable WS : Water Side CR : Crown		** Rating A : Acceptable                      N : Not Inspected/Rated M : Minimally Acceptable        C : Corrected U : Unacceptable                  A/W : Acceptable but Monitor & Maintain		+ Issue Type Ma : Maintenance Deficiency Ob : Design & System Obsolescence En : Enforcement	
---------------------------------------------------------------------------------------	--	--------------------------------------------------------------------------------------------------------------------------------------------------------------------------------------------------------	--	------------------------------------------------------------------------------------------------------	--



**Flood Control Project Maintenance  
Levee Inspections**

## Maintenance Issue Types Only, Levee Inspection Report By Mile - Fall 2016

### Reclamation District No. 0785 Driver

Waterway	Bank	Unit Miles	Inspection Start/End	Inspector
Unit No. 02 Yolo Bypass	Left	3.31	10/24/2016 10/24/2016	Oleg Yakimov

LM Start	1.05	Rating **	A/W	Issue No.	13
LM End	1.05	Issue Type +	Ma	Location *	WS
Category	Earthen Levee			GPS Latitude/Longitude	
				Start	End
Item	Vegetation			38.627546°	38.627546°
				-121.611998°	-121.611998°
DWR ID	DWR_RD0785_02_f_2016_13				
Comment Code					
V7 : Trees / Woody Vegetation					
Inspector Comment					
Dry, decomposing tree.					

Photo 1 of 1 : FA\_2016\_RD0785\_186\_13\_20161024\_00028.jpg



View of dry tree on waterward slope. Fall 2016.

LM Start	1.08	Rating **	M	Issue No.	14
LM End	1.12	Issue Type +	Ma	Location *	CR
Category	Earthen Levee			GPS Latitude/Longitude	
				Start	End
Item	Crown Surface / Depressions / Rutting			38.627165 °	38.626711 °
				-121.611698 °	-121.611349 °
DWR ID	DWR_RD0785_02_f_2016_14				
Comment Code					
C2 : Repair depressions or ruts in the crown or slope.					
Inspector Comment					

Photo 1 of 1 : FA\_2016\_RD0785\_186\_14\_20161025\_00029.jpg



Ruts on the crown. Fall 2016.

<b>* Location</b> LS : Land Side    N/A : Not Applicable WS : Water Side CR : Crown	<b>** Rating</b> A : Acceptable M : Minimally Acceptable U : Unacceptable	N : Not Inspected/Rated C : Corrected A/W : Acceptable but Monitor & Maintain	<b>+ Issue Type</b> Ma : Maintenance Deficiency Ob : Design & System Obsolescence En : Enforcement
----------------------------------------------------------------------------------------------	------------------------------------------------------------------------------------	-------------------------------------------------------------------------------------	-------------------------------------------------------------------------------------------------------------

**Flood Control Project Maintenance  
Levee Inspections**

## Maintenance Issue Types Only, Levee Inspection Report By Mile - Fall 2016

### Reclamation District No. 0785 Driver

Waterway	Bank	Unit Miles	Inspection Start/End	Inspector
Unit No. 02 Yolo Bypass	Left	3.31	10/24/2016 10/24/2016	Oleg Yakimov

LM Start	1.12	Rating **	M	Issue No.	10
LM End	1.12	Issue Type +	Ma	Location *	WS
Category	Earthen Levee			GPS Latitude/Longitude	
				Start	End
Item	Encroachments			38.626626 °	38.626626 °
				-121.611295 °	-121.611295 °
DWR ID	DWR_RD0785_02_s_2016_10				
Comment Code					
TR : Tree or limb					
Inspector Comment					

Photo 1 of 2 : FA\_2016\_RD0785\_186\_10\_20160913\_00005.jpg



Discarded tree is on the waterward slope of the levee. Spring 2016.

LM Start	<b>1.12</b>	Rating **	M	Issue No.	<b>10 (cont)</b>
LM End	<b>1.12</b>	Issue Type +	Ma	Location *	WS

Photo 2 of 2 : FA\_2016\_RD0785\_186\_10\_20160913\_00006.jpg



Perspective view of the discarded tree looking upstream. Spring 2016.

LM Start	1.32	Rating **	M	Issue No.	15
LM End	1.38	Issue Type +	Ma	Location *	CR
Category	Earthen Levee			GPS Latitude/Longitude	
				Start	End
Item	Crown Surface / Depressions / Rutting			38.624171 °	38.623416 °
				-121.609395 °	-121.608832 °
DWR ID	DWR_RD0785_02_f_2016_15				
Comment Code					
C2 : Repair depressions or ruts in the crown or slope.					
Inspector Comment					

No Photos

\* Location  
LS : Land Side    N/A : Not Applicable  
WS : Water Side  
CR : Crown

\*\* Rating  
A : Acceptable                      N : Not Inspected/Rated  
M : Minimally Acceptable        C : Corrected  
U : Unacceptable                  A/W : Acceptable but Monitor & Maintain

+ Issue Type  
Ma : Maintenance Deficiency  
Ob : Design & System Obsolescence  
En : Enforcement

## Reclamation District No. 0785 Driver

Waterway	Bank	Unit Miles	Inspection Start/End	Inspector
Unit No. 02 Yolo Bypass	Left	3.31	10/24/2016 10/24/2016	Oleg Yakimov

LM Start	1.52	Rating **	M	Issue No.	16
LM End	1.64	Issue Type +	Ma	Location *	LS
Category	Earthen Levee			GPS Latitude/Longitude	
				Start	End
Item	Vegetation			38.621620 °	38.620099 °
				-121.607526 °	-121.606430 °
DWR ID	DWR_RD0785_02_f _ 2016_16				
Comment Code					
V2 : Remove the wild growth other than native grasses from the levee slopes.					
Inspector Comment					

No Photos

LM Start	2.04	Rating **	M	Issue No.	17
LM End	2.04	Issue Type +	Ma	Location *	WS
Category	Earthen Levee			GPS Latitude/Longitude	
				Start	End
Item	Erosion / Bank Caving			38.615215 °	38.615215 °
				-121.602596 °	-121.602596 °
DWR ID	DWR_RD0785_02_f_2016_17				
Comment Code					
E1 : Note and monitor erosion site.					
Inspector Comment					

Photo 1 of 1 : FA\_2016\_RD0785\_186\_17\_20161025\_00030.jpg



View of erosion site on waterward side of the levee. Fall 2016.

LM Start	2.21	Rating **	M	Issue No.	30
LM End	2.21	Issue Type +	Ma	Location *	LS
Category	Earthen Levee			GPS Latitude/Longitude	
				Start	End
Item	Slope Stability			38.613104 °	38.613104 °
				-121.600915 °	-121.600915 °
DWR ID	DWR_RD0785_02_s_2012_30				
Comment Code					
S1 : Repair slope instability.					
Inspector Comment					
Spring 2016: cannot tell if issue has been fixed due to vegetations.					

Photo 1 of 5 : FA\_2016\_RD0785\_186\_30\_20161025\_00031.jpg



Updated view of the slope stability site Fall 2016.

* Location	** Rating	+ Issue Type
LS : Land Side    N/A : Not Applicable WS : Water Side CR : Crown	A : Acceptable                      N : Not Inspected/Rated M : Minimally Acceptable        C : Corrected U : Unacceptable                  A/W : Acceptable but Monitor & Maintain	Ma : Maintenance Deficiency Ob : Design & System Obsolescence En : Enforcement



**Flood Control Project Maintenance  
Levee Inspections**

**Maintenance Issue Types Only, Levee Inspection Report By Mile - Fall 2016**

**Reclamation District No. 0785 Driver**

Waterway	Bank	Unit Miles	Inspection Start/End	Inspector
Unit No. 02 Yolo Bypass	Left	3.31	10/24/2016 10/24/2016	Oleg Yakimov

LM Start	2.21	Rating **	M	Issue No.	30 (cont)	
LM End	2.21	Issue Type +	Ma	Location *	LS	
Category	Earthen Levee			GPS Latitude/Longitude		
				Start		End
Item	Slope Stability			38.613104 °		38.613104 °
				-121.600915 °		-121.600915 °
DWR ID	DWR_RD0785_02_s_2012_30					
Comment Code						
S1 : Repair slope instability.						
Inspector Comment						
Spring 2016: cannot tell if issue has been fixed due to vegetations.						

Photo 2 of 5 : FA\_2016\_RD0785\_186\_30\_20160913\_00013.jpg



There is slope instability with three step like spots. The cuts are 1' to 1.5' deep. Photo taken spring 2012.

LM Start	<b>2.21</b>	Rating **	M	Issue No.	<b>30 (cont)</b>
LM End	<b>2.21</b>	Issue Type +	Ma	Location *	LS

Photo 3 of 5 : FA\_2016\_RD0785\_186\_30\_20160913\_00014.jpg



Slope instability. Photo fall 2012.

LM Start	<b>2.21</b>	Rating **	M	Issue No.	<b>30 (cont)</b>
LM End	<b>2.21</b>	Issue Type +	Ma	Location *	LS

Photo 4 of 5 : FA\_2016\_RD0785\_186\_30\_20160913\_00015.jpg




Slope instability is still there. Spring 2013

<b>* Location</b> LS : Land Side    N/A : Not Applicable WS : Water Side CR : Crown		<b>** Rating</b> A : Acceptable                      N : Not Inspected/Rated M : Minimally Acceptable        C : Corrected U : Unacceptable                  A/W : Acceptable but Monitor & Maintain		<b>+ Issue Type</b> Ma : Maintenance Deficiency Ob : Design & System Obsolescence En : Enforcement	
----------------------------------------------------------------------------------------------	--	---------------------------------------------------------------------------------------------------------------------------------------------------------------------------------------------------------------	--	-------------------------------------------------------------------------------------------------------------	--

## Maintenance Issue Types Only, Levee Inspection Report By Mile - Fall 2016

Waterway	Bank	Unit Miles	Inspection Start/End	Inspector
Unit No. 02 Yolo Bypass	Left	3.31	10/24/2016 10/24/2016	Oleg Yakimov

Photo 5 of 5 : FA\_2016\_RD0785\_186\_30\_20160913\_00016.jpg




Current view of the slope instability. Spring 2014

Photo 1 of 1 : FA\_2016\_RD0785\_186\_18\_20161025\_00032.jpg



Ruts on levee crown. Fall 2016.

Photo 1 of 3 : FA\_2016\_RD0785\_186\_56\_20161025\_00034.jpg



Updated view of a tree on waterward side of the levee. Fall 2016.

Thursday, December 08, 2016 15:27 **FINAL DATA** Page 12 of 14



**Flood Control Project Maintenance  
Levee Inspections**

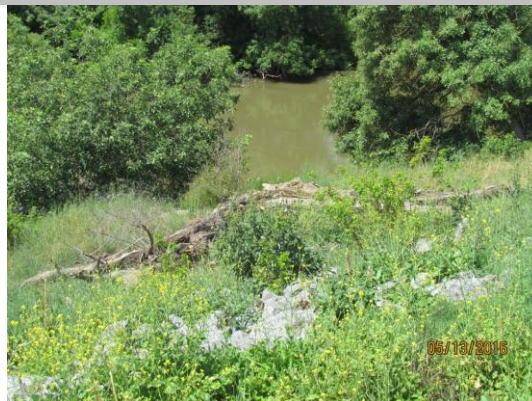
## Maintenance Issue Types Only, Levee Inspection Report By Mile - Fall 2016

### Reclamation District No. 0785 Driver

Waterway	Bank	Unit Miles	Inspection Start/End	Inspector
Unit No. 02 Yolo Bypass	Left	3.31	10/24/2016 10/24/2016	Oleg Yakimov

LM Start	3.01	Rating **	M	Issue No.	56 (cont)	
LM End	3.01	Issue Type +	Ma	Location *	WS	
Category	Earthen Levee			GPS Latitude/Longitude		
				Start		End
Item	Encroachments			38.603222 °		38.603222 °
				-121.593231 °		-121.593231 °
DWR ID	DWR_RD0785_02_s_2014_56					
Comment Code						
TR : Tree or limb						
Inspector Comment						

Photo 2 of 3 : FA\_2016\_RD0785\_186\_56\_20160913\_00018.jpg



Discarded tree is on the slope of the waterward side of the levee. Spring 2016.

LM Start	<b>3.01</b>	Rating **	M	Issue No.	<b>56 (cont)</b>
LM End	<b>3.01</b>	Issue Type +	Ma	Location *	WS

Photo 3 of 3 : FA\_2016\_RD0785\_186\_56\_20160913\_00019.jpg



Perspective view of the tree looking upstream. Spring 2016.

LM Start	3.08	Rating **	M	Issue No.	20
LM End	3.27	Issue Type +	Ma	Location *	LS
Category	Earthen Levee			GPS Latitude/Longitude	
				Start	End
Item	Vegetation			38.602317°	38.600010°
				-121.592521°	-121.590754°
DWR ID	DWR_RD0785_02_f_2016_20				
Comment Code					
V2 : Remove the wild growth other than native grasses from the levee slopes.					
Inspector Comment					

No Photos

<b>* Location</b> LS : Land Side    N/A : Not Applicable WS : Water Side CR : Crown		<b>** Rating</b> A : Acceptable                      N : Not Inspected/Rated M : Minimally Acceptable        C : Corrected U : Unacceptable                  A/W : Acceptable but Monitor & Maintain		<b>+ Issue Type</b> Ma : Maintenance Deficiency Ob : Design & System Obsolescence En : Enforcement	
----------------------------------------------------------------------------------------------	--	---------------------------------------------------------------------------------------------------------------------------------------------------------------------------------------------------------------	--	-------------------------------------------------------------------------------------------------------------	--



**Flood Control Project Maintenance  
Levee Inspections**

## Maintenance Issue Types Only, Levee Inspection Report By Mile - Fall 2016

### Reclamation District No. 0785 Driver

Waterway	Bank	Unit Miles	Inspection Start/End	Inspector
Unit No. 02 Yolo Bypass	Left	3.31	10/24/2016 10/24/2016	Oleg Yakimov

<b>* Location</b> LS : Land Side    N/A : Not Applicable WS : Water Side CR : Crown	<b>** Rating</b> A : Acceptable                      N : Not Inspected/Rated M : Minimally Acceptable        C : Corrected U : Unacceptable                  A/W : Acceptable but Monitor & Maintain	<b>+ Issue Type</b> Ma : Maintenance Deficiency Ob : Design & System Obsolescence En : Enforcement
----------------------------------------------------------------------------------------------	---------------------------------------------------------------------------------------------------------------------------------------------------------------------------------------------------------------	-------------------------------------------------------------------------------------------------------------