

**Flood Control Project Maintenance  
Levee Inspections**

**Maintenance Issue Types Only, Levee Inspection Report By Mile - Spring 2022**

**Reclamation District No. 0784 Plumas Lake**

Waterway	Bank	Unit Miles	Inspection Start/End	Inspector
Unit No. 01 Yuba River	Left	2.21	04/27/2022 04/27/2022	Brooks Weisser

LM Start	<b>0.00</b>	Rating **	A	Issue No.	<b>4</b>
LM End	<b>0.00</b>	Issue Type +	Ma	Location *	N/A
Category	Earthen Levee			GPS Latitude/Longitude	
				Start	End
Item	Operations & Maintenance Manuals			°	°
DWR ID	DWR_RD0784_01_s_2013_4				
Comment Code					
Inspector Comment					
O&M manuals are located at the district office.					

No Photos

LM Start	<b>0.00</b>	Rating **	A	Issue No.	<b>5</b>
LM End	<b>0.00</b>	Issue Type +	Ma	Location *	N/A
Category	Earthen Levee			GPS Latitude/Longitude	
				Start	End
Item	Emergency Supplies & Equipment			°	°
DWR ID	DWR_RD0784_01_s_2013_5				
Comment Code					
Inspector Comment					
RD 784 participates with the neighboring districts to strategically place flood fight supplies around the local districts for fast response. They also have a shipping container at their district office, and three containers at another district full of flood fight supplies.					

No Photos

LM Start	<b>0.00</b>	Rating **	A	Issue No.	<b>6</b>
LM End	<b>0.00</b>	Issue Type +	Ma	Location *	N/A
Category	Earthen Levee			GPS Latitude/Longitude	
				Start	End
Item	Flood Preparedness & Training			°	°
DWR ID	DWR_RD0784_01_s_2013_6				
Comment Code					
Inspector Comment					
RD 784 and its employees host and participate in a Flood Fight class put on by DWR every fall in their district.					

No Photos

<b>* Location</b> LS : Land Side    N/A : Not Applicable WS : Water Side CR : Crown	<b>** Rating</b> A : Acceptable M : Minimally Acceptable U : Unacceptable	N : Not Inspected/Rated C : Corrected A/W : Acceptable but Monitor & Maintain	<b>+ Issue Type</b> Ma : Maintenance Deficiency Ob : Design & System Obsolescence En : Enforcement
--	--	---	---

**Flood Control Project Maintenance  
Levee Inspections**

**Maintenance Issue Types Only, Levee Inspection Report By Mile - Spring 2022**

**Reclamation District No. 0784 Plumas Lake**

Waterway	Bank	Unit Miles	Inspection Start/End	Inspector
Unit No. 01 Yuba River	Left	2.21	04/27/2022 04/27/2022	Brooks Weisser

LM Start	0.04	Rating **	M	Issue No.	24
LM End	2.20	Issue Type +	Ma	Location *	WS
Category	Earthen Levee			GPS Latitude/Longitude	
				Start	End
Item	Vegetation			39.134436 °	39.125944 °
				-121.552701 °	-121.588611 °
DWR ID	DWR_RD0784_01_s_2022_24				
Comment Code					
V1 : Control annual grass and weeds on the levee slopes and easements.					
Inspector Comment					
Annual vegetation on the waterside slope needs to be maintained, Spring 2022.					

Photo 1 of 1 : SP\_2022\_RD0784\_178\_24\_20220503\_00029.jpg



View of vegetation on the waterside slope, Spring 2022.

LM Start	0.04	Rating **	M	Issue No.	23
LM End	2.20	Issue Type +	Ma	Location *	LS
Category	Earthen Levee			GPS Latitude/Longitude	
				Start	End
Item	Vegetation			39.134432 °	39.125943 °
				-121.552698 °	-121.588611 °
DWR ID	DWR_RD0784_01_s_2022_23				
Comment Code					
V1 : Control annual grass and weeds on the levee slopes and easements.					
Inspector Comment					

Photo 1 of 1 : SP\_2022\_RD0784\_178\_23\_20220503\_00030.jpg



View of annual vegetation on the landside slope, Spring 2022.

**\* Location**  
LS : Land Side    N/A : Not Applicable  
WS : Water Side  
CR : Crown

**\*\* Rating**  
A : Acceptable                      N : Not Inspected/Rated  
M : Minimally Acceptable        C : Corrected  
U : Unacceptable                  A/W : Acceptable but Monitor & Maintain

**+ Issue Type**  
Ma : Maintenance Deficiency  
Ob : Design & System Obsolescence  
En : Enforcement

**Flood Control Project Maintenance  
Levee Inspections**

**Maintenance Issue Types Only, Levee Inspection Report By Mile - Spring 2022**

**Reclamation District No. 0784 Plumas Lake**

Waterway	Bank	Unit Miles	Inspection Start/End	Inspector
Unit No. 02A Feather River	Left	2.54	04/27/2022 04/27/2022	Brooks Weisser

LM Start	0.10	Rating **	M	Issue No.	3
LM End	2.54	Issue Type +	Ma	Location *	WS
Category	Earthen Levee			GPS Latitude/Longitude	
				Start	End
Item	Vegetation			39.124367 °	39.090305 °
				-121.588320 °	-121.584733 °
DWR ID	DWR_RD0784_02A_s_2022_3				
Comment Code					
V1 : Control annual grass and weeds on the levee slopes and easements.					
Inspector Comment					
Annual vegetation on the waterside slope needs to be maintained, Spring 2022.					

Photo 1 of 1 : SP\_2022\_RD0784\_531\_3\_20220503\_00004.jpg



View of annual vegetation on the waterside slope, Spring 2022.

LM Start	0.10	Rating **	M	Issue No.	2
LM End	2.54	Issue Type +	Ma	Location *	LS
Category	Earthen Levee			GPS Latitude/Longitude	
				Start	End
Item	Vegetation			39.124362 °	39.090305 °
				-121.588318 °	-121.584736 °
DWR ID	DWR_RD0784_02A_s_2022_2				
Comment Code					
V1 : Control annual grass and weeds on the levee slopes and easements.					
Inspector Comment					
Annual vegetation on the landside slope needs to be maintained, Spring 2022.					

Photo 1 of 1 : SP\_2022\_RD0784\_531\_2\_20220503\_00005.jpg



View of annual vegetation on the landside slope, Spring 2022.

\* Location  
LS : Land Side    N/A : Not Applicable  
WS : Water Side  
CR : Crown

\*\* Rating  
A : Acceptable                      N : Not Inspected/Rated  
M : Minimally Acceptable        C : Corrected  
U : Unacceptable                  A/W : Acceptable but Monitor & Maintain

+ Issue Type  
Ma : Maintenance Deficiency  
Ob : Design & System Obsolescence  
En : Enforcement

**Flood Control Project Maintenance  
Levee Inspections**

**Maintenance Issue Types Only, Levee Inspection Report By Mile - Spring 2022**

**Reclamation District No. 0784 Plumas Lake**

Waterway	Bank	Unit Miles	Inspection Start/End	Inspector
Unit No. 02B Feather River	Left	3.95	04/27/2022 04/27/2022	Brooks Weisser

LM Start	8.96	Rating **	A/W	Issue No.	1
LM End	9.36	Issue Type +	Ma	Location *	WS
Category	Supplemental			GPS Latitude/Longitude	
				Start	End
Item	2018 USACE Erosion Survey			39.009366 °	39.004549 °
				-121.579766 °	-121.579143 °
DWR ID	DWR_RD0784_02B_s_2022_1				
Comment Code					

**Comment Code**

**Inspector Comment**

2018 Site ID: FHR 17.8 L  
 Status: Eroding  
 2018 Field Notes: Site continues to erode.  
 Site History: 2003 - Bank is near vertical. Identified as a Potentially Critical site. 2004 - Eddy flow off downstream end of Modesto formation eroding the fluvial sediments. 2005 - Some new slumping. Actively eroding but berm width is greater than 50 ft. 2006 - Downgraded to regular erosion site. Still actively eroding. Large old rotational failures in high bank on the downstream end. 2008 - Removed from inventory due to wide berm width does not meet criteria for an erosion site. 2010 - Added back to the inventory after 10 ft of bank erosion in the winter 2009 storm. Steep vertical face. 2011 - Bank has retreated an additional 2.5 ft from last year. New tree popouts and erosion throughout the site. 2012 - Site continues to worsen with new tree popouts and many sections of new erosion. 2017 - Large sandbag on opposite bank, thalweg is moving closer to the levee.

LM Start	<b>8.96</b>	Rating **	A/W	Issue No.	<b>1 (cont)</b>
LM End	<b>9.36</b>	Issue Type +	Ma	Location *	WS

Photo 1 of 2 : SP\_2022\_RD0784\_532\_1\_20220415\_00001.jpg



USACE 2018 Erosion Photo #1

Photo 2 of 2 : SP\_2022\_RD0784\_532\_1\_20220415\_00002.jpg



USACE 2018 Erosion Photo #2

<b>* Location</b> LS : Land Side    N/A : Not Applicable WS : Water Side CR : Crown	<b>** Rating</b> A : Acceptable M : Minimally Acceptable U : Unacceptable	N : Not Inspected/Rated C : Corrected A/W : Acceptable but Monitor & Maintain	<b>+ Issue Type</b> Ma : Maintenance Deficiency Ob : Design & System Obsolescence En : Enforcement
--	--	---	---



**Flood Control Project Maintenance  
Levee Inspections**

**Maintenance Issue Types Only, Levee Inspection Report By Mile - Spring 2022**

**Reclamation District No. 0784 Plumas Lake**

Waterway	Bank	Unit Miles	Inspection Start/End	Inspector
Unit No. 02B Feather River	Left	3.95	04/27/2022 04/27/2022	Brooks Weisser

LM Start	8.97	Rating **	M	Issue No.	2
LM End	12.79	Issue Type +	Ma	Location *	LS
Category	Earthen Levee			GPS Latitude/Longitude	
				Start	End
Item	Vegetation			39.009874 °	38.955620 °
				-121.579135 °	-121.574925 °
DWR ID	DWR_RD0784_02B_s_2022_2				
Comment Code					
V1 : Control annual grass and weeds on the levee slopes and easements.					
Inspector Comment					
Annual vegetation on the landside slope needs to be maintained, Spring 2022.					

Photo 1 of 1 : SP\_2022\_RD0784\_532\_2\_20220503\_00004.jpg



View of annual vegetation on the landside slope, Spring 2022.

LM Start	8.97	Rating **	M	Issue No.	3
LM End	12.79	Issue Type +	Ma	Location *	WS
Category	Earthen Levee			GPS Latitude/Longitude	
				Start	End
Item	Vegetation			39.009874 °	38.955620 °
				-121.579129 °	-121.574924 °
DWR ID	DWR_RD0784_02B_s_2022_3				
Comment Code					
V1 : Control annual grass and weeds on the levee slopes and easements.					
Inspector Comment					
Annual vegetation on the waterside slope needs to be maintained, Spring 2022.					

Photo 1 of 1 : SP\_2022\_RD0784\_532\_3\_20220503\_00005.jpg



View of annual vegetation on the waterside slope, Spring 2022.

**\* Location**  
LS : Land Side    N/A : Not Applicable  
WS : Water Side  
CR : Crown

**\*\* Rating**  
A : Acceptable                      N : Not Inspected/Rated  
M : Minimally Acceptable        C : Corrected  
U : Unacceptable                  A/W : Acceptable but Monitor & Maintain

**+ Issue Type**  
Ma : Maintenance Deficiency  
Ob : Design & System Obsolescence  
En : Enforcement

**Flood Control Project Maintenance  
Levee Inspections**

**Maintenance Issue Types Only, Levee Inspection Report By Mile - Spring 2022**

**Reclamation District No. 0784 Plumas Lake**

Waterway	Bank	Unit Miles	Inspection Start/End	Inspector
Unit No. 03A Bear River	Right	0.78	04/27/2022 04/27/2022	Brooks Weisser

LM Start	2.43	Rating **	M	Issue No.	3
LM End	3.21	Issue Type +	Ma	Location *	LS
Category	Earthen Levee			GPS Latitude/Longitude	
				Start	End
Item	Vegetation			38.970619 °	38.970560 °
				-121.547559 °	-121.547546 °
DWR ID	DWR_RD0784_03A_s_2022_3				
Comment Code					
V1 : Control annual grass and weeds on the levee slopes and easements.					
Inspector Comment					
Annual vegetation on the landside slope needs to be maintained, Spring 2022.					

Photo 1 of 1 : SP\_2022\_RD0784\_533\_3\_20220503\_00010.jpg



View of annual vegetation on the landside slope, Spring 2022.

LM Start	2.43	Rating **	M	Issue No.	4
LM End	3.21	Issue Type +	Ma	Location *	WS
Category	Earthen Levee			GPS Latitude/Longitude	
				Start	End
Item	Vegetation			38.970623 °	38.970560 °
				-121.547553 °	-121.547546 °
DWR ID	DWR_RD0784_03A_s_2022_4				
Comment Code					
V1 : Control annual grass and weeds on the levee slopes and easements.					
Inspector Comment					
Annual vegetation on the waterside slope needs to be maintained, Spring 2022.					

Photo 1 of 1 : SP\_2022\_RD0784\_533\_4\_20220503\_00009.jpg



View of annual vegetation on the waterside slope, Spring 2022.

**\* Location**  
LS : Land Side    N/A : Not Applicable  
WS : Water Side  
CR : Crown

**\*\* Rating**  
A : Acceptable                      N : Not Inspected/Rated  
M : Minimally Acceptable        C : Corrected  
U : Unacceptable                  A/W : Acceptable but Monitor & Maintain

**+ Issue Type**  
Ma : Maintenance Deficiency  
Ob : Design & System Obsolescence  
En : Enforcement

**Flood Control Project Maintenance  
Levee Inspections**

**Maintenance Issue Types Only, Levee Inspection Report By Mile - Spring 2022**

**Reclamation District No. 0784 Plumas Lake**

Waterway	Bank	Unit Miles	Inspection Start/End	Inspector
Unit No. 03B Bear River	Right	1.49	04/27/2022 04/27/2022	Brooks Weisser

LM Start	3.27	Rating **	M	Issue No.	5
LM End	4.69	Issue Type +	Ma	Location *	LS
Category	Earthen Levee			GPS Latitude/Longitude	
				Start	End
Item	Vegetation			38.974249 °	38.985554 °
				-121.531416 °	-121.510470 °
DWR ID	DWR_RD0784_03B_s_2022_5				
Comment Code					
V1 : Control annual grass and weeds on the levee slopes and easements.					
Inspector Comment					
Annual vegetation on the landside slope needs to be maintained, Spring 2022.					

Photo 1 of 1 : SP\_2022\_RD0784\_534\_5\_20220503\_00010.jpg



View of annual vegetation on the landside slope, Spring 2022.

LM Start	3.27	Rating **	M	Issue No.	6
LM End	4.69	Issue Type +	Ma	Location *	WS
Category	Earthen Levee			GPS Latitude/Longitude	
				Start	End
Item	Vegetation			38.974246 °	38.985554 °
				-121.531408 °	-121.510470 °
DWR ID	DWR_RD0784_03B_s_2022_6				
Comment Code					
V1 : Control annual grass and weeds on the levee slopes and easements.					
Inspector Comment					
Annual vegetation on the waterside slope needs to be maintained, Spring 2022.					

Photo 1 of 1 : SP\_2022\_RD0784\_534\_6\_20220503\_00011.jpg



View of annual vegetation on the waterside slope, Spring 2022.

<b>* Location</b> LS : Land Side    N/A : Not Applicable WS : Water Side CR : Crown	<b>** Rating</b> A : Acceptable M : Minimally Acceptable U : Unacceptable	N : Not Inspected/Rated C : Corrected A/W : Acceptable but Monitor & Maintain	<b>+ Issue Type</b> Ma : Maintenance Deficiency Ob : Design & System Obsolescence En : Enforcement
--	--	---	---



**Flood Control Project Maintenance  
Levee Inspections**

## Maintenance Issue Types Only, Levee Inspection Report By Mile - Spring 2022

### Reclamation District No. 0784 Plumas Lake

Waterway	Bank	Unit Miles	Inspection Start/End	Inspector
Unit No. 03B Bear River	Right	1.49	04/27/2022 04/27/2022	Brooks Weisser

LM Start	3.52	Rating **	U	Issue No.	1	
LM End	3.52	Issue Type +	Ma	Location *		
Category	Supplemental			GPS Latitude/Longitude		
				Start	End	
Item	DWR UCIP LMA Responsibility			38.974330 °	38.974330 °	
				-121.526799 °	-121.526799 °	
DWR ID	18580					
Comment Code						
Inspector Comment						
FS_ID:69907 DS_ID:18580 EP_NO: N/A Repair Type: Urgent Crossing Status: Found UCIP Comments: 10/05/2020 - Record has been updated from No Action Needed to Urgent. DWR DMP has found integrity issues, LOF between 5 and 6. Recommend monitoring crossing until funding becomes available to address. No permit was found authorizing this encroachment. CVFPB will need to review crossing to determine owner. (O. Magana - DWR UCIP)12/16/2019 - Pipe crossing was hydroflushed and video inspected in October 2019. Pending final review by RD784 District Engineer and DWR. (P. Meagher - RD784)02/01/2019 - Pipe crossing was video inspected on 8-14-2018. (P. Meagher - RD784) FIELD_STRUCT_DESC: 30-inch corrugated metal (CM) drainage pipe through the levee, 19.0 feet below the crown. Flap gate on the waterside (WS) end. Concrete headwall at the WS toe. (No permit found for this crossing. Owner unknown). [Additional Reference(s): DWR Levee Log, 2005, (HLM 3.56). USACE Sacramento O&M Manual, Unit No. 145, August 1955, Revised 6 August 2019, (Station 92+88)]. FS Date: 10/5/2020						

LM Start	<b>3.52</b>	Rating **	U	Issue No.	<b>1 (cont)</b>
LM End	<b>3.52</b>	Issue Type +	Ma	Location *	

Photo 1 of 3 : UCIP\_SP\_2022\_69907\_101266.jpg



Overview of Levee: Looking upstream from crown.

Photo 2 of 3 : UCIP\_SP\_2022\_69907\_101271.jpg



Overview of Levee: Looking downstream from crown.

<b>* Location</b> LS : Land Side    N/A : Not Applicable WS : Water Side CR : Crown	<b>** Rating</b> A : Acceptable M : Minimally Acceptable U : Unacceptable	N : Not Inspected/Rated C : Corrected A/W : Acceptable but Monitor & Maintain	<b>+ Issue Type</b> Ma : Maintenance Deficiency Ob : Design & System Obsolescence En : Enforcement
--	--	---	---



**Flood Control Project Maintenance  
Levee Inspections**

## Maintenance Issue Types Only, Levee Inspection Report By Mile - Spring 2022

### Reclamation District No. 0784 Plumas Lake

Waterway	Bank	Unit Miles	Inspection Start/End	Inspector
Unit No. 03B Bear River	Right	1.49	04/27/2022 04/27/2022	Brooks Weisser

LM Start	3.52	Rating **	U	Issue No.	1 (cont)	
LM End	3.52	Issue Type +	Ma	Location *		
Category	Supplemental			GPS Latitude/Longitude		
				Start	End	
Item	DWR UCIP LMA Responsibility			38.974330 °	38.974330 °	
				-121.526799 °	-121.526799 °	
DWR ID	18580					

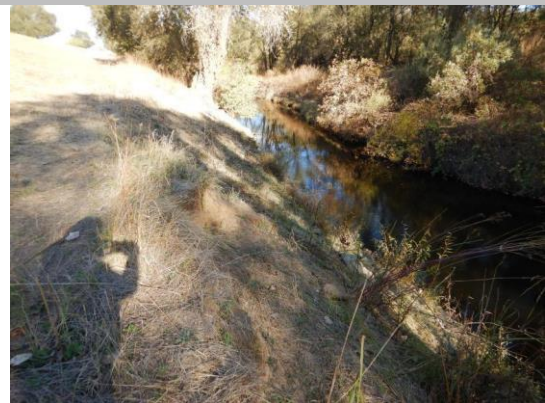
Photo 3 of 3 : UCIP\_SP\_2022\_69907\_101267.jpg



Water-Side: View of waterside looking from crown.

LM Start	4.28	Rating **	A/W	Issue No.	3
LM End	4.29	Issue Type +	Ma	Location *	WS
Category	Supplemental			GPS Latitude/Longitude	
				Start	End
Item	2018 USACE Erosion Survey			38.981271 °	38.981400 °
				-121.515999 °	-121.515848 °
DWR ID	DWR_RD0784_03B_s_2022_3				
Comment Code					
Inspector Comment					
2018 Site ID: BER 4.9 R					
Status: Eroding					
2018 Field Notes: No observed change.					
Site History: 2009 - Small site which could be repaired with maintenance. Erosion into the levee toe, rock has started to fail.					

Photo 1 of 2 : SP\_2022\_RD0784\_534\_3\_20220415\_00001.jpg



USACE 2018 Erosion Photo #1

LM Start	<b>4.28</b>	Rating **	A/W	Issue No.	<b>3 (cont)</b>
LM End	<b>4.29</b>	Issue Type +	Ma	Location *	WS

Photo 2 of 2 : SP\_2022\_RD0784\_534\_3\_20220415\_00002.jpg



USACE 2018 Erosion Photo #2

<b>* Location</b> LS : Land Side    N/A : Not Applicable WS : Water Side CR : Crown	<b>** Rating</b> A : Acceptable M : Minimally Acceptable U : Unacceptable	N : Not Inspected/Rated C : Corrected A/W : Acceptable but Monitor & Maintain	<b>+ Issue Type</b> Ma : Maintenance Deficiency Ob : Design & System Obsolescence En : Enforcement
--	--	---	---

**Flood Control Project Maintenance  
Levee Inspections**

**Maintenance Issue Types Only, Levee Inspection Report By Mile - Spring 2022**

**Reclamation District No. 0784 Plumas Lake**

Waterway	Bank	Unit Miles	Inspection Start/End	Inspector
Unit No. 03B Bear River	Right	1.49	04/27/2022 04/27/2022	Brooks Weisser

LM Start	<b>4.66</b>	Rating **	A/W	Issue No.	<b>4</b>
LM End	<b>4.66</b>	Issue Type +	Ma	Location *	
Category	Supplemental		GPS Latitude/Longitude		
			Start	End	
Item	DWR UCIP LMA Responsibility		38.985123 °	38.985123 °	
			-121.511265 °	-121.511265 °	
DWR ID	25674				
Comment Code					
Inspector Comment					
FS_ID:69909 DS_ID:25674 EP_NO: T2020061 Repair Type: No Action Needed Crossing Status: Found UCIP Comments: Pending field inspection and evaluation FIELD_STRUCT_DESC: 18-inch steel drainage pipe through the levee, 18.35 feet below the crown. Gate riser structure with positive closure device on the waterside (WS) shoulder. Inlet structure with trash rack on the landside (LS). Outfall structure with automatic drainage gate on the WS. Riprap area next to outfall structure. This crossing replaces 18- inch pipe (see DSID 18627). (18-inch pipe installed under Work Authorization No. T2020061, WA2020068, 2020 - Reclamation District No. 784 [RD0784]). [Additional Reference(s): USACE Sacramento O&M Manual, Unit No. 145, August 1955, Revised 6 August 2019, (Station 4+96). USACE Sacramento As-Built Drawing No. 2-4-106, Sheet No. 106/2, July 1944, (Station 4+96)]. FS Date: 10/5/2020					

No Photos

<b>* Location</b> LS : Land Side    N/A : Not Applicable WS : Water Side CR : Crown	<b>** Rating</b> A : Acceptable M : Minimally Acceptable U : Unacceptable	N : Not Inspected/Rated C : Corrected A/W : Acceptable but Monitor & Maintain	<b>+ Issue Type</b> Ma : Maintenance Deficiency Ob : Design & System Obsolescence En : Enforcement
--	--	---	---

**Flood Control Project Maintenance  
Levee Inspections**

**Maintenance Issue Types Only, Levee Inspection Report By Mile - Spring 2022**

**Reclamation District No. 0784 Plumas Lake**

Waterway	Bank	Unit Miles	Inspection Start/End	Inspector
Unit No. 04 Interceptor Canal	Right	6.33	04/27/2022 04/27/2022	Brooks Weisser

LM Start	0.06	Rating **	M	Issue No.	5
LM End	6.31	Issue Type +	Ma	Location *	LS
Category	Earthen Levee			GPS Latitude/Longitude	
				Start	End
Item	Vegetation			38.975523 °	39.059291 °
				-121.535221 °	-121.550962 °
DWR ID	DWR_RD0784_04_s_2022_5				
Comment Code					
V1 : Control annual grass and weeds on the levee slopes and easements.					
Inspector Comment					
Annual vegetation on the landside slope needs to be maintained, Spring 2022.					

Photo 1 of 1 : SP\_2022\_RD0784\_181\_5\_20220503\_00013.jpg



View of annual vegetation on the landside slope, Spring 2022.

LM Start	0.08	Rating **	M	Issue No.	6
LM End	6.31	Issue Type +	Ma	Location *	WS
Category	Earthen Levee			GPS Latitude/Longitude	
				Start	End
Item	Vegetation			38.975863 °	39.059291 °
				-121.535284 °	-121.550962 °
DWR ID	DWR_RD0784_04_s_2022_6				
Comment Code					
V1 : Control annual grass and weeds on the levee slopes and easements.					
Inspector Comment					
Annual vegetation on the waterside slope needs to be maintained, Spring 2022.					

Photo 1 of 1 : SP\_2022\_RD0784\_181\_6\_20220503\_00014.jpg



View of annual vegetation on the waterside slope, Spring 2022.

<b>* Location</b> LS : Land Side    N/A : Not Applicable WS : Water Side CR : Crown	<b>** Rating</b> A : Acceptable M : Minimally Acceptable U : Unacceptable	N : Not Inspected/Rated C : Corrected A/W : Acceptable but Monitor & Maintain	<b>+ Issue Type</b> Ma : Maintenance Deficiency Ob : Design & System Obsolescence En : Enforcement
--	--	---	---

**Flood Control Project Maintenance  
Levee Inspections**

**Maintenance Issue Types Only, Levee Inspection Report By Mile - Spring 2022**

**Reclamation District No. 0784 Plumas Lake**

Waterway	Bank	Unit Miles	Inspection Start/End	Inspector
Unit No. 05 Interceptor Canal	Left	4.19	04/27/2022 04/27/2022	Brooks Weisser

LM Start	0.04	Rating **	M	Issue No.	13
LM End	3.86	Issue Type +	Ma	Location *	WS
Category	Earthen Levee			GPS Latitude/Longitude	
				Start	End
Item	Vegetation			38.974885 °	39.019459 °
				-121.532757 °	-121.515101 °
DWR ID	DWR_RD0784_05_s_2022_13				
Comment Code					
V1 : Control annual grass and weeds on the levee slopes and easements.					
Inspector Comment					
Annual vegetation on the waterside slope needs to be maintained, Spring 2022.					

Photo 1 of 1 : SP\_2022\_RD0784\_182\_13\_20220503\_00025.jpg



View of annual vegetation on the waterside slope, Spring 2022.

LM Start	0.04	Rating **	M	Issue No.	12
LM End	3.86	Issue Type +	Ma	Location *	LS
Category	Earthen Levee			GPS Latitude/Longitude	
				Start	End
Item	Vegetation			38.974887 °	39.019464 °
				-121.532758 °	-121.515105 °
DWR ID	DWR_RD0784_05_s_2022_12				
Comment Code					
V1 : Control annual grass and weeds on the levee slopes and easements.					
Inspector Comment					
Annual vegetation on the landside slope needs to be maintained, Spring 2022.					

Photo 1 of 1 : SP\_2022\_RD0784\_182\_12\_20220503\_00026.jpg



View of annual vegetation on the landside slope, Spring 2022.

**\* Location**  
LS : Land Side    N/A : Not Applicable  
WS : Water Side  
CR : Crown

**\*\* Rating**  
A : Acceptable                      N : Not Inspected/Rated  
M : Minimally Acceptable        C : Corrected  
U : Unacceptable                  A/W : Acceptable but Monitor & Maintain

**+ Issue Type**  
Ma : Maintenance Deficiency  
Ob : Design & System Obsolescence  
En : Enforcement



**Flood Control Project Maintenance  
Levee Inspections**

## Maintenance Issue Types Only, Levee Inspection Report By Mile - Spring 2022

### Reclamation District No. 0784 Plumas Lake

Waterway	Bank	Unit Miles	Inspection Start/End	Inspector
Unit No. 05 Interceptor Canal	Left	4.19	04/27/2022 04/27/2022	Brooks Weisser

LM Start	0.12	Rating **	U	Issue No.	1	
LM End	0.12	Issue Type +	Ma	Location *		
Category	Supplemental			GPS Latitude/Longitude		
				Start	End	
Item	DWR UCIP LMA Responsibility			38.976147 °	38.976147 °	
				-121.533019 °	-121.533019 °	
DWR ID	18592					
Comment Code						
Inspector Comment						
FS_ID:70298 DS_ID:18592 EP_NO: N/A Repair Type: Urgent Crossing Status: Found UCIP Comments: 10/05/2020 - Record has been updated from No Action Needed to Urgent. DWR DMP has found integrity issues, LOF between 5 and 6. Recommend monitoring crossing until funding becomes available to address. No permit was found authorizing this encroachment. CVFPB will need to review crossing to determine owner. (O. Magana - DWR UCIP)12/16/2019 - Pipe crossing was hydroflushed and video inspected (again) in October 2019. Pending final review by RD784 Engineer and DWR. (P. Meagher - RD784)02/01/2019 - Pipe crossing was video inspected on 8/13/2018. (P. Meagher - RD784)02/26/2013 Good candidate for video inspection. (W. Wylie - DWR UCIP) FIELD_STRUCT_DESC: 18-inch corrugated metal (CM) drainage pipe through the levee, 18.0 feet below the crown. Flap gate on the waterside (WS) end. Concrete U-shaped headwall on the WS end. Polyvinyl chloride (PVC) weir inlet on the landside (LS) toe. (No permit found authorizing this pipe. Owner unknown). [Additional Reference(s): DWR Levee Log, 2005, (HLM 0.10). USACE Sacramento O&M Manual, Unit No. 145, August 1955, Revised 6 August 2019, (Station 25+28). USACE As-Built Drawing No. 2-4-106, Sheet No. 106/5, July 1944, (Station 25+28)]. FS Date: 10/5/2020						

LM Start	<b>0.12</b>	Rating **	U	Issue No.	<b>1 (cont)</b>
LM End	<b>0.12</b>	Issue Type +	Ma	Location *	

Photo 1 of 3 : UCIP\_SP\_2022\_70298\_100864.jpg



Overview of Levee: Looking upstream from crown.

Photo 2 of 3 : UCIP\_SP\_2022\_70298\_100865.jpg



Overview of Levee: Looking downstream from crown.

<b>* Location</b> LS : Land Side    N/A : Not Applicable WS : Water Side CR : Crown	<b>** Rating</b> A : Acceptable M : Minimally Acceptable U : Unacceptable	N : Not Inspected/Rated C : Corrected A/W : Acceptable but Monitor & Maintain	<b>+ Issue Type</b> Ma : Maintenance Deficiency Ob : Design & System Obsolescence En : Enforcement
--	--	---	---

**Flood Control Project Maintenance  
Levee Inspections**

## Maintenance Issue Types Only, Levee Inspection Report By Mile - Spring 2022

### Reclamation District No. 0784 Plumas Lake

Waterway	Bank	Unit Miles	Inspection Start/End	Inspector
Unit No. 05 Interceptor Canal	Left	4.19	04/27/2022 04/27/2022	Brooks Weisser

LM Start	<b>0.12</b>	Rating **	U	Issue No.	<b>1 (cont)</b>
LM End	<b>0.12</b>	Issue Type +	Ma	Location *	
Category	Supplemental			GPS Latitude/Longitude	
				Start	End
Item	DWR UCIP LMA Responsibility			38.976147 °	38.976147 °
				-121.533019 °	-121.533019 °
DWR ID	18592				

Photo 3 of 3 : UCIP\_SP\_2022\_70298\_100866.jpg



Water-Side: Outlet structure with flap gate at waterside toe.

LM Start	<b>0.84</b>	Rating **	U	Issue No.	<b>2</b>
LM End	<b>0.84</b>	Issue Type +	Ma	Location *	
Category	Supplemental			GPS Latitude/Longitude	
				Start	End
Item	DWR UCIP LMA Responsibility			38.986432 °	38.986432 °
				-121.534983 °	-121.534983 °
DWR ID	18591				

#### Comment Code

#### Inspector Comment

FS\_ID:70299  
DS\_ID:18591  
EP\_NO: N/A  
Repair Type: Urgent  
Crossing Status: Found  
UCIP Comments: 10/05/2020 - Record has been updated from Non-Urgent to Urgent. DWR DMP has found integrity issues, LOF between 5 and 6. Recommend monitoring crossing until funding becomes available to address. Pipe was underwater during site inspection. No permit was found authorizing this encroachment. CVFPB will need to review crossing to determine owner. (O. Magana - DWR UCIP)12/16/2019 - Pipe crossing was hydroflushed and video inspected (again) in October 2019. Pending final review by RD784 Engineer and DWR. (P. Meagher - RD784)02/01/2019 - Pipe crossing was video inspected on 8/14/2018. (P. Meagher)02/26/2013 - No handle or access to slide gate on LS toe. (W. Wylie - DWR UCIP) FIELD\_STRUCT\_DESC: 30-inch corrugated metal (CM) drainage pipe through the levee, 23.7 feet below the crown. Flap gate on the waterside (WS) end. Slide gate inside a concrete drop inlet on the landside (LS). (No permit found authorizing this pipe. Owner unknown). [Additional Reference(s): DWR Levee Log, 2005, (HLM 0.82). USACE Sacramento O&M Manual, Unit No. 145, August 1955, Revised 6 August 2019, (Station 63+00). USACE As-Built Drawing No. 2-4-106, Sheet No. 106/5, July 1944, (Station 63+00)].  
FS Date: 10/5/2020

Photo 1 of 3 : UCIP\_SP\_2022\_70299\_100890.jpg



Overview of Levee: Looking upstream from crown.

* Location	** Rating	+ Issue Type
LS : Land Side WS : Water Side CR : Crown	A : Acceptable M : Minimally Acceptable U : Unacceptable	Ma : Maintenance Deficiency Ob : Design & System Obsolescence En : Enforcement
N/A : Not Applicable	N : Not Inspected/Rated C : Corrected A/W : Acceptable but Monitor & Maintain	

**Flood Control Project Maintenance  
Levee Inspections**

## Maintenance Issue Types Only, Levee Inspection Report By Mile - Spring 2022

### Reclamation District No. 0784 Plumas Lake

Waterway	Bank	Unit Miles	Inspection Start/End	Inspector
Unit No. 05 Interceptor Canal	Left	4.19	04/27/2022 04/27/2022	Brooks Weisser

LM Start	<b>0.84</b>	Rating **	U	Issue No.	<b>2 (cont)</b>
LM End	<b>0.84</b>	Issue Type +	Ma	Location *	
Category	Supplemental			GPS Latitude/Longitude	
				Start	End
Item	DWR UCIP LMA Responsibility			38.986432 °	38.986432 °
				-121.534983 °	-121.534983 °
DWR ID	18591				

Photo 2 of 3 : UCIP\_SP\_2022\_70299\_100891.jpg



Overview of Levee: Looking downstream from crown.

LM Start	<b>0.84</b>	Rating **	U	Issue No.	<b>2 (cont)</b>
LM End	<b>0.84</b>	Issue Type +	Ma	Location *	

Photo 3 of 3 : UCIP\_SP\_2022\_70299\_100892.jpg



Land-Side: Drop inlet at landside toe.

<b>* Location</b> LS : Land Side    N/A : Not Applicable WS : Water Side CR : Crown	<b>** Rating</b> A : Acceptable M : Minimally Acceptable U : Unacceptable	N : Not Inspected/Rated C : Corrected A/W : Acceptable but Monitor & Maintain	<b>+ Issue Type</b> Ma : Maintenance Deficiency Ob : Design & System Obsolescence En : Enforcement
--	--	---	---



**Flood Control Project Maintenance  
Levee Inspections**

## Maintenance Issue Types Only, Levee Inspection Report By Mile - Spring 2022

### Reclamation District No. 0784 Plumas Lake

Waterway	Bank	Unit Miles	Inspection Start/End	Inspector
Unit No. 05 Interceptor Canal	Left	4.19	04/27/2022 04/27/2022	Brooks Weisser

LM Start	1.86	Rating **	U	Issue No.	3	
LM End	1.86	Issue Type +	Ma	Location *		
Category	Supplemental			GPS Latitude/Longitude		
				Start	End	
Item	DWR UCIP LMA Responsibility			39.000975 °	39.000975 °	
				-121.537779 °	-121.537779 °	
DWR ID	18588					
Comment Code						
Inspector Comment						
FS_ID:70301 DS_ID:18588 EP_NO: N/A Repair Type: Urgent Crossing Status: Found UCIP Comments: 10/05/2020 - Record has been updated from Non-Urgent to Urgent. DWR DMP has found integrity issues, LOF between 5 and 6. Recommend monitoring crossing until funding becomes available to address. No permit was found authorizing this encroachment. CVFPB will need to review crossing to determine owner. (O. Magana - DWR UCIP)12/16/2019 - Pipe crossing was hydroflushed and video inspected in October 2019. Pending final review by RD784 District Engineer and DWR. (P. Meagher - RD784)02/01/2019 - Pipe crossing was video inspected on 8-14-2018. (P. Meagher - RD784)09/11/2015 - Inlet buried. Good candidate for video inspection as pipe is corroded. (W. Wylie - DWR UCIP) FIELD_STRUCT_DESC: 18-inch corrugated metal (CM) drainage pipe through the levee, 14.5 feet below the crown. Flap gate on the waterside (WS) end. Concrete U-shaped headwall on the WS. [Additional Reference(s): DWR Levee Log, 2005, (HLM 1.86). USACE Sacramento O&M Manual, Unit No. 145, August 1955, Revised 6 August 2019, (Station 116+78). USACE As-Built Drawing No. 2-4-106, Sheet No. 106/5, July 1944, (Station 116+78)]. FS Date: 10/5/2020						

LM Start	<b>1.86</b>	Rating **	U	Issue No.	<b>3 (cont)</b>
LM End	<b>1.86</b>	Issue Type +	Ma	Location *	

Photo 1 of 3 : UCIP\_SP\_2022\_70301\_100930.jpg



Overview of Levee: Looking upstream from crown.

Photo 2 of 3 : UCIP\_SP\_2022\_70301\_100931.jpg



Overview of Levee: Looking downstream from crown.

<b>* Location</b> LS : Land Side    N/A : Not Applicable WS : Water Side CR : Crown	<b>** Rating</b> A : Acceptable M : Minimally Acceptable U : Unacceptable	N : Not Inspected/Rated C : Corrected A/W : Acceptable but Monitor & Maintain	<b>+ Issue Type</b> Ma : Maintenance Deficiency Ob : Design & System Obsolescence En : Enforcement
--	--	---	---



**Flood Control Project Maintenance  
Levee Inspections**

**Maintenance Issue Types Only, Levee Inspection Report By Mile - Spring 2022**

**Reclamation District No. 0784 Plumas Lake**

Waterway	Bank	Unit Miles	Inspection Start/End	Inspector
Unit No. 05 Interceptor Canal	Left	4.19	04/27/2022 04/27/2022	Brooks Weisser

LM Start	<b>1.86</b>	Rating **	U	Issue No.	<b>3 (cont)</b>
LM End	<b>1.86</b>	Issue Type +	Ma	Location *	
Category	Supplemental			GPS Latitude/Longitude	
				Start	End
Item	DWR UCIP LMA Responsibility			39.000975 °	39.000975 °
				-121.537779 °	-121.537779 °
DWR ID	18588				

Photo 3 of 3 : UCIP\_SP\_2022\_70301\_100932.jpg



Water-Side: Outlet structure with flap gate at waterside toe.

LM Start	<b>2.04</b>	Rating **	A/W	Issue No.	<b>4</b>
LM End	<b>2.04</b>	Issue Type +	Ma	Location *	
Category	Supplemental			GPS Latitude/Longitude	
				Start	End
Item	DWR UCIP LMA Responsibility			39.003643 °	39.003643 °
				-121.538292 °	-121.538292 °
DWR ID	25675				

No Photos

Comment Code					
Inspector Comment					
FS_ID:70302 DS_ID:25675 EP_NO: WA2020067 Repair Type: No Action Needed Crossing Status: Found UCIP Comments: Pending field inspection and evaluation FIELD_STRUCT_DESC: 18-inch steel drainage pipe through levee, 16.65 feet below the crown. Gate riser structure with positive closure device on the waterside (WS) shoulder. Inlet structure with trash rack, steel walkway on the landside. Outfall structure with automatic drainage gate on the WS, riprap area next to outfall structure. This crossing replaces previous 18-inch pipe (see DSID 18587). (18-inch pipe installed under Work Authorization No. T2020060, WA2020067, 2020 - Reclamation District No. 784 [RD0784]). [Additional Reference(s): DWR Levee Log, 2005, (HLM 2.04), listed as an 18-inch CMP. USACE Sacramento O&M Manual, Unit No. 145, August 1955, Revised 6 August 2019, (Station 126+53), listed as an 18-inch CMP. USACE As-Built Drawing No. 2-4-106, Sheet No. 106/5, July 1944, (Station 126+53), listed as an 18-inch CMP]. FS Date: 11/4/2021 4:22:00 PM					

* Location	** Rating	+ Issue Type
LS : Land Side    N/A : Not Applicable WS : Water Side CR : Crown	A : Acceptable M : Minimally Acceptable U : Unacceptable N : Not Inspected/Rated C : Corrected A/W : Acceptable but Monitor & Maintain	Ma : Maintenance Deficiency Ob : Design & System Obsolescence En : Enforcement

**Flood Control Project Maintenance  
Levee Inspections**

**Maintenance Issue Types Only, Levee Inspection Report By Mile - Spring 2022**

**Reclamation District No. 0784 Plumas Lake**

Waterway	Bank	Unit Miles	Inspection Start/End	Inspector
Unit No. 05 Interceptor Canal	Left	4.19	04/27/2022 04/27/2022	Brooks Weisser

LM Start	3.06	Rating **	U	Issue No.	6	
LM End	3.06	Issue Type +	Ma	Location *		
Category	Supplemental			GPS Latitude/Longitude		
				Start	End	
Item	DWR UCIP LMA Responsibility			39.015549 °	39.015549 °	
				-121.528590 °	-121.528590 °	
DWR ID	18596					
Comment Code						
Inspector Comment						
FS_ID:70306 DS_ID:18596 EP_NO: N/A Repair Type: Urgent Crossing Status: Found UCIP Comments: 10/05/2020 - Record has been updated from Non-Urgent to Urgent. DWR DMP has found integrity issues, LOF between 5 and 6. Recommend monitoring crossing until funding becomes available to address. No permit was found authorizing this encroachment. CVFPB will need to review crossing to determine owner. (O. Magana - DWR UCIP)12/16/2019 - Pipe crossing was hydroflushed and video inspected in October 2019. Pending final review by RD784 Engineer and DWR. (P. Meagher - RD784)02/01/2019 - Pipe crossing was video inspected on 8-15-2018. (P. Meagher - RD784)02/27/2013 - Pipe has been sliplined with PVC, but the liner appears to be eroding at outlet and may be disjointed internal to the levee. See pic. Good candidate for video inspection. (W. Wylie - DWR UCIP) FIELD_STRUCT_DESC: 12-inch corrugated metal (CM) drainage pipe through the levee, 12.0 feet below the crown. Flap gate and concrete U-shaped headwall on the waterside (WS). Polyvinyl chloride (PVC) weir on inlet at the landside (LS) toe. [Additional Reference(s): DWR Levee Log, 2005, (HLM 3.08). USACE Sacramento O&M Manual, Unit No. 145, August 1955, Revised 6 August 2019, (Station 44+96). USACE As-Built Drawing No. 2-4-106, Sheet No. 106/6, July 1944, (Station 44+96)]. FS Date: 10/5/2020						

LM Start	<b>3.06</b>	Rating **	U	Issue No.	<b>6 (cont)</b>
LM End	<b>3.06</b>	Issue Type +	Ma	Location *	

Photo 1 of 3 : UCIP\_SP\_2022\_70306\_100939.jpg



Overview of Levee: Looking upstream from crown.

Photo 2 of 3 : UCIP\_SP\_2022\_70306\_100940.jpg



Overview of Levee: Looking downstream from crown.

<b>* Location</b> LS : Land Side    N/A : Not Applicable WS : Water Side CR : Crown	<b>** Rating</b> A : Acceptable M : Minimally Acceptable U : Unacceptable	N : Not Inspected/Rated C : Corrected A/W : Acceptable but Monitor & Maintain	<b>+ Issue Type</b> Ma : Maintenance Deficiency Ob : Design & System Obsolescence En : Enforcement
--	--	---	---

**Flood Control Project Maintenance  
Levee Inspections**

## Maintenance Issue Types Only, Levee Inspection Report By Mile - Spring 2022

### Reclamation District No. 0784 Plumas Lake

Waterway	Bank	Unit Miles	Inspection Start/End	Inspector
Unit No. 05 Interceptor Canal	Left	4.19	04/27/2022 04/27/2022	Brooks Weisser

LM Start	<b>3.06</b>	Rating **	U	Issue No.	<b>6 (cont)</b>
LM End	<b>3.06</b>	Issue Type +	Ma	Location *	
Category	Supplemental			GPS Latitude/Longitude	
				Start	End
Item	DWR UCIP LMA Responsibility			39.015549 °	39.015549 °
				-121.528590 °	-121.528590 °
DWR ID	18596				

Photo 3 of 3 : UCIP\_SP\_2022\_70306\_100941.jpg



Water-Side: Outlet structure with flap gate at waterside toe.

LM Start	<b>3.23</b>	Rating **	U	Issue No.	<b>7</b>
LM End	<b>3.23</b>	Issue Type +	Ma	Location *	
Category	Supplemental			GPS Latitude/Longitude	
				Start	End
Item	DWR UCIP LMA Responsibility			39.017336 °	39.017336 °
				-121.526530 °	-121.526530 °
DWR ID	18595				

#### Comment Code

#### Inspector Comment

FS\_ID:70307  
 DS\_ID:18595  
 EP\_NO: N/A  
 Repair Type: Urgent  
 Crossing Status: Found  
 UCIP Comments: 10/05/2020 Record has been updated from No Action Needed to Urgent. DWR DMP has found integrity issues, LOF between 5 and 6. Recommend monitoring crossing until funding becomes available to address. No permit was found authorizing this encroachment. CVFPB will need to review crossing to determine owner. (O. Magana - DWR UCIP)12/16/2019 - Pipe crossing was hydroflushed and video inspected in October 2019. Pending final review by RD784 District Engineer and DWR. (P. Meagher - RD784)02/01/2019 - Pipe crossing was video inspected on 8-15-2018 (P. Meagher - RD784)02/27/2013 - Good candidate for video inspection. (W. Wylie - DWR UCIP)  
 FIELD\_STRUCT\_DESC: 18-inch corrugated metal (CM) drainage pipe through the levee, 15.8 feet below the crown. Flap gate on the waterside (WS) end. Polyvinyl chloride (PVC) weir on inlet at the landside (LS) toe. [Additional Reference(s): DWR Levee Log, 2005, (HLM 3.24). USACE Sacramento O&M Manual, Unit No. 145, August 1955, Revised 6 August 2019, (Station 53+86). USACE As-Built Drawing No. 2-4-106, Sheet No. 106/6, July 1944, (Station 53+86)].  
 FS Date: 10/5/2020

Photo 1 of 3 : UCIP\_SP\_2022\_70307\_100943.jpg



Overview of Levee: Looking upstream from crown.

* Location	** Rating	+ Issue Type
LS : Land Side WS : Water Side CR : Crown	A : Acceptable M : Minimally Acceptable U : Unacceptable	Ma : Maintenance Deficiency Ob : Design & System Obsolescence En : Enforcement
N/A : Not Applicable	N : Not Inspected/Rated C : Corrected A/W : Acceptable but Monitor & Maintain	

**Flood Control Project Maintenance  
Levee Inspections**

## Maintenance Issue Types Only, Levee Inspection Report By Mile - Spring 2022

### Reclamation District No. 0784 Plumas Lake

Waterway	Bank	Unit Miles	Inspection Start/End	Inspector
Unit No. 05 Interceptor Canal	Left	4.19	04/27/2022 04/27/2022	Brooks Weisser

LM Start	3.23	Rating **	U	Issue No.	7 (cont)	
LM End	3.23	Issue Type +	Ma	Location *		
Category	Supplemental			GPS Latitude/Longitude		
				Start		End
Item	DWR UCIP LMA Responsibility			39.017336 °	39.017336 °	
				-121.526530 °	-121.526530 °	
DWR ID	18595					

Photo 2 of 3 : UCIP\_SP\_2022\_70307\_100944.jpg



Overview of Levee: Looking downstream from crown.

LM Start	<b>3.23</b>	Rating **	U	Issue No.	<b>7 (cont)</b>
LM End	<b>3.23</b>	Issue Type +	Ma	Location *	

Photo 3 of 3 : UCIP\_SP\_2022\_70307\_100945.jpg



Land-Side: Inlet structure at landside toe.

<b>* Location</b> LS : Land Side    N/A : Not Applicable WS : Water Side CR : Crown	<b>** Rating</b> A : Acceptable M : Minimally Acceptable U : Unacceptable N : Not Inspected/Rated C : Corrected A/W : Acceptable but Monitor & Maintain	<b>+ Issue Type</b> Ma : Maintenance Deficiency Ob : Design & System Obsolescence En : Enforcement
--	---	---



**Flood Control Project Maintenance  
Levee Inspections**

**Maintenance Issue Types Only, Levee Inspection Report By Mile - Spring 2022**

**Reclamation District No. 0784 Plumas Lake**

Waterway	Bank	Unit Miles	Inspection Start/End	Inspector
Unit No. 05 Interceptor Canal	Left	4.19	04/27/2022 04/27/2022	Brooks Weisser

LM Start	3.79	Rating **	M	Issue No.	8	
LM End	3.79	Issue Type +	Ma	Location *		
Category	Supplemental			GPS Latitude/Longitude		
				Start	End	
Item	DWR UCIP LMA Responsibility			39.019222 °	39.019222 °	
				-121.516414 °	-121.516414 °	
DWR ID	18594					
Comment Code						
Inspector Comment						
FS_ID:70308 DS_ID:18594 EP_NO: N/A Repair Type: Non-Urgent Crossing Status: Found UCIP Comments: 10/05/2020 - Record has been updated from No Action Needed to Non-Urgent. No permit was found authorizing this encroachment. CVFPB will need to review crossing to determine owner. DWR DMP has not found internal issues, LOF between 1 and 2. Recommend inspection in 5 years. (O. Magana - DWR UCIP)12/16/2019 - Pipe crossing was video inspected in October 2019. Pending final review by RD784 Engineer and DWR. (P. Meagher - RD784)02/01/2019 - Pipe crossing was video inspected on 8-15-2018. (P. Meagher - RD784) FIELD_STRUCT_DESC: 18-inch corrugated metal (CM) drainage pipe through the levee, 8.8 feet below the crown. Flap gate and headwall on the waterside (WS) end. [Additional Reference(s): DWR Levee Log, 2005, (HLM 3.81). USACE Sacramento O&M Manual, Unit No. 145, August 1955, Revised 6 August 2019, (Station 83+39). USACE As-Built Drawing No. 2-4-106, Sheet No. 106/6, July 1944, (Station 83+39)]. FS Date: 10/5/2020						

LM Start	<b>3.79</b>	Rating **	M	Issue No.	<b>8 (cont)</b>
LM End	<b>3.79</b>	Issue Type +	Ma	Location *	

Photo 1 of 3 : UCIP\_SP\_2022\_70308\_100946.jpg



Overview of Levee: Looking upstream from crown.

Photo 2 of 3 : UCIP\_SP\_2022\_70308\_100947.jpg



Overview of Levee: Looking downstream from crown.

<b>* Location</b> LS : Land Side    N/A : Not Applicable WS : Water Side CR : Crown	<b>** Rating</b> A : Acceptable M : Minimally Acceptable U : Unacceptable	N : Not Inspected/Rated C : Corrected A/W : Acceptable but Monitor & Maintain	<b>+ Issue Type</b> Ma : Maintenance Deficiency Ob : Design & System Obsolescence En : Enforcement
--	--	---	---

**Flood Control Project Maintenance  
Levee Inspections**

## Maintenance Issue Types Only, Levee Inspection Report By Mile - Spring 2022

### Reclamation District No. 0784 Plumas Lake

Waterway	Bank	Unit Miles	Inspection Start/End	Inspector
Unit No. 05 Interceptor Canal	Left	4.19	04/27/2022 04/27/2022	Brooks Weisser

LM Start	<b>3.79</b>	Rating **	M	Issue No.	<b>8 (cont)</b>
LM End	<b>3.79</b>	Issue Type +	Ma	Location *	
Category	Supplemental			GPS Latitude/Longitude	
				Start	End
Item	DWR UCIP LMA Responsibility			39.019222 °	39.019222 °
				-121.516414 °	-121.516414 °
DWR ID	18594				

Photo 3 of 3 : UCIP\_SP\_2022\_70308\_100948.jpg



Water-Side: Outlet structure with flap gate at waterside toe.

<b>* Location</b> LS : Land Side    N/A : Not Applicable WS : Water Side CR : Crown	<b>** Rating</b> A : Acceptable M : Minimally Acceptable U : Unacceptable	N : Not Inspected/Rated C : Corrected A/W : Acceptable but Monitor & Maintain	<b>+ Issue Type</b> Ma : Maintenance Deficiency Ob : Design & System Obsolescence En : Enforcement
--	--	---	---

**Flood Control Project Maintenance  
Levee Inspections**

## Maintenance Issue Types Only, Levee Inspection Report By Mile - Spring 2022

### Reclamation District No. 0784 Plumas Lake

Waterway	Bank	Unit Miles	Inspection Start/End	Inspector
Unit No. 05 Interceptor Canal	Left	4.19	04/27/2022 04/27/2022	Brooks Weisser

LM Start	3.96	Rating **	M	Issue No.	11	
LM End	3.96	Issue Type +	Ma	Location *		
Category	Supplemental			GPS Latitude/Longitude		
				Start	End	
Item	DWR UCIP LMA Responsibility			39.019787 °	39.019787 °	
				-121.513386 °	-121.513386 °	
DWR ID	18593					
Comment Code						
Inspector Comment						
FS_ID:70309 DS_ID:18593 EP_NO: N/A Repair Type: Non-Urgent Crossing Status: Found UCIP Comments: 10/05/2020 - Record remains Non-Urgent. No permit was found authorizing this encroachment. CVFPB will need to review crossing to determine owner. No DWR DMP internal inspection has been completed yet. This crossing appears to be abandoned: buried inlet at landside toe. No access for internal video inspection. DWR DMP will complete assessment to determine final recommendation. (O. Magana - DWR UCIP) 02/01/2019 - An attempt was made to video inspect this pipe crossing on 8-15-2018 but conditions were too muddy inside the pipe. (P. Meagher - RD784)11/14/2016 - Photos added of exposed flap gate on WS and possible inlet location on LS. Condition remains as Non-Urgent because of inlet not being fully operable. Unknown if pipe will operate as designed during high water or if it is full of sediment. (P. Meagher - RD784)11/01/2015 - Waterside Flap Gate Uncovered. Photo sent to DWR Matt Hoffman on 3-3-2014. Fresh photo sent to DWR Pavel Kazi on 9-9-2015. Landside toe has never been able to be located. Requesting DWR inspector to change the status of this issue to "No Action Needed". (P. Meagher - RD784).02/26/2013 - Pipe buried on LS toe and flap gate is blocked by soil on WS toe. (W. Wylie - DWR UCIP). FIELD_STRUCT_DESC: 18-inch corrugated metal (CM) drainage pipe through the levee, 10.0 feet below the crown. Flap gate on the waterside (WS) end. [Additional Reference(s): DWR Levee Log, 2005, (HLM 3.98). USACE Sacramento O&M Manual, Unit No. 145, August 1955, Revised 6 August 2019, (Station 91+50). USACE As-Built Drawing No. 2-4-106, Sheet No. 106/6, July 1944, (Station 91+50)]. FS Date: 10/5/2020						

Photo 1 of 3 : UCIP\_SP\_2022\_70309\_100951.jpg



Overview of Levee: Looking upstream from crown.

<b>* Location</b> LS : Land Side    N/A : Not Applicable WS : Water Side CR : Crown	<b>** Rating</b> A : Acceptable M : Minimally Acceptable U : Unacceptable	N : Not Inspected/Rated C : Corrected A/W : Acceptable but Monitor & Maintain	<b>+ Issue Type</b> Ma : Maintenance Deficiency Ob : Design & System Obsolescence En : Enforcement
--	--	---	---

**Flood Control Project Maintenance  
Levee Inspections**

## Maintenance Issue Types Only, Levee Inspection Report By Mile - Spring 2022

### Reclamation District No. 0784 Plumas Lake

Waterway	Bank	Unit Miles	Inspection Start/End	Inspector
Unit No. 05 Interceptor Canal	Left	4.19	04/27/2022 04/27/2022	Brooks Weisser

LM Start	<b>3.96</b>	Rating **	M	Issue No.	<b>11 (cont)</b>
LM End	<b>3.96</b>	Issue Type +	Ma	Location *	
Category	Supplemental		GPS Latitude/Longitude		
			Start	End	
Item	DWR UCIP LMA Responsibility		39.019787 °	39.019787 °	
			-121.513386 °	-121.513386 °	
DWR ID	18593				

Photo 2 of 3 : UCIP\_SP\_2022\_70309\_100952.jpg



Overview of Levee: Looking downstream from crown.

LM Start	<b>3.96</b>	Rating **	M	Issue No.	<b>11 (cont)</b>
LM End	<b>3.96</b>	Issue Type +	Ma	Location *	

Photo 3 of 3 : UCIP\_SP\_2022\_70309\_100953.jpg



Water-Side: View from crown. Outlet not visible.

<b>* Location</b> LS : Land Side    N/A : Not Applicable WS : Water Side CR : Crown	<b>** Rating</b> A : Acceptable M : Minimally Acceptable U : Unacceptable	N : Not Inspected/Rated C : Corrected A/W : Acceptable but Monitor & Maintain	<b>+ Issue Type</b> Ma : Maintenance Deficiency Ob : Design & System Obsolescence En : Enforcement
--	--	---	---



**Flood Control Project Maintenance  
Levee Inspections**

**Maintenance Issue Types Only, Levee Inspection Report By Mile - Spring 2022**

**Reclamation District No. 0784 Plumas Lake**

Waterway	Bank	Unit Miles	Inspection Start/End	Inspector
Unit No. 06 South Dry Creek	Right	0.25	04/27/2022 04/27/2022	Brooks Weisser

LM Start	0.05	Rating **	M	Issue No.	2
LM End	0.23	Issue Type +	Ma	Location *	LS
Category	Earthen Levee			GPS Latitude/Longitude	
				Start	End
Item	Vegetation			38.985941 °	38.987429 °
				-121.509776 °	-121.506953 °
DWR ID	DWR_RD0784_06_s_2022_2				
Comment Code					
V1 : Control annual grass and weeds on the levee slopes and easements.					
Inspector Comment					
Annual vegetation on the landside slope needs to be maintained, Spring 2022.					

Photo 1 of 1 : SP\_2022\_RD0784\_183\_2\_20220503\_00004.jpg



View of annual vegetation on the landside slope, Spring 2022.

LM Start	0.05	Rating **	M	Issue No.	3
LM End	0.23	Issue Type +	Ma	Location *	WS
Category	Earthen Levee			GPS Latitude/Longitude	
				Start	End
Item	Vegetation			38.985943 °	38.987428 °
				-121.509771 °	-121.506953 °
DWR ID	DWR_RD0784_06_s_2022_3				
Comment Code					
V1 : Control annual grass and weeds on the levee slopes and easements.					
Inspector Comment					

Photo 1 of 1 : SP\_2022\_RD0784\_183\_3\_20220503\_00005.jpg



View of annual vegetation on the waterside slope, Spring 2022.

**\* Location**  
LS : Land Side    N/A : Not Applicable  
WS : Water Side  
CR : Crown

**\*\* Rating**  
A : Acceptable                      N : Not Inspected/Rated  
M : Minimally Acceptable        C : Corrected  
U : Unacceptable                  A/W : Acceptable but Monitor & Maintain

**+ Issue Type**  
Ma : Maintenance Deficiency  
Ob : Design & System Obsolescence  
En : Enforcement

**Flood Control Project Maintenance  
Levee Inspections**

**Maintenance Issue Types Only, Levee Inspection Report By Mile - Spring 2022**

**Reclamation District No. 0784 Plumas Lake**

Waterway	Bank	Unit Miles	Inspection Start/End	Inspector
Unit No. 06 South Dry Creek	Right	0.25	04/27/2022 04/27/2022	Brooks Weisser

LM Start	0.06	Rating **	U	Issue No.	1	
LM End	0.06	Issue Type +	Ma	Location *		
Category	Supplemental			GPS Latitude/Longitude		
				Start	End	
Item	DWR UCIP LMA Responsibility			38.985999 °	38.985999 °	
				-121.509618 °	-121.509618 °	
DWR ID	18626					
Comment Code						
Inspector Comment						
FS_ID:70311 DS_ID:18626 EP_NO: N/A Repair Type: Urgent Crossing Status: Found UCIP Comments: 10/05/2020 Record has been updated from Non-Urgent to Urgent. DWR DMP has found integrity issues, LOF between 5 and 6. Recommend monitoring crossing until funding becomes available to address. No permit was found authorizing this encroachment. CVFPB will need to review crossing to determine owner. (O. Magana - DWR UCIP)12/16/2019 Pipe was hydroflushed and video inspected (again) in October 2019. Pending final review by RD784 District Engineer and DWR. (P. Meagher - RD784)02/01/2019 - Pipe was video inspected on 8-13-2018. (P. Meagher - RD784)10/30/2015 - Waterside flap gate was cleared in December 2014 and again in September 2015 No LMA access available on Landside. (P. Meagher - RD784)02/26/2013 - Pipe partially blocked on LS and flap gate blocked on WS (W. Wylie - DWR UCIP) FIELD_STRUCT_DESC: 18-inch corrugated metal (CM) storm drainage pipe through the levee, 19.0 feet below the crown. Gate valve on the waterside (WS). (No permit found authorizing this pipe. Owner unknown). [Additional Reference(s): USACE Sacramento O&M Manual, Unit No. 145, August 1955, Revised 6 August 2019, (Station 9+85). USACE As-Built Drawing No. 2-4-106, Sheet No. 106/2, July 1944, (Station 9+85)]. FS Date: 10/5/2020						

LM Start	<b>0.06</b>	Rating **	U	Issue No.	<b>1 (cont)</b>
LM End	<b>0.06</b>	Issue Type +	Ma	Location *	

Photo 1 of 3 : UCIP\_SP\_2022\_70311\_100955.jpg



Overview of Levee: Looking upstream from crown.

Photo 2 of 3 : UCIP\_SP\_2022\_70311\_100956.jpg



Overview of Levee: Looking downstream from crown.

<b>* Location</b> LS : Land Side    N/A : Not Applicable WS : Water Side CR : Crown	<b>** Rating</b> A : Acceptable M : Minimally Acceptable U : Unacceptable	N : Not Inspected/Rated C : Corrected A/W : Acceptable but Monitor & Maintain	<b>+ Issue Type</b> Ma : Maintenance Deficiency Ob : Design & System Obsolescence En : Enforcement
--	--	---	---

**Flood Control Project Maintenance  
Levee Inspections**

**Maintenance Issue Types Only, Levee Inspection Report By Mile - Spring 2022**

**Reclamation District No. 0784 Plumas Lake**

Waterway	Bank	Unit Miles	Inspection Start/End	Inspector
Unit No. 06 South Dry Creek	Right	0.25	04/27/2022 04/27/2022	Brooks Weisser

LM Start	<b>0.06</b>	Rating **	U	Issue No.	<b>1 (cont)</b>
LM End	<b>0.06</b>	Issue Type +	Ma	Location *	
Category	Supplemental			GPS Latitude/Longitude	
				Start	End
Item	DWR UCIP LMA Responsibility			38.985999 °	38.985999 °
				-121.509618 °	-121.509618 °
DWR ID	18626				

Photo 3 of 3 : UCIP\_SP\_2022\_70311\_100957.jpg



Water-Side: Headwall, outlet, and flap gate on waterside.

<b>* Location</b> LS : Land Side    N/A : Not Applicable WS : Water Side CR : Crown	<b>** Rating</b> A : Acceptable M : Minimally Acceptable U : Unacceptable	N : Not Inspected/Rated C : Corrected A/W : Acceptable but Monitor & Maintain	<b>+ Issue Type</b> Ma : Maintenance Deficiency Ob : Design & System Obsolescence En : Enforcement
--	--	---	---

**Flood Control Project Maintenance  
Levee Inspections**

**Maintenance Issue Types Only, Levee Inspection Report By Mile - Spring 2022**

**Reclamation District No. 0784 Plumas Lake**

Waterway	Bank	Unit Miles	Inspection Start/End	Inspector
Unit No. 07 Yuba River	Left	3.82	04/27/2022 04/27/2022	Brooks Weisser

LM Start	0.12	Rating **	M	Issue No.	10
LM End	3.50	Issue Type +	Ma	Location *	WS
Category	Earthen Levee			GPS Latitude/Longitude	
				Start	End
Item	Vegetation			39.135139 °	39.163121 °
				-121.550132 °	-121.500499 °
DWR ID	DWR_RD0784_07_s_2022_10				
Comment Code					
V1 : Control annual grass and weeds on the levee slopes and easements.					
Inspector Comment					
Annual vegetation on the waterside slope needs to be maintained, Spring 2022.					

Photo 1 of 1 : SP\_2022\_RD0784\_184\_10\_20220503\_00023.jpg



View of annual vegetation on the waterside slope, Spring 2022.

LM Start	0.26	Rating **	M	Issue No.	9
LM End	3.51	Issue Type +	Ma	Location *	LS
Category	Earthen Levee			GPS Latitude/Longitude	
				Start	End
Item	Vegetation			39.135619 °	39.163268 °
				-121.547579 °	-121.500216 °
DWR ID	DWR_RD0784_07_s_2022_9				
Comment Code					
V1 : Control annual grass and weeds on the levee slopes and easements.					
Inspector Comment					
Annual vegetation on the landside slope needs to be maintained, Spring 2022.					

Photo 1 of 1 : SP\_2022\_RD0784\_184\_9\_20220503\_00024.jpg



View of annual vegetation on the landside slope, Spring 2022.

<b>* Location</b> LS : Land Side    N/A : Not Applicable WS : Water Side CR : Crown	<b>** Rating</b> A : Acceptable M : Minimally Acceptable U : Unacceptable	N : Not Inspected/Rated C : Corrected A/W : Acceptable but Monitor & Maintain	<b>+ Issue Type</b> Ma : Maintenance Deficiency Ob : Design & System Obsolescence En : Enforcement
--	--	---	---



**Flood Control Project Maintenance  
Levee Inspections**

## Maintenance Issue Types Only, Levee Inspection Report By Mile - Spring 2022

### Reclamation District No. 0784 Plumas Lake

Waterway	Bank	Unit Miles	Inspection Start/End	Inspector
Unit No. 08 Three Rivers	Right	1.93	04/27/2022 04/27/2022	Brooks Weisser

LM Start	0.04	Rating **	M	Issue No.	1
LM End	1.93	Issue Type +	Ma	Location *	LS
Category	Earthen Levee			GPS Latitude/Longitude	
				Start	End
Item	Vegetation			38.955527 °	38.970542 °
				-121.574167 °	-121.547615 °
DWR ID	DWR_RD0784_08_s_2022_1				
Comment Code					
V1 : Control annual grass and weeds on the levee slopes and easements.					
Inspector Comment					
Annual vegetation on the landside slope needs to be maintained, Spring 2022.					

Photo 1 of 1 : SP\_2022\_RD0784\_437\_1\_20220503\_00001.jpg



View of annual vegetation on the landside slope, Spring 2022.

LM Start	0.04	Rating **	M	Issue No.	2
LM End	1.93	Issue Type +	Ma	Location *	WS
Category	Earthen Levee			GPS Latitude/Longitude	
				Start	End
Item	Vegetation			38.955526 °	38.970543 °
				-121.574166 °	-121.547616 °
DWR ID	DWR_RD0784_08_s_2022_2				
Comment Code					
V1 : Control annual grass and weeds on the levee slopes and easements.					
Inspector Comment					
Annual vegetation on the waterside slope needs to be maintained, Spring 2022.					

Photo 1 of 1 : SP\_2022\_RD0784\_437\_2\_20220503\_00002.jpg



View of annual vegetation on the waterside slope, Spring 2022.

<b>* Location</b> LS : Land Side    N/A : Not Applicable WS : Water Side CR : Crown	<b>** Rating</b> A : Acceptable M : Minimally Acceptable U : Unacceptable	N : Not Inspected/Rated C : Corrected A/W : Acceptable but Monitor & Maintain	<b>+ Issue Type</b> Ma : Maintenance Deficiency Ob : Design & System Obsolescence En : Enforcement
--	--	---	---

**Flood Control Project Maintenance  
Levee Inspections**

**Maintenance Issue Types Only, Levee Inspection Report By Mile - Spring 2022**

**Reclamation District No. 0784 Plumas Lake**

Waterway	Bank	Unit Miles	Inspection Start/End	Inspector
Unit No. 09 Feather River	Left	5.71	04/27/2022 04/27/2022	Brooks Weisser

LM Start	0.03	Rating **	M	Issue No.	1
LM End	5.70	Issue Type +	Ma	Location *	LS
Category	Earthen Levee			GPS Latitude/Longitude	
				Start	End
Item	Vegetation			39.089862 °	39.010241 °
				-121.584841 °	-121.579518 °
DWR ID	DWR_RD0784_09_s_2022_1				
Comment Code					
V1 : Control annual grass and weeds on the levee slopes and easements.					
Inspector Comment					
Annual vegetation on the landside slope needs to be maintained, Spring 2022.					

Photo 1 of 1 : SP\_2022\_RD0784\_530\_1\_20220503\_00001.jpg



View of annual vegetation on the landside slope, Spring 2022.

LM Start	0.03	Rating **	M	Issue No.	2
LM End	5.70	Issue Type +	Ma	Location *	WS
Category	Earthen Levee			GPS Latitude/Longitude	
				Start	End
Item	Vegetation			39.089859 °	39.010238 °
				-121.584842 °	-121.579518 °
DWR ID	DWR_RD0784_09_s_2022_2				
Comment Code					
V1 : Control annual grass and weeds on the levee slopes and easements.					
Inspector Comment					
Annual vegetation on the waterside slope needs to be maintained, Spring 2022.					

Photo 1 of 1 : SP\_2022\_RD0784\_530\_2\_20220503\_00002.jpg



View of annual vegetation on the waterside slope, Spring 2022.

**\* Location**  
LS : Land Side    N/A : Not Applicable  
WS : Water Side  
CR : Crown

**\*\* Rating**  
A : Acceptable                      N : Not Inspected/Rated  
M : Minimally Acceptable        C : Corrected  
U : Unacceptable                  A/W : Acceptable but Monitor & Maintain

**+ Issue Type**  
Ma : Maintenance Deficiency  
Ob : Design & System Obsolescence  
En : Enforcement