

**Flood Control Project Maintenance
Levee Inspections**

Maintenance Issue Types Only, Levee Inspection Report By Mile - Spring 2019

Reclamation District No. 0784 Plumas Lake

| Waterway | Bank | Unit Miles | Inspection Start/End | Inspector |
|------------------------|------|------------|--------------------------|---------------|
| Unit No. 01 Yuba River | Left | 2.21 | 03/21/2019 03/21/2019 | Sterling York |

| | | | | | |
|---|----------------------------------|--------------|------------------------|------------|----------|
| LM Start | 0.00 | Rating ** | A | Issue No. | 4 |
| LM End | 0.00 | Issue Type + | Ma | Location * | CR |
| Category | Earthen Levee | | GPS Latitude/Longitude | | |
| | | | Start | End | |
| Item | Operations & Maintenance Manuals | | | ° | ° |
| DWR ID | DWR_RD0784_01_s_2013_4 | | | | |
| Comment Code | | | | | |
| Inspector Comment | | | | | |
| O&M manuals are located at the district office. | | | | | |

No Photos

| | | | | | |
|---|--------------------------------|--------------|------------------------|------------|----------|
| LM Start | 0.00 | Rating ** | A | Issue No. | 5 |
| LM End | 0.00 | Issue Type + | Ma | Location * | CR |
| Category | Earthen Levee | | GPS Latitude/Longitude | | |
| | | | Start | End | |
| Item | Emergency Supplies & Equipment | | | ° | ° |
| DWR ID | DWR_RD0784_01_s_2013_5 | | | | |
| Comment Code | | | | | |
| Inspector Comment | | | | | |
| RD 784 participates with the neighboring districts to strategically place flood fight supplies around the local districts for fast response. They also have a shipping container at their district office, and three containers at another district full of flood fight supplies. | | | | | |

No Photos

| | | | | | |
|--|-------------------------------|--------------|------------------------|------------|----------|
| LM Start | 0.00 | Rating ** | A | Issue No. | 6 |
| LM End | 0.00 | Issue Type + | Ma | Location * | CR |
| Category | Earthen Levee | | GPS Latitude/Longitude | | |
| | | | Start | End | |
| Item | Flood Preparedness & Training | | | ° | ° |
| DWR ID | DWR_RD0784_01_s_2013_6 | | | | |
| Comment Code | | | | | |
| Inspector Comment | | | | | |
| RD 784 and its employees host and participate in a Flood Fight class put on by DWR every fall in their district. | | | | | |

No Photos

| | | | |
|--|--|---|---|
| * Location LS : Land Side N/A : Not Applicable WS : Water Side CR : Crown | ** Rating A : Acceptable M : Minimally Acceptable U : Unacceptable | N : Not Inspected/Rated C : Corrected A/W : Acceptable but Monitor & Maintain | + Issue Type Ma : Maintenance Deficiency Ob : Design & System Obsolescence En : Enforcement |
|--|--|---|---|

**Flood Control Project Maintenance
Levee Inspections**

Maintenance Issue Types Only, Levee Inspection Report By Mile - Spring 2019

Reclamation District No. 0784 Plumas Lake

| Waterway | Bank | Unit Miles | Inspection Start/End | Inspector |
|------------------------|------|------------|--------------------------|---------------|
| Unit No. 01 Yuba River | Left | 2.21 | 03/21/2019 03/21/2019 | Sterling York |

| | | | | | |
|--|------------------------|--------------|----|------------------------|---------------|
| LM Start | 0.04 | Rating ** | A | Issue No. | 2 |
| LM End | 2.21 | Issue Type + | Ma | Location * | LS |
| Category | Earthen Levee | | | GPS Latitude/Longitude | |
| | | | | Start | End |
| Item | Vegetation | | | 39.134430 ° | 39.125800 ° |
| | | | | -121.552686 ° | -121.588658 ° |
| DWR ID | DWR_RD0784_01_s_2019_2 | | | | |
| Comment Code | | | | | |
| V1 : Control annual grass and weeds on the levee slopes and easements. | | | | | |
| Inspector Comment | | | | | |
| The annual vegetation is well maintained, Spring 2019. | | | | | |

Photo 1 of 1 : SP_2019_RD0784_178_2_20190325_00008.jpg



View looking downstream landside at the well maintained annual vegetation, Spring 2019.

| | | | | | |
|--|------------------------|--------------|----|------------------------|---------------|
| LM Start | 0.04 | Rating ** | A | Issue No. | 3 |
| LM End | 2.21 | Issue Type + | Ma | Location * | WS |
| Category | Earthen Levee | | | GPS Latitude/Longitude | |
| | | | | Start | End |
| Item | Vegetation | | | 39.134430 ° | 39.125800 ° |
| | | | | -121.552686 ° | -121.588658 ° |
| DWR ID | DWR_RD0784_01_s_2019_3 | | | | |
| Comment Code | | | | | |
| V1 : Control annual grass and weeds on the levee slopes and easements. | | | | | |
| Inspector Comment | | | | | |
| The annual vegetation is well maintained, Spring 2019. | | | | | |

Photo 1 of 1 : SP_2019_RD0784_178_3_20190325_00009.jpg



View looking downstream waterside at the well maintained annual vegetation, Spring 2019.

* Location
LS : Land Side N/A : Not Applicable
WS : Water Side
CR : Crown

** Rating
A : Acceptable
M : Minimally Acceptable
U : Unacceptable
N : Not Inspected/Rated
C : Corrected
A/W : Acceptable but Monitor & Maintain

+ Issue Type
Ma : Maintenance Deficiency
Ob : Design & System Obsolescence
En : Enforcement

**Flood Control Project Maintenance
Levee Inspections**

Maintenance Issue Types Only, Levee Inspection Report By Mile - Spring 2019

Reclamation District No. 0784 Plumas Lake

| Waterway | Bank | Unit Miles | Inspection Start/End | Inspector |
|----------------------------|------|------------|--------------------------|---------------|
| Unit No. 02A Feather River | Left | 2.54 | 03/21/2019 03/21/2019 | Sterling York |

| | | | | | |
|--|-------------------------|--------------|----|------------------------|---------------|
| LM Start | 0.00 | Rating ** | A | Issue No. | 2 |
| LM End | 2.52 | Issue Type + | Ma | Location * | WS |
| Category | Earthen Levee | | | GPS Latitude/Longitude | |
| | | | | Start | End |
| Item | Vegetation | | | 39.125799 ° | 39.090526 ° |
| | | | | -121.588657 ° | -121.584699 ° |
| DWR ID | DWR_RD0784_02A_s_2019_2 | | | | |
| Comment Code | | | | | |
| V1 : Control annual grass and weeds on the levee slopes and easements. | | | | | |
| Inspector Comment | | | | | |
| The annual vegetation is well maintained, Spring 2019. | | | | | |

Photo 1 of 1 : SP_2019_RD0784_531_2_20190325_00002.jpg



View looking downstream waterside at the well maintained annual vegetation, Spring 2019.

| | | | | | |
|--|-------------------------|--------------|----|------------------------|---------------|
| LM Start | 0.00 | Rating ** | A | Issue No. | 1 |
| LM End | 2.52 | Issue Type + | Ma | Location * | LS |
| Category | Earthen Levee | | | GPS Latitude/Longitude | |
| | | | | Start | End |
| Item | Vegetation | | | 39.125799 ° | 39.090526 ° |
| | | | | -121.588658 ° | -121.584699 ° |
| DWR ID | DWR_RD0784_02A_s_2019_1 | | | | |
| Comment Code | | | | | |
| V1 : Control annual grass and weeds on the levee slopes and easements. | | | | | |
| Inspector Comment | | | | | |
| The annual vegetation is well maintained, Spring 2019. | | | | | |

Photo 1 of 1 : SP_2019_RD0784_531_1_20190325_00001.jpg



View looking downstream landside at the well maintained annual vegetation, Spring 2019.

* Location
LS : Land Side N/A : Not Applicable
WS : Water Side
CR : Crown

** Rating
A : Acceptable
M : Minimally Acceptable
U : Unacceptable
N : Not Inspected/Rated
C : Corrected
A/W : Acceptable but Monitor & Maintain

+ Issue Type
Ma : Maintenance Deficiency
Ob : Design & System Obsolescence
En : Enforcement

**Flood Control Project Maintenance
Levee Inspections**

Maintenance Issue Types Only, Levee Inspection Report By Mile - Spring 2019

Reclamation District No. 0784 Plumas Lake

| Waterway | Bank | Unit Miles | Inspection Start/End | Inspector |
|----------------------------|------|------------|--------------------------|---------------|
| Unit No. 02B Feather River | Left | 3.95 | 03/21/2019 03/21/2019 | Sterling York |

| | | | | | |
|--|----------------------------------|--------------|-----|------------------------|---------------|
| LM Start | | Rating ** | A/W | Issue No. | 1 |
| LM End | 9.36 | Issue Type + | Ma | Location * | WS |
| Category | Supplemental | | | GPS Latitude/Longitude | |
| | | | | Start | End |
| Item | 2017 USACE Erosion Survey, DRAFT | | | 39.009366 ° | 39.004549 ° |
| | | | | -121.579766 ° | -121.579143 ° |
| DWR ID | DWR_RD0784_02B_f_2018_1 | | | | |
| Comment Code | | | | | |
| | | | | | |
| Inspector Comment | | | | | |
| 2017 Site ID: FHR 17.8 L | | | | | |
| Status: Eroding | | | | | |
| 2017 Field Notes: Large sandbar on opposite bank, thalweg moving closer to levee. | | | | | |
| Site History: 2003 - Bank is near vertical. Identified as a Potentially Critical site. 2004 - Eddy flow off downstream end of Modesto formation eroding the fluvial sediments. 2005 - Some new slumping. Actively eroding but berm width is greater than 50 ft. 2006 - Downgraded to regular erosion site. Still actively eroding. Large old rotational failures in high bank on the downstream end. 2008 - Removed from inventory due to wide berm width does not meet criteria for an erosion site. 2010 - Added back to the inventory after 10 ft of bank erosion in the winter 2009 storm. Steep vertical face. 2011 - Bank has retreated an additional 2.5 ft from last year. New tree popouts and erosion throughout the site. 2012 - Site continues to worsen with new tree popouts and many sections of new erosion. | | | | | |

Photo 1 of 1 : SP_2019_RD0784_532_1_20190305_00001.jpg



USACE 2013 Photo #1

| | | | | | |
|--|-------------------------|--------------|----|------------------------|---------------|
| LM Start | 9.03 | Rating ** | A | Issue No. | 3 |
| LM End | 12.74 | Issue Type + | Ma | Location * | WS |
| Category | Earthen Levee | | | GPS Latitude/Longitude | |
| | | | | Start | End |
| Item | Vegetation | | | 39.009022 ° | 38.956310 ° |
| | | | | -121.578594 ° | -121.575308 ° |
| DWR ID | DWR_RD0784_02B_s_2019_3 | | | | |
| Comment Code | | | | | |
| V1 : Control annual grass and weeds on the levee slopes and easements. | | | | | |
| Inspector Comment | | | | | |
| The annual vegetation is well maintained, Spring 2019. | | | | | |

Photo 1 of 1 : SP_2019_RD0784_532_3_20190415_00006.jpg



View looking downstream waterside at the well maintained annual vegetation, Spring 2019.

| | | | | | | | |
|--|--|--|--|---|--|---|--|
| * Location LS : Land Side N/A : Not Applicable WS : Water Side CR : Crown | | ** Rating A : Acceptable M : Minimally Acceptable U : Unacceptable | | N : Not Inspected/Rated C : Corrected A/W : Acceptable but Monitor & Maintain | | + Issue Type Ma : Maintenance Deficiency Ob : Design & System Obsolescence En : Enforcement | |
|--|--|--|--|---|--|---|--|

**Flood Control Project Maintenance
Levee Inspections**

Maintenance Issue Types Only, Levee Inspection Report By Mile - Spring 2019

Reclamation District No. 0784 Plumas Lake

| Waterway | Bank | Unit Miles | Inspection Start/End | Inspector |
|----------------------------|------|------------|--------------------------|---------------|
| Unit No. 02B Feather River | Left | 3.95 | 03/21/2019 03/21/2019 | Sterling York |

| | | | | | |
|--|-------------------------|--------------|----|------------------------|---------------|
| LM Start | 9.03 | Rating ** | A | Issue No. | 2 |
| LM End | 12.74 | Issue Type + | Ma | Location * | LS |
| Category | Earthen Levee | | | GPS Latitude/Longitude | |
| | | | | Start | End |
| Item | Vegetation | | | 39.009021 ° | 38.956310 ° |
| | | | | -121.578595 ° | -121.575307 ° |
| DWR ID | DWR_RD0784_02B_s_2019_2 | | | | |
| Comment Code | | | | | |
| V1 : Control annual grass and weeds on the levee slopes and easements. | | | | | |
| Inspector Comment | | | | | |
| The annual vegetation is well maintained, Spring 2019. | | | | | |

Photo 1 of 1 : SP_2019_RD0784_532_2_20190415_00007.jpg



View looking downstream landside at the well maintained annual vegetation, Spring 2019.

| | | |
|--|---|---|
| * Location LS : Land Side N/A : Not Applicable WS : Water Side CR : Crown | ** Rating A : Acceptable M : Minimally Acceptable U : Unacceptable N : Not Inspected/Rated C : Corrected A/W : Acceptable but Monitor & Maintain | + Issue Type Ma : Maintenance Deficiency Ob : Design & System Obsolescence En : Enforcement |
|--|---|---|

**Flood Control Project Maintenance
Levee Inspections**

Maintenance Issue Types Only, Levee Inspection Report By Mile - Spring 2019

Reclamation District No. 0784 Plumas Lake

| Waterway | Bank | Unit Miles | Inspection Start/End | Inspector |
|-------------------------|-------|------------|--------------------------|---------------|
| Unit No. 03A Bear River | Right | 0.78 | 03/21/2019 03/21/2019 | Sterling York |

| | | | | | |
|--|-------------------------|--------------|----|------------------------|---------------|
| LM Start | 2.43 | Rating ** | A | Issue No. | 2 |
| LM End | 3.19 | Issue Type + | Ma | Location * | WS |
| Category | Earthen Levee | | | GPS Latitude/Longitude | |
| | | | | Start | End |
| Item | Vegetation | | | 38.970596 ° | 38.974692 ° |
| | | | | -121.547559 ° | -121.535502 ° |
| DWR ID | DWR_RD0784_03A_s_2019_2 | | | | |
| Comment Code | | | | | |
| V1 : Control annual grass and weeds on the levee slopes and easements. | | | | | |
| Inspector Comment | | | | | |
| The annual vegetation is well maintained, Spring 2019. | | | | | |

Photo 1 of 1 : SP_2019_RD0784_533_2_20190325_00002.jpg



View looking upstream waterside at the well maintained annual vegetation, Spring 2019.

| | | | | | |
|--|-------------------------|--------------|----|------------------------|---------------|
| LM Start | 2.43 | Rating ** | A | Issue No. | 1 |
| LM End | 3.19 | Issue Type + | Ma | Location * | LS |
| Category | Earthen Levee | | | GPS Latitude/Longitude | |
| | | | | Start | End |
| Item | Vegetation | | | 38.970596 ° | 38.974692 ° |
| | | | | -121.547559 ° | -121.535497 ° |
| DWR ID | DWR_RD0784_03A_s_2019_1 | | | | |
| Comment Code | | | | | |
| V1 : Control annual grass and weeds on the levee slopes and easements. | | | | | |
| Inspector Comment | | | | | |
| The annual vegetation is well maintained, Spring 2019. | | | | | |

Photo 1 of 1 : SP_2019_RD0784_533_1_20190325_00001.jpg



View looking upstream landside at the well maintained annual vegetation, Spring 2019.

* Location
LS : Land Side N/A : Not Applicable
WS : Water Side
CR : Crown

** Rating
A : Acceptable
M : Minimally Acceptable
U : Unacceptable
N : Not Inspected/Rated
C : Corrected
A/W : Acceptable but Monitor & Maintain

+ Issue Type
Ma : Maintenance Deficiency
Ob : Design & System Obsolescence
En : Enforcement

**Flood Control Project Maintenance
Levee Inspections**

Maintenance Issue Types Only, Levee Inspection Report By Mile - Spring 2019

Reclamation District No. 0784 Plumas Lake

| Waterway | Bank | Unit Miles | Inspection Start/End | Inspector |
|-------------------------|-------|------------|--------------------------|------------------|
| Unit No. 03B Bear River | Right | 1.49 | 03/21/2019 03/21/2019 | Sterling York |

| | | | | | |
|--|-------------------------|--------------|----|------------------------|---------------|
| LM Start | 3.23 | Rating ** | A | Issue No. | 5 |
| LM End | 4.69 | Issue Type + | Ma | Location * | WS |
| Category | Earthen Levee | | | GPS Latitude/Longitude | |
| | | | | Start | End |
| Item | Vegetation | | | 38.974360 ° | 38.985496 ° |
| | | | | -121.532187 ° | -121.510637 ° |
| DWR ID | DWR_RD0784_03B_s_2019_5 | | | | |
| Comment Code | | | | | |
| V1 : Control annual grass and weeds on the levee slopes and easements. | | | | | |
| Inspector Comment | | | | | |
| Annual vegetation is well maintained, Spring 2019. | | | | | |

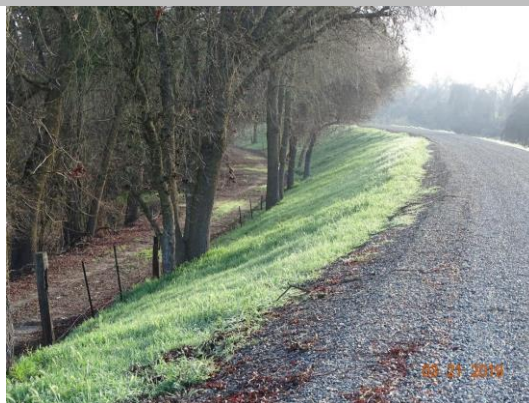
Photo 1 of 1 : SP_2019_RD0784_534_5_20190325_00007.jpg



View Looking upstream waterside of well maintained annual vegetation, Spring 2019.

| | | | | | |
|--|-------------------------|--------------|----|------------------------|---------------|
| LM Start | 3.23 | Rating ** | A | Issue No. | 4 |
| LM End | 4.69 | Issue Type + | Ma | Location * | LS |
| Category | Earthen Levee | | | GPS Latitude/Longitude | |
| | | | | Start | End |
| Item | Vegetation | | | 38.974360 ° | 38.985496 ° |
| | | | | -121.532187 ° | -121.510636 ° |
| DWR ID | DWR_RD0784_03B_s_2019_4 | | | | |
| Comment Code | | | | | |
| V1 : Control annual grass and weeds on the levee slopes and easements. | | | | | |
| Inspector Comment | | | | | |
| Annual vegetation is well maintained, Spring 2019. | | | | | |

Photo 1 of 1 : SP_2019_RD0784_534_4_20190325_00005.jpg



View Looking upstream landside of well maintained annual vegetation, Spring 2019.

| | | | | | | | |
|--|--|--|--|---|--|---|--|
| * Location LS : Land Side N/A : Not Applicable WS : Water Side CR : Crown | | ** Rating A : Acceptable M : Minimally Acceptable U : Unacceptable | | N : Not Inspected/Rated C : Corrected A/W : Acceptable but Monitor & Maintain | | + Issue Type Ma : Maintenance Deficiency Ob : Design & System Obsolescence En : Enforcement | |
|--|--|--|--|---|--|---|--|

**Flood Control Project Maintenance
Levee Inspections**

Maintenance Issue Types Only, Levee Inspection Report By Mile - Spring 2019

Reclamation District No. 0784 Plumas Lake

| Waterway | Bank | Unit Miles | Inspection Start/End | Inspector |
|-------------------------|-------|------------|--------------------------|---------------|
| Unit No. 03B Bear River | Right | 1.49 | 03/21/2019 03/21/2019 | Sterling York |

| | | | | | |
|--|-----------------------------|--------------|-----|------------------------|---------------|
| LM Start | 3.52 | Rating ** | A/W | Issue No. | 8 |
| LM End | 3.52 | Issue Type + | Ma | Location * | |
| Category | Supplemental | | | GPS Latitude/Longitude | |
| | | | | Start | End |
| Item | DWR UCIP LMA Responsibility | | | 38.974330 ° | 38.974330 ° |
| | | | | -121.526799 ° | -121.526799 ° |
| DWR ID | 18580 | | | | |
| Comment Code | | | | | |
| | | | | | |
| Inspector Comment | | | | | |
| FS_ID:53545 DS_ID:18580 EP_NO: N/A Repair Type: No Action Needed Crossing Status: Found UCIP Comments: 2-1-2019 - Pipe crossing was video inspected on 8/14/2018. (P. Meagher) FIELD_STRUCT_DESC: 30-inch corrugated metal drainage pipe through the levee, 19 feet below the crown. Flap gate on the waterside (WS) end. Concrete headwall at the WS toe. [Additional Reference(s): DWR Levee Log, 2005. USACE Sacramento O&M Manual 145, August 1955 (Station 92+88)]. FS Date: 2/27/2013 | | | | | |

No Photos

| | | | | | |
|---|----------------------------------|--------------|----|------------------------|---------------|
| LM Start | 4.28 | Rating ** | M | Issue No. | 3 |
| LM End | 4.29 | Issue Type + | Ma | Location * | WS |
| Category | Supplemental | | | GPS Latitude/Longitude | |
| | | | | Start | End |
| Item | 2017 USACE Erosion Survey, DRAFT | | | 38.981271 ° | 38.981400 ° |
| | | | | -121.515999 ° | -121.515848 ° |
| DWR ID | DWR_RD0784_03B_f_2018_3 | | | | |
| Comment Code | | | | | |
| | | | | | |
| | | | | | |
| Inspector Comment | | | | | |
| 2017 Site ID: BER 4.9 R | | | | | |
| Status: Eroding | | | | | |
| 2017 Field Notes: Access Issues - Could not observe | | | | | |
| Site History: 2009 - Small site which could be repaired with maintenance. Erosion into the levee toe, rock has started to fail. | | | | | |

No Photos

| | | | |
|--|--|---|---|
| * Location LS : Land Side N/A : Not Applicable WS : Water Side CR : Crown | ** Rating A : Acceptable M : Minimally Acceptable U : Unacceptable | N : Not Inspected/Rated C : Corrected A/W : Acceptable but Monitor & Maintain | + Issue Type Ma : Maintenance Deficiency Ob : Design & System Obsolescence En : Enforcement |
|--|--|---|---|

**Flood Control Project Maintenance
Levee Inspections**

Maintenance Issue Types Only, Levee Inspection Report By Mile - Spring 2019

Reclamation District No. 0784 Plumas Lake

| Waterway | Bank | Unit Miles | Inspection Start/End | Inspector |
|-------------------------|-------|------------|--------------------------|---------------|
| Unit No. 03B Bear River | Right | 1.49 | 03/21/2019 03/21/2019 | Sterling York |

| | | | | | |
|----------|-----------------------------|--------------|----|------------------------|--------------|
| LM Start | 4.66 | Rating ** | U | Issue No. | 9 |
| LM End | 4.66 | Issue Type + | Ma | Location * | |
| Category | Supplemental | | | GPS Latitude/Longitude | |
| | | | | Start | End |
| Item | DWR UCIP LMA Responsibility | | | 38.985247° | 38.985247° |
| | | | | -121.511075° | -121.511075° |
| DWR ID | 18627 | | | | |

Comment Code

Inspector Comment

FS_ID:53072
DS_ID:18627
EP_NO: N/A
Repair Type: Urgent
Crossing Status: Found
UCIP Comments: 10/16/2018 Internal video inspection was completed recently and the inspection is being evaluated by the District Engineer. Waiting for internal inspection results to determine the internal condition of this crossing. Crossing remains Urgent due to the unknown condition of the pipe through the levee. (O. Magana - DWR UCIP) 11/30/2017 Crossing remains Urgent due to uncertainty of pipe condition through levee -- recommend an internal inspection of the pipe through the levee as a precaution measure to determine integrity of pipe. Repair of the rusted out collar (void) found at the WS pipe outlet has been repaired by the LMA. Received additional photos from DWR levee inspector, S. York, of the WS concrete headwall installed and vegetation cleared from WS. (O. Magana - DWR UCIP)07/13/2017 - The rusted out collar at the bottom of the waterside flap gate has been sealed with concrete. Internal pipe inspections still pending. (P.Meagher-RD784).04/13/2017 - Spoke to LMA representative, P. Meagher, regarding the status of this crossing. The report has been updated to indicate vegetation has been cleared from WS outlet and LS inlet. The crossing remains Urgent--WS pipe collar is rusted out on the bottom. Recommend internal pipe inspection to determine pipe integrity through the levee. Owner will need to coordinate with the CVFPB to address issue. (O. Magana - DWR UCIP) 01/16/2017 - Landowner who utilizes this pipe reported to RD784 staff on 1/11/2017 that he suspected this pipe at the waterside flap gate ring area was rusted out at the bottom. After investigating, we could see what was reported is correct. Sandbags have been temporarily placed around the 2" +/- gapped area underneath the flap gate ring. A permanent solution is anticipated to be completed in the next 3 to 6 months. The plan is to pour a concrete ring / headwall around the open corroded pipe end. Photos attached. (P. Meagher - RD784).11/04/2016 - Flap gate on waterside has been cleared again as of 10/17/2016. The LS inlet area has been cleared as of 9/21/2016. See updated photos attached. (P.Meagher - RD784)09/22/2016 - vegetation at inlet of pipe has been cleared by owner. photos added showing pipe inlet. (T. Hatch - DWR UCIP)08/09/2016 - vegetation partially obscuring outlet on WS. Heavy vegetation on landside (LS) limiting inspection of inlet. Owner asked by RD0784 to clear vegetation and debris. (T. Hatch - DWR UCIP)11/1/2015 - Flap Gate has been cleared as of 12/9/2014 and again during summer of 2015 (P. Meagher/RD0784)2/27/2013 - Flap gate blocked by vegetation on WS toe. Unable to locate inlet. (W. Wylie - DWR UCIP)
FIELD_STRUCT_DESC: 18-inch corrugated metal drainage pipe through the levee, 20 feet below the crown. Gate valve on the waterside

Photo 1 of 3 : UCIP_SP_2019_53072_77114.jpg



Close up photo of concrete seal where the rusted out void used to be. Farmer irrigation was currently flowing at the time the photo was taken.

| | | | | | |
|-------------------|----------------------|--------------------------|---|-----------------------------------|--|
| * Location | | ** Rating | | + Issue Type | |
| LS : Land Side | N/A : Not Applicable | A : Acceptable | N : Not Inspected/Rated | Ma : Maintenance Deficiency | |
| WS : Water Side | | M : Minimally Acceptable | C : Corrected | Ob : Design & System Obsolescence | |
| CR : Crown | | U : Unacceptable | A/W : Acceptable but Monitor & Maintain | En : Enforcement | |

**Flood Control Project Maintenance
Levee Inspections**

Maintenance Issue Types Only, Levee Inspection Report By Mile - Spring 2019

Reclamation District No. 0784 Plumas Lake

| Waterway | Bank | Unit Miles | Inspection Start/End | Inspector |
|-------------------------|-------|------------|--------------------------|---------------|
| Unit No. 03B Bear River | Right | 1.49 | 03/21/2019 03/21/2019 | Sterling York |

(WS). [Additional Reference(s): USACE Sacramento O&M Manual 145, August 1955 (Station 4+96). USACE Sacramento As-built Drawings, 2-4-106, Exhibit B, Sheet 2, July 1944 (Station 4+96)].
FS Date: 10/16/2018 1:17:00 PM

| | | | | | |
|----------|-------------|--------------|----|------------|-----------------|
| LM Start | 4.66 | Rating ** | U | Issue No. | 9 (cont) |
| LM End | 4.66 | Issue Type + | Ma | Location * | |

Photo 2 of 3 : UCIP_SP_2019_53072_77115.jpg



Concrete collar completed around the waterside exterior flap gate section.

| | | | | | |
|----------|-------------|--------------|----|------------|-----------------|
| LM Start | 4.66 | Rating ** | U | Issue No. | 9 (cont) |
| LM End | 4.66 | Issue Type + | Ma | Location * | |

Photo 3 of 3 : UCIP_SP_2019_53072_76618.jpg



Sandbags temporarily placed in front of flapgate.

| * Location | ** Rating | + Issue Type |
|---|---|--|
| LS : Land Side WS : Water Side CR : Crown | A : Acceptable M : Minimally Acceptable U : Unacceptable | Ma : Maintenance Deficiency Ob : Design & System Obsolescence En : Enforcement |
| N/A : Not Applicable | N : Not Inspected/Rated C : Corrected A/W : Acceptable but Monitor & Maintain | |

**Flood Control Project Maintenance
Levee Inspections**

Maintenance Issue Types Only, Levee Inspection Report By Mile - Spring 2019

Reclamation District No. 0784 Plumas Lake

| Waterway | Bank | Unit Miles | Inspection Start/End | Inspector |
|-------------------------------|-------|------------|--------------------------|---------------|
| Unit No. 04 Interceptor Canal | Right | 6.33 | 03/21/2019 03/21/2019 | Sterling York |

| | | | | | |
|--|------------------------|--------------|----|------------------------|---------------|
| LM Start | 0.00 | Rating ** | A | Issue No. | 2 |
| LM End | 6.29 | Issue Type + | Ma | Location * | LS |
| Category | Earthen Levee | | | GPS Latitude/Longitude | |
| | | | | Start | End |
| Item | Vegetation | | | 38.974758 ° | 39.059203 ° |
| | | | | -121.535092 ° | -121.550801 ° |
| DWR ID | DWR_RD0784_04_s_2019_2 | | | | |
| Comment Code | | | | | |
| V1 : Control annual grass and weeds on the levee slopes and easements. | | | | | |
| Inspector Comment | | | | | |
| Annual vegetation is well maintained, Spring 2019. | | | | | |

Photo 1 of 1 : SP_2019_RD0784_181_2_20190325_00009.jpg



View Looking upstream landside of well maintained annual vegetation, Spring 2019.

| | | | | | |
|--|------------------------|--------------|----|------------------------|---------------|
| LM Start | 0.00 | Rating ** | A | Issue No. | 3 |
| LM End | 6.29 | Issue Type + | Ma | Location * | WS |
| Category | Earthen Levee | | | GPS Latitude/Longitude | |
| | | | | Start | End |
| Item | Vegetation | | | 38.974758 ° | 39.059203 ° |
| | | | | -121.535092 ° | -121.550801 ° |
| DWR ID | DWR_RD0784_04_s_2019_3 | | | | |
| Comment Code | | | | | |
| V1 : Control annual grass and weeds on the levee slopes and easements. | | | | | |
| Inspector Comment | | | | | |
| The annual vegetation is well maintained, Spring 2019. | | | | | |

Photo 1 of 1 : SP_2019_RD0784_181_3_20190325_00008.jpg



View Looking upstream waterside of well maintained annual vegetation, Spring 2019.

* Location
LS : Land Side N/A : Not Applicable
WS : Water Side
CR : Crown

** Rating
A : Acceptable
M : Minimally Acceptable
U : Unacceptable
N : Not Inspected/Rated
C : Corrected
A/W : Acceptable but Monitor & Maintain

+ Issue Type
Ma : Maintenance Deficiency
Ob : Design & System Obsolescence
En : Enforcement

**Flood Control Project Maintenance
Levee Inspections**

Maintenance Issue Types Only, Levee Inspection Report By Mile - Spring 2019

Reclamation District No. 0784 Plumas Lake

| Waterway | Bank | Unit Miles | Inspection Start/End | Inspector |
|-------------------------------|------|------------|--------------------------|------------------|
| Unit No. 05 Interceptor Canal | Left | 4.19 | 03/21/2019 03/21/2019 | Sterling York |

| | | | | | |
|--|-------------------------|--------------|----|------------------------|---------------|
| LM Start | 0.01 | Rating ** | A | Issue No. | 14 |
| LM End | 4.19 | Issue Type + | Ma | Location * | LS |
| Category | Earthen Levee | | | GPS Latitude/Longitude | |
| | | | | Start | End |
| Item | Vegetation | | | 38.974526 ° | 39.020566 ° |
| | | | | -121.532507 ° | -121.509102 ° |
| DWR ID | DWR_RD0784_05_s_2019_14 | | | | |
| Comment Code | | | | | |
| V1 : Control annual grass and weeds on the levee slopes and easements. | | | | | |
| Inspector Comment | | | | | |
| Annual vegetation is well maintained, Spring 2019. | | | | | |

Photo 1 of 1 : SP_2019_RD0784_182_14_20190325_00034.jpg



View looking downstream landside of well maintained annual vegetation, Spring 2019.

| | | | | | | |
|--|-------------------------|--------------|----|------------------------|----|---------------|
| LM Start | 0.01 | Rating ** | A | Issue No. | 15 | |
| LM End | 4.19 | Issue Type + | Ma | Location * | WS | |
| Category | Earthen Levee | | | GPS Latitude/Longitude | | |
| | | | | Start | | End |
| Item | Vegetation | | | 38.974526 ° | | 39.020566 ° |
| | | | | -121.532507 ° | | -121.509102 ° |
| DWR ID | DWR_RD0784_05_s_2019_15 | | | | | |
| Comment Code | | | | | | |
| V1 : Control annual grass and weeds on the levee slopes and easements. | | | | | | |
| Inspector Comment | | | | | | |
| Annual vegetation is well maintained, Spring 2019. | | | | | | |

Photo 1 of 1 : SP_2019_RD0784_182_15_20190325_00033.jpg



View looking downstream waterside of well maintained annual vegetation, Spring 2019.

* Location
LS : Land Side N/A : Not Applicable
WS : Water Side
CR : Crown

** Rating
A : Acceptable
M : Minimally Acceptable
U : Unacceptable
N : Not Inspected/Rated
C : Corrected
A/W : Acceptable but Monitor & Maintain

+ Issue Type
Ma : Maintenance Deficiency
Ob : Design & System Obsolescence
En : Enforcement

**Flood Control Project Maintenance
Levee Inspections**

Maintenance Issue Types Only, Levee Inspection Report By Mile - Spring 2019

Reclamation District No. 0784 Plumas Lake

| Waterway | Bank | Unit Miles | Inspection Start/End | Inspector |
|-------------------------------|------|------------|--------------------------|---------------|
| Unit No. 05 Interceptor Canal | Left | 4.19 | 03/21/2019 03/21/2019 | Sterling York |

| | | | | | | |
|--|-----------------------------|--------------|-----|------------------------|----|---------------|
| LM Start | 0.12 | Rating ** | A/W | Issue No. | 16 | |
| LM End | 0.12 | Issue Type + | Ma | Location * | | |
| Category | Supplemental | | | GPS Latitude/Longitude | | |
| | | | | Start | | End |
| Item | DWR UCIP LMA Responsibility | | | 38.976147 ° | | 38.976147 ° |
| | | | | -121.533019 ° | | -121.533019 ° |
| DWR ID | 18592 | | | | | |
| Comment Code | | | | | | |
| | | | | | | |
| Inspector Comment | | | | | | |
| FS_ID:53544 | | | | | | |
| DS_ID:18592 | | | | | | |
| EP_NO: N/A | | | | | | |
| Repair Type: No Action Needed | | | | | | |
| Crossing Status: Found | | | | | | |
| UCIP Comments: 2/1/2019 - Pipe crossing was video inspected on 8/13/2018. (P. Meagher)02/26/2013 Good candidate for video inspection. (W. Wylie - DWR UCIP) | | | | | | |
| FIELD_STRUCT_DESC: 18-inch corrugated metal drainage pipe through the levee, 18 feet below the crown. Flap gate on the waterside (WS) end. Concrete U-shaped headwall on the WS end. Polyvinyl chloride weir inlet on landside (LS) toe. [Additional Reference(s): DWR Levee Log, 2005. USACE Sacramento O&M Manual 145, August 1955 (Station 25+28)]. | | | | | | |
| FS Date: 2/26/2013 | | | | | | |

| | | | | | |
|----------|-------------|--------------|-----|------------|------------------|
| LM Start | 0.12 | Rating ** | A/W | Issue No. | 16 (cont) |
| LM End | 0.12 | Issue Type + | Ma | Location * | |

Photo 1 of 3 : UCIP_SP_2019_53544_16552.jpg



inlet control structure on LS toe.

Photo 2 of 3 : UCIP_SP_2019_53544_16555.jpg



Concrete U-shaped outlet with flap gate on WS toe.

| | | | | |
|--|--|---|--|---|
| * Location LS : Land Side N/A : Not Applicable WS : Water Side CR : Crown | | ** Rating A : Acceptable M : Minimally Acceptable U : Unacceptable N : Not Inspected/Rated C : Corrected A/W : Acceptable but Monitor & Maintain | | + Issue Type Ma : Maintenance Deficiency Ob : Design & System Obsolescence En : Enforcement |
|--|--|---|--|---|

**Flood Control Project Maintenance
Levee Inspections**

Maintenance Issue Types Only, Levee Inspection Report By Mile - Spring 2019

Reclamation District No. 0784 Plumas Lake

| Waterway | Bank | Unit Miles | Inspection Start/End | Inspector |
|-------------------------------|------|------------|--------------------------|---------------|
| Unit No. 05 Interceptor Canal | Left | 4.19 | 03/21/2019 03/21/2019 | Sterling York |

| | | | | | | |
|--|-----------------------------|--------------|-----|------------------------|---------------|--|
| LM Start | 0.12 | Rating ** | A/W | Issue No. | 16 (cont) | |
| LM End | 0.12 | Issue Type + | Ma | Location * | | |
| Category | Supplemental | | | GPS Latitude/Longitude | | |
| | | | | Start | End | |
| Item | DWR UCIP LMA Responsibility | | | 38.976147 ° | 38.976147 ° | |
| | | | | -121.533019 ° | -121.533019 ° | |
| DWR ID | 18592 | | | | | |
| Comment Code | | | | | | |
| | | | | | | |
| Inspector Comment | | | | | | |
| FS_ID:53544 DS_ID:18592 EP_NO: N/A Repair Type: No Action Needed Crossing Status: Found UCIP Comments: 2/1/2019 - Pipe crossing was video inspected on 8/13/2018. (P. Meagher)02/26/2013 Good candidate for video inspection. (W. Wylie - DWR UCIP) FIELD_STRUCT_DESC: 18-inch corrugated metal drainage pipe through the levee, 18 feet below the crown. Flap gate on the waterside (WS) end. Concrete U-shaped headwall on the WS end. Polyvinyl chloride weir inlet on landside (LS) toe. [Additional Reference(s): DWR Levee Log, 2005. USACE Sacramento O&M Manual 145, August 1955 (Station 25+28)]. FS Date: 2/26/2013 | | | | | | |

Photo 3 of 3 : UCIP_SP_2019_53544_16554.jpg



Concrete U-shaped outlet on WS toe.

| | | | | | |
|---|-----------------------------|--------------|----|------------------------|---------------|
| LM Start | 0.84 | Rating ** | M | Issue No. | 17 |
| LM End | 0.84 | Issue Type + | Ma | Location * | |
| Category | Supplemental | | | GPS Latitude/Longitude | |
| | | | | Start | End |
| Item | DWR UCIP LMA Responsibility | | | 38.986432 ° | 38.986432 ° |
| | | | | -121.534983 ° | -121.534983 ° |
| DWR ID | 18591 | | | | |
| Comment Code | | | | | |
| | | | | | |
| Inspector Comment | | | | | |
| FS_ID:53546 DS_ID:18591 EP_NO: N/A Repair Type: Non-Urgent Crossing Status: Found UCIP Comments: 2-1-2019 - Pipe crossing was video inspected on 8/14/2018. (P. Meagher)02/26/2013 No handle or access to slide gate on LS toe. (W. Wylie - DWR UCIP) FIELD_STRUCT_DESC: 30-inch corrugated metal drainage pipe through the levee, 23.7 feet below the crown. Flap gate on the waterside (WS) end. Slide gate inside a concrete drop inlet on the landside (LS). [Additional Reference(s): DWR Levee Log, 2005. USACE Sacramento O&M Manual 145, August 1955 (Station 63+00)]. FS Date: 9/11/2015 9:05:00 AM | | | | | |

Photo 1 of 2 : UCIP_SP_2019_53546_54246.jpg



Concrete drop-inlet at LS toe.

| | | | | |
|--|--|---|--|---|
| * Location LS : Land Side N/A : Not Applicable WS : Water Side CR : Crown | | ** Rating A : Acceptable M : Minimally Acceptable U : Unacceptable N : Not Inspected/Rated C : Corrected A/W : Acceptable but Monitor & Maintain | | + Issue Type Ma : Maintenance Deficiency Ob : Design & System Obsolescence En : Enforcement |
|--|--|---|--|---|

**Flood Control Project Maintenance
Levee Inspections**

Maintenance Issue Types Only, Levee Inspection Report By Mile - Spring 2019

Reclamation District No. 0784 Plumas Lake

| Waterway | Bank | Unit Miles | Inspection Start/End | Inspector |
|-------------------------------|------|------------|--------------------------|---------------|
| Unit No. 05 Interceptor Canal | Left | 4.19 | 03/21/2019 03/21/2019 | Sterling York |

| | | | | | | |
|---|-----------------------------|--------------|-----|------------------------|-----------|---------------|
| LM Start | 1.60 | Rating ** | A/W | Issue No. | 18 (cont) | |
| LM End | 1.60 | Issue Type + | Ma | Location * | | |
| Category | Supplemental | | | GPS Latitude/Longitude | | |
| | | | | Start | | End |
| Item | DWR UCIP LMA Responsibility | | | 38.997305 ° | | 38.997305 ° |
| | | | | -121.537081 ° | | -121.537081 ° |
| DWR ID | 18590 | | | | | |
| Comment Code | | | | | | |
| | | | | | | |
| Inspector Comment | | | | | | |
| FS_ID:53547 | | | | | | |
| DS_ID:18590 | | | | | | |
| EP_NO: N/A | | | | | | |
| Repair Type: No Action Needed | | | | | | |
| Crossing Status: Found | | | | | | |
| UCIP Comments: 2-1-2019 - Pipe crossing was video inspected on 8/14/2018. (P. Meagher)02/26/2013 Good candidate for video inspection. (W. Wylie - DWR UCIP) | | | | | | |
| FIELD_STRUCT_DESC: 18-inch corrugated metal drainage pipe through the levee, 14.5 feet below the crown. Flap gate on the waterside (WS) end. Concrete U-shaped headwall on the WS. Polyvinyl chloride weir on inlet. (See Drawing No. 2-4-106, Sheet 5). [Additional Reference(s): DWR Levee Log, 2005. USACE Sacramento O&M Manual 145, August 1955 (Station 103+23)]. | | | | | | |
| FS Date: 2/26/2013 | | | | | | |

| | | | | | |
|----------|-------------|--------------|-----|------------|------------------|
| LM Start | 1.60 | Rating ** | A/W | Issue No. | 18 (cont) |
| LM End | 1.60 | Issue Type + | Ma | Location * | |

Photo 2 of 3 : UCIP_SP_2019_53547_16563.jpg



Pvc weir on inlet at LS toe.

Photo 3 of 3 : UCIP_SP_2019_53547_16562.jpg



Concrete U-shaped headwall and flap gate on WS toe.

| | | | | |
|--|--|---|--|---|
| * Location LS : Land Side N/A : Not Applicable WS : Water Side CR : Crown | | ** Rating A : Acceptable M : Minimally Acceptable U : Unacceptable N : Not Inspected/Rated C : Corrected A/W : Acceptable but Monitor & Maintain | | + Issue Type Ma : Maintenance Deficiency Ob : Design & System Obsolescence En : Enforcement |
|--|--|---|--|---|

**Flood Control Project Maintenance
Levee Inspections**

Maintenance Issue Types Only, Levee Inspection Report By Mile - Spring 2019

Reclamation District No. 0784 Plumas Lake

| Waterway | Bank | Unit Miles | Inspection Start/End | Inspector |
|-------------------------------|------|------------|--------------------------|---------------|
| Unit No. 05 Interceptor Canal | Left | 4.19 | 03/21/2019 03/21/2019 | Sterling York |

| | | | | | |
|---|-----------------------------|--------------|----|------------------------|---------------|
| LM Start | 1.86 | Rating ** | M | Issue No. | 19 |
| LM End | 1.86 | Issue Type + | Ma | Location * | |
| Category | Supplemental | | | GPS Latitude/Longitude | |
| | | | | Start | End |
| Item | DWR UCIP LMA Responsibility | | | 39.000975 ° | 39.000975 ° |
| | | | | -121.537779 ° | -121.537779 ° |
| DWR ID | 18588 | | | | |
| Comment Code | | | | | |
| | | | | | |
| Inspector Comment | | | | | |
| FS_ID:53548 DS_ID:18588 EP_NO: N/A Repair Type: Non-Urgent Crossing Status: Found UCIP Comments: 2-1-2019 - Pipe crossing was video inspected on 8/14/2018. (P. Meagher)09/11/2015 Inlet burried. Good candidate for video inspection as pipe is corroded. (G. Wylie - FPIIB) FIELD_STRUCT_DESC: 18-inch corrugated metal drainage pipe through the levee, 14.5 feet below the crown. Flap gate on the waterside (WS) end. Concrete U-shaped headwall on the WS. [Additional Reference(s): DWR Levee Log, 2005. USACE Sacramento O&M Manual 145, August 1955 (Station 116+78)]. FS Date: 9/11/2015 9:36:00 AM | | | | | |

Photo 1 of 3 : UCIP_SP_2019_53548_54247.jpg



Concrete U-shaped outlet and flap-gate on WS toe.

| | | | | | |
|----------|-------------|--------------|----|------------|------------------|
| LM Start | 1.86 | Rating ** | M | Issue No. | 19 (cont) |
| LM End | 1.86 | Issue Type + | Ma | Location * | |

Photo 2 of 3 : UCIP_SP_2019_53548_54248.jpg



Debris covered inlet on LS toe.

| | | | | |
|--|--|---|--|---|
| * Location LS : Land Side N/A : Not Applicable WS : Water Side CR : Crown | | ** Rating A : Acceptable N : Not Inspected/Rated M : Minimally Acceptable C : Corrected U : Unacceptable A/W : Acceptable but Monitor & Maintain | | + Issue Type Ma : Maintenance Deficiency Ob : Design & System Obsolescence En : Enforcement |
|--|--|---|--|---|

**Flood Control Project Maintenance
Levee Inspections**

Maintenance Issue Types Only, Levee Inspection Report By Mile - Spring 2019

Reclamation District No. 0784 Plumas Lake

| Waterway | Bank | Unit Miles | Inspection Start/End | Inspector |
|-------------------------------|------|------------|--------------------------|---------------|
| Unit No. 05 Interceptor Canal | Left | 4.19 | 03/21/2019 03/21/2019 | Sterling York |

| | | | | | | |
|---|-----------------------------|--------------|----|------------------------|---------------|--|
| LM Start | 1.86 | Rating ** | M | Issue No. | 19 (cont) | |
| LM End | 1.86 | Issue Type + | Ma | Location * | | |
| Category | Supplemental | | | GPS Latitude/Longitude | | |
| | | | | Start | End | |
| Item | DWR UCIP LMA Responsibility | | | 39.000975 ° | 39.000975 ° | |
| | | | | -121.537779 ° | -121.537779 ° | |
| DWR ID | 18588 | | | | | |
| Comment Code | | | | | | |
| | | | | | | |
| | | | | | | |
| Inspector Comment | | | | | | |
| FS_ID:53548 | | | | | | |
| DS_ID:18588 | | | | | | |
| EP_NO: N/A | | | | | | |
| Repair Type: Non-Urgent | | | | | | |
| Crossing Status: Found | | | | | | |
| UCIP Comments: 2-1-2019 - Pipe crossing was video inspected on 8/14/2018. (P. Meagher)09/11/2015 Inlet burried. Good candidate for video inspection as pipe is corroded. (G. Wylie - FPIIB) | | | | | | |
| FIELD_STRUCT_DESC: 18-inch corrugated metal drainage pipe through the levee, 14.5 feet below the crown. Flap gate on the waterside (WS) end. Concrete U-shaped headwall on the WS. | | | | | | |
| [Additional Reference(s): DWR Levee Log, 2005. USACE Sacramento O&M Manual 145, August 1955 (Station 116+78)]. | | | | | | |
| FS Date: 9/11/2015 9:36:00 AM | | | | | | |

Photo 3 of 3 : UCIP_SP_2019_53548_54249.jpg



Drainage outlet on WS toe.

| | | | | |
|--|--|---|--|---|
| * Location LS : Land Side N/A : Not Applicable WS : Water Side CR : Crown | | ** Rating A : Acceptable M : Minimally Acceptable U : Unacceptable N : Not Inspected/Rated C : Corrected A/W : Acceptable but Monitor & Maintain | | + Issue Type Ma : Maintenance Deficiency Ob : Design & System Obsolescence En : Enforcement |
|--|--|---|--|---|

**Flood Control Project Maintenance
Levee Inspections**

Maintenance Issue Types Only, Levee Inspection Report By Mile - Spring 2019

Reclamation District No. 0784 Plumas Lake

| Waterway | Bank | Unit Miles | Inspection Start/End | Inspector |
|-------------------------------|------|------------|--------------------------|---------------|
| Unit No. 05 Interceptor Canal | Left | 4.19 | 03/21/2019 03/21/2019 | Sterling York |

| | | | | | |
|----------|-----------------------------|--------------|----|------------------------|---------------|
| LM Start | 2.04 | Rating ** | M | Issue No. | 20 |
| LM End | 2.04 | Issue Type + | Ma | Location * | |
| Category | Supplemental | | | GPS Latitude/Longitude | |
| | | | | Start | End |
| Item | DWR UCIP LMA Responsibility | | | 39.003643 ° | 39.003643 ° |
| | | | | -121.538292 ° | -121.538292 ° |
| DWR ID | 18587 | | | | |

Comment Code

Inspector Comment

FS_ID:53557
DS_ID:18587
EP_NO: N/A
Repair Type: Non-Urgent
Crossing Status: Found
UCIP Comments: 2-1-2019 - The pipe crossing was video inspected on 8/14/2018. New photos of the landside toe added. In August 2017 a sinkhole was noticed at the bottom of the landside toe shelf area. The sinkhole developed as a result of the landowner who extended the existing pipe in order to complete a new unauthorized concrete flashboard structure replacement. The pipe owner was mailed a letter from RD784 with a Cc to CVFPB and DWR dated 10/23/2017 acknowledging the owner's completion of an attempted repair. The sinkhole has since returned. On 1/31/2017 The waterside excess pipe end was discovered to be floating to the surface due to landside water runoff through the pipe. Because of the floating pipe, the water was not draining all the way through the pipe. Instead, the water was overtopping the levee shelf area. In order to resolve this issue, the excess portion of the pipe was cut off. After doing so, the water immediately started draining properly again. (P. Meagher, RD784 2/3/2017). Erosion at outlet may or may not be an issue.
FIELD_STRUCT_DESC: 18-inch corrugated metal drainage pipe through the levee, 14.5 feet below the crown. Flap gate on the waterside (WS) end. Concrete U-shaped headwall on the WS. Polyvinyl chloride weir on inlet. [Additional Reference(s): DWR Levee Log, 2005. USACE Sacramento O&M Manual 145, August 1955 (Station 126+53)].
FS Date: 2/3/2017

Photo 1 of 3 : UCIP_SP_2019_53557_54250.jpg



Inlet with PVC weir on LS toe.

| | | | | |
|--|--|---|--|---|
| * Location LS : Land Side N/A : Not Applicable WS : Water Side CR : Crown | | ** Rating A : Acceptable M : Minimally Acceptable U : Unacceptable N : Not Inspected/Rated C : Corrected A/W : Acceptable but Monitor & Maintain | | + Issue Type Ma : Maintenance Deficiency Ob : Design & System Obsolescence En : Enforcement |
|--|--|---|--|---|

**Flood Control Project Maintenance
Levee Inspections**

Maintenance Issue Types Only, Levee Inspection Report By Mile - Spring 2019

Reclamation District No. 0784 Plumas Lake

| Waterway | Bank | Unit Miles | Inspection Start/End | Inspector |
|-------------------------------|------|------------|--------------------------|---------------|
| Unit No. 05 Interceptor Canal | Left | 4.19 | 03/21/2019 03/21/2019 | Sterling York |

| | | | | | | |
|--|-----------------------------|--------------|----|------------------------|---------------|--|
| LM Start | 2.04 | Rating ** | M | Issue No. | 20 (cont) | |
| LM End | 2.04 | Issue Type + | Ma | Location * | | |
| Category | Supplemental | | | GPS Latitude/Longitude | | |
| | | | | Start | End | |
| Item | DWR UCIP LMA Responsibility | | | 39.003643 ° | 39.003643 ° | |
| | | | | -121.538292 ° | -121.538292 ° | |
| DWR ID | 18587 | | | | | |
| Comment Code | | | | | | |
| | | | | | | |
| Inspector Comment | | | | | | |
| FS_ID:53557 DS_ID:18587 EP_NO: N/A Repair Type: Non-Urgent Crossing Status: Found UCIP Comments: 2-1-2019 - The pipe crossing was video inspected on 8/14/2018. New photos of the landside toe added. In August 2017 a sinkhole was noticed at the bottom of the landside toe shelf area. The sinkhole developed as a result of the landowner who extended the existing pipe in order to complete a new unauthorized concrete flashboard structure replacement. The pipe owner was mailed a letter from RD784 with a Cc to CVFPB and DWR dated 10/23/2017 acknowledging the owner's completion of an attempted repair. The sinkhole has since returned. On 1/31/2017 The waterside excess pipe end was discovered to be floating to the surface due to landside water runoff through the pipe. Because of the floating pipe, the water was not draining all the way through the pipe. Instead, the water was overtopping the levee shelf area. In order to resolve this issue, the excess portion of the pipe was cut off. After doing so, the water immediately started draining properly again. (P. Meagher, RD784 2/3/2017). Erosion at outlet may or may not be an issue. FIELD_STRUCT_DESC: 18-inch corrugated metal drainage pipe through the levee, 14.5 feet below the crown. Flap gate on the waterside (WS) end. Concrete U-shaped headwall on the WS. Polyvinyl chloride weir on inlet. [Additional Reference(s): DWR Levee Log, 2005. USACE Sacramento O&M Manual 145, August 1955 (Station 126+53)]. FS Date: 2/3/2017 | | | | | | |

Photo 2 of 3 : UCIP_SP_2019_53557_54253.jpg



Concrete U-shaped headwall on WS toe with Flap gate showing erosion at outlet.

| | | | |
|--|--|---|---|
| * Location LS : Land Side N/A : Not Applicable WS : Water Side CR : Crown | ** Rating A : Acceptable M : Minimally Acceptable U : Unacceptable | N : Not Inspected/Rated C : Corrected A/W : Acceptable but Monitor & Maintain | + Issue Type Ma : Maintenance Deficiency Ob : Design & System Obsolescence En : Enforcement |
|--|--|---|---|

**Flood Control Project Maintenance
Levee Inspections**

Maintenance Issue Types Only, Levee Inspection Report By Mile - Spring 2019

Reclamation District No. 0784 Plumas Lake

| Waterway | Bank | Unit Miles | Inspection Start/End | Inspector |
|-------------------------------|------|------------|--------------------------|---------------|
| Unit No. 05 Interceptor Canal | Left | 4.19 | 03/21/2019 03/21/2019 | Sterling York |

| | | | | | |
|----------|-----------------------------|--------------|------------------------|---------------|------------------|
| LM Start | 2.04 | Rating ** | M | Issue No. | 20 (cont) |
| LM End | 2.04 | Issue Type + | Ma | Location * | |
| Category | Supplemental | | GPS Latitude/Longitude | | |
| | | | Start | End | |
| Item | DWR UCIP LMA Responsibility | | 39.003643 ° | 39.003643 ° | |
| | | | -121.538292 ° | -121.538292 ° | |
| DWR ID | 18587 | | | | |

Comment Code

Inspector Comment

FS_ID:53557
DS_ID:18587
EP_NO: N/A
Repair Type: Non-Urgent
Crossing Status: Found
UCIP Comments: 2-1-2019 - The pipe crossing was video inspected on 8/14/2018. New photos of the landside toe added. In August 2017 a sinkhole was noticed at the bottom of the landside toe shelf area. The sinkhole developed as a result of the landowner who extended the existing pipe in order to complete a new unauthorized concrete flashboard structure replacement. The pipe owner was mailed a letter from RD784 with a Cc to CVFPB and DWR dated 10/23/2017 acknowledging the owner's completion of an attempted repair. The sinkhole has since returned. On 1/31/2017 The waterside excess pipe end was discovered to be floating to the surface due to landside water runoff through the pipe. Because of the floating pipe, the water was not draining all the way through the pipe. Instead, the water was overtopping the levee shelf area. In order to resolve this issue, the excess portion of the pipe was cut off. After doing so, the water immediately started draining properly again. (P. Meagher, RD784 2/3/2017). Erosion at outlet may or may not be an issue.
FIELD_STRUCT_DESC: 18-inch corrugated metal drainage pipe through the levee, 14.5 feet below the crown. Flap gate on the waterside (WS) end. Concrete U-shaped headwall on the WS. Polyvinyl chloride weir on inlet. [Additional Reference(s): DWR Levee Log, 2005. USACE Sacramento O&M Manual 145, August 1955 (Station 126+53)].
FS Date: 2/3/2017

Photo 3 of 3 : UCIP_SP_2019_53557_76774.jpg



After photo after excess pipe was cut off. Actual photo date was 1/31/2017

| * Location | ** Rating | + Issue Type |
|---|---|--|
| LS : Land Side WS : Water Side CR : Crown | A : Acceptable M : Minimally Acceptable U : Unacceptable | Ma : Maintenance Deficiency Ob : Design & System Obsolescence En : Enforcement |
| N/A : Not Applicable | N : Not Inspected/Rated C : Corrected A/W : Acceptable but Monitor & Maintain | |

**Flood Control Project Maintenance
Levee Inspections**

Maintenance Issue Types Only, Levee Inspection Report By Mile - Spring 2019

Reclamation District No. 0784 Plumas Lake

| Waterway | Bank | Unit Miles | Inspection Start/End | Inspector |
|-------------------------------|------|------------|--------------------------|---------------|
| Unit No. 05 Interceptor Canal | Left | 4.19 | 03/21/2019 03/21/2019 | Sterling York |

| | | | | | |
|----------|-----------------------------|--------------|----|------------------------|---------------|
| LM Start | 2.47 | Rating ** | U | Issue No. | 21 |
| LM End | 2.47 | Issue Type + | Ma | Location * | |
| Category | Supplemental | | | GPS Latitude/Longitude | |
| | | | | Start | End |
| Item | DWR UCIP LMA Responsibility | | | 39.008994 ° | 39.008994 ° |
| | | | | -121.535679 ° | -121.535679 ° |
| DWR ID | 18597 | | | | |

Comment Code

Inspector Comment

FS_ID:53540

DS_ID:18597

EP_NO: N/A

Repair Type: Urgent

Crossing Status: Found

UCIP Comments: 01/15/2019 - Status email from Mr. Patrick Meagher to District Engineer was forwarded to Sterling York on 01-14-2019.

Erosion on LS has progressed. An additional 6 to 8 inches has eroded from the LS slope (see photo comparison from 12/2018 to 01/2019).

LMA continues to monitor site. (O. Magana - DWR UCIP)

10/16/2018 - Pipe remains Urgent due to internal pipe failure. Diversion dam on the WS slope is still present. Mr. Meagher is monitoring the progress of the erosion on the LS. Flag markers have been added just above the erosion site on the LS to monitor the progress of the slope failure. LMA is working with the District Engineer on proposed repair and CVFPB to obtain approval for a pipe replacement. Crossing is listed as DMP Phase 1 eligible crossing. (O. Magana - DWR UCIP)

11/30/2017 - same as previous inspection - crossing remains Urgent. Received updated photos from DWR levee inspector, S. York, showing current condition of levee LS and WS. (O. Magana - DWR UCIP)

12/15/2016 - Coordination email was received from RD0784 this afternoon. Patrick Meagher with Reclamation District is closely monitoring the eroded pipe area at the Horseshoe Levee due to periodic rainstorms and unpredictable water flow elevations. To avoid further damage at this location, Mr. Meagher has coordinated with LMA Consultant Sean Minard at MHM Engineering and DWR Levee Inspector Sterling York to address further deterioration at site. As a proactive measure by RD784, sandbags were used to fill in the sink hole on the WS. A "V" shape diversion dam was also built of sandbags above the sinkhole area to help divert running rainwater coming down the slope around the fill area. RD0784 used approximately 100 sandbags at the site to fill in sink hole and create the "V" shaped diversion dam. (O. Magana - DWR UCIP) 07/29/2016 - Erosion scarp on LS cut into levee shoulder starting at inlet headwall. Cavity failure on WS shoulder approximately 2-feet in diameter and several feet in depth. (T. Hatch/UCIP) 11/01/2015 - The concrete box weir structure on the landside inlet has slumped off the end of the pipe. DWR Chief inspector George Willie inspected the site on 8/13/2015 with Steve Fordice, General Manager of RD784. (P. Meagher - RD784)

2/27/2013 - Heavy erosion around inlet headwall due to beaver activity. (W. Wylie/UCIP)

FIELD_STRUCT_DESC: 18-inch corrugated metal drainage pipe through the levee, 15.5 feet below the crown. Flap gate on the

Photo 1 of 3 : UCIP_SP_2019_53540_54258.jpg



Concrete U-shaped headwall and flap gate on WS toe.

| | | | | | |
|-------------------|----------------------|--------------------------|---|-----------------------------------|--|
| * Location | | ** Rating | | + Issue Type | |
| LS : Land Side | N/A : Not Applicable | A : Acceptable | N : Not Inspected/Rated | Ma : Maintenance Deficiency | |
| WS : Water Side | | M : Minimally Acceptable | C : Corrected | Ob : Design & System Obsolescence | |
| CR : Crown | | U : Unacceptable | A/W : Acceptable but Monitor & Maintain | En : Enforcement | |

**Flood Control Project Maintenance
Levee Inspections**

Maintenance Issue Types Only, Levee Inspection Report By Mile - Spring 2019

Reclamation District No. 0784 Plumas Lake

| Waterway | Bank | Unit Miles | Inspection Start/End | Inspector |
|-------------------------------|------|------------|--------------------------|---------------|
| Unit No. 05 Interceptor Canal | Left | 4.19 | 03/21/2019 03/21/2019 | Sterling York |

waterside (WS) toe. Concrete U-shaped headwall on the WS toe. (Removable standpipe and bulkheads approved under Permit No. 9230, 1974 - Frach, Inc.). [Additional Reference(s): DWR Levee Log, 2005. USACE Sacramento O&M Manual 145, August 1955 (Station 13+72). USACE As-Built Drawing No. 2-4-106, Sheet 6, July 1944 (Station 13+72)].
FS Date: 10/16/2018 1:06:00 PM

| | | | | | |
|----------|-------------|--------------|----|------------|------------------|
| LM Start | 2.47 | Rating ** | U | Issue No. | 21 (cont) |
| LM End | 2.47 | Issue Type + | Ma | Location * | |

Photo 2 of 3 : UCIP_SP_2019_53540_76309.jpg



WS view: Sink hole filled in with sandbags and "V" shaped diversion dam built to help divert rainwater.

| | | | | | |
|----------|-------------|--------------|----|------------|------------------|
| LM Start | 2.47 | Rating ** | U | Issue No. | 21 (cont) |
| LM End | 2.47 | Issue Type + | Ma | Location * | |

Photo 3 of 3 : UCIP_SP_2019_53540_54254.jpg



Erosion and debris from Beaver activity.

| * Location | ** Rating | + Issue Type |
|---|---|--|
| LS : Land Side WS : Water Side CR : Crown | A : Acceptable M : Minimally Acceptable U : Unacceptable | Ma : Maintenance Deficiency Ob : Design & System Obsolescence En : Enforcement |
| N/A : Not Applicable | N : Not Inspected/Rated C : Corrected A/W : Acceptable but Monitor & Maintain | |

**Flood Control Project Maintenance
Levee Inspections**

Maintenance Issue Types Only, Levee Inspection Report By Mile - Spring 2019

Reclamation District No. 0784 Plumas Lake

| Waterway | Bank | Unit Miles | Inspection Start/End | Inspector |
|-------------------------------|------|------------|--------------------------|---------------|
| Unit No. 05 Interceptor Canal | Left | 4.19 | 03/21/2019 03/21/2019 | Sterling York |

| | | | | | |
|--|-----------------------------|--------------|----|------------------------|---------------|
| LM Start | 3.06 | Rating ** | M | Issue No. | 22 |
| LM End | 3.06 | Issue Type + | Ma | Location * | |
| Category | Supplemental | | | GPS Latitude/Longitude | |
| | | | | Start | End |
| Item | DWR UCIP LMA Responsibility | | | 39.015549 ° | 39.015549 ° |
| | | | | -121.528590 ° | -121.528590 ° |
| DWR ID | 18596 | | | | |
| Comment Code | | | | | |
| | | | | | |
| | | | | | |
| Inspector Comment | | | | | |
| FS_ID:53553 DS_ID:18596 EP_NO: N/A Repair Type: Non-Urgent Crossing Status: Found UCIP Comments: 2-1-2019 - Pipe crossing was video inspected on 8/15/2018. (P. Meagher)02/27/2013 Pipe has been sliplied with PVC, but the liner appears to be eroding at outlet and may be disjointed internal to the levee. See pic. Good candidate for video inspection. (W. Wylie - DWR UCIP) FIELD_STRUCT_DESC: 12-inch corrugated metal drainage pipe through the levee, 12 feet below the crown. Flap gate and concrete U-shaped headwall on the waterside (WS). Polyvinyl chloride weir on inlet at the landside (LS) toe. [Additional Reference(s): DWR Levee Log, 2005. USACE Sacramento O&M Manual 145, August 1955 (Station 44+96)]. FS Date: 9/11/2015 9:26:00 AM | | | | | |

Photo 1 of 3 : UCIP_SP_2019_53553_54259.jpg



Concrete U-shaped headwall and flap gate on WS toe.

| | | | | | |
|----------|-------------|--------------|----|------------|------------------|
| LM Start | 3.06 | Rating ** | M | Issue No. | 22 (cont) |
| LM End | 3.06 | Issue Type + | Ma | Location * | |

Photo 2 of 3 : UCIP_SP_2019_53553_54262.jpg



Pipe showing sliplied PVC insert. some erosion of PV at outlet and it may be disjointed internally.

| | | | | |
|--|--|---|--|---|
| * Location LS : Land Side N/A : Not Applicable WS : Water Side CR : Crown | | ** Rating A : Acceptable M : Minimally Acceptable U : Unacceptable N : Not Inspected/Rated C : Corrected A/W : Acceptable but Monitor & Maintain | | + Issue Type Ma : Maintenance Deficiency Ob : Design & System Obsolescence En : Enforcement |
|--|--|---|--|---|

**Flood Control Project Maintenance
Levee Inspections**

Maintenance Issue Types Only, Levee Inspection Report By Mile - Spring 2019

Reclamation District No. 0784 Plumas Lake

| Waterway | Bank | Unit Miles | Inspection Start/End | Inspector |
|-------------------------------|------|------------|--------------------------|---------------|
| Unit No. 05 Interceptor Canal | Left | 4.19 | 03/21/2019 03/21/2019 | Sterling York |

| | | | | | | |
|---|-----------------------------|--------------|----|------------------------|-----------|---------------|
| LM Start | 3.06 | Rating ** | M | Issue No. | 22 (cont) | |
| LM End | 3.06 | Issue Type + | Ma | Location * | | |
| Category | Supplemental | | | GPS Latitude/Longitude | | |
| | | | | Start | | End |
| Item | DWR UCIP LMA Responsibility | | | 39.015549 ° | | 39.015549 ° |
| | | | | -121.528590 ° | | -121.528590 ° |
| DWR ID | 18596 | | | | | |
| Comment Code | | | | | | |
| | | | | | | |
| | | | | | | |
| Inspector Comment | | | | | | |
| FS_ID:53553 DS_ID:18596 EP_NO: N/A Repair Type: Non-Urgent Crossing Status: Found UCIP Comments: 2-1-2019 - Pipe crossing was video inspected on 8/15/2018. (P. Meagher)02/27/2013 Pipe has been sliplined with PVC, but the liner appears to be eroding at outlet and may be disjointed internal to the levee. See pic. Good candidate for video inspection. (W. Wylie - DWR UCIP) FIELD_STRUCT_DESC: 12-inch corrugated metal drainage pipe through the levee, 12 feet below the crown. Flap gate and concrete U-shaped headwall on the waterside (WS). Polyvinyl chloride weir on inlet at the landside (LS) toe. [Additional Reference(s): DWR Levee Log, 2005. USACE Sacramento O&M Manual 145, August 1955 (Station 44+96)]. FS Date: 9/11/2015 9:26:00 AM | | | | | | |

Photo 3 of 3 : UCIP_SP_2019_53553_54261.jpg



Concrete U-shaped headwall on WS toe.

| | | | |
|--|--|---|---|
| * Location LS : Land Side N/A : Not Applicable WS : Water Side CR : Crown | ** Rating A : Acceptable M : Minimally Acceptable U : Unacceptable | N : Not Inspected/Rated C : Corrected A/W : Acceptable but Monitor & Maintain | + Issue Type Ma : Maintenance Deficiency Ob : Design & System Obsolescence En : Enforcement |
|--|--|---|---|

**Flood Control Project Maintenance
Levee Inspections**

Maintenance Issue Types Only, Levee Inspection Report By Mile - Spring 2019

Reclamation District No. 0784 Plumas Lake

| Waterway | Bank | Unit Miles | Inspection Start/End | Inspector |
|-------------------------------|------|------------|--------------------------|---------------|
| Unit No. 05 Interceptor Canal | Left | 4.19 | 03/21/2019 03/21/2019 | Sterling York |

| | | | | | |
|--|-----------------------------|--------------|-----|------------------------|---------------|
| LM Start | 3.23 | Rating ** | A/W | Issue No. | 23 |
| LM End | 3.23 | Issue Type + | Ma | Location * | |
| Category | Supplemental | | | GPS Latitude/Longitude | |
| | | | | Start | End |
| Item | DWR UCIP LMA Responsibility | | | 39.017336 ° | 39.017336 ° |
| | | | | -121.526530 ° | -121.526530 ° |
| DWR ID | 18595 | | | | |
| Comment Code | | | | | |
| | | | | | |
| Inspector Comment | | | | | |
| FS_ID:53552 DS_ID:18595 EP_NO: N/A Repair Type: No Action Needed Crossing Status: Found UCIP Comments: 02/01/2019 - Pipe crossing was video inspected on 8/15/2018 (P. Meagher)02/27/2013 Good candidate for video inspection. (W. Wylie - DWR UCIP) FIELD_STRUCT_DESC: 18-inch corrugated metal drainage pipe through the levee, 15.8 feet below the crown. Flap gate on the waterside (WS) end. Polyvinyl chloride weir on inlet at the landside (LS) toe. [Additional Reference(s): DWR Levee Log, 2005. USACE Sacramento O&M Manual 145, August 1955, Drawing No. 2-4-106, Sheet 6 (Station 53+86)]. FS Date: 2/27/2013 | | | | | |

Photo 1 of 2 : UCIP_SP_2019_53552_16594.jpg



PVC weir inlet on LS toe.

| | | | | | |
|----------|-------------|--------------|-----|------------|------------------|
| LM Start | 3.23 | Rating ** | A/W | Issue No. | 23 (cont) |
| LM End | 3.23 | Issue Type + | Ma | Location * | |

Photo 2 of 2 : UCIP_SP_2019_53552_16593.jpg



Flap gate at WS toe.

| | | | |
|--|--|---|---|
| * Location LS : Land Side N/A : Not Applicable WS : Water Side CR : Crown | ** Rating A : Acceptable M : Minimally Acceptable U : Unacceptable | N : Not Inspected/Rated C : Corrected A/W : Acceptable but Monitor & Maintain | + Issue Type Ma : Maintenance Deficiency Ob : Design & System Obsolescence En : Enforcement |
|--|--|---|---|

**Flood Control Project Maintenance
Levee Inspections**

Maintenance Issue Types Only, Levee Inspection Report By Mile - Spring 2019

Reclamation District No. 0784 Plumas Lake

| Waterway | Bank | Unit Miles | Inspection Start/End | Inspector |
|-------------------------------|------|------------|--------------------------|---------------|
| Unit No. 05 Interceptor Canal | Left | 4.19 | 03/21/2019 03/21/2019 | Sterling York |

| | | | | | |
|---|-----------------------------|--------------|-----|------------------------|---------------|
| LM Start | 3.79 | Rating ** | A/W | Issue No. | 24 |
| LM End | 3.79 | Issue Type + | Ma | Location * | |
| Category | Supplemental | | | GPS Latitude/Longitude | |
| | | | | Start | End |
| Item | DWR UCIP LMA Responsibility | | | 39.019222 ° | 39.019222 ° |
| | | | | -121.516414 ° | -121.516414 ° |
| DWR ID | 18594 | | | | |
| Comment Code | | | | | |
| | | | | | |
| Inspector Comment | | | | | |
| FS_ID:53551 DS_ID:18594 EP_NO: N/A Repair Type: No Action Needed Crossing Status: Found UCIP Comments: 2-1-2019 - Pipe crossing was video inspected on 8/15/2018. (P. Meagher) FIELD_STRUCT_DESC: 18-inch corrugated metal drainage pipe through the levee, 8.8 feet below the crown. Flap gate and headwall on the waterside (WS) end. [Additional Reference(s): DWR Levee Log, 2005. USACE Sacramento O&M Manual 145, August 1955 (Station 83+39)]. FS Date: 2/27/2013 | | | | | |

Photo 1 of 3 : UCIP_SP_2019_53551_16590.jpg



Concrete outlet and flap gate on WS toe.

| | | | | | |
|----------|-------------|--------------|-----|------------|------------------|
| LM Start | 3.79 | Rating ** | A/W | Issue No. | 24 (cont) |
| LM End | 3.79 | Issue Type + | Ma | Location * | |

Photo 2 of 3 : UCIP_SP_2019_53551_16591.jpg



PVC weir at inlet on LS toe.

| | | | | |
|--|--|---|--|---|
| * Location LS : Land Side N/A : Not Applicable WS : Water Side CR : Crown | | ** Rating A : Acceptable M : Minimally Acceptable U : Unacceptable N : Not Inspected/Rated C : Corrected A/W : Acceptable but Monitor & Maintain | | + Issue Type Ma : Maintenance Deficiency Ob : Design & System Obsolescence En : Enforcement |
|--|--|---|--|---|

**Flood Control Project Maintenance
Levee Inspections**

Maintenance Issue Types Only, Levee Inspection Report By Mile - Spring 2019

Reclamation District No. 0784 Plumas Lake

| Waterway | Bank | Unit Miles | Inspection Start/End | Inspector |
|-------------------------------|------|------------|--------------------------|---------------|
| Unit No. 05 Interceptor Canal | Left | 4.19 | 03/21/2019 03/21/2019 | Sterling York |

| | | | | | | |
|---|-----------------------------|--------------|-----|------------------------|-----------|---------------|
| LM Start | 3.79 | Rating ** | A/W | Issue No. | 24 (cont) | |
| LM End | 3.79 | Issue Type + | Ma | Location * | | |
| Category | Supplemental | | | GPS Latitude/Longitude | | |
| | | | | Start | | End |
| Item | DWR UCIP LMA Responsibility | | | 39.019222 ° | | 39.019222 ° |
| | | | | -121.516414 ° | | -121.516414 ° |
| DWR ID | 18594 | | | | | |
| Comment Code | | | | | | |
| | | | | | | |
| Inspector Comment | | | | | | |
| FS_ID:53551 DS_ID:18594 EP_NO: N/A Repair Type: No Action Needed Crossing Status: Found UCIP Comments: 2-1-2019 - Pipe crossing was video inspected on 8/15/2018. (P. Meagher) FIELD_STRUCT_DESC: 18-inch corrugated metal drainage pipe through the levee, 8.8 feet below the crown. Flap gate and headwall on the waterside (WS) end. [Additional Reference(s): DWR Levee Log, 2005. USACE Sacramento O&M Manual 145, August 1955 (Station 83+39)]. FS Date: 2/27/2013 | | | | | | |

Photo 3 of 3 : UCIP_SP_2019_53551_16592.jpg



Concrete outlet on WS toe.

| | | |
|--|---|---|
| * Location LS : Land Side N/A : Not Applicable WS : Water Side CR : Crown | ** Rating A : Acceptable M : Minimally Acceptable U : Unacceptable N : Not Inspected/Rated C : Corrected A/W : Acceptable but Monitor & Maintain | + Issue Type Ma : Maintenance Deficiency Ob : Design & System Obsolescence En : Enforcement |
|--|---|---|

**Flood Control Project Maintenance
Levee Inspections**

Maintenance Issue Types Only, Levee Inspection Report By Mile - Spring 2019

Reclamation District No. 0784 Plumas Lake

| Waterway | Bank | Unit Miles | Inspection Start/End | Inspector |
|-------------------------------|------|------------|--------------------------|---------------|
| Unit No. 05 Interceptor Canal | Left | 4.19 | 03/21/2019 03/21/2019 | Sterling York |

| | | | | | | |
|---|-----------------------------|--------------|----|------------------------|---------------|--|
| LM Start | 3.96 | Rating ** | M | Issue No. | 25 | |
| LM End | 3.96 | Issue Type + | Ma | Location * | | |
| Category | Supplemental | | | GPS Latitude/Longitude | | |
| | | | | Start | End | |
| Item | DWR UCIP LMA Responsibility | | | 39.019787 ° | 39.019787 ° | |
| | | | | -121.513386 ° | -121.513386 ° | |
| DWR ID | 18593 | | | | | |
| Comment Code | | | | | | |
| | | | | | | |
| Inspector Comment | | | | | | |
| FS_ID:53550 DS_ID:18593 EP_NO: N/A Repair Type: Non-Urgent Crossing Status: Found UCIP Comments: 2/1/2019 - An attempt was made to video inspect this pipe crossing on 8/15/2018 but conditions were too muddy inside the pipe. (P. Meagher)11/14/2016 - Photos added of exposed flap gate on WS and possible inlet location on LS. Condition remains as Non-Urgent because of inlet not being fully operable. Unknown if pipe will operate as designed during high water or if it is full of sediment.11/01/2015 - Waterside Flap Gate Uncovered. Photo sent to DWR Matt Hoffman on 3/3/2014. Fresh photo sent to DWR Pavel Kazi on 9/9/2015. Landside toe has never been able to be located. Requesting DWR inspector to change the status of this issue to "No Action Needed". (P.Meagher - RD784).Pipe buried on LS toe and flap gate is blocked by soil on WS toe. (W. Wylie - UCIP Inspector). FIELD_STRUCT_DESC: 18-inch corrugated metal drainage pipe through the levee, 10 feet below the crown. Flap gate on the waterside (WS) end. [Additional Reference(s): DWR Levee Log, 2005. USACE Sacramento O&M Manual 145, August 1955 (Station 91+50)]. FS Date: 10/9/2015 | | | | | | |

| | | | | | |
|----------|-------------|--------------|----|------------|------------------|
| LM Start | 3.96 | Rating ** | M | Issue No. | 25 (cont) |
| LM End | 3.96 | Issue Type + | Ma | Location * | |

Photo 1 of 3 : UCIP_SP_2019_53550_76147.jpg



Flap gate on the WS toe is exposed

Photo 2 of 3 : UCIP_SP_2019_53550_76148.jpg



Possible location of the inlet on the LS toe

| | | | | | |
|--|--|--|--|---|---|
| * Location LS : Land Side N/A : Not Applicable WS : Water Side CR : Crown | | ** Rating A : Acceptable M : Minimally Acceptable U : Unacceptable | | N : Not Inspected/Rated C : Corrected A/W : Acceptable but Monitor & Maintain | + Issue Type Ma : Maintenance Deficiency Ob : Design & System Obsolescence En : Enforcement |
|--|--|--|--|---|---|

**Flood Control Project Maintenance
Levee Inspections**

Maintenance Issue Types Only, Levee Inspection Report By Mile - Spring 2019

Reclamation District No. 0784 Plumas Lake

| Waterway | Bank | Unit Miles | Inspection Start/End | Inspector |
|-------------------------------|------|------------|--------------------------|---------------|
| Unit No. 05 Interceptor Canal | Left | 4.19 | 03/21/2019 03/21/2019 | Sterling York |

| | | | | | | | | | | | | |
|---|-----------------------------|--------------|------------------------|---------------|------------------|--|--|--|--|--|--|--|
| LM Start | 3.96 | Rating ** | M | Issue No. | 25 (cont) | | | | | | | |
| LM End | 3.96 | Issue Type + | Ma | Location * | | | | | | | | |
| Category | Supplemental | | GPS Latitude/Longitude | | | | | | | | | |
| | | | Start | End | | | | | | | | |
| Item | DWR UCIP LMA Responsibility | | 39.019787 ° | 39.019787 ° | | | | | | | | |
| | | | -121.513386 ° | -121.513386 ° | | | | | | | | |
| DWR ID | 18593 | | | | | | | | | | | |
| Comment Code | | | | | | | | | | | | |
| Inspector Comment | | | | | | | | | | | | |
| FS_ID:53550 DS_ID:18593 EP_NO: N/A Repair Type: Non-Urgent Crossing Status: Found UCIP Comments: 2/1/2019 - An attempt was made to video inspect this pipe crossing on 8/15/2018 but conditions were too muddy inside the pipe. (P. Meagher)11/14/2016 - Photos added of exposed flap gate on WS and possible inlet location on LS. Condition remains as Non-Urgent because of inlet not being fully operable. Unknown if pipe will operate as designed during high water or if it is full of sediment.11/01/2015 - Waterside Flap Gate Uncovered. Photo sent to DWR Matt Hoffman on 3/3/2014. Fresh photo sent to DWR Pavel Kazi on 9/9/2015. Landside toe has never been able to be located. Requesting DWR inspector to change the status of this issue to "No Action Needed". (P.Meagher - RD784).Pipe buried on LS toe and flap gate is blocked by soil on WS toe. (W. Wylie - UCIP Inspector). FIELD_STRUCT_DESC: 18-inch corrugated metal drainage pipe through the levee, 10 feet below the crown. Flap gate on the waterside (WS) end. [Additional Reference(s): DWR Levee Log, 2005. USACE Sacramento O&M Manual 145, August 1955 (Station 91+50)]. FS Date: 10/9/2015 | | | | | | | | | | | | |

Photo 3 of 3 : UCIP_SP_2019_53550_74710.jpg



Enter photo 3 description or comment here.

| | | | | |
|--|--|---|--|---|
| * Location LS : Land Side N/A : Not Applicable WS : Water Side CR : Crown | | ** Rating A : Acceptable N : Not Inspected/Rated M : Minimally Acceptable C : Corrected U : Unacceptable A/W : Acceptable but Monitor & Maintain | | + Issue Type Ma : Maintenance Deficiency Ob : Design & System Obsolescence En : Enforcement |
|--|--|---|--|---|

**Flood Control Project Maintenance
Levee Inspections**

Maintenance Issue Types Only, Levee Inspection Report By Mile - Spring 2019

Reclamation District No. 0784 Plumas Lake

| Waterway | Bank | Unit Miles | Inspection Start/End | Inspector |
|-----------------------------|-------|------------|--------------------------|------------------|
| Unit No. 06 South Dry Creek | Right | 0.25 | 03/21/2019 03/21/2019 | Sterling York |

| | | | | | |
|--|------------------------|--------------|----|------------------------|---------------|
| LM Start | 0.00 | Rating ** | A | Issue No. | 2 |
| LM End | 0.25 | Issue Type + | Ma | Location * | LS |
| Category | Earthen Levee | | | GPS Latitude/Longitude | |
| | | | | Start | End |
| Item | Vegetation | | | 38.985601 ° | 38.987611 ° |
| | | | | -121.510428 ° | -121.506593 ° |
| DWR ID | DWR_RD0784_06_s_2019_2 | | | | |
| Comment Code | | | | | |
| V1 : Control annual grass and weeds on the levee slopes and easements. | | | | | |
| Inspector Comment | | | | | |
| The annual vegetation is well maintained, Spring 2019. | | | | | |

Photo 1 of 1 : SP_2019_RD0784_183_2_20190325_00006.jpg



View looking upstream landside at the well maintained annual vegetation, Spring 2019.

| | | | | | |
|--|------------------------|--------------|----|------------------------|---------------|
| LM Start | 0.00 | Rating ** | A | Issue No. | 3 |
| LM End | 0.25 | Issue Type + | Ma | Location * | WS |
| Category | Earthen Levee | | | GPS Latitude/Longitude | |
| | | | | Start | End |
| Item | Vegetation | | | 38.985601 ° | 38.987612 ° |
| | | | | -121.510428 ° | -121.506594 ° |
| DWR ID | DWR_RD0784_06_s_2019_3 | | | | |
| Comment Code | | | | | |
| V1 : Control annual grass and weeds on the levee slopes and easements. | | | | | |
| Inspector Comment | | | | | |
| The annual vegetation is well maintained, Spring 2019. | | | | | |

Photo 1 of 1 : SP_2019_RD0784_183_3_20190325_00007.jpg



View looking upstream waterside at the well maintained annual vegetation, Spring 2019.

| | | | | |
|--|--|---|--|---|
| * Location LS : Land Side N/A : Not Applicable WS : Water Side CR : Crown | | ** Rating A : Acceptable N : Not Inspected/Rated M : Minimally Acceptable C : Corrected U : Unacceptable A/W : Acceptable but Monitor & Maintain | | + Issue Type Ma : Maintenance Deficiency Ob : Design & System Obsolescence En : Enforcement |
|--|--|---|--|---|

**Flood Control Project Maintenance
Levee Inspections**

Maintenance Issue Types Only, Levee Inspection Report By Mile - Spring 2019

Reclamation District No. 0784 Plumas Lake

| Waterway | Bank | Unit Miles | Inspection Start/End | Inspector |
|-----------------------------|-------|------------|--------------------------|---------------|
| Unit No. 06 South Dry Creek | Right | 0.25 | 03/21/2019 03/21/2019 | Sterling York |

| | | | | | |
|---|-----------------------------|--------------|----|------------------------|---------------|
| LM Start | 0.06 | Rating ** | M | Issue No. | 4 |
| LM End | 0.06 | Issue Type + | Ma | Location * | |
| Category | Supplemental | | | GPS Latitude/Longitude | |
| | | | | Start | End |
| Item | DWR UCIP LMA Responsibility | | | 38.985999 ° | 38.985999 ° |
| | | | | -121.509618 ° | -121.509618 ° |
| DWR ID | 18626 | | | | |
| Comment Code | | | | | |
| | | | | | |
| Inspector Comment | | | | | |
| FS_ID:53542 DS_ID:18626 EP_NO: N/A Repair Type: Non-Urgent Crossing Status: Found UCIP Comments: 2-1-2019 - Pipe was video inspected on 8/13/2018. (P. Meagher)10-30-2015 - Waterside flap gate was cleared in December 2014 and again in September 2015 No LMA access available on Landside (P. Meagher).Pipe partially blocked on LS and flap gate blocked on WS (W. Wylie-UCIP Inspector) FIELD_STRUCT_DESC: 18-inch corrugated metal storm drainage pipe through the levee, 19 feet below the crown. Gate valve on the waterside (WS). [Additional Reference(s): USACE Drawing No. 2-4-106, Sheet 2]. FS Date: 9/11/2015 | | | | | |

| | | | | | |
|----------|-------------|--------------|----|------------|-----------------|
| LM Start | 0.06 | Rating ** | M | Issue No. | 4 (cont) |
| LM End | 0.06 | Issue Type + | Ma | Location * | |

Photo 1 of 3 : UCIP_SP_2019_53542_74682.jpg



Flap Gate is clear as of 9/11/15.

Photo 2 of 3 : UCIP_SP_2019_53542_54268.jpg



Partially clogged inlet pipe at LS toe.

| | | | | |
|--|--|---|--|---|
| * Location LS : Land Side N/A : Not Applicable WS : Water Side CR : Crown | | ** Rating A : Acceptable N : Not Inspected/Rated M : Minimally Acceptable C : Corrected U : Unacceptable A/W : Acceptable but Monitor & Maintain | | + Issue Type Ma : Maintenance Deficiency Ob : Design & System Obsolescence En : Enforcement |
|--|--|---|--|---|

**Flood Control Project Maintenance
Levee Inspections**

Maintenance Issue Types Only, Levee Inspection Report By Mile - Spring 2019

Reclamation District No. 0784 Plumas Lake

| Waterway | Bank | Unit Miles | Inspection Start/End | Inspector |
|-----------------------------|-------|------------|--------------------------|---------------|
| Unit No. 06 South Dry Creek | Right | 0.25 | 03/21/2019 03/21/2019 | Sterling York |

| | | | | | | |
|---|-----------------------------|--------------|----|------------------------|---------------|-----|
| LM Start | 0.06 | Rating ** | M | Issue No. | 4 (cont) | |
| LM End | 0.06 | Issue Type + | Ma | Location * | | |
| Category | Supplemental | | | GPS Latitude/Longitude | | |
| | | | | Start | | End |
| Item | DWR UCIP LMA Responsibility | | | 38.985999 ° | 38.985999 ° | |
| | | | | -121.509618 ° | -121.509618 ° | |
| DWR ID | 18626 | | | | | |
| Comment Code | | | | | | |
| | | | | | | |
| Inspector Comment | | | | | | |
| FS_ID:53542 DS_ID:18626 EP_NO: N/A Repair Type: Non-Urgent Crossing Status: Found UCIP Comments: 2-1-2019 - Pipe was video inspected on 8/13/2018. (P. Meagher)10-30-2015 - Waterside flap gate was cleared in December 2014 and again in September 2015 No LMA access available on Landside (P. Meagher).Pipe partially blocked on LS and flap gate blocked on WS (W. Wylie-UCIP Inspector) FIELD_STRUCT_DESC: 18-inch corrugated metal storm drainage pipe through the levee, 19 feet below the crown. Gate valve on the waterside (WS). [Additional Reference(s): USACE Drawing No. 2-4-106, Sheet 2]. FS Date: 9/11/2015 | | | | | | |

Photo 3 of 3 : UCIP_SP_2019_53542_54265.jpg



Flap gate blocked by vegetation at WS.

| | | |
|--|---|---|
| * Location LS : Land Side N/A : Not Applicable WS : Water Side CR : Crown | ** Rating A : Acceptable M : Minimally Acceptable U : Unacceptable N : Not Inspected/Rated C : Corrected A/W : Acceptable but Monitor & Maintain | + Issue Type Ma : Maintenance Deficiency Ob : Design & System Obsolescence En : Enforcement |
|--|---|---|

**Flood Control Project Maintenance
Levee Inspections**

Maintenance Issue Types Only, Levee Inspection Report By Mile - Spring 2019

Reclamation District No. 0784 Plumas Lake

| Waterway | Bank | Unit Miles | Inspection Start/End | Inspector |
|------------------------|------|------------|--------------------------|---------------|
| Unit No. 07 Yuba River | Left | 3.82 | 03/21/2019 03/21/2019 | Sterling York |

| | | | | | |
|--|------------------------|--------------|----|------------------------|---------------|
| LM Start | 0.00 | Rating ** | A | Issue No. | 1 |
| LM End | 3.81 | Issue Type + | Ma | Location * | LS |
| Category | Earthen Levee | | | GPS Latitude/Longitude | |
| | | | | Start | End |
| Item | Vegetation | | | 39.134878 ° | 39.165521 ° |
| | | | | -121.552262 ° | -121.495548 ° |
| DWR ID | DWR_RD0784_07_s_2019_1 | | | | |
| Comment Code | | | | | |
| V1 : Control annual grass and weeds on the levee slopes and easements. | | | | | |
| Inspector Comment | | | | | |
| The annual vegetation is well maintained, Spring 2019. | | | | | |

Photo 1 of 1 : SP_2019_RD0784_184_1_20190325_00001.jpg



View looking downstream landside at the well maintained annual vegetation, Spring 2019.

| | | | | | |
|--|------------------------|--------------|----|------------------------|---------------|
| LM Start | 0.00 | Rating ** | A | Issue No. | 2 |
| LM End | 3.81 | Issue Type + | Ma | Location * | WS |
| Category | Earthen Levee | | | GPS Latitude/Longitude | |
| | | | | Start | End |
| Item | Vegetation | | | 39.134878 ° | 39.165521 ° |
| | | | | -121.552262 ° | -121.495548 ° |
| DWR ID | DWR_RD0784_07_s_2019_2 | | | | |
| Comment Code | | | | | |
| V1 : Control annual grass and weeds on the levee slopes and easements. | | | | | |
| Inspector Comment | | | | | |
| The annual vegetation is well maintained, Spring 2019. | | | | | |

Photo 1 of 1 : SP_2019_RD0784_184_2_20190325_00002.jpg



View looking downstream waterside at the well maintained annual vegetation, Spring 2019.

* Location
LS : Land Side N/A : Not Applicable
WS : Water Side
CR : Crown

** Rating
A : Acceptable
M : Minimally Acceptable
U : Unacceptable
N : Not Inspected/Rated
C : Corrected
A/W : Acceptable but Monitor & Maintain

+ Issue Type
Ma : Maintenance Deficiency
Ob : Design & System Obsolescence
En : Enforcement

**Flood Control Project Maintenance
Levee Inspections**

Maintenance Issue Types Only, Levee Inspection Report By Mile - Spring 2019

Reclamation District No. 0784 Plumas Lake

| Waterway | Bank | Unit Miles | Inspection Start/End | Inspector |
|---------------------------|------|------------|--------------------------|---------------|
| Unit No. 09 Feather River | Left | 5.71 | 03/21/2019 03/21/2019 | Sterling York |

| | | | | | |
|--|------------------------|--------------|----|------------------------|---------------|
| LM Start | 0.01 | Rating ** | A | Issue No. | 1 |
| LM End | 5.69 | Issue Type + | Ma | Location * | LS |
| Category | Earthen Levee | | | GPS Latitude/Longitude | |
| | | | | Start | End |
| Item | Vegetation | | | 39.090177 ° | 39.010391 ° |
| | | | | -121.584774 ° | -121.579597 ° |
| DWR ID | DWR_RD0784_09_s_2019_1 | | | | |
| Comment Code | | | | | |
| V1 : Control annual grass and weeds on the levee slopes and easements. | | | | | |
| Inspector Comment | | | | | |
| The annual vegetation is well maintained, Spring 2019. | | | | | |

Photo 1 of 1 : SP_2019_RD0784_530_1_20190325_00001.jpg



View looking downstream landside at the well maintained vegetation, Spring 2019.

| | | | | | |
|--|------------------------|--------------|----|------------------------|---------------|
| LM Start | 5.69 | Rating ** | A | Issue No. | 2 |
| LM End | 5.69 | Issue Type + | Ma | Location * | WS |
| Category | Earthen Levee | | | GPS Latitude/Longitude | |
| | | | | Start | End |
| Item | Vegetation | | | 39.010392 ° | 39.010391 ° |
| | | | | -121.579596 ° | -121.579596 ° |
| DWR ID | DWR_RD0784_09_s_2019_2 | | | | |
| Comment Code | | | | | |
| V1 : Control annual grass and weeds on the levee slopes and easements. | | | | | |
| Inspector Comment | | | | | |
| The annual vegetation is well maintained, Spring 2019. | | | | | |

Photo 1 of 1 : SP_2019_RD0784_530_2_20190325_00002.jpg



View looking downstream waterside at the well maintained vegetation, Spring 2019.

* Location
LS : Land Side N/A : Not Applicable
WS : Water Side
CR : Crown

** Rating
A : Acceptable
M : Minimally Acceptable
U : Unacceptable
N : Not Inspected/Rated
C : Corrected
A/W : Acceptable but Monitor & Maintain

+ Issue Type
Ma : Maintenance Deficiency
Ob : Design & System Obsolescence
En : Enforcement