

**Flood Control Project Maintenance
Levee Inspections**

Maintenance Issue Types Only, Levee Inspection Report By Mile - Fall 2020

Reclamation District No. 0784 Plumas Lake

Waterway	Bank	Unit Miles	Inspection Start/End	Inspector
Unit No. 01 Yuba River	Left	2.21	10/27/2020 10/27/2020	Brooks Weisser

LM Start	0.00	Rating **	A	Issue No.	4
LM End	0.00	Issue Type +	Ma	Location *	CR
Category	Earthen Levee		GPS Latitude/Longitude		
			Start	End	
Item	Operations & Maintenance Manuals			°	°
				°	°
DWR ID	DWR_RD0784_01_s_2013_4				
Comment Code					
Inspector Comment					
O&M manuals are located at the district office.					

No Photos

LM Start	0.00	Rating **	A	Issue No.	5
LM End	0.00	Issue Type +	Ma	Location *	CR
Category	Earthen Levee		GPS Latitude/Longitude		
			Start	End	
Item	Emergency Supplies & Equipment			°	°
				°	°
DWR ID	DWR_RD0784_01_s_2013_5				
Comment Code					
Inspector Comment					
RD 784 participates with the neighboring districts to strategically place flood fight supplies around the local districts for fast response. They also have a shipping container at their district office, and three containers at another district full of flood fight supplies.					

No Photos

LM Start	0.00	Rating **	A	Issue No.	6
LM End	0.00	Issue Type +	Ma	Location *	CR
Category	Earthen Levee		GPS Latitude/Longitude		
			Start	End	
Item	Flood Preparedness & Training			°	°
				°	°
DWR ID	DWR_RD0784_01_s_2013_6				
Comment Code					
Inspector Comment					
RD 784 and its employees host and participate in a Flood Fight class put on by DWR every fall in their district.					

No Photos

* Location LS : Land Side N/A : Not Applicable WS : Water Side CR : Crown	** Rating A : Acceptable M : Minimally Acceptable U : Unacceptable	N : Not Inspected/Rated C : Corrected A/W : Acceptable but Monitor & Maintain	+ Issue Type Ma : Maintenance Deficiency Ob : Design & System Obsolescence En : Enforcement
--	--	---	---

**Flood Control Project Maintenance
Levee Inspections**

Maintenance Issue Types Only, Levee Inspection Report By Mile - Fall 2020

Reclamation District No. 0784 Plumas Lake

Waterway	Bank	Unit Miles	Inspection Start/End	Inspector
Unit No. 01 Yuba River	Left	2.21	10/27/2020 10/27/2020	Brooks Weisser

LM Start	0.05	Rating **	A	Issue No.	3
LM End	2.20	Issue Type +	Ma	Location *	LS
Category	Earthen Levee			GPS Latitude/Longitude	
				Start	End
Item	Vegetation			39.134361 °	39.125902 °
				-121.552808 °	-121.588644 °
DWR ID	DWR_RD0784_01_f_2020_3				
Comment Code					
V1 : Control annual grass and weeds on the levee slopes and easements.					
Inspector Comment					
Annual vegetation is well maintained, Fall 2020.					

Photo 1 of 1 : FA_2020_RD0784_178_3_20201028_00011.jpg



View of landside annual vegetation that is well maintained, Fall 2020.

LM Start	0.05	Rating **	A	Issue No.	7
LM End	2.20	Issue Type +	Ma	Location *	WS
Category	Earthen Levee			GPS Latitude/Longitude	
				Start	End
Item	Vegetation			39.134360 °	39.125929 °
				-121.552811 °	-121.588635 °
DWR ID	DWR_RD0784_01_f_2020_7				
Comment Code					
V1 : Control annual grass and weeds on the levee slopes and easements.					
Inspector Comment					
Annual vegetation is well maintained, Fall 2020.					

Photo 1 of 1 : FA_2020_RD0784_178_7_20201028_00010.jpg



View of waterside annual vegetation that is well maintained, Fall 2020.

* Location LS : Land Side N/A : Not Applicable WS : Water Side CR : Crown	** Rating A : Acceptable M : Minimally Acceptable U : Unacceptable	N : Not Inspected/Rated C : Corrected A/W : Acceptable but Monitor & Maintain	+ Issue Type Ma : Maintenance Deficiency Ob : Design & System Obsolescence En : Enforcement
--	--	---	---

**Flood Control Project Maintenance
Levee Inspections**

Maintenance Issue Types Only, Levee Inspection Report By Mile - Fall 2020

Reclamation District No. 0784 Plumas Lake

Waterway	Bank	Unit Miles	Inspection Start/End	Inspector
Unit No. 02A Feather River	Left	2.54	10/27/2020 10/27/2020	Brooks Weisser

LM Start	0.00	Rating **	A	Issue No.	1
LM End	2.51	Issue Type +	Ma	Location *	LS
Category	Earthen Levee			GPS Latitude/Longitude	
				Start	End
Item	Vegetation			39.125828 °	39.090732 °
				-121.588666 °	-121.584629 °
DWR ID	DWR_RD0784_02A_f_2020_1				
Comment Code					
V1 : Control annual grass and weeds on the levee slopes and easements.					
Inspector Comment					
Annual vegetation is well maintained, Fall 2020.					

Photo 1 of 1 : FA_2020_RD0784_531_1_20201028_00001.jpg



View of annual vegetation on landside slope, Fall 2020.

LM Start	0.02	Rating **	A	Issue No.	2
LM End	2.51	Issue Type +	Ma	Location *	WS
Category	Earthen Levee			GPS Latitude/Longitude	
				Start	End
Item	Vegetation			39.125581 °	39.090754 °
				-121.588673 °	-121.584624 °
DWR ID	DWR_RD0784_02A_f_2020_2				
Comment Code					
V1 : Control annual grass and weeds on the levee slopes and easements.					
Inspector Comment					
Annual vegetation is well maintained, Fall 2020.					

Photo 1 of 1 : FA_2020_RD0784_531_2_20201028_00002.jpg



View of annual vegetation on waterside slope, Fall 2020.

*** Location**
LS : Land Side N/A : Not Applicable
WS : Water Side
CR : Crown

**** Rating**
A : Acceptable N : Not Inspected/Rated
M : Minimally Acceptable C : Corrected
U : Unacceptable A/W : Acceptable but Monitor & Maintain

+ Issue Type
Ma : Maintenance Deficiency
Ob : Design & System Obsolescence
En : Enforcement

**Flood Control Project Maintenance
Levee Inspections**

Maintenance Issue Types Only, Levee Inspection Report By Mile - Fall 2020

Reclamation District No. 0784 Plumas Lake

Waterway	Bank	Unit Miles	Inspection Start/End	Inspector
Unit No. 02B Feather River	Left	3.95	10/27/2020 10/27/2020	Brooks Weisser

LM Start	8.96	Rating **	A/W	Issue No.	1
LM End	9.36	Issue Type +	Ma	Location *	WS
Category	Supplemental			GPS Latitude/Longitude	
				Start	End
Item	2017 USACE Erosion Survey			39.009366 °	39.004549 °
				-121.579766 °	-121.579143 °
DWR ID	DWR_RD0784_02B_f _ 2018_1				
Comment Code					
Inspector Comment					
2017 Site ID: FHR 17.8 L					
Status: Eroding					
2017 Field Notes: Large sandbar on opposite bank, thalweg moving closer to levee.					
Site History: 2003 - Bank is near vertical. Identified as a Potentially Critical site. 2004 - Eddy flow off downstream end of Modesto formation eroding the fluvial sediments. 2005 - Some new slumping. Actively eroding but berm width is greater than 50 ft. 2006 - Downgraded to regular erosion site. Still actively eroding. Large old rotational failures in high bank on the downstream end. 2008 - Removed from inventory due to wide berm width does not meet criteria for an erosion site. 2010 - Added back to the inventory after 10 ft of bank erosion in the winter 2009 storm. Steep vertical face. 2011 - Bank has retreated an additional 2.5 ft from last year. New tree popouts and erosion throughout the site. 2012 - Site continues to worsen with new tree popouts and many sections of new erosion.					

Photo 1 of 1 : FA_2020_RD0784_532_1_20201016_00001.jpg



USACE 2013 Photo #1

LM Start	8.98	Rating **	A	Issue No.	2
LM End	12.80	Issue Type +	Ma	Location *	LS
Category	Earthen Levee			GPS Latitude/Longitude	
				Start	End
Item	Vegetation			39.009700 °	38.955555 °
				-121.578969 °	-121.574835 °
DWR ID	DWR_RD0784_02B_f_2020_2				
Comment Code					
V1 : Control annual grass and weeds on the levee slopes and easements.					
Inspector Comment					
Annual vegetation is well maintained, Fall 2020.					

Photo 1 of 1 : FA_2020_RD0784_532_2_20201028_00005.jpg



View of annual vegetation on landside slope, Fall 2020.

* Location LS : Land Side N/A : Not Applicable WS : Water Side CR : Crown	** Rating A : Acceptable M : Minimally Acceptable U : Unacceptable	N : Not Inspected/Rated C : Corrected A/W : Acceptable but Monitor & Maintain	+ Issue Type Ma : Maintenance Deficiency Ob : Design & System Obsolescence En : Enforcement
--	--	---	---

**Flood Control Project Maintenance
Levee Inspections**

Maintenance Issue Types Only, Levee Inspection Report By Mile - Fall 2020

Reclamation District No. 0784 Plumas Lake

Waterway	Bank	Unit Miles	Inspection Start/End	Inspector
Unit No. 02B Feather River	Left	3.95	10/27/2020 10/27/2020	Brooks Weisser

LM Start	8.99	Rating **	A	Issue No.	3
LM End	12.80	Issue Type +	Ma	Location *	WS
Category	Earthen Levee			GPS Latitude/Longitude	
				Start	End
Item	Vegetation			39.009602 °	38.955556 °
				-121.578882 °	-121.574835 °
DWR ID	DWR_RD0784_02B_f_2020_3				
Comment Code					
V1 : Control annual grass and weeds on the levee slopes and easements.					
Inspector Comment					
Annual vegetation is well maintained, Fall 2020.					

Photo 1 of 1 : FA_2020_RD0784_532_3_20201028_00006.jpg



View of annual vegetation on waterside slope, Fall 2020.

* Location LS : Land Side N/A : Not Applicable WS : Water Side CR : Crown	** Rating A : Acceptable M : Minimally Acceptable U : Unacceptable	N : Not Inspected/Rated C : Corrected A/W : Acceptable but Monitor & Maintain	+ Issue Type Ma : Maintenance Deficiency Ob : Design & System Obsolescence En : Enforcement
--	--	---	---

**Flood Control Project Maintenance
Levee Inspections**

Maintenance Issue Types Only, Levee Inspection Report By Mile - Fall 2020

Reclamation District No. 0784 Plumas Lake

Waterway	Bank	Unit Miles	Inspection Start/End	Inspector
Unit No. 03A Bear River	Right	0.78	10/27/2020 10/27/2020	Brooks Weisser

LM Start	2.43	Rating **	A	Issue No.	1
LM End	3.20	Issue Type +	Ma	Location *	LS
Category	Earthen Levee			GPS Latitude/Longitude	
				Start	End
Item	Vegetation			38.970579 °	38.974705 °
				-121.547582 °	-121.535278 °
DWR ID	DWR_RD0784_03A_f_2020_1				
Comment Code					
V1 : Control annual grass and weeds on the levee slopes and easements.					
Inspector Comment					
Annual vegetation is well maintained, Fall 2020.					

Photo 1 of 1 : FA_2020_RD0784_533_1_20201028_00001.jpg



View of annual vegetation on landside slope, Fall 2020.

LM Start	2.43	Rating **	A	Issue No.	2
LM End	3.20	Issue Type +	Ma	Location *	WS
Category	Earthen Levee			GPS Latitude/Longitude	
				Start	End
Item	Vegetation			38.970581 °	38.974704 °
				-121.547580 °	-121.535275 °
DWR ID	DWR_RD0784_03A_f_2020_2				
Comment Code					
V1 : Control annual grass and weeds on the levee slopes and easements.					
Inspector Comment					
Annual vegetation is well maintained, Fall 2020.					

Photo 1 of 1 : FA_2020_RD0784_533_2_20201028_00002.jpg



View of annual vegetation on waterside slope, Fall 2020.

* Location LS : Land Side N/A : Not Applicable WS : Water Side CR : Crown	** Rating A : Acceptable M : Minimally Acceptable U : Unacceptable N : Not Inspected/Rated C : Corrected A/W : Acceptable but Monitor & Maintain	+ Issue Type Ma : Maintenance Deficiency Ob : Design & System Obsolescence En : Enforcement
--	---	---

**Flood Control Project Maintenance
Levee Inspections**

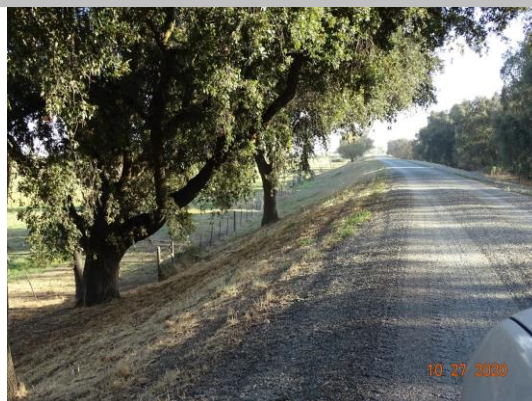
Maintenance Issue Types Only, Levee Inspection Report By Mile - Fall 2020

Reclamation District No. 0784 Plumas Lake

Waterway	Bank	Unit Miles	Inspection Start/End	Inspector
Unit No. 03B Bear River	Right	1.49	10/27/2020 10/27/2020	Brooks Weisser

LM Start	3.25	Rating **	A	Issue No.	4
LM End	4.59	Issue Type +	Ma	Location *	LS
Category	Earthen Levee			GPS Latitude/Longitude	
				Start	End
Item	Vegetation			38.974282 °	38.984655 °
				-121.531791 °	-121.512126 °
DWR ID	DWR_RD0784_03B_f_2020_4				
Comment Code					
V1 : Control annual grass and weeds on the levee slopes and easements.					
Inspector Comment					
Annual vegetation is well maintained, Fall 2020.					

Photo 1 of 1 : FA_2020_RD0784_534_4_20201028_00005.jpg



View of annual vegetation on landside slope, Fall 2020.

LM Start	3.52	Rating **	A/W	Issue No.	8	
LM End	3.52	Issue Type +	Ma	Location *		
Category	Supplemental			GPS Latitude/Longitude		
				Start	End	
Item	DWR UCIP LMA Responsibility			38.974330 °	38.974330 °	
				-121.526799 °	-121.526799 °	
DWR ID	18580					
Comment Code						
Inspector Comment						
DS_ID:18580 FS_ID:61741 EP_NO: N/A Repair Type: No Action Needed EVAL Issue: Crossing Status: Found UCIP Comments: 12/16/2019 - Pipe crossing was hydroflushed and video inspected in October 2019. Pending final review by RD784 District Engineer and DWR. (P. Meagher - RD784)02/01/2019 - Pipe crossing was video inspected on 8-14-2018. (P. Meagher - RD784) FIELD_STRUCT_DESC: 30-inch corrugated metal drainage pipe through the levee, 19 feet below the crown. Flap gate on the waterside (WS) end. Concrete headwall at the WS toe. [Additional Reference(s): DWR Levee Log, 2005 (HLM 3.56), listed as a 30-inch CMP. USACE Sacramento O&M Manual, Unit No. 145, August 1955, Revised 6 Aug 2019, (Station 92+88)]. FS Date: 2/27/2013						

No Photos

* Location LS : Land Side N/A : Not Applicable WS : Water Side CR : Crown	** Rating A : Acceptable M : Minimally Acceptable U : Unacceptable	N : Not Inspected/Rated C : Corrected A/W : Acceptable but Monitor & Maintain	+ Issue Type Ma : Maintenance Deficiency Ob : Design & System Obsolescence En : Enforcement
--	--	---	---

**Flood Control Project Maintenance
Levee Inspections**

Maintenance Issue Types Only, Levee Inspection Report By Mile - Fall 2020

Reclamation District No. 0784 Plumas Lake

Waterway	Bank	Unit Miles	Inspection Start/End	Inspector
Unit No. 03B Bear River	Right	1.49	10/27/2020 10/27/2020	Brooks Weisser

LM Start	4.28	Rating **	A/W	Issue No.	3
LM End	4.29	Issue Type +	Ma	Location *	WS
Category	Supplemental			GPS Latitude/Longitude	
				Start	End
Item	2017 USACE Erosion Survey			38.981271 °	38.981400 °
				-121.515999 °	-121.515848 °
DWR ID	DWR_RD0784_03B_f_2018_3				
Comment Code					
Inspector Comment					
2017 Site ID: BER 4.9 R					
Status: Eroding					
2017 Field Notes: Access Issues - Could not observe					
Site History: 2009 - Small site which could be repaired with maintenance. Erosion into the levee toe, rock has started to fail.					

No Photos

*** Location**
 LS : Land Side N/A : Not Applicable
 WS : Water Side
 CR : Crown

**** Rating**
 A : Acceptable N : Not Inspected/Rated
 M : Minimally Acceptable C : Corrected
 U : Unacceptable A/W : Acceptable but Monitor & Maintain

+ Issue Type
 Ma : Maintenance Deficiency
 Ob : Design & System Obsolescence
 En : Enforcement

**Flood Control Project Maintenance
Levee Inspections**

Maintenance Issue Types Only, Levee Inspection Report By Mile - Fall 2020

Reclamation District No. 0784 Plumas Lake

Waterway	Bank	Unit Miles	Inspection Start/End	Inspector
Unit No. 03B Bear River	Right	1.49	10/27/2020 10/27/2020	Brooks Weisser

LM Start	4.66	Rating **	U	Issue No.	9
LM End	4.66	Issue Type +	Ma	Location *	
Category	Supplemental			GPS Latitude/Longitude	
				Start	End
Item	DWR UCIP LMA Responsibility			38.985247 °	38.985247 °
				-121.511075 °	-121.511075 °
DWR ID	18627				

Comment Code

Inspector Comment

DS_ID:18627
FS_ID:61742
EP_NO: N/A
Repair Type: Urgent
EVAL Issue:
Crossing Status: Found
UCIP Comments: 08/18/2020 - CVFPB authorization letter for total pipe replacement received. (Project No. WA2020068) (P. Meagher - RD784)12/16/2019 - Pipe crossing was hydroflushed and video inspected (again) in October 2019. Pending final review and recommendations from the RD784 District Engineer and DWR. (P. Meagher - RD784)10/16/2018 - Internal video inspection was completed recently and the inspection is being evaluated by the District Engineer. Waiting for internal inspection results to determine the internal condition of this crossing. Crossing remains Urgent due to the unknown condition of the pipe through the levee. (O. Magana - DWR UCIP)
11/30/2017 - Crossing remains Urgent due to uncertainty of pipe condition through levee -- recommend an internal inspection of the pipe through the levee as a precaution measure to determine integrity of pipe. Repair of the rusted out collar (void) found at the WS pipe outlet has been repaired by the LMA. Received additional photos from DWR levee inspector, S. York, of the WS concrete headwall installed and vegetation cleared from WS. (O. Magana - DWR UCIP)
07/13/2017 - The rusted out collar at the bottom of the waterside flap gate has been sealed with concrete. Internal pipe inspections still pending. (P. Meagher - RD784).
04/13/2017 - Spoke to LMA representative, P. Meagher, regarding the status of this crossing. The report has been updated to indicate vegetation has been cleared from WS outlet and LS inlet. The crossing remains Urgent--WS pipe collar is rusted out on the bottom. Recommend internal pipe inspection to determine pipe integrity through the levee. Owner will need to coordinate with the CVFPB to address issue. (O. Magana - DWR UCIP)
01/16/2017 - Landowner who utilizes this pipe reported to RD784 staff on 1/11/2017 that he suspected this pipe at the waterside flap gate ring area was rusted out at the bottom. After investigating, we could see what was reported is correct. Sandbags have been temporarily placed around the 2" +/- gapped area underneath the flap gate ring. A permanent solution is anticipated to be completed in the next 3 to 6 months. The plan is to pour a concrete ring / headwall around the open corroded pipe end. Photos attached. (P. Meagher - RD784).
11/04/2016 - Flap gate on waterside has been cleared again as of 10/17/2016. The LS inlet area has been cleared as of 9/21/2016. See updated photos attached. (P. Meagher - RD784)
09/22/2016 - vegetation at inlet of pipe has been cleared by owner. photos added showing pipe inlet. (T. Hatch - DWR UCIP)

Photo 1 of 3 : UCIP_FA_2020_61742_77114.jpg



Close up photo of concrete seal where the rusted out void used to be. Farmer irrigation was currently flowing at the time the photo was taken.

* Location LS : Land Side N/A : Not Applicable WS : Water Side CR : Crown	** Rating A : Acceptable M : Minimally Acceptable U : Unacceptable	N : Not Inspected/Rated C : Corrected A/W : Acceptable but Monitor & Maintain	+ Issue Type Ma : Maintenance Deficiency Ob : Design & System Obsolescence En : Enforcement
--	--	--	---

**Flood Control Project Maintenance
Levee Inspections**

Maintenance Issue Types Only, Levee Inspection Report By Mile - Fall 2020

Reclamation District No. 0784 Plumas Lake

Waterway	Bank	Unit Miles	Inspection Start/End	Inspector
Unit No. 03B Bear River	Right	1.49	10/27/2020 10/27/2020	Brooks Weisser

08/09/2016 - vegetation partially obscuring outlet on WS. Heavy vegetation on landside (LS) limiting inspection of inlet. Owner asked by RD0784 to clear vegetation and debris. (T. Hatch - DWR UCIP)
11/01/2015 - Flap Gate has been cleared as of 12-9-2014 and again during summer of 2015 (P. Meagher - RD0784)02/27/2013 - Flap gate blocked by vegetation on WS toe. Unable to locate inlet. (W. Wylie - DWR UCIP)
FIELD_STRUCT_DESC: 18-inch corrugated metal drainage pipe through the levee, 20 feet below the crown. Gate valve on the waterside (WS). [Additional Reference(s): USACE Sacramento O&M Manual, Unit No. 145, August 1955, Revised 6 Aug 2019, (Station 4+96). USACE Sacramento As-built Drawings, 2-4-106, Exhibit B, Sheet 2, July 1944 (Station 4+96)].
FS Date: 10/16/2018 1:17:00 PM

LM Start	4.66	Rating **	U	Issue No.	9 (cont)
LM End	4.66	Issue Type +	Ma	Location *	

Photo 2 of 3 : UCIP_FA_2020_61742_77115.jpg



Concrete collar completed around the waterside exterior flap gate section.

LM Start	4.66	Rating **	U	Issue No.	9 (cont)
LM End	4.66	Issue Type +	Ma	Location *	

Photo 3 of 3 : UCIP_FA_2020_61742_76618.jpg



Sandbags temporarily placed in front of flapgate.

* Location LS : Land Side N/A : Not Applicable WS : Water Side CR : Crown	** Rating A : Acceptable M : Minimally Acceptable U : Unacceptable	N : Not Inspected/Rated C : Corrected A/W : Acceptable but Monitor & Maintain	+ Issue Type Ma : Maintenance Deficiency Ob : Design & System Obsolescence En : Enforcement
--	--	---	---

Reclamation District No. 0784 Plumas Lake

No Photos

View of annual vegetation on waterside slope, Fall 2020.

View of annual vegetation on landside slope, Fall 2020.

Page 1 of 1

**Flood Control Project Maintenance
Levee Inspections**

Maintenance Issue Types Only, Levee Inspection Report By Mile - Fall 2020

Reclamation District No. 0784 Plumas Lake

Waterway	Bank	Unit Miles	Inspection Start/End	Inspector
Unit No. 05 Interceptor Canal	Left	4.19	10/27/2020 10/27/2020	Brooks Weisser

LM Start	0.12	Rating **	A/W	Issue No.	11	
LM End	0.12	Issue Type +	Ma	Location *		
Category	Supplemental			GPS Latitude/Longitude		
				Start	End	
Item	DWR UCIP LMA Responsibility			38.976147 °	38.976147 °	
				-121.533019 °	-121.533019 °	
DWR ID	18592					
Comment Code						
Inspector Comment						
DS_ID:18592 FS_ID:61747 EP_NO: N/A Repair Type: No Action Needed EVAL Issue: Crossing Status: Found UCIP Comments: 12/16/2019 - Pipe crossing was hydroflushed and video inspected (again) in October 2019. Pending final review by RD784 Engineer and DWR. (P. Meagher - RD784)02/01/2019 - Pipe crossing was video inspected on 8/13/2018. (P. Meagher - RD784)02/26/2013 Good candidate for video inspection. (W. Wylie - DWR UCIP) FIELD_STRUCT_DESC: 18-inch corrugated metal drainage pipe through the levee, 18 feet below the crown. Flap gate on the waterside (WS) end. Concrete U-shaped headwall on the WS end. Polyvinyl chloride weir inlet on landside (LS) toe. [Additional Reference(s): DWR Levee Log, 2005 (HLM 0.10), listed as an 18-inch CMP. USACE Sacramento O&M Manual, Unit No. 145, August 1955, Revised 6 Aug 2019, (Station 25+28)]. FS Date: 2/26/2013						

LM Start	0.12	Rating **	A/W	Issue No.	11 (cont)
LM End	0.12	Issue Type +	Ma	Location *	

Photo 1 of 3 : UCIP_FA_2020_61747_16552.jpg



inlet control structure on LS toe.

Photo 2 of 3 : UCIP_FA_2020_61747_16555.jpg



Concrete U-shaped outlet with flap gate on WS toe.

* Location LS : Land Side N/A : Not Applicable WS : Water Side CR : Crown	** Rating A : Acceptable M : Minimally Acceptable U : Unacceptable	N : Not Inspected/Rated C : Corrected A/W : Acceptable but Monitor & Maintain	+ Issue Type Ma : Maintenance Deficiency Ob : Design & System Obsolescence En : Enforcement
--	--	---	---

**Flood Control Project Maintenance
Levee Inspections**

Maintenance Issue Types Only, Levee Inspection Report By Mile - Fall 2020

Reclamation District No. 0784 Plumas Lake

Waterway	Bank	Unit Miles	Inspection Start/End	Inspector
Unit No. 05 Interceptor Canal	Left	4.19	10/27/2020 10/27/2020	Brooks Weisser

LM Start	0.12	Rating **	A/W	Issue No.	11 (cont)
LM End	0.12	Issue Type +	Ma	Location *	
Category	Supplemental			GPS Latitude/Longitude	
				Start	End
Item	DWR UCIP LMA Responsibility			38.976147 °	38.976147 °
				-121.533019 °	-121.533019 °
DWR ID	18592				

Photo 3 of 3 : UCIP_FA_2020_61747_16554.jpg



Concrete U-shaped outlet on WS toe.

LM Start	0.84	Rating **	M	Issue No.	12
LM End	0.84	Issue Type +	Ma	Location *	
Category	Supplemental			GPS Latitude/Longitude	
				Start	End
Item	DWR UCIP LMA Responsibility			38.986432 °	38.986432 °
				-121.534983 °	-121.534983 °
DWR ID	18591				

Comment Code

Inspector Comment

DS_ID:18591
FS_ID:61748
EP_NO: N/A
Repair Type: Non-Urgent
EVAL Issue:
Crossing Status: Found
UCIP Comments: 12/16/2019 - Pipe crossing was hydroflushed and video inspected (again) in October 2019. Pending final review by RD784 Engineer and DWR. (P.Meagher - RD784)02/01/2019 - Pipe crossing was video inspected on 8/14/2018. (P. Meagher)02/26/2013 - No handle or access to slide gate on LS toe. (W. Wylie - DWR UCIP)
FIELD_STRUCT_DESC: 30-inch corrugated metal drainage pipe through the levee, 23.7 feet below the crown. Flap gate on the waterside (WS) end. Slide gate inside a concrete drop inlet on the landside (LS). [Additional Reference(s): DWR Levee Log, 2005 (HLM 0.82), listed as a 30-inch CMP. USACE Sacramento O&M Manual, Unit No. 145, August 1955, Revised 6 Aug 2019, (Station 63+00)].
FS Date: 9/11/2015 9:05:00 AM

Photo 1 of 2 : UCIP_FA_2020_61748_54246.jpg



Concrete drop-inlet at LS toe.

* Location	** Rating	+ Issue Type
LS : Land Side WS : Water Side CR : Crown	A : Acceptable M : Minimally Acceptable U : Unacceptable	Ma : Maintenance Deficiency Ob : Design & System Obsolescence En : Enforcement
N/A : Not Applicable	N : Not Inspected/Rated C : Corrected A/W : Acceptable but Monitor & Maintain	

**Flood Control Project Maintenance
Levee Inspections**

Maintenance Issue Types Only, Levee Inspection Report By Mile - Fall 2020

Reclamation District No. 0784 Plumas Lake

Waterway	Bank	Unit Miles	Inspection Start/End	Inspector
Unit No. 05 Interceptor Canal	Left	4.19	10/27/2020 10/27/2020	Brooks Weisser

LM Start	1.60	Rating **	A/W	Issue No.	13 (cont)
LM End	1.60	Issue Type +	Ma	Location *	
Category	Supplemental			GPS Latitude/Longitude	
				Start	End
Item	DWR UCIP LMA Responsibility			38.997305 °	38.997305 °
				-121.537081 °	-121.537081 °
DWR ID	18590				

Photo 2 of 3 : UCIP_FA_2020_61749_16563.jpg



Pvc weir on inlet at LS toe.

LM Start	1.60	Rating **	A/W	Issue No.	13 (cont)
LM End	1.60	Issue Type +	Ma	Location *	

Photo 3 of 3 : UCIP_FA_2020_61749_16562.jpg



Concrete U-shaped headwall and flap gate on WS toe.

* Location LS : Land Side N/A : Not Applicable WS : Water Side CR : Crown		** Rating A : Acceptable N : Not Inspected/Rated M : Minimally Acceptable C : Corrected U : Unacceptable A/W : Acceptable but Monitor & Maintain		+ Issue Type Ma : Maintenance Deficiency Ob : Design & System Obsolescence En : Enforcement
--	--	---	--	---

**Flood Control Project Maintenance
Levee Inspections**

Maintenance Issue Types Only, Levee Inspection Report By Mile - Fall 2020

Reclamation District No. 0784 Plumas Lake

Waterway	Bank	Unit Miles	Inspection Start/End	Inspector
Unit No. 05 Interceptor Canal	Left	4.19	10/27/2020 10/27/2020	Brooks Weisser

LM Start	1.86	Rating **	M	Issue No.	14	
LM End	1.86	Issue Type +	Ma	Location *		
Category	Supplemental			GPS Latitude/Longitude		
				Start		End
Item	DWR UCIP LMA Responsibility			39.000975 °	39.000975 °	
				-121.537779 °	-121.537779 °	
DWR ID	18588					
Comment Code						
Inspector Comment						
DS_ID:18588 FS_ID:61750 EP_NO: N/A Repair Type: Non-Urgent EVAL Issue: Crossing Status: Found UCIP Comments: 12/16/2019 - Pipe crossing was hydroflushed and video inspected in October 2019. Pending final review by RD784 District Engineer and DWR. (P. Meagher - RD784)02/01/2019 - Pipe crossing was video inspected on 8-14-2018. (P. Meagher - RD784)09/11/2015 - Inlet burried. Good candidate for video inspection as pipe is corroded. (W. Wylie - DWR UCIP) FIELD_STRUCT_DESC: 18-inch corrugated metal drainage pipe through the levee, 14.5 feet below the crown. Flap gate on the waterside (WS) end. Concrete U-shaped headwall on the WS. [Additional Reference(s): DWR Levee Log, 2005 (HLM 1.86), listed as an 18-inch CMP. USACE Sacramento O&M Manual, Unit No. 145, August 1955, Revised 6 Aug 2019, (Station 116+78)]. FS Date: 9/11/2015 9:36:00 AM						

LM Start	1.86	Rating **	M	Issue No.	14 (cont)
LM End	1.86	Issue Type +	Ma	Location *	

Photo 1 of 3 : UCIP_FA_2020_61750_54247.jpg



Concrete U-shaped outlet and flap-gate on WS toe.

Photo 2 of 3 : UCIP_FA_2020_61750_54248.jpg



Debris covered inlet on LS toe.

* Location LS : Land Side N/A : Not Applicable WS : Water Side CR : Crown	** Rating A : Acceptable M : Minimally Acceptable U : Unacceptable	N : Not Inspected/Rated C : Corrected A/W : Acceptable but Monitor & Maintain	+ Issue Type Ma : Maintenance Deficiency Ob : Design & System Obsolescence En : Enforcement
--	--	---	---

**Flood Control Project Maintenance
Levee Inspections**

Maintenance Issue Types Only, Levee Inspection Report By Mile - Fall 2020

Reclamation District No. 0784 Plumas Lake

Waterway	Bank	Unit Miles	Inspection Start/End	Inspector
Unit No. 05 Interceptor Canal	Left	4.19	10/27/2020 10/27/2020	Brooks Weisser

LM Start	1.86	Rating **	M	Issue No.	14 (cont)
LM End	1.86	Issue Type +	Ma	Location *	
Category	Supplemental			GPS Latitude/Longitude	
				Start	End
Item	DWR UCIP LMA Responsibility			39.000975 °	39.000975 °
				-121.537779 °	-121.537779 °
DWR ID	18588				

Photo 3 of 3 : UCIP_FA_2020_61750_54249.jpg



Drainage outlet on WS toe.

* Location LS : Land Side N/A : Not Applicable WS : Water Side CR : Crown	** Rating A : Acceptable M : Minimally Acceptable U : Unacceptable N : Not Inspected/Rated C : Corrected A/W : Acceptable but Monitor & Maintain	+ Issue Type Ma : Maintenance Deficiency Ob : Design & System Obsolescence En : Enforcement
--	---	---

**Flood Control Project Maintenance
Levee Inspections**

Maintenance Issue Types Only, Levee Inspection Report By Mile - Fall 2020

Reclamation District No. 0784 Plumas Lake

Waterway	Bank	Unit Miles	Inspection Start/End	Inspector
Unit No. 05 Interceptor Canal	Left	4.19	10/27/2020 10/27/2020	Brooks Weisser

LM Start	2.04	Rating **	M	Issue No.	15
LM End	2.04	Issue Type +	Ma	Location *	
Category	Supplemental			GPS Latitude/Longitude	
				Start	End
Item	DWR UCIP LMA Responsibility			39.003643 °	39.003643 °
				-121.538292 °	-121.538292 °
DWR ID	18587				

Comment Code

Inspector Comment

DS_ID:18587
FS_ID:61751
EP_NO: N/A
Repair Type: Non-Urgent
EVAL Issue:
Crossing Status: Found
UCIP Comments: 08/18/2020 - Letter of Authorization Received from the CVFPB to proceed with total pipe replacement (CVFPB Project No. WA2020067) (P. Meagher - RD784)12/16/2019 - This pipe crossing was hydroflushed and video inspected (again) in October 2019. Pending final review by RD784 District engineers and DWR. (P. Meagher - RD784)02/01/2019 - The pipe crossing was video inspected on 8-14-2018. New photos of the landside toe added. In August 2017 a sinkhole was noticed at the bottom of the landside toe shelf area. The sinkhole developed as a result of the landowner who extended the existing pipe in order to complete a new unauthorized concrete flashboard structure replacement. The pipe owner was mailed a letter from RD784 with a Cc to CVFPB and DWR dated 10-23-2017 acknowledging the owner's completion of an attempted repair. The sinkhole has since returned. (P. Meagher - RD784)02/03/2017 - On 1-31-2017 The waterside excess pipe end was discovered to be floating to the surface due to landside water runoff through the pipe. Because of the floating pipe, the water was not draining all the way through the pipe. Instead, the water was overtopping the levee shelf area. In order to resolve this issue, the excess portion of the pipe was cut off. After doing so, the water immediately started draining properly again. (P. Meagher - RD784). 02/26/2013 - Erosion at outlet may or may not be an issue. (W. Wylie - DWR UCIP)
FIELD_STRUCT_DESC: 18-inch corrugated metal drainage pipe through the levee, 14.5 feet below the crown. Flap gate on the waterside (WS) end. Concrete U-shaped headwall on the WS. Polyvinyl chloride weir on inlet. [Additional Reference(s): DWR Levee Log, 2005 (HLM 2.04), listed as an 18-inch CMP. USACE Sacramento O&M Manual, Unit No. 145, August 1955, Revised 6 Aug 2019, (Station 126+53)].
FS Date: 2/3/2017

Photo 1 of 3 : UCIP_FA_2020_61751_54250.jpg



Inlet with PVC weir on LS toe.

* Location	** Rating	+ Issue Type
LS : Land Side WS : Water Side CR : Crown	A : Acceptable M : Minimally Acceptable U : Unacceptable	N : Not Inspected/Rated C : Corrected A/W : Acceptable but Monitor & Maintain
N/A : Not Applicable		Ma : Maintenance Deficiency Ob : Design & System Obsolescence En : Enforcement

**Flood Control Project Maintenance
Levee Inspections**

Maintenance Issue Types Only, Levee Inspection Report By Mile - Fall 2020

Reclamation District No. 0784 Plumas Lake

Waterway	Bank	Unit Miles	Inspection Start/End	Inspector
Unit No. 05 Interceptor Canal	Left	4.19	10/27/2020 10/27/2020	Brooks Weisser

LM Start	2.04	Rating **	M	Issue No.	15 (cont)
LM End	2.04	Issue Type +	Ma	Location *	
Category	Supplemental			GPS Latitude/Longitude	
				Start	End
Item	DWR UCIP LMA Responsibility			39.003643 °	39.003643 °
				-121.538292 °	-121.538292 °
DWR ID	18587				

Photo 2 of 3 : UCIP_FA_2020_61751_54253.jpg



Concrete U-shaped headwall on WS toe with Flap gate showing erosion at outlet.

LM Start	2.04	Rating **	M	Issue No.	15 (cont)
LM End	2.04	Issue Type +	Ma	Location *	

Photo 3 of 3 : UCIP_FA_2020_61751_76774.jpg



After photo after excess pipe was cut off. Actual photo date was 1/31/2017

* Location LS : Land Side N/A : Not Applicable WS : Water Side CR : Crown		** Rating A : Acceptable N : Not Inspected/Rated M : Minimally Acceptable C : Corrected U : Unacceptable A/W : Acceptable but Monitor & Maintain		+ Issue Type Ma : Maintenance Deficiency Ob : Design & System Obsolescence En : Enforcement
--	--	---	--	---

**Flood Control Project Maintenance
Levee Inspections**

Maintenance Issue Types Only, Levee Inspection Report By Mile - Fall 2020

Reclamation District No. 0784 Plumas Lake

Waterway	Bank	Unit Miles	Inspection Start/End	Inspector
Unit No. 05 Interceptor Canal	Left	4.19	10/27/2020 10/27/2020	Brooks Weisser

LM Start	3.06	Rating **	M	Issue No.	17	
LM End	3.06	Issue Type +	Ma	Location *		
Category	Supplemental			GPS Latitude/Longitude		
				Start	End	
Item	DWR UCIP LMA Responsibility			39.015549 °	39.015549 °	
				-121.528590 °	-121.528590 °	
DWR ID	18596					
Comment Code						
Inspector Comment						
DS_ID:18596 FS_ID:61754 EP_NO: N/A Repair Type: Non-Urgent EVAL Issue: Crossing Status: Found UCIP Comments: 12/16/2019 - Pipe crossing was hydroflushed and video inspected in October 2019. Pending final review by RD784 Engineer and DWR. (P. Meagher - RD784)02/01/2019 - Pipe crossing was video inspected on 8-15-2018. (P. Meagher - RD784)02/27/2013 - Pipe has been sliplined with PVC, but the liner appears to be eroding at outlet and may be disjointed internal to the levee. See pic. Good candidate for video inspection. (W. Wylie - DWR UCIP) FIELD_STRUCT_DESC: 12-inch corrugated metal drainage pipe through the levee, 12 feet below the crown. Flap gate and concrete U-shaped headwall on the waterside (WS). Polyvinyl chloride weir on inlet at the landside (LS) toe. [Additional Reference(s): DWR Levee Log, 2005 (HLM 3.08), listed as 12-inch CMP. USACE Sacramento O&M Manual, Unit No. 145, August 1955, Revised 6 Aug 2019, (Station 44+96)]. FS Date: 9/11/2015 9:26:00 AM						

LM Start	3.06	Rating **	M	Issue No.	17 (cont)
LM End	3.06	Issue Type +	Ma	Location *	

Photo 1 of 3 : UCIP_FA_2020_61754_54259.jpg



Concrete U-shaped headwall and flap gate on WS toe.

Photo 2 of 3 : UCIP_FA_2020_61754_54262.jpg



Pipe showing sliplined PVC insert. some erosion of PV at outlet and it may be disjointed internally.

* Location LS : Land Side N/A : Not Applicable WS : Water Side CR : Crown	** Rating A : Acceptable M : Minimally Acceptable U : Unacceptable	N : Not Inspected/Rated C : Corrected A/W : Acceptable but Monitor & Maintain	+ Issue Type Ma : Maintenance Deficiency Ob : Design & System Obsolescence En : Enforcement
--	--	---	---

**Flood Control Project Maintenance
Levee Inspections**

Maintenance Issue Types Only, Levee Inspection Report By Mile - Fall 2020

Reclamation District No. 0784 Plumas Lake

Waterway	Bank	Unit Miles	Inspection Start/End	Inspector
Unit No. 05 Interceptor Canal	Left	4.19	10/27/2020 10/27/2020	Brooks Weisser

LM Start	3.06	Rating **	M	Issue No.	17 (cont)
LM End	3.06	Issue Type +	Ma	Location *	
Category	Supplemental			GPS Latitude/Longitude	
				Start	End
Item	DWR UCIP LMA Responsibility			39.015549 °	39.015549 °
				-121.528590 °	-121.528590 °
DWR ID	18596				

Photo 3 of 3 : UCIP_FA_2020_61754_54261.jpg



Concrete U-shaped headwall on WS toe.

LM Start	3.23	Rating **	A/W	Issue No.	18
LM End	3.23	Issue Type +	Ma	Location *	
Category	Supplemental			GPS Latitude/Longitude	
				Start	End
Item	DWR UCIP LMA Responsibility			39.017336 °	39.017336 °
				-121.526530 °	-121.526530 °
DWR ID	18595				

Comment Code

Inspector Comment

DS_ID:18595
 FS_ID:61755
 EP_NO: N/A
 Repair Type: No Action Needed
 EVAL Issue:
 Crossing Status: Found
 UCIP Comments: 12/16/2019 - Pipe crossing was hydroflushed and video inspected in October 2019. Pending final review by RD784 District Engineer and DWR. (P. Meagher - RD784)02/01/2019 - Pipe crossing was video inspected on 8-15-2018 (P. Meagher - RD784)02/27/2013 - Good candidate for video inspection. (W. Wylie - DWR UCIP)
 FIELD_STRUCT_DESC: 18-inch corrugated metal drainage pipe through the levee, 15.8 feet below the crown. Flap gate on the waterside (WS) end. Polyvinyl chloride weir on inlet at the landside (LS) toe. [Additional Reference(s): DWR Levee Log, 2005 (HLM 3.24), listed as an 18-inch pipe. USACE Sacramento O&M Manual, Unit No. 145, August 1955, Revised 6 Aug 2019, Drawing No. 2-4-106, Sheet 6 (Station 53+86)].
 FS Date: 2/27/2013

Photo 1 of 2 : UCIP_FA_2020_61755_16594.jpg



PVC weir inlet on LS toe.

* Location LS : Land Side N/A : Not Applicable WS : Water Side CR : Crown	** Rating A : Acceptable M : Minimally Acceptable U : Unacceptable N : Not Inspected/Rated C : Corrected A/W : Acceptable but Monitor & Maintain	+ Issue Type Ma : Maintenance Deficiency Ob : Design & System Obsolescence En : Enforcement
--	---	---

Reclamation District No. 0784 Plumas Lake

**Flood Control Project Maintenance
Levee Inspections**

Maintenance Issue Types Only, Levee Inspection Report By Mile - Fall 2020

Reclamation District No. 0784 Plumas Lake

Waterway	Bank	Unit Miles	Inspection Start/End	Inspector
Unit No. 05 Interceptor Canal	Left	4.19	10/27/2020 10/27/2020	Brooks Weisser

LM Start	3.79	Rating **	A/W	Issue No.	19 (cont)
LM End	3.79	Issue Type +	Ma	Location *	
Category	Supplemental			GPS Latitude/Longitude	
				Start	End
Item	DWR UCIP LMA Responsibility			39.019222 °	39.019222 °
				-121.516414 °	-121.516414 °
DWR ID	18594				

Photo 2 of 3 : UCIP_FA_2020_61756_16591.jpg



PVC weir at inlet on LS toe.

LM Start	3.79	Rating **	A/W	Issue No.	19 (cont)
LM End	3.79	Issue Type +	Ma	Location *	

Photo 3 of 3 : UCIP_FA_2020_61756_16592.jpg



Concrete outlet on WS toe.

* Location LS : Land Side N/A : Not Applicable WS : Water Side CR : Crown	** Rating A : Acceptable M : Minimally Acceptable U : Unacceptable N : Not Inspected/Rated C : Corrected A/W : Acceptable but Monitor & Maintain	+ Issue Type Ma : Maintenance Deficiency Ob : Design & System Obsolescence En : Enforcement
--	---	---

**Flood Control Project Maintenance
Levee Inspections**

Maintenance Issue Types Only, Levee Inspection Report By Mile - Fall 2020

Reclamation District No. 0784 Plumas Lake

Waterway	Bank	Unit Miles	Inspection Start/End	Inspector
Unit No. 05 Interceptor Canal	Left	4.19	10/27/2020 10/27/2020	Brooks Weisser

LM Start	3.96	Rating **	M	Issue No.	20	
LM End	3.96	Issue Type +	Ma	Location *		
Category	Supplemental			GPS Latitude/Longitude		
				Start	End	
Item	DWR UCIP LMA Responsibility			39.019787 °	39.019787 °	
				-121.513386 °	-121.513386 °	
DWR ID	18593					
Comment Code						
Inspector Comment						
DS_ID:18593 FS_ID:61757 EP_NO: N/A Repair Type: Non-Urgent EVAL Issue: Crossing Status: Found UCIP Comments: 02/01/2019 - An attempt was made to video inspect this pipe crossing on 8-15-2018 but conditions were too muddy inside the pipe. (P. Meagher - RD784)11/14/2016 - Photos added of exposed flap gate on WS and possible inlet location on LS. Condition remains as Non-Urgent because of inlet not being fully operable. Unknown if pipe will operate as designed during high water or if it is full of sediment. (P. Meagher - RD784)11/01/2015 - Waterside Flap Gate Uncovered. Photo sent to DWR Matt Hoffman on 3-3-2014. Fresh photo sent to DWR Pavel Kazi on 9-9-2015. Landside toe has never been able to be located. Requesting DWR inspector to change the status of this issue to "No Action Needed". (P. Meagher - RD784).02/26/2013 - Pipe buried on LS toe and flap gate is blocked by soil on WS toe. (W. Wylie - DWR UCIP). FIELD_STRUCT_DESC: 18-inch corrugated metal drainage pipe through the levee, 10 feet below the crown. Flap gate on the waterside (WS) end. [Additional Reference(s): DWR Levee Log, 2005 (HLM 3.98), listed as an 18-inch pipe. USACE Sacramento O&M Manual, Unit No. 145, August 1955, Revised 6 Aug 2019, (Station 91+50)]. FS Date: 10/9/2015						

LM Start	3.96	Rating **	M	Issue No.	20 (cont)
LM End	3.96	Issue Type +	Ma	Location *	

Photo 1 of 3 : UCIP_FA_2020_61757_76147.jpg



Flap gate on the WS toe is exposed

Photo 2 of 3 : UCIP_FA_2020_61757_76148.jpg



Possible location of the inlet on the LS toe

* Location LS : Land Side N/A : Not Applicable WS : Water Side CR : Crown	** Rating A : Acceptable M : Minimally Acceptable U : Unacceptable	N : Not Inspected/Rated C : Corrected A/W : Acceptable but Monitor & Maintain	+ Issue Type Ma : Maintenance Deficiency Ob : Design & System Obsolescence En : Enforcement
--	--	---	---

**Flood Control Project Maintenance
Levee Inspections**

Maintenance Issue Types Only, Levee Inspection Report By Mile - Fall 2020

Reclamation District No. 0784 Plumas Lake

Waterway	Bank	Unit Miles	Inspection Start/End	Inspector
Unit No. 05 Interceptor Canal	Left	4.19	10/27/2020 10/27/2020	Brooks Weisser

LM Start	3.96	Rating **	M	Issue No.	20 (cont)
LM End	3.96	Issue Type +	Ma	Location *	
Category	Supplemental			GPS Latitude/Longitude	
				Start	End
Item	DWR UCIP LMA Responsibility			39.019787 °	39.019787 °
				-121.513386 °	-121.513386 °
DWR ID	18593				

Photo 3 of 3 : UCIP_FA_2020_61757_74710.jpg



Enter photo 3 description or comment here.

* Location LS : Land Side N/A : Not Applicable WS : Water Side CR : Crown	** Rating A : Acceptable M : Minimally Acceptable U : Unacceptable N : Not Inspected/Rated C : Corrected A/W : Acceptable but Monitor & Maintain	+ Issue Type Ma : Maintenance Deficiency Ob : Design & System Obsolescence En : Enforcement
--	---	---

**Flood Control Project Maintenance
Levee Inspections**

Maintenance Issue Types Only, Levee Inspection Report By Mile - Fall 2020

Reclamation District No. 0784 Plumas Lake

Waterway	Bank	Unit Miles	Inspection Start/End	Inspector
Unit No. 06 South Dry Creek	Right	0.25	10/27/2020 10/27/2020	Brooks Weisser

LM Start	0.00	Rating **	A	Issue No.	3
LM End	0.25	Issue Type +	Ma	Location *	WS
Category	Earthen Levee			GPS Latitude/Longitude	
				Start	End
Item	Vegetation			38.985554 °	38.987575 °
				-121.510470 °	-121.506615 °
DWR ID	DWR_RD0784_06_f_2020_3				
Comment Code					
V1 : Control annual grass and weeds on the levee slopes and easements.					
Inspector Comment					
Annual vegetation is well maintained, Fall 2020					

Photo 1 of 1 : FA_2020_RD0784_183_3_20201029_00004.jpg



View of annual vegetation on waterside slope, Fall 2020.

LM Start	0.06	Rating **	M	Issue No.	4	
LM End	0.06	Issue Type +	Ma	Location *		
Category	Supplemental			GPS Latitude/Longitude		
				Start	End	
Item	DWR UCIP LMA Responsibility			38.985999 °	38.985999 °	
				-121.509618 °	-121.509618 °	
DWR ID	18626					
Comment Code						
Inspector Comment						
DS_ID:18626 FS_ID:61758 EP_NO: N/A Repair Type: Non-Urgent EVAL Issue: Crossing Status: Found UCIP Comments: 12/16/2019 Pipe was hydroflushed and video inspected (again) in October 2019. Pending final review by RD784 District Engineer and DWR. (P. Meagher - RD784)02/01/2019 - Pipe was video inspected on 8-13-2018. (P. Meagher - RD784)10/30/2015 - Waterside flap gate was cleared in December 2014 and again in September 2015 No LMA access available on Landside. (P. Meagher - RD784)02/26/2013 - Pipe partially blocked on LS and flap gate blocked on WS (W. Wylie - DWR UCIP) FIELD_STRUCT_DESC: 18-inch corrugated metal storm drainage pipe through the levee, 19 feet below the crown. Gate valve on the waterside (WS). [Additional Reference(s): USACE Drawing No. 2-4-106, Sheet 2]. FS Date: 9/11/2015						

Photo 1 of 3 : UCIP_FA_2020_61758_74682.jpg



Flap Gate is clear as of 9/11/15.

* Location LS : Land Side N/A : Not Applicable WS : Water Side CR : Crown	** Rating A : Acceptable M : Minimally Acceptable U : Unacceptable N : Not Inspected/Rated C : Corrected A/W : Acceptable but Monitor & Maintain	+ Issue Type Ma : Maintenance Deficiency Ob : Design & System Obsolescence En : Enforcement
--	---	---

**Flood Control Project Maintenance
Levee Inspections**

Maintenance Issue Types Only, Levee Inspection Report By Mile - Fall 2020

Reclamation District No. 0784 Plumas Lake

Waterway	Bank	Unit Miles	Inspection Start/End	Inspector
Unit No. 06 South Dry Creek	Right	0.25	10/27/2020 10/27/2020	Brooks Weisser

LM Start	0.06	Rating **	M	Issue No.	4 (cont)
LM End	0.06	Issue Type +	Ma	Location *	
Category	Supplemental			GPS Latitude/Longitude	
				Start	End
Item	DWR UCIP LMA Responsibility			38.985999 °	38.985999 °
				-121.509618 °	-121.509618 °
DWR ID	18626				

Photo 2 of 3 : UCIP_FA_2020_61758_54268.jpg



Partially clogged inlet pipe at LS toe.

LM Start	0.06	Rating **	M	Issue No.	4 (cont)
LM End	0.06	Issue Type +	Ma	Location *	

Photo 3 of 3 : UCIP_FA_2020_61758_54265.jpg



Flap gate blocked by vegetation at WS.

* Location LS : Land Side N/A : Not Applicable WS : Water Side CR : Crown	** Rating A : Acceptable M : Minimally Acceptable U : Unacceptable N : Not Inspected/Rated C : Corrected A/W : Acceptable but Monitor & Maintain	+ Issue Type Ma : Maintenance Deficiency Ob : Design & System Obsolescence En : Enforcement
--	---	---

**Flood Control Project Maintenance
Levee Inspections**

Maintenance Issue Types Only, Levee Inspection Report By Mile - Fall 2020

Reclamation District No. 0784 Plumas Lake

Waterway	Bank	Unit Miles	Inspection Start/End	Inspector
Unit No. 07 Yuba River	Left	3.82	10/27/2020 10/27/2020	Brooks Weisser

LM Start	0.13	Rating **	A	Issue No.	1
LM End	3.76	Issue Type +	Ma	Location *	LS
Category	Earthen Levee			GPS Latitude/Longitude	
				Start	End
Item	Vegetation			39.135154 °	39.165105 °
				-121.550015 °	-121.496222 °
DWR ID	DWR_RD0784_07_f_2020_1				
Comment Code					
V1 : Control annual grass and weeds on the levee slopes and easements.					
Inspector Comment					
Annual vegetation is well maintained, Fall 2020.					

Photo 1 of 1 : FA_2020_RD0784_184_1_20201028_00004.jpg



View of annual vegetation on landside slope, Fall 2020.

LM Start	0.13	Rating **	A	Issue No.	2
LM End	3.76	Issue Type +	Ma	Location *	WS
Category	Earthen Levee			GPS Latitude/Longitude	
				Start	End
Item	Vegetation			39.135153 °	39.165074 °
				-121.550008 °	-121.496367 °
DWR ID	DWR_RD0784_07_f_2020_2				
Comment Code					
V1 : Control annual grass and weeds on the levee slopes and easements.					
Inspector Comment					
Annual vegetation is well maintained, Fall 2020.					

Photo 1 of 1 : FA_2020_RD0784_184_2_20201028_00003.jpg



View of annual vegetation on waterside slope, Fall 2020.

*** Location**
LS : Land Side N/A : Not Applicable
WS : Water Side
CR : Crown

**** Rating**
A : Acceptable N : Not Inspected/Rated
M : Minimally Acceptable C : Corrected
U : Unacceptable A/W : Acceptable but Monitor & Maintain

+ Issue Type
Ma : Maintenance Deficiency
Ob : Design & System Obsolescence
En : Enforcement

**Flood Control Project Maintenance
Levee Inspections**

Maintenance Issue Types Only, Levee Inspection Report By Mile - Fall 2020

Reclamation District No. 0784 Plumas Lake

Waterway	Bank	Unit Miles	Inspection Start/End	Inspector
Unit No. 08 Three Rivers	Right	1.93	10/27/2020 10/27/2020	Brooks Weisser

LM Start	0.01	Rating **	A	Issue No.	1
LM End	1.93	Issue Type +	Ma	Location *	LS
Category	Earthen Levee			GPS Latitude/Longitude	
				Start	End
Item	Vegetation			38.955554 °	38.970563 °
				-121.574836 °	-121.547592 °
DWR ID	DWR_RD0784_08_f_2020_1				
Comment Code					
V1 : Control annual grass and weeds on the levee slopes and easements.					
Inspector Comment					
Annual vegetation is well maintained, Fall 2020.					

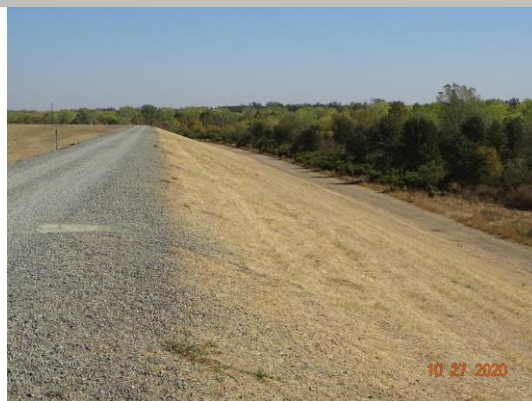
Photo 1 of 1 : FA_2020_RD0784_437_1_20201028_00001.jpg



View of annual vegetation on landside slope, Fall 2020.

LM Start	0.01	Rating **	A	Issue No.	2
LM End	1.93	Issue Type +	Ma	Location *	WS
Category	Earthen Levee			GPS Latitude/Longitude	
				Start	End
Item	Vegetation			38.955555 °	38.970566 °
				-121.574832 °	-121.547591 °
DWR ID	DWR_RD0784_08_f_2020_2				
Comment Code					
V1 : Control annual grass and weeds on the levee slopes and easements.					
Inspector Comment					
Annual vegetation is well maintained, Fall 2020.					

Photo 1 of 1 : FA_2020_RD0784_437_2_20201028_00002.jpg



View of annual vegetation on waterside slope, Fall 2020.

* Location LS : Land Side N/A : Not Applicable WS : Water Side CR : Crown	** Rating A : Acceptable M : Minimally Acceptable U : Unacceptable	N : Not Inspected/Rated C : Corrected A/W : Acceptable but Monitor & Maintain	+ Issue Type Ma : Maintenance Deficiency Ob : Design & System Obsolescence En : Enforcement
--	--	---	---

**Flood Control Project Maintenance
Levee Inspections**

Maintenance Issue Types Only, Levee Inspection Report By Mile - Fall 2020

Reclamation District No. 0784 Plumas Lake

Waterway	Bank	Unit Miles	Inspection Start/End	Inspector
Unit No. 09 Feather River	Left	5.71	10/27/2020 10/27/2020	Brooks Weisser

LM Start	0.01	Rating **	A	Issue No.	1
LM End	5.66	Issue Type +	Ma	Location *	WS
Category	Earthen Levee			GPS Latitude/Longitude	
				Start	End
Item	Vegetation			39.090229 °	39.010826 °
				-121.584726 °	-121.579747 °
DWR ID	DWR_RD0784_09_f_2020_1				
Comment Code					
V1 : Control annual grass and weeds on the levee slopes and easements.					
Inspector Comment					
Annual vegetation is well maintained, Fall 2020.					

Photo 1 of 1 : FA_2020_RD0784_530_1_20201028_00002.jpg



View of annual vegetation on waterside slope, Fall 2020.

LM Start	0.01	Rating **	A	Issue No.	2
LM End	5.66	Issue Type +	Ma	Location *	LS
Category	Earthen Levee			GPS Latitude/Longitude	
				Start	End
Item	Vegetation			39.090228 °	39.010834 °
				-121.584731 °	-121.579748 °
DWR ID	DWR_RD0784_09_f_2020_2				
Comment Code					
V1 : Control annual grass and weeds on the levee slopes and easements.					
Inspector Comment					
Annual vegetation is well maintained, Fall 2020.					

Photo 1 of 1 : FA_2020_RD0784_530_2_20201028_00001.jpg



View of annual vegetation on landside slope, Fall 2020.

* Location
LS : Land Side N/A : Not Applicable
WS : Water Side
CR : Crown

** Rating
A : Acceptable N : Not Inspected/Rated
M : Minimally Acceptable C : Corrected
U : Unacceptable A/W : Acceptable but Monitor & Maintain

+ Issue Type
Ma : Maintenance Deficiency
Ob : Design & System Obsolescence
En : Enforcement