

**Flood Control Project Maintenance
Levee Inspections**

Maintenance Issue Types Only, Levee Inspection Report By Mile - Fall 2019

Reclamation District No. 0784 Plumas Lake

Waterway	Bank	Unit Miles	Inspection Start/End	Inspector
Unit No. 01 Yuba River	Left	2.21	10/24/2019 10/24/2019	Sterling York

LM Start	0.00	Rating **	A	Issue No.	4
LM End	0.00	Issue Type +	Ma	Location *	CR
Category	Earthen Levee		GPS Latitude/Longitude		
			Start	End	
Item	Operations & Maintenance Manuals			°	°
				°	°
DWR ID	DWR_RD0784_01_s _ 2013_4				
Comment Code					
Inspector Comment					
O&M manuals are located at the district office.					

No Photos

LM Start	0.00	Rating **	A	Issue No.	5
LM End	0.00	Issue Type +	Ma	Location *	CR
Category	Earthen Levee		GPS Latitude/Longitude		
			Start	End	
Item	Emergency Supplies & Equipment			°	°
				°	°
DWR ID	DWR_RD0784_01_s _ 2013_5				
Comment Code					
Inspector Comment					
RD 784 participates with the neighboring districts to strategically place flood fight supplies around the local districts for fast response. They also have a shipping container at their district office, and three containers at another district full of flood fight supplies.					

No Photos

LM Start	0.00	Rating **	A	Issue No.	6
LM End	0.00	Issue Type +	Ma	Location *	CR
Category	Earthen Levee		GPS Latitude/Longitude		
			Start	End	
Item	Flood Preparedness & Training			°	°
				°	°
DWR ID	DWR_RD0784_01_s _ 2013_6				
Comment Code					
Inspector Comment					
RD 784 and its employees host and participate in a Flood Fight class put on by DWR every fall in their district.					

No Photos

* Location LS : Land Side N/A : Not Applicable WS : Water Side CR : Crown	** Rating A : Acceptable M : Minimally Acceptable U : Unacceptable	N : Not Inspected/Rated C : Corrected A/W : Acceptable but Monitor & Maintain	+ Issue Type Ma : Maintenance Deficiency Ob : Design & System Obsolescence En : Enforcement
--	--	---	---

Reclamation District No. 0784 Plumas Lake

View looking downstream waterside at the well maintained annual vegetation, Fall 2019.

Page 2 of 2

**Flood Control Project Maintenance
Levee Inspections**

Maintenance Issue Types Only, Levee Inspection Report By Mile - Fall 2019

Reclamation District No. 0784 Plumas Lake

Waterway	Bank	Unit Miles	Inspection Start/End	Inspector
Unit No. 02A Feather River	Left	2.54	10/24/2019 10/24/2019	Sterling York

LM Start	0.02	Rating **	A	Issue No.	2
LM End	2.52	Issue Type +	Ma	Location *	WS
Category	Earthen Levee			GPS Latitude/Longitude	
				Start	End
Item	Vegetation			39.125604 °	39.090555 °
				-121.588668 °	-121.584672 °
DWR ID	DWR_RD0784_02A_f_2019_2				
Comment Code					
V1 : Control annual grass and weeds on the levee slopes and easements.					
Inspector Comment					
The annual vegetation is well maintained, Fall 2019.					

Photo 1 of 1 : FA_2019_RD0784_531_2_20191029_00001.jpg



View looking downstream waterside at the well maintained annual vegetation, Fall 2019.

LM Start	0.02	Rating **	A	Issue No.	1
LM End	2.52	Issue Type +	Ma	Location *	LS
Category	Earthen Levee			GPS Latitude/Longitude	
				Start	End
Item	Vegetation			39.125604 °	39.090532 °
				-121.588668 °	-121.584676 °
DWR ID	DWR_RD0784_02A_f_2019_1				
Comment Code					
V1 : Control annual grass and weeds on the levee slopes and easements.					
Inspector Comment					
The annual vegetation is well maintained, Fall 2019.					

Photo 1 of 1 : FA_2019_RD0784_531_1_20191029_00002.jpg



View looking downstream landside at the well maintained annual vegetation, Fall 2019.

*** Location**

LS : Land Side N/A : Not Applicable
WS : Water Side
CR : Crown

**** Rating**

A : Acceptable N : Not Inspected/Rated
M : Minimally Acceptable C : Corrected
U : Unacceptable A/W : Acceptable but Monitor & Maintain

+ Issue Type

Ma : Maintenance Deficiency
Ob : Design & System Obsolescence
En : Enforcement

Reclamation District No. 0784 Plumas Lake

View looking downstream landside at the well maintained annual vegetation, Fall 2019.

Page 1 of 2

Reclamation District No. 0784 Plumas Lake

View looking downstream waterside at the well maintained annual vegetation, Fall 2019.

Page 1 of 1

**Flood Control Project Maintenance
Levee Inspections**

Maintenance Issue Types Only, Levee Inspection Report By Mile - Fall 2019

Reclamation District No. 0784 Plumas Lake

Waterway	Bank	Unit Miles	Inspection Start/End	Inspector
Unit No. 03B Bear River	Right	1.49	10/24/2019 10/24/2019	Sterling York

LM Start	3.21	Rating **	A	Issue No.	4
LM End	4.68	Issue Type +	Ma	Location *	LS
Category	Earthen Levee			GPS Latitude/Longitude	
				Start	End
Item	Vegetation			38.974450 °	38.985442 °
				-121.532432 °	-121.510728 °
DWR ID	DWR_RD0784_03B_f_2019_4				
Comment Code					
V1 : Control annual grass and weeds on the levee slopes and easements.					
Inspector Comment					
The annual vegetation is well maintained, Fall 2019.					

Photo 1 of 1 : FA_2019_RD0784_534_4_20191029_00005.jpg



View looking downstream landside at the well maintained annual vegetation, Fall 2019.

LM Start	3.21	Rating **	A	Issue No.	5
LM End	4.68	Issue Type +	Ma	Location *	WS
Category	Earthen Levee			GPS Latitude/Longitude	
				Start	End
Item	Vegetation			38.974450 °	38.985442 °
				-121.532432 °	-121.510728 °
DWR ID	DWR_RD0784_03B_f_2019_5				
Comment Code					
V1 : Control annual grass and weeds on the levee slopes and easements.					
Inspector Comment					
The annual vegetation is well maintained, Fall 2019.					

Photo 1 of 1 : FA_2019_RD0784_534_5_20191029_00006.jpg



View looking downstream waterside at the well maintained annual vegetation, Fall 2019.

* Location LS : Land Side N/A : Not Applicable WS : Water Side CR : Crown		** Rating A : Acceptable N : Not Inspected/Rated M : Minimally Acceptable C : Corrected U : Unacceptable A/W : Acceptable but Monitor & Maintain		+ Issue Type Ma : Maintenance Deficiency Ob : Design & System Obsolescence En : Enforcement
--	--	---	--	---

**Flood Control Project Maintenance
Levee Inspections**

Maintenance Issue Types Only, Levee Inspection Report By Mile - Fall 2019

Reclamation District No. 0784 Plumas Lake

Waterway	Bank	Unit Miles	Inspection Start/End	Inspector
Unit No. 03B Bear River	Right	1.49	10/24/2019 10/24/2019	Sterling York

LM Start	3.52	Rating **	A/W	Issue No.	8	
LM End	3.52	Issue Type +	Ma	Location *		
Category	Supplemental			GPS Latitude/Longitude		
				Start	End	
Item	DRAFT DWR UCIP LMA Responsibility			38.974330 °	38.974330 °	
				-121.526799 °	-121.526799 °	
DWR ID	18580					
Comment Code						
Inspector Comment						
DS_ID:18580 FS_ID:53545 EP_NO: N/A Repair Type: No Action Needed Crossing Status: Found UCIP Comments: 2-1-2019 - Pipe crossing was video inspected on 8/14/2018. (P. Meagher) FIELD_STRUCT_DESC: 30-inch corrugated metal drainage pipe through the levee, 19 feet below the crown. Flap gate on the waterside (WS) end. Concrete headwall at the WS toe. [Additional Reference(s): DWR Levee Log, 2005. USACE Sacramento O&M Manual 145, August 1955 (Station 92+88)]. FS Date: 2/27/2013						

No Photos

LM Start	4.28	Rating **	A/W	Issue No.	3
LM End	4.29	Issue Type +	Ma	Location *	WS
Category	Supplemental			GPS Latitude/Longitude	
				Start	End
Item	2017 USACE Erosion Survey			38.981271 °	38.981400 °
				-121.515999 °	-121.515848 °
DWR ID	DWR_RD0784_03B_f_2018_3				
Comment Code					
Inspector Comment					
2017 Site ID: BER 4.9 R					
Status: Eroding					
2017 Field Notes: Access Issues - Could not observe					
Site History: 2009 - Small site which could be repaired with					
maintenance. Erosion into the levee toe, rock has started to fail.					

No Photos

* Location LS : Land Side N/A : Not Applicable WS : Water Side CR : Crown	** Rating A : Acceptable M : Minimally Acceptable U : Unacceptable	N : Not Inspected/Rated C : Corrected A/W : Acceptable but Monitor & Maintain	+ Issue Type Ma : Maintenance Deficiency Ob : Design & System Obsolescence En : Enforcement
--	--	---	---

**Flood Control Project Maintenance
Levee Inspections**

Maintenance Issue Types Only, Levee Inspection Report By Mile - Fall 2019

Reclamation District No. 0784 Plumas Lake

Waterway	Bank	Unit Miles	Inspection Start/End	Inspector
Unit No. 03B Bear River	Right	1.49	10/24/2019 10/24/2019	Sterling York

LM Start	4.66	Rating **	U	Issue No.	9
LM End	4.66	Issue Type +	Ma	Location *	
Category	Supplemental			GPS Latitude/Longitude	
				Start	End
Item	DRAFT DWR UCIP LMA Responsibility			38.985247 °	38.985247 °
				-121.511075 °	-121.511075 °

Comment Code

Inspector Comment

DS_ID:18627

FS_ID:53072

EP_NO: N/A

Repair Type: Urgent

Crossing Status: Found

UCIP Comments: 10/16/2018 Internal video inspection was completed recently and the inspection is being evaluated by the District Engineer. Waiting for internal inspection results to determine the internal condition of this crossing. Crossing remains Urgent due to the unknown condition of the pipe through the levee. (O. Magana - DWR UCIP)

11/30/2017 Crossing remains Urgent due to uncertainty of pipe condition through levee -- recommend an internal inspection of the pipe through the levee as a precaution measure to determine integrity of pipe. Repair of the rusted out collar (void) found at the WS pipe outlet has been repaired by the LMA. Received additional photos from DWR levee inspector, S. York, of the WS concrete headwall installed and vegetation cleared from WS. (O. Magana - DWR UCIP)

07/13/2017 - The rusted out collar at the bottom of the waterside flap gate has been sealed with concrete. Internal pipe inspections still pending. (P.Meagher-RD784).

04/13/2017 - Spoke to LMA representative, P. Meagher, regarding the status of this crossing. The report has been updated to indicate vegetation has been cleared from WS outlet and LS inlet. The crossing remains Urgent--WS pipe collar is rusted out on the bottom. Recommend internal pipe inspection to determine pipe integrity through the levee. Owner will need to coordinate with the CVFPB to address issue. (O. Magana - DWR UCIP)

01/16/2017 - Landowner who utilizes this pipe reported to RD784 staff on 1/11/2017 that he suspected this pipe at the waterside flap gate ring area was rusted out at the bottom. After investigating, we could see what was reported is correct. Sandbags have been temporarily placed around the 2" +/- gapped area underneath the flap gate ring. A permanent solution is anticipated to be completed in the next 3 to 6 months. The plan is to pour a concrete ring / headwall around the open corroded pipe end. Photos attached. (P. Meagher - RD784).

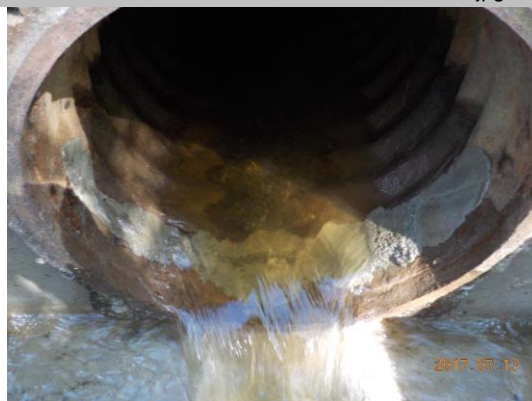
11/04/2016 - Flap gate on waterside has been cleared again as of 10/17/2016. The LS inlet area has been cleared as of 9/21/2016. See updated photos attached. (P.Meagher - RD784)

09/22/2016 - vegetation at inlet of pipe has been cleared by owner. photos added showing pipe inlet. (T. Hatch - DWR UCIP)

08/09/2016 - vegetation partially obscuring outlet on WS. Heavy vegetation on landside (LS) limiting inspection of inlet. Owner asked by RD0784 to clear vegetation and debris. (T. Hatch - DWR UCIP)

11/1/2015 - Flap Gate has been cleared as of 12/9/2014 and again during summer of 2015 (P. Meagher/RD0784)2/27/2013 - Flap gate blocked by vegetation on WS toe. Unable to locate inlet. (W. Wylie - DWR UCIP)

Photo 1 of 3 : UCIP_FA_2019_53072_77114.jpg



Close up photo of concrete seal where the rusted out void used to be. Farmer irrigation was currently flowing at the time the photo was taken.

* Location		** Rating		+ Issue Type	
LS : Land Side	N/A : Not Applicable	A : Acceptable	N : Not Inspected/Rated	Ma : Maintenance Deficiency	
WS : Water Side		M : Minimally Acceptable	C : Corrected	Ob : Design & System Obsolescence	
CR : Crown		U : Unacceptable	A/W : Acceptable but Monitor & Maintain	En : Enforcement	

**Flood Control Project Maintenance
Levee Inspections**

Maintenance Issue Types Only, Levee Inspection Report By Mile - Fall 2019

Reclamation District No. 0784 Plumas Lake

Waterway	Bank	Unit Miles	Inspection Start/End	Inspector
Unit No. 03B Bear River	Right	1.49	10/24/2019 10/24/2019	Sterling York

FIELD_STRUCT_DESC: 18-inch corrugated metal drainage pipe through the levee, 20 feet below the crown. Gate valve on the waterside (WS). [Additional Reference(s): USACE Sacramento O&M Manual 145, August 1955 (Station 4+96). USACE Sacramento As-built Drawings, 2-4-106, Exhibit B, Sheet 2, July 1944 (Station 4+96)].
FS Date: 10/16/2018 1:17:00 PM

LM Start	4.66	Rating **	U	Issue No.	9 (cont)
LM End	4.66	Issue Type +	Ma	Location *	

Photo 2 of 3 : UCIP_FA_2019_53072_77115.jpg



Concrete collar completed around the waterside exterior flap gate section.

LM Start	4.66	Rating **	U	Issue No.	9 (cont)
LM End	4.66	Issue Type +	Ma	Location *	

Photo 3 of 3 : UCIP_FA_2019_53072_76618.jpg



Sandbags temporarily placed in front of flapgate.

* Location LS : Land Side N/A : Not Applicable WS : Water Side CR : Crown	** Rating A : Acceptable M : Minimally Acceptable U : Unacceptable	N : Not Inspected/Rated C : Corrected A/W : Acceptable but Monitor & Maintain	+ Issue Type Ma : Maintenance Deficiency Ob : Design & System Obsolescence En : Enforcement
--	--	---	---

Reclamation District No. 0784 Plumas Lake

Waterway	Bank	Unit Miles	Inspection Start/End	Inspector
Unit No. 04 Interceptor Canal	Right	6.33	10/24/2019 10/24/2019	Sterling York

LM Start	0.00	Rating **	A/W	Issue No.	6
LM End	5.81	Issue Type +	Ma	Location *	WS
Category	Supplemental			GPS Latitude/Longitude	
				Start	End
Item	2017 USACE Erosion Survey			38.974837 °	39.058518 °
				-121.538075 °	-121.542532 °
DWR ID					
Comment Code					
Inspector Comment					
2017 Site ID: WPC 0.1 R					
Status: Under Construction					
2017 Field Notes: Entire levee was under construction.					
Site History:					

No Photos

LM Start	0.00	Rating **	A	Issue No.	3
LM End	6.31	Issue Type +	Ma	Location *	WS
Category	Earthen Levee			GPS Latitude/Longitude	
				Start	End
Item	Vegetation			38.974774 °	39.059299 °
				-121.535088 °	-121.551062 °
DWR ID	DWR_RD0784_04_f _ 2019_3				
Comment Code					
V1 : Control annual grass and weeds on the levee slopes and easements.					
Inspector Comment					
The annual vegetation is well maintained, Fall 2019.					

Photo 1 of 1 : FA_2019_RD0784_181_3_20191029_00007.jpg



View looking downstream waterside at the well maintained annual vegetation, Fall 2019.

LM Start	0.00	Rating **	A	Issue No.	2
LM End	6.31	Issue Type +	Ma	Location *	LS
Category	Earthen Levee			GPS Latitude/Longitude	
				Start	End
Item	Vegetation			38.974774 °	39.059299 °
				-121.535087 °	-121.551062 °
DWR ID	DWR_RD0784_04_f_2019_2				
Comment Code					
V1 : Control annual grass and weeds on the levee slopes and easements.					
Inspector Comment					
The annual vegetation is well maintained, Fall 2019.					

Photo 1 of 1 : FA_2019_RD0784_181_2_20191029_00006.jpg



View looking downstream landside at the well maintained annual vegetation, Fall 2019.

* Location	** Rating	+ Issue Type
LS : Land Side N/A : Not Applicable WS : Water Side CR : Crown	A : Acceptable N : Not Inspected/Rated M : Minimally Acceptable C : Corrected U : Unacceptable A/W : Acceptable but Monitor & Maintain	Ma : Maintenance Deficiency Ob : Design & System Obsolescence En : Enforcement

**Flood Control Project Maintenance
Levee Inspections**

Maintenance Issue Types Only, Levee Inspection Report By Mile - Fall 2019

Reclamation District No. 0784 Plumas Lake

Waterway	Bank	Unit Miles	Inspection Start/End	Inspector
Unit No. 04 Interceptor Canal	Right	6.33	10/24/2019 10/24/2019	Sterling York

* Location LS : Land Side N/A : Not Applicable WS : Water Side CR : Crown	** Rating A : Acceptable N : Not Inspected/Rated M : Minimally Acceptable C : Corrected U : Unacceptable A/W : Acceptable but Monitor & Maintain	+ Issue Type Ma : Maintenance Deficiency Ob : Design & System Obsolescence En : Enforcement
--	---	---

**Flood Control Project Maintenance
Levee Inspections**

Maintenance Issue Types Only, Levee Inspection Report By Mile - Fall 2019

Reclamation District No. 0784 Plumas Lake

Waterway	Bank	Unit Miles	Inspection Start/End	Inspector
Unit No. 05 Interceptor Canal	Left	4.19	10/24/2019 10/24/2019	Sterling York

LM Start	0.02	Rating **	A	Issue No.	14
LM End	3.87	Issue Type +	Ma	Location *	LS
Category	Earthen Levee			GPS Latitude/Longitude	
				Start	End
Item	Vegetation			38.974677 °	39.019504 °
				-121.532668 °	-121.514914 °
DWR ID	DWR_RD0784_05_f_2019_14				
Comment Code					
V1 : Control annual grass and weeds on the levee slopes and easements.					
Inspector Comment					
The annual vegetation is well maintained, Fall 2019.					

Photo 1 of 1 : FA_2019_RD0784_182_14_20191029_00032.jpg



View looking downstream landside at the well maintained annual vegetation, Fall 2019.

LM Start	0.02	Rating **	A	Issue No.	15
LM End	3.87	Issue Type +	Ma	Location *	WS
Category	Earthen Levee			GPS Latitude/Longitude	
				Start	End
Item	Vegetation			38.974677 °	39.019504 °
				-121.532668 °	-121.514914 °
DWR ID	DWR_RD0784_05_f_2019_15				
Comment Code					
V1 : Control annual grass and weeds on the levee slopes and easements.					
Inspector Comment					
The annual vegetation is well maintained, Fall 2019.					

Photo 1 of 1 : FA_2019_RD0784_182_15_20191029_00033.jpg



View looking downstream waterside at the well maintained annual vegetation, Fall 2019.

*** Location**
LS : Land Side N/A : Not Applicable
WS : Water Side
CR : Crown

**** Rating**
A : Acceptable
M : Minimally Acceptable
U : Unacceptable
N : Not Inspected/Rated
C : Corrected
A/W : Acceptable but Monitor & Maintain

+ Issue Type
Ma : Maintenance Deficiency
Ob : Design & System Obsolescence
En : Enforcement

**Flood Control Project Maintenance
Levee Inspections**

Maintenance Issue Types Only, Levee Inspection Report By Mile - Fall 2019

Reclamation District No. 0784 Plumas Lake

Waterway	Bank	Unit Miles	Inspection Start/End	Inspector
Unit No. 05 Interceptor Canal	Left	4.19	10/24/2019 10/24/2019	Sterling York

LM Start	0.12	Rating **	A/W	Issue No.	16
LM End	0.12	Issue Type +	Ma	Location *	
Category	Supplemental			GPS Latitude/Longitude	
				Start	End
Item	DRAFT DWR UCIP LMA Responsibility			38.976147 °	38.976147 °
				-121.533019 °	-121.533019 °
DWR ID	18592				
Comment Code					
Inspector Comment					
DS_ID:18592					
FS_ID:53544					
EP_NO: N/A					
Repair Type: No Action Needed					
Crossing Status: Found					
UCIP Comments: 2/1/2019 - Pipe crossing was video inspected on 8/13/2018. (P. Meagher)02/26/2013 Good candidate for video inspection. (W. Wylie - DWR UCIP)					
FIELD_STRUCT_DESC: 18-inch corrugated metal drainage pipe through the levee, 18 feet below the crown. Flap gate on the waterside (WS) end. Concrete U-shaped headwall on the WS end. Polyvinyl chloride weir inlet on landside (LS) toe. [Additional Reference(s): DWR Levee Log, 2005. USACE Sacramento O&M Manual 145, August 1955 (Station 25+28)].					
FS Date: 2/26/2013					

LM Start	0.12	Rating **	A/W	Issue No.	16 (cont)
LM End	0.12	Issue Type +	Ma	Location *	

Photo 1 of 3 : UCIP_FA_2019_53544_16552.jpg



inlet control structure on LS toe.

Photo 2 of 3 : UCIP_FA_2019_53544_16555.jpg



Concrete U-shaped outlet with flap gate on WS toe.

* Location LS : Land Side N/A : Not Applicable WS : Water Side CR : Crown	** Rating A : Acceptable M : Minimally Acceptable U : Unacceptable	N : Not Inspected/Rated C : Corrected A/W : Acceptable but Monitor & Maintain	+ Issue Type Ma : Maintenance Deficiency Ob : Design & System Obsolescence En : Enforcement
--	--	--	---

**Flood Control Project Maintenance
Levee Inspections**

Maintenance Issue Types Only, Levee Inspection Report By Mile - Fall 2019

Reclamation District No. 0784 Plumas Lake

Waterway	Bank	Unit Miles	Inspection Start/End	Inspector
Unit No. 05 Interceptor Canal	Left	4.19	10/24/2019 10/24/2019	Sterling York

LM Start	0.12	Rating **	A/W	Issue No.	16 (cont)	
LM End	0.12	Issue Type +	Ma	Location *		
Category	Supplemental			GPS Latitude/Longitude		
				Start		End
Item	DRAFT DWR UCIP LMA Responsibility			38.976147 °		38.976147 °
				-121.533019 °		-121.533019 °
DWR ID	18592					
Comment Code						
Inspector Comment						
DS_ID:18592						
FS_ID:53544						
EP_NO: N/A						
Repair Type: No Action Needed						
Crossing Status: Found						
UCIP Comments: 2/1/2019 - Pipe crossing was video inspected on 8/13/2018. (P. Meagher)02/26/2013 Good candidate for video inspection. (W. Wylie - DWR UCIP)						
FIELD_STRUCT_DESC: 18-inch corrugated metal drainage pipe through the levee, 18 feet below the crown. Flap gate on the waterside (WS) end. Concrete U-shaped headwall on the WS end. Polyvinyl chloride weir inlet on landside (LS) toe. [Additional Reference(s): DWR Levee Log, 2005. USACE Sacramento O&M Manual 145, August 1955 (Station 25+28)].						
FS Date: 2/26/2013						

Photo 3 of 3 : UCIP_FA_2019_53544_16554.jpg



Concrete U-shaped outlet on WS toe.

LM Start	0.84	Rating **	M	Issue No.	17	
LM End	0.84	Issue Type +	Ma	Location *		
Category	Supplemental			GPS Latitude/Longitude		
				Start		End
Item	DRAFT DWR UCIP LMA Responsibility			38.986432 °		38.986432 °
				-121.534983 °		-121.534983 °
DWR ID	18591					
Comment Code						
Inspector Comment						
DS_ID:18591						
FS_ID:53546						
EP_NO: N/A						
Repair Type: Non-Urgent						
Crossing Status: Found						
UCIP Comments: 2-1-2019 - Pipe crossing was video inspected on 8/14/2018. (P. Meagher)02/26/2013 No handle or access to slide gate on LS toe. (W. Wylie - DWR UCIP)						
FIELD_STRUCT_DESC: 30-inch corrugated metal drainage pipe through the levee, 23.7 feet below the crown. Flap gate on the waterside (WS) end. Slide gate inside a concrete drop inlet on the landside (LS). [Additional Reference(s): DWR Levee Log, 2005. USACE Sacramento O&M Manual 145, August 1955 (Station 63+00)].						
FS Date: 9/11/2015 9:05:00 AM						

Photo 1 of 2 : UCIP_FA_2019_53546_54246.jpg



Concrete drop-inlet at LS toe.

* Location LS : Land Side N/A : Not Applicable WS : Water Side CR : Crown		** Rating A : Acceptable N : Not Inspected/Rated M : Minimally Acceptable C : Corrected U : Unacceptable A/W : Acceptable but Monitor & Maintain		+ Issue Type Ma : Maintenance Deficiency Ob : Design & System Obsolescence En : Enforcement
--	--	---	--	---

**Flood Control Project Maintenance
Levee Inspections**

Maintenance Issue Types Only, Levee Inspection Report By Mile - Fall 2019

Reclamation District No. 0784 Plumas Lake

Waterway	Bank	Unit Miles	Inspection Start/End	Inspector
Unit No. 05 Interceptor Canal	Left	4.19	10/24/2019 10/24/2019	Sterling York

LM Start	0.84	Rating **	M	Issue No.	17 (cont)	
LM End	0.84	Issue Type +	Ma	Location *		
Category	Supplemental			GPS Latitude/Longitude		
				Start	End	
Item	DRAFT DWR UCIP LMA Responsibility			38.986432 °	38.986432 °	
				-121.534983 °	-121.534983 °	
DWR ID	18591					
Comment Code						
Inspector Comment						
DS_ID:18591 FS_ID:53546 EP_NO: N/A Repair Type: Non-Urgent Crossing Status: Found UCIP Comments: 2-1-2019 - Pipe crossing was video inspected on 8/14/2018. (P. Meagher)02/26/2013 No handle or access to slide gate on LS toe. (W. Wylie - DWR UCIP) FIELD_STRUCT_DESC: 30-inch corrugated metal drainage pipe through the levee, 23.7 feet below the crown. Flap gate on the waterside (WS) end. Slide gate inside a concrete drop inlet on the landside (LS). [Additional Reference(s): DWR Levee Log, 2005. USACE Sacramento O&M Manual 145, August 1955 (Station 63+00)]. FS Date: 9/11/2015 9:05:00 AM						

Photo 2 of 2 : UCIP_FA_2019_53546_54245.jpg



Outlet with riprap on WS toe.

LM Start	1.60	Rating **	A/W	Issue No.	18	
LM End	1.60	Issue Type +	Ma	Location *		
Category	Supplemental			GPS Latitude/Longitude		
				Start		End
Item	DRAFT DWR UCIP LMA Responsibility			38.997305 °		38.997305 °
				-121.537081 °		-121.537081 °
DWR ID	18590					
Comment Code						
Inspector Comment						
DS_ID:18590						
FS_ID:53547						
EP_NO: N/A						
Repair Type: No Action Needed						
Crossing Status: Found						
UCIP Comments: 2-1-2019 - Pipe crossing was video inspected on						
8/14/2018. (P. Meagher)02/26/2013 Good candidate for video						
inspection. (W. Wylie - DWR UCIP)						
FIELD_STRUCT_DESC: 18-inch corrugated metal drainage pipe						
through the levee, 14.5 feet below the crown. Flap gate on the						
waterside (WS) end. Concrete U-shaped headwall on the WS. Polyvinyl						
chloride weir on inlet. (See Drawing No. 2-4-106, Sheet 5). [Additional						
Reference(s): DWR Levee Log, 2005. USACE Sacramento O&M						
Manual 145, August 1955 (Station 103+23)].						
FS Date: 2/26/2013						

Photo 1 of 3 : UCIP_FA_2019_53547_16565.jpg



Concrete U-shaped headwall and flap gate on WS toe.

* Location LS : Land Side N/A : Not Applicable WS : Water Side CR : Crown	** Rating A : Acceptable M : Minimally Acceptable U : Unacceptable	N : Not Inspected/Rated C : Corrected A/W : Acceptable but Monitor & Maintain	+ Issue Type Ma : Maintenance Deficiency Ob : Design & System Obsolescence En : Enforcement
--	--	---	---

**Flood Control Project Maintenance
Levee Inspections**

Maintenance Issue Types Only, Levee Inspection Report By Mile - Fall 2019

Reclamation District No. 0784 Plumas Lake

Waterway	Bank	Unit Miles	Inspection Start/End	Inspector
Unit No. 05 Interceptor Canal	Left	4.19	10/24/2019 10/24/2019	Sterling York

LM Start	1.60	Rating **	A/W	Issue No.	18 (cont)	
LM End	1.60	Issue Type +	Ma	Location *		
Category	Supplemental			GPS Latitude/Longitude		
				Start		End
Item	DRAFT DWR UCIP LMA Responsibility			38.997305 °		38.997305 °
				-121.537081 °		-121.537081 °
DWR ID	18590					
Comment Code						
Inspector Comment						
DS_ID:18590						
FS_ID:53547						
EP_NO: N/A						
Repair Type: No Action Needed						
Crossing Status: Found						
UCIP Comments: 2-1-2019 - Pipe crossing was video inspected on 8/14/2018. (P. Meagher)02/26/2013 Good candidate for video inspection. (W. Wylie - DWR UCIP)						
FIELD_STRUCT_DESC: 18-inch corrugated metal drainage pipe through the levee, 14.5 feet below the crown. Flap gate on the waterside (WS) end. Concrete U-shaped headwall on the WS. Polyvinyl chloride weir on inlet. (See Drawing No. 2-4-106, Sheet 5). [Additional Reference(s): DWR Levee Log, 2005. USACE Sacramento O&M Manual 145, August 1955 (Station 103+23)].						
FS Date: 2/26/2013						

Photo 2 of 3 : UCIP_FA_2019_53547_16563.jpg



Pvc weir on inlet at LS toe.

LM Start	1.60	Rating **	A/W	Issue No.	18 (cont)
LM End	1.60	Issue Type +	Ma	Location *	

Photo 3 of 3 : UCIP_FA_2019_53547_16562.jpg



Concrete U-shaped headwall and flap gate on WS toe.

* Location LS : Land Side N/A : Not Applicable WS : Water Side CR : Crown	** Rating A : Acceptable M : Minimally Acceptable U : Unacceptable	N : Not Inspected/Rated C : Corrected A/W : Acceptable but Monitor & Maintain	+ Issue Type Ma : Maintenance Deficiency Ob : Design & System Obsolescence En : Enforcement
--	--	---	---

**Flood Control Project Maintenance
Levee Inspections**

Maintenance Issue Types Only, Levee Inspection Report By Mile - Fall 2019

Reclamation District No. 0784 Plumas Lake

Waterway	Bank	Unit Miles	Inspection Start/End	Inspector
Unit No. 05 Interceptor Canal	Left	4.19	10/24/2019 10/24/2019	Sterling York

LM Start	1.86	Rating **	M	Issue No.	19	
LM End	1.86	Issue Type +	Ma	Location *		
Category	Supplemental			GPS Latitude/Longitude		
				Start		End
Item	DRAFT DWR UCIP LMA Responsibility			39.000975 °		39.000975 °
				-121.537779 °		-121.537779 °
DWR ID	18588					
Comment Code						
Inspector Comment						
DS_ID:18588 FS_ID:53548 EP_NO: N/A Repair Type: Non-Urgent Crossing Status: Found UCIP Comments: 2-1-2019 - Pipe crossing was video inspected on 8/14/2018. (P. Meagher)09/11/2015 Inlet burried. Good candidate for video inspection as pipe is corroded. (G. Wylie - FPIIB) FIELD_STRUCT_DESC: 18-inch corrugated metal drainage pipe through the levee, 14.5 feet below the crown. Flap gate on the waterside (WS) end. Concrete U-shaped headwall on the WS. [Additional Reference(s): DWR Levee Log, 2005. USACE Sacramento O&M Manual 145, August 1955 (Station 116+78)]. FS Date: 9/11/2015 9:36:00 AM						

Photo 1 of 3 : UCIP_FA_2019_53548_54247.jpg



Concrete U-shaped outlet and flap-gate on WS toe.

LM Start	1.86	Rating **	M	Issue No.	19 (cont)
LM End	1.86	Issue Type +	Ma	Location *	

Photo 2 of 3 : UCIP_FA_2019_53548_54248.jpg



Debris covered inlet on LS toe.

* Location LS : Land Side N/A : Not Applicable WS : Water Side CR : Crown	** Rating A : Acceptable M : Minimally Acceptable U : Unacceptable	N : Not Inspected/Rated C : Corrected A/W : Acceptable but Monitor & Maintain	+ Issue Type Ma : Maintenance Deficiency Ob : Design & System Obsolescence En : Enforcement
--	--	---	---

**Flood Control Project Maintenance
Levee Inspections**

Maintenance Issue Types Only, Levee Inspection Report By Mile - Fall 2019

Reclamation District No. 0784 Plumas Lake

Waterway	Bank	Unit Miles	Inspection Start/End	Inspector
Unit No. 05 Interceptor Canal	Left	4.19	10/24/2019 10/24/2019	Sterling York

LM Start	1.86	Rating **	M	Issue No.	19 (cont)	
LM End	1.86	Issue Type +	Ma	Location *		
Category	Supplemental			GPS Latitude/Longitude		
				Start	End	
Item	DRAFT DWR UCIP LMA Responsibility			39.000975 °	39.000975 °	
				-121.537779 °	-121.537779 °	
DWR ID	18588					
Comment Code						
Inspector Comment						
DS_ID:18588 FS_ID:53548 EP_NO: N/A Repair Type: Non-Urgent Crossing Status: Found UCIP Comments: 2-1-2019 - Pipe crossing was video inspected on 8/14/2018. (P. Meagher)09/11/2015 Inlet burried. Good candidate for video inspection as pipe is corroded. (G. Wylie - FPIIB) FIELD_STRUCT_DESC: 18-inch corrugated metal drainage pipe through the levee, 14.5 feet below the crown. Flap gate on the waterside (WS) end. Concrete U-shaped headwall on the WS. [Additional Reference(s): DWR Levee Log, 2005. USACE Sacramento O&M Manual 145, August 1955 (Station 116+78)]. FS Date: 9/11/2015 9:36:00 AM						

Photo 3 of 3 : UCIP_FA_2019_53548_54249.jpg



Drainage outlet on WS toe.

* Location LS : Land Side N/A : Not Applicable WS : Water Side CR : Crown	** Rating A : Acceptable M : Minimally Acceptable U : Unacceptable	N : Not Inspected/Rated C : Corrected A/W : Acceptable but Monitor & Maintain	+ Issue Type Ma : Maintenance Deficiency Ob : Design & System Obsolescence En : Enforcement
--	--	---	---

**Flood Control Project Maintenance
Levee Inspections**

Maintenance Issue Types Only, Levee Inspection Report By Mile - Fall 2019

Reclamation District No. 0784 Plumas Lake

Waterway	Bank	Unit Miles	Inspection Start/End	Inspector
Unit No. 05 Interceptor Canal	Left	4.19	10/24/2019 10/24/2019	Sterling York

LM Start	2.04	Rating **	M	Issue No.	20
LM End	2.04	Issue Type +	Ma	Location *	
Category	Supplemental			GPS Latitude/Longitude	
				Start	End
Item	DRAFT DWR UCIP LMA Responsibility			39.003643 °	39.003643 °
				-121.538292 °	-121.538292 °
DWR ID	18587				

Comment Code

Inspector Comment

DS_ID:18587
FS_ID:53557
EP_NO: N/A
Repair Type: Non-Urgent
Crossing Status: Found
UCIP Comments: 2-1-2019 - The pipe crossing was video inspected on 8/14/2018. New photos of the landside toe added. In August 2017 a sinkhole was noticed at the bottom of the landside toe shelf area. The sinkhole developed as a result of the landowner who extended the existing pipe in order to complete a new unauthorized concrete flashboard structure replacement. The pipe owner was mailed a letter from RD784 with a Cc to CVFPB and DWR dated 10/23/2017 acknowledging the owner's completion of an attempted repair. The sinkhole has since returned. On 1/31/2017 The waterside excess pipe end was discovered to be floating to the surface due to landside water runoff through the pipe. Because of the floating pipe, the water was not draining all the way through the pipe. Instead, the water was overtopping the levee shelf area. In order to resolve this issue, the excess portion of the pipe was cut off. After doing so, the water immediately started draining properly again. (P. Meagher, RD784 2/3/2017). Erosion at outlet may or may not be an issue.
FIELD_STRUCT_DESC: 18-inch corrugated metal drainage pipe through the levee, 14.5 feet below the crown. Flap gate on the waterside (WS) end. Concrete U-shaped headwall on the WS. Polyvinyl chloride weir on inlet. [Additional Reference(s): DWR Levee Log, 2005. USACE Sacramento O&M Manual 145, August 1955 (Station 126+53)].
FS Date: 2/3/2017

Photo 1 of 3 : UCIP_FA_2019_53557_54250.jpg



Inlet with PVC weir on LS toe.

* Location	** Rating	+ Issue Type
LS : Land Side WS : Water Side CR : Crown	A : Acceptable M : Minimally Acceptable U : Unacceptable	Ma : Maintenance Deficiency Ob : Design & System Obsolescence En : Enforcement
N/A : Not Applicable	N : Not Inspected/Rated C : Corrected A/W : Acceptable but Monitor & Maintain	

**Flood Control Project Maintenance
Levee Inspections**

Maintenance Issue Types Only, Levee Inspection Report By Mile - Fall 2019

Reclamation District No. 0784 Plumas Lake

Waterway	Bank	Unit Miles	Inspection Start/End	Inspector
Unit No. 05 Interceptor Canal	Left	4.19	10/24/2019 10/24/2019	Sterling York

LM Start	2.04	Rating **	M	Issue No.	20 (cont)	
LM End	2.04	Issue Type +	Ma	Location *		
Category	Supplemental			GPS Latitude/Longitude		
				Start	End	
Item	DRAFT DWR UCIP LMA Responsibility			39.003643 °	39.003643 °	
				-121.538292 °	-121.538292 °	
DWR ID	18587					
Comment Code						
Inspector Comment						
DS_ID:18587 FS_ID:53557 EP_NO: N/A Repair Type: Non-Urgent Crossing Status: Found UCIP Comments: 2-1-2019 - The pipe crossing was video inspected on 8/14/2018. New photos of the landside toe added. In August 2017 a sinkhole was noticed at the bottom of the landside toe shelf area. The sinkhole developed as a result of the landowner who extended the existing pipe in order to complete a new unauthorized concrete flashboard structure replacement. The pipe owner was mailed a letter from RD784 with a Cc to CVFPB and DWR dated 10/23/2017 acknowledging the owner's completion of an attempted repair. The sinkhole has since returned. On 1/31/2017 The waterside excess pipe end was discovered to be floating to the surface due to landside water runoff through the pipe. Because of the floating pipe, the water was not draining all the way through the pipe. Instead, the water was overtopping the levee shelf area. In order to resolve this issue, the excess portion of the pipe was cut off. After doing so, the water immediately started draining properly again. (P. Meagher, RD784 2/3/2017). Erosion at outlet may or may not be an issue. FIELD_STRUCT_DESC: 18-inch corrugated metal drainage pipe through the levee, 14.5 feet below the crown. Flap gate on the waterside (WS) end. Concrete U-shaped headwall on the WS. Polyvinyl chloride weir on inlet. [Additional Reference(s): DWR Levee Log, 2005. USACE Sacramento O&M Manual 145, August 1955 (Station 126+53)]. FS Date: 2/3/2017						

Photo 2 of 3 : UCIP_FA_2019_53557_54253.jpg



Concrete U-shaped headwall on WS toe with Flap gate showing erosion at outlet.

* Location	** Rating	+ Issue Type
LS : Land Side WS : Water Side CR : Crown	A : Acceptable M : Minimally Acceptable U : Unacceptable	Ma : Maintenance Deficiency Ob : Design & System Obsolescence En : Enforcement
N/A : Not Applicable	N : Not Inspected/Rated C : Corrected A/W : Acceptable but Monitor & Maintain	

**Flood Control Project Maintenance
Levee Inspections**

Maintenance Issue Types Only, Levee Inspection Report By Mile - Fall 2019

Reclamation District No. 0784 Plumas Lake

Waterway	Bank	Unit Miles	Inspection Start/End	Inspector
Unit No. 05 Interceptor Canal	Left	4.19	10/24/2019 10/24/2019	Sterling York

LM Start	2.04	Rating **	M	Issue No.	20 (cont)
LM End	2.04	Issue Type +	Ma	Location *	
Category	Supplemental			GPS Latitude/Longitude	
				Start	End
Item	DRAFT DWR UCIP LMA Responsibility			39.003643 °	39.003643 °
				-121.538292 °	-121.538292 °
DWR ID	18587				

Comment Code

Inspector Comment

DS_ID:18587
FS_ID:53557
EP_NO: N/A
Repair Type: Non-Urgent
Crossing Status: Found
UCIP Comments: 2-1-2019 - The pipe crossing was video inspected on 8/14/2018. New photos of the landside toe added. In August 2017 a sinkhole was noticed at the bottom of the landside toe shelf area. The sinkhole developed as a result of the landowner who extended the existing pipe in order to complete a new unauthorized concrete flashboard structure replacement. The pipe owner was mailed a letter from RD784 with a Cc to CVFPB and DWR dated 10/23/2017 acknowledging the owner's completion of an attempted repair. The sinkhole has since returned. On 1/31/2017 The waterside excess pipe end was discovered to be floating to the surface due to landside water runoff through the pipe. Because of the floating pipe, the water was not draining all the way through the pipe. Instead, the water was overtopping the levee shelf area. In order to resolve this issue, the excess portion of the pipe was cut off. After doing so, the water immediately started draining properly again. (P. Meagher, RD784 2/3/2017). Erosion at outlet may or may not be an issue.
FIELD_STRUCT_DESC: 18-inch corrugated metal drainage pipe through the levee, 14.5 feet below the crown. Flap gate on the waterside (WS) end. Concrete U-shaped headwall on the WS. Polyvinyl chloride weir on inlet. [Additional Reference(s): DWR Levee Log, 2005. USACE Sacramento O&M Manual 145, August 1955 (Station 126+53)].
FS Date: 2/3/2017

Photo 3 of 3 : UCIP_FA_2019_53557_76774.jpg



After photo after excess pipe was cut off. Actual photo date was 1/31/2017

* Location	** Rating	+ Issue Type
LS : Land Side WS : Water Side CR : Crown	A : Acceptable M : Minimally Acceptable U : Unacceptable	Ma : Maintenance Deficiency Ob : Design & System Obsolescence En : Enforcement
N/A : Not Applicable	N : Not Inspected/Rated C : Corrected A/W : Acceptable but Monitor & Maintain	

**Flood Control Project Maintenance
Levee Inspections**

Maintenance Issue Types Only, Levee Inspection Report By Mile - Fall 2019

Reclamation District No. 0784 Plumas Lake

Waterway	Bank	Unit Miles	Inspection Start/End	Inspector
Unit No. 05 Interceptor Canal	Left	4.19	10/24/2019 10/24/2019	Sterling York

LM Start	2.47	Rating **	U	Issue No.	21
LM End	2.47	Issue Type +	Ma	Location *	
Category	Supplemental			GPS Latitude/Longitude	
				Start	End
Item	DRAFT DWR UCIP LMA Responsibility			39.008994 °	39.008994 °
				-121.535679 °	-121.535679 °
DWR ID	18597				

Comment Code

Inspector Comment

DS_ID:18597

FS_ID:56031

EP_NO: N/A

Repair Type: Urgent

Crossing Status: Found

UCIP Comments: 01/15/2019 - Status email from Mr. Patrick Meagher to District Engineer was forwarded to Sterling York on 01-14-2019.

Erosion on LS has progressed. An additional 6 to 8 inches has eroded from the LS slope (see photo comparison from 12/2018 to 01/2019).

LMA continues to monitor site. (O. Magana - DWR UCIP)

10/16/2018 - Pipe remains Urgent due to internal pipe failure. Diversion dam on the WS slope is still present. Mr. Meagher is monitoring the progress of the erosion on the LS. Flag markers have been added just above the erosion site on the LS to monitor the progress of the slope failure. LMA is working with the District Engineer on proposed repair and CVFPB to obtain approval for a pipe replacement. Crossing is listed as DMP Phase 1 eligible crossing. (O. Magana - DWR UCIP)

11/30/2017 - same as previous inspection - crossing remains Urgent. Received updated photos from DWR levee inspector, S. York, showing current condition of levee LS and WS. (O. Magana - DWR UCIP)

12/15/2016 - Coordination email was received from RD0784 this afternoon. Patrick Meagher with Reclamation District is closely monitoring the eroded pipe area at the Horseshoe Levee due to periodic rainstorms and unpredictable water flow elevations. To avoid further damage at this location, Mr. Meagher has coordinated with LMA Consultant Sean Minard at MHM Engineering and DWR Levee Inspector Sterling York to address further deterioration at site. As a proactive measure by RD784, sandbags were used to fill in the sink hole on the WS. A "V" shape diversion dam was also built of sandbags above the sinkhole area to help divert running rainwater coming down the slope around the fill area. RD0784 used approximately 100 sandbags at the site to fill in sink hole and create the "V" shaped diversion dam. (O. Magana - DWR UCIP) 07/29/2016 - Erosion scarp on LS cut into levee shoulder starting at inlet headwall. Cavity failure on WS shoulder approximately 2-feet in diameter and several feet in depth. (T. Hatch/UCIP) 11/01/2015 - The concrete box weir structure on the landside inlet has slumped off the end of the pipe. DWR Chief inspector George Wilie inspected the site on 8-13-2015 with Steve Fordice, General Manager of RD784. (P. Meagher - RD784)

2/27/2013 - Heavy erosion around inlet headwall due to beaver activity. (W. Wylie/UCIP)

FIELD_STRUCT_DESC: 18-inch corrugated metal drainage pipe through the levee, 15.5 feet below the crown. Flap gate on the

Photo 1 of 3 : UCIP_FA_2019_56031_54258.jpg



Concrete U-shaped headwall and flap gate on WS toe.

* Location	** Rating	+ Issue Type
LS : Land Side WS : Water Side CR : Crown	A : Acceptable M : Minimally Acceptable U : Unacceptable	Ma : Maintenance Deficiency Ob : Design & System Obsolescence En : Enforcement
N/A : Not Applicable	N : Not Inspected/Rated C : Corrected A/W : Acceptable but Monitor & Maintain	

**Flood Control Project Maintenance
Levee Inspections**

Maintenance Issue Types Only, Levee Inspection Report By Mile - Fall 2019

Reclamation District No. 0784 Plumas Lake

Waterway	Bank	Unit Miles	Inspection Start/End	Inspector
Unit No. 05 Interceptor Canal	Left	4.19	10/24/2019 10/24/2019	Sterling York

waterside (WS) toe. Concrete U-shaped headwall on the WS toe. (Removable standpipe and bulkheads approved under Permit No. 9230, 1974 - Frach, Inc.). [Additional Reference(s): DWR Levee Log, 2005. USACE Sacramento O&M Manual 145, August 1955 (Station 13+72). USACE As-Built Drawing No. 2-4-106, Sheet 6, July 1944 (Station 13+72)].
FS Date: 10/16/2018 1:06:00 PM

LM Start	2.47	Rating **	U	Issue No.	21 (cont)
LM End	2.47	Issue Type +	Ma	Location *	

Photo 2 of 3 : UCIP_FA_2019_56031_76309.jpg



WS view: Sink hole filled in with sandbags and "V" shaped diversion dam built to help divert rainwater.

LM Start	2.47	Rating **	U	Issue No.	21 (cont)
LM End	2.47	Issue Type +	Ma	Location *	

Photo 3 of 3 : UCIP_FA_2019_56031_54254.jpg



Erosion and debris from Beaver activity.

* Location	** Rating	+ Issue Type
LS : Land Side WS : Water Side CR : Crown	A : Acceptable M : Minimally Acceptable U : Unacceptable	Ma : Maintenance Deficiency Ob : Design & System Obsolescence En : Enforcement
N/A : Not Applicable	N : Not Inspected/Rated C : Corrected A/W : Acceptable but Monitor & Maintain	

**Flood Control Project Maintenance
Levee Inspections**

Maintenance Issue Types Only, Levee Inspection Report By Mile - Fall 2019

Reclamation District No. 0784 Plumas Lake

Waterway	Bank	Unit Miles	Inspection Start/End	Inspector
Unit No. 05 Interceptor Canal	Left	4.19	10/24/2019 10/24/2019	Sterling York

LM Start	3.06	Rating **	M	Issue No.	22	
LM End	3.06	Issue Type +	Ma	Location *		
Category	Supplemental			GPS Latitude/Longitude		
				Start	End	
Item	DRAFT DWR UCIP LMA Responsibility			39.015549 °	39.015549 °	
				-121.528590 °	-121.528590 °	
DWR ID	18596					
Comment Code						
Inspector Comment						
DS_ID:18596 FS_ID:53553 EP_NO: N/A Repair Type: Non-Urgent Crossing Status: Found UCIP Comments: 2-1-2019 - Pipe crossing was video inspected on 8/15/2018. (P. Meagher)02/27/2013 Pipe has been sliplined with PVC, but the liner appears to be eroding at outlet and may be disjointed internal to the levee. See pic. Good candidate for video inspection. (W. Wylie - DWR UCIP) FIELD_STRUCT_DESC: 12-inch corrugated metal drainage pipe through the levee, 12 feet below the crown. Flap gate and concrete U-shaped headwall on the waterside (WS). Polyvinyl chloride weir on inlet at the landside (LS) toe. [Additional Reference(s): DWR Levee Log, 2005. USACE Sacramento O&M Manual 145, August 1955 (Station 44+96)]. FS Date: 9/11/2015 9:26:00 AM						

LM Start	3.06	Rating **	M	Issue No.	22 (cont)
LM End	3.06	Issue Type +	Ma	Location *	

Photo 1 of 3 : UCIP_FA_2019_53553_54259.jpg



Concrete U-shaped headwall and flap gate on WS toe.

Photo 2 of 3 : UCIP_FA_2019_53553_54262.jpg



Pipe showing sliplined PVC insert. some erosion of PV at outlet and it may be disjointed internally.

* Location LS : Land Side N/A : Not Applicable WS : Water Side CR : Crown	** Rating A : Acceptable M : Minimally Acceptable U : Unacceptable	N : Not Inspected/Rated C : Corrected A/W : Acceptable but Monitor & Maintain	+ Issue Type Ma : Maintenance Deficiency Ob : Design & System Obsolescence En : Enforcement
--	--	---	---

**Flood Control Project Maintenance
Levee Inspections**

Maintenance Issue Types Only, Levee Inspection Report By Mile - Fall 2019

Reclamation District No. 0784 Plumas Lake

Waterway	Bank	Unit Miles	Inspection Start/End	Inspector
Unit No. 05 Interceptor Canal	Left	4.19	10/24/2019 10/24/2019	Sterling York

LM Start	3.06	Rating **	M	Issue No.	22 (cont)	
LM End	3.06	Issue Type +	Ma	Location *		
Category	Supplemental			GPS Latitude/Longitude		
				Start	End	
Item	DRAFT DWR UCIP LMA Responsibility			39.015549 °	39.015549 °	
				-121.528590 °	-121.528590 °	
DWR ID	18596					
Comment Code						
Inspector Comment						
DS_ID:18596						
FS_ID:53553						
EP_NO: N/A						
Repair Type: Non-Urgent						
Crossing Status: Found						
UCIP Comments: 2-1-2019 - Pipe crossing was video inspected on 8/15/2018. (P. Meagher)02/27/2013 Pipe has been sliplined with PVC, but the liner appears to be eroding at outlet and may be disjointed internal to the levee. See pic. Good candidate for video inspection. (W. Wylie - DWR UCIP)						
FIELD_STRUCT_DESC: 12-inch corrugated metal drainage pipe through the levee, 12 feet below the crown. Flap gate and concrete U-shaped headwall on the waterside (WS). Polyvinyl chloride weir on inlet at the landside (LS) toe. [Additional Reference(s): DWR Levee Log, 2005. USACE Sacramento O&M Manual 145, August 1955 (Station 44+96)].						
FS Date: 9/11/2015 9:26:00 AM						

Photo 3 of 3 : UCIP_FA_2019_53553_54261.jpg



Concrete U-shaped headwall on WS toe.

* Location LS : Land Side N/A : Not Applicable WS : Water Side CR : Crown	** Rating A : Acceptable M : Minimally Acceptable U : Unacceptable N : Not Inspected/Rated C : Corrected A/W : Acceptable but Monitor & Maintain	+ Issue Type Ma : Maintenance Deficiency Ob : Design & System Obsolescence En : Enforcement
--	---	---

**Flood Control Project Maintenance
Levee Inspections**

Maintenance Issue Types Only, Levee Inspection Report By Mile - Fall 2019

Reclamation District No. 0784 Plumas Lake

Waterway	Bank	Unit Miles	Inspection Start/End	Inspector
Unit No. 05 Interceptor Canal	Left	4.19	10/24/2019 10/24/2019	Sterling York

LM Start	3.23	Rating **	A/W	Issue No.	23	
LM End	3.23	Issue Type +	Ma	Location *		
Category	Supplemental			GPS Latitude/Longitude		
				Start		End
Item	DRAFT DWR UCIP LMA Responsibility			39.017336 °		39.017336 °
				-121.526530 °		-121.526530 °
DWR ID	18595					
Comment Code						
Inspector Comment						
DS_ID:18595 FS_ID:53552 EP_NO: N/A Repair Type: No Action Needed Crossing Status: Found UCIP Comments: 02/01/2019 - Pipe crossing was video inspected on 8/15/2018 (P. Meagher)02/27/2013 Good candidate for video inspection. (W. Wylie - DWR UCIP) FIELD_STRUCT_DESC: 18-inch corrugated metal drainage pipe through the levee, 15.8 feet below the crown. Flap gate on the waterside (WS) end. Polyvinyl chloride weir on inlet at the landside (LS) toe. [Additional Reference(s): DWR Levee Log, 2005. USACE Sacramento O&M Manual 145, August 1955, Drawing No. 2-4-106, Sheet 6 (Station 53+86)]. FS Date: 2/27/2013						

Photo 1 of 2 : UCIP_FA_2019_53552_16594.jpg



PVC weir inlet on LS toe.

LM Start	3.23	Rating **	A/W	Issue No.	23 (cont)
LM End	3.23	Issue Type +	Ma	Location *	

Photo 2 of 2 : UCIP_FA_2019_53552_16593.jpg



Flap gate at WS toe.

* Location LS : Land Side N/A : Not Applicable WS : Water Side CR : Crown	** Rating A : Acceptable M : Minimally Acceptable U : Unacceptable	N : Not Inspected/Rated C : Corrected A/W : Acceptable but Monitor & Maintain	+ Issue Type Ma : Maintenance Deficiency Ob : Design & System Obsolescence En : Enforcement
--	--	---	---

**Flood Control Project Maintenance
Levee Inspections**

Maintenance Issue Types Only, Levee Inspection Report By Mile - Fall 2019

Reclamation District No. 0784 Plumas Lake

Waterway	Bank	Unit Miles	Inspection Start/End	Inspector
Unit No. 05 Interceptor Canal	Left	4.19	10/24/2019 10/24/2019	Sterling York

LM Start	3.79	Rating **	A/W	Issue No.	24	
LM End	3.79	Issue Type +	Ma	Location *		
Category	Supplemental			GPS Latitude/Longitude		
				Start	End	
Item	DRAFT DWR UCIP LMA Responsibility			39.019222°	39.019222°	
				-121.516414°	-121.516414°	
DWR ID	18594					
Comment Code						
Inspector Comment						
DS_ID:18594 FS_ID:53551 EP_NO: N/A Repair Type: No Action Needed Crossing Status: Found UCIP Comments: 2-1-2019 - Pipe crossing was video inspected on 8/15/2018. (P. Meagher) FIELD_STRUCT_DESC: 18-inch corrugated metal drainage pipe through the levee, 8.8 feet below the crown. Flap gate and headwall on the waterside (WS) end. [Additional Reference(s): DWR Levee Log, 2005. USACE Sacramento O&M Manual 145, August 1955 (Station 83+39)]. FS Date: 2/27/2013						

Photo 1 of 3 : UCIP_FA_2019_53551_16590.jpg



Concrete outlet and flap gate on WS toe.

LM Start	3.79	Rating **	A/W	Issue No.	24 (cont)
LM End	3.79	Issue Type +	Ma	Location *	

Photo 2 of 3 : UCIP_FA_2019_53551_16591.jpg



PVC weir at inlet on LS toe.

* Location LS : Land Side N/A : Not Applicable WS : Water Side CR : Crown	** Rating A : Acceptable M : Minimally Acceptable U : Unacceptable	N : Not Inspected/Rated C : Corrected A/W : Acceptable but Monitor & Maintain	+ Issue Type Ma : Maintenance Deficiency Ob : Design & System Obsolescence En : Enforcement
--	--	---	---

**Flood Control Project Maintenance
Levee Inspections**

Maintenance Issue Types Only, Levee Inspection Report By Mile - Fall 2019

Reclamation District No. 0784 Plumas Lake

Waterway	Bank	Unit Miles	Inspection Start/End	Inspector
Unit No. 05 Interceptor Canal	Left	4.19	10/24/2019 10/24/2019	Sterling York

LM Start	3.79	Rating **	A/W	Issue No.	24 (cont)	
LM End	3.79	Issue Type +	Ma	Location *		
Category	Supplemental			GPS Latitude/Longitude		
				Start		End
Item	DRAFT DWR UCIP LMA Responsibility			39.019222 °		39.019222 °
				-121.516414 °		-121.516414 °
DWR ID	18594					
Comment Code						
Inspector Comment						
DS_ID:18594 FS_ID:53551 EP_NO: N/A Repair Type: No Action Needed Crossing Status: Found UCIP Comments: 2-1-2019 - Pipe crossing was video inspected on 8/15/2018. (P. Meagher) FIELD_STRUCT_DESC: 18-inch corrugated metal drainage pipe through the levee, 8.8 feet below the crown. Flap gate and headwall on the waterside (WS) end. [Additional Reference(s): DWR Levee Log, 2005. USACE Sacramento O&M Manual 145, August 1955 (Station 83+39)]. FS Date: 2/27/2013						

Photo 3 of 3 : UCIP_FA_2019_53551_16592.jpg



Concrete outlet on WS toe.

* Location LS : Land Side N/A : Not Applicable WS : Water Side CR : Crown	** Rating A : Acceptable M : Minimally Acceptable U : Unacceptable	N : Not Inspected/Rated C : Corrected A/W : Acceptable but Monitor & Maintain	+ Issue Type Ma : Maintenance Deficiency Ob : Design & System Obsolescence En : Enforcement
--	--	---	---

**Flood Control Project Maintenance
Levee Inspections**

Maintenance Issue Types Only, Levee Inspection Report By Mile - Fall 2019

Reclamation District No. 0784 Plumas Lake

Waterway	Bank	Unit Miles	Inspection Start/End	Inspector
Unit No. 05 Interceptor Canal	Left	4.19	10/24/2019 10/24/2019	Sterling York

LM Start	3.96	Rating **	M	Issue No.	25
LM End	3.96	Issue Type +	Ma	Location *	
Category	Supplemental			GPS Latitude/Longitude	
				Start	End
Item	DRAFT DWR UCIP LMA Responsibility			39.019787 °	39.019787 °
				-121.513386 °	-121.513386 °
DWR ID	18593				
Comment Code					
Inspector Comment					
DS_ID:18593 FS_ID:53550 EP_NO: N/A Repair Type: Non-Urgent Crossing Status: Found UCIP Comments: 2/1/2019 - An attempt was made to video inspect this pipe crossing on 8/15/2018 but conditions were too muddy inside the pipe. (P. Meagher)11/14/2016 - Photos added of exposed flap gate on WS and possible inlet location on LS. Condition remains as Non-Urgent because of inlet not being fully operable. Unknown if pipe will operate as designed during high water or if it is full of sediment.11/01/2015 - Waterside Flap Gate Uncovered. Photo sent to DWR Matt Hoffman on 3/3/2014. Fresh photo sent to DWR Pavel Kazi on 9/9/2015. Landside toe has never been able to be located. Requesting DWR inspector to change the status of this issue to "No Action Needed". (P.Meagher - RD784).Pipe buried on LS toe and flap gate is blocked by soil on WS toe. (W. Wylie - UCIP Inspector). FIELD_STRUCT_DESC: 18-inch corrugated metal drainage pipe through the levee, 10 feet below the crown. Flap gate on the waterside (WS) end. [Additional Reference(s): DWR Levee Log, 2005. USACE Sacramento O&M Manual 145, August 1955 (Station 91+50)]. FS Date: 10/9/2015					

LM Start	3.96	Rating **	M	Issue No.	25 (cont)
LM End	3.96	Issue Type +	Ma	Location *	

Photo 1 of 3 : UCIP_FA_2019_53550_76147.jpg



Flap gate on the WS toe is exposed

Photo 2 of 3 : UCIP_FA_2019_53550_76148.jpg



Possible location of the inlet on the LS toe

* Location LS : Land Side N/A : Not Applicable WS : Water Side CR : Crown	** Rating A : Acceptable M : Minimally Acceptable U : Unacceptable	N : Not Inspected/Rated C : Corrected A/W : Acceptable but Monitor & Maintain	+ Issue Type Ma : Maintenance Deficiency Ob : Design & System Obsolescence En : Enforcement
--	--	---	---

**Flood Control Project Maintenance
Levee Inspections**

Maintenance Issue Types Only, Levee Inspection Report By Mile - Fall 2019

Reclamation District No. 0784 Plumas Lake

Waterway	Bank	Unit Miles	Inspection Start/End	Inspector
Unit No. 05 Interceptor Canal	Left	4.19	10/24/2019 10/24/2019	Sterling York

LM Start	3.96	Rating **	M	Issue No.	25 (cont)	
LM End	3.96	Issue Type +	Ma	Location *		
Category	Supplemental			GPS Latitude/Longitude		
				Start		End
Item	DRAFT DWR UCIP LMA Responsibility			39.019787 °		39.019787 °
				-121.513386 °		-121.513386 °
DWR ID	18593					
Comment Code						
Inspector Comment						
DS_ID:18593 FS_ID:53550 EP_NO: N/A Repair Type: Non-Urgent Crossing Status: Found UCIP Comments: 2/1/2019 - An attempt was made to video inspect this pipe crossing on 8/15/2018 but conditions were too muddy inside the pipe. (P. Meagher)11/14/2016 - Photos added of exposed flap gate on WS and possible inlet location on LS. Condition remains as Non-Urgent because of inlet not being fully operable. Unknown if pipe will operate as designed during high water or if it is full of sediment.11/01/2015 - Waterside Flap Gate Uncovered. Photo sent to DWR Matt Hoffman on 3/3/2014. Fresh photo sent to DWR Pavel Kazi on 9/9/2015. Landside toe has never been able to be located. Requesting DWR inspector to change the status of this issue to "No Action Needed". (P.Meagher - RD784).Pipe burried on LS toe and flap gate is blocked by soil on WS toe. (W. Wylie - UCIP Inspector). FIELD_STRUCT_DESC: 18-inch corrugated metal drainage pipe through the levee, 10 feet below the crown. Flap gate on the waterside (WS) end. [Additional Reference(s): DWR Levee Log, 2005. USACE Sacramento O&M Manual 145, August 1955 (Station 91+50)]. FS Date: 10/9/2015						

Photo 3 of 3 : UCIP_FA_2019_53550_74710.jpg



Enter photo 3 description or comment here.

* Location LS : Land Side N/A : Not Applicable WS : Water Side CR : Crown	** Rating A : Acceptable M : Minimally Acceptable U : Unacceptable	N : Not Inspected/Rated C : Corrected A/W : Acceptable but Monitor & Maintain	+ Issue Type Ma : Maintenance Deficiency Ob : Design & System Obsolescence En : Enforcement
--	--	---	---

**Flood Control Project Maintenance
Levee Inspections**

Maintenance Issue Types Only, Levee Inspection Report By Mile - Fall 2019

Reclamation District No. 0784 Plumas Lake

Waterway	Bank	Unit Miles	Inspection Start/End	Inspector
Unit No. 06 South Dry Creek	Right	0.25	10/24/2019 10/24/2019	Sterling York

LM Start	0.00	Rating **	A	Issue No.	2
LM End	0.25	Issue Type +	Ma	Location *	LS
Category	Earthen Levee			GPS Latitude/Longitude	
				Start	End
Item	Vegetation			38.985574 °	38.987564 °
				-121.510469 °	-121.506675 °
DWR ID	DWR_RD0784_06_f_2019_2				
Comment Code					
V1 : Control annual grass and weeds on the levee slopes and easements.					
Inspector Comment					
The annual vegetation is well maintained, Fall 2019.					

Photo 1 of 1 : FA_2019_RD0784_183_2_20191029_00005.jpg



View looking downstream landside at the well maintained annual vegetation, Fall 2019.

LM Start	0.00	Rating **	A	Issue No.	3
LM End	0.25	Issue Type +	Ma	Location *	WS
Category	Earthen Levee			GPS Latitude/Longitude	
				Start	End
Item	Vegetation			38.985574 °	38.987564 °
				-121.510469 °	-121.506675 °
DWR ID	DWR_RD0784_06_f_2019_3				
Comment Code					
V1 : Control annual grass and weeds on the levee slopes and easements.					
Inspector Comment					
The annual vegetation is well maintained, Fall 2019.					

Photo 1 of 1 : FA_2019_RD0784_183_3_20191029_00004.jpg



View looking downstream waterside at the well maintained annual vegetation, Fall 2019.

*** Location**
LS : Land Side N/A : Not Applicable
WS : Water Side
CR : Crown

**** Rating**
A : Acceptable N : Not Inspected/Rated
M : Minimally Acceptable C : Corrected
U : Unacceptable A/W : Acceptable but Monitor & Maintain

+ Issue Type
Ma : Maintenance Deficiency
Ob : Design & System Obsolescence
En : Enforcement

**Flood Control Project Maintenance
Levee Inspections**

Maintenance Issue Types Only, Levee Inspection Report By Mile - Fall 2019

Reclamation District No. 0784 Plumas Lake

Waterway	Bank	Unit Miles	Inspection Start/End	Inspector
Unit No. 06 South Dry Creek	Right	0.25	10/24/2019 10/24/2019	Sterling York

LM Start	0.06	Rating **	M	Issue No.	4	
LM End	0.06	Issue Type +	Ma	Location *		
Category	Supplemental			GPS Latitude/Longitude		
				Start	End	
Item	DRAFT DWR UCIP LMA Responsibility			38.985999 °	38.985999 °	
				-121.509618 °	-121.509618 °	
DWR ID	18626					
Comment Code						
Inspector Comment						
DS_ID:18626 FS_ID:53542 EP_NO: N/A Repair Type: Non-Urgent Crossing Status: Found UCIP Comments: 2-1-2019 - Pipe was video inspected on 8/13/2018. (P. Meagher)10-30-2015 - Waterside flap gate was cleared in December 2014 and again in September 2015 No LMA access available on Landside (P. Meagher).Pipe partially blocked on LS and flap gate blocked on WS (W. Wylie-UCIP Inspector) FIELD_STRUCT_DESC: 18-inch corrugated metal storm drainage pipe through the levee, 19 feet below the crown. Gate valve on the waterside (WS). [Additional Reference(s): USACE Drawing No. 2-4-106, Sheet 2]. FS Date: 9/11/2015						

Photo 1 of 3 : UCIP_FA_2019_53542_74682.jpg



Flap Gate is clear as of 9/11/15.

LM Start	0.06	Rating **	M	Issue No.	4 (cont)
LM End	0.06	Issue Type +	Ma	Location *	

Photo 2 of 3 : UCIP_FA_2019_53542_54268.jpg



Partially clogged inlet pipe at LS toe.

* Location LS : Land Side N/A : Not Applicable WS : Water Side CR : Crown	** Rating A : Acceptable M : Minimally Acceptable U : Unacceptable	N : Not Inspected/Rated C : Corrected A/W : Acceptable but Monitor & Maintain	+ Issue Type Ma : Maintenance Deficiency Ob : Design & System Obsolescence En : Enforcement
--	--	---	---

**Flood Control Project Maintenance
Levee Inspections**

Maintenance Issue Types Only, Levee Inspection Report By Mile - Fall 2019

Reclamation District No. 0784 Plumas Lake

Waterway	Bank	Unit Miles	Inspection Start/End	Inspector
Unit No. 06 South Dry Creek	Right	0.25	10/24/2019 10/24/2019	Sterling York

LM Start	0.06	Rating **	M	Issue No.	4 (cont)	
LM End	0.06	Issue Type +	Ma	Location *		
Category	Supplemental			GPS Latitude/Longitude		
				Start		End
Item	DRAFT DWR UCIP LMA Responsibility			38.985999 °		38.985999 °
				-121.509618 °		-121.509618 °
DWR ID	18626					
Comment Code						
Inspector Comment						
DS_ID:18626 FS_ID:53542 EP_NO: N/A Repair Type: Non-Urgent Crossing Status: Found UCIP Comments: 2-1-2019 - Pipe was video inspected on 8/13/2018. (P. Meagher)10-30-2015 - Waterside flap gate was cleared in December 2014 and again in September 2015 No LMA access available on Landside (P. Meagher).Pipe partially blocked on LS and flap gate blocked on WS (W. Wylie-UCIP Inspector) FIELD_STRUCT_DESC: 18-inch corrugated metal storm drainage pipe through the levee, 19 feet below the crown. Gate valve on the waterside (WS). [Additional Reference(s): USACE Drawing No. 2-4-106, Sheet 2]. FS Date: 9/11/2015						

Photo 3 of 3 : UCIP_FA_2019_53542_54265.jpg



Flap gate blocked by vegetation at WS.

* Location LS : Land Side N/A : Not Applicable WS : Water Side CR : Crown	** Rating A : Acceptable M : Minimally Acceptable U : Unacceptable	N : Not Inspected/Rated C : Corrected A/W : Acceptable but Monitor & Maintain	+ Issue Type Ma : Maintenance Deficiency Ob : Design & System Obsolescence En : Enforcement
--	--	---	---

**Flood Control Project Maintenance
Levee Inspections**

Maintenance Issue Types Only, Levee Inspection Report By Mile - Fall 2019

Reclamation District No. 0784 Plumas Lake

Waterway	Bank	Unit Miles	Inspection Start/End	Inspector
Unit No. 07 Yuba River	Left	3.82	10/24/2019 10/24/2019	Sterling York

LM Start	0.11	Rating **	A	Issue No.	1
LM End	3.81	Issue Type +	Ma	Location *	LS
Category	Earthen Levee			GPS Latitude/Longitude	
				Start	End
Item	Vegetation			39.135157°	39.165489°
				-121.550333°	-121.495622°
DWR ID	DWR_RD0784_07_f_2019_1				
Comment Code					
V1 : Control annual grass and weeds on the levee slopes and easements.					
Inspector Comment					
The annual vegetation is well maintained, Fall 2019.					

Photo 1 of 1 : FA_2019_RD0784_184_1_20191029_00003.jpg



View looking downstream landside at the well maintained annual vegetation, Fall 2019.

LM Start	0.11	Rating **	A	Issue No.	2
LM End	3.81	Issue Type +	Ma	Location *	WS
Category	Earthen Levee			GPS Latitude/Longitude	
				Start	End
Item	Vegetation			39.135157 °	39.165489 °
				-121.550333 °	-121.495622 °
DWR ID	DWR_RD0784_07_f_2019_2				
Comment Code					
V1 : Control annual grass and weeds on the levee slopes and easements.					
Inspector Comment					
The annual vegetation is well maintained, Fall 2019.					

Photo 1 of 1 : FA_2019_RD0784_184_2_20191029_00002.jpg



View looking downstream waterside at the well maintained annual vegetation, Fall 2019.

*** Location**
LS : Land Side N/A : Not Applicable
WS : Water Side
CR : Crown

**** Rating**
A : Acceptable
M : Minimally Acceptable
U : Unacceptable
N : Not Inspected/Rated
C : Corrected
A/W : Acceptable but Monitor & Maintain

+ Issue Type
Ma : Maintenance Deficiency
Ob : Design & System Obsolescence
En : Enforcement

**Flood Control Project Maintenance
Levee Inspections**

Maintenance Issue Types Only, Levee Inspection Report By Mile - Fall 2019

Reclamation District No. 0784 Plumas Lake

Waterway	Bank	Unit Miles	Inspection Start/End	Inspector
Unit No. 08 Three Rivers	Right	1.93	10/24/2019 10/24/2019	Sterling York

LM Start	0.03	Rating **	A	Issue No.	1
LM End	1.93	Issue Type +	Ma	Location *	LS
Category	Earthen Levee			GPS Latitude/Longitude	
				Start	End
Item	Vegetation			38.955512 °	38.970535 °
				-121.574328 °	-121.547602 °
DWR ID	DWR_RD0784_08_f_2019_1				
Comment Code					
V1 : Control annual grass and weeds on the levee slopes and easements.					
Inspector Comment					
The annual vegetation is well maintained, Fall 2019.					

Photo 1 of 1 : FA_2019_RD0784_437_1_20191029_00001.jpg



View looking downstream landside at the well maintained annual vegetation, Fall 2019.

LM Start	0.03	Rating **	A	Issue No.	2
LM End	1.93	Issue Type +	Ma	Location *	WS
Category	Earthen Levee			GPS Latitude/Longitude	
				Start	End
Item	Vegetation			38.955512 °	38.970535 °
				-121.574328 °	-121.547602 °
DWR ID	DWR_RD0784_08_f_2019_2				
Comment Code					
V1 : Control annual grass and weeds on the levee slopes and easements.					
Inspector Comment					
The annual vegetation is well maintained, Fall 2019.					

Photo 1 of 1 : FA_2019_RD0784_437_2_20191029_00002.jpg



View looking downstream waterside at the well maintained annual vegetation, Fall 2019.

*** Location**
LS : Land Side N/A : Not Applicable
WS : Water Side
CR : Crown

**** Rating**
A : Acceptable
M : Minimally Acceptable
U : Unacceptable
N : Not Inspected/Rated
C : Corrected
A/W : Acceptable but Monitor & Maintain

+ Issue Type
Ma : Maintenance Deficiency
Ob : Design & System Obsolescence
En : Enforcement

**Flood Control Project Maintenance
Levee Inspections**

Maintenance Issue Types Only, Levee Inspection Report By Mile - Fall 2019

Reclamation District No. 0784 Plumas Lake

Waterway	Bank	Unit Miles	Inspection Start/End	Inspector
Unit No. 09 Feather River	Left	5.71	10/24/2019 10/24/2019	Sterling York

LM Start	0.01	Rating **	A	Issue No.	1
LM End	5.68	Issue Type +	Ma	Location *	LS
Category	Earthen Levee			GPS Latitude/Longitude	
				Start	End
Item	Vegetation			39.090175 °	39.010516 °
				-121.584752 °	-121.579670 °
DWR ID	DWR_RD0784_09_f_2019_1				
Comment Code					
V1 : Control annual grass and weeds on the levee slopes and easements.					
Inspector Comment					
The annual vegetation is well maintained, Fall 2019.					

Photo 1 of 1 : FA_2019_RD0784_530_1_20191029_00001.jpg



View looking downstream landside at the well maintained annual vegetation, Fall 2019.

LM Start	0.01	Rating **	A	Issue No.	2
LM End	5.68	Issue Type +	Ma	Location *	WS
Category	Earthen Levee			GPS Latitude/Longitude	
				Start	End
Item	Vegetation			39.090175 °	39.010516 °
				-121.584752 °	-121.579670 °
DWR ID	DWR_RD0784_09_f_2019_2				
Comment Code					
V1 : Control annual grass and weeds on the levee slopes and easements.					
Inspector Comment					
The annual vegetation is well maintained, Fall 2019.					

Photo 1 of 1 : FA_2019_RD0784_530_2_20191029_00002.jpg



View looking downstream waterside at the well maintained annual vegetation, Fall 2019.

*** Location**
LS : Land Side N/A : Not Applicable
WS : Water Side
CR : Crown

**** Rating**
A : Acceptable
M : Minimally Acceptable
U : Unacceptable
N : Not Inspected/Rated
C : Corrected
A/W : Acceptable but Monitor & Maintain

+ Issue Type
Ma : Maintenance Deficiency
Ob : Design & System Obsolescence
En : Enforcement