

**Flood Control Project Maintenance  
Levee Inspections**

## Maintenance Issue Types Only, Levee Inspection Report By Mile - Spring 2016

### Reclamation District No. 0765 Glide

Waterway	Bank	Unit Miles	Inspection Start/End	Inspector
Unit No. 01 Sacramento River	Right	1.72	03/08/2016 03/08/2016	Richard Willoughby

LM Start		Rating **	M	Issue No.	18
LM End		Issue Type +	Ma	Location *	N/A
Category	Earthen Levee		GPS Latitude/Longitude		
			Start	End	
Item	Emergency Supplies & Equipment			°	°
				°	°
DWR ID	DWR_RD0765_01_s _ 2013_18				
Comment Code					
Inspector Comment					
The LMA does have an adequate supply of flood fight materials.					

No Photos

LM Start		Rating **	A	Issue No.	44
LM End		Issue Type +	Ma	Location *	N/A
Category	Earthen Levee		GPS Latitude/Longitude		
			Start	End	
Item	Operations & Maintenance Manuals			°	°
				°	°
DWR ID	DWR_RD0765_01_s _ 2012_44				
Comment Code					
Inspector Comment					
LMA has a copy of O&M manual on file in office.					

No Photos

LM Start		Rating **	M	Issue No.	46
LM End		Issue Type +	Ma	Location *	N/A
Category	Earthen Levee		GPS Latitude/Longitude		
			Start	End	
Item	Flood Preparedness & Training			°	°
				°	°
DWR ID	DWR_RD0765_01_s _ 2012_46				
Comment Code					
Inspector Comment					
LMA does not have a written flood preparedness plan. Also LMA staff has not been involved in flood training for several years.					

No Photos

<b>* Location</b> LS : Land Side    N/A : Not Applicable WS : Water Side CR : Crown	<b>** Rating</b> A : Acceptable M : Minimally Acceptable U : Unacceptable	N : Not Inspected/Rated C : Corrected A/W : Acceptable but Monitor & Maintain	<b>+ Issue Type</b> Ma : Maintenance Deficiency Ob : Design & System Obsolescence En : Enforcement
----------------------------------------------------------------------------------------------	------------------------------------------------------------------------------------	-------------------------------------------------------------------------------------	-------------------------------------------------------------------------------------------------------------

**Flood Control Project Maintenance  
Levee Inspections**

## Maintenance Issue Types Only, Levee Inspection Report By Mile - Spring 2016

### Reclamation District No. 0765 Glide

Waterway	Bank	Unit Miles	Inspection Start/End	Inspector
Unit No. 01 Sacramento River	Right	1.72	03/08/2016 03/08/2016	Richard Willoughby

LM Start	0.00	Rating **	M	Issue No.	39
LM End	1.70	Issue Type +	Ma	Location *	LS
Category	Earthen Levee			GPS Latitude/Longitude	
				Start	End
Item	Vegetation			38.502965 °	38.480329 °
				-121.560104 °	-121.549517 °
DWR ID	DWR_RD0765_01_s _ 2016_39				
Comment Code					
V1 : Control annual grass and weeds on the levee slopes and easements.					
Inspector Comment					

No Photos

LM Start	0.00	Rating **	M	Issue No.	48
LM End	1.72	Issue Type +	Ma	Location *	WS
Category	Earthen Levee			GPS Latitude/Longitude	
				Start	End
Item	Vegetation			38.502898 °	38.480158 °
				-121.559978 °	-121.549440 °
DWR ID	DWR_RD0765_01_s _ 2016_48				
Comment Code					
V1 : Control annual grass and weeds on the levee slopes and easements.					
Inspector Comment					
Control vegetation on waterward slope.					

No Photos

LM Start	0.05	Rating **	U	Issue No.	3
LM End	0.05	Issue Type +	Ma	Location *	LS
Category	Earthen Levee			GPS Latitude/Longitude	
				Start	End
Item	Trim / Thin Trees			38.502253 °	38.502253 °
				-121.560192 °	-121.560192 °
DWR ID	DWR_RD0765_01_s _ 2012_3				
Comment Code					
T1 : Trim trees to at least five feet above ground level.					
Inspector Comment					
Trees blocking view of landward slope.					

Photo 1 of 3 : SP\_2016\_RD0765\_211\_3\_20160311\_00063.jpg



Looking west at tree on landward slope.

* Location		** Rating		+ Issue Type	
LS : Land Side	N/A : Not Applicable	A : Acceptable	N : Not Inspected/Rated	Ma : Maintenance Deficiency	
WS : Water Side		M : Minimally Acceptable	C : Corrected	Ob : Design & System Obsolescence	
CR : Crown		U : Unacceptable	A/W : Acceptable but Monitor & Maintain	En : Enforcement	

**Flood Control Project Maintenance  
Levee Inspections**

## Maintenance Issue Types Only, Levee Inspection Report By Mile - Spring 2016

### Reclamation District No. 0765 Glide

Waterway	Bank	Unit Miles	Inspection Start/End	Inspector
Unit No. 01 Sacramento River	Right	1.72	03/08/2016 03/08/2016	Richard Willoughby

LM Start	0.05	Rating **	U	Issue No.	3 (cont)	
LM End	0.05	Issue Type +	Ma	Location *	LS	
Category	Earthen Levee			GPS Latitude/Longitude		
				Start		End
Item	Trim / Thin Trees			38.502253 °		38.502253 °
				-121.560192 °		-121.560192 °
DWR ID	DWR_RD0765_01_s _ 2012_3					
Comment Code						
T1 : Trim trees to at least five feet above ground level.						
Inspector Comment						
Trees blocking view of landward slope.						

LM Start	<b>0.05</b>	Rating **	U	Issue No.	<b>3 (cont)</b>
LM End	<b>0.05</b>	Issue Type +	Ma	Location *	LS

Photo 2 of 3 : SP\_2016\_RD0765\_211\_3\_20160311\_00064.jpg



Photo 3 of 3 : SP\_2016\_RD0765\_211\_3\_20160224\_00001.jpg



Looking north (upstream) at trees on landside slope.

LM Start	0.09	Rating **	A/W	Issue No.	27
LM End	0.09	Issue Type +	Ma	Location *	WS
Category	Earthen Levee			GPS Latitude/Longitude	
				Start	End
Item	Trim / Thin Trees			38.501650 °	38.501650 °
				-121.560290 °	-121.560290 °
DWR ID	DWR_RD0765_01_s _ 2012_27				
Comment Code					
T1 : Trim trees to at least five feet above ground level.					
Inspector Comment					

No Photos

* Location		** Rating		+ Issue Type	
LS : Land Side	N/A : Not Applicable	A : Acceptable	N : Not Inspected/Rated	Ma : Maintenance Deficiency	
WS : Water Side		M : Minimally Acceptable	C : Corrected	Ob : Design & System Obsolescence	
CR : Crown		U : Unacceptable	A/W : Acceptable but Monitor & Maintain	En : Enforcement	

**Flood Control Project Maintenance  
Levee Inspections**

## Maintenance Issue Types Only, Levee Inspection Report By Mile - Spring 2016

### Reclamation District No. 0765 Glide

Waterway	Bank	Unit Miles	Inspection Start/End	Inspector
Unit No. 01 Sacramento River	Right	1.72	03/08/2016 03/08/2016	Richard Willoughby

LM Start	0.12	Rating **	M	Issue No.	28
LM End	0.19	Issue Type +	Ma	Location *	LS
Category	Earthen Levee			GPS Latitude/Longitude	
				Start	End
Item	Trim / Thin Trees			38.501215 °	38.500271 °
				-121.560432 °	-121.560434 °
DWR ID	DWR_RD0765_01_s_2012_28				
Comment Code					
T3 : Trim and thin trees to allow visibility of the ground and room to flood fight.					
Inspector Comment					

Photo 1 of 2 : SP\_2016\_RD0765\_211\_28\_20160224\_00013.jpg



Looking downstream (south) at trees on landside slope &amp; toe.

LM Start	<b>0.12</b>	Rating **	M	Issue No.	<b>28 (cont)</b>
LM End	<b>0.19</b>	Issue Type +	Ma	Location *	LS

Photo 2 of 2 : SP\_2016\_RD0765\_211\_28\_20160224\_00014.jpg



Looking west at trees on landside toe.

LM Start	0.13	Rating **	A/W	Issue No.	45
LM End	0.13	Issue Type +	Ma	Location *	LS
Category	Earthen Levee			GPS Latitude/Longitude	
				Start	End
Item	Trim / Thin Trees			38.501181 °	38.501181 °
				-121.560410 °	-121.560410 °
DWR ID	DWR_RD0765_01_f_2013_45				
Comment Code					
T1 : Trim trees to at least five feet above ground level.					
Inspector Comment					

No Photos

<b>* Location</b> LS : Land Side    N/A : Not Applicable WS : Water Side CR : Crown		<b>** Rating</b> A : Acceptable                      N : Not Inspected/Rated M : Minimally Acceptable        C : Corrected U : Unacceptable                  A/W : Acceptable but Monitor & Maintain		<b>+ Issue Type</b> Ma : Maintenance Deficiency Ob : Design & System Obsolescence En : Enforcement
----------------------------------------------------------------------------------------------	--	---------------------------------------------------------------------------------------------------------------------------------------------------------------------------------------------------------------	--	-------------------------------------------------------------------------------------------------------------



**Flood Control Project Maintenance  
Levee Inspections**

## Maintenance Issue Types Only, Levee Inspection Report By Mile - Spring 2016

### Reclamation District No. 0765 Glide

Waterway	Bank	Unit Miles	Inspection Start/End	Inspector
Unit No. 01 Sacramento River	Right	1.72	03/08/2016 03/08/2016	Richard Willoughby

LM Start	0.14	Rating **	A/W	Issue No.	22
LM End	0.14	Issue Type +	Ma	Location *	LS
Category	Earthen Levee			GPS Latitude/Longitude	
				Start	End
Item	Vegetation			38.500928 °	38.500928 °
				-121.560431 °	-121.560431 °
DWR ID	DWR_RD0765_01_s _ 2012_22				
Comment Code					
V4 : Elderberries are blocking visibility and flood fight capability.					
Inspector Comment					

Photo 1 of 1 : SP\_2016\_RD0765\_211\_22\_20160224\_00012.jpg



Looking northwest at dense vegetation on landside slope.

LM Start	0.18	Rating **	M	Issue No.	14
LM End	0.34	Issue Type +	Ma	Location *	LS
Category	Earthen Levee			GPS Latitude/Longitude	
				Start	End
Item	Trim / Thin Trees			38.500343 °	38.498032 °
				-121.560507 °	-121.560337 °
DWR ID	DWR_RD0765_01_s _ 2012_14				
Comment Code					
T1 : Trim trees to at least five feet above ground level.					
Inspector Comment					

No Photos

LM Start	0.21	Rating **	C	Issue No.	25
LM End	0.21	Issue Type +	Ma	Location *	WS
Category	Earthen Levee			GPS Latitude/Longitude	
				Start	End
Item	Trim / Thin Trees			38.500018 °	38.500018 °
				-121.560457 °	-121.560457 °
DWR ID	DWR_RD0765_01_s _ 2012_25				
Comment Code					
T1 : Trim trees to at least five feet above ground level.					
Inspector Comment					

No Photos

* Location		** Rating		+ Issue Type	
LS : Land Side	N/A : Not Applicable	A : Acceptable	N : Not Inspected/Rated	Ma : Maintenance Deficiency	
WS : Water Side		M : Minimally Acceptable	C : Corrected	Ob : Design & System Obsolescence	
CR : Crown		U : Unacceptable	A/W : Acceptable but Monitor & Maintain	En : Enforcement	

**Flood Control Project Maintenance  
Levee Inspections**

## Maintenance Issue Types Only, Levee Inspection Report By Mile - Spring 2016

### Reclamation District No. 0765 Glide

Waterway	Bank	Unit Miles	Inspection Start/End	Inspector
Unit No. 01 Sacramento River	Right	1.72	03/08/2016 03/08/2016	Richard Willoughby

LM Start	0.24	Rating **	M	Issue No.	49
LM End	0.24	Issue Type +	Ma	Location *	LS
Category	Earthen Levee			GPS Latitude/Longitude	
				Start	End
Item	Vegetation			38.499530 °	38.499530 °
				-121.560490 °	-121.560490 °
DWR ID	DWR_RD0765_01_s_2013_49				
Comment Code					
V2 : Remove the wild growth other than native grasses from the levee slopes.					
Inspector Comment					
Control wild berryvines on landside slope.					

Photo 1 of 1 : SP\_2016\_RD0765\_211\_49\_20160224\_00030.jpg



Looking at wild berryvines or wild roses on landside slope and toe.

LM Start	0.25	Rating **	U	Issue No.	11
LM End	0.27	Issue Type +	Ma	Location *	WS
Category	Earthen Levee			GPS Latitude/Longitude	
				Start	End
Item	Trim / Thin Trees			38.499405 °	38.499042 °
				-121.560445 °	-121.560430 °
DWR ID	DWR_RD0765_01_s_2012_11				
Comment Code					
T3 : Trim and thin trees to allow visibility of the ground and room to flood fight.					
Inspector Comment					
Trees shall be trimmed and thinned on waterward slope.					

Photo 1 of 1 : SP\_2016\_RD0765\_211\_11\_20160311\_00065.jpg



Looking southwest at trees along landward shoulder and slope.

LM Start	0.27	Rating **	C	Issue No.	62
LM End	0.27	Issue Type +	Ma	Location *	LS
Category	Earthen Levee			GPS Latitude/Longitude	
				Start	End
Item	Encroachments			38.499015 °	38.499015 °
				-121.560463 °	-121.560463 °
DWR ID	DWR_RD0765_01_f_2015_62				
Comment Code					
GA : Garbage					
Inspector Comment					
Garbage on landward shoulder.					

No Photos

<b>* Location</b> LS : Land Side    N/A : Not Applicable WS : Water Side CR : Crown		<b>** Rating</b> A : Acceptable M : Minimally Acceptable U : Unacceptable N : Not Inspected/Rated C : Corrected A/W : Acceptable but Monitor & Maintain		<b>+ Issue Type</b> Ma : Maintenance Deficiency Ob : Design & System Obsolescence En : Enforcement	
----------------------------------------------------------------------------------------------	--	---------------------------------------------------------------------------------------------------------------------------------------------------------------------------	--	-------------------------------------------------------------------------------------------------------------	--

**Flood Control Project Maintenance  
Levee Inspections**

## Maintenance Issue Types Only, Levee Inspection Report By Mile - Spring 2016

### Reclamation District No. 0765 Glide

Waterway	Bank	Unit Miles	Inspection Start/End	Inspector
Unit No. 01 Sacramento River	Right	1.72	03/08/2016 03/08/2016	Richard Willoughby

LM Start	0.31	Rating **	A/W	Issue No.	31
LM End	0.31	Issue Type +	Ma	Location *	LS
Category	Earthen Levee			GPS Latitude/Longitude	
				Start	End
Item	Vegetation			38.498516 °	38.498516 °
				-121.560463 °	-121.560463 °
DWR ID	DWR_RD0765_01_f_2012_31				
Comment Code					
V2 : Remove the wild growth other than native grasses from the levee slopes.					
Inspector Comment					
Wild berryvines on landside toe.					

No Photos

LM Start	0.31	Rating **	M	Issue No.	23
LM End	0.31	Issue Type +	Ma	Location *	WS
Category	Earthen Levee			GPS Latitude/Longitude	
				Start	End
Item	Trim / Thin Trees			38.498453 °	38.498453 °
				-121.560360 °	-121.560360 °
DWR ID	DWR_RD0765_01_s_2012_23				
Comment Code					
T3 : Trim and thin trees to allow visibility of the ground and room to flood fight.					
Inspector Comment					
Trees should be trimmed and thinned.					

Photo 1 of 1 : SP\_2016\_RD0765\_211\_23\_20160311\_00066.jpg



Looking northeast at trees along waterward shoulder and slope.

LM Start	0.40	Rating **	A/W	Issue No.	21
LM End	0.40	Issue Type +	Ma	Location *	LS
Category	Earthen Levee			GPS Latitude/Longitude	
				Start	End
Item	Trim / Thin Trees			38.497196 °	38.497196 °
				-121.560147 °	-121.560147 °
DWR ID	DWR_RD0765_01_s_2012_21				
Comment Code					
T1 : Trim trees to at least five feet above ground level.					
Inspector Comment					

No Photos

<b>* Location</b> LS : Land Side    N/A : Not Applicable WS : Water Side CR : Crown		<b>** Rating</b> A : Acceptable M : Minimally Acceptable U : Unacceptable N : Not Inspected/Rated C : Corrected A/W : Acceptable but Monitor & Maintain		<b>+ Issue Type</b> Ma : Maintenance Deficiency Ob : Design & System Obsolescence En : Enforcement	
----------------------------------------------------------------------------------------------	--	---------------------------------------------------------------------------------------------------------------------------------------------------------------------------	--	-------------------------------------------------------------------------------------------------------------	--



**Flood Control Project Maintenance  
Levee Inspections**

## Maintenance Issue Types Only, Levee Inspection Report By Mile - Spring 2016

### Reclamation District No. 0765 Glide

Waterway	Bank	Unit Miles	Inspection Start/End	Inspector
Unit No. 01 Sacramento River	Right	1.72	03/08/2016 03/08/2016	Richard Willoughby

LM Start	0.41	Rating **	M	Issue No.	47
LM End	0.41	Issue Type +	Ma	Location *	LS
Category	Earthen Levee			GPS Latitude/Longitude	
				Start	End
Item	Vegetation			38.497069 °	38.497069 °
				-121.560106 °	-121.560106 °
DWR ID	DWR_RD0765_01_f_2012_47				
Comment Code					
V2 : Remove the wild growth other than native grasses from the levee slopes.					
Inspector Comment					
Control wild berryvines on landside toe.					

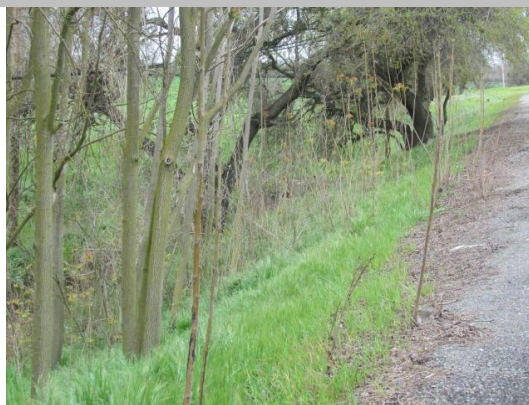
Photo 1 of 1 : SP\_2016\_RD0765\_211\_47\_20160224\_00029.jpg



Looking west at dense berryvines on landside toe.

LM Start	0.43	Rating **	U	Issue No.	32
LM End	0.46	Issue Type +	Ma	Location *	LS
Category	Earthen Levee			GPS Latitude/Longitude	
				Start	End
Item	Trim / Thin Trees			38.496792 °	38.496321 °
				-121.560026 °	-121.559842 °
DWR ID	DWR_RD0765_01_s_2012_32				
Comment Code					
T3 : Trim and thin trees to allow visibility of the ground and room to flood fight.					
Inspector Comment					
New saplings should be removed.					

Photo 1 of 2 : SP\_2016\_RD0765\_211\_32\_20160311\_00067.jpg



Looking northwest at trees (saplings) on landward slope.

LM Start	<b>0.43</b>	Rating **	U	Issue No.	<b>32 (cont)</b>
LM End	<b>0.46</b>	Issue Type +	Ma	Location *	LS

Photo 2 of 2 : SP\_2016\_RD0765\_211\_32\_20160224\_00021.jpg



Looking southwest at dense vegetation on landside slope and toe. (2015)

* Location LS : Land Side    N/A : Not Applicable WS : Water Side CR : Crown		** Rating A : Acceptable M : Minimally Acceptable U : Unacceptable N : Not Inspected/Rated C : Corrected A/W : Acceptable but Monitor & Maintain		+ Issue Type Ma : Maintenance Deficiency Ob : Design & System Obsolescence En : Enforcement	
---------------------------------------------------------------------------------------	--	--------------------------------------------------------------------------------------------------------------------------------------------------------------------	--	------------------------------------------------------------------------------------------------------	--



**Flood Control Project Maintenance  
Levee Inspections**

## Maintenance Issue Types Only, Levee Inspection Report By Mile - Spring 2016

### Reclamation District No. 0765 Glide

Waterway	Bank	Unit Miles	Inspection Start/End	Inspector
Unit No. 01 Sacramento River	Right	1.72	03/08/2016 03/08/2016	Richard Willoughby

LM Start	0.45	Rating **	U	Issue No.	24
LM End	0.47	Issue Type +	Ma	Location *	WS
Category	Earthen Levee			GPS Latitude/Longitude	
				Start	End
Item	Trim / Thin Trees			38.496534 °	38.496249 °
				-121.559880 °	-121.559760 °
DWR ID	DWR_RD0765_01_s_2012_24				
Comment Code					
T2 : Thin trees to allow visibility of the ground and room to flood fight.					
Inspector Comment					

Photo 1 of 1 : SP\_2016\_RD0765\_211\_24\_20160311\_00068.jpg



Looking northeast at cluster of trees on waterward slope.

LM Start	0.47	Rating **	A/W	Issue No.	55
LM End	0.47	Issue Type +	Ma	Location *	LS
Category	Earthen Levee			GPS Latitude/Longitude	
				Start	End
Item	Encroachments			38.496235 °	38.496235 °
				-121.559796 °	-121.559796 °
DWR ID	DWR_RD0765_01_f_2013_55				
Comment Code					
GA : Garbage					
Inspector Comment					
Trash dumped on landside slope.					

Photo 1 of 2 : SP\_2016\_RD0765\_211\_55\_20160224\_00036.jpg



Looking northwest at garbage on landside slope.

LM Start	<b>0.47</b>	Rating **	A/W	Issue No.	<b>55 (cont)</b>
LM End	<b>0.47</b>	Issue Type +	Ma	Location *	LS

Photo 2 of 2 : SP\_2016\_RD0765\_211\_55\_20160224\_00037.jpg



Looking west at garbage on landside slope.

<b>* Location</b> LS : Land Side    N/A : Not Applicable WS : Water Side CR : Crown		<b>** Rating</b> A : Acceptable                      N : Not Inspected/Rated M : Minimally Acceptable        C : Corrected U : Unacceptable                  A/W : Acceptable but Monitor & Maintain		<b>+ Issue Type</b> Ma : Maintenance Deficiency Ob : Design & System Obsolescence En : Enforcement
----------------------------------------------------------------------------------------------	--	---------------------------------------------------------------------------------------------------------------------------------------------------------------------------------------------------------------	--	-------------------------------------------------------------------------------------------------------------

**Flood Control Project Maintenance  
Levee Inspections**

## Maintenance Issue Types Only, Levee Inspection Report By Mile - Spring 2016

### Reclamation District No. 0765 Glide

Waterway	Bank	Unit Miles	Inspection Start/End	Inspector
Unit No. 01 Sacramento River	Right	1.72	03/08/2016 03/08/2016	Richard Willoughby

LM Start	0.48	Rating **	U	Issue No.	59
LM End	0.48	Issue Type +	Ma	Location *	LS
Category	Earthen Levee			GPS Latitude/Longitude	
				Start	End
Item	Vegetation			38.496053 °	38.496053 °
				-121.559690 °	-121.559690 °
DWR ID	DWR_RD0765_01_s _ 2016_59				
Comment Code					
V2 : Remove the wild growth other than native grasses from the levee slopes.					
Inspector Comment					
Dense vegetation on landward slope.					

Photo 1 of 2 : SP\_2016\_RD0765\_211\_59\_20160311\_00069.jpg



Looking northwest at dense vegetation on landward slope.

LM Start	<b>0.48</b>	Rating **	U	Issue No.	<b>59 (cont)</b>
LM End	<b>0.48</b>	Issue Type +	Ma	Location *	LS

Photo 2 of 2 : SP\_2016\_RD0765\_211\_59\_20160311\_00070.jpg



LM Start	0.54	Rating **	M	Issue No.	34
LM End	0.63	Issue Type +	Ma	Location *	LS
Category	Earthen Levee			GPS Latitude/Longitude	
				Start	End
Item	Trim / Thin Trees			38.495347 °	38.494204 °
				-121.559291 °	-121.558313 °
DWR ID	DWR_RD0765_01_s _ 2012_34				
Comment Code					
T1 : Trim trees to at least five feet above ground level.					
Inspector Comment					

No Photos

* Location		** Rating		+ Issue Type	
LS : Land Side	N/A : Not Applicable	A : Acceptable	N : Not Inspected/Rated	Ma : Maintenance Deficiency	
WS : Water Side		M : Minimally Acceptable	C : Corrected	Ob : Design & System Obsolescence	
CR : Crown		U : Unacceptable	A/W : Acceptable but Monitor & Maintain	En : Enforcement	

**Flood Control Project Maintenance  
Levee Inspections**

## Maintenance Issue Types Only, Levee Inspection Report By Mile - Spring 2016

### Reclamation District No. 0765 Glide

Waterway	Bank	Unit Miles	Inspection Start/End	Inspector
Unit No. 01 Sacramento River	Right	1.72	03/08/2016 03/08/2016	Richard Willoughby

LM Start	0.56	Rating **	M	Issue No.	10
LM End	0.59	Issue Type +	Ma	Location *	WS
Category	Earthen Levee			GPS Latitude/Longitude	
				Start	End
Item	Trim / Thin Trees			38.495035 °	38.494642 °
				-121.559027 °	-121.558697 °
DWR ID	DWR_RD0765_01_s _ 2016_10				
Comment Code					
T2 : Thin trees to allow visibility of the ground and room to flood fight.					
Inspector Comment					

Photo 1 of 1 : SP\_2016\_RD0765\_211\_10\_20160311\_00071.jpg



Looking northeast at trees on waterward slope.

LM Start	0.63	Rating **	A/W	Issue No.	15
LM End	0.70	Issue Type +	Ma	Location *	WS
Category	Earthen Levee			GPS Latitude/Longitude	
				Start	End
Item	Trim / Thin Trees			38.494171 °	38.493392 °
				-121.558253 °	-121.557640 °
DWR ID	DWR_RD0765_01_s _ 2012_15				
Comment Code					
T1 : Trim trees to at least five feet above ground level.					
Inspector Comment					

No Photos

LM Start	0.68	Rating **	M	Issue No.	35
LM End	0.72	Issue Type +	Ma	Location *	LS
Category	Earthen Levee			GPS Latitude/Longitude	
				Start	End
Item	Trim / Thin Trees			38.493596 °	38.493077 °
				-121.557832 °	-121.557451 °
DWR ID	DWR_RD0765_01_s _ 2012_35				
Comment Code					
T1 : Trim trees to at least five feet above ground level.					
Inspector Comment					

No Photos

* Location		** Rating		+ Issue Type	
LS : Land Side	N/A : Not Applicable	A : Acceptable	N : Not Inspected/Rated	Ma : Maintenance Deficiency	
WS : Water Side		M : Minimally Acceptable	C : Corrected	Ob : Design & System Obsolescence	
CR : Crown		U : Unacceptable	A/W : Acceptable but Monitor & Maintain	En : Enforcement	



**Flood Control Project Maintenance  
Levee Inspections**

## Maintenance Issue Types Only, Levee Inspection Report By Mile - Spring 2016

### Reclamation District No. 0765 Glide

Waterway	Bank	Unit Miles	Inspection Start/End	Inspector
Unit No. 01 Sacramento River	Right	1.72	03/08/2016 03/08/2016	Richard Willoughby

LM Start	0.77	Rating **	M	Issue No.	36
LM End	0.80	Issue Type +	Ma	Location *	LS
Category	Earthen Levee			GPS Latitude/Longitude	
				Start	End
Item	Trim / Thin Trees			38.492392 °	38.492034 °
				-121.557026 °	-121.556820 °
DWR ID	DWR_RD0765_01_s _ 2012_36				
Comment Code					
T1 : Trim trees to at least five feet above ground level.					
Inspector Comment					

No Photos

LM Start	0.86	Rating **	M	Issue No.	17
LM End	0.98	Issue Type +	Ma	Location *	LS
Category	Earthen Levee			GPS Latitude/Longitude	
				Start	End
Item	Trim / Thin Trees			38.491283 °	38.489771 °
				-121.556360 °	-121.555451 °
DWR ID	DWR_RD0765_01_s _ 2012_17				
Comment Code					
T1 : Trim trees to at least five feet above ground level.					
Inspector Comment					

No Photos

LM Start	0.86	Rating **	M	Issue No.	61
LM End	0.86	Issue Type +	Ma	Location *	LS
Category	Earthen Levee			GPS Latitude/Longitude	
				Start	End
Item	Vegetation			38.491259 °	38.491259 °
				-121.556359 °	-121.556359 °
DWR ID	DWR_RD0765_01_s _ 2016_61				
Comment Code					
V2 : Remove the wild growth other than native grasses from the levee slopes.					
Inspector Comment					
Control dense vegetation (wild rose) on landward slope.					

Photo 1 of 1 : SP\_2016\_RD0765\_211\_61\_20160311\_00072.jpg



Looking southwest at wildroses on landward slope.

* Location		** Rating		+ Issue Type	
LS : Land Side	N/A : Not Applicable	A : Acceptable	N : Not Inspected/Rated	Ma : Maintenance Deficiency	
WS : Water Side		M : Minimally Acceptable	C : Corrected	Ob : Design & System Obsolescence	
CR : Crown		U : Unacceptable	A/W : Acceptable but Monitor & Maintain	En : Enforcement	



**Flood Control Project Maintenance  
Levee Inspections**

## Maintenance Issue Types Only, Levee Inspection Report By Mile - Spring 2016

### Reclamation District No. 0765 Glide

Waterway	Bank	Unit Miles	Inspection Start/End	Inspector
Unit No. 01 Sacramento River	Right	1.72	03/08/2016 03/08/2016	Richard Willoughby

LM Start	0.98	Rating **	A/W	Issue No.	6
LM End	1.14	Issue Type +	Ma	Location *	WS
Category	Earthen Levee			GPS Latitude/Longitude	
				Start	End
Item	Trim / Thin Trees			38.489664 °	38.487617 °
				-121.555370 °	-121.554200 °
DWR ID	DWR_RD0765_01_f_2012_6				
Comment Code					
T1 : Trim trees to at least five feet above ground level.					
Inspector Comment					

No Photos

LM Start	1.01	Rating **	A/W	Issue No.	40
LM End	1.01	Issue Type +	Ma	Location *	LS
Category	Earthen Levee			GPS Latitude/Longitude	
				Start	End
Item	Vegetation			38.489283 °	38.489283 °
				-121.555223 °	-121.555223 °
DWR ID	DWR_RD0765_01_s_2012_40				
Comment Code					
V7 : Trees / Woody Vegetation					
Inspector Comment					
Fig trees on landside slope					

Photo 1 of 1 : SP\_2016\_RD0765\_211\_40\_20160224\_00027.jpg



Looking southwest at fig trees and other trees on landside slope and toe.

LM Start	1.04	Rating **	A/W	Issue No.	58
LM End	1.04	Issue Type +	Ma	Location *	WS
Category	Earthen Levee			GPS Latitude/Longitude	
				Start	End
Item	Encroachments			38.488903 °	38.488903 °
				-121.554921 °	-121.554921 °
DWR ID	DWR_RD0765_01_f_2014_58				
Comment Code					
PR : Prunings					
Inspector Comment					
Prunings on waterward shoulder.					

No Photos

<b>* Location</b> LS : Land Side    N/A : Not Applicable WS : Water Side CR : Crown		<b>** Rating</b> A : Acceptable M : Minimally Acceptable U : Unacceptable N : Not Inspected/Rated C : Corrected A/W : Acceptable but Monitor & Maintain		<b>+ Issue Type</b> Ma : Maintenance Deficiency Ob : Design & System Obsolescence En : Enforcement	
----------------------------------------------------------------------------------------------	--	---------------------------------------------------------------------------------------------------------------------------------------------------------------------------	--	-------------------------------------------------------------------------------------------------------------	--

**Flood Control Project Maintenance  
Levee Inspections**

## Maintenance Issue Types Only, Levee Inspection Report By Mile - Spring 2016

### Reclamation District No. 0765 Glide

Waterway	Bank	Unit Miles	Inspection Start/End	Inspector
Unit No. 01 Sacramento River	Right	1.72	03/08/2016 03/08/2016	Richard Willoughby

LM Start	1.07	Rating **	A/W	Issue No.	37
LM End	1.07	Issue Type +	Ma	Location *	LS
Category	Earthen Levee			GPS Latitude/Longitude	
				Start	End
Item	Trim / Thin Trees			38.488503 °	38.488503 °
				-121.554757 °	-121.554757 °
DWR ID	DWR_RD0765_01_s _ 2012_37				
Comment Code					
T3 : Trim and thin trees to allow visibility of the ground and room to flood fight.					
Inspector Comment					

No Photos

LM Start	1.09	Rating **	M	Issue No.	38
LM End	1.15	Issue Type +	Ma	Location *	LS
Category	Earthen Levee			GPS Latitude/Longitude	
				Start	End
Item	Trim / Thin Trees			38.488279 °	38.487465 °
				-121.554615 °	-121.554117 °
DWR ID	DWR_RD0765_01_s _ 2012_38				
Comment Code					
T1 : Trim trees to at least five feet above ground level.					
Inspector Comment					

No Photos

LM Start	1.15	Rating **	A/W	Issue No.	9
LM End	1.15	Issue Type +	Ma	Location *	WS
Category	Earthen Levee			GPS Latitude/Longitude	
				Start	End
Item	Trim / Thin Trees			38.487473 °	38.487473 °
				-121.554080 °	-121.554080 °
DWR ID	DWR_RD0765_01_s _ 2012_9				
Comment Code					
T1 : Trim trees to at least five feet above ground level.					
Inspector Comment					

No Photos

* Location		** Rating		+ Issue Type	
LS : Land Side	N/A : Not Applicable	A : Acceptable	N : Not Inspected/Rated	Ma : Maintenance Deficiency	
WS : Water Side		M : Minimally Acceptable	C : Corrected	Ob : Design & System Obsolescence	
CR : Crown		U : Unacceptable	A/W : Acceptable but Monitor & Maintain	En : Enforcement	

**Flood Control Project Maintenance  
Levee Inspections**

## Maintenance Issue Types Only, Levee Inspection Report By Mile - Spring 2016

### Reclamation District No. 0765 Glide

Waterway	Bank	Unit Miles	Inspection Start/End	Inspector
Unit No. 01 Sacramento River	Right	1.72	03/08/2016 03/08/2016	Richard Willoughby

LM Start	1.28	Rating **	U	Issue No.	33
LM End	1.32	Issue Type +	Ma	Location *	LS
Category	Earthen Levee			GPS Latitude/Longitude	
				Start	End
Item	Vegetation			38.485699 °	38.485161 °
				-121.553107 °	-121.552806 °
DWR ID	DWR_RD0765_01_f_2015_33				
Comment Code					
V2 : Remove the wild growth other than native grasses from the levee slopes.					
Inspector Comment					

Photo 1 of 2 : SP\_2016\_RD0765\_211\_33\_20160311\_00073.jpg



Looking west at dense vegetation on landward toe.

LM Start	<b>1.28</b>	Rating **	U	Issue No.	<b>33 (cont)</b>
LM End	<b>1.32</b>	Issue Type +	Ma	Location *	LS

Photo 2 of 2 : SP\_2016\_RD0765\_211\_33\_20160311\_00074.jpg



LM Start	1.29	Rating **	M	Issue No.	26	
LM End	1.29	Issue Type +	Ma	Location *	LS	
Category	Earthen Levee			GPS Latitude/Longitude		
				Start		End
Item	Trim / Thin Trees			38.485561 °	38.485561 °	
				-121.553031 °	-121.553031 °	
DWR ID	DWR_RD0765_01_s_2012_26					
Comment Code						
T1 : Trim trees to at least five feet above ground level.						
Inspector Comment						

No Photos

<b>* Location</b> LS : Land Side    N/A : Not Applicable WS : Water Side CR : Crown		<b>** Rating</b> A : Acceptable M : Minimally Acceptable U : Unacceptable		N : Not Inspected/Rated C : Corrected A/W : Acceptable but Monitor & Maintain		<b>+ Issue Type</b> Ma : Maintenance Deficiency Ob : Design & System Obsolescence En : Enforcement	
----------------------------------------------------------------------------------------------	--	------------------------------------------------------------------------------------	--	-------------------------------------------------------------------------------------	--	-------------------------------------------------------------------------------------------------------------	--

**Flood Control Project Maintenance  
Levee Inspections**

## Maintenance Issue Types Only, Levee Inspection Report By Mile - Spring 2016

### Reclamation District No. 0765 Glide

Waterway	Bank	Unit Miles	Inspection Start/End	Inspector
Unit No. 01 Sacramento River	Right	1.72	03/08/2016 03/08/2016	Richard Willoughby

LM Start	1.32	Rating **	U	Issue No.	7
LM End	1.34	Issue Type +	Ma	Location *	WS
Category	Earthen Levee			GPS Latitude/Longitude	
				Start	End
Item	Encroachments			38.485287 °	38.485014 °
				-121.552818 °	-121.552618 °
DWR ID	DWR_RD0765_01_s_2015_7				
Comment Code					
TR : Tree or limb					
Inspector Comment					
Downed tree branches across waterward slope.					

LM Start	<b>1.32</b>	Rating **	U	Issue No.	<b>7 (cont)</b>
LM End	<b>1.34</b>	Issue Type +	Ma	Location *	WS

Photo 1 of 4 : SP\_2016\_RD0765\_211\_7\_20160311\_00075.jpg



Looking northeast at tree limbs on waterward slope.

Photo 2 of 4 : SP\_2016\_RD0765\_211\_7\_20160311\_00076.jpg



Looking southeast at branch on waterward slope.

LM Start	<b>1.32</b>	Rating **	U	Issue No.	<b>7 (cont)</b>
LM End	<b>1.34</b>	Issue Type +	Ma	Location *	WS

Photo 3 of 4 : SP\_2016\_RD0765\_211\_7\_20160224\_00005.jpg



Looking at several tree branches on waterward slope and berm.(2015)

* Location LS : Land Side    N/A : Not Applicable WS : Water Side CR : Crown		** Rating A : Acceptable M : Minimally Acceptable U : Unacceptable		N : Not Inspected/Rated C : Corrected A/W : Acceptable but Monitor & Maintain		+ Issue Type Ma : Maintenance Deficiency Ob : Design & System Obsolescence En : Enforcement	
---------------------------------------------------------------------------------------	--	-----------------------------------------------------------------------------	--	-------------------------------------------------------------------------------------	--	------------------------------------------------------------------------------------------------------	--



**Flood Control Project Maintenance  
Levee Inspections**

## Maintenance Issue Types Only, Levee Inspection Report By Mile - Spring 2016

### Reclamation District No. 0765 Glide

Waterway	Bank	Unit Miles	Inspection Start/End	Inspector
Unit No. 01 Sacramento River	Right	1.72	03/08/2016 03/08/2016	Richard Willoughby

LM Start	1.32	Rating **	U	Issue No.	7 (cont)	
LM End	1.34	Issue Type +	Ma	Location *	WS	
Category	Earthen Levee			GPS Latitude/Longitude		
				Start		End
Item	Encroachments			38.485287 °		38.485014 °
				-121.552818 °		-121.552618 °
DWR ID	DWR_RD0765_01_s _ 2015_7					
Comment Code						
TR : Tree or limb						
Inspector Comment						
Downed tree branches across waterward slope.						

Photo 4 of 4 : SP\_2016\_RD0765\_211\_7\_20160224\_00006.jpg



Looking north at down tree across waterward slope.(2015)

LM Start	1.39	Rating **	A/W	Issue No.	4
LM End	1.39	Issue Type +	Ma	Location *	WS
Category	Earthen Levee			GPS Latitude/Longitude	
				Start	End
Item	Trim / Thin Trees			38.484316 °	38.484316 °
				-121.552115 °	-121.552115 °
DWR ID	DWR_RD0765_01_s _ 2012_4				
Comment Code					
T1 : Trim trees to at least five feet above ground level.					
Inspector Comment					

Photo 1 of 1 : SP\_2016\_RD0765\_211\_4\_20160224\_00002.jpg



Looking north at untrimmed trees on waterward slope.

LM Start	1.42	Rating **	A/W	Issue No.	5
LM End	1.45	Issue Type +	Ma	Location *	WS
Category	Earthen Levee			GPS Latitude/Longitude	
				Start	End
Item	Trim / Thin Trees			38.483925 °	38.483530 °
				-121.551845 °	-121.551587 °
DWR ID	DWR_RD0765_01_s _ 2012_5				
Comment Code					
T2 : Thin trees to allow visibility of the ground and room to flood fight.					
Inspector Comment					

No Photos

* Location		** Rating		+ Issue Type	
LS : Land Side	N/A : Not Applicable	A : Acceptable	N : Not Inspected/Rated	Ma : Maintenance Deficiency	
WS : Water Side		M : Minimally Acceptable	C : Corrected	Ob : Design & System Obsolescence	
CR : Crown		U : Unacceptable	A/W : Acceptable but Monitor & Maintain	En : Enforcement	

**Flood Control Project Maintenance  
Levee Inspections**

## Maintenance Issue Types Only, Levee Inspection Report By Mile - Spring 2016

### Reclamation District No. 0765 Glide

Waterway	Bank	Unit Miles	Inspection Start/End	Inspector
Unit No. 01 Sacramento River	Right	1.72	03/08/2016 03/08/2016	Richard Willoughby

LM Start	1.44	Rating **	M	Issue No.	41
LM End	1.44	Issue Type +	Ma	Location *	LS
Category	Earthen Levee			GPS Latitude/Longitude	
				Start	End
Item	Trim / Thin Trees			38.483640 °	38.483640 °
				-121.551727 °	-121.551727 °
DWR ID	DWR_RD0765_01_s_2012_41				
Comment Code					
T1 : Trim trees to at least five feet above ground level.					
Inspector Comment					

No Photos

LM Start	1.47	Rating **	M	Issue No.	64
LM End	1.47	Issue Type +	Ma	Location *	WS
Category	Earthen Levee			GPS Latitude/Longitude	
				Start	End
Item	Encroachments			38.483333 °	38.483333 °
				-121.551440 °	-121.551440 °
DWR ID	DWR_RD0765_01_s_2016_64				
Comment Code					
TR : Tree or limb					
Inspector Comment					
Remove fallen tree on waterward slope.					

Photo 1 of 1 : SP\_2016\_RD0765\_211\_64\_20160311\_00077.jpg



Looking at fallen tree on waterward slope and toe.

LM Start	1.48	Rating **	A/W	Issue No.	42
LM End	1.50	Issue Type +	Ma	Location *	LS
Category	Earthen Levee			GPS Latitude/Longitude	
				Start	End
Item	Trim / Thin Trees			38.483170 °	38.482965 °
				-121.551367 °	-121.551265 °
DWR ID	DWR_RD0765_01_s_2012_42				
Comment Code					
T1 : Trim trees to at least five feet above ground level.					
Inspector Comment					

No Photos

* Location		** Rating		+ Issue Type	
LS : Land Side	N/A : Not Applicable	A : Acceptable	N : Not Inspected/Rated	Ma : Maintenance Deficiency	
WS : Water Side		M : Minimally Acceptable	C : Corrected	Ob : Design & System Obsolescence	
CR : Crown		U : Unacceptable	A/W : Acceptable but Monitor & Maintain	En : Enforcement	

**Flood Control Project Maintenance  
Levee Inspections**

## Maintenance Issue Types Only, Levee Inspection Report By Mile - Spring 2016

### Reclamation District No. 0765 Glide

Waterway	Bank	Unit Miles	Inspection Start/End	Inspector
Unit No. 01 Sacramento River	Right	1.72	03/08/2016 03/08/2016	Richard Willoughby

LM Start	1.51	Rating **	M	Issue No.	50
LM End	1.51	Issue Type +	Ma	Location *	WS
Category	Earthen Levee			GPS Latitude/Longitude	
				Start	End
Item	Trim / Thin Trees			38.482870 °	38.482870 °
				-121.551127 °	-121.551127 °
DWR ID	DWR_RD0765_01_s_2016_50				
Comment Code					
T1 : Trim trees to at least five feet above ground level.					
Inspector Comment					

Photo 1 of 1 : SP\_2016\_RD0765\_211\_50\_20160311\_00079.jpg



Looking east at untrimmed tree on waterward slope.

LM Start	1.52	Rating **	U	Issue No.	29
LM End	1.62	Issue Type +	Ma	Location *	LS
Category	Earthen Levee			GPS Latitude/Longitude	
				Start	End
Item	Vegetation			38.482665 °	38.481421 °
				-121.551036 °	-121.550207 °
DWR ID	DWR_RD0765_01_s_2012_29				
Comment Code					
V2 : Remove the wild growth other than native grasses from the levee slopes.					
Inspector Comment					
Dense berryvines and dense trees on landward slope. The LMA removed a sizeable amount of vines, but some still remain.					

Photo 1 of 2 : SP\_2016\_RD0765\_211\_29\_20160311\_00080.jpg



Looking northwest at dense vegetation on landward slope and toe.

LM Start	<b>1.52</b>	Rating **	U	Issue No.	<b>29 (cont)</b>
LM End	<b>1.62</b>	Issue Type +	Ma	Location *	LS

Photo 2 of 2 : SP\_2016\_RD0765\_211\_29\_20160311\_00081.jpg



Looking southwest at ground cover on landward slope.

* Location LS : Land Side    N/A : Not Applicable WS : Water Side CR : Crown		** Rating A : Acceptable M : Minimally Acceptable U : Unacceptable		N : Not Inspected/Rated C : Corrected A/W : Acceptable but Monitor & Maintain		+ Issue Type Ma : Maintenance Deficiency Ob : Design & System Obsolescence En : Enforcement	
---------------------------------------------------------------------------------------	--	-----------------------------------------------------------------------------	--	-------------------------------------------------------------------------------------	--	------------------------------------------------------------------------------------------------------	--



**Flood Control Project Maintenance  
Levee Inspections**

## Maintenance Issue Types Only, Levee Inspection Report By Mile - Spring 2016

### Reclamation District No. 0765 Glide

Waterway	Bank	Unit Miles	Inspection Start/End	Inspector
Unit No. 01 Sacramento River	Right	1.72	03/08/2016 03/08/2016	Richard Willoughby

LM Start	1.52	Rating **	A/W	Issue No.	30
LM End	1.52	Issue Type +	Ma	Location *	WS
Category	Earthen Levee			GPS Latitude/Longitude	
				Start	End
Item	Encroachments			38.482647 °	38.482647 °
				-121.550957 °	-121.550957 °
DWR ID	DWR_RD0765_01_s_2015_30				
Comment Code					
PR : Prunings					
Inspector Comment					
Pruning piles on waterward berm.					

No Photos

LM Start	1.55	Rating **	U	Issue No.	57
LM End	1.55	Issue Type +	Ma	Location *	LS
Category	Earthen Levee			GPS Latitude/Longitude	
				Start	End
Item	Erosion / Bank Caving			38.482327 °	38.482327 °
				-121.550848 °	-121.550848 °
DWR ID	DWR_RD0765_01_s_2015_57				
Comment Code					
E2 : Schedule repair of erosion site prior to the next inspection.					
Inspector Comment					
Caving greater than one inch deep and greater that three inches in length on landward shoulder. Caving has grew to 3ft deep, 3ft wide and 10ft long. Erosion starting to undermine toward crown of levee.					

Photo 1 of 7 : SP\_2016\_RD0765\_211\_57\_20160224\_00041.jpg



Looking east at caving on landward shoulder.

LM Start	<b>1.55</b>	Rating **	U	Issue No.	<b>57 (cont)</b>
LM End	<b>1.55</b>	Issue Type +	Ma	Location *	LS

Photo 2 of 7 : SP\_2016\_RD0765\_211\_57\_20160224\_00042.jpg



Looking south at caving on landward shoulder.

* Location LS : Land Side    N/A : Not Applicable WS : Water Side CR : Crown		** Rating A : Acceptable M : Minimally Acceptable U : Unacceptable N : Not Inspected/Rated C : Corrected A/W : Acceptable but Monitor & Maintain		+ Issue Type Ma : Maintenance Deficiency Ob : Design & System Obsolescence En : Enforcement	
---------------------------------------------------------------------------------------	--	--------------------------------------------------------------------------------------------------------------------------------------------------------------------	--	------------------------------------------------------------------------------------------------------	--



**Flood Control Project Maintenance  
Levee Inspections**

## Maintenance Issue Types Only, Levee Inspection Report By Mile - Spring 2016

### Reclamation District No. 0765 Glide

Waterway	Bank	Unit Miles	Inspection Start/End	Inspector
Unit No. 01 Sacramento River	Right	1.72	03/08/2016 03/08/2016	Richard Willoughby

LM Start	1.55	Rating **	U	Issue No.	57 (cont)	
LM End	1.55	Issue Type +	Ma	Location *	LS	
Category	Earthen Levee			GPS Latitude/Longitude		
				Start		End
Item	Erosion / Bank Caving			38.482327 °		38.482327 °
				-121.550848 °		-121.550848 °
DWR ID	DWR_RD0765_01_s_2015_57					
Comment Code						
E2 : Schedule repair of erosion site prior to the next inspection.						
Inspector Comment						
Caving greater than one inch deep and greater that three inches in length on landward shoulder. Caving has grew to 3ft deep, 3ft wide and 10ft long. Erosion starting to undermine toward crown of levee.						

LM Start	1.55	Rating **	U	Issue No.	57 (cont)
LM End	1.55	Issue Type +	Ma	Location *	LS

Photo 3 of 7 : SP\_2016\_RD0765\_211\_57\_20160311\_00083.jpg



Looking east at large hole on landward shoulder and slope.

Photo 4 of 7 : SP\_2016\_RD0765\_211\_57\_20160311\_00082.jpg



Looking southwest at large hole on landward shoulder and slope.

LM Start	1.55	Rating **	U	Issue No.	57 (cont)
LM End	1.55	Issue Type +	Ma	Location *	LS

Photo 5 of 7 : SP\_2016\_RD0765\_211\_57\_20160311\_00084.jpg



Looking depth of hole on landward shoulder and slope.

* Location LS : Land Side    N/A : Not Applicable WS : Water Side CR : Crown		** Rating A : Acceptable M : Minimally Acceptable U : Unacceptable		N : Not Inspected/Rated C : Corrected A/W : Acceptable but Monitor & Maintain		+ Issue Type Ma : Maintenance Deficiency Ob : Design & System Obsolescence En : Enforcement	
---------------------------------------------------------------------------------------	--	-----------------------------------------------------------------------------	--	-------------------------------------------------------------------------------------	--	------------------------------------------------------------------------------------------------------	--

**Flood Control Project Maintenance  
Levee Inspections**

## Maintenance Issue Types Only, Levee Inspection Report By Mile - Spring 2016

### Reclamation District No. 0765 Glide

Waterway	Bank	Unit Miles	Inspection Start/End	Inspector
Unit No. 01 Sacramento River	Right	1.72	03/08/2016 03/08/2016	Richard Willoughby

LM Start	1.55	Rating **	U	Issue No.	57 (cont)	
LM End	1.55	Issue Type +	Ma	Location *	LS	
Category	Earthen Levee			GPS Latitude/Longitude		
				Start		End
Item	Erosion / Bank Caving			38.482327 °		38.482327 °
				-121.550848 °		-121.550848 °
DWR ID	DWR_RD0765_01_s _ 2015_57					
Comment Code						
E2 : Schedule repair of erosion site prior to the next inspection.						
Inspector Comment						
Caving greater than one inch deep and greater that three inches in length on landward shoulder. Caving has grew to 3ft deep, 3ft wide and 10ft long. Erosion starting to undermine toward crown of levee.						

Photo 6 of 7 : SP\_2016\_RD0765\_211\_57\_20160311\_00085.jpg



Looking north at hole on landward shoulder and slope.

LM Start	<b>1.55</b>	Rating **	U	Issue No.	<b>57 (cont)</b>
LM End	<b>1.55</b>	Issue Type +	Ma	Location *	LS

Photo 7 of 7 : SP\_2016\_RD0765\_211\_57\_20160311\_00086.jpg



Looking south at large hole on landward shoulder and slope.

LM Start	1.66	Rating **	M	Issue No.	53
LM End	1.67	Issue Type +	Ma	Location *	WS
Category	Earthen Levee			GPS Latitude/Longitude	
				Start	End
Item	Trim / Thin Trees			38.480892 °	°
				-121.549654 °	°
DWR ID	DWR_RD0765_01_s _ 2013_53				
Comment Code					
T1 : Trim trees to at least five feet above ground level.					
Inspector Comment					
Trees has been trimmed, but should be monitored.					

No Photos

<b>* Location</b> LS : Land Side    N/A : Not Applicable WS : Water Side CR : Crown		<b>** Rating</b> A : Acceptable M : Minimally Acceptable U : Unacceptable N : Not Inspected/Rated C : Corrected A/W : Acceptable but Monitor & Maintain		<b>+ Issue Type</b> Ma : Maintenance Deficiency Ob : Design & System Obsolescence En : Enforcement	
----------------------------------------------------------------------------------------------	--	---------------------------------------------------------------------------------------------------------------------------------------------------------------------------	--	-------------------------------------------------------------------------------------------------------------	--



**Flood Control Project Maintenance  
Levee Inspections**

## Maintenance Issue Types Only, Levee Inspection Report By Mile - Spring 2016

### Reclamation District No. 0765 Glide

Waterway	Bank	Unit Miles	Inspection Start/End	Inspector
Unit No. 01 Sacramento River	Right	1.72	03/08/2016 03/08/2016	Richard Willoughby

LM Start	1.67	Rating **	M	Issue No.	13
LM End	1.68	Issue Type +	Ma	Location *	WS
Category	Earthen Levee			GPS Latitude/Longitude	
				Start	End
Item	Encroachments			38.480763 °	38.480632 °
				-121.549581 °	-121.549543 °
DWR ID	DWR_RD0765_01_s_2012_13				
Comment Code					
PR : Prunings					
Inspector Comment					
Large tree branch on waterward slope.					

LM Start	<b>1.67</b>	Rating **	M	Issue No.	<b>13 (cont)</b>
LM End	<b>1.68</b>	Issue Type +	Ma	Location *	WS

Photo 1 of 4 : SP\_2016\_RD0765\_211\_13\_20160311\_00087.jpg



Looking northwest at tree limb on waterward slope.

Photo 2 of 4 : SP\_2016\_RD0765\_211\_13\_20160224\_00008.jpg



Looking east at large tree limb on waterward slope. (2015)

LM Start	<b>1.67</b>	Rating **	M	Issue No.	<b>13 (cont)</b>
LM End	<b>1.68</b>	Issue Type +	Ma	Location *	WS

Photo 3 of 4 : SP\_2016\_RD0765\_211\_13\_20160224\_00007.jpg



Looking northeast at tree limbs on waterward slope.(2015)

<b>* Location</b> LS : Land Side    N/A : Not Applicable WS : Water Side CR : Crown		<b>** Rating</b> A : Acceptable M : Minimally Acceptable U : Unacceptable N : Not Inspected/Rated C : Corrected A/W : Acceptable but Monitor & Maintain		<b>+ Issue Type</b> Ma : Maintenance Deficiency Ob : Design & System Obsolescence En : Enforcement
----------------------------------------------------------------------------------------------	--	---------------------------------------------------------------------------------------------------------------------------------------------------------------------------	--	-------------------------------------------------------------------------------------------------------------

**Flood Control Project Maintenance  
Levee Inspections**

## Maintenance Issue Types Only, Levee Inspection Report By Mile - Spring 2016

### Reclamation District No. 0765 Glide

Waterway	Bank	Unit Miles	Inspection Start/End	Inspector
Unit No. 01 Sacramento River	Right	1.72	03/08/2016 03/08/2016	Richard Willoughby

LM Start	1.67	Rating **	M	Issue No.	13 (cont)	
LM End	1.68	Issue Type +	Ma	Location *	WS	
Category	Earthen Levee			GPS Latitude/Longitude		
				Start		End
Item	Encroachments			38.480763 °	38.480632 °	
				-121.549581 °	-121.549543 °	
DWR ID	DWR_RD0765_01_s _ 2012_13					
Comment Code						
PR : Prunings						
Inspector Comment						
Large tree branch on waterward slope.						

Photo 4 of 4 : SP\_2016\_RD0765\_211\_13\_20160224\_00009.jpg



Looking north at large tree limb on waterward slope.(2015)

LM Start	1.69	Rating **	A/W	Issue No.	52
LM End	1.72	Issue Type +	Ma	Location *	WS
Category	Earthen Levee			GPS Latitude/Longitude	
				Start	End
Item	Trim / Thin Trees			38.480519 °	38.480164 °
				-121.549513 °	-121.549445 °
DWR ID	DWR_RD0765_01_s _ 2013_52				
Comment Code					
T1 : Trim trees to at least five feet above ground level.					
Inspector Comment					

No Photos

LM Start	1.71	Rating **	A/W	Issue No.	20
LM End	1.71	Issue Type +	Ma	Location *	WS
Category	Earthen Levee			GPS Latitude/Longitude	
				Start	End
Item	Encroachments			38.480236 °	38.480236 °
				-121.549442 °	-121.549442 °
DWR ID	DWR_RD0765_01_f _ 2015_20				
Comment Code					
TR : Tree or limb					
Inspector Comment					

No Photos

<b>* Location</b> LS : Land Side    N/A : Not Applicable WS : Water Side CR : Crown		<b>** Rating</b> A : Acceptable M : Minimally Acceptable U : Unacceptable N : Not Inspected/Rated C : Corrected A/W : Acceptable but Monitor & Maintain		<b>+ Issue Type</b> Ma : Maintenance Deficiency Ob : Design & System Obsolescence En : Enforcement	
----------------------------------------------------------------------------------------------	--	---------------------------------------------------------------------------------------------------------------------------------------------------------------------------	--	-------------------------------------------------------------------------------------------------------------	--